



DEPARTMENT OF REGULATORY AND ECONOMIC RESOURCES (RER)
BOARD AND CODE ADMINISTRATION DIVISION

NOTICE OF ACCEPTANCE (NOA)

MIAMI-DADE COUNTY
PRODUCT CONTROL SECTION

11805 SW 26 Street, Room 208
Miami, FL 33175
T (786) 315-2590 F (786) 315-2599

www.miamidade.gov/economy

RC Home Showcase, Inc.
16115 NW 52nd Avenue
Miami, FL 33014

SCOPE:

This NOA is being issued under the applicable rules and regulations governing the use of construction materials. The documentation submitted has been reviewed and accepted by Miami-Dade County RER - Product Control Section to be used in Miami Dade County and other areas where allowed by the Authority Having Jurisdiction (AHJ).

This NOA shall not be valid after the expiration date stated below. The Miami-Dade County Product Control Section (In Miami Dade County) and/or the AHJ (in areas other than Miami Dade County) reserve the right to have this product or material tested for quality assurance purposes. If this product or material fails to perform in the accepted manner, the manufacturer will incur the expense of such testing and the AHJ may immediately revoke, modify, or suspend the use of such product or material within their jurisdiction. RER reserves the right to revoke this acceptance, if it is determined by Miami-Dade County Product Control Section that this product or material fails to meet the requirements of the applicable building code.

This product is approved as described herein, and has been designed to comply with the Florida Building Code, including the High Velocity Hurricane Zone.

DESCRIPTION: Series "CM075" Outswing Aluminum Casement Window - L.M.I.

APPROVAL DOCUMENT: Drawing No. **W10-44**, titled "Series CM075 Aluminum Casement Wdw. (L.M.I.)", sheets 1 through 6 of 6, dated 07/06/10, with revision **E** dated 11/30/20, prepared by Al-Farooq Corporation, signed and sealed by Jalal Farooq, P.E., bearing the Miami-Dade County Product Control Revision stamp with the Notice of Acceptance number and expiration date by the Miami-Dade County Product Control Section.

MISSILE IMPACT RATING: Large and Small Missile Impact Resistant

LABELING: Each unit shall bear a permanent label with the manufacturer's name or logo, city, state, model/series, and following statement: "Miami-Dade County Product Control Approved", unless otherwise noted herein.

RENEWAL of this NOA shall be considered after a renewal application has been filed and there has been no change in the applicable building code negatively affecting the performance of this product.

TERMINATION of this NOA will occur after the expiration date or if there has been a revision or change in the materials, use, and/or manufacture of the product or process. Misuse of this NOA as an endorsement of any product, for sales, advertising or any other purposes shall automatically terminate this NOA. Failure to comply with any section of this NOA shall be cause for termination and removal of NOA.

ADVERTISEMENT: The NOA number preceded by the words Miami-Dade County, Florida, and followed by the expiration date may be displayed in advertising literature. If any portion of the NOA is displayed, then it shall be done in its entirety.

INSPECTION: A copy of this entire NOA shall be provided to the user by the manufacturer or its distributors and shall be available for inspection at the job site at the request of the Building Official.

This NOA **revises and renews NOA# 18-0418.04** and consists of this page 1 and evidence pages E-1 and E-2, as well as approval document mentioned above.

The submitted documentation was reviewed by **Sifang Zhao, P.E.**



S.2.
04/29/2021

NOA No. 20-1216.10
Expiration Date: December 23, 2025
Approval Date: April 29, 2021
Page 1

NOTICE OF ACCEPTANCE: EVIDENCE SUBMITTED

1. EVIDENCE SUBMITTED UNDER PREVIOUS NOA's

A. DRAWINGS

1. Manufacturer's die drawings and sections.
(Submitted under NOA No. 10-0811.13)
2. Drawing No. **W10-44**, titled "Series CM075 Aluminum Casement Wdw. (L.M.I.)", sheets 1 through 6 of 6, dated 07/06/10, with revision **D** dated 02/28/18, prepared by Al-Farooq Corporation, signed and sealed by Javad Ahmad, P.E.

B. TESTS

1. Test reports on: 1) Air Infiltration Test, per FBC, TAS 202-94
2) Uniform Static Air Pressure Test, Loading per FBC, TAS 202-94
3) Water Resistance Test, per FBC, TAS 202-94
4) Large Missile Impact Test per FBC, TAS 201-94
5) Cyclic Wind Pressure Loading per FBC, TAS 203-94
6) Forced Entry Test, per FBC 2411.3.2.1, and TAS 202-94
along with marked-up drawings and installation diagram of a casement, projected and fixed window, prepared by Fenestration Testing Laboratory, Inc., Test Report No. **FTL-6605**, dated 04/18/12, signed and sealed by Marlin D. Brinson, P.E.
(Submitted under NOA No. 12-1003.03)
2. Test reports on: 1) Air Infiltration Test, per FBC, TAS 202-94
2) Uniform Static Air Pressure Test, Loading per FBC, TAS 202-94
3) Water Resistance Test, per FBC, TAS 202-94
4) Large Missile Impact Test per FBC, TAS 201-94
5) Cyclic Wind Pressure Loading per FBC, TAS 203-94
along with marked-up drawings and installation diagram of a casement window, prepared by Fenestration Testing Laboratory, Inc., Test Report No. **FTL-6190**, dated 05/11/10, signed and sealed by Jorge A. Causo, P.E.
(Submitted under NOA No. 10-0811.13)


C. CALCULATIONS

1. Anchor verification calculations, structural and comparative analysis, complying with **FBC 5th Edition (2014)**, dated 11/25/13 and revised on 09/15/15, prepared by Al-Farooq Corporation, signed and sealed by Javad Ahmad, P.E.
2. Glazing complies with **ASTM E1300-09**

D. QUALITY ASSURANCE

1. Miami-Dade Department of Regulatory and Economic Resources (RER)

E. MATERIAL CERTIFICATIONS

1. Notice of Acceptance No. **14-0916.10** issued to **Kuraray America, Inc.** for their "**Butacite® PVB Glass Interlayer**" dated 04/25/15, expiring on 12/11/16. 

Sifang Zhao, P.E.
Product Control Examiner
NOA No. 20-1216.10
Expiration Date: December 23, 2025
Approval Date: April 29, 2021

NOTICE OF ACCEPTANCE: EVIDENCE SUBMITTED

F. STATEMENTS

1. Statement letter of conformance, complying with **FBC 6th Edition (2017)**, and of no financial interest, dated February 22, 2018, issued by Al-Farooq Corporation, signed and sealed by Javad Ahmad, P.E. *(Submitted under NOA No. 18-0418.04)*
2. Proposal issued by Product Control, dated 09/30/11, with the latest revision, dated 12/19/11, signed by Jaime D. Gascon, P.E. *(Submitted under NOA No. 14-0128.09)*

G. OTHERS

1. Notice of Acceptance No. **15-0416.01**, issued to R.C. Home Showcase, Inc. for their Series “CM075” Outswing Aluminum Casement Window – L.M.I., approved on 01/21/16 and expiring on 12/23/20.

2. NEW EVIDENCE SUBMITTED

A. DRAWINGS

1. Drawing No. **W10-44**, titled “Series CM075 Aluminum Casement Wdw. (L.M.I.)”, sheets 1 through 6 of 6, dated 07/06/10, with revision **E** dated 11/30/20, prepared by Al-Farooq Corporation, signed and sealed by Jalal Farooq, P.E.

B. TESTS

1. None

C. CALCULATIONS

1. Anchor verification, complying with **FBC 7th Edition (2020)**, dated 12/18/20, prepared by Al-Farooq Corporation, signed and sealed by Jalal Farooq, P.E.

D. QUALITY ASSURANCE

1. Miami-Dade Department of Regulatory and Economic Resources (RER)

E. MATERIAL CERTIFICATIONS

1. NOA No. **20-0915.22** issued to Kuraray America, Inc. for their “Trosifol® Ultraclear, Clear and Color PVB Glass Interlayers” dated 11/19/20, expiring on 07/08/24.

F. STATEMENTS

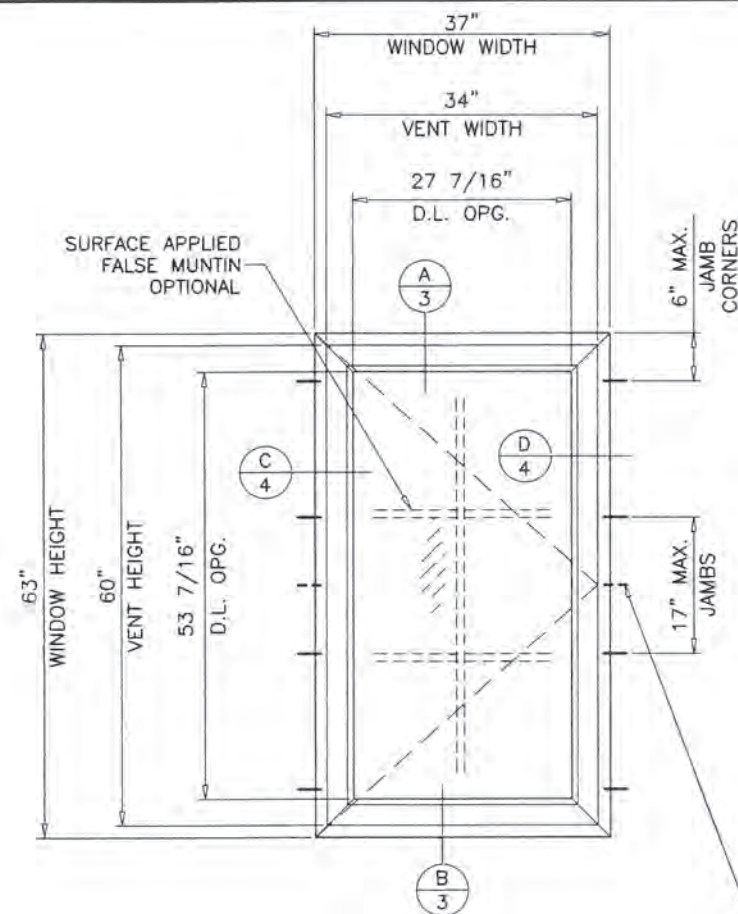
1. Statement letter of conformance, complying with **FBC 6th Edition (2017)** and **FBC 7th Edition (2020)**, and of no financial interest, dated December 18, 2020, issued by Al-Farooq Corporation, signed and sealed by Jalal Farooq, P.E.

G. OTHERS

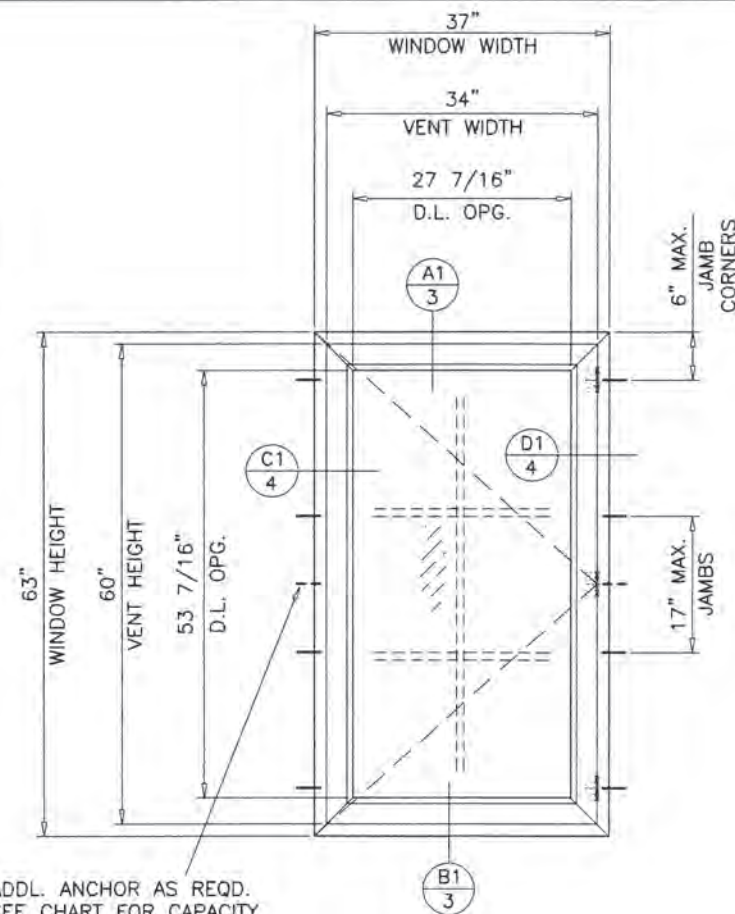
1. Notice of Acceptance No. **18-0418.04**, issued to R.C. Home Showcase, Inc. for their Series “CM075” Outswing Aluminum Casement Window – L.M.I., approved on 05/14/2018 and expiring on 12/23/2020.



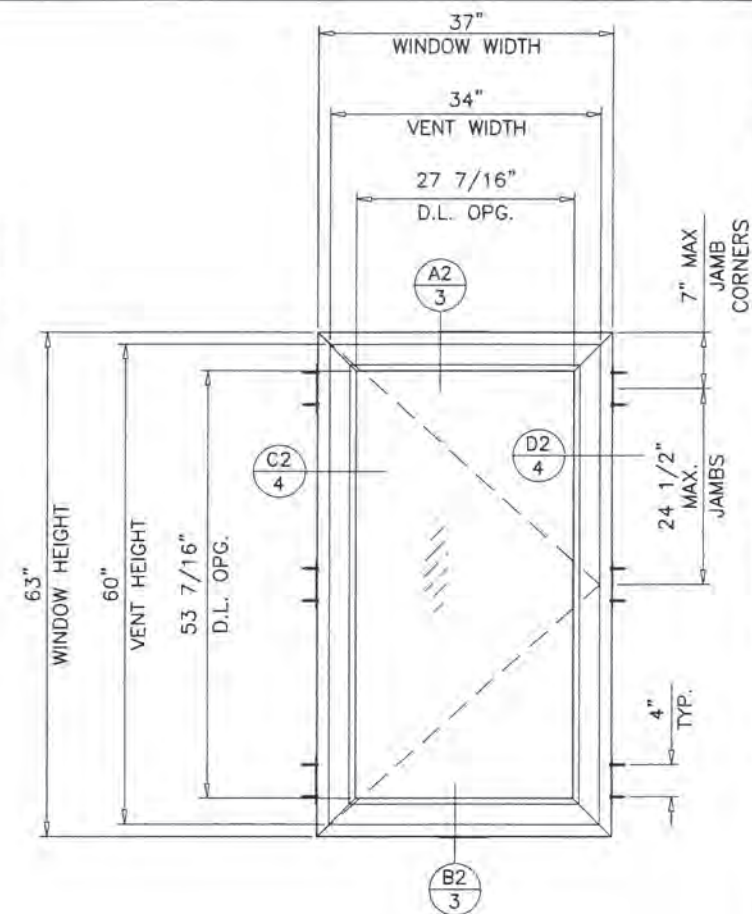
Sifang Zhao, P.E.
Product Control Examiner
NOA No. 21-1216.10
Expiration Date: December 23, 2025
Approval Date: April 29, 2021



TYPICAL ELEVATION 'A'
CONCEALED SCISSOR HINGES
 ANCHORS DIRECTLY THRU FRAME



TYPICAL ELEVATION 'B'
BUTT HINGES
 ANCHORS DIRECTLY THRU FRAME



TYPICAL ELEVATION 'C'
CONCEALED SCISSOR HINGES
BUTT HINGES
 ANCHORS THRU FRAME ADAPTERS

ADDL. ANCHOR AS REQD.
 SEE CHART FOR CAPACITY

SERIES CM075 ALUMINUM CASEMENT WINDOW

DESIGN LOAD RATING FOR THESE WINDOWS TO BE AS PER
 CHARTS SHOWN ON SHEET 2.

APPROVAL APPLIES TO SINGLE UNITS OR SIDE BY SIDE
 COMBINATIONS OF CASEMENT/CASEMENT OR CASEMENT WITH OTHER
 MIAMI-DADE COUNTY APPR'D WINDOWS USING MIAMI-DADE COUNTY
 APPROVED MULLIONS IN BETWEEN.
 LOWER DESIGN PRESSURE FROM WINDOWS OR MULLION APPROVAL
 WILL APPLY TO ENTIRE SYSTEM.

THIS PRODUCT HAS BEEN DESIGNED AND TESTED TO COMPLY WITH THE
 REQUIREMENTS OF THE 2017 (6TH EDITION)/2020 (7TH EDITION) FLORIDA
 BUILDING CODE INCLUDING HIGH VELOCITY HURRICANE ZONE (HVHZ).

1BY OR 2BY WOOD BUCKS & BUCK FASTENERS BY OTHERS, MUST BE
 DESIGNED AND INSTALLED ADEQUATELY TO TRANSFER APPLIED PRODUCT LOADS
 TO THE BUILDING STRUCTURE.

ANCHORS SHALL BE CORROSION RESISTANT, SPACED AS SHOWN ON DETAILS
 AND INSTALLED PER MANUF'S INSTRUCTIONS. SPECIFIED EMBEDMENT TO BASE
 MATERIAL SHALL BE BEYOND WALL DRESSING OR STUCCO.


A LOAD DURATION INCREASE IS USED IN DESIGN OF ANCHORS INTO WOOD ONLY.
 ALL SHIMS TO BE HIGH IMPACT, NON-METALLIC AND NON-COMPRESSIBLE.

MATERIALS INCLUDING BUT NOT LIMITED TO STEEL/METAL SCREWS, THAT
 COME INTO CONTACT WITH OTHER DISSIMILAR MATERIALS SHALL MEET THE
 REQUIREMENTS OF THE 2017/2020 FLORIDA BLDG. CODE & ADOPTED STANDARDS.

THIS PRODUCT APPROVAL IS GENERIC AND DOES NOT PROVIDE INFORMATION
 FOR A SITE SPECIFIC PROJECT, i.e. LIFE SAFETY OF THIS PRODUCT, ADEQUACY
 OF STRUCTURE RECEIVING THIS PRODUCT AND SEALING AROUND OPENING FOR
 WATER INFILTRATION RESISTANCE ETC.
 CONDITIONS NOT SHOWN IN THIS DRAWING ARE TO BE ANALYZED SEPARATELY,
 AND TO BE REVIEWED BY BUILDING OFFICIAL.

DESIGN LOADS SHOWN ARE BASED ON 'ALLOWABLE STRESS DESIGN (ASD)'.

THESE WINDOWS ARE RATED FOR LARGE & SMALL MISSILE IMPACT.
 SHUTTERS ARE NOT REQUIRED.

PRODUCT REVISED
 as complying with the Florida
 Building Code
 NOA-No. 20-1216.10
 Expiration Date 12/23/2025
 By 
 Miami-Dade Product Control



SERIES CM075 ALUMINUM CASEMENT WDW. (L.M.I.)

RC Home Showcase, Inc.
 16115 NW 52nd Ave.
 Miami, FL 33014
 TEL. (305) 392-6214 FAX. (305) 260-6432

AL-FAROOQ CORPORATION
 ENGINEERS & PRODUCT DEVELOPMENT
 9360 SUNSET DRIVE, SUITE 220
 MIAMI, FLORIDA 33173 (C.A.N. 3538)
 TEL. (305) 264-8100 FAX. (305) 262-6978

COMP-ANL\W10-44RC

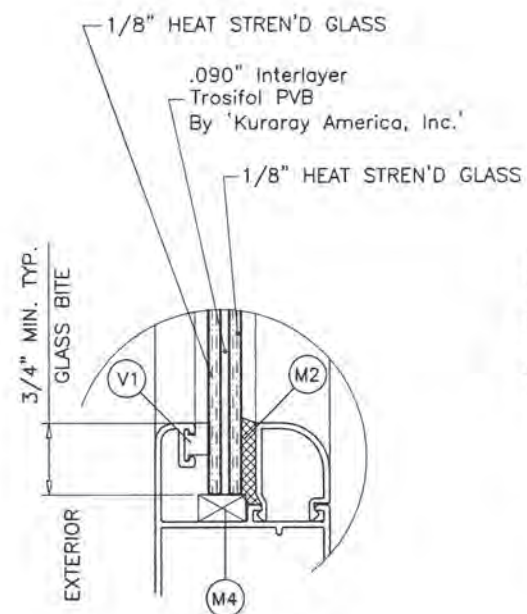
no	date	by	description
A	11.05.10		REV. PER BCCO COMMENTS
B	11.26.13		GENERAL REVISION
C	09.17.15		UPDATED TO 2014 FBC
D	02.28.18		UPDATED TO 2017 FBC
E	11.30.20		UPDATED TO 2020 FBC

date: 07-06-10
 scale: 1/2"=1'-0"
 dr. by: TARIO
 chk. by:

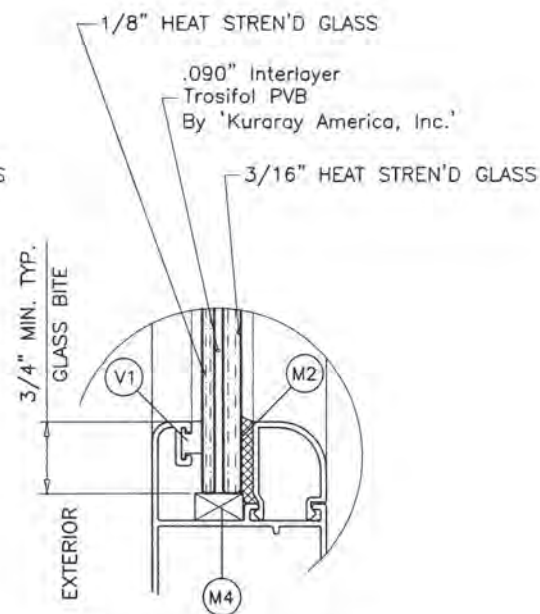
drawing no.
W10-44
 sheet 1 of 6

DESIGN LOAD CAPACITY - PSF ELEVATIONS 'A' & 'B'					
WINDOW DIMS.		GLASS TYPES 'A' & 'B'			
WIDTH	HEIGHT	EXT.(+)	INT.(-)		
19-1/8"	38-3/8"	85.0	85.0		
26-1/2"		85.0	85.0		
30"		85.0	85.0		
37"		85.0	85.0		
42"		80.4	80.4	85.0	85.0 *
48"		70.4	70.4	85.0	85.0 *
53-1/8"		63.6	63.6	85.0	85.0 *
19-1/8"	48"	85.0	85.0		
26-1/2"		85.0	85.0		
30"		85.0	85.0		
37"		85.0	85.0		
42"		85.0	85.0		
48"		75.0	75.0	85.0	85.0 *
19-1/8"	50-5/8"	85.0	85.0		
26-1/2"		85.0	85.0		
30"		85.0	85.0		
37"		85.0	85.0		
42"		81.3	81.3	85.0	85.0 *
19-1/8"	60"	85.0	85.0		
26-1/2"		85.0	85.0		
30"		85.0	85.0		
37"		77.8	77.8	85.0	85.0 *
19-1/8"	63"	85.0	85.0		
26-1/2"		85.0	85.0		
30"		85.0	85.0		
37"		74.1	74.1	85.0	85.0 *
19-1/8"	66"	85.0	85.0		
26-1/2"		85.0	85.0		
30"		85.0	85.0		
19-1/8"	72"	85.0	85.0		
26-1/2"		72.7	72.7		
30"		65.2	65.2		
19-1/8"	74-1/4"	85.0	85.0		
26-1/2"		66.0	66.0		
30"		59.2	59.2		

*
LOADS WITH ADDL. ANCHOR
AT FRAME JAMBS



GLASS TYPE 'A'
5/16" NOM. OVERALL THK.




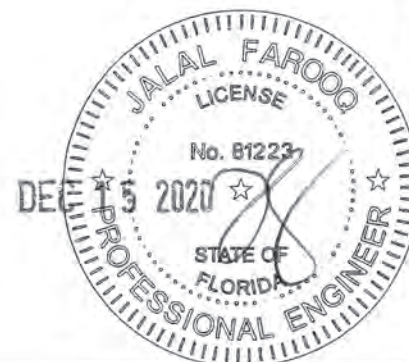
GLASS TYPE 'B'
3/8" NOM. OVERALL THK.

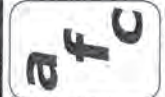
GLAZING OPTIONS

NOTE:
GLASS CAPACITIES ON THIS SHEET ARE
BASED ON ASTM E1300-09 (3 SEC. GUSTS)
AND FLORIDA BUILDING COMMISSION
DECLARATORY STATEMENT DCA05-DEC-219

DESIGN LOAD CAPACITY - PSF ELEVATION 'C'					
WINDOW DIMS.		GLASS TYPES 'A' & 'B'			
		3/8" MAX. SHIM		1/2" MAX. SHIM	
WIDTH	HEIGHT	EXT.(+)	INT.(-)	EXT.(+)	INT.(-)
19-1/8"	38-3/8"	85.0	85.0	85.0	85.0
26-1/2"		85.0	85.0	85.0	85.0
30"		85.0	85.0	85.0	85.0
37"		85.0	85.0	85.0	85.0
42"		85.0	85.0	85.0	85.0
48"		85.0	85.0	85.0	85.0
53-1/8"		85.0	85.0	85.0	85.0
19-1/8"	48"	85.0	85.0	85.0	85.0
26-1/2"		85.0	85.0	85.0	85.0
30"		85.0	85.0	85.0	85.0
37"		85.0	85.0	85.0	85.0
42"		85.0	85.0	85.0	85.0
48"		85.0	85.0	81.2	81.2
19-1/8"	50-5/8"	85.0	85.0	85.0	85.0
26-1/2"		85.0	85.0	85.0	85.0
30"		85.0	85.0	85.0	85.0
37"		85.0	85.0	85.0	85.0
42"		85.0	85.0	85.0	85.0
19-1/8"	60"	85.0	85.0	85.0	85.0
26-1/2"		85.0	85.0	85.0	85.0
30"		85.0	85.0	85.0	85.0
37"		85.0	85.0	84.3	84.3
19-1/8"	63"	85.0	85.0	85.0	85.0
26-1/2"		85.0	85.0	85.0	85.0
30"		85.0	85.0	85.0	85.0
37"		85.0	85.0	85.0	85.0
19-1/8"	66"	85.0	85.0	85.0	85.0
26-1/2"		85.0	85.0	85.0	85.0
30"		85.0	85.0	85.0	85.0
37"		85.0	85.0	85.0	85.0
19-1/8"	72"	85.0	85.0	85.0	85.0
26-1/2"		72.7	72.7	72.7	72.7
30"		65.2	65.2	65.2	65.2
19-1/8"	74-1/4"	85.0	85.0	85.0	85.0
26-1/2"		66.0	66.0	66.0	66.0
30"		59.2	59.2	59.2	59.2

PRODUCT REVISED
as complying with the Florida
Building Code
NOA-No. 20-1216.10
Expiration Date 12/23/2025
By 
Miami-Dade Product Control





AL-FAROOQ CORPORATION
ENGINEERS & PRODUCT DEVELOPMENT
9360 SUNSET DRIVE, SUITE 220
MIAMI, FLORIDA 33173 (C.A.N. 3538)
TEL. (305) 262-8100 FAX. (305) 262-6978
COMP - ANL \ W10 - 44RC

SERIES CM075 ALUMINUM CASEMENT WDW. (L.M.I.)

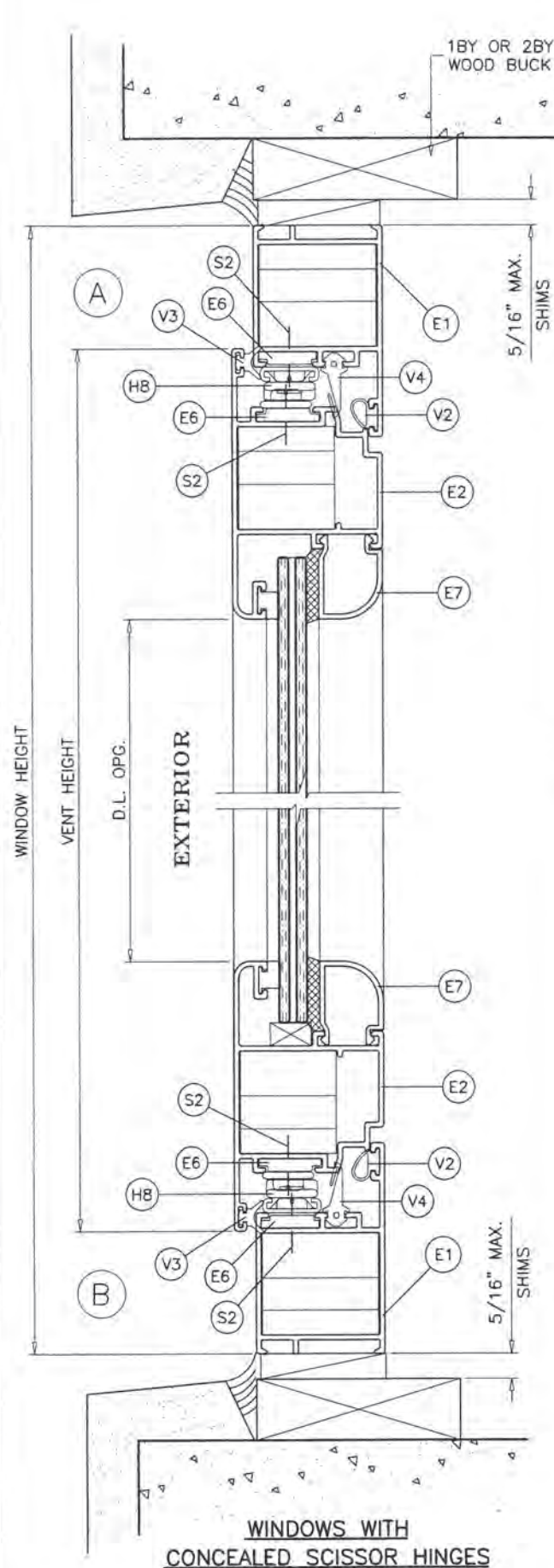
RC Home Showcase, Inc.
16115 NW 52nd Ave.
Miami, FL. 33014
TEL. (305) 392-6214 FAX. (305) 260-6432

revisions:

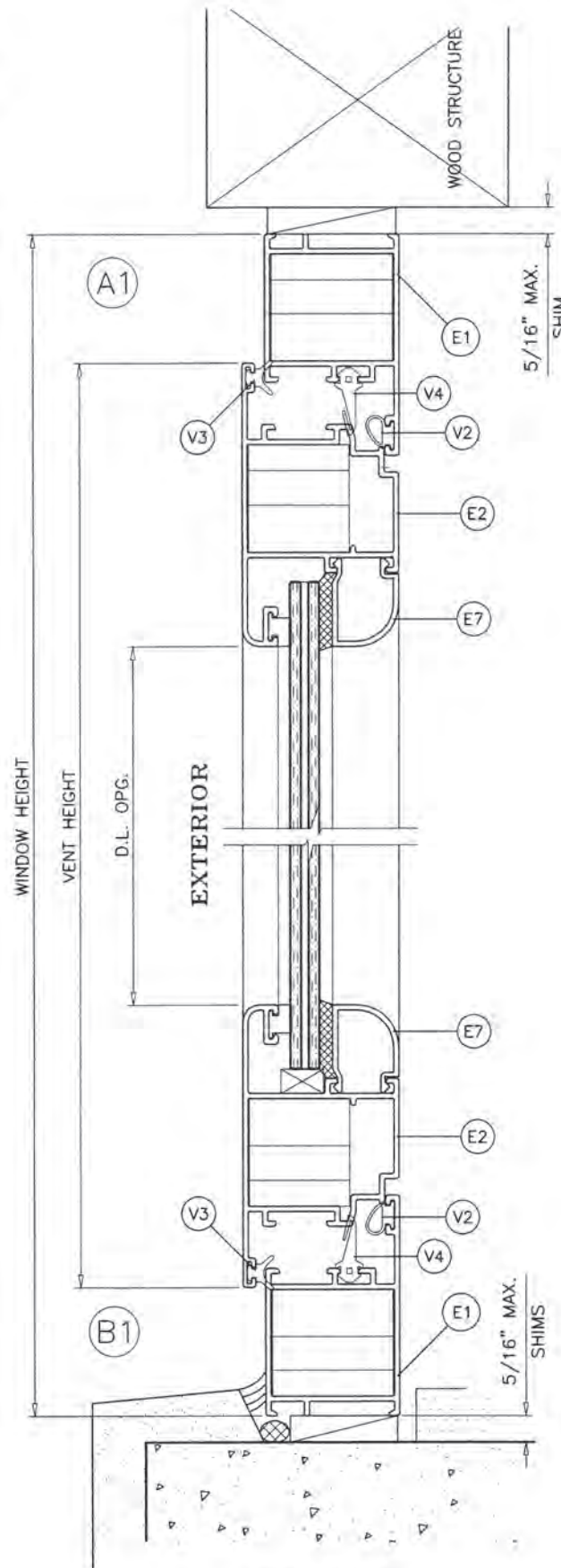
no	date	by	description
B	11.26.13		GENERAL REVISION
C	09.17.15		UPDATED TO 2014 FBC
D	02.28.18		UPDATED TO 2017 FBC
E	11.30.20		UPDATED TO 2020 FBC

date: 07-06-10
scale: 1/2" = 1"
dr. by: TARIQ
chk. by:

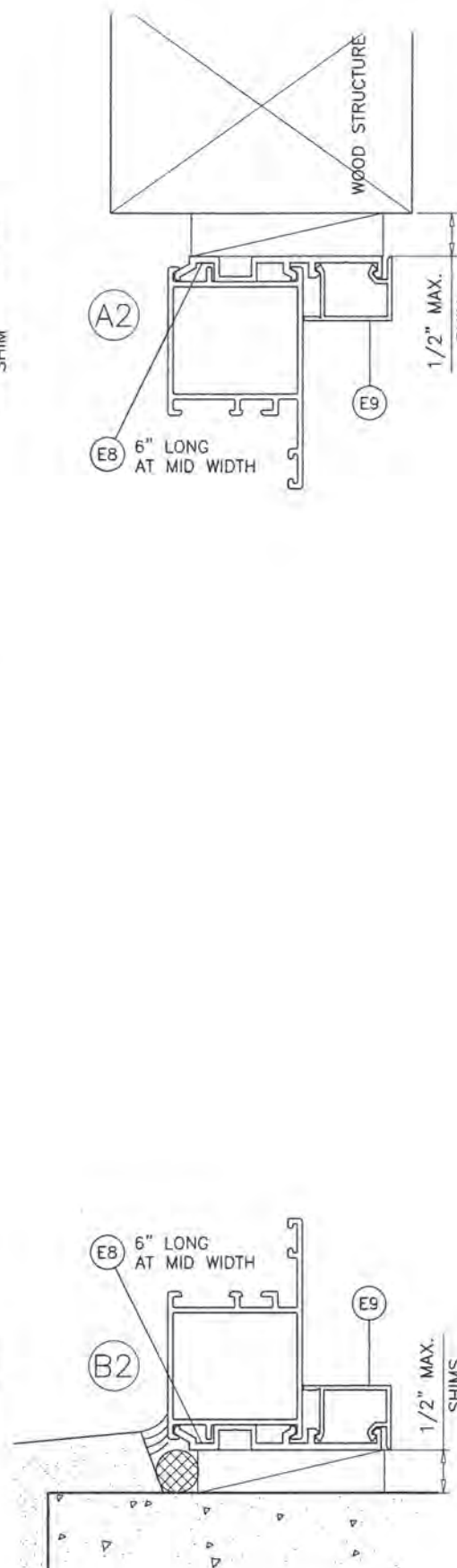
drawing no.
W10-44
sheet 2 of 6



WINDOWS WITH
CONCEALED SCISSOR HINGES



WINDOWS WITH
BUTT HINGES



WOOD BUCKS AND METAL STRUCTURE NOT BY 'RC HOME SHOWCASE'
MUST SUSTAIN LOADS IMPOSED BY GLAZING SYSTEM
AND TRANSFER THEM TO THE BUILDING STRUCTURE.

TYPICAL ANCHORS: SEE ELEV. FOR SPACING

1/4" DIA. ULTRACON+ BY 'DEWALT' (Fu=164 KSI, Fy=148 KSI)

1/4" DIA. KWIK-CON II+ BY 'HILTI' (Fu=138 KSI, Fy=137 KSI)

INTO WOOD STRUCTURES

2" MIN. PENETRATION INTO WOOD

THRU 1BY OR 2BY WOOD BUCKS INTO CONC. OR BLOCKS

1-1/4" MIN. EMBED INTO CONCRETE OR BLOCKS

DIRECTLY INTO CONCRETE OR BLOCKS

2" MIN. EMBED INTO CONCRETE

2" MIN. EMBED INTO GROUT-FILLED BLOCKS

1/4" DIA. TEKS OR SELF-DRILLING SCREWS (GRADE 5 CRS)

INTO MIAMI-DADE COUNTY APPROVED MULLIONS

OR

INTO METAL STRUCTURES

(3) THREADS MIN. TO EXTEND BEYOND METAL THICKNESS

ALUMINUM: 1/8" THK. MIN. (6063-T5 MIN.)

STEEL: 1/8" THK. MIN. (Fy = 36 KSI MIN.)

(STEEL IN CONTACT WITH ALUMINUM TO BE PLATED OR PAINTED)

CRITICAL EDGE DISTANCE

INTO CONCRETE AND BLOCKS = 1-1/2" MIN.

INTO WOOD STRUCTURE = 1" MIN.

INTO METAL STRUCTURE = 3/4" MIN.

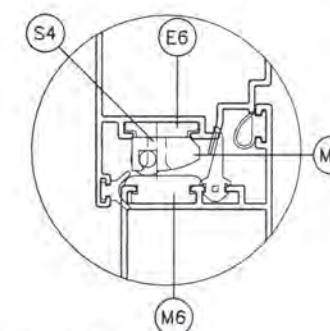
WOOD AT JAMBS SG = 0.55 MIN.

CONCRETE AT JAMBS f'c = 3000 PSI MIN.

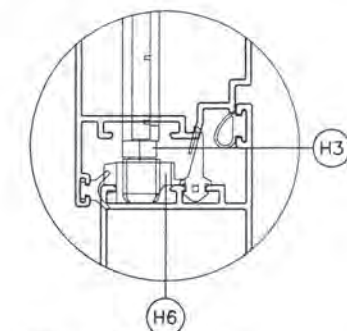
C-90 HOLLOW/FILLED BLOCK AT JAMBS f'm = 2000 PSI MIN.

SEALANTS:

ALL FRAME AND VENT CORNERS SEALED WITH SILICONE.



SASH LIFT DETAIL
AT FRAME SILL OF WINDOWS
WITH SCISSOR HINGES ONLY



LOCK KEEPER DETAIL
AT HEAD & SILL OF WINDOWS
WITH SCISSOR OR BUTT HINGES

PRODUCT REVISED
as complying with the Florida
Building Code
NOA-No. 20-1216.10

Expiration Date 12/23/2025

By 
Miami-Dade Product Control



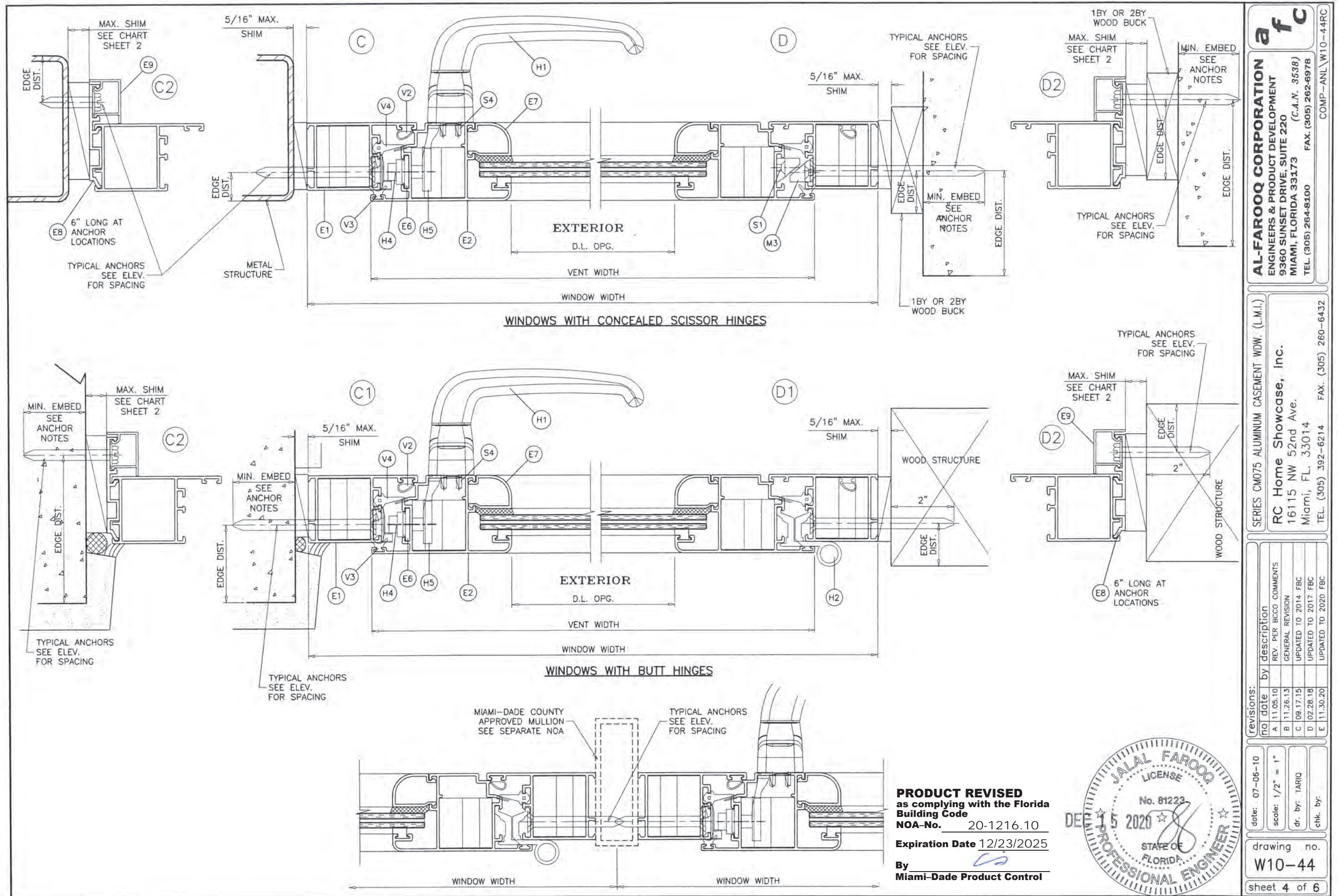
AL-FAROOQ CORPORATION
ENGINEERS & PRODUCT DEVELOPMENT
9360 SUNSET DRIVE, SUITE 220
MIAMI, FLORIDA 33173 (C.A.N. 3538)
TEL. (305) 264-8100 FAX. (305) 262-6978
COMP-ANL\W10-44RC

SERIES CM075 ALUMINUM CASEMENT WDW. (L.M.I.)
RC Home Showcase, Inc.
16115 NW 52nd Ave.
Miami, FL. 33014
TEL. (305) 392-6214 FAX. (305) 260-6432

no.	date	by	description
A	11.05.10	REV. PER BCCO COMMENTS	
B	11.26.13	GENERAL REVISION	
C	09.17.15	UPDATED TO 2014 FBC	
D	02.28.18	UPDATED TO 2017 FBC	
E	11.30.20	UPDATED TO 2020 FBC	

date:	07-06-10
scale:	1/2" = 1"
dr. by:	TARIQ
chk. by:	

drawing no.	W10-44
sheet	3 of 6



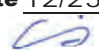
af c
AL-FAROOQ CORPORATION
ENGINEERS & PRODUCT DEVELOPMENT
9360 SUNSET DRIVE, SUITE 220
MIAMI, FLORIDA 33173 (C.A.N. 3538)
TEL. (305) 264-8100 FAX. (305) 262-6978
COMP-ANL W10-44RC

SERIES CM075 ALUMINUM CASEMENT WDW. (L.M.I.)
RC Home Showcase, Inc.
16115 NW 52nd Ave.
Miami, FL 33014
TEL. (305) 392-6214 FAX. (305) 260-6432

revisions:		no	date	by	description
A	11.05.10	REV. PER BCCO COMMENTS			
B	11.26.13	GENERAL REVISION			
C	09.17.15	UPDATED TO 2014 FBC			
D	02.28.18	UPDATED TO 2017 FBC			
E	11.30.20	UPDATED TO 2020 FBC			

date:	07-06-10
scale:	1/2" = 1"
dr. by:	TARIQ
chk. by:	

drawing no.
W10-44
sheet 4 of 6

PRODUCT REVISED
as complying with the Florida
Building Code
NOA-No. 20-1216.10
Expiration Date 12/23/2025
By 
Miami-Dade Product Control

LOCKS:

SURFACE MOUNT METALLIC 8 POINT LOCK SYSTEM
WITH ACTIVATING LEVER TYPE HANDLE AT 30" FROM BOTTOM
FASTENED WITH (4) #10-24 X 3/4" OH MS

SURFACE MOUNT KEEPERS FACING LOCKING POINTS
(6) METALLIC KEEPERS AT FRAME JAMB
FASTENED WITH (1) #10-32 X 3/8" SOCKET SET SCREW
(1) PLASTIC KEEPER AT FRAME HEAD AND SILL
FASTENED WITH (2) #10-32 X 3/8" SOCKET SET SCREW

HINGES:

OPTION #1:

3-5/8" LONG TWO PIECE METALLIC LIFT OFF HINGES
3 PER VENT LOCATED AT 6" FROM EACH END & AT MIDSPAN
FASTENED TO FRAME AND VENT WITH (2) #10-24 X 3/8" OH MS.

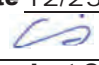
OPTION #2:

SURFACE MOUNT METALLIC FOUR BAR HINGES BY 'ANDERBERG'
FASTENED TO FRAME WITH (4) #8-32 X 3/4" PH MS
FASTENED TO VENT WITH (3) #8-32 X 3/4" PH MS

SNUBBERS: REQD. AT WINDOWS WITH 4 BAR HINGES

(6) SURFACE MOUNT PLASTIC ANTI BLOW OUT CLIPS LOCATED AT
15-1/2" FROM ENDS AND AT MIDSPAN
FASTENED TO FRAME AND VENT WITH (2) #6 X 3/8" PH SMS

ITEM	PART #	QUANTITY	DESCRIPTION	MATERIAL	MANF./SUPPLIER/REMARKS
E1	CM075-001	4	FRAME HEAD/ SILL/ JAMBS 3709 FISA	6063-T6	-
E2	CM075-002	4	VENT HEAD/ SILL/ JAMBS 3707 FISA	6063-T6	-
E3	CM075-007	AS REQD.	FRAME & VENT CORNER LOCK MALE 3550 FISA	6063-T6	-
E4	CM075-004	AS REQD.	FRAME & VENT CORNER LOCK 3551 FISA	6063-T6	-
E5	CM075-005	AS REQD.	FRAME & VENT CORNER LOCK ADAPTOR 1338	6063-T6	-
E6	CM075-006	AS REQD.	LOCK PLATE 3771 FISA	ALUMINUM	-
E7	FX075-003	4	GLAZING BEAD	6063-T6	-
E8	FX075-001	AS REQD.	INSTALLATION FRAME ADAPTER, 6" LONG	6063-T6	-
E9	500Y-010	AS REQD.	SNAP COVER	6063-T6	-
V1	V-101	AS REQD.	SQUARE VINYL TPE MELTPOINT, DUROMETER 70±5	TPE	MELTPOINT
V2	V-108	AS REQD.	TEAR VINYL INSIDE VENT, DUROMETER 65±5	EPDM	TREMCO
V3	V-033	AS REQD.	COMPRESSION "V" GASKET, SPONGE	NEOPRENE	TREMCO
V4	V-104	AS REQD.	FRAME FLAPPY VINYL PART-C040621, DUROMETER 65±5	EPDM	TREMCO
M1	DOWSIL 791	AS REQD.	WHITE SILICONE FOR ASSEMBLY	-	-
M2	DOWSIL 791	AS REQD.	BLACK SILICONE FOR GLAZING	-	-
M3	12206	AS REQD.	SNUBBERS	-	-
M4		2/ LITE	1/4" X 1/2" X 4" LONG T.P.E. SETTING BLOCK	EPDM	DUROMETER 80±5 SHORE A
M5	SR01-7500-51	AS REQD.	1/2" SASH LIFT WHITE	-	-
M6	P-055	2/ WDW.	CAM	PLASTIC	M & M PLASTICS
S1		2/ SNUBBER	#6 X 1/2" LG. FH. SMS.	ST/ST	-
S2		6/ HINGE	#10 X 1/2" LG. PH. THREAD CUTTING POINT "F"	ST/ST	AT 4 BAR HINGES
S3		1/ CAM	#8-32 X 3/4" LG. FH. THREAD CUTTING POINT "F"	ST/ST	-
S4		4/ CROO	#8-32 X 3/4" LG. FH. THREAD CUTTING POINT "F"	ST/ST	-
S5		1/ CORNER	5/16" Ø-18 X 1/2" LG. SET SOCKET HEAD SCREW	ST/ST	-
H1	CR0115-7D	AS REQD.	HANDLE EXTERIOR COLOR WHITE	-	-
H2	B1021512T7	AS REQD.	HINGES RAPID 2T NON-CORROSION RIGHT HAND	-	-
H3	ED0018	AS REQD.	DOUBLE POINT MEETING LOCKING	-	-
H4	KT005	AS REQD.	LOCK POINT NON-CENTER	-	-
H5	KT00311	AS REQD.	KIT ALUMINUM EXTERIOR OPENING	-	-
H6	TR0018	AS REQD.	END PLATE LOCK POINT ADJUSTABLE	-	-
H7	KT0022	AS REQD.	LOCK POINT NON-CENTER 6.5 MM. HEIGHT + SCREW	-	-
H8	35.09.00.100	AS REQD.	12" 4-BAR HINGES	ST/ST	TRUTH HARDWARE

PRODUCT REVISED
as complying with the Florida
Building Code
NOA-No. 20-1216.10
Expiration Date 12/23/2025
By 
Miami-Dade Product Control



af c

AL-FAROOQ CORPORATION
ENGINEERS & PRODUCT DEVELOPMENT
9360 SUNSET DRIVE, SUITE 220
MIAMI, FLORIDA 33173
TEL. (305) 264-8100 FAX. (305) 262-6978

SERIES CM075 ALUMINUM CASEMENT WDW. (L.M.I.)

RC Home Showcase, Inc.
16115 NW 52nd Ave.
Miami, FL 33014
TEL. (305) 392-6214 FAX. (305) 260-6432

revisions:

no	date	by	description
A	11.05.10		REV. PER BCCO COMMENTS
B	11.26.13		GENERAL REVISION
C	09.17.15		UPDATED TO 2014 FBC
D	02.28.18		UPDATED TO 2017 FBC
E	11.30.20		UPDATED TO 2020 FBC

date: 07-06-10

scale: 1/2" = 1"

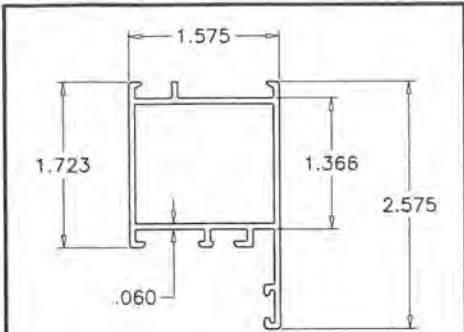
dr. by: TARIQ

chk. by:

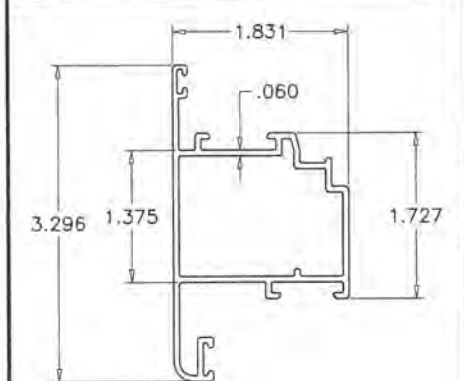
drawing no.

W10-44

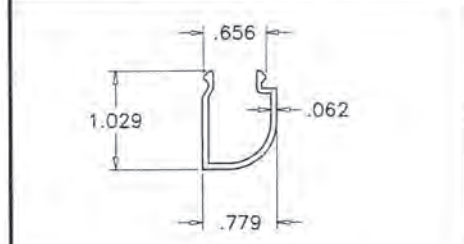
sheet 5 of 6



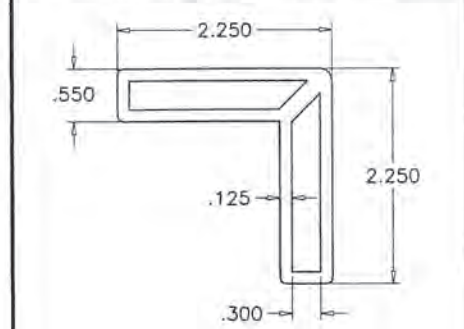
E1 FRAME HEAD/SILL/JAMB



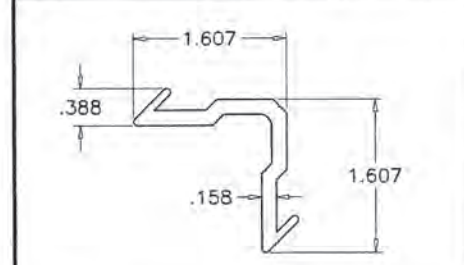
E2 VENT HEAD/SILL/JAMB



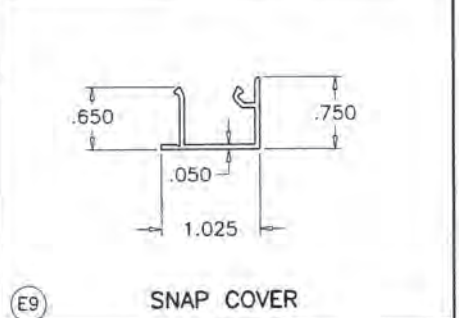
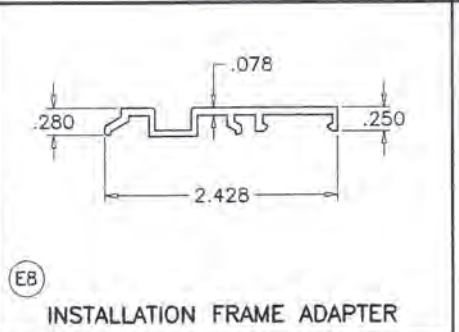
E7 GLAZING BEAD



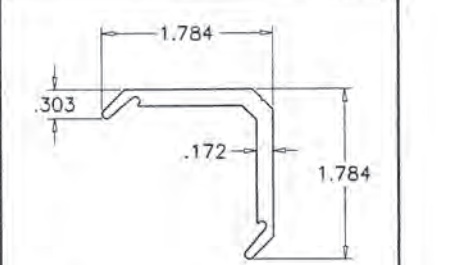
E5 CORNER LOCK ADAPTER



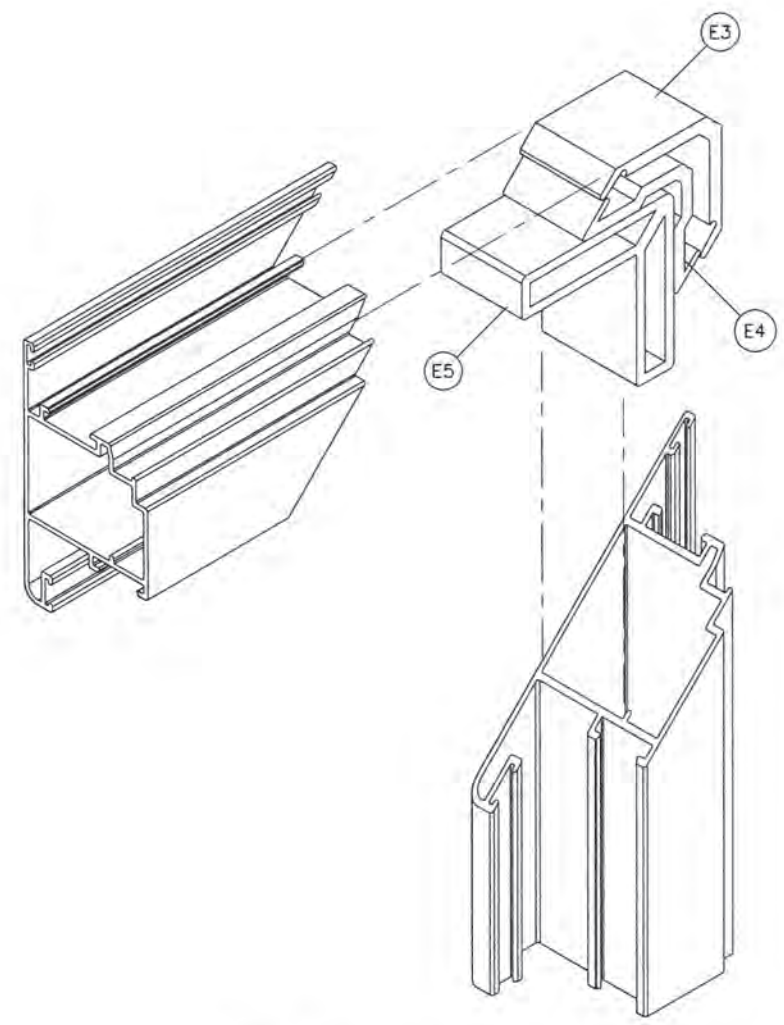
E4 CORNER LOCK



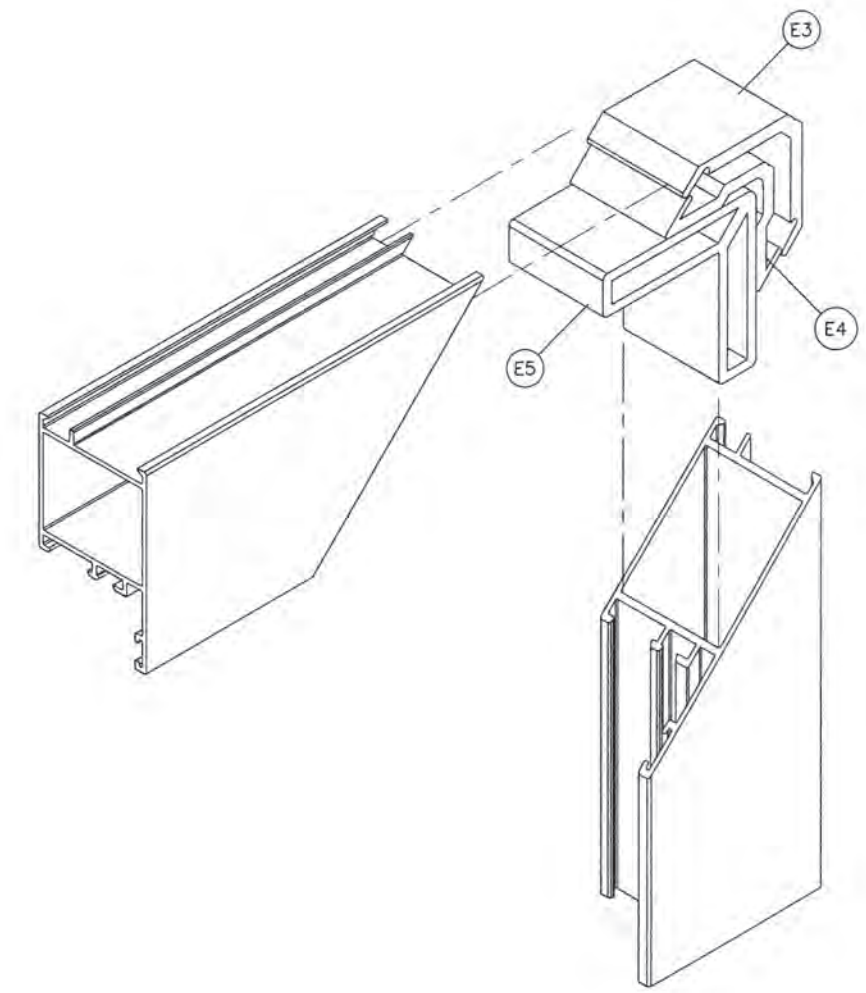
E9 SNAP COVER



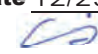
E3 CORNER LOCK MALE



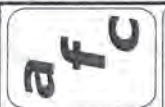
VENT CORNERS



FRAME CORNERS

PRODUCT REVISED
as complying with the Florida
Building Code
NOA-No. 20-1216.10
Expiration Date 12/23/2025
By 
Miami-Dade Product Control





AL-FAROOQ CORPORATION
ENGINEERS & PRODUCT DEVELOPMENT
9360 SUNSET DRIVE, SUITE 220
MIAMI, FLORIDA 33173 (C.A.N. 3538)
TEL. (305) 264-8100 FAX. (305) 262-6978
COMP-ANL\W10-44RC

SERIES CM075 ALUMINUM CASEMENT WDW. (L.M.I.)

RC Home Showcase, Inc.
16115 NW 52nd Ave.
Miami, FL 33014
TEL. (305) 392-6214 FAX. (305) 260-6432

no	date	by	description
A	11.05.10		NO CHANGE THIS SHEET
B	11.26.13		GENERAL REVISION
C	09.17.15		NO CHANGE THIS SHEET
D	02.28.18		UPDATED TO 2017 FBC
E	11.30.20		UPDATED TO 2020 FBC

date: 07-06-10	scale: 1/2" = 1"	dr. by: TARIQ	chk. by:
drawing no. W10-44			
sheet 6 of 6			