



DEPARTMENT OF REGULATORY AND ECONOMIC RESOURCES (RER)
BOARD AND CODE ADMINISTRATION DIVISION

NOTICE OF ACCEPTANCE (NOA)

MIAMI-DADE COUNTY, FLORIDA
PRODUCT CONTROL SECTION

11805 SW 26 Street, Room 208
T (786) 315-2590 F (786) 315-2599

www.miamidade.gov/economy

Vintage Ironworks, LLC
671 Newbury Port Ave.,
Altamonte Spring, Fl. 32701

SCOPE:

This NOA is being issued under the applicable rules and regulations governing the use of construction materials. The documentation submitted has been reviewed and accepted by Miami-Dade County RER-Product Control Section to be used in Miami-Dade County and other areas where allowed by the Authority Having Jurisdiction (AHJ).

This NOA shall not be valid after the expiration date stated below. The Miami-Dade County Product Control Section (In Miami-Dade County) and/ or the AHJ (in areas other than Miami-Dade County) reserve the right to have this product or material tested for quality assurance purposes. If this product or material fails to perform in the accepted manner, the manufacturer will incur the expense of such testing and the AHJ may immediately revoke, modify, or suspend the use of such product or material within their jurisdiction. RER reserves the right to revoke this acceptance, if it is determined by Miami-Dade County Product Control Section that this product or material fails to meet the requirements of the applicable building code.

This product is approved as described herein and has been designed to comply with the Florida Building Code, including the High Velocity Hurricane Zone.

DESCRIPTION: Series Outswing Glazed Steel Doors w/ wo Transoms and /or Sidelites – L.M.I.

APPROVAL DOCUMENT: Drawing No. **VIN0001 Rev J**, titled series “Steel Outswing Doors w/ & w/o Sidelights & Transoms”, sheets 01 through 15 of 15, dated 07/22/08 and last revised on 01/04/21, prepared by PTC, LLC, signed and sealed by Robert J. Amoroso, P. E., bearing the Miami-Dade County Product Control Section Revision stamp with the Notice of Acceptance number and expiration date by the Miami-Dade County Product Control Section.

MISSILE IMPACT RATING: Large and Small Missile Impact Resistant

LABELING: Each unit shall bear a permanent label with the manufacturer's name or logo, city, state, series, and following statement: "Miami-Dade County Product Control Approved", unless otherwise noted herein.

REVISION of this NOA shall be considered after a renewal application has been filed and there has been no change in the applicable building code negatively affecting the performance of this product.

TERMINATION of this NOA will occur after the expiration date or if there has been a revision or change in the materials, use, and/ or manufacture of the product or process. Misuse of this NOA as an endorsement of any product, for sales, advertising or any other purposes shall automatically terminate this NOA. Failure to comply with any section of this NOA shall be cause for termination and removal of NOA.

ADVERTISEMENT: The NOA number preceded by the words Miami-Dade County, Florida, and followed by the expiration date may be displayed in advertising literature. If any portion of the NOA is displayed, then it shall be done in its entirety.

INSPECTION: A copy of this entire NOA shall be provided to the user by the manufacturer or its distributors and shall be available for inspection at the job site at the request of the Building Official.

This NOA **revises** NOA No. **20-0417.03** and consists of this page 1 and evidence pages E-1, E-2, E-3 and E-4, as well as approval document mentioned above.

The submitted documentation was reviewed by **Ishaq I. Chanda, P.E.**



Ishaq I. Chanda

NOA No. 21-0224.04
Expiration Date: April 15, 2025
Approval Date: April 15, 2021
Page 1

Vintage Ironworks, LLC

NOTICE OF ACCEPTANCE: EVIDENCE SUBMITTED

1. Evidence submitted under previous approvals

A. DRAWINGS

1. Manufacturer's die drawings and sections.
2. Drawing No. **VIN0001**, titled series "Steel Outswing Doors w/ & w/o Sidelights & Transoms", sheets 01 through 15 of 15, dated 07/22/08 with revision "**F**" dated 04/13/14, prepared by PTC, LLC, signed and sealed by Robert J. Amoruso, P. E.

B. TESTS (*Submitted under previous NOA No. 08-0807.21*)

1. Test reports on
 - 1) Air Infiltration Test, per FBC, TAS 202-94
 - 2) Uniform Static Air Pressure Test, Loading per PA 202-94
 - 3) Water Resistance Test, per FBC, TAS 202-94
 - 4) Large Missile Impact Test per FBC, TAS 201-94
 - 5) Cyclic Wind Pressure Loading per SFBC, PA 203-94
 - 6) Forced Entry Test, per FBC 2411 3.2.1 and TAS 202-94

along with marked-up drawings and installation diagram of Steel Outswing Doors w/ & w/o Sidelights & Transoms, prepared by National Certified Testing Laboratories, Inc., Test Report No. **NCTL 210-3485-1**, dated 12/04/07, signed and sealed by Gerard J. Ferrara, P. E.

C. CALCULATIONS

1. Anchor verification calculations and structural analysis, complying with FBC-2004/ 2007, prepared by PTC, LLC, dated 07/15/08, signed and sealed by Paul E. Winter, P. E.
(*Submitted under previous NOA No. 08-0807.21*)
2. Glazing complies with ASTM E 1300-02/ 98.

D. QUALITY ASSURANCE

1. Miami-Dade Department of Regulatory and Economic Resources (RER).

E. MATERIAL CERTIFICATIONS

1. Notice of Acceptance No. **12-1231.09** issued to **Eastman Chemical Company (MA)** for their "**Saflex HP Clear or Color Glass Interlayers**" dated 03/28/13, expiring on 04/14/18.

F. STATEMENTS

1. Statement letter of no financial interest, conformance to and complying with **FBC 5th Edition (2014)**, issued by PTC, LLC, dated 04/13/14, prepared, signed and sealed by Robert J. Amoruso, P. E.
2. Statement letter of no financial interest, conformance to and complying with **FBC-2010**, issued by PTC, LLC, dated 05/10/12, prepared, signed & sealed by Robert J. Amoruso, P. E.
3. Test Proposal issued by the Product Control Section, dated 09/04/07, signed by Ishaq Chanda, P. E.
4. Lab compliance letter, part of the above referenced test report.

Ishaq I. Chanda

Ishaq I. Chanda, P. E.
Product Control Unit Supervisor
NOA No. 21-0224.04
Expiration Date: April 15, 2025
Approval Date: April 15, 2021

Vintage Ironworks, LLC

NOTICE OF ACCEPTANCE: EVIDENCE SUBMITTED

G. OTHERS

1. Notice of Acceptance No. **12-0604.02**, issued to Vintage Ironworks, LLC for their Series “**Steel Outswing Doors with & without Sidelights & Transoms – L.M.I.**”, approved on 08/02/12 and expiring on 04/15/14.

2. Evidence submitted under previous approval

A. DRAWINGS

1. Drawing No. **VIN0001 Rev G**, titled series “Steel Outswing Doors w/ & w/o Sidelights & Transoms”, sheets 01 through 15 of 15, dated 07/22/08 and last revised on 06/23/19, prepared by PTC, LLC, signed and sealed by Robert J. Amoruso, P. E.

B. TESTS

1. None.

C. CALCULATIONS

1. None.

D. QUALITY ASSURANCE

1. Miami-Dade Department of Regulatory and Economic Resources (RER).

E. MATERIAL CERTIFICATIONS

1. Notice of Acceptance No. **18-0301.05** issued to **Eastman Chemical Company (MA)** (former Solutia, Inc.) for their “**Saflex HP Clear or Color Glass Interlayers**”, expiring on 04/14/23.

F. STATEMENTS

1. Statement letter of to complying with **FBC 6th Edition (2017)** and “no financial interest, issued by PTC, LLC, dated 06/25/19, signed and sealed by Robert J. Amoruso, P. E.
2. Statement letter from Vantage Ironworks, LLC dated April 5th, 2019 requesting 1-year renewal, due to on-going verification test at NCTL lab, signed by William J. Walters III, President.

G. OTHERS

1. This NOA **renews & revises NOA No. 14-0421.02**, expiring 04/15/2020.

Ishaq I. Chanda

Ishaq I. Chanda, P. E.
Product Control Unit Supervisor
NOA No. 21-0224.04
Expiration Date: April 15, 2025
Approval Date: April 15, 2021

Vintage Ironworks, LLC

NOTICE OF ACCEPTANCE: EVIDENCE SUBMITTED

3. Evidence submitted under previous approval

A. DRAWINGS

1. Drawing No. **VIN0001 Rev H**, titled series “Steel Outswing Doors w/ & w/o Sidelights & Transoms”, sheets 01 through 15 of 15, dated 07/22/08 and last revised on 04/14/2020, prepared by PTC, LLC, signed and sealed by Robert J. Amoruso, P. E.
(Note: This renewal is without any change, except address change)

B. TESTS

1. None.

C. CALCULATIONS

1. None.

D. QUALITY ASSURANCE

1. Miami-Dade Department of Regulatory and Economic Resources (RER).

E. MATERIAL CERTIFICATIONS

1. Notice of Acceptance No. **18-0301.05** issued to **Eastman Chemical Company (MA)** (former Solutia, Inc.) for their “**Saflex HP Clear or Color Glass Interlayers**”, expiring on 04/14/23.

F. STATEMENTS

1. Statement letter dated 04/14/20, issued by PTC, LLC for the compliance to **FBC 6th Edition (2017)**, “no financial interest” and “no DWG change other than address”, signed and sealed by Robert J. Amoruso, P. E.
2. Statement letter dated 04/14 by Vantage Ironworks, LLC requesting renewal without product change, signed by Ms. Brigitte Palumbo, Manager.

G. OTHERS

1. This NOA revises & renews NOA No. **19-0520.05**, expiring 04/15/2025.

Ishaq I. Chanda

Ishaq I. Chanda, P. E.
Product Control Unit Supervisor
NOA No. 21-0224.04
Expiration Date: April 15, 2025
Approval Date: April 15, 2021

Vintage Ironworks, LLC

NOTICE OF ACCEPTANCE: EVIDENCE SUBMITTED

4. New Evidence submitted

A. DRAWINGS

1. Drawing No. **VIN0001 Rev J**, titled series “Steel Outswing Doors w/ & w/o Sidelights & Transoms”, sheets 01 through 15 of 15, dated 07/22/08 and last revised on 01/04/2021, prepared by PTC, LLC, signed and sealed by Robert J. Amoruso, P. E.
(Note: This revision is FBC 2020 (7th Edition) update notes only)

B. TESTS

1. None.

C. CALCULATIONS

1. None.

D. QUALITY ASSURANCE

1. Miami–Dade Department of Regulatory and Economic Resources (RER).

E. MATERIAL CERTIFICATIONS

1. Notice of Acceptance No. **18–0301.05** issued to **Eastman Chemical Company (MA)** (former Solutia, Inc.) for their “**Saflex HP Clear or Color Glass Interlayers**”, expiring on 04/14/23.

F. STATEMENTS

1. Statement letter of FBC 2020 (7th Edition) dated 01/04/21, “no financial interest” and “no DWG change other than code update notes”, signed and sealed by Robert J. Amoruso, P. E.

G. OTHERS

1. This NOA revises **NOA No. 20-0417.03**, expiring 04/15/2025.

Ishaq I. Chanda

Ishaq I. Chanda, P. E.
Product Control Unit Supervisor
NOA No. 21-0224.04
Expiration Date: April 15, 2025
Approval Date: April 15, 2021

VINTAGE IRONWORKS

STEEL OUTSWING DOORS W/ & W/O SIDELITES & TRANSOMS

INSTALLATION ANCHORAGE DETAILS

GENERAL NOTES:

1. THE PRODUCT ANCHORAGE SHOWN HEREIN IS DESIGNED TO COMPLY WITH THE 7TH EDITION (2020) FLORIDA BUILDING CODE (FBC), INCLUDING HIGH VELOCITY HURRICANE ZONE (HVHZ) REQUIREMENTS AND AT THE DESIGN PRESSURES STATED HEREIN.
2. THE PRODUCT DETAILS CONTAINED HEREIN ARE BASED UPON SIGNED AND SEALED TEST REPORT NO. NCTL-210-3485-1 DATED 12-04-07, AND ASSOCIATED LABORATORY STAMPED DRAWINGS.
3. THE PRODUCT HAS BEEN EVALUATED FOR CONFORMANCE TO THE STANDARDS LISTED IN THE FLORIDA BUILDING CODE (FBC) AND IS IN COMPLIANCE WITH SAID STANDARDS, INCLUDING HIGH VELOCITY HURRICANE ZONE (HVHZ) REQUIREMENTS.
4. ADEQUACY OF THE EXISTING STRUCTURAL CONCRETE / MASONRY AND 2X FRAMING AS A MAIN WIND FORCE RESISTING SYSTEM CAPABLE OF WITHSTANDING AND TRANSFERRING APPLIED PRODUCT LOADS TO THE FOUNDATION IS THE RESPONSIBILITY OF THE ENGINEER OR ARCHITECT OF RECORD.
5. 1X AND 2X BUCKS (WHEN USED) SHALL BE DESIGNED AND ANCHORED TO PROPERLY TRANSFER ALL LOADS TO THE STRUCTURE. BUCK DESIGN AND INSTALLATION IS THE RESPONSIBILITY OF THE ENGINEER OR ARCHITECT OF RECORD.
6. THE INSTALLATION DETAILS DESCRIBED HEREIN ARE GENERIC AND MAY NOT REFLECT ACTUAL CONDITIONS FOR A SPECIFIC SITE. IF SITE CONDITIONS CAUSE INSTALLATION TO DEVIATE FROM THE REQUIREMENTS DETAILED HEREIN, SITE SPECIFIC DOCUMENTS SHALL BE PREPARED FOR USE WITH THIS DOCUMENT.

7. IN HVHZ AREAS, USE OF AN APPROVED IMPACT PROTECTIVE SYSTEM COMPLYING WITH THE HVHZ REQUIREMENTS OF THE FBC IS NOT REQUIRED FOR THE PRODUCT(S) HEREIN.
8. DOOR FRAME AND PANEL MATERIAL: 14 GA. STEEL
9. GLASS MEETS THE REQUIREMENTS OF ASTM E1300-04e1 SEE SHEET 7 FOR GLAZING DETAILS.
10. DESIGNATIONS "X" AND "O" STAND FOR THE FOLLOWING:
X: OPERABLE PANEL
O: FIXED PANEL
11. A 1/3 INCREASE IN ALLOWABLE STRESS FOR WIND LOADS WAS NOT USED IN THE DESIGN OF THE PRODUCT(S) SHOWN HEREIN, EXCEPT IN WOOD.

PRODUCT REVISED
as complying with the Florida
Building Code
NOA-No. 21-0224.04
Expiration Date 04/15/2025
By Ishag I. Chande
Miami-Dade Product Control

TABLE OF CONTENTS		
SHEET	REV.	SHEET DESCRIPTION
1	F	GENERAL NOTES, INSTALLATION NOTES & D.P. CHART
2	D	ELEVATION & ANCHOR LAYOUT
3	D	ELEVATION & ANCHOR LAYOUT
4	D	ELEVATION & ANCHOR LAYOUT
5	D	VERTICAL SECTIONS
6	C	VERTICAL AND HORIZONTAL SECTIONS
7	F	HORIZONTAL SECTIONS AND GLAZING DETAILS
8	D	HORIZONTAL SECTIONS
9	-	HORIZONTAL SECTIONS
10	D	VERTICAL SECTIONS
11	C	VERTICAL AND HORIZONTAL SECTIONS
12	C	HORIZONTAL SECTIONS
13	A	QUALIFIED CONFIGURATIONS
14	F	COMPONENTS AND BILL OF MATERIALS
15	D	WELDING SCHEDULE AND DETAILS

INSTALLATION NOTES:

1. ONE (1) INSTALLATION ANCHOR IS REQUIRED AT EACH ANCHOR LOCATION SHOWN.
2. THE NUMBER OF INSTALLATION ANCHORS DEPICTED IS THE MINIMUM NUMBER OF ANCHORS TO BE USED FOR PRODUCT INSTALLATION.
3. AT EACH INSTALLATION ANCHOR, SHIM GAPS THAT ARE EQUAL TO OR GREATER THAN 1/16". MAXIMUM ALLOWABLE SHIM SIZE IS 1/4".
4. FOR INSTALLATION INTO WOOD FRAMING, USE #14 WOOD SCREWS OF SUFFICIENT LENGTH TO ACHIEVE 1 1/2 INCH MINIMUM EMBEDMENT.
5. FOR INSTALLATION THROUGH 1X BUCK TO CONCRETE / MASONRY, OR DIRECTLY INTO CONCRETE / MASONRY, USE 5/16 INCH ITW TAPCONS OF SUFFICIENT LENGTH TO ACHIEVE 1 3/4 INCH MINIMUM EMBEDMENT.
6. MINIMUM EMBEDMENT AND EDGE DISTANCE EXCLUDE WALL FINISHES (INCLUDING BUT NOT LIMITED TO STUCCO, FOAM, BRICK VENEER, AND SIDING).
7. INSTALLATION ANCHORS AND ASSOCIATED HARDWARE MUST BE MADE OF CORROSION RESISTANT MATERIAL OR HAVE A CORROSION RESISTANT COATING.
8. FOR CONCRETE BLOCK, DO NOT INSTALL INSTALLATION ANCHORS INTO MORTAR JOINTS. EDGE DISTANCE IS MEASURED FROM FREE EDGE OF BLOCK OR EDGE OF MORTAR JOINT INTO FACE SHELL OF BLOCK.

9. INSTALLATION ANCHORS SHALL BE INSTALLED IN ACCORDANCE WITH ANCHOR MANUFACTURER'S INSTALLATION INSTRUCTIONS, AND ANCHORS SHALL NOT BE USED IN SUBSTRATES WITH STRENGTHS LESS THAN THE MINIMUM STRENGTH SPECIFIED BY THE ANCHOR MANUFACTURER BELOW.

10. INSTALLATION ANCHOR CAPACITIES FOR PRODUCTS HEREIN ARE BASED ON SUBSTRATE MATERIALS WITH THE FOLLOWING PROPERTIES:

- A. WOOD - PT SOUTHERN YELLOW PINE - MINIMUM SPECIFIC GRAVITY OF 0.55.
- B. CONCRETE - MINIMUM COMPRESSIVE STRENGTH OF 2899 PSI AND COMPLIES WITH ACI 301.
- C. MASONRY - STRENGTH CONFORMANCE TO ASTM C-90.

11. THE STRUCTURAL PERFORMANCE TEST REPORT INDICATES THAT HINGE FRAME SCREWS WERE NOT REPLACED WITH ADDITIONAL INSTALLATION ANCHORS DURING PRODUCT TESTING. HINGE INSTALLATION, USING TESTED HINGE SCREWS, IS QUALIFIED BY SATISFACTORY TEST PERFORMANCE.

12. ALUMINUM IN CONTACT WITH WOOD OR OTHER ABSORBING MATERIALS WHICH MAY BECOME REPEATEDLY WET SHALL BE PAINTED WITH TWO COATS OF ALUMINUM METAL-AND-MASONRY PAINT OR A COAT OF HEAVY-BODIED BITUMINOUS PAINT, OR THE WOOD OR OTHER ABSORBING MATERIAL SHALL BE PAINTED WITH TWO COATS OF ALUMINUM HOUSE PAINT AND THE JOINTS SEALED WITH A GOOD QUALITY CAULKING COMPOUND. WHERE ALUMINUM IS IN CONTACT WITH TREATED WOOD, WOOD SHALL BE TREATED WITH PENTACHLOROPHENOL, 5 PERCENT MINIMUM CONCENTRATION, CREOSOTE, OR ZINC NAPHTHANATE, FOLLOWING THE PROTECTIVE MEASURES OUTLINED ABOVE.

13. ALUMINUM IN CONTACT WITH STEEL SHALL BE PROTECTED AS FOLLOWS:

A. PAINTING DISSIMILAR METALS WITH ZINC-CHROMATE PRIMER AND 2 COATS ALUM METAL-AND -CONCRETE PAINT, EXCLUDING LEAD PIGMENTATION.

B. PAINTING DISSIMILAR METALS WITH HEAVY-BODIED BITUMINOUS PAINT.

C. APPLYING A NONABSORPTIVE TAPE OR GASKET

D. HOT-DIP GALVANIZING OR ZINC-PLATING STEEL MEMBERS AFTER FABRICATION

DESIGN PRESSURE RATING (PSF)		IMPACT RATING
WHERE WATER INFILTRATION REQUIREMENT IS NEEDED	WHERE WATER INFILTRATION REQUIREMENT IS NOT NEEDED	LARGE MISSLE IMPACT
±45.0	±80.0	

PROJECT NO. 420-1208			
J	Update to 7th Edition (2020) FBC	1/4/2021	RJA
H	CHANGED MANUFACTURER'S ADDRESS	4/14/2020	RJA
G	UPDATED TO 6TH EDITION (2017) FBC	6/25/19	RJA
REV	DESCRIPTION	DATE	BY

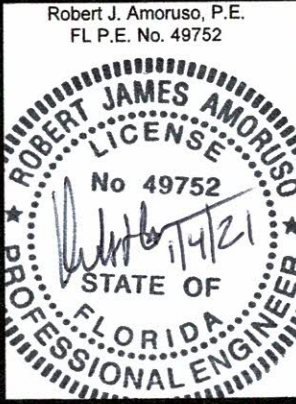
VINTAGE IRONWORKS
671 NEWBURYPORT AVE.
ALTAMONTE SPRINGS, FL 32701

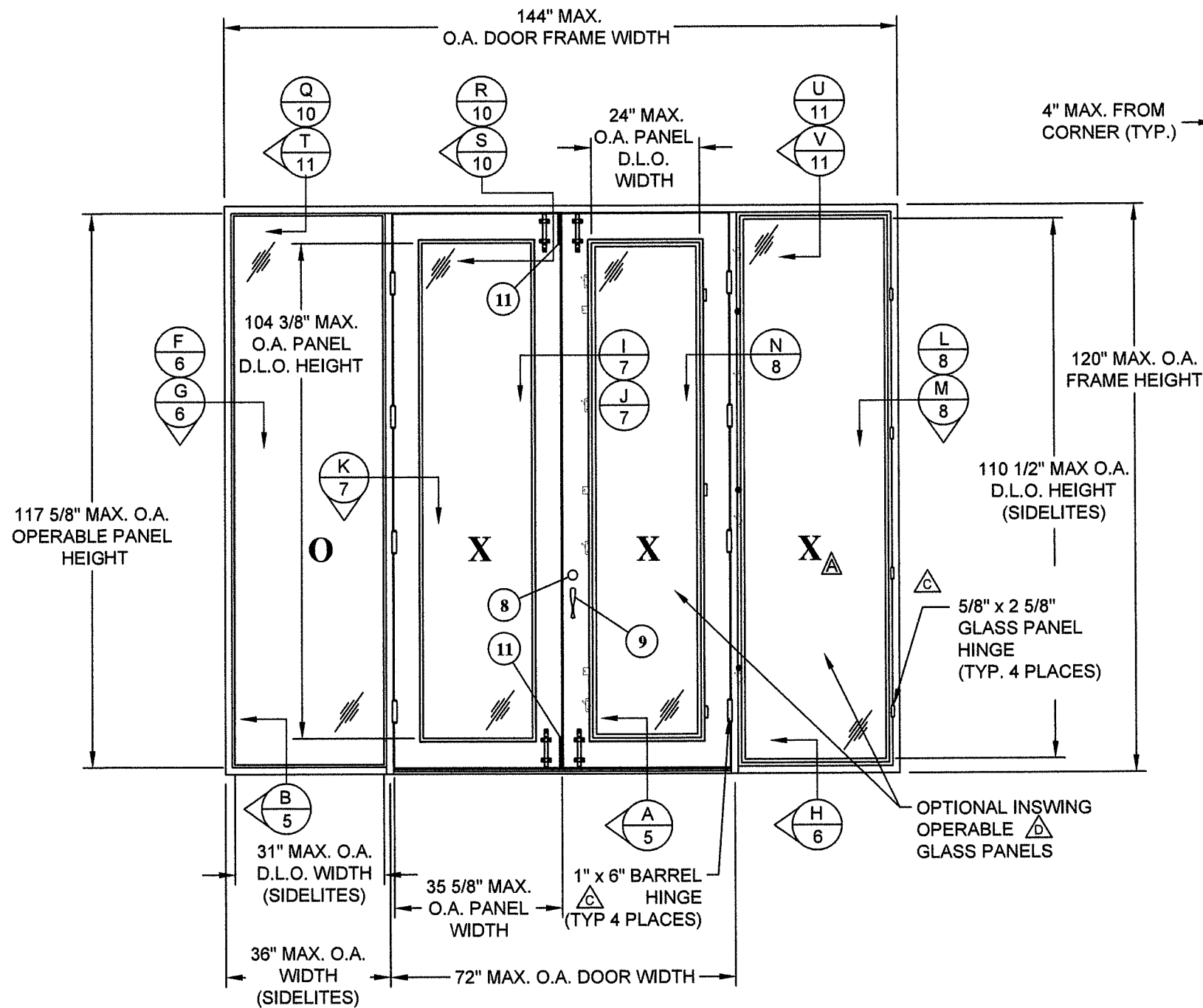
STEEL OUTSWING DOORS W/ & W/O SIDELITES & TRANSOM
GENERAL NOTES, INSTALLATION NOTES & D.P. CHART

DATE: 07/22/08
DRAWING NO: VIN0001
SCALE: N.T.S.
REV: J

1 OF 15

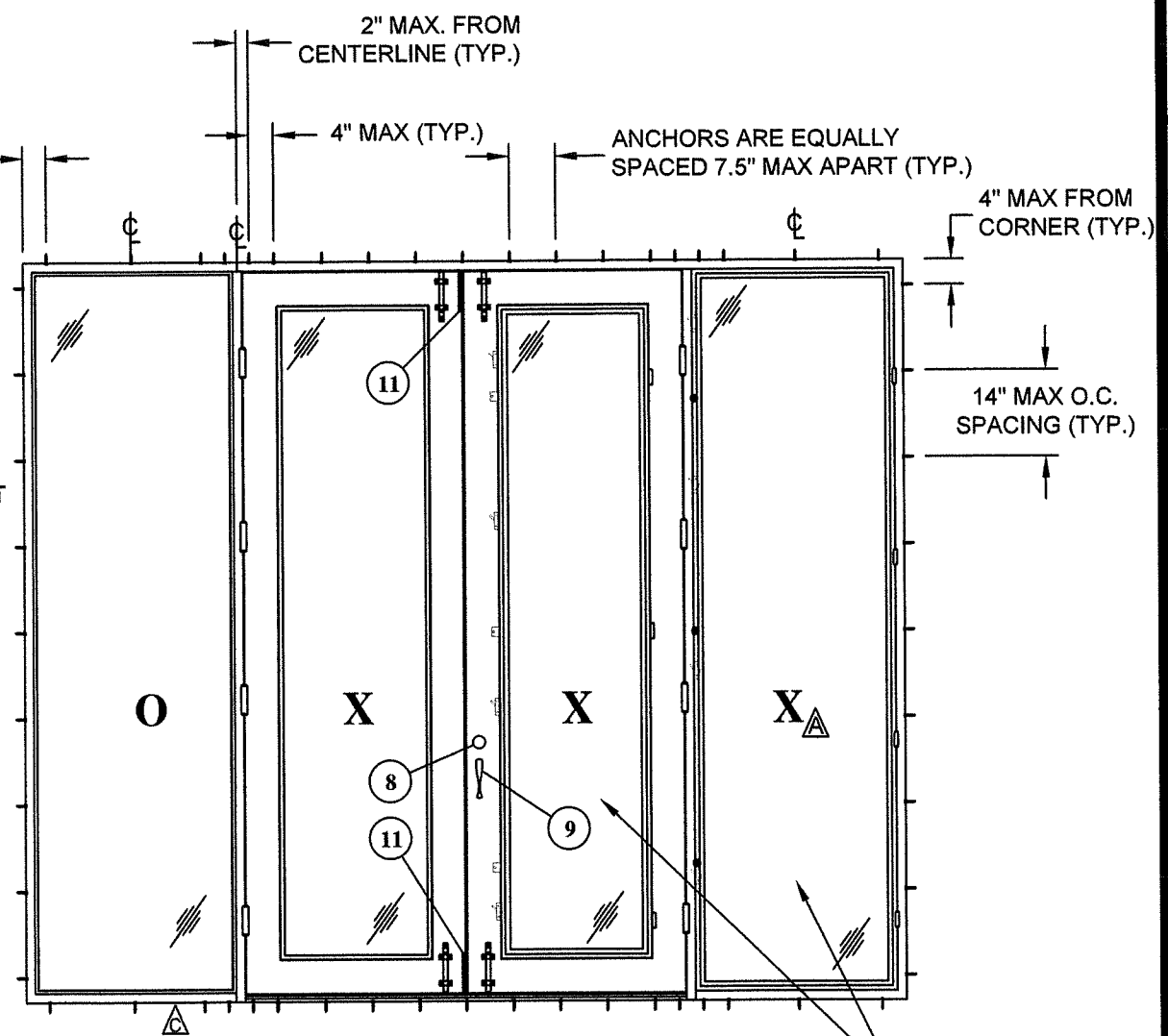
PREPARED BY: PTC PRODUCT DESIGN GROUP, LLC
10000 WOODS FLORENCE 32752
PHONE 321.690.1788
FAX 321.690.1789
FIBRE Cert. of Authorization No. 25935 Email: info@ptc-corp.com





ELEVATION
INTERIOR VIEW

NOTE:
HINGES SHOWN ARE THE MINIMUM
REQUIRED. ADDITIONAL HINGES,
IF DESIRED, MAY BE USED. MINIMUM
OF (4) STEEL SWEEP LOCKS
ON OPTIONAL INSWING OPERABLE
GLASS PANELS.

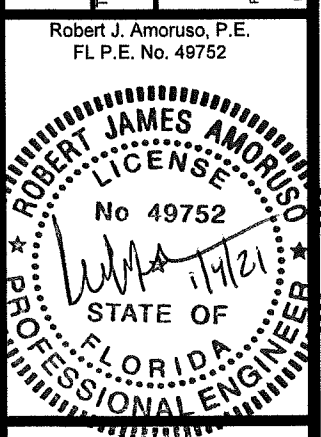


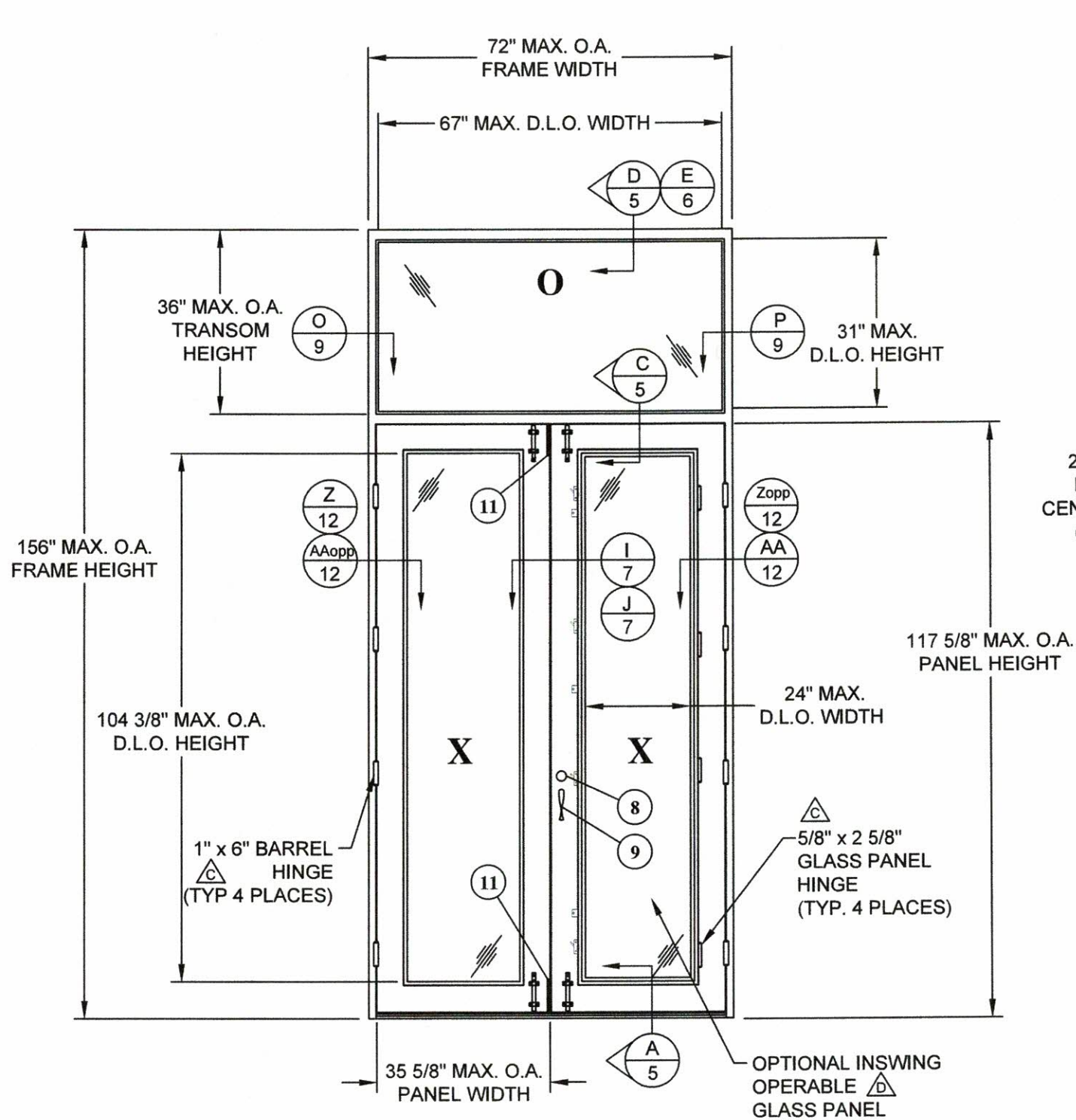
PRODUCT REVISED
as complying with the Florida
Building Code
NOA-No. 21-0224.04
Expiration Date 04/15/2025
By *Isaac I. Chandra*
Miami-Dade Product Control

ANCHOR LAYOUT
INTERIOR VIEW

PROJECT NO. 420-1208		RJA	1/4/2021	RJA	4/14/2020	RJA	6/25/19	BY
J	Update to 7th Edition (2020) FBC	H	CHANGED MANUFACTURER'S ADDRESS	G	UPDATED TO 6TH EDITION (2017) FBC	REV	DESCRIPTION	DATE

VINTAGE IRONWORKS 671 NEWBURYPORT AVE. ALTAMONTE SPRINGS, FL 32701		DATE: 07/22/08		DRAWING NO: VIN0001		SHEET: 2 OF 15	
TITLE: STEEL OUTSWING DOORS W/ & W/O SIDELITES & TRANSOM ELEVATION & ANCHOR LAYOUT		SCALE: N.T.S.		REV: J			
PREPARED BY: CB		DATE: 07/22/08		DRAWING NO: VIN0001		SHEET: 2 OF 15	
PTC PRODUCT DESIGN GROUP, LLC LONGWOOD, FLORIDA 32752 Phone 321.690.1788 Fax 321.690.1788 FBPE Cert. of Authorization No. 25955 Email: info@ptc-corp.com							



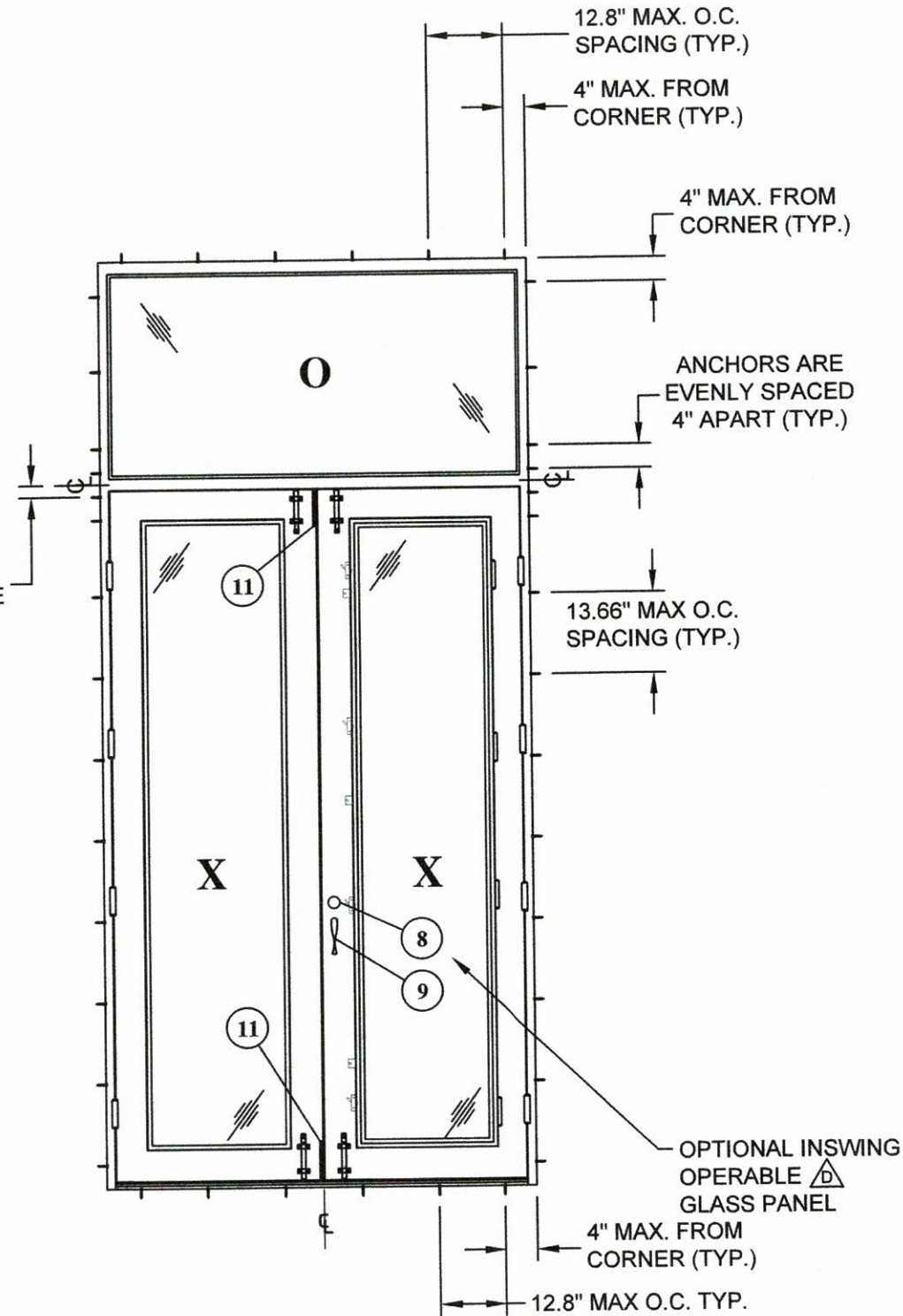


ELEVATION
INTERIOR VIEW

PRODUCT REVISED
as complying with the Florida
Building Code
NOA-No. 21-0224.04

Expiration Date 04/15/2025

By Isaac I. Chantz
Miami-Dade Product Control



ANCHOR LAYOUT
INTERIOR VIEW

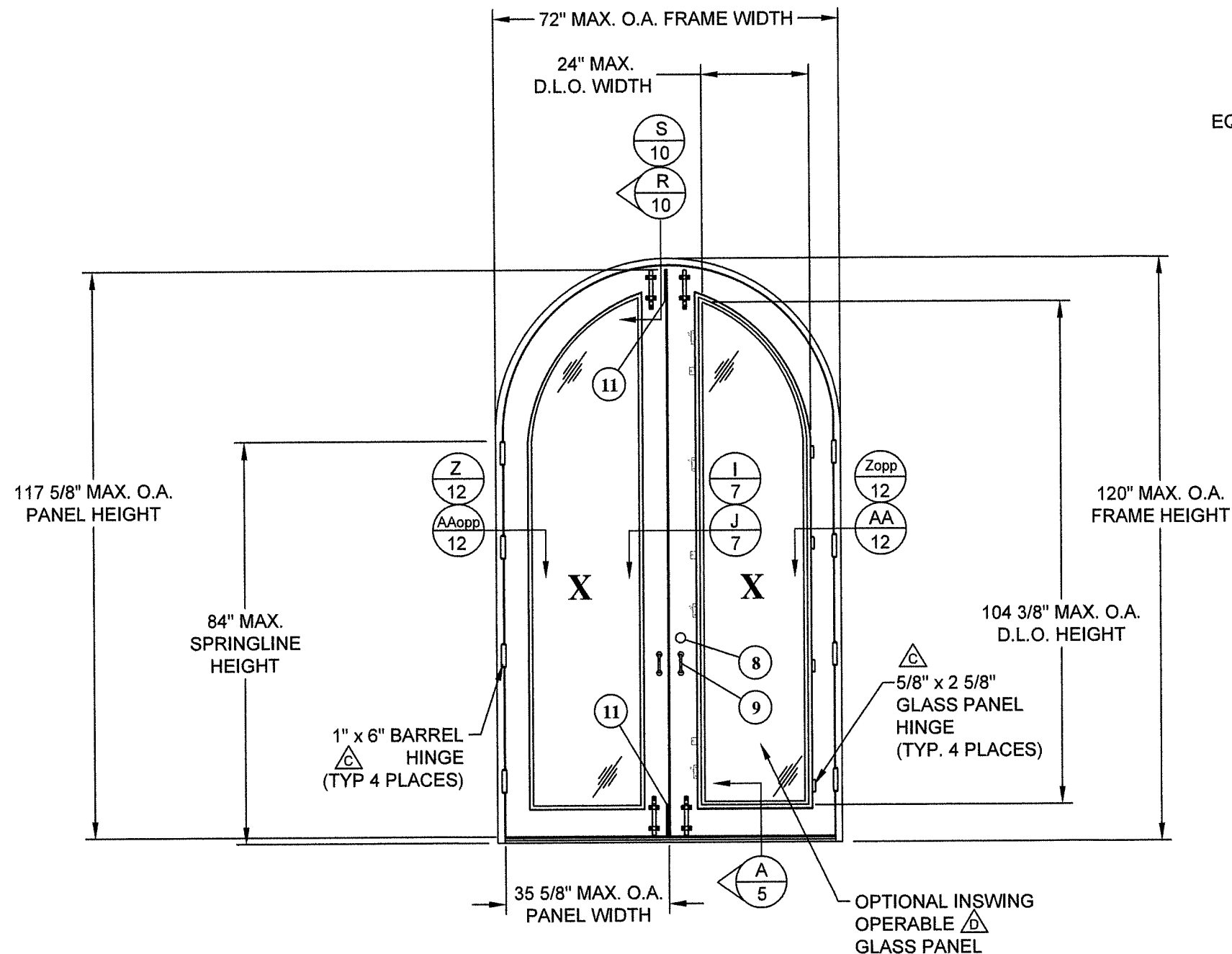
NOTE:
HINGES SHOWN ARE THE MINIMUM
REQUIRED. ADDITIONAL HINGES,
IF DESIRED, MAY BE USED. MINIMUM
OF (4) STEEL SWEEP LOCKS
ON OPTIONAL INSWING OPERABLE
GLASS PANELS. \triangle

PROJECT NO. 420-1208	1/4/2021	4/14/2020	6/25/19	DATE
J	Update to 7th Edition (2020) FBC	H	G	REV
	CHANGED MANUFACTURER'S ADDRESS			DESCRIPTION

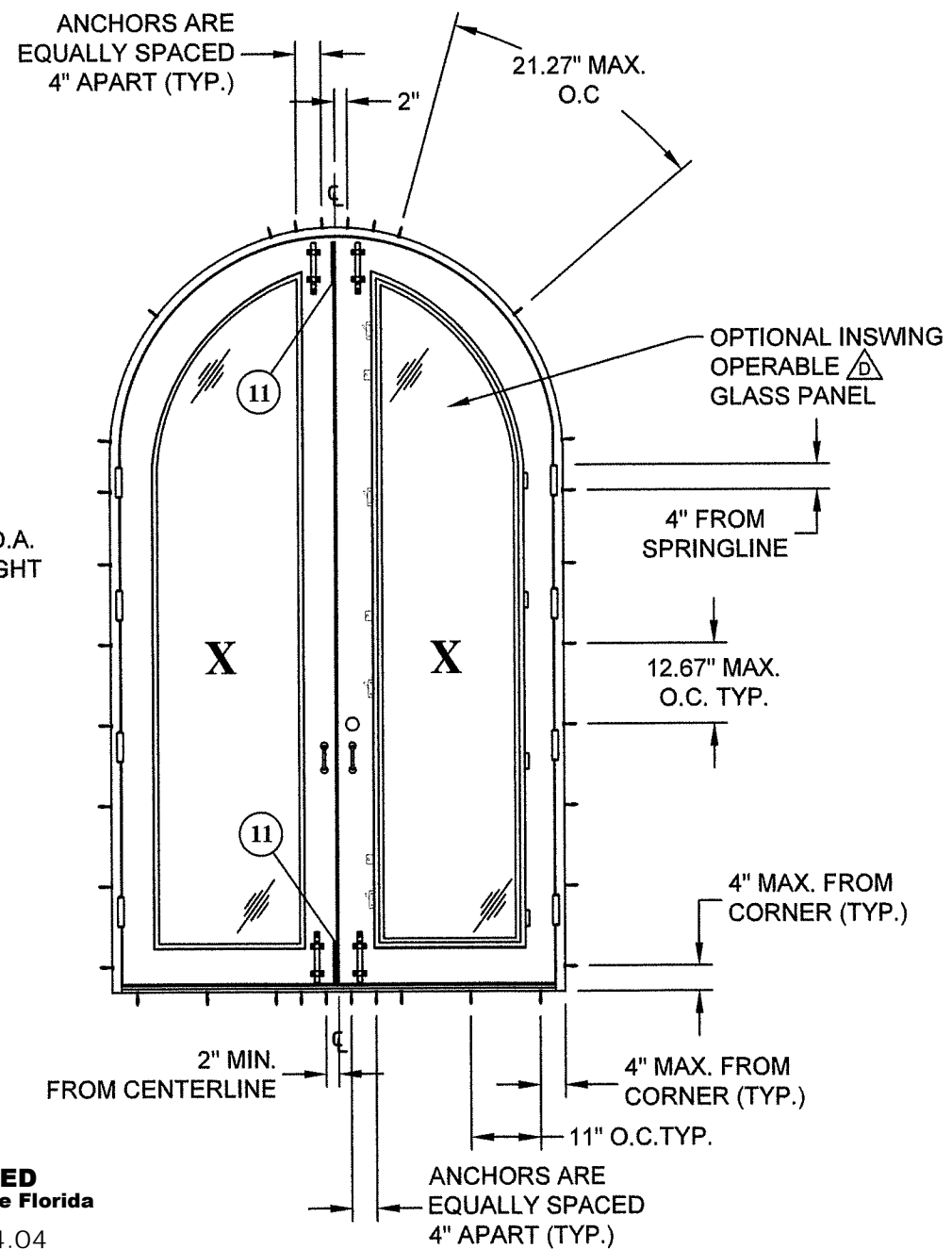
VINTAGE IRONWORKS 671 NEWBURYPORT AVE. ALTA MONTE SPRINGS, FL 32701	DATE: 07/22/08	DRAWING NO: VIN0001	SHEET: 3 OF 15
TITLE: STEEL OUTSWING DOORS W/ & W/O SIDELITES & TRANSOM ELEVATION & ANCHOR LAYOUT	DRAWN BY: CB	SCALE: N.T.S.	REV: J
PREPARED BY:	DATE:	DRAWING NO:	SHEET:
PTC PRODUCT DESIGN GROUP, LLC P.O. BOX 520775 LONGWOOD, FLORIDA 32752 FBPE Cert. of Authorization No. 25935	Phone 321.690.1788 Fax 321.690.1789 Email: info@ptc-corp.com		

Robert J. Amoroso, P.E.
FL P.E. No. 49752





ELEVATION
INTERIOR VIEW



ANCHOR LAYOUT
INTERIOR VIEW

NOTE:
HINGES SHOWN ARE THE MINIMUM REQUIRED. ADDITIONAL HINGES, IF DESIRED, MAY BE USED. MINIMUM OF (4) STEEL SWEEP LOCKS ON OPTIONAL INSWING OPERABLE GLASS PANELS.

PRODUCT REVISED
as complying with the Florida
Building Code
NOA-No. 21-0224.04

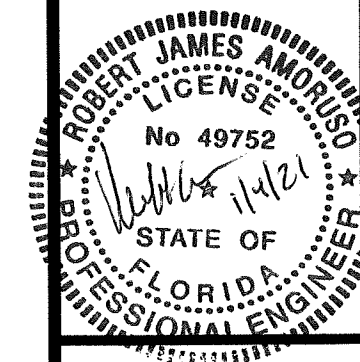
Expiration Date 04/15/2025

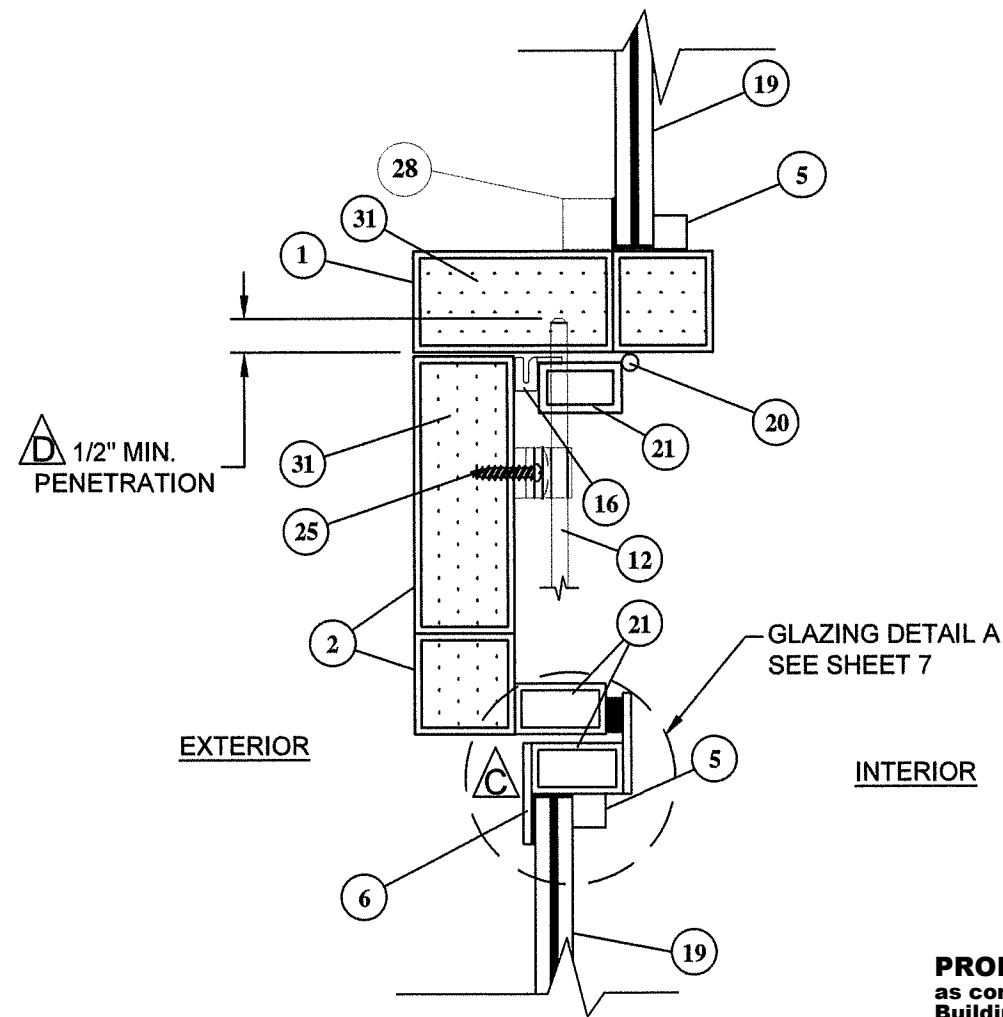
By Isaac L. Chanda
Miami-Dade Product Control

PROJECT NO. 420-1208		RJA	1/4/2021
J	Update to 7th Edition (2020) FBC	H	CHANGED MANUFACTURER'S ADDRESS
G	UPDATED TO 6TH EDITION (2017) FBC	BY	DATE
REV	DESCRIPTION		

VINTAGE IRONWORKS 671 NEWBURYPORT AVE. ALTA MONTE SPRINGS, FL 32701		DATE: 07/22/08	DRAWING NO: VIN0001	SHEET: 4 OF 15
TITLE: STEEL OUTSWING DOORS W/ & W/O SIDELITES & TRANSOM ELEVATION & ANCHOR LAYOUT		CB	N.T.S.	J
PREPARED BY:		SCALE:	REV:	
PTC PRODUCT DESIGN GROUP, LLC P.O. BOX 520775 LONGWOOD, FLORIDA 32752 Phone 321.680.1788 Fax 321.680.1788 FBPE Cert. of Authorization No. 25935 Email: info@ptc-corp.com				

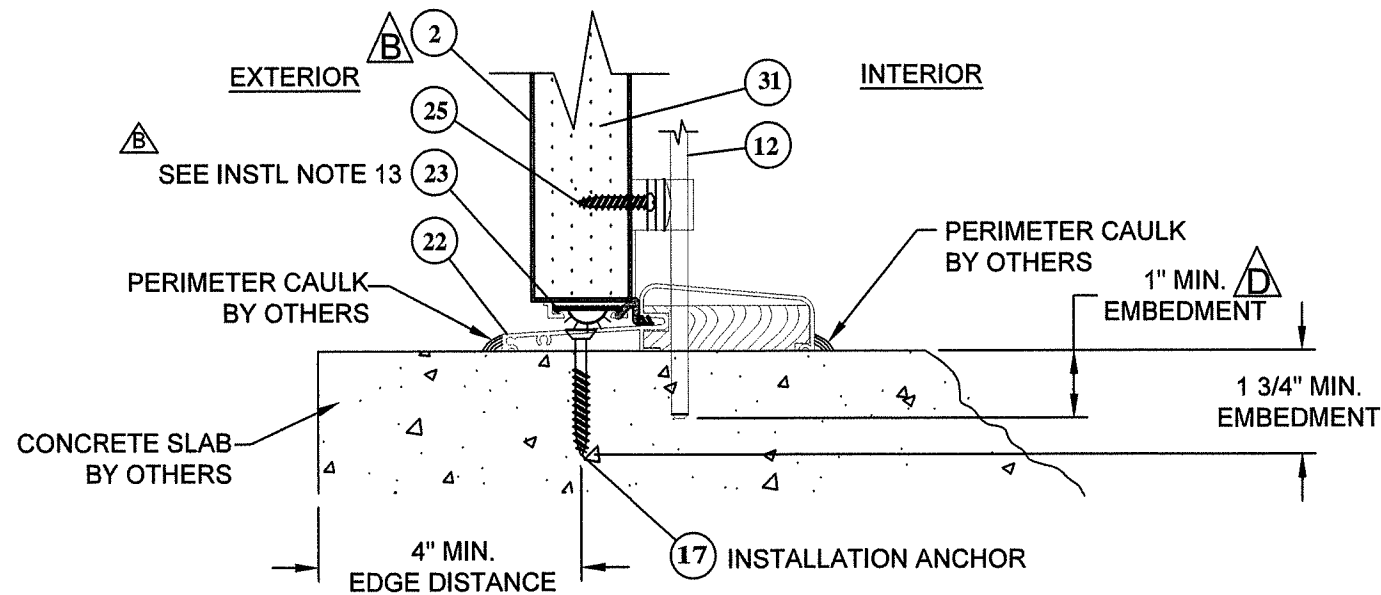
Robert J. Amoroso, P.E.
FL P.E. No. 49752



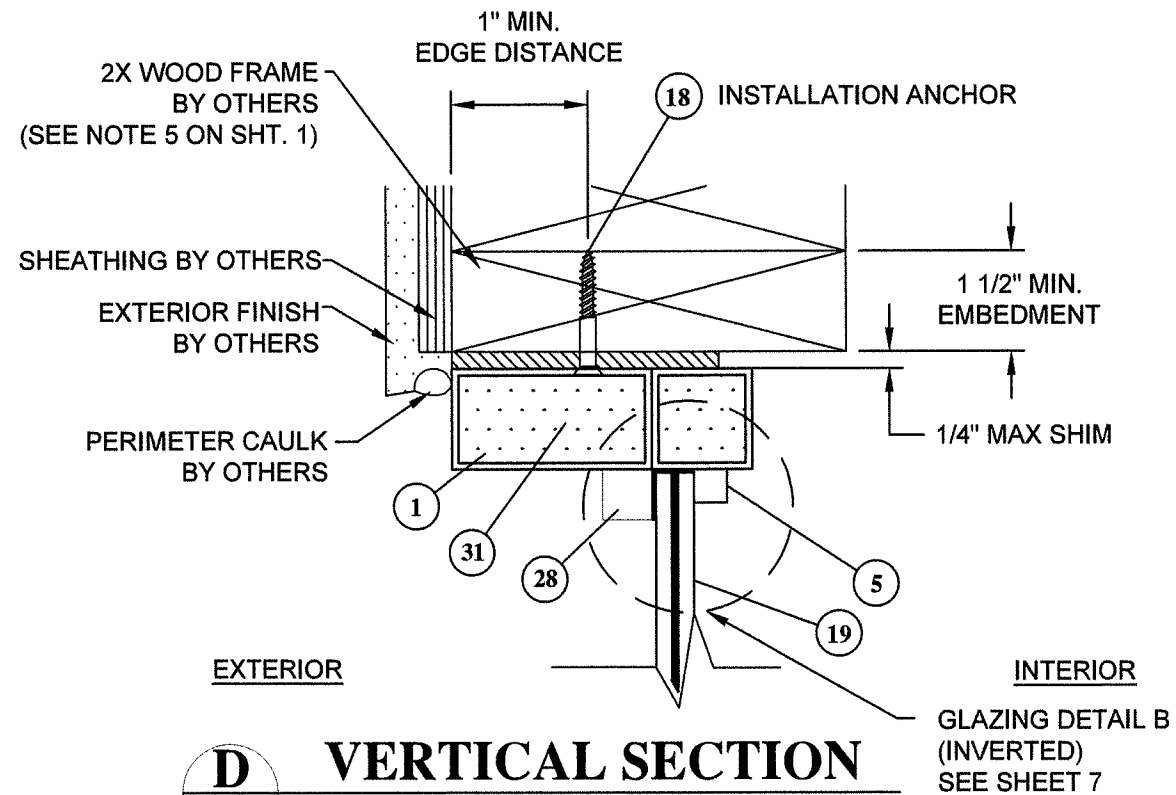


C
5 **VERTICAL SECTION**
HORIZONTAL MULLION

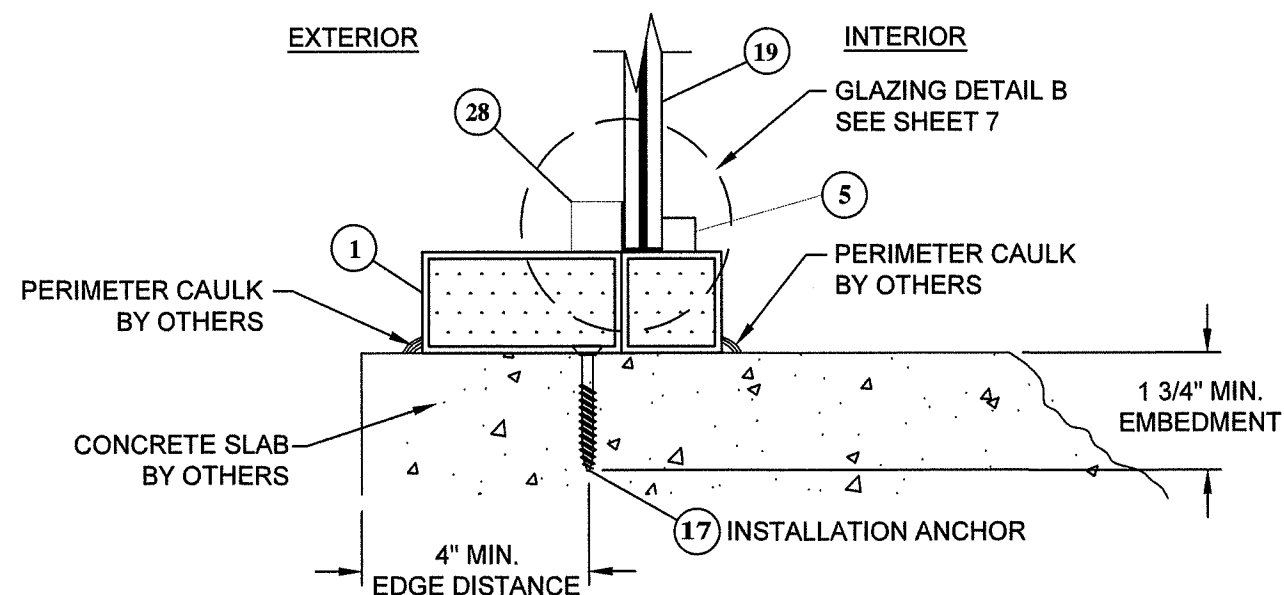
PRODUCT REVISED
as complying with the Florida
Building Code
NOA-No. 21-0224.04
Expiration Date 04/15/2025
By *Ishag I. Chande*
Miami-Dade Product Control



A
5 **VERTICAL SECTION**
THRESHOLD - FRAME DOOR
CONCRETE / MASONRY SUBSTRATE



D
5 **VERTICAL SECTION**
HEAD - FIXED TRANSOM
WOOD SUBSTRATE



B
5 **VERTICAL SECTION**
SILL - FIXED LITE
CONCRETE / MASONRY SUBSTRATE

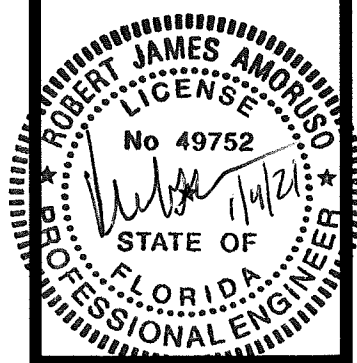
PROJECT NO. 420-1208

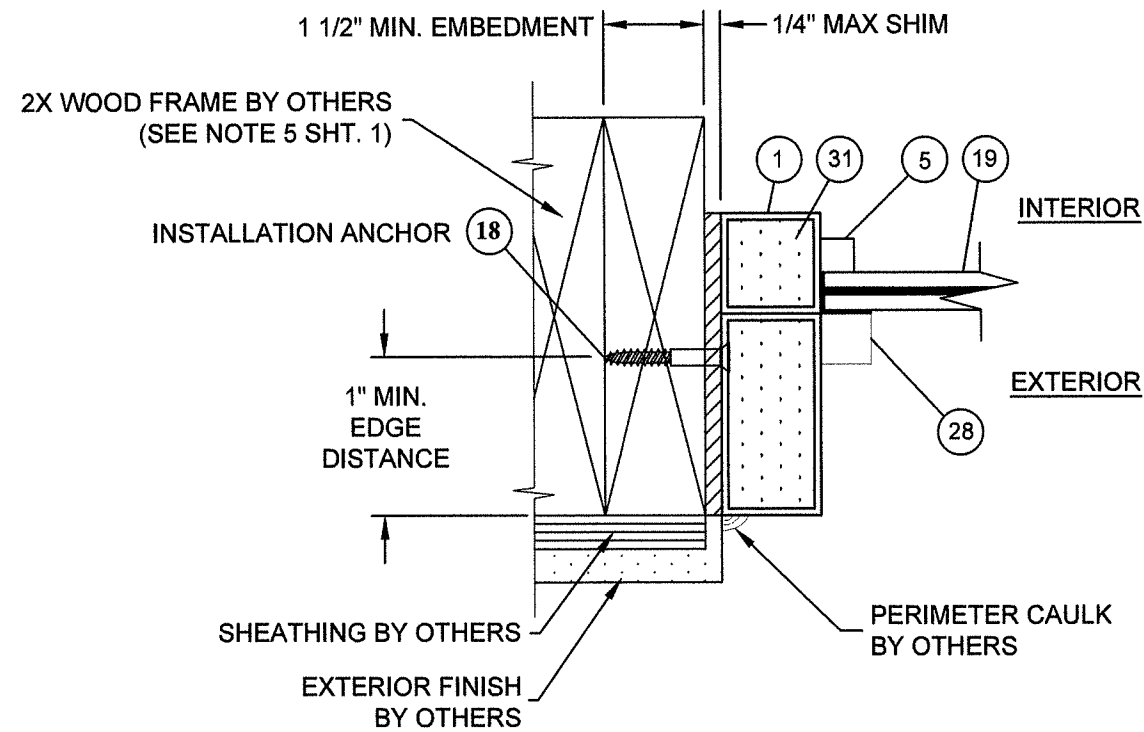
REV	DESCRIPTION	DATE	BY
J	Update to 7th Edition (2020) FBC	1/4/2021	RJA
H	CHANGED MANUFACTURER'S ADDRESS	4/14/2020	RJA
G	UPDATED TO 6TH EDITION (2017) FBC	6/25/19	RJA

VINTAGE IRONWORKS
671 NEWBURYPORT AVE.
ALTA MONTE SPRINGS, FL 32701
TITLE: STEEL OUTSWING DOORS W/ & W/O SIDELITES & TRANSOM
VERTICAL SECTIONS

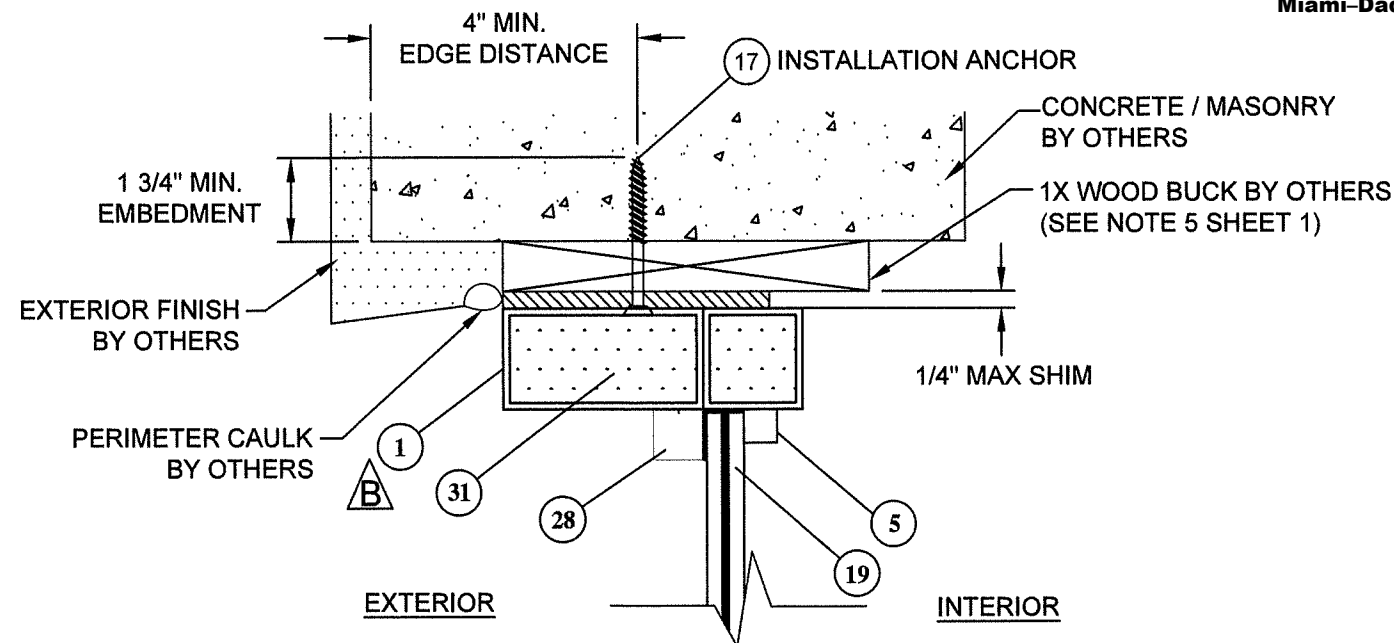
DRAWN BY:	DATE:	07/22/08
CB	DRAWING NO:	VIN0001
SCALE:	N.T.S.	REV:
J	SHEET:	5 OF 15

Robert J. Amoroso, P.E.
FL P.E. No. 49752

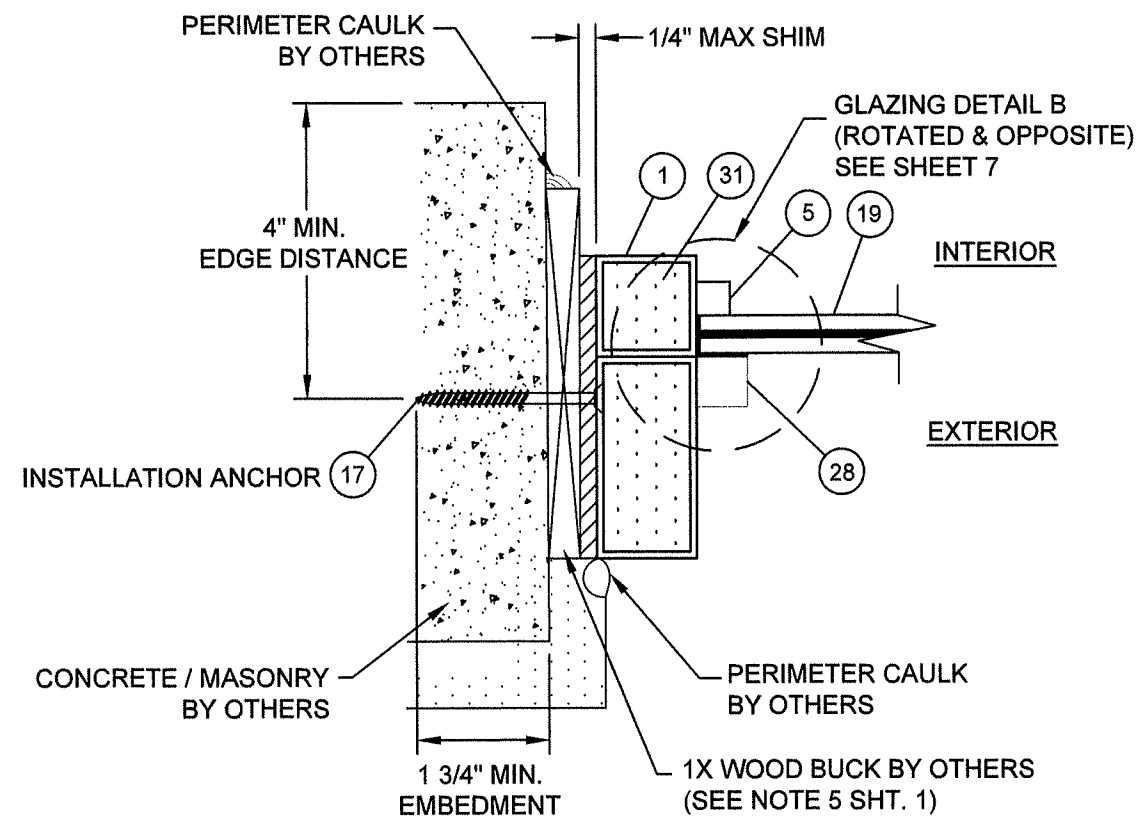




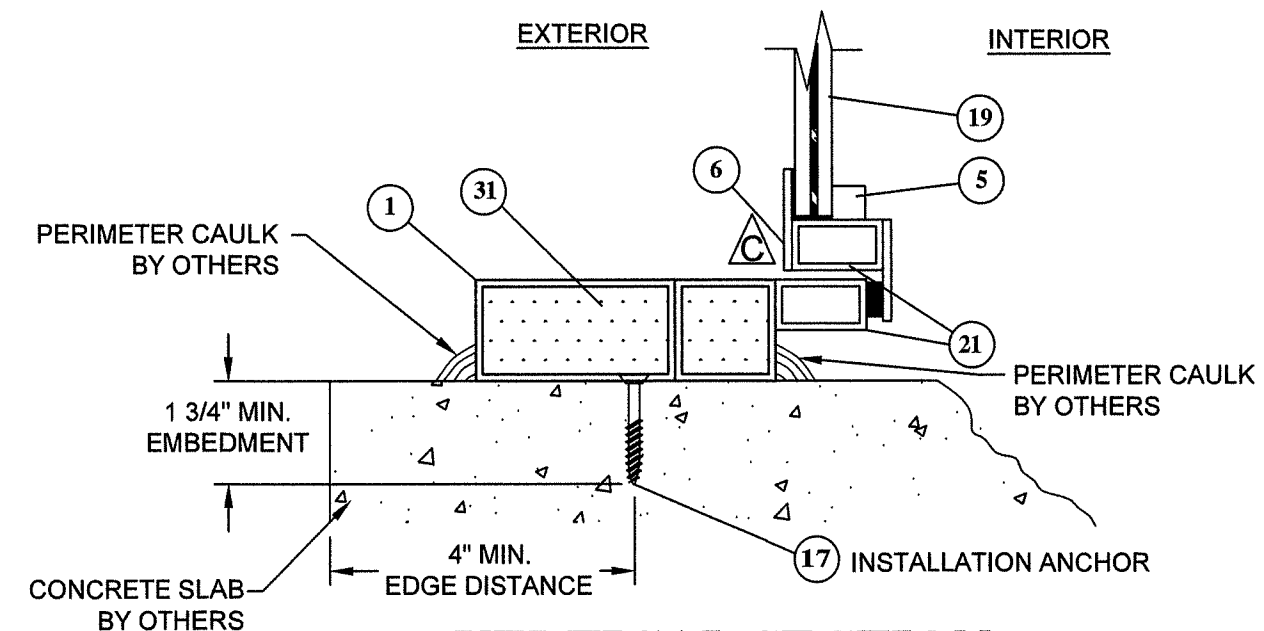
F
6 **HORIZONTAL SECTION**
JAMB - FIXED LITE
WOOD FRAME SUBSTRATE



E
6 **VERTICAL SECTION**
HEAD - TRANSOM
CONCRETE/MASONRY SUBSTRATE




G
6 **HORIZONTAL SECTION**
JAMB - FIXED LITE
CONCRETE / MASONRY SUBSTRATE



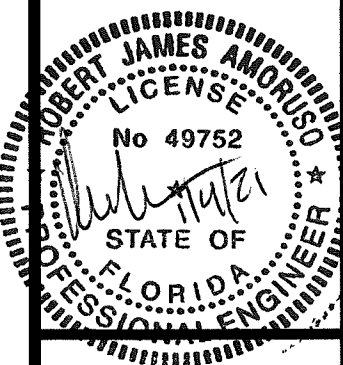
H
6 **VERTICAL SECTION**
SILL - SIDELITE W/ OPT. OPERABLE GLAZING
CONCRETE / MASONRY SUBSTRATE

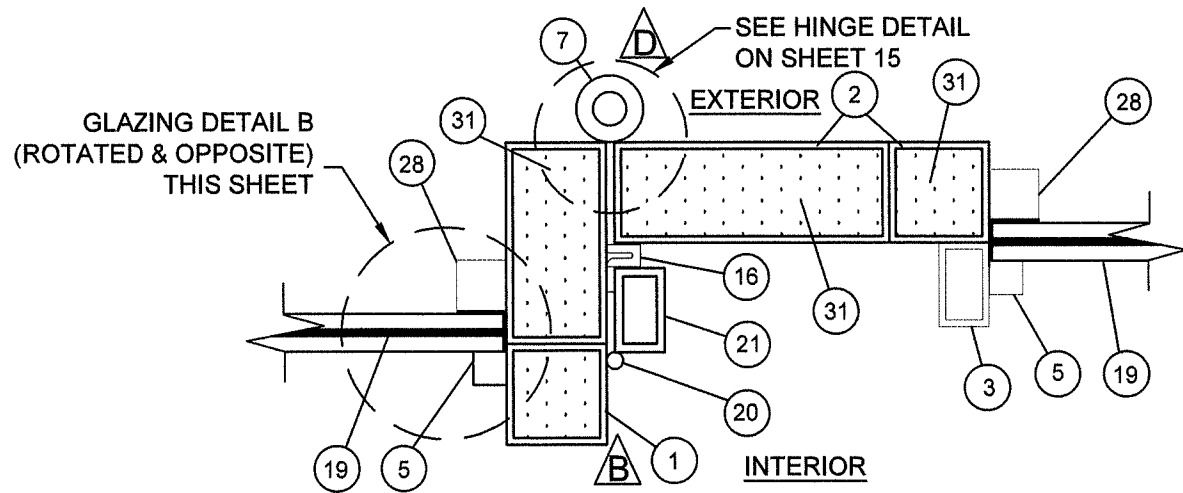
PRODUCT REVISED
as complying with the Florida
Building Code
NOA-No. 21-0224.04
Expiration Date 04/15/2025
By Ishag I. Chande
Miami-Dade Product Control

PROJECT NO. 420-1208						
J	Update to 7th Edition (2020) FBC	1/4/2021	RJA			
H	CHANGED MANUFACTURER'S ADDRESS	4/14/2020	RJA			
G	UPDATED TO 6TH EDITION (2017) FBC	6/25/19	RJA			
REV	DESCRIPTION	DATE	BY			

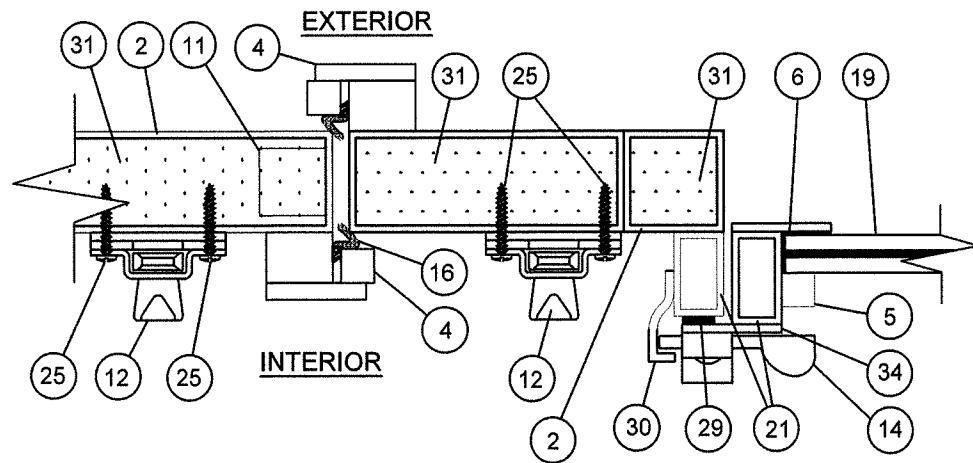
<div>671 NEWBURYPORT AVE. ALTAMONTE SPRINGS, FL 32701</div> <div>TITLE: STEEL OUTSWING DOORS W/ & W/O SIDELITES & TRANSOM VERTICAL AND HORIZONTAL SECTIONS</div>					
PREPARED BY:	DRAWN BY: CB		DATE: 07/22/08		
 <div>Phone 321.690.1788 Fax 321.690.1789 P.O. BOX 520775 LONGWOOD, FLORIDA 32752 FBPE Cert. of Authorization No. 25895 Email: info@pdc-corp.com</div>	SCALE:		DRAWING NO: VIN0001		
	REV:		N.T.S.	SHEET:	6 OF 15
			J		

Robert J. Amoroso, P.E.
FL P.E. No. 49752

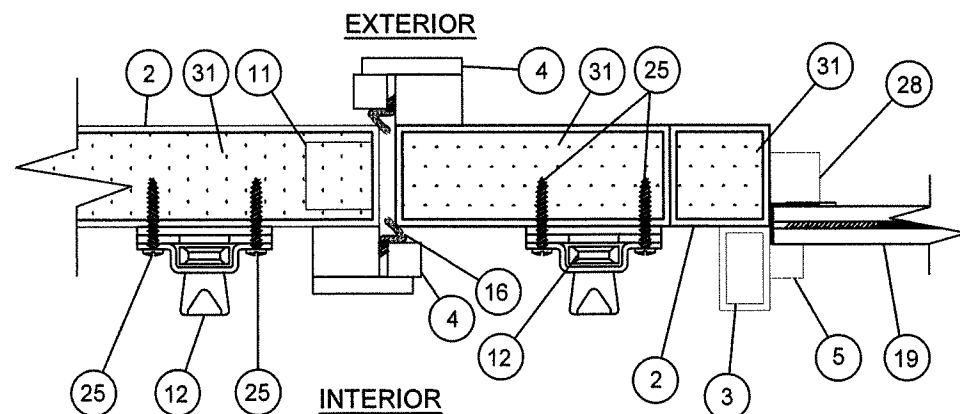




K HORIZONTAL SECTION
7 VERTICAL MULLION AT FIXED LITE

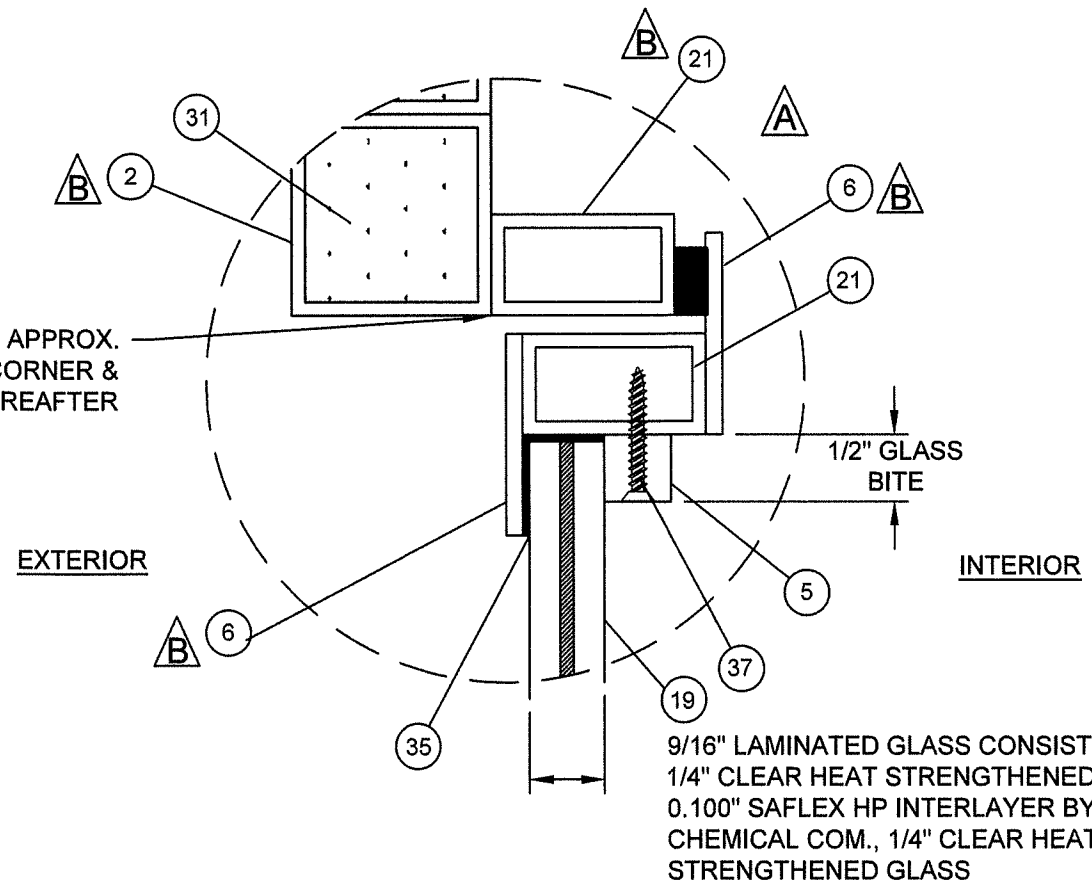


J HORIZONTAL SECTION
7 ASTRAGAL W/ OPTIONAL OPERABLE GLAZING PANEL

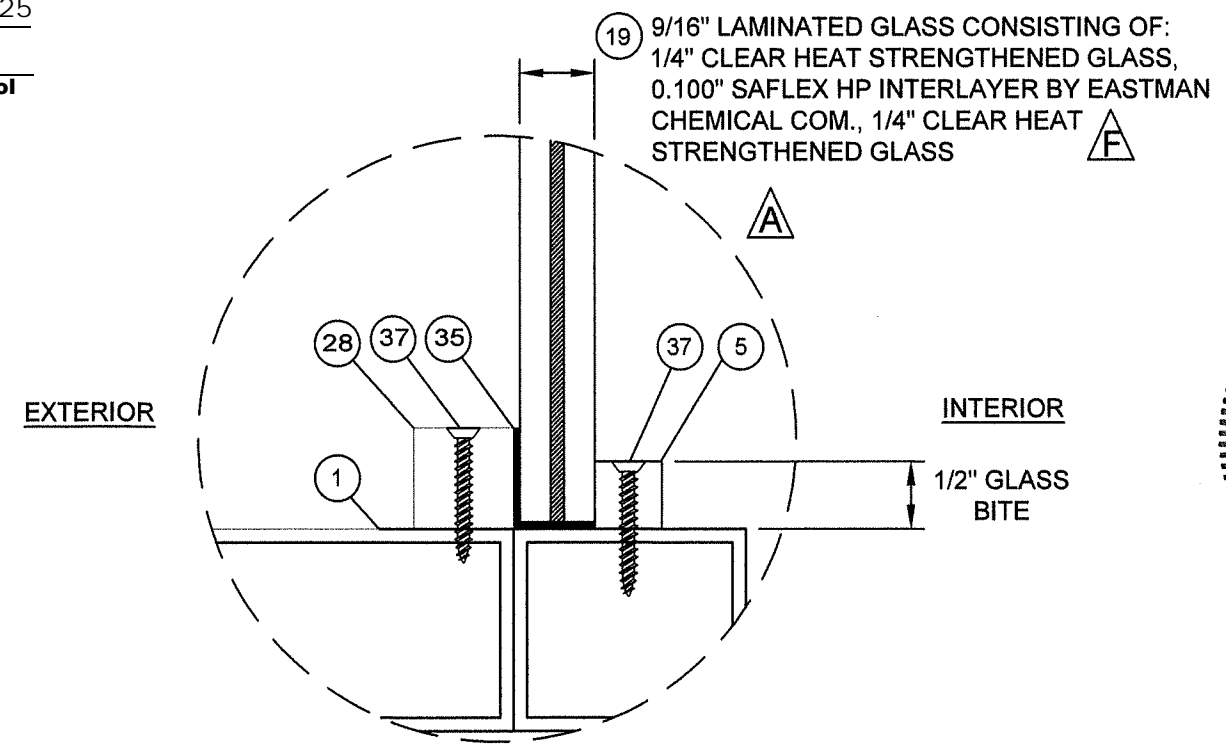


I HORIZONTAL SECTION
7 ASTRAGAL W/ FIXED GLAZING PANEL

TACK WELD APPROX.
4" FROM EACH CORNER &
11" O.C. THEREAFTER



GLAZING DETAIL A




GLAZING DETAIL B

PRODUCT REVISED
as complying with the Florida
Building Code
NOA-No. 21-0224.04

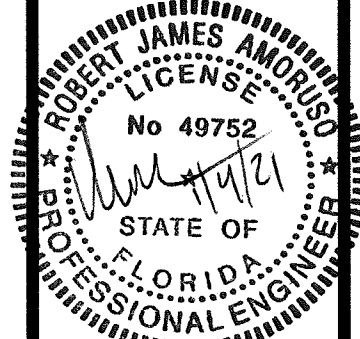
Expiration Date 04/15/2025

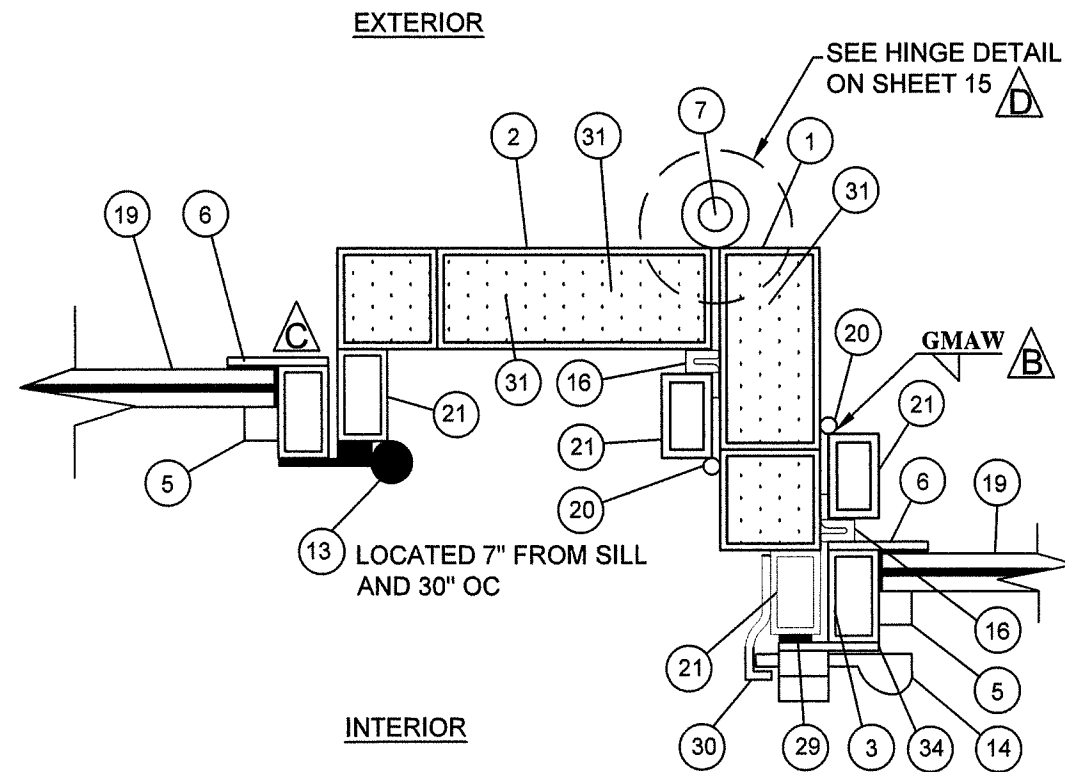
By Ishag I. Chande
Miami-Dade Product Control

PROJECT NO. 420-1208					
J	Update to 7th Edition (2020)	FBC	1/4/2021	RJA	BY
H	CHANGED MANUFACTURER'S ADDRESS		4/14/2020	RJA	DATE
G	UPDATED TO 6TH EDITION (2017) FBC		6/25/19	RJA	
REV	DESCRIPTION				

VINTAGE IRONWORKS 671 NEWBURYPORT AVE. ALTAMONTE SPRINGS, FL 32701					
TITLE: STEEL OUTSWING DOORS W/ & W/O SIDELITES & TRANSOM HORIZONTAL SECTIONS AND GLAZING DETAILS					
DATE:	07/22/08	DRAWING NO.:	VIN0001	SHEET:	7 OF 15
DRAWN BY:	CB	SCALE:	N.T.S.	REV:	J
 PTC PRODUCT DESIGN GROUP, LLC P.O. BOX 520775 LONGWOOD, FLORIDA 32752 Phone 321.690.1788 Fax 321.690.1789 FBPE Cert. of Authorization No. 25935 Email: info@ptc-corp.com					

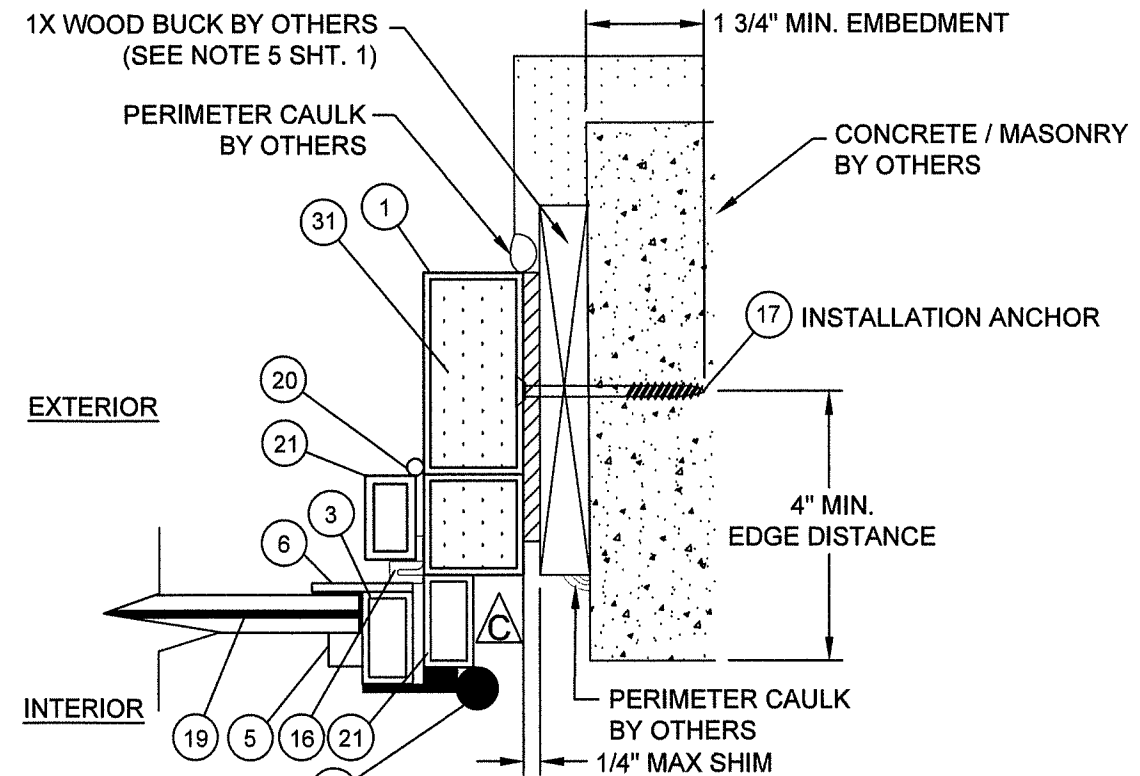
Robert J. Amoroso, P.E.
FL P.E. No. 49752



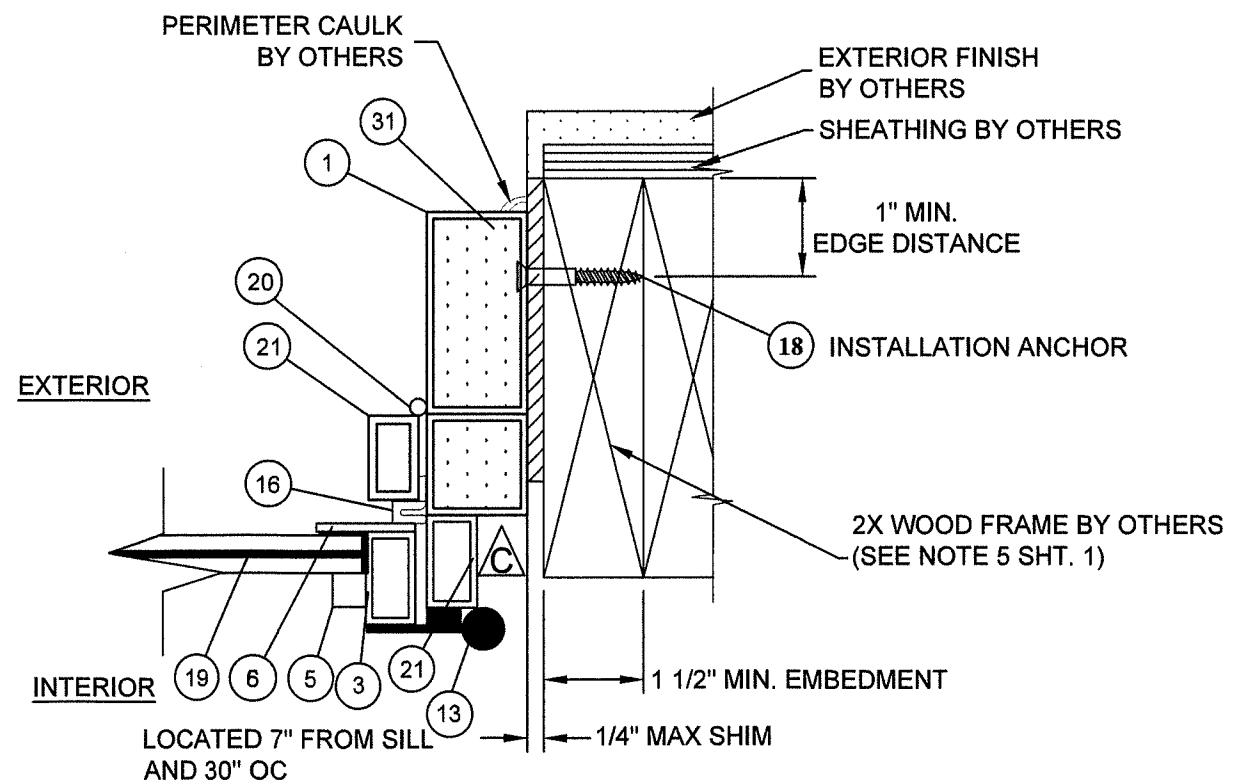


N8 HORIZONTAL SECTION
VERTICAL MULLION AT SIDELITE
W/ OPTIONAL OPERABLE GLAZING

PRODUCT REVISED
as complying with the Florida
Building Code
NOA-No. 21-0224.04
Expiration Date 04/15/2025
By *Ishag I. Chande*
Miami-Dade Product Control



L8 HORIZONTAL SECTION
JAMB - SIDELITE W/ OPT. OPERABLE GLAZING
CONCRETE / MASONRY SUBSTRATE

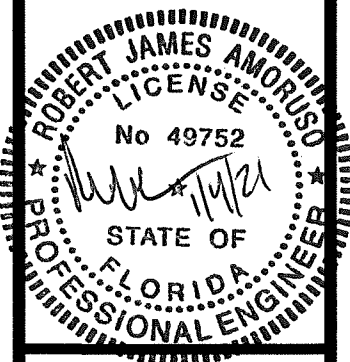


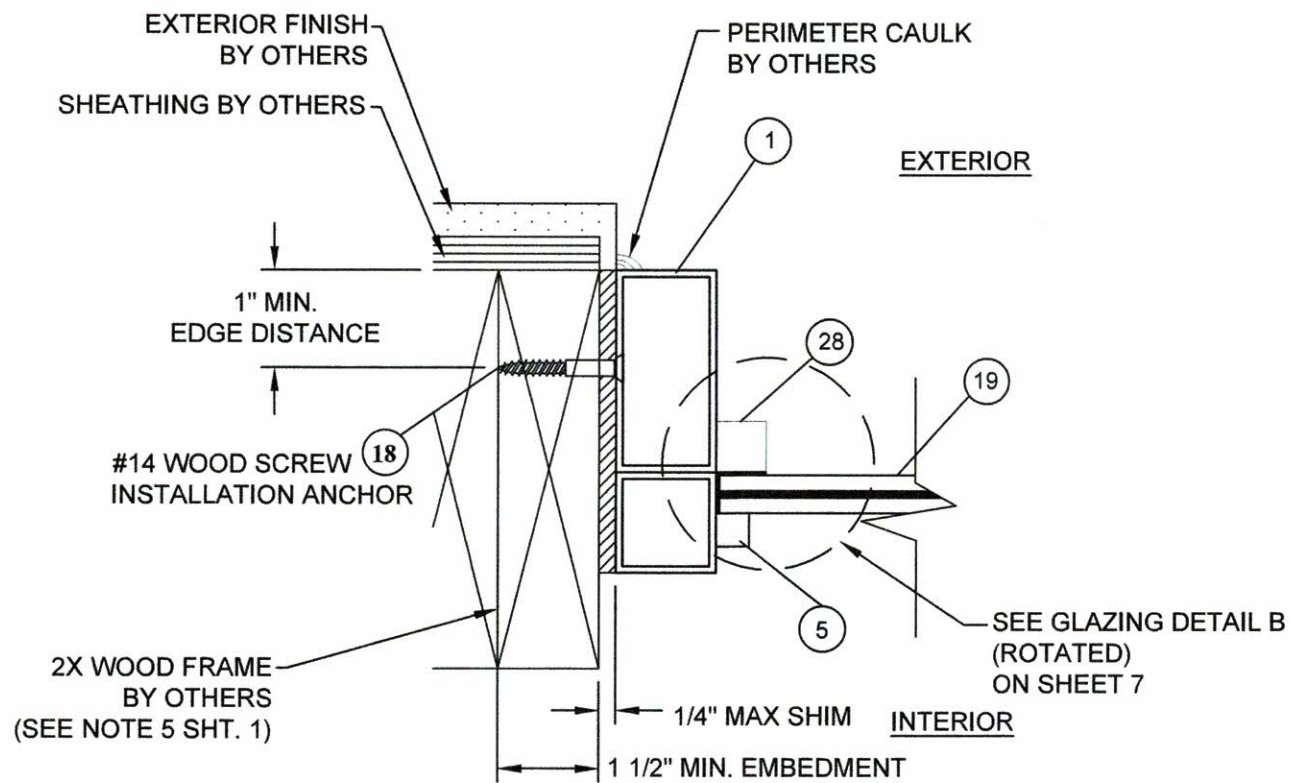
M8 HORIZONTAL SECTION
JAMB - SIDELITE W/ OPT. OPERABLE GLAZING
WOOD FRAME SUBSTRATE

PROJECT NO. 420-1208									
J	Update to 7th Edition (2020) FBC		1/4/2021	RJA					
H	CHANGED MANUFACTURER'S ADDRESS		4/14/2020	RJA					
G	UPDATED TO 6TH EDITION (2017) FBC		6/25/19	RJA					
REV/	DESCRIPTION		DATE	BY					

VINTAGE IRONWORKS 671 NEWBURYPORT AVE. ALTA MONTE SPRINGS, FL 32701					TITLE: STEEL OUTSWING DOORS W/ & W/O SIDELITES & TRANSOM HORIZONTAL SECTIONS				
DRAWN BY: CB					DATE: 07/22/08				
SCALE: N.T.S.					DRAWING NO: VIN0001				
REV: J					SHEET: 8 OF 15				
PREPARED BY: PTC PRODUCT DESIGN GROUP, LLC P.O. BOX 520775 LONGWOOD, FLORIDA 32752 FBPE Cert. of Authorization No. 25936 Email: info@ptc-corp.com					Phone 321.690.1788 Fax 321.690.1789				

Robert J. Amoroso, P.E.
FL P.E. No. 49752

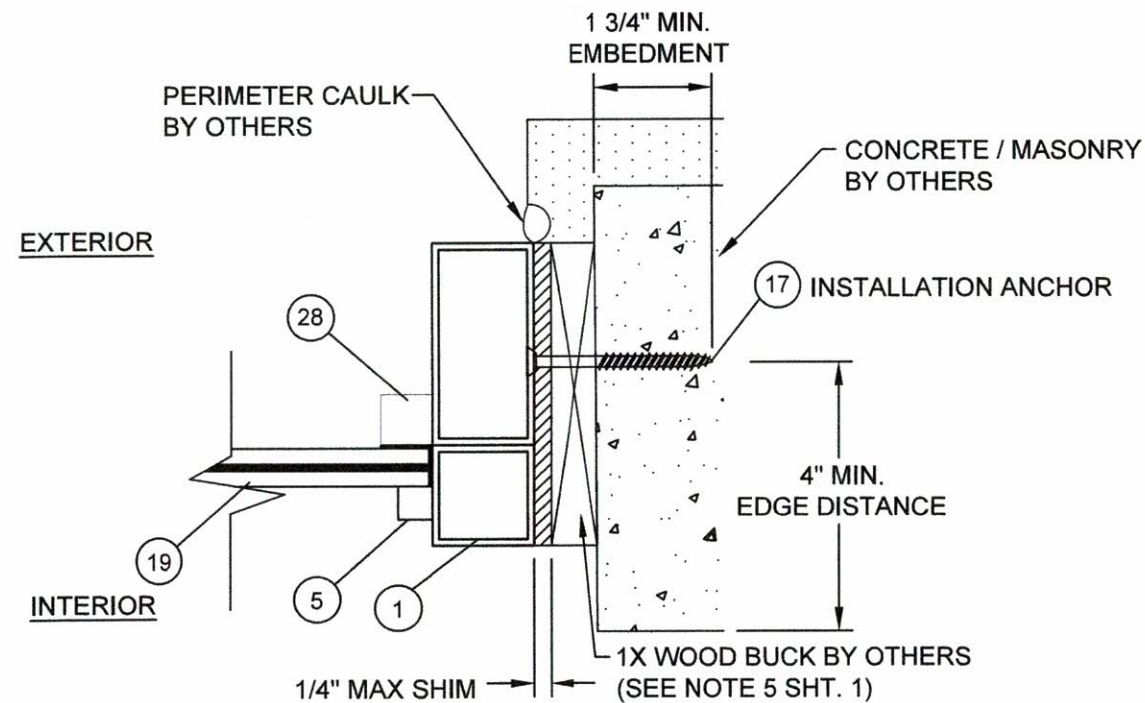




O HORIZONTAL SECTION

JAMB - FIXED TRANSOM INTO WOOD SUBSTRATE

PRODUCT REVISED
as complying with the Florida
Building Code
NOA-No. 21-0224.04
Expiration Date 04/15/2025
By *Ishag I. Chande*
Miami-Dade Product Control



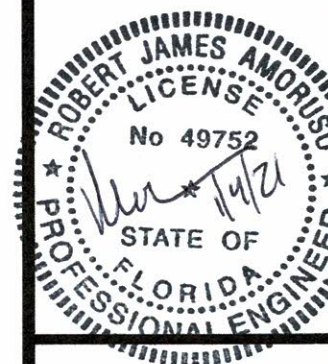
P HORIZONTAL SECTION

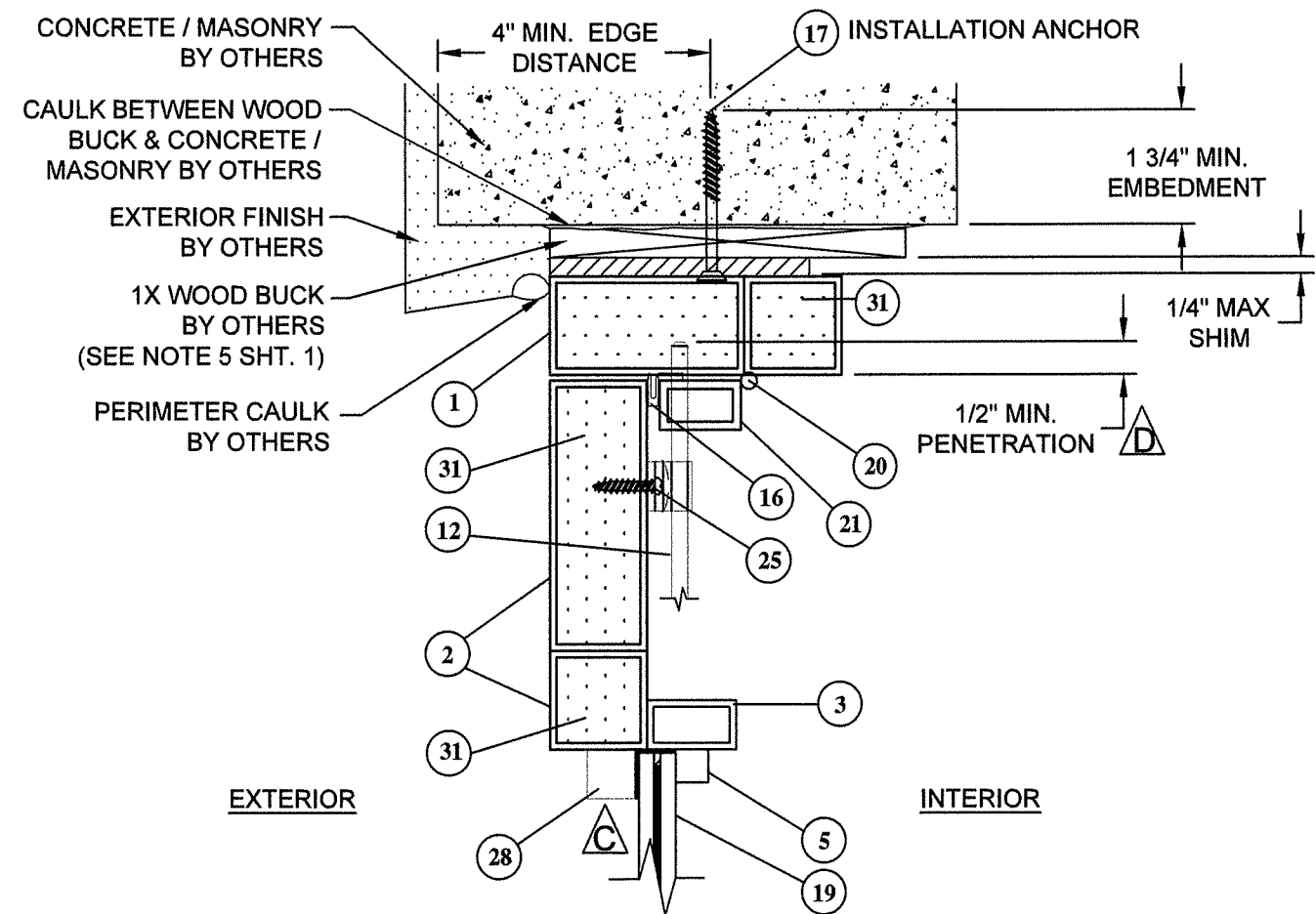
JAMB - FIXED TRANSOM INTO CONCRETE / MASONRY SUBSTRATE

PROJECT NO. 420-1208				
J	Update to 7th Edition (2020) FBC	1/4/2021	RJA	BY
H	CHANGED MANUFACTURER'S ADDRESS	4/14/2020	RJA	DATE
G	UPDATED TO 6TH EDITION (2017) FBC	6/25/19	RJA	REV
REV	DESCRIPTION			

VINTAGE IRONWORKS 671 NEWBURYPORT AVE. ALTAMONTE SPRINGS, FL 32701				
TITLE: STEEL OUTSWING DOORS W/ & W/O SIDELITES & TRANSOM HORIZONTAL SECTIONS				
DATE:	07/22/08	DRAWING NO:	VIN0001	SHEET: 9 OF 15
DRAWN BY:	CB	SCALE:	N.T.S.	REV:
PREPARED BY:	J			
PTC PRODUCT DESIGN GROUP, LLC 10000 BAYVIEW BLVD., SUITE 100 LONGWOOD, FLORIDA 32750 Phone 321.690.1788 Fax 321.690.1789 Email: info@ptc-corp.com				

Robert J. Amoruso, P.E.
FL P.E. No. 49752

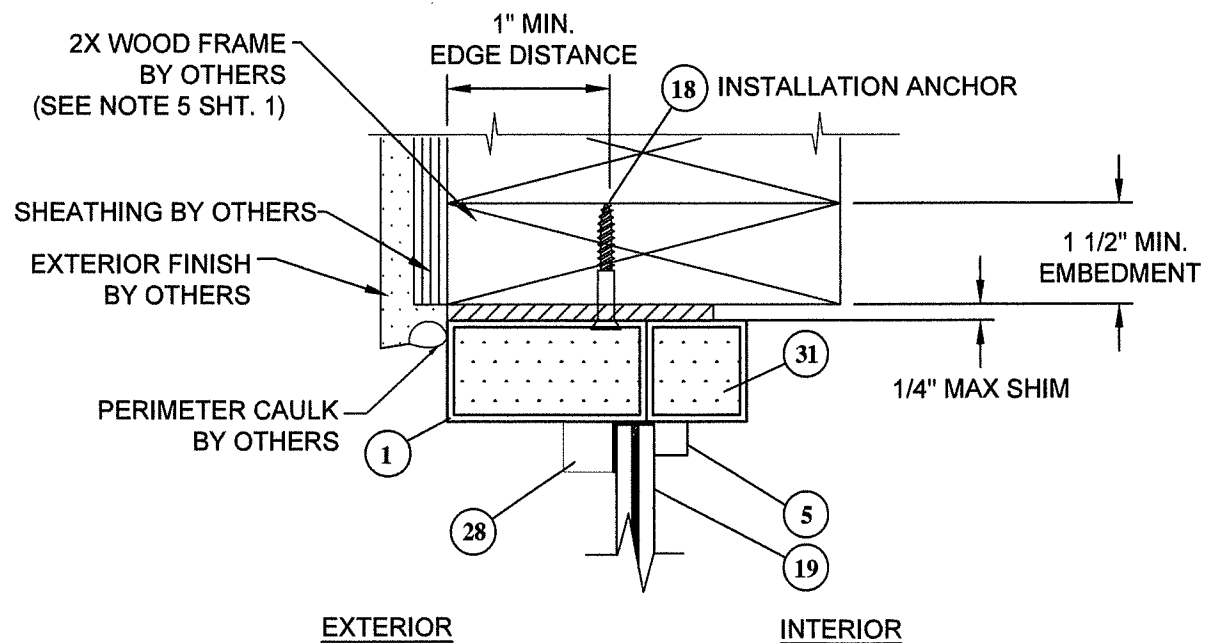




R
10

VERTICAL SECTION

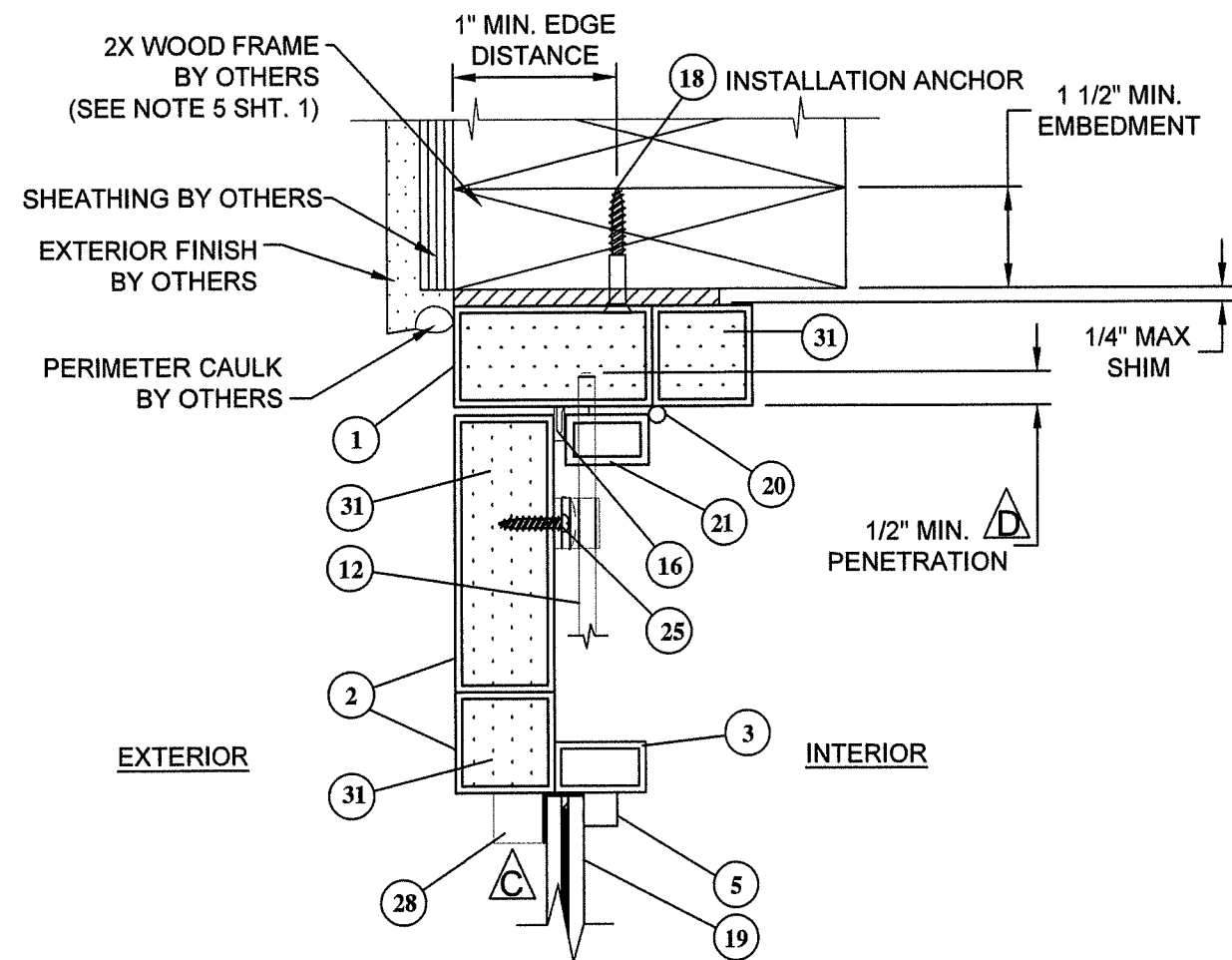
HEAD - FRAME DOOR
CONCRETE / MASONRY SUBSTRATE



Q
10

VERTICAL SECTION

HEAD - FIXED LITE
WOOD FRAME SUBSTRATE



S
10

VERTICAL SECTION

HEAD - FRAME DOOR
WOOD SUBSTRATE

PRODUCT REVISED
as complying with the Florida
Building Code
NOA-No. 21-0224.04

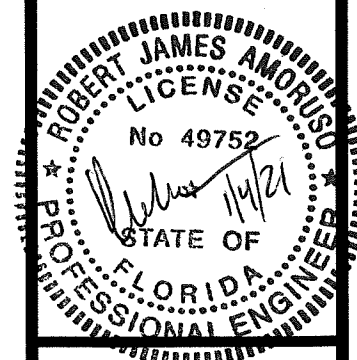
Expiration Date 04/15/2025

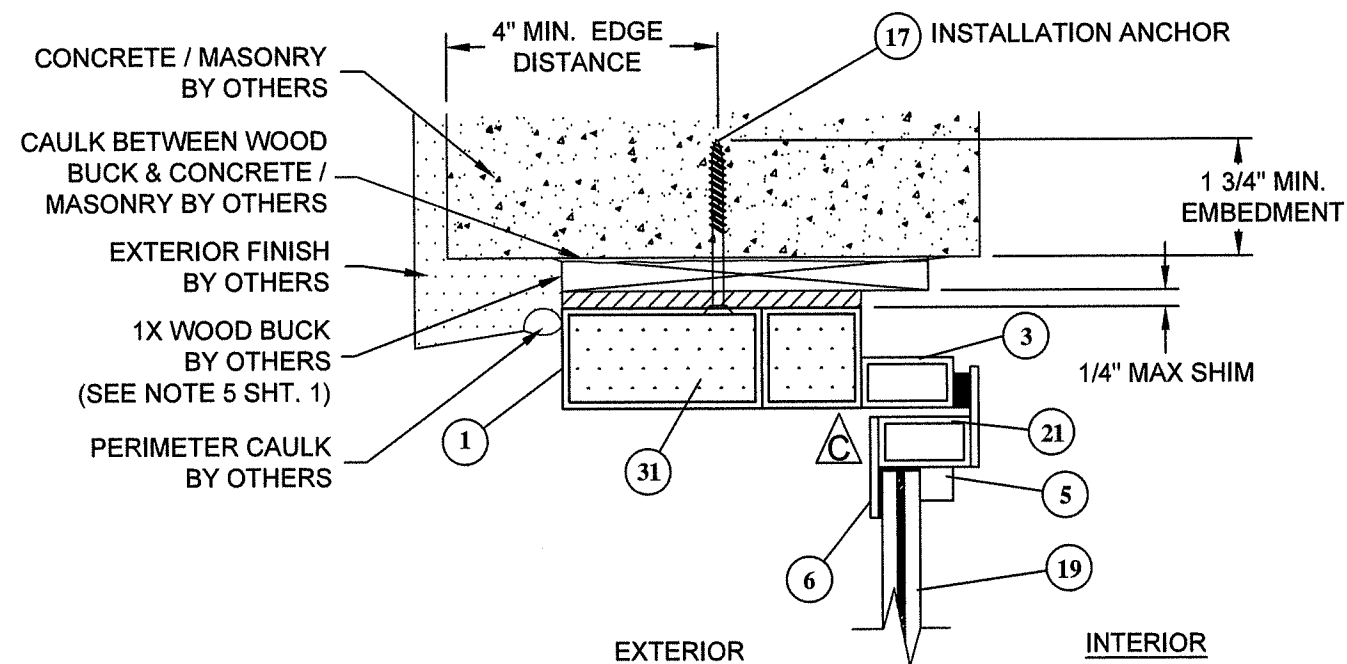
By Isaac I. Chandra
Miami-Dade Product Control

PROJECT NO. 420-1208		RJA	1/4/2021	RJA	4/14/2020	RJA	6/25/19	DATE
J	Update to 7th Edition (2020) FBC	H	CHANGED MANUFACTURER'S ADDRESS	G	UPDATED TO 6TH EDITION (2017) FBC	REV	DESCRIPTION	BY

VINTAGE IRONWORKS 671 NEWBURYPORT AVE. ALTA MONTE SPRINGS, FL 32701		DATE: 07/22/08		DRAWING NO: VIN0001		SHEET: 10 OF 15	
TITLE: STEEL OUTSWING DOORS W/ & W/O SIDELITES & TRANSOM VERTICAL SECTIONS		SCALE: N.T.S.		REV: J			
PREPARED BY: CB		DRAWN BY: N.T.S.		CHECKED BY: J			
PTC PRODUCT DESIGN GROUP, LLC P.O. BOX 520775 LONGWOOD, FLORIDA 32752 Phone 321.690.1788 Fax 321.690.1788 Email info@ptc-corp.com							

Robert J. Amoroso, P.E.
FL P.E. No. 49752



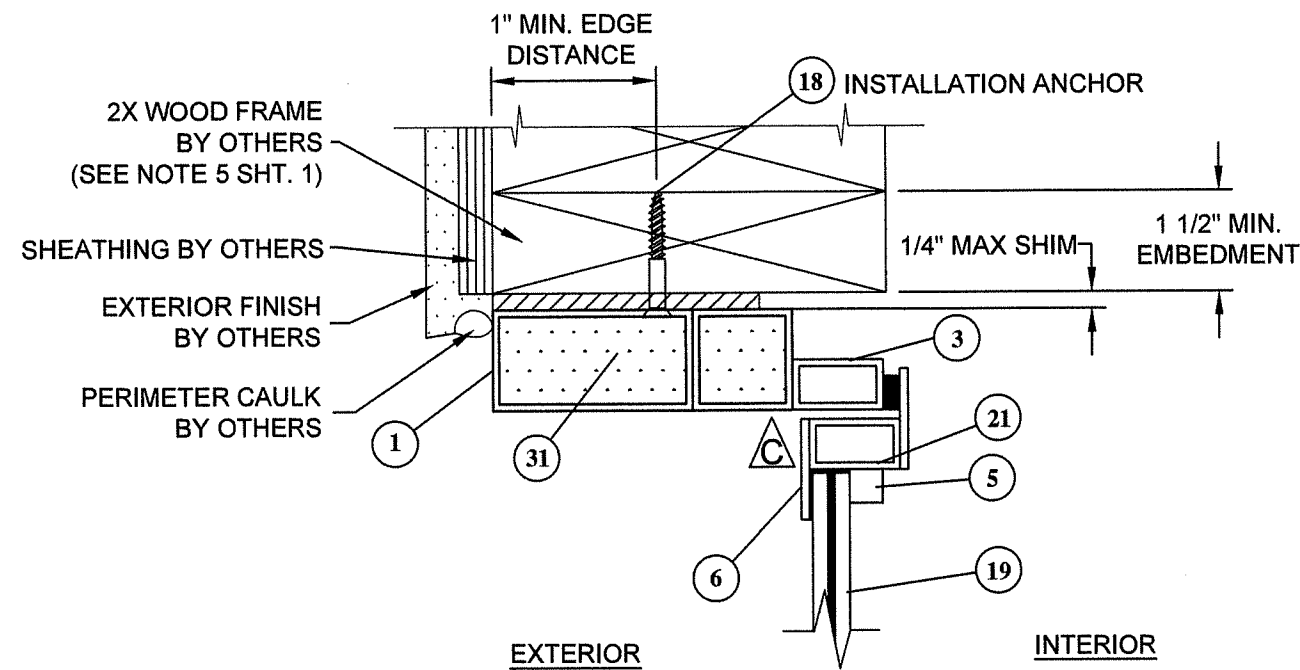


U
11 **VERTICAL SECTION**
HEAD FRAME - SIDELITE W/ OPT. OPERABLE GLAZING
CONCRETE / MASONRY

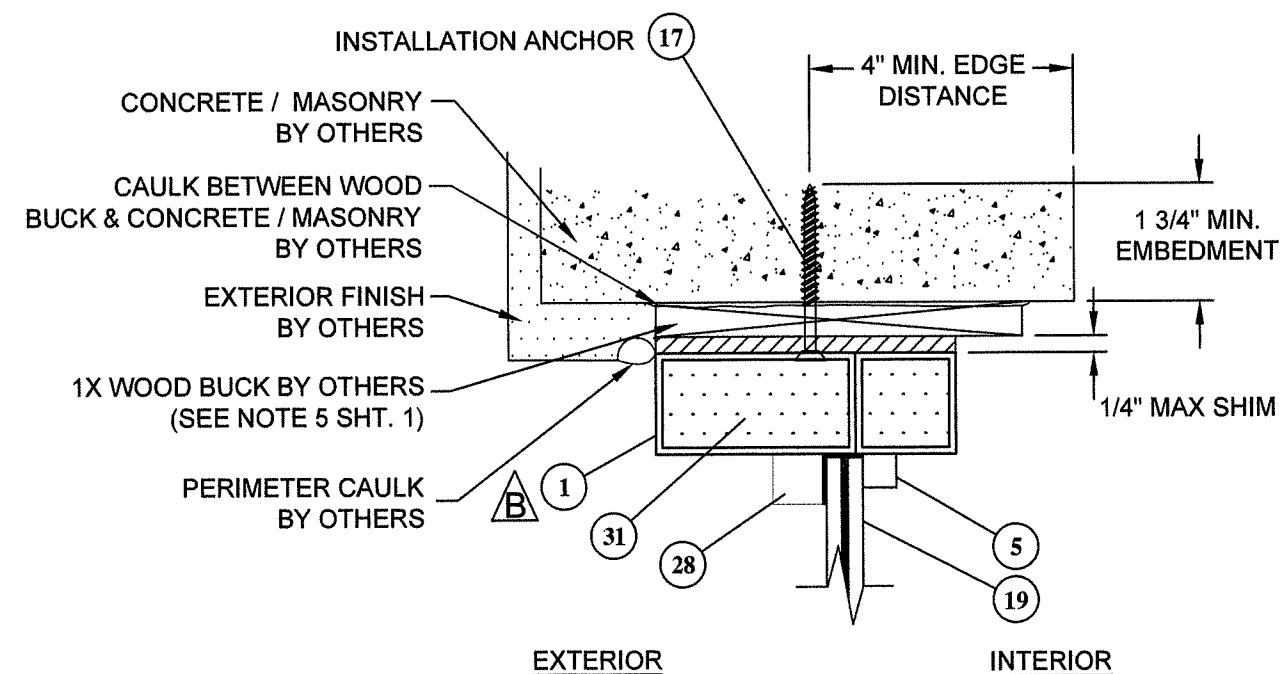
PRODUCT REVISED
as complying with the Florida
Building Code
NOA-No. 21-0224.04

Expiration Date 04/15/2025

By *Ishag I. Chanda*
Miami-Dade Product Control

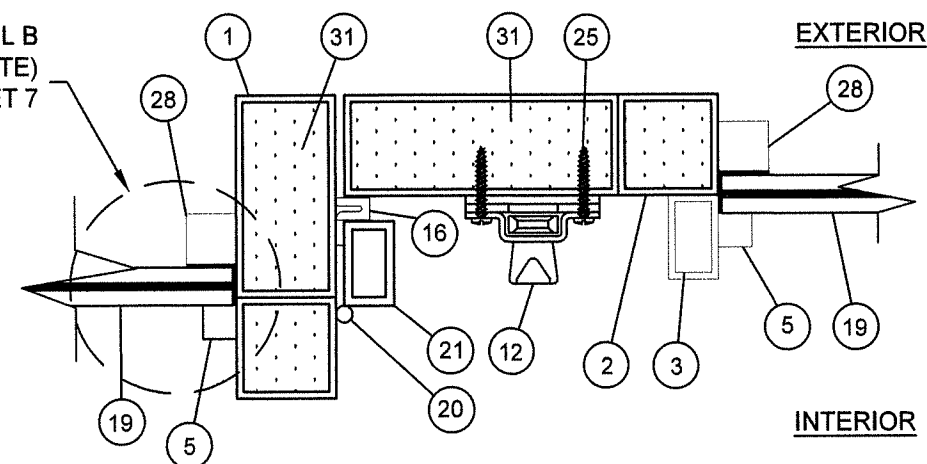


V
11 **VERTICAL SECTION**
HEAD FRAME - SIDELITE W/ OPT. OPERABLE GLAZING
WOOD SUBSTRATE



T
11 **VERTICAL SECTION**
HEAD - FIXED LITE
CONCRETE / MASONRY SUBSTRATE

GLAZING DETAIL B
(ROTATED & OPPOSITE)
SEE SHEET 7



W
11 **HORIZONTAL SECTION**
LOCKSTILE INTO MULLION

PROJECT NO. 420-1208

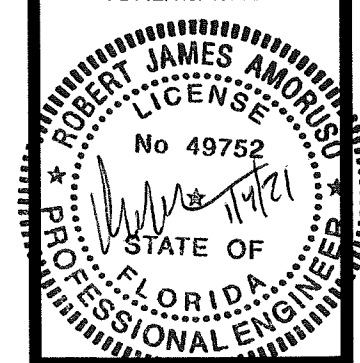
REV	DATE	DESCRIPTION
J	1/4/2021	Update to 7th Edition (2020) FBC
H	4/14/2020	CHANGED MANUFACTURER'S ADDRESS
G	6/25/19	UPDATED TO 6TH EDITION (2017) FBC

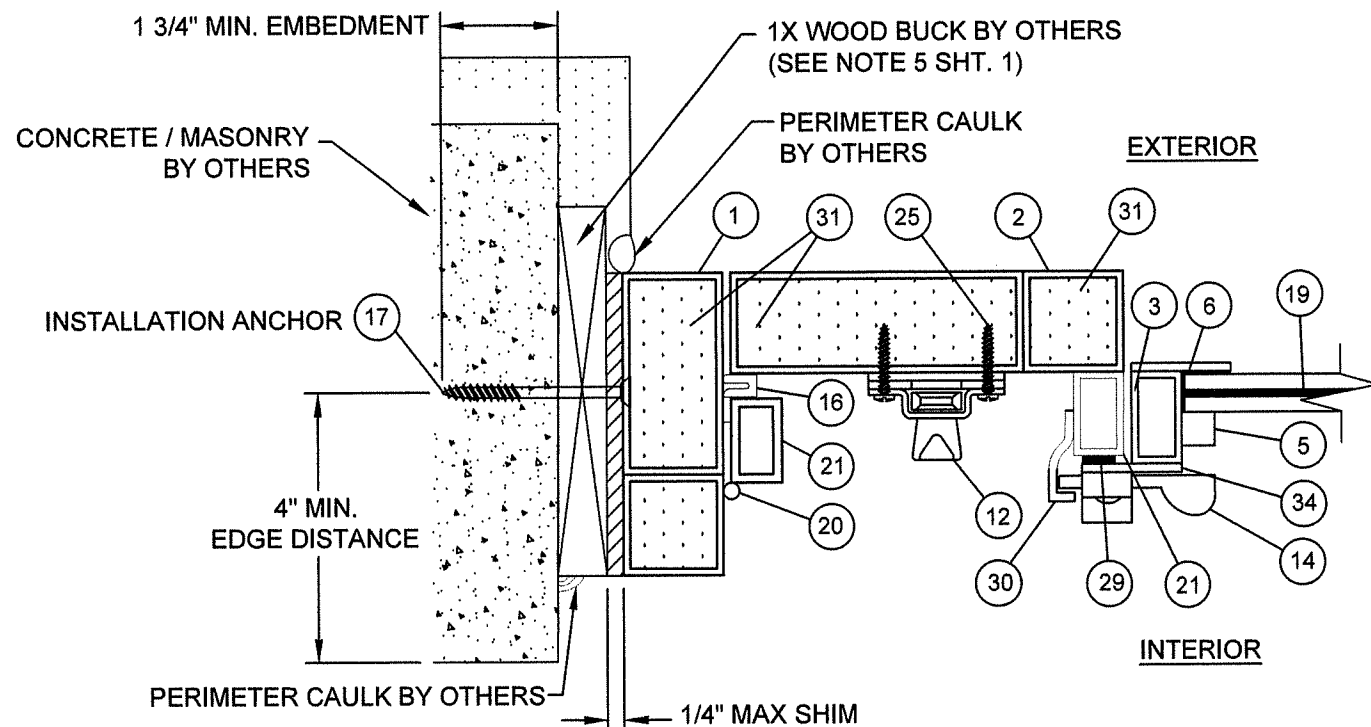
VINTAGE IRONWORKS
671 NEWBURYPORT AVE.
ALTAMONTE SPRINGS, FL 32701

TITLE: STEEL OUTSWING DOORS W/ & W/O SIDELITES & TRANSOM
VERTICAL AND HORIZONTAL SECTIONS

DATE:	07/22/08
DRAWN BY:	CB
SCALE:	N.T.S.
DRAWING NO.:	VIN0001
SHEET:	11 OF 15

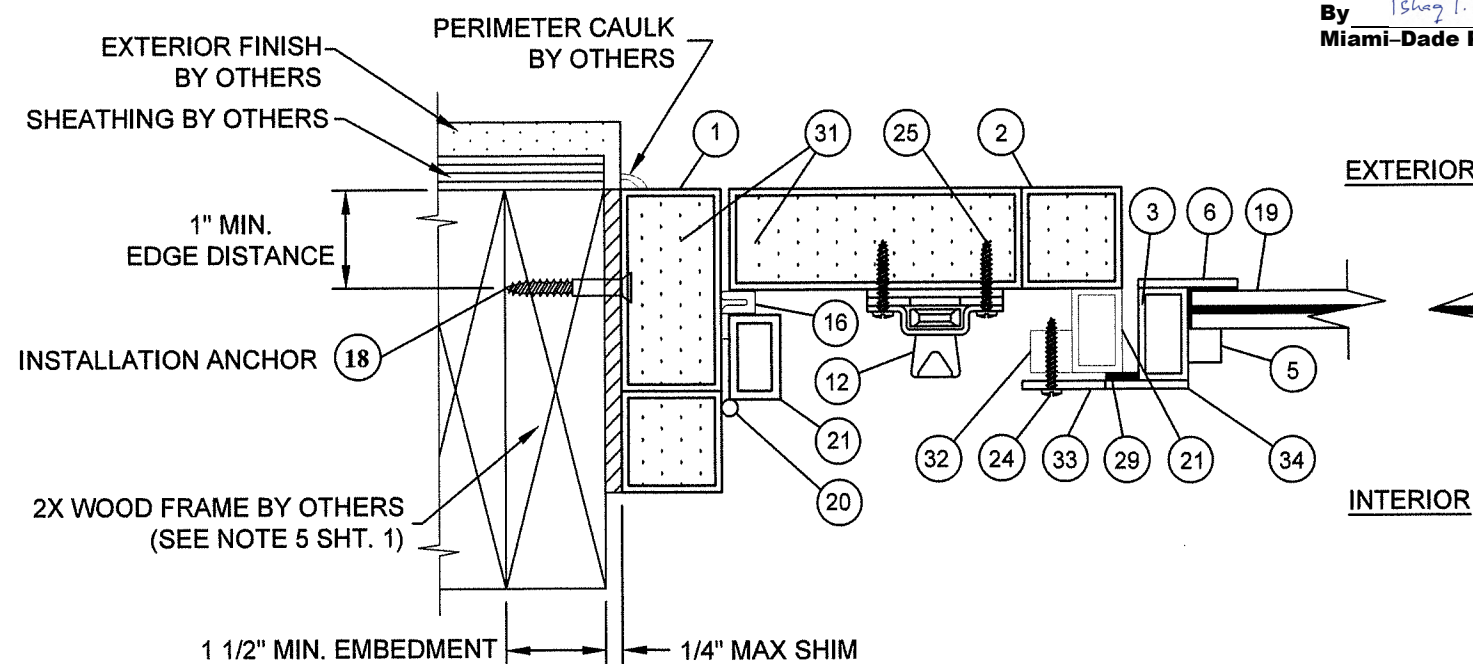
Robert J. Amoruso, P.E.
FL P.E. No. 49752



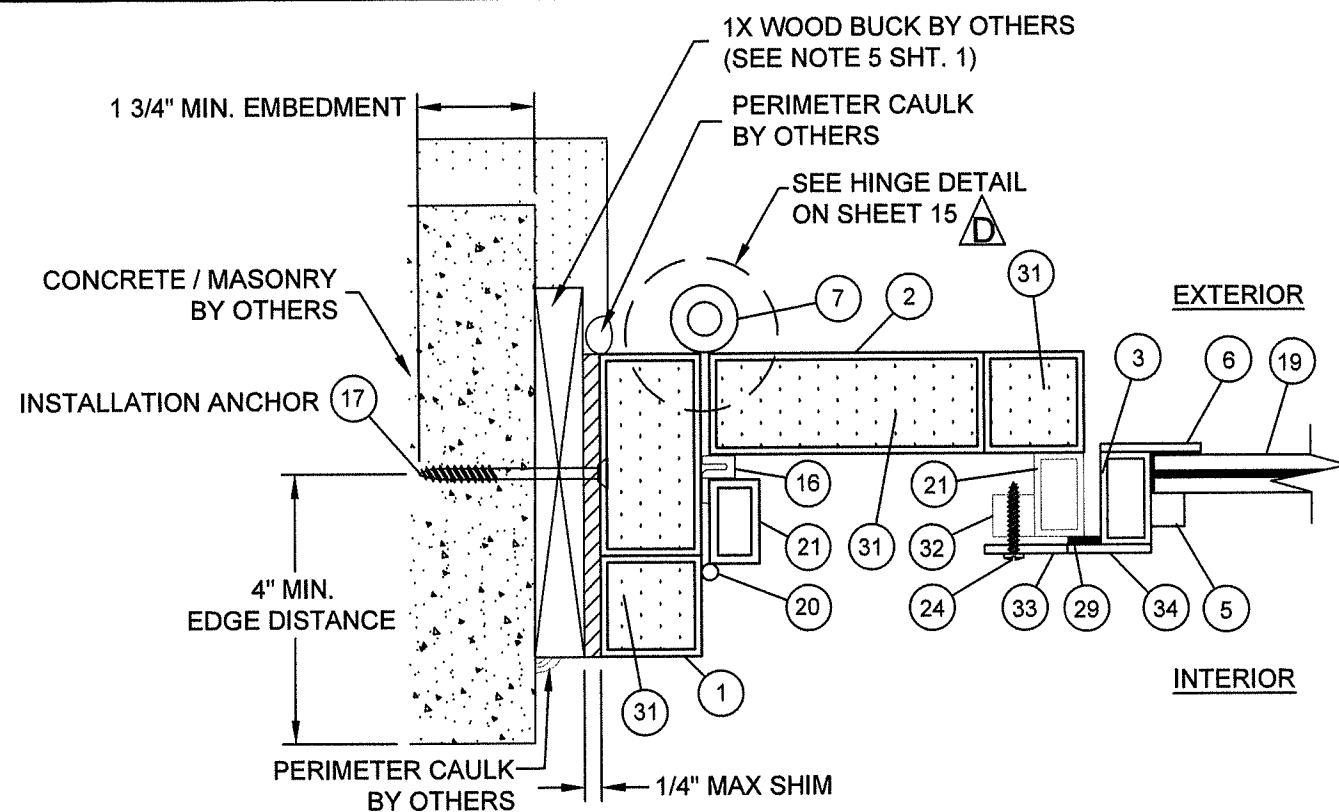


**Y
12** **HORIZONTAL SECTION**
JAMB - LOCKSTILE INTO
CONCRETE / MASONRY SUBSTRATE
W/ OPTIONAL OPERABLE GLAZING

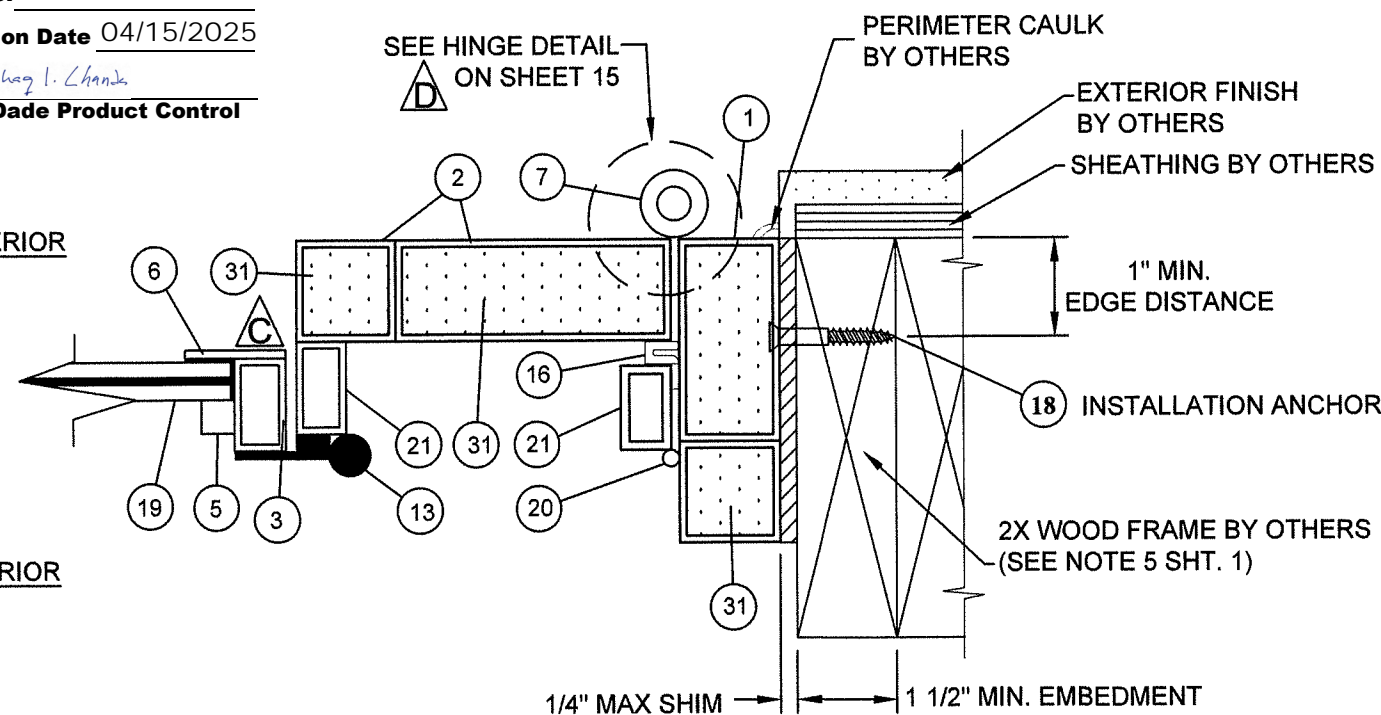
PRODUCT REVISED
as complying with the Florida
Building Code
NOA-No. 21-0224.04
Expiration Date 04/15/2025
By *Ishag I. Chande*
Miami-Dade Product Control



**X
12** **HORIZONTAL SECTION**
JAMB - LOCKSTILE INTO
WOOD SUBSTRATE
W/ OPTIONAL OPERABLE GLAZING



**Z
12** **HORIZONTAL SECTION**
HINGE STILE INTO CONCRETE SUBSTRATE
W/ OPTIONAL OPERABLE GLAZING

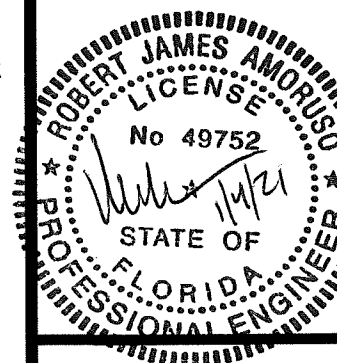


**AA
12** **HORIZONTAL SECTION**
HINGE STILE INTO CONCRETE SUBSTRATE
W/ OPTIONAL OPERABLE GLAZING

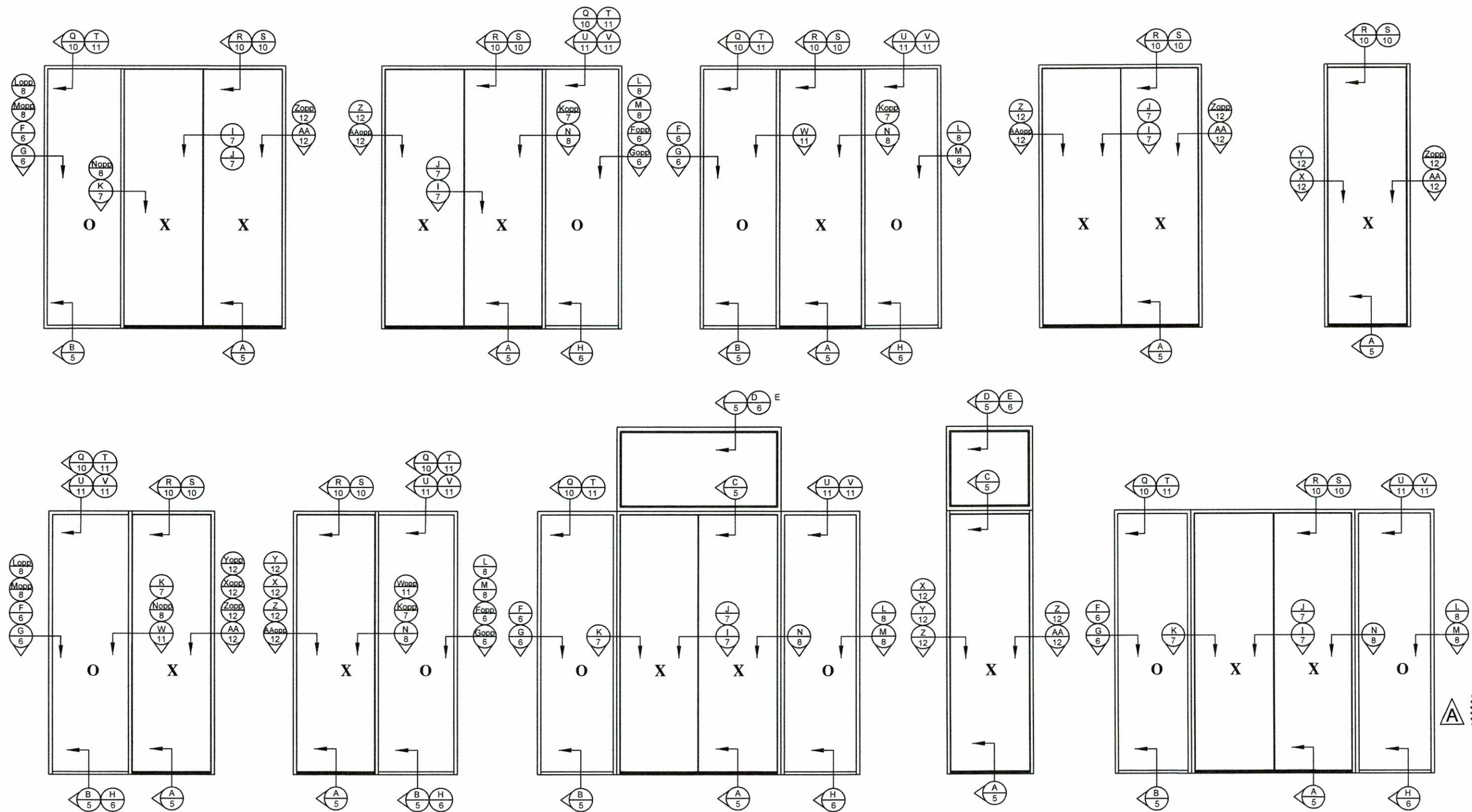
PROJECT NO. 420-1208		RJA	1/4/2021	RJA	4/14/2020	RJA	6/25/19	BY
Update to 7th Edition (2020) FBC		J		H		G		DATE
CHANGED MANUFACTURER'S ADDRESS								DESCRIPTION
UPDATED TO 6TH EDITION (2017) FBC								

VINTAGE IRONWORKS 671 NEWBURYPORT AVE. ALTA MONTE SPRINGS, FL 32701		DATE: 07/22/08		DRAWING NO: VIN0001		SHEET: 12 OF 15	
TITLE: STEEL OUTSWING DOORS W/ & W/O SIDELITES & TRANSOM HORIZONTAL SECTIONS		DRAWN BY: CB		SCALE: N.T.S.		REV: J	
PREPARED BY: PIC		P.O. BOX 520735 LONGWOOD, FLORIDA 32752		Phone 321.680.1788 Fax 321.680.1789		Email: info@pic-corp.com	

Robert J. Amoroso, P.E.
FL P.E. No. 49752



QUALIFIED CONFIGURATIONS



PRODUCT REVISED
as complying with the Florida
Building Code
NOA-No. 21-0224.04

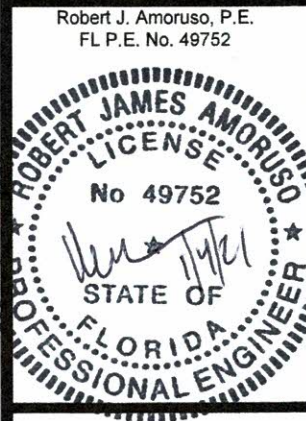
Expiration Date 04/15/2025

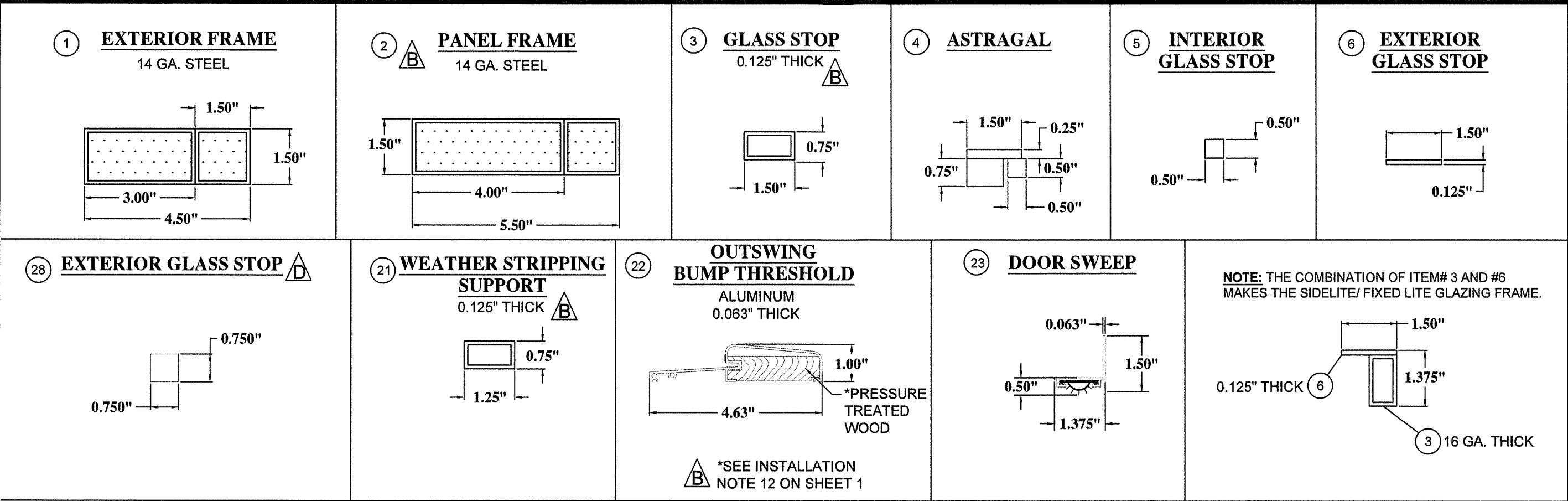
By Ishay L. Chandra
Miami-Dade Product Control

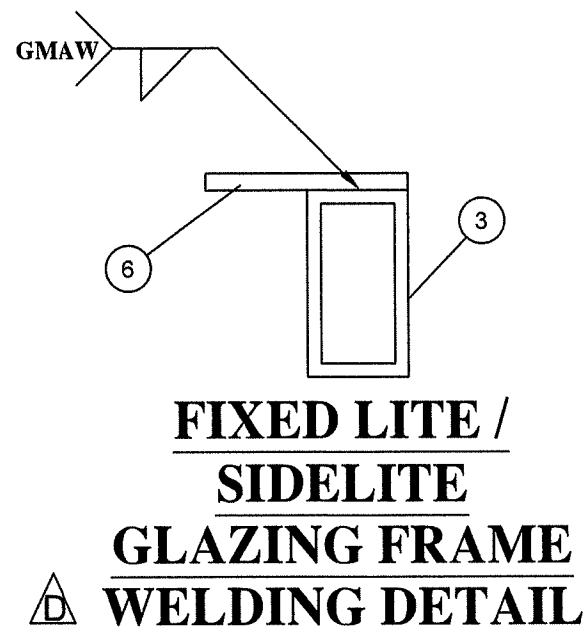
NOTE: ALL QUALIFIED CONFIGURATIONS REQUIRE SURFACE BOLTS ON ALL DOOR PANELS.

PROJECT NO. 420-1208			
Update to 7th Edition (2020)	1/4/2021	RJA	BY
CHANGED MANUFACTURER'S ADDRESS	4/14/2020	RJA	DATE
UPDATED TO 6TH EDITION (2017) FBC	6/25/19	RJA	REV
DESCRIPTION			

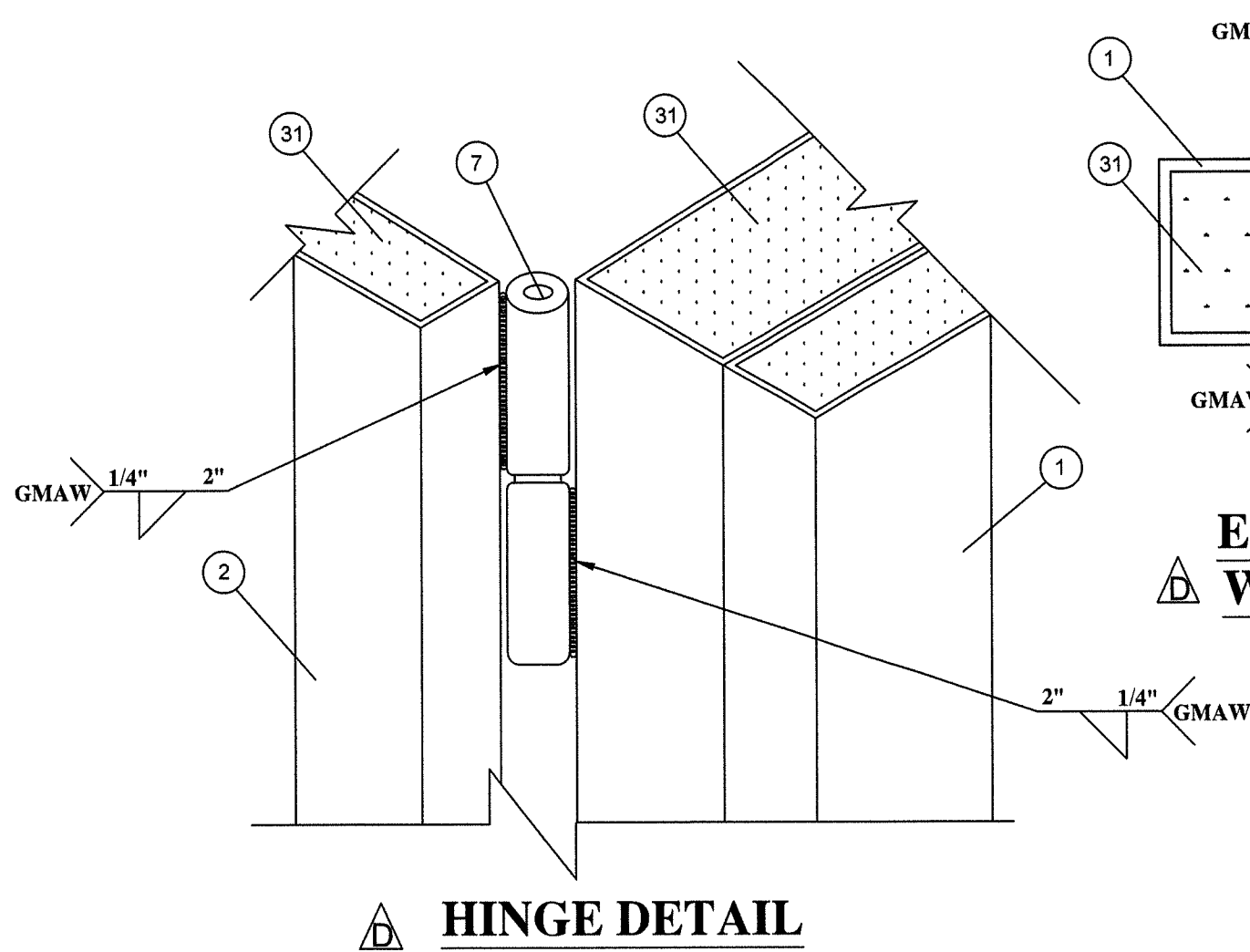
VINTAGE IRONWORKS 671 NEWBURYPORT AVE. ALTAMONTE SPRINGS, FL 32701			
TITLE: STEEL OUTSWING DOORS W/ & W/O SIDELITES & TRANSOM			
QUALIFIED CONFIGURATIONS			
DATE:	07/22/08	DRAWING NO:	VIN0001
SCALE:	N.T.S.	REV:	J
SHEET 13 OF 15			



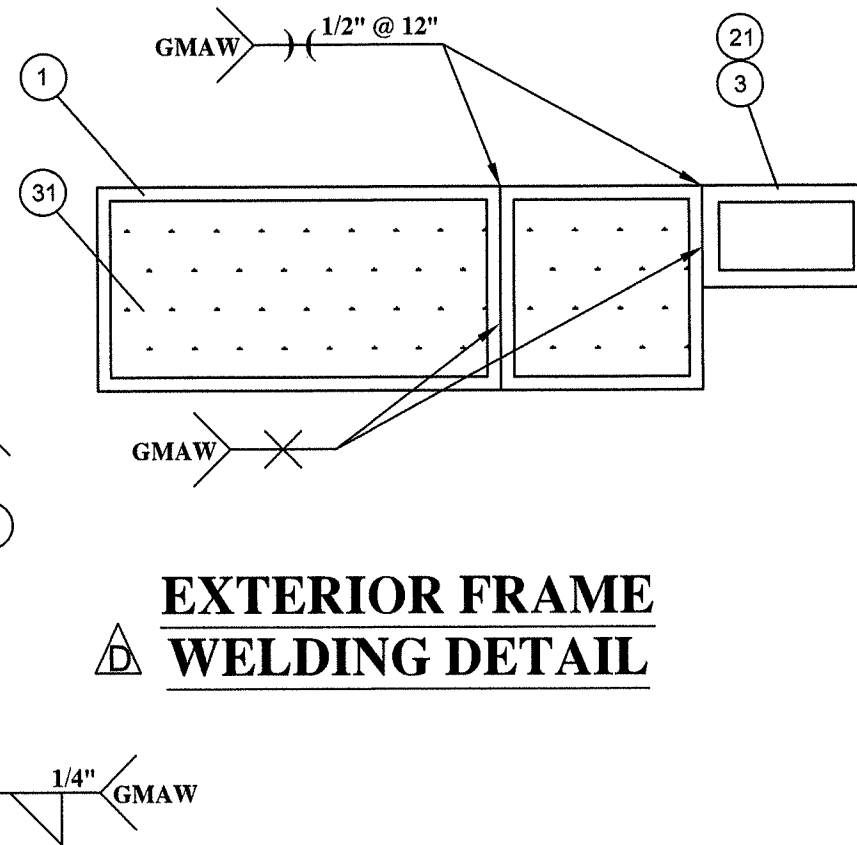




**FIXED LITE /
SIDELITE
GLAZING FRAME
WELDING DETAIL**

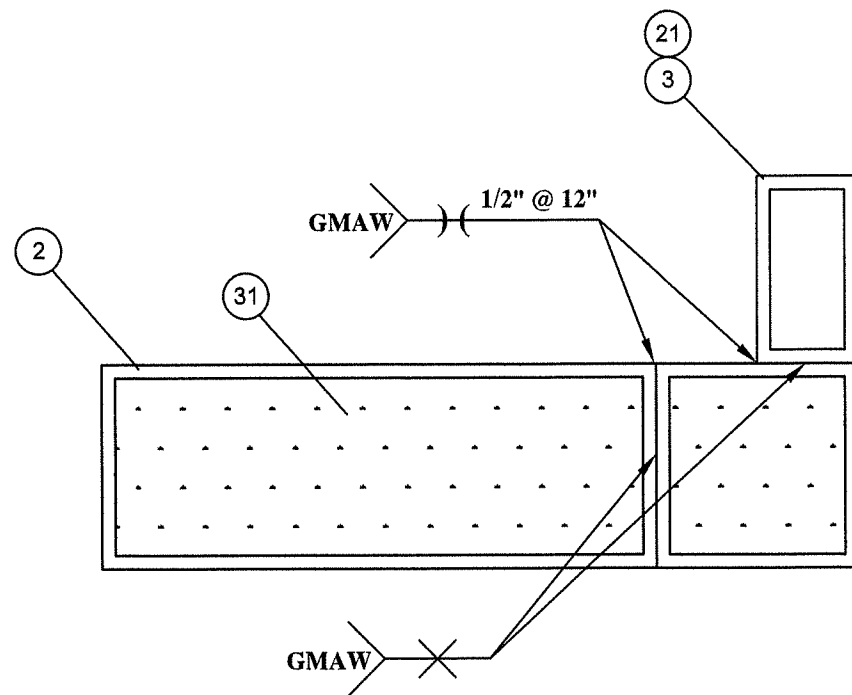


HINGE DETAIL



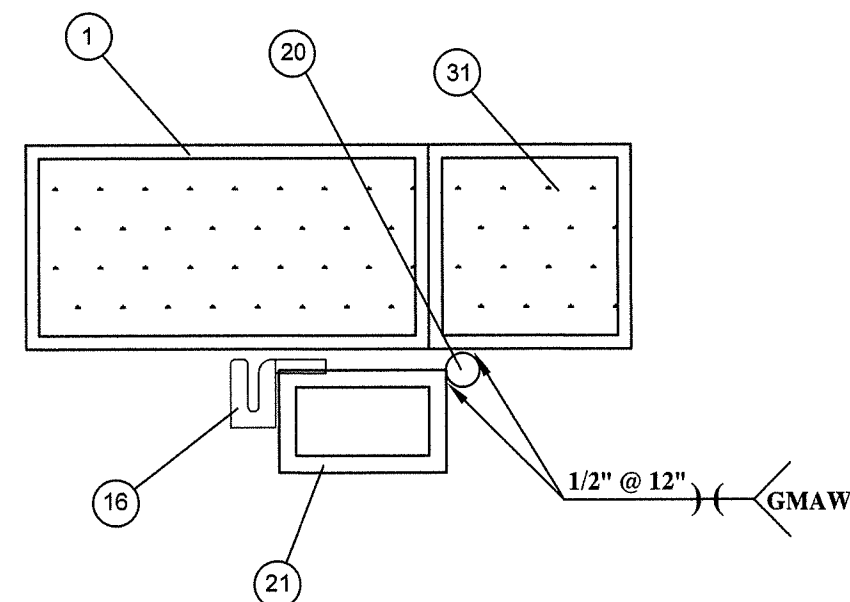
**EXTERIOR FRAME
WELDING DETAIL**

PRODUCT REVISED
as complying with the Florida
Building Code
NOA-No. 21-0224.04
Expiration Date 04/15/2025
By *Ismael L. Chanda*
Miami-Dade Product Control



**PANEL FRAME
WELDING DETAIL**

TABLE I											
SOLID MIG WIRE: AWS ER70S-6 This is a copper coated, mild steel solid welding wire that is formulated with a high deoxidizer content to provide excellent welding performance with CO2 and argon rich shielding gasses. Ideal for short circuit transfer general fabrication welding. Produces an exceptionally smooth and stable arc with minimal spatter and offers good wetting characteristics that allow for uniform tie-in. It is a great choice for welding light to moderately scaled, oily or rusty plates. It can also be recommended for spay transfer arc welding applications.	TYPICAL APPLICATIONS Pressure vessels, pipe, shaft build up, tanks, farm implements, steel castings, auto body, collision repair and very thin sheet metal. Excellent choice when welding with wire feed speeds ranging from very slow to moderately fast.										
Typical Wire Chemistry Carbon .09 Manganese 1.55 Silicon .84 Phosphorus .011 Sulfur .015 Copper .115	Welding Positions All Positions Shielding Gas CO2 or 75% Air / 25% CO2										
Typical Mechanical Properties (AW): CO2 Tensile Strength (psf) 90,000 Yield Strength (psf) 73,000 Elongation % in 2" 25%	Operating Range Amps <table><tr><th>Wire Dia.</th><th>Amps</th></tr><tr><td>.023"</td><td>35-70</td></tr><tr><td>.030"</td><td>50-100</td></tr><tr><td>.035"</td><td>100-150</td></tr><tr><td>.045"</td><td>150-200</td></tr></table> Approvals and Conformance AWS, A5.18, ER70S-6 *ASME SFA 5.18, F-6, A-1	Wire Dia.	Amps	.023"	35-70	.030"	50-100	.035"	100-150	.045"	150-200
Wire Dia.	Amps										
.023"	35-70										
.030"	50-100										
.035"	100-150										
.045"	150-200										



**WEATHER STRIP SUPPORT /
EXTERIOR FRAME
WELDING DETAIL**

PROJECT NO. 420-1208				
REV	DESCRIPTION	DATE	BY	
J	Update to 7th Edition (2020) FBC	1/4/2021	RJA	
H	CHANGED MANUFACTURER'S ADDRESS	4/14/2020	RJA	
G	UPDATED TO 6TH EDITION (2017) FBC	6/25/19	RJA	

VINTAGE IRONWORKS 671 NEWBURYPORT AVE. ALTA MONTE SPRINGS, FL 32701		DATE: 07/22/08	
TITILE: STEEL OUTSWING DOORS W/ & W/O SIDELITES & TRANSOM WELDING SCHEDULE AND DETAILS		DRAWING NO: VIN0001	
DRAWN BY: CB		SCALE: N.T.S.	
PREPARED BY:		SHEET: 15 OF 15	
P.O. BOX 52075 LONGWOOD, FLORIDA 32752 FBC Cert. of Authorization No. 25595 Email: info@pic-corp.com		Phone 321.690.1788 Fax 321.690.1788	

Robert J. Amoroso, P.E.
FL P.E. No. 49752

