



DEPARTMENT OF REGULATORY AND ECONOMIC RESOURCES (RER)
BOARD AND CODE ADMINISTRATION DIVISION
NOTICE OF ACCEPTANCE (NOA)

Ultimate Door of Palm Beach, Inc.
2800 North 2nd Avenue
Lake Worth, FL 33461

SCOPE:

This NOA is being issued under the applicable rules and regulations governing the use of construction materials. The documentation submitted has been reviewed and accepted by Miami-Dade County RER -Product Control Section to be used in Miami Dade County and other areas where allowed by the Authority Having Jurisdiction (AHJ).

This NOA shall not be valid after the expiration date stated below. The Miami-Dade County Product Control Section (In Miami Dade County) and/or the AHJ (in areas other than Miami Dade County) reserve the right to have this product or material tested for quality assurance purposes. If this product or material fails to perform in the accepted manner, the manufacturer will incur the expense of such testing and the AHJ may immediately revoke, modify, or suspend the use of such product or material within their jurisdiction. RER reserves the right to revoke this acceptance, if it is determined by Miami-Dade County Product Control Section that this product or material fails to meet the requirements of the applicable building code.

This product is approved as described herein and has been designed to comply with the Florida Building Code, including the High Velocity Hurricane Zone.

DESCRIPTION: Series Alum Clad Outswing Wood French Doors – L.M.I.

APPROVAL DOCUMENT: Drawing No. **1748 Rev A**, titled series “Aluminum Clad Wood Impact Out-Swing French Doors,” Sheets 1 through 17 of 17, prepared by W. W. Schaefer Engineering & Consulting, P.A., dated March 01, 2021, signed and sealed by Warren W. Schaefer, P. E., bearing the Miami-Dade County Product Control Renewal stamp with the Notice of Acceptance number and Expiration date by the Miami-Dade County Product Control Section.

MISSILE IMPACT RATING: Large and Small Missile Impact Resistant

Limitations:

1. Max. Single partial raised panel allowed is 26” W X 32” H= 832 in² or multi-mid rails with partial raised panel **not** to exceed 832 in² total area. Positive DP exceeding +50 PSF require overhang complying w/FBC requirement.
2. Except where cluster anchors are specified, the #8 nail fin perimeter fasteners must not exceed 9” O.C.
3. Min four (4) frame screws at mullion end (Sill) are required, when tributary load width is 33-1/2” or less or when mullion span is 96” or less.
4. Direct Glazed Windows (DWG Ref. # **1749**) by Ultimate Door are under current separate NOA.

LABELING: Each unit shall bear a permanent label with the manufacturer's name or logo, city, state and series and following statement: "Miami-Dade County Product Control Approved", noted herein.

RENEWAL of this NOA shall be considered after a renewal application has been filed and there has been no change in the applicable building code negatively affecting the performance of this product.

TERMINATION of this NOA will occur after the expiration date or if there has been a revision or change in the materials, use, and/or manufacture of the product or process. Misuse of this NOA as an endorsement of any product, for sales, advertising or any other purposes shall automatically terminate this NOA. Failure to comply with any section of this NOA shall be cause for termination and removal of NOA.

ADVERTISEMENT: The NOA number preceded by the words Miami-Dade County, Florida, and followed by the expiration date may be displayed in advertising literature. If any portion of the NOA is displayed, then it shall be done in its entirety.

INSPECTION: A copy of this entire NOA shall be provided to the user by the manufacturer or its distributors and shall be available for inspection at the job site at the request of the Building Official.

This NOA **renews NOA # 20-0623.17** and consists of this page 1 and evidence pages E-1, E-2, E-3 & E-4, as well as approval document mentioned above.

The submitted documentation was reviewed by **Ishaq I. Chanda, P.E.**



Ishaq I. Chanda

NOA No. 21-0308.03
Expiration Date: April 16, 2026
Approval Date: April 01, 2021
Page 1

NOTICE OF ACCEPTANCE: EVIDENCE SUBMITTED

1. Evidence submitted in previous files

A. DRAWINGS

1. Manufacturer's parts drawings and sections (submitted under files listed below)
2. Drawing No. **1748 Rev, A**, titled series "Aluminum Clad Wood Impact Out-Swing French Doors," Sheets 1 through 17 of 17, prepared by W. W. Schaefer Engineering & Consulting, P.A., dated JAN 11, 2016, signed and sealed by Warren W. Schaefer, P.E.

B. TESTS (submitted under files #14-0424.02/#12-0410.11/#11-0310.01)

1. Test reports on: 1) Air Infiltration Test, per FBC, TAS 202-94
2) Uniform Static Air Pressure Test, Loading per FBC TAS 202-94
3) Water Resistance Test, per FBC, TAS 202-94
4) Large Missile Impact Test per FBC, TAS 201-94
5) Cyclic Wind Pressure Loading per FBC, TAS 203-94
6) Forced Entry Test, per FBC 2411 3.2.1, TAS 202-94

along with marked-up drawings and installation diagram of outswing alum clad wood French doors w/ mullions, an alum clad outswing Arch double wood door and alum clad outswing Rectangular double wood doors, prepared by Architectural Testing Lab, Test Report No. **B5667.02-450-18** dated 07/02/12, signed and sealed by Vinu Abraham, P. E.

2. Test reports on: 1) Air Infiltration Test, per FBC, TAS 202-94
2) Uniform Static Air Pressure Test, Loading per FBC TAS 202-94
3) Water Resistance Test, per FBC, TAS 202-94

along with marked-up drawings and installation diagram of an out-swinging wood clad aluminum French door prepared by Hurricane Test Laboratory, LLC, Test Reports No.'s **HTL-0026-1008-94** and **HTL-0026-0214-97**, dated 11/14/94 and 01/09/97, **HTL-0026-1017-99**, dated 10/22/99, all signed and sealed by Timothy Marshall, P. E. and Test Laboratory, LLC, Test Report No. **HTL-0026-1212-99**, dated 12/08/99, signed and sealed by Vinu J. Abraham, P. E. (submitted under file # **11-0310.01**)

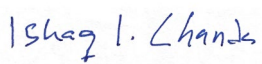
3. Test reports on: 1) Large Missile Impact Test per FBC, TAS 201-94
2) Cyclic Wind Pressure Loading per FBC, TAS 203-94

along with marked-up drawings and installation diagram of an out-swinging wood clad aluminum French door, prepared by Hurricane Test Laboratory, LLC, Test Reports No.'s **HTL-0026-1023-95**, **HTL-0026-0508-95** and **HTL-0026-1212-99**, dated 1/23/95, 5/12/95 and 12/08/99, **HTL-0026-0913-96**, dated 06/26/97 and 09/23/96, **HTL-0026-0508-95** and **HTL-0026-0123-95**, dated 01/23/95 and 05/12/95, all signed and sealed by Timothy Marshall, P. E. (under file # **11-0310.01**)

4. Test reports on: 1) Air Infiltration Test, per FBC, TAS 202-94
2) Uniform Static Air Pressure Test, Loading per FBC TAS 202-94
3) Water Resistance Test, per FBC, TAS 202-94
4) Large Missile Impact Test per FBC, TAS 201-94
5) Cyclic Wind Pressure Loading per FBC, TAS 203-94
6) Forced Entry Test, per FBC 2411 3.2.1, TAS 202-94

along with marked-up drawings of pair of outswing wood and fixed lite (OOX) & XX/O, prepared by Hurricane Test Laboratory, LLC, Test Report No. **HTL-0026-0320-97**, dated 03/27/97, **HTL-0026-0405-97**, dated 08/27/97 and **HTL-0026-0214-97 (TAS-201)**, dated 05/09/97, all signed and sealed by Timothy Marshall, P. E. (transferred from file # **11-0310.02**)

Note: The original tests conducted were per SFBC PA 202, 201 and 203-94, now termed as FBC, TAS 202, 201 and 203-94.



Ishaq I. Chanda, P.E.
Product Control Unit Supervisor
NOA No. 21-0308.03
Expiration Date: April 16, 2026
Approval Date: April 01, 2021

NOTICE OF ACCEPTANCE: EVIDENCE SUBMITTED

C. CALCULATIONS

1. Anchor verification calculations and structural analysis, complying with FBC-2014(5th Edition), prepared by W. W. Schaefer Engineering & Consulting, P.A., dated JAN 11, 2016, signed and sealed by Warren W. Schaefer, P. E.
2. Glazing complies w/ ASTM E-1300-02, -04 & -09.

D. QUALITY ASSURANCE

1. Miami Dade Department of Regulatory and Economic Resources (RER).

E. MATERIAL CERTIFICATIONS

1. Notice of Acceptance No. **14-0916.11** issued to **Kuraray America, Inc.** (Former E.I. DuPont DeNemours & Co., Inc. for the “**Sentry Glass ® (Clear and White) Glass Interlayers**”, expiring on 07/04/18.

F. STATEMENTS

1. Statement letter of conformance to FBC 2014(5th Edition) and letter of no financial interest, prepared by W. W. Schaefer Engineering & Consulting, P.A., dated JAN 11, 2016, signed and sealed by Warren W. Schaefer, P.E.
2. Lab compliance as part of the above referenced test reports.

G. OTHER

1. This NOA **revises & renews** NOA # **14-0424.02**, expiring on April 16, 2021.
2. Reference Series Un-clipped wood mullion NOA # 11-0310.02.
3. Test proposal dated 03-10-11 and e-mail correspondence approval dated 08-02-12 approved by PERA.
4. Previous associated files are NOA(s) #12-0410.11/#11-0310.01, # 05-0824.03, 01-0327.01, 00-0912.03, 99-0317.06 and 97-0912.01.

2. Evidence submitted in previous files.

A. DRAWINGS

1. None.

B. Test

1. None.

C. CALCULATIONS

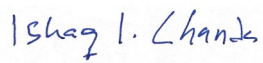
1. None.

D. QUALITY ASSURANCE

1. Miami Dade Department of Regulatory and Economic Resources (RER).

E. MATERIAL CERTIFICATIONS

1. None.



Ishaq I. Chanda, P.E.
Product Control Unit Supervisor
NOA No. 21-0308.03
Expiration Date: April 16, 2026
Approval Date: April 01, 2021

NOTICE OF ACCEPTANCE: EVIDENCE SUBMITTED

F. STATEMENTS

1. Statement letter of conformance to FBC 2014(5th Edition) & FBC 2017 (6th Edition), prepared by W. W. Schaefer Engineering & Consulting, P.A., dated July 21, 2017, signed and sealed by Warren W. Schaefer, P.E.

G. OTHER

1. This NOA revises NOA # **16-0114.08**, expiring on 04/16/21.

3. Evidence submitted under previous approval.

A. DRAWINGS

1. None.

B. Test

1. None.

C. CALCULATIONS

1. None.

D. QUALITY ASSURANCE

1. Miami Dade Department of Regulatory and Economic Resources (RER).

E. MATERIAL CERTIFICATIONS

1. Notice of Acceptance No. **17-0808.02** issued to **Kuraray America, Inc.** (Former E.I. DuPont DE Nemours & Co., Inc. for the “**Sentry Glass ® (Clear and White) Glass Interlayers**”, expiring on 07/04/2023.

F. STATEMENTS

1. Statement letter of conformance to FBC 2020 (7th Edition), prepared by W. W. Schaefer Engineering & Consulting, P.A., dated Jun 05, 2020, signed and sealed by Warren W. Schaefer, P.E.

G. OTHER

1. This NOA revises NOA # **17-0803.03**, expiring on 04/16/21.

Ishaq I. Chanda

Ishaq I. Chanda, P.E.
Product Control Unit Supervisor
NOA No. 21-0308.03
Expiration Date: April 16, 2026
Approval Date: April 01, 2021

NOTICE OF ACCEPTANCE: EVIDENCE SUBMITTED

4. New Evidence submitted.

A. DRAWINGS

1. Drawing No. **1748 Rev, A**, titled series “Aluminum Clad Wood Impact Out-Swing French Doors,” Sheets 1 through 17 of 17, prepared by W. W. Schaefer Engineering & Consulting, P.A., dated March 01, 2021, signed and sealed by Warren W. Schaefer, P. E.

B. Test

1. None.

C. CALCULATIONS

1. None.

D. QUALITY ASSURANCE

1. Miami Dade Department of Regulatory and Economic Resources (RER).

E. MATERIAL CERTIFICATIONS

1. Notice of Acceptance No. **17-0808.02** issued to **Kuraray America, Inc.** (Former E.I. DuPont DE Nemours & Co., Inc. for the “**Sentry Glass ® (Clear and White) Glass Interlayers**”, expiring on 07/04/2023.

F. STATEMENTS

1. Statement letter from Ultimate Door dated 02/03/21, asking for renewal with no change, signed by Ms. Jessica Covey, office manager.
2. Statement letter of conformance to FBC 2020 (**7th Edition**), prepared by W. W. Schaefer Engineering & Consulting, P.A., dated Jun 05, 2020, signed and sealed by Warren W. Schaefer, P.E. (submitted under file **#20-0623.17**)

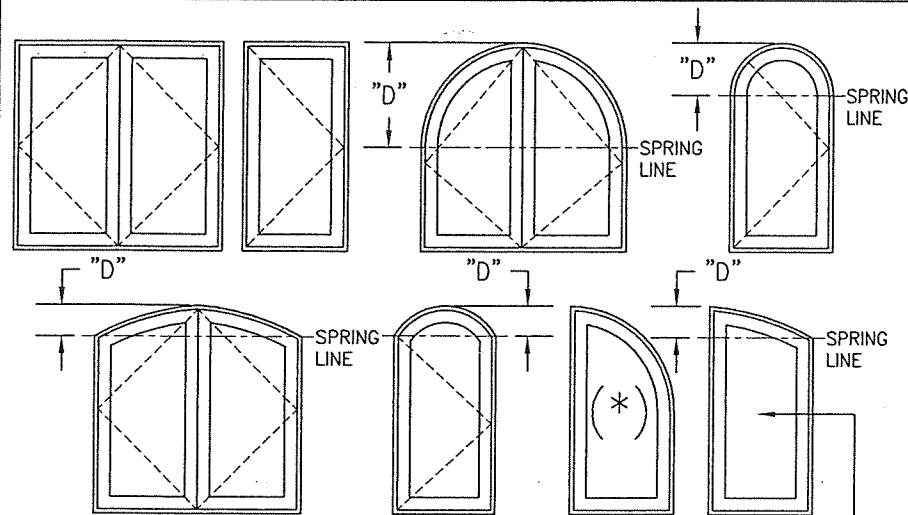
G. OTHER

1. This NOA **renews** NOA # **20-0623.17**, expiring on 04/16/26.

Ishaq I. Chanda

Ishaq I. Chanda, P.E.
Product Control Unit Supervisor
NOA No. 21-0308.03
Expiration Date: April 16, 2026
Approval Date: April 01, 2021

APPROVED SHAPES



NOTES:

1. FIXED PANEL DOOR FRAME WIDTH SHALL NOT BE GOVERNED BY SHAPE OF DOOR.
2. OTHER SHAPES MAY APPLY PROVIDING THEY ARE SIMILAR TO THOSE SHOWN & HAVE CORNER CONSTRUCTION AS DESCRIBED IN THIS DRAWING.
3. THE SHAPES LABELED (*) ARE ONLY APPLICABLE TO FIXED PANEL DOORS (NOT APPLICABLE TO OPERABLE DOORS).

THIS SHAPE MAY BE USED AS AN OPERABLE DOOR ONLY IF SPRING LINE HEIGHT ABOVE SILL IS 80" OR MORE

PRODUCT RENEWED
as complying with the Florida
Building Code
NOA-No. 21-0308.03

Expiration Date 04/16/2026

By *Ishag I. Chande*
Miami-Dade Product Control

HINGE REQUIREMENTS
(HALF-ROUND TOP DOUBLE
DOORS)

PANEL HEIGHT	QUANTITY PER PANEL
OVER 96"	4
96" OR LESS	3

NOTES:

1. HINGE CENTERLINES SHALL BE LOCATED APPROXIMATELY 3 1/2" BELOW FRAME SPRING-LINE, 9 1/4" ABOVE BOTTOM OF SILL AND EQUALLY SPACED BETWEEN.

HINGE REQUIREMENTS
(RECTANGULAR & EYEBROW
TOP DOUBLE DOORS & ALL
SINGLE DOORS)

PANEL HEIGHT	QUANTITY PER PANEL
OVER 96"	5
96" OR LESS	4

NOTES:

1. HINGE CENTERLINES SHALL BE LOCATED APPROXIMATELY 7 1/2" BELOW TOP OF DOOR FRAME OR BELOW FRAME SPRING-LINE, 9 1/4" ABOVE BOTTOM OF SILL AND EQUALLY SPACED BETWEEN.

ALLOWABLE DESIGN
PRESSURE(ALL SINGLE & DOUBLE
RECTANGULAR OPERABLE DOORS &
ALL SINGLE FIXED PANEL DOORS)

(2) MAX. FRAME HEIGHT (IN.)	(2) MAX. FRAME WIDTH (IN.)	ALLOWABLE PRESSURE (1) (PSF)	
		POS.	NEG.

SINGLE DOORS

120	43 1/2	50.0	50.0
	40 1/2	53.7	53.7
	37 1/2	58.0	58.0
	34 1/2	63.0	63.0
108	43 1/2	55.6	55.6
	40 1/2	59.7	59.7
	37 1/2	64.4	64.4
	36 1/2	65.0	65.0
102	43 1/2	58.8	58.8
	40 1/2	63.2	63.2
	38 1/2	65.0	65.0
96	43 1/2	62.5	62.5
	41 1/2	65.0	65.0
92	43 1/2	65.0	65.0

120	84	50.0	50.0
	78	53.8	53.8
	72	58.3	58.3
	66	63.6	63.6
108	84	55.6	55.6
	78	59.8	59.8
	72	64.8	64.8
	71	65.0	65.0
102	84	58.8	58.8
	78	63.3	63.3
	76	65.0	65.0
96	84	62.5	62.5
	80	65.0	65.0
92	84	65.0	65.0

120	72	50.0	50.0
	66	54.5	54.5
	60	60.0	60.0
	55	65.0	65.0
108	72	55.6	55.6
	66	60.6	60.6
	61	65.0	65.0
102	72	58.8	58.8
	66	64.2	64.2
	65	65.0	65.0
96	72	62.5	62.5
	69	65.0	65.0
92	72	65.0	65.0

DOUBLE DOORS

120	72	50.0	50.0
	66	54.5	54.5
	60	60.0	60.0
	55	65.0	65.0
108	72	55.6	55.6
	66	60.6	60.6
	61	65.0	65.0
102	72	58.8	58.8
	66	64.2	64.2
	65	65.0	65.0
96	72	62.5	62.5
	69	65.0	65.0
92	72	65.0	65.0

120	72	50.0	50.0
	66	54.5	54.5
	60	60.0	60.0
	55	65.0	65.0
108	72	55.6	55.6
	66	60.6	60.6
	61	65.0	65.0
102	72	58.8	58.8
	66	64.2	64.2
	65	65.0	65.0
96	72	62.5	62.5
	69	65.0	65.0
92	72	65.0	65.0

120	72	50.0	50.0
	66	54.5	54.5
	60	60.0	60.0
	55	65.0	65.0
108	72	55.6	55.6
	66	60.6	60.6
	61	65.0	65.0
102	72	58.8	58.8
	66	64.2	64.2
	65	65.0	65.0
96	72	62.5	62.5
	69	65.0	65.0
92	72	65.0	65.0

120	72	50.0	50.0
	66	54.5	54.5
	60	60.0	60.0
	55	65.0	65.0
108	72	55.6	55.6
	66	60.6	60.6
	61	65.0	65.0
102	72	58.8	58.8
	66	64.2	64.2
	65	65.0	65.0
96	72	62.5	62.5
	69	65.0	65.0
92	72	65.0	65.0

(1) POSITIVE PRESSURE SHALL BE LIMITED TO +50 PSF WHEN DOORS ARE TO BE WATER INFILTRATION RATED.

(2) SEE LOCK OPTIONS TABLE FOOTNOTE 2 FOR FRAME SIZE RESTRICTION WHEN LOCK COMBINATION 35 & 36 ARE USED WITH ACTIVE PANEL OF DOORS.

(1) (2)	LOCK OPTIONS
DOUBLE DOOR ACTIVE PANEL	USE LOCK PART #31, 33 OR COMBINATION OF 35 & 36
SINGLE RECTANGULAR DOOR PANEL	USE LOCK PART #31, 33, 38 OR COMBINATION OF 35 & 36
DOUBLE DOOR INACTIVE PANEL	USE LOCK PART #32, 34 OR 36
SHAPE TOP SINGLE DOOR PANEL	USE LOCK PART #38

(1) LOCK PART #36 SHALL EXIST AT TOP & BOTTOM OF DOOR PANEL.
(2) WHEN LOCK COMBINATION OF PART #35 & 36 IS USED WITH ACTIVE DOOR PANELS, FRAME SIZE OF DOOR MAY NOT EXCEED 72" WIDE X 96" TALL WITH DOUBLE DOORS NOR 37 1/2" WIDE X 96" TALL WITH SINGLE DOORS.

ALLOWABLE DESIGN
PRESSURE(SINGLE & DOUBLE SHAPED TOP
OPERABLE DOORS)

MAX. FRAME HEIGHT (IN.)	MAX. FRAME WIDTH (IN.)	ALLOWABLE PRESSURE (1) (PSF)	
		POS.	NEG.

SINGLE DOORS

120	37 1/2	50.0	50.0
	34 1/2	54.3	54.3
	31 1/2	59.3	59.3
	28 1/2	65.0	65.0
108	37 1/2	55.6	55.6
	34 1/2	60.4	60.4
	31 1/2	65.0	65.0
	30 1/2	65.0	65.0
102	37 1/2	58.8	58.8
	34 1/2	63.9	63.9
	33 1/2	65.0	65.0
96	37 1/2	62.5	62.5
	35 1/2	65.0	65.0
92	37 1/2	65.0	65.0

120	72	50.0	50.0
	66	54.5	54.5
	60	60.0	60.0
	55	65.0	65.0
108	72	55.6	55.6
	66	60.6	60.6
	61	65.0	65.0
102	72	58.8	58.8
	66	64.2	64.2
	65	65.0	65.0
96	72	62.5	62.5
	69	65.0	65.0
92	72	65.0	65.0

120	72	50.0	50.0
	66	54.5	54.5
	60	60.0	60.0
	55	65.0	65.0
108	72	55.6	55.6
	66	60.6	60.6
	61	65.0	65.0
102	72	58.8	58.8
	66	64.2	64.2
	65	65.0	65.0
96	72	62.5	62.5
	69	65.0	65.0
92	72	65.0	65.0

DOUBLE DOORS

120	72	50.0	50.0
	66	54.5	54.5
	60	60.0	60.0
	55	65.0	65.0
108	72	55.6	55.6
	66	60.6	60.6
	61	65.0	65.0
102	72	58.8	58.8
	66	64.2	64.2
	65	65.0	65.0
96	72	62.5	62.5
	69	65.0	65.0
92	72	65.0	65.0

120	72	50.0	50.0
	66	54.5	54.5
	60	60.0	60.0
	55	65.0	65.0
108	72	55.6	55.6
	66	60.6	60.6
	61	65.0	65.0
102	72	58.8	58.8
	66	64.2	64.2
	65	65.0	65.0
96	72	62.5	62.5
	69	65.0	65.0
92	72	65.0	65.0

120	72	50.0	50.0
	66	54.5	54.5
	60	60.0	60.0
	55	65.0	65.0
108	72	55.6	55.6
	66	60.6	60.6
	61	65.0	65.0
102	72	58.8	58.8
	66	64.2	64.2
	65	65.0	65.0
96	72	62.5	62.5
	69	65.0	65.0
92	72	65.0	65.0

120	72	50.0	50.0
	66	54.5	54.5
	60	60.0	60.0
	55	65.0	65.0
108	72	55.6	55.6
	66	60.6	60.6
	61	65.0	65.0
102	72	58.8	58.8
	66	64.2	64.2
	65	65.0	65.0
96	72	62.5	62.5
	69	65.0	65.0
92	72	65.0	65.0

(1) POSITIVE PRESSURE SHALL BE LIMITED TO +50 PSF WHEN DOORS ARE TO BE WATER INFILTRATION RATED.

(2) SEE LOCK OPTIONS TABLE FOOTNOTE 2 FOR FRAME SIZE RESTRICTION WHEN LOCK COMBINATION 35 & 36 ARE USED WITH ACTIVE PANEL OF DOORS.

(1) (2)	LOCK OPTIONS
DOUBLE DOOR ACTIVE PANEL	USE LOCK PART #31, 33 OR COMBINATION OF 35 & 36
SINGLE RECTANGULAR DOOR PANEL	USE LOCK PART #31, 33, 38 OR COMBINATION OF 35 & 36
DOUBLE DOOR INACTIVE PANEL	USE LOCK PART #32, 34 OR 36
SHAPE TOP SINGLE DOOR PANEL	USE LOCK PART #38

(1) LOCK PART #36 SHALL EXIST AT TOP & BOTTOM OF DOOR PANEL.
(2) WHEN LOCK COMBINATION OF PART #35 & 36 IS USED WITH ACTIVE DOOR PANELS, FRAME SIZE OF DOOR MAY NOT EXCEED 72" WIDE X 96" TALL WITH DOUBLE DOORS NOR 37 1/2" WIDE X 96" TALL WITH SINGLE DOORS.

THESE DRAWINGS ARE APPLICABLE ONLY TO THE PRODUCT SPECIFIED. THEY MAY NOT BE USED FOR THE ASSEMBLY AND/OR INSTALLATION OF ANY OTHER PRODUCT NOR MAY THEY BE USED FOR RATIONAL AND/OR LOCAL APPROVAL OF ANY PRODUCT NOT PRODUCED BY THE MANUFACTURER STATED ON THESE DRAWINGS.

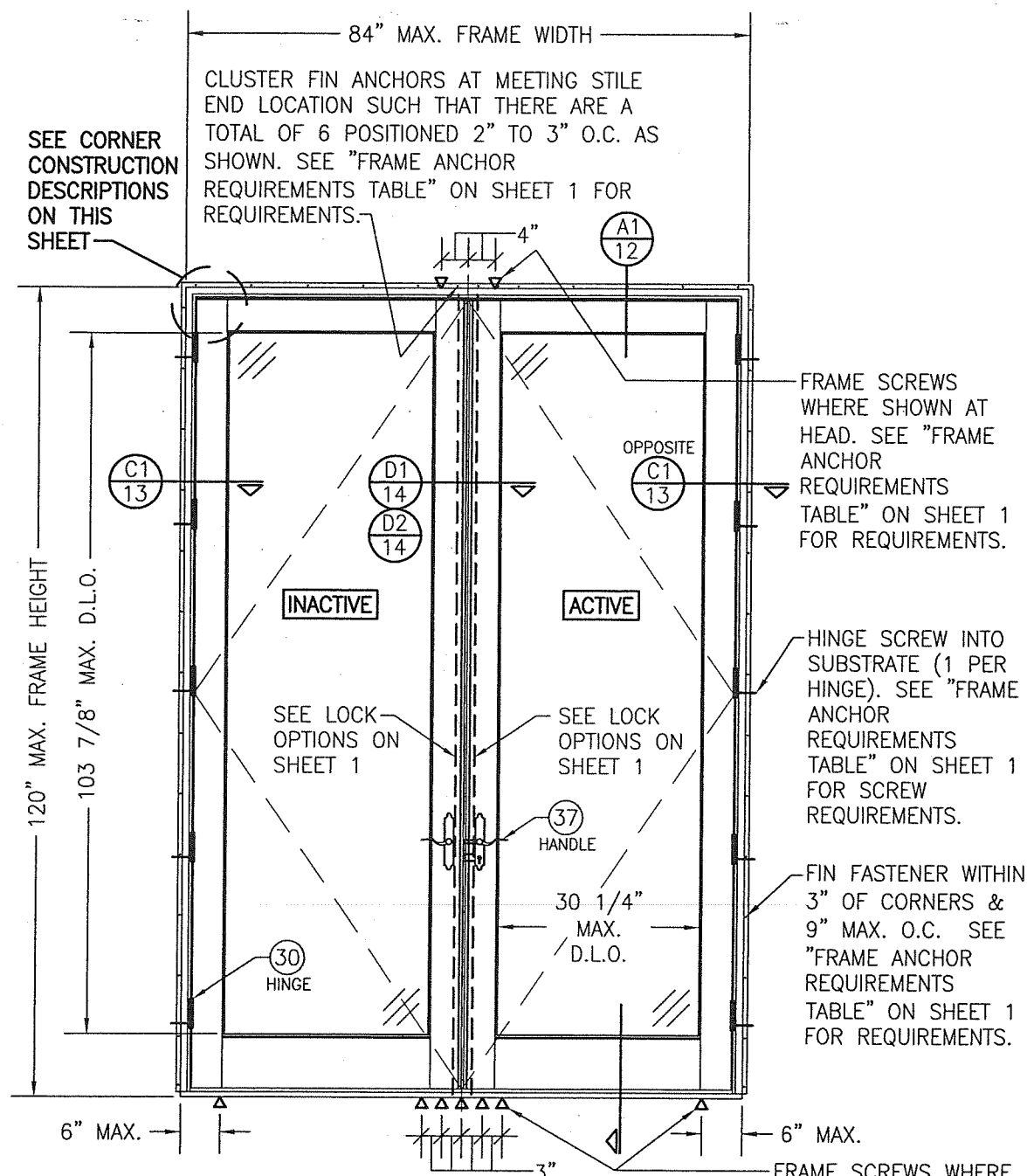
GENERAL NOTES:

1. THIS PRODUCT HAS BEEN TESTED, ANALYZED & APPROVED FOR DESIGN PRESSURES NOT TO EXCEED THOSE SHOWN IN THE "ALLOWABLE DESIGN PRESSURE TABLE(S)".
2. OPENINGS, BUCKING & BUCKING FASTENERS MUST BE PROPERLY DESIGNED & INSTALLED TO TRANSFER WIND LOADS TO THE STRUCTURE.
3. ALL HARDWARE & FASTENERS SHALL BE IN ACCORDANCE WITH THESE DRAWINGS & SHALL NOT VARY UNLESS SPECIFICALLY MENTIONED ON THE DRAWINGS. SPECIFIED ANCHOR EMBED TO BASE MATERIAL SHALL BE BEYOND WALL FINISH OR STUCCO.
4. THE DETAILS & SPECIFICATIONS SHOWN HEREIN REPRESENT THE PRODUCTS TESTED & PROPOSED FOR CONFORMANCE WITH THE FLORIDA BUILDING CODE PROTOCOLS TAS-201, 202 & 203 FOR LARGE MISSILE IMPACT PRODUCTS.
5. THIS PRODUCT HAS BEEN DESIGNED IN ACCORDANCE WITH AND MEETS THE REQUIREMENTS OF THE FLORIDA BUILDING CODE (FBC) INCLUDING HIGH VELOCITY HURRICANE ZONES (HVHZ).
6. IMPACT SHUTTERS ARE NOT REQUIRED WITH THIS PRODUCT.
7. ALL ANCHORS SECURING PRODUCT FRAMES TO PRESSURE TREATED BUCKS OR WOOD FRAMING SHALL BE CAPABLE OF RESISTING CORROSION CAUSED BY THE PRESSURE TREATING CHEMICALS IN THE WOOD.
8. DETERMINE THE POSITIVE & NEGATIVE DESIGN LOADS TO USE WHEN REFERENCING THESE DOCUMENTS IN ACCORDANCE WITH THE GOVERNING CODE AND GOVERNING WIND VELOCITY. FOR WIND LOAD CALCULATIONS IN ACCORDANCE WITH THE FLORIDA BUILDING CODE, A DIRECTIONALITY FACTOR OF Kd = 0.85 MAY BE APPLIED PER THE ASCE-7 STANDARD.
9. NO INCREASE IN ALLOWABLE STRESS HAS BEEN USED IN THE CERTIFICATION OF THIS PRODUCT. WIND LOAD DURATION FACTOR Cd = 1.6 WAS USED FOR WOOD SCREW ANALYSIS ONLY.
10. MATERIALS, INCLUDING BUT NOT LIMITED TO STEEL SCREWS, THAT COME INTO CONTACT WITH OTHER DISSIMILAR MATERIALS SHALL MEET THE REQUIREMENTS OF FLORIDA BUILDING CODE.
11. ALL WOOD MEMBERS OF THIS PRODUCT THAT MAY POSSIBLY COME INTO CONTACT WITH MASONRY OR CONCRETE SUBSTRATES, ARE SUBJECT TO MOISTURE &/OR ARE SUBJECT TO THE OUTSIDE ENVIRONMENT SHALL BE OF AN APPROVED DURABLE SPECIES OR BE TREATED IN AN APPROVED METHOD WITH AN APPROVED PRESERVATIVE PER FBC REQUIREMENTS.

NOTE: WHEN THE JOB REQUIRED POSITIVE DESIGN PRESSURE EXCEEDS +50 PSF, THE DOOR UNITS ARE NOT APPROVED FOR USE WHERE WATER INFILTRATION RESISTANCE IS REQUIRED BY THE DOOR UNLESS THE UNITS ARE INSTALLED IN NON-HABITABLE AREAS WHERE THE UNIT & THE AREA ARE DESIGNED TO ACCEPT WATER INFILTRATION OR THE UNITS ARE INSTALLED AT LOCATIONS PROTECTED BY A CANOPY OR OVERHANG WHERE-BY THE OVERHANG(OH) RATIO IS EQUAL TO OR MORE THAN 1.0 PER FBC.

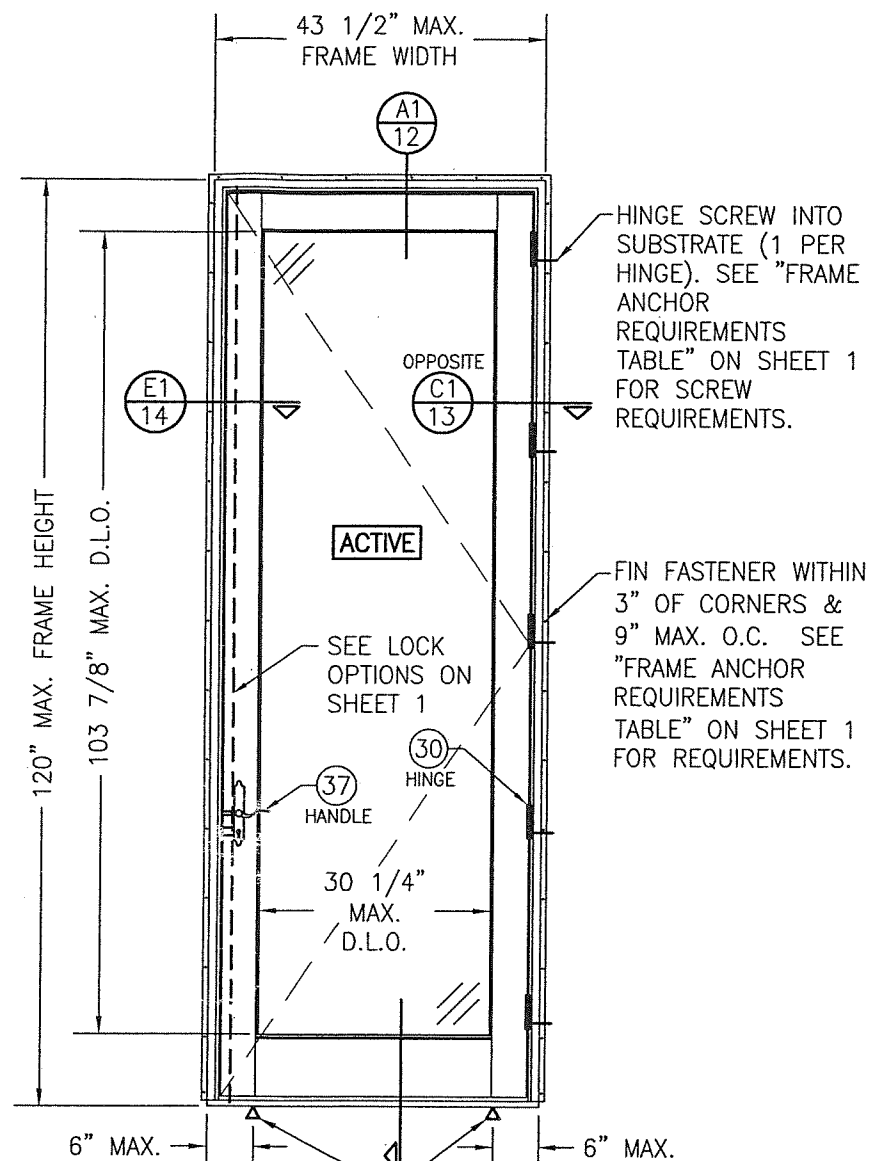
FRAME ANCHOR REQUIREMENTS TABLE

OPENING TYPE (SUBSTRATE)	FRAME/HINGE/ FIN TO OPENING FASTENER TYPE	MINIMUM EMBED	MINIMUM EDGE DIST.
FRAME & HINGE SCREWS			
MIN. 2X4 WOOD FRAME OR BUCK (MIN. GR. 3 & G=0.55)	NO. 12 SMS OR WOOD SCREW	1 1/4"	3/4"</



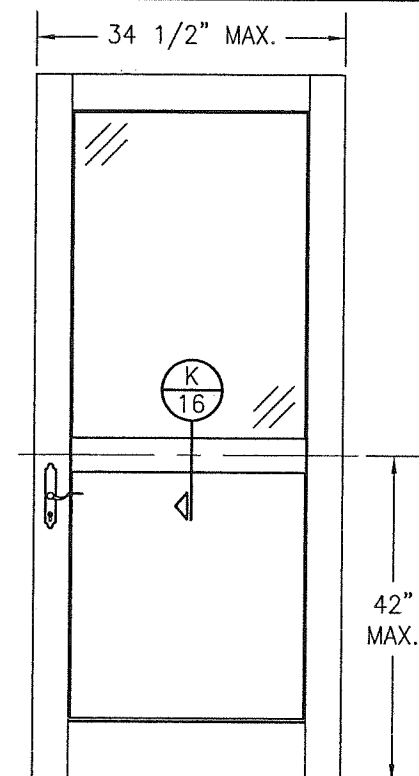
EXTERIOR ELEVATION:
DOUBLE RECTANGULAR DOOR

SCALE: $1/2" = 1'-0"$
(NAIL FIN MOUNT CONDITION)



EXTERIOR ELEVATION;
SINGLE RECTANGULAR
DOOR

SCALE: $1/2" = 1'-0"$
(NAIL FIN MOUNT CONDITION)



EXTERIOR ELEVATION:
PARTIAL RAISED PANEL

SCALE: $1/2" = 1'-0"$
(SEE DOOR ELEVATIONS FOR DOOR DETAIL
AND INSTALLATION NOT SHOWN)

PANEL NOTES:

1. SINGLE RAISED PANEL CONDITION SHOWN, MORE THAN ONE RAISED PANEL MAY EXIST IN A SINGLE DOOR PANEL WHEN MULTIPLE MID-RAILS ARE USED.
2. PANEL ONLY IS SHOWN. FOR INSTALLATION INTO FRAME, SEE OTHER ELEVATIONS.
3. THESE PANEL CONDITIONS APPLY WITH BOTH OPERABLE & FIXED PANEL DOORS
4. RECTANGULAR CONDITION SHOWN, SHAPED CONDITIONS ALSO APPLY.

CORNER CONSTRUCTION:

JAMB TO HEAD JAMB WOOD FRAME: MEMBERS ARE COPED, BUTTED AND JOINED WITH (1)ONE NO. 10 X 3 1/2" GALVANIZED WOOD SCREW THROUGH THE HORIZONTAL FRAME MEMBER INTO THE VERTICAL MEMBERS & (2)TWO NO. 8 X 2 1/2" GALVANIZED WOOD SCREWS THROUGH THE VERTICAL MEMBER INTO THE HORIZONTAL MEMBER. CORNERS ARE SEALED WITH DOW 795.

JAMB TO SILL WOOD FRAME: MEMBERS ARE COPED, BUTTED AND JOINED WITH (2)TWO NO. 8 X 2 1/2" GALVANIZED WOOD SCREW THROUGH THE HORIZONTAL FRAME MEMBER INTO THE VERTICAL MEMBERS & (2)TWO NO. 10 X 3 1/2" GALVANIZED WOOD SCREWS THROUGH THE VERTICAL MEMBER INTO THE HORIZONTAL MEMBERS. CORNERS ARE SEALED WITH DOW 795.

TOP RAIL & MID-RAIL TO STILE: MEMBERS ARE COPED, BUTTED AND JOINED WITH A (1)ONE 3/4" X 2" TENON DOWEL. CORNERS ARE GLUED & SEALED WITH MULTIBOND 2000 WOOD GLUED.

BOTTOM RAIL TO STILE: MEMBERS ARE COPE, BUTTED AND JOINED WITH A (2) TWO 3/4" X 2" TENON DOWEL. CORNERS ARE GLUED & SEALED WITH MULTIBOND 2000 WOOD GLUED.

FRAME CLAD: MEMBERS ARE MITERED AND JOINED WITH (2) TWO NO. 6 x 2" SMS SCREWS INTO THE SCREW SPLINE. CORNERS ARE SEALED WITH DOW 795 SILICONE SEALANT.


PANEL CLAD: MEMBERS ARE COPED, BUTTED & SECURED TO THE SASH. CORNERS ARE SEALED WITH DOW 795 SILICONE SEALANT.

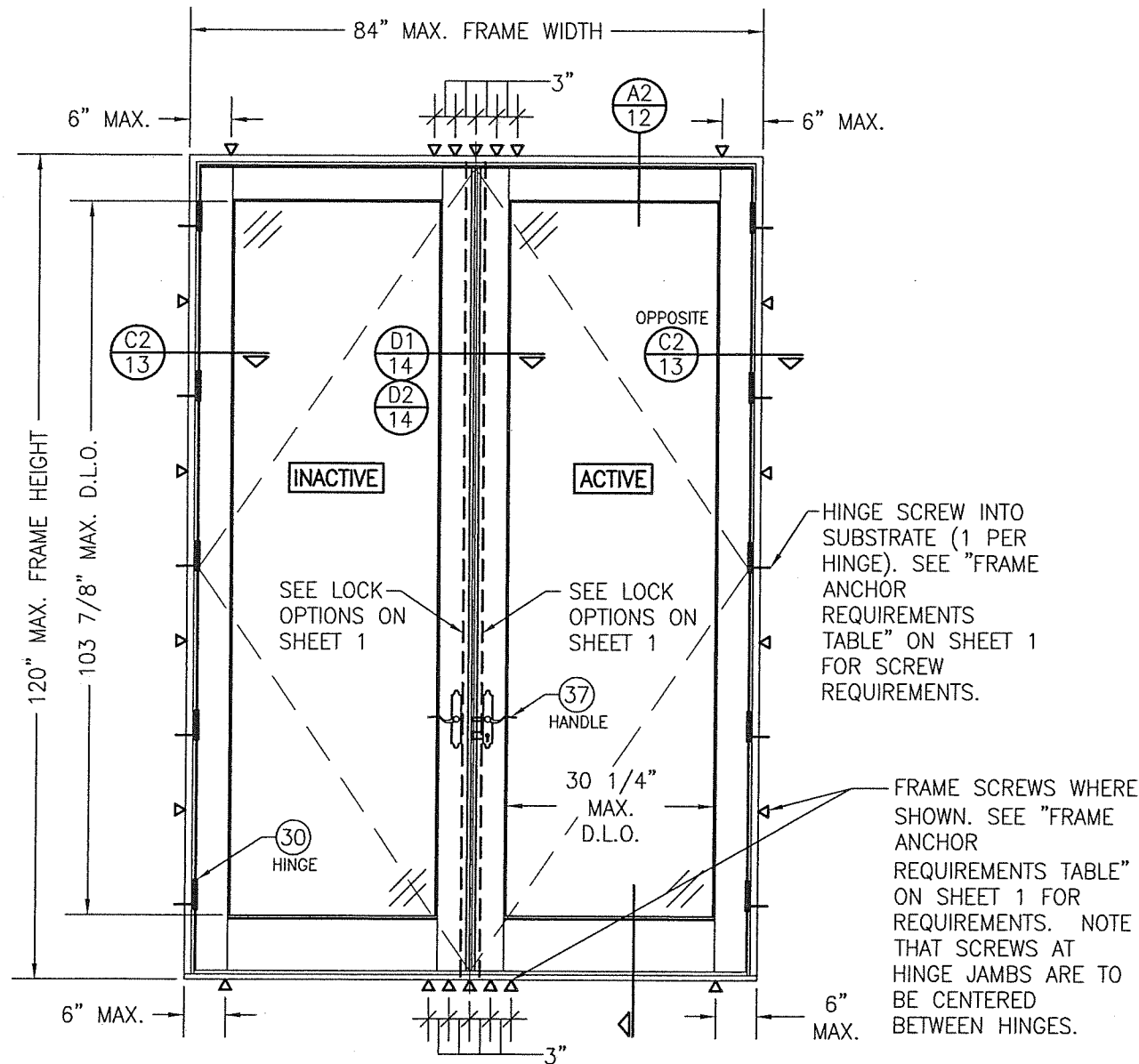
SEE ALLOWABLE DESIGN PRESSURE
TABLES ON SHEET 1 FOR
ALLOWABLE DESIGN PRESSURES ON
SINGLE & DOUBLE DOORS.

PRODUCT RENEWED
as complying with the Florida
Building Code
NOA-No. 21-0308.03

Expiration Date 04/16/2026

By Ishaq I. Chande
Miami-Dade Product Control

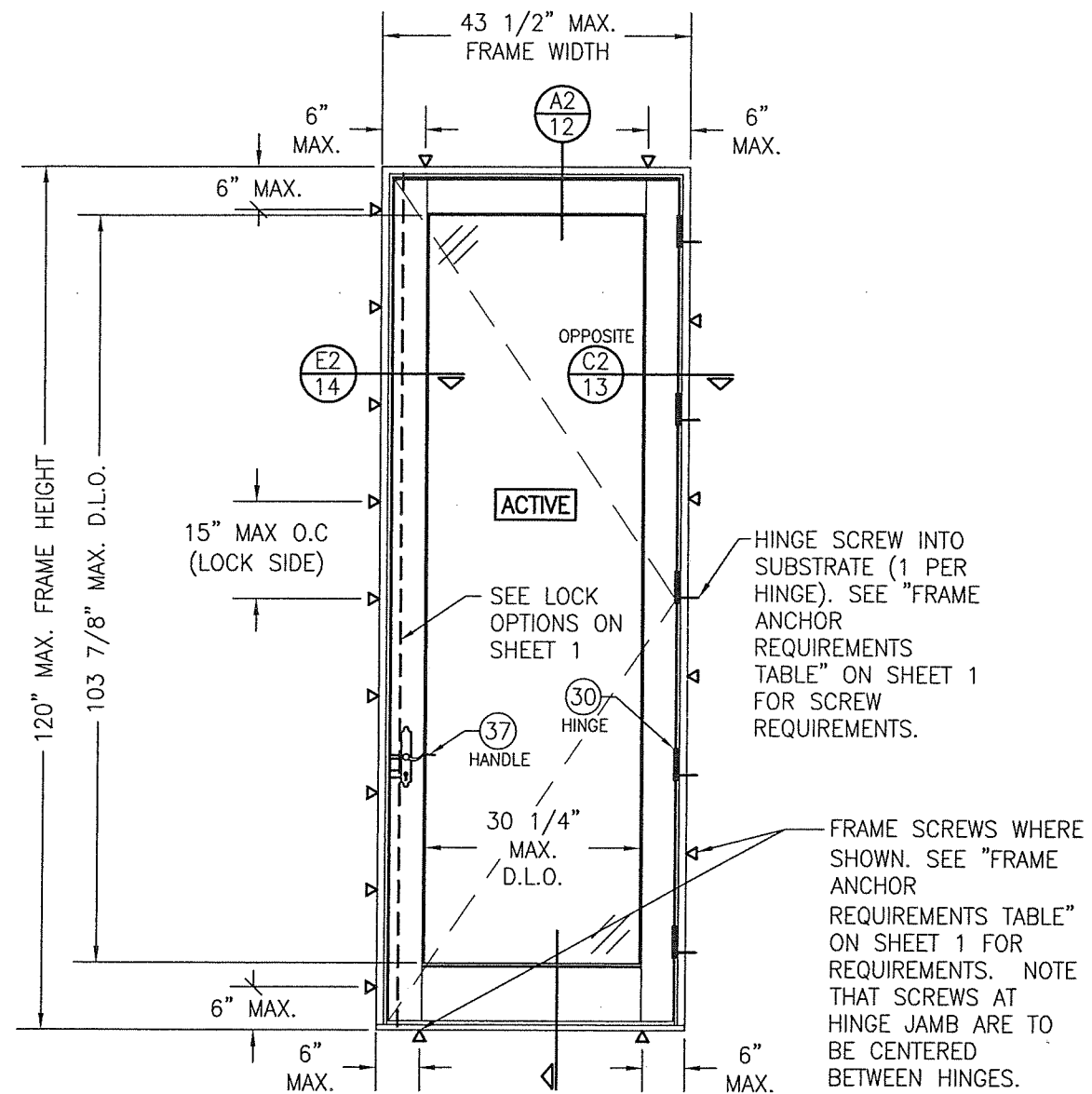
DRAWING NO. 1748	REV. A	DRAWING TITLE ALUMINUM CLAD WOOD IMPACT OUT-SWING FRENCH DOOR	
		DRAWN BY: W.R.M. CHECKED BY: W.W.S. PLOT: 1=24 DATE: 07/09/12	
SHEET NO. 2 OF 17		NO. REVISION DESCRIPTION BY DATE	
CERTIFICATION <div style="text-align: center;">  <p>MAR 01 2021</p> </div>		CONSULTANTS W. W. SCHAEFER ENGINEERING & CONSULTING, P.A. (CA 6809) 7480 150TH COURT NORTH PALM BEACH GARDENS, FL 33418 PHONE: 561-744-3424	
WARREN W. SCHAEFER, P.E. P.E. NO. 44135		MANUFACTURER ULTIMATE DOOR OF PALM BEACH, INC. 2800 2ND AVE. NORTH LAKE WORTH, FL 33461 561-642-2828	



**EXTERIOR ELEVATION:
DOUBLE RECTANGULAR DOOR**
SCALE: 1/2" = 1'-0"
(FRAME SCREW MOUNT CONDITION)

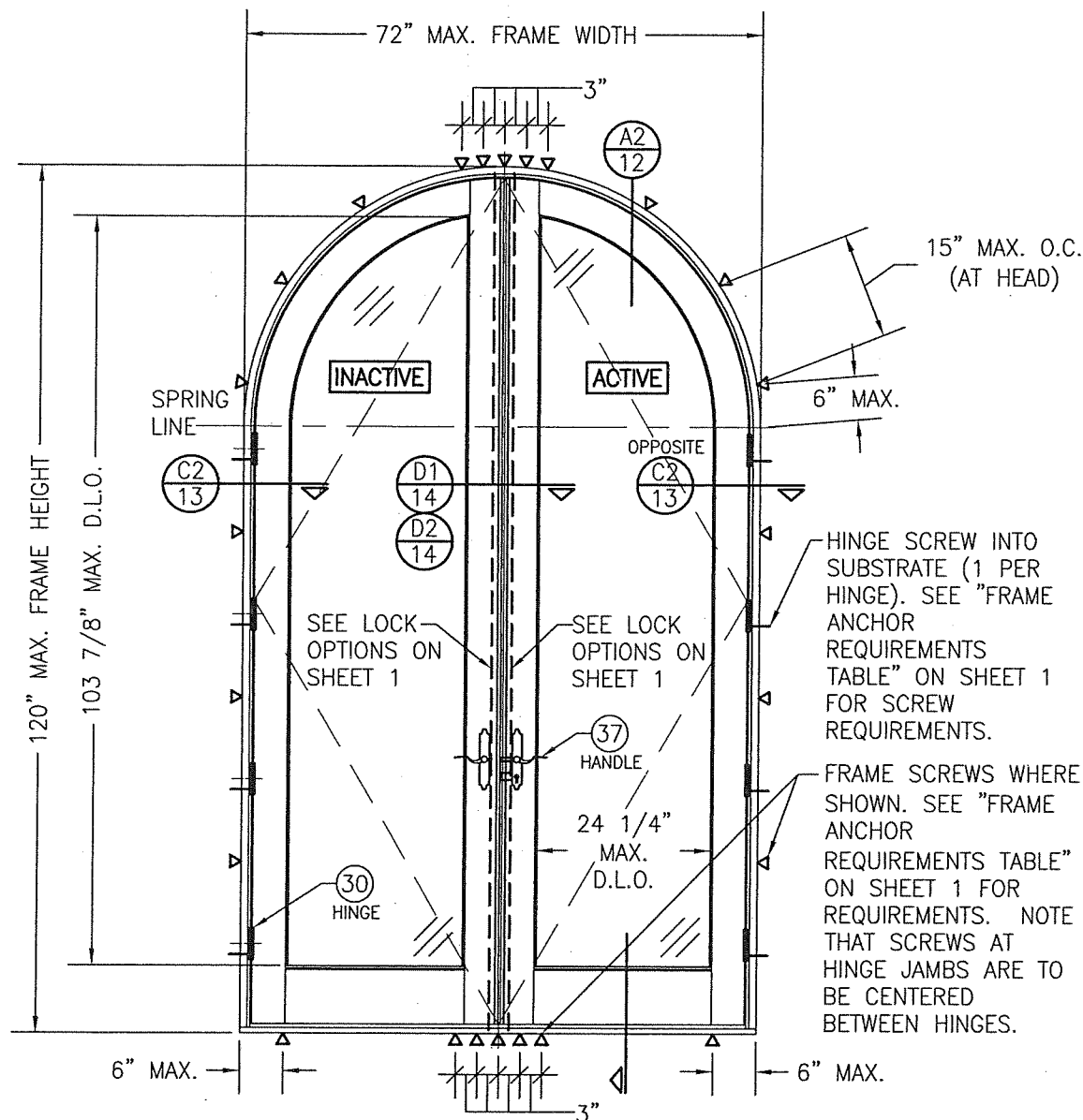
SEE ALLOWABLE DESIGN PRESSURE
TABLES ON SHEET 1 FOR
ALLOWABLE DESIGN PRESSURES ON
SINGLE & DOUBLE DOORS.

PRODUCT RENEWED
as complying with the Florida
Building Code
NOA-No. 21-0308.03
Expiration Date 04/16/2026
By *Ismael L. Chandra*
Miami-Dade Product Control



**EXTERIOR ELEVATION:
SINGLE RECTANGULAR
DOOR**
SCALE: 1/2" = 1'-0"
(FRAME SCREW MOUNT CONDITION)

DRAWN BY: W.R.M.		CHECKED BY: W.W.S.	
PLOT: 1=24		DATE: 07/09/12	
NO.	REVISION DESCRIPTION	BY	DATE
DRAWING TITLE: ALUMINUM CLAD WOOD IMPACT OUT-SWING FRENCH DOOR CONSULTANTS: W. W. SCHAEFER ENGINEERING & CONSULTING, P.A. (CA 6809) 7480 150TH COURT NORTH PALM BEACH GARDENS, FL 33418 PHONE: 561-744-3424 MANUFACTURER: ULTIMATE DOOR OF PALM BEACH, INC. 2800 2ND AVE. NORTH LAKE WORTH, FL 33461 561-642-2828			
CERTIFICATION: MAR 01 2021 WARREN W. SCHAEFER, P.E. P.E. NO. 44135			
DRAWING NO. 1748		REV. A	
SHEET NO. 3		OF 17	

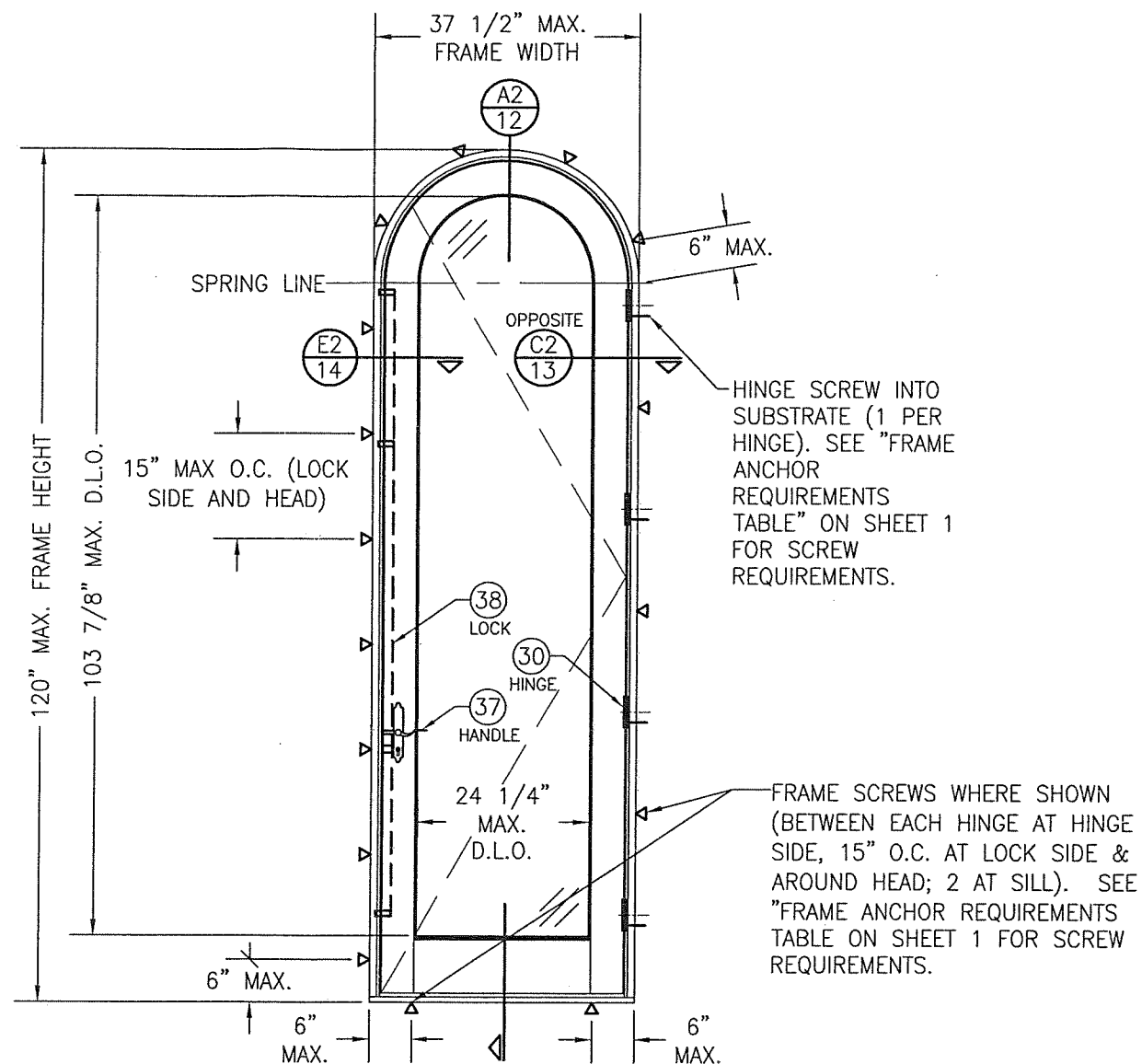


**EXTERIOR ELEVATION:
DOUBLE HALF-ROUND TOP DOOR**

SCALE: 1/2" = 1'-0"

(FRAME SCREW MOUNT CONDITION SHOWN. FOR
NAIL FIN MOUNT, SEE RECTANGULAR DOOR NAIL
FIN MOUNT ELEVATION)

SEE ALLOWABLE DESIGN PRESSURE
TABLES ON SHEET 1 FOR
ALLOWABLE DESIGN PRESSURES ON
SINGLE & DOUBLE DOORS.



**EXTERIOR ELEVATION:
SINGLE HALF-ROUND TOP
DOOR**

SCALE: 1/2" = 1'-0"

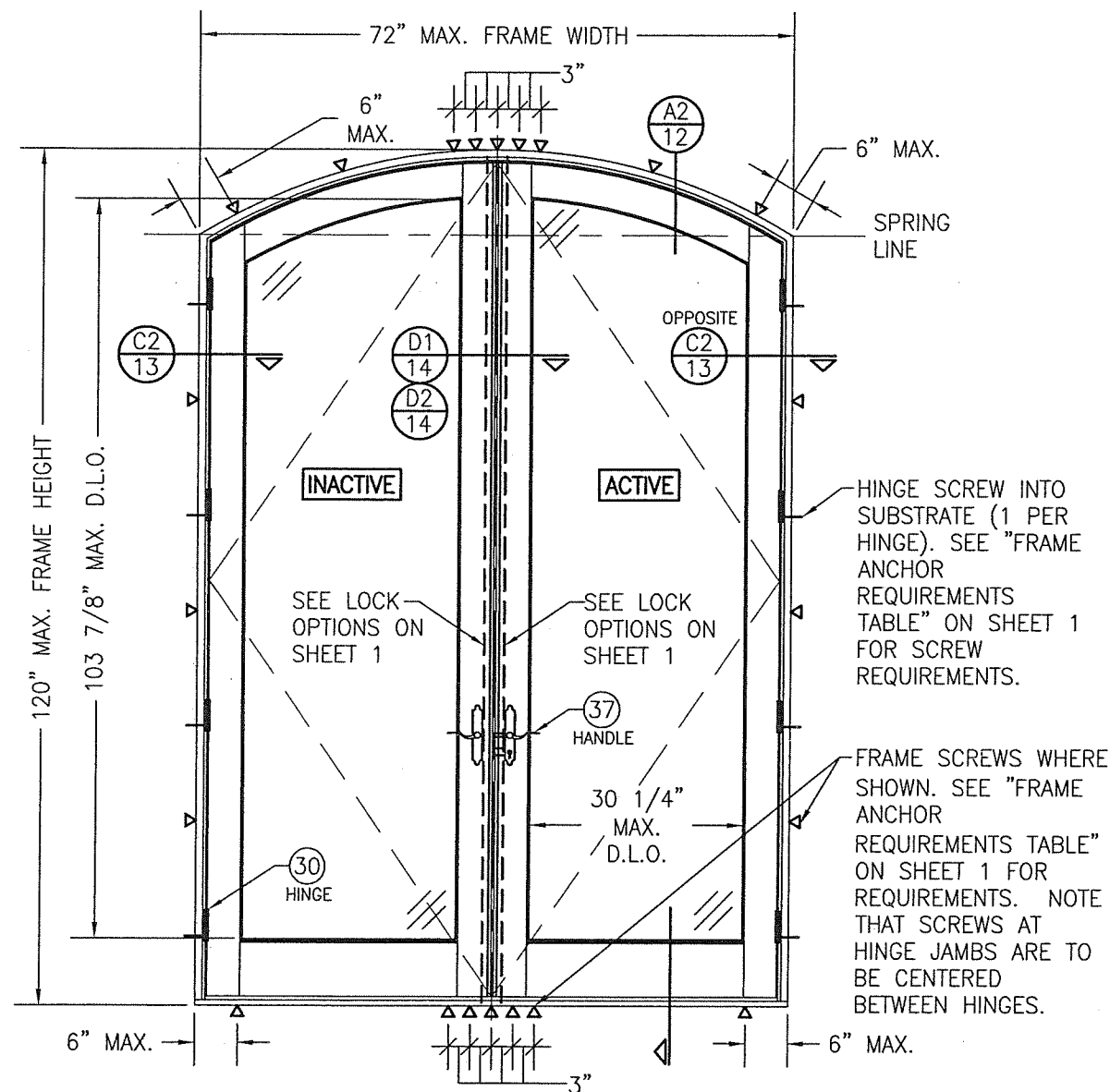
(FRAME SCREW MOUNT CONDITION
SHOWN. FOR NAIL FIN MOUNT, SEE
RECTANGULAR DOOR NAIL FIN
MOUNT ELEVATION)

PRODUCT RENEWED
as complying with the Florida
Building Code
NOA-No. 21-0308.03

Expiration Date 04/16/2026

By Ishaq I. Chande
Miami-Dade Product Control

DRAWN BY: W.R.M.		CHECKED BY: W.W.S.	
PLOT: 1=24		DATE: 07/09/12	
NO.	REVISION DESCRIPTION	BY	DATE
DRAWING TITLE ALUMINUM CLAD WOOD IMPACT OUT-SWING FRENCH DOOR			
CONSULTANTS W. W. SCHAEFER ENGINEERING & CONSULTING, P.A. (CA 6809)		MANUFACTURER ULTIMATE DOOR OF PALM BEACH, INC. 2800 2ND AVE. NORTH LAKE WORTH, FL 33461 561-642-2828	
7480 150TH COURT NORTH PALM BEACH GARDENS, FL 33418 PHONE: 561-744-3424		P.E. NO. 44135	
CERTIFICATION MAR 01 2021		WARREN W. SCHAEFER, P.E.	
DRAWING NO. 1748	REV. A	SHEET NO. 4 OF 17	

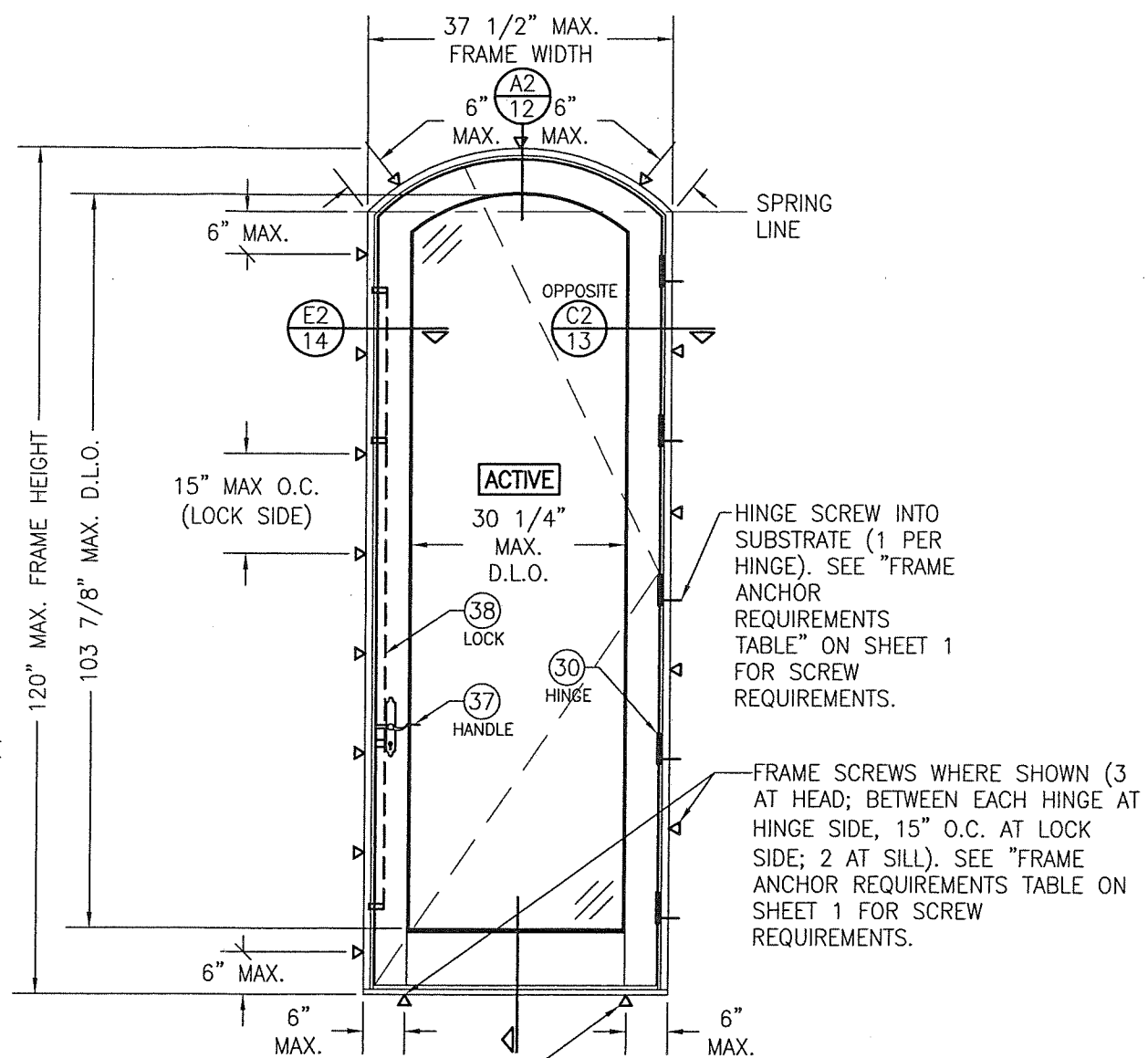


**EXTERIOR ELEVATION:
DOUBLE EYE-BROW TOP DOOR**

SCALE: 1/2" = 1'-0"

(FRAME SCREW MOUNT CONDITION SHOWN. FOR NAIL FIN MOUNT, SEE RECTANGULAR DOOR NAIL FIN MOUNT ELEVATION)

SEE ALLOWABLE DESIGN PRESSURE TABLES ON SHEET 1 FOR ALLOWABLE DESIGN PRESSURES ON SINGLE & DOUBLE DOORS.



**EXTERIOR ELEVATION:
SINGLE EYE-BROW TOP
DOOR**

SCALE: 1/2" = 1'-0"

(FRAME SCREW MOUNT CONDITION SHOWN. FOR NAIL FIN MOUNT, SEE RECTANGULAR DOOR NAIL FIN MOUNT ELEVATION)

PRODUCT RENEWED
as complying with the Florida
Building Code
NOA-No. 21-0308.03

Expiration Date 04/16/2026

By *Ishaq I. Chank*
Miami-Dade Product Control

DRAWN BY: W.R.M.		CHECKED BY: W.W.S.	
PLOT: 1=24		DATE: 07/09/12	
NO.	REVISION DESCRIPTION	BY	DATE
DRAWING TITLE: ALUMINUM CLAD WOOD IMPACT OUT-SWING FRENCH DOOR MANUFACTURER: ULTIMATE DOOR OF PALM BEACH, INC. 2800 2ND AVE. NORTH LAKE WORTH, FL 33461 561-642-2828 CONSULTANTS: W. W. SCHAEFER ENGINEERING & CONSULTING, P.A. (CA 6809) 7480 150TH COURT NORTH PALM BEACH GARDENS, FL 33418 PHONE: 561-744-3424			
CERTIFICATION	MAR 01 2021 WARREN W. SCHAEFER, P.E. P.E. NO. 44135		
DRAWING NO.	1748	REV.	A
SHEET NO.	5	OF	17

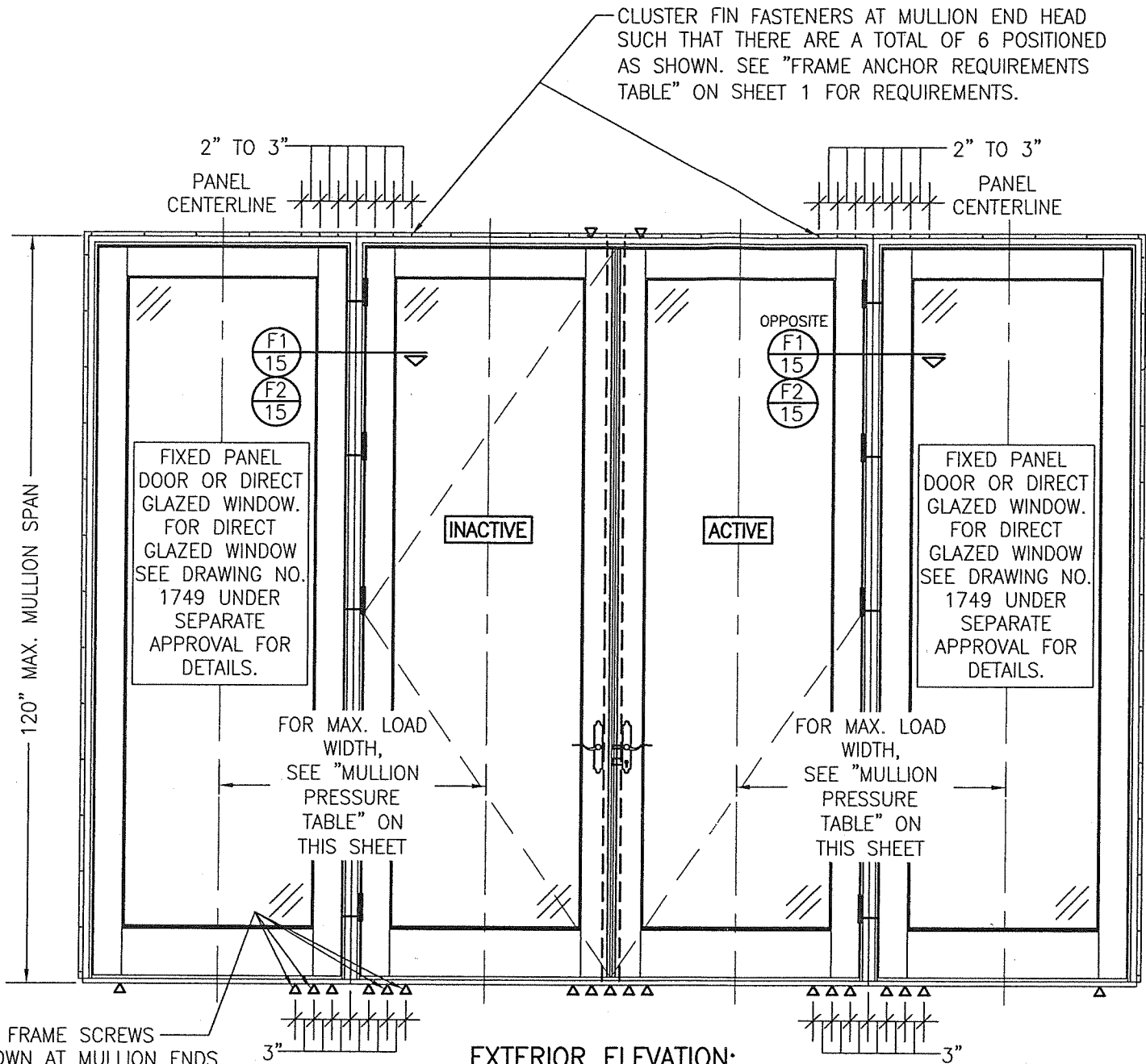
MULLION ALLOWABLE DESIGN PRESSURE (SIDE BY SIDE DOORS)			
MAXIMUM MULLION SPAN (IN.)	MAXIMUM LOAD WIDTH (IN.)	ALLOWABLE PRESSURE (PSF)	
		POS.	NEG.
120	51	41.2	41.2
	45	46.7	46.7
	42	50.0	50.0
	39	53.8	53.8
	36	58.3	58.3
	33	63.6	63.6
	31	65.0	65.0
108	54	43.2	43.2
	51	45.8	45.8
	45	51.9	51.9
	42	55.6	55.6
	39	59.8	59.8
	36	64.8	64.8
	35	65.0	65.0
102	56	44.1	44.1
	51	48.4	48.4
	45	54.9	54.9
	42	58.8	58.8
	39	63.3	63.3
	38	65.0	65.0
96	57	46.1	46.1
	51	51.5	51.5
	45	58.3	58.3
	42	62.5	62.5
	40	65.0	65.0
90	57	49.1	49.1
	51	54.9	54.9
	48	58.3	58.3
	45	62.2	62.2
	43	65.0	65.0
84	57	52.6	52.6
	51	58.8	58.8
	49	61.2	61.2
	46	65.0	65.0
80	57	55.3	55.3
	54	58.3	58.3
	51	61.8	61.8
	49	64.3	64.3
	48	65.0	65.0

NOTES:
1. SEE ELEVATIONS FOR DIMENSIONING OF LOAD WIDTH.
2. ALLOWABLE UNIT PRESSURE SHALL BE THE LESSER OF THE PRESSURE SHOWN IN THIS TABLE & THAT SPECIFIED FOR THE INDIVIDUAL DOOR.

ADDITIONAL FRAME SCREWS WHERE SHOWN AT MULLION ENDS. SEE "FRAME ANCHOR REQUIREMENTS TABLE" ON SHEET 1 FOR REQUIREMENTS. NOTE: OUTER-MOST SCREW ON EACH SIDE OF THE MULLION IS NOT REQUIRED AT THE SILL WHEN LOAD WIDTH IS 33 1/2" OR LESS OR WHEN FRAME HEIGHT IS 96" OR LESS

MULTIPLE UNIT NOTES:

- FOR ALL DETAIL NOT SHOWN, SEE INDIVIDUAL UNIT ELEVATIONS.
- THERE IS NO LIMIT ON THE NUMBER OF DOORS THAT MAY BE COMBINED IN ONE DIRECTION INTO ONE OPENING PROVIDING THE OPENING IS DESIGNED TO SUPPORT ALL LOADS TRANSFERRED FROM THE DOORS & THEIR MULLIONS.
- OXOXO UNIT IS SHOWN. ALL OTHER FIXED/OPERABLE COMBINATIONS ALSO APPLY WITH THE MULLION CONDITIONS SHOWN.
- INDIVIDUAL DOOR SIZES SHALL BE RESTRICTED AS SPECIFIED IN THE SINGLE UNIT ELEVATION.



EXTERIOR ELEVATION:
DOUBLE DOORS WITH SIDE LIGHTS

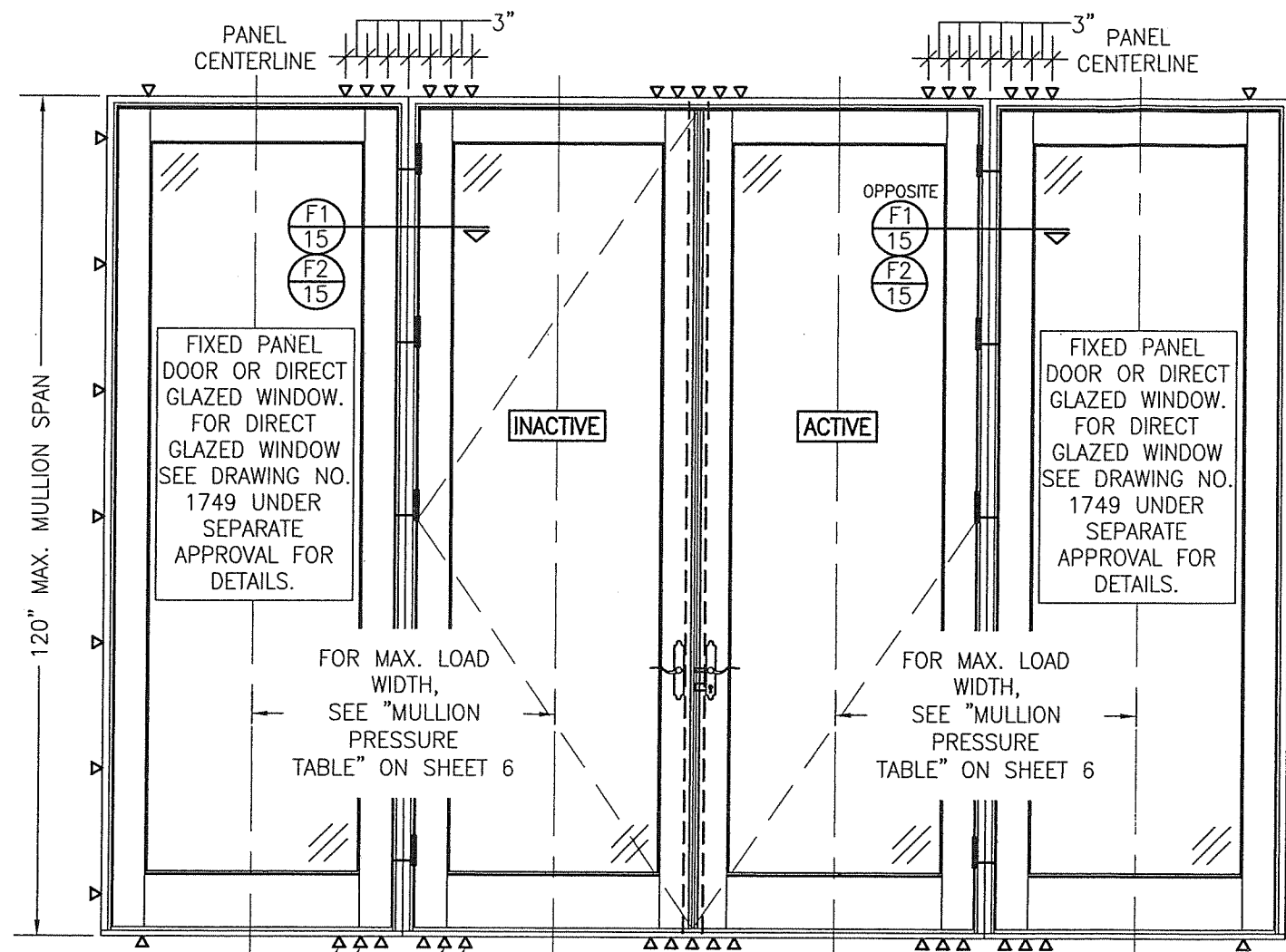
SCALE: 1/2" = 1'-0"
(NAIL FIN MOUNT CONDITION)

(RECTANGULAR DOORS SHOWN, SHAPED DOORS ALSO APPLY. SEE "APPROVED SHAPES" TABLE ON SHEET 1)

SEE SINGLE UNIT ELEVATIONS FOR FIN FASTENER REQUIREMENTS & POSITIONS AROUND EACH UNIT

PRODUCT RENEWED
as complying with the Florida Building Code
NOA-No. 21-0308.03
Expiration Date 04/16/2026
By *Ishag I. Chande*
Miami-Dade Product Control

DRAWN BY: W.R.M.	CHECKED BY: W.W.S.
PLOT: 1=24	DATE: 07/09/12
DATE	BY
REVISION DESCRIPTION	
NO.	
DRAWING TITLE ALUMINUM CLAD WOOD IMPACT OUT-SWING FRENCH DOOR	
CONSULTANTS W. W. SCHAEFER ENGINEERING & CONSULTING, P.A. (CA 6809) 7480 150TH COURT NORTH PALM BEACH GARDENS, FL 33418 PHONE: 561-744-3424	MANUFACTURER ULTIMATE DOOR OF PALM BEACH, INC. 2800 2ND AVE. NORTH LAKE WORTH, FL 33461 561-642-2828
CERTIFICATION MAR 01 2021 WARREN W. SCHAEFER, P.E. P.E. NO. 44135	DRAWING NO. 1748 REV. A
SHEET NO. 6 OF 17	



SEE SINGLE UNIT
ELEVATIONS FOR
FRAME ANCHOR
REQUIREMENTS &
POSITIONS
AROUND EACH
UNIT

ADDITIONAL FRAME SCREWS
WHERE SHOWN AT MULLION ENDS.
SEE "FRAME ANCHOR
REQUIREMENTS TABLE" ON SHEET
1 FOR REQUIREMENTS (TYP. HEAD
& SILL).
NOTE: OUTER-MOST SCREW ON
EACH SIDE OF THE MULLION IS
NOT REQUIRED WHEN LOAD WIDTH
IS 33 1/2" OR LESS OR WHEN
FRAME HEIGHT IS 96" OR LESS

EXTERIOR ELEVATION: DOUBLE DOORS WITH SIDE LIGHTS

SCALE: 1/2" = 1'-0"
(FRAME SCREW MOUNT CONDITION)
(RECTANGULAR DOORS SHOWN, SHAPED DOORS ALSO APPLY. SEE
"APPROVED SHAPES" TABLE ON SHEET 1)

SEE "MULLION ALLOWABLE DESIGN
PRESSURE" TABLE ON SHEET 6
FOR ALLOWABLE DESIGN
PRESSURES ON MULLED UNIT

MULTIPLE UNIT NOTES:

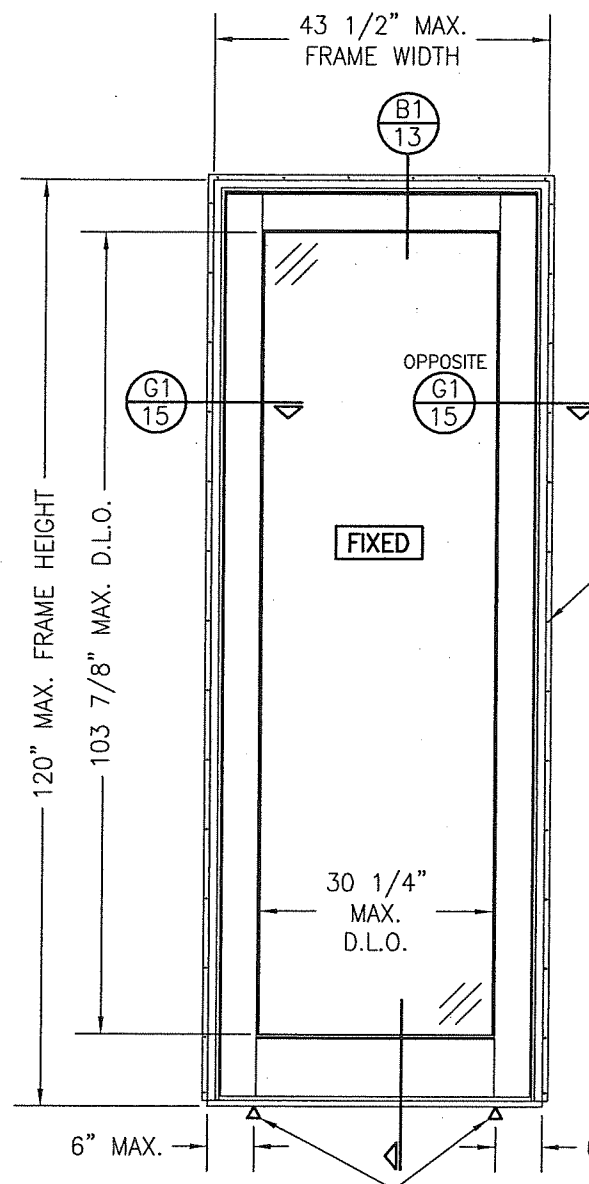
1. FOR ALL DETAIL NOT SHOWN, SEE INDIVIDUAL UNIT ELEVATIONS.
2. THERE IS NO LIMIT ON THE NUMBER OF DOORS THAT MAY BE COMBINED IN ONE DIRECTION INTO ONE OPENING PROVIDING THE OPENING IS DESIGNED TO SUPPORT ALL LOADS TRANSFERRED FROM THE DOORS & THEIR MULLIONS.
3. OXO UNIT IS SHOWN. ALL OTHER FIXED/OPERABLE COMBINATIONS ALSO APPLY WITH THE MULLION CONDITIONS SHOWN.
4. INDIVIDUAL DOOR SIZES SHALL BE RESTRICTED AS SPECIFIED IN THE SINGLE UNIT ELEVATION.

PRODUCT RENEWED
as complying with the Florida
Building Code
NOA-No. 21-0308.03

Expiration Date 04/16/2026

By Ishaq I. Chande
Miami-Dade Product Control

DRAWN BY: W.R.M.		CHECKED BY: W.W.S.	
PLOT: 1=24		DATE: 07/09/12	
NO.	REVISION	DESCRIPTION	DATE
DRAWING TITLE: ALUMINUM CLAD WOOD IMPACT OUT-SWING FRENCH DOOR MANUFACTURER: ULTIMATE DOOR OF PALM BEACH, INC. 2800 2ND AVE. NORTH LAKE WORTH, FL 33461 561-642-2828 CONSULTANTS: W. W. SCHAEFER ENGINEERING & CONSULTING, P.A. (CA 6809) 7480 150TH COURT NORTH PALM BEACH GARDENS, FL 33418 PHONE: 561-744-3424 CERTIFICATION: MAR 01 2021 WARREN W. SCHAEFER, P.E. P.E. NO. 44135 DRAWING NO. 1748 SHEET NO. 7 OF 17			



**EXTERIOR ELEVATION:
SINGLE FIXED PANEL DOOR**
SCALE: 1/2" = 1'-0"
(NAIL FIN MOUNT CONDITION)

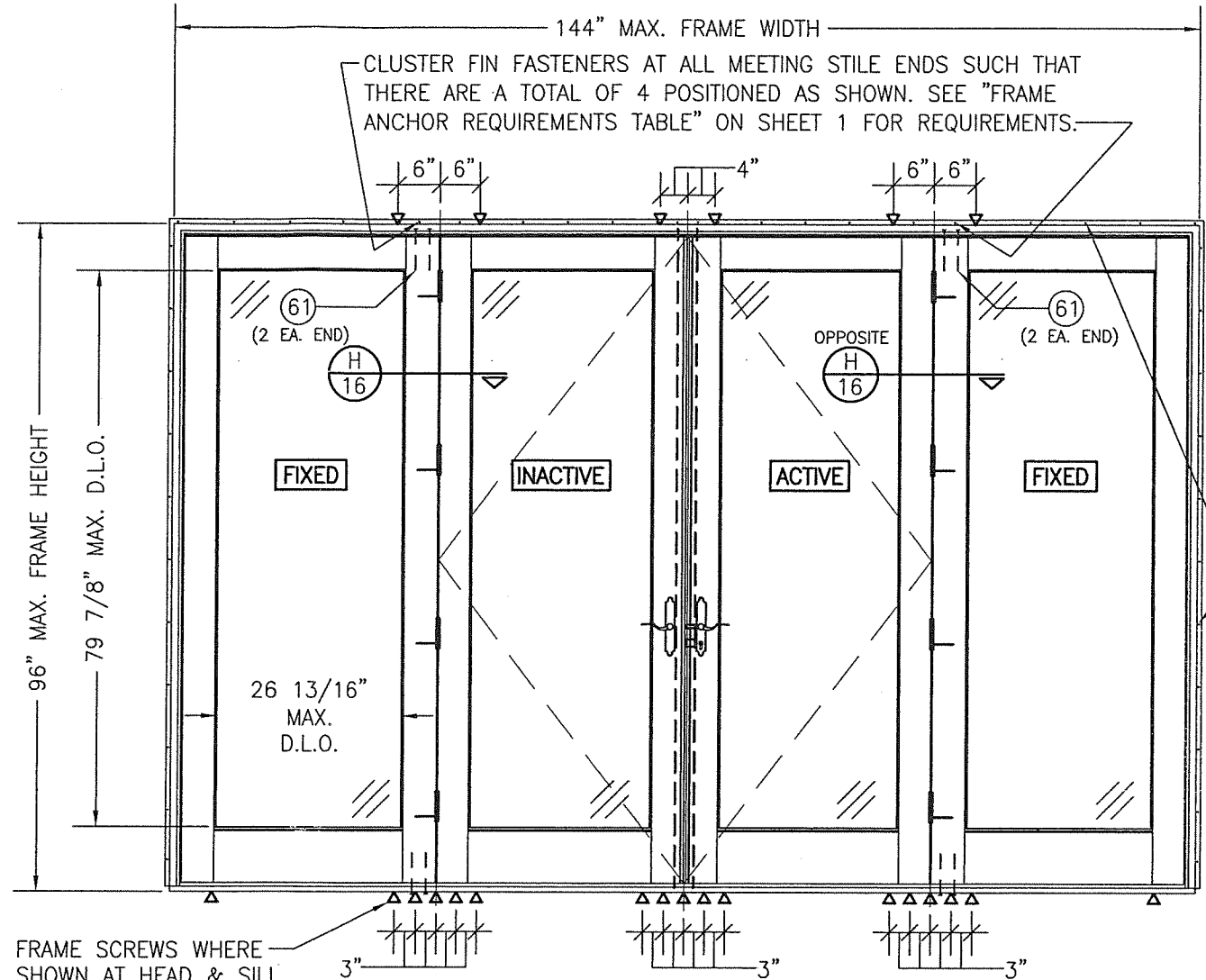
RECTANGULAR FIXED PANEL SHOWN. SHAPE TOP CONDITION ALSO APPLIES WITH ANCHORING ALONG THE FRAME CIRCUMFERENCE BEING THE SAME AS SPECIFIED FOR A STRAIGHT FRAME.

SEE ALLOWABLE DESIGN PRESSURE TABLES ON SHEET 1 FOR ALLOWABLE DESIGN PRESSURES ON FIXED PANEL DOORS.

FIN FASTENER WITHIN 3" OF CORNERS & 9" MAX. O.C. SEE "FRAME ANCHOR REQUIREMENTS TABLE" ON SHEET 1 FOR REQUIREMENTS.

FRAME SCREWS WHERE SHOWN AT SILL. SEE "FRAME ANCHOR REQUIREMENTS TABLE" ON SHEET 1 FOR REQUIREMENTS.

PRODUCT RENEWED
as complying with the Florida Building Code
NOA-No. 21-0308.03
Expiration Date 04/16/2026
By Ishag I. Chande
Miami-Dade Product Control



**EXTERIOR ELEVATION:
QUAD PANEL DOOR WITH FIXED ASTRAGALS
IN ONE FRAME**
SCALE: 1/2" = 1'-0"
(NAIL FIN MOUNT CONDITION)

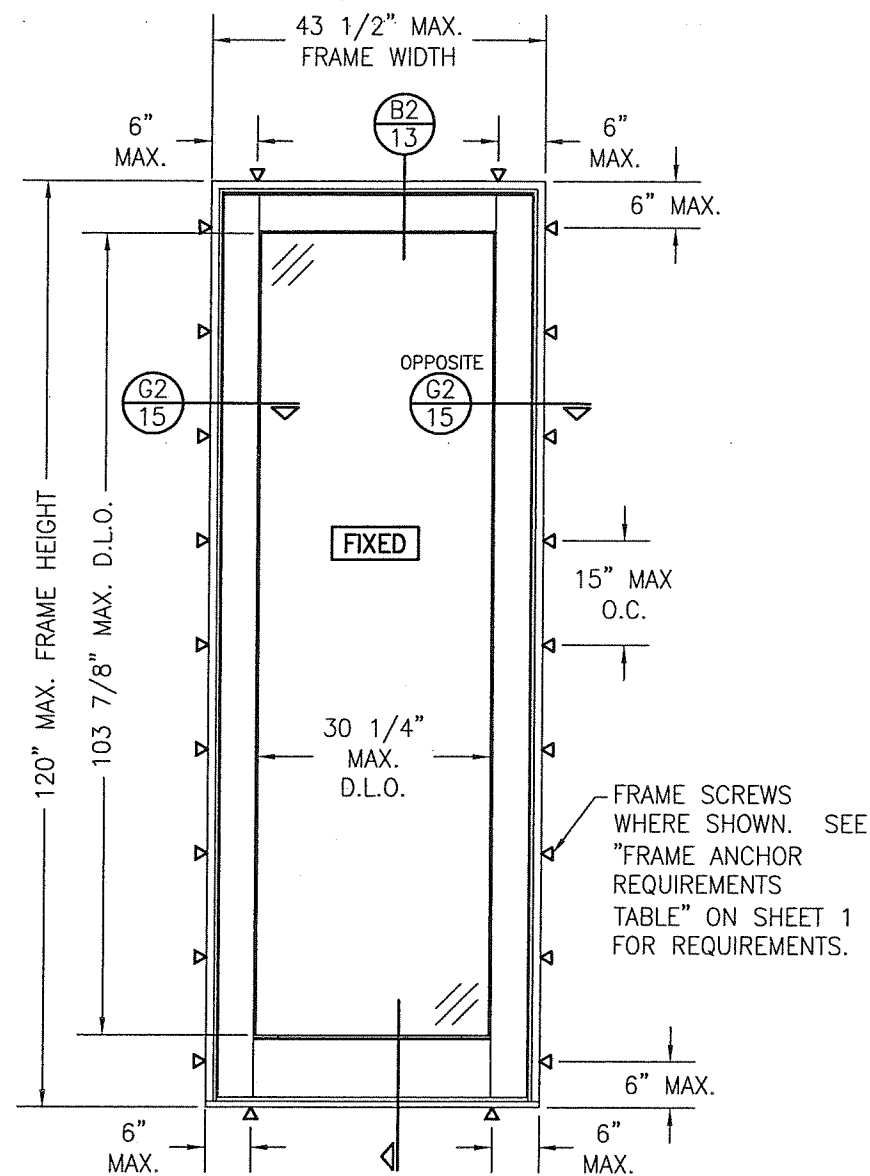
ALLOWABLE DESIGN PRESSURE
(DOORS WITH FIXED ASTRAGALS)
+48/-59 PSF

- FIXED ASTRIGAL UNIT NOTES:**
1. OXXO UNIT IS SHOWN. OX, XO, OXO, XXO & OXX UNITS ALSO APPLY.
 2. FOR DETAIL NOT SHOWN, SEE INDIVIDUAL UNIT ELEVATIONS.

FIN FASTENER WITHIN 3" OF CORNERS & 9" MAX. O.C. SEE "FRAME ANCHOR REQUIREMENTS TABLE" ON SHEET 1 FOR REQUIREMENTS.

FRAME SCREWS WHERE SHOWN AT HEAD & SILL. SEE "FRAME ANCHOR REQUIREMENTS TABLE" ON SHEET 1 FOR REQUIREMENTS.

DRAWN BY: W.R.M.		CHECKED BY: W.W.S.	
PLOT: 1=24		DATE: 07/09/12	
NO.	REVISION DESCRIPTION	BY	DATE
DRAWING TITLE: ALUMINUM CLAD WOOD IMPACT OUT-SWING FRENCH DOOR MANUFACTURER: ULTIMATE DOOR OF PALM BEACH, INC. 2800 2ND AVE. NORTH LAKE WORTH, FL 33461 561-642-2828 CONSULTANTS: W. W. SCHAEFER ENGINEERING & CONSULTING, P.A. (CA 6809) 7480 150TH COURT NORTH PALM BEACH GARDENS, FL 33418 PHONE: 561-744-3424 CERTIFICATION: MAR 01 2021 WARREN W. SCHAEFER, P.E. P.E. NO. 44135			
DRAWING NO. 1748		REV. A	
SHEET NO. 8		OF 17	



**EXTERIOR ELEVATION:
SINGLE FIXED PANEL DOOR**

SCALE: 1/2" = 1'-0"
(FRAME SCREW MOUNT CONDITION)

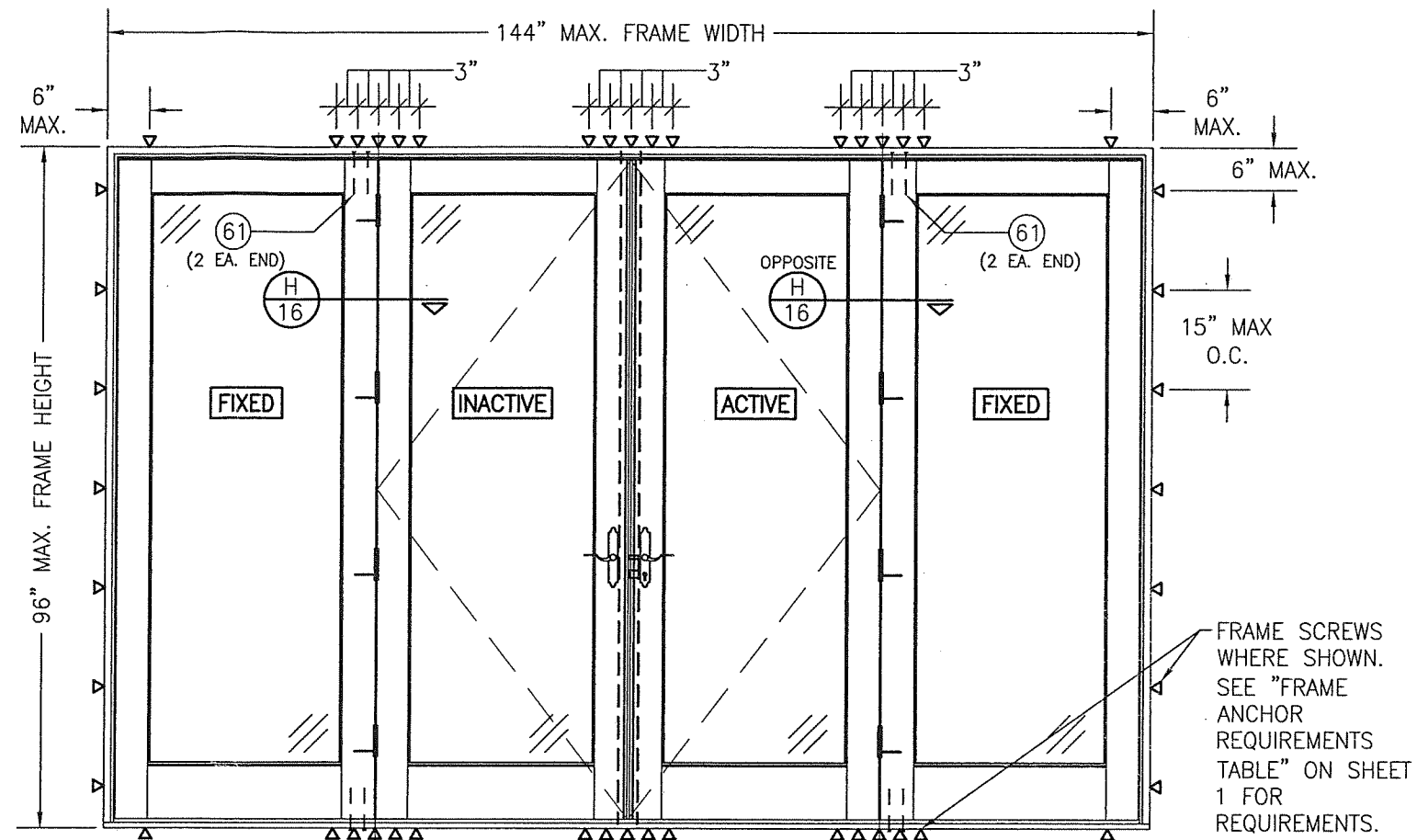
RECTANGULAR FIXED PANEL SHOWN. SHAPE TOP CONDITION ALSO APPLIES WITH ANCHORING ALONG THE FRAME CIRCUMFERENCE BEING THE SAME AS SPECIFIED FOR A STRAIGHT FRAME.

SEE ALLOWABLE DESIGN PRESSURE TABLES ON SHEET 1 FOR ALLOWABLE DESIGN PRESSURES ON FIXED PANEL DOORS.

PRODUCT RENEWED
as complying with the Florida Building Code
NOA-No. 21-0308.03

Expiration Date 04/16/2026

By *Ishag I. Chank*
Miami-Dade Product Control



**EXTERIOR ELEVATION:
QUAD PANEL DOOR WITH FIXED ASTRAGALS
IN ONE FRAME**

SCALE: 1/2" = 1'-0"
(FRAME SCREW MOUNT CONDITION)

ALLOWABLE DESIGN PRESSURE
(DOORS WITH FIXED ASTRAGALS)

+48/-59 PSF

FIXED ASTRIGAL UNIT NOTES:

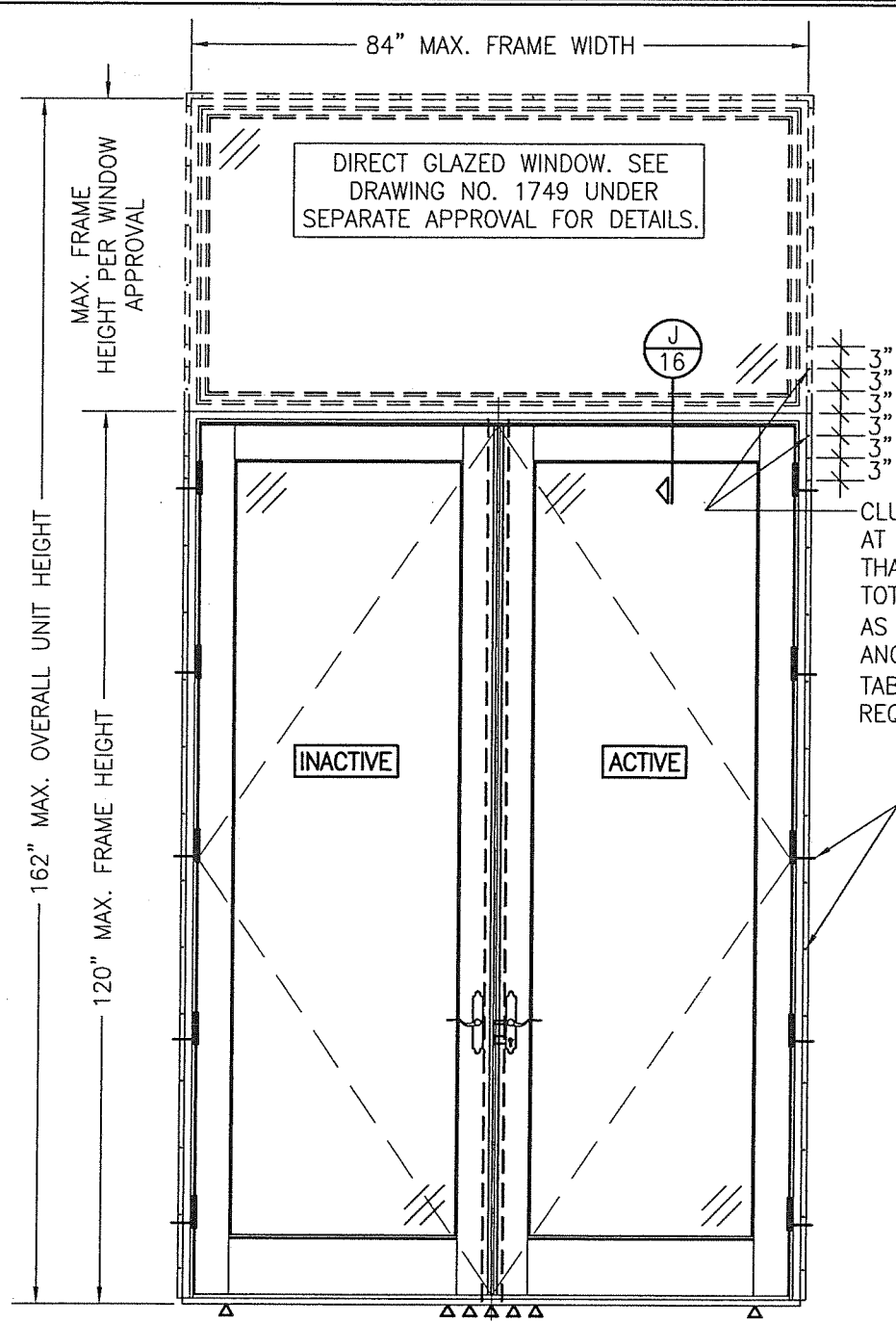
1. OXXO UNIT IS SHOWN. OX, XO, OXO, XXO & OXX UNITS ALSO APPLY.
2. FOR DETAIL NOT SHOWN, SEE INDIVIDUAL UNIT ELEVATIONS.

DRAWN BY: W.R.M.	CHECKED BY: W.W.S.
PLOT: 1-24	DATE: 07/09/12
DATE	BY
REVISION DESCRIPTION	NO.
DRAWING TITLE ALUMINUM CLAD WOOD IMPACT OUT-SWING FRENCH DOOR	
MANUFACTURER ULTIMATE DOOR OF PALM BEACH, INC. 2800 2ND AVE. NORTH LAKE WORTH, FL 33461 561-642-2828	
CONSULTANTS W. W. SCHAEFER ENGINEERING & CONSULTING, P.A. (CA 6809) 7480 150TH COURT NORTH PALM BEACH GARDENS, FL 33418 PHONE: 561-744-3424	
CERTIFICATION MAR 01 2021 WARREN W. SCHAEFER, P.E. P.E. NO. 44135	
DRAWING NO. 1748	REV. A
SHEET NO. 9 OF 17	

**MULLION ALLOWABLE
DESIGN PRESSURE
(DOUBLE DOORS WITH TRANSOM)**

MAXIMUM FRAME WIDTH (IN.)	MAXIMUM OVERALL HEIGHT (IN.)	ALLOWABLE PRESSURE (PSF)	
		POS.	NEG.
84	162	50.0	50.0
	150	54.0	54.0
	144	56.3	56.3
	138	58.7	58.7
	132	61.4	61.4
	126	64.3	64.3
	124	65.0	65.0
78	162	53.8	53.8
	150	58.2	58.2
	144	60.6	60.6
	138	63.2	63.2
75	162	56.0	56.0
	156	58.2	58.2
	150	60.5	60.5
	144	63.0	63.0
72	162	58.3	58.3
	156	60.6	60.6
	150	63.0	63.0
	145	65.0	65.0
66	162	63.6	63.6
	158	65.0	65.0
60	162	65.0	65.0

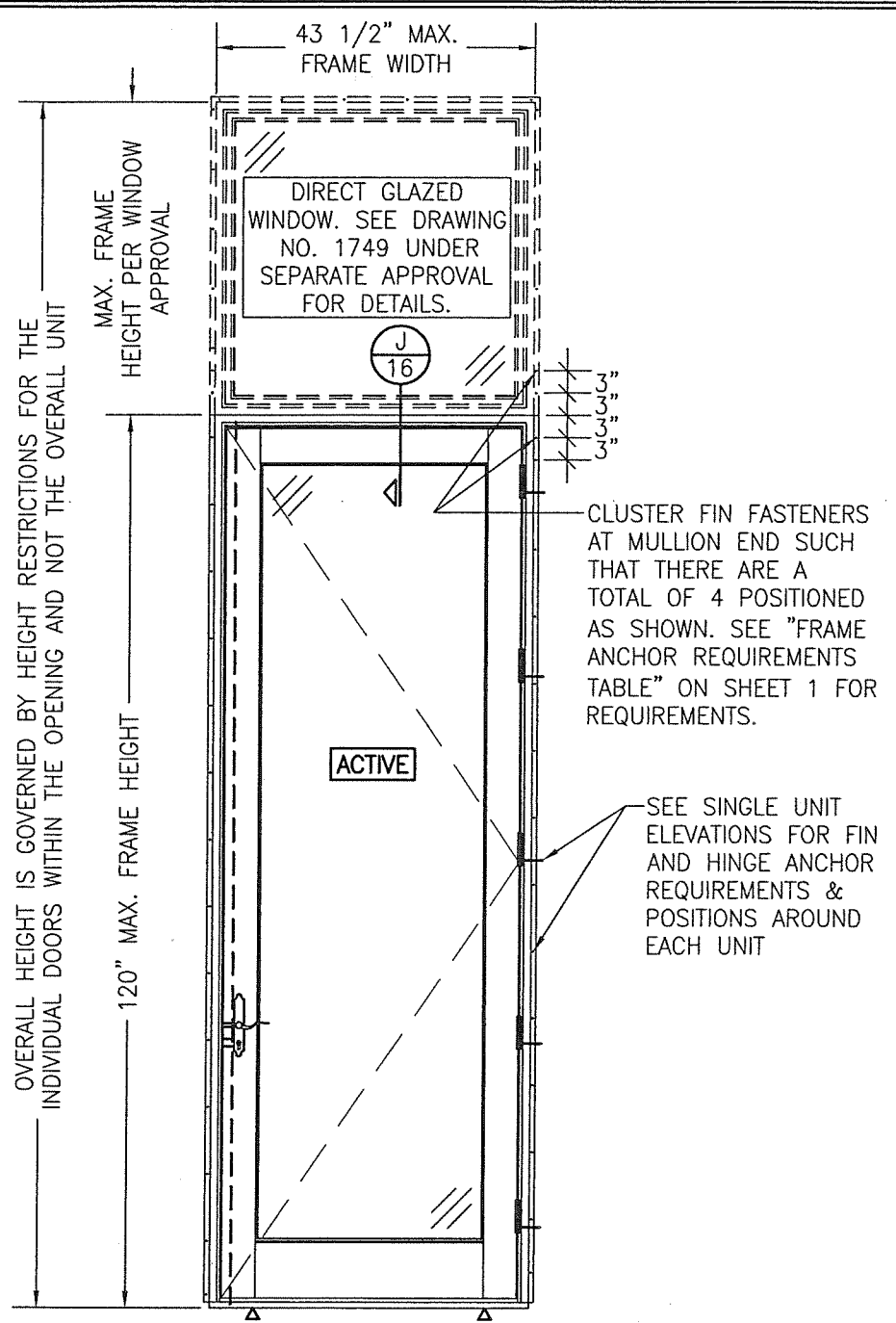
NOTES:
1. ALLOWABLE UNIT PRESSURE SHALL BE THE LESSER OF THE PRESSURE SHOWN IN THIS TABLE & THAT SPECIFIED FOR THE INDIVIDUAL WINDOW OR DOOR.



**EXTERIOR ELEVATION:
DOUBLE DOORS WITH TRANSOM**

SCALE: 1/2" = 1'-0"
(NAIL FIN MOUNT CONDITION)
(FOR DETAIL NOT SHOWN, SEE INDIVIDUAL UNIT ELEVATIONS)

PRODUCT RENEWED
as complying with the Florida
Building Code
NOA-No. 21-0308.03
Expiration Date 04/16/2026
By *Ishaq I. Chande*
Miami-Dade Product Control

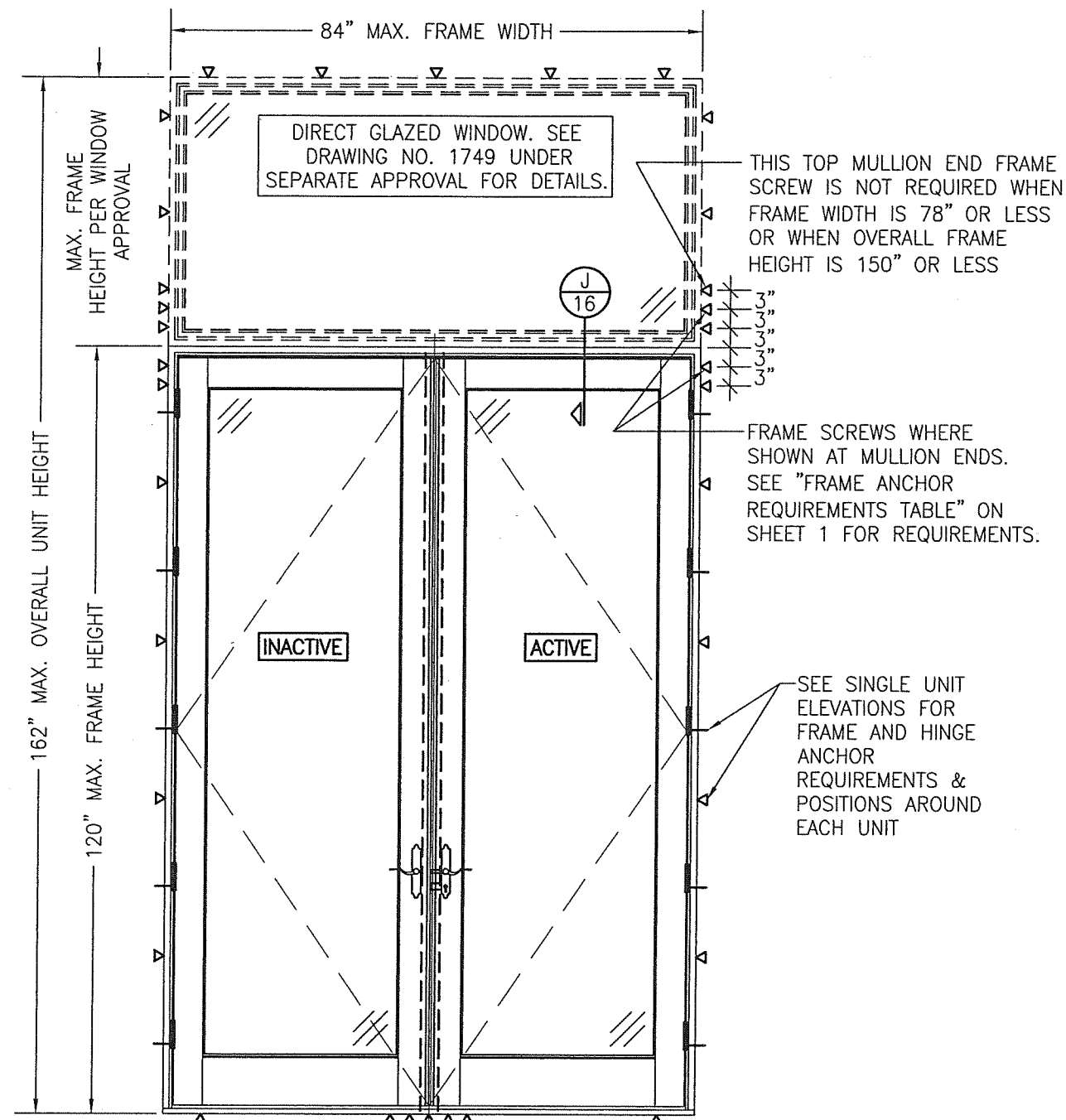


**EXTERIOR ELEVATION:
SINGLE DOOR WITH TRANSOM**

SCALE: 1/2" = 1'-0"
(NAIL FIN MOUNT CONDITION)
(FOR DETAIL NOT SHOWN, SEE INDIVIDUAL UNIT ELEVATIONS)

**MULLION ALLOWABLE
DESIGN PRESSURE
(SINGLE DOORS WITH TRANSOM)**
ALLOWABLE PRESSURE SHALL BE GOVERNED BY THE ALLOWABLE PRESSURE ON THE SINGLE DOOR. SEE SHEET 1 FOR ALLOWABLE PRESSURE ON SINGLE DOORS.

DRAWN BY: W.R.M.		CHECKED BY: W.W.S.	
PLOT: 1=24		DATE: 07/09/12	
NO.	REVISION DESCRIPTION	BY	DATE
DRAWING TITLE ALUMINUM CLAD WOOD IMPACT OUT-SWING FRENCH DOOR			
CONSULTANTS W. W. SCHAEFER ENGINEERING & CONSULTING, P.A. (CA 6809) 7480 150TH COURT NORTH PALM BEACH GARDENS, FL 33418 PHONE: 561-744-3424		MANUFACTURER ULTIMATE DOOR OF PALM BEACH, INC. 2800 2ND AVE., NORTH LAKE WORTH, FL 33461 561-642-2828	
CERTIFICATION MAR 01 2021		WARREN W. SCHAEFER, P.E. P.E. NO. 44135	
DRAWING NO. 1748		REV. A	
SHEET NO. 10 OF 17			



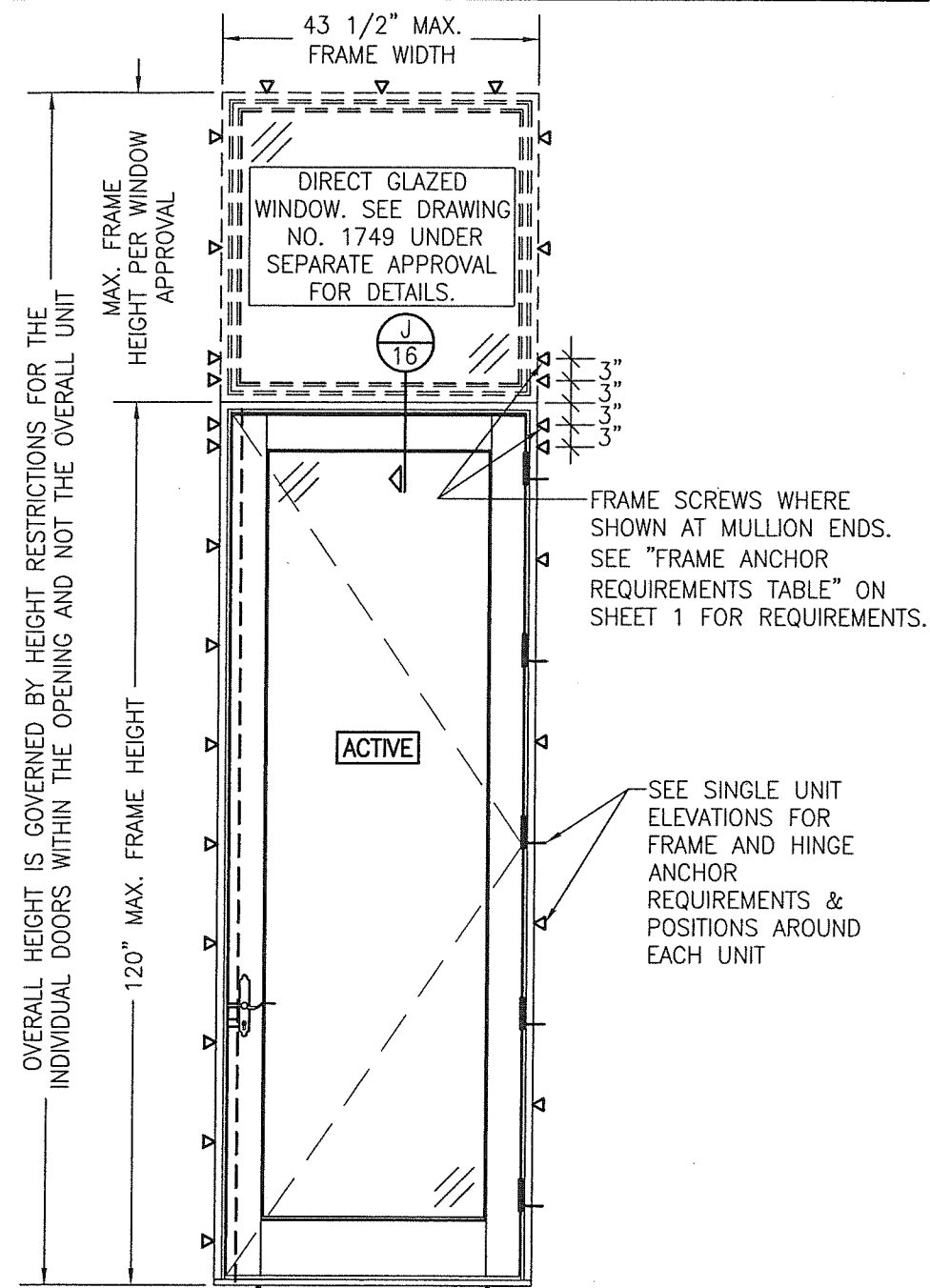
**EXTERIOR ELEVATION:
DOUBLE DOORS WITH TRANSOM**

SCALE: 1/2" = 1'-0"
(FRAME SCREW MOUNT CONDITION)
(FOR DETAIL NOT SHOWN, SEE INDIVIDUAL UNIT ELEVATIONS)

SEE "MULLION ALLOWABLE DESIGN
PRESSURE" TABLE ON SHEET 10
FOR ALLOWABLE DESIGN
PRESSURES ON TRANSOM UNIT

PRODUCT RENEWED
as complying with the Florida
Building Code
NOA-No. 21-0308.03
Expiration Date 04/16/2026

By Ishag I. Chande
Miami-Dade Product Control



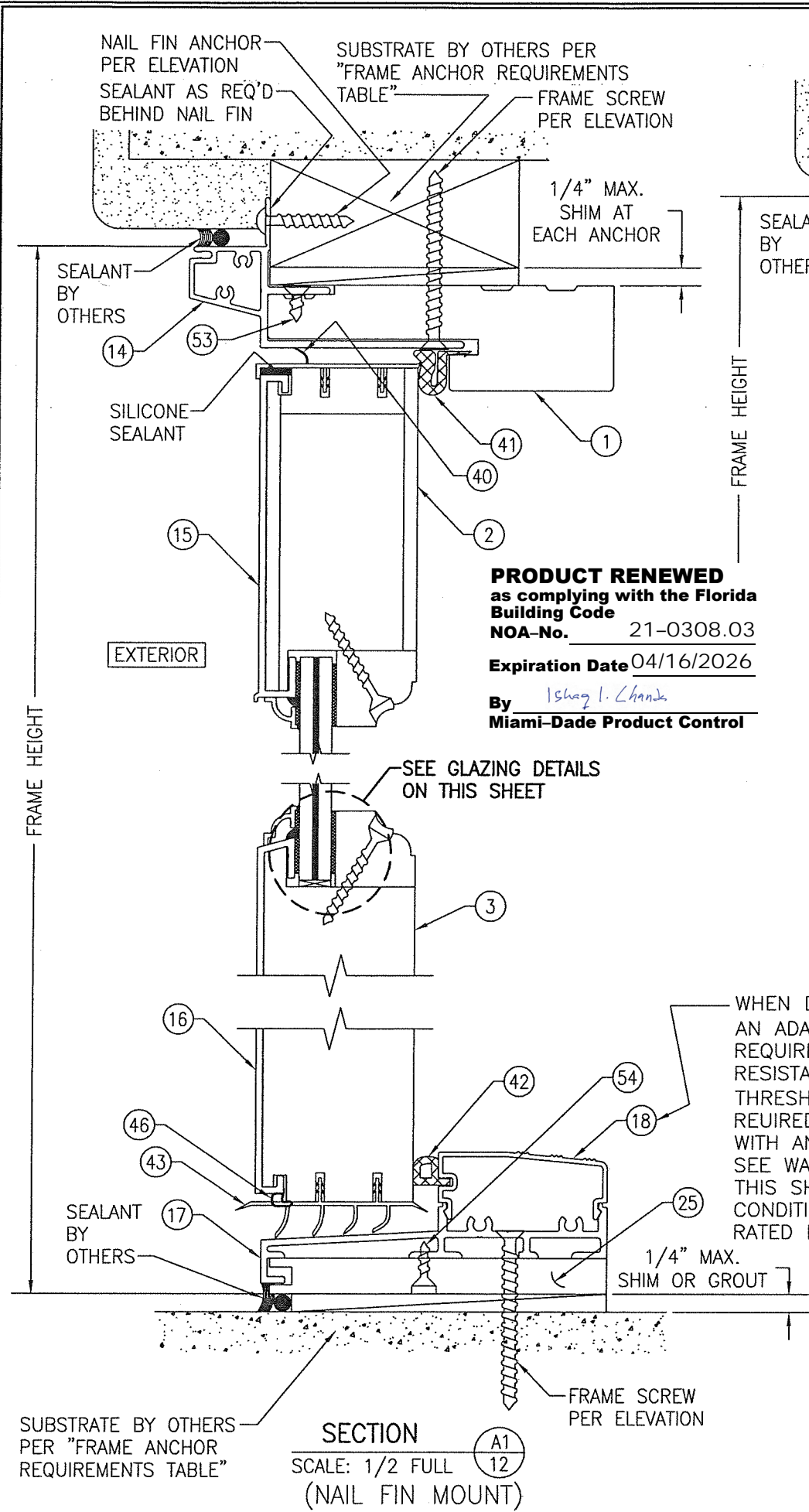
**EXTERIOR ELEVATION:
SINGLE DOOR WITH TRANSOM**

SCALE: 1/2" = 1'-0"
(FRAME SCREW MOUNT CONDITION)
(FOR DETAIL NOT SHOWN, SEE INDIVIDUAL UNIT ELEVATIONS)

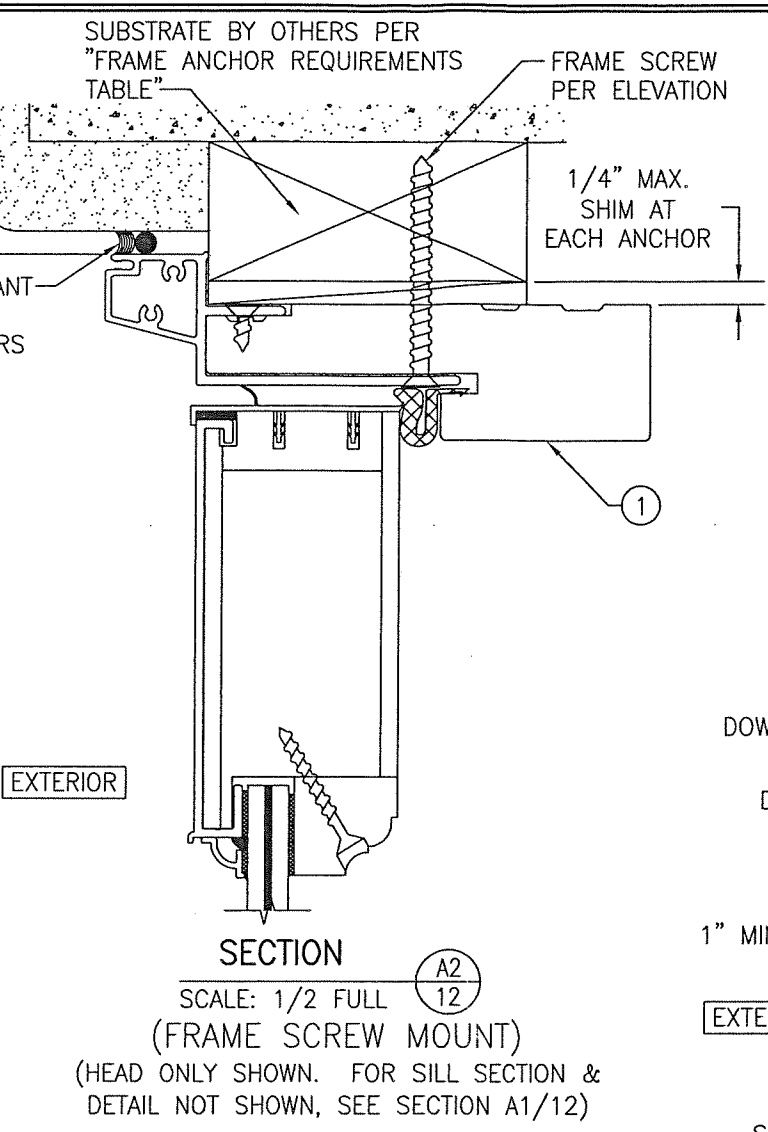
**MULLION ALLOWABLE
DESIGN PRESSURE
(SINGLE DOORS WITH TRANSOM)**

ALLOWABLE PRESSURE SHALL BE
GOVERNED BY THE ALLOWABLE
PRESSURE ON THE SINGLE DOOR.
SEE SHEET 1 FOR ALLOWABLE
PRESSURE ON SINGLE DOORS.

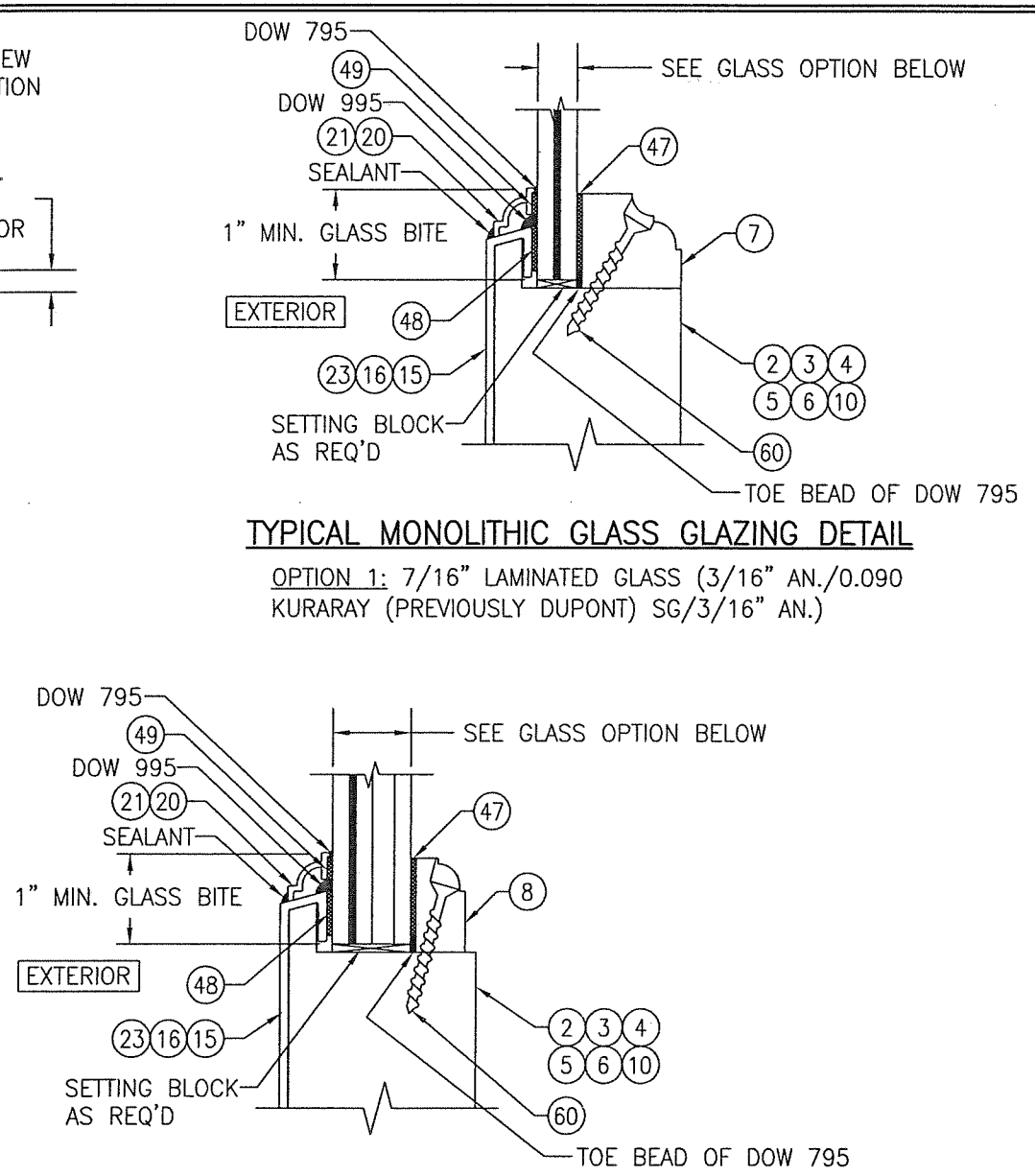
DRAWN BY: W.R.M.		CHECKED BY: W.W.S.	
PLOT: 1=24		DATE: 07/09/12	
NO.	REVISION	DESCRIPTION	BY
DRAWING TITLE ALUMINUM CLAD WOOD IMPACT OUT-SWING FRENCH DOOR			
CONSULTANTS W. W. SCHAEFER ENGINEERING & CONSULTING, P.A. (CA 6809) 7480 150TH COURT NORTH PALM BEACH GARDENS, FL 33418 PHONE: 561-744-3424		MANUFACTURER ULTIMATE DOOR OF PALM BEACH, INC. 2800 2ND AVE. NORTH LAKE WORTH, FL 33461 561-642-2828	
CERTIFICATION MAR 01 2021		WARREN W. SCHAEFER, P.E. P.E. NO. 44133	
DRAWING NO. 1748		REV. A	
SHEET NO. 11		OF 17	



PRODUCT RENEWED
 as complying with the Florida
 Building Code
 NOA-No. 21-0308.03
 Expiration Date 04/16/2026
 By *Ishag I. Chande*
 Miami-Dade Product Control



SECTION A2
 SCALE: 1/2 FULL
 (FRAME SCREW MOUNT)
 (HEAD ONLY SHOWN. FOR SILL SECTION &
 DETAIL NOT SHOWN, SEE SECTION A1/12)

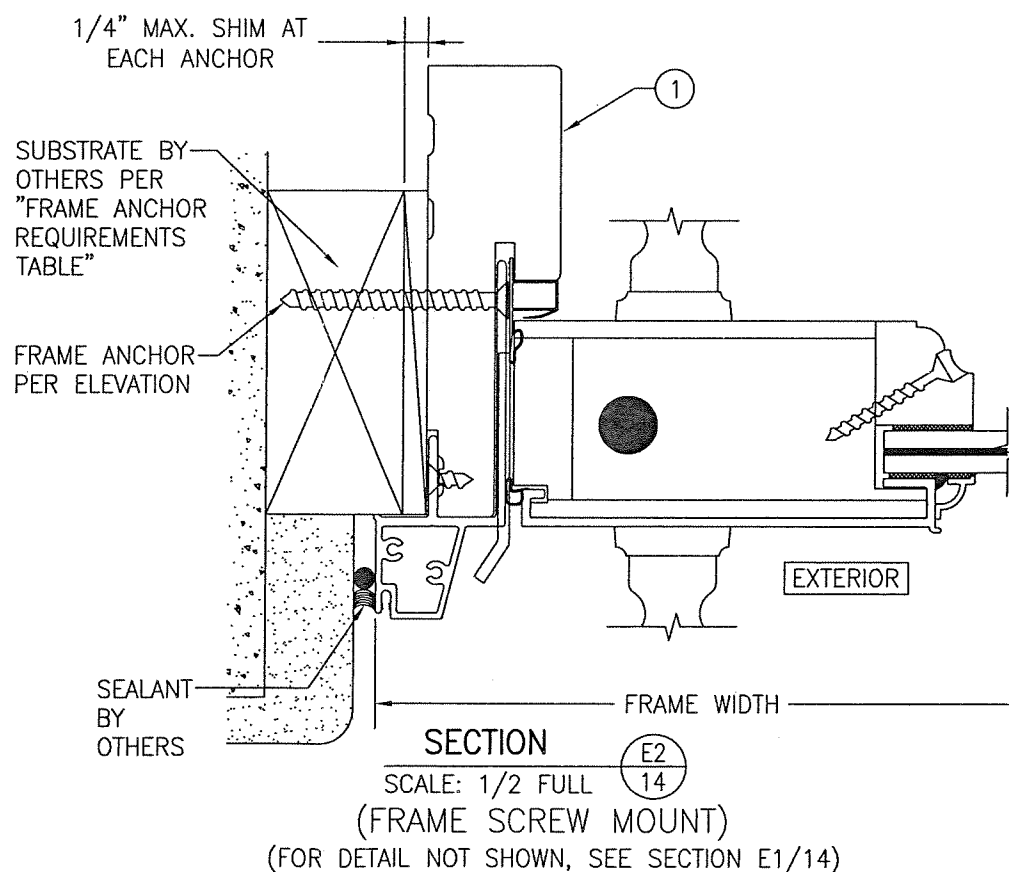
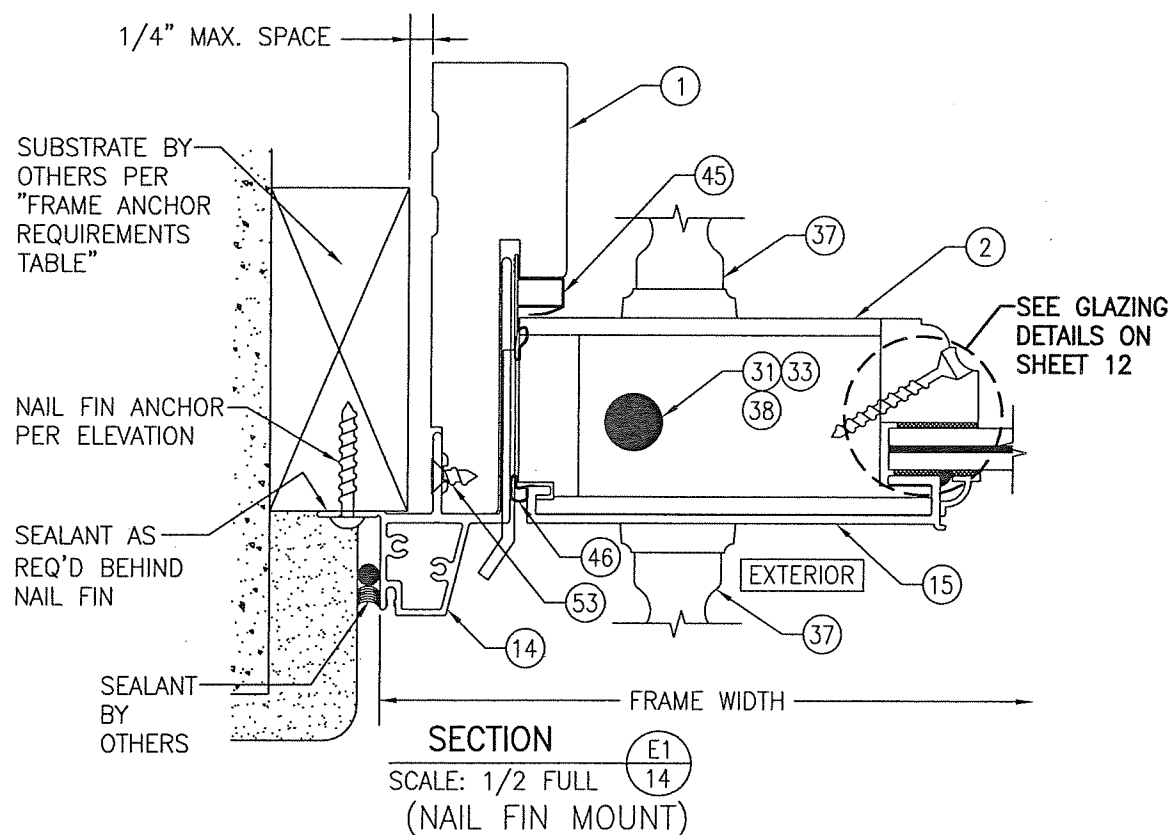
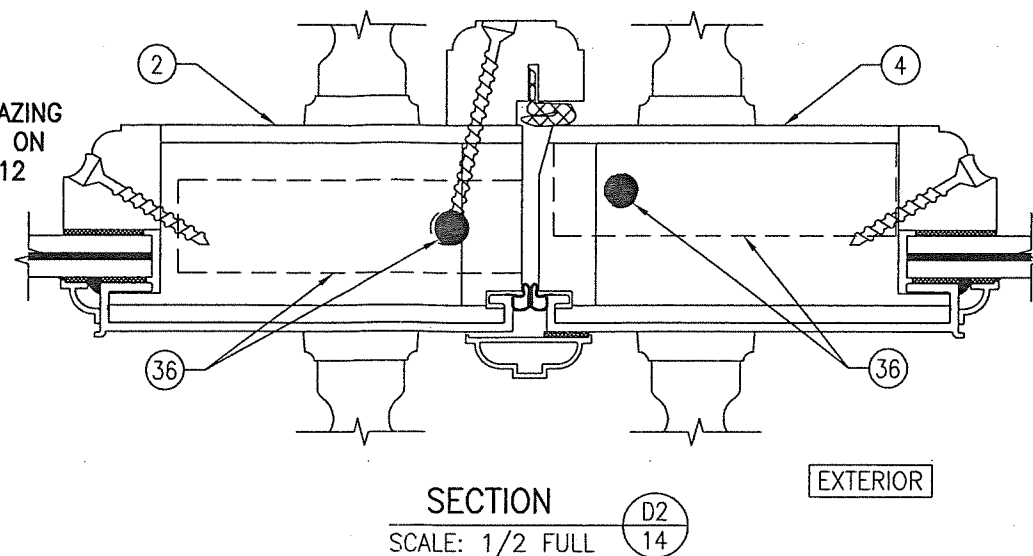
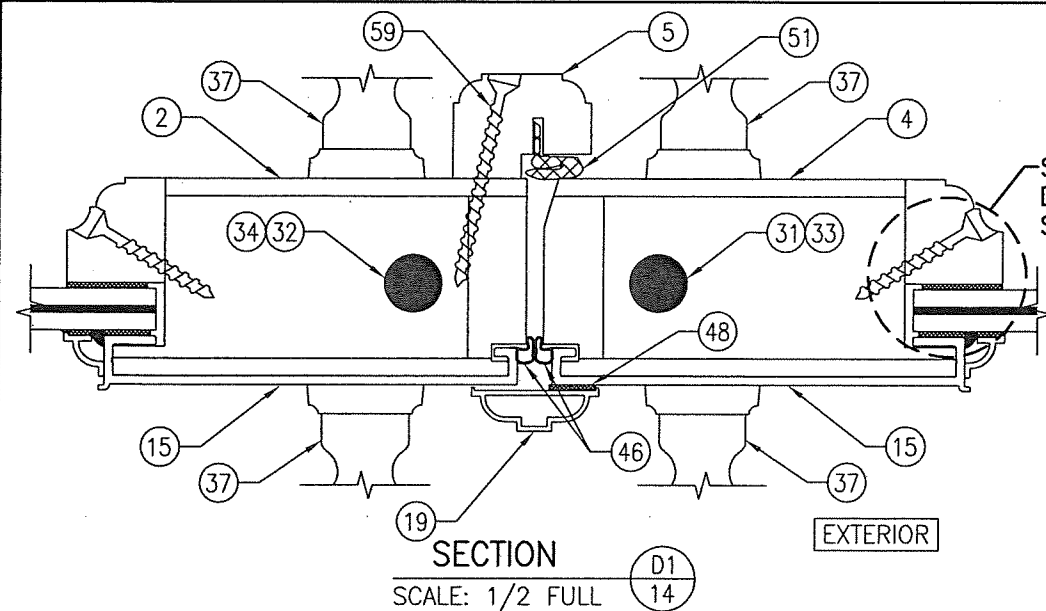


TYPICAL MONOLITHIC GLASS GLAZING DETAIL
 OPTION 1: 7/16" LAMINATED GLASS (3/16" AN./0.090
 KURARAY (PREVIOUSLY DUPONT) SG/3/16" AN.)

TYPICAL I.G. GLAZING DETAIL
 OPTION 1: 7/8" I.G. LAMINATED GLASS
 (3/16" AN./0.090 KURARAY (PREVIOUSLY DUPONT) SG/3/16"
 AN. EXTERIOR/1/4" AIR SPACE/3/16" TEMP. INTERIOR)

WATER RESISTANCE NOTE: THESE DOORS ARE APPROVED FOR
 WATER INFILTRATION RESISTANCE ONLY WHEN THRESHOLD CAP
 PART #18 IS USED. WHEN PART #18 IS NOT USED, THESE
 DOORS SHALL NOT BE INSTALLED WHERE WATER INFILTRATION
 RESISTANCE IS REQUIRED BY THE DOOR. WHEN NOT RATED
 FOR WATER INFILTRATION RESISTANCE, UNLESS UNITS ARE
 INSTALLED IN NON-HABITABLE AREAS WHERE THE UNIT & THE
 AREA ARE DESIGNED TO ACCEPT WATER INFILTRATION, UNITS
 SHALL BE INSTALLED ONLY AT LOCATIONS PROTECTED BY A
 CANOPY OR OVERHANG WHERE-BY THE OVERHANG(OH) RATIO
 IS EQUAL TO OR MORE THAN 1.0 PER FBC.

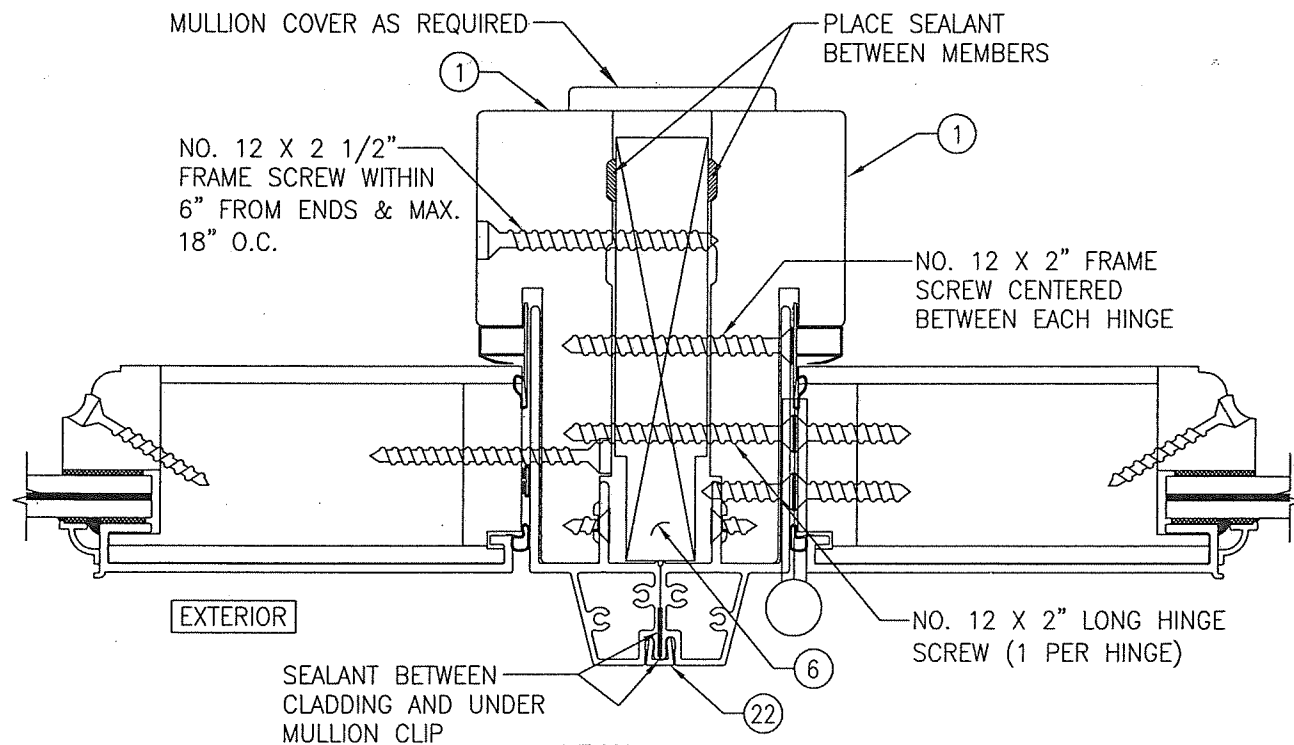
DRAWN BY: W.R.M.		CHECKED BY: W.W.S.	
PLOT: 1=2		DATE: 07/09/12	
NO.	REVISION DESCRIPTION	BY	DATE
DRAWING TITLE ALUMINUM CLAD WOOD IMPACT OUT-SWING FRENCH DOOR			
MANUFACTURER ULTIMATE DOOR OF PALM BEACH, INC. 2800 2ND AVE. NORTH LAKE WORTH, FL 33461 561-642-2828			
CONSULTANTS W. W. SCHAEFER ENGINEERING & CONSULTING, P.A. (CA 6809) 7480 150TH COURT NORTH PALM BEACH GARDENS, FL 33418 PHONE: 561-744-3424			
CERTIFICATION MAR 01 2021 WARREN W. SCHAEFER, P.E. P.E. NO. 44135			
DRAWING NO. 1748		REV. A	
SHEET NO. 12 OF 17			



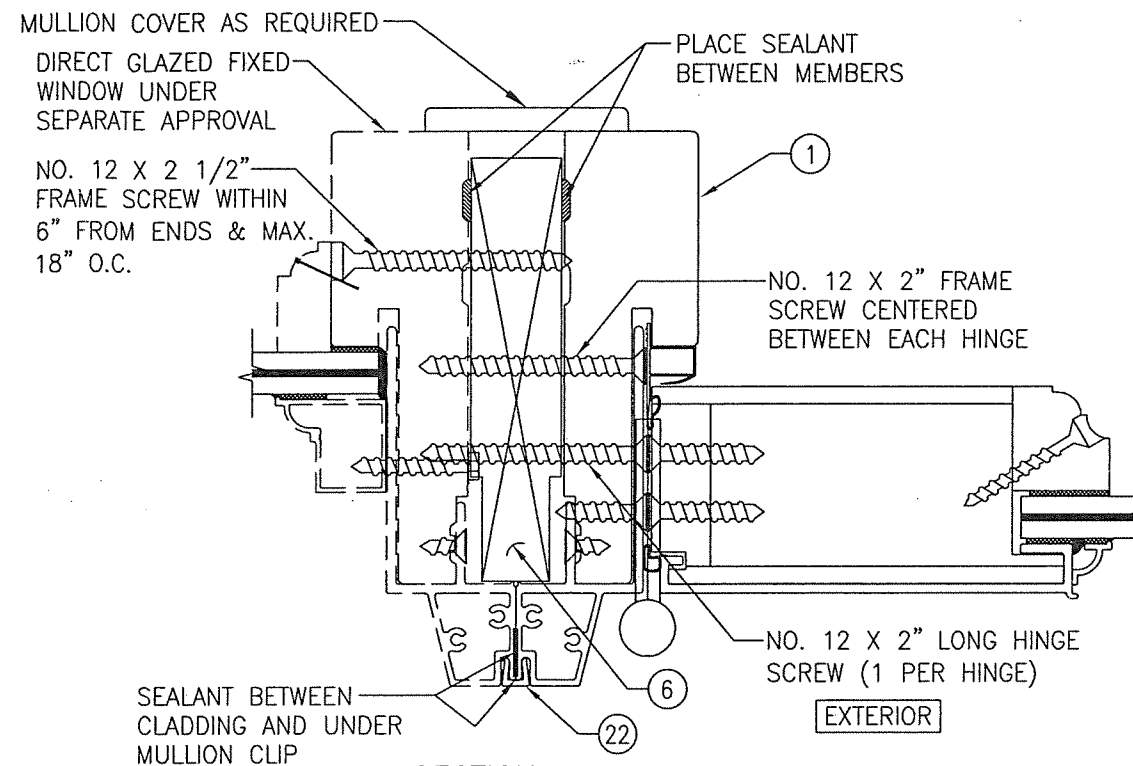
MULTI-POINT LOCK SYSTEM SHOWN.
FLUSH BOLTS PART #36 WITH DEAD BOLT
PART #35 ALSO APPLIES FOR USE WITH
SINGLE RECTANGULAR DOORS.

PRODUCT RENEWED
as complying with the Florida
Building Code
NOA-No. 21-0308.03
Expiration Date 04/16/2026
By Ishaq I. Chande
Miami-Dade Product Control

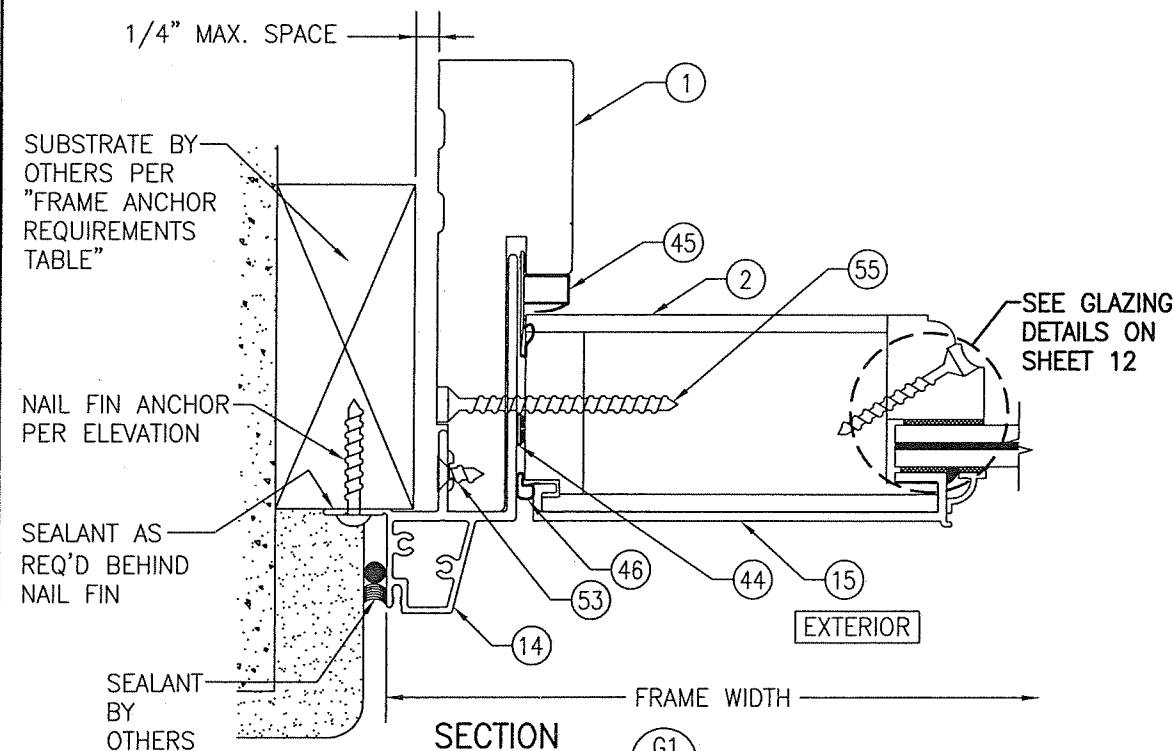
DRAWN BY: W.R.M.		CHECKED BY: W.W.S.	
PLOT: 1=2		DATE: 07/09/12	
NO.	REVISION	DESCRIPTION	DATE
DRAWING TITLE: ALUMINUM CLAD WOOD IMPACT OUT-SWING FRENCH DOOR MANUFACTURER: ULTIMATE DOOR OF PALM BEACH, INC. 2800 2ND AVE. NORTH LAKE WORTH, FL 33461 561-642-2828 CONSULTANTS: W. W. SCHAEFER ENGINEERING & CONSULTING, P.A. (CA 6809) 7480 150TH COURT NORTH PALM BEACH GARDENS, FL 33418 PHONE: 561-744-3424			
CERTIFICATION	MAR 01 2021 WARREN W. SCHAEFER, P.E. P.E. NO. 44135		
DRAWING NO.	1748	REV.	A
SHEET NO.	14	OF	17



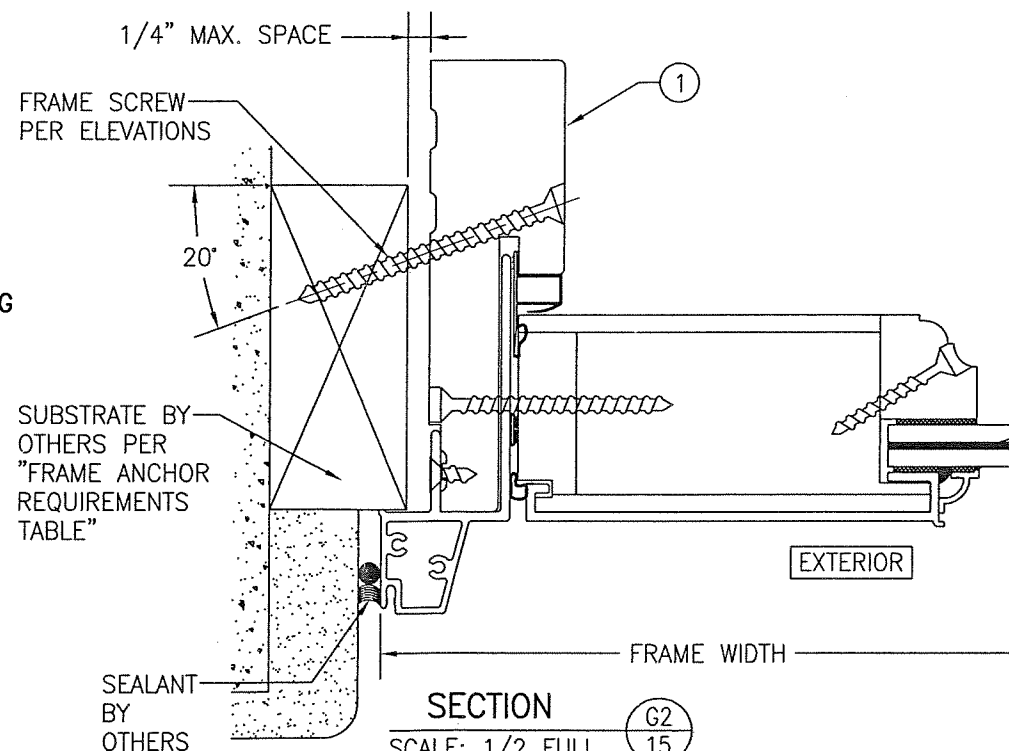
SECTION F1
SCALE: 1/2 FULL
(FOR DETAIL NOT SHOWN, SEE OTHER SECTIONS)



SECTION F2
SCALE: 1/2 FULL
(FOR DETAIL NOT SHOWN, SEE OTHER SECTIONS)



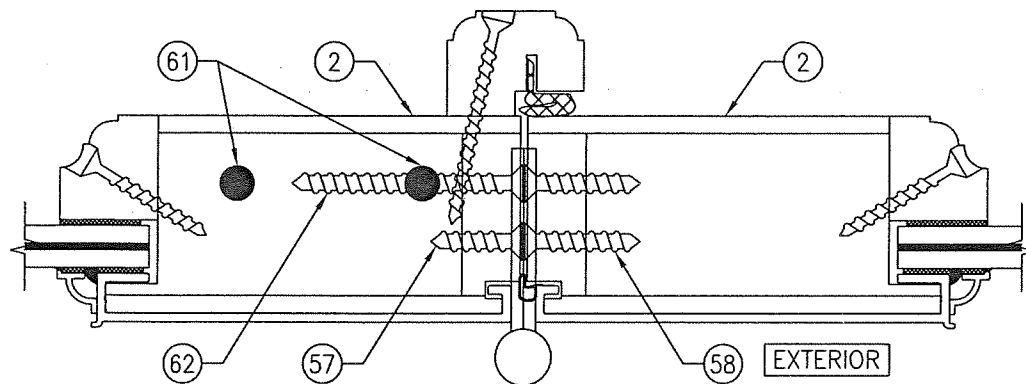
SECTION G1
SCALE: 1/2 FULL
(NAIL FIN MOUNT)



SECTION G2
SCALE: 1/2 FULL
(FRAME SCREW MOUNT)
(FOR DETAIL NOT SHOWN, SEE SECTION G1/15)

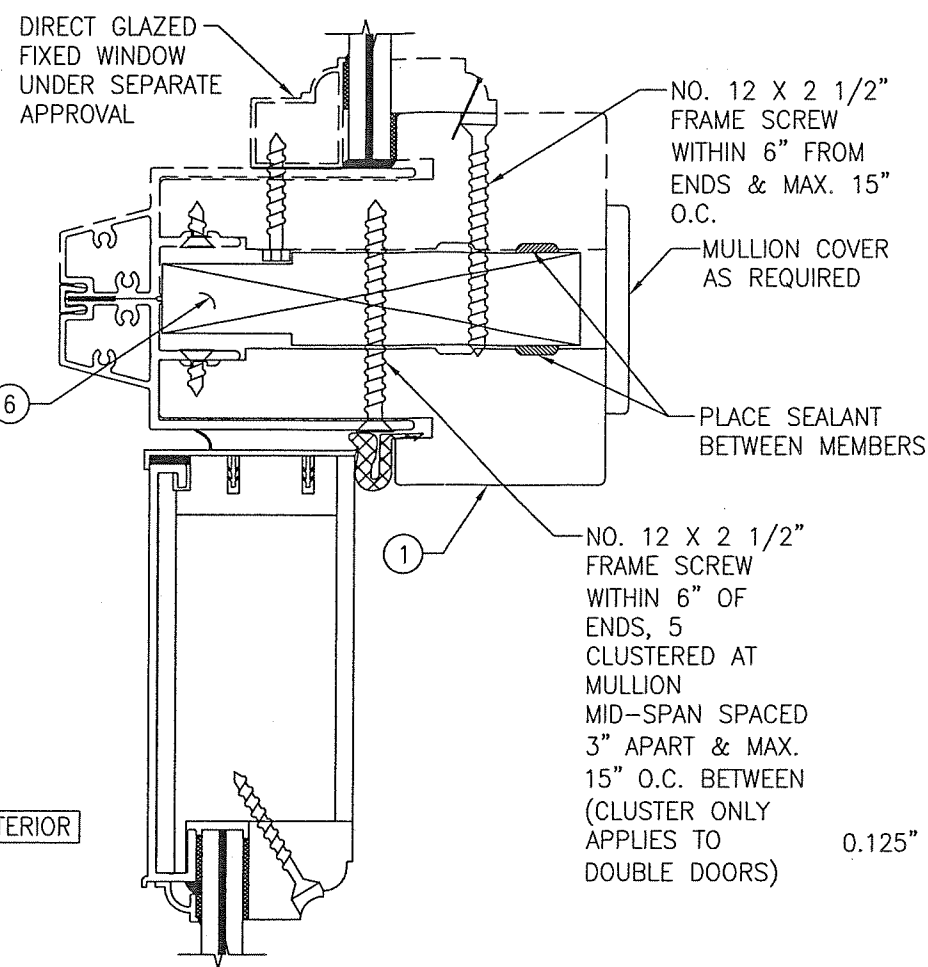
PRODUCT RENEWED
as complying with the Florida
Building Code
NOA-No. 21-0308.03
Expiration Date 04/16/2026
By *Ishag I. Chande*
Miami-Dade Product Control

DRAWN BY: W.R.M.	CHECKED BY: W.W.S.
PLOT: 1=2	DATE: 07/09/12
DATE	
BY	
REVISION DESCRIPTION	
NO.	
DRAWING TITLE ALUMINUM CLAD WOOD IMPACT OUT-SWING FRENCH DOOR	
MANUFACTURER ULTIMATE DOOR OF PALM BEACH, INC. 2800 2ND AVE. NORTH LAKE WORTH, FL 33461 561-642-2828	
CONSULTANTS W. W. SCHAEFER ENGINEERING & CONSULTING, P.A. (CA 6809) 7480 150TH COURT NORTH PALM BEACH GARDENS, FL 33418 PHONE: 561-744-3424	
CERTIFICATION MAR 01 2021 WARREN W. SCHAEFER, P.E. P.E. NO. 44135	
DRAWING NO. 1748	REV. A
SHEET NO. 15 OF 17	

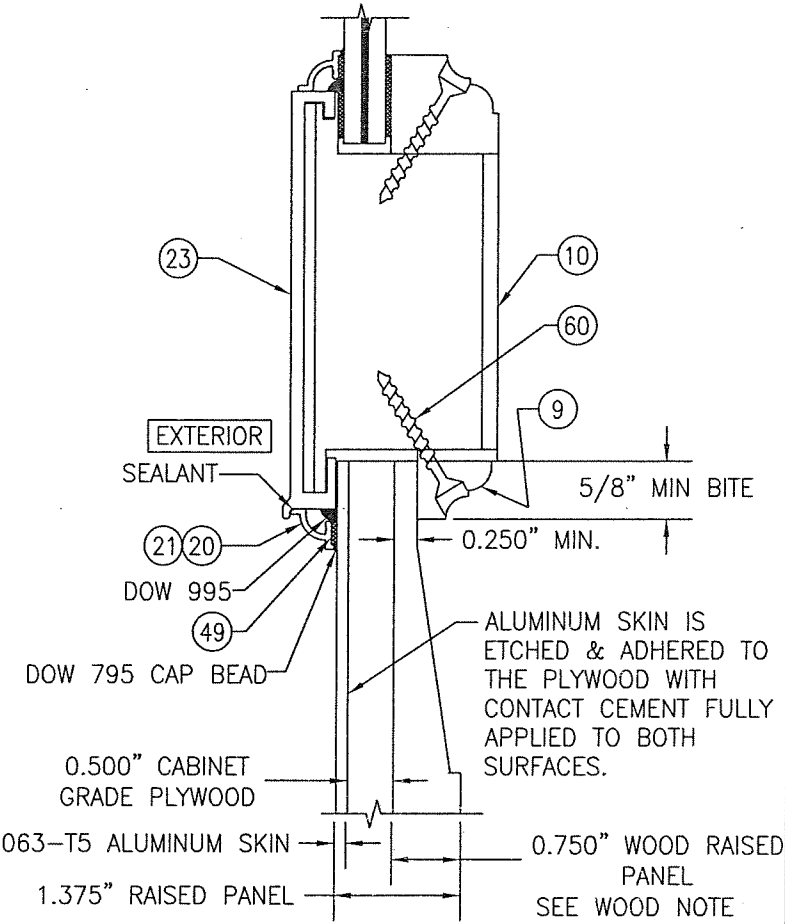


SECTION H
SCALE: 1/2 FULL

(FOR DETAIL NOT SHOWN, SEE OTHER SECTIONS)



SECTION J
SCALE: 1/2 FULL

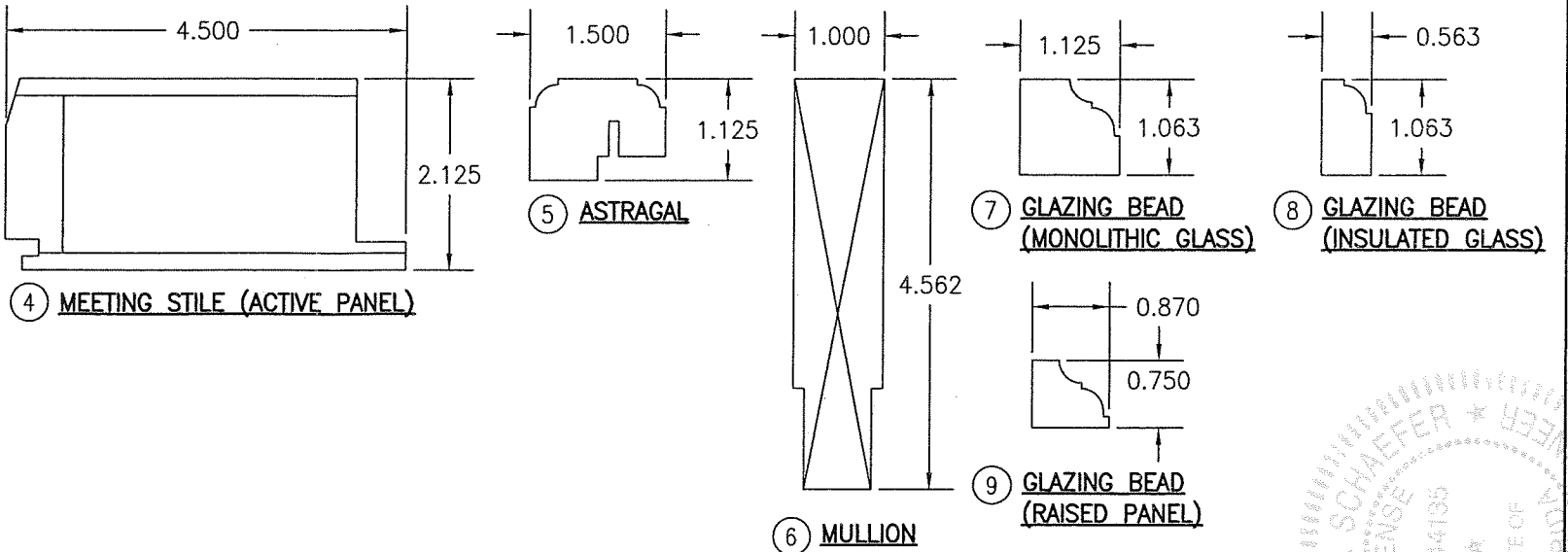
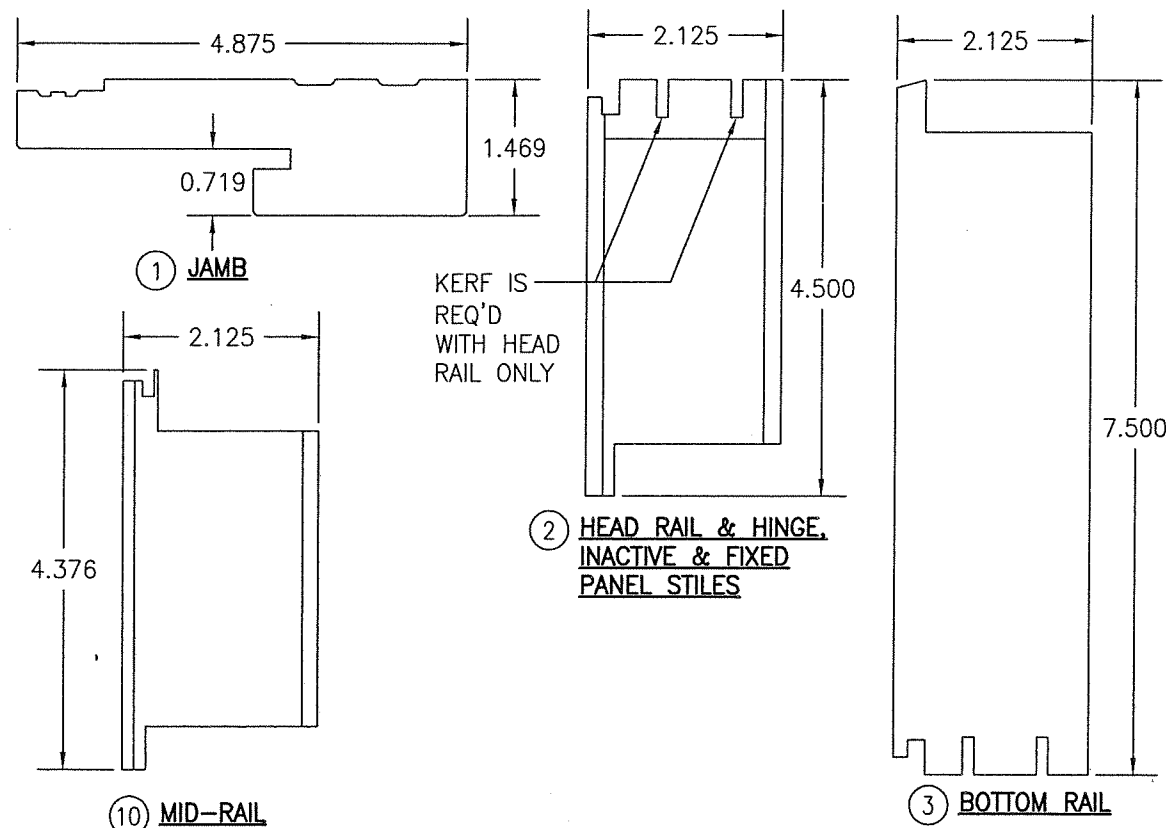


SECTION K
SCALE: 1/2 FULL

PRODUCT RENEWED
as complying with the Florida
Building Code
NOA-No. 21-0308.03

Expiration Date 04/16/2026

By *Isahq I. Chande*
Miami-Dade Product Control



DRAWN BY: W.R.M.	CHECKED BY: W.W.S.
PLOT: 1=2	DATE: 07/09/12
DATE	BY
REVISION DESCRIPTION	NO.
<p>DRAWING TITLE: ALUMINUM CLAD WOOD IMPACT OUT-SWING FRENCH DOOR</p> <p>MANUFACTURER: ULTIMATE DOOR OF PALM BEACH, INC. 2800 2ND AVE. NORTH LAKE WORTH, FL 33461 561-642-2828</p> <p>CONSULTANTS: W. W. SCHAEFER ENGINEERING & CONSULTING, P.A. (CA 6809) 7480 150TH COURT NORTH PALM BEACH GARDENS, FL 33418 PHONE: 561-744-3424</p> <p>CERTIFICATION: MAR 01 2021 WARREN W. SCHAEFER, P.E. P.E. NO. 44135</p>	
DRAWING NO. 1748	REV. A
SHEET NO. 16	OF 17

