



**MIAMI-DADE COUNTY  
PRODUCT CONTROL SECTION**

11805 SW 26 Street, Room 208

Miami, FL 33175

T (786) 315-2590 F (786) 315-2599

**DEPARTMENT OF REGULATORY AND ECONOMIC RESOURCES (RER)  
BOARD AND CODE ADMINISTRATION DIVISION**

**NOTICE OF ACCEPTANCE (NOA)**

[www.miamidade.gov/economy](http://www.miamidade.gov/economy)

**Miami Wall Systems, Inc.  
701 West 25<sup>th</sup> Street  
Hialeah, Florida 33010**

**SCOPE:**

This NOA is being issued under the applicable rules and regulations governing the use of construction materials. The documentation submitted has been reviewed and accepted by Miami-Dade County RER - Product Control Section to be used in Miami Dade County and other areas where allowed by the Authority Having Jurisdiction (AHJ).

This NOA shall not be valid after the expiration date stated below. The Miami-Dade County Product Control Section (In Miami-Dade County) and/or the AHJ (in areas other than Miami-Dade County) reserve the right to have this product or material tested for quality assurance purposes. If this product or material fails to perform in the accepted manner, the manufacturer will incur the expense of such testing and the AHJ may immediately revoke, modify, or suspend the use of such product or material within their jurisdiction. RER reserves the right to revoke this acceptance, if it is determined by Miami-Dade County Product Control Section that this product or material fails to meet the requirements of the applicable building code.

This product is approved as described herein, and has been designed to comply with the Florida Building Code, including the High Velocity Hurricane Zone.-

**DESCRIPTION: Series "1060" Aluminum Horizontal Rolling Window - L.M.I.**

**APPROVAL DOCUMENT:** Drawing No. **NOA 1060 LMI**, titled "HRW Window Series 1060 (L.M.I.)", sheets 1 through 9 of 9, dated 10/29/2018 with **revision "1"** dated 03/26/2021 prepared by manufacturer, signed and sealed by Jorge E. Valdes, P.E., bearing the Miami-Dade County Product Control revision stamp with the Notice of Acceptance number and expiration date by the Miami-Dade County Product Control Section.

**MISSILE IMPACT RATING: Large and Small Missile Impact Resistant**

**LABELING:** Each unit shall bear a permanent label with the manufacturer's name or logo, city, state, series, and following statement: "Miami-Dade County Product Control Approved", unless otherwise noted herein.

**RENEWAL** of this NOA shall be considered after a renewal application has been filed and there has been no change in the applicable building code negatively affecting the performance of this product.

**TERMINATION** of this NOA will occur after the expiration date or if there has been a revision or change in the materials, use, and/or manufacture of the product or process. Misuse of this NOA as an endorsement of any product, for sales, advertising or any other purposes shall automatically terminate this NOA. Failure to comply with any section of this NOA shall be cause for termination and removal of NOA.

**ADVERTISEMENT:** The NOA number preceded by the words Miami-Dade County, Florida, and followed by the expiration date may be displayed in advertising literature. If any portion of the NOA is displayed, then it shall be done in its entirety.

**INSPECTION:** A copy of this entire NOA shall be provided to the user by the manufacturer or its distributors and shall be available for inspection at the job site at the request of the Building Official.

This NOA revised NOA#18-1211.05 and consists of this page 1 and evidence page E-1 and E-2 as well as approval document mentioned above.

The submitted documentation was reviewed by **Sifang Zhao, P.E.**



*S. Z.*  
06/24/2021

**NOA No. 21-0405.16**  
**Expiration Date: March 21, 2024**  
**Approval Date: June 24, 2021**  
**Page 1**

**NOTICE OF ACCEPTANCE: EVIDENCE SUBMITTED**

**1. EVIDENCE SUBMITTED UNDER PREVIOUS NOA's**

**A. DRAWINGS**

1. Manufacturer's die drawings and sections. (*Submitted under NOA No. 18-1211.05*)
2. Drawing No. **NOA 1060 LMI**, titled "HRW Window Series 1060 (L.M.I.)", sheets 1 through 9 of 9, dated 10/29/2018, prepared by manufacturer, signed and sealed by Jorge E. Valdes, P.E. (*Submitted under NOA No. 18-1211.05*)

**B. TESTS**

1. Test reports on: 1) Air Infiltration Test, per FBC, TAS 202-94  
2) Uniform Static Air Pressure Test, Loading per FBC, TAS 202-94  
3) Water Resistance Test, per FBC, TAS 202-94  
4) Forced Entry Test, per FBC 2411.3.2.1, and TAS 202-94  
5) Large Missile Impact Test per FBC, TAS 201-94  
6) Cyclic Wind Pressure Loading per FBC, TAS 203-94  
along with marked-up drawings and installation diagram of a series 1060 aluminum horizontal rolling window, prepared by Fenestration Testing Laboratory, Test Report No. **FTL-108180**, dated 06/22/2018, signed and sealed by Idalmis Ortega, P.E. (*Submitted under NOA No. 18-1211.05*)

**C. CALCULATIONS**

1. Anchor verification and structural analysis, complying with **FBC 6<sup>th</sup> edition (2017)**, dated 11/21/2018, revised on 01/18/2019, prepared, signed and sealed by Jorge E. Valdes, P.E. (*Submitted under NOA No. 18-1211.05*)
2. Glazing complies with **ASTM E1300-04/09**

**D. QUALITY ASSURANCE**

1. Miami-Dade Department of Regulatory and Economic Resources (RER).

**E. MATERIAL CERTIFICATIONS**

1. NOA No. **17-1114.14** issued to **Kuraray America, Inc.** for their "**Kuraray Trosifol® Ultraclear, clear and color PVB Interlayer**" dated 01/18/18, expiring on 07/08/19.
2. NOA No. **17-0712.05** issued to **Eastman Chemical Co. (MA)** for their "**Saflex Clear and Color Glass Interlayers**" dated 09/07/17, expiring on 05/21/21.

**F. STATEMENTS**

1. Statement letter of conformance, complying with **FBC 6<sup>th</sup> Edition (2017)**, and of no financial interest, dated 11/16/2018, issued, signed and sealed by Jorge E. Valdes, P.E.
2. Proposal No. **18-0003R** issued by the Product Control Section, dated 02/07/2018 and revised on 05/21/2018, signed by Manuel Perez, P.E.

**G. OTHERS**

1. None.



---

Sifang Zhao, P.E.  
Product Control Examiner  
NOA No. 21-0405.16  
Expiration Date: March 21, 2024  
Approval Date: June 24, 2021

**NOTICE OF ACCEPTANCE: EVIDENCE SUBMITTED**

**2. NEW EVIDENCE SUBMITTED**

**A. DRAWINGS**

1. Drawing No. **NOA 1060 LMI**, titled “HRW Window Series 1060 (L.M.I.)”, sheets 1 through 9 of 9, dated 10/29/2018 with **revision “1”** dated 03/26/2021 prepared by manufacturer, signed and sealed by Jorge E. Valdes, P.E.

**B. TESTS**

1. None.

**C. CALCULATIONS**

1. None.

**D. QUALITY ASSURANCE**

1. Miami-Dade Department of Regulatory and Economic Resources (RER).

**E. MATERIAL CERTIFICATIONS**

1. NOA No. **20-0915.22** issued to **Kuraray America, Inc.** for their “**Kuraray Trosifol® Ultraclear, clear and color PVB Interlayer**” dated 11/19/20, expiring on 07/08/24.
2. NOA No. **21-0216.01** issued to **Eastman Chemical Co. (MA)** for their “**Saflex PVB Interlayers - Clear and Colored for Glass**” dated 04/29/21, expiring on 05/21/26.

**F. STATEMENTS**

1. Statement letter of conformance, complying with **FBC 7<sup>th</sup> Edition (2020)**, and of no financial interest, dated 03/29/2021, issued, signed and sealed by Jorge E. Valdes, P.E.

**G. OTHERS**

1. Notice of Acceptance No. **18-1211.05** issued to Miami Wall Systems, Inc.. for their **Series “1060” Aluminum Horizontal Rolling Window - L.M.I.**, approved on 03/21/2019 and expiring on 03/21/2024.




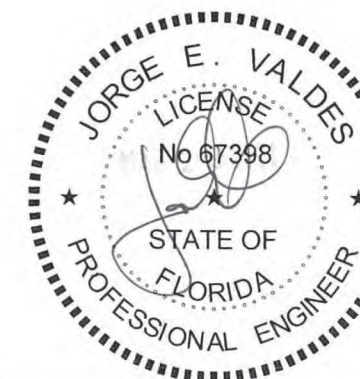
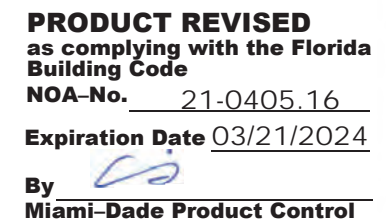
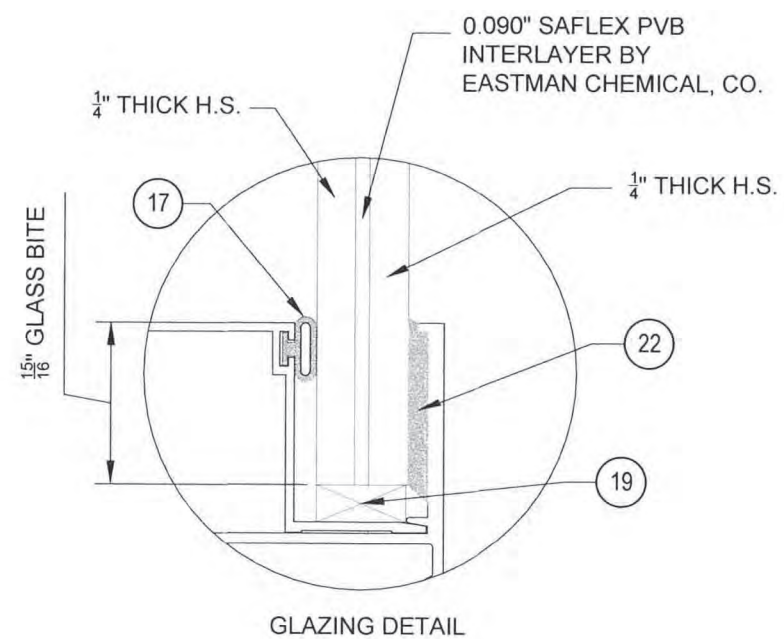
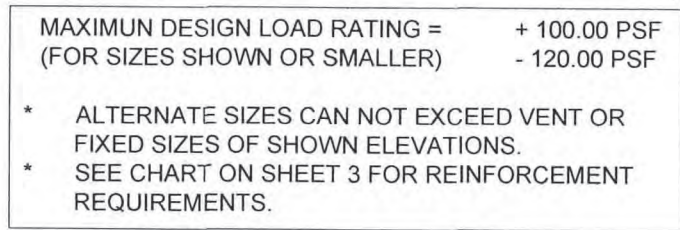
---

Sifang Zhao, P.E.  
Product Control Examiner  
NOA No. 21-0405.16  
Expiration Date: March 21, 2024  
Approval Date: June 24, 2021









*Miami Wall Systems, Inc.*

701 West 25th Street  
Hialeah, Florida. 33010

Phone: (305) 888-2300 Fax: (305) 888-3058

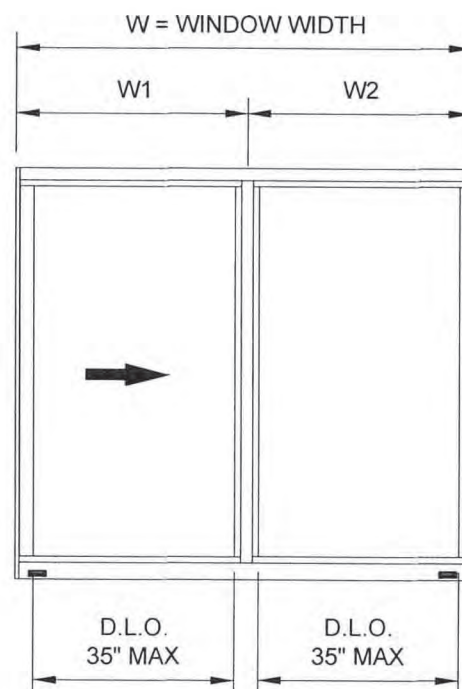
WINDOW ELEVATIONS  
GENERAL NOTES

Phone:(305) 888-2300 Fax:(305) 888-3058

[illegible]

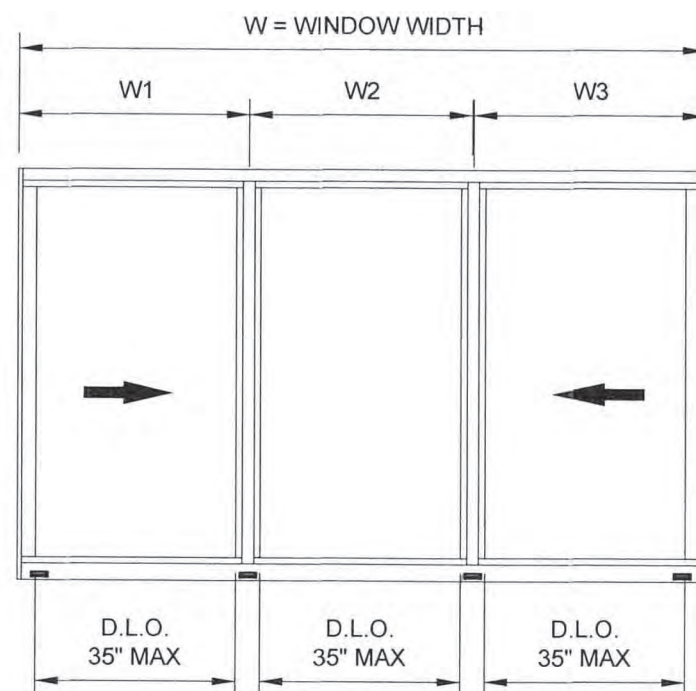


DESIGN LOAD CAPACITY - PSF (XO or OX)									
WINDOW DIMS		STD INTERLOCK		LIGHT REINF. INTERLOCK		MEDIUM REINF. INTERLOCK		HEAVY REINF. INTERLOCK	
WIDTH (W)	HEIGHT	EXT (+)	INT (-)	EXT (+)	INT (-)	EXT (+)	INT (-)	EXT (+)	INT (-)
48	54	100	120	100	120	100	120	100	120
60		100	120	100	120	100	120	100	120
72		100	120	100	120	100	120	100	120
80		100	112	100	120	100	120	100	120
48	60	100	115	100	120	100	120	100	120
60		100	100	100	120	100	120	100	120
72		100	100	100	120	100	120	100	120
80		100	100	100	120	100	120	100	120
48	72	100	100	100	100	100	120	100	120
60		100	100	100	100	100	120	100	120
72		100	100	100	100	100	112	100	120
80		100	100	100	100	100	105	100	120

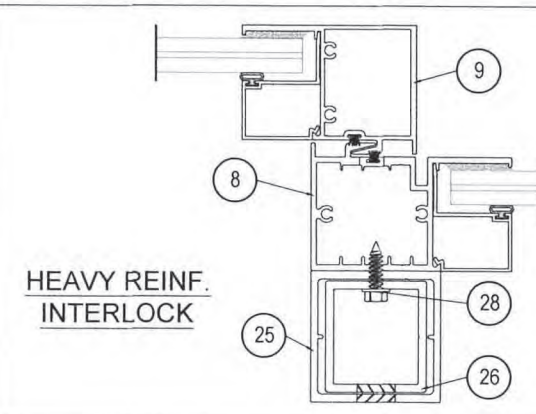
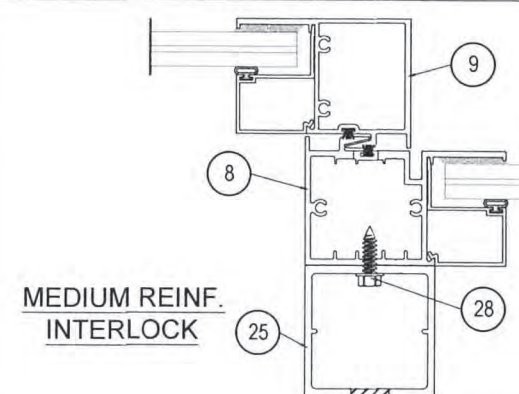
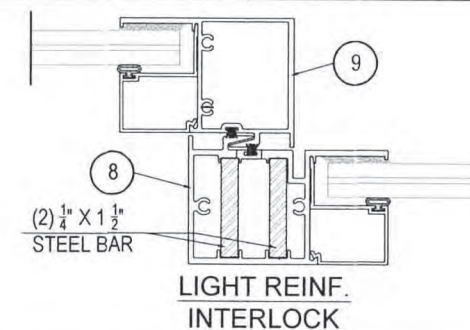
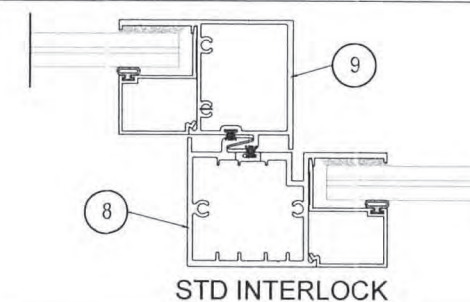


$$W_1 = W_2 = \frac{W}{2}$$

DESIGN LOAD CAPACITY - PSF (OXO)									
WINDOW DIMS		STD INTERLOCK		LIGHT REINF. INTERLOCK		MEDIUM REINF. INTERLOCK		HEAVY REINF. INTERLOCK	
WIDTH (W)	HEIGHT	EXT (+)	INT (-)	EXT (+)	INT (-)	EXT (+)	INT (-)	EXT (+)	INT (-)
84	54	100	120	100	120	100	120	100	120
96		100	120	100	120	100	120	100	120
108		100	120	100	120	100	120	100	120
120		100	112	100	120	100	120	100	120
84	60	100	100	100	120	100	120	100	120
96		100	100	100	120	100	120	100	120
108		100	100	100	120	100	120	100	120
120		100	100	100	120	100	120	100	120
84	72	100	100	100	100	100	120	100	120
96		100	100	100	100	100	120	100	120
108		100	100	100	100	100	112	100	120
120		100	100	100	100	100	105	100	120



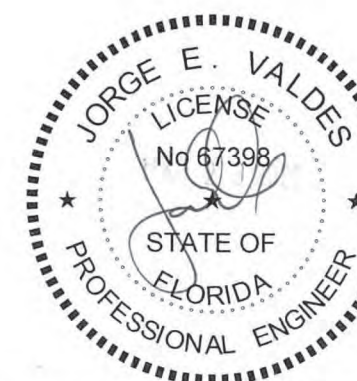
$$W_1 = W_2 = W_3 = \frac{W}{3}$$



**PRODUCT REVISED**  
as complying with the Florida  
Building Code  
NOA-No. 21-0405.16

**Expiration Date** 03/21/2024

By                       
Miami-Dade Product Control



Miami Wall Systems, Inc.

701 West 25th Street  
Hialeah, Florida. 33010

Phone:(305) 888-2300 Fax:(305) 888-3058

---



---

HRW WINDOW SERIES 1060 (L.M.I.)

## PRESSURE CHARTS

NO.	DATE	REVISION
1	3/26/2021	UPDATE TO 2020 FBC

DATE: 10/29/2018

SCALE: AS NOTED

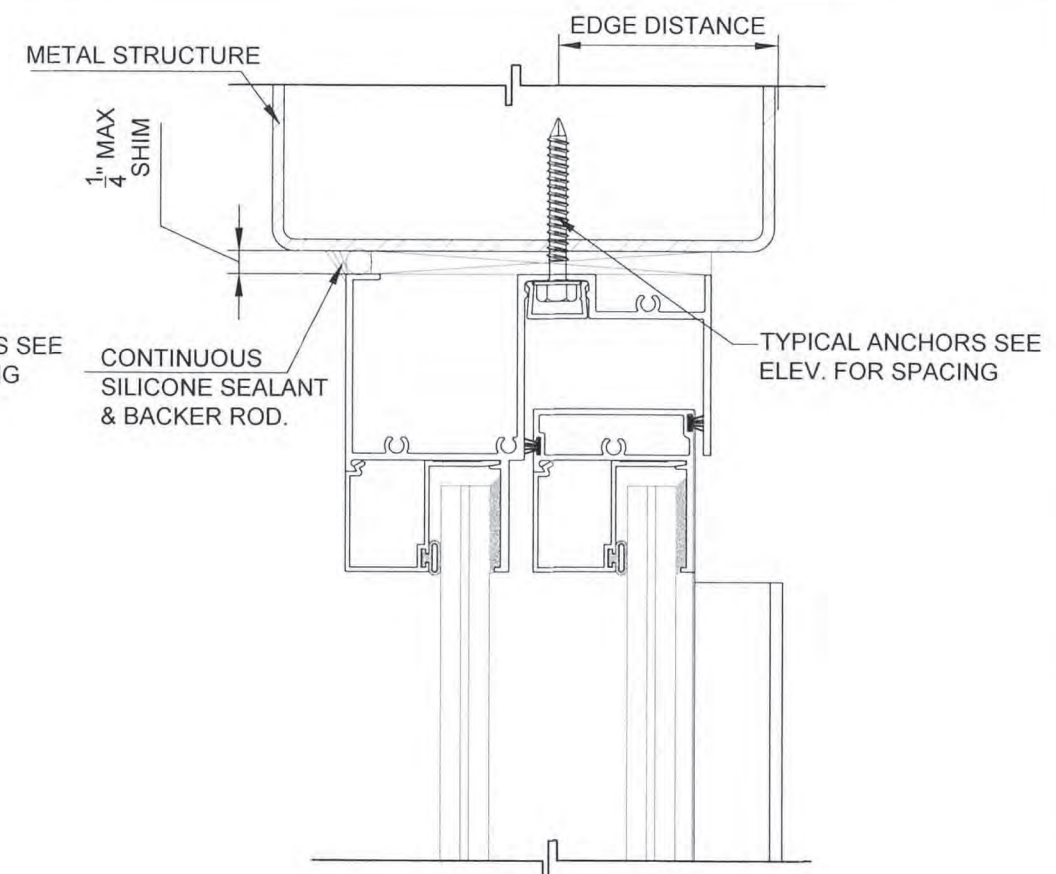
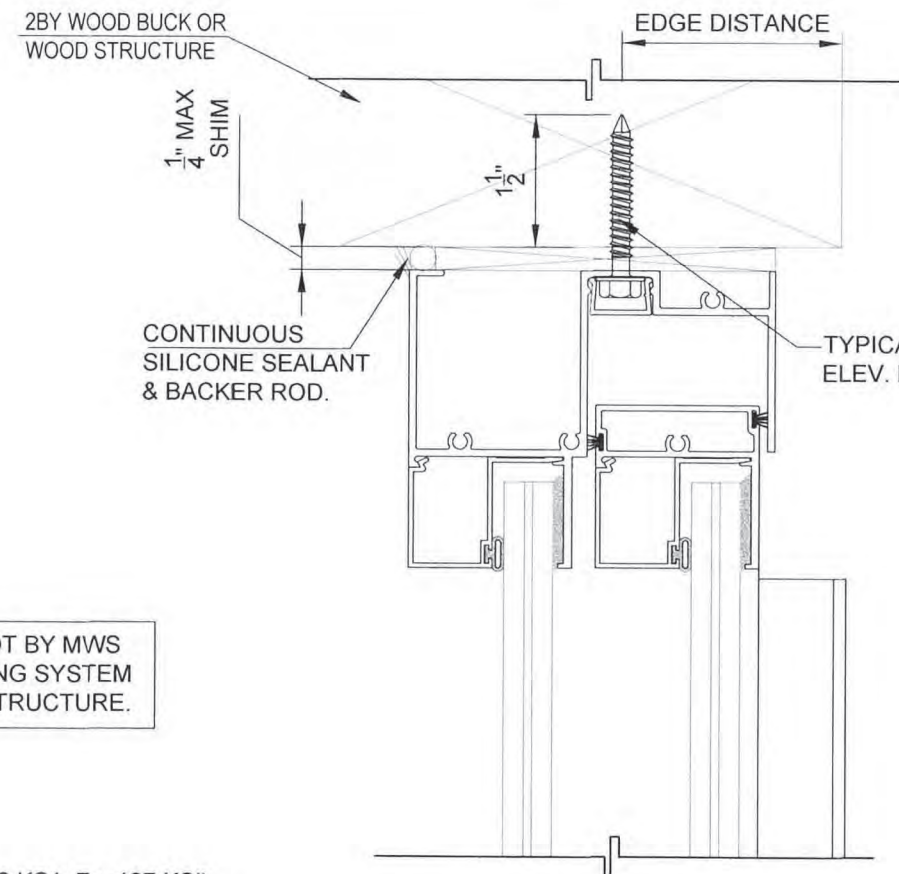
DWG. BY: ADRC

CHK. BY: J.V.

DWG NO: NOA 1060 LM

SHEET 3 OF 9





WOOD BUCKS AND METAL STRUCTURE NOT BY MWS  
MUST SUSTAIN LOADS IMPOSED BY GLAZING SYSTEM  
AND TRANSFER THEM TO THE BUILDING STRUCTURE.

TYPICAL ANCHORS:  
SEE ELEV. FOR SPACING

1/4" DIA. CRETE-FLEX SS4 BY "ELCO" (Fu=190 KS1, Fy=127 KSI)  
1/4" DIA. ULTRACON SS4 410 BY "ELCO" (Fu=190 KS1, Fy=164 KSI)  
1/4" DIA. ULTRACON BY "ELCO" (Fu=177 KS1, Fy=155 KSI)

INTO 2BY BUCKS OR WOOD STRUCTURES:  
1 1/2" MIN. PENETRATION INTO WOOD (HEAD / SILL / JAMBS).

THRU 1BY BUCKS INTO CONC. OR BLOCKS:  
 1  $\frac{1}{4}$ " MIN. EMBED INTO CONCRETE (HEAD / SILL)  
 1  $\frac{1}{4}$ " MIN. EMBED INTO CONCRETE OR BLOCKS (JAMBS)

DIRECTLY INTO CONC. OR BLOCKS  
1  $\frac{1}{4}$ " MIN. EMBED INTO CONCRETE (HEAD / SILL)  
1  $\frac{1}{4}$ " MIN. EMBED INTO CONCRETE OR BLOCKS (JAMBS)

1/4" DIA. DRIL-FLEX SELF DRILLING SCREWS BY "ELCO" (GRADE 5 CRS)

INTO MIAMI-DADE COUNTY APPROVED MULLIONS OR INTO METAL  
STRUCTURES (HEAD / SILL / JAMBS) (3) THREADS MIN. TO EXTEND BEYOND  
METAL THICKNESS

ALUMINUM:  $\frac{1}{8}$ " THK. MIN. (6063-T5 MIN.)

STEEL:  $\frac{1}{8}$ " THK. MIN. ( $F_y = 36$  KSI MIN.)

(STEEL IN CONTACT WITH ALUMINUM TO BE PLATED OR PAINTED)

ANCHOR EGDE DISTANCE

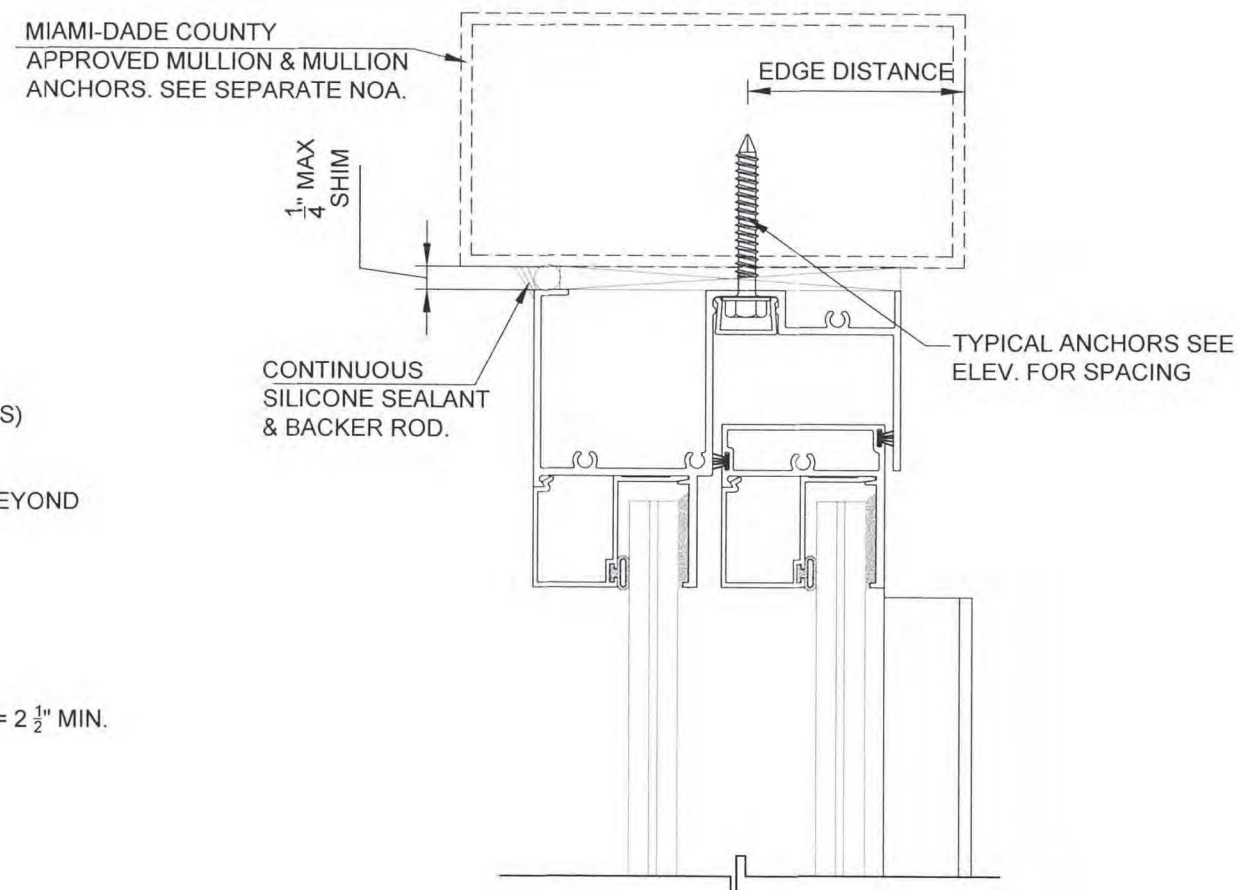
INTO CONCRETE AT HEAD OR INTO CONCRETE / BLOCKS AT JAMBS = 2 1/2" MIN.

INTO CONCRETE AT SILL =  $2\frac{1}{2}$ " MIN.

INTO WOOD STRUCTURE = 1" MIN.

INTO METAL STRUCTURE =  $\frac{3}{4}$ " MIN.

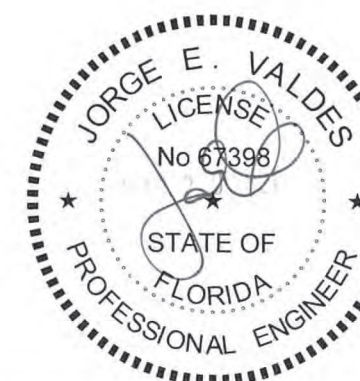
WOOD AT HEAD, SILL OR JAMBS SG = 0.55 MIN.  
CONCRETE AT HEAD, SILL OR JAMBS  $f_c$  = 3000 PSI MIN.  
C-90 HOLLOW/FILLED BLOCK AT JAMBS  $f_m$  = 2000 PSI MIN.



**PRODUCT REVISED**  
as complying with the Florida  
Building Code  
NOA-No. 21-0405.16

**Expiration Date** 03/21/2024

By [Signature]  
Miami-Dade Product Control



Miami Wall Systems, Inc.

701 West 25th Street  
Hialeah, Florida. 33010

Phone:(305) 888-2300 Fax:(305) 888-3058



---



---

HRW WINDOW SERIES 1060 (L.M.I.)

## DETAILS

NO.	DATE	REVISION
1	3/26/2021	UPDATE TO 2020 FBC

DATE: 10/29/2018

SCALE: AS NOTED

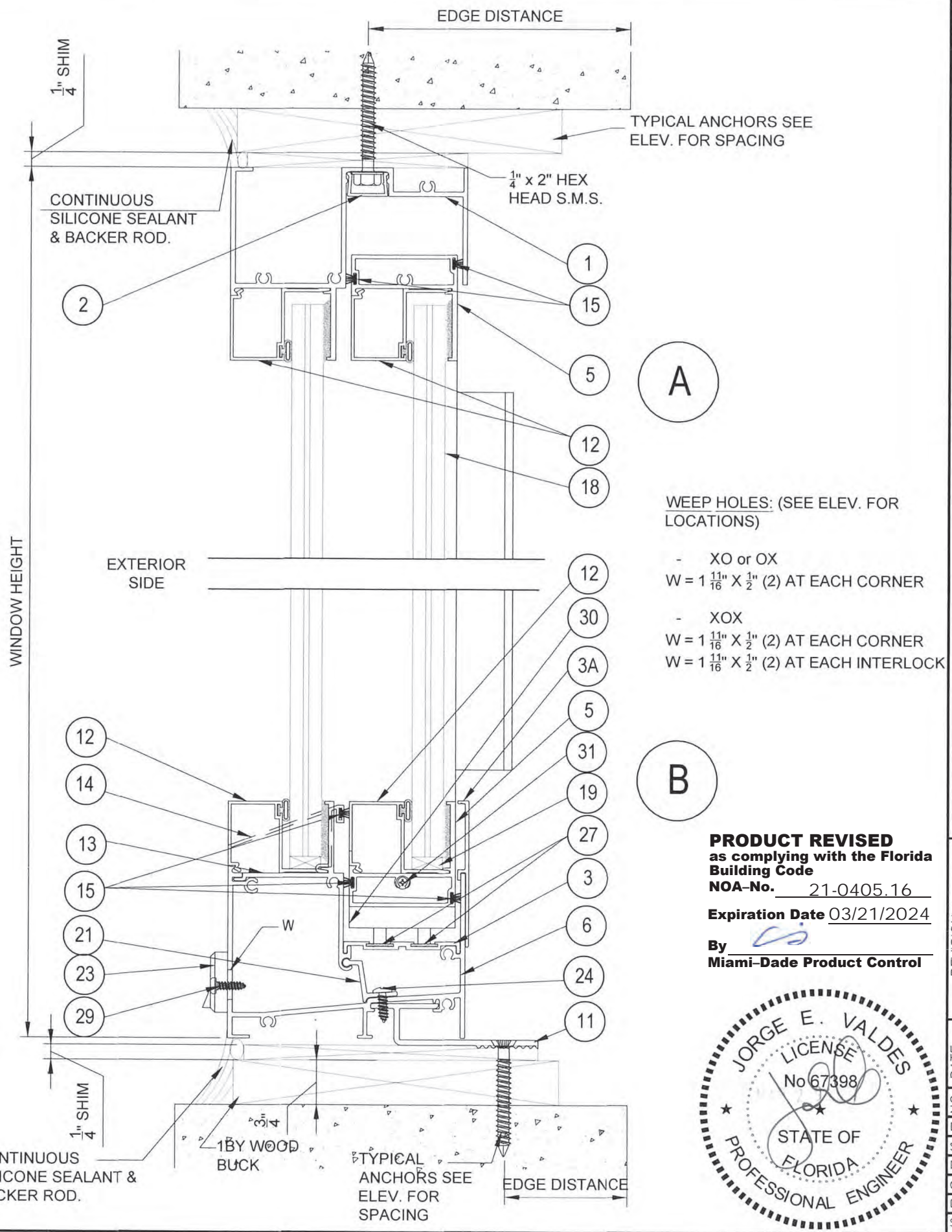
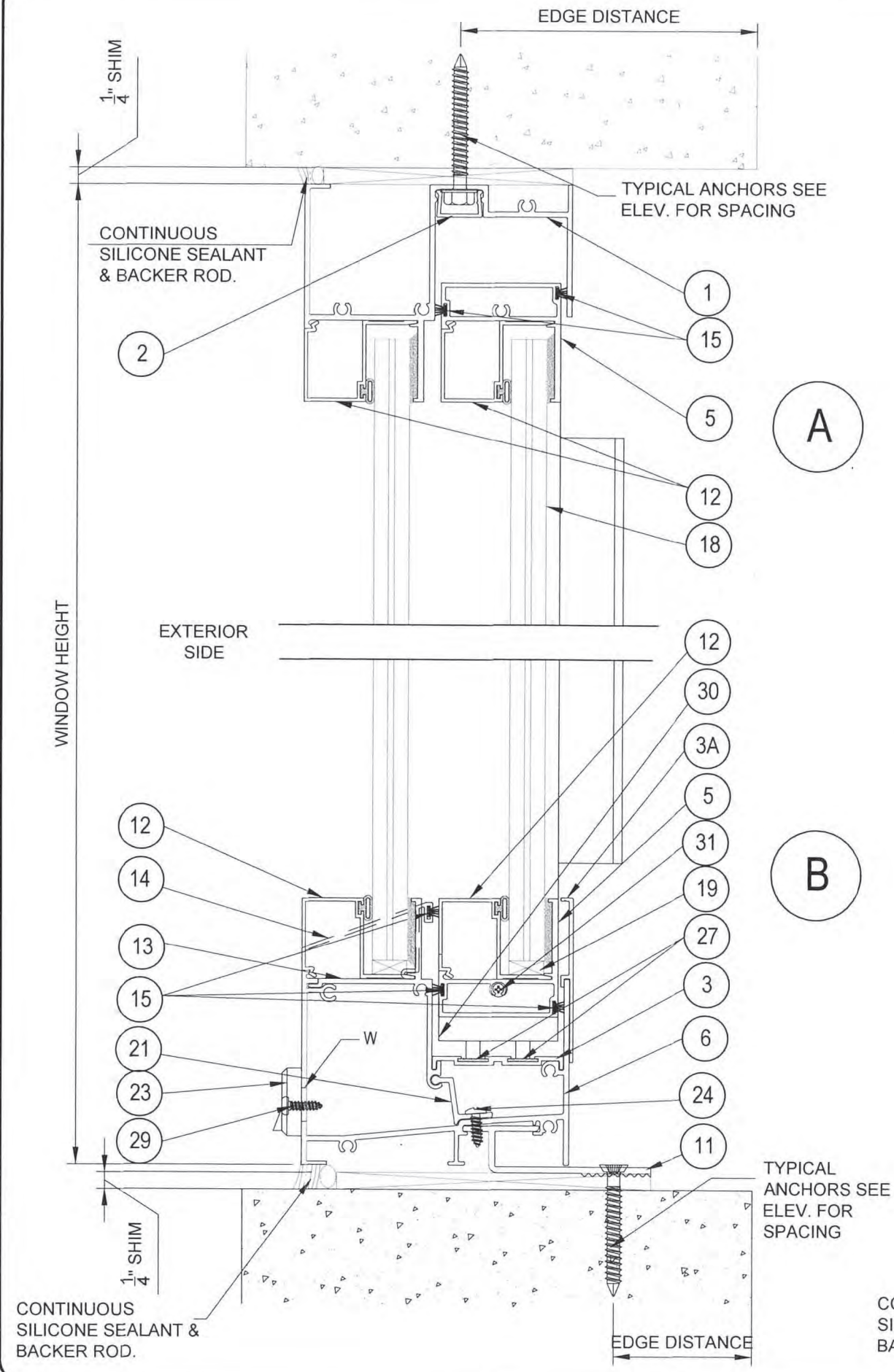
DWG. BY: ADRC

CHK. BY: J.V.

DWG NO: NOA 1060 LMI


SHEET 4 OF 9





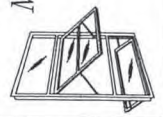
WEEP HOLES: (SEE ELEV. FOR LOCATIONS)

- XO or OX  
W =  $1\frac{11}{16} \times \frac{1}{2}$  (2) AT EACH CORNER
- XOX  
W =  $1\frac{11}{16} \times \frac{1}{2}$  (2) AT EACH CORNER  
W =  $1\frac{11}{16} \times \frac{1}{2}$  (2) AT EACH INTERLOCK

**PRODUCT REVISED**  
as complying with the Florida Building Code  
NOA-No. 21-0405.16  
Expiration Date 03/21/2024  
By   
Miami-Dade Product Control



HRW WINDOW SERIES 1060 (L.M.I.)



**Miami Wall Systems, Inc.**  
701 West 25th Street  
Hialeah, Florida 33010  
Phone: (305) 888-2300 Fax: (305) 888-3058

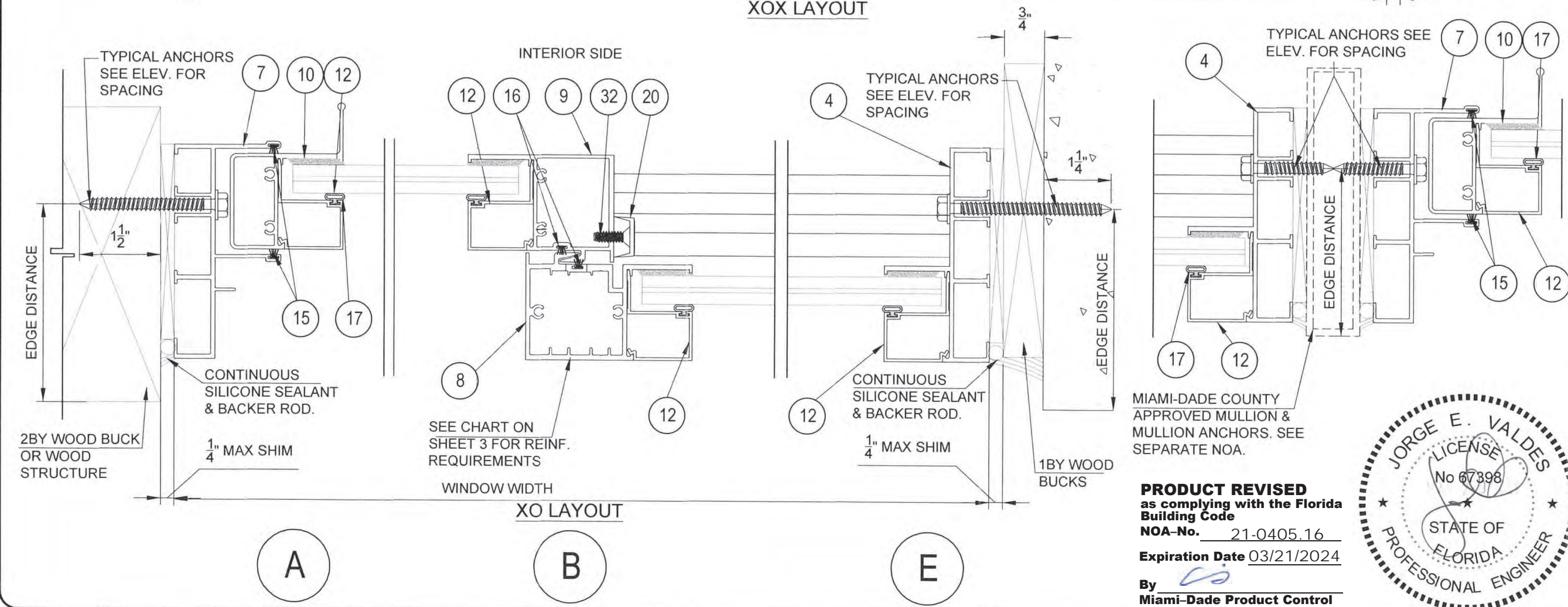
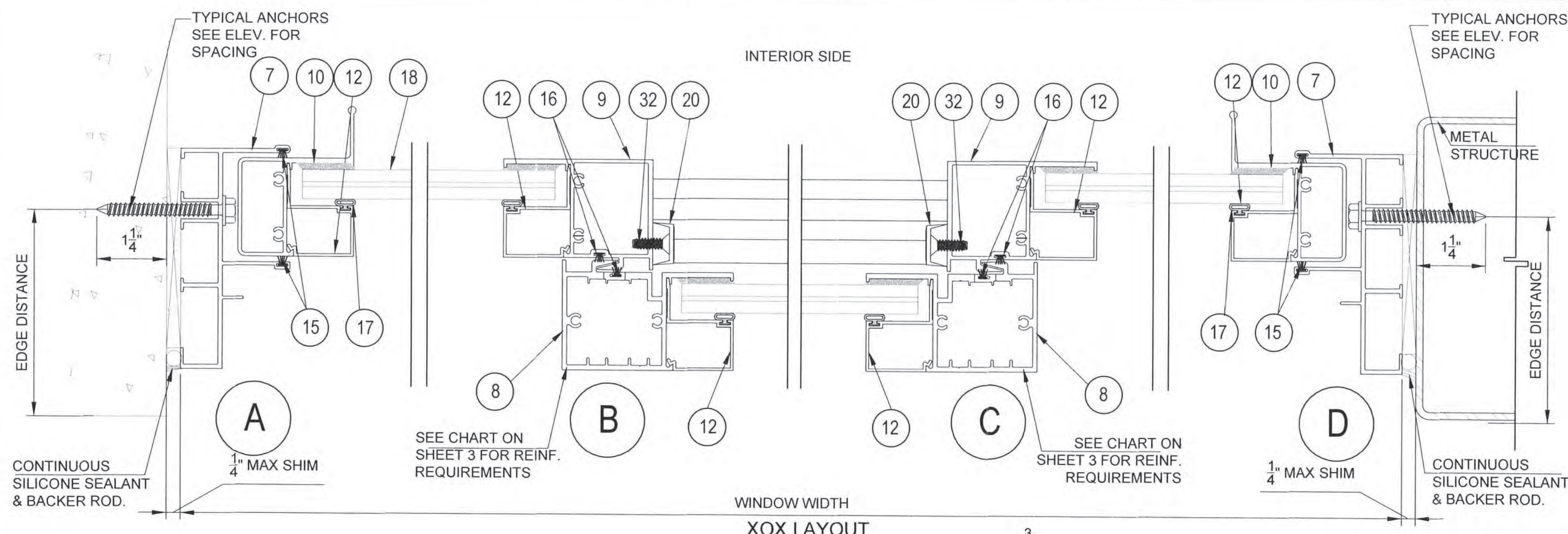
**DETAILS**

NO.	DATE	REVISION	UPDATE TO 2020 FBC
1	3/26/2021	UPDATE TO 2020 FBC	

DATE: 10/29/2018  
 SCALE: AS NOTED  
 DWG. BY: ADRC  
 CHK. BY: J.V.  
 DWG NO: NOA 1060 LMI

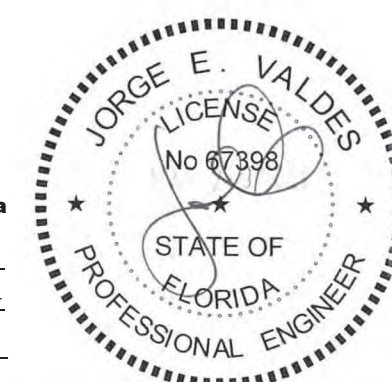
SHEET 5 OF 9





MIAMI-DADE COUNTY  
APPROVED MULLION &  
MULLION ANCHORS. SEE  
SEPARATE NOA.

**PRODUCT REVISED**  
as complying with the Florida  
Building Code  
NOA-No. 21-0405.16  
Expiration Date 03/21/2024  
By   
Miami-Dade Product Control



HRW WINDOW SERIES 1060 (L.M.I.)

DETAILS

NO.	DATE	REVISION
1	3/26/2021	UPDATE TO 2020 FBC

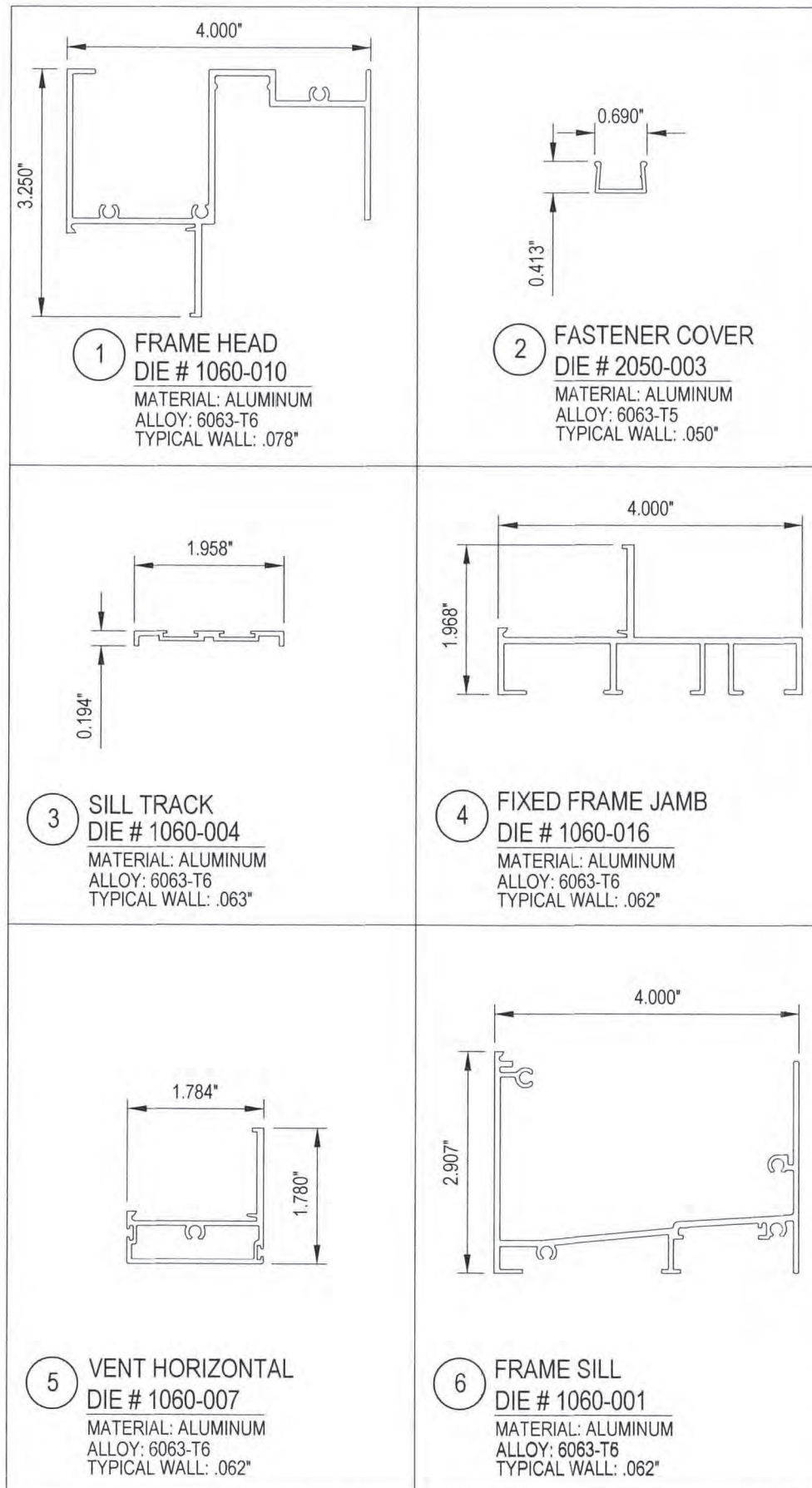
DATE: 10/29/2018  
SCALE: AS NOTED  
DWG. BY: ADRC  
CHK. BY: J.V.  
DWG NO: NOA 1060 LMI  
SHEET 6 OF 9


*Miami Wall Systems, Inc.*

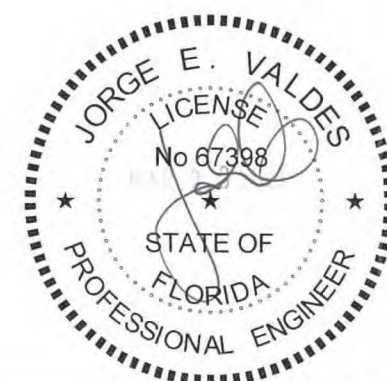
701 West 25th Street  
Hialeah, Florida 33010  
Phone: (305) 888-2300 Fax: (305) 888-3058



BILL OF MATERIALS				
ITEM No.	PART No.	PART NAME	REQ'D	COMMENTS
1	1060-001	FRAME HEAD	1	ALUMINUM ALLOY 6063-T6
2	2050-003	FASTENER COVER	1	ALUMINUM ALLOY 6063-T5
3	1060-004	SILL TRACK	1	ALUMINUM ALLOY 6063-T6
3A	1060-017	SILL RISER	1	ALUMINUM ALLOY 6063-T5
4	1060-016	FIXED FRAME JAMB	1 PER FRAME AT "OX" OR "XO"	ALUMINUM ALLOY 6063-T6
5	1060-007	VENT HORIZONTAL	2 PER VENT	ALUMINUM ALLOY 6063-T6
6	1060-001	FRAME SILL	1	ALUMINUM ALLOY 6063-T6
7	1060-011	LOCK FRAME JAMB	1 PER FRAME AT "OX" OR "XO" 2 PER FRAME AT "XOX"	ALUMINUM ALLOY 6063-T6
8	1060-013	STD FIXED INTERLOCK	1 PER FRAME AT "OX" OR "XO" 2 PER FRAME AT "XOX"	ALUMINUM ALLOY 6063-T6
9	1060-015	MOVING INTERLOCK	1 PER VENT	ALUMINUM ALLOY 6063-T6
10	1060-012	LOCK STILE	1 PER VENT	ALUMINUM ALLOY 6063-T6
11	106-018	2" WIDE SILL ANCHOR	AS REQUIRED	ALUMINUM ALLOY 6063-T6
12	1060-008	GLAZING BEAD FOR $\frac{9}{16}$ " GLASS	AS REQUIRED	ALUMINUM ALLOY 6063-T6
13	1060-003	SILL CAP	1	ALUMINUM ALLOY 6063-T6
14	1060-006	HORIZONTAL ADAPTOR	1 PER FRAME AT "OX" OR "XO" 2 PER FRAME AT "XOX"	ALUMINUM ALLOY 6063-T5
15	24018745 GYGF	FIN SEAL	AS REQUIRED	SCHLEGEL @ JAMB FRAME
16	17018745 GYGF	FIN SEAL	AS REQUIRED	SCHLEGEL @ VERTICAL INTERLOCKS
17	EE23018KN3020	BULB T-SLOT	AS REQUIRED	WITH GLAZING BEAD
18	-	LAMINATED GLASS	2 PER FRAME AT "OX" OR "XO" 3 PER FRAME AT "XOX"	
19	-	SETTING BLOCK	2 PER LITE	$\frac{3}{16}$ " X $\frac{1}{2}$ " X 4" LG EPDM
20	-	LOCK	2 PER VENT	
21	1060-002	SILL LOCK	1 PER FRAME AT "OX" OR "XO" 2 PER FRAME AT "XOX"	10" LONG AT INTERLOCK LOCATIONS
22	-	SILICONE	AS REQUIRED	GE SSG 4000 ULTRAGLAZE
23	-	WEEP HOLE COVER	2 PER FRAME AT "OX" OR "XO" 4 PER FRAME AT "XOX"	M&M (2) PARTS NYLON
24	-	SCREWS	4 PER SILL LOCK	#10 X $\frac{1}{2}$ ", S/S, PAN HEAD
25	1060-019	REINFORCEMENT TUBE	1	ALUMINUM ALLOY 6063-T6
26	113-015	INTERLOCK TUBE REINFORCEMENT	1	ALUMINUM ALLOY 6063-T6
27	-	S/S TRACK INSERT	2	22 GAGE STAINLESS STEEL
28	-	REINFORCEMENT FASTENERS	5	#12 X 1" LG, HEX HEAD, S/S, SMS
29	-	SCREWS	2 PER COVER	#6 X $\frac{1}{2}$ " PAN HEAD, S/S, SMS
30	-	ROLLER	2 PER VENT	MWS CUSTOM
31	-	ROLLER SCREW	1 PER ROLLER	#10 X $\frac{1}{2}$ " PAN HEAD, S/S, SMS
32	-	LOCK SCREW	4 PER VENT (2 PER LOCK)	#10 X $\frac{5}{8}$ " LG, FLAT HD, S/S, SMS



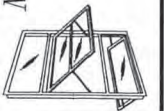
**PRODUCT REVISED**  
as complying with the Florida  
Building Code  
NOA-No. 21-0405.16  
Expiration Date 03/21/2024  
By   
Miami-Dade Product Control



Miami Wall Systems, Inc.

701 West 25th Street  
Hialeah, Florida. 33010

Phone: (305) 888-2300 Fax: (305) 888-3058



---

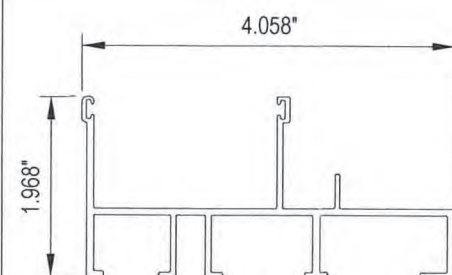


---

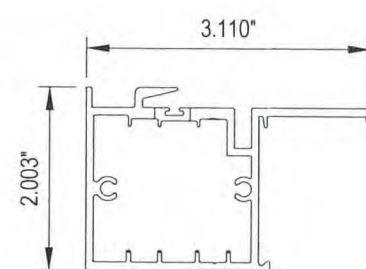
HRW WINDOW SERIES 1060 (L.M.I.)

BILL OF MATERIALS

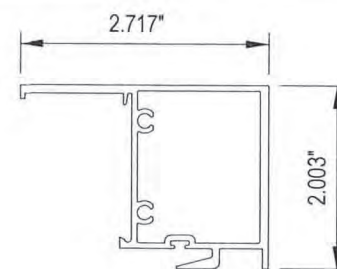




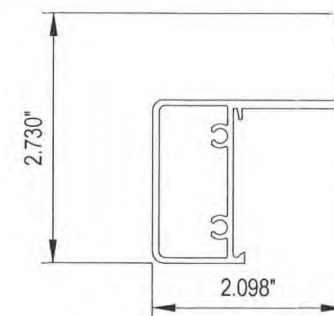
7 LOCK FRAME JAMB  
DIE # 1060-011  
MATERIAL: ALUMINUM  
ALLOY: 6063-T6  
TYPICAL WALL: .078"



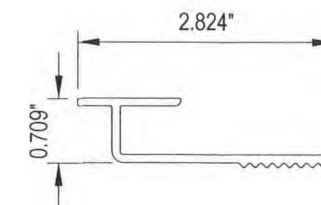
8 STD FIXED INTERLOCK  
DIE # 1060-013  
MATERIAL: ALUMINUM  
ALLOY: 6063-T6  
TYPICAL WALL: .105"



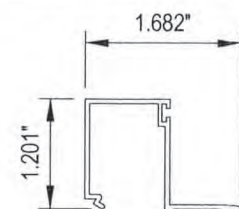
9 MOVING INTERLOCK  
DIE # 1060-015  
MATERIAL: ALUMINUM  
ALLOY: 6063-T6  
TYPICAL WALL: .062"



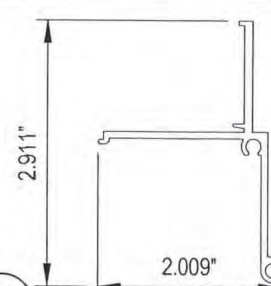
10 LOCK STILE  
DIE # 1060-012  
MATERIAL: ALUMINUM  
ALLOY: 6063-T6  
TYPICAL WALL: .062"



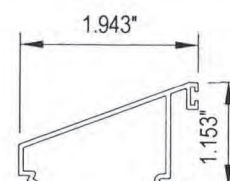
11 SILL ANCHOR  
DIE # 106-018  
MATERIAL: ALUMINUM  
ALLOY: 6005-T5  
TYPICAL WALL: .125"



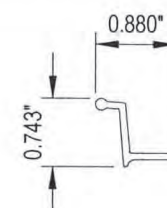
12 GLAZING BEAD FOR  
9/16" GLASS  
DIE # 1060-008  
MATERIAL: ALUMINUM  
ALLOY: 6063-T6  
TYPICAL WALL: .050"



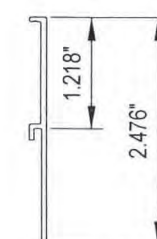
13 SILL CAP  
DIE # 1060-003  
MATERIAL: ALUMINUM  
ALLOY: 6063-T6  
TYPICAL WALL: .072"



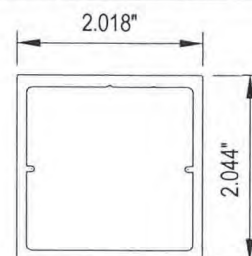
14 HORIZONTAL  
ADAPTOR  
DIE # 1060-006  
MATERIAL: ALUMINUM  
ALLOY: 6063-T6  
TYPICAL WALL: .062"



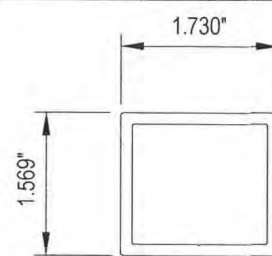
21 SILL LOCK  
DIE # 1060-002  
MATERIAL: ALUMINUM  
ALLOY: 6063-T6  
TYPICAL WALL: .075"




3A SILL RISER  
DIE # 1060-017  
MATERIAL: ALUMINUM  
ALLOY: 6063-T5  
TYPICAL WALL: .050"

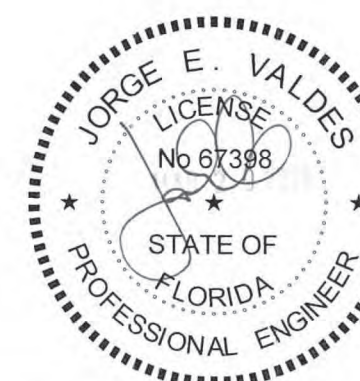


25 REINFORCEMENT TUBE  
DIE # 1060-019  
MATERIAL: ALUMINUM  
ALLOY: 6063-T6  
TYPICAL WALL: .105"



26 INTERLOCK REINFORCEMENT  
DIE # 113-015  
MATERIAL: ALUMINUM  
ALLOY: 6005-T5  
TYPICAL WALL: .105"

**PRODUCT REVISED**  
as complying with the Florida  
Building Code  
NOA-No. 21-0405.16  
Expiration Date 03/21/2024  
By   
Miami-Dade Product Control



---



---

HRW WINDOW SERIES 1060 (L.M.I.)

BILL OF MATERIALS

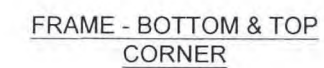
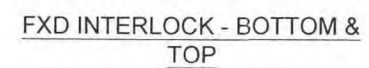
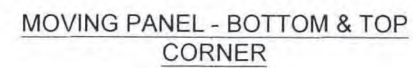
Miami Wall Systems, Inc.


701 West 25th Street  
Hialeah, Florida. 33010

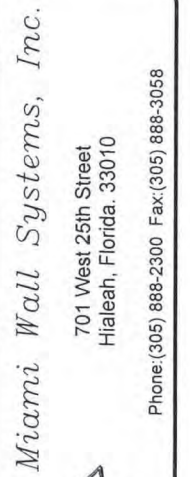
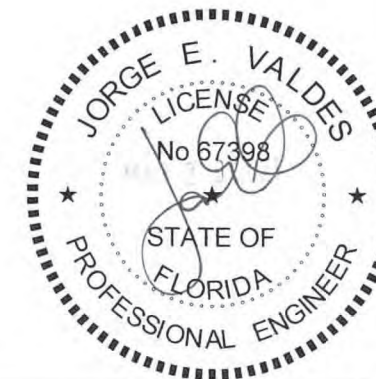
Phone: (305) 888-2300 Fax: (305) 888-3058

NO.	DATE	REVISION
1	3/26/2021	UPDATE TO 2020 FBC
DATE: 10/29/2018		
SCALE: AS NOTED		
DWG. BY: ADRC		
CHK. BY: J.V.		
DWG NO: NOA 1060 LI		
SHEET 8 OF 9		





**PRODUCT REVISED**  
as complying with the Florida  
Building Code  
NOA-No. 21-0405.16  
Expiration Date 03/21/2024  
By   
Miami-Dade Product Control



---



---

HRW WINDOW SERIES 1060 (L.M.I.)

## ASSEMBLY DETAILS

[illegible]