



DEPARTMENT OF REGULATORY AND ECONOMIC RESOURCES (RER)  
BOARD AND CODE ADMINISTRATION DIVISION

## NOTICE OF ACCEPTANCE (NOA)

MIAMI-DADE COUNTY  
PRODUCT CONTROL SECTION

11805 SW 26 Street, Room 208  
Miami, FL 33175  
T (786) 315-2590 F (786) 315-2599

[www.miamidade.gov/economy](http://www.miamidade.gov/economy)

**Tecnoglass, LLC**  
**3550 NW 49 Street**  
**Miami, FL 33142**

### SCOPE:

This NOA is being issued under the applicable rules and regulations governing the use of construction materials. The documentation submitted has been reviewed and accepted by Miami-Dade County RER - Product Control Section to be used in Miami Dade County and other areas where allowed by the Authority Having Jurisdiction (AHJ).

This NOA shall not be valid after the expiration date stated below. The Miami-Dade County Product Control Section (In Miami Dade County) and/ or the AHJ (in areas other than Miami Dade County) reserve the right to have this product or material tested for quality assurance purposes. If this product or material fails to perform in the accepted manner, the manufacturer will incur the expense of such testing and the AHJ may immediately revoke, modify, or suspend the use of such product or material within their jurisdiction. RER reserves the right to revoke this acceptance, if it is determined by Miami-Dade County Product Control Section that this product or material fails to meet the requirements of the applicable building code.

This product is approved as described herein, and has been designed to comply with the Florida Building Code, including the High Velocity Hurricane Zone.

### DESCRIPTION: Series "PH3400" 9'10" Aluminum Sliding Glass Door – S.M.I.

**APPROVAL DOCUMENT:** Drawing No. **W07-108**, titled "Series PH 3400 Alum. Sliding Glass Door (S.M.I.)", sheets 1, 2, 3, 3.1, 4, 4.1, 5, 6, 7 of 7, dated 02/07/08, with revision "E" dated 11/19/2020, prepared by Al-Farooq Corporation, signed and sealed by Jalal Farooq, P.E., bearing the Miami-Dade County Product Control Revision stamp with the Notice of Acceptance number and expiration date by the Miami-Dade County Product Control Section.

### MISSILE IMPACT RATING: Small Missile Impact Resistant

**LABELING:** Each unit shall bear a permanent label with the manufacturer's name or logo, **Barranquilla, Colombia S.A.**, series and following statement: "Miami-Dade County Product Control Approved" unless otherwise noted herein.

**RENEWAL** of this NOA shall be considered after a renewal application has been filed and there has been no change in the applicable building code negatively affecting the performance of this product.

**TERMINATION** of this NOA will occur after the expiration date or if there has been a revision or change in the materials, use, and/ or manufacture of the product or process. Misuse of this NOA as an endorsement of any product, for sales, advertising or any other purposes shall automatically terminate this NOA. Failure to comply with any section of this NOA shall be cause for termination and removal of NOA.

**ADVERTISEMENT:** The NOA number preceded by the words Miami-Dade County, Florida, and followed by the expiration date may be displayed in advertising literature. If any portion of the NOA is displayed, then it shall be done in its entirety.

**INSPECTION:** A copy of this entire NOA shall be provided to the user by the manufacturer or its distributors and shall be available for inspection at the job site at the request of the Building Official.

This NOA **revises NOA No. 16-0510.16** and consists of this page 1 and evidence pages E-1, E-2, E-3 and E-4, as well as approval document mentioned above.

The submitted documentation was reviewed by **Sifang Zhao, P.E.**



*S.Z.*  
08/12/2021

**NOA No. 21-0405.18**  
**Expiration Date: November 22, 2023**  
**Approval Date: August 12, 2021**  
Page 1

**NOTICE OF ACCEPTANCE: EVIDENCE SUBMITTED**

**1. EVIDENCE SUBMITTED UNDER PREVIOUS NOA's**

**A. DRAWINGS**

1. Manufacturer's die drawings and sections.  
(Submitted under NOA No. 08-0312.02)
2. Drawing No. **W07-108**, titled "Series PH 3400 Alum. Sliding Glass Door (S.M.I.)", sheets 1 through 7 of 7, dated 02/07/08 with revision "**B**" dated 11/12/09, prepared by Al-Farooq Corporation, dated 04/23/10, signed and sealed by Javad Ahmad, P. E.

**B. TESTS**

1. Test reports on: 1) Air Infiltration Test, per FBC, TAS 202-94  
2) Uniform Static Air Pressure Test, Loading per FBC TAS 202-94  
3) Water Resistance Test, per FBC, TAS 202-94  
4) Small Missile Impact Test per FBC, TAS 201-94  
5) Cyclic Wind Pressure Loading per FBC, TAS 203-94  
6) Forced Entry Test, per FBC 2411 3.2.1, TAS 202-94  
along with marked-up drawings and installation diagram of Aluminum Sliding Glass Door, prepared by Fenestration Testing Laboratory, Inc., Test Report No. **FTL-5362**, dated October 17, 2007, signed and sealed by Michael Wenzel, P. E.  
(Submitted under NOA No. 08-0312.02)

**C. CALCULATIONS**

1. Anchor verification calculations and structural analysis, complying with FBC-2004 and 2007, prepared by Al-Farooq Corporation, dated February 01, 2008, signed and sealed by Dr. Humayoun Farooq, P. E.
2. **Complies with ASTM E1300-02**  
(Submitted under NOA No. 08-0312.02)

**D. QUALITY ASSURANCE**

1. Miami-Dade Department of Regulatory and Economic Resources (RER)

**E. MATERIAL CERTIFICATIONS**

1. Notice of Acceptance No. **09-0312.02** issued to E.I. DuPont DeNemours & Co., Inc. for their "**DuPont Butacite® PVB, Interlayer**" dated 05/13/09, expiring on 12/11/10.
2. Test reports on neoprene wedge #V-067 prepared by Ghesquiere Plastic Testing, Inc., Report #**0810-71244**, dated November 05, 2008, signed by M. W. Ghesquiere.
  - 1) Shore "A" Hardness per ASTM D2240-05, passed  $70 \leq 75 \pm 5$  Shore A
  - 2) Compression Set per ASTM D395-08: passed  $27\% \leq 30\%$  max at 70 Durometer
  - 3) Ozone Resistance per ASTM D1149-07: NO Cracks;
  - 4) Tensile Strength per ASTM D412-05: Elongation  $273\% > 200\%$  min. at 70 Durometer



---

**Sifang Zhao, P. E.**  
Product Control Examiner  
NOA No. 21-0405.18  
Expiration Date: November 22, 2023  
Approval Date: August 12, 2021

**NOTICE OF ACCEPTANCE: EVIDENCE SUBMITTED**

**E. MATERIAL CERTIFICATIONS (CONTINUED)**

- 5) Heat Aging per ASTM D573-04: passed: +1 point  $\leq$  +10 points max change
- 6) Tear Test per ASTM D624C-07: passed 112 lbs/in  $\geq$  100 lbs/in
- 7) Brittleness per ASTM D746-07: Non-Brittle at -40°C
- 8) Non-Staining Characteristics test per ASTM D925-08: No Migration Staining
3. Test reports on Ethylene Propylene Diene Monomer Rubber (EPDM) prepared by Delsen Testing Laboratories, Inc., Test Report No. **T41631**, dated 01/26/2009, signed by Suzanne Cannell
  - 1.) ASTM C116-06, Standard Test method for Flame Propagation of Dense and Cellular Elastomeric Gaskets and Accessories: 460 mm Flame Propagation

**F. STATEMENTS**

1. Statement letter of conformance and complying with FBC 2007, and no financial interest, dated April 22, 2010, signed and sealed by Javad Ahmad, P. E.
2. Laboratory compliance letter for Test Report no. **FTL-5362**, issued by Fenestration Testing Laboratory, Inc., dated November 14, 2007, signed and sealed by Michael Wenzel, P. E.
3. Addendum letter for Test Report No. **FTL-5362**, issued by Fenestration Testing Laboratory, Inc., dated January 04, 2008, signed and sealed by Carlos S. Rionda, P. E. (*Submitted under NOA No. 08-0312.02*)

**G. OTHERS**

1. None.

**2. EVIDENCE SUBMITTED UNDER PREVIOUS NOA N. 16-0510.16**

**A. DRAWINGS**

1. Drawing No. **W07-108**, titled "Series PH 3400 Alum. Sliding Glass Door (S.M.I.)", sheets 1, 2, 3, 3.1, 4, 4.1, 5, 6, 7 of 7, with revision "**D**" dated 02/26/18, prepared by Al-Farooq Corporation, signed and sealed by Javad Ahmad, P. E.,

**B. TESTS**

1. None

**C. CALCULATIONS**

1. Anchor verification and structural analysis complying with **FBC 6<sup>th</sup> Edition (2017)** dated 02/23/2018, prepared by Al-Farooq Corporation, signed and sealed by Javad Ahmad, P.E.

**D. QUALITY ASSURANCE**

1. Miami-Dade Department of Regulatory and Economic Resources (RER)



---

**Sifang Zhao, P. E.**  
**Product Control Examiner**  
**NOA No. 21-0405.18**  
**Expiration Date: November 22, 2023**  
**Approval Date: August 12, 2021**

**NOTICE OF ACCEPTANCE: EVIDENCE SUBMITTED**

**E. MATERIAL CERTIFICATIONS**

1. NOA No. **17-1114.14** issued to **Kuraray America, Inc.** for their “**Trosifol® Ultraclear, Clear and Color PVB Glass Interlayers**” dated 01/18/18, expiring on 07/08/19.

**F. STATEMENTS**

1. Statement letter of conformance, complying with **FBC 6<sup>th</sup> Edition (2017)**, and of no financial interest, dated September 25, 2018, issued by Al-Farooq Corporation, signed and sealed by Javad Ahmad, P.E.
2. Distribution agreement dated 02/17/17 between Energia Solar, SA, Columbia and Tecnoglass, LLC (USA), signed by Ms. Carla Garcia, Int’l Sales Manager and Ms. Evelyn Daes, General Manager on behalf of their respective companies.
3. Asset purchase agreement dated 06/19/14, signed by Mr. Raul Casares, for and on behalf of R.C. Aluminum Industries, Inc. and Mr. José M. Daes, for and on behalf of Tecnoglass, LLC (submitted under file #**14-0807.15**).
4. Statement letter dated 07/15/14, issued by R.C. Aluminum Industries, Inc. of sales of asset and relinquishing of all rights of NOA No. **08-0312.02**, signed by Raul Casares, for and on behalf of R.C. Aluminum Industries, Inc.
5. Department of State Certification of **TECNOGLASS, LLC** as a limited liability company, active and organized under the laws of the State of Florida, dated 03/03/14 and signed by Ken Detzner, Secretary of State.

**G. OTHERS**

1. NOA #08-0312.02, issued to R.C. Aluminum Industries, Inc., for their **Series "PH3400" 9'10" Aluminum Sliding Glass Door – S.M.I.** approved on 06/16/2010 and expiring on 06/16/2015.

**3. EVIDENCE SUBMITTED UNDER PREVIOUS NOA N. 16-0510.16**

**A. DRAWINGS**

1. Drawing No. **W07–108**, titled “Series PH 3400 Alum. Sliding Glass Door (S.M.I.)”, sheets 1, 2, 3, 3.1, 4, 4.1, 5, 6, 7 of 7, with revision “**E**” dated 11/19/2020, prepared by Al-Farooq Corporation, signed and sealed by Jalal Farooq, P. E.,

**B. TESTS**

1. None

**C. CALCULATIONS**

1. None.



---

**Sifang Zhao, P. E.**  
**Product Control Examiner**  
**NOA No. 21-0405.18**  
**Expiration Date: November 22, 2023**  
**Approval Date: August 12, 2021**

NOTICE OF ACCEPTANCE: EVIDENCE SUBMITTED

**D. QUALITY ASSURANCE**

1. Miami-Dade Department of Regulatory and Economic Resources (RER)

**E. MATERIAL CERTIFICATIONS**

1. Notice of Acceptance No. **19-0305.02** issued to **Kuraray America, Inc.** for their “**Trosifol® Ultraclear, Clear and Color PVB Glass Interlayers**” dated 05/09/19, expiring on 07/08/24.

**F. STATEMENTS**

1. Statement letter of conformance, complying with **FBC 7<sup>th</sup> Edition (2020)**, and of no financial interest, dated 01/11/2021, issued by Al-Farooq Corporation, signed and sealed by Jalal Farooq, P.E.

**G. OTHERS**

1. NOA #16-0510.16, issued to **Tecnoglass, LLC**, for their **Series "PH3400" 9'10" Aluminum Sliding Glass Door – S.M.I.** approved on 11/22/2018 and expiring on 11/22/2023.



---

**Sifang Zhao, P. E.**  
Product Control Examiner  
NOA No. 21-0405.18  
Expiration Date: November 22, 2023  
Approval Date: August 12, 2021



DAYLITE OPENINGS:  
D.L.O. HEIGHT = PANEL HEIGHT - 4.188"  
D.L.O. WIDTH (FIX. PANEL) = PANEL WIDTH - 5.875"  
D.L.O. WIDTH (OPER. PANEL) = PANEL WIDTH - 5.500"  
PANEL HEIGHT = DOOR FRAME HEIGHT - 1.375"

# **SERIES PH3400 ALUM SLIDING GLASS DOOR**

DESIGN LOAD RATING FOR DOORS TO BE AS PER CHART SHOWN ON SHEET 2.

THIS PRODUCT HAS BEEN DESIGNED AND TESTED TO COMPLY WITH THE REQUIREMENTS OF THE 2020 (7TH EDITION) FLORIDA BUILDING CODE INCLUDING HIGH VELOCITY HURRICANE ZONE (HVHZ).

1BY OR 2BY WOOD BUCKS & BUCK FASTENERS BY OTHERS, MUST BE DESIGNED AND INSTALLED ADEQUATELY TO TRANSFER APPLIED PRODUCT LOADS TO THE BUILDING STRUCTURE.

ANCHORS SHALL BE CORROSION RESISTANT, SPACED AS SHOWN ON DETAILS AND INSTALLED PER MANUF'S INSTRUCTIONS. SPECIFIED EMBEDMENT TO BASE MATERIAL SHALL BE BEYOND WALL DRESSING OR STUCCO.

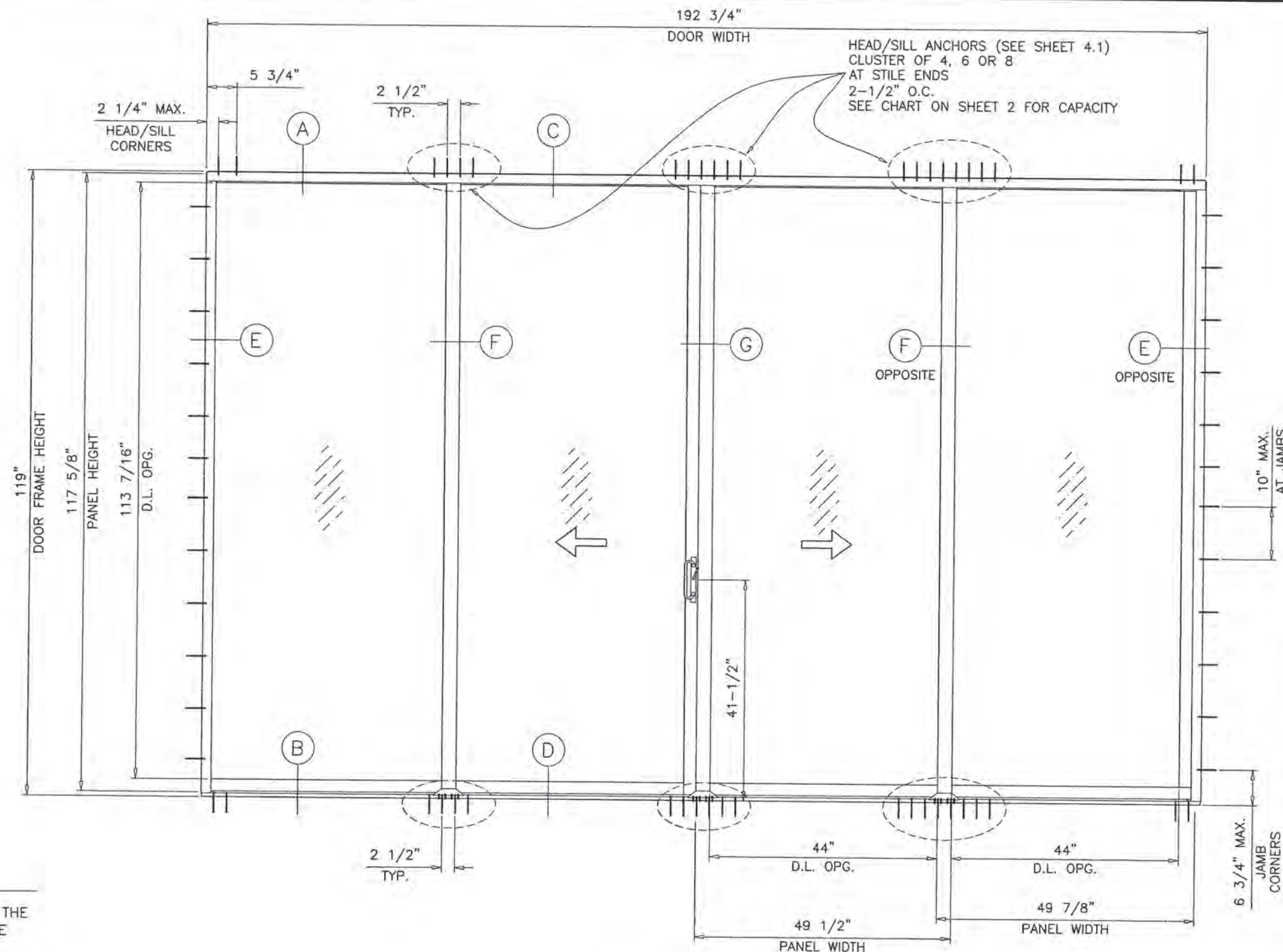
A LOAD DURATION INCREASE IS USED IN DESIGN OF ANCHORS INTO WOOD ONLY.

ALL SHIMS TO BE HIGH IMPACT, NON-METALLIC AND NON-COMPRESSIBLE.

MATERIALS INCLUDING BUT NOT LIMITED TO STEEL/METAL SCREWS, THAT COME INTO CONTACT WITH OTHER DISSIMILAR MATERIALS SHALL MEET THE REQUIREMENTS OF THE 2020 FLORIDA BLDG. CODE & ADOPTED STANDARDS.

THIS PRODUCT APPROVAL IS GENERIC AND DOES NOT PROVIDE INFORMATION FOR A SITE SPECIFIC PROJECT, i.e. LIFE SAFETY OF THIS PRODUCT, ADEQUACY OF STRUCTURE RECEIVING THIS PRODUCT AND SEALING AROUND OPENING FOR WATER INFILTRATION RESISTANCE ETC. CONDITIONS NOT SHOWN IN THIS DRAWING ARE TO BE ANALYZED SEPARATELY, AND TO BE REVIEWED BY BUILDING OFFICIAL.

DESIGN LOADS SHOWN ARE BASED ON 'ALLOWABLE STRESS DESIGN (ASD)'.



**TYPICAL ELEVATION**  
TESTED UNIT (OXXO)

ALTERNATE SIZE UNITS: (4 PANELS OR LESS)  
MAX. FRAME AREA OF DOORS NOT TO EXCEED  
THE TESTED FRAME AREA OF 160 SQ. FT.

THESE DOORS ARE RATED FOR SMALL MISSILE IMPACT.  
MIAMI-DADE COUNTY APPROVED IMPACT RESISTANT SHUTTERS  
REQUIRED FOR INSTALLATIONS UP TO 30 FT. OF GRADE.  
SHUTTERS NOT REQD. FOR INSTALLATIONS ABOVE 30 FT. OF GRADE.

**PRODUCT REVISED**  
as complying with the Florida  
Building Code  
NOA-No. 21-0405.18

Expiration Date 11/22/2023

By   
Miami-Dade Product Control

**INSUL. LAM. GLASS**  
**SMALL MISSILE IMPACT**



**af c**  
**AL-FAROOQ CORPORATION**  
ENGINEERS & PRODUCT DEVELOPMENT  
9360 SUNSET DRIVE, SUITE 220  
MIAMI, FLORIDA 33173 (C.A.N. 3538)  
TEL. (305) 264-8100 FAX. (305) 262-6978  
COMP-AN\W07-108RC

SERIES PH3400 ALUM SLIDING GLASS DOOR (S.M.I.)  
**TECNOGLASS, LLC**  
3550 N.W. 49 STREET  
MIAMI, FL. 33142  
TEL. (305) 638-5151 FAX. (305) 638-5158

no	date	by	description
A	04.04.08	REV. PER BCCO COMMENTS	
B	11.12.09	REV. PER BCCO COMMENTS	
C	03.02.16	GENERAL REVISION	
D	02.26.18	REV. PER RER COMMENTS	
E	11.19.20	UPDATED TO 2020 FBC	

revisions:

date: 02-07-08  
scale: 1/2"=1'-0"  
dr. by: TARIQ  
chk. by:

drawing no.  
**W07-108**

sheet 1 of 7



DESIGN LOAD CAPACITY – PSF																							
ANCHOR TYPE		ANCHOR TYPE 'A'						ANCHOR TYPE 'AA'						ANCHOR TYPE 'B'									
SHIM SPACE		1/4" MAX. SHIM			1/2" MAX. SHIM			1/4" MAX. SHIM			1/2" MAX. SHIM			1/4" MAX. SHIM			3/8" MAX. SHIM			1/2" MAX. SHIM			
PANEL WIDTH INCHES	DOOR FRAME HEIGHT INCHES	4 ANCHORS AT MTG. STILE ENDS	6 ANCHORS AT MTG. STILE ENDS	8 ANCHORS AT MTG. STILE ENDS	4 ANCHORS AT MTG. STILE ENDS	6 ANCHORS AT MTG. STILE ENDS	8 ANCHORS AT MTG. STILE ENDS	4 ANCHORS AT MTG. STILE ENDS	6 ANCHORS AT MTG. STILE ENDS	8 ANCHORS AT MTG. STILE ENDS	4 ANCHORS AT MTG. STILE ENDS	6 ANCHORS AT MTG. STILE ENDS	8 ANCHORS AT MTG. STILE ENDS	4 ANCHORS AT MTG. STILE ENDS	6 ANCHORS AT MTG. STILE ENDS	8 ANCHORS AT MTG. STILE ENDS	4 ANCHORS AT MTG. STILE ENDS	6 ANCHORS AT MTG. STILE ENDS	8 ANCHORS AT MTG. STILE ENDS	4 ANCHORS AT MTG. STILE ENDS	6 ANCHORS AT MTG. STILE ENDS	8 ANCHORS AT MTG. STILE ENDS	
		EXT. (+) INT. (–)	EXT. (+) INT. (–)	EXT. (+) INT. (–)	EXT. (+) INT. (–)	EXT. (+) INT. (–)	EXT. (+) INT. (–)	EXT. (+) INT. (–)	EXT. (+) INT. (–)	EXT. (+) INT. (–)	EXT. (+) INT. (–)	EXT. (+) INT. (–)	EXT. (+) INT. (–)	EXT. (+) INT. (–)	EXT. (+) INT. (–)	EXT. (+) INT. (–)	EXT. (+) INT. (–)	EXT. (+) INT. (–)	EXT. (+) INT. (–)	EXT. (+) INT. (–)	EXT. (+) INT. (–)	EXT. (+) INT. (–)	
36	82"	143.2	150.0	150.0	77.4	116.1	150.0	98.0	146.9	150.0	77.4	116.1	150.0	150.0	150.0	150.0	72.7	109.1	145.4	57.2	85.9	114.5	
42		122.8	150.0	150.0	66.4	99.5	132.7	84.0	125.9	150.0	66.4	99.5	132.7	130.8	150.0	150.0	62.3	93.5	124.6	49.1	73.6	98.1	
48		107.4	150.0	150.0	58.1	87.1	116.1	73.5	110.2	146.9	58.1	87.1	116.1	114.4	150.0	150.0	54.5	81.8	109.1	42.9	64.4	85.9	
54		95.5	133.9	133.9	51.6	77.4	103.2	65.3	98.0	130.6	51.6	77.4	103.2	101.7	133.9	133.9	48.5	72.7	96.9	38.2	57.2	76.3	
60		85.9	120.5	120.5	46.5	69.7	92.9	58.8	88.2	117.5	46.5	69.7	92.9	91.6	120.5	120.5	43.6	65.4	87.2	34.3	51.5	68.7	
66		78.1	109.5	109.5	42.2	63.3	84.5	53.4	80.1	106.9	42.2	63.3	84.5	83.2	109.5	109.5	39.7	59.5	79.3	31.2	46.8	62.5	
36	84	139.8	150.0	150.0	75.6	113.4	150.0	95.6	143.4	150.0	75.6	113.4	150.0	149.0	150.0	150.0	71.0	106.5	141.9	55.9	83.8	111.8	
42		119.8	150.0	150.0	64.8	97.2	129.6	82.0	122.9	150.0	64.8	97.2	129.6	127.7	150.0	150.0	60.8	91.2	121.7	47.9	71.9	95.8	
48		104.9	150.0	150.0	56.7	85.0	113.4	71.7	107.6	143.4	56.7	85.0	113.4	111.7	150.0	150.0	53.2	79.8	106.5	41.9	62.9	83.8	
54		93.2	133.9	133.9	50.4	75.6	100.8	63.7	95.6	127.5	50.4	75.6	100.8	99.3	133.9	133.9	47.3	71.0	94.6	37.3	55.9	74.5	
60		83.9	120.5	120.5	45.3	68.0	90.7	57.4	86.1	114.7	45.3	68.0	90.7	89.4	120.5	120.5	42.6	63.9	85.2	33.5	50.3	67.1	
66		76.3	109.5	109.5	41.2	61.8	82.5	52.2	78.2	104.3	41.2	61.8	82.5	81.2	109.5	109.5	38.7	58.1	77.4	30.5	45.7	61.0	
36	90	130.5	150.0	150.0	70.5	105.8	141.1	89.2	133.9	150.0	70.5	105.8	141.1	139.0	150.0	150.0	66.2	99.4	132.5	52.2	78.2	104.3	
42		111.8	150.0	150.0	60.5	90.7	120.9	76.5	114.7	150.0	60.5	90.7	120.9	119.2	150.0	150.0	56.8	85.2	113.6	44.7	67.1	89.4	
48		97.9	146.8	150.0	52.9	79.4	105.8	66.9	100.4	133.9	52.9	79.4	105.8	104.3	150.0	150.0	49.7	74.5	99.4	39.1	58.7	78.2	
54		87.0	130.5	133.9	47.0	70.5	94.1	59.5	89.2	119.0	47.0	70.5	94.1	92.7	133.9	133.9	44.2	66.2	88.3	34.8	52.2	69.5	
60		78.3	117.4	120.5	42.3	63.5	84.7	53.5	80.3	107.1	42.3	63.5	84.7	83.4	120.5	120.5	39.7	59.6	79.5	31.3	46.9	62.6	
36	96	122.3	150.0	150.0	66.1	99.2	132.3	83.7	125.5	150.0	66.1	99.2	132.3	130.3	150.0	150.0	62.1	93.2	124.2	48.9	73.4	97.8	
42		104.9	150.0	150.0	56.7	85.0	113.4	71.7	107.6	143.4	56.7	85.0	113.4	111.7	150.0	150.0	53.2	79.8	106.5	41.9	62.9	83.8	
48		91.8	137.6	150.0	49.6	74.4	99.2	62.8	94.1	125.5	49.6	74.4	99.2	97.8	146.6	150.0	46.6	69.9	93.2	36.7	55.0	73.4	
54		81.6	122.3	133.9	44.1	66.1	88.2	55.8	83.7	111.6	44.1	66.1	88.2	86.9	130.3	133.9	41.4	62.1	82.8	32.6	48.9	65.2	
36	102	115.1	150.0	150.0	62.2	93.4	124.5	78.7	118.1	150.0	62.2	93.4	124.5	122.7	150.0	150.0	58.4	87.7	116.9	46.0	69.0	92.0	
42		98.7	148.0	150.0	53.4	80.0	106.7	67.5	101.2	135.0	53.4	80.0	106.7	105.1	150.0	150.0	50.1	75.1	100.2	39.4	59.2	78.9	
48		86.4	129.5	150.0	46.7	70.0	93.4	59.1	88.6	118.1	46.7	70.0	93.4	92.0	138.0	150.0	43.8	65.8	87.7	34.5	51.8	69.0	
54		76.8	115.1	133.9	41.5	62.2	83.0	52.5	78.7	105.0	41.5	62.2	83.0	81.8	122.7	133.9	39.0	58.4	77.9	30.7	46.0	61.4	
36	108	108.7	150.0	150.0	58.8	88.2	117.6	74.4	111.6	148.7	58.8	88.2	117.6	115.9	150.0	150.0	55.2	82.8	110.4	43.5	65.2	86.9	
42		93.2	139.8	150.0	50.4	75.6	100.8	63.7	95.6	127.5	50.4	75.6	100.8	99.3	149.0	150.0	47.3	71.0	94.6	37.3	55.9	74.5	
48		81.6	122.3	150.0	44.1	66.1	88.2	55.8	83.7	111.6	44.1	66.1	88.2	86.9	130.3	150.0	41.4	62.1	82.8	32.6	48.9	65.2	
36	114	103.0	150.0	150.0	55.7	83.5	111.4	70.5	105.7	140.9	55.7	83.5	111.4	109.8	150.0	150.0	52.3	78.4	104.6	41.2	61.8	82.4	
42		88.3	132.5	150.0	47.7	71.6	95.5	60.4	90.6	120.8	47.7	71.6	95.5	94.1	141.1	150.0	44.8	67.2	89.6	35.3	52.9	70.6	
48		77.3	115.9	146.4	41.8	62.7	83.5	52.8	79.3	105.7	41.8	62.7	83.5	82.3	123.5	146.4	39.2	58.8	78.4	30.9	46.3	61.8	
36	119	98.7	148.0	150.0	53.4	80.0	106.7	67.5	101.2	135.0	53.4	80.0	106.7	105.1	150.0	150.0	50.1	75.1	100.2	39.4	59.2	78.9	
42		84.6	126.9	150.0	45.7	68.6	91.5	57.9	86.8	115.7	45.7	68.6	91.5	90.1	135.2	150.0	42.9	64.4	85.9	33.8	50.7	67.6	
48		74.0	111.0	142.5	40.0	60.0	80.0	50.6	75.9	101.2	40.0	60.0	80.0	78.9	118.3	142.5	37.6	56.4	75.1	29.6	44.4	59.2	

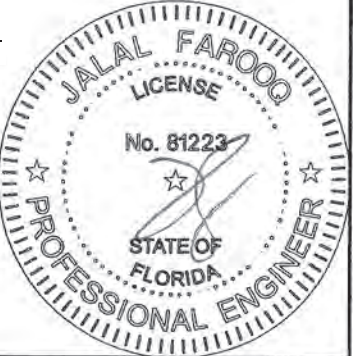
DOOR HEIGHT AND WIDTH SIZE MUST COMPLY  
EGRESS REQUIREMENTS PER FBC AS APPLICABLE.

NOTE:  
GLASS CAPACITIES ON THIS SHEET ARE  
BASED ON ASTM E1300-09 (3 SEC. GUSTS)  
AND FLORIDA BUILDING COMMISSION  
DECLARATORY STATEMENT DCA05-DEC-219


**PRODUCT REVISED**  
as complying with the Florida  
Building Code  
NOA-No. 21-0405.18

Expiration Date 11/22/2023

By   
Miami-Dade Product Control



MAR 26 2021

**AL-FAROOQ CORPORATION**  
ENGINEERS & PRODUCT DEVELOPMENT  
9360 SUNSET DRIVE, SUITE 220  
MIAMI, FLORIDA 33173  
TEL. (305) 264-8100 FAX. (305) 262-6978  
(C.A.N. 3538)

SERIES PH3400 ALUM SLIDING GLASS DOOR (S.M.I.)

**TECNOGLASS, LLC**  
3550 N.W. 49 STREET  
MIAMI, FL. 33142  
TEL. (305) 638-5151 FAX. (305) 638-5158

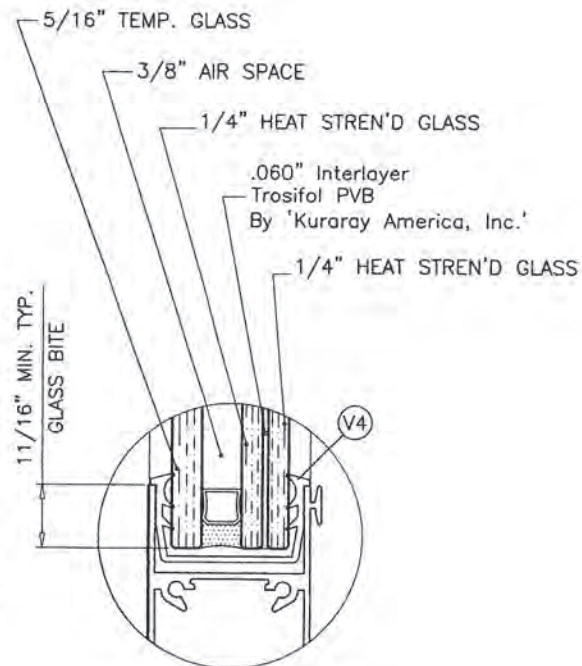
revisions:	no	date	by	description
	A	04.04.08		REV. PER BCCO COMMENTS
	B	11.12.09		REV. PER BCCO COMMENTS
	C	03.02.16		GENERAL REVISION
	D	02.26.18		REV. PER PER COMMENTS
	E	11.19.20		UPDATED TO 2020 FBC

date:	02-07-08
scale:	1/2" = 1"
dr. by:	TARIQ
chk. by:	

drawing no.  
**W07-108**  
sheet 2 of 7



EXTERIOR



**GLAZING DETAIL**

1-1/4" OVERALL INSUL. LAM. GLASS

**3/8" AIR SPACE CONSISTING OF:**

**SPACER:**

'HELIMA' LOW PROFILE ALUMINUM SPACER  
BY 'LINGERMANN GMBH'  
AROUND THE PERIMETER OF THE GLASS.

**PERIMETER SEALANT:**

SILICONE  
DOWSIL 791  
GE 2000

ITEM NO.	PART NUMBER	QUANTITY	DESCRIPTION	MATERIAL	MANF./SUPPLIER/REMARKS
E1	PH3400-001	1/ PANEL	INTERLOCK STILE INSIDE	6005-T5	-
E2	PH3400-002	1	LOCK STILE	6063-T6	-
E4	PH3400-004	1/ FIX. PANEL	JAMB STILE	6063-T6	-
E5	PH3400-005	2	FRAME JAMB	6063-T6	-
E6	PH3400-006	1	FRAME HEAD	6005-T5	-
E7	PH3400-007	1	SILL TRACK	6005-T5	-
E8	PH3400-008	1	SILL THRESHOLD	6063-T6	-
E9	PH3400-009	1	HEAD CLOSURE ADAPTOR	6063-T6	-
E10	PH3400-010	1/ MOV. PANEL	MOVING OUTSIDE TOP RAIL	6063-T6	-
E11	PH3400-011	1/ MOV. PANEL	MOVING OUTSIDE BOTTOM RAIL	6005-T5	-
E12	PH3400-012	1/ FIX. PANEL	FIXED INSIDE TOP RAIL	6063-T6	-
E13	PH3400-013	1/ FIX. PANEL	FIXED INSIDE BOTTOM RAIL	6063-T6	-
E14	2400ST-031	AS REQD.	SILL TRACK PLATE, 5" LONG AT ENDS, 10" LONG AT STILE LOCATIONS	6061-T6	-
E15	2400ST-040	AS REQD.	SCREEN TRACK INSIDE	-	-
E16	2400ST-056	AS REQD.	SCREEN VERTICAL JAMB	-	-
E17	2400ST-057	AS REQD.	SCREEN TOP & BOTTOM RAIL	-	-
E18	PH3400-016	AS REQD.	HEAVY INTERLOCK STILE OUTSIDE	6005-T5	-
E19	PH3400-015	AS REQD.	HEAVY MEETING STILE	6005-T5	-
S1		2/ CORNER	#14 X 1" PH SMS TYPE "B" ST/ST	-	FRAME ASSY SCREWS
S2		2/ CORNER	#10 X 1" PH SMS TYPE "B" ST/ST	-	PANEL ASSY SCREWS
S3		AS REQD.	#10 X 3/4" PH.SMS. ST/ST	-	-
S5		4/ CLIP	1/4-20 X 3/4" LG. SOCKET HEAD CAP SCREW	ST/ST	-
V1	V-019	1/ MOV. PANEL	DRIP SILL VINYL (DUROMETER 65±5 SHORE A)	SOFT PVC	-
V2	V-026	AS REQD.	BULB VINYL (DUROMETER 65±5 SHORE A)	SOFT PVC	-
V3	V-047	AS REQD.	BULB VINYL (DUROMETER 60±5)	-	-
V4	V-067	AS REQD.	MARINE GLAZING FOR LAM/INS. GLASS SMI (DUROMETER ±65 SHORE A)	EPDM	CANAL VIDRIOS LTDA
M1	U54	-	Q-LON 375T270 @ INTERLOCK, JAMBS & MTG. STILES	-	-
M2	W31235NIK	AS REQD.	PILE WITH PLASTIC FIN W'STRIPPING	-	-
M3	E16-106W/B	AS REQD.	SILICONE BUMPER	-	-
M4	DOWSIL 995	-	BLACK SILICONE (LMI)	-	-
M5	CCES-1003	-	ROLLER TRACK COVER	ST/ST	-
M6	RC 00151W/D	-	SILL ANCHOR TRACK	6005-T5	6" LONG
M7	U56	-	Q-LON 250T270 @ HEAD ADAPTOR & SILL THRESHOLD	-	-
H1	10 0030 01	1	(WIPI) HARDWARE	-	-
H2	10 0071 01	2/ MOV. PANEL	(WIPI) ROLLER LARGE	-	-

**SEALANTS:**

ALL FRAME AND PANEL JOINT, INSTALLATION SCREWS AND  
HEADS OF ANCHOR SCREWS AT SILL TO BE SEALED WITH  
WHITE/ALUM COLORED SEALANT.

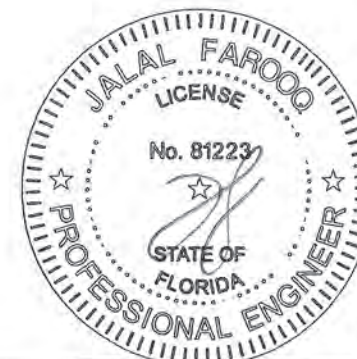
**LOCKS:**

THREE PLY METALLIC HOOK LOCK WITH SURFACE MOUNT METALLIC  
HANDLE AT 42" FROM BOTTOM.  
LOCK FASTENED WITH (2) #6 X 1/2" FH MACHINE SCREWS AND  
HANDLE FASTENED WITH (2) #8 X 2-1/4" OH MACHINE SCREWS.  
SURFACE MOUNT METALLIC KEEPERS AT 42" FROM BOTTOM  
FASTENED WITH (2) #10 X 3/4" PH SMS.

**PRODUCT REVISED**  
as complying with the Florida  
Building Code  
NOA-No. 21-0405.18

Expiration Date 11/22/2023

By   
Miami-Dade Product Control



MAR 26 2021

**af c**  
**AL-FAROOQ CORPORATION**  
ENGINEERS & PRODUCT DEVELOPMENT  
9360 SUNSET DRIVE, SUITE 220  
MIAMI, FLORIDA 33173 (C.A.N. 3538)  
TEL. (305) 264-8100 FAX. (305) 262-6978

SERIES PH3400 ALUM SLIDING GLASS DOOR (S.M.I.)

**TECNOGLASS, LLC**  
3550 N.W. 49 STREET  
MIAMI, FL. 33142  
TEL. (305) 638-5151 FAX. (305) 638-5158

revisions:	no	date	by	description
	A	04.04.08		REV. PER BCCO COMMENTS
	B	11.12.09		REV. PER BCCO COMMENTS
	C	03.02.16		GENERAL REVISION
	D	02.26.18		REV. PER PER COMMENTS
	E	11.19.20		UPDATED TO 2020 FBC

date: 02-07-08  
scale: -  
dr. by: TARIQ  
chk. by:

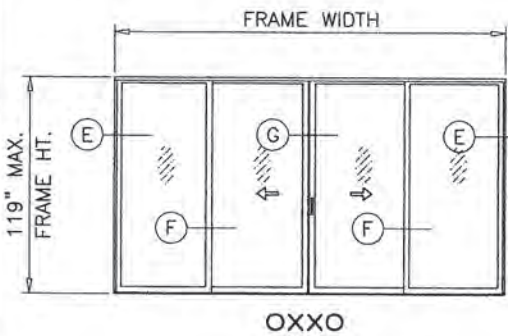
drawing no.

W07-108

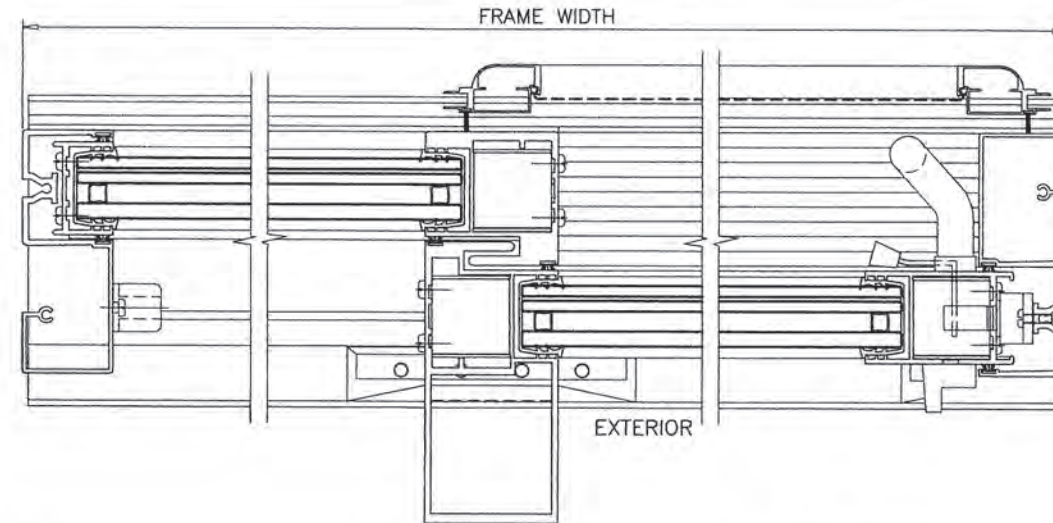
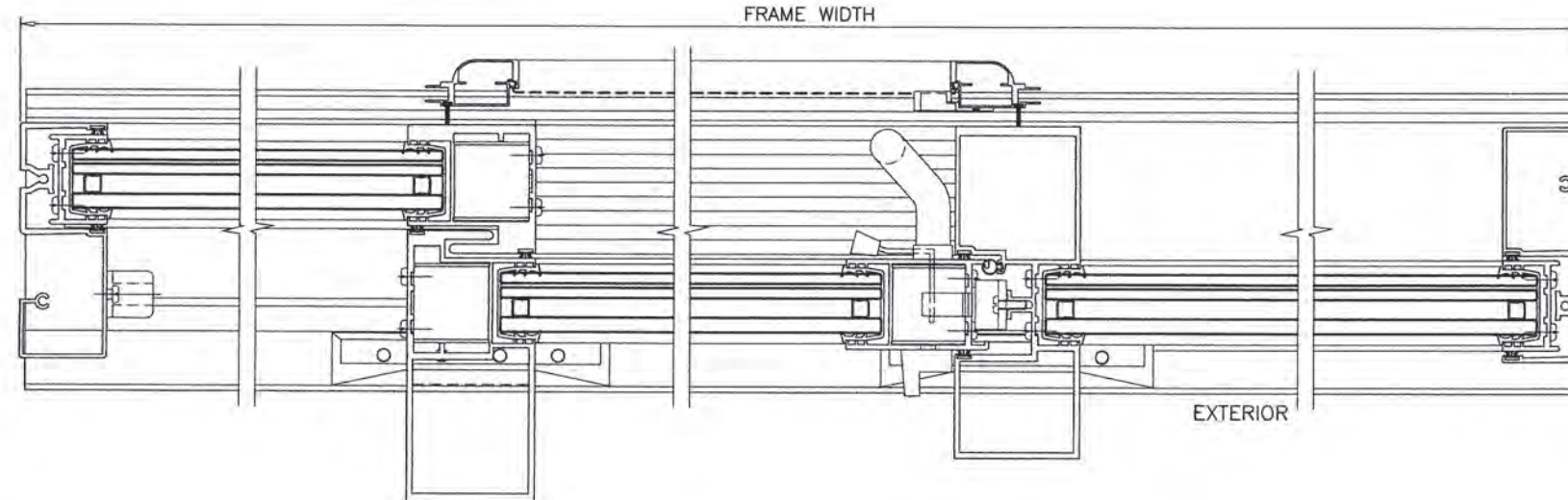
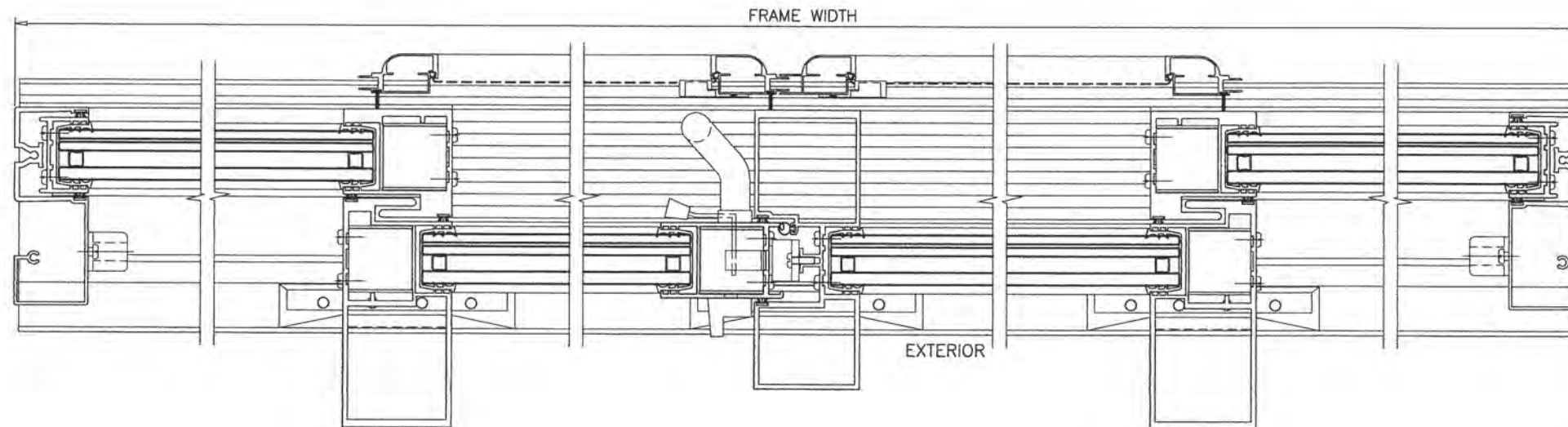
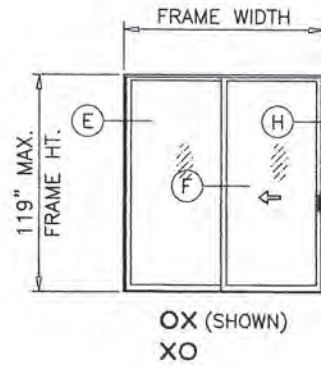
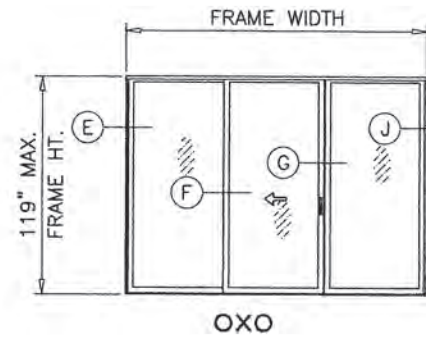
sheet 3 of 7

COMP-ANL\W07-108RC






APPROVED CONFIGURATIONS



NOTE:

1. CONFIGURATIONS SHOWN FOR ILLUSTRATION PURPOSES ONLY.
2. FOR APPLICABLE DESIGN PRESSURES SEE SHEET 2.
3. FOR ANCHOR DETAILS SEE SHEETS 4 THRU 5.

**PRODUCT REVISED**  
as complying with the Florida  
Building Code  
NOA-No. 21-0405.18  
Expiration Date 11/22/2023  
By   
Miami-Dade Product Control

MAR 26 2021



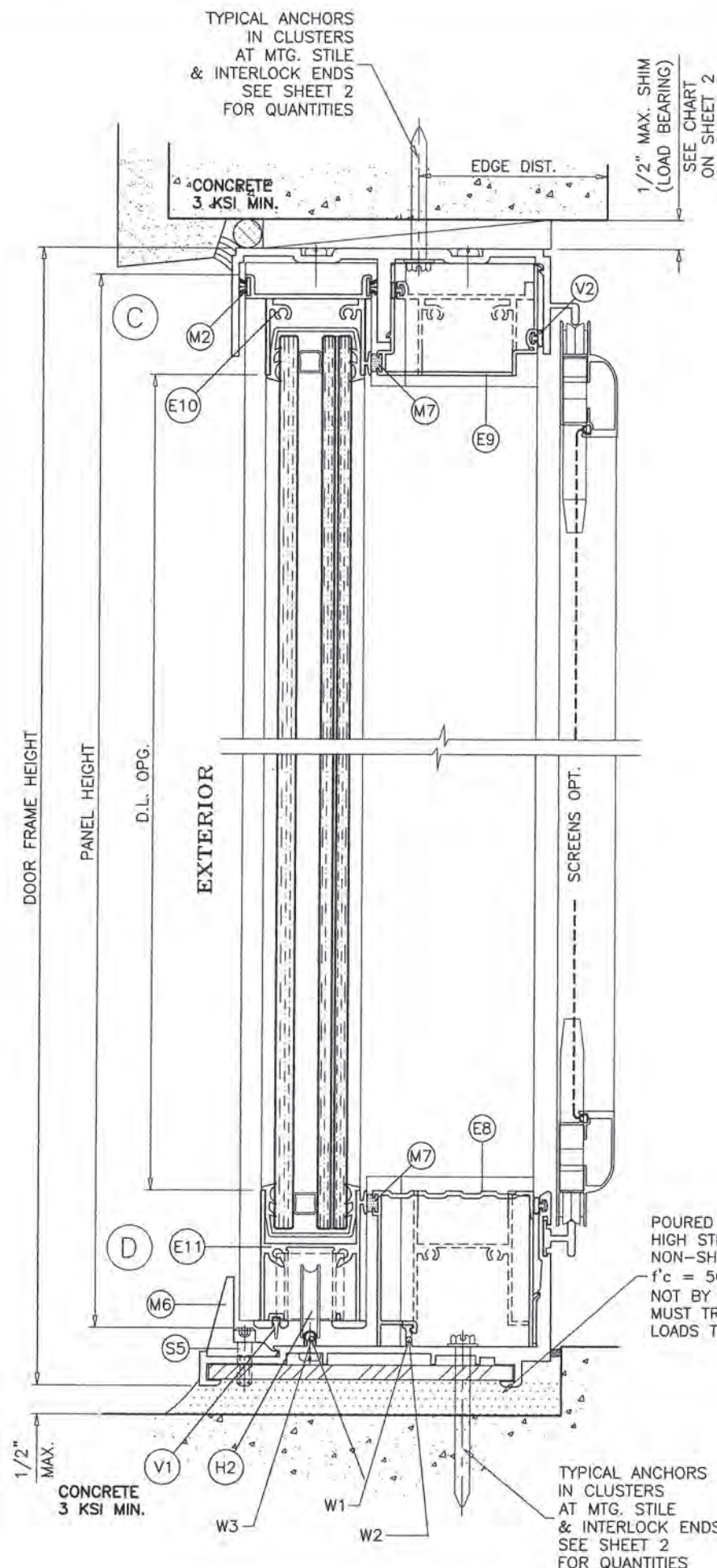
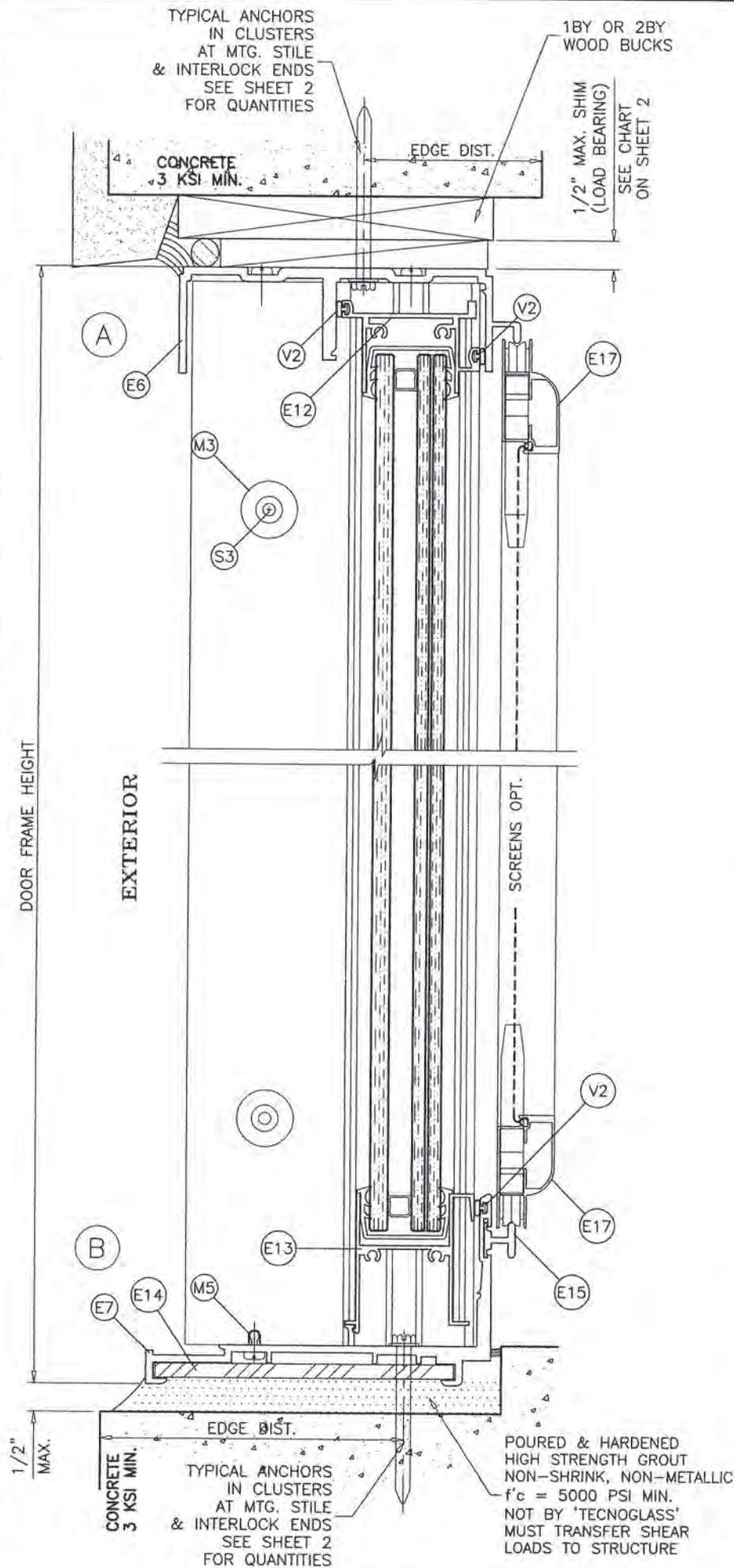
date: 02-07-08	scale: -	dr. by: TARIQ	chk. by:
drawing no. W07-108			
sheet 3.1 of 7			

SERIES PH3400 ALUM SLIDING GLASS DOOR (S.M.I.)  
**TECNOGLASS, LLC**  
3550 N.W. 49 STREET  
MIAMI, FL. 33142  
TEL. (305) 638-5151 FAX. (305) 638-5158

**AL-FAROOQ CORPORATION**  
ENGINEERS & PRODUCT DEVELOPMENT  
9360 SUNSET DRIVE, SUITE 220  
MIAMI, FLORIDA 33173  
TEL. (305) 264-8100 FAX. (305) 262-6978  
(C.A.N. 3538)

COMP-ANL\W07-108RC



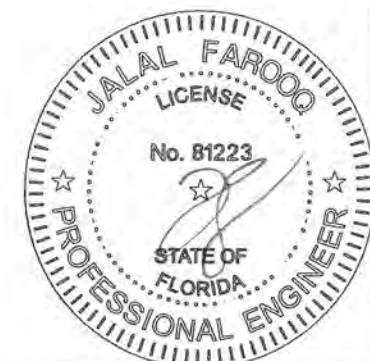


# **WEEPS:**

- W1 = 3/4" WEEP NOTCH AT EACH END OF EACH TRACK
- W2 = 1-3/4" NOTCH AT MIDSPAN OF FIX. PANEL TRACK
- W3 = 2-1/2" NOTCH AT MIDSPAN OF MOV. PANEL TRACK

POURED & HARDENED  
HIGH STRENGTH GROUT  
NON-SHRINK, NON-METALLIC  
f'c = 5000 PSI MIN.  
NOT BY 'TECNOGLASS'  
MUST TRANSFER SHEAR  
LOADS TO STRUCTURE

**PRODUCT REVISED**  
as complying with the Florida  
Building Code  
NOA-No. 21-0405.18  
Expiration Date 11/22/2023  
By   
Miami-Dade Product Control



**AL-FAROOQ CORPORATION**  
ENGINEERS & PRODUCT DEVELOPMENT  
9360 SUNSET DRIVE, SUITE 220  
MIAMI, FLORIDA 33173  
TEL. (305) 264-8100 FAX. (305) 262-6978  
C.A.N. 3538

SERIES PH3400 ALUM SLIDING GLASS DOOR (S.M.I.)  
**TECNOGLASS, LLC**  
3550 N.W. 49 STREET  
MIAMI, FL. 33142  
TEL. (305) 638-5151 FAX. (305) 638-5158

revisions:		by	description
no	date	by	description
A	04.04.08	REV. PER BCCO COMMENTS	
B	11.12.09	REV. PER BCCO COMMENTS	
C	03.02.16	GENERAL REVISION	
D	02.26.18	REV. PER PER COMMENTS	
E	11.19.20	UPDATED TO 2020 FBC	

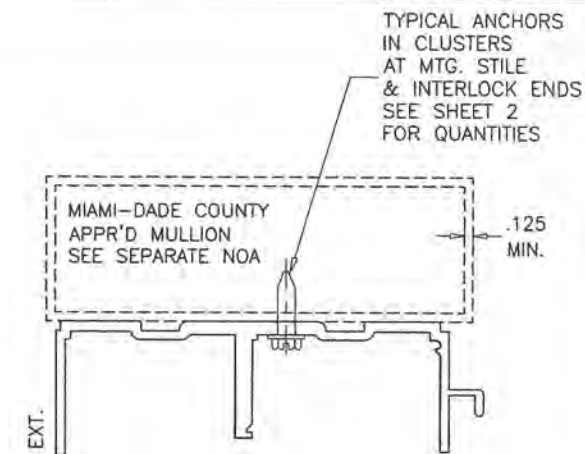
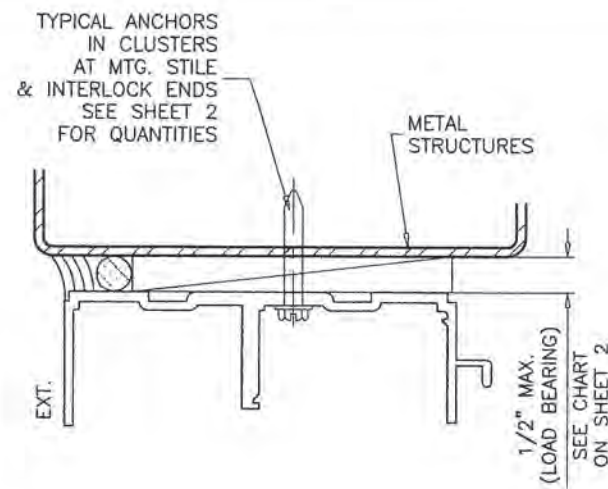
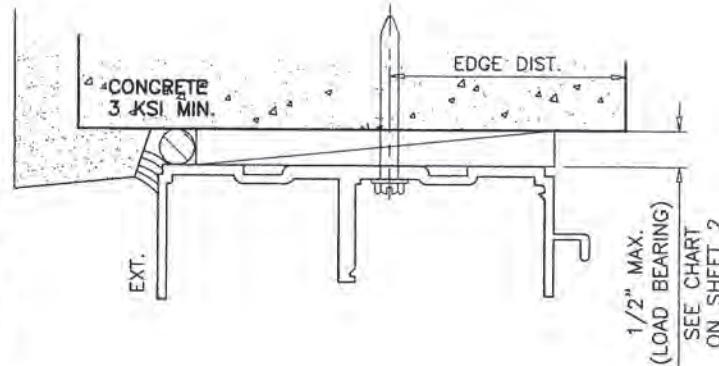
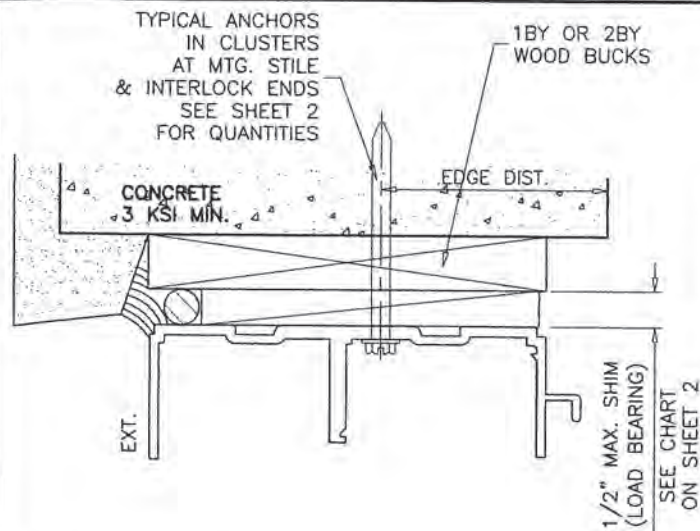
date:	02-07-08
scale:	3/8" = 1"
dr. by:	TARIQ
chk. by:	

drawing no.	W07-108
sheet 4 of	7

COMP-ANL\W07-108RC





**TYPICAL ANCHORS:** SEE ELEV. FOR SPACING

— AT HEAD —

**TYPE 'A'**

**1/4" X 2-3/4" DIA. KWIK-CON II+ BY 'HILTI'** (Fu=138 KSI, Fy=137 KSI)  
DIRECTLY INTO CONCRETE  
2" MIN. EMBED INTO CONCRETE

**TYPE 'AA'**

**1/4" X 2-3/4" DIA. KWIK-CON II+ BY 'HILTI'** (Fu=138 KSI, Fy=137 KSI)  
THRU 1BY OR 2BY WOOD BUCKS INTO CONCRETE  
1-1/4" MIN. EMBED INTO CONCRETE

**TYPE 'B'**

**1/4" DIA. TEKS OR SELF-DRILLING SCREWS** (GRADE 5 CRS)  
INTO MIAMI-DADE COUNTY APPROVED MULLIONS  
OR  
INTO METAL STRUCTURES  
(3) THREADS MIN. TO EXTEND BEYOND METAL THICKNESS  
ALUMINUM: 1/8" THK. MIN. (6063-T5 MIN.)  
STEEL: 1/8" THK. MIN. (Fy = 36 KSI MIN.)  
(STEEL IN CONTACT WITH ALUMINUM TO BE PLATED OR PAINTED)

— AT SILL —

**1/4" X 2-3/4" DIA. KWIK-CON II+ BY 'HILTI'** (Fu=138 KSI, Fy=137 KSI)  
DIRECTLY INTO CONCRETE  
1-1/2" MIN. EMBED INTO CONCRETE

— AT JAMBS —

**1/4" X 2-3/4" DIA. KWIK-CON II+ BY 'HILTI'** (Fu=138 KSI, Fy=137 KSI)  
DIRECTLY INTO CONCRETE OR BLOCKS  
2" MIN. EMBED INTO BLOCKS  
2" MIN. EMBED INTO CONCRETE

**1/4" X 2-3/4" DIA. KWIK-CON II+ BY 'HILTI'** (Fu=138 KSI, Fy=137 KSI)  
INTO WOOD STRUCTURES  
2" MIN. PENETRATION INTO WOOD  
THRU 1BY OR 2BY WOOD BUCKS INTO CONCRETE OR BLOCKS  
1-1/4" MIN. CONCRETE OR BLOCKS EMBEDMENT

**1/4" DIA. TEKS OR SELF-DRILLING SCREWS** (GRADE 5 CRS)  
INTO MIAMI-DADE COUNTY APPROVED MULLIONS  
OR  
INTO METAL STRUCTURES  
(3) THREADS MIN. TO EXTEND BEYOND METAL THICKNESS  
ALUMINUM: 1/8" THK. MIN. (6063-T5 MIN.)  
STEEL: 1/8" THK. MIN. (Fy = 36 KSI MIN.)  
(STEEL IN CONTACT WITH ALUMINUM TO BE PLATED OR PAINTED)

1BY OR 2BY WOOD BUCKS AND METAL STRUCTURES NOT BY 'TECNOGLASS'  
MUST SUPPORT LOADS IMPOSED BY GLAZING SYSTEM AND TRANSFER THEM  
TO THE BUILDING STRUCTURE.

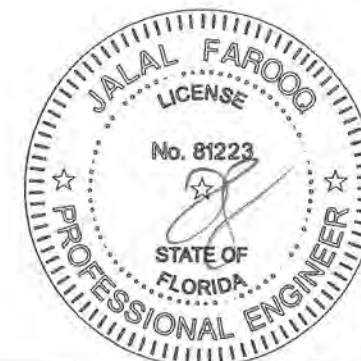
**ANCHOR EDGE DISTANCES**

INTO CONCRETE = 2-1/2" MIN.  
INTO WOOD STRUCTURE = 1" MIN.  
INTO METAL STRUCTURE = 3/4" MIN.  
WOOD AT HEAD OR JAMBS SG = 0.55 MIN.  
CONCRETE AT HEAD, SILL OR JAMBS f'c = 3000 PSI MIN.  
C-90 HOLLOW/FILLED BLOCK AT JAMBS f'm = 2000 PSI MIN.

**PRODUCT REVISED**  
as complying with the Florida  
Building Code  
NOA-No. 21-0405.18

Expiration Date 11/22/2023

By   
Miami-Dade Product Control



SERIES PH3400 ALUM SLIDING GLASS DOOR (S.M.I.)

**TECNOGLASS, LLC**

3550 N.W. 49 STREET  
MIAMI, FL. 33142

TEL. (305) 638-5151 FAX. (305) 638-5158

revisions:

date: 02-07-08

drawing no.

W07-108

sheet 4.1 of 7

no	date	by	description
B	11.12.09		REV. PER BCCO COMMENTS
C	03.02.16		GENERAL REVISION
D	02.26.18		REV. PER PER COMMENTS
E	11.19.20		UPDATED TO 2020 FBC

scale: 3/8" = 1"

dr. by: TARIQ

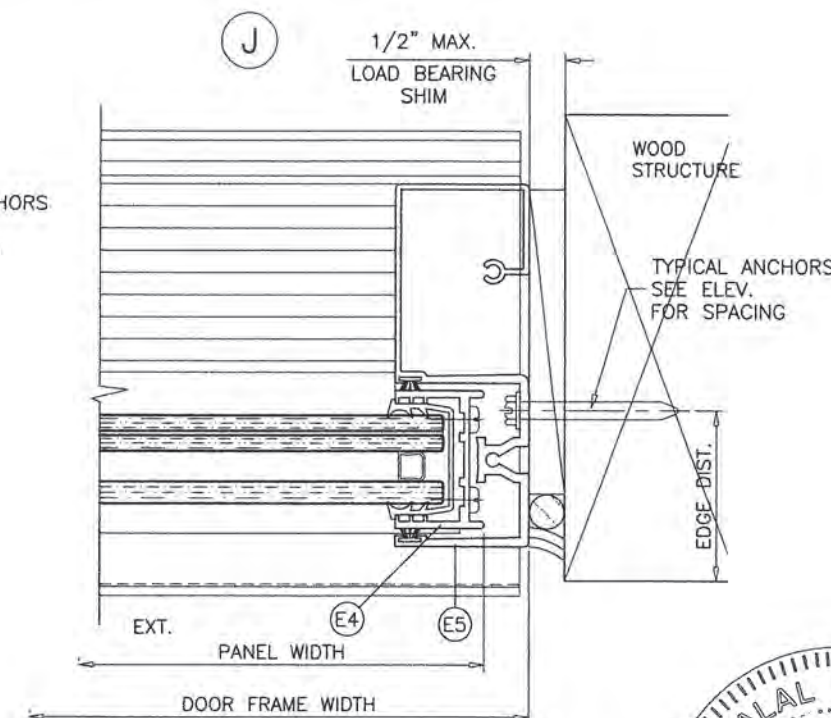
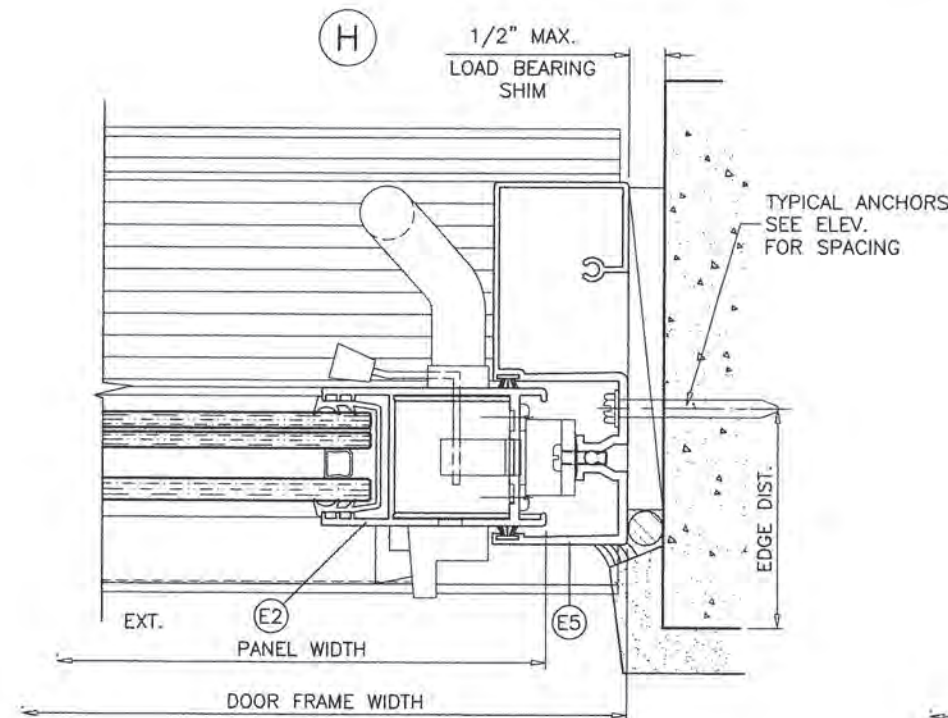
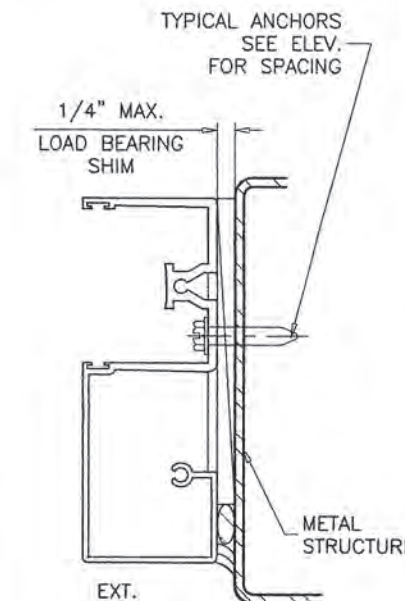
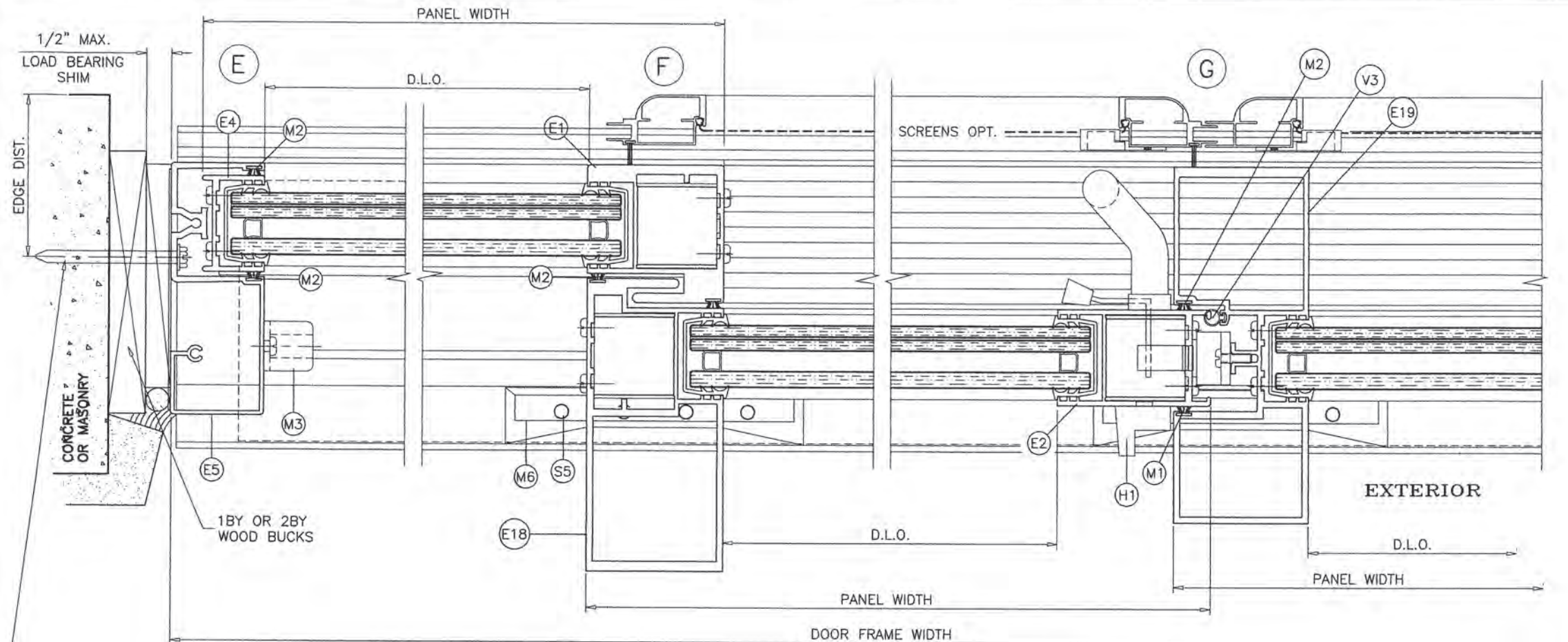
chk. by:

sheet 4.1 of 7

**AL-FAROOQ CORPORATION**  
ENGINEERS & PRODUCT DEVELOPMENT  
9360 SUNSET DRIVE, SUITE 220  
MIAMI, FLORIDA 33173  
TEL. (305) 264-8100 FAX. (305) 262-6978  
(C.A.N. 3538)

COMP-ANL\W07-108RC





**PRODUCT REVISED**  
as complying with the Florida  
Building Code  
NOA-No. 21-0405.18  
Expiration Date 11/22/2023  
By *[Signature]*  
Miami-Dade Product Control



**af c**  
**AL-FAROOQ CORPORATION**  
ENGINEERS & PRODUCT DEVELOPMENT  
9360 SUNSET DRIVE, SUITE 220  
MIAMI, FLORIDA 33173 (C.A.N. 3538)  
TEL. (305) 264-8100 FAX. (305) 262-6978  
COMP-ANL\W07-108RC

SERIES PH3400 ALUM SLIDING GLASS DOOR (S.M.I.)  
**TECNOGLASS, LLC**  
3550 N.W. 49 STREET  
MIAMI, FL. 33142  
TEL. (305) 638-5151 FAX. (305) 638-5158

revisions:		no	date	by	description
A	04.04.08	REV.	PER	BCCO	COMMENTS
B	11.12.09	REV.	PER	BCCO	COMMENTS
C	03.02.16	GENERAL	REVISION		
D	02.26.18	REV.	PER	PER	COMMENTS
E	11.19.20	UPDATED	TO	2020	FBC

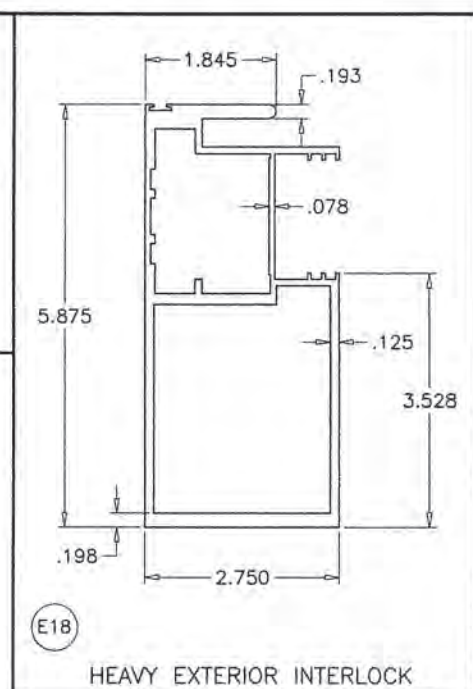
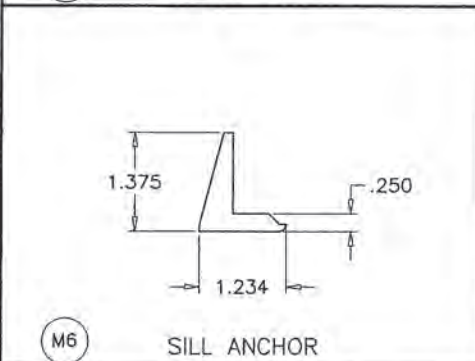
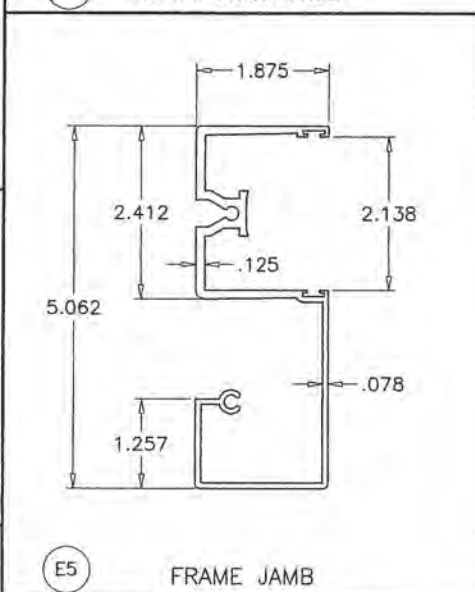
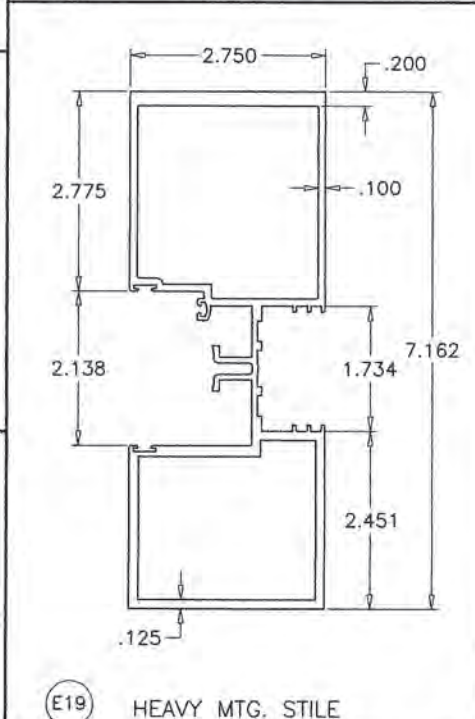
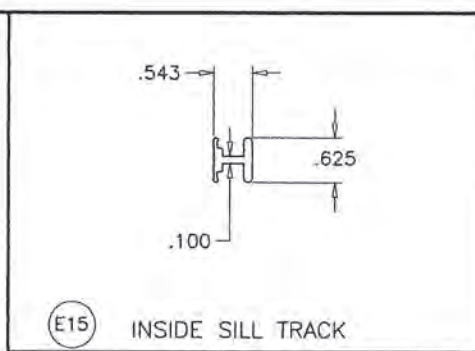
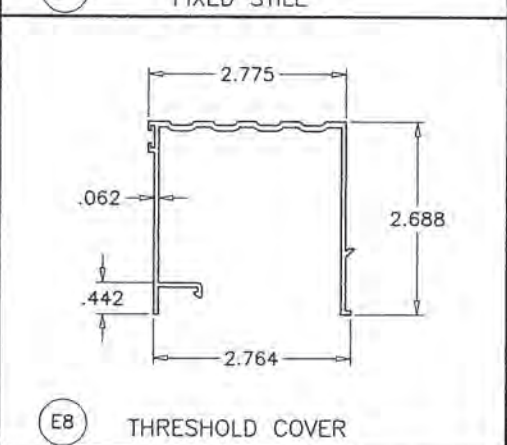
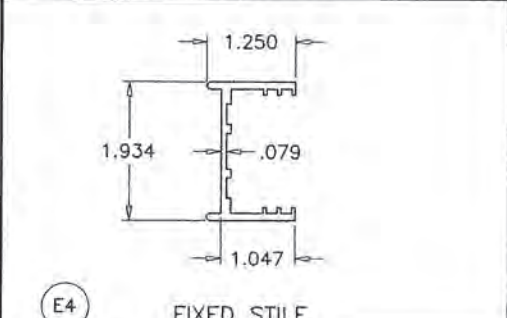
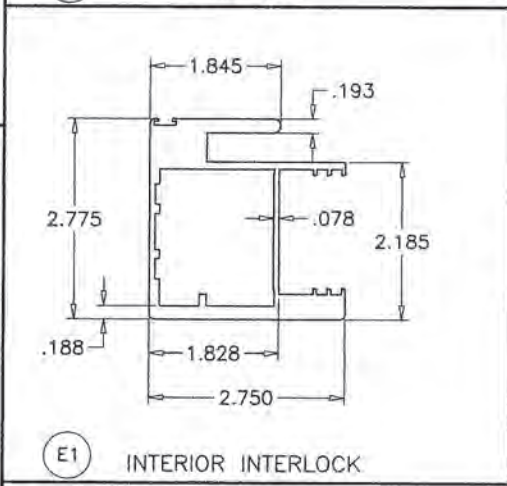
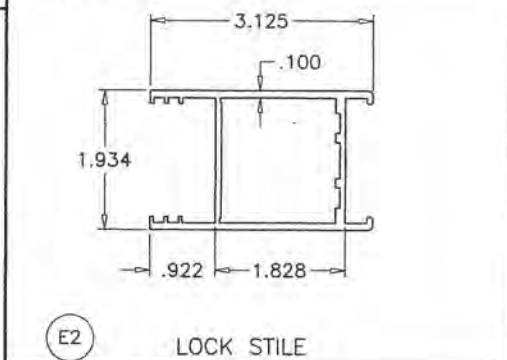
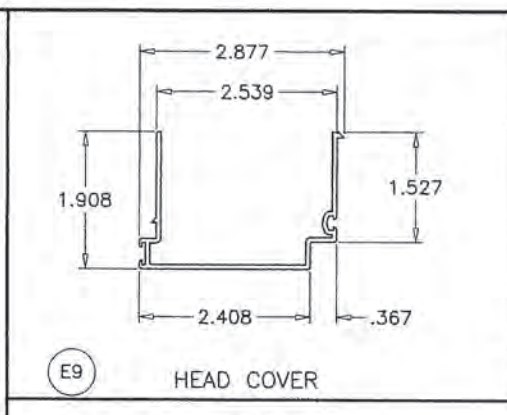
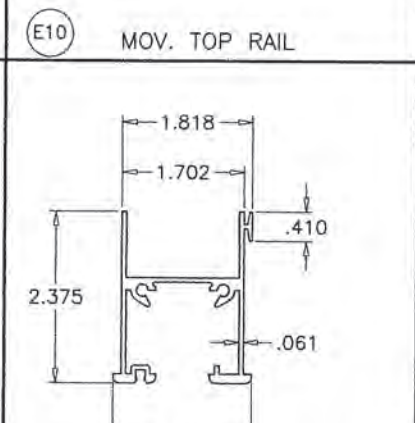
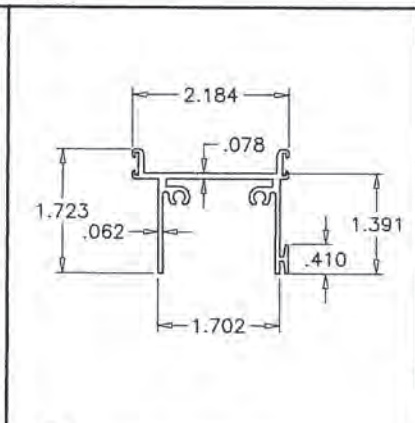
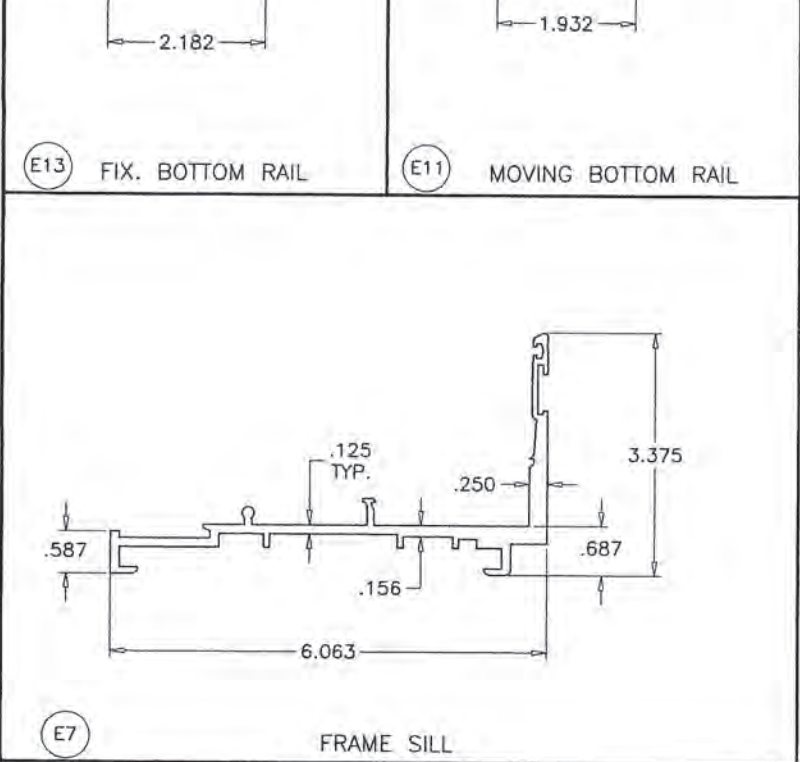
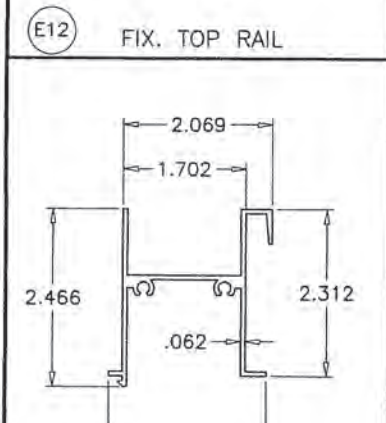
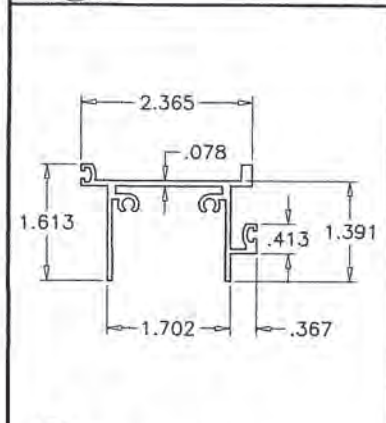
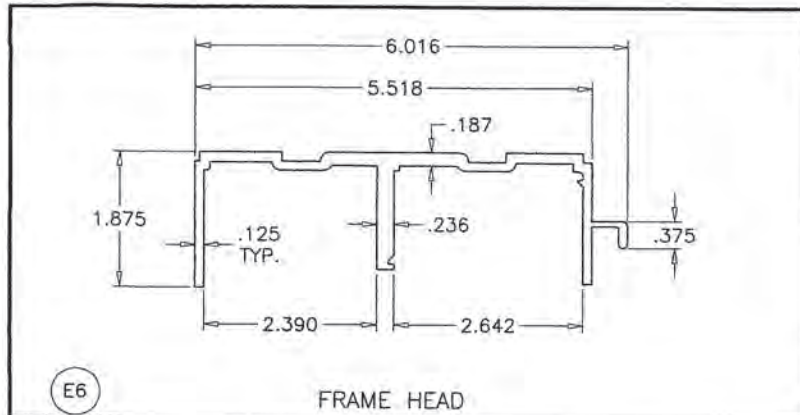
  

date:	02-07-08
scale:	3/8" = 1"
dr. by:	TARIQ
chk. by:	

drawing no.	W07-108
sheet	5 of 7





**PRODUCT REVISED**  
as complying with the Florida  
Building Code  
NOA-No. 21-0405.18  
Expiration Date 11/22/2023  
By *[Signature]*  
Miami-Dade Product Control



**AL-FAROOQ CORPORATION**  
ENGINEERS & PRODUCT DEVELOPMENT  
9360 SUNSET DRIVE, SUITE 220  
MIAMI, FLORIDA 33173  
TEL. (305) 264-8100 FAX. (305) 262-6978

**af c**  
(C.A.N. 3538)  
COMP-ANL\W07-108RC

---

SERIES PH3400 ALUM SLIDING GLASS DOOR (S.M.I.)

**TECNOGLASS, LLC**  
3550 N.W. 49 STREET  
MIAMI, FL. 33142  
TEL. (305) 638-5151 FAX. (305) 638-5158

COMP-ANL\W07-108RC

---

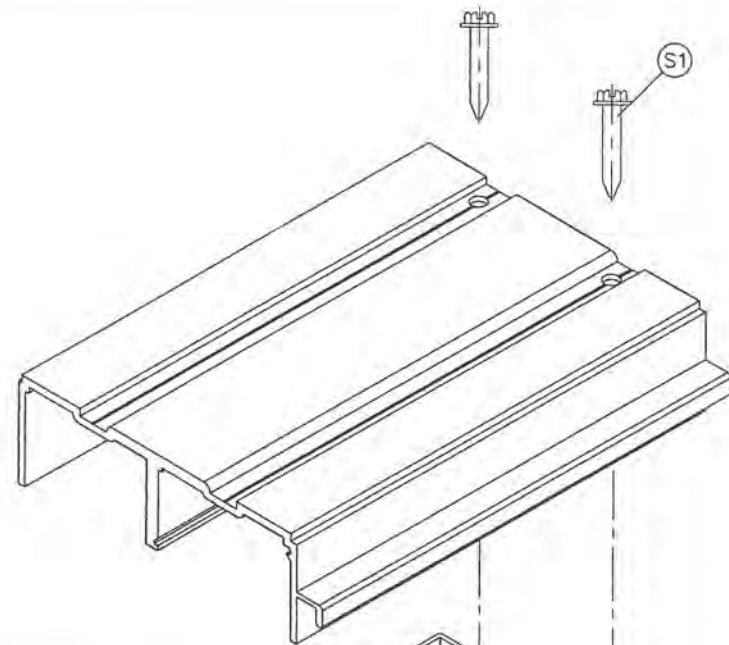
revisions:		no	date	by	description
A	04.04.08	REV. PER BCCO COMMENTS			
B	11.12.09	REV. PER BCCO COMMENTS			
C	03.02.16	GENERAL REVISION			
D	02.26.18	NO CHANGE THIS SHEET			
E	11.19.20	UPDATED TO 2020 FBC			

---

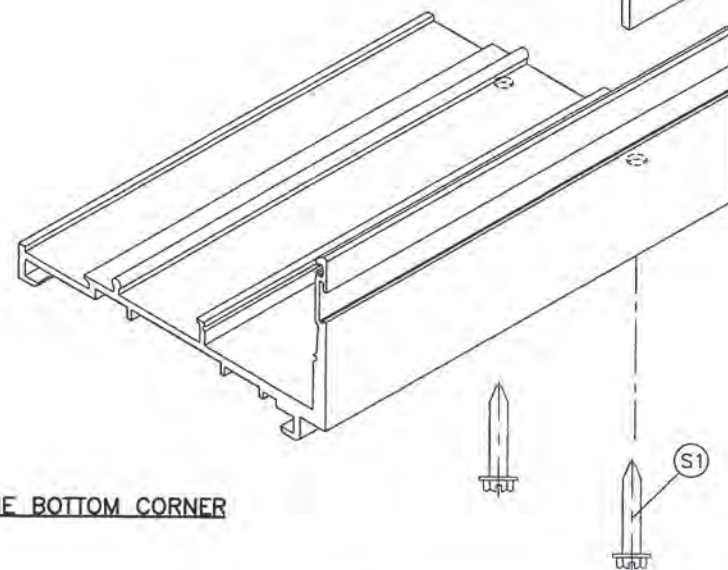
date: 02-07-08	scale: 3/8" = 1"	dr. by: TARIQ	chk. by:	
drawing no. <b>W07-108</b>				
sheet 6 of 7				



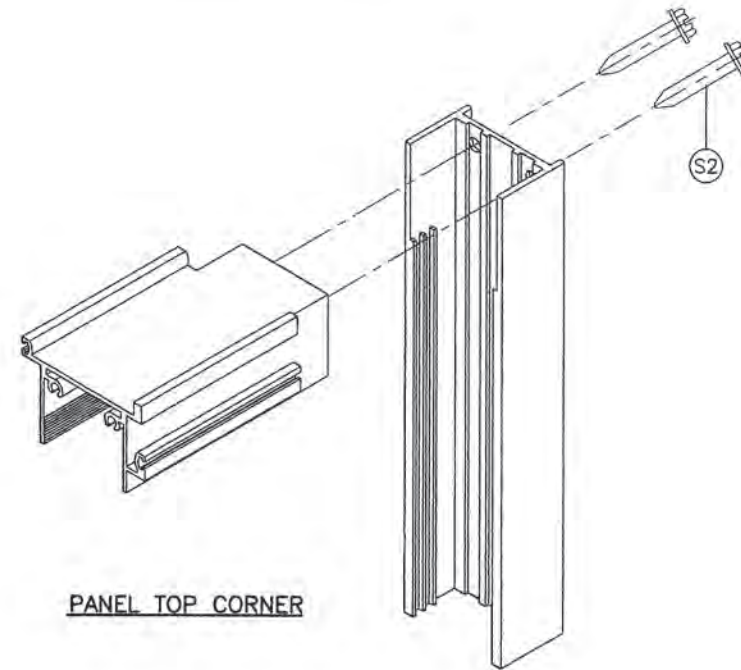
FRAME TOP CORNER



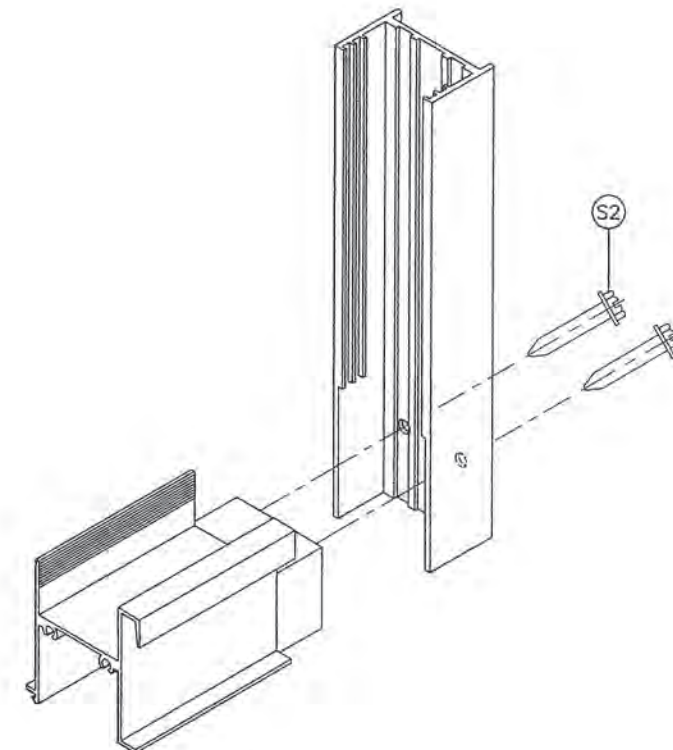
FRAME BOTTOM CORNER




PANEL TOP CORNER



PANEL BOTTOM CORNER



**PRODUCT REVISED**  
as complying with the Florida  
Building Code  
NOA-No. 21-0405.18  
Expiration Date 11/22/2023  
By   
Miami-Dade Product Control



**AL-FAROOQ CORPORATION**  
ENGINEERS & PRODUCT DEVELOPMENT  
9360 SUNSET DRIVE, SUITE 220  
MIAMI, FLORIDA 33173  
TEL. (305) 264-8100 FAX. (305) 262-6978

**a f c**  
COMP-ANL W07-108RC

---

SERIES PH3400 ALUM SLIDING GLASS DOOR (S.M.I.)

**TECNOGLASS, LLC**  
3550 N.W. 49 STREET  
MIAMI, FL. 33142  
TEL. (305) 638-5151 FAX. (305) 638-5158

COMP-ANL W07-108RC

---

revisions:		no	date	by	description
A	04.04.08	REV. PER BCCO COMMENTS			
B	11.12.09	REV. PER BCCO COMMENTS			
C	03.02.16	GENERAL REVISION			
D	02.26.18	NO CHANGE THIS SHEET			
E	11.19.20	UPDATED TO 2020 FBC			

---

date: 02-07-08	scale: 3/8" = 1"	dr. by: TARIQ	chk. by:	
----------------	------------------	---------------	----------	--

---

drawing no.	no.
	W07-108
sheet 7 of 7	