



DEPARTMENT OF REGULATORY AND ECONOMIC RESOURCES (RER)  
BOARD AND CODE ADMINISTRATION DIVISION  
**NOTICE OF ACCEPTANCE (NOA)**

MIAMI-DADE COUNTY  
PRODUCT CONTROL SECTION  
11805 SW 26 Street, Room 208  
Miami, Florida 33175-2474  
T (786) 315-2590 F (786) 315-2599  
[www.miamidade.gov/economy](http://www.miamidade.gov/economy)

**Schlage Lock Company**  
11819 N. Pennsylvania Street  
Carmel, IN 46032

**SCOPE:**

This NOA is being issued under the applicable rules and regulations governing the use of construction materials. The documentation submitted has been reviewed and accepted by Miami-Dade County RER -Product Control Section to be used in Miami Dade County and other areas where allowed by the Authority Having Jurisdiction (AHJ).

This NOA shall not be valid after the expiration date stated below. The Miami-Dade County Product Control Section (In Miami Dade County) and/or the AHJ (in areas other than Miami Dade County) reserve the right to have this product or material tested for quality assurance purposes. If this product or material fails to perform in the accepted manner, the manufacturer will incur the expense of such testing and the AHJ may immediately revoke, modify, or suspend the use of such product or material within their jurisdiction. RER reserves the right to revoke this acceptance, if it is determined by Miami-Dade County Product Control Section that this product or material fails to meet the requirements of the applicable building code.

This product is approved as described herein and has been designed to comply with the Florida Building Code, including the High Velocity Hurricane Zone.

**DESCRIPTION: SteelCraft H Series Single Flush Inswing Commercial Steel Doors w/ Mortise Lock w/dead bolt**

**APPROVAL DOCUMENT:** Drawing No 776W-3 Rev M, titled "Steelcraft H series Single Door (Inswing)", sheets 1 through 12 of 12, prepared by Building Drops, Inc., dated 05-01-02 and last revised on 11/23/2021, signed and sealed by Hermes F. Norero, P.E., bearing the Miami-Dade County Product Control Renewal stamp with the Notice of Acceptance number and expiration date by the Miami-Dade County Product Control Section.

**MISSILE IMPACT RATING: Large Missile Impact Resistant**

**Limitations:**

1. See Design pressure (w/ **Standard** or **Stainless-Steel** lock strike options) in sheet **1**.
2. Doors are **Not** Rated for Water infiltration requirements or Fire ratings, to be reviewed by Building official.
3. **(5) EMA** anchors **[D]** in sheet **7** must be into **Concrete** for **DP > 120 PSF** up to **170 PSF**, unless **(6)**-anchors used
4. Non-grouted 2" face header will require head anchors per sheets **6, 7, 8 & 9**, Grouted 4" header required no anchors.

**LABELING:** Each unit shall bear a permanent label with the manufacturer's name or logo, Cincinnati, Ohio and Series and following statement: "Miami-Dade County Product Control Approved", unless otherwise noted herein.

**RENEWAL** of this NOA shall be considered after a renewal application has been filed and there has been no change in the applicable building code negatively affecting the performance of this product.

**TERMINATION** of this NOA will occur after the expiration date or if there has been a revision or change in the materials, use, and/or manufacture of the product or process. Misuse of this NOA as an endorsement of any product, for sales, advertising or any other purposes shall automatically terminate this NOA. Failure to comply with any section of this NOA shall be cause for termination and removal of NOA.

**ADVERTISEMENT:** The NOA number preceded by the words Miami-Dade County, Florida, and followed by the expiration date may be displayed in advertising literature. If any portion of the NOA is displayed, then it shall be done in its entirety.

**INSPECTION:** A copy of this entire NOA shall be provided to the user by the manufacturer or its distributors and shall be available for inspection at the job site at the request of the Building Official.

This NOA **revises & renews** NOA #20-1005.12 and consists of this page 1 and evidence pages E-1, E-2, E-3, E-4 & E-5, as well as approval document mentioned above.

The submitted documentation was reviewed by **Ishaq I. Chanda, P.E.**



*Ishaq I. Chanda*

NOA No. 21-1228.04  
Expiration Date: February 24, 2027  
Approval Date: February 03, 2022  
Page 1

**NOTICE OF ACCEPTANCE: EVIDENCE SUBMITTED**

**1. Evidence submitted in previous files**

**A. DRAWINGS**

1. Manufacturer's parts and sections drawings (Submitted under file as below).
2. Drawing No **776W-3 Rev I**, titled "Steelcraft H series Single Door (Inswing)", sheets 1 through 9 of 9, prepared by Building Drops, Inc., dated 05-01-02 and last revised on 02/22/17, signed and sealed by Hermes F. Norero, P.E.

**B. TESTS (Submitted under files #15-0427.04/#13-1217.11/#13-0617.31/#11-0921.12/ #10-1206.02)**

**1. Test report on**

- 1) Air Infiltration Test, per TAS 202-94
- 2) Uniform Static Air Pressure Test, Loading per TAS 202-94
- 3) Large Missile Impact Test per FBC, TAS 201-94
- 4) Cyclic Wind Pressure Loading per FBC, TAS 203-94
- 5) Forced Entry Test, per PA 202-94

Along with manufacturer's parts and section drawings of Single Steel doors w/ Stainless steel continuous Hinges & modified Hat stiffeners, marked by Certified Testing Lab, Test Reports No(s). **CTLA-3045W** dated February 16, 2015, signed and sealed by Ramesh Patel, P.E.

**2. Test report on**

- 1) Air Infiltration Test, per TAS 202-94
- 2) Uniform Static Air Pressure Test, Loading per TAS 202-94
- 3) Large Missile Impact Test per FBC, TAS 201-94
- 4) Cyclic Wind Pressure Loading per FBC, TAS 203-94
- 5) Forced Entry Test, per PA 202-94

Along with manufacturer's parts and section drawings of double outswing steel doors w/CVC panic exit and Peep hole, marked by Element Material Technology, Test Reports No(s). **ESP011623P** dated May 14, 2013, signed and sealed by Jason Sheen, P.E.

**3. Test report on**

- 1) Air Infiltration Test, per TAS 202-94
- 2) Water Resistance Test per FBC TAS 202-94(Not conducted)
- 3) Uniform Static Air Pressure Test, Loading per TAS 202-94
- 3) Large Missile Impact Test per FBC, TAS 201-94
- 4) Cyclic Wind Pressure Loading per FBC, TAS 203-94
- 5) Forced Entry Test, per PA 202-94

along with manufacturer's parts and section drawings of Single flush Inswing / Outswing steel doors, marked by Certified Testing Lab, Test Reports No(s). **CTLA-776W -2 & CTLA-776W -3** both dated June 07, 2002, both signed and sealed by Ramesh Patel, P.E.

Note: Test report No. **CTLA-776W -2** has been issued an addendum letter dated 12/03/09, issued by Certified Testing Lab, signed and sealed by Ramesh Patel, P.E.

- 4 Additional Reference test reports per CTLA 776W-1 and CTLA 1035W-2 for anchor options qualifications.

*Ishaq I. Chanda*

---

**Ishaq I. Chanda, P.E.**  
**Product Control Unit Supervisor**  
**NOA No. 21-1228.04**  
**Expiration Date: February 24, 2027**  
**Approval Date: February 03, 2022**

**Schlage Lock Company**

**NOTICE OF ACCEPTANCE: EVIDENCE SUBMITTED**

**C. CALCULATIONS:**

1. Anchor verification calculation and analysis prepared by Building Drops, Inc., dated 11-28-16 and last revised on 02/11/2017, signed and sealed by Hermes F. Norero, P.E.
2. Hinge Load Evaluation report dated 01/04/04, prepared, signed & sealed by Thomas Gordon, P.E. (submitted under #09-0929.04).

**D. QUALITY ASSURANCE BY**

1. Miami Dade Department of Regulatory and Economic Resources (RER).

**E. MATERIAL CERTIFICATIONS (submitted under file # listed above)**

1. Tensile test report # CTLA-776W (0194H), dated 02/25/02 prepared by CTL Architectural Division, sheet samples, tested per ASTM E8, signed & sealed by Ramesh Patel, P.E.
2. Test Report No. **3094867SAT-001**, April 13, 2006, issued by Intertek for "Surface Burning Characteristics of Building material" per ASTM E84 and self-Ignition per ASTM 1929D for "EPS", issued to Falcon Foam, a Div. of Atlas Roofing, re-named as "ATLAS EPS".
3. Tensile Test report No. A103W1-Test 1, 2 & 3 dated 23 APR 03 per ASTM E-8 for steel face sheet, prepared by Certified Testing laboratory, signed and sealed by Ramesh Patel, P.E.
4. Test Report No. **16206-122543 (1015P200(3))**, dated November 29, 2004 for "Surface Burning Characteristics of Building material" per ASTM E84 and self-Ignition per ASTM 1929D for "Polyisocyanurate" issued by Omega Point Lab, Inc. to Elliot Company, Indianapolis, IN.
5. Material Safety Data Sheet for "Pyrophoric core PSL P250-C60" manufactured by Pyrophobic System LTD, Canada.
6. Material Safety Data sheet for "Calcium Silicate Mineral Block" manufactured by Marshfield Door System Inc., Wisconsin.

**F. STATEMENTS: Except items #1 & 2, all the balanced items submitted under files listed above.**

1. Letter of adoption of another Engineer's work per FLA rule 61G15-27, dated NOV 11, 2016, prepared by Building Drops, Inc., signed and sealed by Hermes F. Norero, P.E.
2. Letter of conformance to FBC 2014 (5<sup>th</sup> Edition), dated 11/11/16, prepared by Building Drops, Inc., signed and sealed by Hermes F. Norero, P.E.
3. Ingersoll-Rand press release, dated 12/10/12, integrating the brands of Ingersoll-Rand and Schlage among others.
4. Department of State Certification of Reinstatement for **SCHLAGE LOCK COMPANY, LLC** as a limited liability company, active and organized under the laws of the State of Florida, dated 03/17/06 and filed with the Secretary of State
5. Certification of Formation dated 12-08-2003 of Schlage Lock Company, LLC, issued by Secretary of State of Delaware.
6. Statement letter dated Nov. 26, 2013 issued by Ingersoll-Rand for name change, signed by Jim Donlan, Compliance Engineer.
7. Laboratory Statement of compliance, part of the above referenced test reports.
8. Addendum letter dated Jan 20, 2011, issued by Certified Testing Lab confirming testing of Alum continuous hinges w/ marked-up drawings, signed and sealed by Ramesh Patel, P.E.
9. Addendum letter dated DEC 19, 2011, issued by Certified Testing Lab verifying wire anchors, strength of grout, stud anchor, Strike plate and MA series Mortise Lock supplemented w/ marked-up drawings, signed and sealed by Ramesh Patel, P.E. *Ishaq I. Chanda*

---

**Ishaq I. Chanda, P.E.**  
**Product Control Unit Supervisor**  
**NOA No. 21-1228.04**  
**Expiration Date: February 24, 2027**  
**Approval Date: February 03, 2022**

**Schlage Lock Company**

**NOTICE OF ACCEPTANCE: EVIDENCE SUBMITTED**

- G. OTHER** *(Except items #1, all other items submitted under files listed above)*
1. This NOA revises & renews NOA #15-0427.04, expiring on 02/24/2022.
  2. Test proposal # 14-1086 dated AUG 29, 2014 approved by RER.
  3. Test proposal dated 12/03/09 for continuous hinges & SS strike plate, approved by BCCO.
  4. Additional marked-up drawings provided as part of addendum letters by Certified Testing laboratory, Inc.
  5. Photo of Stainless-Steel Strike plate supplied by Ingersoll-Rand.
  6. Schlage & Falcon Mortise Locks brochures / catalogs supplied by Ingersoll-Rand.
  7. Technical brochures of butt Hinges & continuous Hinges supplied by Ingersoll-Rand.
- 2. Evidence submitted under previous submittal.**
- A. DRAWINGS**
1. Drawing No 776W-3 Rev J, titled "Steelcraft H series Single Door (Inswing)", sheets 1 through 9 of 9, prepared by Building Drops, Inc., dated 05-01-02 and last revised on 10/24/17, signed and sealed by Hermes F. Norero. P.E. Note: This revision consists of editorial FBC 2017 compliance note only.
- B. TEST**
1. None
- C. CALCULATIONS**
1. None
- D. QUALITY ASSURANCE**
1. Miami Dade Department of Regulatory and Economic Resources (RER).
- E. MATERIAL CERTIFICATIONS**
1. None.
- F. STATEMENTS**
1. Statement letter of conformance to FBC 2017 (6<sup>th</sup> Edition) dated 09/20/17, prepared by Building Drops, Inc., signed and sealed by Hermes F. Norero, P.E.
  2. Statement letter of extent of drawing changes dated 12/11/17, prepared by Building Drops, Inc., signed and sealed by Hermes F. Norero, P.E.
- G. OTHER**
1. This NOA revises NOA # 16-1206.04, expiring 02/24/22.
- 3. Evidence submitted under previous approval.**
- A. DRAWINGS**
1. Drawing No 776W-3 Rev K, titled "Steelcraft H series Single Door (Inswing)", sheets 1 through 9 of 9, prepared by Building Drops, Inc., dated 05-01-02 and last revised on 03/04/2020, signed and sealed by Hermes F. Norero. P.E. (Note: This revision consists of address change only).
- B. TEST**
1. None
- C. CALCULATIONS** (submitted under file #17-1026.24)
1. None.

*Ishaq I. Chanda*

---

**Ishaq I. Chanda, P.E.**  
**Product Control Unit Supervisor**  
**NOA No. 21-1228.04**  
**Expiration Date: February 24, 2027**  
**Approval Date: February 03, 2022**

**Schlage Lock Company**

**NOTICE OF ACCEPTANCE: EVIDENCE SUBMITTED**

**D. QUALITY ASSURANCE**

1. Miami Dade Department of Regulatory and Economic Resources (RER).

**E. MATERIAL CERTIFICATIONS**

1. None.

**F. STATEMENTS**

1. Statement letter of conformance to FBC 2017 (6<sup>th</sup> Edition) dated 09/20/17, prepared by Building Drops, Inc., signed and sealed by Hermes F. Norero, P.E. (submitted under file #17-1026.24)
2. Application request of address change only by Schlage Lock company, signed by Donlan James.

**G. OTHER**

1. This NOA revises NOA # 17-1026.24, expiring 02/24/22.

**4. Evidence submitted under previous approval.**

**A. DRAWINGS**

1. Drawing No 776W-3 Rev L, titled "Steelcraft H series Single Door (Inswing)", sheets 1 through 9 of 9, prepared by Building Drops, Inc., dated 05-01-02 and last revised on 09/13/2020, signed and sealed by Hermes F. Norero. P.E.

**B. TEST**

1. None.

**C. CALCULATIONS**

1. None.

**D. QUALITY ASSURANCE**

1. Miami Dade Department of Regulatory and Economic Resources (RER).

**E. MATERIAL CERTIFICATIONS**

1. None.

**F. STATEMENTS**

1. Statement letter of conformance to FBC 2020 (7<sup>th</sup> Edition) dated 01/29/21, prepared by Building Drops, Inc., signed and sealed by Hermes F. Norero, P.E.
2. Statement letter dated 09/02/20 issued by Allegion in reference to DWG. revision changes, signed by Donlan James, code compliance Engineer.

**G. OTHER**

1. This NOA revises NOA # 20-0310.02, expiring 02/24/22.

*Ishaq I. Chanda*

---

**Ishaq I. Chanda, P.E.**  
**Product Control Unit Supervisor**  
**NOA No. 21-1228.04**  
**Expiration Date: February 24, 2027**  
**Approval Date: February 03, 2022**

**Schlage Lock Company**

**NOTICE OF ACCEPTANCE: EVIDENCE SUBMITTED**

**5. New Evidence submitted.**

**A. DRAWINGS**

1. Drawing No **776W-3 Rev M**, titled “Steelcraft H series Single Door (Inswing)”, sheets 1 through 12 of 12, prepared by Building Drops, Inc., dated 05-01-02 and last revised on 11/23/2021, signed and sealed by Hermes F. Norero. P.E.

**B. TEST**

1. None.

**C. CALCULATIONS**

1. None.

**D. QUALITY ASSURANCE**

1. Miami Dade Department of Regulatory and Economic Resources (RER).

**E. MATERIAL CERTIFICATIONS**

1. None.

**F. STATEMENTS**

1. Statement letter of conformance to FBC 2020 (7<sup>th</sup> Edition) dated 12/17/21, prepared by Building Drops, Inc., signed and sealed by Hermes F. Norero, P.E.

**G. OTHER**

1. This NOA revises & renews NOA # **20-1005.12**, expiring 02/24/27.

*Ishaq I. Chanda*

---

**Ishaq I. Chanda, P.E.**  
**Product Control Unit Supervisor**  
**NOA No. 21-1228.04**  
**Expiration Date: February 24, 2027**  
**Approval Date: February 03, 2022**



s:\projects\alegion\md-21-1036 - md submittal - noa 20-1005.12 renewal & noa 20-1005.13 renewal\dwgs\20-1005.12\76w-3 2021-12-17.dwg 12/17/2021 11:15 AM

SCHLAGE LOCK COMPANY, LLC

STEELCRAFT H SERIES SINGLE FLUSH INSWING COMMERCIAL

STEEL DOOR W/ MORTISE LOCKS

- GENERAL NOTES:
1.

THESE PRODUCTS HAVE BEEN TESTED TO HVHZ PROTOCOLS TAS201, 202, & 203-94 AND COMPLY WITH THE 2020 (7TH EDITION) FLORIDA BUILDING CODE.
2.

THE DOORS ARE LARGE MISSILE IMPACT RATED.
3.

DISSIMILAR MATERIAL IN CONTACT SHALL MEET FBC REQUIREMENTS.

- NOTES:
1.

ONE ROW OF PS074 WEATHERSTRIPPING PER JAMB AND HEAD. INSTALL PER SHEET 5
2.

ANCHORING REQUIREMENTS: SEE SHEETS 6, 7, 8 AND 9 FOR APPROVED ANCHOR AND INSTALLATION REQUIREMENTS.
3.

HINGE REQUIREMENTS: MINIMUM (3) HINGES LOCATIONS: 9.75" FROM RABBET IN HEAD TO CL OF TOP HINGE 10.38 FROM FLOOR TO CL OF BOTTOM HINGE, EQUALLY SPACED IN BETWEEN OR (1) CONTINUOUS HINGE
4.

SEE SHEET 4 & 5 FOR AVAILABLE STANDARD DOOR / FRAME CONFIGURATIONS.
5.

HARDWARE INSTALLATION AS PER MANUFACTURER'S INSTRUCTIONS.
6.

4" FACE HEAD IS AVAILABLE WHEN FRAME IS GROUTED WITH CONCRETE, TO MAX FRAME HEIGHT SHOWN.
7.

APPLY CAULK AS NEEDED.
8.

PRODUCT IS NOT APPROVED WHERE WATER INFILTRATION REQUIREMENT IS NEEDED.
9.

SEE SHT. 2 FOR ELEVATION AND SIZE.
10.

SEE SHT. 6, 7, 8 AND 9 FOR WALL CONSTRUCTION, ANCHORING SYSTEM OPTIONS AND INSTALLATION.
11.

SEE SHT. 5 FOR AVAILABLE OPENING SIZES, JAMB DEPTHS AND SPECIFICATIONS.
12.

APPROVED HARDWARE SHOWN, INSTALLATION IS PER MANUFACTURER'S INSTRUCTIONS.
13.

STUD WALL CONSTRUCTION STRUCTURAL MEMBERS MUST BE DESIGNED TO COMPLY WITH APPROVED DESIGN PRESSURE RATING WITH 283#/FT BASIS.
14.

NUMBER OF ANCHORS FOR VARIOUS OPENING HEIGHTS IS LIMITED BY MAXIMUM DISTANCE BETWEEN ANCHORS, SHOWN ON SHEETS 6, 7, 8 AND 9.
15.

HEAD SECTION CAN HAVE 4" FACE DIMENSION WHEN IT'S GROUTED FULL. 2" FACE HEAD WITHOUT GROUT REQUIRES (3) EXPANSION OR LAG BOLTS IN HEAD 6" FROM EACH JAMB AND EQUALLY SPACED.
16.

ELEVATIONS SHOWN FROM INTERIOR FOR INSWING APPLICATIONS.

- CONSTRUCTION NOTES:
1.

DOOR CONSTRUCTION

1.1.

NOMINAL DOOR THICKNESS - 1 3/4"

1.2.

DOORS AVAILABLE IN FLAT AND EMBOSSED SURFACE MODELS (SEE TABLE.1)

1.3.

ALL DOORS ARE FLUSH - NO LITES OR LOUVERS APPROVED

1.4.

DOOR VIEWERS ARE PERMITTED TO BE USED IN A DOOR WITH A DESIGN RATING OF +/-75 PSF OR LESS
2.

FRAME CONSTRUCTION

2.1.

NOMINAL JAMB DEPTH - 5 3/4", STOP HEIGHT - 5/8"

2.2.

FRAMES AVAILABLE AS FLUSH (F-SERIES) AND MULTI-USE (MU-SERIES) (SEE TABLE. 4)
3.

FOR DOOR/FRAME MATERIAL SPECIFICATIONS REFERENCE SEE TABLE 2 AND 3.
4.

FRAME CORNER WELD: CONTINUOUS BACK WELD WITH FULL PENETRATION TO FACE SEAM. GRIND, SMOOTH, PRIME, & PAINT. WELD CLASSIFICATION - E70XX. SEE SHEET 5 FOR DETAIL.

TABLE OF CONTENTS	
SHEET	SHEET DESCRIPTION
1	TOC, DESIGN PRESSURE TABLE & NOTES
2	OPENING DIMENSIONS & BOM
3	DOOR & FRAME SECTION VIEWS
4	DOOR PANEL & CORE DETAILS
5	FRAME DETAILS & CORNER CONSTRUCTION
6	ANCHORS - WIRE, WOOD STUD, STEEL STUD
7	ANCHORS - EMA IN CONCRETE OR CMU
8	ANCHORS - EMA IN WOOD STUD, MASONRY T IN CMU
9	ANCHOR DETAILS
10	HINGES, TRESHOLDS AND CHANNEL REINFORCEMENT
11	HINGES, TRESHOLDS AND CHANNEL REINFORCEMENT (CONT.)
12	LATCH & STRIKE HARDWARE DETAILS

DESIGN PRESSURE RATING (INSWING DOOR)			IMPACT RATING
LOCK/STRIKE PLATE OPTION	WHERE WATER INFILTRATION REQUIREMENT IS NEEDED	WHERE WATER INFILTRATION REQUIREMENT IS <u>NOT</u> NEEDED*	LARGE AND SMALL MISSILE IMPACT (LMI - 50 FPS)
STANDARD	NOT APPROVED	+120 PSF / -120 PSF	
STAINLESS STEEL SS 304 OR 306 FY MIN= 31.2 KSI	NOT APPROVED	+170 PSF / -170 PSF	

- \*

WATER INFILTRATION RESISTANCE IS NOT REQUIRED WHEN DOOR ASSEMBLIES INSTALLED IN NON-HABITABLE AREAS WHERE THE DOOR ASSEMBLY AND AREA ARE DESIGNED TO ACCEPT WATER INFILTRATION, OR IF PROTECTED BY OVERHANG WITH RATIO LENGTH/HEIGHT EQUAL OR GREATER THAN 1.
- \*

DOOR ASSEMBLIES MEET THE 2020 (7TH EDITION) FBC AIR INFILTRATION REQUIREMENTS.

PRODUCT RENEWED

as complying with the Florida

Building Code

NOA-No. 21-1228.04

Expiration Date 02/24/2027

By Ishaq I. Chande

Miami-Dade Product Control



SCHLAGE LOCK COMPANY, LLC  
11819 N. PENNSYLVANIA STREET  
CARMEL, IN 46032  
  
MANUFACTURING FACILITY:  
STEELCRAFT  
9017 BLUE ASH ROAD  
CINCINNATI, OH 45242  
PH: (317) 715-4073

TITLE:STEELCRAFT H SERIES SINGLE  
FLUSH INSWING COMMERCIAL  
STEEL DOOR W/ MORTISE LOCKS

TOC, DESIGN PRESSURE TABLE & NOTES

PREPARED BY:  
BUILDING DROPS, INC.  
398 E. DANIA BEACH BLVD., STE. 338  
DANIA BEACH, FL 33004  
PH: (954) 399-8478  
FAX: (954) 744-4738  
WEB: www.buildingdrops.com

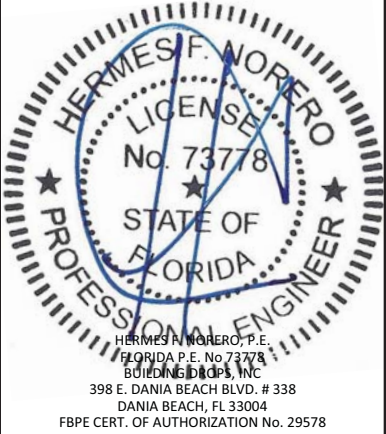


BUILDING DROPS

REMARKS	BY	DATE
2017 FBC UPDATE	-	09.20.17
ADDRESS UPDATE	-	02.25.20
2020 FBC UPDATE	SM	07.05.20
FORMAT UPDATE	LL	11.30.21

THE INSTALLATION DETAILS DESCRIBED HEREIN ARE GENERIC AND MAY NOT REFLECT ACTUAL CONDITIONS FOR A SPECIFIC SITE. IF SITE CONDITIONS CAUSE INSTALLATION TO DEVIATE FROM THE REQUIREMENTS DETAILED HEREIN, A LICENSED ENGINEER OR ARCHITECT SHALL PREPARE SITE SPECIFIC DOCUMENTS FOR USE WITH THIS DOCUMENT. DEVIATION IN NOA FOR HVHZ WILL REQUIRE ONE-TIME APPROVAL FROM MIAMI-DADE COUNTY.

Digitally signed by Hermes F Norero  
Reason: I am approving this document  
Date: 2022.01.21 12:03:24 -05'00'



DATE: 11.23.21

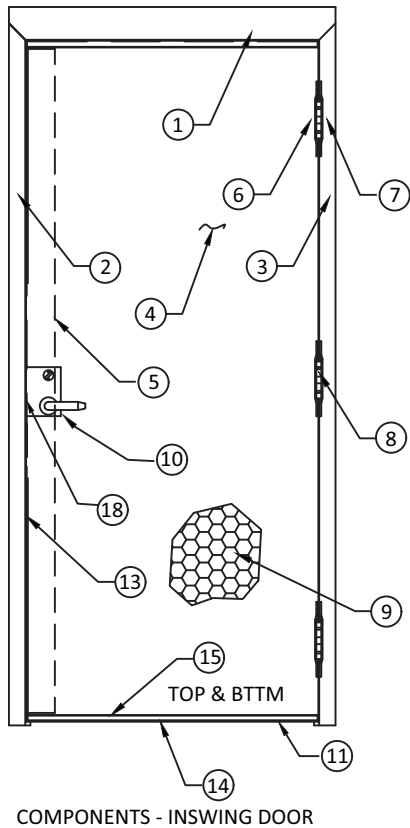
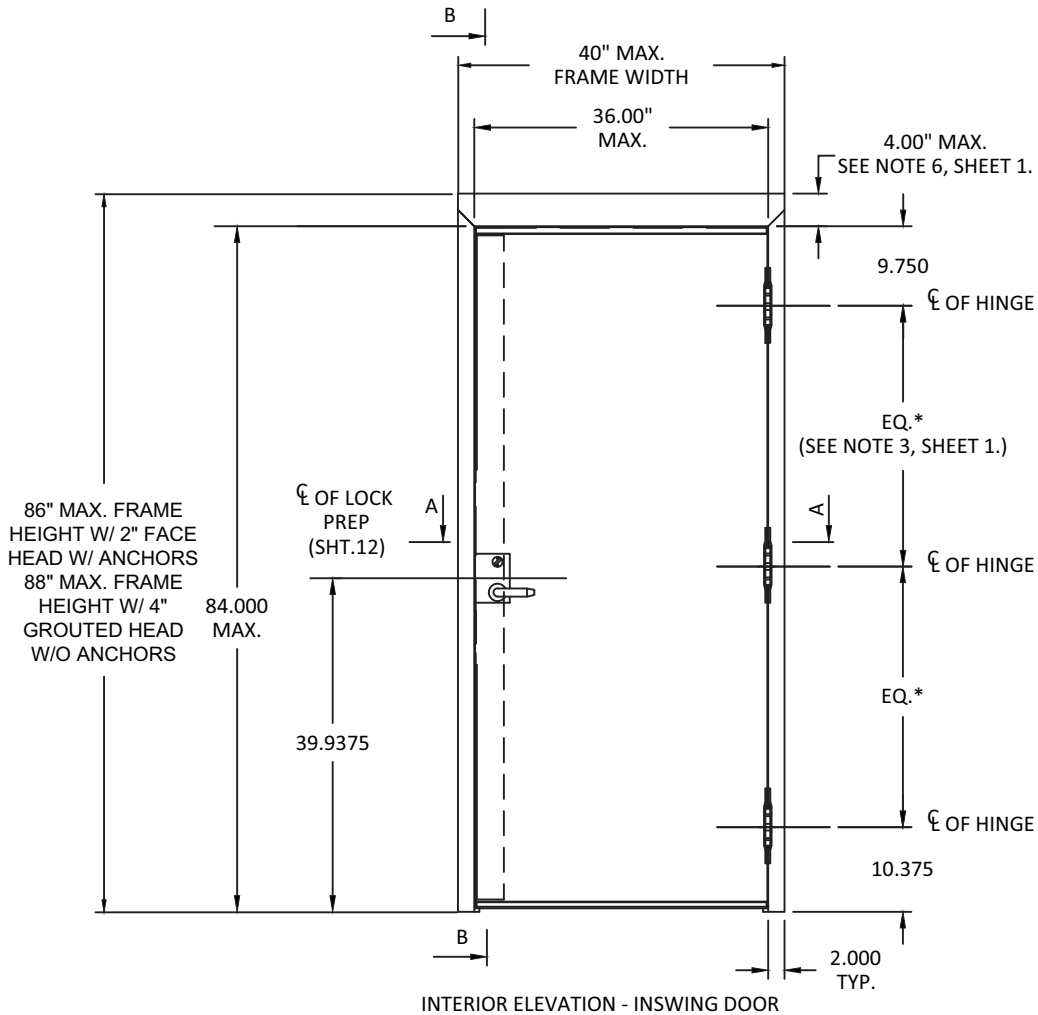
DWG. BY: LLCHK. BY: HFN

SCALE: NTS

DWG. #:776W-3REV M

SHEET: 1 OF 12

s:\projects\allegion\md-21-1036 - md submittal - noa 20-1005,12 renewal & noa 20-1005,13 renewal\dwgs\20-1005,12\776w-3 2021-12-17.dwg  
12/17/2021 11:15 AM



SEE SHEETS 6, 7, 8 AND 9 FOR ANCHOR LOCATIONS

ITEM	QUANTITY	DESCRIPTION	MATERIAL	SIZE
1	1	HEAD SEE SHT 3 & 5. ASTM A366	.053" MIN. STL	MAX. 40"
2	1	STRIKE JAMB. SEE SHT 5. ASTM A366	.053" MIN. STL	MAX. 86"-88"
3	1	HINGE JAMB SEE SHT 5. ASTM A366	.053" MIN. STL	MAX. 86"-88"
4	1	DOOR SLAB	SEE SHT 5	3'0"(36") X 7'0"(84") MAX.
5	1	LOCK SIDE REINFORCEMENT CHANNEL SHT 11	.099" MIN. STL	3.5" X 81.44" MAX.
6	NOTE 3, SHT1.	HINGE REINFORCEMENT DOOR ASTM A621 SHT 10	.167" MIN. STL.	1.23" X 9.19"
7	NOTE 3, SHT1.	HINGE REINFORCEMENT FRAME ASTM A621 SHT 10	.167" MIN. STL.	1.28" X 9.19"
8	NOTE 3, SHT1.	4.5" X 4.5" BUTT HINGES (SEE SHT. 11)	.134 MIN.	(4) #12-24 MS PER HINGE
		OPTIONAL CONTINUOUS HINGE (SEE SHT. 11)	.750" MIN.STL / .11 ALUM.	MAX. 84"
9	1	CORE MATERIAL:	SEE SHEET 4	35.66" X 81.5" MAX.
		D) HONEYCOMB C) STEEL STIFFENED		
		A&F) POLYSTYRENE B&F) POLYURETHANE		
		E) MINERAL BOARD TEMPERATURE RISE CORE		
10	1	LOCKING HARDWARE - LOCKSET	SEE SHEET 12	
		1) SCHLAGE L/LV9400 SERIES MORTISE LOCK W/DEADBOLT		
		2) FALCON MA-SERIES MORTISE LOCK W/ DEADBOLT		
11	1	THRESHOLD SILL W/BUMPER GASKET. SHT. 10	.125" ALUM. 6063 T5	5.5" X 0.5" X 36" MAX
		1) PEMKO 2005AS 3) ZERO 566A		
		2) NAT'L GUARD 950A		
12	NOTE 2, SHT1.	JAMB ANCHOR (LOCK-IN OR WELD-IN) MIN 18 GA	SEE SHTS. 6, 7 & 8	
13	3	PSO74 WEATHER STRIPPING. SHEET 10	TPE	MAX. 21'
14	1	FAS-SEAL DOOR SWEEP	TPE	MAX. 35.66"
15	2	END CHANNEL ASTM A924 (14 GAGE) SHT 4	.070" MIN. STL	.69" X 1.66" X 35.66" MAX.
16	AS NEEDED	BUTYL RUBBER OR 100% SILICONE		
17	1	TOP CAP GALV. A60 ASTM A924 (24 GAGE) SHT 4	.020" MIN. STL	0.5" X 1.76" X 36" MAX
18	1	STRIKE REINFORCEMENT FRAME ASTM A366 SHT 3	.053" MIN. STL	1.31" X 8.38"
19		IVES 698/U698 VIEWER SHT 10	BRASS	
20	NOTE 3, SHT1.	.045" (19 GA.) WIRE DOOR HINGE SPACER SHT 10	.045" MIN. STL	

**PRODUCT RENEWED**  
as complying with the Florida  
Building Code  
NOA-No. 21-1228.04  
Expiration Date 02/24/2027  
By Isheq I. Chank  
Miami-Dade Product Control



SCHLAGE LOCK COMPANY, LLC  
11819 N. PENNSYLVANIA STREET  
CARMEL, IN 46032

MANUFACTURING FACILITY:  
STEELCRAFT  
9017 BLUE ASH ROAD  
CINCINNATI, OH 45242  
PH: (317) 715-4073

TITLE:STEELCRAFT H SERIES SINGLE  
FLUSH INSWING COMMERCIAL  
STEEL DOOR W/ MORTISE LOCKS

OPENING DIMENSIONS & BOM

PREPARED BY:

BUILDING DROPS, INC.

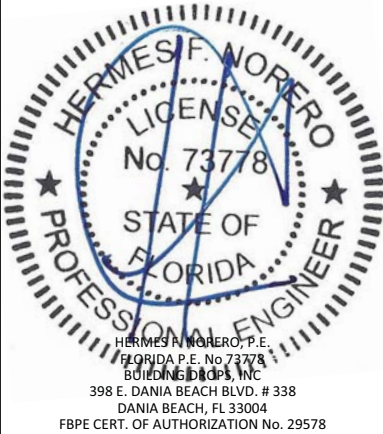
398 E. DANIA BEACH BLVD., STE. 338  
DANIA BEACH, FL 33004

PH: (954) 399-8478  
FAX: (954) 744-4738  
WEB: www.buildingdrops.com



REMARKS	BY	DATE
2017 FBC UPDATE	-	09.20.17
ADDRESS UPDATE	-	02.25.20
2020 FBC UPDATE	SM	07.05.20
FORMAT UPDATE	LL	11.30.21

THE INSTALLATION DETAILS DESCRIBED HEREIN ARE GENERIC AND MAY NOT REFLECT ACTUAL CONDITIONS FOR A SPECIFIC SITE. IF SITE CONDITIONS CAUSE INSTALLATION TO DEVIATE FROM THE REQUIREMENTS DETAILED HEREIN, A LICENSED ENGINEER OR ARCHITECT SHALL PREPARE SITE SPECIFIC DOCUMENTS FOR USE WITH THIS DOCUMENT. DEVIATION IN NOA FOR HVHZ WILL REQUIRE ONE-TIME APPROVAL FROM MIAMI-DADE COUNTY.



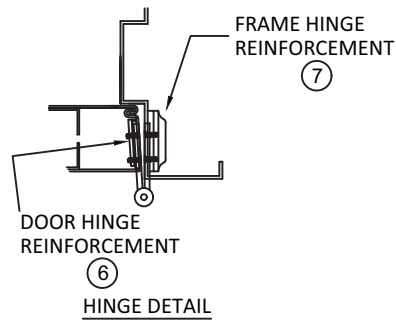
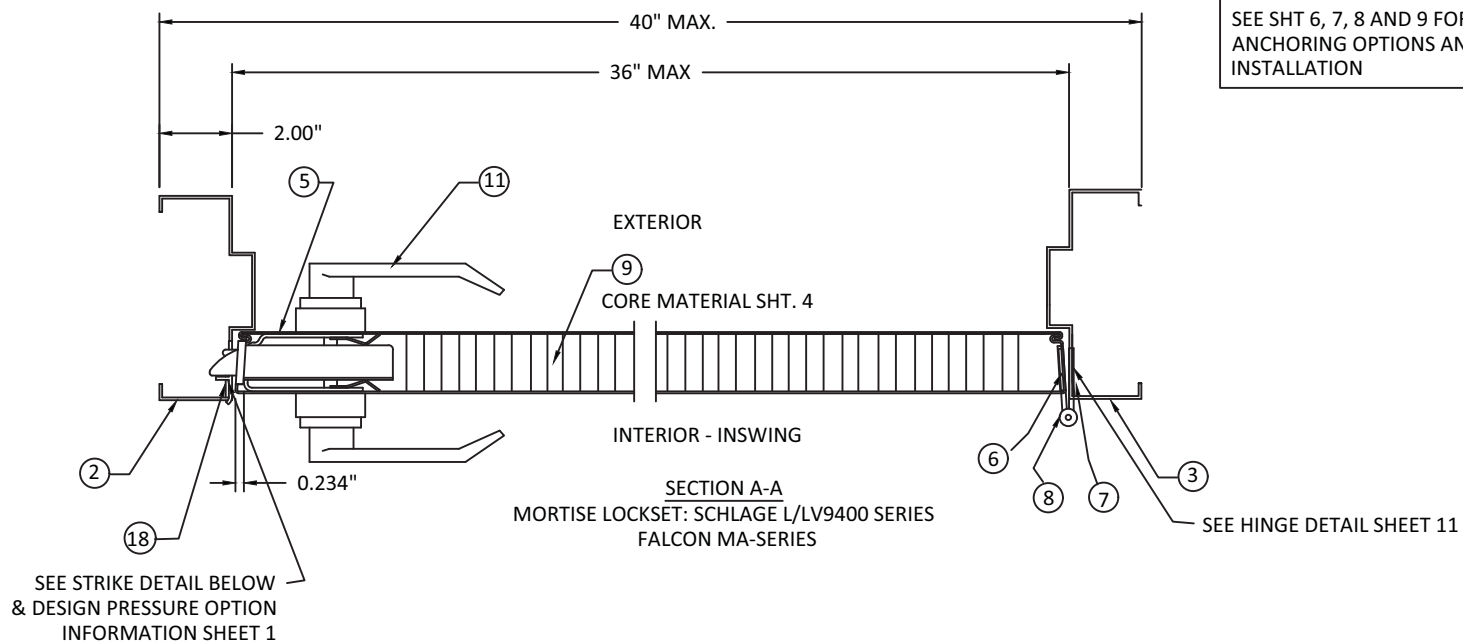
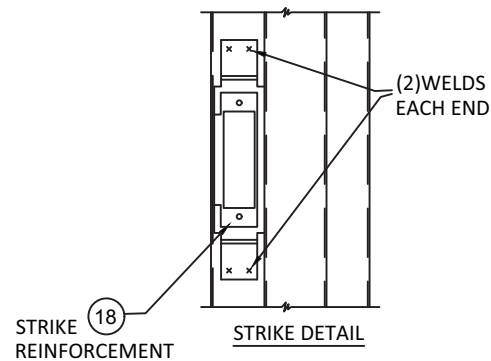
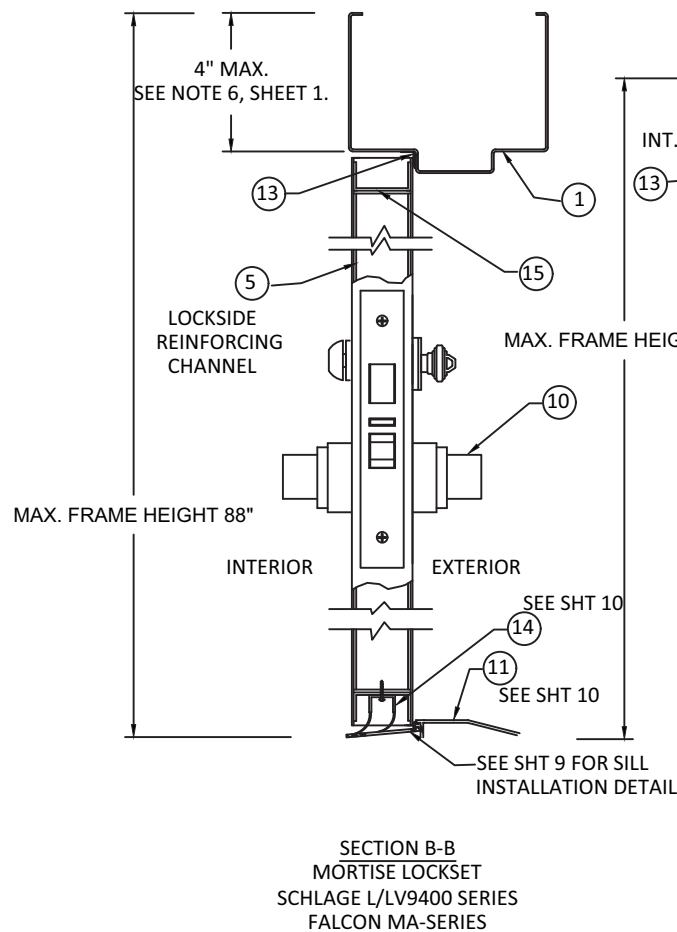
DATE:	11.23.21
DWG. BY:	LL
CHK. BY:	HFN
SCALE:	NTS
DWG. #:	776W-3
REV	M
SHEET:	

2

OF 12



s:\projects\allegion\md-21-1036 - md submittal - noa 20-1005,12 renewal & noa 20-1005,13 renewal\dwgs\20-1005,12\76w-3 2021-12-17.dwg  
12/17/2021 11:15 AM



**PRODUCT RENEWED**  
as complying with the Florida  
Building Code  
NOA-No. 21-1228.04  
Expiration Date 02/24/2027  
By Ishag I. Chande  
Miami-Dade Product Control



SCHLAGE LOCK COMPANY, LLC  
11819 N. PENNSYLVANIA STREET  
CARMEL, IN 46032

MANUFACTURING FACILITY:  
STEELCRAFT  
9017 BLUE ASH ROAD  
CINCINNATI, OH 45242  
PH: (317) 715-4073

TITLE: STEELCRAFT H SERIES SINGLE  
FLUSH INSWING COMMERCIAL  
STEEL DOOR W/ MORTISE LOCKS

DOOR & FRAME SECTION VIEWS

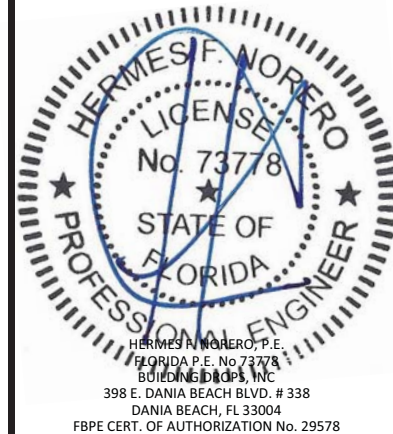
PREPARED BY: BUILDING DROPS, INC.

398 E. DANIA BEACH BLVD., STE. 338  
DANIA BEACH, FL 33004  
PH: (954) 399-8478  
FAX: (954) 744-4738  
WEB: www.buildingdrops.com



REMARKS	BY	DATE
2017 FBC UPDATE	-	09.20.17
ADDRESS UPDATE	-	02.25.20
2020 FBC UPDATE	SM	07.05.20
FORMAT UPDATE	LL	11.30.21

THE INSTALLATION DETAILS DESCRIBED HEREIN ARE GENERIC AND MAY NOT REFLECT ACTUAL CONDITIONS FOR A SPECIFIC SITE. IF SITE CONDITIONS CAUSE INSTALLATION TO DEVIATE FROM THE REQUIREMENTS DETAILED HEREIN, A LICENSED ENGINEER OR ARCHITECT SHALL PREPARE SITE SPECIFIC DOCUMENTS FOR USE WITH THIS DOCUMENT. DEVIATION IN NOA FOR HVHZ WILL REQUIRE ONE-TIME APPROVAL FROM MIAMI-DADE COUNTY.



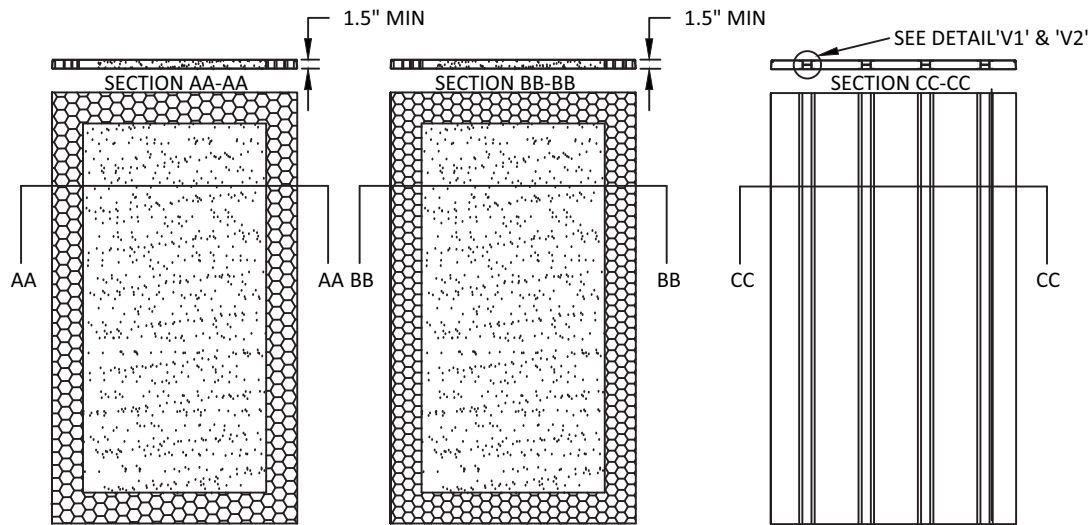
DATE:	11.23.21
DWG. BY:	LL
CHK. BY:	HFN
SCALE:	NTS
DWG. #:	776W-3
REV	M
SHEET:	

3

OF 12

12/17/2021 11:15 AM

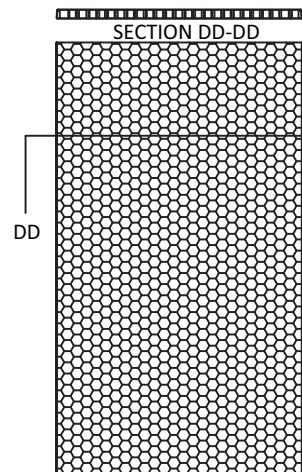
s:\projects\allegion\md-21-1036 - md submittal - noa 20-1005.12 renewal & noa 20-1005.13 renewal\dwgs\20-1005.12\76w-3 2021-12-17.dwg



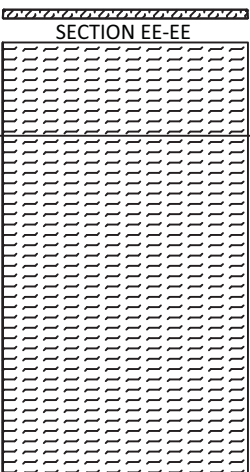
(A) EXPANDED POLYSTYRENE FOAM BY ATLAS EPS DENSITY: 1.0 LBS/FT<sup>3</sup>

(B) POLYISOCYANURATE (POLYURETHANE) BY ELLIOT CO. OF INDIANAPOLIS, IN DENSITY: 2 LBS/FT<sup>3</sup>

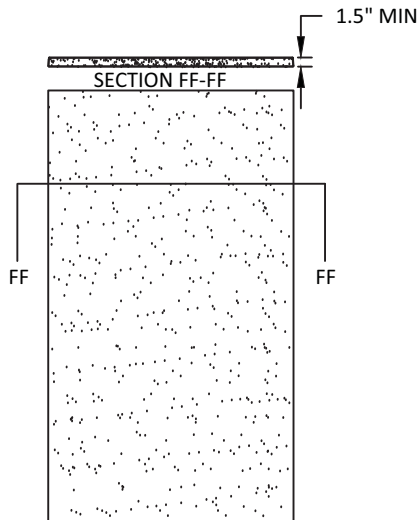
(C) STEEL STIFFENED HAT SHAPED SECTIONS 20 GA. MIN.



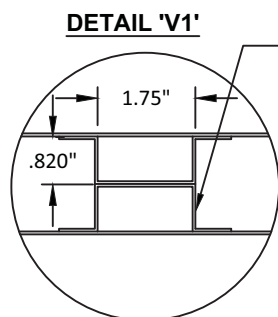
(D) HONEYCOMB KRAFT PAPER.



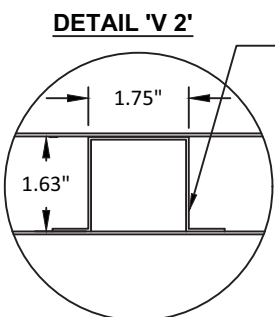
(E) TEMPERATURE RISE CORE MINERAL FIBER BOARD DENSITY: 17±1.5 LBS/FT<sup>3</sup> BY PYROPHOBIC SYSTEM LTD PYROPHOBIC PSL-P250C-60 OR MARSHFIELD DOOR SYSTEMS CALCIUM SILICATE MINERAL CORE



(F) EXPANDED POLYSTYRENE FOAM BY ATLAS EPS, DENSITY: 1.0 LB/FT<sup>3</sup> OR POLYISOCYANURATE (POLYURETHANE) BY ELLIOT CO. OF INDIANAPOLIS, IN DENSITY: 2 LBS/FT<sup>3</sup>



SECTION CC-CC



SECTION CC-CC

DOOR WIDTH	'V1' STIFFENERS
3'-0"	8

DOOR WIDTH	'V2' STIFFENERS
3'-0"	4

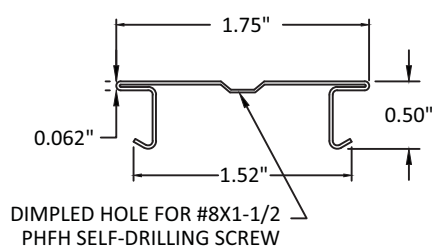
NOTE:  
CORE MATERIAL SHOWN WITHOUT HARDWARE REINFORCEMENTS

TABLE 1. AVAILABLE STEELCRAFT DOOR CONFIGURATIONS (SEE CONSTRUCTION NOTE 1, SHEET 1.)

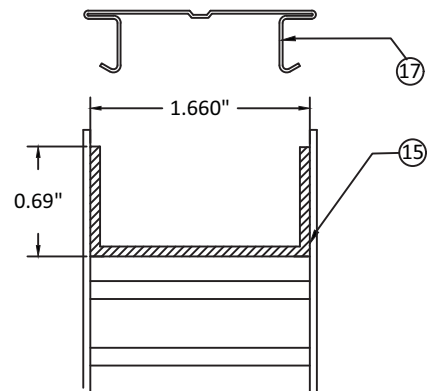
STEELCRAFT H SERIES DOOR TYPE	CORE MATERIAL PER THIS SHEET	MAXIMUM OPENING SIZE		SKIN MATERIAL	
		WIDTH	HEIGHT	DESCR.	GA./MIN. THK
FLUSH	HONEYCOMB POLYSTYRENE POLYURETHANE	3'0"	7'0"	CRS GALV	16/.053" 14/.067"
STEEL STIFFENED	STEEL STIFFENED	3'0"	7'0"	CRS GALV	16/.053" 14/.067"
TEMPERATURE RISE CORE	MINERAL FIBER	3'0"	7'0"	CRS GALV	16/.053" 14/.067"
EMBOSSED PANELS	POLYSTYRENE/HONEYCOMB	3'0"	7'0"	GALV	16/.053"

TABLE 2. STEEL DOOR MECHANICAL PROPERTIES.

MATERIAL	ASTM REF.	DOOR	
		YIELD (KSI)	TENSILE (KSI)
CRS	ASTM A366	44.7 MIN.	50.2 MIN.
HRS	ASTM A1011	44.7 MIN.	50.2 MIN.
GALV: A60	ASTM A924	44.7 MIN.	50.2 MIN.



24 GA TOP CAP 17



TOP & BOTTOM CHANNEL L=FULL DOOR WIDTH 14 GAGE

**PRODUCT RENEWED**  
as complying with the Florida Building Code  
NOA-No. 21-1228.04

Expiration Date 02/24/2027

By Ishaq I. Chande  
Miami-Dade Product Control



SCHLAGE LOCK COMPANY, LLC  
11819 N. PENNSYLVANIA STREET  
CARMEL, IN 46032

MANUFACTURING FACILITY:  
STEELCRAFT  
9017 BLUE ASH ROAD  
CINCINNATI, OH 45242  
PH: (317) 715-4073

TITLE: STEELCRAFT H SERIES SINGLE  
FLUSH INSWING COMMERCIAL  
STEEL DOOR W/ MORTISE LOCKS

DOOR PANEL & CORE DETAILS

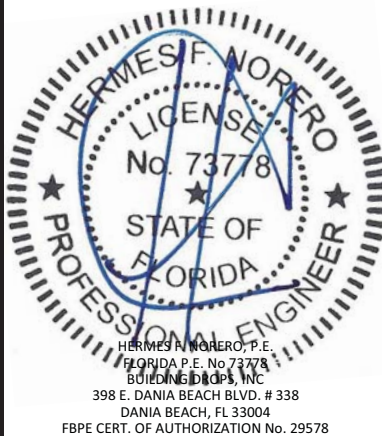
PREPARED BY: BUILDING DROPS, INC.

398 E. DANIA BEACH BLVD., STE. 338  
DANIA BEACH, FL 33004  
PH: (954) 399-8478  
FAX: (954) 744-4738  
WEB: www.buildingdrops.com



REMARKS	BY	DATE
2017 FBC UPDATE	-	09.20.17
ADDRESS UPDATE	-	02.25.20
2020 FBC UPDATE	SM	07.05.20
FORMAT UPDATE	LL	11.30.21

THE INSTALLATION DETAILS DESCRIBED HEREIN ARE GENERIC AND MAY NOT REFLECT ACTUAL CONDITIONS FOR A SPECIFIC SITE. IF SITE CONDITIONS CAUSE INSTALLATION TO DEVIATE FROM THE REQUIREMENTS DETAILED HEREIN, A LICENSED ENGINEER OR ARCHITECT SHALL PREPARE SITE SPECIFIC DOCUMENTS FOR USE WITH THIS DOCUMENT. DEVIATION IN NOA FOR HVHZ WILL REQUIRE ONE-TIME APPROVAL FROM MIAMI-DADE COUNTY.

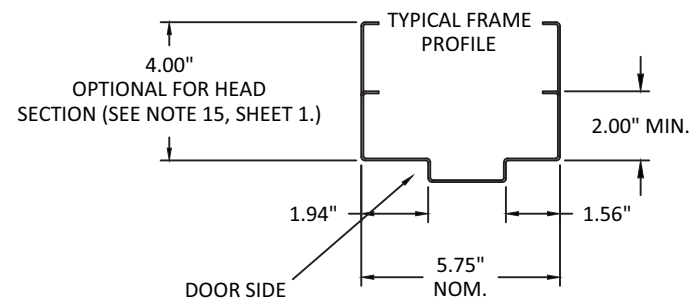
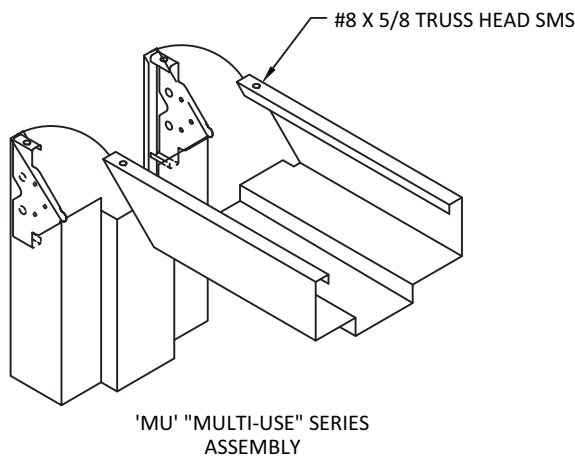
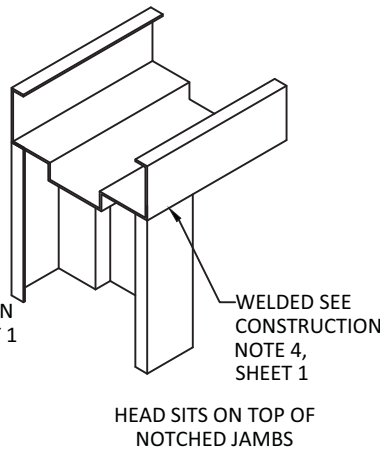
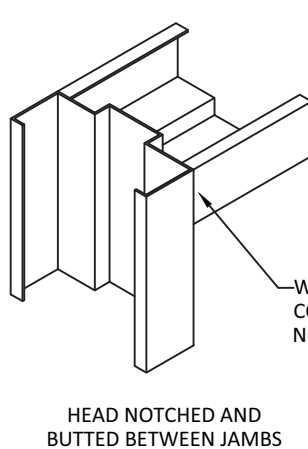
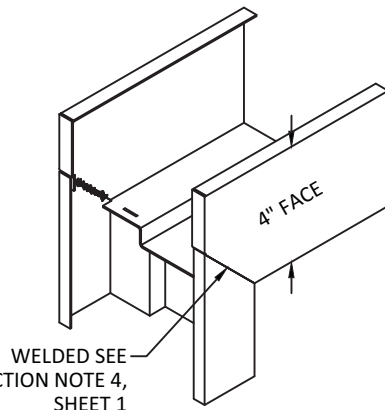
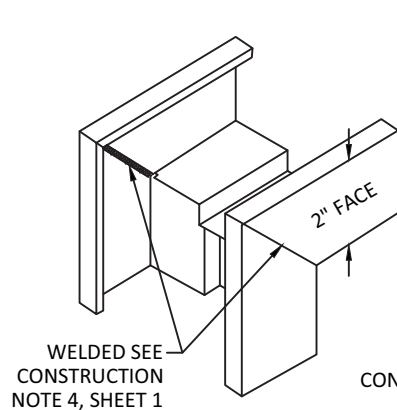
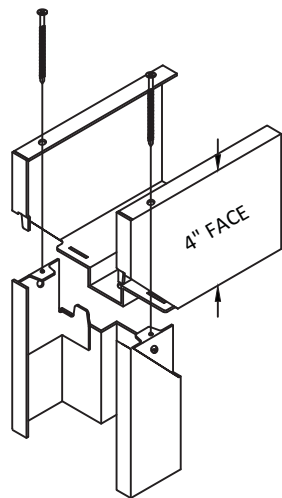
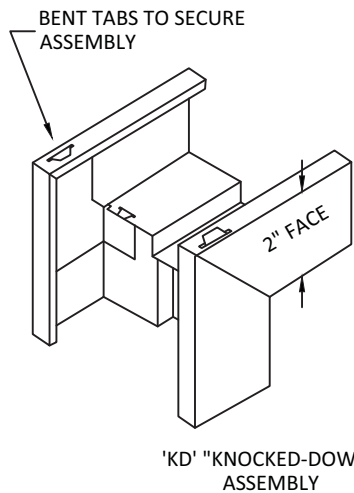


DATE:	11.23.21
DWG. BY:	LL
CHK. BY:	HFN
SCALE:	NTS
DWG. #:	776W-3
REV	M
SHEET:	

4

12/17/2021 11:15 AM

s:\projects\allegion\md-21-1036 - md submittal - noa 20-1005.12 renewal & noa 20-1005.13 renewal\dwgs\20-1005.12\76w-3 2021-12-17.dwg



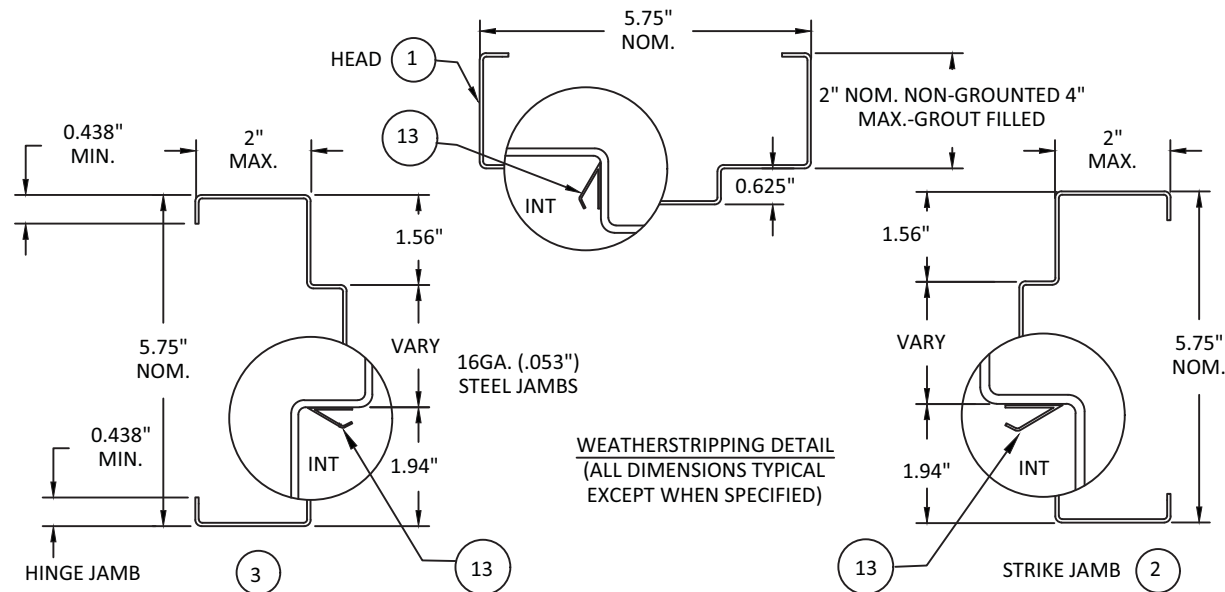
**PRODUCT RENEWED**  
as complying with the Florida  
Building Code  
NOA-No. 21-1228.04  
Expiration Date 02/24/2027  
By *Ishag I. Chande*  
**Miami-Dade Product Control**

TABLE 3. STEEL FRAME MECHANICAL PROPERTIES.

MATERIAL	ASTM REF.	FRAME	
		YIELD (KSI)	TENSILE (KSI)
CRS	ASTM A366	31.1 MIN.	41.5 MIN.
HRS	ASTM A1011	31.1 MIN.	41.5 MIN.
GALV: A60	ASTM A924	31.1 MIN.	41.5 MIN.

TABLE 4. AVAILABLE STEELCRAFT FRAME CONFIGURATIONS (SEE CONSTRUCTION NOTE 2, SHEET 1.)

STEELCRAFT FRAME SERIES	JAMB DEPTH	MAXIMUM OPENING SIZE		MATERIAL	
		WIDTH	HEIGHT	DESCR.	GA./MIN. THK
F	5.75" NOM.	3'0"	7'0"	CRS/HRS GALV	16/.053" 14/.067" 12/.093"
MU	5.75" NOM.	3'0"	7'0"	CRS/HRS GALV	16/.053" 14/.067"



SCHLAGE LOCK COMPANY, LLC  
11819 N. PENNSYLVANIA STREET  
CARMEL, IN 46032

MANUFACTURING FACILITY:  
STEELCRAFT  
9017 BLUE ASH ROAD  
CINCINNATI, OH 45242  
PH: (317) 715-4073

TITLE: STEELCRAFT H SERIES SINGLE  
FLUSH INSWING COMMERCIAL  
STEEL DOOR W/ MORTISE LOCKS

FRAME DETAILS & CORNER CONSTRUCTION

PREPARED BY:

BUILDING DROPS, INC.

398 E. DANIA BEACH BLVD., STE. 338  
DANIA BEACH, FL 33004

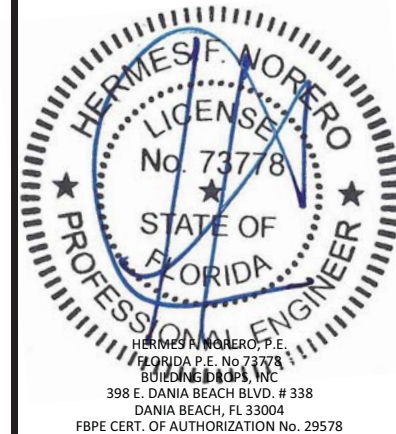
PH: (954) 399-8478  
FAX: (954) 744-4738

WEB: www.buildingdrops.com



REMARKS	BY	DATE
2017 FBC UPDATE	-	09.20.17
ADDRESS UPDATE	-	02.25.20
2020 FBC UPDATE	SM	07.05.20
FORMAT UPDATE	LL	11.30.21

THE INSTALLATION DETAILS DESCRIBED HEREIN ARE GENERIC  
AND MAY NOT REFLECT ACTUAL CONDITIONS FOR A SPECIFIC  
SITE. IF SITE CONDITIONS CAUSE INSTALLATION TO DEVIATE  
FROM THE REQUIREMENTS DETAILED HEREIN, A LICENSED  
ENGINEER OR ARCHITECT SHALL PREPARE SITE SPECIFIC  
DOCUMENTS FOR USE WITH THIS DOCUMENT. DEVIATION IN  
NOA FOR HVHZ WILL REQUIRE ONE-TIME APPROVAL FROM  
MIAMI-DADE COUNTY.



DATE: 11.23.21

DWG. BY:  
LL

CHK. BY:  
HFN

SCALE: NTS

DWG. #: 776W-3 | REV M

SHEET:

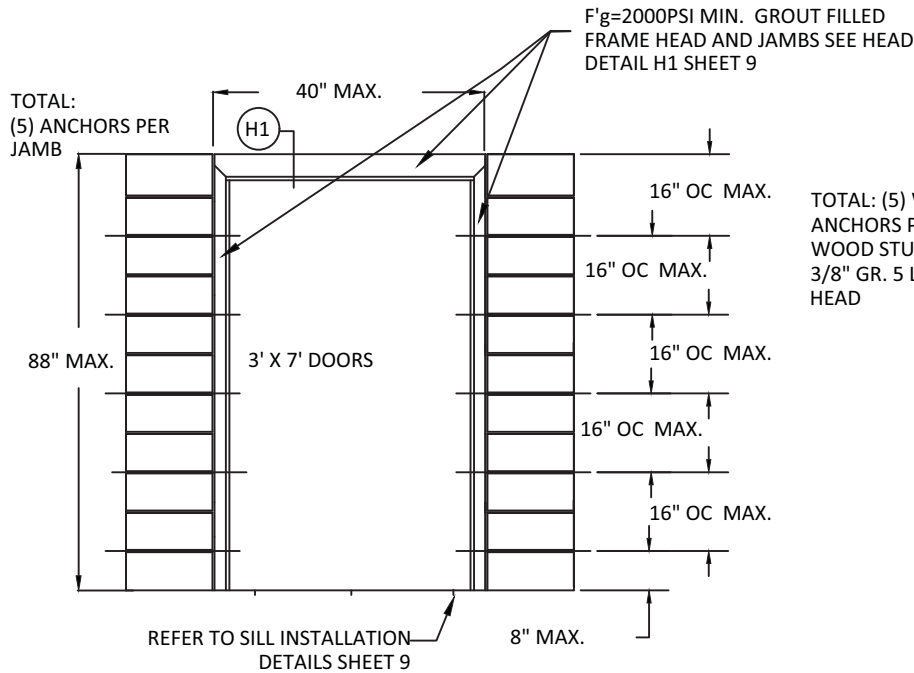
5

OF 12

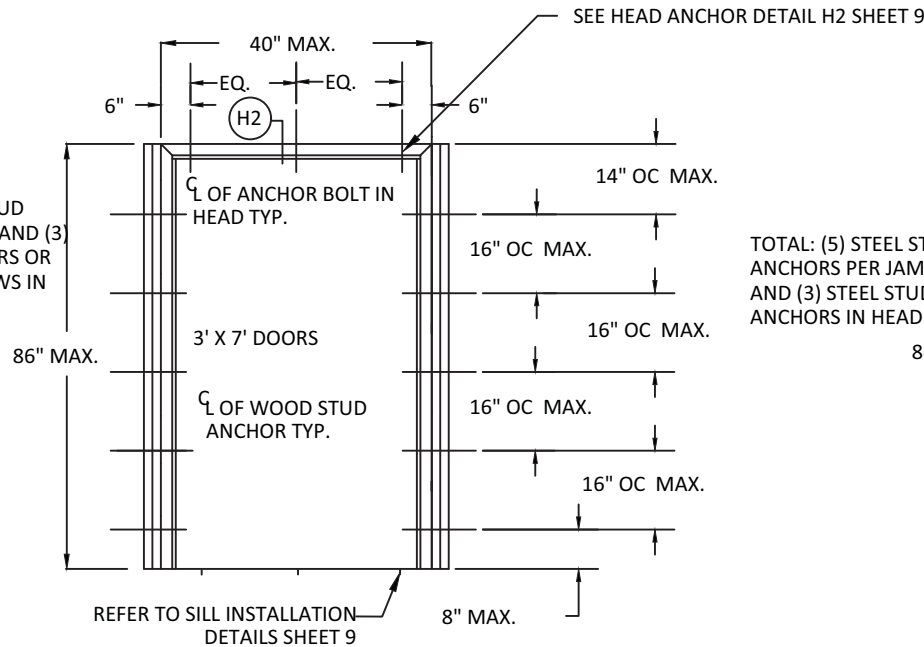


12/17/2021 11:15 AM  
s:\projects\allegion\md-21-1036 - md submittal - noa 20-1005.12 renewal & noa 20-1005.13 renewal\dwgs\20-1005.12\76w-3 2021-12-17.dwg

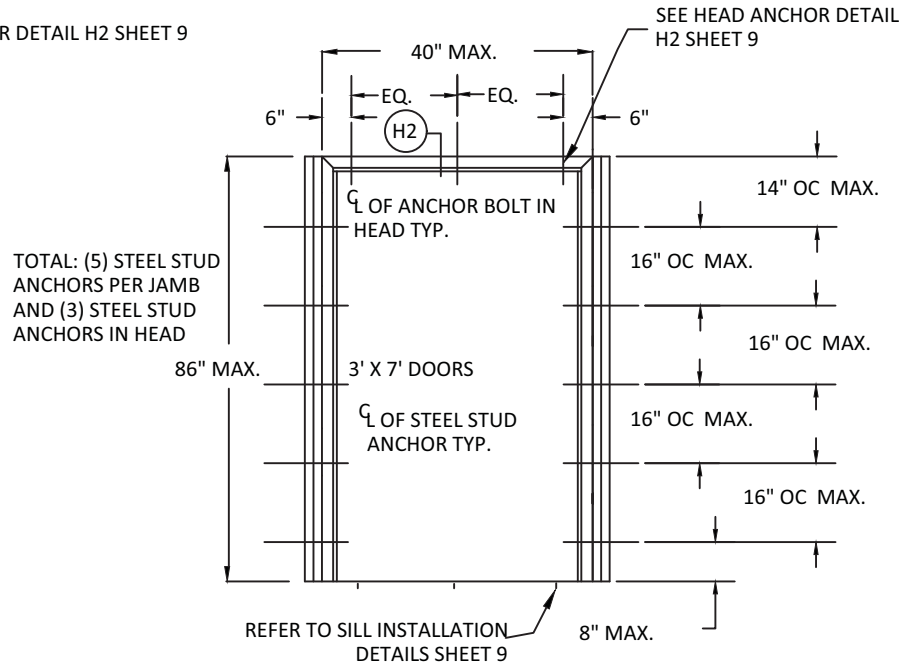
**A** WIRE ANCHOR  
INTO GROUT FILLED FRAME AND  
BLOCK WALL



**B** WOOD STUD ANCHOR



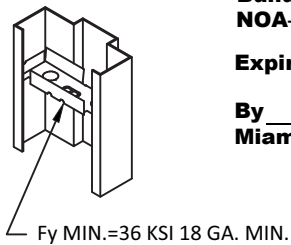
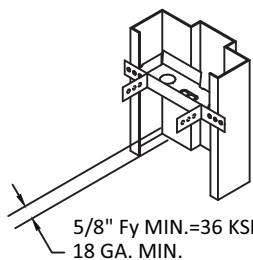
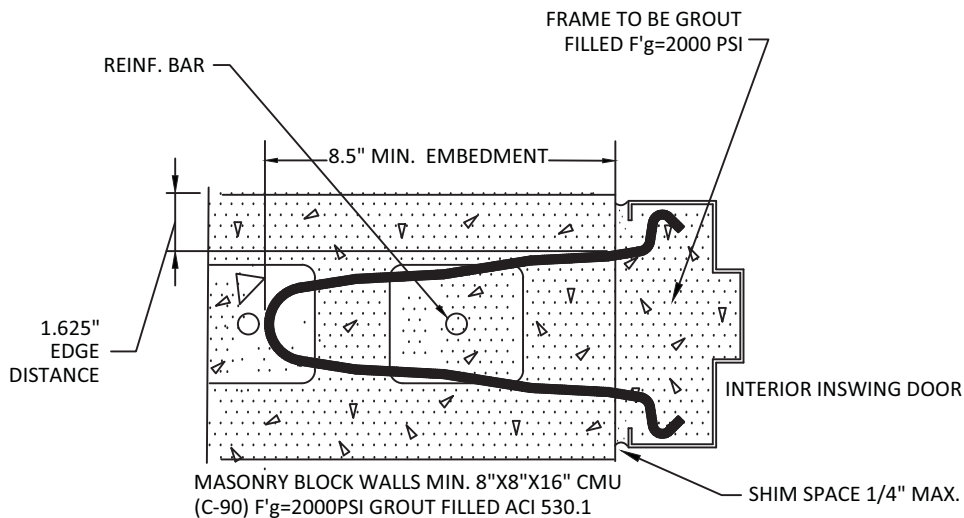
**C** STEEL STUD ANCHOR



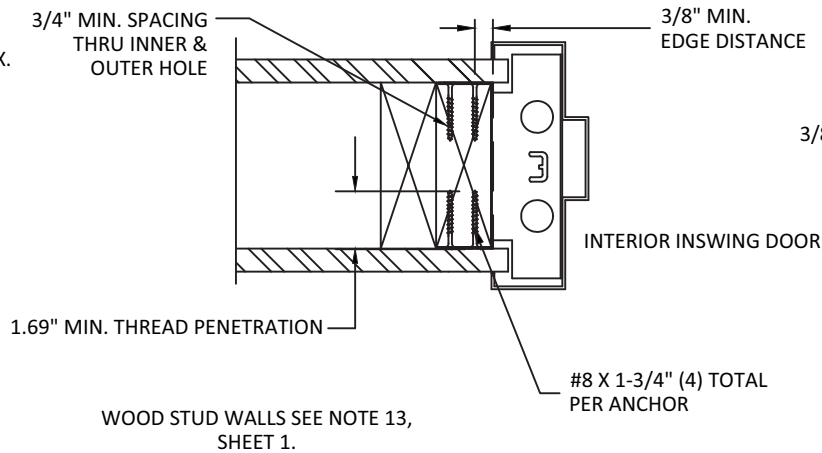
**PRODUCT RENEWED**  
as complying with the Florida  
Building Code  
NOA-No. 21-1228.04

Expiration Date 02/24/2027

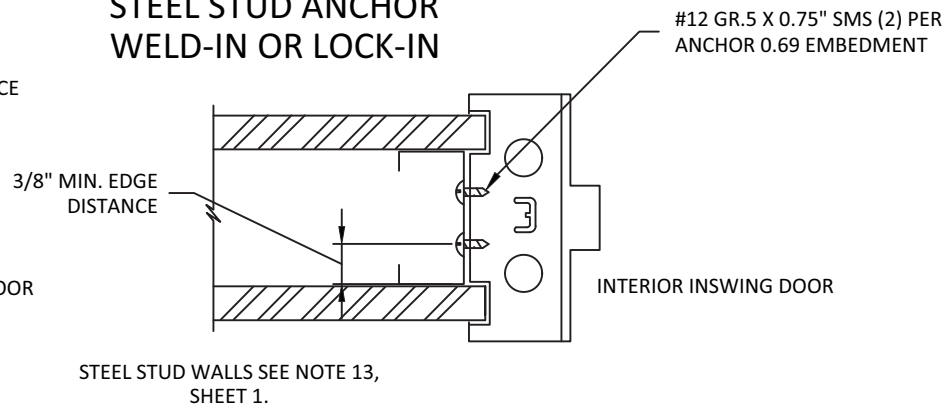
By *Ismael L. Chando*  
Miami-Dade Product Control



**WOOD STUD ANCHOR  
(LOCK-IN OR WELD-IN)**



**STEEL STUD ANCHOR  
WELD-IN OR LOCK-IN**



**WIRE MASONRY  
ANCHOR** Fultim MIN.=58  
KSI Fy MIN.=36 KSI



SCHLAGE LOCK COMPANY, LLC  
11819 N. PENNSYLVANIA STREET  
CARMEL, IN 46032

MANUFACTURING FACILITY:  
STEELCRAFT  
9017 BLUE ASH ROAD  
CINCINNATI, OH 45242  
PH: (317) 715-4073

TITLE: STEELCRAFT H SERIES SINGLE  
FLUSH INSWING COMMERCIAL  
STEEL DOOR W/ MORTISE LOCKS

ANCHORS - WIRE, WOOD STUD, STEEL STUD

PREPARED BY:

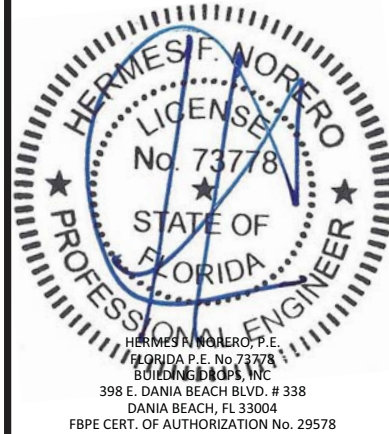
BUILDING DROPS, INC.

398 E. DANIA BEACH BLVD., STE. 338  
DANIA BEACH, FL 33004  
PH: (954) 399-8478  
FAX: (954) 744-4738  
WEB: www.buildingdrops.com



REMARKS	BY	DATE
2017 FBC UPDATE	-	09.20.17
ADDRESS UPDATE	-	02.25.20
2020 FBC UPDATE	SM	07.05.20
FORMAT UPDATE	LL	11.30.21

THE INSTALLATION DETAILS DESCRIBED HEREIN ARE GENERIC  
AND MAY NOT REFLECT ACTUAL CONDITIONS FOR A SPECIFIC  
SITE. IF SITE CONDITIONS CAUSE INSTALLATION TO DEVIATE  
FROM THE REQUIREMENTS DETAILED HEREIN, A LICENSED  
ENGINEER OR ARCHITECT SHALL PREPARE SITE SPECIFIC  
DOCUMENTS FOR USE WITH THIS DOCUMENT. DEVIATION IN  
NOA FOR HVHZ WILL REQUIRE ONE-TIME APPROVAL FROM  
MIAMI-DADE COUNTY.

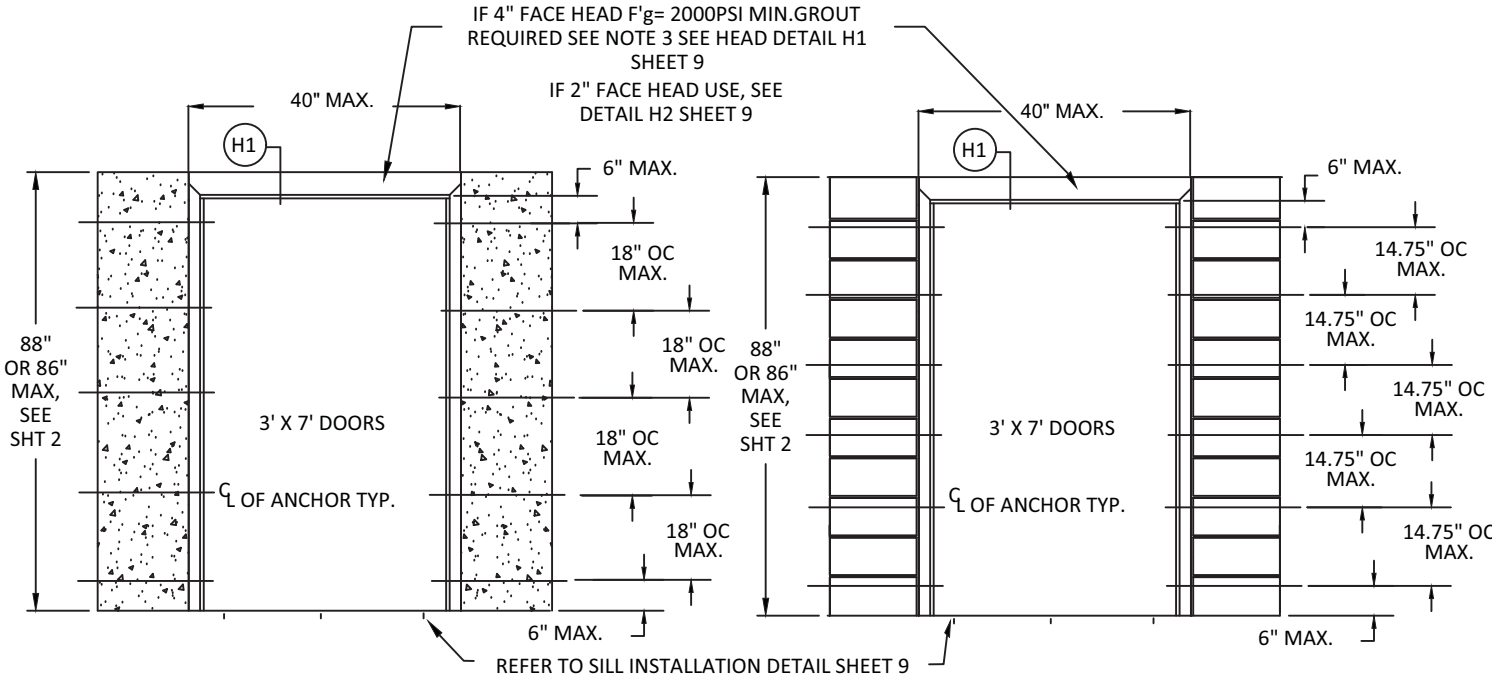


DATE:	11.23.21
DWG. BY:	LL
CHK. BY:	HFN
SCALE:	NTS
DWG. #:	776W-3
REV	M
SHEET:	

6

s:\projects\allegion\md-21-1036 - md submittal - noa 20-1005.12 renewal & noa 20-1005.13 renewal\dwgs\20-1005.12\76w-3 2021-12-17.dwg  
12/17/2021 11:15 AM

**D** EXISTING MASONRY ANCHOR (EMA)  
INTO CONCRETE WALL OR CMU



FOR DP > 120 PSF

CONCRETE

TOTAL: (5) EMA ANCHORS PER JAMB

FOR DP < 120 PSF

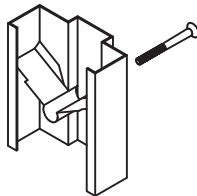
CONCRETE & CMU

TOTAL: (5) EMA ANCHORS PER JAMB

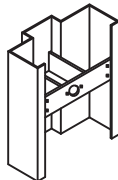
FOR DP > 120 PSF

CMU

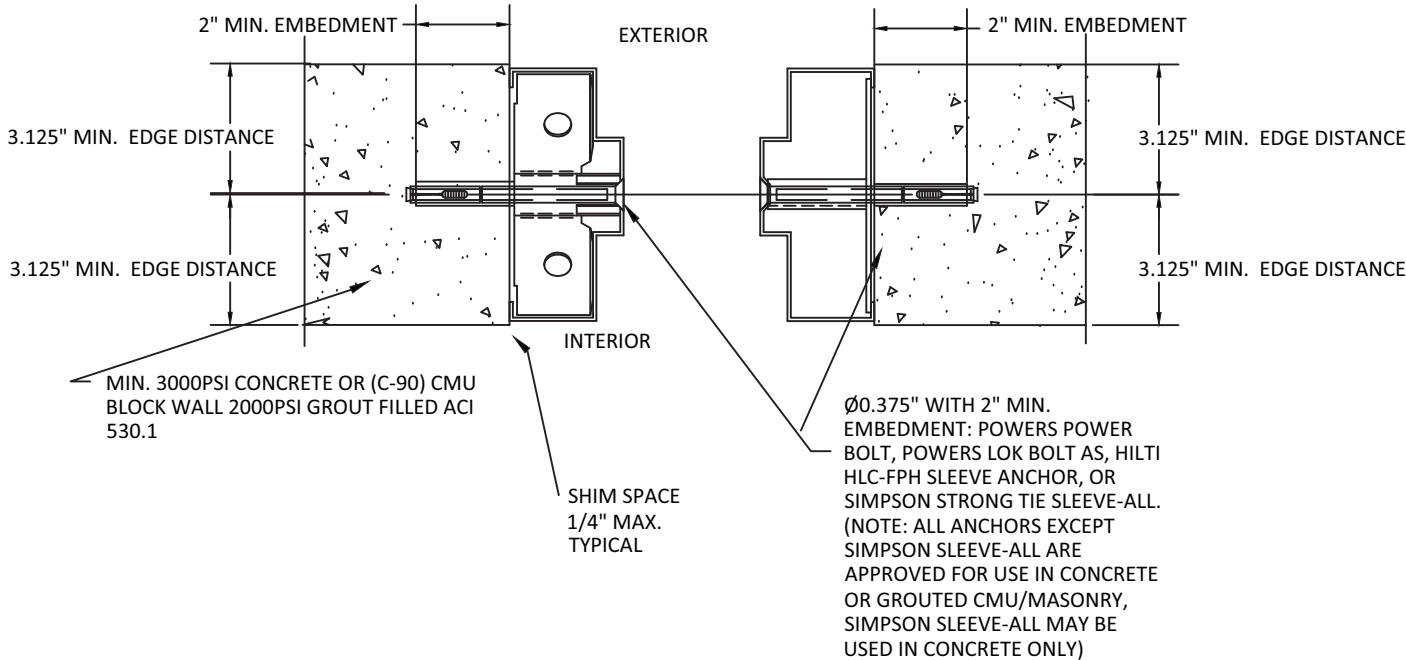
TOTAL: (6) EMA ANCHORS PER JAMB



12 JAMB LOCK-IN



12 JAMB WELD-IN



**PRODUCT RENEWED**  
as complying with the Florida  
Building Code  
NOA-No. 21-1228.04

Expiration Date 02/24/2027

By *Ishaq I. Chandra*  
Miami-Dade Product Control



SCHLAGE LOCK COMPANY, LLC  
11819 N. PENNSYLVANIA STREET  
CARMEL, IN 46032

MANUFACTURING FACILITY:  
STEELCRAFT  
9017 BLUE ASH ROAD  
CINCINNATI, OH 45242  
PH: (317) 715-4073

TITLE: STEELCRAFT H SERIES SINGLE  
FLUSH INSWING COMMERCIAL  
STEEL DOOR W/ MORTISE LOCKS

ANCHORS - EMA IN CONCRETE OR CMU

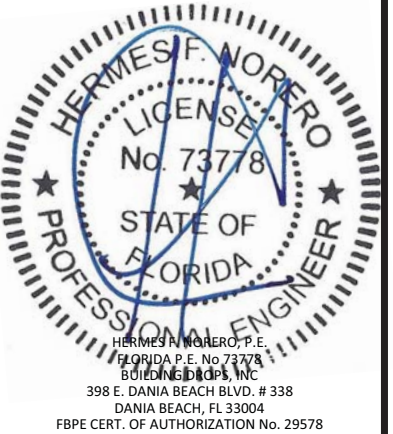
PREPARED BY:

**BUILDING DROPS, INC.**  
398 E. DANIA BEACH BLVD., STE. 338  
DANIA BEACH, FL 33004  
PH: (954) 399-8478  
FAX: (954) 744-4738  
WEB: www.buildingdrops.com



REMARKS	BY	DATE
2017 FBC UPDATE	-	09.20.17
ADDRESS UPDATE	-	02.25.20
2020 FBC UPDATE	SM	07.05.20
FORMAT UPDATE	LL	11.30.21

THE INSTALLATION DETAILS DESCRIBED HEREIN ARE GENERIC  
AND MAY NOT REFLECT ACTUAL CONDITIONS FOR A SPECIFIC  
SITE. IF SITE CONDITIONS CAUSE INSTALLATION TO DEVIATE  
FROM THE REQUIREMENTS DETAILED HEREIN, A LICENSED  
ENGINEER OR ARCHITECT SHALL PREPARE SITE SPECIFIC  
DOCUMENTS FOR USE WITH THIS DOCUMENT. DEVIATION IN  
NOA FOR HVHZ WILL REQUIRE ONE-TIME APPROVAL FROM  
MIAMI-DADE COUNTY.



DATE:	11.23.21
DWG. BY:	LL
CHK. BY:	HFN
SCALE:	NTS
DWG. #:	776W-3
REV	M

SHEET:

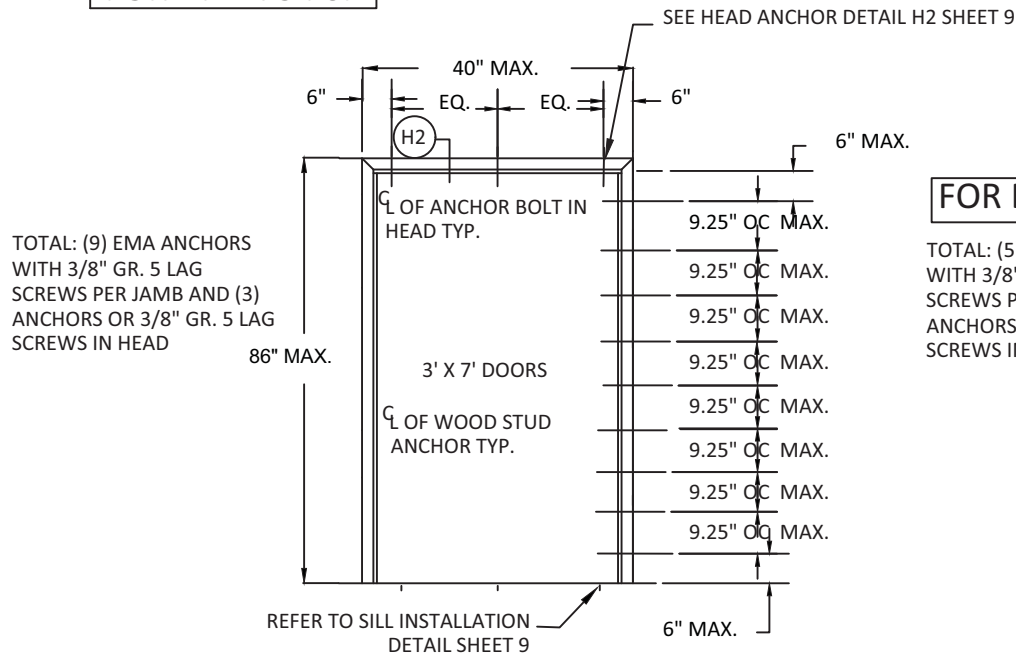
7



12/17/2021 11:15 AM  
s:\projects\allegion\md-21-1036 - md submittal - noa 20-1005.13 renewal & noa 20-1005.12 renewal & noa 20-1005.13 renewal\dwgs\20-1005.12\776w-3 2021-12-17.dwg

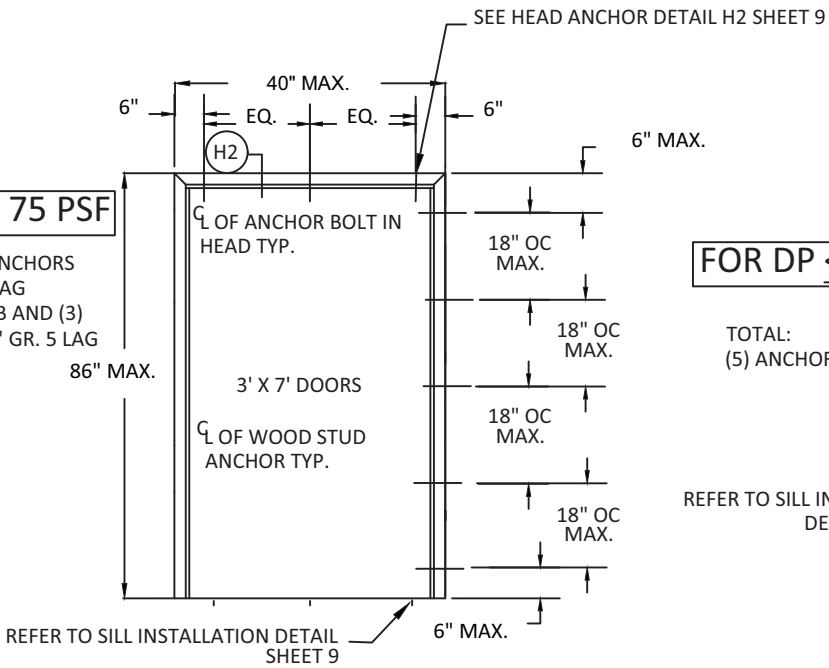
**E** EXISTING MASONRY ANCHOR (EMA)  
WITH LAG BOLT INTO WOOD STUD WALL

FOR DP > 75 PSF



FOR DP ≤ 75 PSF

TOTAL: (5) EMA ANCHORS  
WITH 3/8" GR. 5 LAG  
SCREWS PER JAMB AND (3)  
ANCHORS OR 3/8" GR. 5 LAG  
SCREWS IN HEAD



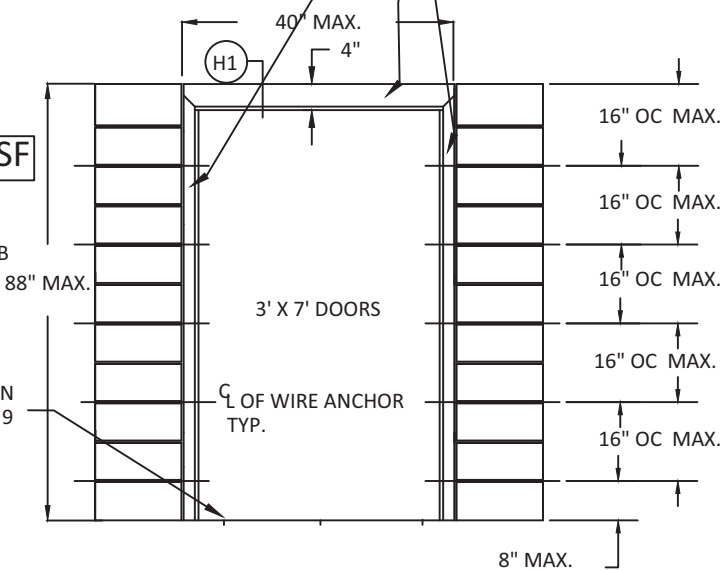
**F** T MASONRY ANCHOR  
INTO GROUT FILLED FRAME AND BLOCK WALL

F<sub>g</sub>=2000PSI MIN. GROUT  
FILLED FRAME HEAD AND  
JAMBS SEE HEAD DETAIL H1  
SHEET 9

FOR DP ≤ 75 PSF

TOTAL:  
(5) ANCHORS PER JAMB

REFER TO SILL INSTALLATION  
DETAIL SHEET 9



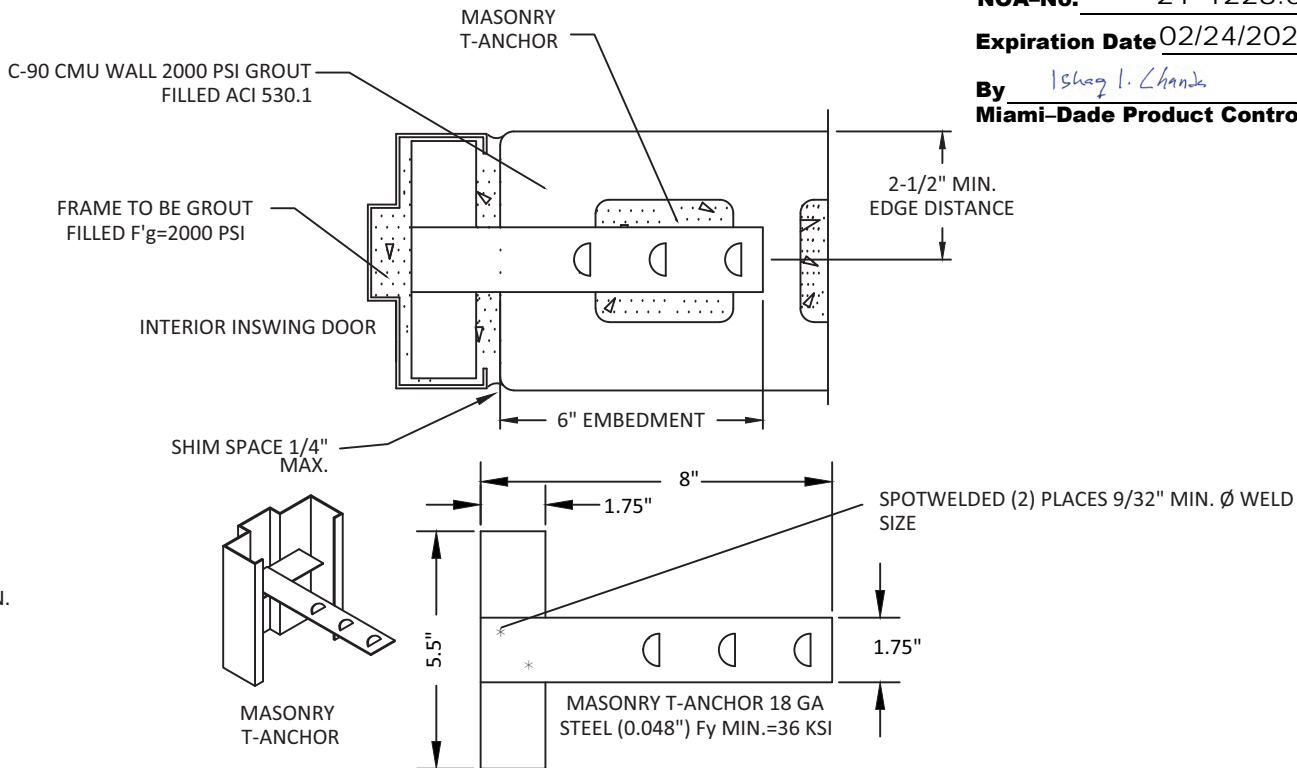
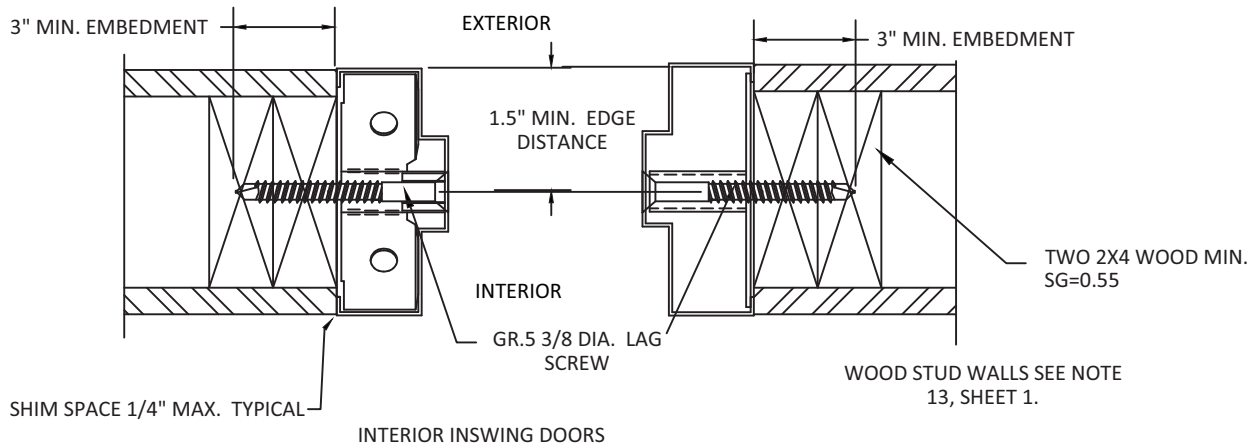
**PRODUCT RENEWED**  
as complying with the Florida  
Building Code  
NOA-No. 21-1228.04

Expiration Date 02/24/2027

By *Ishaq I. Chande*  
**Miami-Dade Product Control**

12 JAMB LOCK-IN

12 JAMB WELD-IN



SCHLAGE LOCK COMPANY, LLC  
11819 N. PENNSYLVANIA STREET  
CARMEL, IN 46032

MANUFACTURING FACILITY:  
STEELCRAFT  
9017 BLUE ASH ROAD  
CINCINNATI, OH 45242  
PH: (317) 715-4073

TITLE: STEELCRAFT H SERIES SINGLE  
FLUSH INSWING COMMERCIAL  
STEEL DOOR W/ MORTISE LOCKS

ANCHORS - EMA IN WOOD STUD, MASONRY  
T IN CMU

PREPARED BY:

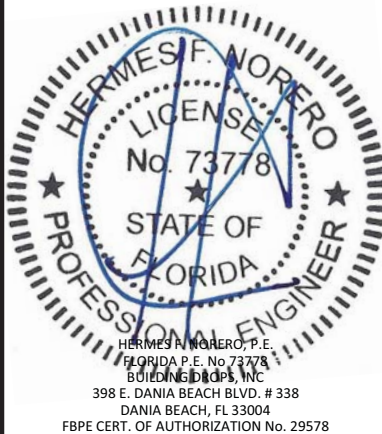
BUILDING DROPS, INC.

398 E. DANIA BEACH BLVD., STE. 338  
DANIA BEACH, FL 33004  
PH: (954) 399-8478  
FAX: (954) 744-4738  
WEB: www.buildingdrops.com



REMARKS	BY	DATE
2017 FBC UPDATE	-	09.20.17
ADDRESS UPDATE	-	02.25.20
2020 FBC UPDATE	SM	07.05.20
FORMAT UPDATE	LL	11.30.21

THE INSTALLATION DETAILS DESCRIBED HEREIN ARE GENERIC  
AND MAY NOT REFLECT ACTUAL CONDITIONS FOR A SPECIFIC  
SITE. IF SITE CONDITIONS CAUSE INSTALLATION TO DEVIATE  
FROM THE REQUIREMENTS DETAILED HEREIN, A LICENSED  
ENGINEER OR ARCHITECT SHALL PREPARE SITE SPECIFIC  
DOCUMENTS FOR USE WITH THIS DOCUMENT. DEVIATION IN  
NOA FOR HVHZ WILL REQUIRE ONE-TIME APPROVAL FROM  
MIAMI-DADE COUNTY.



DATE: 11.23.21

DWG. BY:  
LL

CHK. BY:  
HFN

SCALE: NTS

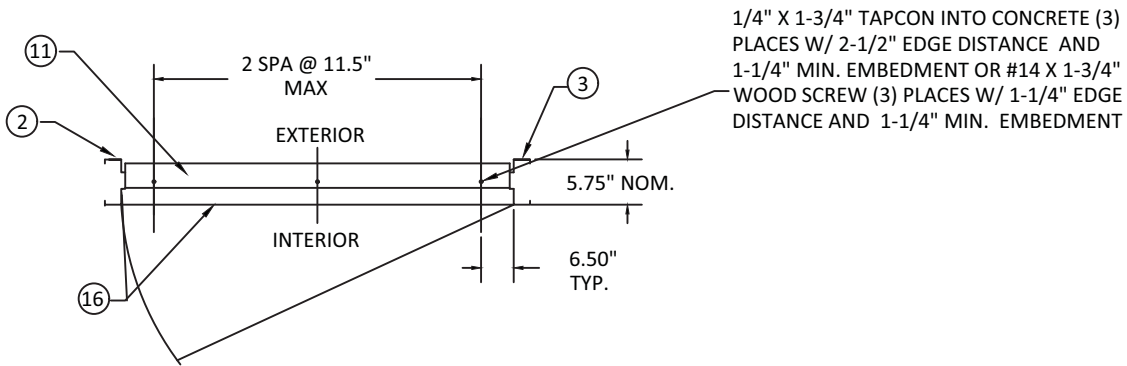
DWG. #: 776W-3 REV M

SHEET:

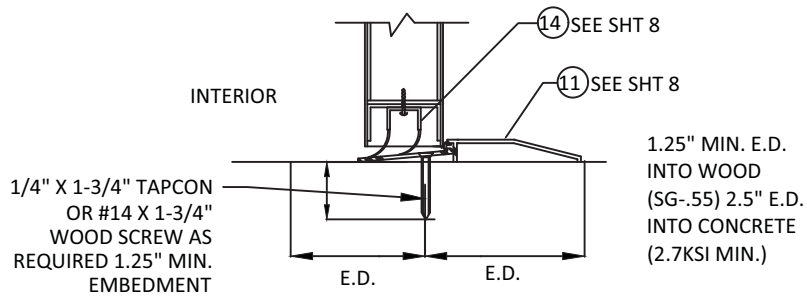
8

OF 12

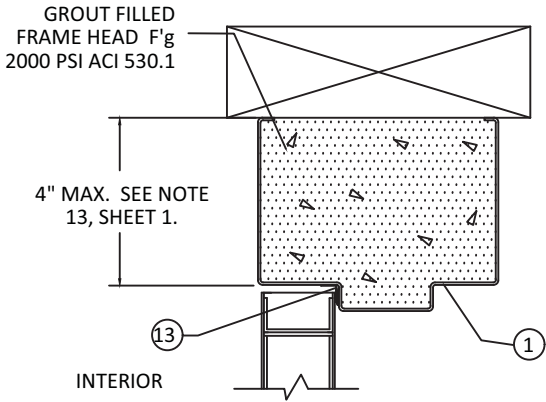
SILL INSTALLATION  
(TYPICAL)  
SEE SHEETS 5, 6, 7 & 8 FOR DETAILS



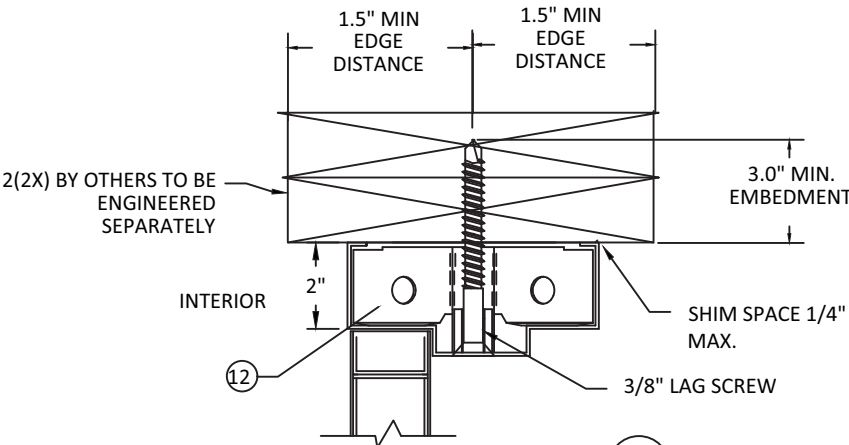
SILL INSTALLATION (TYPICAL)  
INSWING DOOR



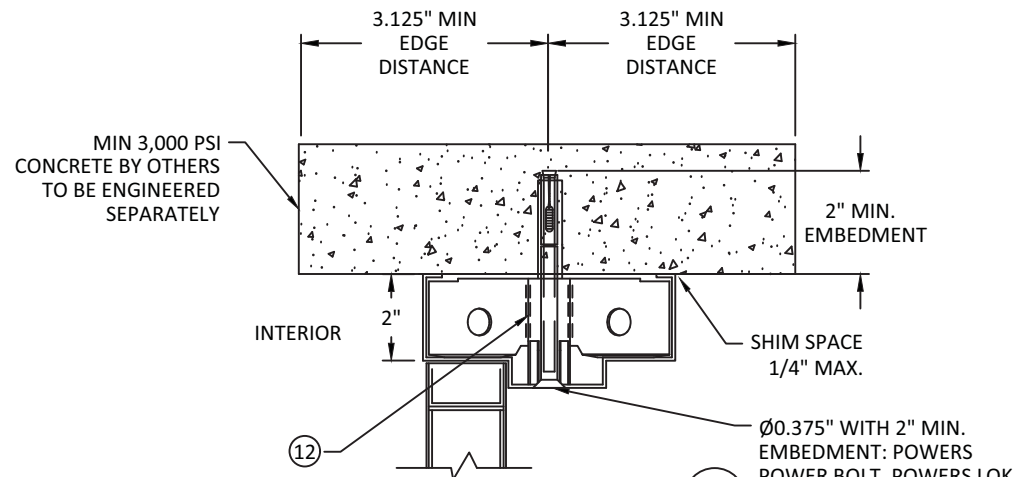
SILL DETAIL (SIDEVIEW)  
WOOD OR CONCRETE  
SILL E.D.=EDGE DISTANCE



HEAD WITHOUT ANCHOR DETAIL (H1)  
(SEE OPENINGS, SHEETS 6-8)



HEAD ANCHOR DETAIL (H2)  
(SEE OPENINGS, SHEETS 6-8)



HEAD ANCHOR DETAIL (H3)  
(SEE OPENINGS, SHEETS 6-8)

**PRODUCT RENEWED**  
as complying with the Florida  
Building Code  
NOA-No. 21-1228.04  
Expiration Date 02/24/2027  
By *Ishag I. Chande*  
Miami-Dade Product Control

**SCHLAGE**  
SCHLAGE LOCK COMPANY, LLC  
11819 N. PENNSYLVANIA STREET  
CARMEL, IN 46032  
MANUFACTURING FACILITY:  
STEELCRAFT  
9017 BLUE ASH ROAD  
CINCINNATI, OH 45242  
PH: (317) 715-4073

TITLE: STEELCRAFT H SERIES SINGLE  
FLUSH INSWING COMMERCIAL  
STEEL DOOR W/ MORTISE LOCKS  
ANCHOR DETAILS  
PREPARED BY: BUILDING DROPS, INC.  
398 E. DANIA BEACH BLVD., STE. 338  
DANIA BEACH, FL 33004  
PH: (954) 399-8478  
FAX: (954) 474-4738  
WEB: www.buildingdrops.com

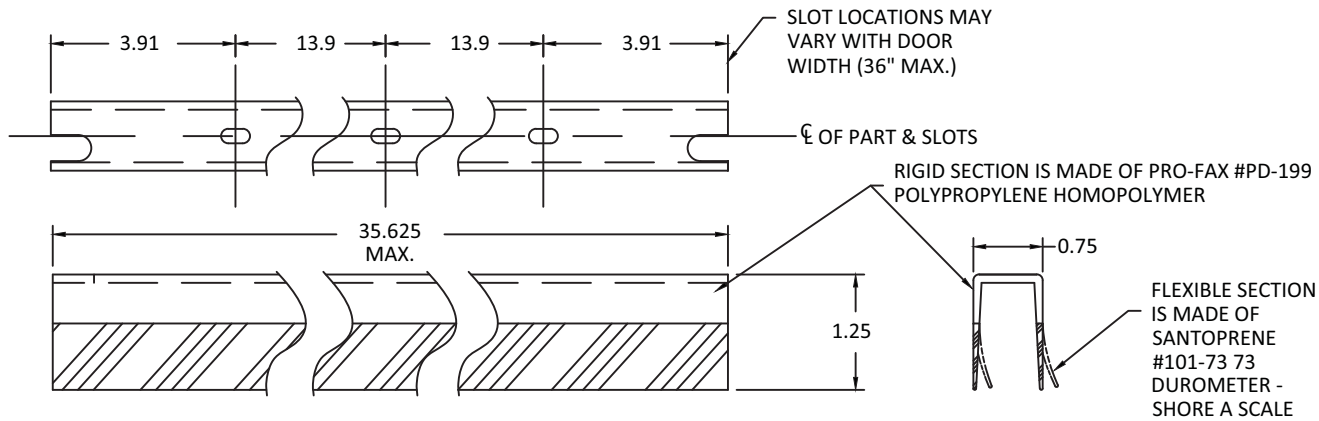
REMARKS	BY	DATE
2017 FBC UPDATE	-	09.20.17
ADDRESS UPDATE	-	02.25.20
2020 FBC UPDATE	SM	07.05.20
FORMAT UPDATE	LL	11.30.21

THE INSTALLATION DETAILS DESCRIBED HEREIN ARE GENERIC AND MAY NOT REFLECT ACTUAL CONDITIONS FOR A SPECIFIC SITE. IF SITE CONDITIONS CAUSE INSTALLATION TO DEVIATE FROM THE REQUIREMENTS DETAILED HEREIN, A LICENSED ENGINEER OR ARCHITECT SHALL PREPARE SITE SPECIFIC DOCUMENTS FOR USE WITH THIS DOCUMENT. DEVIATION IN NOA FOR HVHZ WILL REQUIRE ONE-TIME APPROVAL FROM MIAMI-DADE COUNTY.

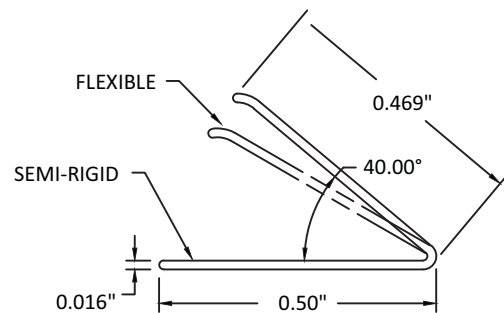


DATE:	11.23.21
DWG. BY:	LL
CHK. BY:	HFN
SCALE:	NTS
DWG. #:	776W-3
REV	M
SHEET:	9

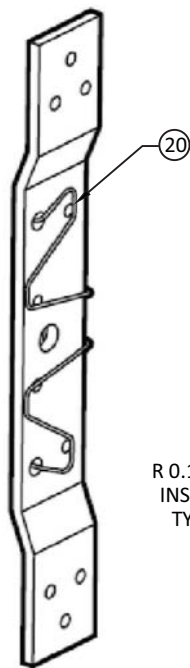
12/17/2021 11:15 AM  
s:\projects\allegion\md-21-1036 - md submittal - noa 20-1005.12 renewal & noa 20-1005.13 renewal\dwgs\20-1005.12\76w-3 2021-12-17.dwg



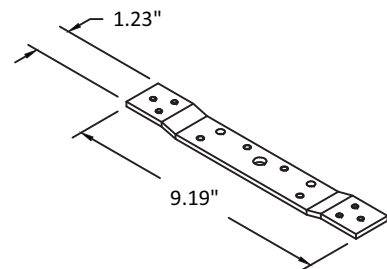
14 FAS-SEAL DOOR SWEEP



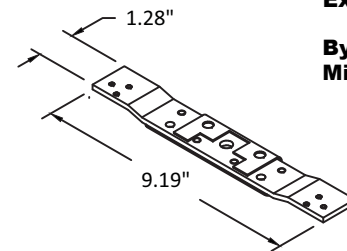
13 PS-074 SELF-ADHESIVE WEATHERSTRIPPING



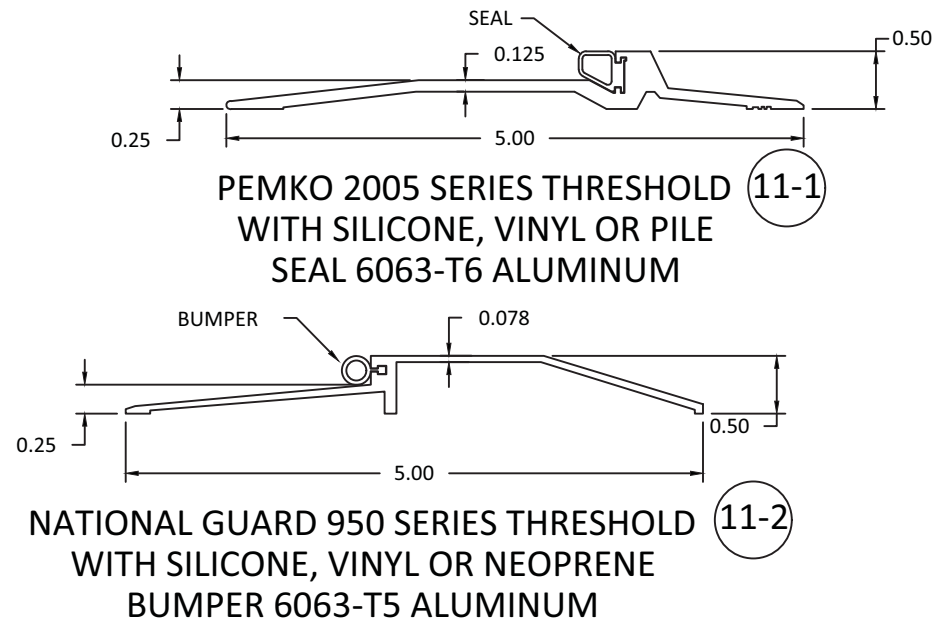
20 .045 WIRE DOOR HINGE SPACER



7 7 GA. DOOR HINGE REINFORCEMENT

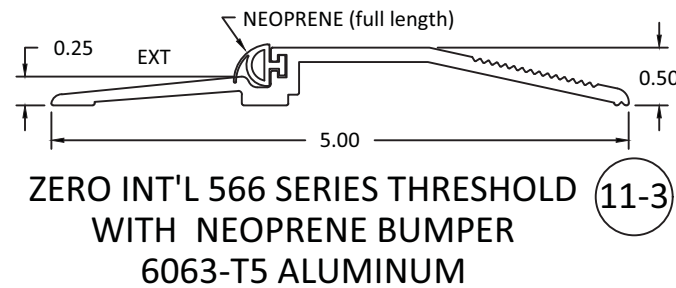


8 7 GA. DOOR HINGE REINFORCEMENT

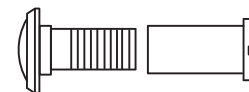


11-1 PEMKO 2005 SERIES THRESHOLD WITH SILICONE, VINYL OR PILE SEAL 6063-T6 ALUMINUM

11-2 NATIONAL GUARD 950 SERIES THRESHOLD WITH SILICONE, VINYL OR NEOPRENE BUMPER 6063-T5 ALUMINUM



11-3 ZERO INT'L 566 SERIES THRESHOLD WITH NEOPRENE BUMPER 6063-T5 ALUMINUM



19 IVES 698/U698 DOOR VIEWER  
FOR DP < 75 PSF

**PRODUCT RENEWED**  
as complying with the Florida  
Building Code  
NOA-No. 21-1228.04  
Expiration Date 02/24/2027  
By *Ishag I. Chande*  
Miami-Dade Product Control

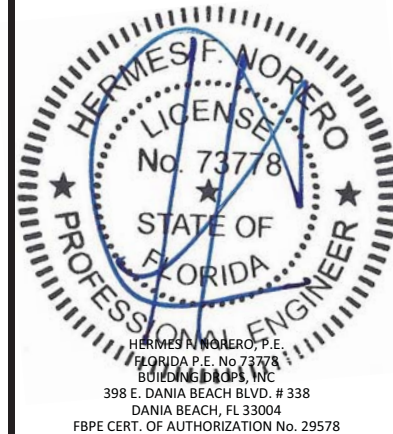
**SCHLAGE**  
SCHLAGE LOCK COMPANY, LLC  
11819 N. PENNSYLVANIA STREET  
CARMEL, IN 46032  
MANUFACTURING FACILITY:  
STEELCRAFT  
9017 BLUE ASH ROAD  
CINCINNATI, OH 45242  
PH: (317) 715-4073

TITLE: STEELCRAFT H SERIES SINGLE  
FLUSH INSWING COMMERCIAL  
STEEL DOOR W/ MORTISE LOCKS  
HINGES, THRESHOLDS AND CHANNEL  
REINFORCEMENT

PREPARED BY:  
**BUILDING DROPS, INC.**  
398 E. DANIA BEACH BLVD., STE. 338  
DANIA BEACH, FL 33004  
PH: (954) 399-8478  
FAX: (954) 474-4738  
WEB: www.buildingdrops.com

REMARKS	BY	DATE
2017 FBC UPDATE	-	09.20.17
ADDRESS UPDATE	-	02.25.20
2020 FBC UPDATE	SM	07.05.20
FORMAT UPDATE	LL	11.30.21

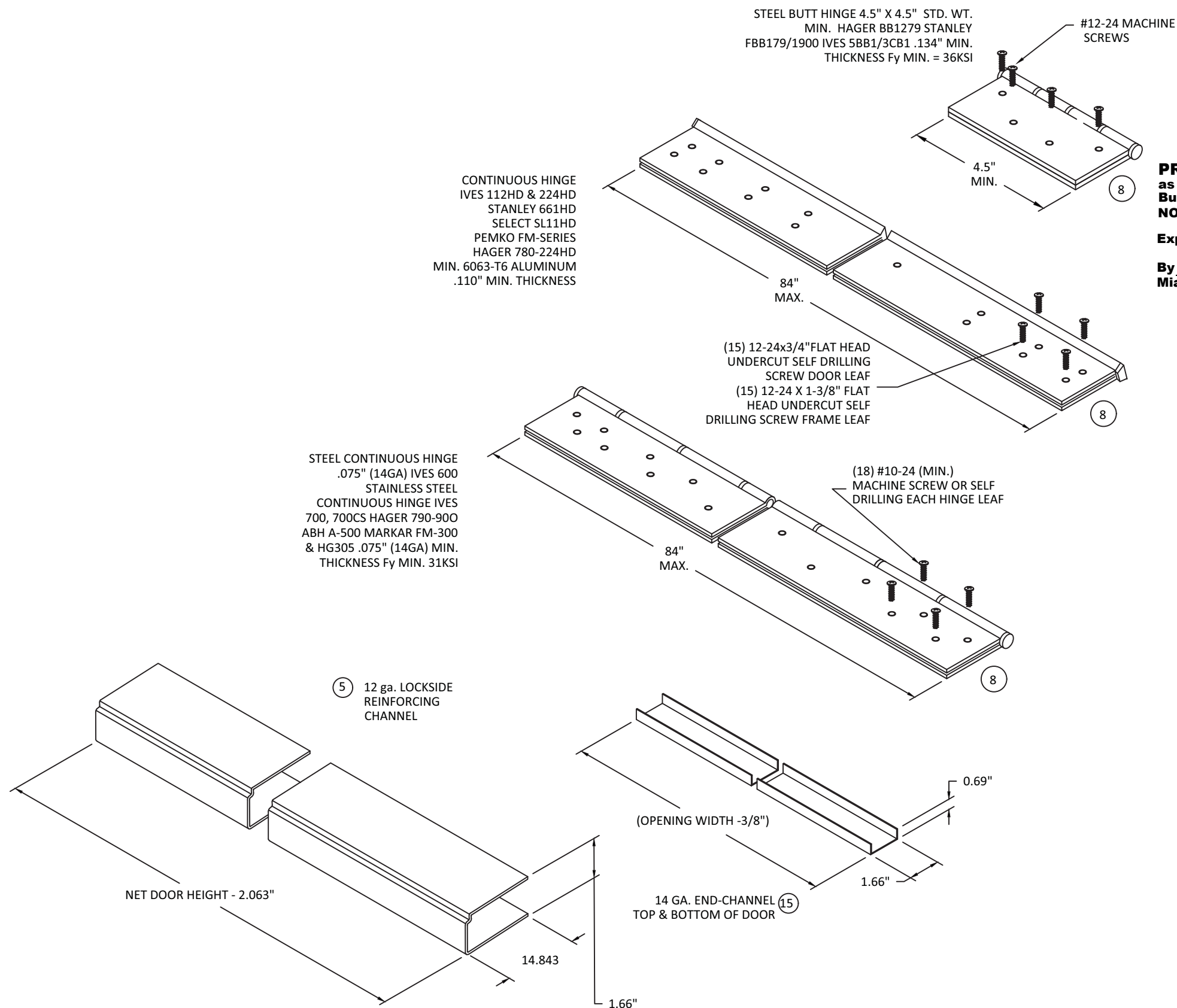
THE INSTALLATION DETAILS DESCRIBED HEREIN ARE GENERIC AND MAY NOT REFLECT ACTUAL CONDITIONS FOR A SPECIFIC SITE. IF SITE CONDITIONS CAUSE INSTALLATION TO DEVIATE FROM THE REQUIREMENTS DETAILED HEREIN, A LICENSED ENGINEER OR ARCHITECT SHALL PREPARE SITE SPECIFIC DOCUMENTS FOR USE WITH THIS DOCUMENT. DEVIATION IN NOA FOR HVHZ WILL REQUIRE ONE-TIME APPROVAL FROM MIAMI-DADE COUNTY.



DATE:	11.23.21
DWG. BY:	LL
CHK. BY:	HFN
SCALE:	NTS
DWG. #:	776W-3
REV	M
SHEET:	10



s:\projects\allegion\md-21-1036 - md submittal - noa 20-1005.12 renewal & noa 20-1005.13 renewal\dwgs\20-1005.12\76w-3 2021-12-17.dwg  
12/17/2021 11:15 AM



**PRODUCT RENEWED**  
as complying with the Florida  
Building Code  
NOA-No. 21-1228.04  
Expiration Date 02/24/2027  
By Ishaq I. Chandra  
Miami-Dade Product Control



SCHLAGE LOCK COMPANY, LLC  
11819 N. PENNSYLVANIA STREET  
CARMEL, IN 46032

MANUFACTURING FACILITY:  
STEELCRAFT  
9017 BLUE ASH ROAD  
CINCINNATI, OH 45242  
PH: (317) 715-4073

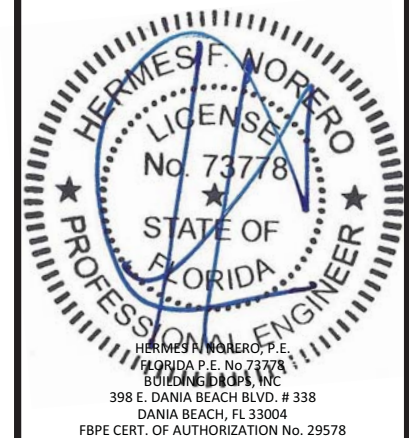
TITLE: STEELCRAFT H SERIES SINGLE  
FLUSH INSWING COMMERCIAL  
STEEL DOOR W/ MORTISE LOCKS  
HINGES, THRESHOLDS AND CHANNEL  
REINFORCEMENT (CONT.)

PREPARED BY:  
BUILDING DROPS, INC.  
398 E. DANIA BEACH BLVD., STE. 338  
DANIA BEACH, FL 33004  
PH: (954) 399-8478  
FAX: (954) 744-4738  
WEB: www.buildingdrops.com



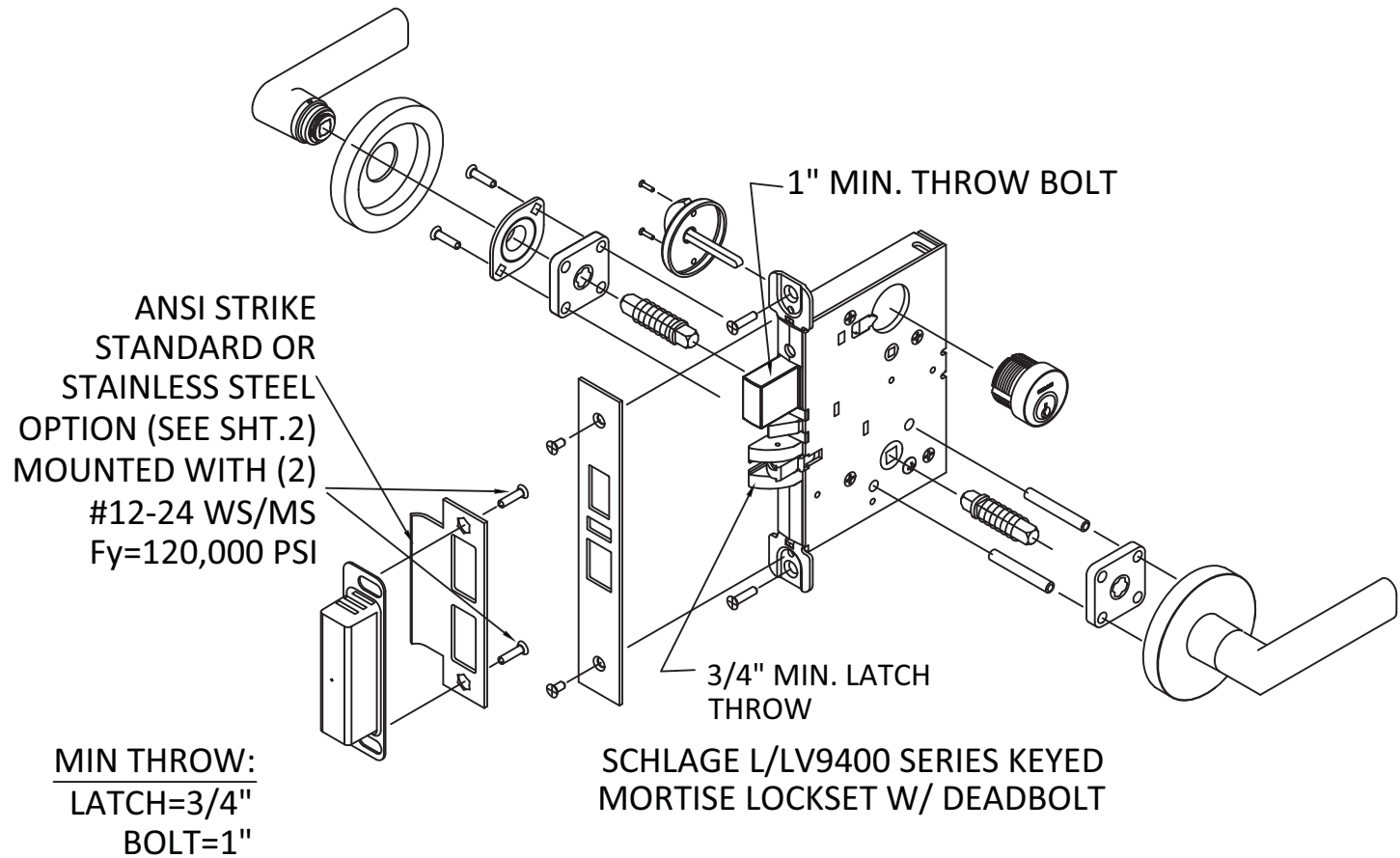
REMARKS	BY	DATE
2017 FBC UPDATE	-	09.20.17
ADDRESS UPDATE	-	02.25.20
2020 FBC UPDATE	SM	07.05.20
FORMAT UPDATE	LL	11.30.21

THE INSTALLATION DETAILS DESCRIBED HEREIN ARE GENERIC  
AND MAY NOT REFLECT ACTUAL CONDITIONS FOR A SPECIFIC  
SITE. IF SITE CONDITIONS CAUSE INSTALLATION TO DEVIATE  
FROM THE REQUIREMENTS DETAILED HEREIN, A LICENSED  
ENGINEER OR ARCHITECT SHALL PREPARE SITE SPECIFIC  
DOCUMENTS FOR USE WITH THIS DOCUMENT. DEVIATION IN  
NOA FOR HVHZ WILL REQUIRE ONE-TIME APPROVAL FROM  
MIAMI-DADE COUNTY.

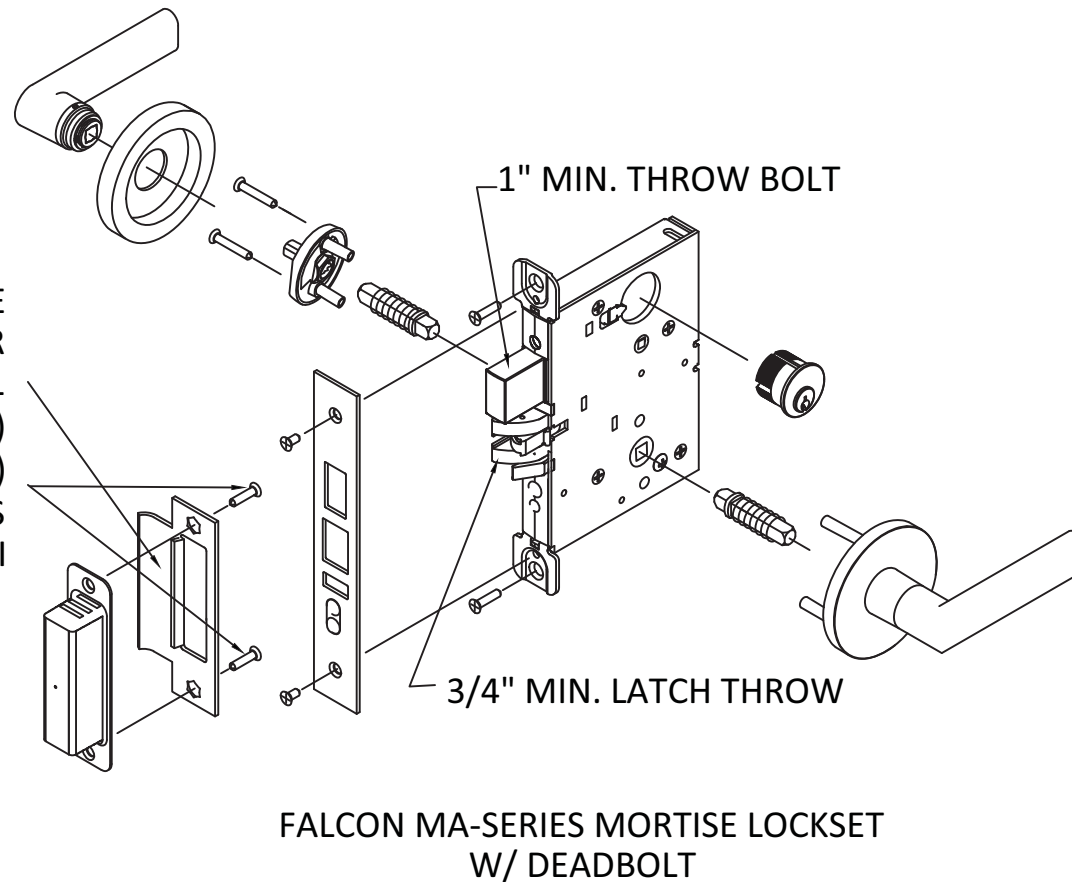


DATE:	11.23.21
DWG. BY:	LL
CHK. BY:	HFN
SCALE:	NTS
DWG. #:	776W-3
REV	M
SHEET:	11

s:\projects\allegion\md-21-1036 - md submittal - noa 20-1005,12 renewal & noa 20-1005,13 renewal\dwgs\20-1005,12\76w-3 2021-12-17.dwg 12/17/2021 11:15 AM



**PRODUCT RENEWED**  
as complying with the Florida  
Building Code  
NOA-No. 21-1228.04  
Expiration Date 02/24/2027  
By Ishag I. Chande  
Miami-Dade Product Control



SCHLAGE LOCK COMPANY, LLC  
11819 N. PENNSYLVANIA STREET  
CARMEL, IN 46032

MANUFACTURING FACILITY:  
STEELCRAFT  
9017 BLUE ASH ROAD  
CINCINNATI, OH 45242  
PH: (317) 715-4073

TITLE: STEELCRAFT H SERIES SINGLE  
FLUSH INSWING COMMERCIAL  
STEEL DOOR W/ MORTISE LOCKS

LATCH & STRIKE HARDWARE DETAILS

PREPARED BY:

BUILDING DROPS, INC.

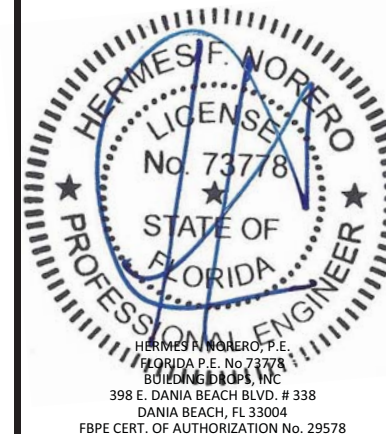
398 E. DANIA BEACH BLVD., STE. 338  
DANIA BEACH, FL 33004

PH: (954) 399-8478  
FAX: (954) 744-4738  
WEB: www.buildingdrops.com



REMARKS	BY	DATE
2017 FBC UPDATE	-	09.20.17
ADDRESS UPDATE	-	02.25.20
2020 FBC UPDATE	SM	07.05.20
FORMAT UPDATE	LL	11.30.21

THE INSTALLATION DETAILS DESCRIBED HEREIN ARE GENERIC AND MAY NOT REFLECT ACTUAL CONDITIONS FOR A SPECIFIC SITE. IF SITE CONDITIONS CAUSE INSTALLATION TO DEVIATE FROM THE REQUIREMENTS DETAILED HEREIN, A LICENSED ENGINEER OR ARCHITECT SHALL PREPARE SITE SPECIFIC DOCUMENTS FOR USE WITH THIS DOCUMENT. DEVIATION IN NOA FOR HVHZ WILL REQUIRE ONE-TIME APPROVAL FROM MIAMI-DADE COUNTY.



DATE:	11.23.21
DWG. BY:	LL
CHK. BY:	HFN
SCALE:	NTS
DWG. #:	776W-3
REV	M

SHEET:  
12  
OF 12