



DEPARTMENT OF REGULATORY AND ECONOMIC RESOURCES (RER)  
BOARD AND CODE ADMINISTRATION DIVISION

## NOTICE OF ACCEPTANCE (NOA)

MIAMI-DADE COUNTY  
PRODUCT CONTROL SECTION

11805 SW 26 Street, Room 208  
Miami, Florida 33175-2474  
T (786) 315-2590 F (786) 315-2599

[www.miamidade.gov/building](http://www.miamidade.gov/building)

**Shanghai Superhouse Building Material Co. Ltd.**  
**No. 8666 Hunan Hwy. Rd. Unit 10, Level 5**  
**Pudong New Area, Shanghai, China 201314**

### SCOPE:

This NOA is being issued under the applicable rules and regulations governing the use of construction materials. The documentation submitted has been reviewed and accepted by Miami-Dade County RER - Product Control Section to be used in Miami Dade County and other areas where allowed by the Authority Having Jurisdiction (AHJ).

This NOA shall not be valid after the expiration date stated below. The Miami-Dade County Product Control Section (In Miami Dade County) and/or the AHJ (in areas other than Miami Dade County) reserve the right to have this product or material tested for quality assurance purposes. If this product or material fails to perform in the accepted manner, the manufacturer will incur the expense of such testing and the AHJ may immediately revoke, modify, or suspend the use of such product or material within their jurisdiction. RER reserves the right to revoke this acceptance if it is determined by Miami-Dade County Product Control Section that this product or material fails to meet the requirements of the applicable building code.

This product is approved as described herein and has been designed to comply with the Florida Building Code, including the High Velocity Hurricane Zone.

### DESCRIPTION: Series "SP60" Aluminum Awning Window – L.M.I.

**APPROVAL DOCUMENT:** Drawing No. **AD21-41**, titled "SP60 Awning Window – L.M.I.", sheets 1 through 8 of 8, dated 11/25/21, with revision #1 dated 10/12/21, prepared by MCY Engineering, Inc., signed and sealed by Yiping Wang, P.E., bearing the Miami-Dade County Product Control Approval stamp with the Notice of Acceptance number and approval date by the Miami-Dade County Product Control Section.

### MISSILE IMPACT RATING: Large and Small Missile Impact Resistant

**LABELING:** Each unit shall bear a permanent label with the manufacturer's name or logo, city, state, model/series, and following statement: "Miami-Dade County Product Control Approved", unless otherwise noted herein.

**RENEWAL** of this NOA shall be considered after a renewal application has been filed and there has been no change in the applicable building code negatively affecting the performance of this product.

**TERMINATION** of this NOA will occur after the expiration date or if there has been a revision or change in the materials, use, and/or manufacture of the product or process. Misuse of this NOA as an endorsement of any product, for sales, advertising or any other purposes shall automatically terminate this NOA. Failure to comply with any section of this NOA shall be cause for termination and removal of NOA.


**ADVERTISEMENT:** The NOA number preceded by the words Miami-Dade County, Florida, and followed by the expiration date may be displayed in advertising literature. If any portion of the NOA is displayed, then it shall be done in its entirety.

**INSPECTION:** A copy of this entire NOA shall be provided to the user by the manufacturer or its distributors and shall be available for inspection at the job site at the request of the Building Official.

This NOA consists of this page 1 and evidence pages E-1 and E-2, as well as approval document mentioned above.

The submitted documentation was reviewed by **Manuel Perez, P.E.**



  
5/23/22

NOA No. 22-0125.01  
Expiration Date: June 02, 2027  
Approval Date: June 02, 2022  
Page 1

**Shanghai Superhouse Building Material Co. Ltd.**

**NOTICE OF ACCEPTANCE: EVIDENCE SUBMITTED**

**A. DRAWINGS**

1. Manufacturer's die drawings and sections.
2. Drawing No. **AD21-41**, titled "SP60 Casement Window – L.M.I.", sheets 1 through 8 of 8, dated 11/25/21, with revision #1 dated 10/12/21, prepared by MCY Engineering, Inc., signed and sealed by Yiping Wang, P.E.

**B. TESTS**

1. Test reports on: 1) Air Infiltration Test, per FBC, TAS 202-94  
2) Uniform Static Air Pressure Test, Loading per FBC TAS 202-94  
3) Water Resistance Test, per FBC, TAS 202-94  
4) Large Missile Impact Test per FBC, TAS 201-94  
5) Cyclic Wind Pressure Loading per FBC, TAS 203-94  
6) Forced Entry Test, per ASTM F588 & FBC 2411.3.2.1, TAS202-94  
along with marked-up drawings and installation diagram of specimen #21 aluminum fixed, awning and outswing casement windows mulled together; specimen #22, aluminum awning and outswing casement windows mulled together, and specimen #23 aluminum fixed and awning windows mulled together, prepared by Intertek Testing Services Shenzhen Ltd. Shanghai Fengxian Branch, Test Report No. **Intertek-210716005SHF-002-R1**, dated 12/21/21 and revised on 05/04/22, signed and sealed by Vinu Abraham, P.E.

**C. CALCULATIONS**

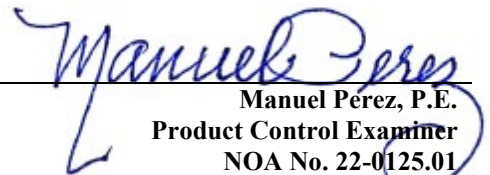
1. Anchor verification calculations and structural analysis, complying with **FBC 7<sup>th</sup> Edition (2020)**, dated 01/14/22, prepared by MCY Engineering, Inc., signed and sealed by Yiping Wang, P.E.
2. Glazing complies with **ASTM E1300-09**

**D. QUALITY ASSURANCE**

1. Miami-Dade Department of Regulatory and Economic Resources (RER)

**E. MATERIAL CERTIFICATIONS**

1. Notice of Acceptance No. **20-0915.22** issued to **Kuraray America, Inc.** for their "Trosifol® Ultraclear, Clear and Color PVB Glass Interlayers" dated 11/19/20, expiring on 07/08/24.

  
Manuel Pérez, P.E.  
Product Control Examiner  
NOA No. 22-0125.01  
Expiration Date: June 02, 2027  
Approval Date: June 02, 2022

**Shanghai Superhouse Building Material Co. Ltd.**

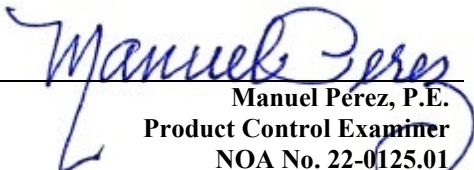
**NOTICE OF ACCEPTANCE: EVIDENCE SUBMITTED**

**F. STATEMENTS**

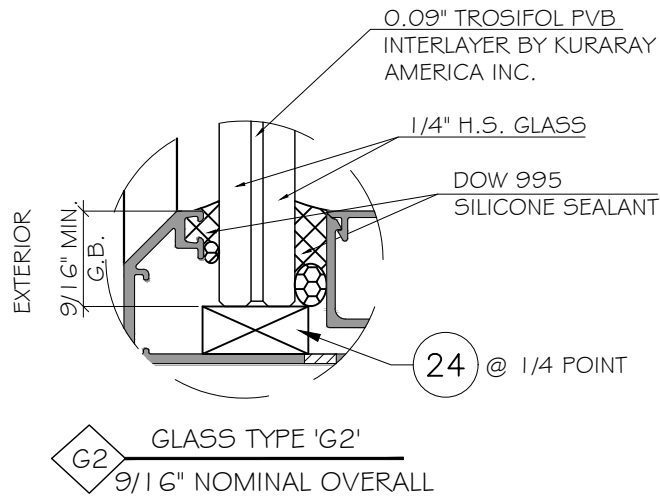
1. Statement letter of conformance, complying with **FBC 7<sup>th</sup> Edition (2020)**, dated January 14, 2022, issued by MCY Engineering, Inc., signed and sealed by Yiping Wang, P.E.
2. Statement letter of no financial interest, dated January 14, 2022, issued by MCY Engineering, Inc., signed and sealed by Yiping Wang, P.E.
3. Distributor Agreement between Shanghai Superhouse Building Material Co. Ltd., Shanghai, China and CasaNoah Design Group, LLC, Panama City Beach, Florida USA, dated 01/13/22, signed by Lilian Li and Bin Lin, respectively.

**G. OTHERS**

1. None.

  
Manuel Pérez, P.E.  
Product Control Examiner  
NOA No. 22-0125.01  
Expiration Date: June 02, 2027  
Approval Date: June 02, 2022

SHANGHAI SUPERHOUSE BUILDING MATERIAL CO., LTD  
SP60 AWNING WINDOW LARGE MISSILE IMPACT



NOTE:  
GLASS COMPLIES WITH ASTM E1300-09  
(3 SEC. GUSTS).

GENERAL NOTES:

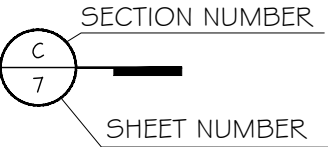
- THIS PRODUCT HAS BEEN DESIGNED AND TESTED TO COMPLY WITH THE REQUIREMENTS OF THE 7TH EDITION OF FLORIDA BUILDING CODE 2020 INCLUDING HIGH VELOCITY HURRICANE ZONE (HVHZ).
- WINDOWS ARE RATED FOR LARGE MISSILE IMPACT. IMPACT SHUTTERS ARE NOT REQUIRED.
- THESE WINDOWS ARE APPROVED FOR AIR AND WATER INFILTRATION.
- ANCHORS SHALL BE AS LISTED, SPACED AS SHOWN ON DETAILS. ANCHORS EMBEDMENT TO BASE MATERIAL SHALL BE BEYOND WALL DRESSING OR STUCCO.
- ANCHORING OR LOADING CONDITIONS NOT SHOWN IN THESE DETAILS ARE NOT PART OF THIS APPROVAL.
- MATERIALS INCLUDING BUT NOT LIMITED TO STEEL/ METAL SCREWS THAT COME INTO CONTACT WITH OTHER DISSIMILAR MATERIALS SHALL MEET THE REQUIREMENTS OF THE 7TH EDITION OF FLORIDA BUILDING CODE 2020 SECTION AS APPLICABLE.
- METAL STRUCTURES BY OTHERS TO BE DESIGNED TO SUPPORT THE LOADS IMPOSED BY THIS GLAZING SYSTEM AND TO TRANSFER SUCH LOADS TO THE BUILDING MAIN STRUCTURE.
- ULTIMATE LOAD OBTAINED FROM ASCE 7-16, MULTIPLY BY 0.6 SHALL BE LESS THAN OR EQUAL TO MAX. DESIGN LOAD IN THIS DOCUMENT. THE DESIGN LOADS SHOWN IN THIS DOCUMENT ARE ALLOWABLE DESIGN LOADS.
- SEALANT:  
ALL FRAME CORNERS, JOINTS, MULLION SEAMS AND PERIMETER GLAZING BEAD TO FRAME INSTALLATION FASTENERS SEALED WITH SILICONE SEALANT.

USE CHARTS AS FOLLOWS.

- STEP 1: DETERMINE DESIGN WIND LOAD REQUIREMENTS BASED ON WIND VELOCITY, BLDG. HEIGHT, WIND ZONE USING APPLICABLE ASCE 7-16 STANDARD OR WIND TUNNEL REPORTS.
- STEP 2: SEE SHEET E1 FOR APPROVED TYPICAL ELEVATION & CONFIGURATION.
- STEP 3: ANCHOR OPTION SEE SHEET D1. ANCHOR LAYOUT SEE SHEET E1.
- STEP 4: THE LOWEST VALUE RESULTING FROM STEPS 2 & 3 THAT EXCEED THE DESIGN WIND PRESSURES DETERMINED THRU STEP 1 SHALL APPLY TO ENTIRE SYSTEM.

ABBREVIATIONS AND SYMBOLS

G.B. - GLASS BITE  
D.L.O. - DAYLITE OPENING  
F.H. - FRAME HEIGHT  
F.W. - FRAME WIDTH  
W/ - WITH  
W/O - WITHOUT  
O.C. - ON CENTER



PRODUCT CONTROL APPROVAL:

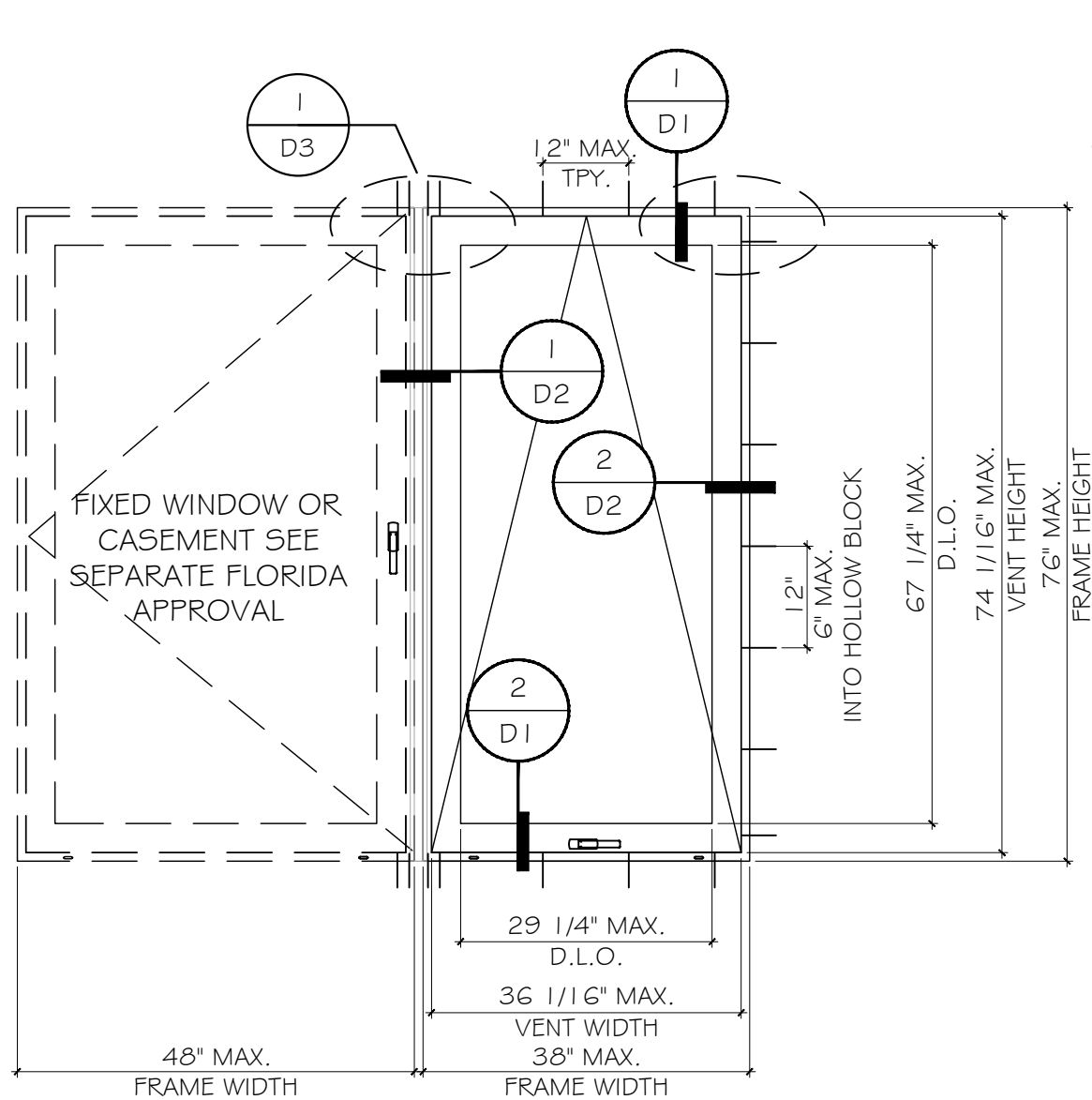
**PRODUCT APPROVED**  
as complying with the Florida  
Building Code  
NOA-No. **22-0125.01**  
Approval Date: **06/02/2022**  
By: *Manuel Perez*  
Miami-Dade Product Control

Professional Engineer Seal: YOUNG WANG P.E., FLORIDA REGISTRATION NO. 155983, C.A. 1528677, STATE OF FLORIDA, PROFESSIONAL ENGINEER, January 17th, 2022

**MCY ENGINEERING, INC.**  
GLAZING CONSULTANTS  
12781 MIRAMAR PKWY., STE. 301  
MIRAMAR, FL 33027 P: 305.271.0117  
www.MCYEngineering.com mcy@mcyengineering.com

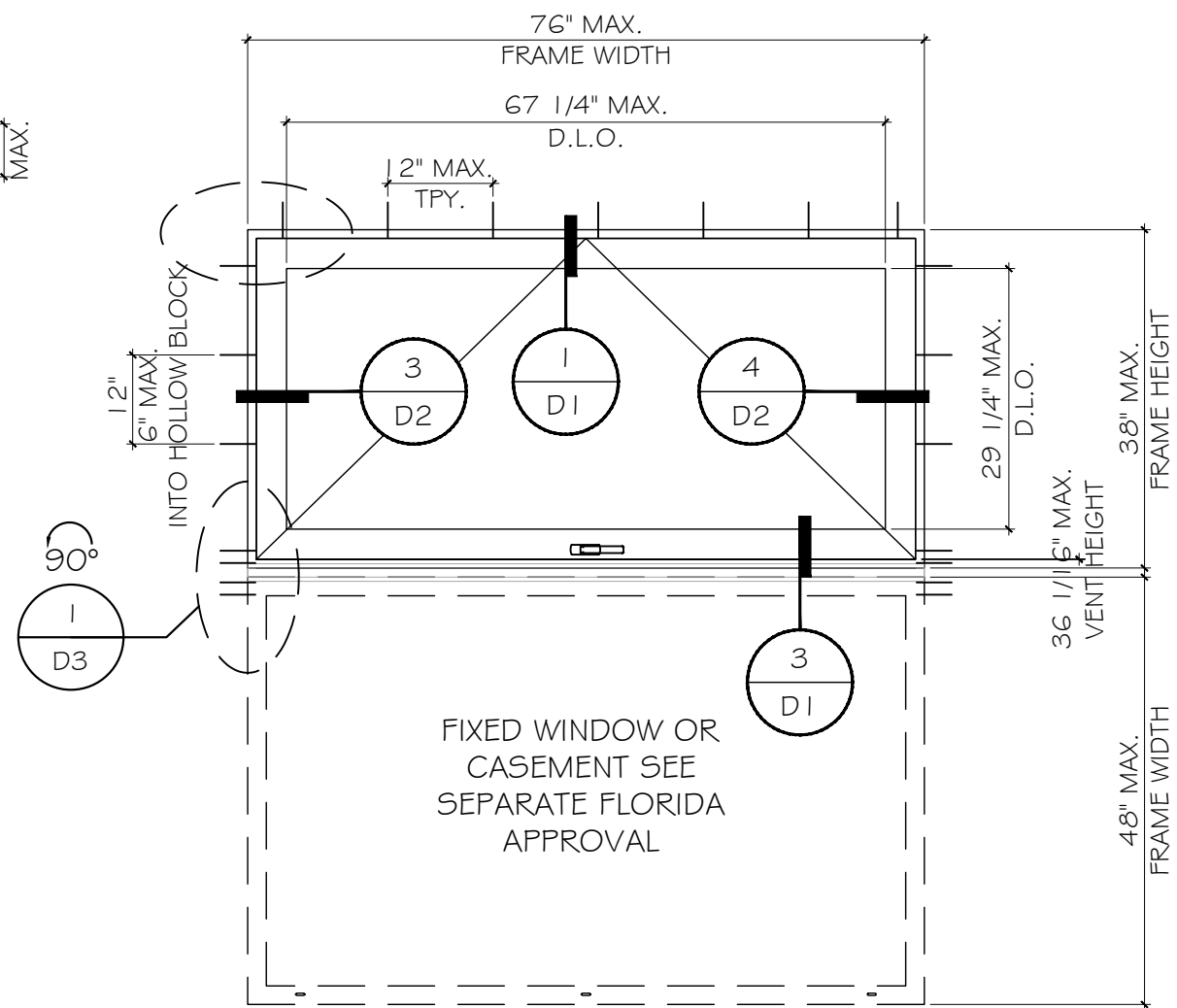
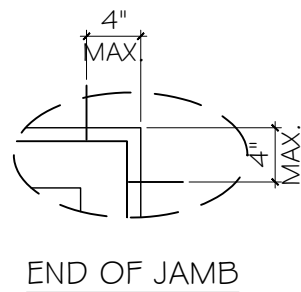
**SP60 AWNING WINDOW - L.M.I.**  
SHANGHAI SUPERHOUSE BUILDING MATERIAL CO., LTD  
LEVEL 5, BUILDING 10, NO.8666 HUNAN RD, PUDONG NEW AREA  
SHANG HAI, CHINA  
TEL.86 021-5822 0630 CELL.86 135-8572-3609

																																																																																																																																																																																																																																																																																																																																																																																																																																																																																																																																																																																																																																																																																																																																																																																																																																																																																																																																																																																																																																																																																																																																																																																																																																																																																																																																																																																																																																																																																																																																																													</
--	--	--	--	--	--	--	--	--	--	--	--	--	--	--	--	--	--	--	--	--	--	--	--	--	--	--	--	--	--	--	--	--	--	--	--	--	--	--	--	--	--	--	--	--	--	--	--	--	--	--	--	--	--	--	--	--	--	--	--	--	--	--	--	--	--	--	--	--	--	--	--	--	--	--	--	--	--	--	--	--	--	--	--	--	--	--	--	--	--	--	--	--	--	--	--	--	--	--	--	--	--	--	--	--	--	--	--	--	--	--	--	--	--	--	--	--	--	--	--	--	--	--	--	--	--	--	--	--	--	--	--	--	--	--	--	--	--	--	--	--	--	--	--	--	--	--	--	--	--	--	--	--	--	--	--	--	--	--	--	--	--	--	--	--	--	--	--	--	--	--	--	--	--	--	--	--	--	--	--	--	--	--	--	--	--	--	--	--	--	--	--	--	--	--	--	--	--	--	--	--	--	--	--	--	--	--	--	--	--	--	--	--	--	--	--	--	--	--	--	--	--	--	--	--	--	--	--	--	--	--	--	--	--	--	--	--	--	--	--	--	--	--	--	--	--	--	--	--	--	--	--	--	--	--	--	--	--	--	--	--	--	--	--	--	--	--	--	--	--	--	--	--	--	--	--	--	--	--	--	--	--	--	--	--	--	--	--	--	--	--	--	--	--	--	--	--	--	--	--	--	--	--	--	--	--	--	--	--	--	--	--	--	--	--	--	--	--	--	--	--	--	--	--	--	--	--	--	--	--	--	--	--	--	--	--	--	--	--	--	--	--	--	--	--	--	--	--	--	--	--	--	--	--	--	--	--	--	--	--	--	--	--	--	--	--	--	--	--	--	--	--	--	--	--	--	--	--	--	--	--	--	--	--	--	--	--	--	--	--	--	--	--	--	--	--	--	--	--	--	--	--	--	--	--	--	--	--	--	--	--	--	--	--	--	--	--	--	--	--	--	--	--	--	--	--	--	--	--	--	--	--	--	--	--	--	--	--	--	--	--	--	--	--	--	--	--	--	--	--	--	--	--	--	--	--	--	--	--	--	--	--	--	--	--	--	--	--	--	--	--	--	--	--	--	--	--	--	--	--	--	--	--	--	--	--	--	--	--	--	--	--	--	--	--	--	--	--	--	--	--	--	--	--	--	--	--	--	--	--	--	--	--	--	--	--	--	--	--	--	--	--	--	--	--	--	--	--	--	--	--	--	--	--	--	--	--	--	--	--	--	--	--	--	--	--	--	--	--	--	--	--	--	--	--	--	--	--	--	--	--	--	--	--	--	--	--	--	--	--	--	--	--	--	--	--	--	--	--	--	--	--	--	--	--	--	--	--	--	--	--	--	--	--	--	--	--	--	--	--	--	--	--	--	--	--	--	--	--	--	--	--	--	--	--	--	--	--	--	--	--	--	--	--	--	--	--	--	--	--	--	--	--	--	--	--	--	--	--	--	--	--	--	--	--	--	--	--	--	--	--	--	--	--	--	--	--	--	--	--	--	--	--	--	--	--	--	--	--	--	--	--	--	--	--	--	--	--	--	--	--	--	--	--	--	--	--	--	--	--	--	--	--	--	--	--	--	--	--	--	--	--	--	--	--	--	--	--	--	--	--	--	--	--	--	--	--	--	--	--	--	--	--	--	--	--	--	--	--	--	--	--	--	--	--	--	--	--	--	--	--	--	--	--	--	--	--	--	--	--	--	--	--	--	--	--	--	--	--	--	--	--	--	--	--	--	--	--	--	--	--	--	--	--	--	--	--	--	--	--	--	--	--	--	--	--	--	--	--	--	--	--	--	--	--	--	--	--	--	--	--	--	--	--	--	--	--	--	--	--	--	--	--	--	--	--	--	--	--	--	--	--	--	--	--	--	--	--	--	--	--	--	--	--	--	--	--	--	--	--	--	--	--	--	--	--	--	--	--	--	--	--	--	--	--	--	--	--	--	--	--	--	--	--	--	--	--	--	--	--	--	--	--	--	--	--	--	--	--	--	--	--	--	--	--	--	--	--	--	--	--	--	--	--	--	--	--	--	--	--	--	--	--	--	--	--	--	--	--	--	--	--	--	--	--	--	--	--	--	--	--	--	--	--	--	--	--	--	--	--	--	--	--	--	--	--	--	--	--	--	--	--	--	--	--	--	--	--	--	--	--	--	--	--	--	--	--	--	--	--	--	--	--	--	--	--	--	--	--	--	--	--	--	--	--	--	--	--	--	--	--	--	--	--	--	--	--	--	--	--	--	--	--	--	--	--	--	--	--	--	--	--	--	--	--	--	--	--	--	--	--	--	--	--	--	--	--	--	--	--	--	--	--	--	--	--	--	--	--	--	--	--	--	--	--	--	--	--	--	--	--	--	--	--	--	--	--	--	--	--	--	--	--	--	--	--	--	--	--	--	--	--	--	--	--	--	--	--	--	--	--	--	--	--	--	--	--	--	--	--	--	--	--	--	--	--	--	--	--	--	--	--	--	--	--	--	--	--	--	--	--	--	--	--	--	--	--	--	--	--	--	--	--	--	--	--	--	--	--	--	--	--	--	--	--	--	--	--	--	--	--	--	--	--	--	--	--	--	--	--	--	--	--	--	--	--	--	--	--	--	--	--	--	--	--	--	--	--	--	--	--	--	--	--	--	--	--	--	--	--	--	--	--	--	--	--	--	--	--	--	--	--	--	--	--	--	--	--	--	--	--	--	--	--	--	--	--	--	--	--	--	--	--	--	--	--	--	--	--	--	--	--	--	--	--	--	--	--	--	--	--	--	--	--	--	--	--	--	--	--	--	--	--	--	--	--	--	--	--	--	--	--	--	--	--	--	--	--	--	--	--	--	--	--	--	--	--	--	--	--	--	--	--	--	--	--	--	--	--	--	--	--	--	--	--	--	--	--	--	--	--	--	--	--	--	--	--	--	--	--	--	--	--	--	--	--	--	--	--	--	--	--	--	--	--	--	--	--	--	--	--	--	--	--	--	--	--	--	--	--	--	--	--	--	--	--	--	--	--	--	--	--	--	--	--	--	--	--	--	--	--	--	--	--	--	--	--	--	--	--	--	--	--	--	--	--	--	--	--	--	--	--	--	--	--	--	--	--	--	--	--	--	--	--	--	--	--	--	--	--	--	--	--	--	--	--	--	--	--	--	--	--	--	--	--	--	--	--	--	--	--	--	--	--	--	--	--	--	--	--	--	--	--	--	--	--	--	--	--	--	--	--	--	--	--	--	--	--	--	--	--	--	--	--	--	--	--	--	--	--	--	--	--	--	--	--	--	--	--	--	--	--	--	--	--	--	--	--	--	--	--	--	--	--	--	--	--	--	--	--	--	--	--	--	--	--	--	--	--	--	--	--	--	--	--	--	--	--	--	--	--	--	--	--	--	--	--	--	--	--	--	----



TYPICAL EXTERIOR ELEVATION

DESIGN LOAD
FOR SIZE SHOWN ABOVE OR SMALLER AS PERMITTED BY FBC
+60 PSF -60 PSF



TYPICAL EXTERIOR ELEVATION

DESIGN LOAD
FOR SIZE SHOWN ABOVE OR SMALLER AS PERMITTED BY FBC
+60 PSF -60 PSF

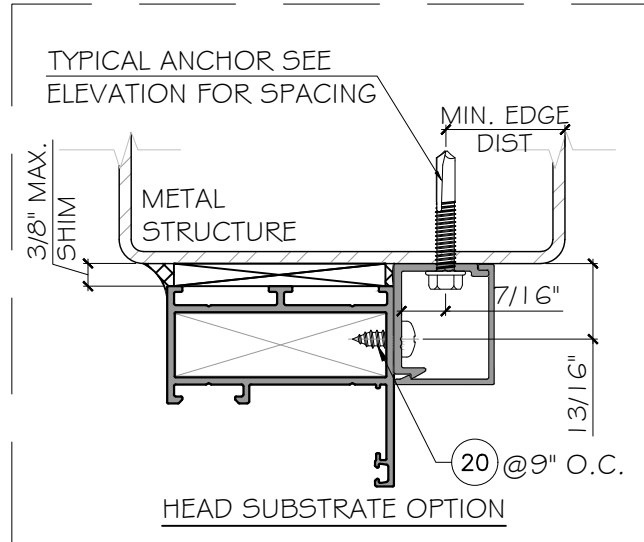
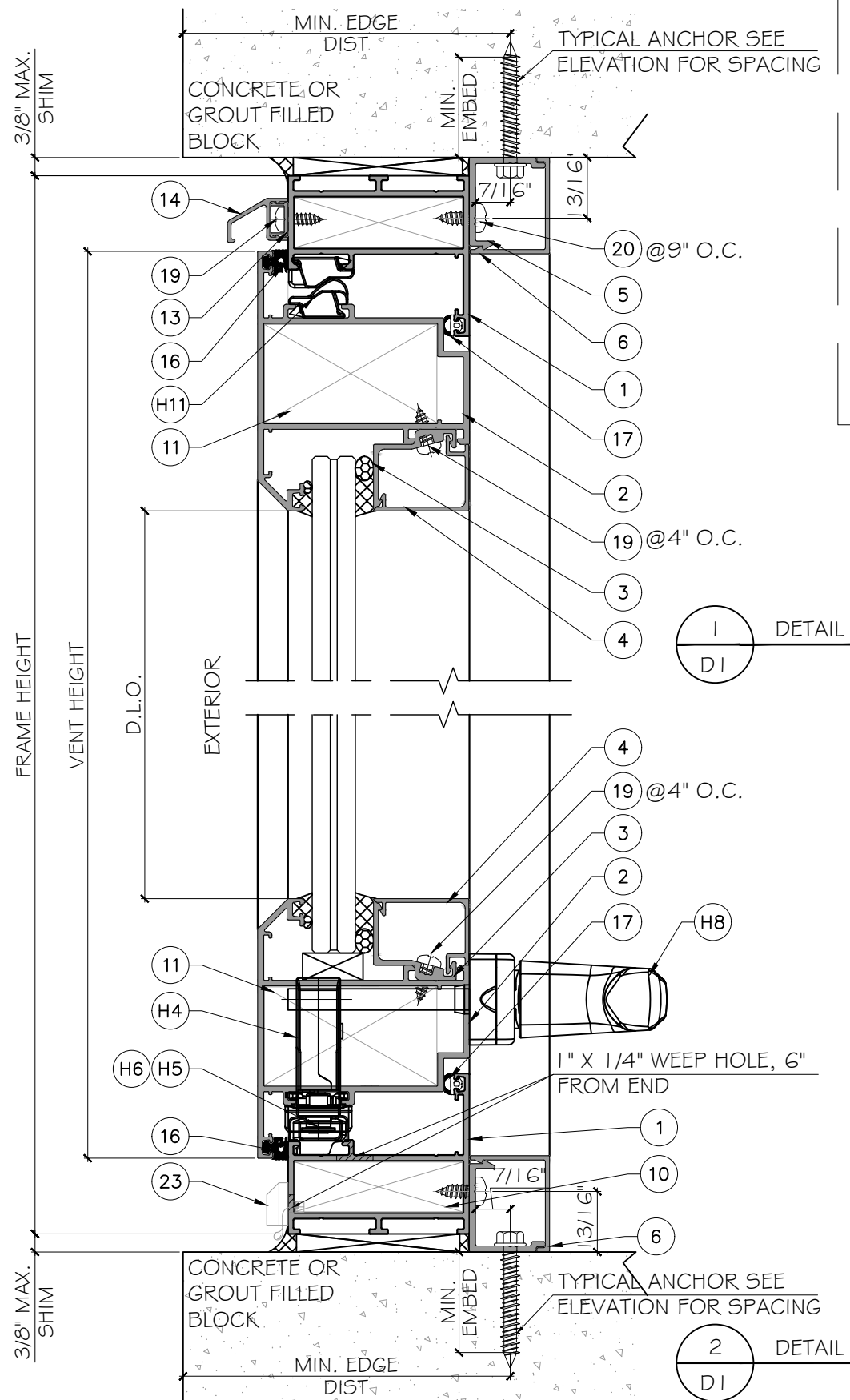
PRODUCT CONTROL APPROVAL:

**PRODUCT APPROVED**  
as complying with the Florida  
Building Code  
NOA-No. **22-0125.01**  
Approval Date: **06/02/2022**  
By: *Manuel Perez*  
Miami-Dade Product Control

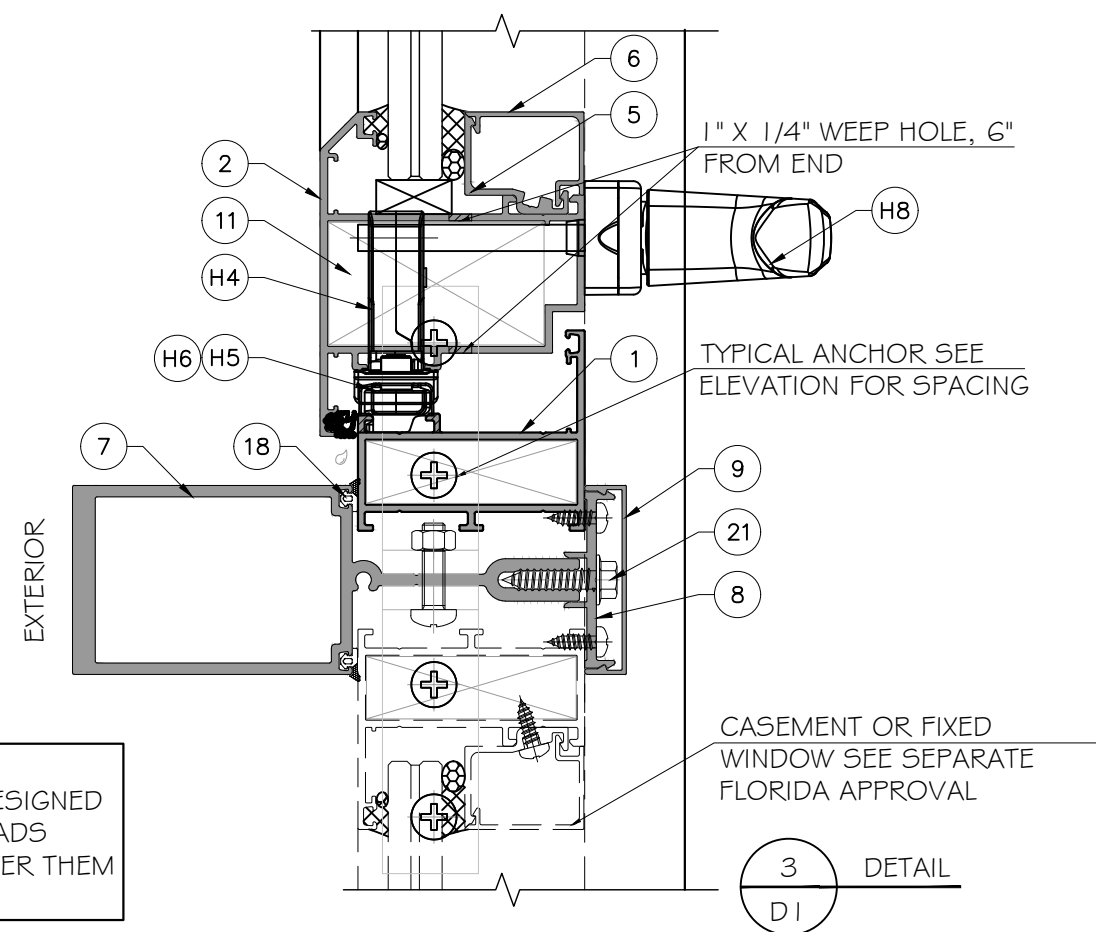
January 17th, 2022

Rev. No.	Date	Drawn By	Description
1.	10.12.2021	JAMES	NEW NOA
Drawn Date	11/25/2021	Scale	
DRAWING NO.	AD21-41		
Sheet No.	2 OF 8		





NOTE:  
METAL STRUCTURE BY OTHERS MUST BE DESIGNED  
AND ANCHORED PROPERLY TO SUSTAIN LOADS  
IMPOSED BY GLAZING SYSTEM AND TRANSFER THEM  
TO THE BUILDING STRUCTURE.



#### ANCHOR TYPES: (SEE ELEVATIONS FOR SPACING)

TYPE 'A' -- 1/4" DIA. ULTRACON+ BY 'DEWALT' ( $F_u = 164 \text{ KSI}$ ,  $F_y = 148 \text{ KSI}$ )  
DIRECTLY INTO CONCRETE OR BLOCKS  
1 3/4" MIN. EMBED INTO CONCRETE (HEAD/ SILL/ JAMB)  
1 3/4" MIN. EMBED INTO HOLLOW OR GROUT FILLED BLOCKS (JAMB ONLY)

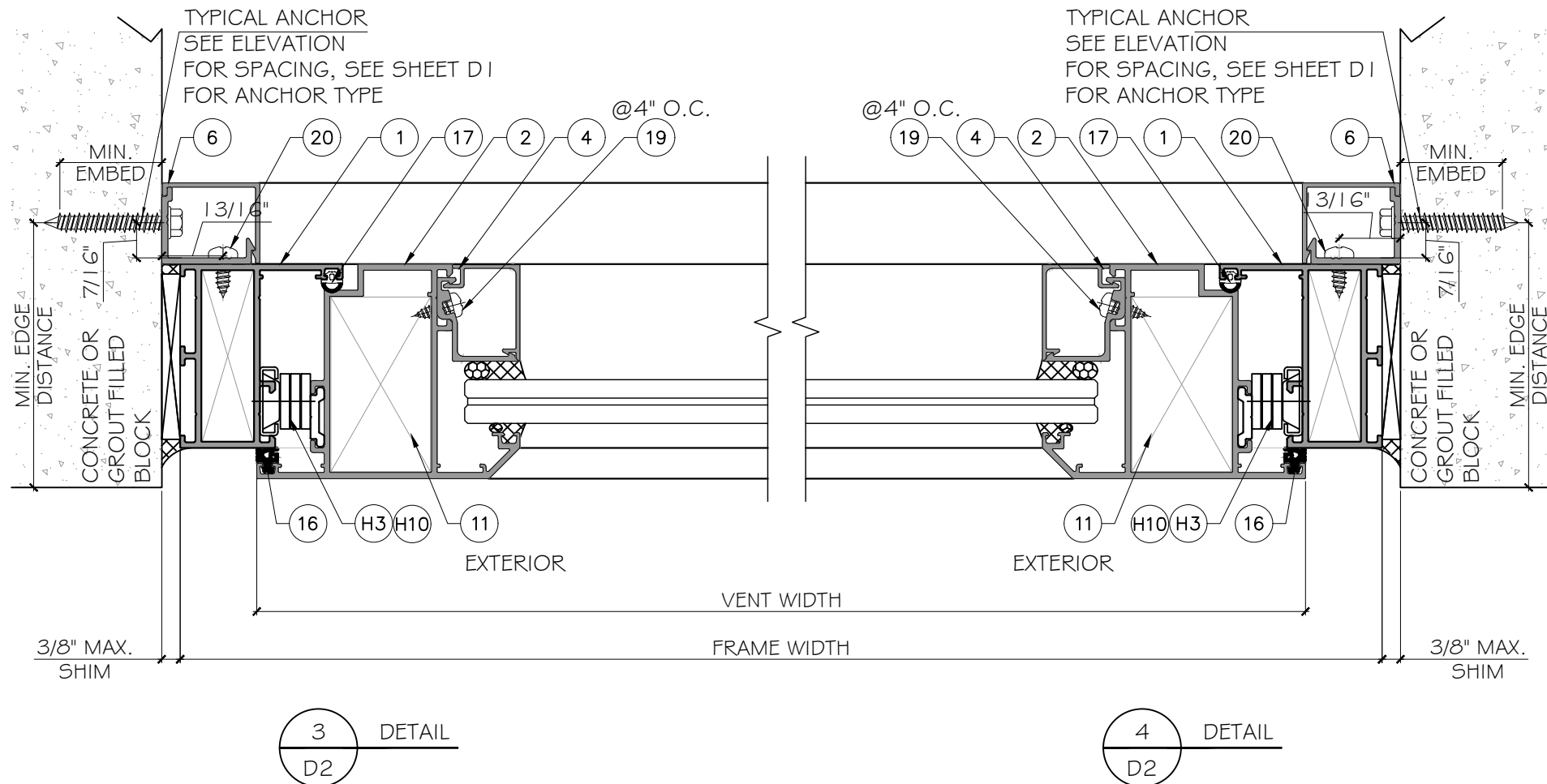
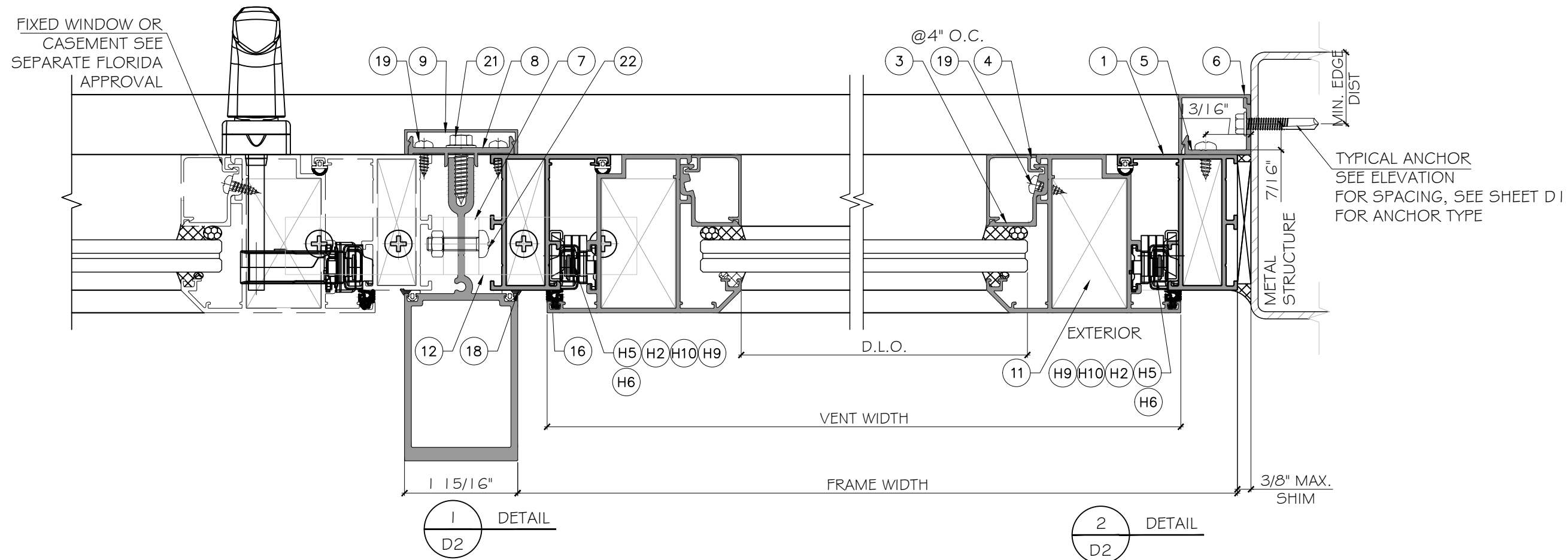
TYPE 'B' -- 1/4" DIA. SS SCREW ( $F_u = 100 \text{ KSI}$ ,  $F_y = 65 \text{ KSI}$ )  
OR 1/4" TEKS (GRADE 5) ( $F_u = 120 \text{ KSI}$ ,  $F_y = 92 \text{ KSI}$ )  
INTO FBC APPROVED MULLIONS (1/8" THK. MIN.)  
OR INTO METAL STRUCTURES, STEEL: 1/8" THK. MIN. (A36 MIN.)  
(3) THREADS MIN. TO EXTEND BEYOND METAL THICKNESS  
(STEEL IN CONTACT WITH ALUMINUM TO BE PLATED OR PAINTED)

#### TYPICAL EDGE DISTANCE

INTO CONCRETE OR BLOCKS = 2-1/2" MIN.  
INTO METAL STRUCTURE = 3/4" MIN.  
CONCRETE AT HEAD, SILL OR JAMB  $f'_c = 3000 \text{ PSI}$  MIN.  
BLOCK AT JAMB  $f'_m = 2000 \text{ PSI}$  MIN.

PRODUCT CONTROL APPROVAL:  
**PRODUCT APPROVED**  
as complying with the Florida  
Building Code  
NOA-No. **22-0125.01**  
Approval Date: **06/02/2022**  
By: *Manuel Perez*  
Miami-Dade Product Control

YOUNG WANG P.E.  
FLORIDA REGISTRATION  
FL #55983  
C.A. #52877  
January 17th, 2022



PRODUCT CONTROL APPROVAL:

**PRODUCT APPROVED**  
as complying with the Florida Building Code

NOA-No. **22-0125.01**

Approval Date: **06/02/2022**

By: *Manuel Perez*  
Miami-Dade Product Control

YOUNG WANG P.E.  
FLORIDA REGISTRATION  
FL #55983  
C.A. #528677

January 17th, 2022

**MCY ENGINEERING, INC.**  
GLAZING CONSULTANTS  
12781 MIRAMAR PKWY., STE. 301  
MIRAMAR, FL 33027  
P: 305.271.0117  
www.MCYEngineering.com mcy@mcyengineering.com

**SP60 AWNING WINDOW - L.M.I.**

SHANGHAI SUPERHOUSE BUILDING MATERIAL CO., LTD  
LEVEL 5, BUILDING 10, NO.8666 HUNAN RD, PUDONG NEW AREA  
SHANG HAI, CHINA  
TEL:86 021-5822 0630 CELL:86 135-8572-3609

Rev. No.	Date	Drawn By	Description
1.	10.12.2021	JAMES	NEW NOA

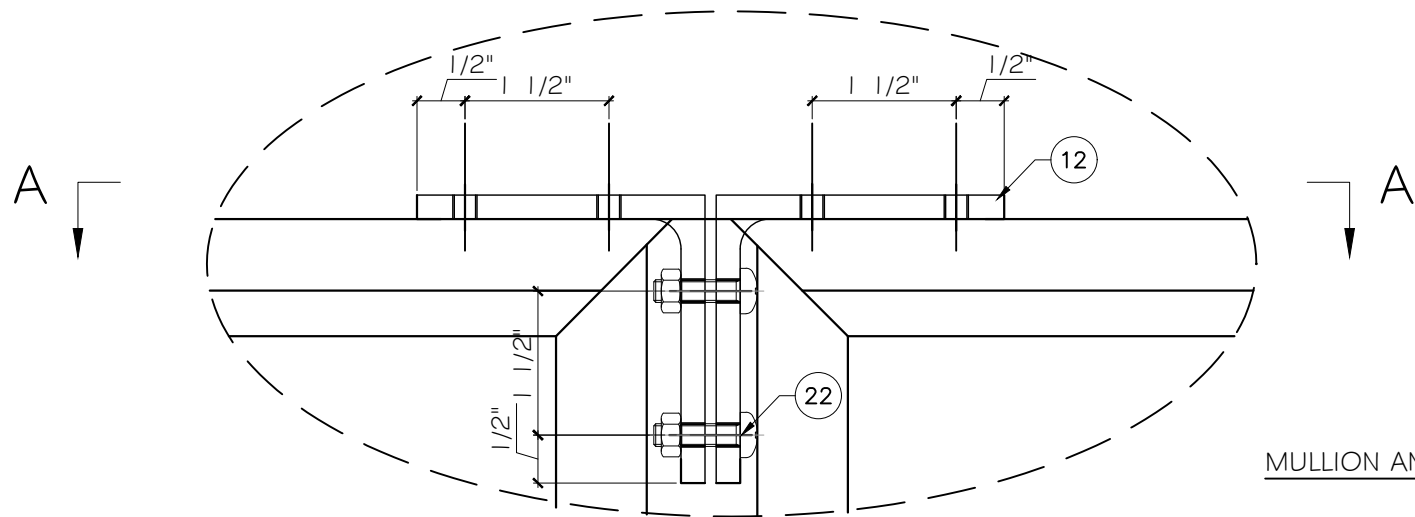
Drawn Date: 11/25/2021

Scale:

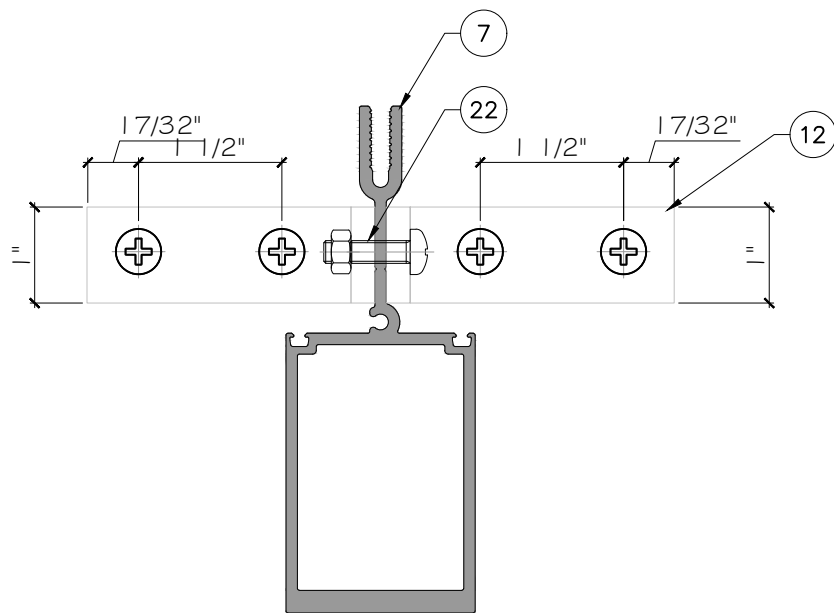
DRAWING NO. **AD21-41**

**D2**

Sheet No. **4 OF 8**



1  
D3  
DETAIL



SECTION A-A

MULLION ANCHOR:

TYPE 'A' -- 1/4" DIA. ULTRACON+ BY 'DEWALT' (Fu=164 KSI, Fy=148 KSI)  
DIRECTLY INTO CONCRETE ONLY  
1 3/4" MIN. EMBED INTO CONCRETE(HEAD/ SILL/ JAMBS)

TYPE 'B' -- 1/4" DIA. SS SCREW (Fu=100 KSI, Fy= 65 KSI)  
1/4" DIA. TEKS (Fu=120 KSI, Fy= 92KSI)  
INTO FBC APPROVED MULLIONS (1/8" THK. MIN.)  
OR INTO METAL STRUCTURES, STEEL: 1/8" THK. MIN. (A36 MIN.)  
(3) THREADS MIN. TO EXTEND BEYOND METAL THICKNESS  
(STEEL IN CONTACT WITH ALUMINUM TO BE PLATED OR PAINTED)

TYPICAL EDGE DISTANCE

INTO CONCRETE = 2-1/2" MIN.  
INTO METAL STRUCTURE = 3/4" MIN.  
CONCRETE AT HEAD, SILL OR JAMB f'c=3000PSI MIN.

FOR CONDITION NOT COVERED, TO BE CHECKED  
BY DELEGATED ENGINEER ON JOB BASES.

PRODUCT CONTROL APPROVAL:

**PRODUCT APPROVED**  
as complying with the Florida  
Building Code  
NOA-No. **22-0125.01**  
Approval Date: **06/02/2022**  
By: *Manuel Perez*  
Miami-Dade Product Control

YOUNG WANG P.E.  
FLORIDA REGISTRATION  
FL #55983  
C.A.#28677

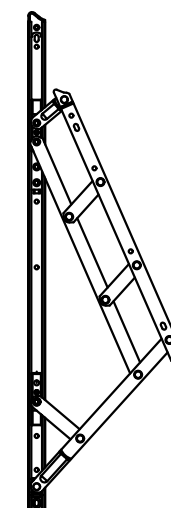
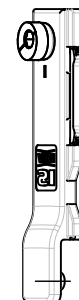
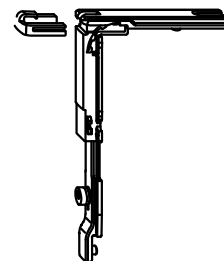
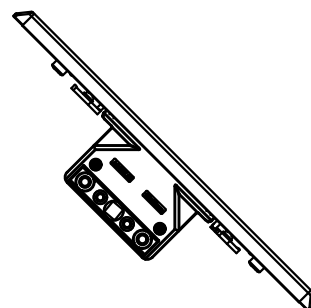
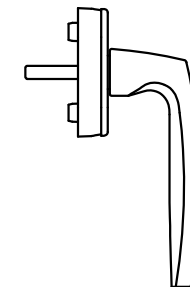
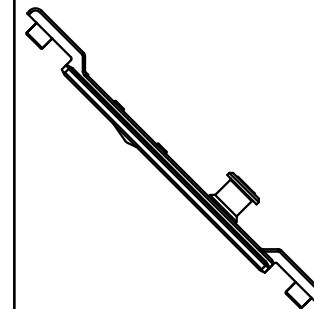
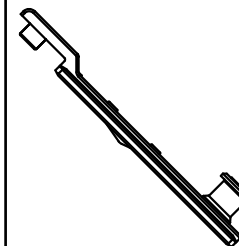
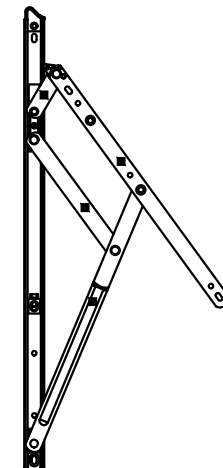
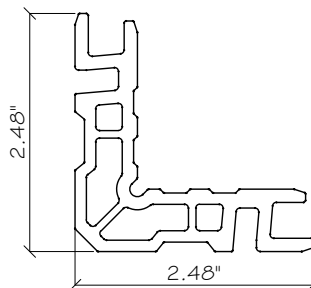
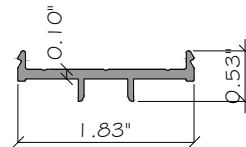
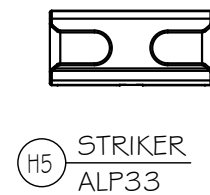
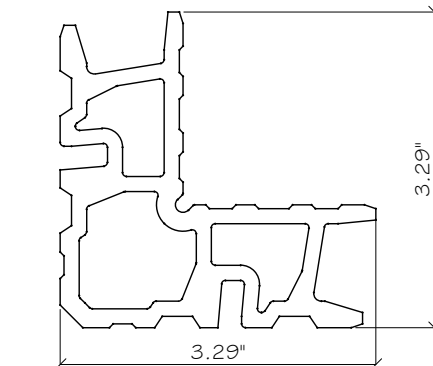
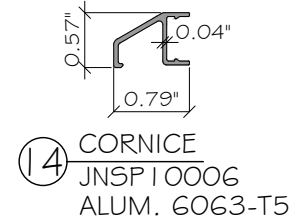
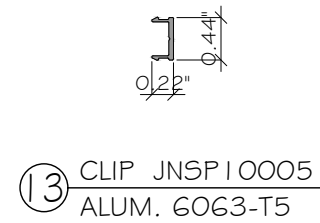
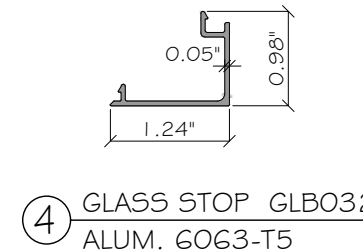
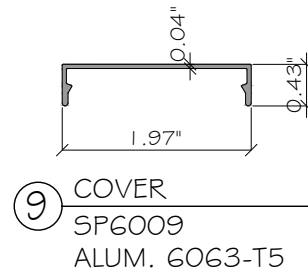
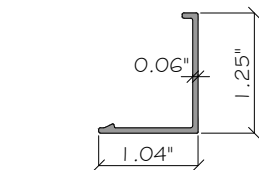
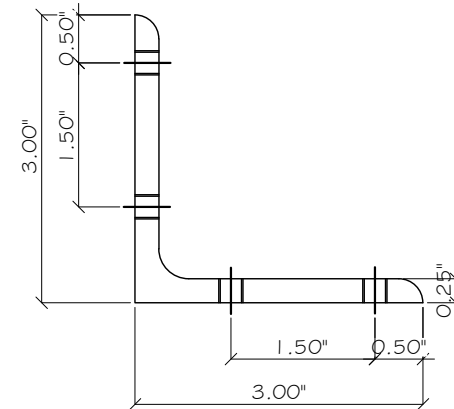
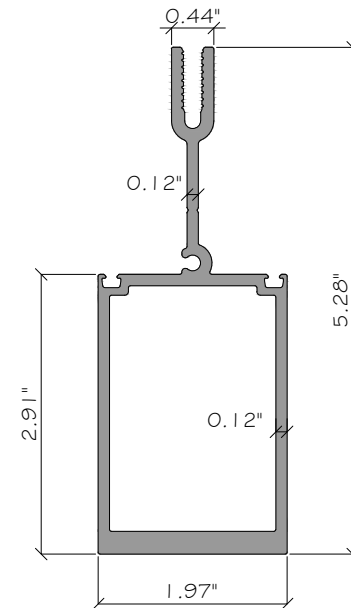
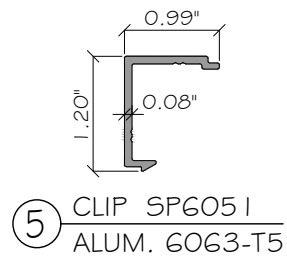
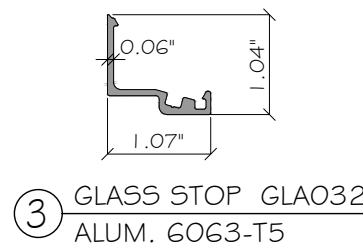
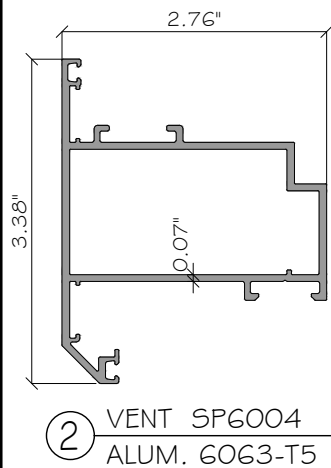
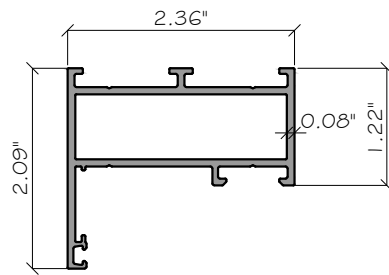
January 17th, 2022

**MCY ENGINEERING, INC.**  
GLAZING CONSULTANTS  
12781 MIRAMAR PKWY, STE. 301  
MIRAMAR, FL 33027 P: 305.271.0117  
www.MCYEngineering.com mcy@mcyengineering.com

**SP60 AWNING WINDOW - L.M.I.**  
SHANGHAI SUPERHOUSE BUILDING MATERIAL CO., LTD  
LEVEL 5, BUILDING 10, NO.8666 HUNAN RD, PUDONG NEW AREA  
SHANG HAI, CHINA  
TEL.86 021-5822 0630 CELL.86 135-8572-3609

																																																																																																																																																																																																																																																																																																																																																																																																																																																																																																																																																																																																																																																																																																																																																																																																																																																																																																																																																																																																																																																																																																																																																																																																																																																																																																																																																																																																																																																																																																																																																																																																																																																																																																																																																																																																																																																																																																																																				</
--	--	--	--	--	--	--	--	--	--	--	--	--	--	--	--	--	--	--	--	--	--	--	--	--	--	--	--	--	--	--	--	--	--	--	--	--	--	--	--	--	--	--	--	--	--	--	--	--	--	--	--	--	--	--	--	--	--	--	--	--	--	--	--	--	--	--	--	--	--	--	--	--	--	--	--	--	--	--	--	--	--	--	--	--	--	--	--	--	--	--	--	--	--	--	--	--	--	--	--	--	--	--	--	--	--	--	--	--	--	--	--	--	--	--	--	--	--	--	--	--	--	--	--	--	--	--	--	--	--	--	--	--	--	--	--	--	--	--	--	--	--	--	--	--	--	--	--	--	--	--	--	--	--	--	--	--	--	--	--	--	--	--	--	--	--	--	--	--	--	--	--	--	--	--	--	--	--	--	--	--	--	--	--	--	--	--	--	--	--	--	--	--	--	--	--	--	--	--	--	--	--	--	--	--	--	--	--	--	--	--	--	--	--	--	--	--	--	--	--	--	--	--	--	--	--	--	--	--	--	--	--	--	--	--	--	--	--	--	--	--	--	--	--	--	--	--	--	--	--	--	--	--	--	--	--	--	--	--	--	--	--	--	--	--	--	--	--	--	--	--	--	--	--	--	--	--	--	--	--	--	--	--	--	--	--	--	--	--	--	--	--	--	--	--	--	--	--	--	--	--	--	--	--	--	--	--	--	--	--	--	--	--	--	--	--	--	--	--	--	--	--	--	--	--	--	--	--	--	--	--	--	--	--	--	--	--	--	--	--	--	--	--	--	--	--	--	--	--	--	--	--	--	--	--	--	--	--	--	--	--	--	--	--	--	--	--	--	--	--	--	--	--	--	--	--	--	--	--	--	--	--	--	--	--	--	--	--	--	--	--	--	--	--	--	--	--	--	--	--	--	--	--	--	--	--	--	--	--	--	--	--	--	--	--	--	--	--	--	--	--	--	--	--	--	--	--	--	--	--	--	--	--	--	--	--	--	--	--	--	--	--	--	--	--	--	--	--	--	--	--	--	--	--	--	--	--	--	--	--	--	--	--	--	--	--	--	--	--	--	--	--	--	--	--	--	--	--	--	--	--	--	--	--	--	--	--	--	--	--	--	--	--	--	--	--	--	--	--	--	--	--	--	--	--	--	--	--	--	--	--	--	--	--	--	--	--	--	--	--	--	--	--	--	--	--	--	--	--	--	--	--	--	--	--	--	--	--	--	--	--	--	--	--	--	--	--	--	--	--	--	--	--	--	--	--	--	--	--	--	--	--	--	--	--	--	--	--	--	--	--	--	--	--	--	--	--	--	--	--	--	--	--	--	--	--	--	--	--	--	--	--	--	--	--	--	--	--	--	--	--	--	--	--	--	--	--	--	--	--	--	--	--	--	--	--	--	--	--	--	--	--	--	--	--	--	--	--	--	--	--	--	--	--	--	--	--	--	--	--	--	--	--	--	--	--	--	--	--	--	--	--	--	--	--	--	--	--	--	--	--	--	--	--	--	--	--	--	--	--	--	--	--	--	--	--	--	--	--	--	--	--	--	--	--	--	--	--	--	--	--	--	--	--	--	--	--	--	--	--	--	--	--	--	--	--	--	--	--	--	--	--	--	--	--	--	--	--	--	--	--	--	--	--	--	--	--	--	--	--	--	--	--	--	--	--	--	--	--	--	--	--	--	--	--	--	--	--	--	--	--	--	--	--	--	--	--	--	--	--	--	--	--	--	--	--	--	--	--	--	--	--	--	--	--	--	--	--	--	--	--	--	--	--	--	--	--	--	--	--	--	--	--	--	--	--	--	--	--	--	--	--	--	--	--	--	--	--	--	--	--	--	--	--	--	--	--	--	--	--	--	--	--	--	--	--	--	--	--	--	--	--	--	--	--	--	--	--	--	--	--	--	--	--	--	--	--	--	--	--	--	--	--	--	--	--	--	--	--	--	--	--	--	--	--	--	--	--	--	--	--	--	--	--	--	--	--	--	--	--	--	--	--	--	--	--	--	--	--	--	--	--	--	--	--	--	--	--	--	--	--	--	--	--	--	--	--	--	--	--	--	--	--	--	--	--	--	--	--	--	--	--	--	--	--	--	--	--	--	--	--	--	--	--	--	--	--	--	--	--	--	--	--	--	--	--	--	--	--	--	--	--	--	--	--	--	--	--	--	--	--	--	--	--	--	--	--	--	--	--	--	--	--	--	--	--	--	--	--	--	--	--	--	--	--	--	--	--	--	--	--	--	--	--	--	--	--	--	--	--	--	--	--	--	--	--	--	--	--	--	--	--	--	--	--	--	--	--	--	--	--	--	--	--	--	--	--	--	--	--	--	--	--	--	--	--	--	--	--	--	--	--	--	--	--	--	--	--	--	--	--	--	--	--	--	--	--	--	--	--	--	--	--	--	--	--	--	--	--	--	--	--	--	--	--	--	--	--	--	--	--	--	--	--	--	--	--	--	--	--	--	--	--	--	--	--	--	--	--	--	--	--	--	--	--	--	--	--	--	--	--	--	--	--	--	--	--	--	--	--	--	--	--	--	--	--	--	--	--	--	--	--	--	--	--	--	--	--	--	--	--	--	--	--	--	--	--	--	--	--	--	--	--	--	--	--	--	--	--	--	--	--	--	--	--	--	--	--	--	--	--	--	--	--	--	--	--	--	--	--	--	--	--	--	--	--	--	--	--	--	--	--	--	--	--	--	--	--	--	--	--	--	--	--	--	--	--	--	--	--	--	--	--	--	--	--	--	--	--	--	--	--	--	--	--	--	--	--	--	--	--	--	--	--	--	--	--	--	--	--	--	--	--	--	--	--	--	--	--	--	--	--	--	--	--	--	--	--	--	--	--	--	--	--	--	--	--	--	--	--	--	--	--	--	--	--	--	--	--	--	--	--	--	--	--	--	--	--	--	--	--	--	--	--	--	--	--	--	--	--	--	--	--	--	--	--	--	--	--	--	--	--	--	--	--	--	--	--	--	--	--	--	--	--	--	--	--	--	--	--	--	--	--	--	--	--	--	--	--	--	--	--	--	--	--	--	--	--	--	--	--	--	--	--	--	--	--	--	--	--	--	--	--	--	--	--	--	--	--	--	--	--	--	--	--	--	--	--	--	--	--	--	--	--	--	--	--	--	--	--	--	--	--	--	--	--	--	--	--	--	--	--	--	--	--	--	--	--	--	--	--	--	--	--	--	--	--	--	--	--	--	--	--	--	--	--	--	--	--	--	--	--	--	--	--	--	--	--	--	--	--	--	--	--	--	--	--	--	--	--	--	--	--	--	--	--	--	--	--	--	--	--	--	--	--	--	--	--	--	--	--	--	--	--	--	--	--	--	--	--	--	--	--	--	--	--	--	--	--	--	--	--	--	--	--	--	--	--	--	--	--	--	--	--	--	--	--	--	--	--	--	--	--	--	--	--	--	--	--	--	--	--	--	--	--	--	--	--	--	--	--	--	--	--	--	--	--	--	--	--	--	--	--	--	--	--	--	--	--	--	--	--	--	--	--	--	--	--	--	--	--	--	--	--	--	--	--	--	--	--	--	--	--	--	--	--	--	--	--	--	--	--	--	--	--	--	--	--	--	--	--	--	--	--	--	--	--	--	--	--	--	--	--	--	--	--	--	--	--	--	--	--	--	--	--	--	--	--	--	--	--	--	--	--	--	--	--	--	--	--	--	--	--	--	--	--	--	--	--	--	--	--	--	--	--	--	--	--	--	--	--	--	--	--	--	--	--	--	--	--	--	--	--	--	--	--	--	--	--	--	--	--	--	--	--	--	--	--	--	--	--	--	--	--	--	--	--	--	--	--	--	--	--	--	--	--	--	--	--	--	--	--	--	--	--	--	--	--	--	--	--	--	--	--	--	--	--	--	--	--	--	--	--	--	--	--	--	--	--	--	--	--	--	--	--	--	--	--	--	--	--	--	--	--	--	--	--	--	--	--	--	--	--	--	--	--	--	--	--	--	--	--	--	--	--	--	--	--	--	--	--	--	--	--	--	--	--	--	--	--	--	--	--	--	--	--	--	--	--	--	--	--	--	--	--	--	--	--	--	--	--	--	--	--	--	--	--	--	--	--	--	--	--	--	--	--	--	--	--	--	--	--	--	--	--	--	--	--	--	--	--	--	--	--	--	--	--	--	--	--	--	--	--	--	--	--	--	--	--	--	--	--	--	--	--	--	--	--	--	--	----





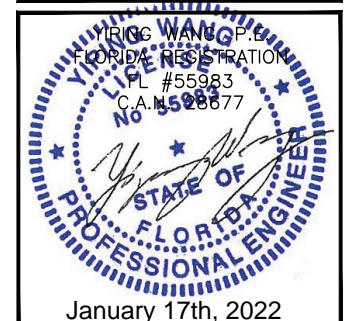
PRODUCT CONTROL APPROVAL:

**PRODUCT APPROVED**  
as complying with the Florida  
Building Code

NOA-No. 22-0125.01

Approval Date: 06/02/2022

By: Manuel Perez  
Miami-Dade Product Control



**MCY ENGINEERING, INC.**  
GLAZING CONSULTANTS

2781 MIRAMAR PKWY,STE.301  
MIRAMAR, FL 33027 P: 305.271.0117  
mcyring.com mcyr@mcyrengineering.com

SP60 AWNING WINDOW - L.M.I.

[illegible]

BILL OF MATERIALS				
ITEM #	PROFILE	DESCRIPTION	MATERIAL	MANUFACTURER/REMARKS
1	SP6001	FRAME	ALUM. 6063-T5	SUPERHOUSE
2	SP6004	VENT	ALUM. 6063-T5	SUPERHOUSE
3	GLA032	GLASS STOP	ALUM. 6063-T5	SUPERHOUSE
4	GLB032	GLASS STOP COVER	ALUM. 6063-T5	SUPERHOUSE
5	SP6051	CLIP	ALUM. 6063-T5	SUPERHOUSE
6	SP6052	COVER	ALUM. 6063-T5	SUPERHOUSE
7	SP6007	STACKING MULLION	ALUM. 6063-T5	SUPERHOUSE
8	SP6008	PRESSURE BAR	ALUM. 6063-T5	SUPERHOUSE
9	SP6009	COVER	ALUM. 6063-T5	SUPERHOUSE
10	JM0022	CLAMPING CORNER	ALUM. 6063-T5	SUPERHOUSE
11	JM0026	CLAMPING CORNER	ALUM. 6063-T5	SUPERHOUSE
12	ZL-758	MULLION CLIP, 1" LONG	ALUM. 6063-T5	SUPERHOUSE
13	JNSP10005	CLIP	ALUM. 6063-T5	SUPERHOUSE
14	JNSP10006	CORNICE	ALUM. 6063-T5	SUPERHOUSE
15	-			
16	SBWG-001	EPDM GASKET	HARDNESS:30 ± 5 DURO	SUPERHOUSE
17	SBWG-006	EPDM GASKET	HARDNESS:30 ± 5 DURO	SUPERHOUSE
18	SBWG-002	EPDM GASKET	HARDNESS:30 ± 5 DURO	SUPERHOUSE
19	-	SCREW, DIA. 5/32" X 1/2".	STEEL	VARIES
20	-	#12 X 1/2" S.S. SCREW, 4" FROM EACH END, @9" O.C.	STEEL	VARIES
21	-	HEX HEAD SCREW, DIA. 1/4" X 3 1/32"	STEEL	VARIES
22	-	DIA. 1/4" X 3 1/32" PAN HEAD SS SCREW, WITH 1/4" DIA. NUT, (2) AT EACH MULLION END	STEEL	VARIES
23	-	WEEP HOLE COVER, 5/16" X 1-1/32"	-	SUPERHOUSE
24	-	SETTING BLOCK, 1/4" X 1".	SILICONE	75 +/- 2A DURO.
H2	HC680-28	FRICTION HINGE	-	KINLONG
H3	FJ600A-14	FRICTION HINGE	-	KINLONG
H4	AGC37.35	FLUSH-ENCASED GEARBOX	-	HOPO
H5	ALP33	STRIKER	-	HOPO
H6	ALR21	LOCKING CAM	-	HOPO
H7	ALR28	LOCKING CAM	-	HOPO
H8	0738	HANDLE	-	HOPO
H9	VSO TS K50	COVER DRIVE	-	SIEGENIA
H12	266533	STRIKER	-	SIEGENIA
H13	254509	LOCKING CAM	-	SIEGENIA
H14	303511	LOCKING CAM	-	SIEGENIA

PRODUCT CONTROL APPROVAL:

**PRODUCT APPROVED**  
as complying with the Florida Building Code  
NOA-No. **22-0125.01**  
Approval Date: **06/02/2022**  
By: *Manuel Perez*  
**Miami-Dade Product Control**

1.

10.12.2021

JAMES

Drawn By

Rev. No.

Date

By

Description

Drawn Date

11/25/2021

Scale

IRIG WANG P.E.  
FLORIDA REGISTRATION  
FL #55983  
C.A.#52877

*Y. Wang*  
STATE OF FLORIDA  
PROFESSIONAL ENGINEER

January 17th, 2022

SP60 AWNING WINDOW - L.M.I.

SHANGHAI SUPERHOUSE BUILDING MATERIAL CO., LTD  
LEVEL 5, BUILDING 10, NO.8666 HUNAN RD, PUDONG NEW AREA  
SHANG HAI, CHINA  
TEL.86 021-5822 0630 CELL.86 135-8572-3609

MCY

**MCY ENGINEERING, INC.**  
GLAZING CONSULTANTS  
12781 MIRAMAR PKWY.,STE.301  
MIRAMAR, FL 33027 P: 305.271.0117  
www.MCYEngineering.com mcy@mcyengineering.com

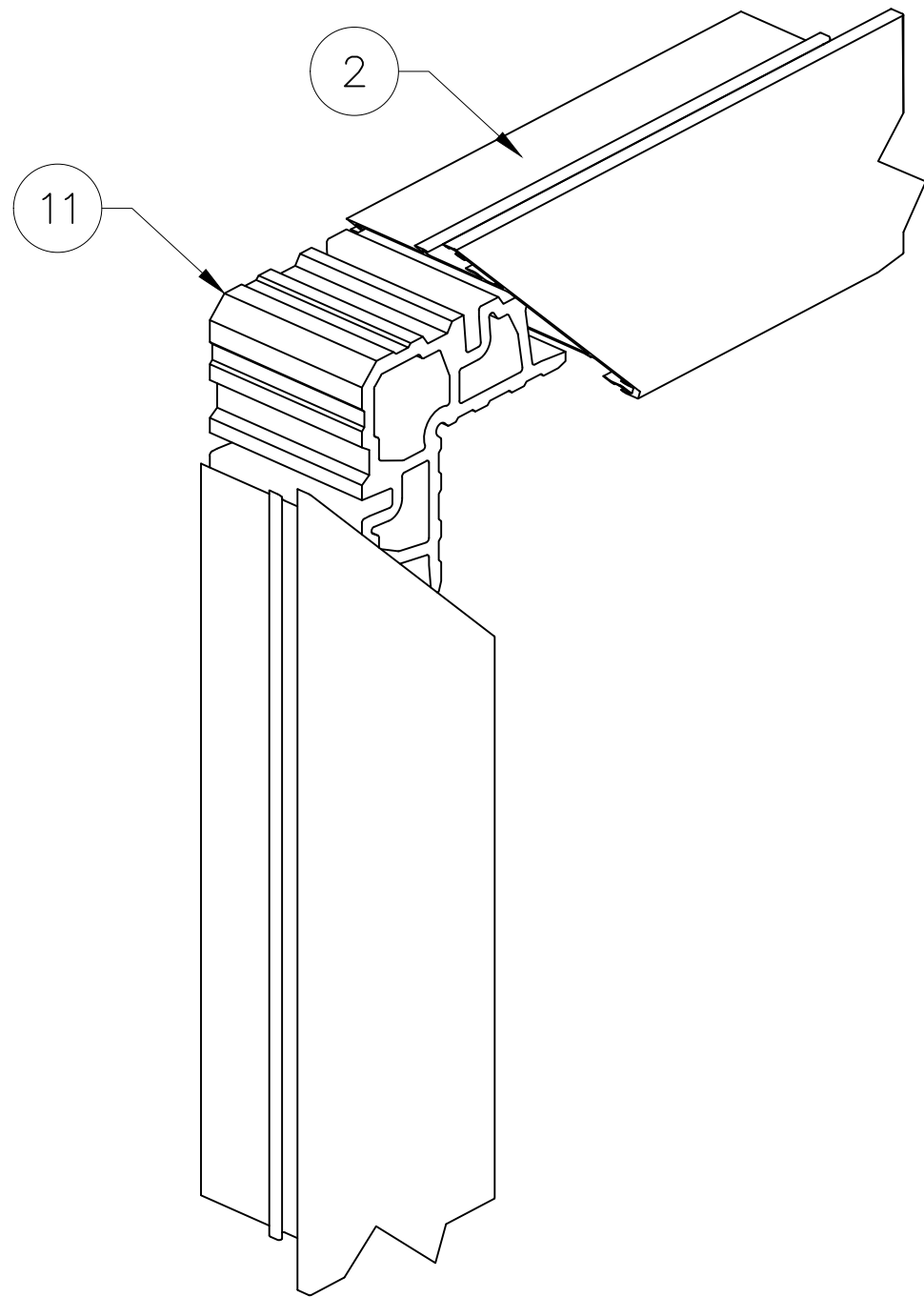
DRAWING NO.

AD21-41

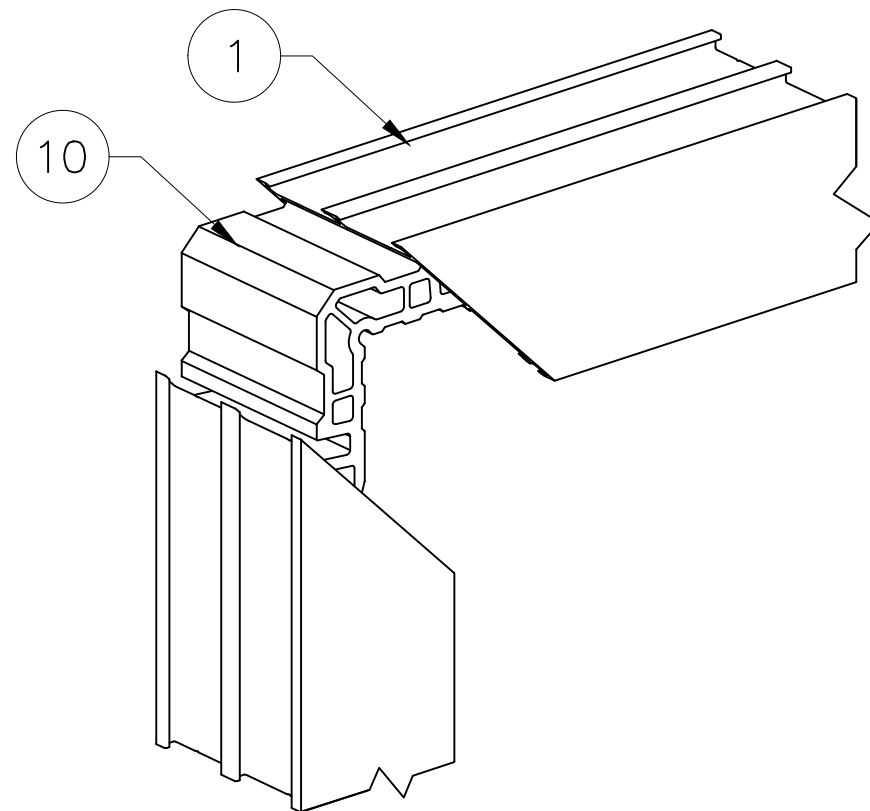
BOM

Sheet No.

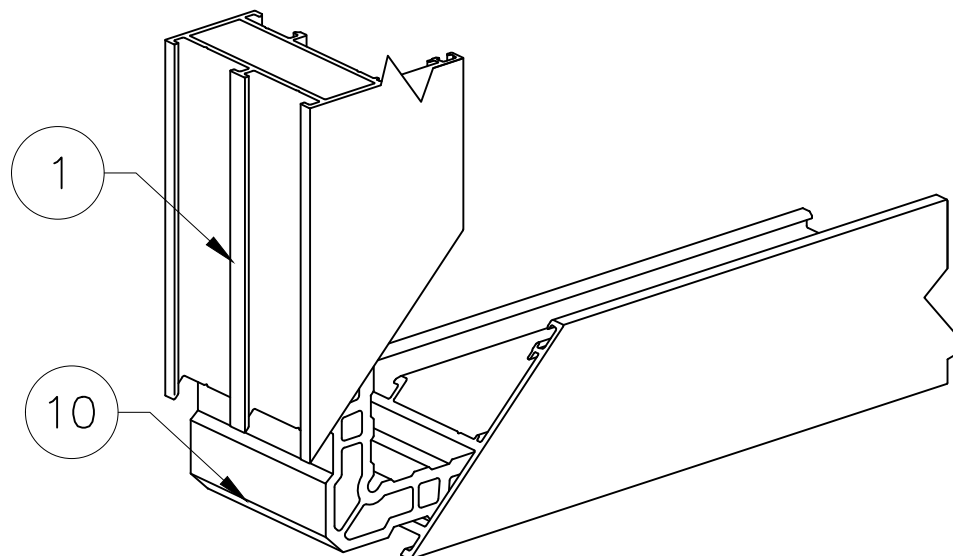
7 OF 8



VENT CORNER



FRAME CORNER



PRODUCT CONTROL APPROVAL:  
**PRODUCT APPROVED**  
 as complying with the Florida  
 Building Code  
 NOA-No. **22-0125.01**  
 Approval Date: **06/02/2022**  
 By: *Manuel Perez*  
 Miami-Dade Product Control

YONG WANG P.E.  
 FLORIDA REGISTRATION  
 FL #55983  
 C.A. #528677  
 STATE OF  
 FLORIDA  
 PROFESSIONAL ENGINEER  
 January 17th, 2022

**MCY ENGINEERING, INC.**  
GLAZING CONSULTANTS  
12781 MIRAMAR PKWY. STE. 301  
MIRAMAR, FL 33027 P: 305.271.0117  
www.MCYEngineering.com mcy@mcyengineering.com

**SP60 AWNING WINDOW - L.M.I.**  
 SHANGHAI SUPERHOUSE BUILDING MATERIAL CO., LTD  
 LEVEL 5, BUILDING 10, NO.8666 HUNAN RD, PUDONG NEW AREA  
 SHANG HAI, CHINA  
 TEL.86 021-5822 0630 CELL.86 135-8572-3609

Rev. No.	Date	Drawn By	Description
1.	10.12.2021	JAMES	NEW NOA

Drawn Date: 11/25/2021

Scale:

DRAWING NO.  
**AD21-41**

ASSEMBLY

Sheet No.  
**8 OF 8**