



DEPARTMENT OF REGULATORY AND ECONOMIC RESOURCES (RER)  
BOARD AND CODE ADMINISTRATION DIVISION

## NOTICE OF ACCEPTANCE (NOA)

MIAMI-DADE COUNTY  
PRODUCT CONTROL SECTION  
11805 SW 26 Street, Room 208  
Miami, Florida 33175-2474  
T (786) 315-2590 F (786) 315-2599  
[www.miamidade.gov/economy](http://www.miamidade.gov/economy)

**Longboard Architectural Products**  
**#120-1777 Clearbrook Rd.**  
**V2T 5X5, B.C., Canada**

### SCOPE:

This NOA is being issued under the applicable rules and regulations governing the use of construction materials. The documentation submitted has been reviewed and accepted by Miami-Dade County RER-Product Control Section to be used in Miami Dade County and other areas where allowed by the Authority Having Jurisdiction (AHJ).

This NOA shall not be valid after the expiration date stated below. The Miami-Dade County Product Control Section (In Miami Dade County) and/or the AHJ (in areas other than Miami Dade County) reserve the right to have this product or material tested for quality assurance purposes. If this product or material fails to perform in the accepted manner, the manufacturer will incur the expense of such testing and the AHJ may immediately revoke, modify, or suspend the use of such product or material within their jurisdiction. RER reserves the right to revoke this acceptance if it is determined by Miami-Dade County Product Control Section that this product or material fails to meet the requirements of the applicable building code.

This product is approved as described herein and has been designed to comply with the Florida Building Code, including the High Velocity Hurricane Zone.

### DESCRIPTION: V-Groove and Smooth Planks Aluminum Siding Systems

**APPROVAL DOCUMENT:** Drawing titled "6" V-Groove and 6" Smooth Planks", sheets 1 through 10 of 10, dated 11/30/2022, prepared by Calc Engineering, signed and sealed by Masood Hajali, PhD, P.E. on 01/04/2023, bearing the Miami-Dade County Product Control approval stamp with the Notice of Acceptance number and approval date by the Miami-Dade County Product Control Section.

### MISSILE IMPACT RATING: Large and Small Missile Impact Resistant

**LABELING:** Each unit shall bear a permanent label with the manufacturer's name or logo, city, state, model/series, and following statement: "Miami-Dade County Product Control Approved", unless otherwise noted herein.

**RENEWAL** of this NOA shall be considered after a renewal application has been filed and there has been no change in the applicable building code negatively affecting the performance of this product.

**TERMINATION** of this NOA will occur after the expiration date or if there has been a revision or change in the materials, use, and/or manufacture of the product or process. Misuse of this NOA as an endorsement of any product, for sales, advertising or any other purposes shall automatically terminate this NOA. Failure to comply with any section of this NOA shall be cause for termination and removal of NOA.

**ADVERTISEMENT:** The NOA number preceded by the words Miami-Dade County, Florida, and followed by the expiration date may be displayed in advertising literature. If any portion of the NOA is displayed, then it shall be done in its entirety.

**INSPECTION:** A copy of this entire NOA shall be provided to the user by the manufacturer or its distributors and shall be available for inspection at the job site at the request of the Building Official.

This NOA consists of this page 1 and evidence page E-1, as well as approval document mentioned above. The submitted documentation was reviewed by **Carlos M. Utrera, P.E.**



NOA No. 22-0209.01  
Expiration Date: January 26, 2028  
Approval Date: January 26, 2023  
Page 1

**NOTICE OF ACCEPTANCE: EVIDENCE SUBMITTED**

**A. DRAWINGS**

1. Drawing titled “6” V-Groove and 6” Smooth Planks”, sheets 1 through 10 of 10, dated 11/30/2022, prepared by Calc Engineering, signed and sealed by Masood Hajali, PhD, P.E. on 01/04/2023.

**B. TESTS**

1. Test reports on 1) Uniform Static Air Pressure Test, Loading per FBC TAS 202-94  
2) Large Missile Impact Test per FBC, TAS 201-94  
3) Cyclic Wind Pressure Loading per FBC, TAS 203-94  
along with marked-up drawings and installation diagram of 6” Aluminum T&G V-Groove Siding, prepared by Intertek, Test Report No. **104810579COQ-004A**, dated 11/15/2021, signed and sealed by Tyler Westerling, P.E.
2. Test reports on 1) Uniform Static Air Pressure Test, Loading per FBC TAS 202-94  
2) Large Missile Impact Test per FBC, TAS 201-94  
3) Cyclic Wind Pressure Loading per FBC, TAS 203-94  
along with marked-up drawings and installation diagram of 6” Aluminum Smooth Panelboard Siding, prepared by Intertek, Test Report No. **104810579COQ-004B**, dated 11/15/2021, signed and sealed by Tyler Westerling, P.E.
3. Test reports on Tensile Test per ASTM E8-16 of Aluminum Siding Panels, prepared by Intertek, Test Report No. **104810579TOR-005**, dated 11/26/2021, signed and sealed by Tyler Westerling, P.E.

**C. CALCULATIONS**

1. Structural calculations for fasteners, prepared by Calc Engineering, dated 11/07/2022, signed and sealed by Masood Hajali, PhD, P.E.

**D. QUALITY ASSURANCE**

1. Miami-Dade Department of Regulatory and Economic Resources (RER).

**E. MATERIAL CERTIFICATIONS**

1. None.

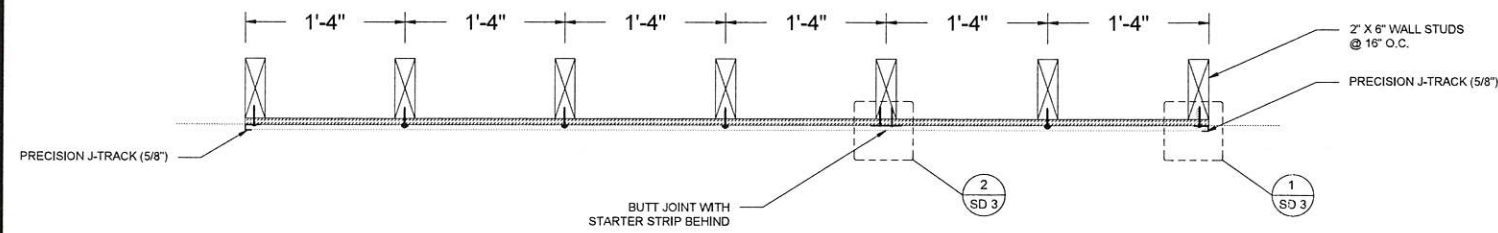
**F. STATEMENTS**

1. Statement letter of code conformance to the 7<sup>th</sup> edition (2020) of the FBC issued, by Calc Engineering, dated 10/05/2022, signed and sealed by Masood Hajali, PhD, P.E.
2. Statement letter of no financial interest issued by Calc Engineering, dated 10/05/2022, signed and sealed by Masood Hajali, PhD, P.E.
3. Distributor agreement dated 01/13/2022.

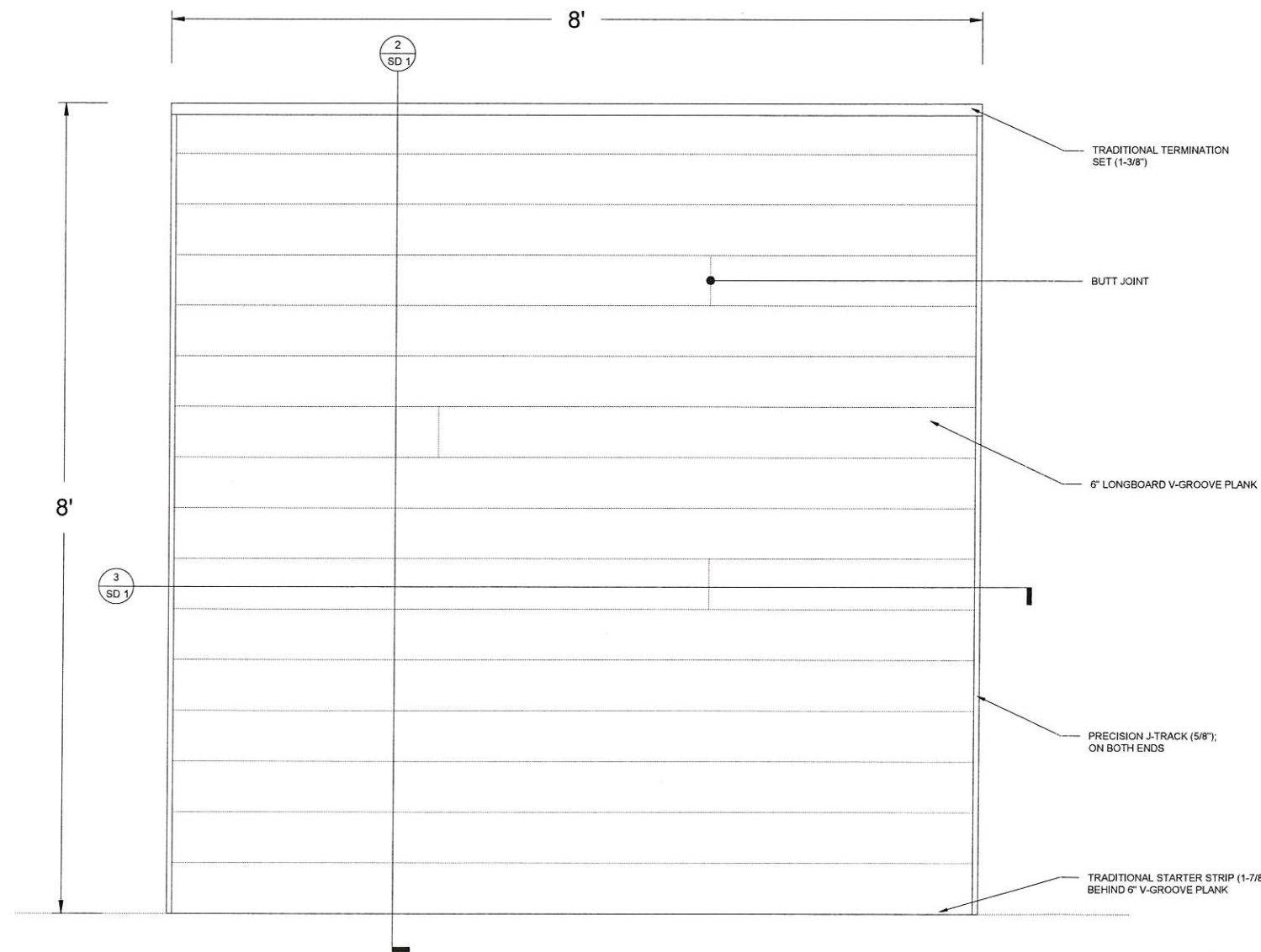


**Carlos M. Utrera, P.E.**  
**Product Control Examiner**  
**NOA No. 22-0209.01**

**Expiration Date: January 26, 2028**  
**Approval Date: January 26, 2023**



3 WALL PLAN  
SCALE 1"= 1'-0"



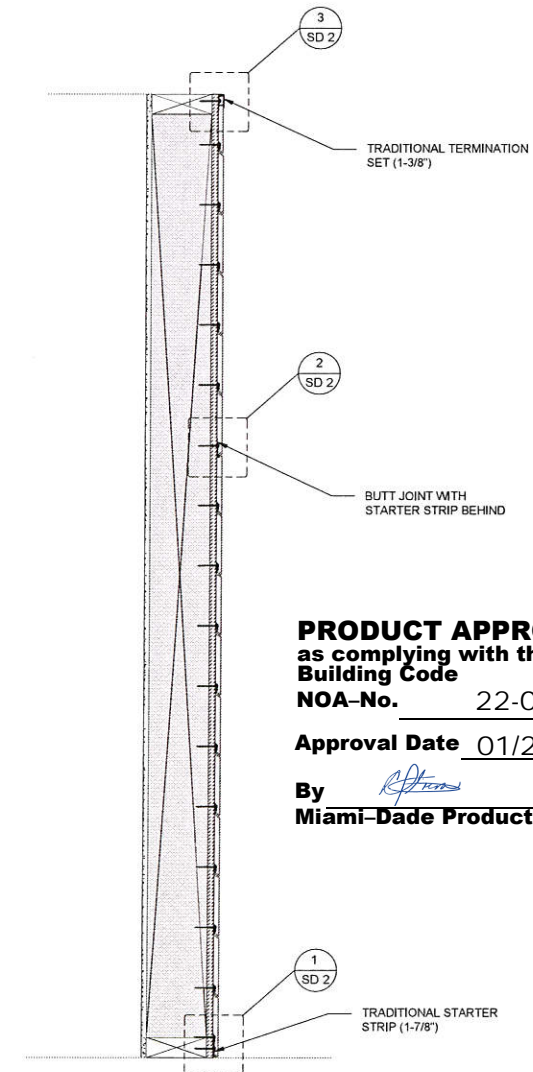
1 WALL ELEVATION  
SCALE 1"= 1'-0"

- #8 PAN-HEAD FASTENERS MUST BE CORROSION RESISTANT AND COMPATIBLE WITH THE SUBSTRATE, TO BE SPECIFIED BY THE PROJECT DESIGNER AND/OR ENGINEER. DO NOT USE ANY FASTENER WITH A TAPERED BACKSIDE OF THE HEAD (FLAT-HEAD WOOD SCREW OR SIMILAR).

- ALWAYS ALLOW FOR THERMAL MOVEMENT OF MATERIAL. SEE INSTALLATION GUIDELINES FOR DETAILS - [LONGBOARDPRODUCTS.COM/INSTALLATION](http://longboardproducts.com/installation)

- ALL DIMENSIONS TO BE VERIFIED IN THE FIELD.

| GENERAL NOTES:          |                            |          |
|-------------------------|----------------------------|----------|
| Design pressure         | 121 psf (5794 Pa)          |          |
| Impact resistance       | Large Missile Impact: PASS |          |
| Material                | Alloy                      | 6063     |
| properties for extruded | Temper                     | T-5      |
| Aluminum                | Min. Ultimate              | 25.3 ksi |
| planks and trim         | Tensile Strength           |          |
| components              | Min. Yield                 | 21.4 ksi |
|                         | Tensile Strength           |          |



**PRODUCT APPROVED**  
as complying with the Florida  
Building Code  
NOA-No. 22-0209.01  
Approval Date 01/26/2023  
By *[Signature]*  
Miami-Dade Product Control

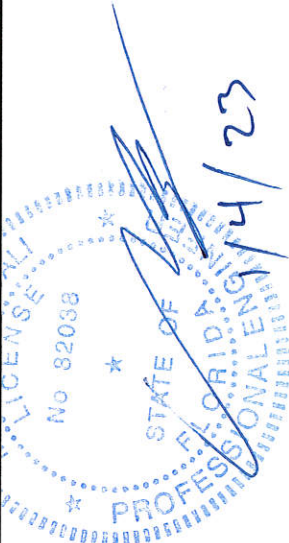
**LONGBOARD®**  
ARCHITECTURAL PRODUCTS  
#120-1777 Clearbrook Road, V2T 5X5, B.C. Canada  
p: 1.800.604.0343  
e: [info@longboardproducts.com](mailto:info@longboardproducts.com)  
w: [longboardproducts.com](http://longboardproducts.com)

**Calc Engineering**  
CALC ENGINEERING  
2000 NW 89 PL UNIT 102 DORAL FL 33172  
P: (305) 898-9995  
ENGINEERING BUSINESS CA CERTIFICATION: 32566

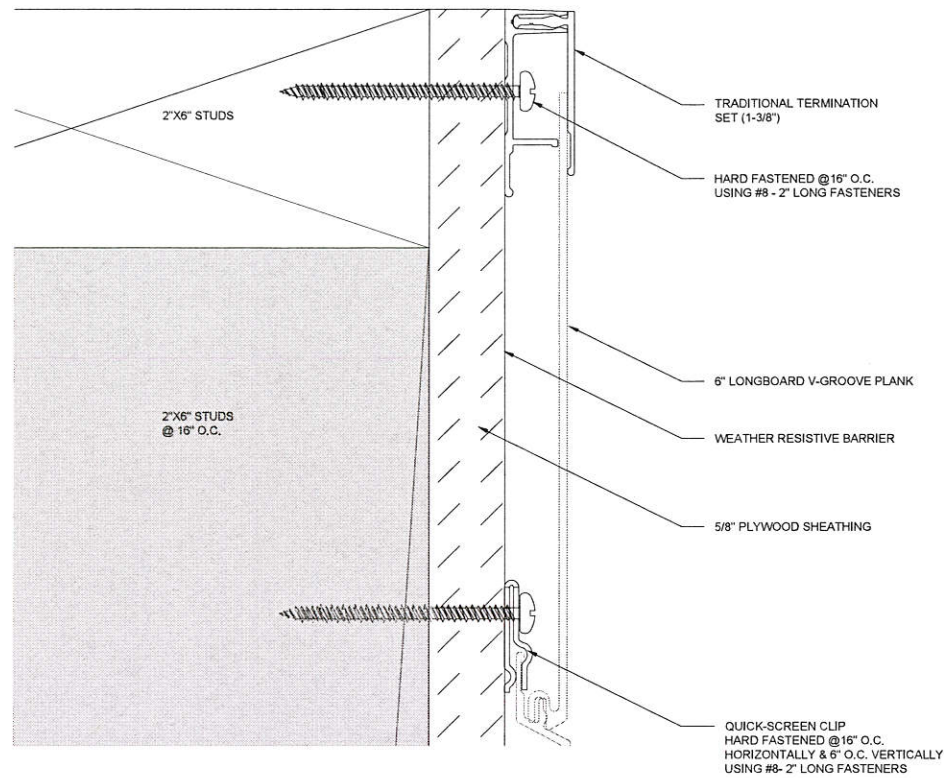
PROJECT: MIAMI-DADE TESTING  
PROFILE: 6" V-GROOVE PLANK  
TITLE: PLAN, ELEVATION & SECTION

DRAWN BY: MS  
REVIEWED BY: JH  
ISSUE DATE: AUGUST 30/2021  
REVISION SCHEDULE: 05  
REVISION DATE: NOVEMBER 30/2022

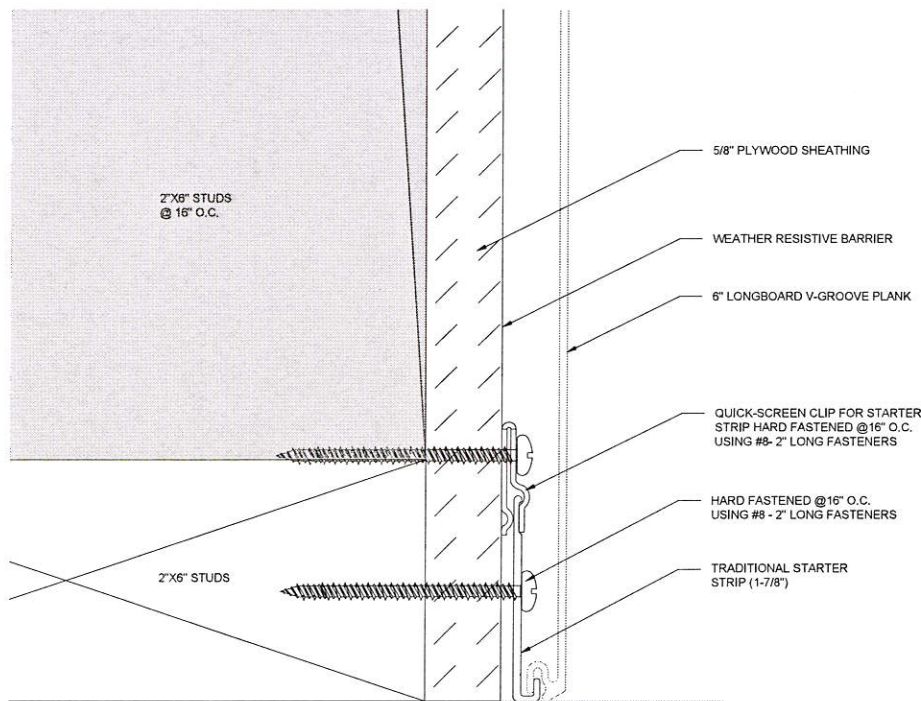
SHEET  
1 OF 10



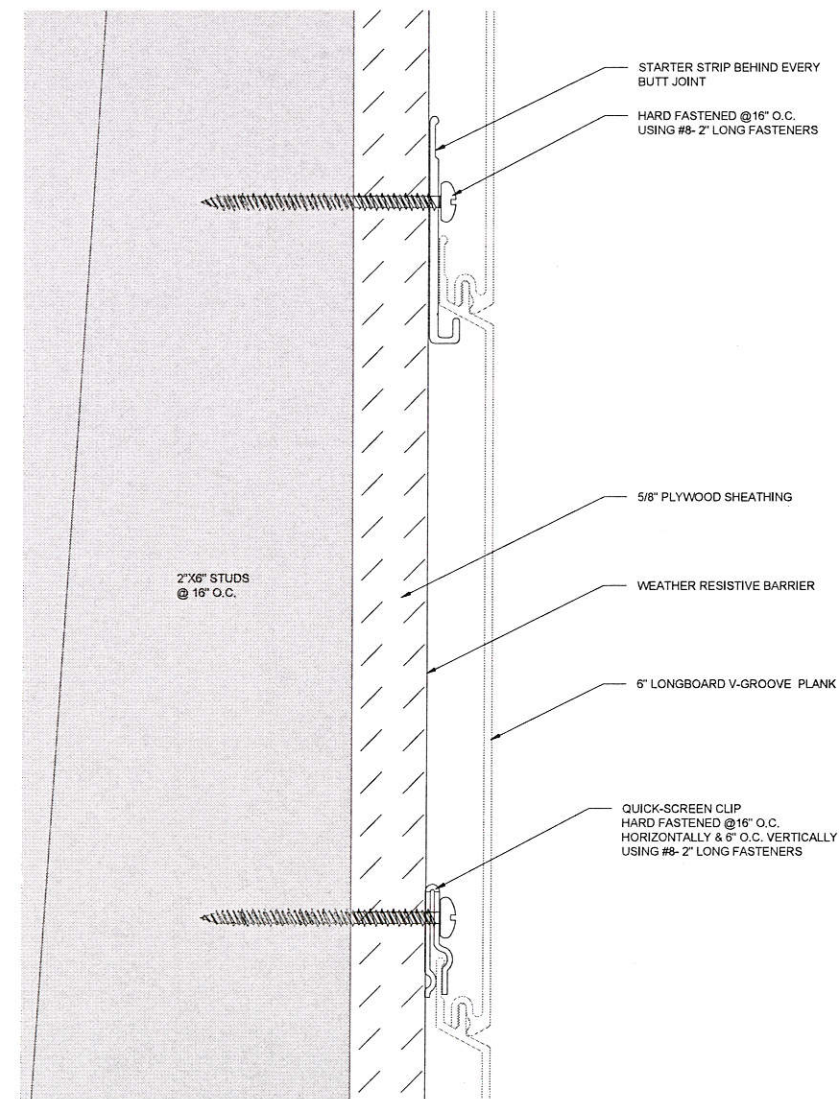




3 TOP OF WALL DETAIL  
SCALE 1'-0"= 1'-0"



1 BOTTOM OF WALL DETAIL  
SCALE 1'-0"= 1'-0"



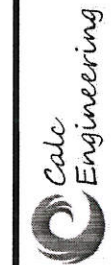
2 BUTT JOINT SECTION DETAIL  
SCALE 1'-0"= 1'-0"

**PRODUCT APPROVED**  
as complying with the Florida  
Building Code  
NOA-No. 22-0209.01  
Approval Date 01/26/2023  
By *[Signature]*  
Miami-Dade Product Control

**LONGBOARD®**  
ARCHITECTURAL PRODUCTS  
#120-1777 Clearbrook Road, V2T 5X5, B.C. Canada  
p: 1.800.604.0343  
e: info@longboardproducts.com  
w: longboardproducts.com



SEAL



CALC ENGINEERING  
2000 NW 89 PL UNIT 102 DORAL FL 33172  
p: (305) 898-9995  
ENGINEERING BUSINESS CA CERTIFICATION: 32566

|          |                          |
|----------|--------------------------|
| PROJECT: | MIAMI-DADE TESTING       |
| PROFILE: | 6" V-GROOVE PLANK        |
| TITLE:   | ENLARGED SECTION DETAILS |

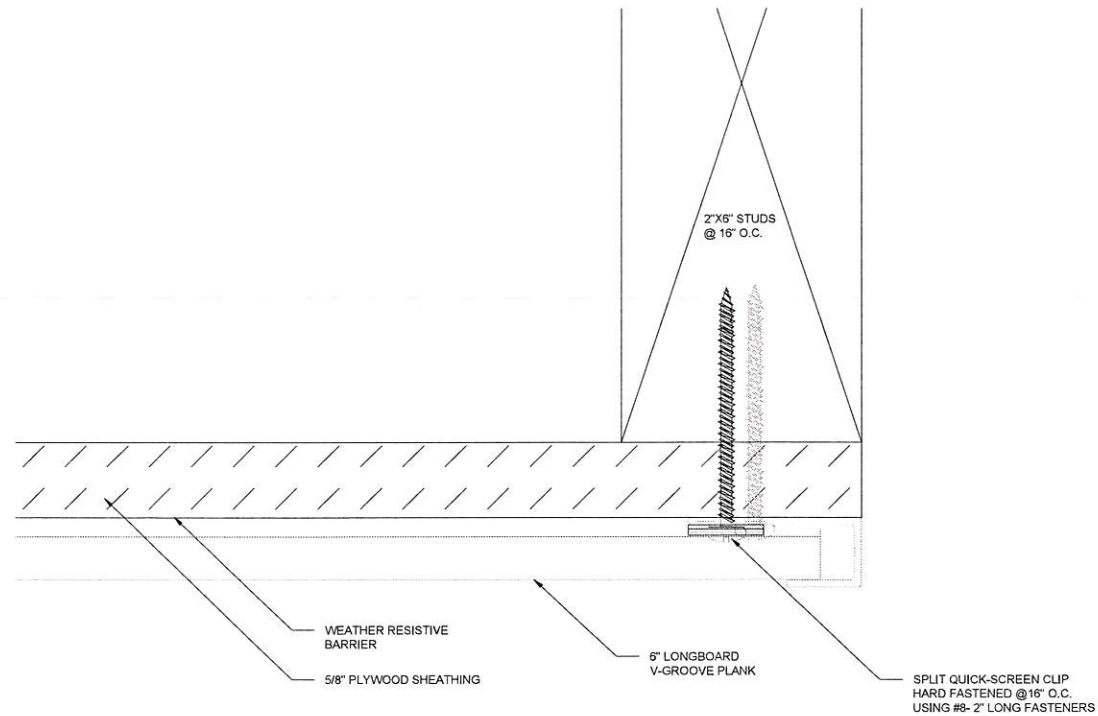
|                    |                  |
|--------------------|------------------|
| DRAWN BY:          | MS               |
| REVIEWED BY:       | JH               |
| ISSUE DATE:        | AUGUST 30/2021   |
| REVISION SCHEDULE: | 05               |
| REVISION DATE:     | NOVEMBER 30/2022 |

SHEET

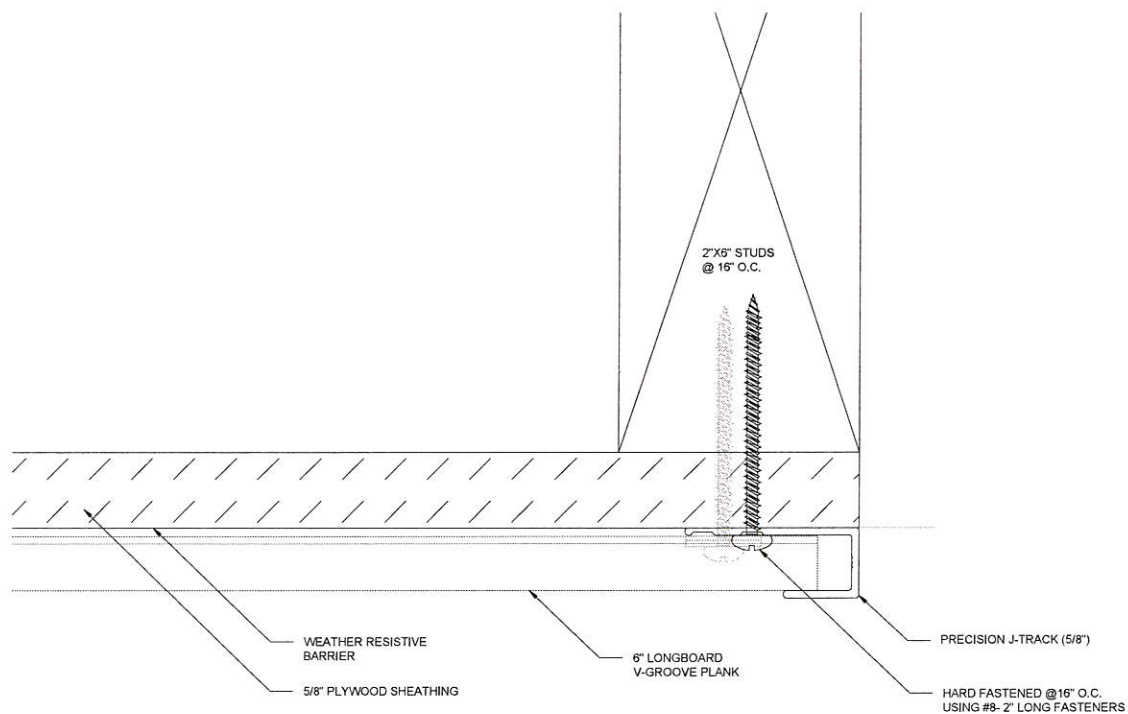
2 OF 10



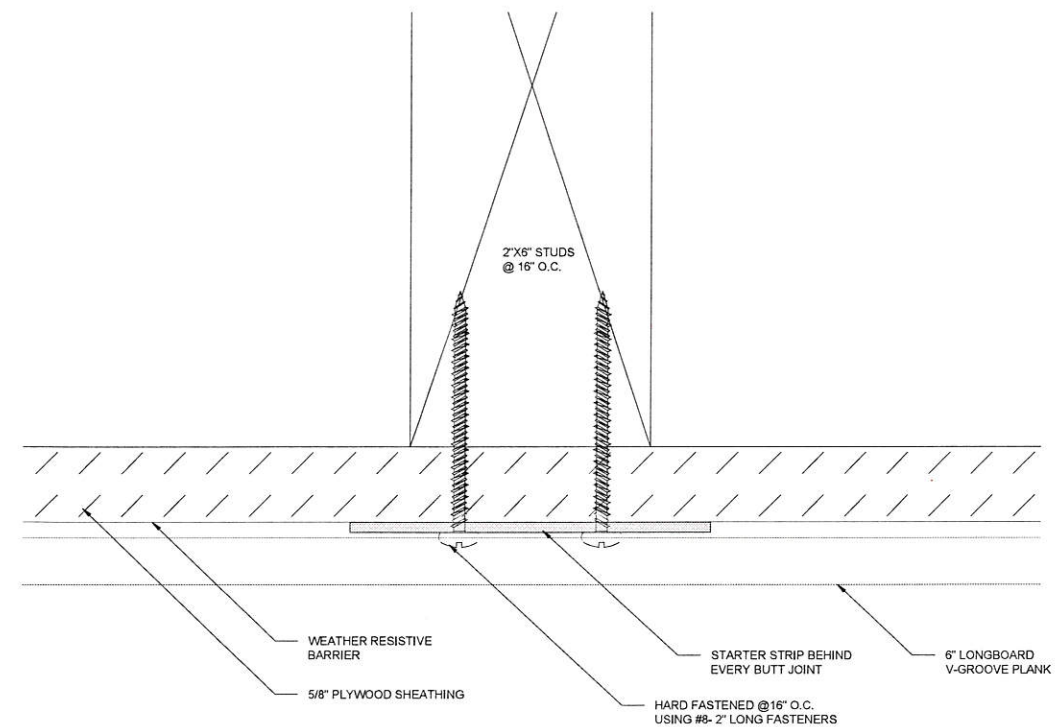




③ PLANK ATTACHMENT AT J-TRACK  
SCALE 1'-0"= 1'-0"



① J-TRACK ATTACHMENT (Typ. on both ends)  
SCALE 1'-0"= 1'-0"



② TYPICAL BUTT-JOINT DETAIL  
SCALE 1'-0"= 1'-0"

#### GENERAL NOTES:

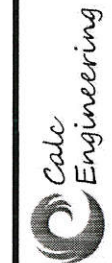
1. SIDING PRODUCTS, CLIPS AND FASTENERS SHOWN ON THIS APPROVAL HAVE BEEN DESIGNED AND TESTED TO MEET OR EXCEED THE SPECIFICATIONS OF THE FLORIDA BUILDING CODE 2020 (7TH EDITION), INCLUDING HIGH VELOCITY HURRICANE ZONE (HVHZ).
2. ALL ITEMS ON THIS NOA SHALL BE INSTALLED AS PER THE SPECIFICATIONS OF THE FLORIDA BUILDING CODE 2020 (7TH EDITION), ALUMINUM DESIGN MANUAL 2015, NATIONAL DESIGN SPECIFICATION (NDS) FOR WOOD CONSTRUCTION AND ANY OTHER LOCAL BUILDING CODE AMENDMENTS OR REQUIREMENTS BY THE AUTHORITY HAVING JURISDICTION.
3. DESIGN PRESSURE SHOWN ARE SERVICE LOADS (ASD). TO OBTAIN ULTIMATE LOADS MULTIPLY BY 1.67.
4. APPROVAL APPLIES TO PANEL SIZE SHOWN. DO NOT EXCEED PANEL MAXIMUM DIMENSIONS.
5. PRODUCT ASSEMBLY AS SHOWN IS LARGE MISSILE IMPACT RESISTANT AS PER TAS 201-94.
6. WALL STUDS AND PLYWOOD WALL SHEATHING SHALL BE DESIGNED BY THE ENGINEER OF RECORD AND SHALL BE CAPABLE OF RESISTING THE WIND LOADS SHOWN ON THIS APPROVAL, INCLUDING THEIR CONNECTIONS TO THE HOST STRUCTURE AND BETWEEN THEMSELVES.
7. ALL 2X6 WOOD MEMBERS SHALL BE SPF No. 2 OR BETTER, MOISTURE CONTENT < 19%, SG=0.55 OR BETTER, MEMBER SIZE NOMINAL.
8. ALL SUPPORTING STRUCTURE MATERIALS AND CONNECTORS MAY BE SUBSTITUTED WITH EQUAL OR BETTER, WITH THE APPROVAL OF ENGINEER OF RECORD.
9. ALL FASTENERS SHALL BE GALVANIZED.
10. ALL CLIPS SHALL BE STAINLESS STEEL SAE 304
11. INSPECTIONS: SHALL COMPLY WITH THE LOCAL BUILDING CODE REQUIREMENTS FOR INSPECTIONS (BY THE MUNICIPALITY, ARCHITECT OR ENGINEER). INSPECTOR SHALL VERIFY THAT BACKING WOOD MEMBERS DO NOT SPLIT AS A RESULT OF FASTENER INSTALLATION.

**PRODUCT APPROVED**  
**as complying with the Florida**  
**Building Code**  
**NOA-No.** 22-0209.01

**Approval Date** 01/26/2023

**By**   
**Miami-Dade Product Control**

**LONGBOARD®**  
ARCHITECTURAL PRODUCTS  
#120-1777 Clearbrook Road, V2T 5X5, B.C. Canada  
p: 1.800.604.0343  
e: info@longboardproducts.com  
w: longboardproducts.com



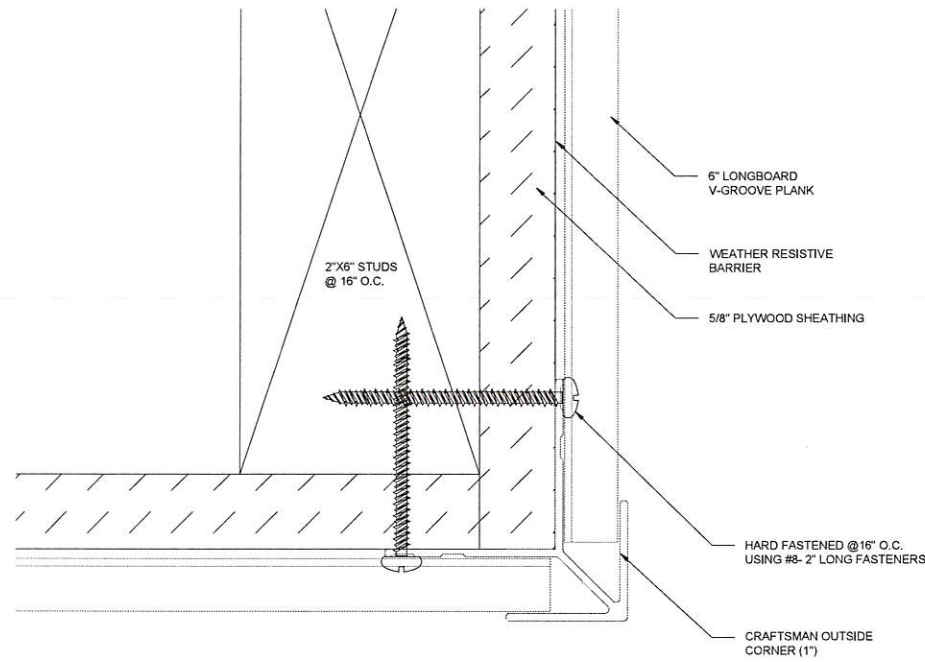
CALC ENGINEERING  
2000 NW 89 PL UNIT 102 DORAL FL 33172  
P: (305) 898-9995  
ENGINEERING BUSINESS CA CERTIFICATION: 32566

|          |                       |
|----------|-----------------------|
| PROJECT: | MIAMI-DADE TESTING    |
| PROFILE: | 6" V-GROOVE PLANK     |
| TITLE:   | ENLARGED PLAN DETAILS |

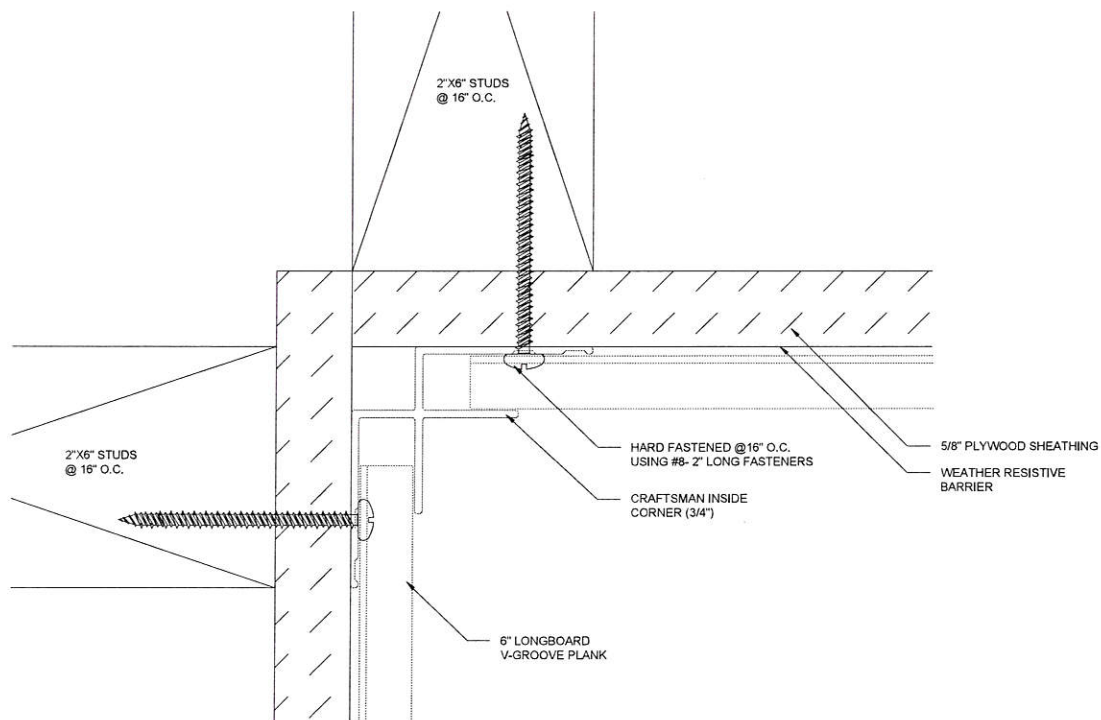
|                    |                  |
|--------------------|------------------|
| DRAWN BY:          | MS               |
| REVIEWED BY:       | JH               |
| ISSUE DATE:        | AUGUST 30/2021   |
| REVISION SCHEDULE: | 05               |
| REVISION DATE:     | NOVEMBER 30/2022 |

SHEET  
**3 OF 10**

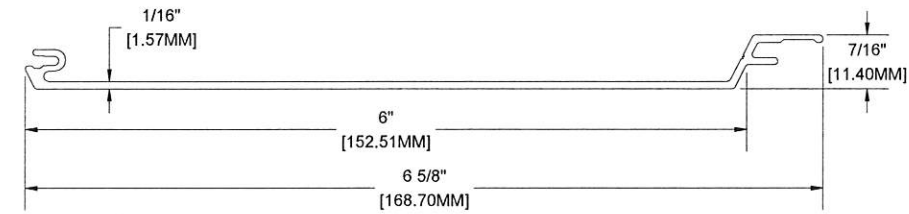




3 TYPICAL OUTSIDE CORNER DETAIL  
SCALE 1'-0"= 1'-0"

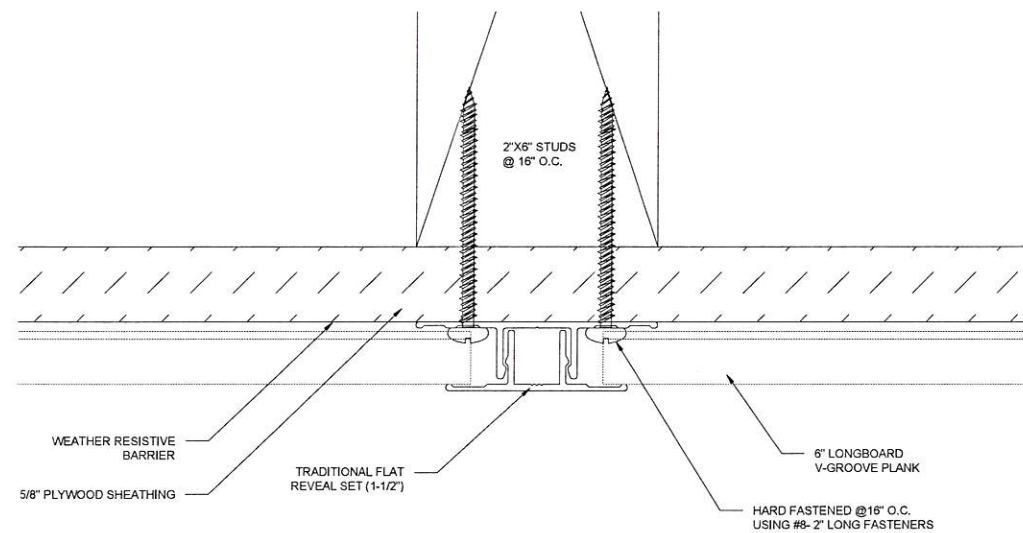


1 TYPICAL INSIDE CORNER DETAIL  
SCALE 1'-0"= 1'-0"



MATERIAL = ALUMINUM  
ALLOW = 6063  
TEMPER = T-5

4 6" V-GROOVE PLANK PROFILE DETAIL  
SCALE 1'-0"= 1'-0"



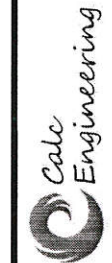
2 TYPICAL FLAT REVEAL DETAIL  
SCALE 1'-0"= 1'-0"

**PRODUCT APPROVED**  
as complying with the Florida  
Building Code  
NOA-No. 22-0209.01  
Approval Date 01/26/2023  
By *[Signature]*  
Miami-Dade Product Control

**LONGBOARD®**  
ARCHITECTURAL PRODUCTS  
#120-1777 Clearbrook Road, V2T 5X5, B.C. Canada  
p: 1.800.604.0343  
e: info@longboardproducts.com  
w: longboardproducts.com



SEAL



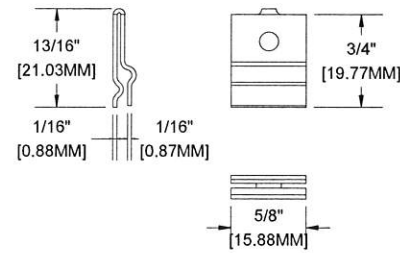
CALC ENGINEERING  
2000 NW 89 PL UNIT 102 DORAL FL 33172  
p: (305) 898-9995  
ENGINEERING BUSINESS CA CERTIFICATION: 32956

|          |                    |
|----------|--------------------|
| PROJECT: | MIAMI-DADE TESTING |
| PROFILE: | 6" V-GROOVE PLANK  |
| TITLE:   | TYPICAL DETAILS    |

|                    |                  |
|--------------------|------------------|
| DRAWN BY:          | MS               |
| REVIEWED BY:       | JH               |
| ISSUE DATE:        | AUGUST 30/2021   |
| REVISION SCHEDULE: | 05               |
| REVISION DATE:     | NOVEMBER 30/2022 |

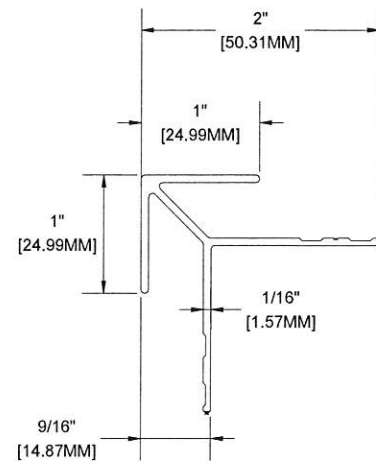






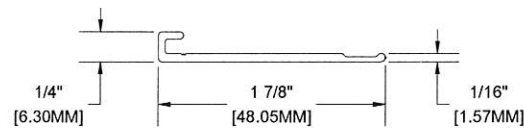
MATERIAL = 316 STAINLESS STEEL

7 QUICK SCREEN CLIP  
SCALE 1'-0"= 1'-0"



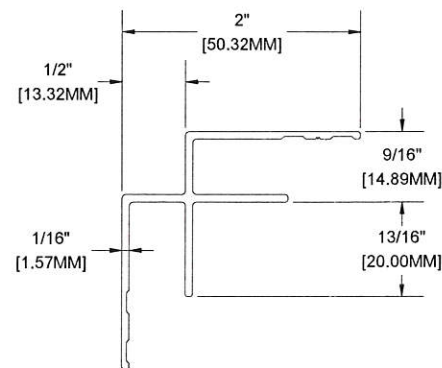
MATERIAL = ALUMINUM  
ALLOY = 6063  
TEMPER = T-5

4 CRAFTSMAN OUTSIDE CORNER  
SCALE 1'-0"= 1'-0"



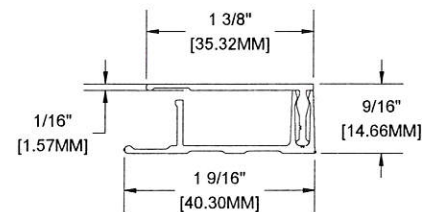
MATERIAL = ALUMINUM  
ALLOY = 6063  
TEMPER = T-5

1 TRADITIONAL STARTER STRIP (1-7/8")  
SCALE 1'-0"= 1'-0"



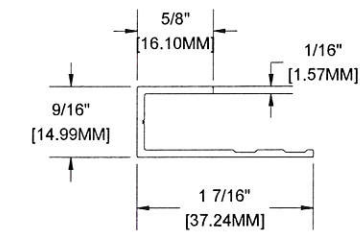
MATERIAL = ALUMINUM  
ALLOY = 6063  
TEMPER = T-5

5 CRAFTSMAN INSIDE CORNER  
SCALE 1'-0"= 1'-0"



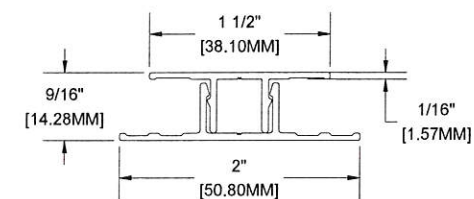
MATERIAL = ALUMINUM  
ALLOY = 6063  
TEMPER = T-5

2 TRADITIONAL TERMINATION SET  
SCALE 1'-0"= 1'-0"



MATERIAL = ALUMINUM  
ALLOY = 6063  
TEMPER = T-5

6 PRECISION J-TRACK  
SCALE 1'-0"= 1'-0"

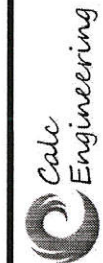


MATERIAL = ALUMINUM  
ALLOY = 6063  
TEMPER = T-5

3 TRADITIONAL FLAT REVEAL SET  
SCALE 1'-0"= 1'-0"

**PRODUCT APPROVED**  
as complying with the Florida  
Building Code  
NOA-No. 22-0209.01  
Approval Date 01/26/2023  
By *[Signature]*  
Miami-Dade Product Control

**LONGBOARD®**  
ARCHITECTURAL PRODUCTS  
#120-1777 Clearbrook Road, V2T 5X5, B.C. Canada  
p: 1.800.604.0343  
e: info@longboardproducts.com  
w: longboardproducts.com



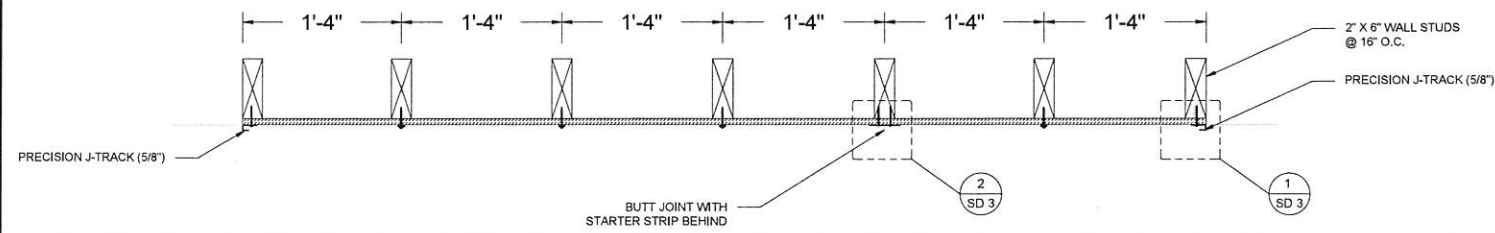
CALC ENGINEERING  
2000 NW 89 PL UNIT 102 DORAL FL 33172  
p: (305) 898-9995  
ENGINEERING BUSINESS CA CERTIFICATION: 32586

PROJECT: MIAMI-DADE TESTING  
PROFILE: 6" V-GROOVE PLANK  
TITLE: TYPICAL PROFILES

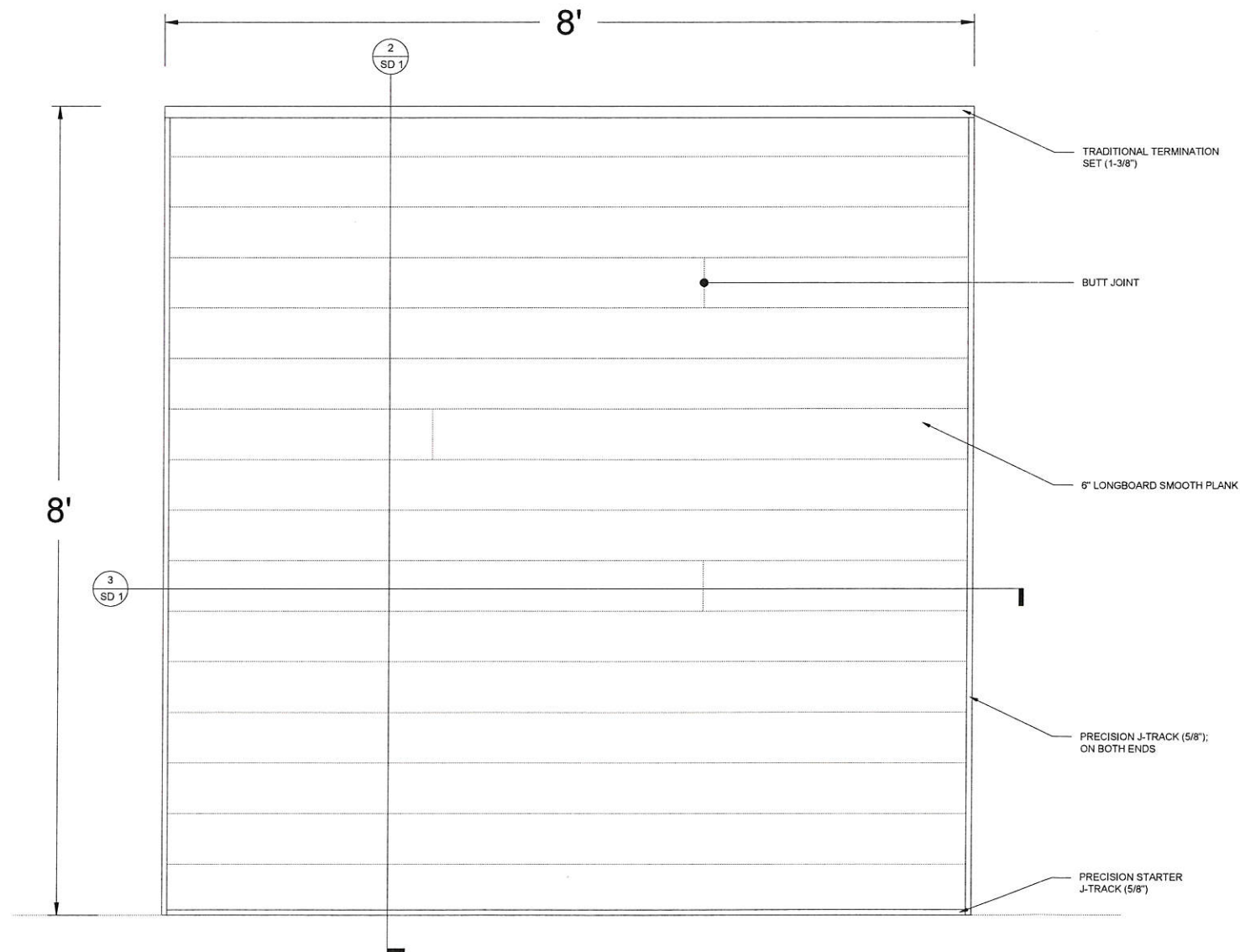
DRAWN BY: MS  
REVIEWED BY: JH  
ISSUE DATE: AUGUST 30/2021  
REVISION SCHEDULE: 05  
REVISION DATE: NOVEMBER 30/2022

SHEET  
5 OF 10





3 WALL PLAN  
SCALE 1"= 1'-0"



1 WALL ELEVATION  
SCALE 1"= 1'-0"

- #8 PAN-HEAD FASTENERS MUST BE CORROSION RESISTANT AND COMPATIBLE WITH THE SUBSTRATE, TO BE SPECIFIED BY THE PROJECT DESIGNER AND/OR ENGINEER. DO NOT USE ANY FASTENER WITH A TAPERED BACKSIDE OF THE HEAD (FLAT-HEAD WOOD SCREW OR SIMILAR).

- ALWAYS ALLOW FOR THERMAL MOVEMENT OF MATERIAL. SEE INSTALLATION GUIDELINES FOR DETAILS - LONGBOARDPRODUCTS.COM/INSTALLATION

- ALL DIMENSIONS TO BE VERIFIED IN THE FIELD.

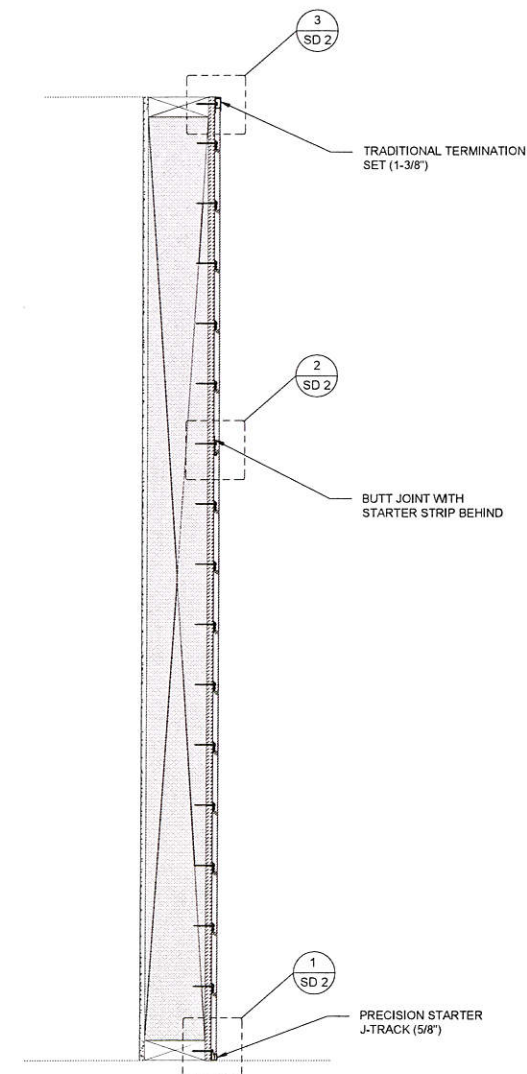
| GENERAL NOTES:          |                            |          |
|-------------------------|----------------------------|----------|
| Design pressure         | 121 psf (5794 Pa)          |          |
| Impact resistance       | Large Missile Impact: PASS |          |
| Material                | Alloy                      | 6063     |
| properties for extruded | Temper                     | T-5      |
| Aluminum                | Min. Ultimate              | 25.3 ksi |
| planks and trim         | Tensile Strength           |          |
| components              | Min. Yield                 | 21.4 ksi |
|                         | Tensile Strength           |          |

**PRODUCT APPROVED**  
as complying with the Florida  
Building Code

NOA-No. 22-0209.01

Approval Date 01/26/2023

By *[Signature]*  
Miami-Dade Product Control



2 WALL SECTION  
SCALE 1"= 1'-0"

**LONGBOARD®**  
ARCHITECTURAL PRODUCTS  
#120-1777 Clearbrook Road, V2T 5X5, B.C. Canada  
p: 1.800.604.0343  
e: info@longboardproducts.com  
w: longboardproducts.com

**Calc Engineering**  
CALC ENGINEERING  
2000 NW 89 PL UNIT 102 DORAL FL 33172  
p: (305) 898-9995  
ENGINEERING BUSINESS CA CERTIFICATION: 32566

|          |                           |
|----------|---------------------------|
| PROJECT: | MIAMI-DADE TESTING        |
| PROFILE: | 6" SMOOTH PLANK           |
| TITLE:   | PLAN, ELEVATION & SECTION |

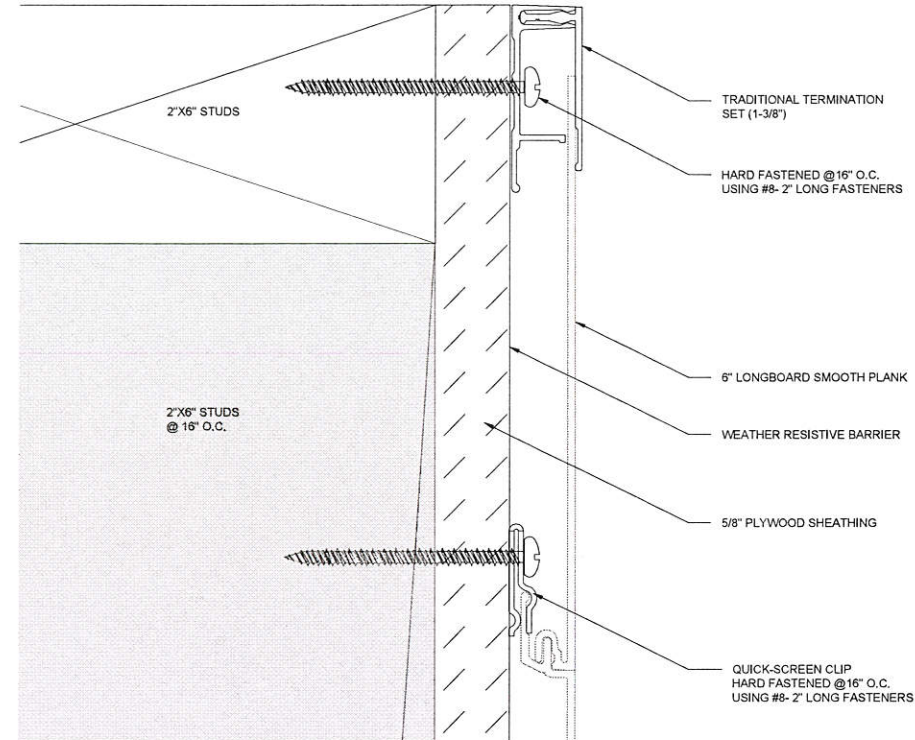
|                    |                  |
|--------------------|------------------|
| DRAWN BY:          | MS               |
| REVIEWED BY:       | JH               |
| ISSUE DATE:        | AUGUST 30/2021   |
| REVISION SCHEDULE: | 05               |
| REVISION DATE:     | NOVEMBER 30/2022 |

SHEET

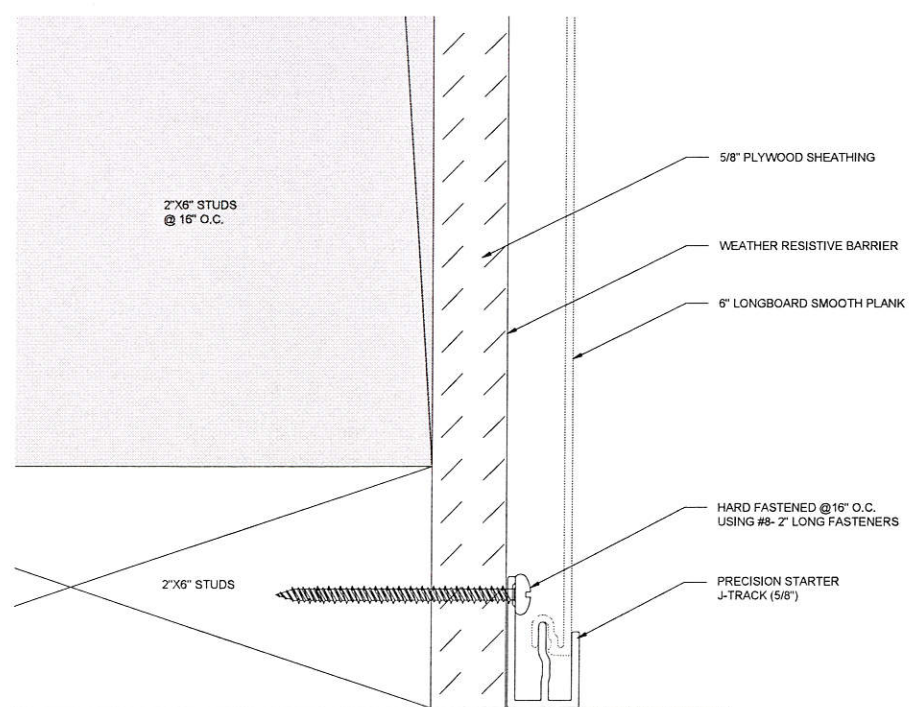
6 OF 10



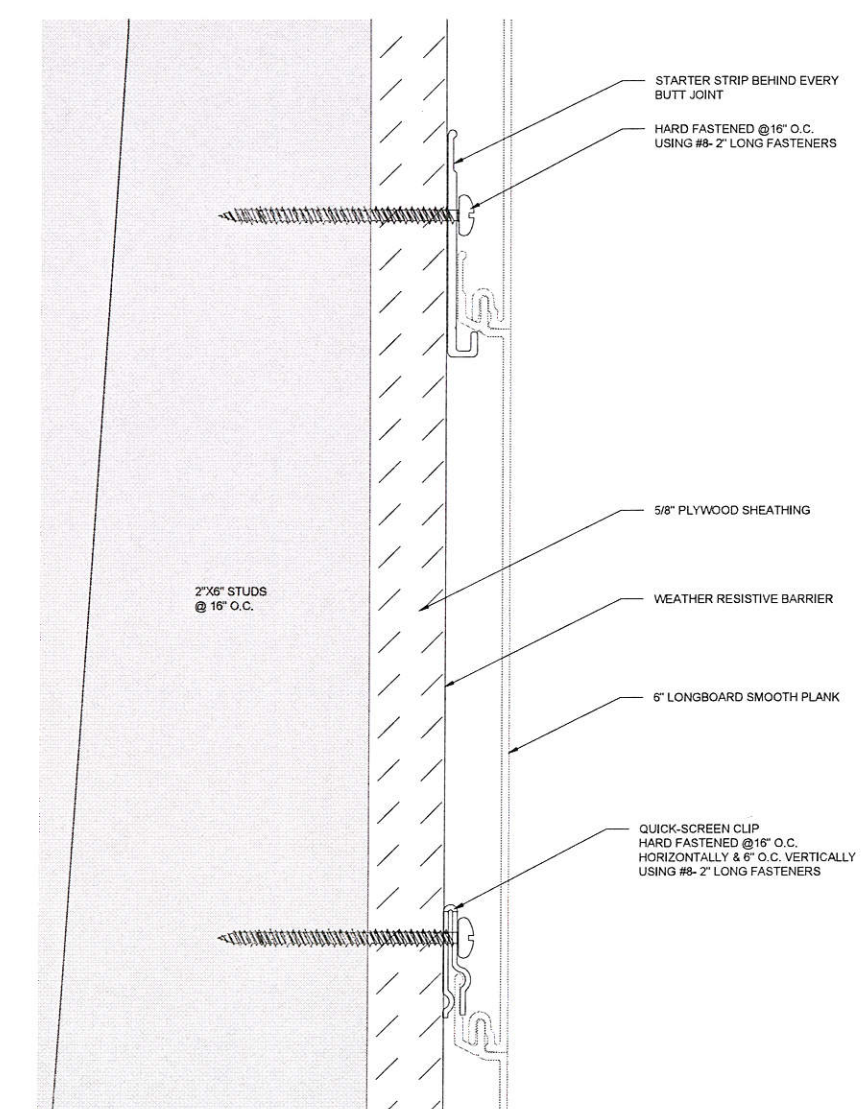




3 TOP OF WALL DETAIL  
SCALE 1'-0"= 1'-0"



1 BOTTOM OF WALL DETAIL  
SCALE 1'-0"= 1'-0"



2 BUTT JOINT SECTION DETAIL  
SCALE 1'-0"= 1'-0"

**PRODUCT APPROVED**  
as complying with the Florida  
Building Code  
NOA-No. 22-0209.01  
Approval Date 01/26/2023  
By *[Signature]*  
Miami-Dade Product Control

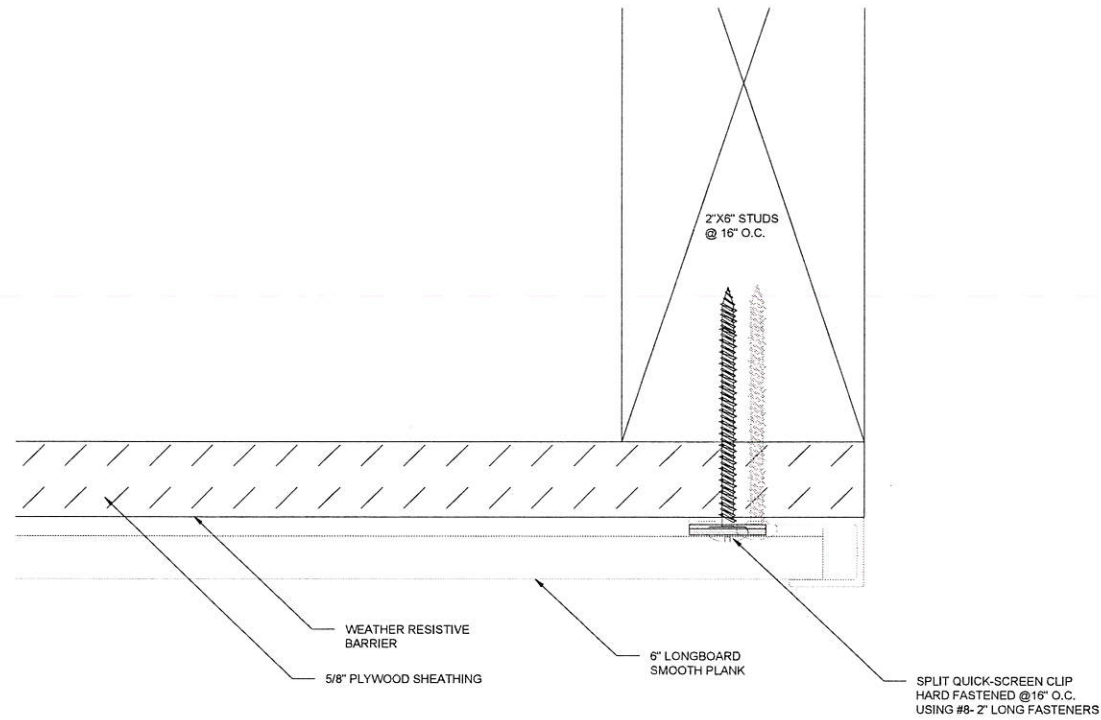
**LONGBOARD®**  
ARCHITECTURAL PRODUCTS  
#120-1777 Clearbrook Road, V2T 5X5, B.C. Canada  
p: 1.800.604.0343  
e: info@longboardproducts.com  
w: longboardproducts.com

**Calc Engineering**  
CALC ENGINEERING  
2000 NW 89 PL UNIT 102 DORAL FL 33172  
p: (305) 898-9995  
ENGINEERING BUSINESS CA CERTIFICATION: 32566

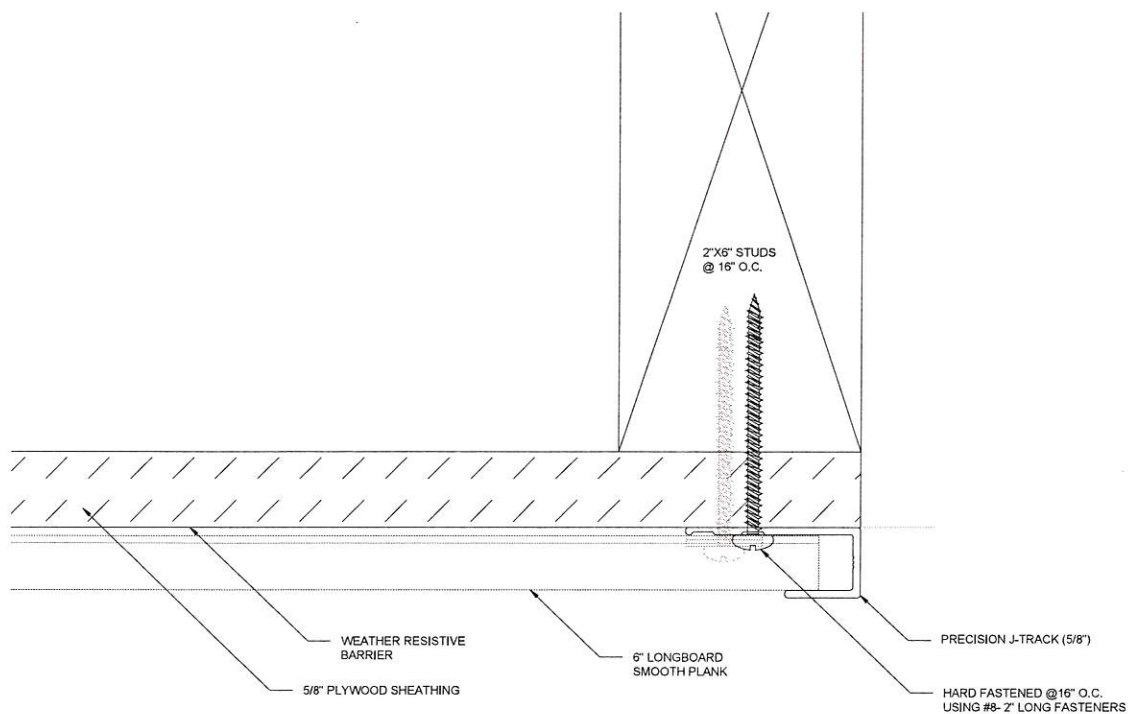
|                                 |                                 |                       |
|---------------------------------|---------------------------------|-----------------------|
| PROJECT: MIAMI-DADE TESTING     | DRAWN BY: MS                    | REVIEWED BY: JH       |
| PROFILE: 6" SMOOTH PLANK        | ISSUE DATE: AUGUST 30/2021      | REVISION SCHEDULE: 05 |
| TITLE: ENLARGED SECTION DETAILS | REVISION DATE: NOVEMBER 30/2022 |                       |
| SHEET                           |                                 |                       |
| 7 OF 10                         |                                 |                       |



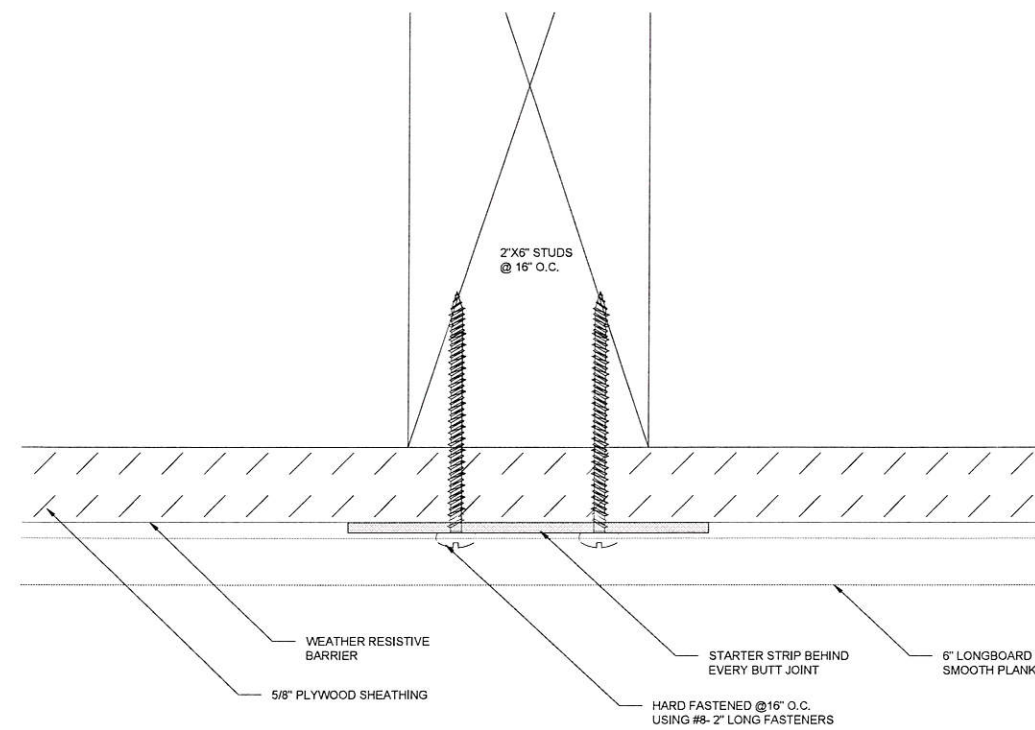




③ PLANK ATTACHMENT AT J-TRACK  
SCALE 1'-0"= 1'-0"



① J-TRACK ATTACHMENT (Typ. on both ends)  
SCALE 1'-0"= 1'-0"



② TYPICAL BUTT-JOINT DETAIL  
SCALE 1'-0"= 1'-0"

#### GENERAL NOTES:

1. SIDING PRODUCTS, CLIPS AND FASTENERS SHOWN ON THIS APPROVAL HAVE BEEN DESIGNED AND TESTED TO MEET OR EXCEED THE SPECIFICATIONS OF THE FLORIDA BUILDING CODE 2020 (7TH EDITION), INCLUDING HIGH VELOCITY HURRICANE ZONE (HVHZ).
2. ALL ITEMS ON THIS NOA SHALL BE INSTALLED AS PER THE SPECIFICATIONS OF THE FLORIDA BUILDING CODE 2020 (7TH EDITION), ALUMINUM DESIGN MANUAL 2015, NATIONAL DESIGN SPECIFICATION (NDS) FOR WOOD CONSTRUCTION AND ANY OTHER LOCAL BUILDING CODE AMENDMENTS OR REQUIREMENTS BY THE AUTHORITY HAVING JURISDICTION.
3. DESIGN PRESSURE SHOWN ARE SERVICE LOADS (ASD). TO OBTAIN ULTIMATE LOADS MULTIPLY BY 1.67.
4. APPROVAL APPLIES TO PANEL SIZE SHOWN. DO NOT EXCEED PANEL MAXIMUM DIMENSIONS.
5. PRODUCT ASSEMBLY AS SHOWN IS LARGE MISSILE IMPACT RESISTANT AS PER TAS 201-94.
6. WALL STUDS AND PLYWOOD WALL SHEATHING SHALL BE DESIGNED BY THE ENGINEER OF RECORD AND SHALL BE CAPABLE OF RESISTING THE WIND LOADS SHOWN ON THIS APPROVAL, INCLUDING THEIR CONNECTIONS TO THE HOST STRUCTURE AND BETWEEN THEMSELVES.
7. ALL 2X6 WOOD MEMBERS SHALL BE SPF No. 2 OR BETTER, MOISTURE CONTENT < 19%, SG=0.55 OR BETTER, MEMBER SIZE NOMINAL.
8. ALL SUPPORTING STRUCTURE MATERIALS AND CONNECTORS MAY BE SUBSTITUTED WITH EQUAL OR BETTER, WITH THE APPROVAL OF ENGINEER OF RECORD.
9. ALL FASTENERS SHALL BE GALVANIZED.
10. ALL CLIPS SHALL BE STAINLESS STEEL SAE 304
11. INSPECTIONS: SHALL COMPLY WITH THE LOCAL BUILDING CODE REQUIREMENTS FOR INSPECTIONS (BY THE MUNICIPALITY, ARCHITECT OR ENGINEER). INSPECTOR SHALL VERIFY THAT BACKING WOOD MEMBERS DO NOT SPLIT AS A RESULT OF FASTENER INSTALLATION.

**PRODUCT APPROVED**  
as complying with the Florida  
Building Code  
NOA-No. 22-0209.01

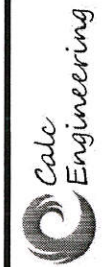
Approval Date 01/26/2023

By   
Miami-Dade Product Control

**LONGBOARD®**  
ARCHITECTURAL PRODUCTS  
#120-1777 Clearbrook Road, V2T 5X5, B.C. Canada  
p: 1.800.604.0343  
e: info@longboardproducts.com  
w: longboardproducts.com



SEAL



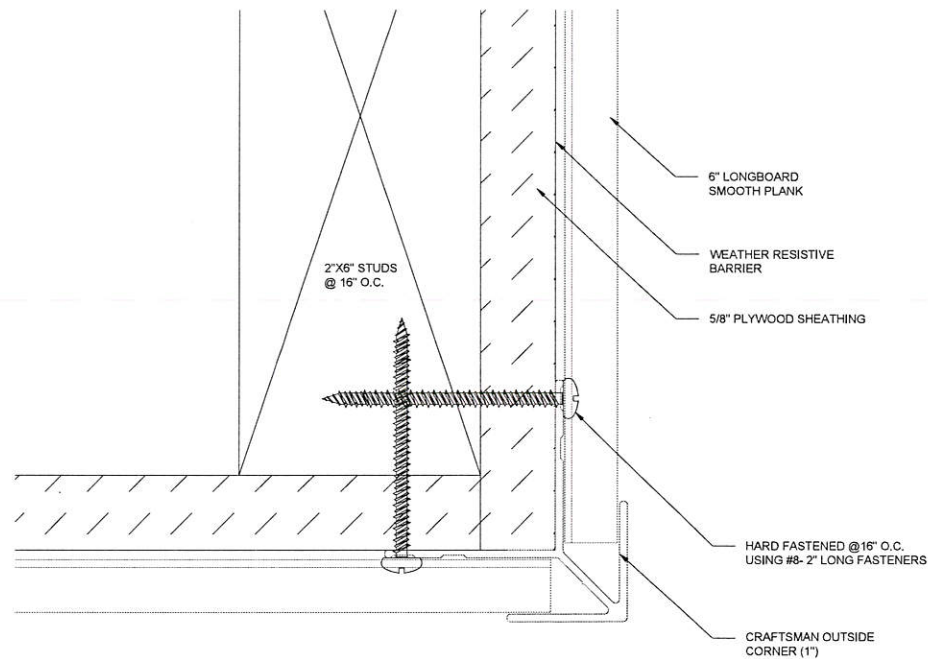
**Cale Engineering**  
CALC ENGINEERING  
2000 NW 89 PL UNIT 102 DORAL FL 33172  
p: (305) 898-9995  
ENGINEERING BUSINESS CA CERTIFICATION: 32566

|          |                       |
|----------|-----------------------|
| PROJECT: | MIAMI-DADE TESTING    |
| PROFILE: | 6" SMOOTH PLANK       |
| TITLE:   | ENLARGED PLAN DETAILS |

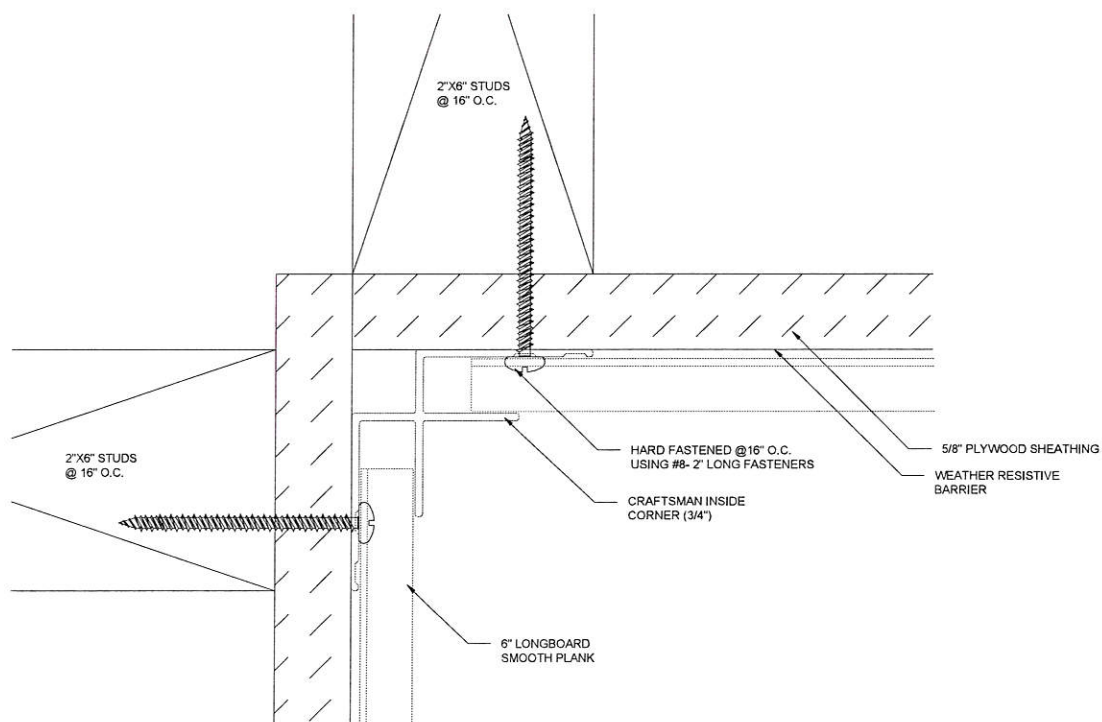
|                    |                  |
|--------------------|------------------|
| DRAWN BY:          | MS               |
| REVIEWED BY:       | JH               |
| ISSUE DATE:        | AUGUST 30/2021   |
| REVISION SCHEDULE: | 05               |
| REVISION DATE:     | NOVEMBER 30/2022 |

SHEET  
8 OF 10

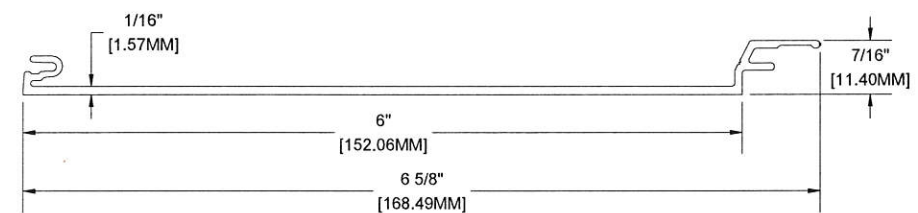




3 TYPICAL OUTSIDE CORNER DETAIL  
SCALE 1'-0" = 1'-0"

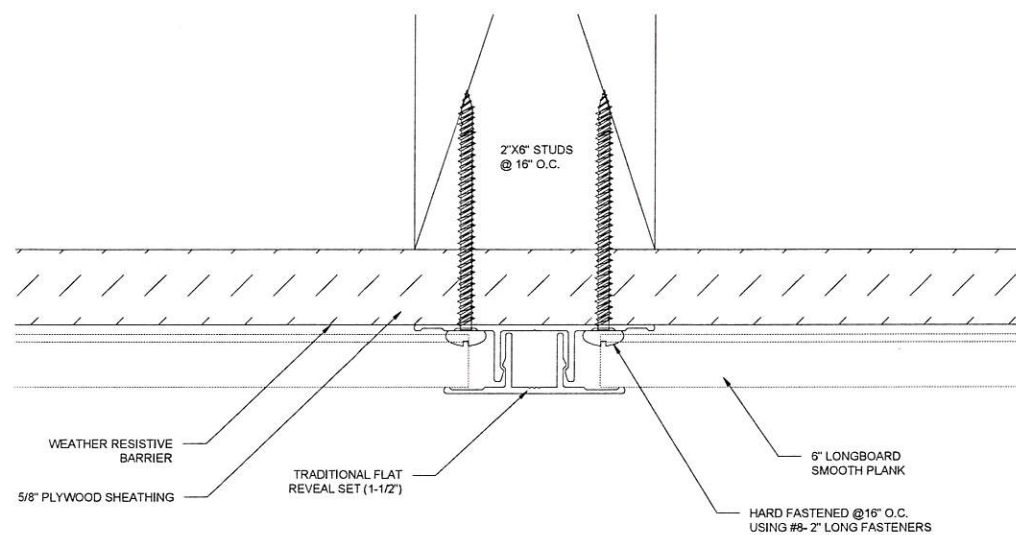


1 TYPICAL INSIDE CORNER DETAIL  
SCALE 1'-0" = 1'-0"



MATERIAL = ALUMINUM  
ALLOW = 6063  
TEMPER = T-5

4 6" SMOOTH PLANK PROFILE DETAIL  
SCALE 1'-0" = 1'-0"



2 TYPICAL FLAT REVEAL DETAIL  
SCALE 1'-0" = 1'-0"

**PRODUCT APPROVED**  
as complying with the Florida  
Building Code  
NOA-No. 22-0209.01  
Approval Date 01/26/2023  
By *[Signature]*  
Miami-Dade Product Control

**LONGBOARD®**  
ARCHITECTURAL PRODUCTS  
#120-1777 Clearbrook Road, V2T 5X5, B.C. Canada  
p: 1.800.604.0343  
e: info@longboardproducts.com  
w: longboardproducts.com

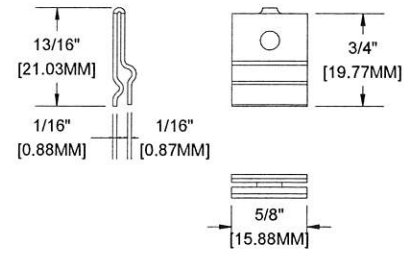
**Calc Engineering**  
CALC ENGINEERING  
2000 NW 89 89 PL UNIT 102 DORAL FL 33172  
p: (305) 898-9995  
ENGINEERING BUSINESS CA CERTIFICATION: 32566

PROJECT: MIAMI-DADE TESTING  
PROFILE: 6" SMOOTH PLANK  
TITLE: TYPICAL DETAILS

DRAWN BY: MS  
REVIEWED BY: JH  
ISSUE DATE: AUGUST 30/2021  
REVISION SCHEDULE: 05  
REVISION DATE: NOVEMBER 30/2022

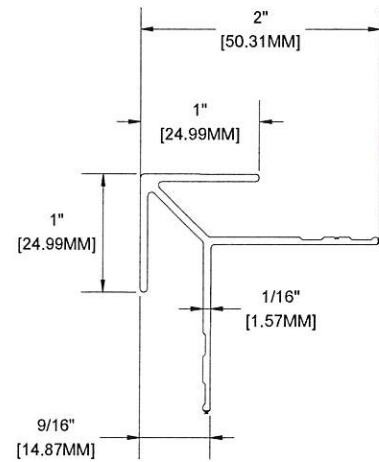
SHEET  
9 OF 10

*[Handwritten Signature]*  
1/4/23  
STATE OF FLORIDA  
PROFESSIONAL ENGINEER  
MASON HALL  
LICENSE NO. 82038



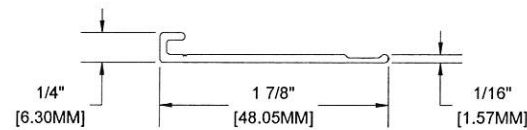
MATERIAL = 316 STAINLESS STEEL

7 QUICK SCREEN CLIP  
SCALE 1'-0"= 1'-0"



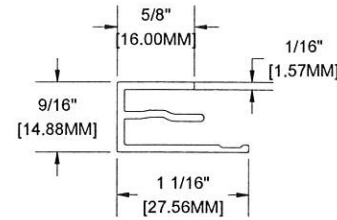
MATERIAL = ALUMINUM  
ALLOY = 6063  
TEMPER = T-5

4 CRAFTSMAN OUTSIDE CORNER  
SCALE 1'-0"= 1'-0"



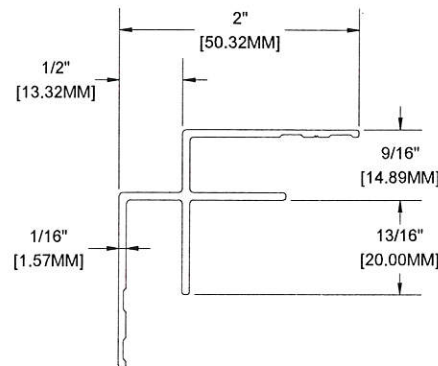
MATERIAL = ALUMINUM  
ALLOY = 6063  
TEMPER = T-5

1 TRADITIONAL STARTER STRIP (1-7/8")  
SCALE 1'-0"= 1'-0"



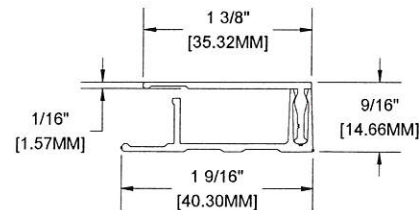
MATERIAL = ALUMINUM  
ALLOY = 6063  
TEMPER = T-5

8 PRECISION STARTER J-TRACK  
SCALE 1'-0"= 1'-0"



MATERIAL = ALUMINUM  
ALLOY = 6063  
TEMPER = T-5

5 CRAFTSMAN INSIDE CORNER  
SCALE 1'-0"= 1'-0"



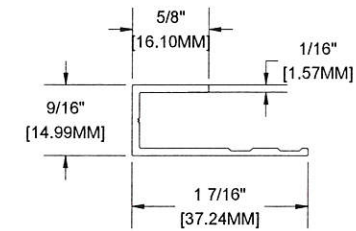
MATERIAL = ALUMINUM  
ALLOY = 6063  
TEMPER = T-5

2 TRADITIONAL TERMINATION SET  
SCALE 1'-0"= 1'-0"

PRODUCT APPROVED  
as complying with the Florida  
Building Code  
NOA-No. 22-0209.01

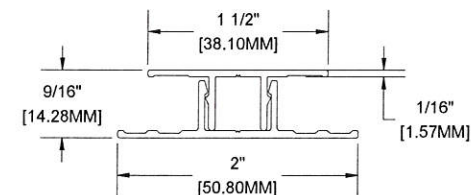
Approval Date 01/26/2023

By *[Signature]*  
Miami-Dade Product Control



MATERIAL = ALUMINUM  
ALLOY = 6063  
TEMPER = T-5

6 PRECISION J-TRACK  
SCALE 1'-0"= 1'-0"



MATERIAL = ALUMINUM  
ALLOY = 6063  
TEMPER = T-5

3 TRADITIONAL FLAT REVEAL SET  
SCALE 1'-0"= 1'-0"

**LONGBOARD®**  
ARCHITECTURAL PRODUCTS  
#120-1777 Clearbrook Road, V2T 5X5, B.C. Canada  
p: 1.800.604.0343  
e: info@longboardproducts.com  
w: longboardproducts.com



CALC ENGINEERING  
2000 NW 89 PL UNIT 102 DORAL FL 33172  
p: (305) 898-9995  
ENGINEERING BUSINESS CA CERTIFICATION: 32566

PROJECT: MIAMI-DADE TESTING  
PROFILE: SMOOTH PLANK  
TITLE: TYPICAL PROFILES

DRAWN BY: MS  
REVIEWED BY: JH  
ISSUE DATE: AUGUST 30/2021  
REVISION SCHEDULE: 05  
REVISION DATE: NOVEMBER 30/2022

SHEET  
10 OF 10

