



DEPARTMENT OF REGULATORY AND ECONOMIC RESOURCES (RER)  
BOARD AND CODE ADMINISTRATION DIVISION

## NOTICE OF ACCEPTANCE (NOA)

MIAMI-DADE COUNTY  
PRODUCT CONTROL SECTION  
11805 SW 26 Street, Room 208  
Miami, Florida 33175-2474  
T (786) 315-2590 F (786) 315-2599  
[www.miamidade.gov/economy](http://www.miamidade.gov/economy)

**Wayne Dalton a Div. of Overhead Door Corporation**  
**3395 Addison Drive**  
**Pensacola, FL 32514**

**SCOPE:** This NOA is being issued under the applicable rules and regulations governing the use of construction materials. The documentation submitted has been reviewed and accepted by Miami-Dade County RER-Product Control Section to be used in Miami-Dade County and other areas, where allowed by the Authority Having Jurisdiction (AHJ).

This NOA shall not be valid after the expiration date stated below. The Miami-Dade County Product Control Section (In Miami-Dade County) and/ or the AHJ (in areas other than Miami-Dade County) reserve the right to have this product or material tested for quality assurance purposes. If this product or material fails to perform in the accepted manner, the manufacturer will incur the expense of such testing and the AHJ may immediately revoke, modify, or suspend the use of such product or material within their jurisdiction. RER reserves the right to revoke this acceptance if it is determined by Miami-Dade County Product Control Section that this product or material fails to meet the requirements of the applicable building code.

This product is approved as described herein and has been designed to comply with the Florida Building Code, including the High Velocity Hurricane Zone.

**DESCRIPTION: Models 6600/8300/8350/8500/8600/5150/5200 Insulated Steel Sectional Garage Door up to 16ft.-2in. Wide with Optional Impact Resistant Glazing (DP +46.0, -52.0 PSF)**

**APPROVAL DOCUMENT:** Drawing No. **D-365446**, titled "Windload Models 6600/8300/8350/8500/8600/5150/5200, +46/-52 PSF Dade County, 16'2" Max. Width", sheets 1 through 4 of 4, dated 10/25/2021, prepared by Overhead Door Corporation, signed and sealed by Junfeng Qian, P.E., bearing the Miami-Dade County Product Control Approval stamp with the NOA number and Approval date by the Miami-Dade County Product Control Section.

**MISSILE IMPACT RATING: Large and Small Missile Impact Resistant**

**LABELING:** A permanent label with the manufacturer's name or logo, manufacturing addresses in Pensacola, FL or Mt. Hope, OH, model number, the positive and negative design pressure rating, indicate impact rated if applicable, installation instruction drawing reference number, approval number (NOA), the applicable test standards, and the statement reading 'Miami-Dade County Product Control Approved' is to be located on the door's sidetrack, bottom angle, or inner surface of a panel.

**LIMITATION: This door has not been tested for air infiltration.**

**RENEWAL** of this NOA shall be considered after a renewal application has been filed and there has been no change in the applicable building code negatively affecting the performance of this product.

**TERMINATION** of this NOA will occur after the expiration date or if there has been a revision or change in the materials, use, and/ or manufacture of the product or process. Misuse of this NOA as an endorsement of any product, for sales, advertising or any other purposes shall automatically terminate this NOA. Failure to comply with any section of this NOA shall be cause for termination and removal of NOA.

**ADVERTISEMENT:** The NOA number preceded by the words Miami-Dade County, Florida, and followed by the expiration date may be displayed in advertising literature. If any portion of the NOA is displayed, then it shall be done in its entirety.

**INSPECTION:** A copy of this entire NOA shall be provided to the user by the manufacturer or its distributors and shall be available for inspection at the job site at the request of the Building Official.

This NOA consists of this page 1 and evidence page E-1, as well as approval document mentioned above.

The submitted documentation was reviewed by **Sifang Zhao, P.E.**



*S.Z.*  
08/04/2022

NOA-No. 22-0315.05  
Expiration Date: August 04, 2027  
Approval Date: August 04, 2022  
Page 1

## Overhead Door Corporation

### NOTICE OF ACCEPTANCE: EVIDENCE SUBMITTED

#### A. DRAWINGS

1. Drawing No. **D-365446**, titled “Windload Models **6600/8300/8350/8500/8600/5150/5200**, +46/-52 PSF Dade County, 16’2” Max. Width”, sheets 1 through 4 of 4, dated 10/28/2021, prepared by Overhead Door Corporation, signed and sealed by Junfeng Qian, P.E. on 03/10/2022.

#### B. TESTS

1. Test reports on 1) Uniform Static Air Pressure Test, Loading per FBC TAS 202-94  
2) Large Missile Impact Test per FBC, TAS 201-94  
3) Cyclic Wind Pressure Loading per FBC, TAS 203-94  
4) Forced Entry Test, per FBC, TAS 202-94  
5) Tensile Test per ASTM E8  
along with marked-up drawings of a 16’-2” Wide Models **6600/8300/8350/8500/8600/5150/5200** Sectional Garage Doors, prepared by Intertek, Test Report No. **L7620.01-801-18-R0**, dated 02/24/2022, signed and sealed by Tyler Westerling, P.E.
2. Test report on Standard Test Method for Evaluation of Painted or Coated Specimens Subjected to Corrosive Environments per ASTM D1654-08(2016)-e1 and Standard Practice for Operating Salt Spray (Fog) Apparatus per ASTM B117-16 and on garage door exterior steel, prepared by Intertek, Report No. **J4650.02-106-18 R0**, dated 05/24/2019, signed by Gary T. Hartman, P.E. (*Submitted under NOA#20-1106.11*)

#### C. CALCULATIONS

1. Anchorage verification calculations prepared by Overhead Door Engineering, dated 03/04/2022, signed and sealed by Junfeng Qian, P.E.

#### D. QUALITY ASSURANCE

1. Miami-Dade Department of Regulatory and Economic Resources (RER).

#### E. MATERIAL CERTIFICATIONS

1. Test report on Ignition Temperatures of Plastic per ASTM D1929-16 on BASF Corp. Elastopor P19670R polyurethane foam insulation, prepared by QAI Laboratories, Inc., Test Report No. **RJ6431F-1**, dated 09/28/2018, signed by Bryan Ortega.
2. Test report on Surface Burning Characteristics of Building Materials per ASTM E84-18b on BASF Corp. Elastopor P19670R polyurethane foam insulation, prepared by QAI Laboratories, Inc., Test Report No. **RJ6648F-4**, dated 12/12/2018, signed by Bryan Ortega.
3. Notice of Acceptance No. **18-0918.06**, issued to Plaskolite, LLC, for their TUFFAK Polycarbonate Sheets, approved on 11/15/2018 and expiring on 08/27/2022.

#### F. STATEMENTS

1. Statement letter of code conformance to the **7<sup>th</sup> edition (2020) FBC**, issued by Overhead Door Corporation, dated 03/07/2022, signed and sealed by Junfeng Qian, P.E.
2. No financial interest letter issued by Overhead Door Corporation, dated 03/07/2022, signed and sealed by Junfeng Qian, P.E.



Sifang Zhao, P.E.

Product Control Examiner

NOA-No. 22-0315.05

Expiration Date: August 04, 2027

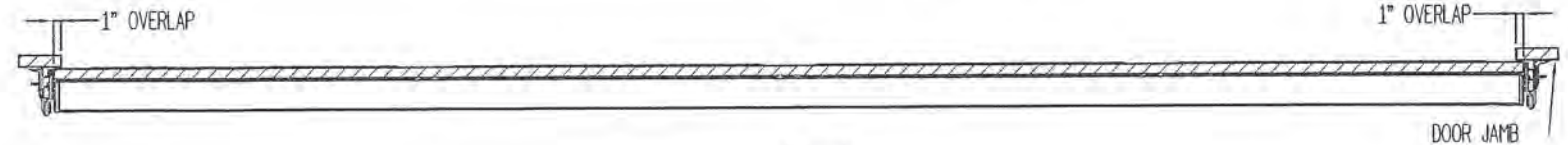
Approval Date: August 04, 2022




NOTES: (UNLESS OTHERWISE SPECIFIED)

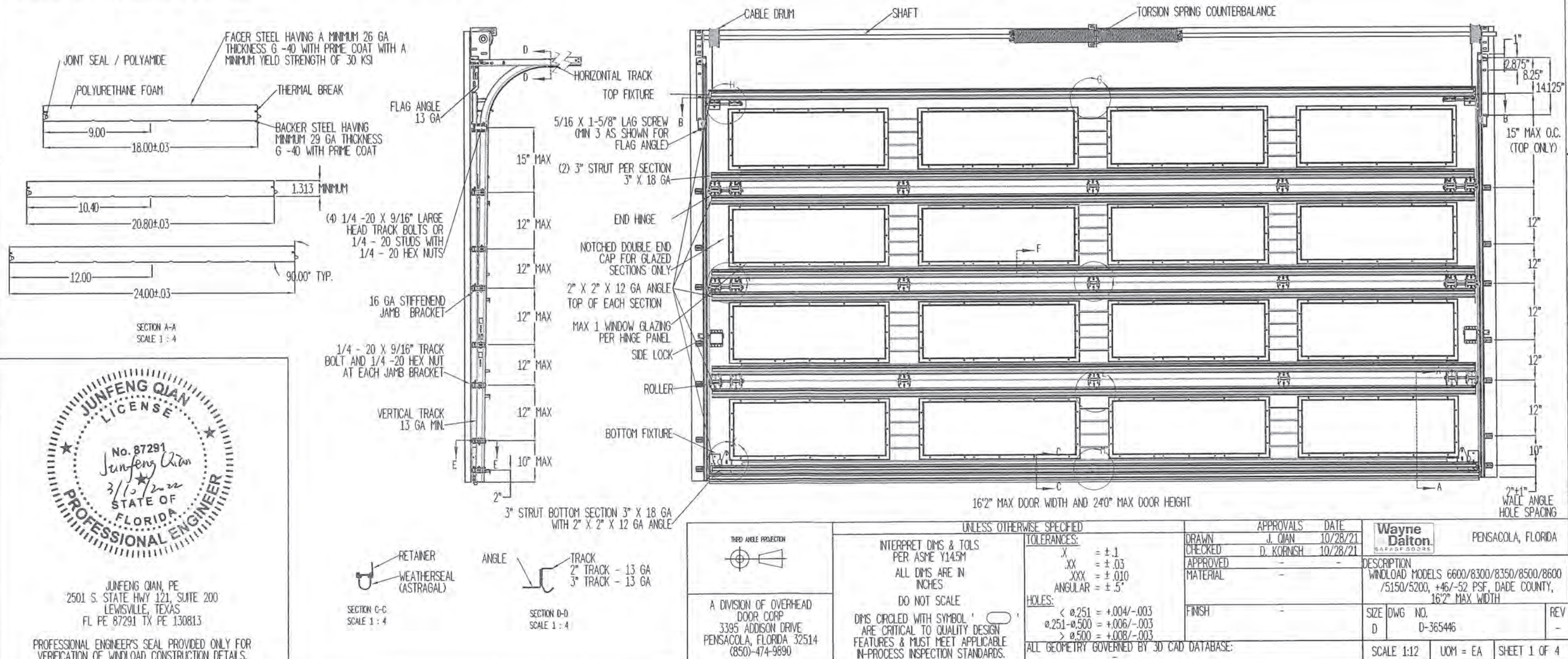
1. RATED DESIGN LOAD +46/-52 PSF.
2. SECTION HEIGHTS MAY VARY TO CREATE VARIOUS DOOR HEIGHTS, 24" MAXIMUM SECTION HEIGHT.
3. MINIMUM 1" OVERLAP ON BOTH JAMBS REQUIRED TO MEET NEGATIVE DESIGN PRESSURES.
4. TESTED IN ACCORDANCE WITH DADE COUNTY PROTOCOLS TAS 201-94, TAS 202-94, & TAS 203-94.
5. DOOR SKIN MUST BE 30,000 PSI MIN. YIELD STRENGTH.
6. JAMB LOAD CALCULATIONS:  
(1/2 DOOR WIDTH X 1 FT OF HEIGHT X DESIGN PRESSURE)  
(8.067 X 1 FOOT X 46.00 AND -52.00) = (371.08 / -419.48) LB  
F<sub>y</sub> = 371 LBS.
7. JAMB FASTENER REQUIREMENTS:  
F<sub>y</sub> = (1/2 DOOR WIDTH X 1 FT OF HEIGHT X DESIGN PRESSURE)  
F<sub>y</sub> = 371 LBS.
8. DOOR SKIN MATERIAL SHALL BE GALVANIZED ACCORDING TO ASTM A-525 TO G40 MIN, WITH BAKED-ON PRIMER, AND BAKED-ON POLYESTER PAINT TOP COAT.
9. FOR ANCHORING INTO WOOD, USE ONE 5/16" LAG SCREW PER TRACK BRACKET WITH 1-1/2" EMBEDMENT INTO SOUTHERN PINE (G=0.55) OR BETTER.
10. WELD SLOT ON ANGLE 3/32" X 1" LONG ON 12" CENTERS. IF WELDING MOUNTING OPTION IS CHOSEN.
11. LIFT UP MECHANISM-MANUAL, CHAIN LIFT, OR OPERATOR IS NOT PART OF THIS APPROVAL.
12. STANDARD LIFT, HIGH LIFT, VERTICAL LIFT, AND LOW HEADROOM TRACK IS AVAILABLE. FOR LOW HEADROOM LIFT CONDITIONS TOP BRACKET SHALL BE 13 GA LHR 7/4 TOP BRACKET WITH A MIN OF (3) 1/4 - 14 X 7/8" SELF DRILLING CRIMPITE SCREWS IN LIEU OF THE BRACKET SHOWN ON DRAWING. U-BAR ON TOP SECTION SHALL BE INSTALLED ON TOP OF LHR TOP BRACKETS.
13. ATTACH STRUTS WITH (2) 1/4-14x7/8" SELF DRILLING CRIMPITE SCREWS AT ALL HINGE LOCATIONS AND (2) BETWEEN EACH INTERMEDIATE HINGE, TYP. STRUT LOCATED AT TOP AND/ OR AT BOTTOM OF SECTION.
14. KEY LOCK, OR SIDE LOCK REQUIRED.
15. IMPACT RESISTANT GLAZING OPTION- IMPACT RESISTANT GLAZING SYSTEM MAY BE INSTALLED IN ALL SECTIONS. GLAZING SHALL BE 1/4" POLYCARBONATE, 44.1" X 16.8" MAXIMUM SIZE, FASTENED WITH # 8 X 1" SMS: 5X MAX ALONG THE HORIZONTAL AND 3X MAX ALONG THE VERTICAL. SEE DETAIL F-F ON SHEET 2 FOR ASSEMBLY DETAILS.
16. THE DESIGN OF THE SUPPORTING STRUCTURAL ELEMENTS SHALL BE THE RESPONSIBILITY OF THE PROFESSIONAL OF RECORD FOR THE BUILDING OR STRUCTURE AND IN ACCORDANCE WITH CURRENT BUILDING CODES FOR THE LOADS LISTED ON THIS DRAWING.
17. A 4-1/2" X 6" X 22 GA BACKER PLATE IS TO BE LOCATED AT EVERY INTERMEDIATE AND OUTER END HINGE LOCATIONS.
18. COMPLIES WITH THE REQUIREMENTS OF IBC/RC 2018.

REVISIONS				
ER	REV	DESCRIPTION	DATE	APVL
ER	-	NEW DRAWING	10/25/21	JQ



SECTION B-B  
SCALE 1 : 12

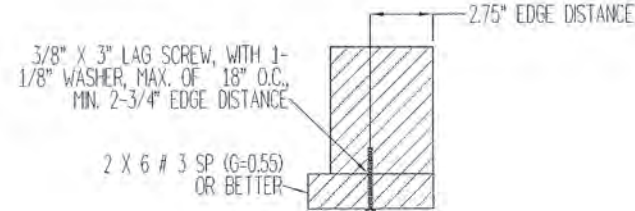
**PRODUCT APPROVED**  
as complying with the Florida  
Building Code  
NOA-No. 22-0315.05  
Approval Date 08/04/2022  
By   
Miami-Dade Product Control



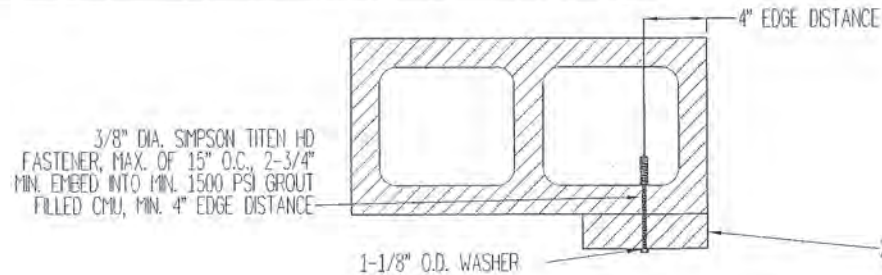
JUNFENG QIAN, PE  
2501 S. STATE HWY 121, SUITE 200  
LEWISVILLE, TEXAS  
FL PE 87291 TX PE 130813

PROFESSIONAL ENGINEER'S SEAL PROVIDED ONLY FOR  
VERIFICATION OF WINDLOAD CONSTRUCTION DETAILS.

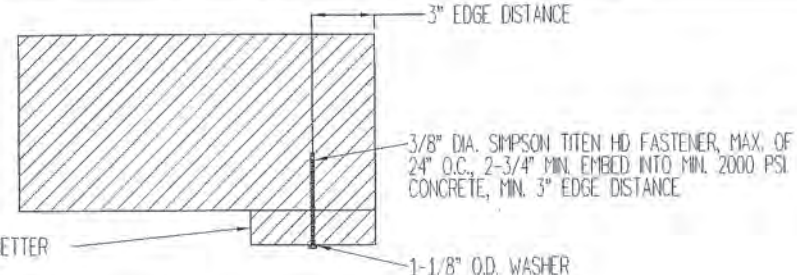




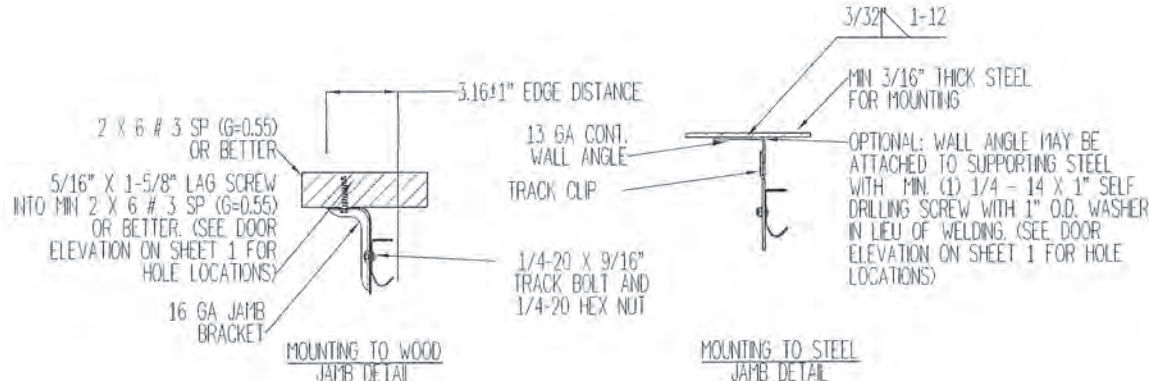
WOOD MOUNTED TO #3 SOUTHERN PINE SUBSTRATE



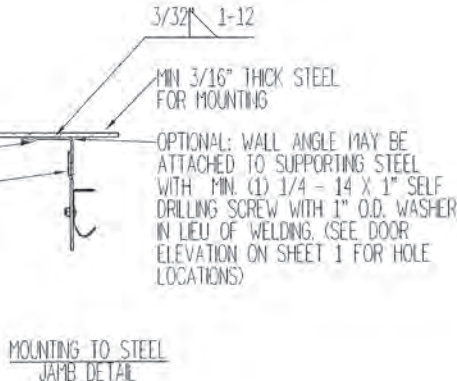
WOOD MOUNTED TO GROUT FILLED MASONRY BLOCK DETAIL



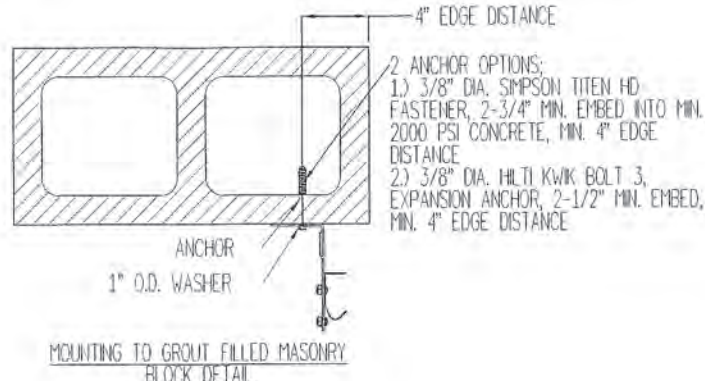
WOOD MOUNTED TO 2000 PSI CONCRETE DETAIL



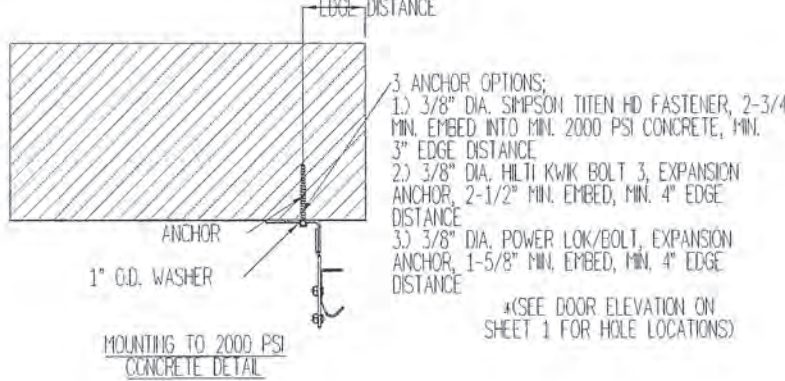
MOUNTING TO WOOD JAMB DETAIL



MOUNTING TO STEEL JAMB DETAIL

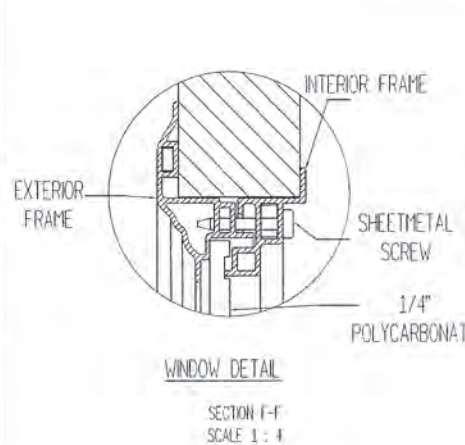


MOUNTING TO GROUT FILLED MASONRY BLOCK DETAIL

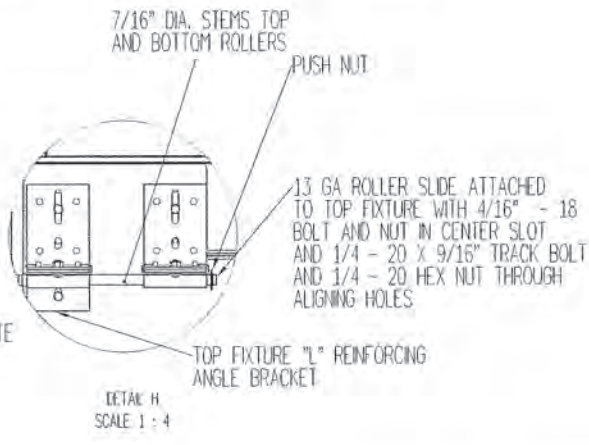


MOUNTING TO 2000 PSI CONCRETE DETAIL

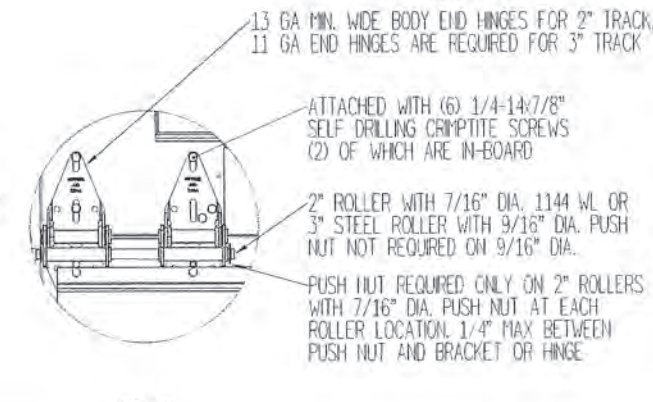
\*(SEE DOOR ELEVATION ON SHEET 1 FOR HOLE LOCATIONS)



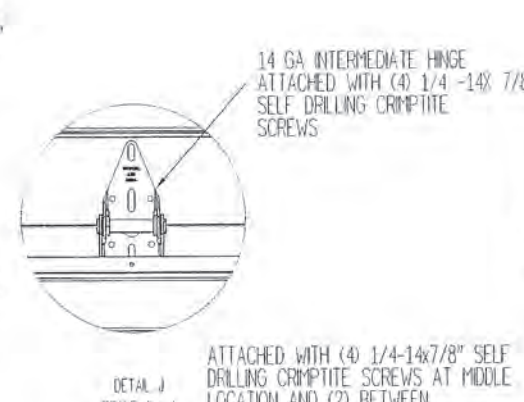
WINDOW DETAIL  
SECTION F-F  
SCALE 1:4



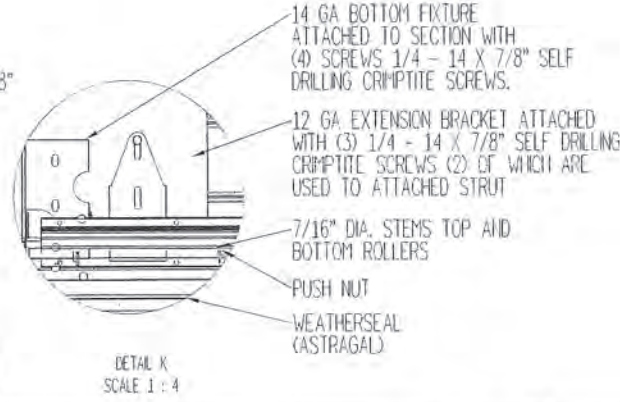
DETAIL H  
SCALE 1:4



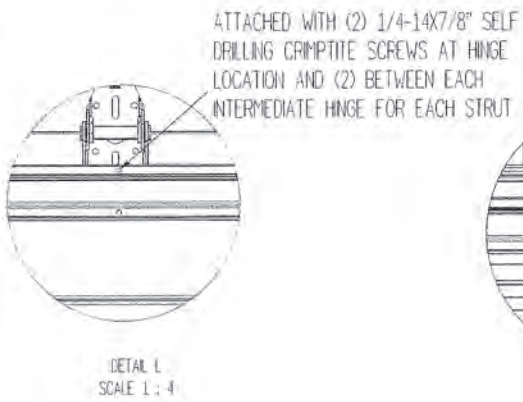
DETAIL N  
SCALE 1:4



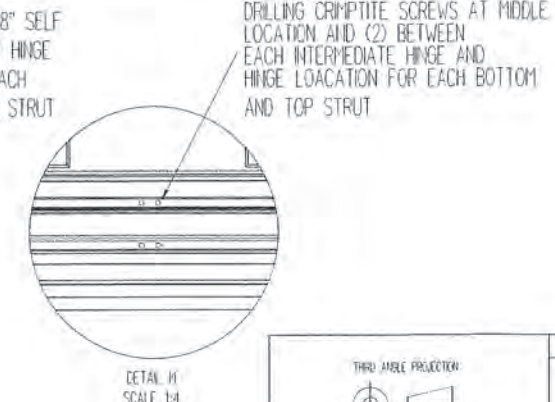
DETAIL J  
SCALE 1:4



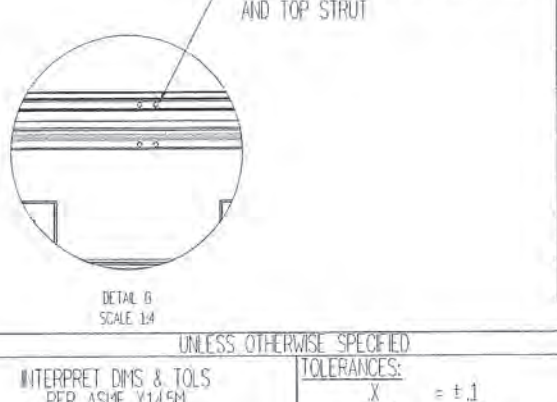
DETAIL K  
SCALE 1:4



DETAIL L  
SCALE 1:4



DETAIL M  
SCALE 1:4



DETAIL G  
SCALE 1:4


IMPACT FRAME SIZE	DAYLIGHT OPENING (DLO)	SCREW QTY
19.2 X 15.3	15 X 11	10
19.8 X 16.8	15.75 X 12.75	10
40 X 12.8	35.8 X 8.6	14
42 X 16.8	37.8 X 12.75	14
41.2 X 7.1	37 X 3	12
44.1 X 15.5	40.13 X 11.25	16



JUNFENG QIAN, PE  
2501 S. STATE HWY 121, SUITE 200  
LEWISVILLE, TEXAS  
FL PE 87291 TX PE 130813

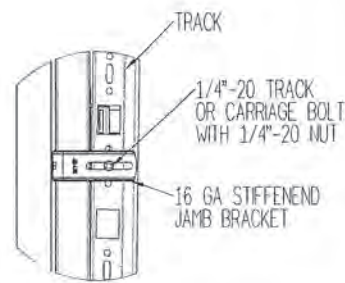
PROFESSIONAL ENGINEER'S SEAL PROVIDED ONLY FOR VERIFICATION OF WINDLOAD CONSTRUCTION DETAILS.

**PRODUCT APPROVED**  
as complying with the Florida Building Code  
NOA-No. 22-0315.05  
Approval Date 08/04/2022  
By Miami-Dade Product Control

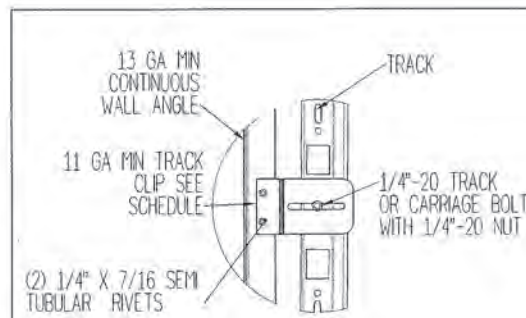
<div>THIRD ANGLE PROJECTION</div> 	UNLESS OTHERWISE SPECIFIED		APPROVALS DATE		<div>Wayne Dalton</div> <div>GARAGE DOORS</div> <div>PENSACOLA, FLORIDA</div>
	<div>INTERPRET DIMS &amp; TOLS PER ASME Y14.5M</div> <div>ALL DIMS ARE IN INCHES</div> <div>DO NOT SCALE</div> <div>DIMS CIRCLED WITH SYMBOL ARE CRITICAL TO QUALITY DESIGN FEATURES &amp; MUST MEET APPLICABLE IN-PROCESS INSPECTION STANDARDS.</div>	<div>TOLERANCES:</div> <div>X = ±.1</div> <div>XX = ±.03</div> <div>XXX = ±.010</div> <div>ANGULAR = ±.5°</div> <div>HOLES:</div> <div>&lt; .251 = +.004/-0.003</div> <div>.251-.500 = +.006/-0.003</div> <div>&gt; .500 = +.008/-0.003</div> <div>ALL GEOMETRY GOVERNED BY 3D CAD DATABASE:</div>	DRAWN J. QIAN 10/28/21		
CHECKED D. KORNISH 10/28/21			SIZE DWG NO. REV D D-365446 -		
A DIVISION OF OVERHEAD DOOR CORP 3395 ADDISON DRIVE PENSACOLA, FLORIDA 32514 (850)-474-9890		MATERIAL -		FINISH -	
SCALE 1:12 UOM = EA SHEET 2 OF 4					



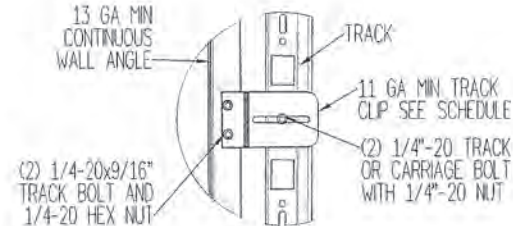
NOTES: (UNLESS OTHERWISE SPECIFIED)  
1. FOR DIMENSIONS AND NOTE REFERENCES, REFER TO INDIVIDUAL DRAWINGS.



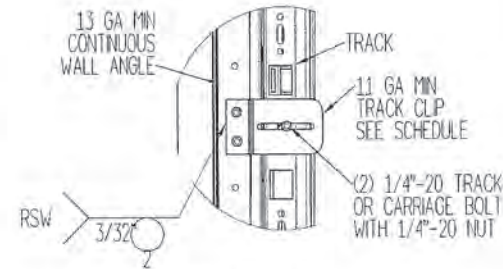
TYPICAL TRACK AND JAMB  
FASTENERS DETAIL



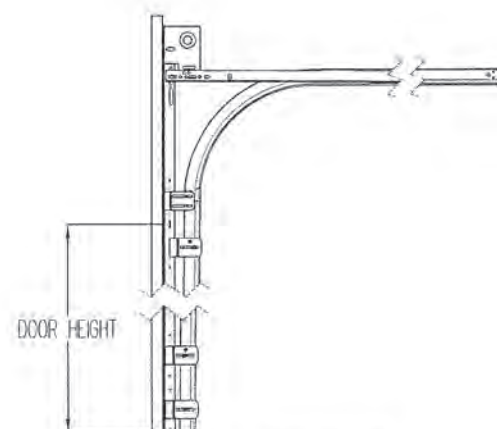
TYPICAL TRACK CLIP  
RIVETING DETAIL



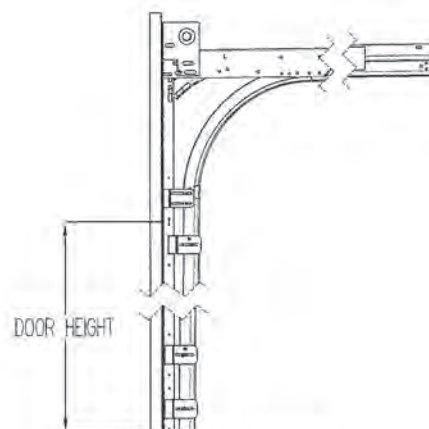
TYPICAL TRACK CLIP  
BOLTING DETAIL  
OPTIONAL WALL ANGLE TRACK



TYPICAL TRACK CLIP  
WELDING DETAIL

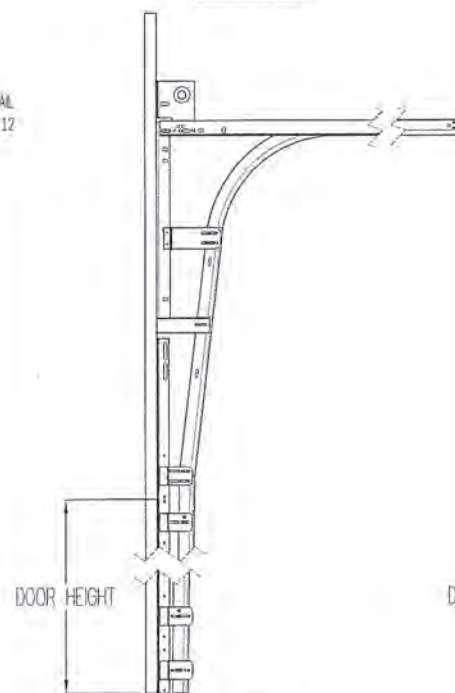


STANDARD LIFT  
TRACK DETAIL

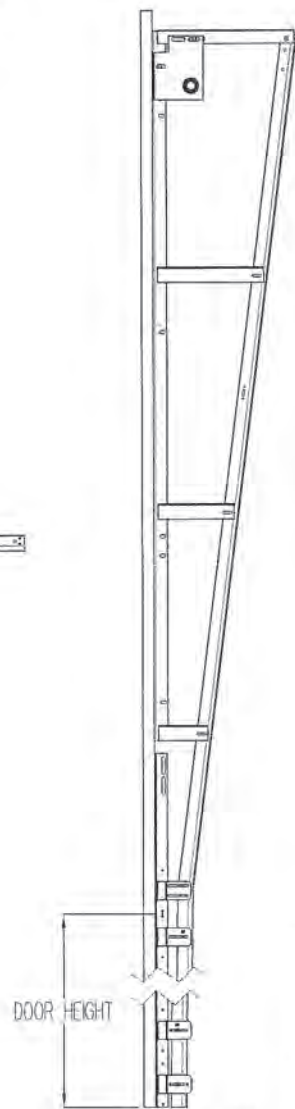


LOW HEADROOM  
TRACK DETAIL

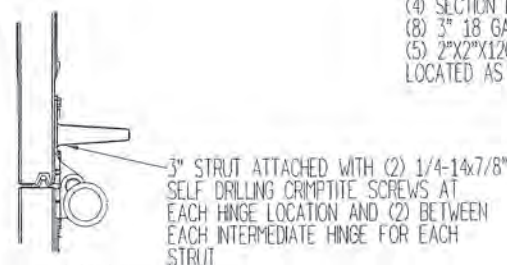
TRACK DETAIL  
SCALE 1 : 12



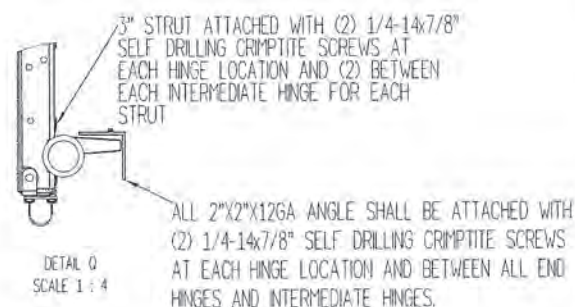
HIGH LIFT  
TRACK DETAIL



VERTICAL LIFT  
TRACK DETAIL



DETAIL P  
SCALE 1 : 4



DETAIL Q  
SCALE 1 : 4

(4) SECTION DOORS WITH  
(8) 3\"/>

(5) SECTION DOORS WITH  
(10) 3\"/>

(6) SECTION DOORS WITH  
(12) 3\"/>

(7) SECTION DOORS WITH  
(14) 3\"/>

(8) SECTION DOORS WITH  
(16) 3\"/>

(9) SECTION DOORS WITH  
(18) 3\"/>

(10) SECTION DOORS WITH  
(20) 3\"/>

(11) SECTION DOORS WITH  
(22) 3\"/>



(12) SECTION DOORS WITH  
(24) 3\"/>

**PRODUCT APPROVED**  
as complying with the Florida  
Building Code  
NOA-No. 22-0315.05  
Approval Date 08/04/2022

By   
Miami-Dade Product Control

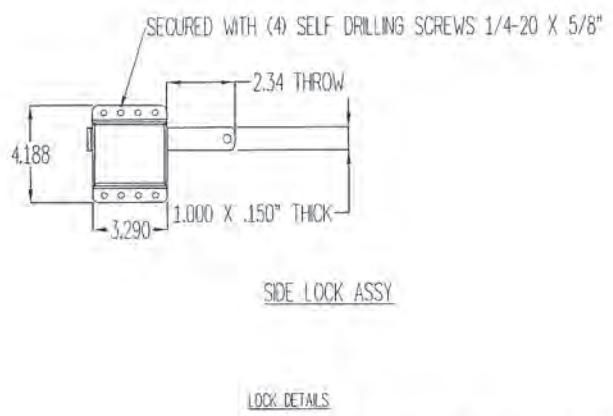
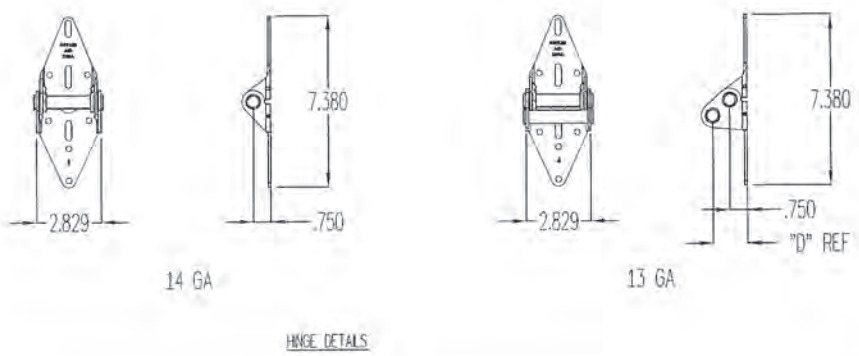
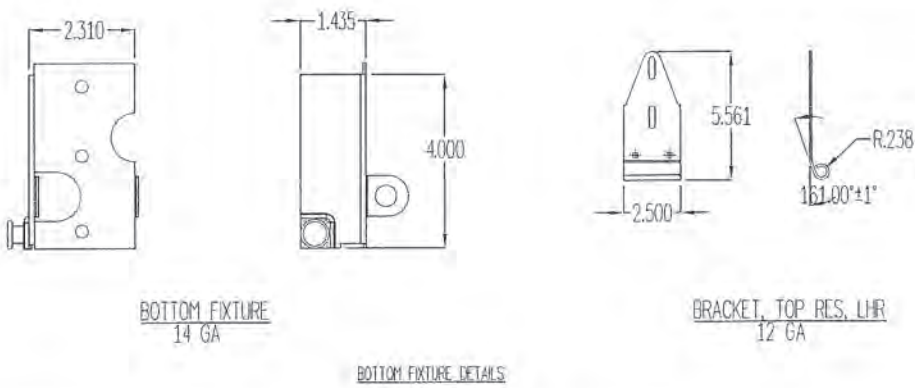
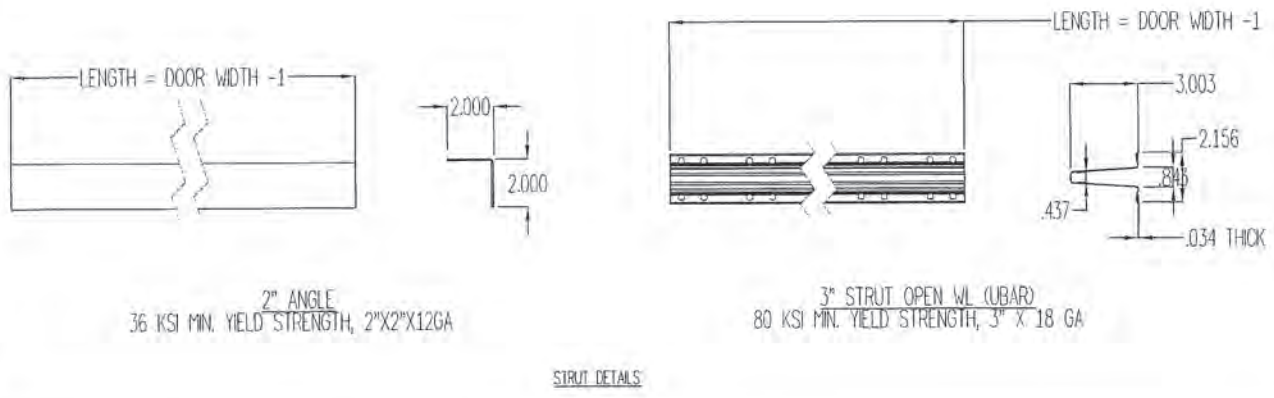
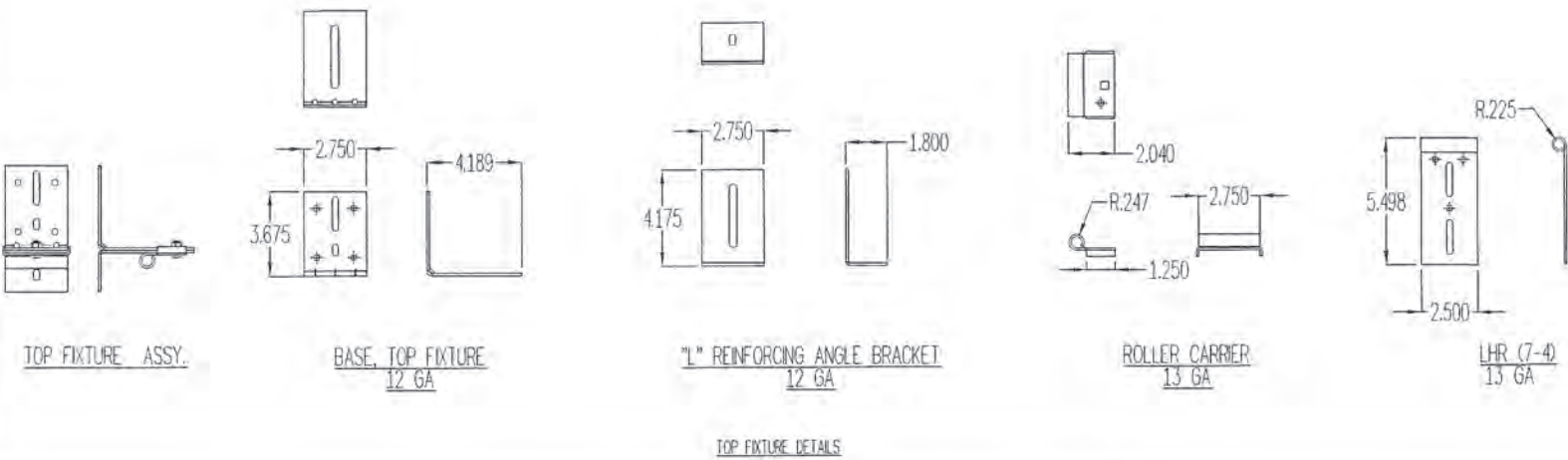


JUNFENG QIAN, PE  
2501 S. STATE HWY 121, SUITE 200  
LEWISVILLE, TEXAS  
FL PE 87291 TX PE 130813  
PROFESSIONAL ENGINEER'S SEAL PROVIDED ONLY FOR  
VERIFICATION OF WINDLOAD CONSTRUCTION DETAILS.

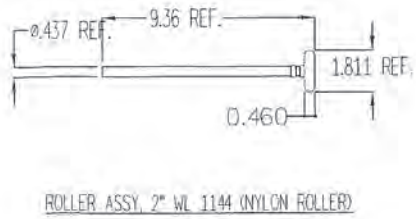
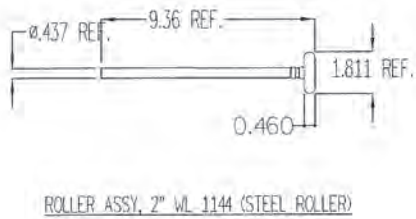
THIRD ANGLE PROJECTION 		UNLESS OTHERWISE SPECIFIED		APPROVALS DATE		Wayne Dalton GARAGE DOORS		PENSACOLA, FLORIDA			
A DIVISION OF OVERHEAD DOOR CORP 3395 ADDISON DRIVE PENSACOLA, FLORIDA 32514 (850)-474-9890		INTERPRET DIMS & TOLS PER ASME Y14.5M ALL DIMS ARE IN INCHES DO NOT SCALE DIMs CIRCLED WITH SYMBOL *  ARE CRITICAL TO QUALITY DESIGN FEATURES & MUST MEET APPLICABLE IN-PROCESS INSPECTION STANDARDS.		TOLERANCES: X = ±.1 .XX = ±.03 .XXX = ±.010 ANGULAR = ±.5° HOLES: < Ø.251 = +.004/-0.003 Ø.251-Ø.500 = +.006/-0.003 > Ø.500 = +.008/-0.003 ALL GEOMETRY GOVERNED BY 3D CAD DATABASE:		DRAWN J. QIAN 10/28/21		DESCRIPTION WINDLOAD MODELS 6600/8300/8350/8500/8600 /5150/5200, +46/-52 PSF, DADE COUNTY, 162" MAX WIDTH			
						CHECKED D. KORNISH 10/28/21					
						APPROVED -					
						MATERIAL -					
				FINISH -		SIZE DWG NO. D D-365446		REV -			
						SCALE 1:12		UOM = EA		SHEET 3 OF 4	



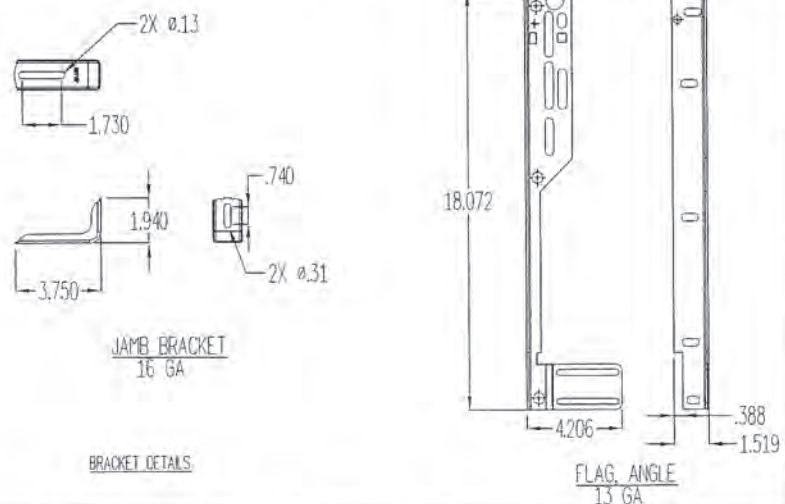
NOTES: (UNLESS OTHERWISE SPECIFIED)  
1. FOR DIMENSIONS AND NOTE REFERENCES, REFER TO INDIVIDUAL DRAWINGS.



7/16" STEEL PUSHNUTS



ROLLER STEM ASSY DETAILS



JUNFENG QIAN, PE  
2501 S. STATE HWY 121, SUITE 200  
LEWISVILLE, TEXAS  
FL PE 87291 TX PE 130813

PROFESSIONAL ENGINEER'S SEAL PROVIDED ONLY FOR  
VERIFICATION OF WINDLOAD CONSTRUCTION DETAILS.

**PRODUCT APPROVED**  
as complying with the Florida  
Building Code  
NOA-No. 22-0315.05  
Approval Date 08/04/2022  
By   
Miami-Dade Product Control



A DIVISION OF OVERHEAD  
DOOR CORP.  
3395 ADDISON DRIVE  
PENSACOLA, FLORIDA 32514  
(850)-474-9890

INTERPRET DIMS & TOLS  
PER ASME Y14.5M  
ALL DIMS ARE IN  
INCHES  
DO NOT SCALE  
DIMS CIRCLED WITH SYMBOL \*  
ARE CRITICAL TO QUALITY DESIGN  
FEATURES & MUST MEET APPLICABLE  
IN-PROCESS INSPECTION STANDARDS.

UNLESS OTHERWISE SPECIFIED  
TOLERANCES:  
.X = ±.1  
.XX = ±.03  
.XXX = ±.010  
ANGULAR = ±.5°  
HOLES:  
< .0251 = +.004/-0.003  
.0251-.0500 = +.006/-0.003  
> .0500 = +.008/-0.003  
ALL GEOMETRY GOVERNED BY 3D CAD DATABASE:

APPROVALS	DATE
DRAWN J. QIAN	10/28/21
CHECKED D. KORNISH	10/28/21
APPROVED	
MATERIAL	
FINISH	

<b>Wayne Dalton</b> GARAGE DOORS	PENSACOLA, FLORIDA
DESCRIPTION WINDLOAD MODELS 6600/8300/8350/8500/8600 /5150/5200, +46/-52 PSF, DADE COUNTY, 16'2" MAX WIDTH	
SIZE DWG NO. D D-365446	REV -
SCALE 1:12	UOM =
SHEET 4 OF 4	