



DEPARTMENT OF REGULATORY AND ECONOMIC RESOURCES (RER)
BOARD AND CODE ADMINISTRATION DIVISION
NOTICE OF ACCEPTANCE (NOA)

Gensteel Doors Inc.
4950 Hickmore Street
Ville St. Laurent, Quebec, Canada H4T1K6

SCOPE:

This NOA is being issued under the applicable rules and regulations governing the use of construction materials. The documentation submitted has been reviewed and accepted by Miami-Dade County RER -Product Control Section to be used in Miami Dade County and other areas where allowed by the Authority Having Jurisdiction (AHJ).

This NOA shall not be valid after the expiration date stated below. The Miami-Dade County Product Control Section (In Miami Dade County) and/or the AHJ (in areas other than Miami Dade County) reserve the right to have this product or material tested for quality assurance purposes. If this product or material fails to perform in the accepted manner, the manufacturer will incur the expense of such testing and the AHJ may immediately revoke, modify, or suspend the use of such product or material within their jurisdiction. RER reserves the right to revoke this acceptance, if it is determined by Miami-Dade County Product Control Section that this product or material fails to meet the requirements of the applicable building code.

This product is approved as described herein and has been designed to comply with the Florida Building Code, including the High Velocity Hurricane Zone.

DESCRIPTION: Series "GenStorm" Inswing Opaque Steel Doors

APPROVAL DOCUMENT: Drawing No. **AD11-04**, titled "Genstorm Opaque Inswing Door - LMI", sheet 1 through 8 of 8, prepared by manufacture, signed and sealed by Gordon D. Thomas, P.E. on 03/23/2022, bearing the Miami-Dade County Product Control Renewal stamp with the Notice of Acceptance number and expiration date by the Miami-Dade County Product Control Section.

MISSILE IMPACT RATING: Large Missile Impact Resistant

Limitations:

1. See Design Pressures & corresponding Hardware in sheets 1 & 6. Max. Exterior (positive) DP= **+33** (double), **+65** (Single) w/ PEMKO-177 AT threshold, where water infiltration requirement is needed.
2. Options **#1, 2 & #3** require total two (2) flush bolts (top/bottom) on in-active panel.

LABELING: Each unit shall bear one of the following permanent labels:

Gensteel Doors Inc.	Gensteel Doors Inc.	Gensteel Doors, USA
4950 Hickmore Street	2335 Industrial Park Drive	1551 Fairground Road
Ville St. Laurent, Quebec, Canada H4T1K6	Cornwall, Ontario, Canada K6H7M4	Madison, Georgia, USA 30650

Along w/ series or model number and the statement: "Miami-Dade County Product Control Approved".

RENEWAL of this NOA shall be considered after a renewal application has been filed and there has been no change in the applicable building code negatively affecting the performance of this product.

TERMINATION of this NOA will occur after the expiration date or if there has been a revision or change in the materials, use, and/or manufacture of the product or process. Misuse of this NOA as an endorsement of any product, for sales, advertising or any other purposes shall automatically terminate this NOA. Failure to comply with any section of this NOA shall be cause for termination and removal of NOA.

ADVERTISEMENT: The NOA number preceded by the words Miami-Dade County, Florida, and followed by the expiration date may be displayed in advertising literature. If any portion of the NOA is displayed, then it shall be done in its entirety.

INSPECTION: A copy of this entire NOA shall be provided to the user by the manufacturer or its distributors and shall be available for inspection at the job site at the request of the Building Official.

This NOA **renews NOA #20-1230.07** and consists of this page 1 and evidence pages E-1, E-2 & E-3, as well as approval document mentioned above.

The submitted documentation was reviewed by **Sifang Zhao, P.E.**



05/12/2022

NOA No. 22-0330.01
Expiration Date: February 23, 2027
Approval Date: May 12, 2022
Page 1

NOTICE OF ACCEPTANCE: EVIDENCE SUBMITTED

1. Evidence submitted under previous approvals

A. DRAWINGS

1. Manufacturer's die drawings and sections (submitted under file listed below)
2. Drawing No. **AD11-04**, titled "Genstorm Opaque Inswing Door - LMI", sheet 1 through 8 of 8, dated 02-02-12 and last revised on December 24, 2020, prepared by MCY Engineering, Inc, signed and sealed by Yiping Wang, P.E.

B. TESTS (submitted under file #11-0907.01)

1. Test reports on
 - 1) Air Infiltration Test, per FBC, TAS 202-94
 - 2) Uniform Static Air Pressure Test, Loading per FBC, TAS 202-94
 - 3) Water Resistance Test, per FBC, TAS 202-94 (w/ PEMA 177 AT)
 - 4) Large Missile Impact Test per FBC, TAS 201-94
 - 5) Cyclic Wind Pressure Loading per FBC, TAS 203-94
 - 6) Forced Entry Test, per FBC 2411 3.2.1 and TAS 202-94
 - 7) Tensile Test, per ASTM A370-05

Along with marked-up drawings and installation diagram of Genstorm Opaque Double & Single Swinging Doors, prepared by Fenestration Testing Laboratory, Inc., Test Reports No(s). **6491**, dated 05/31/11, signed and sealed by Martin D. Brinson, P.E.

Note: This test report has addendum letter dated Nov 11, 2011 issued by Fenestration Testing lab, signed and sealed by Martin D. Brinson, P.E.

C. CALCULATIONS

1. Anchor verification calculations and structural analysis, complying with FBC-2014 (**5th Edition**), prepared by MCY Engineering, Inc., dated 12/20/16, signed and sealed by Yiping Wang, P.E.

D. QUALITY ASSURANCE

1. Miami Dade Department of Regulatory and Economic Resources (RER).

E. MATERIAL CERTIFICATIONS (submitted under file #11-0907.01)

1. Tensile Test, per ASTM A370-05 item B (1) (7)
2. Tensile test report N0. FTL 6745 per ASTM A370-05 dated 12/01/11, issued by Fenestration Testing Lab, signed and sealed by Martin D. Brinson, P.E.

F. STATEMENTS

1. Statement letter of conformance to FBC 2014 (**5th Edition**) and "No financial interest", dated 12/15/16, prepared by MCY Engineering, Inc, signed and sealed by Yiping Wang, P.E.
2. Statement letter of Lab. Compliance, as a part of above test reports.

G. OTHER

1. This NOA **revises & renews NOA #11-0907.01**, expiring on 02/23/22.
2. Test proposals # **10-0769R** dated 11/27/11 and e-mail 11/01/10 approved by PERA.
3. Distribution agreement between GenSteel Door, Canada & North American Door Corp, N.Y. dated 10/22/10, signed by Bruno Gervasi and Antonio Gervasi, respectively.



Sifang Zhao, P.E.
Product Control Examiner
NOA No. 22-0330.01
Expiration Date: February 23, 2027
Approval Date: May 12, 2022

NOTICE OF ACCEPTANCE: EVIDENCE SUBMITTED

2. Evidence submitted under NOA #18-0116.20

A. DRAWINGS

1. Drawing No. **AD11-04**, titled "Genstorm Opaque Inswing Door - LMI", sheet 1 through 8 of 8, dated 02-02-12 and last revised on JAN 02, 2018, prepared by MCY Engineering, Inc, signed and sealed by Yiping Wang, P.E.

B. Test

1. None.

C. CALCULATIONS

1. None.

D. QUALITY ASSURANCE

1. Miami Dade Department of Regulatory and Economic Resources (RER).

E. MATERIAL CERTIFICATIONS

1. None.

F. STATEMENTS

1. Statement letter of conformance to FBC 2017 (6th Edition), dated 01/02/18, prepared by MCY Engineering, Inc., signed and sealed by Yiping Wang, P.E.
2. E-mail statement letter dated 02/27/18 clarifying DWG changes, issued by MCY Engineering, Inc., signed by Yanet Pablos.

G. OTHER

1. This NOA revises NOA# 17-0130.02, expiring 02/23/22.

3. Evidence submitted under NOA #20-1230.07

A. DRAWINGS

1. Drawing No. **AD11-04**, titled "Genstorm Opaque Inswing Door - LMI", sheet 1 through 8 of 8, dated 02-02-12 and last revised on December 24, 2020, prepared by MCY Engineering, Inc, signed and sealed by Yiping Wang, P.E.

B. Test

1. None.

C. CALCULATIONS

1. None.

D. QUALITY ASSURANCE

1. Miami Dade Department of Regulatory and Economic Resources (RER).

E. MATERIAL CERTIFICATIONS

1. None.

F. STATEMENTS

1. Statement letter of conformance to FBC 2020 (7th Edition), dated 12/24/20, prepared by MCY Engineering, Inc., signed and sealed by Yiping Wang, P.E.

G. OTHER

1. This NOA revises NOA #18-0116.20, expiring 02/23/22.



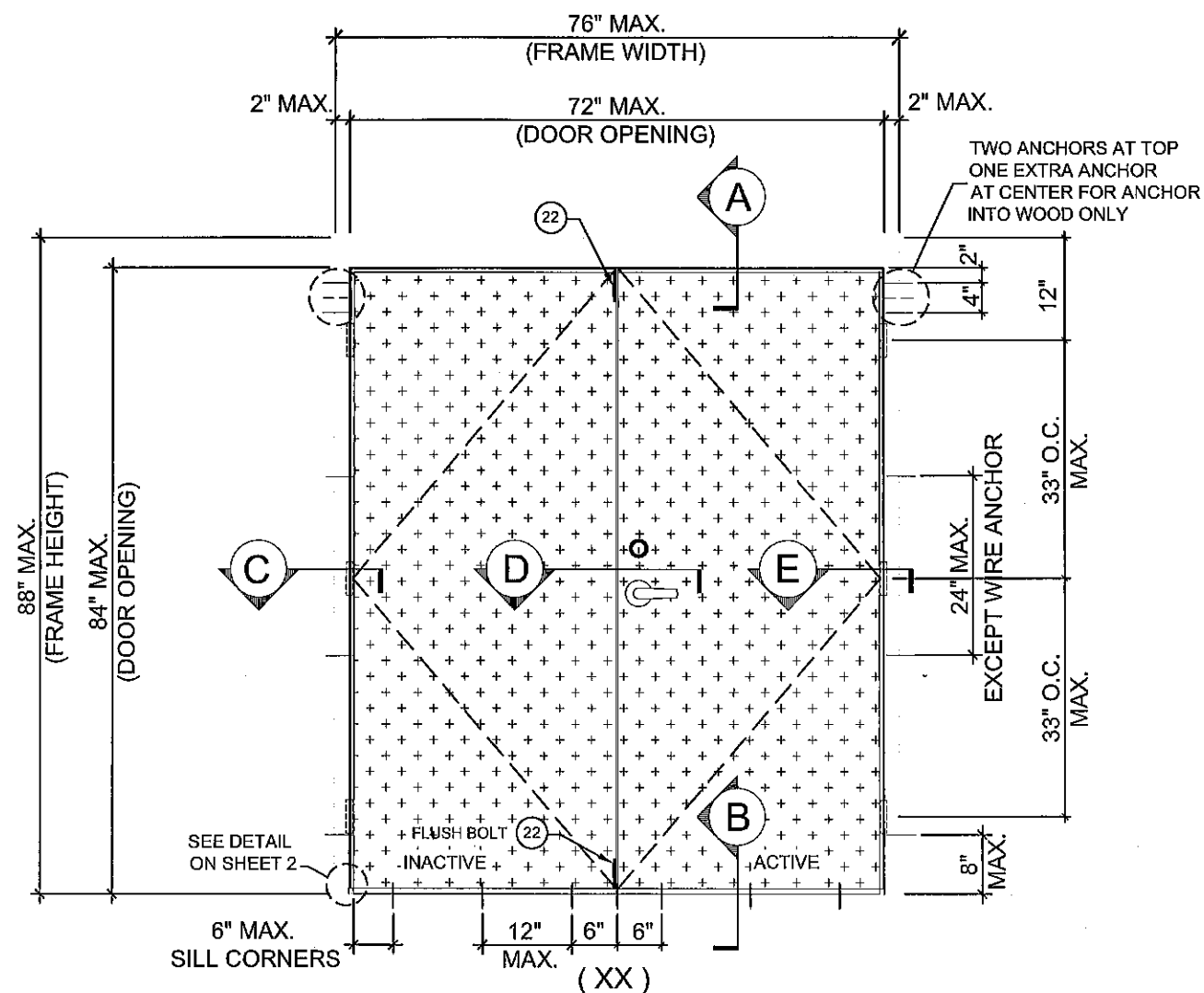
Sifang Zhao, P.E.
Product Control Examiner
NOA No. 22-0330.01
Expiration Date: February 23, 2027
Approval Date: May 12, 2022

NOTICE OF ACCEPTANCE: EVIDENCE SUBMITTED

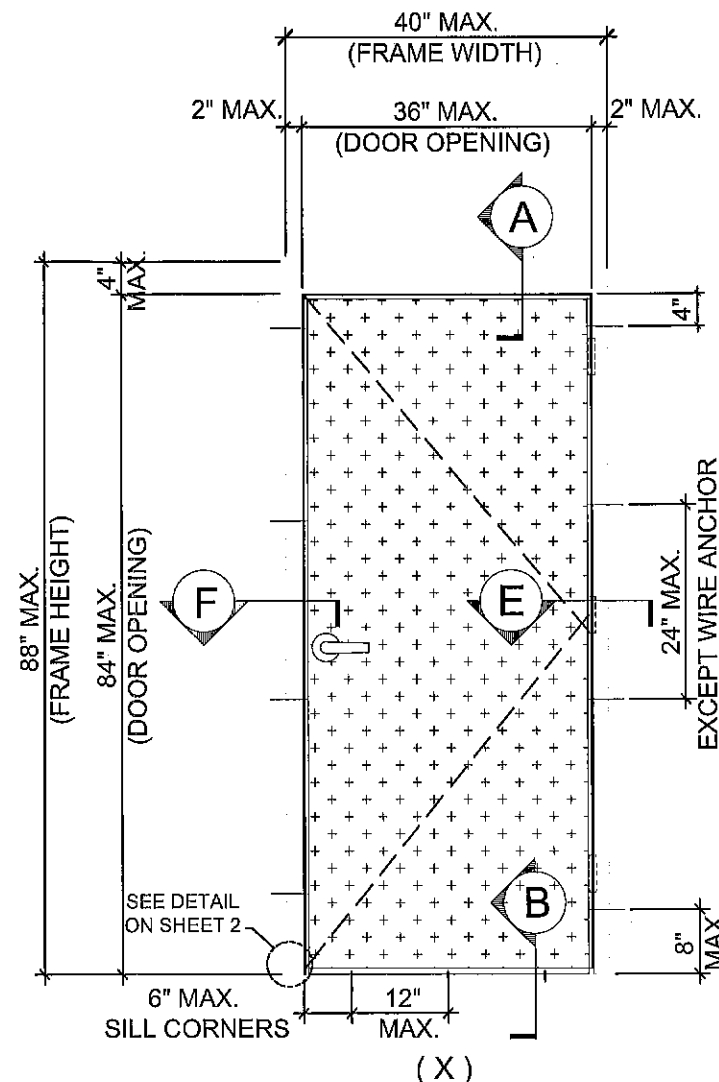
- 4. Evidence submitted under NOA#22-0330.01**
- A. DRAWINGS**
1. Drawing No. **AD11-04**, titled “Genstorm Opaque Inswing Door - LMI”, sheet 1 through 8 of 8, prepared by manufacture, signed and sealed by Gordon D. Thomas, P.E. on 03/23/2022.
- B. Test**
1. None.
- C. CALCULATIONS**
1. None.
- D. QUALITY ASSURANCE**
1. Miami Dade Department of Regulatory and Economic Resources (RER).
- E. MATERIAL CERTIFICATIONS**
1. None.
- F. STATEMENTS**
1. Statement letter of conformance to FBC 2020 (7th Edition) and no financial interest, dated 05/02/2022, signed and sealed by Gordon D. Thomas, P.E
- G. OTHER**
1. This NOA **renews NOA #20-1230.07**, expiring 02/23/22.



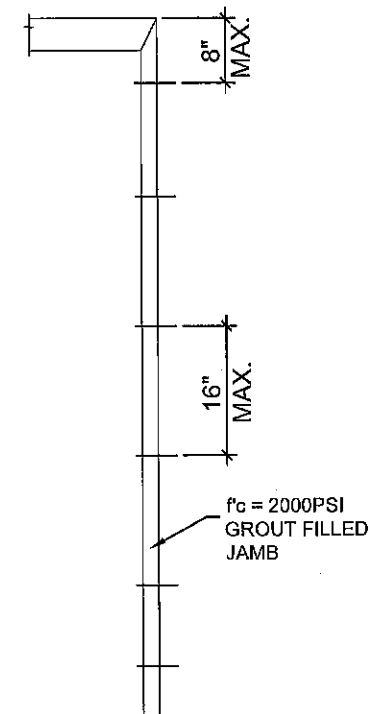
Sifang Zhao, P.E.
Product Control Examiner
NOA No. 22-0330.01
Expiration Date: February 23, 2027
Approval Date: May 12, 2022



TYPICAL EXTERIOR ELEVATION
(DOUBLE PANEL INSWING DOOR)



TYPICAL EXTERIOR ELEVATION
(SINGLE PANEL INSWING DOOR)



WIRE ANCHOR LAYOUT

SERIES GENSTORM OPAQUE INSWING STEEL DOOR (LMI)

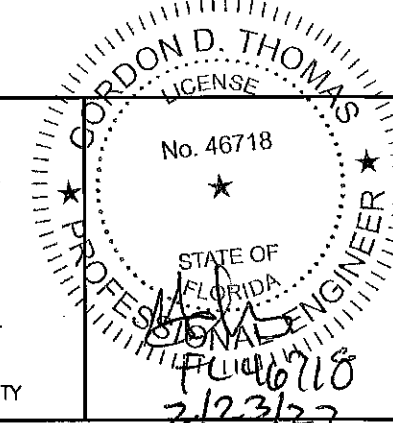
- THIS PRODUCT HAS BEEN DESIGNED AND TESTED TO COMPLY WITH THE REQUIREMENTS OF THE 7TH EDITION FLORIDA BUILDING CODE (2020) INCLUDING HIGH VELOCITY HURRICANE ZONE (HVHZ).
- DOORS RATED FOR LARGE MISSILE IMPACT AND DO NOT REQUIRE SHUTTERS.
- SEE DOOR DESIGN LOAD CHART FOR APPLICABLE WATER RATING WITH SILL PEMKO 177-AT OR PEMKO 2005 AT
- ANCHORS SHALL BE AS LISTED, SPACED AS SHOWN ON DETAILS. ANCHORS EMBEDMENT TO BASE MATERIAL SHALL BE BEYOND WALL DRESSING OR STUCCO.
- ANCHORING OR LOADING CONDITIONS NOT SHOWN IN THESE DETAILS ARE NOT PART OF THIS APPROVAL.
- MATERIALS INCLUDING BUT NOT LIMITED TO STEEL/METAL SCREWS THAT COME INTO CONTACT WITH OTHER DISSIMILAR MATERIALS SHALL MEET THE REQUIREMENTS OF THE 7TH EDITION FLORIDA BUILDING CODE (2020) AS APPLICABLE.
- METAL STRUCTURES NOT BY GENSTEEL DOOR CO. MUST SUPPORT LOADS IMPOSED BY DOOR SYSTEM AND TRANSFER THEM TO THE BUILDING STRUCTURE.

- WOOD BUCKS BY OTHERS MUST BE ANCHORED PROPERLY TO TRANSFER LOADS TO THE STRUCTURE.
- A LOAD DURATION FACTOR IN ALLOWABLE STRESS IS USED IN DESIGN OF ANCHORS INTO WOOD ONLY.
- DOOR PANEL: MIN. 20 GA. STEEL MIN. $F_y = 47.3$ KSI MIN. DOOR FRAME: MIN. 18 GA. STEEL MIN. $F_y = 47.3$ KSI MIN
- DOOR PANEL STAINLESS OPTION: 20 GA STAINLESS STEEL DOOR PANEL MEETING MIN. $F_y = 47.3$ ksi OR BETTER MAY QUALIFY HAVING "MIL-CERTIFICATE" AS A VERIFICATION OF THE AVAILABLE MIN. YIELD STRENGTH.
- DOOR FRAME STAINLESS OPTION: 18 GA STAINLESS STEEL DOOR FRAME MEETING MIN. $F_y = 47.3$ ksi OR BETTER MAY QUALIFY HAVING "MIL-CERTIFICATE" AS A VERIFICATION OF THE AVAILABLE MIN. YIELD STRENGTH.

NOTES:
EGRESS REQUIREMENTS TO BE REVIEWED BY BUILDING OFFICIAL.

DOOR DESIGN LOAD (DDL)				
FOR SIZES SHOWN ABOVE OR SMALLER AS PERMITTED BY FBC	DOUBLE DOOR		SINGLE DOOR	
	WITH SILL PMK 177-AT	WITH SILL PMK 2005AT	WITH SILL PMK 177-AT	WITH SILL PMK 2005AT
NOT APPROVED FOR WATER INFILTRATION	+65.0 PSF -65.0PSF	+65.0 PSF -65.0PSF	+65.0 PSF -65.0PSF	+65.0 PSF -65.0PSF
APPROVED FOR WATER INFILTRATION	+33.0 PSF -65.0PSF	+33.0 PSF -65.0PSF	+65.0 PSF -65.0PSF	+33.0 PSF -65.0PSF

PRODUCT RENEWED
as complying with the Florida
Building Code
NOA-No. **22-0330.01**
Expiration Date **02 / 23 / 2027**
By **Miami-Dade Product Control**
MIAMI DADE COUNTY



REVISIONS	
NO.	DATE DESCRIPTION

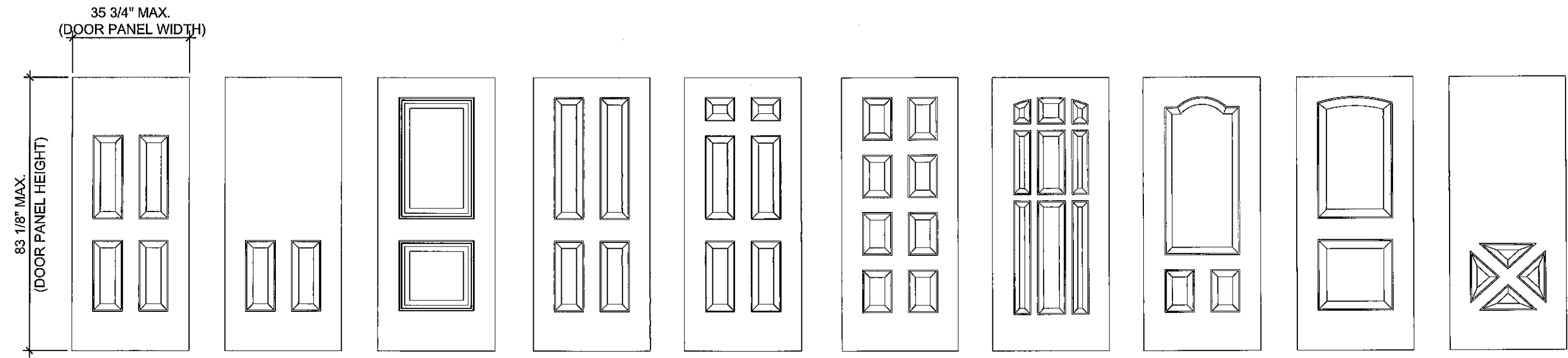
GENSTORM OPAQUE INSWING STEEL DOOR (LMI)

gensteeldoors
www.gensteeldoors.com
4950 Hickmore, St. Laurent, Quebec, Canada, H4T1K6
Tel: (514) 733-3562 Fax: (514) 733-1932

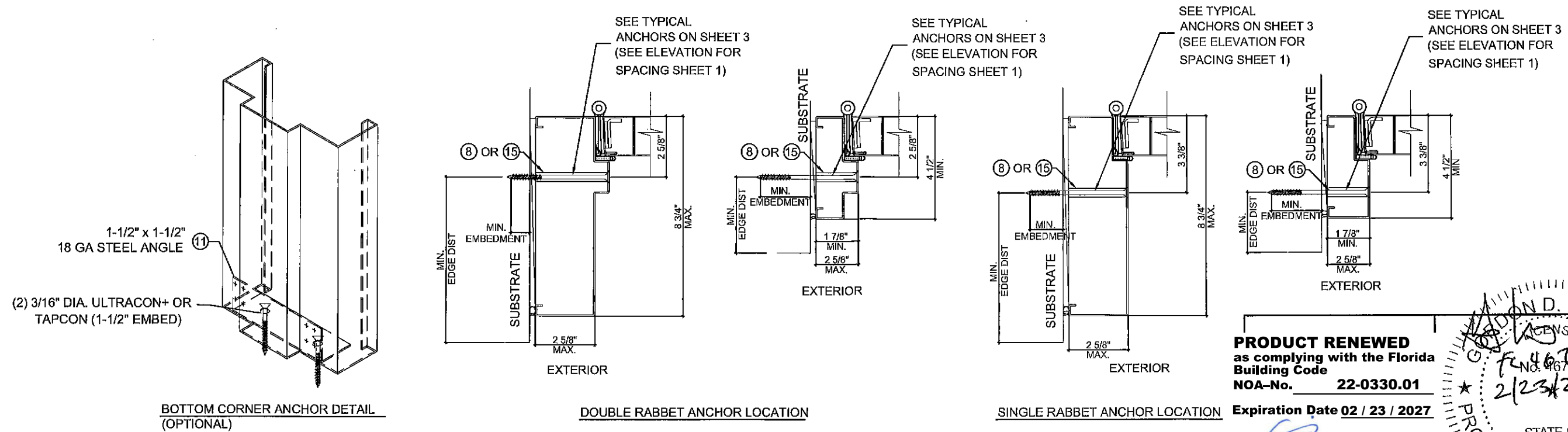
DATE	
SCALE	NTS.
DRAWN	
PROJECT	

DRAWING NO.
AD11-04

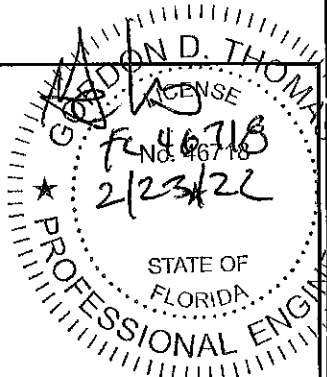
SHEET 1 OF 8



OPTIONAL EMBOSSED DOOR LEAF PATTERNS (MIN Fy = 47.3 KSI)



PRODUCT RENEWED
as complying with the Florida
Building Code
NOA-No. **22-0330.01**
Expiration Date **02 / 23 / 2027**
By *[Signature]*
Miami-Dade Product Control
MIAMI DADE COUNTY



REVISIONS	
NO.	DATE DESCRIPTION

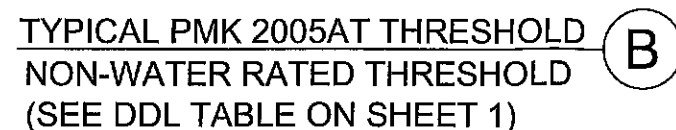
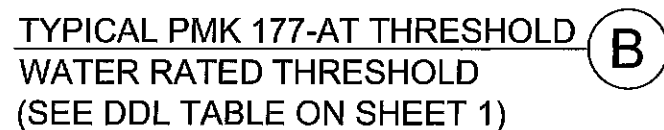
GENSTORM OPAQUE INSWING STEEL DOOR (LMI)

gensteeldoors
www.gensteeldoors.com
4950 Hickmore, St. Laurent, Quebec, Canada, H4T 1K6
Tel: (514) 733-3562 Fax: (514) 733-1932

DATE	
SCALE	
DRAWN	
PROJECT	

DRAWING NO. **AD11-04**

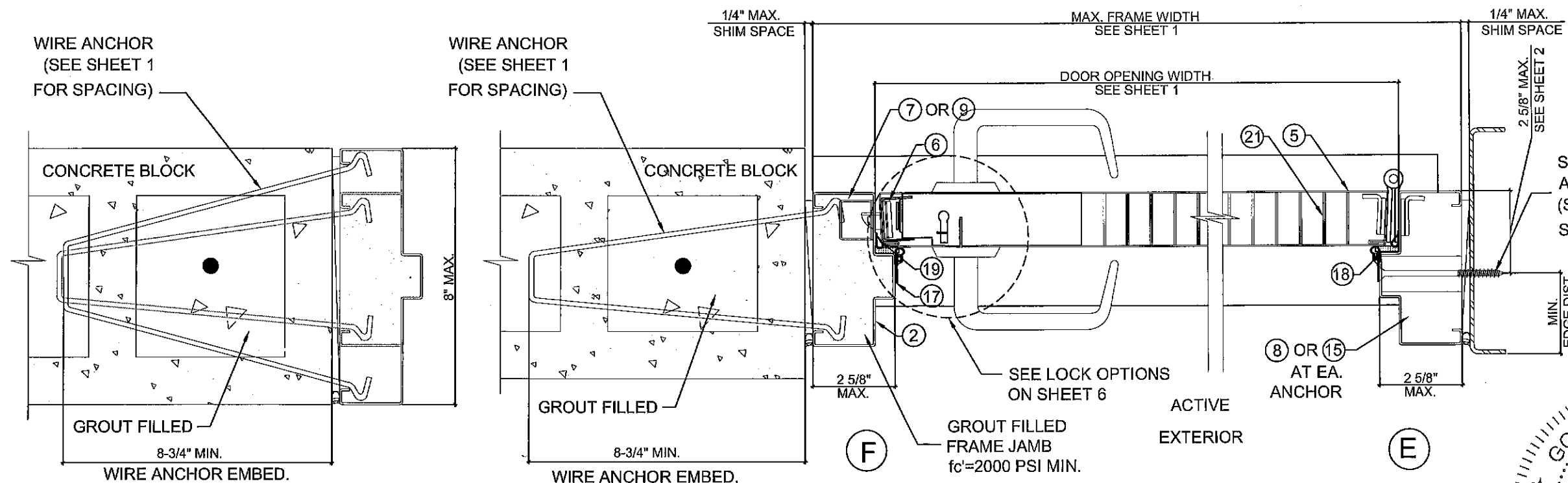
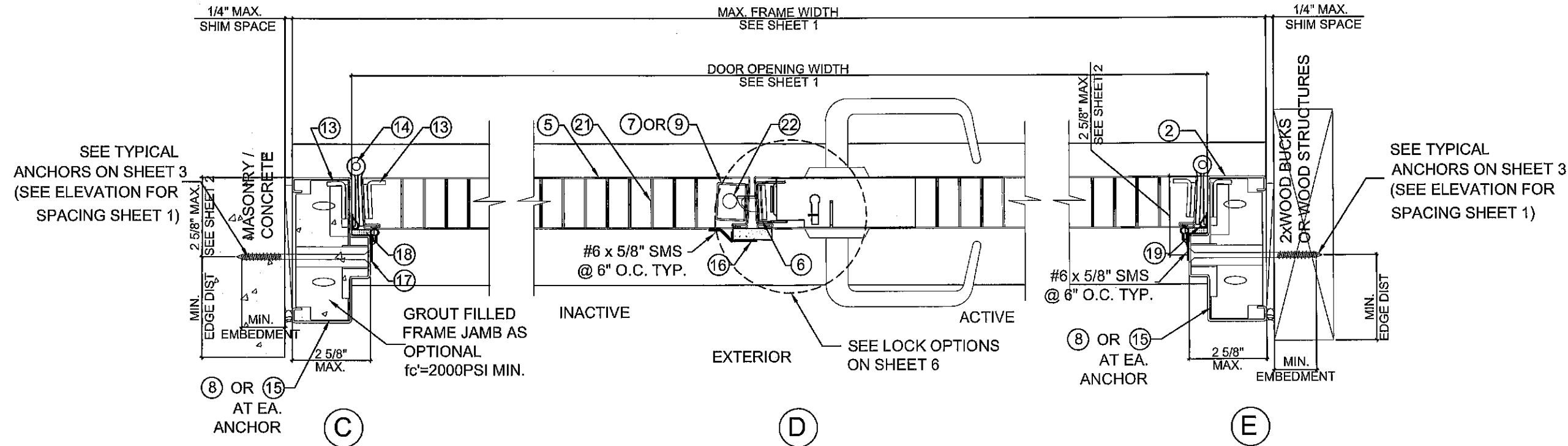
SHEET 2 OF 8



DATE	
SCALE	
DRAWN	
PROJECT	

DRAWING NO. AD11-04

SHEET 3 OF 8



NOTE: JAMB MUST FULL BEARING ON SUBSTRATE.

DOOR SECTION DETAILS FOR DOUBLE RABBIT DOOR FRAMES

PRODUCT RENEWED
as complying with the Florida Building Code
NOA-No. **22-0330.01**
Expiration Date **02 / 23 / 2027**
By *[Signature]*
Miami-Dade Product Control
MIAMI DADE COUNTY

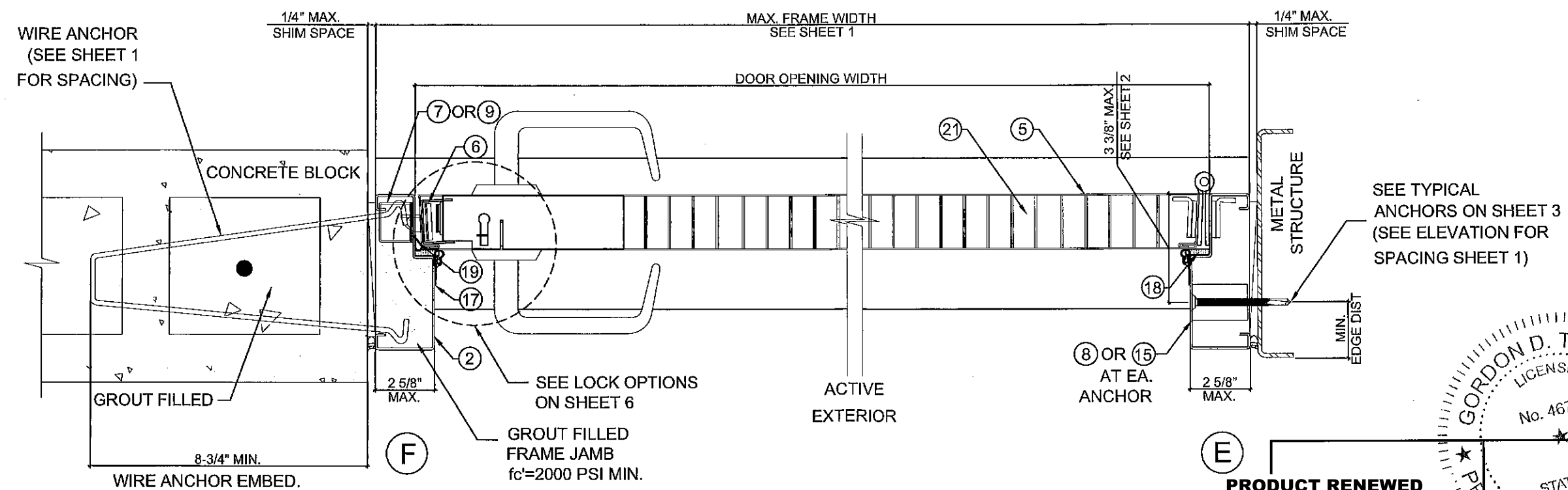
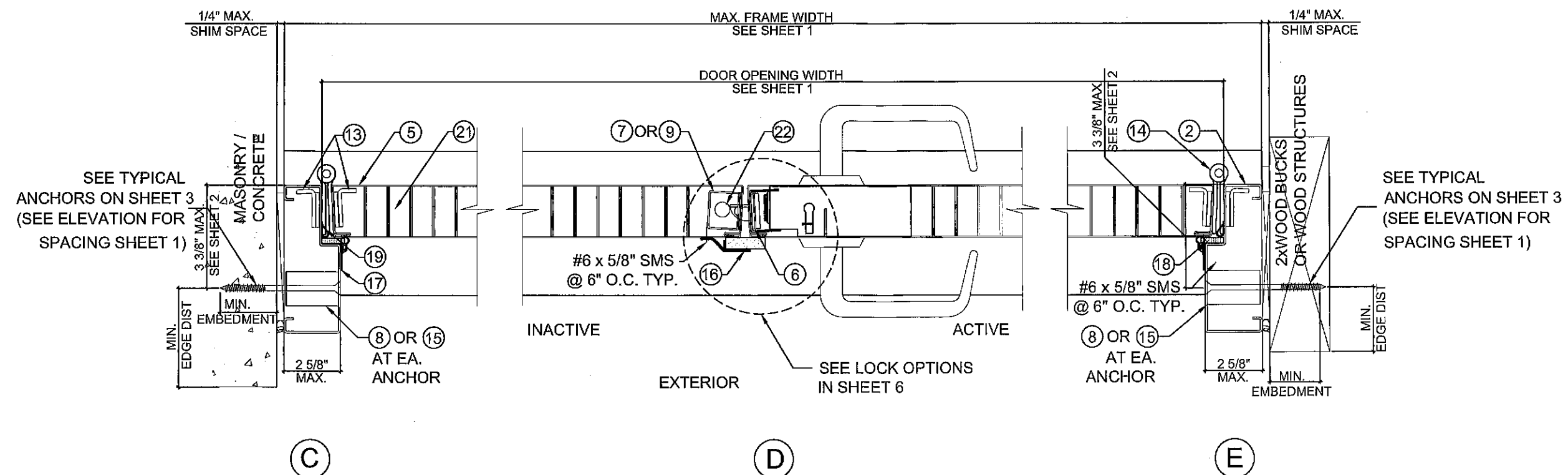
GORDON D. THOMAS
LICENSE
No. 46718
STATE OF FLORIDA
PROFESSIONAL ENGINEER
[Signature]
FL 46718
2/23/22

REVISIONS	NO.	DATE	DESCRIPTION

GENSTORM OPAQUE INSWING STEEL DOOR (LMI)

gensteeldoors
www.gensteeldoors.com
4950 Hickmore, St. Laurent, Quebec, Canada, H4T1K6
Tel: (514) 733-3562 Fax: (514) 733-1932

DATE	
SCALE	
DRAWN	
PROJECT	
DRAWING NO.	AD11-04
SHEET 4 OF 8	



NOTE: JAMB MUST FULL BEARING ON SUBSTRATE.

**DOOR SECTION DETAILS
FOR SINGLE RABBET DOOR FRAMES**

PRODUCT RENEWED
as complying with the Florida
Building Code
NOA-No. **22-0330.01**
Expiration Date **02 / 23 / 2027**
By *[Signature]*
Miami-Dade Product Control
MIAMI DADE COUNTY

GORDON D. THOMAS
LICENSE
No. 46718
STATE OF FLORIDA
PROFESSIONAL ENGINEER
[Signature]
FL 46718
2/23/22

REVISIONS	
NO.	DESCRIPTION

GENSTORM OPAQUE INSWING STEEL DOOR (LMI)

gensteeldoors
www.gensteeldoors.com
4950 Hickmore, St. Laurent, Quebec, Canada, H4T1K6
Tel: (514) 733-3562 Fax: (514) 733-1932

DATE	
SCALE	
DRAWN	
PROJECT	

DRAWING NO.
AD11-04

SHEET 5 OF 8

LOCK OPTIONS

LOCK OPTIONS FOR DOUBLE DOORS ACTIVE PANEL
CAN APPLY TO SINGLE DOORS

(EXTERIOR ELEVATIONS - INSWING DOORS)

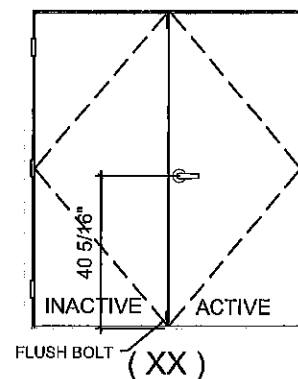
OPTION 1

ACTIVE LEAF:

DOREX 12 SERIES LOCK SET
40 5/16" FROM BOTTOM

INACTIVE LEAF:

STRIKE FOR LOCKSET.
IVES FB 458 MANUAL FLUSH BOLT
(TOP & BOTTOM)



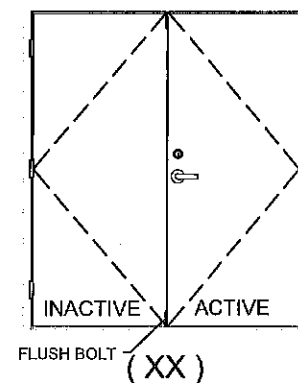
OPTION 2

ACTIVE LEAF:

SCHLAGE AL SERIES LOCK SET,
40 5/16" FROM BOTTOM.
& SCHLAGE B SERIES DEADLOCK,
46 5/16" FROM BOTTOM.

INACTIVE LEAF:

STRIKE FOR LOCKSET.
STRIKES FOR DEADLOCK.
IVES FB 458 MANUAL FLUSH BOLT
TOP & BOTTOM



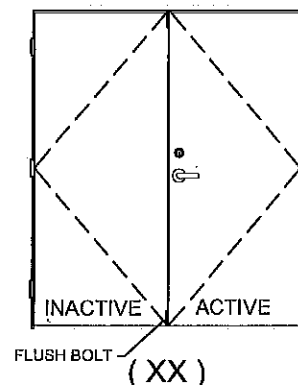
OPTION 3

ACTIVE LEAF:

DOREX FH SERIES LOCKSET,
40 5/16" FROM BOTTOM.
DOREX TLA SERIES DEADLOCK,
46 5/16" FROM BOTTOM.

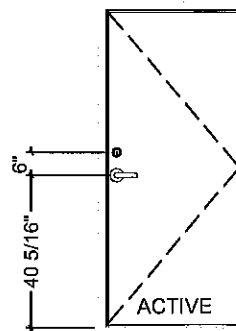
INACTIVE LEAF:

STRIKE FOR LOCKSET.
STRIKES FOR DEADLOCK.
IVES FB 458 MANUAL FLUSH BOLT
TOP & BOTTOM

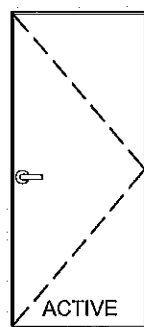


HINGES: STEEL BUTT HINGES 3 PER LEAF LOCATED AT 12" MAX. FROM TOP OF THE DOOR TO CENTER LINE OF 1ST HINGE AND TO BE SPACED OUT NOT TO EXCEED 33" FROM CL TO CL OF HINGE. TO BE FASTENED BY (4) #12-24 x 1/2" FLATHEAD MACHINE SCREWS.

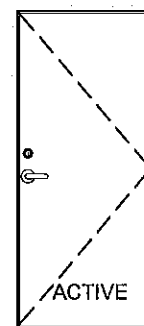
HARDWARE LOCATIONS: ALL THESE DOORS WERE MANUFACTURED WITH THE CYLINDRICAL, LEVER, OR KNOBS AT 40-5/16" C.L. FROM THE BOTTOM OF THE FRAME. ALL THE DEADLOCKS WERE POSITIONED 46-5/16" FROM THE BOTTOM OF THE FRAME.



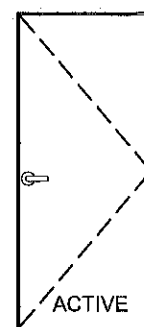
(X)



(X)



(X)



(X)

OPTION 4

ACTIVE LEAF:

SCHLAGE AL SERIES LOCK SET,
40 5/16" FROM BOTTOM.
& SCHLAGE B SERIES DEADLOCK,
46 5/16" FROM BOTTOM

OPTION 5

ACTIVE LEAF:

DOREX FHA SERIES LOCKSET,
40 5/16" FROM BOTTOM.

OPTION 6

ACTIVE LEAF:

DOREX FH SERIES LOCKSET,
40 5/16" FROM BOTTOM.
DOREX TLA SERIES DEADLOCK,
46 5/16" FROM BOTTOM.

OPTION 7

ACTIVE LEAF:

SCHLAGE AL SERIES LOCKSET,
40 5/16" FROM BOTTOM.

CONTINUOUS VERTICAL
LOCK SEAM SPOT WELDED
AT EACH END

DOOR EDGE CONSTRUCTION

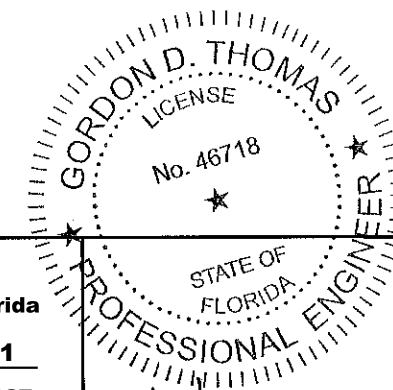
PRODUCT RENEWED
as complying with the Florida
Building Code

NOA-No. 22-0330.01

Expiration Date 02 / 23 / 2027

By 
Miami-Dade Product Control

MIAMI DADE COUNTY



DATE
SCALE
DRAWN
PROJECT

DRAWING NO.
AD11-04

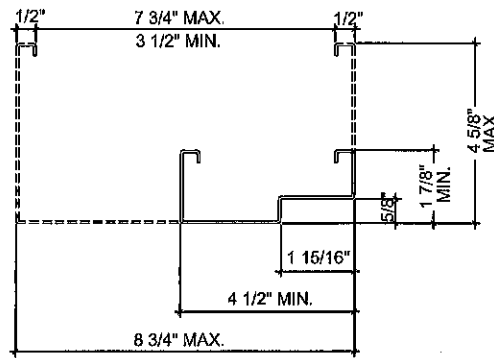
SHEET 6 OF 8

GENSTORM OPAQUE INSWING STEEL DOOR (LMI)

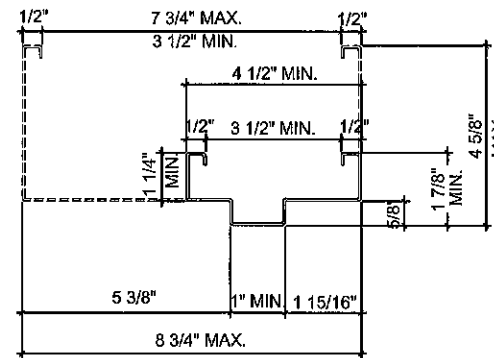
gensteeldoors

www.gensteeldoors.com

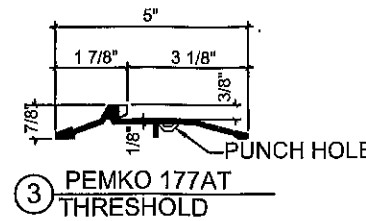
4950 Hickmore, St. Laurent, Quebec, Canada, H4T 1K6
Tel: (514) 733-3562 Fax: (514) 733-1932



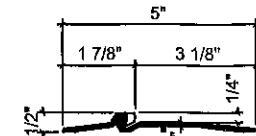
① FRAME HEAD 18 GA (0.048") STEEL
(SINGLE RABBET)



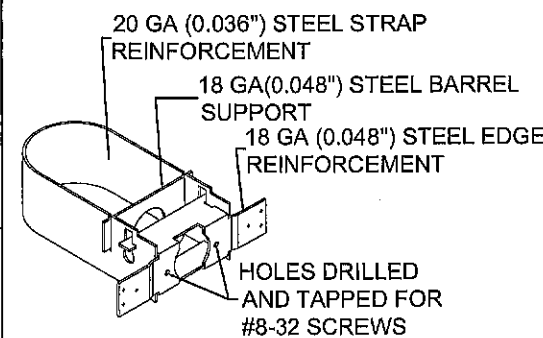
① FRAME HEAD OPTION 18 GA (0.048") STEEL
(DOUBLE RABBET)



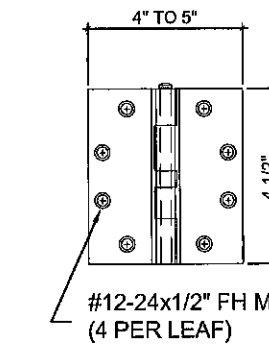
③ PEMKO 177AT
THRESHOLD



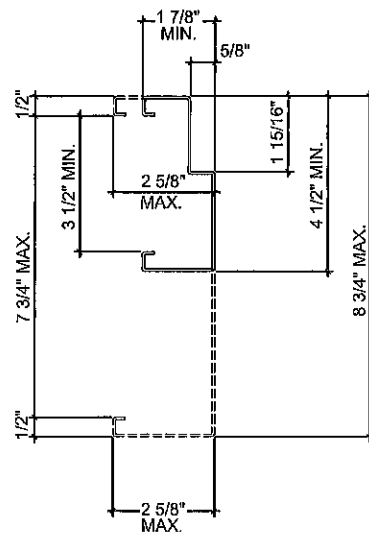
④ PEMKO 2005AT
THRESHOLD OPTION



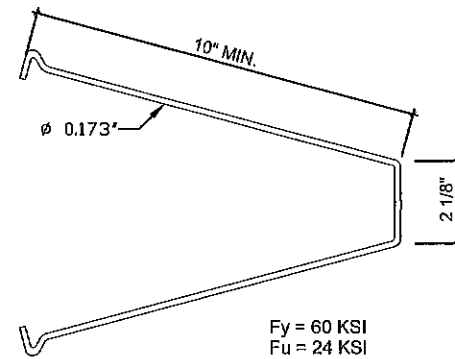
⑥ DR1600
(CYLINDRICAL LOCK
REINFORCEMENT ASSEMBLY
ALSO FOR DEAD BOLT)



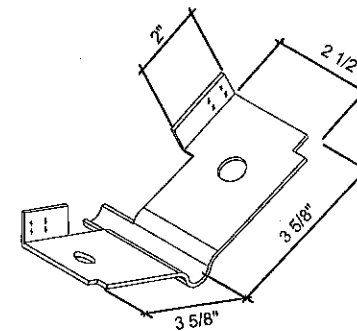
⑭ 0.134" THICK STEEL
HINGE



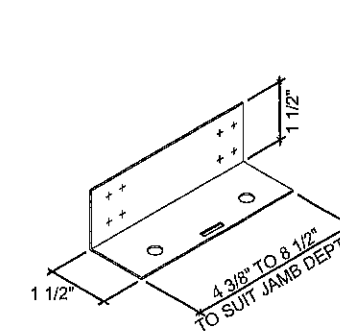
② FRAME JAMB 18 GA (.048") STEEL
(SINGLE RABBET)



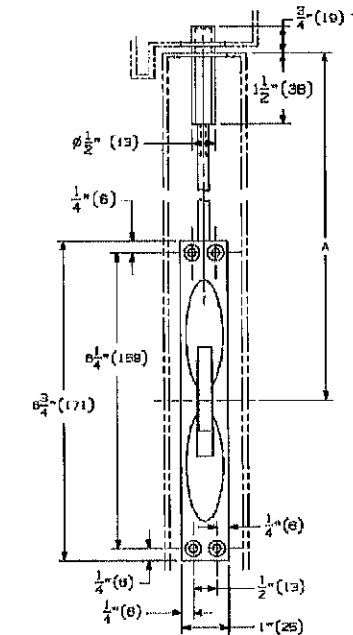
⑩ FA3030 - STEEL MASONRY
WIRE ANCHOR



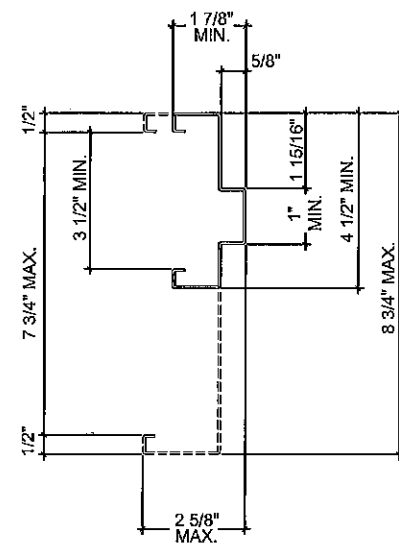
⑧ FA3010 - 18GA (0.048") STEEL
EMA BUTTERFLY MASONRY
ANCHOR



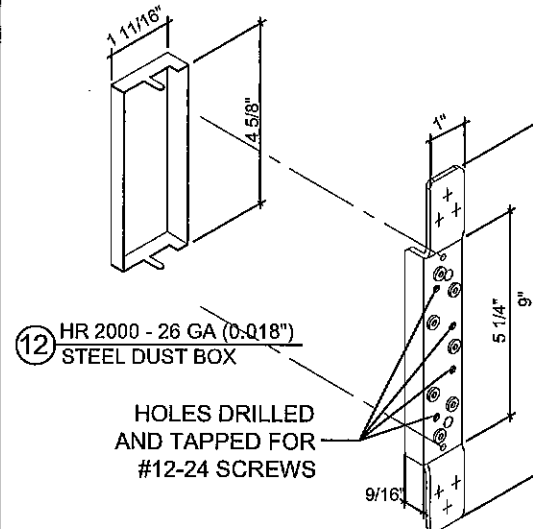
⑪ FA 1040 - 18GA (0.048") STEEL
FLOOR ANCHOR AS OPTION



⑫ IVES FB 458 FLUSH BOLT



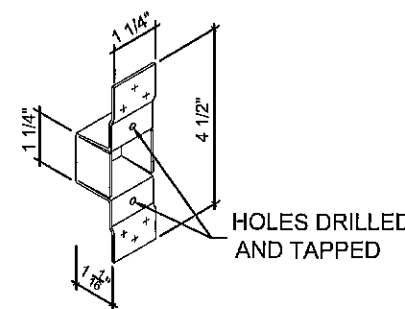
② FRAME JAMB OPTION 18 GA (.048") STEEL
(DOUBLE RABBET)



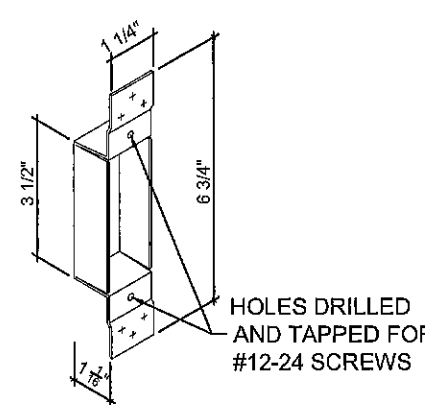
⑫ HR 2000 - 26 GA (0.018")
STEEL DUST BOX

HOLES DRILLED
AND TAPPED FOR
#12-24 SCREWS

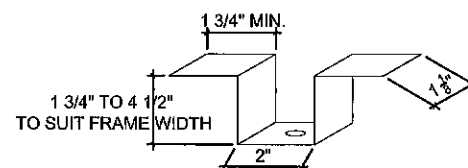
⑬ HR 1030 - 10 GA (0.134") STEEL
HINGE REINFORCEMENT



⑦ FR 1000 - 18 GA (0.048") STEEL
DEAD BOLT STRIKE REINFORCEMENT

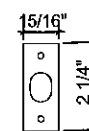


⑨ FR 1100 - 18 GA (0.048") STEEL
ASA STRIKE BOX REINFORCEMENT

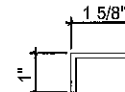


⑮ FA3012 - 18GA
ANCHOR CLIP OPTION

OPTIONAL



⑫ IVES FB 458
TOP & BOTTOM BOLT (STRIKE)



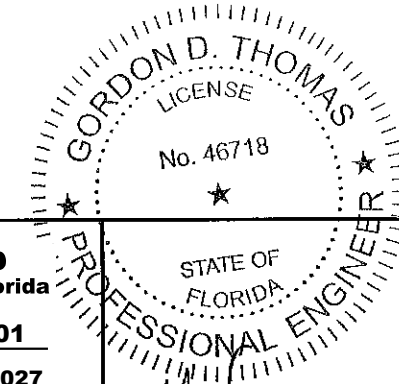
⑮ 18 GA CHANNEL
(FULL LENGTH OF PANEL WIDTH)

PRODUCT RENEWED
as complying with the Florida
Building Code
NOA-No. 22-0330.01

Expiration Date 02 / 23 / 2027

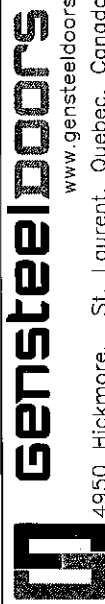
By 
Miami-Dade Product Control

MIAMI DADE COUNTY



REVISIONS	
NO.	DATE DESCRIPTION

GENSTORM OPAQUE INSWING STEEL DOOR (LMI)



www.gensteeldoors.com
4950 Hickmore, St. Laurent, Quebec, Canada, H4T1K6
Tel: (514) 733-3562 Fax: (514) 733-1932

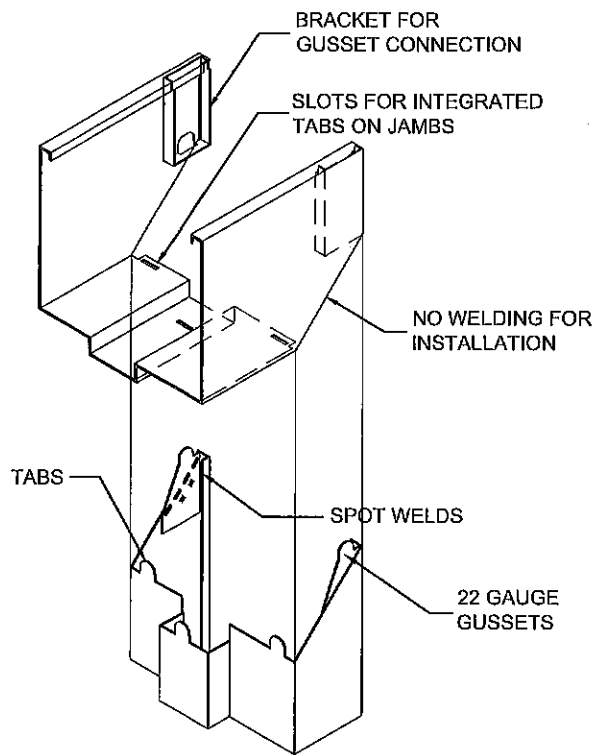
DATE	
SCALE	
DRAWN	
PROJECT	

DRAWING NO.
AD11-04

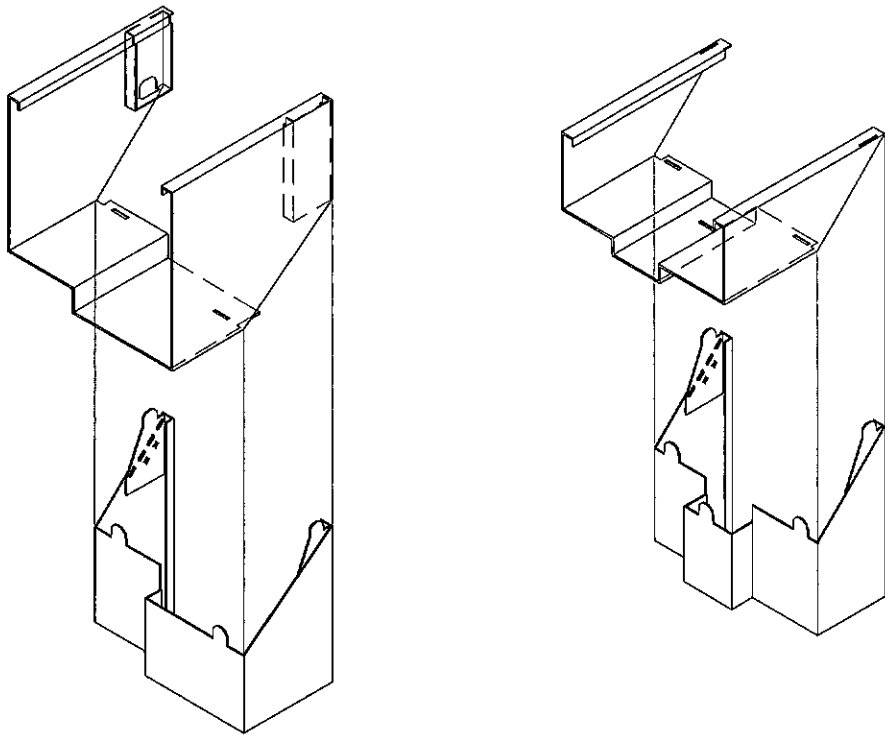
SHEET 7 OF 8

BILL OF MATERIALS

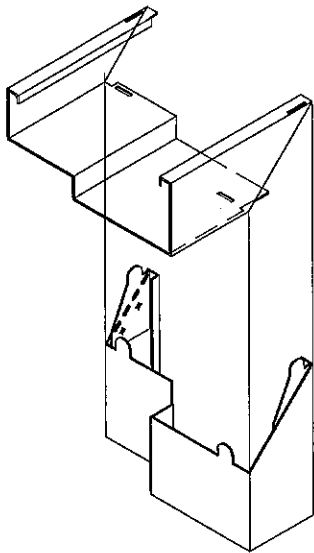
ITEM	PART No.	MATERIAL	QTY.	DESCRIPTION	MANUFACTURER/SUPPLIER/ REMARKS
1	-	STEEL OR ST/ST	AS REQD.	FRAME HEAD	18 GA. (0.048MIN.) Fy= 47.3 KSI MIN.
2	-	STEEL OR ST/ST	AS REQD.	FRAME JAMB	18 GA. (0.048MIN.) Fy= 47.3 KSI MIN.
3	PMK177-AT	ALUM.	1	THRESHOLD WITH THERMO SEAL INSERT	PEMKO 177AT
4	PMK 2005AT	ALUMINUM	1	OPTIONAL THRESHOLD WITH THERMO SEAL INSERT	PEMKO 2005AT
5	-	STEEL OR ST/ST	AS REQD.	DOOR PANEL 1 3/4" THK.	20 GA. (0.036MIN.) Fy= 47.3 KSI MIN.
6	DR1600	STEEL	AS REQD.	CYLINDRICAL LOCK REINFORCEMENT	GENSTEEL PROGRESSION WELDED TO THE PANEL
7	FR1000	STEEL	AS REQD.	DEAD BOLT STRIKE REINFORCEMENT	GENSTEEL PROGRESSION WELDED TO THE PANEL
8	FA3010	STEEL	AS REQD.	BUTTERFLY MASONRY ANCHOR	GENSTEEL
9	FR1100	STEEL	AS REQD.	ASA STRIKE BOX	GENSTEEL PROGRESSION WELDED TO THE FRAME AND/OR THE DOOR
10	FA3030	STEEL	AS REQD.	MASONRY WIRE ANCHOR 0.173 DIA.	GENSTEEL Fy=60 KSI Fv=24 KSI MIN.
11	FA1040	STEEL	2	FLOOR ANCHOR 18 GA. (1-1/2" x 1-1/2") (OPTION)	GENSTEEL
12	HR2000	STEEL	3 PER LEAF	HINGE DUSTBOX	GENSTEEL
13	HR1030	STEEL	3 PER LEAF	HINGE REINFORCEMENT WELDED TO FRAME & DOOR	GENSTEEL PROGRESSION WELDED TO THE FRAME AND/OR THE DOOR
14	HINGE	STEEL	3 PER LEAF	4 1/2" LONG HINGE	HAGER USA OR EQUAL
15	FA3012	STEEL	AS REQD.	ANCHOR CLIP (OPTION)	GENSTEEL PROGRESSION WELDED TO THE FRAME
16	PEMKO P375R	-	AS REQD.	PEMKO 375R ASTRAGAL WITH SPONGE NEOPRENE	PEMKO (WITH #6x5/8" ST/ST SMS @ 6" O.C.)
17	PEMKO 303_S	STEEL	AS REQD.	PERIMETER GASKETING WEATHERSTRIP ADAPTER	PEMKO (WITH #6x5/8" ST/ST SMS @ 6" O.C.)
18	PEMKO 387	-	AS REQD.	ADHESIVE CLOSED CELL SPONGE WEATHERSTRIP	PEMKO
19	PEMKO 88	SILICONSEAL TM	AS REQD.	ADHESIVE GASKETING WEATHERSTRIP	PEMKO
20	PEMKO 315_N	-	1 PER LEAF.	DOOR SWEEP WEATHERSTRIP AT BOTTOM OF PANEL	PEMKO (WITH #6x1" ST/ST SMS @ 6" O.C.)
21	HONEYCOMB CORE	-	AS REQD.	INSIDE OF DOOR PANEL	GENSTEEL
22	IVES FB 458	STEEL	AS REQD.	IVES TOP & BOTTOM FLUSH BOLTS	IVES
23	CH3601	STEEL	AS REQD.	1" X 1-5/8" X 1" X 18GA DOOR END CHANNEL	GENSTEEL




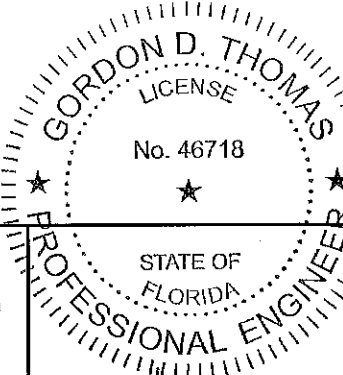
CORNER FRAME CONSTRUCTION



THE JAMB AND HEAD MEETING CORNERS ARE NOT REQUIRED TO BE WELDED TO EACH OTHER. ALL THE FRAMES WERE TESTED AS "KNOCK-DOWN" UNITS.

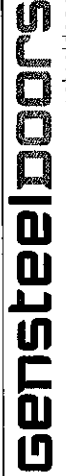


PRODUCT RENEWED
as complying with the Florida
Building Code
NOA-No. 22-0330.01
Expiration Date 02 / 23 / 2027
By 
Miami-Dade Product Control
MIAMI DADE COUNTY



2/23/22
40760

GENSTORM OPAQUE INSWING STEEL DOOR (LMI)


www.gensteeldoors.com
4950 Hickmore, St. Laurent, Quebec, Canada, H4T1K6
Tel: (514) 733-3562 Fax: (514) 733-1932

DATE	
SCALE	
DRAWN	
PROJECT	
DRAWING NO.	AD11-04
SHEET 8 OF 8	