



DEPARTMENT OF REGULATORY AND ECONOMIC RESOURCES (RER)  
BOARD AND CODE ADMINISTRATION DIVISION

**NOTICE OF ACCEPTANCE (NOA)**

MIAMI-DADE COUNTY  
PRODUCT CONTROL SECTION  
11805 SW 26 Street, Room 208  
Miami, Florida 33175-2474  
T (786) 315-2590 F (786) 315-2599  
[www.miamidade.gov/economy](http://www.miamidade.gov/economy)

**Janus International Group, LLC**  
**134 Janus International Blvd.**  
**Temple, GA 30179**

**SCOPE:** This NOA is being issued under the applicable rules and regulations governing the use of construction materials. The documentation submitted has been reviewed and accepted by Miami-Dade County RER-Product Control Section to be used in Miami Dade County and other areas where allowed by the Authority Having Jurisdiction (AHJ). This NOA shall not be valid after the expiration date stated below. The Miami-Dade County Product Control Section (In Miami Dade County) and/or the AHJ (in areas other than Miami Dade County) reserve the right to have this product or material tested for quality assurance purposes. If this product or material fails to perform in the accepted manner, the manufacturer will incur the expense of such testing and the AHJ may immediately revoke, modify, or suspend the use of such product or material within their jurisdiction. RER reserves the right to revoke this acceptance if it is determined by Miami-Dade County Product Control Section that this product or material fails to meet the requirements of the applicable building code.

This product is approved as described herein and has been designed to comply with the Florida Building Code, including the High Velocity Hurricane Zone.

**DESCRIPTION: Series 3400 Steel Roll-Up Door up to 12'-0" Wide**

**APPROVAL DOCUMENT:** Drawing No. **T1011**, titled "Dade County Commercial Door Series 3400, Max. Size 12'-0" x 20'-0", sheets 1 and 2 of 2, dated 03/16/2006, with revision dated 12/07/2022, prepared by Janus International Group, LLC, signed and sealed by John E. Scates, P.E., bearing the Miami-Dade County Product Control revision stamp with the Notice of Acceptance number and expiration date by the Miami-Dade County Product Control Section.

**MISSILE IMPACT RATING: Large and Small Missile Impact Resistant**

**LABELING:** A permanent label with the manufacturer's name or logo, manufacturing address, model/series number, the positive and negative design pressure rating, indicate impact rated if applicable, installation instruction drawing reference number, approval number (NOA), the applicable test standards, and the statement reading 'Miami-Dade County Product Control Approved' is to be located on the door's sidetrack, bottom angle, or inner surface of a panel.

**LIMITATION:** Operating (Roll-up) mechanism is not part of this approval. It must be certified by an independent testing agency, if required.

**RENEWAL** of this NOA shall be considered after a renewal application has been filed and there has been no change in the applicable building code negatively affecting the performance of this product.

**TERMINATION** of this NOA will occur after the expiration date or if there has been a revision or change in the materials, use, and/or manufacture of the product or process. Misuse of this NOA as an endorsement of any product, for sales, advertising or any other purposes shall automatically terminate this NOA. Failure to comply with any section of this NOA shall be cause for termination and removal of NOA.

**ADVERTISEMENT:** The NOA number preceded by the words Miami-Dade County, Florida, and followed by the expiration date may be displayed in advertising literature. If any portion of the NOA is displayed, then it shall be done in its entirety.

**INSPECTION:** A copy of this entire NOA shall be provided to the user by the manufacturer or its distributors and shall be available for inspection at the job site at the request of the Building Official.

This NOA **revises NOA # 22-0317.01** and consists of this page 1 and evidence pages E-1, E-2, E-3, E-4 and E-5, as well as approval document mentioned above.

The submitted documentation was reviewed by **Carlos M. Utrera, P.E.**



**NOA No. 22-1215.03**  
**Expiration Date: April 19, 2027**  
**Approval Date: January 19, 2023**  
**Page 1**

**NOTICE OF ACCEPTANCE: EVIDENCE SUBMITTED**

**1. Evidence submitted under previous NOAs**

**A. DRAWINGS “Submitted under NOA #17-0307.08”**

1. Drawing No. **T1011**, titled “Dade County Commercial Door Series 3400, Max. Size 12’-0” x 20’-0””, sheets 1 and 2 of 2, dated 03/16/2006, prepared by Janus International Corporation, signed and sealed by Joseph. H. Dixon, Jr., P.E. on 02/21/2017.

**B. TESTS “Submitted under NOA # 13-0124.05”**

1. Test report on Forced Entry Resistance Test per FBC, TAS 202-94 of a Series 3400, 24 Gauge Commercial Roll-up Door, prepared by Element Materials Technology, Test Report No. **ESP012111P-1**, dated 01/14/2013, signed and sealed by Thomas A. Kolden, P.E.

**“Submitted under NOA # 06-0809.09”**

2. Certified Testing Laboratories Report No. **CTLA-1493W**, pages 1 thru 5 of 5, dated 03/16/2006, signed and sealed on 03/17/2006 by Ramesh Patel, P.E. for Testing Standards TAS 201, TAS 202 and TAS 203.
3. Certified Testing Laboratories Report No. **1493W** for Galvanized Steel, dated 02/14/2006, signed and sealed on 03/17/2006 for Tensile Test per ASTM E8 by Ramesh Patel, P.E.

**C. CALCULATIONS “Submitted under NOA # 06-0809.09”**

1. Calculations for attachment of guide angles to steel or concrete jamb prepared by Joseph H. Dixon, Jr. PE, dated 02/03/2006, 18 pages, signed and sealed on 07/29/2006 by Joseph H. Dixon, Jr., P.E.

**D. QUALITY ASSURANCE**

1. Miami-Dade Department of Regulatory and Economic Resources (RER)

**E. MATERIAL CERTIFICATIONS**

1. None.

**F. STATEMENTS “Submitted under NOA #15-0520.05”**

1. Statement letter of code conformance to the 5<sup>th</sup> edition (2014) FBC, dated 03/04/2015, issued, signed and sealed by Joseph H. Dixon, Jr., P.E.

**“Submitted under NOA # 12-0322.06”**

2. Statement letter of code conformance to 2010 FBC, dated 03/14/2012, issued, signed and sealed by Joseph H. Dixon, Jr., P.E.



---

**Carlos M. Utrera, P.E.**  
**Product Control Examiner**  
**NOA No. 22-1215.03**  
**Expiration Date: April 19, 2027**  
**Approval Date: January 19, 2023**

**NOTICE OF ACCEPTANCE: EVIDENCE SUBMITTED**

**2. Evidence submitted under NOA # 18-0123.13**

**A. DRAWINGS**

1. Drawing No. **T1011**, titled “Dade County Commercial Door Series 3400, Max. Size 12’-0” x 20’-0”, sheets 1 and 2 of 2, dated 03/16/2006, with revision A dated 01/04/2018, prepared by Janus International Corporation, signed and sealed by John E. Scates, P.E.

**B. TESTS**

1. None.

**C. CALCULATIONS**

1. Anchorage and structural calculations prepared by John E. Scates, P.E., dated 01/09/2018, signed and sealed by John E. Scates, P.E.

**D. QUALITY ASSURANCE**

1. Miami-Dade Department of Regulatory and Economic Resources (RER)

**E. MATERIAL CERTIFICATIONS**

1. None.

**F. STATEMENTS**

1. Statement letter of code conformance to the 6<sup>th</sup> edition (2017) FBC issued by John E. Scates, P.E., dated 02/06/2018, signed and sealed by John E. Scates, P.E.
2. Statement letter of no financial interest issued by John E. Scates, P.E., dated 01/09/2018, signed and sealed by John E. Scates, P.E.
3. Certificate of Merger dated 12/12/2013.



---

**Carlos M. Utrera, P.E.**  
**Product Control Examiner**  
**NOA No. 22-1215.03**  
**Expiration Date: April 19, 2027**  
**Approval Date: January 19, 2023**

**NOTICE OF ACCEPTANCE: EVIDENCE SUBMITTED**

**3. Evidence submitted under NOA # 20-1106.05**

**A. DRAWINGS**

1. None.

**B. TESTS**

1. None.

**C. CALCULATIONS**

1. None.

**E. QUALITY ASSURANCE**

1. Miami-Dade Department of Regulatory and Economic Resources (RER).

**E. MATERIAL CERTIFICATIONS**

1. None.

**F. STATEMENTS**

1. Statement letter of code conformance to the 7<sup>th</sup> edition (2020) FBC issued by John E. Scates, P.E., dated 10/29/2020, signed and sealed by John E. Scates, P.E.
2. Statement letter of no financial interest issued by John E. Scates, P.E., dated 10/29/2020, signed and sealed by John E. Scates, P.E.



---

**Carlos M. Utrera, P.E.**  
**Product Control Examiner**  
**NOA No. 22-1215.03**  
**Expiration Date: April 19, 2027**  
**Approval Date: January 19, 2023**

**NOTICE OF ACCEPTANCE: EVIDENCE SUBMITTED**

**4. Evidence submitted under NOA # 22-0317.01**

**A. DRAWINGS**

1. Drawing No. **T1011**, titled “Dade County Commercial Door Series 3400, Max. Size 12’-0” x 20’-0””, sheets 1 and 2 of 2, dated 03/16/2006, with revision B dated 01/14/2022, prepared by Janus International Corporation, signed and sealed by John E. Scates, P.E. on 04/22/2022.

**B. TESTS**

1. Test reports on 1) Uniform Static Air Pressure Test, Loading per FBC, TAS 202-94  
2) Large Missile Impact Test per FBC, TAS 201-94 (Level ‘E’)  
3) Cyclic Wind Pressure Loading per FBC, TAS 203-94  
4) Forced Entry Test per FBC, TAS 202-94  
along with marked-up drawings and installation diagram of Model 3400 Roll-up Single Curtain Steel Door, prepared by Intertek, Test Report No. **N2991.01-550-18 R0**, dated 02/15/2022, signed and sealed by Vinu J. Abraham, P.E.

**C. CALCULATIONS**

1. Anchorage and structural calculations prepared by John E. Scates, P.E., dated 05/01/2022, signed and sealed by John E. Scates, P.E.

**D. QUALITY ASSURANCE**

1. Miami-Dade Department of Regulatory and Economic Resources (RER).

**E. MATERIAL CERTIFICATIONS**

1. Test report on Tensile Test per ASTM E8-16a of Janus test samples, prepared by Element Material Technology, Test Report No. **150258**, dated 02/28/2022, signed by Crystal Dibble.

**F. STATEMENTS**

1. Statement letter of code conformance to the 7<sup>th</sup> edition (2020) of the FBC, issued by John E. Scates, P.E., dated 02/03/2022, signed and sealed by John E. Scates, P.E.
2. Statement letter of no financial interest issued by John E. Scates, P.E., dated 02/03/2022, signed and sealed by John E. Scates, P.E.



---

**Carlos M. Utrera, P.E.**  
**Product Control Examiner**  
**NOA No. 22-1215.03**  
**Expiration Date: April 19, 2027**  
**Approval Date: January 19, 2023**

**NOTICE OF ACCEPTANCE: EVIDENCE SUBMITTED**

**5. New evidence submitted**

**A. DRAWINGS**

1. Drawing No. **T1011**, titled “Dade County Commercial Door Series 3400, Max. Size 12’-0” x 20’-0””, sheets 1 and 2 of 2, dated 03/16/2006, with revision dated 12/07/2022, prepared by Janus International Group, LLC, signed and sealed by John E. Scates, P.E.

**B. TESTS**

1. None.

**C. CALCULATIONS**

1. Anchorage and structural calculations prepared by John E. Scates, P.E., dated 12/07/2022, signed and sealed by John E. Scates, P.E.

**D. QUALITY ASSURANCE**

1. Miami-Dade Department of Regulatory and Economic Resources (RER).

**E. MATERIAL CERTIFICATIONS**

1. None.

**F. STATEMENTS**

1. Statement letter of code conformance to the 7<sup>th</sup> edition (2020) of the FBC and of no financial interest, issued by John E. Scates, P.E., dated 12/07/2022, signed and sealed by John E. Scates, P.E.



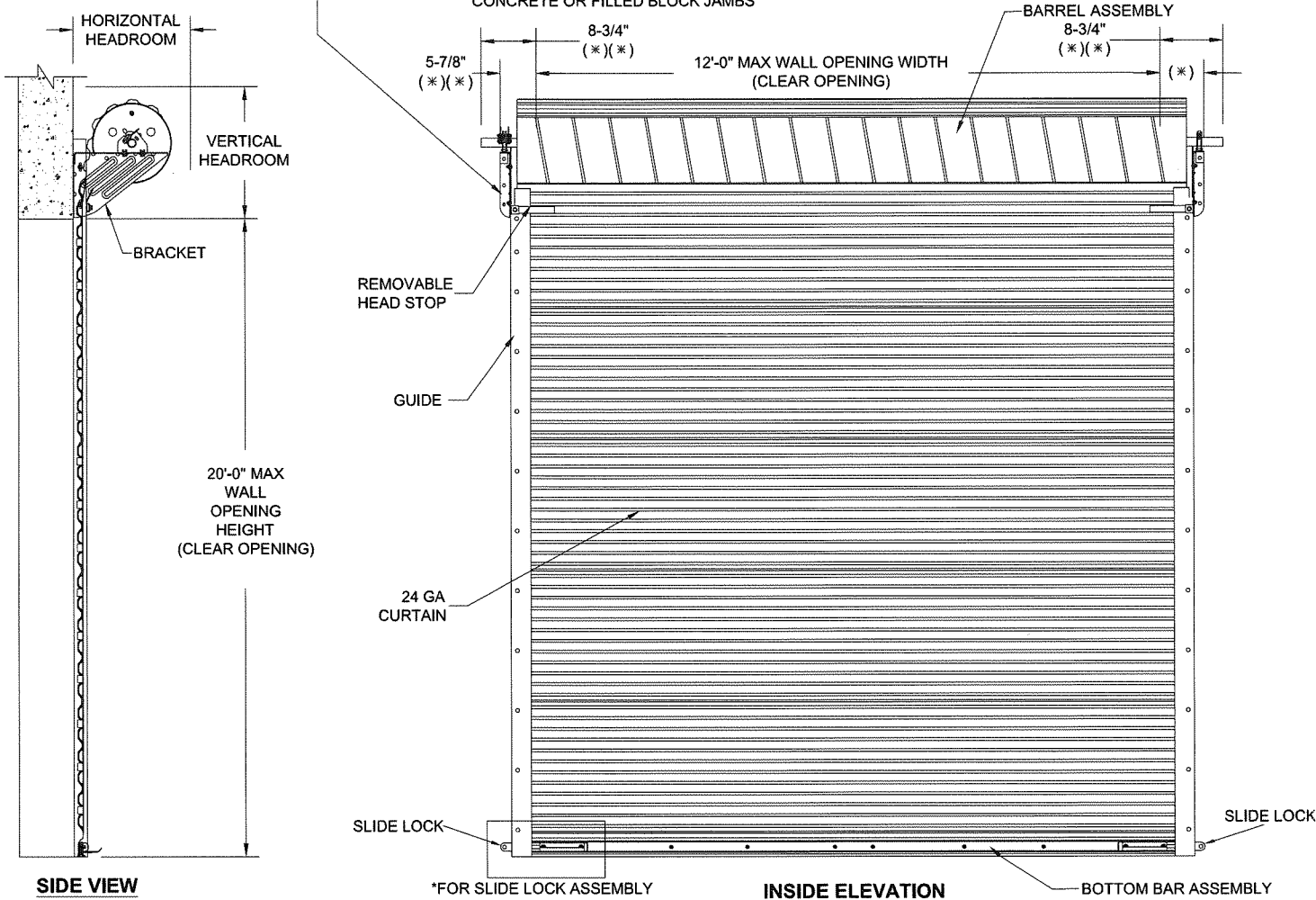
---

**Carlos M. Utrera, P.E.**  
**Product Control Examiner**  
**NOA No. 22-1215.03**  
**Expiration Date: April 19, 2027**  
**Approval Date: January 19, 2023**

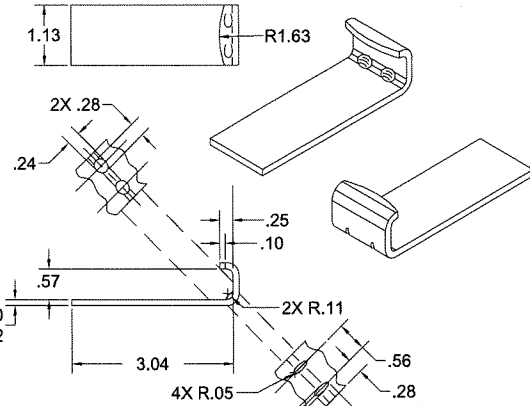
**BRACKET ATTACHMENT**  
 CONCRETE/FILLED BLOCK: DEWALT SCREW-BOLT+, 3/8 X 1-3/4" LONG  
 STEEL: HEX BOLT, GR.5, 3/8-16 X 1-1/4" LONG

- (\*)  
 • FOR PUSH-UP OPERATION: 5-7/8"  
 • FOR HAND CHAIN OPERATION: 6-5/8"  
 • FOR ELECTRIC OPERATION: 7-3/8"  
 • FOR OUTSIDE OF CHAIN DRIVE: 8-1/8"  
 • NOTE: RIGHT SIDE DRIVE SHOWN

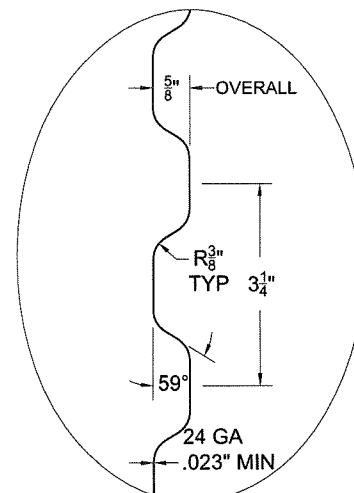
(\*)(\*)  
 DIMENSIONS SHOWN ARE FOR MOUNTING TO  
 STEEL JAMBS. ADD 1-1/16" WHEN ATTACHING TO  
 CONCRETE OR FILLED BLOCK JAMBS



\*FOR SLIDE LOCK ASSEMBLY SEE SHEET 2

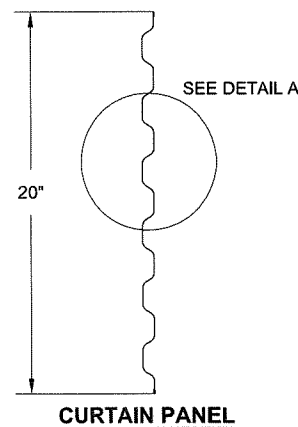


SEE SHEET 2 FOR NOTES



ASTM A653 G90 GR 80 MIN (FY=80 KSI) STEEL.  
 CURTAIN PANELS LOCK SEAMED TOGETHER  
 PRE-PAINTED WITH A FULL COAT OF PRIMER AND BAKED SILICONIZED POLYESTER FINISH COAT.

**CURTAIN DETAIL**



**PRODUCT REVISED**  
 as complying with the Florida Building Code  
 NOA-No. 22-1215.03

Expiration Date 04/19/2027

By *[Signature]*  
 Miami-Dade Product Control

UNLESS OTHERWISE SPECIFIED DIMENSIONS ARE IN INCHES AND TOLERANCES ARE:

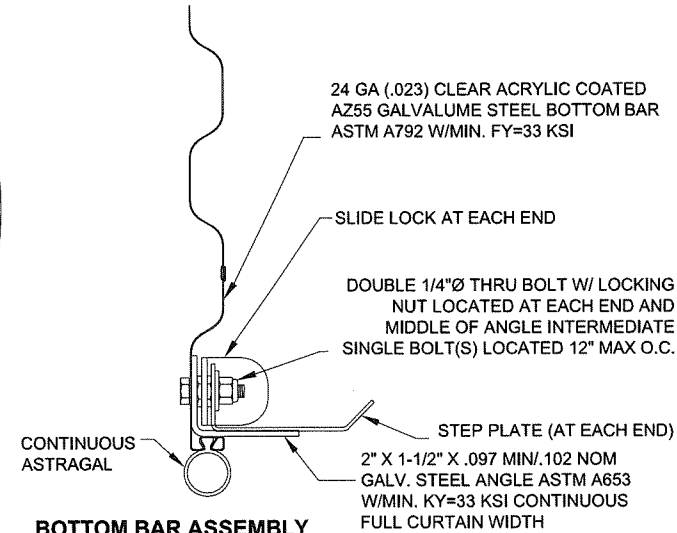
DECIMAL	FRACTION	ANGLES	HOLE DIAMETERS	
.XX +/- .03	+/- 1/16	+/- 1°	UNDER .251	+.004 -.003
.XXX +/- .010			.251 TO .500	+.006 -.003
			OVER .500	+.008 -.003

**REVISIONS**

REV	DESCRIPTION	DATE	APPROVAL
-	DRAWING RELEASE	03-16-06	DM
A	CO. NAME & FASTENER CHANGE	01-04-18	SR
B	WINDLOCK PLACEMENT & QTY. & O.C. FASTENER PLACEMENT	01-14-22	BA
C	WINDLOCK PLACEMENT & QTY. & O.C. FASTENER PLACEMENT	11-22-22	BA

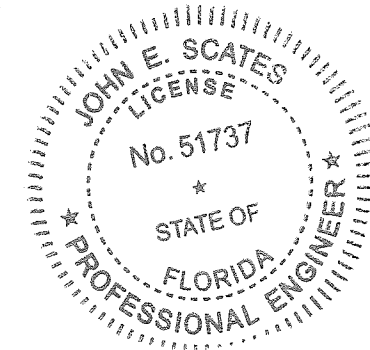
**HEADROOM REQUIRED**

OPENING HEIGHT	VERTICAL HEADROOM	HORIZONTAL HEADROOM
THRU 8'-0"	17"	19"
OVER 8'-0" THRU 10'-0"	19"	21"
OVER 10'-0" THRU 14'-0"	20"	22"
OVER 14'-0" THRU 16'-0"	21"	23"
OVER 16'-0" THRU 18'-0"	22"	24"
OVER 18'-0" THRU 20'-0"	23"	25"



John E. Scates, P.E.  
 2560 King Arthur Blvd, Ste 124-54  
 Lewisville, TX 75056  
 FL PE 51737  
 TX PE 56308/F2203

*[Signature]*  
 12/7/22



Printed copies of this document are not considered signed and sealed and the signature must be verified on any electronic copies.

PART NUMBER: NA	APPROVALS	DATE
MATERIAL: NA	BECKY NELSON	1-20-06
APPLIED FINISH: NA	CHECKED: DON MILLS	3-16-06
UNIT OF MEASURE: NA	APPROVED: DON MILLS	3-16-06

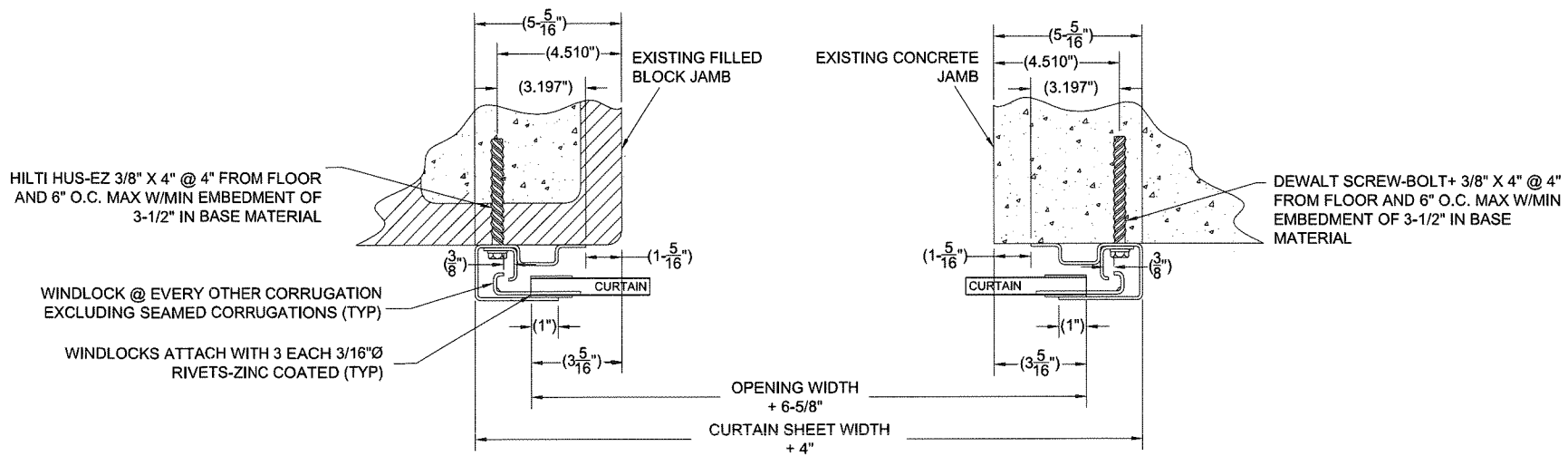
**JANUS INTERNATIONAL GROUP, LLC**  
 135 JANUS INTERNATIONAL BLVD. TEMPLE, GA 30179-4435  
 770-562-2850/Fax 770-562-2264  
 © 2018 JANUS INTERNATIONAL GROUP ALL RIGHTS RESERVED

DADE COUNTY COMMERCIAL DOOR SERIES 3400 MAX SIZE 12'-0" X 20'-0"

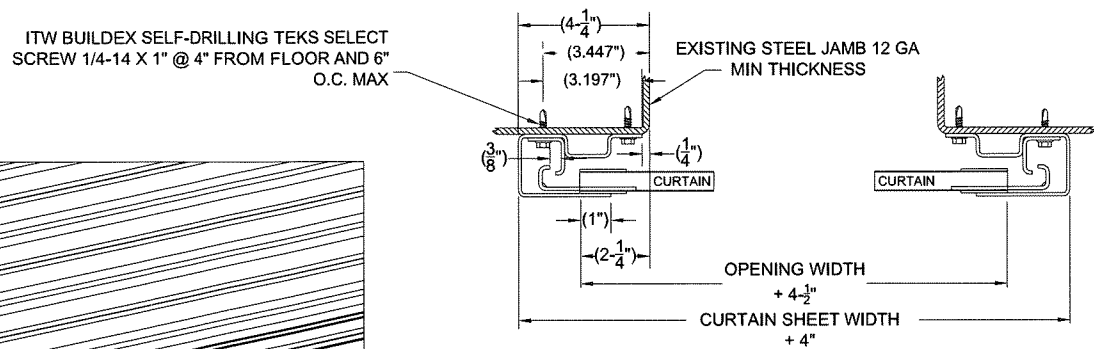
SIZE <b>B</b>	DRAWING NUMBER: <b>T1011</b>	REV: <b>C</b>
SCALE: NONE	SHEET: 1	OF: 2

**GENERAL NOTES:**

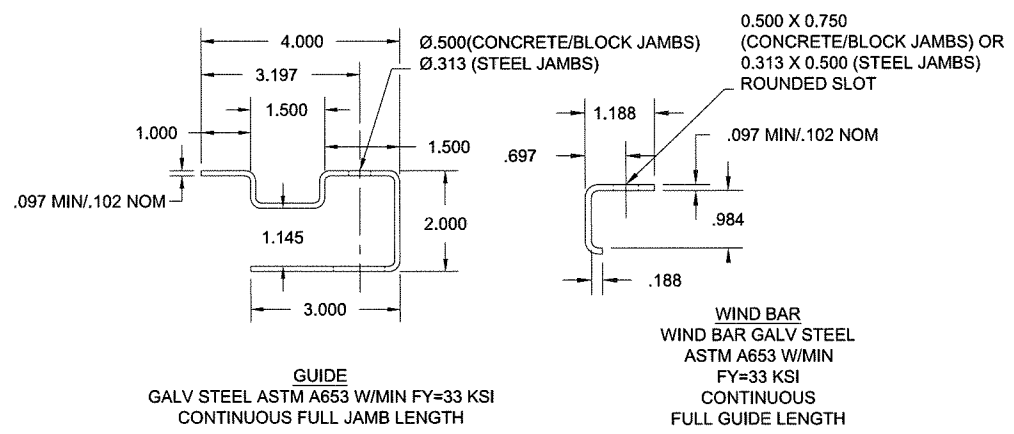
1. TESTING:
  - 1.1. TESTED PER TAS-202 (STATIC) AND TAS-201/203 (IMPACT AND CYCLIC).
  - 1.2. TESTING PERFORMED IN AN INDEPENDENT LAB.
  - 1.3. DESIGN PRESSURE: +43.0/-49.0 PSF AT 12'-0" OPENING WIDTH.
2. DESIGN WINDLOAD REQUIREMENTS FOR BUILDING OPENINGS SHALL BE DETERMINED BY OTHERS.
3. SUPERIMPOSED LOADS ON THE JAMBS FROM THIS DOOR ARE DESIGNATED AS Vx and Vy HEREIN. OTHERS SHALL VERIFY ADEQUACY OF BUILDING STRUCTURE TO RESIST SUPERIMPOSED LOADS Vx, Vy.
4. ALL WELDING SHALL BE PERFORMED BY QUALIFIED WELDERS IN ACCORDANCE WITH A.W.S. SPECIFICATIONS. WELDING ELECTRODES SHALL CONFORM TO A.W.S. A5.1 GRADE E-70
5. DOORS SHALL BE PROVIDED WITH LOCK MECHANISMS AT THE BOTTOM OF THE DOOR.
6. ALL BOLTS AND WASHERS SHALL BE GALVANIZED OR STAINLESS STEEL WITH A MINIMUM TENSILE STRENGTH OF 60 KSI.
7. ANCHOR NOTES:
  - 7.1. EMBEDMENT LENGTH DOES NOT INCLUDE STUCCO FINISH.
  - 7.2. FOR HOLLOW BLOCK, FILL ALL CELLS @ANCHOR WITH 2000 PSI GROUT.
  - 7.3. CONCRETE TO BE 2500 PSI MIN.
  - 7.4. ANCHORS SHALL BE INSTALLED IN ACCORDANCE WITH MANUFACTURER'S SPECIFICATIONS
  - 7.5. APPROVED CONCRETE ANCHORS:
    - 7.5.1. 3/8" DEWALT SCREW-BOLT +
    - 7.6. APPROVED FILLED-CMU ANCHORS:
      - 7.6.1. 3/8" HILTI KH-EZ
  8. DOOR OPERATION TYPE MAY BE PUSH-UP, HAND CHAIN, OR ELECTRIC. THEY ARE NOT PART OF THE NOA.
  9. GUIDE-TO-JAMB ATTACHMENT FASTENERS BEGIN 4" FROM FLOOR AND END 2" BELOW THE TOP OF WALL OPENING.
  10. COMPLIES WITH THE WINDLOAD REQUIREMENTS OF IBC/IRC 2018
  11. THIS DRAWING PROVIDES WINDLOAD ASSEMBLY DETAILS FOR THE CLAIMED SIZE AND PRESSURES.
  12. PROFESSIONAL ENGINEER'S SEAL PROVIDED ONLY FOR VERIFICATION OF WINDLOAD CONSTRUCTION DETAILS



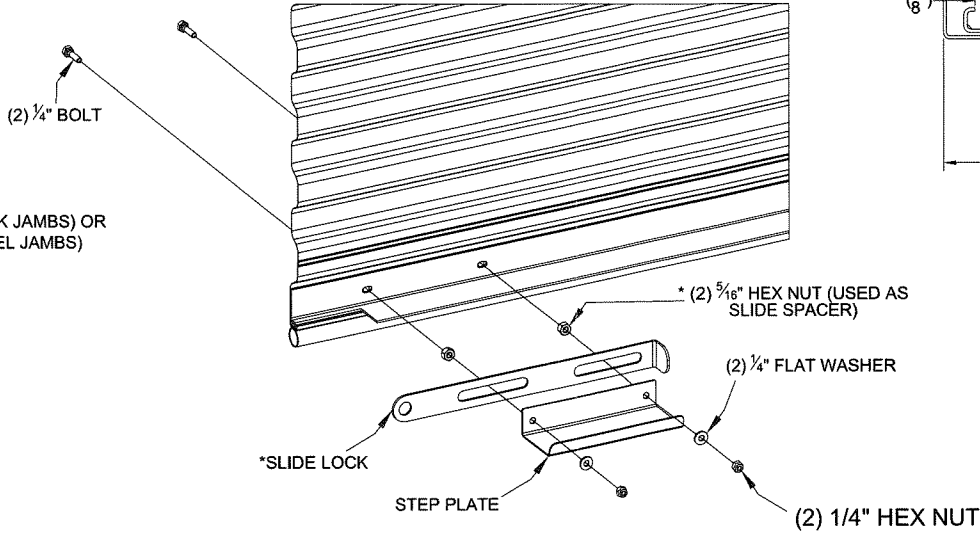
**FILLED BLOCK/CONCRETE JAMB DETAIL**



**STEEL JAMB DETAIL**



**SUPERIMPOSED LOAD DIAGRAM**



**SLIDE LOCK ASSEMBLY**

*John E. Scates*  
12/7/22

JOHN E. SCATES  
LICENSE  
No. 51737  
STATE OF  
FLORIDA  
PROFESSIONAL ENGINEER

**PRODUCT REVISED**  
as complying with the Florida  
Building Code  
NOA-No. 22-1215.03  
Expiration Date 04/19/2027  
By *[Signature]*  
Miami-Dade Product Control

UNLESS OTHERWISE SPECIFIED DIMENSIONS ARE IN INCHES AND TOLERANCES ARE:

DECIMAL	FRACTION	ANGLES	HOLE DIAMETERS	
.XX +/- .03	+/- 1/16	+/- 1°	UNDER .251	+ .004 - .003
.XXX +/- .010			.251 TO .500	+ .006 - .003
			OVER .500	+ .008 - .003

PART NUMBER: NA		<b>JANUS INTERNATIONAL GROUP, LLC</b>	
MATERIAL: NA		135 JANUS INTERNATIONAL BLVD. TEMPLE, GA 30179-4435	
APPLIED FINISH: NA		770-562-2850/Fax 770-562-2264	
UNIT OF MEASURE: NA		© 2018 JANUS INTERNATIONAL GROUP ALL RIGHTS RESERVED	
APPROVALS		DADE COUNTY COMMERCIAL DOOR SERIES 3400 MAX SIZE 12'-0" X 20'-0"	
DATE		DATE	
UNIT OF MEASURE: BECKY NELSON		1-20-06	
CHECKED: DON MILLS		3-16-06	
APPROVED: DON MILLS		3-16-06	
SIZE <b>B</b>	DRAWING NUMBER: <b>T1011</b>	SCALE: NONE	SHEET: 2 OF 2
			REV: <b>C</b>