



MIAMI-DADE COUNTY
DEPARTMENT OF REGULATORY AND ECONOMIC RESOURCES (RER)
BOARD AND CODE ADMINISTRATION DIVISION
NOTICE OF ACCEPTANCE (NOA)

MIAMI-DADE COUNTY
PRODUCT CONTROL SECTION
11805 SW 26 Street, Room 208
T (786) 315-2590 F (786) 315-2599
www.miamidade.gov/economy

Shanghai Superhouse Building Material Co., Ltd
Level 5, Unit 10, No. 8666 Hunan highway Road,
PuDong New Area, Shanghai, China, 201314

SCOPE:

This NOA is being issued under the applicable rules and regulations governing the use of construction materials. The documentation submitted has been reviewed and accepted by Miami-Dade County RER -Product Control Section to be used in Miami Dade County and other areas where allowed by the Authority Having Jurisdiction (AHJ).

This NOA shall not be valid after the expiration date stated below. The Miami-Dade County Product Control Section (In Miami Dade County) and/or the AHJ (in areas other than Miami Dade County) reserve the right to have this product or material tested for quality assurance purposes. If this product or material fails to perform in the accepted manner, the manufacturer will incur the expense of such testing and the AHJ may immediately revoke, modify, or suspend the use of such product or material within their jurisdiction. RER reserves the right to revoke this acceptance, if it is determined by Miami-Dade County Product Control Section that this product or material fails to meet the requirements of the applicable building code.

This product is approved as described herein and has been designed to comply with the Florida Building Code, including the High Velocity Hurricane Zone.

DESCRIPTION: Series "SPA 100 & SPA 150" Aluminum Sliding Glass Door - L.M.I.

APPROVAL DOCUMENT: Drawing No. **AD 22-33**, titled "SPA 100 & SPA 150 Aluminum Sliding Glass Door (L.M.I.)", sheets 1 through 17 of 17, dated 01/19/2023 and last revised on FEB 24, 2023 prepared by MCY Engineering, Inc., signed and sealed by Yipping Wang, P.E., bearing the Miami-Dade County Product Control Approval stamp with the Notice of Acceptance number and approval date by the Miami-Dade County Product Control Section.

MISSILE IMPACT RATING: Large and Small Missile Impact Resistant

Limitations:

1. Doors with Glazing options are allowed up to 108" frame height, other limited to 96" max frame height.
2. See sheet 2, 3 and 4 for Design Pressure (DP) based on glazing options, frame sizes, threshold adapters and Hardware options.
3. Max. DP= +90 PSF requires use of threshold adapter (part #9A) limited to tested frame size.

LABELING: Each unit shall bear a permanent label with the manufacturer's name or logo, **Shanghai, China**, series, and the following statement: "Miami-Dade County Product Control Approved", unless otherwise noted herein.

RENEWAL of this NOA shall be considered after a renewal application has been filed and there has been no change in the applicable building code negatively affecting the performance of this product.

TERMINATION of this NOA will occur after the expiration date or if there has been a revision or change in the materials, use, and/or manufacture of the product or process. Misuse of this NOA as an endorsement of any product, for sales, advertising or any other purposes shall automatically terminate this NOA. Failure to comply with any section of this NOA shall be cause for termination and removal of NOA.

ADVERTISEMENT: The NOA number preceded by the words Miami-Dade County, Florida, and followed by the expiration date may be displayed in advertising literature. If any portion of the NOA is displayed, then it shall be done in its entirety.

INSPECTION: A copy of this entire NOA shall be provided to the user by the manufacturer or its distributors and shall be available for inspection at the job site at the request of the Building Official.

This NOA is consists of this page 1 and evidence pages E-1 & E-2, as well as approval document mentioned above. The submitted documentation was reviewed by **Ishaq I. Chanda, P.E.**



Ishaq I. Chanda

NOA No. 23-0119.02
Expiration Date: March 09, 2028
Approval Date: March 09, 2023
Page 1

NOTICE OF ACCEPTANCE: EVIDENCE SUBMITTED

A. DRAWINGS

1. Manufacturer's die drawings and sections.
2. Drawing No. **AD 22-33**, titled "SPA 100 & SPA 150 Aluminum Sliding Glass Door (L.M.I.)", sheets 1 through 17 of 17, dated 01/19/2023 and last revised on FEB 24, 2023 prepared by MCY Engineering, Inc., signed and sealed by Yipping Wang, P.E.

B. TESTS

1. Test reports on: 1) Air Infiltration Test, per FBC, TAS 202-94
2) Uniform Static Air Pressure Test, Loading per FBC, TAS 202-94
3) Water Resistance Test, per FBC, TAS 202-94
4) Forced Entry Test, per FBC, and TAS 202-94
6) Large Missile Impact Test per FBC, TAS 201-94
7) Cyclic Wind Pressure Loading per FBC, TAS 203-94
along with marked-up drawings and installation diagram of an aluminum sliding glass door, prepared by Intertek Testing, Shanghai, China., Test Report No(s) **#190904008SHF-001** dated 11/27/2019 and **#21071600SHF-001**, dated 03/28/2022, signed and sealed by Vinu Abraham , P.E.

C. CALCULATIONS

1. Anchor verification calculations and structural analysis, complying with FBC-7th Edition dated 01/03/23, prepared by MCY Engineering, Inc., signed and sealed by Yipping wang, P.E.
2. Glazing complies with ASTM E1300-04 & -09.

D. QUALITY ASSURANCE

1. Miami-Dade Department of Regulatory and Economic Resources (RER).

E. MATERIAL CERTIFICATIONS

1. Notice of Acceptance No. **17-0808.02** issued to Kuraray America, Inc. (former E.I. DuPont DE Nemours & Co., Inc.) for the "**Sentry Glass ® Interlayer**", expiring on 07/4/23.
2. Notice of Acceptance No. **21-0216.01** issued to Eastman Chemical Company (MA) (Former Solutia, Inc.) for the "**Saflex Clear and Color Glass Interlayers**", expiring on 05/21/26.

F. STATEMENTS

1. Statement letter of conformance, complying with **FBC2020 (7th Edition)** dated 01/03/23, issued by MCY Engineering, Inc., signed and sealed by Yipping Wang, P.E.

Ishaq I. Chanda

Ishaq I. Chanda, P.E.
Product Control Unit Supervisor
NOA No. 23-0119.02
Expiration Date: March 09, 2028
Approval Date: March 09, 2023

NOTICE OF ACCEPTANCE: EVIDENCE SUBMITTED

F. STATEMENTS (continue)

2. Statement letter of “No financial interest” dated 01/03/23, issued by MCY Engineering, Inc., signed and sealed by Yipping Wang, P.E
3. Distributor Agreement, between manufacturer Shanghai Superhouse Bldg. Material Co., China and CasaNoah Design Group, LLC, USA (Distributor), signed by Lilian Li, director and Bin Lin, director on behalf of their respective companies.

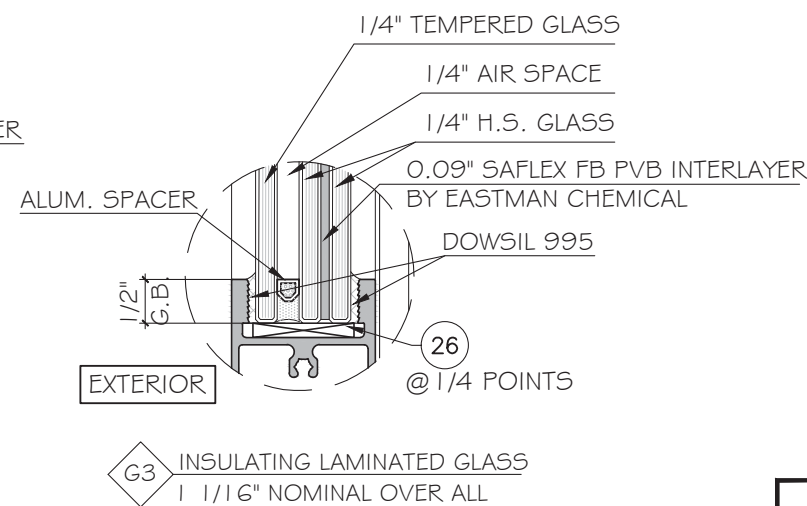
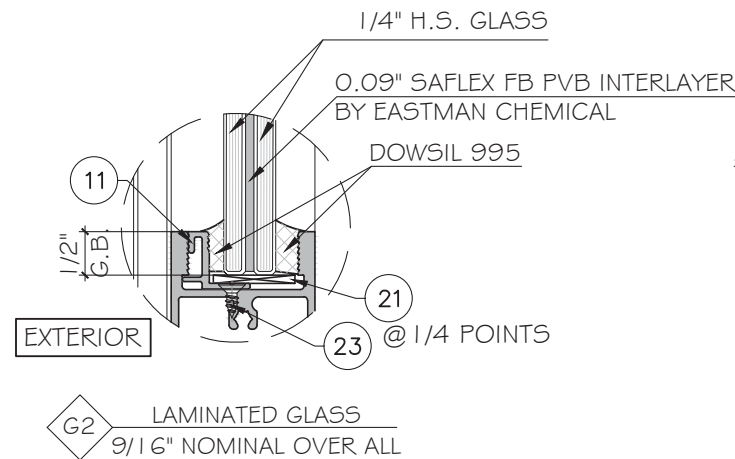
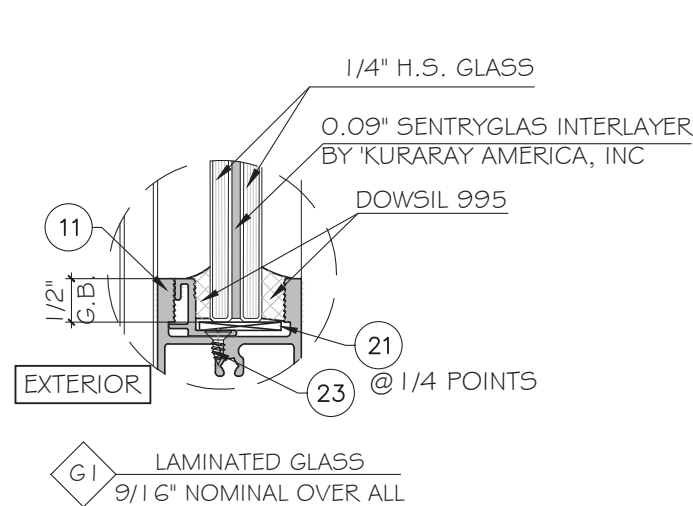
G. OTHER

1. Technical hardware brochure and assembly screw specifications.

Ishaq I. Chanda

Ishaq I. Chanda, P.E.
Product Control Unit Supervisor
NOA No. 23-0119.02
Expiration Date: March 09, 2028
Approval Date: March 09, 2023

SHANGHAI SUPERHOUSE BUILDING MATERIAL CO., LTD.
SERIES SPA100 AND SPA150 SLIDING GLASS DOOR - L.M.I.



NOTE:
GLASS COMPLIES WITH ASTM E1300-09
(3 SEC. GUSTS).

PRODUCT APPROVED
as complying with the Florida
Building Code
NOA-No. 23-0119.02

Approval Date 03/09/2023

By Ishag I. Chande
Miami-Dade Product Control

USE CHARTS AS FOLLOWS.

STEP 1: DETERMINE DESIGN WIND LOAD REQUIREMENTS BASED ON WIND VELOCITY, BLDG. HEIGHT, WIND ZONE USING APPLICABLE ASCE 7-16 STANDARD OR WIND TUNNEL REPORTS.

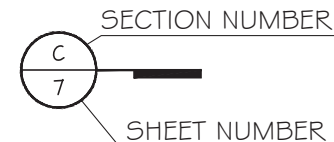
STEP 2: SEE SHEET E1 & E2 & E3 FOR TYPICAL SLIDING DOOR ELEVATION.

STEP 3: SEE SHEET A1 & A2 FOR ANCHOR OPTIONS. SEE SHEET E1 & E2 & E3 FOR ANCHOR LAYOUT.

STEP 4: THE LOWEST VALUE RESULTING FROM STEPS 2 & 3 THAT EXCEED THE DESIGN WIND PRESSURES DETERMINED THROUGH STEP 1 SHALL APPLY TO ENTIRE SYSTEM

ABBREVIATIONS AND SYMBOLS

D.L.O. - DAYLITE OPENING
F.H. - FRAME HEIGHT
F.W. - FRAME WIDTH
W/ - WITH
W/O - WITHOUT
O.C. - ON CENTER



MIAMI-DADE COUNTY

LIMITATIONS OF USE

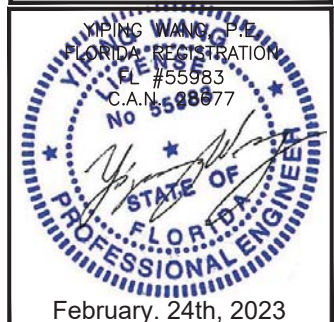
A- THIS PRODUCT EVALUATION DOCUMENT (P.E.D.) PREPARED BY THIS ENGINEER IS GENERIC AND DOES NOT PROVIDE INFORMATION FOR A SITE SPECIFIC PROJECT; i.e. WHERE THE SITE CONDITIONS DEVIATE FROM THE P.E.D.

B- CONTRACTOR TO BE RESPONSIBLE FOR THE SELECTION, PURCHASE AND INSTALLATION OF THIS PRODUCT BASED ON THIS PRODUCT EVALUATION PROVIDED HE/SHE DOES NOT DEVIATE FROM THE CONDITIONS DETAILED ON THIS DOCUMENT.

C- THIS PRODUCT EVALUATION DOCUMENT WILL BE CONSIDERED INVALID IF ALTERED BY ANY MEANS.

D- SITE SPECIFIC PROJECTS SHALL BE PREPARED BY A FLORIDA REGISTERED ENGINEER OR ARCHITECT WHICH WILL BECOME THE ENGINEER OF RECORD (E.O.R.) FOR THE PROJECT AND WHO WILL BE RESPONSIBLE FOR THE PROPER USE OF THE P.E.D. ENGINEER OF RECORD, ACTING AS A DELEGATED ENGINEER TO THE P.E.D. ENGINEER SHALL SUBMIT TO THIS LATTER THE SITE SPECIFIC DRAWINGS FOR REVIEW. THIS P.E.D. SHALL BEAR THE DATE AND ORIGINAL SEAL AND SIGNATURE OF THE PROFESSIONAL ENGINEER OF RECORD THAT PREPARED IT.

E- IN HVHZ AREA, ANY DEVIATION FROM NOA REQUIRES ONE-TIME APPROVAL FROM MIAMI-DADE COUNTY.



MCY ENGINEERING, INC.
GLAZING CONSULTANTS
12781 MIRAMAR PKWY., STE. 301
MIRAMAR, FL 33027 P: 305 271-0117
www.MCYEngineering.com mcy@mcyengineering.com

SERIES SPA100 AND SPA150 SLIDING GLASS DOOR - L.M.I.
SHANGHAI SUPERHOUSE BUILDING MATERIAL CO., LTD
LEVEL 5, BUILDING 10, NO.8666 HUNAN RD, PUDONG NEW AREA
Shanghai, China
TEL:86 021-5822 0630 CELL:86 135-8572-3609

Rev. No.	Date	Drawn By	Description
01	12.06.2022	James	NEW PRODUCT APPLICATION

Drawn Date 02.26.2022

DRAWING NO.

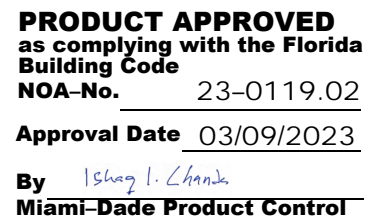
AD22-33

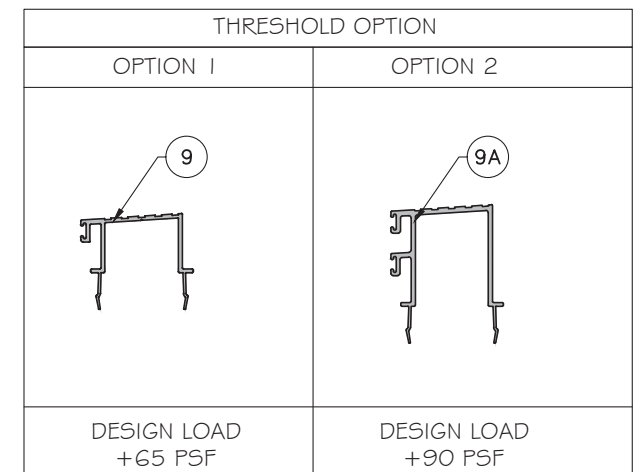
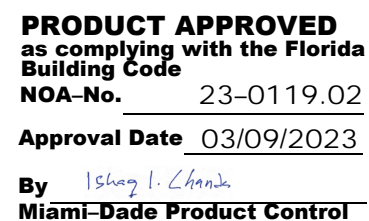
COVER

Sheet No.
1 OF 17

GENERAL NOTES:

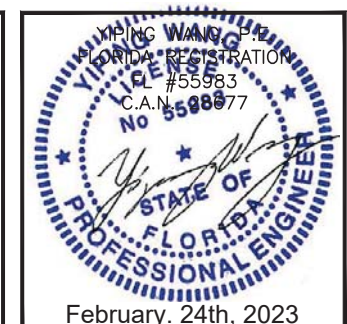
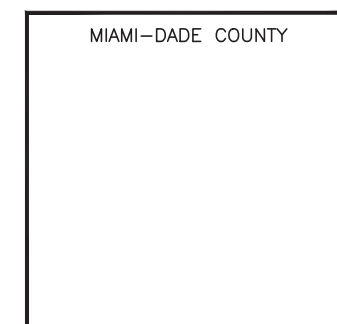
- THIS PRODUCT HAS BEEN DESIGNED AND TESTED TO COMPLY WITH THE REQUIREMENTS OF THE 7TH EDITION FLORIDA BUILDING CODE (2020) INCLUDING HIGH VELOCITY HURRICANE ZONE (HVHZ).
- DOORS RATED FOR LARGE MISSILE IMPACT. LMI SYSTEM TO BE USED FOR INSTALLATIONS UP TO 30 FT AND CAN BE USED ABOVE 30 FT OF GRADE. IMPACT SHUTTERS ARE NOT REQUIRED.
- THESE DOORS ARE APPROVED FOR AIR AND WATER INFILTRATION.
- ANCHORS SHALL BE AS LISTED, SPACED AS SHOWN ON DETAILS. ANCHORS EMBEDMENT TO BASE MATERIAL SHALL BE BEYOND WALL DRESSING OR STUCCO.
- ANCHORING OR LOADING CONDITIONS NOT SHOWN IN THESE DETAILS ARE NOT PART OF THIS APPROVAL.
- MATERIALS INCLUDING BUT NOT LIMITED TO STEEL/ METAL SCREWS THAT COME INTO CONTACT WITH OTHER DISSIMILAR MATERIALS SHALL MEET THE REQUIREMENTS OF THE 7TH EDITION FLORIDA BUILDING CODE (2020) SECTION AS APPLICABLE.
- METAL STRUCTURES BY OTHERS TO BE DESIGNED TO SUPPORT THE LOADS IMPOSED BY THIS GLAZING SYSTEM AND TO TRANSFER SUCH LOADS TO THE BUILDING MAIN STRUCTURE.
- ULTIMATE LOAD OBTAINED FROM ASCE 7-16 APPLICABLE LOAD COMBINATION EQUATIONS, MULTIPLY BY 0.6 SHALL BE LESS THAN OR EQUAL TO MAX. DESIGN LOAD IN THIS DOCUMENT. THE DESIGN LOADS SHOWN IN THIS DOCUMENT ARE ALLOWABLE DESIGN LOADS.
- SEALANTS:
ALL FRAME CORNERS, JOINTS, MULLION SEAMS AND PERIMETER GLAZING BEAD TO FRAME INSTALLATION FASTENERS SEALED WITH SILICON SEALANT.



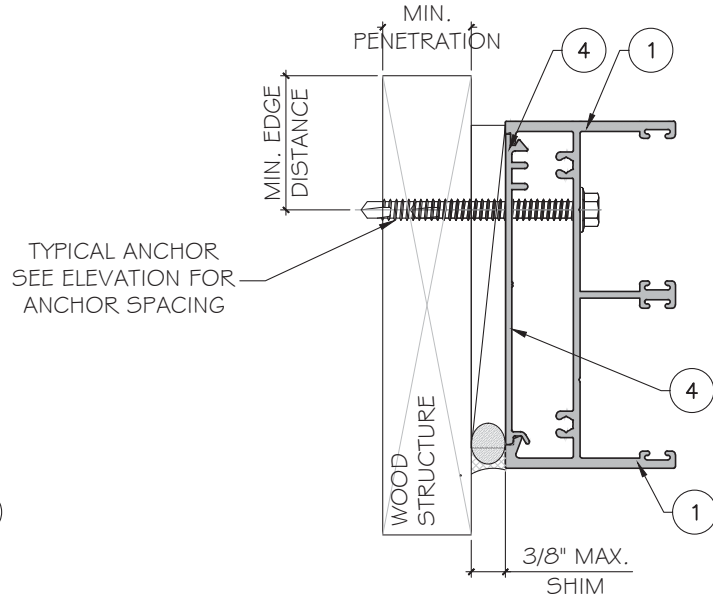
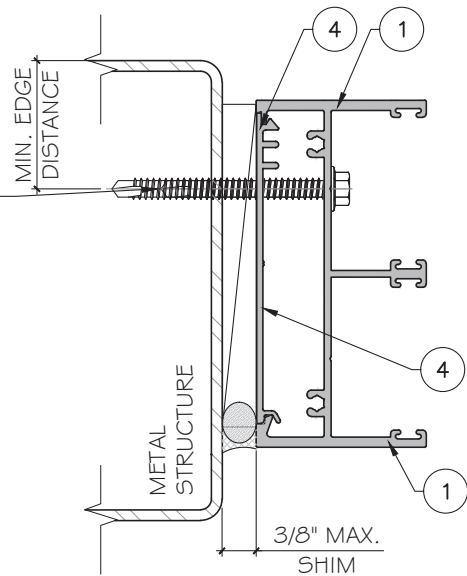
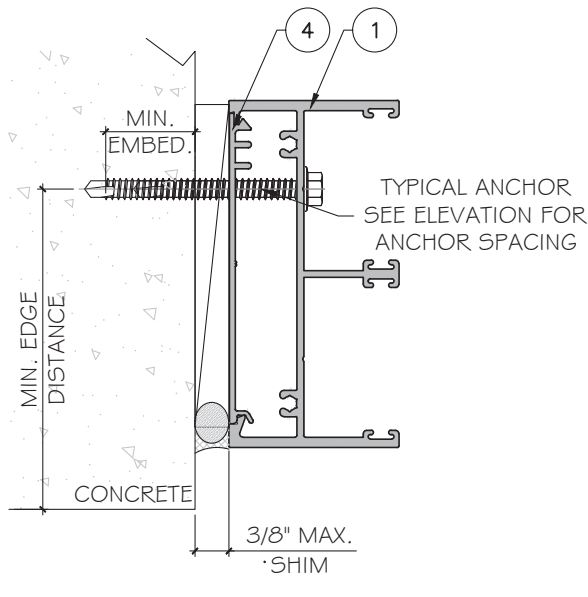
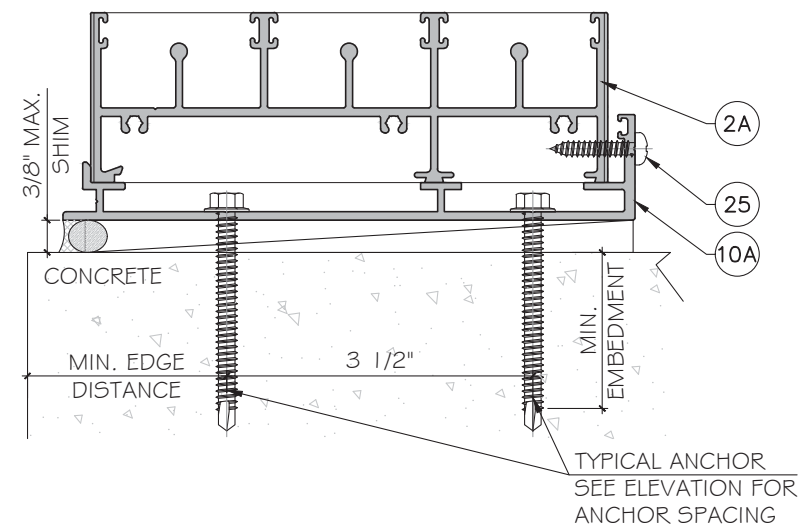
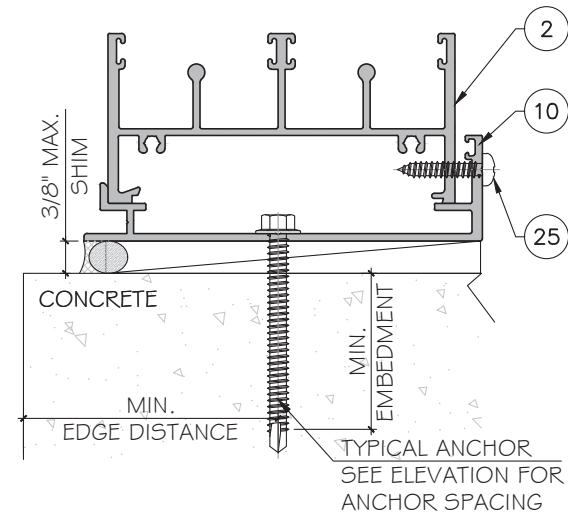
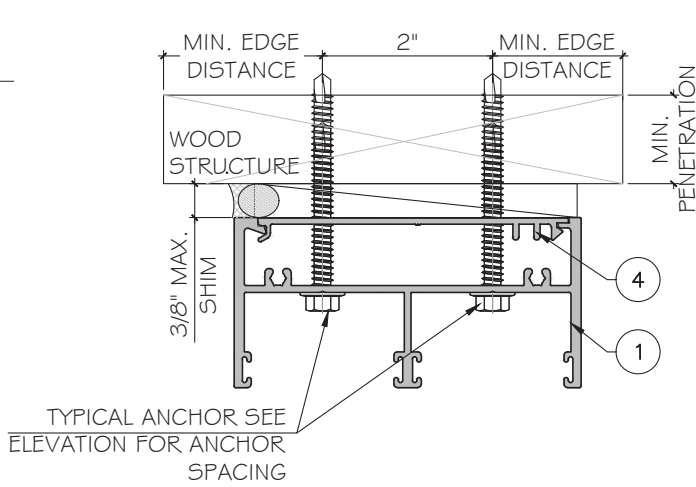
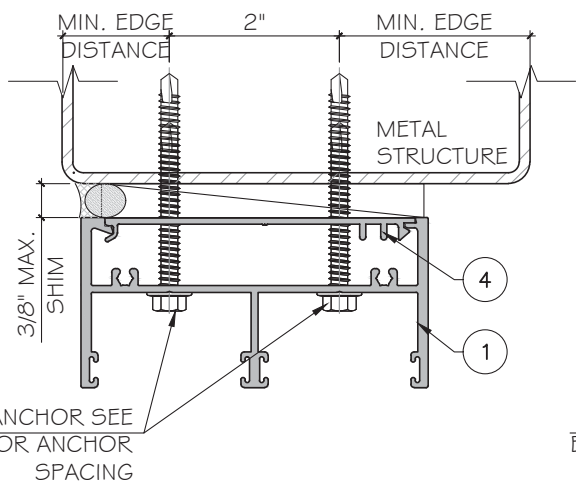
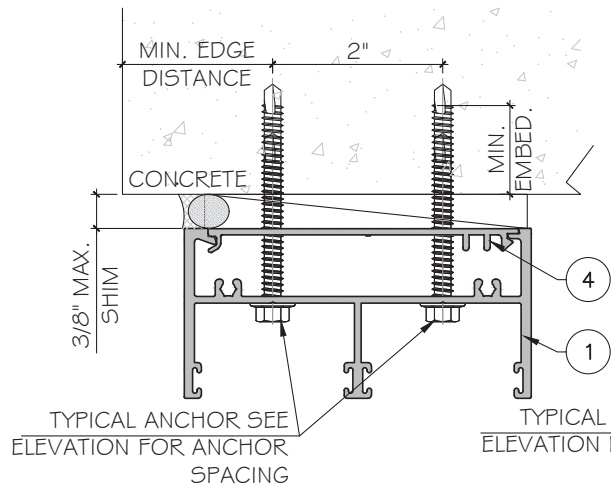


GLASS TYPE	DIMENSIONS		DIMENSIONS		INTERLOCK OPTION	DESIGN LOADS (PSF)		HARDWARE OPTION (SEE SHEET 12 FOR COMPOSITION)
	PANEL WIDTH MAX.	FRAME HEIGHT MAX.	D.L.O.W. MAX.	D.L.O.H. MAX.		EXT. (+)	INT. (-)	
	IN.	IN.	IN.	IN.				
G1	48 5/8"	96"	43 1/2"	87 3/8"	HD	90	110	#1 & #2
G1,G2,G3	48 5/8"	96"	43 1/2"	87 3/8"	STD	65	65	#3
G3	48 5/8"	108"	43 1/2"	99 3/8"	HD	65	65	#1

NOTE: FOR SIZE SHOWN ABOVE OR SMALLER AS PERMITTED BY FBC
HARDWARE OPTION #1: MULTI-POINT LOCK BY SIEGA.
HARDWARE OPTION #2: DUAL POINT MORTISE LOCK BY DNW.
HARDWARE OPTION #3: DUAL MORTISE LOCK BY MUTU.

[illegible]

MCY ENGINEERING, INC.
GLAZING CONSULTANTS
12781 MIRAMAR PKWY. STE. 301
MIRAMAR, FL 33027 P: 305 271-0101
www.MCYEngineering.com mcy@mcyengineering.com



TYPICAL ANCHOR TYPES:
SEE ELEVATIONS FOR SPACING

TYPE "A": 1/4" DIA. ULTRACON+ BY 'DEWALT' ($F_u = 164 \text{ KSI}$, $F_y = 148 \text{ KSI}$)
THRU 1 BY OR 2 BY WOOD BUCKS INTO CONCRETE
WITH 1 1/2" MIN. PENETRATION INTO WOOD
OR THRU WOOD INTO MASONRY

TYPE "B": 1/4" DIA. ULTRACON+ BY 'DEWALT' ($F_u = 164 \text{ KSI}$, $F_y = 148 \text{ KSI}$)
DIRECTLY INTO CONCRETE ($f'_c = 3000 \text{ PSI MIN.}$)
WITH 1 3/4" MIN. EMBED
DIRECTLY INTO HOLLOW BLOCK (JAMB ONLY)
WITH 1 1/4" MIN. EMBED.

DIRECTLY INTO GROUT FILLED BLOCKS (JAMB ONLY)
WITH 1 3/4" MIN. EMBED

TYPE "C": 1/4" TEKS SELF DRILLING SCREW (GRADE 5) ($F_u = 120 \text{ KSI}$, $F_y = 90 \text{ KSI}$)
INTO APPROVED MULLIONS
INTO METAL STRUCTURE
STEEL: 12 GA. MIN. ($F_y = 36 \text{ KSI MIN.}$)
ALUMINUM: 1/8" THK. MIN. (6063-T6 MIN.)
(STEEL IN CONTACT WITH ALUMINUM TO BE PLATED OR PANTED)

TYPICAL ANCHOR EDGE DISTANCE:
INTO CONCRETE AND MASONRY = 2 1/2" MIN.
INTO WOOD STRUCTURE = 1" MIN.
INTO METAL STRUCTURE = 3/4" MIN.

WOOD SG = 0.55 MIN. (HEAD & JAMB)
CONCRETE $f'_c = 3000 \text{ PSI MIN.}$ (HEAD & SILL & JAMB)
C-90 HOLLOW/FILLED BLOCK $f'_m = 2000 \text{ PSI MIN.}$ (JAMB ONLY)
NORMAL STRENGTH CMU

GLAZING BEAD AT FRAME SILL SEALED TO GLASS WITH DOW CORNING 983.
FRAME CORNERS SEALED WITH DOW CORNING 999 OR EQUAL COMPATIBLE

PRODUCT APPROVED
as complying with the Florida
Building Code
NOA-No. 23-0119.02

Approval Date 03/09/2023

By Ishag I. Chande
Miami-Dade Product Control

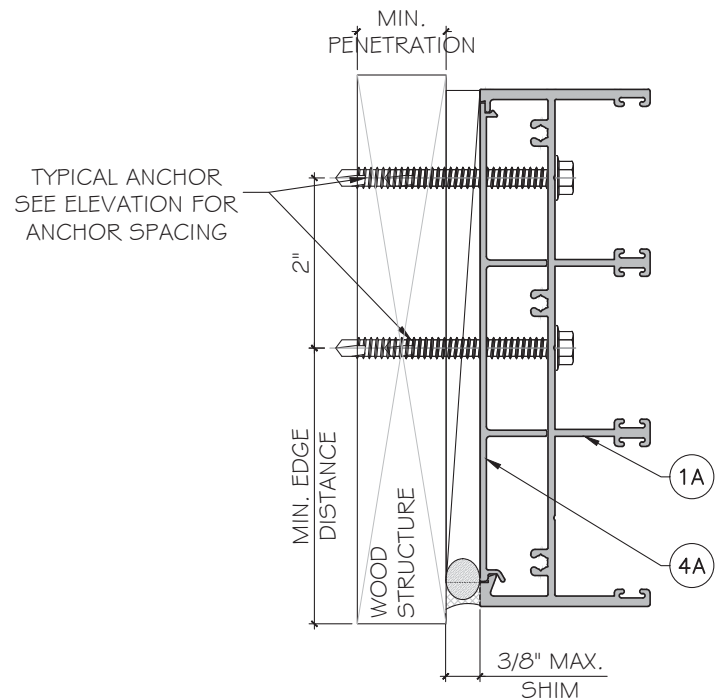
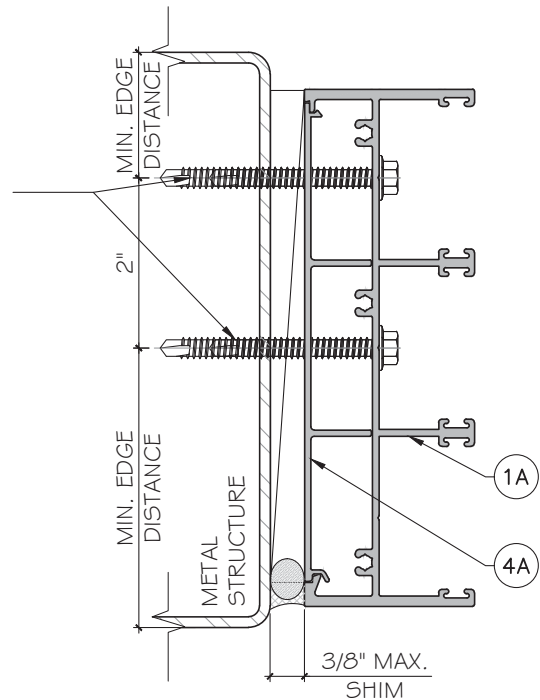
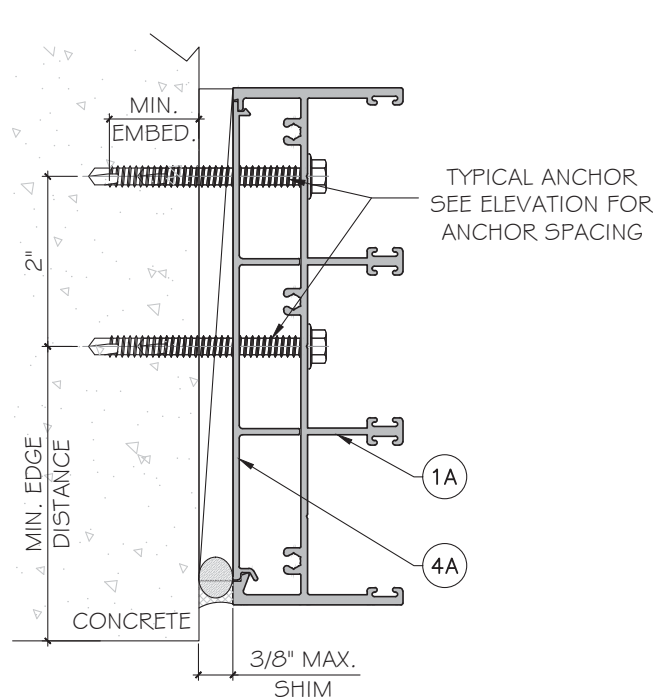
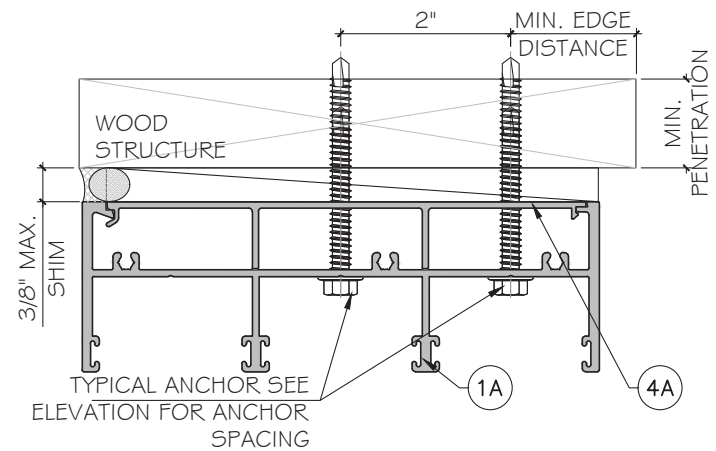
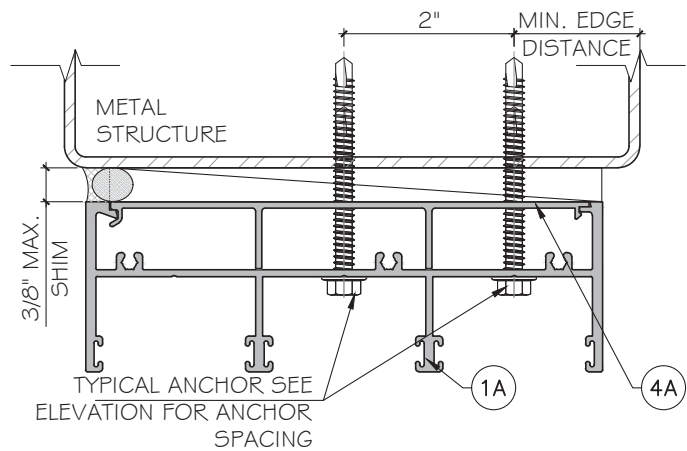
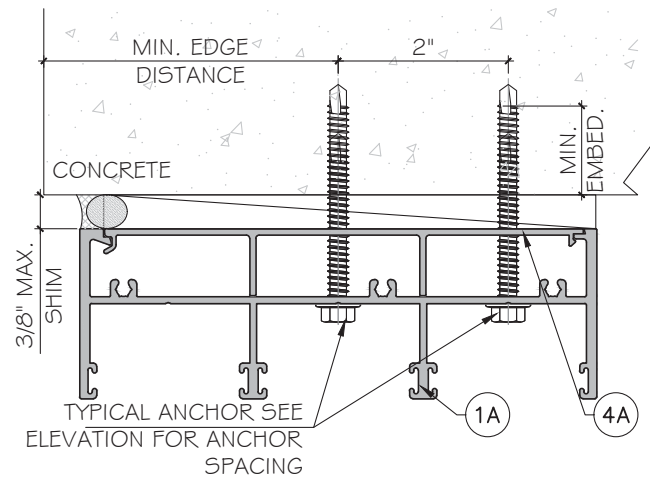
MIAMI-DADE COUNTY

YOUNG WANG & ASSOCIATES, P.A.
FLORIDA REGISTRATION
#55983
C.A.N. No. 5598377
February 24th, 2023

MCY ENGINEERING, INC.
GLAZING CONSULTANTS
12781 MIRAMAR PKWY. STE. 301
MIRAMAR, FL 33027 P: 305 271-0117
www.MCYEngineering.com mcy@mcyengineering.com

SERIES SPA100 AND SPA150 SLIDING GLASS DOOR - L.M.I.
SHANGHAI SUPERHOUSE BUILDING MATERIAL CO., LTD
LEVEL 5, BUILDING 10, NO.8666 HUNAN RD, PUDONG NEW AREA
Shanghai, China
TEL:86 021-5822 0630 CELL:86 135-8572-3609

Rev. No.	Date	Drawn By	Description
01	12.06.2022	James	NEW PRODUCT APPLICATION
Drawing Date 02.26.2022			
DRAWING NO. AD22-33			
A1			
Sheet No. 5 OF 17			



TYPICAL ANCHOR TYPES: SEE ELEVATIONS FOR SPACING

TYPE "A": 1/4" DIA. ULTRACON+ BY 'DEWALT' ($F_u=164$ KSI, $F_y=148$ KSI)
THRU 1BY OR 2BY WOOD BUCKS INTO CONCRETE
WITH 1 1/2" MIN. PENETRATION INTO WOOD
OR THRU WOOD INTO MONSORY

TYPE "B": 1/4" DIA. ULTRACON+ BY 'DEWALT' ($F_u=164$ KSI, $F_y=148$ KSI)
DIRECTLY INTO CONCRETE ($f'_c=3000$ PSI MIN.)
WITH 1 3/4" MIN. EMBED
DIRECTLY INTO HOLLOW BLOCK (JAMB ONLY)
WITH 1 1/4" MIN. EMBED.

DIRECTLY INTO GROUT FILLED BLOCKS (JAMB ONLY)
WITH 1 3/4" MIN. EMBED

TYPE "C": 1/4" TEKS SELF DRILLING SCREW(GRADE 5) ($F_u=120$ KSI, $F_y=90$ KSI)
INTO APPROVED MULLIONS
INTO METAL STRUCTURE
STEEL: 12 GA. MIN. ($F_y=36$ KSI MIN.)
ALUMINUM: 1/8" THK. MIN. (6063-T6 MIN.)
(STEEL IN CONTACT WITH ALUMINUM TO BE PLATED OR PANTED)

TYPICAL ANCHOR EDGE DISTANCE:
INTO CONCRETE AND MASONRY = 2 1/2" MIN.
INTO WOOD STRUCTURE = 1" MIN.
INTO METAL STRUCTURE = 3/4" MIN.

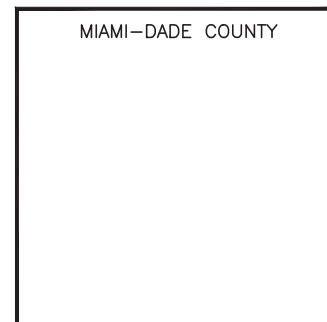
WOOD SG = 0.55 MIN. (HEAD & JAMB)
CONCRETE $f'_c = 3000$ psi MIN. (HEAD & SILL & JAMB)
C-90 HOLLOW/FILLED BLOCK $f'_m = 2000$ psi MIN. (JAMB ONLY)
NORMAL STRENGTH CMU

GLAZING BEAD AT FRAME SILL SEALED TO GLASS WITH DOW CORNING 983.
FRAME CORNERS SEALED WITH DOW CORNING 999 OR EQUAL COMPATIBLE

PRODUCT APPROVED
as complying with the Florida
Building Code
NOA-No. 23-0119.02

Approval Date 03/09/2023

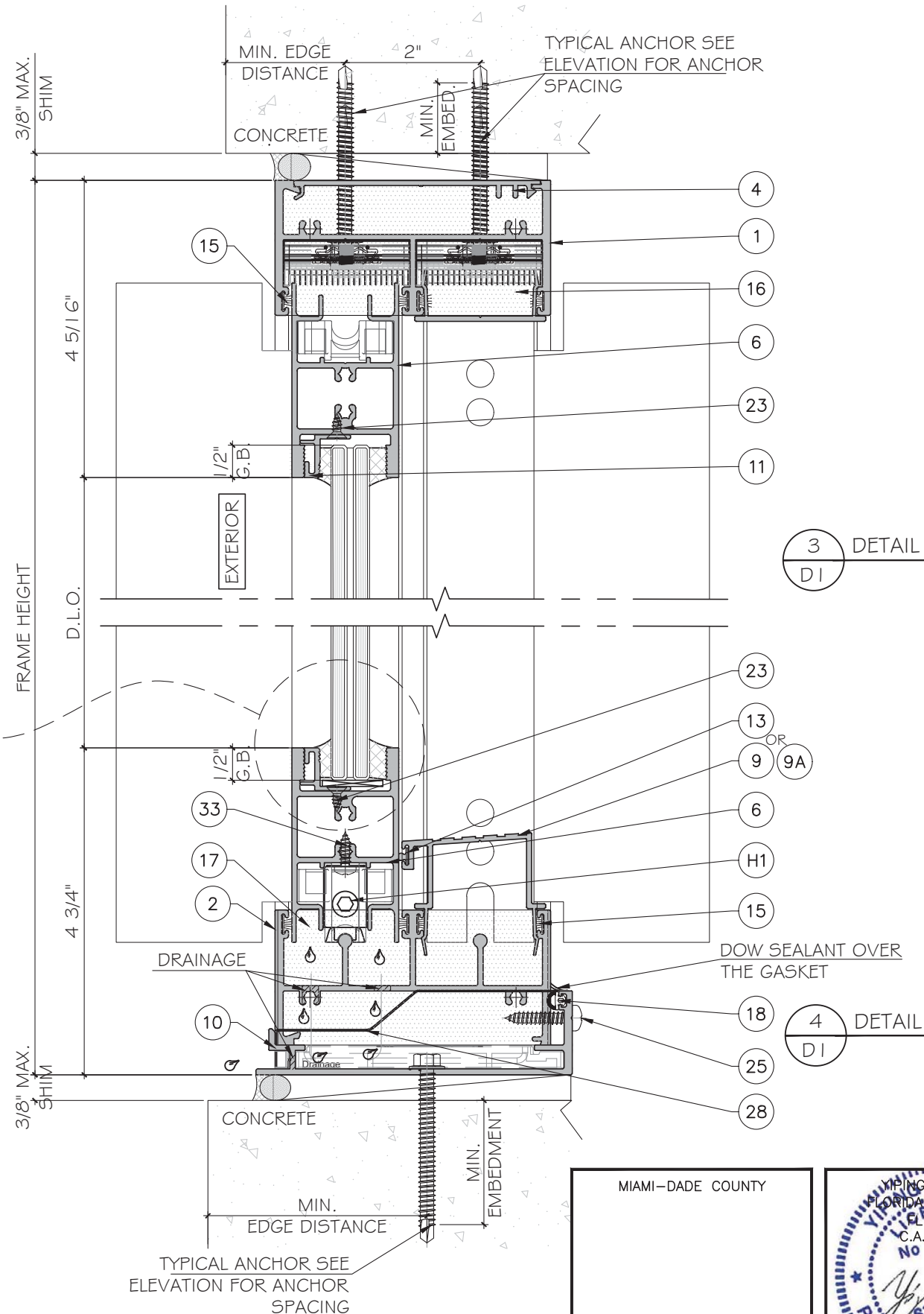
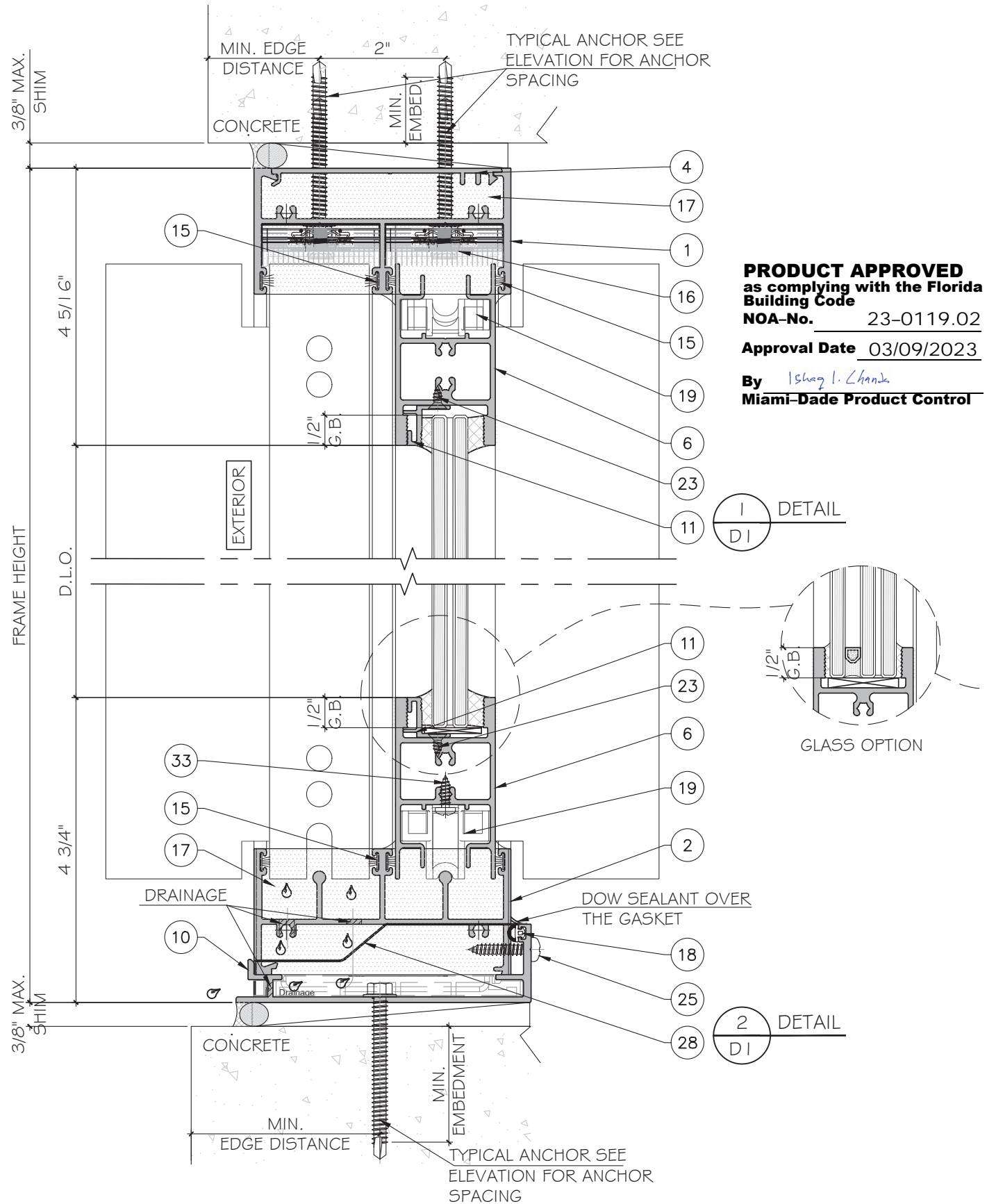
By *Ishaq I. Chanda*
Miami-Dade Product Control



SERIES SPA100 AND SPA150 SLIDING GLASS DOOR - L.M.I.
SHANGHAI SUPERHOUSE BUILDING MATERIAL CO., LTD
LEVEL 5, BUILDING 10, NO.8666 HUNAN RD, PUDONG NEW AREA
Shanghai, China
TEL:86 021-5822 0630 CELL:86 135-8572-3609

Rev. No.	Date	Drawn By	Description
01	12.06.2022	James	NEW PRODUCT APPLICATION
DRAWING NO. AD22-33			
A2			
Sheet No. 6 OF 17			

MCY ENGINEERING, INC.
GLAZING CONSULTANTS
12781 MIRAMAR PKWY. STE. 301
MIRAMAR, FL 33027 P: 305 271-0117
www.MCYEngineering.com mcy@mcyengineering.com



MIAMI-DADE COUNTY



MCY ENGINEERING, INC.
GLAZING CONSULTANTS
12781 MIRAMAR PKWY. STE. 301
MIRAMAR, FL 33027 P: 305 271-0117
www.MCYEngineering.com mcy@mcyengineering.com

SERIES SPA100 AND SPA150 SLIDING GLASS DOOR - L.M.I.
SHANGHAI SUPERHOUSE BUILDING MATERIAL CO., LTD
LEVEL 5, BUILDING 10, NO.8666 HUNAN RD, PUDONG NEW AREA
Shanghai, China
TEL:86 021-5822 0630 CELL:86 135-8572-3609

Rev. No.	Date	Drawn By	Description
01	12.06.2022	James	NEW PRODUCT APPLICATION

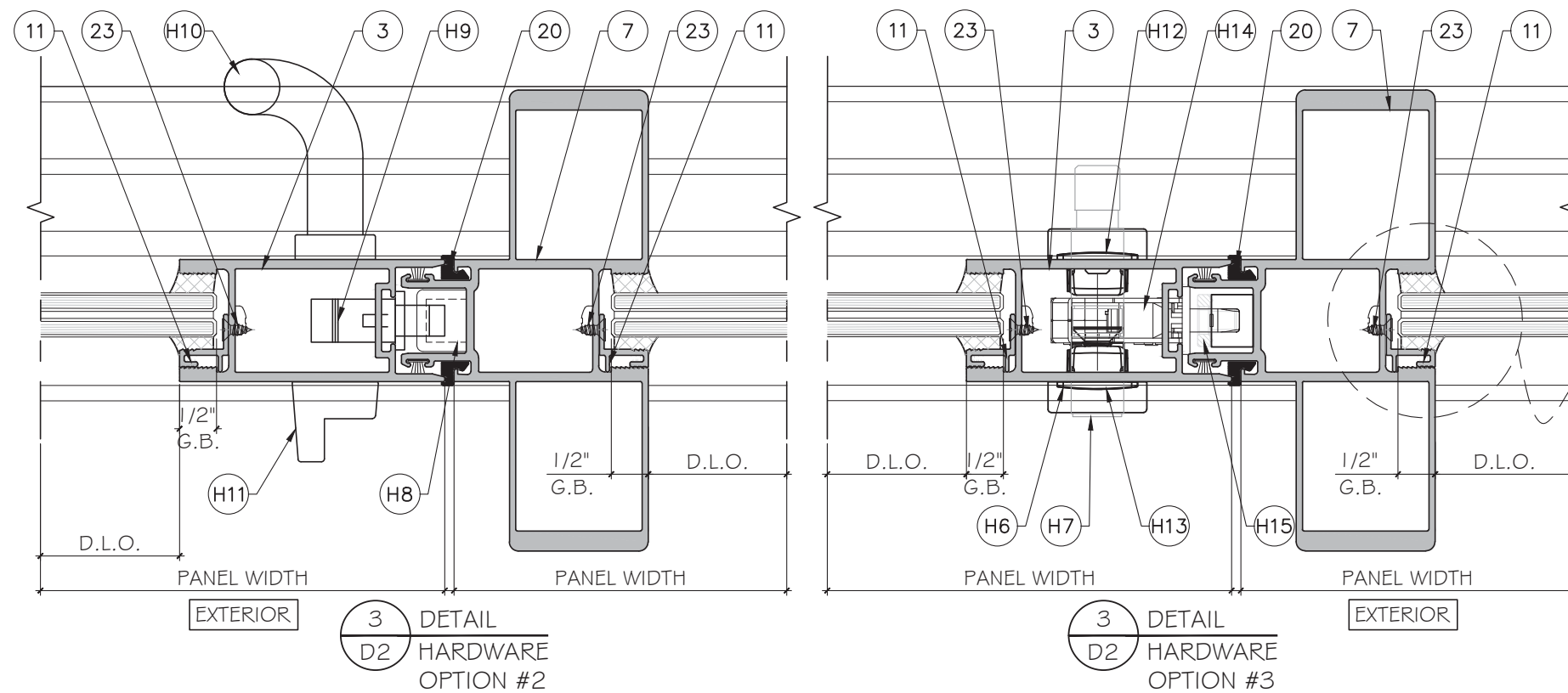
Drawn Date 02.26.2023

Drawn By

DRAWING NO. AD22-33

D1

Sheet No. 7 OF 17



A cross-sectional diagram of the door assembly showing the glass option. The diagram illustrates the door frame, the glass panel, and the internal components. A dimension line indicates a height of 1/2" for the glass panel. The text "G.B." is written below the dimension line. Below the diagram, the text "GLASS OPTION" is written.

YIPING WANG, P.E.
FLORIDA REGISTRATION
#55983
C.A.N. 5598377

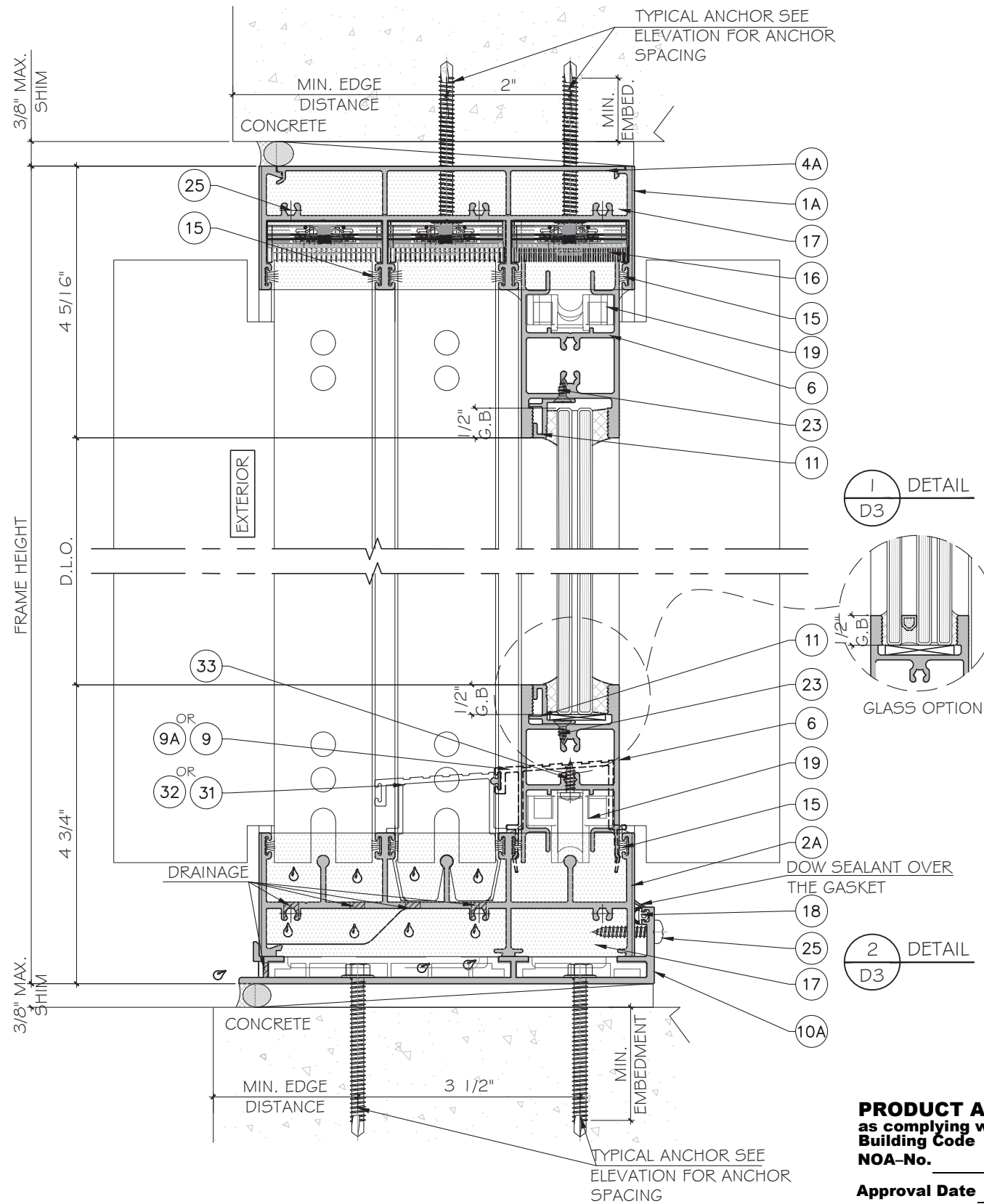
February 24th, 2023

[illegible]

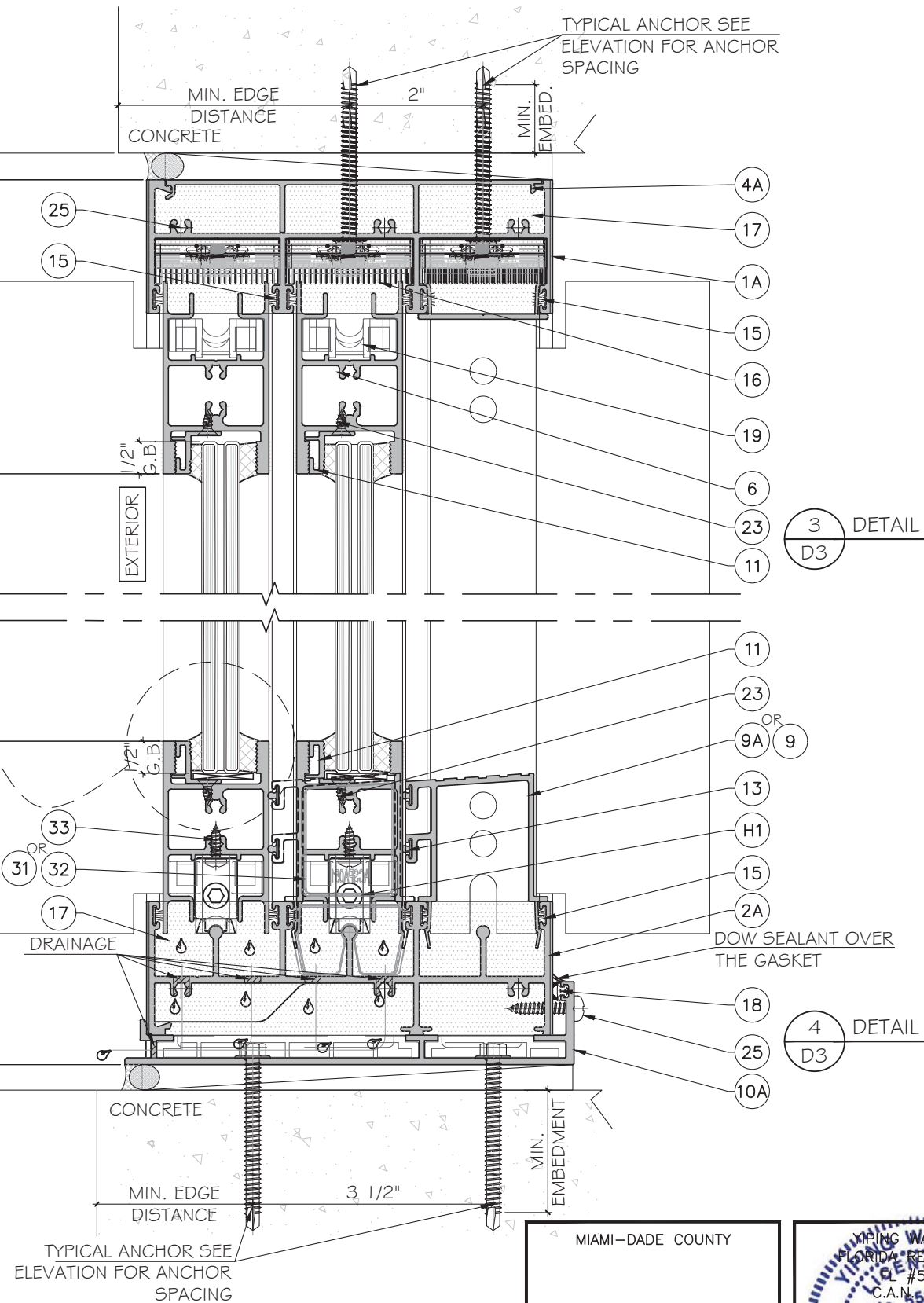
SERIES SPA100 AND SPA150 SLIDING GLASS DOOR - L.M.I.

SHANGHAI SUPERHOUSE BUILDING MATERIAL CO., LTD
LEVEL 5, BUILDING 10, NO.8666 HUNAN RD, PUDONG NEW AREA
Shanghai, China

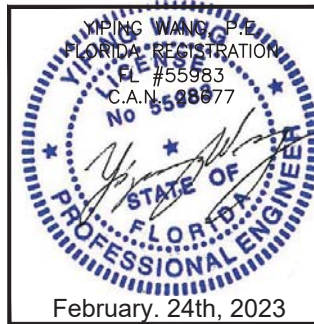
TEL 86 021-5822 0630 CELL 86 135-8572-3609



PRODUCT APPROVED
as complying with the Florida
Building Code
NOA-No. 23-0119.02
Approval Date 03/09/2023
By Ishag I. Chande
Miami-Dade Product Control



MIAMI-DADE COUNTY



MCY ENGINEERING, INC.
GLAZING CONSULTANTS
12781 MIRAMAR PKWY. STE. 301
MIRAMAR, FL 33027
P: 305 271-0117
www.MCYEngineering.com mcy@mcyengineering.com

MCY

SERIES SPA100 AND SPA150 SLIDING GLASS DOOR - L.M.I.
SHANGHAI SUPERHOUSE BUILDING MATERIAL CO., LTD
LEVEL 5, BUILDING 10, NO.8666 HUNAN RD, PUDONG NEW AREA
Shanghai, China
TEL:86 021-5822 0630 CELL:86 135-8572-3609

Rev.	Date	Drawn By	Description
01	12.06.2022	James	NEW PRODUCT APPLICATION

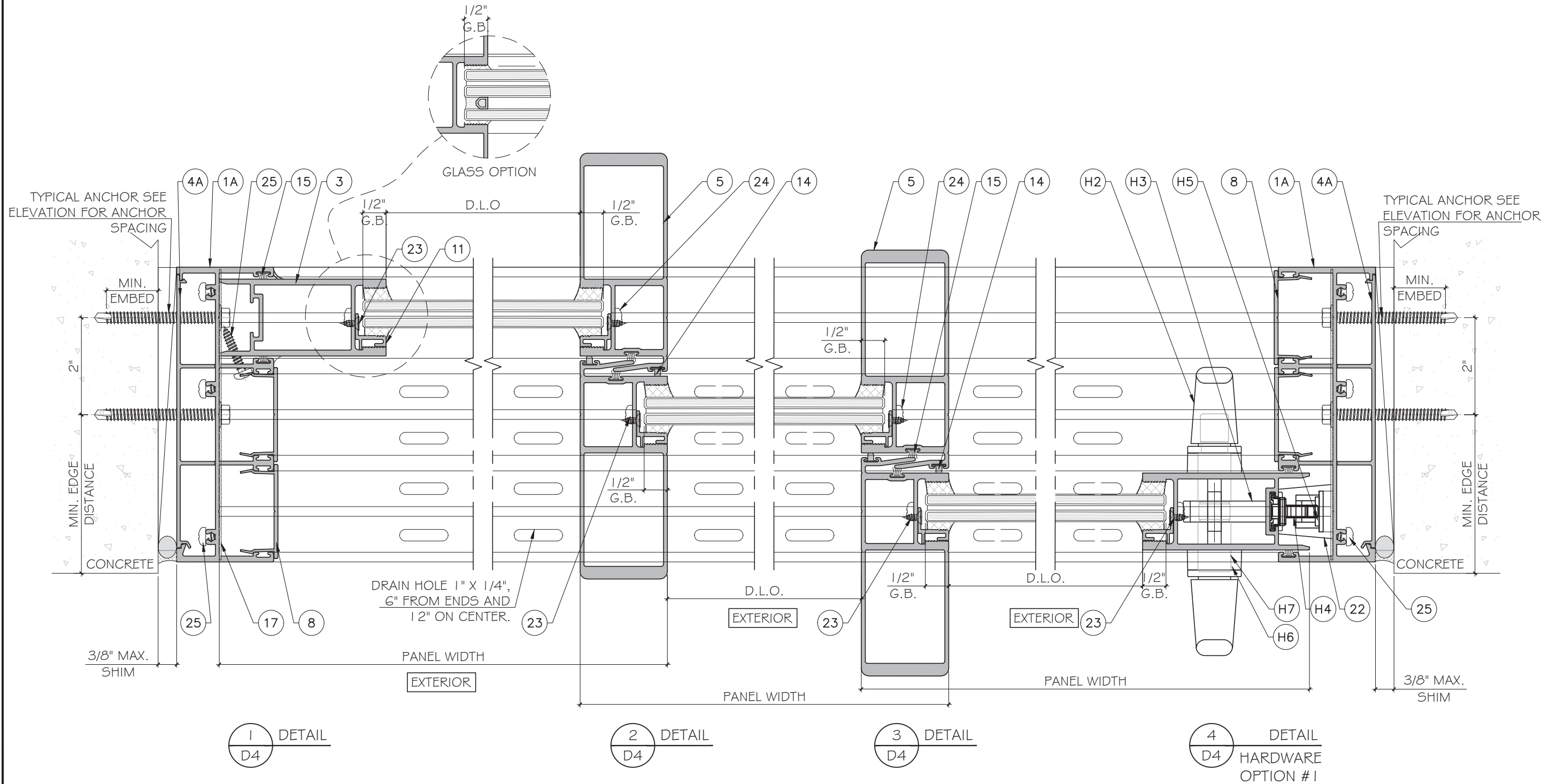
Drawn Date
02.26.2022

Drawn By

DRAWING NO.
AD22-33

D3

Sheet No.
9 OF 17



PRODUCT APPROVED
as complying with the Florida
Building Code
NOA-No. 23-0119.02
Approval Date 03/09/2023
By Ishaq I. Chande
Miami-Dade Product Control

MIAMI-DADE COUNTY

MIAMI-DADE COUNTY
FLORIDA REGISTRATION
#55983
C.A.N. No 5598377

February 24th, 2023

MCY

ENGINEERING, INC.

GLAZING CONSULTANTS

12781 MIRAMAR PKWY. STE. 301
MIRAMAR, FL 33027
P: 305 271-0117
www.MCYEngineering.com mcy@mcyengineering.com

SERIES SPA100 AND SPA150 SLIDING GLASS DOOR - L.M.I.

SHANGHAI SUPERHOUSE BUILDING MATERIAL CO., LTD
LEVEL 5, BUILDING 10, NO.8666 HUNAN RD, PUDONG NEW AREA
Shanghai, China
TEL:86 021-5822 0630 CELL:86 135-8572-3609

Rev. No.	Date	Drawn By	Description
01	12.06.2022	James	NEW PRODUCT APPLICATION

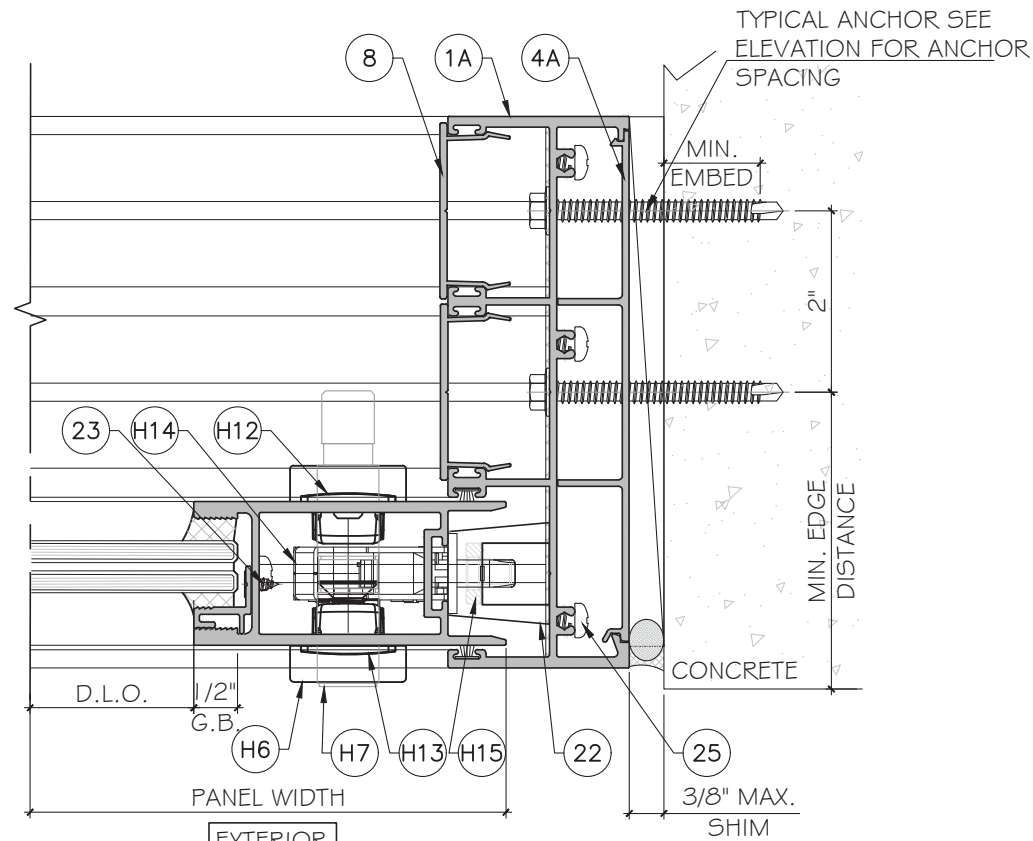
Drawn Date
02.26.2022

Drawn By

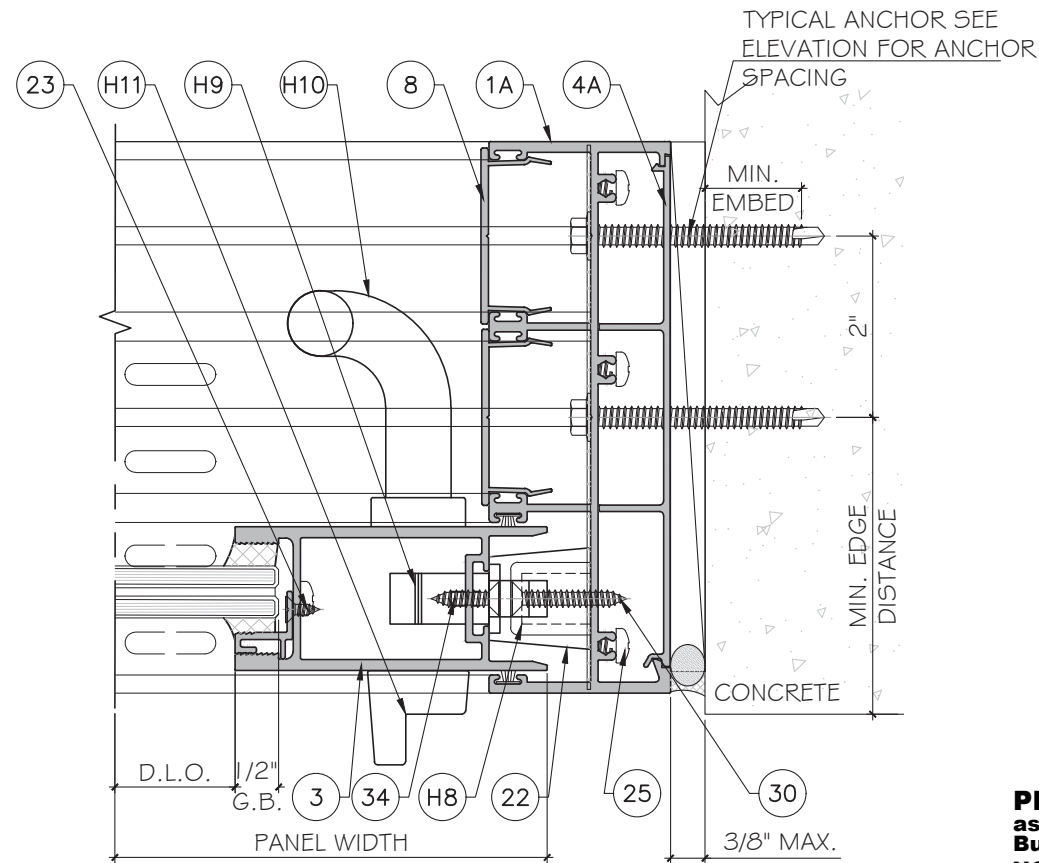
DRAWING NO.
AD22-33

D4

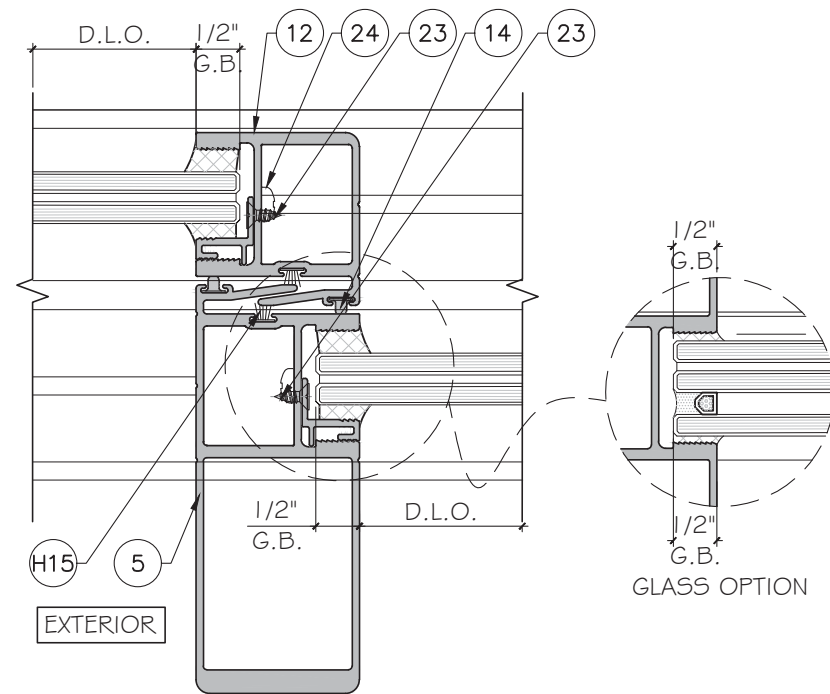
Sheet No.
10 OF 17



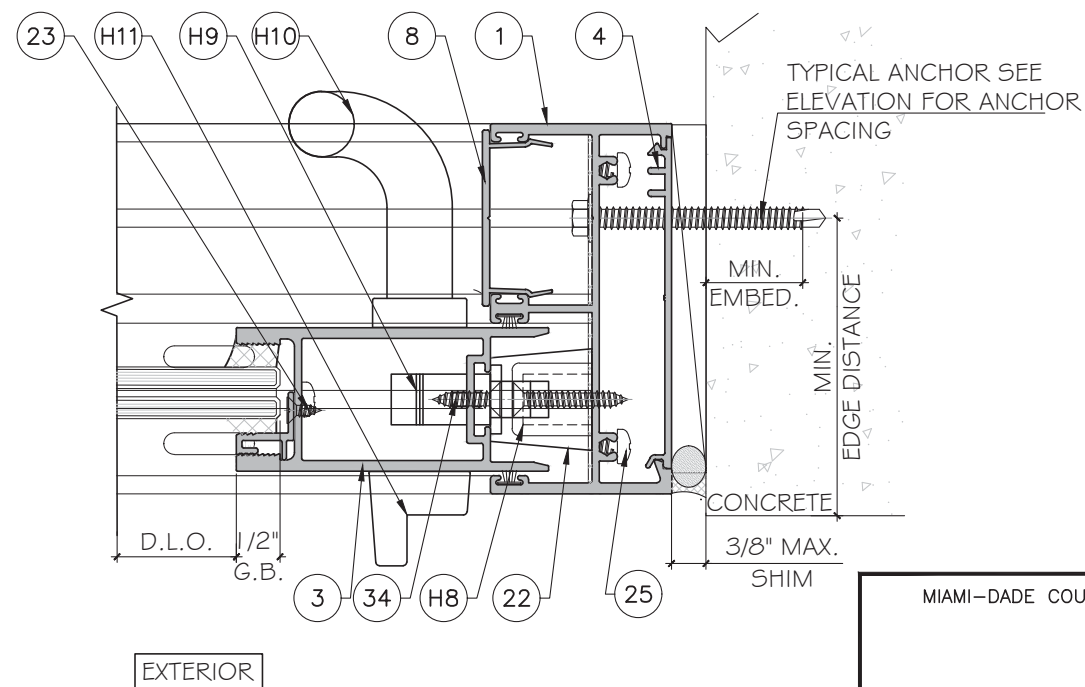
1
D5 DETAIL
D5 HARDWARE
OPTION #3



1
D5 DETAIL
D5 HARDWARE
OPTION #2



2
D5 DETAIL
D5 HARDWARE
OPTION #2



3
D5 DETAIL
D5 HARDWARE
OPTION #2

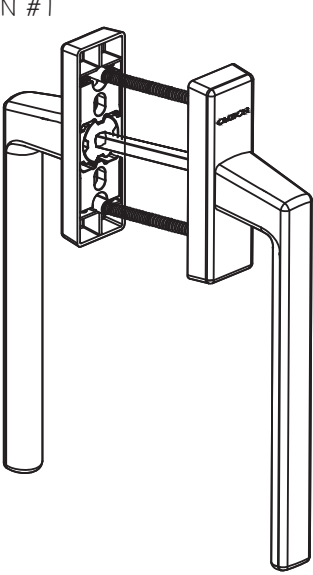
PRODUCT APPROVED
as complying with the Florida
Building Code
NOA-No. 23-0119.02
Approval Date 03/09/2023
By *Ishaq I. Chande*
Miami-Dade Product Control

MIAMI-DADE COUNTY

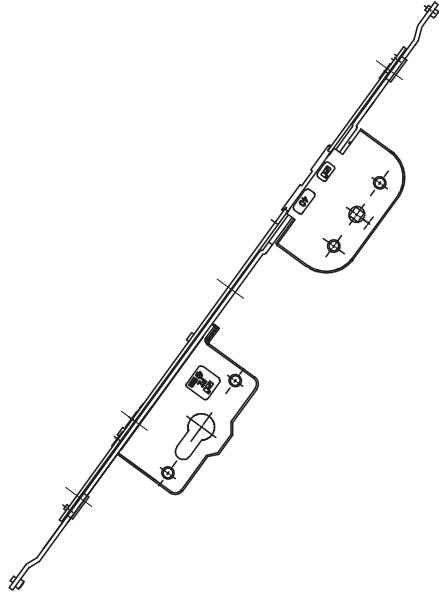
MIAMI-DADE COUNTY
FLORIDA REGISTRATION
#55983
C.A.N. No. 5598377
February 24th, 2023

HARDWARE COMPOSITION

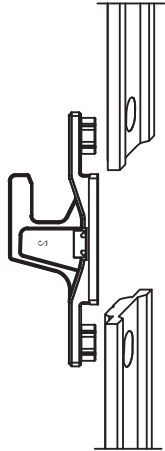
OPTION #1



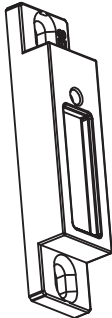
H2 HANDLE
E010204



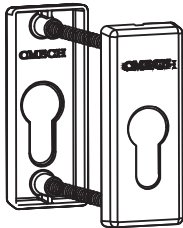
H3 MULTI-POINT LOCK
35PZ/C



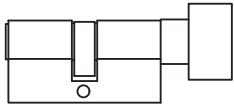
H4 HOOK&OPERATING
ROD
MTL08



H5 KEEPER
MTJ08E



H6 CYLINDER COVER
E140001



H7 CYLINDER
R3030

PRODUCT APPROVED
as complying with the Florida
Building Code
NOA-No. 23-0119.02
Approval Date 03/09/2023
By *Isheq L. Chande*
Miami-Dade Product Control

OPTION #2



H8 DOOR KEEPER
ACHSPA002



H9 DUAL POINT
MORTISE LOCK
D70L-SS

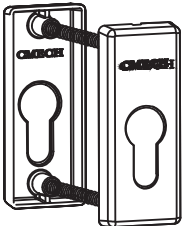


H10 INTERIOR HANDLE
2095 HANDLE-AL

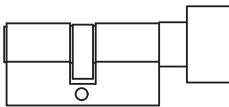


H11 EXTERIOR HANDLE
2095 HANDLE-AL

OPTION #3



H6 CYLINDER COVER
E140001



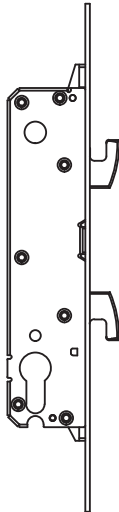
H7 CYLINDER
R3030



H12 EXTERIOR HANDLE
E010023



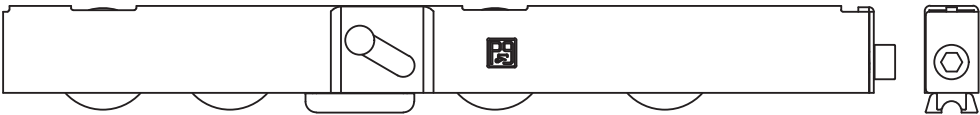
H13 INTERIOR HANDLE
E010019



H14 DUAL POINT
MORTISE LOCK
MTK02A-30

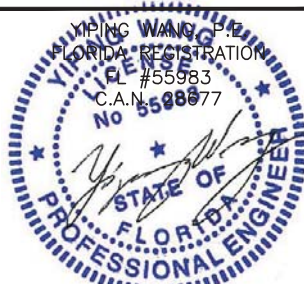


H15 KEEPER
MTJ02C



H1 DOOR ROLLER
SA89181-02T

MIAMI-DADE COUNTY



February. 24th, 2023

MCY ENGINEERING, INC.
GLAZING CONSULTANTS
12781 MIRAMAR PKWY. STE. 301
MIRAMAR, FL 33027 P: 305 271-0117
www.MCYEngineering.com mcy@mcyengineering.com

SERIES SPA100 AND SPA150 SLIDING GLASS DOOR - L.M.I
SHANGHAI SUPERHOUSE BUILDING MATERIAL CO., LTD
LEVEL 5, BUILDING 10, NO.8666 HUNAN RD, PUDONG NEW AREA
Shanghai, China
TEL:86 021-5822 0630 CELL:86 135-8572-3609

Rev. No.	Date	Drawn By	Description
01	12.06.2022	James	NEW PRODUCT APPLICATION

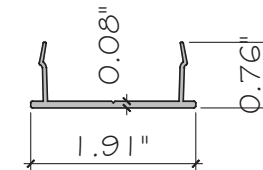
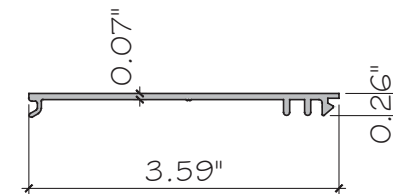
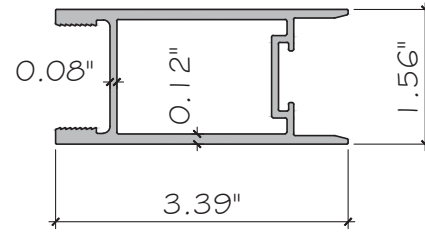
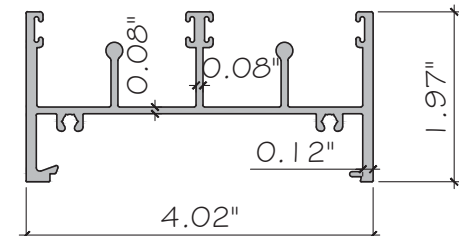
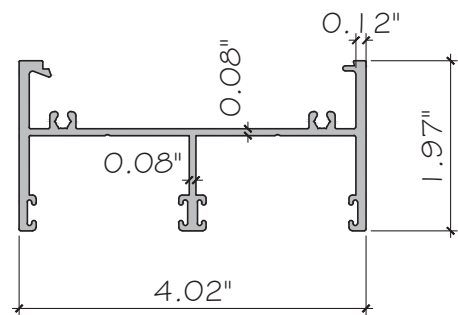
Drawn Date
02.26.2022

Drawn By

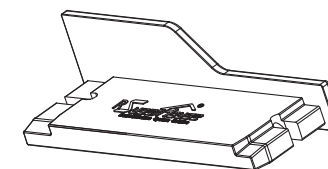
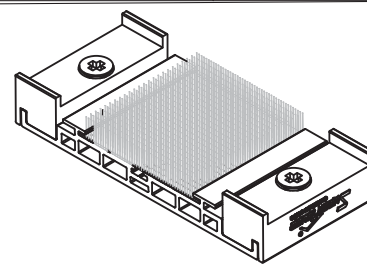
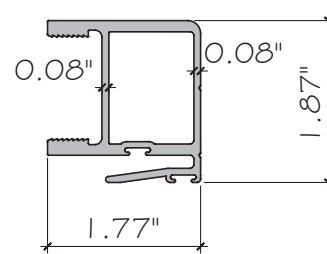
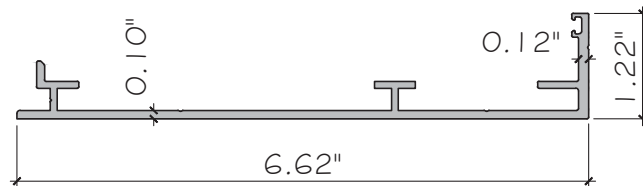
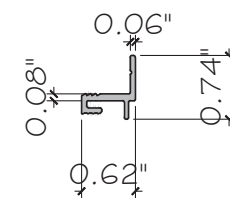
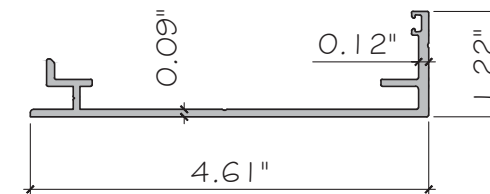
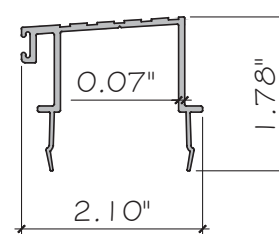
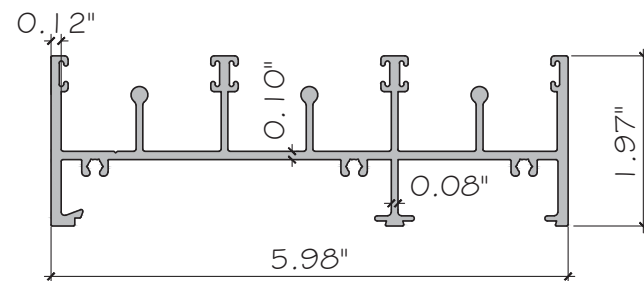
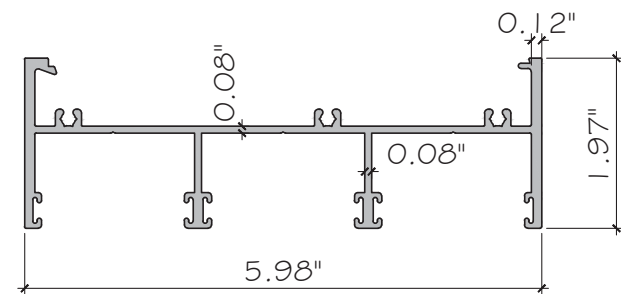
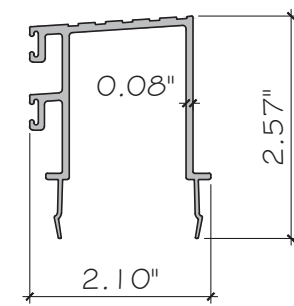
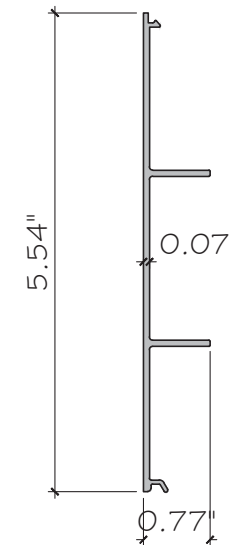
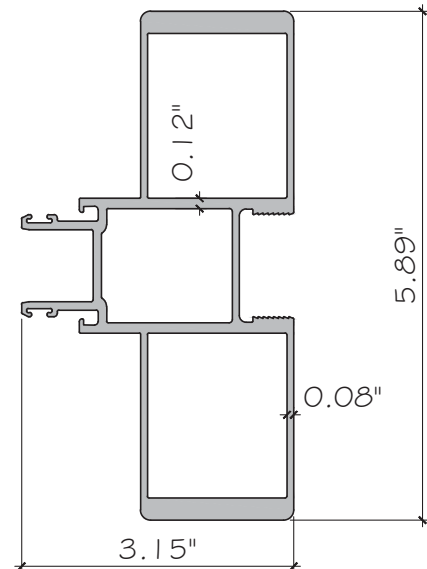
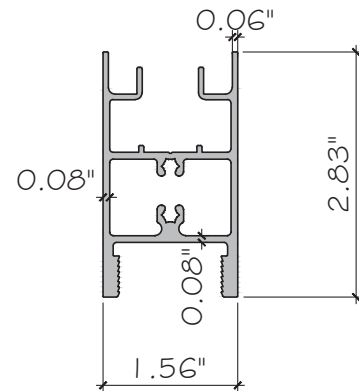
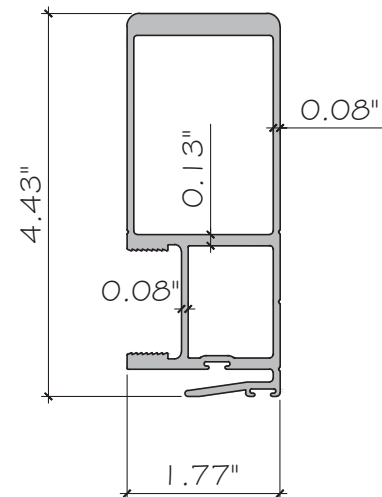
DRAWING NO.
AD22-33

Sheet No.
H1

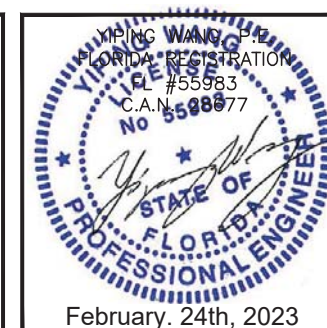
12 OF 17



PRODUCT APPROVED
as complying with the Florida
Building Code
NOA-No. 23-0119.02
Approval Date 03/09/2023
By Ishaq I. Chandra
Miami-Dade Product Control



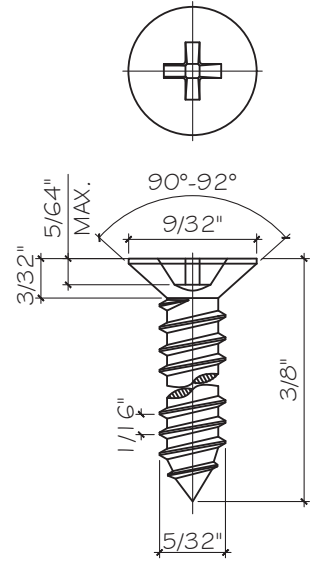
MIAMI-DADE COUNTY



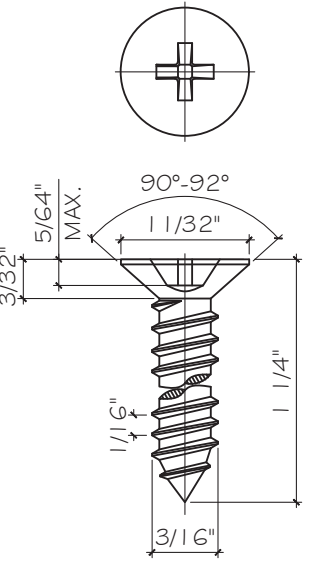
MCY ENGINEERING, INC.
GLAZING CONSULTANTS
12781 MIRAMAR PKWY. STE. 301
MIRAMAR, FL 33027 P: 305 271-0111
www.MCYEngineering.com mcy@mcyengineering.com

SERIES SPA100 AND SPA150 SLIDING GLASS DOOR - L.M.I
 SHANGHAI SUPERHOUSE BUILDING MATERIAL CO., LTD
 LEVEL 5, BUILDING -10, NO 8866 HUNAN RD, PUDONG NEW AREA
 Shanghai, China
 TEL.86 021-5822 0630 CELL.86 135-8572-3609

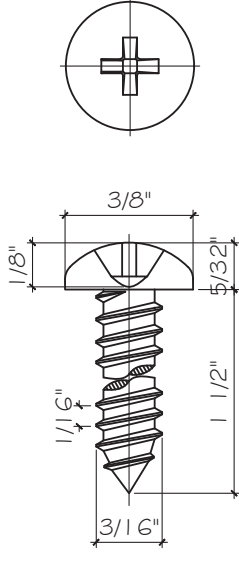
[illegible]



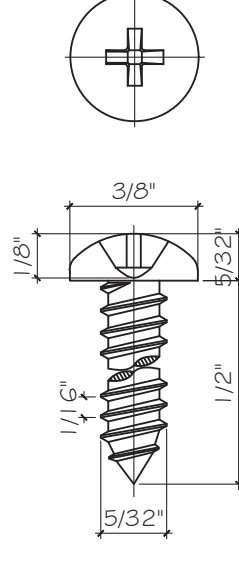
23 CROSS SLOTTED HEAD SCREW
SS304 $F_y \geq 205\text{MPa}$. $F_u = 594\text{-}620\text{MPa}$.
(SCREW COMPLY WITH US ASTM.)



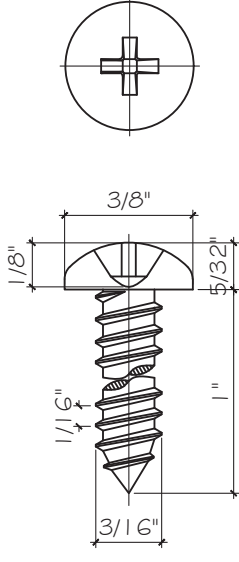
30 CROSS SLOTTED HEAD SCREW
SS304 $F_y \geq 205\text{MPa}$. $F_u = 594\text{-}620\text{MPa}$.
(SCREW COMPLY WITH US ASTM.)



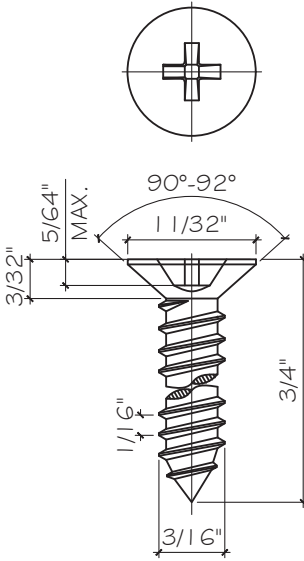
24 CROSS PAN HEAD SCREW
SS304 $F_y \geq 205\text{MPa}$. $F_u = 594\text{-}620\text{MPa}$.
(SCREW COMPLY WITH US ASTM.)



33 CROSS PAN HEAD SCREW
SS304 $F_y \geq 205\text{MPa}$. $F_u = 594\text{-}620\text{MPa}$.
(SCREW COMPLY WITH US ASTM.)



25 CROSS PAN HEAD SCREW
SS304 $F_y \geq 205\text{MPa}$. $F_u = 594\text{-}620\text{MPa}$.
(SCREW COMPLY WITH US ASTM.)



34 CROSS SLOTTED HEAD SCREW
SS304 $F_y \geq 205\text{MPa}$. $F_u = 594\text{-}620\text{MPa}$.
(SCREW COMPLY WITH US ASTM.)

PRODUCT APPROVED
as complying with the Florida
Building Code
NOA-No. 23-0119.02
Approval Date 03/09/2023
By Ishag I. Chande
Miami-Dade Product Control

MIAMI-DADE COUNTY



MCY ENGINEERING, INC.
GLAZING CONSULTANTS
12781 MIRAMAR PKWY. STE. 301
MIRAMAR, FL 33027 P: 305 271-0117
www.MCYEngineering.com mcy@mcysengineering.com

SERIES SPA100 AND SPA150 SLIDING GLASS DOOR - L.M.I.
SHANGHAI SUPERHOUSE BUILDING MATERIAL CO., LTD
LEVEL 5, BUILDING 10, NO.8666 HUNAN RD, PUDONG NEW AREA
Shanghai, China
TEL:86 021-5822 0630 CELL:86 135-8572-3609

Rev. No.	Date	Drawn By	Description
01	12.06.2022	James	NEW PRODUCT APPLICATION

Drawn Date 02.26.2022

DRAWING NO.

AD22-33

PARTS

Sheet No.
14 OF 17

BILL OF MATERIALS				
ITEM	PART	DESCRIPTION	MATERIAL	MANUFACTURE
1	SPA10058	FRAME HEAD AND JAMB	ALUM. 6063-T5	GUANGYA ALU. COMPANY
1A	SPA15033	DOOR FRAME	ALUM. 6063-T5	GUANGYA ALU. COMPANY
2	SPA10059	FRAME SILL	ALUM. 6063-T5	GUANGYA ALU. COMPANY
2A	SPA15034	DOOR TRACK	ALUM. 6063-T5	GUANGYA ALU. COMPANY
3	SPA10162B	DOOR LOCK STILE	ALUM. 6063-T5	GUANGYA ALU. COMPANY
4	SPA10007	FLUSH ADAPTOR	ALUM. 6063-T5	GUANGYA ALU. COMPANY
4A	SPA15007A	FLUSH ADAPTOR	ALUM. 6063-T5	GUANGYA ALU. COMPANY
5	SPA10025A	HEAVY DUTY INTERLOCK	ALUM. 6063-T5	GUANGYA ALU. COMPANY
6	SPA10098	TOP & BOTTOM RAIL	ALUM. 6063-T5	GUANGYA ALU. COMPANY
7	SPA10163	HEAVY DUTY MALE LOCK STILE	ALUM. 6063-T5	GUANGYA ALU. COMPANY
8	SPA10029	FRAME ADAPTOR	ALUM. 6063-T5	GUANGYA ALU. COMPANY
9	SPA10036	LOW THRESHOLD	ALUM. 6063-T5	GUANGYA ALU. COMPANY
9A	SPA10039	HIGH THRESHOLD	ALUM. 6063-T5	GUANGYA ALU. COMPANY
10	SPA10060	SUB SILL	ALUM. 6063-T5	GUANGYA ALU. COMPANY
10A	SPA15035	SUB SILL	ALUM. 6063-T5	GUANGYA ALU. COMPANY
11	SPA10040	LAM. GLASS ADAPTOR	ALUM. 6063-T5	GUANGYA ALU. COMPANY
12	SPA10023	INTERLOCK	ALUM. 6063-T5	GUANGYA ALU. COMPANY
13	KS211	THRESHOLD GASKET, ADUROMETER 9±2 SHORE A	FOAM	-
14	KS201	INTERLOCK GASKET, ADUROMETER 9±2 SHORE A	FOAM	-
15	7-3.5-4	PILE W/STRIPPING WITH FIN	-	-
16	ACSPA001	TOP SEALING BLOCK AND STOPPER	PA66	SUPERHOUSE COMPANY
17	SPA10001W	FRAME JOINT GASKET	-	3M COMPANY
18	SBWG-006	SUBSILL GASKET, ADUROMETER 70±5 SHORE A	EPDM	-
19	ACSPA020	SUPPORT BLOCK FOR FIX PANEL BOTTOM	PA66	SUPERHOUSE COMPANY
20	KS521	MALE LOCK STILE GASKET, ADUROMETER 9±2 SHORE A	FOAM	-
21	-	EPDM SETTING BLOCK 3/32" X 7/8", ADUROMETER 75±5 SHORE A	EPDM	-
22	-	EPDM STOPPER, ADUROMETER 65±2 SHORE A	EPDM	-
23	-	CROSS SLOTTED HEAD SCREW DIA.5/32" X 3/8", Fy≥205MPA, Fu=594-620MPA. @ 12" O.C. (SCREW COMPLY WITH US ASTM.)	S5304	CHUANGGU COMPANY
24	-	CROSS PAN HEAD SCREW DIA.3/16" X 1 1/2", Fy≥205MPA, Fu=594-620MPA. (SCREW COMPLY WITH US ASTM.)	S5304	CHUANGGU COMPANY
25	-	CROSS PAN HEAD SCREW DIA.3/16" X 1",Fy≥205MPA, Fu=594-620MPA. @ 12" O.C. (SCREW COMPLY WITH US ASTM.)	S5304	CHUANGGU COMPANY
26	-	EPDM SETTING BLOCK 5/32" X 1-3/32", ADUROMETER 75±5 SHORE A	EPDM	-
27	-	STRUCTURE SILICONE DOWSIL 995	SILICONE	DOWSIL
28	ACSPA008	SUBSILL END CAP (L&R)	PA66	SUPERHOUSE COMPANY
29	NOT USED			
30	-	CROSS SLOTTED HEAD SCREW, DIA.3/16" X 1 1/4", Fy≥205MPA. Fu=594-620MPA. (SCREW COMPLY WITH US ASTM.)	S5304	CHUANGGU COMPANY
31	ACSPA-018	LOW THRESHOLD END CAP	TPR	SUPERHOUSE COMPANY
32	ACSPA-051	HIGH THRESHOLD END CAP	TPR	SUPERHOUSE COMPANY
33		CROSS PAN HEAD SCREW DIA.5/32" X 1/2", Fy≥205MPA. Fu=594-620MPA. (SCREW COMPLY WITH US ASTM.)	S5304	CHUANGGU COMPANY
34		CROSS SLOTTED HEAD SCREW, DIA.3/16" X 3/4", Fy≥205MPA. Fu=594-620MPA. (SCREW COMPLY WITH US ASTM.)	S5304	CHUANGGU COMPANY

SERIES SPA100 AND SPA150 SLIDING GLASS DOOR - L.M.I

SHANGHAI SUPERHOUSE BUILDING MATERIAL CO., LTD
LEVEL 5, BUILDING 10, NO.8666 HUNAN RD, PUDONG NEW AREA
Shanghai, China
TEL.86 021-5822 0630 CELL.86 135-9572-3609

MCY ENGINEERING, INC.
GLAZING CONSULTANTS

12781 MIRAMAR PKWY. STE. 301
MIRAMAR, FL 33027 P: 305 271-0100
www.MCVEngineering.com mcye@mcveengineering.com

BILL OF MATERIALS				
ITEM	PART	DESCRIPTION	MATERIAL	MANUFACTURE
H1	SA89181-02T	DOOR ROLLER	PAGG	PAG
H2	EO10204	HANDLE	ZINC ALLOY	CMECH
H3	35PZ/C	MULTI-POINT LOCK	ZINC ALLOY	SIEGENIA
H4	MTL08	HOOK	STAINLESS STEEL	MUTU
H5	MTJ08E	KEEPER	STAINLESS STEEL	MUTU
H6	E140001	CYLINDER COVER	ZINC ALLOY	CMECH
H7	FT130105	CYLINDER, R3030	BRASS	CMECH
H8	ACHSPA002	DOOR KEEPER	STAINLESS STEEL	SUPERHOUSE COMPANY
H9	D70L-SS	DUAL POINT MORTISE LOCK	STAINLESS STEEL	DNW COMPANY
H10	2095 HANDLE - AL	INTERIOR HANDLE	STAINLESS STEEL	DNW COMPANY
H11	2095 HANDLE - AL	EXTERIOR HANDLE	STAINLESS STEEL	DNW COMPANY
H12	EO10023	EXTERIOR HANDLE	ZINC ALLOY	CMECH
H13	EO10019	INTERIOR HANDLE	ZINC ALLOY	CMECH
H14	MTK02A-30	DUAL POINT MORTISE LOCK	STAINLESS STEEL	MUTU
H15	MTJ02C	KEEPER	STAINLESS STEEL	MUTU

By Ishaq I. Chande
Miami-Dade Product Control

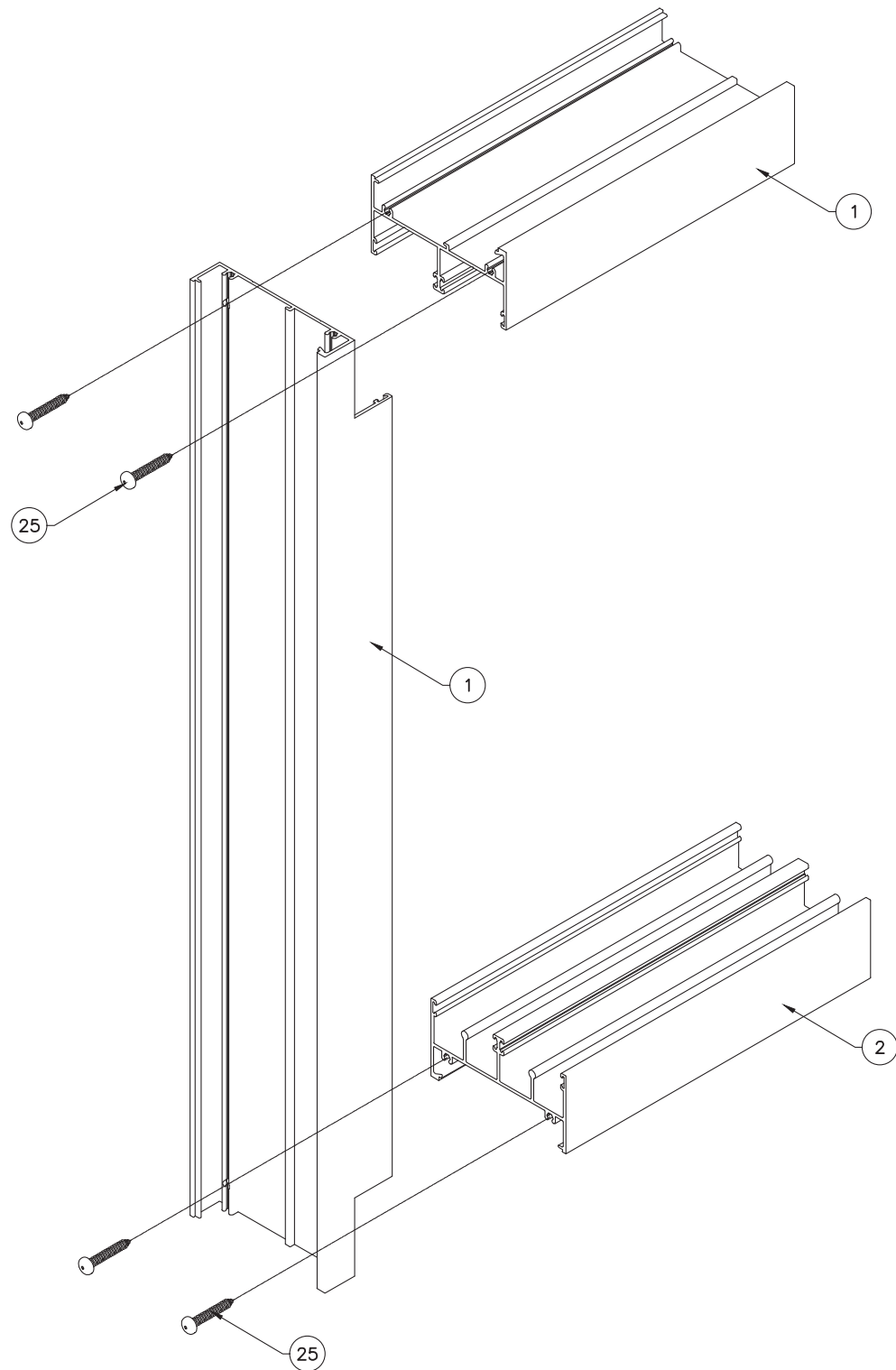
MIAMI-DADE COUNTY



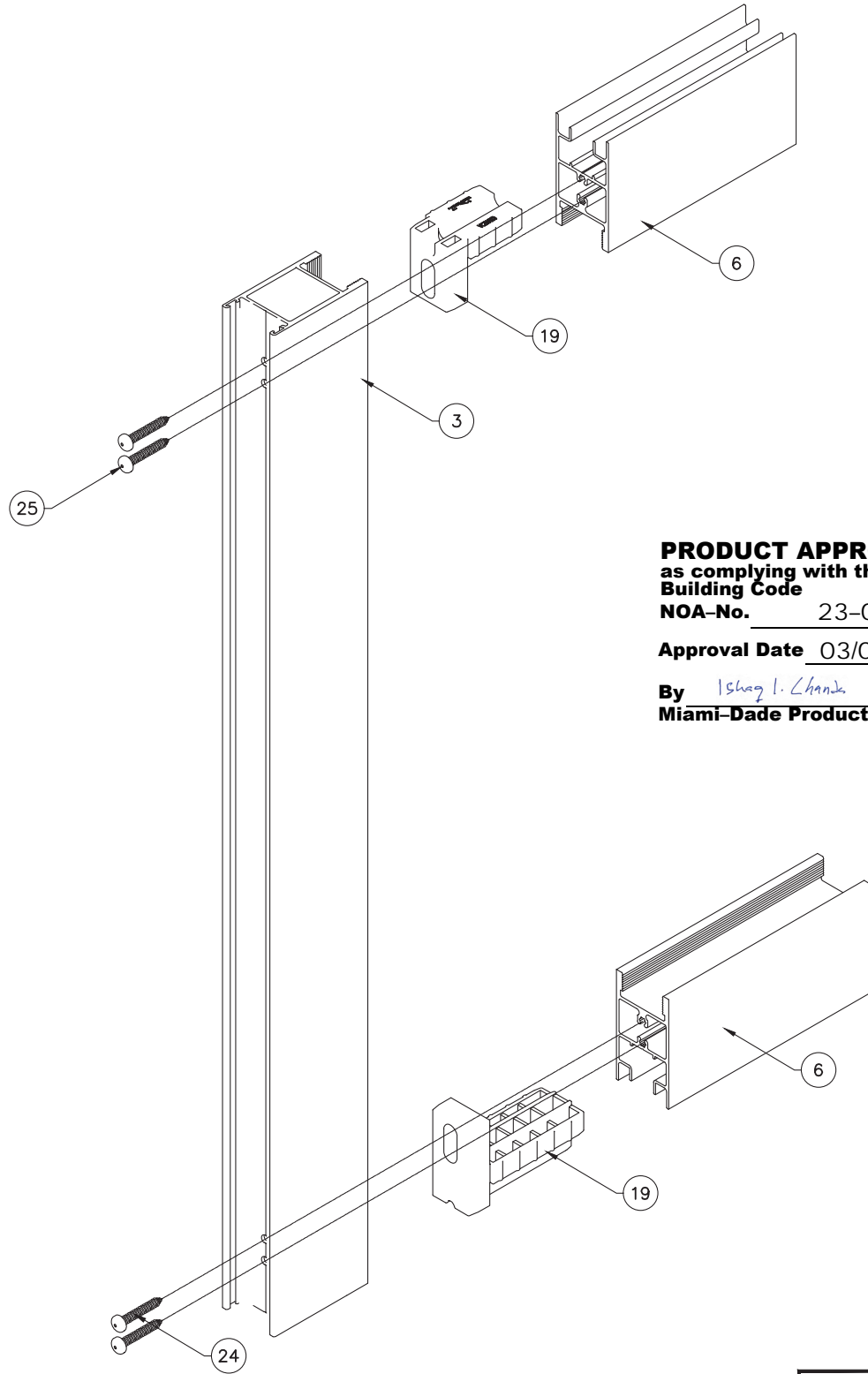
mcy@mcyengineering.com

Shanghai, China
TEL.86 021-5822 0630 CELL.86 135-8572-3609

[illegible]



FRAME CORNER ASSEMBLY
TOP AND BOTTOM



PANEL ASSEMBLY
TOP AND BOTTOM

PRODUCT APPROVED
as complying with the Florida
Building Code
NOA-No. 23-0119.02
Approval Date 03/09/2023
By *Ishaq I. Chande*
Miami-Dade Product Control



Drawn Date 02.26.2022		Drawn By	
DRAWING NO. AD22-33		ASSEMBLY	
Sheet No. 17 OF 17			

SERIES SPA100 AND SPA150 SLIDING GLASS DOOR - L.M.I.
SHANGHAI SUPERHOUSE BUILDING MATERIAL CO., LTD
LEVEL 5, BUILDING 10, NO.8666 HUNAN RD, PUDONG NEW AREA
Shanghai, China
TEL.86 021-5822 0630 CELL.86 135-8572-3609

M

C

Y

MCY ENGINEERING, INC.
GLAZING CONSULTANTS
12781 MIRAMAR PKWY. STE. 301
MIRAMAR, FL 33027 P: 305 271-0117
www.MCYEngineering.com mcy@mcyengineering.com