



DEPARTMENT OF REGULATORY AND ECONOMIC RESOURCES  
(RER)

BOARD AND CODE ADMINISTRATION DIVISION

## NOTICE OF ACCEPTANCE (NOA)

Clopay Corporation  
8585 Duke Boulevard  
Mason, OH 45040

### MIAMI-DADE COUNTY PRODUCT CONTROL SECTION

11805 SW 26 Street, Room 208

Miami, Florida 33175-2474

T (786) 315-2590 F (786) 315-2599

[www.miamidade.gov/economy](http://www.miamidade.gov/economy)

### SCOPE:

This NOA is being issued under the applicable rules and regulations governing the use of construction materials. The documentation submitted has been reviewed and accepted by Miami-Dade County RER-Product Control Section to be used in Miami-Dade County and other areas where allowed by the Authority Having Jurisdiction (AHJ).

This NOA shall not be valid after the expiration date stated below. The Miami-Dade County Product Control Section (In Miami-Dade County) and/ or the AHJ (in areas other than Miami-Dade County) reserve the right to have this product or material tested for quality assurance purposes. If this product or material fails to perform in the accepted manner, the manufacturer will incur the expense of such testing and the AHJ may immediately revoke, modify, or suspend the use of such product or material within their jurisdiction. RER reserves the right to revoke this acceptance if it is determined by Miami-Dade County Product Control Section that this product or material fails to meet the requirements of the applicable building code.

This product is approved as described herein and has been designed to comply with the Florida Building Code, including the High Velocity Hurricane Zone.

**DESCRIPTION: Full Vision W8 DP52 Aluminum Sectional Garage Door up to 12'-2" Wide with Impact Resistant Lites**

**APPROVAL DOCUMENT:** Drawing No. **105608**, titled "M/N 904 12' Wide +52/-58 psf", sheets 1 through 4 of 4, dated 09/22/2020, with revision **3** dated 09/06/2023, prepared by Clopay Corporation, signed and sealed by Mark Westerfield, P.E. on 09/14/2023, bearing the Miami-Dade County Product Control revision stamp with the Notice of Acceptance number and approval date by the Miami-Dade County Product Control Section.

**MISSILE IMPACT RATING: Large and Small Missile Impact Resistant**

**LABELING:** A permanent label with the manufacturer's name or logo, manufacturing address, model number, the positive and negative design pressure rating, indicate impact rated if applicable, installation instruction drawing reference number, approval number (NOA), the applicable test standards, and the statement reading 'Miami-Dade County Product Control Approved' is to be located on the door's sidetrack, bottom angle, or inner surface of a panel.

**RENEWAL** of this NOA shall be considered after a renewal application has been filed and there has been no change in the applicable building code negatively affecting the performance of this product.

**TERMINATION** of this NOA will occur after the expiration date or if there has been a revision or change in the materials, use, and/ or manufacture of the product or process. Misuse of this NOA as an endorsement of any product, for sales, advertising or any other purposes shall automatically terminate this NOA. Failure to comply with any section of this NOA shall be cause for termination and removal of NOA.

**ADVERTISEMENT:** The NOA number preceded by the words Miami-Dade County, Florida, and followed by the expiration date may be displayed in advertising literature. If any portion of the NOA is displayed, then it shall be done in its entirety.

**INSPECTION:** A copy of this entire NOA shall be provided to the user by the manufacturer or its distributors and shall be available for inspection at the job site at the request of the Building Official.

This NOA **revises NOA #22-0705.10** and consists of this page 1 and evidence pages E-1, E-2 and E-3, as well as approval document mentioned above.

The submitted documentation was reviewed by **Helmy A. Makar, P.E., M.S.**



*Helmy A. Makar*  
12/21/2023

NOA-No 23-0928.61  
Expiration Date: 01/13/2027  
Approval Date: 12/21/2023  
Page 1

**NOTICE OF ACCEPTANCE: EVIDENCE SUBMITTED**

**1. Evidence submitted under NOA # 20-1013.02**

**A. DRAWINGS**

- 1. Drawing No. **105608**, titled “M/N 904 12’ Wide +52/-58 psf”, sheets 1 through 4 of 4, dated 09/22/2020, with revision **1** dated 09/2021, prepared by Clopay Corporation, signed and sealed by Mark Westerfield, P.E. on 11/23/2021.

**B. TESTS**

- 1. Addendum 2 prepared by American Test Lab, Inc. to Test Report No. **ATLNC 0512.01-20**, dated 07/15/2021, signed and sealed by David W. Johnson, P.E.
- 2. Addendum 3 prepared by American Test Lab, Inc. to Test Report No. **ATLNC 0512.01-20**, dated 08/09/2021, signed and sealed by David W. Johnson, P.E.
- 3. Addendum 4 prepared by American Test Lab, Inc. to Test Report No. **ATLNC 0512.01-20**, dated 09/07/2021, signed and sealed by David W. Johnson, P.E.
- 4. Test reports on
  - 1) Uniform Static Air Pressure Test, Loading per FBC TAS 202-94
  - 2) Large Missile Impact Test per FBC, TAS 201-94
  - 3) Cyclic Wind Pressure Loading per FBC, TAS 203-94
  - 4) Forced Entry Test, per FBC, TAS 202-94
  - 5) Tensile Test per ASTM E8along with marked-up drawings and installation diagram of 12’2”x 8’, aluminum garage doors Model 904W8 with windows, prepared by American Test Lab, Inc., Test Report No. **ATLNC 0512.01-20**, dated 07/29/2020, signed and sealed by David W. Johnson, P.E.

**C. CALCULATIONS**

- 1. Horizontal track calculations prepared by Clopay Building Products Company, dated 11/23/2021, signed and sealed by Mark Westerfield, P.E.
- 2. Jamb anchor calculations prepared by Clopay Building Products Company, dated 09/11/2020, signed and sealed by Mark Westerfield, P.E.

**D. QUALITY ASSURANCE**


- 1. Miami-Dade Department of Regulatory and Economic Resources (RER).

**E. MATERIAL CERTIFICATIONS**

- 1. Notice of Acceptance No. **20-0915.22** issued to Kuraray America, Inc. for their **Trosifol Ultraclear, Clear and Color PVB Glass Interlayers**, approved on 11/19/2020, expiring on 07/08/2024.

**F. STATEMENTS**

- 1. Statement letter of code conformance to the 6<sup>th</sup> edition (2017) and 7<sup>th</sup> edition (2020) of the FBC, issued by Clopay Corporation, dated 09/10/2020, signed and sealed by Mark Westerfield, P.E.
- 2. Statement letter of no financial interest issued by Clopay Corporation, dated 09/10/2020, signed and sealed by Mark Westerfield, P.E.

  
Helmy A. Makar, P.E., M.S.  
Product Control Section Supervisor  
NOA-No 23-0928.61  
Expiration Date: 01/13/2027  
Approval Date: 12/21/2023



NOTICE OF ACCEPTANCE: EVIDENCE SUBMITTED

2. EVIDENCE SUBMITTED UNDER PREVIOUS APPROVAL #22-0705.10

A. DRAWINGS

1. Drawing No. **105611**, titled “M/N 904 9’ Wide +52/-58 psf”, sheets 1 through 4 of 4, dated 09/22/2020, with revision **2** dated 06/2022, prepared by Clopay Corporation, signed and sealed by Mark Westerfield, P.E. on 06/27/2022.

B. TESTS

1. Test reports on 1) Uniform Static Air Pressure Test, Loading per FBC TAS 202-94  
2) Large Missile Impact Test per FBC, TAS 201-94  
3) Cyclic Wind Pressure Loading per FBC, TAS 203-94  
4) Forced Entry Test, per FBC, TAS 202-94  
5) Tensile Test per ASTM E8  
along with marked-up drawings and installation diagram of 9’x 8’, aluminum garage doors Model 904W8 with larger windows, prepared by American Test Lab, Inc., Test Report No. **ATLNC 0606.01-22**, dated 06/13/2022, signed and sealed by David W. Johnson, P.E.

C. CALCULATIONS

1. None.

D. QUALITY ASSURANCE


1. Miami-Dade Department of Regulatory and Economic Resources (RER).

E. MATERIAL CERTIFICATIONS

1. None.

F. STATEMENTS

1. None.

  
Helmy A. Makar, P.E., M.S.  
Product Control Section Supervisor  
NOA-No 23-0928.61  
Expiration Date: 01/13/2027  
Approval Date: 12/21/2023

Clopay Corporation

NOTICE OF ACCEPTANCE: EVIDENCE SUBMITTED

3. NEW EVIDENCE SUBMITTED

A. DRAWINGS

- 1. Drawing No. **105608**, titled “M/N 904 12’ Wide +52/-58 psf”, sheets 1 through 4 of 4, dated 09/22/2020, with revision **3** dated 09/06/2023, prepared by Clopay Corporation, signed and sealed by Mark Westerfield, P.E. on 09/14/2023.

B. TESTS

- 1. None.

C. CALCULATIONS

- 1. None.

D. QUALITY ASSURANCE

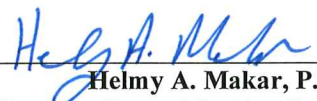
- 1. Miami-Dade Department of Regulatory and Economic Resources (RER).

E. MATERIAL CERTIFICATIONS

- 1. Notice of Acceptance No. **20-0915.22** issued to Kuraray America, Inc. for their **Trosifol Ultraclear, Clear and Color PVB Glass Interlayers**, approved on 11/19/2020, expiring on 07/08/2024.

G. STATEMENTS

- 1. Statement letter of code conformance to the 8<sup>th</sup> edition (2023) and 7<sup>th</sup> edition (2020) of the FBC, issued by Clopay Corporation, dated 09/15/2023, signed and sealed by Mark Westerfield, P.E.
- 2. Statement letter of no financial interest issued by Clopay Corporation, dated 09/15/2023, signed and sealed by Mark Westerfield, P.E.

  
\_\_\_\_\_  
Helmy A. Makar, P.E., M.S.  
Product Control Section Supervisor  
NOA-No 23-0928.61  
Expiration Date: 01/13/2027  
Approval Date: 12/21/2023

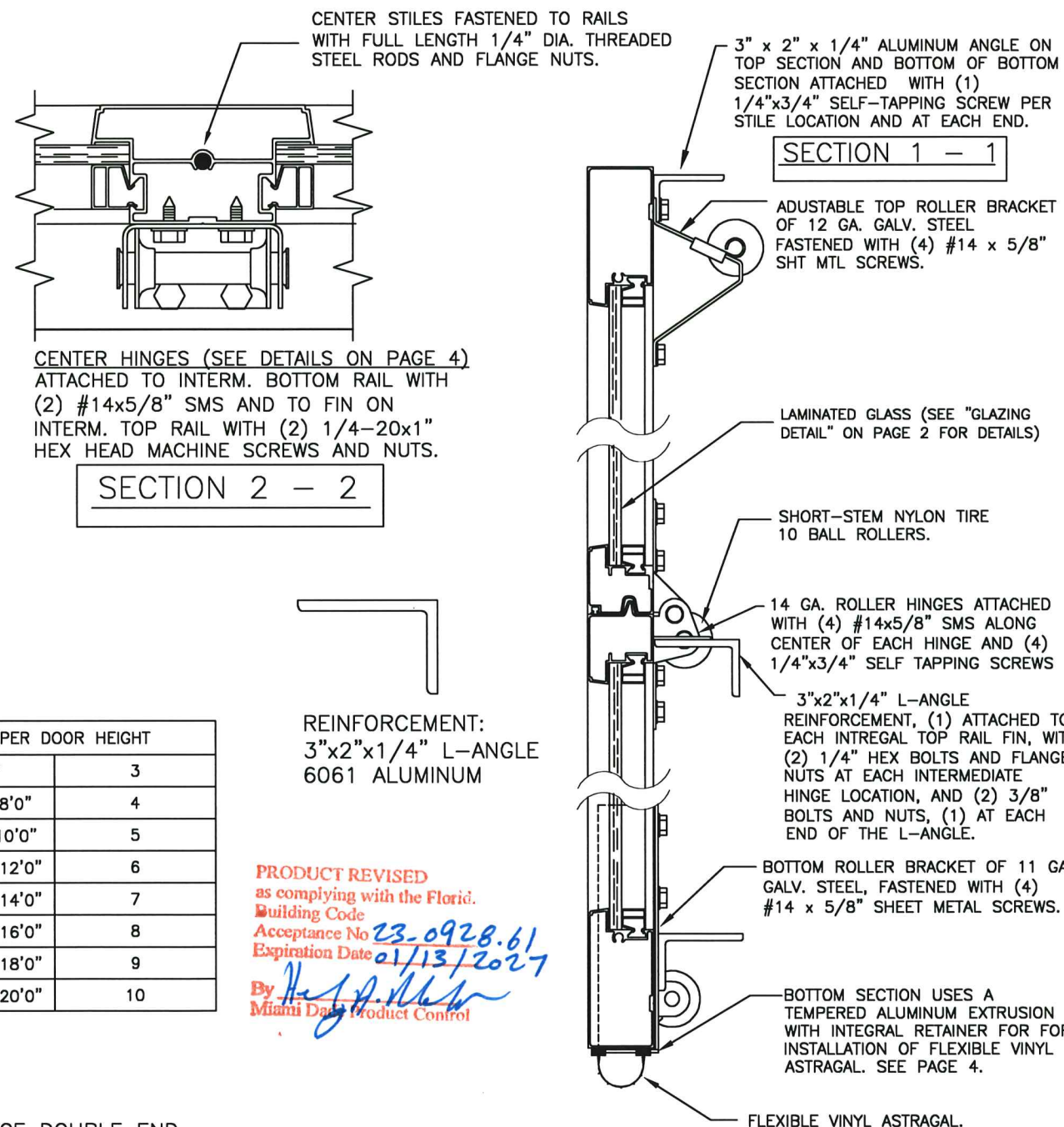
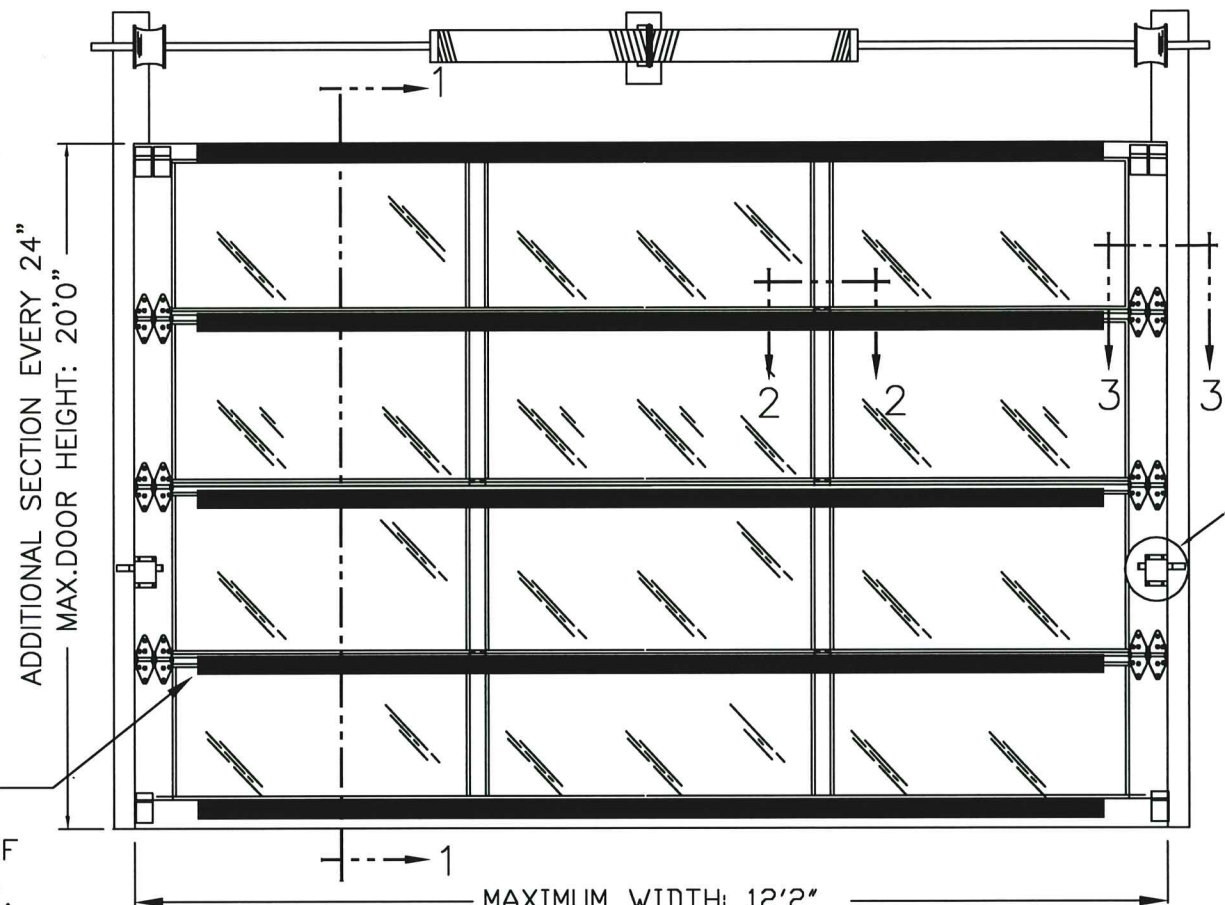


BRAND	MODEL
CLOPAY	904, 904U, AX, AXU
IDEAL	C4AL, C4ALU

THIS PRODUCT CONFORMS TO THE REQUIREMENTS OF 7TH AND 8TH EDITION OF THE FLORIDA BUILDING CODE.

SHEET:  
1 OF 4

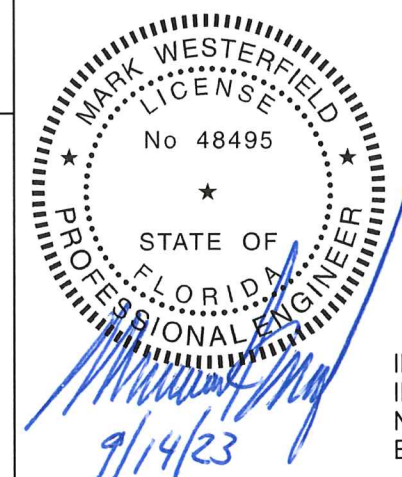
REVISIONS					
REV. NO.	ZONE	DATE	ECN NO.	APPVD:	DESCRIPTION
01	ALL	9/21		MWW	UPDATE PER M-D REQUEST; ADDED PAGE 4
02	ALL	6/22		MWW	SWITCH TO SNAP-IN BEAD; SB100; 1-1/2" SCREWS
03	D-3	9/6/23		JDW	ADDED CODE COMPLIANCE STATEMENT.



SECTIONS PER DOOR HEIGHT	
UP TO 6'0"	3
FROM 6'1" TO 8'0"	4
FROM 8'1" TO 10'0"	5
FROM 10'1" TO 12'0"	6
FROM 12'1" TO 14'0"	7
FROM 14'1" TO 16'0"	8
FROM 16'1" TO 18'0"	9
FROM 18'1" TO 20'0"	10

REINFORCEMENT:  
3"x2"x1/4" L-ANGLE  
6061 ALUMINUM

PRODUCT REVISED  
as complying with the Florida  
Building Code  
Acceptance No. 23-0928.61  
Expiration Date 01/13/2027  
By *[Signature]*  
Miami Data Product Control



DESIGN ENGINEER:  
MARK WESTERFIELD, P.E.  
FLORIDA P.E. #48495, NC P.E. #23832, TEXAS P.E. #91513

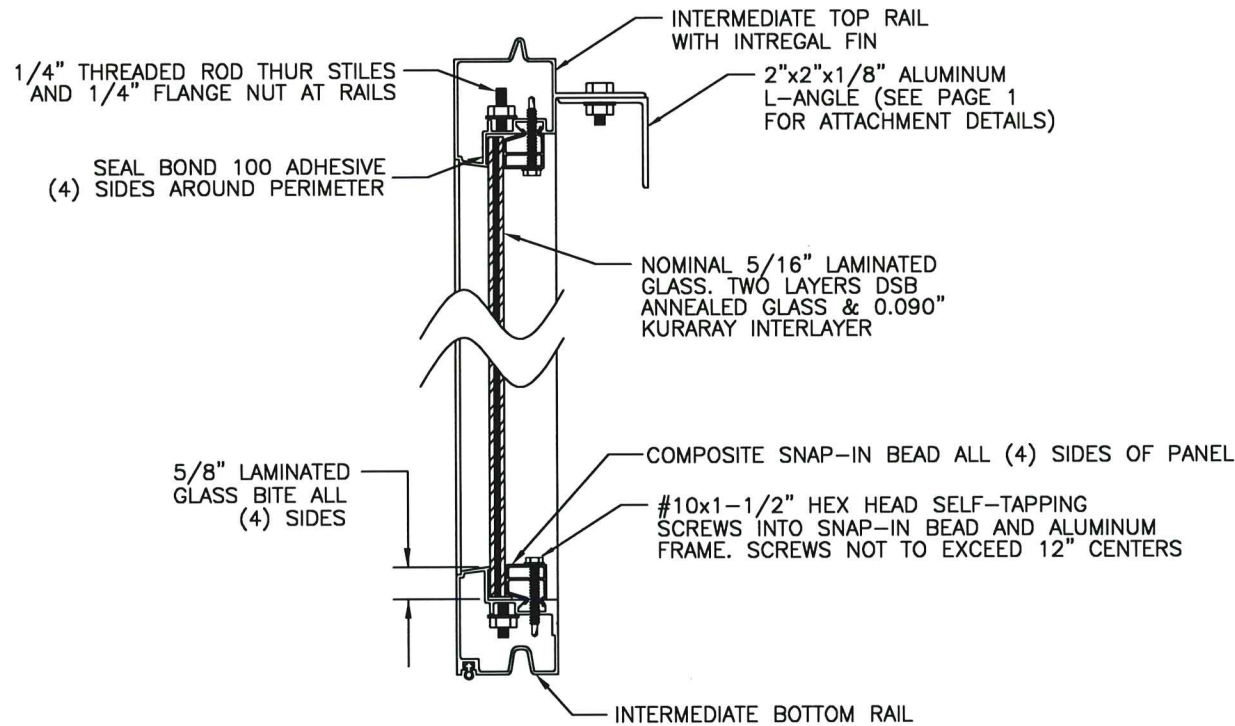
DESIGN LOADS: +52.0, -58.0 PSF

<b>Clopay CORPORATION</b>		8585 Duke Boulevard Mason, OH 45040 USA Tel. No. 513-770-4800 Fax No. 513-770-4853	CLOPAY WINDLOAD RATING <b>W8</b>
DESCRIPTION: M/N 904 12' WIDE +52/-58 PSF			
DRAWN BY: SH	DATE: 9/22/20	SCALE:	DWG. SIZE <b>B</b>
CHECKED BY: MWW	DATE: 9/9/21	SHEET 1 OF 4	
DWG. NO.: 105608	VERSION: M-D		

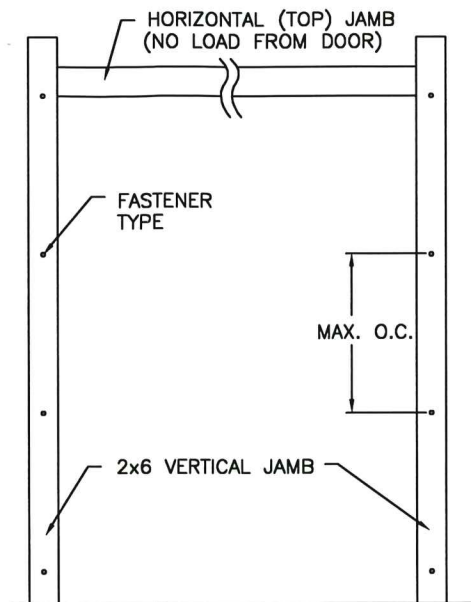


BRAND	MODEL
CLOPAY	904, 904U, AX, AXU
IDEAL	C4AL, C4ALU

SHEET		REVISIONS				
2 OF 4		REV. NO.	ZONE:	DATE:	ECN NO.	APPVD:
		---	---	---	---	---
		DESCRIPTION				
		SEE PAGE 1 FOR REVISION DETAILS				



GLAZING DETAIL  
INTERMEDIATE SECTION SHOWN



### JAMB TO SUPPORTING STRUCTURE ATTACHMENT

- NOTES:
1. ALL THE LOAD FROM THE DOOR IS TRANSFERRED TO THE TRACK AND THEN FROM THE TRACK TO THE 2x6 VERTICAL SYP (GRADE #2 OR BETTER) JAMBS. NO LOAD FROM THE DOOR IS TRANSFERRED TO THE HORIZONTAL (TOP) JAMB.
  2. EACH VERTICAL JAMB SEES A MAXIMUM DESIGN LOAD OF +312 LB. PER LINEAR FOOT OF JAMB.
  3. ALL JAMB FASTENERS MAY BE (BUT ARE NOT REQUIRED TO BE) COUNTERSUNK TO PROVIDE A FLUSH MOUNTING SURFACE.
  4. A 1/3 STRESS INCREASE FOR WIND LOAD WAS NOT USED IN THE CALCULATION OF ALLOWABLE LOADS FOR ANCHORS AND FASTENERS FOR STEEL, CONCRETE AND MASONRY.

### PREPARATION OF JAMBS BY OTHERS

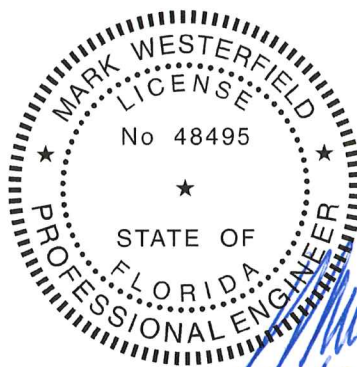
NOTE: THE DESIGN OF THE SUPPORTING STRUCTURAL ELEMENTS SHALL BE THE RESPONSIBILITY OF THE PROFESSIONAL OF RECORD FOR THE BUILDING OR STRUCTURE AND IN ACCORDANCE WITH CURRENT BUILDING CODES FOR THE LOADS LISTED ON THIS DRAWING.

2x6 JAMB TO SUPPORTING STRUCTURE ATTACHMENT  
(NOT TO BE USED FOR ATTACHMENT OF TRACK ANGLE TO 2x6 VERTICAL JAMBS OR SUPPORTING STRUCTURE)

BUILDING TYPE	FASTENER TYPE	MAXIMUM ON-CENTER DISTANCE BETWEEN FASTENERS*	STEEL WASHERS REQUIRED?
BLOCK WALL	1/4" x 1-1/4" EMBED ULTRACON CONCRETE ANCHOR	5-1/4"	NO
GROUT-FILLED BLOCK WALL	1/4" x 1-3/4" EMBED ULTRACON CONCRETE ANCHOR	8-3/4"	NO
2,846 PSI MIN. CONCRETE	1/4" x 1-3/4" EMBED ULTRACON CONCRETE ANCHOR	18=1/4"	NO
2,000 PSI MIN. CONCRETE	1/4" x 1-3/4" EMBED ULTRACON CONCRETE ANCHOR	17"	NO
2,500 PSI MIN. CONCRETE	3/8" x 1-3/4" EMBED ITW TRIBOLT WEDGE CONCRETE ANCHOR WITH SYP 0.55 SG	16=1/2'	1" O.D.
WOOD FRAME (SYP 0.55 SG)	1/2" x 1-1/2" EMBED LAG SCREW WITH 1-3/8" O.D. WASHER	20"	YES
14 GA MIN. STEEL JAMB	1/4" -14 ITW BUILDEX TEKS SELF-DRILLING FASTENER	9"	NO
12 GA MIN. STEEL JAMB	1/4" -14 ITW BUILDEX TEKS SELF-DRILLING FASTENER	12-3/4"	NO
1/8" MIN. STEEL JAMB	1/4" -14 ITW BUILDEX TEKS SELF-DRILLING FASTENER	15-1/4"	NO

NOTE: FOR DOORS WITH CONTINUOUS OR REVERSE ANGLE TRACK, THESE VALUES CAN BE USED TO DIRECTLY ATTACH THE TRACK TO THE WALL.

\* FIRST (BOTTOM) ANCHOR STARTING AT NO MORE THAN HALF OF THE MAXIMUM ON-CENTER DISTANCE. HIGHEST ANCHOR INSTALLED AT LEAST AS HIGH AS THE DOOR OPENING.  
CLOPAY DOES NOT SUPPLY JAMB ATTACHMENT FASTENERS.  
MINIMUM DISTANCE BETWEEN CENTER OF ANCHOR AND EDGE OF CONCRETE BLOCK: 2-1/2", EXCLUDING STUCCO THICKNESS.



DESIGN ENGINEER:  
MARK WESTERFIELD, P.E.  
FLORIDA P.E. #48495, NC P.E. #23832, TEXAS P.E. #91513

PRODUCT REVISED  
as complying with the Florida:  
Building Code  
Acceptance No. 23-0928.61  
Expiration Date 07/13/2027  
By *Heidi A. Miller*  
Miami Data Product Control

<b>Clopay</b> CORPORATION		8585 Duke Boulevard Mason, OH 45040 USA Tel. No. 513-770-4800 Fax No. 513-770-4853	CLOPAY WINDLOAD RATING <b>W8</b>
DESCRIPTION: M/N 904 12' WIDE +52/-58 PSF			
DRAWN BY: SH	DATE: 9/22/20	SCALE:	DWG. <b>B</b>
CHECKED BY: MWW	DATE: 9/9/21	SHEET 2 OF 4	SIZE
DWG. NO.: 105608		VERSION: M-D	

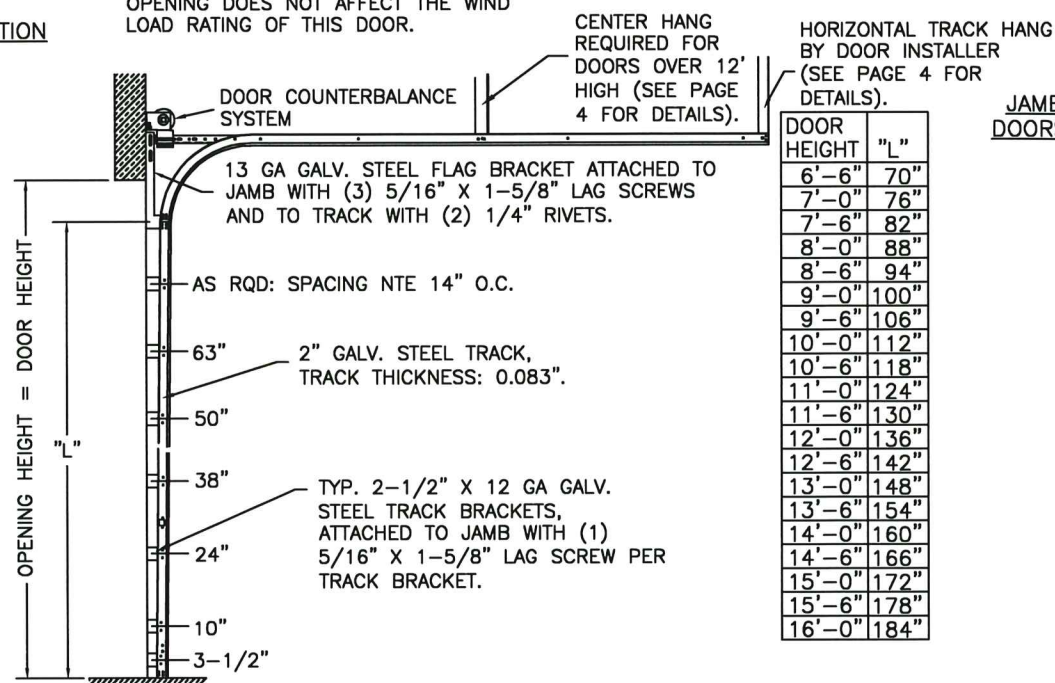


BRAND	MODEL
CLOPAY	904, 904U, AX, AXU
IDEAL	C4AL, C4ALU

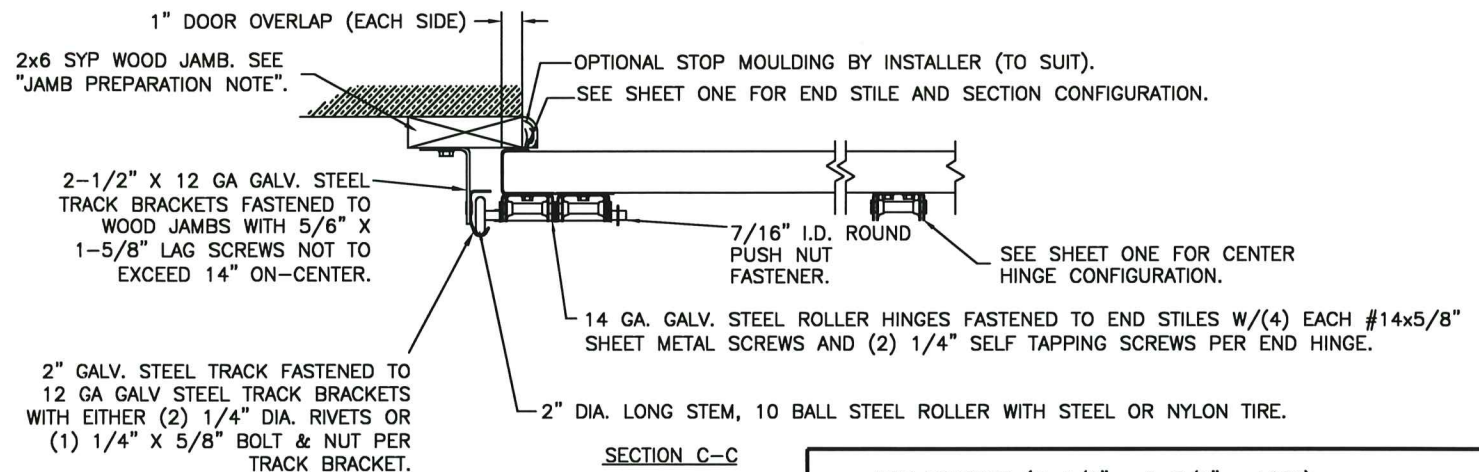
SHEET		REVISIONS					DESCRIPTION
3 OF 4		REV. NO.	ZONE:	DATE:	ECN NO.	APPVD:	
		--	--	--	--	--	
SEE PAGE 1 FOR REVISION DETAILS							

NOTE: HORIZONTAL TRACK CONFIGURATION ABOVE THE DOOR OPENING DOES NOT AFFECT THE WIND LOAD RATING OF THIS DOOR.

### 2" TRACK CONFIGURATION



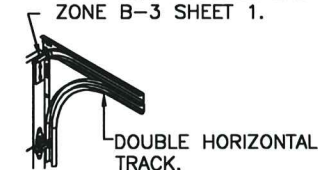
### JAMB CONFIGURATION DOORS WITH 2" TRACK.



### PREPARATION OF JAMBS BY OTHERS.

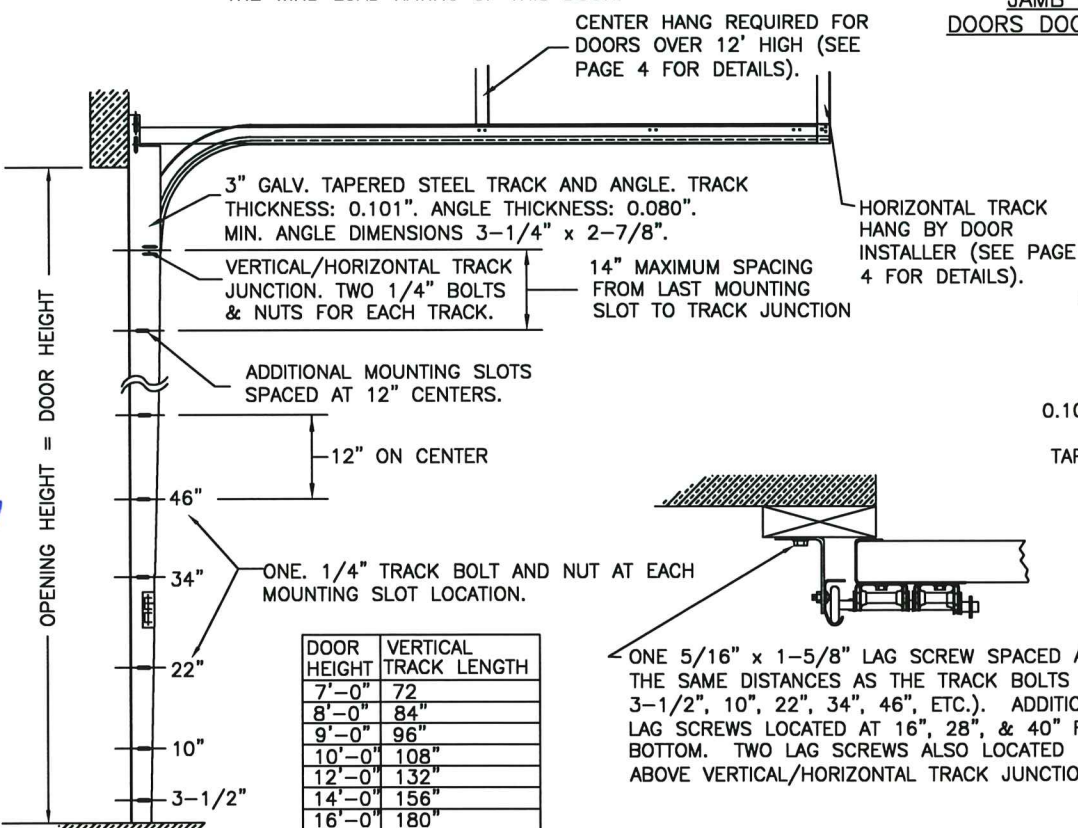
LHR BRACKET (2-1/2" x 5-3/4" x 12GA) ATTACHED WITH (2) 1/4" x 3/4" SELF TAPPING SCREWS. NOTE THAT LHR BRACKETS ARE ALSO USED WITH "DOUBLE END STILE" AS SHOWN IN ZONE B-3 SHEET 1.

DOUBLE TRACK LOW HEADROOM OPTION (AVAIL. FOR BOTH 2" AND 3" TRACK)

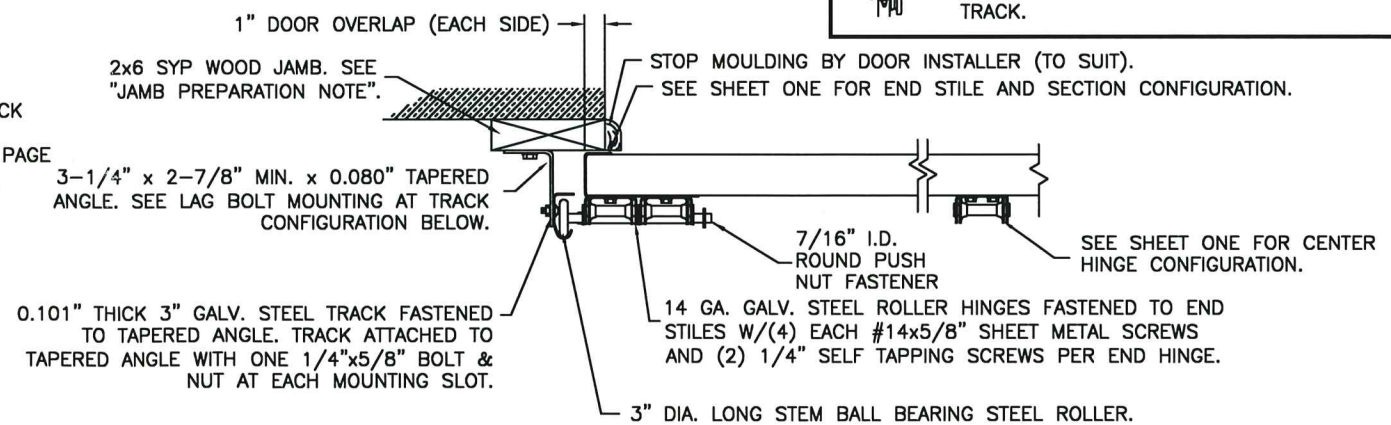


### 3" TRACK CONFIGURATION

NOTE: HORIZONTAL TRACK CONFIGURATION ABOVE THE DOOR OPENING DOES NOT AFFECT THE WIND LOAD RATING OF THIS DOOR.

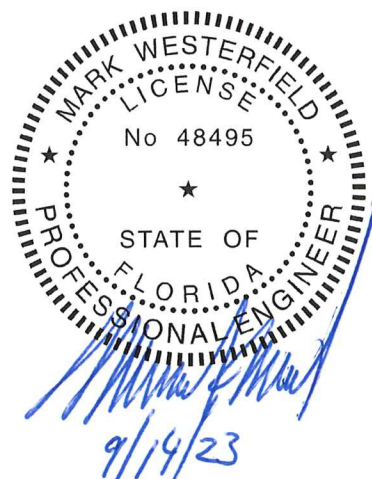


### JAMB CONFIGURATION DOORS WITH 3" TRACK.



### PREPARATION OF JAMBS BY OTHERS.

PRODUCT REVISED as complying with the Florida Building Code  
 Building Code 23-0924.61  
 Acceptance No. 01/13/2027  
 Expiration Date  
 By H. A. Miller  
 Miami Dept Product Control



DESIGN ENGINEER:  
 MARK WESTERFIELD, P.E.  
 FLORIDA P.E. #48495, NC P.E. #23832, TEXAS P.E. #91513

<b>Clopay CORPORATION</b>		8585 Duke Boulevard Mason, OH 45040 USA Tel. No. 513-770-4800 Fax No. 513-770-4853	CLOPAY WINDLOAD RATING <b>W8</b>
DESCRIPTION: M/N 904 12' WIDE +52/-58 PSF			
DRAWN BY: SH	DATE: 9/22/20	SCALE:	DWG. B
CHECKED BY: MWW	DATE: 9/9/21	SHEET 3 OF 4	SIZE
DWG. NO.: 105608	VERSION: M-D		



BRAND	MODEL
CLOPAY	904, 904U, AX, AXU
IDEAL	C4AL, C4ALU

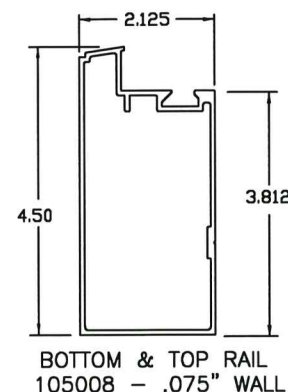
# ALUMINUM PROFILES, HARDWARE & TRACK PARTS

SHEET  
4 OF 4

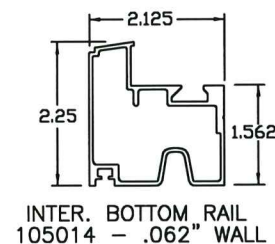
## REVISIONS

REV. NO.	ZONE:	DATE:	ECN NO.	APPVD:	DESCRIPTION
--	--	---	--	--	SEE PAGE 1 FOR REVISION DETAILS

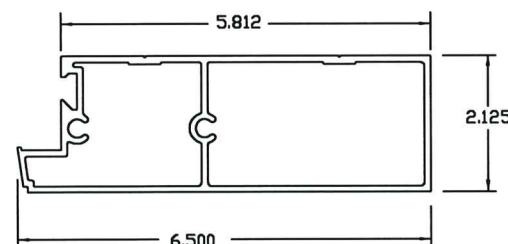
ALUMINUM PROFILES (6063-T5)



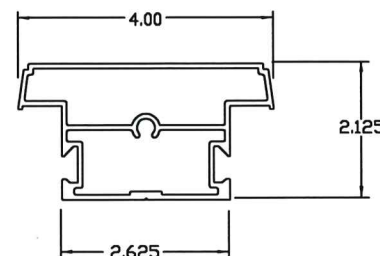
BOTTOM & TOP RAIL  
105008 - .075" WALL



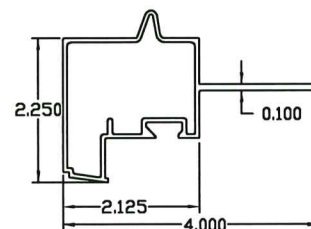
INTER. BOTTOM RAIL  
105014 - .062" WALL



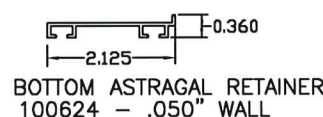
DOUBLE END STILE  
105010 - .095" WALL



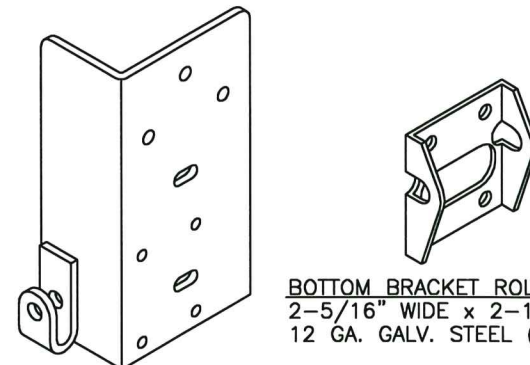
CENTER STILE  
105011 - .075" WALL



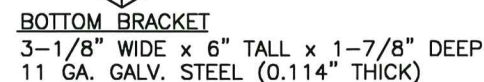
INTER. TOP RAIL W/FIN  
105012 - .062" WALL



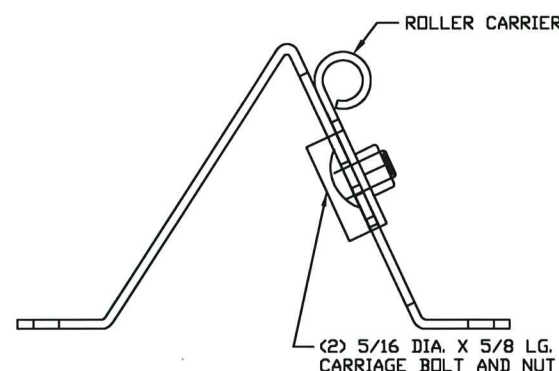
BOTTOM ASTRAGAL RETAINER  
100624 - .050" WALL



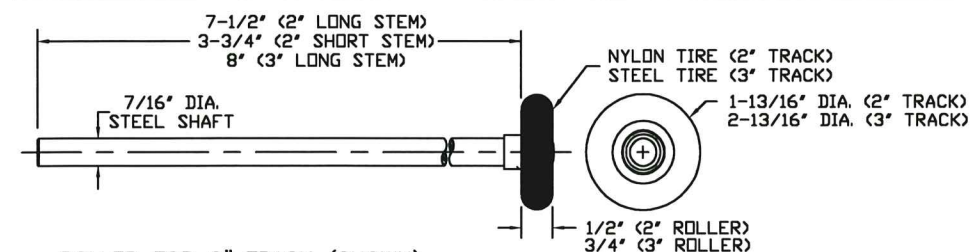
BOTTOM BRACKET ROLLER CARRIER  
2-5/16" WIDE x 2-1/2" TALL  
12 GA. GALV. STEEL (0.097" THICK)



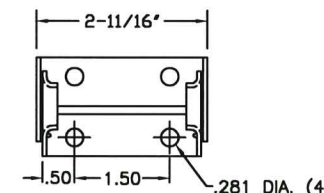
BOTTOM BRACKET  
3-1/8" WIDE x 6" TALL x 1-7/8" DEEP  
11 GA. GALV. STEEL (0.114" THICK)



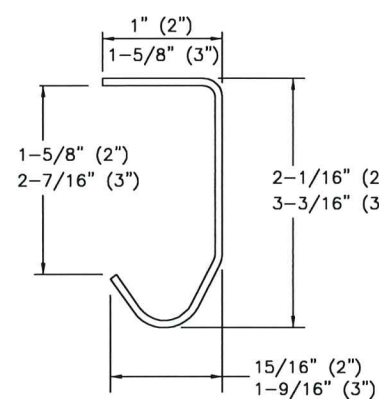
TOP ROLLER BRACKET  
5-3/8" LONG x 3-1/8" TALL x 2-3/4" WIDE  
MAIN PART: 12 GA. GALV. STEEL (0.099")  
ROLLER CARRIER: 13 GA. GALV. STEEL (0.085")



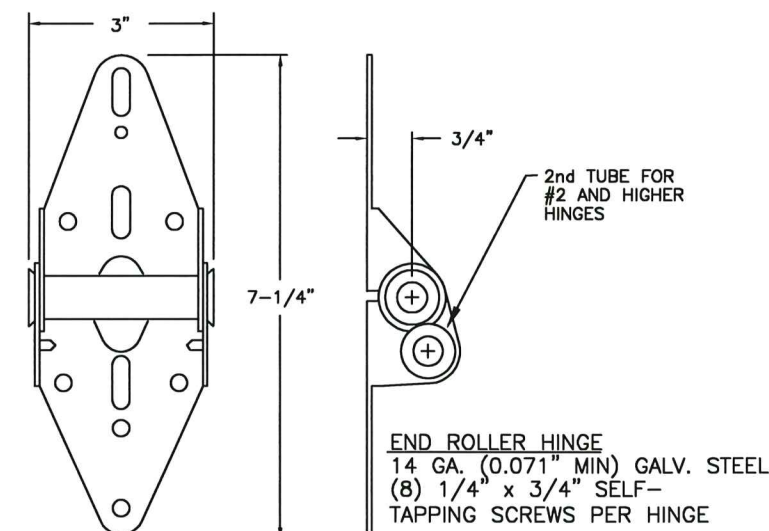
ROLLER FOR 2" TRACK (SHOWN)  
ROLLER FOR 3" TRACK FOR DOORS OVER 800 LB.  
OR OPTIONAL FOR DOORS LESS THAN 800 LB.



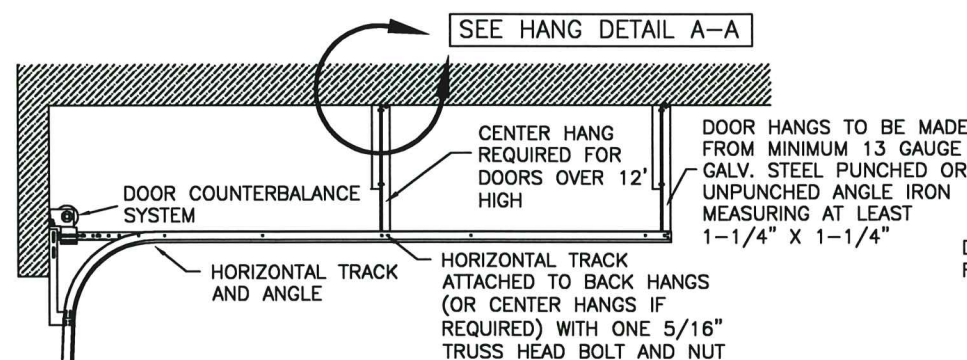
2-LEAF CENTER HINGE  
14 GA. GALV. STEEL



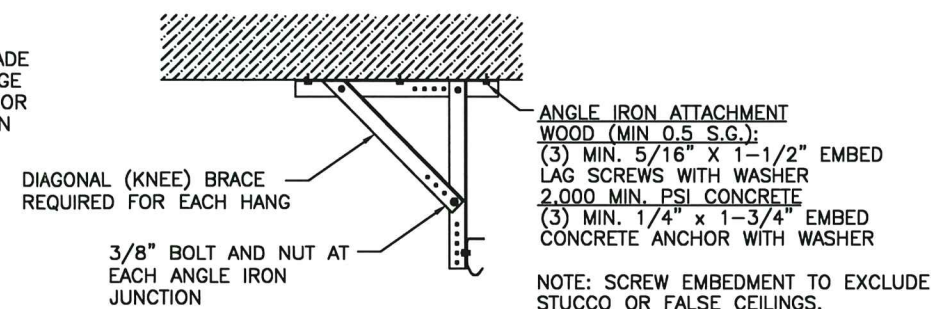
TRACK (2" AND 3")  
0.075" OR 0.083" GALV. STEEL (2")  
0.101" GALV. STEEL (3")



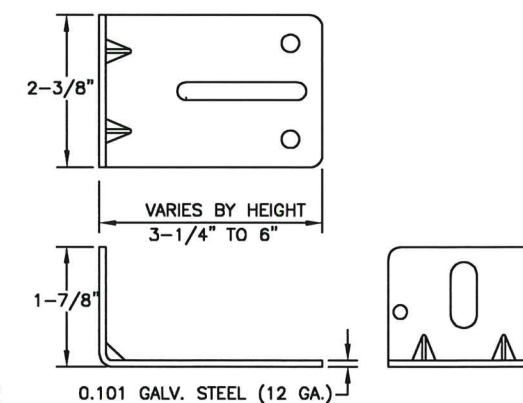
END ROLLER HINGE  
14 GA. (0.071" MIN) GALV. STEEL  
(8) 1/4" x 3/4" SELF-TAPPING SCREWS PER HINGE



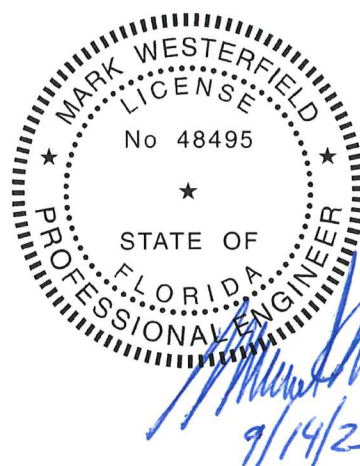
HORIZONTAL TRACK  
STANDARD LIFT TRACK SHOWN.  
LOW HEADROOM, HIGH LIFT AND VERTICAL LIFT  
TRACK ALSO AVAILABLE.



HANG DETAIL A-A  
HANGS CAN BE MOVED TO MATCH CEILING STRUCTURE



TRACK BRACKETS  
ATTACHED TO VERTICAL TRACKS



DESIGN ENGINEER:  
MARK WESTERFIELD, P.E.  
FLORIDA P.E. #48495, NC P.E. #23832, TEXAS P.E. #91513

PRODUCT REVISED  
as complying with the Florida  
Building Code  
Acceptance No. 23-0924.61  
Expiration Date 01/13/2027  
By H. G. A. Miller  
Miami Door Product Control

<b>Clopay</b> CORPORATION	8585 Duke Boulevard Mason, OH 45040 USA Tel. No. 513-770-4800 Fax No. 513-770-4853	CLOPAY WINDLOAD RATING W8
DESCRIPTION: M/N 904 12' WIDE +52/-58 PSF		
DRAWN BY: SH	DATE: 9/22/20	SCALE:
CHECKED BY: MWW	DATE: 9/9/21	SHEET 4 OF 4
DWG. NO.: 105608	VERSION: M-D	

DWG. SIZE B