



DEPARTMENT OF REGULATORY AND ECONOMIC RESOURCES (RER)
BOARD AND CODE ADMINISTRATION DIVISION
NOTICE OF ACCEPTANCE (NOA)

Quality Engineered Products Co., Inc.

4506 Quality Lane

Tampa, FL 33634

SCOPE:

This NOA is being issued under the applicable rules and regulations governing the use of construction materials. The documentation submitted has been reviewed and accepted by Miami-Dade County RER -Product Control Section to be used in Miami Dade County and other areas where allowed by the Authority Having Jurisdiction (AHJ).

This NOA shall not be valid after the expiration date stated below. The Miami-Dade County Product Control Section (In Miami Dade County) and/or the AHJ (in areas other than Miami Dade County) reserve the right to have this product or material tested for quality assurance purposes. If this product or material fails to perform in the accepted manner, the manufacturer will incur the expense of such testing and the AHJ may immediately revoke, modify, or suspend the use of such product or material within their jurisdiction. RER reserves the right to revoke this acceptance, if it is determined by Miami-Dade County Product Control Section that this product or material fails to meet the requirements of the applicable building code.

This product is approved as described herein and has been designed to comply with the Florida Building Code, including the High Velocity Hurricane Zone.

DESCRIPTION: Series "HMS" Glazed 16 ga Steel Storefront System-Impact

APPROVAL DOCUMENT: Drawing No. **QEP004 Rev 3**, titled "Storefront System (LMI)", sheets 1 through 16 of 16, prepared by manufacturer, dated 02/26/16 and last revised on 01-31-24, signed and sealed by David M. Schonacher, P. E., bearing the Miami-Dade County Product Control Renewal stamp with the Notice of Acceptance number and expiration date by the Miami-Dade County Product Control Section.

MISSILE IMPACT RATING: Large and Small Missile Impact Resistant

Limitations:

1. Louvered Transom, as part of Storefront, is **not** approved where Air & Water infiltration is needed.
2. See approved installation substrates in sheet **8** thru **12**. Item # 5 (Welded pipe Sleeve) is required with 1/2" Sleeve w/ 3/8" bolt anchors (thru storefront frames) into Concrete or grout filled CMU or block substrates. Illustrative frame Hinge Jamb detail **A/16** on sheet **16** to be mounted per installation details sheets **8** thru **10**.
4. See Precision Removable door mullion installation details in sheet **10**.
5. See vertical & horizontal 16 ga steel (6" deep) mullion (item#14) details in sheets **7** & **16**.
6. Approved EPS core by Dynaplast (Former Apache) having current NOA.

LABELING: Each unit shall bear a permanent label with the manufacturer's name or logo, city, state and series and following statement: "Miami-Dade County Product Control Approved", noted herein.

RENEWAL of this NOA shall be considered after a renewal application has been filed and there has been no change in the applicable building code negatively affecting the performance of this product.

TERMINATION of this NOA will occur after the expiration date or if there has been a revision or change in the materials, use, and/or manufacture of the product or process. Misuse of this NOA as an endorsement of any product, for sales, advertising or any other purposes shall automatically terminate this NOA. Failure to comply with any section of this NOA shall be cause for termination and removal of NOA.

ADVERTISEMENT: The NOA number preceded by the words Miami-Dade County, Florida, and followed by the expiration date may be displayed in advertising literature. If any portion of the NOA is displayed, then it shall be done in its entirety.

INSPECTION: A copy of this entire NOA shall be provided to the user by the manufacturer or its distributors and shall be available for inspection at the job site at the request of the Building Official.

This NOA **revises & renews NOA #20-1123.19** and consists of this page 1 and evidence pages E-1, E-2, E-3 and E-4, as well as approval document mentioned above.

The submitted documentation was reviewed by **Ishaq I. Chanda, P.E.**

Ishaq I. Chanda



NOTICE OF ACCEPTANCE: EVIDENCE SUBMITTED

1. EVIDENCE SUBMITTED under previous NOA

A. DRAWINGS

1. Manufacturer's die drawings and sections (Submitted under files #12-1115.11 /# 09-0617.03)
2. Drawing No. **QEP004**, titled "Storefront System (LMI)", sheets 1 through 13 of 13, prepared by manufacturer, dated 06/10/09 and last revised on 10/07/09, signed and sealed by David M. Schonacher, Jr., P. E.

B. TESTS (Submitted under files #12-1115.11 /# 09-0617.03/ #04-0218.01)

1. Test reports on
 - 1) Air Infiltration Test, per FBC TAS 202-94
 - 2) Uniform Static Air Pressure Test, Loading per FBC TAS 202.
 - 3) Water Resistance Test per FBC TAS 202-94.
 - 4) Large Missile Impact Test per FBC, TAS 201-94
 - 5) Cyclic Wind Pressure Loading per FBC, TAS 203-94
 - 6) Forced Entry Test, per FBC and TAS 202-94

Along with marked-up drawings and installation diagram of glazed steel storefront, prepared by Certified Testing Laboratories Inc., Test Reports No(s). **CTLA 976W-1, 976W-2, 1976W-3 and 1976W-4**, dated December 08, 2003, signed & sealed by Ramesh Patel, P. E

Note: This test report has been revised by addendum letter dated May 06, 2004 and 09-15-09, issued by Certified Testing Lab. Inc, signed & sealed by Ramesh Patel, P. E.

C. CALCULATIONS

1. Anchor verification calculations, dated 10-07-09, prepared, signed and sealed by David M. Schonacher, Jr., P.E. (Submitted under file # **09-0617.03**).

D. QUALITY ASSURANCE

- 1 Miami Dade Department of Regulatory and Economic Resources (RER)

E. MATERIAL CERTIFICATIONS

1. Tensile test report prepared by Certified Testing Laboratories Inc., Test Report No. **CTL 1023J (CTL976W-1, 2, 3 & 4)**, tested per ASTM E-A370-97, dated December 11, 2003, signed and sealed by Ramesh Patel, P. E. (Submitted under file # **09-0617.03**)
2. Notice of Acceptance No. **11-0926.07** issued to Dyplastic Products, LLC (former Apache Products Co) for "EPS-Expanded Polystyrene Insulation", expiring on 01/11/2017.
3. Notice of Acceptance No. **13-1126.20** issued to Allnex, USA, Inc. (former Cytec Industries Inc.) for "Uvekool-S Laminated Glass interlayer", expiring on 02/08/2019.

F. STATEMENTS

1. Statement letter of conformance to FBC 2010 and "no financial interest", dated 01/15/13, signed and sealed by David M. Schonacher Jr., P. E.
2. Statesman letter of conformance to FBC 2007 and "No financial interest", dated August 27, 2009, signed and sealed by David M. Schonacher Jr., P. E. (Submitted under file # **09-0617.03**)
3. Statement letter of compliance, as a part of the above referenced test reports.

G. OTHER

1. This revises **NOA # 12-1115.11**, expiring August 27, 2019.
2. Test Proposal by Q. E. P. dated September 19, 2002, approved by BCCO.

Ishaq I. Chanda, P.E.
Product Control Unit Supervisor
NOA No. 23-1218.03
Expiration Date: August 27, 2025
Approval Date: June 13, 2024

NOTICE OF ACCEPTANCE: EVIDENCE SUBMITTED

- 2. EVIDENCE SUBMITTED under file #15-0422.06**
- A. DRAWINGS**
1. Drawing No. **QEP004**, titled “Storefront System (LMI)”, sheets 1 thru 13 of 13, prepared by manufacturer, dated 06/10/09 and last revised on 10/07/09, signed and sealed by David M. Schonacher, Jr., P. E.
- B. TESTS**
1. None.
- C. CALCULATIONS**
1. None.
- D. QUALITY ASSURANCE**
- 1 Miami Dade Department of Regulatory and Economic Resources (RER)
- E. MATERIAL CERTIFICATIONS**
1. Notice of Acceptance No. **16-1129.05** issued to Dyplastic Products, LLC (former Apache Products Co) for “E & R Expanded Rigid Foam Insulation”, expiring on 01/11/2022.
2. Notice of Acceptance No. **17-0919.09** issued to Allnex, USA, Inc. (former Cytec Industries Inc.) for “Uvekool-S Laminated Glass interlayer”, expiring on 02/08/2019.
- F. STATEMENTS**
1. Statement letter of conformance to FBC 2017 (6th Edition) and “no financial interest”, dated 12/01/17, signed and sealed by David M. Schonacher Jr., P. E.
- G. OTHER**
1. This revises **NOA # 15-0422.06**, expiring August 27, 2019.
- 3. EVIDENCE SUBMITTED under previous approval**
- A. DRAWINGS**
1. Drawing No. **QEP004**, titled “Storefront System (LMI)”, sheets 1 through 13 of 13, prepared by manufacturer, dated 06/10/09 and last revised on 10/07/09, signed and sealed by David M. Schonacher, J. R., P. E.
- B. TESTS**
1. None.
- C. CALCULATIONS**
1. None.
- D. QUALITY ASSURANCE**
- 1 Miami Dade Department of Regulatory and Economic Resources (RER)
- E. MATERIAL CERTIFICATIONS**
1. Notice of Acceptance No. **17-0919.09** issued to Allnex, USA, Inc. (former Cytec Industries Inc.) for “Uvekool-S Laminated Glass interlayer”, expiring on 02/08/2019.
- F. STATEMENTS (submitted under file #17-1102.04)**
1. Statement letter of conformance to FBC 2017 (6th Edition) and “no financial interest”, both dated 12/01/17, signed and sealed by David M. Schonacher Jr., P. E.
- G. OTHER**
1. This **renews NOA # 19-0221.01**, expiring 02/08/24.

Ishaq I. Chanda

Ishaq I. Chanda, P.E.
Product Control Unit Supervisor
NOA No. 23-1218.03
Expiration Date: August 27, 2025
Approval Date: June 13, 2024

Quality Engineered Products Co, Inc.

NOTICE OF ACCEPTANCE: EVIDENCE SUBMITTED

4. EVIDENCE SUBMITTED under previous approval

A. DRAWINGS

1. Drawing No. **QEP004 Rev 2**, titled “Storefront System (LMI)”, sheets 1 through 16 of 16, prepared by manufacturer, dated 02/26/16 and last revised on 03-03-21, signed and sealed by David M. Schonacher, J. R., P. E.

B. TESTS

1. None.

C. CALCULATIONS

1. None.

D. QUALITY ASSURANCE

- 1 Miami Dade Department of Regulatory and Economic Resources (RER).

E. MATERIAL CERTIFICATIONS

1. Notice of Acceptance No. **20-0901.03** issued to Allnex, USA, Inc. (former Cytec Industries Inc.) for “Uvekol-S Laminated Glass interlayer”, expiring on 02/08/2024.

F. STATEMENTS

1. Statement letter of conformance to FBC 2020 (7th Edition) and “no financial interest”, both dated March 03, 2021, signed and sealed by David M. Schonacher Jr., P. E.

G. OTHER

1. This revises **NOA # 19-0603.04**, expiring 08/27/24.

Ishaq I. Chanda

Ishaq I. Chanda, P.E.
Product Control Unit Supervisor
NOA No. 23-1218.03
Expiration Date: August 27, 2025
Approval Date: June 13, 2024

Quality Engineered Products Co, Inc.

NOTICE OF ACCEPTANCE: EVIDENCE SUBMITTED

5. New EVIDENCE SUBMITTED

A. DRAWINGS

1. Drawing No. **QEP004 Rev 3**, titled “Storefront System (LMI)”, sheets 1 through 16 of 16, prepared by manufacturer, dated 02/26/16 and last revised on 01-31-21, signed and sealed by David M. Schonacher, J. R., P. E.

B. Test

1. None.

C. CALCULATIONS

1. Anchor verification calculations complying w/ FBC 2023(8^h Edition), dated 01/31/2024, prepared, signed and sealed by Cody C. Davis, P.E.

D. QUALITY ASSURANCE

1. Miami Dade Department of Regulatory and Economic Resources (RER).

E. MATERIAL CERTIFICATIONS

1. Notice of Acceptance No. **23-0815.25** issued to Allnex, USA, Inc. (former Cytec Industries Inc.) for “Uvekol-S Laminated Glass interlayer”, (submittal under Review).

F. STATEMENTS

1. Statement letter of conformance to FBC 2023 (8th Edition) and “No financial interest” dated 01/31/24, prepared by Master Consulting Inc., signed and sealed by Cody C. Davis, P.E.
2. E-mail statement issued by PRI testing Lab dated 05/30/24 referenced to RER QEP re-test proposals, for near future schedule, signed by Timothy Efwa, Manager.

G. OTHER

1. This NOA **revises & renews** conditionally **NOA #20-1123.19**, expiring 08/27/25.

Ishaq I. Chanda

Ishaq I. Chanda, P.E.
Product Control Unit Supervisor
NOA No. 23-1218.03
Expiration Date: August 27, 2025
Approval Date: June 13, 2024

INSTALLATION NOTES:

1. ONE (1) INSTALLATION ANCHOR IS REQUIRED AT EACH ANCHOR LOCATION SHOWN.
2. THE NUMBER OF INSTALLATION ANCHORS DEPICTED IS THE MINIMUM NUMBER OF ANCHORS TO BE USED FOR PRODUCT INSTALLATION.
3. INSTALL INDIVIDUAL INSTALLATION ANCHORS WITHIN A TOLERANCE OF ±1/2 INCH OF THE DEPICTED LOCATION IN THE ANCHOR LAYOUT DETAIL (I.E., WITHOUT CONSIDERATION OF TOLERANCES). TOLERANCES ARE NOT CUMULATIVE FROM ONE INSTALLATION ANCHOR TO THE NEXT.
4. SHIM AS REQUIRED AT EACH INSTALLATION ANCHOR WITH LOAD BEARING SHIM(S). MAXIMUM ALLOWABLE SHIM STACK TO BE 1/4 INCH. SHIM WHERE SPACE OF 1/16 INCH OR GREATER OCCURS. SHIM(S) SHALL BE CONSTRUCTED OF HIGH DENSITY PLASTIC OR BETTER. (ALUMINUM OR SS)
5. MINIMUM EMBEDMENT AND EDGE DISTANCE EXCLUDE WALL FINISHES, INCLUDING BUT NOT LIMITED TO STUCCO, FOAM, BRICK VENEER, AND SIDING.
6. INSTALLATION ANCHORS AND ASSOCIATED HARDWARE MUST BE MADE OF CORROSION RESISTANT MATERIAL OR HAVE A CORROSION RESISTANT COATING.
7. FOR GROUT FILLED BLOCK, DO NOT INSTALL INSTALLATION ANCHORS INTO MORTAR JOINTS. EDGE DISTANCE IS MEASURED FROM FREE EDGE OF BLOCK OR EDGE OF MORTAR JOINT INTO FACE SHELL OF BLOCK.
8. INSTALLATION ANCHORS SHALL BE INSTALLED IN ACCORDANCE WITH ANCHOR MANUFACTURER'S INSTALLATION INSTRUCTIONS, AND ANCHORS SHALL NOT BE USED IN SUBSTRATES WITH STRENGTHS LESS THAN THE MINIMUM STRENGTH SPECIFIED BY THE ANCHOR MANUFACTURER.
9. INSTALLATION ANCHOR CAPACITIES FOR PRODUCTS HEREIN ARE BASED ON SUBSTRATE MATERIALS WITH THE FOLLOWING PROPERTIES:

A. WOOD - MINIMUM SPECIFIC GRAVITY OF 0.55.

B. CONCRETE -MINIMUM COMPRESSIVE STRENGTH OF 3000 PSI.

C. GROUTED MASONRY - STRENGTH CONFORMANCE TO ASTM C-90, NORMAL WEIGHT WITH 2 KSI STRENGTH (OR GREATER) WITH MINIMUM 3,000 PSI GROUT.

D. STRUCTURAL STEEL - MEMBER TO COMPLY WITH AISC 360. ADEQUACY OF METAL STRUCTURE TO BE REVIEWED BY BUILDING OFFICIAL.

GENERAL NOTES:

1. THE PRODUCT SHOWN HEREIN IS DESIGNED AND MANUFACTURED TO COMPLY WITH THE FLORIDA BUILDING CODE FBC 8th EDITION (2023), INCLUDING HVHZ AND HAS BEEN EVALUATED ACCORDING TO THE FOLLOWING:

TAS 201-94

TAS 202-94

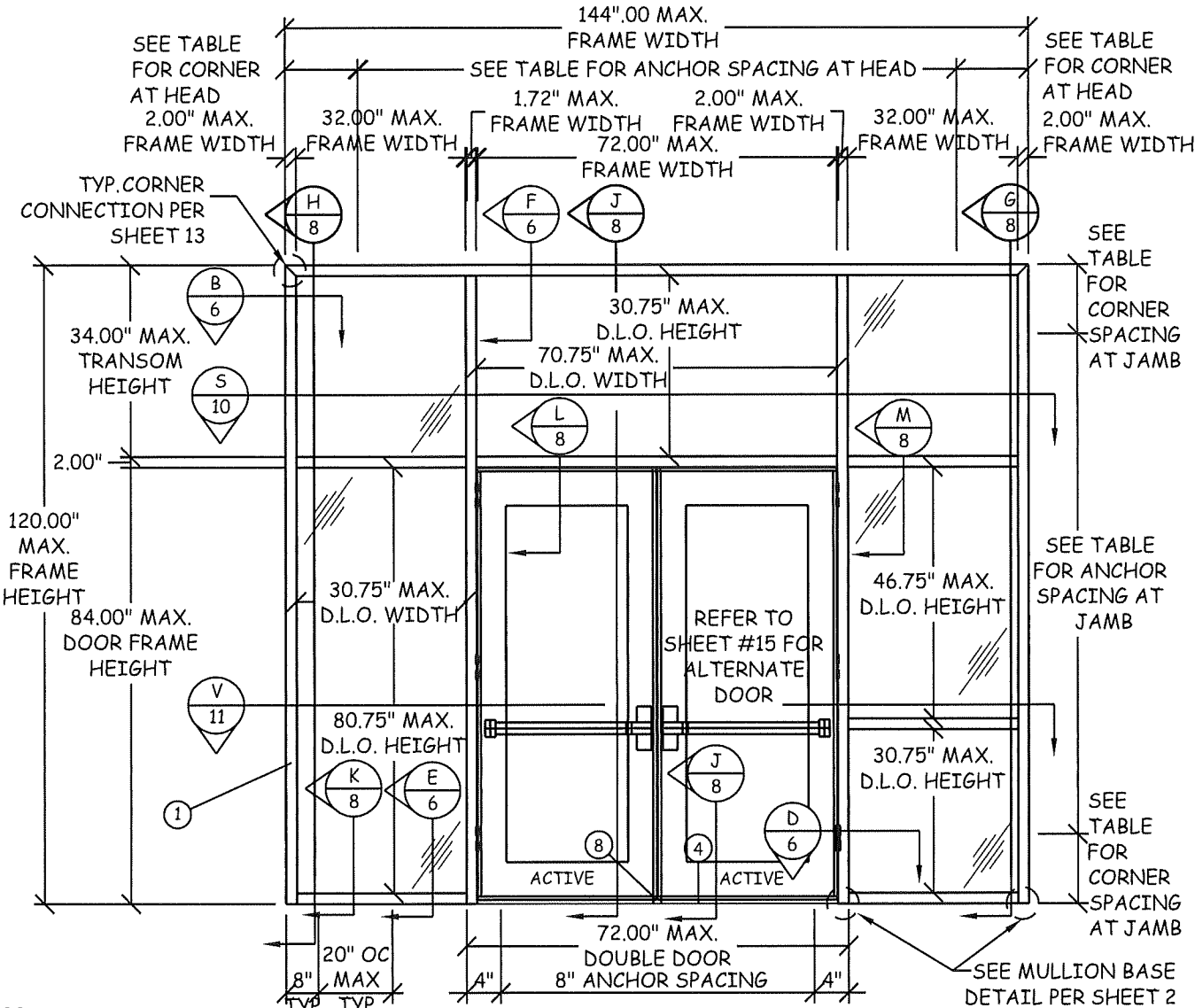
TAS 203-94
2. ADEQUACY OF THE EXISTING STRUCTURAL CONCRETE, MASONRY AND STRUCTURAL STEEL AS A HVHZ-ZONE CAPABLE OF WITHSTANDING AND TRANSFERRING APPLIED PRODUCT LOADS TO THE FOUNDATION IS THE RESPONSIBILITY OF THE ENGINEER OR ARCHITECT OF RECORD FOR THE PROJECT OF INSTALLATION.
3. 1X AND 2X BUCKS (WHEN USED) SHALL BE DESIGNED AND ANCHORED TO PROPERLY TRANSFER ALL LOADS TO THE STRUCTURE. BUCK DESIGN AND INSTALLATION IS THE RESPONSIBILITY OF THE ENGINEER OR ARCHITECT OF RECORD FOR THE PROJECT OF INSTALLATION.
4. THE INSTALLATION DETAILS DESCRIBED HEREIN ARE GENERIC AND MAY NOT REFLECT ACTUAL CONDITIONS FOR A SPECIFIC SITE. IF SITE CONDITIONS CAUSE INSTALLATION TO DEVIATE FROM THE REQUIREMENTS DETAILED HEREIN, A LICENSED ENGINEER OR ARCHITECT SHALL PREPARE SITE SPECIFIC DOCUMENTS FOR USE WITH THIS DOCUMENT.
5. THIS PRODUCT IS LARGE AND SMALL MISSILE IMPACT RESISTANT. APPROVED IMPACT PROTECTIVE SYSTEM **IS NOT REQUIRED** ON THIS PRODUCT IN AREAS REQUIRING IMPACT RESISTANCE.
6. DOOR FRAME MATERIAL: 16 GA. OR 14 GA. STEEL MEETING FyMIN=46.3KSI; FuMIN=52.1KSI OR STAINLESS STEEL FyMIN=50.5 KSI; FuMIN=98.5KSI. MIL-CERTIFICATE REQUIRED FOR VERIFICATION OF AVAILABLE STRENGTH.
7. DESIGNATIONS "X" AND "O" STAND FOR THE FOLLOWING:

X: OPERABLE PANEL

O: FIXED PANEL

QUALITY ENGINEERED PRODUCTS

STOREFRONT SYSTEM - IMPACT

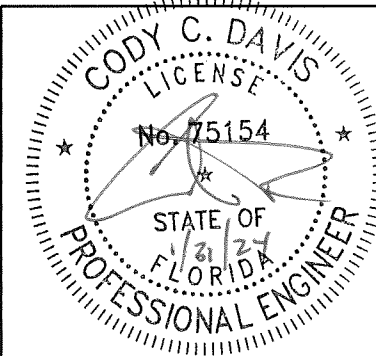


OUTSWING DOOR
(INTERIOR VIEW)

Anchor and Spacing Table

ANCHOR	SUBSTRATE	MAX SPACING		JAMB		HEAD	
		JAMB	HEAD	NUMBER OF ANCHORS	MAX CORNER SPACING	NUMBER OF ANCHORS	MAX CORNER SPACING
DYNABOLT	CMU	18"	20"	7 TOTAL	8"	8 TOTAL	8"
SCREW	STEEL	12"	12"	11	6"	13	6"

DESIGN PRESSURE RATING (STOREFRONT SYSTEM)			
	WHERE AIR & WATER INFILTRATION REQUIREMENTS IS NEEDED	WHERE AIR & WATER INFILTRATION REQUIREMENTS IS NOT NEEDED	MISSILE IMPACT RATING
POSITIVE	+60 PSF	+60 PSF	LARGE & SMALL MISSILE IMPACT RATED
NEGATIVE	-60 PSF	-60 PSF	LARGE & SMALL MISSILE IMPACT RATED



STOREFRONT SYSTEM (LMI)

DRAWING NUMBER QEP004

REVISIONS

02-26-16 (FBC2014)
02-15-21 (FBC2020)
01-31-24 (FBC2023)

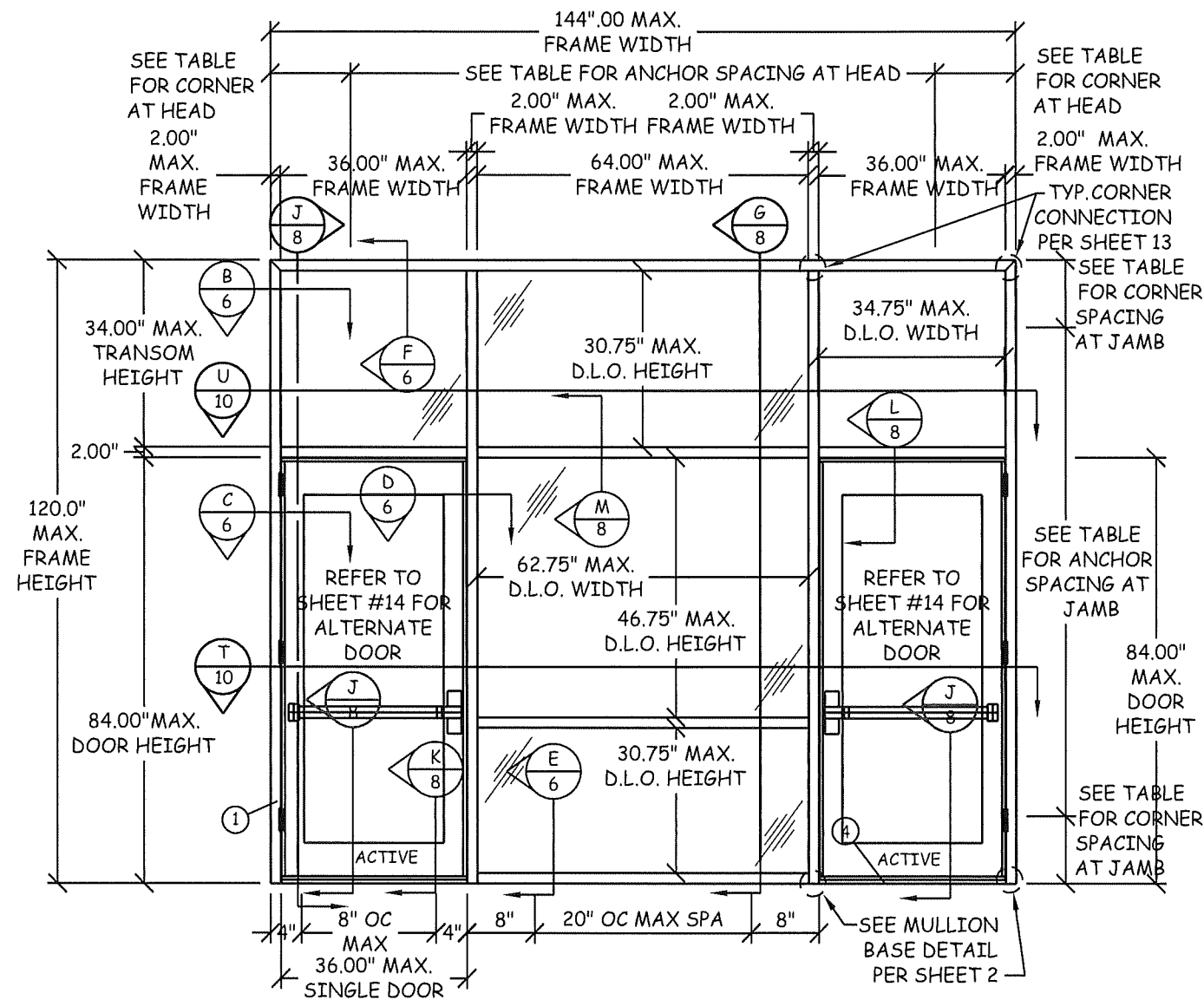
STOREFRONT SYSTEM (LMI)
LOUVER ELEVATION
& DETAILS

SHEET 1 OF 16

DATE 01-31-2024

4506 QUALITY LANE
TAMPA, FLORIDA 33634
(813) 885-1693

Quality Engineered Products Co., Inc.



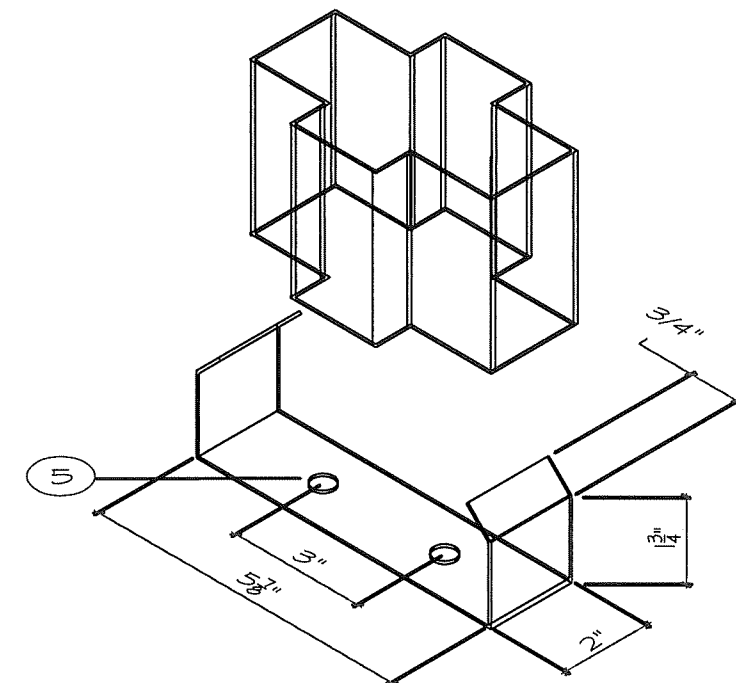
**OUTSWING DOOR
(INTERIOR VIEW)**

Anchor and Spacing Table

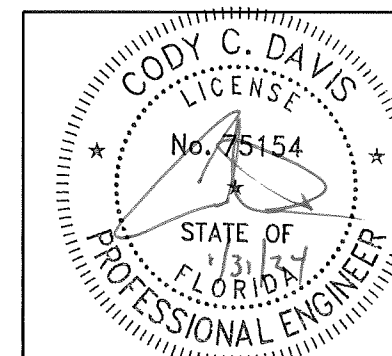
ANCHOR	SUBSTRATE	MAX SPACING		JAMB		HEAD	
		JAMB	HEAD	NUMBER OF ANCHORS	MAX CORNER SPACING	NUMBER OF ANCHORS	MAX CORNER SPACING
DYNABOLT	CMU	18"	20"	7 TOTAL	8"	8 TOTAL	8"
SCREW	STEEL	12"	12"	11	6"	13	6"

	DESIGN PRESSURE RATING (STOREFRONT SYSTEM)		MISSILE IMPACT RATING
	WHERE AIR & WATER INFILTRATION REQUIREMENTS IS NEEDED	WHERE AIR & WATER INFILTRATION REQUIREMENTS IS NOT NEEDED	
POSITIVE	+60 PSF	+60 PSF	LARGE & SMALL MISSILE IMPACT RATED
NEGATIVE	-60 PSF	-60 PSF	LARGE & SMALL MISSILE IMPACT RATED

PRODUCT RENEWED
as complying with the Florida
Building Code
NOA-No. 23-1218.03
Expiration Date 08/27/2025
By Ishaq I. Chande
Miami-Dade Product Control



MULLION BASE DETAIL



STOREFRONT SYSTEM (LMI)

DRAWING NUMBER QEP004

REVISIONS

02-26-16 (FBC2014)
02-15-21 (FBC2020)
01-31-24 (FBC2023)

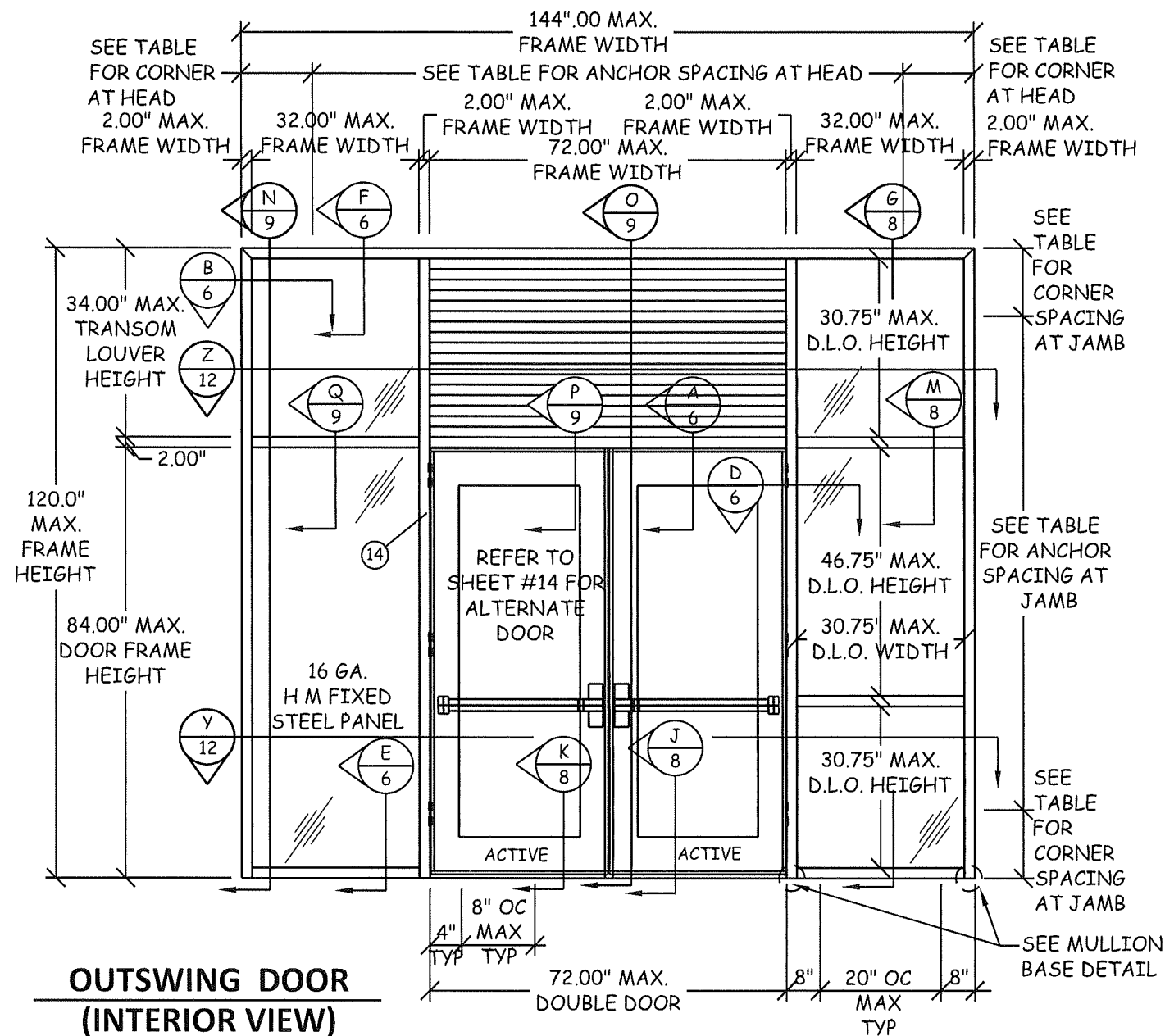
STOREFRONT SYSTEM (LMI)
LOUVER ELEVATION
& DETAILS

SHEET 2 OF 16

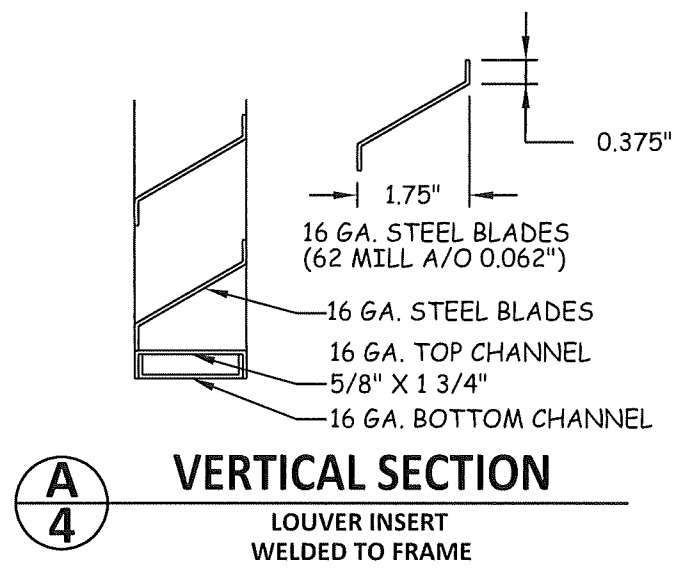
DATE 01-31-2024

4506 QUALITY LANE
TAMPA, FLORIDA 33634
(813) 885-1693

*Quality
Engineered
Products Co., Inc.*





**OUTSWING DOOR
(INTERIOR VIEW)**



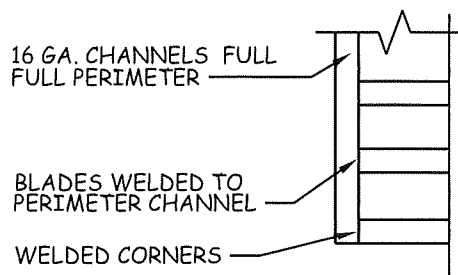
VERTICAL SECTION

LOUVER INSERT
WELDED TO FRAME

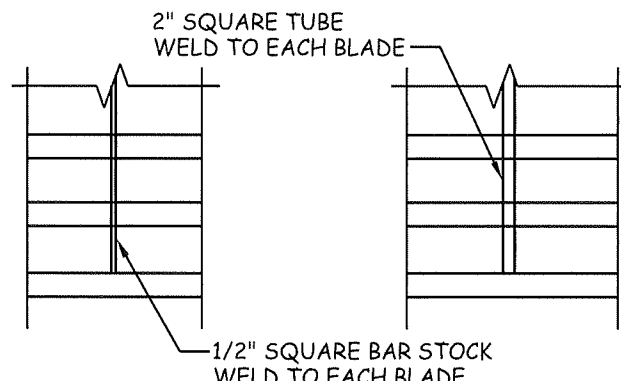
Anchor and Spacing Table

ANCHOR	SUBSTRATE	MAX SPACING		JAMB		HEAD	
		JAMB	HEAD	NUMBER OF ANCHORS	MAX CORNER SPACING	NUMBER OF ANCHORS	MAX CORNER SPACING
 DYNABOLT	CMU	18"	20"	7 TOTAL	8"	8 TOTAL	8"
 SCREW	STEEL	12"	12"	11	6"	13	6"

DESIGN PRESSURE RATING (STOREFRONT SYSTEM)			
	WHERE AIR & WATER INFILTRATION REQUIREMENTS IS NEEDED	WHERE AIR & WATER INFILTRATION REQUIREMENTS IS NOT NEEDED	MISSILE IMPACT RATING
POSITIVE	NOT APPROVED	+60 PSF	LARGE & SMALL MISSILE IMPACT RATED
NEGATIVE	NOT APPROVED	-60 PSF	LARGE & SMALL MISSILE IMPACT RATED

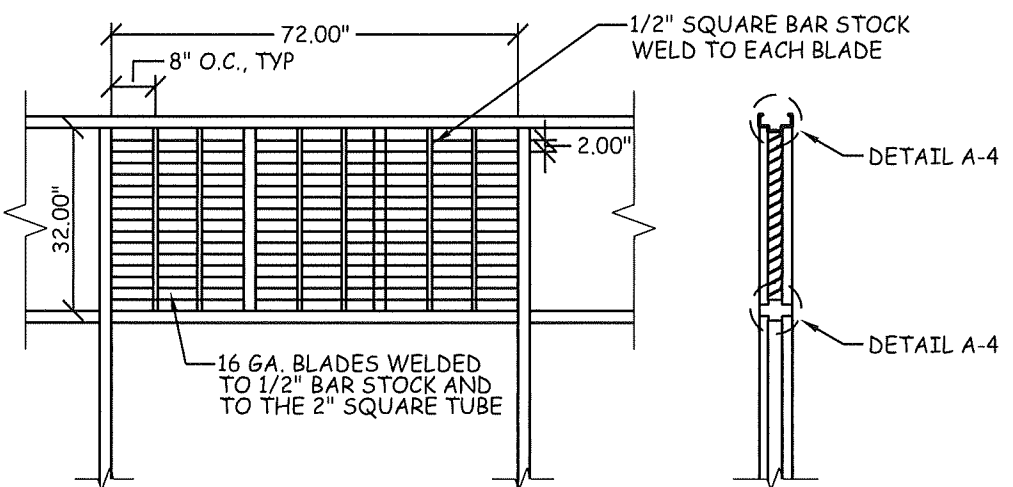


**LOUVER INSERT
CORNER DETAIL**

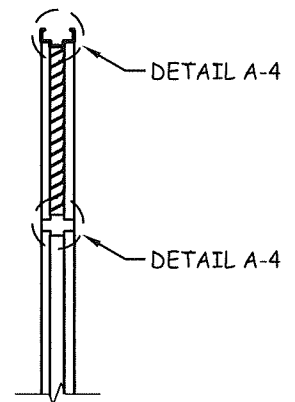


**LOUVER INSERT
DETAIL AT
1/2" BAR STOCK**

**LOUVER INSERT
DETAIL AT
2" SQUARE TUBE**

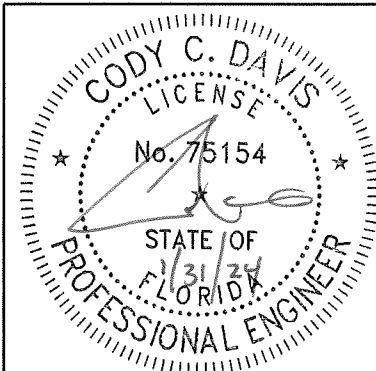


**TRANSOM LOUVER INSERT
WELDED TO FRAME**



LOUVER SECTION

PRODUCT RENEWED
as complying with the Florida
Building Code
NOA-No. 23-1218.03
Expiration Date 08/27/2025
By *Ishag I. Chande*
Miami-Dade Product Control



STOREFRONT SYSTEM (LMI)

DRAWING NUMBER QEP004

REVISIONS
02-26-16 (FBC2014)
02-15-21 (FBC2020)
01-31-24 (FBC2023)

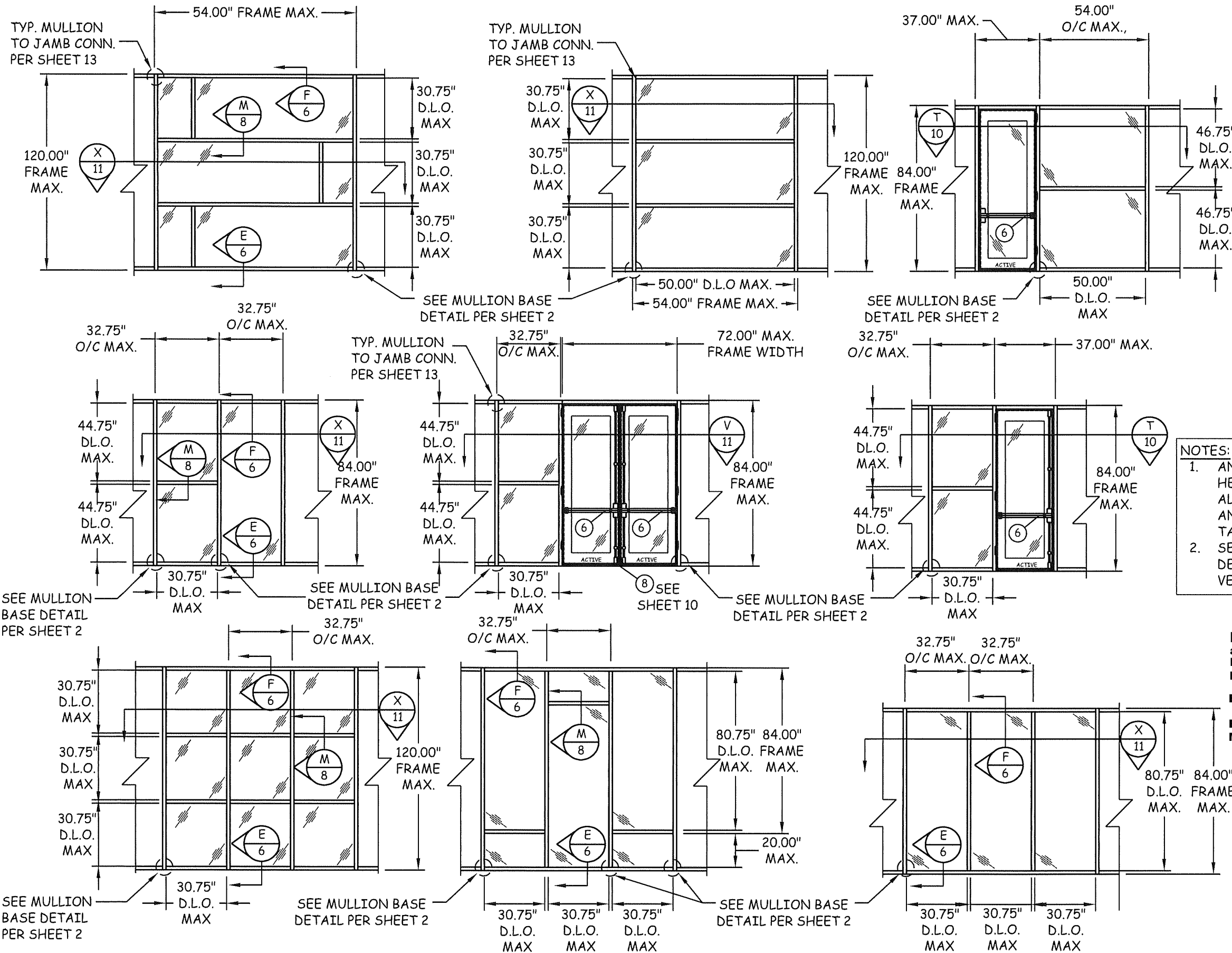
STOREFRONT SYSTEM (LMI)
LOUVER ELEVATION
& DETAILS

SHEET 4 OF 16

DATE 01-31-2024

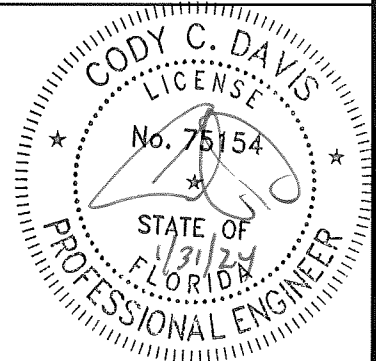
4506 QUALITY LANE
TAMPA, FLORIDA 33634
(813) 885-1693

*Quality
Engineered
Products Co., Inc.*



- NOTES:**
1. ANCHOR SPACING AT HEAD AND SILL TYP. FOR ALL CONDITIONS. SEE ANCHOR AND SPACING TABLE.
 2. SEE MULLION BASE DETAIL 2, TYP. AT EACH VERTICAL MULLION.

PRODUCT RENEWED
as complying with the Florida
Building Code
NOA-No. 23-1218.03
Expiration Date 08/27/2025
By *Ishag I. Chande*
Miami-Dade Product Control



STOREFRONT SYSTEM (LMI)

DRAWING NUMBER QEP004

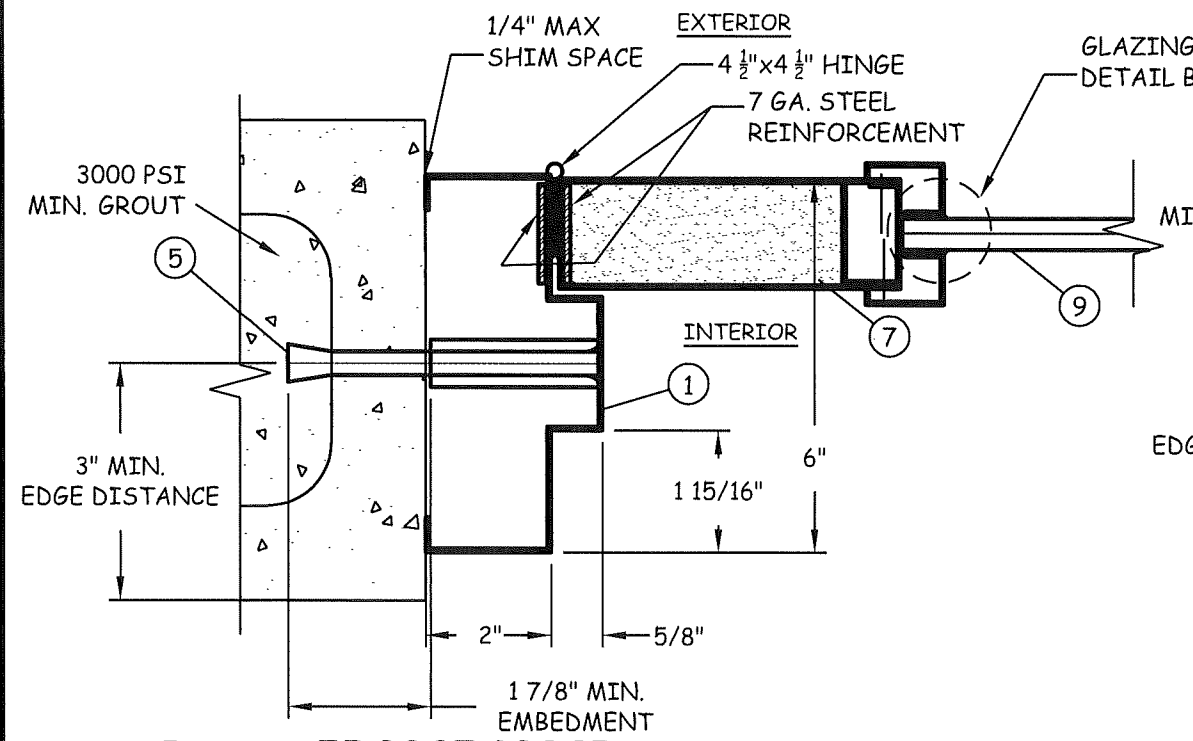
4506 QUALITY LANE
TAMPA, FLORIDA 33634
(813) 885-1693

Quality Engineered Products Co., Inc.

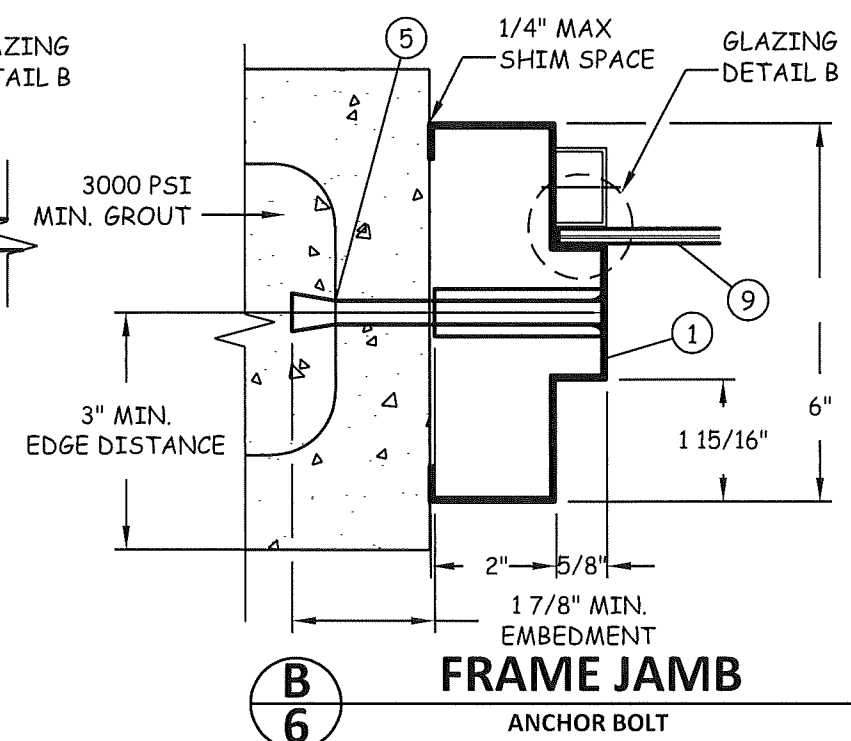
REVISIONS

02-26-16	(FBC2014)
02-15-21	(FBC2020)
01-31-24	(FBC2023)

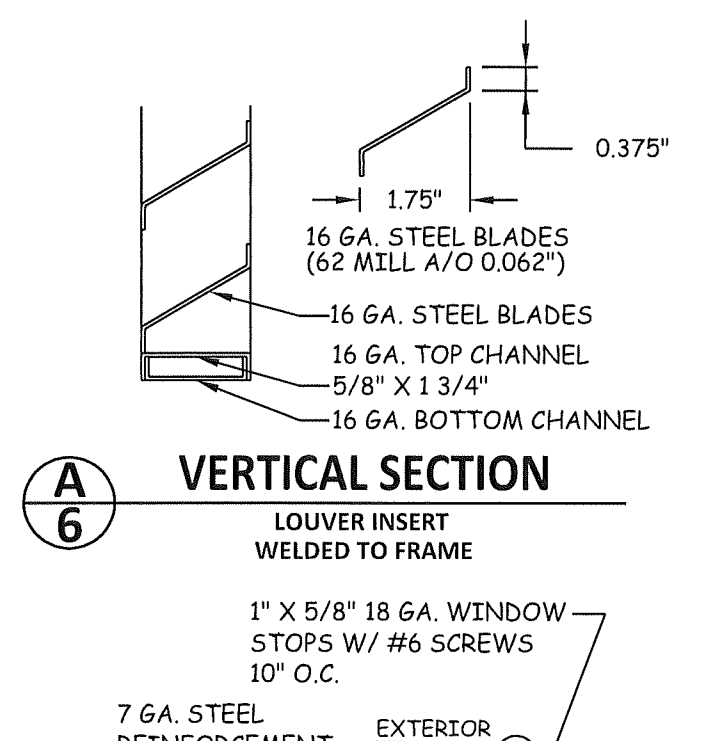
STOREFRONT SYSTEM (LMI)
CONFIGURATIONS



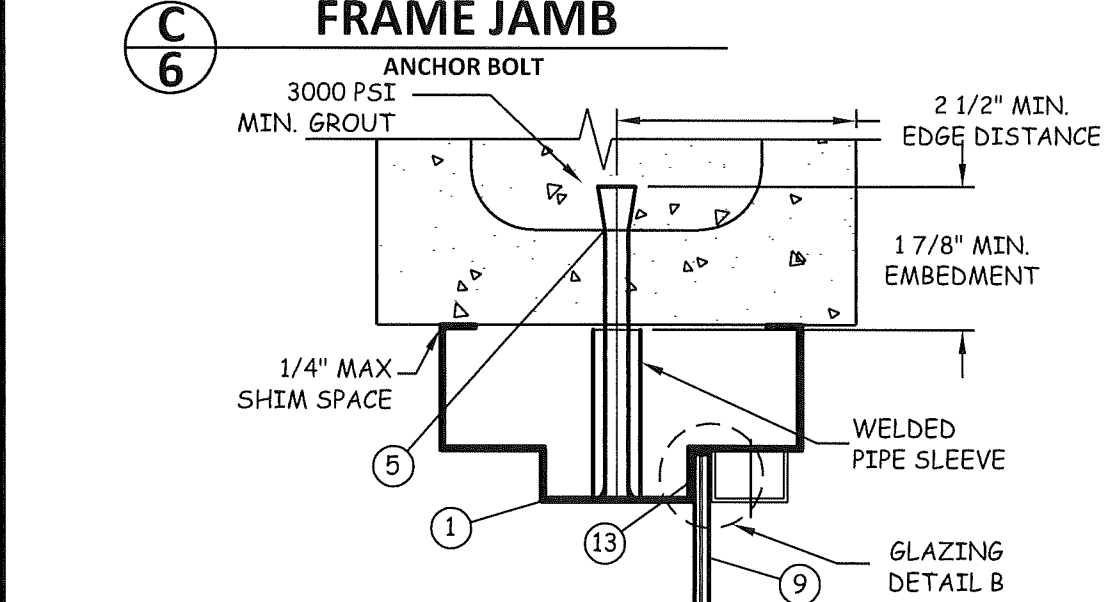
FRAME JAMB



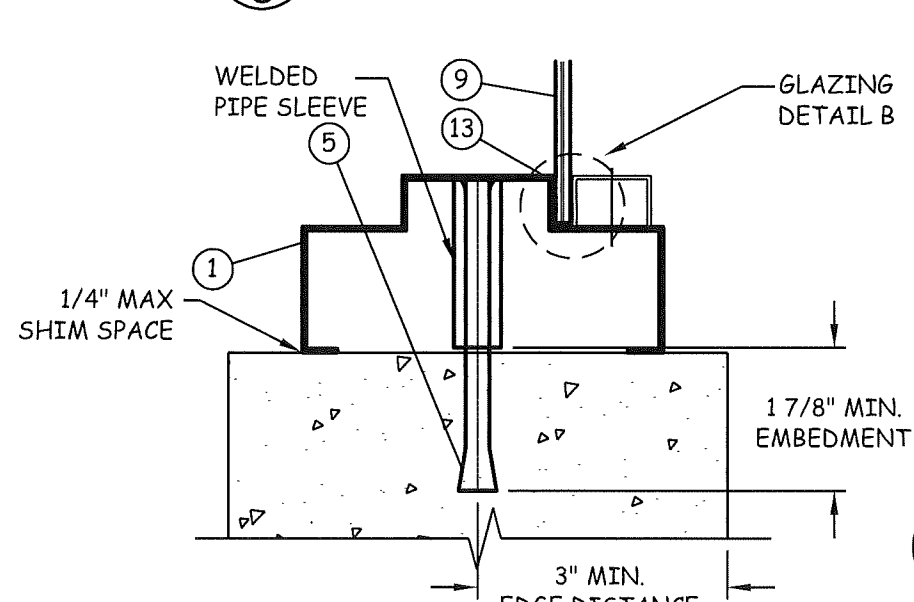
FRAME JAMB



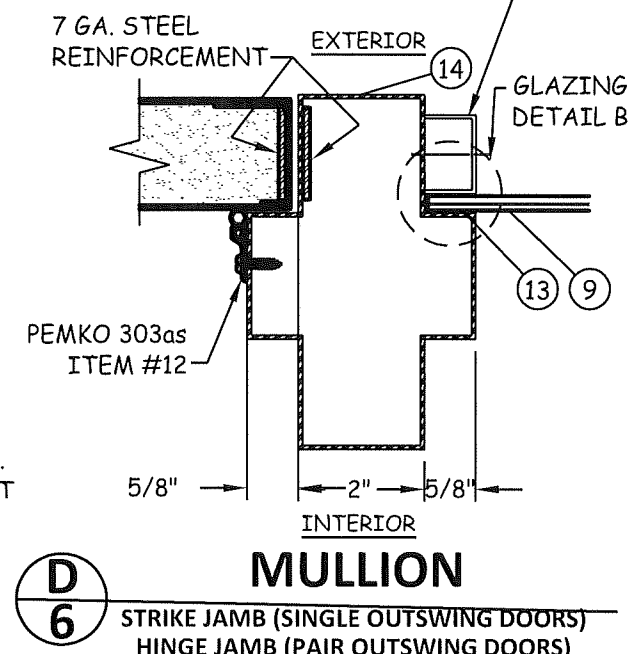
VERTICAL SECTION



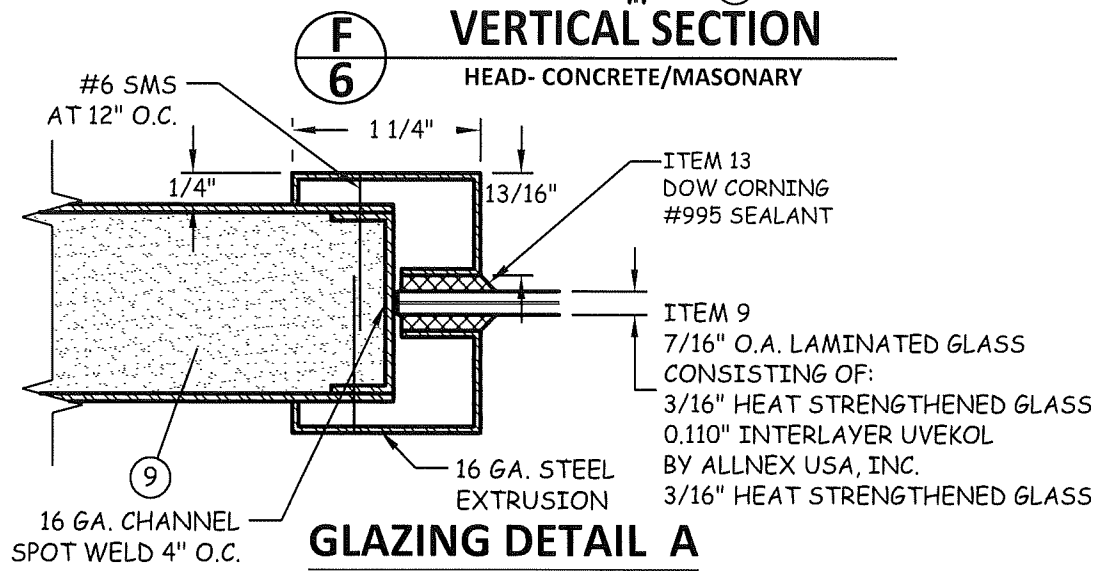
VERTICAL SECTION



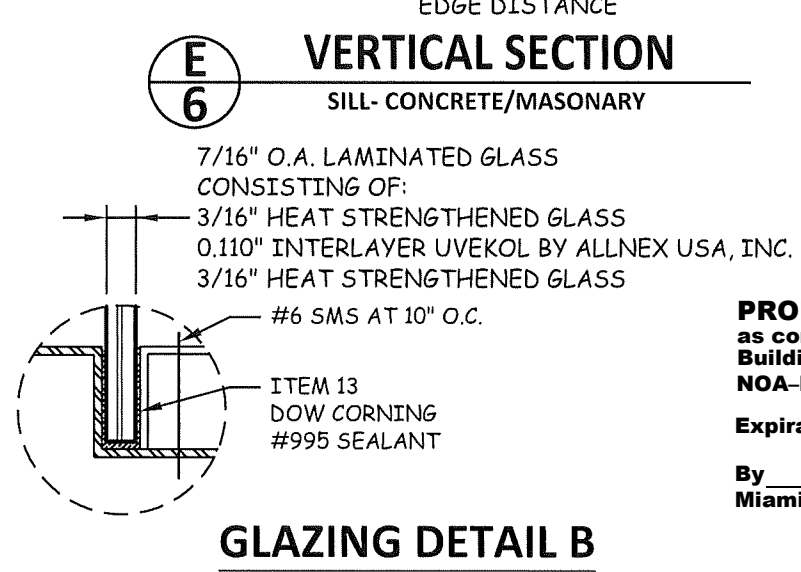
VERTICAL SECTION



MULLION

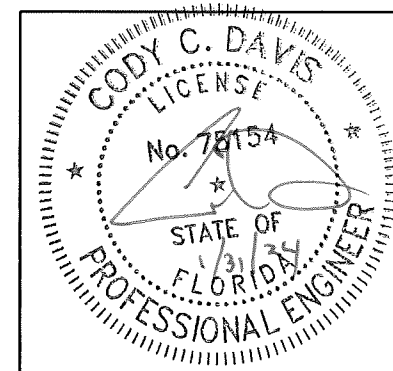


GLAZING DETAIL A



GLAZING DETAIL B

PRODUCT RENEWED
as complying with the Florida
Building Code
NOA-No. 23-1218.03
Expiration Date 08/27/2025
By Ishag I. Chank
Miami-Dade Product Control



STOREFRONT SYSTEM (LMI)

DRAWING NUMBER QEP004

REVISIONS
02-26-16 (FBC2014)
02-15-21 (FBC2020)
01-31-24 (FBC2023)

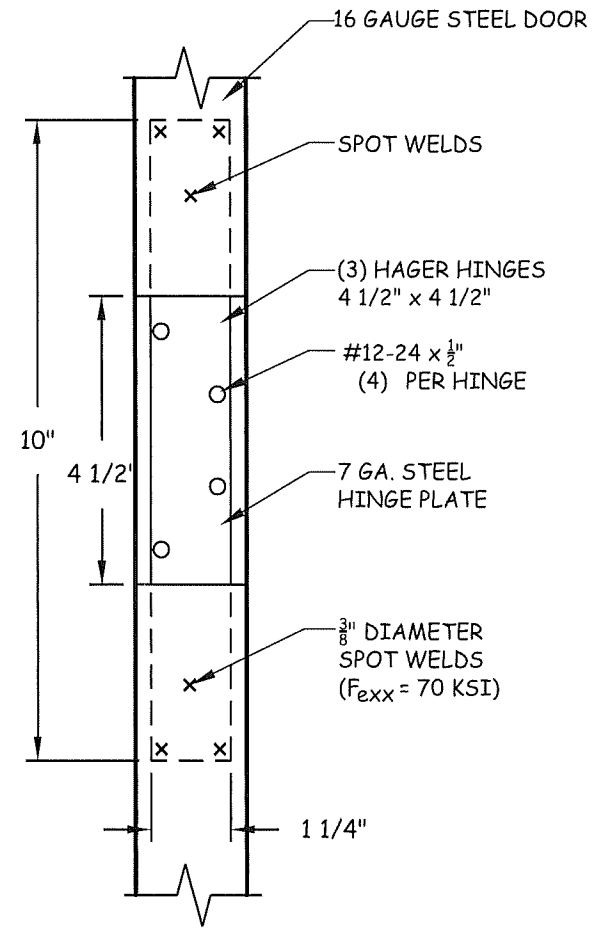
STOREFRONT SYSTEM (LMI)
VERTICAL & HORIZONTAL
SECTIONS & GLZ DETAILS

SHEET 6 OF 16

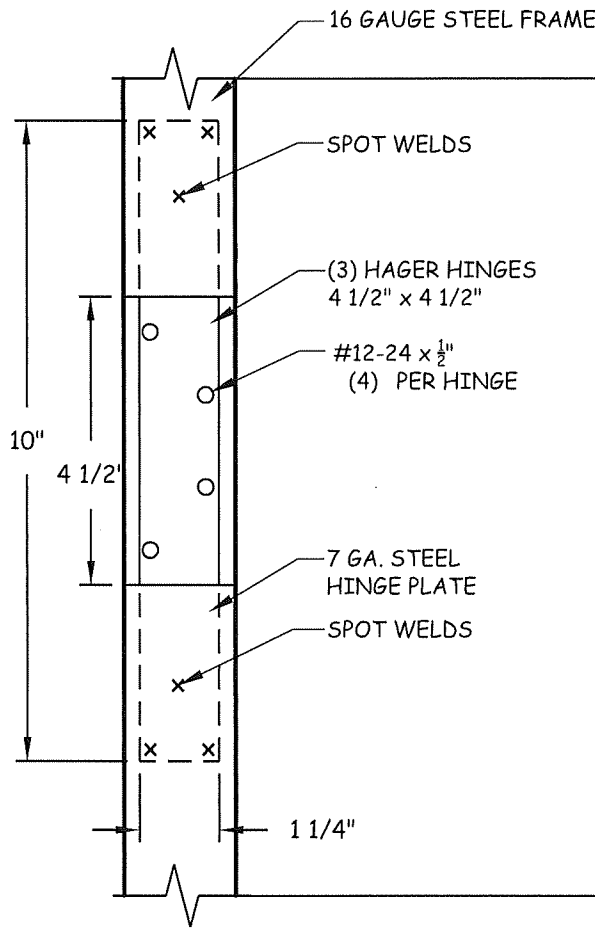
DATE 01-31-2024

4506 QUALITY LANE
TAMPA, FLORIDA 33634
(813) 885-1693

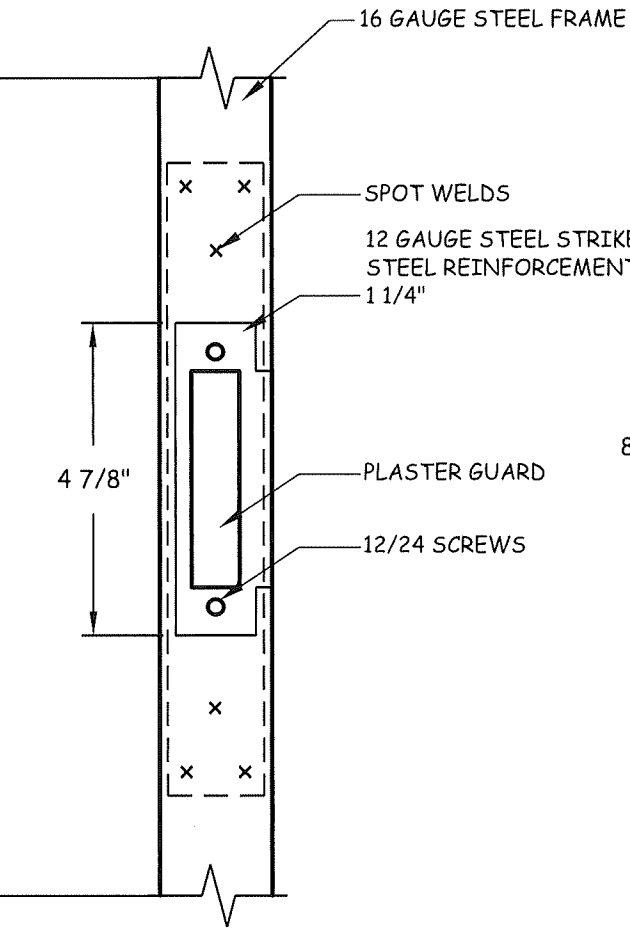
*Quality
Engineered
Products Co., Inc.*



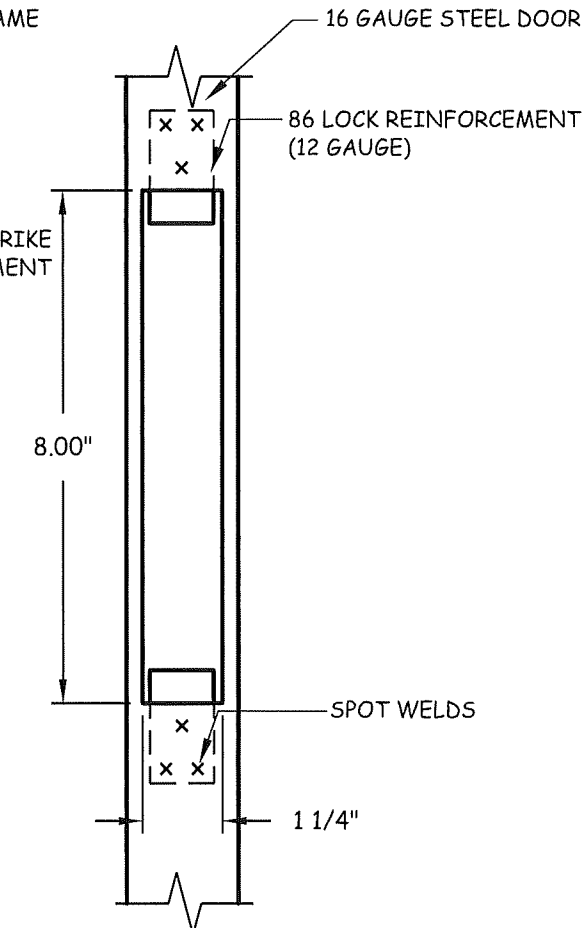
**DOOR HINGE STEEL
REINFORCEMENT**



**DOOR HINGE STEEL
REINFORCEMENT**

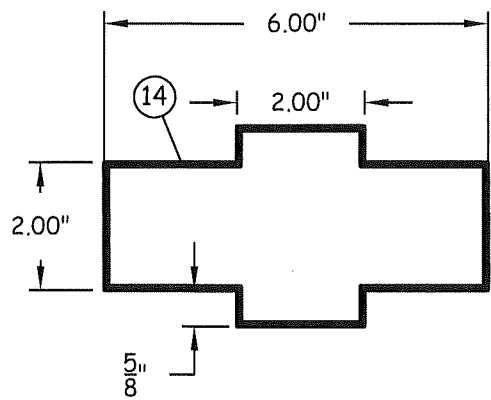


**DOOR STRIKE STEEL
REINFORCEMENT**

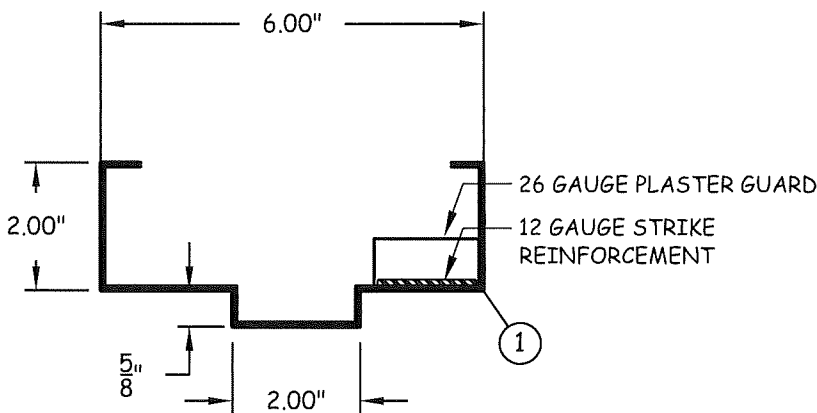


**DOOR LOCK STEEL
REINFORCEMENT**

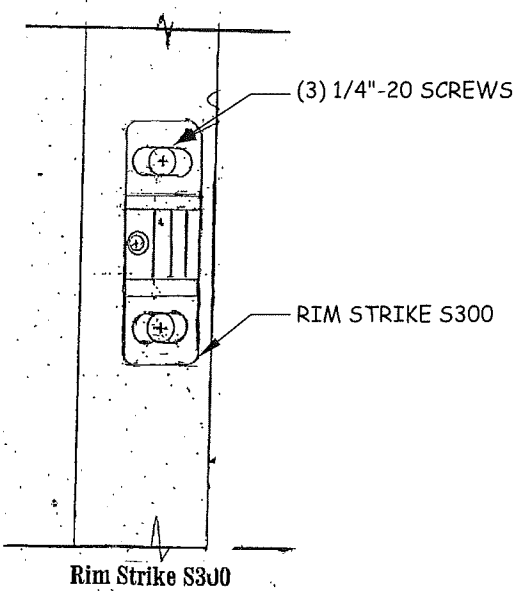
DETAIL A



**16 GA. HORIZONTAL &
VERTICAL MULLION**

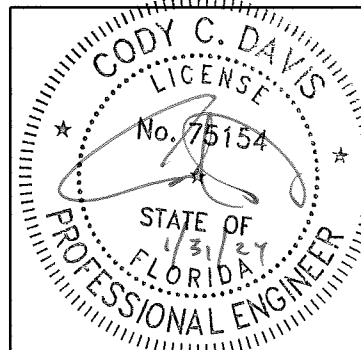


**PLASTER GUARD
W/ 16 GA. JAMB**



REMOVABLE MULLION

PRODUCT RENEWED
as complying with the Florida
Building Code
NOA-No. 23-1218.03
Expiration Date 08/27/2025
By Ishag I. Chande
Miami-Dade Product Control



STOREFRONT SYSTEM (LMI)

DRAWING NUMBER QEP004

4506 QUALITY LANE
TAMPA, FLORIDA 33634
(813) 885-1693

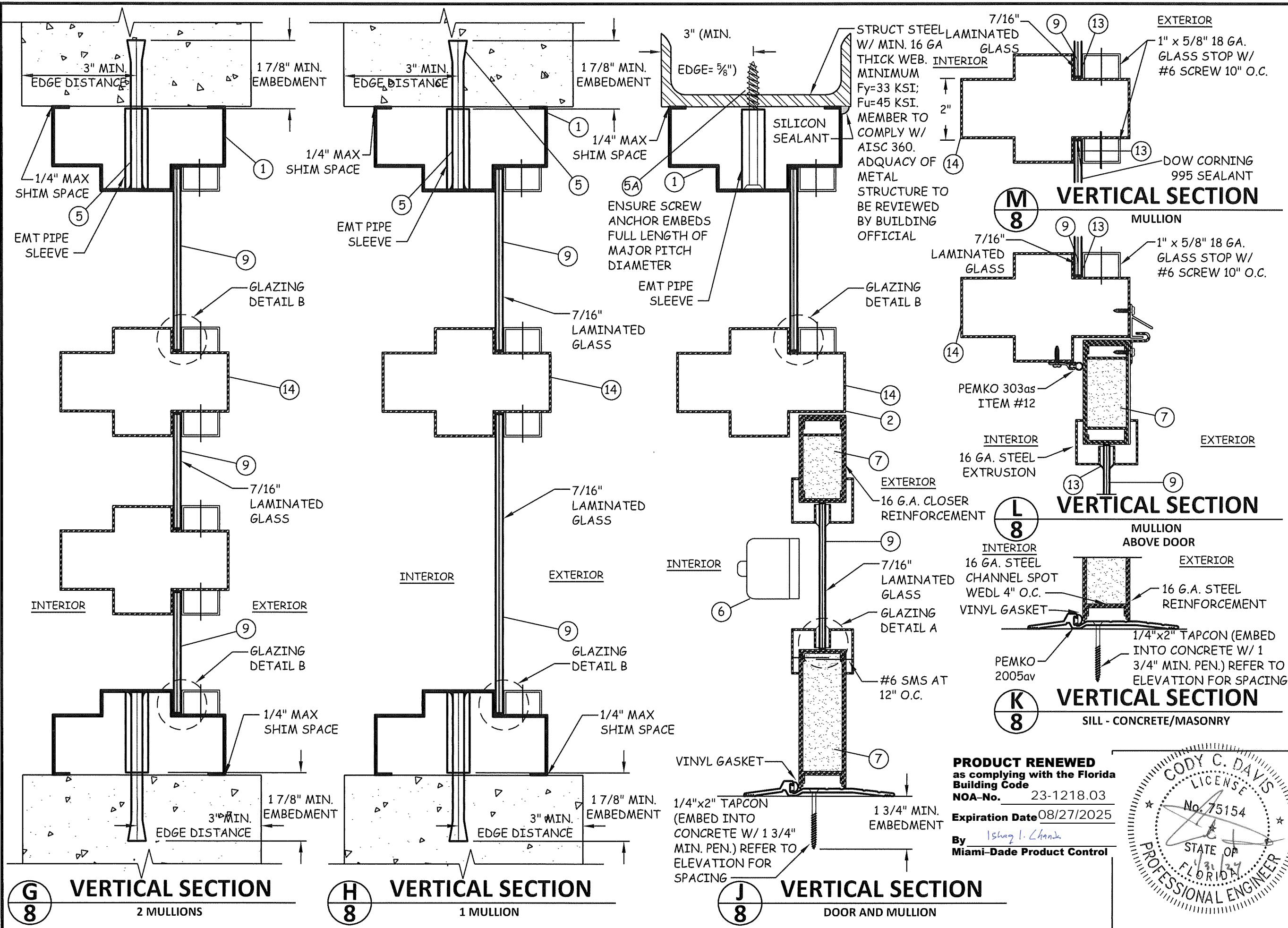
*Quality
Engineered
Products Co., Inc.*

REVISIONS
02-26-16 (FBC2014)
02-15-21 (FBC2020)
01-31-24 (FBC2023)

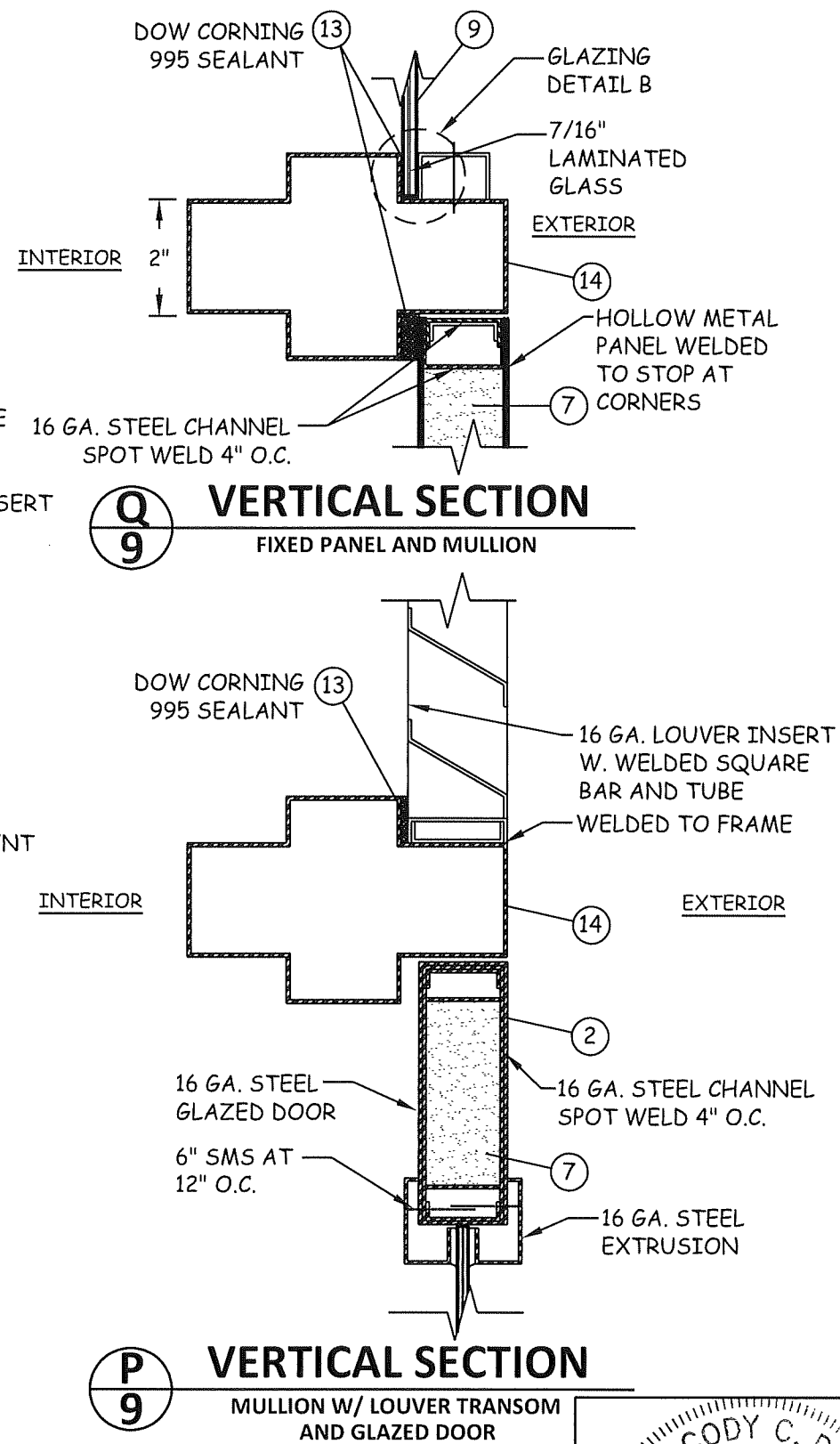
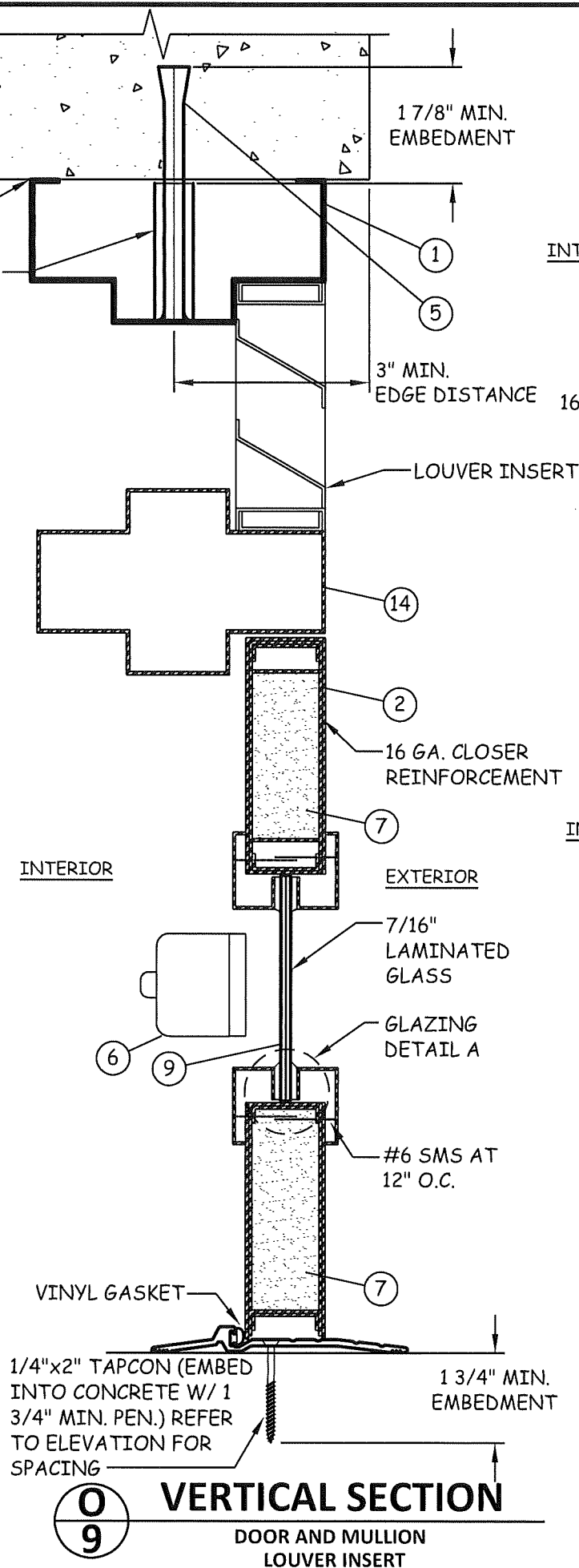
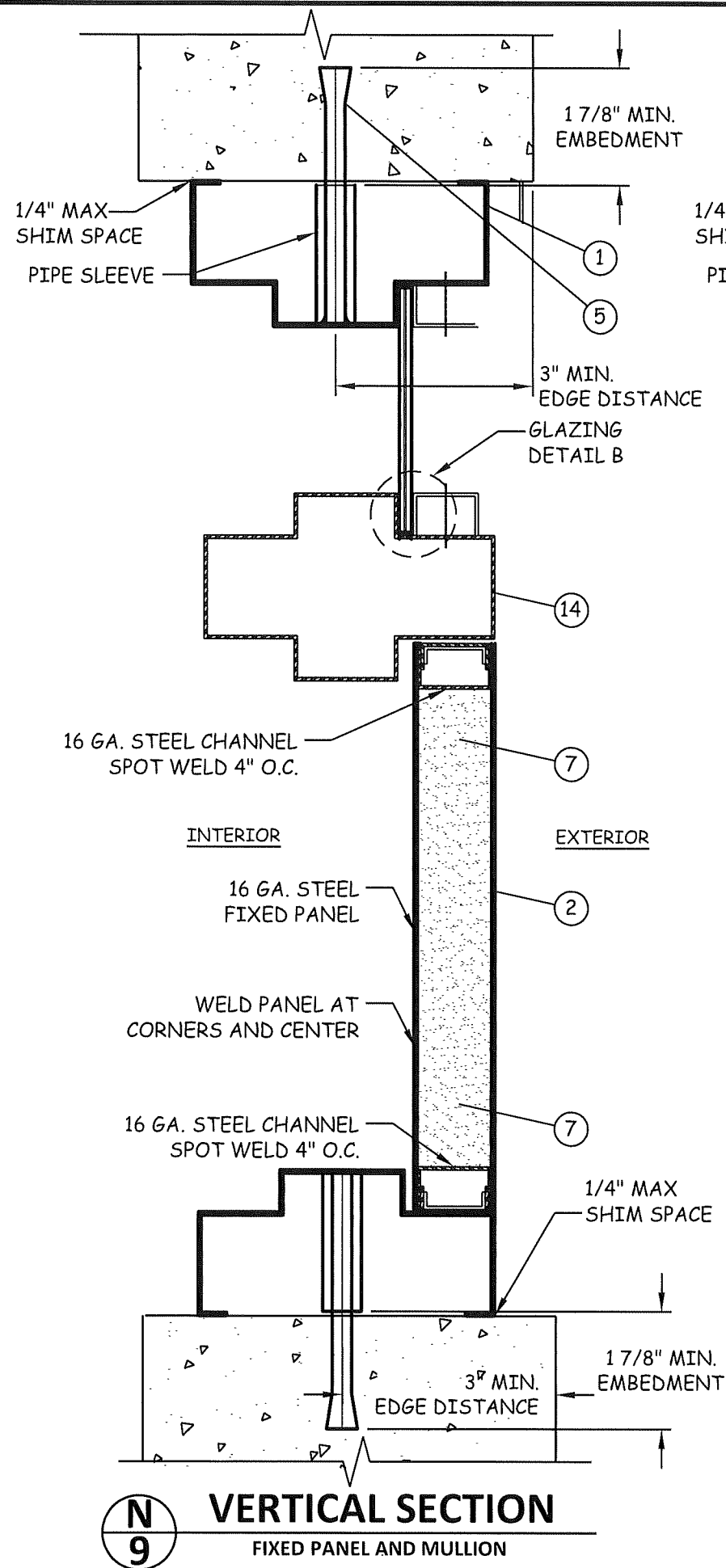
STOREFRONT SYSTEM (LMI)
DOOR &
FRAME REINFORCEMENTS

SHEET 7 OF 16

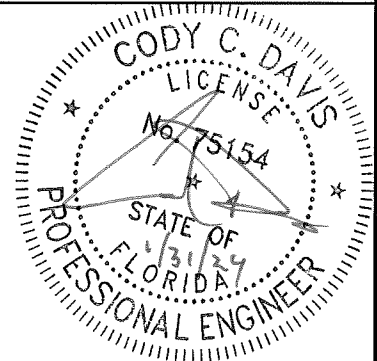
DATE 01-31-2024



STOREFRONT SYSTEM (LMI)	REVISIONS 02-26-16 (FBC2014) 02-15-21 (FBC2020) 01-31-24 (FBC2023)	DRAWING NUMBER QEP004 STOREFRONT SYSTEM (LMI) VERTICAL SECTIONS
4506 QUALITY LANE TAMPA, FLORIDA 33634 (813) 885-1693 <i>Quality Engineered Products Co., Inc.</i>		SHEET 8 OF 16 DATE 01-31-2024



PRODUCT RENEWED
as complying with the Florida
Building Code
NOA-No. 23-1218.03
Expiration Date 08/27/2025
By Ishaq I. Chande
Miami-Dade Product Control



STOREFRONT SYSTEM (LMI)

DRAWING NUMBER QEP004

4506 QUALITY LANE
TAMPA, FLORIDA 33634
(813) 885-1693

Quality Engineered Products Co., Inc.

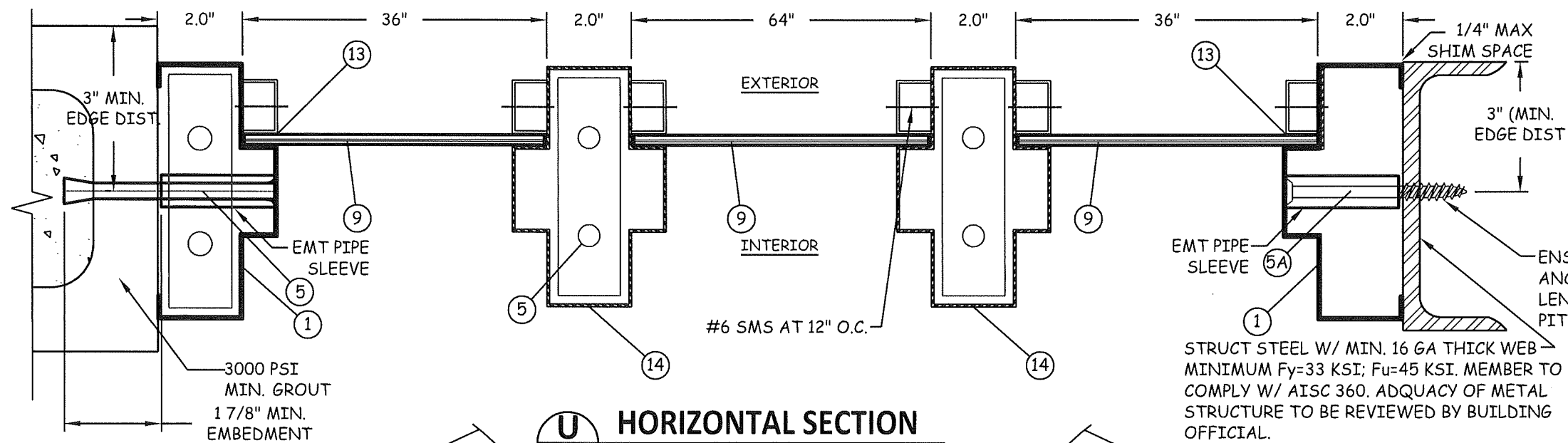
REVISIONS
02-26-16 (FBC2014)
02-15-21 (FBC2020)
01-31-24 (FBC2023)

STOREFRONT SYSTEM (LMI)

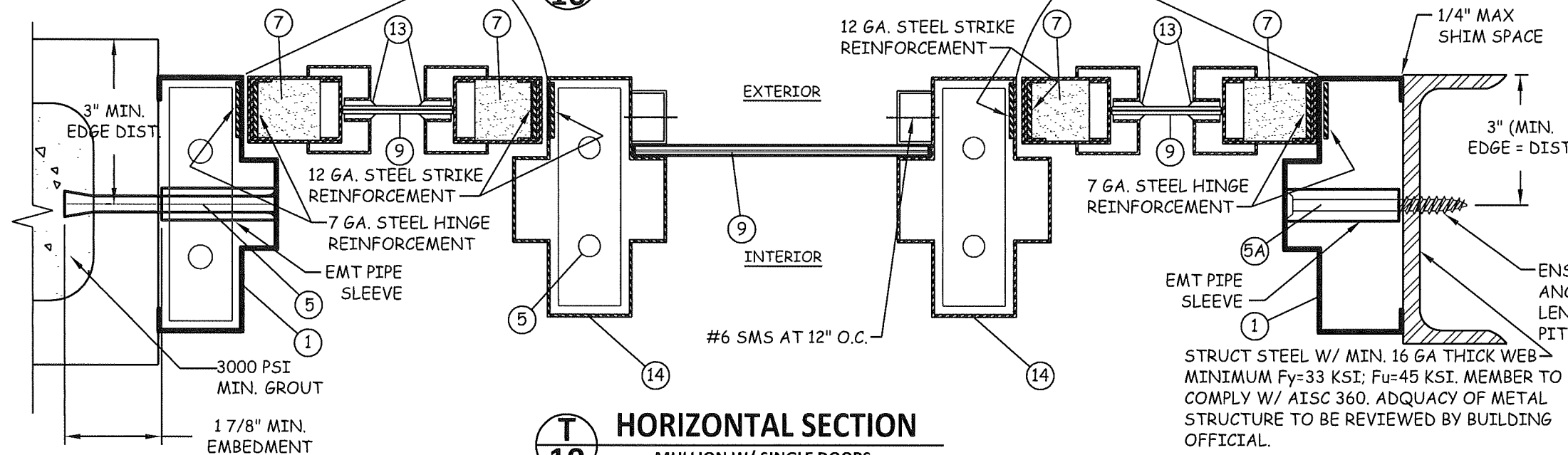
VERTICAL SECTIONS

SHEET 9 OF 16

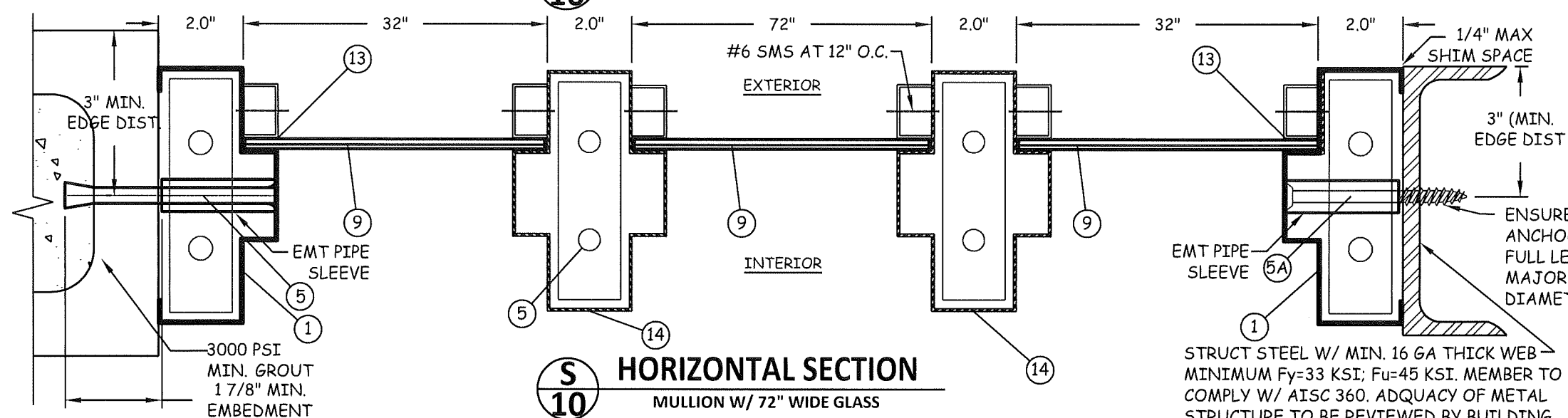
DATE 01-31-2024



**U
10** HORIZONTAL SECTION
MULLION W/ 64" WIDE GLASS

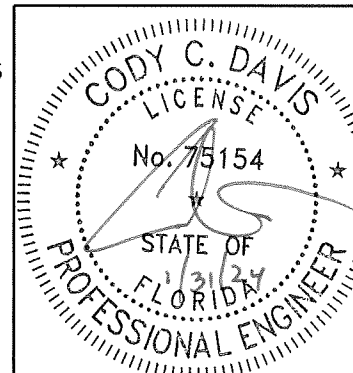
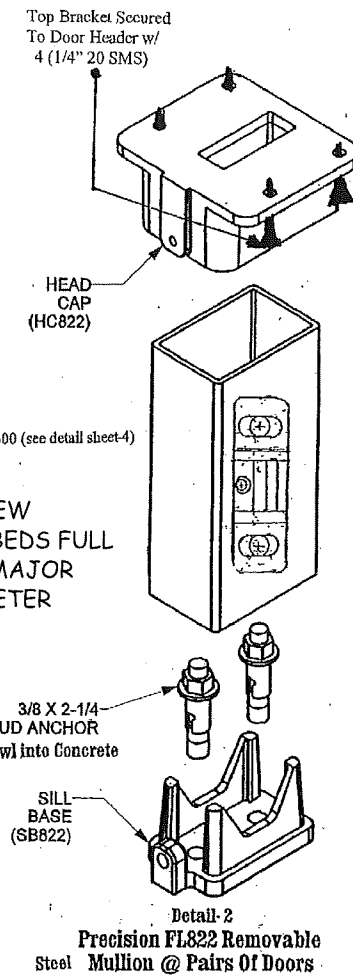


**T
10** HORIZONTAL SECTION
MULLION W/ SINGLE DOORS



**S
10** HORIZONTAL SECTION
MULLION W/ 72" WIDE GLASS

PRODUCT RENEWED
as complying with the Florida
Building Code
NOA-No. 23-1218.03
Expiration Date 08/27/2025
By Ishaq I. Chande
Miami-Dade Product Control



STOREFRONT SYSTEM (LMI)

DRAWING NUMBER QEP004

REVISIONS
02-26-16 (FBC2014)
02-15-21 (FBC2020)
01-31-24 (FBC2023)

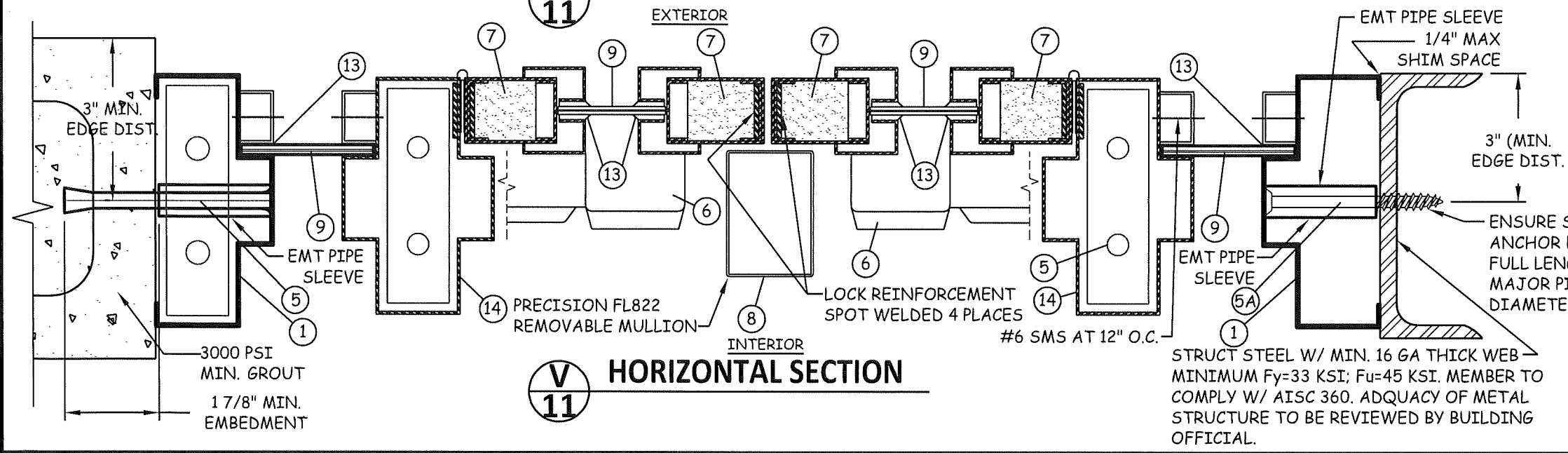
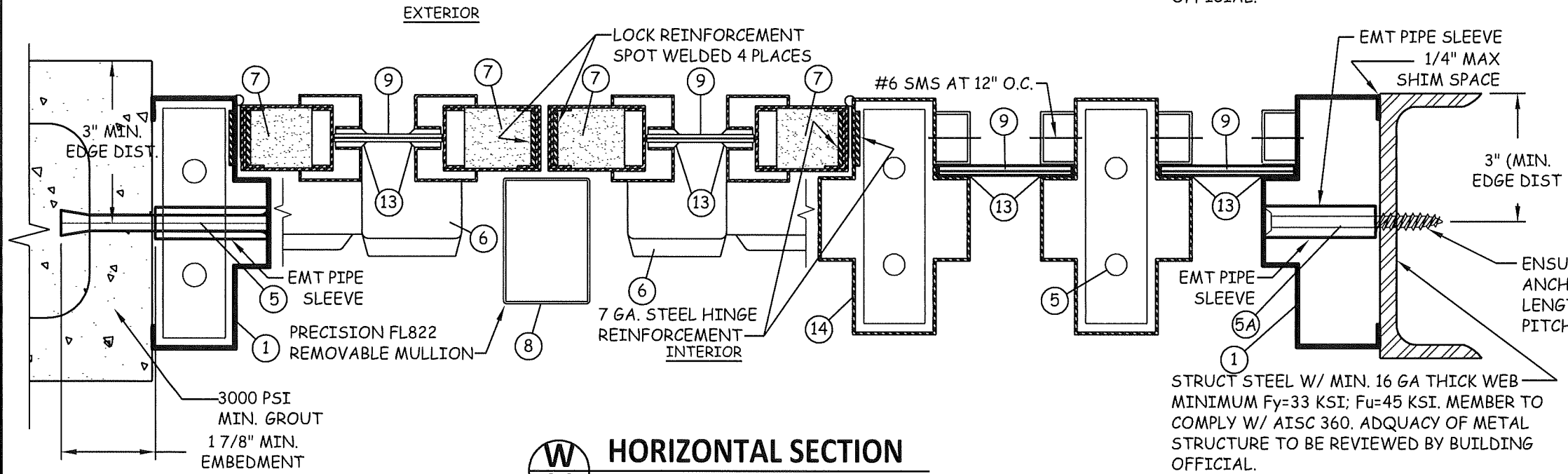
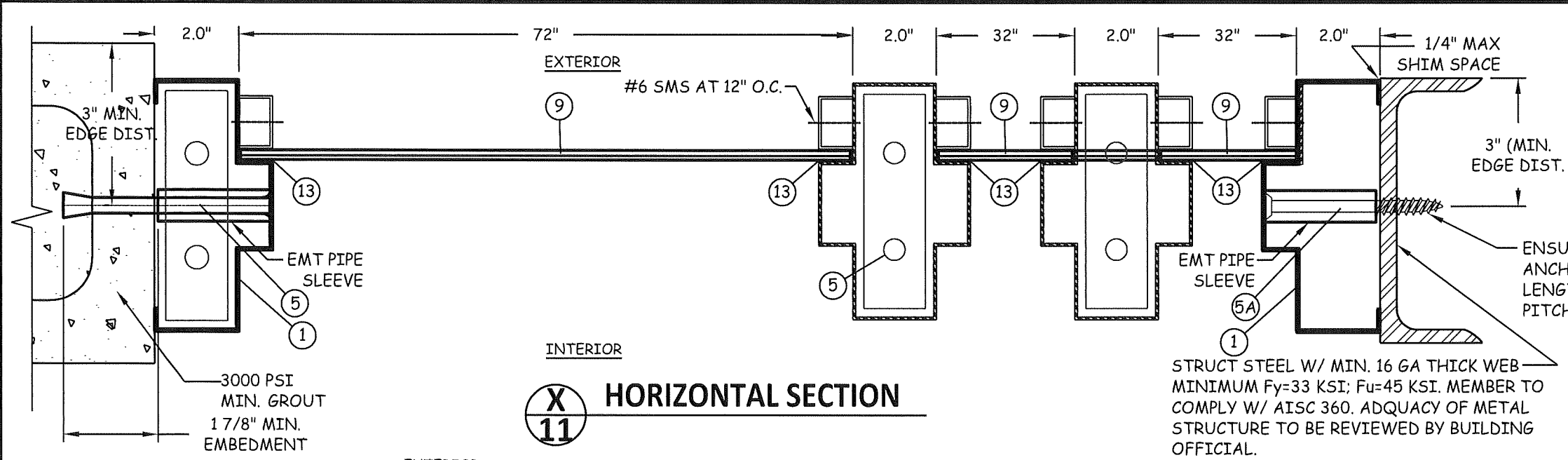
STOREFRONT SYSTEM (LMI)
HORIZONTAL SECTIONS
& DETAILS

SHEET 10 OF 16

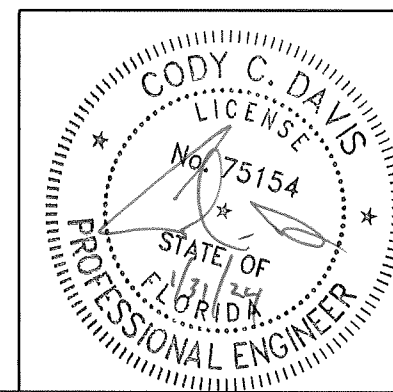
DATE 01-31-2024

4506 QUALITY LANE
TAMPA, FLORIDA 33634
(813) 885-1693

*Quality
Engineered
Products Co., Inc.*



PRODUCT RENEWED
as complying with the Florida
Building Code
NOA-No. 23-1218.03
Expiration Date 08/27/2025
By Ishag I. Chande
Miami-Dade Product Control



STOREFRONT SYSTEM (LMI)

DRAWING NUMBER QEP004

REVISIONS
02-26-16 (FBC2014)
02-15-21 (FBC2020)
01-31-24 (FBC2023)

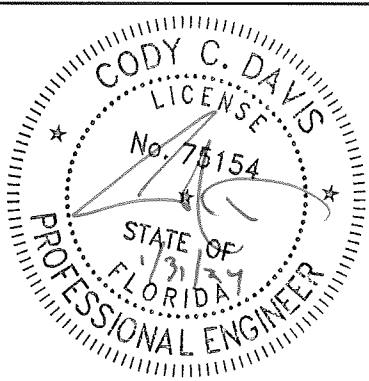
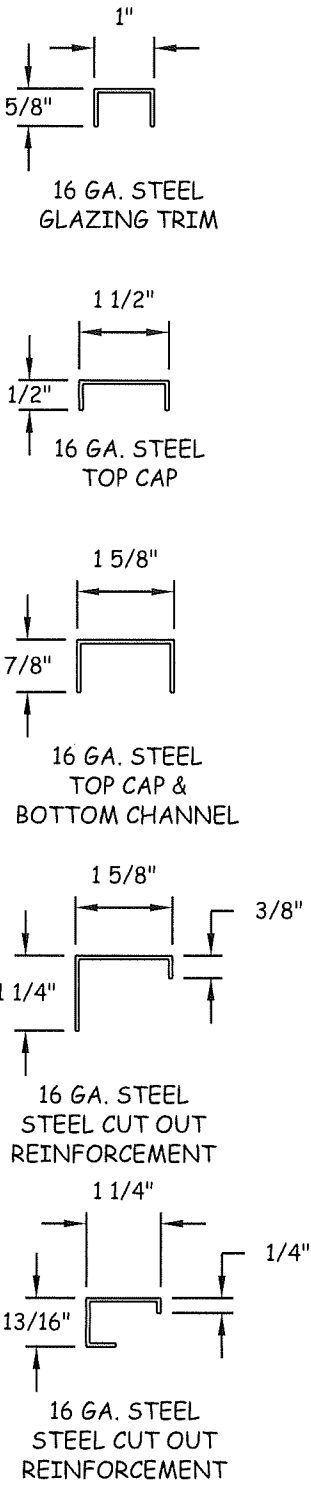
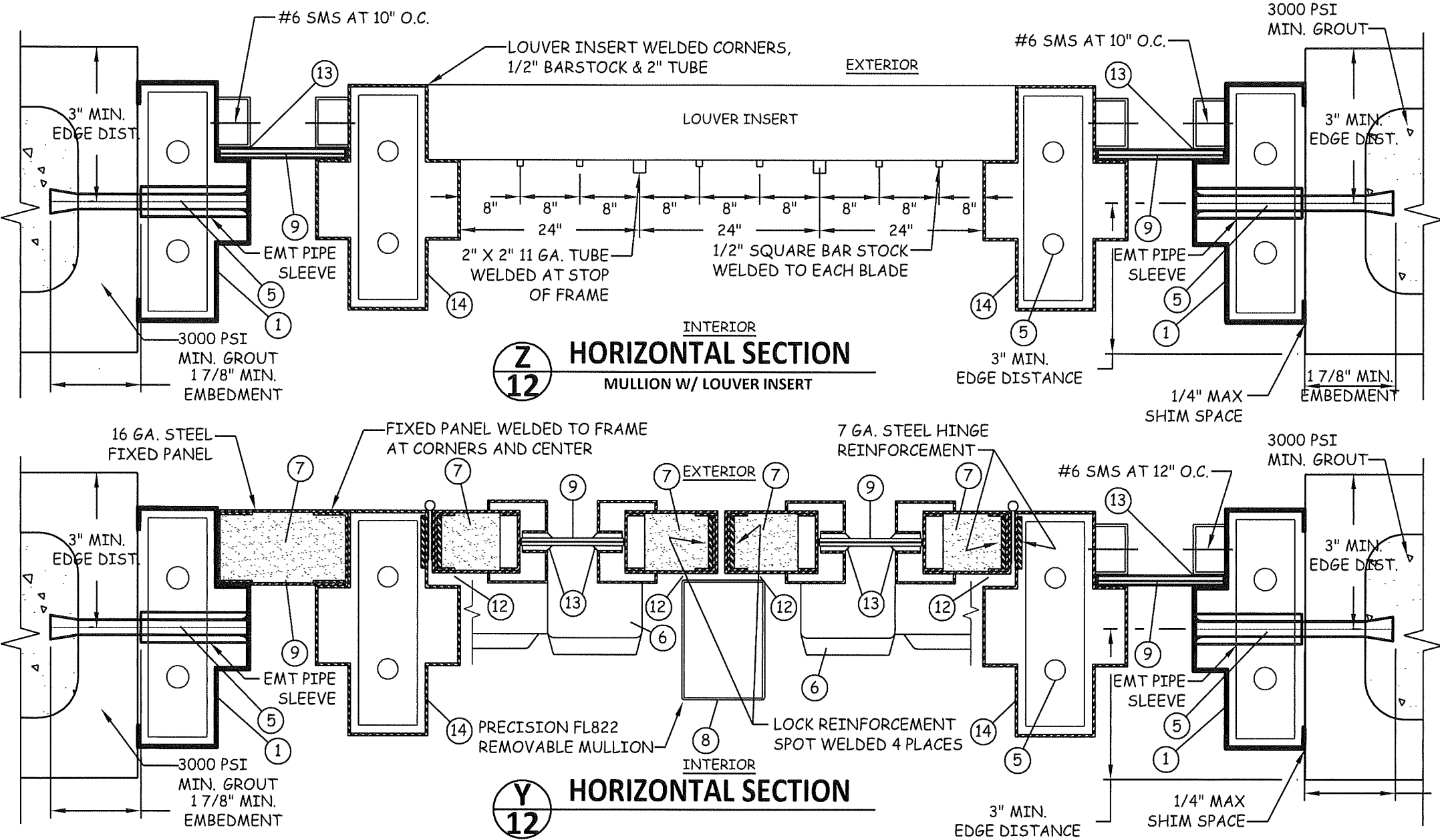
STOREFRONT SYSTEM (LMI)
HORIZONTAL SECTIONS

SHEET 11 OF 16
DATE 01-31-2024

4506 QUALITY LANE
TAMPA, FLORIDA 33634
(813) 885-1693
Quality Engineered Products Co., Inc.

BILL OF MATERIALS		
MARK	QUANTITY	DESCRIPTION
1	1	16 GA. (.063") MIN. (14 GA. MAX.) STEEL HOLLOW METAL FRAME
2	2	16 GA. (.063") MIN. (14 GA. MAX.) STEEL HOLLOW METAL DOOR
3	6	HAGER HINGES BB1279 4 1/2" x 0.134"
4	1	PEMCO 2005AV THRESHOLD
5	SEE ELEV.	1/2" DIA. DYNABOLT ITW/REDHEAD SLEEVE ANCHOR (3/8" DIA. BOLT) X 4-1/2" SLEEVE ANCHOR W/ 3/4" DIA. WELDED PIPE SLEEVE W/ 1-7/8" MIN. EMBEDMENT & 3" MIN. EDGE DISTANCE
5A	SEE ELEV.	3/8" Ø SCREW THRU EMT PIPE SLEEVE CONFORMING TO SAE GRADE 2 OR EQUAL
6	2	RIM EXIT DEVICE- PRECISION FL2100 W/ FL822 REMOVABLE MULLION (DOUBLE DOORS)
7	AS REQ.	EPS POLYSTYRENE FOAM CORE BY DYPLAST PRODUCTS W/ CURRENT NOA
8	1	PRECISION 822/KR822 REMOVABLE MULLION (DOUBLE DOORS)
9	AS REQ.	7/16" LAMINATED GLASS (3/16" HEAT STRENGTHENED GLASS - 0.110" UVEKOL INTERLAYER BY CYTEC, LAMINATED BY WEST TAMPA GLASS 3/16" HEAT STRENGTHED GLASS) OR OLDCASTLE STORMGLASS W/ SAFEX INTERLAYER
10	1	PEMCO 347A TOP DRIP
11	2	PEMCO 68A DOOR TOP WEATHERSTRIP
12	3	PEMCO 303AS WEATHERSTRIP
13	AS REQ.	DOW CORNING #995 STRUCTURAL SILICONE SEALANT
14	AS REQ.	16 GA. (.063") MIN. (14 GA. MAX.) STEEL HORIZONTAL & VERTICAL MULLION

PRODUCT RENEWED
as complying with the Florida
Building Code
NOA-No. 23-1218.03
Expiration Date 08/27/2025
By Ishaq I. Chank
Miami-Dade Product Control



STOREFRONT SYSTEM (LMI)

DRAWING NUMBER QEP004

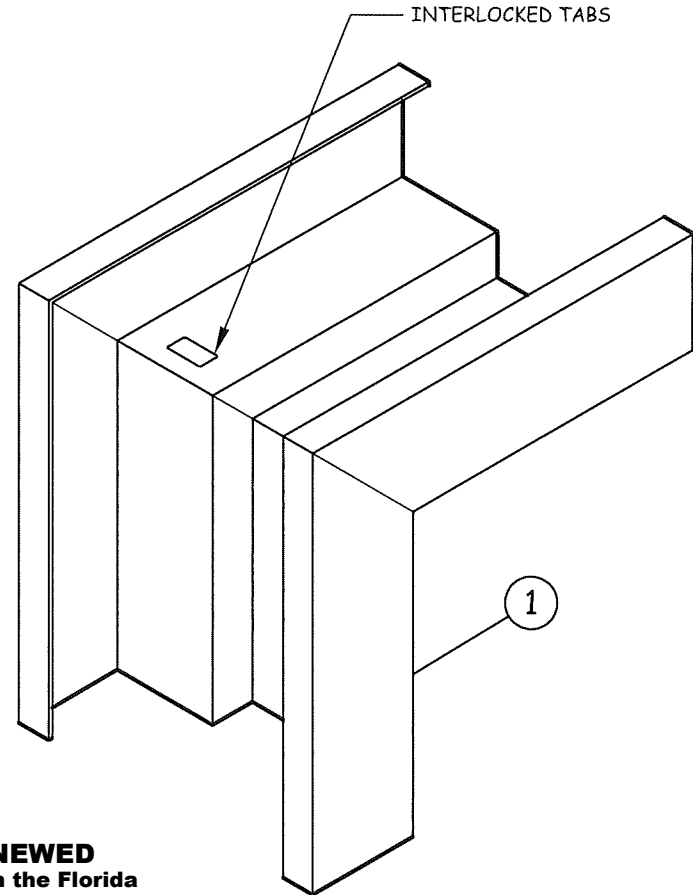
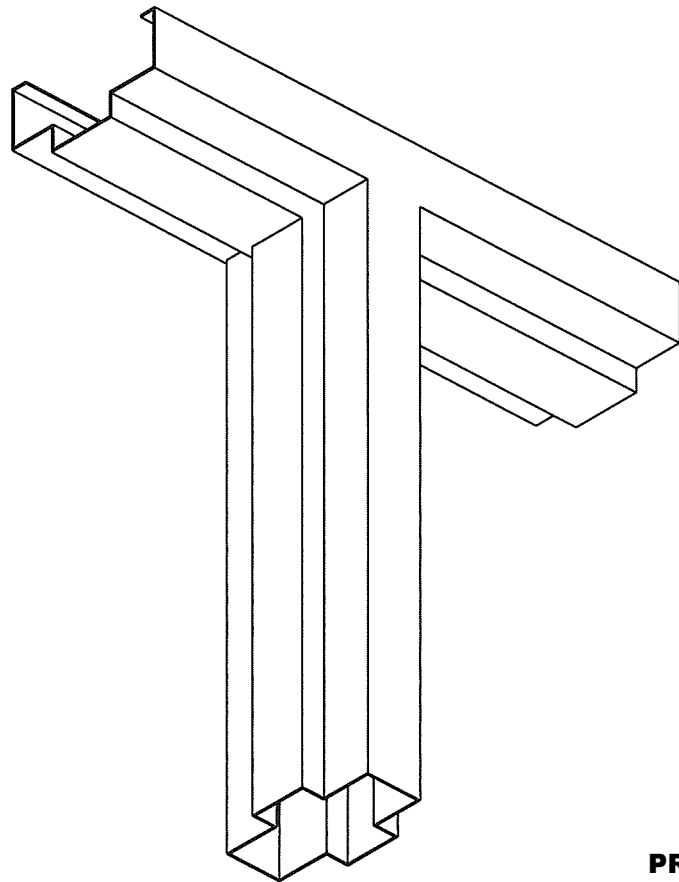
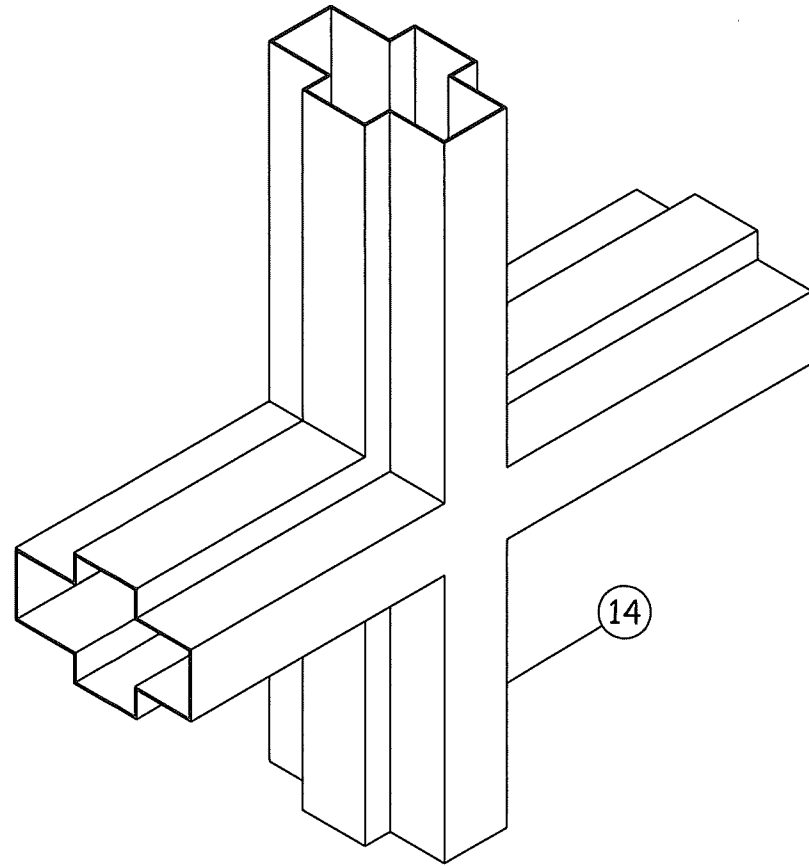
4506 QUALITY LANE
TAMPA, FLORIDA 33634
(813) 885-1693

*Quality
Engineered
Products Co., Inc.*

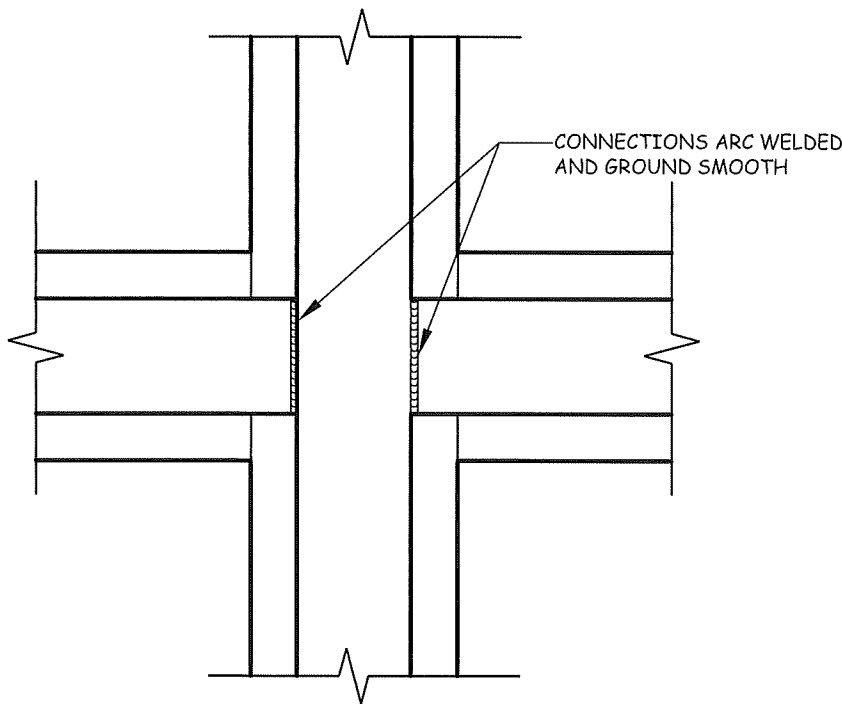
REVISIONS
02-26-16 (FBC2014)
02-15-21 (FBC2020)
01-31-24 (FBC2023)

STOREFRONT SYSTEM (LMI)
HORIZONTAL SECTIONS,
BILL OF MATERIALS & DETAILS

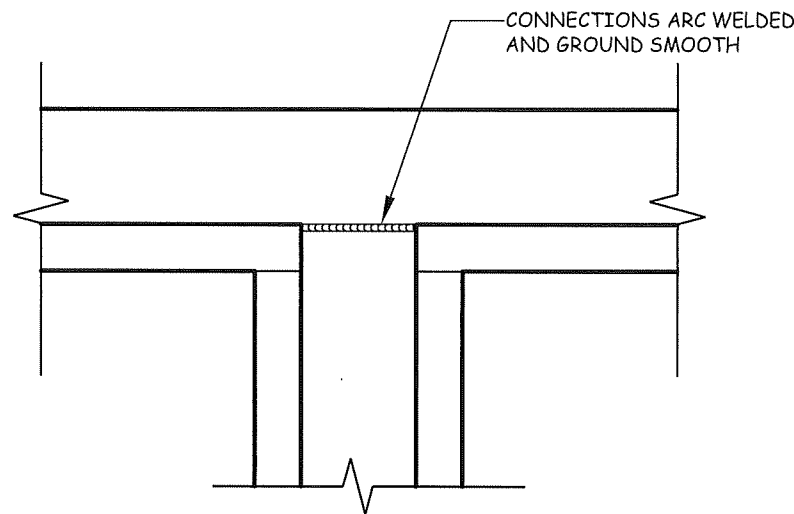
SHEET 12 OF 16
DATE 01-31-2024



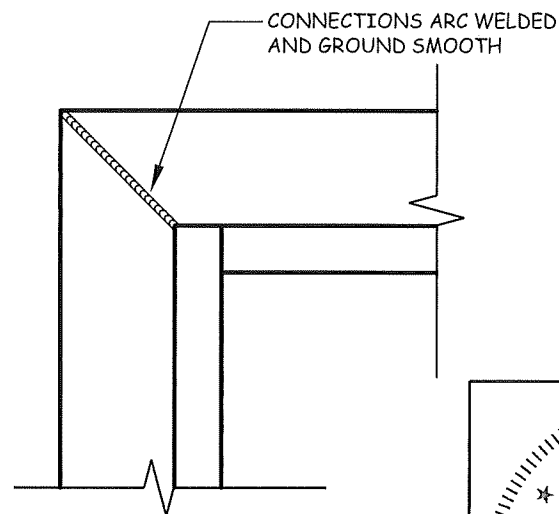
PRODUCT RENEWED
 as complying with the Florida
 Building Code
 NOA-No. 23-1218.03
 Expiration Date 08/27/2025
 By Ishaq I. Chande
 Miami-Dade Product Control



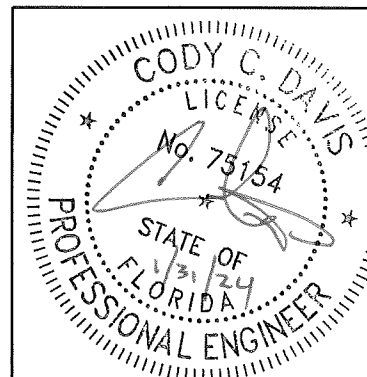
**TYPICAL MULLION
 TO MULLION
 CONNECTION**



**TYPICAL MULLION
 TO JAMB
 CONNECTION**



**TYPICAL CORNER
 CONNECTION**



STOREFRONT SYSTEM (LMI)

DRAWING NUMBER QEP004

4506 QUALITY LANE
 TAMPA, FLORIDA 33634
 (813) 885-1693

*Quality
 Engineered
 Products Co., Inc.*

REVISIONS

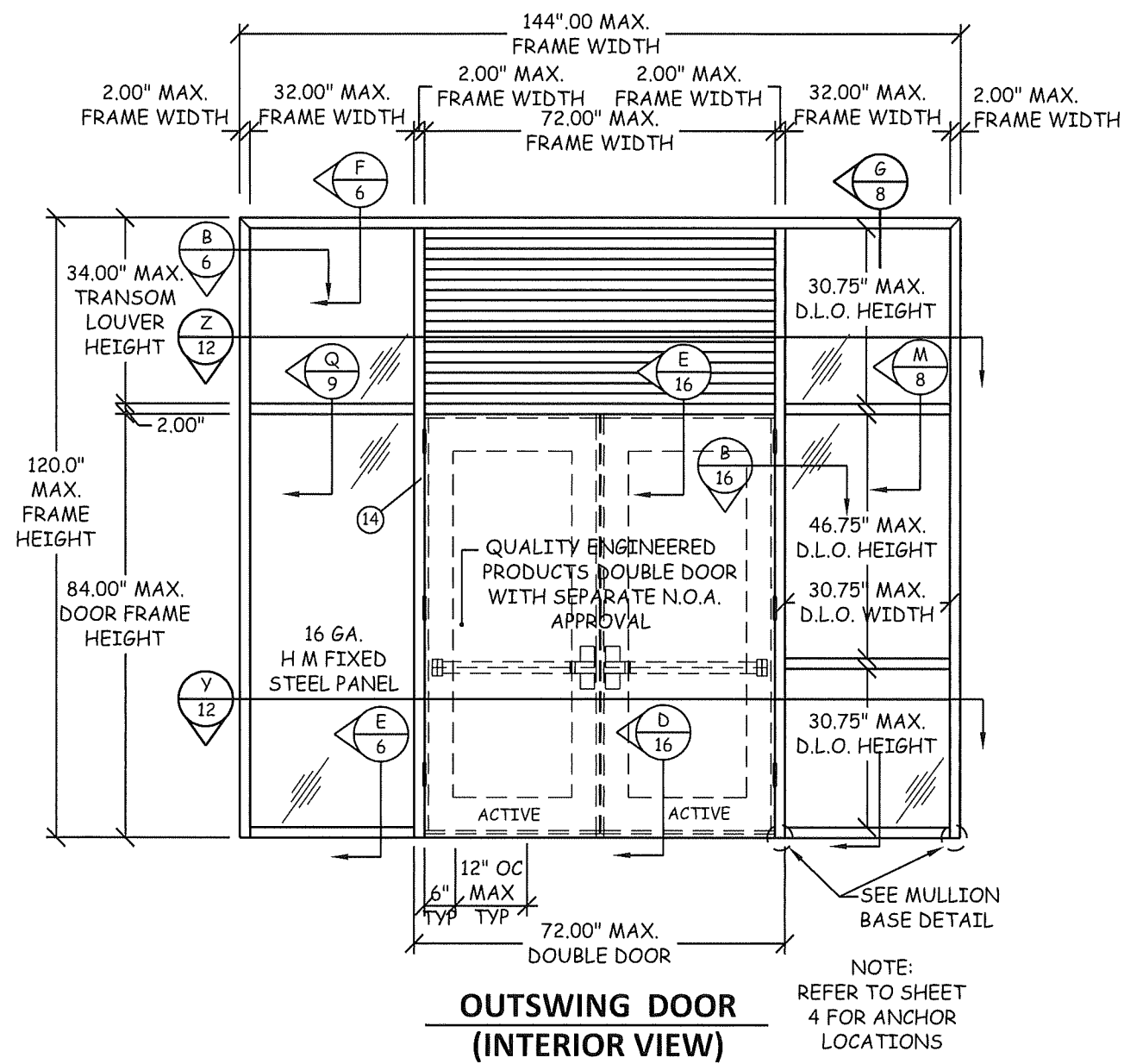
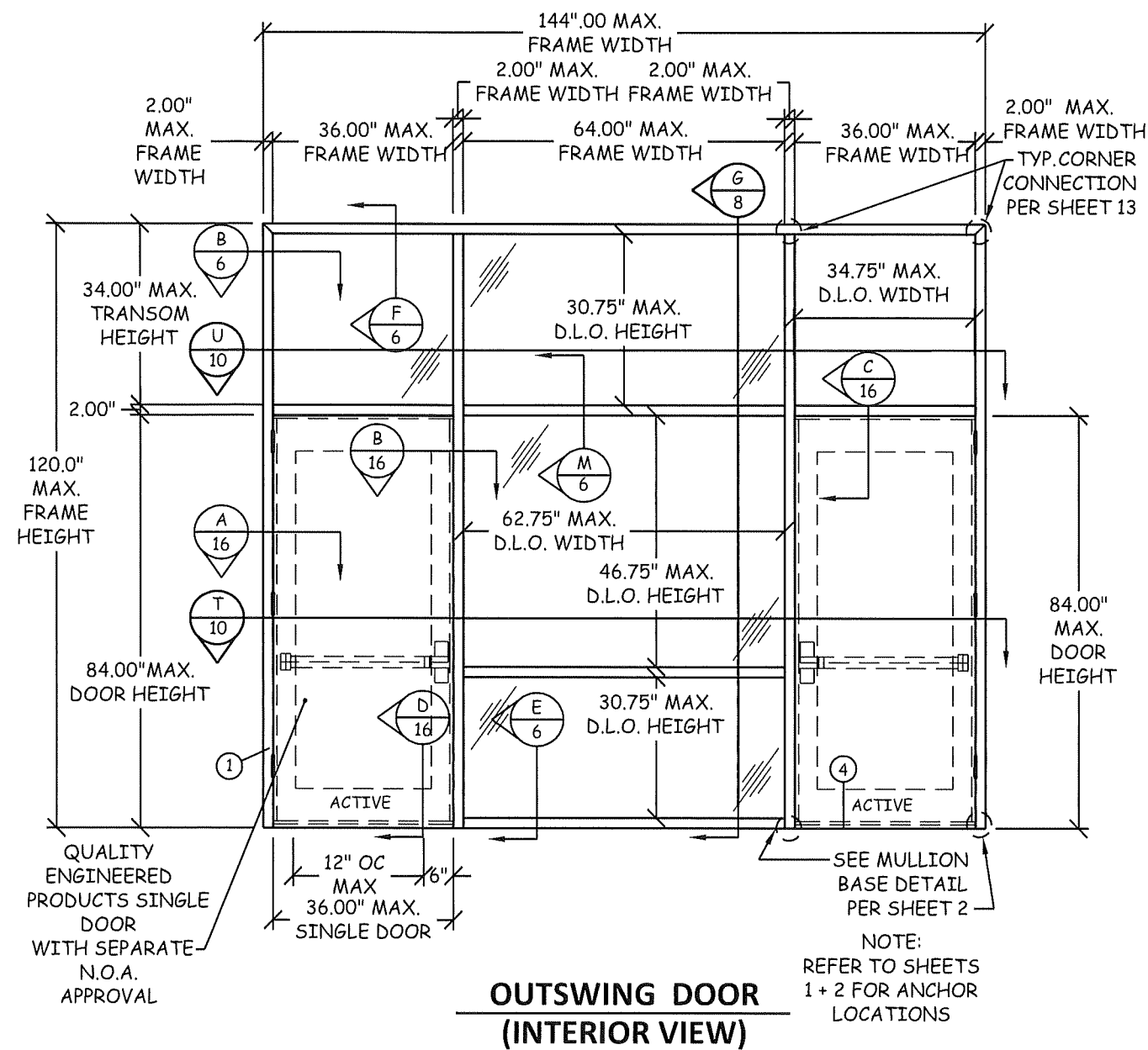
02-26-16 (FBC2014)
 02-15-21 (FBC2020)
 01-31-24 (FBC2023)

STOREFRONT SYSTEM (LMI)

ISO-METRIC VIEWS

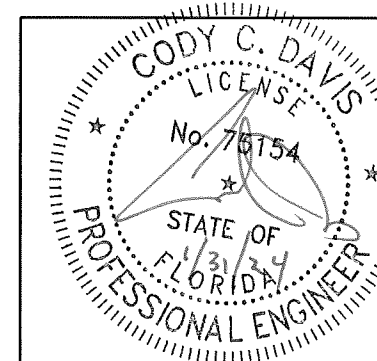
SHEET 13 OF 16

DATE 01-31-2024



NOTE:
LOWER DESIGN PRESSURE OF
ALTERNATE DOOR AND
STOREFRONT SHALL
APPLY TO THE ENTIRE
SYSTEM. ALSO, ANY
LIMITATIONS OF THE
ALTERNATE DOOR WILL
ALSO APPLY TO THE
ENTIRE SYSTEM

PRODUCT RENEWED
as complying with the Florida
Building Code
NOA-No. 23-1218.03
Expiration Date 08/27/2025
By Ishag I. Chande
Miami-Dade Product Control



STOREFRONT SYSTEM (LMI)

DRAWING NUMBER QEP0004

4506 QUALITY LANE
TAMPA, FLORIDA 33634
(813) 885-1693

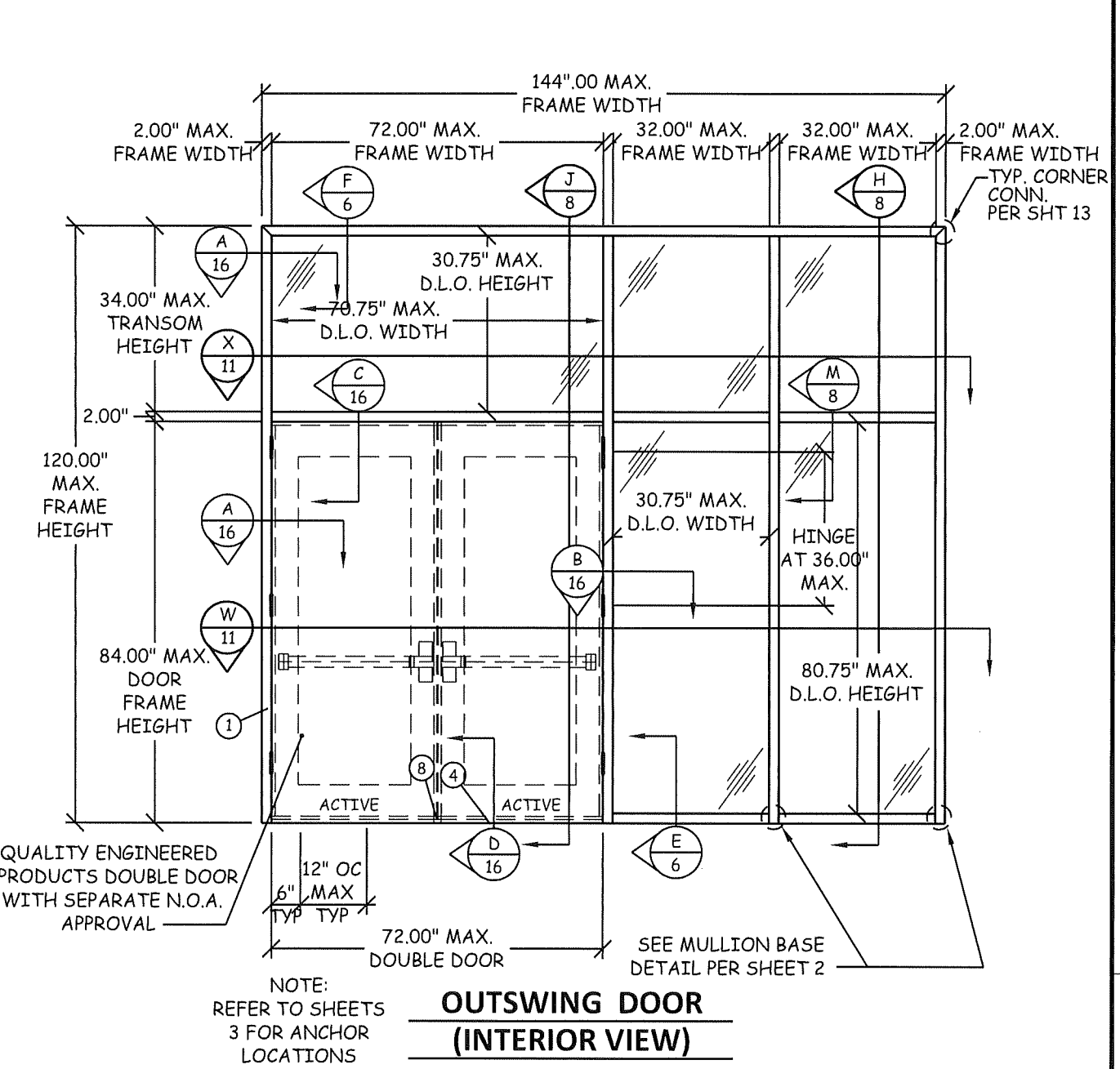
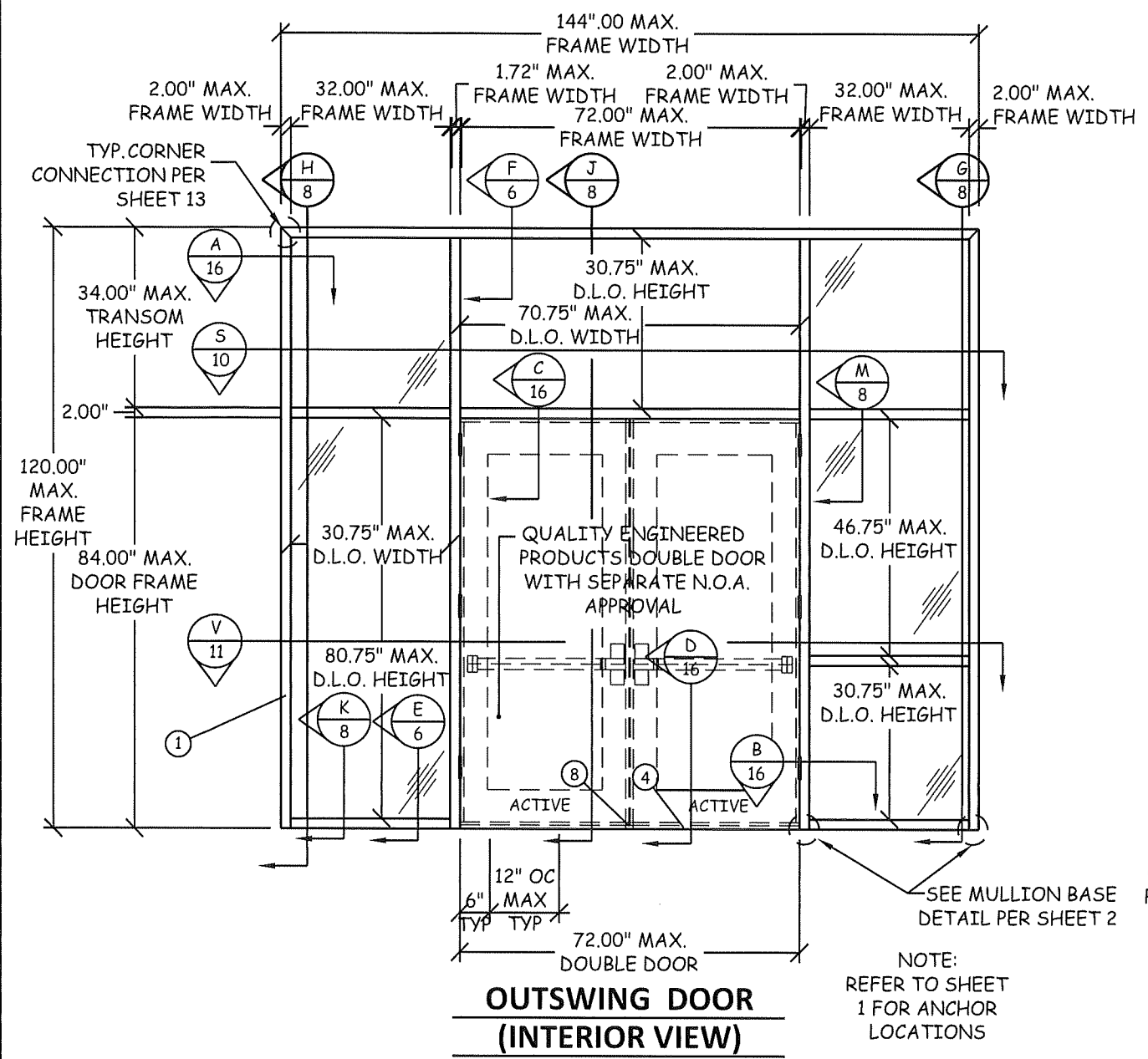
*Quality
Engineered
Products Co., Inc.*

REVISIONS

**STOREFRONT SYSTEM (LMI)
LOUVER ELEVATION
& DETAILS**

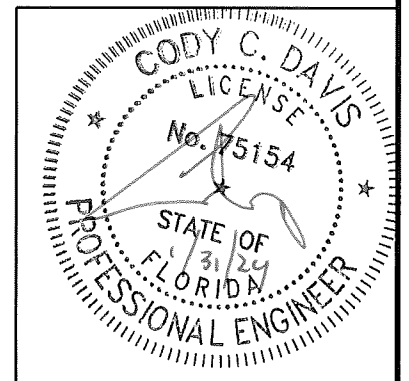
SHEET 14 OF 16

DATE 01-31-2024



NOTE:
LOWER DESIGN PRESSURE OF
ALTERNATE DOOR AND
STOREFRONT SHALL
APPLY TO THE ENTIRE
SYSTEM. ALSO, ANY
LIMITATIONS OF THE
ALTERNATE DOOR WILL
ALSO APPLY TO THE
ENTIRE SYSTEM

PRODUCT RENEWED
as complying with the Florida
Building Code
NOA-No. 23-1218.03
Expiration Date 08/27/2025
By Ishaq I. Chank
Miami-Dade Product Control



STOREFRONT SYSTEM (LMI)

DRAWING NUMBER QEPO04

REVISIONS
02-26-16 (FBC2014)
02-15-21 (FBC2020)
01-31-24 (FBC2023)

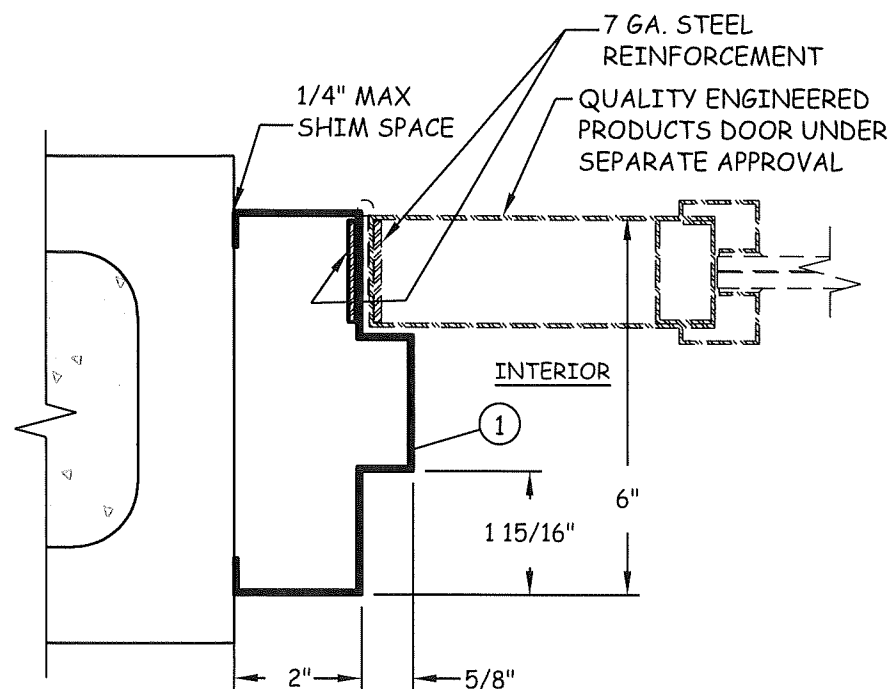
STOREFRONT SYSTEM (LMI)
LOUVER ELEVATION
& DETAILS

SHEET 15 OF 16

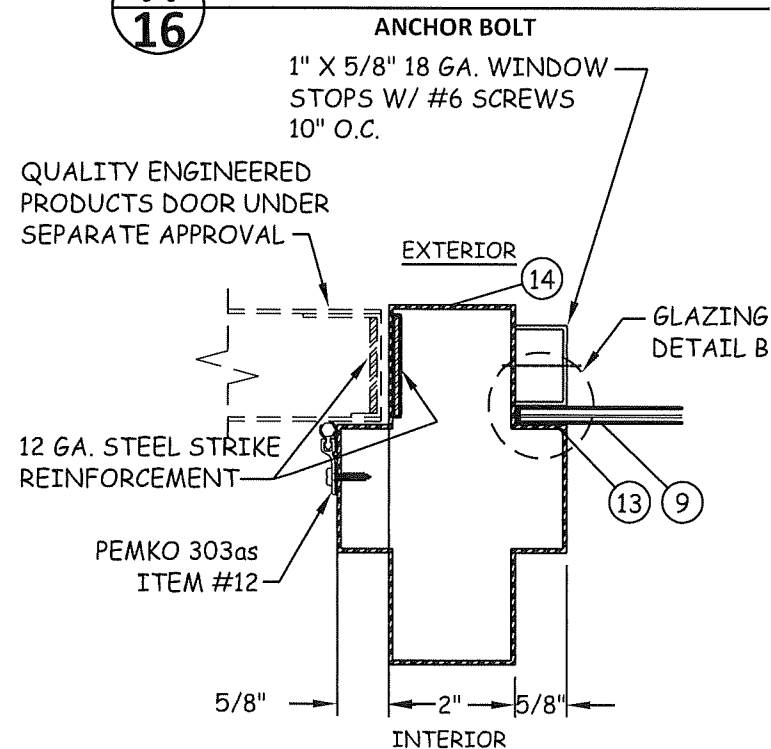
DATE 01-31-2024

4506 QUALITY LANE
TAMPA, FLORIDA 33634
(813) 885-1693

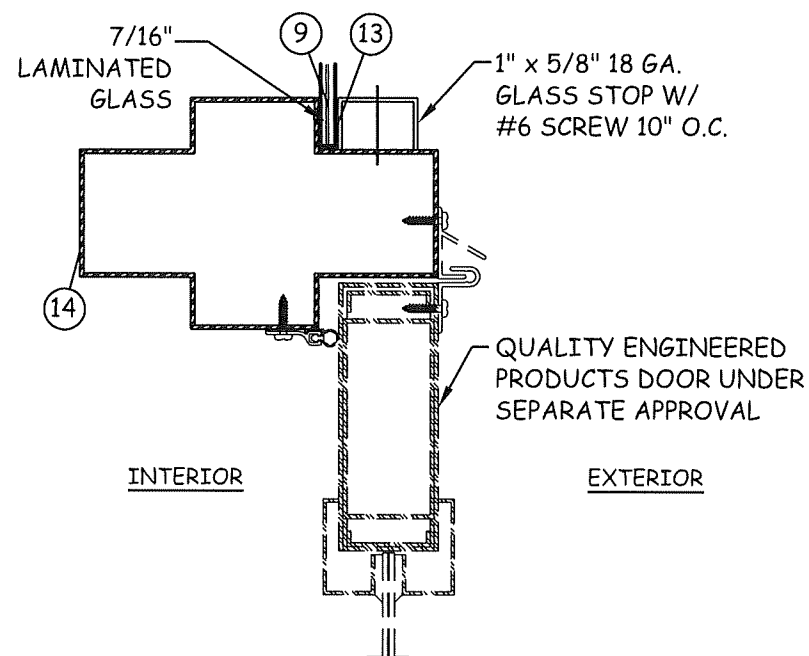
*Quality
Engineered
Products Co., Inc.*



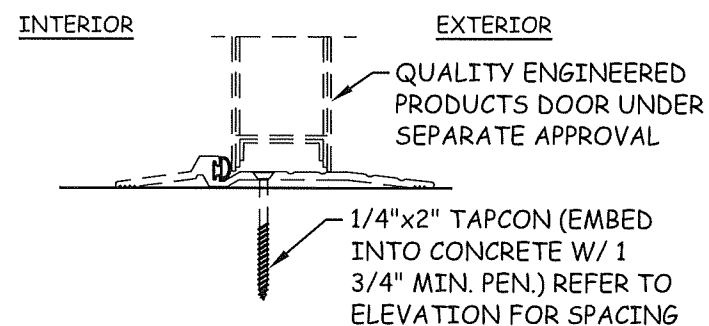
A
16 **FRAME JAMB AT HINGE**



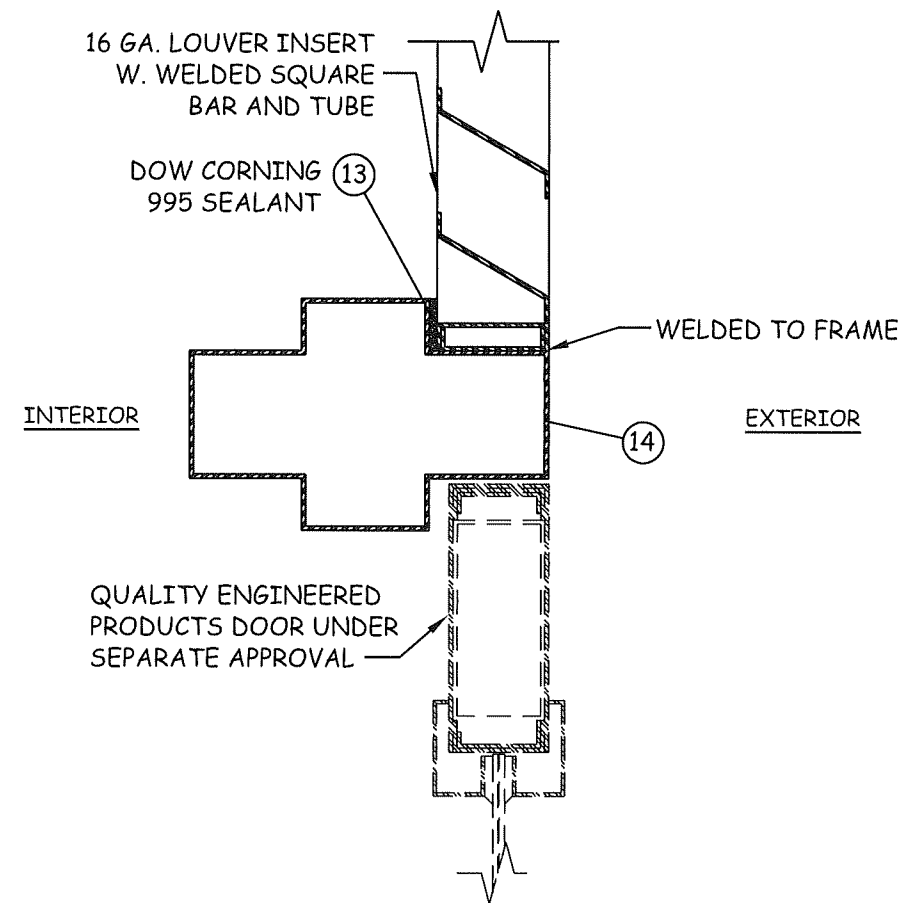
B
16 **MULLION AT STRIKE**
STRIKE JAMB (SINGLE OUTSWING DOORS)
HINGE JAMB (PAIR OUTSWING DOORS)



C
16 **VERTICAL SECTION**
MULLION ABOVE DOOR

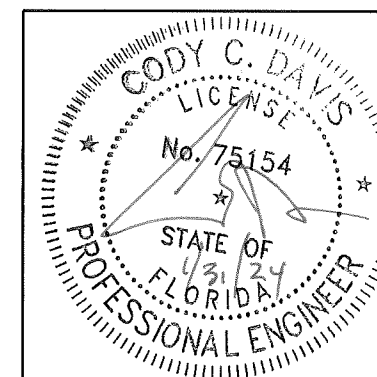


D
16 **VERTICAL SECTION**
SILL - CONCRETE/MASONRY



E
16 **VERTICAL SECTION**
MULLION W/ LOUVER TRANSOM AND GLAZED DOOR

PRODUCT RENEWED
as complying with the Florida
Building Code
NOA-No. 23-1218.03
Expiration Date 08/27/2025
By *Ishag I. Chande*
Miami-Dade Product Control



STOREFRONT SYSTEM (LMI)

DRAWING NUMBER QEP004

4506 QUALITY LANE
TAMPA, FLORIDA 33634
(813) 885-1693

*Quality
Engineered
Products Co., Inc.*

REVISIONS
02-26-16 (FBC2014)
02-15-21 (FBC2020)
01-31-24 (FBC2023)

STOREFRONT SYSTEM (LMI)
VERTICAL & HORIZONTAL
SECTIONS & DETAILS

SHEET 16 OF 16

DATE 01-31-2024