



DEPARTMENT OF REGULATORY AND ECONOMIC RESOURCES (RER)  
BOARD AND CODE ADMINISTRATION DIVISION  
**NOTICE OF ACCEPTANCE (NOA)**

MIAMI-DADE COUNTY  
PRODUCT CONTROL SECTION  
11805 SW 26 Street, Room 208  
Miami, Florida 33175-2474  
T (786) 315-2590 F (786) 315-2599  
[www.miamidade.gov/economy](http://www.miamidade.gov/economy)

**Quality Engineered Products Co., Inc.**  
**4506 Quality Lane, Tampa, FL 33634**

**SCOPE:**

This NOA is being issued under the applicable rules and regulations governing the use of construction materials. The documentation submitted has been reviewed and accepted by Miami-Dade County RER -Product Control Section to be used in Miami Dade County and other areas where allowed by the Authority Having Jurisdiction (AHJ).

This NOA shall not be valid after the expiration date stated below. The Miami-Dade County Product Control Section (In Miami Dade County) and/or the AHJ (in areas other than Miami Dade County) reserve the right to have this product or material tested for quality assurance purposes. If this product or material fails to perform in the accepted manner, the manufacturer will incur the expense of such testing and the AHJ may immediately revoke, modify, or suspend the use of such product or material within their jurisdiction. RER reserves the right to revoke this acceptance, if it is determined by Miami-Dade County Product Control Section that this product or material fails to meet the requirements of the applicable building code.

This product is approved as described herein and has been designed to comply with the Florida Building Code, including the High Velocity Hurricane Zone.

**DESCRIPTION: Series 16 ga Inswing Single Flush Commercial Steel Door-Impact**

**APPROVAL DOCUMENT:** Drawing No. **QEP001 Rev #2**, titled "Single Flush Door (Inswing)", sheets 1 through 7 of 7, prepared by manufacturer, dated 03/03/21 and last revised on 01/31/24, signed and sealed by Cody Davis, P. E., bearing the Miami-Dade County Product Control Renewal stamp with the Notice of Acceptance number and expiration date by the Miami-Dade County Product Control Section.

**MISSILE IMPACT RATING: Large and Small Missile Impact Resistant**

**Limitations:**

1. Not approved, where water infiltration requirement is needed.
2. Doors are 16 ga (min .063" thk) with min CS Tensile yield strength  $F_y = 46.3$  ksi and Tensile ultimate strength  $F_u = 52.1$  Ksi and SS Tensile yield strength  $F_y = 50.5$  ksi and Tensile ultimate strength  $F_u = 98.5$  Ksi.
3. Doors w/ cylindrical lock & standard reinforced are rated at +/- 80 psf.
4. Doors w/ Mortise lock w/ dead bolt & Hat Channel reinforced are rated at +/- 110 psf.
5. The 20-gauge Hat-Stiffener with Fiberglass core Insulation, having current NOA or listing.
6. Sill installation w/ 3/16" Tapcon, limited to min. 3000 psi concrete.

**LABELING:** Each unit shall bear a permanent label with the manufacturer's name or logo, city, state and series and following statement: "Miami-Dade County Product Control Approved", noted herein.

**RENEWAL** of this NOA shall be considered after a renewal application has been filed and there has been no change in the applicable building code negatively affecting the performance of this product.

**TERMINATION** of this NOA will occur after the expiration date or if there has been a revision or change in the materials, use, and/or manufacture of the product or process. Misuse of this NOA as an endorsement of any product, for sales, advertising or any other purposes shall automatically terminate this NOA. Failure to comply with any section of this NOA shall be cause for termination and removal of NOA.

**ADVERTISEMENT:** The NOA number preceded by the words Miami-Dade County, Florida, and followed by the expiration date may be displayed in advertising literature. If any portion of the NOA is displayed, then it shall be done in its entirety.

**INSPECTION:** A copy of this entire NOA shall be provided to the user by the manufacturer or its distributors and shall be available for inspection at the job site at the request of the Building Official.

This NOA **revises & renews NOA #20-1123.24** and consists of this page 1 and evidence pages E-1, E-2, E-3 and E-4, as well as approval document mentioned above.

The submitted documentation was reviewed by **Ishaq I. Chanda, P.E.**

*Ishaq I. Chanda*



**NOA No. 23-1218.08**  
**Expiration Date: December 30, 2025**  
**Approval Date: June 13, 2024**  
**Page 1**

**NOTICE OF ACCEPTANCE: EVIDENCE SUBMITTED**

**1. Evidence previously submitted**

**A. DRAWINGS**

1. Manufacturer's die drawings and sections (see files referenced below)
2. Drawing No. **QEP001**, titled "Single Flush Door (Inswing)", sheets 1 through 7 of 7, prepared by manufacturer, dated 02/26/16, signed and sealed by Cody Davis, P. E.

**B. TESTS (Submitted under file #15-0422.10/#12-1115.10/# 09-0604.11)**

1. Test reports on 1) Air Infiltration Test, per FBC TAS 202-94
  - 2) Uniform Static Air Pressure Test, Loading per FBC, TAS 202.
  - 3) Water Resistance Test per FBC, TAS 202-94 (Not Performed).
  - 4) Large Missile Impact Test per FBC, TAS 201-94
  - 5) Cyclic Wind Pressure Loading per FBC, TAS 203-94
  - 6) Forced Entry Test, per FBC and TAS 202-94

Along with marked-up drawings and installation diagram of Single Outswing /Inswing Flush and Glazed Commercial Steel Doors, prepared by Architect Testing Lab Inc., Test Report No. **84528.01-401-18**, dated May 19, 2009 (This test report was last revised on 11/06/09), signed and sealed by Joseph A. Reed, P.E.

**C. CALCULATIONS**

1. Anchor verification calculations, complying with **FBC-2014**, prepared, signed, sealed and dated 05/17/16, by Cody Davis, P.E.

**D. QUALITY ASSURANCE**

1. Miami Dade Department of Regulatory and Economic Resources (RER)

**E. MATERIAL CERTIFICATIONS**

1. Tensile test report prepared by prepared by Architect Testing, Test Report No. **84528.01-401-18**, tested per ASTM E8-03, dated 11/09/09 signed and sealed by Joseph A. Reed, P. E.
2. Notice of Acceptance No. **11-0926.07** issued to Dyplast Products, LLC (former Apache Products Co) for "EPS-Expanded Polystyrene Block Type Insulation", expiring on 01/11/2017.

**F. STATEMENTS**

1. Statement letter of conformance, complying with **FBC-2014, 5<sup>th</sup> edition**, issued, prepared, signed, sealed and dated 05/17/16 by Cody Davis, P. E.
2. Statement letter of no financial interest, issued, prepared, signed, sealed and dated 05/17/16 by Cody Davis, P.E.
3. Statement letter of compliance, as a part of the above referenced test reports.
4. Statement letter dated 05/17/16 of successor engineer adopting as his own, another engineer's work per FAC, Rule Chapter 61G15-27, issued by Master Consulting Engineers, Inc., both signed and sealed by Cody Davis, P. E.

**G. OTHER**

1. Notice of Acceptance No. **14-0910.05**, issued to Quality Engineering Products Co., Inc. for their Series 16 GA Inswing Single Flush Commercial Steel Door-Impact approved on 12/18/14 and expiring on 12/30/19.

*Ishaq I. Chanda*

---

**Ishaq I. Chanda, P.E.**  
**Product Control Unit Supervisor**  
**NOA No. 23-1218.08**  
**Expiration Date: December 30, 2025**  
**Approval Date: June 13, 2024**

**Quality Engineered Products Co, Inc.**

**NOTICE OF ACCEPTANCE: EVIDENCE SUBMITTED**

**2. Evidence submitted under file # 17-1102.08.**

**A. DRAWINGS**

1. Drawing No. **QEP001**, titled “Single Flush Door (Inswing)”, sheets 1 through 7 of 7, prepared by manufacturer, dated 01/31/18, signed and sealed by Cody Davis, P.E.

**B. Test**

1. None.

**C. CALCULATIONS**

1. None.

**D. QUALITY ASSURANCE**

1. Miami Dade Department of Regulatory and Economic Resources (RER).

**E. MATERIAL CERTIFICATIONS**

1. Notice of Acceptance No. **17-1207.05** issued to Dyplastic Products, LLC (former Apache Products Co) for “E& R-Board Expanded Polystyrene Rigid Foam Insulation”, expiring on 01/11/2022.

**F. STATEMENTS**

1. Statement letter of conformance to FBC 2017 (6<sup>th</sup> Edition), dated 12/01/17, prepared by Master Consulting Engineer Inc., signed and sealed by Cody Davis, P. E.

**G. OTHER**

1. This NOA **revises # 15-0422.10**, expiring 12/30/19.

**3. Evidence submitted under file # 17-1102.08.**

**A. DRAWINGS**

1. Drawing No. **QEP001**, titled “Single Flush Door (Inswing)”, sheets 1 through 7 of 7, prepared by manufacturer, dated 01/31/18, signed and sealed by Cody Davis, P.E.

**B. Test**

1. None.

**C. CALCULATIONS**

1. None.

**D. QUALITY ASSURANCE**

1. Miami Dade Department of Regulatory and Economic Resources (RER).

**E. MATERIAL CERTIFICATIONS**

1. Notice of Acceptance No. **17-1207.05** issued to Dyplastic Products, LLC (former Apache Products Co) for “E& R-Board Expanded Polystyrene Rigid Foam Insulation”, expiring on 01/11/2022.

**F. STATEMENTS (submitted under file #17-1102.08)**

1. Statement letter of conformance to FBC 2017 (6<sup>th</sup> Edition), dated 12/01/17, prepared by Master Consulting Engineer Inc., signed and sealed by Cody Davis, P. E.

**G. OTHER**

1. This NOA **renews # 17-1102.08**, expiring 12/30/24.

*Ishaq I. Chanda*

---

**Ishaq I. Chanda, P.E.**  
**Product Control Unit Supervisor**  
**NOA No. 23-1218.08**  
**Expiration Date: December 30, 2025**  
**Approval Date: June 13, 2024**

**Quality Engineered Products Co, Inc.**

**NOTICE OF ACCEPTANCE: EVIDENCE SUBMITTED**

**4. Evidence submitted previous approval.**

**A. DRAWINGS**

1. Drawing No. **QEP001 Rev #1**, titled “Single Flush Door (Inswing)”, sheets 1 through 7 of 7, prepared by manufacturer, dated 03/03/21, signed and sealed by Cody Davis, P.E.

**B. Test**

1. None.

**C. CALCULATIONS**

1. None.

**D. QUALITY ASSURANCE**

1. Miami Dade Department of Regulatory and Economic Resources (RER).

**E. MATERIAL CERTIFICATIONS**

1. Notice of Acceptance No. **17-1207.05** issued to Dyplastic Products, LLC (former Apache Products Co) for “E& R-Board Expanded Polystyrene Rigid Foam Insulation”, expiring on 01/11/2022.

**F. STATEMENTS**

1. Statement letter of conformance to FBC 2020 (7<sup>th</sup> Edition), dated March 03, 2021, prepared by Master Consulting Engineer Inc., signed and sealed by Cody Davis, P. E.

**G. OTHER**

1. This NOA revises **NOA #19-1001.13**, expiring 12/30/24.

*Ishaq I. Chanda*

---

**Ishaq I. Chanda, P.E.**  
**Product Control Unit Supervisor**  
**NOA No. 23-1218.08**  
**Expiration Date: December 30, 2025**  
**Approval Date: June 13, 2024**

**Quality Engineered Products Co, Inc.**

**NOTICE OF ACCEPTANCE: EVIDENCE SUBMITTED**

**5. New Evidence submitted.**

**A. DRAWINGS**

1. Drawing No. **QEP001 Rev #2**, titled “Single Flush Door (Inswing)”, sheets 1 through 7 of 7, prepared by manufacturer, dated 03/03/21 and last revised on 01/30/24, signed and sealed by Cody Davis, P.E.

**B. Test**

1. None.

**C. CALCULATIONS**

1. Anchor verification calculations complying w/ FBC 2023(8<sup>h</sup> Edition), dated 01/31/2024, prepared, signed and sealed by Cody C. Davis, P.E.

**D. QUALITY ASSURANCE**

1. Miami Dade Department of Regulatory and Economic Resources (RER).

**E. MATERIAL CERTIFICATIONS**

1. Underwriter test report file # R3576 (Proj #09NK13240) dated Nov 16, 2009 for Surface Burning Characteristics for Fiberglass Batts & Blanket per ANSI/UL-723 & ASTM E-84, issued to Owens Corning, Toledo, OH.

**F. STATEMENTS**

1. Statement letter of conformance to FBC 2023 (8<sup>th</sup> Edition) and “No financial interest” dated 01/31/24, prepared by Master Consulting Inc., signed and sealed by Cody C. Davis, P.E.
2. E-mail statement issued by PRI testing Lab dated 05/30/24 referenced to RER QEP re-test proposals, for near future schedule, signed by Timothy Efwu, Manager.

**G. OTHER**

1. This NOA **revises & renews NOA #20-1123.24**, conditionally, expiring 12/30/25.

*Ishaq I. Chanda*

---

**Ishaq I. Chanda, P.E.**  
**Product Control Unit Supervisor**  
**NOA No. 23-1218.08**  
**Expiration Date: December 30, 2025**  
**Approval Date: June 13, 2024**



INSTALLATION NOTES:

- ONE (1) INSTALLATION ANCHOR IS REQUIRED AT EACH ANCHOR LOCATION SHOWN.
- THE NUMBER OF INSTALLATION ANCHORS DEPICTED IS THE MINIMUM NUMBER OF ANCHORS TO BE USED FOR PRODUCT INSTALLATION.
- SHIM AS REQUIRED AT EACH INSTALLATION ANCHOR WITH LOAD BEARING SHIM(S). MAXIMUM ALLOWABLE SHIM STACK TO BE 1/4 INCH. SHIM WHERE SPACE OF 1/16 INCH OR GREATER OCCURS. SHIM(S) SHALL BE CONSTRUCTED OF HIGH DENSITY PLASTIC OR BETTER.
- MINIMUM EMBEDMENT AND EDGE DISTANCE EXCLUDE WALL FINISHES, INCLUDING BUT NOT LIMITED TO STUCCO, FOAM, BRICK VENEER, AND SIDING.
- INSTALLATION ANCHORS AND ASSOCIATED HARDWARE MUST BE MADE OF CORROSION RESISTANT MATERIAL OR HAVE A CORROSION RESISTANT COATING.
- FOR GROUT FILLED BLOCK, DO NOT INSTALL INSTALLATION ANCHORS INTO MORTAR JOINTS. EDGE DISTANCE IS MEASURED FROM FREE EDGE OF BLOCK OR EDGE OF MORTAR JOINT INTO FACE SHELL OF BLOCK.
- INSTALLATION ANCHORS SHALL BE INSTALLED IN ACCORDANCE WITH ANCHOR MANUFACTURER'S INSTALLATION INSTRUCTIONS, AND ANCHORS SHALL NOT BE USED IN SUBSTRATES WITH STRENGTHS LESS THAN THE MINIMUM STRENGTH SPECIFIED BY THE ANCHOR MANUFACTURER.
- INSTALLATION ANCHOR CAPACITIES FOR PRODUCTS HEREIN ARE BASED ON SUBSTRATE MATERIALS WITH THE FOLLOWING PROPERTIES:
  - WOOD - MINIMUM SPECIFIC GRAVITY OF 0.55 (FOR SILL INSTALLATION ONLY).
  - CONCRETE -MINIMUM COMPRESSIVE STRENGTH OF 3000 PSI.
  - GROUTED MASONRY - STRENGTH CONFORMANCE TO ASTM C-90, GRADE N, TYPE 1 (OR GREATER) W/ MIN. 3000 PSI GROUT.

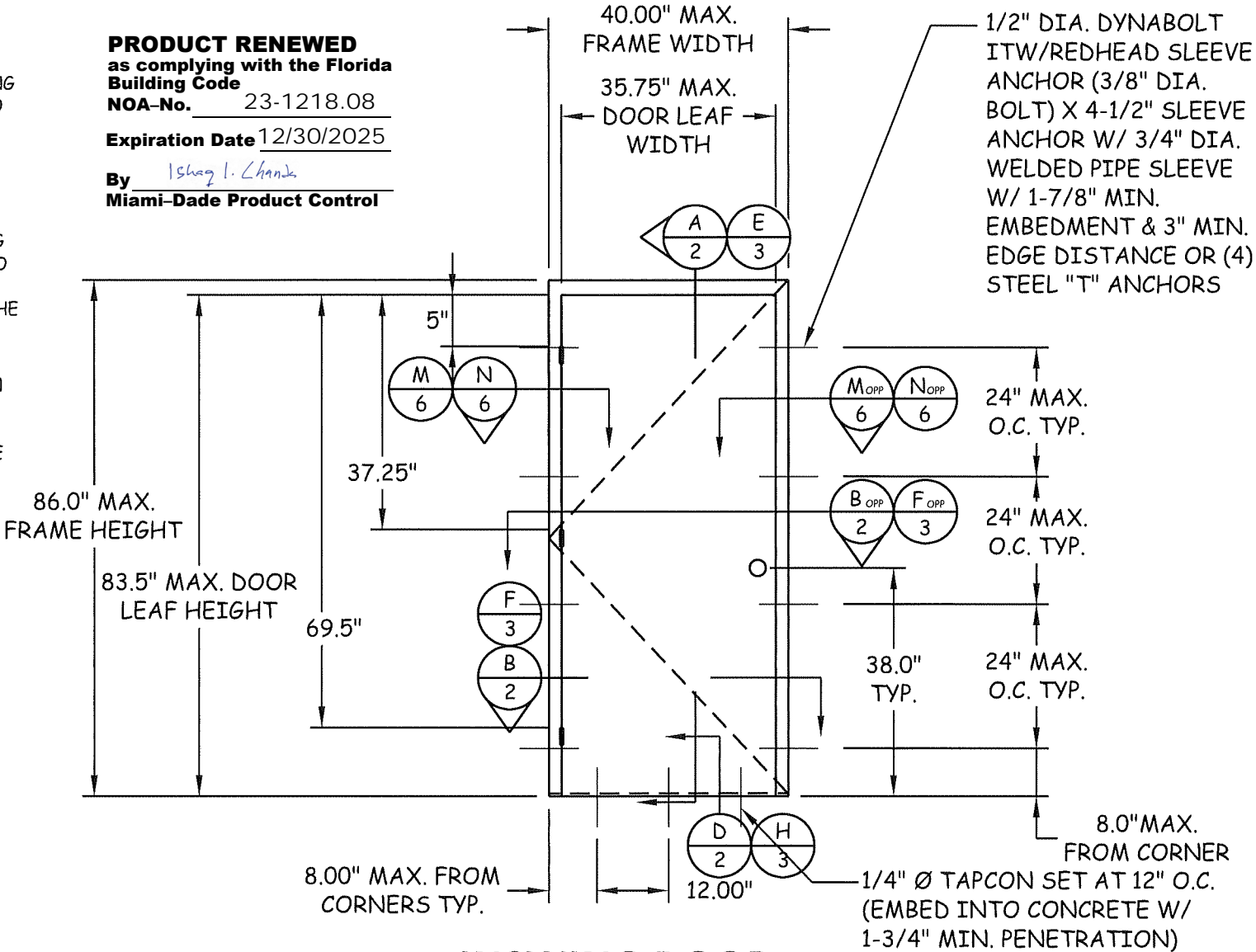
GENERAL NOTES:

- THE PRODUCT SHOWN HEREIN IS DESIGNED MANUFACTURED TO COMPLY WITH THE 2023 FLORIDA BUILDING CODE (FBC) 8th ED., INCLUDING HVHZ AND HAS BEEN EVALUATED ACCORDING TO THE FOLLOWING: TAS 201-94/TAS 202-94/TAS 203-94
- ADEQUACY OF THE EXISTING STRUCTURAL CONCRETE/MASONRY AS A MAIN WIND FORCE RESISTING SYSTEM CAPABLE OF WITHSTANDING AND TRANSFERRING APPLIED PRODUCT LOADS TO THE FOUNDATION IS THE RESPONSIBILITY OF THE ENGINEER OR ARCHITECT OF RECORD FOR THE PROJECT OF INSTALLATION.
- THE INSTALLATION DETAILS DESCRIBED HEREIN ARE GENERIC AND MAY NOT REFLECT ACTUAL CONDITIONS FOR A SPECIFIC SITE. IF SITE CONDITIONS CAUSE INSTALLATION TO DEVIATE FROM THE REQUIREMENTS DETAILED HEREIN, A LICENSED ENGINEER OR ARCHITECT SHALL PREPARE SITE SPECIFIC DOCUMENTS FOR USE WITH THIS DOCUMENT FOR NON-HVHZ. ONE TIME APPROVAL REQUIRES FOR HVHZ FROM MIAMI-DADE COUNTY.
- THIS PRODUCT IS LARGE AND SMALL MISSILE IMPACT RESISTANT APPROVED IMPACT PROTECTIVE SYSTEM IS NOT REQUIRED ON THIS PRODUCT IN AREAS REQUIRING IMPACT RESISTANCE.
- DOOR FRAME MATERIAL: STEEL
- DESIGNATIONS "X" FOLLOWING:  
X: OPERABLE PANEL

# QUALITY ENGINEERED PRODUCTS

## SINGLE FLUSH DOOR (INSWING)

**PRODUCT RENEWED**  
as complying with the Florida  
Building Code  
NOA-No. 23-1218.08  
Expiration Date 12/30/2025  
By Ishaq I. Chande  
Miami-Dade Product Control

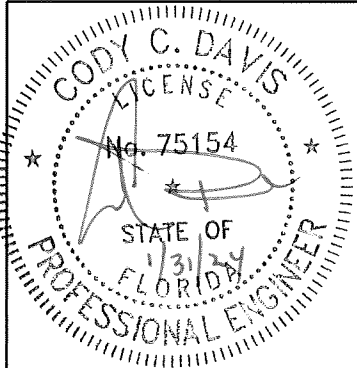


### INSWING DOOR (EXTERIOR VIEW)

TABLE OF CONTENTS		
SHEET	REVISION	SHEET DESCRIPTION
1	-	INSTALLATION & GENERAL NOTES
2	-	CYLINDRICAL LOCK SECTIONS
3	-	MORTISE LOCK SECTIONS
4	-	INTERNAL SECTIONS & DOOR DETAILS
5	-	ANCHOR DETAILS
6	-	STEEL REINFORCEMENTS
7	-	COMPONENTS & BILL OF MATERIALS

MIAMI DADE/FLORIDA BUILDING CODE DESIGN PRESSURES			
	WHERE WATER INFILTRATION REQUIREMENTS ARE NEEDED	WHERE WATER INFILTRATION REQUIREMENTS ARE NOT NEEDED	MISSILE IMPACT RATING
CYLINDRICAL LOCK W/ STD. REINFORCED	NOT APPROVED	+/- 80 PSF*	SMALL AND LARGE MISSILE IMPACT RATED
MORTISE LOCK W/ DEAD BOLT W/ HAT REINFORCED	NOT APPROVED	+/- 110 PSF*	SMALL AND LARGE MISSILE IMPACT RATED

\* UNIT SHALL BE INSTALLED AT LOCATION PROTECTED BY OVERHANG SUCH THAT OVERHANG RATIO (OH) = OH LENGTH/OH HEIGHT IS GREATER THAN 1



FLUSH DOOR

QEPO01

DRAWING NUMBER

REVISIONS

02-15-21 (FBC2020)  
01-31-24 (FBC2023)

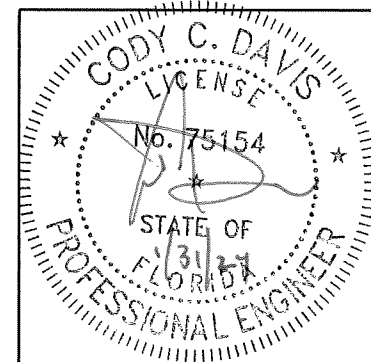
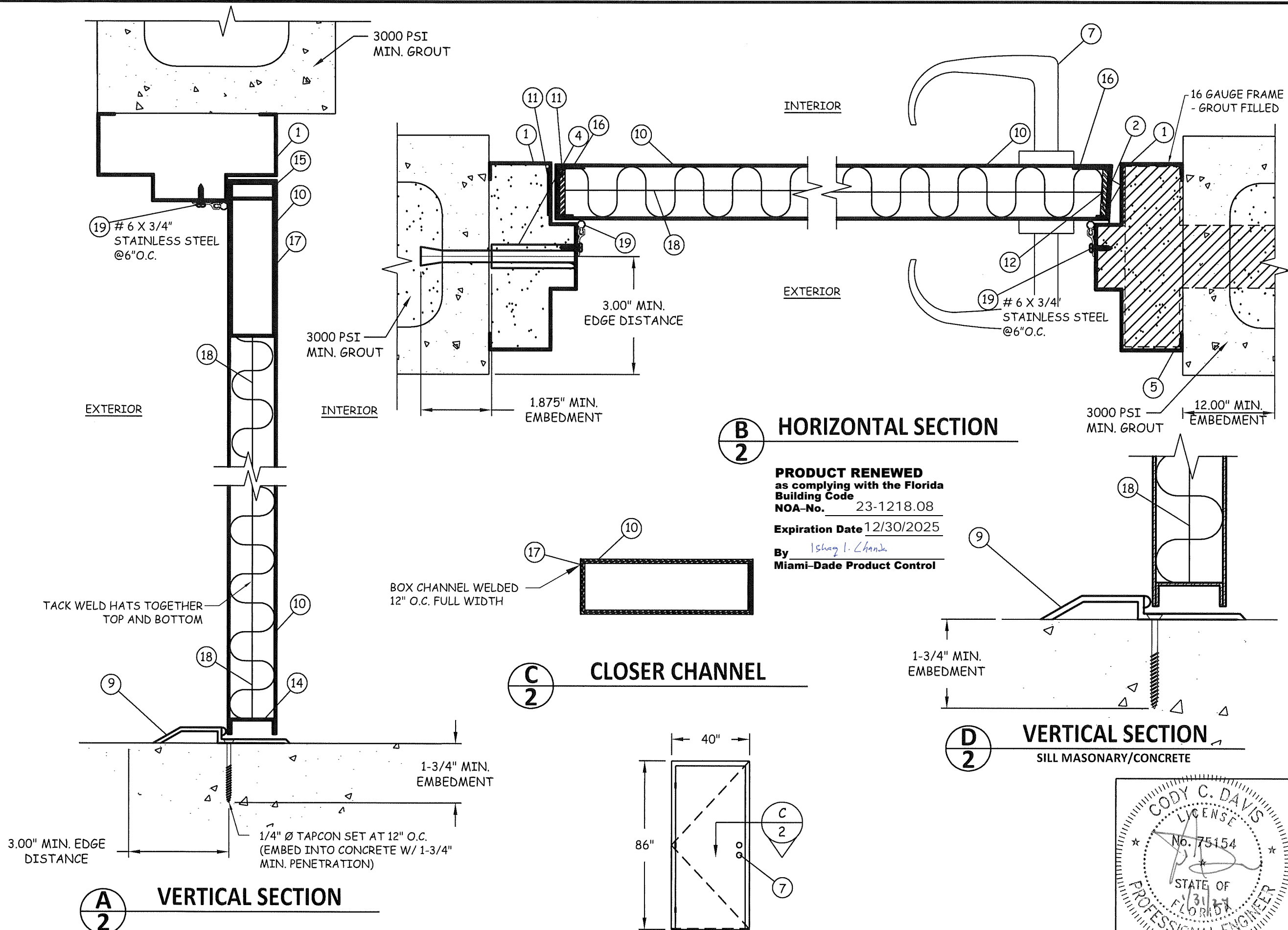
FLUSH DOOR  
INSTALLATION &  
GENERAL NOTES

SHEET 1 OF 7

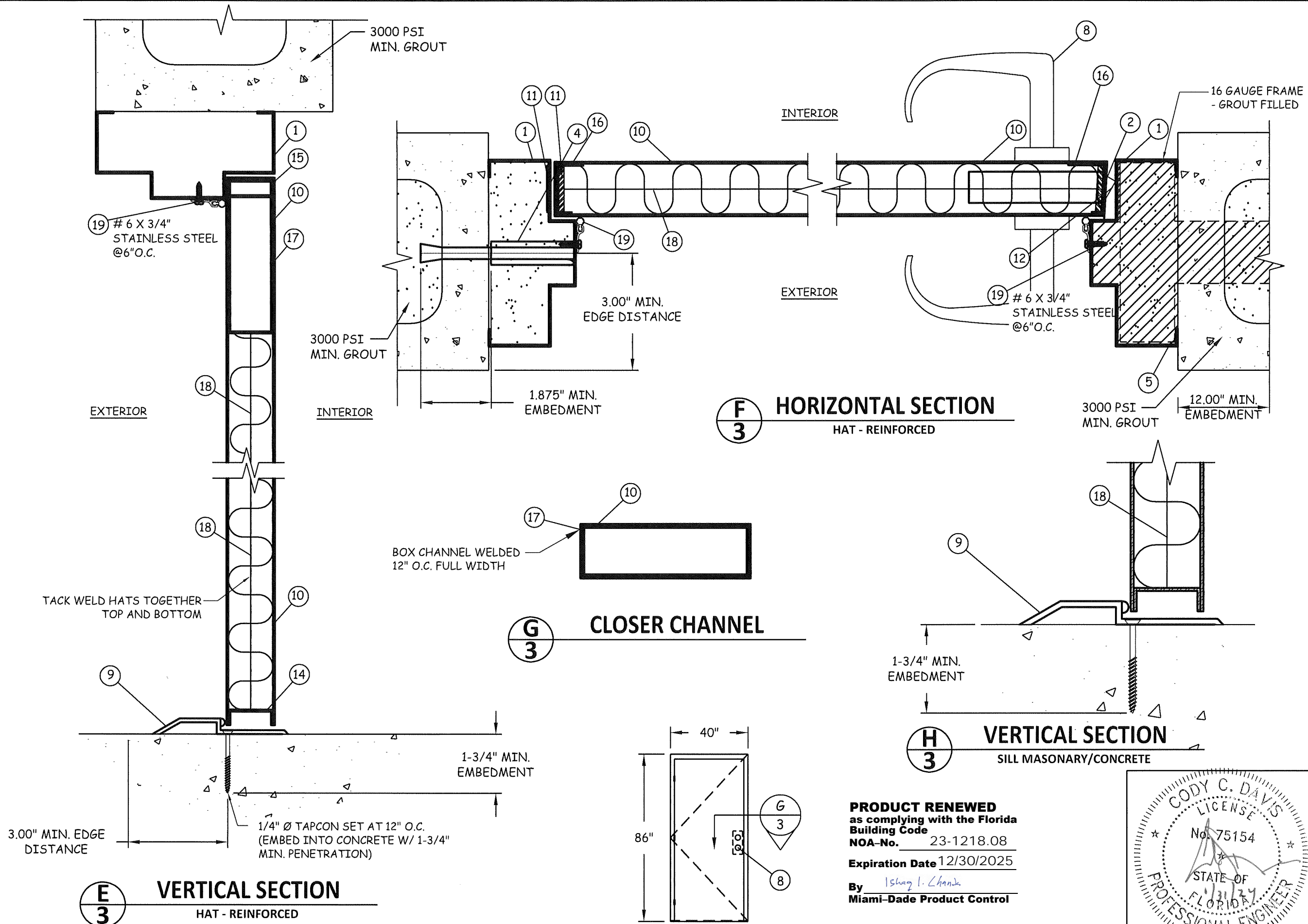
DATE 01-31-2024

4506 QUALITY LANE  
TAMPA, FLORIDA 33634  
(813) 885-1693

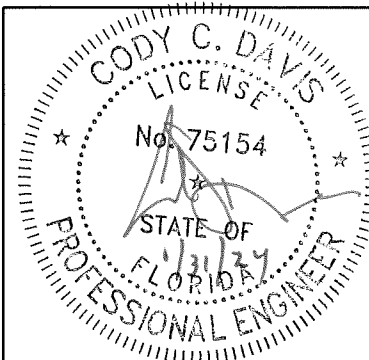
*Quality Engineered Products Co., Inc.*



DRAWING NUMBER	QE001	FLUSH DOOR	FLUSH DOOR
<div data-bbox="2750 74 3024 880"> <p>4506 QUALITY LANE TAMPA, FLORIDA 33634 (813) 885-1693</p> <p><i>Quality Engineered Products Co., Inc.</i></p> </div> <div data-bbox="2750 880 3024 1274"> <p>REVISIONS</p> <p>02-15-21 (FBC2020)</p> <p>01-31-24 (FBC2023)</p> </div> <div data-bbox="2750 1274 3024 1961"> <p>FLUSH DOOR</p> <p>CYLINDRICAL LOCK SECTIONS</p> <p>SHEET 2 OF 7</p> <p>DATE 01-31-2024</p> </div>			



**PRODUCT RENEWED**  
 as complying with the Florida  
 Building Code  
 NOA-No. 23-1218.08  
 Expiration Date 12/30/2025  
 By Ishag I. Chande  
 Miami-Dade Product Control



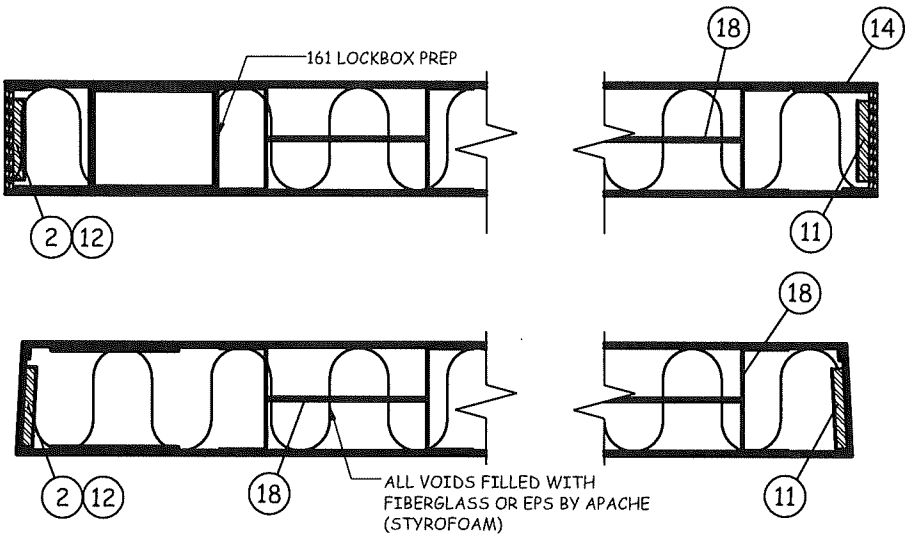
DRAWING NUMBER	QEPO01	FLUSH DOOR		4506 QUALITY LANE TAMPA, FLORIDA 33634 (813) 885-1693  <i>Quality Engineered Products Co., Inc.</i>
		FLUSH DOOR	REVISIONS	
	MORTISE LOCK SECTIONS	02-15-21 (FBC2020) 01-31-24 (FBC2023)		
SHEET 3 OF 7		DATE 01-31-2024		



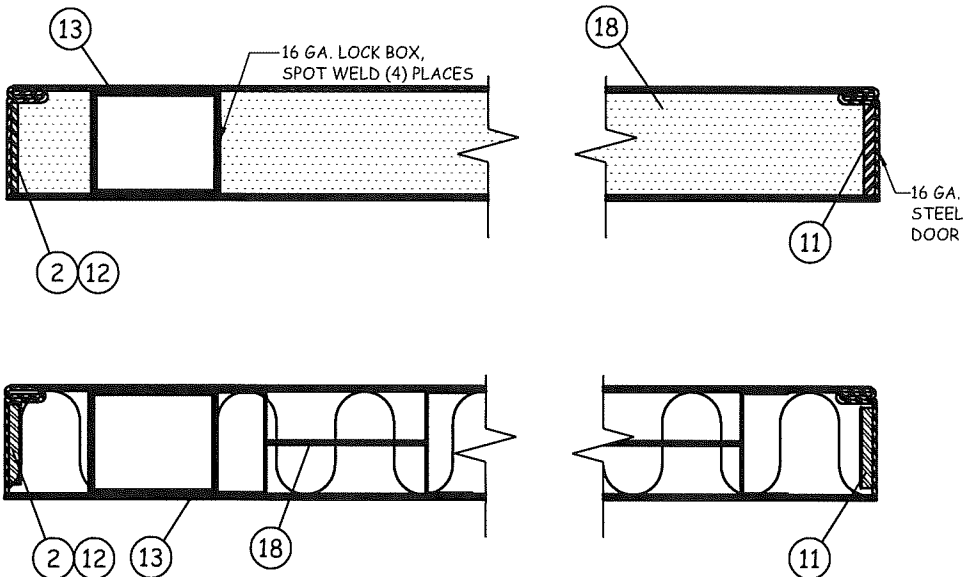
**PRODUCT RENEWED**  
as complying with the Florida  
Building Code  
NOA-No. 23-1218.08

Expiration Date 12/30/2025

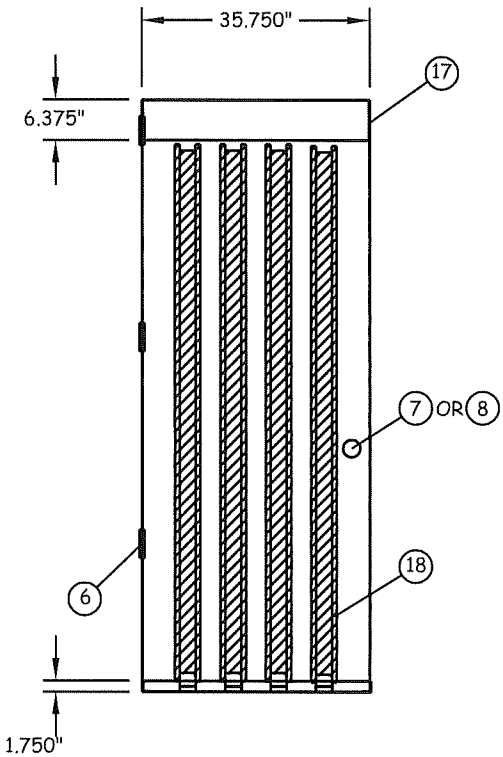
By Ishag I. Chande  
Miami-Dade Product Control



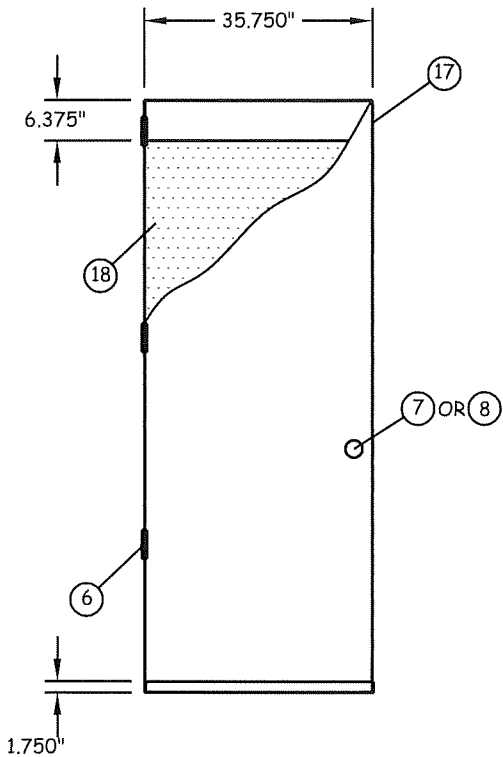
**I/4 SEAMLESS EDGE DOOR**



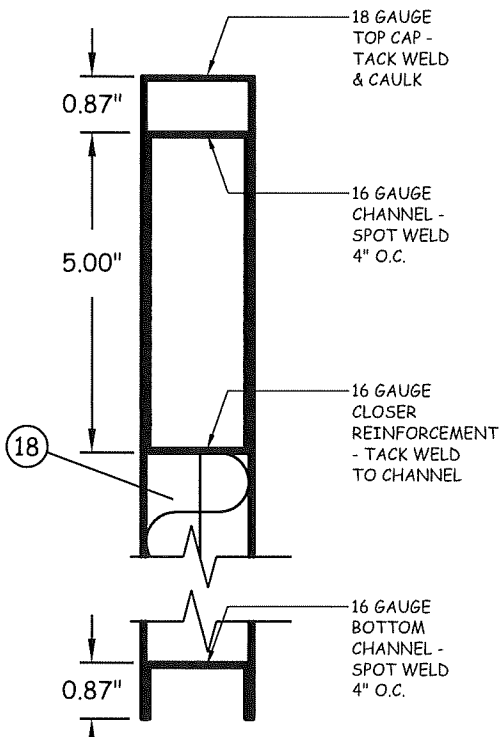
**J/4 EDGE SEAM DOOR**



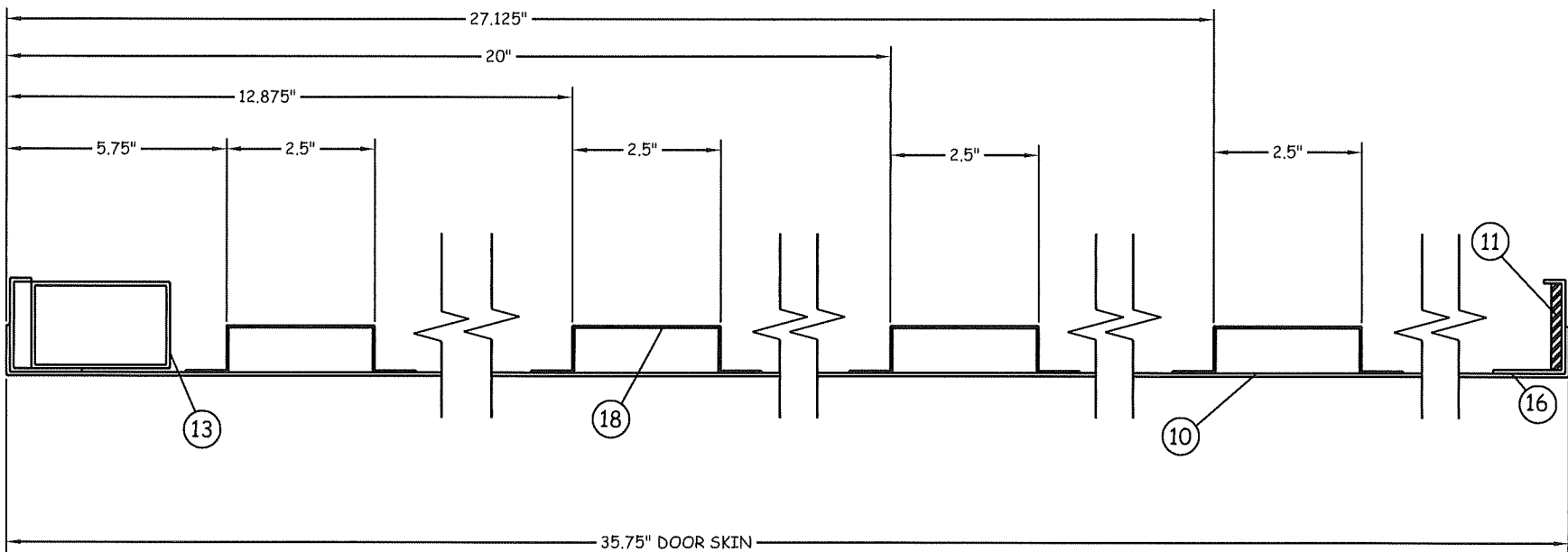
**INTERNAL ELEVATION**  
HAT CHANNEL REINFORCED



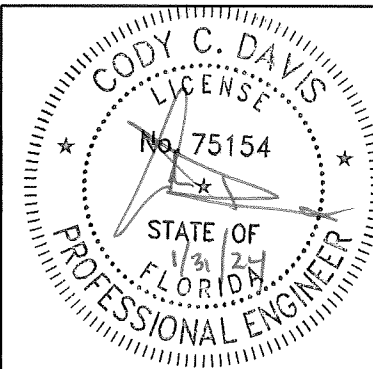
**INTERNAL ELEVATION**  
STANDARD REINFORCEMENT



**L/4 VERTICAL DOOR SECTION**



**K/4 INTERNAL SECTION**  
REINFORCEMENT SPACING



FLUSH DOOR

QEP001

DRAWING NUMBER

REVISIONS  
02-15-21 (FBC2020)  
01-31-24 (FBC2023)

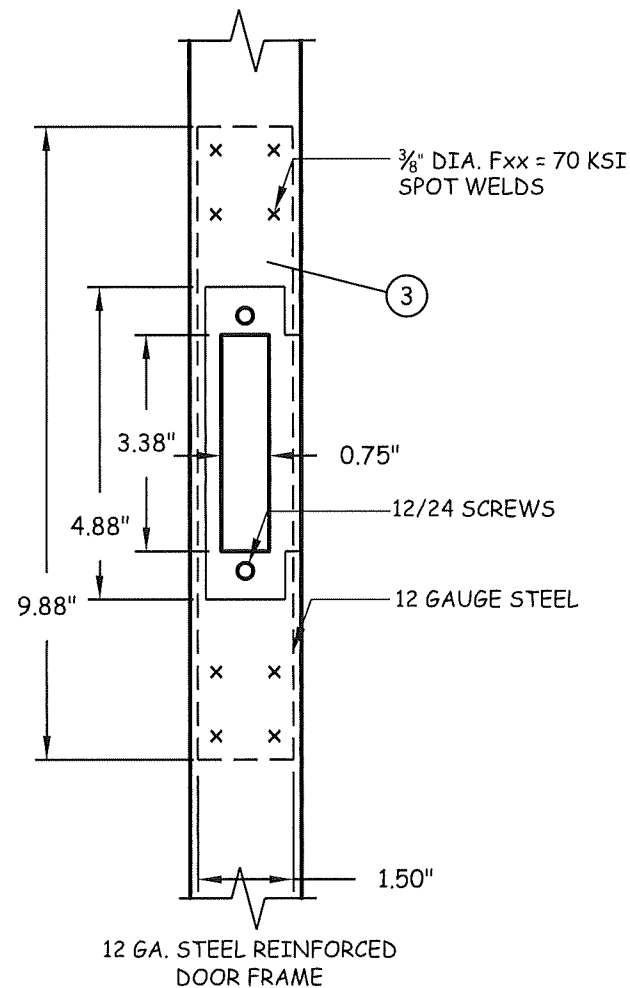
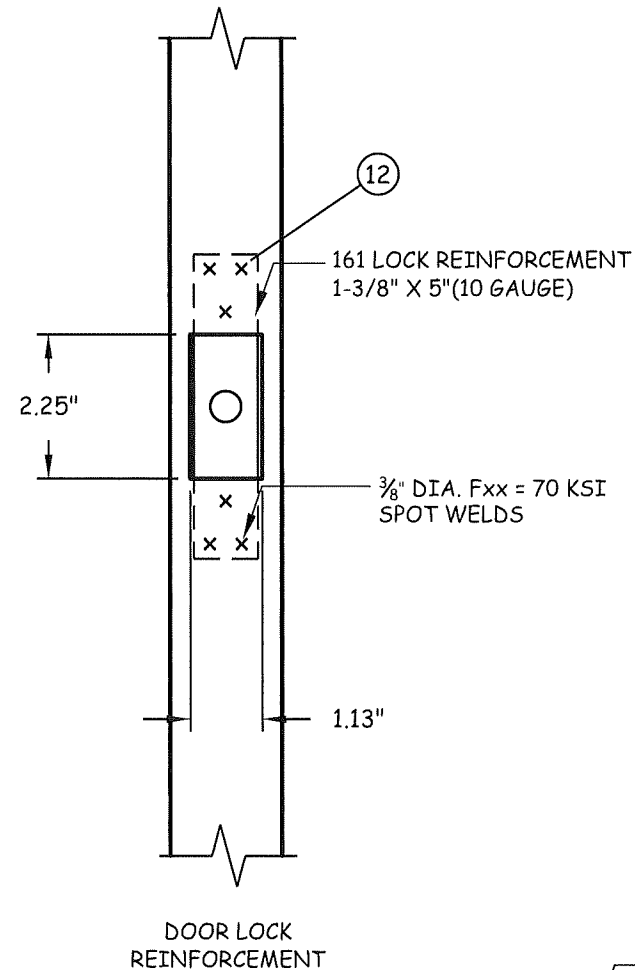
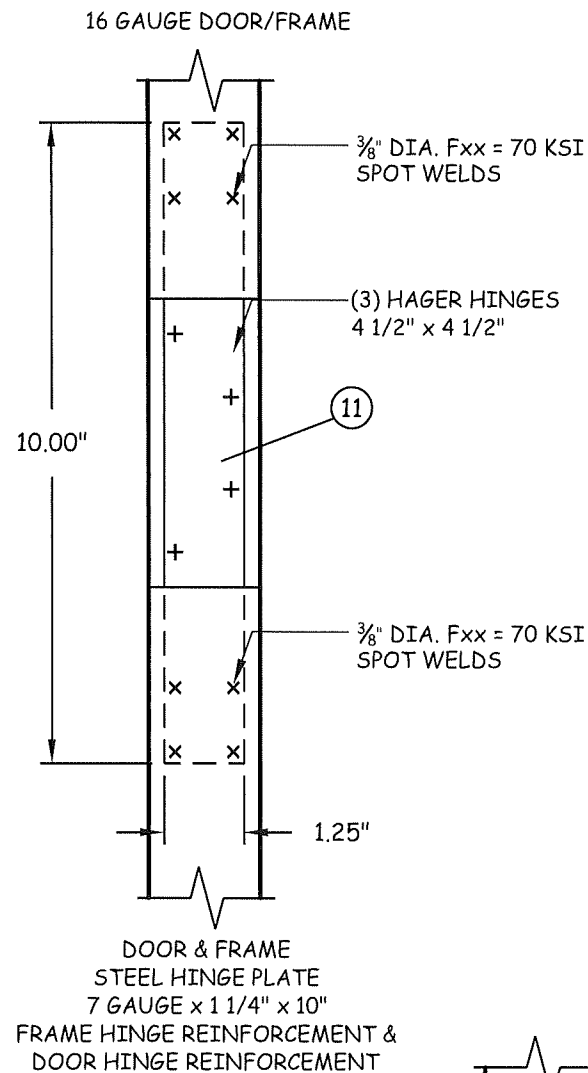
FLUSH DOOR  
INTERNAL SECTIONS &  
DOOR DETAILS

SHEET 4 OF 7

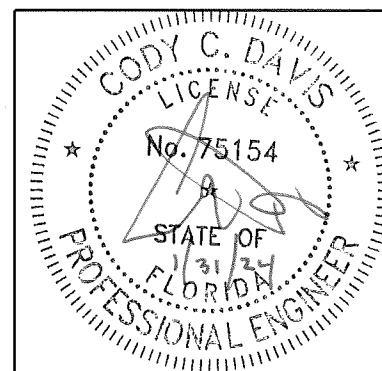
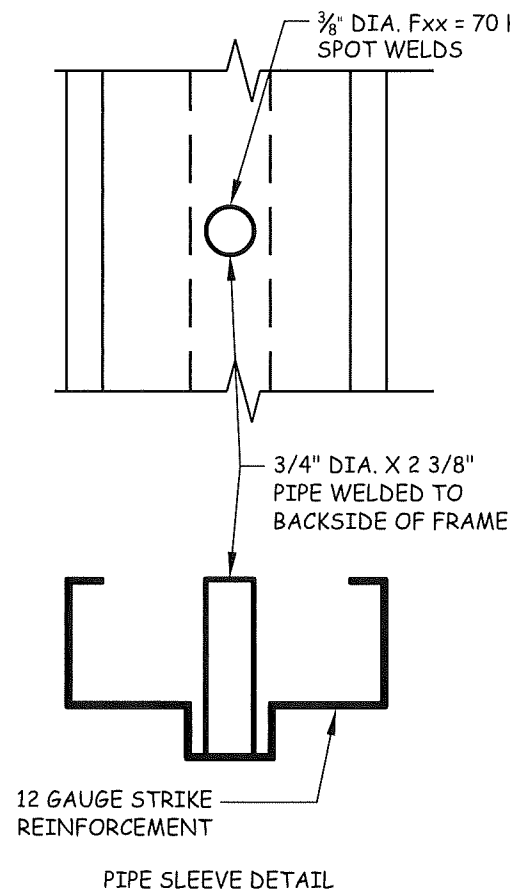
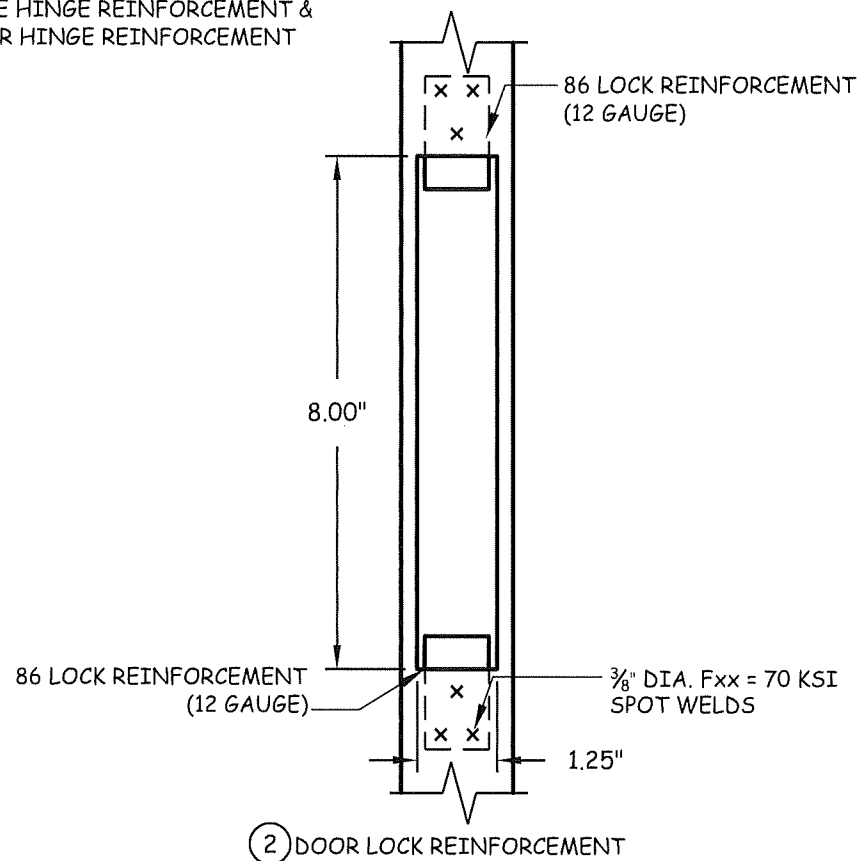
DATE 01-31-2024

4506 QUALITY LANE  
TAMPA, FLORIDA 33634  
(813) 885-1693

*Quality  
Engineered  
Products Co., Inc.*



**PRODUCT RENEWED**  
as complying with the Florida  
Building Code  
NOA-No. 23-1218.08  
Expiration Date 12/30/2025  
By Ishag I. Chande  
Miami-Dade Product Control



FLUSH DOOR

DRAWING NUMBER QEP001

4506 QUALITY LANE  
TAMPA, FLORIDA 33634  
(813) 885-1693

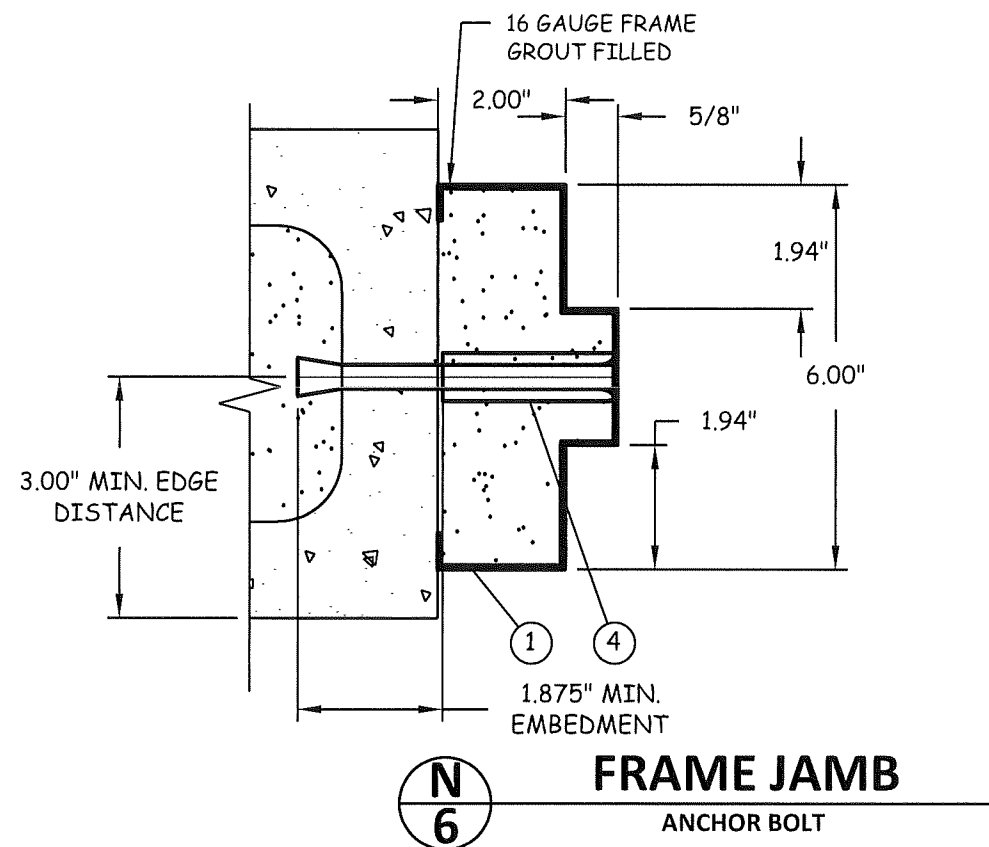
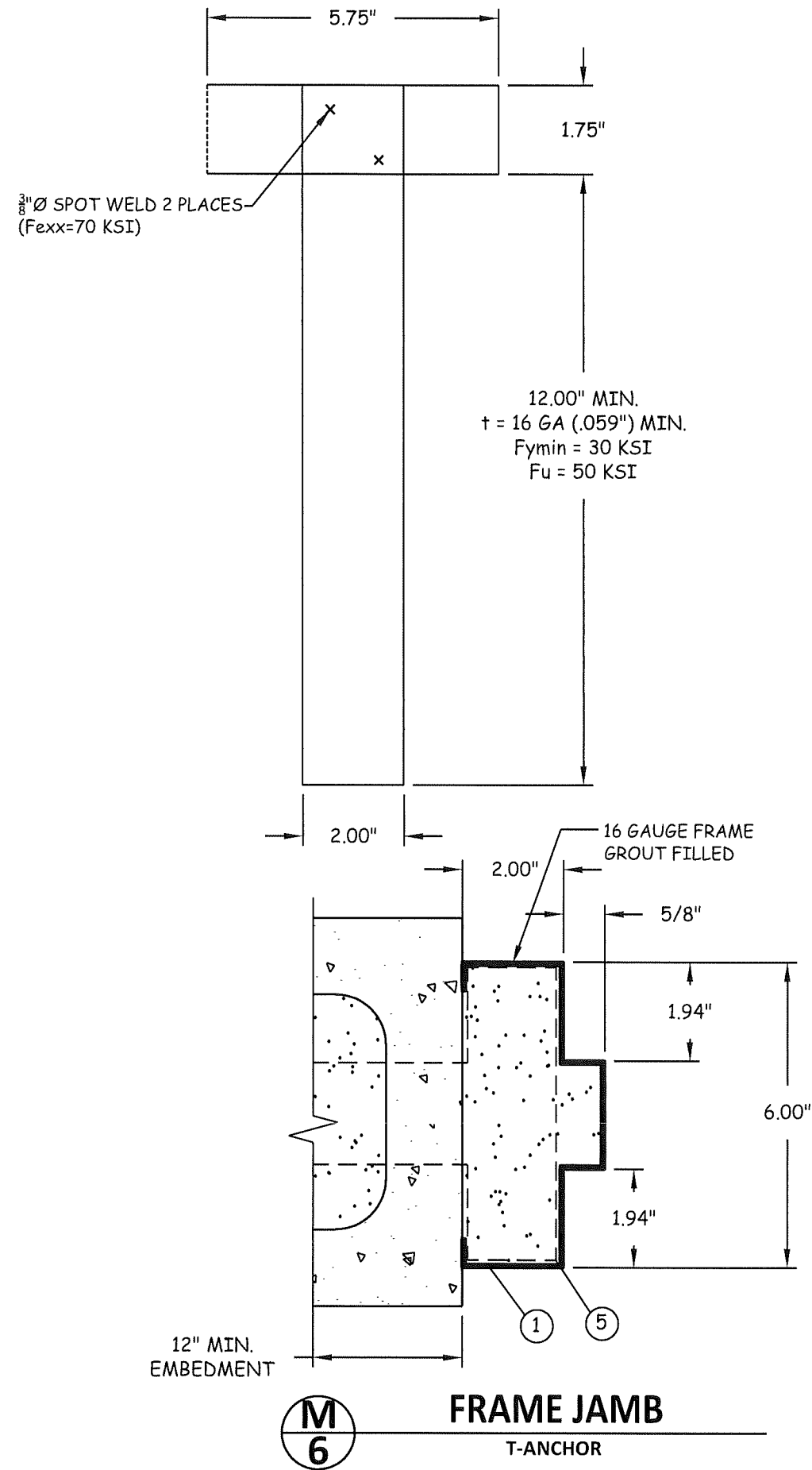
*Quality  
Engineered  
Products Co., Inc.*

REVISIONS  
02-15-21 (FBC2020)  
01-31-24 (FBC2023)

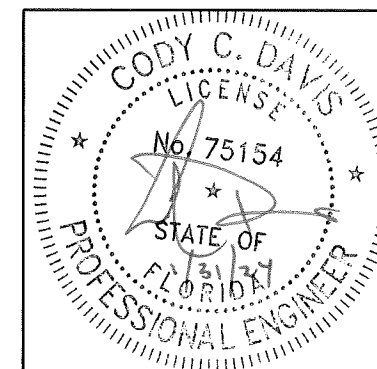
FLUSH DOOR  
STEEL REINFORCEMENTS

SHEET 5 OF 7

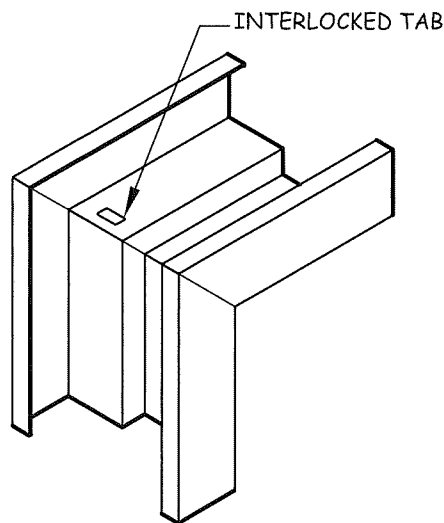
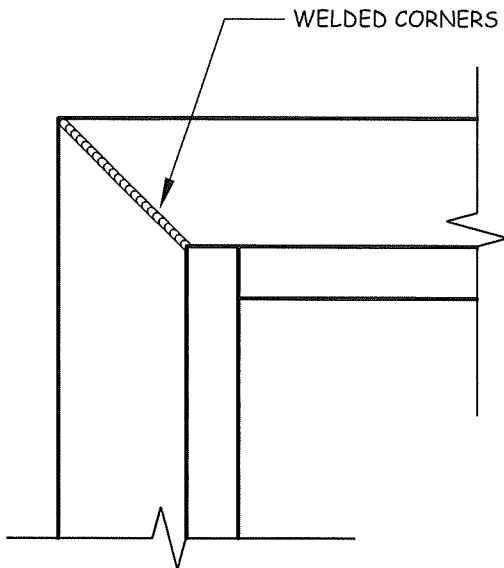
DATE 01-31-2024



**PRODUCT RENEWED**  
as complying with the Florida  
Building Code  
NOA-No. 23-1218.08  
Expiration Date 12/30/2025  
By Ishag I. Chanda  
Miami-Dade Product Control

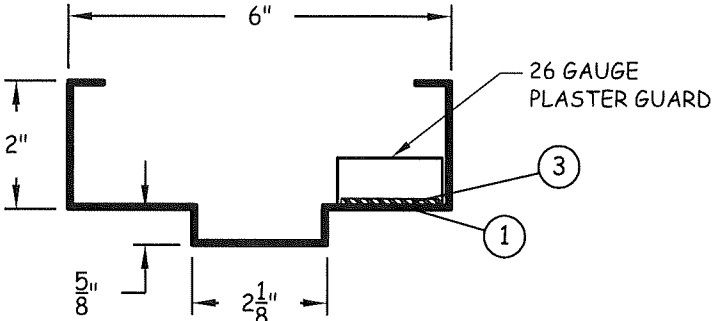


DRAWING NUMBER	QEPO01	FLUSH DOOR	<div> <div>4506 QUALITY LANE TAMPA, FLORIDA 33634 (813) 885-1693</div> <div> <i>Quality Engineered Products Co., Inc.</i> </div> </div>
		<div> <div>REVISIONS</div> <div>02-15-21 (FBC2020)</div> <div>01-31-24 (FBC2023)</div> </div>	
		<div> <div>FLUSH DOOR</div> <div>ANCHOR DETAILS</div> </div>	
		<div> <div>SHEET 6 OF 7</div> <div>DATE 01-31-2024</div> </div>	

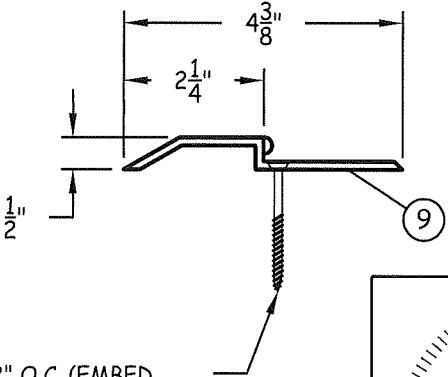


BILL OF MATERIALS	
MARK	DESCRIPTION
1	16 GA. (.063") MIN. (14 GA. MAX.) STEEL HOLLOW METAL FRAME FyMIN= 46.3 KSI; FuMIN= 52.1 KSI (OR S.S. MEETING FyMIN= 50.5 KSI; FuMIN= 98.5 KSI) W/ GROUTED JAMBS
2	1 1/8" X 2 1/2" X 12 GA. STEEL LOCK OR STRIKE REINFORCEMENT
3	1 1/2" x 8" x 12 GA. FRAME STRIKE REINFORCEMENTS
4	1/2" DIA. DYNABOLT ITW/REDHEAD SLEEVE ANCHOR (3/8" DIA. BOLT) X 4 1/2" SLEEVE ANCHOR W/ 3/4" DIA. WELDED PIPE SLEEVE W/ 1 7/8" MIN. EMBEDMENT & 3" MIN. EDGE DISTANCE
5	T-ANCHORS PER DETAIL SHEET6
6	HAGER HINGES BB1279 4.5 X 4.5 X .134 THICK
7	MARKS 195 SERIES, SCHLAGE D SERIES OR BEST 93K (CYLINDRICAL)
8	SCHLAGE L9000 SERIES MORTISE LOCK
9	PEMKO 2005av THRESHOLD
10	16 GA. (.063") MIN. (14 GA. MAX.) STEEL DOOR FyMIN= 46.3 KSI; FuMIN= 52.1 KSI (OR S.S. MEETING FyMIN= 50.5 KSI; FuMIN= 98.5 KSI)
11	1 1/4" X 10" X 7 GA. STEEL HINGE REINFORCEMENT
12	1 3/8" x 5" x 10 GA. LATCH REINFORCEMENT
13	16 GAUGE LOCK BODY REINFORCEMENT (16 GAUGE PLATE AT MORTISE LOCKS)
14	U-SHAPE END STEEL CHANNEL
15	U-SHAPE CLOSE TOP STEEL CHANNEL
16	1 1/4" x 1 5/8" x 1/2" FULL LENGTH STEEL CHANNEL
17	1 1/2" x 5 1/4" 12 GA. STEEL BOX CHANNEL WELDED 6" O.C. FULL LENGTH
18	20 GAUGE HAT STIFFENERS 74" LONG W/ FIBERGLASS INSULATION OR POLYSTYRENE FOAM BY DYNAPLAST (FOAM APACHE PZOD) PER CURRENT NOA.
19	PEMKO 303AS WEATHER STRIP

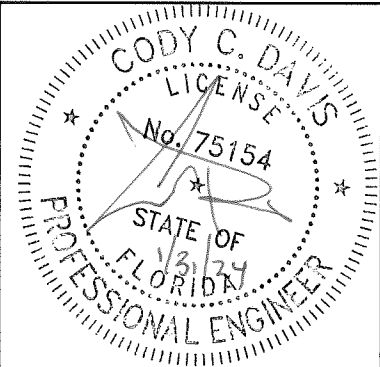
**PRODUCT RENEWED**  
as complying with the Florida  
Building Code  
NOA-No. 23-1218.08  
Expiration Date 12/30/2025  
By Ishag I. Chande  
Miami-Dade Product Control



PLASTER GUARD  
W/ 16 GA. JAMB



1/4" Ø TAPCON SET AT 12" O.C. (EMBED INTO CONCRETE W/ 1-3/4" MIN. PENETRATION)



DRAWING NUMBER	FLUSH DOOR	FLUSH DOOR
	QEPO01	
REVISIONS	02-15-21 (FBC2020)	01-31-24 (FBC2023)
	01-31-24 (FBC2023)	
SHEET	7	7
	DATE	01-31-2024

4506 QUALITY LANE  
TAMPA, FLORIDA 33634  
(813) 885-1693

*Quality Engineered Products Co., Inc.*