



DEPARTMENT OF REGULATORY AND ECONOMIC RESOURCES (RER)
BOARD AND CODE ADMINISTRATION DIVISION
NOTICE OF ACCEPTANCE (NOA)

MIAMI-DADE COUNTY
PRODUCT CONTROL SECTION
11805 SW 26 Street, Room 208
Miami, Florida 33175-2474
T (786) 315-2590 F (786) 315-2599
www.miamidade.gov/economy

Air Performance, LLC
159 Genco Drive
Hartford, AL 36344

SCOPE:

This NOA is being issued under the applicable rules and regulations governing the use of construction materials. The documentation submitted has been reviewed and accepted by Miami-Dade County RER - Product Control Section to be used in Miami Dade County and other areas where allowed by the Authority Having Jurisdiction (AHJ).

This NOA shall not be valid after the expiration date stated below. The Miami-Dade County Product Control Section (In Miami Dade County) and/or the AHJ (in areas other than Miami Dade County) reserve the right to have this product or material tested for quality assurance purposes. If this product or material fails to perform in the accepted manner, the manufacturer will incur the expense of such testing and the AHJ may immediately revoke, modify, or suspend the use of such product or material within their jurisdiction. RER reserves the right to revoke this acceptance if it is determined by Miami-Dade County Product Control Section that this product or material fails to meet the requirements of the applicable building code.

This product is approved as described herein and has been designed to comply with the Florida Building Code, including the High Velocity Hurricane Zone.

DESCRIPTION: Model 5WDRL 5" Blade Aluminum Louver System

APPROVAL DOCUMENT: Drawing No. **23-205**, titled "5" Blade Louvered System, Model 5WDRL", sheets 1 through 7 of 7, dated 09/01/2023, prepared by Tilteco, Inc, signed and sealed by Walter A. Tillit, Jr., P.E., bearing the Miami-Dade County Product Control revision stamp with the Notice of Acceptance number and expiration date by the Miami-Dade County Product Control Section.

MISSILE IMPACT RATING: Large and Small Missile Impact Resistant

LABELING: A permanent label with the manufacturer's name or logo, manufacturing plant's city and state, model/series, and following statement: "Miami-Dade County Product Control Approved", is to be located on each unit.

RENEWAL of this NOA shall be considered after a renewal application has been filed and there has been no change in the applicable building code negatively affecting the performance of this product.

TERMINATION of this NOA will occur after the expiration date or if there has been a revision or change in the materials, use, and/or manufacture of the product or process. Misuse of this NOA as an endorsement of any product, for sales, advertising or any other purposes shall automatically terminate this NOA. Failure to comply with any section of this NOA shall be cause for termination and removal of NOA.

ADVERTISEMENT: The NOA number preceded by the words Miami-Dade County, Florida, and followed by the expiration date may be displayed in advertising literature. If any portion of the NOA is displayed, then it shall be done in its entirety.

INSPECTION: A copy of this entire NOA shall be provided to the user by the manufacturer or its distributors and shall be available for inspection at the job site at the request of the Building Official.

This NOA **revises NOA # 20-1104.21** and consists of this page 1 and evidence pages E-1, E-2, E-3 and E-4, as well as approval document mentioned above.

The submitted documentation was reviewed by **Carlos M. Utrera, P.E.**




06/13/24

NOA No. 24-0520.03
Expiration Date: March 10, 2026
Approval Date: June 20, 2024
Page 1

NOTICE OF ACCEPTANCE: EVIDENCE SUBMITTED

1. Evidence submitted under previous NOA's

A. DRAWINGS “Submitted under NOA # 15-1008.05”

1. Drawing No. **15-153**, titled “5” Blade Louvered System, Model 5WDRL”, sheets 1 through 7 of 7, prepared by Tilteco, Inc, dated 05/28/2015, signed and sealed by Walter A. Tillit, Jr., P.E.

B. TESTS “Submitted under NOA # 10-1214.14”

1. Test reports on 1) Uniform Static Air Pressure Test, Loading per FBC, TAS 202-94
2) Large Missile Impact Test per FBC, TAS 201-94
3) Cyclic Wind Pressure Loading per FBC, TAS 203-94
4) Tensile Test, per ASTM E8
along with marked-up drawings and installation diagram of a Model 5WDRL 5” Blade Aluminum Louvered System, prepared by American Test Lab of South Florida, Test Report No. **0726.01-10**, dated 09/16/2010, signed and sealed by Julio E. Gonzalez, P.E.

C. CALCULATIONS “Submitted under NOA # 15-1008.05”

1. Anchor calculations prepared by Tilteco, Inc, dated 06/02/2015, signed and sealed by Walter A. Tillit, Jr., P.E.

“Submitted under NOA # 10-1214.14”
2. Anchor verification calculations prepared by Tilteco, Inc, dated 07/26/2010, signed and sealed by Walter A. Tillit, Jr., P.E.

D. QUALITY ASSURANCE

1. Miami-Dade Department of Regulatory and Economic Resources (RER)

E. MATERIAL CERTIFICATIONS

1. None.

F. STATEMENTS “Submitted under NOA # 15-1008.05”

1. Statement letter of code conformance to the 5th edition (2014) FBC issued by Tilteco, Inc, dated 05/28/2015, signed and sealed by Walter A. Tillit, Jr., P.E.

“Submitted under NOA # 12-0314.15”
2. Statement letter of code conformance to the 2010 FBC, issued by Tilteco, Inc, dated 03/12/2012, signed and sealed by Walter A. Tillit, Jr., P.E.

“Submitted under NOA # 10-1214.14”
3. Statement letter of conformance to the 2007 FBC, issued by Tilteco, Inc, dated 12/13/2010, signed and sealed by Walter A. Tillit, Jr., P.E.
4. Statement letter of no financial interest issued by Tilteco, Inc, dated 12/13/2010, signed and sealed by Walter A. Tillit, Jr., P.E.



Carlos M. Utrera, P.E.
Product Control Examiner
NOA No. 24-0520.03
Expiration Date: March 10, 2026
Approval Date: June 20, 2024

NOTICE OF ACCEPTANCE: EVIDENCE SUBMITTED

2. Evidence submitted under NOA # 17-1026.06

A. DRAWINGS

1. Drawing No. **17-251**, titled “5” Blade Louvered System, Model 5WDRL”, sheets 1 through 7 of 7, prepared by Tilteco, Inc, dated 08/28/2017, signed and sealed by Walter A. Tillit, Jr., P.E.

B. TESTS

1. None.

C. CALCULATIONS

1. None.

D. QUALITY ASSURANCE

1. Miami-Dade Department of Regulatory and Economic Resources (RER)

E. MATERIAL CERTIFICATIONS

1. None.

F. STATEMENTS

1. Statement letter of code conformance to the 6th edition (2017) FBC issued by Tilteco, Inc, dated 08/28/2017, signed and sealed by Walter A. Tillit, Jr., P.E.



Carlos M. Utrera, P.E.
Product Control Examiner
NOA No. 24-0520.03
Expiration Date: March 10, 2026
Approval Date: June 20, 2024

NOTICE OF ACCEPTANCE: EVIDENCE SUBMITTED

3. Evidence submitted under NOA # 19-0731.05

A. DRAWINGS

1. Drawing No. **17-251**, titled “5” Blade Louvered System, Model 5WDRL”, sheets 1 through 7 of 7, dated 08/28/2017, with revision 2 dated 07/22/2019, prepared by Tilteco, Inc, signed and sealed by Walter A. Tillit, Jr., P.E.

B. TESTS

1. None.

C. CALCULATIONS

1. None.

D. QUALITY ASSURANCE

1. Miami-Dade Department of Regulatory and Economic Resources (RER)

E. MATERIAL CERTIFICATIONS

1. None.

F. STATEMENTS

1. Statement letter issued by Air Performance, Inc., stating the following: a) They have legally sold all assets to Air Performance, LLC, b) Requesting the existing NOA to be rescinded, c) They no longer manufacture the product under the existing NOA, d) They have given up all the rights to the existing NOA, and e) All the necessary machinery, equipment, and know-how used in the fabrication of the product used for the tests, which were the basis for obtaining the NOA are being sold to Air Performance, LLC, dated 07/17/2019, signed by Ross Strickland.
2. Contribution and Purchase Agreement among United Enertech Holdings, LLC, Air Performance, LLC and Air Performance, Inc, dated 09/12/2017.



Carlos M. Utrera, P.E.
Product Control Examiner
NOA No. 24-0520.03
Expiration Date: March 10, 2026
Approval Date: June 20, 2024

NOTICE OF ACCEPTANCE: EVIDENCE SUBMITTED

4. Evidence submitted under NOA # 20-1104.21 and new

A. DRAWINGS

1. Drawing No. **23-205**, titled “5” Blade Louvered System, Model 5WDRL”, sheets 1 through 7 of 7, dated 09/01/2023, prepared by Tilteco, Inc, signed and sealed by Walter A. Tillit, Jr., P.E.

B. TESTS

1. None.

C. CALCULATIONS

1. None.

D. QUALITY ASSURANCE

1. Miami-Dade Department of Regulatory and Economic Resources (RER).

E. MATERIAL CERTIFICATIONS

1. None.

F. STATEMENTS

1. Statement letter of code conformance to the 8th edition (2023) of the FBC issued by Tilteco, Inc, dated 09/01/2023, signed and sealed by Walter A. Tillit, Jr., P.E.

“Submitted under NOA # 20-1104.21”

2. Statement letter of code conformance to the 7th edition (2020) of the FBC issued by Tilteco, Inc, dated 10/07/2020, signed and sealed by Walter A. Tillit, Jr., P.E.



Carlos M. Utrera, P.E.
Product Control Examiner
NOA No. 24-0520.03
Expiration Date: March 10, 2026
Approval Date: June 20, 2024

GENERAL NOTES:

1). 5" BLADE LOUVERED SYSTEM SHOWN ON THIS PRODUCT APPROVAL DOCUMENT (P.A.D.) HAS BEEN VERIFIED FOR COMPLIANCE IN ACCORDANCE WITH THE 2023 (8th EDITION) AND 2020 (7th EDITION) OF THE FLORIDA BUILDING CODE. 5" BLADE LOUVERED SYSTEM MAY BE INSTALLED AT HIGH VELOCITY HURRICANE ZONES (MIAMI-DADE/BROWARD COUNTIES).

DESIGN WIND LOADS SHALL BE DETERMINED AS PER SECTION 1620 OF THE ABOVE MENTIONED CODE, USING ASCE 7-22 (FBC 2023) & ASCE 7-16 (FBC 2020) AND SHALL NOT EXCEED THE MAXIMUM (A.S.D.) DESIGN PRESSURE RATING INDICATED ON THIS NOTE.

IN ORDER TO VERIFY THE ABOVE CONDITION, ULTIMATE DESIGN WIND LOADS DETERMINED PER ASCE 7-22 & ASCE 7-16 SHALL BE FIRST REDUCED TO A.S.D. DESIGN WIND LOADS BY MULTIPLYING THEM BY 0.6 IN ORDER TO COMPARE THESE W/ MAX. (A.S.D.) DESIGN PRESSURE RATING INDICATED ON THIS NOTE.

IN ORDER TO VERIFY THAT COMPONENTS ON THIS (P.A.D.), AS TESTED, WERE NOT OVERSTRESSED, A 33% INCREASE IN ALLOWABLE STRESS FOR WIND LOADS WAS NOT USED IN THEIR ANALYSIS. FASTENERS SPACING TO WOOD HAS BEEN DETERMINED IN ACCORDANCE WITH N.D.S. 2018.


5" BLADE LOUVERED SYSTEM ADEQUACY FOR IMPACT AND FATIGUE RESISTANCE HAS BEEN VERIFIED IN ACCORDANCE WITH SECTION 1626 OF THE ABOVE MENTIONED CODE AS PER AMERICAN TESTING LAB OF SOUTH FLORIDA REPORT # 0726.01-10, AS PER TAS-201, TAS-202, TAS-203.

MAXIMUM A.S.D. DESIGN PRESSURE RATING 150.0, -150.0 psf. LARGE MISSILE IMPACT RESISTANCE

- 2). ALL ALUMINUM EXTRUSIONS SHALL BE 6063-T6 ALLOY WITH MIN. SPECIFIC YIELD STRENGTHS AS SHOWN ON SHEET 2.
- 3). ALL SCREWS TO BE STAINLESS STEEL 304 OR 316 SERIES WITH 50 ksi YIELD POINT AND 90 ksi TENSILE STRENGTH OR CORROSION RESISTANT CARBON STEEL AS PER DIN 50018 & SHALL COMPLY W/ FLORIDA BUILDING CODE SECTION 2411.3.3.4. (SEE BILL OF MATERIALS ON SHEET 2)
- 4). ALL WELDING OF ALUMINUM FRAMING SHALL BE IN ACCORDANCE WITH THE AMERICAN WELDING SOCIETY A.W.S. D.1.2 REGULATIONS. USE CERTIFIED WELDERS. USE ER-5356 ELECTRODES.
- 5). ALL ALUMINUM EXTRUSIONS IN CONTACT WITH DISSIMILAR MATERIALS SHALL COMPLY WITH SECTION III-6 OF THE 2015 & 2020 ALUMINUM DESIGN MANUAL.
- 6). ANCHORS FOR JAMB ③ CONNECTION TO EXISTING STRUCTURE SHALL BE AS FOLLOWS (SEE SHEET 5):
- ANCHORS SHALL BE INSTALLED FOLLOWING ALL OF THE RECOMMENDATIONS AND SPECIFICATIONS OF THE ANCHOR'S MANUFACTURER. EDGE DISTANCE (E.D.), MINIMUM EMBEDMENT OR THREADED PENETRATION ARE BEYOND ANY WALL FINISH.

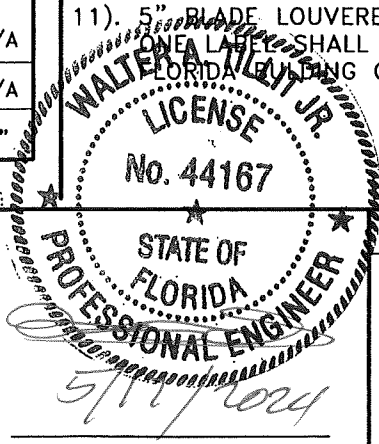
ANCHOR TYPE	MANUFACTURER	DIAMETER	MINIMUM EMBEDMENT OR THREADED PENETRATION				MIN. EDGE DISTANCE (E.D.)			MIN. SPACING		
			TO POURED CONCRETE (f'c=3192psi Min.)	TO CONCRETE BLOCK (ASTM C-90 UNIT)	TO 1/8" MIN. STEEL (Fy=33ksi Min.)	TO MIN. 2x6 WOOD (G=0.55 Min.)	POURED CONCRETE OR CONCRETE BLOCK	STEEL	WOOD	POURED CONCRETE OR CONCRETE BLOCK	STEEL	WOOD
CRETE-FLEX SS4	ELCO CONSTRUCTION PRODUCTS	1/4"Ø	1 3/4"	1 1/4"	N/A	N/A	2 1/2"	N/A	N/A	3"	N/A	N/A
TEK SCREW	ITW/BUILDEX	1/4"Ø	N/A	N/A	3/4"	N/A	N/A	1"	N/A	N/A	3/4"	N/A
TAPCON	ITW/BUILDEX	1/4"Ø	N/A	N/A	N/A	1 1/2"	N/A	N/A	1"	N/A	N/A	1"

THIS DRAWING SHALL ONLY BE USED TO OBTAIN PERMITS IN THE STATE OF FLORIDA

PRODUCT REVISED as complying with the Florida Building Code
NOA-No. 24-0520.03
Expiration Date 03/10/2026
By 
Miami-Dade Product Control

MIAMI-DADE COUNTY

P.E. SEAL/SIGNATURE/DATE



©2023 TILTECO, INC

**TILTECO INC.**

TILLIT TESTING & ENGINEERING COMPANY
6355 N.W. 36th St., Ste. 305, VIRGINIA GARDENS, FL 33166
Phone : (305)871-1530 . Fax : (305)871-1531
e-mail: tilteco@aol.com
CA-0006719
WALTER A. TILLIT Jr. P.E.
FLORIDA Lic. # 44167

5" BLADE LOUVERED SYSTEM, MODEL 5WDRL

AIR PERFORMANCE, LLC

159 GENCO DRIVE
HARTFORD, ALABAMA 36344
PHONE: (334) 588-0070 , FAX: (334) 588-0071

REV. No	DESCRIPTION	DATE	REV. No	DESCRIPTION	DATE
1	OLD 20-287	9/1/23	3	-	-
2	-	-	4	-	-

DRAWN BY: Y.M.

09/01/2023 DATE

23-205 DRAWING No

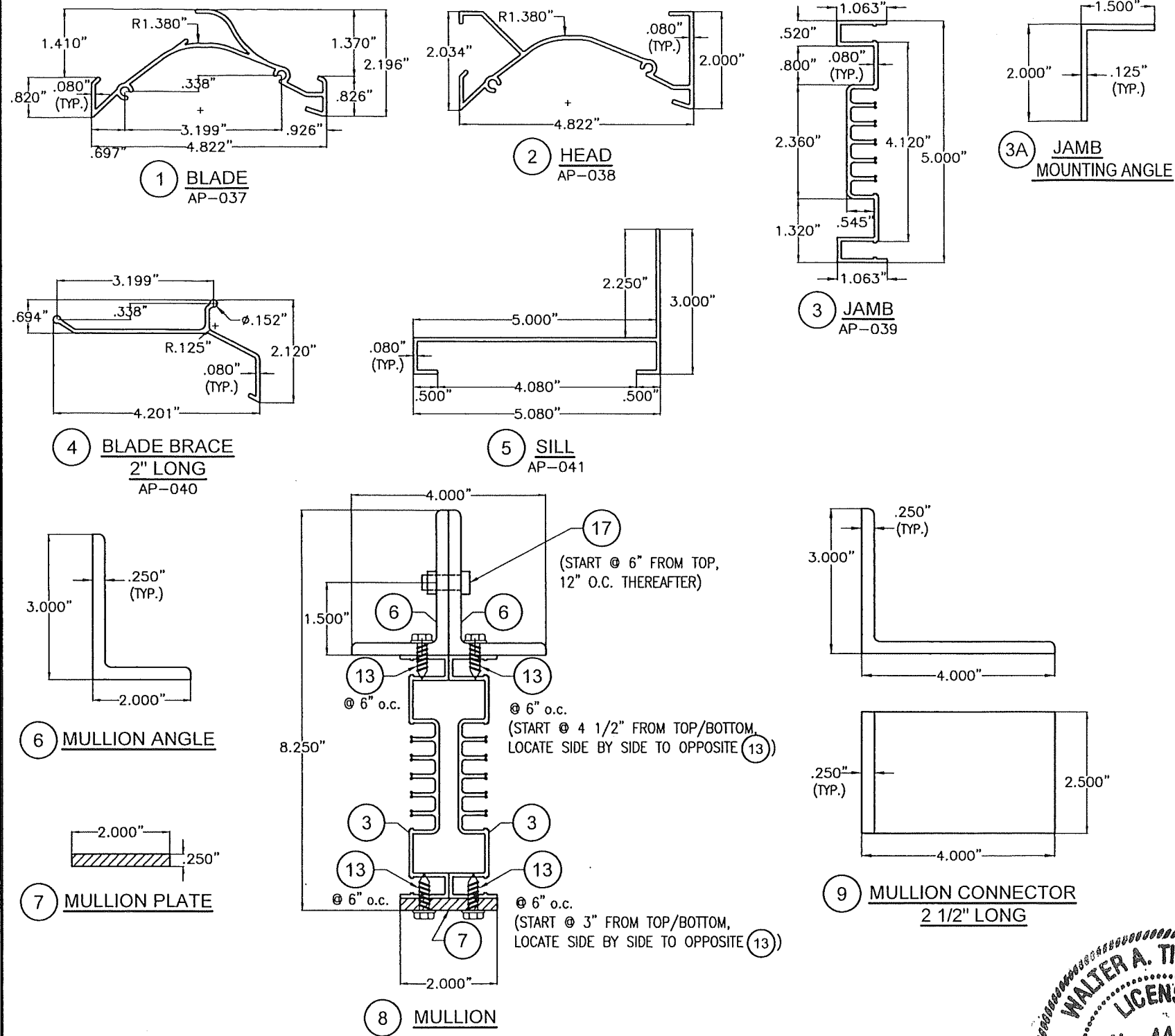
SHEET 1 OF 7

- 7). ANCHORS FOR MULLION ⑧ CONNECTION TO EXISTING STRUCTURE SHALL BE AS FOLLOWS (SEE SHEET 7).
- ANCHORS SHALL BE INSTALLED FOLLOWING ALL OF THE RECOMMENDATIONS AND SPECIFICATIONS OF THE ANCHOR'S MANUFACTURER. EDGE DISTANCE (E.D.) MINIMUM EMBEDMENT OR THREADED PENETRATION ARE BEYOND ANY FINISH.

ANCHOR TYPE	MANUFACTURER	DIAMETER	MIN. EMBEDMENT OR THREADED PENETRATION			MIN. EDGE DISTANCE (E.D.)			MIN. SPACING		
			TO POURED CONCRETE (f'c=3000 psi Min.)	TO 1/4" MIN. STEEL (ASTM-A36)	TO MIN. 2x6 WOOD (G=0.55 Min.)	POURED CONCRETE	STEEL	WOOD	POURED CONCRETE	STEEL	WOOD
TAPCON XL	ITW/BUILDEX	5/16"Ø	2 1/4"	N/A	N/A	3 1/8"	N/A	N/A	2"	N/A	N/A
TYPE "F" BOLT OR HHB THRU BOLT W/ NUT & LOCK WASHER	-	5/16"Ø	N/A	1/4"	N/A	N/A	3/4"	N/A	N/A	1 1/8"	N/A
ULTRACON FASTENER	ELCO CONSTRUCTION PRODUCTS	5/16"Ø	N/A	N/A	1 1/2"	N/A	N/A	1 9/16"	N/A	N/A	1 9/16"

- 8). 5" BLADE LOUVERED SYSTEM SHALL ONLY BE INSTALLED IN A LOCATION WHERE THE ROOM BEHIND THE LOUVER IS DESIGNED TO DRAIN WATER PENETRATING INTO THE ROOM, AND THE ROOM WILL HOUSE WATER RESISTANT/WATER PROOF EQUIPMENT, COMPONENTS OR SUPPLIES.
- 9). IT SHALL BE RESPONSIBILITY OF THE CONTRACTOR TO VERIFY THE SOUNDNESS OF THE STRUCTURE WHERE LOUVER SYSTEM IS TO BE ATTACHED TO INSURE PROPER ANCHORAGE.
- 10). (A) THIS PRODUCT APPROVAL DOCUMENT (P.A.D.) PREPARED BY THIS ENGINEER IS GENERIC AND DOES NOT PROVIDE INFORMATION FOR A SPECIFIC PROJECT; i.e. WHERE THE SITE CONDITIONS DEVIATE FROM THE PRODUCT APPROVAL DOCUMENT (P.A.D.)
- (B) CONTRACTOR TO BE RESPONSIBLE FOR THE SELECTION, PURCHASE AND INSTALLATION INCLUDING LIFE SAFETY OF THIS PRODUCT, BASED ON THIS PRODUCT APPROVAL DOCUMENT (P.A.D.), PROVIDED HE/SHE DOES NOT DEVIATE FROM THE CONDITIONS DETAILED ON THIS DOCUMENT. CONSTRUCTION SAFETY AT SITE IS THE CONTRACTOR'S RESPONSIBILITY.
- (C) THIS PRODUCT APPROVAL DOCUMENT (P.A.D.) WILL BE CONSIDERED INVALID IF MODIFIED.
- (D) SITE SPECIFIC PROJECTS SHALL BE PREPARED BY A FLORIDA REGISTERED ENGINEER OR ARCHITECT WHICH WILL BECOME THE ENGINEER OF RECORD (E.O.R.) FOR THE PROJECT AND WHO WILL BE RESPONSIBLE FOR THE PROPER USE OF THE P.A.D.
- (E) ORIGINAL PRODUCT APPROVAL DOCUMENT (P.A.D.) SHALL BEAR THE DATE AND ORIGINAL SEAL AND SIGNATURE OF THE PROFESSIONAL ENGINEER OR RECORD THAT PREPARED IT.
- 11). 5" BLADE LOUVERED SYSTEM MANUFACTURER'S LABEL SHALL BE PLACED ON A READILY VISIBLE LOCATION. ONE LABEL SHALL BE PLACED FOR EVERY OPENING AND SHALL COMPLY WITH SECTION 1703.5 OF THE FLORIDA BUILDING CODE.

FLORIDA BUILDING CODE (High Velocity Hurricane Zone)



BILL OF MATERIALS 5WDR L LOUVER ASSEMBLY				
ITEM	DESCRIPTION	MATERIAL	SIZE	REMARKS
1	BLADE	6063-T6 ALLOY EXTRUDED ALUM.	SEE DETAIL	Fy (MIN.) = 25 ksi
2	HEAD	6063-T6 ALLOY EXTRUDED ALUM.	SEE DETAIL	Fy (MIN.) = 25 ksi
3	JAMB	6063-T6 ALLOY EXTRUDED ALUM.	SEE DETAIL	Fy (MIN.) = 25 ksi
3A	JAMB MOUNTING ANGLE	6063-T6 ALLOY EXTRUDED ALUM.	SEE DETAIL	Fy (MIN.) = 25 ksi
4	BLADE BRACE	6063-T6 ALLOY EXTRUDED ALUM.	SEE DETAIL	Fy (MIN.) = 25 ksi
5	SILL	6063-T6 ALLOY EXTRUDED ALUM.	SEE DETAIL	Fy (MIN.) = 25 ksi
6	MULLION ANGLE	6061-T6 ALLOY EXTRUDED ALUM.	SEE DETAIL	Fy (MIN.) = 35 ksi
7	MULLION PLATE	6063-T6 ALLOY EXTRUDED ALUM.	SEE DETAIL	Fy (MIN.) = 25 ksi
8	MULLION	6063-T6 ALLOY EXTRUDED ALUM.	SEE DETAIL	Fy (MIN.) = 25 ksi
9	MULLION CONNECTOR	6061-T6 ALLOY EXTRUDED ALUM.	SEE DETAIL	Fy (MIN.) = 35 ksi
10	SCREEN FRAME	6063-T6 ALLOY EXTRUDED ALUM.	SEE DETAIL	Fy (MIN.) = 25 ksi
11	BLADE BRACE ANGLE	6063-T6 ALLOY EXTRUDED ALUM.	SEE DETAIL	Fy (MIN.) = 25 ksi
12	BIRD SCREEN	3003-H14 ALLOY	SEE DETAIL	Fy (MIN.) = 16 ksi
13	HEX HEAD TEK SCREWS	410 STAINLESS STEEL	1/4" x 3/4" LONG	ITW / BUILDDEX
13A	HEX HEAD TEK SCREWS	410 STAINLESS STEEL	1/4" x 2" LONG	ITW / BUILDDEX
15	HEX HEAD TEK SCREWS W/ NEOPRENE WASHER	410 STAINLESS STEEL	#10 x 1 1/4" LONG	LOUVER BLADE AND FRAME ASSEMBLY
16	THRU BOLT @ 9	ZINC PLATED STEEL	5/16" x 1 1/2" LONG W/ NUT & WASHER	ASTM A-307
17	THRU BOLT @ 6	ZINC PLATED STEEL	5/16" x 1 1/2" LONG W/ NUT & LOCK WASHER	ASTM A-307

COMPONENTS

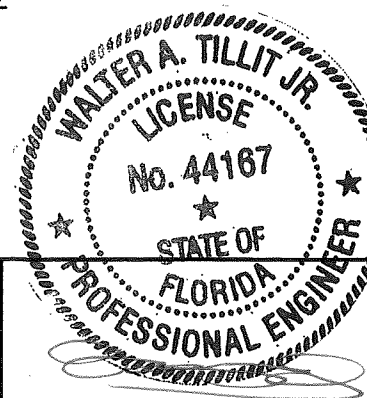
SCALE 3/8"=1"

PRODUCT REVISED
as complying with the Florida
Building Code
NOA-No. 24-0520.03

Expiration Date 03/10/2026

By *[Signature]*
Miami-Dade Product Control

MIAMI-DADE COUNTY



P.E. SEAL/SIGNATURE/DATE

©2023 TILTECO, INC

TILTECO INC.
TILLIT TESTING & ENGINEERING COMPANY
6355 N.W. 36th St., Ste. 305, VIRGINIA GARDENS, FL 33166
Phone: (305) 871-1530 • Fax: (305) 871-1531
e-mail: tiltenco@aol.com
CA-0006719
WALTER A. TILLIT JR., P.E.
FLORIDA Lic. # 44167

FLORIDA BUILDING CODE (High Velocity Hurricane Zone)

**5" BLADE LOUVERED SYSTEM,
MODEL 5WDR L**

AIR PERFORMANCE, LLC

159 GENCO DRIVE
HARTFORD, ALABAMA 36344
PHONE: (334) 588-0070, FAX: (334) 588-0071

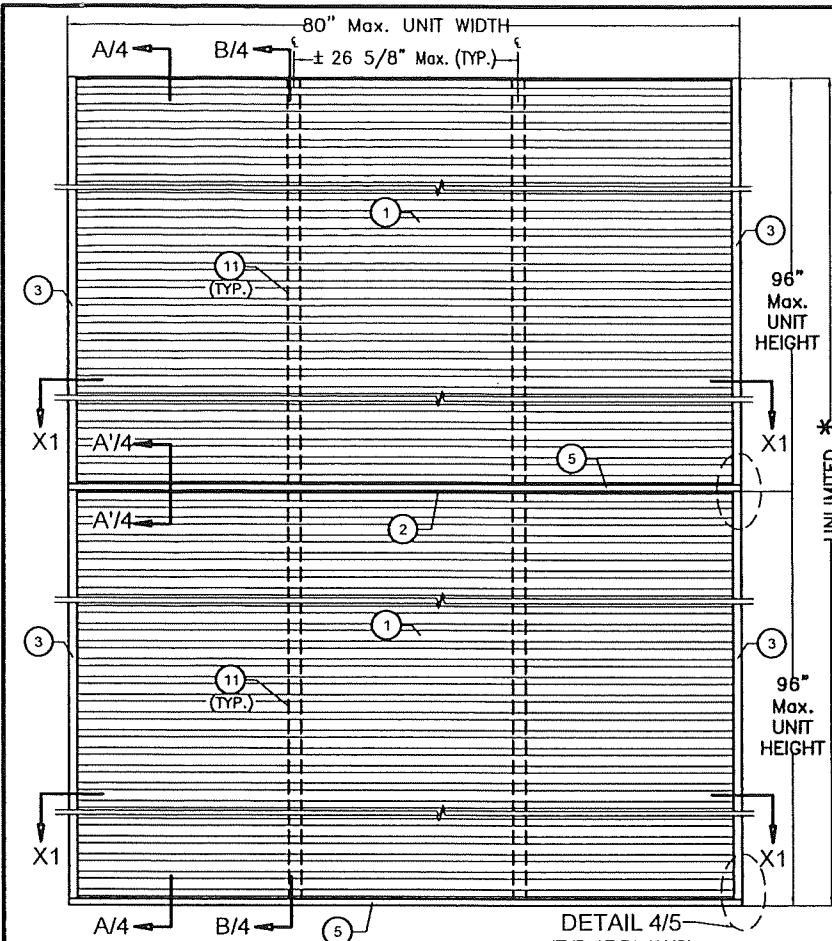
DRAWN BY:
Y.M.

09/01/2023
DATE

23-205
DRAWING No

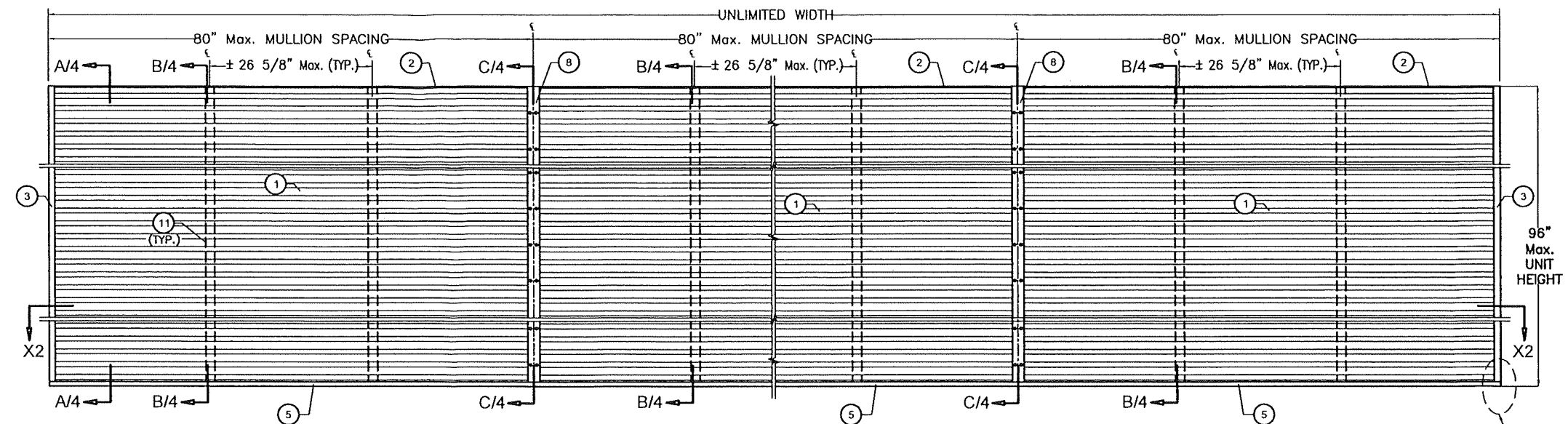
SHEET 2 OF 7

REV. No	DESCRIPTION	DATE	REV. No	DESCRIPTION	DATE
1	OLD 20-287	9/1/23	3	-	-
2	-	-	4	-	-



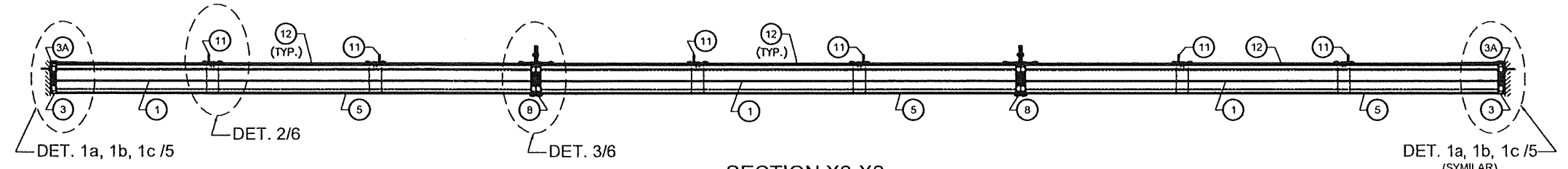
SINGLE LOUVER UNIT *
(EXTERIOR ELEVATION)

* NUMBER OF LOUVER PANEL UNITS NEEDED TO ACHIEVE THE OPENING OVERALL HEIGHT MAY VARY, HOWEVER MAX. UNIT HEIGHT SHALL NO EXCEED 96".

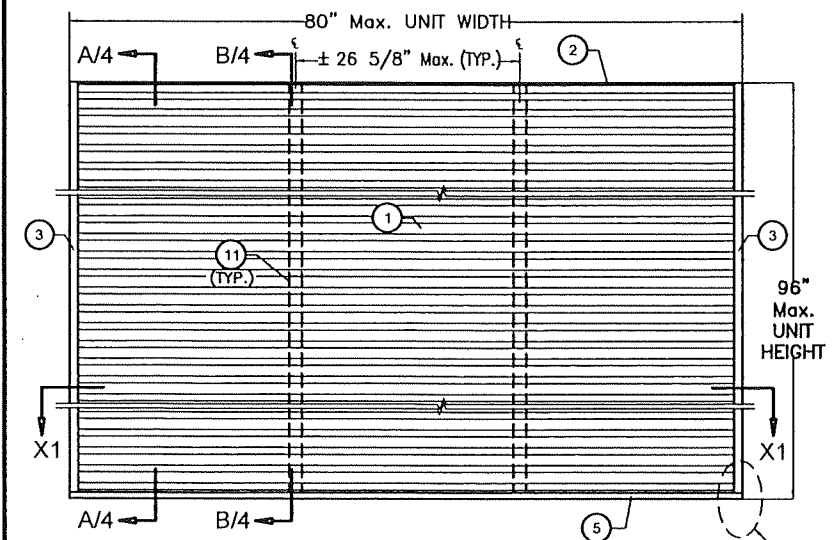


MULTIPLE LOUVER UNITS
(EXTERIOR ELEVATION)

DETAIL 4/5
(TYP. AT EA JAMB)

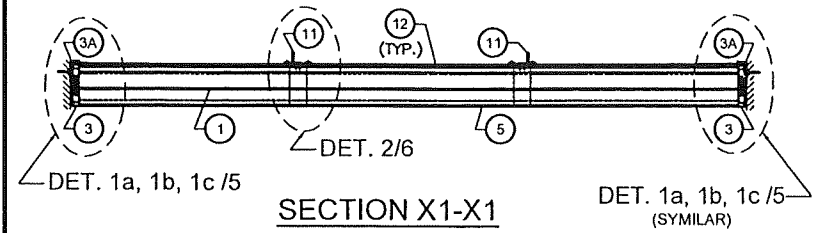


SECTION X2-X2



SINGLE LOUVER UNIT
(EXTERIOR ELEVATION)

DETAIL 4/5
(TYP. AT EA JAMB)

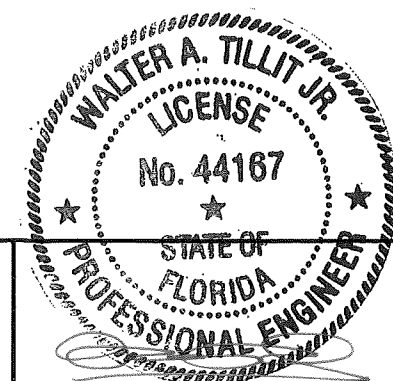


SECTION X1-X1

DET. 1a, 1b, 1c /5
(SYMLAR)

SINGLE & MULTIPLE UNITS 5WDRL LOUVER SYSTEMS

N.T.S.



PRODUCT REVISED
as complying with the Florida
Building Code
NOA-No. 24-0520.03
Expiration Date 03/10/2026
By *[Signature]*
Miami-Dade Product Control
MIAMI-DADE COUNTY

P.E. SEAL/SIGNATURE/DATE

©2023 TILTECO, INC.
TILTECO INC.
TILLIT TESTING & ENGINEERING COMPANY
6355 N.W. 36th St., Ste. 305, VIRGINIA GARDENS, FL 33166
Phone : (305)871-1530 • Fax : (305)871-1531
e-mail: tilteco@aol.com
CA-0006719
WALTER A. TILLIT Jr., P.E.
FLORIDA Lic. # 44167

FLORIDA BUILDING CODE (High Velocity Hurricane Zone)

**5" BLADE LOUVERED SYSTEM,
MODEL 5WDRL**

AIR PERFORMANCE, LLC

159 GENCO DRIVE
HARTFORD, ALABAMA 36344
PHONE: (334) 588-0070 , FAX: (334) 588-0071

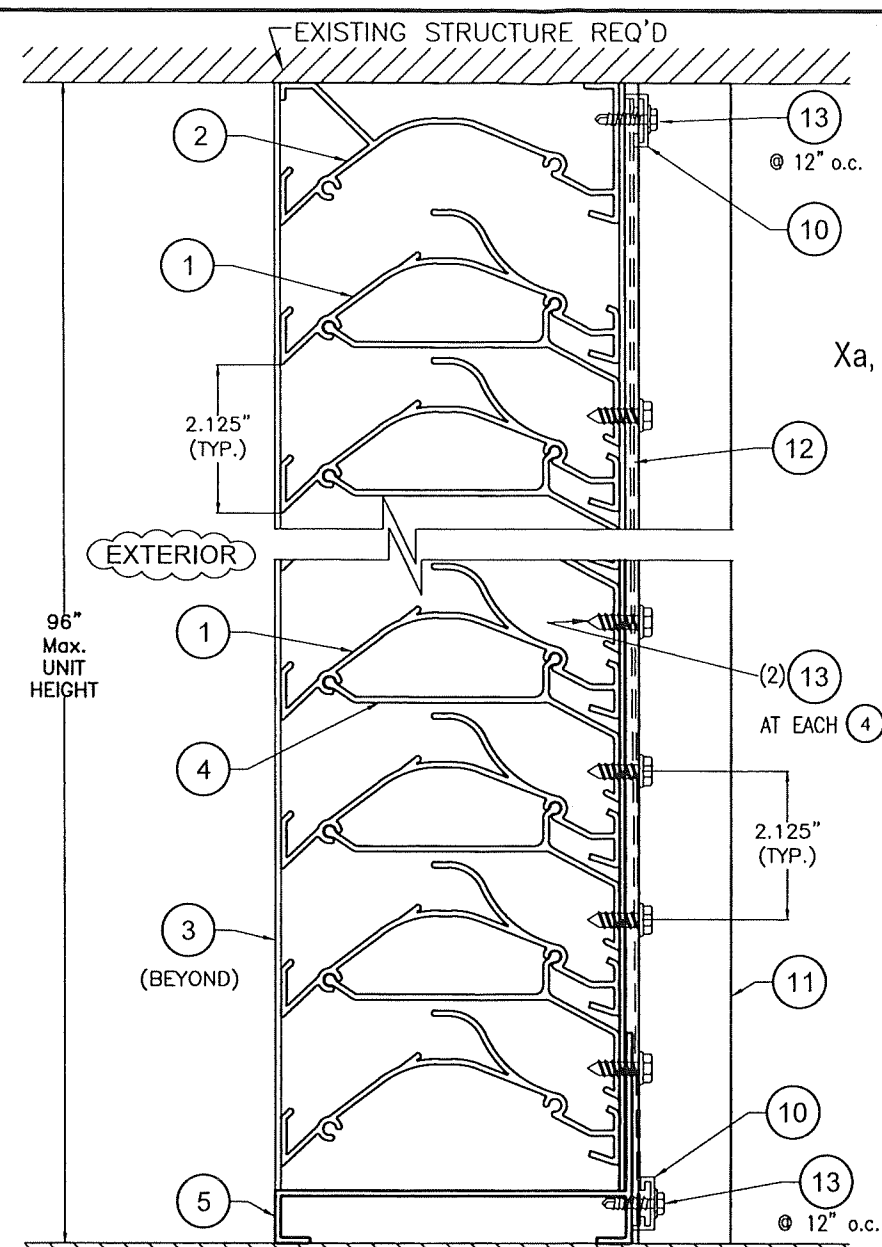
REV. No	DESCRIPTION	DATE	REV. No	DESCRIPTION	DATE
1	OLD 20-287	9/1/23	3	-	-
2	-	-	4	-	-

DRAWN BY:
Y.M.

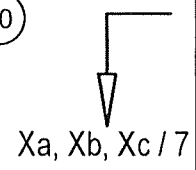
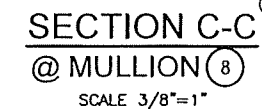
09/01/2023
DATE

23-205
DRAWING No

SHEET 3 OF 7



SECTION B-B
@ BLADE BRACE ANGLE (11)
SCALE 3/8"=1"


$$X_a, X_b, X_c / 7$$


						DRAWING No
REV. No	DESCRIPTION	DATE	REV. No	DESCRIPTION	DATE	SHEET 4 OF 7
1	OLD 20-287	9/1/23	3	-	-	
2	-	-	4	-	-	

ET 4 OF 7

P.E. SEAL/SIGNATURE/DATE

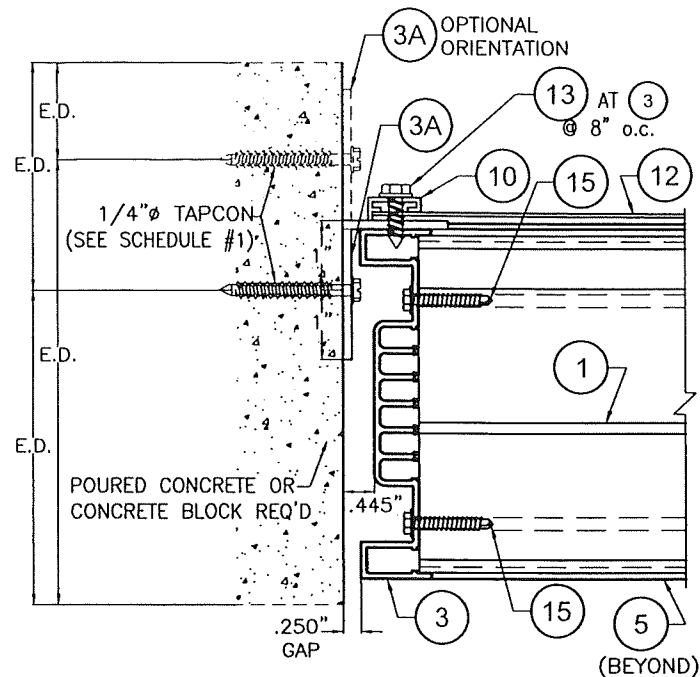
TILTECO INC.

TILLIT TESTING & ENGINEERING COMPANY

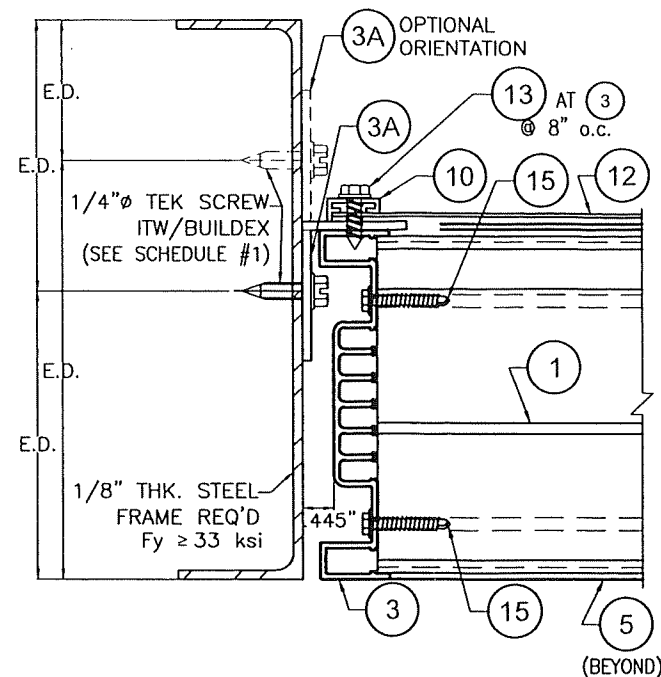
6355 N.W. 36th, St., Ste. 305, VIRGINIA GARDENS, FL 33166
Phone : (305)871-1530 . Fax : (305)871-1531
e-mail: tilliteco@aol.com
CA-0006719

WALTER A. TILLIT Jr. P.E.
FLORIDA Lic. # 44167

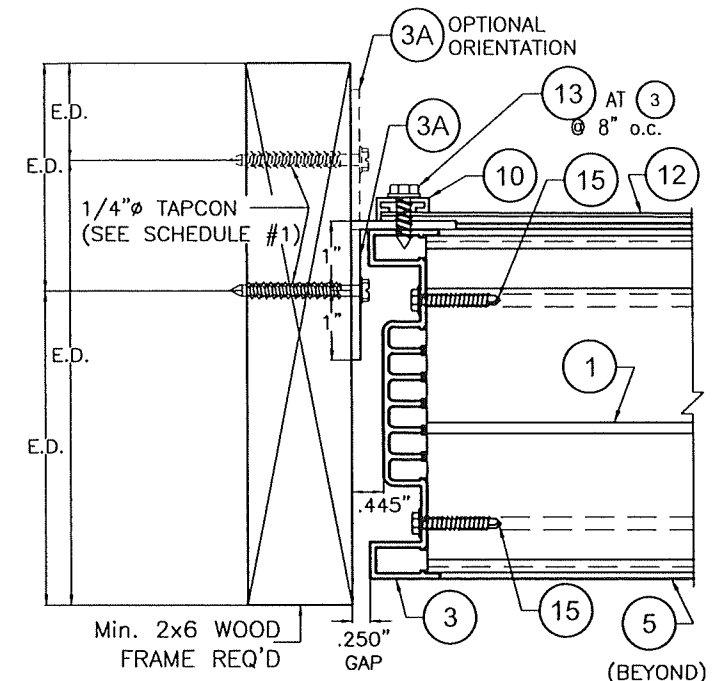
5" BLADE LOUVERED SYSTEM,
MODEL 5WDRL



DETAIL 1a
TO POURED CONCRETE
OR CONCRETE BLOCK



DETAIL 1b
TO STEEL



DETAIL 1c
TO WOOD

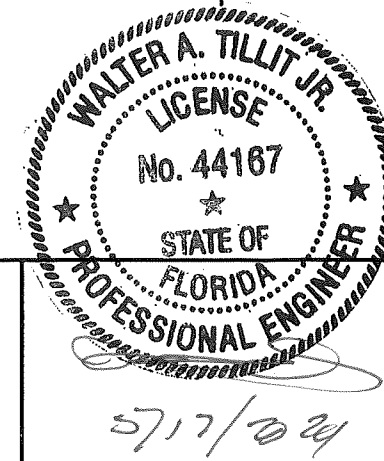
JAMB ③ CONNECTION DETAILS TO DIFFERENT SUBSTRATES

(SEE GENERAL NOTE 6/1)

ANCHOR SPACING SCHEDULE AT JAMB, VALID FOR CONNECTION TO
POURED CONCRETE, CONCRETE BLOCK, STEEL & WOOD SUBSTRATES

MAX. ANCHOR SPACING AT JAMBS, SCHEDULE # 1					
W/ ③A (1 1/2"x 2"x1/8" ANGLE)					
MAX. A.S.D. DESIGN PRESSURE RATING (psf)	SINGLE UNIT WIDTH OR MULLION SPACING (S) AT MULTIPLE UNITS (in)	MAXIMUM SPACING (in o.c.)			
		1/4"Ø CRETE- FLEX SS4 TO POURED CONCRETE	1/4"Ø CRETE- FLEX SS4 TO CONCRETE BLOCK	1/4"Ø TEK SCREW TO STEEL	1/4"Ø TAPCON TO WOOD
±75 OR LESS	48	8	7	8	8
	60	8	5 1/2	8	7 1/2
	72	8	4 1/2	8	6 1/2
	80	8	4	8	6
> ±75 TO ±110	48	8	4 1/2	8	6 1/2
	60	8	3 1/2	8	5 1/2
	72	8	3	8	4 1/2
	80	7	3*	8	4
> ±110 TO ±150	48	8	3 1/2	8	5
	60	7	3**	8	4
	72	6	-	8	3
	80	5 1/2	-	7	3

* VALID ONLY FOR W=100 psf.
** VALID ONLY FOR W=137 psf.



PRODUCT REVISED
as complying with the Florida
Building Code
NOA-No. 24-0520.03
Expiration Date 03/10/2026
By *[Signature]*
Miami-Dade Product Control

MIAMI-DADE COUNTY

P.E. SEAL/SIGNATURE/DATE

FLORIDA BUILDING CODE (High Velocity Hurricane Zone)

©2023 TILTECO, INC.
TILTECO INC.
TILLIT TESTING & ENGINEERING COMPANY
6355 N.W. 36th St., Ste. 305, VIRGINIA GARDENS, FL 33166
Phone : (305)871-1530 • Fax : (305)871-1531
e-mail: tilteco@aol.com
CA-0006719
WALTER A. TILLIT Jr. P.E.
FLORIDA Lic. # 44167

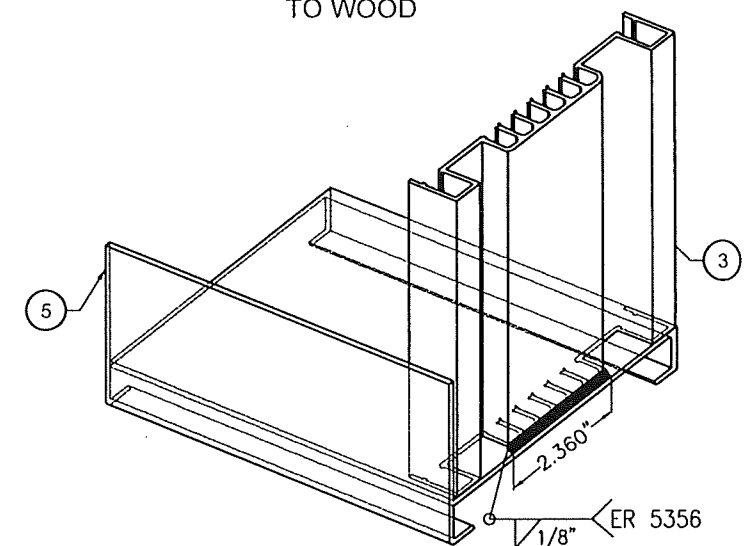
5" BLADE LOUVERED SYSTEM, MODEL 5WDR L					
AIR PERFORMANCE, LLC					
159 GENCO DRIVE HARTFORD, ALABAMA 36344 PHONE: (334) 588-0070 • FAX: (334) 588-0071					
REV. No	DESCRIPTION	DATE	REV. No	DESCRIPTION	DATE
1	OLD 20-287	9/1/23	3	-	-
2	-	-	4	-	-

DRAWN BY:
Y.M.

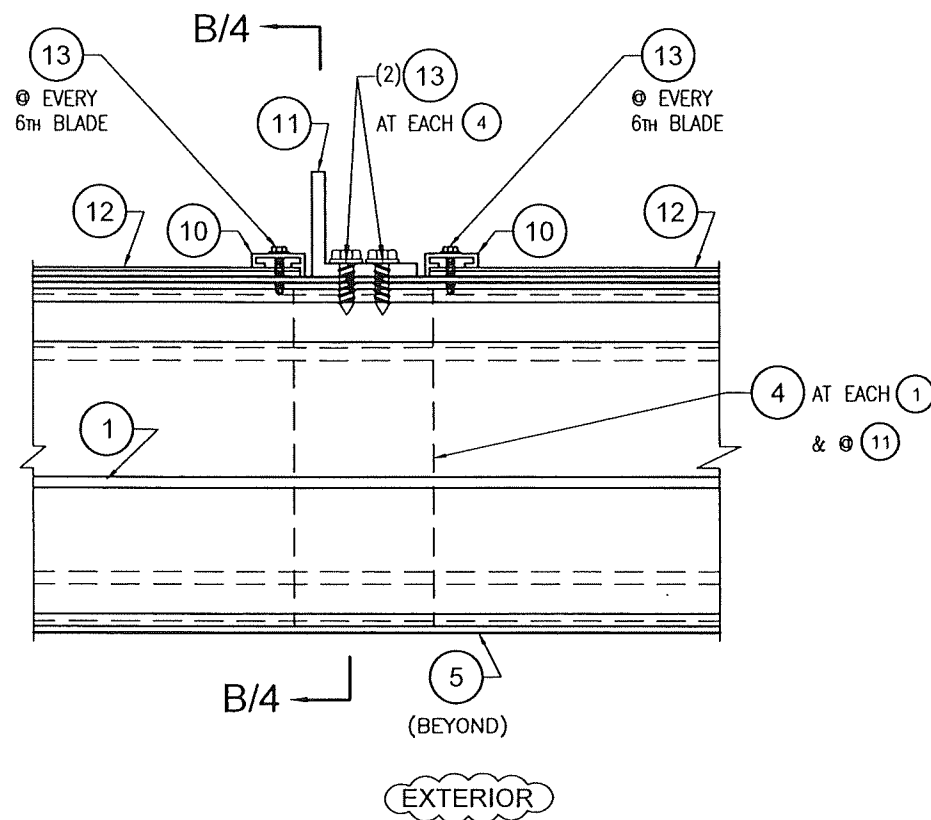
09/01/2023
DATE

23-205
DRAWING No

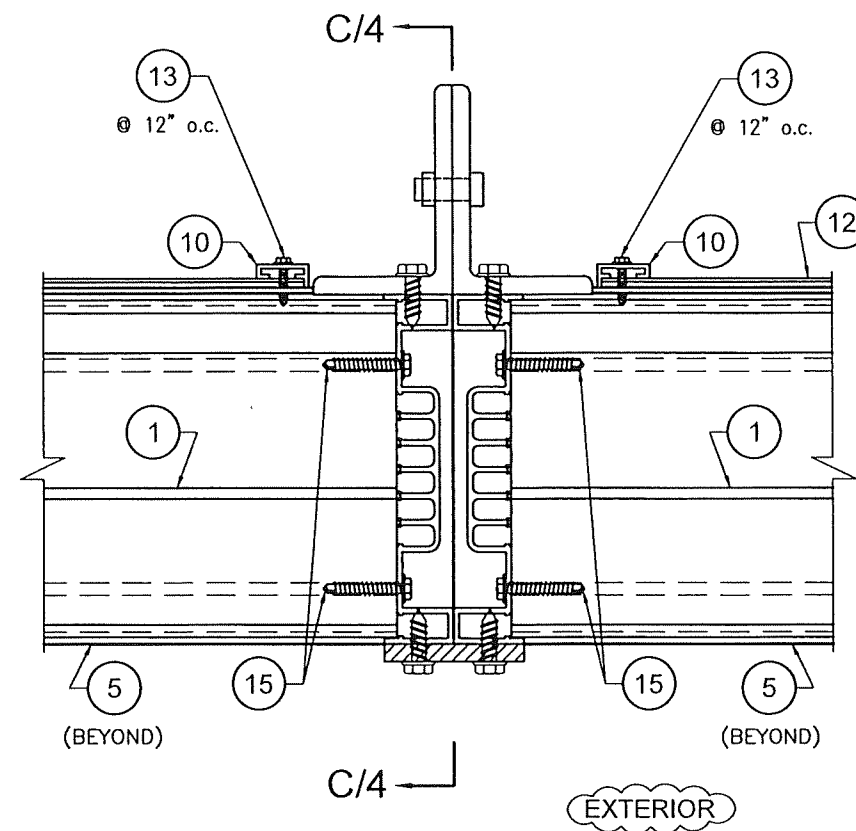
SHEET 5 OF 7



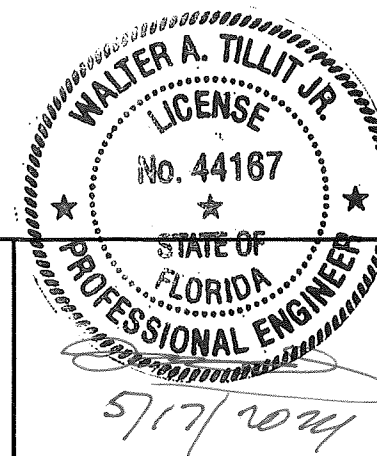
DETAIL 4
CORNER AT BOTTOM
N.T.S.



DETAIL 2 (PLAN)
@ BLADE BRACE ANGLE 11
 SCALE 3/8"=1"



DETAIL 3 (PLAN)
@ MULLION 8
 SCALE 3/8"=1"



PRODUCT REVISED
 as complying with the Florida
 Building Code
 NOA-No. 24-0520.03
 Expiration Date 03/10/2026
 By *[Signature]*
 Miami-Dade Product Control
 MIAMI-DADE COUNTY

P.E. SEAL/SIGNATURE/DATE

©2023 TILTECO, INC.
TILTECO INC.
 TILLIT TESTING & ENGINEERING COMPANY
 6355 N.W. 36th St., Ste. 305, VIRGINIA GARDENS, FL 33166
 Phone : (305)871-1530 . Fax : (305)871-1531
 e-mail: tiltco@aol.com
 CA-0006719
 WALTER A. TILLIT Jr., P.E.
 FLORIDA Lic. # 44167

FLORIDA BUILDING CODE (High Velocity Hurricane Zone)

**5" BLADE LOUVERED SYSTEM,
 MODEL 5WDRL**

AIR PERFORMANCE, LLC

159 GENCO DRIVE
 HARTFORD, ALABAMA 36344
 PHONE: (334) 588-0070 , FAX: (334) 588-0071

DRAWN BY:
 Y.M.

09/01/2023
 DATE

23-205
 DRAWING No

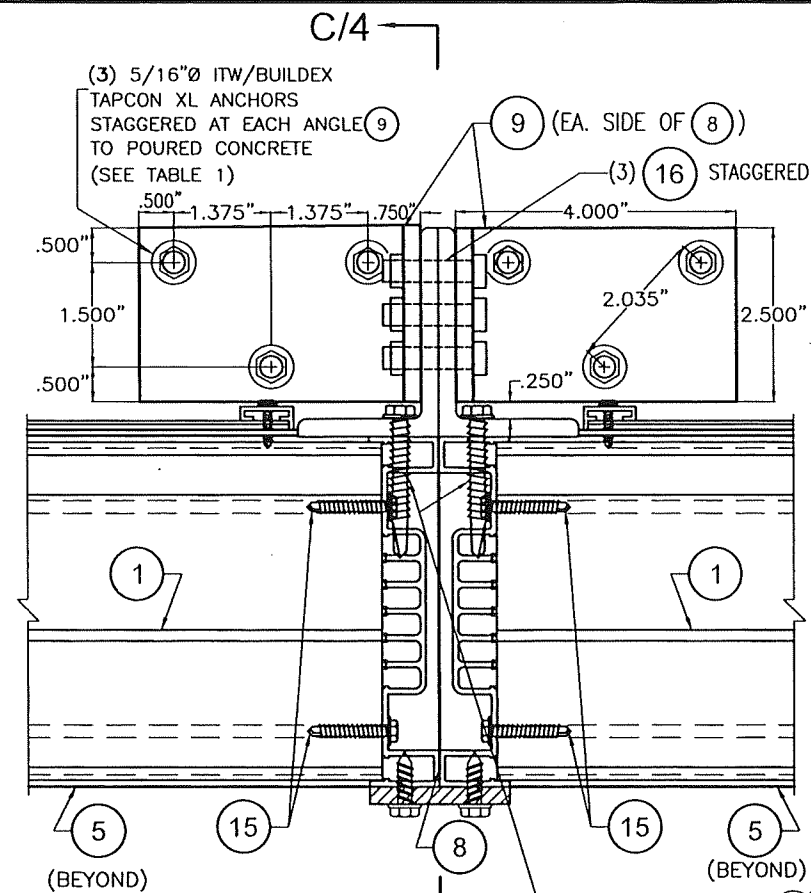
REV. No	DESCRIPTION	DATE	REV. No	DESCRIPTION	DATE
1	OLD 20-287	9/1/23	3	-	-
2	-	-	4	-	-

SHEET 6 OF 7

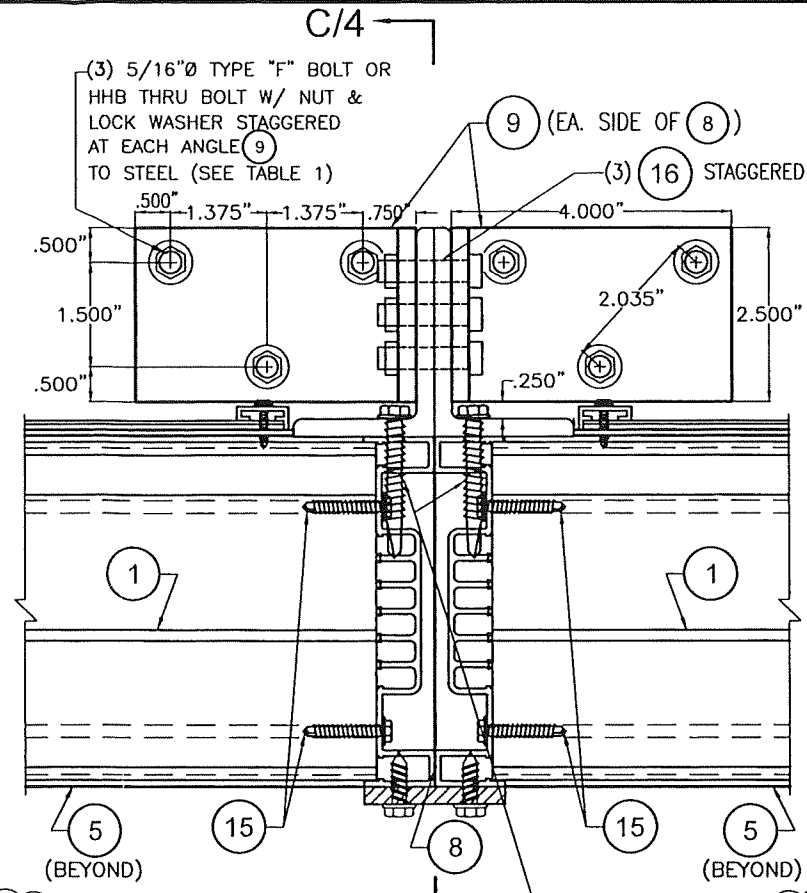
TABLE 1

MAX. A.S.D. DESIGN PRESSURE RATING (psf)	MAX. MULLION SPACING AT MULTIPLE UNITS (in)	TOTAL NUMBER OF ANCHORS PER CONNECTION			
		Section Xa-Xa	Section Xb-Xb	Section Xc-Xc	
±75 OR LESS	48	5/16"Ø ITW/BUILDEX TAPCON XL TO POURED CONCRETE	5/16"Ø TYPE "F" BOLT OR HHB THRU BOLT W/ NUT & LOCK WASHER TO STEEL	5/16"Ø ULTRACON FASTENER TO WOOD	10
	60				10
	72				10
	80				10
> ±75 TO ±110	48				10
	60				10
	72				10
	80	-	6		10
> ±110 TO ±150	48				10
	60	-	6		10
	72	-	6		10
	80	-	6		10

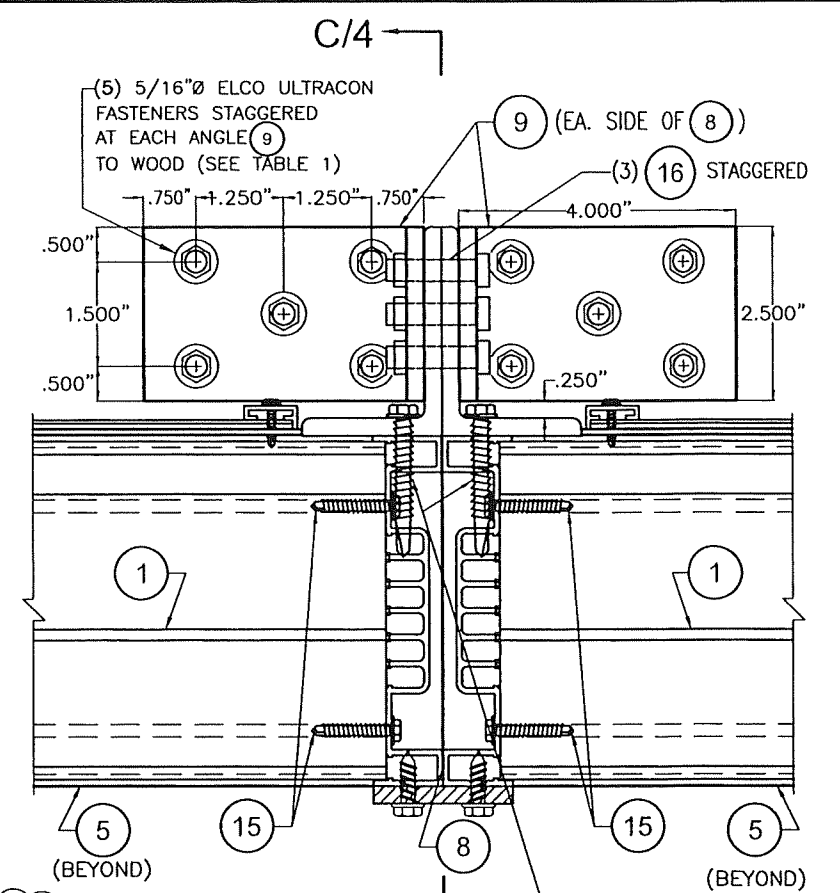
SECTION Xa-Xa
CONNECTION
TO POURED CONCRETE
SCALE: 3/8"=1"



SECTION Xb-Xb
CONNECTION
TO STEEL
SCALE: 3/8"=1"



SECTION Xc-Xc
CONNECTION
TO WOOD
SCALE: 3/8"=1"



(5) (13A) CONCENTRATED AT TOP TO (8) EA. SIDE @ 1/2" o.c. AND USE (4) (13A) CONCENTRATED AT BOTTOM TO (8) EA. SIDE, @ 1/2" o.c. & START WITH (1) (13) TO SILL (5) EA. SIDE OF (8) @ 1/2" FROM BOTTOM

(5) (13A) CONCENTRATED AT TOP TO (8) EA. SIDE @ 1/2" o.c. AND USE (4) (13A) CONCENTRATED AT BOTTOM TO (8) EA. SIDE, @ 1/2" o.c. & START WITH (1) (13) TO SILL (5) EA. SIDE OF (8) @ 1/2" FROM BOTTOM

(5) (13A) CONCENTRATED AT TOP TO (8) EA. SIDE @ 1/2" o.c. AND USE (4) (13A) CONCENTRATED AT BOTTOM TO (8) EA. SIDE, @ 1/2" o.c. & START WITH (1) (13) TO SILL (5) EA. SIDE OF (8) @ 1/2" FROM BOTTOM

MULLION (8) CONNECTION DETAIL
TOP & BOTTOM TO DIFFERENT SUBSTRATES
(SEE GENERAL NOTE 7/1)

PRODUCT REVISED
as complying with the Florida
Building Code
NOA-No. 24-0520.03
Expiration Date 03/10/2026
By *[Signature]*
Miami-Dade Product Control
MIAMI-DADE COUNTY

STATE OF FLORIDA
PROFESSIONAL ENGINEER
No. 44167
5/17/2024
P.E. SEAL/SIGNATURE/DATE

©2023 TILTECO, INC.
TILTECO INC.
TILLIT TESTING & ENGINEERING COMPANY
6355 N.W. 36th St., Ste. 305, VIRGINIA GARDENS, FL 33166
Phone: (305)871-1530, Fax: (305)871-1531
e-mail: tiltco@aol.com
CA-0006719
WALTER A. TILLIT Jr., P.E.
FLORIDA Lic. # 44167

FLORIDA BUILDING CODE (High Velocity Hurricane Zone)

5" BLADE LOUVERED SYSTEM,
MODEL 5WDRL

AIR PERFORMANCE, LLC

159 GENCO DRIVE
HARTFORD, ALABAMA 36344
PHONE: (334) 588-0070, FAX: (334) 588-0071

REV. No	DESCRIPTION	DATE	REV. No	DESCRIPTION	DATE
1	OLD 20-287	9/1/23	3	-	-
2	-	-	4	-	-

DRAWN BY:
Y.M.

09/01/2023
DATE

23-205
DRAWING No

SHEET 7 OF 7