



DEPARTMENT OF REGULATORY AND ECONOMIC RESOURCES (RER)  
BOARD AND CODE ADMINISTRATION DIVISION

## NOTICE OF ACCEPTANCE (NOA)

MIAMI-DADE COUNTY  
PRODUCT CONTROL SECTION  
11805 SW 26 Street, Room 208  
Miami, Florida 33175-2474  
T (786) 315-2590 F (786) 315-2599  
[www.miamidade.gov/economy](http://www.miamidade.gov/economy)

**International Door, Inc.**  
**8001 Ronda Drive**  
**Canton, MI 48187**

**SCOPE:** This NOA is being issued under the applicable rules and regulations governing the use of construction materials. The documentation submitted has been reviewed and accepted by Miami-Dade County RER-Product Control Section to be used in Miami Dade County and other areas where allowed by the Authority Having Jurisdiction (AHJ).

This NOA shall not be valid after the expiration date stated below. The Miami-Dade County Product Control Section (In Miami Dade County) and/or the AHJ (in areas other than Miami Dade County) reserve the right to have this product or material tested for quality assurance purposes. If this product or material fails to perform in the accepted manner, the manufacturer will incur the expense of such testing and the AHJ may immediately revoke, modify, or suspend the use of such product or material within their jurisdiction. RER reserves the right to revoke this acceptance if it is determined by Miami-Dade County Product Control Section that this product or material fails to meet the requirements of the applicable building code.

This product is approved as described herein and has been designed to comply with the Florida Building Code, including the High Velocity Hurricane Zone.

**DESCRIPTION: Model "HVVHZZFF120" Four-Fold Steel Garage Door - up to 16'-0" Wide x 16'-0" High, with Impact Resistant Windows**

**APPROVAL DOCUMENT:** Drawing No. **19-ID-2311**, titled "Model #HVVHZZFF120 Four-Fold Door", sheets 1 through 12 of 12, dated 02/27/2019, with last revision dated 07/21/2024, prepared by International Door, Inc., signed and sealed by Gordon D. Thomas, P.E., bearing the Miami-Dade County Product Control revision stamp with the Notice of Acceptance number and expiration date by the Miami-Dade County Product Control Section.

**MISSILE IMPACT RATING: Large and Small Missile Impact Resistant**

**LABELING:** A permanent label with the manufacturer's name or logo, manufacturing address, model number, the positive and negative design pressure rating, indicate impact rated if applicable, installation instruction drawing reference number, approval number (NOA), the applicable test standards, and the statement reading 'Miami-Dade County Product Control Approved' is to be located on the door's side track, bottom angle, or inner surface of a panel.

**RENEWAL** of this NOA shall be considered after a renewal application has been filed and there has been no change in the applicable building code negatively affecting the performance of this product.

**TERMINATION** of this NOA will occur after the expiration date or if there has been a revision or change in the materials, use, and/or manufacture of the product or process. Misuse of this NOA as an endorsement of any product, for sales, advertising or any other purposes shall automatically terminate this NOA. Failure to comply with any section of this NOA shall be cause for termination and removal of NOA.

**ADVERTISEMENT:** The NOA number preceded by the words Miami-Dade County, Florida, and followed by the expiration date may be displayed in advertising literature. If any portion of the NOA is displayed, then it shall be done in its entirety.

**INSPECTION:** A copy of this entire NOA shall be provided to the user by the manufacturer or its distributors and shall be available for inspection at the job site at the request of the Building Official.

This NOA **renews and revises** NOA # **23-0119.07** and consists of this page 1 and evidence pages E-1, E-2 and E-3, as well as approval document mentioned above.

The submitted documentation was reviewed by **Carlos M. Utrera, P.E.**



07/26/24

NOA No 24-0627.02  
Expiration Date: June 18, 2030  
Approval Date: August 8, 2024  
Page 1

**International Door, Inc.**

**NOTICE OF ACCEPTANCE: EVIDENCE SUBMITTED**

**1. EVIDENCE SUBMITTED UNDER PREVIOUS NOA's**

**A. DRAWINGS**

1. Drawing No. **13-ID-2140**, titled "Hurricane Four-Fold", sheets 1 through 12 of 12, dated 08/23/2013, with revision #3, dated 01/31/15, prepared by International Door, Inc., signed and sealed by Gordon D. Thomas, P.E.

**B. TESTS**

1. Test reports on 1) Uniform Static Air Pressure Test, Loading per FBC TAS 202-94  
2) Large Missile Impact Test per FBC, TAS 201-94  
3) Cyclic Wind Pressure Loading per FBC, TAS 203-94  
4) Forced Entry Test, per FBC, TAS 202-94  
along with marked-up drawings and installation diagram of a 16'-0" x 17'-0", 14ga steel garage door Model MU-1 with impact resistant windows, prepared by American Test Lab of South Florida, Test Report No. **ATLSF 1212.01-14**, dated 03/28/14, signed and sealed by Stephen W. Warter, P.E.

**C. CALCULATIONS**

1. Anchor calculations prepared by Gordon D. Thomas, dated 03/30/15, signed and sealed by Gordon D. Thomas, P.E.

**D. QUALITY ASSURANCE**

1. Miami-Dade Department of Regulatory and Economic Resources (RER)

**E. MATERIAL CERTIFICATIONS**

1. Notice of Acceptance No. **11-0624.02** issued to **E.I. DuPont DeNemours & Co., Inc.** for their **DuPont SentryGlas® Interlayer**, dated on 08/25/11, expiring on 01/14/17.
2. Test report on Tensile Strength of 14 gage steel sheet samples per **ASTM E8**, prepared by **QC Metallurgical, Inc.**, test report # **14CM-284**, dated 04/03/14, signed by Frank Grate.

**F. STATEMENTS**

1. Statement letter of code conformance to the **FBC-2010, FBC 5<sup>th</sup> Edition (2014)** and of no financial interest, issued by Gordon D. Thomas, dated 03/30/15, signed and sealed by Gordon D. Thomas, P.E.



---

**Carlos M. Utrera, P.E.**  
**Product Control Examiner**  
**NOA No 24-0627.02**  
**Expiration Date: June 18, 2030**  
**Approval Date: August 8, 2024**

**NOTICE OF ACCEPTANCE: EVIDENCE SUBMITTED**

**2. EVIDENCE SUBMITTED UNDER NOA #18-1128.12**

**A. DRAWINGS**

1. Drawing No. **13-ID-2140**, titled “Hurricane Four-Fold”, sheets 1 through 12 of 12, dated 08/23/13, with revision #3, dated 01/31/15, prepared by International Door, Inc., signed and sealed by Gordon D. Thomas, P.E.

**B. TESTS**

1. None.

**C. CALCULATIONS**

1. None

**D. QUALITY ASSURANCE**

1. Miami-Dade Department of Regulatory and Economic Resources (RER)

**E. MATERIAL CERTIFICATIONS**

1. Notice of Acceptance No. **17-0808.02** issued to **Kuraray America, Inc.** for their “SentryGlas® (Clear and White) Glass Interlayers” dated 12/28/17, expiring on 07/04/23.

**F. STATEMENTS**

1. Statement letter of code conformance to the **FBC 6<sup>th</sup> Edition (2017)** and of no financial interest, dated 11/02/18, issued, signed and sealed by Gordon Thomas, P.E.



---

**Carlos M. Utrera, P.E.**  
**Product Control Examiner**  
**NOA No 24-0627.02**  
**Expiration Date: June 18, 2030**  
**Approval Date: August 8, 2024**

**NOTICE OF ACCEPTANCE: EVIDENCE SUBMITTED**

**3. EVIDENCE SUBMITTED UNDER NOA # 19-1001.14, # 23-0119.07 AND NEW**

**A. DRAWINGS**

1. Drawing No. **19-ID-2311**, titled “Model #HVHZFF120 Four-Fold Door”, sheets 1 through 12 of 12, dated 02/27/2019, with last revision dated 07/21/2024, prepared by International Door, Inc., signed and sealed by Gordon D. Thomas, P.E.

**B. TESTS “Submitted under NOA # 19-1001.14”**

1. Test reports on
  - 1) Uniform Static Air Pressure Test, Loading per FBC TAS 202-94
  - 2) Large Missile Impact Test per FBC, TAS 201-94 (Level E, 80fps)
  - 3) Cyclic Wind Pressure Loading per FBC, TAS 203-94
  - 4) Forced Entry Test, per FBC, TAS 202-94along with marked-up drawings and installation diagram of a 16’-0” x 16’-0”, 14ga steel garage door Model #HVHZFF120 with impact resistant windows, prepared by American Test Lab of South Florida, Test Report No. **ATLSF 0523.01-19**, dated 07/31/2019, signed and sealed by Frank E. Grate, P.E.

**C. CALCULATIONS “Submitted under NOA # 19-1001.14”**

1. Anchor calculations prepared by Gordon D. Thomas, dated 09/12/2019, signed and sealed by Gordon D. Thomas, P.E.

**D. QUALITY ASSURANCE**

1. Miami-Dade Department of Regulatory and Economic Resources (RER).

**E. MATERIAL CERTIFICATIONS**

1. None.

**F. STATEMENTS**

1. Statement letter of code conformance to the 8<sup>th</sup> edition (2023) of the FBC and of no financial interest, issued by Gordon D. Thomas, P.E., dated 06/15/2024, signed and sealed by Gordon D. Thomas, P.E.
2. 

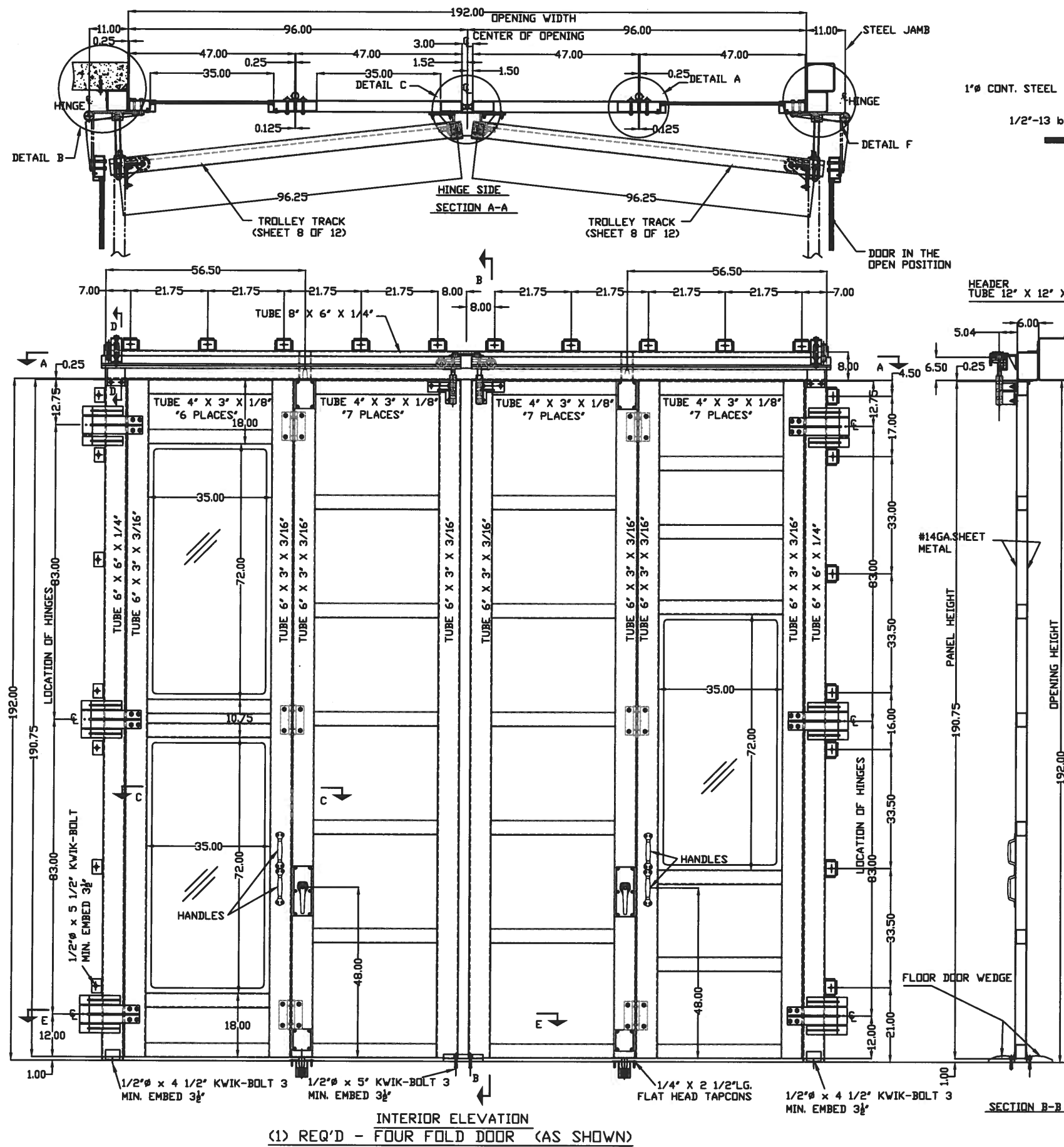
**“Submitted under NOA # 23-0119.07”**

Statement letter of code conformance to the 7<sup>th</sup> edition (2020) of the FBC, issued by Gordon D. Thomas, P.E., dated 01/16/2023, signed and sealed by Gordon D. Thomas, P.E.



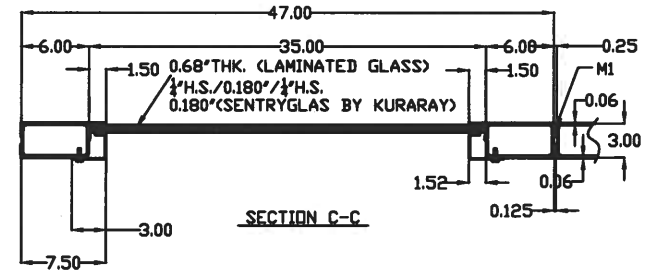
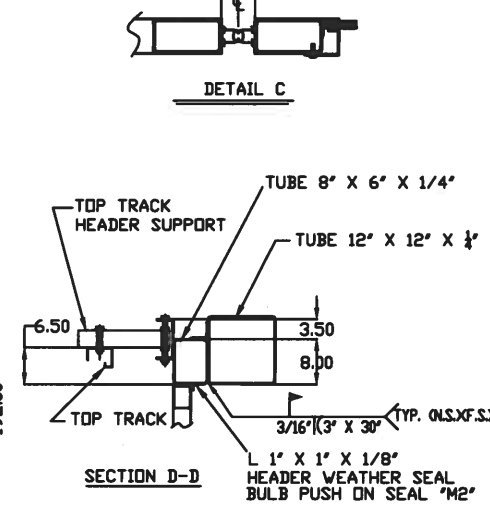
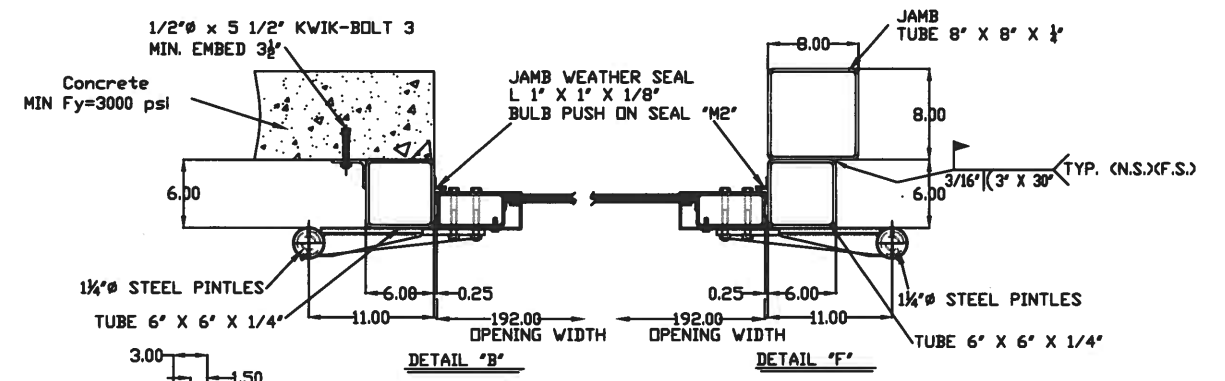
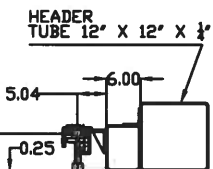
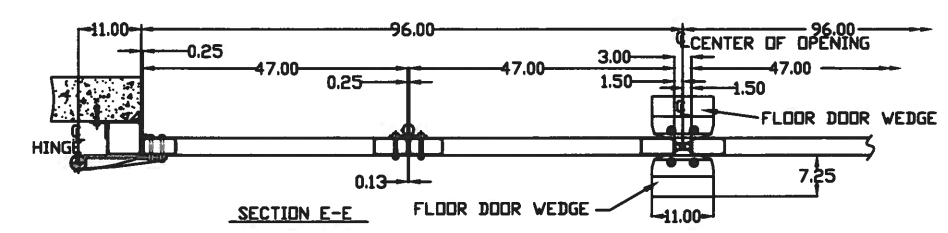
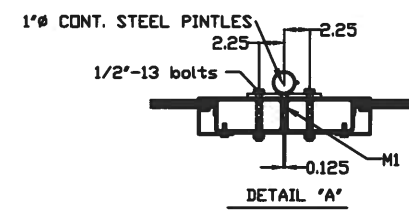
---

**Carlos M. Utrera, P.E.**  
**Product Control Examiner**  
**NOA No 24-0627.02**  
**Expiration Date: June 18, 2030**  
**Approval Date: August 8, 2024**



INTERIOR ELEVATION  
(1) REQ'D - FOUR FOLD DOOR (AS SHOWN)

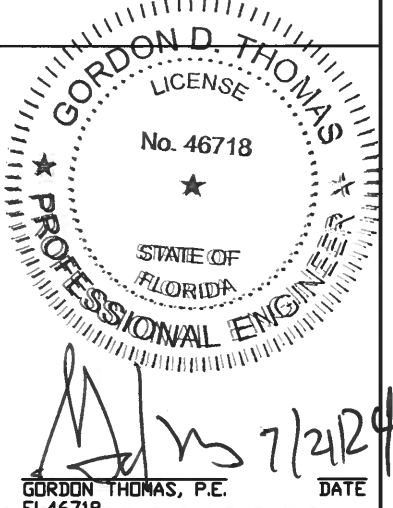
| DESIGN PRESSURE RATING  | IMPACT RATING                  |
|---|--------------------------------|
| +/-120 PSF  | LARGE AND SMALL MISSILE IMPACT |
| NOTE: THIS SYSTEM WAS NOT TESTED FOR WATER INFILTRATION AND IS TO BE INSTALLED ONLY WHERE THE WATER REQUIREMENT IS NOT NEEDED |                                |




NOTE 1: WHEN MOUNTING TO AN OPENING WITH CONCRETE JAMBS & HEADER, ATTACH CLIP ANGLES TO OPENING WITH WEDGE ANCHORS (SEE SHEET 1, DETAIL B)

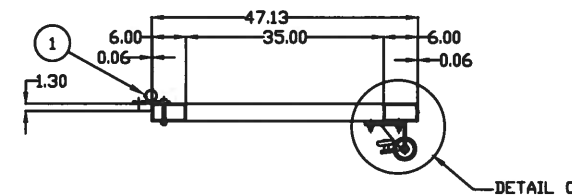
NOTE 2: WHEN MOUNTING TO AN OPENING WITH STEEL JAMBS & HEADER, WELD CLIP ANGLES TO DOOR FRAME AND OPENING, OR WELD DIRECTLY TO JAMBS STEEL AS SHOWN ON THIS SHEET (SEE SHEET 5 FOR WELD DETAILS)

**PRODUCT REVISED**  
as complying with the Florida Building Code  
NOA-No. 24-0627.02  
Expiration Date 06/18/2030  
By *[Signature]*  
Miami-Dade Product Control



|   |         |                              |  |
|---|---------|------------------------------|--|
|   | 11/7/19 | BH                           | REVISED PER DADE COUNTY COMMENTS                         |
|   | 9/4/19  | BH                           | REVISED PER DADE COUNTY CHECKLIST & TEST LAB CORRECTIONS |
|   | 3/19/19 | RB                           | ISSUED FOR TEST LAB REVIEW                               |
|   | 3/8/19  | RB                           | E MAILED FOR REVIEW                                      |
| REV   | DATE    | BY                           | DESCRIPTION  |
| <div><div></div><div><div>INTERNATIONAL DOOR, INC.</div><div>(734) 459-3000</div><div>8001 RONDA DR. CANTON, MICHIGAN 48187</div><div>PROJECT:</div><div>MODEL #HVHZFF120</div><div>HIGH VELOCITY HURRICANE ZONE (120PSF)</div><div>FOUR-FOLD DOOR</div></div></div> |         |                              |  |
| DRAWING TITLE:  |         |                              |  |
| GENERAL ARRANGEMENT FOR FOUR FOLD DOORS   |         |                              |  |
| DOOR# HVHZFF120   |         | OPENING SIZE 16'-0" x 16'-0" |  |
| ARCH.   |         |                              |  |
| CONTR.  |         |                              |  |
| DRAWN: RB   |         | DATE 2/27/19                 | DWG NO. 19-ID-2311                                       |
| CHECKED: CMH  |         | CUSTOMER NO.                 | SHEET 1 OF 12  |
| APPROVED:   |         |                              |  |





**SHEET 2 OF 12**

LH "MIDDLE" PANEL SECTION  
INSIDE SURFACE UP



1 1/2' CONT.  
IN CORNERS TYP. 1/8' x 1' x 9'

DETAIL 'C'

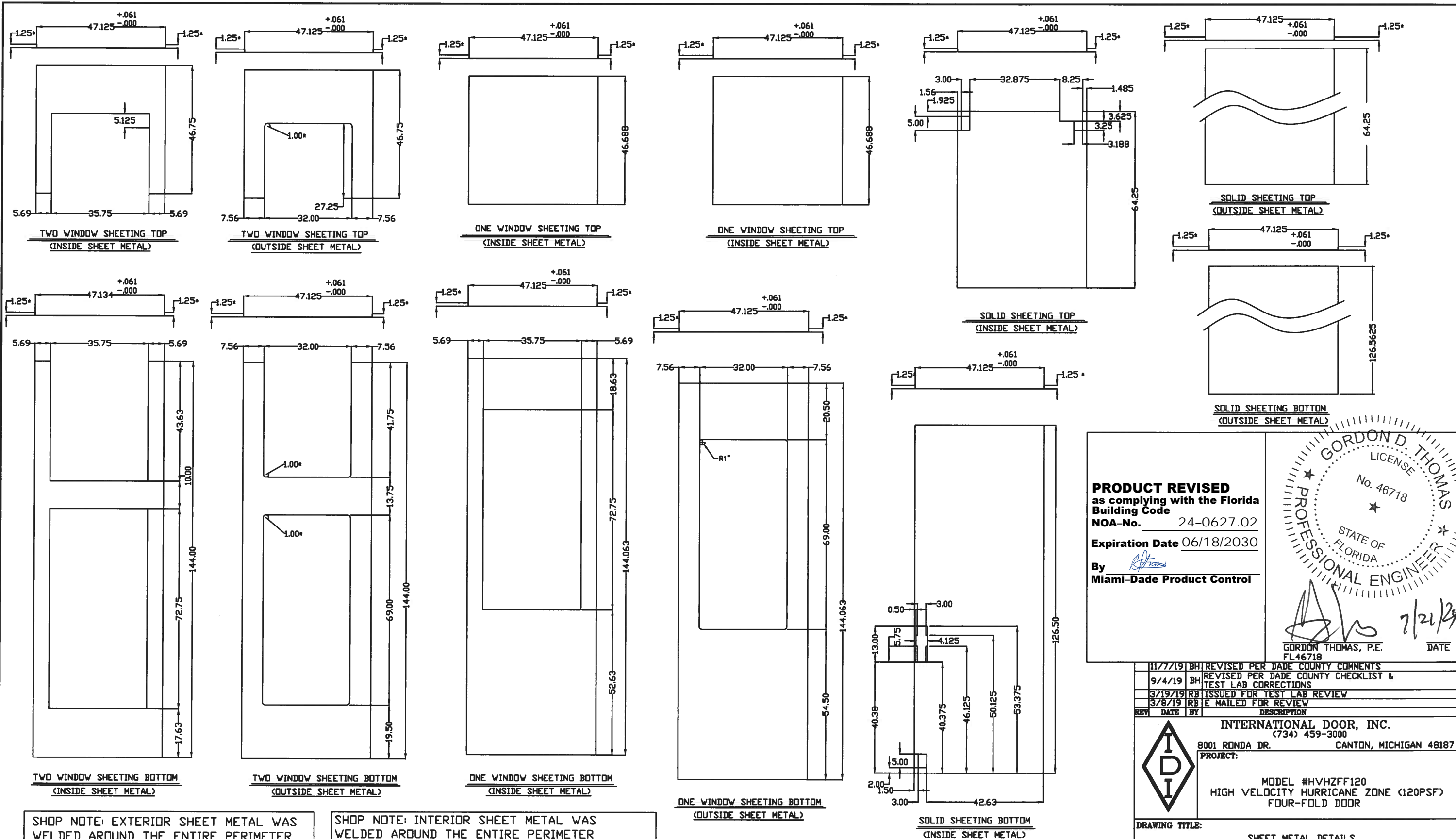


RH 'JAMB' PANEL SECTION

RH 'MIDDLE' PANEL SECTION

RH 'JAMB' PANEL SECTION

|              |              |                    |
|--------------|--------------|--------------------|
| ARCH.        |              |                    |
| CONTR.       |              |                    |
| DRAWN: RB    | DATE 2/27/19 | DWG NO. 19-ID-2311 |
| CHECKED: CMH | CUSTOMER NO. | SHEET 3 OF 12      |
| APPROVED:    |              |                    |



SHOP NOTE: EXTERIOR SHEET METAL WAS WELDED AROUND THE ENTIRE PERIMETER HORIZONTAL & VERTICAL FROM THE INSIDE OF THE FRAME WITH 0.125" WIDE X 1.5" LONG FILLET WELD SPACED AT 6" O.C.

SHOP NOTE: INTERIOR SHEET METAL WAS WELDED AROUND THE ENTIRE PERIMETER HORIZONTAL & VERTICAL FRAME MEMBERS WITH 0.125" WIDE X 1.5" LONG FILLET WELDS AT 6" O.C. AND (.25" DIA.) PLUG WELD TO HORIZONTAL AND VERTICAL FRAME MEMBERS AT 10" O.C.

**NOTE:**  
ALL SHEET METAL #14GAGE  
ASTM A569 - (Fy MIN = 44 KSI)  
WITH GRAY PRIMER

**PRODUCT REVISED**  
as complying with the Florida Building Code  
NOA-No. 24-0627.02  
Expiration Date 06/18/2030  
By *[Signature]*  
Miami-Dade Product Control

**GORDON D. THOMAS**  
LICENSE No. 46718  
STATE OF FLORIDA  
PROFESSIONAL ENGINEER  
*[Signature]* 7/21/20  
GORDON THOMAS, P.E.  
FL46718

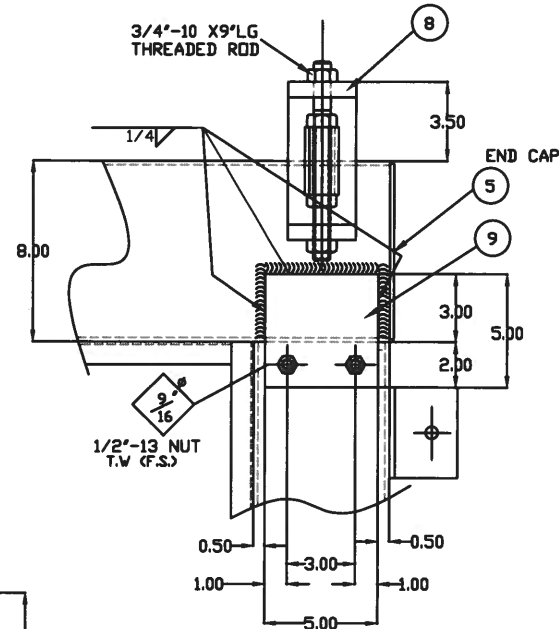
| REV     | DATE | BY | DESCRIPTION  |
|---------|------|----|--|
| 11/7/19 | BH   |    | REVISED PER DADE COUNTY COMMENTS                         |
| 9/4/19  | BH   |    | REVISED PER DADE COUNTY CHECKLIST & TEST LAB CORRECTIONS |
| 3/19/19 | RB   |    | ISSUED FOR TEST LAB REVIEW                               |
| 3/8/19  | RB   |    | E MAILED FOR REVIEW                                      |

**INTERNATIONAL DOOR, INC.**  
(734) 459-3000  
8001 RONDA DR. CANTON, MICHIGAN 48187  
PROJECT: MODEL #HVHZFF120  
HIGH VELOCITY HURRICANE ZONE (120PSF)  
FOUR-FOLD DOOR

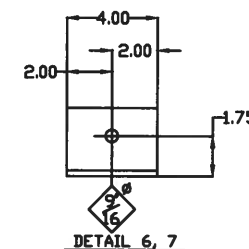
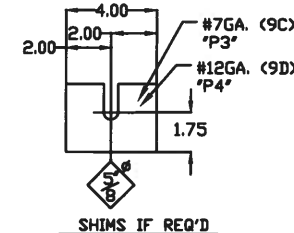
**DRAWING TITLE:** SHEET METAL DETAILS  
DOOR# HVHZFF120 OPENING SIZE 16'-0" x 16'-0"

| CONTR.       | DATE         | DWG NO.       |
|--------------|--------------|---------------|
| DRAWN: RB    | 2/27/19      | 19-ID-2311    |
| CHECKED: CMH | CUSTOMER NO. | SHEET 4 OF 12 |
| APPROVED:    |              |               |





| ITEM# | PART NUMBER              | DESCRIPTION                                     |
|-------|--------------------------|---|
| 1     | TS 6"x6"x1/4"            | JAMB TUBE                                       |
| 2     | TS 8"x6"x1/4"            | HEADER TUBE                                     |
| 3     | L 1' X 1' X 1/8"         | JAMB WEATHER ANGLE                              |
| 4     | L 1' X 1' X 1/8"         | HEADER WEATHER ANGLE                            |
| 5     | #12GA. 6' X 8'           | END CAP   |
| 6     | L 3' X 3' X 1/4"<br>X 4' | CLIP ANGLE                                      |
| 7     | L 3' X 3' X 1/4"<br>X 4' | CLIP ANGLE                                      |
| 8     |                          | END TRACK HANGER                                |
| 9     | 1/4" X 5' X 5'           | CORNER JOINT PLATE                              |
| 10    |                          | CREMONE BOLT GUIDE                              |
| 11    |                          | CREMONE BOLT KEEPER                             |
| 12    |                          | FLOOR WEDGE                                     |
| 13    | 6"x6"x1/2"x9             | TOP TRACK CENTER SUPPORT<br>(SHEET 8 OUT OF 12) |
|       |                          |   |
|       |                          |   |
|       |                          |   |



GORDON D. THOMAS  
LICENSE  
No. 46718  
STATE OF FLORIDA  
PROFESSIONAL ENGINEER

*[Signature]* 2/24/24

GORDON THOMAS, P.E. DATE

|         |    |  |
|---------|----|--|
| 11/7/19 | BH | REVISED PER DADE COUNTY COMMENTS                         |
| 9/4/19  | BH | REVISED PER DADE COUNTY CHECKLIST & TEST LAB CORRECTIONS |
| 3/19/19 | RB | ISSUED FOR TEST LAB REVIEW                               |
| 3/8/19  | RB | E MAILED FOR REVIEW                                      |

| REV   | DATE | BY | DESCRIPTION |
|---|------|----|-------------|
| <div style="display: flex; align-items: center;"> <div> <p style="text-align: center;"><b>INTERNATIONAL DOOR, INC.</b></p> <p style="text-align: center;">(734) 459-3000</p> <p>8001 RONDA DR. <span style="float: right;">CANTON, MICHIGAN 48187</span></p> <p><b>PROJECT:</b></p> <p style="text-align: center; margin-top: 20px;"> <b>MODEL #HVHZFF120</b><br/> <b>HIGH VELOCITY HURRICANE ZONE (120PSF)</b><br/> <b>FOUR-FOLD DOOR</b> </p> </div> </div> |      |    |             |

|                |  |
|----------------|--|
| DRAWING TITLE: |  |
|----------------|--|

JAMB AND HEADER DETAILS

|                 |                              |
|-----------------|------------------------------|
| DOOR# HVHZFF120 | OPENING SIZE 16'-0" x 16'-0" |
|-----------------|------------------------------|

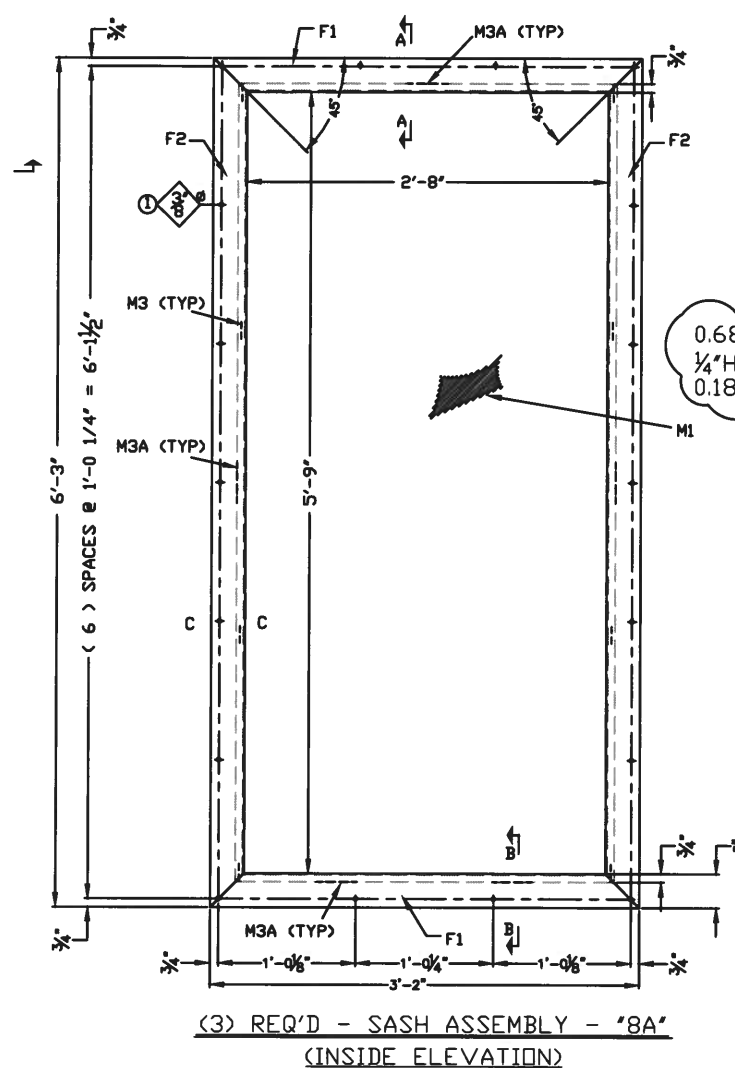
ARCH.

|        |
|--------|
| CONTR. |
|--------|

|           |              |                    |
|-----------|--------------|--------------------|
| DRAWN: RB | DATE 2/27/19 | DWG NO. 19-ID-2311 |
|-----------|--------------|--------------------|

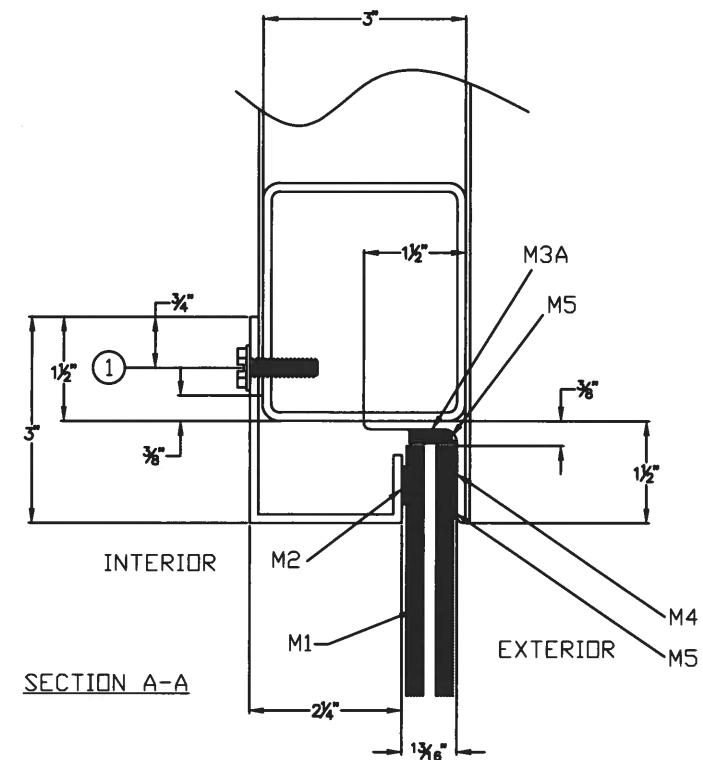
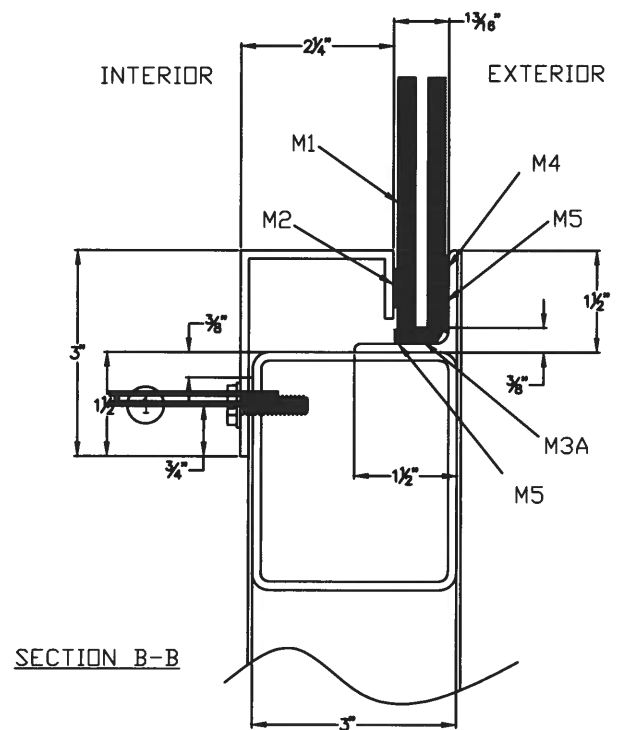
|              |                |                |
|--------------|----------------|----------------|
| CHECKED: CMH | DATE: 12/15/19 | TIME: 10:00 AM |
| CUSTOMER NO. | 123456789      | 123456789      |

|           |              |               |
|-----------|--------------|---------------|
| APPROVED: | CUSTOMER NO. | SHEET 5 OF 12 |
|-----------|--------------|---------------|

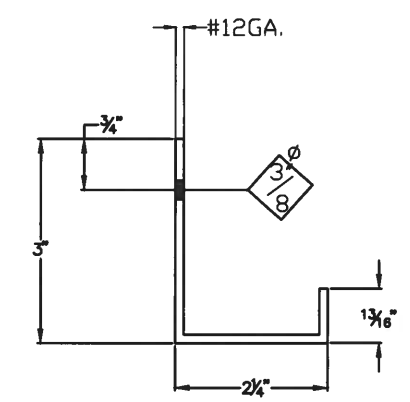


NOTE:  
 INTERIOR WINDOW FRAME  
 #12GA. ASTM A569  
 EXTERIOR WINDOW FRAME  
 #12GA. ASTM A569

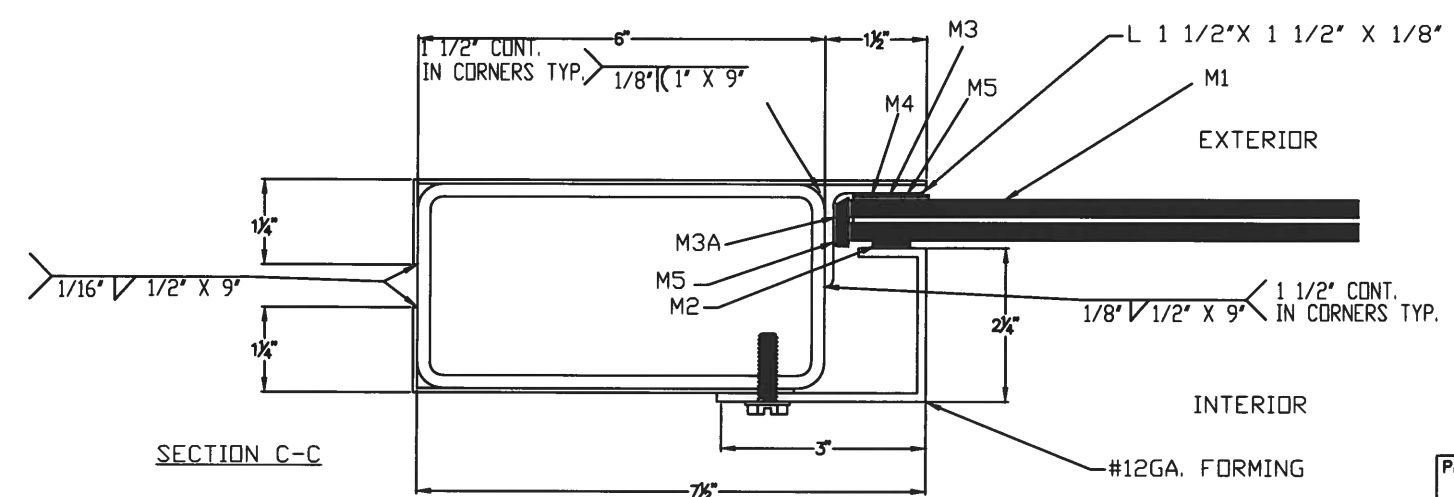
0.68" THK. (LAMINATED GLASS)  
 1/4" H.S. / 0.180" / 1/4" H.S.  
 0.180" SENTRYGLAS BY KURARAY



SECTION A-A



DETAIL OF WINDOW SASH  
 (12 GA. FORMING)



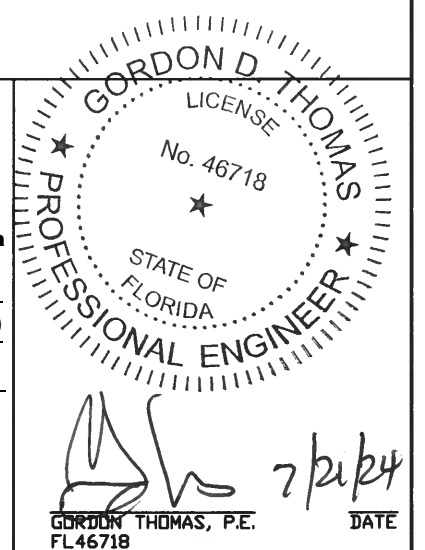
SECTION C-C


PAINT NOTE:  
 (1) CLEAN SURFACES THOROUGHLY  
 (2) APPLY ONE COAT OF RECOATABLE  
 AQUACRON WATERBORNE ACRYLIC  
 #390-9300 SERIES COLOR GRAY  
 (3) ALLOW TIME FOR DRYING

| TOTAL QTY. | UNIT QTY. | MARK | DESCRIPTION  |
|------------|-----------|------|--|
| 3          | 1         | 8A   | SASH ASSEMBLY  |
| 6          | 2         | F1   | FORMING #12GA. X 5 5/8" X 3'-2"  |
| 6          | 2         | F2   | FORMING #12GA. X 5 5/8" X 6'-3"  |
| 3          | 1         | M1   | 0.68" THK. (LAMINATED GLASS) 1/4" HEAT STRENGTHENED / 0.180" SENTRYGLAS BY KURARAY / 1/4" HEAT STRENGTHENED SIZE X 34 1/4" X 71 1/4" |
| 1          | M2        |      | MCMaster FOAM SEALING TAPE (BUTYL TAPE) 1/8" X 1/2" X 26YARDS #75875A662   |
| 3          | 8         | M3   | 80 +/-5 DUROMETER EPDM SETTING BLOCKS 0.250" THICK X 0.475" WIDE AND CUT TO ~ 1/2" MANUFACTURED BY GLAZING RUBBER PRODUCTS, INC.     |
| 3          | 5         | M3A  | 80 +/-5 DUROMETER EPDM SETTING BLOCKS 2" LONG 0.477" WIDE X 0.165" THICK MANUFACTURED BY GLAZING RUBBER PRODUCTS, INC.               |
|            | M4        |      | DOWSIL 1200 DS SPRAY   |
|            | M5        |      | DOWSIL 795 SILICONE SEALANT  |
| 3          | 1         | 8A   | INSIDE SASH ASSEMBLY   |
| 54         | 18        | (1)  | 5/16"-18 X 1' LG. (ST.S.) PLATED (TYPE F)  |

QTY FOR 1

**PRODUCT REVISED**  
 as complying with the Florida  
 Building Code  
 NOA-No. 24-0627.02  
 Expiration Date 06/18/2030  
 By *[Signature]*  
 Miami-Dade Product Control

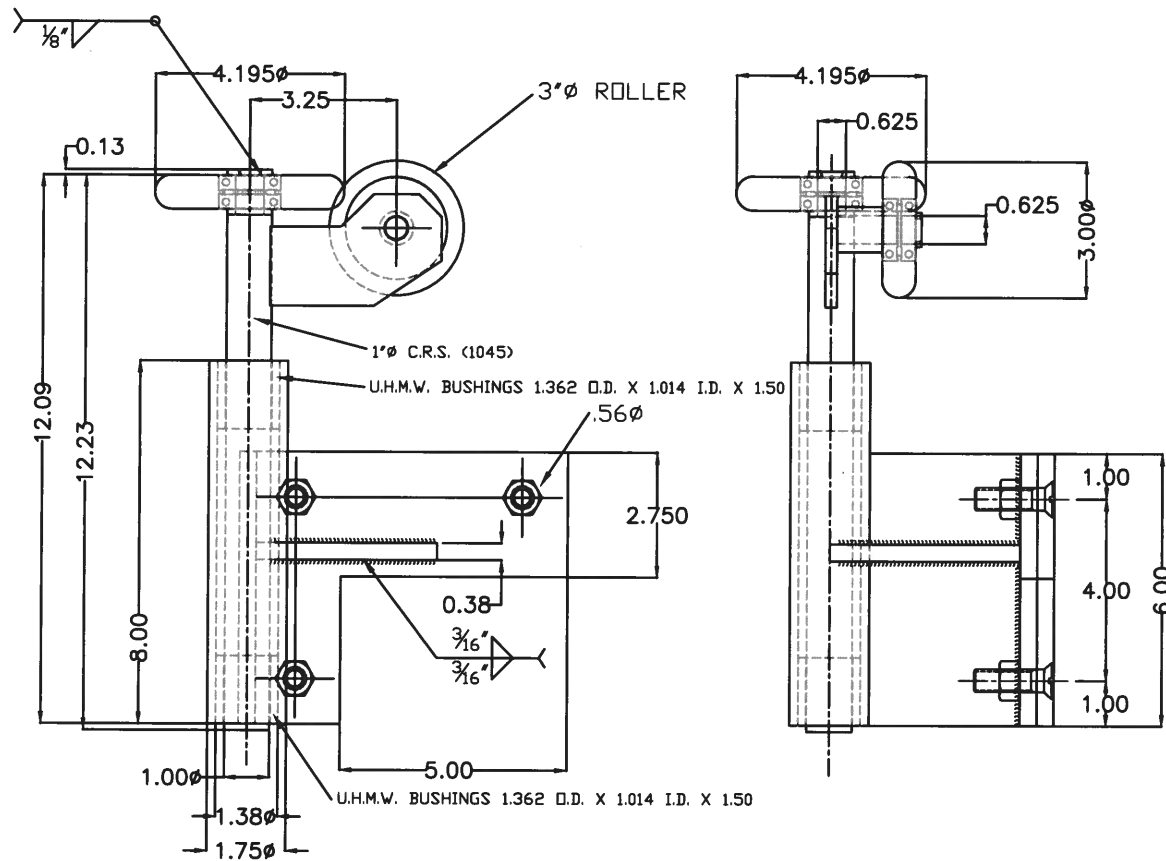
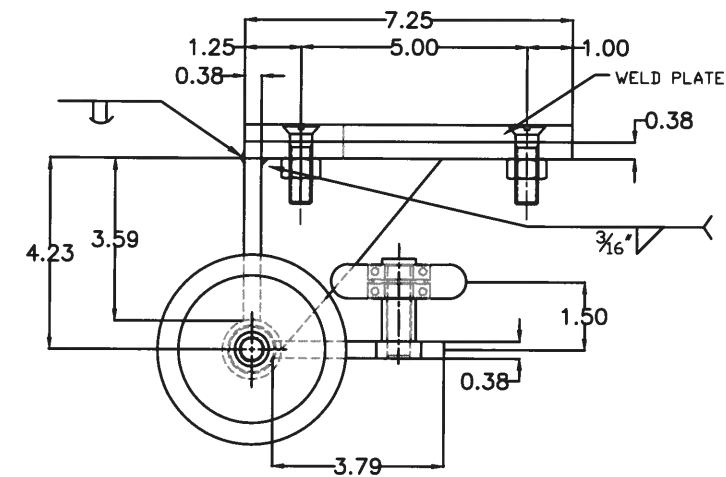


|   |      |                              |  |
|---|------|------------------------------|--|
| 11/7/19   |      | BH                           | REVISED PER DADE COUNTY COMMENTS                         |
| 9/4/19  |      | BH                           | REVISED PER DADE COUNTY CHECKLIST & TEST LAB CORRECTIONS |
| 3/19/19   |      | RB                           | ISSUED FOR TEST LAB REVIEW                               |
| 3/8/19  |      | RB                           | E MAILED FOR REVIEW                                      |
| REV   | DATE | BY                           | DESCRIPTION  |
| <div></div> <div>INTERNATIONAL DOOR, INC.<br/>(734) 459-3000<br/>8001 RONDA DR. CANTON, MICHIGAN 48187<br/>PROJECT:<br/><br/>MODEL #HVHZFF120<br/>HIGH VELOCITY HURRICANE ZONE (120PSF)<br/>FOUR-FOLD DOOR</div> |      |                              |  |
| DRAWING TITLE:<br><br>WINDOW FRAME DETAILS  |      |                              |  |
| DOOR# HVHZFF120   |      | OPENING SIZE 16'-0" x 16'-0" |  |
| ARCH.   |      |                              |  |
| CONTR.  |      |                              |  |
| DRAWN: RB   |      | DATE 2/27/19                 | DWG NO. 19-ID-2311                                       |
| CHECKED: CMH  |      | CUSTOMER NO.                 | SHEET 6 OF 12  |
| APPROVED:   |      |                              |  |

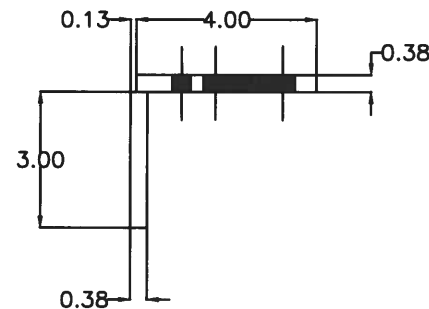
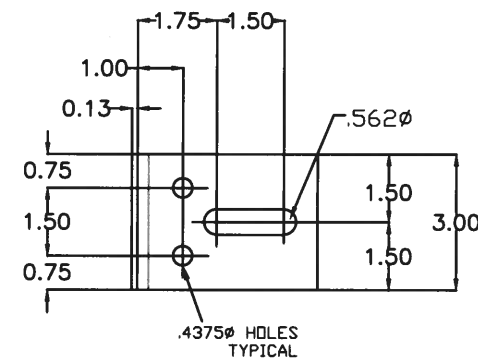


|                          |              |                              |
|--------------------------|--------------|------------------------------|
| <b>DRAWING TITLE:</b>    |              |                              |
| JAMB & MID HINGE DETAILS |              |                              |
| DOOR# HVHZFF120          |              | OPENING SIZE 16'-0" x 16'-0" |
| ARCH.                    |              |                              |
| CONTR.                   |              |                              |
| DRAWN: RB                | DATE 2/27/19 | DWG NO. 19-ID-2311           |
| CHECKED: CMH             | CUSTOMER NO. | SHEET 7 OF 12                |
| APPROVED:                |              |                              |

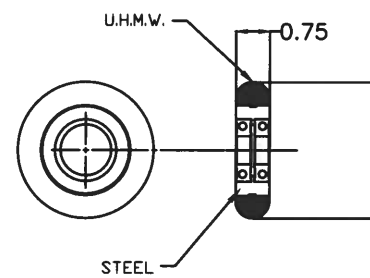




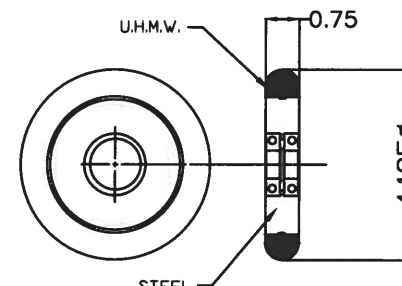
TROLLEY ASSEMBLY



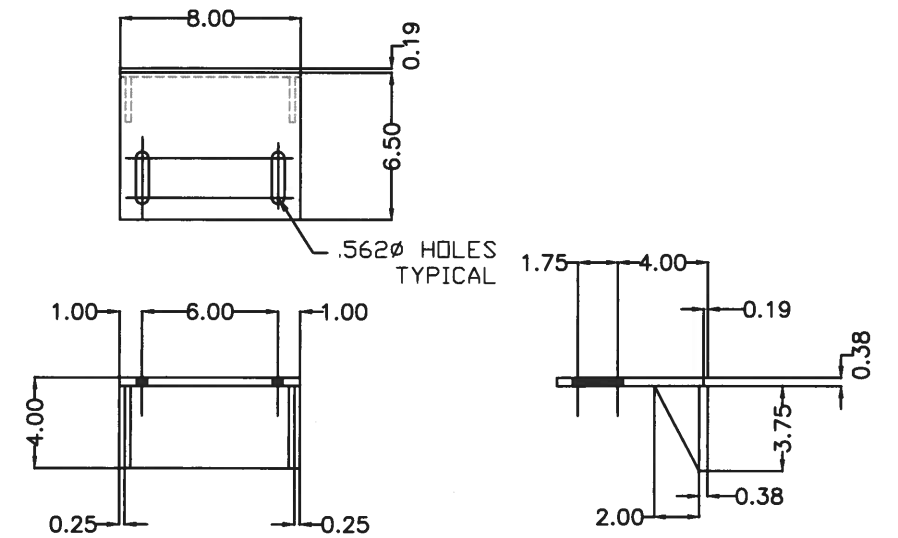
TROLLEY ROLLER SUPPORT



TOP ROLLER

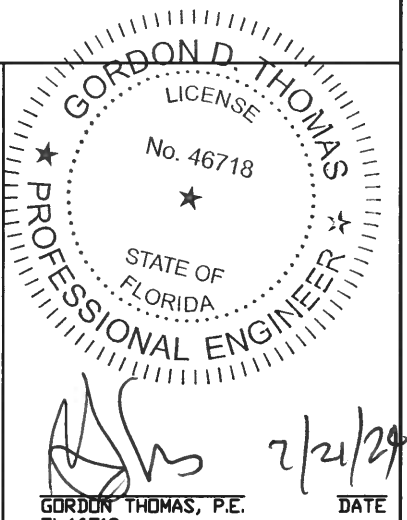


TOP ROLLER



TOP TRACK CENTER SUPPORT

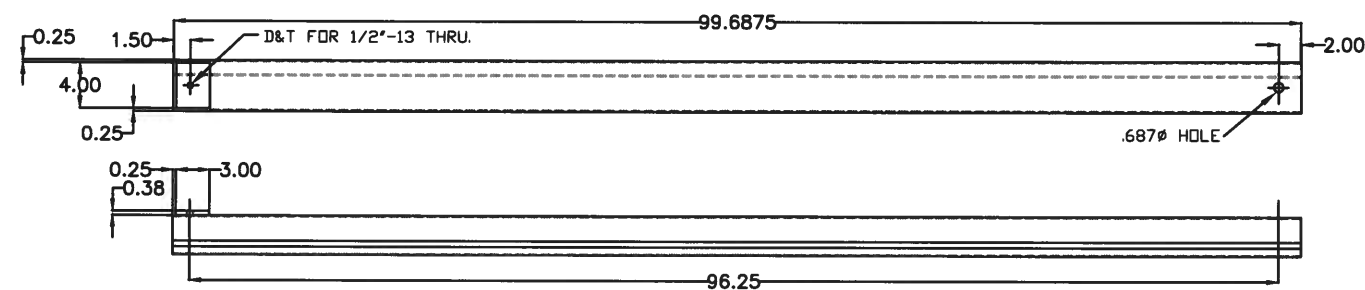
**PRODUCT REVISED**  
as complying with the Florida  
Building Code  
NOA-No. 24-0627.02  
Expiration Date 06/18/2030  
By *[Signature]*  
Miami-Dade Product Control



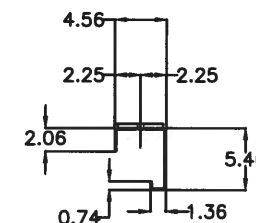
| REV     | DATE | BY | DESCRIPTION  |
|---------|------|----|--|
| 11/7/19 | BH   |    | REVISED PER DADE COUNTY COMMENTS                         |
| 9/4/19  | BH   |    | REVISED PER DADE COUNTY CHECKLIST & TEST LAB CORRECTIONS |
| 3/19/19 | RB   |    | ISSUED FOR TEST LAB REVIEW                               |
| 3/8/19  | RB   |    | E MAILED FOR REVIEW                                      |

**INTERNATIONAL DOOR, INC.**  
(734) 459-3000  
8001 RONDA DR. CANTON, MICHIGAN 48187  
PROJECT: MODEL #HVHZFF120  
HIGH VELOCITY HURRICANE ZONE (120PSF)  
FOUR-FOLD DOOR

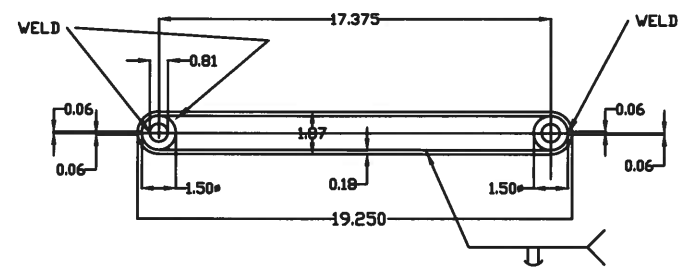
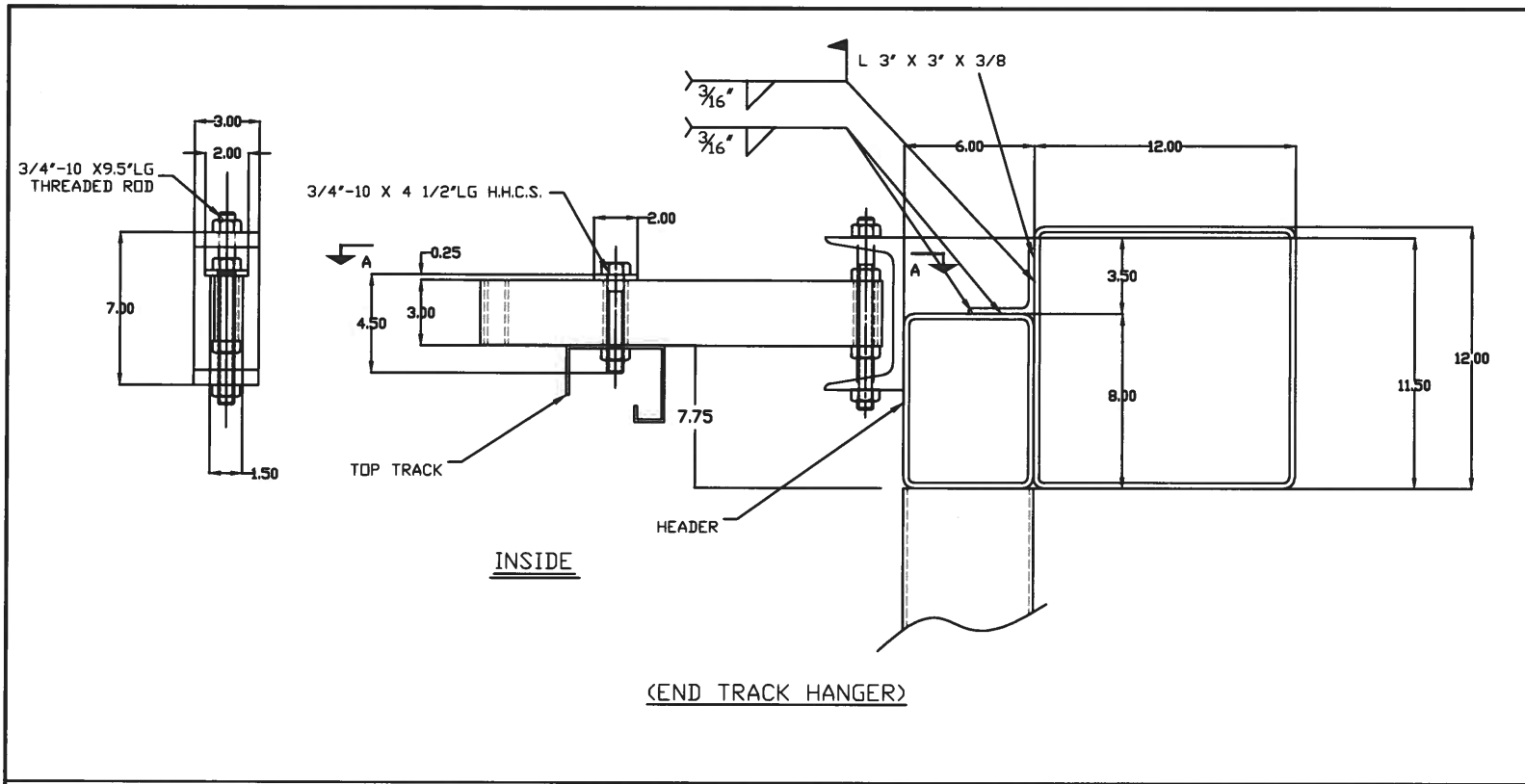
|  |              |                    |
|--|--------------|--------------------|
| DRAWING TITLE:<br>ROLLER ASSEMBLY            |              |                    |
| DOOR# HVHZFF120 OPENING SIZE 16'-0" x 16'-0" |              |                    |
| ARCH.  |              |                    |
| CONTR.                                       |              |                    |
| DRAWN: RB                                    | DATE 2/27/19 | DWG NO. 19-ID-2311 |
| CHECKED: CMH                                 | CUSTOMER NO. | SHEET 8 OF 12      |
| APPROVED:                                    |              |                    |



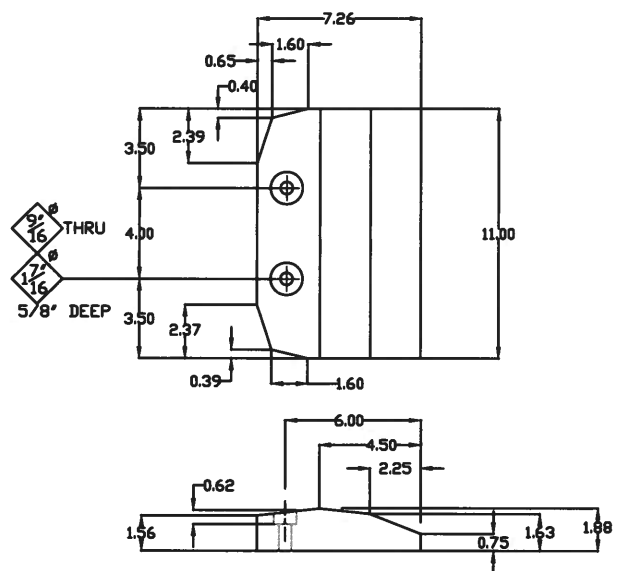
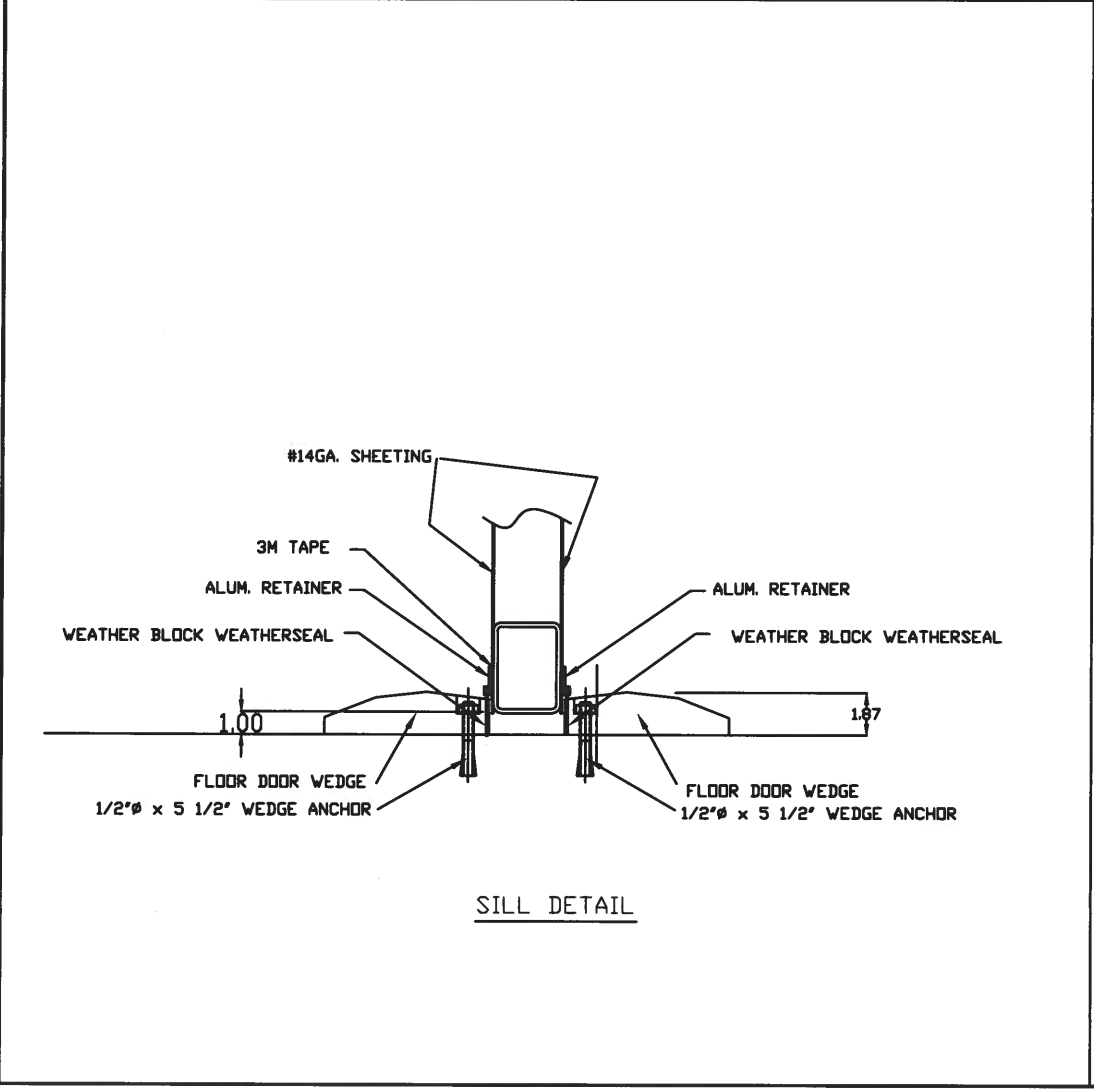
TOP TRACK







SECTION A-A  
(END TRACK HANGER ARM)



FLOOR DOOR WEDGE DETAIL

**PRODUCT REVISED**  
as complying with the Florida Building Code  
NOA-No. 24-0627.02  
Expiration Date 06/18/2030  
By *[Signature]*  
Miami-Dade Product Control

GORDON D. THOMAS, P.E.  
FL46718

*[Signature]* 7/21/24  
DATE

|     |         |    |  |
|-----|---------|----|--|
| REV | DATE    | BY | DESCRIPTION  |
|     | 11/7/19 | BH | REVISED PER DADE COUNTY COMMENTS                         |
|     | 9/4/19  | BH | REVISED PER DADE COUNTY CHECKLIST & TEST LAB CORRECTIONS |
|     | 3/19/19 | RB | ISSUED FOR TEST LAB REVIEW                               |
|     | 3/8/19  | RB | E MAILED FOR REVIEW                                      |

**INTERNATIONAL DOOR, INC.**  
(734) 459-3000  
8001 RONDA DR. CANTON, MICHIGAN 48187

PROJECT: MODEL #HVHZFF120  
HIGH VELOCITY HURRICANE ZONE (120PSF)  
FOUR-FOLD DOOR

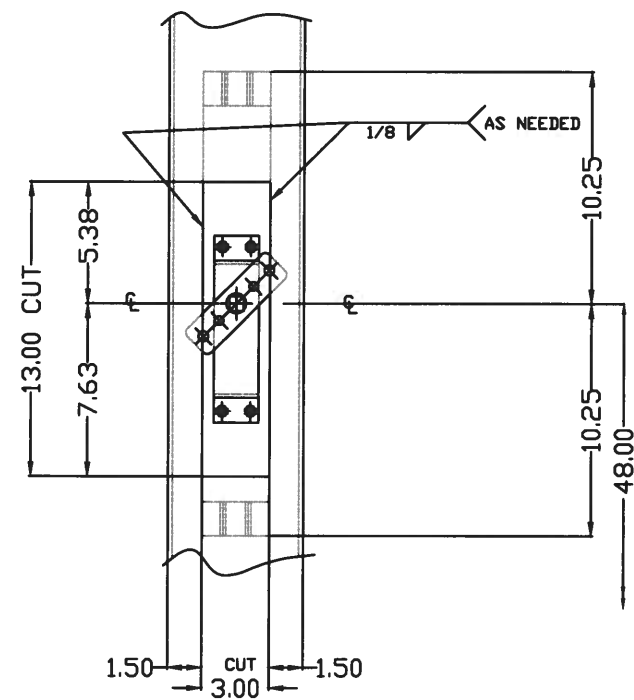
DRAWING TITLE: ROLLER ASSEMBLY

DOOR# HVHZFF120 OPENING SIZE 16'-0" x 16'-0"

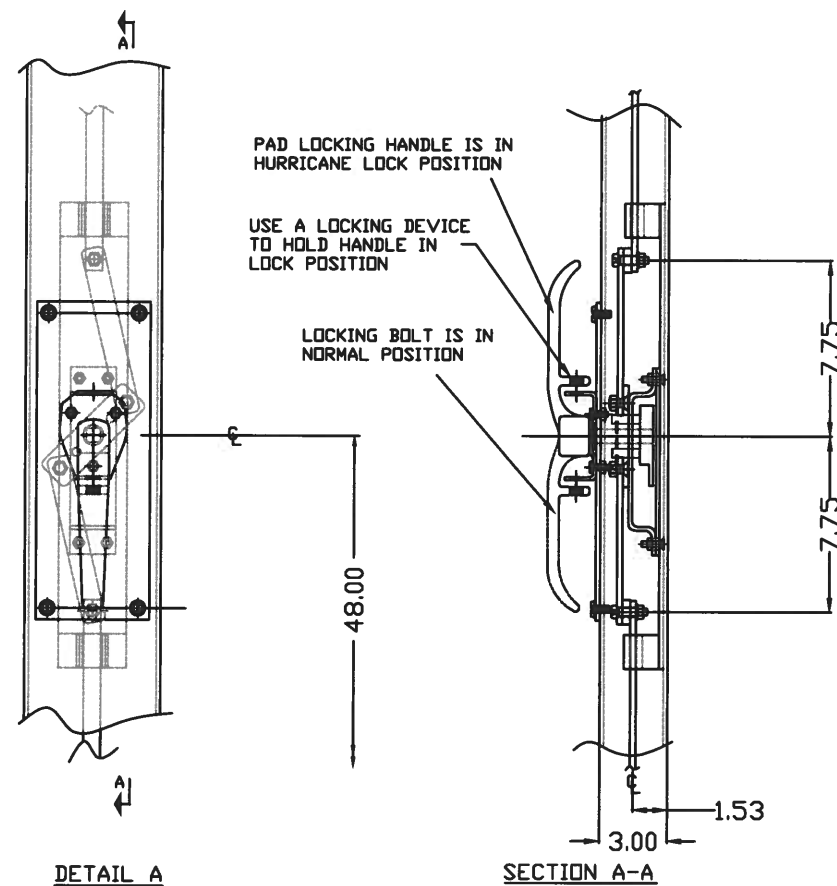
ARCH. \_\_\_\_\_

CONTR. \_\_\_\_\_

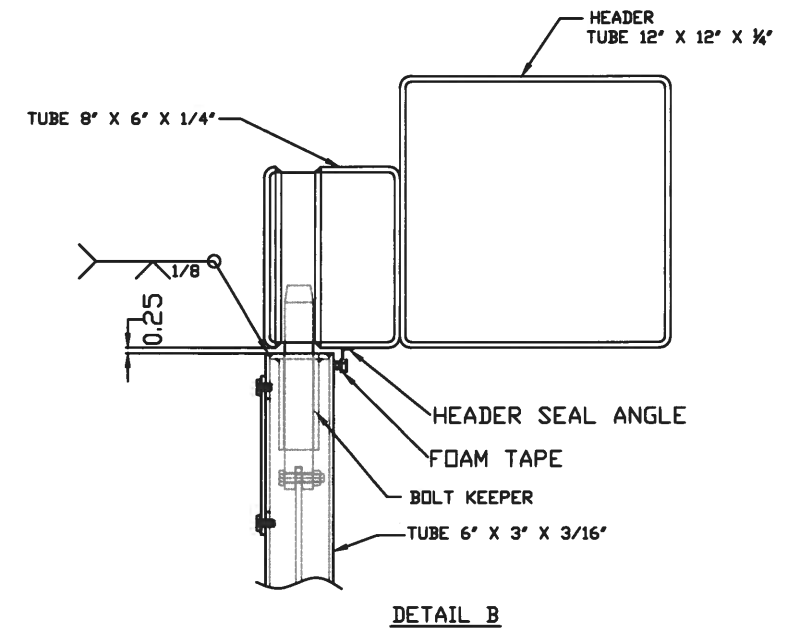
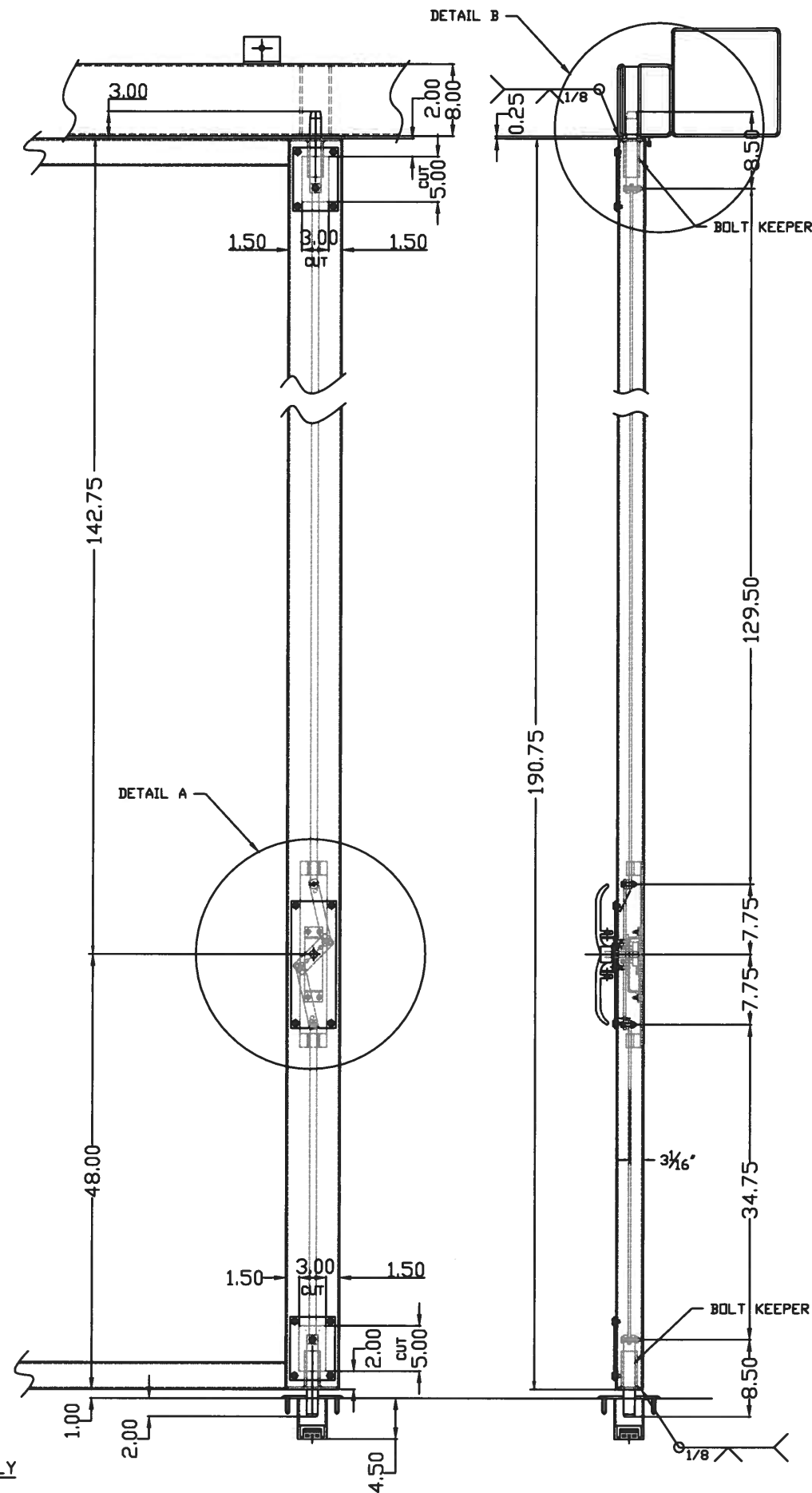
|                 |              |                    |
|-----------------|--------------|--------------------|
| DRAWN: RB       | DATE 2/27/19 | DWG NO. 19-ID-2311 |
| CHECKED: CMH    | CUSTOMER NO. | SHEET 9 OF 12      |
| APPROVED: _____ |              |                    |



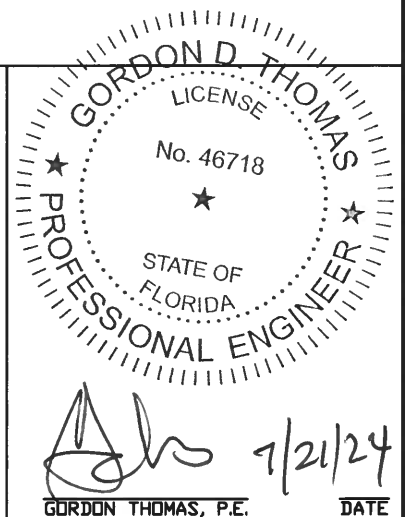
DETAIL A  
NO COVER PLATE, HANDLE, LINKS




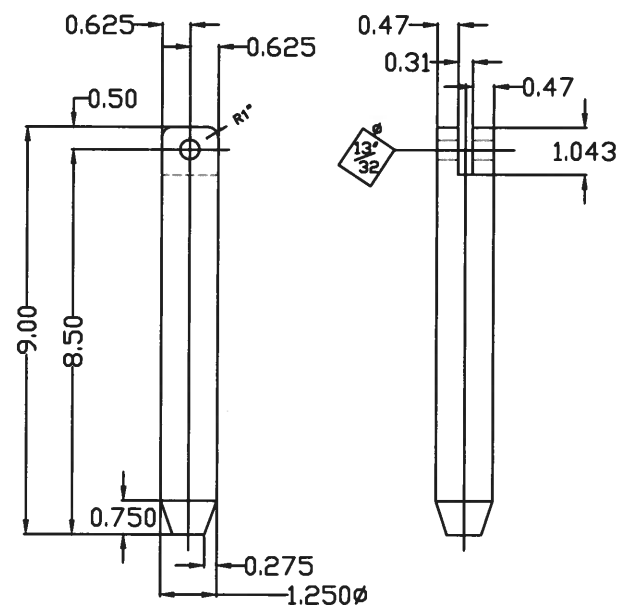
LOCKING BOLT ASSEMBLY



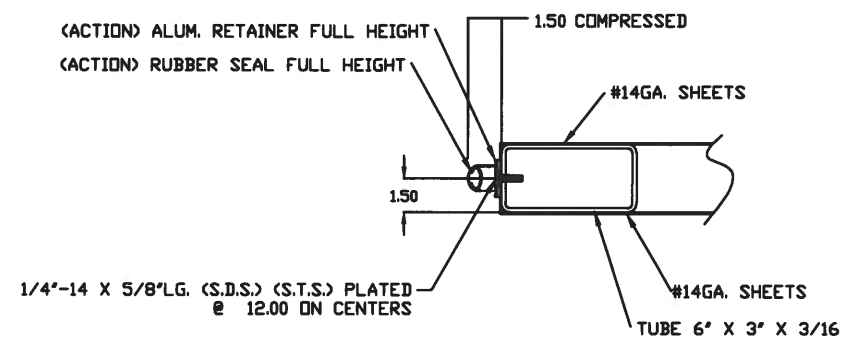
**PRODUCT REVISED**  
as complying with the Florida  
Building Code  
NOA-No. 24-0627.02  
Expiration Date 06/18/2030  
By *[Signature]*  
Miami-Dade Product Control



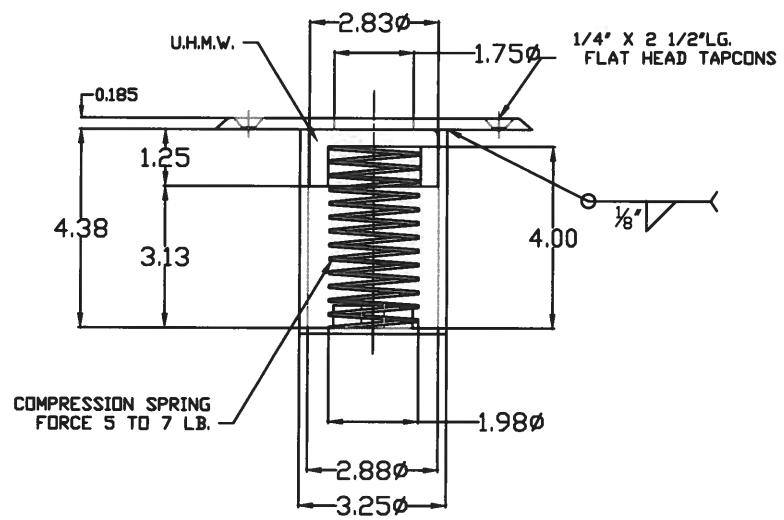
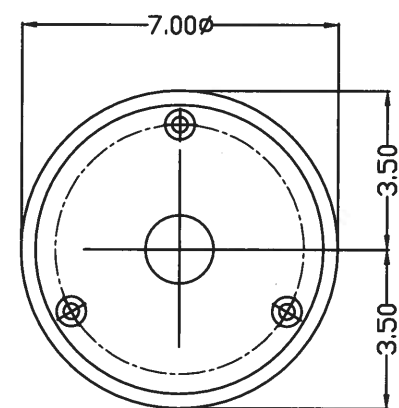
|   |      |                              |   |
|---|------|------------------------------|---|
| 11/7/19   |      | BH                           | REVISED PER DADE COUNTY COMMENTS                            |
| 9/4/19  |      | BH                           | REVISED PER DADE COUNTY CHECKLIST &<br>TEST LAB CORRECTIONS |
| 3/19/19   |      | RB                           | ISSUED FOR TEST LAB REVIEW                                  |
| 3/8/19  |      | RB                           | E MAILED FOR REVIEW   |
| REV   | DATE | BY                           | DESCRIPTION   |
| <div></div> <div>INTERNATIONAL DOOR, INC.<br/>(734) 459-3000<br/>8001 RONDA DR. CANTON, MICHIGAN 48187<br/>PROJECT:<br/><br/>MODEL #HVHZFF120<br/>HIGH VELOCITY HURRICANE ZONE (120PSF)<br/>FOUR-FOLD DOOR</div> |      |                              |   |
| DRAWING TITLE:<br><br>LOCKING BOLT ASSEMBLY   |      |                              |   |
| DOOR# HVHZFF120   |      | OPENING SIZE 16'-0" x 16'-0" |   |
| ARCH.   |      |                              |   |
| CONTR.  |      |                              |   |
| DRAWN: RB   |      | DATE 2/27/19                 | DWG NO. 19-ID-2311  |
| CHECKED: CMH  |      | CUSTOMER NO.                 | SHEET 10 OF 12  |
| APPROVED:   |      |                              |   |



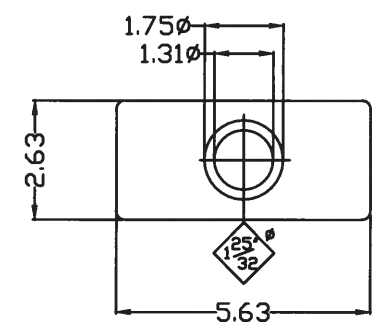
**BOTTOM & TOP BOLT**



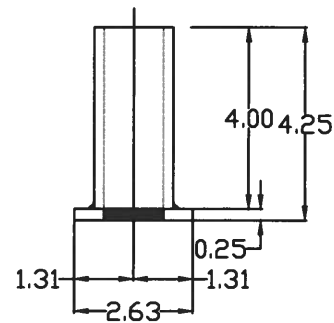
**INTERIOR  
CENTER MEETING WEATHER SEAL**



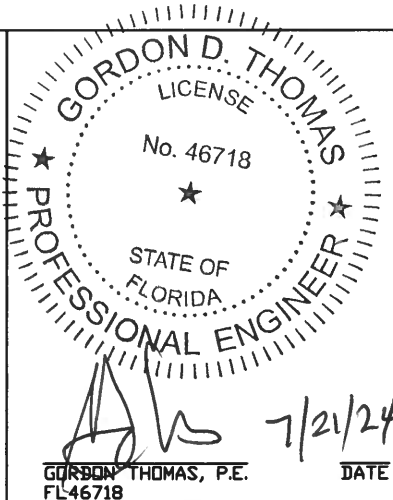
**CREMONE KEEPER**




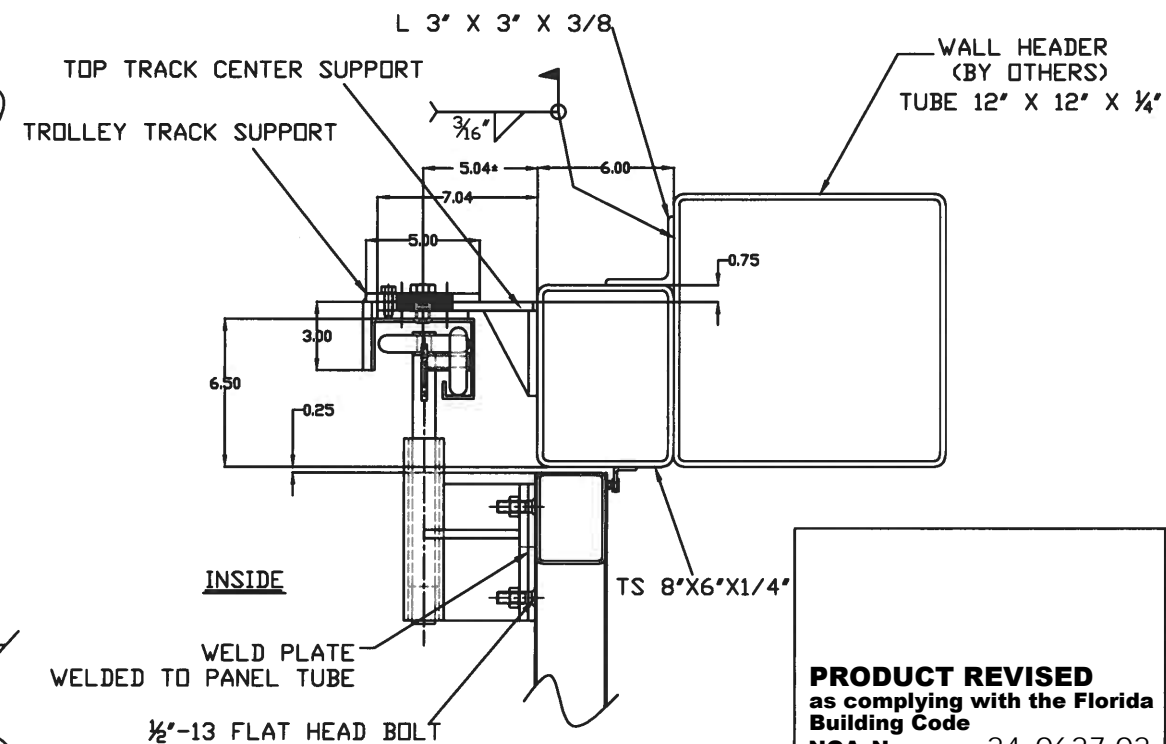
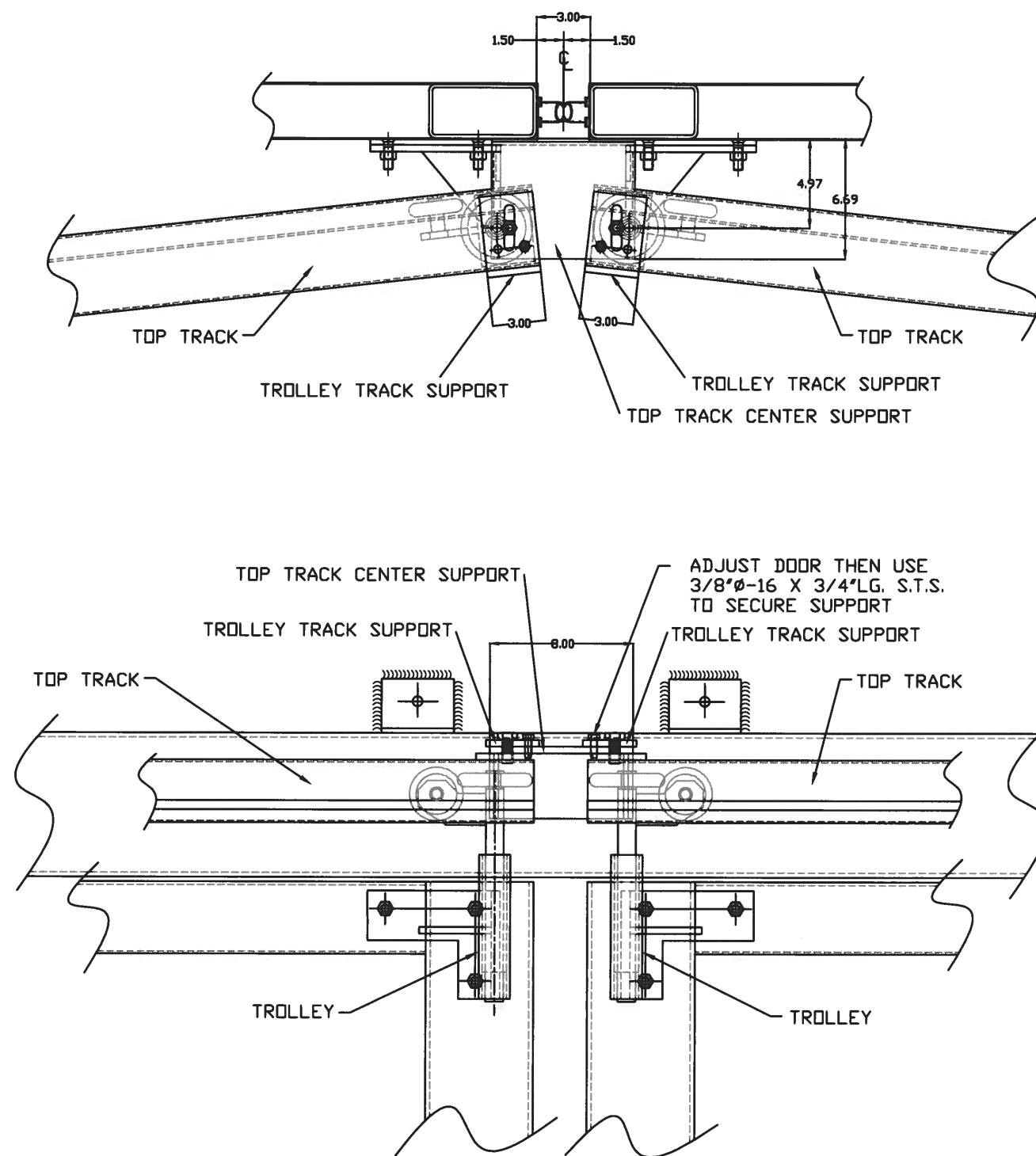
**BOLT KEEPER**



**PRODUCT REVISED**  
as complying with the Florida  
Building Code  
NOA-No. 24-0627.02  
Expiration Date 06/18/2030  
By *[Signature]*  
Miami-Dade Product Control



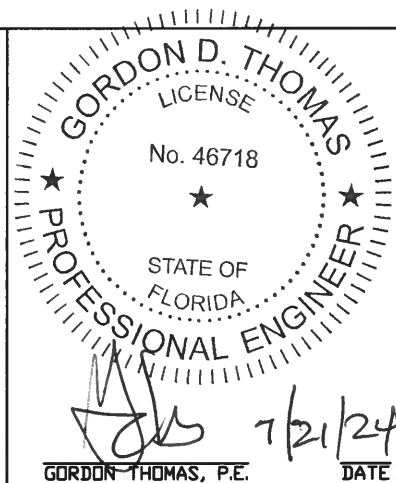
|  |      |  |                |
|--|------|--|----------------|
| 11/7/19  | BH   | REVISED PER DADE COUNTY COMMENTS                         |                |
| 9/4/19   | BH   | REVISED PER DADE COUNTY CHECKLIST & TEST LAB CORRECTIONS |                |
| 3/19/19  | RB   | ISSUED FOR TEST LAB REVIEW                               |                |
| 3/8/19   | RB   | E MAILED FOR REVIEW                                      |                |
| REV  | DATE | BY   | DESCRIPTION    |
| <div></div> <div><b>INTERNATIONAL DOOR, INC.</b><br/>(734) 459-3000<br/>8001 RONDA DR. CANTON, MICHIGAN 48187<br/>PROJECT:<br/><br/>MODEL #HVHZFF120<br/>HIGH VELOCITY HURRICANE ZONE (120PSF)<br/>FOUR-FOLD DOOR</div> |      |  |                |
| DRAWING TITLE:   |      |  |                |
| LOCKING BOLT DETAILS   |      |  |                |
| DOOR# HVHZFF120  |      | OPENING SIZE 16'-0" x 16'-0"                             |                |
| ARCH.  |      |  |                |
| CONTR.   |      |  |                |
| DRAWN: RB  |      | DATE   | DWG NO.        |
| CHECKED: CMH   |      | 2/27/19  | 19-ID-2311     |
| APPROVED:  |      | CUSTOMER NO.   | SHEET 11 OF 12 |



# DOOR TROLLEY

(DOOR SHOWN IN CLOSED POSITION)

**PRODUCT REVISED**  
as complying with the Florida  
Building Code  
NOA-No. 24-0627.02  
Expiration Date 06/18/2030  
By *[Signature]*  
Miami-Dade Product Control



|  |         |                              |   |
|--|---------|------------------------------|---|
|  | 11/7/19 | BH                           | REVISED PER DADE COUNTY COMMENTS                            |
|  | 9/4/19  | BH                           | REVISED PER DADE COUNTY CHECKLIST &<br>TEST LAB CORRECTIONS |
|  | 3/19/19 | RB                           | ISSUED FOR TEST LAB REVIEW                                  |
|  | 3/8/19  | RB                           | E MAILED FOR REVIEW   |
| REV  | DATE    | BY                           | DESCRIPTION   |
| <div></div> <div><b>INTERNATIONAL DOOR, INC.</b><br/>(734) 459-3000<br/>8001 RONDA DR. CANTON, MICHIGAN 48187<br/>PROJECT:<br/><br/>MODEL #HVHZFF120<br/>HIGH VELOCITY HURRICANE ZONE (120PSF)<br/>FOUR-FOLD DOOR</div> |         |                              |   |
| DRAWING TITLE:<br><br>Top Track Layout   |         |                              |   |
| DOOR# HVHZFF120  |         | OPENING SIZE 16'-0" x 16'-0" |   |
| ARCH.  |         |                              |   |
| CONTR.   |         |                              |   |
| DRAWN: RB  |         | DATE 2/27/19                 | DWG NO. 19-ID-2311  |
| CHECKED: CMH   |         | CUSTOMER NO.                 | SHEET 12 OF 12  |
| APPROVED:  |         |                              |   |