



DEPARTMENT OF REGULATORY AND ECONOMIC RESOURCES (RER)
BOARD AND CODE ADMINISTRATION DIVISION

NOTICE OF ACCEPTANCE (NOA)

MIAMI-DADE COUNTY
PRODUCT CONTROL SECTION
11805 SW 26 Street, Room 208
Miami, Florida 33175-2474
T (786) 315-2590 F (786) 315-2599
www.miamidade.gov/economy

Petersen Aluminum Corporation
102 Northpoint Parkway
Acworth, GA 30102

SCOPE:

This NOA is being issued under the applicable rules and regulations governing the use of construction materials. The documentation submitted has been reviewed and accepted by Miami-Dade County RER-Product Control Section to be used in Miami-Dade County and other areas where allowed by the Authority Having Jurisdiction (AHJ).

This NOA shall not be valid after the expiration date stated below. The Miami-Dade County Product Control Section (In Miami-Dade County) and/or the AHJ (in areas other than Miami-Dade County) reserve the right to have this product or material tested for quality assurance purposes. If this product or material fails to perform in the accepted manner, the manufacturer will incur the expense of such testing and the AHJ may immediately revoke, modify, or suspend the use of such product or material within their jurisdiction. RER reserves the right to revoke this acceptance if it is determined by Miami-Dade County Product Control Section that this product or material fails to meet the requirements of the applicable building code.

This product is approved as described herein and has been designed to comply with the Florida Building Code, including the High Velocity Hurricane Zone.

DESCRIPTION: 0.032" (min) Aluminum & 24 Ga. (min) Steel Board & Batten Siding Panels

APPROVAL DOCUMENT: Drawing titled "Board and Batten Profile", sheets 1 through 11 of 11, dated 11/14/2024, prepared by the manufacturer, signed and sealed by Robert V. Nangia, P.E., bearing the Miami-Dade County Product Control Approval stamp with the Notice of Acceptance number and approval date by the Miami-Dade County Product Control Section.

MISSILE IMPACT RATING: Large and Small Missile Impact Resistant

LABELING: A permanent label with the manufacturer's name or logo, manufacturing plant's city and state, model/series, and the statement reading 'Miami-Dade County Product Control Approved' is to be located on each panel.

RENEWAL of this NOA shall be considered after a renewal application has been filed and there has been no change in the applicable building code negatively affecting the performance of this product.

TERMINATION of this NOA will occur after the expiration date or if there has been a revision or change in the materials, use, and/or manufacture of the product or process. Misuse of this NOA as an endorsement of any product, for sales, advertising or any other purposes shall automatically terminate this NOA. Failure to comply with any section of this NOA shall be cause for termination and removal of NOA.

ADVERTISEMENT: The NOA number preceded by the words Miami-Dade County, Florida, and followed by the expiration date may be displayed in advertising literature. If any portion of the NOA is displayed, then it shall be done in its entirety.

INSPECTION: A copy of this entire NOA shall be provided to the user by the manufacturer or its distributors and shall be available for inspection at the job site at the request of the Building Official.

This NOA consists of this page 1 and evidence page E-1, as well as the approval document mentioned above. The submitted documentation was reviewed by **Carlos M. Utrera, P.E.**



02/13/25

NOA No. 24-0717.06
Expiration Date: February 20, 2030
Approval Date: February 20, 2025
Page 1

NOTICE OF ACCEPTANCE: EVIDENCE SUBMITTED

A. DRAWINGS

1. Drawing titled "Board and Batten Profile", sheets 1 through 11 of 11, dated 11/14/2024, prepared by the manufacturer, signed and sealed by Robert V. Nangia, P.E.

B. TESTS

1. Test reports on 1) Uniform Static Air Pressure Test, Loading per FBC TAS 202-94
2) Cyclic Wind Pressure Loading per FBC, TAS 203-94
3) Tensile Test per ASTM A370
along with marked-up drawings and installation diagram of 0.032" Aluminum 16" Board and Batten Wall Panels, prepared by PRI Construction Materials Technologies LLC, Test Report No. **2651T0006A**, dated 05/20/2024, signed and sealed by Zachary R. Priest, P.E.
2. Test reports on 1) Uniform Static Air Pressure Test, Loading per FBC TAS 202-94
2) Cyclic Wind Pressure Loading per FBC, TAS 203-94
3) Tensile Test per ASTM A370
along with marked-up drawings and installation diagram of 24ga. 16" Steel Board and Batten Wall Panels, prepared by PRI Construction Materials Technologies LLC, Test Report No. **2651T0007A**, dated 05/20/2024, signed and sealed by Zachary R. Priest, P.E.
3. Test reports on 1) Air Infiltration Test, per FBC, TAS 202-94 (ASTM E283)
2) Water Resistance Test, per FBC, TAS 202-94 (ASTM E331)
along with marked-up drawings and installation diagram of 0.032" Aluminum 16" Board and Batten Wall Panels, prepared by PRI Construction Materials Technologies LLC, Test Report No. **2651T0008A.01**, dated 05/21/2024, signed and sealed by Zachary R. Priest, P.E.

C. CALCULATIONS

1. Board and batten panels calculations, prepared by Design Dynamics, Inc., dated 01/16/2025, signed and sealed by Robert V. Nangia, P.E.

D. QUALITY ASSURANCE

1. Miami-Dade Department of Regulatory and Economic Resources (RER).

E. MATERIAL CERTIFICATIONS

1. None.

F. STATEMENTS

1. Statement letter of code conformance to the 8th edition (2023) of the FBC, issued by Design Dynamics, Inc., dated 01/16/2025, signed and sealed by Robert V. Nangia, P.E.
2. Statement letter of no financial interest, issued by Design Dynamics, Inc., dated 01/16/2025, signed and sealed by Robert V. Nangia, P.E.



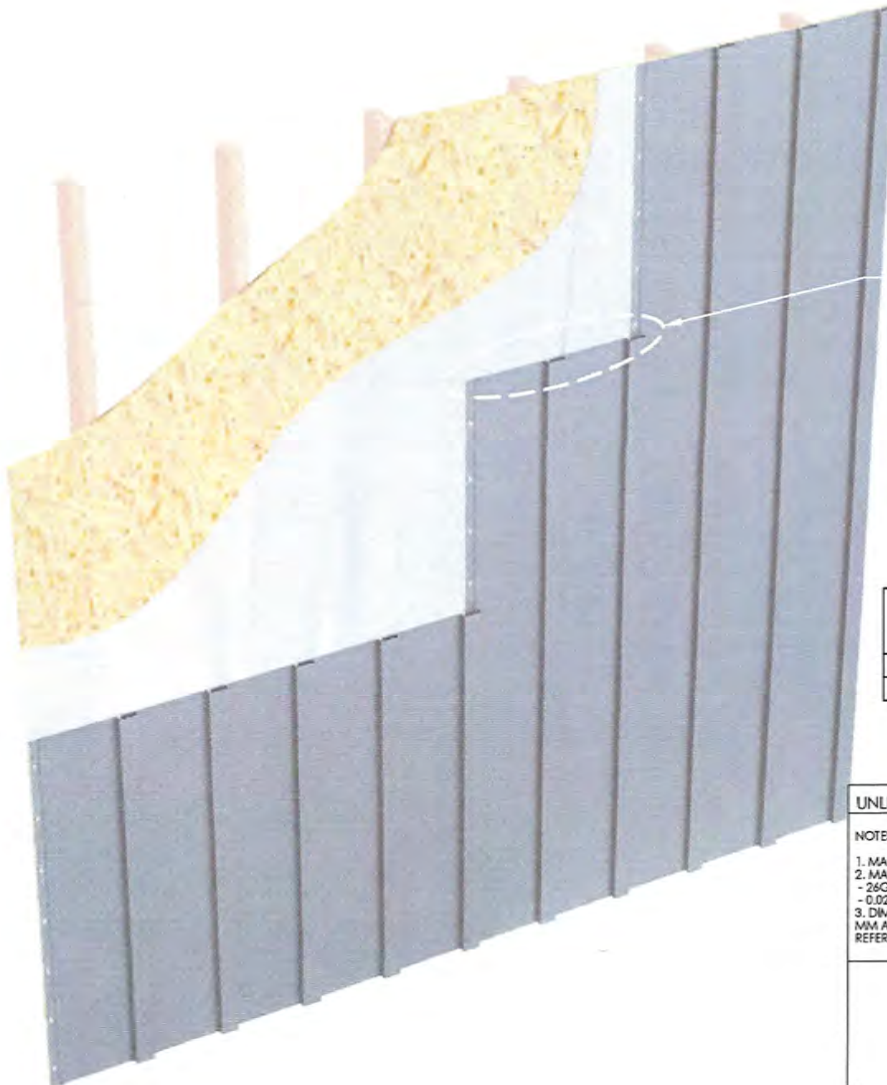
Carlos M. Utrera, P.E.
Product Control Examiner
NOA No. 24-0717.06
Expiration Date: February 20, 2030
Approval Date: February 20, 2025

BOARD AND BATTEN - WOOD SUBSTRATE DETAILS
COVER DETAIL (NOA)
VERTICAL APPLICATION (1 OF 11)

BOARD AND BATTEN PANEL

KEYNOTES:

- FASTENERS MUST PENETRATE WOOD SUBSTRATE BY 5/8" MINIMUM THREAD LENGTH



REFERENCE CROSS SECTION (PAGE 2 OF 19)

PRODUCT APPROVED
as complying with the Florida
Building Code

NOA-No. 24-0717.06

Approval Date 02/20/2025

By *[Signature]*
Miami-Dade Product Control



Robert V. Nangia P.E.
7423 Hollow Ridge Drive
Houston, Texas 77095

PANEL WIDTH	MATERIAL	MAX. DESIGN PRESSURE	FASTENER SPACING	FASTENER TYPE
16"	24 GA STEEL	-112.50 PSI	6.5" O.C.	#10
16"	.032" ALUMINUM	-84.00 PSI	6.5" O.C.	#10

UNLESS OTHERWISE SPECIFIED:

NOTES:

1. MATERIAL USAGE - 3 5/8" APPROX.
2. MATERIALS FORMED:
- 26GA. AND 24GA. GRADE 50 STEEL
- 0.027" AND 0.032" ALUMINUM
3. DIMENSIONS IN BRACKETS ARE FOR
MM AND ARE PROVIDED FOR
REFERENCE ONLY

	NAME	DATE
DRAWN	JR	11/14/24
CHECKED	BB	11/14/24
ENG APPR.		
MFG APPR.		
Q.A.		



PRINT NAME
BOARD AND BATTEN PROFILE

DO NOT SCALE DRAWING

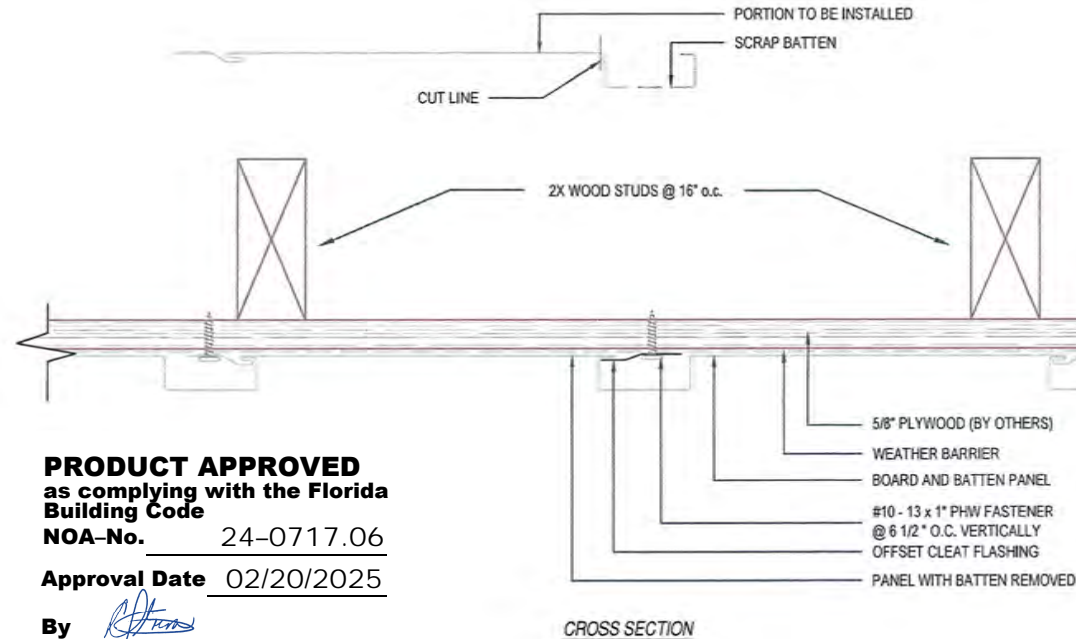
SHEET 1 OF 11

BOARD AND BATTEN - WOOD SUBSTRATE DETAILS INSTALLATION (NOA) VERTICAL APPLICATION (2 OF 11)

BOARD AND BATTEN PANEL

KEYNOTES:

- FASTENERS MUST PENETRATE WOOD SUBSTRATE BY 5/8" MINIMUM THREAD LENGTH

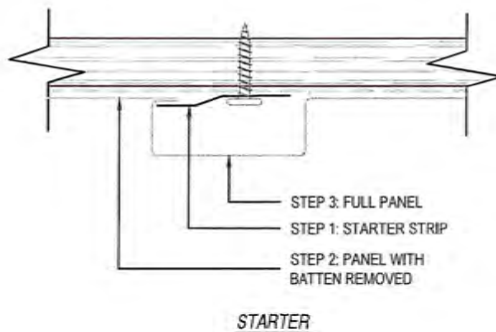


PRODUCT APPROVED
as complying with the Florida
Building Code

NOA-No. 24-0717.06

Approval Date 02/20/2025

By *[Signature]*
Miami-Dade Product Control



STARTER FLASHING

UNLESS OTHERWISE SPECIFIED:		NAME	DATE
NOTES: 1. MATERIAL USAGE - 3 5/8" APPROX. 2. MATERIALS FORMED: - 26GA. AND 24GA. GRADE 50 STEEL - 0.027" AND 0.032" ALUMINUM 3. DIMENSIONS IN BRACKETS ARE FOR MM AND ARE PROVIDED FOR REFERENCE ONLY	DRAWN	JR	11/14/24
	CHECKED	BB	11/14/24
	ENG APPR.		
	MFG APPR.		
	Q.A.		
DO NOT SCALE DRAWING			
		PRINT NAME BOARD AND BATTEN PROFILE	
		SHEET 2 OF 11	

2

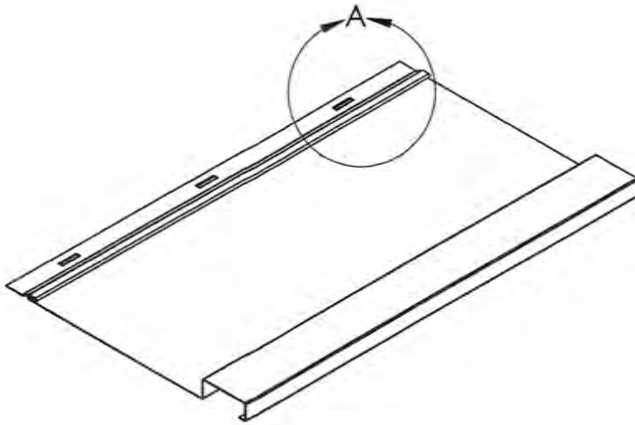
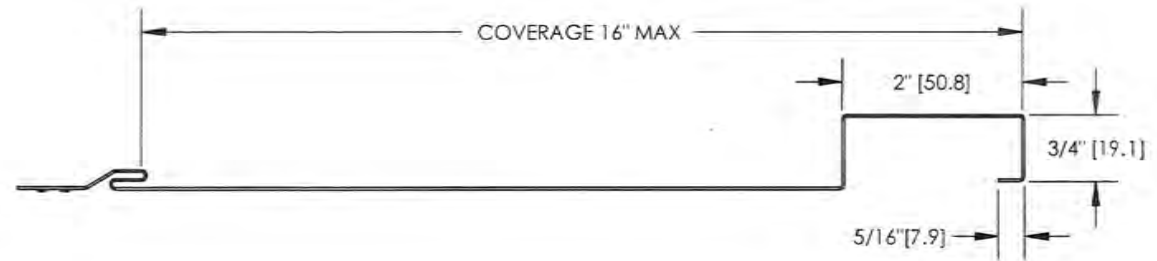
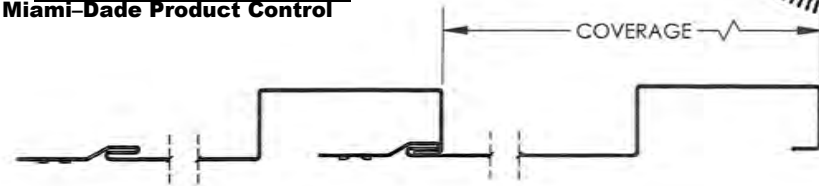
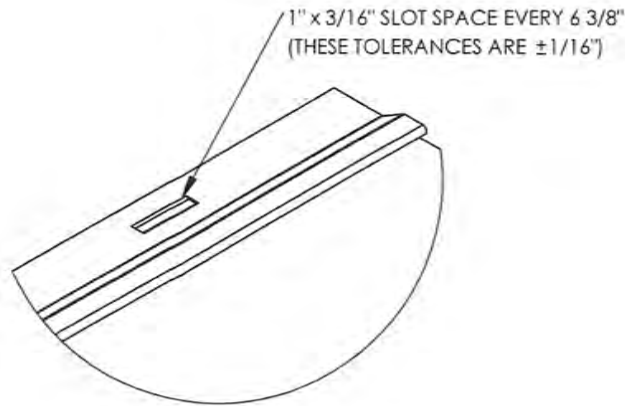
1

PRODUCT APPROVED
as complying with the Florida
Building Code

NOA-No. 24-0717.06

Approval Date 02/20/2025

By 
Miami-Dade Product Control



UNLESS OTHERWISE SPECIFIED:

NOTES:

1. MATERIAL USAGE - 3 5/8" APPROX.
2. MATERIALS FORMED:
- 26GA. AND 24GA. GRADE 50 STEEL
- 0.027" AND 0.032" ALUMINUM
3. DIMENSIONS IN BRACKETS ARE FOR
MM AND ARE PROVIDED FOR
REFERENCE ONLY

DO NOT SCALE DRAWING

	NAME	DATE
DRAWN	JR	11/14/24
CHECKED	BB	11/14/24
ENG APPR.		
MFG APPR.		
Q.A.		



PRINT NAME
BOARD AND BATTEN PROFILE

SCALE: 1:2

SHEET 3 OF 11

2

1

BOARD AND BATTEN - WOOD SUBSTRATE DETAILS

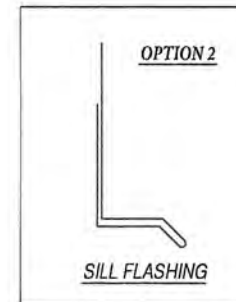
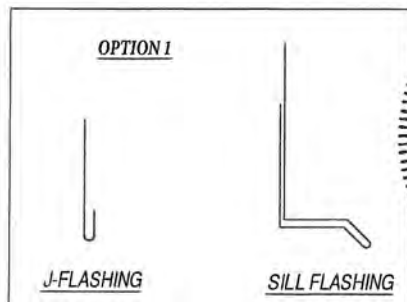
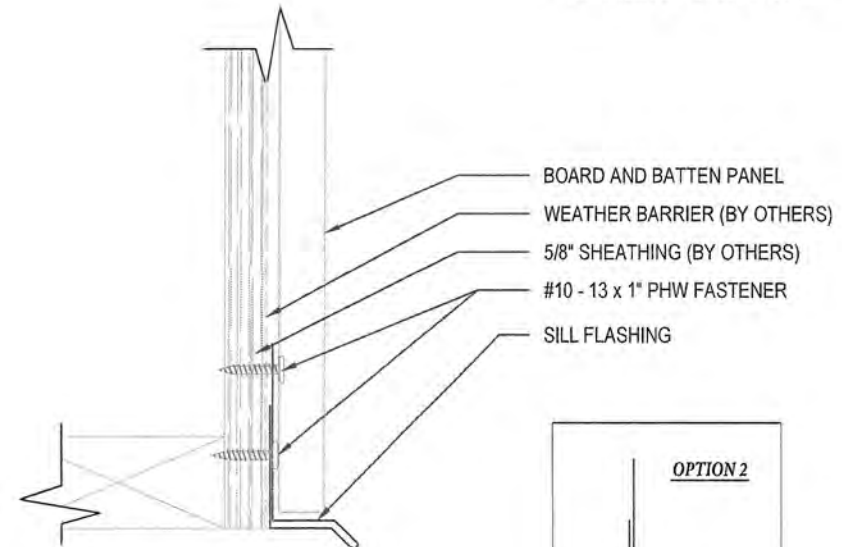
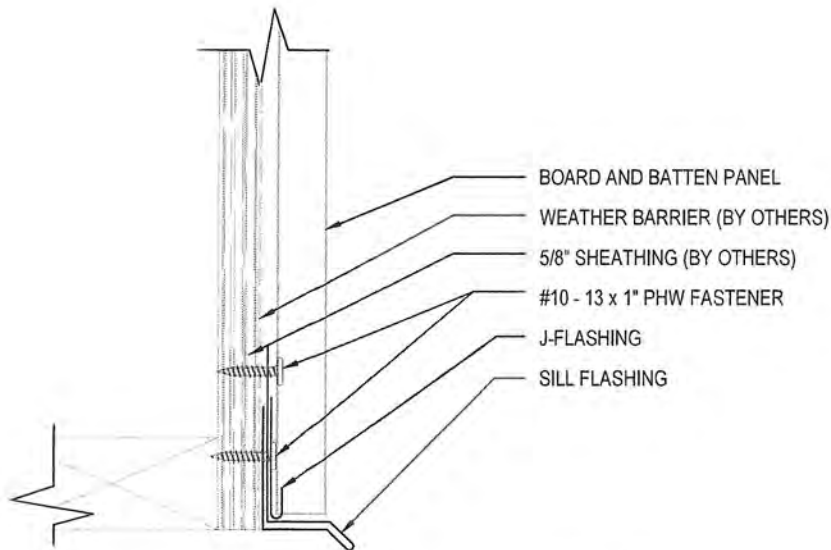
BASE SILL - OPTION 1 & 2 DETAIL (NOA)

VERTICAL APPLICATION (4 OF 11)

BOARD AND BATTEN PANEL

KEYNOTES:

- FASTENERS MUST PENETRATE WOOD SUBSTRATE BY 5/8" MINIMUM THREAD LENGTH




PRODUCT APPROVED
as complying with the Florida
Building Code
NOA-No. 24-0717.06

Approval Date 02/20/2025

By *[Signature]*
Miami-Dade Product Control

SCALE: 4" = 1'-0"



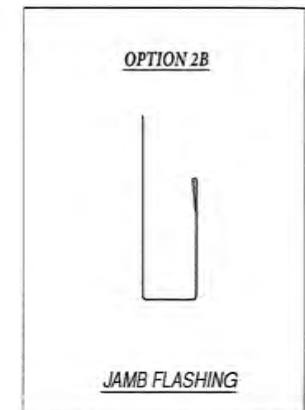
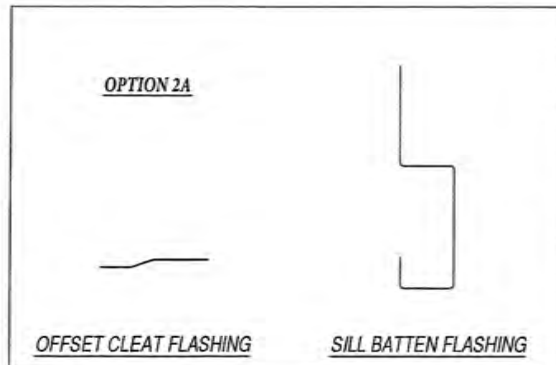
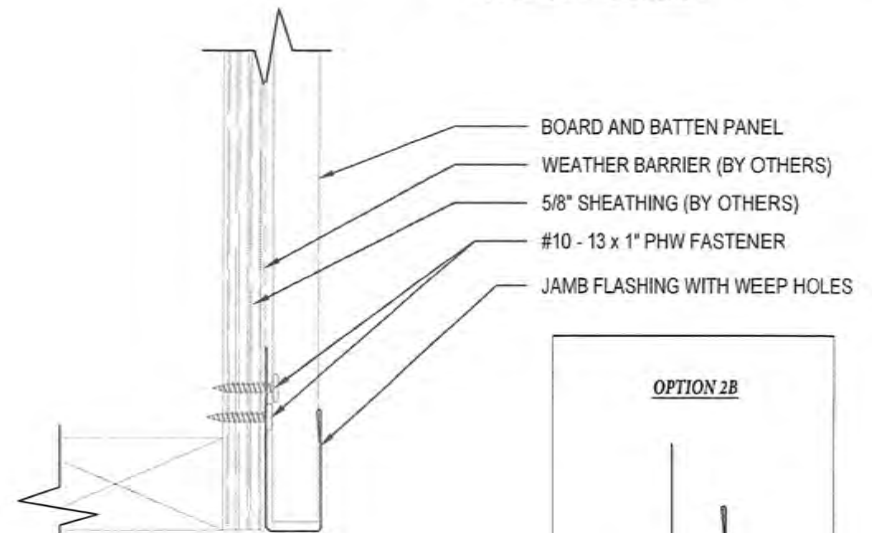
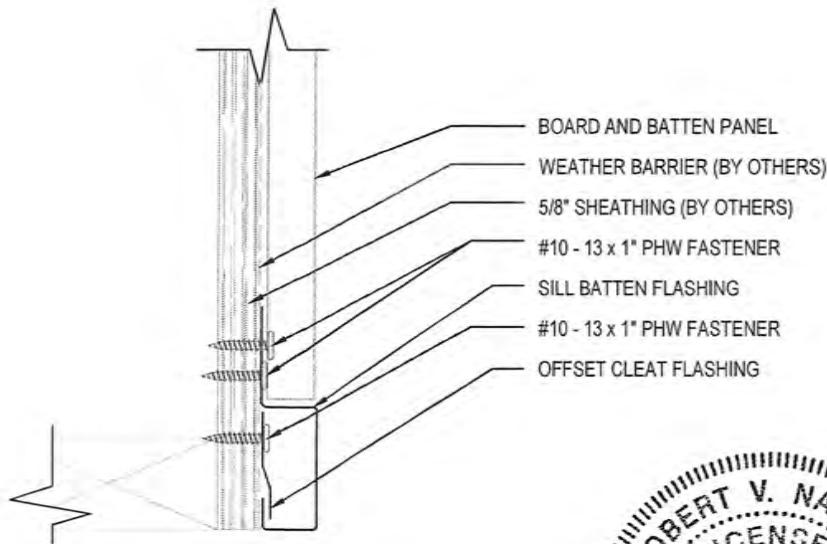
UNLESS OTHERWISE SPECIFIED:		NAME	DATE
NOTES: 1. MATERIAL USAGE - 3 5/8" APPROX. 2. MATERIALS FORMED: - 26GA. AND 24GA. GRADE 50 STEEL - 0.027" AND 0.032" ALUMINUM 3. DIMENSIONS IN BRACKETS ARE FOR MM AND ARE PROVIDED FOR REFERENCE ONLY	DRAWN	JR	11/14/24
	CHECKED	BB	11/14/24
	ENG APPR.		
	MFG APPR.		
	Q.A.		
DO NOT SCALE DRAWING			
		PRINT NAME BOARD AND BATTEN PROFILE	
		SHEET 4 OF 11	

BOARD AND BATTEN - WOOD SUBSTRATE DETAILS
BASE SILL - OPTION 2A & 2B DETAIL (NOA)
VERTICAL APPLICATION (5 OF 11)

BOARD AND BATTEN PANEL

KEYNOTES:

- FASTENERS MUST PENETRATE WOOD SUBSTRATE BY 5/8" MINIMUM THREAD LENGTH



PRODUCT APPROVED
as complying with the Florida
Building Code
NOA-No. 24-0717.06

Approval Date 02/20/2025

By *[Signature]*
Miami-Dade Product Control

UNLESS OTHERWISE SPECIFIED:

NOTES:

1. MATERIAL USAGE - 3 5/8" APPROX.
2. MATERIALS FORMED:
- 26GA. AND 24GA. GRADE 50 STEEL
- 0.02" AND 0.032" ALUMINUM
3. DIMENSIONS IN BRACKETS ARE FOR
MM AND ARE PROVIDED FOR
REFERENCE ONLY

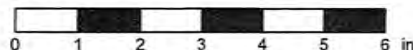
	NAME	DATE
DRAWN	JR	11/14/24
CHECKED	BB	11/14/24
ENG APPR.		
MFG APPR.		
Q.A.		



PRINT NAME
BOARD AND BATTEN PROFILE

SHEET 5 OF 11

SCALE: 4" = 1'-0"



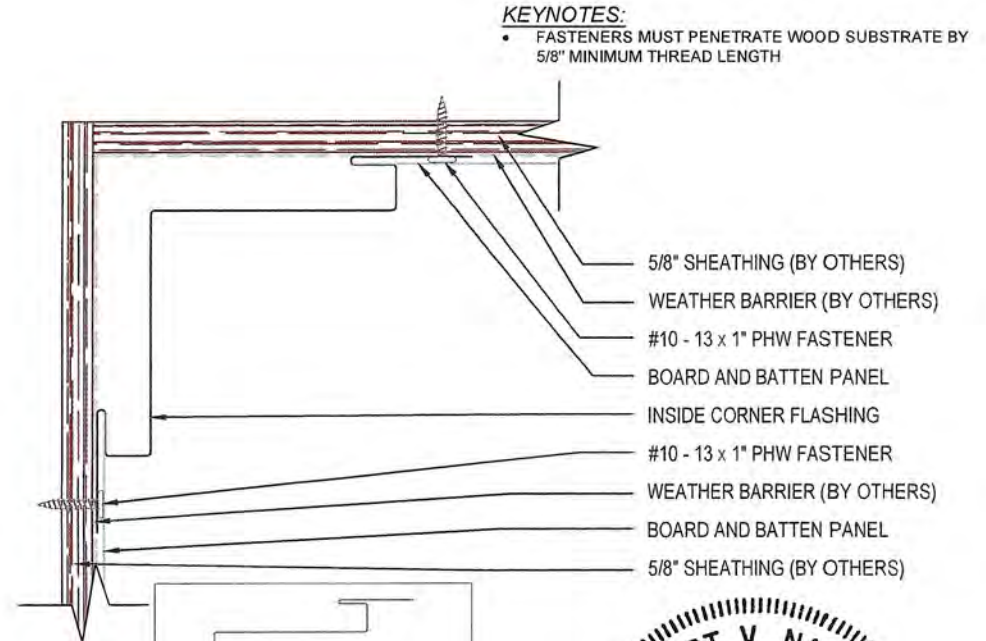
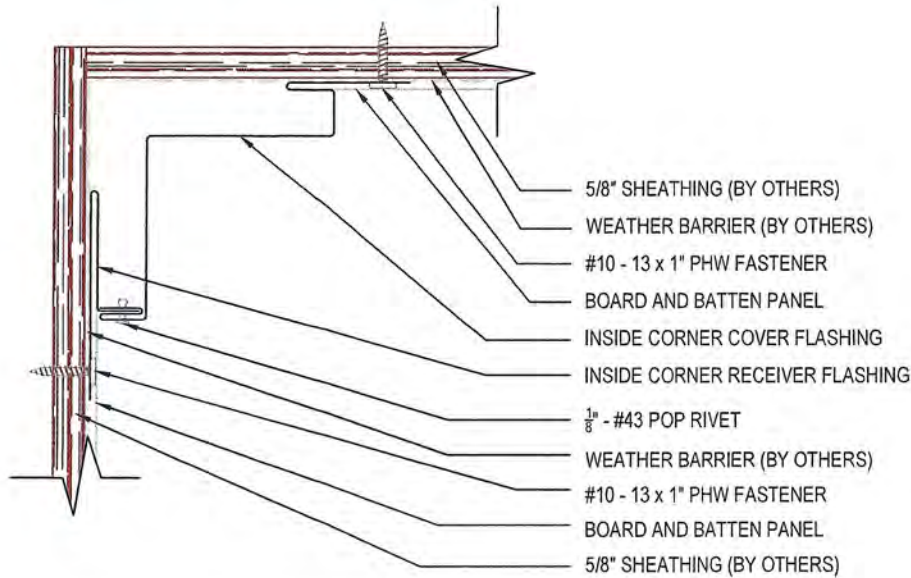
DO NOT SCALE DRAWING

BOARD AND BATTEN - WOOD SUBSTRATE DETAILS

INSIDE CORNER - OPTION 1 & 2 (NOA)

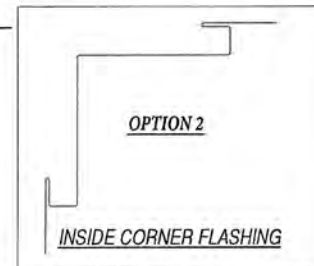
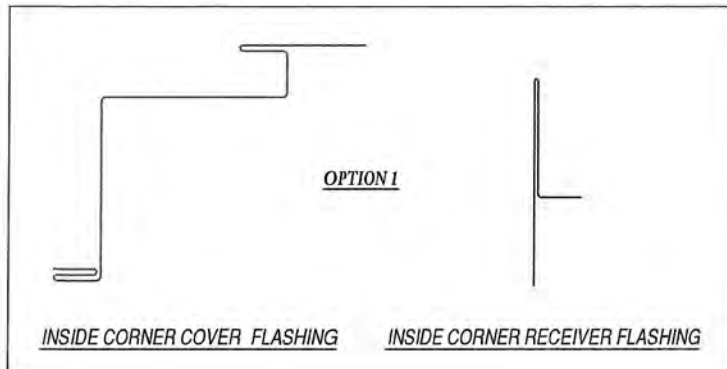
VERTICAL APPLICATION (6 OF 11)

BOARD AND BATTEN PANEL

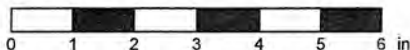


KEYNOTES:

- FASTENERS MUST PENETRATE WOOD SUBSTRATE BY 5/8" MINIMUM THREAD LENGTH



SCALE: 4" = 1'-0"



UNLESS OTHERWISE SPECIFIED:		NAME	DATE
NOTES:			
1. MATERIAL USAGE - 3 5/8" APPROX.		DRAWN	JR 11/14/24
2. MATERIALS FORMED:		CHECKED	BB 11/14/24
- 26GA. AND 24GA. GRADE 50 STEEL		ENG APPR.	
- 0.027" AND 0.032" ALUMINUM		MFG APPR.	
3. DIMENSIONS IN BRACKETS ARE FOR		Q.A.	
MM AND ARE PROVIDED FOR			
REFERENCE ONLY			

PRODUCT APPROVED
as complying with the Florida
Building Code

NOA-No. 24-0717.06

DO NOT SCALE DRAWING Approval Date 02/20/2025

By *[Signature]*
Miami-Dade Product Control

PRINT NAME
BOARD AND BATTEN PROFILE

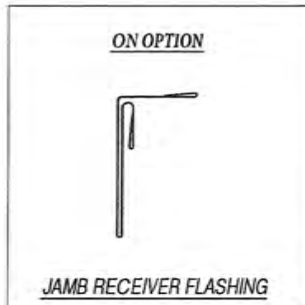
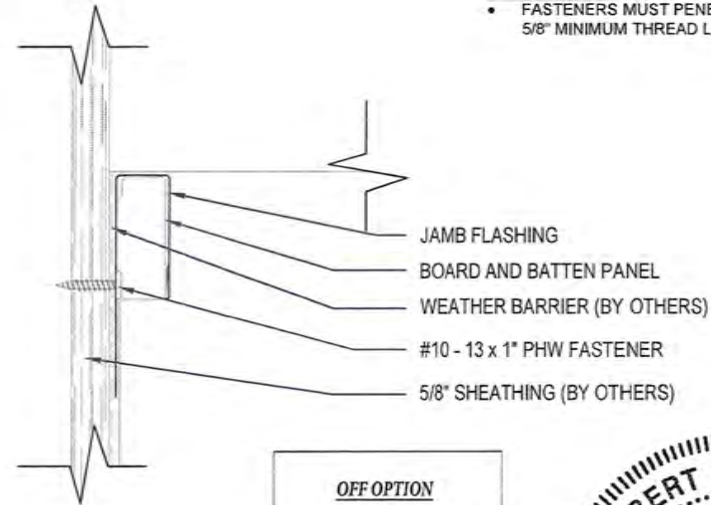
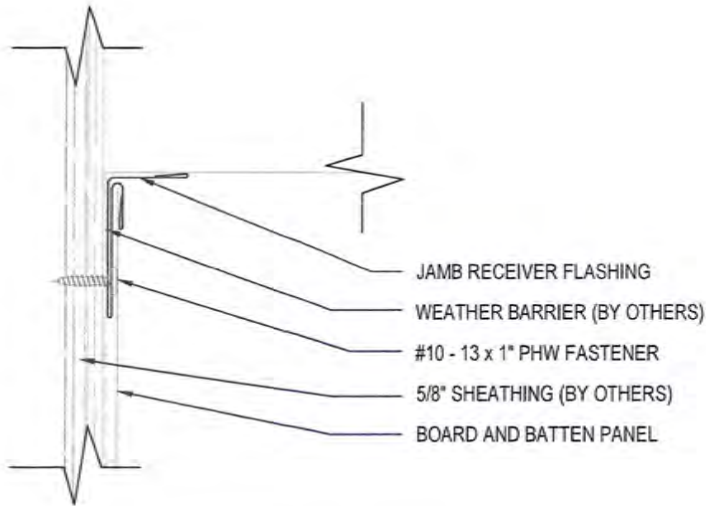
SHEET 6 OF 11

BOARD AND BATTEN - WOOD SUBSTRATE DETAILS
JAMB - ON/OFF MODULE - OPTION 1 & 2 (NOA)
VERTICAL APPLICATION (7 OF 11)

BOARD AND BATTEN PANEL

KEYNOTES:

- FASTENERS MUST PENETRATE WOOD SUBSTRATE BY 5/8" MINIMUM THREAD LENGTH

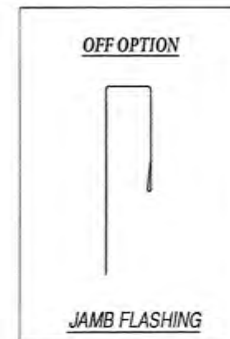


PRODUCT APPROVED
as complying with the Florida
Building Code

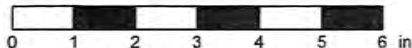
NOA-No. 24-0717.06


Approval Date 02/20/2025

By *[Signature]*
Miami-Dade Product Control



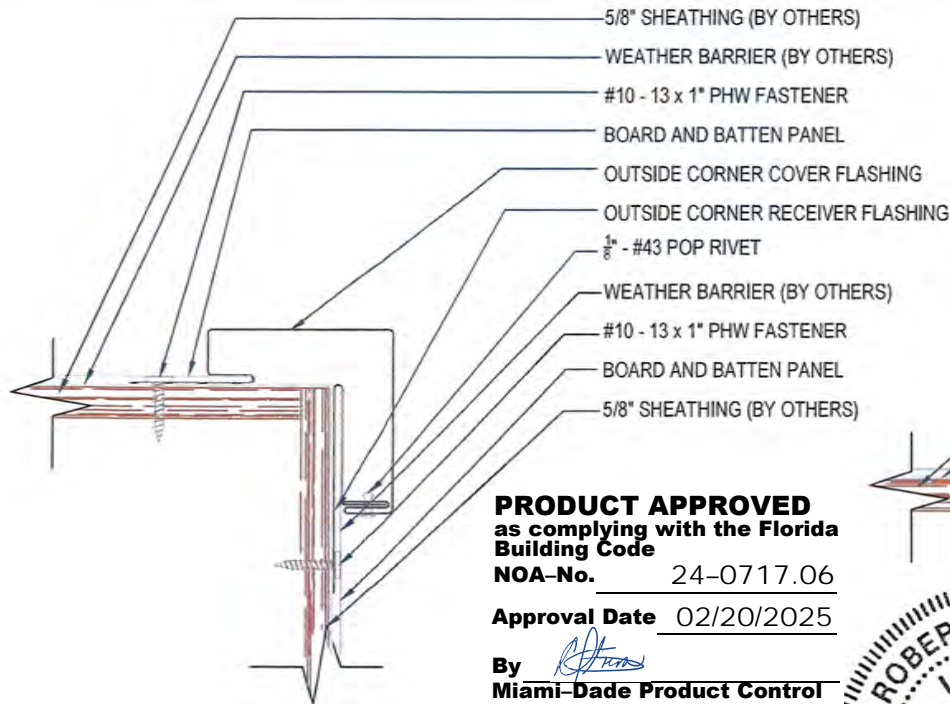
SCALE 4" = 1'-0"



UNLESS OTHERWISE SPECIFIED:		NAME	DATE
NOTES: 1. MATERIAL USAGE - 3 5/8" APPROX. 2. MATERIALS FORMED: - 26GA. AND 24GA. GRADE 50 STEEL - 0.027" AND 0.032" ALUMINUM 3. DIMENSIONS IN BRACKETS ARE FOR MM AND ARE PROVIDED FOR REFERENCE ONLY	DRAWN	JR	11/14/24
	CHECKED	BB	11/14/24
	ENG APPR.		
	MFG APPR.		
	Q.A.		
DO NOT SCALE DRAWING			
		PRINT NAME BOARD AND BATTEN PROFILE	
		SHEET 7 OF 11	

BOARD AND BATTEN - WOOD SUBSTRATE DETAILS OUTSIDE CORNER - OPTION 1 & 2 (NOA) VERTICAL APPLICATION (8 OF 11)

BOARD AND BATTEN PANEL



PRODUCT APPROVED
as complying with the Florida
Building Code

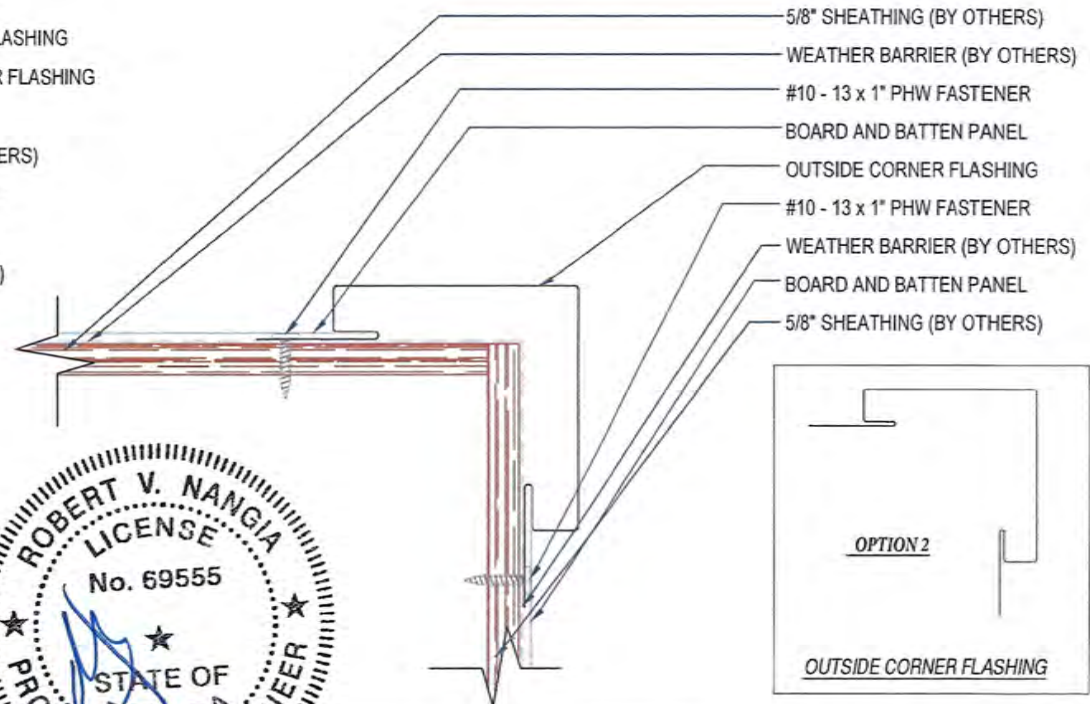
NOA-No. 24-0717.06

Approval Date 02/20/2025

By *[Signature]*
Miami-Dade Product Control

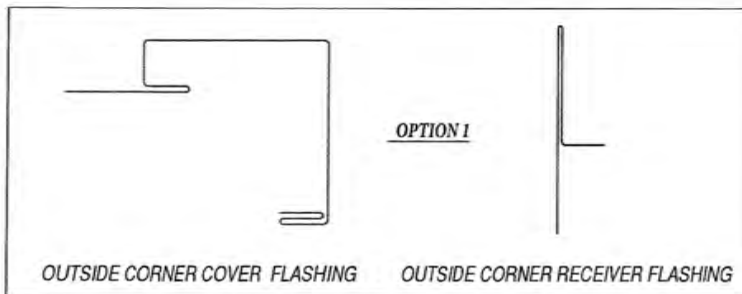
KEYNOTES:

- FASTENERS MUST PENETRATE WOOD SUBSTRATE BY 5/8" MINIMUM THREAD LENGTH



OPTION 2

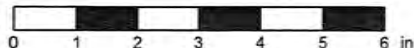
OUTSIDE CORNER FLASHING



OPTION 1

OUTSIDE CORNER COVER FLASHING OUTSIDE CORNER RECEIVER FLASHING

SCALE: 4" = 1'-0"



UNLESS OTHERWISE SPECIFIED:
1. MATERIALS SHALL BE AS SHOWN
2. MATERIALS FORMED:
- 26GA. AND 24GA. GRADE 50 STEEL
- 0.027" AND 0.032" ALUMINUM
3. DIMENSIONS IN BRACKETS ARE FOR
MM AND ARE PROVIDED FOR
REFERENCE ONLY

	NAME	DATE
DRAWN	JR	11/14/24
CHECKED	BB	11/14/24
ENG APPR.		
MFG APPR.		
Q.A.		

DO NOT SCALE DRAWING



PRINT NAME
BOARD AND BATTEN PROFILE

SHEET 8 OF 11

BOARD AND BATTEN - WOOD SUBSTRATE DETAILS

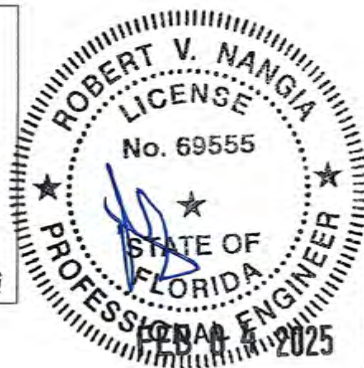
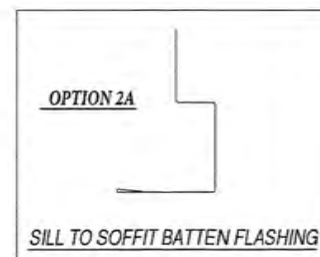
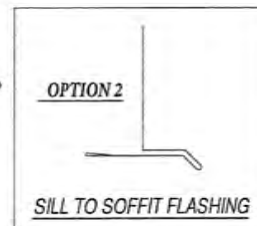
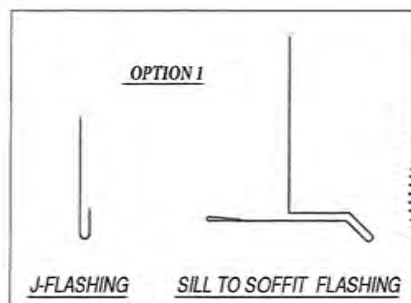
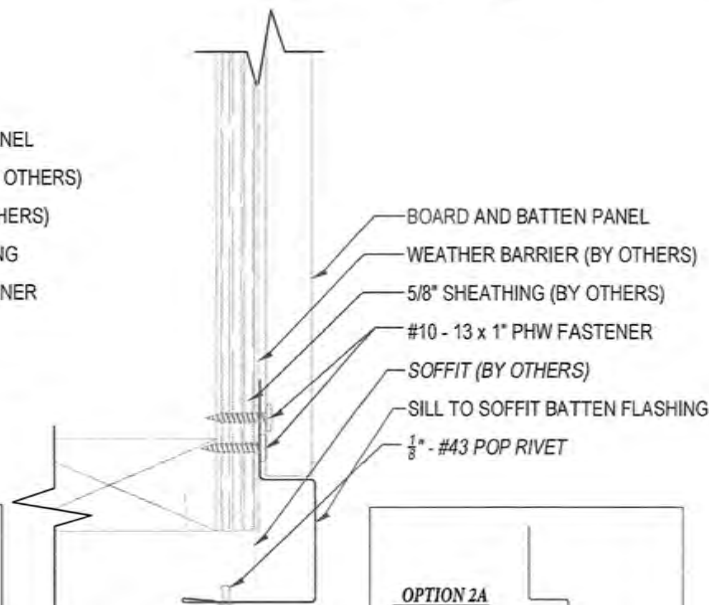
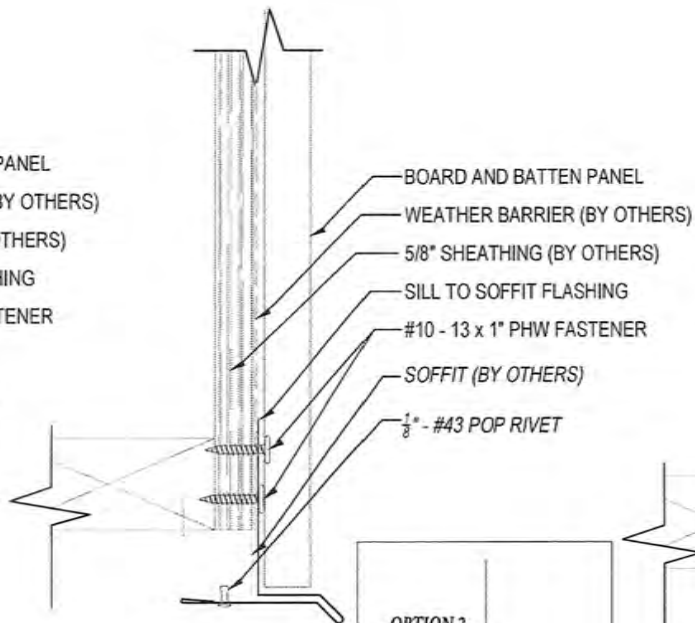
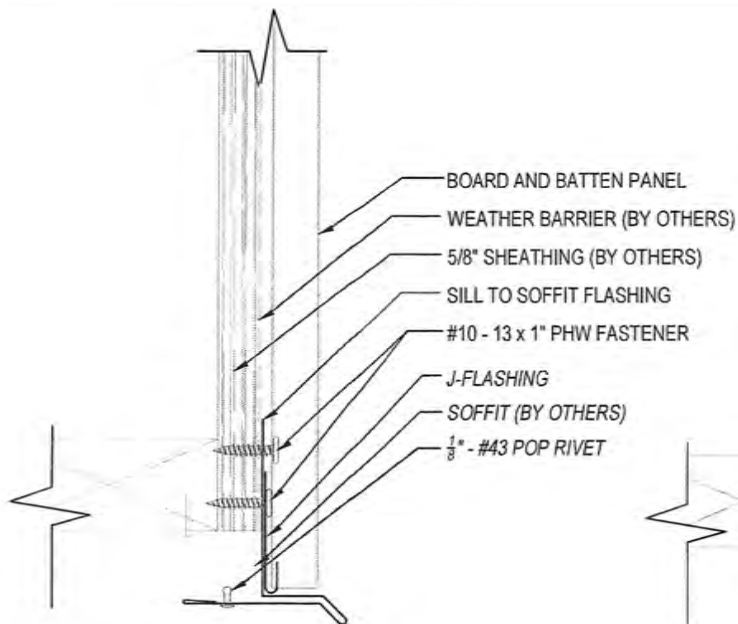
SILL TO SOFFIT - OPTION 1, 2 & 2A (NOA)

VERTICAL APPLICATION (9 OF 11)

BOARD AND BATTEN PANEL

KEYNOTES:

- FASTENERS MUST PENETRATE WOOD SUBSTRATE BY 5/8" MINIMUM THREAD LENGTH



SCALE: 4" = 1'-0"



UNLESS OTHERWISE SPECIFIED:		NAME	DATE
NOTES:			
1. MATERIAL USAGE - 3 5/8" APPROX.	DRAWN	JR	11/14/24
2. MATERIALS FORMED:	CHECKED	BB	11/14/24
- 26GA. AND 24GA. GRADE 50 STEEL	ENG APPR.		
- 0.027" AND 0.032" ALUMINUM	MFG APPR.		
3. DIMENSIONS IN BRACKETS ARE FOR REFERENCE ONLY	Q.A.		

PRODUCT APPROVED
as complying with the Florida
Building Code
NOA-No. 24-0717.06

DO NOT SCALE DRAWING Approval Date 02/20/2025

By *[Signature]*
Miami-Dade Product Control



PRINT NAME
BOARD AND BATTEN PROFILE

SHEET 9 OF 11

BOARD AND BATTEN - WOOD SUBSTRATE DETAILS

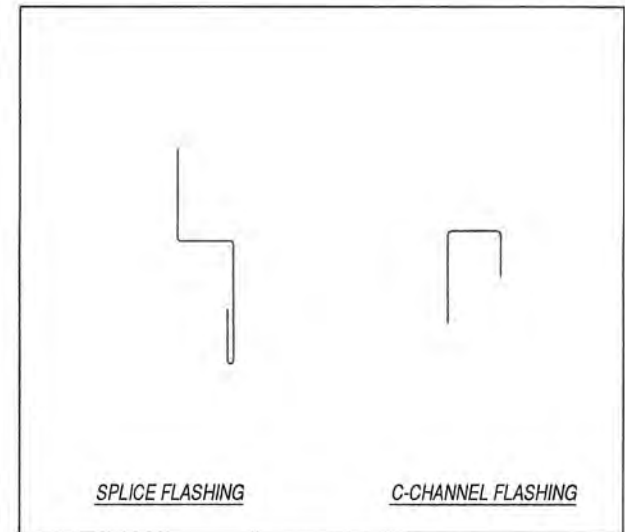
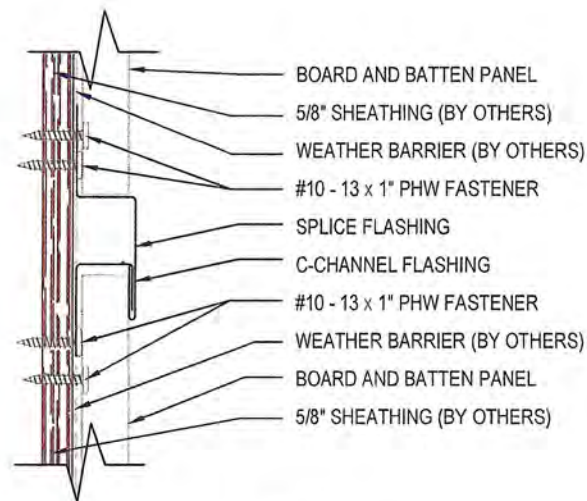
SPLICE (NOA)

VERTICAL APPLICATION (10 OF 11)

BOARD AND BATTEN PANEL

KEYNOTES:

- FASTENERS MUST PENETRATE WOOD SUBSTRATE BY 5/8" MINIMUM THREAD LENGTH



PRODUCT APPROVED
as complying with the Florida
Building Code

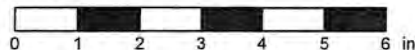
NOA-No. 24-0717.06


Approval Date 02/20/2025

By *[Signature]*
Miami-Dade Product Control



SCALE: 4" = 1'-0"



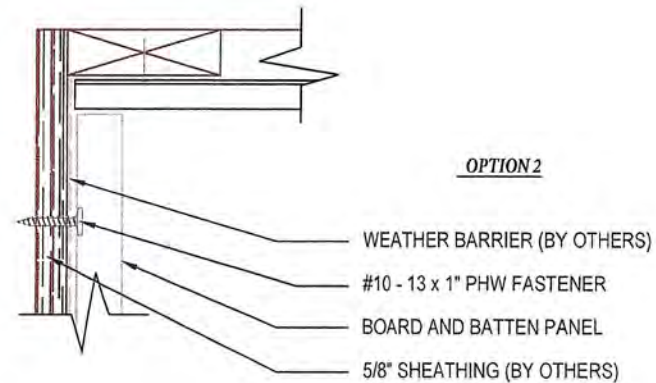
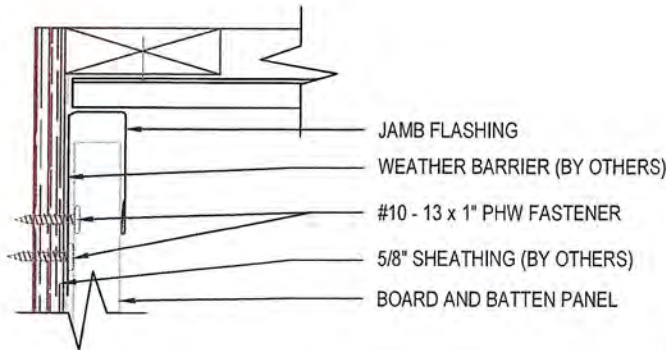
UNLESS OTHERWISE SPECIFIED:		NAME	DATE
NOTES: 1. MATERIAL USAGE - 3 5/8" APPROX. 2. MATERIALS FORMED: - 26GA. AND 24GA. GRADE 50 STEEL - 0.027" AND 0.032" ALUMINUM 3. DIMENSIONS IN BRACKETS ARE FOR MM AND ARE PROVIDED FOR REFERENCE ONLY	DRAWN	JR	11/14/24
	CHECKED	BB	11/14/24
	ENG APPR.		
	MFG APPR.		
	Q.A.		
DO NOT SCALE DRAWING		<div><div>PAC-CLAD</div><div>PETERSEN</div><div>CARUSLS</div></div> <div>PRINT NAME BOARD AND BATTEN PROFILE</div> <div>SHEET 10 OF 11</div>	

BOARD AND BATTEN - WOOD SUBSTRATE DETAILS WALL TO SOFFIT - OPTION 1 & 2 (NOA) VERTICAL APPLICATION (11 OF 11)

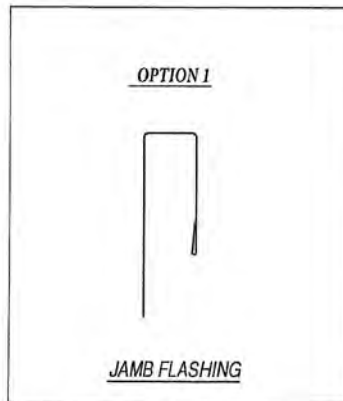
BOARD AND BATTEN PANEL

KEYNOTES:

- FASTENERS MUST PENETRATE WOOD SUBSTRATE BY 5/8" MINIMUM THREAD LENGTH



OPTION 2



OPTION 1

JAMB FLASHING



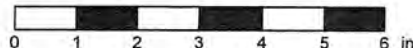
PRODUCT APPROVED
as complying with the Florida
Building Code

NOA-No. 24-0717.06

Approval Date 02/20/2025

By *[Signature]*
Miami-Dade Product Control

SCALE: 4" = 1'-0"



UNLESS OTHERWISE SPECIFIED:		NAME	DATE
NOTES: 1. MATERIAL USAGE - 3 5/8" APPROX. 2. MATERIALS FORMED: - 26GA. AND 24GA. GRADE 50 STEEL - 0.02" AND 0.032" ALUMINUM 3. DIMENSIONS IN BRACKETS ARE FOR REFERENCE ONLY	DRAWN	JR	11/14/24
	CHECKED	BB	11/14/24
	ENG APPR.		
	MFG APPR.		
	Q.A.		
DO NOT SCALE DRAWING			
		PRINT NAME BOARD AND BATTEN PROFILE	
		SHEET 11 OF 11	