



DEPARTMENT OF REGULATORY AND ECONOMIC RESOURCES (RER)
BOARD AND CODE ADMINISTRATION DIVISION

NOTICE OF ACCEPTANCE (NOA)

Custom Impact Doors, LLC

3401 N. Federal HWY 207

Boca Raton, FL 33431

SCOPE:

This NOA is being issued under the applicable rules and regulations governing the use of construction materials. The documentation submitted has been reviewed and accepted by Miami-Dade County RER -Product Control Section to be used in Miami Dade County and other areas where allowed by the Authority Having Jurisdiction (AHJ).

This NOA shall not be valid after the expiration date stated below. The Miami-Dade County Product Control Section (In Miami Dade County) and/or the AHJ (in areas other than Miami Dade County) reserve the right to have this product or material tested for quality assurance purposes. If this product or material fails to perform in the accepted manner, the manufacturer will incur the expense of such testing and the AHJ may immediately revoke, modify, or suspend the use of such product or material within their jurisdiction. RER reserves the right to revoke this acceptance, if it is determined by Miami-Dade County Product Control Section that this product or material fails to meet the requirements of the applicable building code.

This product is approved as described herein and has been designed to comply with the Florida Building Code, including the High Velocity Hurricane Zone.

DESCRIPTION: Moderna Series Outswing glazed Wood Doors-L.M.I.

APPROVAL DOCUMENT: Drawing No. **24-063** (former **20-077**), titled "Moderna Series Outswing glazed Wood Door", sheets 1 through 12 of 12, dated July 17, 2018 and last revised on 06/01/2024, prepared by PPMF, Inc., signed and sealed by Pedro M. De Figueiredo, P.E., bearing the Miami-Dade County Product Control Renewal stamp with the Notice of Acceptance number and expiration date by the Miami-Dade County Product Control Section.

MISSILE IMPACT RATING: Large and Small Missile Impact Resistant

Limitations:

1. See sheet **1** for Design Pressure & configurations. See sheets 2 thru 5 for installations.
2. Partial Raised Wood panel (wood panel per sheets **2, 3 & 4**) is **limited** to max. **25-7/8"** W x **45"** H.
3. Min 3ksi concrete required at head/sill installation.

LABELING: Each unit shall bear a permanent label with the manufacturer's name or logo, **Mistik Trade S.A.C., Lima, Peru** and series and following statement: "Miami-Dade County Product Control Approved", noted herein.

RENEWAL of this NOA shall be considered after a renewal application has been filed and there has been no change in the applicable building code negatively affecting the performance of this product.

TERMINATION of this NOA will occur after the expiration date or if there has been a revision or change in the materials, use, and/or manufacture of the product or process. Misuse of this NOA as an endorsement of any product, for sales, advertising or any other purposes shall automatically terminate this NOA. Failure to comply with any section of this NOA shall be cause for termination and removal of NOA.

ADVERTISEMENT: The NOA number preceded by the words Miami-Dade County, Florida, and followed by the expiration date may be displayed in advertising literature. If any portion of the NOA is displayed, then it shall be done in its entirety.

INSPECTION: A copy of this entire NOA shall be provided to the user by the manufacturer or its distributors and shall be available for inspection at the job site at the request of the Building Official.

This NOA **revises & renews** NOA #**21-0106.05** and consists of this page 1 and evidence pages E-1, E-2 and E-3, as well as approval document mentioned above.

The submitted documentation was reviewed by **Ishaq I. Chanda, P.E.**

Ishaq I. Chanda



NOA No. 24-0719.01
Expiration Date: June 10, 2025
Approval Date: August 22, 2024
Page 1

NOTICE OF ACCEPTANCE: EVIDENCE SUBMITTED

1. Evidence submitted under previous approvals

A. DRAWINGS

1. Manufacturer's parts drawings and sections (submitted under files below)
2. Drawing No. **14-096**, series titled "Outswing Wood Doors Glazed Panels – Large & Small Missile Impact Level", sheets 01 through 12 of 12, dated 09/06/08 with the latest revision dated 10/16/14, prepared by EngCo., Inc., signed and sealed by Pedro De Figueiredo, P. E.

B. TESTS (submitted under files #12-0622.04/#09-0223.03)

1. Test reports on:
 - 1) Air Infiltration Test, per FBC, TAS 202-94
 - 2) Uniform Static Air Pressure Test, Loading per FBC TAS 202-94
 - 3) Water Resistance Test, per FBC, TAS 202-94
 - 4) Large Missile Impact Test per FBC, TAS 201-94
 - 5) Cyclic Wind Pressure Loading per FBC, TAS 203-94
 - 6) Forced Entry Test, per FBC 2411 3.2.1, TAS 202-94

along with marked-up drawings and installation diagram of Outswing Glazed Wood Doors, prepared by American Test Lab of South Florida, Test Report No. **ATLSF 0915.01-06**, dated 09/10/08, signed and sealed by William R. Mehner, P. E., and by Henry Hattem, P. E

C. CALCULATIONS

1. Anchor Calculations and structural analysis, complying with FBC2014(5th edition), prepared by EngCo Inc., dated 05/19/14, signed and sealed by Pedro De Figueiredo, P.E.
2. Glazing complies w/ ASTM E-1300-02, 0

D. QUALITY ASSURANCE

1. Miami Dade Department of Regulatory and Economic Resources (RER).

E. MATERIAL CERTIFICATIONS

1. Notice of Acceptance No. **13-0909.10** issued to Polymer Extrusion Technology Inc., former Nebula Glass International, Inc. dba Glasslam for "Glasslam Safety Plus II Laminated Glass", expiring August 08, 2018.

F. STATEMENTS

1. Statement letter of conformance to FBC 2014(5th Edition), prepared by Engco Inc., dated 10/10/2014, signed and sealed by Pedro M. DeFigueiredo, P.E.
2. Statement letter of conformance to FBC 2010, prepared by Engco Inc., dated 06/09/12, signed and sealed by Pedro M. DeFigueiredo, P.E. (submitted under file # **12-0622.04**).
3. Statement of lab compliance, as part of the test report

G. OTHER

1. This NOA **revises #12-0622.04**, expiring June 10, 2018.
2. Distributor Agreement document in conformance to Product Control guidelines signed by Carlos Nieto (Manufacturer) and Mirtha Abad (Distributor).
3. Test Proposal No. **05-0235R** issued by the BCCO, dated 03/09/06, signed by Ishaq Chanda, P. E.

Ishaq I. Chanda

Ishaq I. Chanda, P.E.
Product Control Unit Supervisor
NOA No. 24-0719.01
Expiration Date: June 10, 2025
Approval Date: August 22, 2024

NOTICE OF ACCEPTANCE: EVIDENCE SUBMITTED

2. Evidence submitted under previous approval

A. DRAWINGS

1. Drawing No. **18-234.1** (former **14-096**), titled “Moderna Series Outswing glazed Wood Door”, sheets 1 through 12 of 12, dated July 17, 2018, prepared by PPMF, Inc., signed and sealed by Pedro M. De Figueiredo, P.E.

B. TESTS

1. None.

C. CALCULATIONS

1. Anchor Calculations and structural analysis, complying with FBC2017(6th edition), prepared by EngCo Inc., dated 04/30/18, signed and sealed by Pedro De Figueiredo, P.E.
2. Glazing complies w/ ASTM E-1300-04 & -09.

D. QUALITY ASSURANCE

1. Miami Dade Department of Regulatory and Economic Resources (RER).

E. MATERIAL CERTIFICATIONS

1. Notice of Acceptance No. **18-0619.01** issued to Polymer Extrusion Laboratory, dba Glasslam for their “**Glasslam Safety Plus II ® Glass Interlayer**”, expiring on 08/07/23.

F. STATEMENTS

1. Statement letter of conformance to **FBC 2017 (6th Edition)**, dated Jul 17, 2018, prepared by PPMF Inc., signed and sealed by Pedro M. De Figueiredo, P. E.
2. Distributor Agreement dated 07-16-18 between Mistik Trade Sac, Peru (manufacturer) and distributor Custom Impact Door, LLC, USA, signed by MS. Mirtha Abad (Manufacturer) and Trasa Valdes (Distributor).

G. OTHER

1. This NOA *revises & renews NOA #14-0606.06*, expiring 06/10/2024.
2. Department of Florida state, active status listing of Custom Impact Doors, LLC.

3. Evidence submitted under previous approval

A. DRAWINGS

1. Drawing No. **20-077** (former **18-234**), titled “Moderna Series Outswing glazed Wood Door”, sheets 1 through 12 of 12, dated July 17, 2018 and last revised on DEC21, 2020, prepared by PPMF, Inc., signed and sealed by Pedro M. De Figueiredo, P.E.

B. TESTS

1. None.

Ishaq I. Chanda

Ishaq I. Chanda, P.E.
Product Control Unit Supervisor
NOA No. 24-0719.01
Expiration Date: June 10, 2025
Approval Date: August 22, 2024

NOTICE OF ACCEPTANCE: EVIDENCE SUBMITTED

C. CALCULATIONS

1. None.

D. QUALITY ASSURANCE

1. Miami Dade Department of Regulatory and Economic Resources (RER).

E. MATERIAL CERTIFICATIONS

1. Notice of Acceptance No. **18-0619.01** issued to Polymer Extrusion Laboratory, dba Glasslam for their “**Glasslam Safety Plus II ® Glass Interlayer**”, expiring on 08/07/23.

F. STATEMENTS

1. Statement letter of conformance to **FBC 2020 (7th Edition)**, dated 12/11/20, prepared by PPMF Inc., signed and sealed by Pedro M. De Figueiredo, P. E.
2. Distributor Agreement dated 07-16-18 between Mistik Trade Sac, Peru (manufacturer) and distributor Custom Impact Door, LLC, USA, signed by MS. Mirtha Abad (Manufacturer) and Trasa Valdes (Distributor) (submitted under previous approval)

G. OTHER

1. This NOA *revises* **NOA #18-0430.01**, expiring 06/10/2024.
2. Florida Department of State, Division of Corporation, active status (listing # L18000166370) for Custom Impact Doors, LLC.

Ishaq I. Chanda

Ishaq I. Chanda, P.E.
Product Control Unit Supervisor
NOA No. 24-0719.01
Expiration Date: June 10, 2025
Approval Date: August 22, 2024

NOTICE OF ACCEPTANCE: EVIDENCE SUBMITTED

4. New Evidence submitted

A. DRAWINGS

1. Drawing No. **24-063** (former **20-077**), titled “Moderna Series Outswing glazed Wood Door”, sheets 1 through 12 of 12, dated July 17, 2018 and last revised on 06/01/2024, prepared by PPMF, Inc., signed and sealed by Pedro M. De Figueiredo, P.E.

Note: This is renewal with No change, except FBC 2023 (8th Edition) note update.

B. TESTS

1. None.

C. CALCULATIONS

1. None.

D. QUALITY ASSURANCE

1. Miami Dade Department of Regulatory and Economic Resources (RER).

E. MATERIAL CERTIFICATIONS

1. Notice of Acceptance No. **24-0611.06** issued to Polymer Extrusion Laboratory, dba Glasslam for their “**Glasslam Safety Plus II ® Glass Interlayer**”, expiring on 08/07/28.

F. STATEMENTS

1. Statement letter of conformance to **FBC 2023 (8th Edition)**, dated 06/01/24, prepared by PPMF Inc., signed and sealed by Pedro M. De Figueiredo, P. E.
2. Distributor Agreement dated 07-16-18 between Mistik Trade Sac, Peru (manufacturer) and distributor Custom Impact Door, LLC, USA, signed by MS. Mirtha Abad (Manufacturer) and Trasa Valdes (Distributor) (submitted under previous approval)

G. OTHER

1. This NOA *revises & renews* **NOA #21-0106.05** *conditionally for one-year*, expiring 06/10/2025.
2. Florida Department of State, Division of Corporation, active status verified on 08/07/24 for (listing # L18000166370) for the Custom Impact Doors, LLC.

Ishaq I. Chanda

Ishaq I. Chanda, P.E.
Product Control Unit Supervisor
NOA No. 24-0719.01
Expiration Date: June 10, 2025
Approval Date: August 22, 2024

TABLE OF CONTENTS:

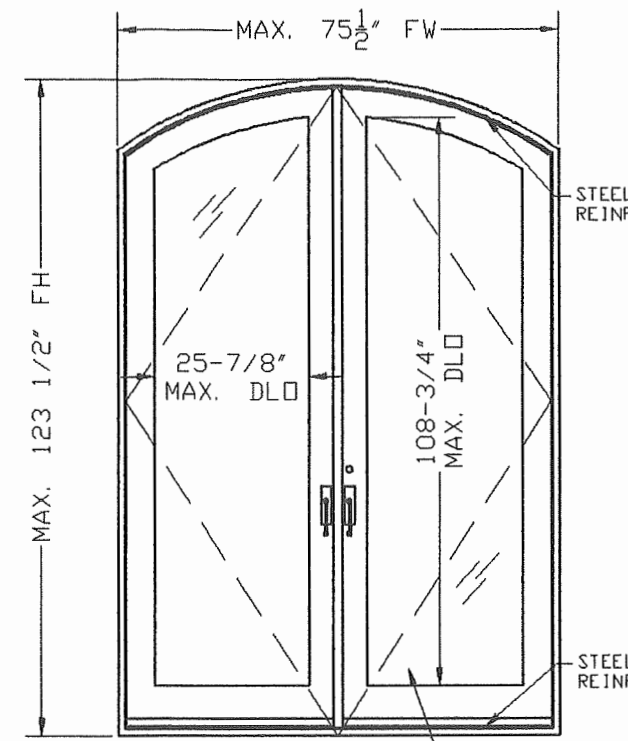
SHEET	DESCRIPTION
1 of 12	GENERAL NOTES & MODEL TYPES
2 of 12	MODEL A ELEVATIONS
3 of 12	MODEL B ELEVATIONS
4 of 12	MODEL C ELEVATIONS
5 of 12	MODEL C1 ELEV.
6 of 12	TYPICAL SECTIONS
7 of 12	TYPICAL SECTIONS
8 of 12	FRAMING ANCHORAGE
9 of 12	CLADDING OPTIONS
10 of 12	SASH OPTIONS, ARCH SASH ASSEMBLY
11 of 12	SASH & FRAMING ASSEMBLY
12 of 12	COMPONENTS.

GENERAL NOTES:

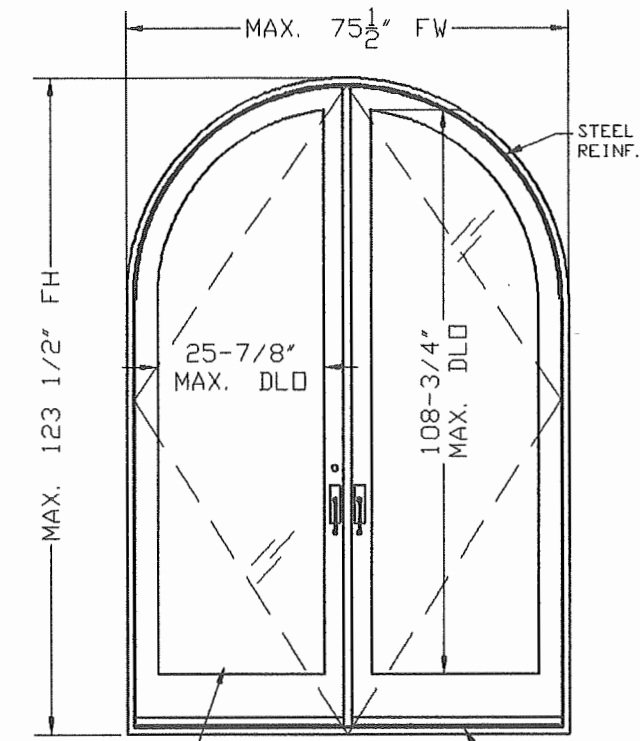
FLORIDA BUILDING CODE 2023 (8th EDITION) HVHZ
LARGE & SMALL MISSILE IMPACT RATED

- 1- CODE: THIS PRODUCT HAS BEEN TESTED AND DESIGNED IN COMPLIANCE WITH THE FLORIDA BUILDING CODE 2023 - 8TH EDITION, HIGH VELOCITY HURRICANE ZONE (HVHZ).
- 2- DEFINITION: THIS PRODUCT IS A MAHOGANY WOOD TYPE DOOR DESIGNED, CONSTRUCTED AND TESTED TO PROVIDE PROTECTION FROM HURRICANE FORCE WINDS AND WIND BORNE DEBRIS (LARGE AND SMALL MISSILE) WITHIN THE ALLOWABLE DESIGNED PRESSURES AND LIMITATIONS STATED IN THIS APPROVAL.
- 3- POSTING:

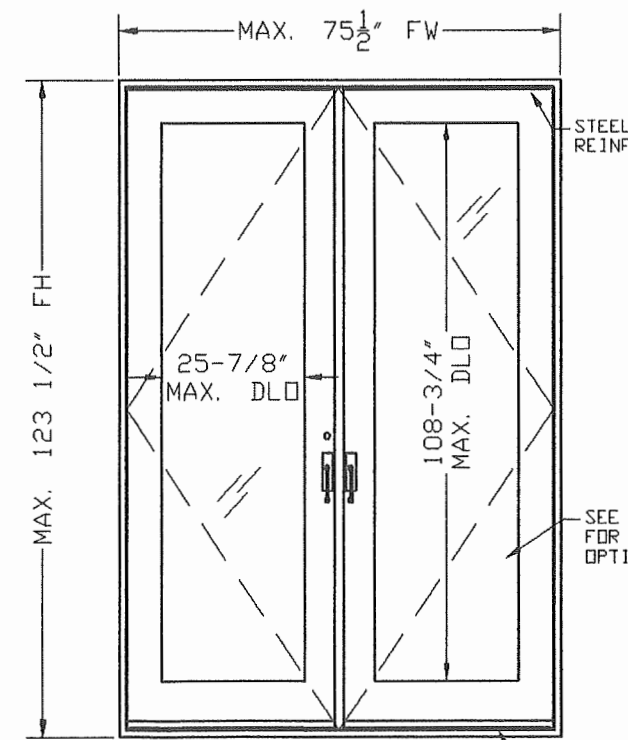
"CUSTOM IMPACT DOORS LLC
OUTSWING GLAZED WOOD DOOR
MODERNA SERIES - LMI
MIAMI-DADE COUNTY PRODUCT CONTROL APPROVED"
- 4- LOADS: DESIGNED LOAD CALCULATED BASED ON THE ASCE 7-22 AND PROVIDED BY A PROFESSIONAL ARCHITECT OR ENGINEER FOR EACH SPECIFIC PROJECT. THE CALCULATED DESIGNED PRESSURE MUST NOT EXCEED THE ALLOWABLE PRESSURES HERE IN SPECIFIED. THE DESIGN PRESSURES, AS DETERMINED FROM ASCE 7-22, ARE TO BE MULTIPLE BY 0.6
- 5- MATERIAL: GLAZING TO BE IMPACT LAMINATED GLASS AS SPECIFIED ON THIS APPROVAL.
- 6- FASTENERS: ASSEMBLY SCREWS AND ANCHORS SHALL BE AS SPECIFIED IN THE CURRENT SET OF DRAWINGS. INSTALLATION AND LOADS AS PER THIS APPROVAL. ANCHOR QUANTITY & SPACING MUST NOT EXCEED THE MAXIMUM LIMITS SPECIFIED BY THIS APPROVAL.
- 7- USE: IT SHALL BE THE RESPONSIBILITY OF THE CONTRACTOR, ARCHITECT OR ENGINEER OF RECORD TO VERIFY THE FOLLOWING:
 - 7.1- THE STABILITY OF THE STRUCTURE WHERE THE PRODUCT IS TO BE ATTACHED INSURING PROPER ANCHORAGE.
 - 7.2- THE SITE SPECIFIC PROJECT CRITERIA, SUCH AS BUT NOT LIMITED TO, LOCAL CODE REQUIREMENTS, DESIGNED PRESSURES ETC.
 - 7.3- THAT THIS APPROVAL IS ADEQUATE TO THE SPECIFIC PROJECT.
- 8- 33 1/3% INCREASE IN ALLOWABLE LOADS HAVE NOT BEEN USED IN THE DESIGN OF THE ANCHORS FOR THIS PRODUCT APPROVAL, HOWEVER, WOOD SCREWS WITH 1.6 INCREASE FOR WIND LOAD DURATION HAVE BEEN USED.
- 9- WOOD SPECIES: ALL WOOD PARTS SHALL BE TRUE MAHOGANY WITH THE MINIMUM SPECIFIC GRAVITY OF $G=0.45$ OR ANY NATURALLY DURABLE WOOD IN COMPLIANCE WITH THE MINIMUM GRADE 2 AND THE SPECIFIC GRAVITY GREATER THAN $G>0.45$.
- 10- PROTECTION: ALL WOOD IN CONTACT WITH MASONRY AND/OR WITH CONCRETE, ETC., SHALL BE TREATED AND PROTECTED PER FLORIDA BUILDING CODE SECTIONS 2411.3.3.3, 2304.12. USING "ENVIRON END SEALER" ACRYLIC URETHANE WATER REPELLENT WOOD PRESERVATIVE AS MANUFACTURED BY PPG INDUSTRIES, INC.



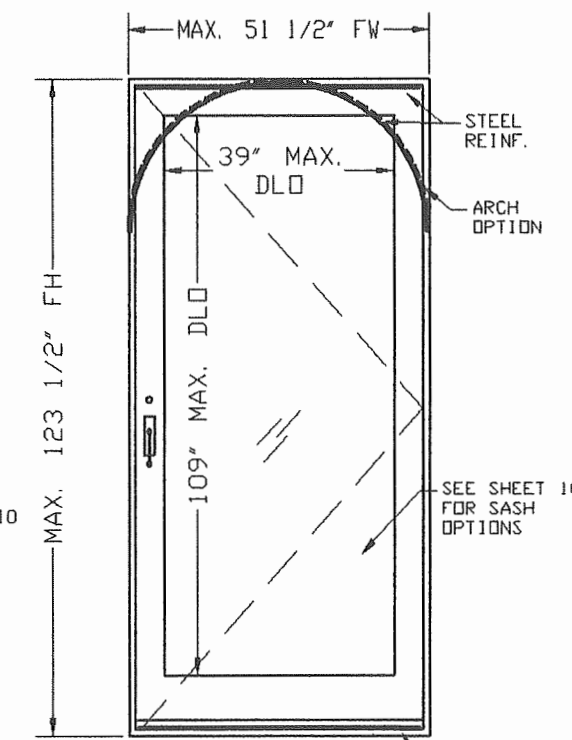
MODEL A
ELLIPSE DOOR
DP= ±70 PSF
FOR MODEL A DETAILS REFER TO:
SHEET 2 of 12



MODEL B
FULL ARCHED DOOR
DP= ±70 PSF
FOR MODEL B DETAILS REFER TO:
SHEET 3 of 12



MODEL C
SQUARE PAIR SWING-OUT DOOR
DP= ±70 PSF
FOR MODEL C DETAILS REFER TO:
SHEET 4 of 12



MODEL C1
48" SINGLE SWING-OUT DOOR
DP= ±70 PSF
FOR MODEL C1 DETAILS REFER TO:
SHEET 5 of 12

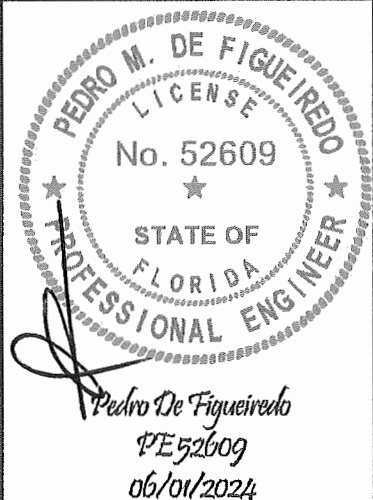
MANUFACTURER:

**CUSTOM IMPACT
DOORS LLC**

3401 N. FEDERAL HWY 207
BOCA RATON, FL 33431
PH: (954) 804-1757
E-MAIL: FROBLE52210@GMAIL.COM

PRODUCT:

**OUTSWING GLAZED
WOOD DOORS**
MODERNA SERIES
LARGE & SMALL MISSILE
IMPACT LEVEL



PPMF Inc.
ENGINEERING SERVICES - CA 32459
631 SEAPORT BLVD.
CAPE CANAVERAL FL 32920
PPMF@AOL.COM

MIAMI-DADE BCCO:

PRODUCT RENEWED
as complying with the Florida
Building Code
NOA-No. 24-0719.01

Expiration Date 06/10/2025

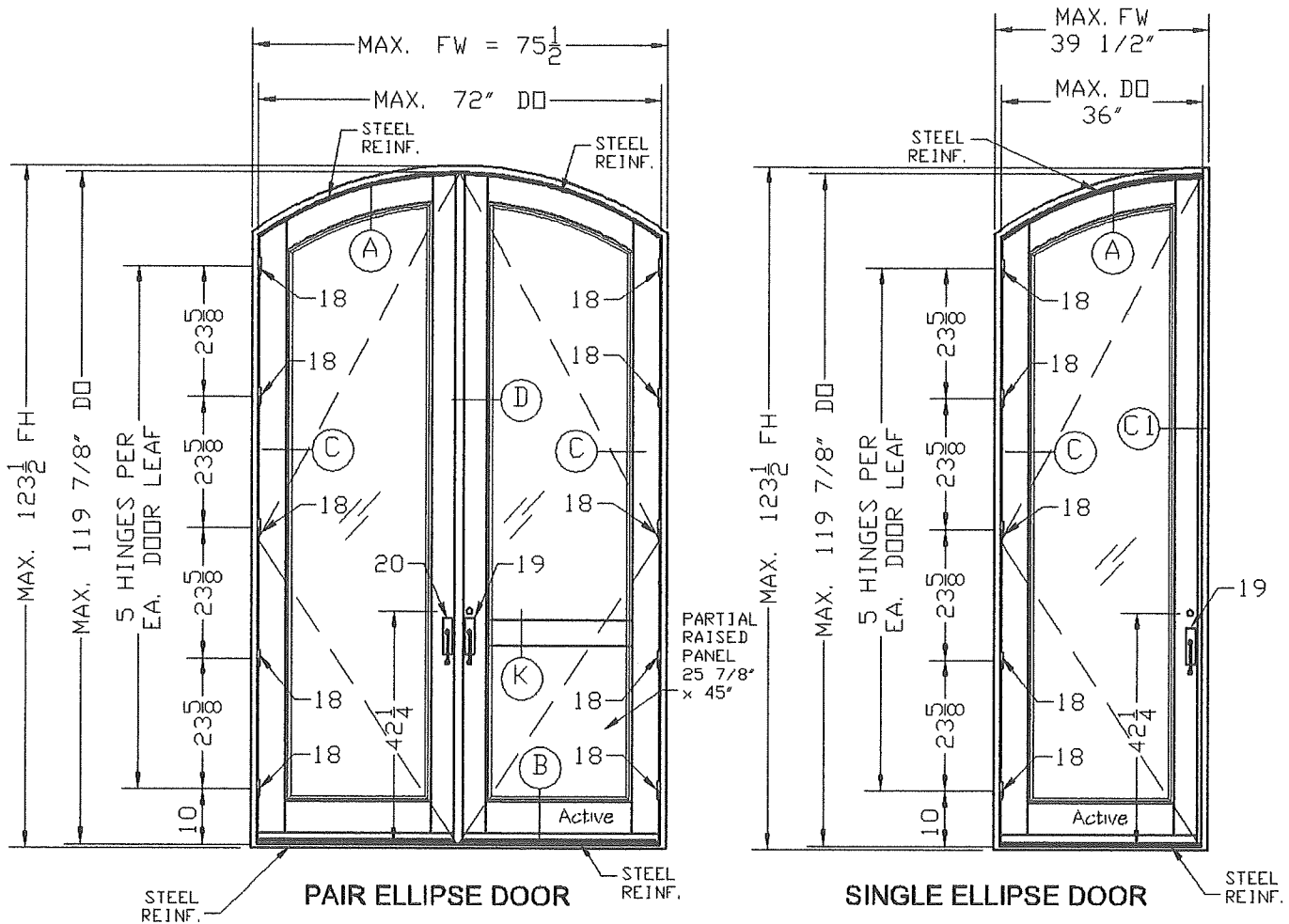
By Ismael L. Chanda
Miami-Dade Product Control

DATE: 06/01/2024
SCALE: NA
DESIGN BY: PPMF

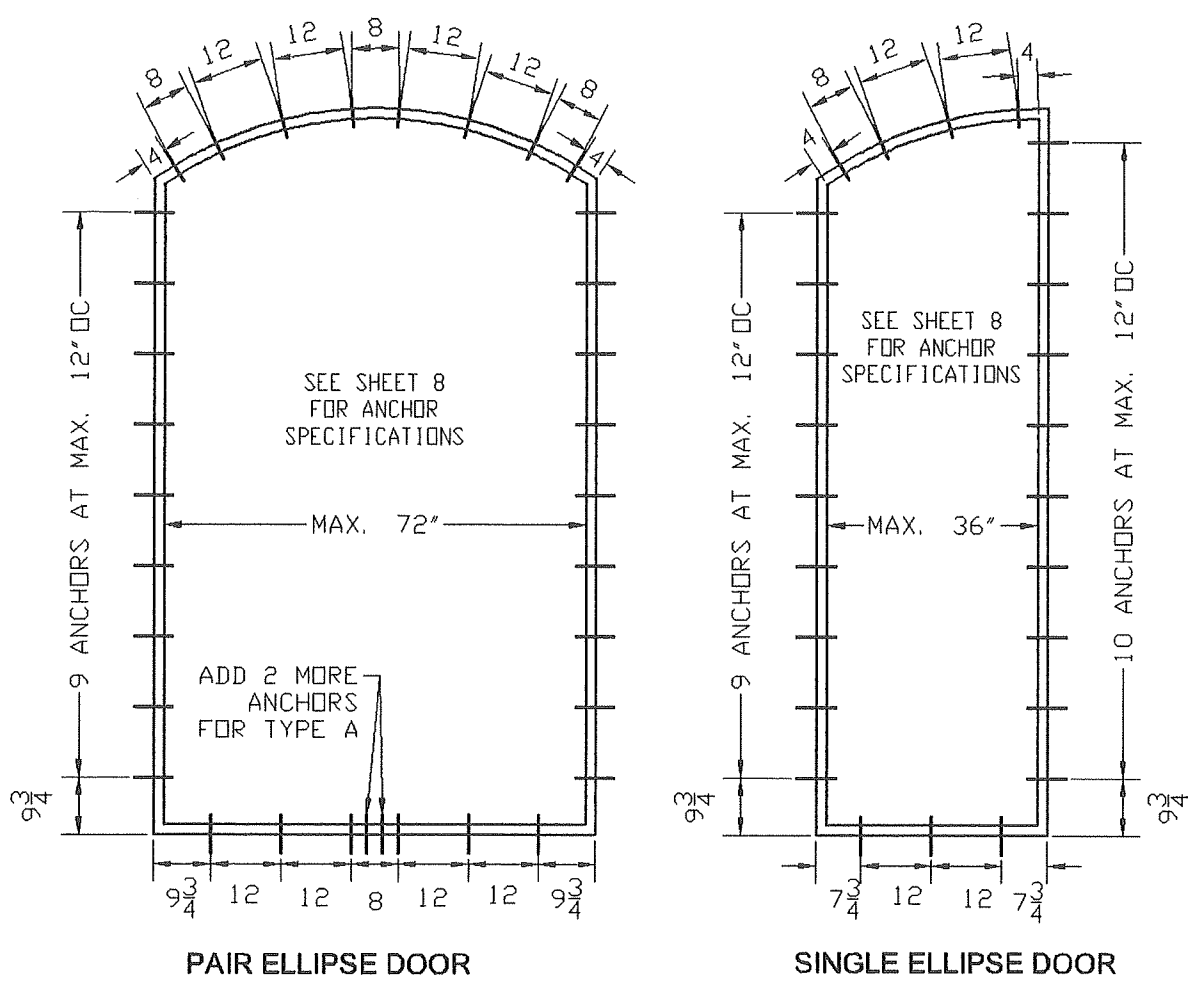
SHEET
1 OF 12

DRAWING #:
24-063

MODEL A - TYPICAL ELEVATIONS



MODEL A - TYPICAL FRAME ANCHORAGE



MODEL A
ELLIPSE SWING-OUT DOOR
SINGLE DOOR (MAX. 36"X119 7/8")
PAIR DOOR (MAX. 72"X119 7/8")
DESIGNED LOADS
PD= ±70 PSF

HINGE NOTE
HINGES QUANTITY CAN BE REDUCED
FROM 5 TO 4 PER LEAF
FOR DOORS WITH:
MAXIMUM 98 3/4" FRAME HEIGHT
AND MAXIMUM ±70 PSF PRESSURE

HARDWARE SCHEDULE

HINGES <18>: (5 PER LEAF) 5X5 HAGER BB 1279 ATTACHED TO THE DOOR STILE WITH (4) #12X1-1/4" PFHWS AND ATTACHED TO THE JAMB WITH (4) #10X1-1/4" PFHWS
LOCK ACTIVE SASH <19>: W&F TRILENNIUM 3500 SERIES FIVE POINT LOCK SYSTEM, W/ 1" THROW AT TOP AND BOTTOM. LOCK SYSTEM WAS FASTENED TO LOCK STILE WITH (11) #10X1-1/2" PFHWS. DOUBLE STRIKE PLATE LOCATED ON FRAME HEAD & SILL SECURED BY (5) #8X1-1/4" PFHWS EACH. LOCK INSTALLED WITH (1) W&F ECLIPSE HANDLE ON BOTH SIDES WITH 42-1/4" FROM KEYHOLE TO BOTTOM RAIL.
INACTIVE STILE <20>: W&F TRILENNIUM 3020 SERIES TWO POINT LOCK SYSTEM, W/ 1" THROW AT TOP AND BOTTOM, LOCATED AT 42-1/4" TO DEAD BOLT FROM BOTTOM RAIL WITH (1) W&F ECLIPSE HANDLE ON BOTH SIDES OF THE LOCK STILE. LOCK SYSTEM WAS FASTENED TO LOCK STILE WITH (2) #10X1-1/2" PFHWS, LOCATED AT 2-1/4" FROM DOOR TOP AND BOTTOM RAILS AND (9) #10-2-1/4" PFHWS. (3) STRIKE PLATES ON THE INACTIVE DOOR ASTRAGAL LOCATED 15", 24-1/4", 53-1/4" FROM THE BOTTOM RAIL FASTENED WITH (3) #10-2-1/4" PFHWS EACH.

MANUFACTURER:
CUSTOM IMPACT DOORS LLC
3401 N. FEDERAL HWY 207
BOCA RATON, FL 33431
PH: (954) 804-1757
E-MAIL: FROBLES2210@GMAIL.COM

PRODUCT:
OUTSWING GLAZED WOOD DOORS
MODERNA SERIES
LARGE & SMALL MISSILE IMPACT LEVEL

PEDRO M. DE FIGUEIREDO
LICENSE
No. 52609
STATE OF FLORIDA
PROFESSIONAL ENGINEER
Pedro De Figueiredo
PE 52609
06/01/2024

PPMF Inc.
ENGINEERING SERVICES - CA 32459
631 SEAPORT BLVD.
CAPE CANAVERAL FL 32920
PPMF@AOL.COM

MIAMI-DADE BCCO:
PRODUCT RENEWED
as complying with the Florida Building Code
NOA-No. 24-0719.01
Expiration Date 06/10/2025
By *Ishaq I. Chank*
Miami-Dade Product Control

DATE: 06/01/2024
SCALE: NA
DESIGN BY: PPMF

SHEET 2 OF 12
DRAWING #: 24-063

[illegible][illegible]

SINGLE DOOR (MAX. 36"X119 7/8")
PAIR DOOR (MAX. 72"X119 7/8")
DESIGNED LOADS
PD= ±70 PSF

HINGE NOTE
HINGES QUANTITY CAN BE REDUCED
FROM 5 TO 4 PER LEAF
FOR DOORS WITH:
MAXIMUM 98 3/4" FRAME HEIGHT
AND MAXIMUM ±70 PSF PRESSURE

<p>HINGES <18>: <5 or 6 PER LEAF> 5X5 HAGER BB 1279 ATTACHED TO THE DOOR STILE WITH <4> #10X2-1/4" PFHWS AND ATTACHED TO THE JAMB WITH <4> #10X1-1/4 PFHWS.</p>
<p>LOCK ACTIVE SASH <19>: W&F TRILENNIUM 3500 SERIES FIVE POINT LOCK SYSTEM, W/ 1" THROW AT TOP AND BOTTOM. LOCK SYSTEM WAS FASTENED TO LOCK STILE WITH <11> #10X1-1/2" PFHWS. DOUBLE STRIKE PLATE LOCATED ON FRAME HEAD & SILL SECURED BY <9> #8X1-1/4 PFHWS EACH. LOCK INSTALLED WITH <1> W&F ECLIPSE HANDLE ON BOTH SIDES WITH 42-1/4" FROM KEYHOLE TO BOTTOM RAIL.</p>
<p>INACTIVE STILE <20>: W&F TRILENNIUM 3020 SERIES TWO POINT LOCK SYSTEM, W/ 1" THROW AT TOP AND BOTTOM, LOCATED AT 42-1/4" TO DEAD BOLT FROM BOTTOM RAIL WITH <1> W&F ECLIPSE HANDLE ON BOTH SIDES OF THE LOCK STILE. LOCK SYSTEM WAS FASTENED TO LOCK STILE WITH <2> #10X1-1/2 PFHWS, LOCATED AT 2-1/4" FROM DOOR TOP AND BOTTOM RAILS AND <9> #10-2-1/4" PFHWS. <3> STRIKE PLATES ON THE INACTIVE DOOR ASTRAGAL LOCATED 15-1/4", 24-1/4, 53-1/4" FROM THE BOTTOM RAIL FASTENED WITH <3> #10-2-1/4 PFHWS EACH.</p>

MANUFACTURER:

CUSTOM IMPACT
DOORS LLC

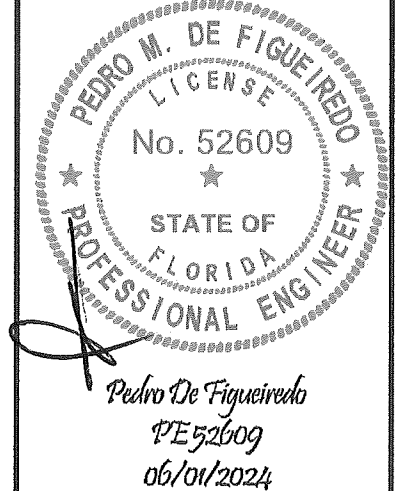
3401 N. FEDERAL HWY 207
BOCA RATON, FL 33431
PH: (954) 804-1757
E-MAIL: FROBLES2210@GMAIL.COM

PRODUCT:

OUTSWING GLAZED
WOOD DOORS

MODERNA SERIES

LARGE & SMALL MISSILE
IMPACT LEVEL



PPMF Inc.
ENGINEERING SERVICES - CA 32459
631 SEAPORT BLVD.
CAPE CANAVERAL FL 32920
PPMF@AOL.COM

MIAMI-DADE BCCO:

PRODUCT RENEWED
as complying with the Florida
Building Code
NOA-No. 24-0719.01
Expiration Date 06/10/2025
By Isaac L. Chan
Miami-Dade Product Control

DATE: 06/01/2024
SCALE: NA
DESIGN BY: PPMF

SHEET 3 OF 12	DRAWING #: 24-063
------------------	----------------------

Technical drawings of two door configurations, (A) and (B), showing dimensions and components.

Configuration (A) - Left:

- Overall height: MAX. 123 1/2" FH
- Overall width: MAX. FW = 75 1/2"
- Door opening height: MAX. 119 7/8" DO
- Door opening width: MAX. 72" DO
- Number of hinges per door leaf: 5
- Panel dimensions: 18" (width), 26" (height), 10" (bottom offset), 41 3/8" (total height)
- Labels: A, C, D, K, B, Active
- Components: STEEL REINF., PARTIAL RAISED PANEL 25 7/8" x 45"

Configuration (B) - Right:

- Overall height: MAX. 123 1/2" FH
- Overall width: MAX. FW = 39 1/2"
- Door opening height: MAX. 119 7/8" DO
- Door opening width: MAX. 36" DO
- Number of hinges per door leaf: 5
- Panel dimensions: 18" (width), 26" (height), 10" (bottom offset), 41 3/8" (total height)
- Labels: A, C, D, K, B, Active
- Component: STEEL REINF.

MODEL C
SQUARE SWING-OUT DOOR
SINGLE DOOR (MAX. 36" X 119 7/8")
PAIR DOOR (MAX. 72" X 119 7/8")
DESIGNED LOADS
PD= ±70 PSF

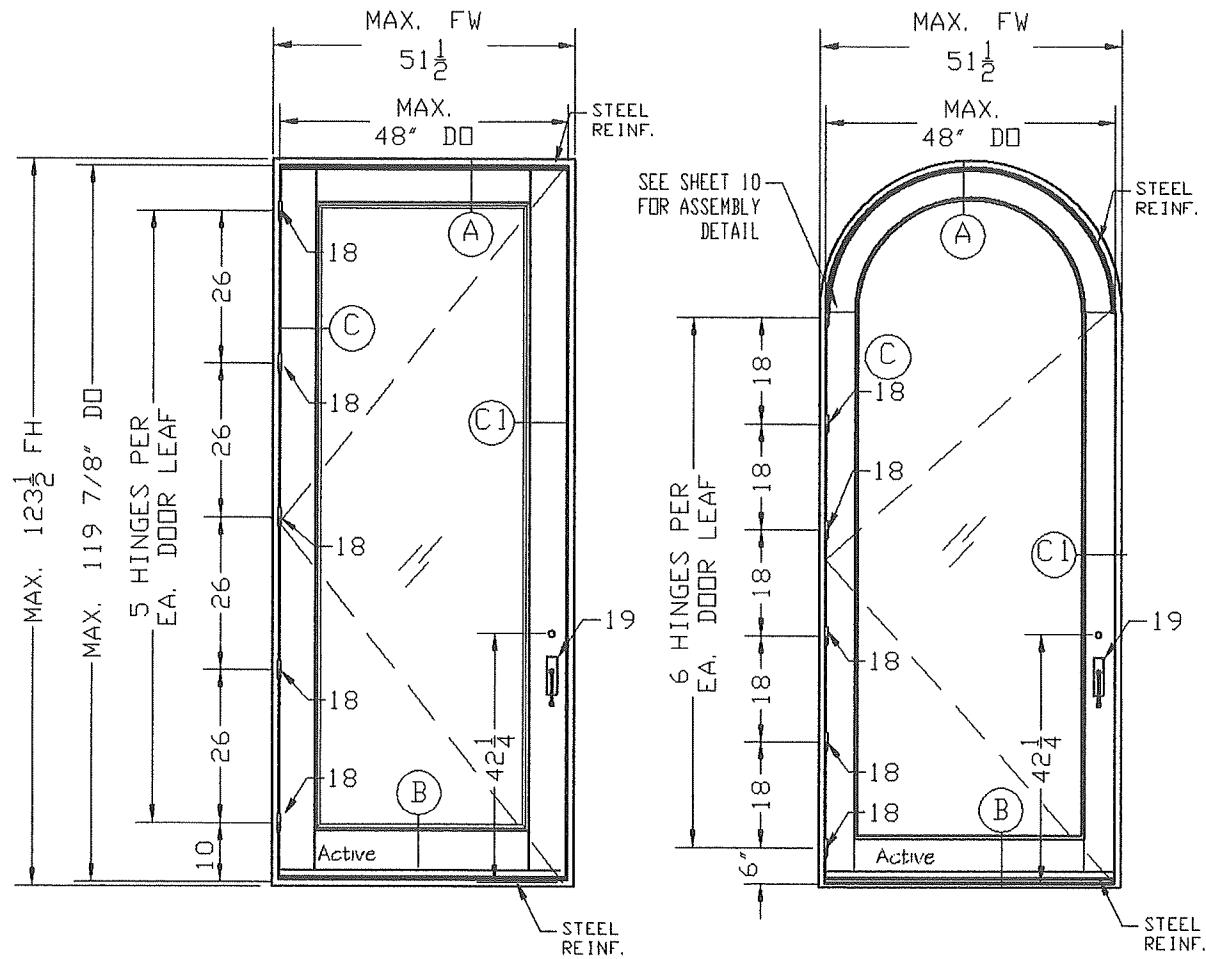
HINGES $\langle 18 \rangle$: $\langle 5 \text{ PER LEAF} \rangle$ 5X5 HAGER BB 1279 ATTACHED TO THE DOOR STILE WITH $\langle 4 \rangle$ #12X1-1/4" PFHWS AND ATTACHED TO THE JAMB WITH $\langle 2 \rangle$ #10X2-3/4 PFHWS & $\langle 2 \rangle$ #12X1-1/4" PFHWS.

LOCK ACTIVE SASH $\langle 19 \rangle$: W&F TRILENNIUM 3500 SERIES FIVE POINT LOCK SYSTEM, W/ 1" THROW AT TOP AND BOTTOM. LOCK SYSTEM WAS FASTENED TO LOCK STILE WITH $\langle 11 \rangle$ #10X1-1/2" PFHWS. DOUBLE STRIKE PLATE LOCATED ON FRAME HEAD & SILL SECURED BY $\langle 9 \rangle$ #8X1-1/4 PFHWS EACH. LOCK INSTALLED WITH $\langle 1 \rangle$ W&F ECLIPSE HANDLE ON BOTH SIDES WITH 41 3/8' FROM KEYHOLE TO BOTTOM RAIL.

INACTIVE STILE $\langle 20 \rangle$: W&F TRILENNIUM 3020 SERIES TWO POINT LOCK SYSTEM, W/ 1" THROW AT TOP AND BOTTOM, LOCATED AT 41-3/8" TO DEAD BOLT FROM BOTTOM RAIL WITH $\langle 1 \rangle$ W&F ECLIPSE HANDLE ON BOTH SIDES OF THE LOCK STILE. LOCK SYSTEM WAS FASTENED TO LOCK STILE WITH $\langle 2 \rangle$ #10X1-1/2 PFHWS, LOCATED AT 2-1/4" FROM DOOR TOP AND BOTTOM RAILS AND $\langle 9 \rangle$ #10-2-1/4" PFHWS. $\langle 3 \rangle$ STRIKE PLATES ON THE INACTIVE DOOR ASTRAGAL LOCATED 14-1/2", 38-3/4", 92" FROM THE BOTTOM RAIL FASTENED WITH $\langle 3 \rangle$ #8-1-1/4 PFHWS EACH.

SHEET 4 OF 12	DRAWING #: 24-063
------------------	----------------------

MODEL C1 - TYPICAL ELEVATION



NOTE: PARTIAL RAISED PANEL
LIMITED TO MAXIMUM 36" DOOR PANEL

MODEL C1
48" SINGLE SWING-OUT DOOR
SINGLE DOOR (MAX. 48" X 119 7/8")
DESIGNED LOADS
PD= +70 PSF, -70 PSF

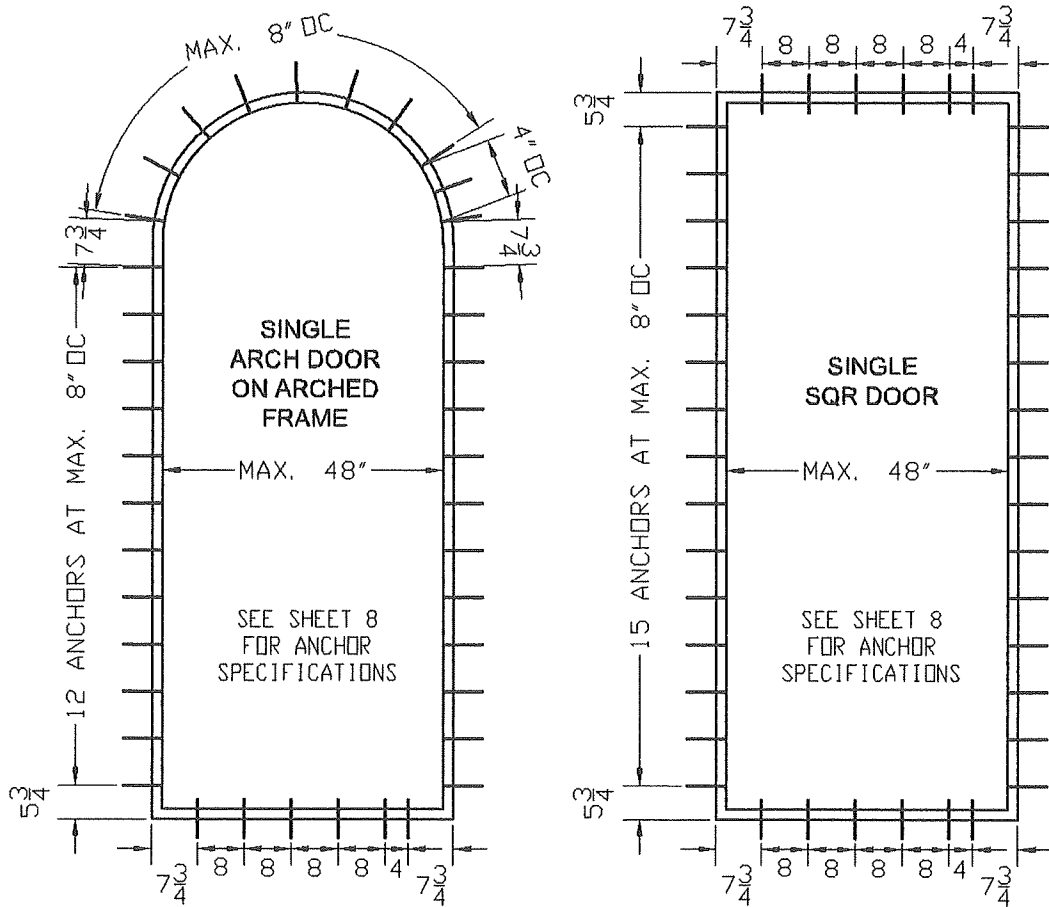
HINGE NOTE
HINGES QUANTITY CAN BE REDUCED
FROM 5 TO 4 PER LEAF
FOR DOORS WITH:
MAXIMUM 97 1/2" FRAME HEIGHT
AND MAXIMUM ±70 PSF PRESSURE

HARDWARE SCHEDULE

HINGES <18>: (5 -SQUARE OR 6 ARCH) 5X5 ROCKY MOUNTAIN HINGE ATTACHED TO THE DOOR STILE WITH (4) #12X1-1/4" PFHWS AND ATTACHED TO THE JAMB WITH (2) #10X2-3/4 PFHWS & (2) #12X1-1/4" PFHWS. THIS HINGE CAN BE USED AS AN ALTERNATE TO HAGER HINGES ON MODELS A, B AND C DOORS.

LOCK ACTIVE SASH <19>: W&F TRILENNIUM 3500 SERIES FIVE POINT LOCK SYSTEM, W/ 1" THROW AT TOP AND BOTTOM. LOCK SYSTEM WAS FASTENED TO LOCK STILE WITH (11) #10X1-1/2" PFHWS. LOCK INSTALLED WITH (1) W&F ECLIPSE HANDLE ON BOTH SIDES WITH 42-1/4" FROM KEYHOLE TO BOTTOM RAIL.
(3) STRIKE PLATES ON THE FRAME JAMB LOCATED 15-18", 39-3/8", 92-5/8" FROM THE SILL FASTENED WITH (3) #10-1-1/2" PFHWS EACH.
(2) STRIKE PLATES ONE AT SILL AND ONE AT HEAD

MODEL C1
TYPICAL FRAME ANCHORAGE



MANUFACTURER:
**CUSTOM IMPACT
DOORS LLC**
3401 N. FEDERAL HWY 207
BOCA RATON, FL 33431
PH: (954) 804-1757
E-MAIL: FROBLE52210@GMAIL.COM

PRODUCT:
**OUTSWING GLAZED
WOOD DOORS**
MODERNA SERIES
LARGE & SMALL MISSILE
IMPACT LEVEL

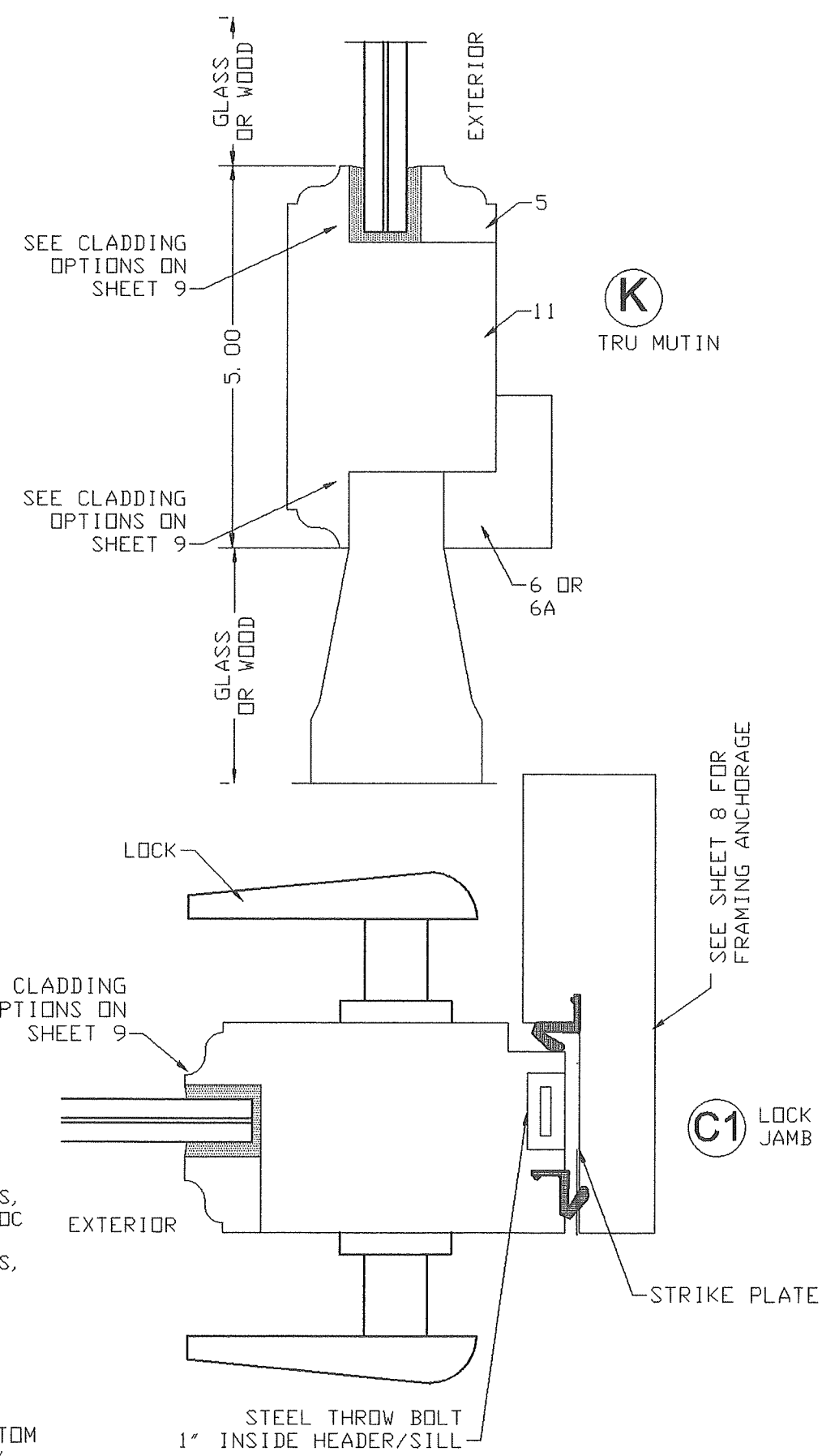
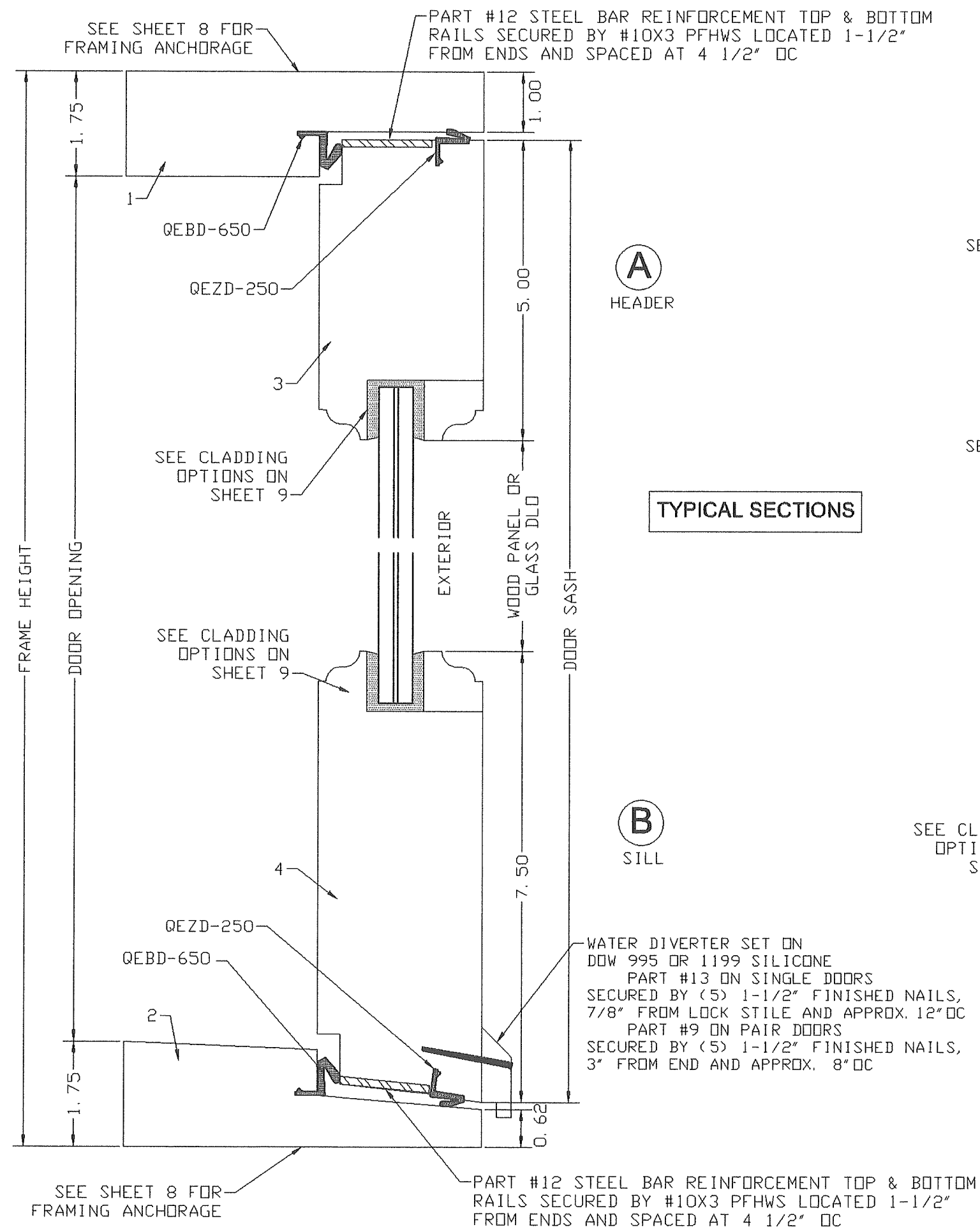
PEDRO M. DE FIGUEIREDO
LICENSE
No. 52609
STATE OF
FLORIDA
PROFESSIONAL ENGINEER
Pedro De Figueiredo
PE 52609
06/01/2024

PPMF Inc.
ENGINEERING SERVICES - CA 32459
631 SEAPORT BLVD.
CAPE CANAVERAL FL 32920
PPMF@AOL.COM

MIAMI-DADE BCCO:
PRODUCT RENEWED
as complying with the Florida
Building Code
NOA-No. 24-0719.01
Expiration Date 06/10/2025
By *Ismael L. Chanda*
Miami-Dade Product Control

DATE: 06/01/2024
SCALE: NA
DESIGN BY: PPMF

SHEET 5 OF 12
DRAWING #: 24-063



MANUFACTURER:

CUSTOM IMPACT DOORS LLC

3401 N. FEDERAL HWY 207
BOCA RATON, FL 33431
PH: (954) 804-1757
E-MAIL: FROBLE52210@GMAIL.COM

PRODUCT:

OUTSWING GLAZED WOOD DOORS
MODERNA SERIES
LARGE & SMALL MISSILE IMPACT LEVEL

PEDRO M. DE FIGUEIREDO
LICENSE
No. 52609
STATE OF FLORIDA
PROFESSIONAL ENGINEER

Pedro De Figueiredo
PE 52609
06/01/2024

PPMF Inc.
ENGINEERING SERVICES - CA 32459
631 SEAPORT BLVD.
CAPE CANAVERAL FL 32920
PPMF@AOL.COM

MIAMI-DADE BCCO:

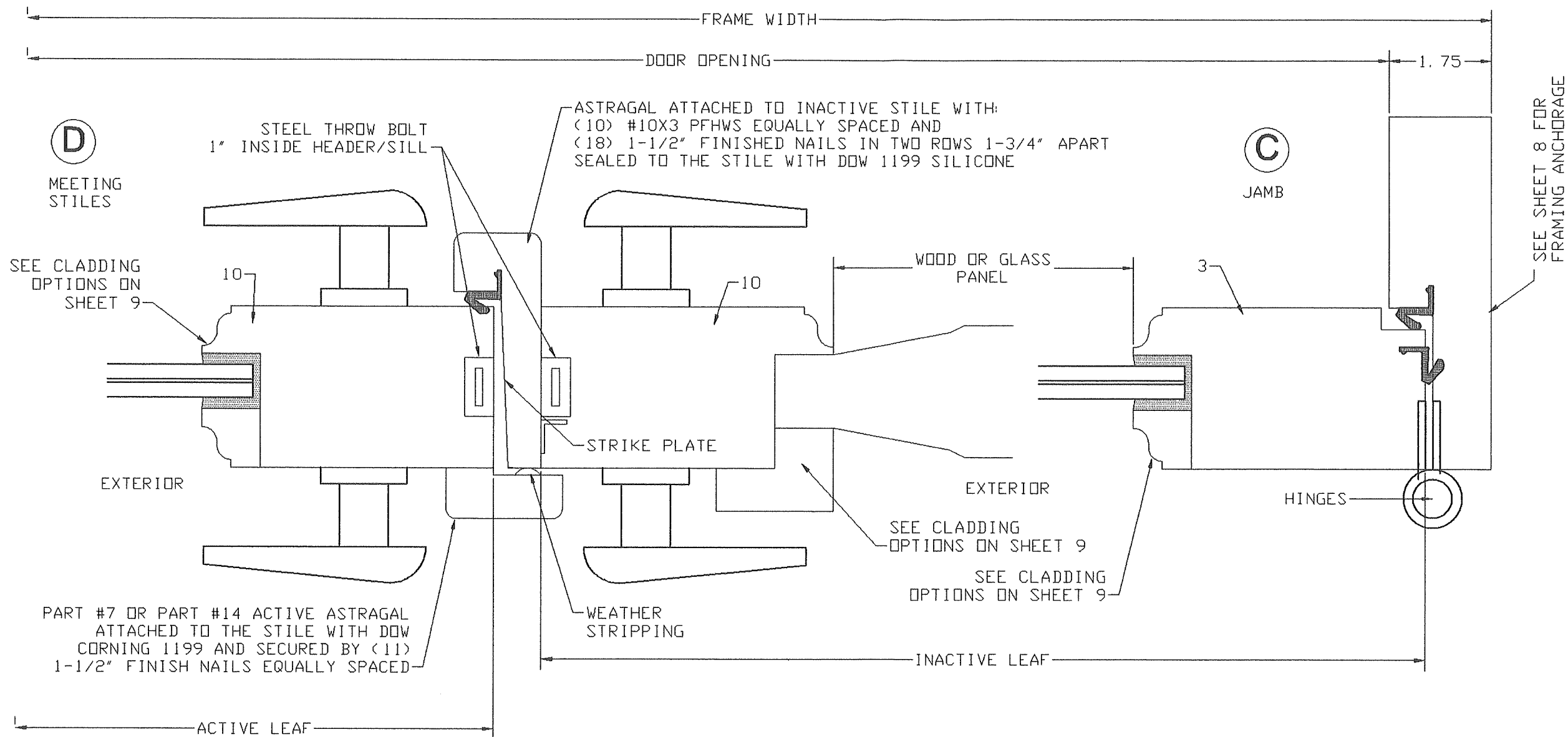
PRODUCT RENEWED
as complying with the Florida Building Code
NOA-No. 24-0719.01
Expiration Date 06/10/2025

By *Ishag I. Chande*
Miami-Dade Product Control

DATE: 06/01/2024
SCALE: NA
DESIGN BY: PPMF

SHEET 6 OF 12

DRAWING #: 24-063



MANUFACTURER:
**CUSTOM IMPACT
DOORS LLC**
3401 N. FEDERAL HWY 207
BOCA RATON, FL 33431
PH: (954) 804-1757
E-MAIL: FROBLE52210@GMAIL.COM

PRODUCT:
**OUTSWING GLAZED
WOOD DOORS**
MODERNA SERIES
LARGE & SMALL MISSILE
IMPACT LEVEL

PEDRO M. DE FIGUEIREDO
LICENSE
No. 52609
STATE OF
FLORIDA
PROFESSIONAL ENGINEER
Pedro De Figueiredo
PE 52609
06/01/2024

PPMF Inc.
ENGINEERING SERVICES - CA 32459
631 SEAPORT BLVD.
CAPE CANAVERAL FL 32920
PPMF@AOL.COM

MIAMI-DADE BCCO:

PRODUCT RENEWED
as complying with the Florida
Building Code
NOA-No. 24-0719.01
Expiration Date 06/10/2025
By *Ishag I. Chande*
Miami-Dade Product Control

DATE: 06/01/2024
SCALE: NA
DESIGN BY: PPMF

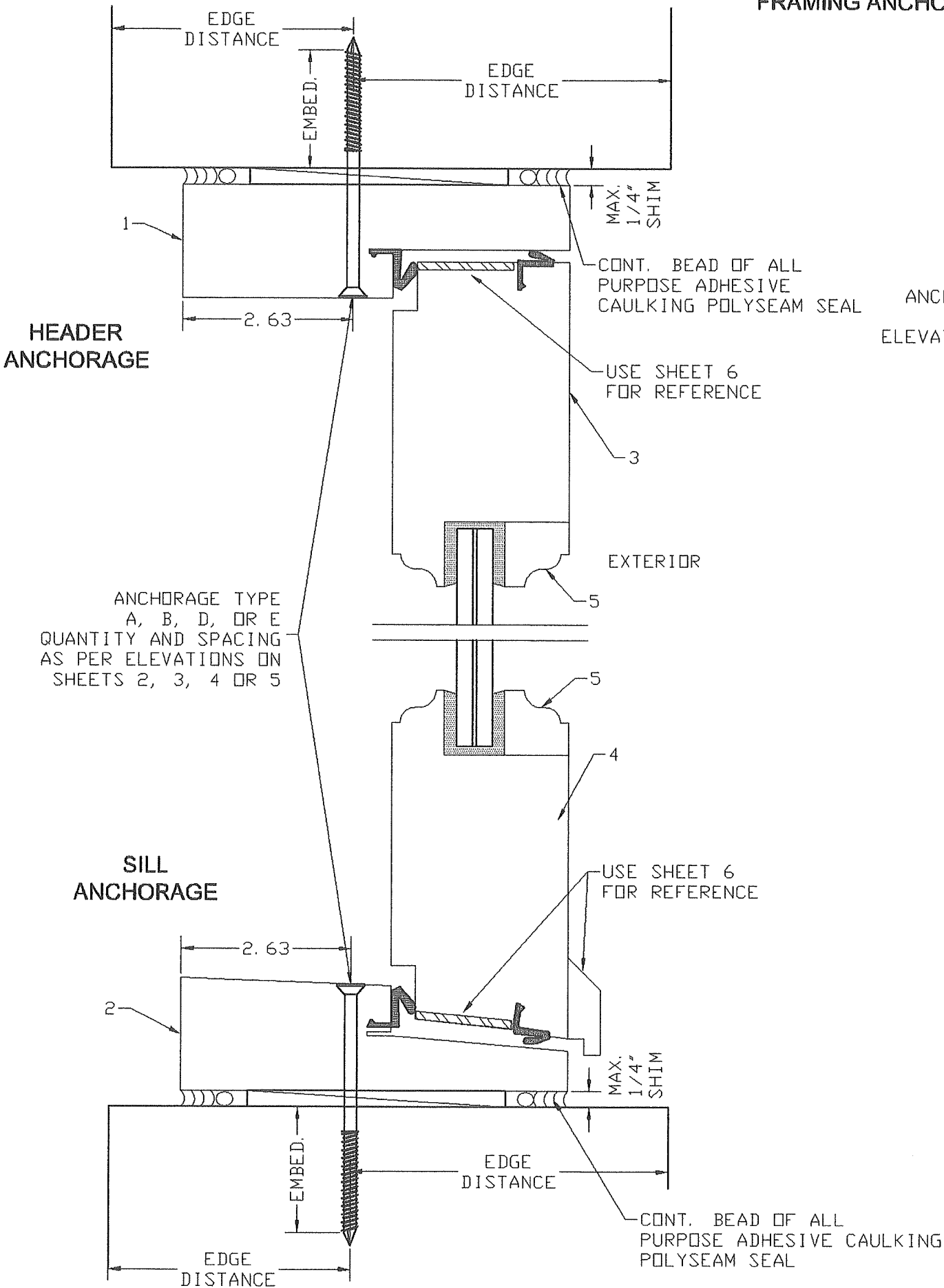
SHEET 7 OF 12
DRAWING #: 24-063

WEATHER STRIPPING

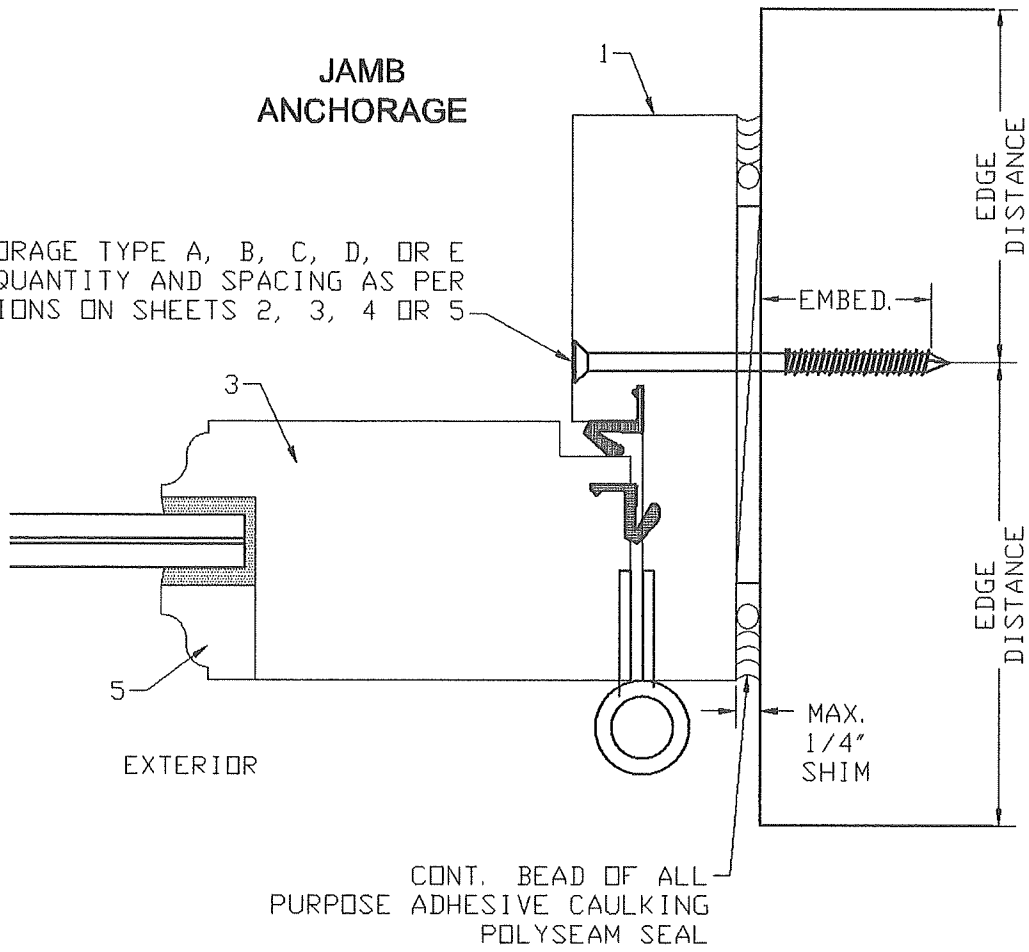
PAIR DOORS:
Q-LON QEZD-250 (1) ROW AT DOOR HINGE STILE AND TOP AND BOTTOM RAILS.
Q-LON QEBD-650 (1) ROW AT THE FRAME HEADER, SILL AND JAMBS AND AT INACTIVE DOOR ASTRAGAL.
QWS-D (U-90) (1) ROW AT THE ACTIVE AND INACTIVE DOOR ASTRAGALS.
SCHLEGEL Q-LON CORNER SEAL AT EACH SILL CORNER

SINGLE DOORS: (Q-LON)
QEZD-250 (1) ROW AT DOOR HINGE AND LOCK STILES AND TOP AND BOTTOM RAILS.
QEBD-875 (1) ROW AT THE FRAME SILL.
QEBD-650 (1) ROW AT THE FRAME HEADER, SILL AND JAMBS.
SCHLEGEL Q-LON CORNER SEAL AT EACH SILL CORNER

FRAMING ANCHORAGE



JAMB ANCHORAGE



ANCHOR NOTES:

- A- INTO 2X WOOD BUCK OR WOOD STRUCTURES (G)=0.55): #10 WOOD SCREWS WITH 1 1/2" PENETRATION 3/4" MIN. EDGE DISTANCE
- B- INTO 2X WOOD BUCK OR WOOD STRUCTURES (G)=0.55): 1/4" DIAM. TAPCONS WITH 1 1/2" PENETRATION 1" MIN. EDGE DISTANCE
- C- DIRECTLY INTO MASONRY (AT JAMBS ONLY) 1/4" DIA TAPCONS WITH 1 1/4" MIN. EMBED 2-1/2" MIN. EDGE DISTANCE
- D- DIRECTLY INTO CONCRETE (MIN. 3192 PSI) 1/4" DIA TAPCONS WITH 1 3/4" MIN. EMBED 2-1/2" MIN. EDGE DISTANCE
- E- INTO MIN. 1/8" METAL STRUCTURES. ASTM A36 STEEL OR 6063-T5 ALUMINUM 1/4" DIA GRADE 5 SELF DRILLING SCREWS 1/2" MIN. EDGE DISTANCE

MANUFACTURER:
CUSTOM IMPACT DOORS LLC
3401 N. FEDERAL HWY 207
BOCA RATON, FL 33431
PH: (954) 804-1757
E-MAIL: FROBLE52210@GMAIL.COM

PRODUCT:
OUTSWING GLAZED WOOD DOORS
MODERNA SERIES
LARGE & SMALL MISSILE IMPACT LEVEL

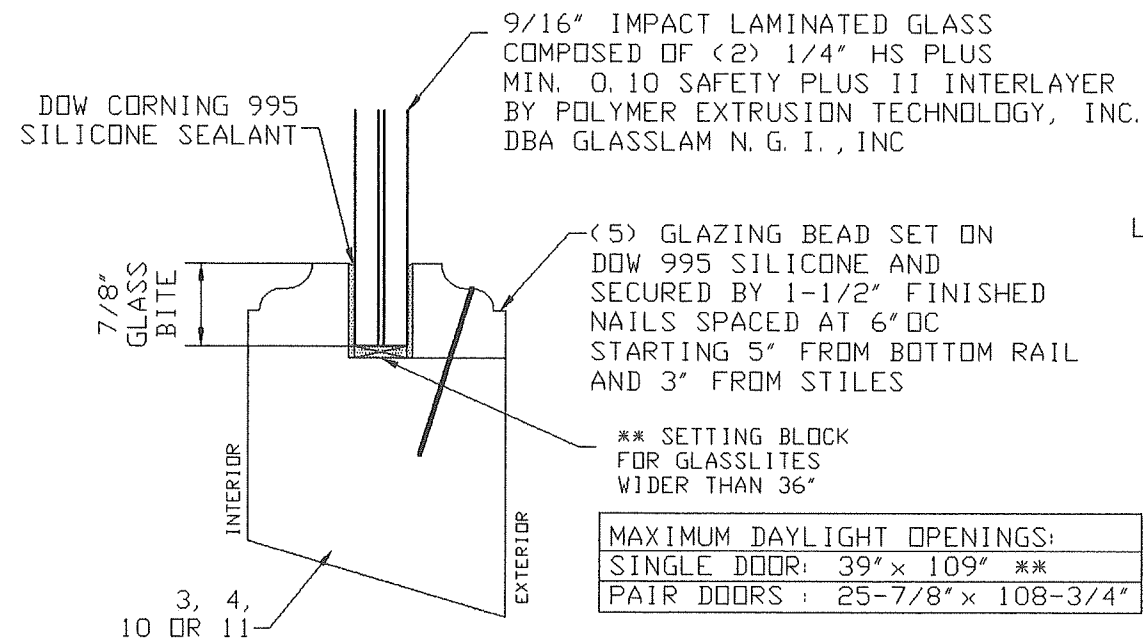
PEDRO M. DE FIGUEIREDO
LICENSE
No. 52609
STATE OF FLORIDA
PROFESSIONAL ENGINEER
Pedro De Figueiredo
PE 52609
06/01/2024

PPMF Inc.
ENGINEERING SERVICES - CA 32459
631 SEAPORT BLVD.
CAPE CANAVERAL FL 32920
PPMF@AOL.COM

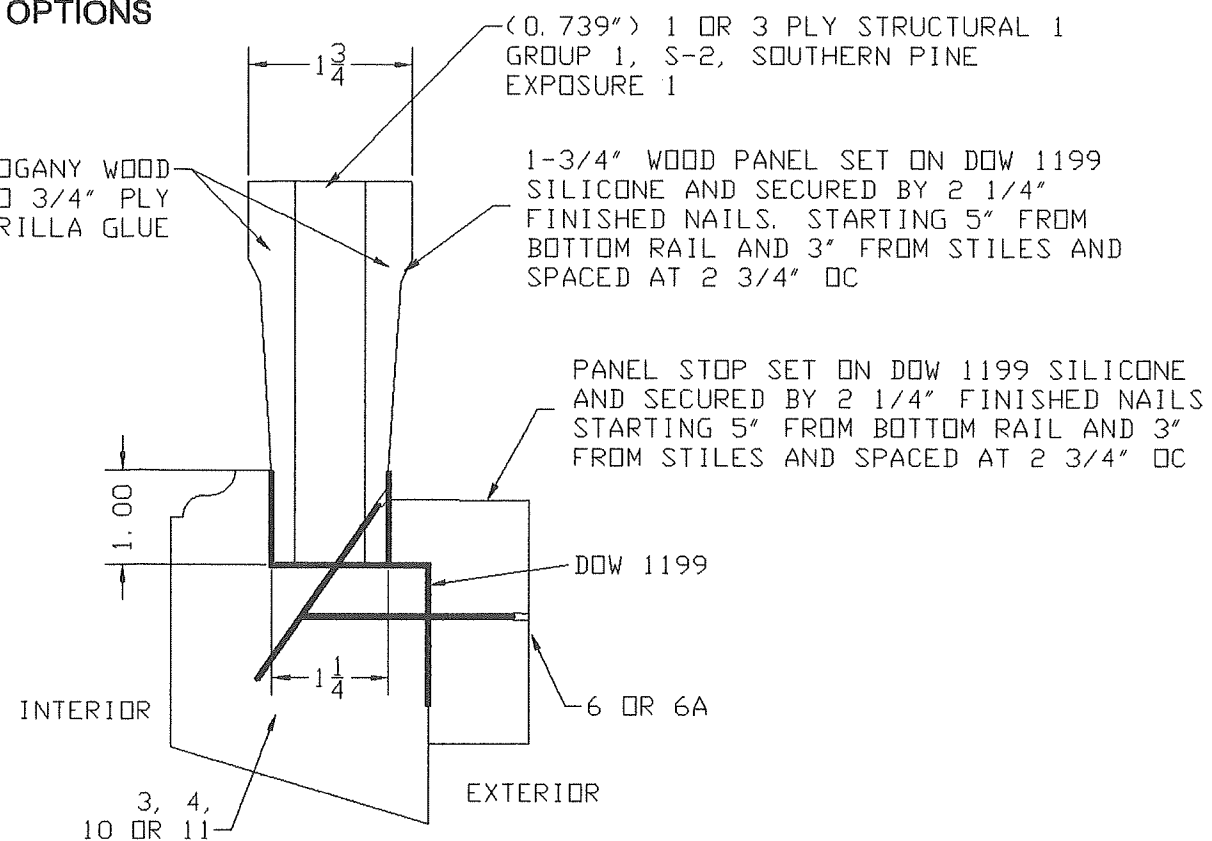
MIAMI-DADE BCCO:
PRODUCT RENEWED
as complying with the Florida Building Code
NOA-No. 24-0719.01
Expiration Date 06/10/2025
By *Ishag I. Chank*
Miami-Dade Product Control

DATE: 06/01/2024
SCALE: NA
DESIGN BY: PPMF

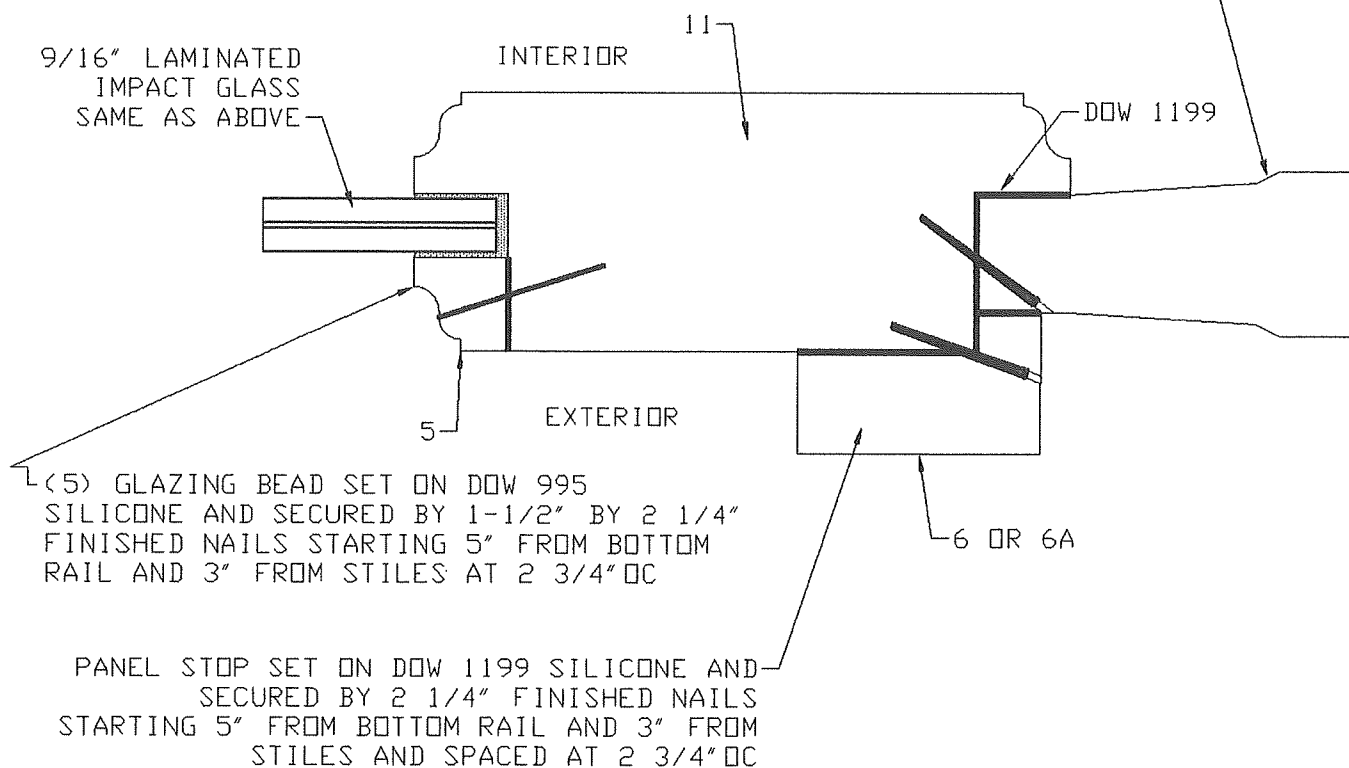
SHEET 8 OF 12
DRAWING #: 24-063



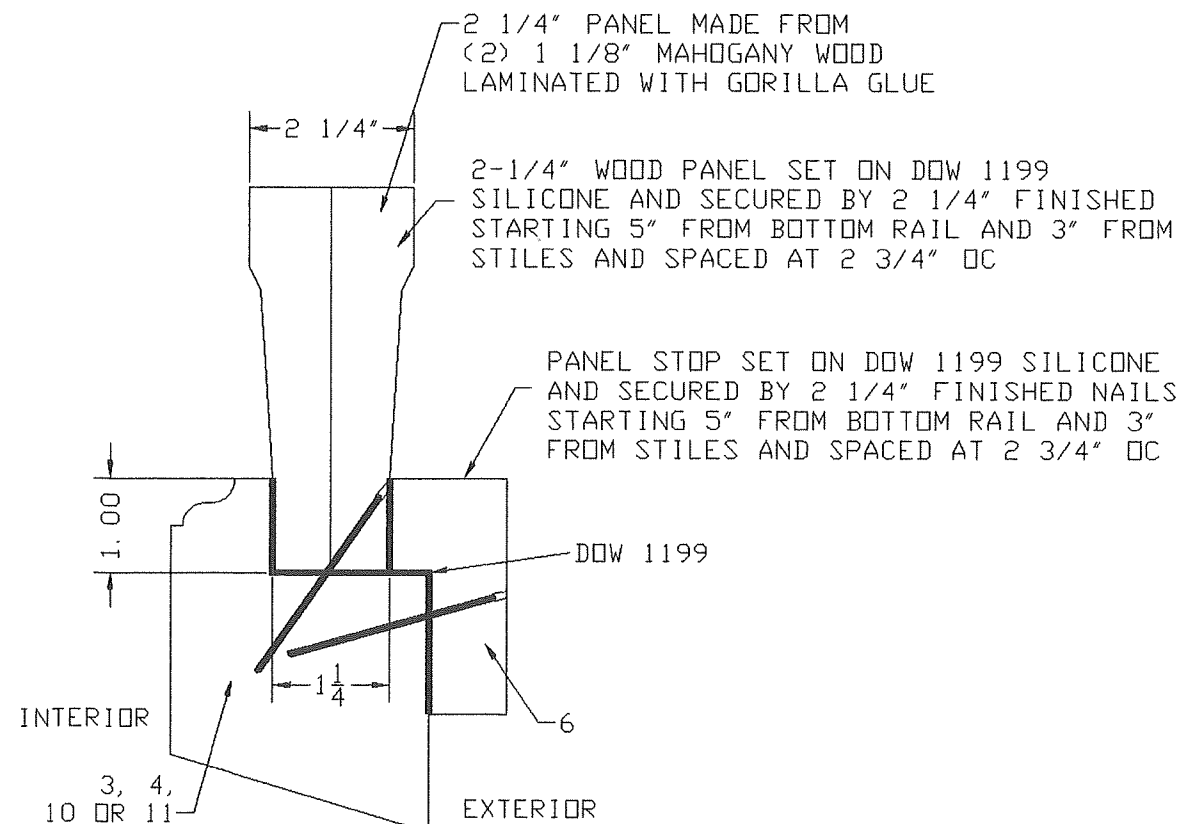
CLADDING OPTIONS



2-1/4" WOOD PANEL OR 1/2" MAHOGANY WOOD LAMINATED TO 3/4" PLY WITH GORILLA GLUE SET ON DOW 1199 SILICONE AND SECURED BY 2 1/4" FINISHED NAILS STARTING 5" FROM BOTTOM RAIL AND 3" FROM STILES AND SPACED AT 2 3/4" OC



FINISHED NAILS NOTE:
7d (0.072") x 2 1/4" FINISHED NAIL TYPE I STYLE 14 (ASTM F1667 NL FH B-06)



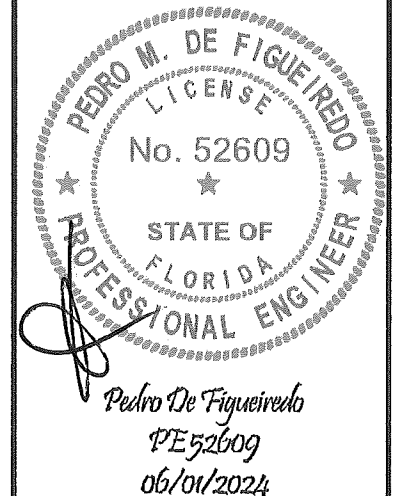
MANUFACTURER:

**CUSTOM IMPACT
DOORS LLC**

3401 N. FEDERAL HWY 207
BOCA RATON, FL 33431
PH: (954) 804-1757
E-MAIL: FROBLE52210@GMAIL.COM

PRODUCT:

**OUTSWING GLAZED
WOOD DOORS**
MODERNA SERIES
LARGE & SMALL MISSILE
IMPACT LEVEL



PPMF Inc.
ENGINEERING SERVICES - CA 32459
631 SEAPORT BLVD.
CAPE CANAVERAL FL 32920
PPMF@AOL.COM

MIAMI-DADE BCCO:

PRODUCT RENEWED
as complying with the Florida
Building Code
NOA-No. 24-0719.01

Expiration Date 06/10/2025

By Ishaq I. Chande
Miami-Dade Product Control

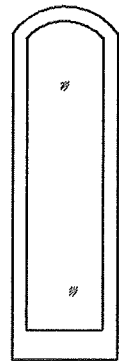
DATE: 06/01/2024
SCALE: NA
DESIGN BY: PPMF

SHEET
9 OF 12

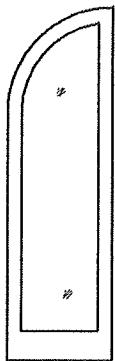
DRAWING #:
24-063

SASH PANEL OPTIONS

GEOMETRIC FORMS



ELLIPTICAL
PANEL



1/2 ARCH
PANEL

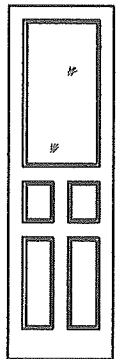


FULL ARCH
PANEL

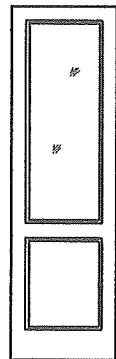


SQUARE
PANEL

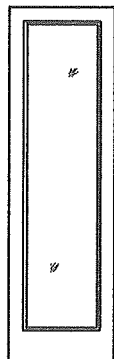
INSERT CONFIGURATIONS FORMS



1 GLASS
4 PANELS
COMBO



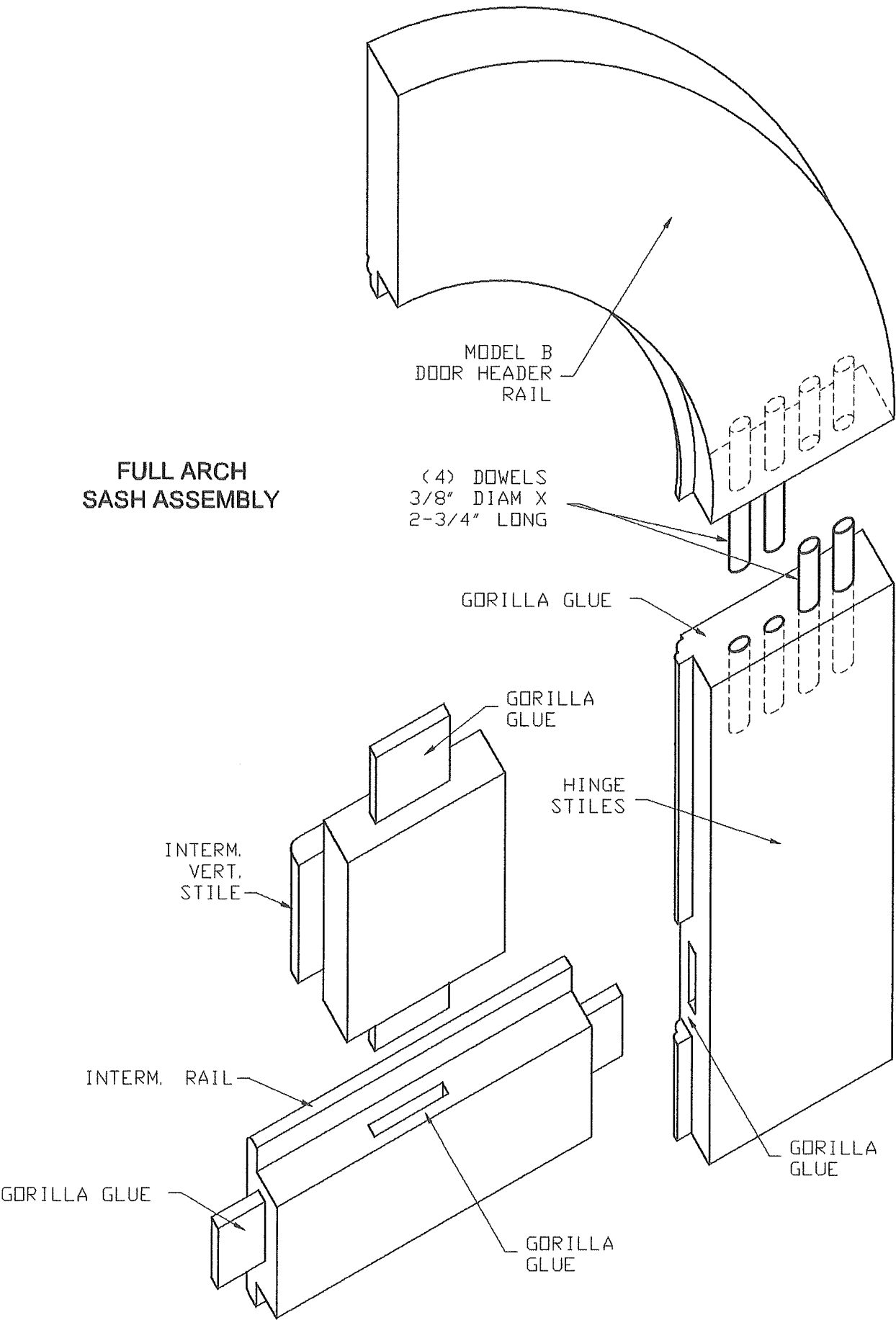
1 GLASS
1 PANEL
COMBO



FULL
GLASS

NOTES:
1- INSERT CONFIGURATIONS CAN BE USED FOR ALL GEOMETRIC FORM OPTIONS ABOVE
2- MAXIMUM DOOR LEAF PANEL SIZES ARE LIMITED BY THE SPECIFIED MAXIMUM OPENING IN THIS APPROVAL.
3- CUSTOM DESIGN PANELS CAN BE ACCOMPLISHED BY OVERLAYING MOLDINGS AND CARVING OVER A SOLID PANEL.

FULL ARCH
SASH ASSEMBLY



MANUFACTURER:

CUSTOM IMPACT
DOORS LLC

3401 N. FEDERAL HWY 207
BOCA RATON, FL 33431
PH: (954) 804-1757
E-MAIL: FROBLES2210@GMAIL.COM

PRODUCT:

OUTSWING GLAZED
WOOD DOORS
MODERNA SERIES
LARGE & SMALL MISSILE
IMPACT LEVEL

PEDRO M. DE FIGUEIREDO
LICENSE
No. 52609
STATE OF
FLORIDA
PROFESSIONAL ENGINEER

Pedro De Figueiredo
PE 52609
06/01/2024

PPMF Inc.
ENGINEERING SERVICES - CA 32459
631 SEAPORT BLVD.
CAPE CANAVERAL FL 32920
PPMF@AOL.COM

MIAMI-DADE BCCO:

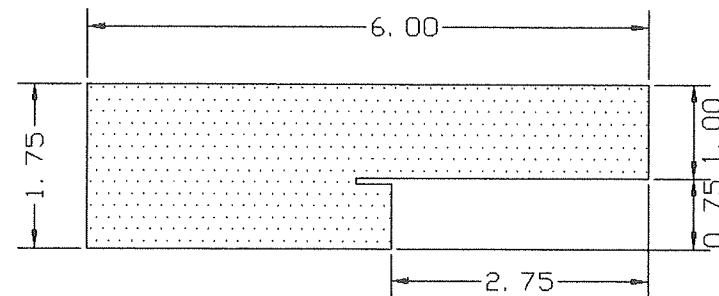
PRODUCT RENEWED
as complying with the Florida
Building Code
NOA-No. 24-0719.01
Expiration Date 06/10/2025
By Ishag I. Chanda
Miami-Dade Product Control

DATE: 06/01/2024
SCALE: NA
DESIGN BY: PPMF

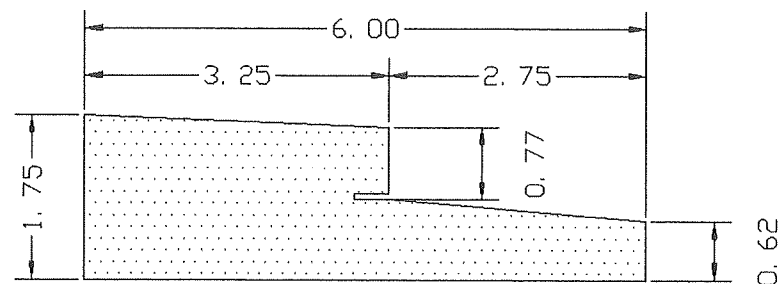
SHEET 10 OF 12
DRAWING #: 24-063

ALL LAMINATED MEMBERS MADE
FROM (2) MAHOGANY WOOD PARTS
JOINED WITH GORILLA GLUE

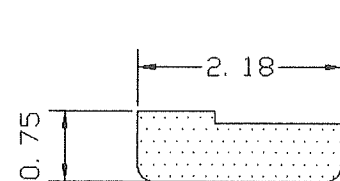
DOOR COMPONENTS



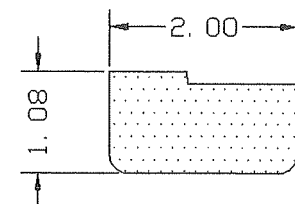
1- DOOR FRAMING HEADER AND JAMBS
SOLID OR LAMINATED MAHOGANY



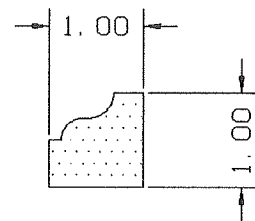
2- DOOR FRAMING SILL
SOLID OR LAMINATED MAHOGANY



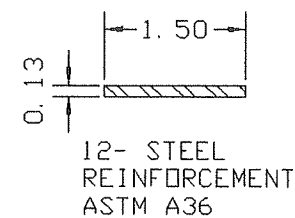
7- EXTERIOR DOOR ASTRAGAL
SOLID MAHOGANY



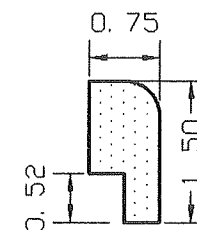
14- EXTERIOR DOOR ASTRAGAL
SOLID MAHOGANY (SAMPLE D)



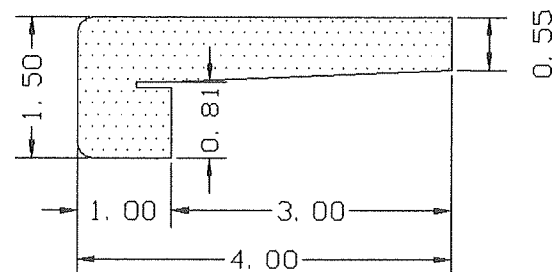
5- GLAZING STOP
MATERIAL: MAHOGANY



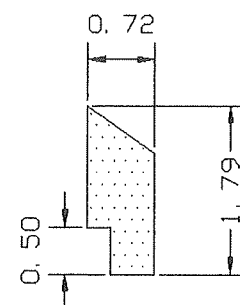
12- STEEL
REINFORCEMENT
ASTM A36



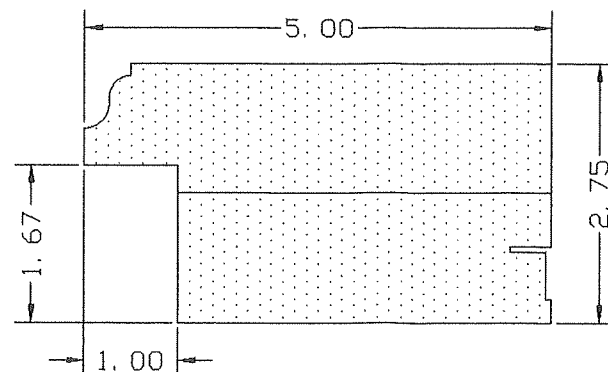
13- BOTTOM RAIL
WATER DIVERTER
SOLID MAHOGANY



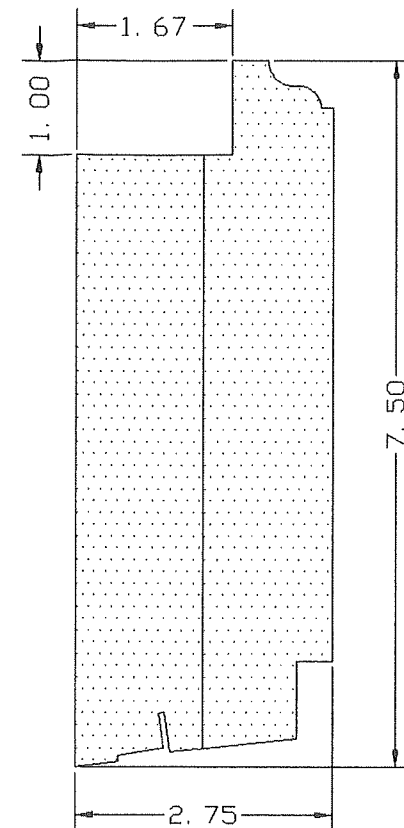
8- INTERIOR DOOR ASTRAGAL
SOLID MAHOGANY



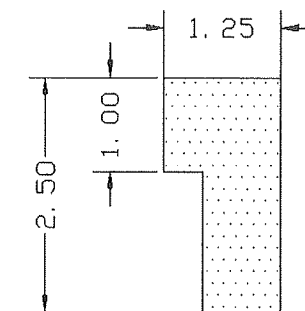
9- BOTTOM RAIL
WATER DIVERTER
SOLID MAHOGANY



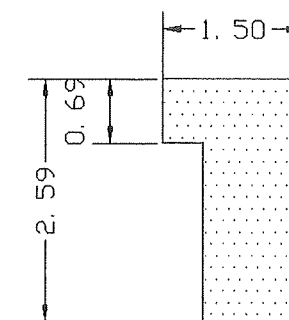
10- DOOR SASH
MEETING STILES
SOLID OR LAMINATED MAHOGANY



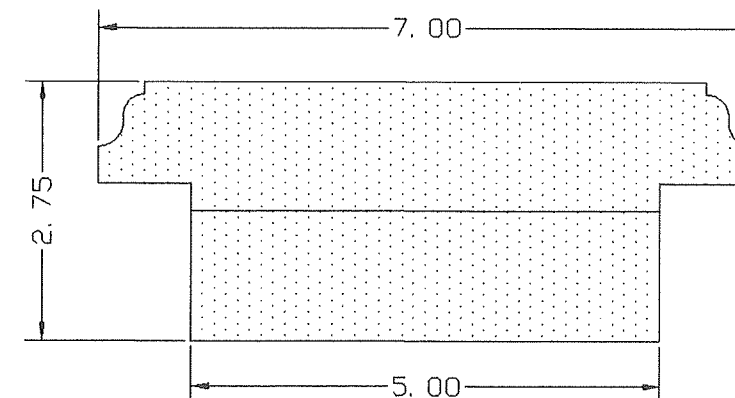
4- DOOR SASH BOTTOM RAIL
SOLID OR LAMINATED MAHOGANY



6- WOOD PANEL STOP
SOLID MAHOGANY



6A- WOOD PANEL STOP
SOLID OAK



11- MID RAIL
SOLID OR LAMINATED MAHOGANY

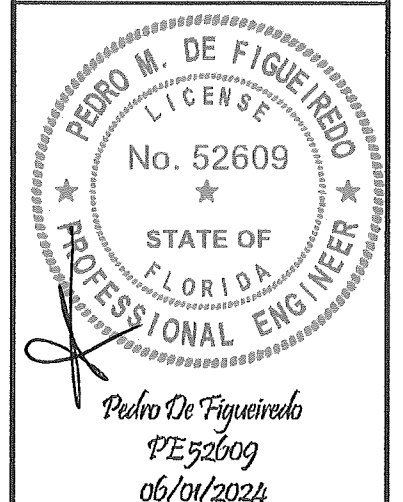
MANUFACTURER:

CUSTOM IMPACT
DOORS LLC

3401 N. FEDERAL HWY 207
BOCA RATON, FL 33431
PH: (954) 804-1757
E-MAIL: FROBLE52210@GMAIL.COM

PRODUCT:

OUTSWING GLAZED
WOOD DOORS
MODERNA SERIES
LARGE & SMALL MISSILE
IMPACT LEVEL



PPMF Inc.
ENGINEERING SERVICES - CA 32459
631 SEAPORT BLVD.
CAPE CANAVERAL FL 32920
PPMF@AOL.COM

MIAMI-DADE BCCO:

PRODUCT RENEWED
as complying with the Florida
Building Code
NOA-No. 24-0719.01

Expiration Date 06/10/2025

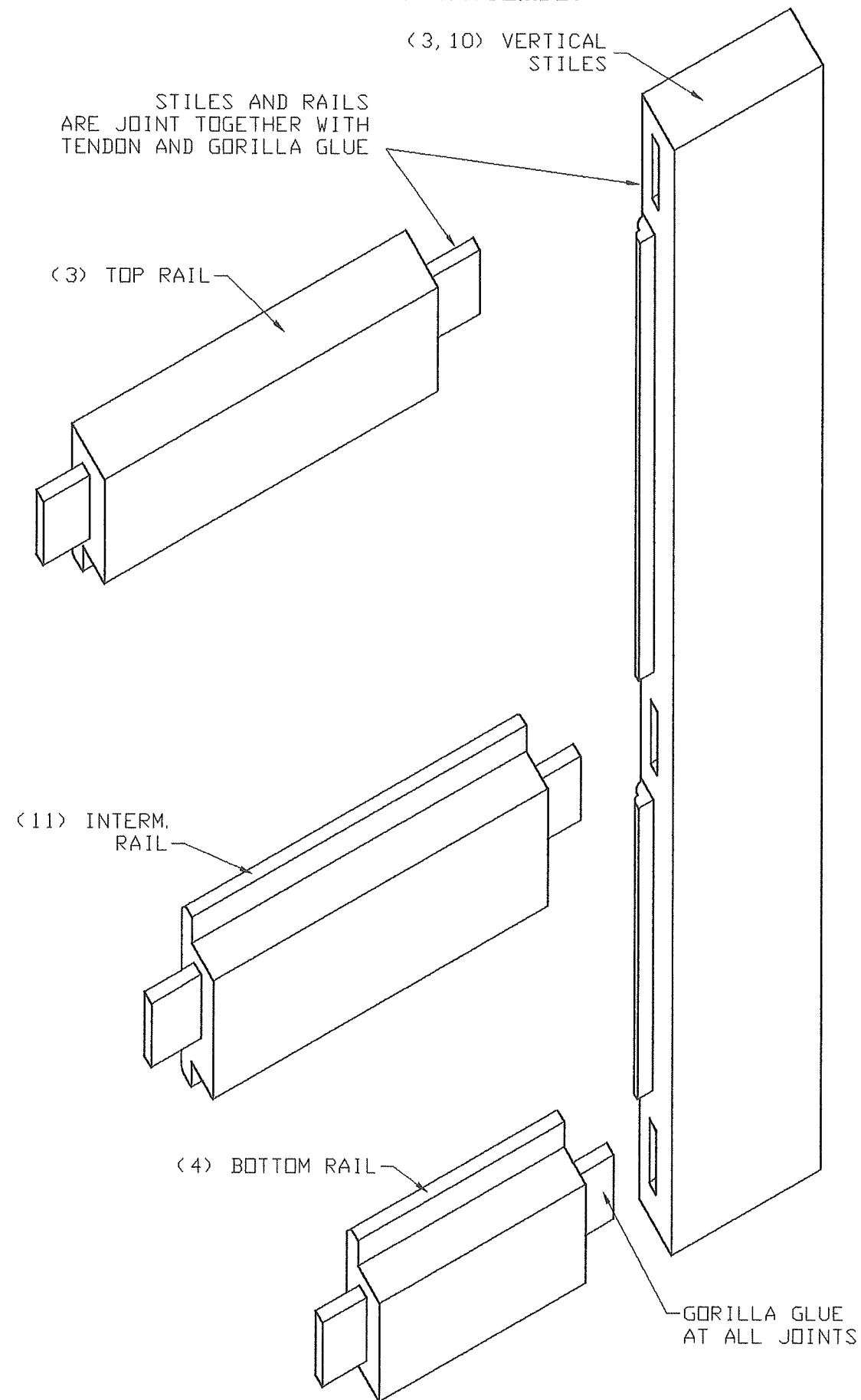
By Isaac I. Chank
Miami-Dade Product Control

DATE: 06/01/2024
SCALE: NA
DESIGN BY: PPMF

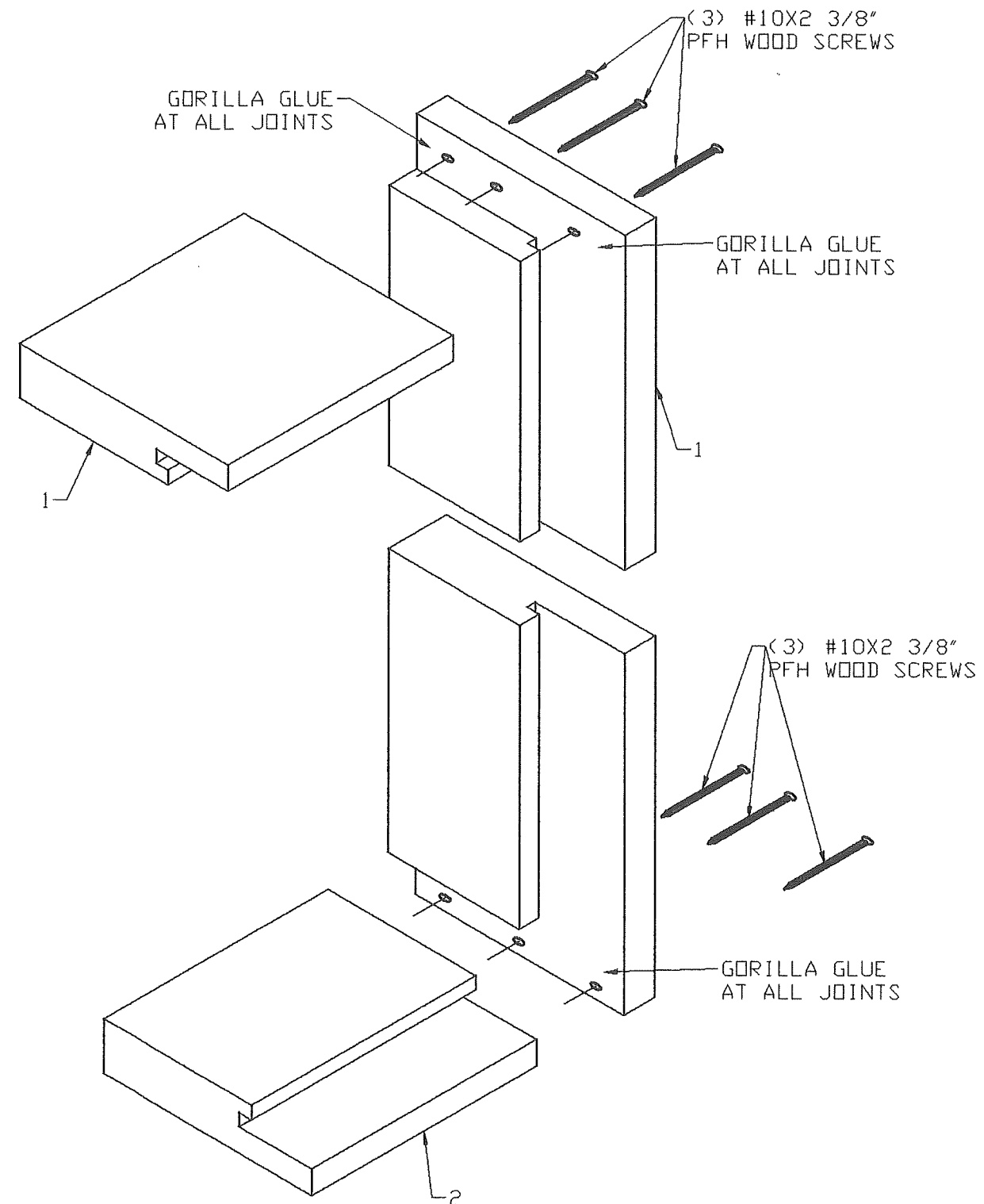
SHEET
12 OF 12

DRAWING #:
24-063

TYPICAL SASH ASSEMBLY



TYPICAL CORNER FRAMING CONSTRUCTION



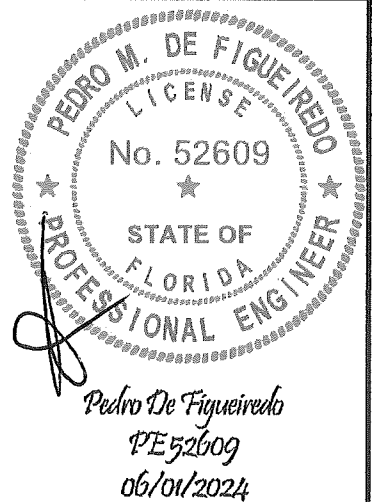
MANUFACTURER:

**CUSTOM IMPACT
DOORS LLC**

3401 N. FEDERAL HWY 207
BOCA RATON, FL 33431
PH: (954) 804-1757
E-MAIL: FROBLE52210@GMAIL.COM

PRODUCT:

**OUTSWING GLAZED
WOOD DOORS**
MODERNA SERIES
LARGE & SMALL MISSILE
IMPACT LEVEL



PPMF Inc.
ENGINEERING SERVICES - CA 32459
631 SEAPORT BLVD.
CAPE CANAVERAL FL 32920
PPMF@AOL.COM

MIAMI-DADE BCCO:

PRODUCT RENEWED
as complying with the Florida
Building Code
NOA-No. 24-0719.01

Expiration Date 06/10/2025

By *Ishag I. Chande*
Miami-Dade Product Control

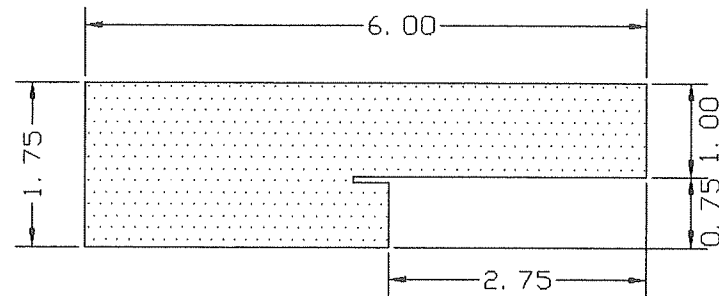
DATE: 06/01/2024
SCALE: NA
DESIGN BY: PPMF

SHEET
11 OF 12

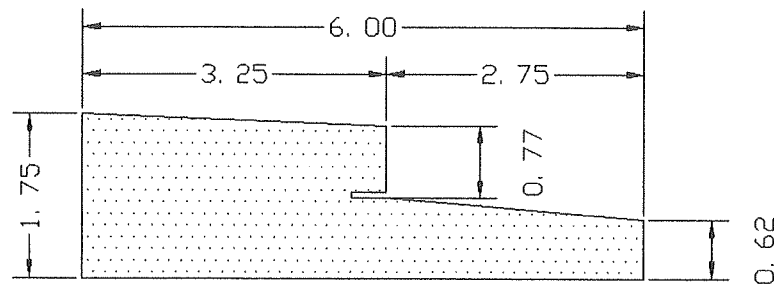
DRAWING #:
24-063

ALL LAMINATED MEMBERS MADE
FROM (2) MAHOGANY WOOD PARTS
JOINED WITH GORILLA GLUE

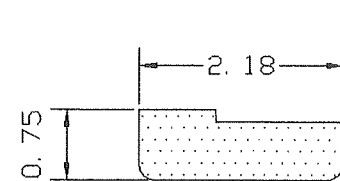
DOOR COMPONENTS



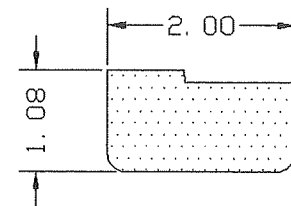
1- DOOR FRAMING HEADER AND JAMBS
SOLID OR LAMINATED MAHOGANY



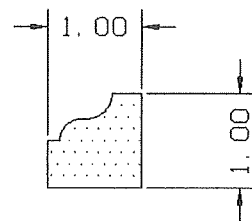
2- DOOR FRAMING SILL
SOLID OR LAMINATED MAHOGANY



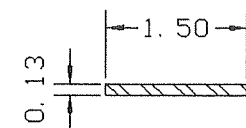
7- EXTERIOR DOOR ASTRAGAL
SOLID MAHOGANY



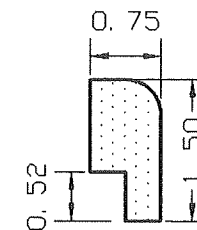
14- EXTERIOR DOOR ASTRAGAL
SOLID MAHOGANY (SAMPLE D)



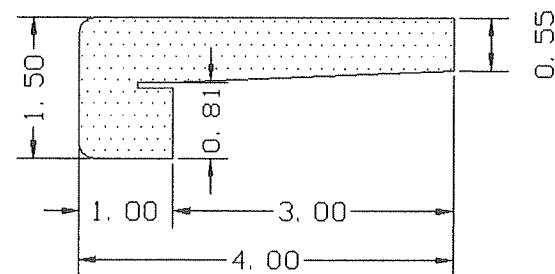
5- GLAZING STOP
MATERIAL: MAHOGANY



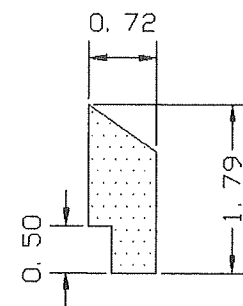
12- STEEL
REINFORCEMENT
ASTM A36



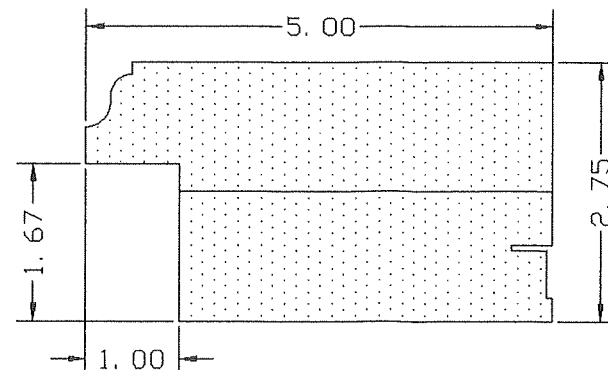
13- BOTTOM RAIL
WATER DIVERTER
SOLID MAHOGANY



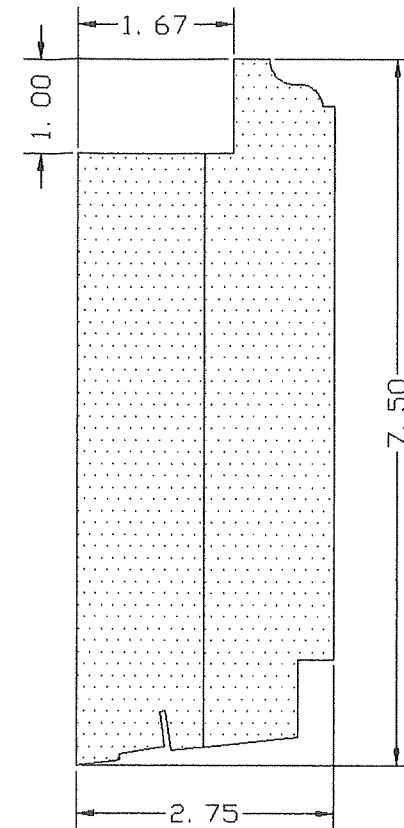
8- INTERIOR DOOR ASTRAGAL
SOLID MAHOGANY



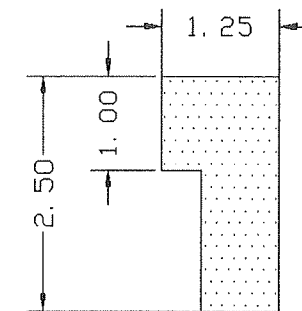
9- BOTTOM RAIL
WATER DIVERTER
SOLID MAHOGANY



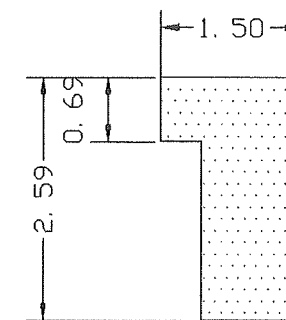
10- DOOR SASH
MEETING STILES
SOLID OR LAMINATED MAHOGANY



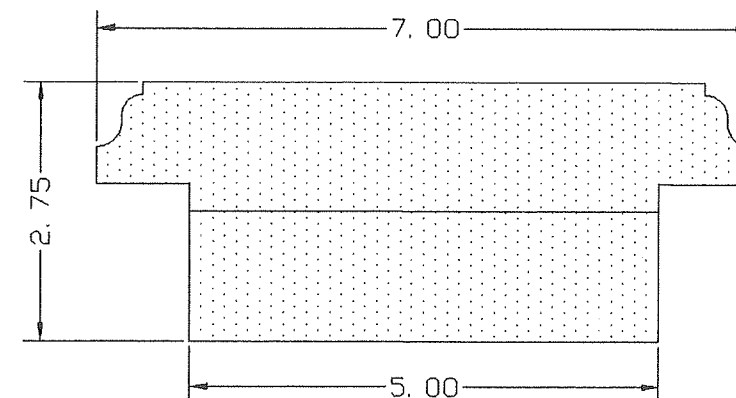
4- DOOR SASH BOTTOM RAIL
SOLID OR LAMINATED MAHOGANY



6- WOOD PANEL STOP
SOLID MAHOGANY



6A- WOOD PANEL STOP
SOLID OAK



11- MID RAIL
SOLID OR LAMINATED MAHOGANY

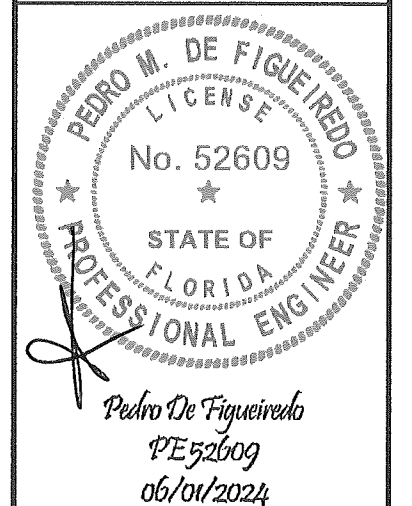
MANUFACTURER:

CUSTOM IMPACT
DOORS LLC

3401 N. FEDERAL HWY 207
BOCA RATON, FL 33431
PH: (954) 804-1757
E-MAIL: FROBLE52210@GMAIL.COM

PRODUCT:

OUTSWING GLAZED
WOOD DOORS
MODERNA SERIES
LARGE & SMALL MISSILE
IMPACT LEVEL



PPMF Inc.
ENGINEERING SERVICES - CA 32459
631 SEAPORT BLVD.
CAPE CANAVERAL FL 32920
PPMF@AOL.COM

MIAMI-DADE BCCO:

PRODUCT RENEWED
as complying with the Florida
Building Code
NOA-No. 24-0719.01

Expiration Date 06/10/2025

By Ishag I. Chank
Miami-Dade Product Control

DATE: 06/01/2024
SCALE: NA
DESIGN BY: PPMF

SHEET
12 OF 12

DRAWING #:
24-063