



DEPARTMENT OF REGULATORY AND ECONOMIC RESOURCES (RER)
BOARD AND CODE ADMINISTRATION DIVISION

NOTICE OF ACCEPTANCE (NOA)

MIAMI-DADE COUNTY
PRODUCT CONTROL SECTION

11805 SW 26 Street, Room 208
Miami, Florida 33175-2474
T (786) 315-2590 F (786) 315-2599

www.miamidade.gov/economy

Custom Impact Doors, LLC
3401 N. Federal HWY 207
Boca Raton, FL 33431

SCOPE:

This NOA is being issued under the applicable rules and regulations governing the use of construction materials. The documentation submitted has been reviewed and accepted by Miami-Dade County RER -Product Control Section to be used in Miami Dade County and other areas were allowed by the Authority Having Jurisdiction (AHJ).

This NOA shall not be valid after the expiration date stated below. The Miami-Dade County Product Control Section (In Miami Dade County) and/or the AHJ (in areas other than Miami Dade County) reserve the right to have this product or material tested for quality assurance purposes. If this product or material fails to perform in the accepted manner, the manufacturer will incur the expense of such testing and the AHJ may immediately revoke, modify, or suspend the use of such product or material within their jurisdiction. RER reserves the right to revoke this acceptance, if it is determined by Miami-Dade County Product Control Section that this product or material fails to meet the requirements of the applicable building code.

This product is approved as described herein and has been designed to comply with the Florida Building Code, including the High Velocity Hurricane Zone.

DESCRIPTION: Moderna Series Fixed Wood Windows-L.M.I.

APPROVAL DOCUMENT: Drawing No. **24-064** (former **21-040**), titled "Moderna Series Fixed Wood Windows", sheets 1 through 5 of 5, dated 05/05/21 and last revised on 06/01/2024, prepared by PPMF, Inc., signed and sealed by Pedro M. De Figueiredo, P.E., bearing the Miami-Dade County Product Control Renewal stamp with the Notice of Acceptance number and expiration date by the Miami-Dade County Product Control Section.

MISSILE IMPACT RATING: Large and Small Missile Impact Resistant

Limitations:

1. 1x or 2x to be properly secured to substrate to transfer imposed load and to be reviewed by the AHJ.
2. Veneer wood cladding for Decorative purposes only.

LABELING: Each unit shall bear a permanent label with the manufacturer's name or logo, **Mistik Trade S.A.C., Lima, Peru** and series and following statement: "Miami-Dade County Product Control Approved", noted herein.

RENEWAL of this NOA shall be considered after a renewal application has been filed and there has been no change in the applicable building code negatively affecting the performance of this product.

TERMINATION of this NOA will occur after the expiration date or if there has been a revision or change in the materials, use, and/or manufacture of the product or process. Misuse of this NOA as an endorsement of any product, for sales, advertising or any other purposes shall automatically terminate this NOA. Failure to comply with any section of this NOA shall be cause for termination and removal of NOA.

ADVERTISEMENT: The NOA number preceded by the words Miami-Dade County, Florida, and followed by the expiration date may be displayed in advertising literature. If any portion of the NOA is displayed, then it shall be done in its entirety.

INSPECTION: A copy of this entire NOA shall be provided to the user by the manufacturer or its distributors and shall be available for inspection at the job site at the request of the Building Official.

This NOA is **revises & renews #21-0512.03** and consists of this page 1 and evidence pages E-1 and E-2, as well as approval document mentioned above.

The submitted documentation was reviewed by **Ishaq I. Chanda, P.E.**

Ishaq I. Chanda



NOA No. 24-0719.03
Expiration Date: June 10, 2025
Approval Date: August 22, 2024
Page 1

NOTICE OF ACCEPTANCE: EVIDENCE SUBMITTED

1. Evidence submitted under previous approvals

A. DRAWINGS

1. Manufacturer's parts drawings and sections.
2. Drawing No. **21-040**, titled "Moderna Series Fixed Wood Windows", sheets 1 through 5 of 5, dated 05/05/21, prepared by PPMF, Inc., signed and sealed by Pedro M. De Figueiredo, P.E.

B. TESTS

1. Test reports on:
 - 1) Air Infiltration Test, per FBC, TAS 202-94
 - 2) Uniform Static Air Pressure Test, Loading per FBC TAS 202-94
 - 3) Water Resistance Test, per FBC, TAS 202-94
 - 4) Large Missile Impact Test per FBC, TAS 201-94
 - 5) Cyclic Wind Pressure Loading per FBC, TAS 203-94
 - 6) Forced Entry Test, per FBC 2411 3.2.1, TAS 202-94

along with marked-up drawings and installation diagram of Fixed Glazed Wood Windows (rectangular/shaped), prepared by American Test Lab of South Florida, Test Report No. **ATLSF 0108.01-21**, dated 09/10/08, signed and sealed by Stephen Warter, P. E.

C. CALCULATIONS

1. Anchor Calculations and structural analysis, complying with FBC2020(7th edition), prepared by PPMF Inc., dated 05/05/21, signed and sealed by Pedro De Figueiredo, P.E.
2. Glazing complies w/ ASTM E-1300-09 & -12

D. QUALITY ASSURANCE

1. Miami Dade Department of Regulatory and Economic Resources (RER).

E. MATERIAL CERTIFICATIONS

1. Notice of Acceptance No. **18-0619.01** issued to Polymer Extrusion Laboratory, dba Glasslam for their "**Glasslam Safety Plus II ® Glass Interlayer**", expiring on 08/07/23.

F. STATEMENTS

1. Statement letter of conformance to FBC 2020(7th Edition), prepared by PPMF Inc., dated May 04, 2021, signed and sealed by Pedro M. DeFigueiredo, P.E.
2. Statement of lab compliance, as part of the test report

G. OTHER

1. This NOA **Spin-off # NOA #21-0106.05**, expiring June 10, 2024.
2. Distributor Agreement dated 07-16-18 between Mistik Trade Sac, Peru (manufacturer) and distributor Custom Impact Door, LLC, USA, signed by MS. Mirtha Abad (Manufacturer) and Trasa Valdes (Distributor) (submitted under **NOA #21-0106.05**).
3. Florida Department of State, Division of Corporation, active status (listing # L18000166370) for Custom Impact Doors, LLC.
4. Test Proposal dated 10/28/08 & revised on 02/09/11, issued by the BCCO.

Ishaq I. Chanda

Ishaq I. Chanda, P.E.
Product Control Unit Supervisor
NOA No. 24-0719.03
Expiration Date: June 10, 2025
Approval Date: August 22, 2024

NOTICE OF ACCEPTANCE: EVIDENCE SUBMITTED

2. New Evidence submitted

A. DRAWINGS

1. Drawing No. **24-064** (former **21-040**), titled “Moderna Series Fixed Wood Windows”, sheets 1 through 5 of 5, dated 05/05/21 and last revised on 06/01/2024, prepared by PPMF, Inc., signed and sealed by Pedro M. De Figueiredo, P.E.

Note: This is renewal with No change, except FBC 2023 (8th Edition) note update.

B. TESTS

1. None.

C. CALCULATIONS

1. None.

D. QUALITY ASSURANCE

1. Miami Dade Department of Regulatory and Economic Resources (RER).

E. MATERIAL CERTIFICATIONS

1. Notice of Acceptance No. **24-0611.06** issued to Polymer Extrusion Laboratory, dba Glasslam for their “**Glasslam Safety Plus II ® Glass Interlayer**”, expiring on 08/07/28.

F. STATEMENTS

1. Statement letter of conformance to **FBC 2023 (8th Edition)**, dated 06/01/24, prepared by PPMF Inc., signed and sealed by Pedro M. De Figueiredo, P. E.
2. Distributor Agreement dated 07-16-18 between Mistik Trade Sac, Peru (manufacturer) and distributor Custom Impact Door, LLC, USA, signed by MS. Mirtha Abad (Manufacturer) and Trasa Valdes (Distributor) (submitted under previous approval)

G. OTHER

1. This NOA *revises & renews* **NOA #21-0512.03** conditionally for one-year, expiring 06/10/2025.
2. Florida Department of State, Division of Corporation, active status verified on 08/07/24 for (listing # L18000166370) for the Custom Impact Doors, LLC.
3. Test Proposal dated 10/28/08 & revised on 02/09/11, issued by the BCCO (submitted under previous approval).

Ishaq I. Chanda

Ishaq I. Chanda, P.E.
Product Control Unit Supervisor
NOA No. 24-0719.03
Expiration Date: June 10, 2025
Approval Date: August 22, 2024

GENERAL NOTES:

FLORIDA BUILDING CODE 2023 - 8th EDITION - HVHZ
LARGE & SMALL MISSILE IMPACT RATED

- 1- DEFINITION: THIS PRODUCT IS A FIXED MAHOGANY WINDOW; DESIGNED, CONSTRUCTED AND ERECTED TO ENCLOSE AN AREA, PROVIDING PROTECTION FROM HURRICANE FORCE WINDS WITHIN THE ALLOWABLE DESIGNED PRESSURES AND LIMITATIONS STATED IN THIS APPROVAL.
- 2- CODE: THIS PRODUCT HAS BEEN TESTED AND DESIGNED IN ACCORDANCE WITH THE FLORIDA BUILDING CODE, HIGH VELOCITY HURRICANE ZONES (HVHZ).
- 3- POSTING: A PERMANENT LEGIBLE DECAL SHALL BE PLACED AT A READILY VISIBLE LOCATION STATING THE FOLLOWING:

"CUSTOM IMPACT DOORS LLC
FIXED WOOD WINDOWS
MODERNA SERIES - LMI
MIAMI-DADE COUNTY PRODUCT APPROVED"

4- LOADS: DESIGNED LOAD CALCULATED BASED ON THE ASCE 7-22 AND PROVIDED BY A PROFESSIONAL ARCHITECT OR ENGINEER FOR EACH SPECIFIC PROJECT. THE CALCULATED DESIGNED PRESSURE MUST NOT EXCEED THE ALLOWABLE PRESSURES HEREIN SPECIFIED. THE DESIGN PRESSURES, AS DETERMINED FROM ASCE 7-22, ARE TO BE MULTIPLE BY 0.6.

5- MATERIAL: ALL WOOD MATERIAL TO BE FABRICATED FROM KILN DRIED MAHOGANY OR AS NOTED.

6- FASTENERS: ASSEMBLY SCREWS AND ANCHORS SHALL BE AS SPECIFIED IN THE CURRENT SET OF DRAWINGS. INSTALLATION AND LOADS AS PER THIS APPROVAL.

7- USE: IT SHALL BE THE RESPONSIBILITY OF THE CONTRACTOR, ARCHITECT OR ENGINEER OF RECORD TO VERIFY THE FOLLOWING:

- 7.1- THE STABILITY OF THE STRUCTURE WHERE THE SHUTTER IS TO BE ATTACHED INSURING PROPER ANCHORAGE.
- 7.2- THE SITE SPECIFIC PROJECT CRITERIA, SUCH AS BUT NOT LIMITED TO, WINDLOADS, LOCAL CODE REQUIREMENTS, DESIGNED PRESSURES ETC.
- 7.3- THAT THIS APPROVAL IS ADEQUATE TO THE SPECIFIC PROJECT.

8- PROTECTION: ALL WOOD IN CONTACT WITH MASONRY AND/OR WITH CONCRETE, ETC., SHALL BE TREATED AND PROTECTED PER FLORIDA BUILDING CODE SECTIONS 2411.3.3.3, 2304.12. USING "ENVIRON END SEALER" ACRYLIC URETHANE WATER REPELLENT WOOD PRESERVATIVE AS MANUFACTURED BY PPG INDUSTRIES, INC. OR SIMILAR.

TABLE OF CONTENTS:

SHEET	CONTENTS
1 OF 5	TYPICAL ELEVATIONS, DESIGN RATING, GENERAL NOTES
2 OF 5	TYPICAL CROSS SECTIONS, CONFIGURATIONS
3 OF 5	TYPICAL FRAME ANCHORAGE
4 OF 5	PRODUCT COMPONENTS AND BILL OF MATERIALS GLAZING OPTIONS
5 OF 5	PRODUCT SASH AND FRAMING ASSEMBLY

TYPICAL ELEVATIONS

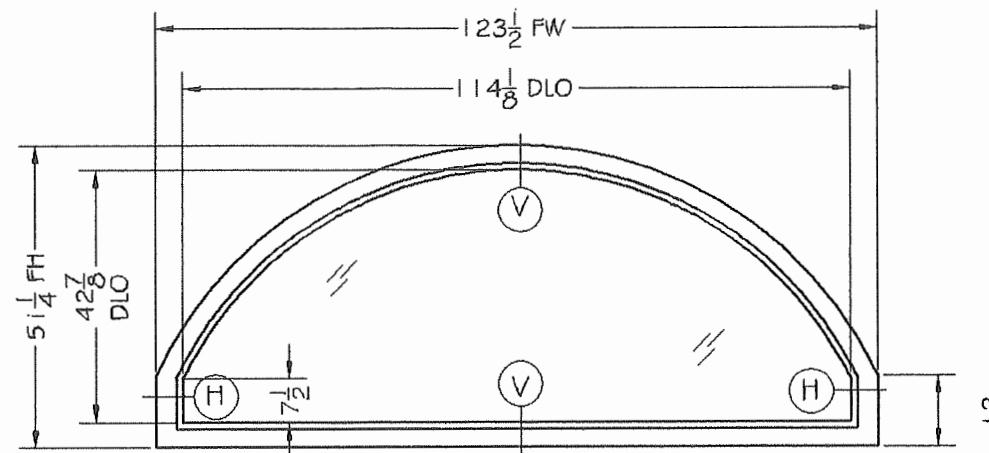
DESIGNED PRESSURE RATING

$P_d = \pm 70$ PSF

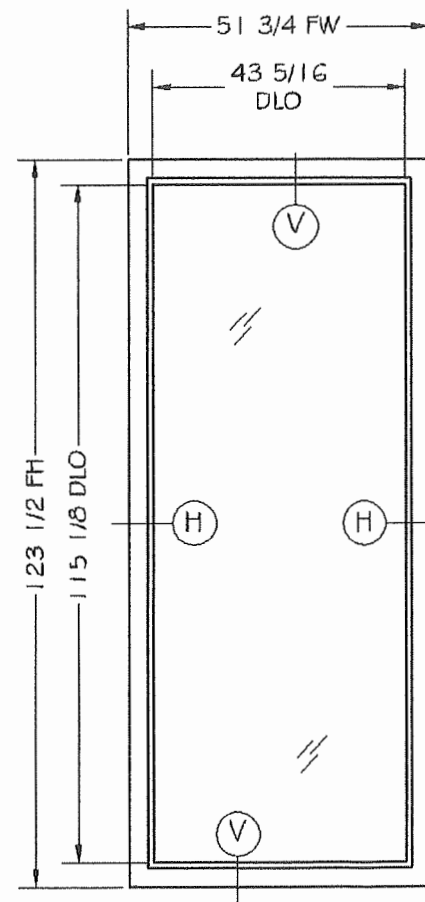
MAXIMUM FRAME SIZES

FRAME WIDTH: FW = 51 3/4"

FRAME HEIGHT: FH = 123 1/2"



MODEL A
ARCH FIXED WINDOWS
(MAX. 123 1/2" X 51 1/4")
DESIGNED LOADS
 $P_d = \pm 70$ PSF



MODEL B
RECTANGULAR FIXED WINDOWS
(MAX. 51 1/4" X 123 1/2")
DESIGNED LOADS
 $P_d = \pm 70$ PSF

WOOD TYPE:

VERNACULAR NAME: GENUINE MAHOGANY
SCIENTIFIC NAME: SWietenia macrophylla G. KING
FAMILY: MELIACEAE
MINIMUM SPECIFIC GRAVITY: 0.45

** WOOD SPECIES WITH GREATER OR EQUAL SPECIFIC GRAVITY THAN 0.45 ARE ACCEPTABLE AS ALTERNATE MATERIAL

GLASS TYPE (SEE SHEET 4 OF 5):
TYPE G1 - 9/16" LAMINATED LARGE MISSILE IMPACT

LEGEND

FH - FRAME HEIGHT
FW - FRAME WIDTH
DLO - DAY LIGHT OPENING



ENGINEERING & ARCHITECTS - CA 32459
631 SEAFORT BLVD.
CAPE CANAVERAL, FL 32920
PPM@aol.com
ENGINEER SEAL
PEDRO DE FIGUEIREDO
PE 52609



PRODUCT CATEGORY: WINDOWS - FIXED
PRODUCT MATERIAL: WOOD / GLASS
IMPACT RATING: LARGE & SMALL MISSILE
MODERNA SERIES WINDOW
FIXED WOOD WINDOW

MANUFACTURER:
CUSTOM IMPACT DOORS LLC
3401 N. FEDERAL HWY 207
BOCA RATON, FL 33431
PH: (954) 804-1757

MIAMI-DADE BCCO:

PRODUCT RENEWED
as complying with the Florida
Building Code

NOA-No. 24-0719.03

Expiration Date 06/10/2025

By Ishag I. Chande
Miami-Dade Product Control

SCALE:
NA

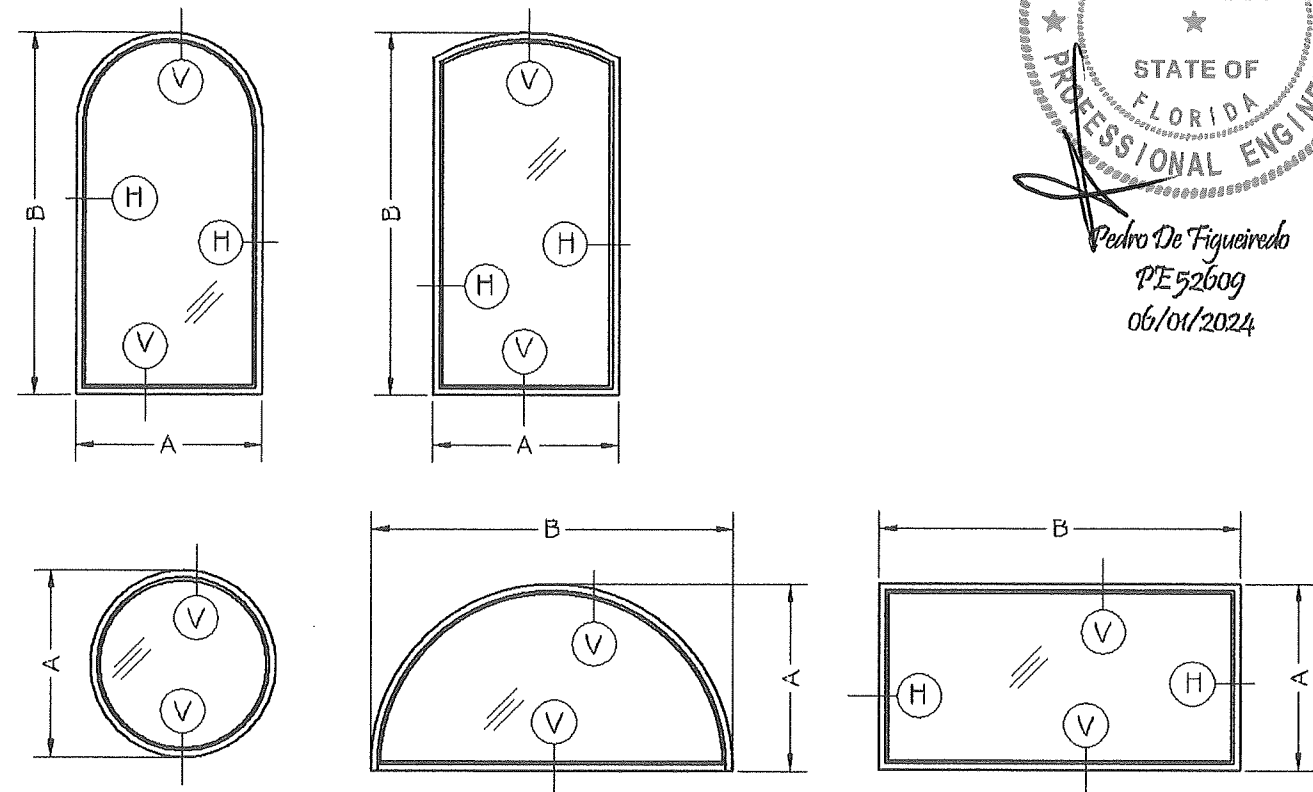
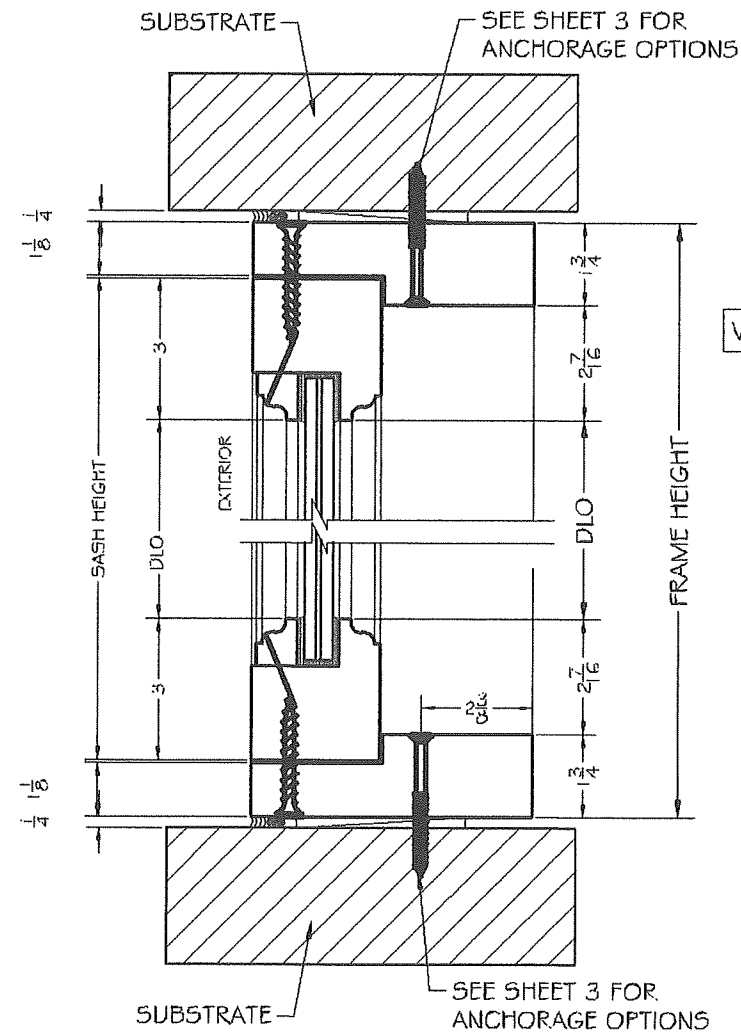
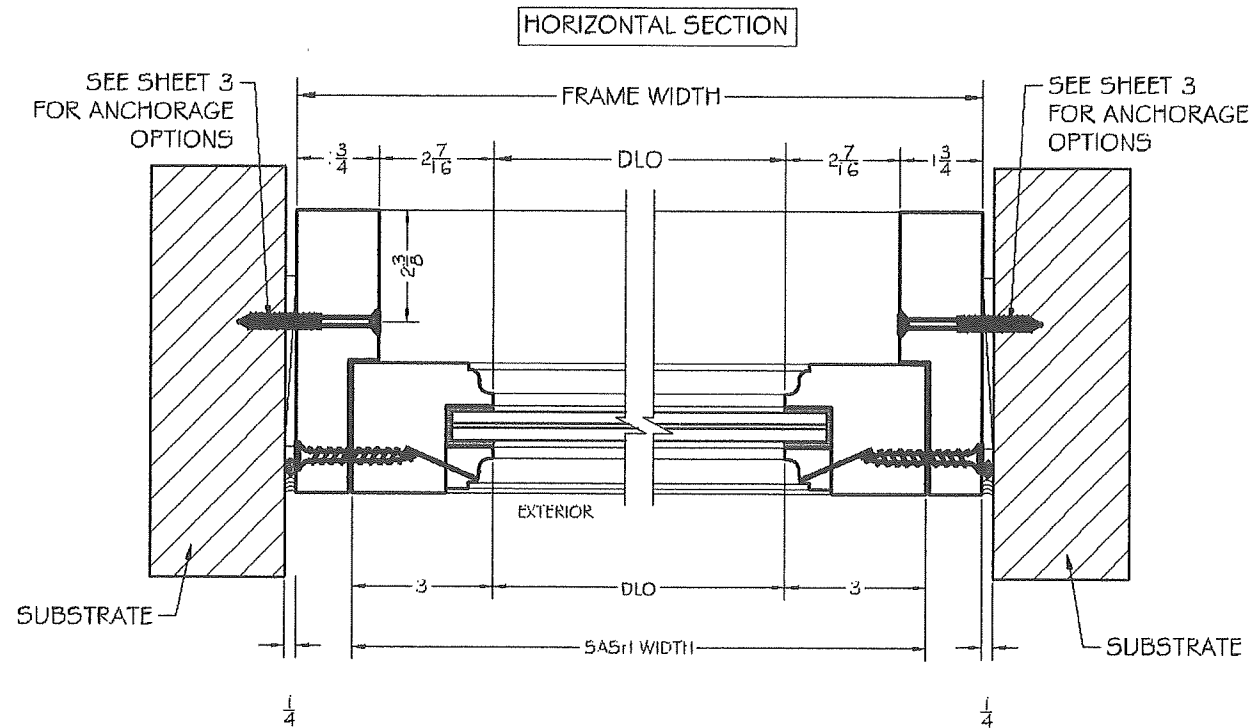
DATE:
06/01/2024

DRAWING #
24-064

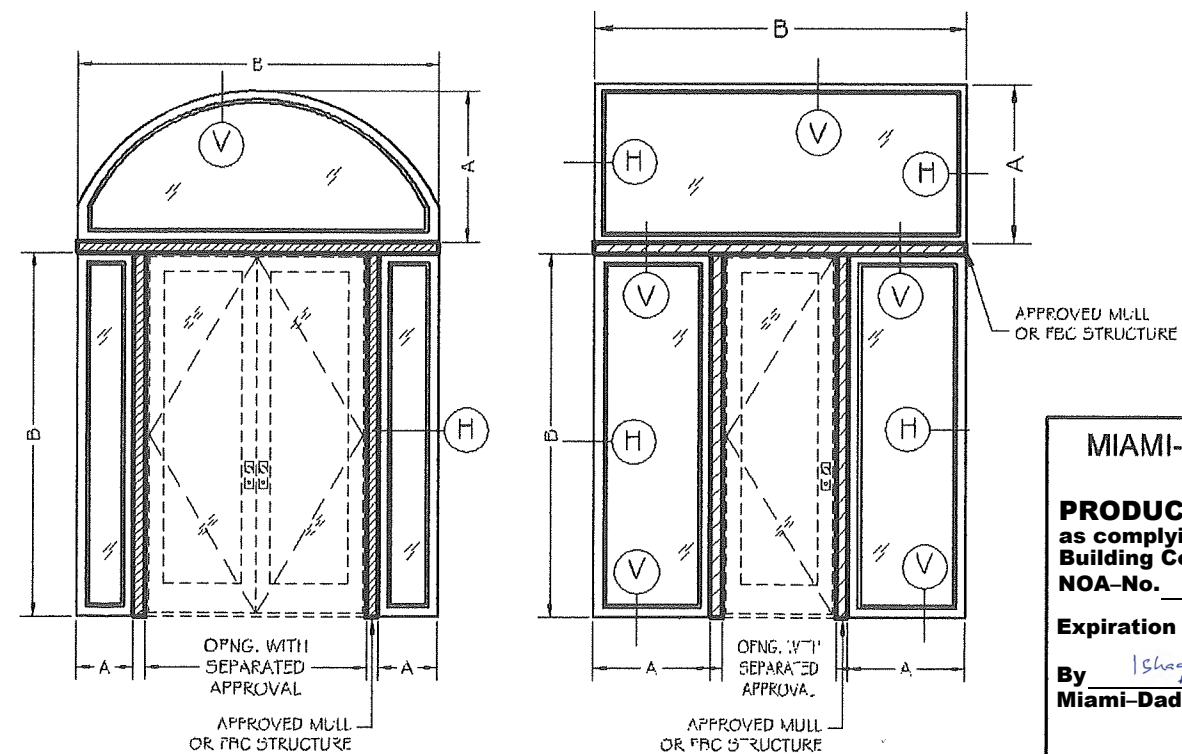
SHEET
1 OF 5

TYPICAL CROSS SECTIONS

ALTERNATED CONFIGURATIONS



MAXIMUM FRAME SIZES SHALL NOT EXCEED
 SHORT DIMENSION: A= 51 3/4"
 LARGE DIMENSION: B= 123 1/2"



ENGINEERING SERV. OFS. - CA 32459
 631 SEAPORT BLVD.
 CAFE CANAVERAL, FL 32920
 PPMF@AOL.COM



PRODUCT CATEGORY: WINDOWS - FIXED
 PRODUCT MATERIAL: WOOD / GLASS
 IMPACT RATING: LARGE & SMALL MISSILE
MODERNA SERIES WINDOW
 FIXED WOOD WINDOW

MANUFACTURER:
CUSTOM IMPACT DOORS LLC
 3401 N. FEDERAL HWY 207
 BOCA RATON, FL 33431
 PH: (954) 804-1757

MIAMI-DADE BCCO:

PRODUCT RENEWED
 as complying with the Florida
 Building Code
 NOA-No. 24-0719.03

Expiration Date 06/10/2025

By Ishaq I. Chanda
 Miami-Dade Product Control

SCALE:
 NA
 DATE:
 06/01/2024
 DRAWING #
 24-064
 SHEET
 2 OF 5

TYPICAL FRAME ANCHORAGE

OPTION 1 - DIRECT MOUNTED

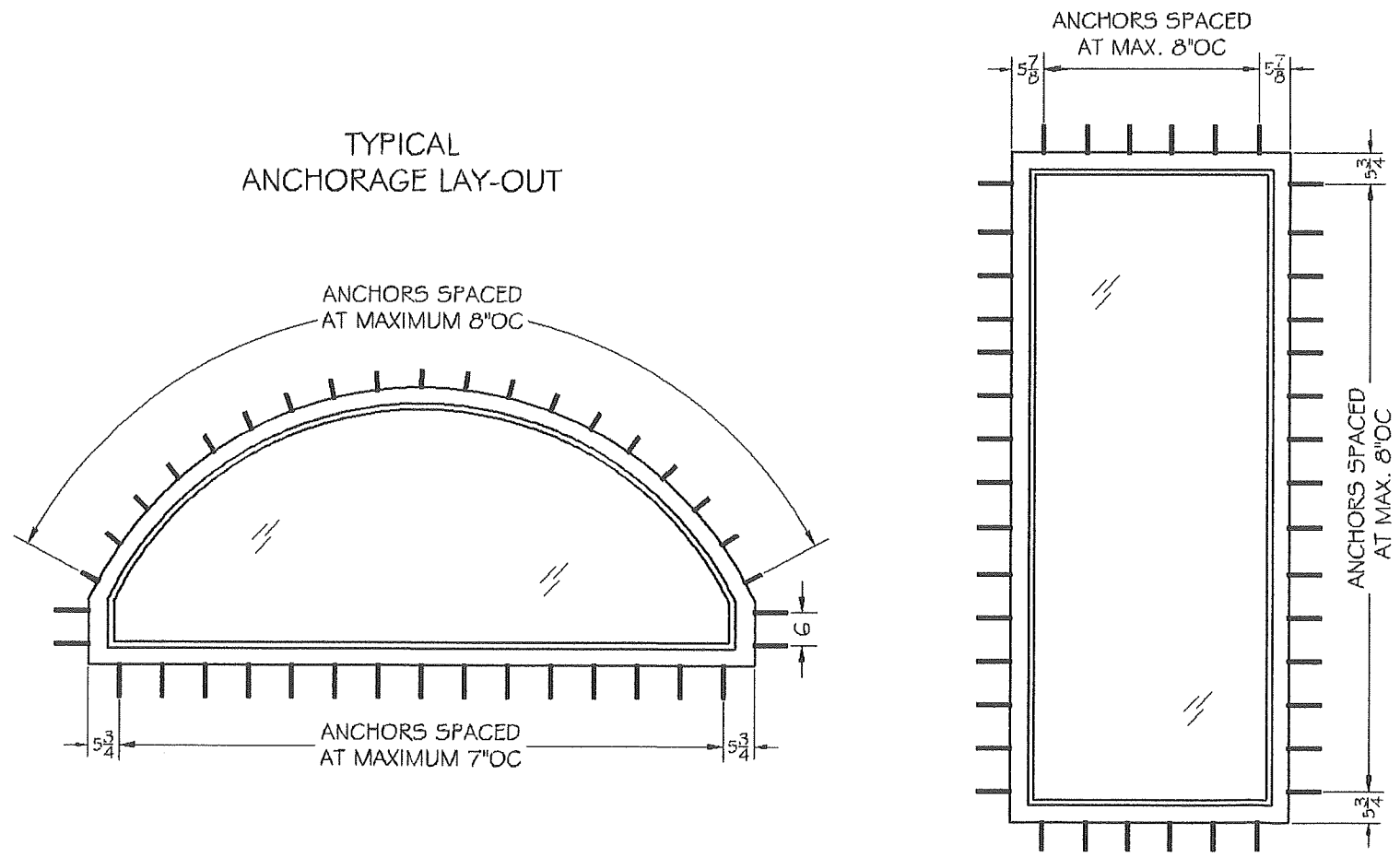
SUBSTRATE: HOLLOW MASONRY OR CONCRETE
1/4" TAPCONS BY ITW BUILDEX SECURING FRAME DIRECTLY INTO SUBSTRATE WITH MAXIMUM 1/4" SHIM
1 1/4" MIN. EMBEDMENT INTO HOLLOW MASONRY (JAMBS)
1 3/4" INTO 3000 PSI CONCRETE (JAMBS, HEADER & SILL)

SUBSTRATE: MINIMUM 1/8" METAL STRUCTURES
1/4"-20 PFH SDS GR 5 SECURING FRAME DIRECTLY INTO SUBSTRATE WITH MAXIMUM 1/4" SHIM
MIN. 3 TREADS PENETRATION INTO 1/8" A36 STEEL OR 1/8" 6063-T6 ALUMINUM

SUBSTRATE: WOOD WITH MINIMUM SG=0.55
1/4" TAPCONS BY ITW BUILDEX SECURING FRAME DIRECTLY INTO SUBSTRATE W/ MAXIMUM 1/4" SHIM
1 1/2" MIN. EMBEDMENT INTO WOOD OR
1 1/2" MIN. EMBEDMENT INTO WOOD STRUCTURES

(REFER TO ELEVATIONS FOR ANCHORS QTY. AND LAY-OUT)

TYPICAL ANCHORAGE LAY-OUT



OPTION 2 - MOUNTED THROUGH 1X BUCK

SUBSTRATE: MASONRY OR CONCRETE 1/4" TAPCONS BY ITW BUILDEX SECURING FRAME INTO SUBSTRATE WITH MAXIMUM 1/4" SHIM THROUGH 1X
1 1/4" MIN. EMBEDMENT INTO HOLLOW MASONRY (JAMBS)
1 3/4" INTO 3000 PSI CONCRETE (JAMBS, HEADER & SILL)

SUBSTRATE: MINIMUM 1/8" METAL STRUCTURES
1/4"-20 PFH SDS GR 5 SECURING FRAME INTO SUBSTRATE WITH MAXIMUM 1/4" SHIM THROUGH 1X
MIN. 3 TREADS PENETRATION INTO 1/8" A36 STEEL OR 1/8" 6063-T6 ALUMINUM

SUBSTRATE: WOOD WITH MINIMUM SG=0.55
1/4" TAPCONS BY ITW BUILDEX SECURING FRAME INTO SUBSTRATE W/ MAXIMUM 1/4" SHIM THROUGH 1X
1 1/2" MIN. EMBEDMENT INTO WOOD OR
1 1/2" MIN. EMBEDMENT INTO WOOD STRUCTURES

(REFER TO ELEVATIONS FOR ANCHORS QTY. AND LAY-OUT)

Pedro De Figueiredo
PE 52609
06/01/2024

PEDRO M. DE FIGUEIREDO
LICENSE
No. 52609
STATE OF
FLORIDA
PROFESSIONAL ENGINEER

MIAMI-DADE BCCO:
PRODUCT RENEWED
as complying with the Florida Building Code
NOA-No. 24-0719.03
Expiration Date 06/10/2025
By Ishag I. Chande
Miami-Dade Product Control

ENGINEERING SERV QCS - CA 32439
631 SEAPORT BLVD.
CAFE CANAVERAL, FL 32920
PPMF@AOL.COM
ENGINEER SEAL
PEDRO DE FIGUEIREDO
PE 52609

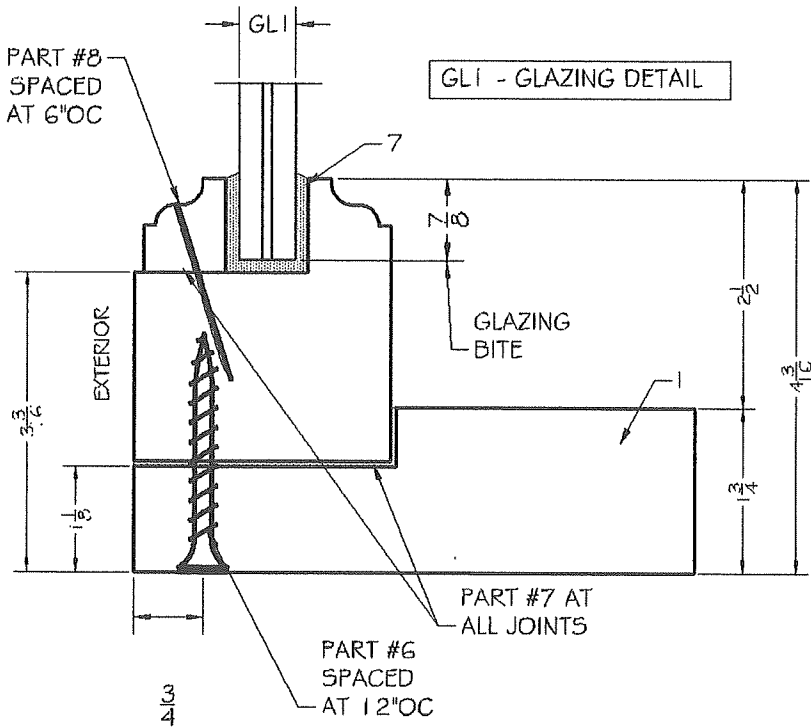
PRP Inc.

PRODUCT CATEGORY: WINDOWS - FIXED
PRODUCT MATERIAL: WOOD / GLASS
IMPACT RATING: LARGE & SMALL MISSILE
MODERNA SERIES WINDOW
FIXED WOOD WINDOW

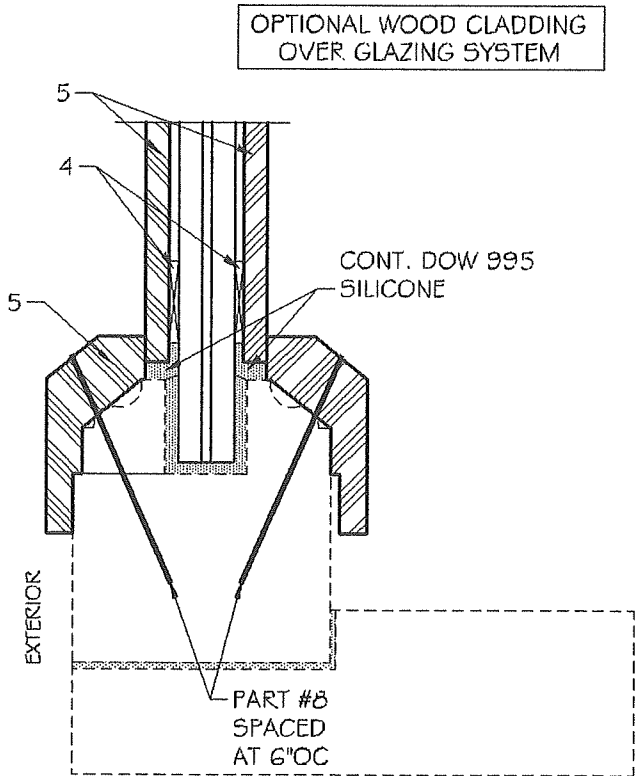
MANUFACTURER:
CUSTOM IMPACT DOORS LLC
3401 N. FEDERAL HWY 207
BOCA RATON, FL 33431
PH: (954) 804-1757

SCALE:
NA
DATE:
06/01/2024
DRAWING #
24-064
SHEET
3 OF 5

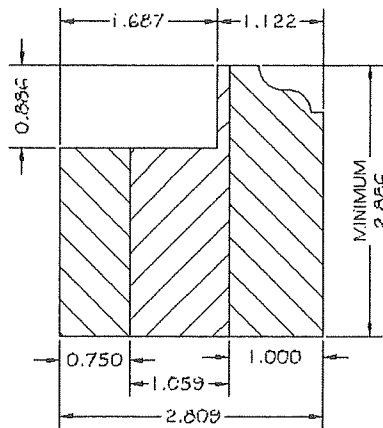
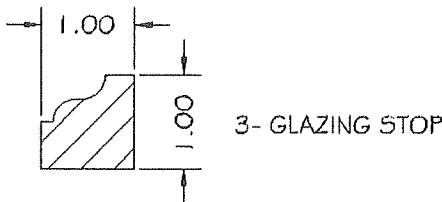
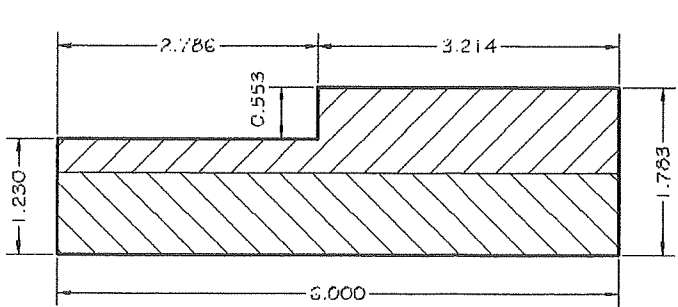
GLAZING AND CLADDING OPTIONS



GLI - 9/16" IMPACT GLASS COMPOSED OF:
1/4" HS OUTER LITE
0.10" GLASSLAM SAFETY PLUS II INTERLAYER
1/4" HS INNER LITE
MINIMUM GLAZING BITE: 7/8"



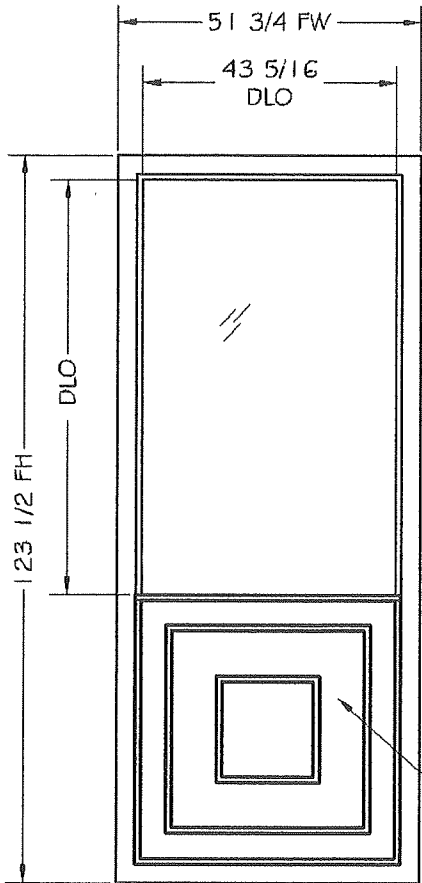
PRODUCT COMPONENTS AND BILL OF MATERIALS



BILL OF MATERIALS

ITEM#	DESCRIPTION	SIZE	REMARKS
1	PERIMETER FRAMING	1 3/4" X 6"	** MAHOGANY
2	GLAZING SASH	2 7/8" X 2 7/8"	** MAHOGANY
3	GLAZING STOP	1" X 1"	** MAHOGANY
4	NORTON DBL FACE TAPE	VARIES	NORTON
5	FACE VENEER	VARIES	** MAHOGANY
6	WOOD SCREWS	1/4" X 3"	STEEL ZINC PLATED
7	STRUCTURAL SILICONE	----	DOW 995
8	FINISHING NAILS	0.05 DIAM X 1 1/2"	STEEL ZINC PLATED
GLI	9/16" IMPACT GLASS	SEE ELEVATIONS	GLASSLAM INTERLAYER

** GENUINE MAHOGANY, SWietenia macrophylla G. KING OR EQUIVALENT WITH MINIMUM 0.45 SG



ENGINEERING 387V QF5 - CA 32459
631 SEAPORT BLVD.
CAFE CANAVERAL, FL 32920
PPMF@AOL.COM
ENGINEER SEAL
PEDRO DE FIGUEIREDO
PE 52609

PRODUCT CATEGORY: WINDOWS - FIXED
PRODUCT MATERIAL: WOOD / GLASS
IMPACT RATING: LARGE & SMALL MISSILE
MODERNA SERIES WINDOW
FIXED WOOD WINDOW

MIAMI-DADE BCCO:
PRODUCT RENEWED
as complying with the Florida
Building Code
NOA-No. 24-0719.03
Expiration Date 06/10/2025
By Ishaq I. Chandra
Miami-Dade Product Control

MANUFACTURER:
CUSTOM IMPACT DOORS LLC
3401 N. FEDERAL HWY 207
BOCA RATON, FL 33431
PH: (954) 804-1757

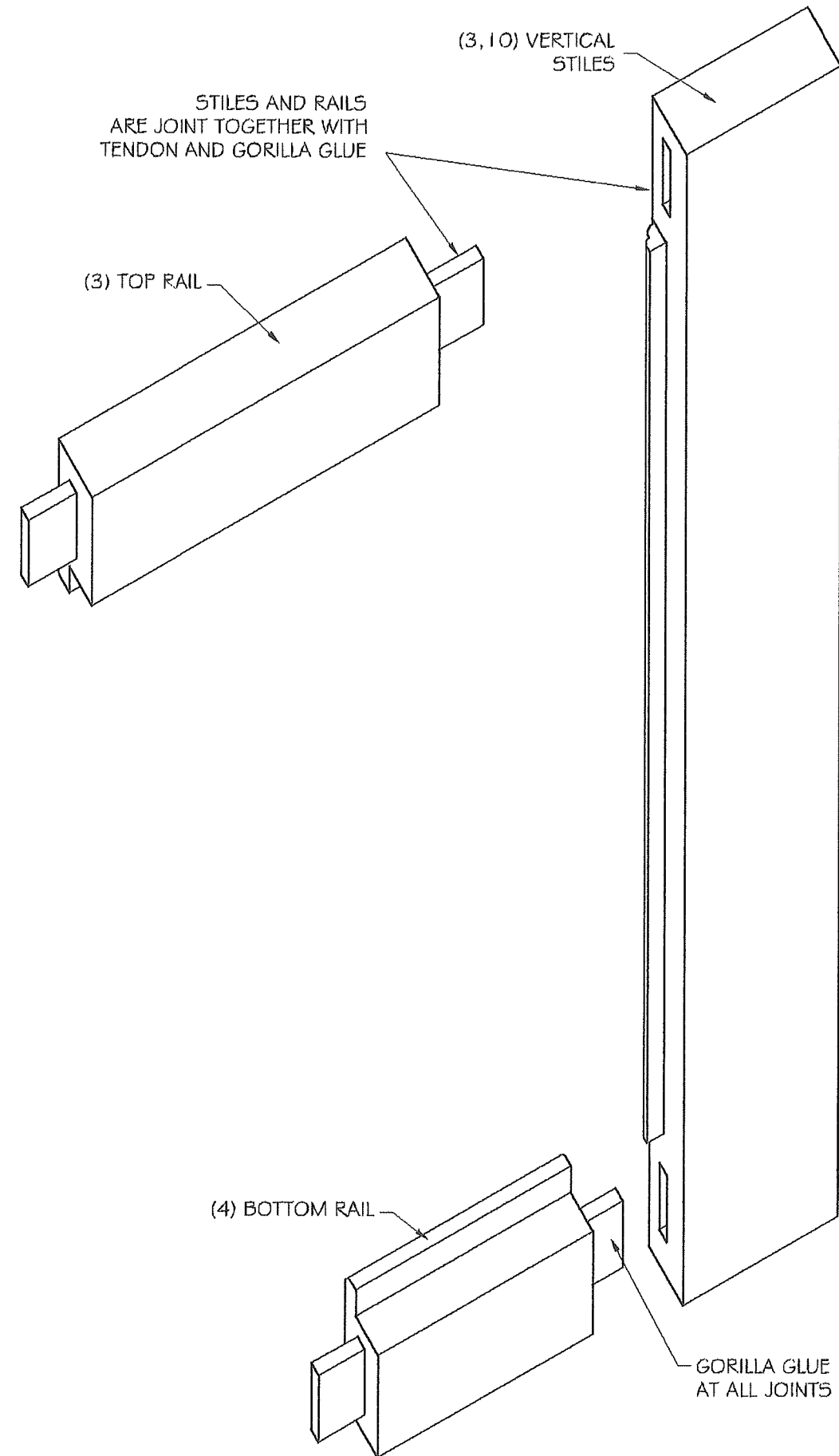
SCALE:
NA

DATE:
06/01/2024

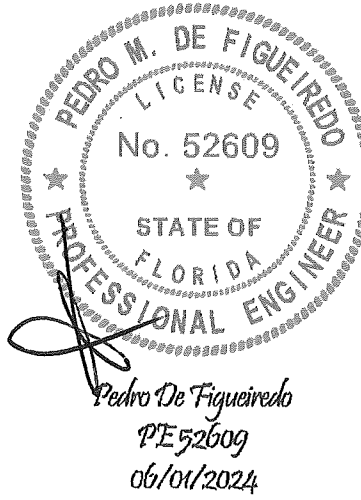
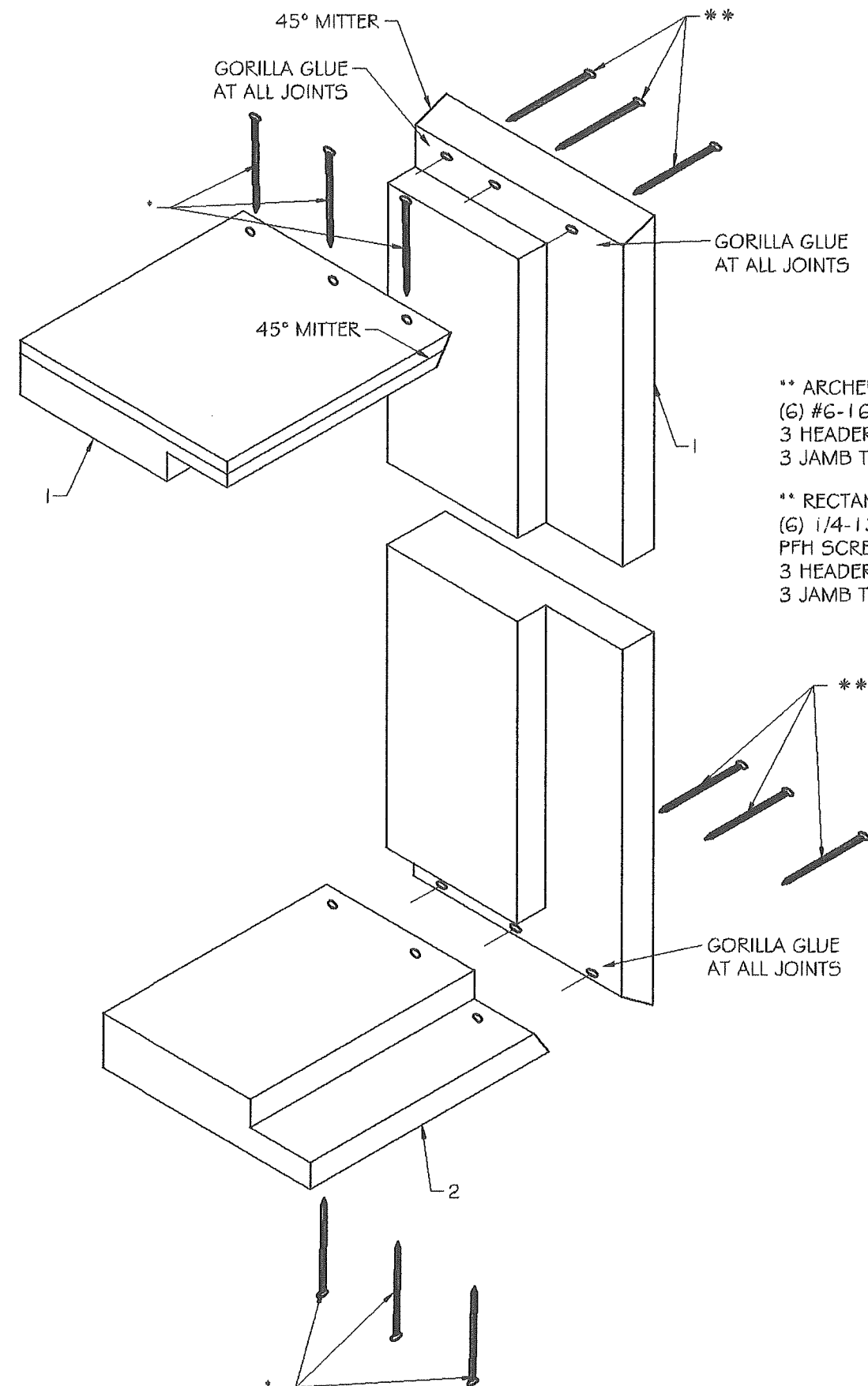
DRAWING #
24-064

SHEET
4 OF 5

TYPICAL SASH ASSEMBLY



TYPICAL CORNER FRAMING CONSTRUCTION



ENGINEERING 3FRV QFS - CA 32459
631 SEAPORT BLVD.
CAFE CANAVERAL, FL 32920
PPMF@AOL.COM
ENGINEER SEAL
PEDRO DE FIGUEIREDO
TE 52609

PRODUCT CATEGORY: WINDOWS - FIXED
PRODUCT MATERIAL: WOOD / GLASS
IMPACT RATING: LARGE & SMALL MISSILE
MODERNA SERIES WINDOW
FIXED WOOD WINDOW

MANUFACTURER:
CUSTOM IMPACT DOORS LLC
3401 N. FEDERAL HWY 207
BOCA RATON, FL 33431
PH: (954) 804-1757

MIAMI-DADE BCCO:
PRODUCT RENEWED
as complying with the Florida
Building Code
NOA-No. 24-0719.03
Expiration Date 06/10/2025
By Ishag I. Chank
Miami-Dade Product Control

SCALE:
NA
DATE:
06/01/2024
DRAWING #
24-064
SHEET
5 OF 5