



DEPARTMENT OF REGULATORY AND ECONOMIC RESOURCES (RER)  
BOARD AND CODE ADMINISTRATION DIVISION

## NOTICE OF ACCEPTANCE (NOA)

MIAMI-DADE COUNTY  
PRODUCT CONTROL SECTION

11805 SW 26 Street, Room 208  
Miami, Florida 33175-2474  
T (786) 315-2590 F (786) 315-2599

[www.miamidade.gov/economy](http://www.miamidade.gov/economy)

**Ply Gem Resid. Solut., div. of Cornerstone Bldg. Brands, Inc.**  
**2415 Campbell Road**  
**Sidney OH 45365**

### SCOPE:

This NOA is being issued under the applicable rules and regulations governing the use of construction materials. The documentation submitted has been reviewed and accepted by Miami-Dade County RER-Product Control Section to be used in Miami Dade County and other areas where allowed by the Authority Having Jurisdiction (AHJ).

This NOA shall not be valid after the expiration date stated below. The Miami-Dade County Product Control Section (In Miami Dade County) and/or the AHJ (in areas other than Miami Dade County) reserve the right to have this product or material tested for quality assurance purposes. If this product or material fails to perform in the accepted manner, the manufacturer will incur the expense of such testing and the AHJ may immediately revoke, modify, or suspend the use of such product or material within their jurisdiction. RER reserves the right to revoke this acceptance if it is determined by Miami-Dade County Product Control Section that this product or material fails to meet the requirements of the applicable building code.

This product is approved as described herein and has been designed to comply with the Florida Building Code, including the High Velocity Hurricane Zone.

### DESCRIPTION: Mastic Aluminum Soffit

**APPROVAL DOCUMENT:** Drawing No. **PGSG008**, titled "Mastic Aluminum Soffit", sheets 1 through 4 of 4, dated 03/08/2024, prepared by the Building Drops, Inc., signed and sealed by Hermes F. Norero, P.E., bearing the Miami-Dade County Product Control revision stamp with the NOA number and expiration date by the Miami-Dade County Product Control Section.

### MISSILE IMPACT RATING: None

**LABELING:** Each piece shall bear a permanent label marked at not more than 4' o.c. with the manufacturer's name or logo, city, state and following statement: "Miami-Dade County Product Control Approved", unless otherwise noted herein and in FBC 1709.10.

**RENEWAL** of this NOA shall be considered after a renewal application has been filed and there has been no change in the applicable building code negatively affecting the performance of this product.

**TERMINATION** of this NOA will occur after the expiration date or if there has been a revision or change in the materials, use, and/or manufacture of the product or process. Misuse of this NOA as an endorsement of any product, for sales, advertising or any other purposes shall automatically terminate this NOA. Failure to comply with any section of this NOA shall be cause for termination and removal of NOA.

**ADVERTISEMENT:** The NOA number preceded by the words Miami-Dade County, Florida, and followed by the expiration date may be displayed in advertising literature. If any portion of the NOA is displayed, then it shall be done in its entirety.

**INSPECTION:** A copy of this entire NOA shall be provided to the user by the manufacturer or its distributors and shall be available for inspection at the job site at the request of the Building Official.

This NOA **revises NOA # 22-0509.02** and consists of this page 1, evidence pages E-1, E-2 and E-3, as well as the approval document mentioned above.

The submitted documentation was reviewed by **Carlos M. Utrera, P.E.**



09/18/24

NOA No: 24-0725.04  
Expiration Date: November 16, 2027  
Approval Date: September 26, 2024  
Page 1

**NOTICE OF ACCEPTANCE      EVIDENCE PAGE**

**1. Evidence submitted under previous NOAs**

**A. DRAWING “Submitted under NOA # 11-1130.02”**

1. Drawing titled “Aluminum Soffit Installation, 12” Wide, T4 Solid and V-Groove Ventilated”, sheets 1 through 3 of 3, dated 07/16/2012, prepared by the manufacturer, signed and sealed by Allen N. Reeves, P.E.

**B. TEST “Submitted under NOA # 07-1026.01”**

1. Test report on 1) Uniform Static Air Pressure Test, Loading per FBC TAS 202-94  
2) Cyclic Wind Pressure Loading per FBC, TAS 203-94  
along with marked-up drawings and installation diagram of the Aluminum Soffits, prepared by Architectural Testing, Inc., Test Reports No. **75856.01-109-18, 75861.01-109-18 and 75862.01-109-18**, (all Revision 1), dated 10/05/2007, signed and sealed by Michael D. Stremmel, P.E.

**C. CALCULATIONS “Submitted under NOA # 07-1026.01”**

1. Installation Analysis of Aluminum Soffits, prepared by H.R. Engineering, Inc., dated 03/27/2008, sheets 1 through 4, signed and sealed by Allen N. Reeves, P.E.

**D. QUALITY ASSURANCE**

1. Miami-Dade Department of Regulatory and Economic Resources (RER).

**E. MATERIAL CERTIFICATIONS**

1. None.

**F. STATEMENTS**

1. Statement letter of code conformance to the 5<sup>th</sup> edition (2014) FBC issued by H.R. Engineering, Inc., dated 08/05/2016, signed and sealed by Allen N. Reeves, P.E.
2. Statement letter of code conformance to the 2007 and 2010 and no financial interest issued by H.R. Engineering, Inc., dated 04/25/2012, signed and sealed by Allen N. Reeves, P.E. **“Submitted under NOA # 11-1130.02”**
3. Certificate of amendment dated 12/01/2010 last revised in May 2002.



---

**Carlos M. Utrera, P.E.**  
**Product Control Examiner**  
**NOA No: 24-0725.04**

**Expiration Date: November 16, 2027**  
**Approval Date: September 26, 2024**

**NOTICE OF ACCEPTANCE: EVIDENCE SUBMITTED**

**2. Evidence submitted under NOA # 21-0628.10 and # 22-0509.02**

**A. DRAWINGS**

1. Drawing titled “Aluminum Soffit Installation, 12” Wide, T4 Solid and V-Groove Ventilated”, sheets 1 through 3 of 3, dated 07/16/2012, prepared by the manufacturer, signed and sealed by Allen N. Reeves, P.E. on 10/06/2021.

**B. TESTS**

1. Test report on 1) Uniform Static Air Pressure Test, Loading per FBC TAS 202-94  
2) Cyclic Wind Pressure Loading per FBC, TAS 203-94  
along with marked-up drawings and installation diagram of the SAS12313 Aluminum Soffit, prepared by Intertek, Test Report No. **N3440.01-109-18**, dated 04/18/2022, signed and sealed by Vinu J. Abraham, P.E.

**C. CALCULATIONS**

1. None.

**D. QUALITY ASSURANCE**

1. Miami-Dade Department of Regulatory and Economic Resources (RER).

**E. MATERIAL CERTIFICATIONS**

1. None.

**F. STATEMENTS**

1. Statement letter of code conformance to the 7<sup>th</sup> edition (2020) of the FBC and of no financial interest, issued by H.R. Engineering, Inc., dated 05/28/2021, signed and sealed by Allen N. Reeves, P.E.
2. Certificate of Merger between Ply Gem Parent, LLC and NCI Building Systems, Inc. under the name of NCI Building Systems, Inc., issued by the State of Delaware, dated 11/16/2018.
3. Press release officially announcing that the merging between NCI Building Systems, Inc. and Ply Gem Building Products will operate as Cornerstone Building Brands.
4. Taxpayer Identification Number and Certification request form W-9 requested by Cornerstone Building Brands, Inc., dated 02/01/2021.
5. Testing contract letter, issued Intertek, dated 10/01/2021, signed by Vicki L. McElwain.



**Carlos M. Utrera, P.E.**  
**Product Control Examiner**  
**NOA No: 24-0725.04**

**Expiration Date: November 16, 2027**  
**Approval Date: September 26, 2024**

**NOTICE OF ACCEPTANCE: EVIDENCE SUBMITTED**

**3. New evidence submitted**

**A. DRAWINGS**

1. Drawing No. **PGSG008**, titled “Mastic Aluminum Soffit”, sheets 1 through 4 of 4, dated 03/08/2024, prepared by the Building Drops, Inc., signed and sealed by Hermes F. Norero, P.E.

**B. TESTS**

1. None.

**C. CALCULATIONS**

1. Product evaluation report # 9171, prepared by Building Drops, Inc., dated 09/03/2024, signed and sealed by Hermes F. Norero, P.E.

**D. QUALITY ASSURANCE**

1. Miami-Dade Department of Regulatory and Economic Resources (RER).

**E. MATERIAL CERTIFICATIONS**

1. None.

**F. STATEMENTS**

1. Statement letter of code conformance to the 8<sup>th</sup> edition (2023) of the FBC, and of no financial interest, issued by Building Drops, Inc., dated 02/26/224, signed and sealed by Hermes F. Norero, P.E.
2. Distributor agreement dated 06/20/2024.



---

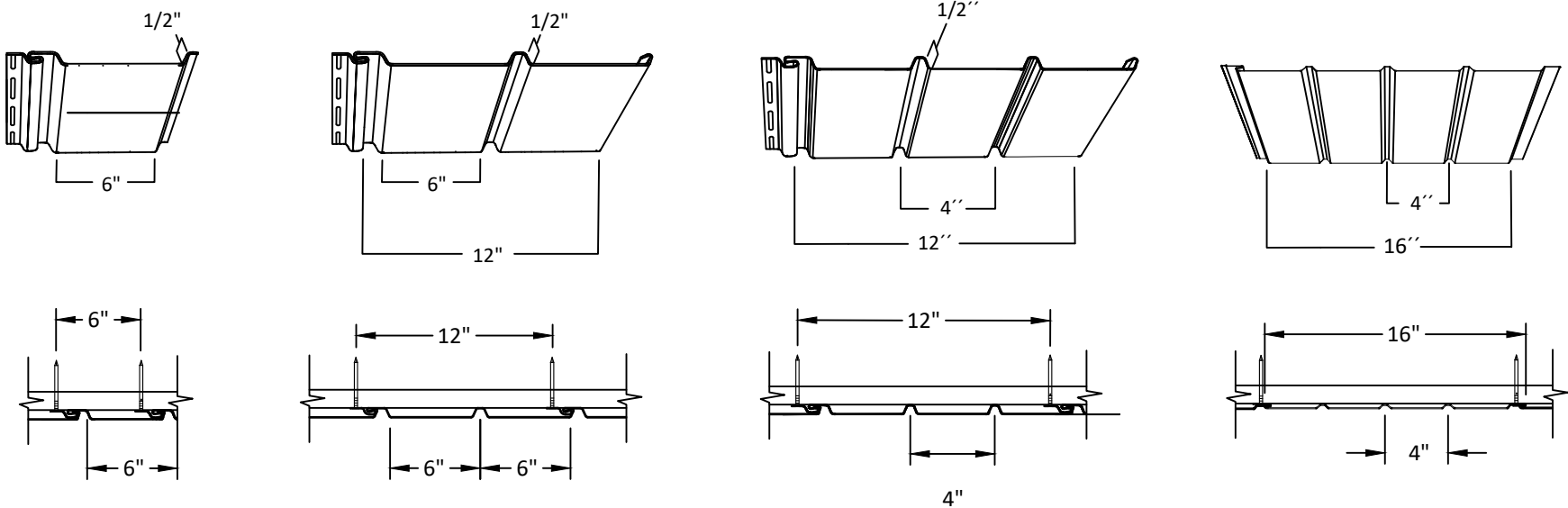
**Carlos M. Utrera, P.E.**  
**Product Control Examiner**  
**NOA No: 24-0725.04**  
**Expiration Date: November 16, 2027**  
**Approval Date: September 26, 2024**

PLY GEM RESIDENTIAL SOLUTIONS DIVISION OF CORNERSTONE BUILDING BRANDS, INC.

MASTIC ALUMINUM SOFFIT



PLY GEM RESID. SOLUT., DIV. OF CORNERSTONE  
BLDG. BRANDS, INC.  
2405 CAMPBELL ROAD  
SIDNEY, OH 45365



SINGLE 6"

DOUBLE 6"

TRIPLE 4"

QUAD 4"

APPROVED MODELS	CONFIGURATION	EXPOSURE INCHES	THICKNESS ±.003 (in)	DESIGN PRESSURE (PSF)	NET FREE AREA IN/FT²
SVG12V20	Double 6"	12	0.019"	±55.0	15.00
SVG6V	Single 6"	6	0.019"	±110	7.50
LFA12219	Double 6"	12	0.019"	±55.0	10.60
LCAS12319	Triple 4"	12	0.019"	±55.0	4.40
SVG420144	Double 6"	12	0.016"	±55.0	15.00
LFAS12216	Double 6"	12	0.016"	±55.0	10.60
SVG12N20	Double 6"	12	0.019"	±55.0	0.00
SVG12L20	Double 6"	12	0.019"	±55.0	0.00
SVGN420144	Double 6"	12	0.016"	±55.0	0.00
SAS12313	Triple 4"	12	0.013"	±115.0	0.00
LCAS12313	Triple 4"	12	0.013"	±115.0	4.40
LFAS12313	Triple 4"	12	0.013"	±115.0	13.20
LFAS16413	Quad 4"	16	0.013"	±41.3	5.16
SAS16413	Quad 4"	16	0.013"	±41.3	0.00

**PRODUCT REVISED**  
as complying with the Florida  
Building Code  
NOA-No. 24-0725.04  
Expiration Date 11/16/2027  
By   
Miami-Dade Product Control

GENERAL NOTES

- THE PRODUCT SHOWN HEREIN IS DESIGNED AND MANUFACTURED TO COMPLY WITH THE 8TH EDITION FLORIDA BUILDING CODE (FBC), EXCLUDING HVHZ AND HAS BEEN EVALUATED ACCORDING TO THE FOLLOWING:
  - TAS-202-94
  - TAS-203-94
  - AAMA 1402-09
- ADEQUACY OF THE EXISTING STRUCTURAL CONCRETE/MASONRY AND 2X FRAMING AS A MAIN WIND FORCE RESISTING SYSTEM CAPABLE OF WITHSTANDING AND TRANSFERRING APPLIED PRODUCT LOADS TO THE FOUNDATION IS THE RESPONSIBILITY OF THE ENGINEER OR ARCHITECT OF RECORD FOR THE PROJECT OF INSTALLATION.
- ALUMINUM SOFFITS MEETS THE REQUIREMENTS OF CHAPTER 14 OF THE FLORIDA BUILDING CODE.
- ALUMINUM SOFFIT SPECIFICATIONS:
  - ALUMINUM MATERIAL: 3105
  - MINIMUM WALL THICKNESS: 0.013"
  - REFER TO DESIGN PRESSURE TABLE, SHEET 1 FOR ALLOWABLE DESIGN PRESSURES.
- WALLS AND FRAMING TO RECEIVE ALUMINUM SOFFIT SHALL BE CHECKED FOR STRUCTURAL ADEQUACY, CRACKS AND DEFECTS THAT SHALL BE ELIMINATED.
- INSTALLATION OF THE SOFFIT AND ACCESSORY PRODUCTS SHALL BE DONE IN ACCORDANCE WITH THE MANUFACTURER'S INSTRUCTIONS AND THE APPLICABLE SECTIONS OF THE FBC.

LEGEND:

- DOUBLE 6 HAS "V" GROOVES EVERY 6" ACROSS WIDTH, AND EACH PANEL IS 12" WIDE.
- TRIPLE 4 OR T4 HAS "V" GROOVES EVERY 4" ACROSS WIDTH, AND EACH PANEL IS 12" WIDE.
- SINGLE 6 OR S6 HAS "V" GROOVES EVERY 6" ACROSS WIDTH, AND EACH PANEL IS 6" WIDE.

MASTIC ALUMINUM SOFFIT

GENERAL NOTES AND SOFFIT DETAILS

TITLE:

PREPARED BY:

BUILDING DROPS, INC.  
1900 NE MIAMI CT, SUITE 2-15  
MIAMI, FL 33132  
PH: (954) 399-8478  
FAX: (954) 744-4738  
WEB: www.buildingdrops.com

REMARKS	BY	DATE

THE INSTALLATION DETAILS DESCRIBED HEREIN ARE GENERIC AND MAY NOT REFLECT ACTUAL CONDITIONS FOR A SPECIFIC SITE. IF SITE CONDITIONS CAUSE INSTALLATION TO DEVIATE FROM THE REQUIREMENTS DETAILED HEREIN, A LICENSED ENGINEER OR ARCHITECT SHALL PREPARE SITE SPECIFIC DOCUMENTS FOR USE WITH THIS DOCUMENT.

HERMES F. NORERO, P.E.  
BUILDING DROPS, INC.  
1900 NE MIAMI CT, SUITE 2-15  
MIAMI, FL 33132  
FBPE CERT. OF AUTHORIZATION No. 29578

DATE: 03.08.24

DWG. BY: RN

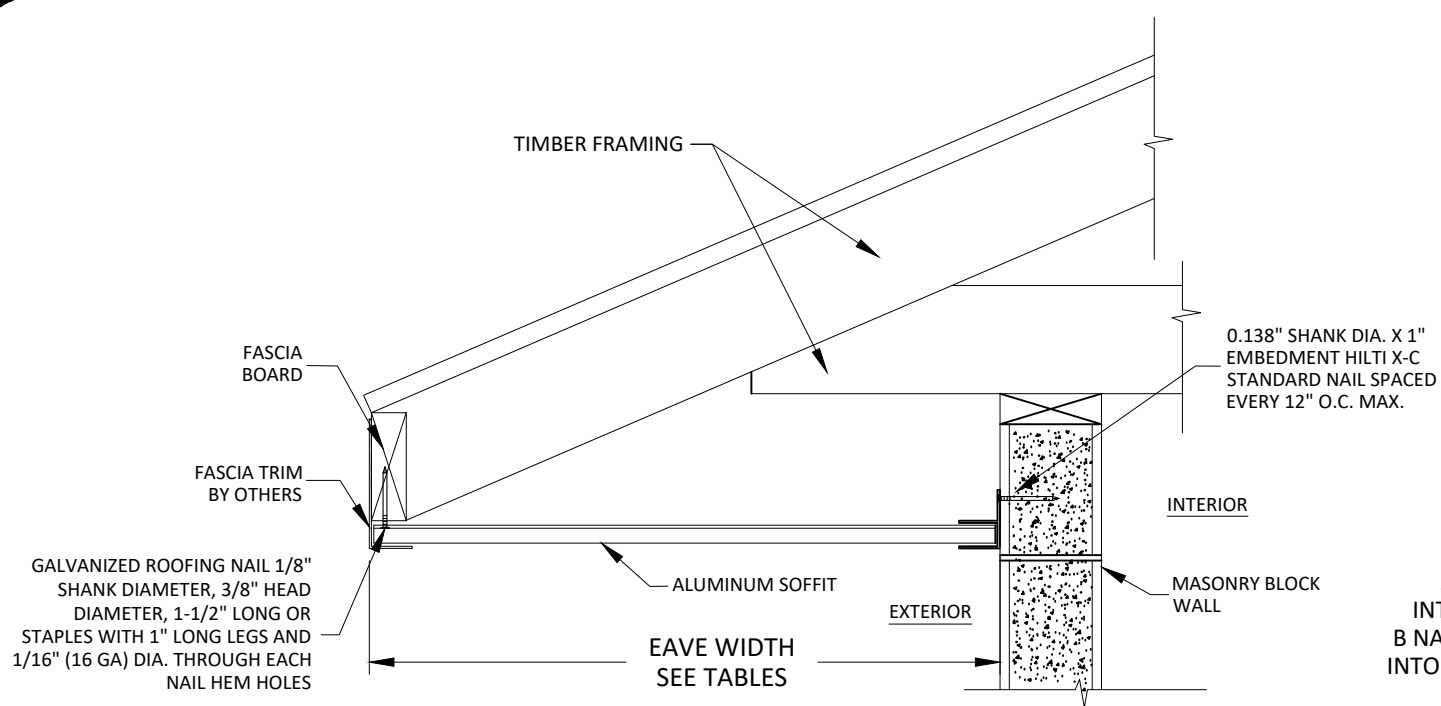
CHK. BY: HFN

SCALE: NTS

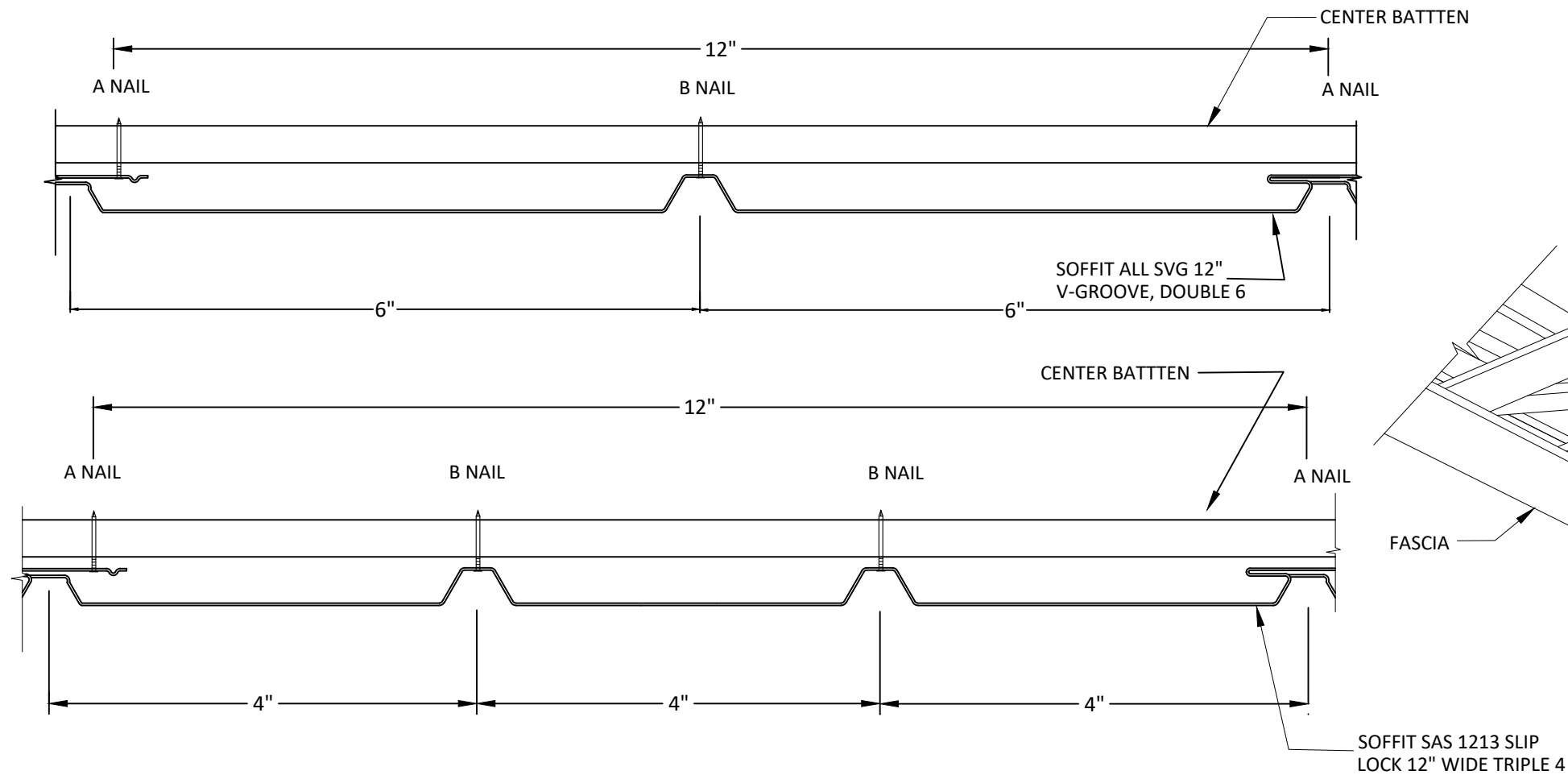
DWG. #: PGSG008

SHEET: 1

OF 4



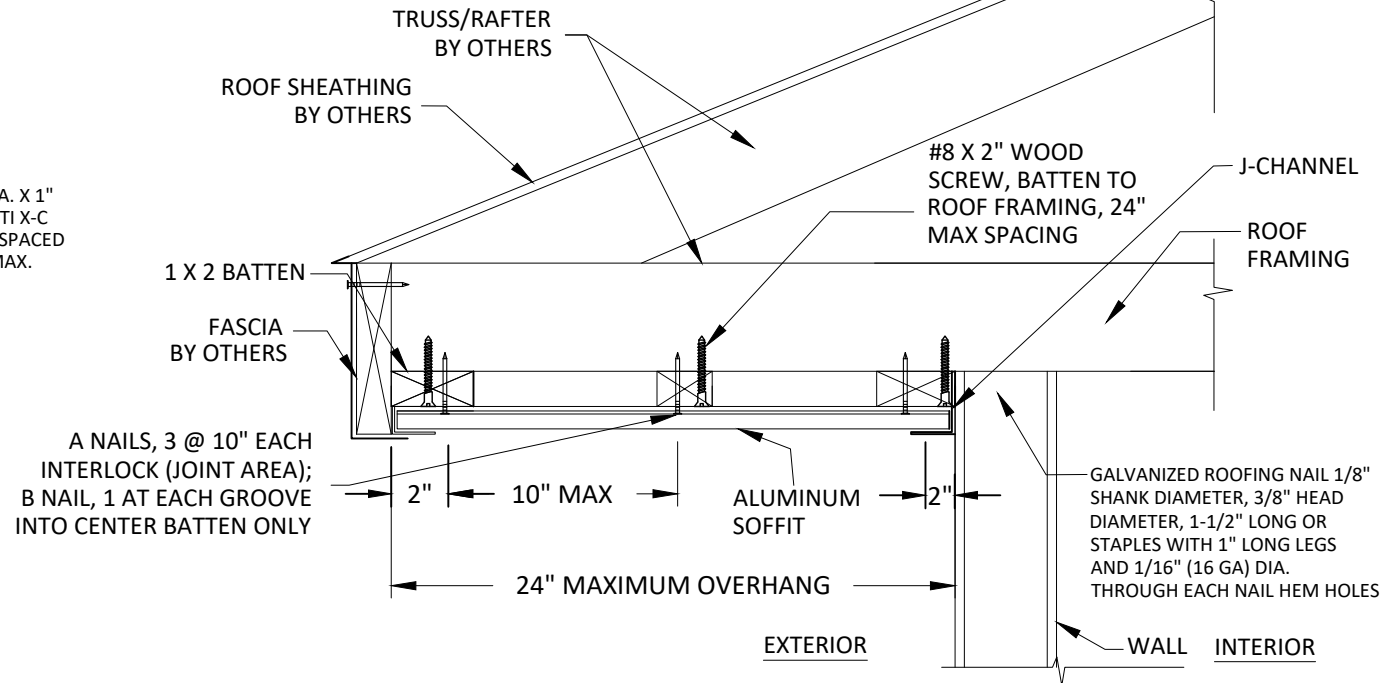
**A**  
**2** **VERTICAL SECTION**  
SOFFIT INSTALLATION DETAIL  
MASONRY BLOCK WALLS



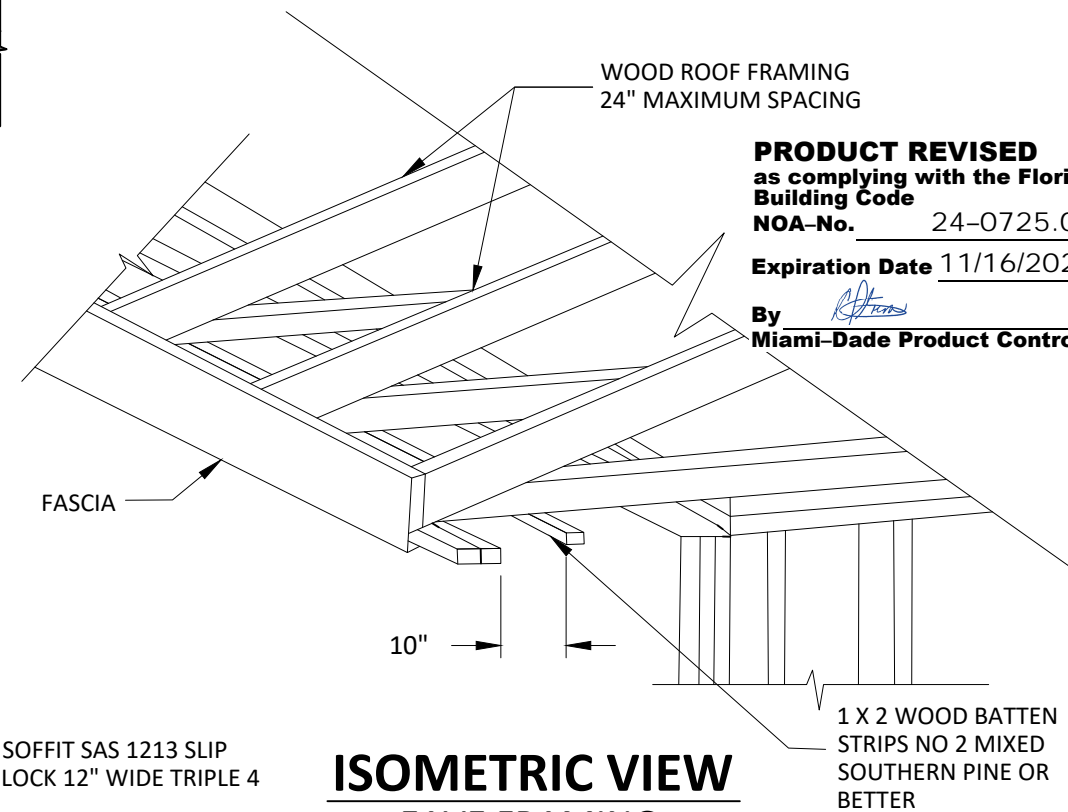
NAILING PATTERN A: 10" ALONG INTERLOCK X 12" ALONG WIDTH  
NAILING PATTERN B: SINGLE ROW IN EACH GROOVE ALONG CENTER BATTEN

NAILS A: JOINT AREA .12" DIA. SHANK 3/8" DIA. HD. 1-1/2" LONG  
NAILS B: GROOVE AREA .10" DIA. SHANK 3/16" DIA. HD. 2" LONG

BATTEN 1" X 2" P.T. SOUTHERN PINE CONSTRUCTION GRADE



**B**  
**2** **VERTICAL SECTION**  
SOFFIT INSTALLATION DETAIL  
1 X 2 BATTEN



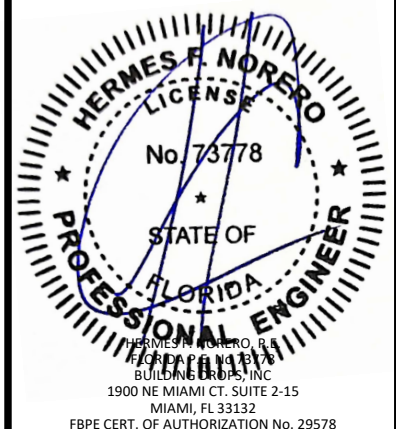
**ISOMETRIC VIEW**  
EAVE FRAMING

**PRODUCT REVISED**  
as complying with the Florida  
Building Code  
NOA-No. 24-0725.04  
Expiration Date 11/16/2027  
By *[Signature]*  
Miami-Dade Product Control

TITLE: MASTIC ALUMINUM SOFFIT	DESIGN PPRESSURE TABLE	
	PREPARED BY: BUILDING DROPS, INC. 1900 NE MIAMI CT, SUITE 2-15 MIAMI, FL 33132 PH: (954)399-8478 FAX: (954)744-4738 WEB: www.buildingdrops.com	

REMARKS	BY	DATE

THE INSTALLATION DETAILS DESCRIBED HEREIN ARE GENERIC  
AND MAY NOT REFLECT ACTUAL CONDITIONS FOR A SPECIFIC  
SITE. IF SITE CONDITIONS CAUSE INSTALLATION TO DEVIATE  
FROM THE REQUIREMENTS DETAILED HEREIN, A LICENSED  
ENGINEER OR ARCHITECT SHALL PREPARE SITE SPECIFIC  
DOCUMENTS FOR USE WITH THIS DOCUMENT.



DATE: 03.08.24

DWG. BY: RN  
CHK. BY: HFN

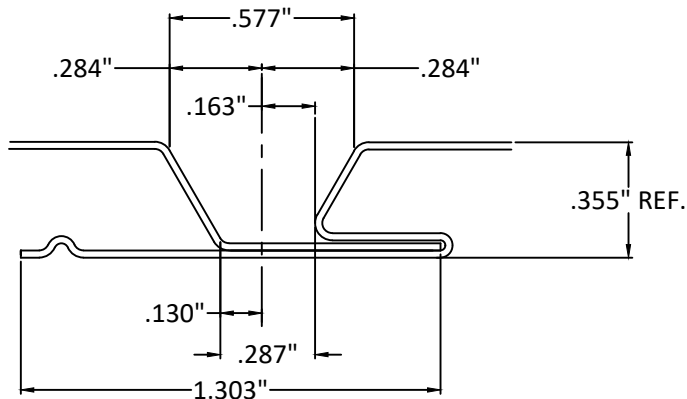
SCALE: NTS

DWG. #: PGSG008

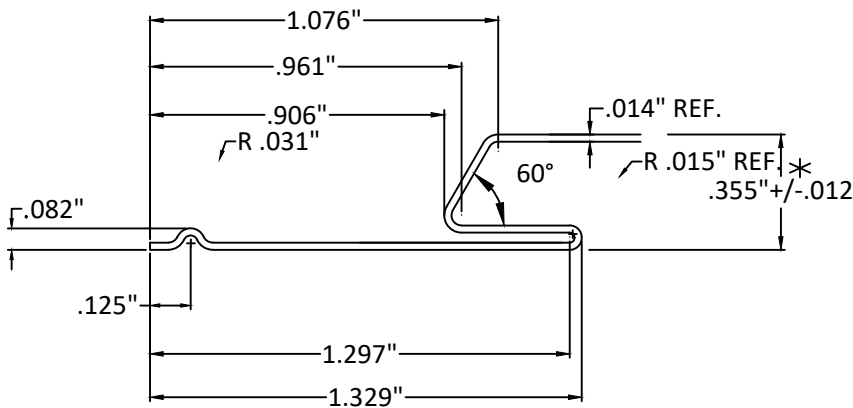
SHEET:

2

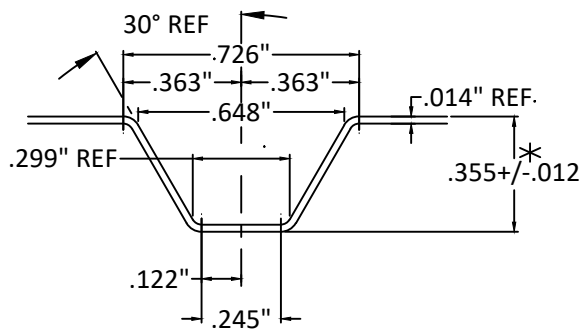
OF 4



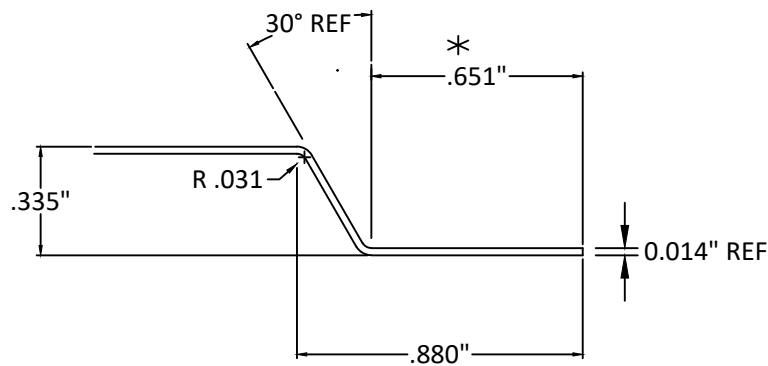
DETAIL A



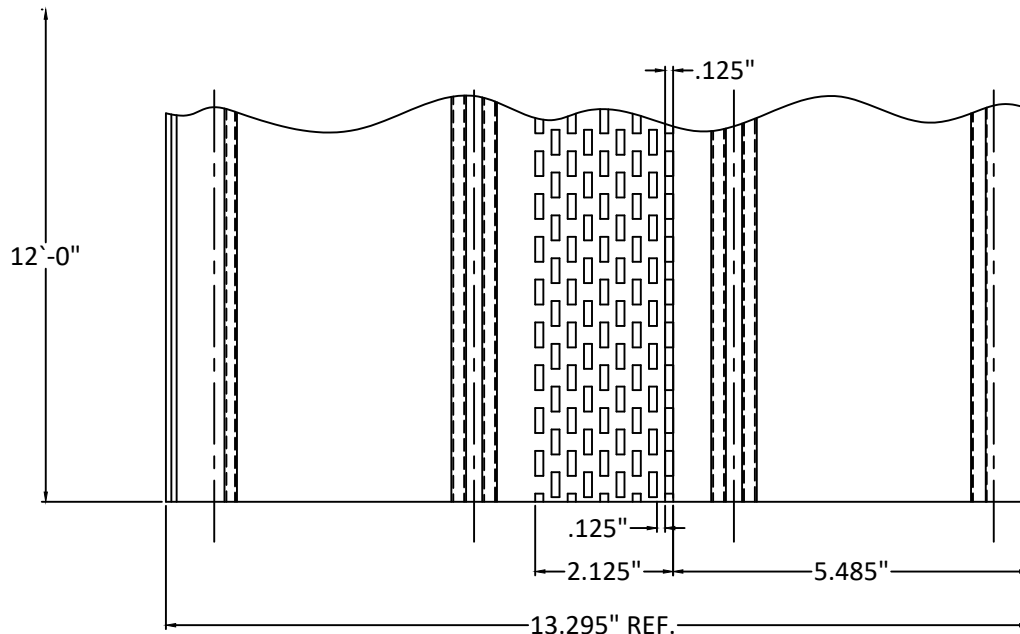
DETAIL B



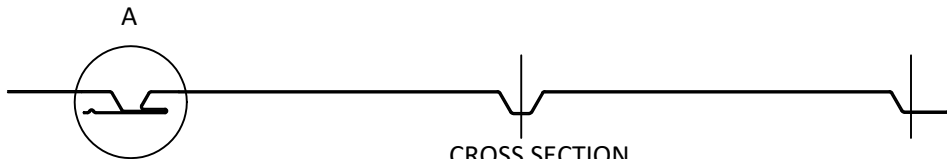
DETAIL C



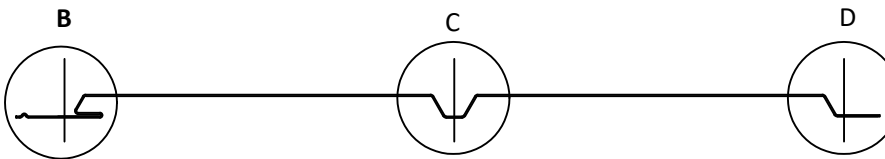
DETAIL D



PLAN VIEW



CROSS SECTION



END VIEW

## GENERAL NOTES

1. MATERIAL - ALUMINUM ALLOY 3105-H13
2. DEVELOPED WIDTH 15.000"
3. LATEST MASTIC PAINT SPECS TO APPLY
4. STANDARD TOLERANCES DIMENSION  $\pm .015"$ , ANGLE  $\pm 1$  DEGREE, RADIUS  $\pm .005"$  UNLESS OTHERWISE SPECIFIED
5. OIL CANNING, BUCKLING, RIPPLES, AND CHATTER CHARACTERISTICS SHALL BE EVALUATED BY A PANEL OF ABF MANAGEMENT USING AN ABF EVALUATION FORM (REF. OIL CAN EVALUATION NO.001).
6. TOOLING MUST BE IN CONTROL AND CAPABLE TO MANUFACTURE THE PART WITHIN ESTABLISHED SPECIFICATION AND TOLERANCES.
7. KEY CHARACTERISTICS ARE NOTED BY (\*) ASTERISK. DIMENSIONS TO BE HELD IN CONTROL AND CAPABLE TO A CPK OF 1.33 OR GREATER.
8. ALL INSIDE RADII TO BE .031" UNLESS OTHERWISE NOTED
9. PRODUCT CODE: SAS12313, LCAS12313, LFAS12313

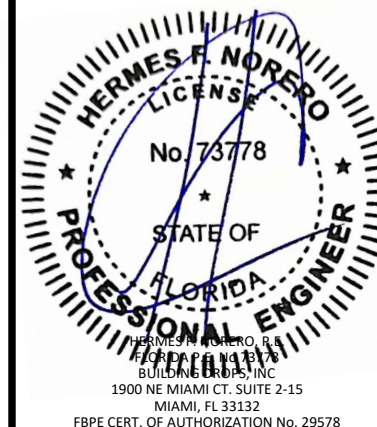
**PRODUCT REVISED**  
as complying with the Florida  
Building Code  
NOA-No. 24-0725.04  
Expiration Date 11/16/2027  
By *[Signature]*  
Miami-Dade Product Control

PLY GEM RESID. SOLUT., DIV. OF CORNERSTONE  
BLDG. BRANDS, INC.  
2405 CAMPBELL ROAD  
SIDNEY, OH 45365

TITLE: MASTIC ALUMINUM SOFFIT  
GENERAL NOTES AND SOFFIT DETAILS  
PREPARED BY: BUILDING DROPS, INC.  
1900 NE MIAMI CT, SUITE 2-15  
MIAMI, FL 33132  
PH: (954) 399-8478  
FAX: (954) 744-4738  
WEB: www.buildingdrops.com

REMARKS	BY	DATE

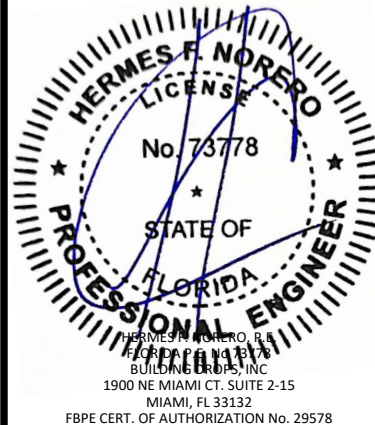
THE INSTALLATION DETAILS DESCRIBED HEREIN ARE GENERIC AND MAY NOT REFLECT ACTUAL CONDITIONS FOR A SPECIFIC SITE. IF SITE CONDITIONS CAUSE INSTALLATION TO DEVIATE FROM THE REQUIREMENTS DETAILED HEREIN, A LICENSED ENGINEER OR ARCHITECT SHALL PREPARE SITE SPECIFIC DOCUMENTS FOR USE WITH THIS DOCUMENT.



DATE: 03.08.24  
DWG. BY: RN  
CHK. BY: HFN  
SCALE: NTS  
DWG. #: PGSG008  
SHEET:

REMARKS	BY	DATE

THE INSTALLATION DETAILS DESCRIBED HEREIN ARE GENERIC AND MAY NOT REFLECT ACTUAL CONDITIONS FOR A SPECIFIC SITE. IF SITE CONDITIONS CAUSE INSTALLATION TO DEVIATE FROM THE REQUIREMENTS DETAILED HEREIN, A LICENSED ENGINEER OR ARCHITECT SHALL PREPARE SITE SPECIFIC DOCUMENTS FOR USE WITH THIS DOCUMENT.



DATE:	03.08.24
DWG. BY:	CHK. BY:
RN	HFN
SCALE:	NTS
DWG. #:	PGSG008
SHEET:	4

## GENERAL NOTES

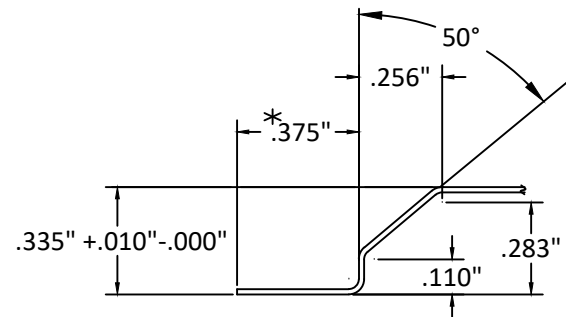
- MATERIAL - ALUMINUM ALLOY 3105-H13
- GAUGE .016"(SVGN420144, SVGV420144); .019" (SVGN12N20, SVG12N20T, SVG12V20, SVG12V20T)
- DEVELOPED WIDTH 14.437" +/- .016"
- LATEST MASTIC PAINT SPECS TO APPLY, ALUMALURE 2000.
- STANDARD TOLERANCES DIMENSION +/- .015", ANGLE +/- 1 DEGREE, RADIUS +/- .005" UNLESS OTHERWISE SPECIFIED
- TRANSVERSE BOW DOWN-MAX .031"
- OIL CANNING, BUCKLING, RIPPLES, AND CHATTER CHARACTERISTICS SHALL BE EVALUATED BY A PANEL OF ABF MANAGEMENT USING AN ABF EVALUATION FORM (REF. OIL CAN EVALUATION NO.001).
- TOOLING MUST BE IN CONTROL AND CAPABLE TO MANUFACTURE THE PART WITHIN ESTABLISHED SPECIFICATION AND TOLERANCES.
- KEY CHARACTERISTICS ARE NOTED BY (\*) ASTERISK. DIMENSIONS TO BE HELD IN CONTROL AND CAPABLE TO A CPK OF 1.33 OR GREATER.
- ALL INSIDE RADII TO BE .031" UNLESS OTHERWISE NOTED

**PRODUCT REVISED**  
as complying with the Florida  
Building Code

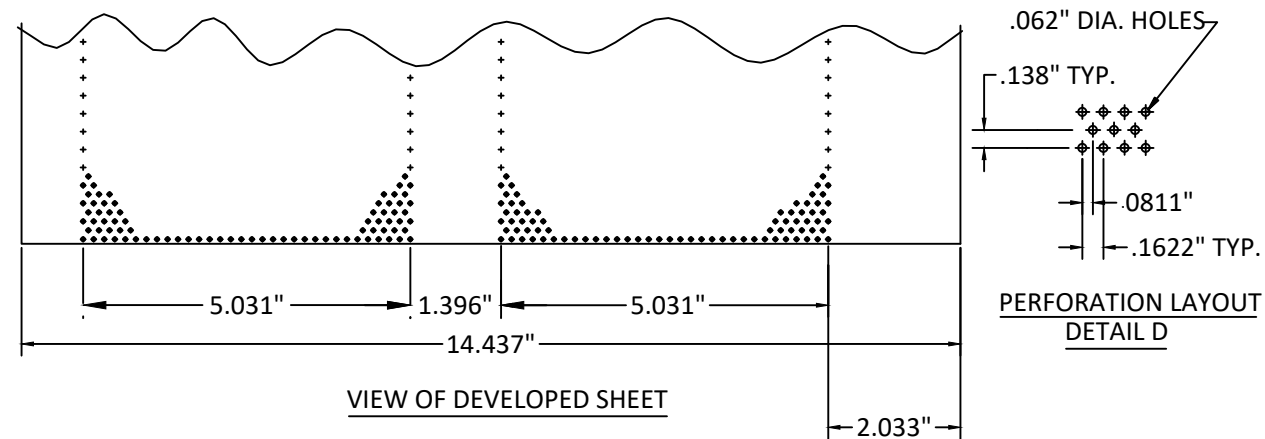
NOA-No. 24-0725.04

Expiration Date 11/16/2027

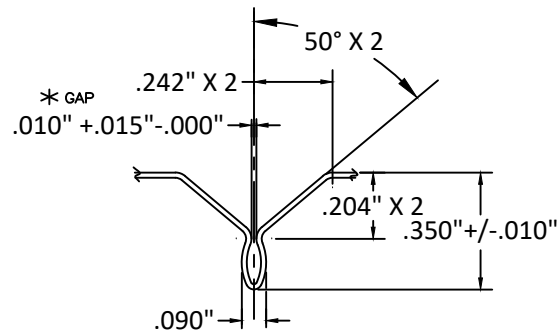
By   
Miami-Dade Product Control



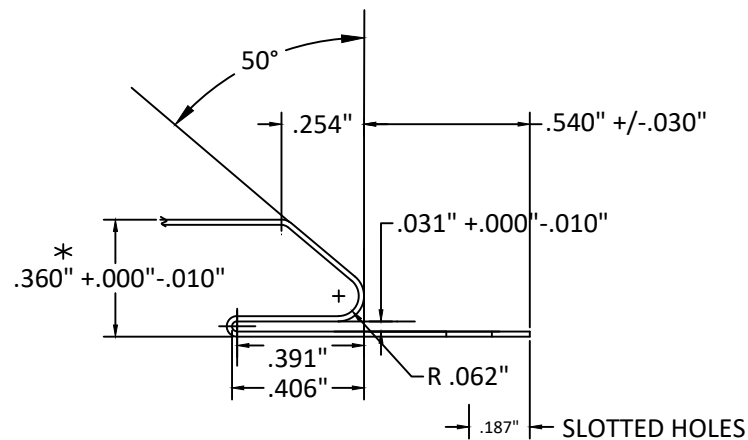
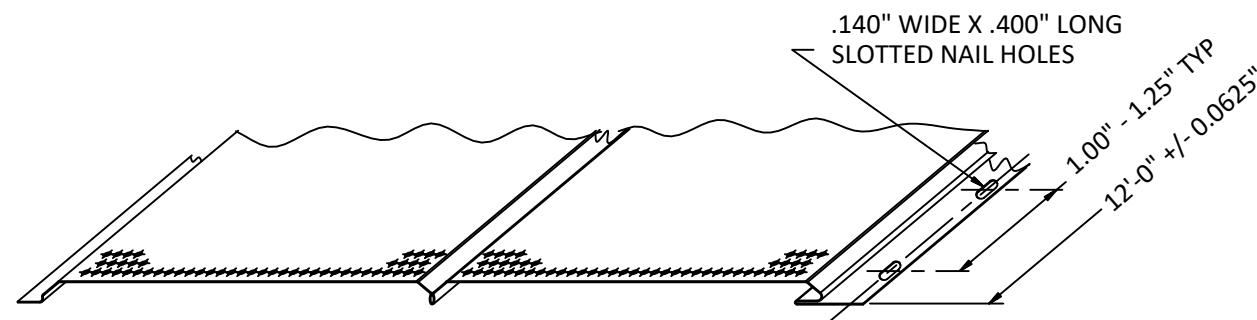
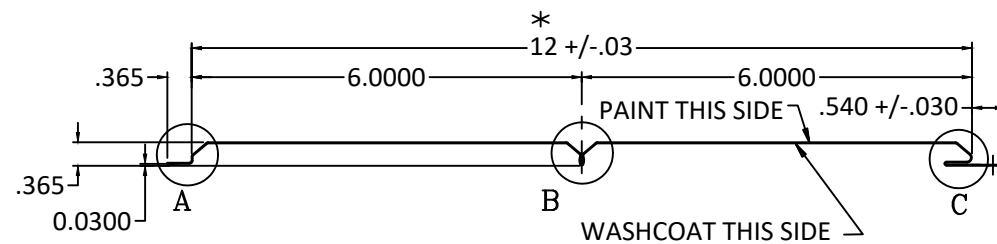
DETAIL A



VIEW OF DEVELOPED SHEET



DETAIL B



DETAIL C