



DEPARTMENT OF REGULATORY AND ECONOMIC RESOURCES (RER)  
BOARD AND CODE ADMINISTRATION DIVISION  
**NOTICE OF ACCEPTANCE (NOA)**

**Mesker Door MBM, LP**  
**3440 Stanwood Blvd.,**  
**Huntsville, AL 35811**

**SCOPE:**

This NOA is being issued under the applicable rules and regulations governing the use of construction materials. The documentation submitted has been reviewed and accepted by Miami-Dade County RER -Product Control Section to be used in Miami Dade County and other areas where allowed by the Authority Having Jurisdiction (AHJ).

This NOA shall not be valid after the expiration date stated below. The Miami-Dade County Product Control Section (In Miami Dade County) and/or the AHJ (in areas other than Miami Dade County) reserve the right to have this product or material tested for quality assurance purposes. If this product or material fails to perform in the accepted manner, the manufacturer will incur the expense of such testing and the AHJ may immediately revoke, modify, or suspend the use of such product or material within their jurisdiction. RER reserves the right to revoke this acceptance, if it is determined by Miami-Dade County Product Control Section that this product or material fails to meet the requirements of the applicable building code.

This product is approved as described herein and has been designed to comply with the Florida Building Code, including the High Velocity Hurricane Zone.

**DESCRIPTION: N-Series Outswing Opaque Steel Doors-LMI**

**APPROVAL DOCUMENT:** Drawing No. **MBM 002 Rev B** (former **DOR010 Rev A**), titled "N-Series Outswing Opaque Steel Door (LMI/SMI)", sheets 1 through 12 of 12, dated 12/15/20 and last revised on 10/24/2024, prepared by Building Drops, Inc., signed and sealed by Hermes Norero, P.E., bearing the Miami-Dade County Product Control Renewal stamp with the Notice of Acceptance number and expiration date by the Miami-Dade County Product Control Section.

**MISSILE IMPACT RATING: Large and Small Missile Impact Resistant**

**Limitations:**

1. See sheet **1** thru **4** for Lock Hardware Options. See sheets **1** thru **5** for Anchor Bracket types and anchor types.
2. See sheet **3** for Embossed or Flush panel options.
3. Private labelling is **not** part of this approval.

**LABELING:** Each unit shall bear a permanent label with the manufacturer's name or logo, city, state and series and following statement: "Miami-Dade County Product Control Approved", noted herein.

**RENEWAL** of this NOA shall be considered after a renewal application has been filed and there has been no change in the applicable building code negatively affecting the performance of this product.

**TERMINATION** of this NOA will occur after the expiration date or if there has been a revision or change in the materials, use, and/or manufacture of the product or process. Misuse of this NOA as an endorsement of any product, for sales, advertising or any other purposes shall automatically terminate this NOA. Failure to comply with any section of this NOA shall be cause for termination and removal of NOA.

**ADVERTISEMENT:** The NOA number preceded by the words Miami-Dade County, Florida, and followed by the expiration date may be displayed in advertising literature. If any portion of the NOA is displayed, then it shall be done in its entirety.

**INSPECTION:** A copy of this entire NOA shall be provided to the user by the manufacturer or its distributors and shall be available for inspection at the job site at the request of the Building Official.

This NOA **revises & renews # 20-0708.03** consists of this page 1 and evidence pages E-1, E-2, E-3 & E-4, as well as approval document mentioned above.

The submitted documentation was reviewed by **Ishaq I. Chanda, P.E.**

*Ishaq I. Chanda*



**NOA No. 24-0812.05**  
**Expiration Date: July 16, 2030**  
**Approval Date: November 07, 2024**  
**Page 1**

**NOTICE OF ACCEPTANCE: EVIDENCE SUBMITTED**

**1. Evidence submitted under previous approvals**

**A. DRAWINGS**

1. Manufacturer's die drawings and sections (submitted under files below)
2. Drawing No. **AD14-19**, titled "N-Series Outswing Opaque Steel Door (LMI/SMI)", sheets 1 through 12 of 12, prepared by MYC Engineering Inc., dated 01/21/15 and last revised on JUL 01, 2015, signed and sealed by Yipping Wang, P.E.

**B. TESTS (submitted under file # 14-1021.03)**

1. Test reports on:
  - 1) Air Infiltration Test, per FBC, TAS 202-94
  - 2) Uniform Static Air Pressure Test, Loading per FBC TAS 202-94
  - 3) Water Resistance Test, per FBC, TAS 202-94
  - 4) Large Missile Impact Test per FBC, TAS 201-94
  - 5) Cyclic Wind Pressure Loading per FBC, TAS 203-94
  - 6) Forced Entry Test, per FBC 2411 3.2.1, TAS 202-94

along with marked-up drawings and installation diagram of outswing Steel door w/ glazed steel lite kit assembly, prepared by Fenestration Testing Lab, Inc., Test Report No. **FTL 7245**, dated 08/22/14 and **FTL 8120**, dated 12/19/14, signed and sealed by Idalmis Ortega, P. E.

Note: Test report **FTL7245** has been revised by an addendum letter dated April 10, 2015, issued by Fenestration Testing lab, signed and sealed by Idalmis Ortega, P. E.

**C. CALCULATIONS**

1. Anchor Verification calculation dated 01/12/15, 07/01/15 and last revised on JUL 07, 2015, prepared by MYC Engineering Inc., signed and sealed by Yipping Wang, P.E.

**D. QUALITY ASSURANCE**

1. Miami Dade Department of Regulatory and Economic Resources (RER).

**E. MATERIAL CERTIFICATIONS**

1. Tensile strength test report **FTL 8319** for "Kit Steel frame" per ASTM E-08, dated 04/07/15 issued by Fenestration Testing lab, signed and sealed by Idalmis Ortega, P. E.

**F. STATEMENTS**

1. Statement letter of conformance FBC 2014 (5<sup>th</sup> Edition) and letter of no financial interest, dated 01/09/15, prepared by MYC Engineering Inc., signed and sealed by Yipping Wang, P.E.
2. Statement letter dated 07/08/15, issued by Mesker Holding, LLC stating Mesker Door, LLC is the subsidiary of Mesker Holding and requesting NOA to be issued under Mesker Door, LLC, signed by Aaron R Schwartz, Chief Financial Officer.
3. State of Alabama Business entity details and legal name listing dated 11-07-2013, signed by Secretary of State.
4. Lab compliance as part of the above referenced test report.

**G. OTHER**

1. Test proposal #13-1401, dated 04/04/14 approved by RER.
2. Internet posting of Mesker Holding, LLC.

*Ishaq I. Chanda*

---

**Ishaq I. Chanda, P.E.**  
**Product Control Unit Supervisor**  
**NOA No. 24-0812.05**  
**Expiration Date: July 16, 2030**  
**Approval Date: November 07, 2024**

**NOTICE OF ACCEPTANCE: EVIDENCE SUBMITTED**

**3. Evidence submitted under previous approvals**

**A. DRAWINGS**

1. Drawing No. **AD14-19**, titled “N-Series Outswing Opaque Steel Door (LMI/SMI)”, sheets 1 through 12 of 12, prepared by MYC Engineering Inc., Sep 05, 2017, signed and sealed by Yipping Wang, P.E.

Note: Revision consist of FBC 2017 code update in sheet 1.

**B. TESTS**

1. None

**C. CALCULATIONS**

1. None.

**D. QUALITY ASSURANCE**

1. Miami Dade Department of Regulatory and Economic Resources (RER).

**E. MATERIAL CERTIFICATIONS**

1. Tensile strength test report **FTL 8319** for “Kit Steel frame” per ASTM E-08, dated 04/07/15 issued by Fenestration Testing lab, signed and sealed by Idalmis Ortega, P. E.

**F. STATEMENTS**

1. Statement letters of conformance to FBC 2017(**6th** Edition) and FBC 2014 (5<sup>th</sup> Edition), dated 09/05/17, prepared by MYC Engineering Inc., signed and sealed by Yipping Wang, P.E.
2. Statement letter dated 11/28/17 of code revision note update only and no other changes in approval drawings, prepared by MYC Engineering Inc., signed and sealed by Yipping Wang, P.E.

**G. OTHER**

1. This NOA revises NOA # **14-1021.03**, expiring 07/16/20.

*Ishaq I. Chanda*

---

**Ishaq I. Chanda, P.E.**  
**Product Control Unit Supervisor**  
**NOA No. 24-0812.05**  
**Expiration Date: July 16, 2030**  
**Approval Date: November 07, 2024**

**NOTICE OF ACCEPTANCE: EVIDENCE SUBMITTE**

**4. Evidence Submitted under previous approval**

**A. DRAWINGS**

1. Drawing No. **DOR010** Rev A (former **AD14-19**), titled “N-Series Outswing Opaque Steel Door (LMI/SMI)”, sheets 1 through 12 of 12, dated 12/15/20, prepared by Building Drops, Inc., signed and sealed by Hermes Norero, P.E.  
(Note: Revision consists of FBC 2020 code updates)

**B. TEST**

1. None.

**C. CALCULATIONS**

1. Anchor Verification calculation dated 07/30/20, prepared by Building Drops, Inc., signed and sealed by Hermes Norero, P.E.

**D. QUALITY ASSURANCE**

1. Miami Dade Department of Regulatory and Economic Resources (RER).

**E. MATERIAL CERTIFICATIONS**

1. None.

**F. STATEMENTS**

1. Statement letters of conformance to FBC 2020 (7<sup>th</sup> Edition) and “No financial interest”), dated 06/30/20, prepared by Building Drops, Inc., signed and sealed by Hermes Norero, P.E.
2. Notification of Successor Engineer per the Florida Administrative Code Section 61G15-27.001, notifying original engineer that the successor engineer is assuming full professional and legal responsibility for all engineering documents pertaining to this NOA, dated 02/09/20, prepared by Building Drops, Inc., signed and sealed by Hermes Norero, P.E.
3. Merger Certificate issued dated DEC 01, 2017 by State of Delaware between Mesker Holding Inc., and “PRT Blocker”, LLC, signed by Jeffery W, Bullock, Secretary of State.
4. Merger Certificate issued dated Jun 13, 2018 by State of Delaware between Mesker Door, Inc., Inc., with and into “PRT Blocker”, LLC, signed by Jeffery W, Bullock, Secretary of State.
5. Merger Certificate issued dated Jun 27, 2018 by State of Delaware between “PRT Blocker”, LLC with and into DormaKaba USA, Inc., signed by Jeffery W, Bullock, Secretary of State.
6. Statement letter dated 10/16/20 requesting Name change based on merger documents, signed by Ms. Nancy M. Lambert, V.P. & general counsel, DormaKaba, USA, Inc.

**G. OTHER**

1. This NOA **revises & renews # 17-0920.07**, expiring 07/16/25.
2. Media Release by dormakaba dated Nov. 08, 2016 to acquire merger of US based Mesker Opening group.

*Ishaq I. Chanda*

---

**Ishaq I. Chanda, P.E.**  
**Product Control Unit Supervisor**  
**NOA No. 24-0812.05**  
**Expiration Date: July 16, 2030**  
**Approval Date: November 07, 2024**



**NOTICE OF ACCEPTANCE: EVIDENCE SUBMITTED**

**5. New Evidence Submitted**

**A. DRAWINGS**

1. Drawing No. **MBM 002 Rev B** (former **DOR010 Rev A**), titled “N-Series Outswing Opaque Steel Door (LMI/SMI)”, sheets 1 through 12 of 12, dated 12/15/20 and last revised on October 24, 2024, prepared by Building Drops, Inc., signed and sealed by Hermes Norero, P.E.  
(Note: Revision consists of Name change and FBC 2023 code updates)

**B. TEST**

1. None.

**C. CALCULATIONS**

1. None.

**D. QUALITY ASSURANCE**

1. Miami Dade Department of Regulatory and Economic Resources (RER).

**E. MATERIAL CERTIFICATIONS**

1. None.

**F. STATEMENTS**

1. Statement letters of conformance to FBC 2023 (**8<sup>th</sup>** Edition) and “No financial interest”), dated 07/22/24, prepared by Building Drops, Inc., signed and sealed by Hermes Norero, P.E.
2. Statement letter from Mesker MBM, LP dated 05/09/24 stating that they have purchased all rights of NOA# 20-0708.03 and .04 from Dorma Kaba, USA and requesting these NOA(s) be reissued to Mesker MBM, LP, signed by Adam Matusz, president.
3. Statement letter by Dorma Kaba, USA dated 05/08/24 confirming legally sold all assets, rights and now how of NOA# 20-0708.03 and #220-0708.04 to Mesker MBM, LP and requesting to rescind the NOA(S), signed by Ms. Nancy Lambart, Senior VP and general counsel.

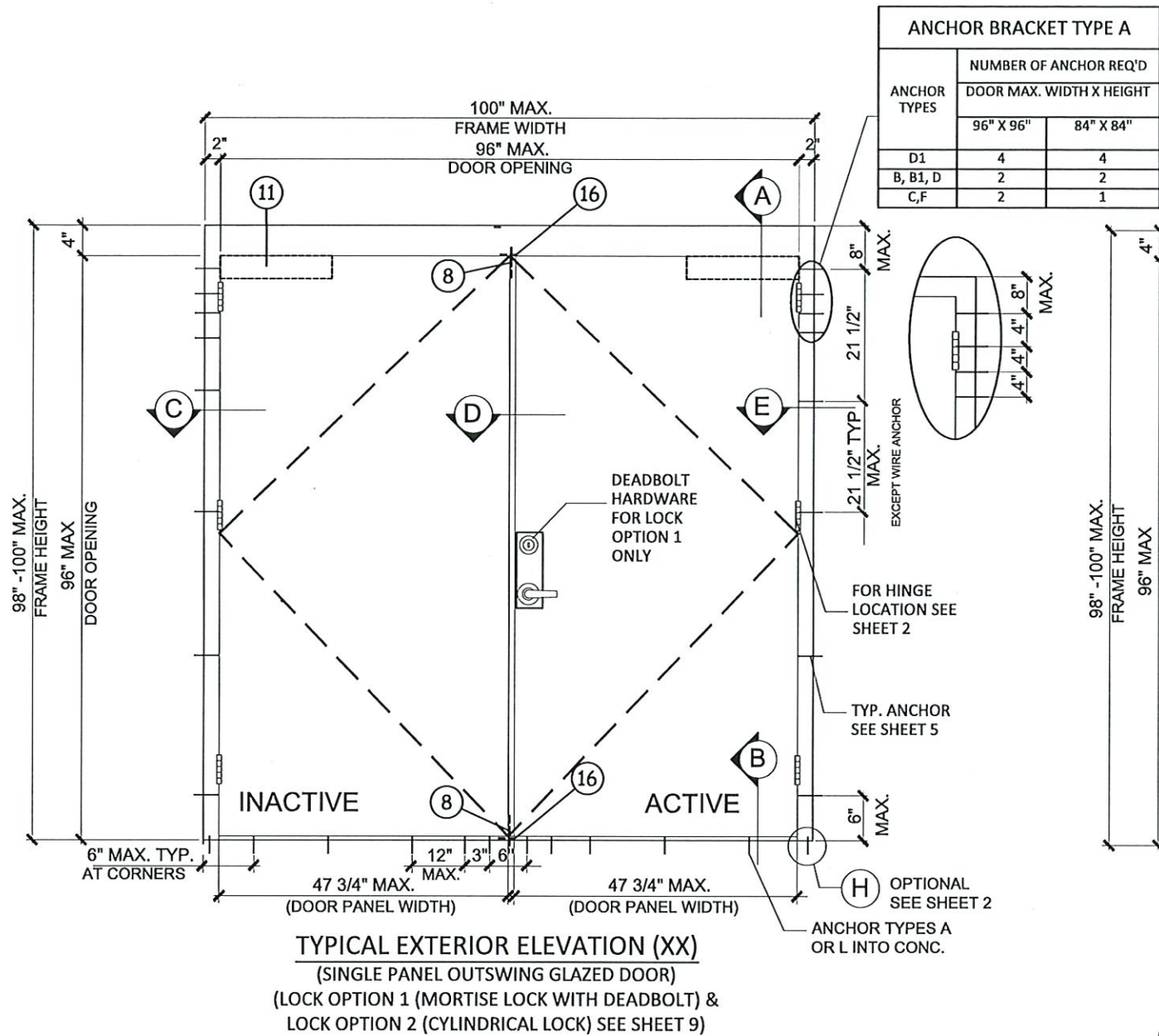
**G. OTHER**

1. This NOA **revises & renews # 20-0708.05**, expiring 07/16/30.
2. Bill of assets dated 06/21/22 between Dorma Kaba, USA (Seller) and Mesker MBM, LP (buyer), signed by their respective official Alex Houston, President Dorma and Adam Matusz, president Mesker.

*Ishaq I. Chanda*

---

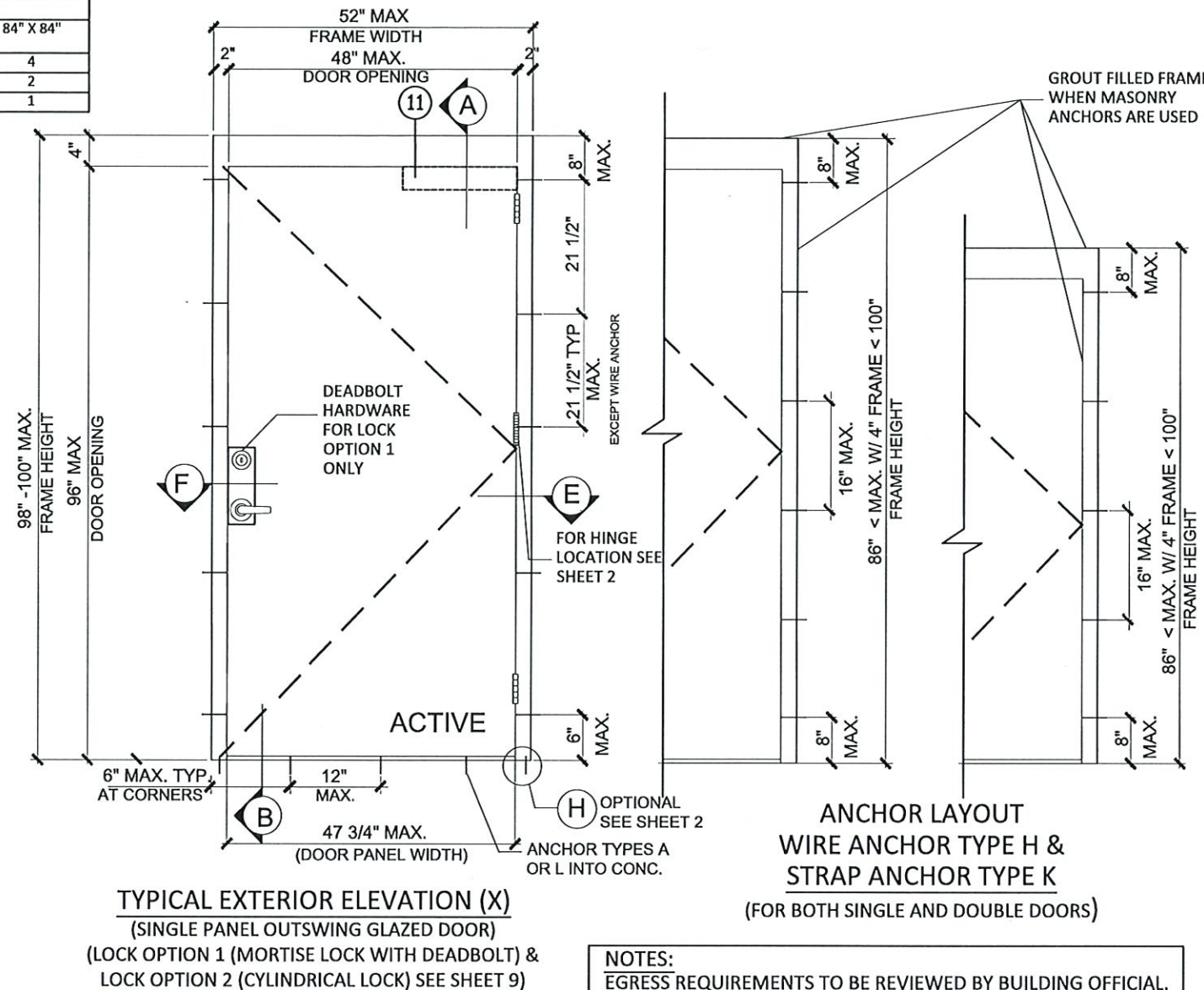
**Ishaq I. Chanda, P.E.**  
**Product Control Unit Supervisor**  
**NOA No. 24-0812.05**  
**Expiration Date: July 16, 2030**  
**Approval Date: November 07, 2024**

**"N" SERIES GLAZED OUTSWING STEEL DOOR (LMI)**

- THIS PRODUCT HAS BEEN DESIGNED AND TESTED TO COMPLY WITH THE REQUIREMENTS OF THE 8TH EDITION (2023) FLORIDA BUILDING CODE INCLUDING HIGH VELOCITY HURRICANE ZONE (HVHZ).
- DOORS ARE RATED FOR LARGE MISSILE IMPACT AND DO NOT REQUIRE SHUTTERS.
- ANCHORS SHALL BE AS LISTED, SPACED AS SHOWN ON ELEVATIONS / DETAILS. ANCHOR EMBEDMENT TO BASE MATERIAL SHALL BE BEYOND WALL DRESSING OR STUCCO.
- ANCHORING OR LOADING CONDITIONS NOT SHOWN IN THESE DETAILS ARE NOT PART OF THIS APPROVAL.
- MATERIALS INCLUDING BUT NOT LIMITED TO STEEL/METAL SCREWS THAT COME INTO CONTACT WITH OTHER DISSIMILAR MATERIALS SHALL MEET THE REQUIREMENTS OF THE 2023 FLORIDA BUILDING CODE AS APPLICABLE.

- METAL STRUCTURES NOT BY MESKER DOOR INC. MUST SUPPORT LOADS IMPOSED BY DOOR SYSTEM AND TRANSFER THEM TO THE BUILDING STRUCTURE.
- 1X OR 2X WOOD BUCKS OR OTHERS MUST BE ANCHORED PROPERLY TO TRANSFER LOADS TO THE STRUCTURE.
- A LOAD DURATION FACTOR IN ALLOWABLE STRESS IS USED IN DESIGN OF WOOD ANCHORS ONLY.
- DOOR PANEL: MIN. 18 GA. (0.042" THK) STEEL MIN.  $F_y = 42$  KSI,  $F_u = 51.5$  KSI MIN. DOOR FRAME: MIN. 16 GA. (0.053" THK) STEEL MIN.  $F_y = 42$  KSI,  $F_u = 51.5$  KSI MIN.
- ULTIMATE DESIGN LOAD OBTAINED FROM ASCE 7-22 MULTIPLIED BY 0.6 SHALL BE LESS THAN OR EQUAL TO MAX. DESIGN LOAD IN THIS DOCUMENT.

ANCHOR BRACKET TYPE A		
ANCHOR TYPES	NUMBER OF ANCHOR REQ'D	
	DOOR MAX. WIDTH X HEIGHT	
	96" X 96"	84" X 84"
D1	4	4
B, B1, D	2	2
C, F	2	1



**NOTES:**  
EGRESS REQUIREMENTS TO BE REVIEWED BY BUILDING OFFICIAL.  
ALL OPENINGS PASSED WITH WATER INFILTRATION.

DESIGN LOADS (FOR SIZES SHOWN ABOVE OR SMALLER) AS PERMITTED BY FBC	
+65.0 PSF	-65.0 PSF

**PRODUCT RENEWED**  
as complying with the Florida  
Building Code  
NOA-No. 24-0812.05  
Expiration Date 07/06/2030  
By Ishaq I. Chanda  
Miami-Dade Product Control



MESKER DOOR®  
3440 Stanwood Blvd.  
Huntsville, AL 35811

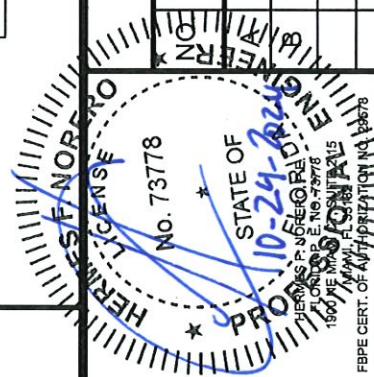
PH: (256) 851-6670 FX: (800) 503-1410

TITLE: N SERIES OUTSWING STEEL  
OPAQUE DOOR

PREPARED BY:  
BUILDING DROPS, INC.  
1900 NE Miami CT, SUITE 2-15  
MIAMI, FL 33132  
PH: (954) 399-8478  
FAX: (954) 744-4738  
WEB: www.buildingdrops.com

**REVISIONS**

DESCRIPTION	BY	DATE
2020 FBC UPDATE	SM	12/15/20
2023 FBC UPDATE	RN	05/29/24



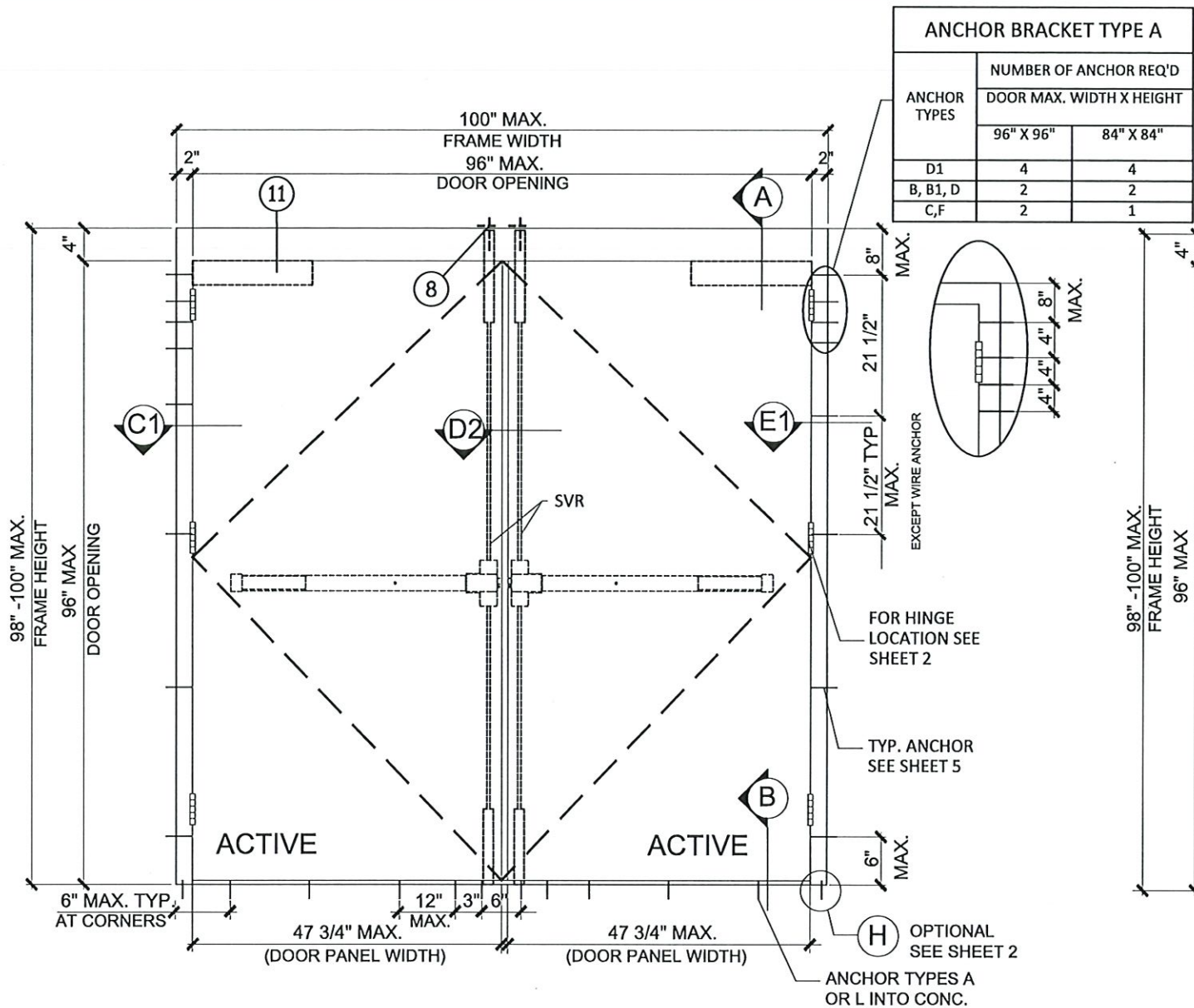
DATE: 06.10.20	DWN BY: ER	CHK BY: HFN	SCALE: NTS
-------------------	---------------	----------------	---------------

DWG #:

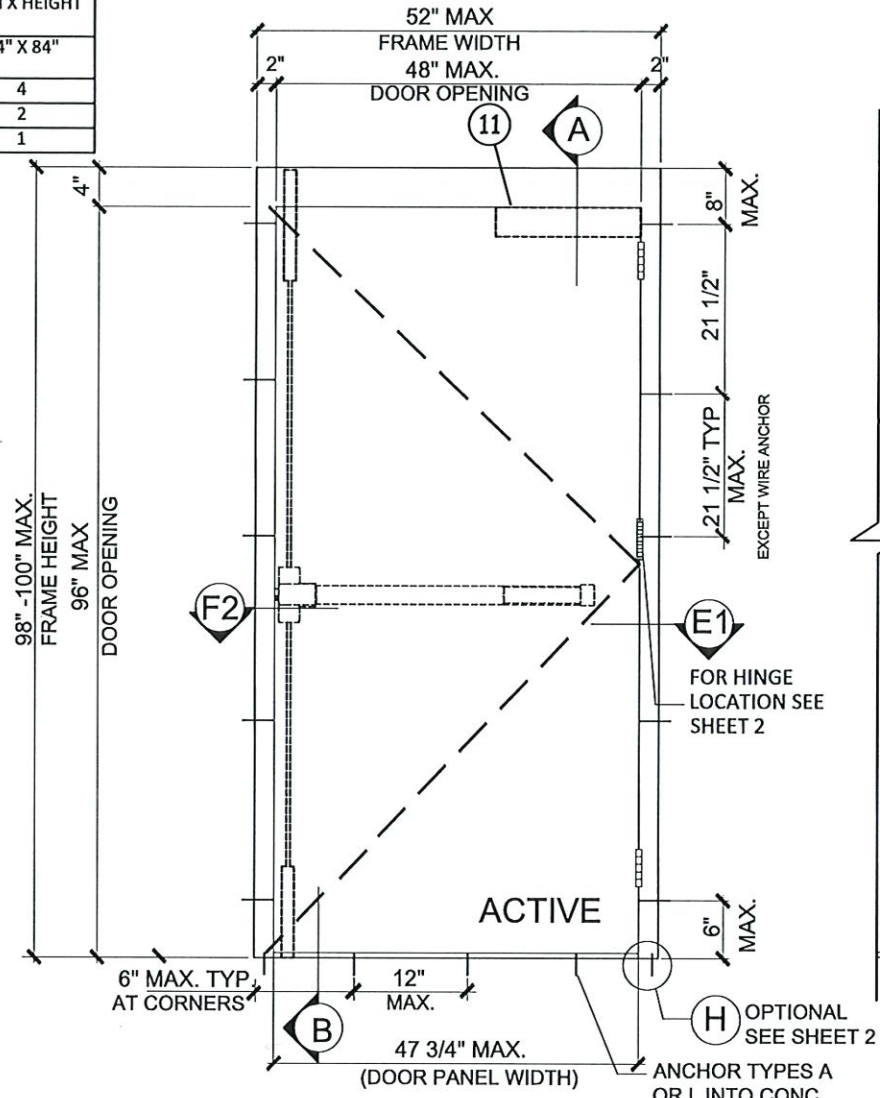
**MBM002**

SHEET: 1 OF 12

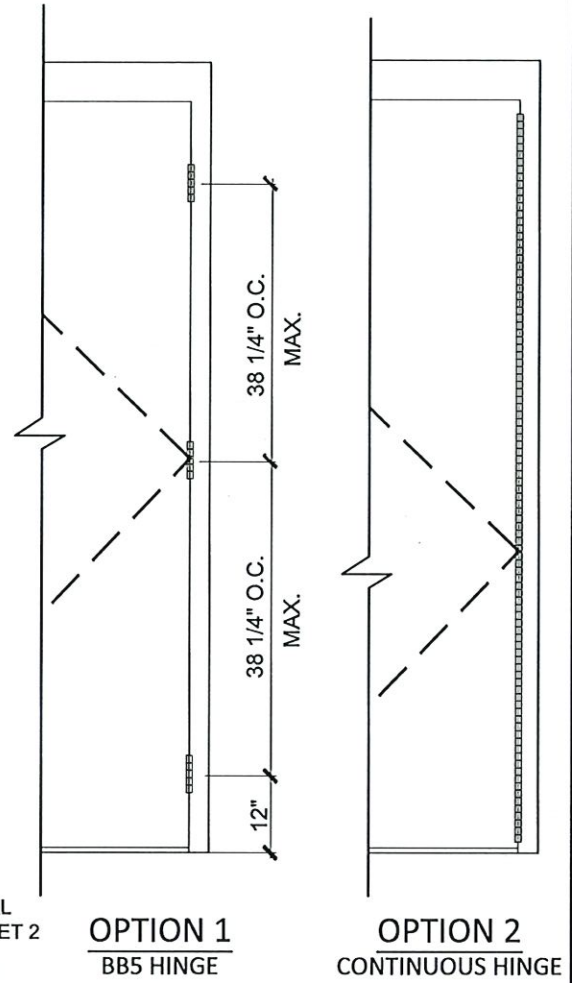




TYPICAL EXTERIOR ELEVATION (XX)  
(DOUBLE PANEL OUTSWING GLAZED DOOR)  
(LOCK OPTION 5 (SVR) SEE SHEET 9)

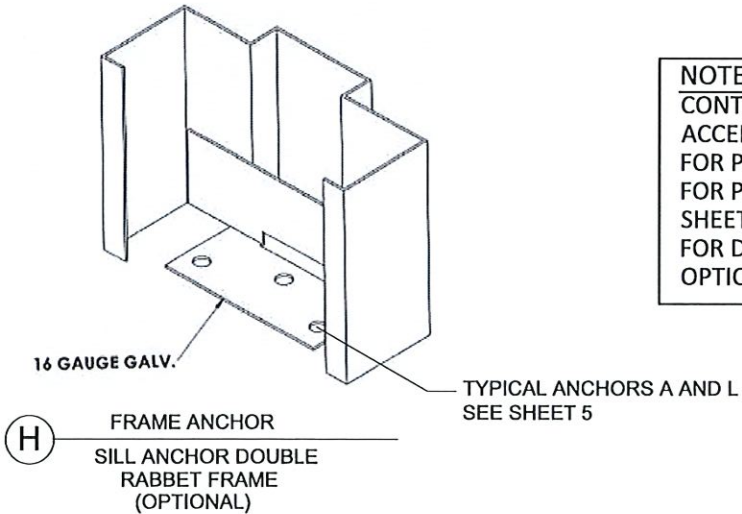


TYPICAL EXTERIOR ELEVATION (X)  
(SINGLE PANEL OUTSWING GLAZED DOOR)  
(LOCK OPTION 5 (SVR) SEE SHEET 9)



HINGE LAYOUTS  
(FOR BOTH SINGLE AND DOUBLE DOORS)  
(SEE DETAIL ON SHEET 5)

DESIGN LOADS	
(FOR SIZES SHOWN ABOVE OR SMALLER AS PERMITTED BY FBC)	
+65.0 PSF	
-65.0 PSF	



NOTES:  
CONTINUOUS HINGE OR BB5 HINGE  
ACCEPTABLE ON ALL OPTIONS.  
FOR PANEL HINGE OPTIONS.  
FOR PANEL HINGE OPTIONS SEE  
SHEET 5.  
FOR DOOR EDGE AND EDGE SEAM  
OPTIONS SEE SHEET 4



MESKER DOOR®  
3440 Stanwood Blvd.  
Huntsville, AL 35811

PH: (256) 851-6670 FX: (800) 503-1410

TITLE: N SERIES OUTSWING STEEL  
OPAQUE DOOR

PREPARED BY:  
BUILDING DROPS, INC.  
1900 NE Miami CT, SUITE 2-15  
MIAMI, FL 33132  
PH: (954) 399-8478  
FAX: (954) 744-4738  
WEB: www.buildingdrops.com

REVISIONS	
DESCRIPTION	BY DATE
2020 FBC UPDATE	SM 12/15/20
2023 FBC UPDATE	RN 05/29/24



PRODUCT RENEWED  
as complying with the Florida  
Building Code  
NOA-No. 24-0812.05  
Expiration Date 07/06/2030  
By Ishag I. Chanda  
Miami-Dade Product Control

DATE: 06.10.20  
DWN BY: ER  
CHK BY: HFN  
SCALE: NTS

DWG #: MBM002  
SHEET: 2 OF 12

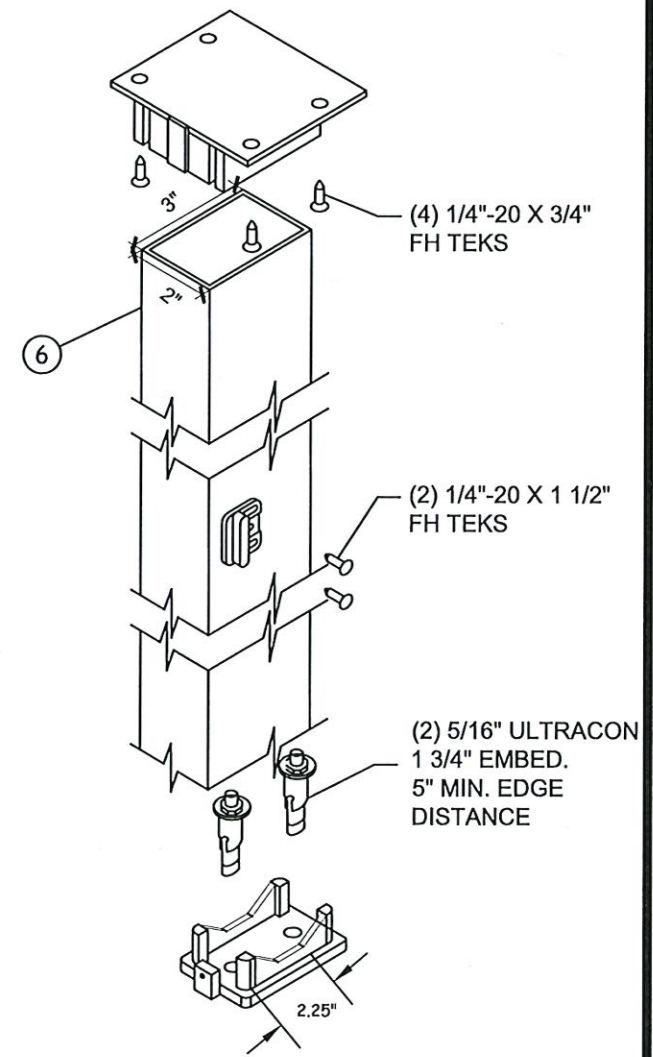
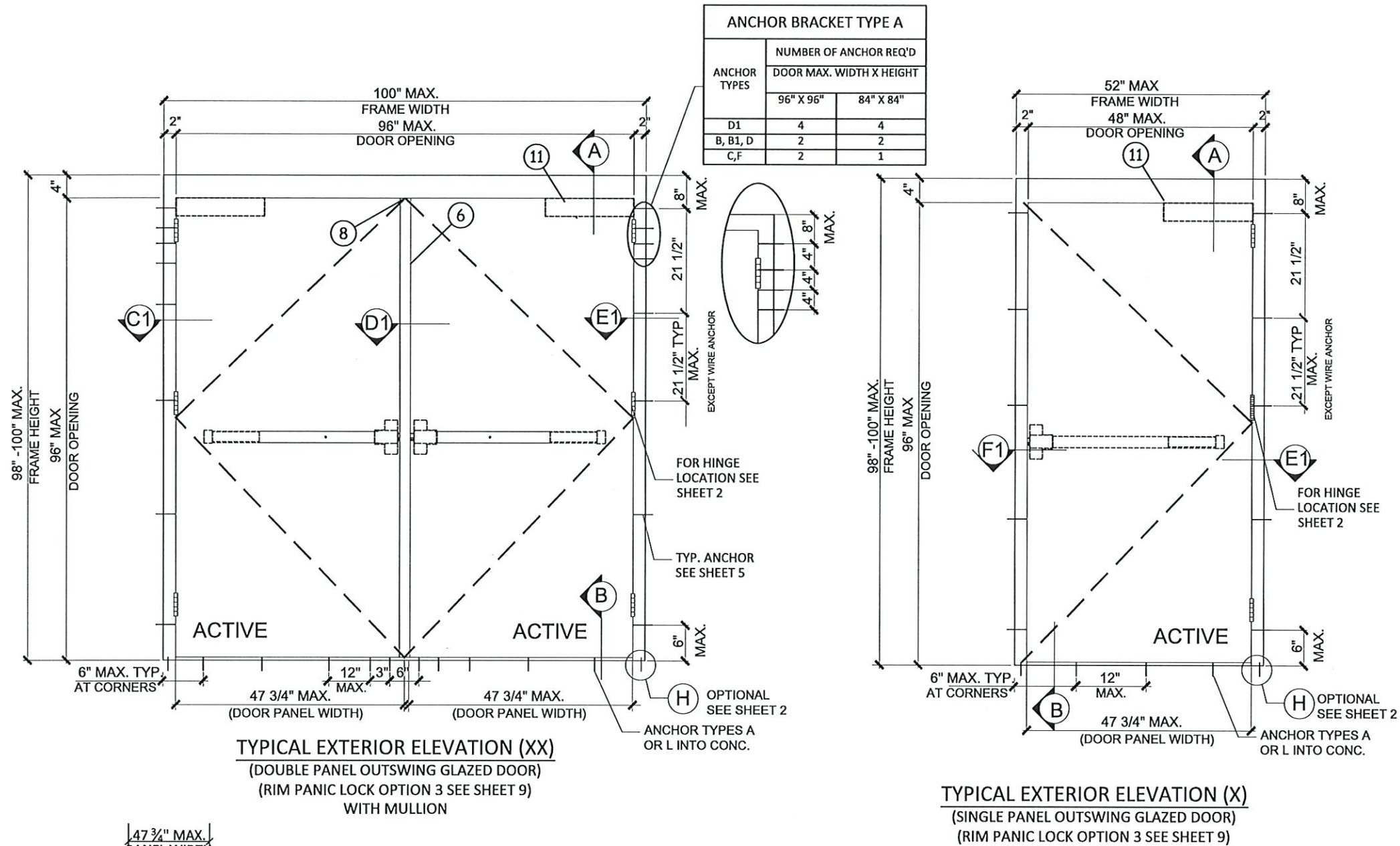


REVISIONS			
	DESCRIPTION	BY	DATE
2020	2020 FBC UPDATE	SM	12/15/20
2023	2023 FBC UPDATE	RN	05/29/24



**PRODUCT RENEWED**  
as complying with the Florida  
Building Code  
NOA-No. 24-0812.05  
Expiration Date 07/06/2030  
By Isaac L. Chan  
Miami-Dade Product Control

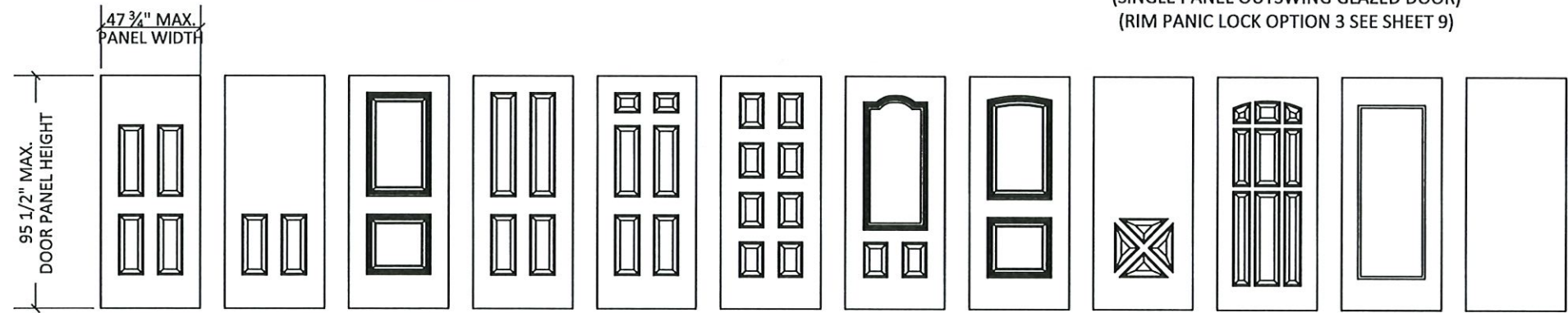
DATE: 06.10.20	DWN BY: ER	CHK BY: HFN	SCALE: NTS
DWG #: <b>MBM002</b>			
SHEET: <b>3 OF 12</b>			



DESIGN HARDWARE SERIES  
KRM REMOVABLE MULLION  

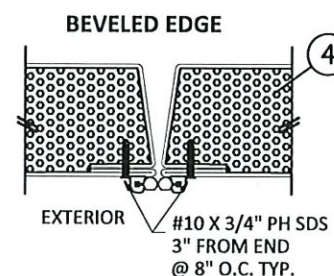
---

Fy= 36 KSI MIN.  
1/8" THK. STEEL

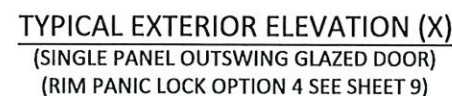
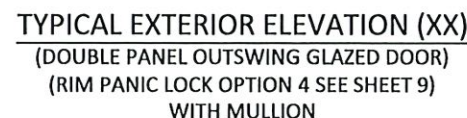


FLUSH DOOR  
(MIN.  $F_y = 42$  KSI  
MIN.  $F_u = 51.5$  KSI)





ANCHOR BRACKET TYPE A		
ANCHOR TYPES	NUMBER OF ANCHOR REQ'D	
	DOOR MAX. WIDTH X HEIGHT	
	96" X 96"	84" X 84"
D1	4	4
B, B1, D	2	2
C.F	2	1



<p align="center"><b>DESIGN LOADS</b>  <b>(FOR SIZES SHOWN ABOVE OR SMALLER)</b>  <b>AS PERMITTED BY FBC</b></p>
<p><b>+65.0 PSF</b></p> <p><b>-65.0 PSF</b></p>

**NOTES:**  
CONTINUOUS HINGE OR BB5 HINGE  
ACCEPTABLE ON ALL OPTIONS.  
FOR PANEL HINGE OPTIONS,  
FOR PANEL HINGE OPTIONS SEE  
SHEET 5.  
FOR DOOR EDGE AND EDGE SEAM  
OPTIONS SEE SHEET 4

**PRODUCT RENEWED**  
as complying with the Florida  
Building Code  
NOA-No. 24-0812.05

**Expiration Date** 07/06/2030

By Ishag I. Chande  
Miami-Dade Product Control

## REVISIONS

NO	DESCRIPTION	BY	DATE
20	2020 FBC UPDATE	SM	12/15/20
21	2023 FBC UPDATE	RN	05/29/24

DATE:	06.10.20
DWN BY:	ER
CHK BY:	HFN
SCALE:	NTS

DWG #:

MBM002

SHEET: 4 OF 12

HERBERT F. NORE PRO  
LICENSE  
No. 73778  
STATE OF  
FLORIDA  
10-24-2024  
HERBERT F. NORE  
FLORIDA'S FNO 73778  
1900 W. MIAMI ST SUITE 215  
MIAMI, FL 33132  
FBI CERT. OF AUTH. 0347341001 2578



7/22/2024 6:19 PM

c:\users\gyloniweta\building drops, inc.\building drops, inc.\projects\mesker mbm, llc\cc-24-0321 - md submittal - 2023 code change\dwgs\opaque door\mbm002.dwg

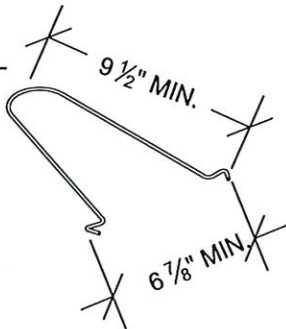
TYPICAL ANCHORS @ HEAD/JAMB: (REFER TO ELEVATION FOR SPACING)

- TYPE B 3/8" DIA. HLC SLEEVE ANCHOR BY "HILTI"  
DIRECTLY INTO  $f_c'=3000$  PSI CONCRETE  
1-3/8" MIN. EMBED, 3 1/4" MIN. EDGE DISTANCE
- TYPE B1 3/8" DIA. HLC SLEEVE ANCHOR BY "HILTI"  
DIRECTLY INTO  $f_c'=3000$  PSI INTO GROUT FILLED CONCRETE BLOCK  
1-3/8" MIN. EMBED, 3 1/2" MIN. EDGE DISTANCE
- TYPE C 3/8" DIA. LOK-BOLT AS BY "DEWALT"  
DIRECTLY INTO CONCRETE  $f_c'=3000$  PSI MIN.  
2 1/2" MIN. EMBED, 3 1/8" MIN. EDGE DISTANCE
- TYPE D 3/8" DIA. SCREW- BOLT + AS BY "DEWALT"  
DIRECTLY INTO CONCRETE  $f_c'=3000$  PSI MIN.  
1 1/2" MIN. EMBED, 3 1/4" MIN. EDGE DISTANCE
- TYPE D1 3/8" DIA. SCREW- BOLT + AS BY "DEWALT"  
DIRECTLY INTO  $f_c'=3000$  PSI INTO GROUT FILLED CONCRETE BLOCK  
1 1/2" MIN. EMBED, 3 3/4" MIN. EDGE DISTANCE
- TYPE F 5/16" DIA. SMS OR MACHINE BOLTS (MIN. GRADE 2 CRS) OR ST/ST  
INTO METAL STRUCTURES  
STEEL:  $F_y=36$  KSI MIN. 1/4" MIN. THK.  
ALUMINUM: 6063-T5, 3/4" MIN. THK.

NOTE:  
EACH TYPE OF ANCHOR SHALL BE USED WITH ANCHOR  
BRACKET TYPE A.

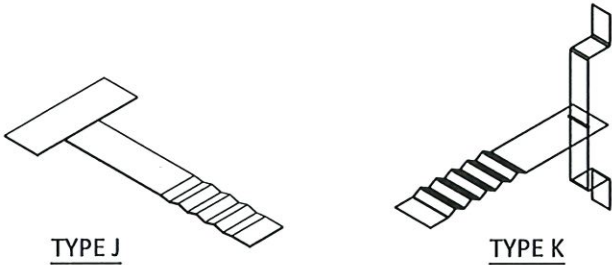
WIRE ANCHOR: (REFER TO ELEVATION FOR SPACING)  
(SEE DETAIL ON SHEET 10)

- TYPE H WIRE ANCHOR (PF-2) ( $F_y=60$  KSI) MIN.  
0.182 DIA. STEEL WIRE ANCHORS EMBED INTO  
GROUT FILLED CONCRETE BLOCK  $f_m'=1500$  PSI MIN.



STRAP ANCHOR: (REFER TO ELEVATION FOR SPACING)  
(SEE DETAIL ON SHEET 10)

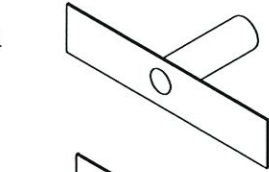
- TYPE H STRAP ANCHOR (PF-2) (PS-241) ( $F_y=60$  KSI) MIN.  
INTO GROUT FILLED CONCRETE BLOCK  
 $f_m'=3000$  PSI MIN.



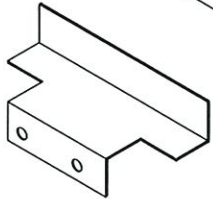
NOTE:  
WOOD OR STEEL STRUCTURAL MEMBERS OF WOOD AND  
STEEL-STUD WALLS MUST BE DESIGNED TO CARRY AT LEAST 271  
LB/FT FOR DOORS RATED @ 65 PSF

ANCHOR BRACKETS  
(SEE DETAILS ON SHEET 10)

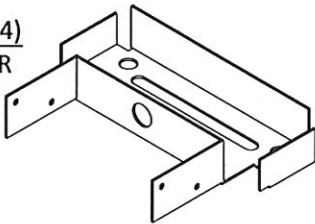
- TYPE A TUBE ANCHOR (PF-10)  
(SEE ELEVATIONS ON SHEETS 1 THRU 4  
FOR ANCHOR BRACKET LOCATIONS)



- TYPE B Z ANCHOR (PF-9)  
(SEE ELEVATIONS BELOW FOR ANCHOR  
BRACKET LOCATIONS)

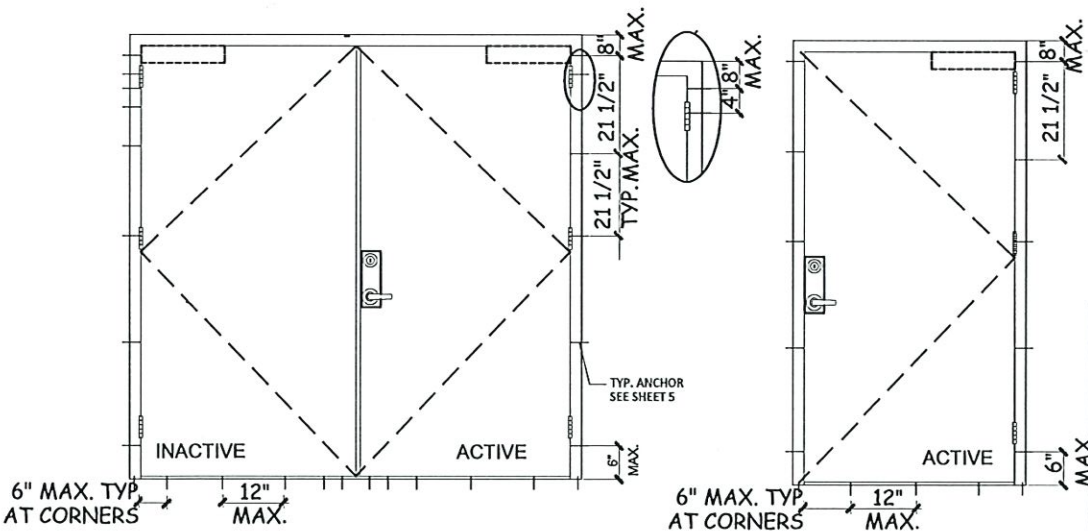


- TYPE C WOOD STUD ANCHOR (F-24)  
(SEE ELEVATIONS BELOW FOR ANCHOR  
BRACKET LOCATIONS)



SEALANT:  
ALL FRAME JOINTS AND CORNERS TO BE SEALED WITH SILICONE  
AT PERIMETER

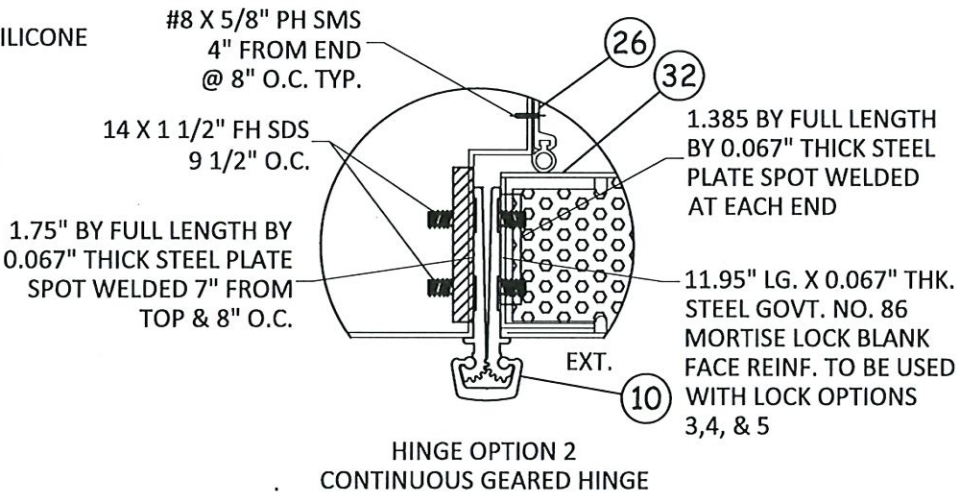
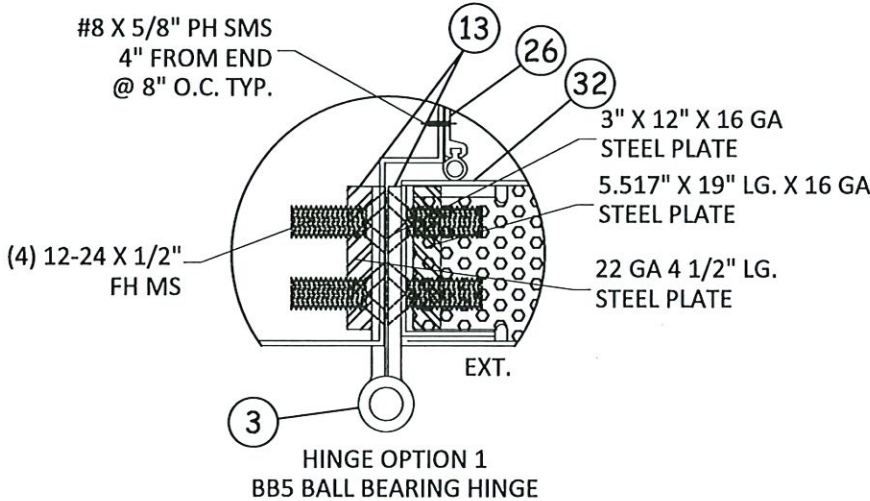
NOTE:  
JAMB SUBSTRATE CAN BE GROUT FILLED CONCRETE, 2X  
WOOD BUCKS, WOOD STRUCTURAL MEMBER(S), FILLED  
CONCRETE BLOCK WALL AND METAL STRUCTURE (STEEL  
OR ALUMINUM). ANCHOR TYPE SHOWN ABOVE SHOULD  
BE CHOSEN BASED ON SUBSTRATE TYPE IN THE PROJECT.  
ANY TYPE OF ANCHOR NOT SPECIFIED HERE IS NOT PART  
OF THIS APPROVAL.



ANCHOR BRACKET TYPE B & C LAYOUT

SILL ANCHORS: (REFER TO ELEVATION FOR SPACING)

- TYPE L 1/4" DIA. ULTRACONS BY "ELCO" ( $F_y=155$  KSI  $F_u=177$  KSI)  
DIRECTLY INTO  $f_c'=3000$  PSI CONCRETE  
1-1/2" EMBED INTO CONCRETE, 2 1/2" MIN. EDGE DISTANCE
- TYPE A 5/16" DIA. ULTRACONS BY "ELCO" ( $F_y=155$  KSI  $F_u=177$  KSI)  
DIRECTLY INTO  $f_c'=3000$  PSI CONCRETE  
1-3/4" EMBED INTO CONCRETE, 2 3/16" MIN. EDGE DISTANCE



MESKER DOOR®  
3440 Stanwood Blvd.  
Huntsville, AL 35811

PH: (256) 851-6670 FX: (800) 503-1410

TITLE: N SERIES OUTSWING STEEL  
OPAQUE DOOR

PREPARED BY:  
BUILDING DROPS, INC.  
1900 NE Miami CT, SUITE 2-15  
MIAMI, FL 33132  
PH: (954) 395-8478  
FAX: (954) 744-4738  
WEB: www.buildingdrops.com

REVISIONS

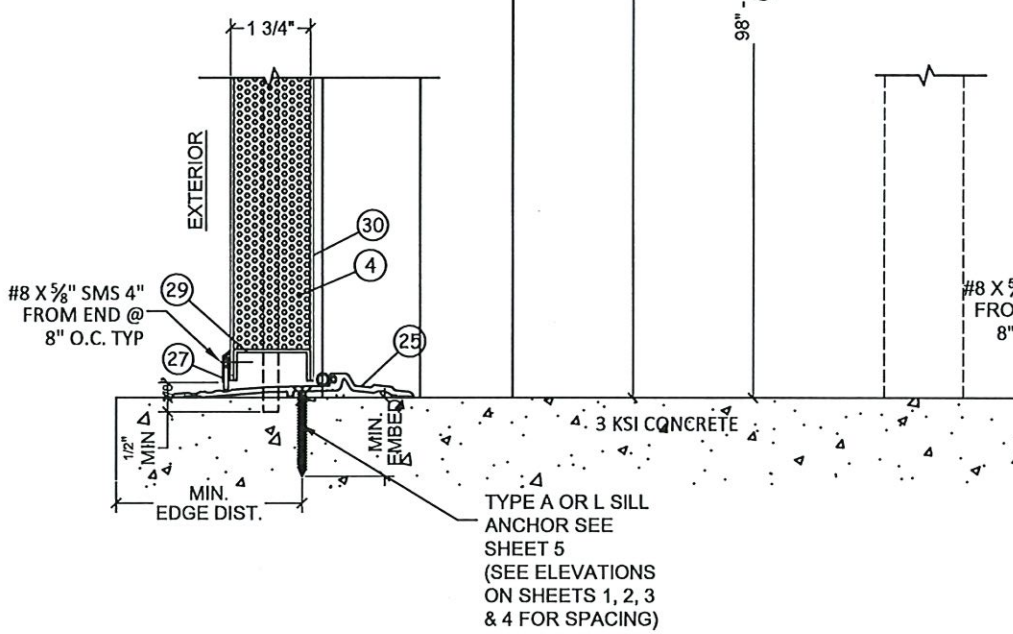
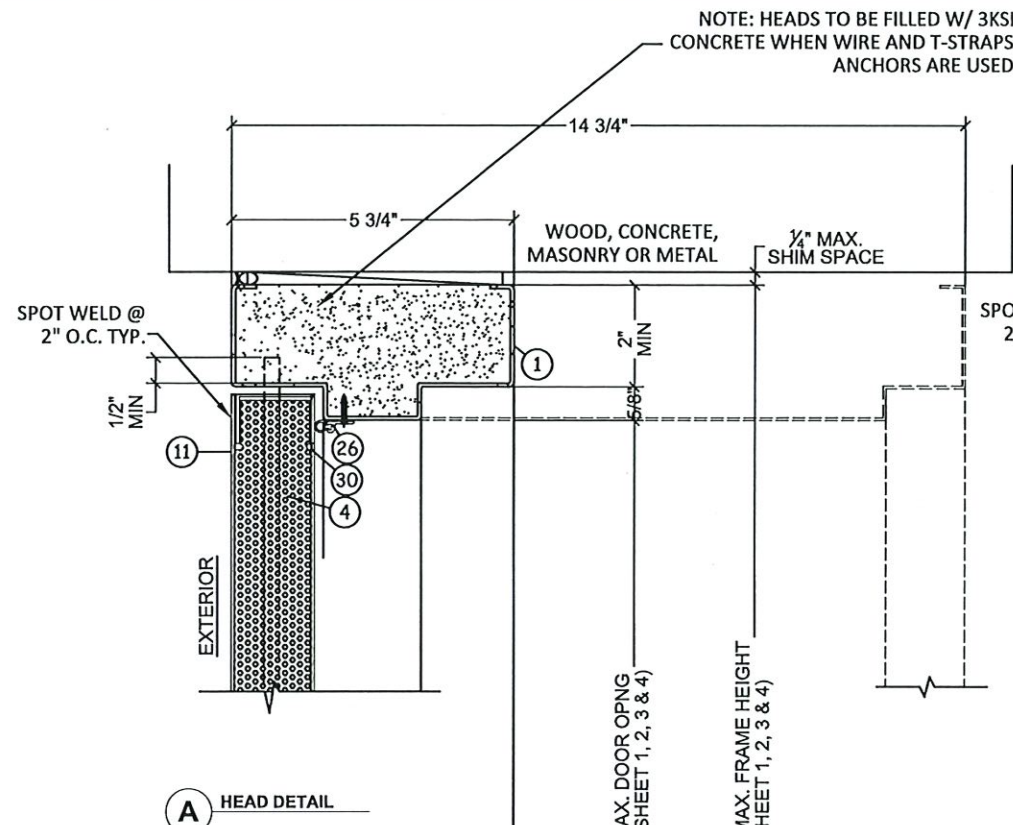
NO.	DESCRIPTION	BY	DATE
1	2020 FBC UPDATE	SM	12/15/20
2	2023 FBC UPDATE	RN	05/29/24



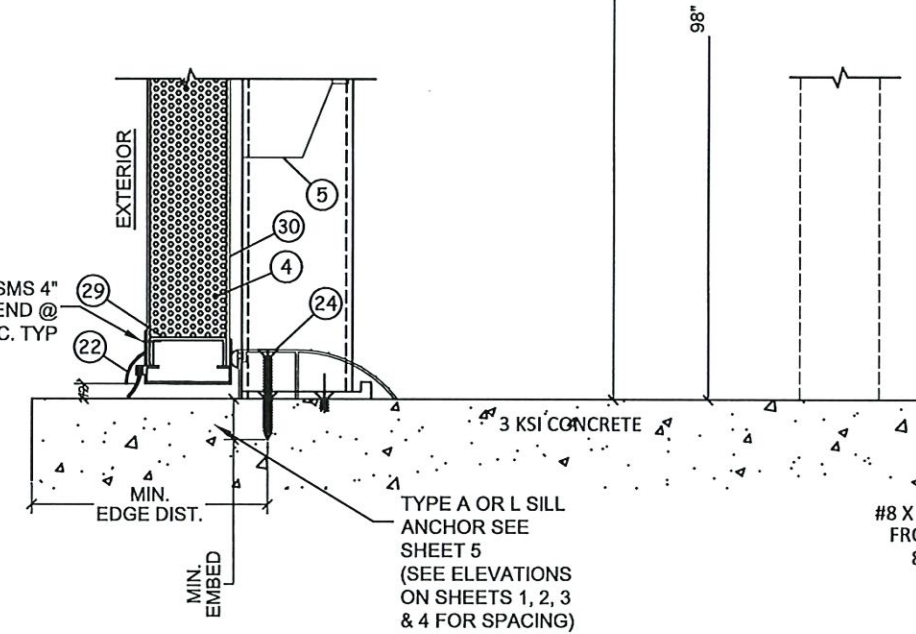
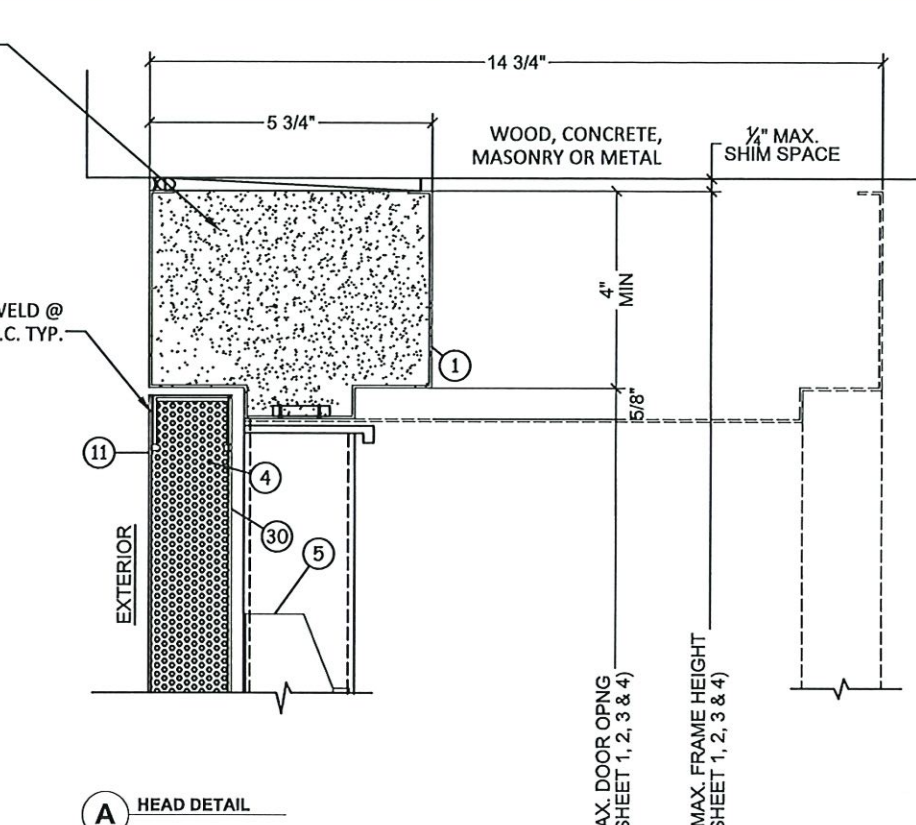
**PRODUCT RENEWED**  
as complying with the Florida  
Building Code  
NOA-No. 24-0812.05  
Expiration Date 07/06/2030  
By Ishaq I. Chanda  
Miami-Dade Product Control

DATE: 06.10.20  
DWN BY: ER  
CHK BY: HFN  
SCALE: NTS  
DWG #: MBM002  
SHEET: 5 OF 12

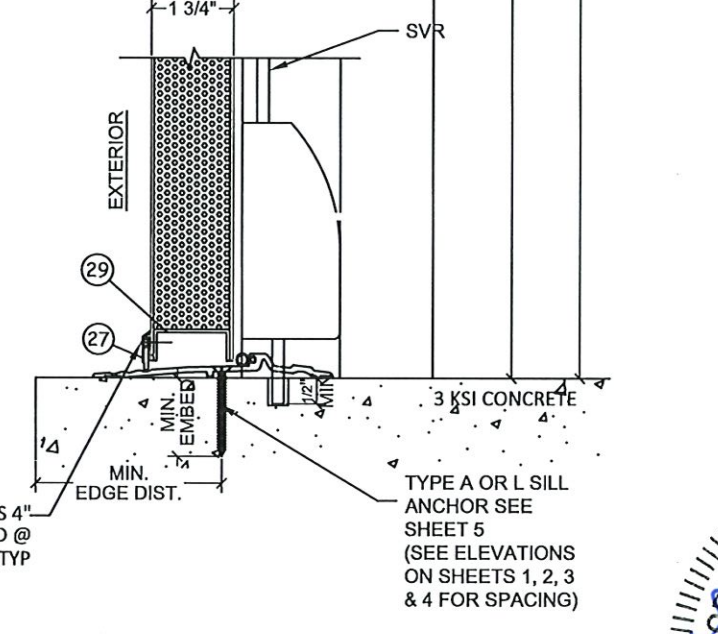
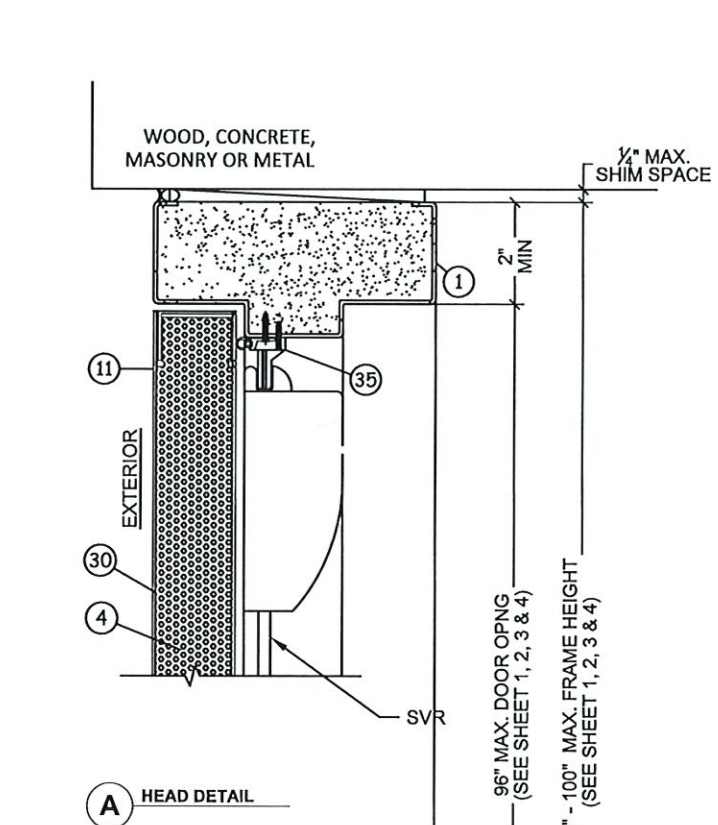




TYPICAL HANDICAP 1/2" BUMPER ADA THRESHOLD # TH5P-ADA-MF-96 WATER RATED THRESHOLD



TYPICAL 1" BUMPER THRESHOLD WATER RATED THRESHOLD



SVR EXIT DEVICE DETAIL

**PRODUCT RENEWED**  
as complying with the Florida Building Code  
NOA-No. 24-0812.05  
Expiration Date 07/06/2030  
By Ishaq I. Chanda  
Miami-Dade Product Control



MESKER DOOR®  
3440 Stanwood Blvd.  
Huntsville, AL 35811

PH: (256) 851-6670 FX: (800) 503-1410

TITLE: N SERIES OUTSWING STEEL OPAQUE DOOR

PREPARED BY: BUILDING DROPS, INC.  
1900 NE Miami CT, SUITE 2-15  
MIAMI, FL 33132  
PH: (954) 399-8478  
FAX: (954) 744-4738  
WEB: www.buildingdrops.com

REVISIONS				
NO.	DESCRIPTION	BY	DATE	
A	2020 FBC UPDATE	SM	12/15/20	
B	2023 FBC UPDATE	RN	05/29/24	



DATE: 06.10.20  
DWN BY: ER  
CHK BY: HFN  
SCALE: NTS

DWG #: MBM002

SHEET: 6 OF 12



BU

No. 73778  
 STATE OF  
 FLORIDA  
 JAMES E. WOODS JR.  
 FLORIDA NO. 73778  
 1800 P. MIAMI BLVD. #2-15  
 MIAMI FL 33132  
 FBPE CERT. OF AUTHORIZATION NO. 29578

By Ishag I. Chande  
Miami-Dade Product Control

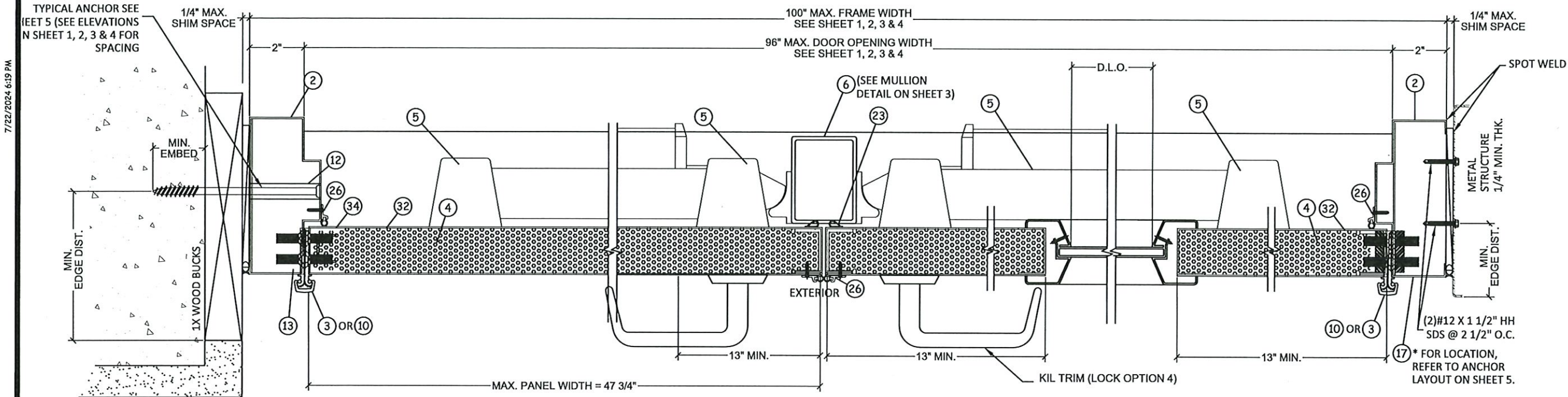


c:\users\dylaniwata\building drops, inc\building drops landing - common\projects\mesker mbm, llc\cc-24-0321 - md submittal - 2023 code change\dwgs\opaque door\mbm002.dwg



7/22/2024 6:19 PM

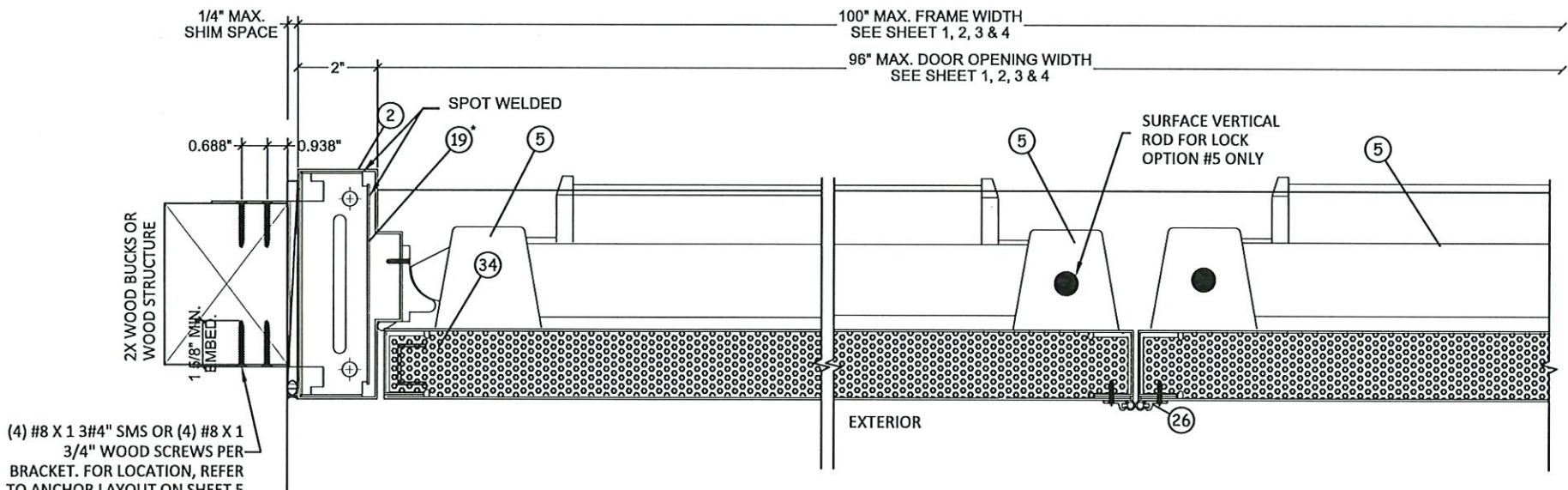
c:\users\dyaniwata\building drops - common\projects\mesker mbm, llc\cc-24-0321 - md submit\tdl - 2023 code change\dwgs\opaque door\mbm002.dwg



DETAIL C1  
FRAME HINGE JAMB OPTION

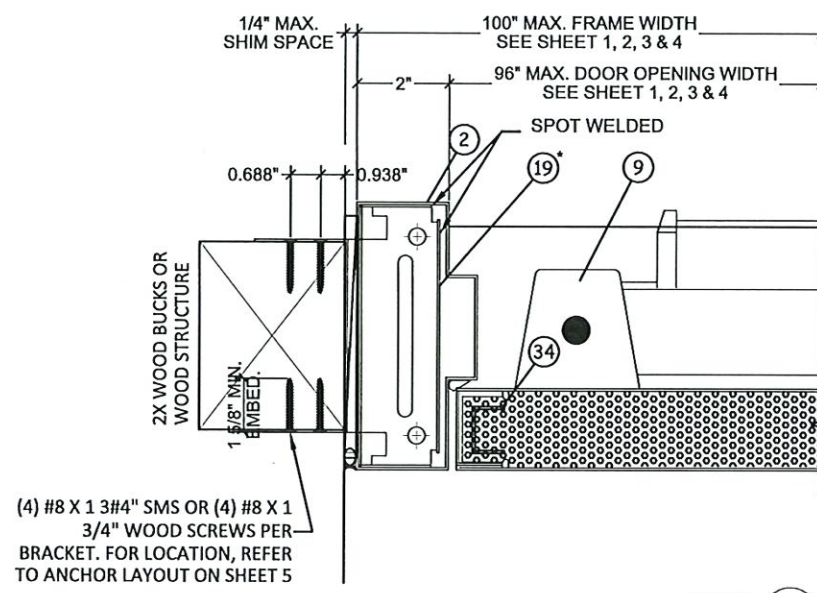
DETAIL D1

DETAIL E1

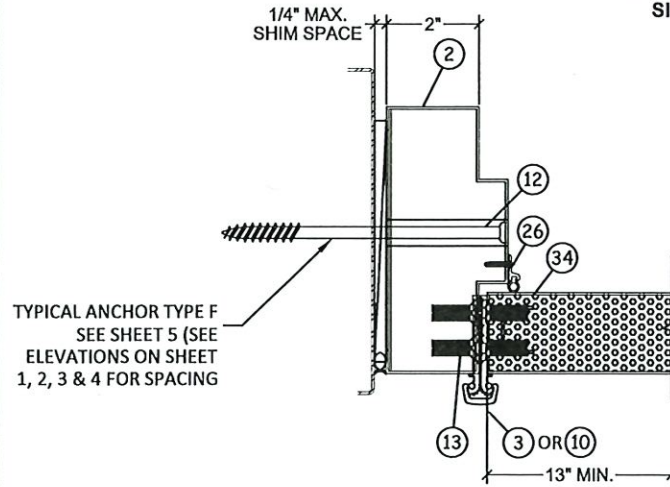


DETAIL F1  
RIM EXT. LOCK JAMBS  
SINGLE DOORS

DETAIL D2  
RIM EXT. LOCK JAMBS  
DOUBLE DOORS



DETAIL F2  
RIM EXT. LOCK JAMBS  
SINGLE DOORS



DETAIL C1  
FRAME HINGE JAMB OPTION

NOTE:  
WOOD OR STEEL STRUCTURAL MEMBERS OF WOOD AND  
STEEL-STUD WALLS MUST BE DESIGNED TO CARRY AT  
LEAST 271 LB/FT FOR DOORS RATED @ 65 PSF.



MESKER DOOR®  
3440 Stanwood Blvd.  
Huntsville, AL 35811

PH: (256) 851-6670 FX: (800) 503-1410

TITLE: N SERIES OUTSWING STEEL  
OPAQUE DOOR

PREPARED BY:  
BUILDING DROPS, INC.  
1900 NE Miami CT, SUITE 2-15  
MIAMI, FL 33132  
PH: (954) 399-8478  
FAX: (954) 744-4738  
WEB: www.buildingdrops.com

REVISIONS		DESCRIPTION	BY	DATE
1	A	2020 FBC UPDATE	SM	12/15/20
2	B	2023 FBC UPDATE	RN	05/29/24



**PRODUCT RENEWED**  
as complying with the Florida  
Building Code  
NOA-No. 24-0812.05  
Expiration Date 07/06/2030  
By Ishaq I. Chanda  
Miami-Dade Product Control

DATE: 06.10.20  
DWN BY: ER  
CHK BY: HFN  
SCALE: NTS

DWG #: MBM002  
SHEET: 8 OF 12



7/22/2024 6:19 PM

c:\users\j\aniweta\building drops, inc\building drops landing - common\projects\mesker mbm, llc\cc-24-0321 - md submit\l - 2023 code change\dwg\opaque door\mbm002.dwg

# HARDWARE/LOCK OPTIONS

ACTIVE DOOR HARDWARE CAN APPLY TO SINGLE DOORS  
(EXTERIOR ELEVATIONS - OUTSWING DOORS)



MESKER DOOR®  
3440 Stanwood Blvd.  
Huntsville, AL 35811

PH: (256) 851-6670 FX: (800) 503-1410

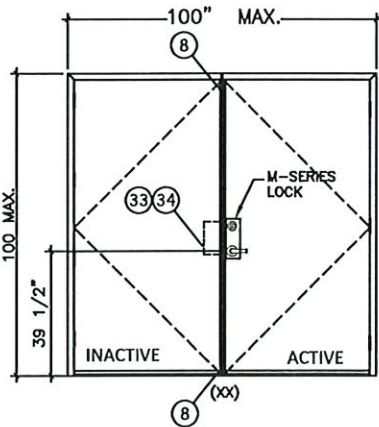
## OPTION 1

### ACTIVE LEAF:

DESIGN HARDWARE M SERIES EXTRA HEAVY DUTY (GRADE 1) MORTISE LOCK WITH (2) 8-32 X 1 1/8" FH MS, LATCH = SS 3/4" THROW, DEADBOLT = SS 1" THROW

### INACTIVE LEAF:

DESIGN HARDWARE UL-MFB-M FLUSH BOLTS WITH (4) 8 X 3/4" FH MULTI THREAD SCREWS, TOP AND BOTTOM, FLUSH MOUNT METALLIC FLUSH BOLT GUIDE WITH (2) #8 X 3/4" FH THREAD SCREWS, FLUSH MOUNT METALLIC STRIKE PLATE, WITH (2) 1/4" X 3/8" FH MS



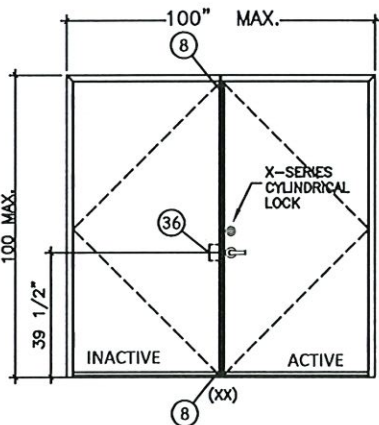
## OPTION 2

### ACTIVE LEAF:

DESIGN HARDWARE X SERIES (GRADE 1) CYLINDRICAL LOCK, WITH (2) #8 X 3/4" FH THREAD SCREWS AND (2) #10 X 1 9/16" FH MS. LATCH = SS 1/2" THROW

### INACTIVE LEAF:

DESIGN HARDWARE UL-MFB-M FLUSH BOLTS, FLUSH MOUNT METALLIC FLUSH BOLT GUIDE, SURFACE MOUNT METALLIC STRIKE PLATE, WITH (4) 8 X 3/4" FH MULTI THREAD SCREWS, TOP AND BOTTOM



## OPTION 3

### OPTION 3.A

#### ACTIVE LEAF/INACTIVE LEAF:

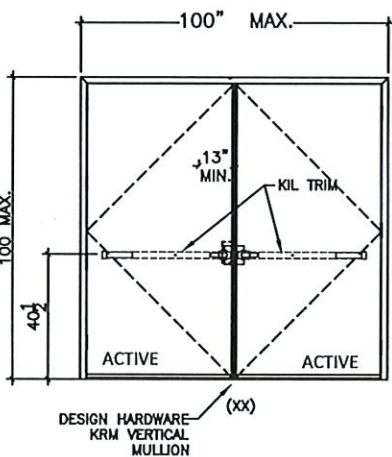
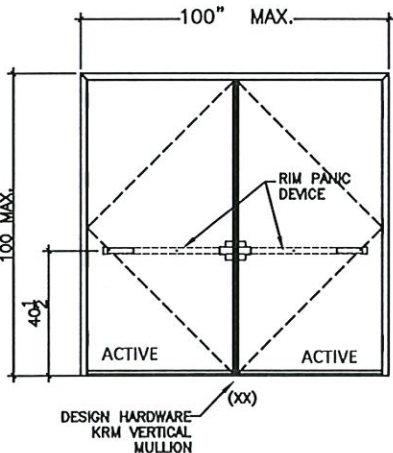
DESIGN HARDWARE 2000 SERIES STANDARD DUTY SURFACE MOUNT METALLIC RIM PANIC DEVICE WITH (6) 14 X 1 1/2" FH SDS, RIM PANIC LATCH AT LOCKS = 5/8" THROW. ROLLER STRIKE WITH 5/8" PROJECTION & 1/8" SHIM. WITH 2" X 3" X 1/8" THICK STEEL VERTICAL TUBE MULLION, FY = 36 KSI MIN.

### OPTION 3.B

#### ACTIVE LEAF/INACTIVE LEAF:

DESIGN HARDWARE 1000 SERIES HEAVY DUTY SURFACE MOUNT METALLIC PANIC DEVICE WITH (5) 14 X 1 1/2" FH SDS, ROLLER STRIKE WITH 5/8" PROJECTION & 1/8" SHIM.

WITH 2" X 3" X 1/8" THICK STEEL VERTICAL TUBE MULLION, FY = 36 KSI MIN.



## OPTION 4

### OPTION 4.A

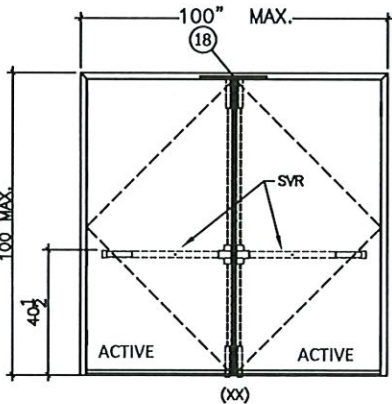
#### ACTIVE LEAF/INACTIVE LEAF:

DESIGN HARDWARE 2000 SERIES STANDARD DUTY SURFACE MOUNT METALLIC PANIC DEVICE WITH DESIGN KIL TRIM, WITH (4) 14 X 1 1/2" FH SDS, HANDLE WITH (2) #8-36 X 1 1/2" PH MS. WITH 2" X 3" X 1/8" THICK STEEL VERTICAL TUBE MULLION, FY = 36 KSI MIN.

### OPTION 4.B

#### ACTIVE LEAF/INACTIVE LEAF:

DESIGN HARDWARE 1000 SERIES HEAVY DUTY SURFACE MOUNT METALLIC PANIC DEVICE WITH DESIGN KIL TRIM WITH (5) 14 X 1 1/2" FH SDS, HANDLE WITH (2) #8-36 X 1 1/2" PH MS. WITH 2" X 3" X 1/8" THICK STEEL VERTICAL TUBE MULLION, FY = 36 KSI MIN.



## OPTION 5

### OPTION 5.A

#### ACTIVE LEAF/INACTIVE LEAF:

DESIGN HARDWARE 2000 SERIES STANDARD DUTY (GRADE 1) SVR SURFACE MOUNT METALLIC 2 POINT LOCK SYSTEM WITH PANIC DEVICE AND VERTICAL RODS ON EXTERIOR WITH (6) 14"-20 X 3/4 PH SMS AND (6) 14-20 X 3/4" FH MS. TOP STRIKE WITH (3) 1/4"-20P X 3/4" FH MS.

### OPTION 5.B

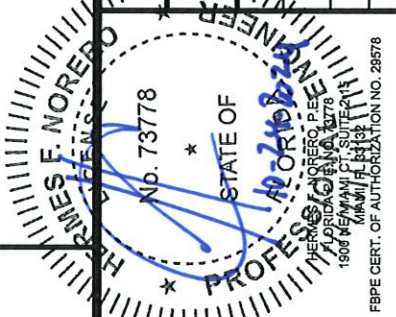
#### ACTIVE LEAF/INACTIVE LEAF:

DESIGN HARDWARE 1000 SERIES HEAVY DUTY (GRADE 1) SVR SURFACE MOUNT METALLIC PANIC DEVICE WITH (2) 14-20" PH MS AND (4) 14 X 1/4" FH SMS, VERTICAL ROD AT TOP AND BOTTOM (2) 14 X 1 1/2" FH SDS. TOP STRIKE WITH (3) 1/4"-20P X 3/4" FH MS.

NOTE:  
CONTINUOUS HINGE OR BB5 HINGE ACCEPTABLE  
ON ALL OPTIONS. FOR PANEL HINGE OPTIONS,  
SEE SHEET 5.  
FOR DOOR EDGE AND EDGE SEAM OPTIONS SEE  
SHEET 4.

TITLE: N SERIES OUTSWING STEEL  
OPAQUE DOOR

REVISIONS	NO.	DESCRIPTION	BY	DATE
	A	2020 FBC UPDATE	SM	12/15/20
	B	2023 FBC UPDATE	RN	05/29/24



**PRODUCT RENEWED**  
as complying with the Florida  
Building Code

NOA-No. 24-0812.05

Expiration Date 07/06/2030

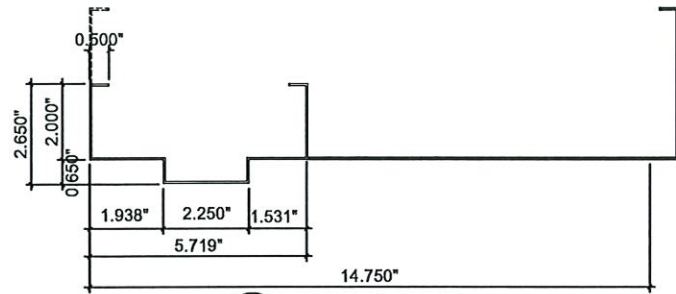
By Ishaq I. Chanda  
Miami-Dade Product Control

DATE:	DWN BY:	ER	CHK BY:	HFN	SCALE:	NTS
06.10.20						

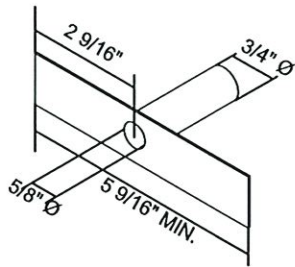
DWG #: **MBM002**

SHEET: **9 OF 12**

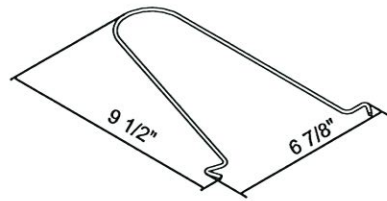




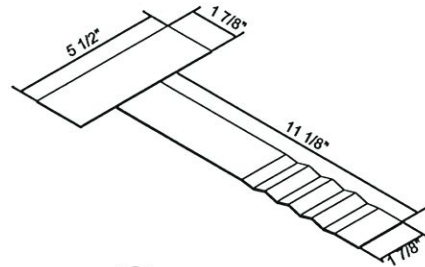
1 FRAME HEAD OPTION  
(16 GA 0.060)



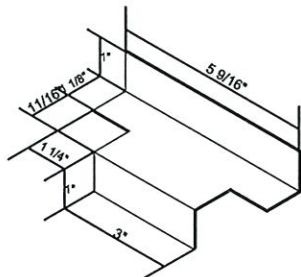
12 TUBE ANCHOR (PF-10)  
TYPE A (16 GA 0.060)



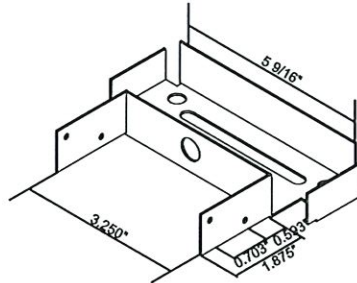
14 WIRE ANCHOR (PF-1)  
TYPE H (0.182) Fy=60 KSI MIN



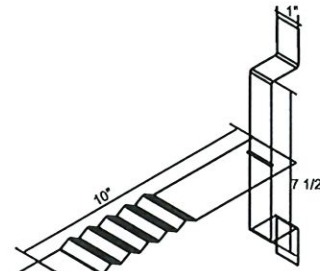
15 T ANCHOR (PF-2)  
TYPE J (16 GA 0.060)



17 Z ANCHOR METAL STUD (PF-9)  
TYPE B (16 GA 0.060)

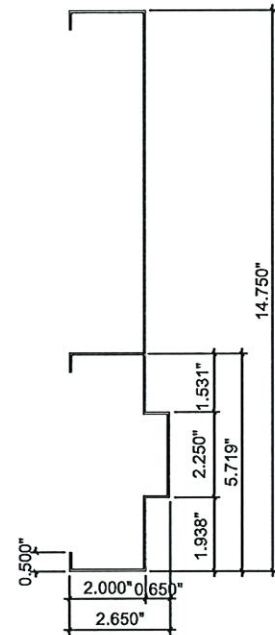


19 WOOD STUD STUD (PF-25)  
TYPE C (18 GA 0.048)

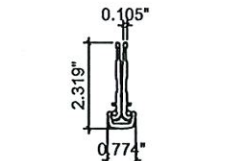


21 T STRAP ANCHOR (PS-241)  
TYPE K (16 GA 0.060)

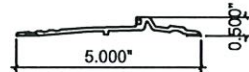
35 "U" STRIKE MORTISE  
(ASA STRIKE)  
21 GA (0.032)



2 JAMB  
(16 GA 0.060)



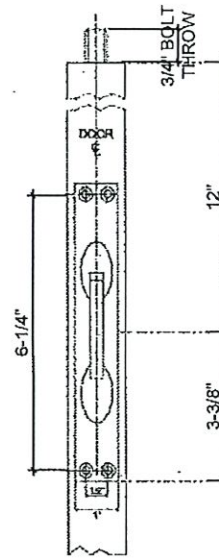
10 CONTINUOUS HINGE  
6063-T6



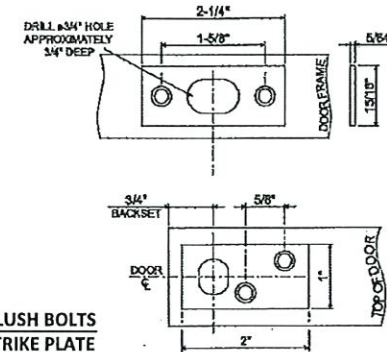
25 HANDICAP 1/2" BUMPER ADA  
6063-T5 ALUM.



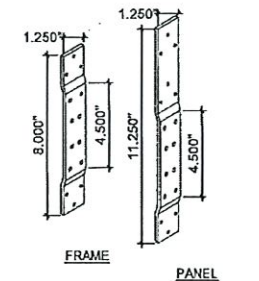
29 DOOR SWEEPS  
6063-T5 ALUM.



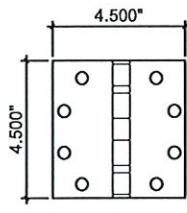
8 FLUSH BOLTS



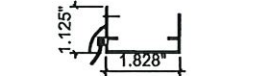
8 FLUSH BOLTS  
STRIKE PLATE



13 HINGE REINFORCEMENT



3 STEEL HINGE  
0.134 THK. STEEL OR ST/ST



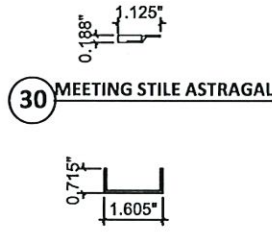
22 DOOR BOTTOM EXTENDER  
(OPT)



23 SELF-ADHESIVE WEATHER  
STRIP

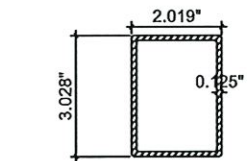


26 PERIMETER SEAL  
6063-T5 ALUM.

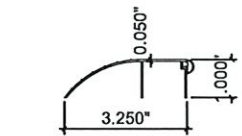


30 MEETING STILE ASTRAGAL

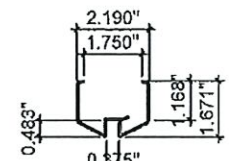
31 STEEL CHANNEL  
20 GA. (0.036")  
FULL PANEL WIDTH



6 KRM REMOVABLE MULLION  
STEEL OR ST/ST Fy=36 KSI MIN

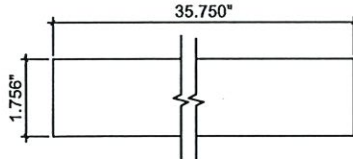


24 1" BUMPER THRESHOLD  
6063-T5 ALUM.

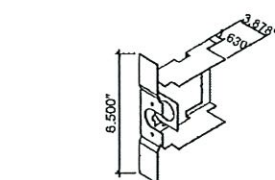


27 LITE KIT #1  
18 GA. (0.048)

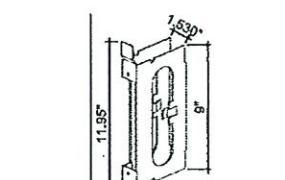
28 LITE KIT #2  
20 GA. (0.039)



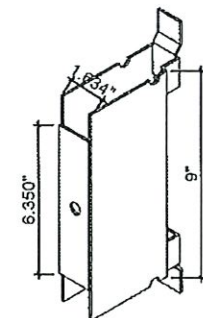
18 STEEL REINFORCEMENT  
1.756 X 35 3/4 LG. 16 GA (0.067)



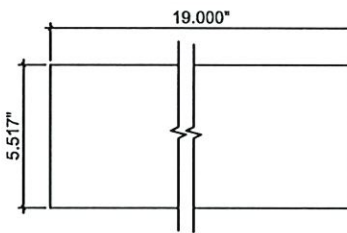
36 CYLINDRICAL LOCK PREPARATION  
17 GA (0.054)



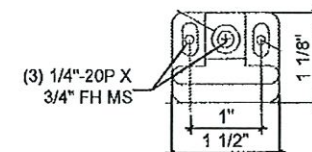
33 MORTISE LOCK REINFORCEMENT  
16 GA (0.067)



34 MORTISE LOCK (MBN)  
14 GA (0.074)



11 CLOSER REINFORCEMENT  
STEEL 16 GA (0.060)



37 SVR TOP STRIKE

**PRODUCT RENEWED**  
as complying with the Florida  
Building Code  
NOA-No. 24-0812.05  
Expiration Date 07/06/2030  
By Ishaq I. Chanda  
Miami-Dade Product Control



MESKER DOOR®  
3440 Stanwood Blvd.  
Huntsville, AL 35811

PH: (256) 851-6670 FX: (800) 503-1410

TITLE: N SERIES OUTSWING STEEL  
OPAQUE DOOR

PREPARED BY:  
BUILDING DROPS, INC.  
1900 NE Miami CT, SUITE 2-15  
MIAMI, FL 33132  
PH: (954) 399-8478  
FAX: (954) 744-4738  
WEB: www.buildingdrops.com



## REVISIONS

NO.	DESCRIPTION	BY	DATE
1	2020 FBC UPDATE	SM	12/15/20
2	2023 FBC UPDATE	RN	05/29/24



DATE: 06.10.20  
DWN BY: ER  
CHK BY: HFN  
SCALE: NTS

DWG #: MBM002

SHEET: 10 OF 12



7/22/2024 6:19 PM

c:\users\dylanwatra\building drops, inc\building drops landing - common\projects\mesker mbm, llc\cc-24-0321 - md submit\l - 2023 code change\dwg\opaque door\mbm002.dwg

BILL OF MATERIALS					
ITEM	PART NO.	MATERIAL	QTY	DESCRIPTION	MANUFACTURER
1	-	STEEL OR ST/ST	AS REQD.	FRAME JAMB/ HEAD (5 3/4" X 2" OR 5 3/4" X 4" UP TO 14 3/4" DEEP)	MESKER DOOR 16 GA (0.06" MIN) Fy=40.8 KSI MIN.
2	-	STEEL OR ST/ST	AS REQD.	JAMB	MESKER DOOR 16 GA (0.06" MIN) Fy= 40.8 KSI MIN.
3	BB5	STEEL OR ST/ST	AS REQD.	STANDARD WEIGHT BALL BEARING HINGES	DESIGN HARDWARE
4	-	POLYSTYRENE	AS REQD.	POLYSTYRENE CORE PER CURRENT NOA	CELLOFOAM, BONDED TO INSIDE OF PANEL
5	2000, 1000	STEEL OR ST/ST	AS REQD.	2000 RM PANIC DEVICE 1000 SERIES OPTIONAL	DESIGN HARDWARE
6	KRM	STEEL OR ST/ST	1	KEY REMOVABLE MULLION	DESIGN HARDWARE
7	-	STEEL	1	X SERIES LOCK (1/2" OR 3/4")	DESIGN HARDWARE
8	UL-MFB-M	CAST BRASS	2	MANUAL FLUSH BOLT	DESIGN HARDWARE
9	2000, 1000	STEEL OR ST/ST	AS REQD.	2000-V EXIT DEVICES 1000-V SERIES OPTIONAL	DESIGN HARDWARE
10	-	ALUM. 6063-T6	AS REQD.	CONTINUOUS GEARED HINGE	DESIGN HARDWARE
11	-	STEEL	-	FRAME REINFORCEMENT	MESKER DOOR 16 GA (0.060" MIN.) HOT MELT PUR GLUE
12	TYPE A, PF-10	STEEL	AS REQD.	TUBE ANCHORS	MESKER DOOR 16 GA (0.060" MIN.) SPOT WELDED TO FRAME
13	-	STEEL OR ST/ST	AS REQD.	HINGE REINFORCEMENT	MESKER DOOR 7 GA (0.170" MIN.)
14	TYPE H, PF-1	STEEL	AS REQD.	WIRE ANCHORS	MESKER DOOR 0.182Ø
15	TYPE J, PF-2	STEEL	AS REQD	T ANCHORS	MESKER DOOR 16 GA (0.060" MIN.) TWISTED INTO FRAME
16	-	STEEL OR ST/ST	AS REQD.	13/16" X 1 3/4" X .118" THK. STEEL PLATE	MESKER DOOR
17	TYPE C, PF-9	STEEL	AS REQD.	Z ANCHORS (METAL STUD)	MESKER DOOR 16 GA (0.060" MIN.) SPOT WELDED TO FRAME
18	-	STEEL OR ST/ST	AS REQD.	STEEL REINFORCEMENT 1.756" X 35 3/4"	MESKER DOOR 16 GA (0.060" MIN.) SPOT WELDED 14" O.C.
19	TYPE D, PF-6	STEEL	AS REQD.	WOOD STUD ANCHORS	MESKER DOOR 18 GA. (0.048" MIN)
20	-	STEEL	AS REQD.	M SERIES MORTISE LOCK W/ DEADBOLT	DESIGN HARDWARE
21	TYPE K, PS-241	STEEL	AS REQD.	T STRAP ANCHOR	MESKER DOOR 16 GA (0.060" MIN.) SPOT WELDED TO FRAME
22	95WH	ALUM. 6063-T5	AS REQD.	DOOR BOTTOM EXTENDER	NATIONAL GUARD PRODUCTS
23	SS-S	RUBBER	AS REQD.	SELF ADHESIVE WEATHERSTRIP	DESIGN HARDWARE
24	646	ALUM. 6063-T5	1	1" BUMPER THRESHOLD	DESIGN HARDWARE
25	#TH5P-ADA-MF-96	ALUM. 6063-T5	1	HANDICAP 1/2" BUMPER THRESHOLD	DESIGN HARDWARE
26	PS-V	ALUM. 6063-T5	AS REQ.D	PERIMETER SEAL- VINYL BULB	DESIGN HARDWARE
27	SW-R	ALUM. 6063-T5	AS REQ.D	DOOR SWEEPS	DESIGN HARDWARE
28	-	-	AS REQ.D	WEATHER STRIP AT MEETING STILE ASTRAGAL - OPTIONAL	DESIGN HARDWARE
29	-	STEEL OR ST/ST	AS REQ.D	0.715" X 1.605" X 0.715 STEEL CHANNEL (DOOR PANEL WIDTH)	MESKER DOOR 20 GA (0.036" MIN) SINGLE ROW OF SPOT WELDS 2" O.C.
30	-	STEEL OR ST/ST	AS REQ.D	DOOR PANELS	MESKER DOOR 18 GA (0.048" MIN.) SPOT WELDED AT EACH END
31	DP-29	STEEL OR ST/ST	AS REQ.D	MORTISE LOCK REINFORCEMENT	MESKER DOOR 16 GA (0.060" MIN.) SPOT WELDED AT EACH END
32	DP-22	STEEL OR ST/ST	AS REQ.D	MORTISE LOCK (MBN) REINFORCEMENT	MESKER DOOR 14 GA (0.074" MIN.) SPOT WELDED TO EACH END
33	FP-9	STEEL OR ST/ST	AS REQ.D	"U" STRIKE MORTISE (ASA STRIKE)	MESKER DOOR 21 GA (0.032" MIN)
34	DP-23	STEEL OR ST/ST	AS REQ.D	CYLINDRICAL LOCK PREPARATION	MESKER DOOR 17 GA (0.054" MIN.) SPOT WELDED AT EACH END
35	-	STEEL OR ST/ST	AS REQ.D	SVR TOP STRIKE	DESIGN HARDWARE



MESKER DOOR®  
3440 Stanwood Blvd.  
Huntsville, AL 35811

PH: (256) 851-6670 FX: (800) 503-1410

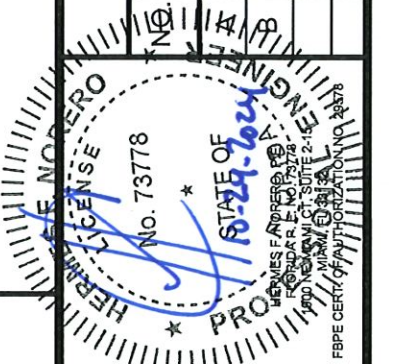
TITLE: N SERIES OUTSWING STEEL  
OPAQUE DOOR

PREPARED BY:  
BUILDING DROPS, INC.  
1900 NE Miami CT, SUITE 2-15  
MIAMI, FL 33132  
PH: (954) 399-8478  
FAX: (954) 744-4738  
WEB: www.buildingdrops.com



REVISIONS

DESCRIPTION	BY	DATE
2020 FBC UPDATE	SM	12/15/20
2023 FBC UPDATE	RN	05/29/24

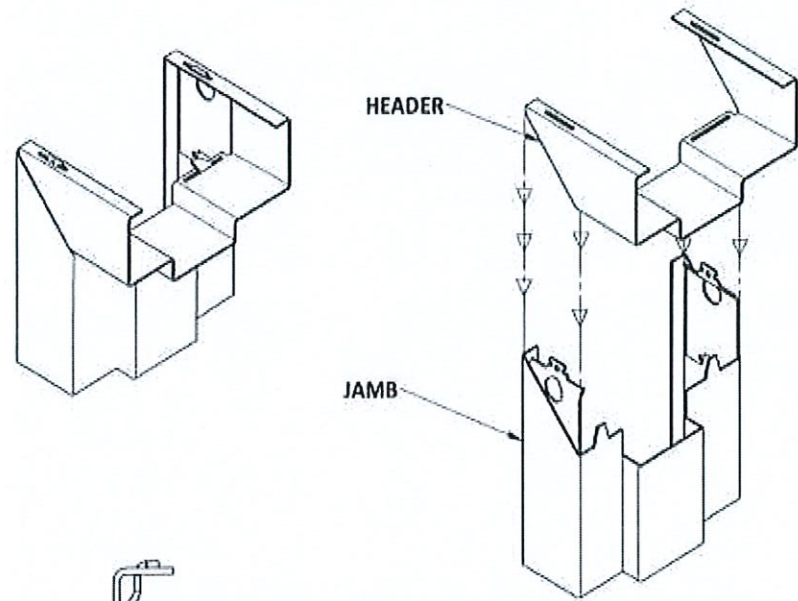


**PRODUCT RENEWED**  
as complying with the Florida  
Building Code  
NOA-No. 24-0812.05  
Expiration Date 07/06/2030  
By Ishaq I. Chanda  
Miami-Dade Product Control

DATE: 06.10.20	DWN BY: ER	CHK BY: HFN	SCALE: NTS
-------------------	---------------	----------------	---------------

DWG #:  
**MBM002**  
SHEET: 11 OF 12

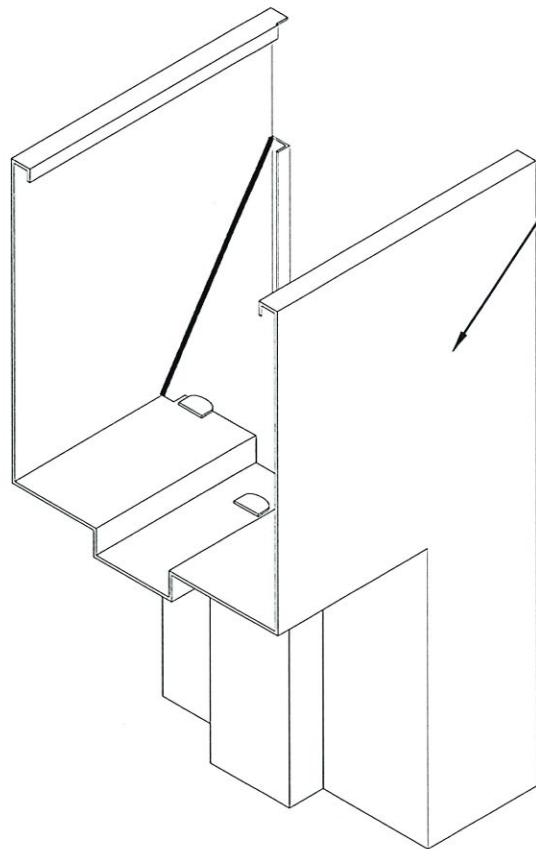




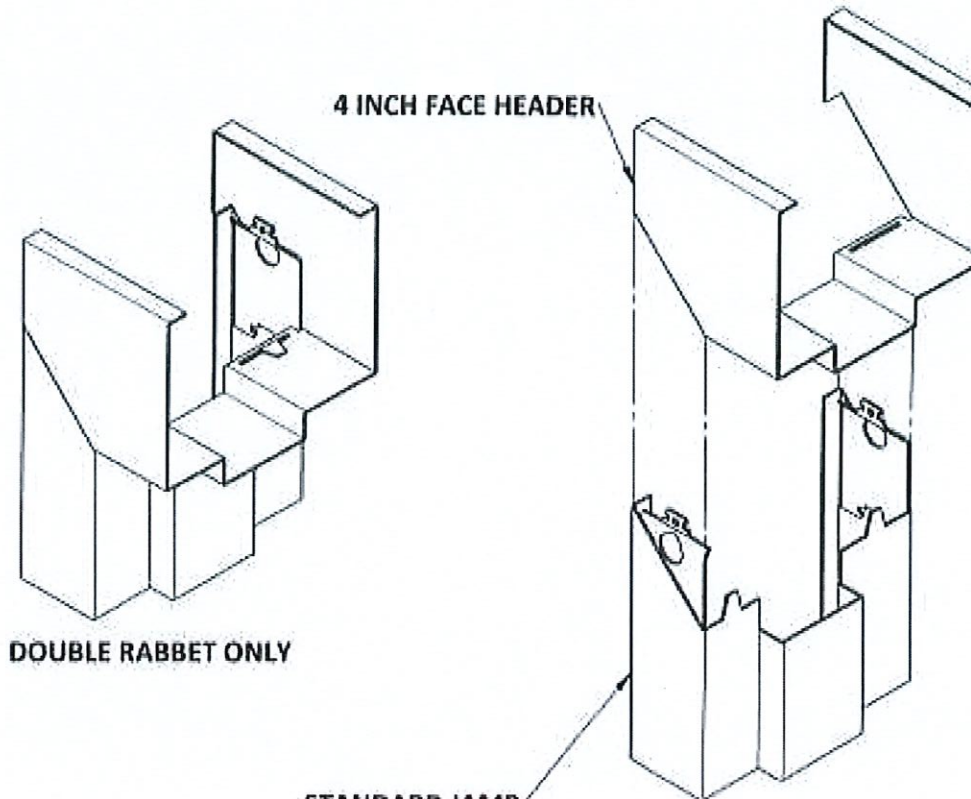
SECTION THRU TAB

CORNER ASSEMBLY

TAB IS OFFSET TO OBTAIN  
SMOOTH BEND ALONG  
TOP OF FRAME HEAD.

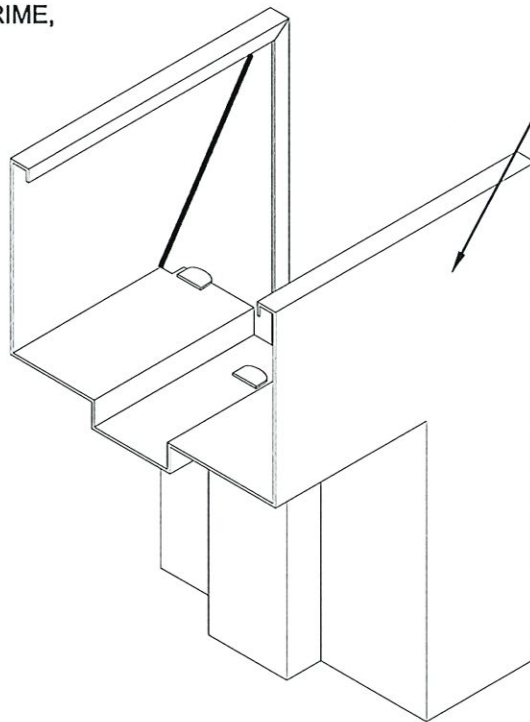


CORNER ASSEMBLY



CORNER ASSEMBLY

DOUBLE RABBET ONLY



CORNER ASSEMBLY



MESKER DOOR®  
3440 Stanwood Blvd.  
Huntsville, AL 35811

PH: (256) 851-6670 FX: (800) 503-1410

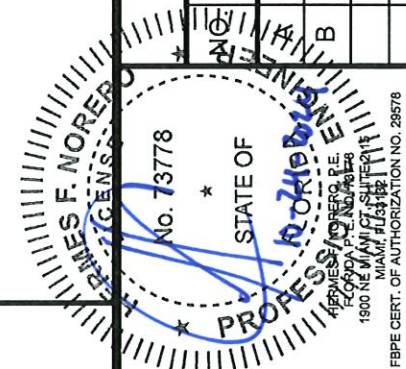
TITLE: N SERIES OUTSWING STEEL  
OPAQUE DOOR

PREPARED BY:  
BUILDING DROPS, INC.  
1900 NE Miami CT, SUITE 2-15  
MIAMI, FL 33132  
PH: (954) 399-8478  
FAX: (954) 744-4738  
WEB: www.buildingdrops.com



REVISIONS

NO.	DESCRIPTION	BY	DATE
1	2020 FBC UPDATE	SM	12/15/20
2	2023 FBC UPDATE	RN	05/29/24



**PRODUCT RENEWED**  
as complying with the Florida  
Building Code  
NOA-No. 24-0812.05  
Expiration Date 07/06/2030  
By Ishaq I. Chande  
Miami-Dade Product Control

DATE: 06.10.20	DWN BY: ER	CHK BY: HFN	SCALE: NTS
-------------------	---------------	----------------	---------------

DWG #: **MBM002**

SHEET: **12 OF 12**