



DEPARTMENT OF REGULATORY AND ECONOMIC RESOURCES (RER)
BOARD AND CODE ADMINISTRATION DIVISION
NOTICE OF ACCEPTANCE (NOA)

Mesker Door MBM, LP
3440 Stanwood Blvd.,
Huntsville, AL 35811

SCOPE:

This NOA is being issued under the applicable rules and regulations governing the use of construction materials. The documentation submitted has been reviewed and accepted by Miami-Dade County RER -Product Control Section to be used in Miami Dade County and other areas where allowed by the Authority Having Jurisdiction (AHJ).

This NOA shall not be valid after the expiration date stated below. The Miami-Dade County Product Control Section (In Miami Dade County) and/or the AHJ (in areas other than Miami Dade County) reserve the right to have this product or material tested for quality assurance purposes. If this product or material fails to perform in the accepted manner, the manufacturer will incur the expense of such testing and the AHJ may immediately revoke, modify, or suspend the use of such product or material within their jurisdiction. RER reserves the right to revoke this acceptance, if it is determined by Miami-Dade County Product Control Section that this product or material fails to meet the requirements of the applicable building code.

This product is approved as described herein and has been designed to comply with the Florida Building Code, including the High Velocity Hurricane Zone.

DESCRIPTION: N-Series Outswing Glazed Steel Doors-LMI

APPROVAL DOCUMENT: Drawing No. **MBM 001 Rev B** (former **DOR010 Rev A**), titled "N-Series Outswing Glazed Steel Door (LMI/SMI)", sheets 1 through 12 of 12, dated 11/01/19 and last revised on October 24, 2024, prepared by Building Drops, Inc., signed and sealed by Hermes Norero, P.E., bearing the Miami-Dade County Product Control renewal stamp with the Notice of Acceptance number and expiration date by the Miami-Dade County Product Control Section.

MISSILE IMPACT RATING: Large and Small Missile Impact Resistant

Limitations:

1. See sheet **1** thru **4** for Lock Hardware Options. See sheets **1** thru **5** for Anchor Bracket types and anchor types.
2. Min 13" wide Stiles and 16" min top/bottom Rails are required for installation of lite kits per sheet **4**.
3. Private labelling is **not** part of this approval.

RENEWAL of this NOA shall be considered after a renewal application has been filed and there has been no change in the applicable building code negatively affecting the performance of this product.

TERMINATION of this NOA will occur after the expiration date or if there has been a revision or change in the materials, use, and/or manufacture of the product or process. Misuse of this NOA as an endorsement of any product, for sales, advertising or any other purposes shall automatically terminate this NOA. Failure to comply with any section of this NOA shall be cause for termination and removal of NOA.

ADVERTISEMENT: The NOA number preceded by the words Miami-Dade County, Florida, and followed by the expiration date may be displayed in advertising literature. If any portion of the NOA is displayed, then it shall be done in its entirety.

INSPECTION: A copy of this entire NOA shall be provided to the user by the manufacturer or its distributors and shall be available for inspection at the job site at the request of the Building Official.

This NOA **revises & renews** # **20-0708.03**, consists of this page 1 and evidence pages E-1, E-2, E-3 & E-4, as well as approval document mentioned above.

The submitted documentation was reviewed by **Ishaq I. Chanda, P.E.**

Ishaq I. Chanda



NOA No. 24-0812.06
Expiration Date: July 16, 2030
Approval Date: November 07, 2024
Page 1

NOTICE OF ACCEPTANCE: EVIDENCE SUBMITTED

- 1. Evidence submitted under previous approvals**
- A. DRAWINGS**
 1. Manufacturer's die drawings and sections (submitted under files below)
 2. Drawing No. **AD14-18**, titled "N-Series Outswing Glazed Steel Door (LMI/SMI)", sheets 1 through 12 of 12, prepared by MYC Engineering Inc., dated 01/21/15 and last revised on JUL 01, 2015, signed and sealed by Yipping Wang, P.E.
- B. TESTS (submitted under files #14-1021.04)**
 1. Test reports on: 1) Air Infiltration Test, per FBC, TAS 202-94
2) Uniform Static Air Pressure Test, Loading per FBC TAS 202-94
3) Water Resistance Test, per FBC, TAS 202-94
4) Large Missile Impact Test per FBC, TAS 201-94
5) Cyclic Wind Pressure Loading per FBC, TAS 203-94
6) Forced Entry Test, per FBC 2411 3.2.1, TAS 202-94

along with marked-up drawings and installation diagram of outswing Steel door w/ glazed steel lite kit assembly, prepared by Fenestration Testing Lab, Inc., Test Report No. **FTL 7245**, dated 08/22/14 and **FTL 8120**, dated 12/19/14, signed and sealed by Idalmis Ortega, P. E.

Note: Test report **FTL7245** has been revised by an addendum letter dated April 10, 2015, issued by Fenestration Testing lab, signed and sealed by Idalmis Ortega, P. E.
- C. CALCULATIONS**
 1. Anchor Verification calculation dated 01/12/15, 07/01/15 and last revised on JUL 07, 2015, prepared by MYC Engineering Inc., signed and sealed by Yipping Wang, P.E.
- D. QUALITY ASSURANCE**
 1. Miami Dade Department of Regulatory and Economic Resources (RER).
- E. MATERIAL CERTIFICATIONS**
 1. Notice of Acceptance No. **11-0624.02** issued to E.I. DuPont DeNemours & Co., Inc. for their "**DuPont Sentry Glass ® Plus**", expiring on 01/14/17.
 2. Notice of Acceptance No. **13-0717.01** issued to Sabic Innovative Plastics, Inc. for their "**Lexan** Polycarbonate sheet Products", expiring on 07/17/18
 3. Tensile strength test report **FTL 8319** for "Kit Steel frame" per ASTM E-08, dated 04/07/15 issued by Fenestration Testing lab, signed and sealed by Idalmis Ortega, P. E.
- F. STATEMENTS**
 1. Statement letter of conformance FBC 2014 (5th Edition) and letter of no financial interest, dated 01/09/15, prepared by MYC Engineering Inc., signed and sealed by Yipping Wang, P.E.
 2. Statement letter dated 07/08/15, issued by Mesker Holding, LLC stating Mesker Door, LLC is the subsidiary of Mesker Holding and requesting NOA to be issued under Mesker Door, LLC, signed by Aaron R Schwartz, Chief Financial Officer.
 3. State of Alabama Business entity details and legal name listing dated 11-07-2013, signed by Secretary of State.
 4. Lab compliance as part of the above referenced test report.
- G. OTHER**
 1. Test proposal **#13-1401**, dated 04/04/14 approved by RER.
 2. Internet posting of Mesker Holding, LLC.

Ishaq I. Chanda

Ishaq I. Chanda, P.E.
Product Control Unit Supervisor
NOA No. 24-0812.06
Expiration Date: July 16, 2030
Approval Date: November 07, 2024

NOTICE OF ACCEPTANCE: EVIDENCE SUBMIT

2. Evidence submitted under previous approvals

A. DRAWINGS

1. Drawing No. **AD14-18**, titled “N-Series Outswing Glazed Steel Door (LMI/SMI)”, sheets 1 through 12 of 12, prepared by MYC Engineering Inc., dated Sep 05, 2017., signed and sealed by Yipping Wang, P.E.

Note: Revision consist of FBC 2017 code update in sheet 1

B. TEST

1. None.

C. CALCULATIONS

1. None.

D. QUALITY ASSURANCE

1. Miami Dade Department of Regulatory and Economic Resources (RER).

E. MATERIAL CERTIFICATIONS

1. Notice of Acceptance No. **14-0916.11** issued to Kuraray America, Inc. (former E.I. DuPont DE Nemours & Co., Inc.) for the “**Sentry Glass ® Interlayer**”, expiring on 07/4/18.
2. Notice of Acceptance No. **13-0717.01** issued to Sabic Innovative Plastics, Inc. for their “**Lexan** Polycarbonate sheet Products”, expiring on 07/17/18.

F. STATEMENTS

1. Statement letters of conformance to FBC 2017(**6th** Edition) and FBC 2014 (5th Edition), dated 11/29/17, prepared by MYC Engineering Inc., signed and sealed by Yipping Wang, P.E.
2. Statement letter dated 11/28/17 of code revision note update only and no other changes in approval drawings, prepared by MYC Engineering Inc., signed and sealed by Yipping Wang, P.E.

G. OTHER

1. This NOA revises NOA # **14-1021.04**, expiring 07/16/20.

Ishaq I. Chanda

Ishaq I. Chanda, P.E.
Product Control Unit Supervisor
NOA No. 24-0812.06
Expiration Date: July 16, 2030
Approval Date: November 07, 2024

NOTICE OF ACCEPTANCE: EVIDENCE SUBMITTED

3. Evidence Submitted previous approval

A. DRAWINGS

1. Drawing No. **DOR010** Rev **A** (former **AD14-18**), titled “N-Series Outswing Glazed Steel Door (LMI/SMI)”, sheets 1 through 12 of 12, dated 12/15/20, prepared by Building Drops, Inc., signed and sealed by Hermes Norero, P.E.
(Note: Revision consists of FBC 2020 code updates)

B. TEST

1. None.

C. CALCULATIONS

1. Anchor Verification calculation dated 07/30/20, prepared by Building Drops, Inc., signed and sealed by Hermes Norero, P.E.

D. QUALITY ASSURANCE

1. Miami Dade Department of Regulatory and Economic Resources (RER).

E. MATERIAL CERTIFICATIONS

1. None.

F. STATEMENTS

1. Statement letters of conformance to FBC 2020 (7th Edition) and “No financial interest”), dated 06/30/20, prepared by Building Drops, Inc., signed and sealed by Hermes Norero, P.E.
2. Notification of Successor Engineer per the Florida Administrative Code Section 61G15-27.001, notifying original engineer that the successor engineer is assuming full professional and legal responsibility for all engineering documents pertaining to this NOA, dated 02/09/20, prepared by Building Drops, Inc., signed and sealed by Hermes Norero, P.E.
3. Merger Certificate issued dated DEC 01, 2017 by State of Delaware between Mesker Holding Inc., and “PRT Blocker”, LLC, signed by Jeffery W, Bullock, Secretary of State.
4. Merger Certificate issued dated Jun 13, 2018 by State of Delaware between Mesker Door, Inc., Inc., with and into “PRT Blocker”, LLC, signed by Jeffery W, Bullock, Secretary of State.
5. Merger Certificate issued dated Jun 27, 2018 by State of Delaware between “PRT Blocker”, LLC with and into Dorma Kaba USA, Inc., signed by Jeffery W, Bullock, Secretary of State.
6. Statement letter dated 10/16/20 requesting Name change based on merger documents, signed by Ms. Nancy M. Lambert, V.P. & general counsel, Dorma Kaba, USA, Inc.

G. OTHER

1. This NOA **revises & renews # 17-0920.08**, expiring 07/16/25.
2. Media Release by dormakaba dated Nov. 08, 2016 to acquire merger of US based Mesker Opening group.

Ishaq I. Chanda

Ishaq I. Chanda, P.E.
Product Control Unit Supervisor
NOA No. 24-0812.06
Expiration Date: July 16, 2030
Approval Date: November 07, 2024

NOTICE OF ACCEPTANCE: EVIDENCE SUBMITTED

4. New Evidence Submitted

A. DRAWINGS

1. Drawing No. **MBM 001** Rev **B** (former **DOR010** Rev **A**), titled “N-Series Outswing Glazed Steel Door (LMI/SMI)”, sheets 1 through 12 of 12, dated 11/01/19 and last revised on October 24, 2024, prepared by Building Drops, Inc., signed and sealed by Hermes Norero, P.E.
(Note: Revision consists of Name change & FBC 2023 code updates)

B. TEST

1. None.

C. CALCULATIONS

1. None.

D. QUALITY ASSURANCE

1. Miami Dade Department of Regulatory and Economic Resources (RER).

E. MATERIAL CERTIFICATIONS

1. Notice of Acceptance No. **22-1116.01** issued to **Kuraray America, Inc.** for their “**SentryGlas® (Clear and White) Glass Interlayers**”, expiring on 07/04/28.
2. Notice of Acceptance No. **24-0117.13** issued to Sabic Innovative Plastics, Inc. for their “**Lexan** Polycarbonate sheet Products”, expiring on 04/01/26.
3. Tensile strength test report **FTL 8319** for “Kit Steel frame” per ASTM E-08, dated 04/07/15 issued by Fenestration Testing lab, signed and sealed by Idalmis Ortega, P. E. (Submitted under previous approval)

F. STATEMENTS

1. Statement letters of conformance to FBC 2023 (**8th** Edition) and “No financial interest”), dated 07/22/24, prepared by Building Drops, Inc., signed and sealed by Hermes Norero, P.E.
2. Statement letter from Mesker MBM, LP dated 05/09/24 stating that they have purchased all rights of NOA# 20-0708.03 and .04 from Dorma Kaba, USA and requesting these NOA(s) be reissued to Mesker MBM, LP, signed by Adam Matusz, president.
3. Statement letter by Dorma Kaba, USA dated 05/08/24 confirming legally sold all assets, rights and now how of NOA# 20-0708.03 and #220-0708.04 to Mesker MBM, LP and requesting to rescind the NOA(S), signed by Ms. Nancy Lambart, Senior VP and general counsel.

G. OTHER

1. This NOA **revises & renews** # **20-0708.04**, expiring 07/16/30.
2. Bill of assets dated 06/21/22 between Dorma Kaba, USA (Seller) and Mesker MBM, LP (buyer), signed by their respective official Alex Houston, President Dorma and Adam Matusz, president Mesker.

Ishaq I. Chanda

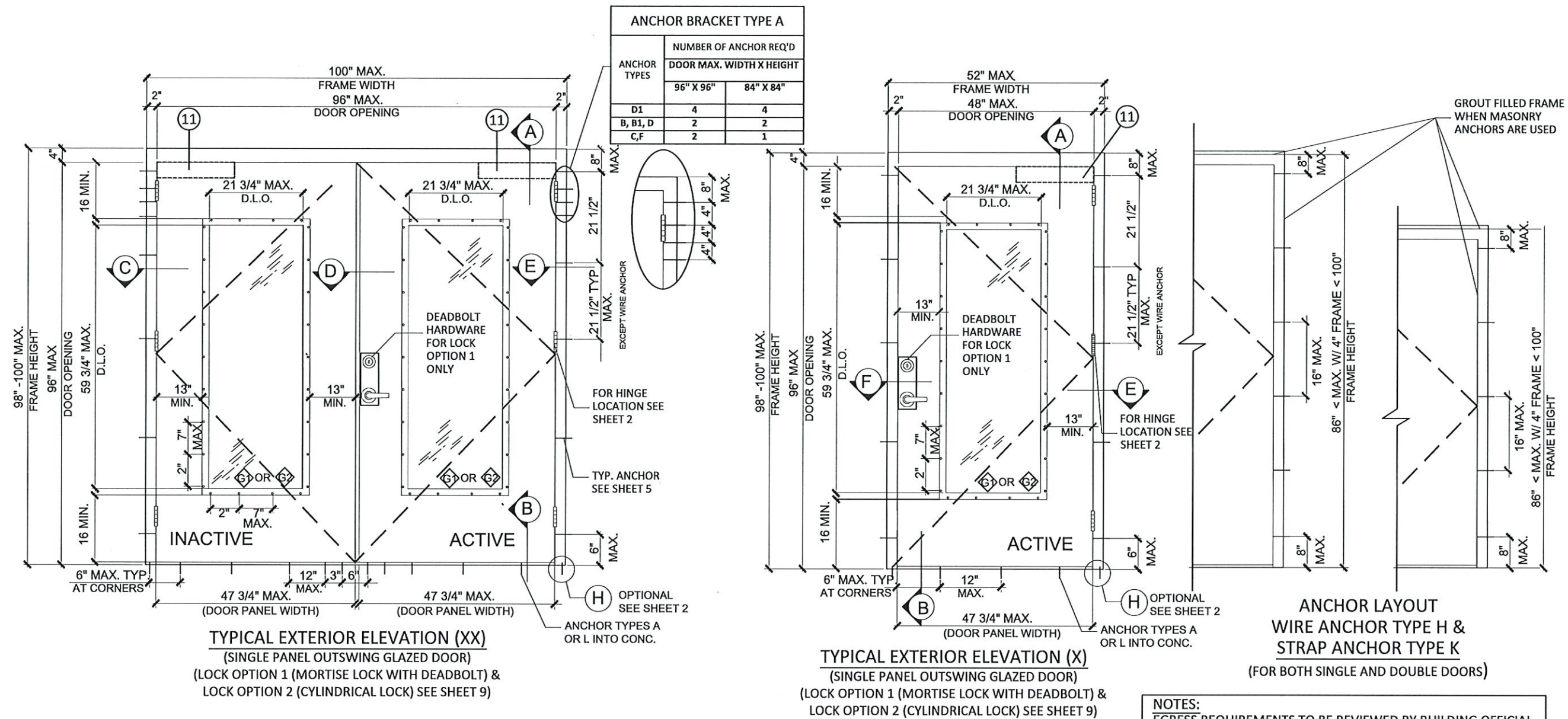
Ishaq I. Chanda, P.E.
Product Control Unit Supervisor
NOA No. 24-0812.06
Expiration Date: July 16, 2030
Approval Date: November 07, 2024

REVISIONS

NO.	DESCRIPTION	BY	DATE
A	2020 FBC UPDATE	SM	12/15/20
B	2023 FBC UPDATE	RN	05/29/24



11.1.19	DWN BY: ER	CHK BY: HFN	SCALE: NTS
WG #: MBM001			
SHEET: 1 OF 12			



NOTES:
EGRESS REQUIREMENTS TO BE REVIEWED BY BUILDING OFFICIAL.
ALL OPENINGS PASSED WITH WATER INFILTRATION.

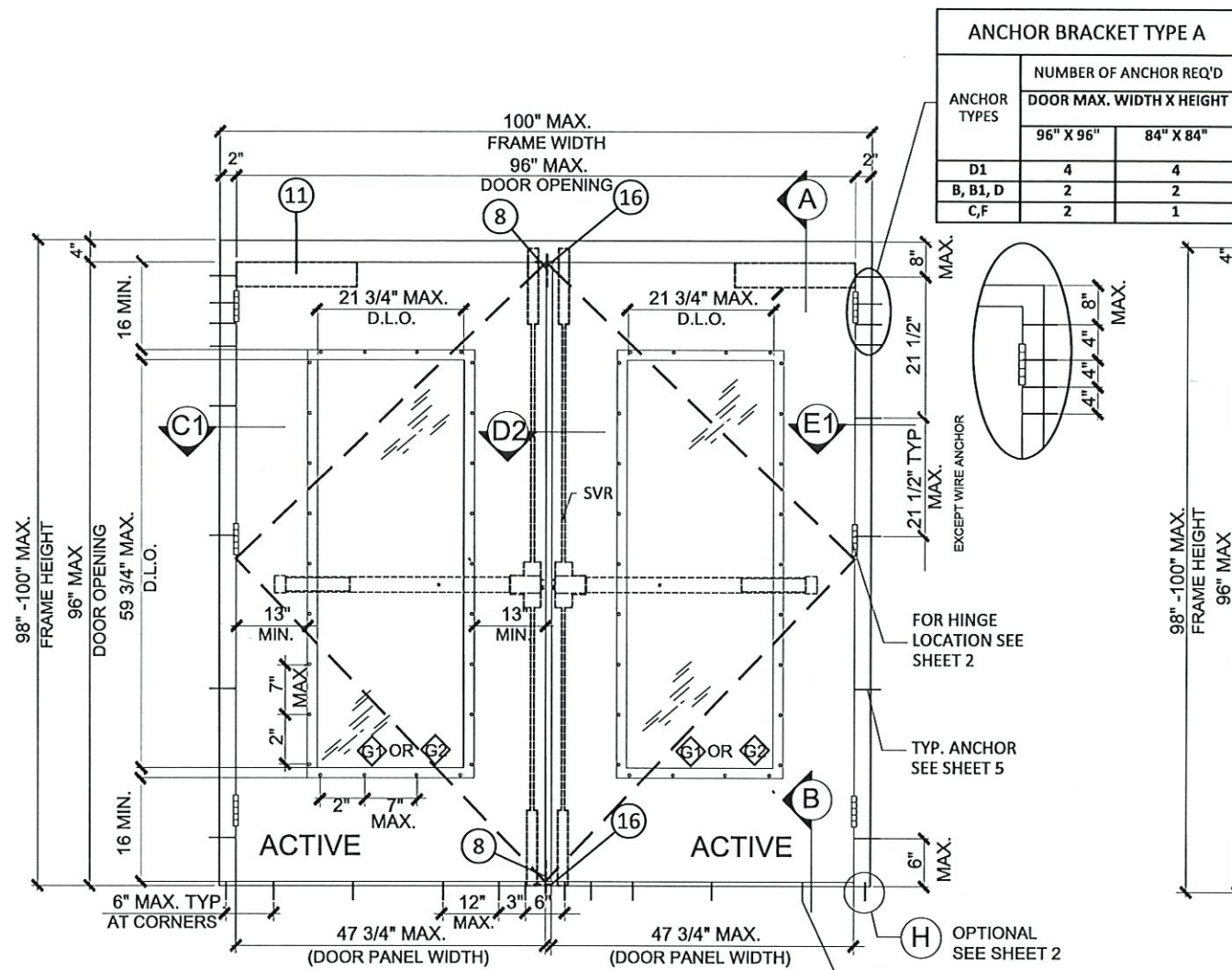
<p align="center">DESIGN LOADS (FOR SIZES SHOWN ABOVE OR SMALLER) AS PERMITTED BY FBC</p>
<p align="center">+65.0 PSF -65.0 PSF</p>

"N" SERIES GLAZED OUTSWING STEEL DOOR (LMI)

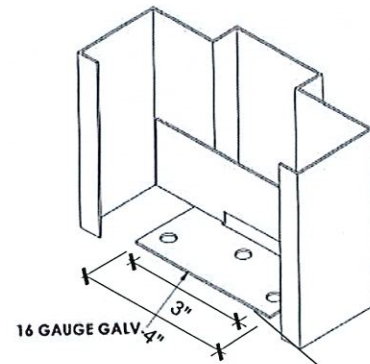
- THIS PRODUCT HAS BEEN DESIGNED AND TESTED TO COMPLY WITH THE REQUIREMENTS OF THE 8TH EDITION (2023) FLORIDA BUILDING CODE INCLUDING HIGH VELOCITY HURRICANE ZONE (HVHZ).
- DOORS ARE RATED FOR LARGE MISSILE IMPACT AND DO NOT REQUIRE SHUTTERS.
- ANCHORS SHALL BE AS LISTED, SPACED AS SHOWN ON ELEVATIONS / DETAILS. ANCHOR EMBEDMENT TO BASE MATERIAL SHALL BE BEYOND WALL DRESSING OR STUCCO.
- ANCHORING OR LOADING CONDITIONS NOT SHOWN IN THESE DETAILS ARE NOT PART OF THIS APPROVAL.
- MATERIALS INCLUDING BUT NOT LIMITED TO STEEL/METAL SCREWS THAT COME INTO CONTACT WITH OTHER DISSIMILAR MATERIALS SHALL MEET THE REQUIREMENTS OF THE 2023 FLORIDA BUILDING CODE AS APPLICABLE.

- METAL STRUCTURES NOT BY MESKER DOOR INC. MUST SUPPORT LOADS IMPOSED BY DOOR SYSTEM AND TRANSFER THEM TO THE BUILDING STRUCTURE.
- 1X OR 2X WOOD BUCKS OR OTHERS MUST BE ANCHORED PROPERLY TO TRANSFER LOADS TO THE STRUCTURE.
- A LOAD DURATION FACTOR IN ALLOWABLE STRESS IS USED IN DESIGN OF WOOD ANCHORS ONLY.
- DOOR PANEL: MIN. 18 GA. (0.042" THK) STEEL MIN. $F_y = 42$ KSI, $F_u = 51.5$ KSI MIN.
- DOOR FRAME: MIN. 16 GA. (0.053" THK) STEEL MIN. $F_y = 42$ KSI, $F_u = 51.5$ KSI MIN.
- ULTIMATE DESIGN LOAD OBTAINED FROM ASCE 7-22 MULTIPLIED BY 0.6 SHALL BE LESS THAN OR EQUAL TO MAX. DESIGN LOAD IN THIS DOCUMENT.

PRODUCT RENEWED
as complying with the Florida
Building Code
NOA-No. 24-0812.06
Expiration Date 07/06/2030
By Ishaq I. Chank
Miami-Dade Product Control



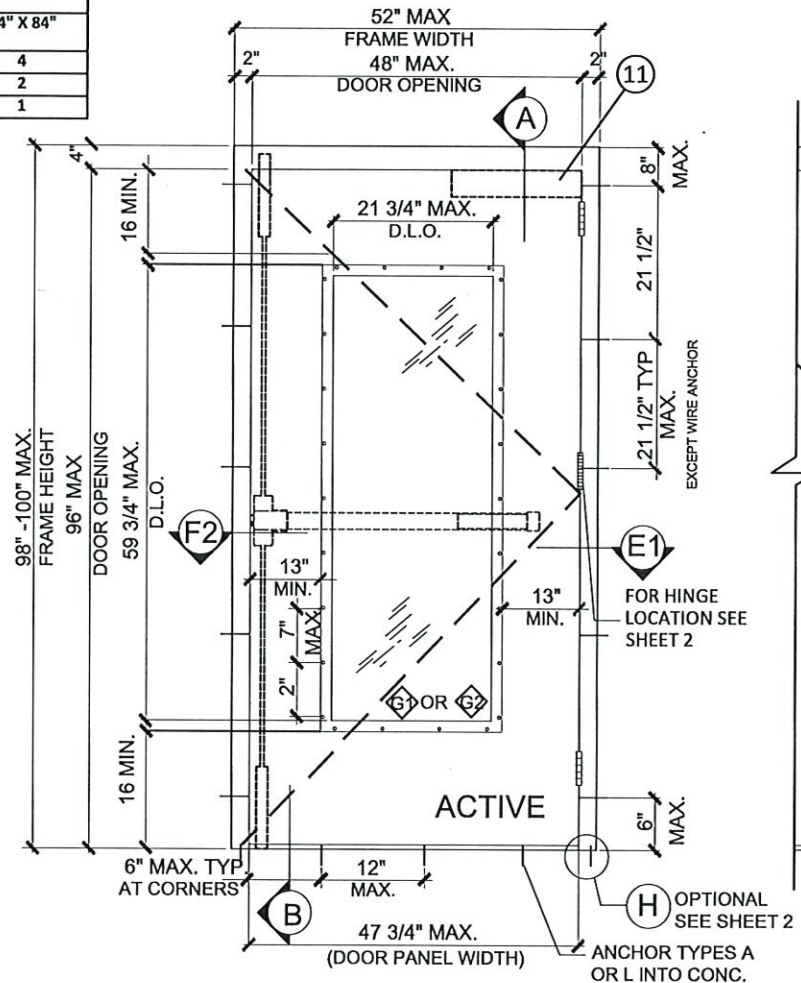
TYPICAL EXTERIOR ELEVATION (XX)
(DOUBLE PANEL OUTSWING GLAZED DOOR)
(LOCK OPTION 5 (SVR) SEE SHEET 9)



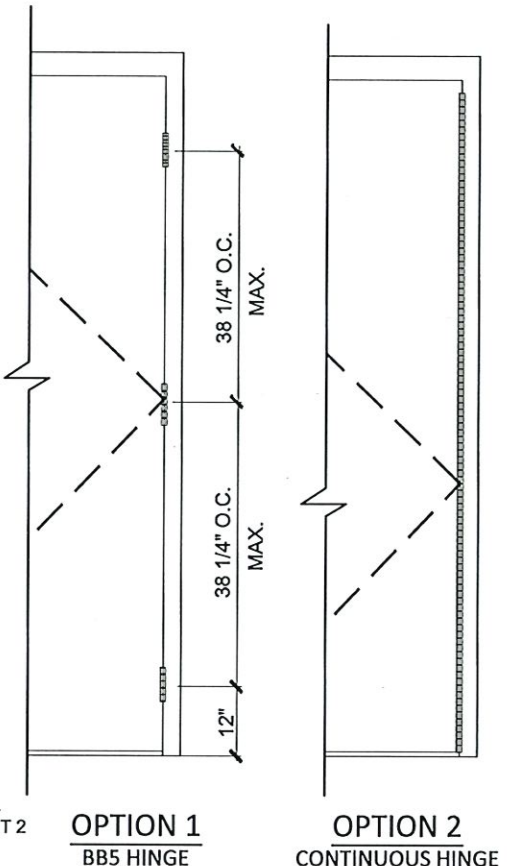
(H) FRAME ANCHOR
SILL ANCHOR DOUBLE
RABBIT FRAME
(OPTIONAL)

NOTES:
CONTINUOUS HINGE OR BB5 HINGE
ACCEPTABLE ON ALL OPTIONS.
FOR PANEL HINGE OPTIONS.
FOR PANEL HINGE OPTIONS SEE
SHEET 5.
FOR DOOR EDGE AND EDGE SEAM
OPTIONS SEE SHEET 4

ANCHOR BRACKET TYPE A		
ANCHOR TYPES	NUMBER OF ANCHOR REQ'D	
	DOOR MAX. WIDTH X HEIGHT	
	96" X 96"	84" X 84"
D1	4	4
B, B1, D	2	2
C, F	2	1



TYPICAL EXTERIOR ELEVATION (X)
(SINGLE PANEL OUTSWING GLAZED DOOR)
(LOCK OPTION 5 (SVR) SEE SHEET 9)



HINGE LAYOUTS
(FOR BOTH SINGLE AND DOUBLE DOORS)
(SEE DETAIL ON SHEET 5)

DESIGN LOADS (FOR SIZES SHOWN ABOVE OR SMALLER) AS PERMITTED BY FBC	
+65.0 PSF	-65.0 PSF

PRODUCT RENEWED
as complying with the Florida
Building Code
NOA-No. 24-0812.06
Expiration Date 07/06/2030
By Ishag I. Chande
Miami-Dade Product Control



MESKER DOOR®
3440 Stanwood Blvd.
Huntsville, AL 35811

PH: (256) 851-6670 FX: (800) 503-1410

TITLE: N SERIES OUTSWING STEEL
GLAZED DOOR

PREPARED BY:
BUILDING DROPS, INC.
1900 NE Miami Ct, Suite 2-15
MIAMI, FL 33132
PH: (954) 395-8478
FAX: (954) 744-4738
WEB: www.buildingdrops.com



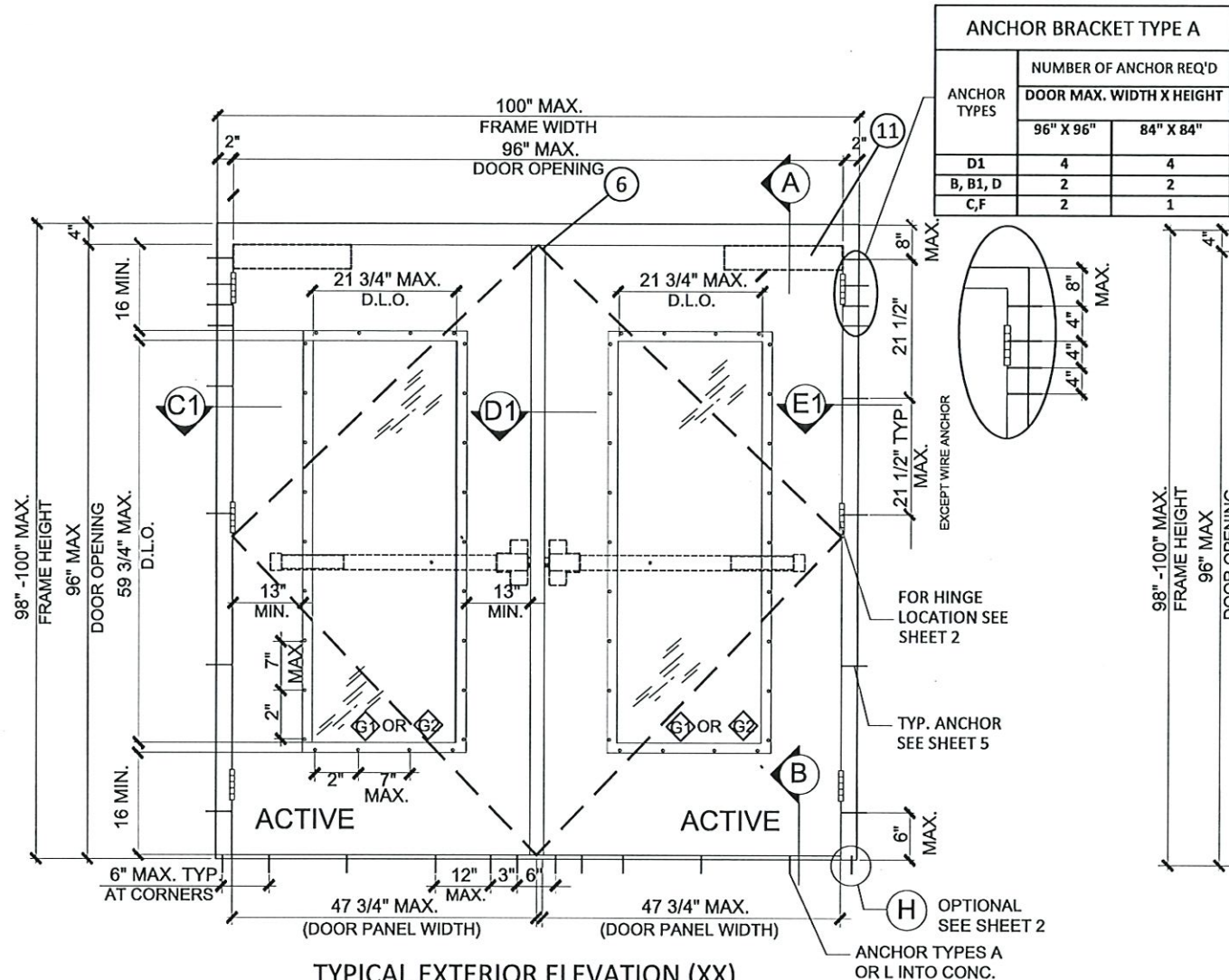
REVISIONS

NO.	DESCRIPTION	BY	DATE
A	2020 FBC UPDATE	SM	12/15/20
B	2023 FBC UPDATE	RN	05/29/24



DATE: 11.1.19	DWN BY: ER	CHK BY: HFN	SCALE: NTS
---------------	------------	-------------	------------

DWG #: MBM001
SHEET: 2 OF 12

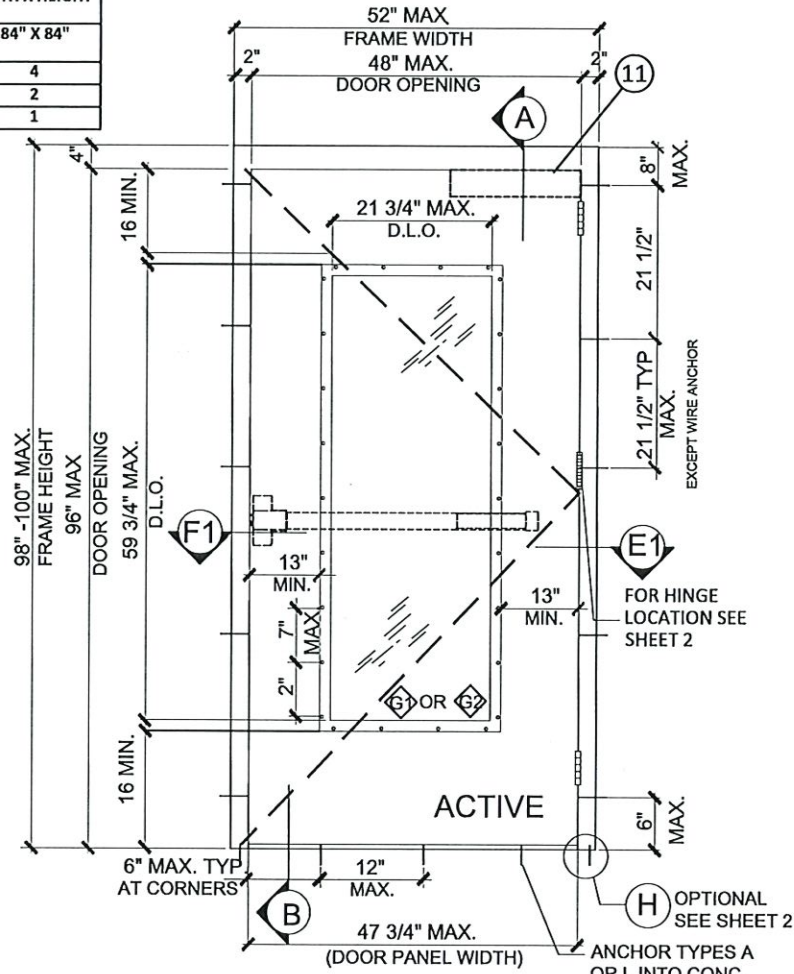
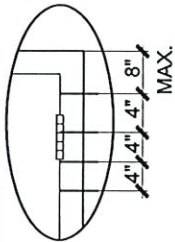


TYPICAL EXTERIOR ELEVATION (XX)
(DOUBLE PANEL OUTSWING GLAZED DOOR)
(RIM PANIC LOCK OPTION 3 SEE SHEET 9)
WITH MULLION

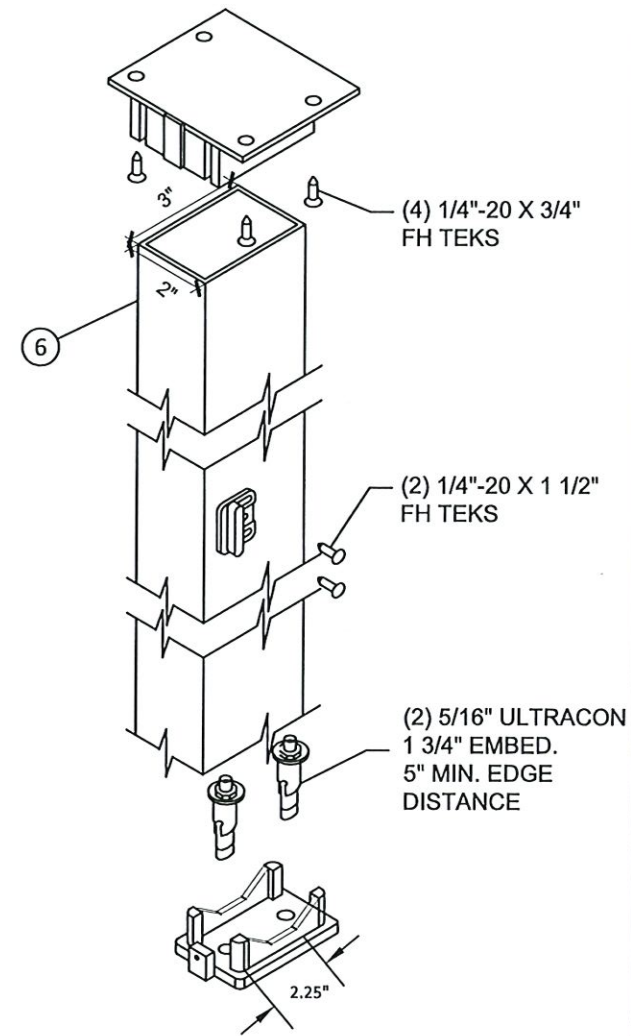
DESIGN LOADS (FOR SIZES SHOWN ABOVE OR SMALLER) AS PERMITTED BY FBC	
+65.0 PSF	
-65.0 PSF	

NOTES:
CONTINUOUS HINGE OR BB5 HINGE
ACCEPTABLE ON ALL OPTIONS.
FOR PANEL HINGE OPTIONS.
FOR PANEL HINGE OPTIONS SEE
SHEET 5.
FOR DOOR EDGE AND EDGE SEAM
OPTIONS SEE SHEET 4

ANCHOR BRACKET TYPE A		
ANCHOR TYPES	NUMBER OF ANCHOR REQ'D	
	DOOR MAX. WIDTH X HEIGHT	
	96" X 96"	84" X 84"
D1	4	4
B, B1, D	2	2
C, F	2	1



TYPICAL EXTERIOR ELEVATION (X)
(SINGLE PANEL OUTSWING GLAZED DOOR)
(RIM PANIC LOCK OPTION 3 SEE SHEET 9)



DESIGN HARDWARE SERIES
KRM REMOVABLE MULLION
Fy= 36 KSI MIN.
1/8" THK. STEEL



MESKER DOOR®
3440 Stanwood Blvd.
Huntsville, AL 35811

PH: (256) 851-6670 FX: (800) 503-1410

TITLE: N SERIES OUTSWING STEEL
GLAZED DOOR

PREPARED BY:

BUILDING DROPS, INC.
1900 NE Miami CT, SUITE 2-15
MIAMI, FL 33132
PH: (954) 395-8478
FAX: (954) 744-4738
WEB: www.buildingdrops.com



REVISIONS

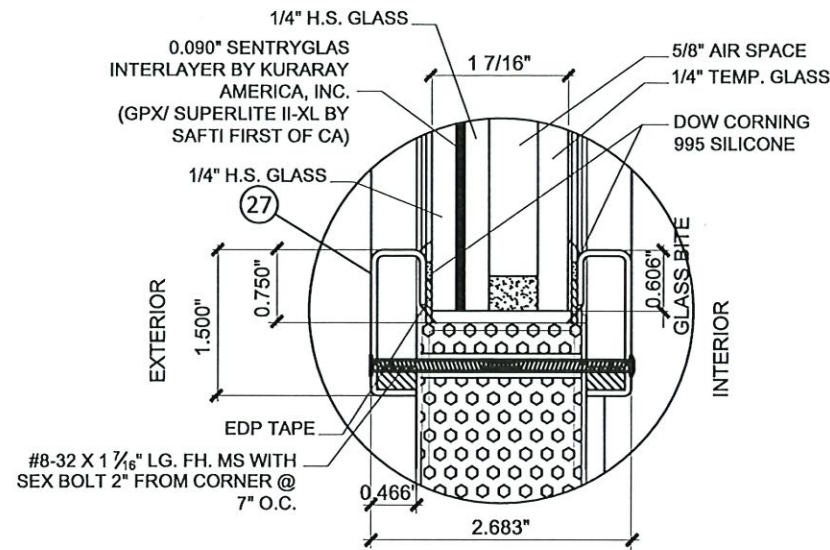
NO.	DESCRIPTION	BY	DATE
1	2020 FBC UPDATE	SM	12/15/20
2	2023 FBC UPDATE	RN	05/29/24



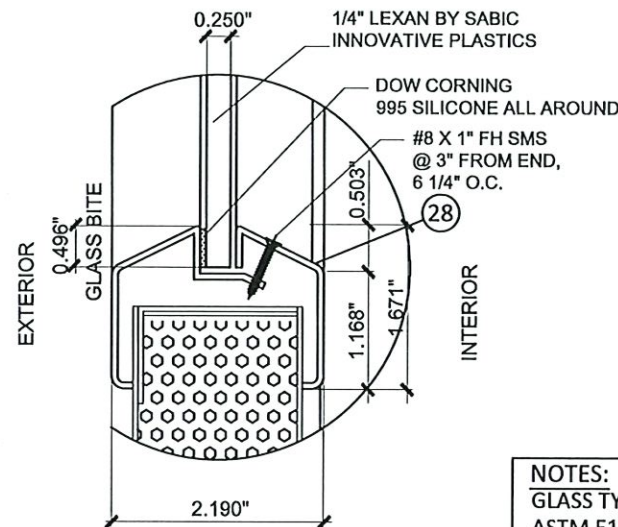
PRODUCT RENEWED
as complying with the Florida
Building Code
NOA-No. 24-0812.06
Expiration Date 07/06/2030
By Ishag I. Chande
Miami-Dade Product Control

DATE: 11.1.19	DWN BY: ER	CHK BY: HFN	SCALE: NTS
------------------	---------------	----------------	---------------

DWG #:
MBM001
SHEET: 3 OF 12

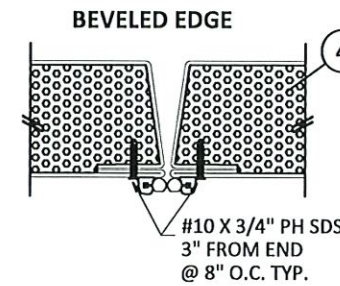
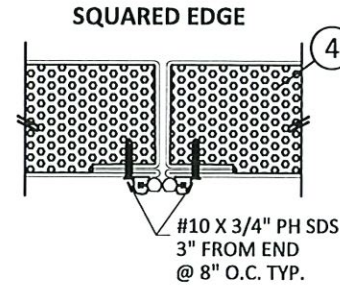


G1
GLASS TYPE 1
(1 7/16" NOMINAL SAFTI-FIRST FIRE RATED LAMINATED INSULATED GLASS)
VLFIG-HRC LITE KIT BY ACTIVAR CONSTRUCTION PRODUCTS GROUP

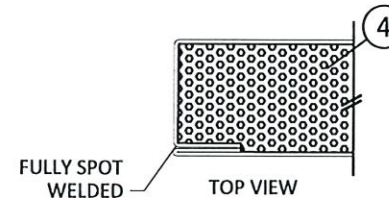
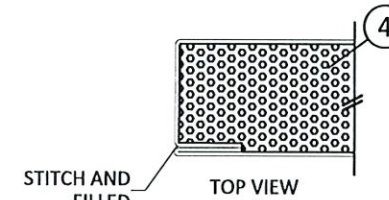
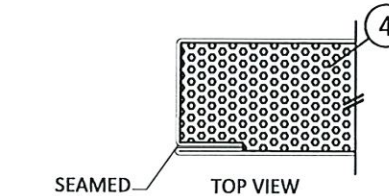


G2
GLASS TYPE 2
(1/4" LEXAN BY SABIC INNOVATIVE PLASTICS)
VLFEZ-HRC LITE KIT BY ACTIVAR CONSTRUCTION PRODUCTS GROUP

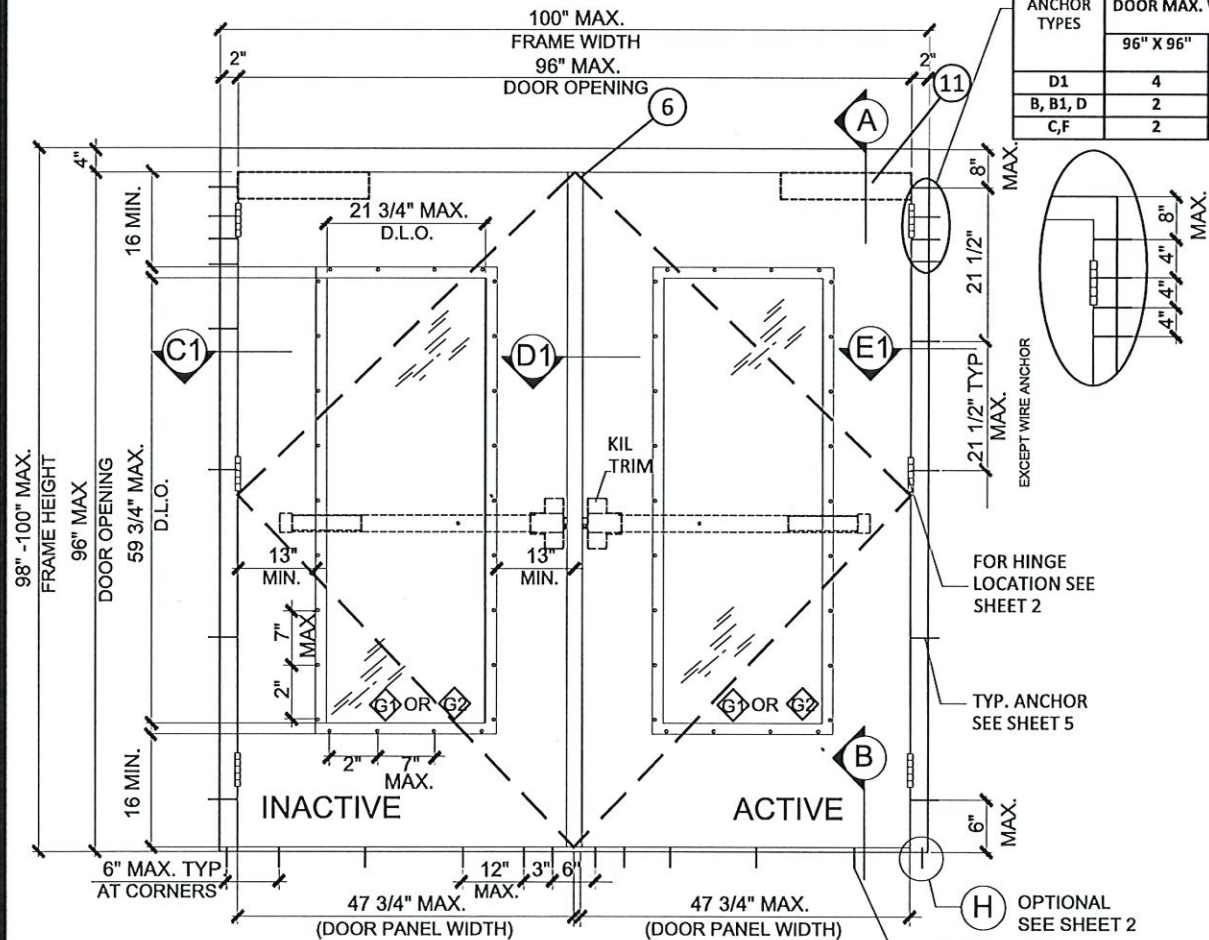
NOTES:
GLASS TYPE G1 COMPLIES WITH ASTM E1300 (3 SEC. GUSTS).
GLASS TYPE G2 COMPLIES WITH CHAPTER 26 OF FBC AND PER CURRENT NOA



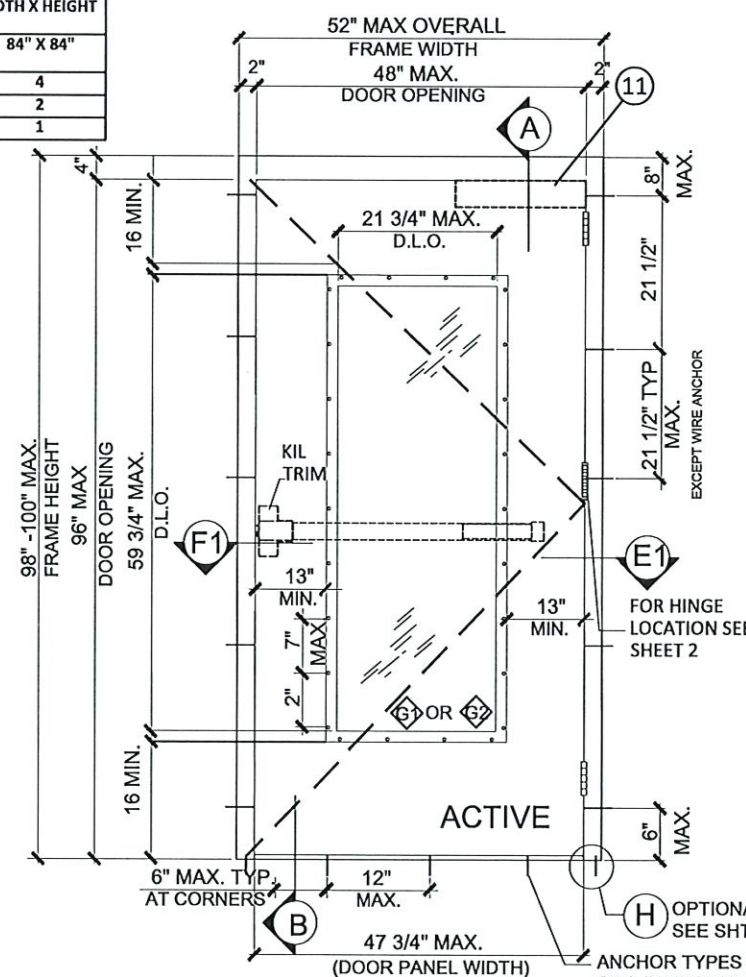
DOOR EDGE OPTIONS



DOOR EDGE SEAM OPTIONS



TYPICAL EXTERIOR ELEVATION (XX)
(DOUBLE PANEL OUTSWING GLAZED DOOR)
(RIM PANIC LOCK OPTION 4 SEE SHEET 9)
WITH MULLION



TYPICAL EXTERIOR ELEVATION (X)
(SINGLE PANEL OUTSWING GLAZED DOOR)
(RIM PANIC LOCK OPTION 4 SEE SHEET 9)

ANCHOR BRACKET TYPE A		
ANCHOR TYPES	NUMBER OF ANCHOR REQ'D	
	DOOR MAX. WIDTH X HEIGHT	
	96" X 96"	84" X 84"
D1	4	4
B, B1, D	2	2
C, F	2	1



MESKER DOOR®
3440 Stanwood Blvd.
Huntsville, AL 35811

PH: (256) 851-6670 FX: (800) 503-1410

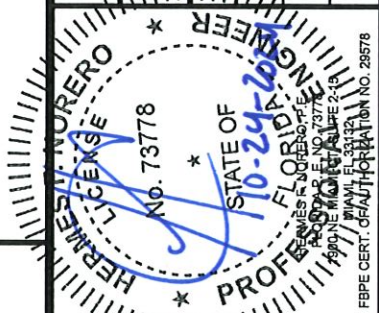
TITLE: N SERIES OUTSWING STEEL GLAZED DOOR

PREPARED BY:
BUILDING DROPS, INC.
1900 NE Miami CT, SUITE 2-15
MIAMI, FL 33132
PH: (954) 395-8478
FAX: (954) 744-4738
WEB: www.buildingdrops.com



REVISIONS

NO.	DESCRIPTION	BY	DATE
A	2020 FBC UPDATE	SM	12/15/20
B	2023 FBC UPDATE	RN	05/29/24



PRODUCT RENEWED
as complying with the Florida Building Code
NOA-No. 24-0812.06
Expiration Date 07/06/2030
By Ishag I. Chande
Miami-Dade Product Control

DATE: 11.1.19
DWN BY: ER
CHK BY: HFN
SCALE: NTS

DWG #: MBM001
SHEET: 4 OF 12

TYPICAL ANCHORS @ HEAD/JAMB: (REFER TO ELEVATION FOR SPACING)

- TYPE B

3/8" DIA. HLC SLEEVE ANCHOR BY "HILTI"
DIRECTLY INTO $f_c'=3000$ PSI CONCRETE
1-3/8" MIN. EMBED, 3 1/4" MIN. EDGE DISTANCE
- TYPE B1

3/8" DIA. HLC SLEEVE ANCHOR BY "HILTI"
DIRECTLY INTO $f_c'=3000$ PSI INTO GROUT FILLED CONCRETE BLOCK
1-3/8" MIN. EMBED, 3 1/2" MIN. EDGE DISTANCE
- TYPE C

3/8" DIA. LOK-BOLT AS BY "DEWALT"
DIRECTLY INTO CONCRETE $f_c'=3000$ PSI MIN.
2 1/2" MIN. EMBED, 3 1/8" MIN. EDGE DISTANCE
- TYPE D

3/8" DIA. SCREW- BOLT + AS BY "DEWALT"
DIRECTLY INTO CONCRETE $f_c'=3000$ PSI MIN.
1 1/2" MIN. EMBED, 3 1/4" MIN. EDGE DISTANCE
- TYPE D1

3/8" DIA. SCREW- BOLT + AS BY "DEWALT"
DIRECTLY INTO $f_c'=3000$ PSI INTO GROUT FILLED CONCRETE BLOCK
1 1/2" MIN. EMBED, 3 3/4" MIN. EDGE DISTANCE
- TYPE F

5/16" DIA. SMS OR MACHINE BOLTS (MIN. GRADE 2 CRS) OR ST/ST
INTO METAL STRUCTURES
STEEL: $F_y=36$ KSI MIN. 1/4" MIN. THK.
ALUMINUM: 6063-T5, 1/4" MIN. THK.

NOTE:
EACH TYPE OF ANCHOR SHALL BE USED WITH ANCHOR
BRACKET TYPE A.

WIRE ANCHOR: (REFER TO ELEVATION FOR SPACING)
(SEE DETAIL ON SHEET 10)

- TYPE H

WIRE ANCHOR (PF-2) ($F_y=60$ KSI) MIN.
0.182 DIA. STEEL WIRE ANCHORS EMBED INTO
GROUT FILLED CONCRETE BLOCK $f_m'=1500$ PSI MIN.

STRAP ANCHOR: (REFER TO ELEVATION FOR SPACING)
(SEE DETAIL ON SHEET 10)

- TYPE H

STRAP ANCHOR (PF-2) (PS-241) ($F_y=60$ KSI) MIN.
INTO GROUT FILLED CONCRETE BLOCK
 $f_m'=3000$ PSI MIN.

NOTE:
WOOD OR STEEL STRUCTURAL MEMBERS OF WOOD AND
STEEL-STUD WALLS MUST BE DESIGNED TO CARRY AT LEAST 271
LB/FT FOR DOORS RATED @ 65 PSF

ANCHOR BRACKETS
(SEE DETAILS ON SHEET 10)

- TYPE A

TUBE ANCHOR (PF-10)
(SEE ELEVATIONS ON SHEETS 1 THRU 4
FOR ANCHOR BRACKET LOCATIONS)

- TYPE B

Z ANCHOR (PF-9)
(SEE ELEVATIONS BELOW FOR ANCHOR
BRACKET LOCATIONS)

- TYPE C

WOOD STUD ANCHOR (F-24)
(SEE ELEVATIONS BELOW FOR ANCHOR
BRACKET LOCATIONS)

SEALANT:
ALL FRAME JOINTS AND CORNERS TO BE SEALED WITH SILICONE
AT PERIMETER

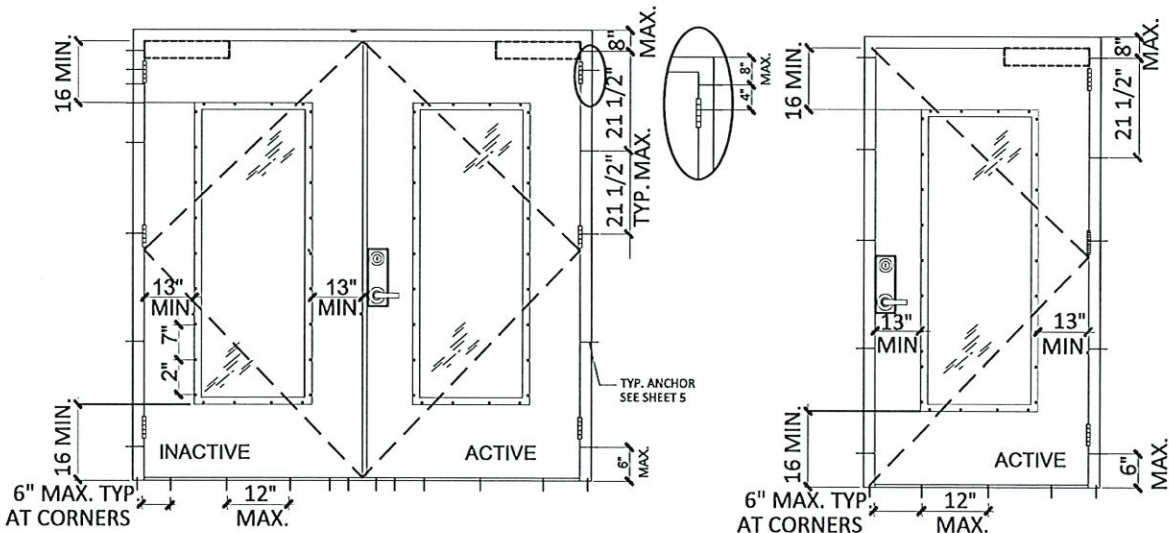
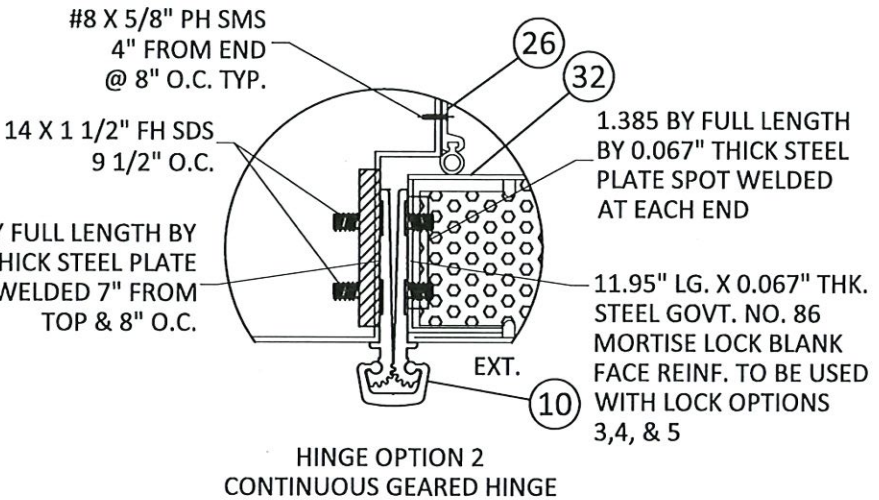
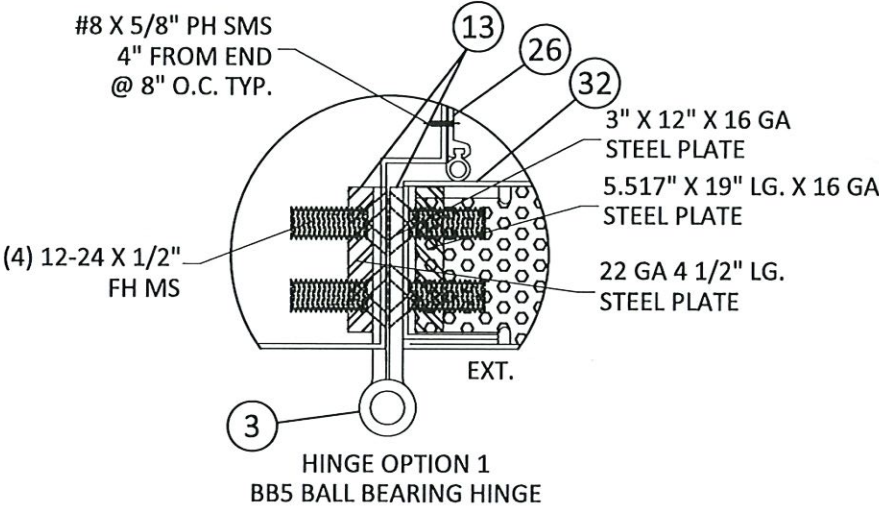
NOTE:
JAMB SUBSTRATE CAN BE GROUT FILLED CONCRETE, 2X
WOOD BUCKS, WOOD STRUCTURAL MEMBER(S), FILLED
CONCRETE BLOCK WALL AND METAL STRUCTURE (STEEL
OR ALUMINUM). ANCHOR TYPE SHOWN ABOVE SHOULD
BE CHOSEN BASED ON SUBSTRATE TYPE IN THE PROJECT.
ANY TYPE OF ANCHOR NOT SPECIFIED HERE IS NOT PART
OF THIS APPROVAL.

SILL ANCHORS: (REFER TO ELEVATION FOR SPACING)

- TYPE L

1/4" DIA. ULTRACONS BY "ELCO" ($F_y=155$ KSI $F_u=177$ KSI)
DIRECTLY INTO $f_c'=3000$ PSI CONCRETE
1-1/2" EMBED INTO CONCRETE, 2 1/2" MIN. EDGE DISTANCE
- TYPE A

5/16" DIA. ULTRACONS BY "ELCO" ($F_y=155$ KSI $F_u=177$ KSI)
DIRECTLY INTO $f_c'=3000$ PSI CONCRETE
1-3/4" EMBED INTO CONCRETE, 2 3/16" MIN. EDGE DISTANCE



ANCHOR BRACKET TYPE B & C LAYOUT



MESKER DOOR®
3440 Stanwood Blvd.
Huntsville, AL 35811

PH: (256) 851-6670 FX: (800) 503-1410

TITLE: N SERIES OUTSWING STEEL
GLAZED DOOR

PREPARED BY:
BUILDING DROPS, INC.
1900 NE Miami CT, SUITE 2-15
MIAMI, FL 33132
PH: (954) 399-8478
FAX: (954) 744-4738
WEB: www.buildingdrops.com



REVISIONS

NO.	DESCRIPTION	BY	DATE
1	2020 FBC UPDATE	SM	12/15/20
2	2023 FBC UPDATE	RN	05/29/24

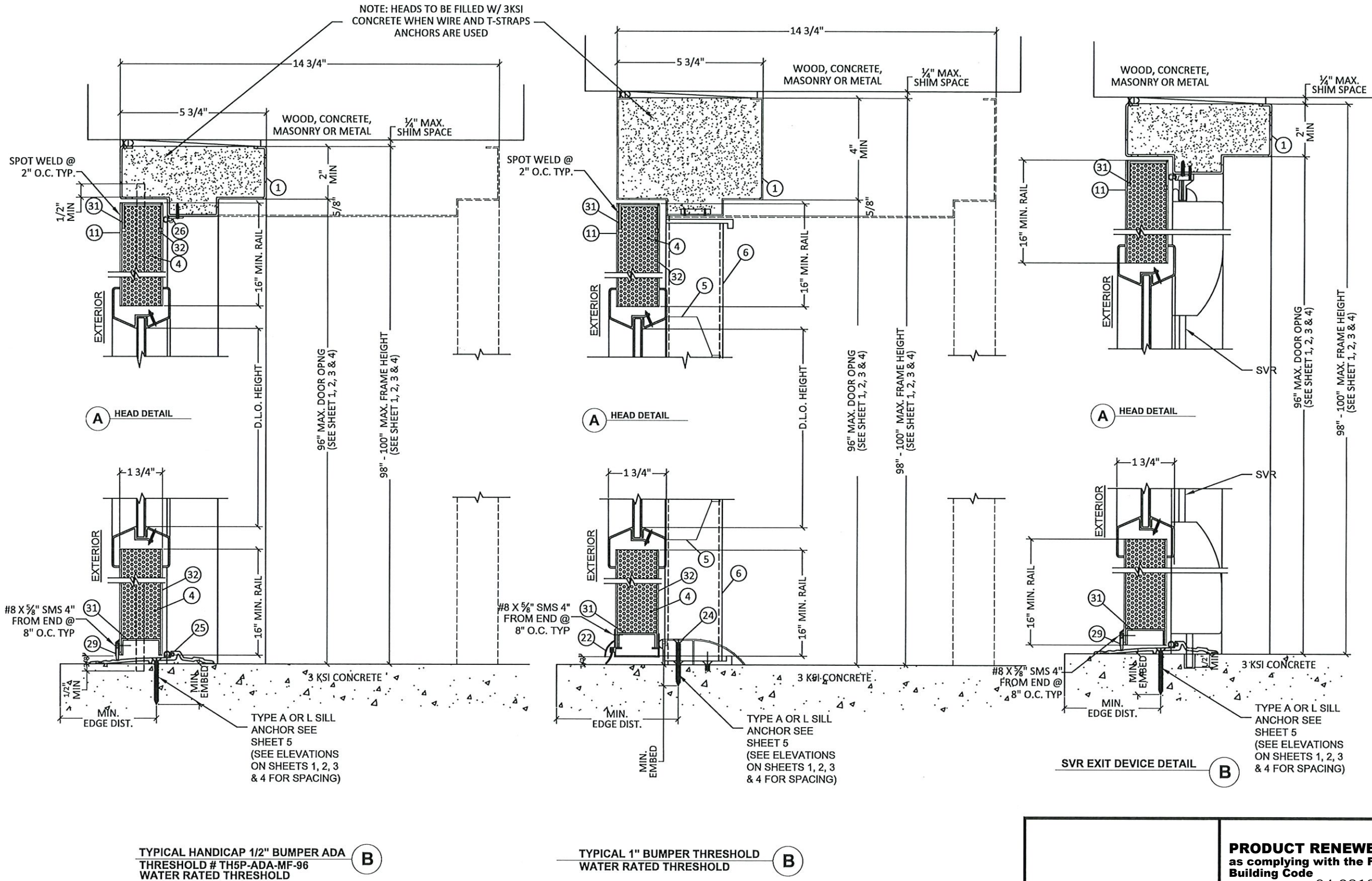
DATE:	11.1.19
DWN BY:	ER
CHK BY:	HFN
SCALE:	NTS

DWG #:
MBM001
SHEET: **5 OF 12**

PRODUCT RENEWED
as complying with the Florida
Building Code
NOA-No. 24-0812.06

Expiration Date 07/06/2030

By *Ishag I. Chank*
Miami-Dade Product Control



MESKER DOOR®
3440 Stanwood Blvd.
Huntsville, AL 35811

PH: (256) 851-6670 FX: (800) 503-1410

TITLE: N SERIES OUTSWING STEEL GLAZED DOOR

PREPARED BY:
BUILDING DROPS, INC.
1900 NE Miami CT, SUITE 2-15
MIAMI, FL 33132
PH: (954) 399-8478
FAX: (954) 744-4738
WEB: www.buildingdrops.com



REVISIONS

NO.	DESCRIPTION	BY	DATE
1	2020 FBC UPDATE	SM	12/15/20
2	2023 FBC UPDATE	RN	05/29/24



PRODUCT RENEWED
as complying with the Florida
Building Code
NOA-No. 24-0812.06

Expiration Date 07/06/2030

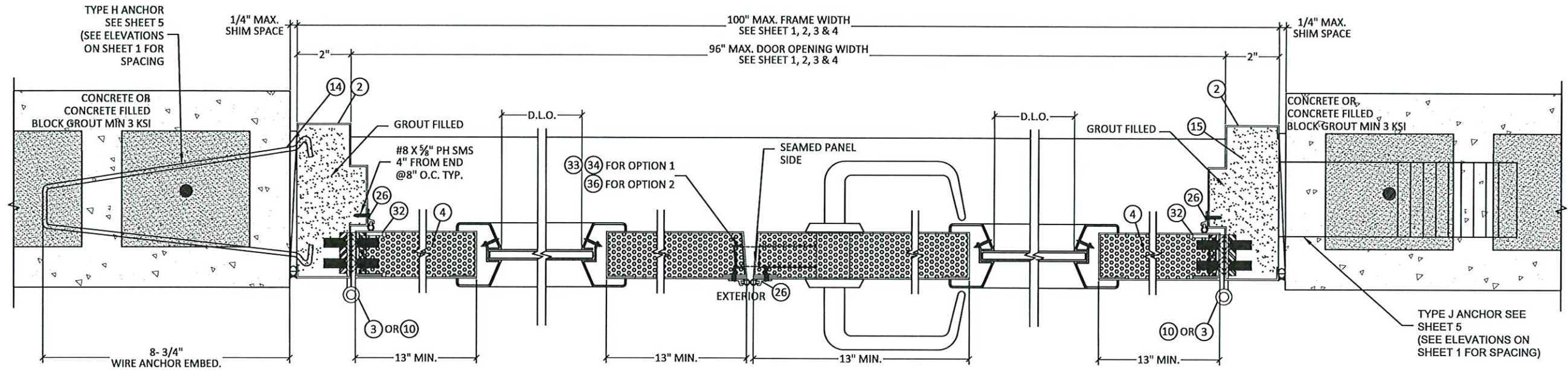
By Ishag I. Chande
Miami-Dade Product Control

DATE: 11.1.19
DWN BY: ER
CHK BY: HFN
SCALE: NTS

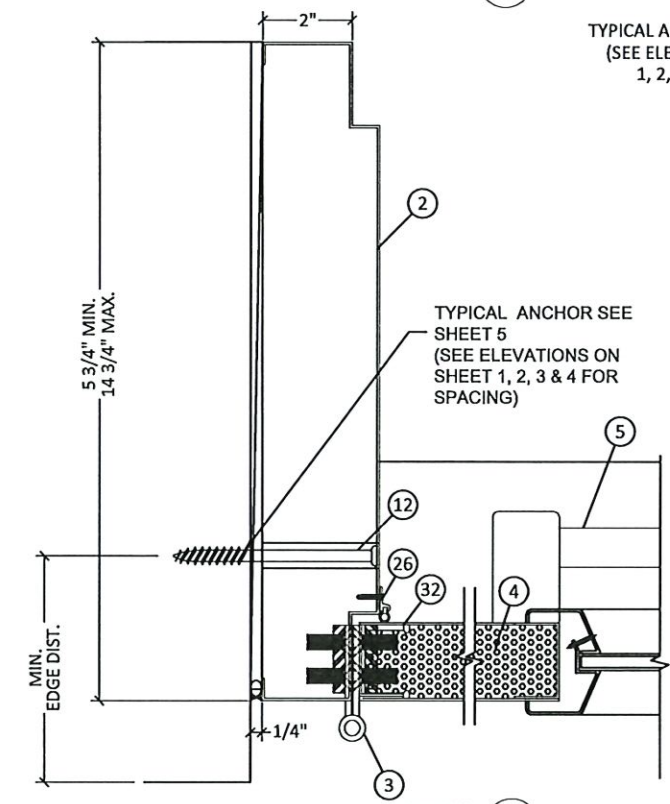
DWG #:
MBM001
SHEET: 6 OF 12

7/22/2024 6:14 PM

c:\users\dylanwata\building drops, inc\building drops landing - common\projects\mesker mbm, llc\cc-24-0321 - md submittal - 2023 code change\dwgs\glazed door\mbm001.dwg

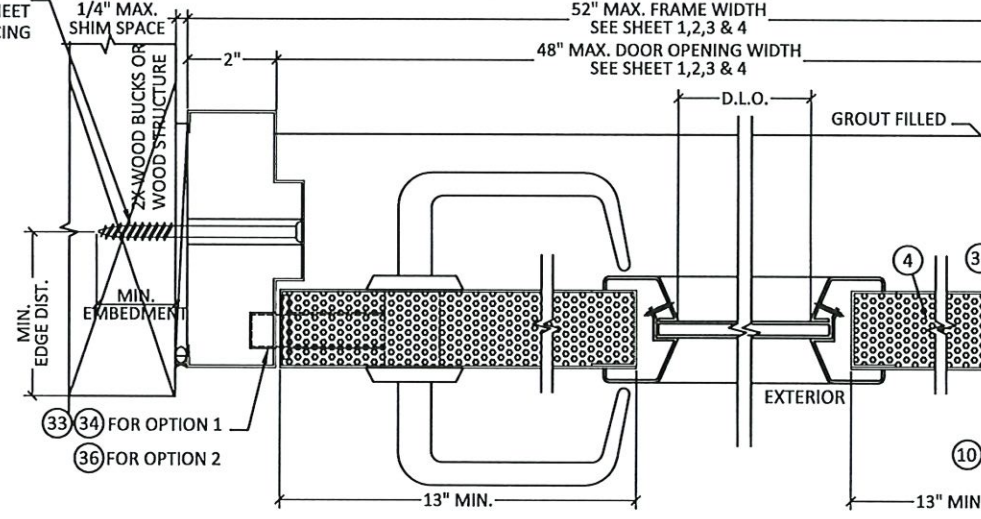


DETAIL C



DETAIL C
FRAME HINGE JAMB OPTION

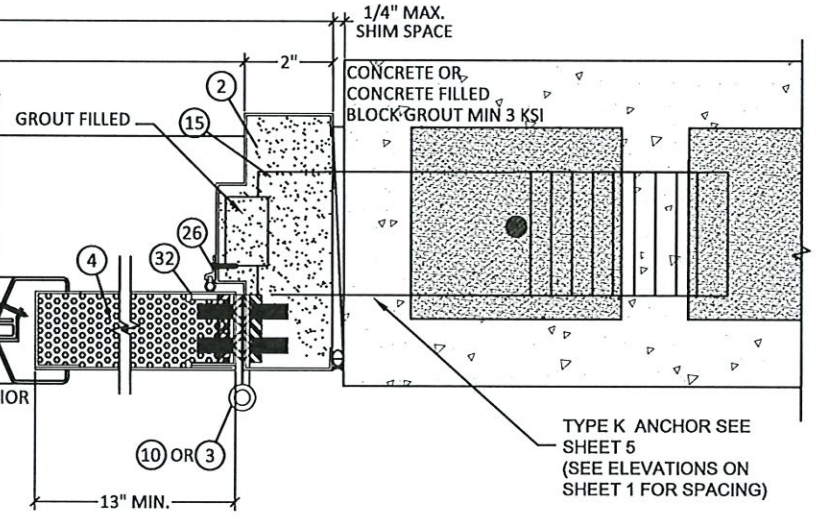
DETAIL D
LOCK OPTION 1 (MORTISE LOCK W/ DEADBOLT)
LOCK OPTION 2 (CYLINDRICAL LOCK)



DETAIL F
LOCK JAMB
SINGLE DOOR

SEAMED PANEL SIDE NOTE:
ALL OPENINGS CAN BE SEAMED OR SEAMLESS.
ALL OPENINGS CAN BE SQ. EDGE OR BEVELED EDGE

DETAIL E



PRODUCT RENEWED
as complying with the Florida
Building Code
NOA-No. 24-0812.06
Expiration Date 07/06/2030
By *Ishag I. Chande*
Miami-Dade Product Control



MESKER DOOR®
3440 Stanwood Blvd.
Huntsville, AL 35811

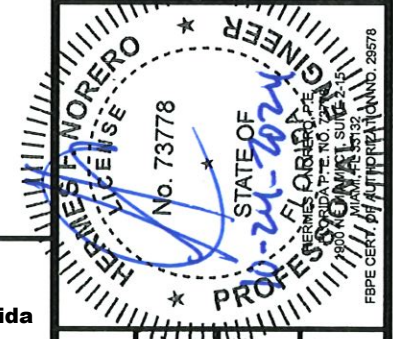
PH: (256) 851-6670 FX: (800) 503-1410

TITLE: N SERIES OUTSWING STEEL
GLAZED DOOR

PREPARED BY:
BUILDING DROPS, INC.
1900 NE Miami CT, SUITE 2-15
MIAMI, FL 33132
PH: (954) 399-8478
FAX: (954) 744-4738
WEB: www.buildingdrops.com

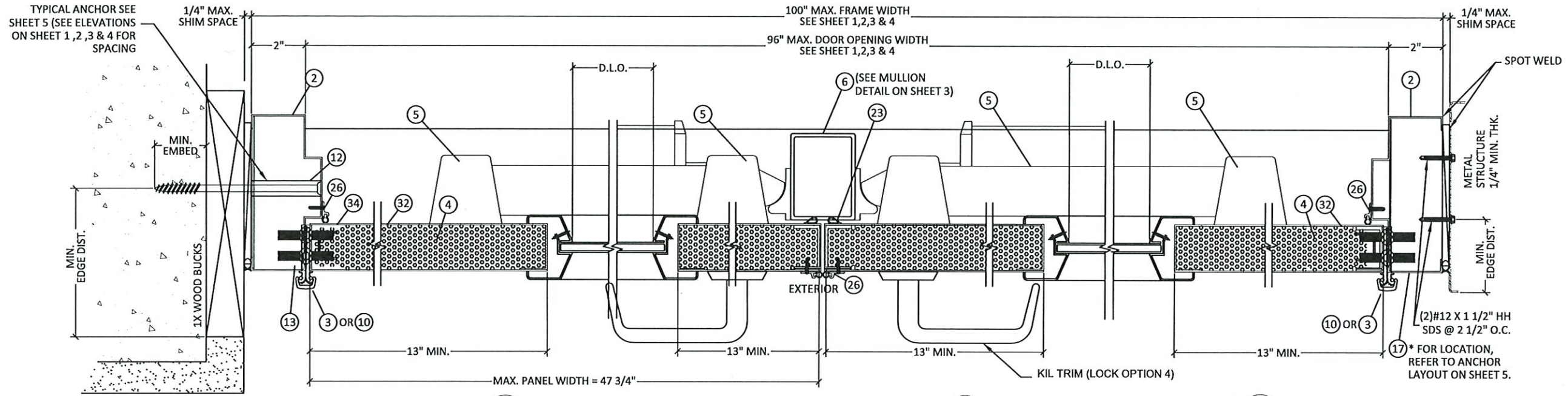
BD
BUILDING DROPS

REVISIONS		NO.	DESCRIPTION	BY	DATE
		A	2020 FBC UPDATE	SM	12/15/20
		B	2023 FBC UPDATE	RN	05/29/24



DATE: 11.1.19
DWN BY: ER
CHK BY: HFN
SCALE: NTS

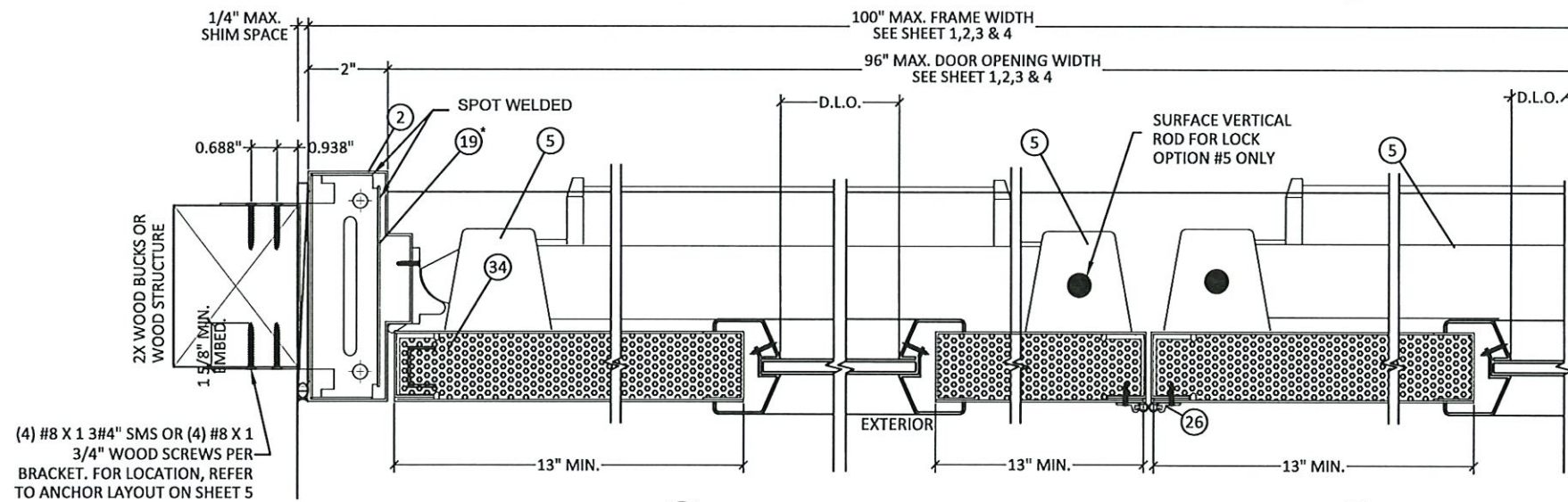
DWG #: MBM001
SHEET: 7 OF 12



DETAIL C1
FRAME HINGE JAMB OPTION

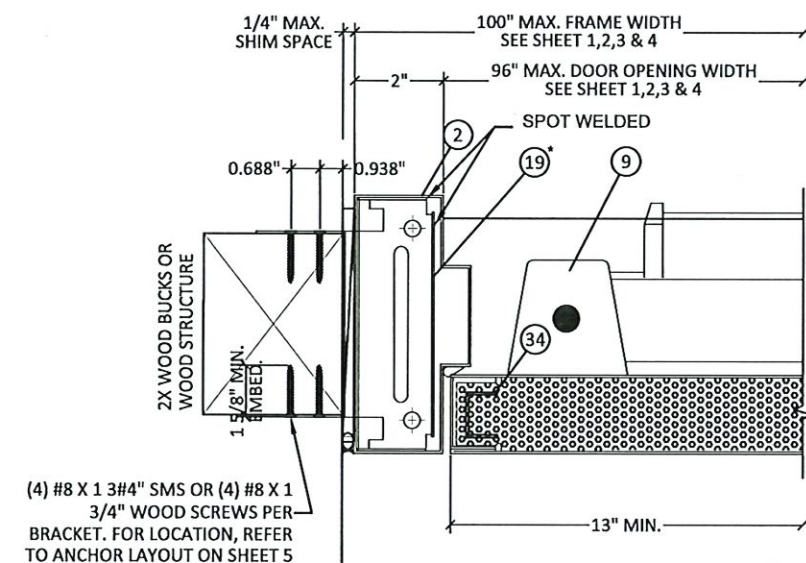
DETAIL **D1**

DETAIL **E1**

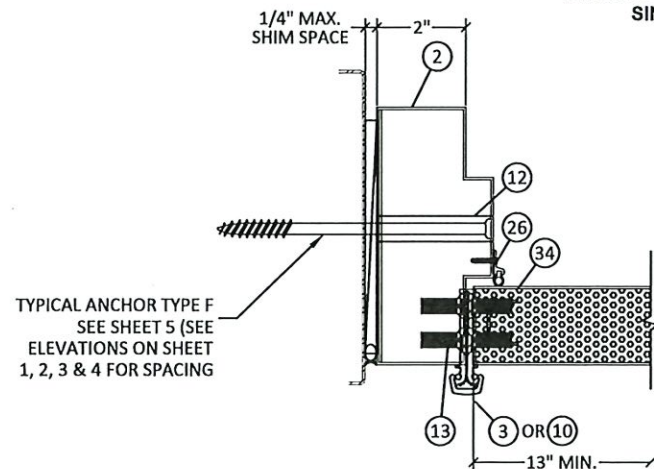


DETAIL F1
RIM EXT. LOCK JAMBS
SINGLE DOORS

DETAIL
RIM EXT. LOCK JAMBS
DOUBLE DOORS



DETAIL
RIM EXT. LOCK JAMBS
SINGLE DOORS



C1 DETAIL
FRAME HINGE JAMB OPTION

* **NOTE:**
WOOD OR STEEL STRUCTURAL MEMBERS OF WOOD AND STEEL-STUD WALLS MUST BE DESIGNED TO CARRY AT LEAST 271 LB/FT FOR DOORS RATED @ 65 PSF.

**TITLE: N SERIES OUTSWING STEEL
GLAZED DOOR**

PREPARED BY:

BUILDING DROPS, INC.
1900 NE Miami CT, SUITE 2-15
MIAMI, FL 33132
PH: (954) 399-8478
FAX: (954) 744-4738
WEB: www.buildingdrops.com

BD
BUILDING DROPS

REVISIONS			
NO.	DESCRIPTION	BY	DATE
A	2020 FBC UPDATE	SM	12/15/20
B	2023 FBC UPDATE	RN	05/29/24



PRODUCT RENEWED
as complying with the Florida
Building Code

NOA-No. 24-0812.06

Expiration Date 07/06/2030

By Ishag I. Chande
Miami-Dade Product Control

DATE: 11.1.19
DOWN BY: ER 3
CHK BY: HFN
SCALE: NTS

DWG #:

MBM001

SHEET: 8 OF 12

HARDWARE/LOCK OPTIONS

ACTIVE DOOR HARDWARE CAN APPLY TO SINGLE DOORS
(EXTERIOR ELEVATIONS - OUTSWING DOORS)



MESKER DOOR®
3440 Stanwood Blvd.
Huntsville, AL 35811

PH: (256) 851-6670 FX: (800) 503-1410

TITLE: N SERIES OUTSWING STEEL
GLAZED DOOR

PREPARED BY:
BUILDING DROPS, INC.
1900 NE Miami CT, SUITE 2-15
MIAMI, FL 33132
PH: (954) 399-8478
FAX: (954) 744-4738
WEB: www.buildingdrops.com



REVISIONS

NO.	DESCRIPTION	BY	DATE
A	2020 FBC UPDATE	SM	12/15/20
B	2023 FBC UPDATE	RN	05/29/24



DATE:	11.1.19
DWN BY:	ER
CHK BY:	HFN
SCALE:	NTS

DWG #: MBM001

SHEET: 9 OF 12

PRODUCT RENEWED
as complying with the Florida
Building Code
NOA-No. 24-0812.06
Expiration Date 07/06/2030
By Ishag I. Chande
Miami-Dade Product Control

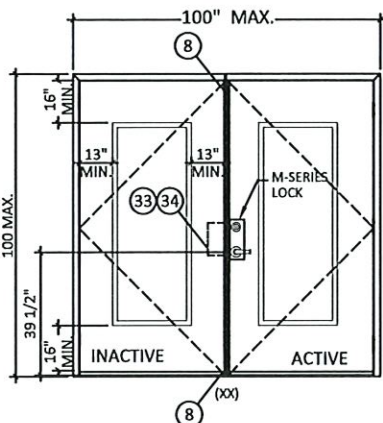
OPTION 1

ACTIVE LEAF:

DESIGN HARDWARE M SERIES EXTRA HEAVY DUTY (GRADE 1) MORTISE LOCK WITH (2) 8-32 X 1 1/8" FH MS, LATCH = SS 3/4" THROW, DEADBOLT = SS 1" THROW

INACTIVE LEAF:

DESIGN HARDWARE UL-MFB-M FLUSH BOLTS WITH (4) 8 X 3/4" FH MULTI THREAD SCREWS, TOP AND BOTTOM, FLUSH MOUNT METALLIC FLUSH BOLT GUIDE WITH (2) #8 X 3/4" FH THREAD SCREWS, FLUSH MOUNT METALLIC STRIKE PLATE, WITH (2) 1/4" X 3/8" FH MS



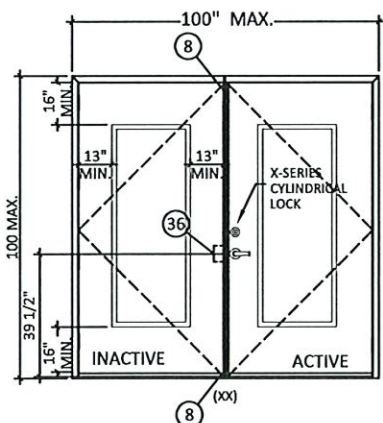
OPTION 2

ACTIVE LEAF:

DESIGN HARDWARE X SERIES (GRADE 1) CYLINDRICAL LOCK, WITH (2) #8 X 3/4" FH THREAD SCREWS AND (2) #10 X 1 9/16" FH MS. LATCH = SS 1/2" THROW

INACTIVE LEAF:

DESIGN HARDWARE UL-MFB-M FLUSH BOLTS, FLUSH MOUNT METALLIC FLUSH BOLT GUIDE, SURFACE MOUNT METALLIC STRIKE PLATE, WITH (4) 8 X 3/4" FH MULTI THREAD SCREWS, TOP AND BOTTOM



OPTION 3

OPTION 3.A

ACTIVE LEAF/INACTIVE LEAF:

DESIGN HARDWARE 2000 SERIES STANDARD DUTY SURFACE MOUNT METALLIC RIM PANIC DEVICE WITH (6) 14 X 1 1/2" FH SDS, RIM PANIC LATCH AT LOCKS = 5/8" THROW. ROLLER STRIKE WITH 5/8" PROJECTION & 1/8" SHIM.

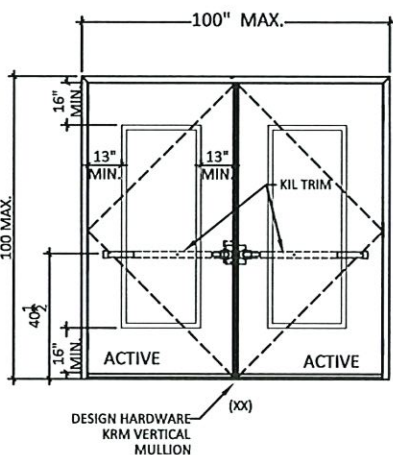
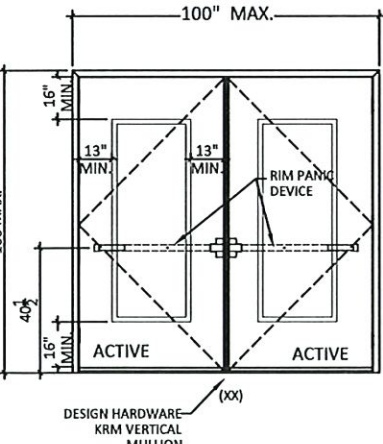
WITH 2" X 3" X 1/8" THICK STEEL VERTICAL TUBE MULLION, FY = 36 KSI MIN.

OPTION 3.B

ACTIVE LEAF/INACTIVE LEAF:

DESIGN HARDWARE 1000 SERIES HEAVY DUTY SURFACE MOUNT METALLIC PANIC DEVICE WITH (5) 14 X 1 1/2" FH SDS, ROLLER STRIKE WITH 5/8" PROJECTION & 1/8" SHIM.

WITH 2" X 3" X 1/8" THICK STEEL VERTICAL TUBE MULLION, FY = 36 KSI MIN.



OPTION 4

OPTION 4.A

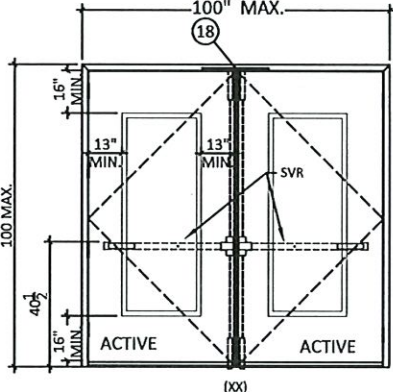
ACTIVE LEAF/INACTIVE LEAF:

DESIGN HARDWARE 2000 SERIES STANDARD DUTY SURFACE MOUNT METALLIC PANIC DEVICE WITH DESIGN KIL TRIM, WITH (4) 14 X 1 1/2" FH SDS, HANDLE WITH (2) #8-36 X 1 1/2" PH MS. WITH 2" X 3" X 1/8" THICK STEEL VERTICAL TUBE MULLION, FY = 36 KSI MIN.

OPTION 4.B

ACTIVE LEAF/INACTIVE LEAF:

DESIGN HARDWARE 1000 SERIES HEAVY DUTY SURFACE MOUNT METALLIC PANIC DEVICE WITH DESIGN KIL TRIM WITH (5) 14 X 1 1/2" FH SDS, HANDLE WITH (2) #8-36 X 1 1/2" PH MS. WITH 2" X 3" X 1/8" THICK STEEL VERTICAL TUBE MULLION, FY = 36 KSI MIN.



OPTION 5

OPTION 5.A

ACTIVE LEAF/INACTIVE LEAF:

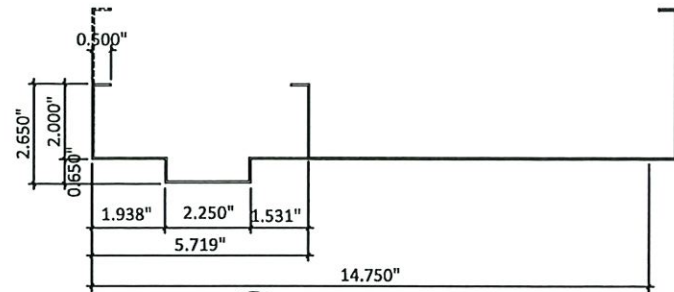
DESIGN HARDWARE 2000 SERIES STANDARD DUTY (GRADE 1) SVR SURFACE MOUNT METALLIC 2 POINT LOCK SYSTEM WITH PANIC DEVICE AND VERTICAL RODS ON EXTERIOR WITH (6) 14"-20 X 3/4 PH SMS AND (6) 14-20 X 3/4" FH MS. TOP STRIKE WITH (3) 1/4"-20P X 3/4" FH MS.

OPTION 5.B

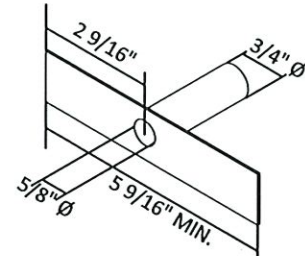
ACTIVE LEAF/INACTIVE LEAF:

DESIGN HARDWARE 1000 SERIES HEAVY DUTY (GRADE 1) SVR SURFACE MOUNT METALLIC PANIC DEVICE WITH (2) 14-20" PH MS AND (4) 14 X 1/4" FH SMS, VERTICAL ROD AT TOP AND BOTTOM (2) 14 X 1 1/2" FH SDS. TOP STRIKE WITH (3) 1/4"-20P X 3/4" FH MS.

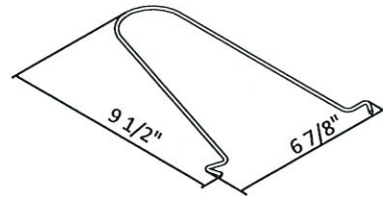
NOTE:
CONTINUOUS HINGE OR BB5 HINGE ACCEPTABLE
ON ALL OPTIONS. FOR PANEL HINGE OPTIONS,
SEE SHEET 5.
FOR DOOR EDGE AND EDGE SEAM OPTIONS SEE
SHEET 4.



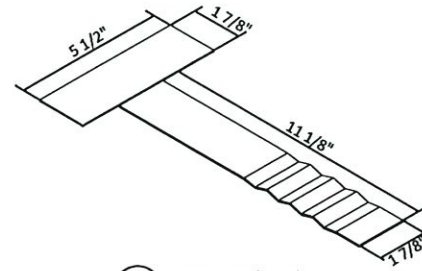
1 FRAME HEAD OPTION
(16 GA 0.060")



12 TUBE ANCHOR (PF-10)
TYPE A (16 GA 0.060")



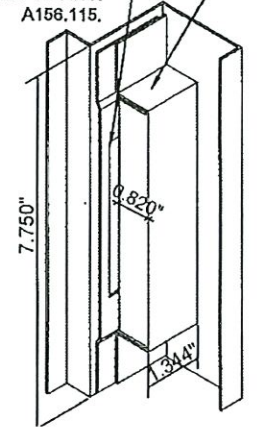
14 WIRE ANCHOR (PF-14)
TYPE H (0.182" Ø)
Fy=60 KSI MIN



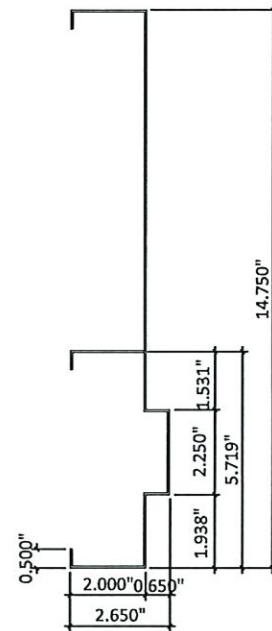
15 T ANCHOR (PF-2)
TYPE J (16 GA 0.060")

A 20 GAUGE STEEL PLASTER
GUARD PROJECTION IS
WELDED TO STRIKE
REINFORCEMENT.

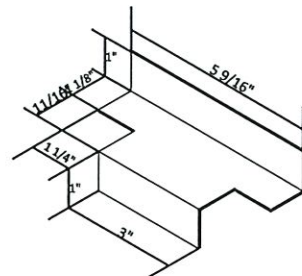
A 16 GAUGE STRIKE
REINFORCEMENT PROJECTION
IS WELDED TO FRAME. STRIKE
MORTISE CONFORMS TO ANSI
A156.115.



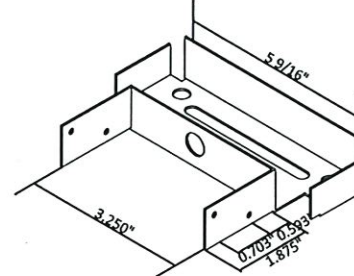
35 "U" STRIKE MORTISE
(ASA STRIKE)
21 GA (0.032")



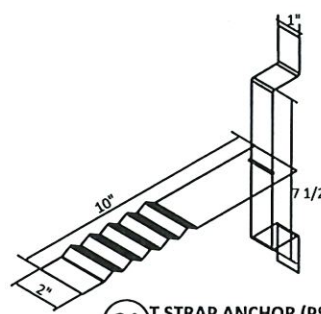
2 JAMB
(16 GA 0.060")



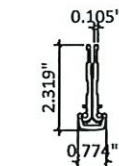
17 Z ANCHOR METAL STUD (PF-9)
TYPE B (16 GA 0.060")



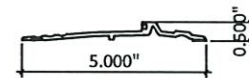
19 WOOD STUD STUD (PF-25)
TYPE C (18 GA 0.048")



21 T STRAP ANCHOR (PS-241)
TYPE K (16 GA 0.060")



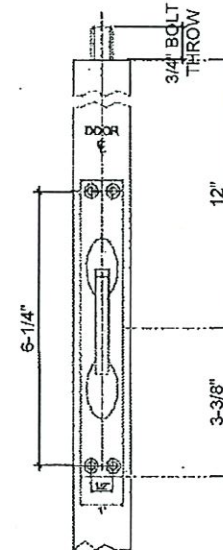
10 CONTINUOUS HINGE
6063-T6



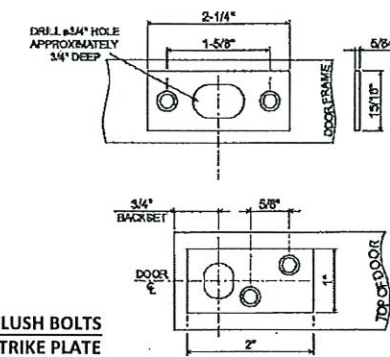
25 HANDICAP 1/2" BUMPER ADA
6063-T5 ALUM.



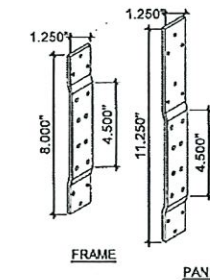
29 DOOR SWEEPS
6063-T5 ALUM.



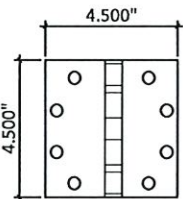
8 FLUSH BOLTS



8 FLUSH BOLTS
STRIKE PLATE



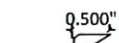
13 HINGE REINFORCEMENT



3 STEEL HINGE
0.134" THK. STEEL OR ST/ST



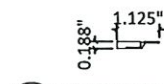
22 DOOR BOTTOM EXTENDER
(OPT)



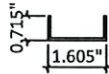
23 SELF-ADHESIVE WEATHER
STRIP



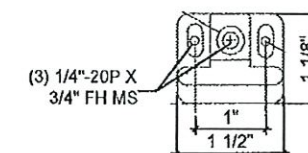
26 PERIMETER SEAL
6063-T5 ALUM.



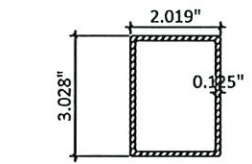
30 MEETING STILE ASTRAGAL



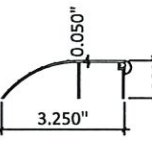
31 STEEL CHANNEL
20 GA. (0.036")
FULL PANEL WIDTH



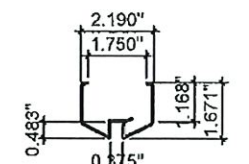
37 SVR TOP STRIKE



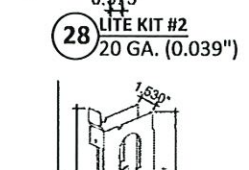
6 KRM REMOVABLE MULLION
STEEL OR ST/ST Fy=36 KSI MIN



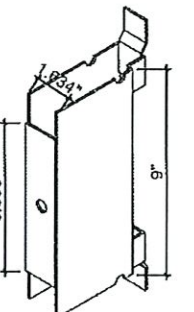
24 1" BUMPER THRESHOLD
6063-T5 ALUM.



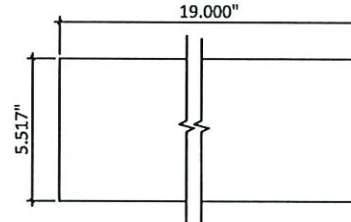
27 LITE KIT #1
18 GA. (0.048")



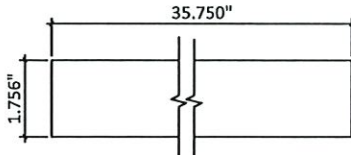
28 LITE KIT #2
20 GA. (0.039")



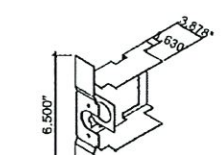
34 MORTISE LOCK (MBN)
14 GA (0.074")



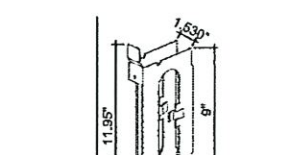
11 CLOSER REINFORCEMENT
STEEL 16 GA (0.060")



18 STEEL REINFORCEMENT
1.756" X 35 3/4" LG. 16 GA (0.067")



36 CYLINDRICAL LOCK PREPARATION
17 GA (0.054")



33 MORTISE LOCK REINFORCEMENT
16 GA (0.067")



MESKER DOOR®
3440 Stanwood Blvd.
Huntsville, AL 35811

PH: (256) 851-6670 FX: (800) 503-1410

TITLE: N SERIES OUTSWING STEEL
GLAZED DOOR

PREPARED BY:
BUILDING DROPS, INC.
1900 NE Miami CT, SUITE 2-15
MIAMI, FL 33132
PH: (954) 399-8478
FAX: (954) 744-4738
WEB: www.buildingdrops.com



REVISIONS

NO.	DESCRIPTION	BY	DATE
A	2020 FBC UPDATE	SM	12/15/20
B	2023 FBC UPDATE	RN	05/29/24



PRODUCT RENEWED
as complying with the Florida
Building Code
NOA-No. 24-0812.06

Expiration Date 07/06/2030

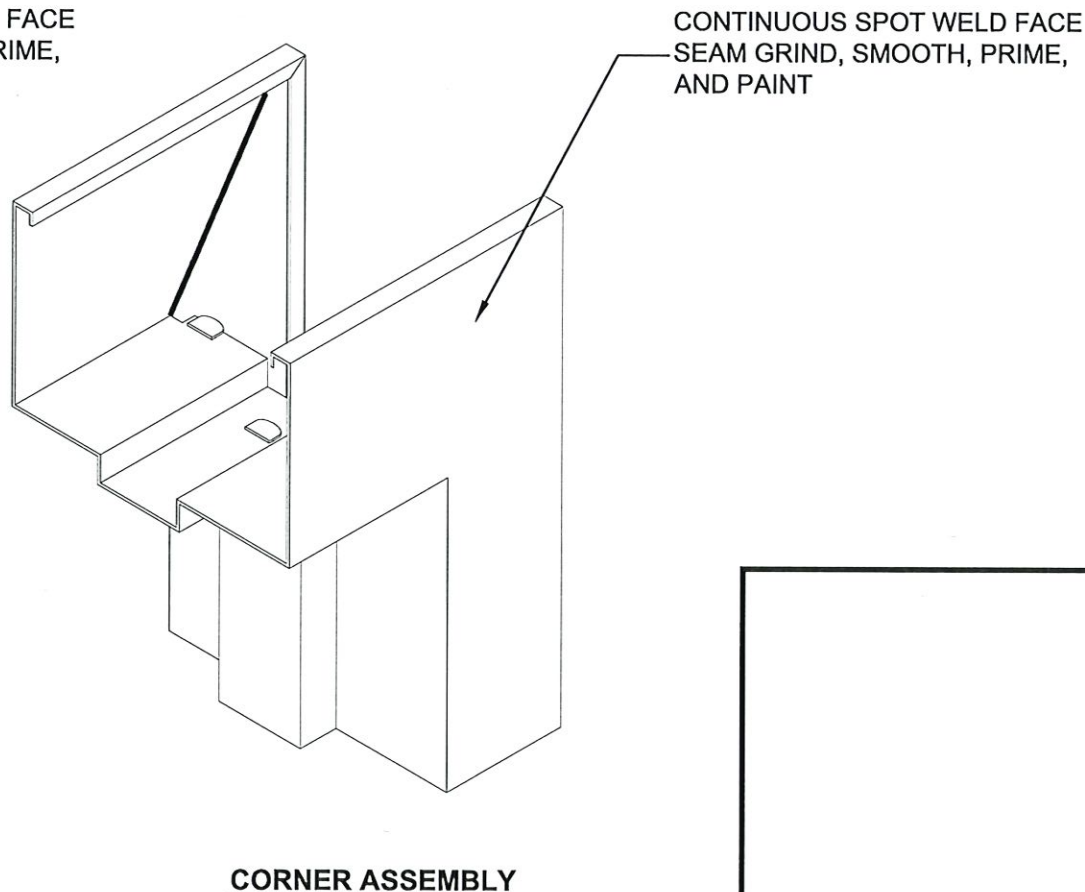
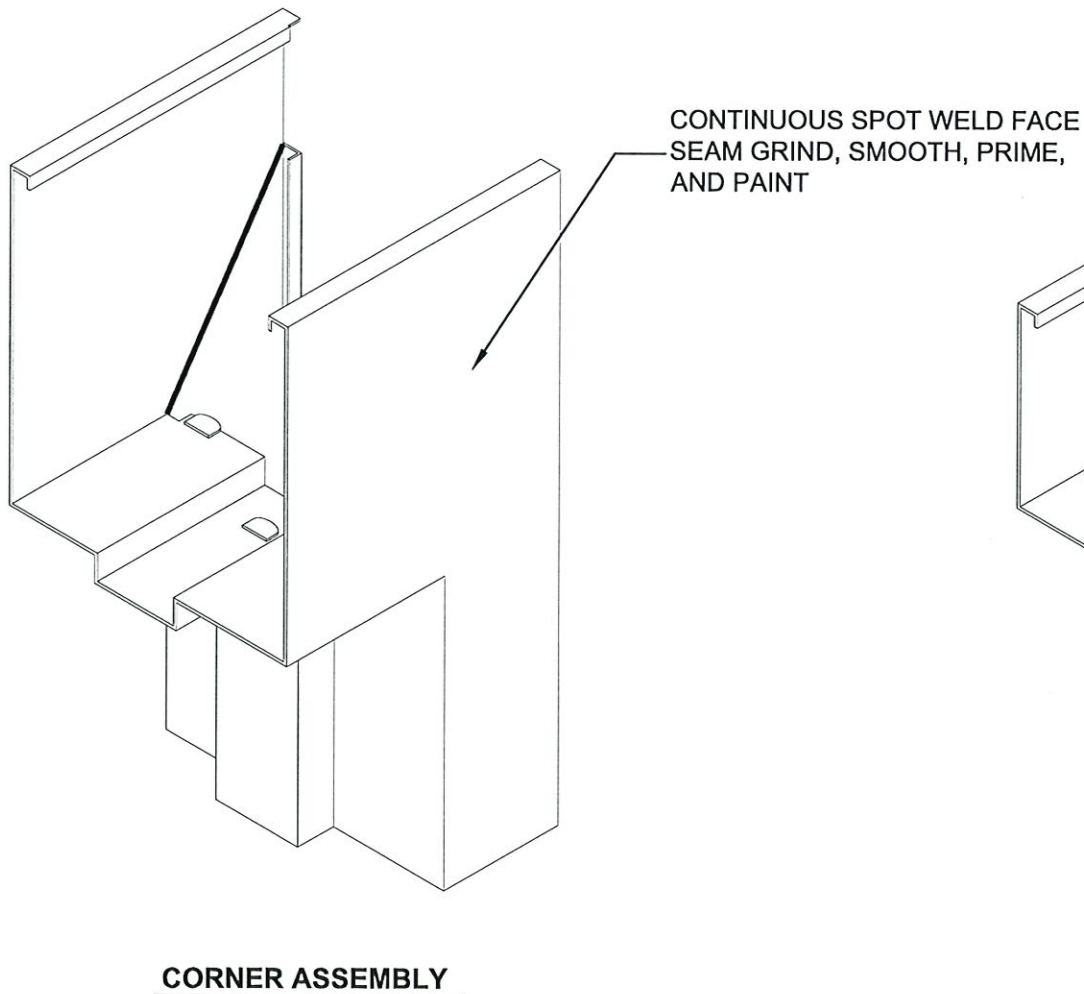
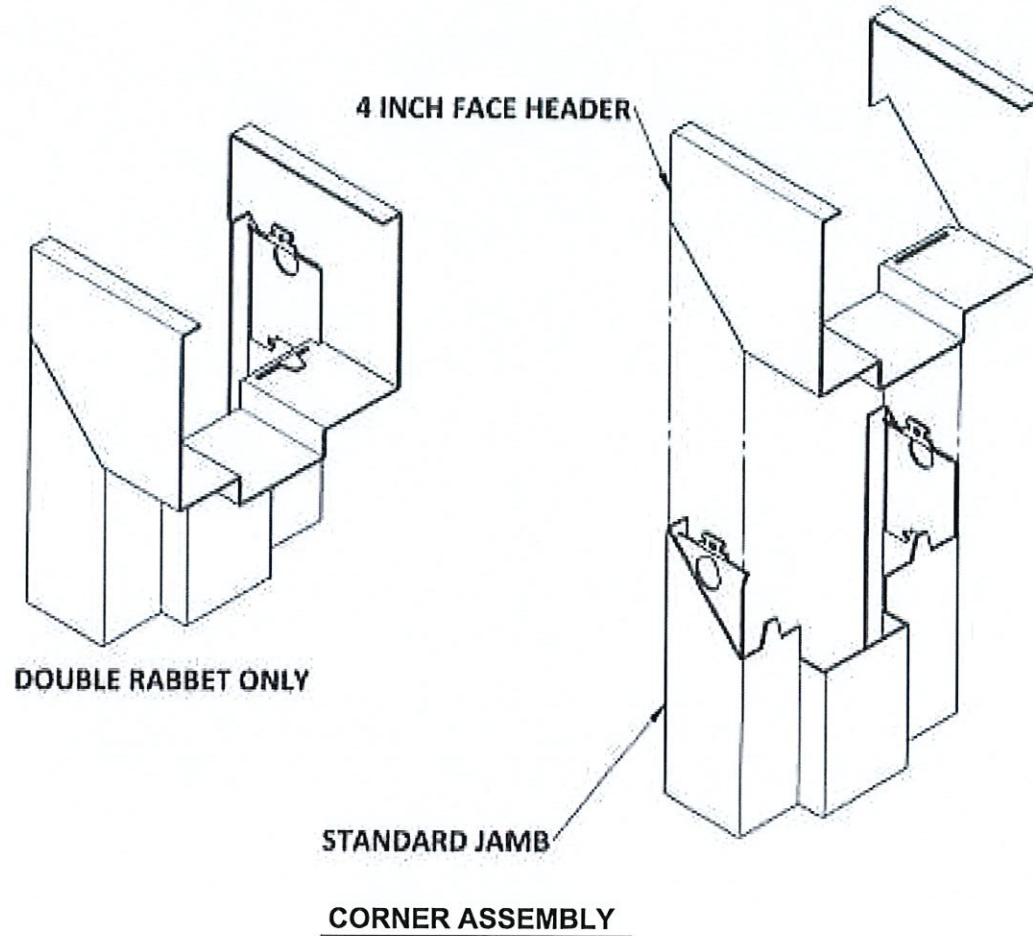
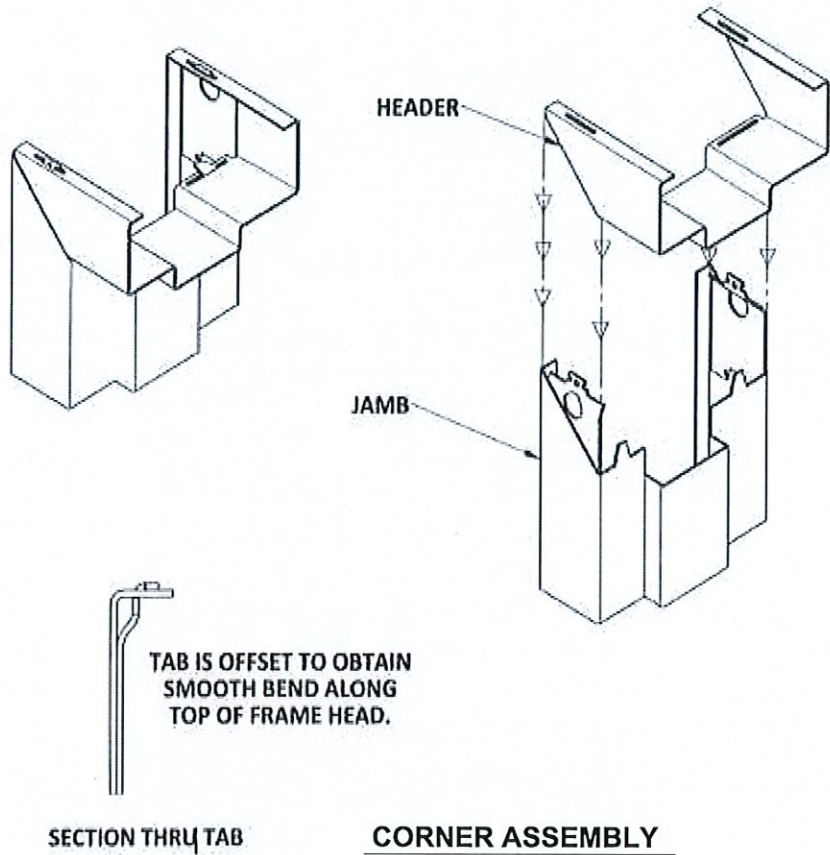
By *Ishag I. Chande*
Miami-Dade Product Control

DATE: 11.1.19	DWN BY: ER	CHK BY: HFN	SCALE: NTS
------------------	---------------	----------------	---------------

DWG #:
MBM001
SHEET: 10 OF 12

PREPARED BY:

DATE: 11.1.19	DWN BY: ER	CHK BY: HFN	SCALE: NTS
DWG #: MBM001			
SHEET: 11 OF 12			



MESKER DOOR®
3440 Stanwood Blvd.
Huntsville, AL 35811

PH: (256) 851-6670 FX: (800) 503-1410

TITLE: N SERIES OUTSWING STEEL
GLAZED DOOR

PREPARED BY:
BUILDING DROPS, INC.
1900 NE Miami CT, SUITE 2-15
MIAMI, FL 33132
PH: (954) 395-8478
FAX: (954) 744-4738
WEB: www.buildingdrops.com



REVISIONS

NO.	DESCRIPTION	BY	DATE
A	2020 FBC UPDATE	SM	12/15/20
B	2023 FBC UPDATE	RN	05/29/24



PRODUCT RENEWED
as complying with the Florida
Building Code
NOA-No. 24-0812.06
Expiration Date 07/06/2030
By Ishag I. Chande
Miami-Dade Product Control

DATE: 11.1.19
DWN BY: ER
CHK BY: HFN
SCALE: NTS

DWG #:
MBM001
SHEET: 12 OF 12