



MIAMI-DADE COUNTY  
PRODUCT CONTROL SECTION

11805 SW 26 Street, Room 208  
Miami, Florida 33175-2474  
T (786) 315-2590 F (786) 315-2599

DEPARTMENT OF REGULATORY AND ECONOMIC RESOURCES (RER)  
BOARD AND CODE ADMINISTRATION DIVISION

[www.miamidade.gov/building](http://www.miamidade.gov/building)

**NOTICE OF ACCEPTANCE (NOA)**

**Overhead Door Corporation**

**2501 South State Hwy. 121, Suite 200**

**Lewisville, Texas 75067**

**SCOPE:** This NOA is being issued under the applicable rules and regulations governing the use of construction materials. The documentation submitted has been reviewed and accepted by Miami-Dade County RER-Product Control Section to be used in Miami Dade County and other areas where allowed by the Authority Having Jurisdiction (AHJ). This NOA shall not be valid after the expiration date stated below. The Miami-Dade County Product Control Section (In Miami Dade County) and/or the AHJ (in areas other than Miami Dade County) reserve the right to have this product or material tested for quality assurance purposes. If this product or material fails to perform in the accepted manner, the manufacturer will incur the expense of such testing and the AHJ may immediately revoke, modify, or suspend the use of such product or material within their jurisdiction. RER reserves the right to revoke this acceptance, if it is determined by Miami-Dade County Product Control Section that this product or material fails to meet the requirements of the applicable building code.

This product is approved as described herein and has been designed to comply with the Florida Building Code, including the High Velocity Hurricane Zone.

**DESCRIPTION: Models 5745/5765/7565/7655/515 and 525 Insulated Steel Sectional Garage Door up to 12ft.-2in. Wide w/ Optional Impact Resistant Glazing**

**APPROVAL DOCUMENT:** Drawing No. **D-411529**, titled "Windload Models 5745/5765/7565/7655/515 /525, +46/-52 PSF Dade County, 12'2" Max. Width", sheets 1 through 4 of 4, dated 08/28/2018, prepared by Overhead Door Corporation, signed and sealed by Dwayne J. Kornish, P.E. on 09/03/2024, bearing the Miami-Dade County Product Control Renewal stamp with the NOA number and expiration date by the Miami-Dade County Product Control Section.

**MISSILE IMPACT RATING: Large and Small Missile Impact Resistant**

**LABELING:** Each unit shall bear a permanent label with the manufacturer's name or logo, manufacturing address, model number, the positive and negative design pressure rating, indicate impact rated if applicable, installation instruction drawing reference number, approval number (NOA), the applicable test standards, and the statement reading 'Miami-Dade County Product Control Approved' is to be located on the door's side track, bottom angle, or inner surface of a panel.

**LIMITATION: This door has not been tested for air infiltration.**

**RENEWAL** of this NOA shall be considered after a renewal application has been filed and there has been no change in the applicable building code negatively affecting the performance of this product.

**TERMINATION** of this NOA will occur after the expiration date or if there has been a revision or change in the materials, use, and/or manufacture of the product or process. Misuse of this NOA as an endorsement of any product, for sales, advertising or any other purposes shall automatically terminate this NOA. Failure to comply with any section of this NOA shall be cause for termination and removal of NOA.

**ADVERTISEMENT:** The NOA number preceded by the words Miami-Dade County, Florida, and followed by the expiration date may be displayed in advertising literature. If any portion of the NOA is displayed, then it shall be done in its entirety.

**INSPECTION:** A copy of this entire NOA shall be provided to the user by the manufacturer or its distributors and shall be available for inspection at the job site at the request of the Building Official.

This NOA **renews NOA No. 23-1120.21** and consists of this page 1 and evidence pages E-1, E-2 and E-3, as well as approval document mentioned above.

The submitted documentation was reviewed by **Carlos M. Utrera, P.E.**



09/13/24

**NOA No. 24-0814.06**

**Expiration Date: October 10, 2029**

**Approval Date: September 26, 2024**

**Page 1**

**NOTICE OF ACCEPTANCE: EVIDENCE SUBMITTED**

**1. EVIDENCE SUBMITTED UNDER PREVIOUS NOA's**

**A. DRAWINGS**

1. Manufacturer's die drawings and sections.  
*(Submitted under NOA No. 19-0815.03)*
2. Drawing No. **D-411529**, titled "Windload Models 5745 / 5765 / 7565 / 7655 / 515 / 525, +46/-52 PSF Dade County, 12'2" Max. Width", sheets 1 through 4 of 4, dated 08/28/18, prepared by manufacturer, signed and sealed by Dwayne J. Kornish, P.E.  
*(Submitted under NOA No. 19-0815.03)*

**B. TESTS**

1. Test reports on: 1) Uniform Static Air Pressure Test, Loading per FBC, TAS 202-94  
2) Large Missile Impact Test per FBC, TAS 201-94  
3) Cyclic Wind Pressure Loading per FBC, TAS 203-94  
4) Forced Entry Test, per FBC, TAS 202-94  
5) Tensile Test per ASTM E8  
along with marked-up drawings and installation diagram of a 12'-2" wide, model 5745 sectional garage door, prepared by Intertek/Architectural Testing, Inc., Test Report No. **J1626.04-801-18R1**, dated 07/10/19, revised on 07/18/19, signed and sealed by Tyler Westerling, P.E.  
*(Submitted under NOA No. 19-0815.03)*
2. Test report on Standard Test Method for Evaluation of Painted or Coated Specimens Subjected to Corrosive Environments per ASTM D1654-08(2016)-e1 and Standard Practice for Operating Salt Spray (Fog) Apparatus per ASTM B117-16 and on garage door exterior steel, prepared by Intertek, Report No. **J4650.02-106-18 R0**, dated 05/24/19, signed by Gary T. Hartman, P.E.  
*(Submitted under NOA No. 19-0815.03)*

**C. CALCULATIONS**

1. Anchor load calculations prepared by manufacturer, dated 06/07/19, signed and sealed by Dwayne J. Kornish, P.E.  
*(Submitted under NOA No. 19-0815.03)*



---

**Carlos M. Utrera, P.E.**  
**Product Control Examiner**  
**NOA No. 24-0814.06**  
**Expiration Date: October 10, 2029**  
**Approval Date: September 26, 2024**

**Overhead Door Corporation**

**NOTICE OF ACCEPTANCE: EVIDENCE SUBMITTED**

**1. EVIDENCE SUBMITTED UNDER PREVIOUS NOA's (CONTINUED)**

**D. QUALITY ASSURANCE**

1. Miami-Dade Department of Regulatory and Economic Resources (RER)

**E. MATERIAL CERTIFICATIONS**

1. UL evaluation report on flame spread and smoke developed of STYROPEK EPS resins per ASTM E84, ANSI/UL723, prepared by UL, LLC, Evaluation Report No. **UL ER38219-01**, dated 04/08/15.
2. Test report on ignition temperature of Drew Foam Company EPS per ASTM D1929-16, prepared by Element Materials Technology, Test Report No. **19-06-P0083**, dated 06/24/19, signed by Rubaiyat Khondker.
3. Notice of Acceptance No. **18-0918.06** issued to **Plaskolite, LLC** for its **TUFFAK Polycarbonate Sheets**, approved on 11/15/18 and expiring on 08/27/22.

**F. STATEMENTS**

1. Statement letter of conformance, complying with **FBC 6<sup>th</sup> Edition (2017)**, dated May 24, 2019, issued by manufacturer, signed and sealed by Dwayne J. Kornish, P.E.
2. Statement letter of no financial interest, dated August 07, 2019, issued by manufacturer, signed and sealed by Dwayne J. Kornish, P.E.

**G. OTHERS**

1. Notice of Acceptance No. **19-0815.03**, issued to Overhead Door Corporation, for their Models 5745 / 5765 / 7565 / 7655 / 515 / 525 Insulated Steel Sectional Garage Door up to 12'-2" Wide w/ Optional Impact Resistant Glazing, approved on 10/10/19 and expiring on 10/10/24.



---

**Carlos M. Utrera, P.E.**  
**Product Control Examiner**  
**NOA No. 24-0814.06**  
**Expiration Date: October 10, 2029**  
**Approval Date: September 26, 2024**

**Overhead Door Corporation**

**NOTICE OF ACCEPTANCE: EVIDENCE SUBMITTED**

**2. EVIDENCE SUBMITTED UNDER NOA # 23-1120.21 AND NEW**

**A. DRAWINGS**

1. Drawing No. **D-411529**, titled “Windload Models 5745/5765/7565/7655/515/525, +46/-52 PSF Dade County, 12’2” Max. Width”, sheets 1 through 4 of 4, dated 08/28/2018, prepared by Overhead Door Corporation, signed and sealed by Dwayne J. Kornish, P.E. on 09/03/2024.

**B. TESTS**

1. None.

**C. CALCULATIONS**

1. None.

**D. QUALITY ASSURANCE**

1. Miami-Dade Department of Regulatory and Economic Resources (RER).

**E. MATERIAL CERTIFICATIONS**

1. Notice of Acceptance No. **22-0317.02** issued to **Plaskolite, LLC** for their “**TUFFAK Polycarbonate Sheets**” dated 04/21/22 expiring on 08/27/27.

**F. STATEMENTS**

1. Statement letter of conformance with the 8<sup>th</sup> edition (2023) of the FBC, dated 08/29/2024, issued by Overhead Door Corporation, signed and sealed by Dwayne J. Kornish, P.E.
2. *“Submitted under NOA # 23-1120.21”*  
Statement letter of conformance with the 8<sup>th</sup> edition (2023) of the FBC and of no financial interest, dated 01/25/2024, issued by Overhead Door Corporation, signed and sealed by Dwayne J. Kornish, P.E.



---

**Carlos M. Utrera, P.E.**  
**Product Control Examiner**  
**NOA No. 24-0814.06**  
**Expiration Date: October 10, 2029**  
**Approval Date: September 26, 2024**



NOTES: (UNLESS OTHERWISE SPECIFIED)

1. RATED DESIGN LOAD +46/-52 PSF.
2. SECTION HEIGHTS MAY VARY TO CREATE VARIOUS DOOR HEIGHTS, 24" MAXIMUM SECTION HEIGHT.
3. FOAMSTOP OR JAMB SEAL ON ALL JAMBS REQUIRED TO MEET NEGATIVE DESIGN PRESSURES.
4. TESTED IN ACCORDANCE WITH DADE COUNTY PROTOCOLS TAS 201-94, TAS 202-94, & TAS 203-94.
5. DOOR SKIN MUST BE 30,000 PSI MIN. YIELD STRENGTH.
6. JAMB LOAD CALCULATIONS:  
 $(1/2 \text{ DOOR WIDTH})(1 \text{ FT OF HEIGHT})(\text{DESIGN PRESSURE})$   
 $(6.08)(1 \text{ FOOT})(46.00 \text{ AND } -52.00)(279.68/-316.16) \text{ LB}$
7. JAMB FASTENER REQUIREMENTS:  
 $F_x = (1/2 \text{ DOOR WIDTH})(1 \text{ FT OF HEIGHT})(\text{DESIGN PRESSURE})$   
 $F_x = 280 \text{ LBS.}$
8. DOOR SKIN MATERIAL SHALL BE GALVANIZED ACCORDING TO ASTM A-525 TO G40 MIN, WITH BAKED-ON PRIMER, AND BAKED-ON POLYESTER PAINT TOP COAT.
9. FOR ANCHORING INTO WOOD, USE ONE 5/16" LAG SCREW PER TRACK BRACKET WITH 1-1/2" EMBEDMENT INTO SOUTHERN PINE (G=0.55) OR BETTER.
10. WELD SLOT ON ANGLE 3/32" X 1" LONG ON 12" CENTERS. "IF WELDING MOUNTING OPTION IS CHOSEN."
11. LIFT UP MECHANISM-MANUAL, CHAIN LIFT, OR OPERATOR IS NOT PART OF THIS APPROVAL.
12. STANDARD LIFT, HIGH LIFT, VERTICAL LIFT, AND LOW HEADROOM TRACK IS AVAILABLE. FOR LOW HEADROOM LIFT CONDITIONS TOP BRACKET SHALL BE 13 GA LHR 7/4 TOP BRACKET WITH A MIN OF (3) 1/4 - 14 X 7/8" SELF DRILLING CRIMPTITE SCREWS IN LIEU OF THE BRACKET SHOWN ON DRAWING. U-BAR ON TOP SECTION SHALL BE INSTALLED ON TOP OF LHR TOP BRACKETS.
13. ATTACH STRUTS WITH (2) 1/4-14x7/8" SELF DRILLING CRIMPTITE SCREWS AT ALL HINGE LOCATIONS AND (2) BETWEEN EACH INTERMEDIATE HINGE.
14. KEY LOCK, OR SIDE LOCK REQUIRED.
15. IMPACT RESISTANT GLAZING OPTION- IMPACT RESISTANT GLAZING SYSTEM MAY BE INSTALLED IN TOP OR INTERMEDIATE SECTIONS. GLAZING SHALL BE 1/4" POLYCARBONATE. FASTENED WITH # 8 X 1" SMS. SEE DETAIL F-F ON SHEET 2 FOR ASSEMBLY DETAILS. MAXIMUM OF ONE GLAZED SECTION.
16. THE DESIGN OF THE SUPPORTING STRUCTURAL ELEMENTS SHALL BE THE RESPONSIBILITY OF THE PROFESSIONAL OF RECORD FOR THE BUILDING OR STRUCTURE AND IN ACCORDANCE WITH CURRENT BUILDING CODES FOR THE LOADS LISTED ON THIS DRAWING.
17. LOUVER OPTION - LOUVERS MAY BE INSTALLED IN DOOR IF THE AREA OF EACH LOUVER DOES NOT EXCEED 60 IN<sup>2</sup>. DOOR VENTS LARGER THAN 60 IN<sup>2</sup> MUST BE TESTED FOR IMPACT.
18. A 2-1/4" X 6-3/8" X 22 GA BACKER PLATE IS TO BE LOCATED AT EVERY CENTER HINGE AND 3" X 3-3/4" X 22 GA BACKER PLATE AT EACH END HINGE LOCATION. EACH IS ADHERED TO THE INTERIOR OF THE SECTION BACKER STEEL.

REVISIONS				
ER	REV	DESCRIPTION	DATE	APVL
ER	P00	NEW DRAWING	8/28/18	ESC

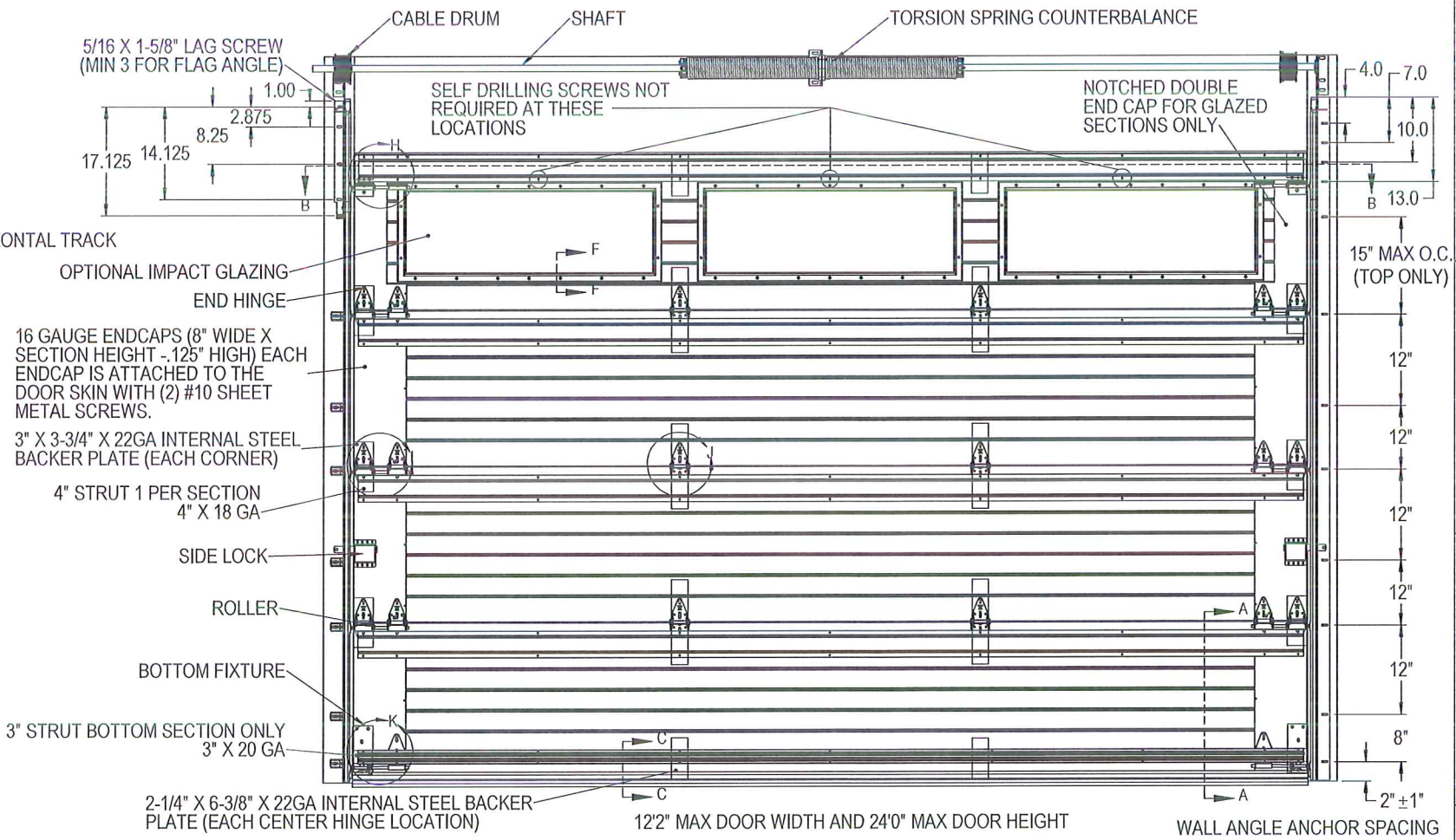
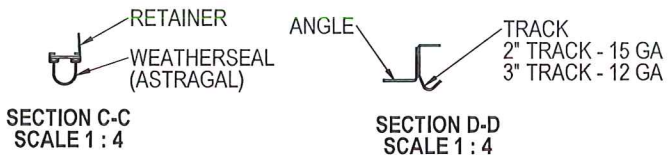
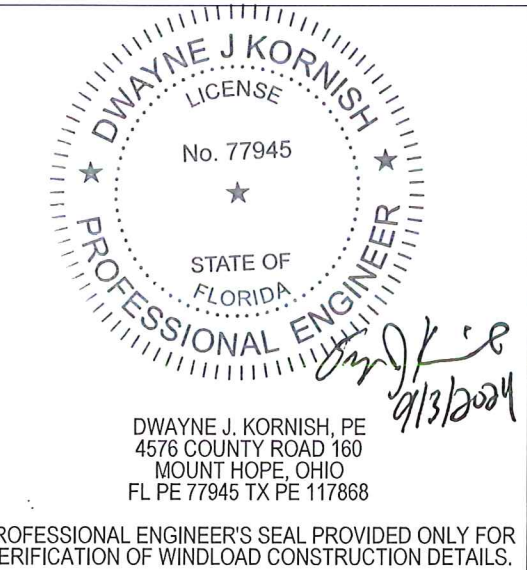
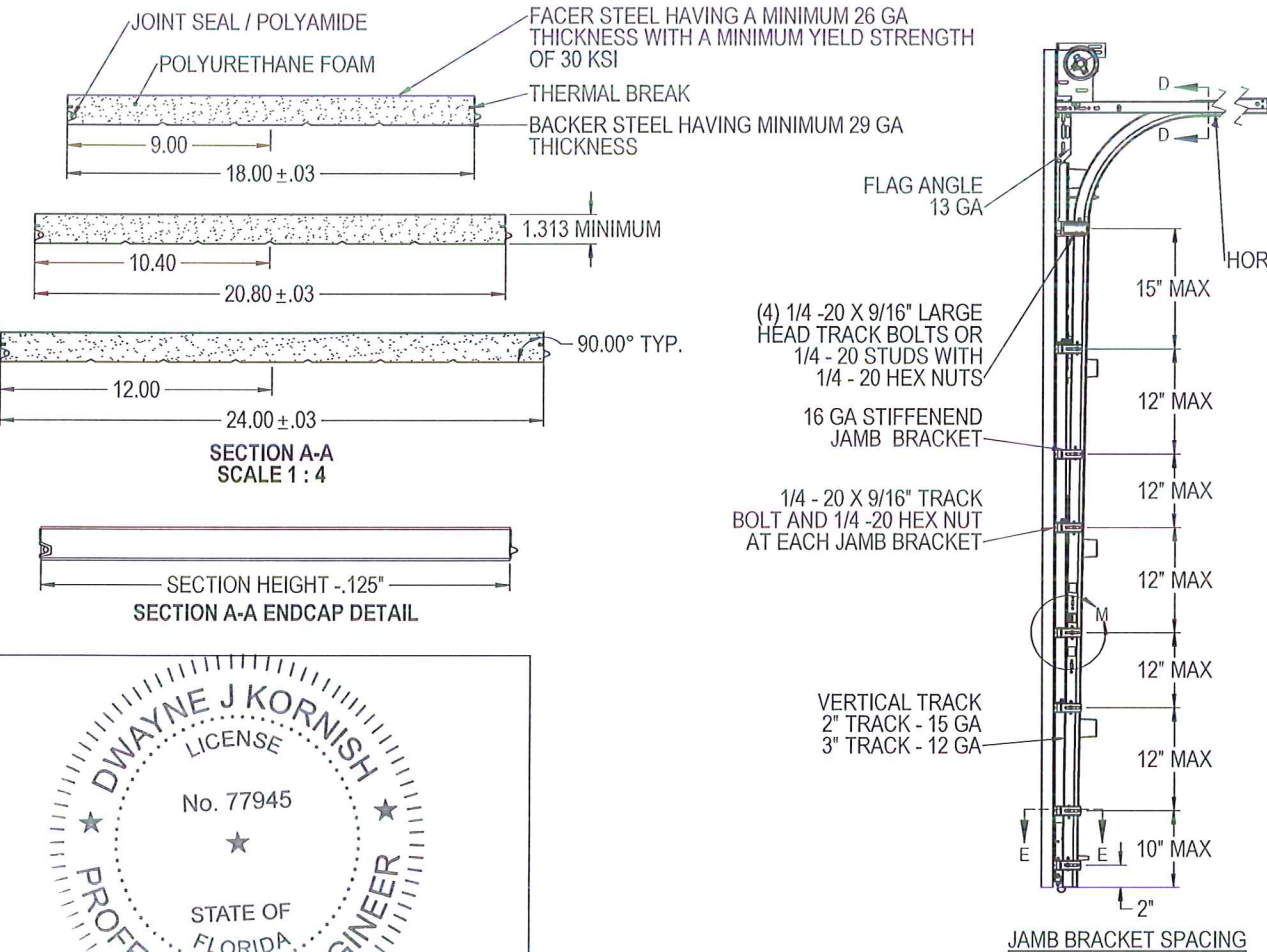
FOAMSTOP/ JAMB SEAL. MIN 7/16" THICK, NAILED EVERY 6" ON CENTER.

SECTION B-B  
SCALE 1 : 12

**PRODUCT RENEWED**  
as complying with the Florida  
Building Code  
NOA-No. 24-0814.06

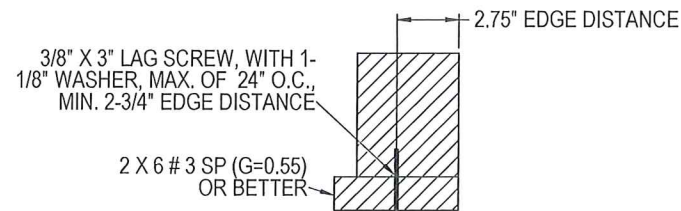
Expiration Date 10/10/2029

By *[Signature]*  
Miami-Dade Product Control

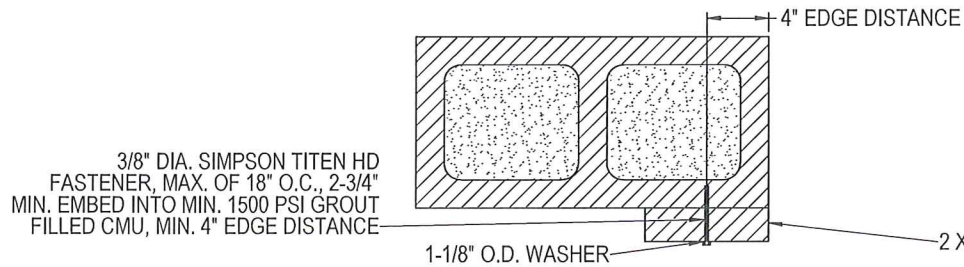


UNLESS OTHERWISE SPECIFIED			APPROVALS		DATE	The Genuine. The Original.	
INTERPRET DIMS & TOLS PER ASME Y14.5M			DRAWN	E. CONRAD	8/28/18	LEWISVILLE, TEXAS	
ALL DIMS ARE IN INCHES			CHECKED	D. KORNISH	-		
DO NOT SCALE			APPROVED	-	-	DESCRIPTION	
DIM CIRCLED WITH SYMBOL 'C' ARE CRITICAL TO QUALITY DESIGN FEATURES & MUST MEET APPLICABLE IN-PROCESS INSPECTION STANDARDS.			MATERIAL	-	-	WINDLOAD MODELS	
			FINISH	-	-	5745/5765/7565/7655/515/525, +46/-52PSF	
			WINDLOAD SPECIFICATION OPTION CODE 2311			DADE COUNTY, 12'2" MAX WIDTH	
						SIZE DWG NO.	REV
						D	P-00
						SCALE 1:12	SHEET 1 OF 4

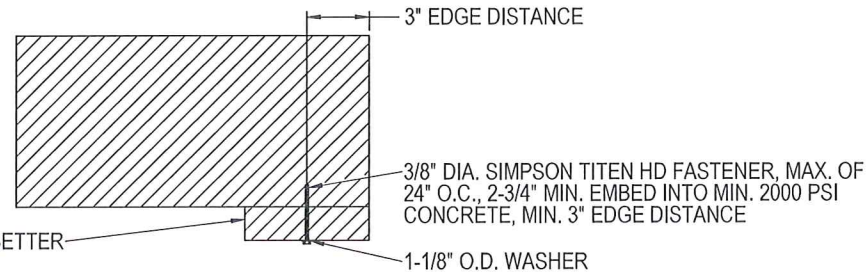




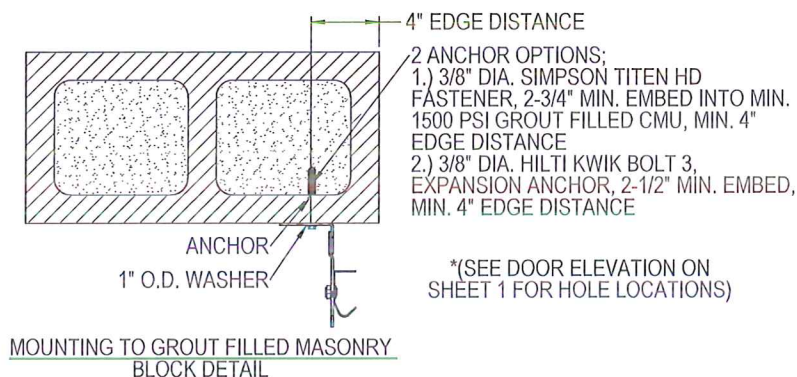
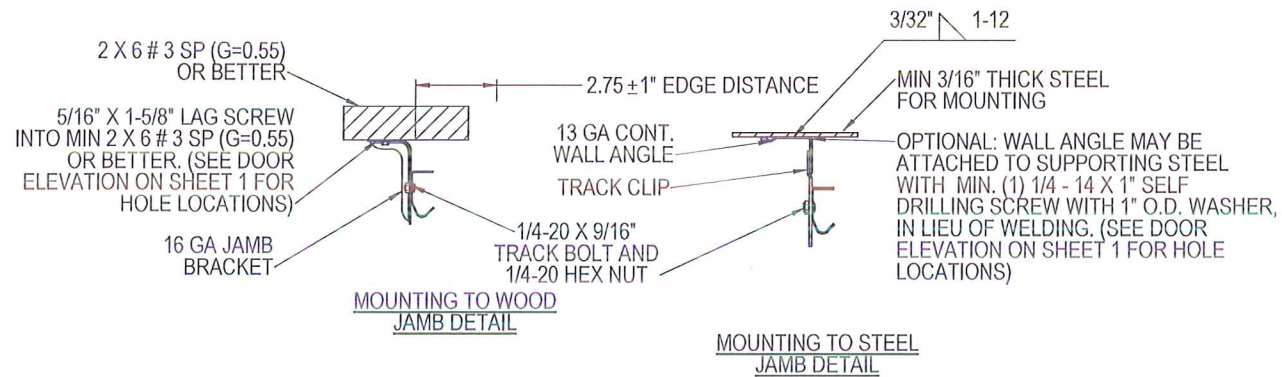
WOOD MOUNTED TO #3 SOUTHERN PINE SUBSTRATE



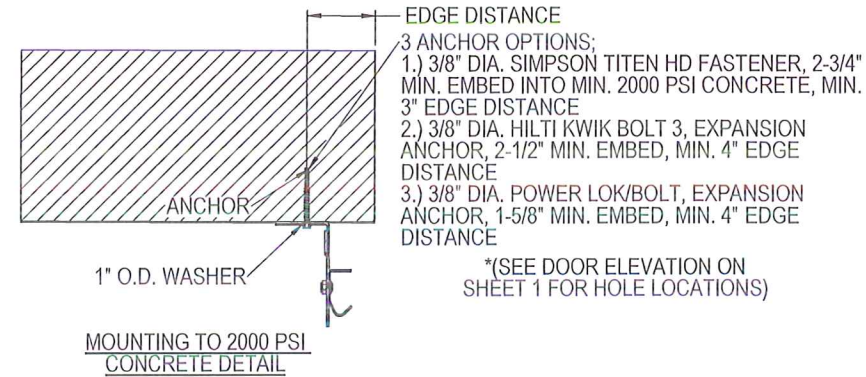
WOOD MOUNTED TO GROUT FILLED MASONRY BLOCK DETAIL



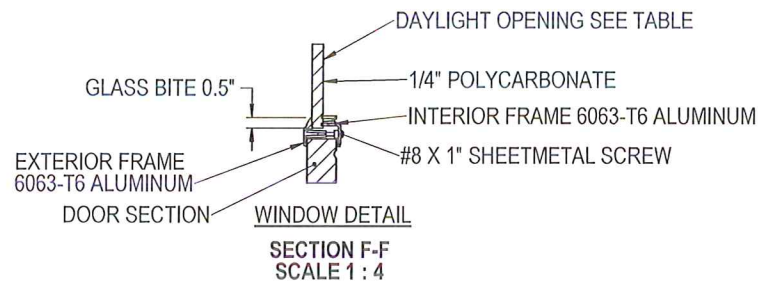
WOOD MOUNTED TO 2000 PSI CONCRETE DETAIL



SECTION E-E  
SCALE 1 : 4

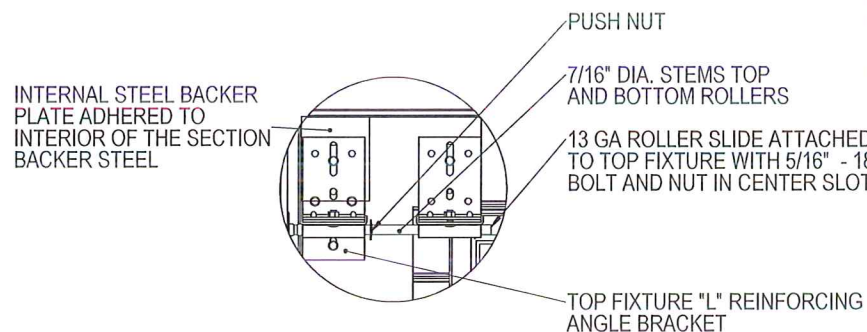


MOUNTING TO 2000 PSI CONCRETE DETAIL

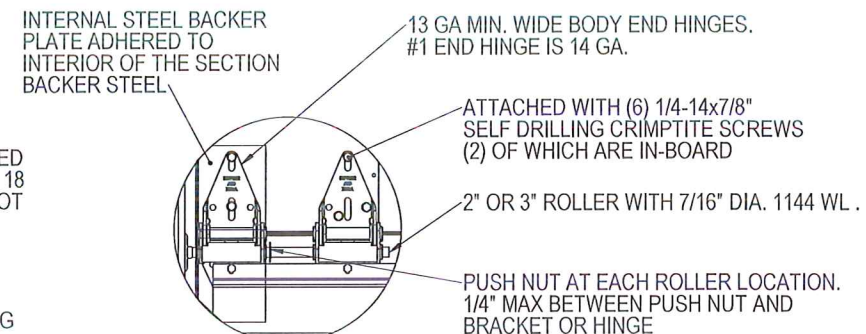


SECTION F-F  
SCALE 1 : 4

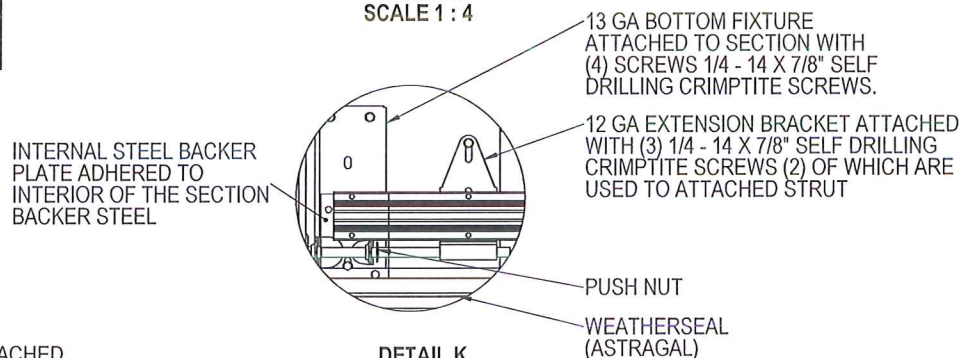
Impact Frame Size	Daylight Opening (DLO)	Screw Qty
15-1/4 x 19-1/8	11-1/8 x 15	10
16-7/8 x 19-7/8	12-3/4 x 15-3/4	10
16-7/8 x 42-1/8	12-3/4 x 37-7/8	14
15-1/4 x 44-1/2	11-1/4 x 40-1/8	14
12-3/4 x 40	8-5/8 x 35-7/8	14
13 x 38	8-7/8 x 33-7/8	14



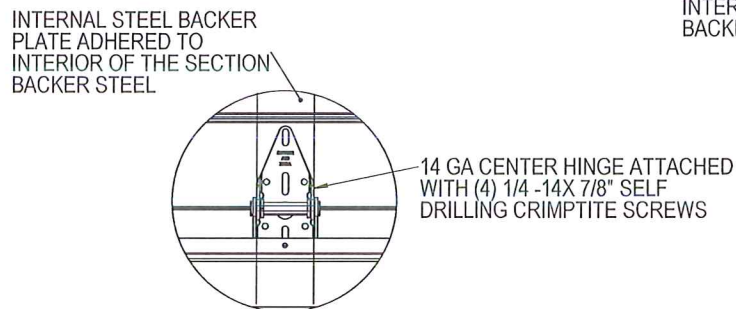
DETAIL H  
SCALE 1 : 4



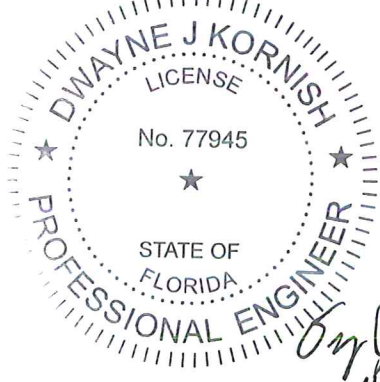
DETAIL I  
SCALE 1 : 4



DETAIL K  
SCALE 1 : 4




DETAIL J  
SCALE 1 : 4



DWAYNE J. KORNISH, PE  
4576 COUNTY ROAD 160  
MOUNT HOPE, OHIO  
FL PE 77945 TX PE 117868

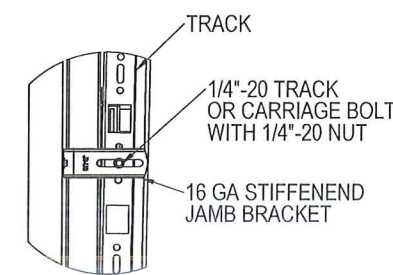
PROFESSIONAL ENGINEER'S SEAL PROVIDED ONLY FOR VERIFICATION OF WINDLOAD CONSTRUCTION DETAILS.

<div>THIRD ANGLE PROJECTION</div> <div></div>		UNLESS OTHERWISE SPECIFIED		APPROVALS		DATE	The Genuine. The Original.				
		INTERPRET DIMS & TOLS PER ASME Y14.5M		TOLERANCES:		DRAWN	E. CONRAD	8/28/18	OVERHEAD DOOR® LEWISVILLE, TEXAS		
<div>A DIVISION OF OVERHEAD DOOR CORP</div> <div>3395 ADDISON DRIVE</div> <div>PENSACOLA, FLORIDA 32514</div> <div>(850)-474-9890</div>		ALL DIMS ARE IN INCHES		.X = ± .1		CHECKED	D. KORNISH	-	DESCRIPTION WINDLOAD MODELS 5745/5765/7565/7655/515/525, +46/-52PSF DADE COUNTY, 12'2" MAX WIDTH		
		DO NOT SCALE		.XX = ± .03		APPROVED	-	-			
		DIMS CIRCLED WITH SYMBOL 'Ø' ARE CRITICAL TO QUALITY DESIGN		.XXX = ± .010		MATERIAL	-	-			
		FEATURES & MUST MEET APPLICABLE IN-PROCESS INSPECTION STANDARDS.		ANGULAR = ± .5°		FINISH	-	-	SIZE DWG NO. D D-411529		
		HOLES:		< Ø.251 = +.004/- .003		WINDLOAD SPECIFICATION		REV			P-0
				Ø.251-Ø.500 = +.006/- .003		OPTION CODE 2311					
		> Ø.500 = +.008/- .003									
		ALL GEOMETRY GOVERNED BY 3D CAD DATABASE:									

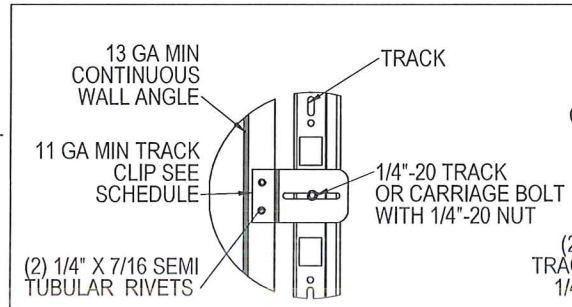
**PRODUCT RENEWED**  
as complying with the Florida  
Building Code  
NOA-No. 24-0814.06  
Expiration Date 10/10/2029  
By   
Miami-Dade Product Control



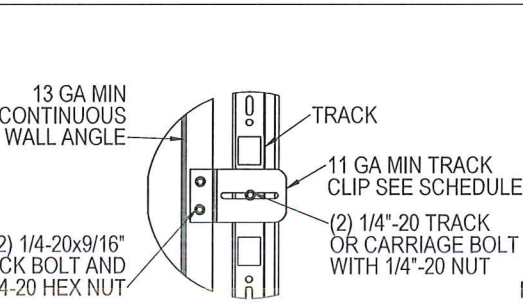
NOTES: (UNLESS OTHERWISE SPECIFIED)  
1. ONE 4" STRUT PER SECTION, AND ONE 3" STRUT PER BOTTOM SECTION, ATTACHED WITH 1/4-14X7/8" SELF DRILLING CRIMPTITE SCREWS.



TYPICAL TRACK AND JAMB FASTENERS DETAIL

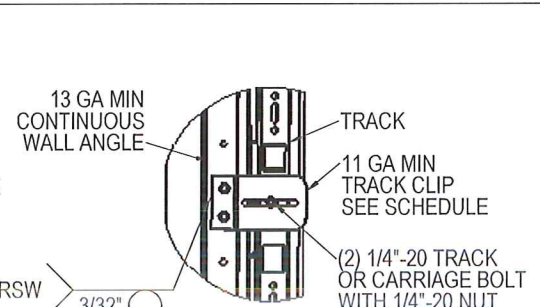


TYPICAL TRACK CLIP RIVETING DETAIL

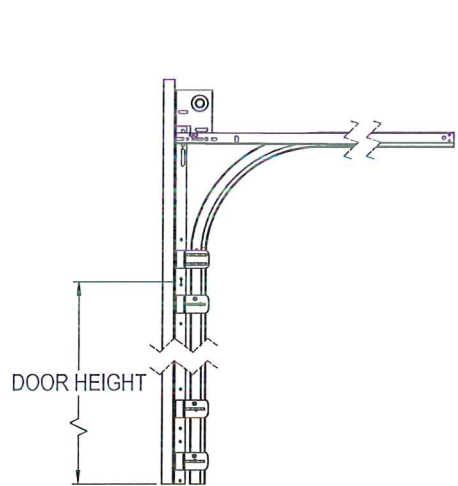


TYPICAL TRACK CLIP BOLTING DETAIL

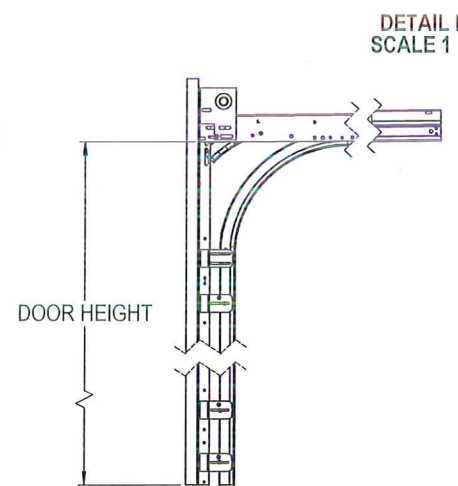
OPTIONAL WALL ANGLE TRACK



TYPICAL TRACK CLIP WELDING DETAIL

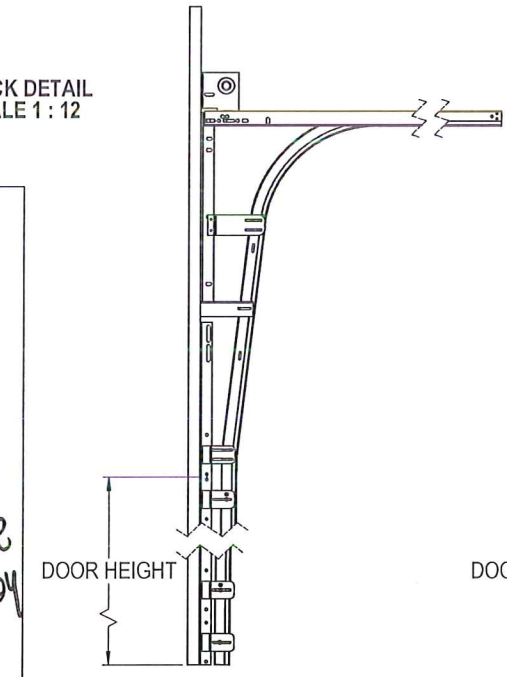


STANDARD LIFT TRACK DETAIL

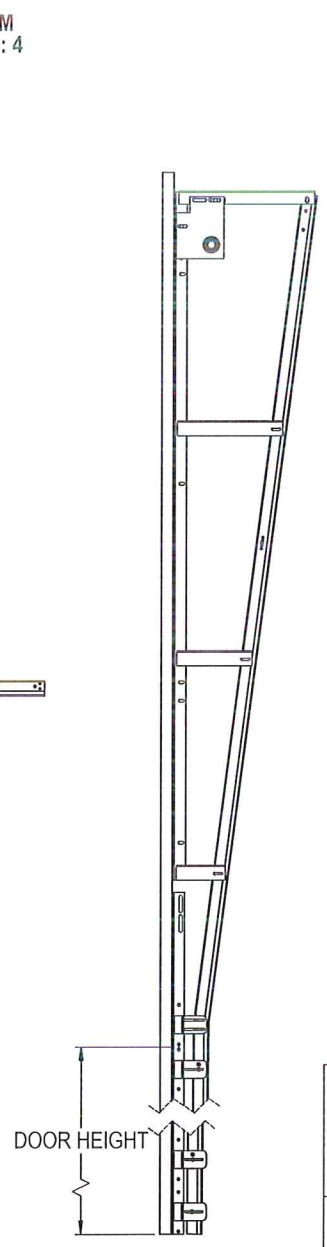


LOW HEADROOM TRACK DETAIL

TRACK DETAIL SCALE 1 : 12

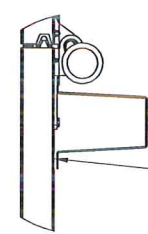


HIGH LIFT TRACK DETAIL

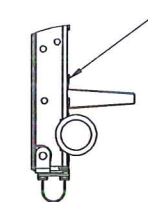


VERTICAL LIFT TRACK DETAIL

**PRODUCT RENEWED**  
as complying with the Florida Building Code  
NOA-No. 24-0814.06  
Expiration Date 10/10/2029  
By *[Signature]*  
Miami-Dade Product Control



DETAIL N SCALE 1 : 4



DETAIL O SCALE 1 : 4

(4) SECTION DOORS WITH  
(4) 4" 18 GA 80 KSI U- BARS  
(1) 3" 20 GA 80 KSI U- BARS  
LOCATED AS SHOWN

(5) SECTION DOORS WITH  
(5) 4" 18 GA 80 KSI U- BARS  
(1) 3" 20 GA 80 KSI U- BARS  
LOCATED AS SHOWN

(6) SECTION DOORS WITH  
(6) 4" 18 GA 80 KSI U- BARS  
(1) 3" 20 GA 80 KSI U- BARS  
LOCATED AS SHOWN

(7) SECTION DOORS WITH  
(7) 4" 18 GA 80 KSI U- BARS  
(1) 3" 20 GA 80 KSI U- BARS  
LOCATED AS SHOWN

(8) SECTION DOORS WITH  
(8) 4" 18 GA 80 KSI U- BARS  
(1) 3" 20 GA 80 KSI U- BARS  
LOCATED AS SHOWN

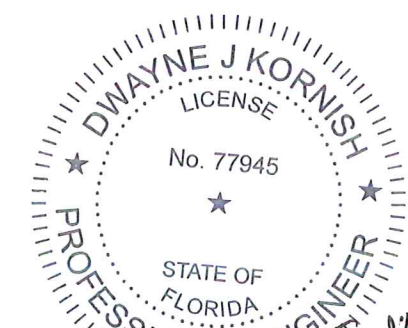
(9) SECTION DOORS WITH  
(9) 4" 18 GA 80 KSI U- BARS  
(1) 3" 20 GA 80 KSI U- BARS  
LOCATED AS SHOWN

(10) SECTION DOORS WITH  
(10) 4" 18 GA 80 KSI U- BARS  
(1) 3" 20 GA 80 KSI U- BARS  
LOCATED AS SHOWN

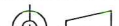

(11) SECTION DOORS WITH  
(11) 4" 18 GA 80 KSI U- BARS  
(1) 3" 20 GA 80 KSI U- BARS  
LOCATED AS SHOWN

(12) SECTION DOORS WITH  
(12) 4" 18 GA 80 KSI U- BARS  
(1) 3" 20 GA 80 KSI U- BARS  
LOCATED AS SHOWN

STRUT LOCATIONS SCALE 1:20

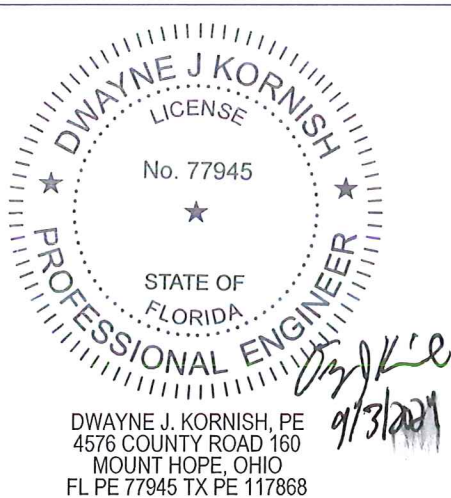
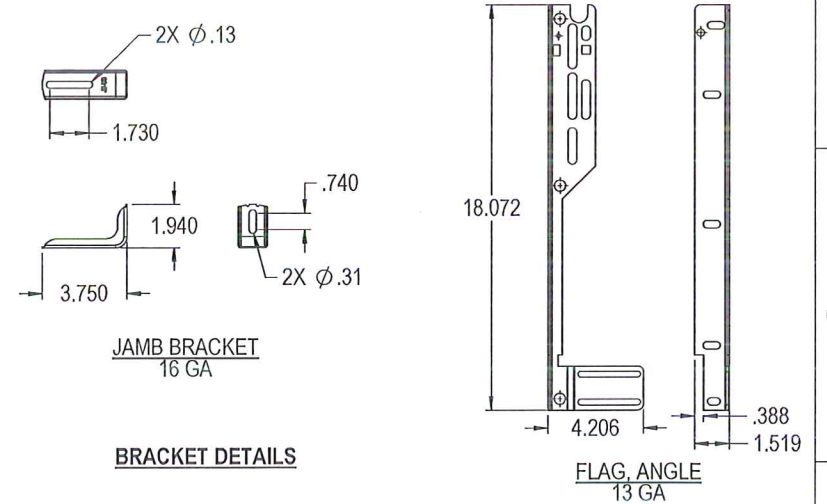
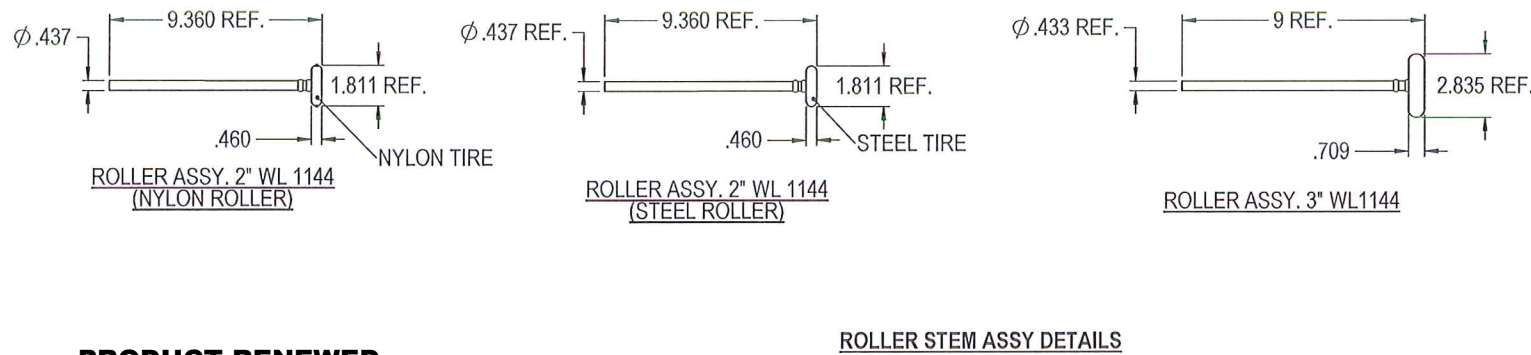
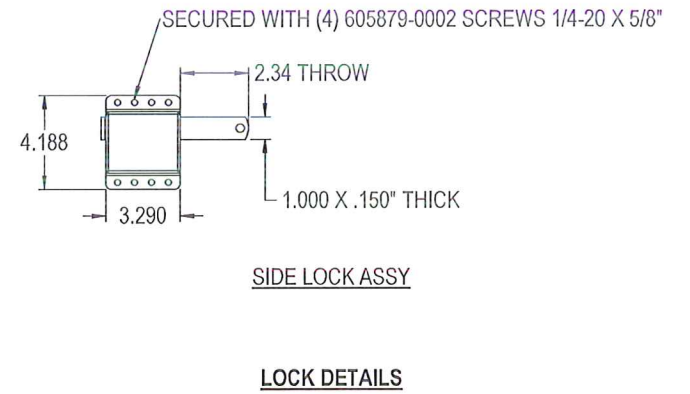
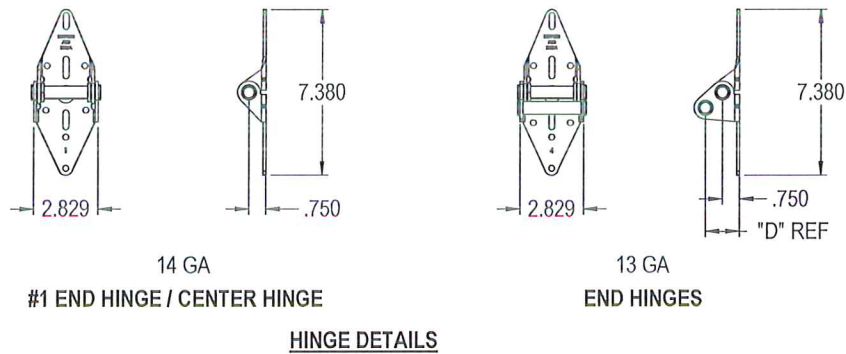
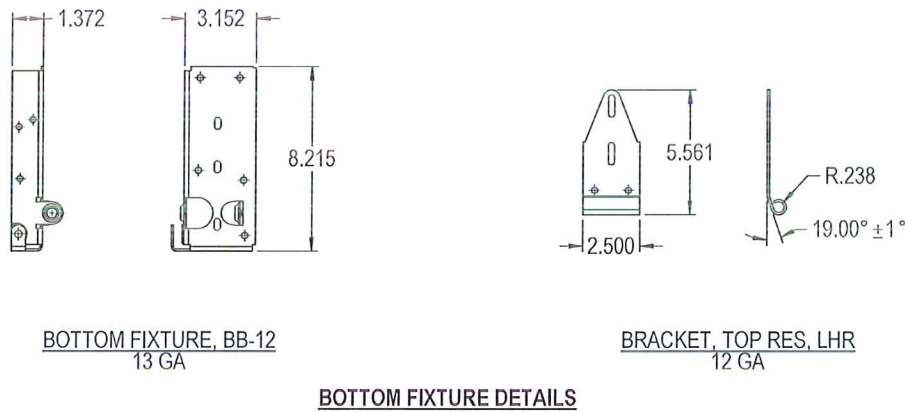
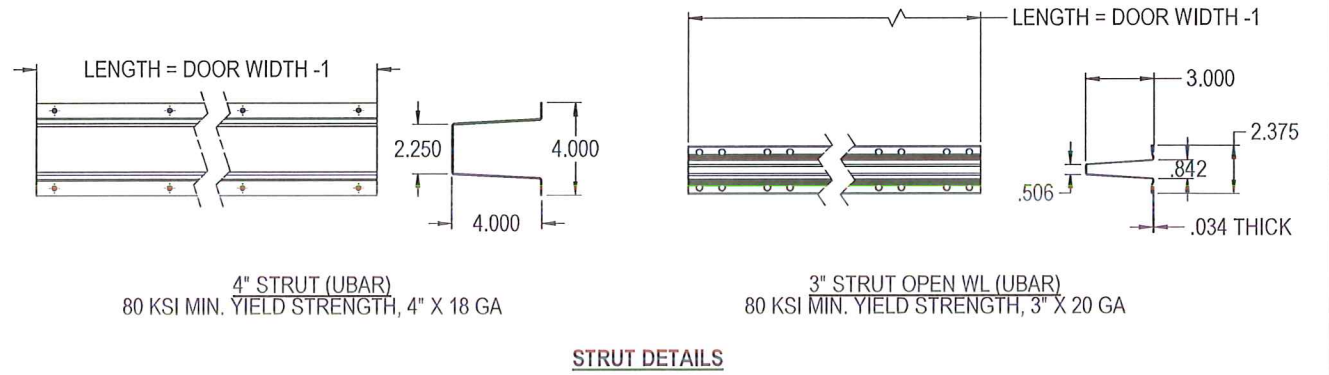
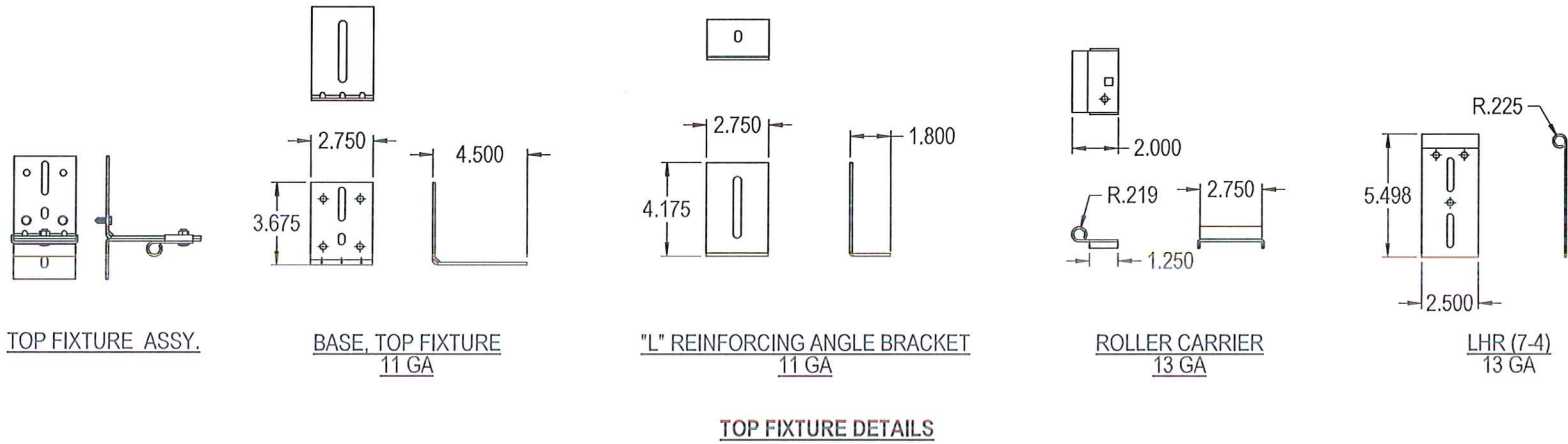


DWAYNE J. KORNISH, PE  
4576 COUNTY ROAD 160  
MOUNT HOPE, OHIO  
FL PE 77945 TX PE 117868  
PROFESSIONAL ENGINEER'S SEAL PROVIDED ONLY FOR VERIFICATION OF WINDLOAD CONSTRUCTION DETAILS.

<div>THIRD ANGLE PROJECTION</div> <div></div>		UNLESS OTHERWISE SPECIFIED		APPROVALS		DATE	The Genuine. The Original.			
<div>A DIVISION OF OVERHEAD DOOR CORP</div> <div>3395 ADDISON DRIVE</div> <div>PENSACOLA, FLORIDA 32514</div> <div>(850)-474-9890</div>		<div>INTERPRET DIMS &amp; TOLS PER ASME Y14.5M</div> <div>ALL DIMS ARE IN INCHES</div> <div>DO NOT SCALE</div> <div>DIMS CIRCLED WITH SYMBOL 'Ø' ARE CRITICAL TO QUALITY DESIGN FEATURES &amp; MUST MEET APPLICABLE IN-PROCESS INSPECTION STANDARDS.</div>		TOLERANCES:		DRAWN	E. CONRAD	8/28/18	<div></div> <div>LEWISVILLE, TEXAS</div>	
				<div>.X = ± .1</div> <div>.XX = ± .03</div> <div>.XXX = ± .010</div> <div>ANGULAR = ± .5°</div>		CHECKED		D. KORNISH		
				HOLES:		APPROVED		-	DESCRIPTION	
				<div>&lt; Ø.251 = +.004/-.003</div> <div>Ø.251-Ø.500 = +.006/-.003</div> <div>&gt; Ø.500 = +.008/-.003</div> <div>ALL GEOMETRY GOVERNED BY 3D CAD DATABASE:</div>		MATERIAL		-	WINDLOAD MODELS	
						FINISH		-	5745/5765/7665/7655/515/525, +46/-52PSF	
						WINDLOAD SPECIFICATION		SIZE		DADE COUNTY, 12'2" MAX WIDTH
				OPTION CODE 2311		DWG NO.		REV		
				D		D-411529		P-00		
				UOM = EA		SHEET 3 OF 4				



NOTES: (UNLESS OTHERWISE SPECIFIED)  
1. FOR DIMENSIONS AND NOTE REFERENCES, REFER TO INDIVIDUAL DRAWINGS.



PROFESSIONAL ENGINEER'S SEAL PROVIDED ONLY FOR VERIFICATION OF WINDLOAD CONSTRUCTION DETAILS.

**PRODUCT RENEWED**  
as complying with the Florida  
Building Code  
NOA-No. 24-0814.06  
Expiration Date 10/10/2029  
By *[Signature]*  
Miami-Dade Product Control

THIRD ANGLE PROJECTION 	UNLESS OTHERWISE SPECIFIED		APPROVALS	DATE	The Genuine. The Original.	
	INTERPRET DIMS & TOLS PER ASME Y14.5M ALL DIMS ARE IN INCHES DO NOT SCALE DIMS CIRCLED WITH SYMBOL 'Ø' ARE CRITICAL TO QUALITY DESIGN FEATURES & MUST MEET APPLICABLE IN-PROCESS INSPECTION STANDARDS.	TOLERANCES: .X = ± .1 .XX = ± .03 .XXX = ± .010 ANGULAR = ± .5° HOLES: < Ø.251 = +.004/- .003 Ø.251-Ø.500 = +.006/- .003 > Ø.500 = +.008/- .003 ALL GEOMETRY GOVERNED BY 3D CAD DATABASE:	DRAWN E. CONRAD CHECKED D. KORNISH APPROVED MATERIAL FINISH	8/28/18	OVERHEAD DOOR LEWISVILLE, TEXAS	
			WINDLOAD SPECIFICATION OPTION CODE 2311		DESCRIPTION WINDLOAD MODELS 5745/5765/7565/7655/515/525, +46/-52PSF DADE COUNTY, 12'2" MAX WIDTH	
			SIZE D	DWG NO. D-411529	REV P-00	
			SCALE 1:12	UOM =	SHEET 4 OF 4	