



DEPARTMENT OF REGULATORY AND ECONOMIC RESOURCES (RER)
BOARD AND CODE ADMINISTRATION DIVISION

NOTICE OF ACCEPTANCE (NOA)

MIAMI-DADE COUNTY
PRODUCT CONTROL SECTION

11805 SW 26 Street, Room 208
Miami, Florida 33175-2474
T (786) 315-2590 F (786) 315-2599

www.miamidade.gov/building

Overhead Door Corporation

2501 South State Hwy. 121, Suite 200

Lewisville, Texas 75067

SCOPE: This NOA is being issued under the applicable rules and regulations governing the use of construction materials. The documentation submitted has been reviewed and accepted by Miami-Dade County RER-Product Control Section to be used in Miami Dade County and other areas where allowed by the Authority Having Jurisdiction (AHJ). This NOA shall not be valid after the expiration date stated below. The Miami-Dade County Product Control Section (In Miami Dade County) and/or the AHJ (in areas other than Miami Dade County) reserve the right to have this product or material tested for quality assurance purposes. If this product or material fails to perform in the accepted manner, the manufacturer will incur the expense of such testing and the AHJ may immediately revoke, modify, or suspend the use of such product or material within their jurisdiction. RER reserves the right to revoke this acceptance, if it is determined by Miami-Dade County Product Control Section that this product or material fails to meet the requirements of the applicable building code.

This product is approved as described herein and has been designed to comply with the Florida Building Code, including the High Velocity Hurricane Zone.

DESCRIPTION: Models 5745/5765/7565/7655/515 and 525 Insulated Steel Sectional Garage Door up to 16ft.-2in. Wide w/ Optional Impact Resistant Glazing

APPROVAL DOCUMENT: Drawing No. **D-411530**, titled "Windload Models 5745/5765/7565/7655/515 /525, +46/-52 PSF Dade County, 16'2" Max. Width", sheets 1 through 4 of 4, dated 08/28/2018, prepared by Overhead Door Corporation, signed and sealed by Dwayne J. Kornish, P.E. on 09/03/2024, bearing the Miami-Dade County Product Control Renewal stamp with the NOA number and expiration date by the Miami-Dade County Product Control Section.

MISSILE IMPACT RATING: Large and Small Missile Impact Resistant

LABELING: Each unit shall bear a permanent label with the manufacturer's name or logo, manufacturing address, model number, the positive and negative design pressure rating, indicate impact rated if applicable, installation instruction drawing reference number, approval number (NOA), the applicable test standards, and the statement reading 'Miami-Dade County Product Control Approved' is to be located on the door's side track, bottom angle, or inner surface of a panel.

LIMITATION: This door has not been tested for air infiltration.

RENEWAL of this NOA shall be considered after a renewal application has been filed and there has been no change in the applicable building code negatively affecting the performance of this product.

TERMINATION of this NOA will occur after the expiration date or if there has been a revision or change in the materials, use, and/or manufacture of the product or process. Misuse of this NOA as an endorsement of any product, for sales, advertising or any other purposes shall automatically terminate this NOA. Failure to comply with any section of this NOA shall be cause for termination and removal of NOA.

ADVERTISEMENT: The NOA number preceded by the words Miami-Dade County, Florida, and followed by the expiration date may be displayed in advertising literature. If any portion of the NOA is displayed, then it shall be done in its entirety.

INSPECTION: A copy of this entire NOA shall be provided to the user by the manufacturer or its distributors and shall be available for inspection at the job site at the request of the Building Official.

This NOA **renews NOA No. 23-1120.22** and consists of this page 1 and evidence pages E-1, E-2 and E-3, as well as approval document mentioned above.

The submitted documentation was reviewed by **Carlos M. Utrera, P.E.**



09/13/24

NOA No. 24-0814.07
Expiration Date: October 10, 2029
Approval Date: September 26, 2024
Page 1

Overhead Door Corporation

NOTICE OF ACCEPTANCE: EVIDENCE SUBMITTED

1. EVIDENCE SUBMITTED UNDER PREVIOUS NOA's

A. DRAWINGS

1. Manufacturer's die drawings and sections.
(Submitted under NOA No. 19-0815.04)
2. Drawing No. **D-411530**, titled "Windload Models 5745 / 5765 / 7565 / 7655 / 515 / 525, +46/-52 PSF Dade County, 16'2" Max. Width", sheets 1 through 4 of 4, dated 08/28/18, prepared by manufacturer, signed and sealed by Dwayne J. Kornish, P.E.
(Submitted under NOA No. 19-0815.04)

B. TESTS

1. Test reports on: 1) Uniform Static Air Pressure Test, Loading per FBC, TAS 202-94
2) Large Missile Impact Test per FBC, TAS 201-94
3) Cyclic Wind Pressure Loading per FBC, TAS 203-94
4) Forced Entry Test, per FBC, TAS 202-94
5) Tensile Test per ASTM E8
along with marked-up drawings and installation diagram of a 12'-2" wide, model 5745 sectional garage door, prepared by Intertek/Architectural Testing, Inc., Test Report No. **J1626.05-801-18R1**, dated 07/10/19, revised on 07/18/19, signed and sealed by Tyler Westerling, P.E.
(Submitted under NOA No. 19-0815.04)
2. Test report on Standard Test Method for Evaluation of Painted or Coated Specimens Subjected to Corrosive Environments per ASTM D1654-08(2016)-e1 and Standard Practice for Operating Salt Spray (Fog) Apparatus per ASTM B117-16 and on garage door exterior steel, prepared by Intertek, Report No. **J4650.02-106-18 R0**, dated 05/24/19, signed by Gary T. Hartman, P.E.
(Submitted under NOA No. 19-0815.04)

C. CALCULATIONS

1. Anchor load calculations prepared by manufacturer, dated 06/07/19, signed and sealed by Dwayne J. Kornish, P.E.
(Submitted under NOA No. 19-0815.04)



Carlos M. Utrera, P.E.
Product Control Examiner
NOA No. 24-0814.07
Expiration Date: October 10, 2029
Approval Date: September 26, 2024

Overhead Door Corporation

NOTICE OF ACCEPTANCE: EVIDENCE SUBMITTED

1. EVIDENCE SUBMITTED UNDER PREVIOUS NOA's (CONTINUED)

D. QUALITY ASSURANCE

1. Miami-Dade Department of Regulatory and Economic Resources (RER)

E. MATERIAL CERTIFICATIONS

1. Test report on Ignition Temperatures of Plastic per ASTM D1929-16 on BASF Corp. Elastopor P19670R polyurethane foam insulation, prepared by QAI Laboratories, Inc., Test Report No. **RJ6431F-1**, dated 09/28/18, signed by Bryan Ortega.
2. Test report on Surface Burning Characteristics of Building Materials per ASTM E84-18b on BASF Corp. Elastopor P19670R polyurethane foam insulation, prepared by QAI Laboratories, Inc., Test Report No. **RJ6648F-4**, dated 12/12/18, signed by Bryan Ortega.
3. Notice of Acceptance No. **18-0918.06** issued to **Plaskolite, LLC** for its **TUFFAK Polycarbonate Sheets**, approved on 11/15/18 and expiring on 08/27/22.

F. STATEMENTS

1. Statement letter of conformance, complying with **FBC 7th Edition (2020)**, dated October 23, 2020, issued by manufacturer, signed and sealed by Dwayne J. Kornish, P.E.
(Submitted under NOA No. 20-1106.11)
2. Statement letter of no financial interest, dated August 07, 2019, issued by manufacturer, signed and sealed by Dwayne J. Kornish, P.E.
(Submitted under NOA No. 19-0815.04)

G. OTHERS

1. Notice of Acceptance No. **19-0815.04**, issued to Overhead Door Corporation, for their Models 5745 / 5765 / 7565 / 7655 / 515 / 525 Insulated Steel Sectional Garage Door up to 16'-2" Wide w/ Optional Impact Resistant Glazing, approved on 10/10/19 and expiring on 10/10/24.



Carlos M. Utrera, P.E.
Product Control Examiner
NOA No. 24-0814.07
Expiration Date: October 10, 2029
Approval Date: September 26, 2024

Overhead Door Corporation

NOTICE OF ACCEPTANCE: EVIDENCE SUBMITTED

2. EVIDENCE SUBMITTED UNDER NOA # 23-1120.22 AND NEW

A. DRAWINGS

1. Drawing No. **D-411530**, titled “Windload Models 5745/5765/7565/7655/515/525, +46/-52 PSF Dade County, 16’2” Max. Width”, sheets 1 through 4 of 4, dated 08/28/2018, prepared by Overhead Door Corporation, signed and sealed by Dwayne J. Kornish, P.E. on 09/03/2024.

B. TESTS

1. None.

C. CALCULATIONS

1. None.

D. QUALITY ASSURANCE

1. Miami-Dade Department of Regulatory and Economic Resources (RER).

E. MATERIAL CERTIFICATIONS

1. Notice of Acceptance No. **22-0317.02** issued to **Plaskolite, LLC** for their “**TUFFAK Polycarbonate Sheets**” dated 04/21/22 expiring on 08/27/27.

F. STATEMENTS

1. Statement letter of conformance with the 8th edition (2023) of the FBC, dated 08/29/2024, issued by Overhead Door Corporation, signed and sealed by Dwayne J. Kornish, P.E.
2. *“Submitted under NOA # 23-1120.22”*
Statement letter of conformance with the 8th edition (2023) of the FBC and of no financial interest, dated 01/25/2024, issued by Overhead Door Corporation, signed and sealed by Dwayne J. Kornish, P.E.



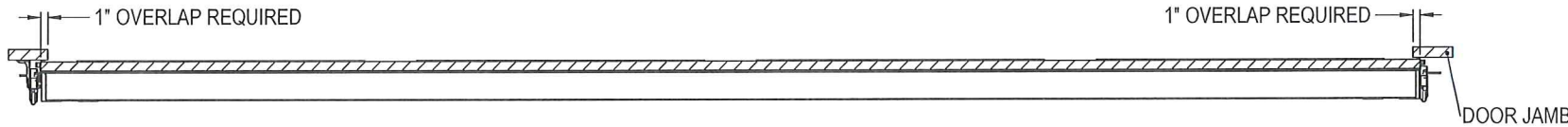
Carlos M. Utrera, P.E.
Product Control Examiner
NOA No. 24-0814.07
Expiration Date: October 10, 2029
Approval Date: September 26, 2024

NOTES: (UNLESS OTHERWISE SPECIFIED)

1. RATED DESIGN LOAD +46/-52 PSF.
2. SECTION HEIGHTS MAY VARY TO CREATE VARIOUS DOOR HEIGHTS, 24" MAXIMUM SECTION HEIGHT.
3. MINIMUM 1" OVERLAP ON BOTH JAMBS REQUIRED TO MEET NEGATIVE DESIGN PRESSURES.
4. TESTED IN ACCORDANCE WITH DADE COUNTY PROTOCOLS TAS 201-94, TAS 202-94, & TAS 203-94.
5. DOOR SKIN MUST BE 30,000 PSI MIN. YIELD STRENGTH.
6. JAMB LOAD CALCULATIONS:
 $(1/2 \text{ DOOR WIDTH})(1 \text{ FT OF HEIGHT})(\text{DESIGN PRESSURE})$
 $(8.08)(1 \text{ FOOT})(46.00 \text{ AND } -52.00)(371.68/-420.16) \text{ LB}$
7. JAMB FASTENER REQUIREMENTS:
 $F_x = (1/2 \text{ DOOR WIDTH})(1 \text{ FT OF HEIGHT})(\text{DESIGN PRESSURE})$
 $F_x = 371 \text{ LBS.}$

8. DOOR SKIN MATERIAL SHALL BE GALVANIZED ACCORDING TO ASTM A-525 TO G40 MIN, WITH BAKED-ON PRIMER, AND BAKED-ON POLYESTER PAINT TOP COAT.
9. FOR ANCHORING INTO WOOD, USE ONE 5/16" LAG SCREW PER TRACK BRACKET WITH 1-1/2" EMBEDMENT INTO SOUTHERN PINE (G=0.55) OR BETTER.
10. WELD SLOT ON ANGLE 3/32" X 1" LONG ON 12" CENTERS. "IF WELDING MOUNTING OPTION IS CHOSEN."
11. LIFT UP MECHANISM-MANUAL, CHAIN LIFT, OR OPERATOR IS NOT PART OF THIS APPROVAL.
12. STANDARD LIFT, HIGH LIFT, VERTICAL LIFT, AND LOW HEADROOM TRACK IS AVAILABLE. FOR LOW HEADROOM LIFT CONDITIONS TOP BRACKET SHALL BE 13 GA LHR 7/4 TOP BRACKET WITH A MIN OF (3) 1/4 - 14 X 7/8" SELF DRILLING CRIMPTITE SCREWS IN LIEU OF THE BRACKET SHOWN ON DRAWING. U-BAR ON TOP SECTION SHALL BE INSTALLED ON TOP OF LHR TOP BRACKETS.
13. ATTACH STRUTS WITH (2) 1/4-14x7/8" SELF DRILLING CRIMPTITE SCREWS AT ALL HINGE LOCATIONS AND (2) BETWEEN EACH INTERMEDIATE HINGE.
14. KEY LOCK, OR SIDE LOCK REQUIRED.
15. IMPACT RESISTANT GLAZING OPTION- IMPACT RESISTANT GLAZING SYSTEM MAY BE INSTALLED IN TOP OR INTERMEDIATE SECTIONS. GLAZING SHALL BE 1/4" POLYCARBONATE. FASTENED WITH # 8 X 1" SMS. SEE DETAIL F-F ON SHEET 2 FOR ASSEMBLY DETAILS. MAXIMUM OF ONE GLAZED SECTION.
16. THE DESIGN OF THE SUPPORTING STRUCTURAL ELEMENTS SHALL BE THE RESPONSIBILITY OF THE PROFESSIONAL OF RECORD FOR THE BUILDING OR STRUCTURE AND IN ACCORDANCE WITH CURRENT BUILDING CODES FOR THE LOADS LISTED ON THIS DRAWING.
17. A 2-1/4" X 6-3/8" X 22 GA BACKER PLATE IS TO BE LOCATED AT EVERY CENTER HINGE AND 3" X 3-3/4" X 22 GA BACKER PLATE AT EACH END HINGE LOCATION. EACH IS ADHERED TO THE INTERIOR OF THE SECTION BACKER STEEL.

REVISIONS				
ER	REV	DESCRIPTION	DATE	APVL
ER	P00	NEW DRAWING	8/28/18	ESC

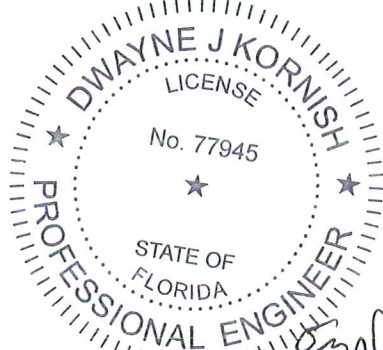
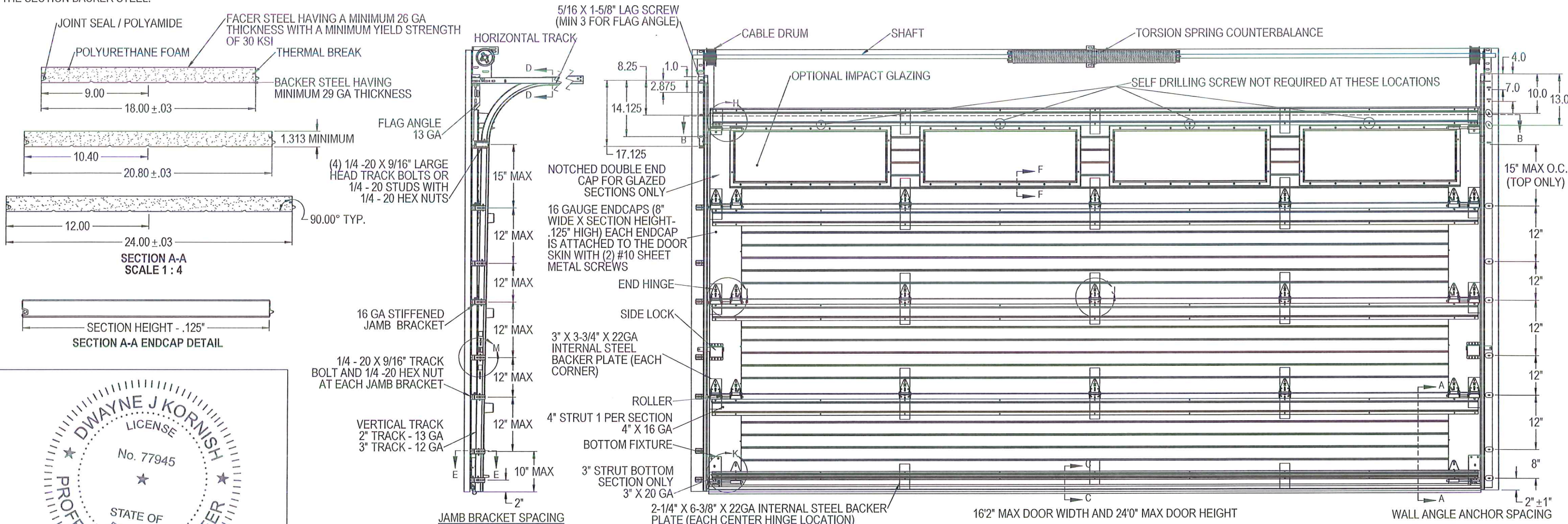


SECTION B-B
SCALE 1 : 12

PRODUCT RENEWED
as complying with the Florida
Building Code
NOA-No. 24-0814.07

Expiration Date 10/10/2029

By *[Signature]*
Miami-Dade Product Control



DWAYNE J. KORNISH, PE
4576 COUNTY ROAD 160
MOUNT HOPE, OHIO
FL PE 77945 TX PE 117868



PROFESSIONAL ENGINEER'S SEAL PROVIDED ONLY FOR
VERIFICATION OF WINDLOAD CONSTRUCTION DETAILS.

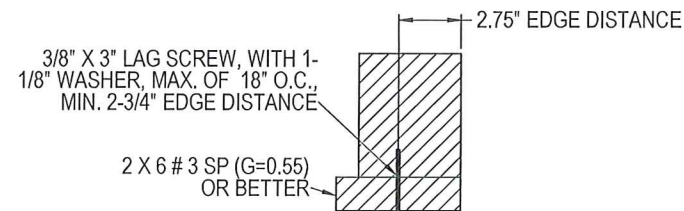


SECTION C-C
SCALE 1 : 4

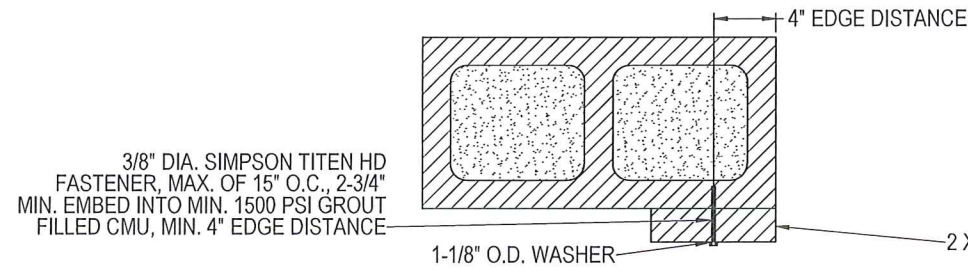


SECTION D-D
SCALE 1 : 4

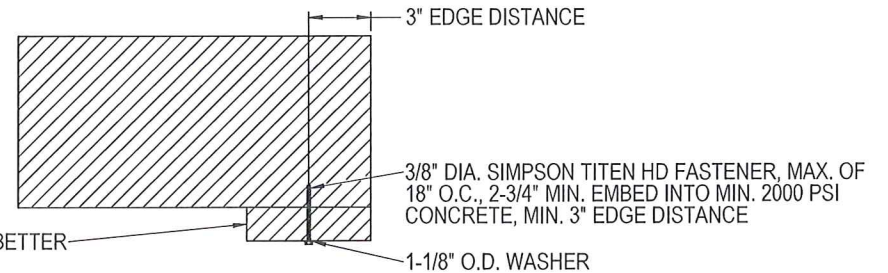
THIRD ANGLE PROJECTION 		UNLESS OTHERWISE SPECIFIED		APPROVALS		DATE	The Genuine. The Original.				
		INTERPRET DIMS & TOLS PER ASME Y14.5M ALL DIMS ARE IN INCHES DO NOT SCALE		TOLERANCES: .X = ± .1 .XX = ± .03 .XXX = ± .010 ANGULAR = ± .5° HOLES: < Ø.251 = +.004/- .003 Ø.251-Ø.500 = +.006/- .003 > Ø.500 = +.008/- .003		DRAWN CHECKED APPROVED MATERIAL FINISH	E. CONRAD D. KORNISH - - -	8/28/18 - - - -	 LEWISVILLE, TEXAS		
A DIVISION OF OVERHEAD DOOR CORP 3395 ADDISON DRIVE PENSACOLA, FLORIDA 32514 (850)-474-9890		DIM CIRCLED WITH SYMBOL 'C' ARE CRITICAL TO QUALITY DESIGN FEATURES & MUST MEET APPLICABLE IN-PROCESS INSPECTION STANDARDS.		ALL GEOMETRY GOVERNED BY 3D CAD DATABASE:		WINDLOAD SPECIFICATION OPTION CODE 2341		DESCRIPTION WINDLOAD MODELS 5745/5765/7565/7655/515/525, +46/-52PSF DADE COUNTY, 16'2" MAX WIDTH			
						SIZE		DWG NO.		REV	
						D		D-411530		P-00	



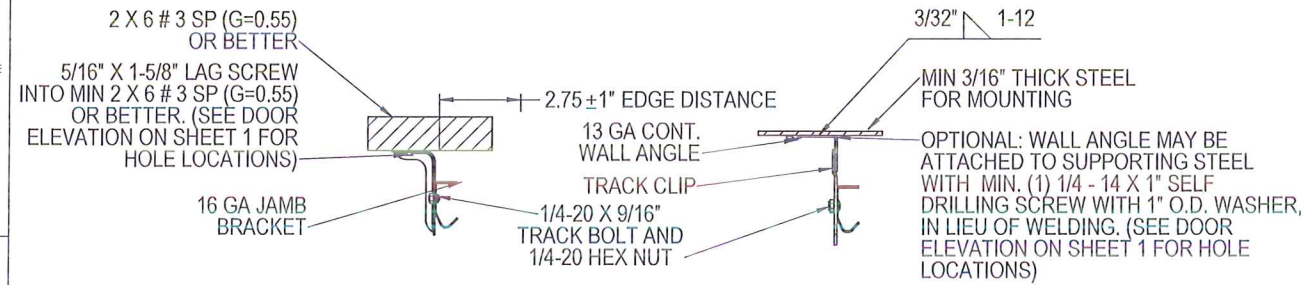
WOOD MOUNTED TO # 3 SOUTHERN PINE SUBSTRATE



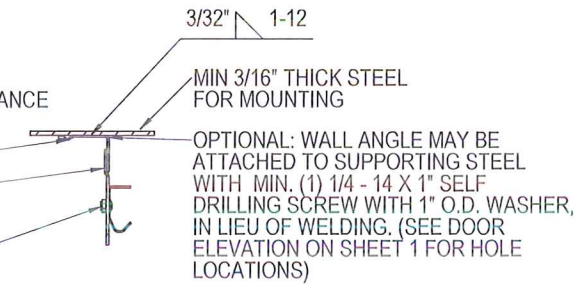
WOOD MOUNTED TO GROUT FILLED MASONRY BLOCK DETAIL



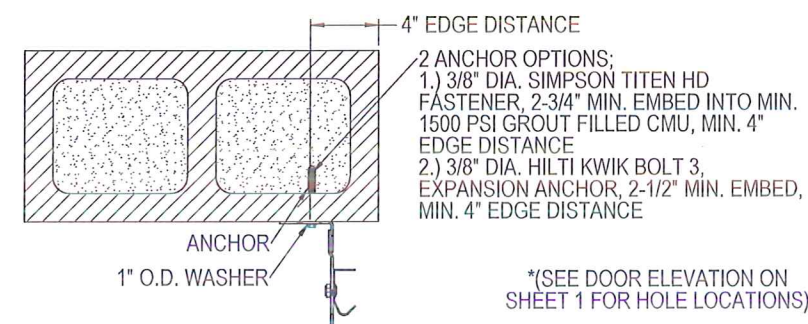
WOOD MOUNTED TO 2000 PSI CONCRETE DETAIL



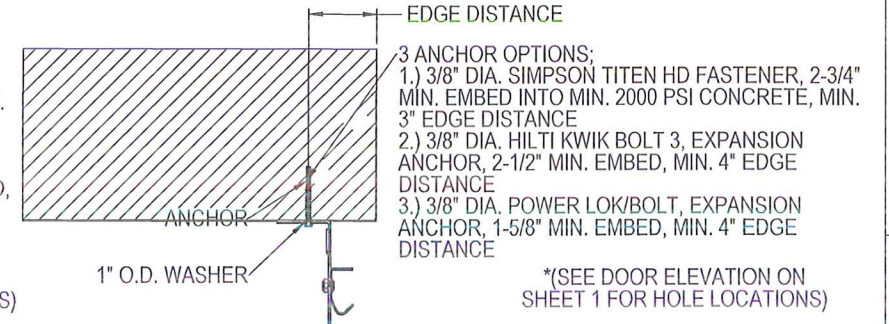
MOUNTING TO WOOD JAMB DETAIL



MOUNTING TO STEEL JAMB DETAIL

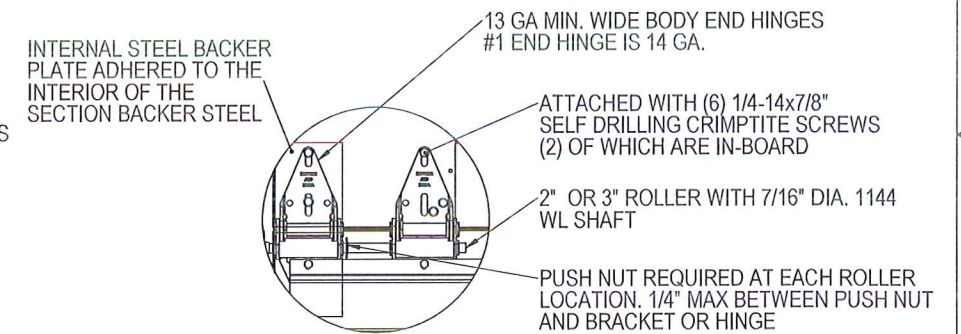
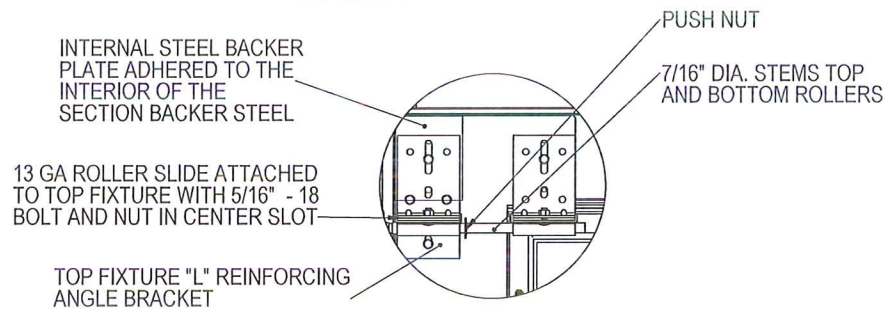


MOUNTING TO GROUT FILLED MASONRY BLOCK DETAIL

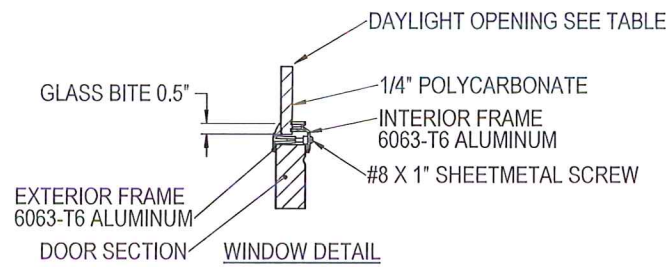


MOUNTING TO 2000 PSI CONCRETE DETAIL

SECTION E-E SCALE 1 : 4



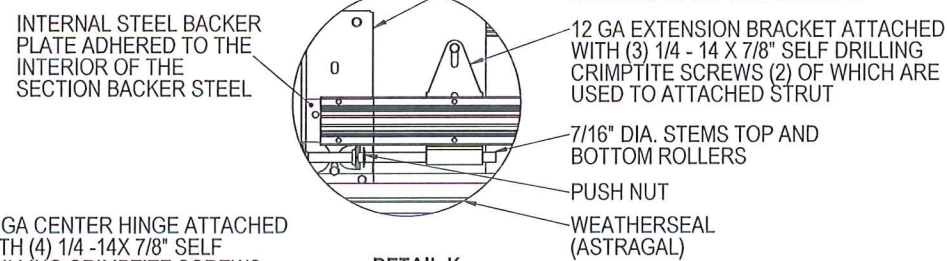
DETAIL I SCALE 1 : 4



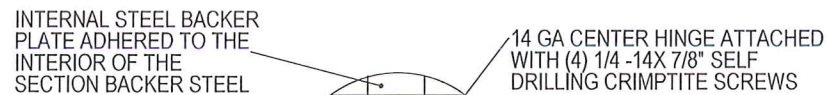
SECTION F-F SCALE 1 : 4

Impact Frame Size	Daylight Opening (DLO)	Screw Qty
15-1/4 x 19-1/8	11-1/8 x 15	10
16-7/8 x 19-7/8	12-3/4 x 15-3/4	10
16-7/8 x 42-1/8	12-3/4 x 37-7/8	14
15-1/4 x 44-1/2	11-1/4 x 40-1/8	14
12-3/4 x 40	8-5/8 x 35-7/8	14
13 x 38	8-7/8 x 33-7/8	14

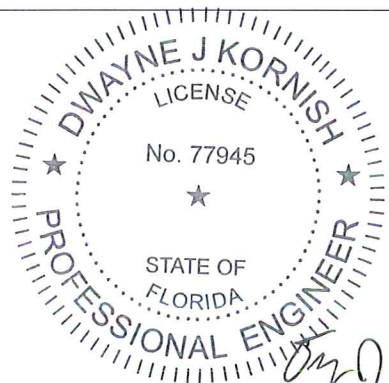
DETAIL H SCALE 1 : 4



DETAIL K SCALE 1 : 4






DETAIL J SCALE 1 : 4



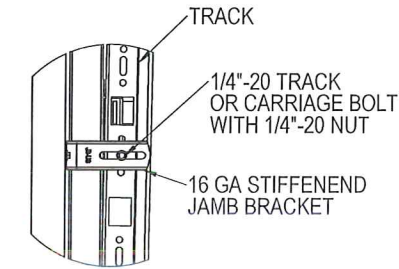
DWAYNE J. KORNISH, PE
4576 COUNTY ROAD 160
MOUNT HOPE, OHIO
FL PE 77945 TX PE 117868

PROFESSIONAL ENGINEER'S SEAL PROVIDED ONLY FOR VERIFICATION OF WINDLOAD CONSTRUCTION DETAILS.

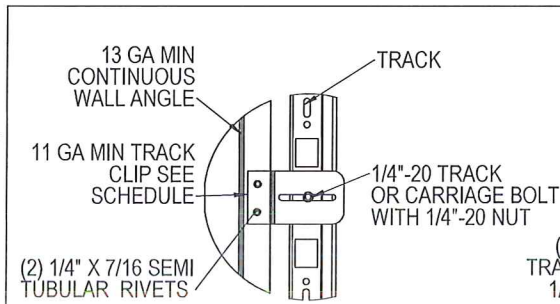
<div>THIRD ANGLE PROJECTION</div> 	UNLESS OTHERWISE SPECIFIED		APPROVALS		DATE	The Genuine. The Original.				
	INTERPRET DIMS & TOLS PER ASME Y14.5M ALL DIMS ARE IN INCHES DO NOT SCALE DIMS CIRCLED WITH SYMBOL 'Ø' ARE CRITICAL TO QUALITY DESIGN FEATURES & MUST MEET APPLICABLE IN-PROCESS INSPECTION STANDARDS.	TOLERANCES: .X = ± .1 .XX = ± .03 .XXX = ± .010 ANGULAR = ± .5° HOLES: < Ø.251 = +.004/- .003 Ø.251-Ø.500 = +.006/- .003 > Ø.500 = +.008/- .003 ALL GEOMETRY GOVERNED BY 3D CAD DATABASE:	DRAWN	E. CONRAD	8/28/18	 LEWISVILLE, TEXAS				
CHECKED			D. KORNISH	-						
A DIVISION OF OVERHEAD DOOR CORP 3395 ADDISON DRIVE PENSACOLA, FLORIDA 32514 (850)-474-9890			APPROVED	-	-	DESCRIPTION WINDLOAD MODELS 5745/5765/7565/7655/515/525, +46/-52PSF DADE COUNTY, 16'2" MAX WIDTH				
			MATERIAL	-	-					
			FINISH	-	-	WINDLOAD SPECIFICATION OPTION CODE 2341		SIZE D	DWG NO. D-411530	REV P-00
						SCALE 1:12	UOM = EA	SHEET 2 OF 4		

PRODUCT RENEWED
as complying with the Florida
Building Code
NOA-No. 24-0814.07
Expiration Date 10/10/2029
By 
Miami-Dade Product Control

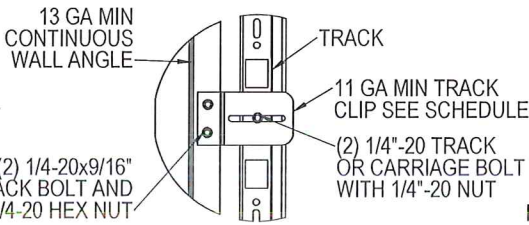
NOTES: (UNLESS OTHERWISE SPECIFIED)
1. ONE 4" STRUT PER SECTION, AND ONE 3" STRUT PER BOTTOM SECTION, ATTACHED WITH 1/4-14X7/8" SELF DRILLING CRIMPTITE SCREWS.



TYPICAL TRACK AND JAMB FASTENERS DETAIL

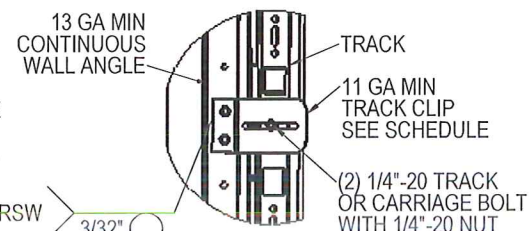


TYPICAL TRACK CLIP RIVETING DETAIL



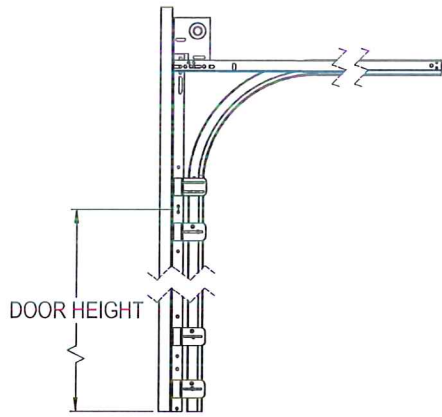
TYPICAL TRACK CLIP BOLTING DETAIL

OPTIONAL WALL ANGLE TRACK

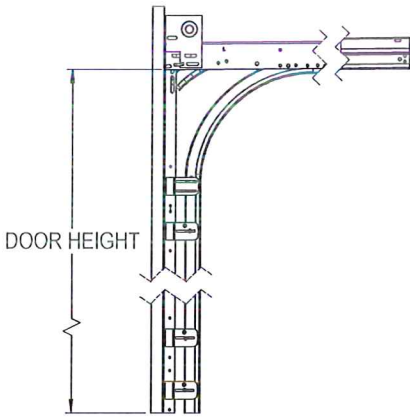


TYPICAL TRACK CLIP WELDING DETAIL

DETAIL M
SCALE 1 : 4

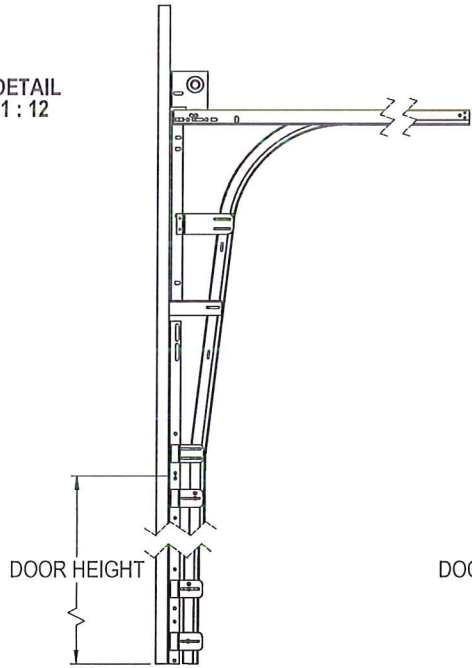


STANDARD LIFT TRACK DETAIL

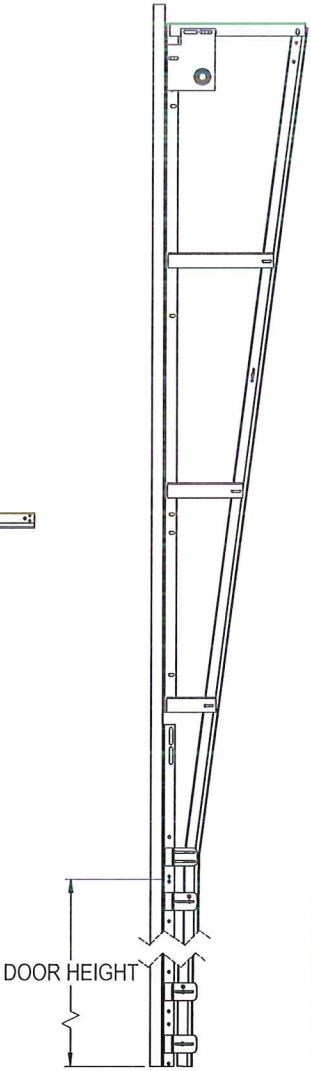


LOW HEADROOM TRACK DETAIL

TRACK DETAIL
SCALE 1 : 12

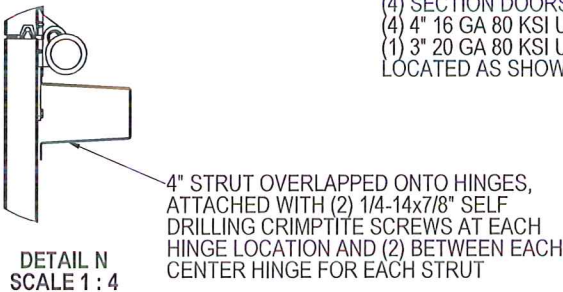


HIGH LIFT TRACK DETAIL

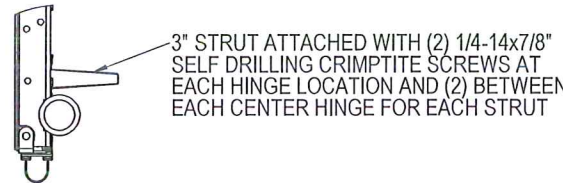


VERTICAL LIFT TRACK DETAIL

PRODUCT RENEWED
as complying with the Florida
Building Code
NOA-No. 24-0814.07
Expiration Date 10/10/2029
By *[Signature]*
Miami-Dade Product Control



DETAIL N
SCALE 1 : 4



DETAIL O
SCALE 1 : 4

(7) SECTION DOORS WITH
(7) 4" 16 GA 80 KSI U- BARS
(1) 3" 20 GA 80 KSI U- BARS
LOCATED AS SHOWN

(6) SECTION DOORS WITH
(6) 4" 16 GA 80 KSI U- BARS
(1) 3" 20 GA 80 KSI U- BARS
LOCATED AS SHOWN

(5) SECTION DOORS WITH
(5) 4" 16 GA 80 KSI U- BARS
(1) 3" 20 GA 80 KSI U- BARS
LOCATED AS SHOWN

(4) SECTION DOORS WITH
(4) 4" 16 GA 80 KSI U- BARS
(1) 3" 20 GA 80 KSI U- BARS
LOCATED AS SHOWN

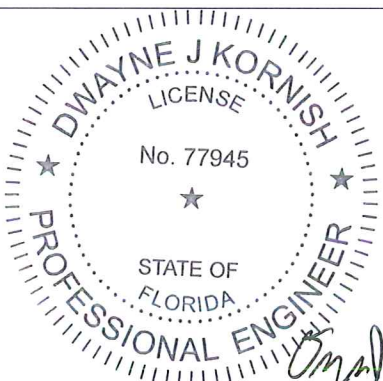
(8) SECTION DOORS WITH
(8) 4" 16 GA 80 KSI U- BARS
(1) 3" 20 GA 80 KSI U- BARS
LOCATED AS SHOWN

(9) SECTION DOORS WITH
(9) 4" 16 GA 80 KSI U- BARS
(1) 3" 20 GA 80 KSI U- BARS
LOCATED AS SHOWN

(11) SECTION DOORS WITH
(11) 4" 16 GA 80 KSI U- BARS
(1) 3" 20 GA 80 KSI U- BARS
LOCATED AS SHOWN

(12) SECTION DOORS WITH
(12) 4" 16 GA 80 KSI U- BARS
(1) 3" 20 GA 80 KSI U- BARS
LOCATED AS SHOWN

STRUT LOCATIONS
SCALE 1:20

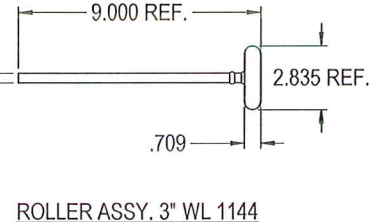
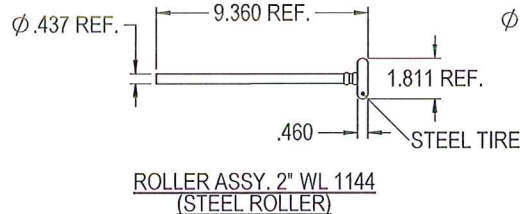
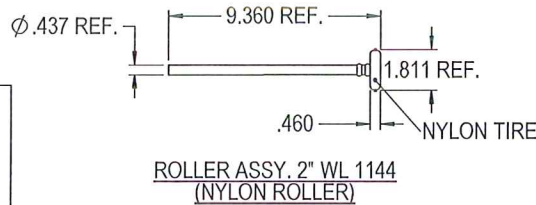
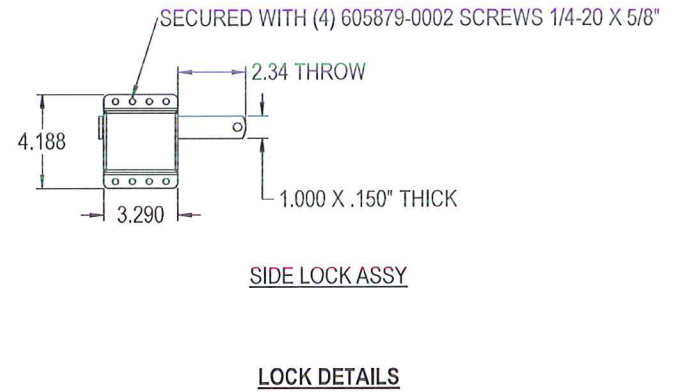
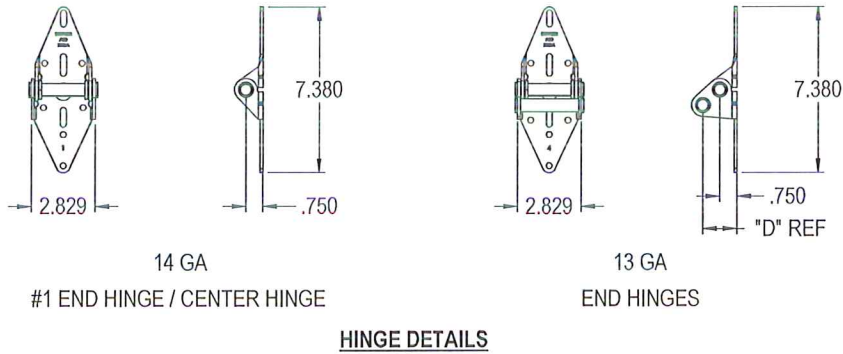
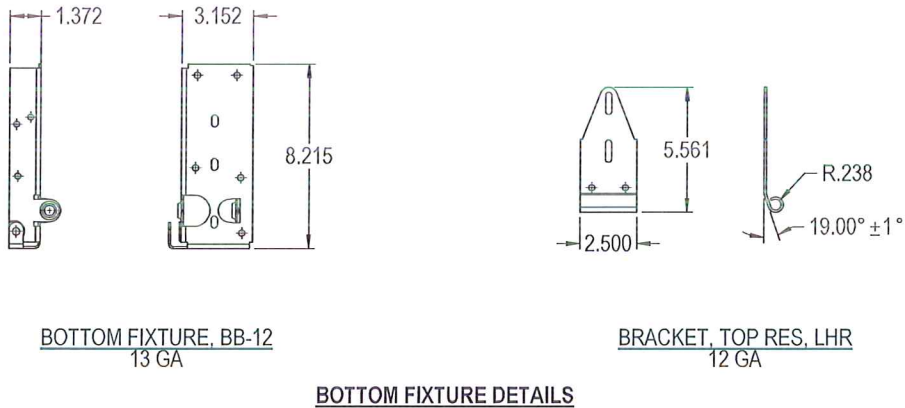
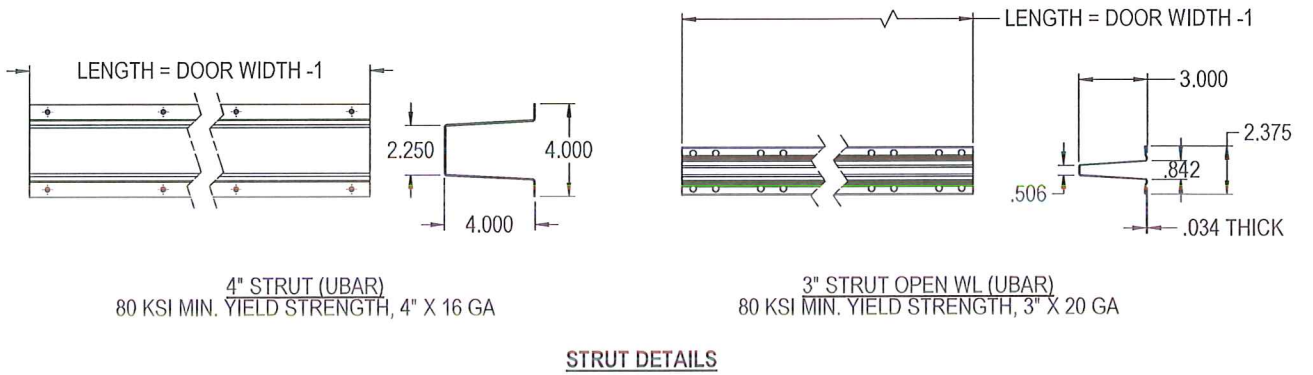
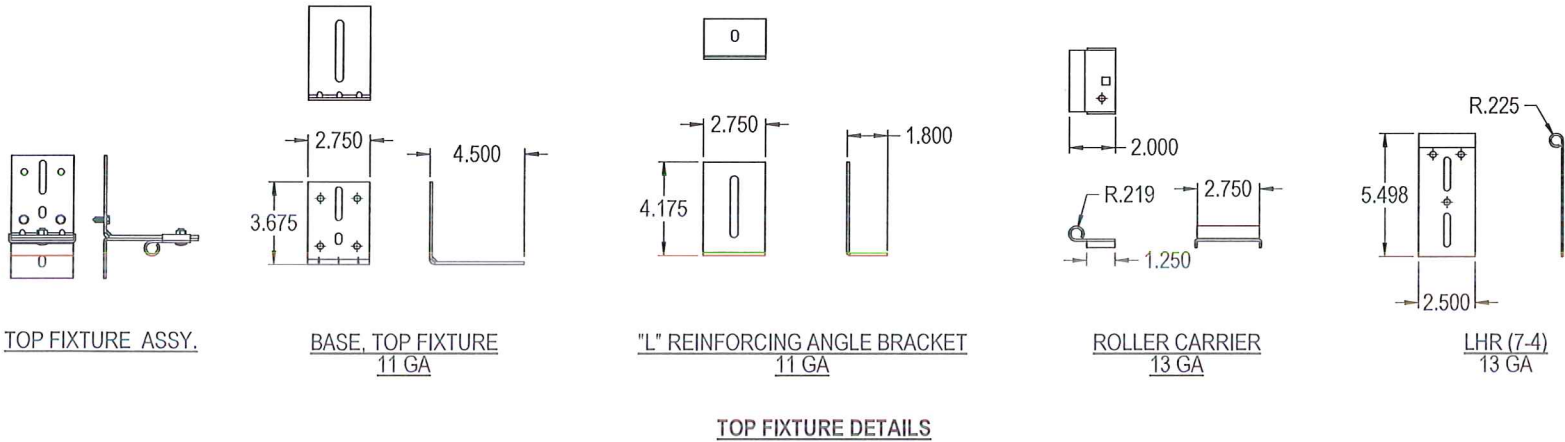


DWAYNE J. KORNISH, PE
4576 COUNTY ROAD 160
MOUNT HOPE, OHIO
FL PE 77945 TX PE 117868

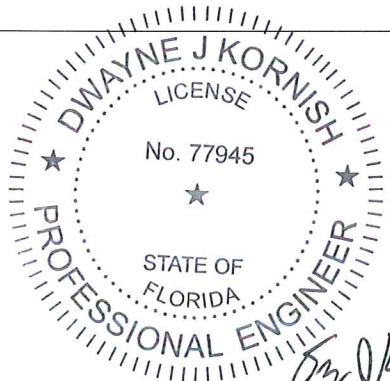
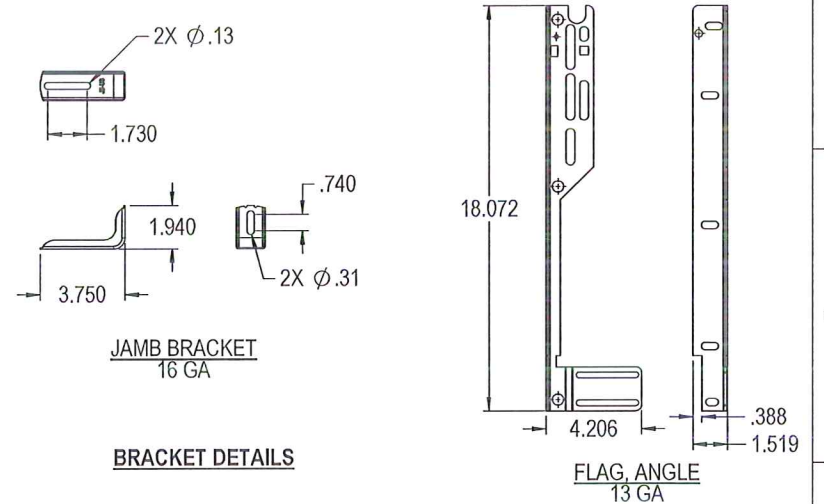
PROFESSIONAL ENGINEER'S SEAL PROVIDED ONLY FOR
VERIFICATION OF WINDLOAD CONSTRUCTION DETAILS.

THIRD ANGLE PROJECTION	UNLESS OTHERWISE SPECIFIED		APPROVALS		DATE		The Genuine. The Original.	
	INTERPRET DIMS & TOLS PER ASME Y14.5M ALL DIMS ARE IN INCHES DO NOT SCALE DIMS CIRCLED WITH SYMBOL 'O' ARE CRITICAL TO QUALITY DESIGN FEATURES & MUST MEET APPLICABLE IN-PROCESS INSPECTION STANDARDS.	TOLERANCES: .X = ± .1 .XX = ± .03 .XXX = ± .010 ANGULAR = ± .5° HOLES: < Ø.251 = +.004/- .003 Ø.251-Ø.500 = +.006/- .003 > Ø.500 = +.008/- .003 ALL GEOMETRY GOVERNED BY 3D CAD DATABASE:	DRAWN CHECKED APPROVED MATERIAL FINISH	E. CONRAD D. KORNISH - - -	8/28/18 - - -	OVERHEAD DOOR		LEWISVILLE, TEXAS
A DIVISION OF OVERHEAD DOOR CORP 3395 ADDISON DRIVE PENSACOLA, FLORIDA 32514 (850)-474-9890		WINDLOAD SPECIFICATION OPTION CODE 2341		DESCRIPTION WINDLOAD MODELS 5745/5765/7565/7655/515/525, +46/-52PSF DADE COUNTY, 16"2" MAX WIDTH		SIZE DWG NO. D D-411530		REV P-00
				SCALE 1:12		UOM = EA		SHEET 3 OF 4

NOTES: (UNLESS OTHERWISE SPECIFIED)
1. FOR DIMENSIONS AND NOTE REFERENCES, REFER TO INDIVIDUAL DRAWINGS.



ROLLER STEM ASSY DETAILS



DWAYNE J. KORNISH, PE
4576 COUNTY ROAD 160
MOUNT HOPE, OHIO
FL PE 77945 TX PE 117868

PROFESSIONAL ENGINEER'S SEAL PROVIDED ONLY FOR
VERIFICATION OF WINDLOAD CONSTRUCTION DETAILS.

PRODUCT RENEWED
as complying with the Florida
Building Code
NOA-No. 24-0814.07
Expiration Date 10/10/2029
By *[Signature]*
Miami-Dade Product Control

<div>THIRD ANGLE PROJECTION</div> <div></div>	UNLESS OTHERWISE SPECIFIED		APPROVALS		DATE	The Genuine. The Original.		
	INTERPRET DIMS & TOLS PER ASME Y14.5M ALL DIMS ARE IN INCHES DO NOT SCALE DIMS CIRCLED WITH SYMBOL 'C' ARE CRITICAL TO QUALITY DESIGN FEATURES & MUST MEET APPLICABLE IN-PROCESS INSPECTION STANDARDS.	TOLERANCES: X = ± .1 XX = ± .03 XXX = ± .010 ANGULAR = ± .5° HOLES: < Ø.251 = +.004/- .003 Ø.251-Ø.500 = +.006/- .003 > Ø.500 = +.008/- .003 ALL GEOMETRY GOVERNED BY 3D CAD DATABASE:	DRAWN	E. CONRAD	8/28/18		LEWISVILLE, TEXAS	
CHECKED			D. KORNISH	DESCRIPTION				
A DIVISION OF OVERHEAD DOOR CORP 3395 ADDISON DRIVE PENSACOLA, FLORIDA 32514 (850)-474-9890			APPROVED	WINDLOAD MODELS				
			MATERIAL	5745/5765/7565/7655/515/525, +46/-52PSF DADE COUNTY, 16'2" MAX WIDTH				
			FINISH	WINDLOAD SPECIFICATION OPTION CODE 2341		SIZE	DWG NO.	REV
						D	D-411530	P-00
						SCALE 1:12	UOM =	SHEET 4 OF 4