



DEPARTMENT OF REGULATORY AND ECONOMIC RESOURCES (RER)  
BOARD AND CODE ADMINISTRATION DIVISION

## NOTICE OF ACCEPTANCE (NOA)

MIAMI-DADE COUNTY  
PRODUCT CONTROL SECTION

11805 SW 26 Street, Room 208  
Miami, Florida 33175-2474  
T (786) 315-2590 F (786) 315-2599

[www.miamidade.gov/economy](http://www.miamidade.gov/economy)

**Greenheck Fan Corporation**  
**P.O. Box 410**  
**Schofield, WI 54476**

### SCOPE:

This NOA is being issued under the applicable rules and regulations governing the use of construction materials. The documentation submitted has been reviewed and accepted by Miami-Dade County RER-Product Control Section to be used in Miami Dade County and other areas where allowed by the Authority Having Jurisdiction (AHJ).

This NOA shall not be valid after the expiration date stated below. The Miami-Dade County Product Control Section (In Miami Dade County) and/or the AHJ (in areas other than Miami Dade County) reserve the right to have this product or material tested for quality assurance purposes. If this product or material fails to perform in the accepted manner, the manufacturer will incur the expense of such testing and the AHJ may immediately revoke, modify, or suspend the use of such product or material within their jurisdiction. RER reserves the right to revoke this acceptance if it is determined by Miami-Dade County Product Control Section that this product or material fails to meet the requirements of the applicable building code.

This product is approved as described herein and has been designed to comply with the Florida Building Code, including the High Velocity Hurricane Zone.

### DESCRIPTION: Model RSQ/XRID Steel Rooftop Fans

**APPROVAL DOCUMENT:** Drawing No. **100897882**, titled "RSQ/XRID High Wind Certification", sheets 1 through 13 of 13, dated 03/07/2025, prepared by Greenheck Fan Corporation, signed and sealed by Wayne K. Helmila, P.E., bearing the Miami-Dade County Product Control approval stamp with the Notice of Acceptance number and expiration date by the Miami-Dade County Product Control Section.

### MISSILE IMPACT RATING: Large and Small Missile Impact Resistant

**LABELING:** Each unit shall bear a permanent label with the manufacturer's name or logo Schofield, WI or Knoxville, TN and following statement: "Miami-Dade County Product Control Approved", unless otherwise noted herein.

**RENEWAL** of this NOA shall be considered after a renewal application has been filed and there has been no change in the applicable building code negatively affecting the performance of this product.

**TERMINATION** of this NOA will occur after the expiration date or if there has been a revision or change in the materials, use, and/or manufacture of the product or process. Misuse of this NOA as an endorsement of any product, for sales, advertising or any other purposes shall automatically terminate this NOA. Failure to comply with any section of this NOA shall be cause for termination and removal of NOA.

**ADVERTISEMENT:** The NOA number preceded by the words Miami-Dade County, Florida, and followed by the expiration date may be displayed in advertising literature. If any portion of the NOA is displayed, then it shall be done in its entirety.

**INSPECTION:** A copy of this entire NOA shall be provided to the user by the manufacturer or its distributors and shall be available for inspection at the job site at the request of the Building Official.

This NOA consists of this page 1 and evidence page E-1, as well as the approval document mentioned above. The submitted documentation was reviewed by **Carlos M. Utrera, P.E.**



  
03/26/25

NOA No. 25-0131.02  
Expiration Date: April 3, 2030  
Approval Date: April 3, 2025  
Page 1

**NOTICE OF ACCEPTANCE: EVIDENCE SUBMITTED**

**A. DRAWINGS**

1. Drawing No. **100897882**, titled “RSQ/XRID High Wind Certification”, sheets 1 through 13 of 13, dated 03/07/2025, prepared by Greenheck Fan Corporation, signed and sealed by Wayne K. Helmila, P.E.

**B. TESTS**

1. Test report on 1) Uniform Static Air Pressure Test per FBC, TAS 202-94  
2) Large Missile Impact Test per FBC, TAS 201-94,  
along with marked-up drawings and installation diagram of the Model RSQ-24 Fan,  
prepared by Quast Consulting & Testing, Inc., Test Report No. **QCT24-7323.03**,  
dated 10/31/2024, signed and sealed by Brian M. Sasman, P.E.
2. Test report on 1) Uniform Static Air Pressure Test per FBC, TAS 202-94  
2) Large Missile Impact Test per FBC, TAS 201-94,  
along with marked-up drawings and installation diagram of the Model RSQ-33 Fan,  
prepared by Quast Consulting & Testing, Inc., Test Report No. **QCT24-7323.04**,  
dated 10/31/2024, signed and sealed by Brian M. Sasman, P.E.

**C. CALCULATIONS**

1. Anchor verification calculations, prepared by Rice Engineering, dated 03/20/2025,  
signed and sealed by Wayne K. Helmila, P.E.

**D. QUALITY ASSURANCE**

1. Miami-Dade Department of Regulatory and Economic Resources (RER).

**E. MATERIAL CERTIFICATIONS**

1. None.

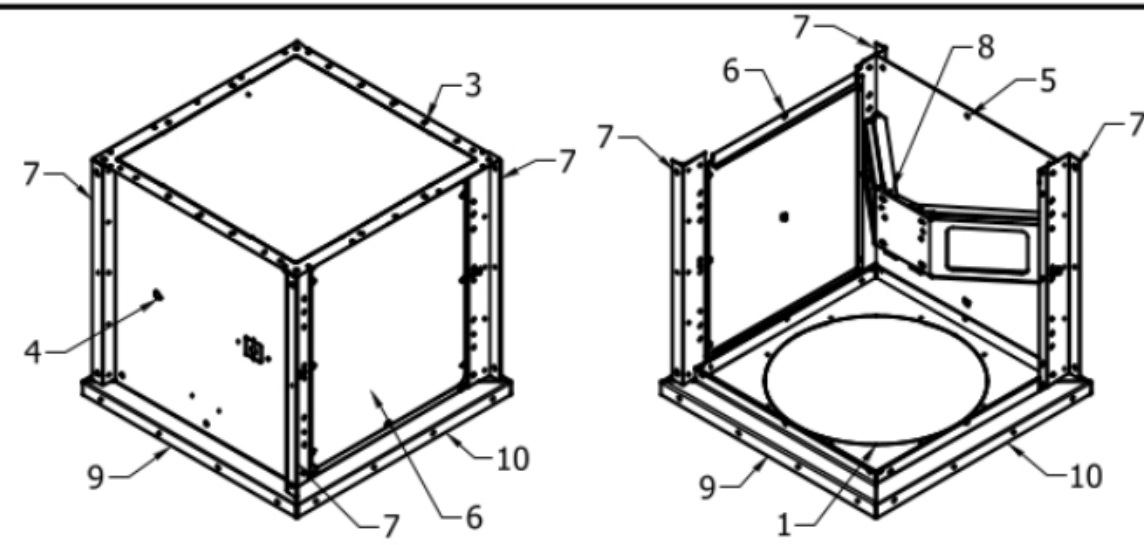
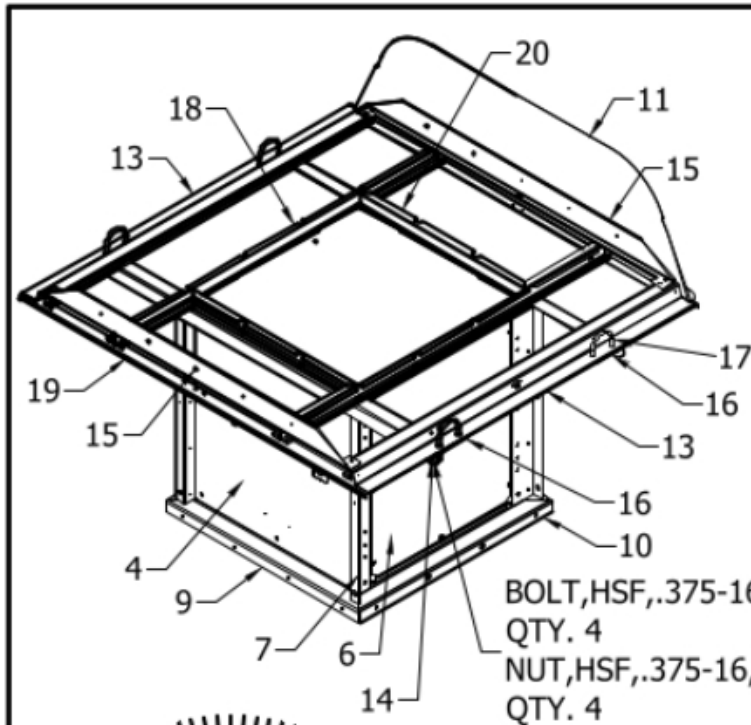
**F. STATEMENTS**

1. Statement letter of code conformance to the 8<sup>th</sup> edition (2023) of the FBC, issued by Rice Engineering, dated 01/15/2025, signed and sealed by Wayne K. Helmila, P.E.
2. Statement letter of no financial interest, issued by Rice Engineering, dated 01/15/2025, signed and sealed by Wayne K. Helmila, P.E.



---

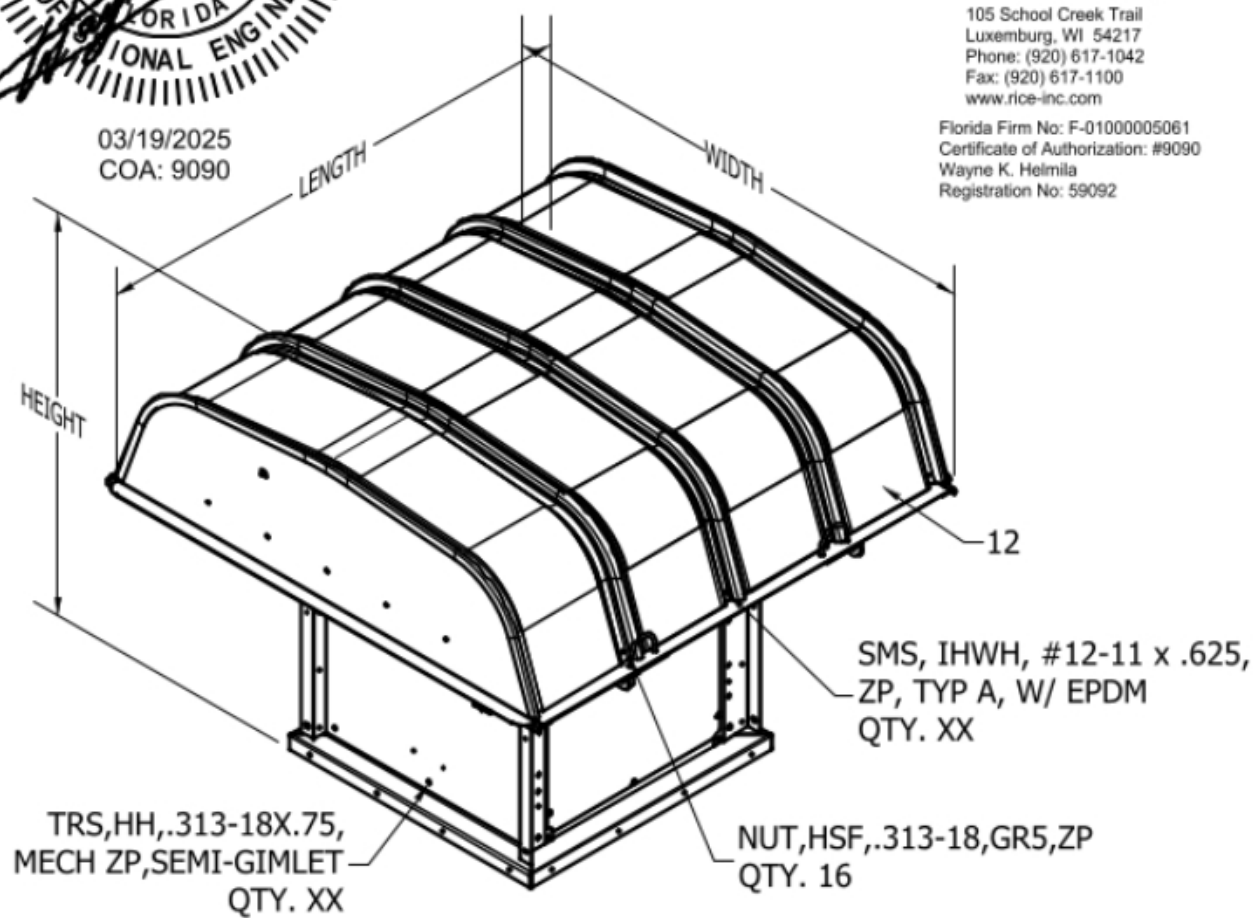
**Carlos M. Utrera, P.E.**  
**Product Control Examiner**  
**NOA No. 25-0131.02**  
**Expiration Date: April 3, 2030**  
**Approval Date: April 3, 2025**



	LENGTH(IN)	WIDTH(IN)	HEIGHT(IN)	WEIGHT(LBS)	SMSFSRQTY	TRSFQRQTY	DESIGN PSF
RSQ-7	27.14	30.23	25.16	80	34	54	90
RSQ-9	39.14	34.86	27.16	110	38	58	90
RSQ-12	39.14	40.23	35.66	140	38	74	90
RSQ-15	51.14	42.74	40.16	180	42	78	90
RSQ-16	51.14	50.98	41.16	200	46	82	90



**RICE**  
ENGINEERING  
105 School Creek Trail  
Luxemburg, WI 54217  
Phone: (920) 617-1042  
Fax: (920) 617-1100  
www.rice-inc.com  
Florida Firm No: F-01000005061  
Certificate of Authorization: #9090  
Wayne K. Helmila  
Registration No: 59092



COMPLETE ISOMETRIC VIEW

ITEM	QTY	DESCRIPTION
1	1	INLET PANEL EXHAUST
2	1	INLET PANEL SUPPLY
3	1	OUTLET PANEL
4	1	TOP PANEL
5	1	BOTTOM PANEL
6	2	ACCESS DOOR
7	4	ISOLATOR RAIL
8	1	MOTOR PLATE BRACKET
9	2	TOP/BOTTOM CURB ADAPTER
10	2	LEFT/RIGHT CURB ADAPTER
11	2	HOOD END PANEL
12	4	HOOD PANEL
13	2	HOOD Z CHANNEL
14	2	HOOD HORIZONTAL RAIL
15	2	HOOD END ANGLE
16	4	HOOD HINGE BRACKET
17	4	U BOLT, .313-18 X 2.532 X 2.75
18	4	FILTER C CHANNEL
19	2	FILTER END ANGLE
20	2	FILTER SHORT C CHANNEL
21	4	BIRDSCREEN CHANNEL
22	4	BIRDSCREEN SHORT CHANNEL
23	4	BIRDSCREEN SMALL CHANNEL
24	4	BIRDSCREEN SMALL SHORT CHANNEL

NOTES:

1. MODEL RSQ HAS BEEN SUCCESSFULLY TESTED IN ACCORDANCE WITH MIAMI DADE TEST PROTOCOL TAS-201 (LARGE MISSILE IMPACT) AND TAS-202 (STATIC LOADING).
2. ROOF STRUCTURE MUST BE DESIGNED TO WITHSTAND THE WEIGHT AND LOADING TRANSMITTED BY ROOF FANS. FASTENERS SHALL BE AS SPECIFIED AND INSTALLED AS DETAILED.
3. DESIGN, TESTING, AND INSTALLATION CONFORMS TO FLORIDA BUILDING CODE.
4. TESTED FOR AREAS INCLUDING HIGH VELOCITY HURRICANE ZONES.
5. THESE FANS HAVE NOT BEEN TESTED FOR WIND DRIVEN RAIN TEST PER FLORIDA BUILDING CODE, TAS-100(A)-95.
6. THIS APPROVAL IS FOR THE STRUCTURAL CAPACITY AND IMPACT RATING OF THE EXTERIOR HOUSING ONLY, IT DOES NOT INCLUDE ANY INTERIOR MECHANISM OR ELECTRICAL COMPONENT.
7. MODEL SHOWN IS IN A EXHAUST/FILTERED CONFIGURATION:
  - WHEN SUPPLY, INLET PANEL EXHAUST (1) IS REPLACED WITH INLET PANEL SUPPLY (2)
  - WHEN BIRDSCREEN, ALL PARTS WITH "FILTER" ARE REPLACED WITH PARTS "BIRDSCREEN"

**GREENHECK**

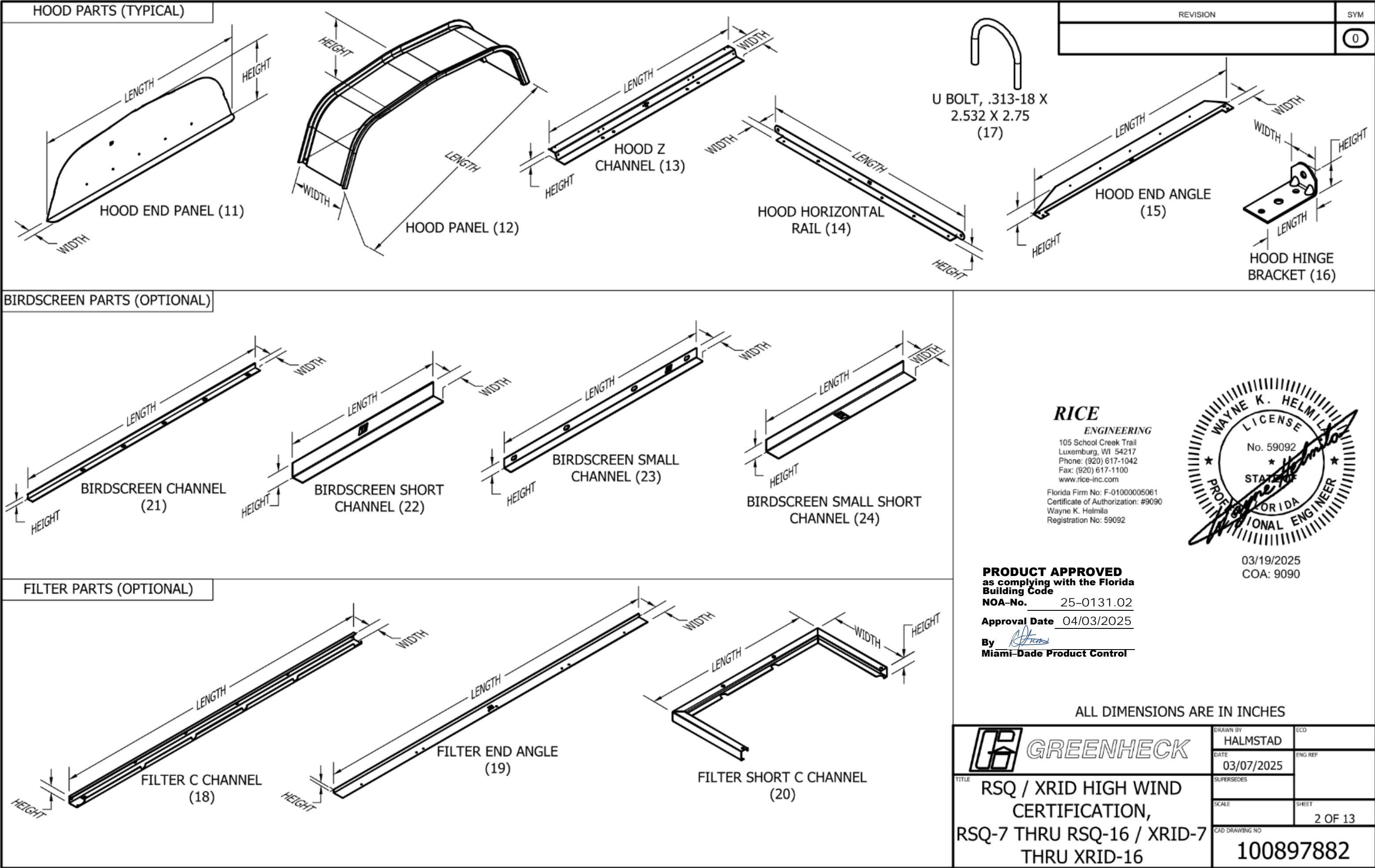
TITLE  
RSQ / XRID HIGH WIND  
CERTIFICATION,  
RSQ-7 THRU RSQ-16 / XRID-7  
THRU XRID-16

DRAWN BY HALMSTAD	ECO
DATE 03/07/2025	ENG REF
SUPERSEDES	
SCALE	SHEET 1 OF 13
CAD DRAWING NO	100897882

REVISION	SYM
	0

**PRODUCT APPROVED**  
as complying with the Florida  
Building Code  
NOA-No. 25-0131.02  
Approval Date 04/03/2025  
By   
Miami-Dade Product Control







														REVISION		SYM	
																0	

HOOD END PANEL (11)					HOOD PANEL (12)					HOOD Z CHANNEL (13)				HOOD HORIZONTAL RAIL (14)			
	LENGTH (IN)	WIDTH (IN)	HEIGHT (IN)	GALV/GVNL	LENGTH (IN)	WIDTH (IN)	HEIGHT (IN)	GALV	GVNL	LENGTH (IN)	WIDTH (IN)	HEIGHT (IN)	GALV/GVNL	LENGTH (IN)	WIDTH (IN)	HEIGHT (IN)	GALV/GVNL
RSQ-7	28.74	1.57	8.75	18 GA	27.24	12.31	8.83	22 GA	20 GA	24	4.21	1.47	12 GA	29.88	1.77	1.85	12 GA
RSQ-9	33.36	1.57	8.75	18 GA	31.59	12.31	8.83	22 GA	20 GA	36	4.21	1.47	12 GA	34.5	1.77	1.85	12 GA
RSQ-12	38.73	1.57	13.80	18 GA	36.64	12.31	13.83	22 GA	20 GA	36	4.21	1.47	12 GA	39.88	1.77	1.85	12 GA
RSQ-15	41.24	1.57	13.80	18 GA	38.99	12.31	13.83	22 GA	20 GA	48	4.21	1.47	12 GA	42.37	1.77	1.85	12 GA
RSQ-16	49.49	1.57	13.80	18 GA	46.74	12.31	13.83	22 GA	20 GA	48	4.21	1.47	12 GA	50.63	1.77	1.85	12 GA

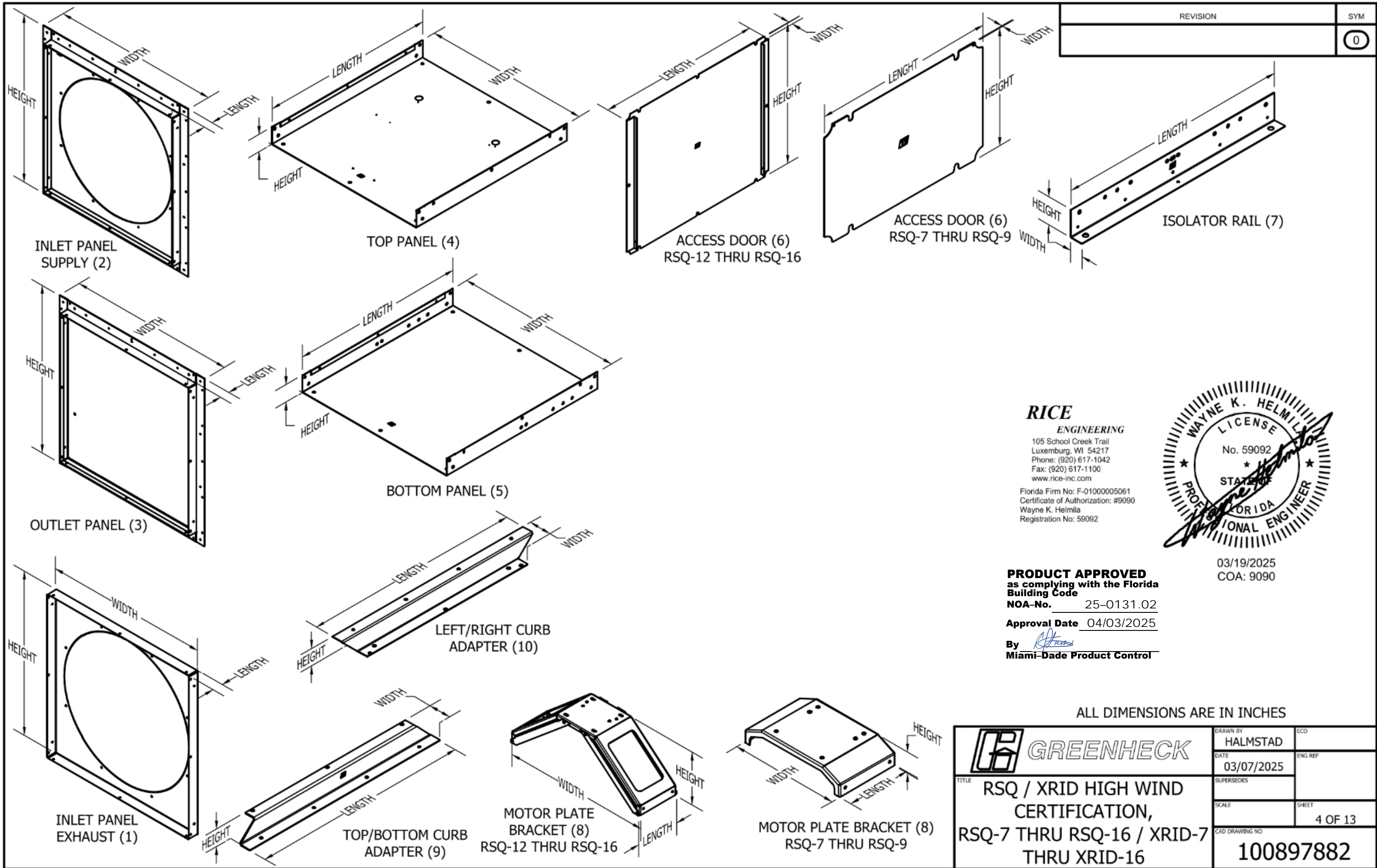
HOOD END ANGLE (15)					HOOD HINGE BRACKET (16)			
	LENGTH (IN)	WIDTH (IN)	HEIGHT (IN)	GALV/GVNL	LENGTH (IN)	WIDTH (IN)	HEIGHT (IN)	GALV/GVNL
RSQ-7	24.24	1.75	3.10	12 GA	4.13	2	1.75	11 GA
RSQ-9	28.86	1.75	3.10	12 GA	4.13	2	1.75	11 GA
RSQ-12	34.24	1.75	3.10	12 GA	4.13	2	1.75	11 GA
RSQ-15	36.74	1.75	3.10	12 GA	4.13	2	1.75	11 GA
RSQ-16	44.99	1.75	3.10	12 GA	4.13	2	1.75	11 GA

FILTER CHANNEL (18)				FILTER END ANGLE (19)				
	LENGTH (IN)	WIDTH (IN)	HEIGHT (IN)	GALV/GVNL	LENGTH (IN)	WIDTH (IN)	HEIGHT (IN)	GALV/GVNL
	23.5	1.37	1	18 GA	30.24	1.5	0.5	18 GA
	35.5	1.37	1	18 GA	34.86	1.5	0.5	18 GA
	35.5	1.37	1	18 GA	40.23	1.5	0.5	18 GA
	47.5	1.37	1	18 GA	42.74	1.5	0.5	18 GA
	47.5	1.37	1	18 GA	50.98	1.5	0.5	18 GA

FILTER SHORT CHANNEL (20)					BIRDSCREEN CHANNEL (21)			
	LENGTH (IN)	WIDTH (IN)	HEIGHT (IN)	GALV/GVNL	LENGTH (IN)	WIDTH (IN)	HEIGHT (IN)	GALV
RSQ-7	11.73	5.87	1.37	18 GA	23.5	1.05	0.86	18 GA
RSQ-9	15.46	10.01	1.37	18 GA	35.5	1.05	0.86	18 GA
RSQ-12	18.63	8.42	1.37	18 GA	35.5	1.05	0.86	18 GA
RSQ-15	22.36	12.56	1.37	18 GA	47.5	1.05	0.86	18 GA
RSQ-16	24.37	11.55	1.37	18 GA	47.5	1.05	0.86	18 GA

BIRDSCREEN SHORT CHANNEL (22)					BIRDSCREEN SMALL CHANNEL (23)			
	LENGTH (IN)	WIDTH (IN)	HEIGHT (IN)	GALV	LENGTH (IN)	WIDTH (IN)	HEIGHT (IN)	GALV
	7.72	0.86	1.05	18 GA	11.43	0.86	1.05	18 GA
	8.16	0.86	1.05	18 GA	15.17	0.86	1.05	18 GA
	9.27	0.86	1.05	18 GA	18.33	0.86	1.05	18 GA
	8.65	0.86	1.05	18 GA	22.07	0.86	1.05	18 GA
	11.77	0.86	1.05	18 GA	24.08	0.86	1.05	18 GA

BIRDSCREEN SMALL SHORT CHANNEL (24)				
	LENGTH (IN)	WIDTH (IN)	HEIGHT (IN)	GALV
RSQ-7	5.78	1.05	0.86	18 GA
RSQ-9	9.91	1.05	0.86	18 GA
RSQ-12	8.33	1.05	0.86	18 GA
RSQ-15	12.46	1.05	0.86	18 GA
RSQ-16	11.45	1.05	0.86	18 GA






REVISION	SYM
	0

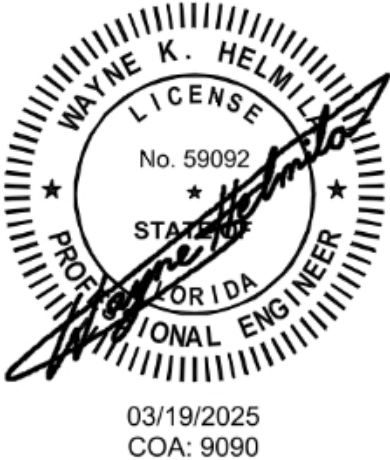
	INLET PANEL EXHAUST (1)				INLET PANEL SUPPLY (2)				OUTLET PANEL (3)				TOP PANEL (4)			
	LENGTH (IN)	WIDTH (IN)	HEIGHT (IN)	GALV/GVNL	LENGTH (IN)	WIDTH (IN)	HEIGHT (IN)	GALV/GVNL	LENGTH (IN)	WIDTH (IN)	HEIGHT (IN)	GALV/GVNL	LENGTH (IN)	WIDTH (IN)	HEIGHT (IN)	GALV/GVNL
RSQ-7	1.50	14.35	14.35	18 GA	1.50	14.35	14.35	18 GA	1.50	14.35	14.35	18 GA	14.21	11.57	2.25	18 GA
RSQ-9	1.50	18.09	18.09	18 GA	1.50	18.09	18.09	18 GA	1.50	18.09	18.09	18 GA	16.21	15.31	2.25	18 GA
RSQ-12	1.50	21.25	21.25	18 GA	1.50	21.25	21.25	18 GA	1.50	21.25	21.25	18 GA	19.71	18.47	2.25	18 GA
RSQ-15	1.50	24.99	24.99	18 GA	1.50	24.99	24.99	18 GA	1.50	24.99	24.99	18 GA	24.21	22.21	2.25	18 GA
RSQ-16	1.50	27.00	27.00	18 GA	1.50	27.00	27.00	18 GA	1.50	27.00	27.00	18 GA	25.21	24.22	2.25	18 GA

	BOTTOM PANEL (5)				ACCESS DOOR (6)				ISOLATOR RAIL (7)				MOTOR PLATE BRACKET (8)			
	LENGTH (IN)	WIDTH (IN)	HEIGHT (IN)	GALV/GVNL	LENGTH (IN)	WIDTH (IN)	HEIGHT (IN)	GALV/GVNL	LENGTH (IN)	WIDTH (IN)	HEIGHT (IN)	GALV/GVNL	LENGTH (IN)	WIDTH (IN)	HEIGHT (IN)	GALV/GVNL
RSQ-7	14.21	11.57	2.25	18 GA	12.75	0.05	8.20	18 GA	14.21	1.39	3.00	14 GA	6.70	11.43	2.21	14 GA
RSQ-9	16.21	15.31	2.25	18 GA	14.75	0.05	11.44	18 GA	16.21	1.39	3.00	14 GA	6.70	15.16	4.08	14 GA
RSQ-12	19.71	18.47	2.25	18 GA	18.25	0.55	14.60	18 GA	19.71	1.39	3.00	14 GA	7.04	18.19	5.63	14 GA
RSQ-15	24.21	22.21	2.25	18 GA	22.75	0.55	18.34	18 GA	24.21	1.39	3.00	14 GA	7.04	21.93	7.49	14 GA
RSQ-16	25.21	24.22	2.25	18 GA	23.75	0.55	20.35	18 GA	25.21	1.39	3.00	14 GA	7.04	23.94	8.50	14 GA


	TOP/BOTTOM CURB ADAPTER (9)				LEFT/RIGHT CURB ADAPTER (10)			
	LENGTH (IN)	WIDTH (IN)	HEIGHT (IN)	GALV/GVNL	LENGTH (IN)	WIDTH (IN)	HEIGHT (IN)	GALV/GVNL
RSQ-7	15.66	2.9	2.25	14 GA	15.66	2.9	2.25	14 GA
RSQ-9	19.4	2.9	2.25	14 GA	19.4	2.9	2.25	14 GA
RSQ-12	22.56	2.9	2.25	14 GA	22.56	2.9	2.25	14 GA
RSQ-15	26.3	2.9	2.25	14 GA	26.3	2.9	2.25	14 GA
RSQ-16	28.31	2.9	2.25	14 GA	28.31	2.9	2.25	14 GA

**PRODUCT APPROVED**  
as complying with the Florida  
Building Code  
NOA-No. 25-0131.02  
Approval Date 04/03/2025  
By   
Miami-Dade Product Control

**RICE**  
ENGINEERING  
105 School Creek Trail  
Luxemburg, WI 54217  
Phone: (920) 617-1042  
Fax: (920) 617-1100  
www.rice-inc.com  
Florida Firm No: F-01000005061  
Certificate of Authorization: #9090  
Wayne K. Helmilla  
Registration No: 59092



ALL DIMENSIONS ARE IN INCHES

 <b>GREENHECK</b> <small>TITLE</small> RSQ / XRID HIGH WIND CERTIFICATION, RSQ-7 THRU RSQ-16 / XRID-7 THRU XRID-16	<small>DRAWN BY</small> HALMSTAD	<small>ECO</small>
	<small>DATE</small> 03/07/2025	<small>ENG REF</small>
	<small>SUPERSEDES</small>	
	<small>SCALE</small>	<small>SHEET</small> 5 OF 13
<small>CAD DRAWING NO</small> 100897882		



21

22

29

19

23

25

24

26

27

28

4

17

9

18

BOLT,HSF, .375-16X1,GR5,ZP

QTY. 4

NUT,HSF, .375-16,GR5,ZP

QTY. 4

BOLT,HSF, .313-18X.75,GR5,ZP

QTY. 4

NUT,HSF, .313-18,GR5,ZP

QTY. 4

3

8

9

4

17

7

18

9

BOLT,HSF, .375-16X1,GR5,ZP

QTY. 4

NUT,HSF, .375-16,GR5,ZP

QTY. 4

BOLT,HSF, .313-18X.75,GR5,ZP

QTY. 4

NUT,HSF, .313-18,GR5,ZP

QTY. 4

8

15

5

11

16

9

14

18

12

17

1

13

7

10

BOLT,HSF, .375-16X1,GR5,ZP

QTY. 4

NUT,HSF, .375-16,GR5,ZP

QTY. 4

BOLT,HSF, .313-18X.75,GR5,ZP

QTY. 4

NUT,HSF, .313-18,GR5,ZP

QTY. 4

REVISION

SYM

0

RICE

ENGINEERING

105 School Creek Trail

Luxemburg, WI 54217

Phone: (920) 617-1042

Fax: (920) 617-1100

www.rice-inc.com

Florida Firm No: F-01000005061

Certificate of Authorization: #9090

Wayne K. Helmila

Registration No: 59092

03/19/2025

COA: 9090


PRODUCT APPROVED

as complying with the Florida

Building Code

NOA-No. 25-0131.02

Approval Date 04/03/2025

By 

Miami-Dade Product Control

	LENGTH(IN)	WIDTH(IN)	HEIGHT(IN)	WEIGHT(LBS)	SMSFSRQTY	TRSFQRQTY	DESIGN PSF
RSQ-18	63.14	50.11	42.22	260	50	114	90
RSQ-20	63.14	61.36	44.80	290	50	118	90
RSQ-22	75.14	61.49	47.65	330	54	124	90
RSQ-24	75.14	74.49	55.10	410	54	124	90
RSQ-27	87.14	75.99	58.54	540	62	140	40
RSQ-30	87.14	89.36	64.56	760	66	144	40
RSQ-33	99.14	93.86	69.87	850	70	148	40

LENGTH

WIDTH

HEIGHT

TRSFQRQTY

DESIGN PSF

SMS, IHWH, #12-11 x .625,

ZP, TYP A, W/ EPDM

QTY. XX

NUT,HSF, .313-18,GR5,ZP

QTY. 16

COMPLETE ISOMETRIC VIEW

ITEM	QTY	DESCRIPTION
1	1	INLET PANEL EXHAUST
2	1	INLET PANEL SUPPLY
3	1	OUTLET PANEL
4	1	TOP PANEL
5	1	BOTTOM PANEL
6	2	ACCESS DOOR
7	2	ACCESS DOOR A
8	2	ACCESS DOOR B
9	4	ISOLATOR RAIL
10	2	ELECTRIC BOX/WIRE SUPPORT
11	1	MOTOR PLATE
12	1	MOTOR PLATE SUPPORT
13	2	MOTOR PLATE SUPPORT BRACKET
14	1	MOTOR BASE LEFT
15	1	MOTOR BASE RIGHT
16	2	CENTER CHANNEL
17	2	TOP/BOTTOM CURB ADAPTER
18	2	LEFT/RIGHT CURB ADAPTER
19	2	HOOD END PANEL
20	8	HOOD PANEL
21	2	HOOD Z CHANNEL
22	2	HOOD HORIZONTAL RAIL
23	2	HOOD END ANGLE
24	4	HOOD HINGE BRACKET
25	4	U BOLT, .313-18 X 2.532 X 2.75
26	4	HOOD SUPPORT ANGLE
27	4	FILTER C CHANNEL
28	2	FILTER END ANGLE
29	4	FILTER SHORT C CHANNEL
30	4	BIRDSCREEN CHANNEL
31	4	BIRDSCREEN SHORT CHANNEL
32	4	BIRDSCREEN SMALL CHANNEL
33	4	BIRDSCREEN SMALL SHORT CHANNEL

NOTES:

1. MODEL RSQ HAS BEEN SUCCESSFULLY TESTED IN ACCORDANCE WITH MIAMI DADE TEST PROTOCOL TAS-201 (LARGE MISSILE IMPACT) AND TAS-202 (STATIC LOADING).

2. ROOF STRUCTURE MUST BE DESIGNED TO WITHSTAND THE WEIGHT AND LOADING TRANSMITTED BY ROOF FANS. FASTENERS SHALL BE AS SPECIFIED AND INSTALLED AS DETAILED.

3. DESIGN, TESTING, AND INSTALLATION CONFORMS TO FLORIDA BUILDING CODE.


4. TESTED FOR AREAS INCLUDING HIGH VELOCITY HURRICANE ZONES.

5. THESE FANS HAVE NOT BEEN TESTED FOR WIND DRIVEN RAIN TEST PER FLORIDA BUILDING CODE, TAS-100(A)-95.

6. THIS APPROVAL IS FOR THE STRUCTURAL CAPACITY AND IMPACT RATING OF THE EXTERIOR HOUSING ONLY, IT DOES NOT INCLUDE ANY INTERIOR MECHANISM OR ELECTRICAL COMPONENT.

7. MODEL SHOWN IS IN A EXHAUST/FILTERED CONFIGURATION:

- WHEN SUPPLY, INLET PANEL EXHAUST (1) IS REPLACED WITH INLET PANEL SUPPLY (2)
- WHEN BIRDSCREEN, ALL PARTS WITH "FILTER" ARE REPLACED WITH PARTS "BIRDSCREEN"



GREENHECK

RSQ / XRID HIGH WIND

CERTIFICATION,

RSQ-18 THRU RSQ-33 /

XRID-18 THRU XRID-33

DRAWN BY

HALMSTAD

DATE

03/07/2025

SUPERSEDES

SCALE

CAD DRAWING NO

ECO

ENG REF

SHEET

6 OF 13

100897882





														REVISION		SYM	
																0	
HOOD END PANEL (19)					HOOD PANEL (20)					HOOD Z PANEL (21)				HOOD HORIZONTAL RAIL (22)			
	LENGTH(IN)	WDHT(IN)	HEIGHT(IN)	GALV/GVNL	LENGTH(IN)	WDHT(IN)	HEIGHT(IN)	GALV	GVNL	LENGTH(IN)	WDHT(IN)	HEIGHT(IN)	GALV/GVNL	LENGTH(IN)	WDHT(IN)	HEIGHT(IN)	GALV/GVNL
RSQ-18	48.61	1.57	13.80	18 GA	45.92	12.31	13.83	22 GA	20 GA	60.00	4.21	1.47	12 GA	49.75	1.77	1.85	12 GA
RSQ-20	59.86	1.57	13.80	18 GA	56.49	12.31	13.83	22 GA	20 GA	60.00	4.21	1.47	12 GA	61.00	1.77	1.85	12 GA
RSQ-22	59.99	1.57	13.80	18 GA	56.61	12.31	13.83	22 GA	20 GA	72.00	4.21	1.47	12 GA	61.12	1.77	1.85	12 GA
RSQ-24	72.99	1.57	17.80	18 GA	68.82	12.31	17.83	22 GA	20 GA	72.00	4.21	1.47	12 GA	74.13	1.77	1.85	12 GA
RSQ-27	74.49	1.57	17.80	18 GA	70.23	12.31	17.83	22 GA	20 GA	84.00	4.21	1.47	12 GA	75.62	1.77	1.85	12 GA
RSQ-30	87.86	1.57	19.80	18 GA	82.80	12.31	19.83	22 GA	20 GA	84.00	4.21	1.47	12 GA	89.00	1.77	1.85	12 GA
RSQ-33	92.36	1.57	20.80	18 GA	87.03	12.31	20.83	22 GA	20 GA	96.00	4.21	1.47	12 GA	93.50	1.77	1.85	12 GA

HOOD END ANGLE (23)					HOOD HINGE BRACKET (24)			
	LENGTH(IN)	WDHT(IN)	HEIGHT(IN)	GALV/GVNL	LENGTH(IN)	WDHT(IN)	HEIGHT(IN)	GALV/GVNL
RSQ-18	44.11	1.75	3.10	12 GA	4.13	2.00	1.75	11 GA
RSQ-20	55.36	1.75	3.10	12 GA	4.13	2.00	1.75	11 GA
RSQ-22	55.49	1.75	3.10	12 GA	4.13	2.00	1.75	11 GA
RSQ-24	68.49	1.75	3.10	12 GA	4.13	2.00	1.75	11 GA
RSQ-27	69.99	1.75	3.10	12 GA	4.13	2.00	1.75	11 GA
RSQ-30	83.36	1.75	3.10	12 GA	4.13	2.00	1.75	11 GA
RSQ-33	87.86	1.75	3.10	12 GA	4.13	2.00	1.75	11 GA

HOOD SUPPORT ANGLE (26)				FILTER CHANNEL (27)				
	LENGTH(IN)	WDHT(IN)	HEIGHT(IN)	GALV/GVNL	LENGTH(IN)	WDHT(IN)	HEIGHT(IN)	GALV/GVNL
	17.33	1.65	1.50	18 GA	59.50	1.37	1.00	18 GA
	21.21	1.65	1.50	18 GA	59.50	1.37	1.00	18 GA
	21.32	1.65	1.50	18 GA	71.50	1.37	1.00	18 GA
	25.86	1.65	1.50	18 GA	71.50	1.37	1.00	18 GA
	26.42	1.65	1.50	18 GA	83.50	1.37	1.00	18 GA
	31.11	1.65	1.50	18 GA	83.50	1.37	1.00	18 GA
	32.71	1.65	1.50	18 GA	95.50	1.37	1.00	18 GA

FILTER END ANGLE (28)					FILTER SHORT CHANNEL (29)			
	LENGTH(IN)	WDHT(IN)	HEIGHT(IN)	GALV/GVNL	LENGTH(IN)	WDHT(IN)	HEIGHT(IN)	GALV/GVNL
RSQ-18	50.11	1.50	0.50	18 GA	26.96	16.26	1.37	18 GA
RSQ-20	61.36	1.50	0.50	18 GA	29.55	14.96	1.37	18 GA
RSQ-22	61.49	1.50	0.50	18 GA	32.42	19.52	1.37	18 GA
RSQ-24	74.48	1.50	0.50	18 GA	35.88	17.80	1.37	18 GA
RSQ-27	75.99	1.50	0.50	18 GA	39.32	22.07	1.37	18 GA
RSQ-30	89.36	1.50	0.50	18 GA	21.64	20.06	1.37	18 GA
RSQ-33	93.86	1.50	0.50	18 GA	23.80	23.91	1.37	18 GA

BIRDSCREEN CHANNEL (30)				BIRDSCREEN SHORT CHANNEL (31)				
	LENGTH(IN)	WDHT(IN)	HEIGHT(IN)	GALV	LENGTH(IN)	WDHT(IN)	HEIGHT(IN)	GALV
	59.50	1.05	0.86	18 GA	10.03	0.86	1.05	18 GA
	59.50	1.05	0.86	18 GA	14.37	0.86	1.05	18 GA
	71.50	1.05	0.86	18 GA	12.99	0.86	1.05	18 GA
	71.50	1.05	0.86	18 GA	17.77	0.86	1.05	18 GA
	83.50	1.05	0.86	18 GA	16.79	0.86	1.05	18 GA
	83.50	1.05	0.86	18 GA	21.47	0.86	1.05	18 GA
	95.50	1.05	0.86	18 GA	21.56	0.86	1.05	18 GA

BIRDSCREEN SMALL CHANNEL (32)				BIRDSCREEN SMALL SHORT CHANNEL (33)				
	LENGTH(IN)	WDHT(IN)	HEIGHT(IN)	GALV	LENGTH(IN)	WDHT(IN)	HEIGHT(IN)	GALV
RSQ-18	26.67	0.86	1.05	18 GA	16.16	1.05	0.86	18 GA
RSQ-20	29.26	0.86	1.05	18 GA	14.86	1.05	0.86	18 GA
RSQ-22	32.13	0.86	1.05	18 GA	19.43	1.05	0.86	18 GA
RSQ-24	35.58	0.86	1.05	18 GA	17.70	1.05	0.86	18 GA
RSQ-27	39.03	0.86	1.05	18 GA	21.98	1.05	0.86	18 GA
RSQ-30	43.06	0.86	1.05	18 GA	19.96	1.05	0.86	18 GA
RSQ-33	47.37	0.86	1.05	18 GA	23.81	1.05	0.86	18 GA

03/19/2025  
COA: 9090

**RICE**  
ENGINEERING  
105 School Creek Trail  
Luxemburg, WI 54217  
Phone: (920) 617-1042  
Fax: (920) 617-1100  
www.rice-inc.com  
Florida Firm No: F-01000005061  
Certificate of Authorization: #9090  
Wayne K. Helmilt  
Registration No: 59092

**PRODUCT APPROVED**  
as complying with the Florida  
Building Code  
NOA-No. 25-0131.02  
Approval Date 04/03/2025  
By   
Miami-Dade Product Control

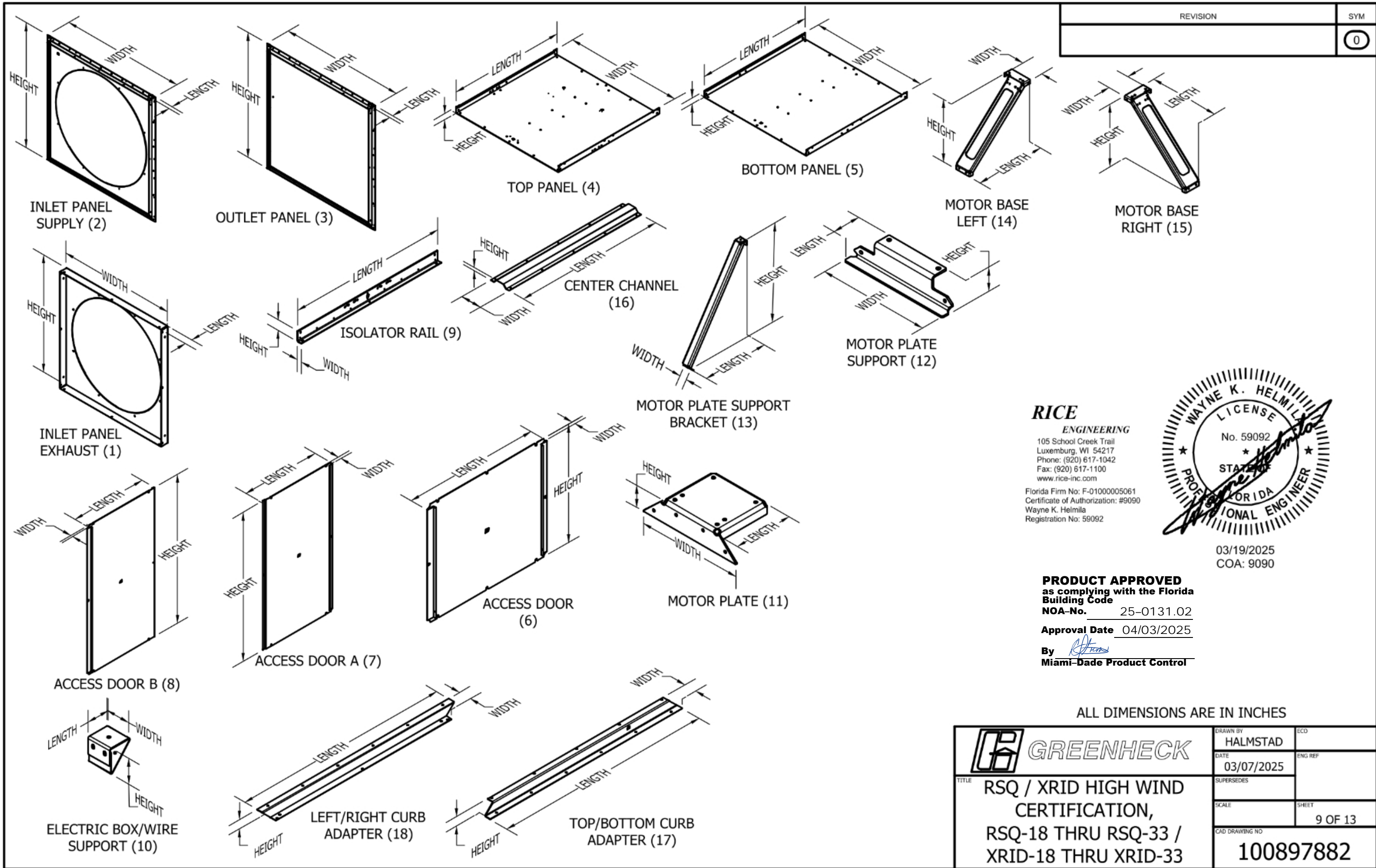
ALL DIMENSIONS ARE IN INCHES

**GREENHECK**

**RSQ / XRID HIGH WIND  
CERTIFICATION,  
RSQ-18 THRU RSQ-33 /  
XRID-18 THRU XRID-33**

DRAWN BY <b>HALMSTAD</b>	ECO
DATE <b>03/07/2025</b>	ENG REF
SUPERSEDES	
SCALE	SHEET <b>8 OF 13</b>
CAD DRAWING NO <b>100897882</b>	






REVISION	SYM
	0

	INLET PANEL EXHAUST (1)				INLET PANEL SUPPLY (2)				OUTLET PANEL (3)				TOP PANEL (4)			
	LENGTH (IN)	WIDTH (IN)	HEIGHT (IN)	GALV/GVNL	LENGTH (IN)	WIDTH (IN)	HEIGHT (IN)	GALV/GVNL	LENGTH (IN)	WIDTH (IN)	HEIGHT (IN)	GALV/GVNL	LENGTH (IN)	WIDTH (IN)	HEIGHT (IN)	GALV/GVNL
RSQ-18	1.50	29.59	29.59	18 GA	1.50	29.59	29.59	18 GA	1.50	29.59	29.59	18 GA	26.29	26.81	2.25	18 GA
RSQ-20	1.50	32.18	32.18	18 GA	1.50	32.18	32.18	18 GA	1.50	32.18	32.18	18 GA	28.88	29.40	2.25	18 GA
RSQ-22	1.50	35.05	35.05	18 GA	1.50	35.05	35.05	18 GA	1.50	35.05	35.05	18 GA	31.76	32.27	2.25	18 GA
RSQ-24	1.50	38.50	38.50	18 GA	1.50	38.50	38.50	18 GA	1.50	38.50	38.50	18 GA	35.21	35.72	2.25	18 GA
RSQ-27	1.50	41.95	41.95	14 GA	1.50	41.95	41.95	14 GA	1.50	41.95	41.95	14 GA	38.51	39.22	2.25	14 GA
RSQ-30	1.50	45.98	45.98	14 GA	1.50	45.98	45.98	14 GA	1.50	45.98	45.98	14 GA	42.54	43.24	2.25	14 GA
RSQ-33	1.50	50.29	50.29	14 GA	1.50	50.29	50.29	14 GA	1.50	50.29	50.29	14 GA	46.85	47.55	2.25	14 GA

	BOTTOM PANEL (5)				ACCESS DOOR (6)				ACCESS DOOR A (7)				ACCESS DOOR B (8)			
	LENGTH (IN)	WIDTH (IN)	HEIGHT (IN)	GALV/GVNL	LENGTH (IN)	WIDTH (IN)	HEIGHT (IN)	GALV/GVNL	LENGTH (IN)	WIDTH (IN)	HEIGHT (IN)	GALV/GVNL	LENGTH (IN)	WIDTH (IN)	HEIGHT (IN)	GALV/GVNL
RSQ-18	26.29	26.81	2.25	18 GA	24.84	0.55	22.94	18 GA	---	---	---	---	---	---	---	---
RSQ-20	28.88	29.40	2.25	18 GA	22.42	0.55	25.52	18 GA	---	---	---	---	---	---	---	---
RSQ-22	31.76	32.27	2.25	18 GA	---	---	---	---	15.79	0.70	28.40	18 GA	15.13	0.55	28.40	18 GA
RSQ-24	35.21	35.72	2.25	18 GA	---	---	---	---	17.52	0.70	31.85	18 GA	16.86	0.55	31.85	18 GA
RSQ-27	38.51	39.22	2.25	14 GA	---	---	---	---	19.24	0.79	35.34	14 GA	18.58	0.57	35.34	14 GA
RSQ-30	42.54	43.24	2.25	14 GA	---	---	---	---	21.25	0.79	39.37	14 GA	20.60	0.57	39.37	14 GA
RSQ-33	46.85	47.55	2.25	14 GA	---	---	---	---	23.41	0.79	43.68	14 GA	22.75	0.57	43.68	14 GA

	ISOLATOR RAIL (9)				ELECTRIC BOX/WIRE SUPPORT (10)				MOTOR PLATE (11)				MOTOR PLATE SUPPORT (12)			
	LENGTH (IN)	WIDTH (IN)	HEIGHT (IN)	GALV/GVNL	LENGTH (IN)	WIDTH (IN)	HEIGHT (IN)	GALV/GVNL	LENGTH (IN)	WIDTH (IN)	HEIGHT (IN)	GALV/GVNL	LENGTH (IN)	WIDTH (IN)	HEIGHT (IN)	GALV/GVNL
RSQ-18	26.29	1.39	3.00	12 GA	2.02	2.17	2.30	18 GA	6.70	10.81	1.75	12 GA	2.43	10.02	1.65	12 GA
RSQ-20	28.88	1.39	3.00	12 GA	2.02	2.17	2.30	18 GA	6.70	10.75	1.75	12 GA	2.43	9.97	1.65	12 GA
RSQ-22	31.76	1.39	3.00	10 GA	2.02	2.17	2.30	18 GA	6.70	12.34	2.50	10 GA	2.79	11.16	2.37	10 GA
RSQ-24	35.21	1.39	3.00	10 GA	2.02	2.17	2.30	18 GA	6.70	12.27	2.50	10 GA	2.79	11.10	2.37	10 GA
RSQ-27	38.51	1.39	3.00	8 GA	2.02	2.17	2.30	14 GA	6.70	12.11	2.50	8 GA	2.75	10.96	2.33	8 GA
RSQ-30	42.54	1.39	3.00	8 GA	2.02	2.17	2.30	14 GA	6.70	12.06	2.50	8 GA	2.75	10.92	2.33	8 GA
RSQ-33	46.85	1.39	3.00	8 GA	2.02	2.17	2.30	14 GA	6.70	12.02	2.50	8 GA	2.75	10.89	2.33	8 GA


**PRODUCT APPROVED**  
as complying with the Florida  
Building Code  
**NOA-No.** 25-0131.02  
**Approval Date** 04/03/2025  
By   
**Miami-Dade Product Control**

**RICE**  
ENGINEERING  
105 School Creek Trail  
Luxemburg, WI 54217  
Phone: (920) 617-1042  
Fax: (920) 617-1100  
www.rice-inc.com  
Florida Firm No: F-01000005061  
Certificate of Authorization: #9090  
Wayne K. Helmilla  
Registration No: 59092



03/19/2025  
COA: 9090

ALL DIMENSIONS ARE IN INCHES


 <b>GREENHECK</b> <b>RSQ / XRID HIGH WIND  CERTIFICATION,  RSQ-18 THRU RSQ-33 /  XRID-18 THRU XRID-33</b>	DRAWN BY <b>HALMSTAD</b>	ECO
	DATE <b>03/07/2025</b>	ENG REF
	SUPERSEDES	
	SCALE	SHEET <b>10 OF 13</b>
CAD DRAWING NO <b>100897882</b>		



REVISION	SYM
	0

	MOTOR PLATE SUPPORT BRACKET (13)				MOTOR BASE LEFT (14)				MOTOR BASE RIGHT (15)				CENTER CHANNEL (16)			
	LENGTH (IN)	WIDTH (IN)	HEIGHT (IN)	GALV/GVNL	LENGTH (IN)	WIDTH (IN)	HEIGHT (IN)	GALV/GVNL	LENGTH (IN)	WIDTH (IN)	HEIGHT (IN)	GALV/GVNL	LENGTH (IN)	WIDTH (IN)	HEIGHT (IN)	GALV/GVNL
RSQ-18	9.30	2.10	17.85	12 GA	12.21	6.94	9.79	12 GA	12.21	6.94	9.79	12 GA	23.46	6.15	1.00	18 GA
RSQ-20	10.59	2.10	19.28	12 GA	13.51	6.94	11.09	12 GA	13.51	6.94	11.09	12 GA	26.05	6.15	1.00	18 GA
RSQ-22	11.97	2.13	20.86	10 GA	14.94	6.94	12.53	10 GA	14.94	6.94	12.53	10 GA	28.93	6.15	1.00	18 GA
RSQ-24	13.69	2.13	22.76	10 GA	16.67	6.94	14.25	10 GA	16.67	6.94	14.25	10 GA	32.38	6.15	1.00	18 GA
RSQ-27	15.33	2.17	24.66	8 GA	18.39	6.94	15.98	8 GA	18.39	6.94	15.98	8 GA	35.82	6.15	1.00	14 GA
RSQ-30	17.34	2.17	26.87	8 GA	20.41	6.94	17.99	8 GA	20.41	6.94	17.99	8 GA	39.85	6.15	1.00	14 GA
RSQ-33	19.50	2.17	29.26	8 GA	22.56	6.94	20.14	8 GA	22.56	6.94	20.14	8 GA	44.16	6.15	1.00	14 GA


	TOP/BOTTOM CURB ADAPTER (17)				LEFT/RIGHT CURB ADAPTER (18)			
	LENGTH (IN)	WIDTH (IN)	HEIGHT (IN)	GALV/GVNL	LENGTH (IN)	WIDTH (IN)	HEIGHT (IN)	GALV/GVNL
RSQ-18	30.84	2.90	2.25	14 GA	30.84	2.90	2.25	14 GA
RSQ-20	33.42	2.90	2.25	14 GA	33.42	2.90	2.25	14 GA
RSQ-22	36.24	2.90	2.25	12 GA	36.24	2.90	2.25	12 GA
RSQ-24	39.69	2.90	2.25	12 GA	39.69	2.90	2.25	12 GA
RSQ-27	43.07	2.90	2.25	12 GA	43.07	2.90	2.25	12 GA
RSQ-30	47.10	2.90	2.25	12 GA	47.10	2.90	2.25	12 GA
RSQ-33	51.41	2.90	2.25	12 GA	51.41	2.90	2.25	12 GA

**PRODUCT APPROVED**  
as complying with the Florida  
Building Code  
NOA-No. 25-0131.02  
Approval Date 04/03/2025  
By   
Miami-Dade Product Control

**RICE**  
ENGINEERING  
105 School Creek Trail  
Luxemburg, WI 54217  
Phone: (920) 617-1042  
Fax: (920) 617-1100  
www.rice-inc.com  
Florida Firm No: F-01000005061  
Certificate of Authorization: #9090  
Wayne K. Helmila  
Registration No: 59092



ALL DIMENSIONS ARE IN INCHES

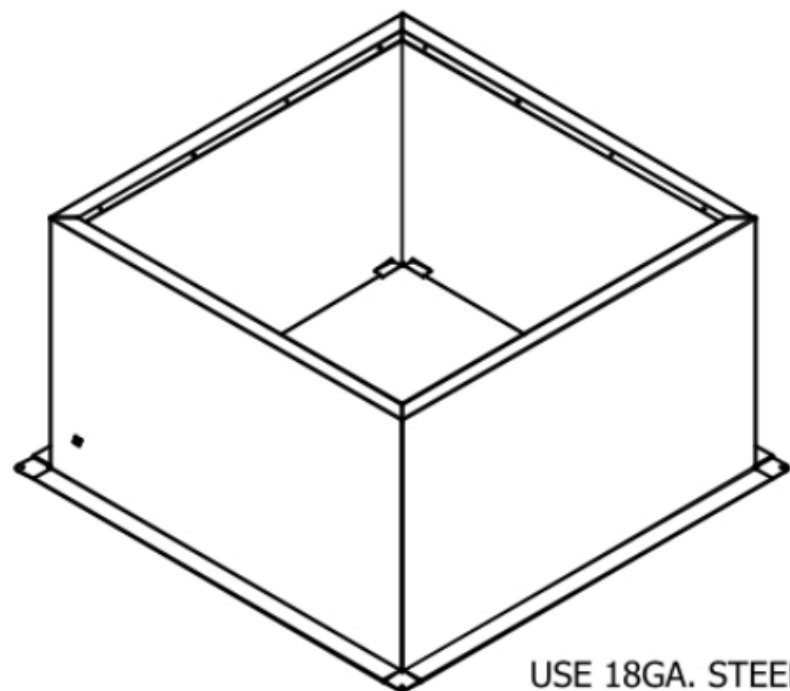
 <b>GREENHECK</b> <small>TITLE</small> RSQ / XRID HIGH WIND CERTIFICATION, RSQ-18 THRU RSQ-33 / XRID-18 THRU XRID-33	<small>DRAWN BY</small> HALMSTAD	<small>ECO</small>
	<small>DATE</small> 03/07/2025	<small>ENG REF</small>
	<small>SUPERSEDES</small>	
	<small>SCALE</small>	<small>SHEET</small> 11 OF 13
	<small>CAD DRAWING NO</small> 100897882	



90 PSF RATING	RSQ / XRID ON CURB	CONCRETE DECK ANCHORING		STEEL ANCHORING		TIMBER ANCHORING		THRU-BOLT ANCHORING	
		MINIMUM ANCHORS PER SIDE	MINIMUM TOTAL ANCHORS	MINIMUM ANCHORS PER SIDE	MINIMUM TOTAL ANCHORS	MINIMUM ANCHORS PER SIDE	MINIMUM TOTAL ANCHORS	MINIMUM ANCHORS PER SIDE	MINIMUM TOTAL ANCHORS
	RSQ-7	3	8	5	16	4	12	3	8
	RSQ-9	3	8	6	20	4	12	3	8
	RSQ-12	4	12	7	24	5	16	3	8
	RSQ-15	4	12	8	28	5	16	3	8
	RSQ-16	4	12	8	28	6	20	3	8
	RSQ-18	5	16	9	32	6	20	4	12
	RSQ-20	5	16	9	32	6	20	4	12
	RSQ-22	5	16	10	36	7	24	4	12
	RSQ-24	6	20	11	40	7	24	4	12

40 PSF RATING	RSQ / XRID ON CURB	CONCRETE DECK ANCHORING		STEEL ANCHORING		TIMBER ANCHORING		THRU-BOLT ANCHORING	
		MINIMUM ANCHORS PER SIDE	MINIMUM TOTAL ANCHORS	MINIMUM ANCHORS PER SIDE	MINIMUM TOTAL ANCHORS	MINIMUM ANCHORS PER SIDE	MINIMUM TOTAL ANCHORS	MINIMUM ANCHORS PER SIDE	MINIMUM TOTAL ANCHORS
	RSQ-27	4	12	6	20	4	12	4	12
	RSQ-30	5	16	6	20	5	16	5	16
	RSQ-33	5	16	7	24	5	16	5	16

NOTE: ALL FASTENER QUANTITIES INCLUDE CORNER FASTENERS



USE 18GA. STEEL CURB MAX 24"  
TALL. (FY=25KSI)

**RICE**  
ENGINEERING  
105 School Creek Trail  
Luxemburg, WI 54217  
Phone: (920) 617-1042  
Fax: (920) 617-1100  
www.rice-inc.com  
Florida Firm No: F-01000005061  
Certificate of Authorization: #9090  
Wayne K. Helmila  
Registration No: 59092



03/19/2025  
COA: 9090

**PRODUCT APPROVED**  
as complying with the Florida  
Building Code  
NOA-No. 25-0131.02  
Approval Date 04/03/2025  
By *[Signature]*  
Miami-Dade Product Control

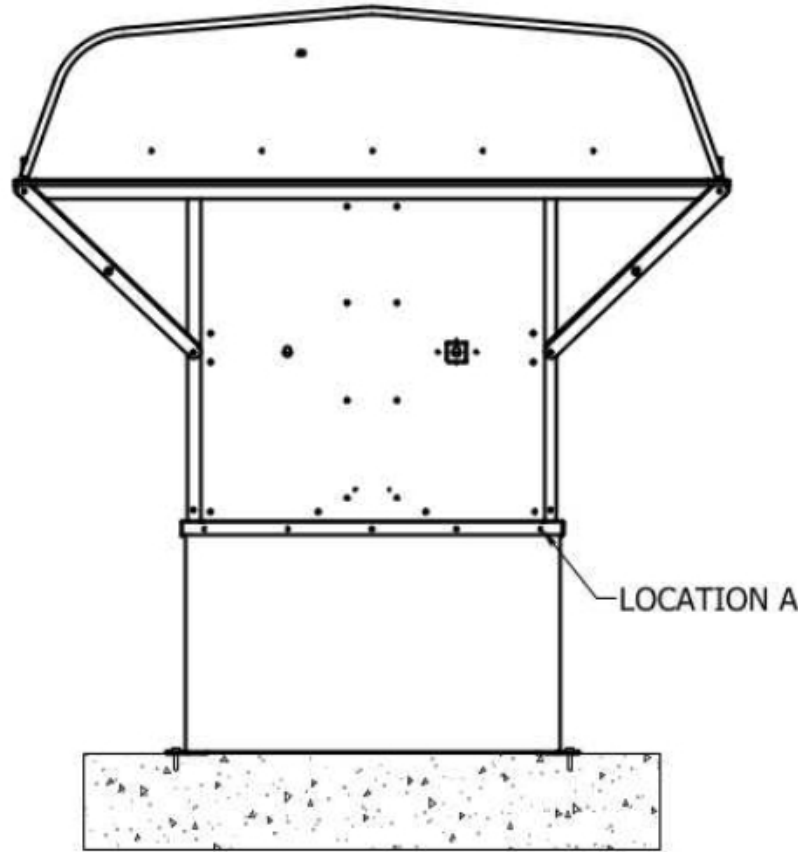
**ANCHORAGE INTO CONCRETE**  
USE 3/8" DIA. HILTI KWIK HUS-EZ ANCHORS (S.S. 316)  
2-1/2" MIN. EMBEDMENT  
2-1/2" MIN. EDGE DISTANCE  
4" MIN. END DISTANCE  
MIN. 4-3/4" THICK CONCRETE (F'C = 3000 PSI) (DESIGN BY OTHERS)  
ADD 2" x 2" x 1/4" THICK GALV. STEEL (A36) PLATE WASHERS  
AT EACH FASTENER. REFERENCE CHART FOR MINIMUM QUANTITY OF  
ANCHORS.

**ANCHORAGE INTO STEEL**  
USE 5/16-18 FASTENERS S.S. SERIES 300 COND. CW  
INTO 0.105" MIN. THICK STEEL FRAMING. (FY=36KSI) (DESIGN BY OTHERS)  
ADD 2" x 2" x 1/4" THICK GALV. STEEL (A36) PLATE WASHERS  
AT EACH FASTENER. REFERENCE CHART FOR MINIMUM QUANTITY OF  
ANCHORS.

**ANCHORAGE INTO TIMBER**  
USE 1/2" DIA. LAG BOLT S.S. SERIES 300 COND. CW  
WOOD FRAMING SG = 0.42 MIN. 4" MIN. THICK (DESIGN BY OTHERS)  
3-1/4" MIN. PENETRATION  
1-1/2" MIN. EDGE DISTANCE  
4" MIN. END DISTANCE  
ADD 2" x 2" x 1/4" THICK GALV. STEEL (A36) PLATE WASHERS  
AT EACH FASTENER. REFERENCE CHART FOR MINIMUM QUANTITY OF  
ANCHORS.

**THRU-BOLT ANCHORAGE**  
USE 1/2"-13 DIA. THRU-BOLTS S.S. SERIES 300 COND. CW  
THROUGH STEEL FRAMING (FY=36KSI), WOOD FRAMING (SG = 0.42), OR  
CONCRETE (F'C = 3000 PSI) (DESIGN BY OTHERS)  
ADD 2" x 2" x 1/4" THICK GALV. STEEL (A36) PLATE WASHERS  
AT EACH FASTENER. REFERENCE CHART FOR MINIMUM QUANTITY OF  
ANCHORS.

	DRAWN BY HALMSTAD	ECO
	DATE 03/07/2025	ENG REF
	SUPERSEDES	
	SCALE	SHEET 12 OF 13
RSQ / XRID, CURB FSR QTY, HIGH WIND		CAD DRAWING NO 100897882

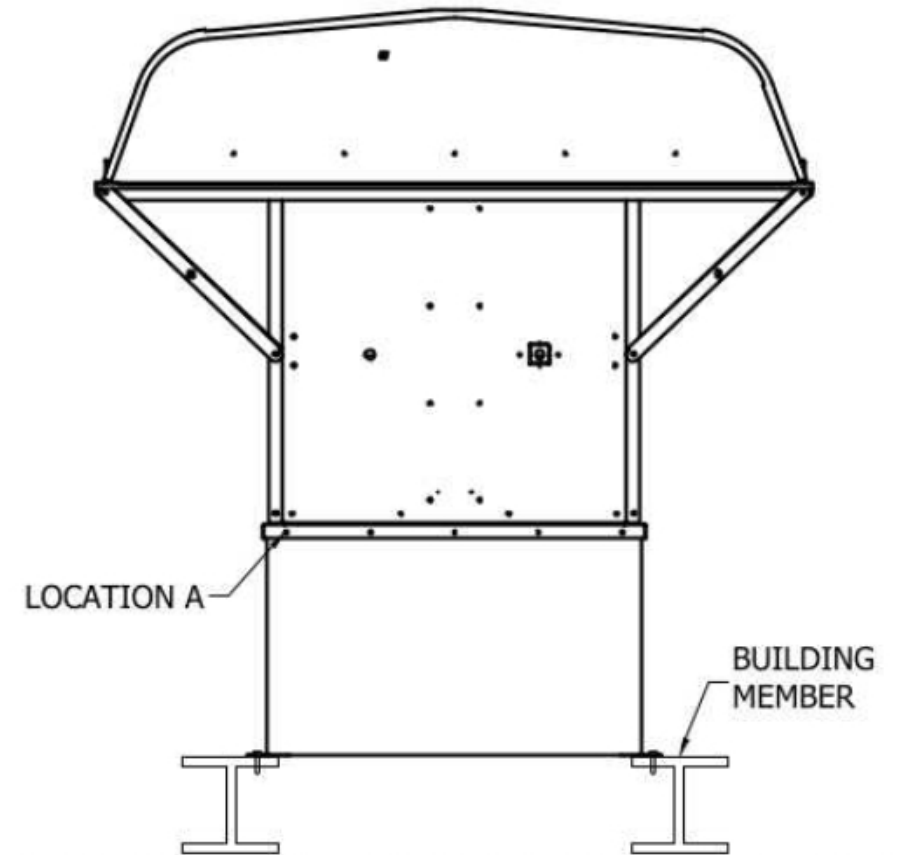


CONCRETE DECK ANCHORING

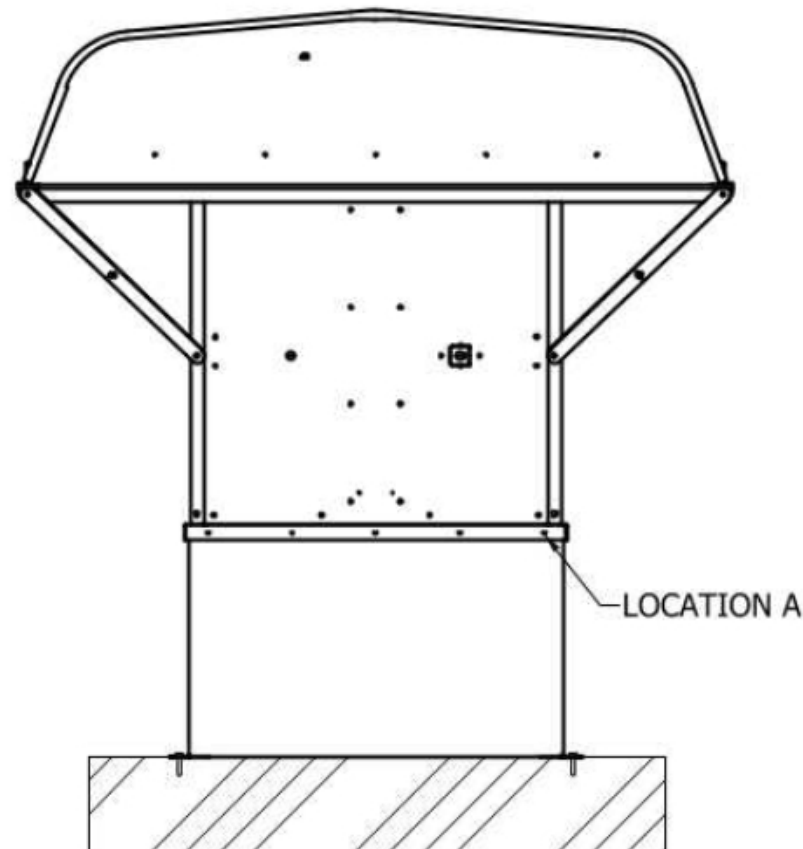
FAN TO CURB - LOCATION A		
FAN	MIN FASTENERS PER SIDE	MIN TOTAL FASTENERS
RSQ-7	3	12
RSQ-9	3	12
RSQ-12	3	12
RSQ-15	3	12
RSQ-16	4	16
RSQ-18	4	16
RSQ-20	4	16
RSQ-22	4	16
RSQ-24	5	20
RSQ-27	5	20
RSQ-30	5	20
RSQ-33	6	24

USE 5/16-18 FASTENERS (S.S. SERIES 300 COND. CW)  
WITH WASHER. MINIMUM FASTENER COUNT PER SIDE OF  
UNIT REFERENCED IN CHART. MINIMUM 18 GA. THICK  
STEEL CURB (FY = 25KSI)

**PRODUCT APPROVED**  
as complying with the Florida  
Building Code  
NOA-No. 25-0131.02  
Approval Date 04/03/2025  
By *[Signature]*  
Miami-Dade Product Control



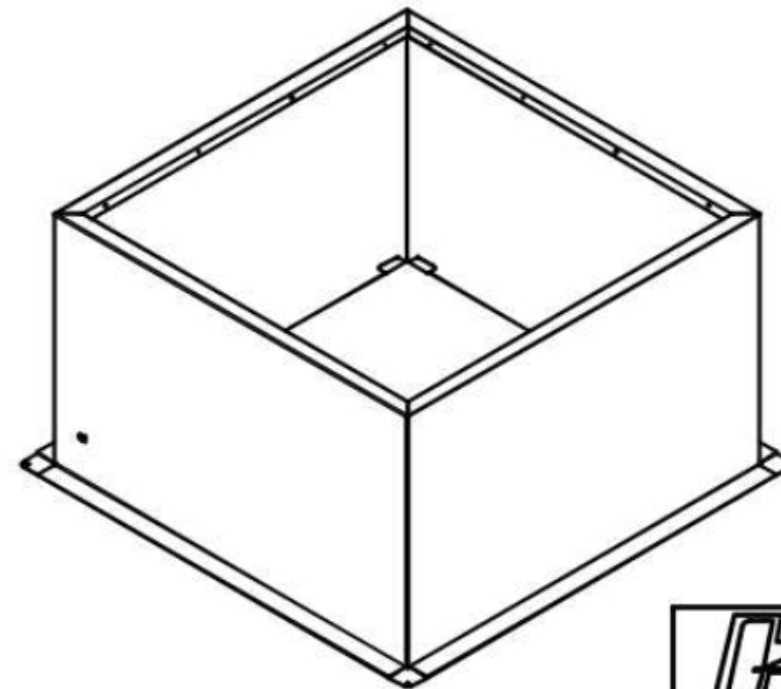
STEEL ANCHORING - SELF DRILL/TAP FASTENERS




TIMBER ANCHORING

**RICE**  
ENGINEERING  
105 School Creek Trail  
Luxemburg, WI 54217  
Phone: (920) 617-1042  
Fax: (920) 617-1100  
www.rice-inc.com

Florida Firm No: F-01000005061  
Certificate of Authorization: #9090  
Wayne K. Helmila  
Registration No: 59092



03/19/2025  
COA: 9090

 <b>GREENHECK</b>	DRAWN BY	ECG
	HALMSTAD	
	DATE	ENG REF
	03/07/2025	
<b>RSQ / XRID, CURB INSTALL, HIGH WIND</b>	SUPERSEDES	
	SCALE	SHEET
		13 OF 13
CAD DRAWING NO		100897882