



DEPARTMENT OF REGULATORY AND ECONOMIC RESOURCES (RER)
BOARD AND CODE ADMINISTRATION DIVISION

NOTICE OF ACCEPTANCE (NOA)

MIAMI-DADE COUNTY
PRODUCT CONTROL SECTION

11805 SW 26 Street, Room 208
Miami, Florida 33175-2474
T (786) 315-2590 F (786) 315-2599

www.miamidade.gov/economy

Clopay Corporation
8585 Duke Boulevard
Mason, OH 45040

SCOPE: This NOA is being issued under the applicable rules and regulations governing the use of construction materials. The documentation submitted has been reviewed and accepted by Miami-Dade County RER-Product Control Section to be used in Miami Dade County and other areas where allowed by the Authority Having Jurisdiction (AHJ).

This NOA shall not be valid after the expiration date stated below. The Miami-Dade County Product Control Section (In Miami Dade County) and/or the AHJ (in areas other than Miami Dade County) reserve the right to have this product or material tested for quality assurance purposes. If this product or material fails to perform in the accepted manner, the manufacturer will incur the expense of such testing and the AHJ may immediately revoke, modify, or suspend the use of such product or material within their jurisdiction. RER reserves the right to revoke this acceptance, if it is determined by Miami-Dade County Product Control Section that this product or material fails to meet the requirements of the applicable building code.

This product is approved as described herein and has been designed to comply with the Florida Building Code, including the High Velocity Hurricane Zone.

DESCRIPTION: Commercial Ribbed W6 DP37 Steel Sectional Garage Door up to 10'-2" Wide with Optional EPS Insulation.

APPROVAL DOCUMENT: Drawing No. **102445**, titled "Commercial Ribbed Steel Doors up to 10'-2" W", sheets 1 thru 3 of 3, dated 10/10/14, with revision 15 dated 02/10/25, prepared by manufacturer, signed and sealed by Mark Westerfield, P.E., bearing the Miami-Dade County Product Control Revision stamp with the Notice of Acceptance number and expiration date by the Miami-Dade County Product Control Section.

MISSILE IMPACT RATING: Large and Small Missile Impact Resistant

LABELING: Each unit shall bear a permanent label with the manufacturer's name or logo, manufacturing address, model number, the positive and negative design pressure rating, indicate impact rated if applicable, installation instruction drawing reference number, approval number (NOA), the applicable test standards, and the statement reading 'Miami-Dade County Product Control Approved' is to be located on the door's side track, bottom angle, or inner surface of a panel.

RENEWAL of this NOA shall be considered after a renewal application has been filed and there has been no change in the applicable building code negatively affecting the performance of this product.

TERMINATION of this NOA will occur after the expiration date or if there has been a revision or change in the materials, use, and/or manufacture of the product or process. Misuse of this NOA as an endorsement of any product, for sales, advertising or any other purposes shall automatically terminate this NOA. Failure to comply with any section of this NOA shall be cause for termination and removal of NOA.

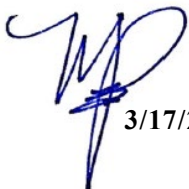
ADVERTISEMENT: The NOA number preceded by the words Miami-Dade County, Florida, and followed by the expiration date may be displayed in advertising literature. If any portion of the NOA is displayed, then it shall be done in its entirety.

INSPECTION: A copy of this entire NOA shall be provided to the user by the manufacturer or its distributors and shall be available for inspection at the job site at the request of the Building Official.

This NOA **revises and renews** NOA No. **23-0928.44** and consists of this page 1 and evidence page E-1, E-2 and E-3, as well as approval document mentioned above.

The submitted documentation was reviewed by **Manuel Perez, P.E.**




3/17/25

NOA No. 25-0224.01
Expiration Date: April 09, 2030
Approval Date: March 27, 2025
Page 1

Clopay Corporation

NOTICE OF ACCEPTANCE: EVIDENCE SUBMITTED

1. EVIDENCE SUBMITTED UNDER PREVIOUS NOA's

A. DRAWINGS

1. Manufacturer's die drawings and sections.
(Submitted under NOA No. 14-1021.05)
2. Drawing No. **102445**, titled "Commercial Ribbed Steel Doors up to 10'-2" W", sheets 1 through 3 of 3, dated 10/10/14, with revision 14 dated 09/06/23, prepared by manufacturer, signed and sealed by Mark Westerfield, P.E.
(Submitted under NOA No. 23-0928.44)

B. TESTS

1. Test reports on: 1) Uniform Static Air Pressure Test, Loading per FBC, TAS 202-94
2) Large Missile Impact Test per FBC, TAS 201-94
3) Cyclic Wind Pressure Loading per FBC, TAS 203-94
4) Forced Entry Test, per TAS 202-94
5) Tensile Test per ASTM E8
along with marked-up drawings and installation diagram of Clopay, Model 524, 10'-2" wide x 8' high, 24 ga. steel garage door, prepared by American Test Lab, Inc., Test Report No. **ATLNC 0709.01-13**, dated 02/05/14, signed and sealed by David W. Johnson, P.E.
(Submitted under NOA No. 14-1021.05)
2. Test report on Salt Spray Performance Test per ASTM B117-09 of painted G40 galvanized painted and G90 panels, prepared by Fenestration Testing Laboratory, Inc., Test Report No. **7890**, dated 10/01/14, signed and sealed by Idalmis Ortega, P.E.
(Submitted under NOA No. 14-1021.05)

C. CALCULATIONS

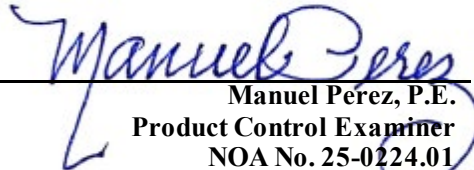
1. Anchoring calculations, prepared by manufacturer, dated 10/10/14, signed and sealed by Mark Westerfield, P.E.
(Submitted under NOA No. 14-1021.05)

D. QUALITY ASSURANCE

1. Miami-Dade Department of Regulatory and Economic Resources (RER)

E. MATERIAL CERTIFICATIONS

1. Test report on Ignition Properties of Plastics per ASTM D1929 of Premier Industries' Type I EPS, Report No. **3082959-500**, prepared by Intertek Testing Services, NA, Inc., dated 09/16/05, signed by C. Anthony Peñaloza.
(Submitted under NOA No. 14-1021.05)


Manuel Pérez, P.E.
Product Control Examiner
NOA No. 25-0224.01
Expiration Date: April 09, 2030
Approval Date: March 27, 2025

Clopay Corporation

NOTICE OF ACCEPTANCE: EVIDENCE SUBMITTED

1. EVIDENCE SUBMITTED UNDER PREVIOUS NOA's (CONTINUED)

E. MATERIAL CERTIFICATIONS (CONTINUED)

2. Test report on Surface Burning Characteristics, per ASTM E84 of Premier Industries' Type I EPS, Report No. **3082960-500**, prepared by Intertek Testing Services, NA, Inc., dated 10/04/05, signed by Javier Trevino.
(Submitted under NOA No. 14-1021.05)

F. STATEMENTS

1. Statement letter of conformance, complying with **FBC 7th Edition (2020)** and **FBC 8th Edition (2023)**, dated September 15, 2023, issued by manufacturer, signed and sealed by Mark Westerfield, P.E.
(Submitted under NOA No. 23-0928.44)
2. Statement letter of no financial interest, dated 09/15/20, issued by manufacturer, signed and sealed by Mark Westerfield, P.E.
(Submitted under NOA No. 20-0922.46)
3. Certificate of amendment changing the company name from Clopay Building Products Company, Inc. to Clopay Corporation, issued by the State of Delaware, dated 08/27/19.
(Submitted under NOA No. 20-0109.03)

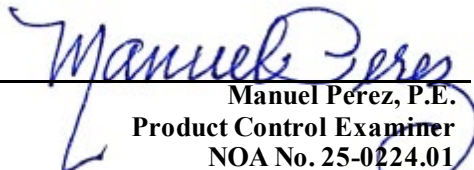
G. OTHERS

1. Notice of Acceptance No. **20-0922.46**, issued to Clopay Corporation for their Commercial Ribbed W6 DP37 Steel Sectional Garage Door up to 10'-2" Wide with Optional EPS Insulation, approved on 12/24/20 and expiring on 04/09/25.

2. NEW EVIDENCE SUBMITTED

A. DRAWINGS

1. Drawing No. **102445**, titled "Commercial Ribbed Steel Doors up to 10'-2" W", sheets 1 through 3 of 3, dated 10/10/14, with revision 15 dated 02/10/25, prepared by manufacturer, signed and sealed by Mark Westerfield, P.E.


Manuel Pérez, P.E.
Product Control Examiner
NOA No. 25-0224.01
Expiration Date: April 09, 2030
Approval Date: March 27, 2025

Clopay Corporation

NOTICE OF ACCEPTANCE: EVIDENCE SUBMITTED

2. NEW EVIDENCE SUBMITTED (CONTINUED)

B. TESTS

1. Test reports on: 1) Uniform Static Air Pressure Test, Loading per FBC, TAS 202-94
2) Large Missile Impact Test per FBC, TAS 201-94
3) Cyclic Wind Pressure Loading per FBC, TAS 203-94
4) Forced Entry Test, per FBC 2411 3.2.1, TAS 202-94
5) Tensile Test per ASTM E8
along with marked-up drawings and installation diagram of Clopay, Model 524, 10'-2" wide x 8' high, 24 ga. steel garage door, prepared by American Test Lab, Inc., Test Report No. **ATLNC 0204.02-25**, dated 02/11/25, signed and sealed by David W. Johnson, P.E.

C. CALCULATIONS

1. Anchoring calculations prepared by manufacturer, dated 02/10/25, signed and sealed by Mark Westerfield, P.E.

D. QUALITY ASSURANCE

1. Miami-Dade Department of Regulatory and Economic Resources (RER)

E. MATERIAL CERTIFICATIONS

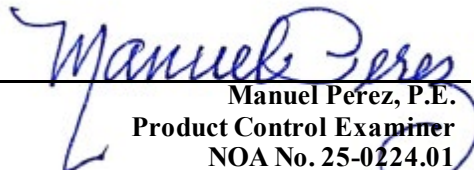
1. Test report on Ignition Properties of Plastics per ASTM D1929 of Atlas EPS ASTM C578 Type I, Report No. **102609488MID-002**, prepared by Intertek Testing Services, NA, Inc., dated 06/13/16, signed and sealed by Frederick D. Curkeet, P.E.
2. Test report on Surface Burning Characteristics, per ASTM E84 of Atlas EPS ASTM C578 Type I, Report No. **102609488SAT-001A**, prepared by Intertek Testing Services, NA, Inc., dated 06/20/16, signed and sealed by Frederick D. Curkeet, P.E.

F. STATEMENTS

1. Statement letter of conformance, complying with **FBC 8th Edition (2023)**, dated February 10, 2025, issued by manufacturer, signed and sealed by Mark Westerfield, P.E.
2. Statement letter of no financial interest issued by manufacturer, dated February 10, 2025, signed and sealed by Mark Westerfield, P.E.

G. OTHERS

1. Notice of Acceptance No. **23-0928.44**, issued to Clopay Corporation for their Commercial Ribbed W6 DP37 Steel Sectional Garage Door up to 10'-2" Wide, with Optional EPS Insulation, approved on 11/09/23 and expiring on 04/09/25.


Manuel Perez, P.E.
Product Control Examiner
NOA No. 25-0224.01
Expiration Date: April 09, 2030
Approval Date: March 27, 2025

CLOPAY / IDEAL / HOLMES
524 / C4ST / 224 / 24GA 1-7/8" RIBBED
524V / C4SV / 224V / 24GA 1-7/8" RIBBED INSULATION
524S / C4SS / 224X / 24GA 1-7/8" RIBBED INSULATION WITH STEEL BACKER
520 / COST / --- / 20GA 1-7/8" RIBBED
520S / COSS / --- / 20GA 1-7/8" RIBBED INSULATION WITH STEEL BACKER

SHEET
1 OF 3

REVISIONS

REV. NO.	ZONE:	DATE:	ECN NO.	APPVD:	DESCRIPTION
09	B2	2/2/15	-	MWW	REVISED CENTER STILE PLACEMENT CHART
10	-	4/06/15	-	MWW	ADDED CODE COMPLIANCE STATEMENT
11	-	7/17/17	-	MWW	UPDATED CODE COMPLIANCE STATEMENT TO ADD 6TH EDITION FBC.
12	-	1/03/20	-	MWW	UPDATED TITLE BLOCK
13	-	9/9/20	-	SH	UPDATED CODE COMPLIANCE STATEMENT TO 7TH EDITION FBC
14	-	9/6/23	-	JDW	UPDATED CODE COMPLIANCE STATEMENT TO ADD 8TH EDITION FBC
15	-	2/10/25	-	MWW	UPDATED JAMB CALCULATIONS AS PART OF RETEST

3" x 20 GA. GALV. STEEL U-BARS ARRANGED IN A 2-1-2-1 PATTERN (SEE TABLE 1)
U-BARS ATTACHED AT EACH STILE LOCATION WITH
(2) 1/4" x 3/4" SELF-TAPPING SCREWS

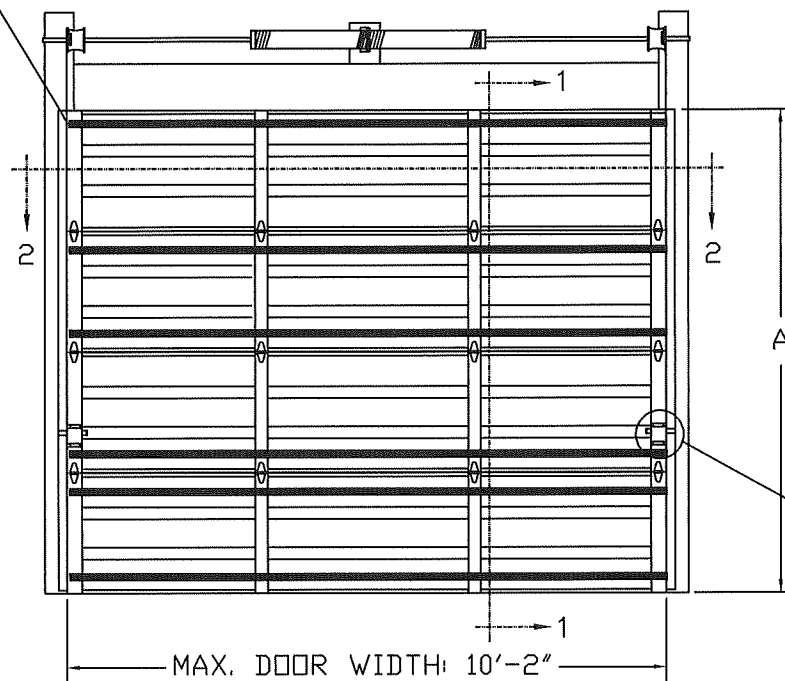
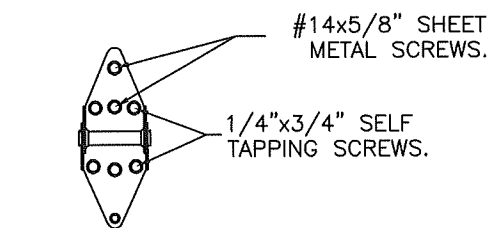


TABLE 1

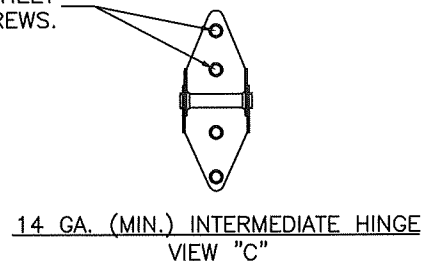
DOOR HEIGHT	TOTAL U-BARS REQUIRED
4'3" TO 6'0"	5
6'3" TO 8'0"	6
8'3" TO 10'0"	8
10'3" TO 12'0"	9
12'3" TO 14'0"	11
14'3" TO 16'0"	12
16'3" TO 18'0"	14

DOOR HEIGHT 'A'	NUMBER OF SECTIONS
UP TO 8'-0"	4
8'-3" THRU 10'-0"	5
10'-3" THRU 12'-0"	6
12'-3" THRU 14'-0"	7
14'-3" THRU 16'-0"	8
16'-3" THRU 18'-0"	9

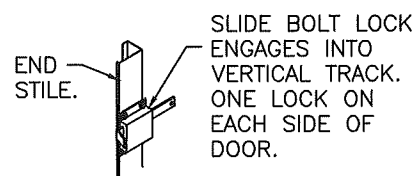
DOOR WIDTH	NUMBER OF CENTER STILES
UP TO 7'-6"	1
7'-7" THRU 10'-2"	2



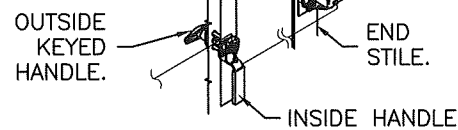
14 GA. END HINGES
VIEW "B"



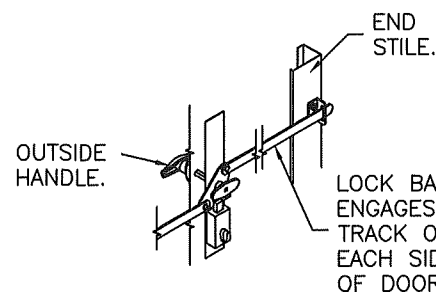
SNAP LATCH ENGAGES
ONTO VERTICAL TRACK.
ONE SNAP LATCH ON
EACH SIDE OF DOOR.



INSIDE SLIDE BOLT
LOCK OPTION.



OUTSIDE KEYED LOCK WITH
SNAP LATCH LOCK OPTION.



OUTSIDE KEYED LOCK WITH
LOCK BAR LOCKING.

DESIGN LOADS: +37.0 P.S.F. & -42.0 P.S.F.

Unless Stated Otherwise
TOLERANCES are
.0 = ±.031
.00 = ±.015
.000 = ±.005
.0000 = ±.001
Degrees = ±1/2'

Unless Stated Otherwise
DIMENSIONS ARE IN INCHES.

Clopay
CORPORATION

8585 Duke Boulevard
Mason, OH 45040 USA
Tel. No. 513-770-4800
Fax No. 513-770-4853

DESCRIPTION: COMMERCIAL RIBBED STEEL DOORS UP TO 10'2"W	DRAWN BY: RJK	DATE: 10/15/01	SCALE: NTS	DWG. SIZE B
CHECKED BY: MWW	DATE: 10/10/14	SHEET 1 OF 3	VER: M-D	
DWG. NO.: 102445				

PRODUCT REVISED
As complying with the Florida
Building Code
NOA-No. **25-0224.01**
Expiration Date: **04/09/2030**
By: *Manuel Perez*
Miami-Dade Product Control

THIS PRODUCT CONFORMS
TO THE REQUIREMENTS OF
8TH EDITION OF THE
FLORIDA BUILDING CODE

MANUFACTURING PRODUCT CODE
C-PAN-1E448
PART NO.: N/A

WINDLOAD RATING
W6 DP37

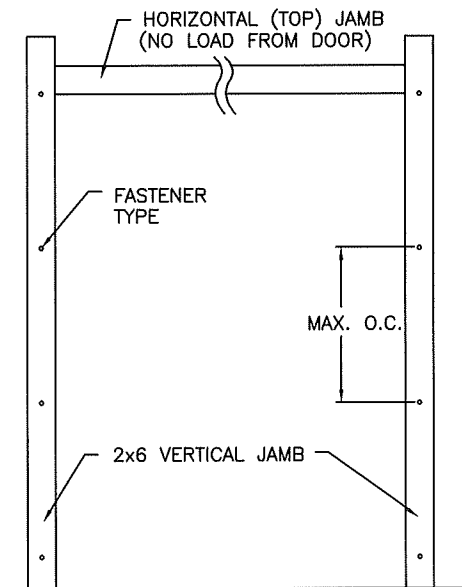
DESIGN ENGINEER:
MARK WESTERFIELD, P.E.
FLORIDA P.E. #48495

CLOPAY /	IDEAL /	HOLMES
524	/ C4ST /	224 / 24GA 1-7/8" RIBBED
524V	/ C4SV /	224V / 24GA 1-7/8" RIBBED INSULATION
524S	/ C4SS /	224X / 24GA 1-7/8" RIBBED INSULATION WITH STEEL BACKER
520	/ C0ST /	--- / 20GA 1-7/8" RIBBED
520S	/ C0SS /	--- / 20GA 1-7/8" RIBBED INSULATION WITH STEEL BACKER

SHEET:
2 OF 3

REVISIONS

REV. NO.	ZONE:	DATE:	ECN NO.	APPVD:	DESCRIPTION
14	-	-	-	-	SEE REVISION HISTORY ON SHEET ONE.

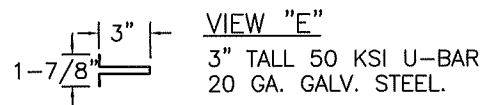


JAMB TO SUPPORTING STRUCTURE ATTACHMENT

NOTES:

1. ALL THE LOAD FROM THE DOOR IS TRANSFERRED TO THE TRACK AND THEN FROM THE TRACK TO THE 2x6 VERTICAL SYP (GRADE #2 OR BETTER) JAMBS. NO LOAD FROM THE DOOR IS TRANSFERRED TO THE HORIZONTAL (TOP) JAMB.
2. EACH VERTICAL JAMB SEES A MAXIMUM DESIGN LOAD OF +185 LB & -220 LB. PER LINEAR FOOT OF JAMB.
3. ALL JAMB FASTENERS MAY BE (BUT ARE NOT REQUIRED TO BE) COUNTERSUNK TO PROVIDE A FLUSH MOUNTING SURFACE.
4. A 1/3 STRESS INCREASE FOR WIND LOAD WAS NOT USED IN THE CALCULATION OF ALLOWABLE LOADS FOR ANCHORS AND FASTENERS FOR STEEL, CONCRETE AND MASONRY.

NOTE: 2x6 WOOD JAMBS ARE NOT REQUIRED WITH CONTINUOUS ANGLE MOUNT TRACK. HOWEVER, IF DESIRED ON STEEL JAMBS OR CONCRETE OR BLOCK WALLS, APPROVED FASTENERS AS DETAILED BELOW SHOULD BE INCREASED IN LENGTH BY 1-1/2" AND INSTALLED DIRECTLY THROUGH THE ANGLE AND 2x6 WOOD JAMBS INTO THE STEEL JAMBS OR CONCRETE OR BLOCK WALLS. ANCHORS CAN BE (BUT ARE NOT REQUIRED TO BE) COUNTERSUNK TO PROVIDE A FLUSH MOUNTING SURFACE. CONTINUOUS ANGLE TRACK CAN BE ANCHORED DIRECTLY TO GROUT REINFORCED BLOCK WALL OR 3,000 PSI MIN. CONCRETE COLUMN OR STEEL JAMBS.

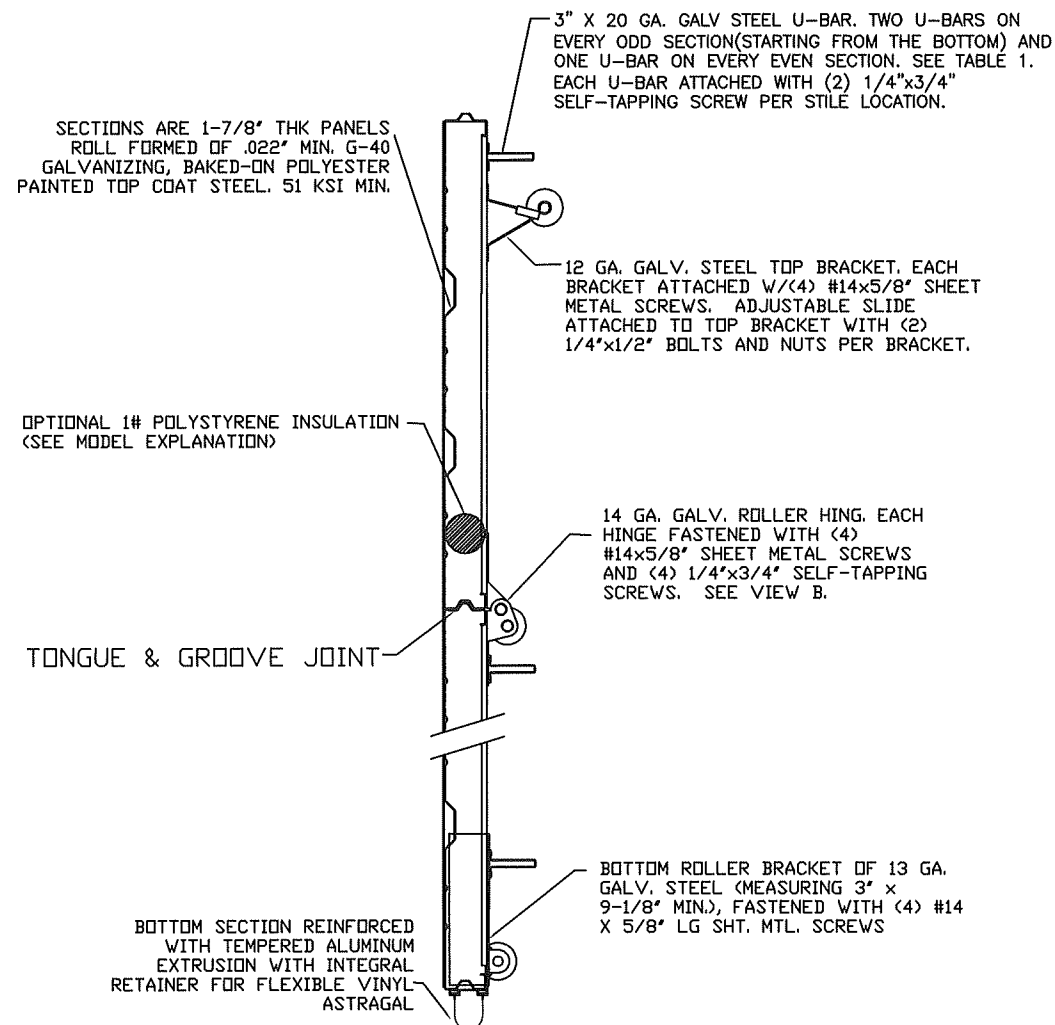


2x6 JAMB TO SUPPORTING STRUCTURE ATTACHMENT
(NOT TO BE USED FOR ATTACHMENT OF TRACK ANGLE TO 2x6 VERTICAL JAMBS OR SUPPORTING STRUCTURE)
FASTENER ATTACHMENT TO SUPPORTING STRUCTURE SCHEDULES

BUILDING TYPE	FASTENER TYPE	MAXIMUM ON-CENTER DISTANCE BETWEEN FASTENERS*	STEEL WASHERS REQUIRED?
HOLLOW BLOCK WALL	1/4" x 1-1/4" MIN. EMBED CARBON STEEL CONCRETE SCREW	11-1/2"	1" O.D.
GROUT FILLED BLOCK WALL	1/4" x 1-3/4" MIN. EMBED CARBON STEEL CONCRETE SCREW	23-3/4"	1" O.D.
2000 PSI MIN. CONCRETE	1/4" x 1-3/4" MIN. EMBED TAPCON CONCRETE ANCHOR	24"	1" O.D.
4000 PSI MIN. CONCRETE	1/4" x 1-3/4" MIN. EMBED TAPCON CONCRETE ANCHOR	24"	1" O.D.
2500 PSI MIN. CONCRETE	3/8" x 3" NOMINAL EMBED HILTI KWIK BOLT TZ2 CONCRETE ANCHOR	24"	INCLUDED
WOOD FRAME (SYP 0.55 SG)	1/2" x 1-1/2" EMBED LAG SCREW (ASTM A307, GRADE A)	24"	1" O.D.
14GA STEEL (0.060" MIN.)	1/4"-14 x 1" ITW BUILDDEX TEKS SELF-DRILLING FASTENER	15-1/2"	1" O.D.
12GA STEEL (0.105" MIN.)	1/4"-14 x 1" ITW BUILDDEX TEKS SELF-DRILLING FASTENER	21-1/2"	1" O.D.
1/8" STEEL	1/4"-14 x 1" ITW BUILDDEX TEKS SELF-DRILLING FASTENER	24"	1" O.D.

* FIRST (BOTTOM) ANCHOR STARTING AT NO MORE THAN HALF OF THE MAXIMUM ON-CENTER DISTANCE. HIGHEST ANCHOR INSTALLED AT LEAST AS HIGH AS THE DOOR OPENING.
CLOPAY DOES NOT SUPPLY JAMB ATTACHMENT FASTENERS.
MINIMUM DISTANCE BETWEEN CENTER OF ANCHOR AND EDGE OF CONCRETE BLOCK: 2-1/2", EXCLUDING STUCCO THICKNESS.

NOTE: FOR DOORS WITH CONTINUOUS OR REVERSE ANGLE TRACK, THESE VALUES CAN BE USED TO DIRECTLY ATTACH THE TRACK ANGLE TO THE WALL.



SECTION A-A (SIDE VIEW)

PRODUCT REVISED
As complying with the Florida Building Code
NOA-No. **25-0224.01**
Expiration Date: **04/09/2030**
By: *Manuel Fernandez*
Miami-Dade Product Control

MANUFACTURING PRODUCT CODE
C-PAN-1E448
PART NO.: N/A

DESIGN LOADS: +37.0 P.S.F. & -42.0 P.S.F.

Unless Stated Otherwise TOLERANCES are .0 = ±.031 .00 = ±.015 .000 = ±.005 .0000 = ±.001 Degrees = ±1/2"	Clopay CORPORATION 8585 Duke Boulevard Mason, OH 45040 USA Tel. No. 513-770-4800 Fax No. 513-770-4853	WINDLOAD RATING W6 DP37
DESCRIPTION: COMMERCIAL RIBBED STEEL DOORS UP TO 10'2"W	DRAWN BY: RJK	DATE: 10/15/01
CHECKED BY: MWW	DATE: 10/10/14	SCALE: NTS
DWG. NO.: 102445	VER: M-D	DWG. SIZE B

DESIGN ENGINEER:
MARK WESTERFIELD, P.E.
FLORIDA P.E. #48495

CLOPAY / IDEAL / HOLMES
524 / C4ST / 224 / 24GA 1-7/8" RIBBED
524V / C4SV / 224V / 24GA 1-7/8" RIBBED INSULATION
524S / C4SS / 224X / 24GA 1-7/8" RIBBED INSULATION WITH STEEL BACKER
520 / C0ST / --- / 20GA 1-7/8" RIBBED
520S / C0SS / --- / 20GA 1-7/8" RIBBED INSULATION WITH STEEL BACKER

SHEET:
3 OF 3

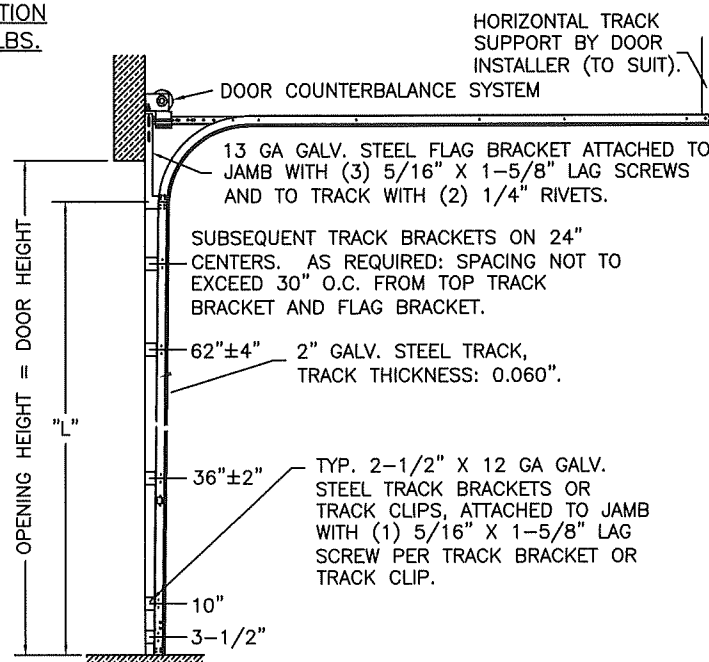
REVISIONS

REV. NO.	ZONE:	DATE:	ECN NO.	APPVD:	DESCRIPTION
14	-	-	-	-	SEE REVISION HISTORY ON SHEET ONE.

2" TRACK CONFIGURATION
DOORS UP TO 800 LBS.

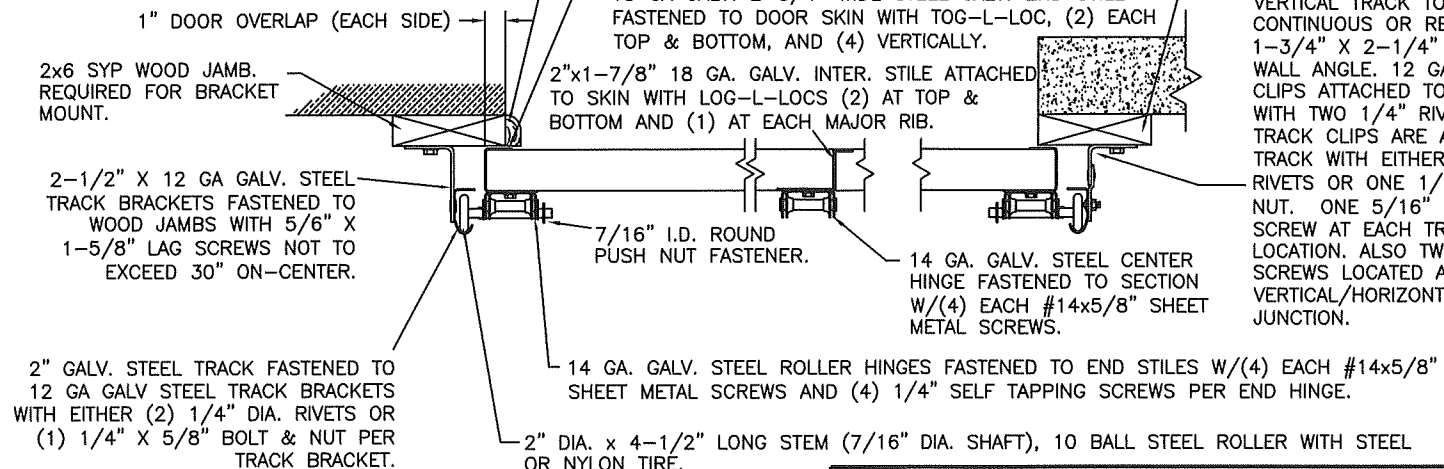
NOTE DOUBLE TRACK
HEADROOM, HI-LIFT TRACK,
FOLLOW-THE- ROOF
TRACK, AND VERTICAL LIFT
TRACK ARE AVAILABLE
OPTIONS.
TRACK CONFIGURATION
ABOVE THE DOOR OPENING
DOES NOT AFFECT THE
WIND LOAD RATING.

PRODUCT REVISED
As complying with the Florida
Building Code
NOA-No. **25-0224.01**
Expiration Date: **04/09/2030**
By: *Manuel Torres*
Miami-Dade Product Control



DOOR HEIGHT	"L"
6'-6"	70"
7'-0"	76"
7'-6"	82"
8'-0"	88"
8'-6"	94"
9'-0"	100"
9'-6"	106"
10'-0"	112"
10'-6"	118"
11'-0"	124"
11'-6"	130"
12'-0"	136"
12'-6"	142"
13'-0"	148"
13'-6"	154"
14'-0"	160"
14'-6"	166"
15'-0"	172"
15'-6"	178"
16'-0"	184"
16'-6"	190"
17'-0"	196"
17'-6"	202"
18'-0"	208"

BRACKET MOUNT JAMB CONFIGURATION



SECTION C-C

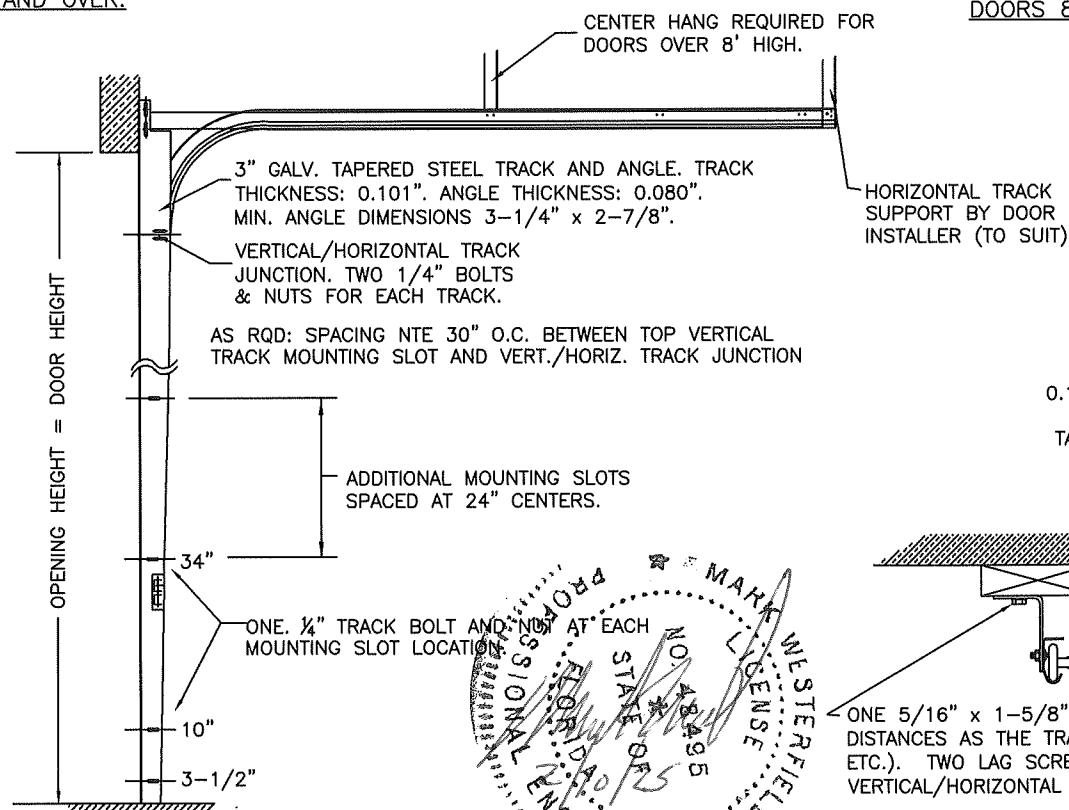
PREPARATION OF JAMBS BY OTHERS.

ANGLE MOUNT JAMB CONFIGURATION

2x6 SYP JAMB (IF PRESENT; SEE JAMB NOTES ON SHEET 2).
VERTICAL TRACK TO BE CONTINUOUS OR REVERSE ANGLE. 1-3/4" X 2-1/4" X 12 GA. WALL ANGLE. 12 GA. TRACK CLIPS ATTACHED TO WALL ANGLE WITH TWO 1/4" RIVETS PER CLIP. TRACK CLIPS ARE ATTACHED TO TRACK WITH EITHER TWO 1/4" RIVETS OR ONE 1/4" BOLT AND NUT. ONE 5/16" X 1-5/8" LAG SCREW AT EACH TRACK CLIP LOCATION. ALSO TWO LAG SCREWS LOCATED ABOVE VERTICAL/HORIZONTAL TRACK JUNCTION.

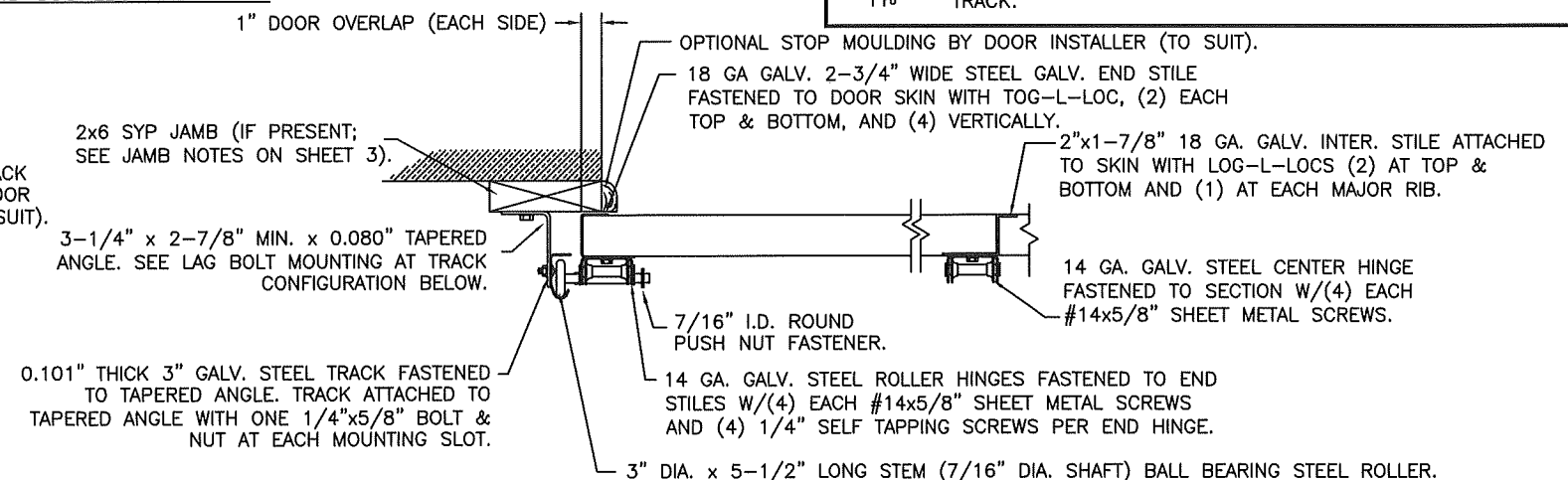
3" TRACK CONFIGURATION
DOORS 800 LBS AND OVER.

NOTE DOUBLE TRACK
HEADROOM, HI-LIFT TRACK,
FOLLOW-THE- ROOF
TRACK, AND VERTICAL LIFT
TRACK ARE AVAILABLE
OPTIONS.
TRACK CONFIGURATION
ABOVE THE DOOR OPENING
DOES NOT AFFECT THE
WIND LOAD RATING.



DOOR HEIGHT	VERTICAL TRACK LENGTH
7'-0"	72"
8'-0"	84"
9'-0"	96"
10'-0"	108"
12'-0"	132"
14'-0"	156"
16'-0"	180"
17'-0"	204"
18'-0"	228"

JAMB CONFIGURATION
DOORS 800 LBS AND OVER.



SECTION C-C

PREPARATION OF JAMBS BY OTHERS.

DESIGN LOADS: +37.0 P.S.F. & -42.0 P.S.F.

Unless Stated Otherwise
TOLERANCES are
.0 = ±.031
.00 = ±.015
.000 = ±.005
.0000 = ±.001
Degrees = ±1/2°

Unless Stated Otherwise
DIMENSIONS ARE IN INCHES.

Clopay
CORPORATION

8585 Duke Boulevard
Mason, OH 45040 USA
Tel. No. 513-770-4800
Fax No. 513-770-4853

MANUFACTURING PRODUCT CODE
C-PAN-1E448

PART NO.: N/A

WINDLOAD RATING
W6 DP37

DESCRIPTION: COMMERCIAL RIBBED STEEL DOORS UP TO 10'2"W

DRAWN BY: RJK DATE: 10/15/01 SCALE: NTS DWG. B

CHECKED BY: MWW DATE: 10/10/14 SHEET 3 OF 3

DWG. NO.: 102445 VER: M-D

DESIGN ENGINEER:
MARK WESTERFIELD, P.E.
FLORIDA P.E. #48495

