



DEPARTMENT OF REGULATORY AND ECONOMIC RESOURCES (RER)
BOARD AND CODE ADMINISTRATION DIVISION
NOTICE OF ACCEPTANCE (NOA)

MIAMI-DADE COUNTY
PRODUCT CONTROL SECTION
11805 SW 26 Street, Room 208
Miami, Florida 33175-2474
T (786) 315-2590 F (786) 315-2599
www.miamidade.gov/economy

Clopay Corporation
8585 Duke Boulevard
Mason, OH 45040

SCOPE: This NOA is being issued under the applicable rules and regulations governing the use of construction materials. The documentation submitted has been reviewed and accepted by Miami-Dade County RER-Product Control Section to be used in Miami Dade County and other areas where allowed by the Authority Having Jurisdiction (AHJ).

This NOA shall not be valid after the expiration date stated below. The Miami-Dade County Product Control Section (In Miami Dade County) and/or the AHJ (in areas other than Miami Dade County) reserve the right to have this product or material tested for quality assurance purposes. If this product or material fails to perform in the accepted manner, the manufacturer will incur the expense of such testing and the AHJ may immediately revoke, modify, or suspend the use of such product or material within their jurisdiction. RER reserves the right to revoke this acceptance, if it is determined by Miami-Dade County Product Control Section that this product or material fails to meet the requirements of the applicable building code.

This product is approved as described herein and has been designed to comply with the Florida Building Code, including the High Velocity Hurricane Zone.

DESCRIPTION: Commercial Ribbed W6 DP38T Steel Sectional Garage Door up to 16'-2" Wide

APPROVAL DOCUMENT: Drawing No. **104858**, titled "Commercial Ribbed Steel Doors up to 16'2" W", sheets 1 thru 3 of 3, dated 10/17/14, with revision 07 dated 02/13/25, prepared by manufacturer, signed and sealed by Mark Westerfield, P.E., bearing the Miami-Dade County Product Control Revision stamp with the Notice of Acceptance number and expiration date by the Miami-Dade County Product Control Section.

MISSILE IMPACT RATING: Large and Small Missile Impact Resistant

LABELING: Each unit shall bear a permanent label with the manufacturer's name or logo, manufacturing address, model number, the positive and negative design pressure rating, indicate impact rated if applicable, installation instruction drawing reference number, approval number (NOA), the applicable test standards, and the statement reading 'Miami-Dade County Product Control Approved' is to be located on the door's side track, bottom angle, or inner surface of a panel.

RENEWAL of this NOA shall be considered after a renewal application has been filed and there has been no change in the applicable building code negatively affecting the performance of this product.

TERMINATION of this NOA will occur after the expiration date or if there has been a revision or change in the materials, use, and/or manufacture of the product or process. Misuse of this NOA as an endorsement of any product, for sales, advertising or any other purposes shall automatically terminate this NOA. Failure to comply with any section of this NOA shall be cause for termination and removal of NOA.

ADVERTISEMENT: The NOA number preceded by the words Miami-Dade County, Florida, and followed by the expiration date may be displayed in advertising literature. If any portion of the NOA is displayed, then it shall be done in its entirety.

INSPECTION: A copy of this entire NOA shall be provided to the user by the manufacturer or its distributors and shall be available for inspection at the job site at the request of the Building Official.

This NOA **revises and renews** NOA No. **23-0928.45** and consists of this page 1 and evidence page E-1, E-2 and E-3, as well as approval document mentioned above.

The submitted documentation was reviewed by **Manuel Perez, P.E.**



3/18/25

NOA No. **25-0228.02**
Expiration Date: **April 16, 2030**
Approval Date: **March 27, 2025**
Page 1

Clopay Corporation

NOTICE OF ACCEPTANCE: EVIDENCE SUBMITTED

1. EVIDENCE SUBMITTED UNDER PREVIOUS NOA's

A. DRAWINGS

1. Manufacturer's die drawings and sections.
(Submitted under NOA No. 14-1105.02)
2. Drawing No. **104858**, titled "Commercial Ribbed Doors up to 16'-2" W", sheets 1 through 3 of 3, dated 10/17/14, with revision 06 dated 09/06/23, prepared by manufacturer, signed and sealed by Mark Westerfield, P.E.
(Submitted under NOA No. 23-0928.45)

B. TESTS

1. Test reports on: 1) Uniform Static Air Pressure Test, Loading per FBC, TAS 202-94
2) Large Missile Impact Test per FBC, TAS 201-94
3) Cyclic Wind Pressure Loading per FBC, TAS 203-94
4) Forced Entry Test, per TAS 202-94
5) Tensile Test per ASTM E8
along with marked-up drawings and installation diagram of Clopay, Model 524, 16'-2" wide x 8' high, 24 ga. steel garage door, prepared by American Test Lab, Inc., Test Report No. **ATLNC 0513.01-13**, dated 05/30/13, signed and sealed by David W. Johnson, P.E.
(Submitted under NOA No. 14-1105.02)
2. Test report on Salt Spray Performance Test per ASTM B117-09 of painted G40 galvanized painted and G90 panels, prepared by Fenestration Testing Laboratory, Inc., Test Report No. **7890**, dated 10/01/14, signed and sealed by Idalmis Ortega, P.E.
(Submitted under NOA No. 14-1105.02)

C. CALCULATIONS

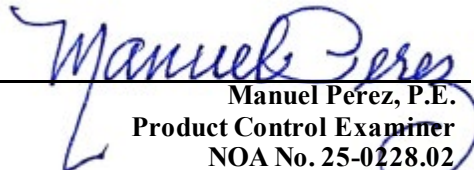
1. Anchoring calculations, prepared by manufacturer, dated 10/31/14, signed and sealed by Mark Westerfield, P.E.
(Submitted under NOA No. 14-1105.02)

D. QUALITY ASSURANCE

1. Miami-Dade Department of Regulatory and Economic Resources (RER)

E. MATERIAL CERTIFICATIONS

1. None.


Manuel Pérez, P.E.
Product Control Examiner
NOA No. 25-0228.02
Expiration Date: April 16, 2030
Approval Date: March 27, 2025

Clopay Corporation

NOTICE OF ACCEPTANCE: EVIDENCE SUBMITTED

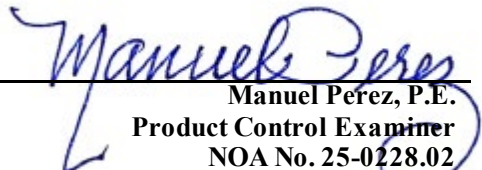
1. EVIDENCE SUBMITTED UNDER PREVIOUS NOA's (CONTINUED)

F. STATEMENTS

1. Statement letter of conformance, complying with **FBC 7th Edition (2020)** and **FBC 8th Edition (2023)**, dated September 15, 2023, issued by manufacturer, signed and sealed by Mark Westerfield, P.E.
(Submitted under NOA No. 23-0928.45)
2. Statement letter of no financial interest issued by manufacturer, dated 09/15/20, signed and sealed by Mark Westerfield, P.E.
(Submitted under NOA No. 20-0922.47)
3. Certificate of amendment changing the company name from Clopay Building Products Company, Inc. to Clopay Corporation, issued by the State of Delaware, dated 08/27/19.
(Submitted under NOA No. 20-0922.47)

G. OTHERS

1. Notice of Acceptance No. **20-0922.47**, issued to Clopay Corporation for their Commercial Ribbed W6 DP38T Steel Sectional Garage Door up to 16'-2" Wide, approved on 12/24/20 and expiring on 04/16/25.


Manuel Perez, P.E.
Product Control Examiner
NOA No. 25-0228.02
Expiration Date: April 16, 2030
Approval Date: March 27, 2025

Clopay Corporation

NOTICE OF ACCEPTANCE: EVIDENCE SUBMITTED

2. NEW EVIDENCE SUBMITTED

A. DRAWINGS

1. Drawing No. **104858**, titled "Commercial Ribbed Doors up to 16'-2" W", sheets 1 through 3 of 3, dated 10/17/14, with revision 07 dated 02/13/25, prepared by manufacturer, signed and sealed by Mark Westerfield, P.E.

B. TESTS

1. Test reports on: 1) Uniform Static Air Pressure Test, Loading per FBC, TAS 202-94
2) Large Missile Impact Test per FBC, TAS 201-94
3) Cyclic Wind Pressure Loading per FBC, TAS 203-94
4) Forced Entry Test, per FBC 2411 3.2.1, TAS 202-94
5) Tensile Test per ASTM E8
along with marked-up drawings and installation diagram of Clopay, Model 524, 16'-2" wide x 8' high, 24 ga. steel garage door, prepared by American Test Lab, Inc., Test Report No. **ATLNC 0204.01-25**, dated 02/11/25, signed and sealed by David W. Johnson, P.E.

C. CALCULATIONS

1. Anchoring calculations prepared by manufacturer, dated 02/13/25, signed and sealed by Mark Westerfield, P.E.

D. QUALITY ASSURANCE

1. Miami-Dade Department of Regulatory and Economic Resources (RER)

E. MATERIAL CERTIFICATIONS


1. None.

F. STATEMENTS

1. Statement letter of conformance, complying with **FBC 8th Edition (2023)**, dated February 13, 2025, issued by manufacturer, signed and sealed by Mark Westerfield, P.E.
2. Statement letter of no financial interest issued by manufacturer, dated February 13, 2025, signed and sealed by Mark Westerfield, P.E.

G. OTHERS

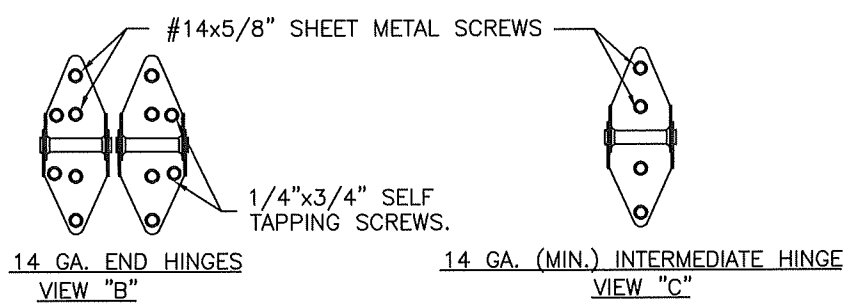
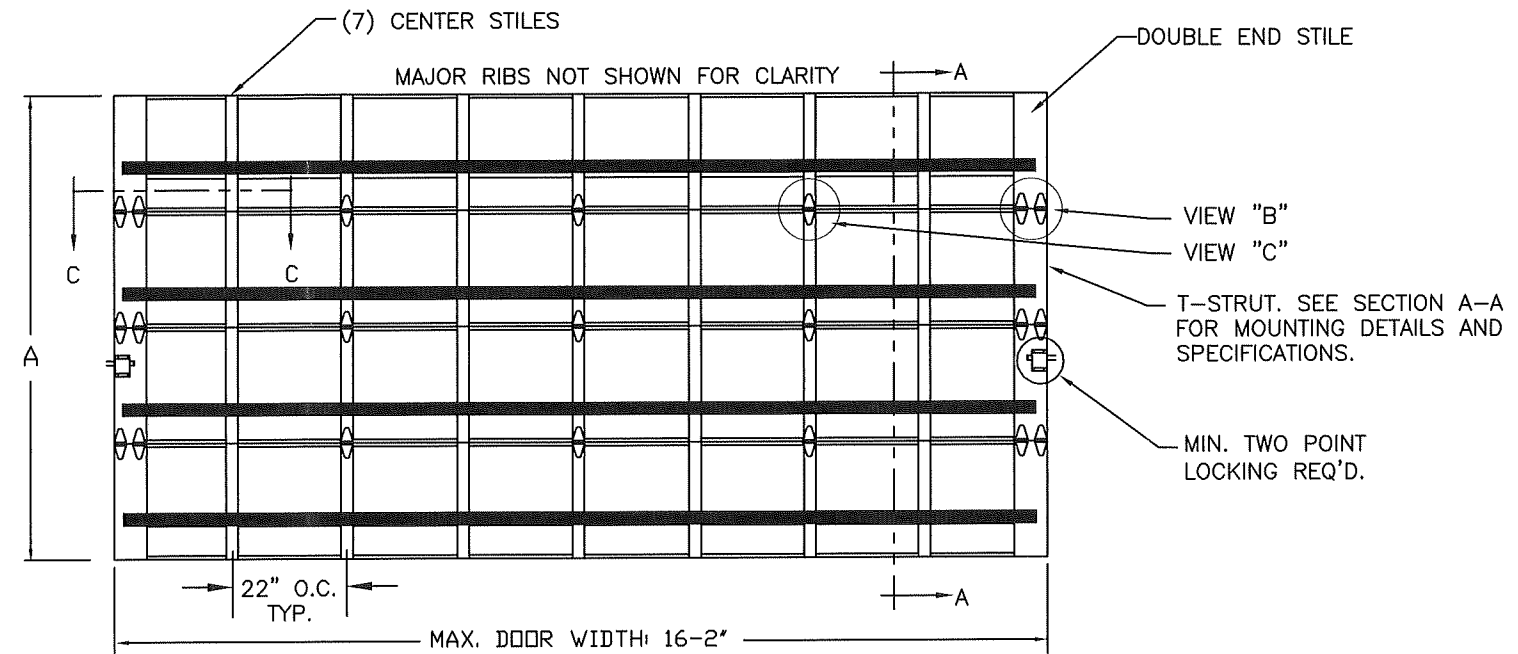
1. Notice of Acceptance No. **23-0928.45**, issued to Clopay Corporation for their Commercial Ribbed W6 DP38T Steel Sectional Garage Door up to 16'-2" Wide, approved on 12/28/23 and expiring on 04/16/25.


Manuel Perez, P.E.
Product Control Examiner
NOA No. 25-0228.02
Expiration Date: April 16, 2030
Approval Date: March 27, 2025

MODELS AVAILABLE (CLOPAY/ HOLMES/ IDEAL)
524 (24 ga.), 520 (20 ga.) / 224 (24 ga.)/ C4ST (24 ga.), C0ST (20 ga.)

SHEET:
1 OF 3

REVISIONS					
REV. NO.	ZONE:	DATE:	ECN NO.	APPVD:	DESCRIPTION
04	-	1/8/20	-	MWW	UPDATED TITLE BLOCK
05	-	9/9/20	-	SH	UPDATED CODE COMPLIANCE STATEMENT TO 7TH EDITION FBC
06	-	9/6/23	-	JDW	UPDATED CODE COMPLIANCE STATEMENT TO ADD 8TH EDITION FBC
07	-	2/13/25	-	MWW	UPDATED JAMB FASTENER CALCS. WITH 10-YEAR RETEST

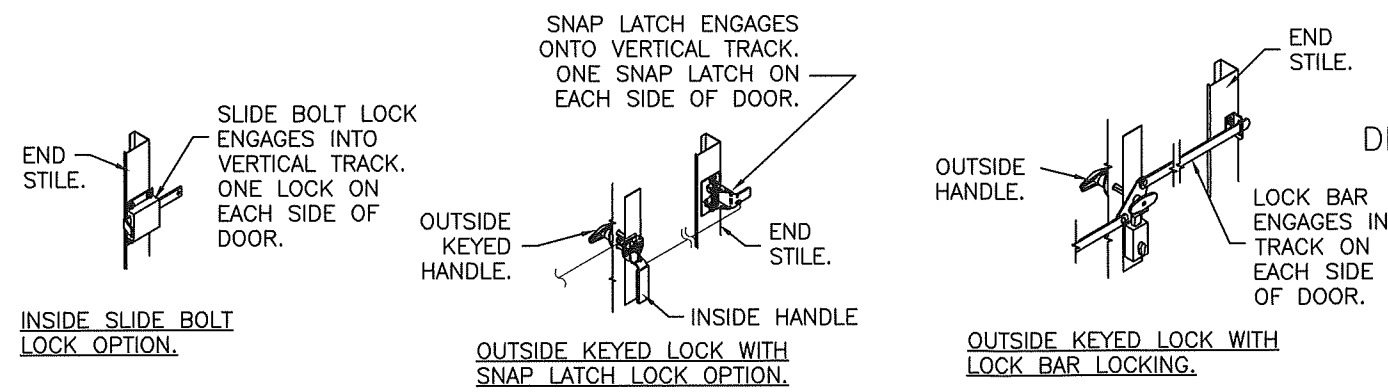


DOOR HEIGHT 'A'	NUMBER OF SECTIONS
UP TO 8'-0"	4
8'-3" THRU 10'-0"	5
10'-3" THRU 12'-0"	6
12'-3" THRU 14'-0"	7
14'-3" THRU 16'-0"	8
16'-3" THRU 18'-0"	9

PRODUCT REVISED
As complying with the Florida Building Code
NOA-No. **25-0228.02**
Expiration Date: **04/16/2030**
By: *Manuel Bern*
Miami-Dade Product Control

THIS PRODUCT CONFORMS TO THE REQUIREMENTS OF 8TH EDITION OF THE FLORIDA BUILDING CODE

Professional Engineer Seal for Mark Westerfield, P.E., State of Florida, License No. 48495. Text: DESIGN ENGINEER, MARK WESTERFIELD, P.E., FLORIDA P.E. #48495.



DESIGN LOADS: +38.0 P.S.F. & -42.0 P.S.F.

Unless Stated Otherwise TOLERANCES are
.0 = ±.031
.00 = ±.015
.000 = ±.005
.0000 = ±.001
Degrees = ±1/2'
Unless Stated Otherwise DIMENSIONS ARE IN INCHES.

Clopay CORPORATION
8585 Duke Boulevard
Mason, OH 45040 USA
Tel. No. 513-770-4800
Fax No. 513-770-4853

MANUFACTURING PRODUCT CODE C-PAN-1E448	
PART NO.: N/A	
WINDLOAD RATING W6 DP38T	
DESCRIPTION: COMMERCIAL RIBBED DOORS UP TO 16'2"W	
DRAWN BY: SH	DATE: 2/12/14
CHECKED BY: MWW	DATE: 10/17/14
DWG. NO.: 104858	VER: M-D

DWG. SIZE **B**

MODELS AVAILABLE (CLOPAY/ HOLMES/ IDEAL)
524 (24 ga.), 520 (20 ga.) / 224 (24 ga.)/ C4ST (24 ga.), COST (20 ga.)

SHEET
2 OF 3

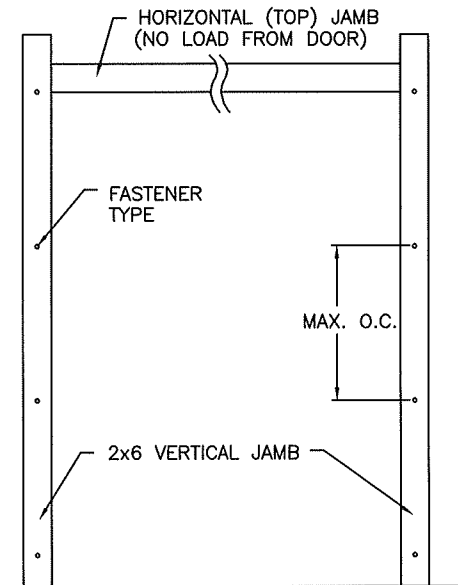
REVISIONS						DESCRIPTION
REV. NO.	ZONE	DATE	ECN NO.	APPVD		
06	-	-	-	-		SEE REVISION HISTORY ON SHEET ONE.

JAMB TO SUPPORTING STRUCTURE ATTACHMENT

NOTES:

- ALL THE LOAD FROM THE DOOR IS TRANSFERRED TO THE TRACK AND THEN FROM THE TRACK TO THE 2x6 VERTICAL SYP (GRADE #2 OR BETTER) JAMBS. NO LOAD FROM THE DOOR IS TRANSFERRED TO THE HORIZONTAL (TOP) JAMB.
- EACH VERTICAL JAMB SEES A MAXIMUM DESIGN LOAD OF +304 LB & -336 LB. PER LINEAR FOOT OF JAMB.
- ALL JAMB FASTENERS MAY BE (BUT ARE NOT REQUIRED TO BE) COUNTERSUNK TO PROVIDE A FLUSH MOUNTING SURFACE.
- A 1/3 STRESS INCREASE FOR WIND LOAD WAS NOT USED IN THE CALCULATION OF ALLOWABLE LOADS FOR ANCHORS AND FASTENERS FOR STEEL, CONCRETE AND MASONRY.

NOTE: 2x6 WOOD JAMBS ARE NOT REQUIRED WITH CONTINUOUS ANGLE MOUNT TRACK. HOWEVER, IF DESIRED ON STEEL JAMBS OR CONCRETE OR BLOCK WALLS, APPROVED FASTENERS AS DETAILED BELOW SHOULD BE INCREASED IN LENGTH BY 1-1/2" AND INSTALLED DIRECTLY THROUGH THE ANGLE AND 2x6 WOOD JAMBS INTO THE STEEL JAMBS OR CONCRETE OR BLOCK WALLS. ANCHORS CAN BE (BUT ARE NOT REQUIRED TO BE) COUNTERSUNK TO PROVIDE A FLUSH MOUNTING SURFACE. CONTINUOUS ANGLE TRACK CAN BE ANCHORED DIRECTLY TO GROUT REINFORCED BLOCK WALL OR 3,000 PSI MIN. CONCRETE COLUMN OR STEEL JAMBS.



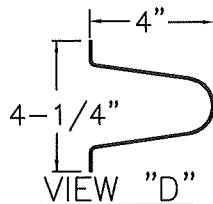
SECTIONS ARE 1-7/8" THICK
PANELS ROLL FORMED OF .022" MIN.
HOT DIPPED G-40 GALVANIZING,
ROLL FORMED STEEL.
MIN. YIELD STRENGTH 56.7 KSI

ADJUSTABLE TOP ROLLER BRACKET
OF 12 GA. GALV. STEEL, INSTALLED
ON DOOR WITH (4) #14 X 5/8" LG
SHEET METAL SCREWS

ONE 4" T-STRUT PER
SECTION. (SEE VIEW "D")
EACH T-STRUT ATTACHED
AT EACH STILE LOCATION
WITH (2) 1/4"x3/4" SELF
TAPPING SCREWS.

TONGUE & GROOVE JOINT.

END HINGE. SEE DETAILS
AT VIEW "B" ON SHEET 1.



4" TALL TAPER STRUT.
0.062" MIN. GALV. STEEL,
80 KSI. MIN.

(2) STACKED LHR BRACKETS USED
AS INNER BOTTOM BRACKET (NOT
SHOWN).

BOTTOM ROLLER BRACKET OF 12 GA.
MIN. GALV. STEEL, FASTENED WITH
(4) #14 X 5/8" LG SHT. MTL.
SCREWS

BOTTOM SECTION REINFORCED
WITH TEMPERED ALUMINUM
EXTRUSION WITH INTEGRAL
RETAINER FOR FLEXIBLE VINYL
ASTRAGAL

SECTION A-A (SIDE VIEW)

2x6 JAMB TO SUPPORTING STRUCTURE ATTACHMENT (NOT TO BE USED FOR ATTACHMENT OF TRACK ANGLE TO 2x6 VERTICAL JAMBS OR SUPPORTING STRUCTURE) FASTENER ATTACHMENT TO SUPPORTING STRUCTURE SCHEDULES

BUILDING TYPE	FASTENER TYPE	MAXIMUM ON-CENTER DISTANCE BETWEEN FASTENERS*	STEEL WASHERS REQUIRED?
HOLLOW BLOCK WALL	1/4" x 1-1/4" MIN. EMBED CARBON STEEL CONCRETE SCREW	7"	1" O.D.
GROUT FILLED BLOCK WALL	1/4" x 1-3/4" MIN. EMBED CARBON STEEL CONCRETE SCREW	14-1/2"	1" O.D.
2000 PSI MIN. CONCRETE	1/4" x 1-3/4" MIN. EMBED TAPCON CONCRETE ANCHOR	17-1/4"	1" O.D.
4000 PSI MIN. CONCRETE	1/4" x 1-3/4" MIN. EMBED TAPCON CONCRETE ANCHOR	23-1/4"	1" O.D.
2500 PSI MIN. CONCRETE	3/8" x 3" NOMINAL EMBED HILTI KWIK BOLT T22 CONCRETE ANCHOR	24"	INCLUDED
WOOD FRAME (SYP 0.55 SG)	1/2" x 1-1/2" EMBED LAG SCREW (ASTM A307, GRADE A)	20-1/2"	1" O.D.
14GA STEEL (0.060" MIN.)	1/4"-14 x 1" ITW BUILDEX TEKS SELF-DRILLING FASTENER	9-1/4"	1" O.D.
12GA STEEL (0.105" MIN.)	1/4"-14 x 1" ITW BUILDEX TEKS SELF-DRILLING FASTENER	13"	1" O.D.
5/8" STEEL	1/4"-14 x 1" ITW BUILDEX TEKS SELF-DRILLING FASTENER	15-1/2"	1" O.D.

* FIRST (BOTTOM) ANCHOR STARTING AT NO MORE THAN HALF OF THE MAXIMUM ON-CENTER DISTANCE. HIGHEST ANCHOR INSTALLED AT LEAST AS HIGH AS THE DOOR OPENING.
CLOPAY DOES NOT SUPPLY JAMB ATTACHMENT FASTENERS.
MINIMUM DISTANCE BETWEEN CENTER OF ANCHOR AND EDGE OF CONCRETE BLOCK: 2-1/2", EXCLUDING STUCCO THICKNESS.

NOTE: FOR DOORS WITH CONTINUOUS OR REVERSE ANGLE TRACK, THESE
VALUES CAN BE USED TO DIRECTLY ATTACH THE TRACK ANGLE TO THE WALL.

PRODUCT REVISED
As complying with the Florida
Building Code
NOA-No. **25-0228.02**

Expiration Date: **04/16/2030**

By: *Manuel Perez*
Miami-Dade Product Control

MANUFACTURING PRODUCT CODE
C-PAN-1E448

PART NO.: N/A

WINDLOAD RATING
W6 DP38T

DESIGN LOADS: +38.0 P.S.F. & -42.0 P.S.F.

Unless Stated Otherwise
TOLERANCES are

.0 = ±.031
.00 = ±.015
.000 = ±.005
.0000 = ±.001
Degrees = ±1/2"

Unless Stated Otherwise
DIMENSIONS ARE IN INCHES.

Clopay
CORPORATION

8585 Duke Boulevard
Mason, OH 45040 USA
Tel. No. 513-770-4800
Fax No. 513-770-4853

DESCRIPTION: COMMERCIAL RIBBED DOORS UP TO 16'2"W

DRAWN BY: SH

DATE: 2/12/14

SCALE: NTS

DWG. **B**

CHECKED BY: MWW

DATE: 10/17/14

SHEET 2 OF 3

SIZE **B**

DWG. NO.: 104858

VER: M-D



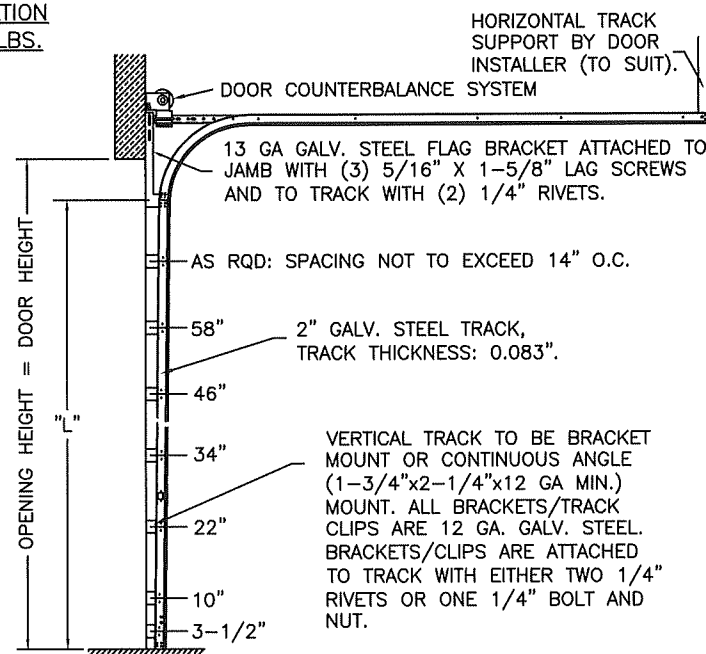
DESIGN ENGINEER:
MARK WESTERFIELD, P.E.
FLORIDA P.E. #48495

MODELS AVAILABLE (CLOPAY/ HOLMES/ IDEAL)
524 (24 ga.), 520 (20 ga.) / 224 (24 ga.)/ C4ST (24 ga.), COST (20 ga.)

2" TRACK CONFIGURATION DOORS UP TO 800 LBS.

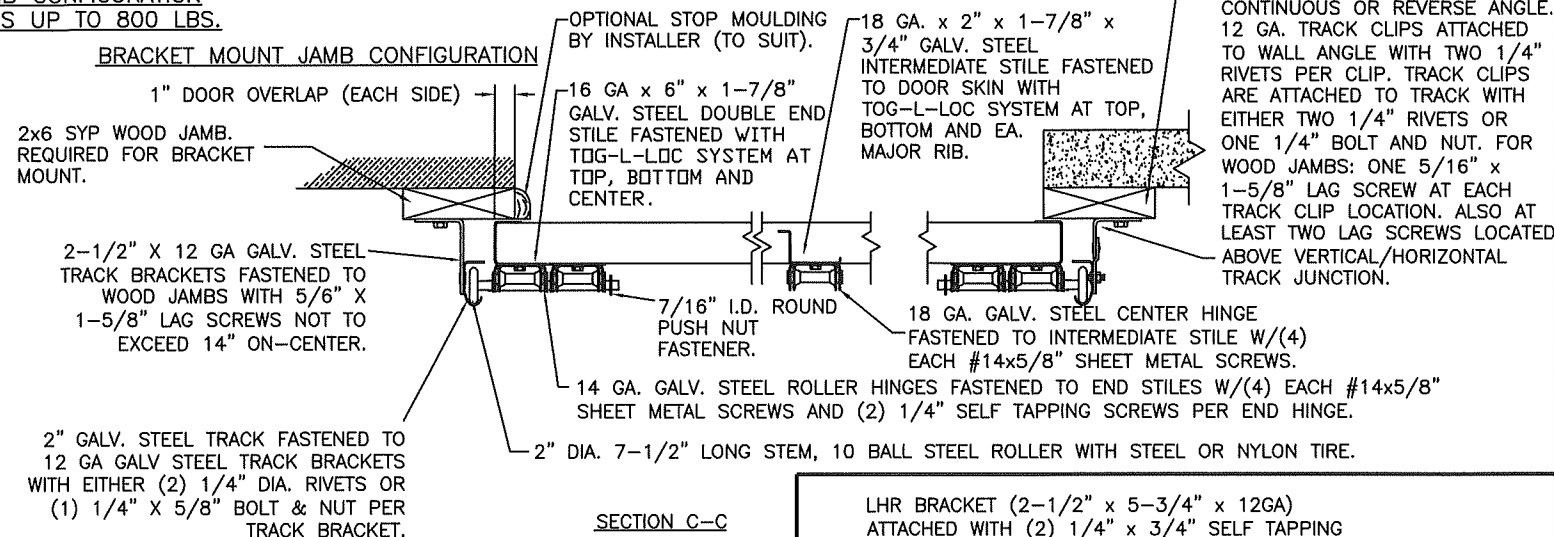
NOTE DOUBLE TRACK HEADROOM, HI-LIFT TRACK, FOLLOW-THE- ROOF TRACK, AND VERTICAL LIFT TRACK ARE AVAILABLE OPTIONS. TRACK CONFIGURATION ABOVE THE DOOR OPENING DOES NOT AFFECT THE WIND LOAD RATING.

PRODUCT REVISED
As complying with the Florida Building Code
NOA-No. **25-0228.02**
Expiration Date: **04/16/2030**
By: *Manuel Perez*
Miami Dade Product Control



DOOR HEIGHT	"L"
6'-6"	70"
7'-0"	76"
7'-6"	82"
8'-0"	88"
8'-6"	94"
9'-0"	100"
9'-6"	106"
10'-0"	112"
10'-6"	118"
11'-0"	124"
11'-6"	130"
12'-0"	136"
12'-6"	142"
13'-0"	148"
13'-6"	154"
14'-0"	160"
14'-6"	166"
15'-0"	172"
15'-6"	178"
16'-0"	184"
16'-6"	190"
17'-0"	196"
17'-6"	202"
18'-0"	208"

JAMB CONFIGURATION DOORS UP TO 800 LBS.

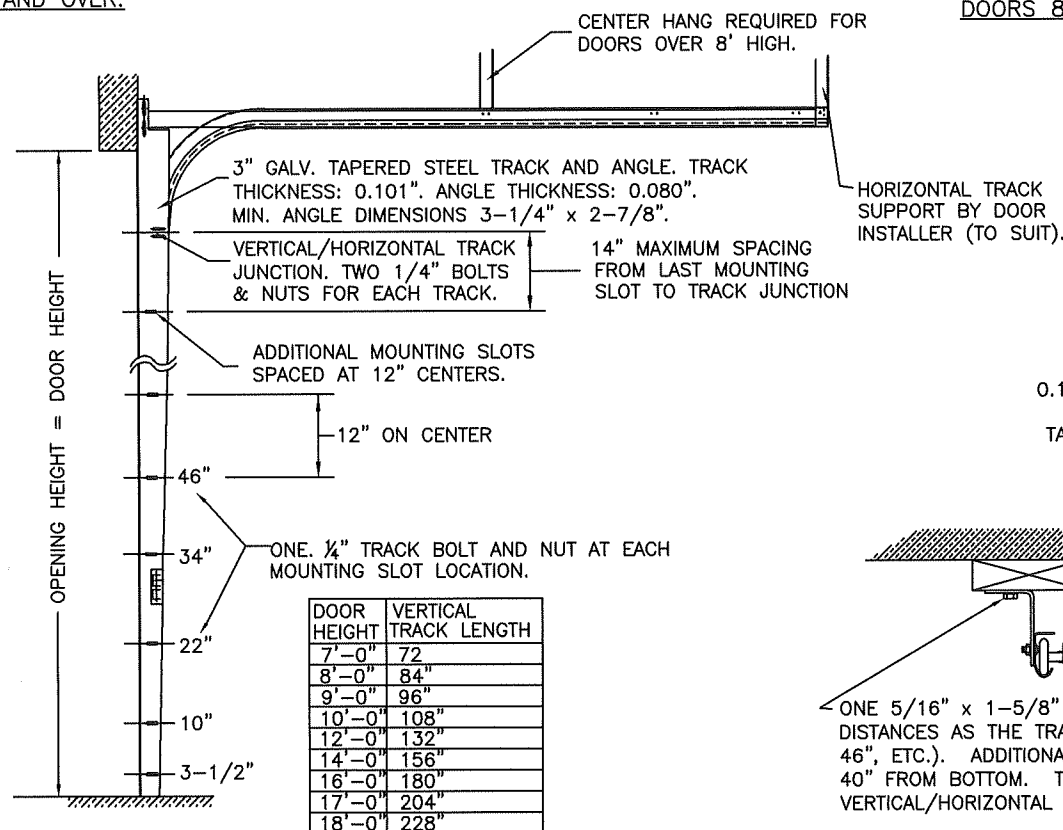


SECTION C-C
PREPARATION OF JAMBS BY OTHERS.

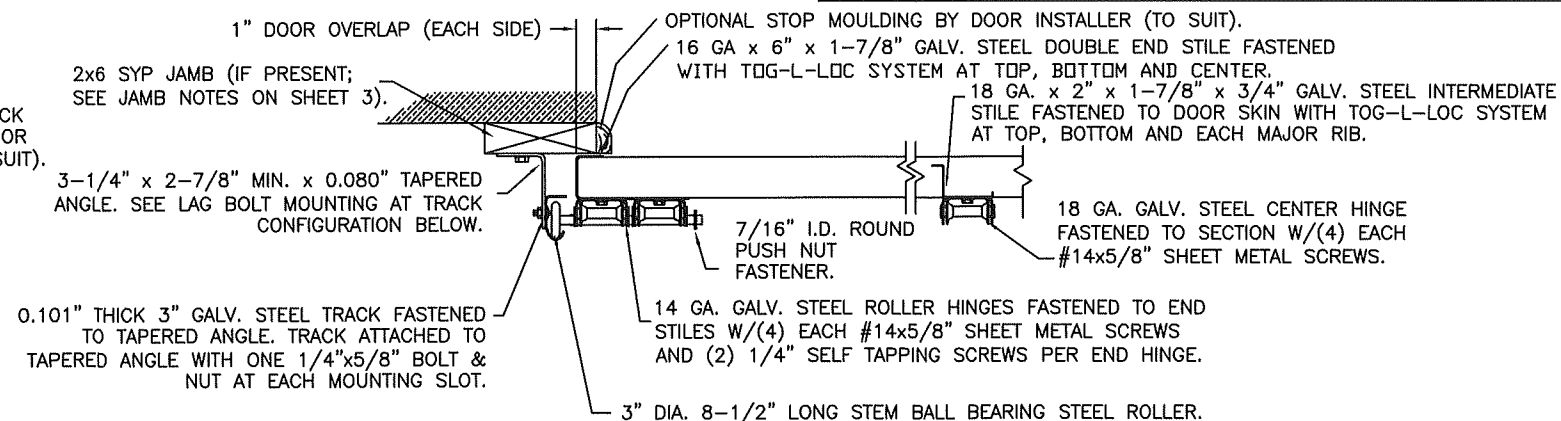
LHR BRACKET (2-1/2" x 5-3/4" x 12GA) ATTACHED WITH (2) 1/4" x 3/4" SELF TAPPING SCREWS. NOTE THAT LHR BRACKETS ARE ALSO USED WITH "DOUBLE END STILE" AS NOTED ON SHEET 2.

3" TRACK CONFIGURATION DOORS 800 LBS AND OVER.

NOTE DOUBLE TRACK HEADROOM, HI-LIFT TRACK, FOLLOW-THE- ROOF TRACK, AND VERTICAL LIFT TRACK ARE AVAILABLE OPTIONS. TRACK CONFIGURATION ABOVE THE DOOR OPENING DOES NOT AFFECT THE WIND LOAD RATING.



JAMB CONFIGURATION DOORS 800 LBS AND OVER.



SECTION C-C
PREPARATION OF JAMBS BY OTHERS.

DESIGN LOADS: +38.0 P.S.F. & -42.0 P.S.F.

Unless Stated Otherwise
TOLERANCES are
.0 = ±.031
.00 = ±.015
.000 = ±.005
.0000 = ±.001
Degrees = ±1/2'

Unless Stated Otherwise
DIMENSIONS ARE IN INCHES.

Clopay
CORPORATION

8585 Duke Boulevard
Mason, OH 45040 USA
Tel. No. 513-770-4800
Fax No. 513-770-4853

DESCRIPTION: COMMERCIAL RIBBED DOORS UP TO 16'2"W

DRAWN BY: SH

DATE: 2/12/14

SCALE: NTS

DWG. B

CHECKED BY: MWW

DATE: 10/17/14

SHEET 3 OF 3

SIZE B

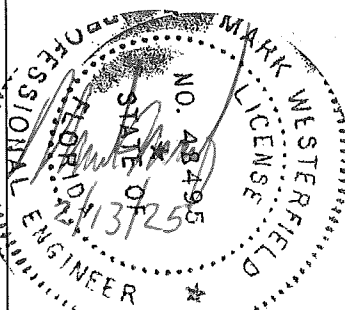
DWG. NO.: 104858

VER: M-D

MANUFACTURING PRODUCT CODE
C-PAN-1E448

PART NO.: N/A

WINDLOAD RATING
W6 DP38T



DESIGN ENGINEER:
MARK WESTERFIELD, P.E.
FLORIDA P.E. #48495