



DEPARTMENT OF REGULATORY AND ECONOMIC RESOURCES (RER)  
BOARD AND CODE ADMINISTRATION DIVISION

## NOTICE OF ACCEPTANCE (NOA)

MIAMI-DADE COUNTY  
PRODUCT CONTROL SECTION

11805 SW 26 Street, Room 208  
Miami, Florida 33175-2474  
T (786) 315-2590 F (786) 315-2599

[www.miamidade.gov/economy](http://www.miamidade.gov/economy)

**Clopay Corporation**  
**8585 Duke Boulevard**  
**Mason, OH 45040**

### SCOPE:

This NOA is being issued under the applicable rules and regulations governing the use of construction materials. The documentation submitted has been reviewed and accepted by Miami-Dade County RER-Product Control Section to be used in Miami Dade County and other areas where allowed by the Authority Having Jurisdiction (AHJ).

This NOA shall not be valid after the expiration date stated below. The Miami-Dade County Product Control Section (In Miami Dade County) and/or the AHJ (in areas other than Miami Dade County) reserve the right to have this product or material tested for quality assurance purposes. If this product or material fails to perform in the accepted manner, the manufacturer will incur the expense of such testing and the AHJ may immediately revoke, modify, or suspend the use of such product or material within their jurisdiction. RER reserves the right to revoke this acceptance, if it is determined by Miami-Dade County Product Control Section that this product or material fails to meet the requirements of the applicable building code.

This product is approved as described herein and has been designed to comply with the Florida Building Code, including the High Velocity Hurricane Zone.

### DESCRIPTION: Commercial Ribbed W8 DP52T Steel Sectional Garage Door up to 14'-2" Wide

**APPROVAL DOCUMENT:** Drawing No. **103288**, titled "Commercial Ribbed Doors up to 14'2" W", sheets 1 through 3 of 3, dated 01/02/2015, with revision 9 dated 02/25/2025, prepared by Clopay Corporation, signed and sealed by Mark Westerfield, P.E., bearing the Miami-Dade County Product Control revision stamp with the Notice of Acceptance number and expiration date by the Miami-Dade County Product Control Section.

### MISSILE IMPACT RATING: Large and Small Missile Impact Resistant

**LABELING:** A permanent label with the manufacturer's name or logo, manufacturing address, model number, the positive and negative design pressure rating, indicate impact rated if applicable, installation instruction drawing reference number, approval number (NOA), the applicable test standards, and the statement reading 'Miami-Dade County Product Control Approved' is to be located on the door's side track, bottom angle, or inner surface of a panel.

**RENEWAL** of this NOA shall be considered after a renewal application has been filed and there has been no change in the applicable building code negatively affecting the performance of this product.

**TERMINATION** of this NOA will occur after the expiration date or if there has been a revision or change in the materials, use, and/or manufacture of the product or process. Misuse of this NOA as an endorsement of any product, for sales, advertising or any other purposes shall automatically terminate this NOA. Failure to comply with any section of this NOA shall be cause for termination and removal of NOA.

**ADVERTISEMENT:** The NOA number preceded by the words Miami-Dade County, Florida, and followed by the expiration date may be displayed in advertising literature. If any portion of the NOA is displayed, then it shall be done in its entirety.

**INSPECTION:** A copy of this entire NOA shall be provided to the user by the manufacturer or its distributors and shall be available for inspection at the job site at the request of the Building Official.

This NOA **renews and revises** NOA # **23-0928.46** and consists of this page 1 and evidence pages E-1, E-2 and E-3, as well as the approval document mentioned above.

The submitted documentation was reviewed by **Carlos M. Utrera, P.E.**



  
03/27/25

NOA No 25-0311.02  
Expiration Date: April 16, 2030  
Approval Date: April 3, 2025  
Page 1

**NOTICE OF ACCEPTANCE: EVIDENCE SUBMITTED**

**1. Evidence submitted under previous NOAs**

**A. DRAWINGS “Submitted under NOA # 20-0128.01”**

1. Drawing No. **103288**, titled “Commercial Ribbed Doors up to 14’2” W”, sheets 1 through 3 of 3, dated 01/02/2015, with revision 6 dated 01/13/2020, prepared by Clopay Corporation, signed and sealed by Mark Westerfield, P.E.

**B. TESTS**

1. Test reports on
  - 1) Uniform Static Air Pressure Test, Loading per FBC TAS 202-94
  - 2) Large Missile Impact Test per FBC, TAS 201-94
  - 3) Cyclic Wind Pressure Loading per FBC, TAS 203-94
  - 4) Forced Entry Test, per FBC TAS 202-94
  - 5) Tensile Test per ASTM E8

Along with marked-up drawings and installation diagram of Clopay 14’-2”x 8’, 24 ga. steel garage door, Model 524W8, prepared by American Test Lab, Inc., Test Report No. **ATLNC 0310.01-14**, dated 03/31/2014, signed and sealed by David W. Johnson, P.E. “Submitted under NOA # 15-0211.03”

2. Test report on Salt Spray per ASTM B117 of painted G40 galvanized painted and G90 panels, prepared by Fenestration Testing Laboratory, Inc., Test Report No. **7890**, dated 10/01/2014, signed by Idalmis Ortega, P.E. “Submitted under NOA # 15-0211.03”

**C. CALCULATIONS “Submitted under NOA # 15-0211.03”**

1. Anchoring calculations, prepared by Clopay Building Products Company, dated 01/02/2015, signed and sealed by Mark Westerfield, P.E.

**D. QUALITY ASSURANCE**

1. Miami-Dade Department of Regulatory and Economic Resources (RER)

**E. MATERIAL CERTIFICATIONS**

1. None.

**F. STATEMENTS “Submitted under NOA # 20-0128.01”**

1. Statement letter of code conformance to 2010, 5<sup>th</sup> Edition (2014) and 6<sup>th</sup> Edition (2017) FBC and Statement letter of no financial interest issued by Clopay Building Products Company, dated 08/02/2017, signed and sealed by Mark Westerfield, P.E.
2. Certificate of amendment changing the company name from Clopay Building Products Company, Inc. to Clopay Corporation, issued by the State of Delaware, dated 08/27/2019. “Submitted under NOA # 20-0128.01”



---

**Carlos M. Utrera, P.E.**  
**Product Control Examiner**  
**NOA No 25-0311.02**  
**Expiration Date: April 16, 2030**  
**Approval Date: April 3, 2025**

**NOTICE OF ACCEPTANCE: EVIDENCE SUBMITTED**

**2. EVIDENCE SUBMITTED UNDER PREVIOUS NOA # 20-0922.48**

**A. DRAWINGS**

1. Drawing No. **103288**, titled “Commercial Ribbed Doors up to 14’2” W”, sheets 1 through 3 of 3, dated 01/02/2015, with revision 7 dated 09/09/2020, prepared by Clopay Corporation, signed and sealed by Mark Westerfield, P.E.

**B. TESTS**

1. None.

**C. CALCULATIONS**

1. None.

**D. QUALITY ASSURANCE**

1. Miami-Dade Department of Regulatory and Economic Resources (RER)

**E. MATERIAL CERTIFICATIONS**

1. None.

**F. STATEMENTS**

1. Statement letter of code conformance to the 6<sup>th</sup> Edition (2017) FBC and 7<sup>th</sup> Edition (2020) FBC and Statement letter of no financial interest issued by Clopay Corporation, dated 09/15/2020, signed and sealed by Mark Westerfield, P.E.



---

**Carlos M. Utrera, P.E.**  
**Product Control Examiner**  
**NOA No 25-0311.02**  
**Expiration Date: April 16, 2030**  
**Approval Date: April 3, 2025**

**NOTICE OF ACCEPTANCE: EVIDENCE SUBMITTED**

**3. EVIDENCE SUBMITTED UNDER NOA # 23-0928.46 AND NEW**

**A. DRAWINGS**

1. Drawing No. **103288**, titled “Commercial Ribbed Doors up to 14’2” W”, sheets 1 through 3 of 3, dated 01/02/2015, with revision 9 dated 02/25/2025, prepared by Clopay Corporation, signed and sealed by Mark Westerfield, P.E.

**B. TESTS**

1. Test reports on
  - 1) Uniform Static Air Pressure Test, Loading per FBC TAS 202-94
  - 2) Large Missile Impact Test per FBC, TAS 201-94
  - 3) Cyclic Wind Pressure Loading per FBC, TAS 203-94
  - 4) Forced Entry Test, per FBC TAS 202-94
  - 5) Tensile Test per ASTM E8along with marked-up drawings and installation diagram of Clopay 14’-2”x 8’, 24 ga. steel garage door, Model 524W8, prepared by American Test Lab, Inc., Test Report No. **ATLNC 0211.02-25**, dated 02/25/2025, signed and sealed by David W. Johnson, P.E.

**C. CALCULATIONS**

1. Anchoring calculations, prepared by Clopay Building Products Company, dated 02/25/2025, signed and sealed by Mark Westerfield, P.E.

**D. QUALITY ASSURANCE**

1. Miami-Dade Department of Regulatory and Economic Resources (RER)

**E. MATERIAL CERTIFICATIONS**

1. None.

**F. STATEMENTS**

1. Statement letter of code conformance to the 8<sup>th</sup> Edition (2023) of the FBC, issued by Clopay Corporation, dated 02/25/2025, signed and sealed by Mark Westerfield, P.E.
2. Statement letter of no financial interest, issued by Clopay Corporation, dated 02/25/2025, signed and sealed by Mark Westerfield, P.E.
3. Statement letter of code conformance to the 8<sup>th</sup> Edition (2023) FBC and 7<sup>th</sup> Edition (2020) FBC and statement letter of no financial interest issued by Clopay Corporation, dated 09/15/2023, signed and sealed by Mark Westerfield, P.E.



---

**Carlos M. Utrera, P.E.**  
**Product Control Examiner**  
**NOA No 25-0311.02**  
**Expiration Date: April 16, 2030**  
**Approval Date: April 3, 2025**

MODELS AVAILABLE (CLOPAY/ HOLMES/ IDEAL)  
524 (24 ga.), 520 (20 ga.) / 224 (24 ga.)/ C4ST (24 ga.), COST (20 ga.)

SHEET:  
1 OF 3

REVISIONS

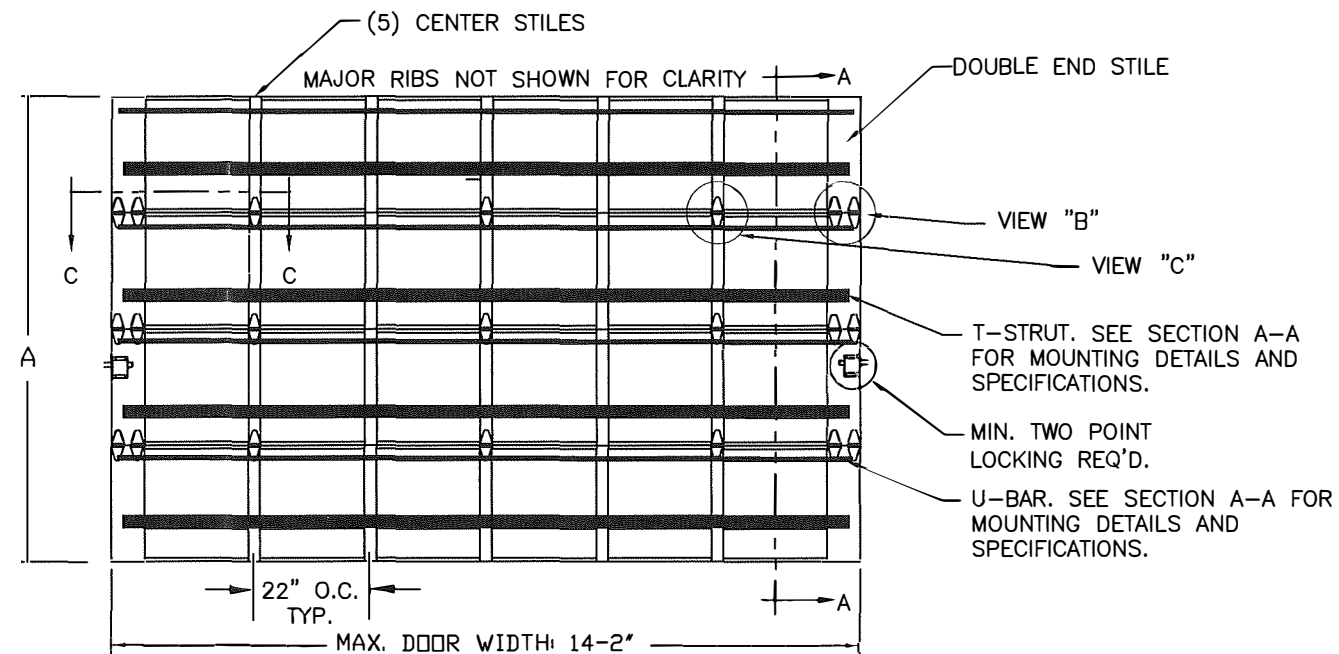
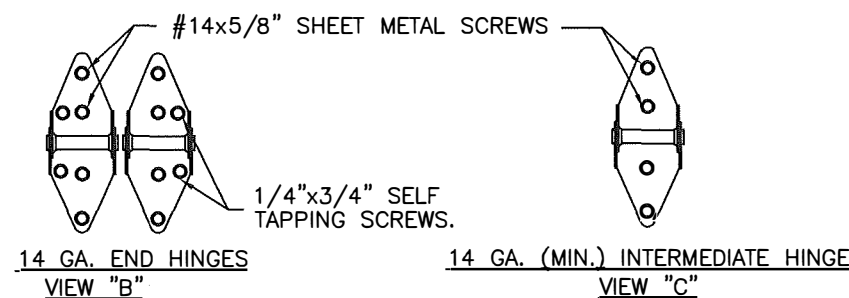
REV. NO.	ZONE:	DATE:	ECN NO.	APPVD:	DESCRIPTION
05	-	1/2/15	-	SH	UPDATED CODE COMPLIANCE STATEMENT TO ADD 6TH EDITION FBC.
06	-	1/13/20	-	MW	UPDATED TITLE BLOCK
07	-	9/9/20	-	SH	UPDATED CODE COMPLIANCE STATEMENT TO 7TH EDITION FBC
08	-	9/6/23	-	JDW	UPDATED CODE COMPLIANCE STATEMENT TO ADD 8TH EDITION FBC
09	-	2/25/25	-	MWW	REVISED JAMB ATTACHMENT CALCS. FOR 10-YEAR RETEST

**PRODUCT REVISED**  
as complying with the Florida  
Building Code

NOA-No. 25-0311.02

Expiration Date 04/16/2030

By RFH  
Miami-Dade Product Control



DOOR HEIGHT 'A'	NUMBER OF SECTIONS
UP TO 8'-0"	4
8'-3" THRU 10'-0"	5
10'-3" THRU 12'-0"	6
12'-3" THRU 14'-0"	7
14'-3" THRU 16'-0"	8
16'-3" THRU 18'-0"	9

THIS PRODUCT CONFORMS TO THE REQUIREMENTS OF 7TH AND 8TH EDITION OF THE FLORIDA BUILDING CODE

MANUFACTURING PRODUCT CODE  
C-PAN-1E448

PART NO.: N/A

WINDLOAD RATING  
W8 DP52T

DESIGN LOADS: +52.0 P.S.F. & -58.0 P.S.F.

Unless Stated Otherwise  
TOLERANCES are  
.0 = ±.031  
.00 = ±.015  
.000 = ±.005  
.0000 = ±.001  
Degrees = ±1/2°

Unless Stated Otherwise  
DIMENSIONS ARE IN INCHES.

**Clopay**  
CORPORATION

8585 Duke Boulevard  
Mason, OH 45040 USA  
Tel. No. 513-770-4800  
Fax No. 513-770-4853

DESCRIPTION: COMMERCIAL RIBBED DOORS UP TO 14'2"W

DRAWN BY: SH

DATE: 3/14/14

SCALE: NTS

DWG. B

CHECKED BY: MWW

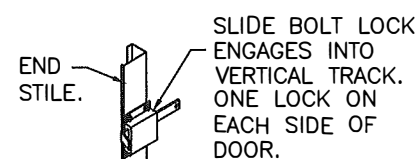
DATE: 1/2/15

SHEET 1 OF 3

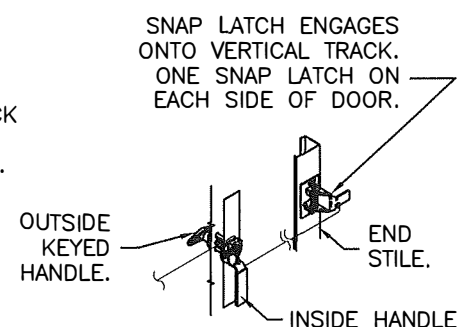
DWG. NO.: 103288

VER: M-D

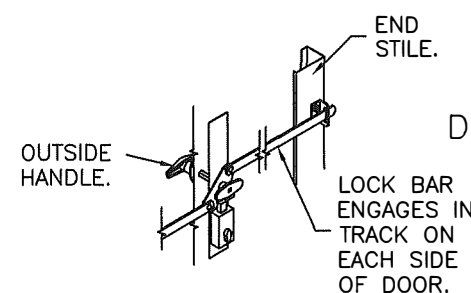
DESIGN ENGINEER  
MARK WESTERFIELD, P.E.  
FLORIDA P.E. #48495



INSIDE SLIDE BOLT LOCK OPTION.



OUTSIDE KEYED LOCK WITH SNAP LATCH LOCK OPTION.



OUTSIDE KEYED LOCK WITH LOCK BAR LOCKING.



MODELS AVAILABLE (CLOPAY/ HOLMES/ IDEAL)  
524 (24 ga.), 520 (20 ga.) / 224 (24 ga.)/ C4ST (24 ga.), COST (20 ga.)

SHEET  
2 OF 3

REVISIONS

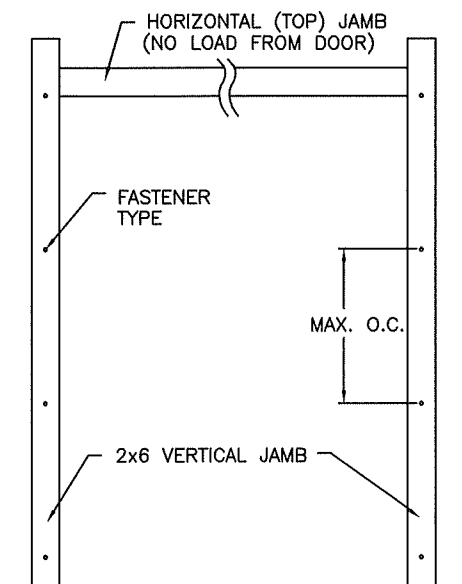
REV. NO.	ZONE	DATE	ECN NO.	APPVD.	DESCRIPTION
--	-	-	-	--	SEE REVISION HISTORY ON SHEET ONE.

### JAMB TO SUPPORTING STRUCTURE ATTACHMENT

#### NOTES:

1. ALL THE LOAD FROM THE DOOR IS TRANSFERRED TO THE TRACK AND THEN FROM THE TRACK TO THE 2x6 VERTICAL SYP (GRADE #2 OR BETTER) JAMBS. NO LOAD FROM THE DOOR IS TRANSFERRED TO THE HORIZONTAL (TOP) JAMB.
2. EACH VERTICAL JAMB SEES A MAXIMUM DESIGN LOAD OF +364 LB & -406 LB. PER LINEAR FOOT OF JAMB.
3. ALL JAMB FASTENERS MAY BE (BUT ARE NOT REQUIRED TO BE) COUNTERSUNK TO PROVIDE A FLUSH MOUNTING SURFACE.
4. A 1/3 STRESS INCREASE FOR WIND LOAD WAS NOT USED IN THE CALCULATION OF ALLOWABLE LOADS FOR ANCHORS AND FASTENERS FOR STEEL, CONCRETE AND MASONRY.

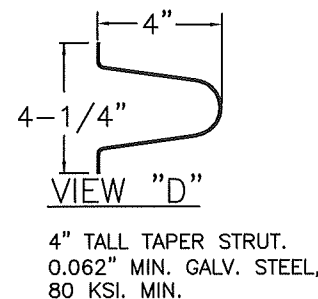
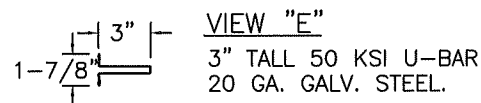
NOTE: 2x6 WOOD JAMBS ARE NOT REQUIRED WITH CONTINUOUS ANGLE MOUNT TRACK. HOWEVER, IF DESIRED ON STEEL JAMBS OR CONCRETE OR BLOCK WALLS, APPROVED FASTENERS AS DETAILED BELOW SHOULD BE INCREASED IN LENGTH BY 1-1/2" AND INSTALLED DIRECTLY THROUGH THE ANGLE AND 2x6 WOOD JAMBS INTO THE STEEL JAMBS OR CONCRETE OR BLOCK WALLS. ANCHORS CAN BE (BUT ARE NOT REQUIRED TO BE) COUNTERSUNK TO PROVIDE A FLUSH MOUNTING SURFACE. CONTINUOUS ANGLE TRACK CAN BE ANCHORED DIRECTLY TO GROUT REINFORCED BLOCK WALL OR 3,000 PSI MIN. CONCRETE COLUMN OR STEEL JAMBS.



**PRODUCT REVISED**  
as complying with the Florida  
Building Code  
NOA-No. 25-0311.02

Expiration Date 04/16/2030

By *[Signature]*  
Miami-Dade Product Control



### 2x6 JAMB TO SUPPORTING STRUCTURE ATTACHMENT (NOT TO BE USED FOR ATTACHMENT OF TRACK ANGLE TO 2x6 VERTICAL JAMBS OR SUPPORTING STRUCTURE) FASTENER ATTACHMENT TO SUPPORTING STRUCTURE SCHEDULES

BUILDING TYPE	FASTENER TYPE	MAXIMUM ON-CENTER DISTANCE BETWEEN FASTENERS*	STEEL WASHERS REQUIRED?
HOLLOW BLOCK WALL	1/4" x 1-1/4" MIN. EMBED CARBON STEEL CONCRETE SCREW	5-3/4"	1" O.D.
GROUT FILLED BLOCK WALL	1/4" x 1-3/4" MIN. EMBED CARBON STEEL CONCRETE SCREW	12"	1" O.D.
2000 PSI MIN. CONCRETE	1/4" x 1-3/4" MIN. EMBED TAPCON CONCRETE ANCHOR	14-1/2"	1" O.D.
4000 PSI MIN. CONCRETE	1/4" x 1-3/4" MIN. EMBED TAPCON CONCRETE ANCHOR	19-1/2"	1" O.D.
2500 PSI MIN. CONCRETE	3/8" x 3" NOMINAL EMBED HILTI KWIK BOLT T22 CONCRETE ANCHOR	24"	INCLUDED
WOOD FRAME (SYP 0.55 SG)	1/2" x 1-1/2" EMBED LAG SCREW (ASTM A307, GRADE A)	17-1/4"	1" O.D.
14GA STEEL (0.060" MIN.)	1/4"-14 x 1" ITW BUILDDEX TEKS SELF-DRILLING FASTENER	7-3/4"	1" O.D.
12GA STEEL (0.105" MIN.)	1/4"-14 x 1" ITW BUILDDEX TEKS SELF-DRILLING FASTENER	11"	1" O.D.
1/8" STEEL	1/4"-14 x 1" ITW BUILDDEX TEKS SELF-DRILLING FASTENER	13"	1" O.D.

\*FIRST (BOTTOM) ANCHOR STARTING AT NO MORE THAN HALF OF THE MAXIMUM ON-CENTER DISTANCE. HIGHEST ANCHOR INSTALLED AT, AT LEAST AS HIGH AS THE DOOR OPENING.  
CLOPAY DOES NOT SUPPLY JAMB ATTACHMENT FASTENERS.  
MINIMUM DISTANCE BETWEEN CENTER OF ANCHOR AND EDGE OF CONCRETE BLOCK: 2-1/2", EXCLUDING STUCCO THICKNESS.

NOTE: FOR DOORS WITH CONTINUOUS OR REVERSE ANGLE TRACK, THESE VALUES CAN BE USED TO DIRECTLY ATTACH THE TRACK ANGLE TO THE WALL.

DESIGN ENGINEER:  
MARK WESTERFELD, P.E.  
FLORIDA P.E. #48495

SECTIONS ARE 1-7/8" THICK  
PANELS ROLL FORMED OF .022" MIN.  
HOT DIPPED G-40 GALVANIZING,  
ROLL FORMED STEEL.  
MIN. YIELD STRENGTH 56.7 KSI

(1) 3" x U-BAR AT THE TOP OF EVERY SECTION, (SEE VIEW "E") ATTACHED WITH (2) 1/4"x3/4" SELF-TAPPING SCREWS PER STILE LOCATION.

ADJUSTABLE TOP ROLLER BRACKET OF 12 GA. GALV. STEEL, INSTALLED ON DOOR WITH (4) #14 X 5/8" LG SHEET METAL SCREWS

ONE 4" T-STRUT PER SECTION. (SEE VIEW "D") EACH T-STRUT ATTACHED AT EACH STILE LOCATION WITH (2) 1/4"x3/4" SELF TAPPING SCREWS.

TONGUE & GROOVE JOINT.

END HINGE. SEE DETAILS AT VIEW "B" ON SHEET 1.

BOTTOM SECTION REINFORCED WITH TEMPERED ALUMINUM EXTRUSION WITH INTEGRAL RETAINER FOR FLEXIBLE VINYL ASTRAGAL

(2) STACKED LHR BRACKETS USED AS INNER BOTTOM BRACKET (NOT SHOWN).

BOTTOM ROLLER BRACKET OF 12 GA. MIN. GALV. STEEL, FASTENED WITH (4) #14 X 5/8" LG SHT. MTL. SCREWS

### SECTION A-A (SIDE VIEW)

DESIGN LOADS: +52.0 P.S.F. & -58.0 P.S.F.

Unless Stated Otherwise  
TOLERANCES are  
.0 = ±.031  
.00 = ±.015  
.000 = ±.005  
.0000 = ±.001  
Degrees = ± 1/2°  
Unless Stated Otherwise  
DIMENSIONS ARE IN INCHES.

**Clopay**  
CORPORATION

8585 Duke Boulevard  
Mason, OH 45040 USA  
Tel. No. 513-770-4800  
Fax No. 513-770-4853

MANUFACTURING PRODUCT CODE  
C-PAN-1E448  
PART NO.: N/A

WINDLOAD RATING  
W8 DP52T

DESCRIPTION: COMMERCIAL RIBBED DOORS UP TO 14'2"W

DRAWN BY: SH	DATE: 3/14/14	SCALE: NTS	DWG. SIZE B
CHECKED BY: MWW	DATE: 1/2/15	SHEET 2 OF 3	
DWG. NO.: 103288	VER: M-D		

MODELS AVAILABLE (CLOPAY/ HOLMES/ IDEAL)  
524 (24 ga.), 520 (20 ga.) / 224 (24 ga.)/ C4ST (24 ga.), C0ST (20 ga.)

SHEET:  
3 OF 3

REVISIONS

REV. NO.	ZONE:	DATE:	ECN NO.	APPVD:	DESCRIPTION
--	--	--	--	--	SEE REVISION HISTORY ON SHEET ONE.

**2" TRACK CONFIGURATION**  
DOORS UP TO 800 LBS.

NOTE DOUBLE TRACK HEADROOM, HI-LIFT TRACK, FOLLOW-THE- ROOF TRACK, AND VERTICAL LIFT TRACK ARE AVAILABLE OPTIONS.

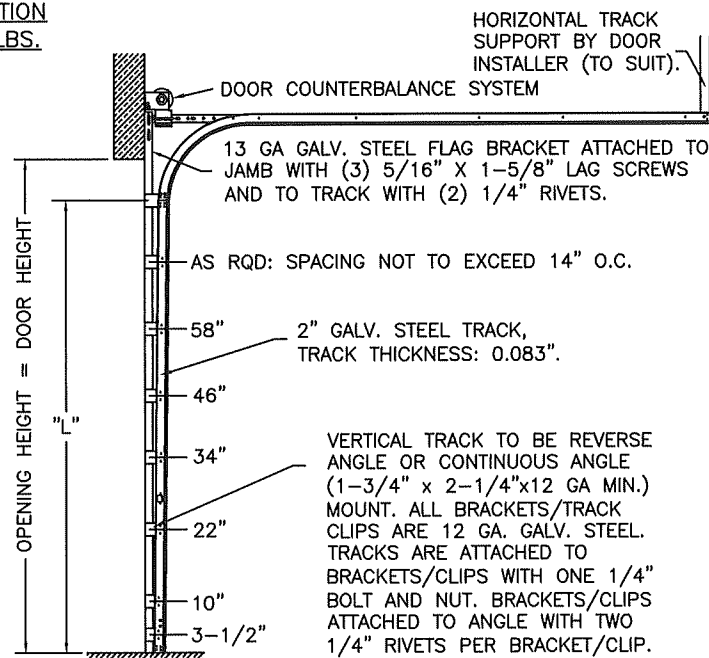
TRACK CONFIGURATION ABOVE THE DOOR OPENING DOES NOT AFFECT THE WIND LOAD RATING.

**PRODUCT REVISED**  
as complying with the Florida Building Code

NOA-No. 25-0311.02

Expiration Date 04/16/2030

By   
Miami-Dade Product Control



DOOR HEIGHT	"L"
6'-6"	70"
7'-0"	76"
7'-6"	82"
8'-0"	88"
8'-6"	94"
9'-0"	100"
9'-6"	106"
10'-0"	112"
10'-6"	118"
11'-0"	124"
11'-6"	130"
12'-0"	136"
12'-6"	142"
13'-0"	148"
13'-6"	154"
14'-0"	160"
14'-6"	166"
15'-0"	172"
15'-6"	178"
16'-0"	184"
16'-6"	190"
17'-0"	196"
17'-6"	202"
18'-0"	208"

**JAMB CONFIGURATION**  
DOORS UP TO 800 LBS.

2x6 SYP WOOD JAMB. REQUIRED FOR BRACKET MOUNT.

2-1/2" X 12 GA GALV. STEEL TRACK BRACKETS FASTENED TO WOOD JAMBS WITH 5/8" X 1-5/8" LAG SCREWS NOT TO EXCEED 14" ON-CENTER.

0.083" MIN. THICK VERTICAL 2" TRACK

**ANGLE MOUNT JAMB CONFIGURATION**

OPTIONAL STOP MOULDING BY INSTALLER (TO SUIT).

16 GA X 6" X 1-7/8" GALV. STEEL DOUBLE END STILE FASTENED WITH TOG-L-LOC SYSTEM AT TOP, BOTTOM AND CENTER.

7/16" I.D. ROUND PUSH NUT FASTENER.

14 GA. GALV. STEEL ROLLER HINGES FASTENED TO END STILES W/(4) EACH #14x5/8" SHEET METAL SCREWS AND (2) 1/4" SELF TAPPING SCREWS PER END HINGE.

SECTION C-C

PREPARATION OF JAMBS BY OTHERS.

18 GA. X 2" X 1-7/8" X 3/4" GALV. STEEL INTERMEDIATE STILE FASTENED TO DOOR SKIN WITH TOG-L-LOC SYSTEM AT TOP, BOTTOM AND EA. MAJOR RIB.

2x6 SYP JAMB (IF PRESENT; SEE JAMB NOTES ON SHEET 2).

VERTICAL TRACK TO BE CONTINUOUS OR REVERSE ANGLE. 12 GA. TRACK CLIPS ATTACHED TO WALL ANGLE WITH TWO 1/4" RIVETS PER CLIP. TRACK CLIPS ARE ATTACHED TO TRACK WITH EITHER TWO 1/4" RIVETS OR ONE 1/4" BOLT AND NUT. FOR WOOD JAMBS: ONE 5/16" X 1-5/8" LAG SCREW AT EACH TRACK CLIP LOCATION. ALSO TWO LAG SCREWS LOCATED ABOVE VERTICAL/HORIZONTAL TRACK JUNCTION.

14 GA. GALV. STEEL CENTER HINGE FASTENED TO SECTION W/(4) EACH #14x5/8" SHEET METAL SCREWS.

2" DIA. 7-1/2" LONG STEM, 10 BALL STEEL ROLLER WITH STEEL OR NYLON TIRE.

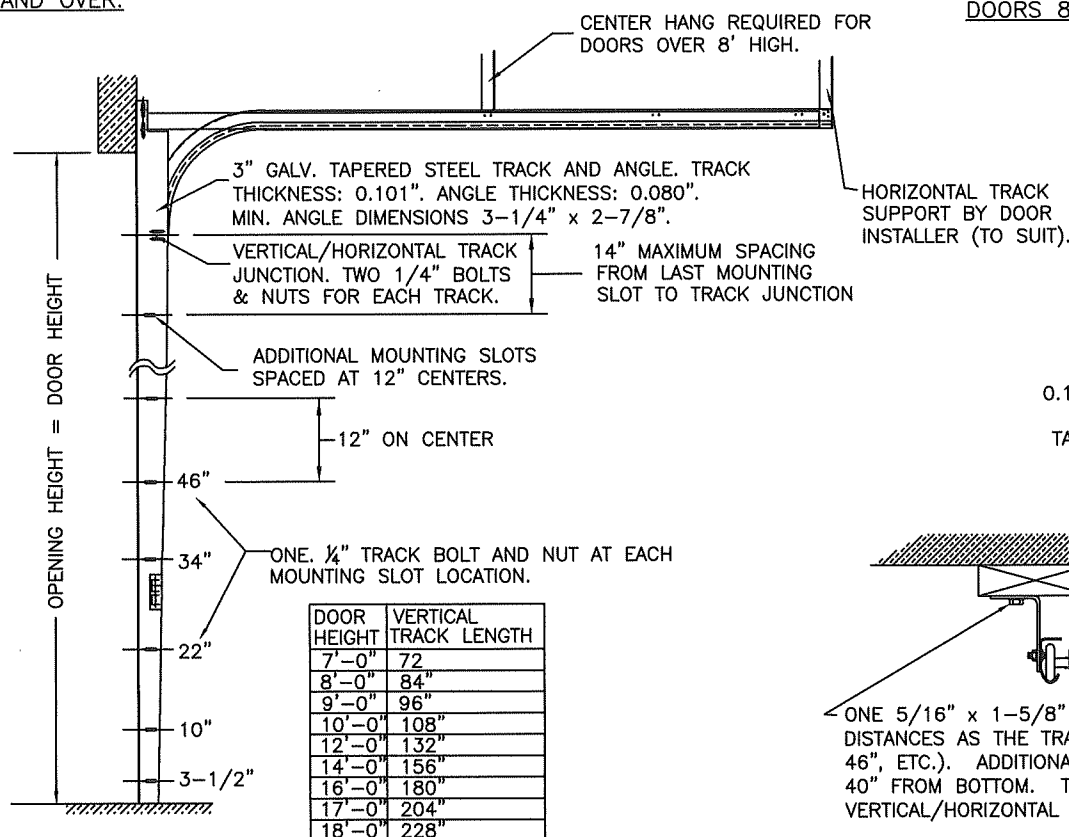
LHR BRACKET (2-1/2" X 5-3/4" X 12GA) ATTACHED WITH (2) 1/4" X 3/4" SELF TAPPING SCREWS. NOTE THAT LHR BRACKETS ARE ALSO USED WITH "DOUBLE END STILE" AS NOTED ON SHEET 2.

**DOUBLE TRACK LOW HEADROOM OPTION**  
(AVAIL. FOR BOTH 2" AND 3" TRACK)

DOUBLE HORIZONTAL TRACK.

**3" TRACK CONFIGURATION**  
DOORS 800 LBS AND OVER.

NOTE DOUBLE TRACK HEADROOM, HI-LIFT TRACK, FOLLOW-THE- ROOF TRACK, AND VERTICAL LIFT TRACK ARE AVAILABLE OPTIONS. TRACK CONFIGURATION ABOVE THE DOOR OPENING DOES NOT AFFECT THE WIND LOAD RATING.



**JAMB CONFIGURATION**  
DOORS 800 LBS AND OVER.

2x6 SYP JAMB (IF PRESENT; SEE JAMB NOTES ON SHEET 3).

3-1/4" X 2-7/8" MIN. X 0.080" TAPERED ANGLE. SEE LAG BOLT MOUNTING AT TRACK CONFIGURATION BELOW.

0.101" THICK 3" GALV. STEEL TRACK FASTENED TO TAPERED ANGLE. TRACK ATTACHED TO TAPERED ANGLE WITH ONE 1/4" X 5/8" BOLT & NUT AT EACH MOUNTING SLOT.

1" DOOR OVERLAP (EACH SIDE)

OPTIONAL STOP MOULDING BY DOOR INSTALLER (TO SUIT).

16 GA X 6" X 1-7/8" GALV. STEEL DOUBLE END STILE FASTENED WITH TOG-L-LOC SYSTEM AT TOP, BOTTOM AND CENTER.

18 GA. X 2" X 1-7/8" X 3/4" GALV. STEEL INTERMEDIATE STILE FASTENED TO DOOR SKIN WITH TOG-L-LOC SYSTEM AT TOP, BOTTOM AND EACH MAJOR RIB.

7/16" I.D. ROUND PUSH NUT FASTENER.

18 GA. GALV. STEEL CENTER HINGE FASTENED TO SECTION W/(4) EACH #14x5/8" SHEET METAL SCREWS.

14 GA. GALV. STEEL ROLLER HINGES FASTENED TO END STILES W/(4) EACH #14x5/8" SHEET METAL SCREWS AND (2) 1/4" SELF TAPPING SCREWS PER END HINGE.

3" DIA. 8-1/2" LONG STEM BALL BEARING STEEL ROLLER.

SECTION C-C

PREPARATION OF JAMBS BY OTHERS.

DESIGN LOADS: +52.0 P.S.F. & -58.0 P.S.F.

Unless Stated Otherwise TOLERANCES are

.0 = ±.031  
.00 = ±.015  
.000 = ±.005  
.0000 = ±.001  
Degrees = ±1/2°

Unless Stated Otherwise DIMENSIONS ARE IN INCHES.

**Clopay**  
CORPORATION

8585 Duke Boulevard  
Mason, OH 45040 USA  
Tel. No. 513-770-4800  
Fax No. 513-770-4853

DESCRIPTION: COMMERCIAL RIBBED DOORS UP TO 14'2"W

DRAWN BY: SH

DATE: 3/14/14

SCALE: NTS

DWG. SIZE B

CHECKED BY: MWW

DATE: 1/2/15

SHEET OF 3

DWG. NO.: 103288

VER: M-D

DESIGN ENGINEER:  
MARK WESTERFIELD, P.E.  
FLORIDA P.E. #48495

MANUFACTURING PRODUCT CODE

C-PAN-1E448

PART NO.: N/A

WINDLOAD RATING

W8 DP52T