



DEPARTMENT OF REGULATORY AND ECONOMIC RESOURCES (RER)
BOARD AND CODE ADMINISTRATION DIVISION
NOTICE OF ACCEPTANCE (NOA)

MIAMI-DADE COUNTY
PRODUCT CONTROL SECTION
11805 SW 26 Street, Room 208
Miami, Florida 33175-2474
T (786) 315-2590 F (786) 315-2599
www.miamidade.gov/building

Regency Plus, Inc.
2000 Locust Gap Highway
Mount Carmel, PA 17851

SCOPE:

This NOA is being issued under the applicable rules and regulations governing the use of construction materials. The documentation submitted has been reviewed and accepted by Miami-Dade County RER-Product Control Section to be used in Miami-Dade County and other areas where allowed by the Authority Having Jurisdiction (AHJ).

This NOA shall not be valid after the expiration date stated below. The Miami-Dade County Product Control Section (In Miami-Dade County) and/ or the AHJ (in areas other than Miami-Dade County) reserve the right to have this product or material tested for quality assurance purposes. If this product or material fails to perform in the accepted manner, the manufacturer will incur the expense of such testing and the AHJ may immediately revoke, modify, or suspend the use of such product or material within their jurisdiction. RER reserves the right to revoke this acceptance if it is determined by Miami-Dade County Product Control Section that this product or material fails to meet the requirements of the applicable building code.

This product is approved as described herein and has been designed to comply with the Florida Building Code, including the High Velocity Hurricane Zone.

DESCRIPTION: Series "5305 Tilt" White PVC Double Hung Window – L.M.I.

APPROVAL DOCUMENT: Drawing No. **RPLS0064**, titled "Series 5305 Tilt Vinyl Double Hung Window - LMI", sheets 1 through 10 of 10, dated 10/14/08, with revision N dated 02/17/25, prepared by Amoruso Consulting Engineering, LLC, signed and sealed by Robert James Amoruso, P.E., bearing the Miami-Dade County Product Control Revision stamp with the Notice of Acceptance number and expiration date by the Miami-Dade County Product Control Section.

MISSILE IMPACT RATING: Large and Small Missile Impact Resistant

LABELING: Each unit shall bear a permanent label with the manufacturer's name or logo, city, state, series, and following statement: "Miami-Dade County Product Control Approved", unless otherwise noted herein.

RENEWAL of this NOA shall be considered after a renewal application has been filed and there has been no change in the applicable building code negatively affecting the performance of this product.

TERMINATION of this NOA will occur after the expiration date or if there has been a revision or change in the materials, use, and/ or manufacture of the product or process. Misuse of this NOA as an endorsement of any product, for sales, advertising or any other purposes shall automatically terminate this NOA. Failure to comply with any section of this NOA shall be cause for termination and removal of NOA.

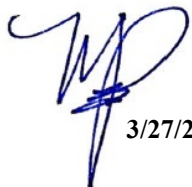
ADVERTISEMENT: The NOA number preceded by the words Miami-Dade County, Florida, and followed by the expiration date may be displayed in advertising literature. If any portion of the NOA is displayed, then it shall be done in its entirety.

INSPECTION: A copy of this entire NOA shall be provided to the user by the manufacturer or its distributors and shall be available for inspection at the job site at the request of the Building Official.

This NOA **revises and renews** NOA No. **23-0929.10** and consists of this page 1 and evidence pages E-1, E-2 and E-3, as well as approval document mentioned above.

The submitted documentation was reviewed by **Manuel Perez, P.E.**




3/27/25

NOA No. **25-0312.08**
Expiration Date: **May 06, 2030**
Approval Date: **April 03, 2025**
Page 1

NOTICE OF ACCEPTANCE: EVIDENCE SUBMITTED

1. EVIDENCE SUBMITTED UNDER PREVIOUS NOA's

A. DRAWINGS

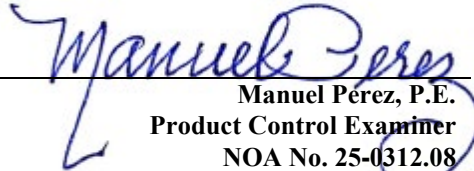
1. Manufacturer's die drawings and sections.
(Submitted under NOA No. 09-0122.05)
2. Drawing No. **RPLS0064**, titled "Series 5305 Tilt Vinyl Double Hung Window - LMI", sheets 1 through 10 of 10, dated 01/12/09, with revision **M** dated 06/07/23, prepared by PTC Product Design Group, LLC, signed and sealed by Robert James Amoruso, P.E.
(Submitted under NOA No. 23-0929.10)

B. TESTS

1. Test reports on: 1) Air Infiltration Test, per FBC, TAS 202-94
2) Uniform Static Air Pressure Test, Loading per FBC, TAS 202-94
3) Water Resistance Test, per FBC, TAS 202-94
4) Large Missile Impact Test per FBC, TAS 201-94
5) Cyclic Wind Pressure Loading per FBC, TAS 203-94
6) Forced Entry Test, per FBC 2411.3.2.1, and TAS 202-94
along with marked-up drawings and installation diagram of series 5305 tilt double hung vinyl window, prepared by National Certified Testing Laboratories, Test Report No. **NCTL-110-11422-2**, dated 10/02/08, with revision dated 01/08/09, and addendum letter dated 03/12/09, all signed and sealed by Harold E. Rupp, P.E.
(Submitted under NOA No. 09-0122.05)
2. Test reports on: 1) Air Infiltration Test, per FBC, TAS 202-94
2) Uniform Static Air Pressure Test, Loading per FBC, TAS 202-94
3) Water Resistance Test, per FBC, TAS 202-94
4) Large Missile Impact Test per FBC, TAS 201-94
5) Cyclic Wind Pressure Loading per FBC, TAS 203-94
6) Forced Entry Test, per FBC 2411.3.2.1, and TAS 202-94
along with marked-up drawings and installation diagram of series 5405 horizontal sliding vinyl window, prepared by National Certified Testing Laboratories, Test Report No. **NCTL-110-22724-1**, dated 04/27/20, signed and sealed by Joseph A. Reed, P.E.
(Submitted under NOA No. 20-0512.01)

C. CALCULATIONS

1. Anchor verification calculations and structural analysis, complying with FBC 5th Edition (2014), dated 06/01/15 with revision dated 09/01/15, prepared by PTC Product Design Group, LLC, signed and sealed by Robert J. Amoruso, P.E.
(Submitted under NOA No. 15-0618.02)
2. Glazing complies with **ASTM E1300-04**


Manuel Pérez, P.E.
Product Control Examiner
NOA No. 25-0312.08
Expiration Date: May 06, 2030
Approval Date: April 03, 2025

NOTICE OF ACCEPTANCE: EVIDENCE SUBMITTED

1. EVIDENCE SUBMITTED UNDER PREVIOUS NOA's (CONTINUED)

D. QUALITY ASSURANCE

1. Miami-Dade Department of Regulatory and Economic Resources (RER).

E. MATERIAL CERTIFICATIONS

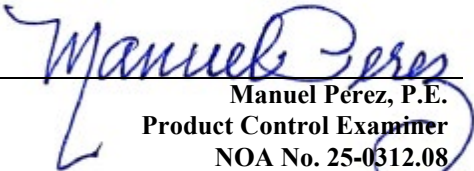
1. Notice of Acceptance No. **20-0915.22** issued to **Kuraray America, Inc.** for their "Trosifol® Ultraclear, Clear and Color PVB Glass Interlayers" dated 11/19/20, expiring on 07/08/24.
2. Notice of Acceptance No. **21-1109.04**, issued to **Vision Extrusions Group Limited**, for their **White Rigid PVC Exterior Extrusions for Windows and Doors**, approved on 03/31/22, expiring on 09/30/24.

F. STATEMENTS

1. Statement letter of conformance, complying with **FBC 8th Edition (2023)**, and of no financial interest, dated June 7, 2023, issued by PTC Product Design Group, LLC, signed and sealed by Robert James Amoruso, P.E.
(Submitted under NOA No. 23-0929.10)

G. OTHERS

1. Notice of Acceptance No. **20-1103.08**, issued to Regency Plus, Inc. for their Series 5305 Tilt White PVC Double Hung Window – L.M.I., approved on 01/21/21 and expiring on 05/06/25.


Manuel Pérez, P.E.
Product Control Examiner
NOA No. 25-0312.08
Expiration Date: May 06, 2030
Approval Date: April 03, 2025

NOTICE OF ACCEPTANCE: EVIDENCE SUBMITTED

2. NEW EVIDENCE SUBMITTED

A. DRAWINGS

1. Drawing No. **RPLS0064**, titled “Series 5305 Tilt Vinyl Double Hung Window - LMI”, sheets 1 through 10 of 10, dated 10/14/08, with revision **N** dated 02/17/25, prepared by Amoruso Consulting Engineering, LLC, signed and sealed by Robert James Amoruso, P.E.

B. TESTS

1. None

C. CALCULATIONS

1. None

D. QUALITY ASSURANCE

1. Miami-Dade Department of Regulatory and Economic Resources (RER)

E. MATERIAL CERTIFICATIONS

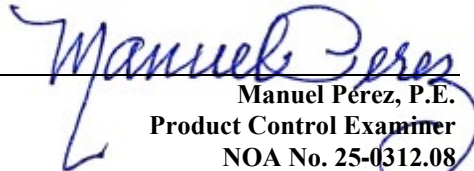
1. Notice of Acceptance No. **24-0205.08** issued to **Kuraray America, Inc.** for their “**Trosifol® Ultraclear, Clear and Color PVB Glass Interlayers**” dated 03/21/24, expiring on 07/08/29.
2. Notice of Acceptance No. **24-0618.01**, issued to **Vision Extrusions Group Limited**, for their **White Rigid PVC Exterior Extrusions for Windows and Doors**, approved on 07/18/24, expiring on 09/30/29.

F. STATEMENTS

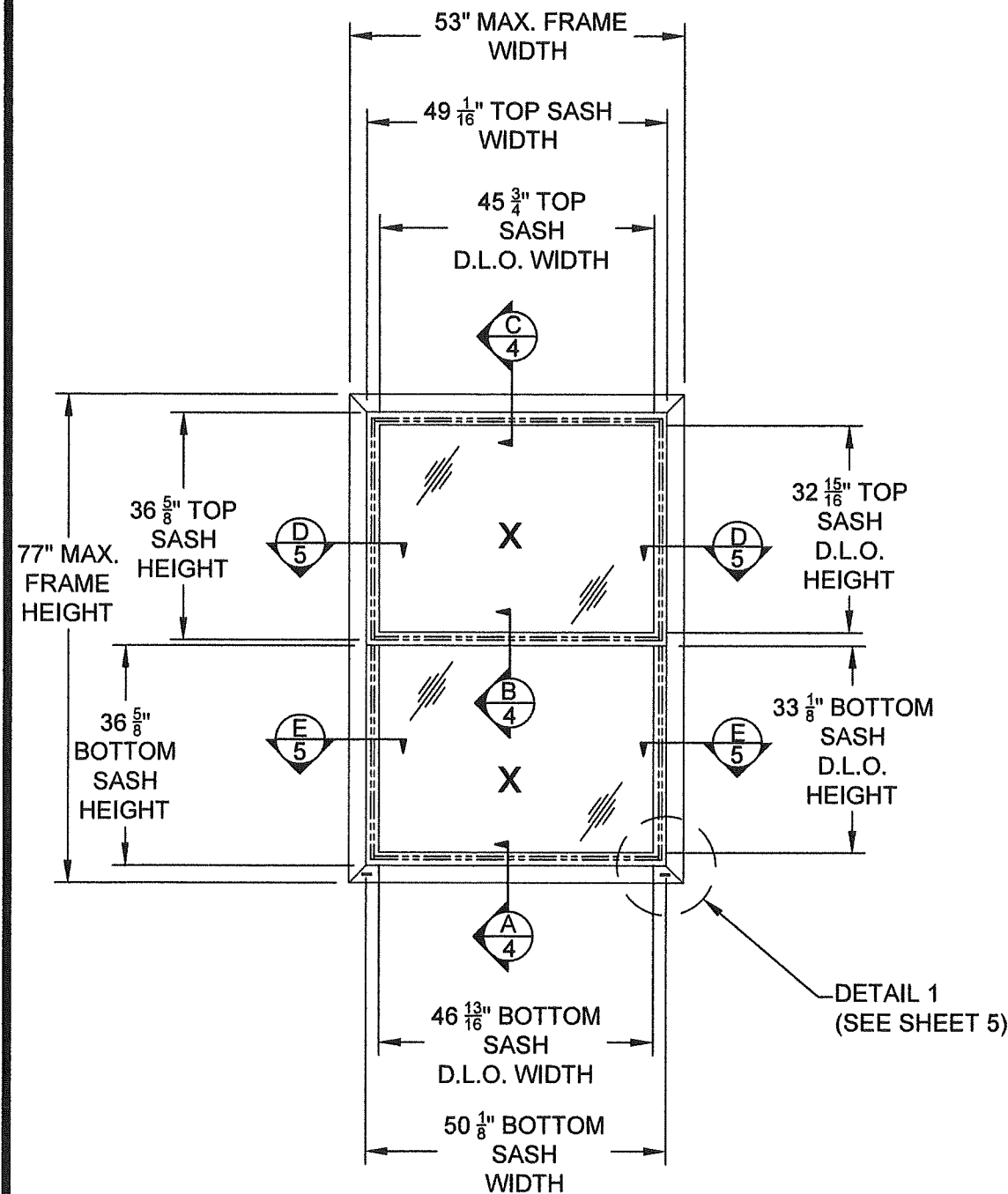
1. Statement letter of conformance, complying with **FBC 8th Edition (2023)**, and of no financial interest, dated February 18, 2025, issued by Amoruso Consulting Engineering, LLC, signed and sealed by Robert James Amoruso, P.E.

G. OTHERS

1. Notice of Acceptance No. **23-0929.10**, issued to Regency Plus, Inc. for their Series 5305 Tilt White PVC Double Hung Window – L.M.I., approved on 11/02/23 and expiring on 05/06/25.

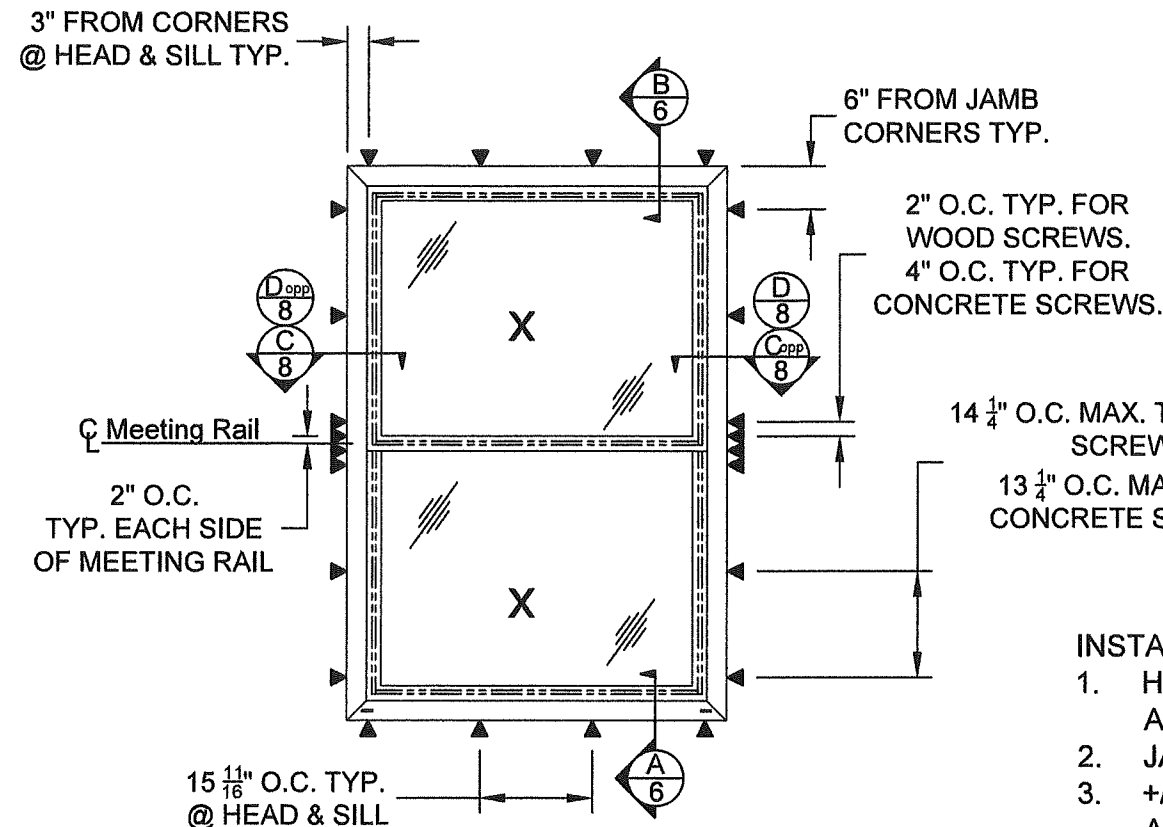

Manuel Pérez, P.E.
Product Control Examiner
NOA No. 25-0312.08
Expiration Date: May 06, 2030
Approval Date: April 03, 2025

SERIES 5305 TILT VINYL DOUBLE HUNG WINDOW WINDOW **INSTALLATION INTO WOOD SUBSTRATE (WOOD OR TAPPING** **SCREWS) OR CONCRETE/MASONRY SUBSTRATE** **(CONCRETE SCREWS)**



**SERIES 5305 TILT VINYL DOUBLE
HUNG WINDOW WINDOW**
EXTERIOR VIEW

DESIGN PRESSURE RATING (PSF)	IMPACT RATING
+55.0/-55.0	LARGE MISSILE IMPACT



**SERIES 5305 TILT VINYL DOUBLE HUNG
WINDOW WINDOW**
EXTERIOR VIEW - ANCHORAGE
WOOD AND CONCRETE/MASONRY SUBSTRATES

PRODUCT REVISED
As complying with the Florida
Building Code
NOA-No. **25-0312.08**
Expiration Date: **05/06/2030**
By: *Manuel Perez*
Miami-Dade Product Control

- INSTALLATION NOTES:**
1. HEAD AND SILL ANCHORAGE THE SAME.
 2. JAMB ANCHORAGE SAME.
 3. +/- 1" TOLERANCE ON ANCHOR LOCATION.
 - 3.1. TAPCON MINIMUM SPACING IS 4" OC.
 - 3.2. WOOD AND TAPPING SCREW MINIMUM SPACING IS 2" OC.

WEEP HOLES:

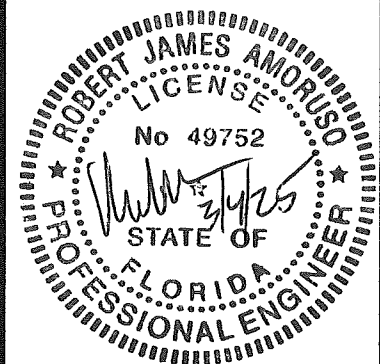
1. ONE (1) TRIANGULAR-SHAPED WEEP HOLE MEASURING APPROXIMATELY 1/2" WIDE BY 1/2" HIGH WAS LOCATED AT EACH END OF THE INTERIOR SILL TRACK CENTER VERTICAL LEG.
2. ONE (1) WEEP HOLE MEASURING 1" X 1/4" WAS LOCATED AT EACH END OF THE EXTERIOR SILL TRACK HORIZONTAL SURFACE AND THROUGH THE EXTERIOR HORIZONTAL SILL FACE.
3. ONE (1) WEEP HOLE MEASURING 1-1/2" X 1/4" AND EMPLOYING A PLASTIC WEEP COVER WAS LOCATED AT 2-7/8" FROM EACH END OF THE EXTERIOR VERTICAL SILL FACE.

REGENCY PLUS, INC.
2000 LOCUST GAP HIGHWAY
MT. CARMEL, PA 17851

SERIES 5305 TILT VINYL DOUBLE HUNG WINDOW - LMI ANCHORAGE DETAILS	DATE	BY	2/17/25	6/7/23
	REVISION DESCRIPTION	REV.	UPDATE FOR NOA EXPIRATION	UPDATE TO 8TH EDITION (2023) FBC
			N	M

DATE: 10/14/2008	DWN BY: CB	CHK BY: n/a	SCALE: NONE
---------------------	---------------	----------------	----------------

AMORUSO CONSULTING
ENGINEERING, LLC
FL Registration No. 38327
ROBERT J. AMORUSO, P.E.
FLORIDA PE NO. 49752
226 N. NOVA RD., #142
ORMOND BEACH, FL 32174
RJAENGPE@GMAIL.COM

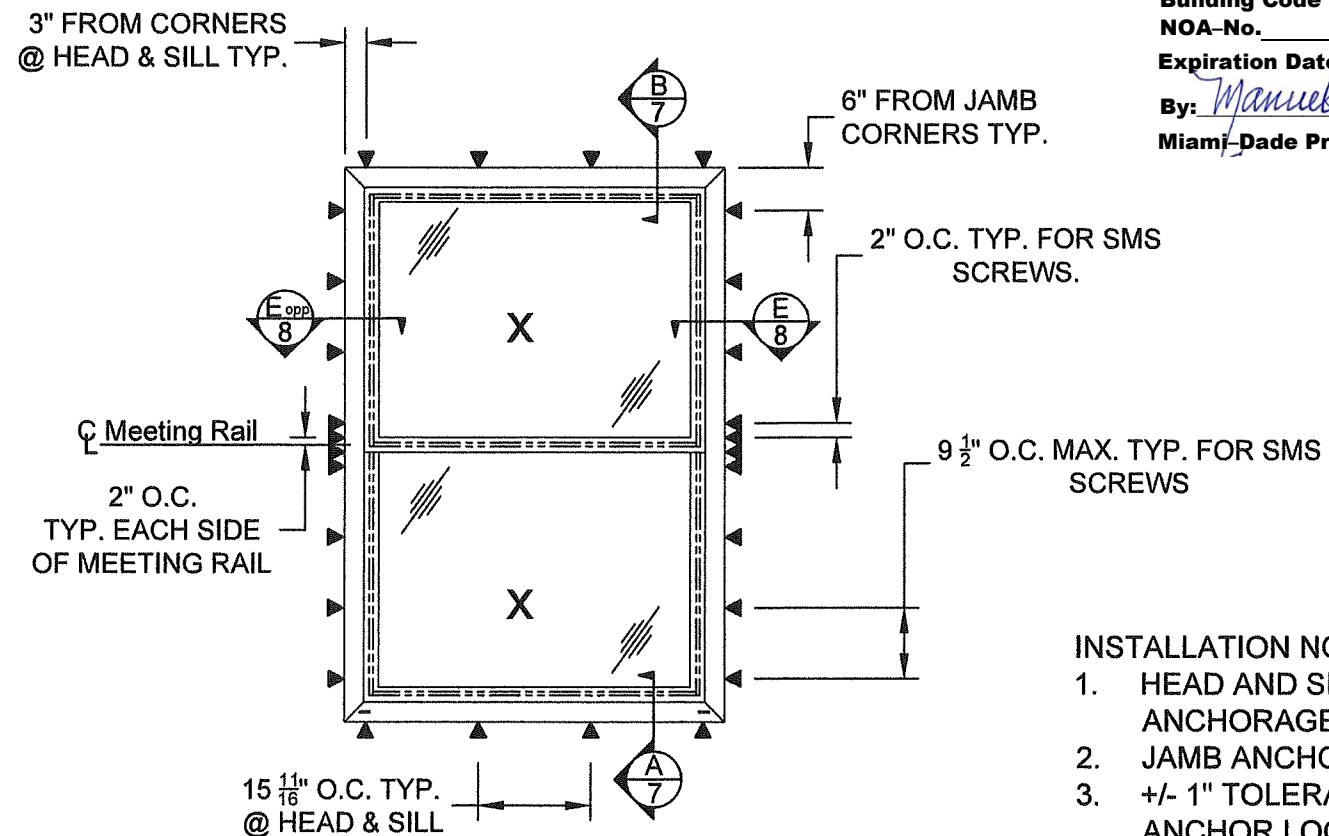


PROJECT#: ACE-2025-101

DWG/REV: RPLS0064, Rev. N

SHT: 2 of 10

REGENCY PLUS, INC.
2000 LOCUST GAP HIGHWAY
MT. CARMEL, PA 17851



PRODUCT REVISED
As complying with the Florida
Building Code
NOA-No. 25-0312.08
Expiration Date: 05/06/2030
By: Manuel Perez
Miami-Dade Product Control

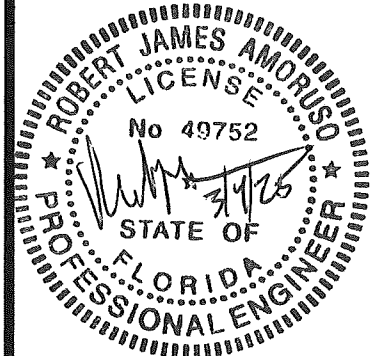
- INSTALLATION NOTES:**
- 1. HEAD AND SILL ANCHORAGE THE SAME.**
 - 2. JAMB ANCHORAGE SAME.**
 - 3. +/- 1" TOLERANCE ON ANCHOR LOCATION.**
 - 3.1. SMS, TAPPING OR SELF-DRILLING SCREWS MINIMUM SPACING IS 2" OC.**

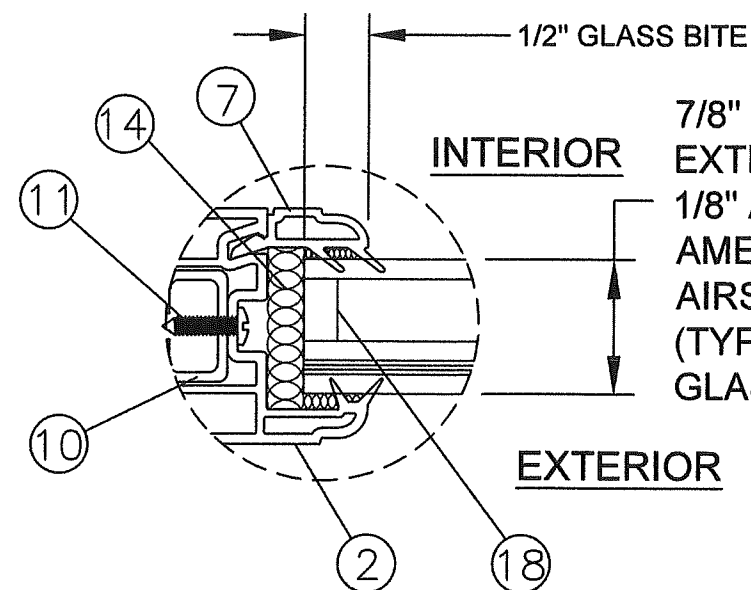
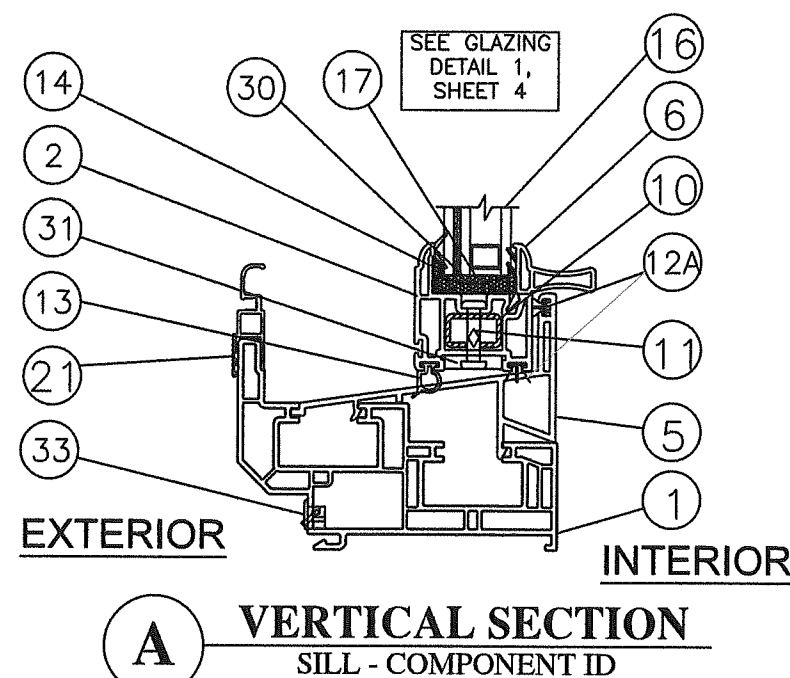
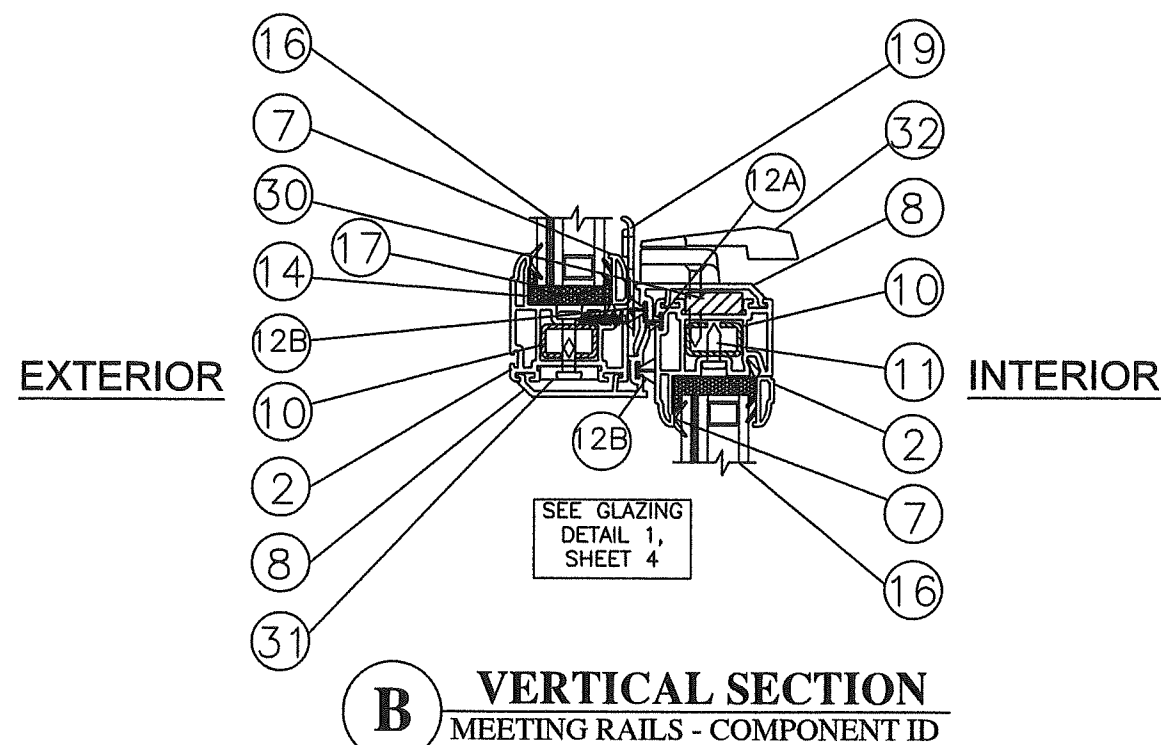
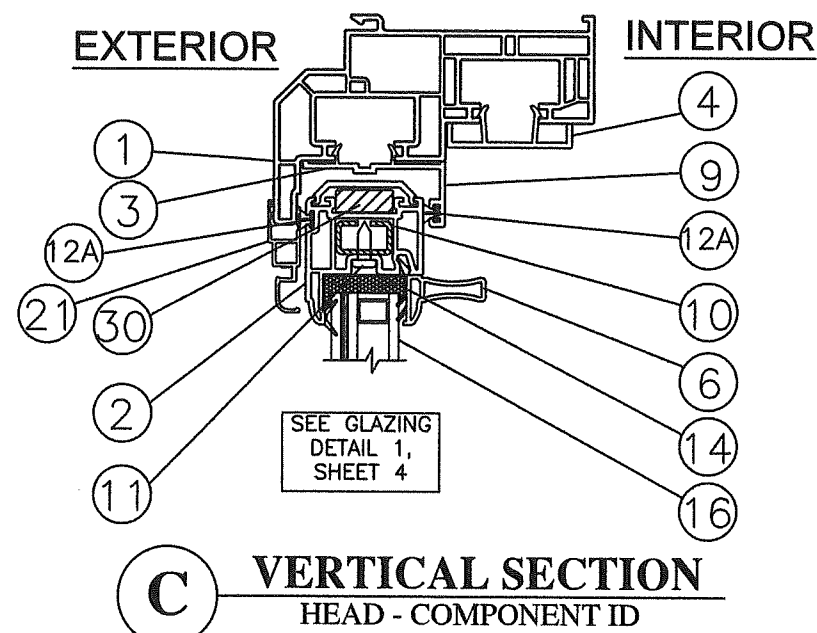
WEEP HOLES:

- PROJECT#: ACE-2025-101

DWG/REV: RPLS0064, Rev. N

SHT: 3 of 10





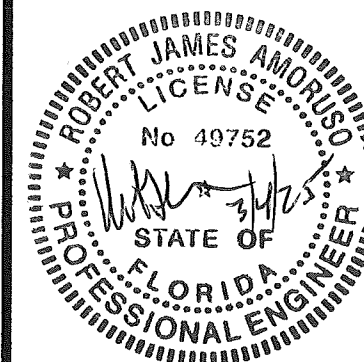
7/8" O.A. LAMINATED GLASS CONSISTING OF:
EXTERIOR LAMINATED GLASS - (2) NOMINAL
1/8" ANNEALED GLASS W/ 0.090" KURARAY
AMERICA INC. TROSIFOL INTERLAYER, 7/16"
AIRSPACE W/ STAINLESS STEEL SPACER
(TYPE SS-D), INTERIOR 1/8" TEMPERED
GLASS

PRODUCT REVISED
As complying with the Florida
Building Code
NOA-No. **25-0312.08**
Expiration Date: **05/06/2030**
By: *Manuel Perez*
Miami-Dade Product Control

SERIES 5305 TILT VINYL DOUBLE HUNG WINDOW - LMI ANCHORAGE DETAILS				
REV.	REVISION DESCRIPTION	BY	DATE	
N	UPDATE FOR NOA EXPIRATION	RJA	2/17/25	
M	UPDATE TO 8TH EDITION (2023) FBC	RJA	6/7/23	

DATE: 10/14/2008	DWN BY: CB	CHK BY: n/a	SCALE: NONE
---------------------	---------------	----------------	----------------

AMORUSO CONSULTING
ENGINEERING, LLC
FL Registration No. 38327
ROBERT J. AMORUSO, P.E.
FLORIDA PE NO. 49752
226 N. NOVA RD., #142
ORMOND BEACH, FL 32174
RJAENGPE@GMAIL.COM

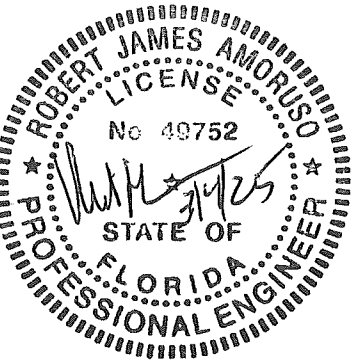


PROJECT#: ACE-2025-101
DWG/REV: RPLS0064, Rev. N
SHT: 4 of 10

REV.	REVISION DESCRIPTION	BY	DATE
N	UPDATE FOR NOA EXPIRATION	RJA	2/17/25
M	UPDATE TO 8TH EDITION (2023) FBC	RJA	6/7/23

DATE: 10/14/2008	DWN BY: CB	CHK BY: n/a	SCALE: NONE
---------------------	---------------	----------------	----------------

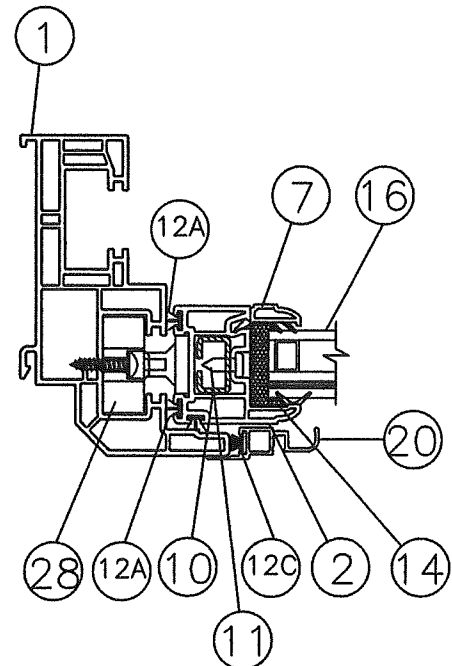
AMORUSO CONSULTING
ENGINEERING, LLC
FL Registration No. 38327
ROBERT J. AMORUSO, P.E.
FLORIDA PE NO. 49752
226 N. NOVA RD., #142
ORMOND BEACH, FL 32174
RJAENGPE@GMAIL.COM



PROJECT#: ACE-2025-101

DWG/REV: RPLS0064, Rev. N

SHT: 5 of 10

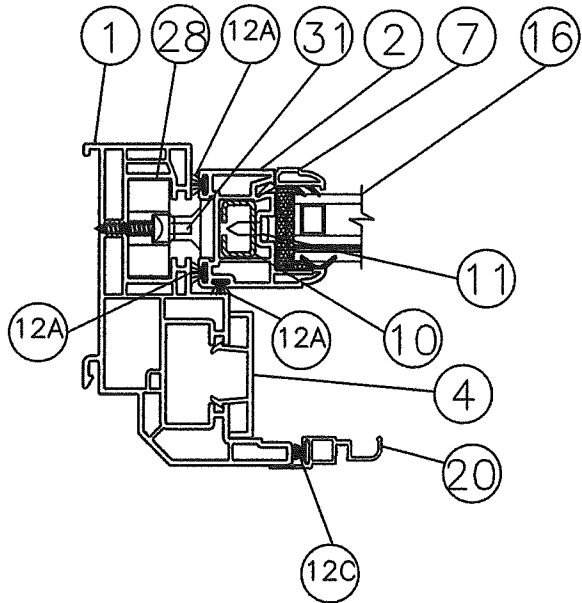
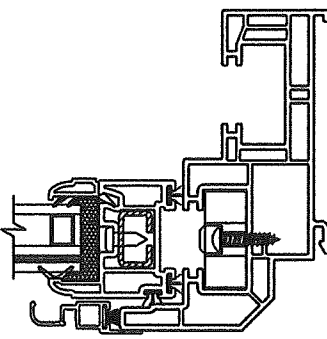


INTERIOR

SEE GLAZING
DETAIL 1,
SHEET 4

EXTERIOR

D HORIZONTAL SECTION
UPPER SASH
JAMBS - COMPONENT ID

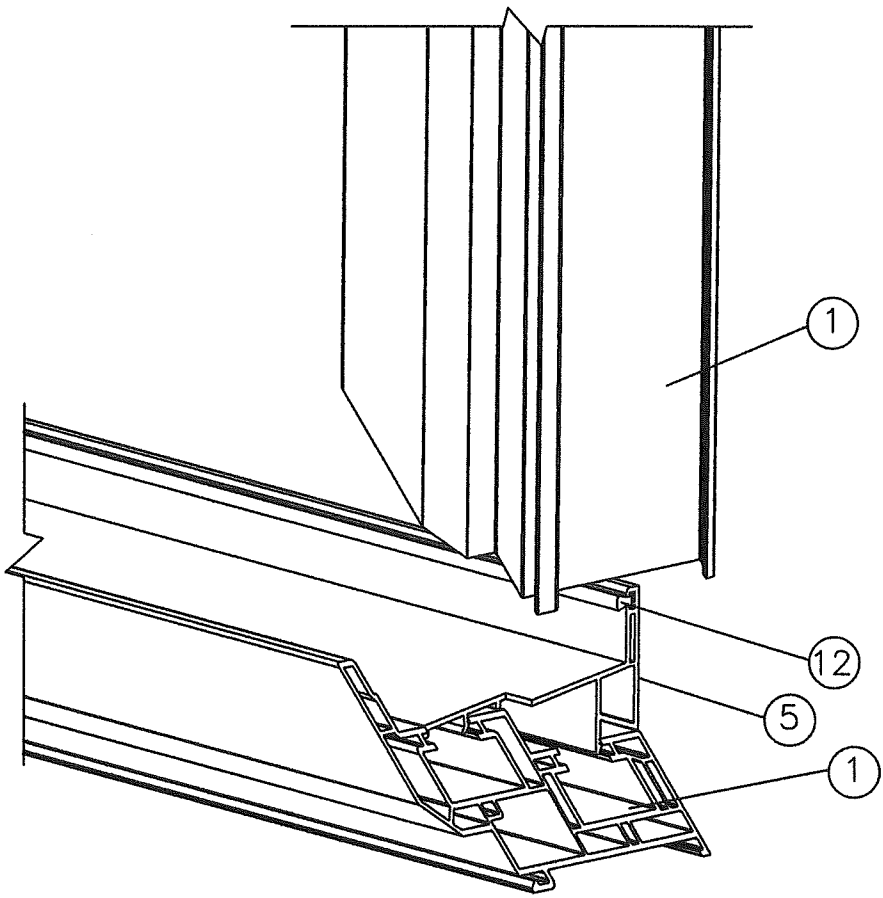
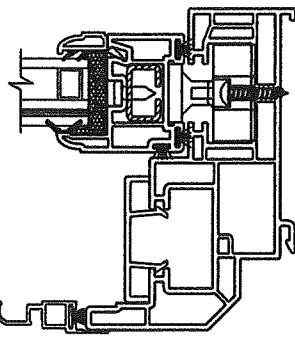


INTERIOR

SEE GLAZING
DETAIL 1,
SHEET 4

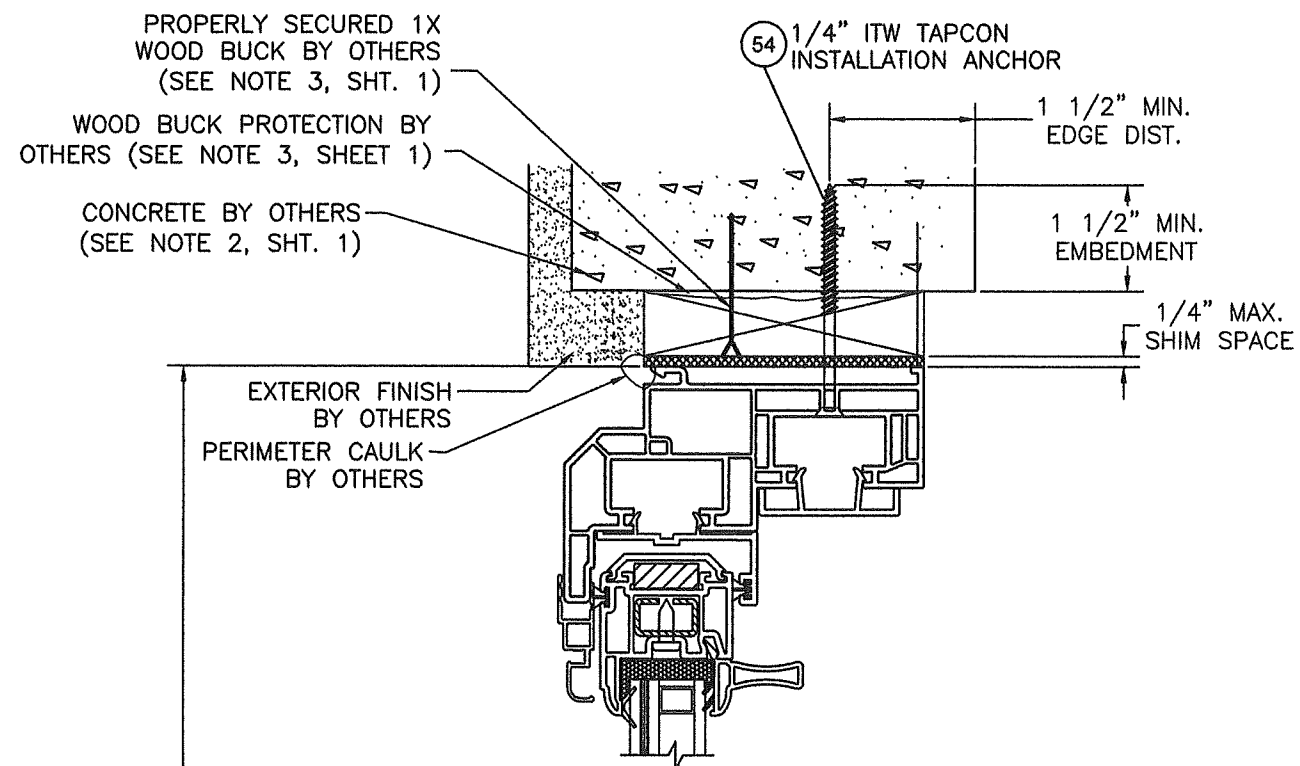
EXTERIOR

E HORIZONTAL SECTION
LOWER SASH
JAMBS - COMPONENT ID



DETAIL 1
MASTER FRAME CONSTRUCTION
(SASH FRAME SIMILAR)

PRODUCT REVISED
As complying with the Florida
Building Code
NOA-No. **25-0312.08**
Expiration Date: **05/06/2030**
By: *Manuel Perez*
Miami-Dade Product Control

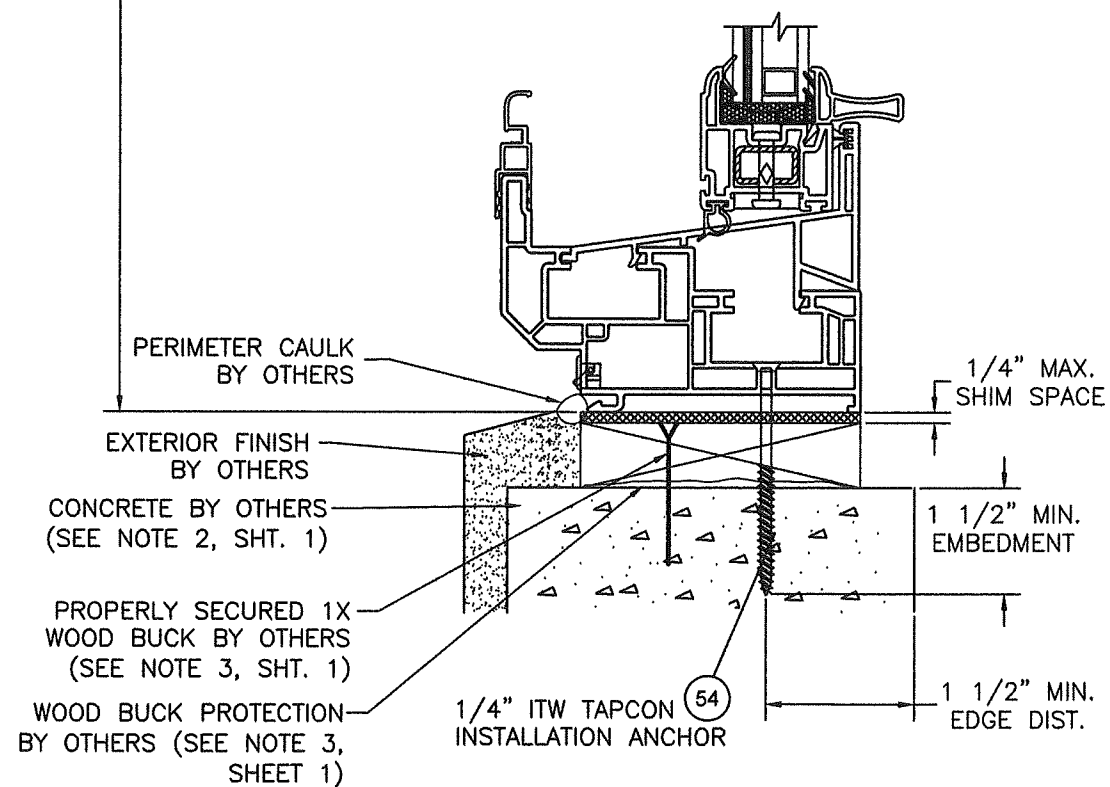


B VERTICAL SECTION
CONCRETE SUBSTRATE

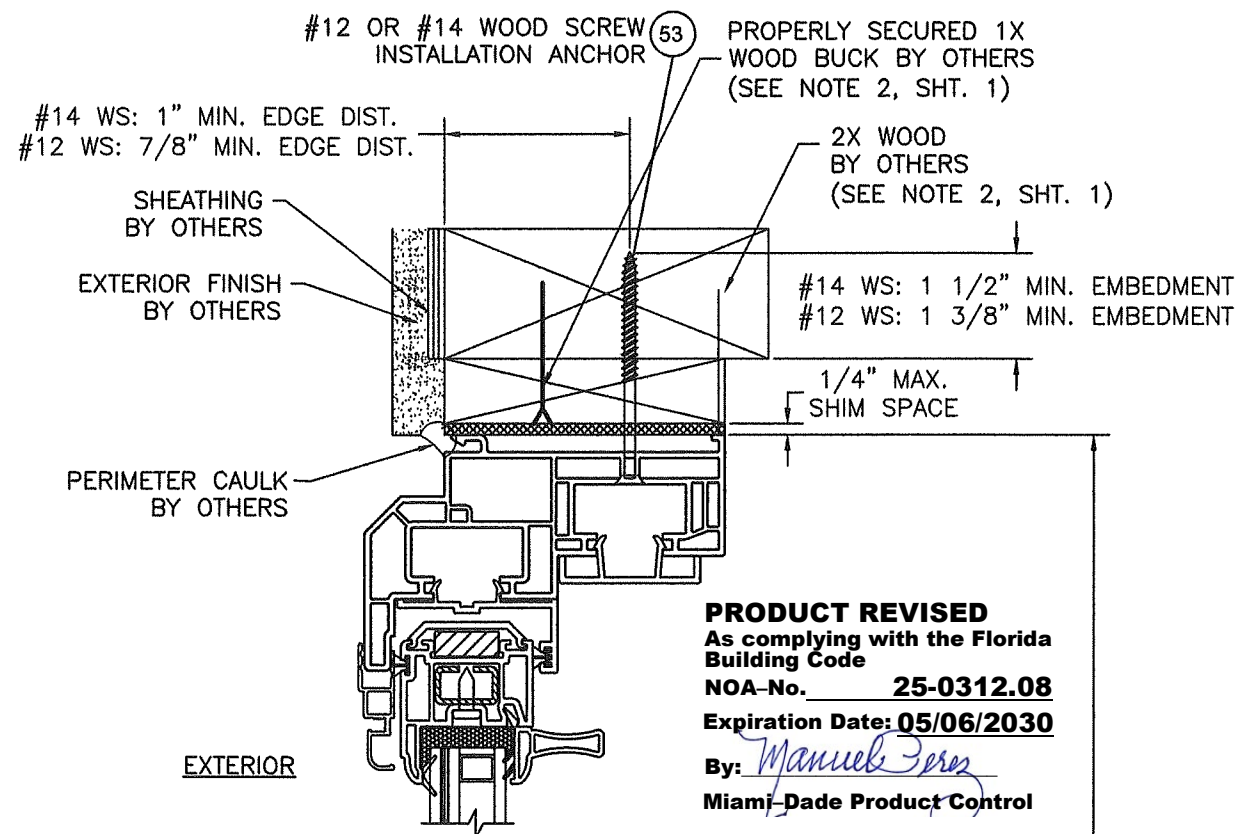
WINDOW
HEIGHT

EXTERIOR

INTERIOR



A VERTICAL SECTION
CONCRETE SUBSTRATE

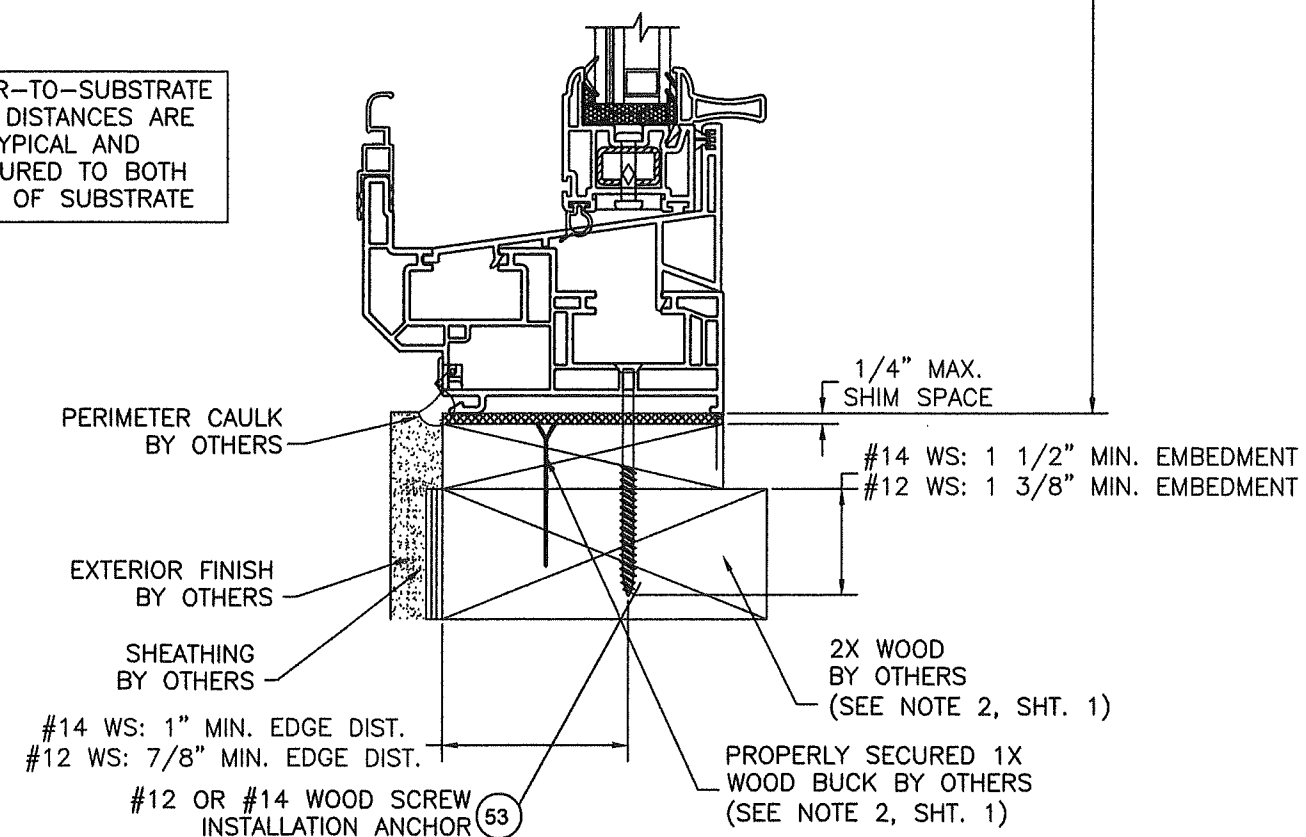


B VERTICAL SECTION
WOOD SUBSTRATE

<u>INTERIOR</u>	WINDOW HEIGHT
1	1
2	2
3	3
4	4
5	5
6	6
7	7
8	8
9	9
10	10
11	11
12	12
13	13
14	14
15	15
16	16
17	17
18	18
19	19
20	20
21	21
22	22
23	23
24	24
25	25
26	26
27	27
28	28
29	29
30	30
31	31
32	32
33	33
34	34
35	35
36	36
37	37
38	38
39	39
40	40
41	41
42	42
43	43
44	44
45	45
46	46
47	47
48	48
49	49
50	50
51	51
52	52
53	53
54	54
55	55
56	56
57	57
58	58
59	59
60	60
61	61
62	62
63	63
64	64
65	65
66	66
67	67
68	68
69	69
70	70
71	71
72	72
73	73
74	74
75	75
76	76
77	77
78	78
79	79
80	80
81	81
82	82
83	83
84	84
85	85
86	86
87	87
88	88
89	89
90	90
91	91
92	92
93	93
94	94
95	95
96	96
97	97
98	98
99	99
100	100

PRODUCT REVISED
As complying with the Florida
Building Code
NOA-No. 25-0312.08
Expiration Date: 05/06/2030
By: Manuel Perez
Miami-Dade Product Control

ANCHOR-TO-SUBSTRATE
EDGE DISTANCES ARE
TYPICAL AND
MEASURED TO BOTH
SIDES OF SUBSTRATE



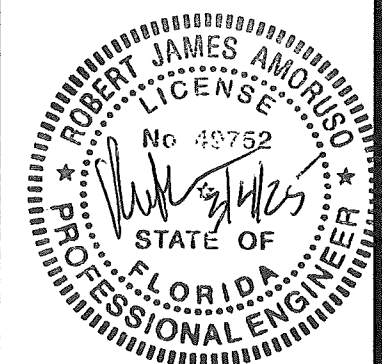
A VERTICAL SECTION
WOOD SUBSTRATE

REGENCY PLUS, INC.
2000 LOCUST GAP HIGHWAY
MT. CARMEL, PA 17851

SERIES 5305 TILT VINYL DOUBLE HUNG WINDOW - LMI ANCHORAGE DETAILS			
REV.	REVISION DESCRIPTION	BY	DATE
N	UPDATE FOR NOA EXPIRATION	RJA	2/17/25
M	UPDATE TO 8TH EDITION (2023) FBC	RJA	6/7/23

DATE: 10/14/2008	DWN BY: CB	CHK BY: n/a	SCALE: NONE
---------------------	---------------	----------------	----------------

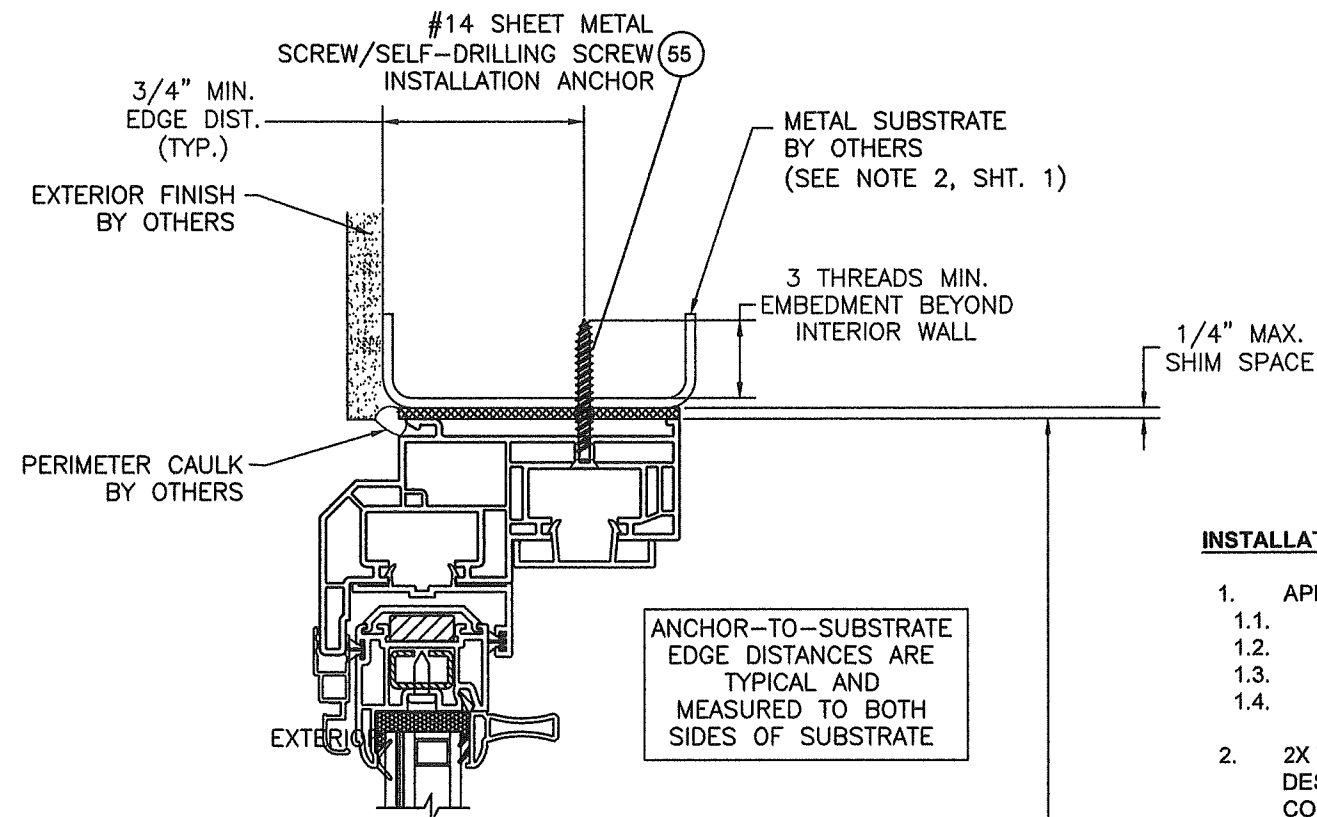
**AMORUSO CONSULTING
ENGINEERING, LLC**
FL Registration No. 38327
ROBERT J. AMORUSO, P.E.
FLORIDA PE NO. 49752
226 N. NOVA RD., #142
ORMOND BEACH, FL 32174
RJAENGPE@GMAIL.COM



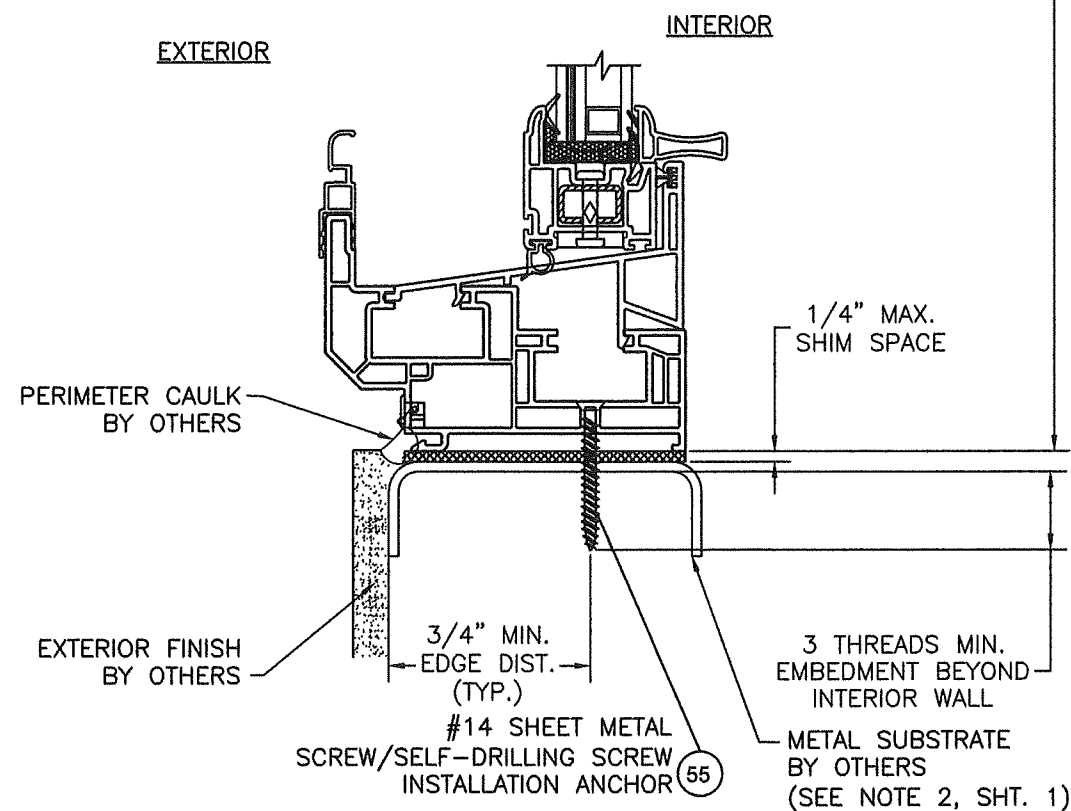
PROJECT#: ACE-2025-101

DWG/REV: RPLS0064, Rev. N

SHT: 6 of 10



B VERTICAL SECTION
METAL SUBSTRATE



A VERTICAL SECTION
METAL SUBSTRATE

INSTALLATION NOTES:

- APPROVED INSTALLATION SUBSTRATES INCLUDE THE FOLLOWING:
 - WOOD FRAMING,
 - STEEL STUD FRAMING,
 - ALUMINUM FRAMING, AND
 - CONCRETE AND/OR MASONRY.
- 2X WOOD FRAMING, 1X OR 2X WOOD BUCK, METAL FRAMING AND CONCRETE/MASONRY OPENING TO BE DESIGNED AND ANCHORED TO PROPERLY TRANSFER ALL LOADS TO STRUCTURE. FRAMING AND CONCRETE/MASONRY OPENING IS THE RESPONSIBILITY OF THE ARCHITECT OR ENGINEER OF RECORD.
- 1X BUCK OVER CONCRETE/MASONRY IS OPTIONAL. WHEN 1X BUCK IS USED, INSTALLATION ANCHORS WILL PASS THROUGH WINDOW FRAME AND 1X BUCK INTO CONCRETE/MASONRY SUBSTRATE. WHEN USED, 1X BUCKS SHALL BE DESIGNED AND ANCHORED TO PROPERLY TRANSFER ALL LOADS TO STRUCTURE AND IS THE RESPONSIBILITY OF THE ARCHITECT OR ENGINEER OF RECORD. DISSIMILAR MATERIALS MUST BE SEPARATED WITH APPROVED COATING OR MEMBRANE. SELECTION OF COATING OR MEMBRANE IS THE RESPONSIBILITY OF THE ARCHITECT OR ENGINEER OF RECORD.
- SHIM AS REQUIRED AT EACH INSTALLATION ANCHOR WITH LOAD BEARING SHIM. SHIM WHERE SPACE OF 1/16" OR GREATER OCCURS. MAXIMUM ALLOWABLE SHIM STACK TO BE 1/4".
- FOR ANCHORING INTO CONCRETE/MASONRY USE 1/4" FLAT HEAD TAPCONS (CS) WITH SUFFICIENT LENGTH TO ACHIEVE A 1 1/2" MINIMUM EMBEDMENT INTO CONCRETE WITH 1 1/2" MINIMUM EDGE DISTANCE AND 1" MINIMUM EMBEDMENT INTO MASONRY WITH 2" MINIMUM EDGE DISTANCE. LOCATE ANCHORS AS SHOWN IN ELEVATIONS AND INSTALLATION DETAILS. 4" MINIMUM SPACING BETWEEN ADJACENT ANCHORS REQUIRED. ANCHOR LOCATIONS HAVE +/- 1" TOLERANCE.
- FOR ANCHORING INTO WOOD FRAMING OR 2X BUCK USE ONE OF THE FOLLOWING:
 - #12 FLAT HEAD WOOD SCREWS (WS) WITH SUFFICIENT LENGTH TO ACHIEVE A 1 3/8" MINIMUM EMBEDMENT INTO SUBSTRATE WITH 7/8" MINIMUM EDGE DISTANCE AND MINIMUM ANCHOR-TO-ANCHOR SPACING OF 2" ON CENTER. LOCATE ANCHORS AS SHOWN IN ELEVATIONS AND INSTALLATION DETAILS. ANCHOR LOCATIONS HAVE +/- 1" TOLERANCE.
 - #14 FLAT HEAD WOOD SCREWS (WS) WITH SUFFICIENT LENGTH TO ACHIEVE A 1 1/2" MINIMUM EMBEDMENT INTO SUBSTRATE WITH 1" MINIMUM EDGE DISTANCE AND MINIMUM ANCHOR-TO-ANCHOR SPACING OF 2" ON CENTER. LOCATE ANCHORS AS SHOWN IN ELEVATIONS AND INSTALLATION DETAILS. ANCHOR LOCATIONS HAVE +/- 1" TOLERANCE.
- FOR ANCHORING INTO METAL STRUCTURE USE #14 FLAT HEAD SHEET METAL OR SELF DRILLING SCREWS (SMS) WITH SUFFICIENT LENGTH TO ACHIEVE 3 THREADS MINIMUM BEYOND STRUCTURE INTERIOR WALL WITH 3/4" MINIMUM EDGE DISTANCE AND MINIMUM ANCHOR-TO-ANCHOR SPACING OF 2" ON CENTER. LOCATE ANCHORS AS SHOWN IN ELEVATIONS AND INSTALLATION DETAILS. ANCHOR LOCATIONS HAVE +/- 1" TOLERANCE.
- INTERIOR AND EXTERIOR FINISHES BY OTHERS. NOT SHOWN FOR CLARITY.
- PERIMETER AND JOINT SEALANT BY OTHERS TO BE DESIGNED AND/OR SPECIFIED IN ACCORDANCE WITH ASTM E2112.

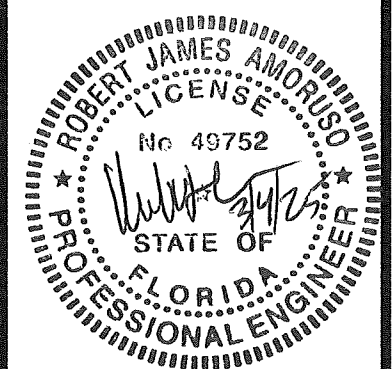
PRODUCT REVISED
As complying with the Florida
Building Code
NOA-No. **25-0312.08**
Expiration Date: **05/06/2030**
By: *Manuel Perez*
Miami-Dade Product Control

REGENCY PLUS, INC.
2000 LOCUST GAP HIGHWAY
MT. CARMEL, PA 17851

SERIES 5305 TILT VINYL DOUBLE HUNG WINDOW - LMI ANCHORAGE DETAILS		DATE	BY	REVISION DESCRIPTION	REV.	DATE	BY	REVISION DESCRIPTION	REV.
						2/17/25	RJA	UPDATE FOR NOA EXPIRATION	N
						6/7/23	RJA	UPDATE TO 8TH EDITION (2023) FBC	M

DATE: 10/14/2008	DWN BY: CB	CHK BY: n/a	SCALE: NONE
---------------------	---------------	----------------	----------------

AMORUSO CONSULTING
ENGINEERING, LLC
FL Registration No. 38327
ROBERT J. AMORUSO, P.E.
FLORIDA PE NO. 49752
226 N. NOVA RD., #142
ORMOND BEACH, FL 32174
RJAENGPE@GMAIL.COM



PROJECT#: ACE-2025-101

DWG/REV: RPLS0064, Rev. N

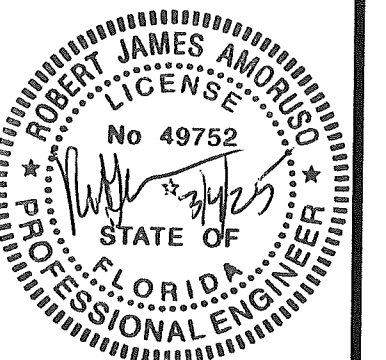
SHT: 7 of 10

SERIES 5305 TILT VINYL DOUBLE HUNG WINDOW - LMI
ANCHORAGE DETAILS

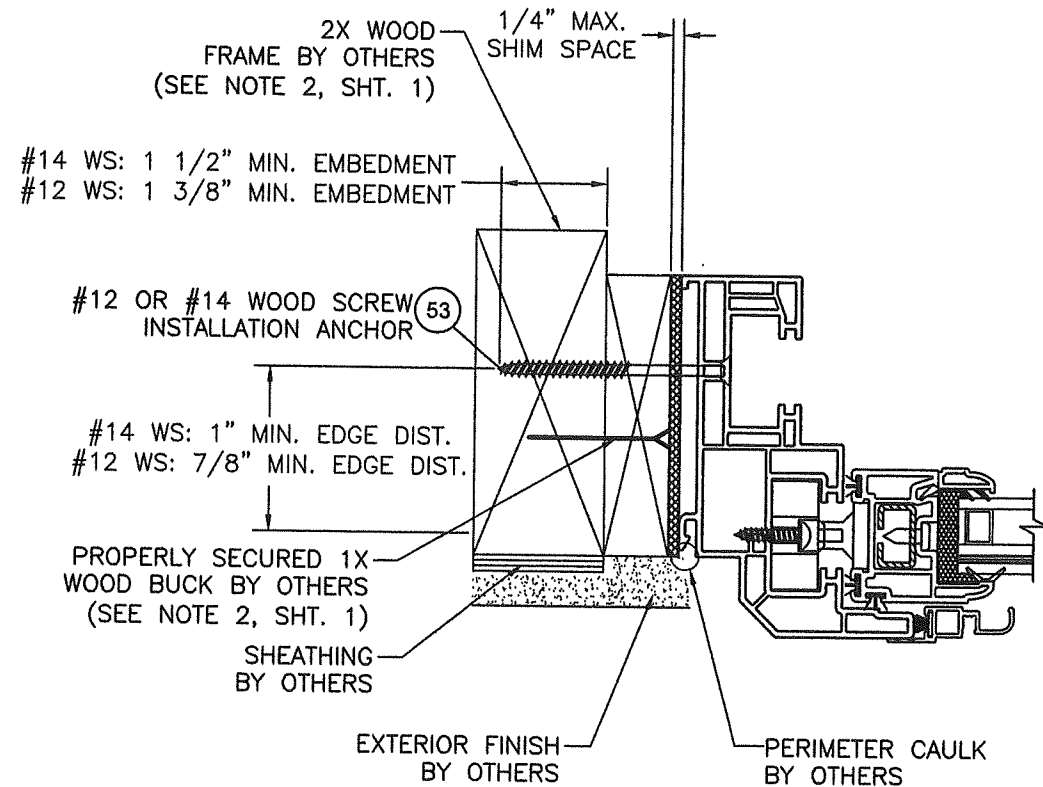
REV.	REVISION DESCRIPTION	BY	DATE
N	UPDATE FOR NOA EXPIRATION	RJA	2/17/25
M	UPDATE TO 8TH EDITION (2023) FBC	RJA	6/7/23

DATE: 10/14/2008	DWN BY: CB	CHK BY: n/a	SCALE: NONE
---------------------	---------------	----------------	----------------

AMORUSO CONSULTING
ENGINEERING, LLC
FL Registration No. 38327
ROBERT J. AMORUSO, P.E.
FLORIDA PE NO. 49752
226 N. NOVA RD., #142
ORMOND BEACH, FL 32174
RJAENGPE@GMAIL.COM



PROJECT#: ACE-2025-101
DWG/REV: RPLS0064, Rev. N
SHT: 8 of 10

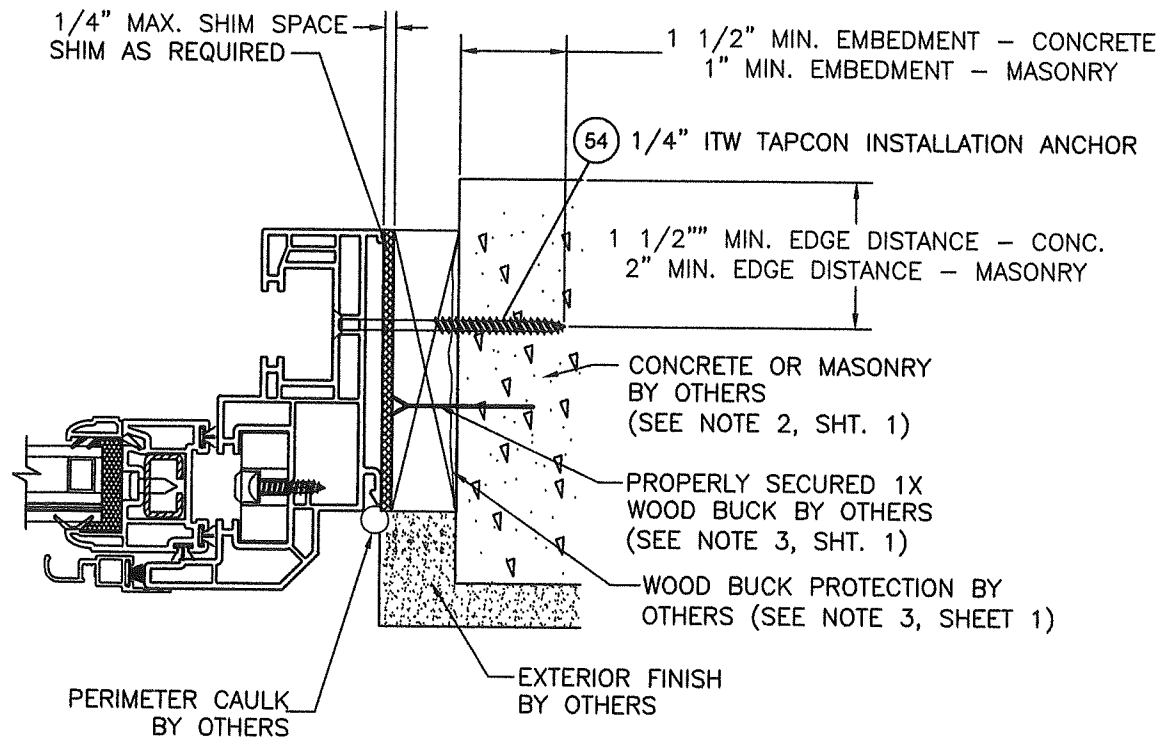


C VERTICAL SECTION
WOOD SUBSTRATE

ANCHOR-TO-SUBSTRATE
EDGE DISTANCES ARE
TYPICAL AND
MEASURED TO BOTH
SIDES OF SUBSTRATE

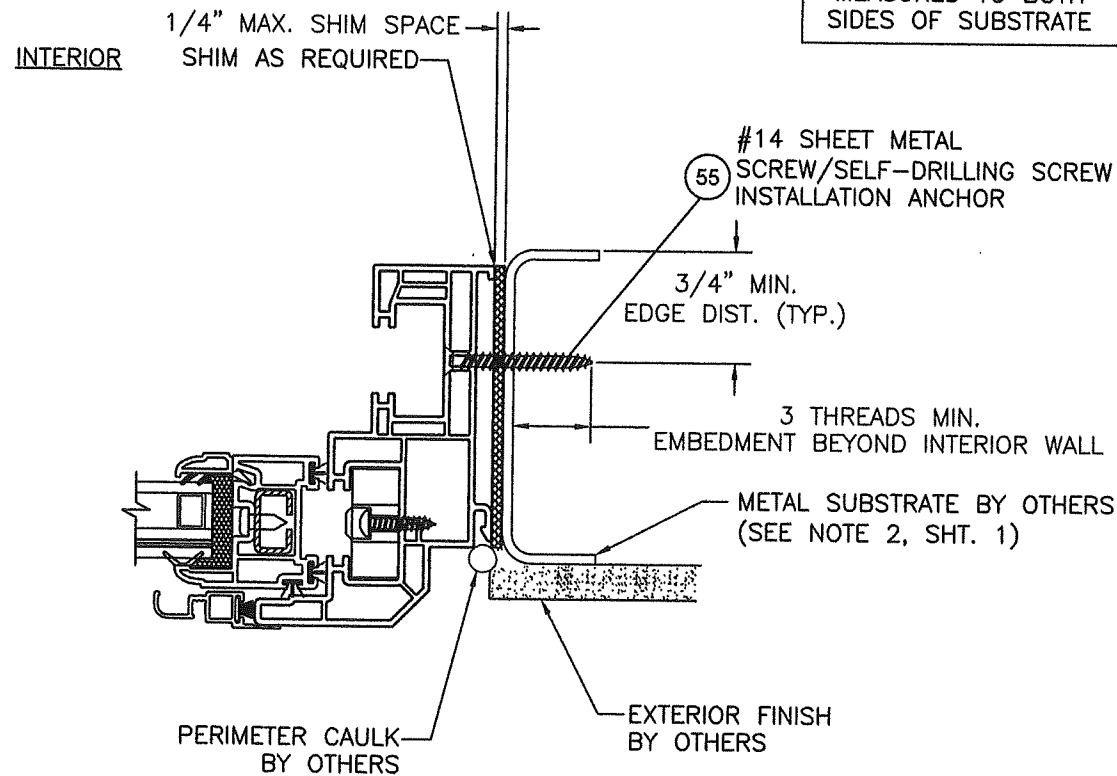
INTERIOR

EXTERIOR



D VERTICAL SECTION
CONCRETE/MASONRY
SUBSTRATE

UPPER SASH JAMBS
SHOWN. SIMILAR
INSTALLATION FOR
LOWER SASH JAMBS.



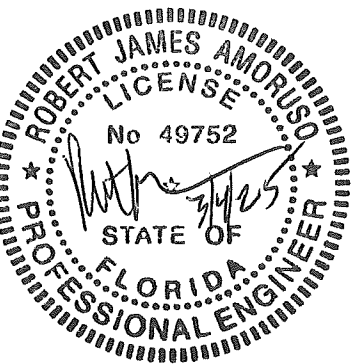
E VERTICAL SECTION
METAL SUBSTRATE

PRODUCT REVISED
As complying with the Florida
Building Code
NOA-No. **25-0312.08**
Expiration Date: **05/06/2030**
By: *Manuel Perez*
Miami-Dade Product Control

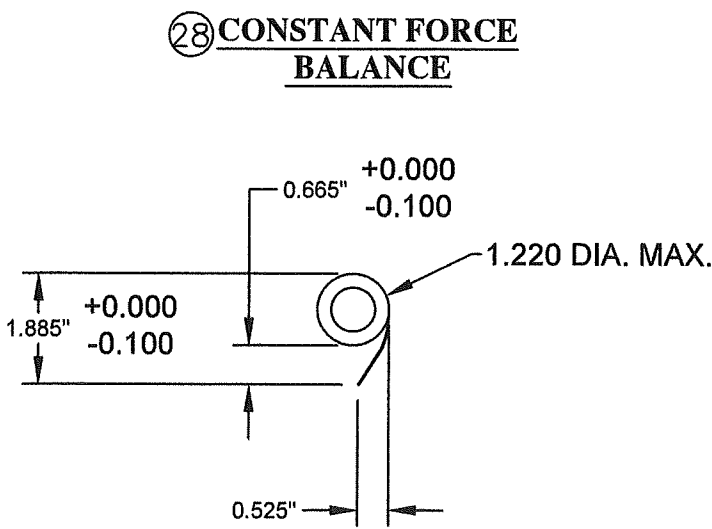
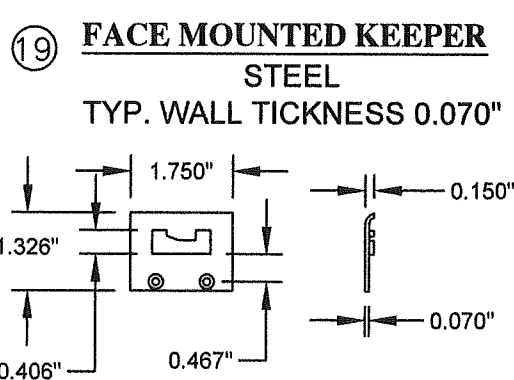
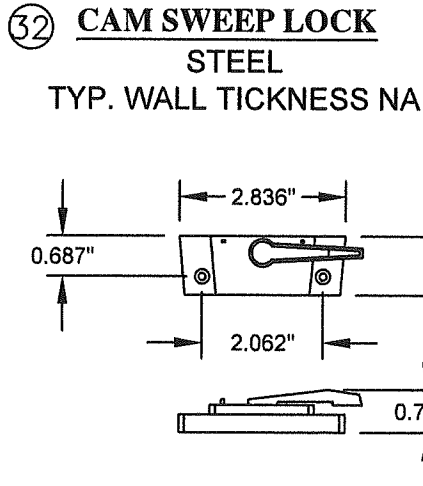
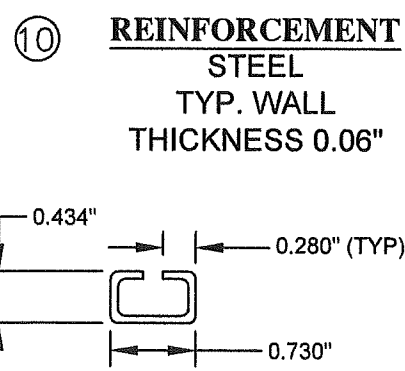
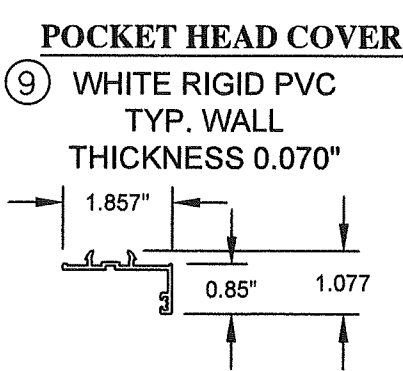
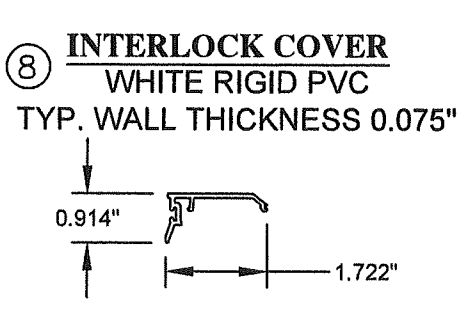
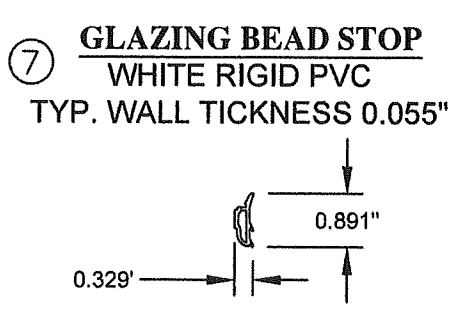
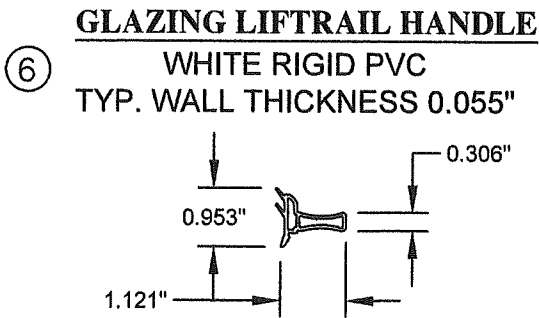
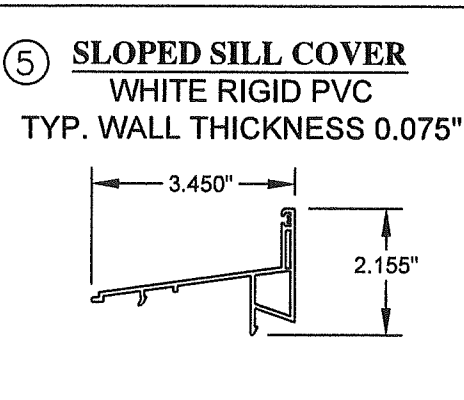
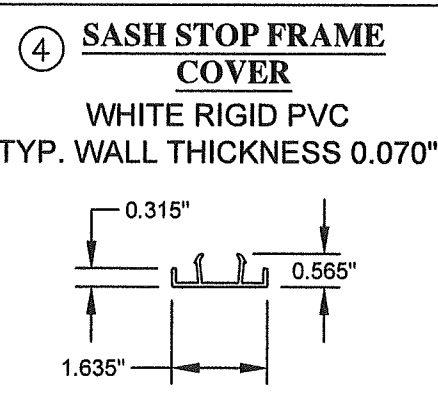
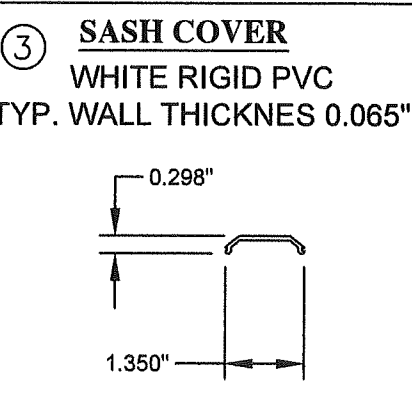
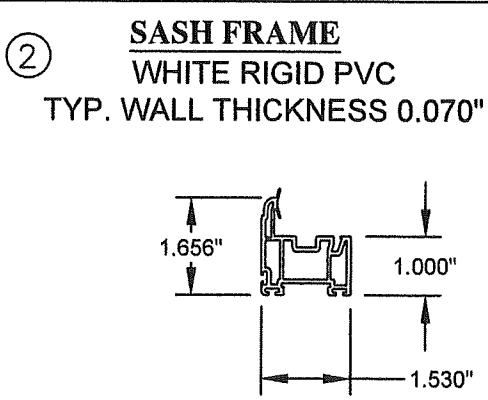
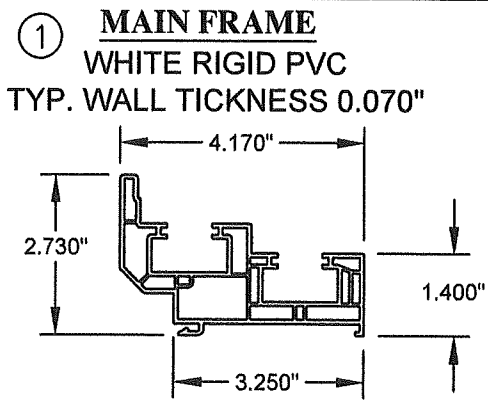
SERIES 5305 TILT VINYL DOUBLE HUNG WINDOW - LMI ANCHORAGE DETAILS	DATE	BY		2/17/25	6/7/23
	REVISION DESCRIPTION			RJA	RJA
	REV.			N	M
				UPDATE FOR NOA EXPIRATION	UPDATE TO 8TH EDITION (2023) FBC

DATE: 10/14/2008	DWN BY: CB	CHK BY: n/a	SCALE: NONE
---------------------	---------------	----------------	----------------

AMORUSO CONSULTING
ENGINEERING, LLC
FL Registration No. 38327
ROBERT J. AMORUSO, P.E.
FLORIDA PE NO. 49752
226 N. NOVA RD., #142
ORMOND BEACH, FL 32174
RJAENGPE@GMAIL.COM



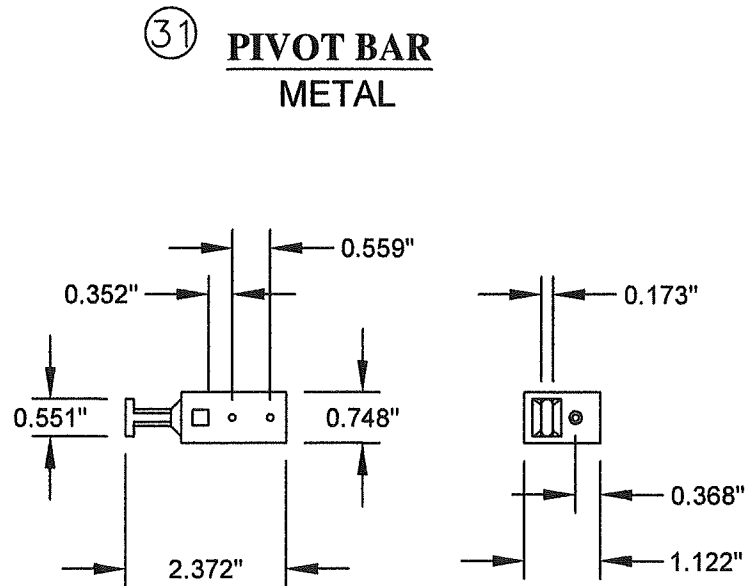
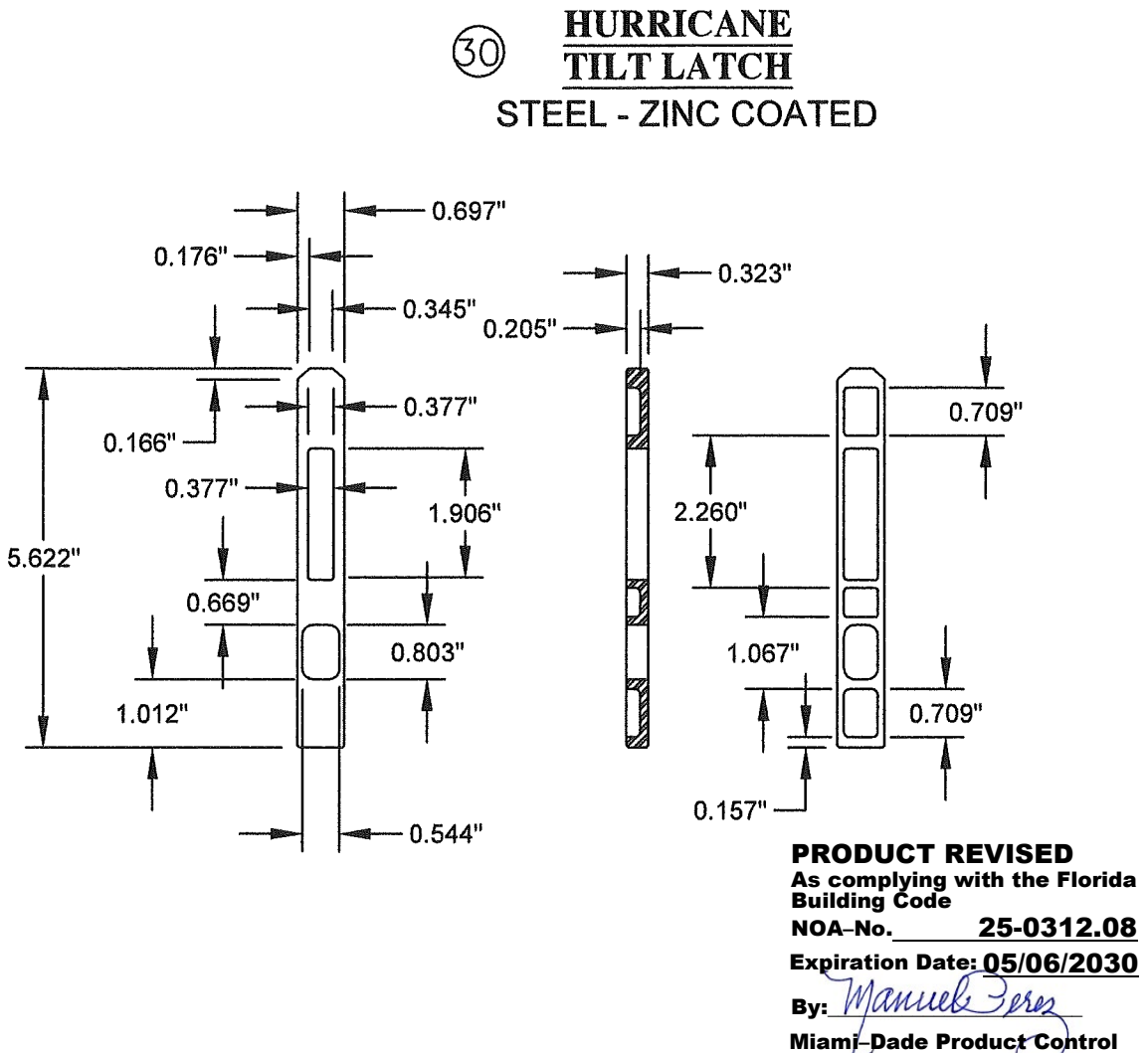
PROJECT#: ACE-2025-101
DWG/REV: RPLS0064, Rev. N
SHT: 9 of 10



PRODUCT REVISED
As complying with the Florida
Building Code
NOA-No. **25-0312.08**
Expiration Date: **05/06/2030**
By: *Manuel Perez*
Miami-Dade Product Control

Series 5305 Double Hung / Bill of Material				
Item No.	Description	Part Numbers	Supplier	Material
Frame Components				
1	Master Frame	IV White 7780	Vision Extr. Grp. LTD	White PVC (2)
2	Sash Frame (Operating Sash)	IV White 1282 / 7750	Vision Extr. Grp. LTD	White PVC (2)
3	Sash Cover Head (Keeper Sash)	IV White 1078 / 7725	Vision Extr. Grp. LTD	White PVC (2)
4	Sash Stop Frame Cover	IV White 1070 / 7736	Vision Extr. Grp. LTD	White PVC (2)
5	Sloped Sill Cover	IV White 1181 / 7738	Vision Extr. Grp. LTD	White PVC (2)
6	Glazing Litrail Handle (Operating Sashes)	IV White 1068 / 7747	Vision Extr. Grp. LTD	White PVC (2)
7	Glazing Bead Stop (Operating Sashes)	IV White 1067 / 7745	Vision Extr. Grp. LTD	White PVC (2)
8	Interlock Cover (Operating Sashes)	IV White 1180 / 7727	Vision Extr. Grp. LTD	White PVC (2)
9	Pocket Cover Head	IV White 1073 / 7724	Vision Extr. Grp. LTD	White PVC (2)
Reinforcement				
10	Operating Sash Perimeters / Heavy Reinforcement	ST-226-144-0.052	Hygrade Metals	.06" Galv. (1)
11	# 6 x 5/8" Tek / Sash Reinforcement Fastener	117595	GLF Corporation	
Weatherstripping				
12A	.210 x .300 Fin Seal Pocket Cover / 1073 / 7724 / Frame Head	W23303NW0000	Ultra-Fab	
	.210 x .300 Fin Seal Pocket Cover / 1181 / 7738 / Frame Sill	W23303NW0000	Ultra-Fab	
	.210 x .300 Fin Seal Sash Frame / 1282 / 7750 / Keeper Sash	W23303NW0000	Ultra-Fab	
	.210 x .300 Fin Seal Sash Frame / 1282 / 7750 / Lock Sash	W23303NW0000	Ultra-Fab	
	.210 x .300 Fin Seal Sash Frame / 1282 / 7750 / Lock Sash	W23303NW0000	Ultra-Fab	
12B	.187 x .300 Fin Seal Interlock Cover / 1180 / 7727 / Keeper Sash	W23301NW0000	Ultra-Fab	
	.187 x .300 Fin Seal Interlock Cover / 1180 / 7727 / Lock Sash	W23301NW0000	Ultra-Fab	
12C	.270 x .220 Fin Seal Sash Frame / Single Leg Screen Frame	W112257W0000	Ultra-Fab	
13	.200 x .340 H-Bulb Seal Sash Frame 1282 / 7750 / Lock Sash	E20718VN2020	Ultra-Fab	
Glazing				
14	Wet Glaze (Operating Sash)	552 Sikaflex Black	Sika US	
16	Operating Lock Sash E366 2.7mm / 0.9.0 PVB Interlayer IG	Hurricane Laminare Impact	Cardinal	
16	Operating Keeper Sash E366 2.7mm / 0.9.0 PVB Interlayer IG	Hurricane Laminare Impact	Cardinal	
17	Glass Setting Blocks Sash	2NB-8K-0.125-032-064	Frank Lowe	
18	ENDUR IG with XL Edge SS Spacer (SS-D TYPE)	---	Cardinal	Stainless Steel
19	Face Mounted Keeper	Steel	Truth Hardware	
Screen Components (not all components ID'ed in section views)				
20	Single Leg Frame New White	06516NEW192	Shapes Unlimited	
21	Double Leg Frame New White	06515NEW192	Shapes Unlimited	
22	Tension Springs	2584	Adept	
23	Fiberglass Screen Cloth Charcoal / 60" x 96"	3002606	Phifer	
24	Screen Spline	EX-FLX-Q165-BK	Imperial Plastic USA	
25	Aluminum Corner Keys	CK262X260	Hygrade Metals	
26	Screen Clip Clear	H-884	Product Design	
27	Screen Clip Clear	H-3150	Product Design	
Misc. Components, Hardware and Hardware Fasteners (not all components ID'ed in section views)				
28	36 lb. 3 Coil / 984 Series / Constant Force Balance	803836	Amesbury / Truth	
29	Not Used	n/a	n/a	
30	Hurricane Tilt Latch	1067A-003-EW	Vision Industries	
31	Pivot Bars / T-Shaped Head	6987	Vision Industries	
32	CAM Type Sweep Lock	3220SS-003-EW	Truth Hardware	
33	Weep Hole Cover White	H-808WHZ	Product Design	
34	Muntin Bar	W58W	Hygrade Metals	
35	Muntin Bar End Pins	D68P	Hygrade Metals	
36	Interlock Cover (Operating Sash) / Lock Sash	HH-66 Vinyl Cement	RH Products	
37	Interlock Cover (Operating Sash) / Keeper Sash	HH-66 Vinyl Cement	RH Products	
38	Litrail End Caps White	00156-C001	S.I.L. Plastic	
39	Stainless Steel Staples 3/8 x 1/2 Sash	BEA 80/10	Smith Staple	
40	30PP12-18P50-9/16 X1 3/8 X 3 Foam Block	W0511022	Lindenmeyr	
41	.75 White Balance Plug	21300-00077	Lamatek	
42	Hurricane Grade Spring	CS025	James Spring Wire	
43	Accessory Parts Installation Translucent	02-MX0150010C2	Novagard Silicones	
44	Safe Seal Lock	3220SS-003-EW	Vision Industries	
45	Safe Seal Keeper	8292A-003-EW	Vision Industries	
46	# 5/32" Tri-Rivet .040 / 275 Grip / Sash Pivot Bars	112003	GLF Corporation	
47	# 8-18 x 0.850 Flat Wafer Shoulder / Sash / Hurricane Latch	137341	GLF Corporation	
48	# 8 x 1 1/4" Tek White / Locks	120376	GLF Corporation	
49	# 6 x 1" Tek White / Keepers	116821	GLF Corporation	
50	# 8 x 3/4" Tek / Pan Head (Balance Shoes)	120766	GLF Corporation	
51	# 5 x 3/8" Tek / Screen Clips White	116508	GLF Corporation	
52	# 12 x 3" Flat / Installation Screws	401168	GLF Corporation	
Installation Fasteners				
53	#12 OR #14 WOOD SCREW	n/a	n/a	Steel
54	1/4" ADVANCED THREADFORM TAPCON	n/a	ITW	Steel
55	#14 SHEET METAL OR SELF-DRILLING SCREW	n/a	n/a	Steel

(1) Hygrade Metals Specification: AISI 1005 to 1010, CS Type A and B, 30 ksi to 50 ksi Yield Strength, G40 Galvanized
(2) VISION EXTRUSIONS GROUP LIMITED PER CURRENT MIAMI-DADE NOTICE OF ACCEPTANCE (NOA).



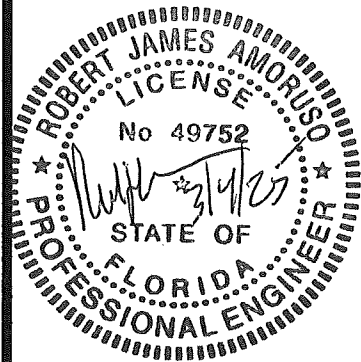
REGENCY PLUS, INC.
2000 LOCUST GAP HIGHWAY
MT. CARMEL, PA 17851

SERIES 5305 TILT VINYL DOUBLE HUNG WINDOW - LMI ANCHORAGE DETAILS

REV.	REVISION DESCRIPTION	BY	DATE
N	UPDATE FOR NOA EXPIRATION	RJA	2/17/25
M	UPDATE TO 8TH EDITION (2023) FBC	RJA	6/7/23

DATE: 10/14/2008	DWN BY: CB	CHK BY: n/a	SCALE: NONE
---------------------	---------------	----------------	----------------

AMORUSO CONSULTING
ENGINEERING, LLC
FL Registration No. 38327
ROBERT J. AMORUSO, P.E.
FLORIDA PE NO. 49752
226 N. NOVA RD., #142
ORMOND BEACH, FL 32174
RJAENGPE@GMAIL.COM



PROJECT#: ACE-2025-101

DWG/REV: RPLS0064, Rev. N

SHT: 10 of 10