



DEPARTMENT OF REGULATORY AND ECONOMIC RESOURCES (RER)
BOARD AND CODE ADMINISTRATION DIVISION
NOTICE OF ACCEPTANCE (NOA)

MIAMI-DADE COUNTY
PRODUCT CONTROL SECTION
11805 SW 26 Street, Room 208
Miami, Florida 33175-2474
T (786) 315-2590 F (786) 315-2599
www.miamidade.gov/building

Regency Plus, Inc.
2000 Locust Gap Highway
Mount Carmel, PA 17851

SCOPE:

This NOA is being issued under the applicable rules and regulations governing the use of construction materials. The documentation submitted has been reviewed and accepted by Miami-Dade County RER-Product Control Section to be used in Miami-Dade County and other areas where allowed by the Authority Having Jurisdiction (AHJ).

This NOA shall not be valid after the expiration date stated below. The Miami-Dade County Product Control Section (In Miami-Dade County) and/ or the AHJ (in areas other than Miami-Dade County) reserve the right to have this product or material tested for quality assurance purposes. If this product or material fails to perform in the accepted manner, the manufacturer will incur the expense of such testing and the AHJ may immediately revoke, modify, or suspend the use of such product or material within their jurisdiction. RER reserves the right to revoke this acceptance if it is determined by Miami-Dade County Product Control Section that this product or material fails to meet the requirements of the applicable building code.

This product is approved as described herein and has been designed to comply with the Florida Building Code, including the High Velocity Hurricane Zone.

DESCRIPTION: Series "5405" White PVC Horizontal Sliding Window – L.M.I.

APPROVAL DOCUMENT: Drawing No. **RPLS0063**, titled "Series 5405 Vinyl XO-OX Horizontal Sliding Window - LMI", sheets 1 through 10 of 10, dated 10/14/08, with revision N dated 02/17/25, prepared by Amoruso Consulting Engineering, LLC, signed and sealed by Robert James Amoruso, P.E., bearing the Miami-Dade County Product Control Revision stamp with the Notice of Acceptance number and expiration date by the Miami-Dade County Product Control Section.

MISSILE IMPACT RATING: Large and Small Missile Impact Resistant

LABELING: Each unit shall bear a permanent label with the manufacturer's name or logo, city, state, series, and following statement: "Miami-Dade County Product Control Approved", unless otherwise noted herein.

RENEWAL of this NOA shall be considered after a renewal application has been filed and there has been no change in the applicable building code negatively affecting the performance of this product.

TERMINATION of this NOA will occur after the expiration date or if there has been a revision or change in the materials, use, and/ or manufacture of the product or process. Misuse of this NOA as an endorsement of any product, for sales, advertising or any other purposes shall automatically terminate this NOA. Failure to comply with any section of this NOA shall be cause for termination and removal of NOA.

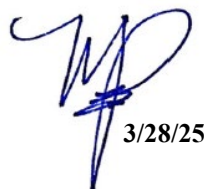
ADVERTISEMENT: The NOA number preceded by the words Miami-Dade County, Florida, and followed by the expiration date may be displayed in advertising literature. If any portion of the NOA is displayed, then it shall be done in its entirety.

INSPECTION: A copy of this entire NOA shall be provided to the user by the manufacturer or its distributors and shall be available for inspection at the job site at the request of the Building Official.

This NOA **revises and renews** NOA No. **23-0929.11** and consists of this page 1 and evidence pages E-1, E-2 and E-3, as well as approval document mentioned above.

The submitted documentation was reviewed by **Manuel Perez, P.E.**




3/28/25

NOA No. 25-0312.09
Expiration Date: July 22, 2030
Approval Date: April 03, 2025
Page 1

NOTICE OF ACCEPTANCE: EVIDENCE SUBMITTED

1. EVIDENCE SUBMITTED UNDER PREVIOUS NOA's

A. DRAWINGS

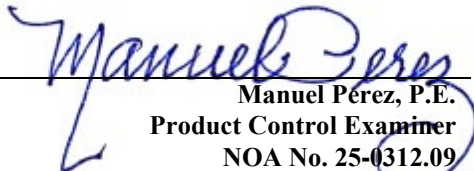
1. Manufacturer's die drawings and sections.
(Submitted under NOA No. 08-1210.12)
2. Drawing No. **RPLS0063**, titled "Series 5405 Vinyl XO-OX Horizontal Sliding Window - LMI", sheets 1 through 10 of 10, dated 01/12/09, with revision **M** dated 06/08/23, prepared by PTC Product Design Group, LLC, signed and sealed by Robert James Amoruso, P.E.
(Submitted under NOA No. 23-0929.11)

B. TESTS

1. Test reports on: 1) Air Infiltration Test, per FBC, TAS 202-94
2) Uniform Static Air Pressure Test, Loading per FBC, TAS 202-94
3) Water Resistance Test, per FBC, TAS 202-94
4) Large Missile Impact Test per FBC, TAS 201-94
5) Cyclic Wind Pressure Loading per FBC, TAS 203-94
6) Forced Entry Test, per FBC 2411.3.2.1, and TAS 202-94
along with marked-up drawings and installation diagram of a white PVC horizontal sliding window, prepared by National Certified Testing Laboratories, Test Report No. **NCTL-110-11507-1**, dated 08/18/08, revised on 09/03/08 and signed and sealed by Harold Rupp, P.E.
(Submitted under NOA No. 08-1210.12)
2. Test reports on: 1) Air Infiltration Test, per FBC, TAS 202-94
2) Uniform Static Air Pressure Test, Loading per FBC, TAS 202-94
3) Water Resistance Test, per FBC, TAS 202-94
4) Large Missile Impact Test per FBC, TAS 201-94
5) Cyclic Wind Pressure Loading per FBC, TAS 203-94
6) Forced Entry Test, per FBC 2411.3.2.1, and TAS 202-94
along with marked-up drawings and installation diagram of series 5405 horizontal sliding vinyl window, prepared by National Certified Testing Laboratories, Test Report No. **NCTL-110-22724-1**, dated 04/27/20, signed and sealed by Joseph A. Reed, P.E.
(Submitted under NOA No. 20-0526.03)

C. CALCULATIONS

1. Anchor verification calculations and structural analysis, complying with **FBC 5th Edition (2014)**, dated 03/31/15, with revision dated 09/01/15, and updated to the **FBC 6th Edition (2017)** with revision 1 dated 04/29/20, prepared by PTC Product Design Group, LLC, signed and sealed by Robert J. Amoruso, P.E.
(Submitted under NOA No. 20-0526.03)
2. Glazing complies with **ASTM E1300-04**


Manuel Pérez, P.E.
Product Control Examiner
NOA No. 25-0312.09
Expiration Date: July 22, 2030
Approval Date: April 03, 2025

Regency Plus, Inc.

NOTICE OF ACCEPTANCE: EVIDENCE SUBMITTED

1. EVIDENCE SUBMITTED UNDER PREVIOUS NOA's (CONTINUED)

D. QUALITY ASSURANCE

1. Miami-Dade Department of Regulatory and Economic Resources (RER).

E. MATERIAL CERTIFICATIONS

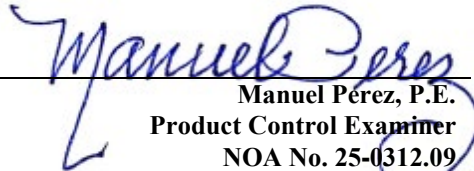
1. Notice of Acceptance No. **20-0915.22** issued to **Kuraray America, Inc.** for their "Trosifol® Ultraclear, Clear and Color PVB Glass Interlayers" dated 11/19/20, expiring on 07/08/24.
2. Notice of Acceptance No. **21-1109.04**, issued to **Vision Extrusions Group Limited**, for their **White Rigid PVC Exterior Extrusions for Windows and Doors**, approved on 03/31/22, expiring on 09/30/24.

F. STATEMENTS

1. Statement letter of conformance, complying with **FBC 8th Edition (2023)**, and of no financial interest, dated June 8, 2023, issued by PTC Product Design Group, LLC, signed and sealed by Robert James Amoruso, P.E.
(Submitted under NOA No. 23-0929.11)
2. Proposal No. **19-0312** issued to Regency Plus, Inc. by the Product Control Section, dated May 15, 2019, signed by Manuel Perez, P.E.
(Submitted under NOA No. 20-0526.03)

G. OTHERS

1. Notice of Acceptance No. **20-1103.09**, issued to Regency Plus, Inc. for their Series "5405" White PVC Horizontal Sliding Window – L.M.I., approved on 01/21/21 and expiring on 07/22/25.


Manuel Pérez, P.E.
Product Control Examiner
NOA No. 25-0312.09
Expiration Date: July 22, 2030
Approval Date: April 03, 2025

NOTICE OF ACCEPTANCE: EVIDENCE SUBMITTED

2. NEW EVIDENCE SUBMITTED

A. DRAWINGS

1. Drawing No. **RPLS0063**, titled “Series 5405 Vinyl XO-OX Horizontal Sliding Window - LMI”, sheets 1 through 10 of 10, dated 10/14/08, with revision **N** dated 02/17/25, prepared by Amoruso Consulting Engineering, LLC, signed and sealed by Robert James Amoruso, P.E.

B. TESTS

1. None

C. CALCULATIONS

1. None

D. QUALITY ASSURANCE

1. Miami-Dade Department of Regulatory and Economic Resources (RER)

E. MATERIAL CERTIFICATIONS


1. Notice of Acceptance No. **24-0205.08** issued to **Kuraray America, Inc.** for their “**Trosifol® Ultraclear, Clear and Color PVB Glass Interlayers**” dated 03/21/24, expiring on 07/08/29.
2. Notice of Acceptance No. **24-0618.01**, issued to **Vision Extrusions Group Limited**, for their **White Rigid PVC Exterior Extrusions for Windows and Doors**, approved on 07/18/24, expiring on 09/30/29.

F. STATEMENTS

1. Statement letter of conformance, complying with **FBC 8th Edition (2023)**, and of no financial interest, dated February 18, 2025, issued by Amoruso Consulting Engineering, LLC, signed and sealed by Robert James Amoruso, P.E.

G. OTHERS

1. Notice of Acceptance No. **23-0929.11**, issued to Regency Plus, Inc. for their Series “5405” White PVC Horizontal Sliding Window – L.M.I., approved on 11/02/23 and expiring on 07/22/25.


Manuel Pérez, P.E.
Product Control Examiner
NOA No. 25-0312.09
Expiration Date: July 22, 2030
Approval Date: April 03, 2025

REGENCY PLUS, INC.

SERIES 5405 VINYL XO-OX HORIZONTAL SLIDING WINDOW

LARGE MISSILE IMPACT

INSTALLATION ANCHORAGE DETAILS

NOTES:

1. THE PRODUCT SHOWN HEREIN IS DESIGNED AND MANUFACTURED TO COMPLY WITH REQUIREMENTS OF THE 8TH EDITION (2023) FLORIDA BUILDING CODE INCLUDING THE HIGH VELOCITY HURRICANE ZONE (HVHZ).
2. 2X WOOD FRAMING, 1X OR 2X WOOD BUCK, METAL FRAMING AND CONCRETE/MASONRY OPENING TO BE DESIGNED AND ANCHORED TO PROPERLY TRANSFER ALL LOADS TO STRUCTURE. FRAMING AND CONCRETE/MASONRY OPENING IS THE RESPONSIBILITY OF THE ARCHITECT OR ENGINEER OF RECORD.
3. 1X BUCK OVER CONCRETE/MASONRY IS OPTIONAL. WHEN 1X BUCK IS USED, INSTALLATION ANCHORS WILL PASS THROUGH WINDOW FRAME AND 1X BUCK INTO CONCRETE/MASONRY SUBSTRATE. WHEN USED, 1X BUCKS SHALL BE DESIGNED AND ANCHORED TO PROPERLY TRANSFER ALL LOADS TO STRUCTURE AND IS THE RESPONSIBILITY OF THE ARCHITECT OR ENGINEER OF RECORD. DISSIMILAR MATERIALS MUST BE SEPARATED WITH APPROVED COATING OR MEMBRANE. SELECTION OF COATING OR MEMBRANE IS THE RESPONSIBILITY OF THE ARCHITECT OR ENGINEER OF RECORD.
4. THE PRODUCT SHOWN HEREIN HAS BEEN TESTED TO TAS 201, TAS 202 AND TAS 203 BY NATIONAL CERTIFIED TESTING LABORATORIES, YORK, PA.
- 4.1. TEST REPORT NO. NCTL-110-11507-1, DATED 08/18/08, revised on 09/03/08, SIGNED AND SEALED BY HAROLD RUPP, FLORIDA P.E.
- 4.2. TEST REPORT NO. NCTL-110-22724-1, DATED 04/27/20, SIGNED AND SEALED BY JOSEPH A. REED FLORIDA P.E.
5. MATERIAL:
- 5.1. FRAME: EXTRUDED RIGID PVC BY *VISION EXTRUSIONS GROUP LIMITED* PER CURRENT MIAMI-DADE NOA.
- 5.2. REINFORCEMENT:
- 5.2.1. GALVANIZED STEEL TUBE (0.730" X 0.434" X 0.06" THICK, Fy = 30-50 ksi & Fu = 37.5-68.7 ksi) - SASH PERIMETER
- 5.2.2. GALVANIZED STEEL TUBE (0.935" X 0.730" X 0.05" THICK, Fy = 30-50 ksi & Fu = 37.5-68.7 ksi) - FIXED MEETING RAIL
- 5.2.3. LAMINATE GLASS INTERLAYER: TROSIFOL INTERLAYER BY KURARAY AMERICA, INC. PER CURRENT MIAMI-DADE NOA.
6. GLAZING:
- 6.1. GLAZING DETAIL AS TESTED:
- 6.1.1. OVERALL: 7/8" NOMINAL INSULATING LAMINATED GLASS.
- 6.1.2. GLASS THICKNESS: (1) LITE OF 1/8" NOMINAL TEMPERED GLASS TO THE INTERIOR AND (1) LITE OF LAMINATED GLASS TO THE EXTERIOR.
- 6.1.3. LAMINATED LITE: (2) LITES OF 1/8" NOMINAL ANNEALED GLASS SEPARATED BY A 0.090" TROSIFOL INTERLAYER BY KURARAY AMERICA, INC.
- 6.1.4. SPACER TYPE/SIZE: 7/16" NOMINAL CARDINAL XL EDGE STAINLESS STEEL SPACER (TYPE SS-D).
- 6.1.5. GLAZING SYSTEM: INTERIOR GLAZED WITH (2)-LEAF DUAL DUROMETER AND SIKAFLEX "552" BACKBEDDING WITH A SNAP-IN (2)-LEAF DUAL DUROMETER RIGID VINYL GLAZING BEAD.
- 6.2. ALL SETTING BLOCKS AND GASKET MATERIALS SHALL BE IN COMPLIANCE WITH THE CURRENT EDITION OF THE FLORIDA BUILDING CODE. SETTING BLOCKS SHALL BE NEOPRENE WITH A 70 TO 90 SHORE A DUROMETER. GASKET MATERIALS SHALL BE EDPM WITH A MINIMUM 60 SHORE A DUROMETER WHERE APPLICABLE.
- 6.3. AS TESTED GLAZING MEETS ASTM E1300-16 FOR THE DESIGN CONDITIONS SHOWN IN THIS PRODUCT APPROVAL DOCUMENT.
7. APPROVED IMPACT PROTECTIVE SYSTEM IS NOT REQUIRED FOR THIS PRODUCT IN WIND BORNE DEBRIS REGIONS INCLUDING THE HVHZ.
8. SHIM AS REQUIRED AT EACH INSTALLATION ANCHOR WITH LOAD BEARING SHIM. SHIM WHERE SPACE OF 1/16" OR GREATER OCCURS. MAXIMUM ALLOWABLE SHIM STACK TO BE 1/4".
9. FOR ANCHORING INTO CONCRETE/MASONRY USE 1/4" FLAT HEAD TAPCONS (CS) WITH SUFFICIENT LENGTH TO ACHIEVE A 1 1/2" MINIMUM EMBEDMENT INTO CONCRETE WITH 1 1/2" MINIMUM EDGE DISTANCE AND 1" MINIMUM EMBEDMENT INTO MASONRY WITH 2" MINIMUM EDGE DISTANCE. LOCATE ANCHORS AS SHOWN IN ELEVATIONS AND INSTALLATION DETAILS. 4" MINIMUM SPACING BETWEEN ADJACENT ANCHORS REQUIRED. ANCHOR LOCATIONS HAVE +/- 1" TOLERANCE.
10. FOR ANCHORING INTO WOOD FRAMING OR 2X BUCK USE ONE OF THE FOLLOWING:
- 10.1. #12 FLAT HEAD WOOD SCREWS (WS) WITH SUFFICIENT LENGTH TO ACHIEVE A 3/8" MINIMUM EMBEDMENT INTO SUBSTRATE WITH 7/8" MINIMUM EDGE DISTANCE AND MINIMUM ANCHOR-TO-ANCHOR SPACING OF 2" ON CENTER. LOCATE ANCHORS AS SHOWN IN ELEVATIONS AND INSTALLATION DETAILS. ANCHOR LOCATIONS HAVE +/- 1" TOLERANCE.
- 10.2. #14 FLAT HEAD WOOD SCREWS (WS) WITH SUFFICIENT LENGTH TO ACHIEVE A 1 1/2" MINIMUM EMBEDMENT INTO SUBSTRATE WITH 1" MINIMUM EDGE DISTANCE AND MINIMUM ANCHOR-TO-ANCHOR SPACING OF 2" ON CENTER. LOCATE ANCHORS AS SHOWN IN ELEVATIONS AND INSTALLATION DETAILS. ANCHOR LOCATIONS HAVE +/- 1" TOLERANCE.
11. FOR ANCHORING INTO METAL STRUCTURE USE #14 FLAT HEAD SHEET METAL OR SELF DRILLING SCREWS (SMS) WITH SUFFICIENT LENGTH TO ACHIEVE 3 THREADS MINIMUM BEYOND STRUCTURE INTERIOR WALL WITH 3/4" MINIMUM EDGE DISTANCE AND MINIMUM ANCHOR-TO-ANCHOR SPACING OF 2" ON CENTER. LOCATE ANCHORS AS SHOWN IN ELEVATIONS AND INSTALLATION DETAILS. ANCHOR LOCATIONS HAVE +/- 1" TOLERANCE.
12. ALL FASTENERS TO BE CORROSION RESISTANT OR HAVE A CORROSION RESISTANT COATING
13. INSTALLATION ANCHORS SHALL BE INSTALLED IN ACCORDANCE WITH ANCHOR MANUFACTURER'S INSTALLATION INSTRUCTIONS AND ANCHORS SHALL NOT BE USED IN SUBSTRATES WITH STRENGTHS LESS THAN THE MINIMUM STRENGTH SPECIFIED BELOW:
- 13.1. WOOD - MINIMUM SPECIFIC GRAVITY OF (G) 0.42 (NON-HVHZ) AND 0.55 (HVHZ)
- 13.2. CONCRETE - MINIMUM COMPRESSIVE STRENGTH OF 2500 PSI
- 13.3. MASONRY - STRENGTH CONFORMANCE TO ASTM C-90, MEDIUM WEIGHT WITH DENSITY > 117 PCF
- 13.4. METAL SUBSTRATE: STEEL 18GA (0.0428"), Fy = 33KSI / Fu = 45 KSI OR ALUMINUM 6063-T5 0.048" THICK MINIMUM.
- 13.4.1. STEEL SUBSTRATE TO MEET MINIMUM FBC HVHZ CODE REQUIREMENTS.

PRODUCT REVISED
As complying with the Florida Building Code
NOA-No. 25-0312.09
Expiration Date: 07/22/2030
By: *Manuel Perez*
Miami-Dade Product Control

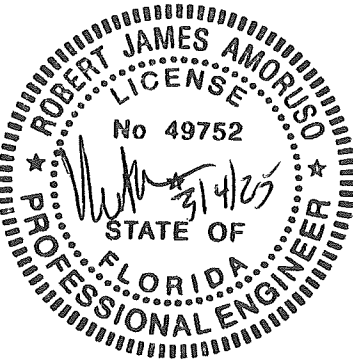
TABLE OF CONTENTS	
SHEET	DESCRIPTION
1	NOTES
2	ELEVATION AND ANCHOR LAYOUT (WS AND CS SCREWS)
3	ELEVATION AND ANCHOR LAYOUT (SMS/TAPPING/SELF-DRILLING SCREWS)
4	VERTICAL SECTIONS - COMPONENT ID
5	HORIZONTAL SECTIONS - COMPONENT ID & FRAME CORNER CONSTRUCTION
6	VERTICAL SECTIONS - WOOD AND CONCRETE/MASONRY SUBSTRATE ANCHORAGE
7	VERTICAL SECTIONS - METAL SUBSTRATE ANCHORAGE & INSTALLATION NOTES
8	HORIZONTAL SECTIONS - WOOD, CONCRETE/MASONRY & METAL SUBSTRATE ANCHORAGE
9	COMPONENTS
10	BILL OF MATERIALS & GLAZING DETAILS

REGENCY PLUS, INC.
2000 LOCUST GAP HIGHWAY
MT. CARMEL, PA 17851

SERIES 5405 VINYL XO-OX HORIZONTAL SLIDING WINDOW - LMI ANCHORAGE DETAILS	REVISION		DATE	
	REV.	DESCRIPTION	BY	DATE
	N	UPDATE FOR NOA EXPIRATION	RJA	2/17/25
	M	UPDATE TO 8TH EDITION (2023) FBC	RJA	6/7/23

DATE: 10/14/2008	DWN BY: CB	CHK BY: n/a	SCALE: NONE
------------------	------------	-------------	-------------

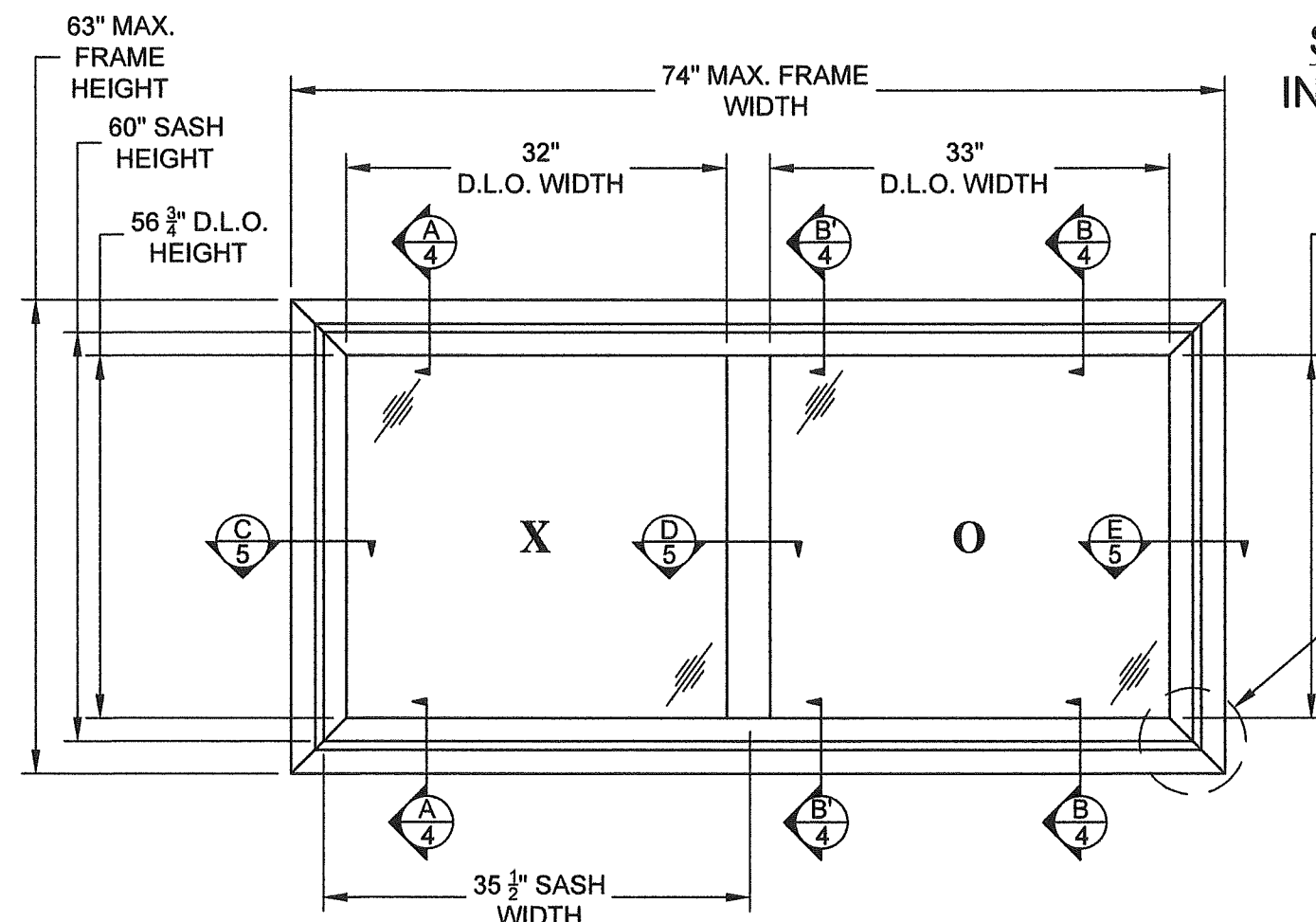
AMORUSO CONSULTING
ENGINEERING, LLC
FL Registration No. 38327
ROBERT J. AMORUSO, P.E.
FLORIDA PE NO. 49752
226 N. NOVA RD., #142
ORMOND BEACH, FL 32174
RJAENGPE@GMAIL.COM



PROJECT#: ACE-2025-101

DWG/REV: RPLS0063, Rev. N

SHT: 1 of 10



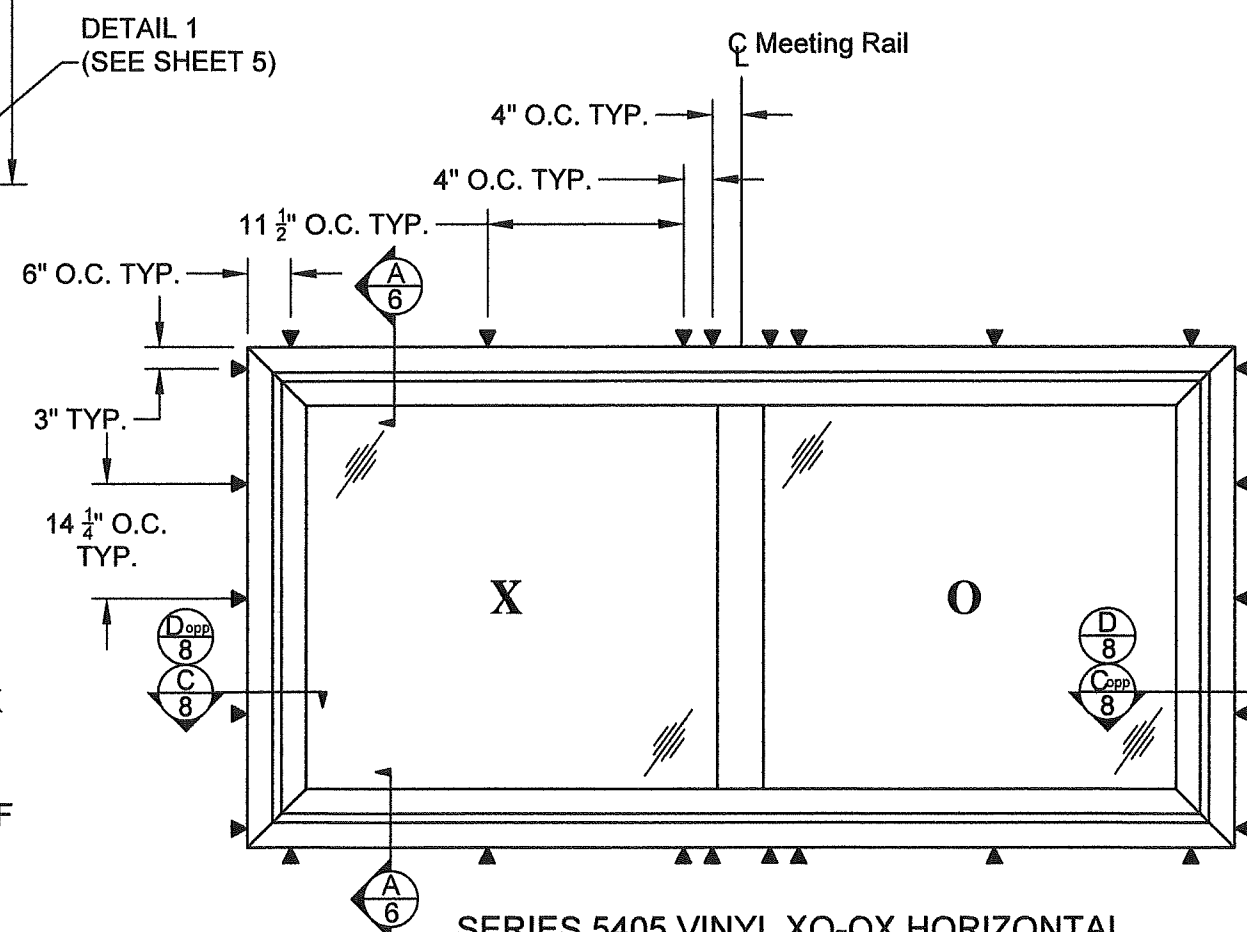
**SERIES 5405 VINYL XO-OX
HORIZONTAL SLIDING WINDOW
EXTERIOR VIEW**

SERIES 5405 VINYL XO-OX HORIZONTAL SLIDING WINDOW INSTALLATION INTO WOOD SUBSTRATE (WOOD OR TAPPING SCREWS) OR CONCRETE/MASONRY SUBSTRATE (CONCRETE SCREWS)

WEEP HOLES:

- 0.25" WIDE BY 0.25" HIGH LOCATED EACH END OF THE BOTTOM RAIL
- 0.180" DIAMETER LOCATED 1" AND 1.5" FROM EACH END OF THE BOTTOM RAIL
- 0.875" WIDE BY 0.375" HIGH LOCATED EACH END OF THE INTERIOR SILL TRACK
- 1" WIDE BY 0.25" HIGH LOCATED 1.25" FROM EACH END OF THE EXTERIOR SILL TRACK
- 1.25" WIDE BY 0.25" WITH PLASTIC WEEP FLAP LOCATED 3" FROM EACH END OF THE EXTERIOR SILL FACE
- 2.5" WIDE BY 0.375" HIGH LOCATED MID SPAN OF THE INTERIOR SILL TRACK
- 0.25" DIAMETER LOCATED MID SPAN AT THE EXTERIOR SILL FACE

DESIGN PRESSURE RATING (PSF)	IMPACT RATING
+55.0/-55.0	LARGE MISSILE IMPACT



**SERIES 5405 VINYL XO-OX HORIZONTAL
SLIDING WINDOW
EXTERIOR VIEW - ANCHORAGE
WOOD AND CONCRETE/MASONRY SUBSTRATES**

INSTALLATION NOTES:

- HEAD AND SILL ANCHORAGE THE SAME.
- JAMB ANCHORAGE SAME.
- +/- 1" TOLERANCE ON ANCHOR LOCATION.
 - TAPCON MINIMUM SPACING IS 4" OC.
 - WOOD AND TAPPING SCREW MINIMUM SPACING IS 4" OC.

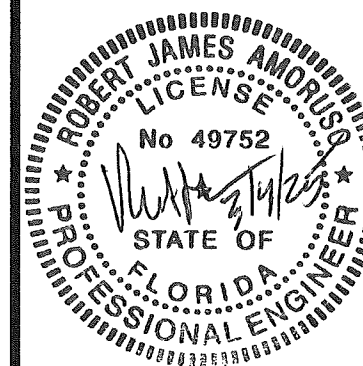
PRODUCT REVISED
 As complying with the Florida
 Building Code
NOA-No. 25-0312.09
Expiration Date: 07/22/2030
 By: *Manuel Perez*
 Miami-Dade Product Control

REGENCY PLUS, INC.
 2000 LOCUST GAP HIGHWAY
 MT. CARMEL, PA 17851

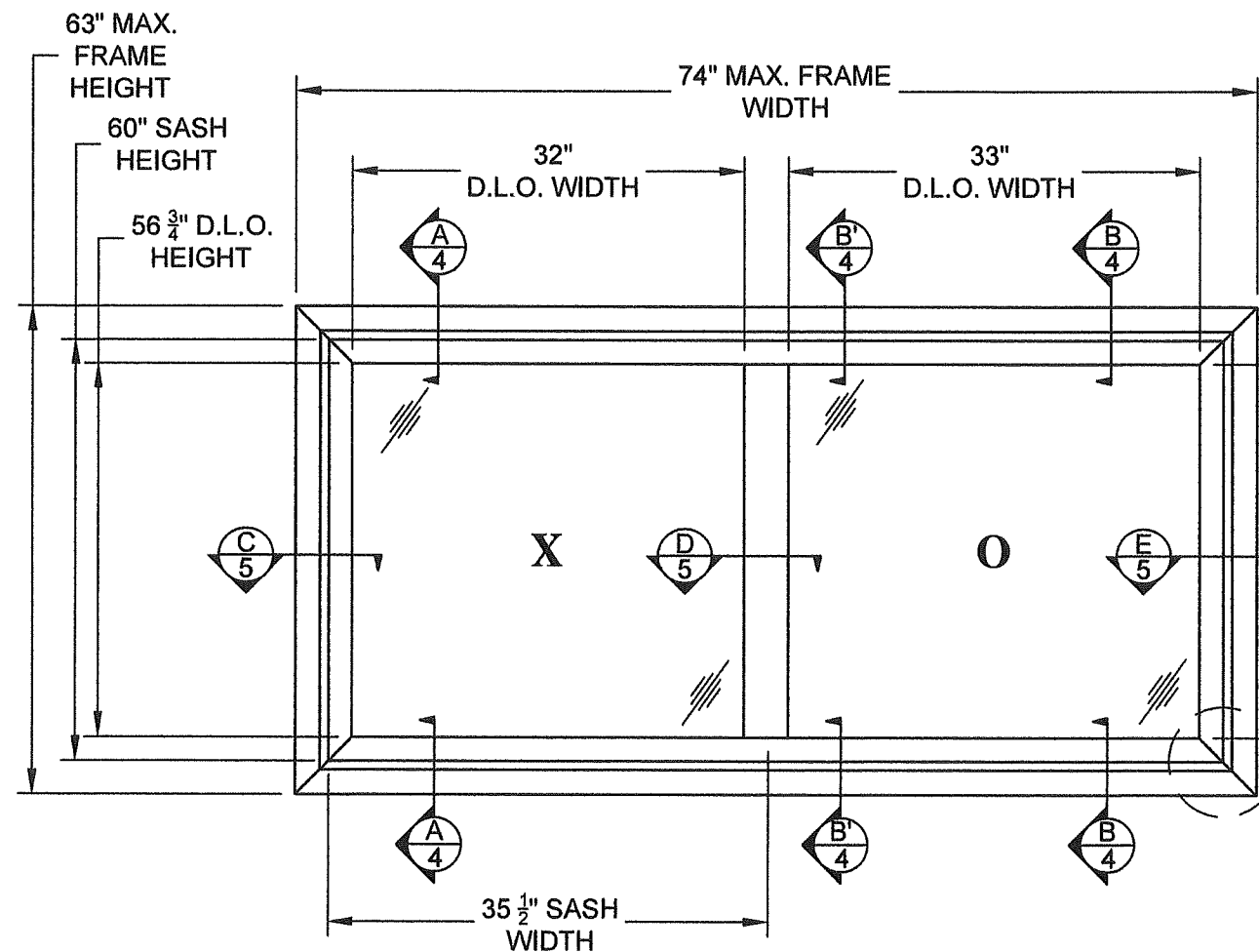
REV.	REVISION DESCRIPTION	BY	DATE	SERIES 5405 VINYL XO-OX HORIZONTAL SLIDING WINDOW - LMI ANCHORAGE DETAILS	
				2/17/25	6/7/23
N	UPDATE FOR NOA EXPIRATION	RJA			
M	UPDATE TO 8TH EDITION (2023) FBC	RJA			

DATE: 10/14/2008	DWN BY: CB	CHK BY: n/a	SCALE: NONE
---------------------	---------------	----------------	----------------

AMORUSO CONSULTING
 ENGINEERING, LLC
 FL Registration No. 38327
 ROBERT J. AMORUSO, P.E.
 FLORIDA PE NO. 49752
 226 N. NOVA RD., #142
 ORMOND BEACH, FL 32174
 RJAENGPE@GMAIL.COM



PROJECT#: ACE-2025-101
 DWG/REV: RPLS0063, Rev. N
 SHT: 2 of 10



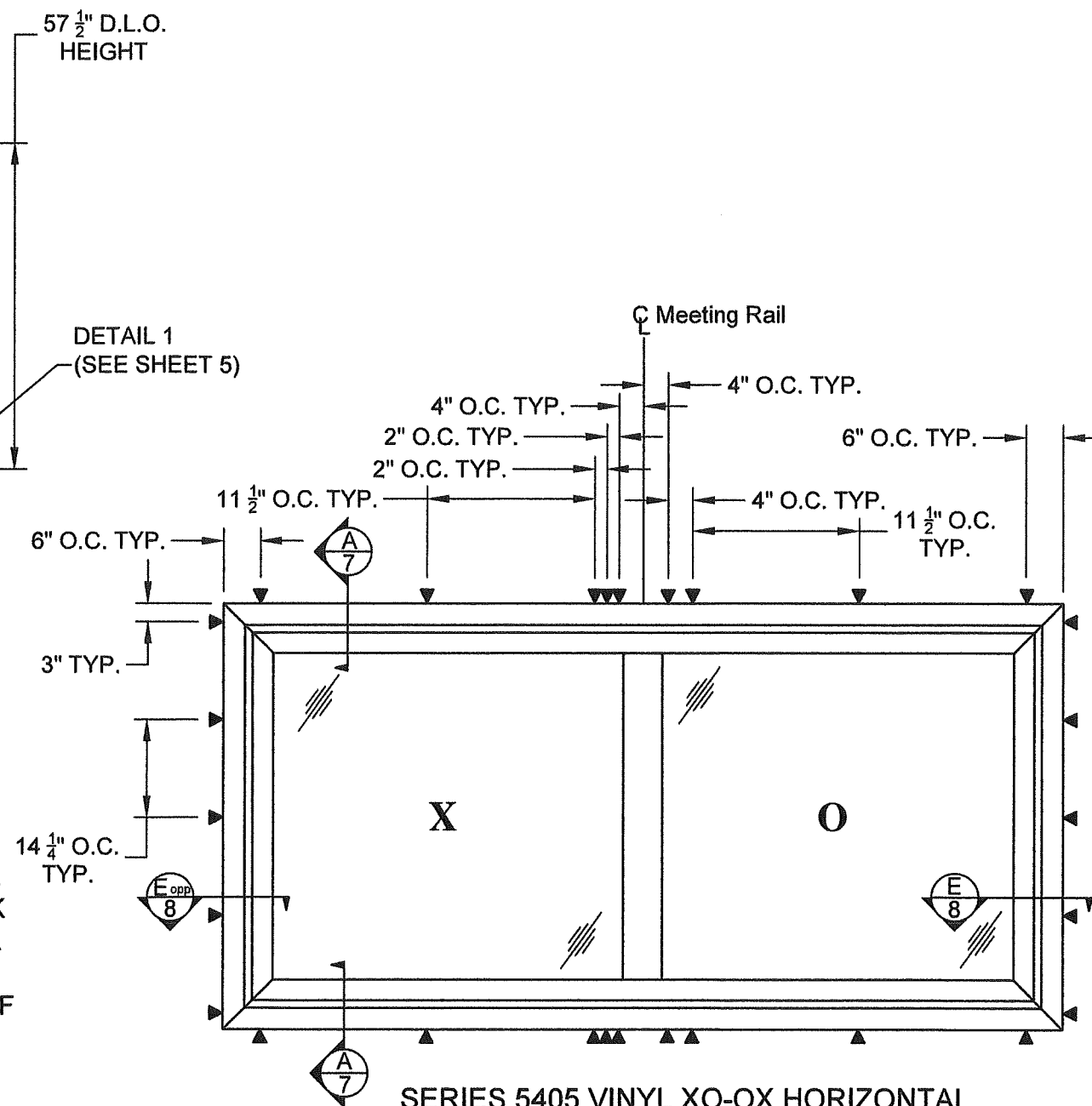
**SERIES 5405 VINYL XO-OX
HORIZONTAL SLIDING WINDOW
EXTERIOR VIEW**

WEEP HOLES:

1. 0.25" WIDE BY 0.25" HIGH LOCATED EACH END OF THE BOTTOM RAIL
2. 0.180" DIAMETER LOCATED 1" AND 1.5" FROM EACH END OF THE BOTTOM RAIL
3. 0.875" WIDE BY 0.375" HIGH LOCATED EACH END OF THE INTERIOR SILL TRACK
4. 1" WIDE BY 0.25" HIGH LOCATED 1.25" FROM EACH END OF THE EXTERIOR SILL TRACK
5. 1.25" WIDE BY 0.25" WITH PLASTIC WEEP FLAP LOCATED 3" FROM EACH END OF THE EXTERIOR SILL FACE
6. 2.5" WIDE BY 0.375" HIGH LOCATED MID SPAN OF THE INTERIOR SILL TRACK
7. 0.25" DIAMETER LOCATED MID SPAN AT THE EXTERIOR SILL FACE

DESIGN PRESSURE RATING (PSF)	IMPACT RATING
+55.0/-55.0	LARGE MISSILE IMPACT

**SERIES 5405 VINYL XO-OX HORIZONTAL SLIDING WINDOW
INSTALLATION INTO METAL SUBSTRATE (SMS, TAPPING OR
SELF-DRILLING SCREW)**



**SERIES 5405 VINYL XO-OX HORIZONTAL
SLIDING WINDOW
EXTERIOR VIEW - ANCHORAGE
STEEL SUBSTRATES**

INSTALLATION NOTES:

1. HEAD AND SILL ANCHORAGE THE SAME.
2. JAMB ANCHORAGE SAME.
3. +/- 1" TOLERANCE ON ANCHOR LOCATION.
 - 3.1. SMS, TAPPING OR SELF-DRILLING SCREWS MINIMUM SPACING IS 2" OC.

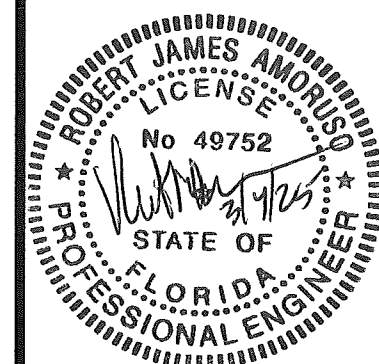
PRODUCT REVISED
As complying with the Florida
Building Code
NOA-No. **25-0312.09**
Expiration Date: **07/22/2030**
By: *Manuel Perez*
Miami-Dade Product Control

REGENCY PLUS, INC.
2000 LOCUST GAP HIGHWAY
MT. CARMEL, PA 17851

REV.	REVISION DESCRIPTION	BY	DATE	2/17/25	
				RJA	RJA
N	UPDATE FOR NOA EXPIRATION				
M	UPDATE TO 8TH EDITION (2023) FBC				

DATE: 10/14/2008	DWN BY: CB	CHK BY: n/a	SCALE: NONE
---------------------	---------------	----------------	----------------

AMORUSO CONSULTING
ENGINEERING, LLC
FL Registration No. 38327
ROBERT J. AMORUSO, P.E.
FLORIDA PE NO. 49752
226 N. NOVA RD., #142
ORMOND BEACH, FL 32174
RJAENGPE@GMAIL.COM



PROJECT#: ACE-2025-101

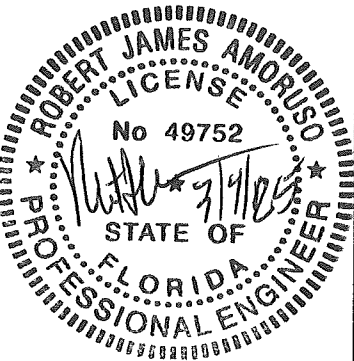
DWG/REV: RPLS0063, Rev. N

SHT: 3 of 10

SERIES 5405 VINYL XO-OX HORIZONTAL SLIDING WINDOW - LMI ANCHORAGE DETAILS				
REV.	REVISION DESCRIPTION	BY	DATE	
N	UPDATE FOR NOA EXPIRATION	RJA	2/17/25	
M	UPDATE TO 8TH EDITION (2023) FBC	RJA	6/7/23	

DATE: 10/14/2008	DWN BY: CB	CHK BY: n/a	SCALE: NONE
---------------------	---------------	----------------	----------------

AMORUSO CONSULTING
ENGINEERING, LLC
FL Registration No. 38327
ROBERT J. AMORUSO, P.E.
FLORIDA PE NO. 49752
226 N. NOVA RD., #142
ORMOND BEACH, FL 32174
RJAENGPE@GMAIL.COM

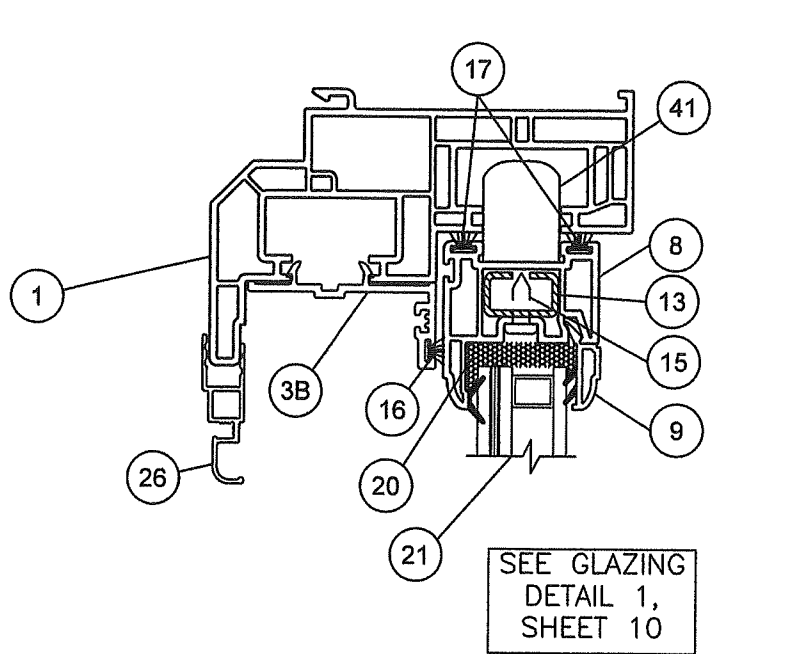


PROJECT#: ACE-2025-101

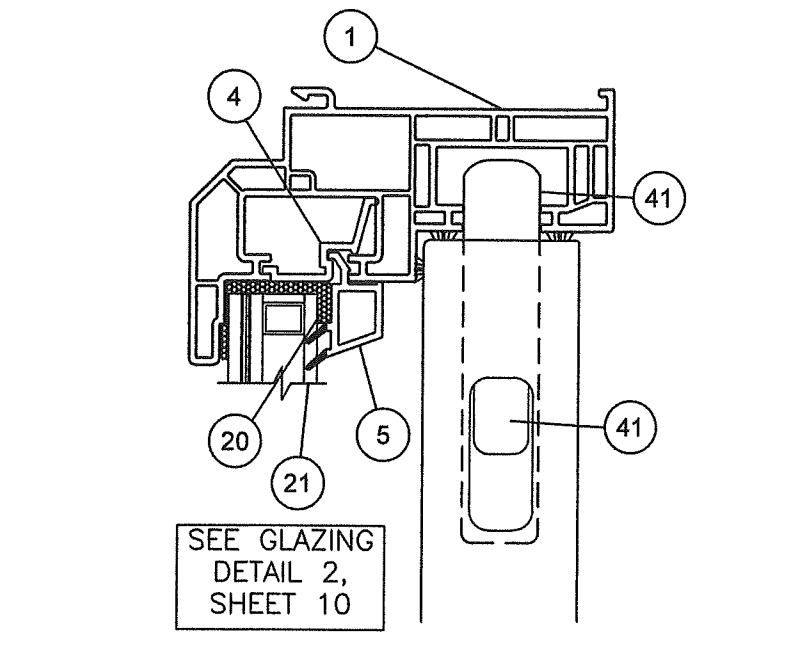
DWG/REV: RPLS0063, Rev. N

SHT: 4 of 10

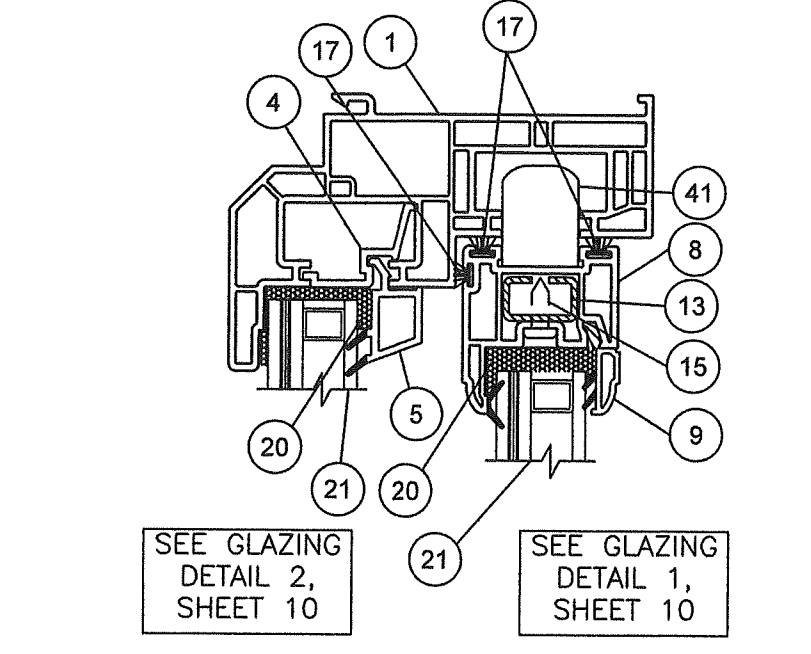
A VERTICAL SECTION
HEAD - COMPONENT ID



B VERTICAL SECTION
HEAD - COMPONENT ID



B' VERTICAL SECTION
HEAD - COMPONENT ID



EXTERIOR

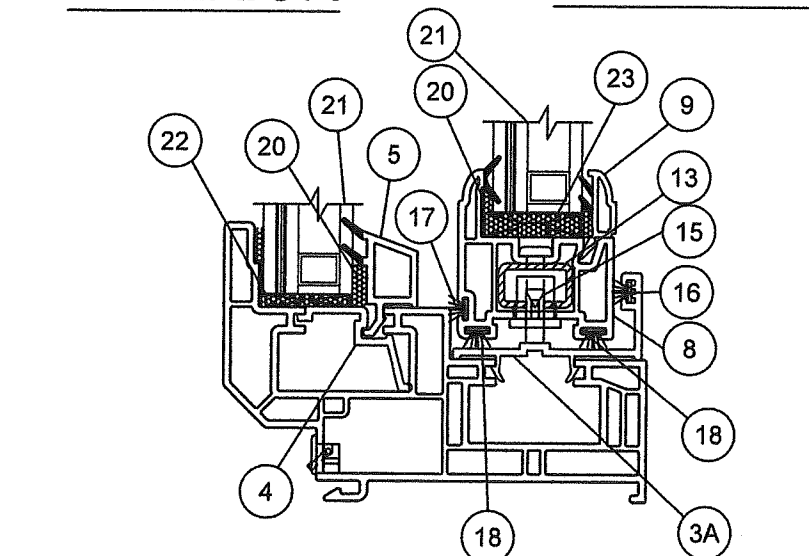
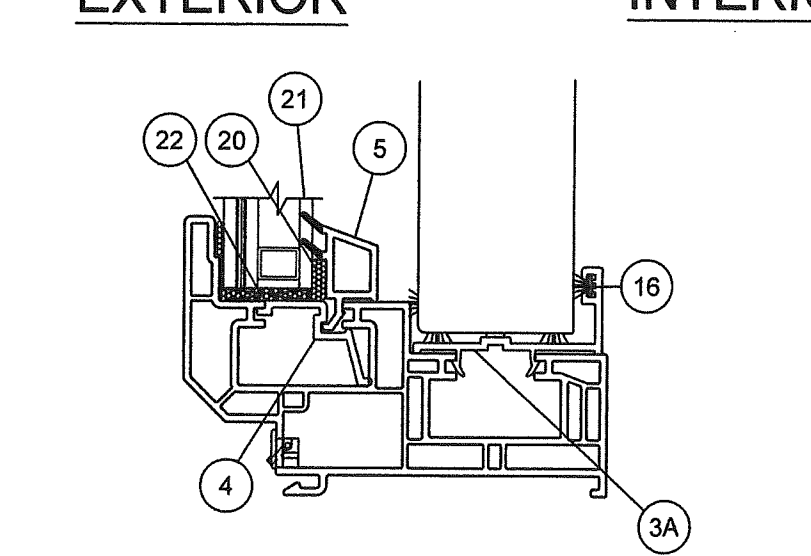
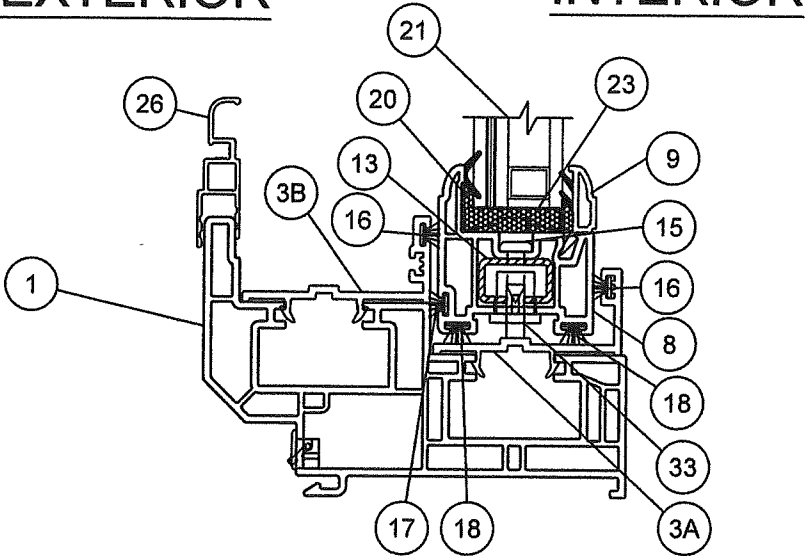
INTERIOR

EXTERIOR

INTERIOR

EXTERIOR

INTERIOR



A VERTICAL SECTION
SILL - COMPONENT ID

B VERTICAL SECTION
SILL - COMPONENT ID

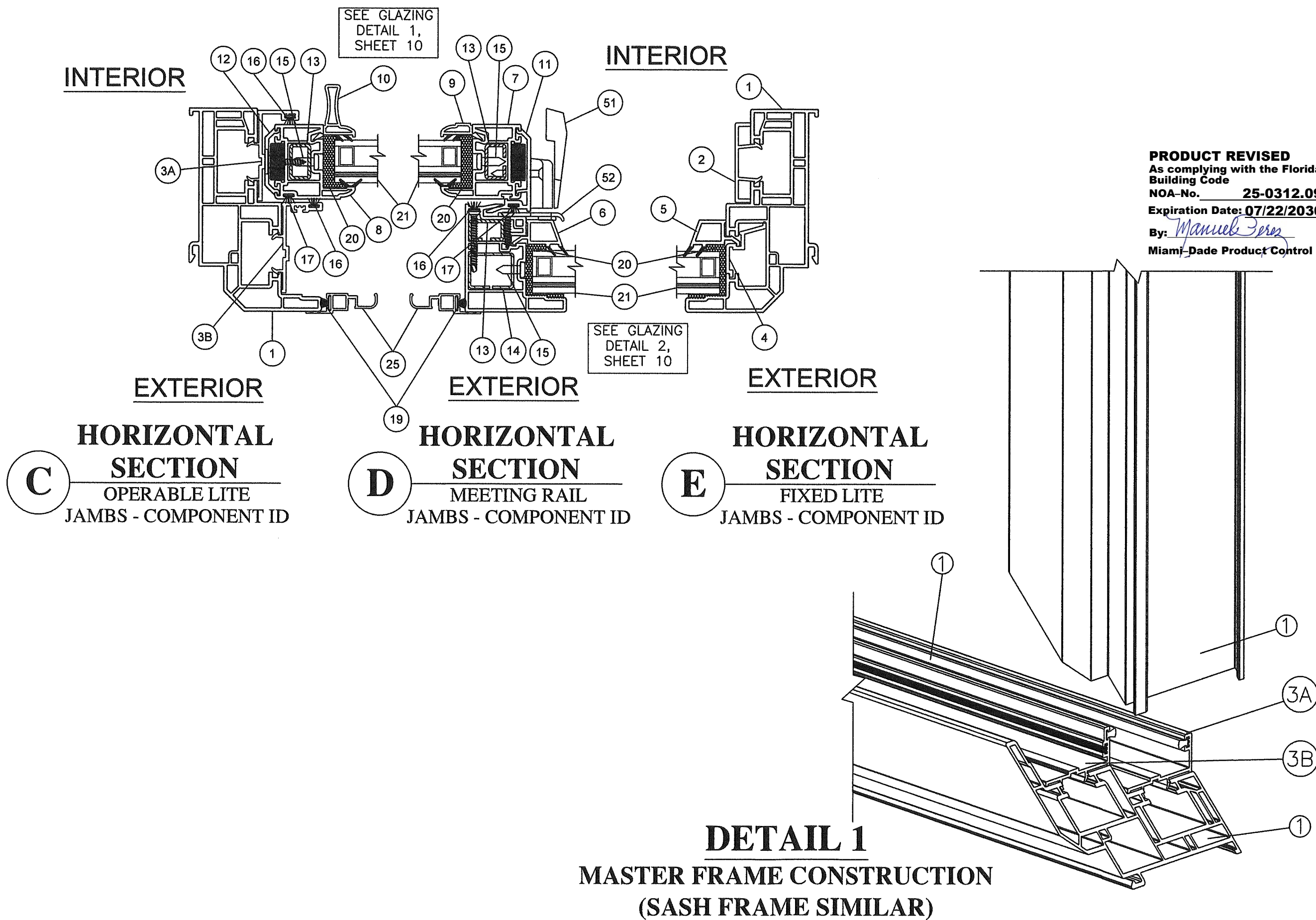
B' VERTICAL SECTION
SILL - COMPONENT ID

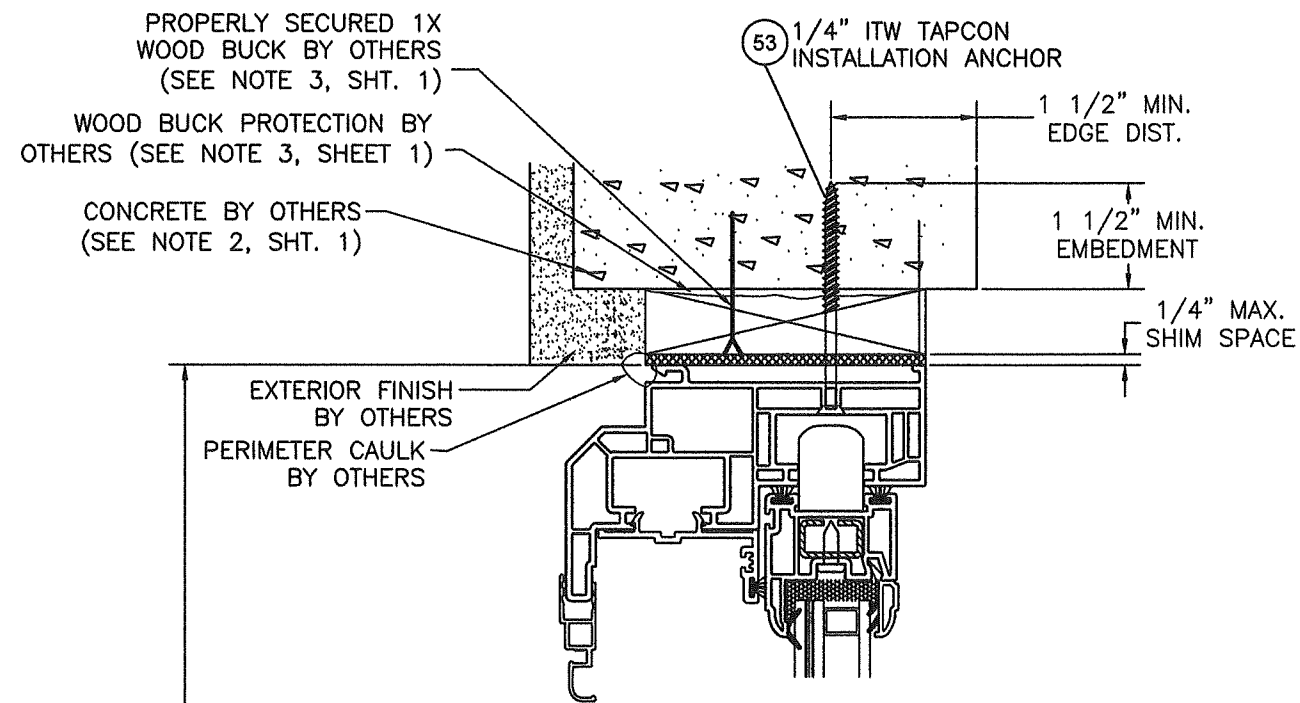
PRODUCT REVISED
As complying with the Florida
Building Code
NOA-No. 25-0312.09
Expiration Date: 07/22/2030
By: *Manuel Perez*
Miami-Dade Product Control

SERIES 5405 VINYL XO-OX HORIZONTAL SLIDING WINDOW - LMI ANCHORAGE DETAILS			
REV.	REVISION DESCRIPTION	BY	DATE
N	UPDATE FOR NOA EXPIRATION	RJA	2/17/25
M	UPDATE TO 8TH EDITION (2023) FBC	RJA	6/7/23

DATE: 10/14/2008	DWN BY: CB	CHK BY: n/a	SCALE: NONE
---------------------	---------------	----------------	----------------

PROJECT#: ACE-2025-101
DWG/REV: RPLS0063, Rev. N
SHT: 5 of 10

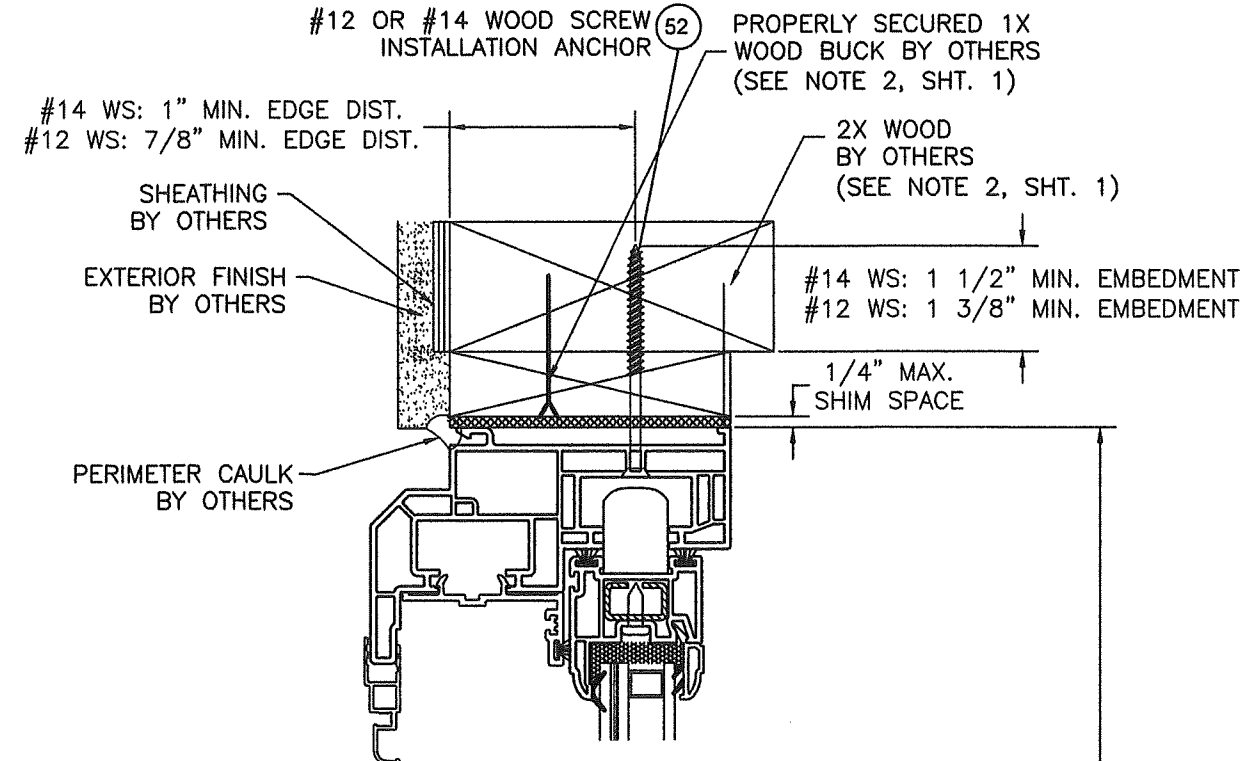




WINDOW
HEIGHT

EXTERIOR

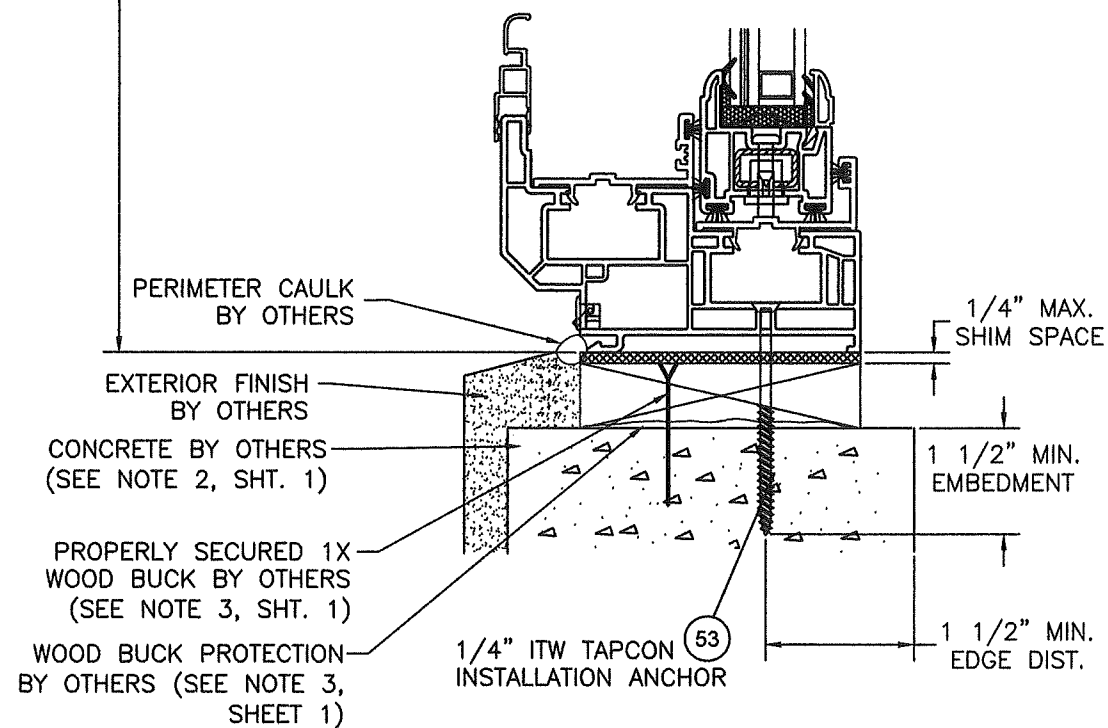
INTERIOR



EXTERIOR

INTERIOR

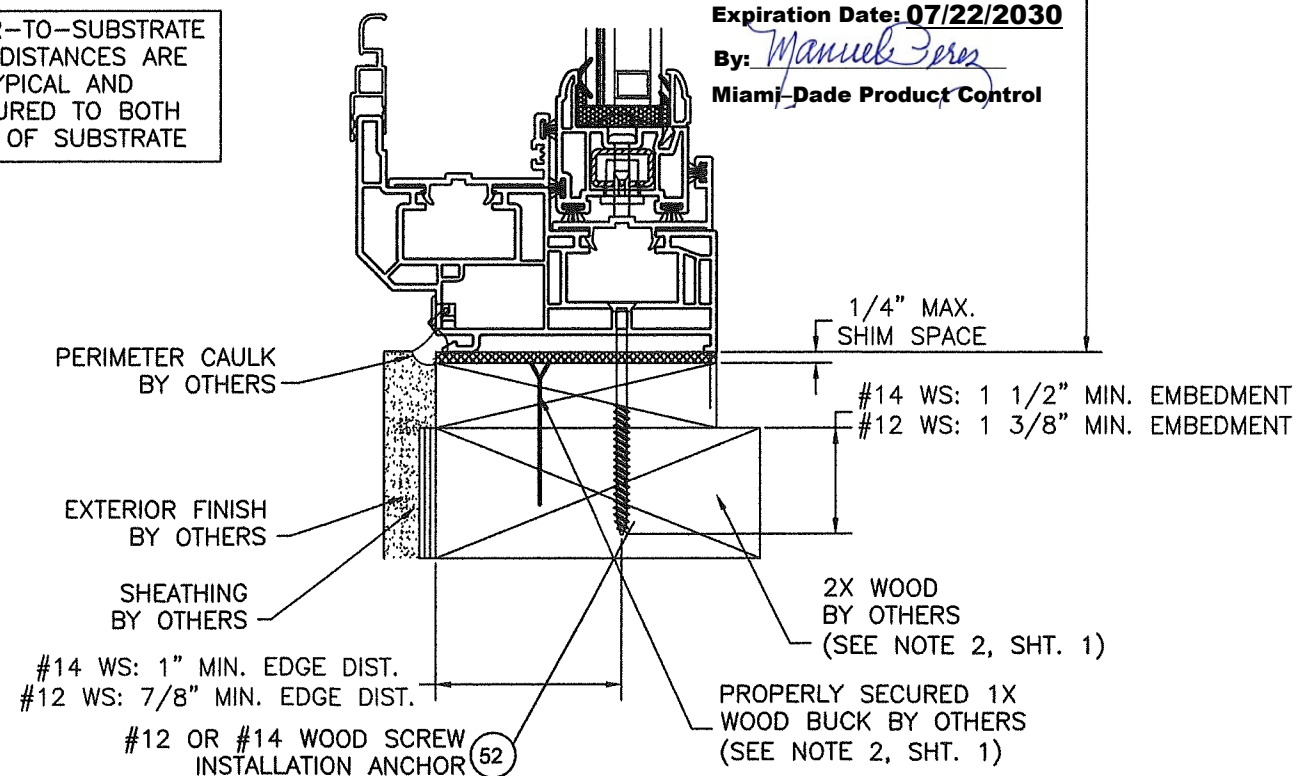
WINDOW
HEIGHT



A

VERTICAL SECTION
CONCRETE SUBSTRATE

ANCHOR-TO-SUBSTRATE
EDGE DISTANCES ARE
TYPICAL AND
MEASURED TO BOTH
SIDES OF SUBSTRATE



A

VERTICAL SECTION
WOOD SUBSTRATE

PRODUCT REVISED
As complying with the Florida
Building Code
NOA-No. **25-0312.09**
Expiration Date: **07/22/2030**
By: *Manuel Torres*
Miami-Dade Product Control

REGENCY PLUS, INC.
2000 LOCUST GAP HIGHWAY
MT. CARMEL, PA 17851

SERIES 5405 VINYL XO-OX HORIZONTAL SLIDING WINDOW - LMI ANCHORAGE DETAILS				
REV.	REVISION DESCRIPTION	BY	DATE	
N	UPDATE FOR NOA EXPIRATION	RJA	2/17/25	
M	UPDATE TO 8TH EDITION (2023) FBC	RJA	6/7/23	

DATE: 10/14/2008	DWN BY: CB	CHK BY: n/a	SCALE: NONE
---------------------	---------------	----------------	----------------

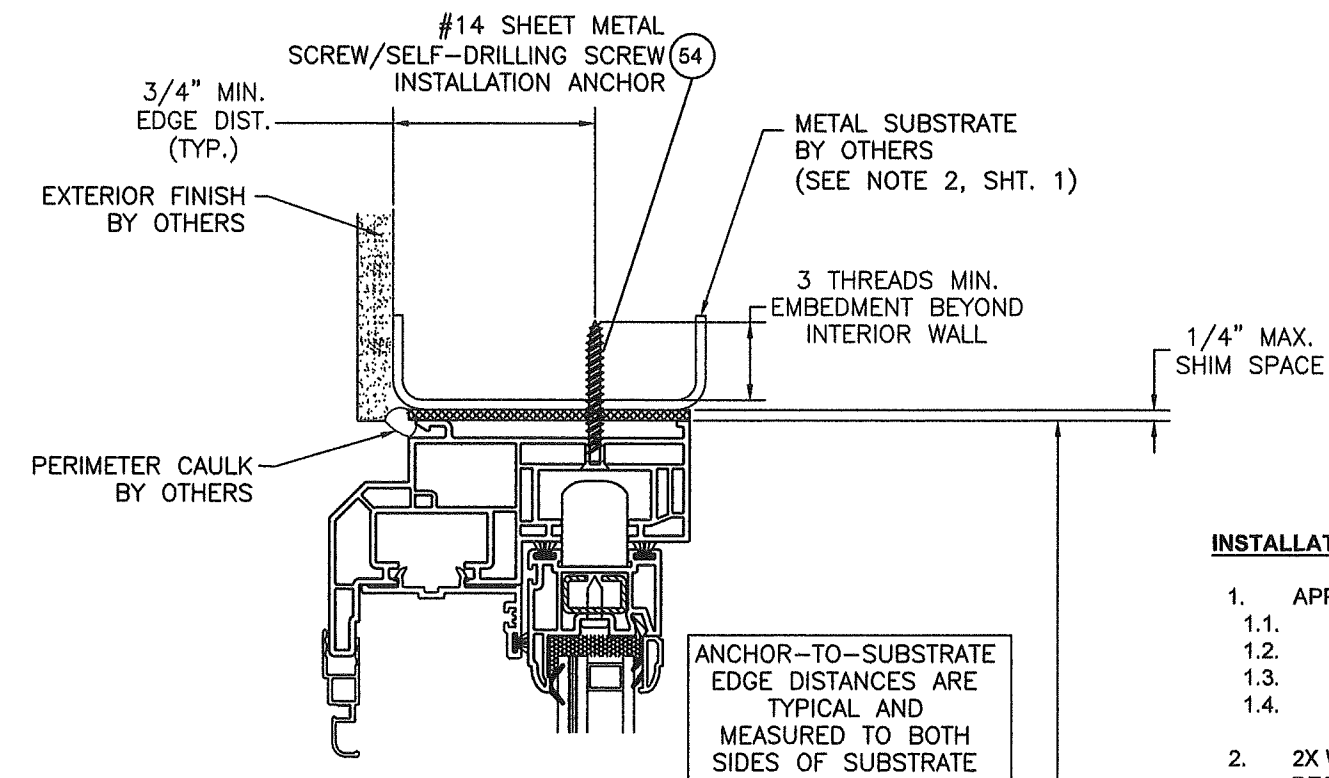
AMORUSO CONSULTING
ENGINEERING, LLC
FL Registration No. 38327
ROBERT J. AMORUSO, P.E.
FLORIDA PE NO. 49752
226 N. NOVA RD., #142
ORMOND BEACH, FL 32174
RJAENGPE@GMAIL.COM



PROJECT#: ACE-2025-101

DWG/REV: RPLS0063, Rev. N

SHT: 6 of 10



INSTALLATION NOTES:

1. APPROVED INSTALLATION SUBSTRATES INCLUDE THE FOLLOWING:

 - 1.1. WOOD FRAMING,
 - 1.2. STEEL STUD FRAMING,
 - 1.3. ALUMINUM FRAMING, AND
 - 1.4. CONCRETE AND/OR MASONRY.

2. 2X WOOD FRAMING, 1X OR 2X WOOD BUCK, METAL FRAMING AND CONCRETE/MASONRY OPENING TO BE DESIGNED AND ANCHORED TO PROPERLY TRANSFER ALL LOADS TO STRUCTURE. FRAMING AND CONCRETE/MASONRY OPENING IS THE RESPONSIBILITY OF THE ARCHITECT OR ENGINEER OF RECORD.

3. 1X BUCK OVER CONCRETE/MASONRY IS OPTIONAL. WHEN 1X BUCK IS USED, INSTALLATION ANCHORS WILL PASS THROUGH WINDOW FRAME AND 1X BUCK INTO CONCRETE/MASONRY SUBSTRATE. WHEN USED, 1X BUCKS SHALL BE DESIGNED AND ANCHORED TO PROPERLY TRANSFER ALL LOADS TO STRUCTURE AND IS THE RESPONSIBILITY OF THE ARCHITECT OR ENGINEER OF RECORD. DISSIMILAR MATERIALS MUST BE SEPARATED WITH APPROVED COATING OR MEMBRANE. SELECTION OF COATING OR MEMBRANE IS THE RESPONSIBILITY OF THE ARCHITECT OR ENGINEER OF RECORD.

4. SHIM AS REQUIRED AT EACH INSTALLATION ANCHOR WITH LOAD BEARING SHIM. SHIM WHERE SPACE OF 1/16" OR GREATER OCCURS. MAXIMUM ALLOWABLE SHIM STACK TO BE 1/4".

5. FOR ANCHORING INTO CONCRETE/MASONRY USE 1/4" FLAT HEAD TAPCONS (CS) WITH SUFFICIENT LENGTH TO ACHIEVE A 1 1/2" MINIMUM EMBEDMENT INTO CONCRETE WITH 1 1/2" MINIMUM EDGE DISTANCE AND 1" MINIMUM EMBEDMENT INTO MASONRY WITH 2" MINIMUM EDGE DISTANCE. LOCATE ANCHORS AS SHOWN IN ELEVATIONS AND INSTALLATION DETAILS. 4" MINIMUM SPACING BETWEEN ADJACENT ANCHORS REQUIRED. ANCHOR LOCATIONS HAVE +/- 1" TOLERANCE.

6. FOR ANCHORING INTO WOOD FRAMING OR 2X BUCK USE ONE OF THE FOLLOWING:

 - 6.1. #12 FLAT HEAD WOOD SCREWS (WS) WITH SUFFICIENT LENGTH TO ACHIEVE A 1 3/8" MINIMUM EMBEDMENT INTO SUBSTRATE WITH 7/8" MINIMUM EDGE DISTANCE AND MINIMUM ANCHOR-TO-ANCHOR SPACING OF 2" ON CENTER. LOCATE ANCHORS AS SHOWN IN ELEVATIONS AND INSTALLATION DETAILS. ANCHOR LOCATIONS HAVE +/- 1" TOLERANCE.
 - 6.2. #14 FLAT HEAD WOOD SCREWS (WS) WITH SUFFICIENT LENGTH TO ACHIEVE A 1 1/2" MINIMUM EMBEDMENT INTO SUBSTRATE WITH 1" MINIMUM EDGE DISTANCE AND MINIMUM ANCHOR-TO-ANCHOR SPACING OF 2" ON CENTER. LOCATE ANCHORS AS SHOWN IN ELEVATIONS AND INSTALLATION DETAILS. ANCHOR LOCATIONS HAVE +/- 1" TOLERANCE.

7. FOR ANCHORING INTO METAL STRUCTURE USE #14 FLAT HEAD SHEET METAL OR SELF DRILLING SCREWS (SMS) WITH SUFFICIENT LENGTH TO ACHIEVE 3 THREADS MINIMUM BEYOND STRUCTURE INTERIOR WALL WITH 3/4" MINIMUM EDGE DISTANCE AND MINIMUM ANCHOR-TO-ANCHOR SPACING OF 2" ON CENTER. LOCATE ANCHORS AS SHOWN IN ELEVATIONS AND INSTALLATION DETAILS. ANCHOR LOCATIONS HAVE +/- 1" TOLERANCE.

8. INTERIOR AND EXTERIOR FINISHES BY OTHERS. NOT SHOWN FOR CLARITY.

9. PERIMETER AND JOINT SEALANT BY OTHERS TO BE DESIGNED AND/OR SPECIFIED IN ACCORDANCE WITH ASTM E2112.

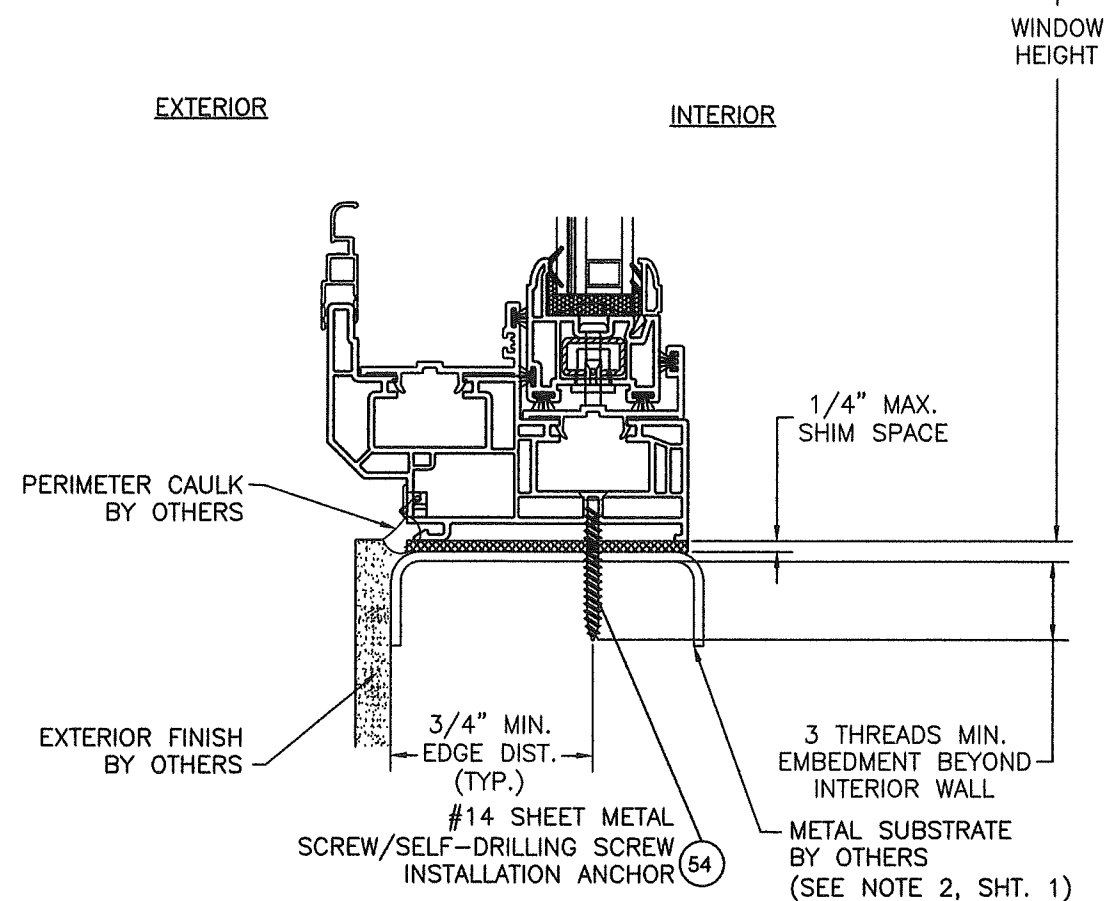
PRODUCT REVISED

As complying with the Florida Building Code

NOA-No. 25-0312.09

Expiration Date: 07/22/2030

By: Manuel Perez
Miami-Dade Product Control



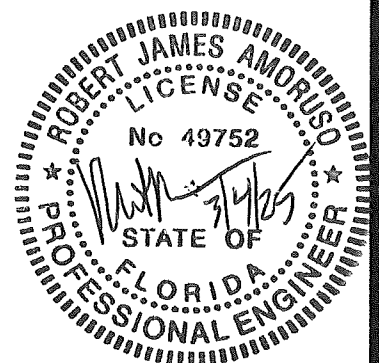
A VERTICAL SECTION
METAL SUBSTRATE

REGENCY PLUS, INC.
2000 LOCUST GAP HIGHWAY
MT. CARMEL, PA 17851

SERIES 5405 VINYL XO-OX HORIZONTAL SLIDING WINDOW - LMI ANCHORAGE DETAILS			
REV.	REVISION DESCRIPTION	BY	DATE
N	UPDATE FOR NOA EXPIRATION	RJA	2/17/25
M	UPDATE TO 8TH EDITION (2023) FBC	RJA	6/7/23

DATE: 00/0/14/2008	DWN BY: CB	CHK BY: n/a	SCALE: NONE
-----------------------	---------------	----------------	----------------

**AMORUSO CONSULTING
ENGINEERING, LLC**
FL Registration No. 38327
ROBERT J. AMORUSO, P.E.
FLORIDA PE NO. 49752
226 N. NOVA RD., #142
ORMOND BEACH, FL 32174
RJAENGPE@GMAIL.COM



PROJECT#: ACE-2025-101

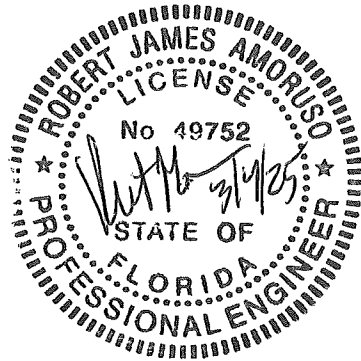
DWG/REV: RPLS0063, Rev. N

SHT: 7 of 10

SERIES 5405 VINYL XO-OX HORIZONTAL SLIDING WINDOW - LMI ANCHORAGE DETAILS					
REV.	REVISION DESCRIPTION	BY	DATE	REV.	DATE
N	UPDATE FOR NOA EXPIRATION	RJA	2/17/25	M	6/7/23
M	UPDATE TO 8TH EDITION (2023) FBC	RJA			

DATE: 10/14/2008	DWN BY: CB	CHK BY: n/a	SCALE: NONE
---------------------	---------------	----------------	----------------

AMORUSO CONSULTING
ENGINEERING, LLC
FL Registration No. 38327
ROBERT J. AMORUSO, P.E.
FLORIDA PE NO. 49752
226 N. NOVA RD., #142
ORMOND BEACH, FL 32174
RJAENGPE@GMAIL.COM



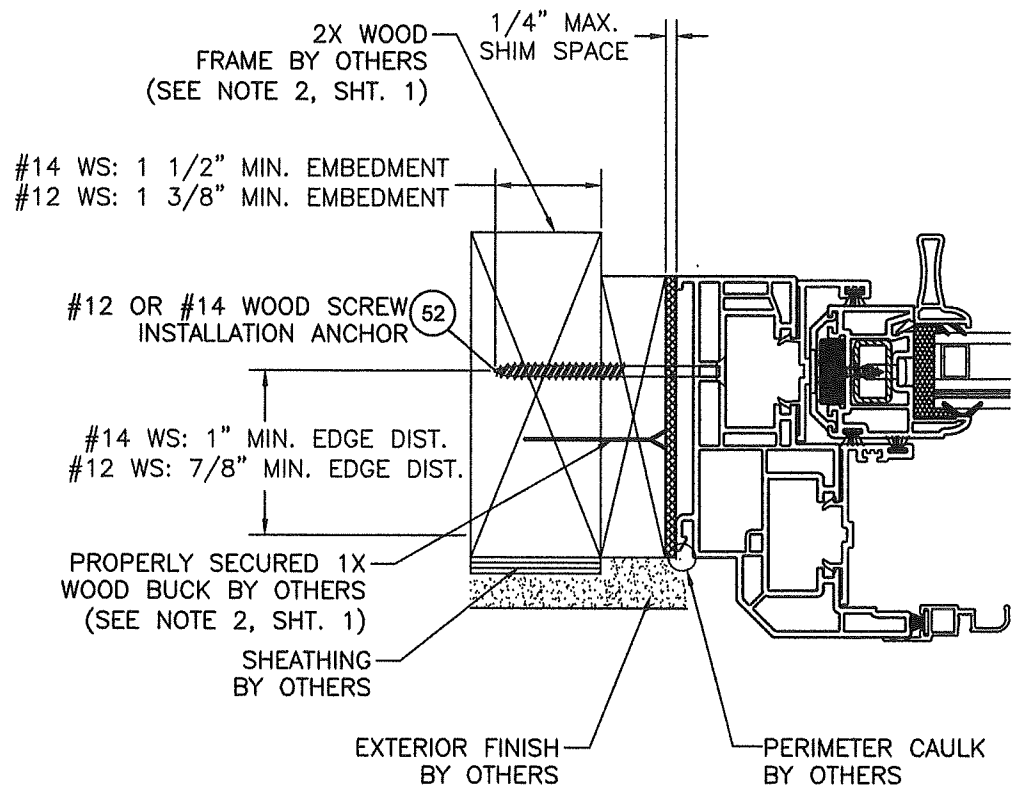
PROJECT#: ACE-2025-101
DWG/REV: RPLS0063, Rev. N
SHT: 8 of 10

PRODUCT REVISED
As complying with the Florida
Building Code
NOA-No. **25-0312.09**
Expiration Date: **07/22/2030**
By: *Manuel Perez*
Miami-Dade Product Control

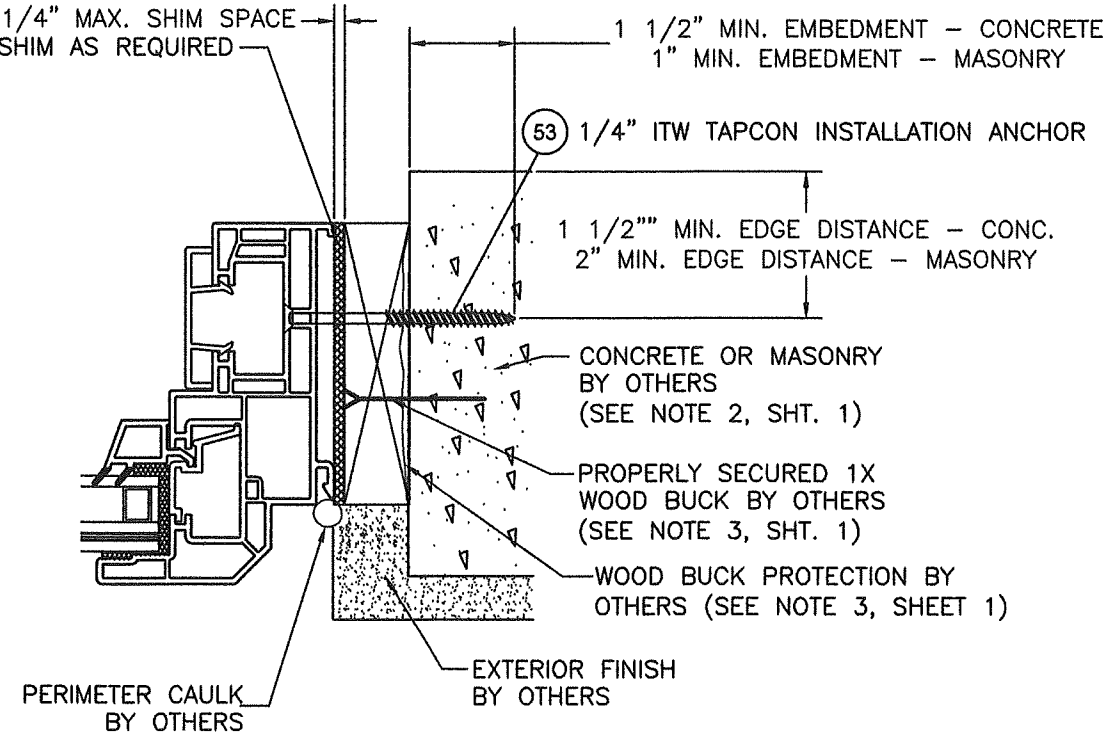
INTERIOR

EXTERIOR

C VERTICAL SECTION
WOOD SUBSTRATE



D VERTICAL SECTION
CONCRETE/MASONRY SUBSTRATE

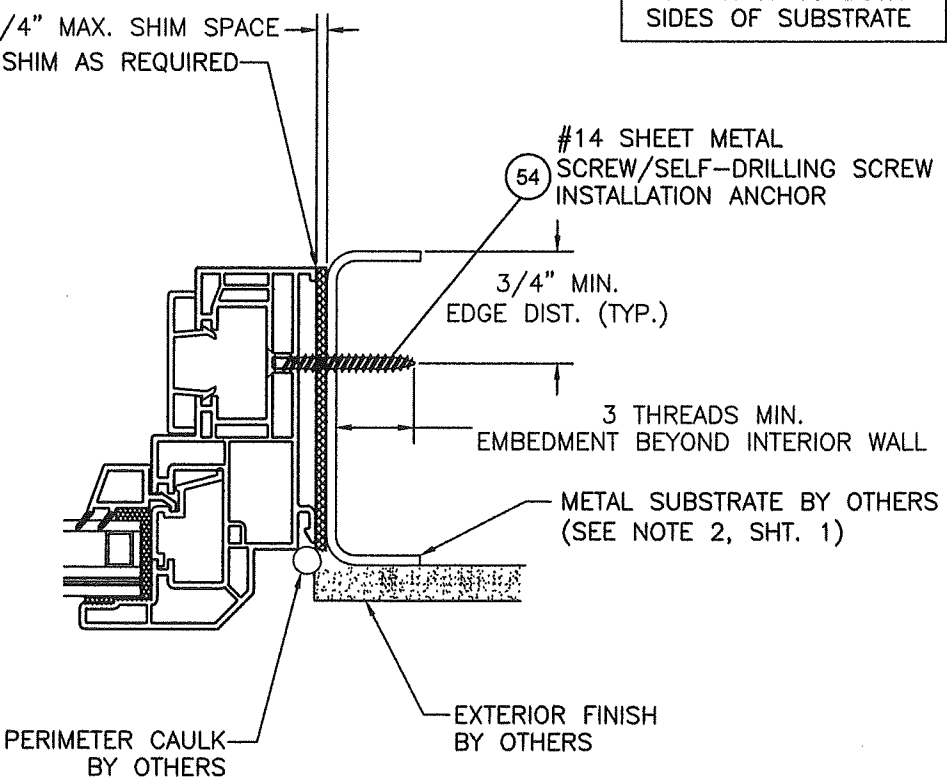


ANCHOR-TO-SUBSTRATE
EDGE DISTANCES ARE
TYPICAL AND
MEASURED TO BOTH
SIDES OF SUBSTRATE

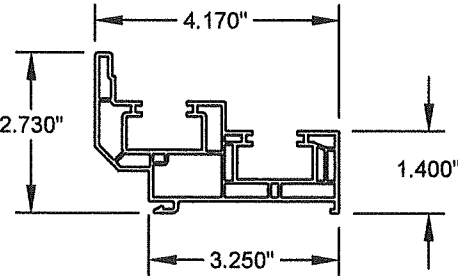
**LOWER SASH JAMBS
SHOWN. SIMILAR
INSTALLATION FOR
UPPER FIXED LITE JAMBS.**

INTERIOR

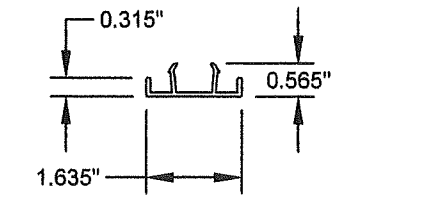
E VERTICAL SECTION
METAL SUBSTRATE



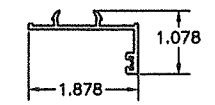
① **MAIN FRAME**
WHITE RIGID PVC
TYP. WALL THICKNESS 0.070"



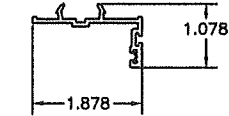
② **SASH STOP FRAME COVER**
WHITE RIGID PVC
TYP. WALL THICKNESS 0.070"



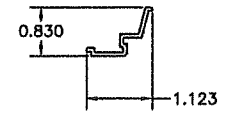
③A **POCKET COVER**
WHITE RIGID PVC
TYP. WALL THICKNESS 0.070"



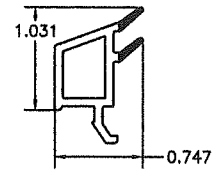
③B **POCKET COVER**
WHITE RIGID PVC
TYP. WALL THICKNESS 0.070"



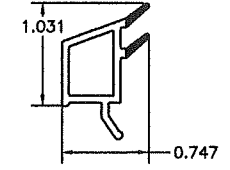
④ **POCKET INSERT**
WHITE RIGID PVC
TYP. WALL THICKNESS 0.070"



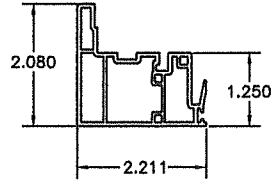
⑤ **GLAZING BEAD STOP**
FIXED LITE HEAD AND JAMBS
WHITE RIGID PVC
TYP. WALL THICKNESS 0.070"



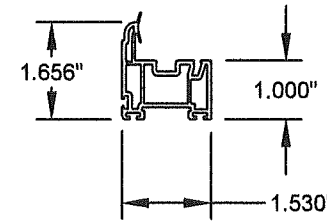
⑥ **GLAZING BEAD STOP**
FIXED LITE MEETING RAIL
WHITE RIGID PVC
TYP. WALL THICKNESS 0.060"



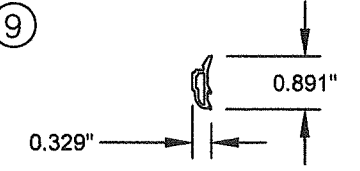
⑦ **IMPOST MULLION/FIXED MEETING RAIL**
WHITE RIGID PVC
TYP. WALL THICKNESS 0.066"



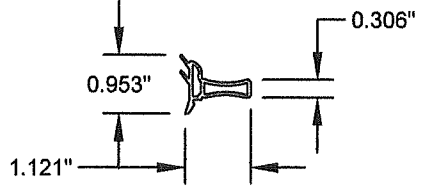
⑧ **SASH FRAME**
WHITE RIGID PVC
TYP. WALL THICKNESS 0.070"



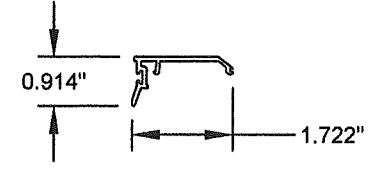
⑨ **GLAZING BEAD STOP/SASH**
WHITE RIGID PVC
TYP. WALL THICKNESS 0.055"



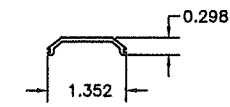
⑩ **GLAZING LIFTRAIL HANDLE**
WHITE RIGID PVC
TYP. WALL THICKNESS 0.055"



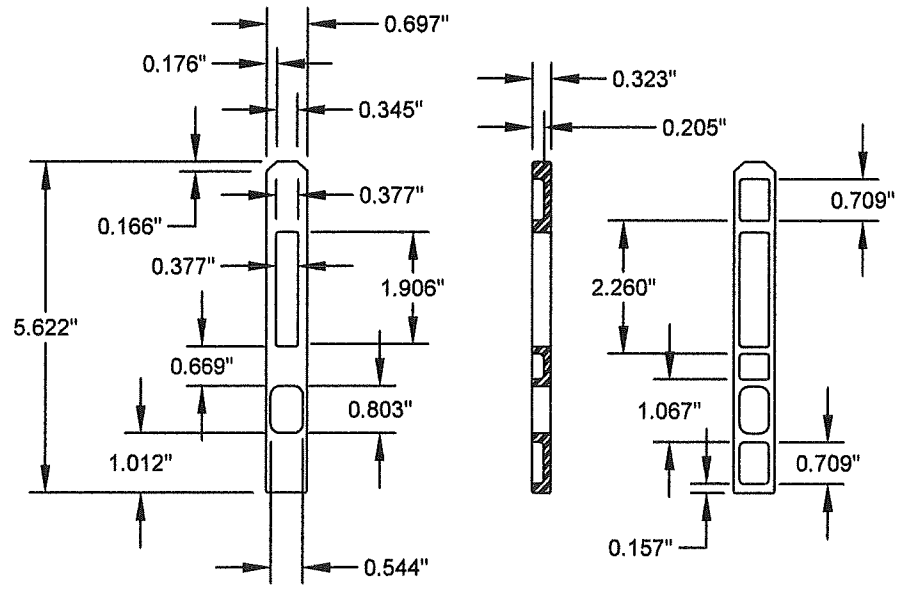
⑪ **INTERLOCK COVER**
WHITE RIGID PVC
TYP. WALL THICKNESS 0.075"



⑫ **SASH COVER**
WHITE RIGID PVC
TYP. WALL THICKNESS 0.065"

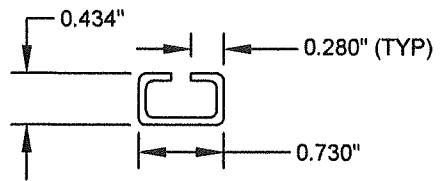


④1 **HURRICANE TILT LATCH**
STEEL - ZINC COATED

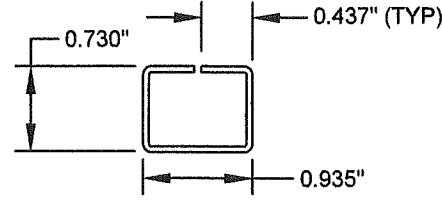


PRODUCT REVISED
As complying with the Florida Building Code
NOA-No. **25-0312.09**
Expiration Date: **07/22/2030**
By: *Manuel Perez*
Miami-Dade Product Control

⑬ **REINFORCEMENT STEEL**
TYP. WALL THICKNESS 0.06"



⑭ **REINFORCEMENT STEEL**
TYP. WALL THICKNESS 0.05"



REGENCY PLUS, INC.
2000 LOCUST GAP HIGHWAY
MT. CARMEL, PA 17851

REV.	REVISION DESCRIPTION	BY	DATE
N	UPDATE FOR NOA EXPIRATION	RJA	2/17/25
M	UPDATE TO 8TH EDITION (2023) FBC	RJA	6/7/23

DATE: 10/14/2008
DWN BY: CB
CHK BY: n/a
SCALE: NONE

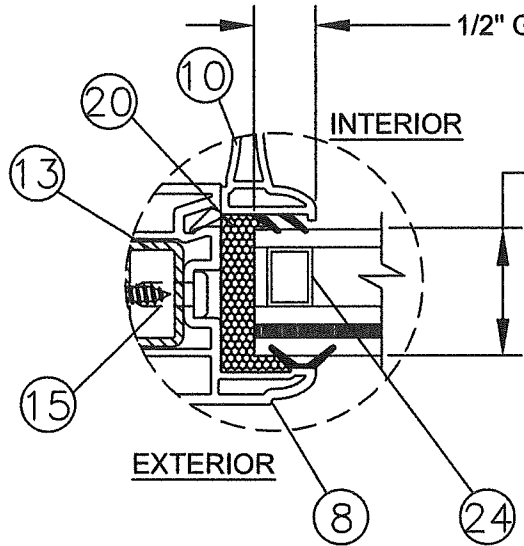
AMORUSO CONSULTING ENGINEERING, LLC
FL Registration No. 38327
ROBERT J. AMORUSO, P.E.
FLORIDA PE NO. 49752
226 N. NOVA RD., #142
ORMOND BEACH, FL 32174
RJAENGPE@GMAIL.COM

PROFESSIONAL ENGINEER
STATE OF FLORIDA
No 49752
ROBERT JAMES AMORUSO

PROJECT#: ACE-2025-101
DWG/REV: RPLS0063, Rev. N
SHT: 9 of 10

Series 5405 XO Horizontal Slider / Bill of Material				
Item No.	Description	Part Numbers	Supplier	Material or Note
Frame Components				
1	Master Frame	IV White 1060 / 7780	Vision Extr. Grp. LTD	White PVC (2)
2	Sash Stop Frame Cover Head	IV White 1070 / 7736	Vision Extr. Grp. LTD	White PVC (2)
3A	Pocket Cover	IV White 1073 / 7724	Vision Extr. Grp. LTD	White PVC (2)
3B	Pocket Cover	IV White 1776 / 7739	Vision Extr. Grp. LTD	White PVC (2)
4	Pocket Insert	IV White 1079 / 7737	Vision Extr. Grp. LTD	White PVC (2)
5	Glazing Bead Fixed Section	IV White 1103 / 7726	Vision Extr. Grp. LTD	White PVC (2)
6	Glazing Bead Fixed Section	IV White 1080 / 7753	Vision Extr. Grp. LTD	White PVC (2)
7	Impost Mullion Fixed Section	IV White 1063 / 7735	Vision Extr. Grp. LTD	White PVC (2)
8	Sash Frame (Operating Sash)	IV White 1282 / 7750	Vision Extr. Grp. LTD	White PVC (2)
9	Glazing Bead Stop (Operating Sash) / Vents	IV White 1067 / 7745	Vision Extr. Grp. LTD	White PVC (2)
10	Glazing Litrail Handle (Operating Sash) / Vent	IV White 1068 / 7747	Vision Extr. Grp. LTD	White PVC (2)
11	Interlock Cover (Operating Sash) / Vent	IV White 1180 / 7727	Vision Extr. Grp. LTD	White PVC (2)
12	Sash Cover (Operating Sash) / Vent	IV White 1078 / 7725	Vision Extr. Grp. LTD	White PVC (2)
Reinforcement				
13	Operating Sash / Reinforcement	ST-226-144-0.052	Hygrade Metals	.08" Galv. (1)
14	Impost Mullion (Fixed Meeting Rail) Reinforcement	ST-888-168-0.062	Hygrade Metals	.05" Galv. (1)
15	# 6 x 5/8" Tek / Reinforcement Fastener	117595	GLF Corporation	
Weatherstripping				
16	.210 x .300 Fin Seal Pocket Cover / 1073 / 7724	W23303NW0000	Ultra-Fab	
16	.210 x .300 Fin Seal Pocket Cover / 1073 / 7724	W23303NW0000	Ultra-Fab	
16	.210 x .300 Fin Seal Impost Mullion / 1063 / 7735	W23303NW0000	Ultra-Fab	
17	.187 x .300 Fin Seal Interlock Cover / 1180 / 7727	W23301NW0000	Ultra-Fab	
17	.187 x .300 Fin Seal Interlock Cover (Top / Blocks) / 1180 / 7727	W23301NW0000	Ultra-Fab	
17	.187 x .300 Fin Seal Sash Frame / 1282 / 7750 / Energi	W23301NW0000	Ultra-Fab	
17	.187 x .300 Fin Seal Sash Frame / 1282 / 7750 / Exterior Top	W23301NW0000	Ultra-Fab	
18	.210 x .220 Fin Seal Sash Frame / 1282 / 7750 / Exterior Base	W23223NW0000	Ultra-Fab	
19	.270 x .220 Fin Seal Sash Frame / Single Leg Screen Frame	W112257W0000	Ultra-Fab	
Glazing				
20	Wet Glaze (Operating Sash) / (Fixed Section)	552 Sikaflex Black	Sika US	
21	E366 2.7mm / 0.9.0 PVB Interlayer IG	Hurricane Laminare Impact	Cardinal	
22	Glass Setting Blocks Fixed Base	2NB-8K-0.125-032-064	Frank Lowe	
23	Glass Setting Blocks Sash Base	2NB-8K-0.125-028-028	Frank Lowe	
24	ENDUR IG with XL Edge SS Spacer (SS-D TYPE)	---	Cardinal	Stainless Steel
Screen Components (not all components ID'ed in section views)				
25	Single Leg Frame New White	06516NEW192	Shapes Unlimited	
26	Double Leg Frame New White	06515NEW192	Shapes Unlimited	
27	Tension Springs	2584	Adept	
28	Fiberglass Screen Cloth Charcoal / 28" x 600'	3002606	Phifer	
29	Screen Spline (H / W)	EX-FLX-Q165-BK	Imperial Plastic USA	
30	Aluminum Corner Keys	CK252X260	Hygrade Metals	
31	Screen Clip Clear	H-3150	Product Design	
Misc. Components, Hardware and Hardware Fasteners (not all components ID'ed in section views)				
32	Weep Hole Cover White	H-808WHZ	Product Design	
33	Stainless Steel Ball Bearing Rollers	WR03-R3	Product Design	
34	Black Glazing Tape 1/8 x 3/8 x 85' (Fixed Section)	VEN-VG-1208B	Industrial Sales	
35	Interlock Cover (Operating Sash) / Vent	HH-66 Vinyl Cement	RH Products	
36	Litrail End Caps White	00156-C001	S.I.L. Plastic	
37	Stainless Steel Staples 3/8 x 1/2 Sash	BEA 80/10	Smith Staple	
38	30PP12-18P50-9/16 X1 3/8 X 3 Foam Block	W0511022	Lindenmeyr	
39	Hurricane Grade Spring	CS025	James Spring Wire	
40	Accessory Parts Installation Translucent	02-MX0150010C2	Novagard Silicones	
41	Hurricane Tilt Latch	1057A-003-EW	Vision Industries	
42	Safe Seal Lock	3220SS-003-EW	Vision Industries	
43	Safe Seal Keeper	8292A-003-EW	Vision Industries	
44	# 8-18 x 0.850 Flat Wafer Shoulder / Sash / Hurricane Latch	137341	GLF Corporation	
45	# 8 x 1 1/4" Tek White / Locks	120376	GLF Corporation	
46	# 6 x 1" Tek White / Keepers	116821	GLF Corporation	
47	# 6 x 1 1/4" Tek White / Impost Mullion Rebar	156180	GLF Corporation	
48	# 8 x 3 1/2" Phil Pan HD SMS Salt Spray / Impost Mullion	120913	GLF Corporation	
49	# 0625 x 0.194 Washer / Impost Mullion	145030	GLF Corporation	
50	# 5 x 3/8" Tek / Screen Clips White	116506	GLF Corporation	
51	CAM Type Sweep Lock	3220SS -003-EW	Truth Hardware	
52	Face Mounted Keeper	---	Truth Hardware	Steel
Installation Fasteners				
52	#12 OR #14 WOOD SCREW	n/a	n/a	Steel
53	1/4" ADVANCED THREADFORM TAPCON	n/a	ITW	Steel
54	#14 SHEET METAL OR SELF-DRILLING SCREW	n/a	n/a	Steel

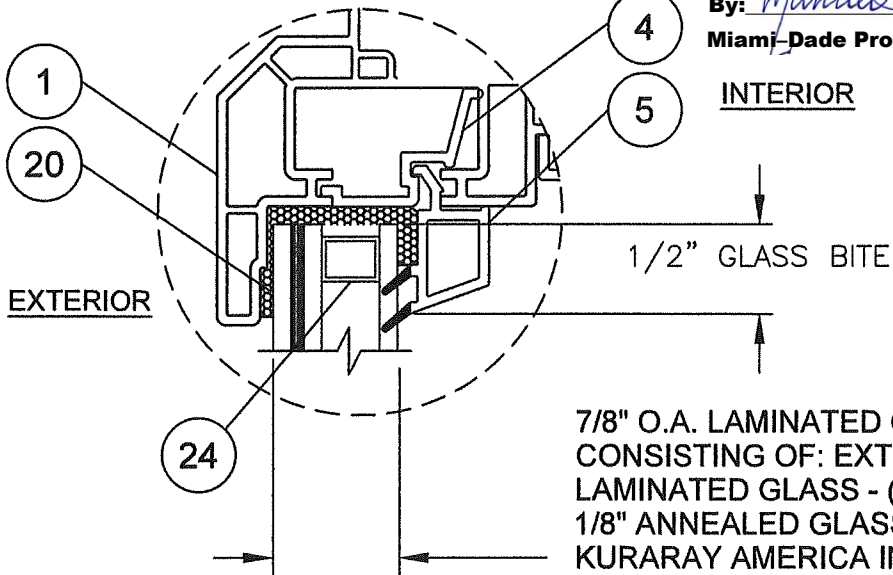
(1) Hygrade Metals Specification: AISI 1005 to 1010, CS Type A and B, 30 ksi to 50 ksi Yield Strength, G40 Galvanized
(2) VISION EXTRUSIONS GROUP LIMITED PER CURRENT MIAMI-DADE NOTICE OF ACCEPTANCE (NOA).



7/8" O.A. LAMINATED GLASS
CONSISTING OF: EXTERIOR
LAMINATED GLASS - (2) NOMINAL 1/8"
ANNEALED GLASS W/ 0.090"
KURARAY AMERICA INC. TROSIFOL
INTERLAYER, 7/16" AIRSPACE W/
STAINLESS STEEL SPACER (TYPE
SS-D), INTERIOR 1/8" TEMPERED
GLASS

GLAZING DETAIL 1
OPERATING SASH JAMB SHOWN.
SAME AT HEAD AND SILL.

PRODUCT REVISED
As complying with the Florida
Building Code
NOA-No. **25-0312.09**
Expiration Date: **07/22/2030**
By: *Manuel Perez*
Miami-Dade Product Control



7/8" O.A. LAMINATED GLASS
CONSISTING OF: EXTERIOR
LAMINATED GLASS - (2) NOMINAL
1/8" ANNEALED GLASS W/ 0.090"
KURARAY AMERICA INC.
TROSIFOL INTERLAYER, 7/16"
AIRSPACE W/ STAINLESS STEEL
SPACER (TYPE SS-D), INTERIOR
1/8" TEMPERED GLASS

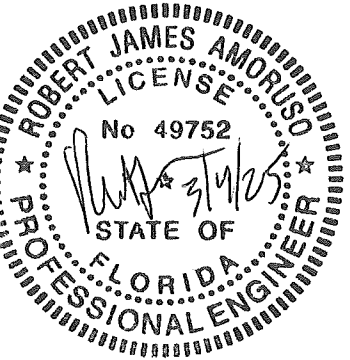
GLAZING DETAIL 2
FIXED LITE HEAD SHOWN. SAME
AT SILL AND JAMBS.

REGENCY PLUS, INC.
2000 LOCUST GAP HIGHWAY
MT. CARMEL, PA 17851

SERIES 5405 VINYL XO-OX HORIZONTAL SLIDING WINDOW - LMI ANCHORAGE DETAILS	DATE			2/17/25	6/7/23
	BY			RJA	RJA
	REVISION DESCRIPTION			UPDATE FOR NOA EXPIRATION	UPDATE TO 8TH EDITION (2023) FBC
	REV.			N	M

DATE: 10/14/2008	DWN BY: CB	CHK BY: n/a	SCALE: NONE
---------------------	---------------	----------------	----------------

AMORUSO CONSULTING
ENGINEERING, LLC
FL Registration No. 38327
ROBERT J. AMORUSO, P.E.
FLORIDA PE NO. 49752
226 N. NOVA RD., #142
ORMOND BEACH, FL 32174
RJAENGPE@GMAIL.COM



PROJECT#: ACE-2025-101

DWG/REV: RPLS0063, Rev. N