



MIAMI-DADE COUNTY
PRODUCT CONTROL SECTION

11805 SW 26 Street, Room 208
Miami, Florida 33175-2474
T (786) 315-2590 F (786) 315-2599

www.miamidade.gov/economy

DEPARTMENT OF REGULATORY AND ECONOMIC RESOURCES (RER)
BOARD AND CODE ADMINISTRATION DIVISION

NOTICE OF ACCEPTANCE (NOA)

TORMAX USA Inc.
12859 Wetmore Road
San Antonio, TX 78247

SCOPE:

This NOA is being issued under the applicable rules and regulations governing the use of construction materials. The documentation submitted has been reviewed and accepted by Miami-Dade County RER -Product Control Section to be used in Miami Dade County and other areas where allowed by the Authority Having Jurisdiction (AHJ).

This NOA shall not be valid after the expiration date stated below. The Miami-Dade County Product Control Section (In Miami Dade County) and/or the AHJ (in areas other than Miami Dade County) reserve the right to have this product or material tested for quality assurance purposes. If this product or material fails to perform in the accepted manner, the manufacturer will incur the expense of such testing and the AHJ may immediately revoke, modify, or suspend the use of such product or material within their jurisdiction. RER reserves the right to revoke this acceptance, if it is determined by Miami-Dade County Product Control Section that this product or material fails to meet the requirements of the applicable building code.

This product is approved as described herein and has been designed to comply with the Florida Building Code, including the High Velocity Hurricane Zone.

DESCRIPTION: Series 9300 Automatic Aluminum Sliding Glass Door w/ Reinforcements- N.I.

APPROVAL DOCUMENT: Drawing No. **20-048** (Former #**20-048**), "Series 9300 Non-Impact" Sheets 1 through 4 of 4, prepared by EngCo. Inc., dated Jun 19, 2020 and last revised on 10/14/23, signed and sealed by Pedro De Figueiredo, P. E. bearing the Miami-Dade County Product Control Renewal stamp with the Notice of Acceptance number and expiration date by the Miami-Dade County Product Control Section.

MISSILE IMPACT RATING: None. Approved Hurricane Protection device complying w/ FBC (HVHZ) is required

Limitations:

1. See Unit sizes Vs Design Pressure ratings, in sheet **1**.

LABELING: Each unit shall bear a permanent label with the manufacturer's name or logo, city, state and series and following statement: "Miami-Dade County Product Control Approved", noted herein.

RENEWAL of this NOA shall be considered after a renewal application has been filed and there has been no change in the applicable building code negatively affecting the performance of this product.

TERMINATION of this NOA will occur after the expiration date or if there has been a revision or change in the materials, use, and/or manufacture of the product or process. Misuse of this NOA as an endorsement of any product, for sales, advertising or any other purposes shall automatically terminate this NOA. Failure to comply with any section of this NOA shall be cause for termination and removal of NOA.

ADVERTISEMENT: The NOA number preceded by the words Miami-Dade County, Florida, and followed by the expiration date may be displayed in advertising literature. If any portion of the NOA is displayed, then it shall be done in its entirety.

INSPECTION: A copy of this entire NOA shall be provided to the user by the manufacturer or its distributors and shall be available for inspection at the job site at the request of the Building Official.

This NOA **renews NOA #23-1113.09** and consists of this page 1 and evidence pages E-1, E-2, E-3, E-4 and E-5, as well as approval document mentioned above.

The submitted documentation was reviewed by **Ishaq I. Chanda, P.E.**

Ishaq I. Chanda



NOA No. 25-0321.05
Expiration Date: June 22, 2030
Approval Date: May 01, 2025
Page 1

NOTICE OF ACCEPTANCE: EVIDENCE SUBMITTED

1. Evidence submitted in previous files

A. DRAWINGS

1. Manufacturer's die drawings and sections (Submitted under files below)
2. Drawing No. **14-104** (Former **#12-175**), "Series 9300 Non-Impact" Sheets 1 through 4 of 4, prepared by EngCo. Inc., 08-24-2014 and last revised on OCT 06, 2015, signed and sealed by Pedro De Figueiredo, P.E.

B. TESTS (Submitted under files **#15-0427.09/#12-1107.02/ 11-0502.06/ #06-0202.03**)

1. Test reports on
 - 1) Air Infiltration Test, per FBC, TAS 202-94
 - 2) Uniform Static Air Pressure Test, Loading per FBC TAS 202-94
 - 3) Water Resistant Test per FBC, TAS 202-94 (Not Performed)
 - 4) Forced Entry Test, per FBC 2411 3.2.1, TAS 202-94along with marked-up drawings and installation diagram of an Automatic Entrance door, prepared by Hurricane Testing Laboratory, LLC, Test Report No **HTL 0368-0807-05 & HTL 0368-0808-05**, both dated 11/28/05, signed and sealed by Vinu J. Abraham, P. E.

C. CALCULATIONS (submitted under file **#15-0427.09**)

1. Anchor Calculations and structural analysis, complying with FBC-2014(5th Edition), prepared by Engco, Inc., dated 01/02/15, signed and sealed by Pedro De Figueiredo, P.E.
2. Glazing complies w/ ASTM-E-1300-02, -04 & -09.

D. QUALITY ASSURANCE

1. Miami Dade Department of Regulatory and Economic Resources (RER).

E. MATERIAL CERTIFICATIONS

1. None.

F. STATEMENTS (submitted under file **#15-0427.09**)

1. Statement letter of conformance to FBC 2014 (5th Edition) and letter of no financial interest, prepared by Engco, Inc, dated 01/02/2015, signed and sealed by Pedro De Figueiredo, P.E.
2. Lab compliance as part of the above referenced test report.

G. OTHER

1. This NOA **renews** NOA **#15-0427.09**, expiring on June 22, 2021.
2. State of Delaware Certificate of amendment of "Tormax Technologies Inc." name change to "TORMAX USA Inc., dated 04-23-15, signed by Jeffery W. Bullock, Secretary of State (submitted under file **#15-0427.09**).

Ishaq I. Chanda

Ishaq I. Chanda, P.E.
Product Control Unit Supervisor
NOA No. 25-0321.05
Expiration Date: June 22, 2030
Approval Date: May 01, 2025

NOTICE OF ACCEPTANCE: EVIDENCE SUBMITTED

2. Evidence submitted in previous files.

A. DRAWINGS

1. Drawing No. **17-477** (Former #**14-104**), "Series 9300 Non-Impact" Sheets 1 through 4 of 4, prepared by EngCo. Inc., dated AUG 15, 2017, signed and sealed by Pedro De Figueiredo, P. E.

Note: This revision consists of editorial changes of FBC 17 (6th Edition) code compliance.

B. Test

1. None.

C. CALCULATIONS

1. None

D. QUALITY ASSURANCE

1. Miami Dade Department of Regulatory and Economic Resources (RER).

E. MATERIAL CERTIFICATIONS

1. None.

F. STATEMENTS

1. Statement letter of conformance to FBC 2017 (6th Edition), dated 08/15/17, prepared by EngCo. Inc., signed and sealed by Pedro De Figueiredo, P. E.
2. Statement letter of extent of drawing editorial revision, dated 01/30/18, prepared by EngCo., signed and sealed by Pedro De Figueiredo, P. E

G. OTHER

1. This NOA revises # **16-0202.13**, expiring 06/22/21.

3. Evidence submitted under previous approval.

A. DRAWINGS

1. Drawing No. **20-048** (Former #**17-477**), "Series 9300 Non-Impact" Sheets 1 through 4 of 4, prepared by EngCo. Inc., dated Jun 19, 2020, signed and sealed by Pedro De Figueiredo, P. E.

B. Test

1. None.

C. CALCULATIONS

1. None

D. QUALITY ASSURANCE

1. Miami Dade Department of Regulatory and Economic Resources (RER).

Ishaq I. Chanda

Ishaq I. Chanda, P.E.
Product Control Unit Supervisor
NOA No. 25-0321.05
Expiration Date: June 22, 2030
Approval Date: May 01, 2025

NOTICE OF ACCEPTANCE: EVIDENCE SUBMITTED

E. MATERIAL CERTIFICATIONS

1. None.

F. STATEMENTS

1. Statement letter of conformance to FBC 2020 (7th Edition), dated 06/15/20, prepared by EngCo. Inc., signed and sealed by Pedro De Figueiredo, P. E.
2. Statement letter of extent of drawing editorial revision, inclusive code change notes, dated 06/15/20, prepared by EngCo., signed and sealed by Pedro De Figueiredo, P. E.

G. OTHER

1. This NOA **revises & renews # 17-1218.27** and FBC 2020 updates, expiring 06/22/25.

Ishaq I. Chanda

Ishaq I. Chanda, P.E.
Product Control Unit Supervisor
NOA No. 25-0321.05
Expiration Date: June 22, 2030
Approval Date: May 01, 2025

NOTICE OF ACCEPTANCE: EVIDENCE SUBMITTED

4. Evidence submitted under previous approval.

A. DRAWINGS

1. Drawing No. **20-048** (Former #**20-048**), “Series 9300 Non-Impact” Sheets 1 through 4 of 4, prepared by EngCo. Inc., dated Jun 19, 2020 and last revised on 10/14/23.

Note: This revision consists of editorial changes of FBC 2023 (8th Edition) code compliance.

B. Test

1. None.

C. CALCULATIONS

1. None.

D. QUALITY ASSURANCE

1. Miami Dade Department of Regulatory and Economic Resources (RER).

E. MATERIAL CERTIFICATIONS

1. None.

F. STATEMENTS

1. Statement letter of conformance to FBC 2023 (8th Edition), dated 10/14/23, prepared by EngCo. Inc., signed and sealed by Pedro De Figueiredo, P. E.
2. Statement letter of extent of drawing editorial revision only, dated 10/14/23, prepared by EngCo., signed and sealed by Pedro De Figueiredo, P. E.

G. OTHER

1. This NOA **revises # 20-0720.05**, expiring 06/22/25.

Ishaq I. Chanda

Ishaq I. Chanda, P.E.
Product Control Unit Supervisor
NOA No. 25-0321.05
Expiration Date: June 22, 2030
Approval Date: May 01, 2025

NOTICE OF ACCEPTANCE: EVIDENCE SUBMITTED

5. New Evidence submitted.

A. DRAWINGS (submitted under previous approval)

1. Drawing No. **20-048** (Former #**20-048**), "Series 9300 Non-Impact" Sheets 1 through 4 of 4, prepared by EngCo. Inc., dated Jun 19, 2020 and last revised on 10/14/23.

B. Test (submitted under previous approval)

1. None.

C. CALCULATIONS (submitted under previous approval)

1. None.

D. QUALITY ASSURANCE

1. Miami Dade Department of Regulatory and Economic Resources (RER).

E. MATERIAL CERTIFICATIONS

1. None.

F. STATEMENTS

1. Statement letter of conformance to FBC 2023 (8th Edition) and no financial interest, dated 03/07/25, prepared by PPMF, Inc., signed and sealed by Pedro De Figueiredo, P. E.
2. Statement letter of extent of drawing editorial revision only, dated 10/14/23, prepared by EngCo., signed and sealed by Pedro De Figueiredo, P. E.

G. OTHER

1. This NOA **renews #23-1113.09**, expiring 06/22/30.

Ishaq I. Chanda

Ishaq I. Chanda, P.E.
Product Control Unit Supervisor
NOA No. 25-0321.05
Expiration Date: June 22, 2030
Approval Date: May 01, 2025

INDEX:

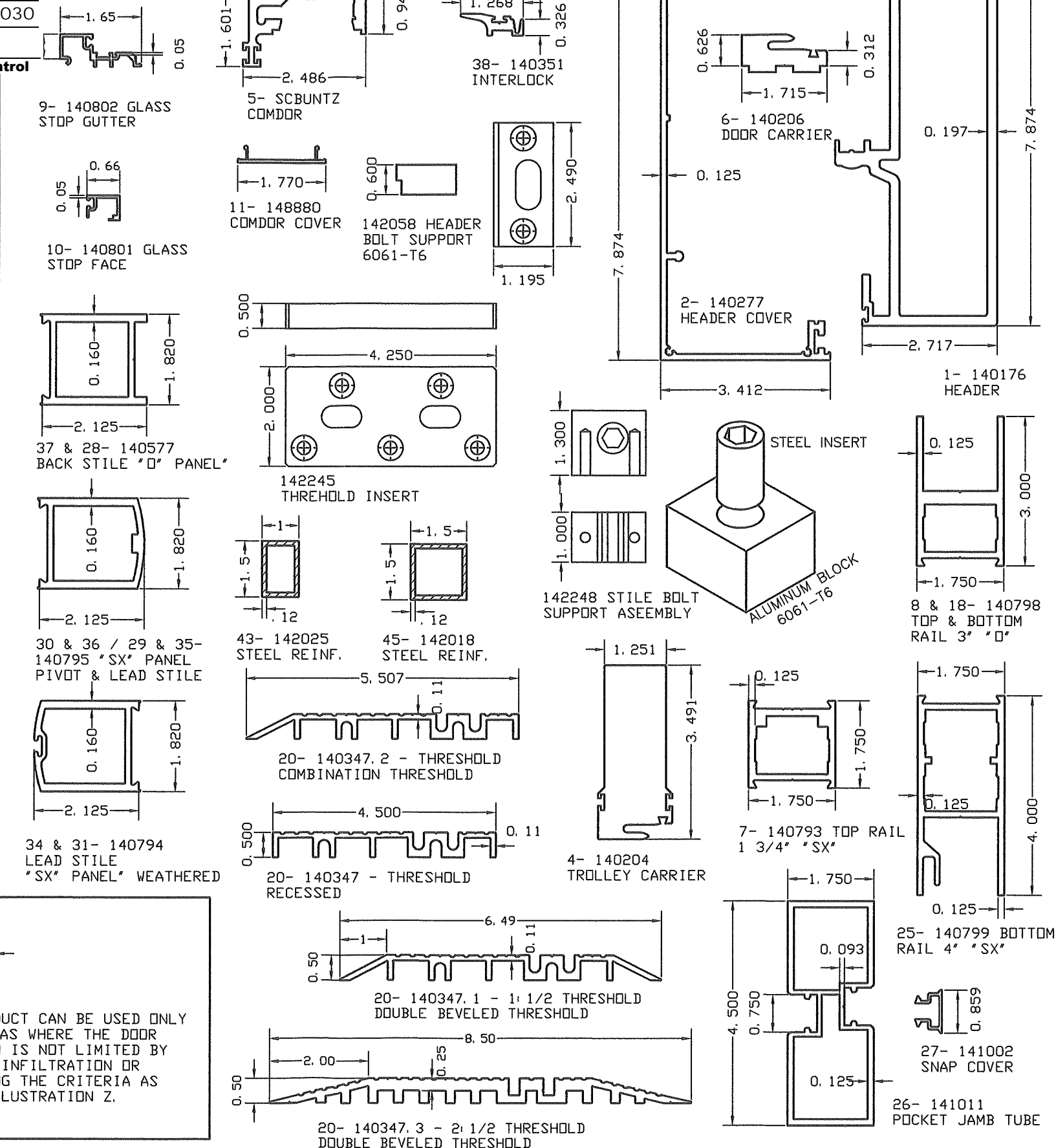
SHEET 1 of 4 - GENERAL NOTES, DESIGN RATING AND DOOR COMP
SHEET 2 of 4 - TYPICAL DOOR ELEVATION, FRAMING ANCHORAGE
SHEET 3 of 4 - SECTION 1 DETAIL & BILL OF MATERIALS
SHEET 4 of 4 - SECTION 2 & 3 DETAILS & GLAZING DETAIL

GENERAL NOTES:

- 1- CODE: THIS PRODUCT HAS BEEN TESTED AND DESIGNED IN ACCORDANCE WITH THE FLORIDA BUILDING CODE 2023 - 8th EDITION., INCLUDING THE HIGH VELOCITY HURRICANE ZONES (HVHZ).
- 2- DEFINITION: THIS PRODUCT IS AN ALUMINUM NON IMPACT RESISTANT AUTOMATIC SLIDING GLASS DOOR. IN ORDER TO MEET IMPACT RESISTANCE CRITERIA, THIS PRODUCT MUST BE INSTALLED WITH AN APPROVED HURRICANE SHUTTER.
- 3- POSTING: "9300 SERIES - NON IMPACT ALUMINUM AUTOMATIC SLIDING GLASS DOORS TORMAX USA, Inc. SAN ANTONIO, TEXAS DADE COUNTY PRODUCT CONTROL APPROVED"
- 4- LOADS: DESIGNED LOAD CALCULATED BASED ON THE ASCE 7-22 AND PROVIDED BY A PROFESSIONAL ARCHITECT OR ENGINEER FOR EACH SPECIFIC PROJECT. THE CALCULATED DESIGNED PRESSURE MUST NOT EXCEED THE ALLOWABLE PRESSURES HERE IN SPECIFIED. THE DESIGN PRESSURES, AS DETERMINED FROM ASCE 7-22, ARE TO BE MULTIPLE BY 0.6
- 5- MATERIAL: ALL ALUMINUM PARTS TO BE 6063-T5 ALLOY OR AS NOTED AND GLAZING TO BE 1/4" TEMPERED GLASS AS PER SHEET 4 of 4 AS SPECIFIED ON THIS APPROVAL.
- 6- FASTENERS: ASSEMBLY SCREWS AND ANCHORS SHALL BE AS SPECIFIED IN THE CURRENT SET OF DRAWINGS. INSTALLATION AND LOADS AS PER THIS APPROVAL. ANCHOR SPACING AND LOADS MUST NOT EXCEED THE MAXIMUM LIMITS SPECIFIED BY THIS APPROVAL.
- 7- USE: IT SHALL BE THE RESPONSIBILITY OF THE CONTRACTOR, ARCHITECT OR ENGINEER OF RECORD TO VERIFY THE FOLLOWING:
 - 7.1- THE STABILITY OF THE STRUCTURE WHERE THE PRODUCT IS TO BE ATTACHED INSURING PROPER ANCHORAGE.
 - 7.2- THE SITE SPECIFIC PROJECT CRITERIA, SUCH AS BUT NOT LIMITED TO, LOCAL CODE REQUIREMENTS, DESIGNED PRESSURES ETC.
 - 7.3- THAT THIS APPROVAL IS ADEQUATE TO THE SPECIFIC PROJECT.
- 8- 33 1/3% INCREASE IN ALLOWABLE LOADS HAVE NOT BEEN USED IN THE DESIGN OF THE ANCHORS FOR THIS PRODUCT APPROVAL, HOWEVER, WOOD SCREWS WITH 1.6 INCREASE FOR WIND LOAD DURATION HAVE BEEN USED.
- 9- THIS SYSTEM COMPLIES W/ ASTM E1300-04e01, 07e01, 09e, 12Ae1 or 16
- 10- DISSIMILAR MATERIALS: WHERE ALUMINUM IS IN CONTACT OR FASTENED TO DISSIMILAR MATERIALS, INCLUDING BUT NOT LIMITED TO STEEL, INSTALLATION SHALL MEET THE REQUIREMENTS OF CHAPTER M.7 OF THE ALUMINUM DESIGN MANUAL 2020.

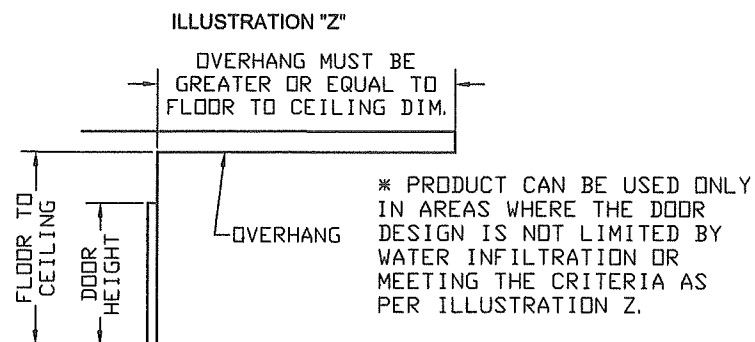
PRODUCT RENEWED
as complying with the Florida
Building Code
NOA-No. 25-0321.05
Expiration Date 06/22/2030
By *Ishaq I. Chandra*
Miami-Dade Product Control

DOOR COMPONENTS



DOOR ALLOWABLE
DESIGNED PRESSURES
NON IMPACT

NOMINAL SIZE	ALLOWABLE PRESSURE (PSF)
184" x 104"	+55*, -55
93" x 104"	+55*, -55
184" x 92"	+62*, -62
93" x 92"	+62*, -62



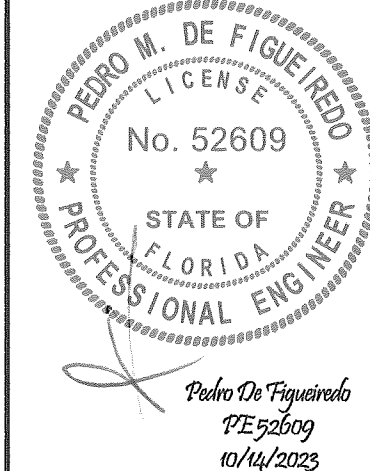
MANUFACTURER:

★★★★★
TORMAX
AUTOMATIC

TORMAX USA Inc.
12859 WETMORE ROAD
SAN ANTONIO, TX 78247
PH: (210) 494-3551
FAX: (210) 494-5930

PRODUCT:
SERIES 9300 NI
AUTOMATIC SLIDING GLASS DOOR
NON IMPACT RESISTANT

PPMF Inc. ENGINEERING SERVICES
CA 32459
9715 W. BROWARD BLVD.
PLANTATION, FL 33324
PPMF@AOL.COM



MIAMI-DADE BCCO:

PRODUCT REVISED
as complying with the Florida
Building Code
NOA-No. 23-1113.09
Expiration Date 06/22/2025

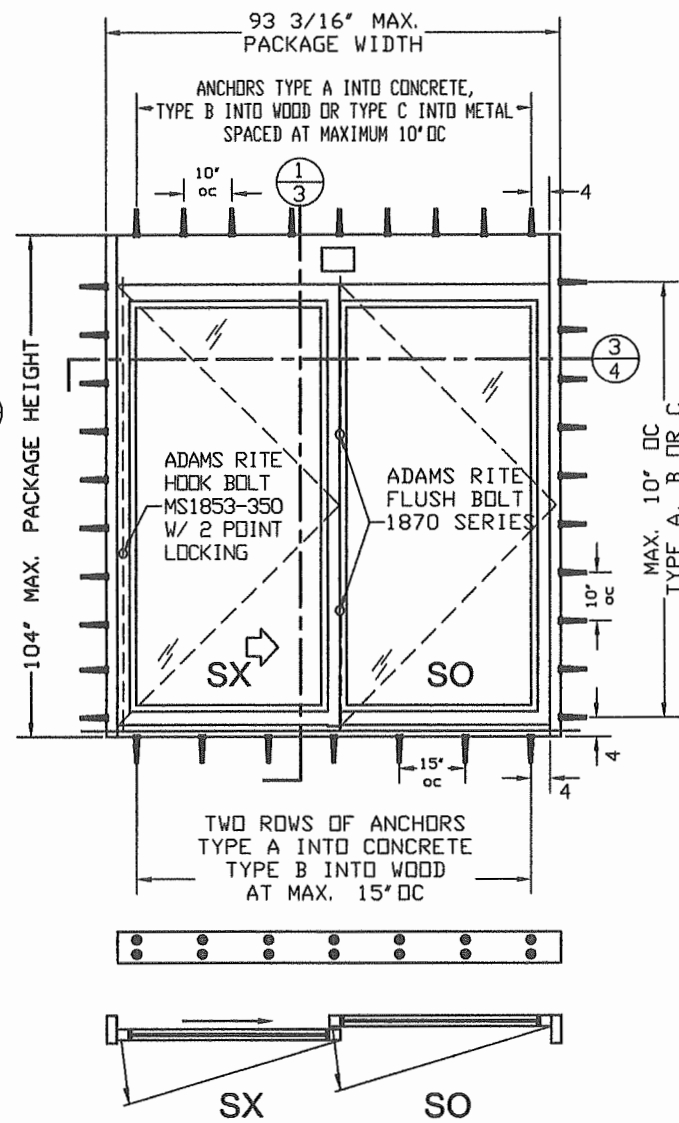
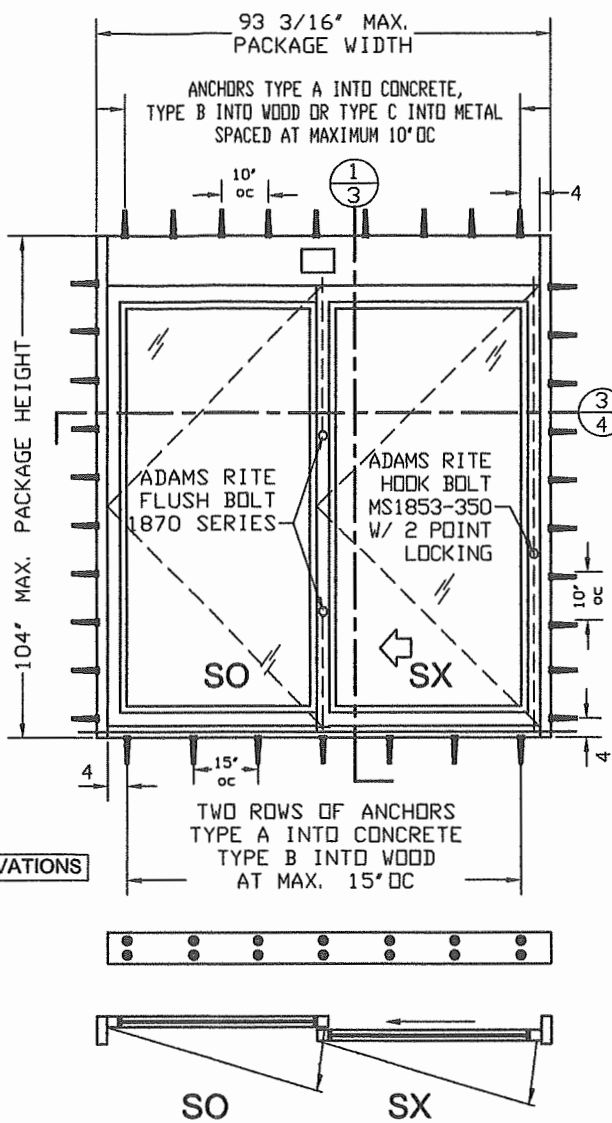
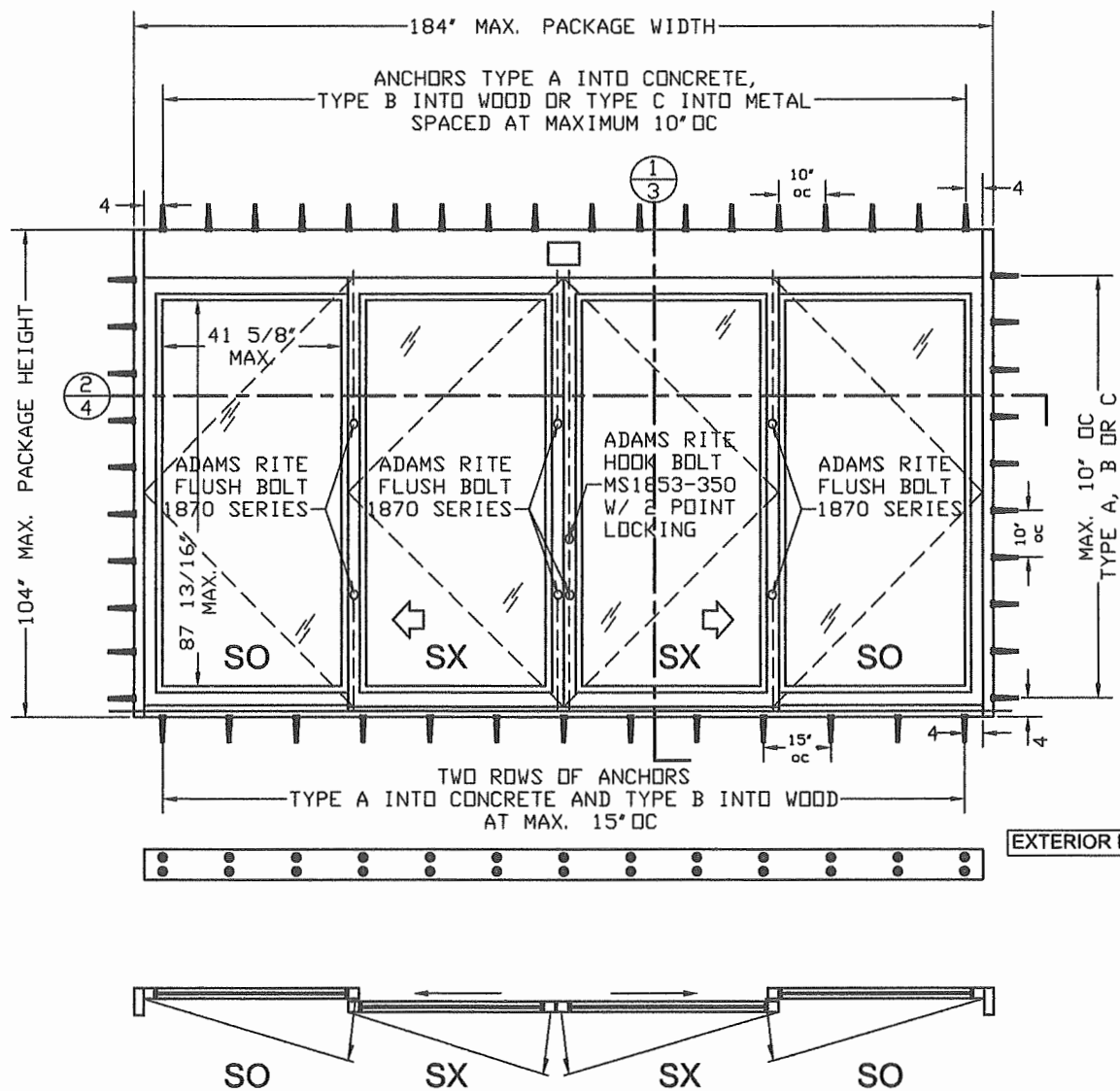
By *Ishaq I. Chandra*
Miami-Dade Product Control

DATE: 10/14/2023
SCALE: NA
DESIGN BY: PPMF

SHEET
1 OF 4

DRAWING
NUMBER
23-188

TYPICAL ELEVATION AND ANCHORAGE SPACING



EXTERIOR ELEVATIONS

HARDWARE NOTE:
LOCK AND FLUSH BOLT HAVE
3/8" HEX BOLT EXTENDED 1/2"
INTO HEAD AND THRESHOLD

ANCHOR DATA

MK	DESCRIPTION	BASE MATERIAL	PENETRATION	EDGE DIST.
A	1/4" ITW TAPCON BY BUILDEX	3000 PSI CONCRETE	1 1/2" MIN.	2 1/2" MIN
B	1/4" ITW TAPCON BY BUILDEX	WOOD (SG>= .55)	1 1/2" MIN	3/4" MIN
C	1/4-14 HH SMS GRADE 5 GENERIC	1/8" THICK 6063-T5 ALUMINUM		3/4" MIN
	1/4-14 HH SMS GRADE 5 GENERIC	1/8" THICK A36 STEEL (Fu=58 ksi)		3/4" MIN

ANCHOR NOTES:
1- SEE SECTION DETAILS FOR ANCHOR SPACING.
2- MINIMUM PENETRATION IS BEYOND WALL DRESSING.
3- TYPICAL 2 ROWS OF ANCHORS FOR THRESHOLD INSTALLATION
4- BASE MATERIAL DESIGNED BY OTHERS TO WITHSTAND IMPOSED LOAD.

PRODUCT RENEWED
as complying with the Florida
Building Code
NOA-No. 25-0321.05
Expiration Date 06/22/2030
By Ishag I. Chande
Miami-Dade Product Control

PACKAGE HEIGHT INFORMATION

PACKAGE HEIGHT	MASONRY OPENING W/ SHIM
8' - 8" (104")	8' - 8 1/4" (104 1/4")

PACKAGE WIDTH INFORMATION

PKG WIDTH	NOMINAL CLEAR DOOR OPENING	SLIDING DOOR PANEL NOM. WIDTH	EMERGENCY BREAKOUT NOM. WIDTH
15' - 4" (184")	78 7/8"	46 11/32"	167 1/2"
7' - 9 3/16" (93 3/16")	40"	46 11/32"	85 1/2"

MANUFACTURER:

★★★★★
TORMAX
AUTOMATIC

TORMAX USA Inc.
12859 WETMORE ROAD
SAN ANTONIO, TX 78247
PH: (210) 494-3551
FAX: (210) 494-5930

PRODUCT:
SERIES 9300 NI
AUTOMATIC SLIDING GLASS DOOR
NON IMPACT RESISTANT



ENGINEERING SERVICES
CA 32459
9715 W. BROWARD BLVD.
PLANTATION, FL 33324
PPMF@AOL.COM



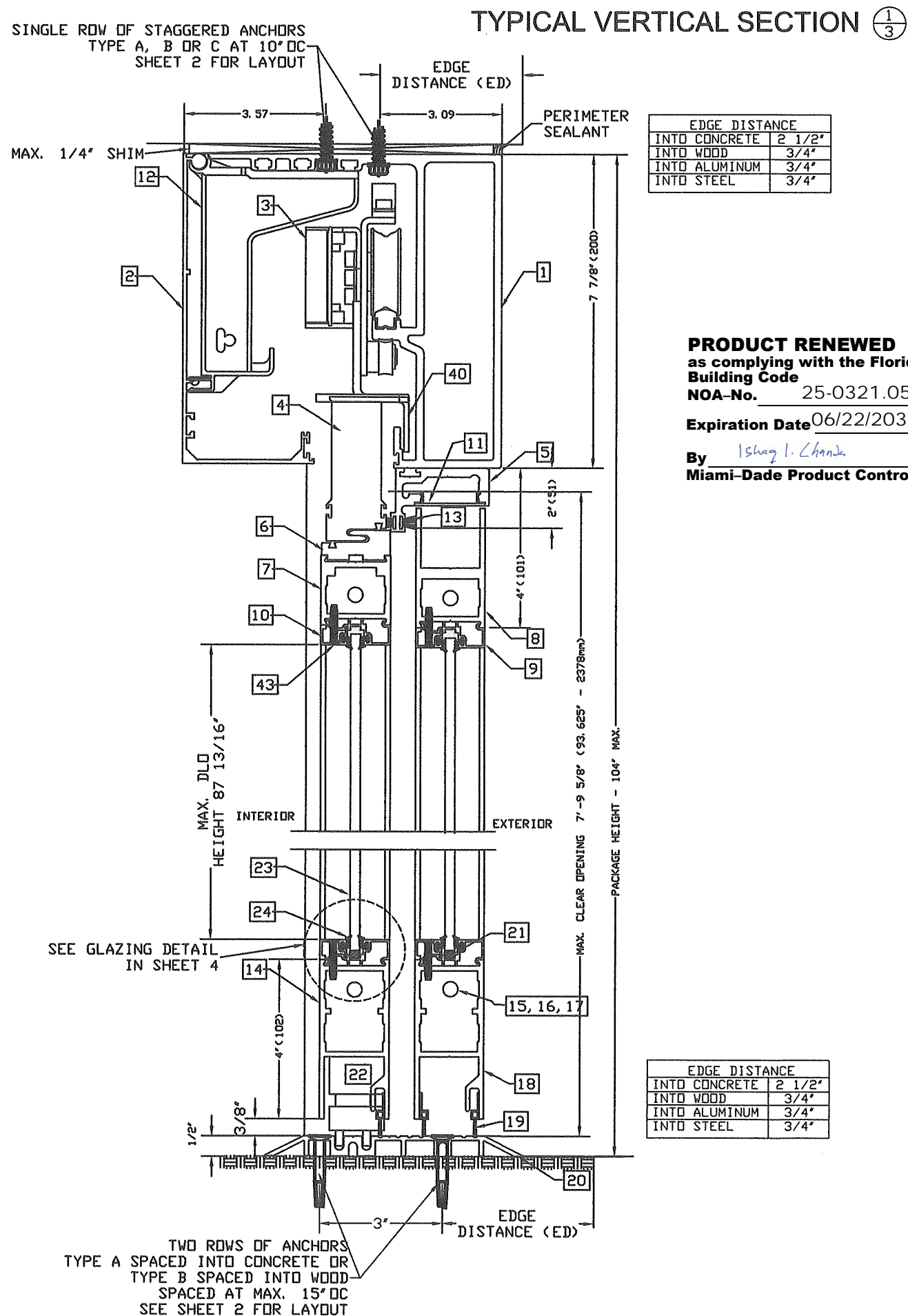
MIAMI-DADE BCCO:

PRODUCT REVISED
as complying with the Florida
Building Code
NOA-No. 23-1113.09
Expiration Date 06/22/2025
By Ishag I. Chande
Miami-Dade Product Control

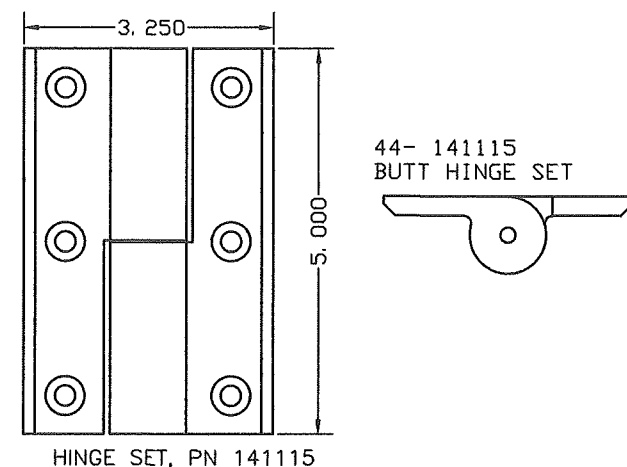
DATE: 10/14/2023
SCALE: NA
DESIGN BY: PPMF

SHEET
2 OF 4

DRAWING
NUMBER
23-188



MATERIAL LIST			
ITEM #	QTY	DESCRIPTION	PART NUMBER
1	1	HEADER	140176
2	1	COVER, HEADER	140277
3	4	TROLLEY ROLLER ASSEMBLY	110445
4	2	TROLLEY CARRIER	140204
5	1	COMDDR	SCB. UNTZ
6	2	DOOR CARRIER	140206
7	2	1-3/4" TOP RAIL, "SX"	140793
8	2	3" TOP RAIL, "SD"	140798
9	16	1/2" GUTTER, GLASS STOP	140802
10	16	1/2" FACE, GLASS STOP	140801
11	3	COMDDR COVER	14. 8880
12	4	BRACKET, HEADER COVER	140219
13	1	PILE-FIN W. STRIP, HEADR & INTERLOCKS	141148
14	2	4" BOTTOM RAIL, "SX"	140799
15	8	3/8" DIA ALL THREAD, THRU ROD	140167
16	16	RAIL CLIP, UNIVERSAL	140928
17	16	NUT, SERRATED FLANGE	140421-08
18	2	4" BOTTOM RAIL, "SD"	140799
19	4	FLOOR SWEEPER	140492
20	1	THRESHOLD, DOUBLE BEVELED	140349
21	AN	1/4" RUBBER SETTING BLOCK	
22	2	POP-UP GUIDE, NON-HANDED	142249
23	4	1/4" TEMPERED GLASS	
24	16	VINYL, GLASS STOPS	140132
25	2	SNAP COVER, JAMB TUBES	141002
26	2	JAMB TUBE, POCKET	141011
27	1	REAR STILE, "SD" PANEL	140577
28	1	LEAD STILE, "SD" PANEL	140795
29	1	PIVOT STILE, "SX"	140795
30	1	LEAD STILE, WEATHERED, "SX" PANEL	140794
31	8	KEY OPERATED LOCK CYLINDER	
32	8	THUMBTURN LOCK CYLINDER	
33	1	LEAD STILE, WEATHERED, "SX"	140794
34	1	LEAD STILE, "SD" PANEL	140795
35	1	PIVOT STILE, "SX"	140795
36	1	REAR STILE, "SD" PANEL	140577
37	4	INTERLOCKS	140351
38	4	GASKET, INTERLOCKS	030. 8877
39	1	PILE-FIN WEATHER STRIP, STILE	141147
40	2	DE-RAILER CLIP, SS	142185
41	4	PILE-FIN W. STRIP, HEADR & INTERLOCKS	141148
42	2	STEEL TUBE, 1" X 1.5" X 0.120"	142025
43	64	8-32 X 7/8" LG. FL HD PH SSMS	US800009
44	6	BUTT HINGES	141115
45	4	STEEL TUBE, 1.5" X 1.5" X 0.120"	142018
46	2	TYPE P, SPONGE RUBBER, BLACK, W. SEAL	142026
47	2	INTERLOCK ADAM RITE FLUSH BOLTS	1870
48	3	LOCK STILE ADAM RITE FLUSH BOLTS	1870
49	1	LOCK STILE ADAM RITE 2 POINTS	MS1853-350



MANUFACTURER:

★★★★★

TORMAX

AUTOMATIC

TORMAX USA Inc.
12859 WETMORE ROAD
SAN ANTONIO, TX 78247
PH: (210) 494-3551
FAX: (210) 494-5930

PRODUCT:
SERIES 9300 NI
AUTOMATIC SLIDING GLASS DOOR
NON IMPACT RESISTANT

PPMF Inc. ENGINEERING SERVICES
CA 32459
9715 W. BROWARD BLVD.
PLANTATION, FL 33324
PPMF@AOL.COM

PEDRO M. DE FIGUEIREDO
LICENSE
No. 52609
STATE OF
FLORIDA
PROFESSIONAL ENGINEER
Pedro De Figueiredo
PE 52609
10/14/2023

MIAMI-DADE BCCO:

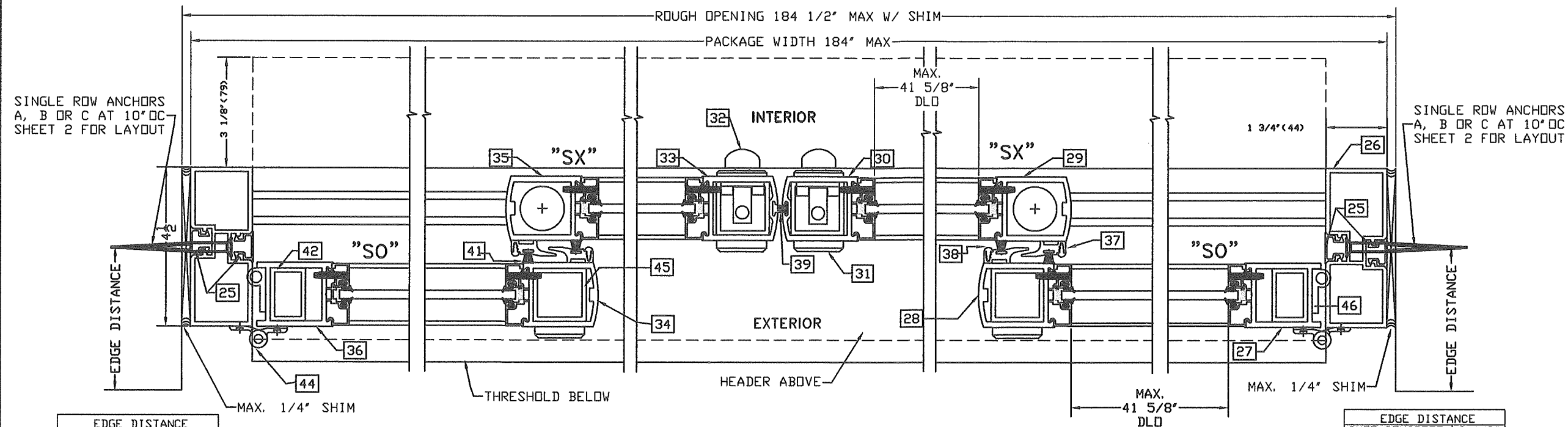
PRODUCT REVISED
as complying with the Florida
Building Code
NOA-No. 23-1113.09
Expiration Date 06/22/2025
By *Ishag I. Chanak*
Miami-Dade Product Control

DATE: 10/14/2023
SCALE: NA
DESIGN BY: PPMF

SHEET
3 OF 4

DRAWING
NUMBER
23-188

TYPICAL HORIZONTAL SECTION 2/4

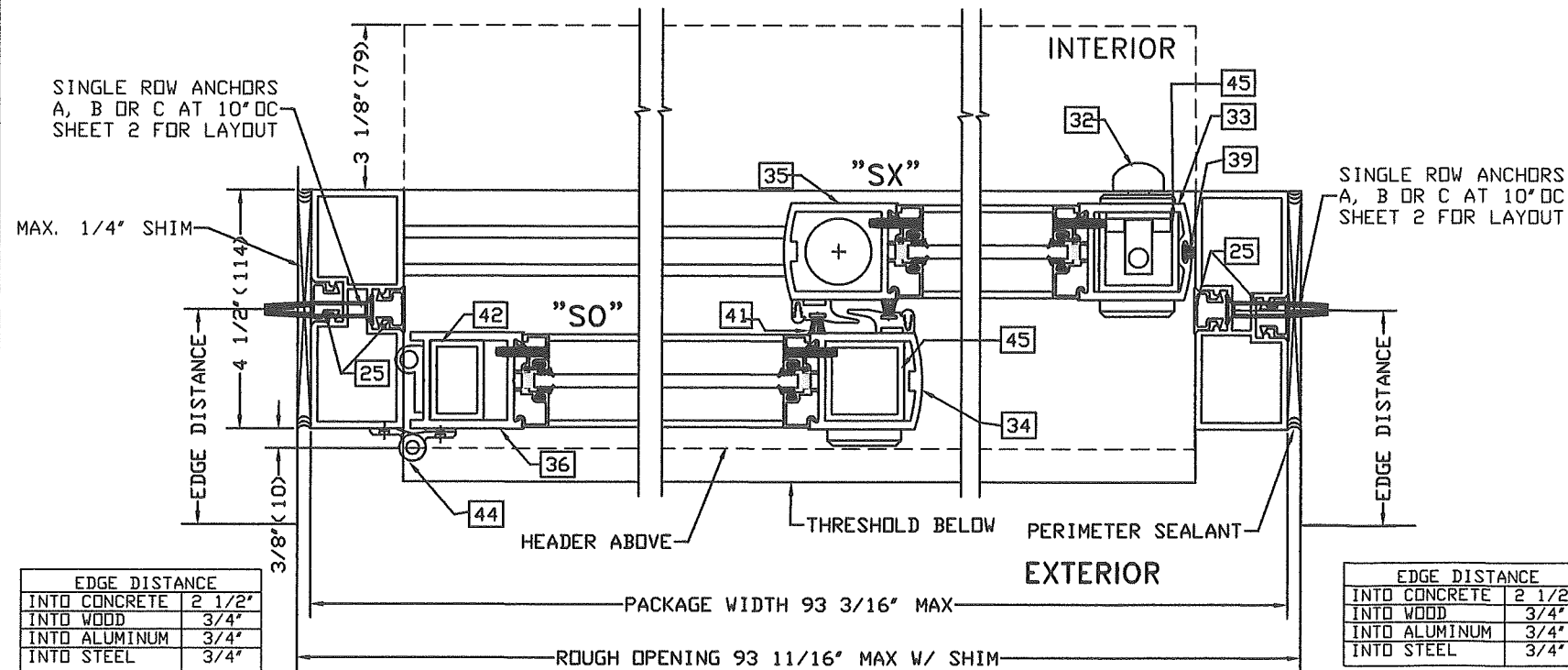


EDGE DISTANCE	
INTO CONCRETE	2 1/2"
INTO WOOD	3/4"
INTO ALUMINUM	3/4"
INTO STEEL	3/4"

EDGE DISTANCE	
INTO CONCRETE	2 1/2"
INTO WOOD	3/4"
INTO ALUMINUM	3/4"
INTO STEEL	3/4"

PRODUCT RENEWED
as complying with the Florida
Building Code
NOA-No. 25-0321.05
Expiration Date 06/22/2030
By Ishag I. Chande
Miami-Dade Product Control

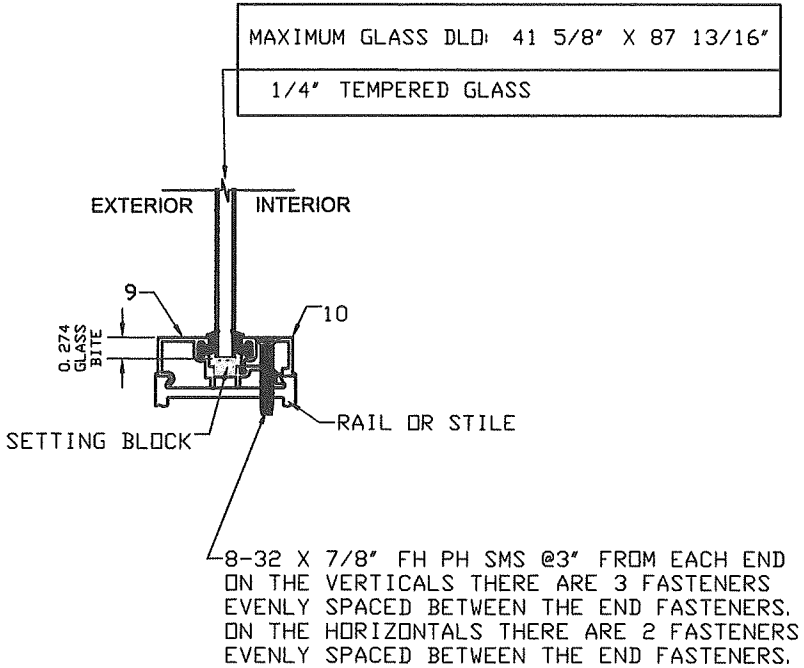
TYPICAL HORIZONTAL SECTION 3/4



EDGE DISTANCE	
INTO CONCRETE	2 1/2"
INTO WOOD	3/4"
INTO ALUMINUM	3/4"
INTO STEEL	3/4"

EDGE DISTANCE	
INTO CONCRETE	2 1/2"
INTO WOOD	3/4"
INTO ALUMINUM	3/4"
INTO STEEL	3/4"

TYPICAL GLAZING DETAIL
ENTIRE PERIMETER ALL LITES



MANUFACTURER:
TORMAX
AUTOMATIC
TORMAX USA Inc.
12859 WETMORE ROAD
SAN ANTONIO, TX 78247
PH: (210) 494-3551
FAX: (210) 494-5930

PRODUCT:
SERIES 9300 NI
AUTOMATIC SLIDING GLASS DOOR
NON IMPACT RESISTANT

PPMF Inc. ENGINEERING SERVICES
CA 32459
9715 W. BROWARD BLVD.
PLANTATION, FL 33324
PPMF@AOL.COM

PEDRO M. DE FIGUEIREDO
LICENSE
No. 52609
STATE OF
FLORIDA
PROFESSIONAL ENGINEER
Pedro De Figueiredo
PE 52609
10/14/2023

MIAMI-DADE BCCO:
PRODUCT REVISED
as complying with the Florida
Building Code
NOA-No. 23-1113.09
Expiration Date 06/22/2025
By Ishag I. Chande
Miami-Dade Product Control

DATE: 10/14/2023
SCALE: NA
DESIGN BY: PPMF
SHEET 4 OF 4
DRAWING NUMBER 23-188