



DEPARTMENT OF REGULATORY AND ECONOMIC RESOURCES (RER)
BOARD AND CODE ADMINISTRATION DIVISION
NOTICE OF ACCEPTANCE (NOA)

TORMAX USA Inc.
12859 Wetmore Road
San Antonio, TX 78247

SCOPE:

This NOA is being issued under the applicable rules and regulations governing the use of construction materials. The documentation submitted has been reviewed and accepted by Miami-Dade County RER - Product Control Section to be used in Miami Dade County and other areas where allowed by the Authority Having Jurisdiction (AHJ).

This NOA shall not be valid after the expiration date stated below. The Miami-Dade County Product Control Section (In Miami Dade County) and/or the AHJ (in areas other than Miami Dade County) reserve the right to have this product or material tested for quality assurance purposes. If this product or material fails to perform in the accepted manner, the manufacturer will incur the expense of such testing and the AHJ may immediately revoke, modify, or suspend the use of such product or material within their jurisdiction. RER reserves the right to revoke this acceptance, if it is determined by Miami-Dade County Product Control Section that this product or material fails to meet the requirements of the applicable building code. This product is approved as described herein and has been designed to comply with the Florida Building Code, including the High Velocity Hurricane Zone.

DESCRIPTION: Series 9200 Automatic Aluminum Sliding Glass Door w/ Reinforcements- L.M.I.

APPROVAL DOCUMENT: Drawing No. **23-189** (Former #**20-045**), "Series 9200 Impact" Sheets 1 through 4 of 4, prepared by EngCo. Inc., 08-24-2014 and last revised on 10/14/23, signed and sealed by Pedro De Figueiredo, P. E. bearing the Miami-Dade County Product Control Renewal stamp with the Notice of Acceptance number and expiration date by the Miami-Dade County Product Control Section.

MISSILE IMPACT RATING: Large and Small Missile Impact Resistant

Limitations:

1. Laminated glass must consist of Vanceva composite interlayer or (Oldcastle Storm glass) w/ PET core.

LABELING: Each unit shall bear a permanent label with the manufacturer's name or logo, city, state and series and following statement: "Miami-Dade County Product Control Approved", noted herein.

RENEWAL of this NOA shall be considered after a renewal application has been filed and there has been no change in the applicable building code negatively affecting the performance of this product.

TERMINATION of this NOA will occur after the expiration date or if there has been a revision or change in the materials, use, and/or manufacture of the product or process. Misuse of this NOA as an endorsement of any product, for sales, advertising or any other purposes shall automatically terminate this NOA. Failure to comply with any section of this NOA shall be cause for termination and removal of NOA.

ADVERTISEMENT: The NOA number preceded by the words Miami-Dade County, Florida, and followed by the expiration date may be displayed in advertising literature. If any portion of the NOA is displayed, then it shall be done in its entirety.

INSPECTION: A copy of this entire NOA shall be provided to the user by the manufacturer or its distributors and shall be available for inspection at the job site at the request of the Building Official.

This NOA **renews NOA # 23-1113.10** and consists of this page 1 and evidence pages E-1, E-2, E-3, E-4 and E-5, as well as approval document mentioned above.

The submitted documentation was reviewed by **Ishaq I. Chanda, P.E.**

Ishaq I. Chanda



NOA No. 25-0321.06
Expiration Date: June 22, 2030
Approval Date: May 01, 2025
Page 1

NOTICE OF ACCEPTANCE: EVIDENCE SUBMITTED

1. Evidence submitted in previous files

A. DRAWINGS

1. Manufacturer's die drawings and sections (Submitted under files below)
2. Drawing No. **14-101** (Former #**12-172**), "Series 9200 Impact" Sheets 1 through 4 of 4, prepared by EngCo. Inc., 08-24-2014 and last revised on OCT 06, 2013, signed and sealed by Pedro De Figueiredo, P.E.

B. TESTS (Submitted under file #**15-0427.10**/# **12-1107.03** /# **11-0502.05**/ #**06-0202.02**)

1. Test reports on
 - 1) Air Infiltration Test, per FBC, TAS 202-94
 - 2) Uniform Static Air Pressure Test, Loading per FBC TAS 202-94
 - 3) Water Resistant Test per FBC, TAS 202-94 (Not Performed)
 - 4) Large Missile Impact Test per FBC, TAS 201-94
 - 5) Cyclic Wind Pressure Loading per FBC, TAS 203-94
 - 6) Forced Entry Test, per FBC 2411 3.2.1, TAS 202-94

along with marked-up drawings and installation diagram of an Automatic Entrance door, prepared by Hurricane Testing Laboratory, LLC, Test Report No **HTL 0368-0220-05** and **HTL 0368-0221-05**, dated 11/28/05, signed and sealed by Vinu J. Abraham, P.E.

C. CALCULATIONS (submitted under file #**15-0427.10**)

1. Anchor Calculations and structural analysis, complying with FBC-2014(5th Edition), prepared by Engco, Inc., dated 01/02/15, signed and sealed by Pedro De Figueiredo, P.E.
2. Glazing complies w/ ASTM E-1300-02, -04 & -09.

D. QUALITY ASSURANCE

1. Miami Dade Department of Regulatory and Economic Resources (RER).

E. MATERIAL CERTIFICATIONS

1. Notice of Acceptance No. **14-0423.11** issued to Oldcastle Building Envelope Inc. (NJ) (Former Oldcastle Glass, Inc.) for "Storm Glass used for lamination glass", expiring on 12/11/2018.
2. Notice of Acceptance No. **14-0423.15** issued to Eastman Chemical Company (MA), former Solutia Inc. for their "**Saflex CP – Saflex and Saflex HP Composite Glass Interlayers with PET Core**", expiring on 12/11/18.

F. STATEMENTS

1. Statement letter of conformance to FBC 2014 (5th Edition) and letter of no financial interest, prepared by Engco, Inc., dated 06/26/15, signed and sealed by Pedro De Figueiredo, P.E. (submitted under file #**15-0427.10**)
2. Lab compliance as part of the above referenced test report.

G. OTHER

1. This NOA **renews** NOA # **15-0427.10**, expiring on June 22, 2021.
2. State of Delaware Certificate of amendment of "Tormax Technologies Inc." name change to "TORMAX USA Inc., dated 04-23-15, signed by Jeffery W. Bullock, Secretary of State.

Ishaq I. Chanda

Ishaq I. Chanda, P.E.
Product Control Unit Supervisor
NOA No. 25-0321.06
Expiration Date: June 22, 2030
Approval Date: May 01, 2025

NOTICE OF ACCEPTANCE: EVIDENCE SUBMITTED

2. Evidence submitted under previous submittal.

A. DRAWINGS

1. Drawing No. **17-474** (Former #**14-101**), “Series 9200 Impact” Sheets 1 through 4 of 4, prepared by EngCo. Inc., 08-24-2014 and last revised on OCT 06, 2013, signed and sealed by Pedro De Figueiredo, P. E.

Note: This revision consists of editorial changes of FBC 17 (6th Edition) code compliance.

B. Test

1. None.

C. CALCULATIONS

1. None

D. QUALITY ASSURANCE

1. Miami Dade Department of Regulatory and Economic Resources (RER).

E. MATERIAL CERTIFICATIONS

1. None.

F. STATEMENTS

1. Statement letter of conformance to FBC 2017 (6th Edition), dated 08/15/17, prepared by EngCo. Inc., signed and sealed by Pedro De Figueiredo, P. E.
2. Statement letter of extent of drawing editorial revision, dated 01/30/18, prepared by EngCo., signed and sealed by Pedro De Figueiredo, P. E.

G. OTHER

1. This NOA revises # **16-0202.14**, expiring 06/22/21.

3. Evidence submitted under previous approval.

A. DRAWINGS

1. Drawing No. **20-045** (Former #**17-474**), “Series 9200 Impact” Sheets 1 through 4 of 4, prepared by EngCo. Inc., 08-24-2014 and last revised on Jun 19, 2020, signed and sealed by Pedro De Figueiredo, P. E.

B. Test

1. None.

C. CALCULATIONS

1. None.

D. QUALITY ASSURANCE

1. Miami Dade Department of Regulatory and Economic Resources (RER).

Ishaq I. Chanda

Ishaq I. Chanda, P.E.
Product Control Unit Supervisor
NOA No. 25-0321.06
Expiration Date: June 22, 2030
Approval Date: May 01, 2025

NOTICE OF ACCEPTANCE: EVIDENCE SUBMITTED

E. MATERIAL CERTIFICATIONS

1. Notice of Acceptance No. **20-0622.03** issued to Eastman Chemical Company (MA), former Solutia Inc. for their “**Saflex CP – Saflex and Saflex HP Composite Glass Interlayers with PET Core**”, expiring on 12/11/23.
2. Notice of Acceptance No. **20-0622.07** issued to Oldcastle Building Envelope Inc. (NJ) (Former Oldcastle Glass, Inc) for “Storm Glass used for lamination glass”, expiring on 12/11/2023.

F. STATEMENTS

1. Statement letter of conformance to FBC 2020 (7th Edition), dated 06/15/20, prepared by EngCo. Inc., signed and sealed by Pedro De Figueiredo, P. E.
2. Statement letter of extent of drawing editorial revision, inclusive code change notes, dated 06/15/20, prepared by EngCo., signed and sealed by Pedro De Figueiredo, P. E

G. OTHER

1. This NOA **revises & renews # 17-1218.28** and FBC code updates, expiring 06/22/25.

Ishaq I. Chanda

Ishaq I. Chanda, P.E.
Product Control Unit Supervisor
NOA No. 25-0321.06
Expiration Date: June 22, 2030
Approval Date: May 01, 2025

NOTICE OF ACCEPTANCE: EVIDENCE SUBMITTED

4. Evidence submitted under previous approval.

A. DRAWINGS

1. Drawing No. **23-189** (Former #**20-045**), “Series 9200 Impact” Sheets 1 through 4 of 4, prepared by EngCo. Inc., 08-24-2014 and last revised on 10/14/23, signed and sealed by Pedro De Figueiredo, P. E.

Note: This revision consists of editorial changes of FBC 2023 (8th Edition) code compliance.

B. Test

1. None.

C. CALCULATIONS

1. None.

D. QUALITY ASSURANCE

1. Miami Dade Department of Regulatory and Economic Resources (RER).

E. MATERIAL CERTIFICATIONS

1. Notice of Acceptance No. **23-0713.21** issued to Eastman Chemical Company (MA), former Solutia Inc. for their “**Saflex CP – Saflex Strom and Saflex HP Composite Glass Interlayers with PET Core**”, expiring on 12/11/28.

F. STATEMENTS

1. Statement letter of conformance to FBC 2023 (8th Edition), dated 10/14/23, prepared by EngCo. Inc., signed and sealed by Pedro De Figueiredo, P. E.
2. Statement letter of extent of drawing editorial revision only, dated 10/14/23, prepared by EngCo., signed and sealed by Pedro De Figueiredo, P. E.

G OTHER

1. This NOA revises # **20-0720.06**, expiring 06/22/25.

Ishaq I. Chanda

Ishaq I. Chanda, P.E.
Product Control Unit Supervisor
NOA No. 25-0321.06
Expiration Date: June 22, 2030
Approval Date: May 01, 2025

NOTICE OF ACCEPTANCE: EVIDENCE SUBMITTED

5. New Evidence submitted.

A. DRAWINGS (submitted under previous approval)

1. Drawing No. **23-189** (Former #**20-045**), “Series 9200 Impact” Sheets 1 through 4 of 4, prepared by EngCo. Inc., 08-24-2014 and last revised on 10/14/23, signed and sealed by Pedro De Figueiredo, P. E.

B. Test (submitted under previous approval)

1. None.

C. CALCULATIONS (submitted under previous approval)

1. None.

D. QUALITY ASSURANCE

1. Miami Dade Department of Regulatory and Economic Resources (RER).

E. MATERIAL CERTIFICATIONS

1. Notice of Acceptance No. **23-0713.21** issued to Eastman Chemical Company (MA), former Solutia Inc. for their “**Saflex CP – Saflex Strom and Saflex HP Composite Glass Interlayers with PET Core**”, expiring on 12/11/28.

F. STATEMENTS

1. Statement letter of conformance to FBC 2023 (**8th** Edition) and no financial interest, dated 03/07/25, prepared by PPMF, Inc., signed and sealed by Pedro De Figueiredo, P. E.
2. Statement letter of extent of drawing editorial revision only, dated 10/14/23, prepared by EngCo., signed and sealed by Pedro De Figueiredo, P. E.

G OTHER

1. This NOA **renews NOA # 23-1113.10**, expiring 06/22/30.

Ishaq I. Chanda

Ishaq I. Chanda, P.E.
Product Control Unit Supervisor
NOA No. 25-0321.06
Expiration Date: June 22, 2030
Approval Date: May 01, 2025

INDEX:

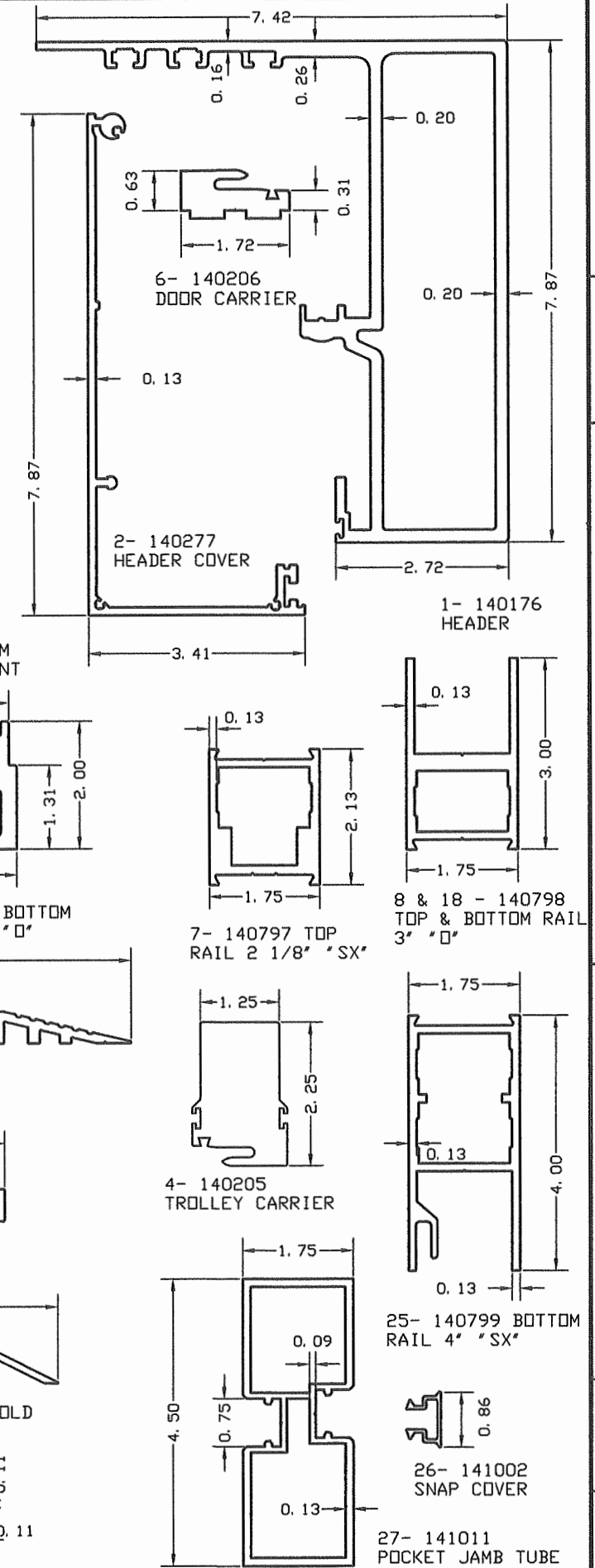
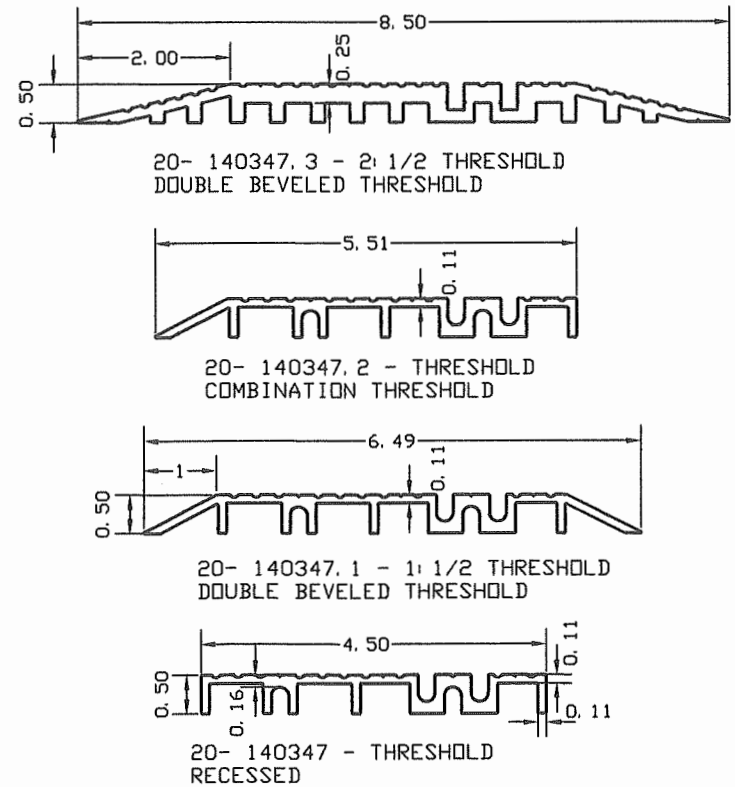
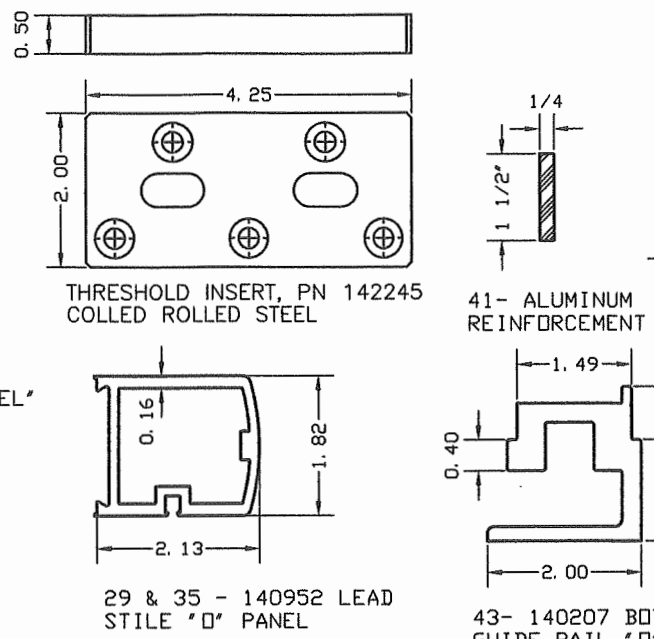
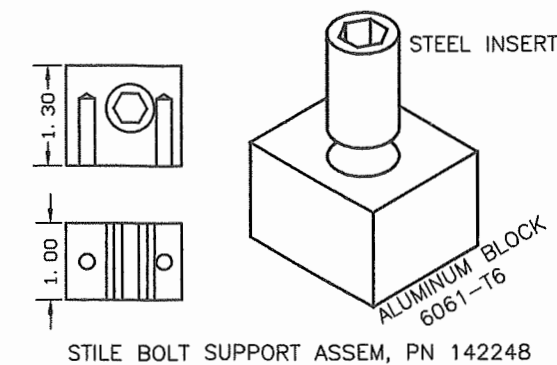
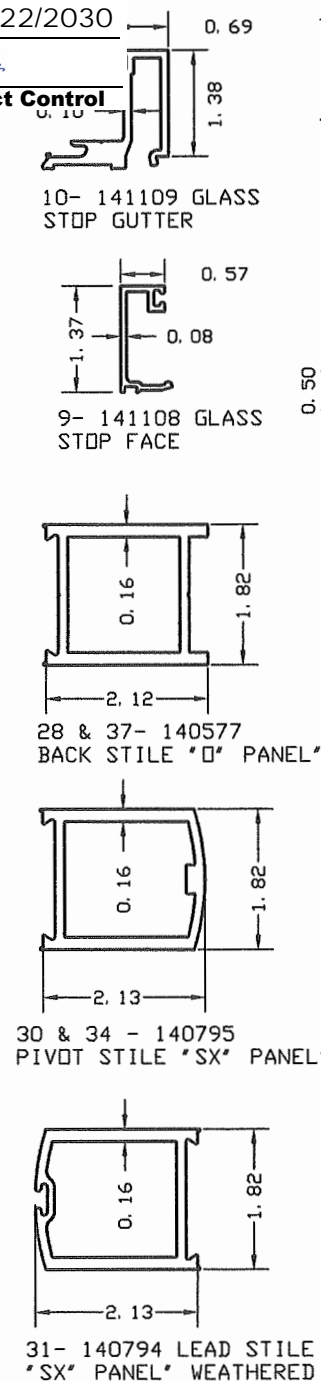
SHEET 1 OF 4 - GENERAL NOTES, DESIGN RATING AND DOOR COMPONENT
SHEET 2 OF 4 - TYPICAL DOOR ELEVATION, FRAMING ANCHORAGE
SHEET 3 OF 4 - SECTION 1 DETAIL & BILL OF MATERIALS
SHEET 4 OF 4 - SECTION 2 & 3 DETAILS & GLAZING DETAIL

GENERAL NOTES:

- 1- CODE: THIS PRODUCT HAS BEEN TESTED AND DESIGNED IN ACCORDANCE WITH THE FLORIDA BUILDING CODE 2023 - 8TH EDITION, INCLUDING THE HIGH VELOCITY HURRICANE ZONES (HVHZ).
- 2- DEFINITION: THIS PRODUCT IS AN ALUMINUM LARGE MISSILE IMPACT RESISTANT AUTOMATIC SLIDING GLASS DOOR. PRODUCT CAN BE USED AT ANY ELEVATION WITHOUT HURRICANE PROTECTION SHUTTERS.
- 3- POSTING: "9200 SERIES - LARGE MISSILE IMPACT ALUMINUM AUTOMATIC SLIDING GLASS DOORS TORMAX USA, INC. SAN ANTONIO, TEXAS DADE COUNTY PRODUCT CONTROL APPROVED"
- 4- LOADS: DESIGNED LOAD CALCULATED BASED ON THE ASCE 7-22 AND PROVIDED BY A PROFESSIONAL ARCHITECT OR ENGINEER FOR EACH SPECIFIC PROJECT. THE CALCULATED DESIGNED PRESSURE MUST NOT EXCEED THE ALLOWABLE PRESSURES HEREIN SPECIFIED. THE DESIGN PRESSURES, AS DETERMINED FROM ASCE 7-22, ARE TO BE MULTIPLE BY 0.6
- 5- MATERIAL: ALL ALUMINUM PARTS TO BE 6063-T5 ALLOY OR AS NOTED AND GLAZING TO BE LAMINATED GLASS AS PER SHEET 4 OF 4 AS SPECIFIED ON THIS APPROVAL.
- 6- FASTENERS: ASSEMBLY SCREWS AND ANCHORS SHALL BE AS SPECIFIED IN THE CURRENT SET OF DRAWINGS. INSTALLATION AND LOADS AS PER THIS APPROVAL. ANCHOR SPACING AND LOADS MUST NOT EXCEED THE MAXIMUM LIMITS SPECIFIED BY THIS APPROVAL.
- 7- USE: IT SHALL BE THE RESPONSIBILITY OF THE CONTRACTOR, ARCHITECT OR ENGINEER OF RECORD TO VERIFY THE FOLLOWING:
 - 7.1- THE STABILITY OF THE STRUCTURE WHERE THE PRODUCT IS TO BE ATTACHED INSURING PROPER ANCHORAGE.
 - 7.2- THE SITE SPECIFIC PROJECT CRITERIA, SUCH AS BUT NOT LIMITED TO, LOCAL CODE REQUIREMENTS, DESIGNED PRESSURES ETC.
 - 7.3- THAT THIS APPROVAL IS ADEQUATE TO THE SPECIFIC PROJECT.
- 8- 33 1/3% INCREASE IN ALLOWABLE LOADS HAVE NOT BEEN USED IN THE DESIGN OF THE ANCHORS FOR THIS PRODUCT APPROVAL, HOWEVER, WOOD SCREWS WITH 1.6 INCREASE FOR WIND LOAD DURATION HAVE BEEN USED.
- 9- THIS SYSTEM COMPLIES W/ ASTM E1300-04e01, 07e01, 09e, 12Ae1 or 16
- 10- DISSIMILAR MATERIALS: WHERE ALUMINUM IS IN CONTACT OR FASTENED TO DISSIMILAR MATERIALS, INCLUDING BUT NOT LIMITED TO STEEL, INSTALLATION SHALL MEET THE REQUIREMENTS OF CHAPTER M.7 OF THE ALUMINUM DESIGN MANUAL 2020.

PRODUCT RENEWED
as complying with the Florida
Building Code
NOA-No. 25-0321.06
Expiration Date 06/22/2030
By Ishaq I. Chande
Miami-Dade Product Control

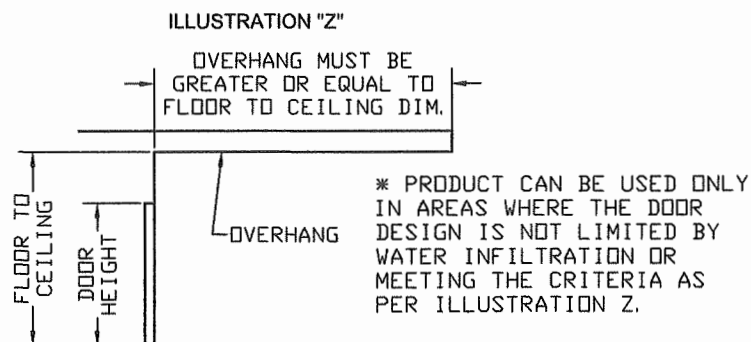
DOOR COMPONENTS



DOOR ALLOWABLE DESIGNED PRESSURES

+57*, -57 PSF

LARGE MISSILE IMPACT



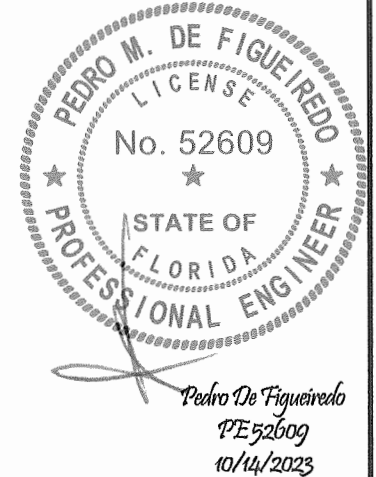
MANUFACTURER:

★★★★★
TORMAX
AUTOMATIC

TORMAX USA Inc.
12859 WETMORE ROAD
SAN ANTONIO, TX 78247
PH: (210) 494-3551
FAX: (210) 494-5930

PRODUCT:
SERIES 9200 IMPACT
AUTOMATIC SLIDING GLASS DOOR
LARGE MISSILE IMPACT

PPMF Inc. ENGINEERING SERVICES
CA 32459
9715 W. BROWARD BLVD.
PLANTATION, FL 33324
PPMF@AOL.COM



MIAMI-DADE BCCO:

PRODUCT REVISED
as complying with the Florida
Building Code
NOA-No. 23-1113.10
Expiration Date 06/22/2025

By Ishaq I. Chande
Miami-Dade Product Control


DATE: 10/14/2023
SCALE: NA
DESIGN BY: PPMF

SHEET
1 OF 4

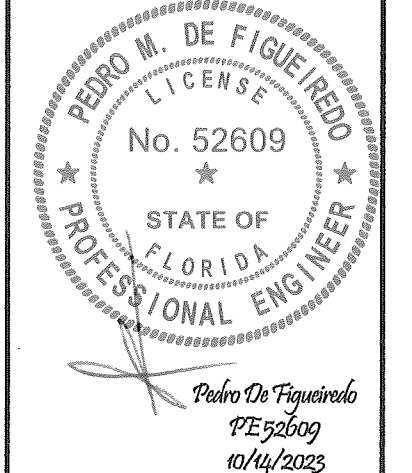
DRAWING
NUMBER
23-189

MANUFACTURER:

TORMAX USA Inc.
12859 WETMORE ROAD
SAN ANTONIO, TX 78247
PH: (210) 494-3551
FAX: (210) 494-5930



ENGINEERING SERVICES
CA 32459
9715 W. BROWARD BLVD.
PLANTATION, FL 33324
PPMF@AOL.COM



MIAMI-DADE BCCO:

NOA-No. 23-1113.10

Expiration Date 06/22/2025

By Ishaq I. Chande
Miami-Dade Product Control

DATE: 10/14/2023
SCALE: NA
DESIGN BY: PPMF

SHEET
2 OF 4

DRAWING
NUMBER
23-189



NOA-No. 25-0321.06

Expiration Date06/22/2030

By Ishaq I. Chande
Miami-Dade Product Control

ANCHOR DATA

MK	DESCRIPTION	BASE MATERIAL	PENETRATION	EDGE DIST.
A	1/4" ITW TAPCON BY BUILDEX	3000 PSI CONCRETE	1 1/2" MIN.	2 1/2" MIN
B	1/4" ITW TAPCON BY BUILDEX	WOOD (SG>= .55)	1 1/2" MIN	3/4" MIN
C	1/4-14 HH SMS GRADE 5 GENERIC	1/8" THICK 6063-T5 ALUMINUM		3/4" MIN
	1/4-14 HH SMS GRADE 5 GENERIC	1/8" THICK A36 STEEL (Fu=58 ksi)		3/4" MIN

ANCHOR NOTES:

- ANCHOR NOTES:
- 1- SEE SECTION DETAILS FOR ANCHOR SPACING.
 - 2- MINIMUM PENETRATION IS BEYOND WALL DRESSING.
 - 3- TYPICAL 2 ROWS OF ANCHORS FOR THRESHOLD INSTALLATION
 - 4- BASE MATERIAL DESIGNED BY OTHERS TO WITHSTAND IMPOSED LOAD.

HARDWARE NOTE:
LOCK AND FLUSH BOLT HAVE
3/8" HEX BOLT EXTENDED 1/2"
INTO HEAD AND THRESHOLD

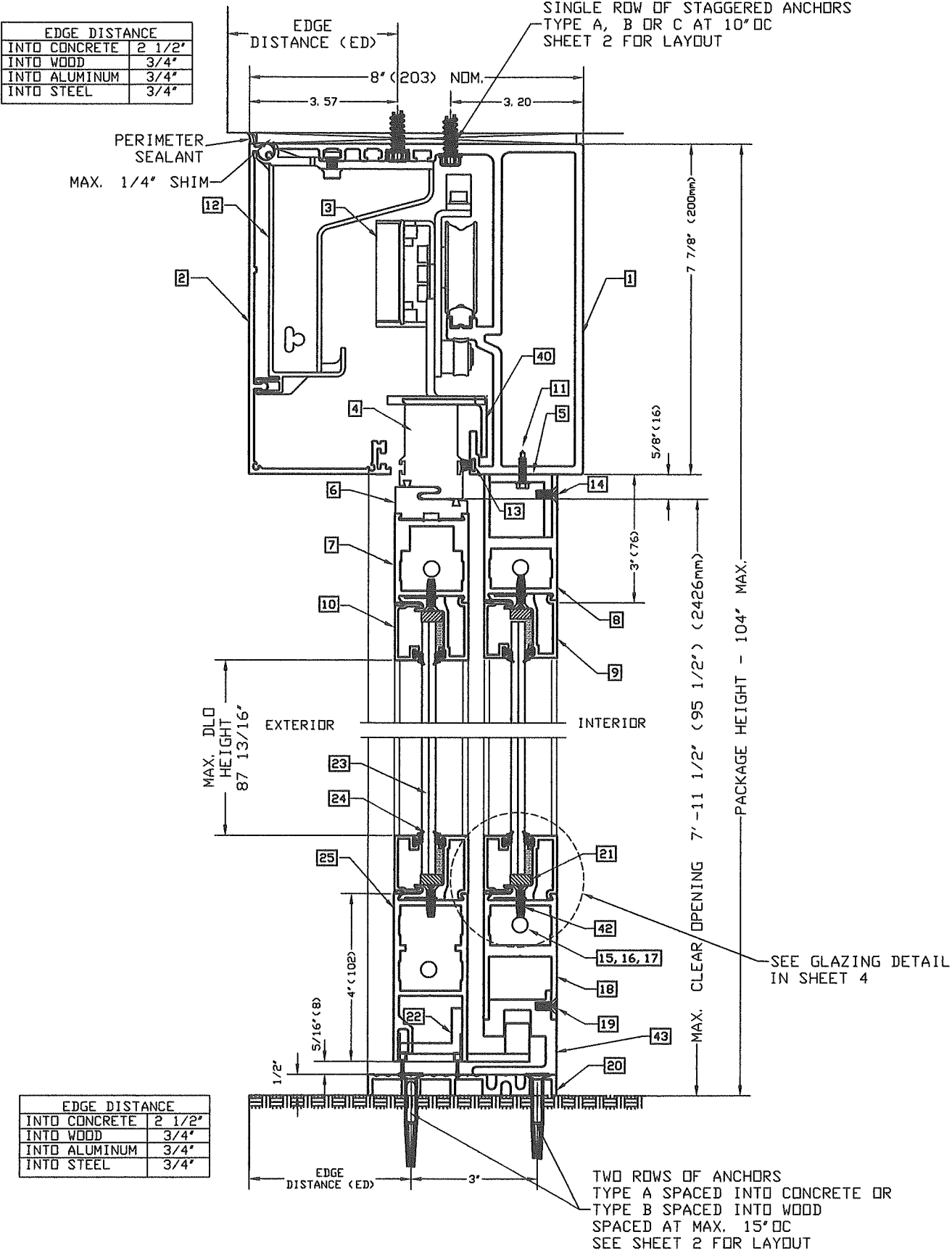
PACKAGE HEIGHT INFORMATION

PACKAGE HEIGHT	MASONRY OPENING
8' -8" (104")	8' -8 1/4" (104 1/4")

PACKAGE WIDTH INFORMATION

PKG WIDTH	NOMINAL CLEAR DOOR OPENING	SLIDING DOOR PANEL NOM. WIDTH	EMERGENCY BREAKOUT NOM. WIDTH
15' -4" (184")	77 7/8"	46 27/32"	86 3/4"
7' -9 3/16" (93 3/16")	38 7/8"	46 27/32"	43 3/8"

TYPICAL VERTICAL SECTION 1/3



MATERIAL LIST

ITEM #	QTY	DESCRIPTION	PART NUMBER
1	1	HEADER	140176
2	1	COVER, HEADER	140277
3	4	TROLLEY ROLLER ASSEMBLY	110445
4	2	TROLLEY CARRIER	140205
5	2	ALUMINUM ANGLE, 1-1/25" X 1-1/2" X 3/16"	141125
6	2	DOOR CARRIER	140206
7	2	2-1/8" TOP RAIL, "SX"	140797
8	2	3" TOP RAIL, "D"	140798
9	16	1-3/8" GUTTER, GLASS STOP	141109
10	16	1-3/8" FACE, GLASS STOP	141108
11	14	#10 TEK SCREW	140270-01
12	4	BRACKET, HEADER COVER	140219
13	1	PILE-FIN WEATHERSEAL, HEADER	141148
14	14	10-32 X 1/2" FL HD PH MACH SCREW	140245-41
15	8	3/8" DIA ALL THREAD, THRU ROD	140167
16	16	RAIL CLIP, UNIVERSAL	140928
17	16	NUT, SERRATED FLANGE	14140421-08
18	2	3" BOTTOM RAIL, "D" PANEL	140798
19	14	10-32 X 1/2" FL HD PH MACH SCREW	140245-41
20	1	THRESHOLD, RECESSED	140347
21	AN	1/4" RUBBER SETTING BLOCK	
22	2	SLIDER, LEFT & RIGHT HAND	110236 & 110237
23	4	0.325" LAM. NOM STORMGLASS (HS)	
24	16	VINYL, GLASS STOPS	140132
25	2	4" BOTTOM RAIL, "SX"	140799
26	2	SNAP COVER, JAMB TUBES	141002
27	2	JAMB TUBE, POCKET	141011
28	1	BACK STILE, "D" PANEL	140577
29	1	LEAD STILE, "D" PANEL	140952
30	1	PIVOT STILE, "SX"	140795
31	1	LEAD STILE, WEATHERED, "SX" PANEL	140794
32	4	KEY OPERATED LOCK CYLINDER - ADAMS RITE 1870 SERIES	1870 SERIES
33	4	THUMBTURN LOCK CYLINDER - ADAMS RITE MS1853	MS1853
34	1	LEAD STILE, NON-WEATHERED, "SX"	140795
35	1	LEAD STILE, "D" PANEL	140952
36	1	PIVOT STILE, "SX"	140795
37	1	BACK STILE, "D" PANEL	140577
38	2	1/2" BRUSH, WEATHER SEAL	141001
39	1	PILE-FIN WEATHER STRIP, STILE	141147
40	2	DE-RAILER	141123
41	2	ALUMINUM BAR, 1/4" X 1-1/2"	142185
42	80	10-32 X 1/2" FL HD PH MACH SCREW	140245-41
43	2	BOTTOM GUIDE RAIL, "D"	140207
44	2	INTERLOCK ADAM RITE FLUSH BOLTS	1870
45	1	LOCK STILE ADAM RITE FLUSH BOLTS	1870
46	1	LOCK STILE ADAM RITE 2 POINTS	MS1853-350

PRODUCT RENEWED
as complying with the Florida
Building Code
NOA-No. 25-0321.06
Expiration Date 06/22/2030
By Ishag I. Chank
Miami-Dade Product Control

MANUFACTURER:

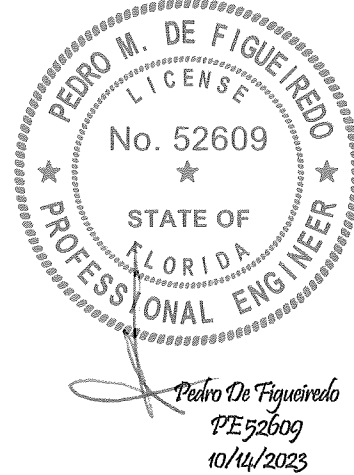
★★★★★
TORMAX
AUTOMATIC

TORMAX USA Inc.
12859 WETMORE ROAD
SAN ANTONIO, TX 78247
PH: (210) 494-3551
FAX: (210) 494-5930

PRODUCT:
SERIES 9200 IMPACT
AUTOMATIC SLIDING GLASS DOOR
LARGE MISSILE IMPACT



ENGINEERING SERVICES
CA 32459
9715 W. BROWARD BLVD.
PLANTATION, FL 33324
PPMF@AOL.COM



MIAMI-DADE BCCO:

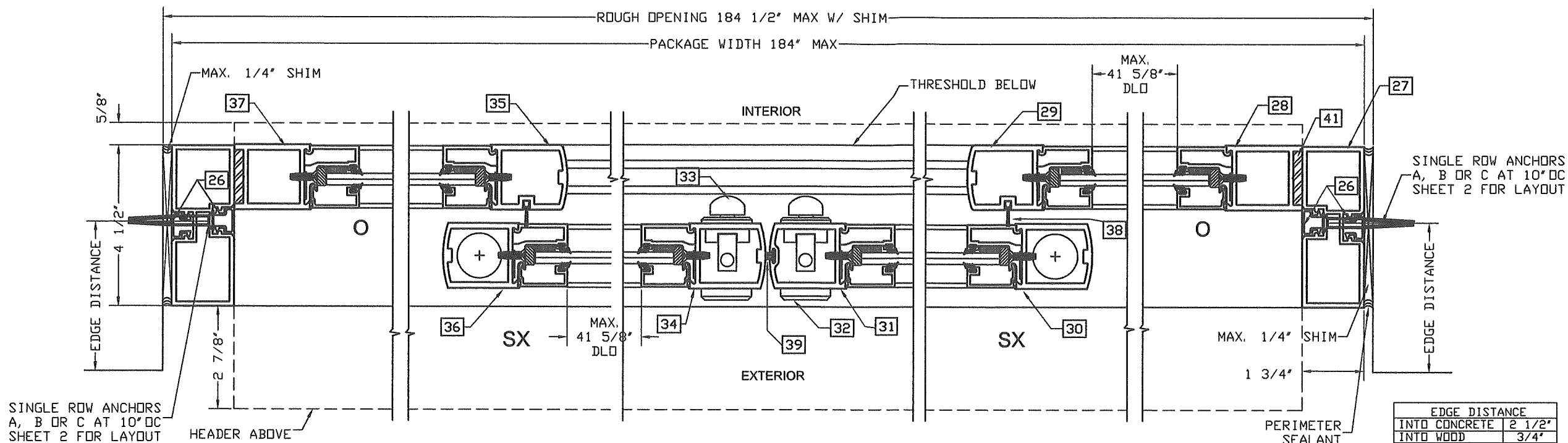
PRODUCT REVISED
as complying with the Florida
Building Code
NOA-No. 23-1113.10
Expiration Date 06/22/2025
By Ishag I. Chank
Miami-Dade Product Control

DATE: 10/14/2023
SCALE: NA
DESIGN BY: PPMF

SHEET
3 OF 4

DRAWING
NUMBER
23-189

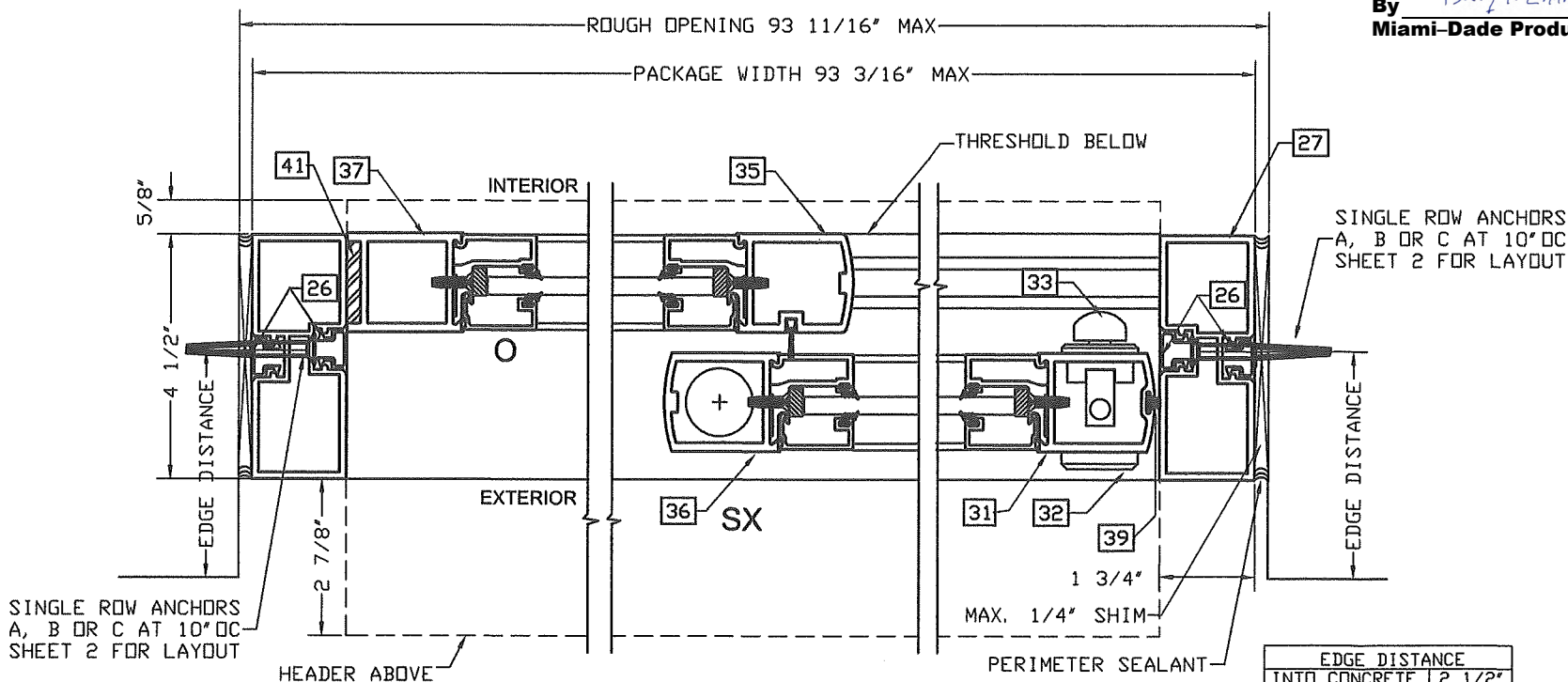
TYPICAL HORIZONTAL SECTION 2/4



EDGE DISTANCE	
INTO CONCRETE	2 1/2"
INTO WOOD	3/4"
INTO ALUMINUM	3/4"
INTO STEEL	3/4"

EDGE DISTANCE	
INTO CONCRETE	2 1/2"
INTO WOOD	3/4"
INTO ALUMINUM	3/4"
INTO STEEL	3/4"

TYPICAL HORIZONTAL SECTION 3/4



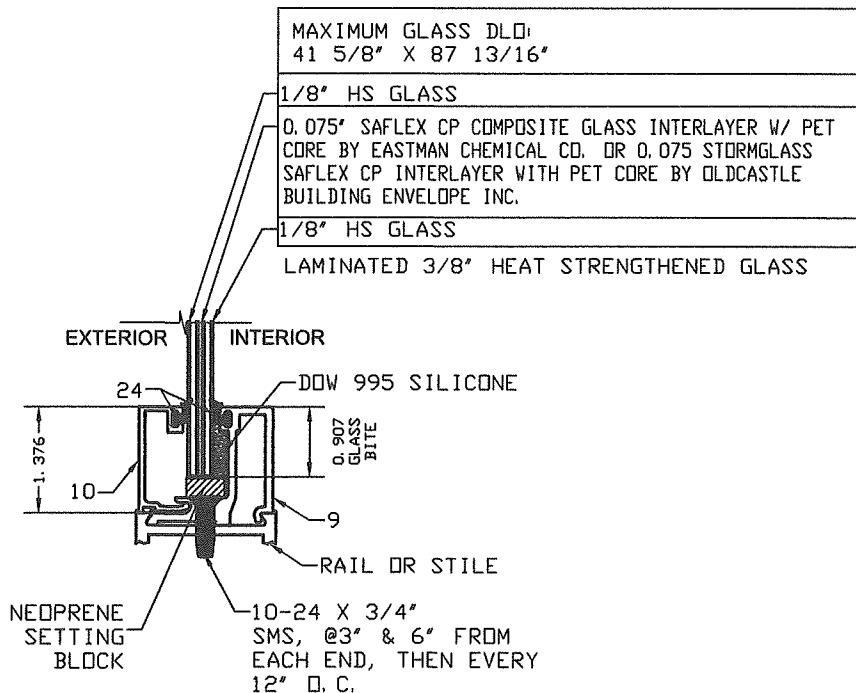
EDGE DISTANCE	
INTO CONCRETE	2 1/2"
INTO WOOD	3/4"
INTO ALUMINUM	3/4"
INTO STEEL	3/4"

PRODUCT RENEWED
as complying with the Florida
Building Code
NOA-No. 25-0321.06

Expiration Date 06/22/2030

By Ishaq I. Chande
Miami-Dade Product Control

TYPICAL GLAZING DETAIL
ENTIRE PERIMETER ALL LITES



MANUFACTURER:

★★★★★
TORMAX
AUTOMATIC

TORMAX USA Inc.
12859 WETMORE ROAD
SAN ANTONIO, TX 78247
PH: (210) 494-3551
FAX: (210) 494-5930

PRODUCT:
SERIES 9200 IMPACT
AUTOMATIC SLIDING GLASS DOOR
LARGE MISSILE IMPACT



ENGINEERING SERVICES
CA 32459
9715 W. BROWARD BLVD.
PLANTATION, FL 33324
PPMF@AOL.COM



MIAMI-DADE BCCO:

PRODUCT REVISED
as complying with the Florida
Building Code
NOA-No. 23-1113.10
Expiration Date 06/22/2025

By Ishaq I. Chande
Miami-Dade Product Control

DATE: 10/14/2023
SCALE: NA
DESIGN BY: PPMF

SHEET
4 OF 4

DRAWING
NUMBER
23-189