



MIAMI-DADE COUNTY, FLORIDA
PRODUCT CONTROL SECTION
11805 SW 26 Street, Room 208
Miami, Florida 33175-2474
T (786) 315-2590 F (786) 315-2599
www.miamidade.gov/economy

DEPARTMENT OF REGULATORY AND ECONOMIC RESOURCES (RER)
BOARD AND CODE ADMINISTRATION DIVISION
NOTICE OF ACCEPTANCE (NOA)

Trulite Glass & Aluminum Solutions, LLC
403 West Park Ct, #201
Peachtree City, GA 30269

SCOPE:

This NOA is being issued under the applicable rules and regulations governing the use of construction materials. The documentation submitted has been reviewed and accepted by Miami-Dade County RER-Product Control Section to be used in Miami-Dade County and other areas where allowed by the Authority Having Jurisdiction (AHJ).

This NOA shall not be valid after the expiration date stated below. The Miami-Dade County Product Control Section (In Miami-Dade County) and/ or the AHJ (in areas other than Miami-Dade County) reserve the right to have this product or material tested for quality assurance purposes. If this product or material fails to perform in the accepted manner, the manufacturer will incur the expense of such testing and the AHJ may immediately revoke, modify, or suspend the use of such product or material within their jurisdiction. RER reserves the right to revoke this acceptance, if it is determined by Miami-Dade County Product Control Section that this product or material fails to meet the requirements of the applicable building code.

This product is approved as described herein, and has been designed to comply with the Florida Building Code, including the High Velocity Hurricane Zone.

DESCRIPTION: Series "3100-Resistor" Aluminum Storefront/Window Wall System – L.M.I.

APPROVAL DOCUMENT: Drawing No. **AD11-21**, titled "Resistor 3100 Aluminum Storefront Wall - LMI", sheets 1 through 13 of 13, dated 09/16/21, with revision **5** dated 12/20/23, prepared by MCY Engineering, Inc., signed and sealed by Yiping Wang, P.E., bearing the Miami-Dade County Product Control Renewal stamp with the Notice of Acceptance number and expiration date by the Miami-Dade County Product Control Section.

MISSILE IMPACT RATING: Large and Small Missile Impact Resistant.

LABELING: Each unit shall bear a permanent label with the manufacturer's name or logo, city, state, series, and following statement: "Miami-Dade County Product Control Approved", unless otherwise noted herein.

RENEWAL of this NOA shall be considered after a renewal application has been filed and there has been no change in the applicable building code negatively affecting the performance of this product.

TERMINATION of this NOA will occur after the expiration date or if there has been a revision or change in the materials, use, and/ or manufacture of the product or process. Misuse of this NOA as an endorsement of any product, for sales, advertising or any other purposes shall automatically terminate this NOA. Failure to comply with any section of this NOA shall be cause for termination and removal of NOA.

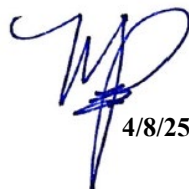
ADVERTISEMENT: The NOA number preceded by the words Miami-Dade County, Florida, and followed by the expiration date may be displayed in advertising literature. If any portion of the NOA is displayed, then it shall be done in its entirety.

INSPECTION: A copy of this entire NOA shall be provided to the user by the manufacturer or its distributors and shall be available for inspection at the job site at the request of the Building Official.

This NOA **renews NOA No. 23-1222.10** and consists of this page 1 and evidence pages E-1, E-2, E-3 and E-4, as well as approval document mentioned above.

The submitted documentation was reviewed by **Manuel Perez, P.E.**




4/8/25

NOA No. 25-0401.01
Expiration Date: March 31, 2030
Approval Date: April 17, 2025
Page 1

Trulite Glass & Aluminum Solutions, LLC

NOTICE OF ACCEPTANCE: EVIDENCE SUBMITTED


1. EVIDENCE SUBMITTED UNDER PREVIOUS NOA's

A. DRAWINGS

1. Manufacturer's die drawings and sections.
(Submitted under NOA No. 04-1213.01)
2. Drawing No. **AD11-21**, titled "Resistor 3100 Aluminum Storefront Wall - LMI", sheets 1 through 13 of 13, dated 09/16/21, with revision **5** dated 12/20/23, prepared by MCY Engineering, Inc., signed and sealed by Yiping Wang, P.E.
(Submitted under NOA No. 23-1222.10)

B. TESTS

1. Test reports on: 1) Uniform Static Air Pressure Test, Loading per FBC, TAS 202-94
2) Large Missile Impact Test per FBC, TAS 201-94
3) Cyclic Wind Pressure Loading per FBC, TAS 203-94
along with marked-up drawings and installation diagram of a series 3100 aluminum storefront system, prepared by Intertek, Inc., Test Report No. **M3224.01-450-18 R0**, dated 12/13/21, signed and sealed by Vinu J. Abraham, P.E.
(Submitted under NOA No. 21-1216.10)
2. Test reports on: 1) Uniform Static Air Pressure Test, Loading per FBC, TAS 202-94
2) Large Missile Impact Test per FBC, TAS 201-94
3) Cyclic Wind Pressure Loading per FBC, TAS 203-94
along with marked-up drawings and installation diagram of a series 3100 aluminum storefront system, prepared by Intertek, Inc., Test Report No. **M7456.01-450-18R0**, dated 09/22/21, signed and sealed by Vinu J. Abraham, P.E.
(Submitted under NOA No. 21-0930.10)
3. Test reports on: 1) Uniform Static Air Pressure Test, Loading per FBC, TAS 202-94
2) Large Missile Impact Test per FBC, TAS 201-94
3) Cyclic Wind Pressure Loading per FBC, TAS 203-94
along with marked-up drawings and installation diagram of an aluminum window wall system, prepared by Fenestration Testing Laboratory, Inc., Test Reports No.:
 - **FTL-5884**, dated 05/28/09, signed and sealed by Michael R. Wenzel, P.E.
(Submitted under NOA No. 09-1022.01)
 - **FTL-5140**, dated 01/20/07, signed and sealed by Michael R. Wenzel, P.E.
(Submitted under NOA No. 08-1024.04)
 - **FTL-3634**, dated 04/24/03, signed and sealed by Joseph Chan, P.E.
(Submitted under NOA No. 04-1213.01)


Manuel Perez, P.E.
Product Control Examiner
NOA No. 25-0401.01
Expiration Date: March 31, 2030
Approval Date: April 17, 2025

Trulite Glass & Aluminum Solutions, LLC

NOTICE OF ACCEPTANCE: EVIDENCE SUBMITTED

1. EVIDENCE SUBMITTED UNDER PREVIOUS NOA's (CONTINUED)

B. TESTS (CONTINUED)

4. Test reports on: 1) Air Infiltration Test, per FBC, TAS 202-94
2) Uniform Static Air Pressure Test, Loading per FBC, TAS 202-94
3) Water Resistance Test, per FBC, TAS 202-94
4) Large Missile Impact Test per FBC, TAS 201-94
5) Cyclic Wind Pressure Loading per FBC, TAS 203-94
along with marked-up drawings and installation diagram of an aluminum window wall system, prepared by Fenestration Testing Laboratory, Inc., Test Report No. **FTL-3942**, dated 02/03/04, signed and sealed by Edmundo Largaespada, P.E.
(Submitted under NOA No. 05-0906.04)

C. CALCULATIONS

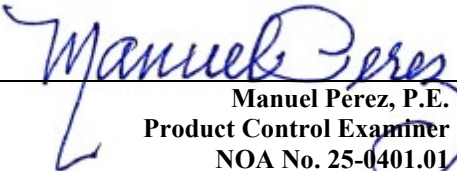
1. Anchor verification calculations and structural analysis, complying with FBC 7th Edition (2020), dated 09/28/21, prepared by MCY Engineering, Inc., signed and sealed by Yiping Wang, P.E.
(Submitted under NOA No. 21-0930.10)
2. Glazing complies with **ASTM E1300-04**

D. QUALITY ASSURANCE

1. Miami-Dade Department of Regulatory and Economic Resources (RER).

E. MATERIAL CERTIFICATIONS

1. Notice of Acceptance No. **23-0717.30** issued to **Kuraray America, Inc.** for their "**SentryGlas® (Clear and White) Glass Interlayers**" dated 08/31/23, expiring on 07/04/28.
2. Notice of Acceptance No. **23-0713.20** issued to **Eastman Chemical Company (MA)** for their "**Saflex HP Clear or Color Glass Interlayers**" dated 08/17/23, expiring on 04/14/28.
3. Notice of Acceptance No. **23-0713.18** issued to **Eastman Chemical Company (MA)** for their "**Saflex PVB Interlayers - Clear and Colored for Glass**" dated 08/17/23, expiring on 05/21/26.
4. Notice of Acceptance No. **23-1017.23** issued to **Everlam N.V.** for their "**Everlam Super Tough PVB Glass Interlayer**", dated 11/30/23, expiring on 04/29/26.
5. Notice of Acceptance No. **23-1017.24** issued to **Everlam N.V.** for their "**Everlam™ LAM50 PVB Glass Interlayer**", dated 11/30/23, expiring on 10/07/26.


Manuel Perez, P.E.
Product Control Examiner
NOA No. 25-0401.01
Expiration Date: March 31, 2030
Approval Date: April 17, 2025

Trulite Glass & Aluminum Solutions, LLC

NOTICE OF ACCEPTANCE: EVIDENCE SUBMITTED


1. EVIDENCE SUBMITTED UNDER PREVIOUS NOA's (CONTINUED)

F. STATEMENTS

1. Statement letter of conformance, complying with **FBC 8th Edition (2023)**, and of no financial interest, dated December 20, 2023, issued by MCY Engineering, Inc., signed and sealed by Yiping Wang, P.E.
(Submitted under NOA No. 23-1222.10)
2. Test Proposal No. **21-0643R** issued by the Product Control Section, dated May 20, 2021, and revised on August 27, 2021, signed by Manuel Perez, P.E.
(Submitted under NOA No. 21-0930.10)

G. OTHERS

1. Notice of Acceptance No. **21-1216.10** issued to Trulite Glass & Aluminum Solutions, LLC for their Series "3100-Resistor" Aluminum Storefront/Window Wall System – L.M.I.", approved on 03/31/22 and expiring on 03/31/25.


Manuel Perez, P.E.
Product Control Examiner
NOA No. 25-0401.01
Expiration Date: March 31, 2030
Approval Date: April 17, 2025

Trulite Glass & Aluminum Solutions, LLC

NOTICE OF ACCEPTANCE: EVIDENCE SUBMITTED

2. NEW EVIDENCE SUBMITTED

A. DRAWINGS

1. None.

B. TESTS

1. None.

C. CALCULATIONS

1. None.

D. QUALITY ASSURANCE

1. Miami-Dade Department of Regulatory and Economic Resources (RER)

E. MATERIAL CERTIFICATIONS


1. Notice of Acceptance No. **23-0717.30** issued to **Kuraray America, Inc.** for their “**SentryGlas® (Clear and White) Glass Interlayers**” dated 08/31/23, expiring on 07/04/28.
2. Notice of Acceptance No. **23-0713.20** issued to **Eastman Chemical Company (MA)** for their “**Saflex HP Clear or Color Glass Interlayers**” dated 08/17/23, expiring on 04/14/28.
3. Notice of Acceptance No. **23-0713.18** issued to **Eastman Chemical Company (MA)** for their “**Saflex PVB Interlayers - Clear and Colored for Glass**” dated 08/17/23, expiring on 05/21/26.
4. Notice of Acceptance No. **23-1017.23** issued to **Everlam N.V.** for their “**Everlam Super Tough PVB Glass Interlayer**”, dated 11/30/23, expiring on 04/29/26.
5. Notice of Acceptance No. **23-1017.24** issued to **Everlam N.V.** for their “**Everlam™ LAM50 PVB Glass Interlayer**”, dated 11/30/23, expiring on 10/07/26.

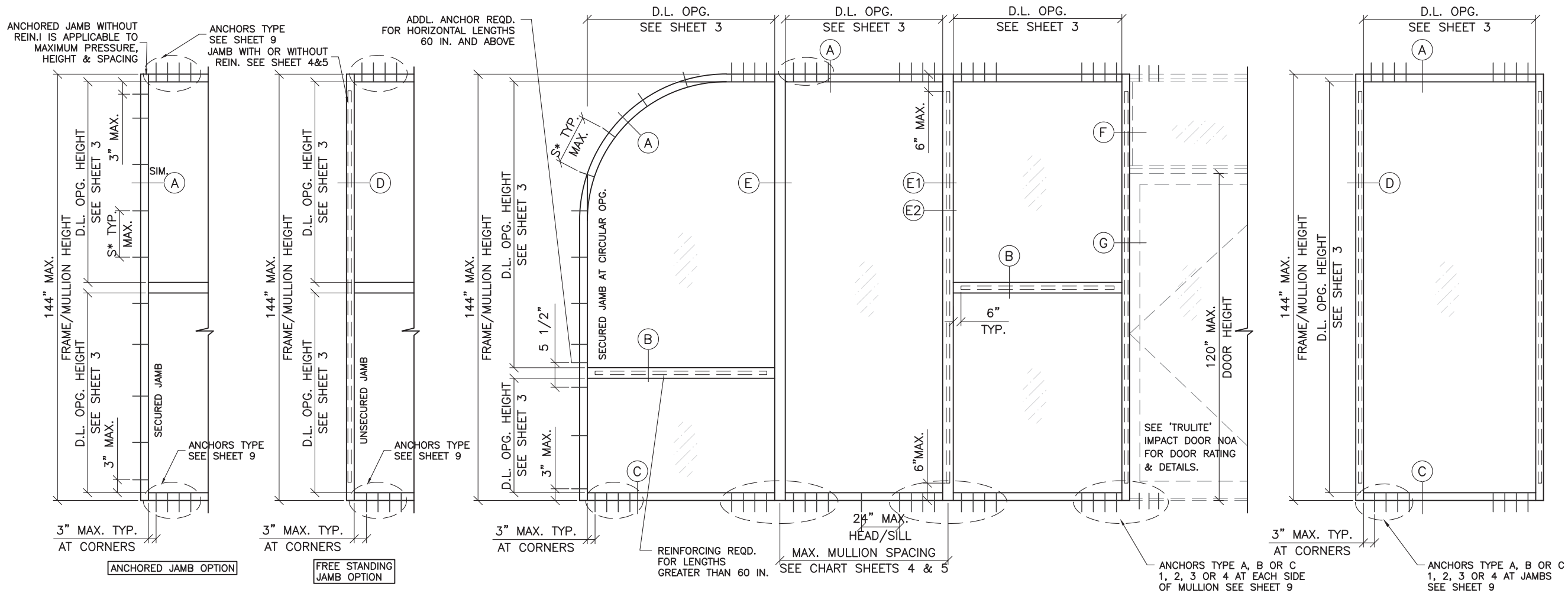
F. STATEMENTS

1. Statement letter of conformance, complying with **FBC 8th Edition (2023)**, and of no financial interest, dated April 7, 2025, issued by MCY Engineering, Inc., signed and sealed by Yiping Wang, P.E.

G. OTHERS

1. Notice of Acceptance No. **23-1222.10** issued to Trulite Glass & Aluminum Solutions, LLC for their Series “**3100-Resistor**” Aluminum Storefront/Window Wall System – L.M.I.”, approved on 02/08/24 and expiring on 03/31/25.


Manuel Perez, P.E.
Product Control Examiner
NOA No. 25-0401.01
Expiration Date: March 31, 2030
Approval Date: April 17, 2025



TYPICAL ELEVATIONS

SERIES 3100/L-3100 ALUMINUM WINDOW WALL SYSTEM

- WINDOW WALL SYSTEM IS RATED FOR LARGE & SMALL MISSILE IMPACT. SHUTTERS ARE NOT REQUIRED.
- THIS SYSTEM MAY BE USED IN CONJUNCTION WITH MIAMI DADE COUNTY APPROVED ENTRANCE DOORS.
- CODE REQUIREMENTS FOR SAFEGUARDS MUST BE OBSERVED.
- THIS PRODUCT HAS BEEN DESIGNED AND TESTED TO COMPLY WITH THE REQUIREMENTS OF THE 8TH EDITION (2023) FLORIDA BUILDING CODE INCLUDING HIGH VELOCITY HURRICANE ZONE (HVHZ).
- WOOD BUCKS BY OTHERS, MUST BE ANCHORED PROPERLY TO TRANSFER LOADS TO THE STRUCTURE.
- ANCHORS SHALL BE AS LISTED, SPACED AS SHOWN ON DETAILS, ANCHORS EMBEDMENT TO BASE MATERIAL SHALL BE BEYOND WALL DRESSING OR STUCCO.
- ANCHORING OR LOADING CONDITIONS NOT SHOWN IN THESE DETAILS ARE NOT PART OF THIS APPROVAL.
- A LOAD DURATION INCREASE IS USED IN DESIGN OF ANCHORS INTO WOOD ONLY.
- MATERIALS INCLUDING BUT NOT LIMITED TO STEEL / METAL SCREWS THAT COME INTO CONTACT WITH OTHER DISSIMILAR MATERIALS SHALL MEET THE REQUIREMENTS OF 2023 FLORIDA BLDG. CODE SECTION AS APPLICABLE.
- ULTIMATE DESIGN LOAD OBTAINED FROM ASCE7-22, MULTIPLY BY 0.6 SHALL BE LESS THAN OR EQUAL TO MAX. DESIGN LOAD IN THIS DOCUMENT.
- MANUFACTURER'S LABEL SHALL BE LOCATED ON A READILY VISIBLE LOCATION IN ACCORDANCE WITH SECTION 1709.9.3 OF FLORIDA BUILDING CODE LABELING TO COMPLY WITH SECTION 1709.9.2.

INSTRUCTIONS:
USE CHARTS AS FOLLOWS.

- STEP 1:** DETERMINE DESIGN WIND LOAD REQUIREMENTS BASED ON WIND VELOCITY, BLDG. HEIGHT, WIND ZONE USING APPLICABLE ASCE 7-22 STANDARD.
- STEP 2:** SEE CHARTS ON SHEET 2 FOR DESIGN LOAD CAPACITY OF DESIRED GLASS SIZE BASED ON APPLICABLE WIND DURATION.
- STEP 3:** CHECK MULLION AND JAMB CAPACITY FOR A GIVEN SPACING AND HEIGHT USING CHARTS ON SHEET 3 & 4. THE CAPACITY SHOULD EXCEED THE DESIGN LOAD.
- STEP 4:** USING CHART ON SHEETS 5 SELECT ANCHOR OPTION WITH DESIGN RATING MORE THAN DESIGN LOAD SPECIFIED IN STEP 1 ABOVE.
- STEP 5:** THE LOWEST VALUE RESULTING FROM STEPS 2, 3 AND 4 SHALL APPLY TO ENTIRE SYSTEM.

S* = 11" O.C. FOR ALL TYPICAL ANCHORS EXCEPT 10" O.C. FOR 1/4" ULTRACON INTO GROUT FILLED BLOCK & MULLION SPACE ≥ 64"

THIS PRODUCT HAS BEEN TESTED FOR WATER RESISTANCE INFILTRATION UP TO 50 PSF.

PRODUCT RENEWED
as complying with the Florida
Building Code
NOA-No. **25-0401.01**
Expiration Date: **03/31/2030**
By: *Manuel Perez*
Miami-Dade Product Control

Trulite
GLASS & ALUMINUM SOLUTIONS™
http://www.trulite.com
403 WESTPARK COURT, Suite 201
PEACHTREE CITY, GA 30269
p. 800-432-8132

PRODUCT:
Resistor
3100 ALUMINUM
STOREFRONT WALL-LMI
Resistor
PRODUCT SERIES

REV#	DATE/REMARKS
REV5	12.20.2023 UPDATE INTERLAYER

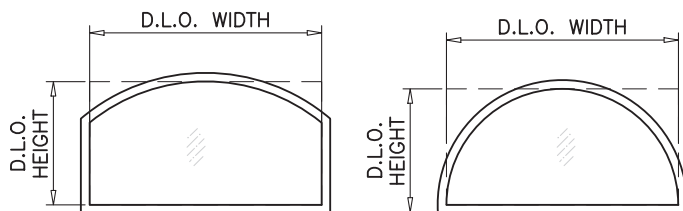
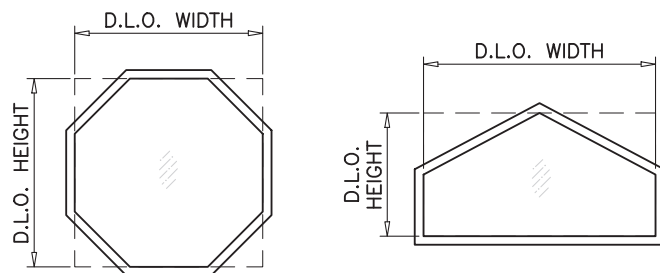
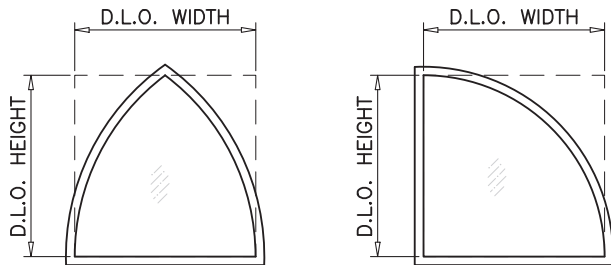
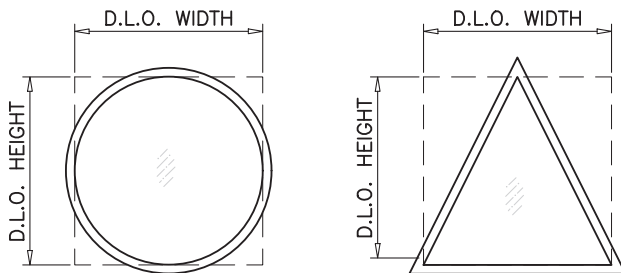
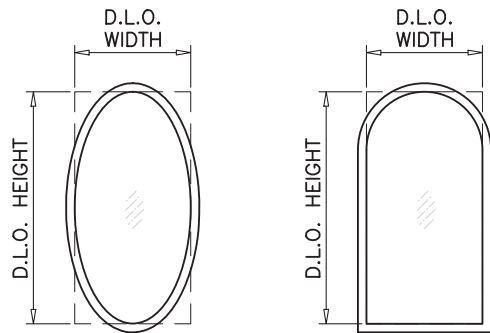
ENGINEER:
MCY ENGINEERING, INC.
GLAZING CONSULTANT
12781 Miramar Parkway #301
Miramar, FL 33027
P: 305-271-0117
Email: mcy@mcyengineering
www.MCYEngineering.com

STAMP:

December 20th, 2023

PRODUCT CONTROL APPROVAL:
PRODUCT REVISED
As complying with the Florida
Building Code
NOA-No. **23-1222.10**
Expiration Date: **03/31/2025**
By: *Manuel Perez*
Miami-Dade Product Control

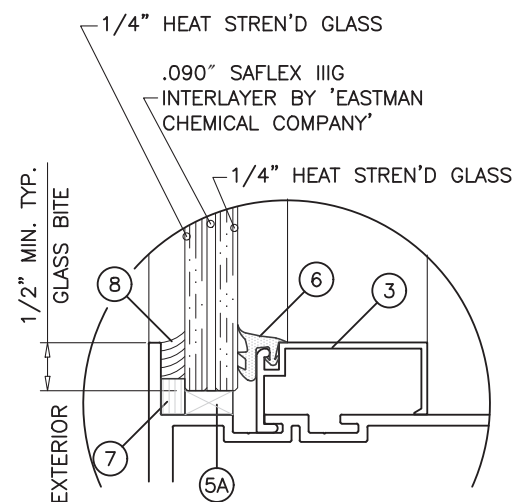
DRAWN: James	DRAWING No:
DATE: 12.20.2023	1 OF 13
DWG: AD11-21	



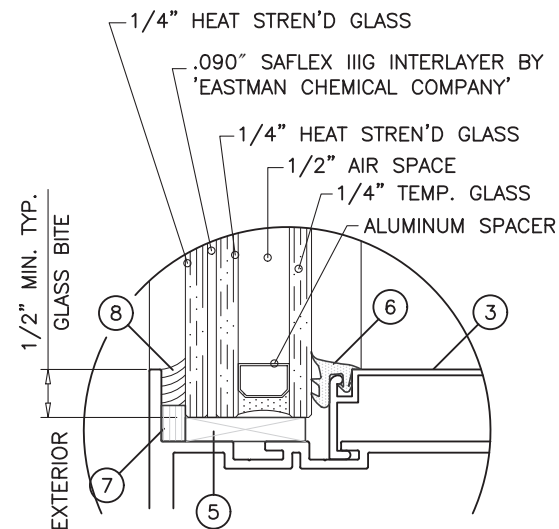
PRODUCT RENEWED
as complying with the Florida
Building Code
NOA-No. **25-0401.01**
Expiration Date: **03/31/2030**
By: *Manuel Perez*
Miami-Dade Product Control

ALLOWABLE LOADS FOR ALTERNATE SHAPES AS SHOWN ABOVE OR SIMILAR CAN BE VERIFIED BY INSCRIBING PICTURE WINDOW SHAPE WITHIN SQUARE OR RECTANGLE AS SHOWN IN DOTTED LINES AND OBTAINING ALLOWABLE LOADS FROM THOSE SHAPES. SINGLE LITES MAY BE INSTALLED VERTICALLY AS SHOWN ABOVE OR HORIZONTALLY.

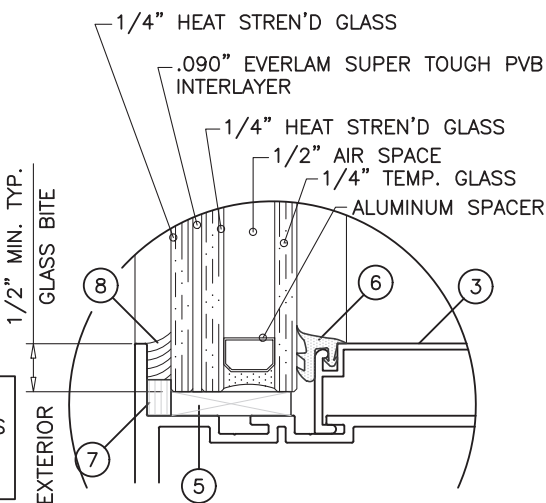
FOR ALTERNATE SHAPES LIMIT MAX. LOADS TO ± 90.0 PSF
SEE SHEET 3 FOR D.L.O. WIDTHS AND HEIGHTS.
USE ANCHOR TYPE 'D' AT 3" FROM FRAME ENDS AND 12" O.C. MAX. SPACING.



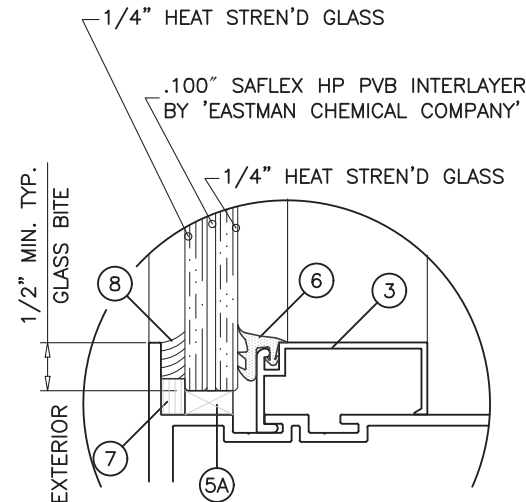
GLASS TYPE 'A'
9/16" NOMINAL OVERALL



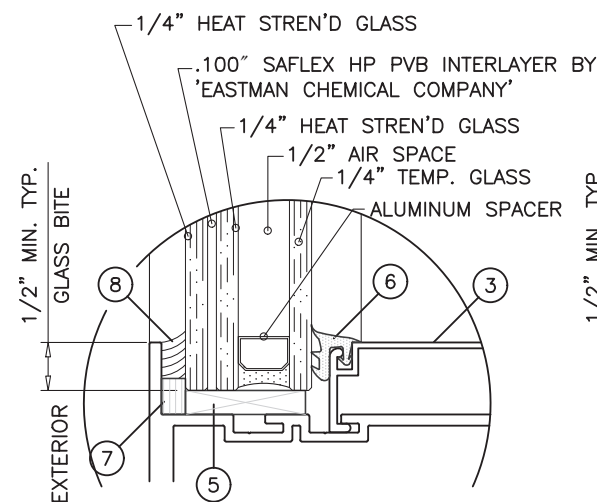
GLASS TYPE 'A1'
1-5/16" NOMINAL OVERALL



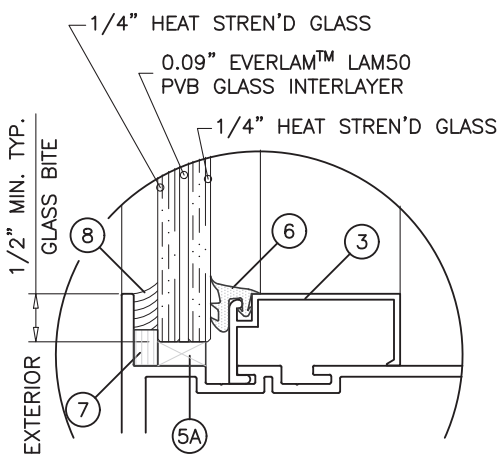
GLASS TYPE 'E'
1-5/16" NOMINAL OVERALL



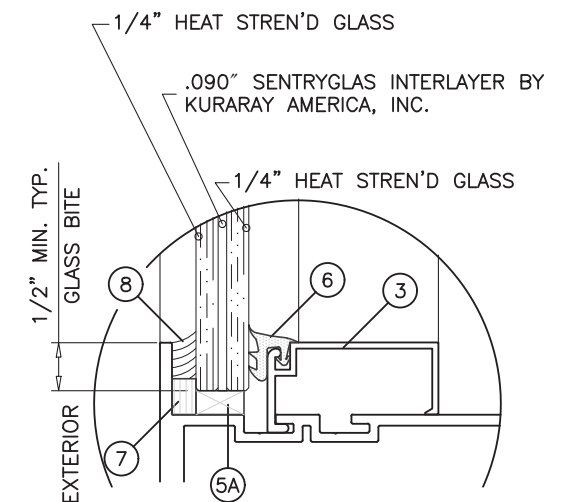
GLASS TYPE 'B'
9/16" NOMINAL OVERALL



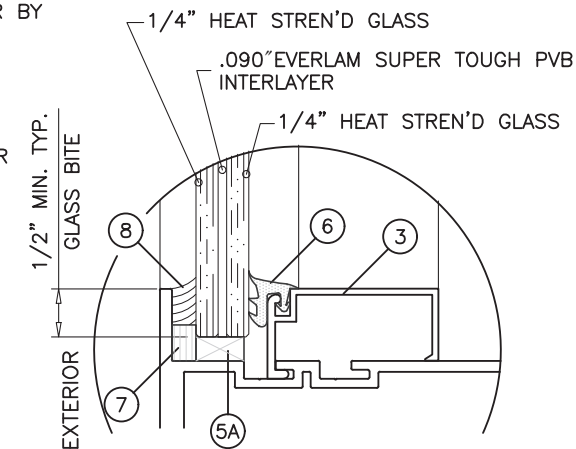
GLASS TYPE 'B1'
1-5/16" NOMINAL OVERALL



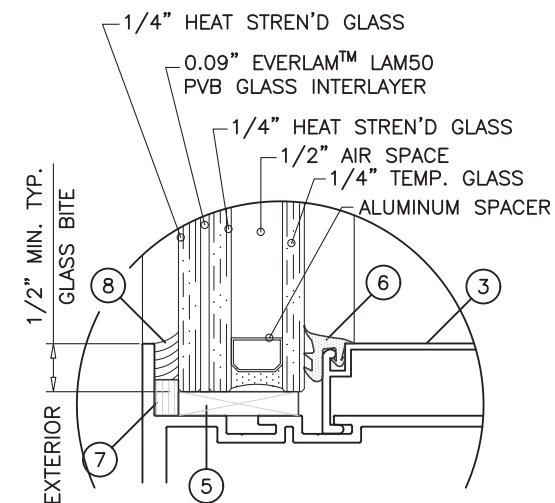
GLASS TYPE 'F'
9/16" NOMINAL OVERALL



GLASS TYPE 'C'
9/16" NOMINAL OVERALL



GLASS TYPE 'D'
9/16" NOMINAL OVERALL



GLASS TYPE 'G'
1-5/16" NOMINAL OVERALL

GLAZING OPTION

Trulite
GLASS & ALUMINUM SOLUTIONS™
<http://www.trulite.com>
403 WESTPARK COURT, Suite 201
PEACHTREE CITY, GA 30269
p. 800-432-8132

PRODUCT:

Resistor
3100 ALUMINUM
STOREFRONT WALL-LMI

Resistor
PRODUCT SERIES

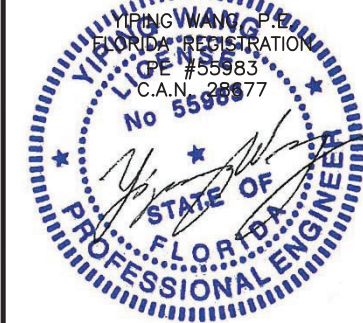
REV#	DATE/REMARKS
REV5	12.20.2023 UPDATE INTERLAYER

ENGINEER:

MCY ENGINEERING, INC.
GLAZING CONSULTANT

12781 Miramar Parkway #301
Miramar, FL 33027
P: 305-271-0117
Email: mcy@mcyengineering.com
www.MCYEngineering.com

STAMP:



December 20th, 2023

PRODUCT CONTROL APPROVAL:

PRODUCT REVISED
As complying with the Florida
Building Code
NOA-No. **23-1222.10**
Expiration Date: **03/31/2025**
By: *Manuel Perez*
Miami-Dade Product Control

DRAWN: James

DATE: 12.20.2023

DWG: AD11-21

DRAWING No:

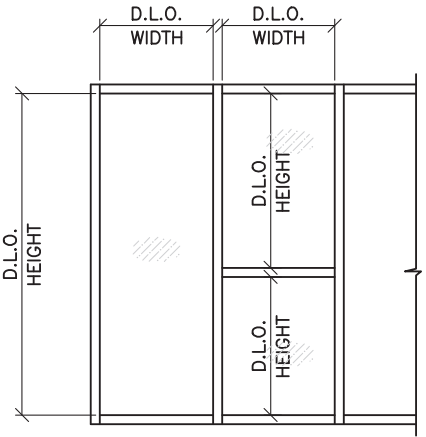
2 OF 13

GLASS LOAD CAPACITY – PSF								
NOMINAL DIMS.		GLASS 'A'	GLASS 'A1'	GLASS 'B'	GLASS 'B1'	GLASS 'C'	GLASS 'D&E'	GLASS 'F&G'
D.L.O. WIDTH	D.L.O. HEIGHT	EXT. (+) INT. (–)	EXT. (+) INT. (–)	EXT. (+) INT. (–)	EXT. (+) INT. (–)	EXT. (+) INT. (–)	EXT. (+) INT. (–)	EXT. (+) INT. (–)
20"	68"	70.0	80.0	100.0	100.0	100.0	+70/–85	+65/–75
26"		70.0	80.0	100.0	100.0	100.0	+70/–85	+65/–75
32"		70.0	80.0	100.0	100.0	100.0	+70/–85	+65/–75
38"		70.0	80.0	100.0	100.0	100.0	+70/–85	+65/–75
44"		70.0	80.0	100.0	100.0	100.0	+70/–85	+65/–75
53"		70.0	80.0	100.0	100.0	100.0	+70/–85	+65/–75
56"		70.0	80.0	100.0	100.0	100.0	+70/–85	–
62"		70.0	80.0	100.0	100.0	100.0	–	–
68"		70.0	–	100.0	100.0	100.0	–	–
72"		70.0	–	100.0	100.0	100.0	–	–
20"	74"	70.0	80.0	100.0	100.0	100.0	+70/–85	+65/–75
26"		70.0	80.0	100.0	100.0	100.0	+70/–85	+65/–75
32"		70.0	80.0	100.0	100.0	100.0	+70/–85	+65/–75
38"		70.0	80.0	100.0	100.0	100.0	+70/–85	+65/–75
44"		70.0	80.0	100.0	100.0	100.0	+70/–85	+65/–75
48"		70.0	80.0	100.0	100.0	100.0	+70/–85	+65/–75
56"		70.0	80.0	100.0	100.0	100.0	+70/–85	–
62"		70.0	–	100.0	100.0	100.0	–	–
68"		–	–	100.0	100.0	100.0	–	–
72"		–	–	100.0	100.0	100.0	–	–
20"	80"	70.0	80.0	100.0	100.0	100.0	+70/–85	+65/–75
26"		70.0	80.0	100.0	100.0	100.0	+70/–85	+65/–75
32"		70.0	80.0	100.0	100.0	100.0	+70/–85	+65/–75
38"		70.0	80.0	100.0	100.0	100.0	+70/–85	+65/–75
45"		70.0	80.0	100.0	100.0	100.0	+70/–85	+65/–75
50"		70.0	80.0	100.0	100.0	100.0	+70/–85	–
56"		70.0	–	100.0	100.0	100.0	–	–
62"		–	–	100.0	100.0	100.0	–	–
68"		–	–	100.0	100.0	100.0	–	–
72"		–	–	100.0	100.0	100.0	–	–
20"	86"	70.0	80.0	100.0	100.0	100.0	+70/–85	+65/–75
26"		70.0	80.0	100.0	100.0	100.0	+70/–85	+65/–75
32"		70.0	80.0	100.0	100.0	100.0	+70/–85	+65/–75
42"		70.0	80.0	100.0	100.0	100.0	+70/–85	+65/–75
44"		70.0	80.0	100.0	100.0	100.0	+70/–85	–
50"		70.0	–	100.0	100.0	100.0	–	–
56"		70.0	–	100.0	100.0	100.0	–	–
62"		–	–	100.0	100.0	100.0	–	–
68"		–	–	100.0	100.0	100.0	–	–
72"		–	–	100.0	100.0	100.0	–	–
20"	92"	70.0	80.0	100.0	100.0	100.0	+70/–85	+65/–75
26"		70.0	80.0	100.0	100.0	100.0	+70/–85	+65/–75
32"		70.0	80.0	100.0	100.0	100.0	+70/–85	+65/–75
39.25"		70.0	80.0	100.0	100.0	100.0	+70/–85	+65/–75
45.25"		70.0	80.0	100.0	100.0	100.0	+70/–85	–
50"		70.0	–	100.0	100.0	100.0	–	–
56"		–	–	100.0	100.0	100.0	–	–
62"		–	–	100.0	100.0	100.0	–	–
68"		–	–	100.0	100.0	100.0	–	–
72"		–	–	100.0	100.0	–	–	–

GLASS LOAD CAPACITY – PSF								
NOMINAL DIMS.		GLASS 'A'	GLASS 'A1'	GLASS 'B'	GLASS 'B1'	GLASS 'C'	GLASS 'D&E'	GLASS 'F&G'
D.L.O. WIDTH	D.L.O. HEIGHT	EXT. (+) INT. (–)	EXT. (+) INT. (–)	EXT. (+) INT. (–)	EXT. (+) INT. (–)	EXT. (+) INT. (–)	EXT. (+) INT. (–)	EXT. (+) INT. (–)
20"	98"	70.0	80.0	100.0	100.0	100.0	+70/–85	+65/–75
26"		70.0	80.0	100.0	100.0	100.0	+70/–85	+65/–75
36"		70.0	80.0	100.0	100.0	100.0	+70/–85	+65/–75
38"		70.0	80.0	100.0	100.0	100.0	+70/–85	–
44"		70.0	–	100.0	100.0	100.0	–	–
50"		–	–	100.0	100.0	100.0	–	–
56"		–	–	100.0	100.0	100.0	–	–
62"		–	–	100.0	100.0	100.0	–	–
68"		–	–	100.0	100.0	–	–	–
20"	104"	70.0	80.0	100.0	100.0	100.0	+70/–85	+65/–75
26"		70.0	80.0	100.0	100.0	100.0	+70/–85	+65/–75
34"		70.0	80.0	100.0	100.0	100.0	+70/–85	+65/–75
38"		70.0	80.0	100.0	100.0	100.0	+70/–85	–
44"		70.0	–	100.0	100.0	100.0	–	–
50"		–	–	100.0	100.0	100.0	–	–
56"		–	–	100.0	100.0	100.0	–	–
62"		–	–	100.0	100.0	100.0	–	–
68"		–	–	100.0	100.0	–	–	–
20"	110"	70.0	80.0	100.0	100.0	100.0	+70/–85	+65/–75
26"		70.0	80.0	100.0	100.0	100.0	+70/–85	+65/–75
32"		70.0	80.0	100.0	100.0	100.0	+70/–85	+65/–75
38"		70.0	80.0	100.0	100.0	100.0	–	–
44"		70.0	–	100.0	100.0	100.0	–	–
50"		–	–	100.0	100.0	100.0	–	–
56"		–	–	100.0	100.0	100.0	–	–
62"		–	–	97.5	100.0	–	–	–
68"		–	–	97.5	100.0	–	–	–
20"	116"	70.0	80.0	100.0	100.0	100.0	+70/–85	+65/–75
31"		70.0	80.0	100.0	100.0	100.0	+70/–85	+65/–75
32"		70.0	80.0	100.0	100.0	100.0	+70/–85	–
38"		70.0	–	100.0	100.0	100.0	–	–
44"		–	–	100.0	100.0	100.0	–	–
50"		–	–	100.0	100.0	100.0	–	–
56"		–	–	97.9	100.0	97.9	–	–
62"		–	–	94.6	100.0	–	–	–
68"		–	–	94.6	100.0	–	–	–
20"	122"	70.0	80.0	100.0	100.0	100.0	+70/–85	+65/–75
29"		70.0	80.0	100.0	100.0	100.0	+70/–85	+65/–75
32"		70.0	80.0	100.0	100.0	100.0	+70/–85	–
38"		70.0	–	100.0	100.0	100.0	–	–
44"		–	–	100.0	100.0	100.0	–	–
50"		–	–	100.0	100.0	100.0	–	–
56"		–	–	100.0	100.0	100.0	–	–
62"		–	–	100.0	100.0	100.0	–	–
68"		–	–	100.0	100.0	100.0	–	–
20"	128"	70.0	80.0	100.0	100.0	100.0	+70/–85	+65/–75
28"		70.0	80.0	100.0	100.0	100.0	+70/–85	+65/–75
32"		70.0	80.0	100.0	100.0	100.0	+70/–85	–
38"		70.0	–	100.0	100.0	100.0	–	–
44"		–	–	100.0	100.0	100.0	–	–
50"		–	–	100.0	100.0	100.0	–	–
56"		–	–	100.0	100.0	100.0	–	–
62"		–	–	100.0	100.0	100.0	–	–
68"		–	–	100.0	100.0	100.0	–	–
72"		–	–	100.0	100.0	–	–	–

GLASS LOAD CAPACITY – PSF								
NOMINAL DIMS.		GLASS 'A'	GLASS 'A1'	GLASS 'B'	GLASS 'B1'	GLASS 'C'	GLASS 'D&E'	GLASS 'F&G'
D.L.O. WIDTH	D.L.O. HEIGHT	EXT. (+) INT. (–)	EXT. (+) INT. (–)	EXT. (+) INT. (–)	EXT. (+) INT. (–)	EXT. (+) INT. (–)	EXT. (+) INT. (–)	EXT. (+) INT. (–)
20"	134"	70.0	80.0	100.0	100.0	100.0	+70/–85	+65/–75
26"		70.0	80.0	100.0	100.0	100.0	+70/–85	+65/–75
32"		70.0	–	100.0	100.0	100.0	–	–
38"		–	–	100.0	100.0	100.0	–	–
44"		–	–	100.0	100.0	100.0	–	–
50"		–	–	99.8	100.0	–	–	–
20"	140"	70.0	80.0	100.0	100.0	100.0	+70/–85	+65/–75
25"		70.0	80.0	100.0	100.0	100.0	+70/–85	+65/–75
32"		70.0	–	100.0	100.0	100.0	–	–
38"		–	–	100.0	100.0	100.0	–	–
44"		–	–	100.0	100.0	100.0	–	–

NOTE:
GLASS CAPACITIES ON THIS SHEET ARE
BASED ON ASTM E1300–16 (3 SEC. GUSTS)



PRODUCT RENEWED
as complying with the Florida
Building Code
NOA-No. **25-0401.01**
Expiration Date: **03/31/2030**
By: *Manuel Perez*
Miami-Dade Product Control



http://www.trulite.com
403 WESTPARK COURT, Suite 201
PEACHTREE CITY, GA 30269
p. 800-432-8132

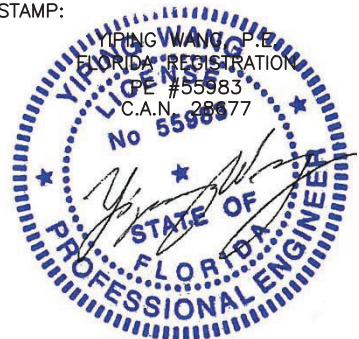
PRODUCT:
Resistor
3100 ALUMINUM
STOREFRONT WALL-LMI



REV N	DATE/REMARKS
REV 5	12.20.2023 UPDATE INTERLAYER

ENGINEER:

MCY ENGINEERING, INC.
GLAZING CONSULTANT
12781 Miramar Parkway #301
Miramar, FL 33027
P: 305-271-0117
Email: mcy@mcyengineering.com
www.MCYEngineering.com

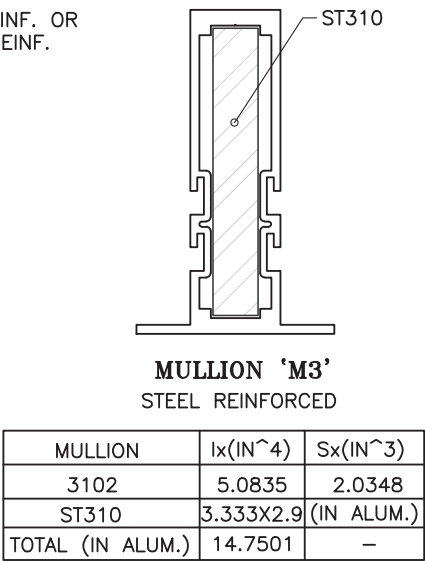
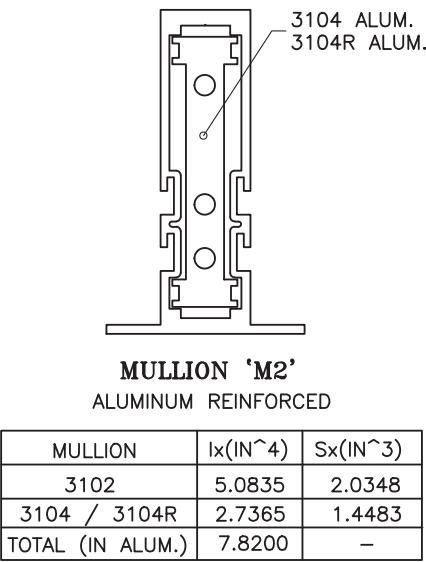
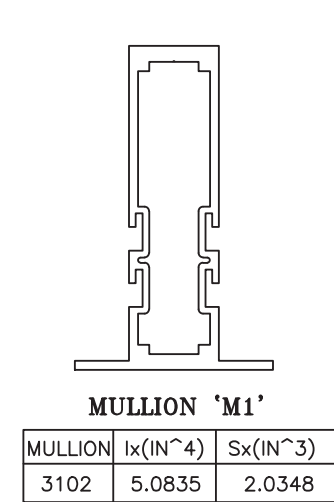
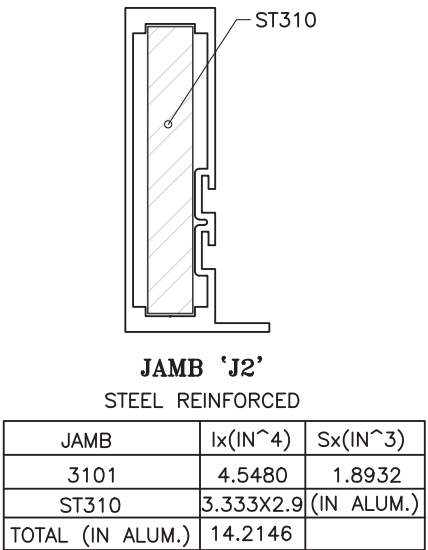
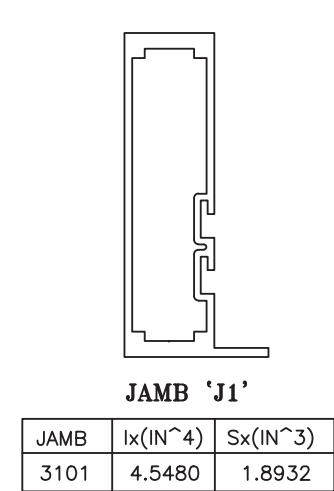
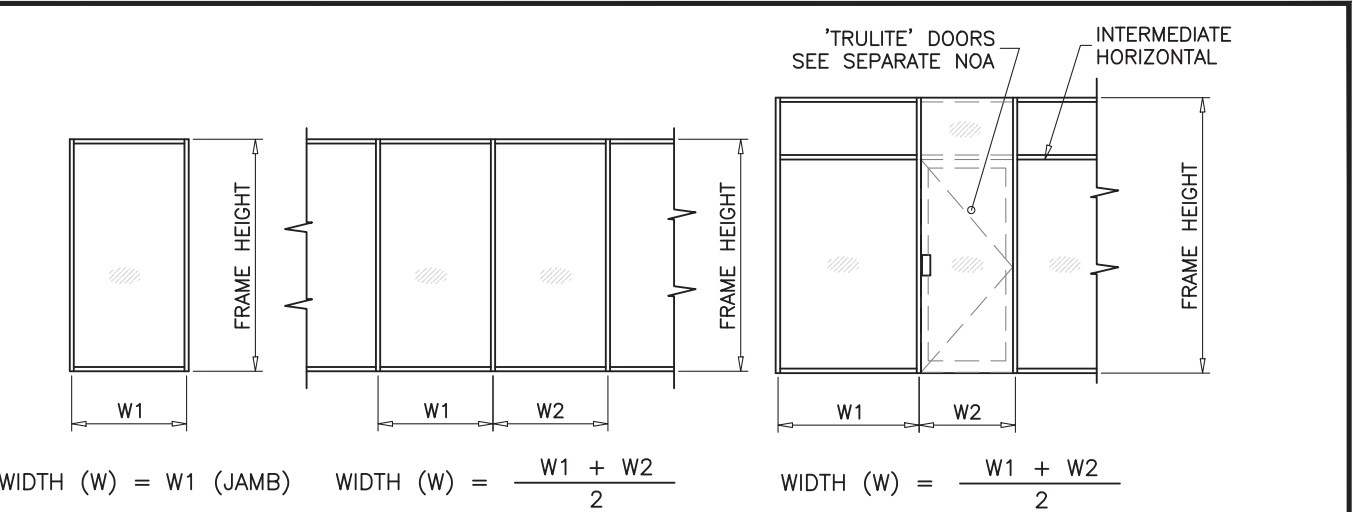
STAMP:

December 20th, 2023

PRODUCT CONTROL APPROVAL:
PRODUCT REVISED
As complying with the Florida
Building Code
NOA-No. **23-1222.10**
Expiration Date: **03/31/2025**
By: *Manuel Perez*
Miami-Dade Product Control

DRAWN:James	DRAWING No:
DATE: 12.20.2023	3 OF 13
DWG: AD11–21	

JAMB/MULLION LOAD CAPACITY – PSF WITHOUT INTERMEDIATE HORIZONTALS				
NOMINAL DIMS.		MULL 'M1'	JAMB 'J1' MULL 'M2'	JAMB 'J2' MULL 'M3'
WIDTH (W)	FRAME HEIGHT	EXT. (+) INT. (–)	EXT. (+) INT. (–)	EXT. (+) INT. (–)
24"	78"	80.0	100.0	100.0
30"		80.0	100.0	100.0
36"		80.0	100.0	100.0
42"		80.0	100.0	100.0
48"		80.0	100.0	100.0
54"		80.0	100.0	100.0
60"		80.0	100.0	100.0
66"		–	100.0	100.0
72"		–	100.0	100.0
24"	84"	80.0	100.0	100.0
30"		80.0	100.0	100.0
36"		80.0	100.0	100.0
42"		80.0	100.0	100.0
48"		80.0	100.0	100.0
54"		80.0	100.0	100.0
60"		80.0	100.0	100.0
66"		–	100.0	100.0
72"		–	100.0	100.0
24"	90"	80.0	100.0	100.0
30"		80.0	100.0	100.0
36"		80.0	100.0	100.0
42"		80.0	100.0	100.0
48"		80.0	100.0	100.0
54"		77.4	100.0	100.0
60"		–	100.0	100.0
66"		–	100.0	100.0
72"		–	100.0	100.0
24"	96"	80.0	100.0	100.0
30"		80.0	100.0	100.0
36"		80.0	100.0	100.0
42"		80.0	100.0	100.0
48"		72.8	100.0	100.0
54"		66.3	100.0	100.0
60"		–	96.8	96.8
66"		–	90.9	90.9
72"		–	86.4	86.4
24"	102"	–	100.0	100.0
30"		–	100.0	100.0
36"		–	100.0	100.0
42"		–	100.0	100.0
48"		–	99.5	99.5
54"		–	90.4	90.4
60"		–	83.3	83.3
66"		–	77.9	77.9
72"		–	73.7	73.7

JAMB/MULLION LOAD CAPACITY – PSF WITHOUT INTERMEDIATE HORIZONTALS				
NOMINAL DIMS.		MULL 'M1'	JAMB 'J1' MULL 'M2'	JAMB 'J2' MULL 'M3'
WIDTH (W)	FRAME HEIGHT	EXT. (+) INT. (–)	EXT. (+) INT. (–)	EXT. (+) INT. (–)
24"	108"	–	100.0	100.0
30"		–	100.0	100.0
36"		–	100.0	100.0
42"		–	98.0	98.0
48"		–	87.1	87.1
54"		–	78.9	78.9
60"		–	72.5	72.5
66"		–	67.6	67.6
24"	114"	–	100.0	100.0
30"		–	100.0	100.0
36"		–	98.2	98.2
42"		–	85.4	85.4
48"		–	76.0	76.0
54"		–	69.0	69.0
60"		–	63.5	63.5
24"	120"	–	100.0	100.0
30"		–	99.5	99.5
36"		–	83.8	83.8
42"		–	72.8	72.8
48"		–	64.7	64.7
54"		–	58.6	60.0
60"		–	53.8	60.0
24"	126"	–	–	60.0
30"		–	–	60.0
36"		–	–	60.0
42"		–	–	60.0
48"		–	–	60.0
54"		–	–	60.0
24"	132"	–	–	60.0
30"		–	–	60.0
36"		–	–	60.0
42"		–	–	60.0
48"		–	–	60.0
24"	138"	–	–	60.0
30"		–	–	60.0
36"		–	–	60.0
42"		–	–	60.0
48"		–	–	60.0
24"	144"	–	–	60.0
30"		–	–	60.0
36"		–	–	60.0
42"		–	–	60.0
48"		–	–	57.6



PRODUCT RENEWED
as complying with the Florida
Building Code
NOA-No. **25-0401.01**
Expiration Date: **03/31/2030**
By: *Manuel Perez*
Miami-Dade Product Control

STEP 3: MULLION LOAD CAPACITIES



GLASS & ALUMINUM SOLUTIONS™

http://www.trulite.com

403 WESTPARK COURT, Suite 201
PEACHTREE CITY, GA 30269
p. 800-432-8132

PRODUCT:

Resistor
3100 ALUMINUM
STOREFRONT WALL-LMI

Resistor
PRODUCT SERIES

REV#	DATE/REMARKS
REV5	12.20.2023 UPDATE INTERLAYER

ENGINEER:

MCY ENGINEERING, INC.
GLAZING CONSULTANT

12781 Miramar Parkway #301
Miramar, FL 33027
P: 305-271-0117
Email: mcy@mcysengineering
www.MCYEngineering.com

STAMP:

YIPING WANG, P.E.
FLORIDA REGISTRATION
PE #55983
C.A.N. 28877

December 20th, 2023

PRODUCT CONTROL APPROVAL:

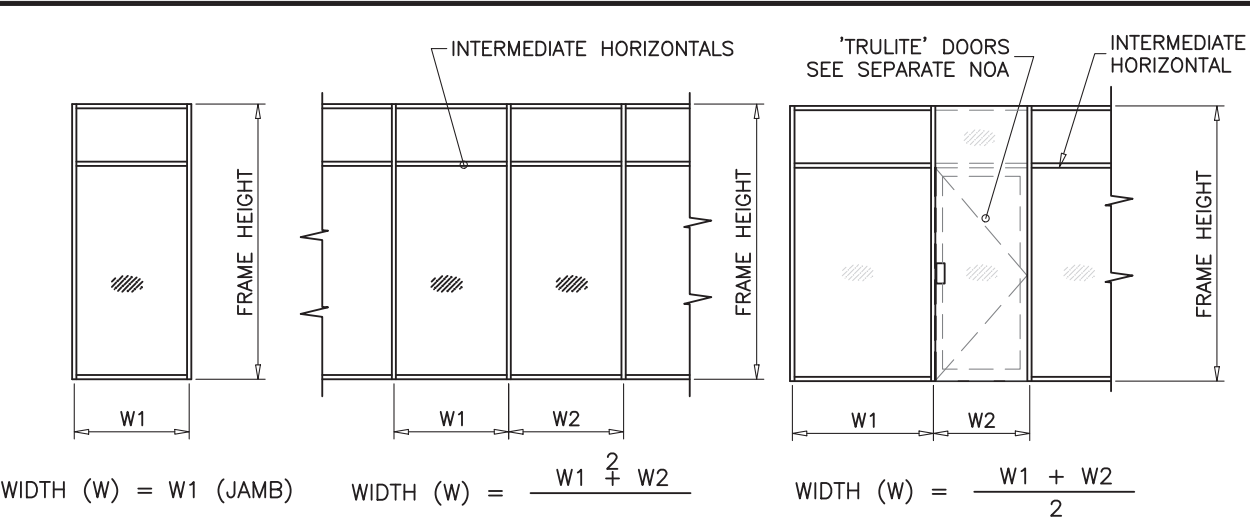
PRODUCT REVISED
As complying with the Florida
Building Code
NOA-No. **23-1222.10**
Expiration Date: **03/31/2025**
By: *Manuel Perez*
Miami-Dade Product Control

DRAWN:James	DRAWING No:
DATE: 12.20.2023	4 OF 13
DWG: AD11–21	

JAMB/MULLION LOAD CAPACITY – PSF				
WITH INTERMEDIATE HORIZONTALS				
NOMINAL DIMS.		MULL ‘M1’	JAMB ‘J1’ MULL ‘M2’	JAMB ‘J2’ MULL ‘M3’
WIDTH (W)	FRAME HEIGHT	EXT. (+) INT. (–)	EXT. (+) INT. (–)	EXT. (+) INT. (–)
24”	78”	80.0	100.0	100.0
30”		80.0	100.0	100.0
36”		80.0	100.0	100.0
42”		80.0	100.0	100.0
48”		80.0	100.0	100.0
54”		80.0	100.0	100.0
60”		80.0	100.0	100.0
66”		–	100.0	100.0
72”		–	100.0	100.0
24”	84”	80.0	100.0	100.0
30”		80.0	100.0	100.0
36”		80.0	100.0	100.0
42”		80.0	100.0	100.0
48”		80.0	100.0	100.0
54”		80.0	100.0	100.0
60”		72.1	100.0	100.0
66”		–	100.0	100.0
72”		–	93.9	93.9
24”	90”	80.0	100.0	100.0
30”		80.0	100.0	100.0
36”		80.0	100.0	100.0
42”		80.0	100.0	100.0
48”		78.6	100.0	100.0
54”		69.8	100.0	100.0
60”		–	97.0	97.0
66”		–	88.2	88.2
72”		–	80.9	80.9
24”	96”	80.0	100.0	100.0
30”		80.0	100.0	100.0
36”		80.0	100.0	100.0
42”		78.9	100.0	100.0
48”		69.0	100.0	100.0
54”		61.4	93.7	93.7
60”		–	84.3	84.3
66”		–	76.7	76.7
72”		–	70.3	70.3
24”	102”	–	100.0	100.0
30”		–	100.0	100.0
36”		–	100.0	100.0
42”		–	100.0	100.0
48”		–	92.9	92.9
54”		–	82.6	82.6
60”		–	74.3	74.3
66”		–	67.6	67.6
72”		–	61.9	61.9

JAMB/MULLION LOAD CAPACITY – PSF				
WITH INTERMEDIATE HORIZONTALS				
NOMINAL DIMS.		MULL ‘M1’	JAMB ‘J1’ MULL ‘M2’	JAMB ‘J2’ MULL ‘M3’
WIDTH (W)	FRAME HEIGHT	EXT. (+) INT. (–)	EXT. (+) INT. (–)	EXT. (+) INT. (–)
24”	108”	–	100.0	100.0
30”		–	100.0	100.0
36”		–	100.0	100.0
42”		–	94.7	94.7
48”		–	82.9	82.9
54”		–	73.7	73.7
60”		–	66.3	66.3
66”		–	60.3	60.3
24”	114”	–	100.0	100.0
30”		–	100.0	100.0
36”		–	94.5	94.5
42”		–	81.0	81.0
48”		–	70.9	70.9
54”		–	63.0	63.0
60”		–	56.7	60.0
24”	120”	–	100.0	100.0
30”		–	97.3	97.3
36”		–	81.1	81.1
42”		–	69.5	69.5
48”		–	60.8	60.8
54”		–	54.0	60.0
60”		–	48.6	60.0
24”	126”	–	–	60.0
30”		–	–	60.0
36”		–	–	60.0
42”		–	–	60.0
48”		–	–	60.0
54”		–	–	60.0
24”	132”	–	–	60.0
30”		–	–	60.0
36”		–	–	60.0
42”		–	–	60.0
48”		–	–	60.0
24”	138”	–	–	60.0
30”		–	–	60.0
36”		–	–	60.0
42”		–	–	60.0
48”		–	–	60.0
24”	144”	–	–	60.0
30”		–	–	60.0
36”		–	–	60.0
42”		–	–	60.0
48”		–	–	55.2

PRODUCT RENEWED
as complying with the Florida
Building Code
NOA-No. **25-0401.01**
Expiration Date: **03/31/2030**
By: *Manuel Perez*
Miami-Dade Product Control



JAMB ‘J1’		
JAMB	Ix(IN^4)	Sx(IN^3)
3101	4.5480	1.8932

MULLION ‘M1’		
MULLION	Ix(IN^4)	Sx(IN^3)
3102	5.0835	2.0348

JAMB ‘J2’ STEEL REINFORCED		
JAMB	Ix(IN^4)	Sx(IN^3)
3101	4.5480	1.8932
ST310	3.333X2.9 (IN ALUM.)	
TOTAL (IN ALUM.)	14.2146	

MULLION ‘M2’ ALUMINUM REINFORCED		
MULLION	Ix(IN^4)	Sx(IN^3)
3102	5.0835	2.0348
3104 / 3104R	2.7365	1.4483
TOTAL (IN ALUM.)	7.8200	–

MULLION ‘M3’ STEEL REINFORCED		
MULLION	Ix(IN^4)	Sx(IN^3)
3102	5.0835	2.0348
ST310	3.333X2.9 (IN ALUM.)	
TOTAL (IN ALUM.)	14.7501	–

STEP 3: MULLION LOAD CAPACITIES

Trulite

GLASS & ALUMINUM SOLUTIONS™

http://www.trulite.com

403 WESTPARK COURT, Suite 201
PEACHTREE CITY, GA 30269
p. 800-432-8132

PRODUCT:

Resistor
3100 ALUMINUM
STOREFRONT WALL-LMI

Resistor
PRODUCT SERIES

REV#	DATE/REMARKS
REV5	12.20.2023 UPDATE INTERLAYER

ENGINEER:

MCY ENGINEERING, INC.
GLAZING CONSULTANT

12781 Miramar Parkway #301
Miramar, FL 33027
P: 305-271-0117
Email: mcy@mcyengineering
www.MCYEngineering.com

STAMP:

YIPING WANG, P.E.
FLORIDA REGISTRATION
PE #55983
C.A.N. 28877

December 20th, 2023

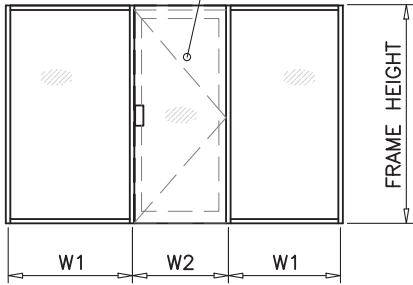
PRODUCT CONTROL APPROVAL:

PRODUCT REVISED
As complying with the Florida
Building Code
NOA-No. **23-1222.10**
Expiration Date: **03/31/2025**
By: *Manuel Perez*
Miami-Dade Product Control

DRAWN:James	DRAWING No:
DATE: 12.20.2023	5 OF 13
DWG: AD11–21	

DOOR MULLION LOAD CAPACITY – PSF			
NOMINAL DIMS.		WITHOUT REINFORCING	WITH REINFORCING
WIDTH (W)	FRAME HEIGHT	EXT.(+) / INT.(–)	EXT.(+) / INT.(–)
30”	81–1/4”	87.0	87.0
36”		87.0	87.0
42”		87.0	87.0
48”		87.0	87.0
54”		–	87.0
60”		–	87.0
30”	85–1/4”	87.0	87.0
36”		87.0	87.0
42”		87.0	87.0
48”		84.5	87.0
54”		–	87.0
60”		–	87.0
30”	91–1/4”	87.0	87.0
36”		87.0	87.0
42”		80.7	87.0
48”		–	87.0
54”		–	87.0
60”		–	87.0
30”	97–1/4”	87.0	87.0
36”		77.8	87.0
42”		66.7	87.0
48”		–	87.0
54”		–	87.0
60”		–	79.1
30”	102”	–	87.0
36”		–	87.0
42”		–	87.0
48”		–	87.0
54”		–	79.9
60”		–	71.9
30”	108”	–	87.0
36”		–	87.0
42”		–	87.0
48”		–	79.3
54”		–	70.5
60”		–	63.5
30”	114”	–	87.0
36”		–	87.0
42”		–	77.1
48”		–	67.5
54”		–	60.0
60”		–	54.0
30”	120”	–	87.0
36”		–	77.1
42”		–	66.1
48”		–	57.8
54”		–	51.4
60”		–	46.3

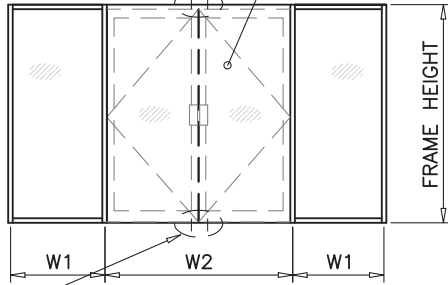
'TRULITE' DOORS
SEE SEPARATE NOA



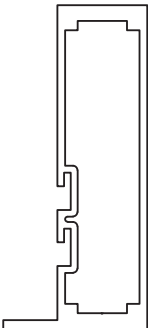
WIDTH (W) = $\frac{W1 + W2}{2}$

ANCHORS REQD.
SEE DOOR NOA

'TRULITE' DOORS
SEE SEPARATE NOA

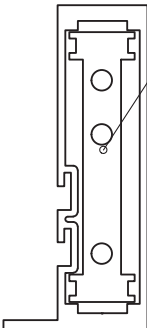


WIDTH (W) = $\frac{W1}{2} + \frac{W2}{4}$



DOOR MULLION
W/O REINF.

JAMB	Ix(IN^4)	Sx(IN^3)
3101	4.5480	1.8932



3104 ALUM. REINF. OR
3104R ALUM. REINF.

DOOR MULLION
W/ ALUM. REINF.

JAMB	Ix(IN^4)	Sx(IN^3)
3101	4.5480	1.8932
3104	2.7385	1.4483
TOTAL	7.2865	

PRODUCT RENEWED
as complying with the Florida
Building Code
NOA-No. **25-0401.01**
Expiration Date: **03/31/2030**
By: *Manuel Perez*
Miami-Dade Product Control

STEP 3: MULLION LOAD CAPACITIES

Trulite
GLASS & ALUMINUM SOLUTIONS™

<http://www.trulite.com>

403 WESTPARK COURT, Suite 201
PEACHTREE CITY, GA 30269
p. 800-432-8132

PRODUCT:

Resistor
3100 ALUMINUM
STOREFRONT WALL-LMI

Resistor
PRODUCT SERIES

REVN	DATE/REMARKS
REV5	12.20.2023 UPDATE INTERLAYER

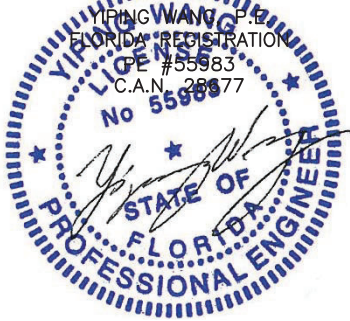
ENGINEER:



MCY ENGINEERING, INC.
GLAZING CONSULTANT

12781 Miramar Parkway #301
Miramar, FL 33027
P: 305-271-0117
Email: mcy@mcyengineering.com
www.MCYEngineering.com

STAMP:



December 20th, 2023

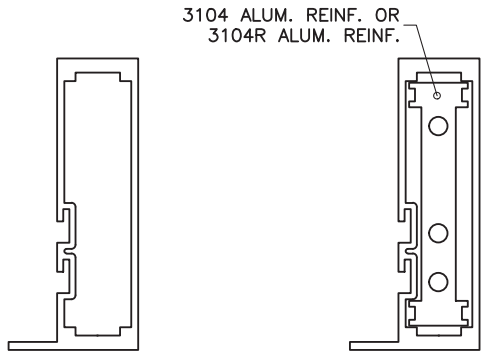
PRODUCT CONTROL APPROVAL:

PRODUCT REVISED
As complying with the Florida
Building Code
NOA-No. **23-1222.10**
Expiration Date: **03/31/2025**
By: *Manuel Perez*
Miami-Dade Product Control

DRAWN:James	DRAWING No:
DATE: 12.20.2023	6 OF 13
DWG: AD11-21	

DOOR MULLION LOAD CAPACITY – PSF AT DOUBLE DOOR WITH TRANSOM					
NOMINAL DIMS.				WITHOUT REINFORCING	WITH REINFORCING
WIDTH (W1)	WIDTH (W2)	LENGTH (A)	LENGTH (L)	EXT.(+) INT.(–)	EXT.(+) INT.(–)
60"	30"	96"	102"	78.3	87.0
	33"			75.0	87.0
	36"			71.9	87.0
	39"			69.0	87.0
	42"			66.4	87.0
	48"			61.7	87.0
	54"			57.6	87.0
72"	30"			71.0	87.0
	33"			68.3	87.0
	36"			65.7	87.0
	39"			63.3	87.0
	42"			61.1	87.0
	48"			57.1	87.0
	54"			53.6	87.0
60"	30"	96"	108"	62.6	87.0
	33"			60.0	87.0
	36"			57.7	87.0
	39"			55.5	87.0
	42"			53.5	87.0
	48"			49.8	86.2
	54"			46.7	80.8
72"	30"			56.5	87.0
	33"			54.4	87.0
	36"			52.5	87.0
	39"			50.6	87.0
	42"			49.0	84.7
	48"			45.9	79.4
	54"			43.2	74.8
60"	30"	96"	114"	50.9	87.0
	33"			48.9	84.7
	36"			47.1	81.5
	39"			45.4	78.5
	42"			43.8	75.8
	48"			40.9	70.8
	54"			38.4	66.5
72"	30"			45.8	79.3
	33"			44.2	76.5
	36"			42.7	73.8
	39"			41.3	71.4
	42"			39.9	69.1
	48"			37.5	65.0
	54"			35.4	61.3

DOOR MULLION LOAD CAPACITY – PSF AT DOUBLE DOOR WITH TRANSOM					
NOMINAL DIMS.				WITHOUT REINFORCING	WITH REINFORCING
WIDTH (W1)	WIDTH (W2)	LENGTH (A)	LENGTH (L)	EXT.(+) INT.(–)	EXT.(+) INT.(–)
60"	30"	96"	120"	42.1	72.9
	33"			40.5	70.1
	36"			39.1	67.6
	39"			37.7	65.2
	42"			36.4	63.0
	48"			34.1	59.0
	54"			32.0	55.5
72"	30"			37.8	65.4
	33"			36.5	63.2
	36"			35.3	61.1
	39"			34.2	59.1
	42"			33.1	57.3
	48"			31.2	54.0
	54"			30.0	52.0
60"	30"	108"	120"	40.0	70.0
	33"			39.0	67.0
	36"			37.0	65.0
	39"			36.0	63.0
	42"			35.0	61.0
	48"			33.0	58.0
	54"			31.0	54.0
72"	30"			35.0	61.0
	33"			34.0	60.0
	36"			33.0	58.0
	39"			32.0	56.0
	42"			31.0	53.0
	48"			30.0	52.0
	54"			30.0	52.0

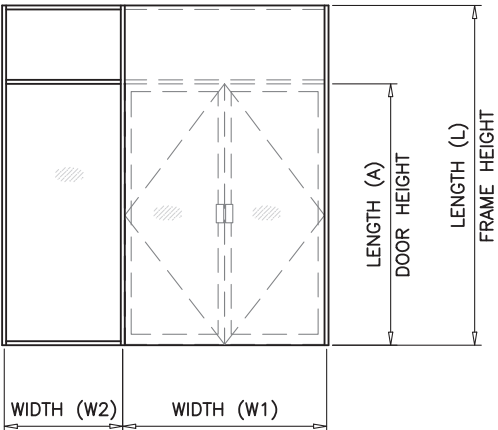


JAMB	Ix(IN^4)	Sx(IN^3)
3101	4.5480	1.8932

JAMB	Ix(IN^4)	Sx(IN^3)
3101	4.5480	1.8932
3104	2.7385	1.4483
TOTAL	7.2865	

DOOR MULLION LOAD CAPACITY – PSF AT DOUBLE DOOR WITH TRANSOM					
NOMINAL DIMS.				WITHOUT REINFORCING	WITH REINFORCING
WIDTH (W1)	WIDTH (W2)	LENGTH (A)	LENGTH (L)	EXT.(+) INT.(–)	EXT.(+) INT.(–)
60"	30"	90"	96"	87.0	87.0
	33"			87.0	87.0
	36"			84.2	87.0
	39"			80.8	87.0
	42"			77.8	87.0
	48"			72.2	87.0
	54"			67.4	87.0
72"	30"			83.4	87.0
	33"			80.1	87.0
	36"			77.0	87.0
	39"			74.2	87.0
	42"			71.6	87.0
	48"			66.9	87.0
	54"			62.7	87.0
60"	30"	90"	102"	73.8	87.0
	33"			70.8	87.0
	36"			68.1	87.0
	39"			65.5	87.0
	42"			63.1	87.0
	48"			58.9	87.0
	54"			55.1	87.0
72"	30"			66.6	87.0
	33"			64.1	87.0
	36"			61.9	87.0
	39"			59.8	87.0
	42"			57.8	87.0
	48"			54.2	87.0
	54"			51.0	86.4
60"	30"	90"	108"	59.4	87.0
	33"			57.1	87.0
	36"			55.0	87.0
	39"			53.0	87.0
	42"			51.2	87.0
	48"			47.8	82.8
	54"			44.9	77.7
72"	30"			53.4	87.0
	33"			51.6	87.0
	36"			49.8	86.2
	39"			48.2	83.4
	42"			46.6	80.7
	48"			43.9	75.9
	54"			41.4	71.6

DOOR MULLION LOAD CAPACITY – PSF AT DOUBLE DOOR WITH TRANSOM					
NOMINAL DIMS.				WITHOUT REINFORCING	WITH REINFORCING
WIDTH (W1)	WIDTH (W2)	LENGTH (A)	LENGTH (L)	EXT.(+) INT.(–)	EXT.(+) INT.(–)
60"	30"	90"	114"	48.7	84.3
	33"			46.9	81.2
	36"			45.2	78.2
	39"			43.6	75.5
	42"			42.2	73.0
	48"			39.5	68.3
	54"			37.1	64.3
72"	30"			43.7	75.6
	33"			42.2	73.1
	36"			40.8	70.7
	39"			39.5	68.4
	42"			38.3	66.3
	48"			36.1	62.5
	54"			34.1	59.1
60"	30"	90"	120"	40.6	70.3
	33"			39.1	67.7
	36"			37.7	65.3
	39"			36.5	63.1
	42"			35.3	61.0
	48"			33.1	57.2
	54"			31.1	53.9
72"	30"			36.3	62.9
	33"			35.1	60.8
	36"			34.0	58.9
	39"			33.0	57.0
	42"			32.0	55.3
	48"			30.2	52.2
	54"			30.2	52.2



PRODUCT RENEWED
as complying with the Florida
Building Code
NOA-No. **25-0401.01**
Expiration Date: **03/31/2030**
By: *Manuel Perez*
Miami-Dade Product Control

STEP 3: MULLION LOAD CAPACITIES



http://www.trulite.com

403 WESTPARK COURT, Suite 201
PEACHTREE CITY, GA 30269
p. 800-432-8132

PRODUCT:

Resistor
3100 ALUMINUM
STOREFRONT WALL-LMI



REV#	DATE/REMARKS
REV5	12.20.2023 UPDATE INTERLAYER

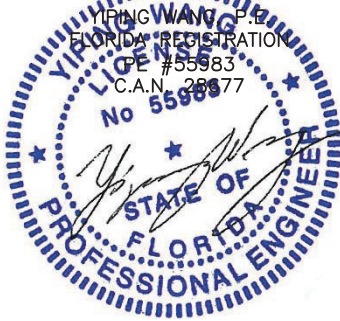
ENGINEER:



MCY ENGINEERING, INC.
GLAZING CONSULTANT

12781 Miramar Parkway #301
Miramar, FL 33027
P: 305-271-0117
Email: mcy@mcyengineering
www.MCYEngineering.com

STAMP:



December 20th, 2023

PRODUCT CONTROL APPROVAL:

PRODUCT REVISED
As complying with the Florida
Building Code
NOA-No. **23-1222.10**
Expiration Date: **03/31/2025**
By: *Manuel Perez*
Miami-Dade Product Control

DRAWN:James

DATE: 12.20.2023

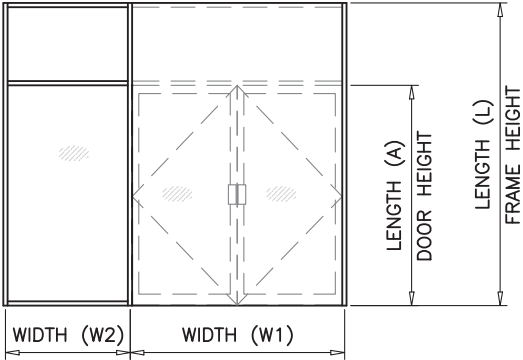
DWG: AD11–21

DRAWING No:

7 OF 13

DOOR MULLION LOAD CAPACITY – PSF AT DOUBLE DOOR WITH TRANSOM					
NOMINAL DIMS.				WITHOUT REINFORCING	WITH REINFORCING
WIDTH (W1)	WIDTH (W2)	LENGTH (A)	LENGTH (L)	EXT.(+) INT.(–)	EXT.(+) INT.(–)
60”	30”	84”	90”	87.0	87.0
	33”			87.0	87.0
	36”			87.0	87.0
	39”			87.0	87.0
	42”			87.0	87.0
	48”			82.7	87.0
	54”			77.3	87.0
72”	30”			87.0	87.0
	33”			87.0	87.0
	36”			87.0	87.0
	39”			84.9	87.0
	42”			81.9	87.0
	48”			76.6	87.0
	54”			71.9	87.0
60”	30”	84”	96”	87.0	87.0
	33”			84.0	87.0
	36”			80.7	87.0
	39”			77.7	87.0
	42”			74.8	87.0
	48”			69.7	87.0
	54”			65.3	87.0
72”	30”			79.0	87.0
	33”			76.1	87.0
	36”			73.4	87.0
	39”			70.9	87.0
	42”			68.5	87.0
	48”			64.2	87.0
	54”			60.4	87.0
60”	30”	84”	102”	70.0	87.0
	33”			67.3	87.0
	36”			64.8	87.0
	39”			62.4	87.0
	42”			60.3	87.0
	48”			56.4	87.0
	54”			53.0	87.0
72”	30”			62.8	87.0
	33”			60.7	87.0
	36”			58.6	87.0
	39”			56.7	87.0
	42”			54.9	87.0
	48”			51.7	87.0
	54”			48.8	83.9

DOOR MULLION LOAD CAPACITY – PSF AT DOUBLE DOOR WITH TRANSOM					
NOMINAL DIMS.				WITHOUT REINFORCING	WITH REINFORCING
WIDTH (W1)	WIDTH (W2)	LENGTH (A)	LENGTH (L)	EXT.(+) INT.(–)	EXT.(+) INT.(–)
60”	30”	84”	108”	56.8	87.0
	33”			54.7	87.0
	36”			52.7	87.0
	39”			50.9	87.0
	42”			49.2	85.1
	48”			46.1	79.8
	54”			43.4	75.1
72”	30”			50.9	87.0
	33”			49.2	85.1
	36”			47.6	82.4
	39”			46.1	79.8
	42”			44.7	77.4
	48”			42.1	72.9
	54”			39.9	69.0
60”	30”	84”	114”	46.9	81.2
	33”			45.2	78.3
	36”			43.7	75.5
	39”			42.2	73.0
	42”			40.8	70.6
	48”			38.3	66.3
	54”			36.1	62.5
72”	30”			42.0	72.6
	33”			40.6	70.3
	36”			39.3	68.0
	39”			38.1	66.0
	42”			37.0	64.0
	48”			34.9	60.4
	54”			33.1	57.2
60”	30”	84”	120”	39.3	68.1
	33”			38.0	65.7
	36”			36.7	63.4
	39”			35.4	61.3
	42”			34.3	59.4
	48”			32.2	55.8
	54”			30.4	52.6
72”	30”			35.1	60.8
	33”			34.0	58.8
	36”			33.0	57.0
	39”			32.0	55.3
	42”			31.0	53.7
	48”			29.3	50.8



DOOR MULLION LOAD CAPACITY – PSF AT DOUBLE DOOR WITH TRANSOM					
NOMINAL DIMS.				WITHOUT REINFORCING	WITH REINFORCING
WIDTH (W1)	WIDTH (W2)	LENGTH (A)	LENGTH (L)	EXT.(+) INT.(–)	EXT.(+) INT.(–)
60”	30”	80”	90”	87.0	87.0
	33”			87.0	87.0
	36”			87.0	87.0
	39”			87.0	87.0
	42”			86.6	87.0
	48”			80.7	87.0
	54”			75.5	87.0
72”	30”			87.0	87.0
	33”			87.0	87.0
	36”			85.1	87.0
	39”			82.2	87.0
	42”			79.4	87.0
	48”			74.4	87.0
	54”			70.0	87.0
60”	30”	80”	96”	84.6	87.0
	33”			81.3	87.0
	36”			78.3	87.0
	39”			75.5	87.0
	42”			72.9	87.0
	48”			68.1	87.0
	54”			64.0	87.0
72”	30”			76.1	87.0
	33”			73.4	87.0
	36”			70.9	87.0
	39”			68.6	87.0
	42”			66.4	87.0
	48”			62.5	87.0
	54”			58.9	87.0
60”	30”	80”	102”	67.8	87.0
	33”			65.2	87.0
	36”			62.9	87.0
	39”			60.7	87.0
	42”			58.7	87.0
	48”			55.0	87.0
	54”			51.7	87.0
72”	30”			60.7	87.0
	33”			58.7	87.0
	36”			56.8	87.0
	39”			55.0	87.0
	42”			53.3	87.0
	48”			50.2	87.0
	54”			47.5	82.2

DOOR MULLION LOAD CAPACITY – PSF AT DOUBLE DOOR WITH TRANSOM					
NOMINAL DIMS.				WITHOUT REINFORCING	WITH REINFORCING
WIDTH (W1)	WIDTH (W2)	LENGTH (A)	LENGTH (L)	EXT.(+) INT.(–)	EXT.(+) INT.(–)
60”	30”	80”	108”	55.3	87.0
	33”			53.3	87.0
	36”			51.5	87.0
	39”			49.7	86.1
	42”			48.1	83.2
	48”			45.1	78.1
	54”			42.5	73.6
72”	30”			49.5	85.6
	33”			47.9	82.8
	36”			46.4	80.2
	39”			44.9	77.8
	42”			43.6	75.5
	48”			41.2	71.2
	54”			39.0	67.5
60”	30”	80”	114”	45.9	79.5
	33”			44.3	76.7
	36”			42.8	74.1
	39”			41.4	71.6
	42”			40.0	69.3
	48”			37.6	65.1
	54”			35.5	61.4
72”	30”			41.0	71.0
	33”			39.7	68.7
	36”			38.5	66.6
	39”			37.3	64.6
	42”			36.2	62.7
	48”			34.3	59.3
	54”			32.5	56.2
60”	30”	80”	120”	38.7	66.9
	33”			37.3	64.6
	36”			36.1	62.4
	39”			34.9	60.4
	42”			33.8	58.5
	48”			31.8	55.0
	54”			30.0	51.9
72”	30”			34.5	59.7
	33”			33.4	57.8
	36”			32.4	56.0
	39”			31.4	54.4
	42”			30.5	52.9
	48”			28.9	50.0

PRODUCT RENEWED
as complying with the Florida
Building Code
NOA-No. **25-0401.01**
Expiration Date: **03/31/2030**
By: *Manuel Perez*
Miami-Dade Product Control

STEP 3: MULLION LOAD CAPACITIES

Trulite
GLASS & ALUMINUM SOLUTIONS™
http://www.trulite.com

403 WESTPARK COURT, Suite 201
PEACHTREE CITY, GA 30269
p. 800-432-8132

PRODUCT:

Resistor
3100 ALUMINUM
STOREFRONT WALL-LMI

Resistor
PRODUCT SERIES

REVN	DATE/REMARKS
REV5	12.20.2023 UPDATE INTERLAYER

ENGINEER:

MCY ENGINEERING, INC.
GLAZING CONSULTANT

12781 Miramar Parkway #301
Miramar, FL 33027
P: 305-271-0117
Email: mcy@mcyengineering
www.MCYEngineering.com

STAMP:



December 20th, 2023

PRODUCT CONTROL APPROVAL:

PRODUCT REVISED
As complying with the Florida
Building Code
NOA-No. **23-1222.10**
Expiration Date: **03/31/2025**
By: *Manuel Perez*
Miami-Dade Product Control

DRAWN:James

DATE: 12.20.2023

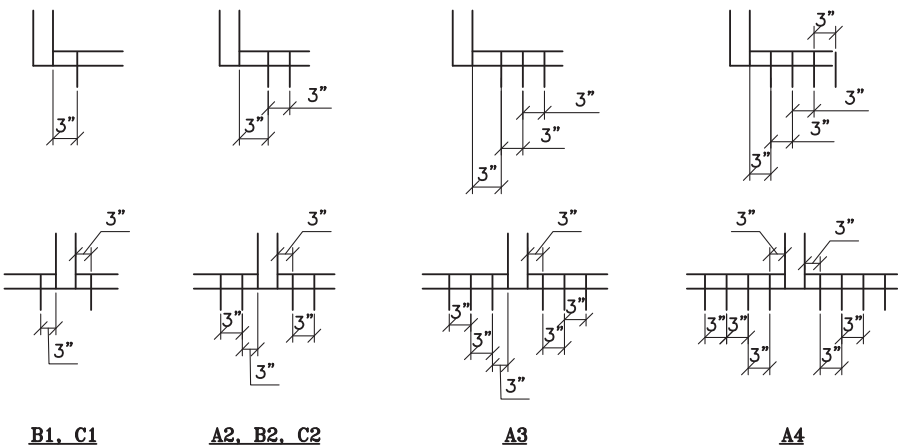
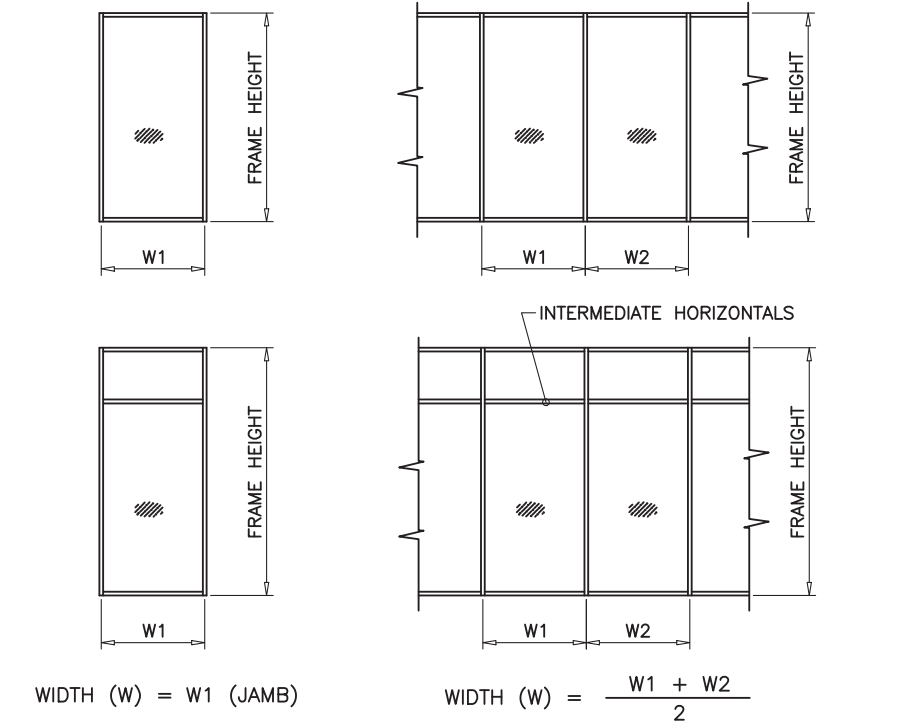
DWG: AD11-21

DRAWING No:

8 OF 13

ANCHOR LOAD CAPACITY – PSF EXT.(+) & INT.(–)						
NOMINAL DIMS.		ANCHORS TYPE 'A'			TYPE 'B' & 'C'	
WIDTH (W)	FRAME HEIGHT	'A2'	'A3'	'A4'	'B1'/'C1'	'B2'/'C2'
24"	66"	100.0	100.0	100.0	100.0	100.0
30"		100.0	100.0	100.0	100.0	100.0
36"		100.0	100.0	100.0	100.0	100.0
42"		100.0	100.0	100.0	100.0	100.0
48"		100.0	100.0	100.0	100.0	100.0
54"		95.4	100.0	100.0	95.8	100.0
60"		85.8	100.0	100.0	86.2	100.0
66"		78.0	100.0	100.0	78.3	100.0
72"	72"	71.5	100.0	100.0	71.8	100.0
24"		100.0	100.0	100.0	100.0	100.0
30"		100.0	100.0	100.0	100.0	100.0
36"		100.0	100.0	100.0	100.0	100.0
42"		100.0	100.0	100.0	100.0	100.0
48"		98.3	100.0	100.0	98.8	100.0
54"		87.4	100.0	100.0	87.8	100.0
60"		78.7	100.0	100.0	79.0	100.0
66"		71.5	100.0	100.0	71.8	100.0
72"		65.6	91.8	100.0	65.8	100.0
24"	78"	100.0	100.0	100.0	100.0	100.0
30"		100.0	100.0	100.0	100.0	100.0
36"		100.0	100.0	100.0	100.0	100.0
42"		100.0	100.0	100.0	100.0	100.0
48"		90.8	100.0	100.0	91.2	100.0
54"		80.7	100.0	100.0	81.0	100.0
60"		72.6	100.0	100.0	72.9	100.0
66"		66.0	92.4	100.0	66.3	100.0
72"	84"	60.5	84.7	100.0	60.8	100.0
24"		100.0	100.0	100.0	100.0	100.0
30"		100.0	100.0	100.0	100.0	100.0
36"		100.0	100.0	100.0	100.0	100.0
42"		96.3	100.0	100.0	96.7	100.0
48"		84.3	100.0	100.0	84.6	100.0
54"		74.9	100.0	100.0	75.2	100.0
60"		67.4	94.4	100.0	67.7	100.0
66"		61.3	85.8	100.0	61.6	100.0
72"		56.2	78.7	100.0	56.4	94.0
24"	90"	100.0	100.0	100.0	100.0	100.0
30"		100.0	100.0	100.0	100.0	100.0
36"		100.0	100.0	100.0	100.0	100.0
42"		89.9	100.0	100.0	90.3	100.0
48"		78.7	100.0	100.0	79.0	100.0
54"		69.9	97.9	100.0	70.2	100.0
60"		62.9	88.1	100.0	63.2	100.0
66"		57.2	80.1	100.0	57.5	95.8
72"	96"	52.4	73.4	94.4	52.7	87.8
24"		100.0	100.0	100.0	100.0	100.0
30"		100.0	100.0	100.0	100.0	100.0
36"		98.3	100.0	100.0	98.8	100.0
42"		84.3	100.0	100.0	84.6	100.0
48"		73.8	100.0	100.0	74.1	100.0
54"		65.6	91.8	100.0	65.8	100.0
60"		59.0	82.6	100.0	59.3	98.8
66"		53.6	75.1	96.5	53.9	89.8

ANCHOR LOAD CAPACITY – PSF EXT.(+) & INT.(–)						
NOMINAL DIMS.		ANCHORS TYPE 'A'			TYPE 'B' & 'C'	
WIDTH (W)	FRAME HEIGHT	'A2'	'A3'	'A4'	'B1'/'C1'	'B2'/'C2'
24"	102"	100.0	100.0	100.0	100.0	100.0
30"		100.0	100.0	100.0	100.0	100.0
36"		92.5	100.0	100.0	92.9	100.0
42"		79.3	100.0	100.0	79.7	100.0
48"		69.4	97.2	100.0	69.7	100.0
54"		61.7	86.4	100.0	62.0	100.0
60"	108"	55.5	77.7	100.0	55.8	92.9
24"		100.0	100.0	100.0	100.0	100.0
30"		100.0	100.0	100.0	100.0	100.0
36"		87.4	100.0	100.0	87.8	100.0
42"		74.9	100.0	100.0	75.2	100.0
48"		65.6	91.8	100.0	65.8	100.0
54"		58.3	81.6	100.0	58.5	97.5
60"		52.4	73.4	94.4	52.7	87.8
24"	114"	100.0	100.0	100.0	100.0	100.0
30"		99.4	100.0	100.0	99.8	100.0
36"		82.8	100.0	100.0	83.2	100.0
42"		71.0	99.4	100.0	71.3	100.0
48"		62.1	86.9	100.0	62.4	100.0
54"		55.2	77.3	99.4	55.4	92.4
24"	120"	100.0	100.0	100.0	100.0	100.0
30"		94.4	100.0	100.0	94.8	100.0
36"		78.7	100.0	100.0	79.0	100.0
42"		67.4	94.4	100.0	67.7	100.0
48"		59.0	82.6	100.0	59.3	98.8
54"		52.4	73.4	94.4	52.7	87.8
24"	126"	60.0	60.0	60.0	60.0	60.0
30"		60.0	60.0	60.0	60.0	60.0
36"		60.0	60.0	60.0	60.0	60.0
42"		60.0	60.0	60.0	60.0	60.0
48"		56.2	60.0	60.0	56.4	60.0
54"		49.9	60.0	60.0	50.2	60.0
24"	132"	60.0	60.0	60.0	60.0	60.0
30"		60.0	60.0	60.0	60.0	60.0
36"		60.0	60.0	60.0	60.0	60.0
42"		60.0	60.0	60.0	60.0	60.0
48"		53.6	60.0	60.0	53.9	60.0
54"		49.9	60.0	60.0	50.2	60.0
24"	138"	60.0	60.0	60.0	60.0	60.0
30"		60.0	60.0	60.0	60.0	60.0
36"		60.0	60.0	60.0	60.0	60.0
42"		58.6	60.0	60.0	58.9	60.0
48"	144"	51.3	60.0	60.0	51.5	60.0
24"		60.0	60.0	60.0	60.0	60.0
30"		60.0	60.0	60.0	60.0	60.0
36"		60.0	60.0	60.0	60.0	60.0
42"		56.2	60.0	60.0	56.4	60.0
48"		49.2	60.0	60.0	49.4	60.0



ANCHORS TYPES: SEE SHEET 10 FOR DESCRIPTION

B1 = (1) ANCHOR TYPE 'B' AT EACH SIDE OF MULLION OR JAMB
C1 = (1) ANCHOR TYPE 'C' AT EACH SIDE OF MULLION OR JAMB

A2 = (2) ANCHORS TYPE 'A' AT EACH SIDE OF MULLION OR JAMB
B2 = (2) ANCHORS TYPE 'B' AT EACH SIDE OF MULLION OR JAMB
C2 = (2) ANCHORS TYPE 'C' AT EACH SIDE OF MULLION OR JAMB

A3 = (3) ANCHORS TYPE 'A' AT EACH SIDE OF MULLION OR JAMB

A4 = (4) ANCHORS TYPE 'A' AT EACH SIDE OF MULLION OR JAMB

MAXIMUM SPACING FOR HEAD AND SILL ANCHORS NOT TO EXCEED 24" O.C.

PRODUCT RENEWED
as complying with the Florida
Building Code
NOA-No. **25-0401.01**
Expiration Date: **03/31/2030**
By: *Manuel Perez*
Miami-Dade Product Control

STEP 4: ANCHOR LOAD CAPACITY



GLASS & ALUMINUM SOLUTIONS™

<http://www.trulite.com>

403 WESTPARK COURT, Suite 201
PEACHTREE CITY, GA 30269
p. 800-432-8132

PRODUCT:

Resistor
3100 ALUMINUM
STOREFRONT WALL-LMI

Resistor
PRODUCT SERIES

REVN	DATE/REMARKS
REV5	12.20.2023 UPDATE INTERLAYER

ENGINEER:

MCY ENGINEERING, INC.
GLAZING CONSULTANT

12781 Miramar Parkway #301
Miramar, FL 33027
P: 305-271-0117
Email: mcy@mcyengineering.com
www.MCYEngineering.com

STAMP:

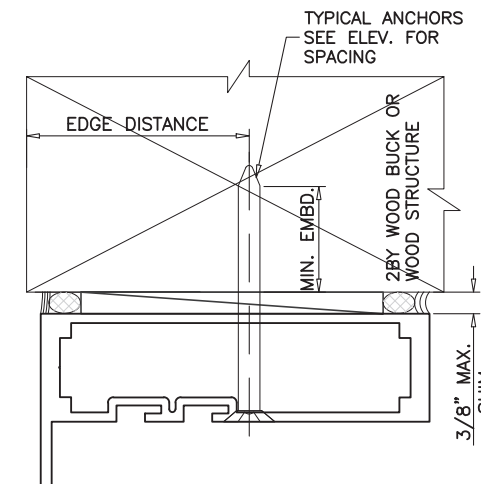
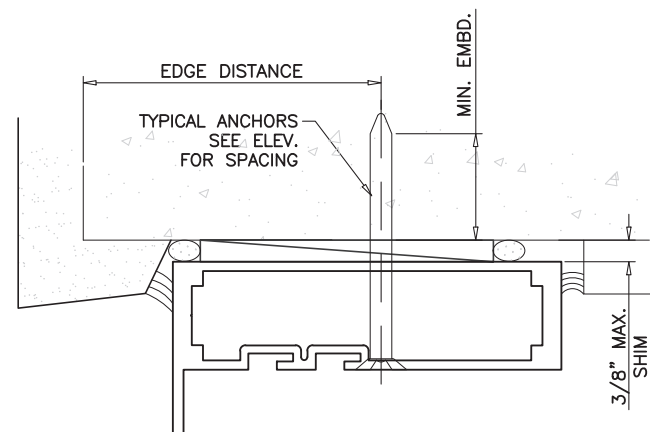
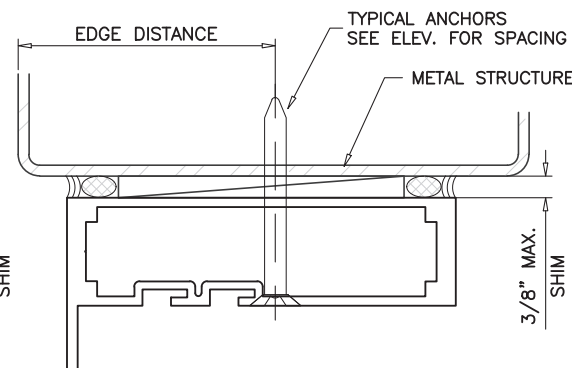
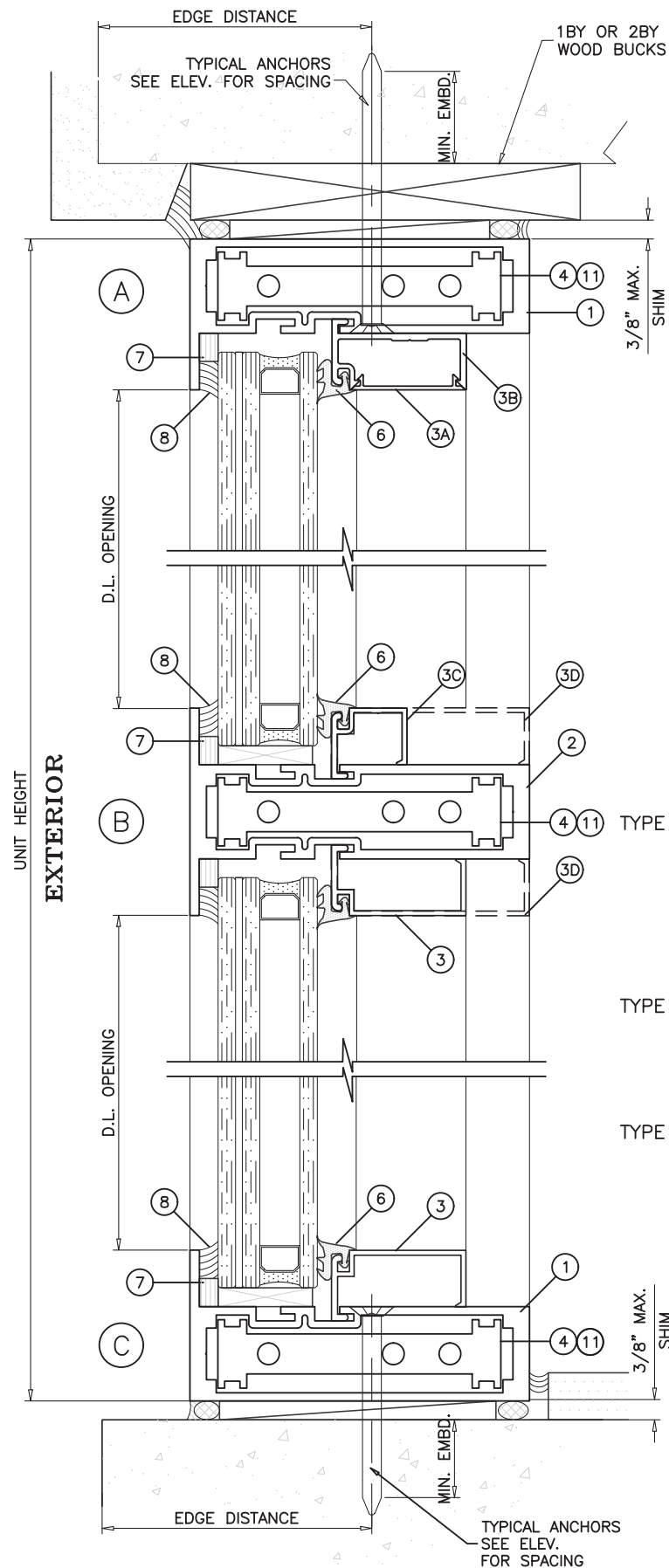
YIPING WANG, P.E.
FLORIDA REGISTRATION
PE #55983
C.A.N. 28877

December 20th, 2023

PRODUCT CONTROL APPROVAL:

PRODUCT REVISED
As complying with the Florida
Building Code
NOA-No. **23-1222.10**
Expiration Date: **03/31/2025**
By: *Manuel Perez*
Miami-Dade Product Control

DRAWN:James	DRAWING No:
DATE: 12.20.2023	9 OF 13
DWG: AD11-21	



NOTE:
MULLIONS SHOWN IN DASHED LINES ARE NOT PART OF
THIS APPROVAL.

WOOD BUCKS AND METAL STRUCTURE NOT BY TRULITE.
MUST SUSTAIN LOADS IMPOSED BY GLAZING SYSTEM
AND TRANSFER THEM TO THE BUILDING STRUCTURE.

TYPICAL ANCHORS

AT WINDOW WALL SYSTEM: SEE ELEV. FOR SPACING

- TYPE 'A'— 1/4" DIA. ULTRACON+ BY 'DEWALT' (Fu=164 KSI, Fy=148 KSI)
INTO 2BY WOOD BUCKS OR WOOD STRUCTURES
1-3/8" MIN. PENETRATION INTO WOOD
THRU 1BY BUCKS INTO CONC. OR HOLLOW BLOCK
1-1/4" MIN. EMBED INTO CONC. OR HOLLOW BLOCK
1-3/4" MIN. EMBED INTO GROUT FILLED BLOCK
- TYPE 'B'— 1/4" DIA. ULTRACON+ BY 'DEWALT' (Fu=164 KSI, Fy=148 KSI)
DIRECTLY INTO CONC. OR HOLLOW BLOCK
1-5/8" MIN. EMBED INTO CONC. OR HOLLOW BLOCK
1-3/4" MIN. EMBED INTO GROUT FILLED BLOCK
- TYPE 'C'— #14 SMS OR SELF DRILLING SCREWS (GRADE 2 CRS)
INTO MIAMI-DADE COUNTY APPROVED MULLIONS (1/8" THK. MIN.)
INTO METAL STRUCTURES
STEEL : 1/8" THK. MIN. (Fy = 36 KSI MIN.)
ALUMINUM : 1/8" THK. MIN. (6063-T5 MIN.)
(STEEL IN CONTACT WITH ALUMINUM TO BE PLATED OR PAINTED)

TYPICAL EDGE DISTANCE

INTO CONCRETE AND MASONRY = 2-1/2" MIN.
INTO WOOD STRUCTURE = 1" MIN.
INTO METAL STRUCTURE = 3/4" MIN.

CONCRETE AT HEAD, SILL OR JAMBS f_c = 3000 PSI MIN.
C-90 HOLLOW/FILLED BLOCK AT JAMBS f_m = 2000 PSI MIN.

TYPICAL ANCHORS

AT ALTERNATE WINDOW SHAPES: SEE SHEET 2 FOR SPACING

- TYPE 'D'— 5/16" DIA. ULTRACON BY 'DEWALT' (Fu=177 KSI, Fy=155 KSI)
INTO 2BY WOOD BUCKS OR WOOD STRUCTURES
1-3/8" MIN. PENETRATION INTO WOOD
THRU 1BY BUCKS INTO CONC. OR HOLLOW BLOCK
1-1/4" MIN. EMBED INTO CONC. OR HOLLOW BLOCK
1-3/4" MIN. EMBED INTO GROUT FILLED BLOCK
- DIRECTLY INTO CONC. OR HOLLOW BLOCK
1-5/8" MIN. EMBED INTO CONC. OR HOLLOW BLOCK
1-3/4" MIN. EMBED INTO GROUT FILLED BLOCK
- TYPE 'D'— 5/16" DIA. SMS OR SELF DRILLING SCREWS (GRADE 2 CRS)
INTO MIAMI-DADE COUNTY APPROVED MULLIONS (1/8" THK. MIN.)
INTO METAL STRUCTURES
STEEL : 1/8" THK. MIN. (Fy = 36 KSI MIN.)
ALUMINUM : 1/8" THK. MIN. (6063-T5 MIN.)
(STEEL IN CONTACT WITH ALUMINUM TO BE PLATED OR PAINTED)

TYPICAL EDGE DISTANCE

INTO CONCRETE AND MASONRY = 3-1/8" MIN.
INTO WOOD STRUCTURE = 1" MIN.
INTO METAL STRUCTURE = 3/4" MIN.

PRODUCT RENEWED
as complying with the Florida
Building Code
NOA-No. **25-0401.01**
Expiration Date: **03/31/2030**
By: *Manuel Perez*
Miami-Dade Product Control

PRODUCT:

Resistor
3100 ALUMINUM
STOREFRONT WALL-LMI

Resistor
PRODUCT SERIES

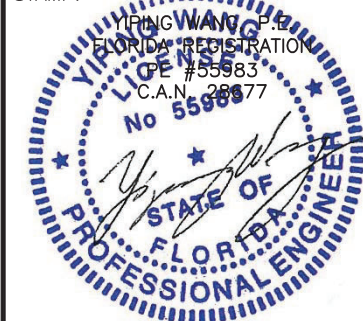
REV#	DATE/REMARKS
REV5	12.20.2023 UPDATE INTERLAYER

ENGINEER:

MCY ENGINEERING, INC.
GLAZING CONSULTANT

12781 Miramar Parkway #301
Miramar, FL 33027
P: 305-271-0117
Email: mcy@mcyengineering.com
www.MCYEngineering.com

STAMP:



December 20th, 2023

PRODUCT CONTROL APPROVAL:

PRODUCT REVISED
As complying with the Florida
Building Code
NOA-No. **23-1222.10**
Expiration Date: **03/31/2025**
By: *Manuel Perez*
Miami-Dade Product Control

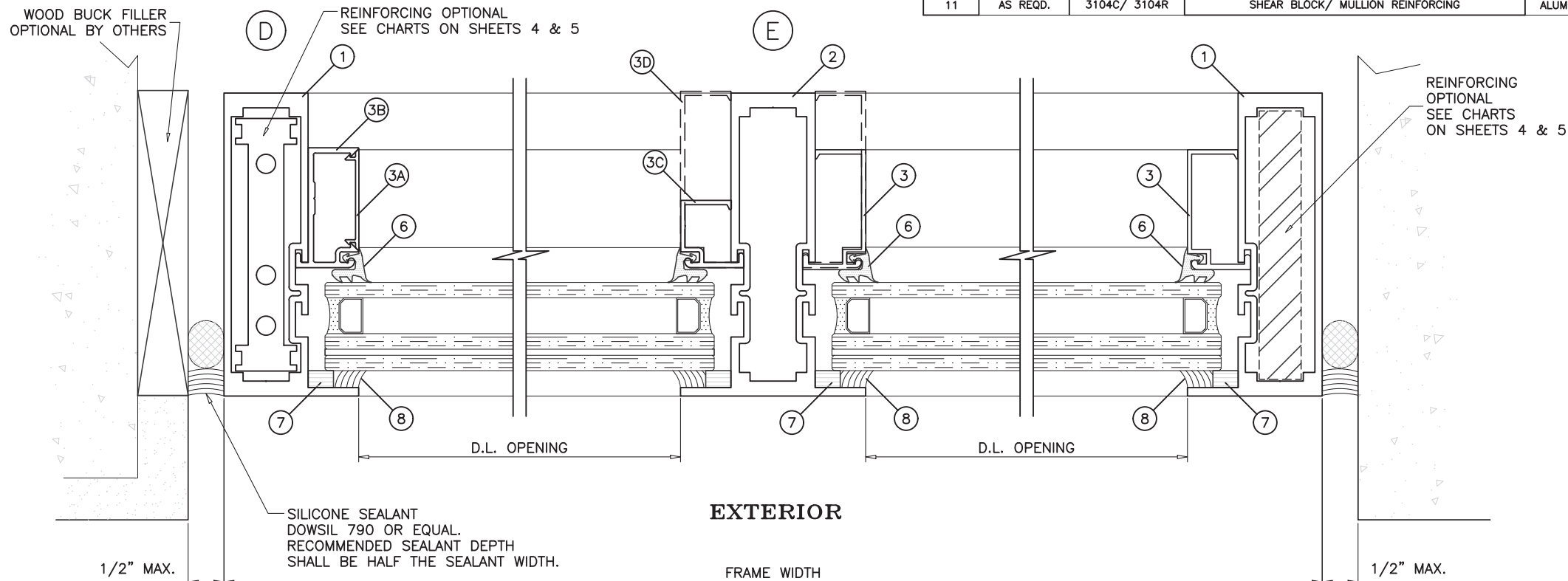
DRAWN: James
DATE: 12.20.2023
DWG: AD11-21

DRAWING No:
10 OF 13

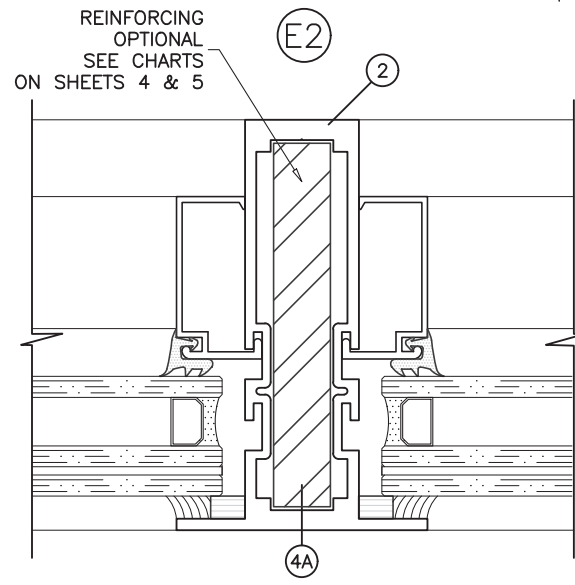
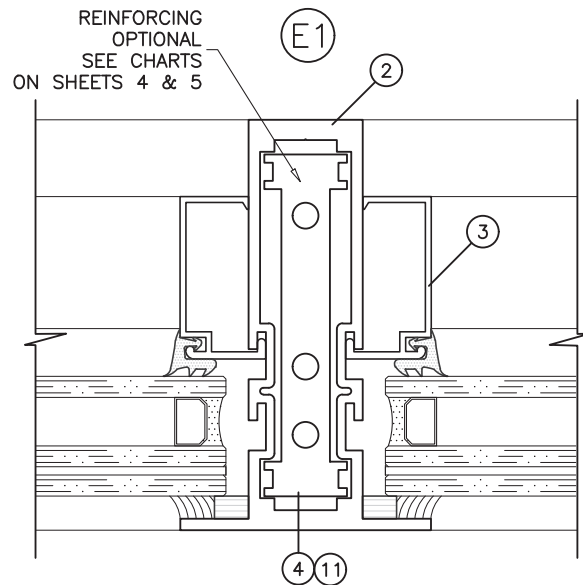
THIS PRODUCT MAY BE INSTALLED INSIDE OR OUTSIDE GLAZED

BILL OF MATERIALS

ITEM #	QTY.	PROFILE	DESCRIPTION	MATERIAL	MANUFACTURER/REMARKS
1	AS REQD.	3101	FRAME HEAD/JAMB/JAMB	ALUM. 6063-T6	TRULITE
2	AS REQD.	3102	INTERMEDIATE VERTICAL/HORIZONTAL	ALUM. 6063-T6	TRULITE
3	AS REQD.	3103	GLASS STOP	ALUM. 6063-T5	TRULITE
3A	AS REQD.	3303	GLASS STOP COVER	ALUM. 6063-T6	TRULITE
3B	AS REQD.	3304	OPEN BACK GLASS STOP	ALUM. 6063-T6	TRULITE
3C	AS REQD.	3003	GLASS STOP	ALUM. 6063-T6	TRULITE
3D	AS REQD.	3103Z	GLASS STOP	ALUM. 6063-T6	TRULITE
4	AS REQD.	3104/ 3104CLIP	SHEAR BLOCK/ MULLION REINFORCING	ALUM. 6063-T6	TRULITE
4A	AS REQD.	ST310	0.625" X 4" STEEL BAR, MULLION REINFORCING	STEEL BAR	5/8" X 4"
5	2/LITE	H62F	SETTING BLOCK (INSUL. LAM. GLASS) DUROMETER 85 +/-5	EPDM	1-1/4" X 1/4" X 4" LONG
5A	2/LITE	H62D	SETTING BLOCK (9/16" LAM. GLASS) DUROMETER 85 +/-5	EPDM	1/2" X 1/4" X 4" LONG
6	AS REQD.	RG-1	WEDGE IN GASKET DUROMETER 60 +/-5	EPDM	-
7	AS REQD.	V2100/ VK1826	GLAZING FOAM TAPE	-	1/4" X 3/8"
8	AS REQD.	DOWSIL 995/ 983	GLAZING SEALANT	SILICONE	DOW
9	2/CORNER	23163	#12-14 X 3/4" FHPMS TYPE 23	ZINC STL.	-
10	2/CORNER	23233	1/4-20 X 1-1/2" PHMS TYPE 23	STAINLESS STL.	-
11	AS REQD.	3104C/ 3104R	SHEAR BLOCK/ MULLION REINFORCING	ALUM. 6063-T6	TRULITE



ALTERNATE SEALANTS AT JAMB GAPS CAN BE DESIGNED BY ENGINEER OF RECORD BASED ON MANUFACTURER GUIDE LINES.



PRODUCT RENEWED
as complying with the Florida
Building Code
NOA-No. **25-0401.01**
Expiration Date: **03/31/2030**
By: *Manuel Perez*
Miami-Dade Product Control

Trulite
GLASS & ALUMINUM SOLUTIONS™

<http://www.trulite.com>

403 WESTPARK COURT, Suite 201
PEACHTREE CITY, GA 30269
p. 800-432-8132

PRODUCT:

Resistor
3100 ALUMINUM
STOREFRONT WALL-LMI

Resistor
PRODUCT SERIES

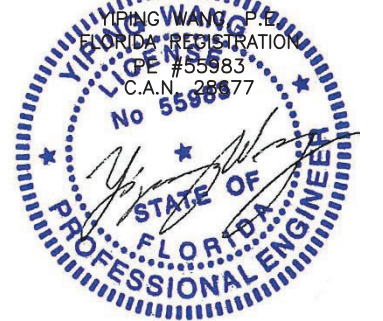
REVN	DATE/REMARKS
REV5	12.20.2023 UPDATE INTERLAYER

ENGINEER:

MCY ENGINEERING, INC.
GLAZING CONSULTANT

12781 Miramar Parkway #301
Miramar, FL 33027
P: 305-271-0117
Email: mcy@mcyengineering.com
www.MCYEngineering.com

STAMP:



December 20th, 2023

PRODUCT CONTROL APPROVAL:

PRODUCT REVISED
As complying with the Florida
Building Code
NOA-No. **23-1222.10**
Expiration Date: **03/31/2025**
By: *Manuel Perez*
Miami-Dade Product Control

DRAWN: James
DATE: 12.20.2023
DWG: AD11-21

DRAWING No:
11 OF 13

PRODUCT:

Resistor
3100 ALUMINUM
STOREFRONT WALL-LMI

Resistor
PRODUCT SERIES

REV#	DATE/REMARKS
REV5	12.20.2023 UPDATE INTERLAYER

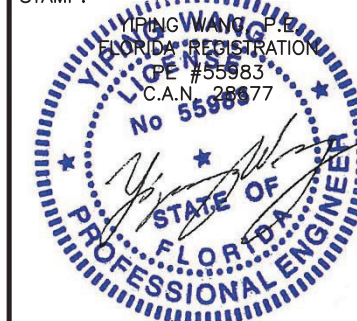
ENGINEER:



MCY ENGINEERING, INC.
GLAZING CONSULTANT

12781 Miramar Parkway #301
Miramar, FL 33027
P: 305-271-0117
Email: mcy@mcyengineering.com
www.MCYEngineering.com

STAMP:



December 20th, 2023

PRODUCT CONTROL APPROVAL:

PRODUCT REVISED
As complying with the Florida
Building Code
NOA-No. **23-1222.10**
Expiration Date: **03/31/2025**
By: *Manuel Perez*
Miami-Dade Product Control

PRODUCT RENEWED
as complying with the Florida
Building Code
NOA-No. **25-0401.01**
Expiration Date: **03/31/2030**
By: *Manuel Perez*
Miami-Dade Product Control

DRAWN: James

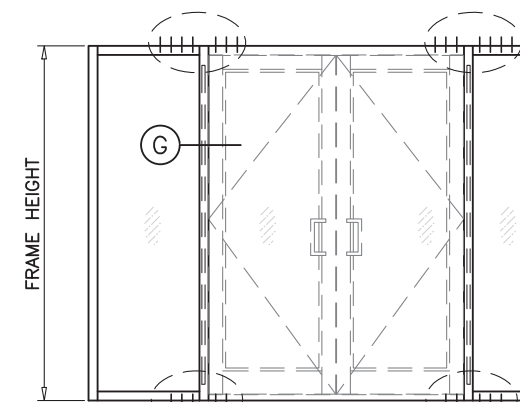
DATE: 12.20.2023

DWG: AD11-21

DRAWING No:

12 OF 13

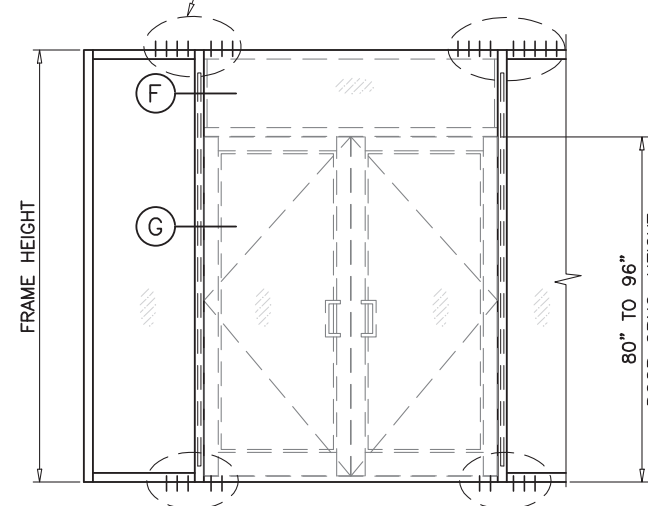
ANCHORS TYPE	MULLION W/O REINFORCING		MULLION WITH REINFORCING	
	AT FIX. LITE	AT DOOR	AT FIX. LITE	AT DOOR
A	3	3	4	3
B	2	2	3	2
C	2	2	3	2



ANCHORS TYPE	MULLION W/O REINFORCING		MULLION WITH REINFORCING	
	AT FIX. LITE	AT DOOR	AT FIX. LITE	AT DOOR
B	2	2	3	2
C	2	2	3	2

CHARTS SHOWN ABOVE APPLY TO ABOVE CASES ONLY.

ANCHORS TYPE	MULLION W/O REINFORCING		MULLION WITH REINFORCING	
	AT FIX. LITE	AT DOOR	AT FIX. LITE	AT DOOR
A	4	3	5	4
B	2	2	3	3
C	2	2	3	3

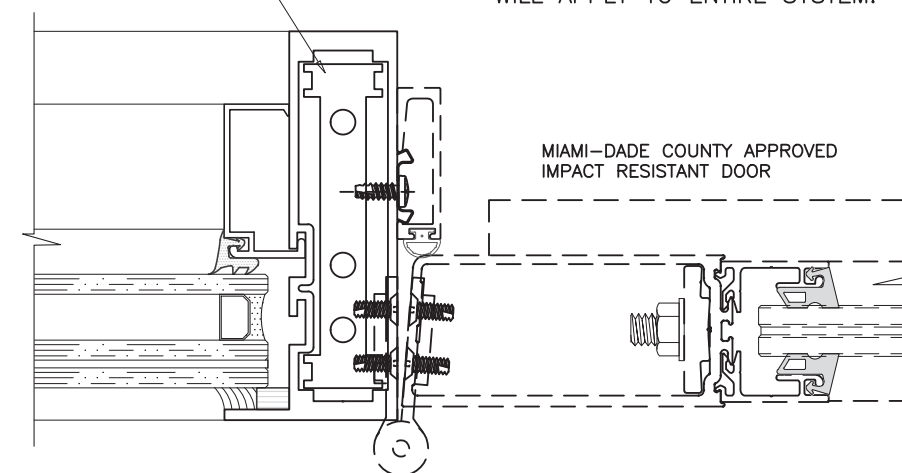


ANCHORS TYPE	MULLION W/O REINFORCING		MULLION WITH REINFORCING	
	AT FIX. LITE	AT DOOR	AT FIX. LITE	AT DOOR
B	2	2	3	2
C	2	2	3	2

SEE SEPARATE NOA FOR DESIGN LOAD
CAPACITY OF DOORS AND DOOR ANCHORS.

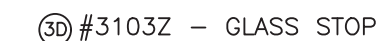
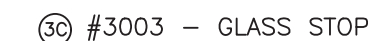
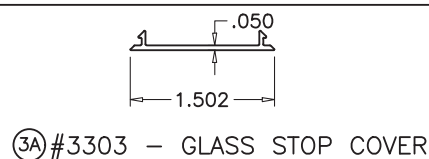
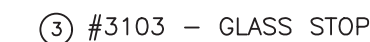
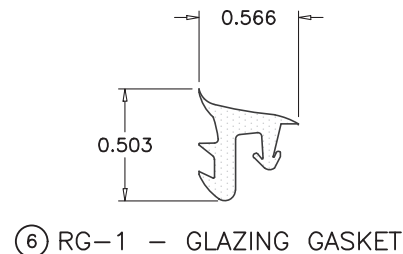
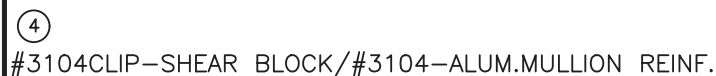
LOWER VALUES FROM DOORS NOA
OR WINDOW WALL SYSTEM CAPACITY CHARTS
WILL APPLY TO ENTIRE SYSTEM.

REINFORCING
OPTIONAL
SEE CHARTS
ON SHEETS 6 THRU 8

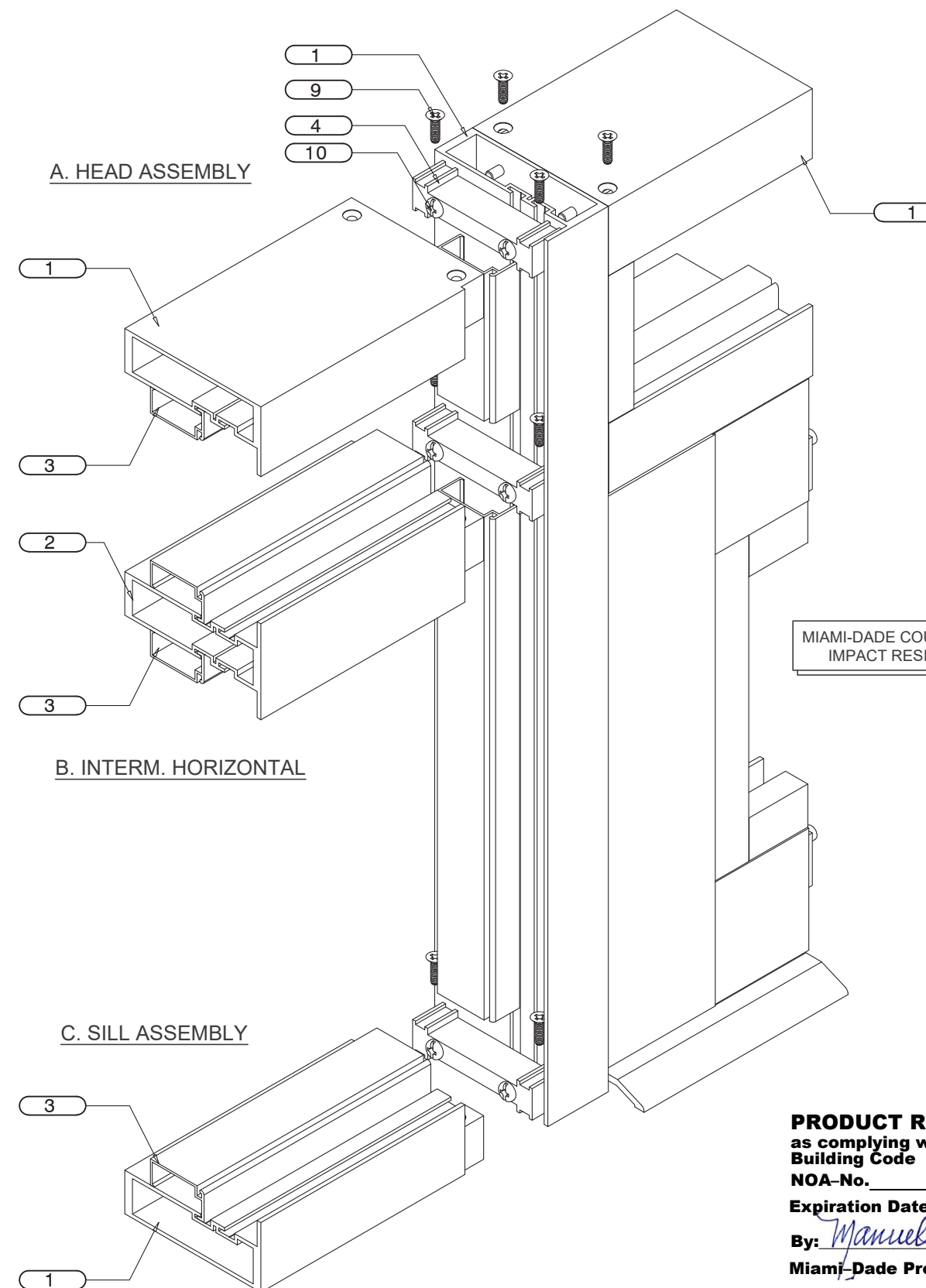


MIAMI-DADE COUNTY APPROVED
IMPACT RESISTANT DOOR

MIAMI-DADE COUNTY APPROVED
IMPACT RESISTANT TRANSOM



NOTE:
DETAIL ABOVE SHOWS CONNECTION OF HORIZONTAL FRAME
MEMBERS TO VERTICAL FRAMES. JAMB AND MULLION CAN BE
WITH OR WITHOUT REINFORCEMENT. SEE SHEETS 4 THRU 8
FOR OPTIONS.



MIAMI-DADE COUNTY APPROVED
IMPACT RESISTANT DOOR

PRODUCT RENEWED
as complying with the Florida
Building Code
NOA-No. **25-0401.01**
Expiration Date: **03/31/2030**
By: Manuel Perez
Miami-Dade Product Control

GENERAL NOTE:

1. GLASS NOT SHOWN FOR CLARITY.
2. FRAME AND PANEL CORNERS, INSTALLATION SCREWS AND ALL METAL PARTS CONNECTIONS TO BE SEALED WITH CLEAR COLORED SEALANT.



<http://www.trulite.com>

403 WESTPARK COURT, Suite 201
PEACHTREE CITY, GA 30269
p. 800-432-8132

PRODUCT:

Resistor
3100 ALUMINUM
STOREFRONT WALL-LMI



Resistor
PRODUCT SERIES

REVN	DATE/REMARKS
REV5	12.20.2023 UPDATE INTERLAYER

ENGINEER:



MCY ENGINEERING, INC.
GLAZING CONSULTANT

12781 Miramar Parkway #301

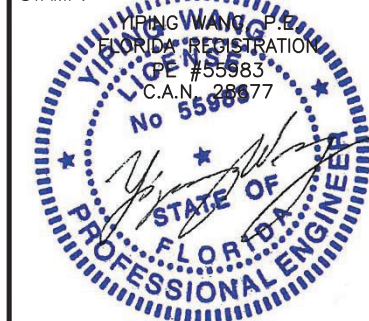
Miramar. FL 33027

P: 305-271-0117

Email: mcy@mcyengineering.com

www.MCYEngineering.com

STAMP:



December 20th, 2023

PRODUCT CONTROL APPROVAL:

PRODUCT REVISED
As complying with the Florida
Building Code

NOA-No. 23-1222.10

Expiration Date: 03/31/2025

By: Manuel Perez
Miami-Dade Product Control

DRAWN:James

DATE: 12.20.2023

DWG: AD11-21

DRAWING No:

23 **13 OF 13**