



DEPARTMENT OF REGULATORY AND ECONOMIC RESOURCES (RER)
BOARD AND CODE ADMINISTRATION DIVISION

NOTICE OF ACCEPTANCE (NOA)

MIAMI-DADE COUNTY
PRODUCT CONTROL SECTION
11805 SW 26 Street, Room 208
Miami, Florida 33175-2474
T (786) 315-2590 F (786) 315-2599
www.miamidade.gov/economy

QuikServ Corp.
11441 Brittmoore Park Drive
Houston, TX 77041

SCOPE:

This NOA is being issued under the applicable rules and regulations governing the use of construction materials. The documentation submitted has been reviewed and accepted by Miami-Dade County RER - Product Control Section to be used in Miami Dade County and other areas where allowed by the Authority Having Jurisdiction (AHJ).

This NOA shall not be valid after the expiration date stated below. The Miami-Dade County Product Control Section (In Miami-Dade County) and/ or the AHJ (in areas other than Miami-Dade County) reserve the right to have this product or material tested for quality assurance purposes. If this product or material fails to perform in the accepted manner, the manufacturer will incur the expense of such testing and the AHJ may immediately revoke, modify, or suspend the use of such product or material within their jurisdiction. RER reserves the right to revoke this acceptance, if it is determined by Miami-Dade County Product Control Section that this product or material fails to meet the requirements of the applicable building code.

This product is approved as described herein and has been designed to comply with the Florida Building Code, including the High Velocity Hurricane Zone. -

DESCRIPTION: Series "Commercial Horizontal Sliding" Aluminum Pass-Through Window – L.M.I.

APPROVAL DOCUMENT: Drawing No. **25-035** (formerly **23-146**), titled "Commercial Pass-Thru Horizontal Sliding Windows – Large Missile Impact Resistant", sheets 1 through 14 of 14, dated 03/18/25, prepared by Tilteco, Inc., signed and sealed by Walter A. Tillit, Jr., P.E., bearing the Miami-Dade County Product Control Revision stamp with the Notice of Acceptance number and expiration date by the Miami-Dade County Product Control Section.

MISSILE IMPACT RATING: Large and Small Missile Impact Resistant

LABELING: Each unit shall bear a permanent label with the manufacturer's name or logo, city, state, series, and following statement: "Miami-Dade County Product Control Approved", unless otherwise noted herein.

RENEWAL of this NOA shall be considered after a renewal application has been filed and there has been no change in the applicable building code negatively affecting the performance of this product.

TERMINATION of this NOA will occur after the expiration date or if there has been a revision or change in the materials, use, and/ or manufacture of the product or process. Misuse of this NOA as an endorsement of any product, for sales, advertising or any other purposes shall automatically terminate this NOA. Failure to comply with any section of this NOA shall be cause for termination and removal of NOA.

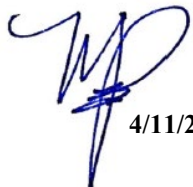
ADVERTISEMENT: The NOA number preceded by the words Miami-Dade County, Florida, and followed by the expiration date may be displayed in advertising literature. If any portion of the NOA is displayed, then it shall be done in its entirety.

INSPECTION: A copy of this entire NOA shall be provided to the user by the manufacturer or its distributors and shall be available for inspection at the job site at the request of the Building Official.

This NOA **revises and renews** NOA No. **24-0208.02** and consists of this page 1 and evidence pages E-1, E-2, E-3 and E-4, as well as approval document mentioned above.

The submitted documentation was reviewed by **Manuel Perez, P.E.**




4/11/25

NOA No. **25-0401.03**
Expiration Date: **March 25, 2030**
Approval Date: **April 17, 2025**
Page 1

NOTICE OF ACCEPTANCE: EVIDENCE SUBMITTED

1. EVIDENCE SUBMITTED UNDER PREVIOUS NOA's

A. DRAWINGS

1. Manufacturer's die drawings and sections.
(Submitted under NOA No. 08-1210.04)
2. Drawing No. **23-146** (formerly **21-029**) titled "Commercial Pass-Thru Horizontal Sliding Windows – Large Missile Impact Resistant", sheets 1 thru 14 of 14, dated 07/28/23, with revision # **1** dated 07/28/23, prepared by Tilteco, Inc., signed and sealed by Walter A. Tillit, Jr., P.E.
(Submitted under NOA No. 23- 0816.27)

B. TESTS

1. Test reports on: 1) Air Infiltration Test, per FBC, TAS 202-94
2) Uniform Static Air Pressure Test, Loading per FBC, TAS 202-94
3) Water Resistance Test, per FBC, TAS 202-94
4) Large Missile Impact Test per FBC, TAS 201-94
5) Cyclic Wind Pressure Loading per FBC, TAS 203-94
6) Forced Entry Test, per FBC 2411.3.2.1, and TAS 202-94
along with marked-up drawings and installation diagram of an aluminum horizontal sliding window, prepared by Architectural Testing, Inc., Test Report No. **ATI-85482.01-801-18**, dated 12/01/08, signed and sealed by Joseph A. Reed, P.E.
(Submitted under NOA No. 08-1210.04)

C. CALCULATIONS

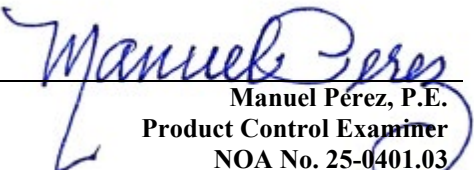
1. Anchor verification calculations and structural analysis, complying with FBC 5th Edition (2014), prepared by Tilteco, Inc., dated 03/11/15, signed and sealed by Walter A. Tillit, P.E.
(Submitted under NOA No. 17-0731.03)
2. Glazing complies with **ASTM E1300-04/09**

D. QUALITY ASSURANCE

1. Miami-Dade Department of Regulatory and Economic Resources (RER).

E. MATERIAL CERTIFICATIONS


1. Notice of Acceptance No. **23-0713.21** issued to **Eastman Chemical Company (MA)** for their "**Saflex Storm - Saflex and Saflex HP Composite Glass Interlayers with PET Core**" dated 08/17/23, expiring on 12/11/28.
2. Material Safety Data Sheet of **MSDS-17 High Density Polyethylene**, dated 09/11/08 and issued by Quadrant Engineering Plastic Products USA, Inc., the latest revision dated 09/01/10 by M. Lykins.


Manuel Pérez, P.E.
Product Control Examiner
NOA No. 25-0401.03
Expiration Date: March 25, 2030
Approval Date: April 17, 2025

NOTICE OF ACCEPTANCE: EVIDENCE SUBMITTED

1. EVIDENCE SUBMITTED UNDER PREVIOUS NOA's (CONTINUED)
F. STATEMENTS

1. Letter from manufacturer requesting a 1-year extension to allow time to perform verification test, dated March 15, 2024, signed by Ken Moore, Quality and Engineering Manager.
(Submitted under NOA No. 24-0208.02)
2. Testing agreement letter dated March 21, 2024, between Intertek, Architectural Testing, Inc. and QuikServ Corp., issued by Architectural Testing, Inc. and signed by Cassandra Mathews, Regional Administrative Manager.
(Submitted under NOA No. 24-0208.02)
3. Statement letter of conformance, complying with **FBC 7th Edition (2020)** and with **FBC 8th Edition (2023)**, dated July 28, 2023, issued by Tilteco, Inc., signed and sealed by Walter A. Tillit, Jr, P.E.
(Submitted under NOA No. 23-0816.27)
4. Department of State Certification of QuikServ Corporation as a foreign profit corporation, active and organized under the laws of the State of Florida, dated 01/13/15 and e-filed by the Secretary of State.
(Submitted under NOA No. 15-0316.03)
5. Department of State Certification of QuikServ Corp. as a For-Profit Corporation, active and organized under the laws of the State of Texas, dated 01/07/14 and e-filed by the Secretary of State.
(Submitted under NOA No. 13-1203.09)
6. Statement letter of no financial interest, dated 08/05/13, signed and sealed by Walter A. Tillit, Jr., P.E.
(Submitted under NOA No. 08-1210.04)
7. Department of State Certification of QuikServ Corp. as a For-Profit Corporation, active and organized under the laws of the State of Texas, dated 07/15/08, filed and signed by Phil Wilson, Secretary of State.
(Submitted under NOA No. 08-1210.04)
8. Laboratory addendum letter for Test Report No. **ATI-85482.01-801-18**, issued by Architectural Testing, Inc., dated 02/16/09, signed and sealed by Joseph A. Reed, P.E.
(Submitted under NOA No. 08-1210.04)
9. Laboratory compliance letter for Test Report No. **ATI-85482.01-801-18**, issued by Architectural Testing, Inc., dated 12/05/08, signed and sealed by Joseph A. Reed, P.E.
(Submitted under NOA No. 08-1210.04)


Manuel Pérez, P.E.
Product Control Examiner
NOA No. 25-0401.03
Expiration Date: March 25, 2030
Approval Date: April 17, 2025

NOTICE OF ACCEPTANCE: EVIDENCE SUBMITTED

1. EVIDENCE SUBMITTED UNDER PREVIOUS NOA's (CONTINUED)

G. OTHERS

1. Notice of Acceptance No. **23-0816.27**, issued to QuikServ Corp. for their Series "Commercial" Aluminum Pass-Through Horizontal Sliding Window – L.M.I.", approved on 09/07/23 and expiring on 03/25/24.
2. This is a one-year approval, subjected to successful verification test, the final approval will be issued for a total of 5 years.

2. NEW EVIDENCE SUBMITTED

A. DRAWINGS

1. Drawing No. **25-035** (formerly **23-146**) titled "Commercial Pass-Thru Horizontal Sliding Windows – Large Missile Impact Resistant", sheets 1 thru 14 of 14, dated 03/18/25, prepared by Tilteco, Inc., signed and sealed by Walter A. Tillit, Jr., P.E.

B. TESTS

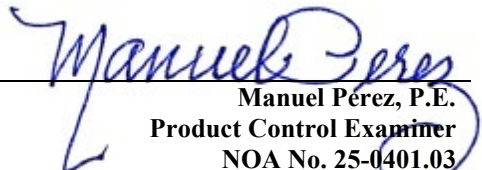
1. Test reports on: 1) Air Infiltration Test, per FBC, TAS 202-94
2) Uniform Static Air Pressure Test, Loading per FBC, TAS 202-94
3) Water Resistance Test, per FBC, TAS 202-94
4) Large Missile Impact Test per FBC, TAS 201-94
5) Cyclic Wind Pressure Loading per FBC, TAS 203-94
6) Forced Entry Test, per FBC 2411.3.2.1, and TAS 202-94
along with marked-up drawings and installation diagram of an aluminum horizontal sliding window, prepared by Intertek, Test Report No. **RR2027.01-801-18-r0**, dated 03/19/25, signed and sealed by Tyler Westerling, P.E.

C. CALCULATIONS

1. Anchor verification calculations and structural analysis, complying with FBC 8th Edition (2023), prepared by Tilteco, Inc., dated 03/11/25, signed and sealed by Walter A. Tillit, P.E.

D. QUALITY ASSURANCE

1. Miami-Dade Department of Regulatory and Economic Resources (RER).


Manuel Pérez, P.E.
Product Control Examiner
NOA No. 25-0401.03
Expiration Date: March 25, 2030
Approval Date: April 17, 2025

NOTICE OF ACCEPTANCE: EVIDENCE SUBMITTED

2. NEW EVIDENCE SUBMITTED (CONTINUED)

E. MATERIAL CERTIFICATIONS


1. Notice of Acceptance No. **24-0312.10** issued to **Eastman Chemical Company (MA)** for their “**Saflex® Storm - Saflex® and Saflex® HP Composite Interlayers with PET Core Laminated Glass**” dated 04/11/24, expiring on 12/11/28.
2. Notice of Acceptance No. **24-0205.08** issued to **Kuraray America, Inc.** for their “**Trosifol® Ultraclear, Clear and Color PVB Glass Interlayers**” dated 03/21/24, expiring on 07/08/29.
3. Notice of Acceptance No. **24-0102.06** issued to **ITW Buildex, a division of Illinois Tool Works, Inc.** for their “**Tapcon® Concrete and Masonry Anchors with Advance Threadform Technology™**” dated 04/25/24, expiring on 08/31/26.

F. STATEMENTS

1. Statement letter of conformance, complying with **FBC 8th Edition (2023)**, dated March 17, 2025, issued by Tilteco, Inc., signed and sealed by Walter A. Tillit, Jr, P.E.
2. Statement letter of no financial interest, dated March 17, 2025, issued by Tilteco, Inc., signed and sealed by Walter A. Tillit, Jr., P.E.
3. Letter from manufacturer requesting a 5-year renewal, dated March 18, 2025, signed by Ken Moore, Quality and Engineering Manager.

G. OTHERS

1. Notice of Acceptance No. **24-0208.02**, issued to QuikServ Corp. for their Series “**Commercial Horizontal Sliding**” Aluminum Pass-Through Window – L.M.I.”, approved on 04/04/24 and expiring on 03/25/25.


Manuel Pérez, P.E.
Product Control Examiner
NOA No. 25-0401.03
Expiration Date: March 25, 2030
Approval Date: April 17, 2025

GENERAL NOTES:

1. COMMERCIAL PASS-THRU HORIZONTAL SLIDING WINDOWS, LARGE MISSILE IMPACT RESISTANT, SHOWN ON THIS PRODUCT APPROVAL DOCUMENT (P.A.D.) HAVE BEEN VERIFIED FOR COMPLIANCE IN ACCORDANCE WITH THE 2023 (8th EDITION) OF THE FLORIDA BUILDING CODE. COMMERCIAL PASS-THRU HORIZONTAL SLIDING WINDOWS, LARGE MISSILE IMPACT RESISTANT, MAY BE INSTALLED AT HIGH VELOCITY HURRICANE ZONES.

DESIGN WIND LOADS SHALL BE DETERMINED AS PER SECTION 1620 OF THE ABOVE MENTIONED CODE. USING ASCE 7-22 SHALL NOT EXCEED THE MAXIMUM (A.S.D.) DESIGN PRESSURE RATINGS INDICATED ON NOTE 2.
IN ORDER TO VERIFY THE ABOVE CONDITION, ULTIMATE DESIGN WIND LOADS DETERMINED PER ASCE 7-22 SHALL BE FIRST REDUCED TO A.S.D. DESIGN WIND LOAD BY MULTIPLYING THEM BY 0.6 IN ORDER TO COMPARE THESE W/ MAX. (A.S.D.) DESIGN PRESSURE RATINGS INDICATED ON NOTE 2.

IN ORDER TO VERIFY THAT ANCHORS ON THIS P.A.D. AS TESTED, WERE NOT OVERSTRESSED, A 33% INCREASE IN ALLOWABLE STRESS FOR WIND LOADS WAS **NOT** USED IN THEIR ANALYSIS, FASTENERS SPACING TO WOOD HAS BEEN DETERMINED IN ACCORDANCE WITH N.D.S. 2018. THESE COMMERCIAL PASS-THRU HORIZONTAL SLIDING WINDOWS' ADEQUACY FOR IMPACT AND FATIGUE RESISTANCE HAS BEEN VERIFIED IN ACCORDANCE WITH SECTION 1626 OF THE ABOVE MENTIONED CODE AS PER PROTOCOLS TAS-201, TAS-202, TAS-203 PROTOCOLS, PER INTERTEK LAB REPORT #RR2027.01-801-18-R0 AND AS PER SUBMITTED STRUCTURAL CALCULATIONS, PERFORMED AS PER SECTION 1616 OF THE FLORIDA BUILDING CODE.

2. MAX. A.S.D. DESIGN PRESSURE RATING FOR THESE COMMERCIAL PASS THRU- HORIZONTAL SLIDING WINDOW IS :
+ 70, - 80 P.S.F.

3. THESE COMMERCIAL PASS-THRU HORIZONTAL SLIDING WINDOW WILL NOT REQUIRE A HURRICANE PROTECTION DEVICE ON INSTALLATIONS UP TO 30 FEET ABOVE GRADE.

4. THESE COMMERCIAL PASS-THRU HORIZONTAL SLIDING WINDOWS ARE APPROVED FOR AIR AND WATER INFILTRATION.

5. ALL COMPONENTS SHALL BE AS INDICATED ON BILL OF MATERIALS ON SHEET 14 AND COMPONENTS DESCRIPTION ON SHEETS 10 THRU 12

6. WOOD BUCKS BY OTHERS, MUST BE ANCHORED PROPERLY TO TRANSFER LOADS TO THE BUILDING STRUCTURE. WOOD BUCKS MUST BE SOUTHERN PINE, G = 0.55.

7. ALL ALUMINUM IN CONTACT WITH DISSIMILAR MATERIALS SHALL COMPLY WITH SECTION III-6 OF THE 2020 ALUMINUM DESIGN MANUAL

8. ANCHOR NOTES: EMBEDMENT AND EDGE DISTANCE ARE BEYOND ANY FINISH.
(A) TO EXISTING POURED CONCRETE: (MIN. f_c = 3000 PSI), MIN. EDGE DISTANCE (E.D.) = 3"
- 1/4" Ø TAPCON ANCHORS W/ 1" MIN. EMBEDMENT, AS MANUFACTURED BY ITW/BUILDEX, INC., THRU 1" P.T. WOOD BUCK (IF APPLICABLE).
(B) TO EXISTING A.S.T.M. C-90 CONCRETE BLOCK WALL. MIN. EDGE DISTANCE (E.D.) = 2".
- 1/4" Ø TAPCON ANCHORS W/ 1" MIN. EMBEDMENT. AS MANUFACTURED BY ITW/BUILDEX, INC., THRU 1" P.T. WOOD BUCK (IF APPLICABLE).
(C) TO EXISTING DOUBLE 2X P.T. WOOD BUCK. MIN. EDGE DISTANCE (E.D.) = 1".
- 1/4" Ø WOOD SCREWS W/ 3" MIN. THREADED PENETRATION, TO COMPLY W/ NDS 2018.
(D) TO EXISTING MIN. 1/8" THICK ALUMINUM TUBE (6063-T5 ALLOY) MIN. EDGE DISTANCE (E.D.) = 1/2".
- 1/4" Ø TEK SCREWS, AS MANUFACTURED BY ITW/BUILDEX, INC.
(E) TO EXISTING MIN. 18 GAUGE STEEL MEMBER (ASTM A-500, A-653 OR A-36) MIN. EDGE DISTANCE (E.D.) = 1/2".
- 1/4" Ø TEK SCREW, AS MANUFACTURED BY ITW/BUILDEX, INC.

9. PROVIDE 1/4" MAX. LOAD BEARING SHIM, WHEN ALLOWED BY THIS DRAWING.

10. PRODUCT MANUFACTURER'S LABEL SHALL BE LOCATED ON A READILY VISIBLE LOCATION AT PRODUCT IN ACCORDANCE WITH SECTION 1709.5 OF THE FLORIDA BUILDING CODE. ONE LABEL SHALL BE PLACED FOR EVERY OPENING.

11. (a) THIS P.A.D. PREPARED BY THIS ENGINEER IS GENERIC AND DOES NOT PROVIDE INFORMATION FOR A SITE SPECIFIC PROJECT; i.e. WHERE THE SITE CONDITIONS DEVIATE FROM THE P.A.D.
(b) CONTRACTOR TO BE RESPONSIBLE FOR THE SELECTION, PURCHASE AND INSTALLATION INCLUDING LIFE SAFETY OF THIS PRODUCT, BASED ON THIS P.A.D. PROVIDED HE/SHE DOES NOT DEVIATE FROM THE CONDITIONS DETAILED ON THIS DOCUMENT. CONSTRUCTION SAFETY AT SITE IS THE CONTRACTOR'S RESPONSIBILITY.

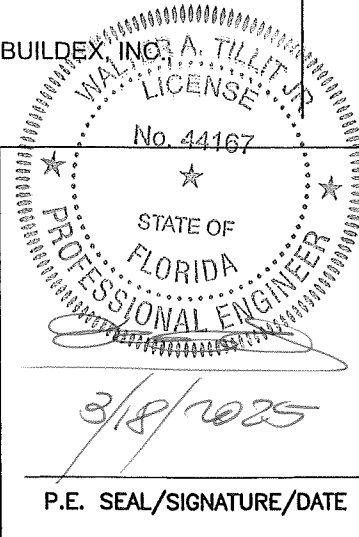
(c) THIS P.A.D. WILL BE CONSIDERED INVALID IF ALTERED BY ANY MEANS.

(d) SITE SPECIFIC PROJECTS SHALL BE PREPARED BY A FLORIDA REGISTERED ENGINEER OR ARCHITECT WHICH WILL BECOME THE ENGINEER OF RECORD (E.O.R.) FOR THE PROJECT AND WHO WILL BE RESPONSIBLE FOR THE PROPER USE OF THE P.A.D. ENGINEER OF RECORD, ACTING AS DELEGATED ENGINEER TO THE P.A.D. ENGINEER, SHALL SUBMIT TO THIS LATTER THE SITE SPECIFIC DRAWINGS FOR REVIEW.

(e) ORIGINAL P.A.D. SHALL BEAR THE DATE AND ORIGINAL SEAL AND SIGNATURE OF THE PROFESSIONAL ENGINEER OF RECORD THAT PREPARED IT.

SHEET #	TABLE OF CONTENTS
	DESCRIPTION
1	GENERAL NOTES
2	IMPACT WINDOWS EXTERIOR ELEVATION
3	SC-4040-IP WINDOW TYPE 1 (XO)
4	SS-4040E-IP WINDOW TYPE 11 (XO)
5	GLAZING DETAILS OPTION 1
6	GLAZING DETAILS OPTION 2
7	DOOR - HEADER AND SILL CONNECTIONS
8	ANCHOR INTALLATION / LAYOUT
9	ANCHOR SCHEDULE
10	STEEL ASSEMBLY COMPONENTS
11	ALUMINUM EXTRUSIONS COMPONENTS
12	ASSEMBLY COMPONENTS (CONTINUED)
13	SASH INSTALLATION DETAILS
14	BILL OF MATERIALS

THIS DRAWING SHALL ONLY BE USED TO OBTAIN PERMITS IN THE STATE OF FLORIDA



PRODUCT REVISED
As complying with the Florida Building Code
NOA-No. **25-0401.03**
Expiration Date: **03/25/2030**
By: *Manuel Perez*
Miami-Dade Product Control

FLORIDA BUILDING CODE (HIGH VELOCITY HURRICANE ZONE)

© 2025 TILTECO, INC.

TILTECO INC.

TILLIT TESTING & ENGINEERING COMPANY
6355 N.W. 36th. St., Ste. 305, VIRGINIA GARDENS, FL 33166
Phone : (305)871-1530 . Fax : (305)871-1531
CA-0006719
WALTER A. TILLIT Jr. P.E.
FLORIDA Lic. # 44167

COMMERCIAL PASS-THRU HORIZONTAL SLIDING WINDOWS LARGE MISSILE IMPACT RESISTANT

QUIKSERV CORP.
11441 BRITTMORE PARK DRIVE,
HOUSTON, TEXAS 77041
PHONE: (713) 937-3437 FAX: (713) 937-9765

REV. NO	DESCRIPTION	DATE	REV. No	DESCRIPTION	DATE
1	-	-	3	-	-
2	-	-	4	-	-

W.H
DRAWN BY:

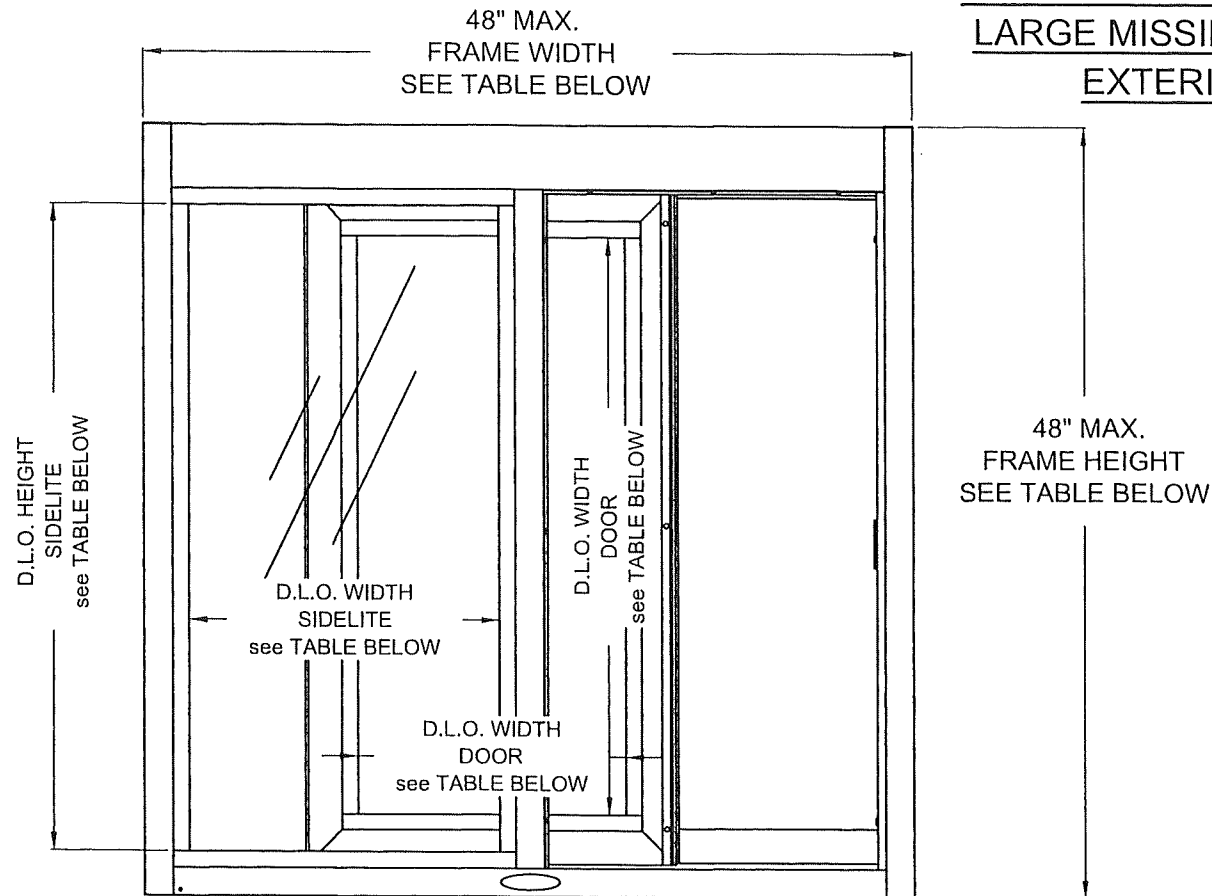
03/18/2025
DATE:

25-035

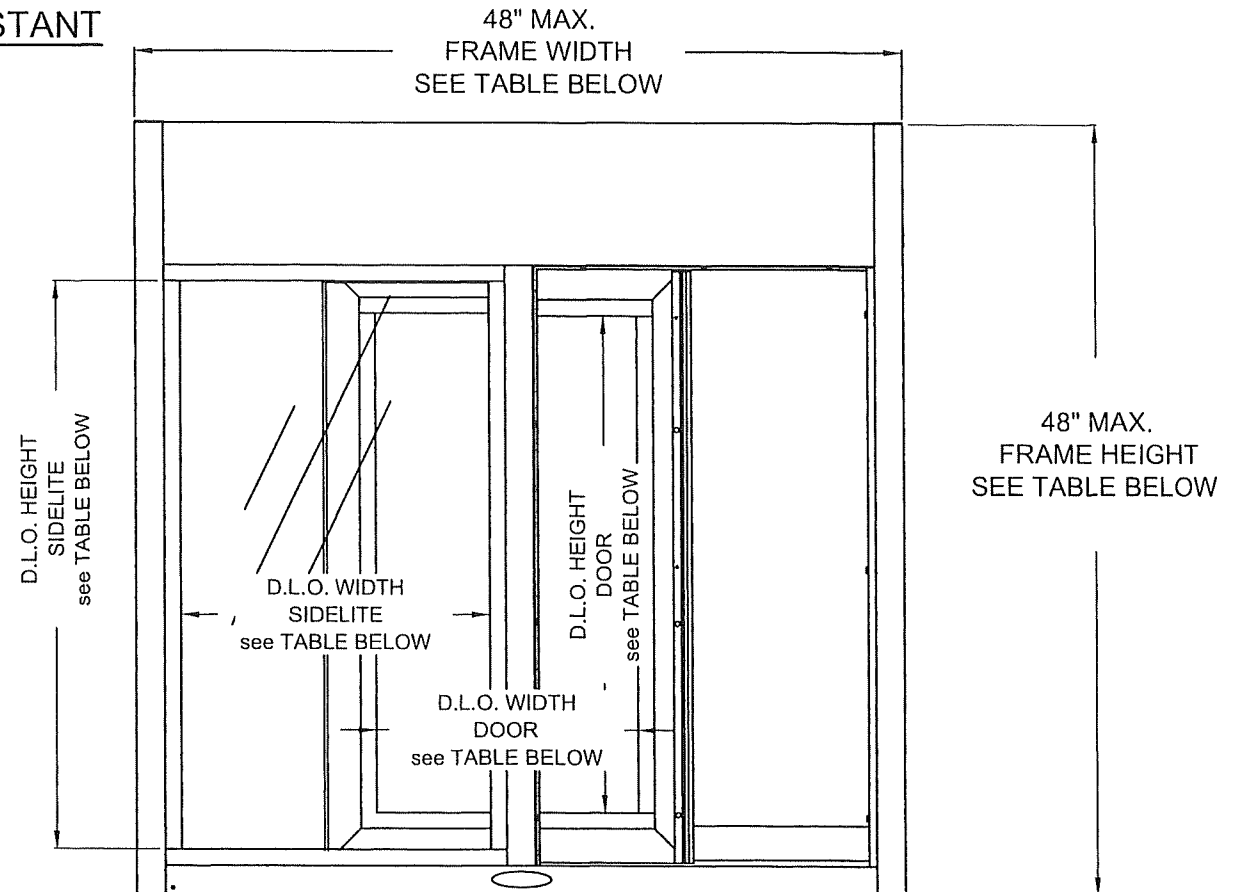
DRAWING No.

SHEET 1 of 14

COMMERCIAL PASS-THRU WINDOWS
LARGE MISSILE IMPACT RESISTANT
EXTERIOR ELEVATIONS



SC-4040-IP WINDOW TYPE 1 (OX) SS-4040M-IP WINDOW TYPE 6 (OX)
SC-4844-IP WINDOW TYPE 2 (OX) SS-4844M-IP WINDOW TYPE 7 (OX)
SC-4030-IP WINDOW TYPE 3 (OX) SS-4030M-IP WINDOW TYPE 8 (OX)
SC-3030-IP WINDOW TYPE 4 (OX) SS-3030M-IP WINDOW TYPE 9 (OX)
SC-4035-IP WINDOW TYPE 5 (OX) SS-4035M-IP WINDOW TYPE 10 (OX)
N.T.S. N.T.S.



SS-4040E-IP WINDOW TYPE 11 (OX)
SS-4844E-IP WINDOW TYPE 12 (OX)
SS-4030E-IP WINDOW TYPE 13 (OX)
SS-3030E-IP WINDOW TYPE 14 (OX)
SS-4035E-IP WINDOW TYPE 15 (OX)
N.T.S.

MODEL	WINDOW TYPE	ACTUAL FRAME MAX. DIMENSION	MAX. D.L.O. DIMENSIONS	GLAZING TYPE
SC-4040-IP	1	48"(W) X 48"(H)	(X) 16-1/2"(W) X 35-3/4"(H) (O) 19-3/8"(W) X 40-1/4"(H)	SEE PAGE 5 & 6 OF 14
SC-4844-IP	2	47-1/2"(W) X 43-1/2"(H)	(X) 16-1/2"(W) X 31-1/4"(H) (O) 19-1/8"(W) X 35-3/4"(H)	SEE PAGE 5 & 6 OF 14
SC-4030-IP	3	48"(W) X 36"(H)	(X) 16-1/2"(W) X 23-3/4"(H) (O) 19-3/8"(W) X 28-1/4"(H)	SEE PAGE 5 & 6 OF 14
SC-3030-IP	4	36"(W) X 36"(H)	(X) 10-3/4"(W) X 23-3/4"(H) (O) 13-3/8"(W) X 28-1/4"(H)	SEE PAGE 5 & 6 OF 14
SC-4035-IP	5	48"(W) X 41"(H)	(X) 16-1/2"(W) X 23-3/8"(H) (O) 19-3/8"(W) X 33-1/4"(H)	SEE PAGE 5 & 6 OF 14
SS-4040M-IP	6	48"(W) X 48"(H)	(X) 16-1/2"(W) X 35-3/4"(H) (O) 19-3/8"(W) X 40-1/4"(H)	SEE PAGE 5 & 6 OF 14
SS-4844M-IP	7	47-1/2"(W) X 43-1/2"(H)	(X) 16-1/2"(W) X 31-1/4"(H) (O) 19-1/8"(W) X 35-3/4"(H)	SEE PAGE 5 & 6 OF 14
SS-4030M-IP	8	48"(W) X 36"(H)	(X) 16-1/2"(W) X 23-3/4"(H) (O) 19-3/8"(W) X 28-1/4"(H)	SEE PAGE 5 & 6 OF 14
SS-3030M-IP	9	36"(W) X 36"(H)	(X) 10-3/4"(W) X 23-3/4"(H) (O) 13-3/8"(W) X 28-1/4"(H)	SEE PAGE 5 & 6 OF 14
SS-4035M-IP	10	48"(W) X 41"(H)	(X) 16-1/2"(W) X 23-3/8"(H) (O) 19-3/8"(W) X 33-1/4"(H)	SEE PAGE 5 & 6 OF 14
SS-4040E-IP	11	48"(W) X 48"(H)	(X) 16-1/2"(W) X 30-3/4"(H) (O) 19-3/8"(W) X 35-3/8"(H)	SEE PAGE 5 & 6 OF 14
SS-4844E-IP	12	47-1/2"(W) X 43-1/2"(H)	(X) 16-1/2"(W) X 26-1/4"(H) (O) 19-1/8"(W) X 30-7/8"(H)	SEE PAGE 5 & 6 OF 14
SS-4030E-IP	13	48"(W) X 36"(H)	(X) 16-1/2"(W) X 18-3/4"(H) (O) 19-3/8"(W) X 23-3/8"(H)	SEE PAGE 5 & 6 OF 14
SS-3030E-IP	14	36"(W) X 36"(H)	(X) 10-3/4"(W) X 18-3/4"(H) (O) 13-3/8"(W) X 23-3/8"(H)	SEE PAGE 5 & 6 OF 14
SS-4035E-IP	15	48"(W) X 41"(H)	(X) 16-1/2"(W) X 23-3/4"(H) (O) 19-3/8"(W) X 28-3/8"(H)	SEE PAGE 5 & 6 OF 14

SC-####-IP = SELF CLOSING (MANUAL OPEN AND SELF-CLOSE)
SS-####M-IP = MANUAL CLOSE AND MANUAL OPEN
SS-####E-IP = ELECTRIC OPEN AND ELECTRIC CLOSE

WALTER A. TILLIT JR.
LICENSE
No. 44167
STATE OF FLORIDA
PROFESSIONAL ENGINEER
P.E. SEAL/SIGNATURE/DATE

PRODUCT REVISED
As complying with the Florida
Building Code
NOA-No. **25-0401.03**
Expiration Date: **03/25/2030**
By: *Manuel Perez*
Miami-Dade Product Control

FLORIDA BUILDING CODE (HIGH VELOCITY HURRICANE ZONE)

© 2025 TILTECO, INC.

TILTECO INC.
TILLIT TESTING & ENGINEERING COMPANY
6355 N.W. 36th. St., Ste. 305, VIRGINIA GARDENS, FL 33166
Phone : (305)871-1530 . Fax : (305)871-1531
CA-0006719
WALTER A. TILLIT Jr. P.E.
FLORIDA Lic. # 44167

COMMERCIAL PASS-THRU HORIZONTAL SLIDING
WINDOWS LARGE MISSILE IMPACT RESISTANT

W.H
DRAWN BY:

QUIKSERV CORP.

11441 BRITTMORE PARK DRIVE,
HOUSTON, TEXAS 77041

PHONE: (713) 937-3437 FAX: (713) 937-9765

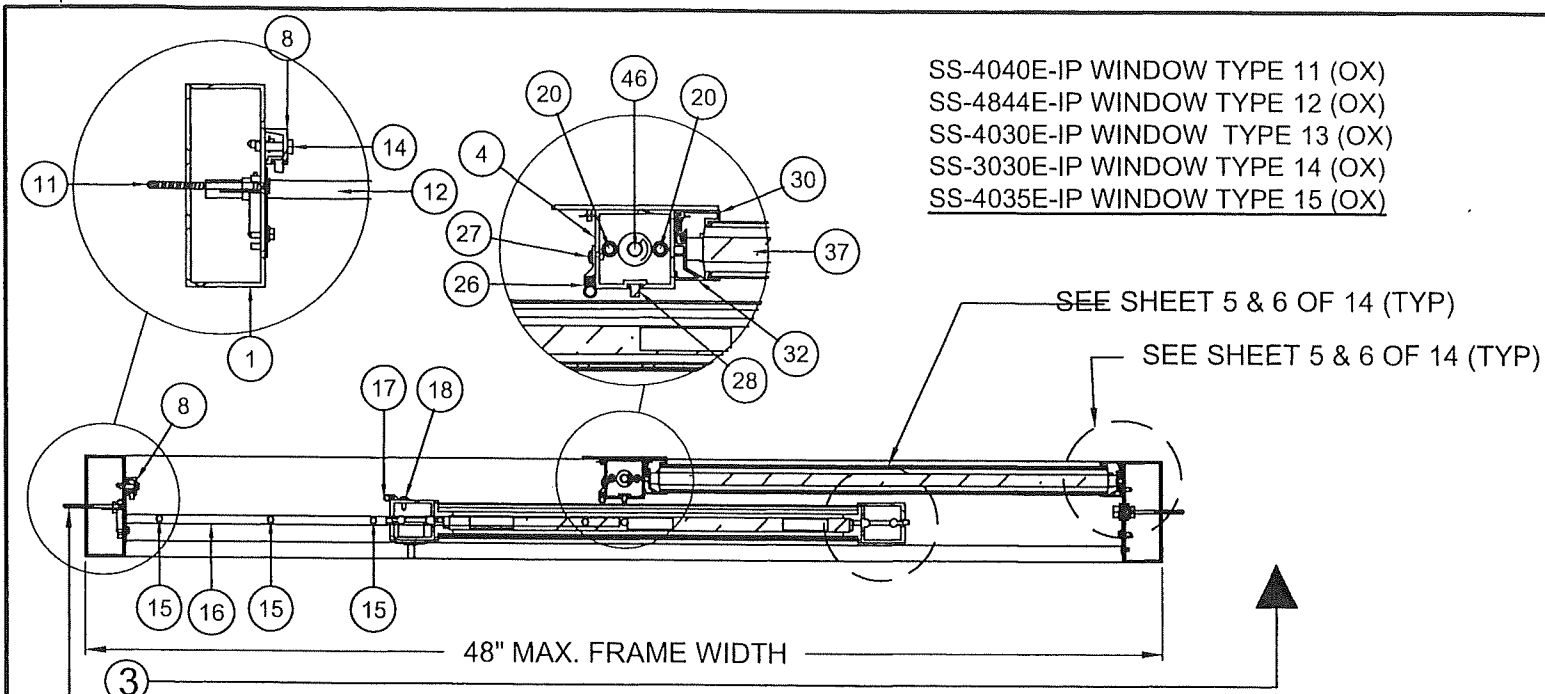
03/18/2025
DATE:

25-035

DRAWING No.

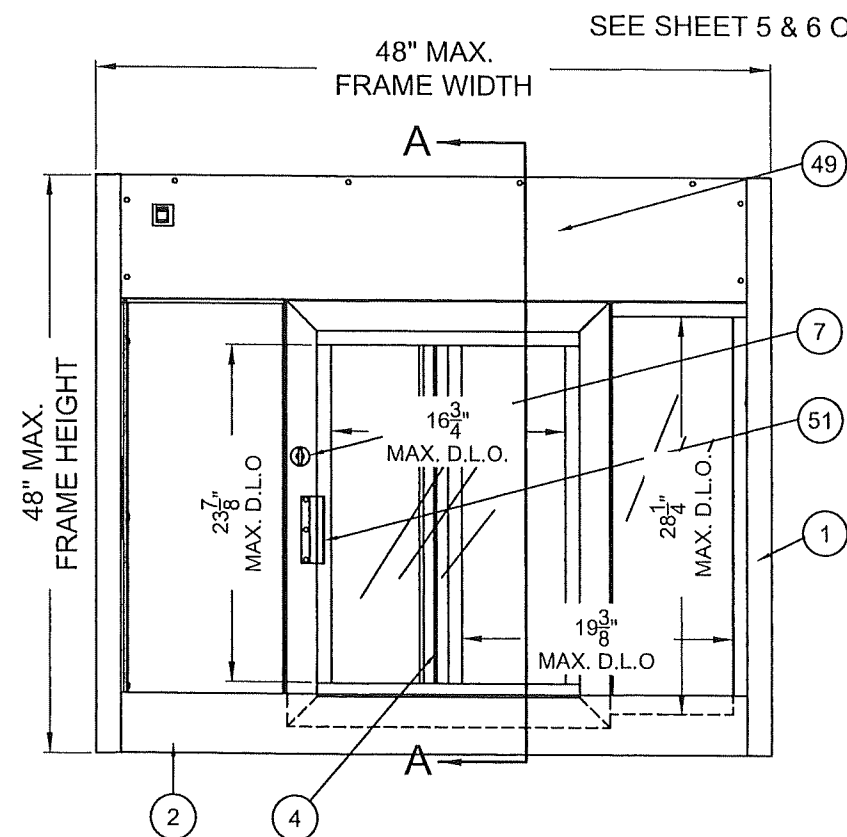
REV. NO	DESCRIPTION	DATE	REV. No	DESCRIPTION	DATE
1	-	-	3	-	-
2	-	-	4	-	-

SHEET 2 of 14

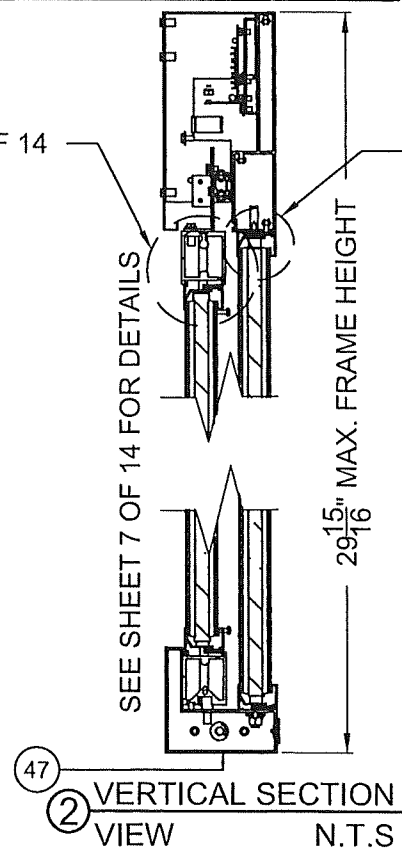


① HORIZONTAL SECTION VIEW
N.T.S

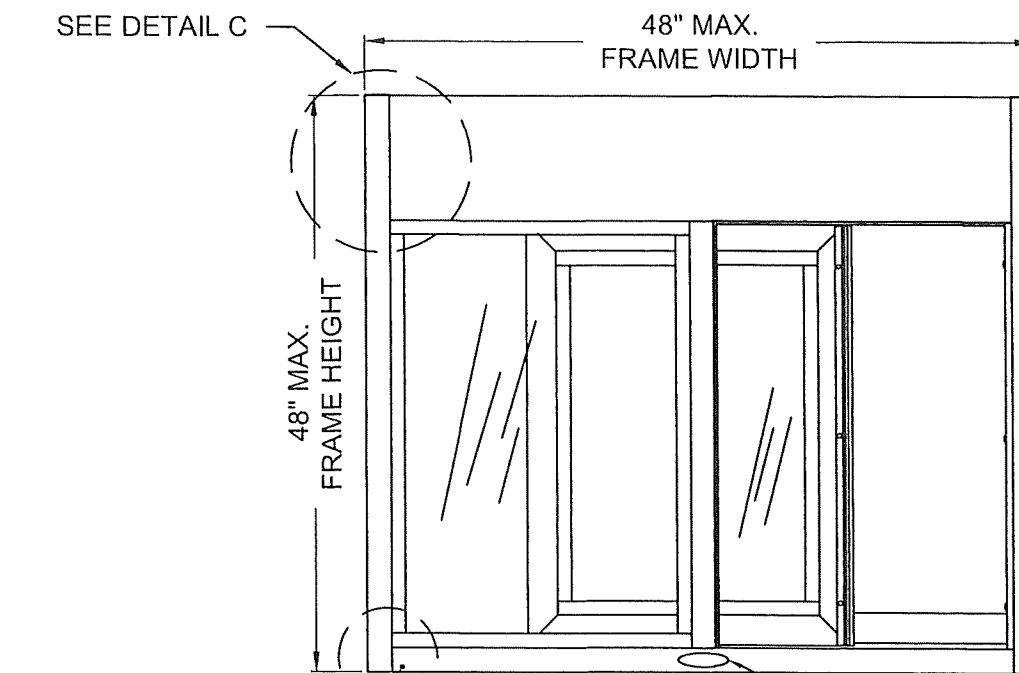
SEE SHEET 9 OF 14



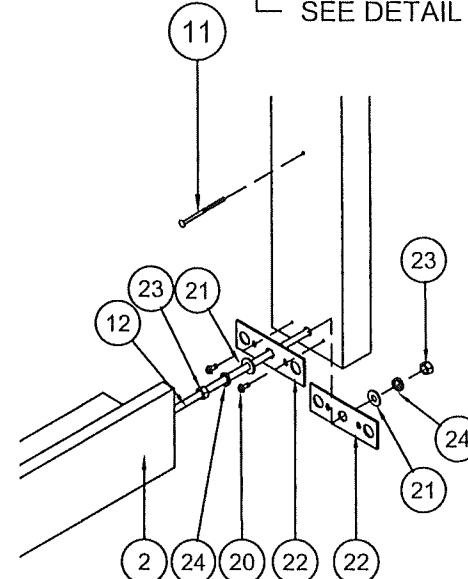
③ INTERIOR VIEW
N.T.S



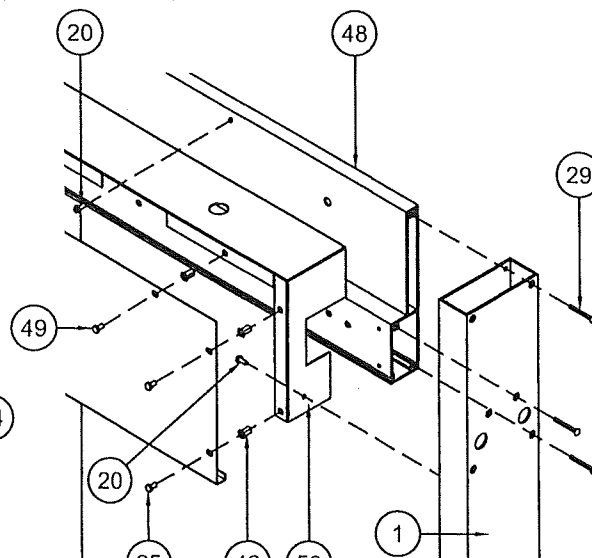
② VERTICAL SECTION VIEW
N.T.S



④ EXTERIOR VIEW (OX)
N.T.S.



DETAIL A (CORNER HEAD)
VIEW
N.T.S



DETAIL C (CORNER HEAD)
VIEW
N.T.S

WALTER A. TILLIT JR.
 LICENSE
 No. 44167
 STATE OF FLORIDA
 PROFESSIONAL ENGINEER
 P.E. SEAL/SIGNATURE/DATE

PRODUCT REVISED
 As complying with the Florida
 Building Code
 NOA-No. **25-0401.03**
 Expiration Date: **03/25/2030**
 By: *Manuel Bern*
 Miami-Dade Product Control

FLORIDA BUILDING CODE (HIGH VELOCITY HURRICANE ZONE)

© 2025 TILTECO, INC.

TILTECO INC.
 TILLIT TESTING & ENGINEERING COMPANY
 6355 N.W. 36th St., Ste. 305, VIRGINIA GARDENS, FL 33166
 Phone : (305)871-1530 . Fax : (305)871-1531
 CA-0006719
 WALTER A. TILLIT Jr. P.E.
 FLORIDA Lic. # 44167

COMMERCIAL PASS-THRU HORIZONTAL SLIDING
 WINDOWS LARGE MISSILE IMPACT RESISTANT

W.H
 DRAWN BY:

QUIKSERV CORP.

11441 BRITTMORE PARK DRIVE,
 HOUSTON, TEXAS 77041

PHONE: (713) 937-3437 FAX: (713) 937-9765

03/18/2025
 DATE:

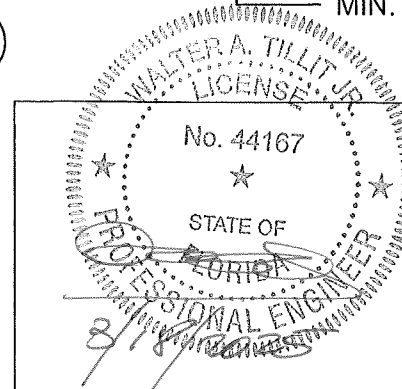
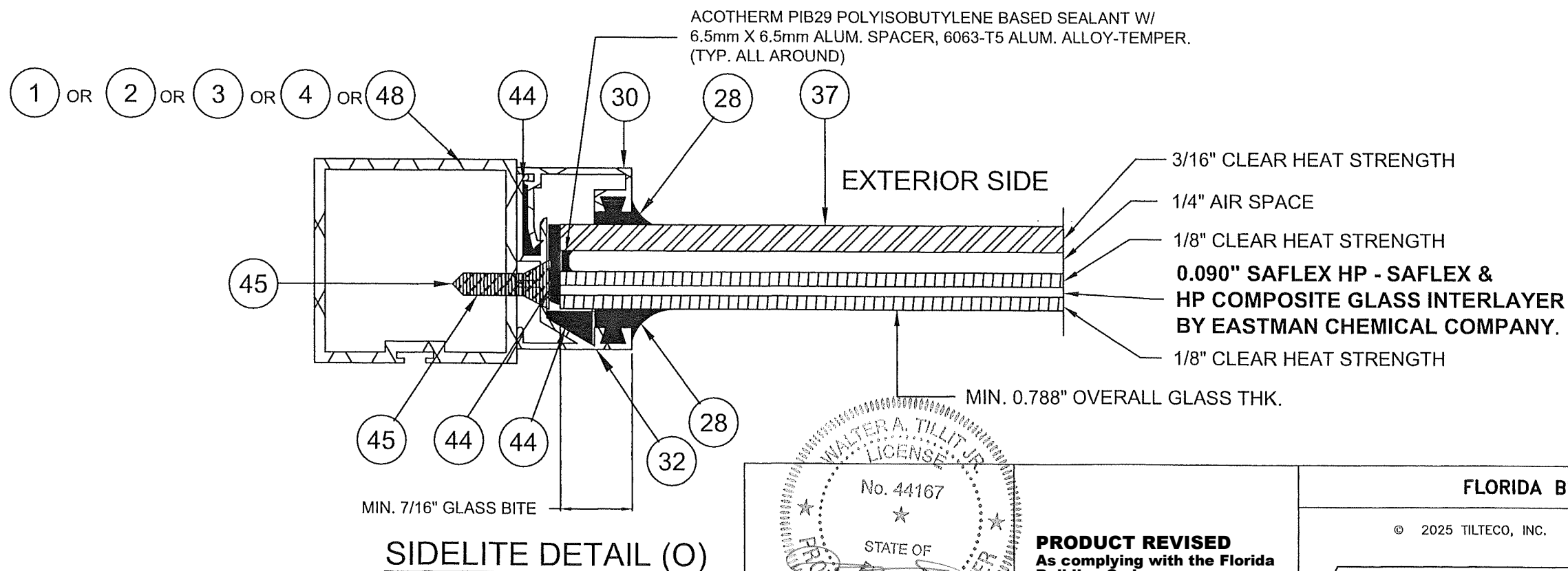
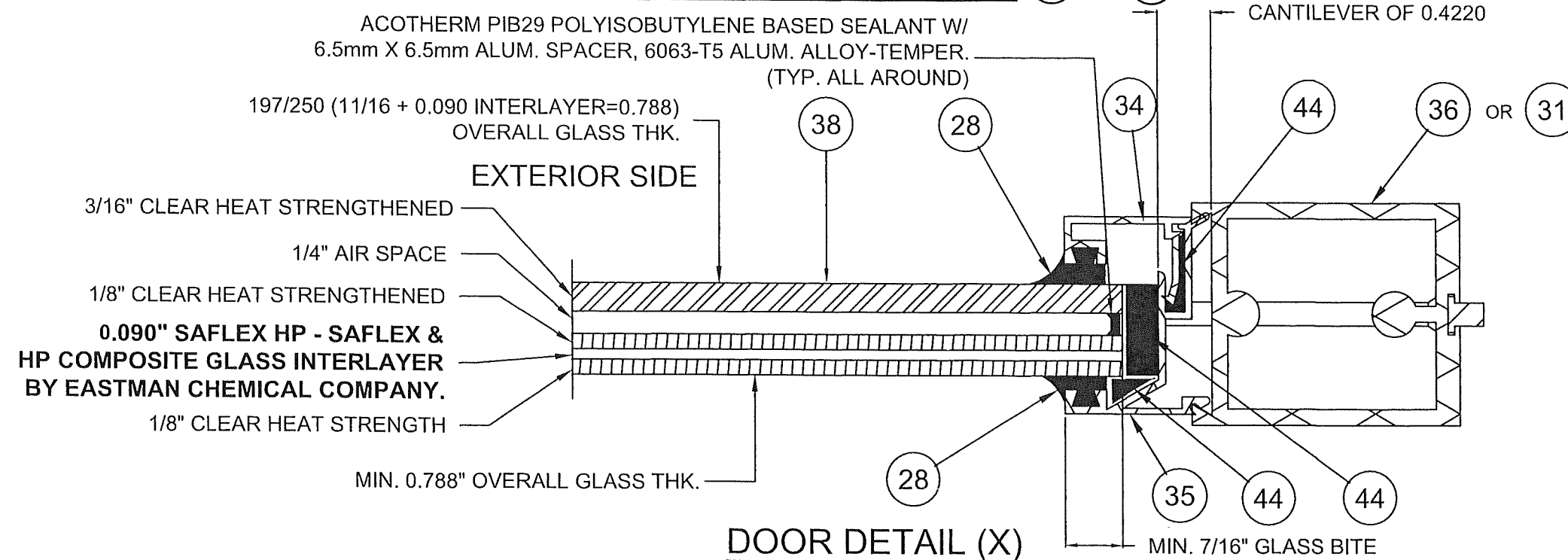
25-035

DRAWING No.

REV. NO	DESCRIPTION	DATE	REV. No	DESCRIPTION	DATE
1	-	-	3	-	-
2	-	-	4	-	-

SHEET 4 of 14

GLAZING DETAIL OPTION 1 (37) AND (38)



P.E. SEAL/SIGNATURE/DATE

PRODUCT REVISED
As complying with the Florida
Building Code
NOA-No. **25-0401.03**
Expiration Date: **03/25/2030**
By: *Manuel Fern*
Miami-Dade Product Control

FLORIDA BUILDING CODE (HIGH VELOCITY HURRICANE ZONE)

© 2025 TILTECO, INC.

TILTECO INC.
TILLIT TESTING & ENGINEERING COMPANY
6355 N.W. 36th St., Ste. 305, VIRGINIA GARDENS, FL 33166
Phone : (305)871-1530 . Fax : (305)871-1531
CA-0006719
WALTER A. TILLIT Jr. P.E.
FLORIDA Lic. # 44167

COMMERCIAL PASS-THRU HORIZONTAL SLIDING
WINDOWS LARGE MISSILE IMPACT RESISTANT

W.H
DRAWN BY:

QUIKSERV CORP.

11441 BRITTMORE PARK DRIVE,
HOUSTON, TEXAS 77041

PHONE: (713) 937-3437 FAX: (713) 937-9765

03/18/2025
DATE:

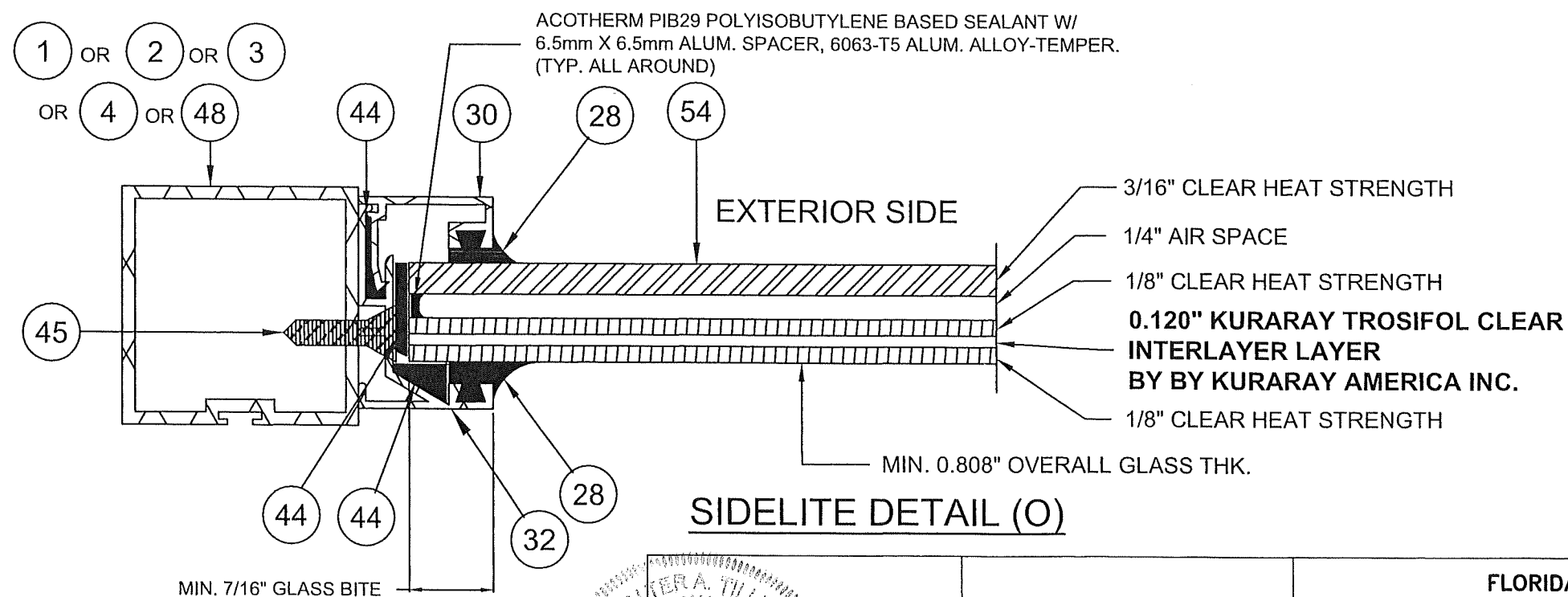
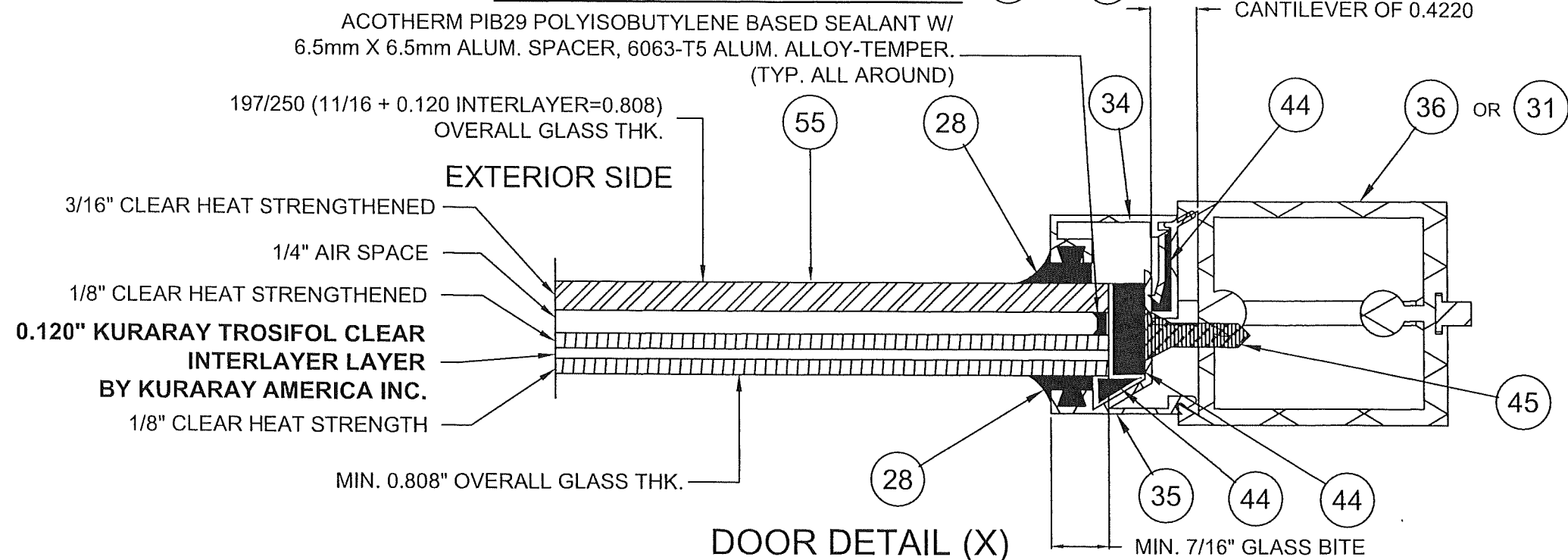
25-035

DRAWING No.

REV. NO	DESCRIPTION	DATE	REV. No	DESCRIPTION	DATE
1	-	-	3	-	-
2	-	-	4	-	-

SHEET 5 of 14

GLAZING DETAIL OPTION 2 (54) AND (55)



WALTER A. TILLIT JR.
LICENSE
No. 44167
STATE OF FLORIDA
PROFESSIONAL ENGINEER
P.E. SEAL/SIGNATURE/DATE

PRODUCT REVISED
As complying with the Florida
Building Code
NOA-No. **25-0401.03**
Expiration Date: **03/25/2030**
By: *Manuel Fern*
Miami-Dade Product Control

FLORIDA BUILDING CODE (HIGH VELOCITY HURRICANE ZONE)

© 2025 TILTECO, INC.

TILTECO INC.
TILLIT TESTING & ENGINEERING COMPANY
6355 N.W. 36th St., Ste. 305, VIRGINIA GARDENS, FL 33166
Phone : (305)871-1530 . Fax : (305)871-1531
CA-0006719
WALTER A. TILLIT Jr. P.E.
FLORIDA Lic. # 44167

COMMERCIAL PASS-THRU HORIZONTAL SLIDING
WINDOWS LARGE MISSILE IMPACT RESISTANT

W.H
DRAWN BY:

QUIKSERV CORP.

11441 BRITTMORE PARK DRIVE,
HOUSTON, TEXAS 77041

PHONE: (713) 937-3437 FAX: (713) 937-9765

03/18/2025
DATE:

25-035

DRAWING No.

REV. NO	DESCRIPTION	DATE	REV. No	DESCRIPTION	DATE
1	-	-	3	-	-
2	-	-	4	-	-

SHEET 6 of 14

DOOR - HEADER CONNECTIONS

- SC-4040-IP WINDOW TYPE 1 (OX)

SC-4844-IP WINDOW TYPE 2 (OX)

SC-4030-IP WINDOW TYPE 3 (OX)

SC-3030-IP WINDOW TYPE 4 (OX)

SC-4035-IP WINDOW TYPE 5 (OX)
- SS-4040M-IP WINDOW TYPE 6 (OX)

SS-4844M-IP WINDOW TYPE 7 (OX)

SS-4030M-IP WINDOW TYPE 8 (OX)

SS-3030M-IP WINDOW TYPE 9 (OX)

SS-4035M-IP WINDOW TYPE 10 (OX)

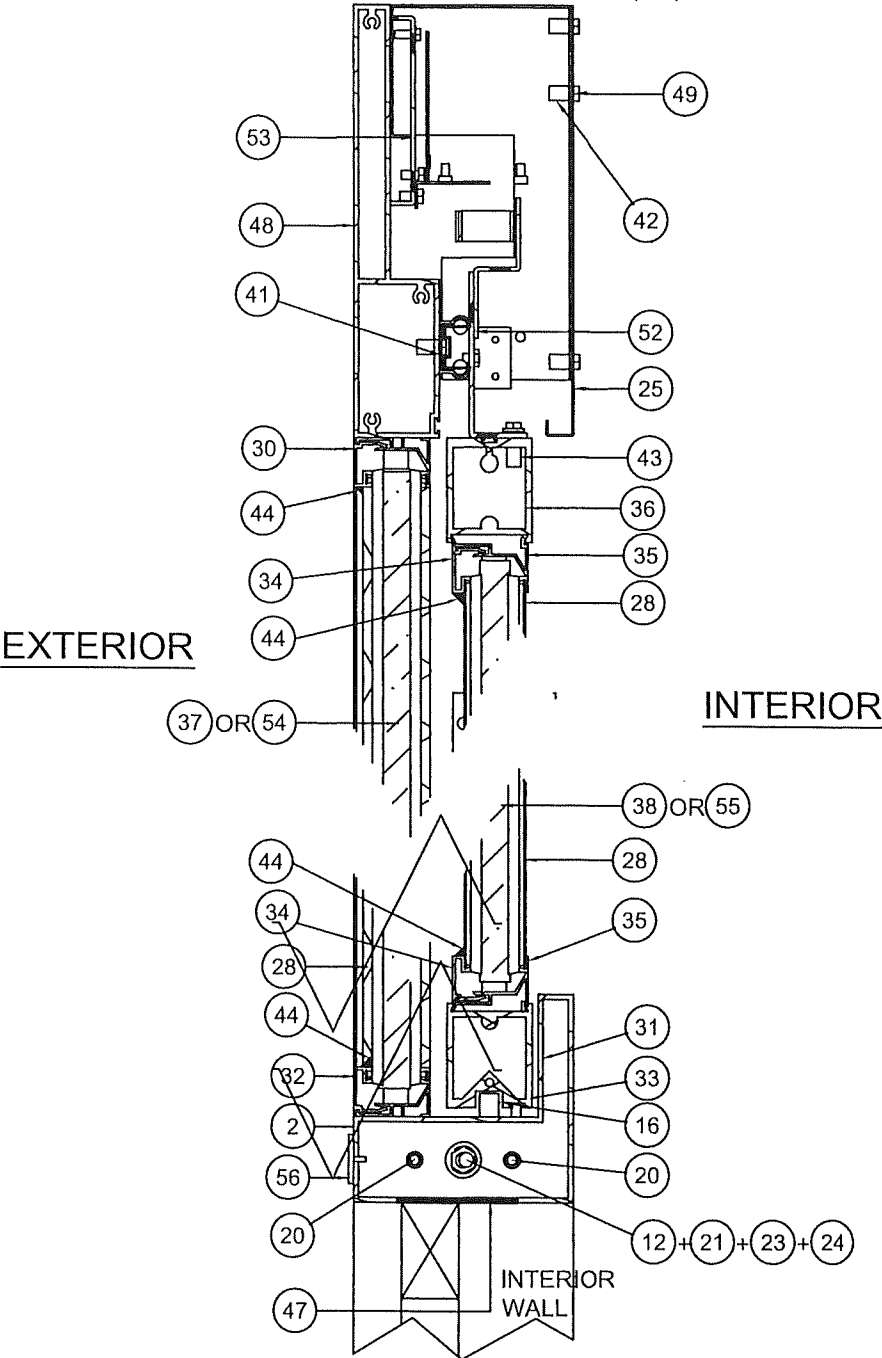
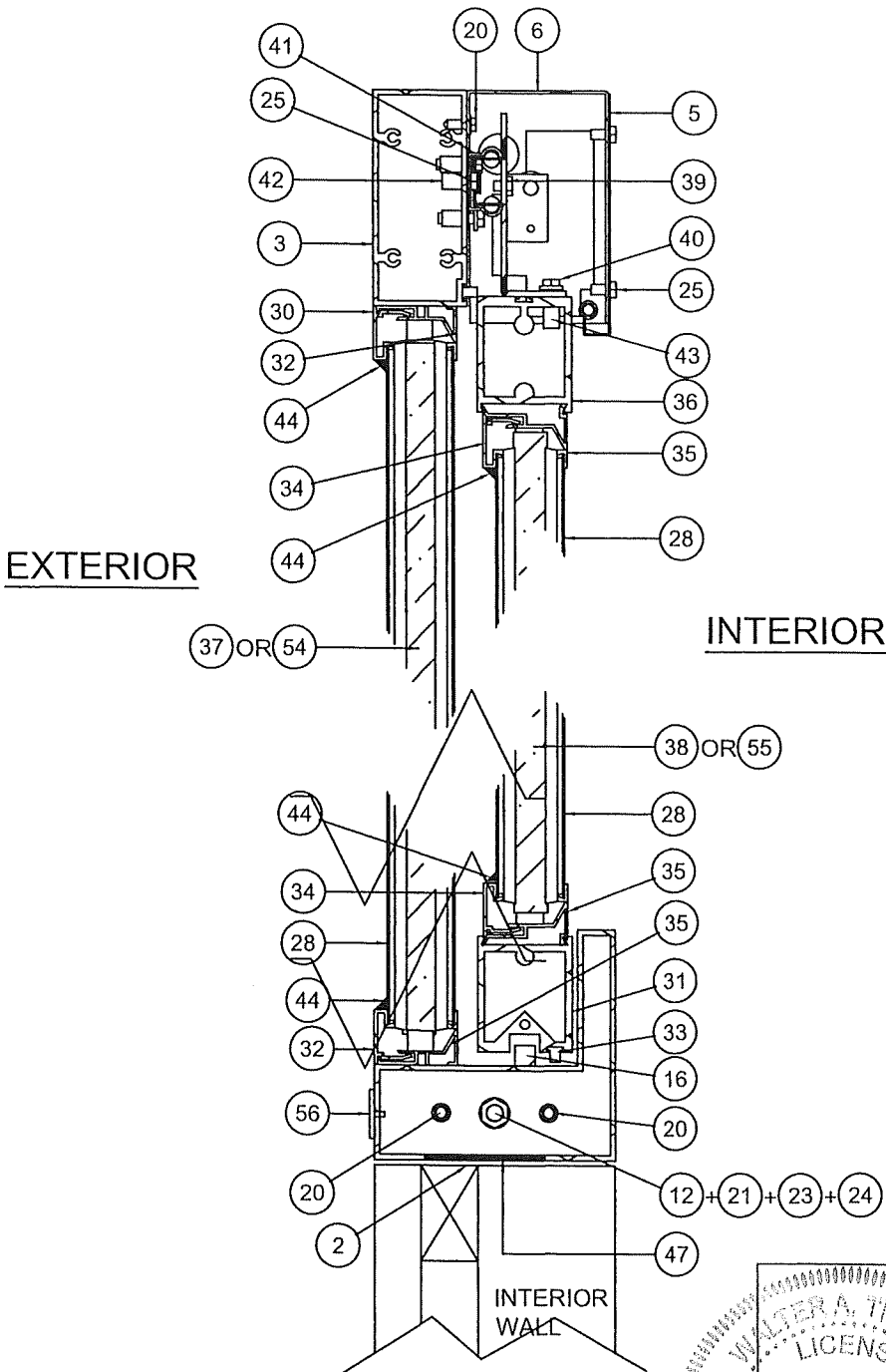
- SS-4040E-IP WINDOW TYPE 11 (OX)

SS-4844E-IP WINDOW TYPE 12 (OX)

SS-4030E-IP WINDOW TYPE 13 (OX)

SS-3030E-IP WINDOW TYPE 14 (OX)

SS-4035E-IP WINDOW TYPE 15 (OX)



WALTER A. TILLIT JR.
LICENSE
No. 44167
STATE OF
FLORIDA
PROFESSIONAL ENGINEER
P.E. SEAL/SIGNATURE/DATE

PRODUCT REVISED
As complying with the Florida
Building Code
NOA-No. **25-0401.03**
Expiration Date: **03/25/2030**
By: *Manuel Perez*
Miami-Dade Product Control

FLORIDA BUILDING CODE (HIGH VELOCITY HURRICANE ZONE)

© 2025 TILTECO, INC.

TILTECO INC.

TILLIT TESTING & ENGINEERING COMPANY
6355 N.W. 36th. St., Ste. 305, VIRGINIA GARDENS, FL. 33166
Phone : (305)871-1530 . Fax : (305)871-1531
CA-0006719
WALTER A. TILLIT Jr. P.E.
FLORIDA Lic. # 44167

COMMERCIAL PASS-THRU HORIZONTAL SLIDING
WINDOWS LARGE MISSILE IMPACT RESISTANT

QUIKSERV CORP.
11441 BRITTMORE PARK DRIVE,
HOUSTON, TEXAS 77041
PHONE: (713) 937-3437 FAX: (713) 937-9785

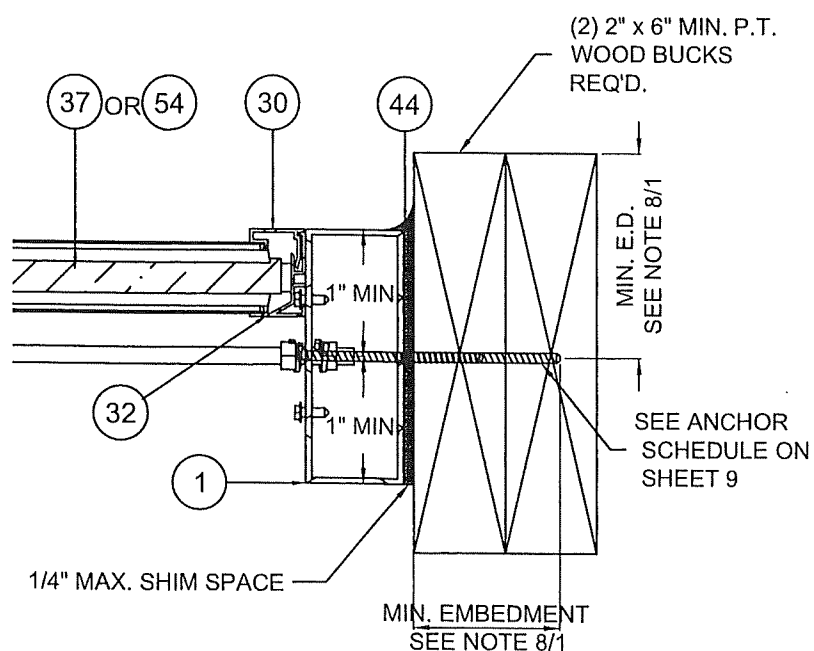
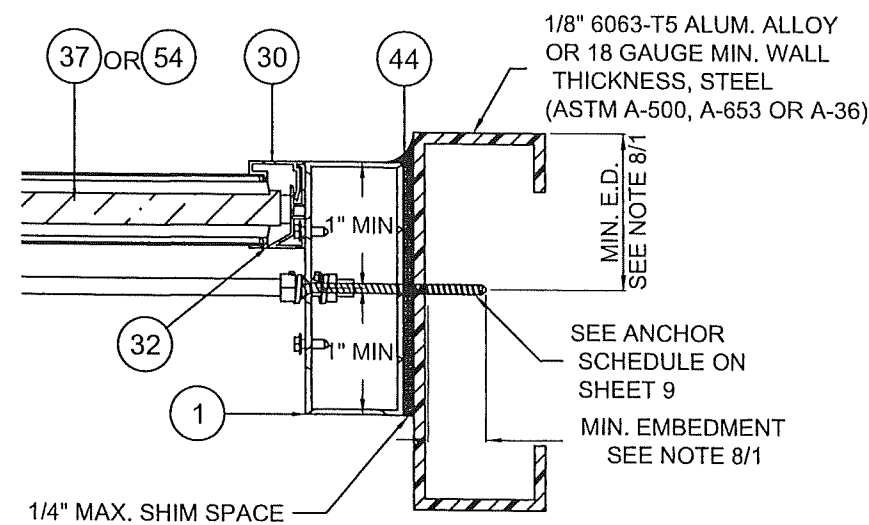
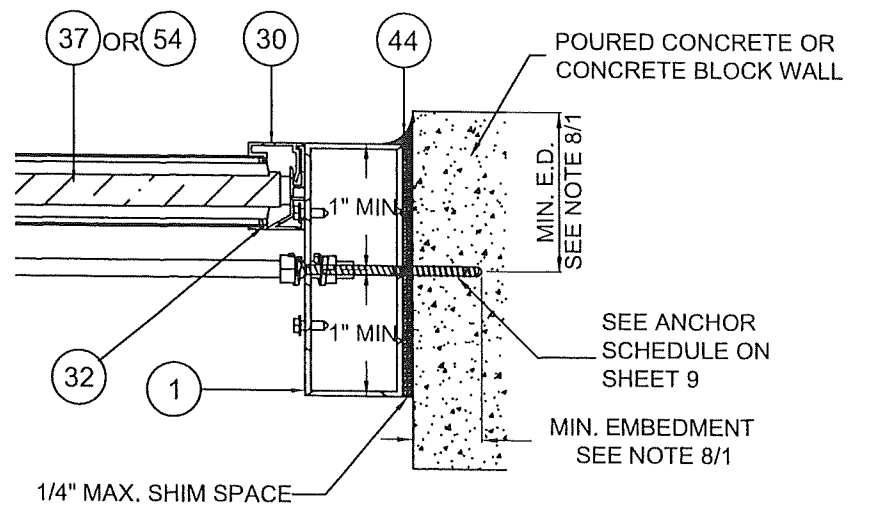
W.H
DRAWN BY:

03/18/2025
DATE:

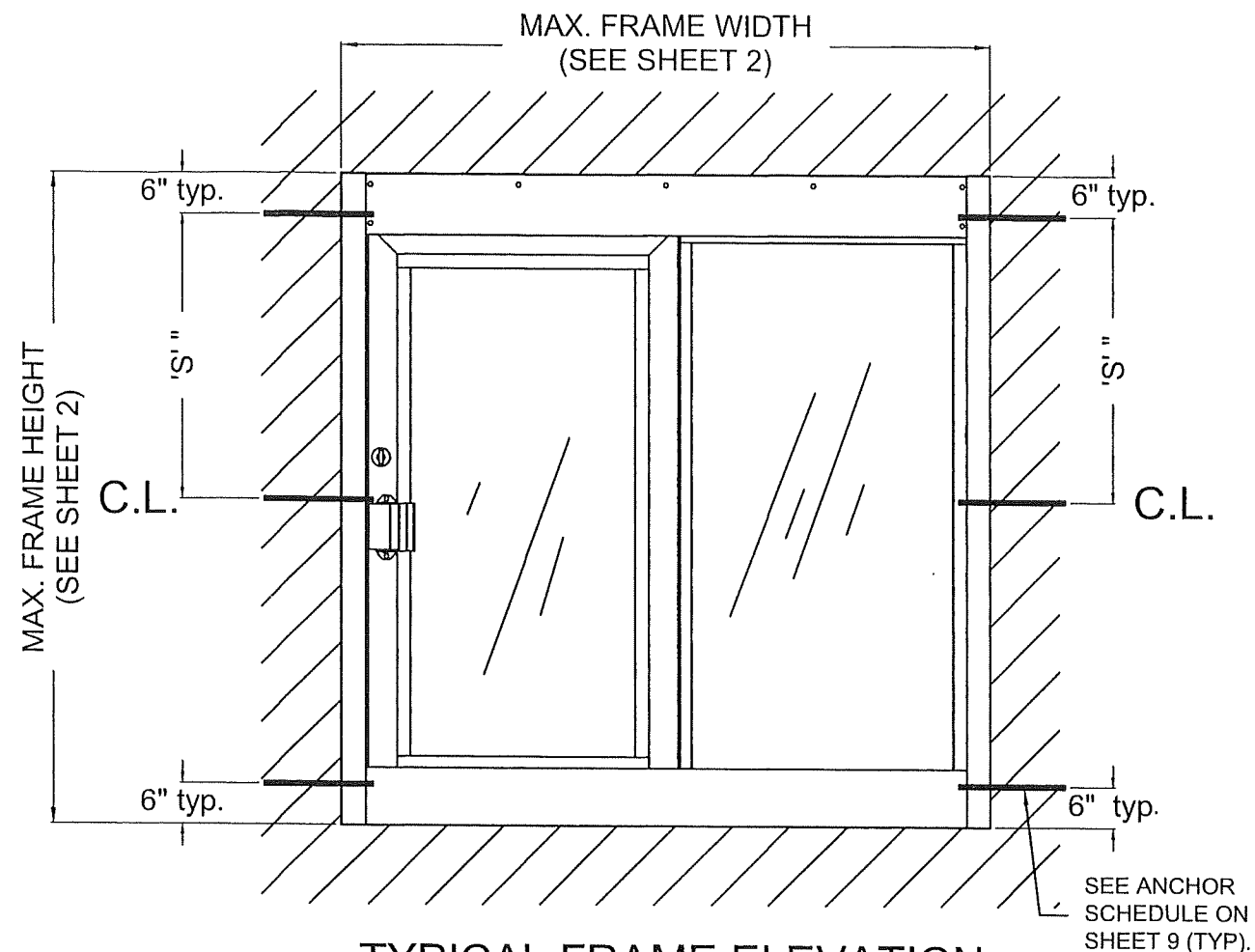
25-035
DRAWING No.

REV. NO	DESCRIPTION	DATE	REV. No	DESCRIPTION	DATE
1	-	-	3	-	-
2	-	-	4	-	-

SHEET 7 of 14

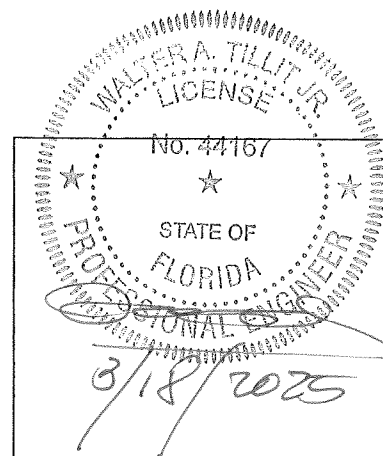


ANCHOR INSTALLATION AND LAYOUT



TYPICAL FRAME ELEVATION
NTS

* "S" = MAXIMUM SPACING
SEE SHEET 9.



P.E. SEAL/SIGNATURE/DATE

PRODUCT REVISED
As complying with the Florida
Building Code
NOA-No. **25-0401.03**
Expiration Date: **03/25/2030**
By: *Manuel Perez*
Miami-Dade Product Control

FLORIDA BUILDING CODE (HIGH VELOCITY HURRICANE ZONE)

© 2025 TILTECO, INC.

TILTECO INC.
TILLIT TESTING & ENGINEERING COMPANY
6355 N.W. 36th St., Ste. 305, VIRGINIA GARDENS, FL 33166
Phone : (305)871-1530 . Fax : (305)871-1531
CA-0006719
WALTER A. TILLIT Jr. P.E.
FLORIDA Lic. # 44167

COMMERCIAL PASS-THRU HORIZONTAL SLIDING
WINDOWS LARGE MISSILE IMPACT RESISTANT

W.H
DRAWN BY:

QUIKSERV CORP.

11441 BRITTMORE PARK DRIVE,
HOUSTON, TEXAS 77041

PHONE: (713) 937-3437 FAX: (713) 937-9765

03/18/2025
DATE:

25-035

DRAWING No.

REV. NO	DESCRIPTION	DATE	REV. No	DESCRIPTION	DATE
1	-	-	3	-	-
2	-	-	4	-	-

SHEET 8 of 14

ANCHOR SCHEDULE


MAXIMUM ANCHOR SPACING "S" SCHEDULE AT JAMB			
DESIGN LOAD (PSF) NEGATIVE LOAD	SUBSTRATE	ANCHOR TYPE	MAX SPACING
50 OR LESS	POURED CONCRETE (SEE NOTE 8A/1)	1/4" Ø ITW BUILDEX TAPCON ANCHORS	16"
	CONCRETE BLOCK (SEE NOTE 8B/1)	1/4" Ø ITW BUILDEX TAPCON ANCHORS	16"
	ALUMINUM MEMBER (8D/1)	1/4" Ø ITW BUILDEX TEK SCREWS	16"
	STEEL MEMBER (8E/1)	1/4" Ø ITW BUILDEX TEK SCREWS	16"
	WOOD (SEE NOTE 8C/1)	1/4" Ø WOOD SCREWS (NDS)	16"
> 50 TO 70	POURED CONCRETE (SEE NOTE 8A/1)	1/4" Ø ITW BUILDEX TAPCON ANCHORS	13"
	CONCRETE BLOCK (SEE NOTE 8B/1)	1/4" Ø ITW BUILDEX TAPCON ANCHORS	13"
	ALUMINUM MEMBER (8D/1)	1/4" Ø ITW BUILDEX TEK SCREWS	13"
	STEEL MEMBER (8E/1)	1/4" Ø ITW BUILDEX TEK SCREWS	13"
	WOOD (SEE NOTE 8C/1)	1/4" Ø WOOD SCREWS (NDS)	13"
> 70 TO 80	POURED CONCRETE (SEE NOTE 8A/1)	1/4" Ø ITW BUILDEX TAPCON ANCHORS	11 1/2"
	CONCRETE BLOCK (SEE NOTE 8B/1)	1/4" Ø ITW BUILDEX TAPCON ANCHORS	11 1/2"
	ALUMINUM MEMBER (8D/1)	1/4" Ø ITW BUILDEX TEK SCREWS	11 1/2"
	STEEL MEMBER (8E/1)	1/4" Ø ITW BUILDEX TEK SCREWS	11 1/2"
	WOOD (SEE NOTE 8C/1)	1/4" Ø WOOD SCREWS (NDS)	11 1/2"

WALTER A. TILLIT JR.
LICENSE
No. 44167
STATE OF
FLORIDA
PROFESSIONAL ENGINEER
P.E. SEAL/SIGNATURE/DATE

PRODUCT REVISED
As complying with the Florida
Building Code
NOA-No. 25-0401.03
Expiration Date: 03/25/2030
By: Manuel Perez
Miami-Dade Product Control

FLORIDA BUILDING CODE (HIGH VELOCITY HURRICANE ZONE)

© 2025 TILTECO, INC.



TILLIT TESTING & ENGINEERING COMPANY
6355 N.W. 36th. St., Ste. 305, VIRGINIA GARDENS, FL 33166
Phone : (305)871-1530 . Fax : (305)871-1531
CA-0006719
WALTER A. TILLIT Jr. P.E.
FLORIDA Lic. # 44167

COMMERCIAL PASS-THRU HORIZONTAL SLIDING
WINDOWS LARGE MISSILE IMPACT RESISTANT

QUIKSERV CORP.
11441 BRITTMORE PARK DRIVE,
HOUSTON, TEXAS 77041
PHONE: (713) 937-3437 FAX: (713) 937-9765

REV. NO	DESCRIPTION	DATE	REV. No	DESCRIPTION	DATE
1	-	-	3	-	-
2	-	-	4	-	-

W.H
DRAWN BY:

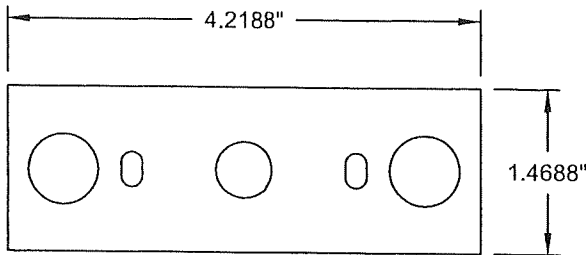
03/18/2025
DATE:

25-035

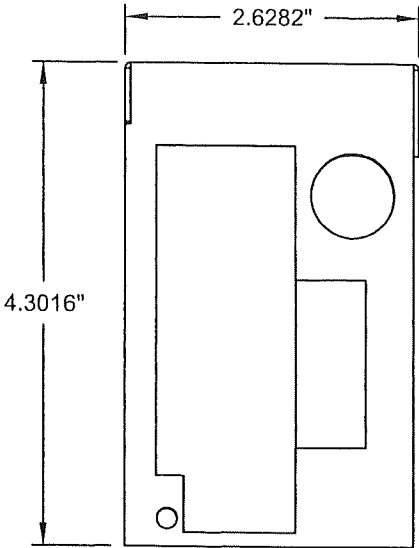
DRAWING No.

SHEET 9 of 14

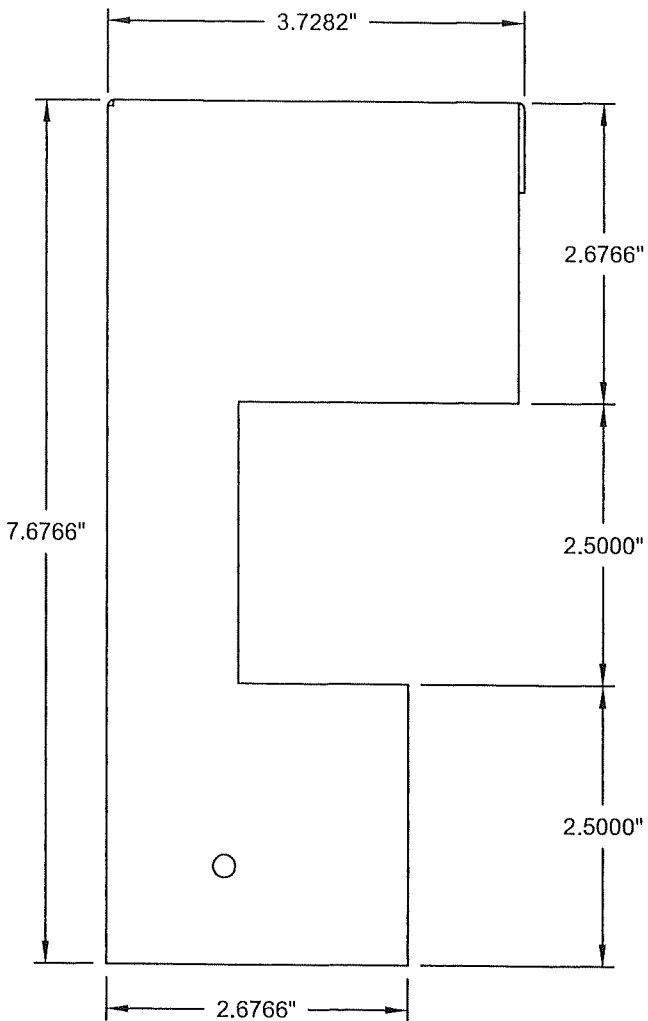
STEEL ASSEMBLY COMPONENTS



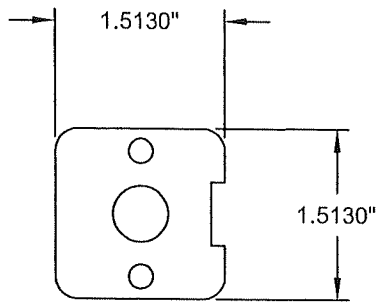
22 FRAMING PLATE SIDE JAMB
14 ga. ASTM A-653, CQ-GRADE 40
G-90 GALVANIZED STEEL
QUIKSERV RM# 3757



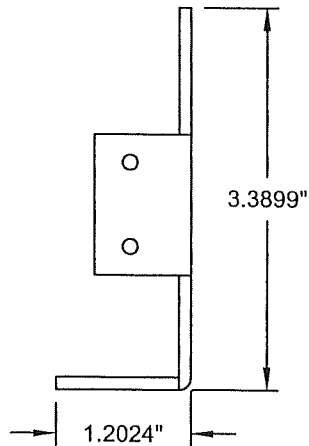
6 HEADER BRACKET
18 ga. ASTM A-653, CQ-GRADE 40
G-90 GALVANIZED STEEL
QUIKSERV RM# 3843



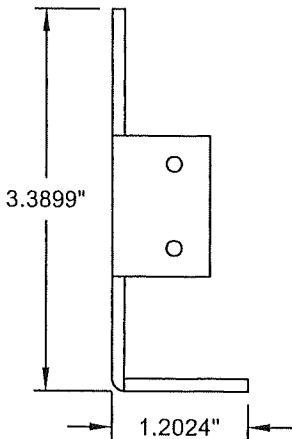
50 HEADER BRACKET FOR 8-7/8" HEADER
18 ga. ASTM A-653, CQ-GRADE 40
G-90 GALVANIZED STEEL
QUIKSERV RM# 3650



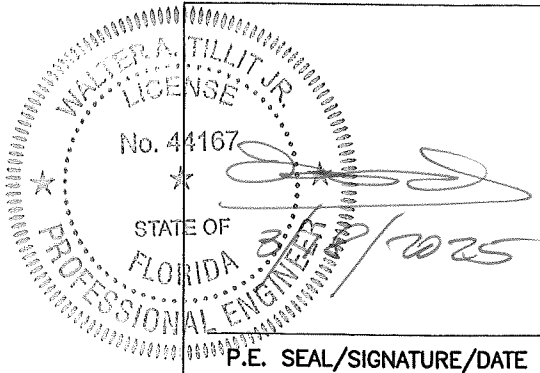
19 FRAMING PLATE CENTER JAMB
14 ga. ASTM A-653, CQ-GRADE 40
G-90 GALVANIZED STEEL
QUIKSERV RM# 3668



52 DOOR BRACKET FOR ELECTRIC
12 ga. ASTM A-653, CQ-GRADE 40
G-90 GALVANIZED STEEL
QUIKSERV RM# 3556



39 DOOR BRACKET
12 ga. ASTM A-653, CQ-GRADE 40
G-90 GALVANIZED STEEL
QUIKSERV RM# 3508



PRODUCT REVISED
As complying with the Florida
Building Code
NOA-No. **25-0401.03**
Expiration Date: **03/25/2030**
By: *Manuel Perez*
Miami-Dade Product Control

FLORIDA BUILDING CODE (HIGH VELOCITY HURRICANE ZONE)

© 2025 TILTECO, INC.

TILTECO INC.
TILLIT TESTING & ENGINEERING COMPANY
6355 N.W. 36th St., Ste. 305, VIRGINIA GARDENS, FL 33166
Phone : (305)871-1530 . Fax : (305)871-1531
CA-0006719
WALTER A. TILLIT Jr. P.E.
FLORIDA Lic. # 44167

COMMERCIAL PASS-THRU HORIZONTAL SLIDING
WINDOWS LARGE MISSILE IMPACT RESISTANT

W.H
DRAWN BY:

QUIKSERV CORP.

11441 BRITTMORE PARK DRIVE,
HOUSTON, TEXAS 77041

PHONE: (713) 937-3437 FAX: (713) 937-9765

03/18/2025
DATE:

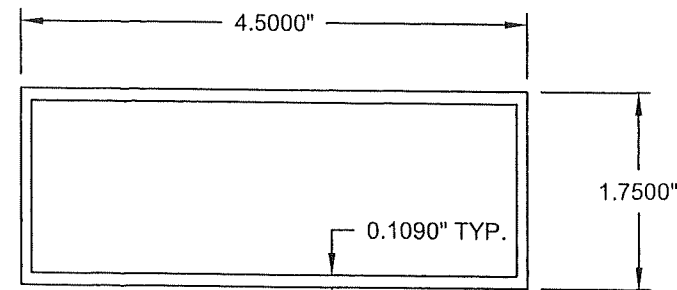
25-035

DRAWING No.

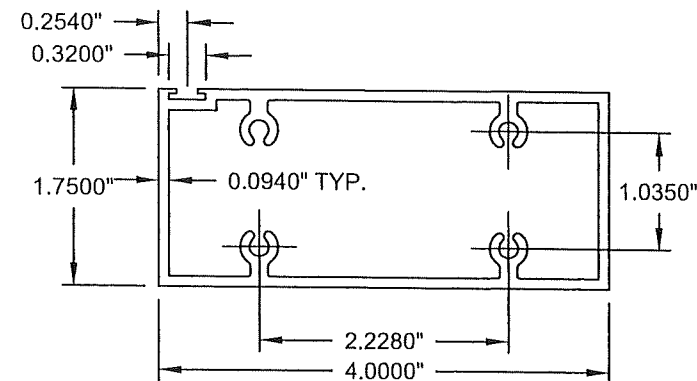
REV. NO	DESCRIPTION	DATE	REV. No	DESCRIPTION	DATE
1	-	-	3	-	-
2	-	-	4	-	-

SHEET 10 of 14

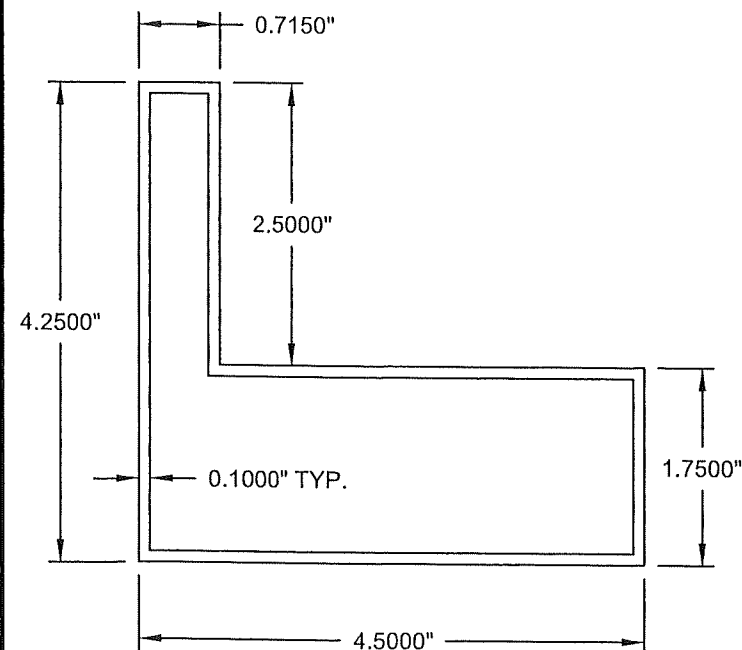
ALUMINUM EXTRUSIONS COMPONENTS



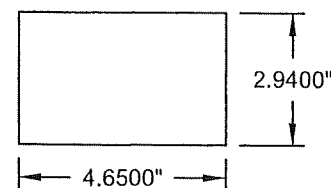
1 1-3/4" X 4-1/2" RECT. TUBE
QUIKSERV RM# 6022



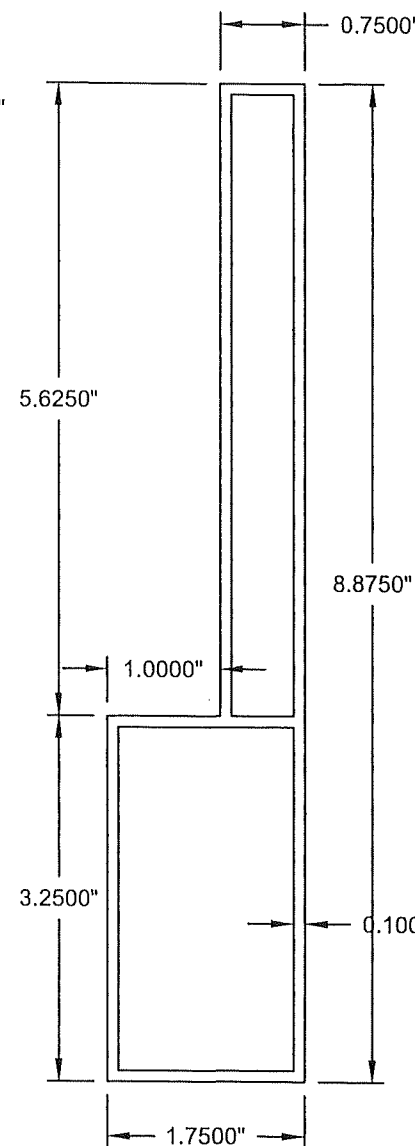
3 1-3/4" X 4" RECT. TUBE
QUIKSERV RM# 6121



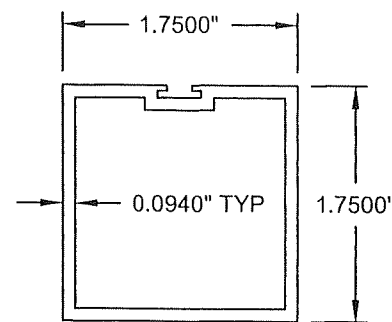
2 BASE TUBE
QUIKSERV RM# 6125



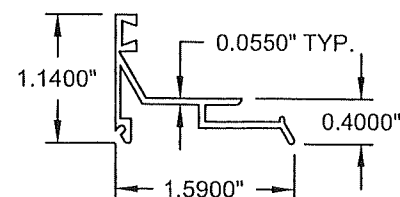
47 BOTTOM COVER PLATE
QUIKSERV RM# 6111



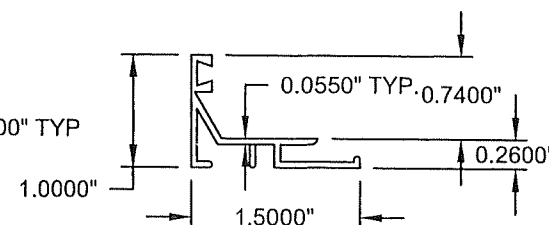
48 HEADER TUBE
QUIKSERV RM# 6168



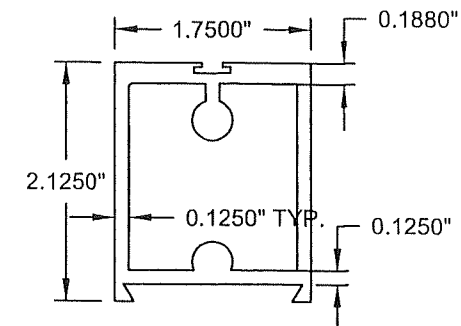
4 1-3/4" SQ. TUBE
QUIKSERV RM# 6024



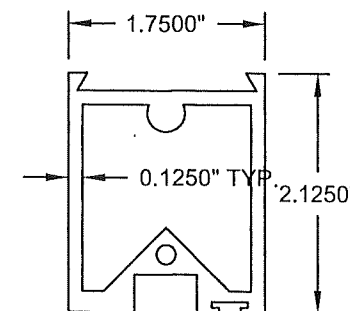
35 SNAP-ON SASH
QUIKSERV RM# 6065



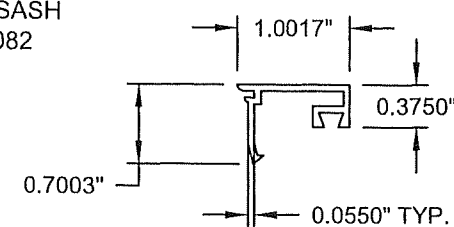
32 SCREW APPLIED SASH
QUIKSERV RM# 6082



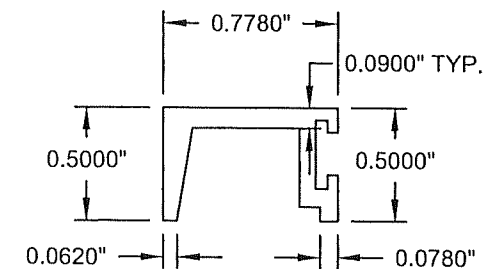
36 WIDE DOOR EXTRUSION
QUIKSERV RM# 6095



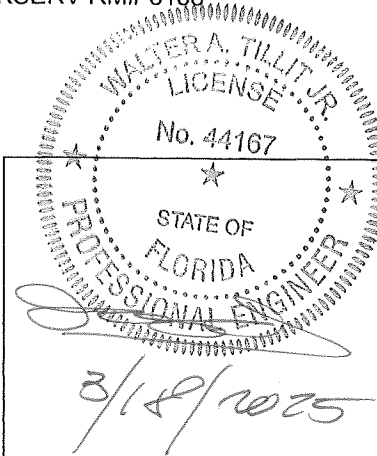
31 WIDE DOOR EXTRUSION W/ SLOT
QUIKSERV RM# 6080



30 + 34 SASH FACE
QUIKSERV RM# 6069



8 SCREW APPLIED STOP
QUIKSERV RM# 6084



P.E. SEAL/SIGNATURE/DATE

PRODUCT REVISED
As complying with the Florida
Building Code
NOA-No. **25-0401.03**
Expiration Date: **03/25/2030**
By: *Manuel Bern*
Miami-Dade Product Control

FLORIDA BUILDING CODE (HIGH VELOCITY HURRICANE ZONE)

© 2025 TILTECO, INC.

TILTECO INC.
TILLIT TESTING & ENGINEERING COMPANY
6355 N.W. 36th St., Ste. 305, VIRGINIA GARDENS, FL 33166
Phone : (305)871-1530 . Fax : (305)871-1531
CA-0006719
WALTER A. TILLIT Jr. P.E.
FLORIDA Lic. # 44167

COMMERCIAL PASS-THRU HORIZONTAL SLIDING
WINDOWS LARGE MISSILE IMPACT RESISTANT

W.H
DRAWN BY:

QUIKSERV CORP.

11441 BRITTMORE PARK DRIVE,
HOUSTON, TEXAS 77041

PHONE: (713) 937-3437 FAX: (713) 937-9765

03/18/2025
DATE:

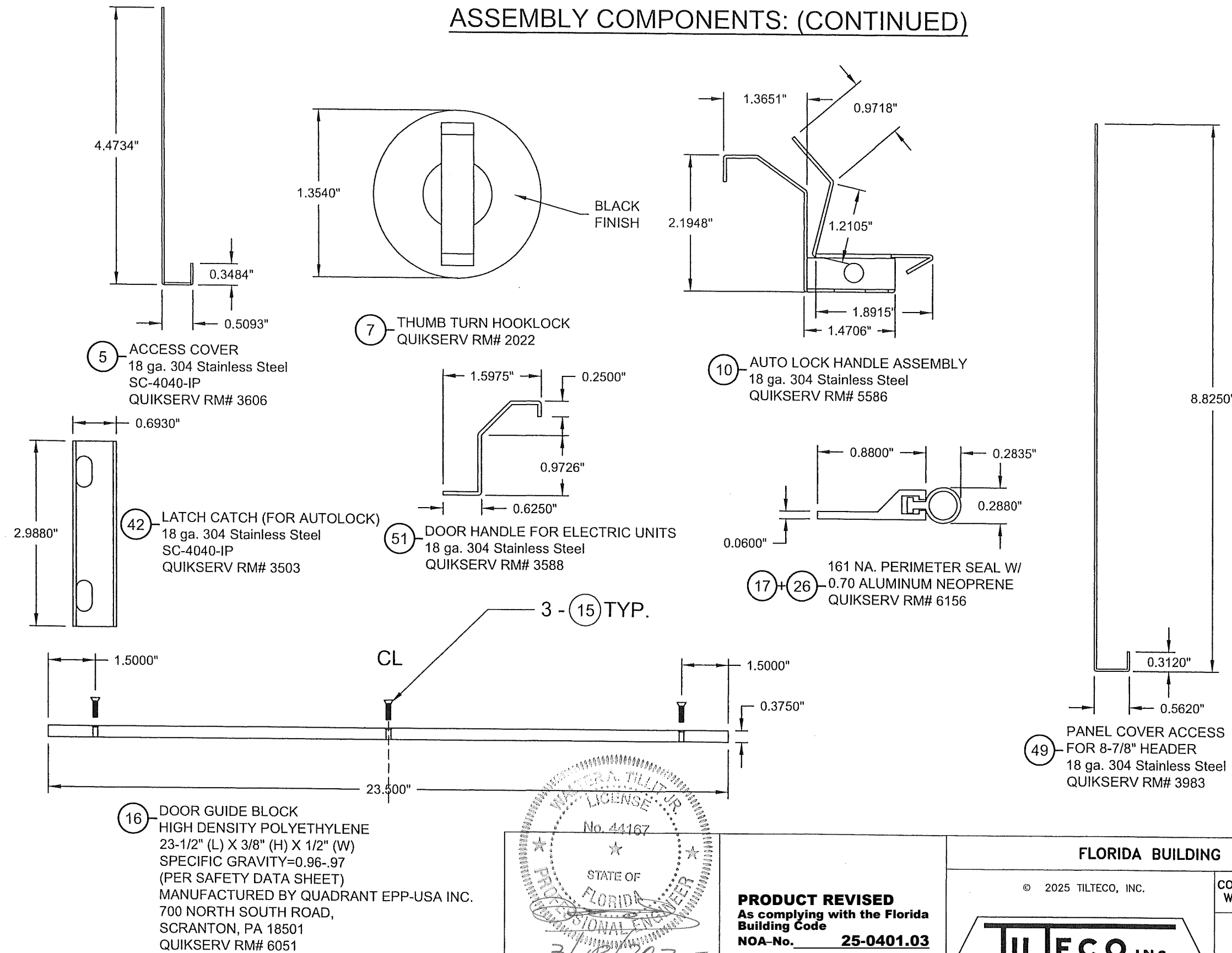
25-035

DRAWING No.

REV. NO	DESCRIPTION	DATE	REV. No	DESCRIPTION	DATE
1	-	-	3	-	-
2	-	-	4	-	-

SHEET 11 of 14

ASSEMBLY COMPONENTS: (CONTINUED)



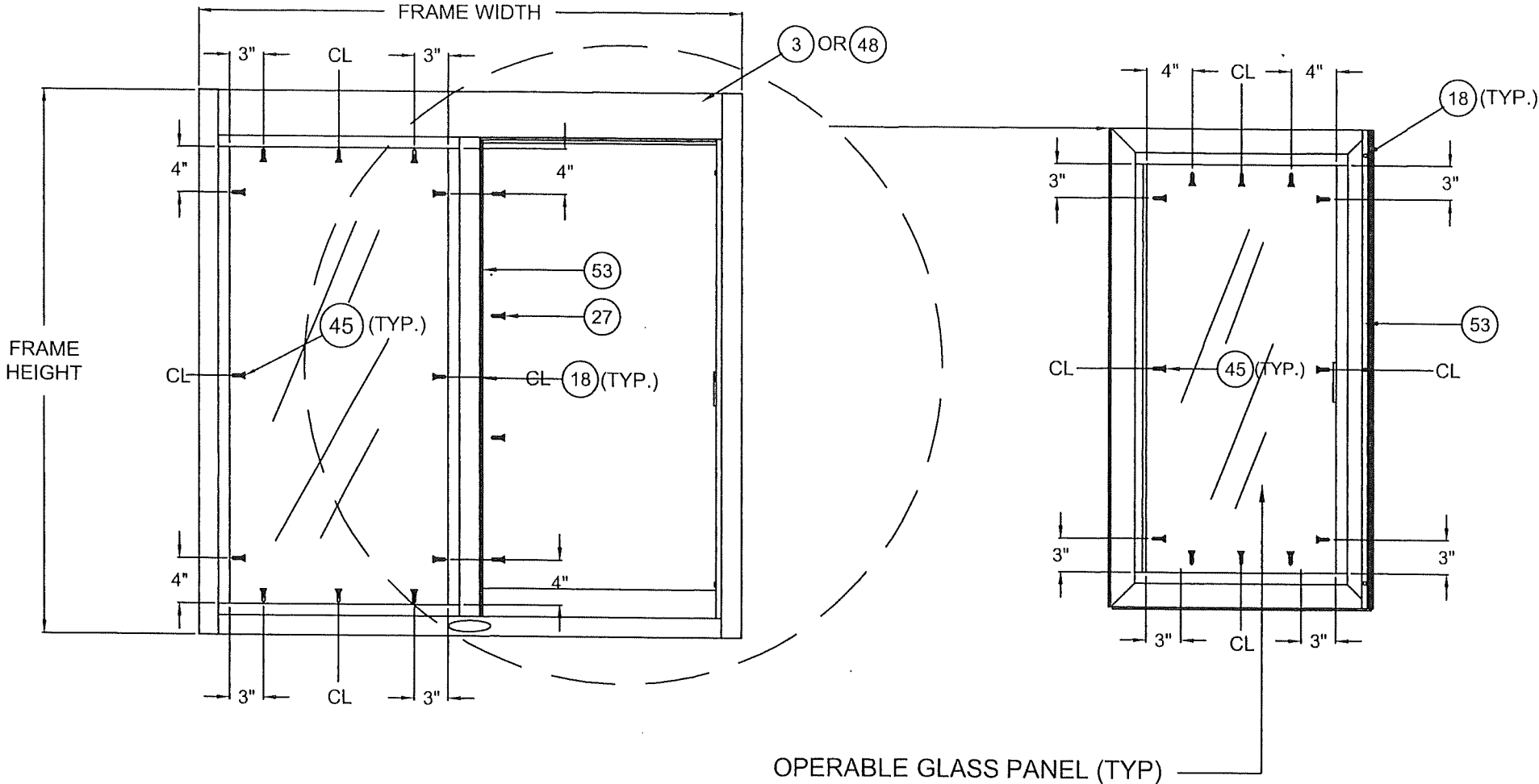
WALTER A. TILLIT JR.
LICENSE
No. 44167
STATE OF FLORIDA
PROFESSIONAL ENGINEER
3/18/2025

P.E. SEAL/SIGNATURE/DATE

PRODUCT REVISED
As complying with the Florida
Building Code
NOA-No. **25-0401.03**
Expiration Date: **03/25/2030**
By: *Manuel Perez*
Miami-Dade Product Control

FLORIDA BUILDING CODE (HIGH VELOCITY HURRICANE ZONE)					
© 2025 TILTECO, INC.			COMMERCIAL PASS-THRU HORIZONTAL SLIDING WINDOWS LARGE MISSILE IMPACT RESISTANT		
 TILLIT TESTING & ENGINEERING COMPANY 6355 N.W. 36th. St., Ste. 305, VIRGINIA GARDENS, FL 33166 Phone : (305)871-1530 . Fax : (305)871-1531 CA-0006719 WALTER A. TILLIT Jr. P.E. FLORIDA Lic. # 44167			QUIKSERV CORP. 11441 BRITTMORE PARK DRIVE, 12 OF 14 HOUSTON, TEXAS 77041 PHONE: (713) 937-3437 FAX: (713) 937-9765		
			W.H DRAWN BY: 03/18/2025 DATE: 25-035 DRAWING No.		
REV. NO	DESCRIPTION	DATE	REV. No	DESCRIPTION	DATE
1	-	-	3	-	-
2	-	-	4	-	-

SASH INSTALLATION DETAILS



SC-4040-IP TYPE WINDOW

WALTER A. TILLIT JR.
LICENSE
No. 44167
STATE OF FLORIDA
PROFESSIONAL ENGINEER
P.E. SEAL/SIGNATURE/DATE

PRODUCT REVISED
As complying with the Florida
Building Code
NOA-No. **25-0401.03**
Expiration Date: **03/25/2030**
By: *Manuel Perez*
Miami-Dade Product Control

FLORIDA BUILDING CODE (HIGH VELOCITY HURRICANE ZONE)

© 2025 TILTECO, INC.

TILTECO INC.
TILLIT TESTING & ENGINEERING COMPANY
6355 N.W. 38th. St., Ste. 305, VIRGINIA GARDENS, FL 33166
Phone : (305)871-1530 . Fax : (305)871-1531
CA-0006719
WALTER A. TILLIT Jr. P.E.
FLORIDA Lic. # 44167

COMMERCIAL PASS-THRU HORIZONTAL SLIDING
WINDOWS LARGE MISSILE IMPACT RESISTANT

W.H
DRAWN BY:

QUIKSERV CORP.

11441 BRITTMORE PARK DRIVE,
HOUSTON, TEXAS 77041

PHONE: (713) 937-3437 FAX: (713) 937-9765

03/18/2025
DATE:

25-035

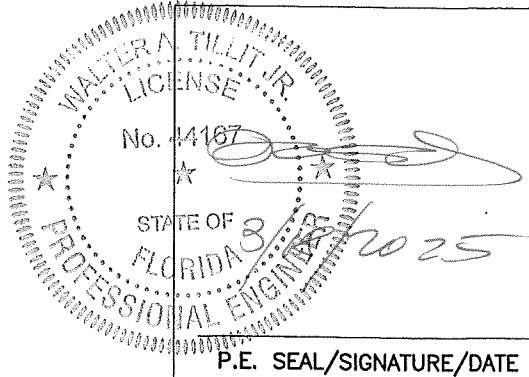
DRAWING No.

REV. NO	DESCRIPTION	DATE	REV. NO	DESCRIPTION	DATE
1	-	-	3	-	-
2	-	-	4	-	-

SHEET 13 of 14

BILL OF MATERIALS

Ref #	Description	Quikserv #	Material	Specs
1	Side Jamb 1-3/4" 4-1/2" Rectangular Tube	6022	6063-T5 Aluminum	See drawing pg. 11
2	Base Tube	6125	6063-T5 Aluminum	See drawing pg. 11
3	Header 1-3/4" x 4" Rectangular Tube	6121	6063-T5 Aluminum	See drawing pg. 11
4	Center Jamb 1-3/4" Square Tube	6024	6063-T5 Aluminum	See drawing pg. 11
5	Panel Cover Access	3606	18 ga 304 Series Stainless Steel	See drawing pg. 12
6	Bracket Header	3843	18 ga. ASTM A-653, CQ Grade 40, G-90, Galvanized Steel	See drawing pg. 10
7	Thumb Turn Cylinder	2022	Grade 2 Carbon Steel, Zinc Plated	See drawing pg. 12
8	Screw Applied Stop	6084	6063-T5 Aluminum	See drawing pg. 11
9	Weight Tube	1019	PVC pipe	n/a
10	Auto Lock Handle	5586	18 ga, 304 Series Stainless Steel	See drawing pg. 12
11	Anchor Screw (See Sheet 8 of 12) TYP	n/a	See Sheet 8 for specification	See Sheet 8 for specification
12	All Thread Rod	2105	Grade 2 Carbon Steel, Zinc Plated	5/16"-18 x 46-1/2"
13	Nut Nylon Insert Locknut	5309	304 Series Stainless Steel	# 10 - 24
14	Screw Machine Hex S/S 10-32 x 3/4	5005	410 Series Stainless Steel	# 10 -32 x 3/4"
15	Phil Flat	5059	304 Series Stainless Steel	M4 - 0.7 x 16 A2 DIN 965
16	Door Guide Strip	6051	High Density Polyethylene 23-1/2" (L) X3/8" (H) X 1/2" (W)	See drawing pg. 12
17	Door Weatherstrip	6156	161 NA. Perimeter seal w/ Aluminum Neoprene	See drawing pg. 12
18	Screw Tek Phil Pan S/S	5036	304 Series Stainless Steel	# 10 1/2"
19	Framing Clip for Center Jamb	3668	14 ga. ASTM A-653, CQ Grade 40, G-90, Galvanized Steel	See drawing pg. 10
20	Screw Tek Hex Washer	5017	Grade 2 Carbon Steel, Zinc Plated	#2 Hex
21	Flatwasher	5402	Grade 2 Carbon Steel, Zinc Plated	5/16"
22	Bracket Framing Plate Side Jambs	3757	14 ga. ASTM A-653, CQ Grade 40, G-90, Galvanized Steel	See drawing pg. 10
23	Nut Finished Hex	5301	Grade 2 Carbon Steel, Zinc Plated	5/16"
24	Lockwasher	5403	Grade 2 Carbon Steel, Zinc Plated	5/16"
25	Screw Machine Trim Hex	5008	304 Series Stainless Steel	#10-32x3/8
26	161 NA Perimeter Seal	6156	161 NA. Perimeter seal w/ Aluminum Neoprene	See drawing pg. 12
27	Screw Machine Phil Pan S/S	5033	304 Series Stainless Steel	# 6 - 32 1/4"
28	Weatherstrip Glazing Vinyl	7001	n/a	n/a
29	Screw Phil Flat	5088	Grade 2 Carbon Steel, Zinc Plated	#10 - 1-1/2"
30	Sash Face Side Lite	6069	6063-T5 Aluminum	See drawing pg. 11
31	Door Bottom Extrusion w/ Slot	6080	6063-T5 Aluminum	See drawing pg. 11
32	Sash Side Lite	6082	6063-T6 Aluminum	See drawing pg. 11
33	Weatherstrip	6034	n/a	n/a
34	Sash Face Door	6069	6063-T5 Aluminum	See drawing pg. 11
35	Sash Door	6065	6063-T5 Aluminum	See drawing pg. 11
36	Door Extrusion Top & Side	6095	6063-T6 Aluminum	See drawing pg. 11
37	Insulated Laminated Glass Sidelite	n/a	0.090" Saflex HP Interlayer by Eastman Chemical Company	See drawing pg. 5 of 14
38	Insulated Laminated Glass Door	n/a	0.090" Saflex HP Interlayer by Eastman Chemical Company	See drawing pg. 5 of 14
39	Bracket Door	3508	12 ga. ASTM A-653, CQ, Grade 40 G-90 Galvanized	See drawing pg. 10
40	Screw Machine Hex	5005	304 Series Stainless Steel	# 10-32 x 3/4
41	Slide Rail Single Sliders 32"	1917	Cold Rolled Steel Zinc Plated Steel	n/a
42	Latch Catch - Auto Lock	3503	18 ga, 304 Series Stainless Steel	See drawing pg. 12
43	Nutzert - Threaded	5317	Zinc Plated Cold Rolled Steel	#10-32
44	Silicone	n/a	n/a	Dow Corning 995
45	Screw Sheet Metal Phil Flat Machine	5443	Grade 2 Carbon Steel, Zinc Plated	#8 x 5/8"
46	All Thread Rod	2104	Grade 2 Carbon Steel, Zinc Plated	5/16"-18 x 44
47	Bottom Cover Plate		20 ga. GALVANIZED STEEL	
48	Header 8-7/8"	6168	6063-T6 Aluminum	See drawing pg. 11
49	Panel Cover Access for 8-7/8" header	3983	18 ga 304 Series Stainless Steel	See drawing pg. 12
50	Bracket Header for 8-7/8" header	3650	18 ga. ASTM A-653, CQ Grade 40, G-90, Galvanized Steel	See drawing pg. 10
51	Door handle for Electric Units	3588	18 ga, 304 Series Stainless Steel	See drawing pg. 12
52	Door Bracket for 8-7/8" header	3556	12 ga. ASTM A-653, CQ, Grade 40 G-90 Galvanized	See drawing pg. 10
53	Assembly Component Rack	5825	n/a	n/a
54	Insulated Laminated Glass Sidelite	n/a	0.120" Trosifol Interlay by Kuraray America, Inc	See drawing pg. 6 of 14
55	Insulated Laminated Glass Door	n/a	0.120" Trosifol Interlay by Kuraray America, Inc	See drawing pg. 6 of 14
56	Quikserv Nameplate	2127	n/a	n/a



PRODUCT REVISED
As complying with the Florida Building Code
NOA-No. 25-0401.03
Expiration Date: 03/25/2030
By: Manuel Perez
Miami-Dade Product Control

FLORIDA BUILDING CODE (HIGH VELOCITY HURRICANE ZONE)

© 2025 TILTECO, INC.

TILTECO INC.

TILLIT TESTING & ENGINEERING COMPANY
6355 N.W. 36th St., Ste. 305, VIRGINIA GARDENS, FL 33166
Phone : (305)871-1530 • Fax : (305)871-1531
CA-0006719
WALTER A. TILLIT Jr. P.E.
FLORIDA Lic. # 44167

COMMERCIAL PASS-THRU HORIZONTAL SLIDING
WINDOWS LARGE MISSILE IMPACT RESISTANT

W.H
DRAWN BY:

QUIKSERV CORP.

11441 BRITTMORE PARK DRIVE,
HOUSTON, TEXAS 77041

PHONE: (713) 937-3437 FAX: (713) 937-9765

03/18/2025
DATE:

25-035

DRAWING No.

REV. NO	DESCRIPTION	DATE	REV. No	DESCRIPTION	DATE
1	-	-	3	-	-
2	-	-	4	-	-

SHEET 14 of 14