



**DEPARTMENT OF REGULATORY AND ECONOMIC RESOURCES (RER)
BOARD AND CODE ADMINISTRATION DIVISION
NOTICE OF ACCEPTANCE (NOA)**

**MIAMI-DADE COUNTY
PRODUCT CONTROL SECTION**
11805 SW 26 Street, Room 208
Miami, Florida 33175-2474
T (786) 315-2590 F (786) 315-2599
www.miamidade.gov/building

**PCI Industries, LLC dba All-Lite Arch. Products
5101 Blue Mound Road
Fort Worth, TX 76106**

SCOPE:

This NOA is being issued under the applicable rules and regulations governing the use of construction materials. The documentation submitted has been reviewed and accepted by Miami-Dade County RER-Product Control Section to be used in Miami Dade County and other areas where allowed by the Authority Having Jurisdiction (AHJ).

This NOA shall not be valid after the expiration date stated below. The Miami-Dade County Product Control Section (In Miami Dade County) and/or the AHJ (in areas other than Miami Dade County) reserve the right to have this product or material tested for quality assurance purposes. If this product or material fails to perform in the accepted manner, the manufacturer will incur the expense of such testing and the AHJ may immediately revoke, modify, or suspend the use of such product or material within their jurisdiction. RER reserves the right to revoke this acceptance if it is determined by Miami-Dade County Product Control Section that this product or material fails to meet the requirements of the applicable building code.

This product is approved as described herein and has been designed to comply with the Florida Building Code, including the High Velocity Hurricane Zone.

DESCRIPTION: Model ECV-345-MD Aluminum Louver

APPROVAL DOCUMENT: Drawing No. **ECV-345-MD NOA**, titled "ECV-345-MD", sheets 1 through 7 of 7, prepared by the manufacturer, dated 07/23/2025, signed and sealed by Wayne K. Helmila, P.E., bearing the Miami-Dade County Product Control approval stamp with the Notice of Acceptance number and approval date by the Miami-Dade County Product Control Section.

MISSILE IMPACT RATING: Large and Small Missile Impact Resistant

LABELING: A permanent label with the manufacturer's name or logo, manufacturing plant's city, state, model/ series, and the statement reading: "Miami-Dade County Product Control Approved", is to be located on each unit.

RENEWAL of this NOA shall be considered after a renewal application has been filed and there has been no change in the applicable building code negatively affecting the performance of this product.

TERMINATION of this NOA will occur after the expiration date or if there has been a revision or change in the materials, use, and/or manufacture of the product or process. Misuse of this NOA as an endorsement of any product, for sales, advertising or any other purposes shall automatically terminate this NOA. Failure to comply with any section of this NOA shall be cause for termination and removal of NOA.

ADVERTISEMENT: The NOA number preceded by the words Miami-Dade County, Florida, and followed by the expiration date may be displayed in advertising literature. If any portion of the NOA is displayed, then it shall be done in its entirety.

INSPECTION: A copy of this entire NOA shall be provided to the user by the manufacturer or its distributors and shall be available for inspection at the job site at the request of the Building Official. This NOA consists of this page 1 and evidence page E-1, as well as the approval document mentioned above.

The submitted documentation was reviewed by **Carlos M. Utrera, P.E.**



07/29/25

NOA No. 25-0701.04
Expiration Date: August 7, 2030
Approval Date: August 7, 2025
Page 1

NOTICE OF ACCEPTANCE: EVIDENCE SUBMITTED

A. DRAWINGS

1. Drawing No. **ECV-345-MD NOA**, titled “ECV-345-MD”, sheets 1 through 7 of 7, prepared by the manufacturer, dated 07/23/2025, signed and sealed by Wayne K. Helmila, P.E.

B. TESTS

1. Test reports on: 1) Uniform Static Air Pressure Test, Loading per FBC, TAS 202-94
2) Large Missile Impact Test per FBC, TAS 201-94
3) Cyclic Wind Pressure Loading per FBC, TAS 203-94
along with installation diagram of a Model ECV-345-MD Aluminum Louvers, prepared by UL LLC, Test Report No. **SV030902-20200224-A**, dated 03/16/2020, signed and sealed by Alexis Spyrou, P.E.
2. Test report on High Velocity Wind Driven Rain Resistance per FBC, AMCA 550-15 on an ECV-345-MD Aluminum Louver, prepared by Intertek, Test Report No. **K4423.01-801-44 R0**, dated 03/20/2020, signed and sealed by Tyler Westerling, P.E.

C. CALCULATIONS

1. ECV -345-MD anchorage, dated 06/27/2025, prepared by Rice Engineering, signed and sealed by Wayne K. Helmila, P.E.

D. QUALITY ASSURANCE

1. Miami-Dade Department of Regulatory and Economic Resources (RER).

E. MATERIAL CERTIFICATIONS

1. None.

F. STATEMENTS

1. Statement letter of code conformance with the 8th edition (2023) of the FBC, issued by Rice Engineering, dated 06/27/2025, signed and sealed by Wayne K. Helmila, P.E.
2. Statement letter of no financial interest, dated 06/27/2025, issued by Rice Engineering, signed and sealed by Wayne K. Helmila, P.E.



Carlos M. Utrera, P.E.
Product Control Examiner
NOA No. 25-0701.04
Expiration Date: August 7, 2030
Approval Date: August 7, 2025

I:\0 ENGINEERING PROJECTS\LOUVERS\ECV-345-MD NOA\Updated Design (Sep. 2019)\

NOTES:

- 4
1.

THIS NOA DRAWING INCLUDES INSTALLATION DETAILS TO ATTAIN MAXIMUM DESIGN PRESSURES OF ±100 PSF AS TESTED IN ACCORDANCE WITH PROTOCOLS TAS 201 (LEVEL 'D', 50 FPS), TAS 202, TAS 203, & AMCA 550 FOR USE WITHIN HIGH VELOCITY HURRICANE-AFFECTED ZONES DEFINED BY THE FLORIDA BUILDING CODE.
2.
2. ALL VARIATIONS ARE LARGE MISSILE IMPACT RESISTANT.
3.
3. UNITS OF MEASURE ARE FRACTIONAL INCHES UNLESS OTHERWISE SPECIFIED.
4.
4. IT IS ASSUMED THAT THE LOUVER SYSTEMS DO NOT SUPPORT ANY LOADS TRANSFERRED FROM THE BUILDING CONDITION.
5.
5. IT IS ASSUMED THAT THE BUILDING CONDITIONS ARE ADEQUATELY DESIGNED TO SUPPORT LOADS IMPARTED BY THE LOUVER SYSTEM.
6.
6. TO PREVENT GALVANIC CORROSION, ELECTROCHEMICALLY DISSIMILAR MATERIALS IN CONTACT WITH ONE ANOTHER SHALL BE PROTECTED BY PAINT, GASKETING OR OTHER MEANS PER THE FLORIDA BUILDING CODE.
7.
7. SINCE THE DESIGN MEETS THE PERFORMANCE STANDARDS OF AMCA 550, THE ROOM BEHIND THE LOUVER NEED NOT BE DESIGNED TO DRAIN WATER PENETRATION INTO THE ROOM, AND MAY HOUSE NON-WATER RESISTANT EQUIPMENT, COMPONENTS, OR SUPPLIES.
8.
8. OTHER BUILDING CONDITIONS THAN THOSE DENOTED CAN BE UTILIZED IF ANALYZED AND APPROVED BY A PROFESSIONAL ENGINEER.
9.
9. MULTI-SECTION HIGH LOUVER SYSTEMS ARE ALLOWABLE PROVIDED THE INDIVIDUAL SECTIONS ARE SUPPORTED PER THE DETAILS ON THIS DRAWING AND A SUITABLE SUPPORT STRUCTURE IS ANALYZED AND APPROVED BY A PROFESSIONAL ENGINEER.

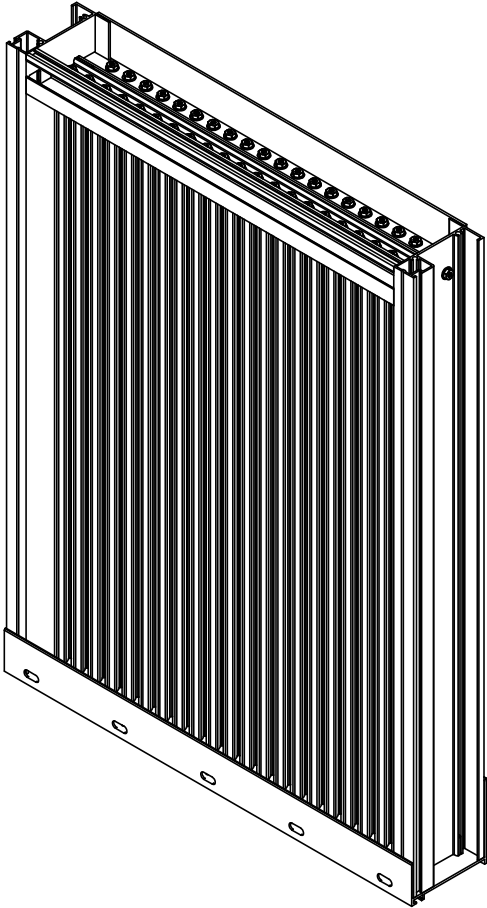
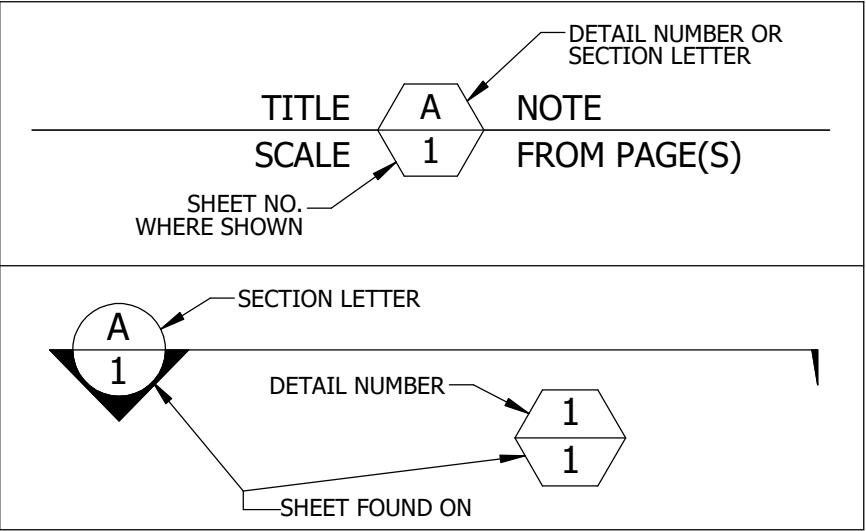


TABLE 3				
ANCHOR SCHEDULE				
SUBSTRATE	ANCHOR TYPE	MIN. EMBEDMENT	MIN. EDGE DISTANCE	MAX. SPACING
CONCRETE (f _c ≥ 2500 PSI)	3/8" X 4" DEWALT SCREW-BOLT+ (F-3)	3 1/4"	1 1/2"	6"
GROUT-FILLED CMU (f _m ≥ 1500 PSI)	3/8" X 4" DEWALT SCREW-BOLT+ (F-3)	3 1/4"	1 1/2"	4"
STEEL (MIN. 3/16" THICK WITH F _y ≥ 36 KSI, OR MIN. 16 GA. WITH F _y ≥ 50 KSI)	1/4" X 1" SELF-DRILLING SCREW (F-4)	FULL	1"	5"
WOOD (S.G. ≥ 0.4)	3/8" X 2 1/2" LAG BOLT WITH FLAT WASHER (F-5)	2 1/4"	1 1/2"	5"

4	UPDATED NOTES 1 AND 7 ON SHEET 1	7/23/2025	NWW
3	RE-RELEASE	6/20/2025	NWW
2	UPDATED FOR NOA RENEWAL	3/11/2021	NWW
1	INITIAL RELEASE	5/5/2020	NWW
REV.	DESCRIPTION	DATE	DRAWN BY

TABLE 1		
SINGLE SECTION SIZE LIMITATIONS		
MAX DESIGN PRESSURE	MIN (W X H)	MAX (W X H)
±100 PSF	12" X 12"	60" X 96"

TABLE 2	
MULTIPLE SECTION SIZE LIMITATIONS (MAX DESIGN PRESSURE: ±100 PSF)	
SINGLE SECTION HIGH - UNLIMITED WIDTH	SEE SHEET 5



P.E. STAMP

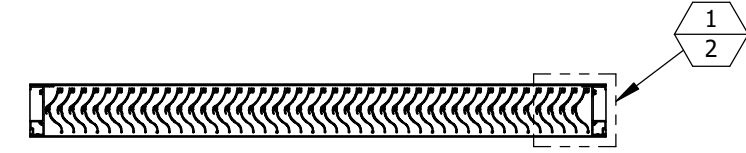


PRODUCT APPROVED
as complying with the Florida
Building Code
NOA-No. 25-0701.04
Approval Date 08/07/2025
By *[Signature]*
Miami-Dade Product Control

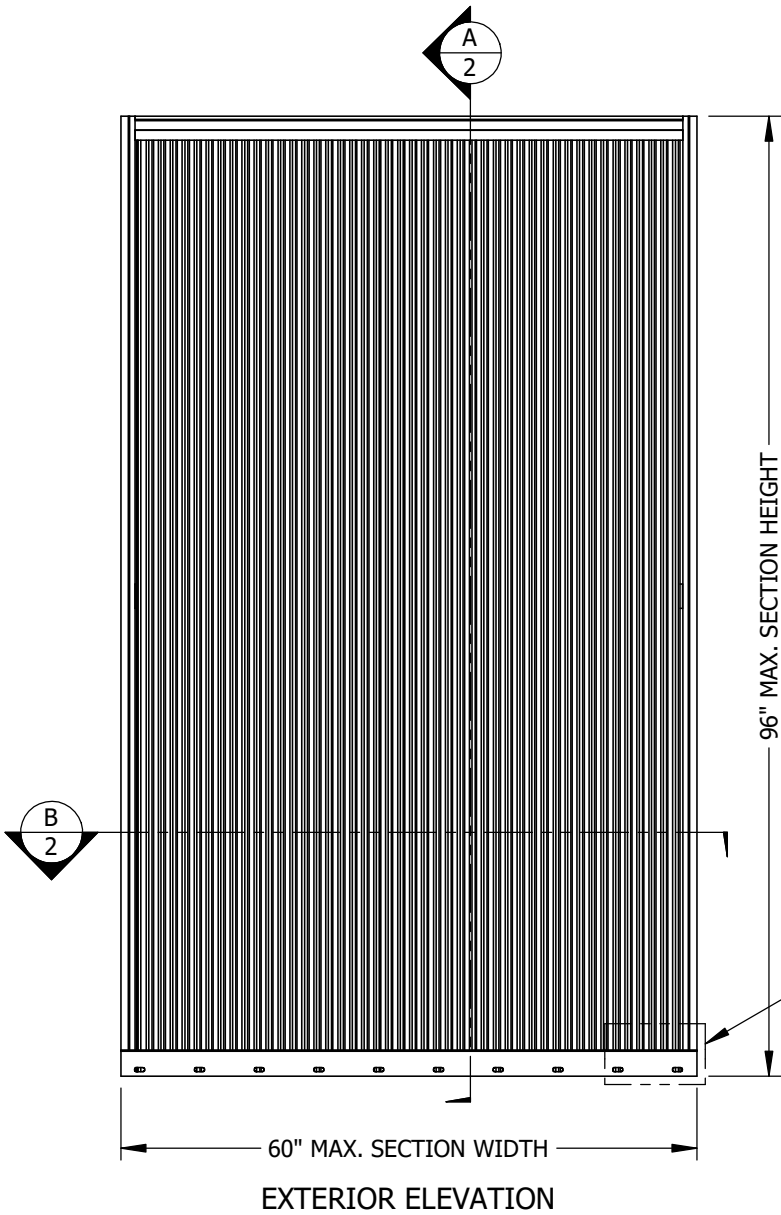
RICE
ENGINEERING
105 School Creek Trail
Luxemburg, WI 54217
Phone: (920) 617-1042
Fax: (920) 617-1100
www.rice-inc.com
Florida Firm No: F-01000005061
Certificate of Authorization: #9090
Wayne K. Helmila
Registration No: 59092

UNLESS OTHERWISE SPECIFIED DIMENSIONS ARE IN INCHES. TOLERANCE UNLESS NOTED: X.X ±0.060 X.XX ±0.030 X.XXX ±0.010 ANGLE ±1° FRACTION ±1/16 MAX HOLE BREAKOUT: 15% OF MATERIAL THICKNESS	PCI INDUSTRIES DOING BUSINESS AS ALL-LITE ARCHITECTURAL PRODUCTS		DRAWING DESCR: COVER SHEET		
	THIRD ANGLE PROJECTION  5101 Blue Mound Road Fort Worth, Texas 76106 Phone: 817-509-2300 Fax: 817-831-3110		PROJECT: ECV-345-MD		
			PROJ. MGR.:		DRAWN BY: NWW / JG
			DATE: 5/5/2020	CHK'D BY:	DRAWING NUMBER ECV-345-MD NOA
			SHEET: 1 of 7	SCALE: NONE	

I:\0 ENGINEERING PROJECTS\LOUVERS\ECV-345-MD NOA\Updated Design (Sep. 2019)\

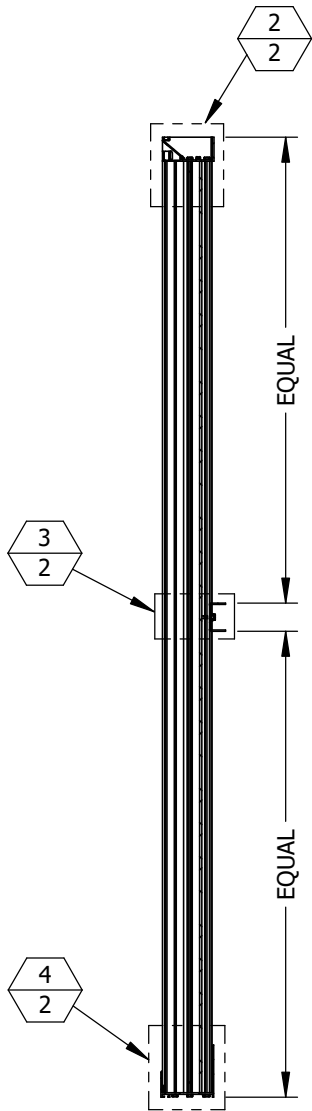


HORIZONTAL SECTION B
2 GENERAL ASSEMBLY
SCALE: 1"=1' SHEET 2

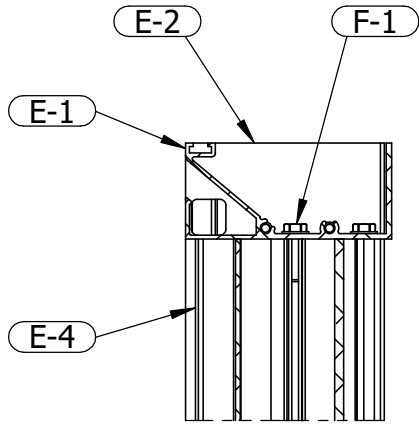


EXTERIOR ELEVATION

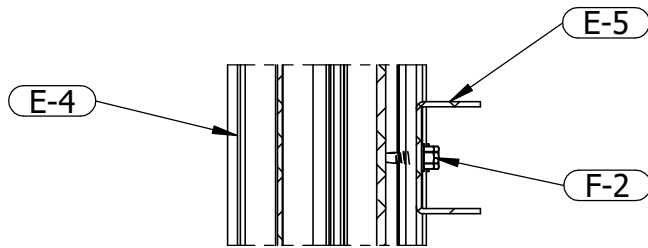
RICE
ENGINEERING
105 School Creek Trail
Luxemburg, WI 54217
Phone: (920) 617-1042
Fax: (920) 617-1100
www.rice-inc.com
Florida Firm No: F-01000005061
Certificate of Authorization: #9090
Wayne K. Helmila
Registration No: 59092



VERTICAL SECTION A
2 GENERAL ASSEMBLY
SCALE: 1"=1' SHEET 2

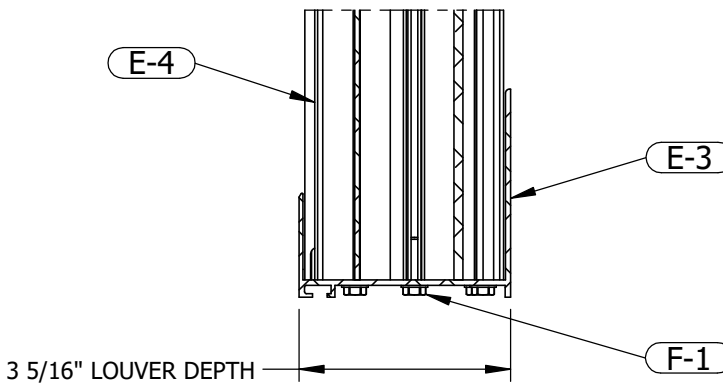


SECTION DETAIL 2
2 FRAME HEAD
SCALE: 1" = 1'-0" SHEET 2



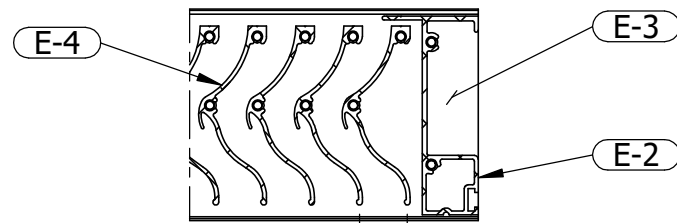
SECTION DETAIL 3
2 STIFFENER
SCALE: 1" = 1'-0" SHEET 2

STIFFENER (E-5) AND ASSOCIATED FASTENERS (F-2)
OMITTED IF SECTION HEIGHT ≤ 48"

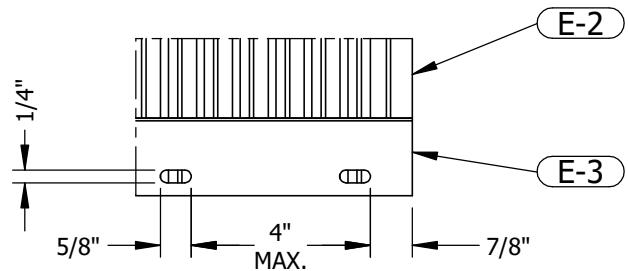


SECTION DETAIL 4
2 FRAME SILL
SCALE: 1" = 1'-0" SHEET 2

GENERAL LOUVER ASSEMBLY




SECTION DETAIL 1
2 FRAME JAMB
SCALE: 1" = 1'-0" SHEET 2



ELEVATION DETAIL 5
2 FRAME SILL
SCALE: 1" = 1'-0" SHEET 2

P.E. STAMP

PRODUCT APPROVED
as complying with the Florida
Building Code
NOA-No. 25-0701.04
Approval Date 08/07/2025
By 
Miami-Dade Product Control



07/23/2025
COA: 9090

4	UPDATED NOTES 1 AND 7 ON SHEET 1	7/23/2025	NWW
3	RE-RELEASE	6/20/2025	NWW
2	UPDATED FOR NOA RENEWAL	3/11/2021	NWW
1	INITIAL RELEASE	5/5/2020	NWW
REV.	DESCRIPTION	DATE	DRAWN BY

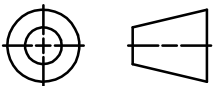
UNLESS OTHERWISE SPECIFIED
DIMENSIONS ARE IN INCHES.

TOLERANCE UNLESS NOTED:
X.X ±0.060
X.XX ±0.030
X.XXX ±0.010
ANGLE ±1°
FRACTION ±1/16

MAX HOLE BREAKOUT:
15% OF MATERIAL THICKNESS

PCI INDUSTRIES DOING BUSINESS AS
ALL-LITE
ARCHITECTURAL PRODUCTS

THIRD ANGLE PROJECTION



5101 Blue Mound Road
Fort Worth, Texas 76106
Phone: 817-509-2300
Fax: 817-831-3110

DRAWING DESCR:
GENERAL LOUVER ASSEMBLY

PROJECT: ECV-345-MD

PROJ. MGR.:

DRAWN BY: NWW / JG

DATE: 5/5/2020

CHK'D BY:

DRAWING NUMBER

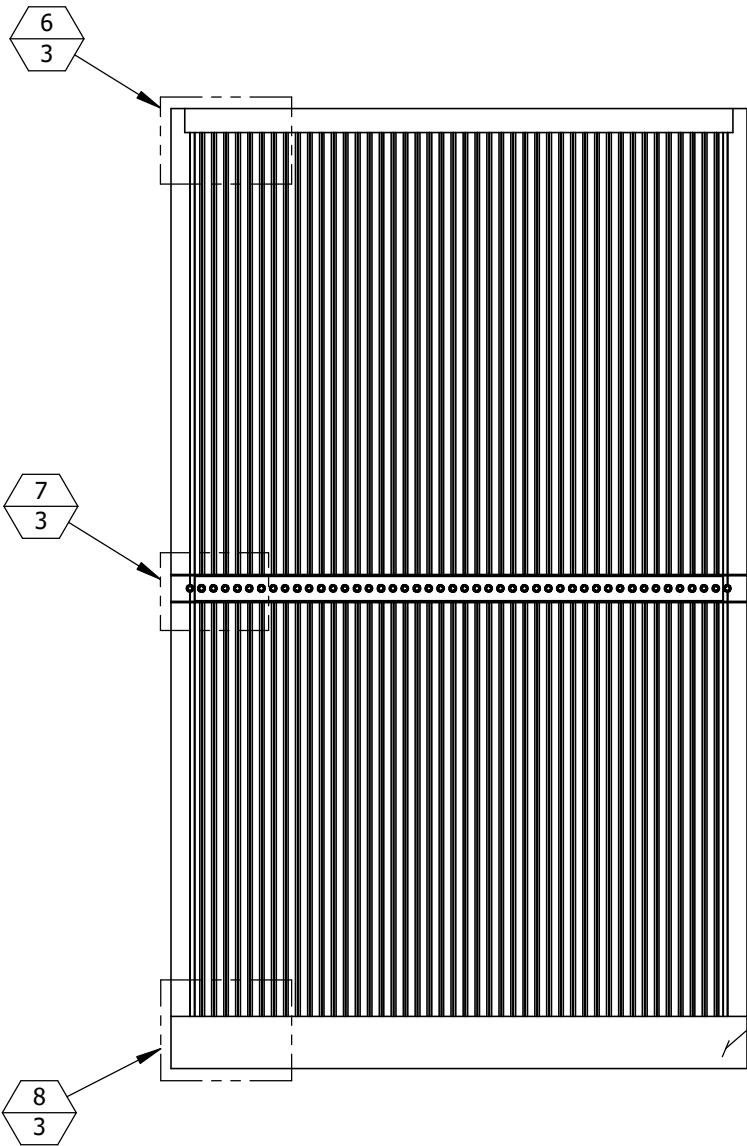
SHEET: 2 of 7

SCALE: 1" = 1'-0"

ECV-345-MD NOA

I:\0 ENGINEERING PROJECTS\LOUVERS\ECV-345-MD NOA\Updated Design (Sep. 2019)\

GENERAL LOUVER ASSEMBLY



INTERIOR ELEVATION

RICE
ENGINEERING

105 School Creek Trail
Luxemburg, WI 54217
Phone: (920) 617-1042
Fax: (920) 617-1100
www.rice-inc.com

Florida Firm No: F-01000005061
Certificate of Authorization: #9090
Wayne K. Helmila
Registration No: 59092

ENGRAVED LABEL DETAIL

PCI Industries LLC d/b/a
ALL-LITE
Ft Worth TX
SO# 123456

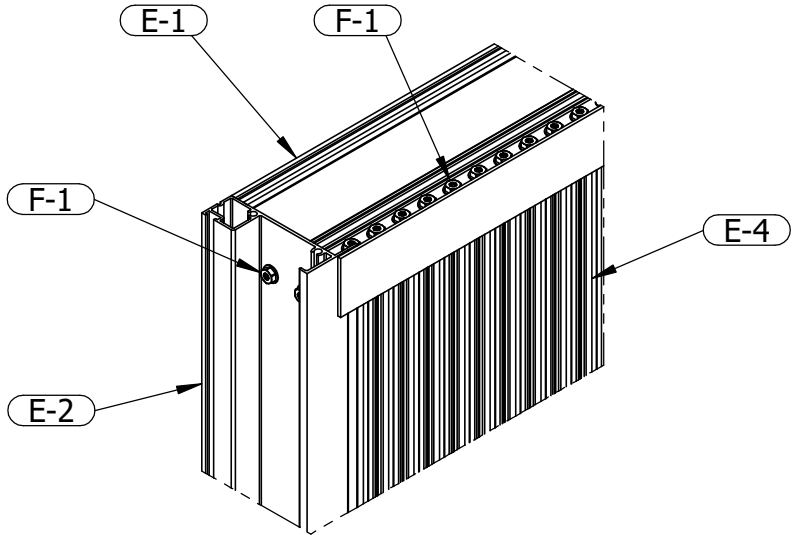
Miami Dade County
Product Control
Approved

PRODUCT APPROVED
as complying with the Florida
Building Code

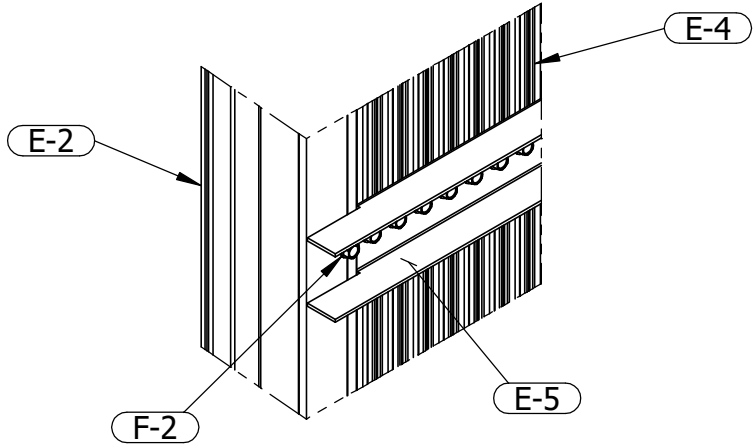
NOA-No. 25-0701.04

Approval Date 08/07/2025

By 
Miami-Dade Product Control

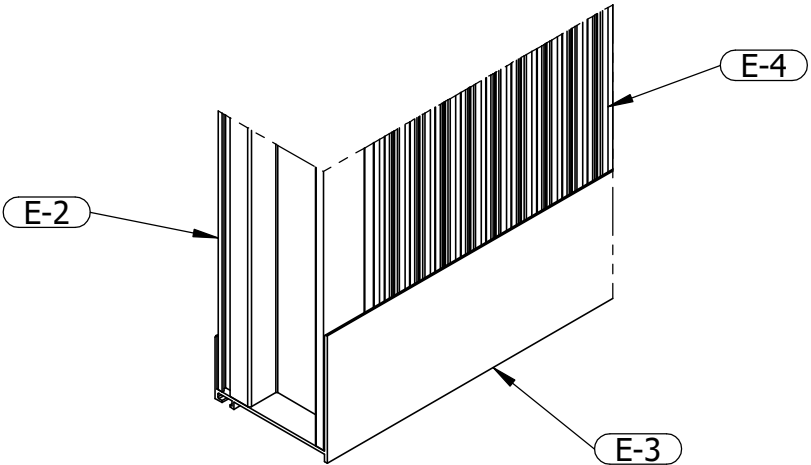


ASSEMBLY DETAIL 6/3 UPPER CORNER
SCALE: 3"=1' SHEET 3



ASSEMBLY DETAIL 7/3 STIFFENER
SCALE: 3"=1' SHEET 3

STIFFENER (E-5) AND ASSOCIATED FASTENERS (F-2)
OMITTED IF SECTION HEIGHT ≤ 48"



ASSEMBLY DETAIL 8/3 LOWER CORNER
SCALE: 3"=1' SHEET 3

P.E. STAMP



07/23/2025
COA: 9090

4	UPDATED NOTES 1 AND 7 ON SHEET 1	7/23/2025	NWW
3	RE-RELEASE	6/20/2025	NWW
2	UPDATED FOR NOA RENEWAL	3/11/2021	NWW
1	INITIAL RELEASE	5/5/2020	NWW
REV.	DESCRIPTION	DATE	DRAWN BY

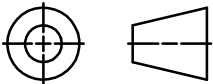
UNLESS OTHERWISE SPECIFIED
DIMENSIONS ARE IN INCHES.

TOLERANCE UNLESS NOTED:
X.X ±0.060
X.XX ±0.030
X.XXX ±0.010
ANGLE ±1°
FRACTION ±1/16

MAX HOLE BREAKOUT:
15% OF MATERIAL THICKNESS

PCI INDUSTRIES DOING BUSINESS AS
ALL-LITE
ARCHITECTURAL PRODUCTS

THIRD ANGLE PROJECTION



5101 Blue Mound Road
Fort Worth, Texas 76106
Phone: 817-509-2300
Fax: 817-831-3110

DRAWING DESCR:
GENERAL LOUVER ASSEMBLY

PROJECT: ECV-345-MD

PROJ. MGR.:

DATE: 5/5/2020

SHEET: 3 of 7

CHK'D BY:

SCALE: 1"=1'-0"

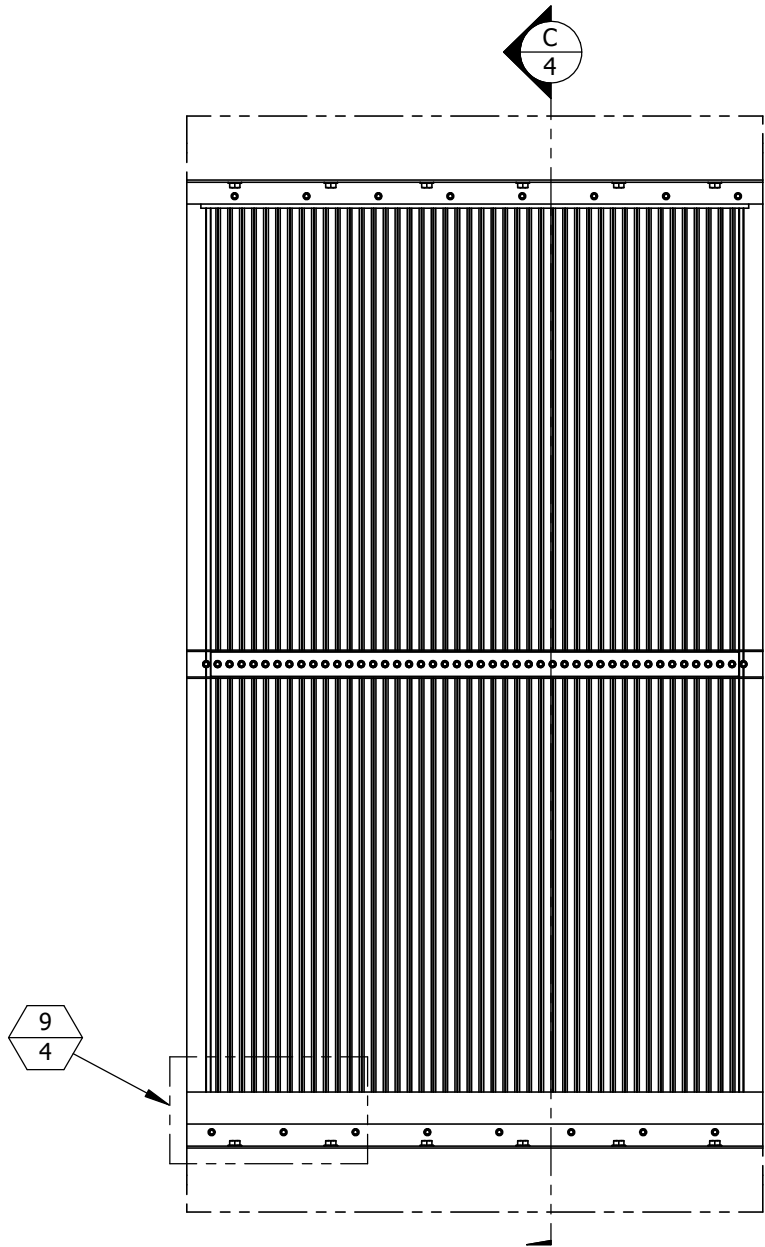
DRAWN BY: NWW / JG

DRAWING NUMBER

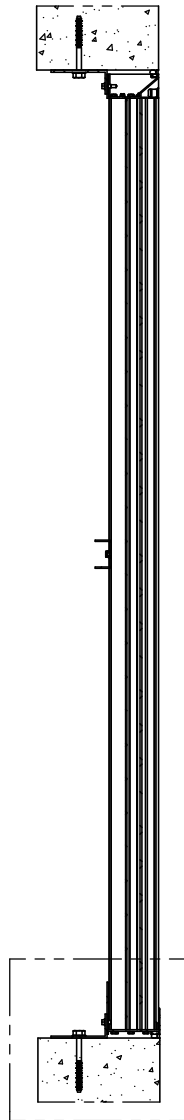
ECV-345-MD NOA

I:\0 ENGINEERING PROJECTS\LOUVERS\ECV-345-MD NOA\Updated Design (Sep. 2019)\

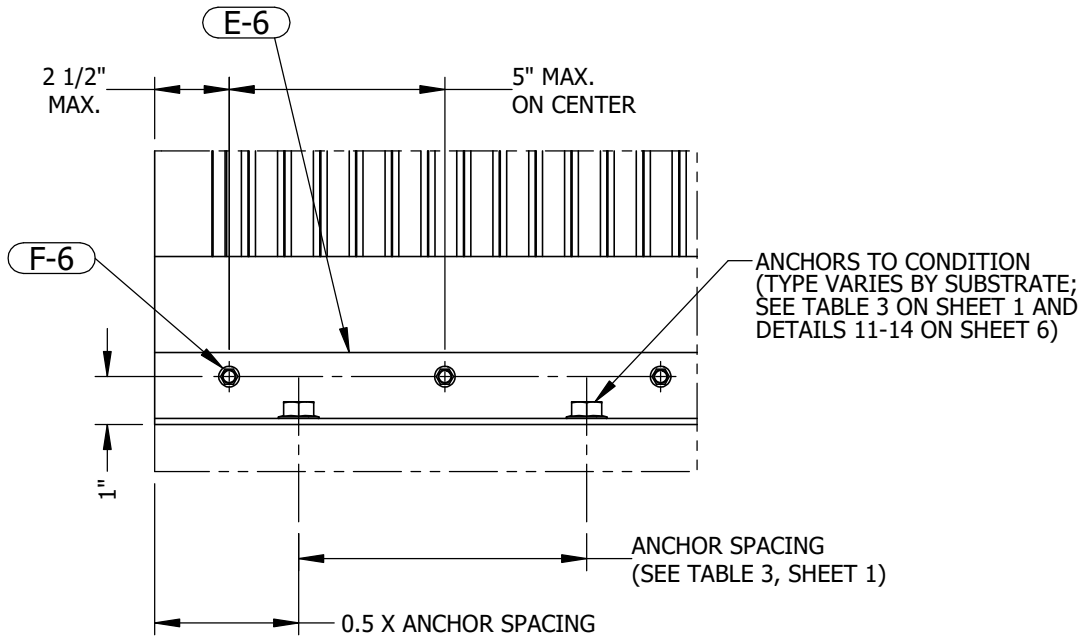
SINGLE-SECTION INSTALLATION




INTERIOR ELEVATION



VERTICAL SECTION C LOUVER INSTALLATION
1"= 1'-0" 4 SHEETS 4 & 5



ELEVATION DETAIL 9 TOP & BTM ATTACHMENT
3" = 1'-0" 4 SHEETS 4 & 5

PRODUCT APPROVED
as complying with the Florida
Building Code
NOA-No. 25-0701.04
Approval Date 08/07/2025
By 
Miami-Dade Product Control

RICE
ENGINEERING
105 School Creek Trail
Luxemburg, WI 54217
Phone: (920) 617-1042
Fax: (920) 617-1100
www.rice-inc.com
Florida Firm No: F-01000005061
Certificate of Authorization: #9090
Wayne K. Helmila
Registration No: 59092

P.E. STAMP



07/23/2025
COA: 9090

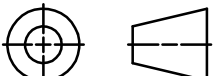
4	UPDATED NOTES 1 AND 7 ON SHEET 1	7/23/2025	NWW
3	RE-RELEASE	6/20/2025	NWW
2	UPDATED FOR NOA RENEWAL	3/11/2021	NWW
1	INITIAL RELEASE	5/5/2020	NWW
REV.	DESCRIPTION	DATE	DRAWN BY

UNLESS OTHERWISE SPECIFIED
DIMENSIONS ARE IN INCHES.

TOLERANCE UNLESS NOTED:
X.X ±0.060
X.XX ±0.030
X.XXX ±0.010
ANGLE ±1°
FRACTION ±1/16

MAX HOLE BREAKOUT:
15% OF MATERIAL THICKNESS

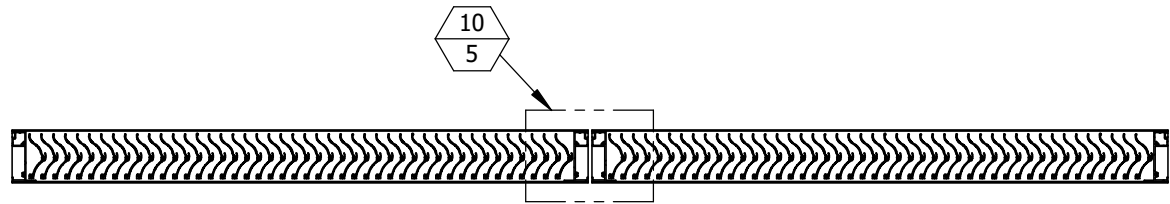
PCI INDUSTRIES DOING BUSINESS AS
ALL-LITE
ARCHITECTURAL PRODUCTS

THIRD ANGLE PROJECTION


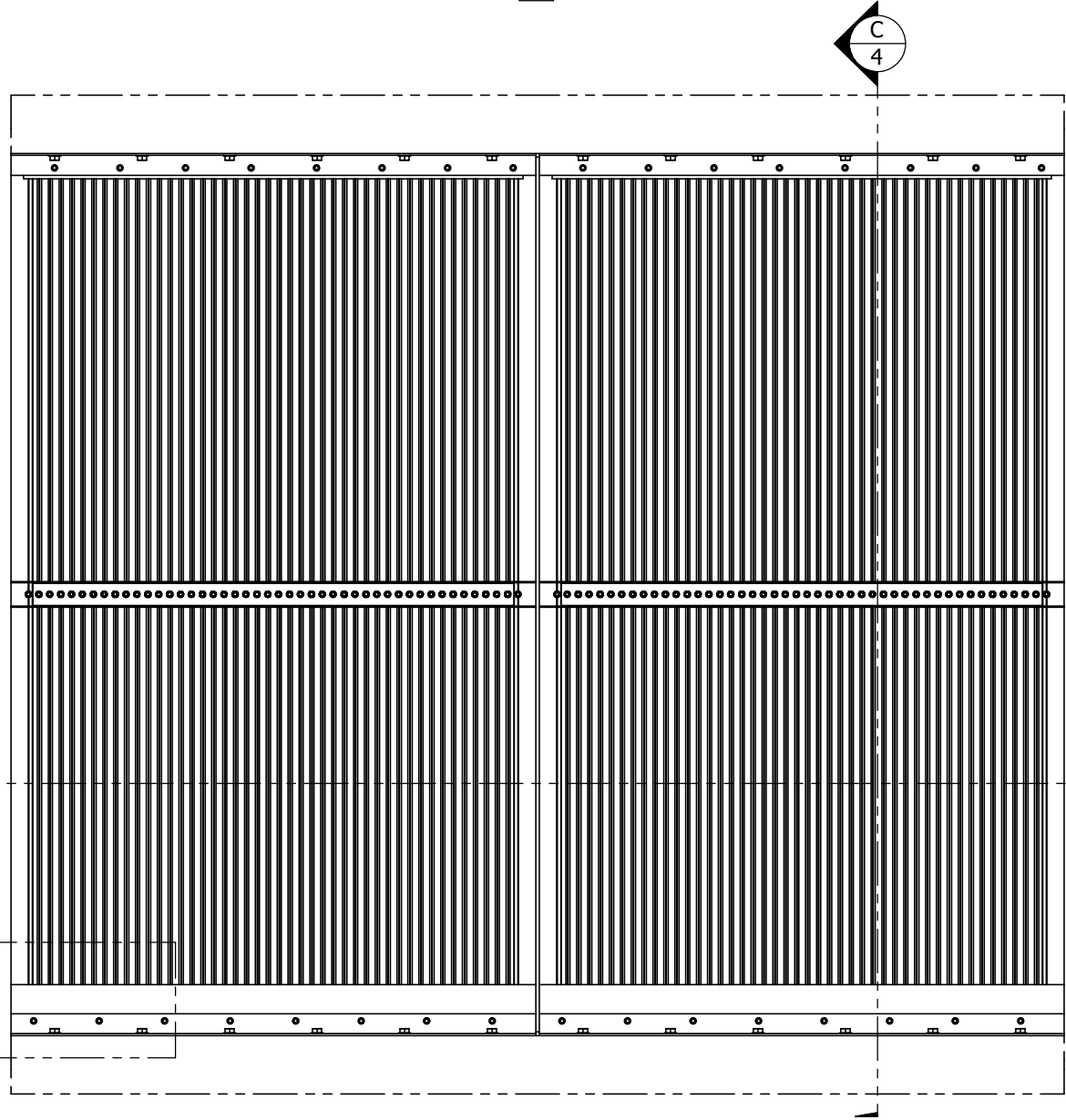
5101 Blue Mound Road
Fort Worth, Texas 76106
Phone: 817-509-2300
Fax: 817-831-3110

DRAWING DESCR: SINGLE-SECTION INSTALLATION		
PROJECT: ECV-345-MD		
PROJ. MGR.:		DRAWN BY: NWW / JG
DATE: 5/5/2020	CHK'D BY:	DRAWING NUMBER ECV-345-MD NOA
SHEET: 4 of 7	SCALE: 1"=1'-0"	

I:\0 ENGINEERING PROJECTS\LOUVERS\ECV-345-MD NOA\Updated Design (Sep. 2019)\

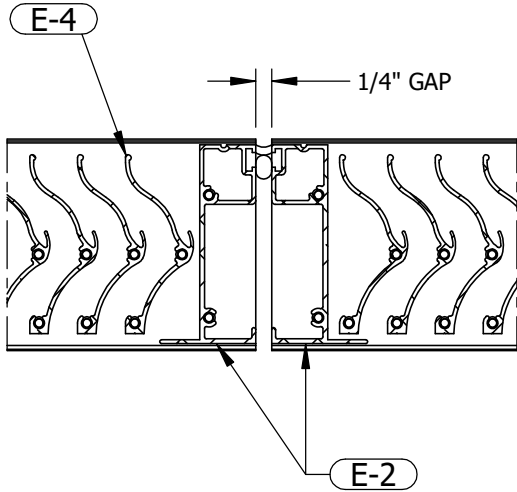


HORIZONTAL SECTION
1" = 1'-0" D
5 MULTI-WIDE ASSEMBLY
SHEET 5




INTERIOR ELEVATION
QUANTITY OF SECTIONS WIDE IS UNLIMITED

MULTI-SECTION WIDE INSTALLATION



SECTION DETAIL 10
5 VERTICAL MULLION
4" = 1'-0" SHEET 5

QUANTITY OF SECTIONS WIDE IS UNLIMITED

PRODUCT APPROVED
as complying with the Florida
Building Code
NOA-No. 25-0701.04
Approval Date 08/07/2025
By 
Miami-Dade Product Control

P.E. STAMP



07/23/2025
COA: 9090

RICE
ENGINEERING
105 School Creek Trail
Luxemburg, WI 54217
Phone: (920) 617-1042
Fax: (920) 617-1100
www.rice-inc.com
Florida Firm No: F-01000005061
Certificate of Authorization: #9090
Wayne K. Helmila
Registration No: 59092

4	UPDATED NOTES 1 AND 7 ON SHEET 1	7/23/2025	NWW
3	RE-RELEASE	6/20/2025	NWW
2	UPDATED FOR NOA RENEWAL	3/11/2021	NWW
1	INITIAL RELEASE	5/5/2020	NWW
REV.	DESCRIPTION	DATE	DRAWN BY

UNLESS OTHERWISE SPECIFIED
DIMENSIONS ARE IN INCHES.

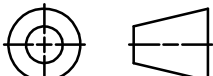
TOLERANCE UNLESS NOTED:
X.X ±0.060
X.XX ±0.030
X.XXX ±0.010
ANGLE ±1°
FRACTION ±1/16

MAX HOLE BREAKOUT:
15% OF MATERIAL THICKNESS

PCI INDUSTRIES DOING BUSINESS AS

ALL-LITE

ARCHITECTURAL PRODUCTS

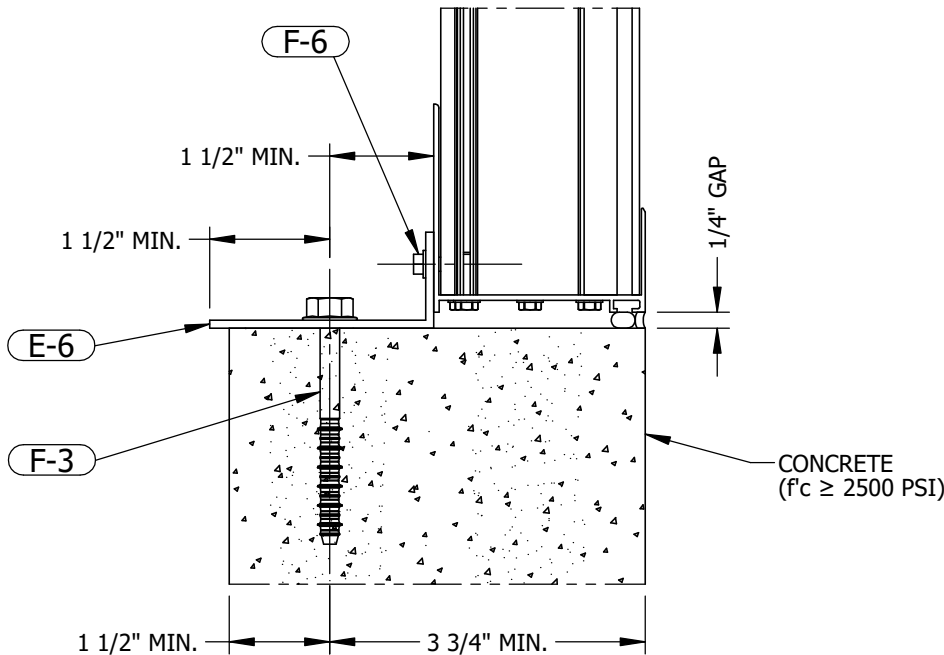
THIRD ANGLE PROJECTION


5101 Blue Mound Road
Fort Worth, Texas 76106
Phone: 817-509-2300
Fax: 817-831-3110

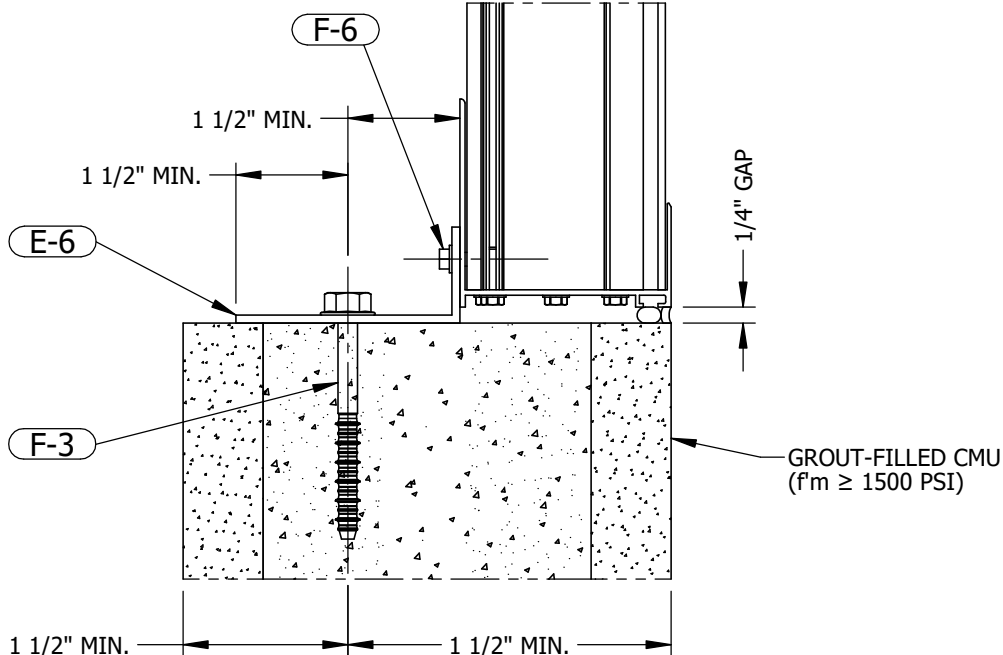
DRAWING DESCR: MULTI-SECTION WIDE INSTALLATION		
PROJECT: ECV-345-MD		
PROJ. MGR.:		DRAWN BY: NWW / JG
DATE: 5/5/2020	CHK'D BY:	DRAWING NUMBER ECV-345-MD NOA
SHEET: 5 of 7	SCALE: 1"=1'-0"	

I:\0 ENGINEERING PROJECTS\LOUVERS\ECV-345-MD NOA\Updated Design (Sep. 2019)\

INSTALLATION DETAILS



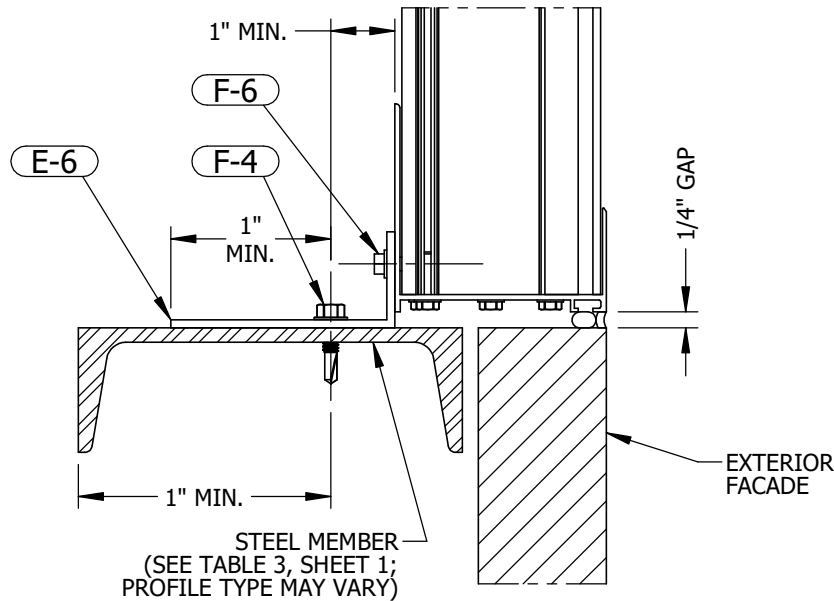
SECTION DETAIL 11 CONCRETE ATTACHMENT
4" = 1'-0" 6 SHEET 4



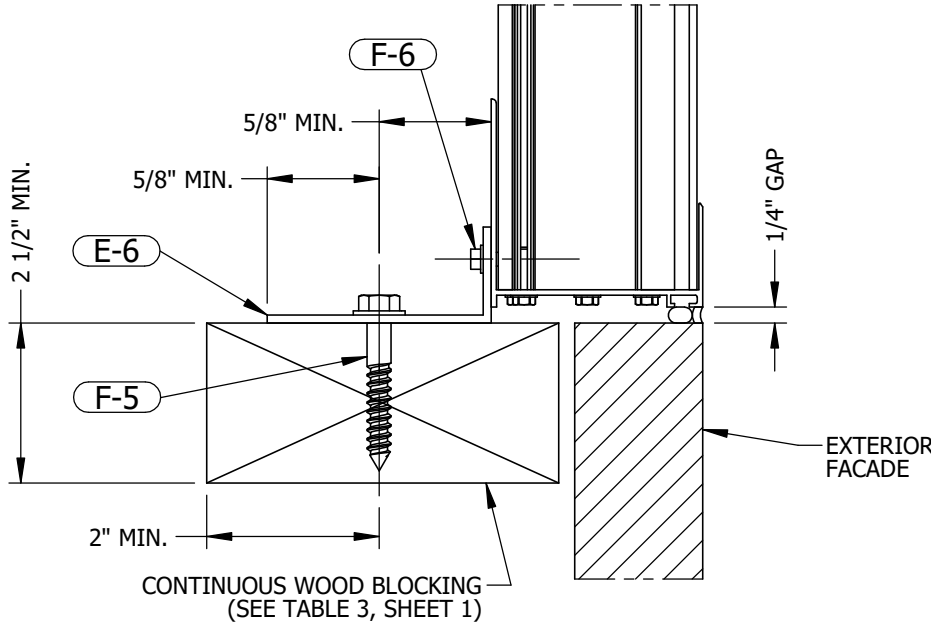
SECTION DETAIL 12 CMU ATTACHMENT
4" = 1'-0" 6 SHEET 4

ANCHOR CENTERS MAY BE LOCATED NO CLOSER THAN 1-1/4" TO A VERTICAL (HEAD) JOINT IN THE MASONRY.

PRODUCT APPROVED
as complying with the Florida
Building Code
NOA-No. 25-0701.04
Approval Date 08/07/2025
By *[Signature]*
Miami-Dade Product Control



SECTION DETAIL 13 STEEL ATTACHMENT
4" = 1'-0" 6 SHEET 4



SECTION DETAIL 14 WOOD ATTACHMENT
4" = 1'-0" 6 SHEET 4

RICE
ENGINEERING
105 School Creek Trail
Luxemburg, WI 54217
Phone: (920) 617-1042
Fax: (920) 617-1100
www.rice-inc.com
Florida Firm No: F-01000005061
Certificate of Authorization: #9090
Wayne K. Helmila
Registration No: 59092

P.E. STAMP



07/23/2025
COA: 9090

UNLESS OTHERWISE SPECIFIED
DIMENSIONS ARE IN INCHES.

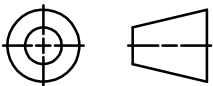
TOLERANCE UNLESS NOTED:

X.X ±0.060
X.XX ±0.030
X.XXX ±0.010
ANGLE ±1°
FRACTION ±1/16

MAX HOLE BREAKOUT:
15% OF MATERIAL THICKNESS

PCI INDUSTRIES DOING BUSINESS AS
ALL-LITE
ARCHITECTURAL PRODUCTS

THIRD ANGLE PROJECTION



5101 Blue Mound Road
Fort Worth, Texas 76106
Phone: 817-509-2300
Fax: 817-831-3110

DRAWING DESCR:
INSTALLATION DETAILS

PROJECT: ECV-345-MD

PROJ. MGR.:

DATE: 5/5/2020

SHEET: 6 of 7

CHK'D BY:

SCALE: AS NOTED

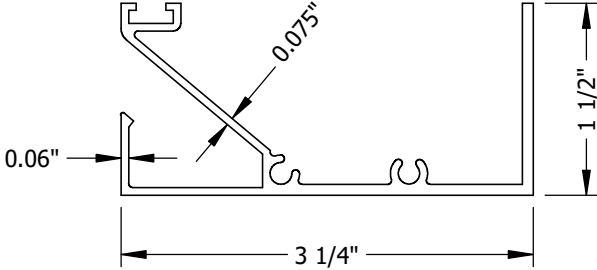
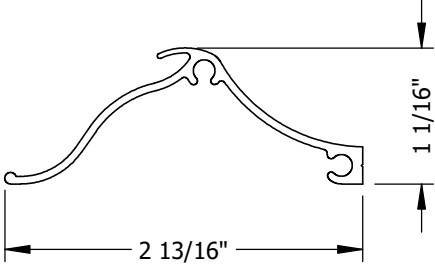

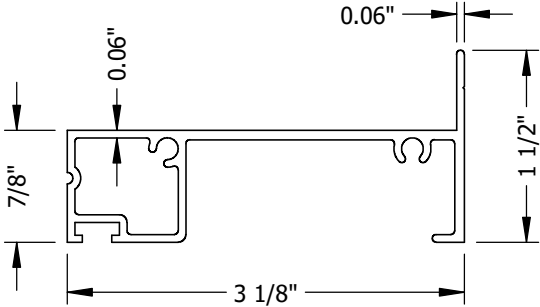
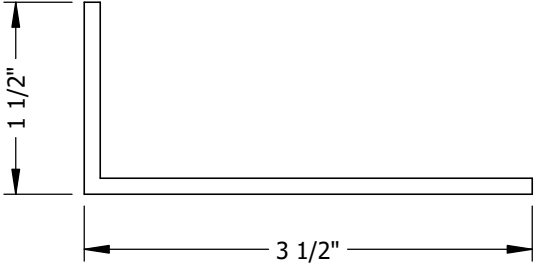
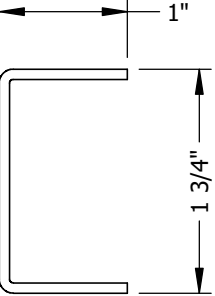
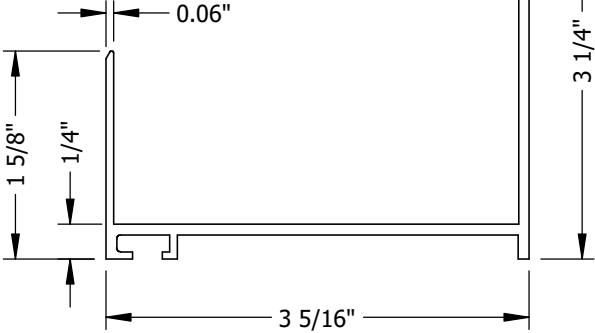

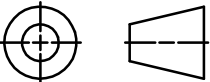
DRAWN BY: NWW / JG

DRAWING NUMBER

ECV-345-MD NOA

4	UPDATED NOTES 1 AND 7 ON SHEET 1	7/23/2025	NWW
3	RE-RELEASE	6/20/2025	NWW
2	UPDATED FOR NOA RENEWAL	3/11/2021	NWW
1	INITIAL RELEASE	5/5/2020	NWW
REV.	DESCRIPTION	DATE	DRAWN BY

I:\0 ENGINEERING PROJECTS\LOUVERS\ECV-345-MD NOA\Updated Design (Sep. 2019)\

<div><div>PART NO: E-1</div><div>PART NAME: FRAME HEAD</div><div>MATERIAL: 0.085" THICK 6063-T6 EXTRUDED ALUMINUM</div></div> <div></div>				<div><div>PART NO: E-4</div><div>PART NAME: BLADE</div><div>MATERIAL: 0.06" THICK 6063-T5 EXTRUDED ALUMINUM</div></div> <div></div>				<div><div>BILL OF MATERIALS</div><div><div>PRODUCT APPROVED</div><div>as complying with the Florida Building Code</div><div>NOA-No. 25-0701.04</div><div>Approval Date 08/07/2025</div><div>By  Miami-Dade Product Control</div></div></div>																											
<div><div>PART NO: E-2</div><div>PART NAME: FRAME JAMB</div><div>MATERIAL: 0.075" THICK 6063-T6 EXTRUDED ALUMINUM</div></div> <div></div>				<div><div>PART NO: E-6</div><div>PART NAME: CONTINUOUS ANGLE</div><div>MATERIAL: 0.125" THICK 6063-T6 EXTRUDED ALUMINUM</div></div> <div></div>				<div><div>PART NO: E-5</div><div>PART NAME: STIFFENER</div><div>MATERIAL: 0.08" THICK 5052-H32 FORMED ALUMINUM</div></div> <div></div>																											
<div><div>PART NO: E-3</div><div>PART NAME: FRAME SILL</div><div>MATERIAL: 0.085" THICK 6063-T6 EXTRUDED ALUMINUM</div></div> <div></div>				<div><div><div>RICE</div><div>ENGINEERING</div><div>105 School Creek Trail Luxemburg, WI 54217 Phone: (920) 617-1042 Fax: (920) 617-1100 www.rice-inc.com</div><div>Florida Firm No: F-01000005061 Certificate of Authorization: #9090 Wayne K. Helmila Registration No: 59092</div></div><div><table><tr><th colspan="2">MISCELLANEOUS FASTENERS</th></tr><tr><th>PART NO.</th><th>DESCRIPTION</th></tr><tr><td>F-1</td><td>#10-14 X 1" LONG, HWH, 410 SST, NEEDLE POINT SELF-TAPPING SCREW</td></tr><tr><td>F-2</td><td>#12-14 X 3/4" LONG, HWH, 410 SST, TEK SELF-DRILLING SCREW</td></tr><tr><td>F-3</td><td>3/8" X 4" DEWALT SCREW-BOLT+ SCREW ANCHOR, GALV. FINISH</td></tr><tr><td>F-4</td><td>1/4-14 X 1" LONG SELF-DRILLING SCREW, 300-SERIES SST</td></tr><tr><td>F-5</td><td>3/8" X 2 1/2" LONG LAG BOLT AND FLAT WASHER, 300-SERIES SST</td></tr><tr><td>F-6</td><td>#12-14 X 3/4" LONG, HWH, TEK SELF-DRILLING SCREW, 300-SERIES SST</td></tr></table></div><div><div>P.E. STAMP</div><div><div>07/23/2025 COA: 9090</div></div></div></div>								MISCELLANEOUS FASTENERS		PART NO.	DESCRIPTION	F-1	#10-14 X 1" LONG, HWH, 410 SST, NEEDLE POINT SELF-TAPPING SCREW	F-2	#12-14 X 3/4" LONG, HWH, 410 SST, TEK SELF-DRILLING SCREW	F-3	3/8" X 4" DEWALT SCREW-BOLT+ SCREW ANCHOR, GALV. FINISH	F-4	1/4-14 X 1" LONG SELF-DRILLING SCREW, 300-SERIES SST	F-5	3/8" X 2 1/2" LONG LAG BOLT AND FLAT WASHER, 300-SERIES SST	F-6	#12-14 X 3/4" LONG, HWH, TEK SELF-DRILLING SCREW, 300-SERIES SST								
MISCELLANEOUS FASTENERS																																			
PART NO.	DESCRIPTION																																		
F-1	#10-14 X 1" LONG, HWH, 410 SST, NEEDLE POINT SELF-TAPPING SCREW																																		
F-2	#12-14 X 3/4" LONG, HWH, 410 SST, TEK SELF-DRILLING SCREW																																		
F-3	3/8" X 4" DEWALT SCREW-BOLT+ SCREW ANCHOR, GALV. FINISH																																		
F-4	1/4-14 X 1" LONG SELF-DRILLING SCREW, 300-SERIES SST																																		
F-5	3/8" X 2 1/2" LONG LAG BOLT AND FLAT WASHER, 300-SERIES SST																																		
F-6	#12-14 X 3/4" LONG, HWH, TEK SELF-DRILLING SCREW, 300-SERIES SST																																		
<table><tr><td>4</td><td>UPDATED NOTES 1 AND 7 ON SHEET 1</td><td>7/23/2025</td><td>NWW</td></tr><tr><td>3</td><td>RE-RELEASE</td><td>6/20/2025</td><td>NWW</td></tr><tr><td>2</td><td>UPDATED FOR NOA RENEWAL</td><td>3/11/2021</td><td>NWW</td></tr><tr><td>1</td><td>INITIAL RELEASE</td><td>5/5/2020</td><td>NWW</td></tr><tr><td>REV.</td><td>DESCRIPTION</td><td>DATE</td><td>DRAWN BY</td></tr></table>				4	UPDATED NOTES 1 AND 7 ON SHEET 1	7/23/2025	NWW	3	RE-RELEASE	6/20/2025	NWW	2	UPDATED FOR NOA RENEWAL	3/11/2021	NWW	1	INITIAL RELEASE	5/5/2020	NWW	REV.	DESCRIPTION	DATE	DRAWN BY	<div><div>UNLESS OTHERWISE SPECIFIED DIMENSIONS ARE IN INCHES.</div><div>TOLERANCE UNLESS NOTED: X.X ±0.060 X.XX ±0.030 X.XXX ±0.010 ANGLE ±1° FRACTION ±1/16</div><div>MAX HOLE BREAKOUT: 15% OF MATERIAL THICKNESS</div></div>				<div><div>PCI INDUSTRIES DOING BUSINESS AS</div><div>ALL-LITE</div><div>ARCHITECTURAL PRODUCTS</div><div>THIRD ANGLE PROJECTION</div><div></div><div>5101 Blue Mound Road Fort Worth, Texas 76106 Phone: 817-509-2300 Fax: 817-831-3110</div></div>				<div><div>DRAWING DESCR: BILL OF MATERIALS</div><div>PROJECT: ECV-345-MD</div><div><div>PROJ. MGR.:</div><div>DRAWN BY: NWW / JG</div></div><div><div>DATE: 5/5/2020</div><div>CHK'D BY:</div><div>DRAWING NUMBER</div></div><div><div>SHEET: 7 of 7</div><div>SCALE: 8"=1'-0"</div><div>ECV-345-MD NOA</div></div></div>			
4	UPDATED NOTES 1 AND 7 ON SHEET 1	7/23/2025	NWW																																
3	RE-RELEASE	6/20/2025	NWW																																
2	UPDATED FOR NOA RENEWAL	3/11/2021	NWW																																
1	INITIAL RELEASE	5/5/2020	NWW																																
REV.	DESCRIPTION	DATE	DRAWN BY																																