



DEPARTMENT OF REGULATORY AND ECONOMIC RESOURCES (RER)  
BOARD AND CODE ADMINISTRATION DIVISION

**NOTICE OF ACCEPTANCE (NOA)**

MIAMI-DADE COUNTY  
PRODUCT CONTROL SECTION  
11805 SW 26 Street, Room 208  
Miami, Florida 33175-2474  
T (786) 315-2590 F (786) 315-2599

[www.miamidade.gov/economy](http://www.miamidade.gov/economy)

**S&P Air Control, LLC**  
**3005 South Hickory Street**  
**Chattanooga, TN 37407**

**SCOPE:**

This NOA is being issued under the applicable rules and regulations governing the use of construction materials. The documentation submitted has been reviewed and accepted by Miami-Dade County RER-Product Control Section to be used in Miami Dade County and other areas where allowed by the Authority Having Jurisdiction (AHJ).

This NOA shall not be valid after the expiration date stated below. The Miami-Dade County Product Control Section (In Miami Dade County) and/or the AHJ (in areas other than Miami Dade County) reserve the right to have this product or material tested for quality assurance purposes. If this product or material fails to perform in the accepted manner, the manufacturer will incur the expense of such testing and the AHJ may immediately revoke, modify, or suspend the use of such product or material within their jurisdiction. RER reserves the right to revoke this acceptance, if it is determined by Miami-Dade County Product Control Section that this product or material fails to meet the requirements of the applicable building code.

This product is approved as described herein and has been designed to comply with the Florida Building Code, including the High Velocity Hurricane Zone.

**DESCRIPTION: Model SED-5.1 Aluminum Louver with or without CD-151 Damper**

**APPROVAL DOCUMENT:** Drawing No. **25-060**, titled “SED-5.1 Louver System with or without CD-151 Damper Assembly”, sheets 1 through 16 (including sheet 4A) of 16, dated 07/07/2025, prepared by Tilteco, Inc., signed and sealed by Walter A. Tillit Jr., P.E., bearing the Miami-Dade County Product Control revision stamp with the Notice of Acceptance number and expiration date by the Miami-Dade County Product Control Section.

**MISSILE IMPACT RATING: Large and Small Missile Impact Resistant.**

**LABELING:** A permanent label with the manufacturer's name or logo, Chattanooga, TN or Hartford, AL, model/series, and following statement: "Miami-Dade County Product Control Approved", is to be located on each unit.

**RENEWAL** of this NOA shall be considered after a renewal application has been filed and there has been no change in the applicable building code negatively affecting the performance of this product.

**TERMINATION** of this NOA will occur after the expiration date or if there has been a revision or change in the materials, use, and/or manufacture of the product or process. Misuse of this NOA as an endorsement of any product, for sales, advertising or any other purposes shall automatically terminate this NOA. Failure to comply with any section of this NOA shall be cause for termination and removal of NOA.

**ADVERTISEMENT:** The NOA number preceded by the words Miami-Dade County, Florida, and followed by the expiration date may be displayed in advertising literature. If any portion of the NOA is displayed, then it shall be done in its entirety.

**INSPECTION:** A copy of this entire NOA shall be provided to the user by the manufacturer or its distributors and shall be available for inspection at the job site at the request of the Building Official.

This NOA **revises NOA # 23-0726.10** and consists of this page 1 and evidence pages E-1, E-2, E-3 and E-4, as well as approval document mentioned above.

The submitted documentation was reviewed by **Carlos M. Utrera, P.E.**



09/08/25

**NOA No. 25-0805.06**  
**Expiration Date: November 20, 2028**  
**Approval Date: September 18, 2025**

**NOTICE OF ACCEPTANCE: EVIDENCE SUBMITTED**

**1. EVIDENCE SUBMITTED UNDER PREVIOUS NOA's**

**A. DRAWINGS “Submitted under NOA # 16-0209.13”**

1. Drawing No. **15-026**, titled “SED-5.1 Louver System with or without CD-151 Damper Assembly”, sheets 1 through 16 (including sheet 4A) of 16, dated 03/16/2015, with revision 2 dated 01/19/2016, prepared by Tilteco, Inc., signed and sealed by Walter A. Tillit Jr., P.E.

**B. TESTS “Submitted under NOA # 08-1003.07”**

1. Test reports on 1) Uniform Static Air Pressure Test, Loading per FBC TAS 202-94  
2) Large Missile Impact Test per FBC, TAS 201-94  
3) Cyclic Wind Pressure Loading per FBC, TAS 203-94  
along with marked-up drawings and installation diagram of Model SED-5.1 Louver System, prepared by American Test Lab of South Florida, Test Report No. **0514.01-08**, dated 09/15/2008, signed and sealed by William R. Mehner, P.E., and Henry Hattem, P.E.
2. Test Report on Wind and Wind Driven Rain Resistance Test per TAS 100(A)-95 of a Model CD-151 Parallel Blade Damper, prepared by PRI Asphalt Technologies, Report No. **UEC-001-02-01**, dated 02/08/2005, signed and sealed by Charles L. Thomas, P.E.

**C. CALCULATIONS “Submitted under NOA # 15-0420.02 and # 08-1003.07”**

1. Anchor calculations, prepared by Tilteco Inc, dated 03/16/2015, sheets 1 through 3 of 3, complying with F.B.C. 2014, signed and sealed by Walter A. Tillit Jr., P.E.
2. Anchor, stress and deflection calculations, prepared by Tilteco Inc, dated 09/09/2009, sheets 1 through 13 of 13, complying with F.B.C. 2007, signed and sealed by Walter A. Tillit Jr., P.E.
3. Anchor, stress and deflection calculations, prepared by Tilteco Inc, dated 09/17/2008, sheets 1 through 79 of 79, complying with F.B.C. 2004, signed and sealed by Walter A. Tillit Jr., P.E.

**D. QUALITY ASSURANCE**

1. Miami-Dade Department of Regulatory and Economic Resources (RER)

**E. MATERIAL CERTIFICATIONS**

1. None.

**F. STATEMENTS “Submitted under NOA # 15-0420.02”**

1. Statement letter of code conformance to the 5<sup>th</sup> edition (2014) FBC issued by Tilteco, Inc. on 03/31/2015, signed and sealed by Walter A. Tillit Jr., P.E.
2. Statement letter of code conformance to 2010 FBC issued by Tilteco, Inc. on 05/28/2013, signed and sealed by Walter A. Tillit Jr., P.E. “Submitted under NOA # 13-0604.09”
3. No financial interest letter issued by Tilteco, Inc., dated 09/10/2009, signed and sealed by Walter A. Tillit Jr., P.E. “Submitted under NOA # 08-1003.07”.

**2. EVIDENCE SUBMITTED UNDER NOA # 17-0823.08**

**A. DRAWINGS**

1. Drawing No. **17-125**, titled “SED-5.1 Louver System with or without CD-151 Damper Assembly”, sheets 1 through 16 (including sheet 4A) of 16, dated 08/02/2017, prepared by Tilteco, Inc., signed and sealed by Walter A. Tillit, Jr., P.E.

**B. TESTS**

1. None.



**Carlos M. Utrera, P.E.**  
**Product Control Examiner**  
**NOA No. 25-0805.06**

**Expiration Date: November 20, 2028**  
**Approval Date: September 18, 2025**

**NOTICE OF ACCEPTANCE: EVIDENCE SUBMITTED**

**2. EVIDENCE SUBMITTED UNDER NOA # 17-0823.08 (Continued)**

**C. CALCULATIONS**

1. None.

**D. QUALITY ASSURANCE**

1. Miami-Dade Department of Regulatory and Economic Resources (RER)

**E. MATERIAL CERTIFICATIONS**

1. None.

**F. STATEMENTS**

1. Statement letter of code conformance to **6<sup>th</sup> Edition (2017) FBC**, issued by Tilteco, Inc., dated 08/02/2017, signed and sealed by Walter A. Tillit Jr., P.E.

**3. EVIDENCE SUBMITTED UNDER NOA #19-0520.01**

**A. DRAWINGS**

1. None.

**B. TESTS (Verification Tests)**

1. Test reports on 1) Uniform Static Air Pressure Test, Loading per FBC TAS 202-94  
2) Large Missile Impact Test per FBC, TAS 201-94  
3) Cyclic Wind Pressure Loading per FBC, TAS 203-94  
along with marked-up drawings and installation diagram of Model SED-5.1 Louver System w/ CD-151 damper, prepared by PRI Construction Materials Technologies, LLC, Test Report No. **UNEN-003-02-02**, dated 04/23/2019, signed and sealed by Zachary Priest, P.E.
2. Test Report on Wind and Wind Driven Rain Resistance Test per TAS 100(A)-95 of a Model SED-5.1 Louver System w/ CD-151 damper, prepared by PRI Construction Materials Technologies, LLC, Report No. **UNEN-003-02-01**, dated 04/17/2019, signed and sealed by Zachary Priest, P.E.

**C. CALCULATIONS**

1. None.

**D. QUALITY ASSURANCE**

1. Miami-Dade Department of Regulatory and Economic Resources (RER)

**E. MATERIAL CERTIFICATIONS**

1. None.

**F. STATEMENTS**

1. Statement letter for renewal with verification test, issued by Tilteco, Inc., dated 05/16/2019, signed and sealed by Walter A. Tillit Jr., P.E.



---

**Carlos M. Utrera, P.E.**  
**Product Control Examiner**  
**NOA No. 25-0805.06**  
**Expiration Date: November 20, 2028**  
**Approval Date: September 18, 2025**

**NOTICE OF ACCEPTANCE: EVIDENCE SUBMITTED**

**4. EVIDENCE SUBMITTED UNDER NOA # 20-0115.02**

**A. DRAWINGS**

1. Drawing No. **17-125**, titled “SED-5.1 Louver System with or without CD-151 Damper Assembly”, sheets 1 through 16 (including sheet 4A) of 16, dated 08/02/2017, with revision 2 dated 11/08/2019, prepared by Tilteco, Inc., signed and sealed by Walter A. Tillit Jr., P.E.

**B. TESTS**

1. None.

**C. CALCULATIONS**

1. None.

**D. QUALITY ASSURANCE**

1. Miami-Dade Department of Regulatory and Economic Resources (RER)

**E. MATERIAL CERTIFICATIONS**

1. None.

**F. STATEMENTS**

1. Letter requesting the company name change from “United Enertech Corp.” to its parent company, “United Enertech Holdings, LLC”, issued by Winstead PC, dated 01/31/2020, signed by Andrew J. Ostapko, Attorney.
2. Certificate of merger between “United Enertech Corp.” and “Enertech Acquisition Corp.”, issued by the State of Delaware, dated 01/04/2017.
3. Amended and restated certificate of incorporation of “United Enertech Corp.” (F/K/A “Enertech Acquisition Corp.”, issued by the State of Delaware, dated 12/30/2016.
4. Certificate of formation of “United Enertech Holdings, LLC”, issued by the State of Delaware, dated 12/02/2016.



---

**Carlos M. Utrera, P.E.**  
**Product Control Examiner**  
**NOA No. 25-0805.06**

**Expiration Date: November 20, 2028**  
**Approval Date: September 18, 2025**

**NOTICE OF ACCEPTANCE: EVIDENCE SUBMITTED**

**5. EVIDENCE SUBMITTED UNDER NOA # 23-0726.10 AND NEW**

**A. DRAWINGS**

1. Drawing No. **25-060**, titled “SED-5.1 Louver System with or without CD-151 Damper Assembly”, sheets 1 through 16 (including sheet 4A) of 16, dated 07/07/2025, prepared by Tilteco, Inc., signed and sealed by Walter A. Tillit Jr., P.E.

**B. TESTS**

1. None.

**C. CALCULATIONS**

1. None.

**D. QUALITY ASSURANCE**

1. Miami-Dade Department of Regulatory and Economic Resources (RER).

**E. MATERIAL CERTIFICATIONS**

1. None.

**F. STATEMENTS**

1. Amended Sales Agreement made on April 8<sup>th</sup>, 2024 by S&P Air Control, LLC.
2. Statement letter of code conformance to the 8<sup>th</sup> edition (2023) of the FBC, issued by Tilteco, Inc. on 07/07/2023, signed and sealed by Walter A. Tillit Jr., P.E.



---

**Carlos M. Utrera, P.E.**  
**Product Control Examiner**  
**NOA No. 25-0805.06**  
**Expiration Date: November 20, 2028**  
**Approval Date: September 18, 2025**

**GENERAL NOTES:**

1). SED-5.1 LOUVER SYSTEM WITH OR WITHOUT CD-151 DAMPER SHOWN ON THIS PRODUCT APPROVAL DOCUMENT (P.A.D.) HAS BEEN VERIFIED FOR COMPLIANCE IN ACCORDANCE WITH THE **2023 (8th EDITION) AND 2020 (7th EDITION)** OF THE FLORIDA BUILDING CODE. THIS SED-5.1 LOUVER SYSTEM WITH OR WITHOUT CD-151 DAMPER MAY BE INSTALLED AT HIGH VELOCITY HURRICANE ZONES (H.V.H.Z) (MIAMI-DADE / BROWARD COUNTIES).

DESIGN WIND LOADS SHALL BE DETERMINED AS PER SECTION 1620 OF THE ABOVE MENTIONED CODE, USING **ASCE 7-22 (FBC 2023) & ASCE 7-16 (FBC 2020)** SHALL NOT EXCEED THE MAXIMUM (A.S.D.) DESIGN PRESSURE RATINGS INDICATED ON SHEETS 4A & 15.

IN ORDER TO VERIFY THE ABOVE CONDITION, ULTIMATE DESIGN WIND LOADS DETERMINED PER **ASCE 7-22 OR ASCE 7-16** SHALL BE FIRST REDUCED TO A.S.D. DESIGN WIND LOADS BY MULTIPLYING THEM BY 0.6 IN ORDER TO COMPARE THESE W/ MAX. (A.S.D) DESIGN PRESSURE RATINGS INDICATED ON SHEETS 4A & 15.

IN ORDER TO VERIFY THAT COMPONENTS ON THIS (P.A.D.), AS TESTED, WERE NOT OVERSTRESSED, A 33% INCREASE IN ALLOWABLE STRESS FOR WIND LOADS WAS **NOT** USED IN THEIR ANALYSIS.

ALUMINUM SED-5.1 LOUVER SYSTEM WITH OR WITHOUT CD-151 DAMPER ADEQUACY FOR IMPACT AND FATIGUE RESISTANCE HAS BEEN VERIFIED IN ACCORDANCE WITH SECTION 1626 OF THE ABOVE MENTIONED CODES AS PER AMERICAN TESTING LAB REPORT# 0514.01-08 AS PER TAS-201, TAS-202, TAS-203, AS WELL AS PER ANSI/AMCA IMPACT STANDARD 540, PER INTERTEK/ARCHITECTURAL TESTING REPORT # F 3136.01-550-44 & PRI TECHNOLOGIES LAB REPORT # UEC-001-02-01, PER TAS-100A (WIND DRIVEN RAIN, EXCEEDS ANSI/AMCA 550-15 STANDARD). THE LOUVER MUST HAVE THE CD-151 DAMPER INSTALLED BEHIND IT (AND IN THE CLOSED BLADE POSITION) TO MEET THE TAS 100(A) OR AMCA 550 REQUIREMENTS.

**A.S.D. DESIGN PRESSURE RATING:**

VARIABLES (psf), FOR ALL SINGLE UNITS W/ SQUARE EDGES WITHOUT MULLIONS WITH OR WITHOUT DAMPER. (SEE SCHEDULE ON SHEET 4A), AND +150, -150 psf. FOR ALL SINGLE UNITS W/ CURVED EDGES W/O DAMPER.

VARIABLES (psf), FOR ALL MULTIPLE UNITS WITH MULLIONS (12L) WITH OR WITHOUT DAMPER (SEE SCHEDULE ON SHEET 15).

- 2). ALL ALUMINUM EXTRUSIONS SHALL BE 6063-T5 ALLOY WITH MIN. SPECIFIC YIELD STRENGTHS AS SHOWN ON SHEET 2 AND 3.
- 3). ALL SCREWS TO BE STAINLESS STEEL 304 OR 316 SERIES WITH 50 ksi YIELD POINT AND 90 ksi TENSILE STRENGTH OR CORROSION RESISTANT CARBON STEEL AS PER DIN 50018 AND SHALL COMPLY W/ FLORIDA BUILDING CODE SECTION 2411.3.3.4.
- 4). ALL WELDING OF ALUMINUM FRAMING SHALL BE IN ACCORDANCE WITH THE AMERICAN WELDING SOCIETY A.W.S. D.1.2 REGULATIONS. USE CERTIFIED WELDERS. USE ER-5356 ELECTRODES.
- 5). ANCHORS TO EXISTING STRUCTURE'S JAMBS SHALL BE AS FOLLOWS (SEE SHEETS 11 AND 16):
  - ANCHORS SHALL BE INSTALLED FOLLOWING ALL OF THE RECOMMENDATIONS AND SPECIFICATIONS OF THE ANCHOR'S MANUFACTURER. E.D. IS BEYOND ANY WALL FINISH.

ANCHOR TYPE	MANUFACTURER	DIAMETER OR GAGE	MIN. EMBEDMENT			MIN. EDGE DISTANCE (E.D)	
			TO CONCRETE (f'c=319psi) MIN.	TO CONCRETE BLOCK (C-90 UNIT)	TO 1/8" MIN. STEEL Fy=33 ksi (MIN.)	CONCRETE OR CONCRETE BLOCK	STEEL
TAPCONS	ITW/ BUILDEX	1/4"	1-3/4"	1-1/4"	N/A	3"	N/A
TEK SCREWS	ITW/ BUILDEX	1/4"	N/A	N/A	3/4"	N/A	1"

- ANCHORS FOR MULLION CONNECTIONS SHALL BE AS INDICATED ON SHEETS 12 AND 13

- 6). SED-5.1 LOUVER SYSTEM WITHOUT CD-151 DAMPER SHALL ONLY BE INSTALLED IN A LOCATION WHERE THE ROOM BEHIND THE LOUVER IS DESIGNED TO DRAIN WATER PENETRATING INTO THE ROOM, AND THE ROOM WILL HOUSE WATER RESISTANT/WATER PROOF EQUIPMENT, COMPONENTS OR SUPPLIES.
- 7). SED-5.1 LOUVER SYSTEM WITH CD-151 DAMPER MAY BE INSTALLED IN LOCATIONS WHERE THE ROOM BEHIND THE LOUVER IS NOT DESIGNED TO DRAIN WATER PENETRATING INTO THE ROOM, OR THE ROOM WILL HOUSE NON-WATER RESISTANT EQUIPMENT, COMPONENTS, OR SUPPLIES. INSTALLATION ON LOUVER WITH DAMPER IS LIMITED TO 40 FT IN HEIGHT ACCORDING TO TABLE 3 OF TAS 100(A)-95.
- 8). **CD-151 DAMPER** IS AN OPERABLE ASSEMBLY, IT MAY BE OPERATED BY MEANS OF A HAND QUADRANT HANDLE MECHANISM (AS SHOWN ON SHEET 7) OR THROUGH AN ELECTRICAL OR PNEUMATIC ACTUATOR. DAMPER'S OPERATIVE MECHANISM IS NOT PART OF THIS APPROVAL, BUT SHALL BE CERTIFIED BY AN INDEPENDENT TESTING AGENCY.
- 9). ALL ALUMINUM EXTRUSIONS IN CONTACT WITH DISSIMILAR MATERIALS SHALL COMPLY WITH SECTION III-6 OF THE 2020 & 2015 ALUMINUM DESIGN MANUAL.
- 10). IT SHALL BE RESPONSIBILITY OF THE CONTRACTOR TO VERIFY THE SOUNDNESS OF THE STRUCTURE WHERE LOUVER SYSTEM IS TO BE ATTACHED TO INSURE PROPER ANCHORAGE.
- 11).
  - (A) THIS PRODUCT APPROVAL DOCUMENT (P.A.D.) PREPARED BY THIS ENGINEER IS GENERIC AND DOES NOT PROVIDE INFORMATION FOR A SPECIFIC PROJECT; i.e. WHERE THE SITE CONDITIONS DEVIATE FROM THE PRODUCT APPROVAL DOCUMENT (P.A.D.)
  - (B) CONTRACTOR TO BE RESPONSIBLE FOR THE SELECTION, PURCHASE AND INSTALLATION INCLUDING LIFE SAFETY OF THIS PRODUCT, BASED ON THIS PRODUCT APPROVAL DOCUMENT (P.A.D.), PROVIDED HE/SHE DOES NOT DEVIATE FROM THE CONDITIONS DETAILED ON THIS DOCUMENT. CONSTRUCTION SAFETY AT SITE IS THE CONTRACTOR'S RESPONSIBILITY.
  - (C) THIS PRODUCT APPROVAL DOCUMENT (P.A.D.) WILL BE CONSIDERED INVALID IF MODIFIED.
  - (D) SITE SPECIFIC PROJECTS SHALL BE PREPARED BY A FLORIDA REGISTERED ENGINEER OR ARCHITECT WHICH WILL BECOME THE ENGINEER OF RECORD (E.O.R.) FOR THE PROJECT AND WHO WILL BE RESPONSIBLE FOR THE PROPER USE OF THE P.A.D.
  - (E) ORIGINAL PRODUCT APPROVAL DOCUMENT (P.A.D.) SHALL BEAR THE DATE AND ORIGINAL SEAL AND SIGNATURE OF THE PROFESSIONAL ENGINEER OR RECORD THAT PREPARED IT.
- 12). PRODUCT MANUFACTURER'S LABEL SHALL BE LOCATED ON A READILY VISIBLE LOCATION AT PRODUCT IN ACCORDANCE WITH SECTION 1703.5 OF FLORIDA BUILDING CODE. ONE LABEL SHALL BE PLACED FOR EVERY OPENING.

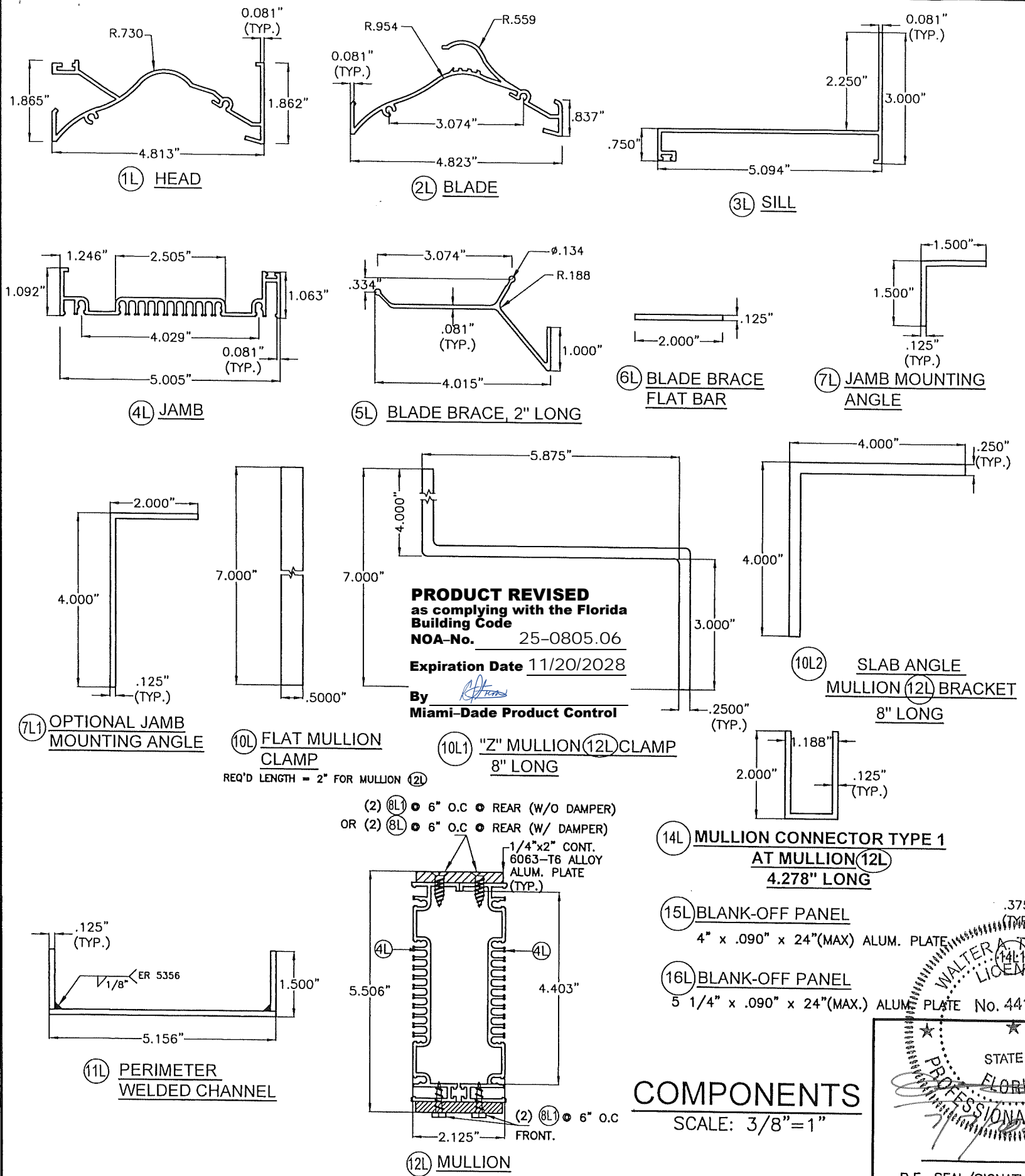
**THIS DRAWING SHALL ONLY BE USED TO OBTAIN PERMITS IN THE STATE OF FLORIDA**

**PRODUCT REVISED**  
 as complying with the Florida Building Code  
 NOA-No. 25-0805.06  
 Expiration Date 11/20/2028  
 By *[Signature]*  
 Miami-Dade Product Control

WALTER A. TILLIT JR.  
 LICENSE  
 No. 44167  
 STATE OF FLORIDA  
 PROFESSIONAL ENGINEER  
*[Signature]*  
 7/7/2025  
 P.E. SEAL/SIGNATURE/DATE

© 2025 TILTECO INC.  
**TILTECO INC.**  
 TILLIT TESTING & ENGINEERING COMPANY  
 6355 N.W. 36th. St., Ste. 305, VIRGINIA GARDENS, FL 33166  
 Phone: (305)871-1530 . Fax: (305)871-1531  
 e-mail: tilteco@aol.com  
 CA-0006719  
 WALTER A. TILLIT Jr. P.E.  
 FLORIDA Lic. # 44167

FLORIDA BUILDING CODE (High Velocity Hurricane Zone)					
SED-5.1 LOUVER SYSTEM WITH OR WITHOUT CD-151 DAMPER ASSEMBLY				W.H. DRAWN BY	
S&P AIR CONTROL, LLC.				7/7/2025 DATE	
3005 SOUTH HICKORY ST. CHATTANOOGA, TN 37407 159 GENCO DRIVE HARTFORD, AL 36344 PHONE: (423)698-7715 FAX:(423)698-6629				25-060 DRAWING No	
REV. No	DESCRIPTION	DATE	REV. No	DESCRIPTION	DATE
1	OLD 23-069	7/7/2025	3		
2			4		



**PRODUCT REVISED**  
as complying with the Florida Building Code  
NOA-No. 25-0805.06  
Expiration Date 11/20/2028  
By *[Signature]*  
Miami-Dade Product Control

**COMPONENTS**  
SCALE: 3/8"=1"

STATE OF FLORIDA  
WALTER A. TILLIT JR.  
PROFESSIONAL ENGINEER  
No. 44167  
P.E. SEAL/SIGNATURE/DATE

© 2025 TILTECO INC.  
**TILTECO INC.**  
TILLIT TESTING & ENGINEERING COMPANY  
6355 N.W. 36th St., Ste. 305, VIRGINIA GARDENS, FL 33166  
Phone: (305)871-1530 Fax: (305)871-1531  
e-mail: tilteco@aol.com  
CA-0006719  
WALTER A. TILLIT JR. P.E.  
FLORIDA Lic. # 44167

**BILL OF MATERIALS SED-5.1 LOUVER ASSEMBLY**

ITEM	DESCRIPTION	MATERIAL	SIZE	REMARKS
(1L)	EXTRUDED ALUM. HEAD	6063-T5 ALLOY	SEE DETAIL	Fy (MIN.) = 16 ksi
(2L)	EXTRUDED ALUM. BLADE	6063-T5 ALLOY	SEE DETAIL	Fy (MIN.) = 16 ksi
(3L)	EXTRUDED ALUM. SILL	6063-T5 ALLOY	SEE DETAIL	Fy (MIN.) = 16 ksi
(4L)	EXTRUDED ALUM. JAMB	6063-T5 ALLOY	SEE DETAIL	Fy (MIN.) = 16 ksi
(5L)	EXTRUDED ALUM. BLADE BRACE	6063-T5 ALLOY	SEE DETAIL	Fy (MIN.) = 16 ksi
(6L)	EXTRUDED ALUM. FLAT BAR	6063-T5 ALLOY	SEE DETAIL	Fy (MIN.) = 16 ksi
(7L)	EXTRUDED ALUM. JAMB MOUNTING ANGLE	6063-T6 ALLOY	SEE DETAIL	Fy (MIN.) = 25 ksi
(7L1)	OPTIONAL EXTRUDED ALUM. JAMB MOUNTING ANGLE	6063-T6 ALLOY	SEE DETAIL	Fy (MIN.) = 25 ksi
(8L)	FLAT HEAD TEK SCREWS	ZINC PLATED STEEL	1/4"Ø x 3/4" LONG	ITW / BUILDDEX
(8L1)	HEX HEAD TEK SCREWS	ZINC PLATED STEEL	1/4"Ø x 1" LONG	ITW / BUILDDEX
(9L)	NEOPRENE WASHER HEAD S.M.S.	410 STAINLESS STEEL	#8 x 1-1/2" LONG	LOUVER BLADE AND FRAME ASSEMBLY (1L, 2L, & 4L)
(10L)	FLAT MULLION CLAMP	ASTM A-36 OR ASTM A-653 GRADE 40 OR AISI 304 S.S. *	SEE DETAIL	REQ'D LENGTH = 2" FOR MULLION (12L) Fy (MIN.) = 36 ksi
(10L1)	"Z" MULLION (12L) CLAMP	ASTM A-36 OR ASTM A-653 GRADE 40 OR AISI 304 S.S. *	SEE DETAIL	8" LONG AT HEAD & SILL AT BLADE W/ MULLION (12L) Fy (MIN.) = 36 ksi
(10L2)	ANGLE MULLION BRACKET	6063-T6 ALLOY	SEE DETAIL	8" LONG AT HEAD & SILL AT BLADE W/ MULLIONS. Fy (MIN.) = 25 ksi
(11L)	PERIMETER WELDED CHANNEL	6063-T5 ALLOY	SEE DETAIL	Fy (MIN.) = 16 ksi
(12L)	MULLION	6063-T5 ALLOY	SEE DETAIL	Fy (MIN.) = 16 ksi
(14L)	MULLION CONNECTOR TYPE 1 AT MULLION (12L)	6063-T6 ALLOY	SEE DETAIL	Fy (MIN.) = 16 ksi
(14L1)	MULLION CONNECTOR TYPE 2 AT MULLION (12L)	ASTM A-36 *	SEE DETAIL	Fy (MIN.) = 36 ksi
(15L)	BLANK-OFF PANEL	6063-T5 ALLOY	SEE DETAIL	Fy (MIN.) = 16 ksi
(16L)	BLANK-OFF PANEL	6063-T5 ALLOY	SEE DETAIL	Fy (MIN.) = 16 ksi
(17L)	REAR MESH	3003-H14 ALLOY	SEE DETAIL	Fy (MIN.) = 16 ksi

\* NOTE: STEEL COMPONENTS SHALL BE PROTECTED FROM CORROSION W/ A PRIMER CONSISTING OF RED OXIDE PAINT OR SIMILAR W/ GALVANIZING (G-60) AS AN OPTION. ADDITIONALLY, FINAL (FINISH) PAINT FOR THESE PROFILES SHALL BE IN ACCORDANCE W/ SECTION 2003.8.4.2 OF THE F.B.C., ADDRESSING PROTECTION OF ALUMINUM IN CONTACT W/ METALS NOT CONSIDERED COMPATIBLE.

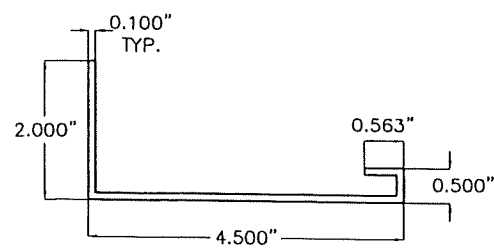
**FLORIDA BUILDING CODE (High Velocity Hurricane Zone)**

**SED-5.1 LOUVER SYSTEM WITH OR WITHOUT CD-151 DAMPER ASSEMBLY**

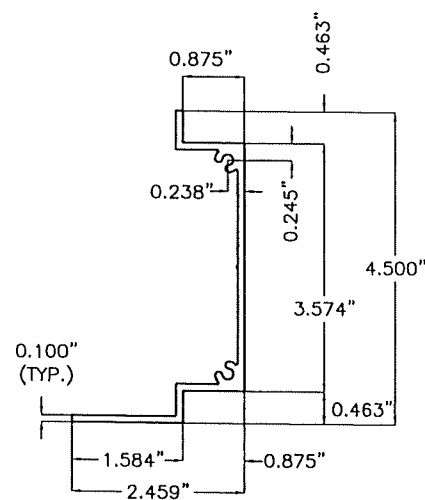
**S&P AIR CONTROL, LLC.**  
3005 SOUTH HICKORY ST. CHATTANOOGA, TN 37407  
159 GENCO DRIVE HARTFORD, AL 36344  
PHONE: (423)698-7715 FAX:(423)698-6629

REV. No	DESCRIPTION	DATE	REV. No	DESCRIPTION	DATE
1	OLD 23-069	7/7/2025	3		
2			4		

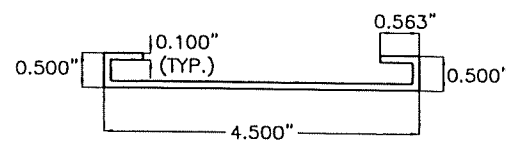
W.H. DRAWN BY  
7/7/2025 DATE  
**25-060** DRAWING No  
SHEET 2 OF 16



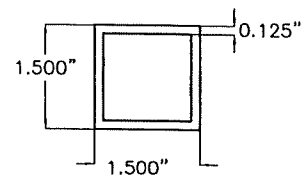
1D HEAD & SILL



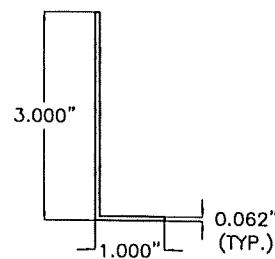
2D JAMB



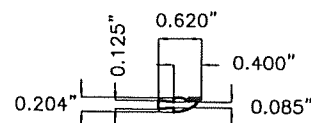
7D MID-HEIGHT HEAD or SILL



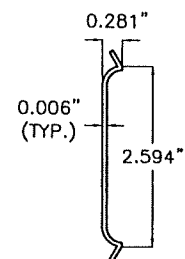
1I INTERMEDIATE TUBE FRAME



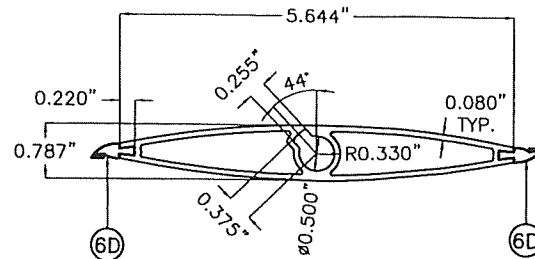
8D ALUM. ANGLE BLADE STOP



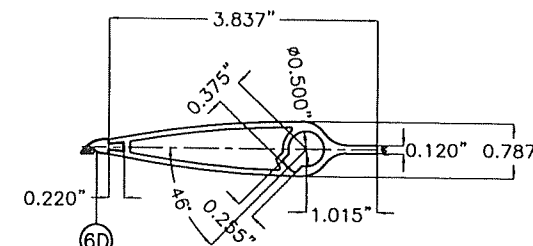
6D BLADE SEAL



9D JAMB SEAL



3D REGULAR DAMPER BLADE



3D1 TOP DAMPER HALF BLADE

BILL OF MATERIALS CD-151 DAMPER ASSEMBLY				
ITEM	DESCRIPTION	MATERIAL	SIZE	REMARKS
1D	EXTRUDED ALUM. HEAD & SILL	6063-T5 ALUMINUM ALLOY	SEE DETAIL	Fy(MIN.)=33.4 ksi
2D	EXTRUDED ALUM. JAMB	6063-T5 ALUMINUM ALLOY	SEE DETAIL	Fy(MIN.)=31.6 ksi
3D	EXTRUDED ALUM. REGULAR DAMPER BLADE	6063-T5 ALUMINUM ALLOY	SEE DETAIL	Fy(MIN.)=31.8 ksi
3D1	EXTRUDED ALUM. TOP DAMPER HALF BLADE	6063-T5 ALUMINUM ALLOY	SEE DETAIL	Fy(MIN.)=31.8 ksi
4D	BUSHING	BRONZE	1/2" I.D.(5/8" O.D.)x1/4"	0.059" THICK @ WASHER SIDE
5D	AXLE PIN	ZAMAC No. 3 ZINC	1/2"x3 1/8"	WITH NYLON WASHER & LOCK RING
6D	BLADE SEAL	SILICONE	SEE DETAIL	ASTM D-2000, 60-65 DUROMETER
7D	MID-HEIGHT EXTRUDED ALUM. HEAD or SILL	6063-T5 ALUMINUM ALLOY	SEE DETAIL	Fy(MIN.)=29.8 ksi
8D	ALUM. ANGLE BLADE STOP	6063-T5 ALUMINUM ALLOY	SEE DETAIL	WITH VINYL WEATHER STRIP AT END OF 3" LEG
9D	JAMB SEAL	STAINLESS STEEL 316 SERIES	SEE DETAIL	ATTACHED TO 2D W/ (3) DOUBLE SIDED (1"x1/8") TAPES
10D	S.D.S. TEK SCREW	ZINC PLATED	#8 X 1/2"	FASTEN TO 6D @ 12" O.C., 2 1/2" FROM ENDS
1I	INTERMEDIATE TUBE FRAME	6063-T5 ALUMINUM ALLOY	SEE DETAIL IN THIS SHEET AND SHEET 9.	Fy(MIN.)=31.9 ksi INSTALL BETWEEN DAMPER & LOUVER FRAME.

CD-151 DAMPER AND INTERMEDIATE TUBE FRAME COMPONENTS  
(EXCLUDES COMPONENTS FOR OPERATIVE MECHANISM, SEE NOTE 8/1)

COMPONENTS  
SCALE: 3/8" = 1"

**PRODUCT REVISED**  
as complying with the Florida Building Code  
NOA-No. 25-0805.06  
Expiration Date 11/20/2028  
By *[Signature]*  
Miami-Dade Product Control

WALTER A. TILLIT JR.  
LICENSE  
No. 44167  
STATE OF FLORIDA  
PROFESSIONAL ENGINEER  
P.E. SEAL/SIGNATURE/DATE

© 2025 TILTECO INC.  
**TILTECO INC.**  
TILLIT TESTING & ENGINEERING COMPANY  
6355 N.W. 38th St., Ste. 305, VIRGINIA GARDENS, FL 33166  
Phone: (305)871-1530 . Fax: (305)871-1531  
e-mail: tilteco@aol.com  
CA-0006719  
WALTER A. TILLIT Jr. P.E.  
FLORIDA Lic. # 44167

FLORIDA BUILDING CODE (High Velocity Hurricane Zone)

SED-5.1 LOUVER SYSTEM WITH OR WITHOUT CD-151 DAMPER ASSEMBLY

W.H. DRAWN BY

**S&P AIR CONTROL, LLC.**

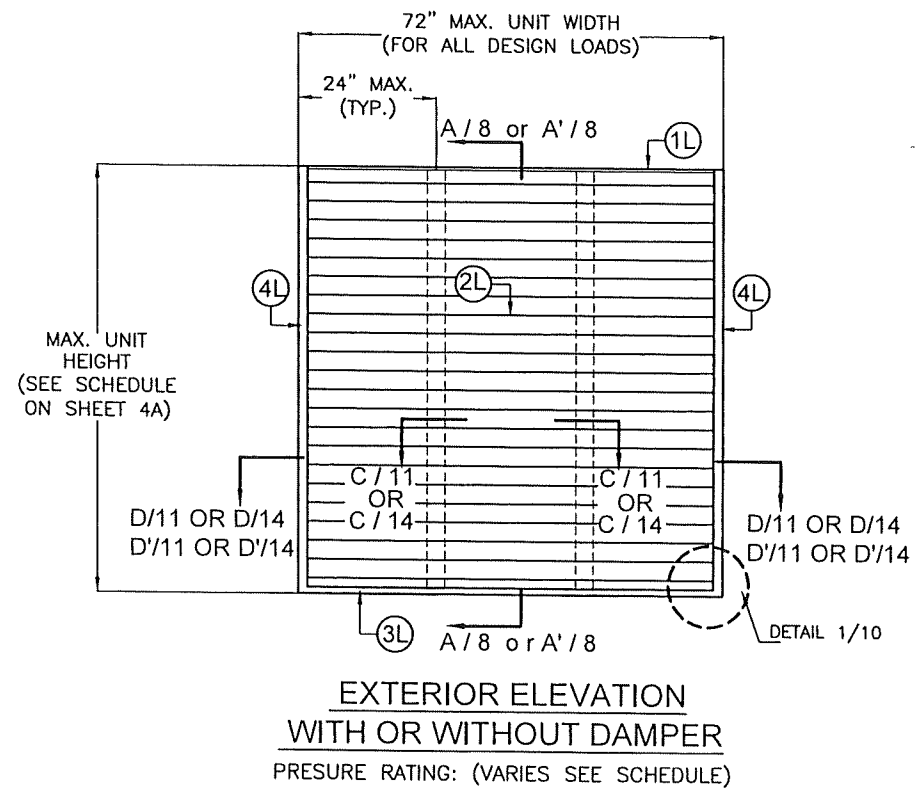
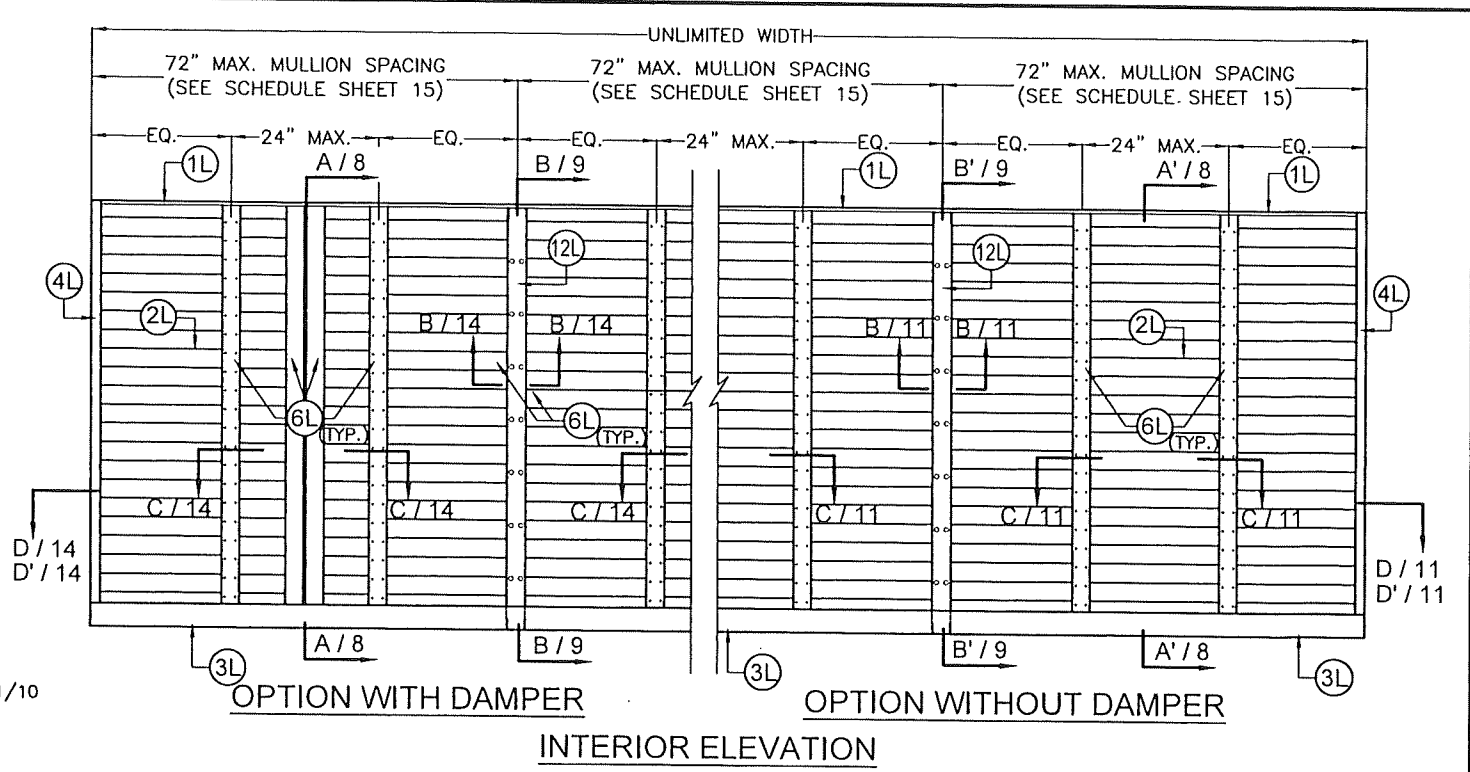
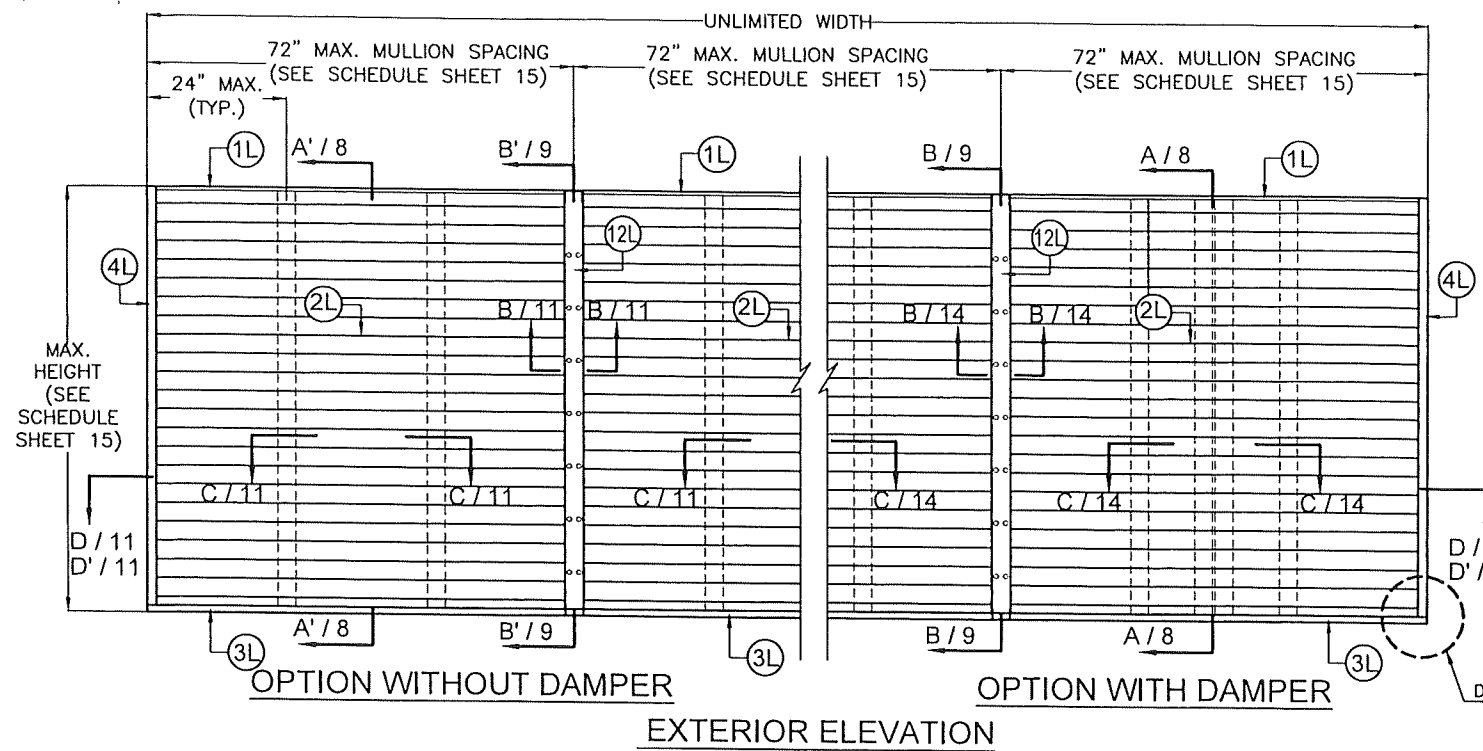
7/7/2025 DATE

3005 SOUTH HICKORY ST. 159 GENCO DRIVE  
CHATTANOOGA, TN 37407 HARTFORD, AL 36344  
PHONE: (423)698-7715 FAX:(423)698-6629

**25-060**  
DRAWING No

REV. No	DESCRIPTION	DATE	REV. No	DESCRIPTION	DATE
1	OLD 23-069	7/7/2025	3		
2			4		

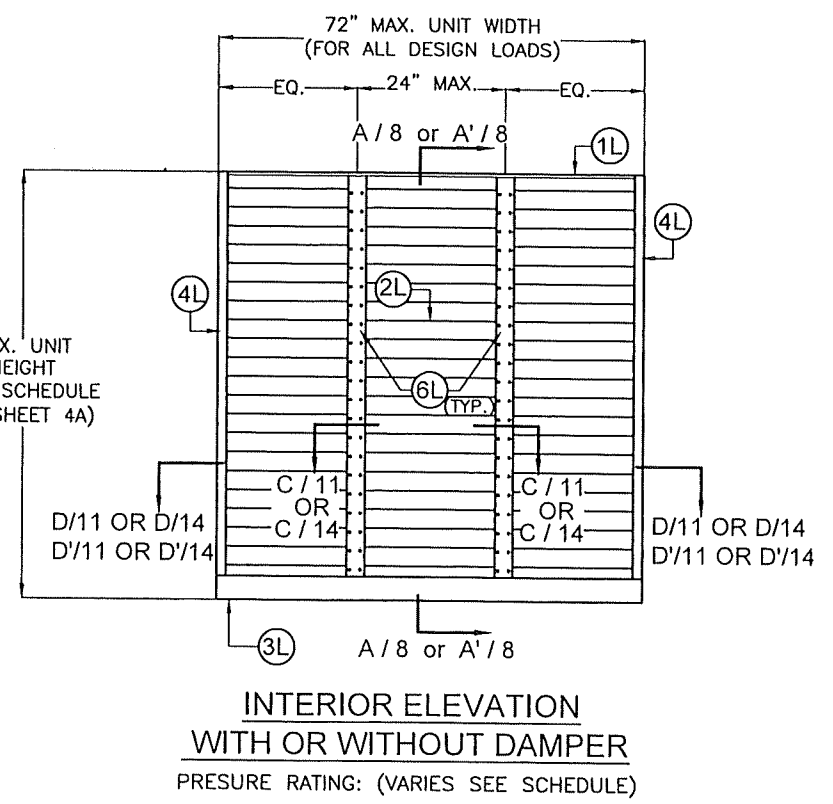
SHEET 3 OF 16



**MULTIPLE SED 5.1 LOUVER UNITS  
WITH OR WITHOUT  
DAMPER WITH MULLION 12L**

N.T.S  
(PRESURE RATING VARIES, SEE SCHEDULE ON SHEET 15)

**PRODUCT REVISED**  
as complying with the Florida Building Code  
NOA-No. 25-0805.06  
Expiration Date 11/20/2028  
By *[Signature]*  
Miami-Dade Product Control



**SINGLE SED 5.1 LOUVER UNITS  
WITH OR WITHOUT  
DAMPER W/ SQUARE EDGES**

FLORIDA BUILDING CODE (High Velocity Hurricane Zone)

No. 44167  
STATE OF FLORIDA  
PROFESSIONAL ENGINEER  
P.E. SEAL/SIGNATURE/DATE

© 2025 TILTECO INC.  
**TILTECO INC.**  
TILLIT TESTING & ENGINEERING COMPANY  
6355 N.W. 36th. St., Ste. 305, VIRGINIA GARDENS, FL. 33166  
Phone: (305)871-1530 Fax: (305)871-1531  
e-mail: tilteco@aol.com  
CA-0006719  
WALTER A. TILLIT Jr. P.E.  
FLORIDA Lic. # 44167

**SED-5.1 LOUVER SYSTEM WITH OR WITHOUT CD-151 DAMPER ASSEMBLY**

**S&P AIR CONTROL, LLC.**  
3005 SOUTH HICKORY ST. 159 GENCO DRIVE  
CHATTANOOGA, TN 37407 HARTFORD, AL 36344  
PHONE: (423)698-7715 FAX:(423)698-6629

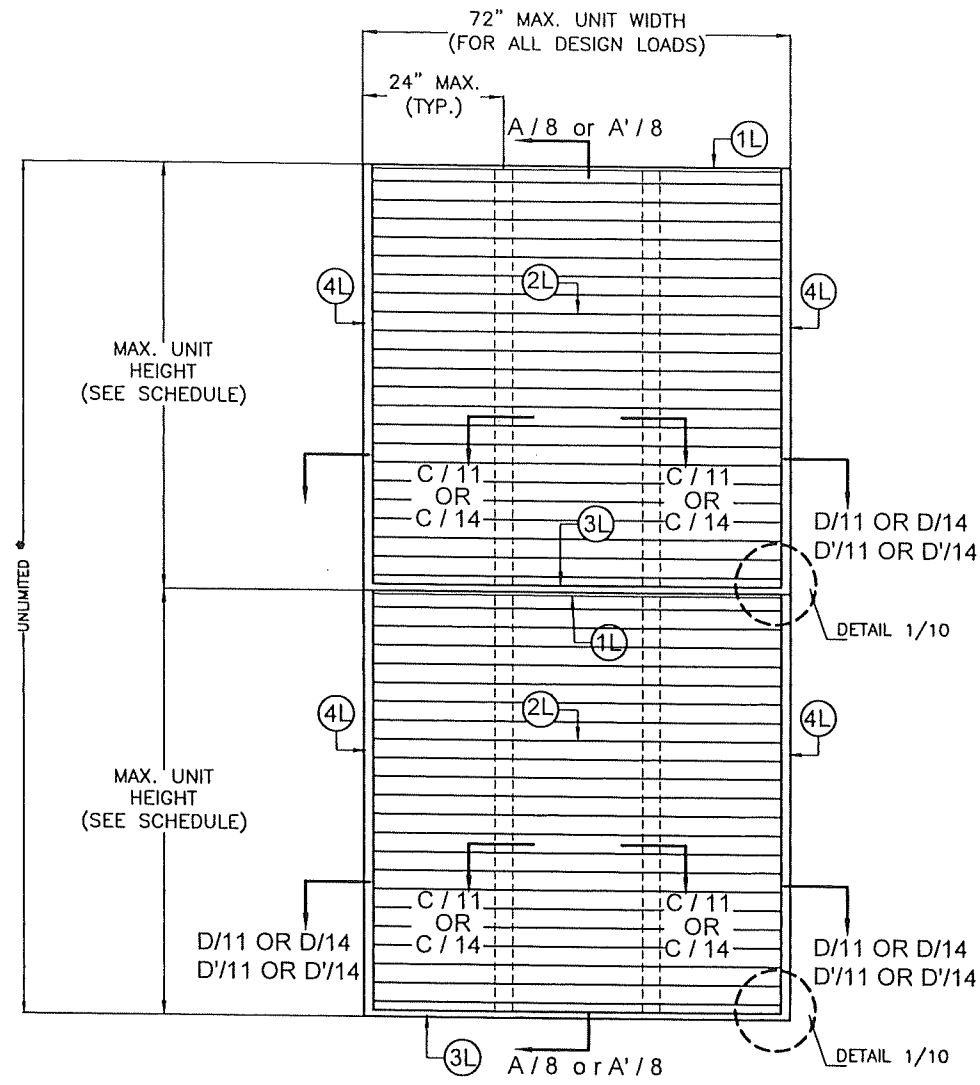
REV. No	DESCRIPTION	DATE	REV. No	DESCRIPTION	DATE
1	OLD 23-069	7/7/2025	3		
2			4		

W.H. DRAWN BY  
7/7/2025 DATE  
**25-060** DRAWING No  
SHEET 4 OF 16

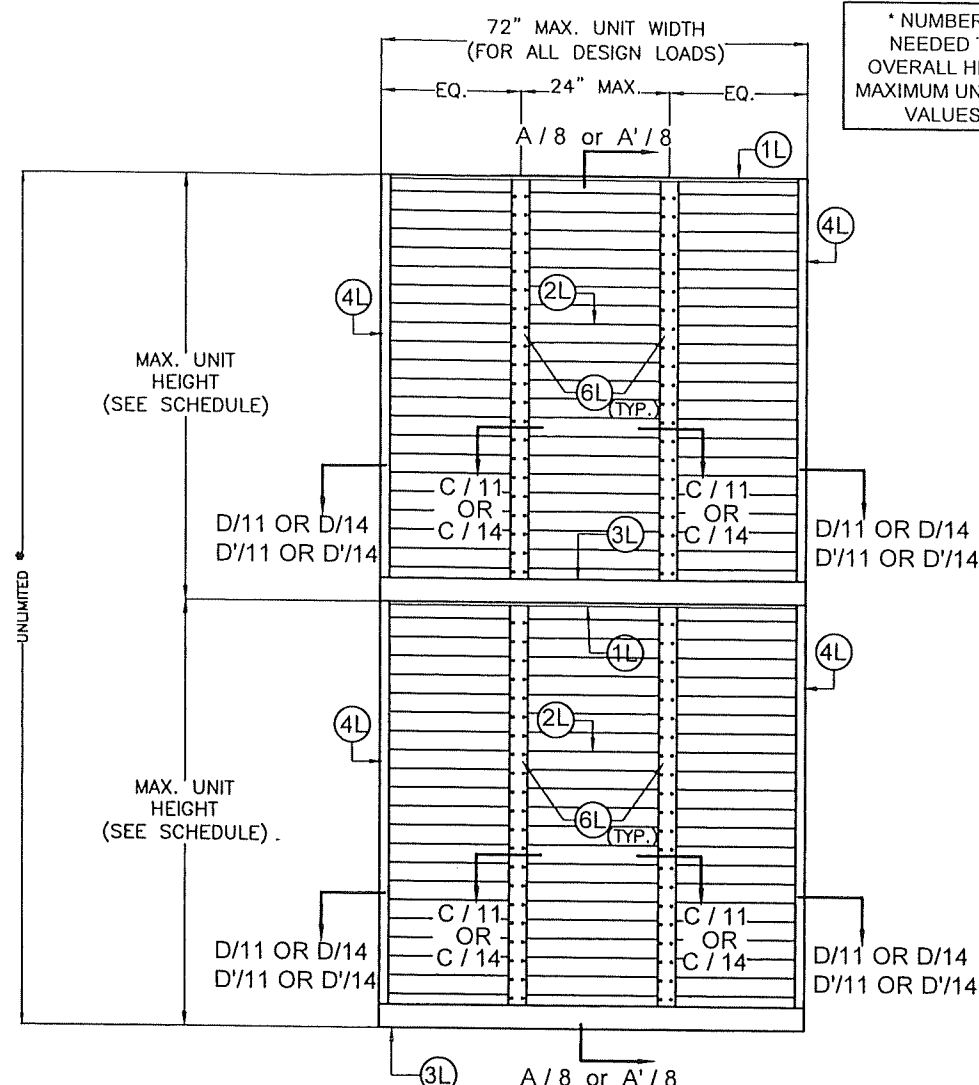
MAX. UNIT HEIGHT FOR A GIVEN A.S.D. DESIGN PRESSURE RATING SCHEDULE, APPLICABLE TO SINGLE UNITS W/ SQUARE EDGES W/O MULLION

MAXIMUM A.S.D. DESIGN PRESSURE RATING (p.s.f)	MAX. UNIT HEIGHT
40	10'-0"
45	10'-0"
50	10'-0"
55	10'-0"
60	10'-0"
65	10'-0"
70	10'-0"
75	9'-11"
80	9'-7"
85	9'-4"
90	9'-0"
95	8'-10"
100	8'-7"
105	8'-4"
110	8'-2"
115	7'-12"
120	7'-10"
125	7'-8"
130	7'-6"
135	7'-5"
140	7'-3"
145	7'-1"
150	7'-0"

\* NUMBER OF LOUVER PANEL UNITS NEEDED TO ACHIEVE THE OPENING OVERALL HEIGHT MAY VARY. HOWEVER MAXIMUM UNIT HEIGHT SHALL NO EXCEED VALUES, SHOWN ON SCHEDULE.



**EXTERIOR ELEVATION**  
WITH OR WITHOUT DAMPER  
PRESURE RATING: (VARIES SEE SCHEDULE)



**INTERIOR ELEVATION**  
WITH OR WITHOUT DAMPER  
PRESURE RATING: (VARIES SEE SCHEDULE)

**SINGLE SED 5.1 LOUVER UNITS**  
WITH OR WITHOUT  
DAMPER W/ SQUARE EDGES

N.T.S

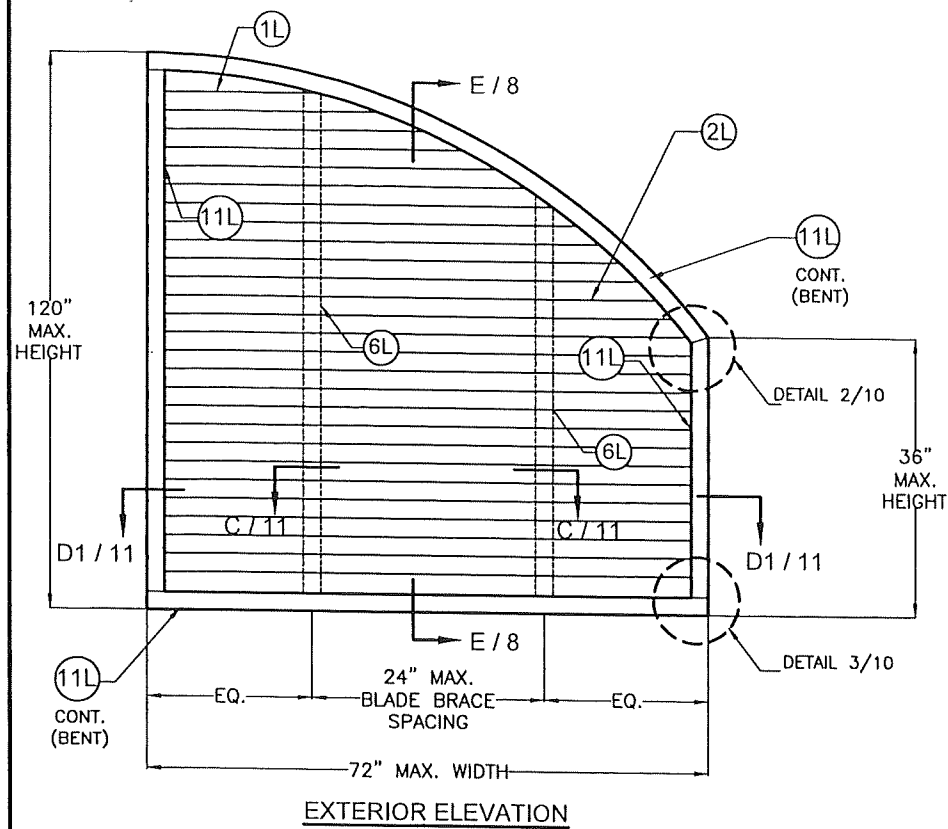
**PRODUCT REVISED**  
as complying with the Florida Building Code  
NOA-No. 25-0805.06  
Expiration Date 11/20/2028  
By *[Signature]*  
Miami-Dade Product Control

WALTER A. TILLIT JR.  
LICENSE  
No. 44167  
STATE OF FLORIDA  
PROFESSIONAL ENGINEER  
P.E. SEAL/SIGNATURE/DATE

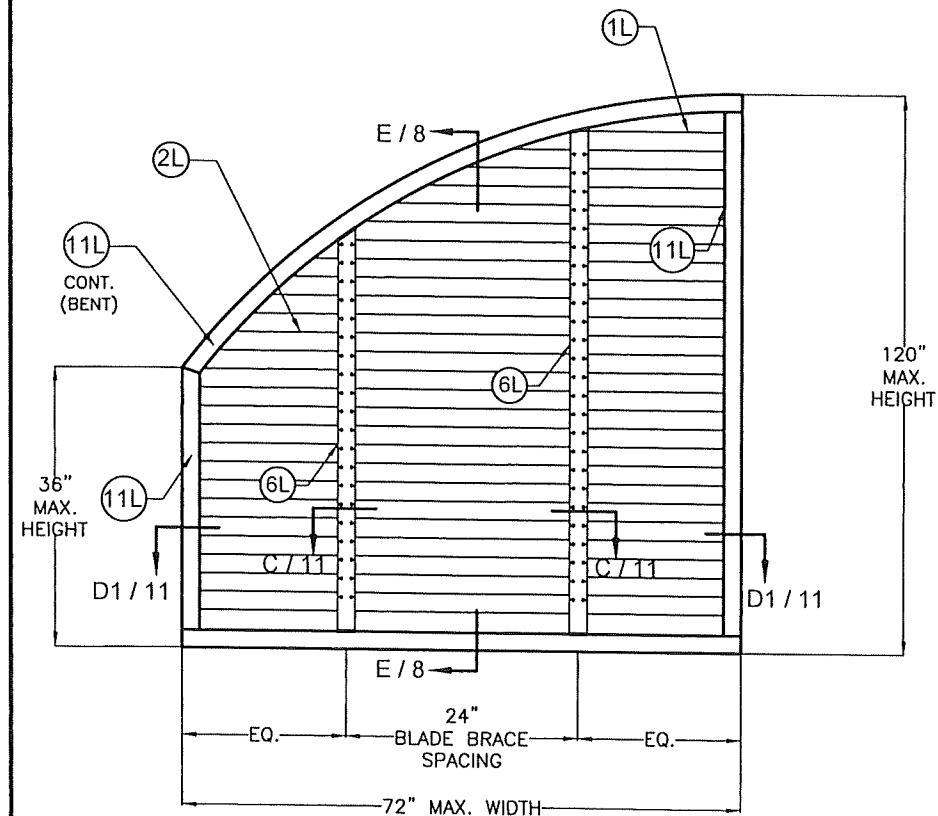
© 2025 TILTECO INC.  
**TILTECO INC.**  
TILLIT TESTING & ENGINEERING COMPANY  
6355 N.W. 36th St., Ste. 305, VIRGINIA GARDENS, FL 33166  
Phone: (305)871-1530 Fax: (305)871-1531  
e-mail: tilteco@aol.com  
CA-0006719  
WALTER A. TILLIT Jr. P.E.  
FLORIDA Lic. # 44167

FLORIDA BUILDING CODE (High Velocity Hurricane Zone)

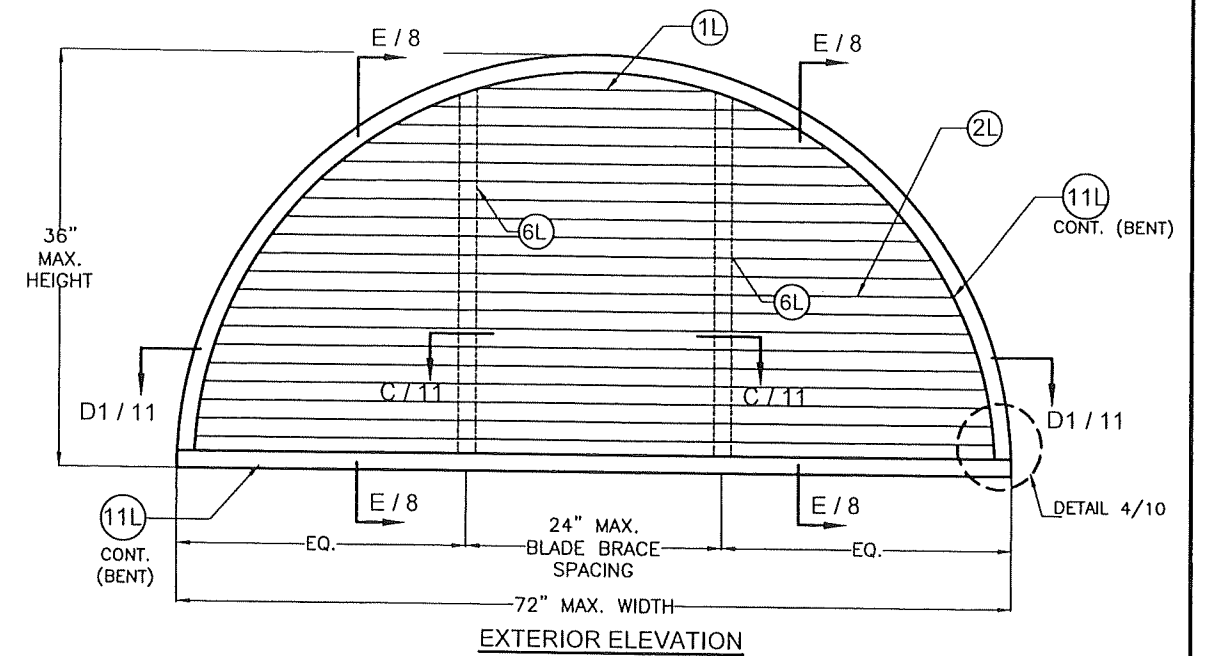
SED-5.1 LOUVER SYSTEM WITH OR WITHOUT CD-151 DAMPER ASSEMBLY		W.H. DRAWN BY	
S&P AIR CONTROL, LLC.		7/7/2025 DATE	
3005 SOUTH HICKORY ST. CHATTANOOGA, TN 37407 PHONE: (423)698-7715		159 GENCO DRIVE HARTFORD, AL 36344 FAX: (423)698-6629	
REV. No	DESCRIPTION	DATE	REV. No
1	OLD 23-069	7/7/2025	3
2			4
25-060 DRAWING No		SHEET 4A OF 16	



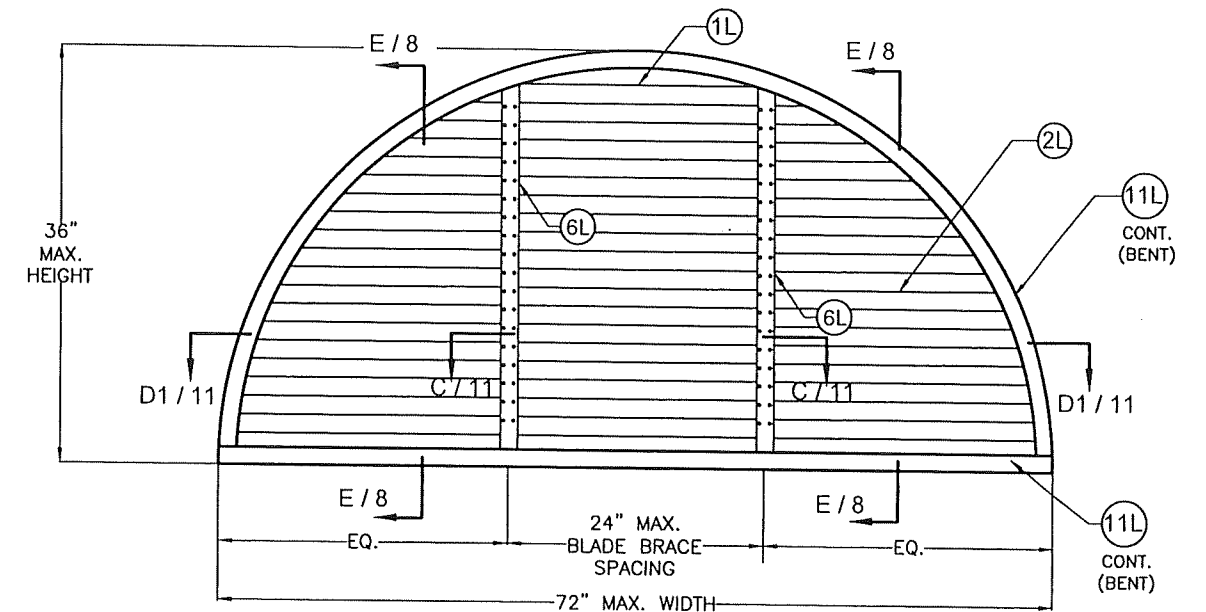
EXTERIOR ELEVATION



INTERIOR ELEVATION

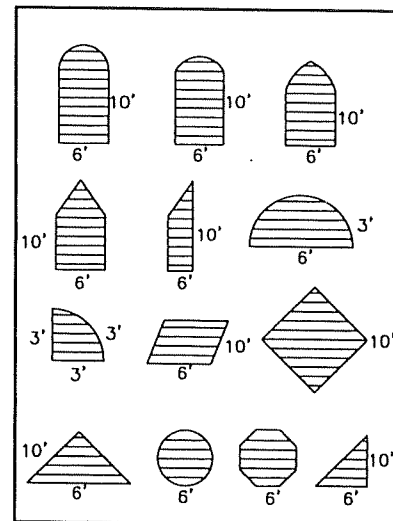


EXTERIOR ELEVATION



INTERIOR ELEVATION

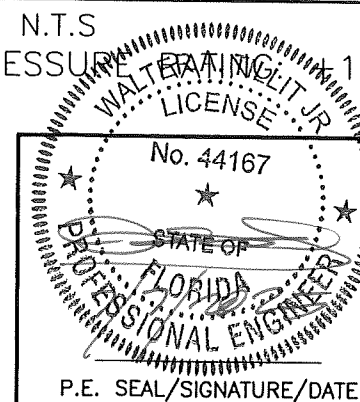
QUALIFIES THE FOLLOWING SHAPES:



## SINGLE SED 5.1 LOUVER UNITS WITHOUT DAMPER W/ CURVED EDGES

N.T.S  
(A.S.D. DESIGN PRESSURE RATING: 150, -150 PSF)

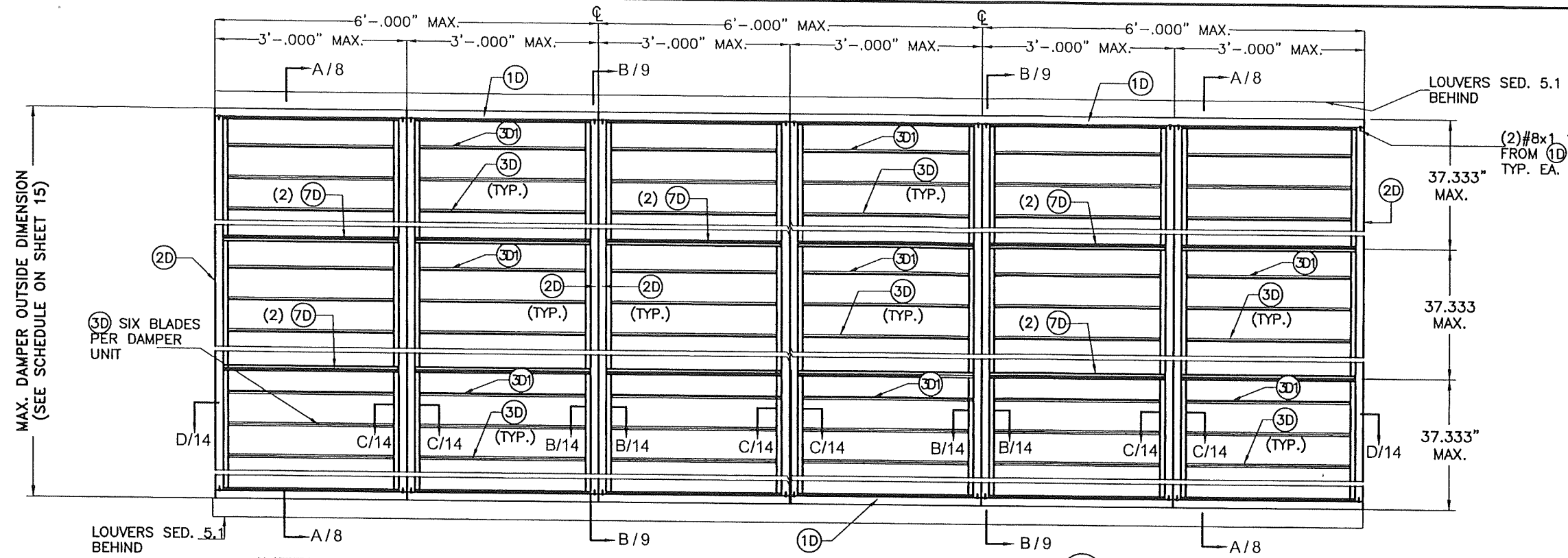
**PRODUCT REVISED**  
as complying with the Florida  
Building Code  
NOA-No. 25-0805.06  
Expiration Date 11/20/2028  
By *[Signature]*  
Miami-Dade Product Control



© 2025 TILTECO INC.  
**TILTECO INC.**  
TILLIT TESTING & ENGINEERING COMPANY  
6355 N.W. 36th St., Ste. 305, VIRGINIA GARDENS, FL 33166  
Phone: (305)871-1530 Fax: (305)871-1531  
e-mail: tilteco@aol.com  
CA-0006719  
WALTER A. TILLIT Jr. P.E.  
FLORIDA Lic. # 44167

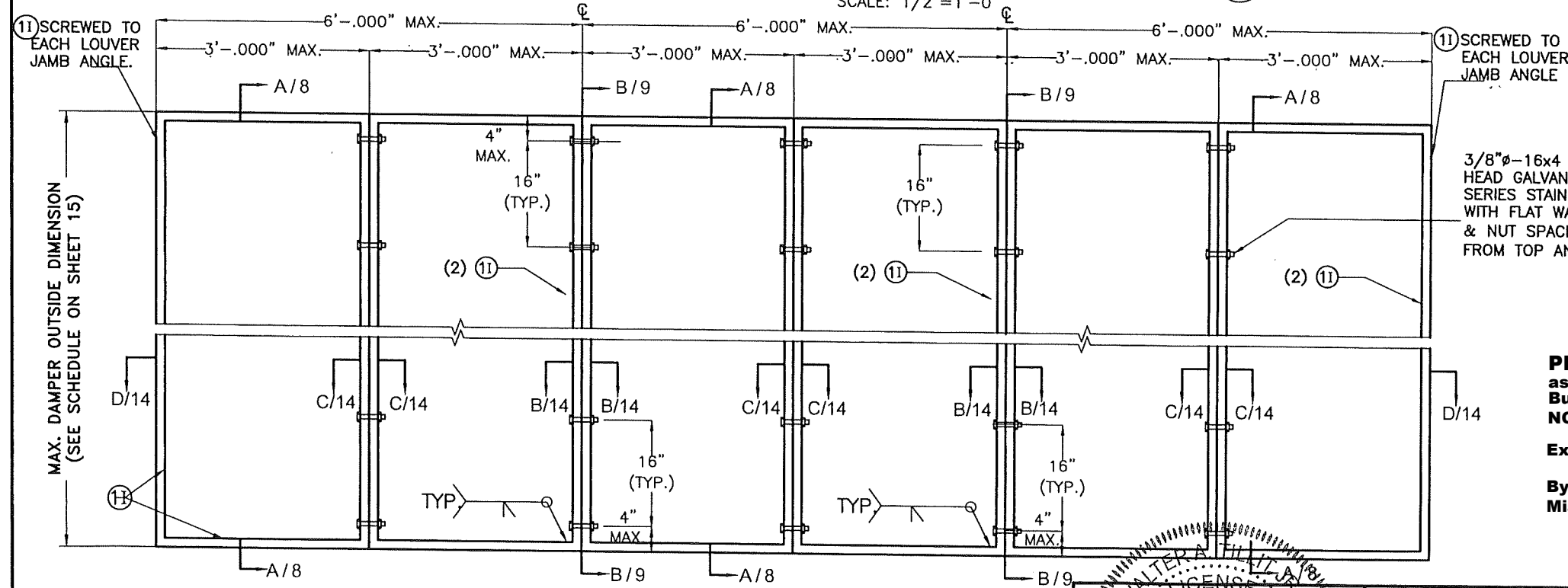
FLORIDA BUILDING CODE (High Velocity Hurricane Zone)

SED-5.1 LOUVER SYSTEM WITH OR WITHOUT CD-151 DAMPER ASSEMBLY				W.H. DRAWN BY	
S&P AIR CONTROL, LLC.				7/7/2025 DATE	
3005 SOUTH HICKORY ST. CHATTANOOGA, TN 37407 159 GENCO DRIVE HARTFORD, AL 36344 PHONE: (423)698-7715 FAX:(423)698-6629				25-060 DRAWING No	
REV. No	DESCRIPTION	DATE	REV. No	DESCRIPTION	DATE
1	OLD 23-069	7/7/2025	3		
2			4		
SHEET 5 OF 16					



NOTE:  
(1) SEE COMPONENTS ON SHEET 3.

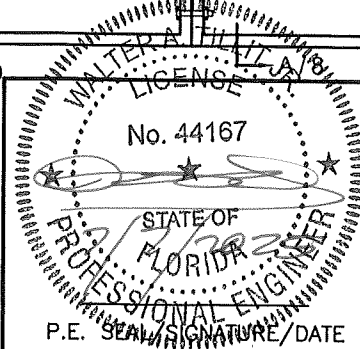
INTERIOR ELEVATION: CD-151 DAMPER MULTIPLE UNITS WITH MULLION (12L)



3/8"Ø-16x4 1/2" LONG A 307 HEX HEAD GALVANIZED STEEL OR 304 SERIES STAINLESS STEEL BOLTS WITH FLAT WASHER, LOCK WASHER, & NUT SPACED @ 16" O.C. & 4" FROM TOP AND BOTTOM (TYP.).

**PRODUCT REVISED**  
as complying with the Florida Building Code  
NOA-No. 25-0805.06  
Expiration Date 11/20/2028  
By *[Signature]*  
Miami-Dade Product Control

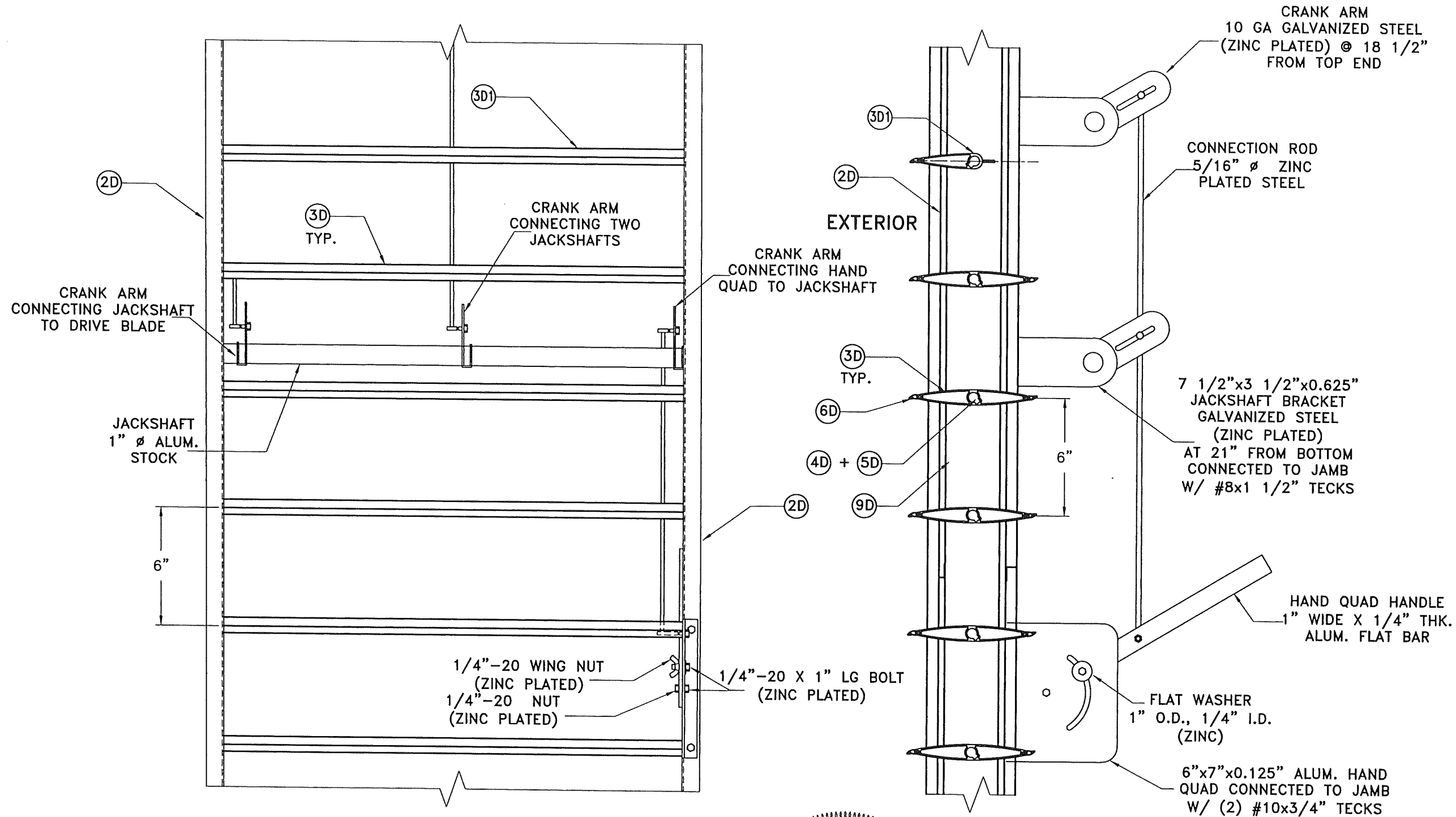
EXTERIOR ELEVATION: INTERMEDIATE TUBE FRAME FOR CD-151 DAMPER ATTACHMENT AT MULTIPLE UNITS WITH MULLION (12L)  
SCALE: 1/2"=1'-0"



© 2025 TILTECO INC.  
**TILTECO INC.**  
TILLIT TESTING & ENGINEERING COMPANY  
6355 N.W. 36th. St., Ste. 305, VIRGINIA GARDENS, FL 33166  
Phone: (305)871-1530 . Fax: (305)871-1531  
e-mail: tilteco@aol.com  
CA-0006719  
WALTER A. TILLIT Jr. P.E.  
FLORIDA Lic. # 44167

FLORIDA BUILDING CODE (High Velocity Hurricane Zone)

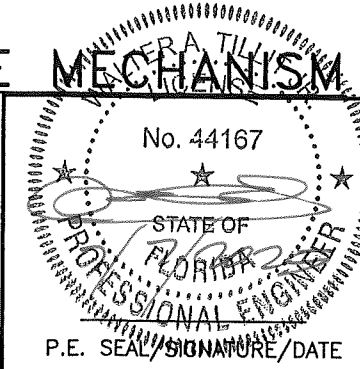
SED-5.1 LOUVER SYSTEM WITH OR WITHOUT CD-151 DAMPER ASSEMBLY		W.H. DRAWN BY	
S&P AIR CONTROL, LLC.		7/7/2025 DATE	
3005 SOUTH HICKORY ST. 159 GENCO DRIVE CHATTANOOGA, TN 37407 HARTFORD, AL 36344 PHONE: (423)698-7715 FAX:(423)698-6629		25-060 DRAWING No	
REV. No	DESCRIPTION	DATE	REV. No
1	OLD 23-069	7/7/2025	3
2			4



# HAND QUADRANT HANDLE MECHANISM

N.T.S.

**PRODUCT REVISED**  
 as complying with the Florida  
 Building Code  
 NOA-No. 25-0805.06  
 Expiration Date 11/20/2028  
 By *[Signature]*  
 Miami-Dade Product Control



© 2025 TILTECO INC.  
**TILTECO INC.**  
 TILLIT TESTING & ENGINEERING COMPANY  
 6355 N.W. 36th St., Ste. 305, VIRGINIA GARDENS, FL 33166  
 Phone: (305)871-1530 Fax: (305)871-1531  
 e-mail: tilteco@aol.com  
 CA-0006719  
 WALTER A. TILLIT Jr. P.E.  
 FLORIDA Lic. # 44167

FLORIDA BUILDING CODE (High Velocity Hurricane Zone)

SED-5.1 LOUVER SYSTEM WITH OR  
 WITHOUT CD-151 DAMPER ASSEMBLY

W.H.  
 DRAWN BY

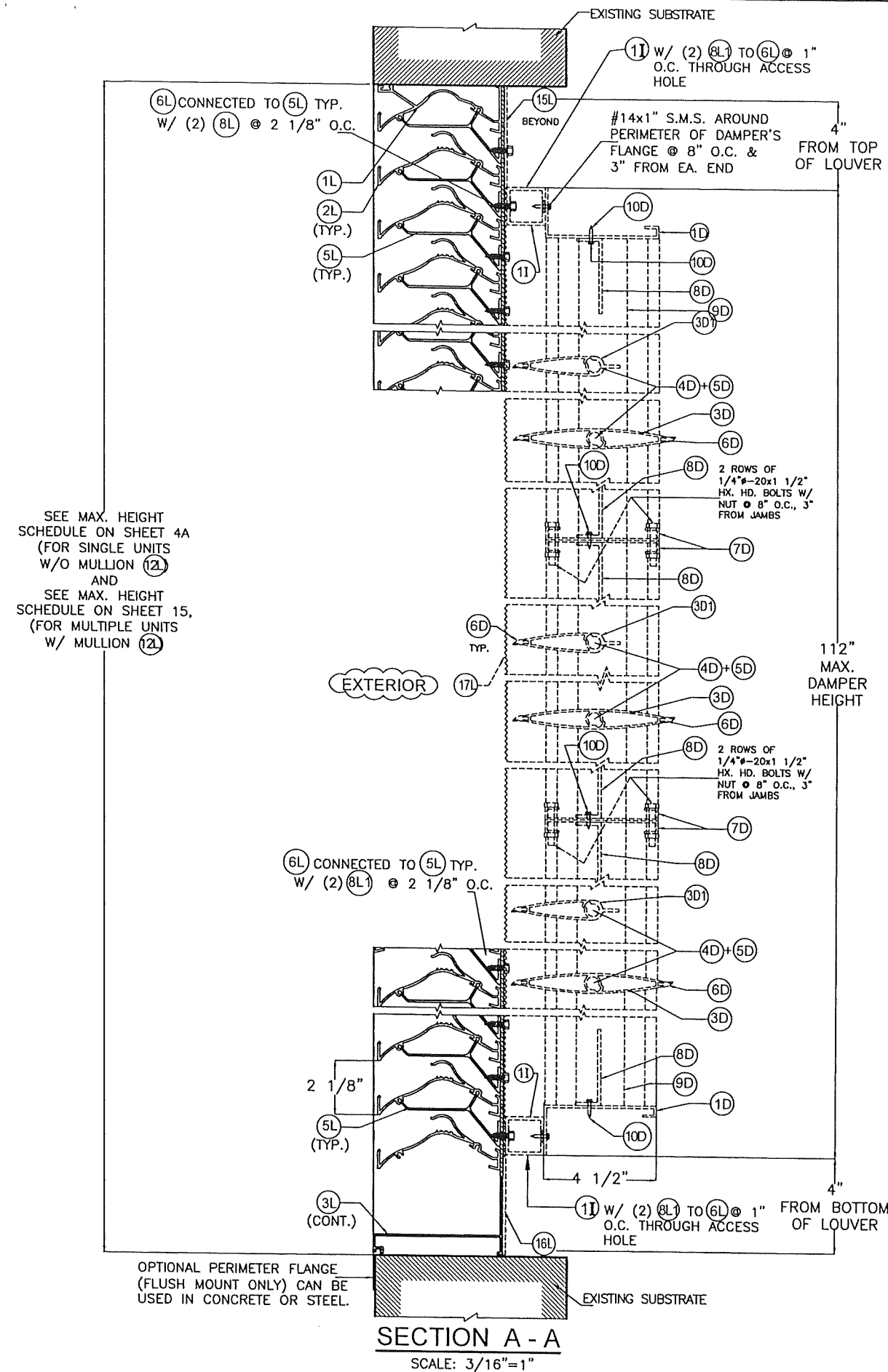
**S&P AIR CONTROL, LLC.**

7/7/2025  
 DATE

3005 SOUTH HICKORY ST. 159 GENCO DRIVE  
 CHATTANOOGA, TN 37407 HARTFORD, AL 36344  
 PHONE: (423)698-7715 FAX:(423)698-6629

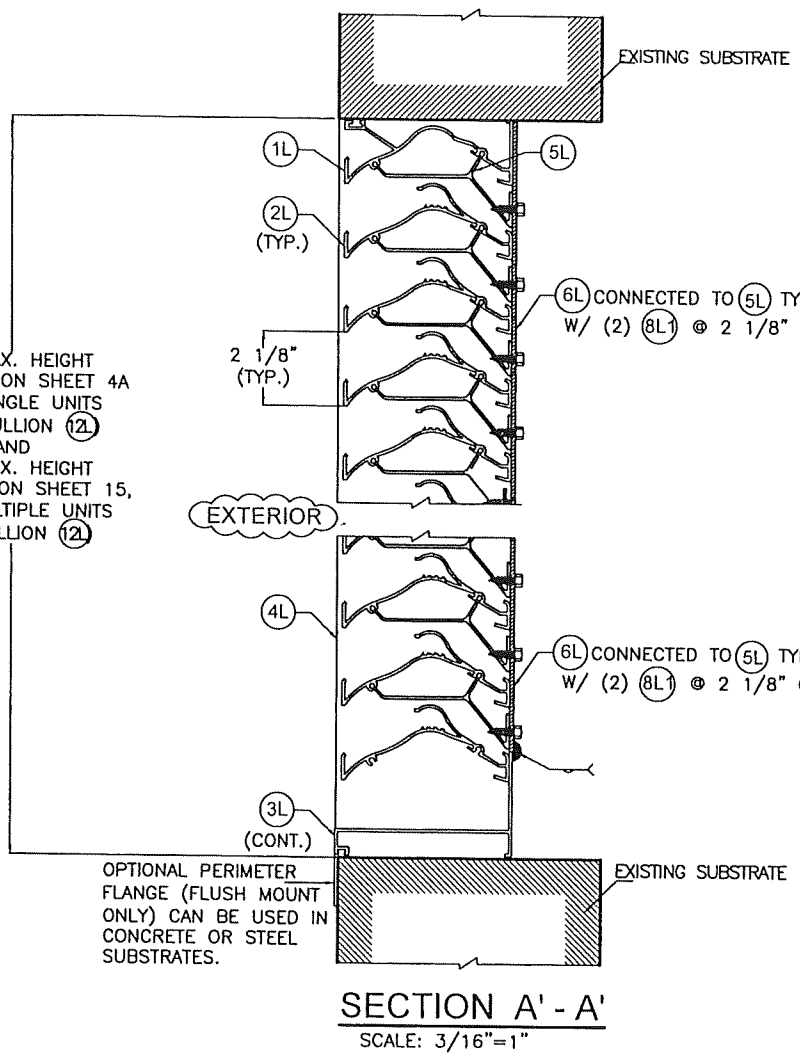
**25-060**  
 DRAWING No

REV. No	DESCRIPTION	DATE	REV. No	DESCRIPTION	DATE
1	OLD 23-069	7/7/2025	3		
2			4		

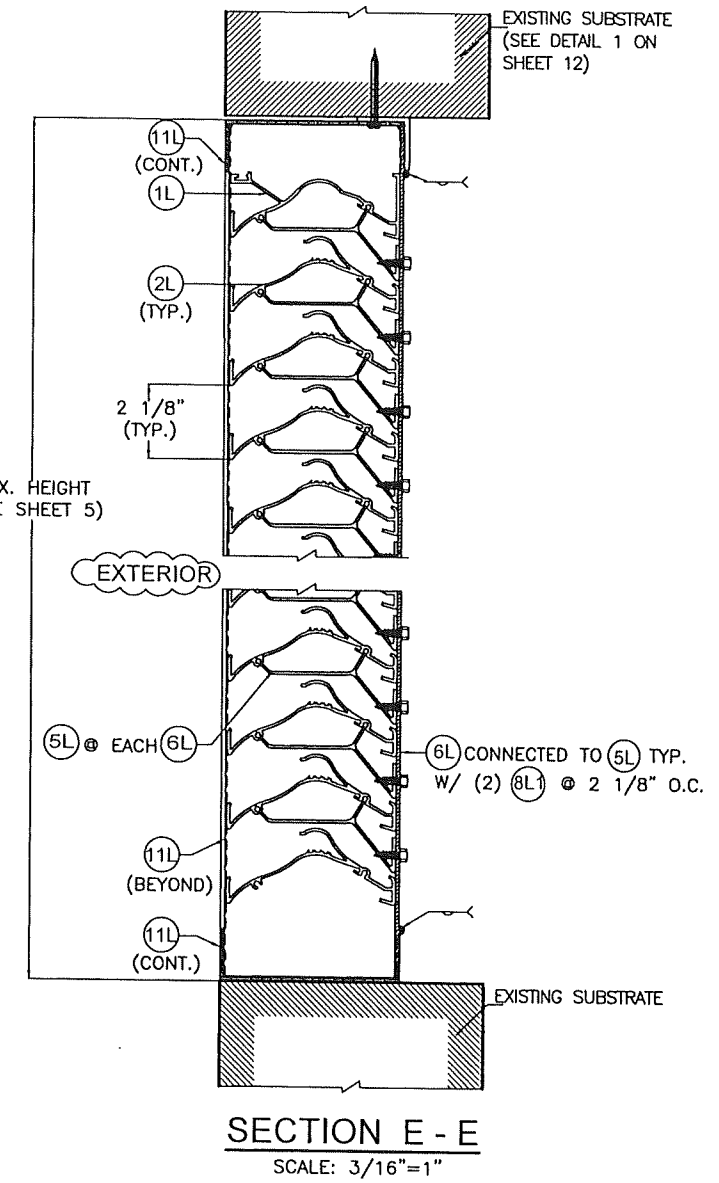


SEE MAX. HEIGHT SCHEDULE ON SHEET 4A (FOR SINGLE UNITS W/O MULLION 12) AND SEE MAX. HEIGHT SCHEDULE ON SHEET 15, (FOR MULTIPLE UNITS W/ MULLION 12)

**PRODUCT REVISED**  
 as complying with the Florida Building Code  
 NOA-No. 25-0805.06  
 Expiration Date 11/20/2028  
 By *[Signature]*  
 Miami-Dade Product Control



SEE MAX. HEIGHT SCHEDULE ON SHEET 4A (FOR SINGLE UNITS W/O MULLION 12) AND SEE MAX. HEIGHT SCHEDULE ON SHEET 15, (FOR MULTIPLE UNITS W/ MULLION 12)



WALTER A. TILLIT JR.  
 LICENSE No. 44167  
 STATE OF FLORIDA  
 PROFESSIONAL ENGINEER  
 P.E. SEAL/SIGNATURE/DATE

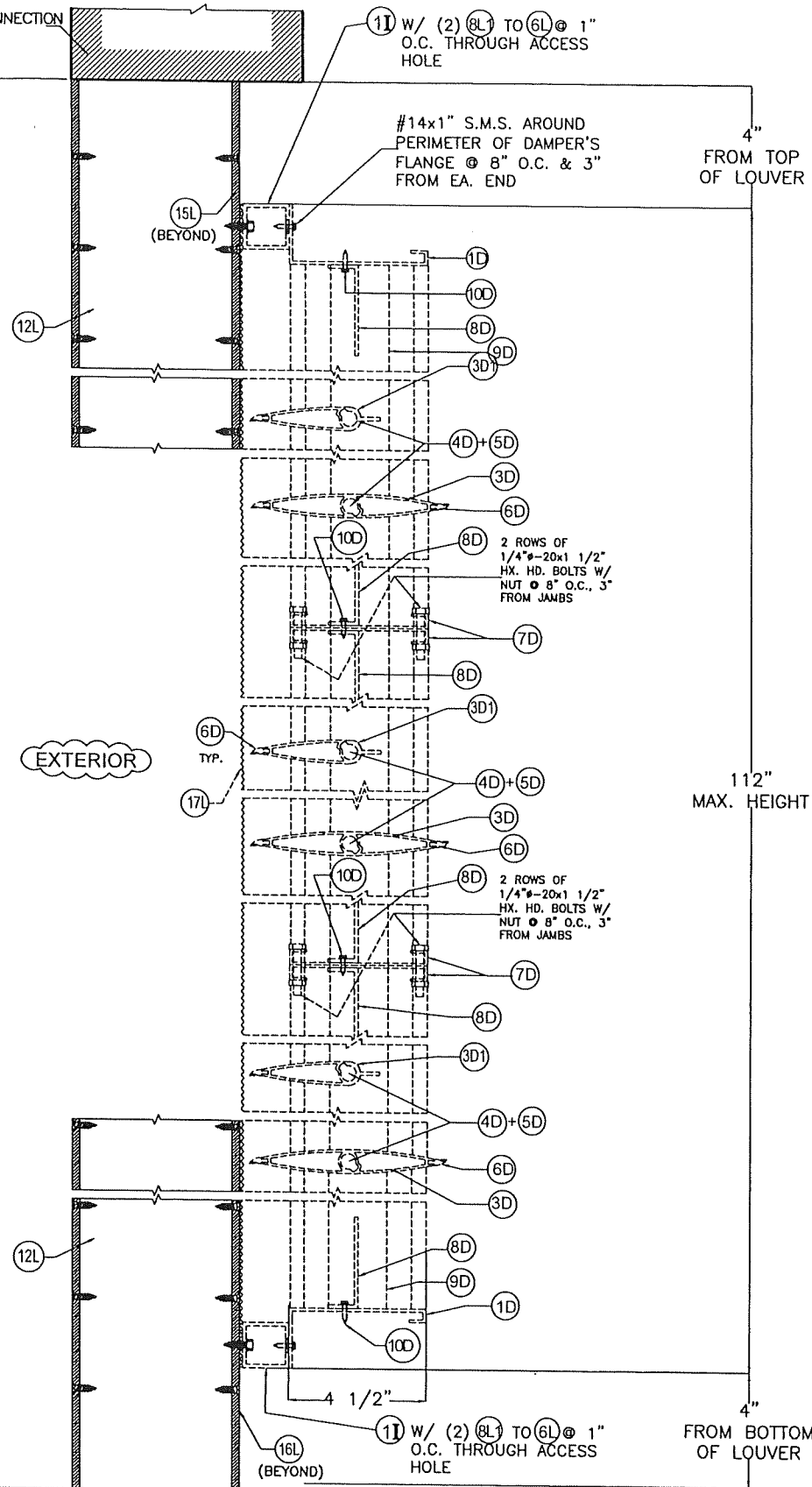
© 2025 TILTECO INC.  
**TILTECO INC.**  
 TILLIT TESTING & ENGINEERING COMPANY  
 6355 N.W. 36th St., Ste. 305, VIRGINIA GARDENS, FL 33166  
 Phone: (305)871-1530 Fax: (305)871-1531  
 e-mail: tilteco@aol.com  
 CA-0006719  
 WALTER A. TILLIT Jr. P.E.  
 FLORIDA Lic. # 44167

**FLORIDA BUILDING CODE (High Velocity Hurricane Zone)**

<b>SED-5.1 LOUVER SYSTEM WITH OR WITHOUT CD-151 DAMPER ASSEMBLY</b>		W.H. DRAWN BY
<b>S&amp;P AIR CONTROL, LLC.</b>		7/7/2025 DATE
3005 SOUTH HICKORY ST. 159 GENCO DRIVE CHATTANOOGA, TN 37407 HARTFORD, AL 36344 PHONE: (423)698-7715 FAX:(423)698-6629		<b>25-060</b> DRAWING No
REV. No	DESCRIPTION	DATE
1	OLD 23-069	7/7/2025
2		

SHEET 8 OF 16

EXISTING SUBSTRATE  
(SEE SHEET 12 FOR CONNECTION  
DETAILS 2 OR 3)



**SECTION B - B**  
SCALE: 3/16"=1"  
(DAMPER BEYOND)

EXISTING SUBSTRATE  
(SEE SHEET 12 FOR CONNECTION  
DETAILS 2 OR 3)

4"  
FROM TOP  
OF LOUVER

112"  
MAX. HEIGHT

4"  
FROM BOTTOM  
OF LOUVER

MAX. HEIGHT  
(SEE SCHEDULE  
ON SHEET 15)

EXTERIOR

#14x1" S.M.S. AROUND  
PERIMETER OF DAMPER'S  
FLANGE @ 8" O.C. & 3"  
FROM EA. END

2 ROWS OF  
1/4"-20x1 1/2"  
HX. HD. BOLTS W/  
NUT @ 8" O.C., 3"  
FROM JAMBS

2 ROWS OF  
1/4"-20x1 1/2"  
HX. HD. BOLTS W/  
NUT @ 8" O.C., 3"  
FROM JAMBS

11 W/ (2) 8L TO 6L @ 1"  
O.C. THROUGH ACCESS  
HOLE

15L  
(BEYOND)

12L

6D  
TYP.

12L

16L  
(BEYOND)

11 W/ (2) 8L TO 6L @ 1"  
O.C. THROUGH ACCESS  
HOLE

MAX. HEIGHT  
(SEE SCHEDULE  
ON SHEET 15)

EXTERIOR

12L

12L

EXISTING SUBSTRATE  
(SEE SHEET 12 FOR CONNECTION  
DETAILS 2 OR 3)

EXISTING SUBSTRATE  
(SEE SHEET 12 FOR CONNECTION  
DETAILS 2 OR 3)

**SECTION B' - B'**  
SCALE: 3/16"=1"

**PRODUCT REVISED**  
as complying with the Florida  
Building Code  
NOA-No. 25-0805.06  
Expiration Date 11/20/2028  
By *[Signature]*  
Miami-Dade Product Control

WALTER A. TILLIT JR.  
LICENSE  
No. 44167  
STATE OF  
FLORIDA  
PROFESSIONAL ENGINEER  
11/20/25  
P.E. SEAL/SIGNATURE/DATE

© 2025 TILTECO INC.  
**TILTECO inc.**  
TILLIT TESTING & ENGINEERING COMPANY  
6355 N.W. 36th St., Ste. 305, VIRGINIA GARDENS, FL 33166  
Phone: (305)871-1530 Fax: (305)871-1531  
e-mail: tilteco@aol.com  
CA-0006719  
WALTER A. TILLIT Jr. P.E.  
FLORIDA Lic. # 44167

FLORIDA BUILDING CODE (High Velocity Hurricane Zone)

SED-5.1 LOUVER SYSTEM WITH OR  
WITHOUT CD-151 DAMPER ASSEMBLY

**S&P AIR CONTROL, LLC.**

3005 SOUTH HICKORY ST. CHATTANOOGA, TN 37407  
159 GENCO DRIVE HARTFORD, AL 36344  
PHONE: (423)698-7715 FAX:(423)698-6629

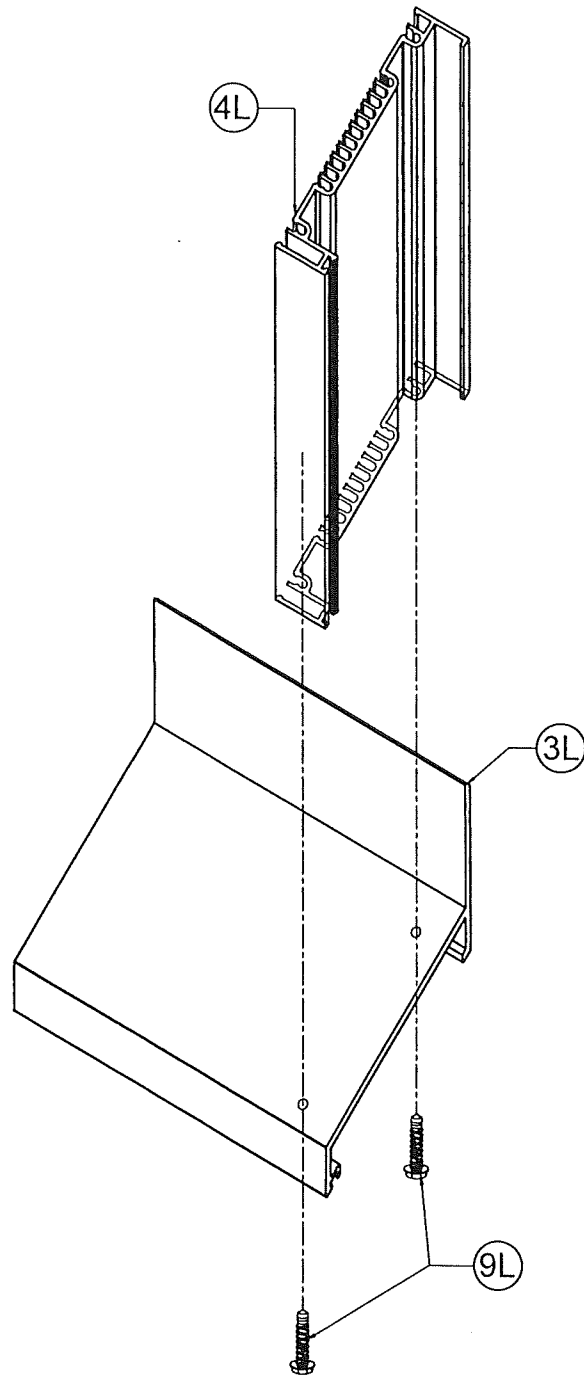
W.H.  
DRAWN BY

7/7/2025  
DATE

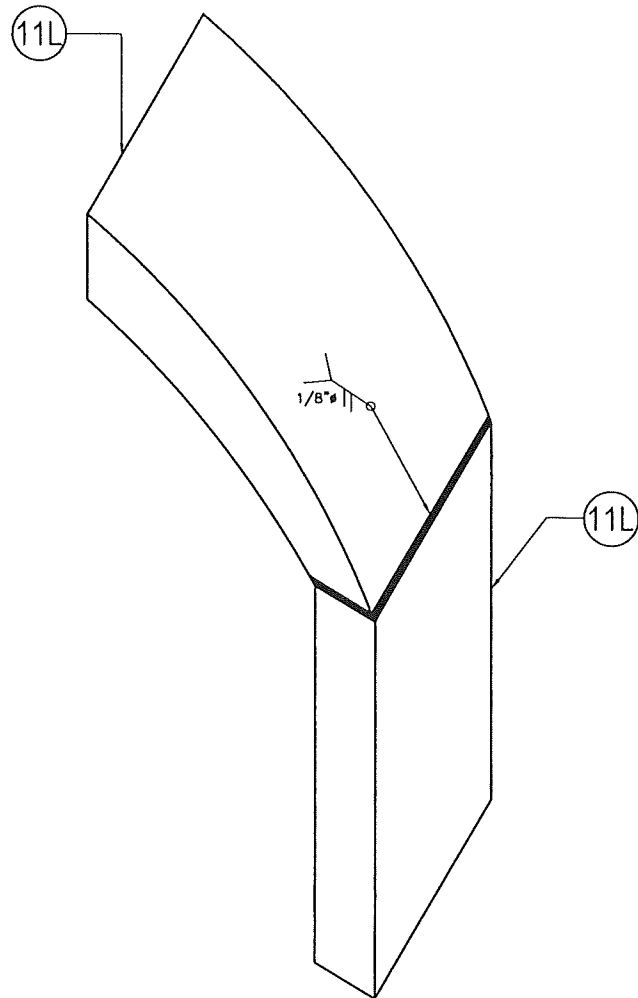
**25-060**  
DRAWING No

REV. No	DESCRIPTION	DATE	REV. No	DESCRIPTION	DATE
1	OLD 23-069	7/7/2025	3		
2			4		

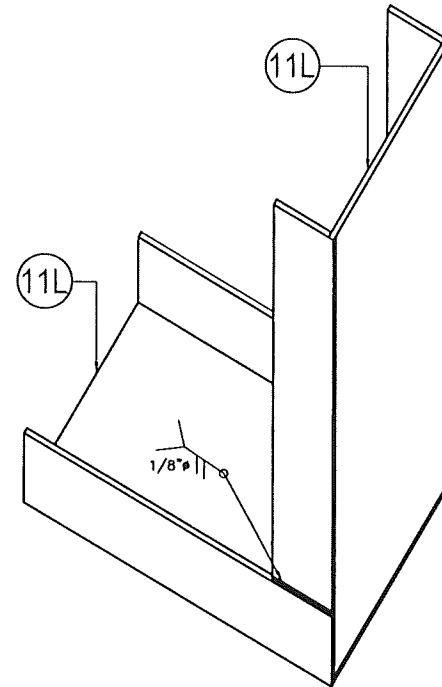
SHEET 9 OF 16



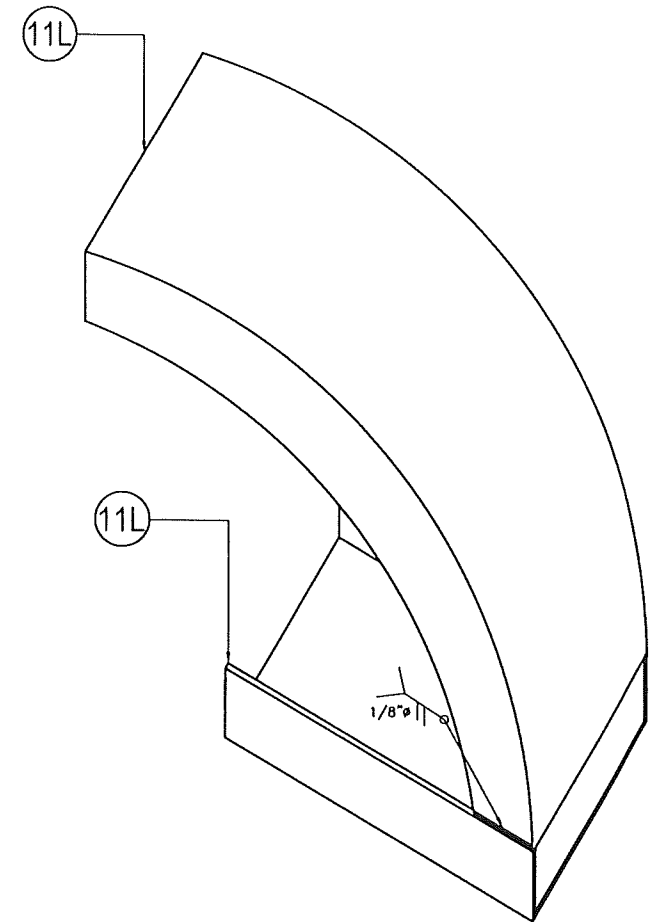
**DETAIL 1**  
**CORNER AT BOTTOM**  
 N.T.S



**DETAIL 2**  
**CORNER AT TOP**  
 N.T.S



**DETAIL 3**  
**CORNER AT BOTTOM**  
 N.T.S



**DETAIL 4**  
**CORNER AT BOTTOM**  
 N.T.S

**PRODUCT REVISED**  
 as complying with the Florida  
 Building Code  
 NOA-No. 25-0805.06  
 Expiration Date 11/20/2028  
 By *[Signature]*  
 Miami-Dade Product Control

WALTER A. TILLIT JR.  
 LICENSE  
 No. 44167  
 STATE OF  
 FLORIDA  
 PROFESSIONAL ENGINEER  
*[Signature]*  
 7/7/2025  
 P.E. SEAL/SIGNATURE/DATE

© 2025 TILTECO INC.  
**TILTECO INC.**  
 TILLIT TESTING & ENGINEERING COMPANY  
 6355 N.W. 36th St., Ste. 305, VIRGINIA GARDENS, FL 33166  
 Phone: (305)871-1530 . Fax: (305)871-1531  
 e-mail: tilteco@aol.com  
 CA-0006719  
 WALTER A. TILLIT Jr. P.E.  
 FLORIDA Lic. # 44167

FLORIDA BUILDING CODE (High Velocity Hurricane Zone)

SED-5.1 LOUVER SYSTEM WITH OR  
 WITHOUT CD-151 DAMPER ASSEMBLY

W.H.  
 DRAWN BY

**S&P AIR CONTROL, LLC.**

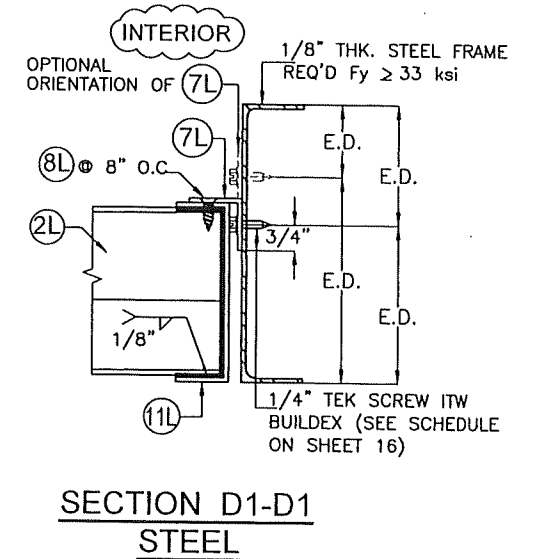
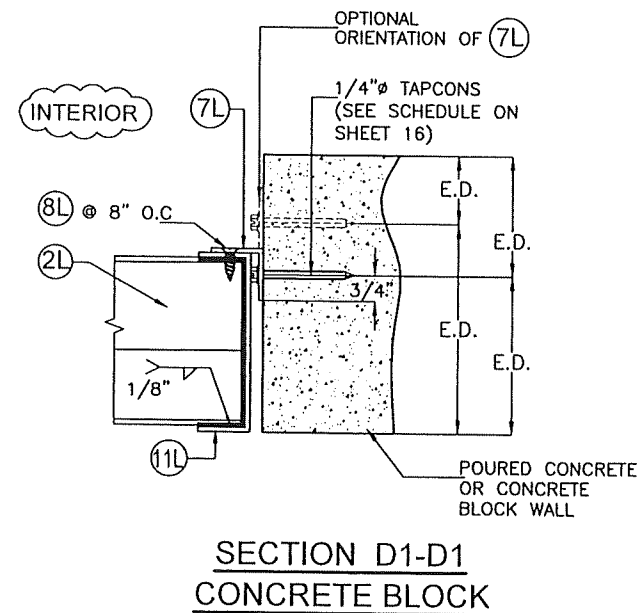
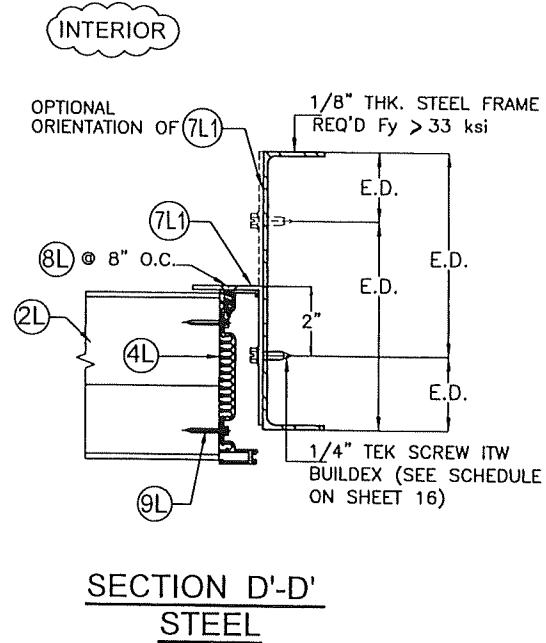
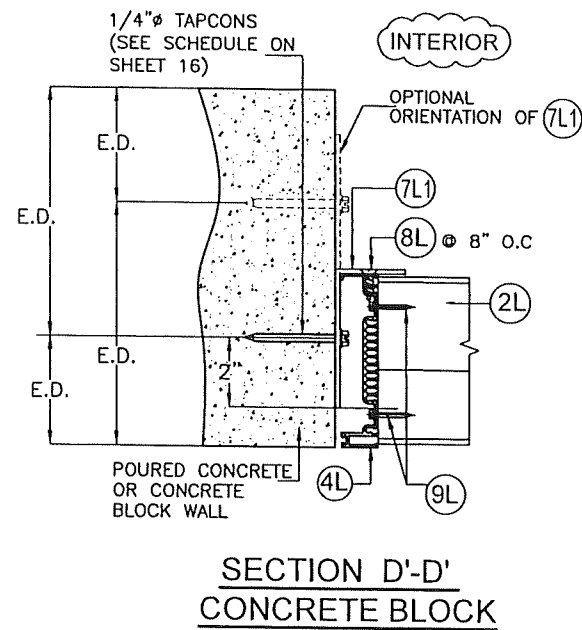
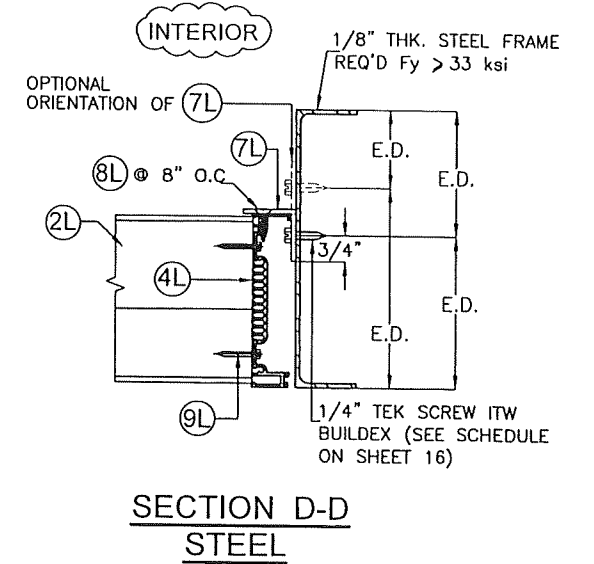
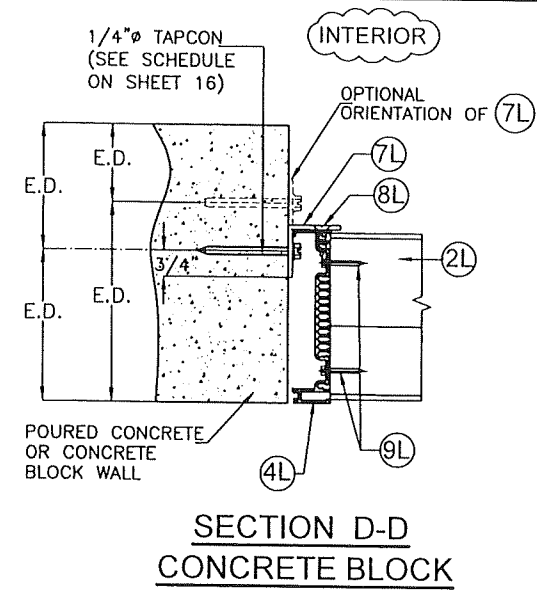
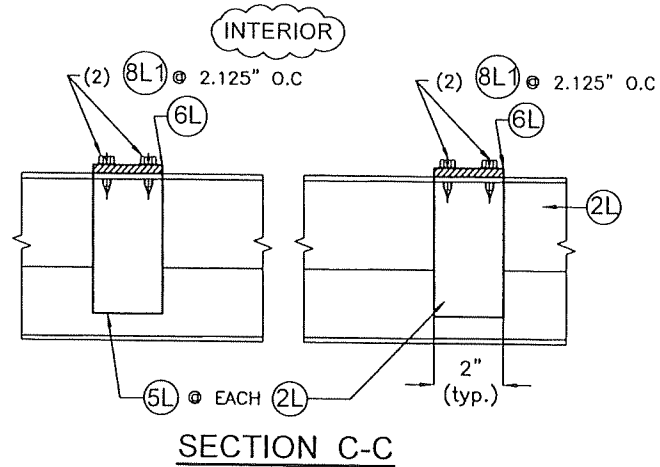
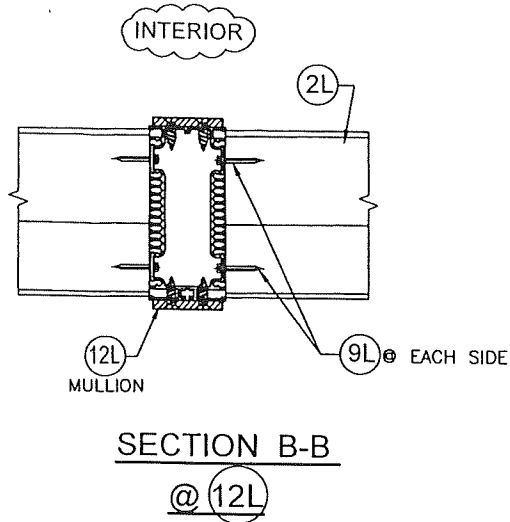
7/7/2025  
 DATE

3005 SOUTH HICKORY ST. 159 GENCO DRIVE  
 CHATTANOOGA, TN 37407 HARTFORD, AL 36344  
 PHONE: (423)698-7715 FAX:(423)698-6629

**25-060**  
 DRAWING No

REV. No	DESCRIPTION	DATE	REV. No	DESCRIPTION	DATE
1	OLD 23-069	7/7/2025	3		
2			4		

SHEET 10 OF 16



**PRODUCT REVISED**  
as complying with the Florida Building Code  
NOA-No. 25-0805.06  
Expiration Date 11/20/2028  
By *[Signature]*  
Miami-Dade Product Control

# CONNECTION DETAILS

SCALE: 3/16" = 1"

WALTER A. TILLIT JR.  
LICENSE  
No. 44167  
STATE OF FLORIDA  
PROFESSIONAL ENGINEER  
7/7/2025  
P.E. SEAL/SIGNATURE/DATE

© 2025 TILTECO INC.  
**TILTECO INC.**  
TILLIT TESTING & ENGINEERING COMPANY  
6355 N.W. 36th St., Ste. 305, VIRGINIA GARDENS, FL 33166  
Phone: (305)871-1530 . Fax: (305)871-1531  
e-mail: tilteco@aol.com  
CA-0006719  
WALTER A. TILLIT Jr. P.E.  
FLORIDA Lic. # 44167

FLORIDA BUILDING CODE (High Velocity Hurricane Zone)

SED-5.1 LOUVER SYSTEM WITH OR WITHOUT CD-151 DAMPER ASSEMBLY

W.H. DRAWN BY

S&P AIR CONTROL, LLC.

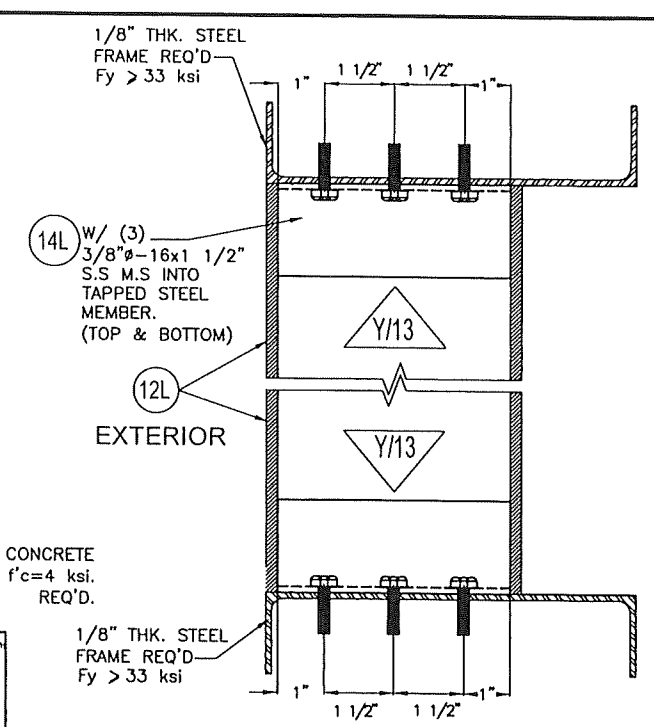
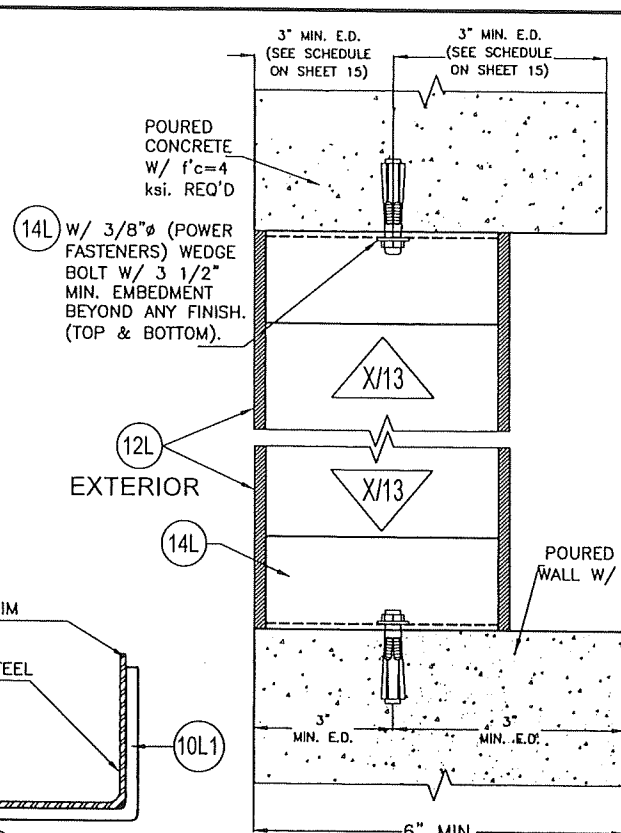
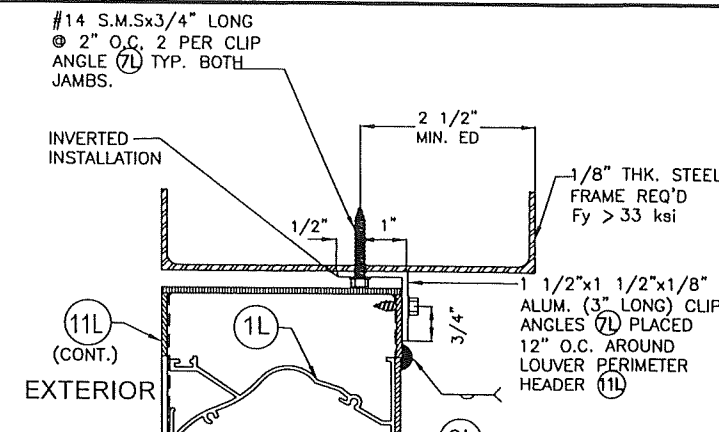
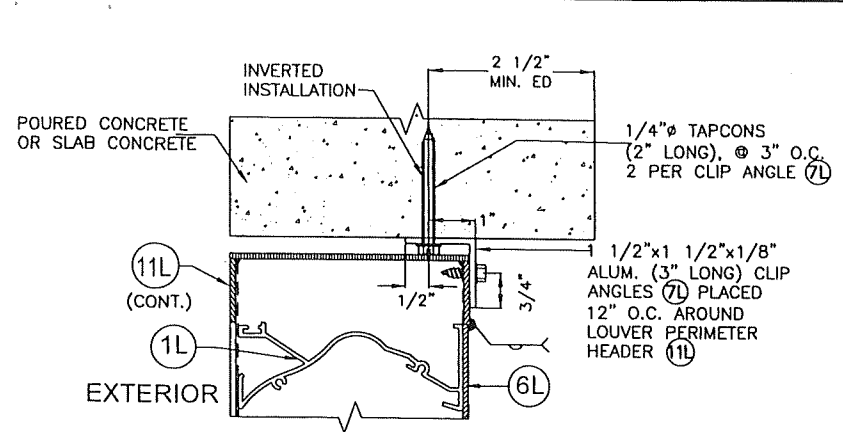
7/7/2025 DATE

3005 SOUTH HICKORY ST. 159 GENCO DRIVE  
CHATTANOOGA, TN 37407 HARTFORD, AL 36344  
PHONE: (423)698-7715 FAX:(423)698-6629

25-060 DRAWING No

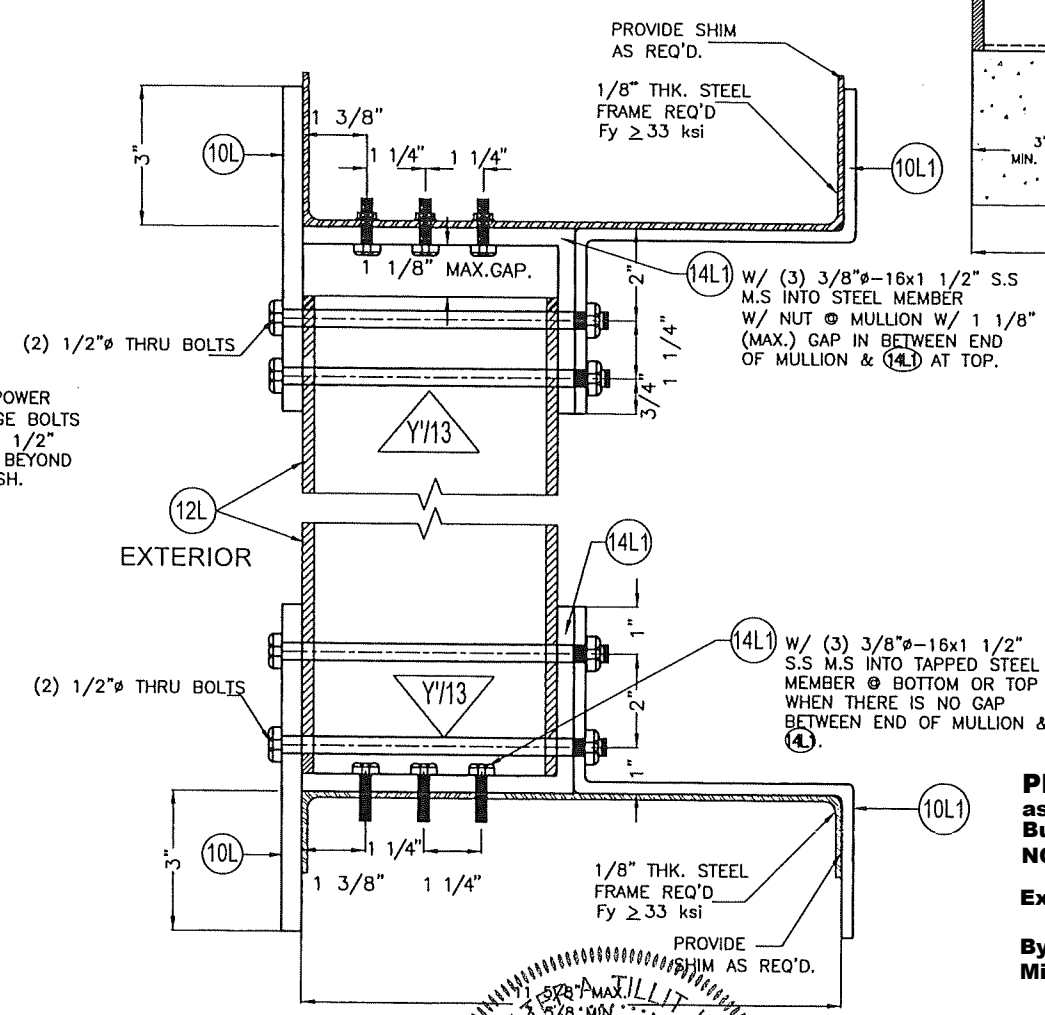
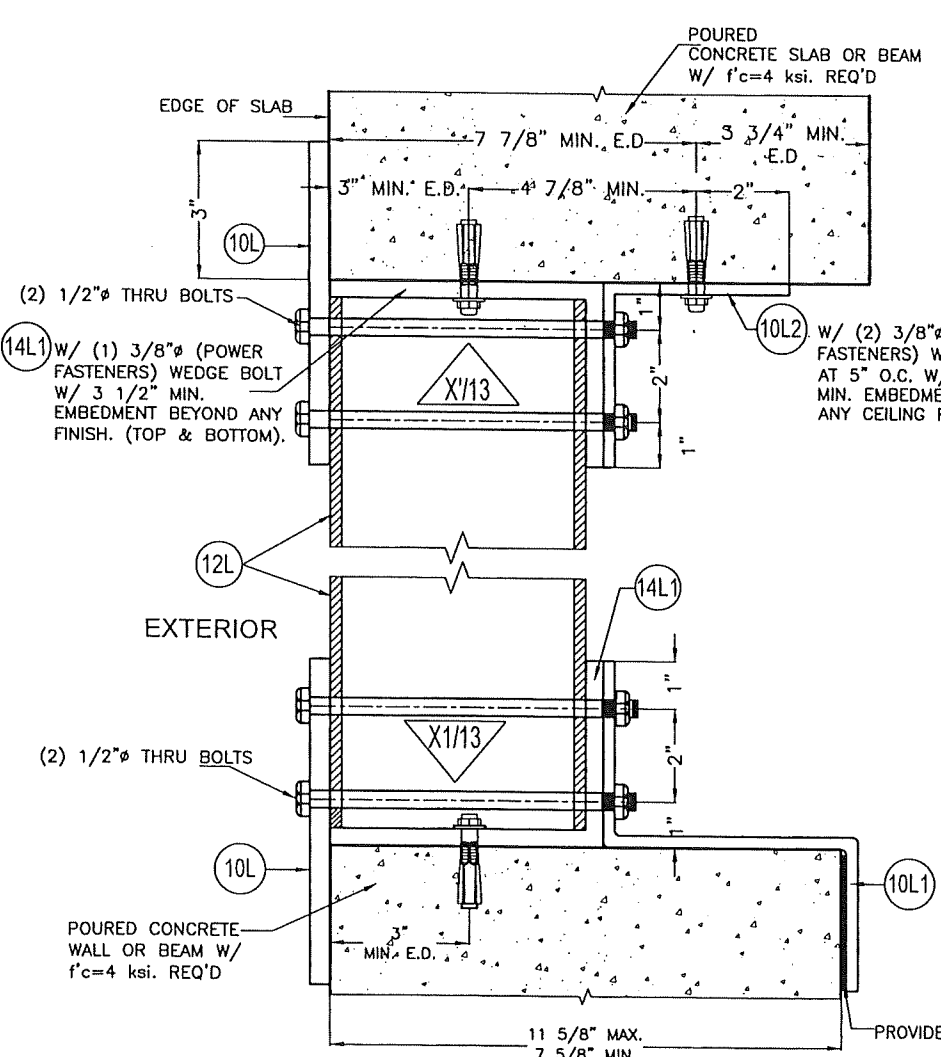
REV. No	DESCRIPTION	DATE	REV. No	DESCRIPTION	DATE
1	OLD 23-089	7/7/2025	3		
2			4		

SHEET 11 OF 16



**DETAIL - 1**

**DETAIL - 2**



(SEE SHEET 15 FOR MAX. MULLION HEIGHT SCHEDULE GIVEN A MULLION SPACING AND A.S.D. DESIGN PRESSURE RATING FOR APPLICABILITY OF THIS DETAIL)

**CONNECTION DETAILS**

SCALE: 1/4" = 1"

NOTE: TOP & BOTTOM MOUNTINGS MAY BE INTERCHANGEABLE

**DETAIL - 3**  
(SEE SHEET 15 FOR MAX. MULLION HEIGHT SCHEDULE GIVEN A MULLION SPACING AND A.S.D. DESIGN PRESSURE RATING FOR APPLICABILITY OF THIS DETAIL)

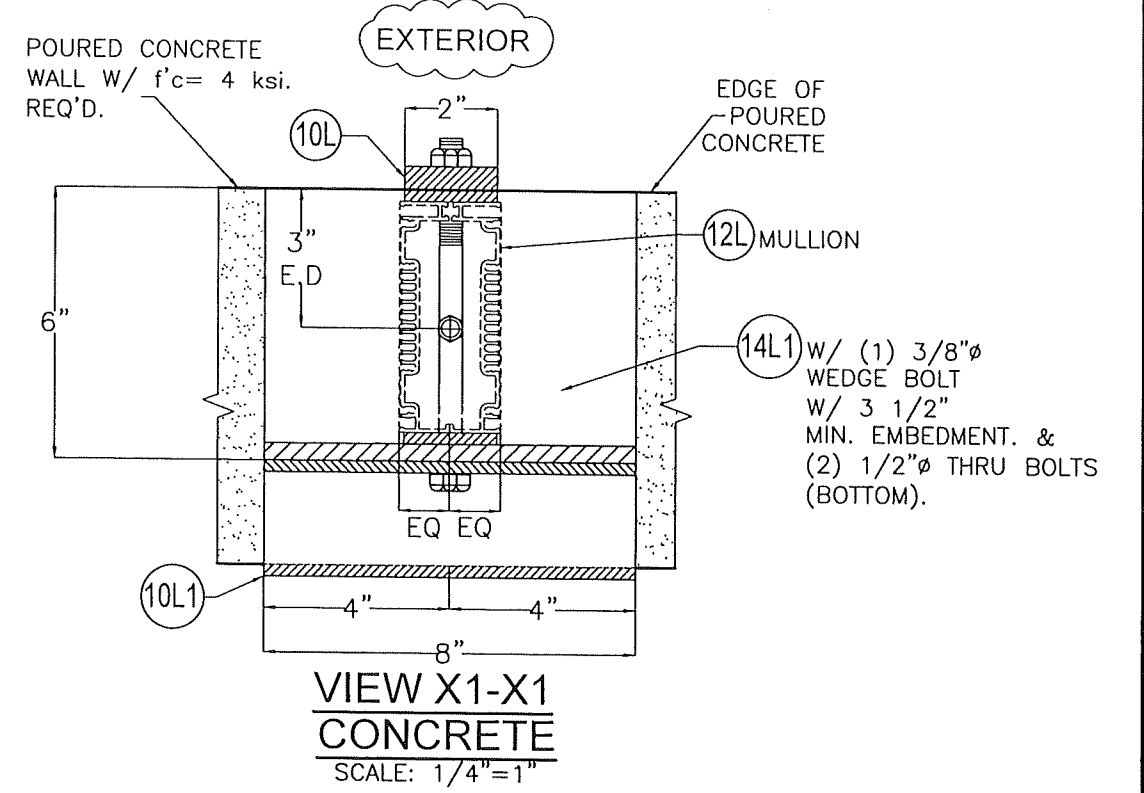
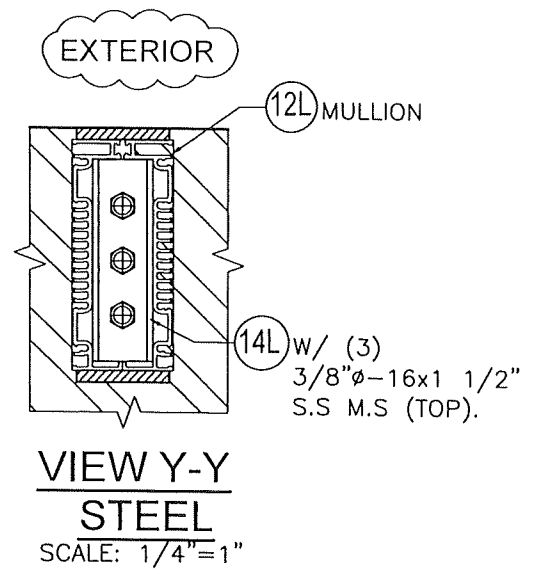
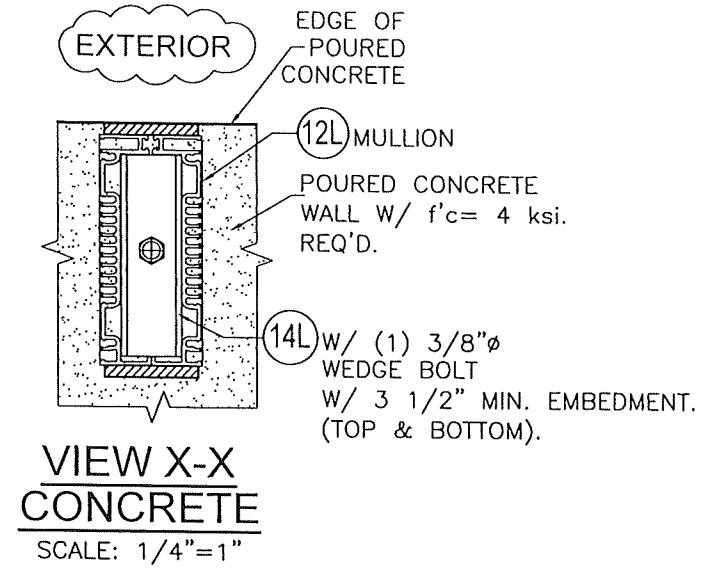
**PRODUCT REVISED**  
as complying with the Florida Building Code  
NOA-No. 25-0805.06  
Expiration Date 11/20/2028  
By *[Signature]*  
Miami-Dade Product Control

FLORIDA BUILDING CODE (High Velocity Hurricane Zone)

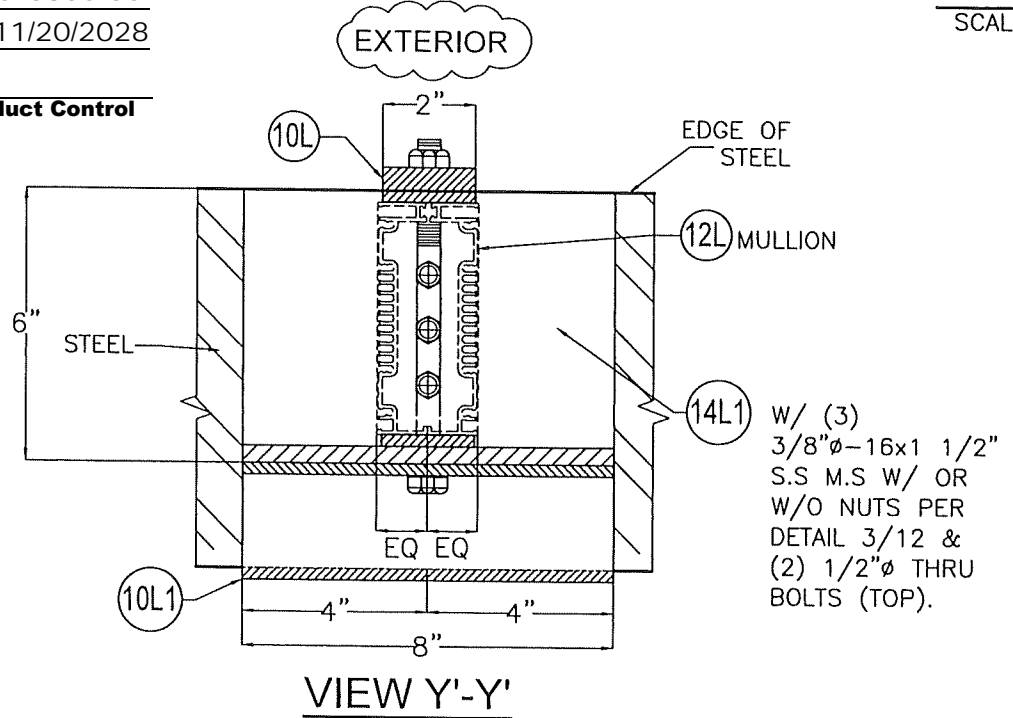
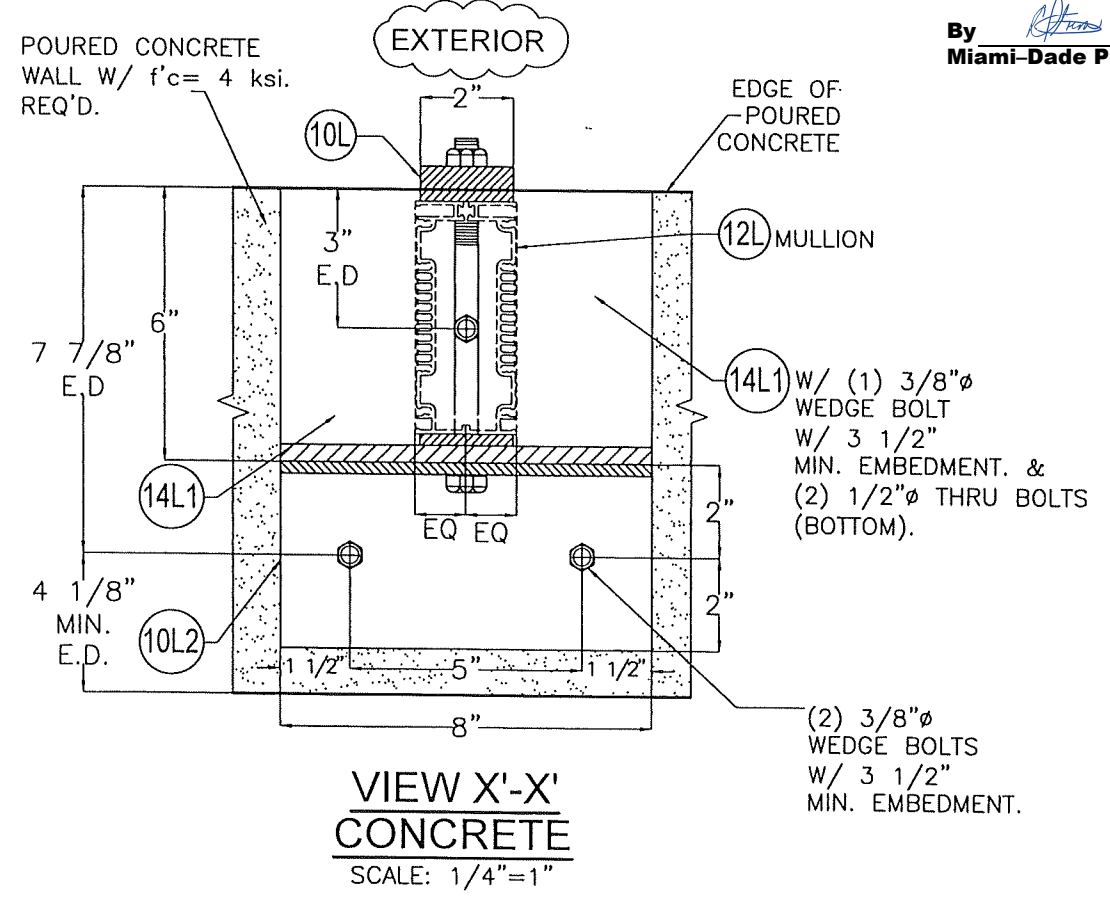
WALTER A. TILLIT JR.  
No. 44167  
STATE OF FLORIDA  
PROFESSIONAL ENGINEER  
P.E. SEAL/SIGNATURE/DATE

© 2025 TILTECO INC.  
**TILTECO INC.**  
TILLIT TESTING & ENGINEERING COMPANY  
6355 N.W. 36th St., Ste. 305, VIRGINIA GARDENS, FL 33166  
Phone: (305)871-1530 Fax: (305)871-1531  
e-mail: tilteco@aol.com  
CA-0006719  
WALTER A. TILLIT JR. P.E.  
FLORIDA Lic. # 44167

SED-5.1 LOUVER SYSTEM WITH OR WITHOUT CD-151 DAMPER ASSEMBLY					W.H. DRAWN BY
S&P AIR CONTROL, LLC.					7/7/2025 DATE
3005 SOUTH HICKORY ST. CHATTANOOGA, TN 37407 159 GENCO DRIVE HARTFORD, AL 36344 PHONE: (423)698-7715 FAX:(423)698-6629					<b>25-060</b> DRAWING No
REV. No	DESCRIPTION	DATE	REV. No	DESCRIPTION	DATE
1	OLD 23-069	7/7/2025	3		
2			4		



**PRODUCT REVISED**  
as complying with the Florida  
Building Code  
NOA-No. 25-0805.06  
Expiration Date 11/20/2028  
By *[Signature]*  
Miami-Dade Product Control



WALTER A. TILLIT JR.  
LICENSE  
No. 44167  
STATE OF FLORIDA  
PROFESSIONAL ENGINEER  
P.E. SEAL/SIGNATURE/DATE

© 2025 TILTECO INC.  
**TILTECO INC.**  
TILLIT TESTING & ENGINEERING COMPANY  
6355 N.W. 36th St., Ste. 305, VIRGINIA GARDENS, FL 33166  
Phone: (305)871-1530 Fax: (305)871-1531  
e-mail: tilteco@aol.com  
CA-0006719  
WALTER A. TILLIT Jr. P.E.  
FLORIDA Lic. # 44167

FLORIDA BUILDING CODE (High Velocity Hurricane Zone)

SED-5.1 LOUVER SYSTEM WITH OR WITHOUT CD-151 DAMPER ASSEMBLY

W.H. DRAWN BY

**S&P AIR CONTROL, LLC.**

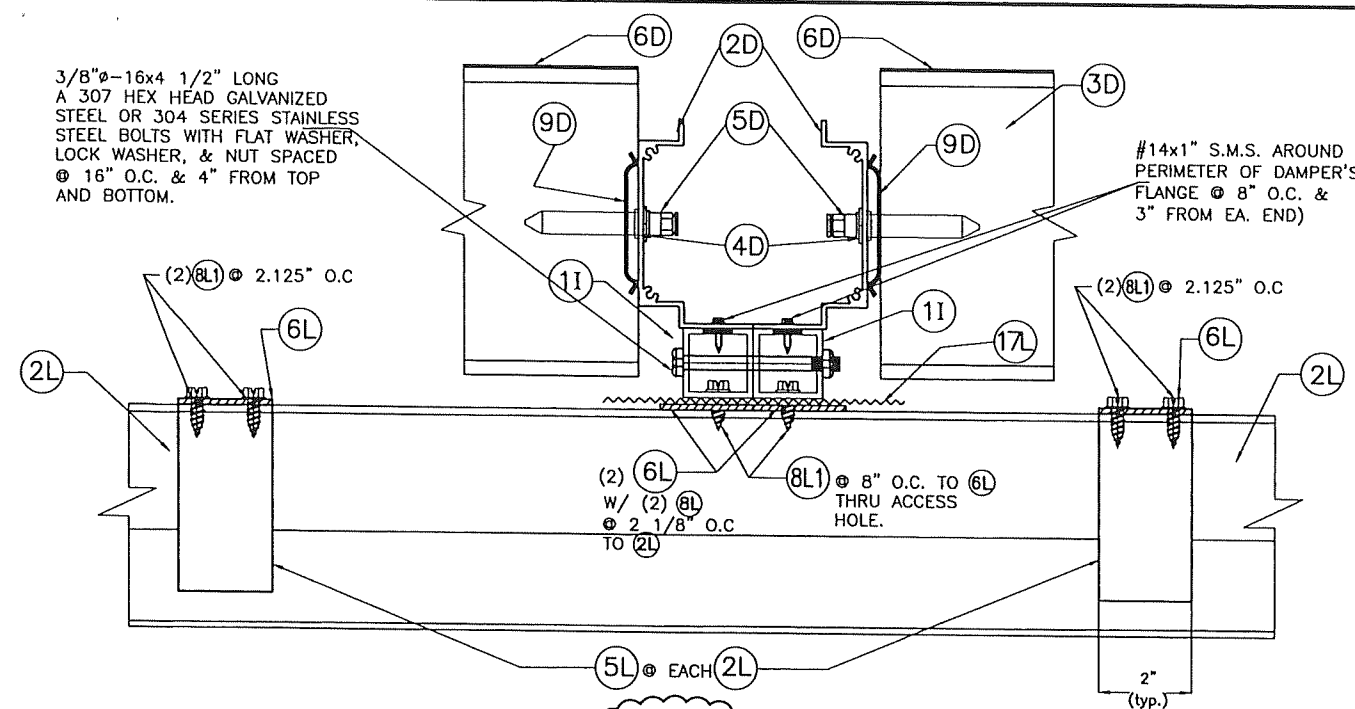
7/7/2025 DATE

3005 SOUTH HICKORY ST. CHATTANOOGA, TN 37407  
159 GENCO DRIVE HARTFORD, AL 36344  
PHONE: (423)698-7715 FAX:(423)698-6629

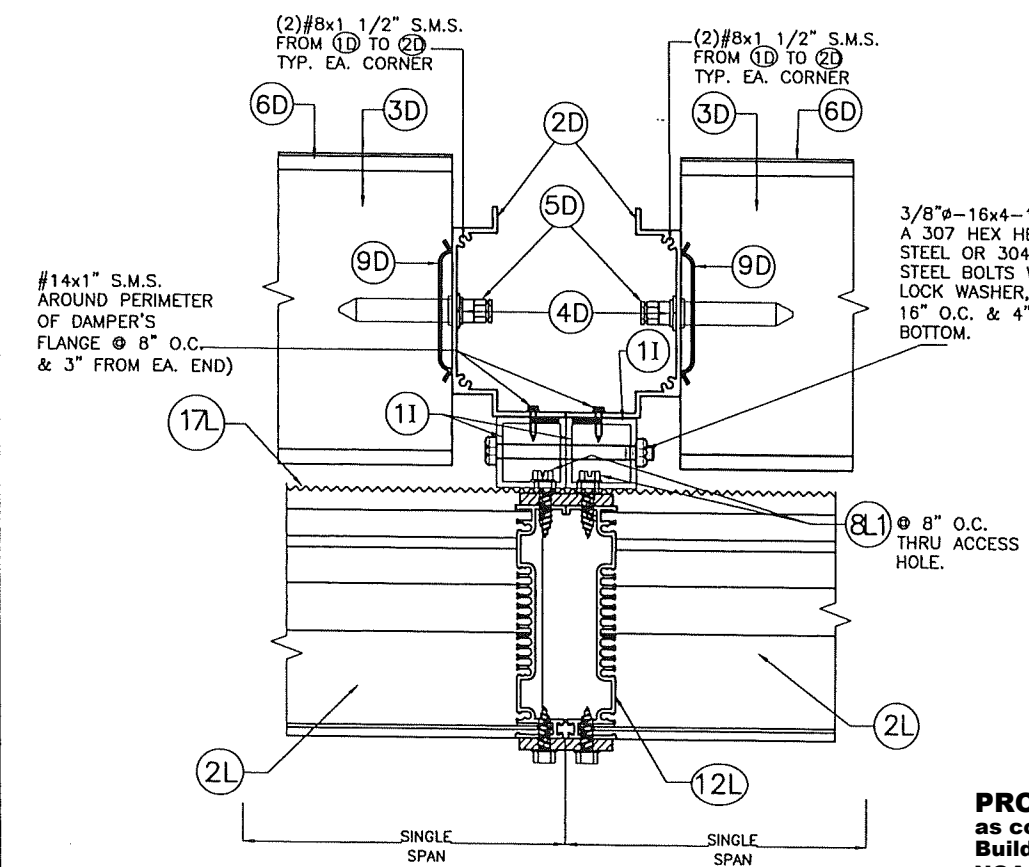
**25-060**  
DRAWING No

REV. No	DESCRIPTION	DATE	REV. No	DESCRIPTION	DATE
1	OLD 23-069	7/7/2025	3		
2			4		

SHEET 13 OF 16

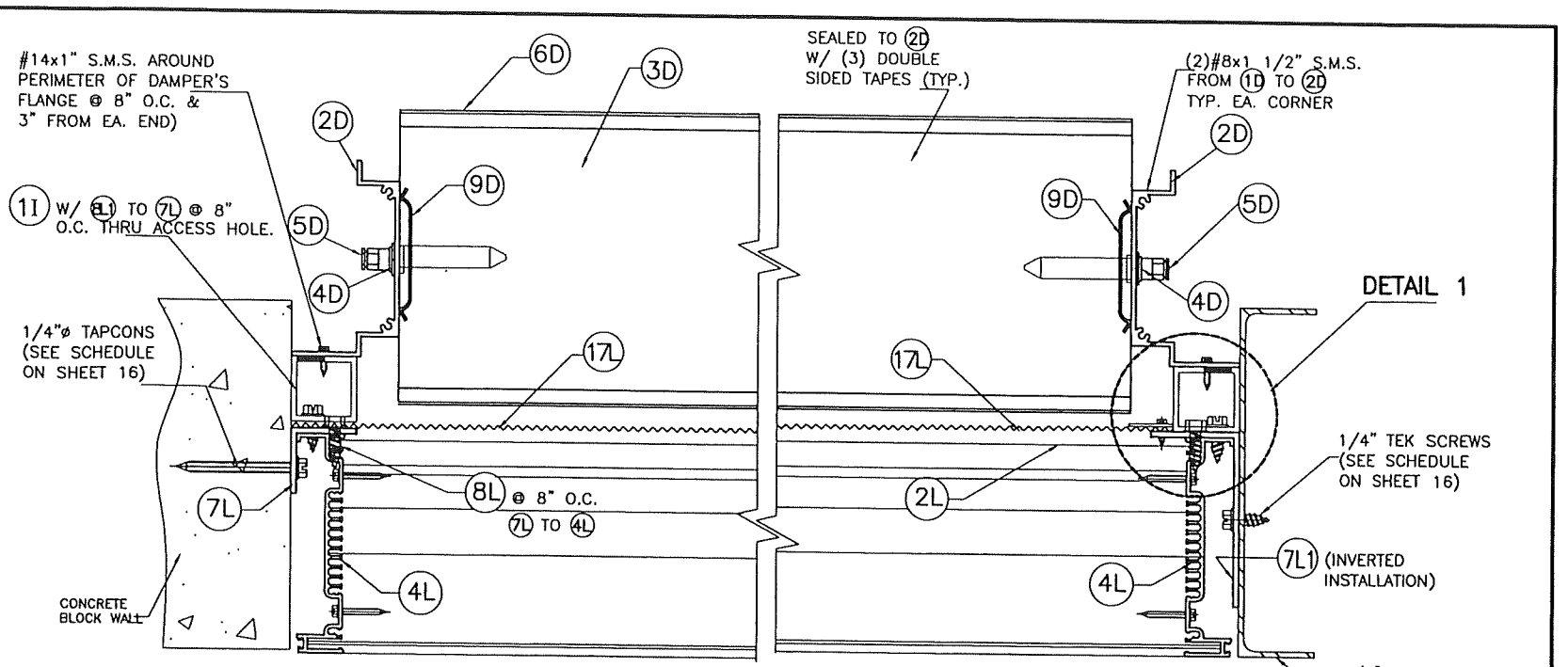


EXTERIOR  
SECTION "C-C"  
SCALE: 3/16"=1"



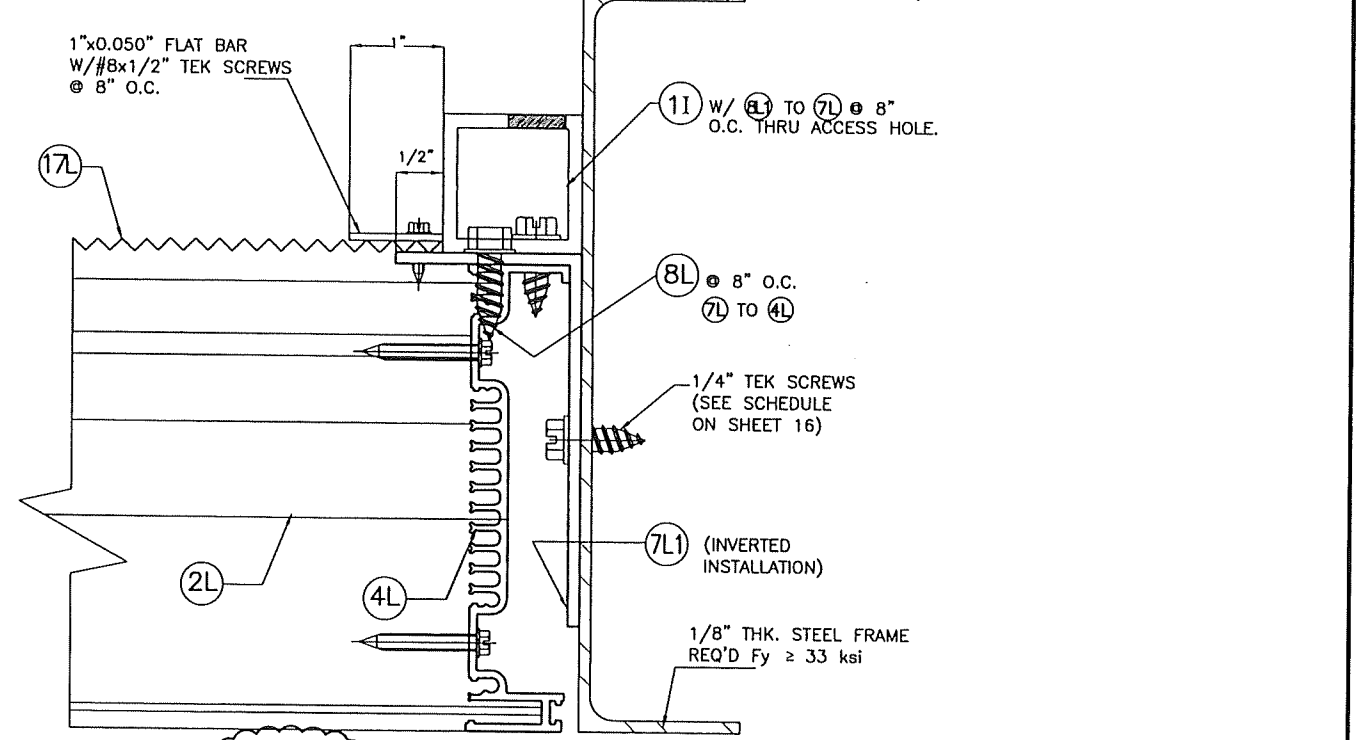
EXTERIOR  
SECTION B-B  
@ MULLION (12L)  
SCALE: 3/16"=1"

**PRODUCT REVISED**  
as complying with the Florida  
Building Code  
NOA-No. 25-0805.06  
Expiration Date 11/20/2028  
By *[Signature]*  
Miami-Dade Product Control



SECTION D-D  
SCALE: 3/16"=1"

SECTION D'-D'  
SCALE: 3/16"=1"



EXTERIOR  
DETAIL 1 (PLAN) 1ST LOUVER BLANK-OFF LOCATION  
SCALE: 3/8"=1"

WALTER A. TILLIT JR.  
LICENSE  
No. 44167  
STATE OF FLORIDA  
PROFESSIONAL ENGINEER  
P.E. SEAL/SIGNATURE/DATE

© 2025 TILTECO INC.  
**TILTECO INC.**  
TILLIT TESTING & ENGINEERING COMPANY  
6355 N.W. 36th St., Ste. 305, VIRGINIA GARDENS, FL 33166  
Phone: (305)871-1530 . Fax: (305)871-1531  
e-mail: tilteco@aol.com  
CA-0006719  
WALTER A. TILLIT Jr. P.E.  
FLORIDA Lic. # 44167

FLORIDA BUILDING CODE (High Velocity Hurricane Zone)

SED-5.1 LOUVER SYSTEM WITH OR WITHOUT CD-151 DAMPER ASSEMBLY		W.H. DRAWN BY	
S&P AIR CONTROL, LLC.		7/7/2025 DATE	
3005 SOUTH HICKORY ST. CHATTANOOGA, TN 37407 PHONE: (423)698-7715		159 GENCO DRIVE HARTFORD, AL 36344 FAX: (423)698-6629	
REV. No	DESCRIPTION	DATE	REV. No
1	OLD 23-069	7/7/2025	3
2			4

25-060 DRAWING No

SHEET 14 OF 16

MAXIMUM LOUVER SYSTEM HEIGHT (ft) SCHEDULE FOR A GIVEN A.S.D. DESIGN PRESSURE RATING (psf) AND A (12) MULLION SPACING (ft), APPLICABLE TO MULLION CONNECTION TO CONCRETE OR STEEL TOP AND BOTTOM COVERED BY DETAIL 2, SHEET 12 W/ ED. = 3" (FOR CONCRETE W/ MIN. f'c = 4 ksi.)

	Concrete		Steel			Concrete		Steel					
	48	60	72	10'-0"		48	60	72	10'-0"				
40	48	10'-0"	10'-0"	100	48	4'-11"	6'-10"	60	3'-11"	5'-5"			
	60	9'-10"	10'-0"	60	3'-11"	5'-5"	72	3'-3"	4'-7"				
	72	8'-3"	10'-0"	72	3'-3"	4'-7"	45	48	10'-0"	10'-0"			
48	10'-0"	10'-0"	105	48	4'-8"	6'-6"		60	3'-9"	5'-2"			
60	8'-9"	10'-0"	60	3'-9"	5'-2"	72		3'-2"	4'-4"				
50	48	9'-10"	10'-0"	110	48	4'-6"	6'-2"	60	3'-7"	4'-12"			
	60	7'-11"	10'-0"	60	3'-7"	4'-12"	72	2'-12"	4'-2"				
	72	6'-7"	9'-1"	72	2'-12"	4'-2"	55	48	10'-0"	10'-0"			
48	8'-12"	10'-0"	115	48	4'-3"	5'-11"		60	3'-5"	4'-9"			
60	7'-2"	9'-11"	60	3'-5"	4'-9"	72		2'-10"	3'-11"				
60	48	8'-3"	10'-0"	120	48	4'-1"	5'-8"	60	3'-3"	4'-7"			
	60	6'-7"	9'-1"	60	3'-3"	4'-7"	72	2'-9"	3'-9"				
	72	5'-6"	7'-7"	72	2'-9"	3'-9"	65	48	10'-0"	10'-0"			
48	7'-7"	10'-0"	125	48	3'-11"	5'-5"		60	3'-2"	4'-4"			
60	6'-1"	8'-5"	60	3'-2"	4'-4"	72		2'-8"	3'-8"				
70	48	7'-1"	9'-9"	130	48	3'-10"	5'-3"	60	3'-0"	4'-2"			
	60	5'-8"	7'-10"	60	3'-0"	4'-2"	72	2'-6"	3'-6"				
	72	4'-8"	6'-6"	72	2'-6"	3'-6"	75	48	10'-0"	10'-0"			
48	6'-7"	9'-1"	135	48	3'-8"	5'-1"		60	2'-11"	4'-0"			
60	5'-3"	7'-3"	60	2'-11"	4'-0"	72		2'-5"	3'-4"				
80	48	6'-2"	8'-6"	140	48	3'-6"	4'-10"	60	2'-10"	3'-11"			
	60	4'-11"	6'-10"	60	2'-10"	3'-11"	72	2'-4"	3'-3"				
	72	4'-1"	5'-8"	72	2'-4"	3'-3"	85	48	10'-0"	10'-0"			
48	5'-10"	8'-0"	145	48	3'-5"	4'-8"		60	2'-9"	3'-9"			
60	4'-8"	6'-5"	60	2'-9"	3'-9"	72		2'-3"	3'-2"				
90	48	5'-6"	7'-7"	150	48	3'-3"	4'-7"	60	2'-8"	3'-8"			
	60	4'-5"	6'-1"	60	2'-8"	3'-8"	72	2'-2"	3'-0"				
	72	3'-8"	5'-1"	72	2'-2"	3'-0"	95	48	10'-0"	10'-0"			
48	5'-2"	7'-2"	100	48	10'-0"	10'-0"		60	10'-0"	10'-0"			
60	4'-2"	5'-9"	60	10'-0"	10'-0"	72		9'-4"	9'-8"				
72	3'-6"	4'-9"	72	9'-4"	9'-8"	105	48	6'-12"	7'-3"				
40	48	10'-0"	10'-0"	100	48	10'-0"	10'-0"	60	5'-7"	5'-10"			
	60	10'-0"	10'-0"	60	5'-7"	5'-10"	72	4'-8"	4'-10"				
	72	10'-0"	10'-0"	72	4'-8"	4'-10"	45	48	10'-0"	10'-0"			
48	10'-0"	10'-0"	105	48	10'-0"	10'-0"		60	5'-4"	5'-6"			
60	10'-0"	10'-0"	60	5'-4"	5'-6"	72		4'-5"	4'-7"				
50	48	10'-0"	10'-0"	110	48	10'-0"	10'-0"	60	6'-4"	6'-7"			
	60	10'-0"	10'-0"	60	6'-4"	6'-7"	72	5'-1"	5'-3"				
	72	10'-0"	10'-0"	72	5'-1"	5'-3"	55	48	10'-0"	10'-0"			
48	10'-0"	10'-0"	115	48	10'-0"	10'-0"		60	4'-10"	5'-1"			
60	10'-0"	10'-0"	60	4'-10"	5'-1"	72		4'-1"	4'-3"				
60	48	10'-0"	10'-0"	120	48	10'-0"	10'-0"	60	5'-10"	6'-1"			
	60	9'-4"	9'-8"	60	5'-10"	6'-1"	72	4'-8"	4'-10"				
	72	7'-9"	8'-1"	72	4'-8"	4'-10"	65	48	10'-0"	10'-0"			
48	10'-0"	10'-0"	125	48	10'-0"	10'-0"		60	4'-6"	4'-8"			
60	8'-7"	8'-11"	60	4'-6"	4'-8"	72		3'-9"	3'-10"				
70	48	9'-12"	10'-0"	130	48	9'-12"	10'-0"	60	4'-4"	4'-6"			
	60	7'-12"	8'-4"	60	4'-4"	4'-6"	72	3'-7"	3'-9"				
	72	6'-8"	6'-11"	72	3'-7"	3'-9"	75	48	10'-0"	10'-0"			
48	9'-4"	9'-8"	135	48	9'-4"	9'-8"		60	5'-2"	5'-5"			
60	7'-6"	7'-9"	60	5'-2"	5'-5"	72		4'-2"	4'-4"				
80	48	8'-9"	9'-1"	140	48	8'-9"	9'-1"	60	4'-12"	5'-2"			
	60	6'-12"	7'-3"	60	4'-12"	5'-2"	72	3'-12"	4'-2"				
	72	5'-10"	6'-1"	72	3'-12"	4'-2"	85	48	10'-0"	10'-0"			
48	8'-3"	8'-7"	145	48	8'-3"	8'-7"		60	3'-10"	4'-0"			
60	6'-7"	6'-10"	60	3'-10"	4'-0"	72		3'-3"	3'-4"				
90	48	7'-9"	8'-1"	150	48	7'-9"	8'-1"	60	4'-8"	4'-10"			
	60	6'-3"	6'-5"	60	4'-8"	4'-10"	72	3'-9"	3'-10"				
	72	5'-2"	5'-5"	72	3'-9"	3'-10"	95	48	10'-0"	10'-0"			
48	7'-4"	7'-8"	100	48	10'-0"	10'-0"		60	8'-8"	8'-8"			
60	5'-11"	6'-1"	60	8'-8"	8'-8"	72		8'-2"	8'-2"				
72	4'-11"	5'-1"	72	8'-2"	8'-2"	40	48	10'-0"	10'-0"	100	48	9'-2"	9'-2"
48	6'-12"	7'-3"	60	5'-7"	5'-10"		60	10'-0"	10'-0"	60	8'-6"	8'-6"	
60	5'-7"	5'-10"	72	4'-8"	4'-10"		72	10'-0"	10'-0"	72	8'-0"	8'-0"	
45	48	10'-0"	10'-0"	105	48	6'-8"	6'-11"	60	10'-0"	10'-0"	48	9'-0"	9'-0"
	60	10'-0"	10'-0"	60	6'-8"	6'-11"	72	10'-0"	10'-0"	60	8'-5"	8'-5"	
	72	10'-0"	10'-0"	72	4'-5"	4'-7"	50	48	10'-0"	10'-0"	110	48	8'-11"
48	10'-0"	10'-0"	110	48	6'-4"	6'-7"		60	10'-0"	10'-0"	60	8'-3"	8'-3"
60	10'-0"	10'-0"	60	6'-4"	6'-7"	72		10'-0"	10'-0"	72	7'-9"	7'-9"	
55	48	10'-0"	10'-0"	115	48	6'-1"	6'-4"	60	10'-0"	10'-0"	48	8'-9"	8'-9"
	60	10'-0"	10'-0"	60	6'-1"	6'-4"	72	10'-0"	10'-0"	60	8'-2"	8'-2"	
	72	10'-0"	10'-0"	72	4'-10"	5'-1"	60	48	10'-0"	10'-0"	120	48	8'-8"
48	10'-0"	10'-0"	120	48	5'-10"	6'-1"		60	10'-0"	10'-0"	60	8'-0"	8'-0"
60	10'-0"	10'-0"	60	5'-10"	6'-1"	72		9'-6"	9'-6"	72	7'-6"	7'-6"	
65	48	10'-0"	10'-0"	125	48	5'-7"	5'-10"	60	10'-0"	10'-0"	48	8'-6"	8'-6"
	60	10'-0"	10'-0"	60	5'-7"	5'-10"	72	10'-0"	10'-0"	60	7'-11"	7'-11"	
	72	10'-0"	10'-0"	72	4'-6"	4'-8"	70	48	10'-0"	10'-0"	130	48	8'-5"
48	10'-0"	10'-0"	130	48	5'-5"	5'-7"		60	9'-7"	9'-7"	60	7'-10"	7'-10"
60	10'-0"	10'-0"	60	4'-4"	4'-6"	72		9'-0"	9'-0"	72	7'-4"	7'-4"	
75	48	10'-0"	10'-0"	135	48	9'-4"	9'-8"	60	10'-0"	10'-0"	48	8'-4"	8'-4"
	60	10'-0"	10'-0"	60	9'-4"	9'-8"	72	10'-0"	10'-0"	60	7'-8"	7'-8"	
	72	10'-0"	10'-0"	72	6'-3"	6'-5"	80	48	10'-0"	10'-0"	140	48	8'-2"
48	10'-0"	10'-0"	140	48	8'-9"	9'-1"		60	9'-11"	9'-11"	60	7'-7"	7'-7"
60	10'-0"	10'-0"	60	8'-9"	9'-1"	72		9'-2"	9'-2"	72	7'-2"	7'-2"	
85	48	10'-0"	10'-0"	145	48	8'-3"	8'-7"	60	10'-0"	10'-0"	48	8'-1"	8'-1"
	60	10'-0"	10'-0"	60	8'-3"	8'-7"	72	10'-0"	10'-0"	60	7'-6"	7'-6"	
	72	10'-0"	10'-0"	72	6'-7"	6'-10"	90	48	10'-0"	10'-0"	145	48	8'-12"
48	10'-0"	10'-0"	145	48	6'-7"	6'-10"		60	9'-8"	9'-8"	60	7'-1"	7'-1"
60	10'-0"	10'-0"	60	6'-7"	6'-10"	72		8'-6"	8'-6"	72	7'-1"	7'-1"	
95	48	10'-0"	10'-0"	150	48	7'-9"	8'-1"	60	10'-0"	10'-0"	48	8'-0"	8'-0"
	60	10'-0"	10'-0"	60	7'-9"	8'-1"	72	10'-0"	10'-0"	60	7'-5"	7'-5"	
	72	10'-0"	10'-0"	72	5'-2"	5'-5"	95	48	10'-0"	10'-0"	150	48	8'-4"
48	10'-0"	10'-0"	150	48	5'-2"	5'-5"		60	9'-6"	9'-6"	60	7'-0"	7'-0"
60	10'-0"	10'-0"	60	5'-2"	5'-5"	72		8'-10"	8'-10"	72	7'-0"	7'-0"	

MAXIMUM LOUVER SYSTEM HEIGHT (ft) SCHEDULE FOR A GIVEN A.S.D. DESIGN PRESSURE RATING (psf) AND A (12) MULLION SPACING (ft), APPLICABLE TO MULLION CONNECTION TO CONCRETE OR STEEL TOP AND BOTTOM COVERED BY DETAIL 2, SHEET 12 W/ ED. = 4" (FOR CONCRETE W/ MIN. f'c = 4 ksi.)

	Concrete		Steel			Concrete		Steel		
	48	60	72	10'-0"		48	60	72	10'-0"	
40	48	10'-0"	10'-0"	100	48	6'-12"	7'-3"	60	5'-7"	5'-10"
	60	10'-0"	10'-0"	60	5'-7"	5'-10"	72	4'-8"	4'-10"	
	72	10'-0"	10'-0"	72	4'-8"	4'-10"	45	48	10'-0"	10'-0"
48	10'-0"	10'-0"	105	48	6'-8"	6'-11"		60	5'-4"	5'-6"
60	10'-0"	10'-0"	60	6'-8"	6'-11"	72		4'-5"	4'-7"	
50	48	10'-0"	10'-0"	110	48	10'-0"	10'-0"	60	6'-4"	6'-7"
	60	10'-0"	10'-0"	60	6'-4"	6'-7"	72	5'-1"	5'-3"	
	72	10'-0"	10'-0"	72	5'-1"	5'-3"	55	48	10'-0"	10'-0"
48	10'-0"	10'-0"	115	48	10'-0"	10'-0"		60	4'-10"	5'-1"
60	10'-0"	10'-0"	60	4'-10"	5'-1"	72		4'-3"	4'-5"	
60	48	10'-0"	10'-0"	120	48	10'-0"	10'-0"	60	6'-1"	6'-4"
	60	9'-4"	9'-8"	60	6'-1"	6'-4"	72	4'-10"	5'-1"	
	72	7'-9"	8'-1"	72	4'-10"	5'-1"	65	48	10'-0"	10'-0"
48	10'-0"	10'-0"	125	48	5'-10"	6'-1"		60	4'-8"	4'-10"
60	10'-0"	10'-0"	60	5'-10"	6'-1"	72		3'-11"	4'-0"	
70	48	10'-0"	10'-0"	130	48	9'-4"	9'-8"	60	5'-7"	5'-10"
	60	10'-0"	10'-0"	60	9'-4"	9'-8"	72	4'-6"	4'-8"	
	72	10'-0"	10'-0"	72	7'-9"	8'-1"	75	48	10'-0"	10'-0"
48	10'-0"	10'-0"	135	48	8'-7"	8'-11"				

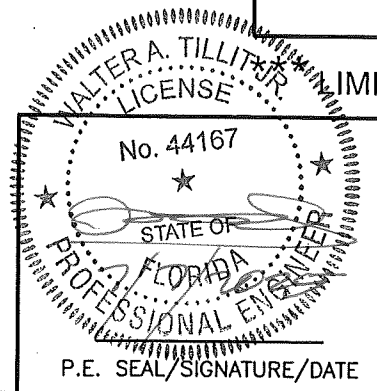
**PRODUCT REVISED**  
 as complying with the Florida  
 Building Code  
 NOA-No. 25-0805.06  
 Expiration Date 11/20/2028  
 By *[Signature]*  
 Miami-Dade Product Control

## ANCHOR SPACING SCHEDULE AT JAMBS, VALID FOR CONNECTION TO CONCRETE, CONCRETE BLOCK & STEEL SUBSTRATES.

ANCHOR SPACING SCHEDULE AT JAMBS W/ (7L) (1 1/2"x1 1/2"x1/8" ANGLE)				
A.S.D. DESIGN PRESSURE RATING (psf.)	SINGLE UNIT WIDTH OR MULLION SPACING (S) AT MULTIPLE UNITS	MAX. SPACING (in)		
		TO CONCRETE	TO CONCRETE BLOCK	TO STEEL
75 OR LESS	48	8" O.C	4" O.C	8" O.C
	60	8" O.C	3" O.C	8" O.C
	72	8" O.C	3" O.C	8" O.C
> 75 TO 110	48	8" O.C	3" O.C	8" O.C
	60	8" O.C	3" O.C**	8" O.C
	72	7" O.C	N/A	7 1/2" O.C
> 110 TO 150	48	8" O.C	3" O.C*	8" O.C
	60	6 1/2" O.C	N/A	6 1/2" O.C
	72	5" O.C	N/A	5 1/2" O.C

ANCHOR SPACING SCHEDULE AT JAMBS W/ (7L1) (2"x4"x1/8" ANGLE)				
A.S.D. DESIGN PRESSURE RATING (psf.)	SINGLE UNIT WIDTH OR MULLION SPACING (S) AT MULTIPLE UNITS	MAX. SPACING (in)		
		TO CONCRETE	TO CONCRETE BLOCK	TO STEEL
75 OR LESS	48	8" O.C	7" O.C	8" O.C
	60	8" O.C	6" O.C	8" O.C
	72	8" O.C	5" O.C	8" O.C
> 75 TO 110	48	8" O.C	5" O.C	8" O.C
	60	8" O.C	4" O.C	8" O.C
	72	8" O.C	3" O.C	8" O.C
> 110 TO 150	48	8" O.C	3" O.C	8" O.C
	60	8" O.C	3" O.C	8" O.C
	72	7 1/2" O.C	3" O.C***	8" O.C

\* LIMITED TO 114.0 psf. A.S.D. DESIGN PRESSURE RATING.  
 \*\* LIMITED TO 91.0 psf. A.S.D. DESIGN PRESSURE RATING.



© 2025 TILTECO INC.

**TILTECO INC.**

TILLIT TESTING & ENGINEERING COMPANY  
 6355 N.W. 36th St., Ste. 305, VIRGINIA GARDENS, FL 33166  
 Phone: (305)871-1530 . Fax: (305)871-1531  
 e-mail: tilteco@aol.com  
 CA-0006719  
 WALTER A. TILLIT Jr. P.E.  
 FLORIDA Lic. # 44167

SED-5.1 LOUVER SYSTEM WITH OR WITHOUT CD-151 DAMPER ASSEMBLY

**S&P AIR CONTROL, LLC.**

3005 SOUTH HICKORY ST. 159 GENCO DRIVE  
 CHATTANOOGA, TN 37407 HARTFORD, AL 36344  
 PHONE: (423)698-7715 FAX:(423)698-6629

W.H.  
DRAWN BY

7/7/2025  
DATE

**25-060**  
DRAWING No

REV. No	DESCRIPTION	DATE	REV. No	DESCRIPTION	DATE
1	OLD 23-069	7/7/2025	3		
2			4		

SHEET 16 OF 16

LIMITED TO 127.0 psf. A.S.D. DESIGN PRESSURE RATING  
 FLORIDA BUILDING CODE (High Velocity Hurricane Zone)