



DEPARTMENT OF REGULATORY AND ECONOMIC RESOURCES (RER)
 BOARD AND CODE ADMINISTRATION DIVISION
NOTICE OF ACCEPTANCE (NOA)

MIAMI-DADE COUNTY
PRODUCT CONTROL SECTION
 11805 SW 26 Street, Room 208
 Miami, Florida 33175-2474
 T (786) 315-2590 F (786) 315-2599
www.miamidade.gov/economy

S&P Air Control, LLC
3005 South Hickory Street
Chattanooga, TN 37407

SCOPE:

This NOA is being issued under the applicable rules and regulations governing the use of construction materials. The documentation submitted has been reviewed and accepted by Miami-Dade County RER-Product Control Section to be used in Miami Dade County and other areas where allowed by the Authority Having Jurisdiction (AHJ).

This NOA shall not be valid after the expiration date stated below. The Miami-Dade County Product Control Section (In Miami Dade County) and/or the AHJ (in areas other than Miami Dade County) reserve the right to have this product or material tested for quality assurance purposes. If this product or material fails to perform in the accepted manner, the manufacturer will incur the expense of such testing and the AHJ may immediately revoke, modify, or suspend the use of such product or material within their jurisdiction. RER reserves the right to revoke this acceptance, if it is determined by Miami-Dade County Product Control Section that this product or material fails to meet the requirements of the applicable building code.

This product is approved as described herein and has been designed to comply with the Florida Building Code, including the High Velocity Hurricane Zone.

DESCRIPTION: Models PTG-42MD (PTAC) & VTG-30MD (VTAC) Aluminum Louver Systems

APPROVAL DOCUMENT: Drawing No. **25-063**, titled “Models PTG-42MD (PTAC) & VTG-30MD (VTAC) Aluminum Louver Systems (L.M.I.)”, sheets 1 through 12 of 12 (including sheets 3A, 7A & 10A), dated 07/07/2025, prepared by Tilteco, Inc., signed and sealed by Walter A. Tillit Jr., P.E., bearing the Miami-Dade County Product Control expiration stamp with the Notice of Acceptance number and expiration date by the Miami-Dade County Product Control Section.

MISSILE IMPACT RATING: Large and Small Missile Impact Resistant.

LABELING: A permanent label with the manufacturer's name or logo, Chattanooga, TN or Hartford, AL, model/series, and following statement: "Miami-Dade County Product Control Approved", is to be located on each unit.

RENEWAL of this NOA shall be considered after a renewal application has been filed and there has been no change in the applicable building code negatively affecting the performance of this product.

TERMINATION of this NOA will occur after the expiration date or if there has been a revision or change in the materials, use, and/or manufacture of the product or process. Misuse of this NOA as an endorsement of any product, for sales, advertising or any other purposes shall automatically terminate this NOA. Failure to comply with any section of this NOA shall be cause for termination and removal of NOA.

ADVERTISEMENT: The NOA number preceded by the words Miami-Dade County, Florida, and followed by the expiration date may be displayed in advertising literature. If any portion of the NOA is displayed, then it shall be done in its entirety.

INSPECTION: A copy of this entire NOA shall be provided to the user by the manufacturer or its distributors and shall be available for inspection at the job site at the request of the Building Official.

This NOA **revises** NOA # **23-1017.02** and consists of this page 1 and evidence page E-1, as well as approval document mentioned above.

The submitted documentation was reviewed by **Carlos M. Utrera, P.E.**



09/09/25

NOA No. 25-0805.09
 Expiration Date: December 28, 2028
 Approval Date: September 18, 2025

NOTICE OF ACCEPTANCE: EVIDENCE SUBMITTED

1. Evidence submitted under NOA # 23-1017.02 and new

A. DRAWINGS

1. Drawing No. **25-063**, titled “Models PTG-42MD (PTAC) & VTG-30MD (VTAC) Aluminum Louver Systems (L.M.I.)”, sheets 1 through 12 of 12 (including sheets 3A, 7A & 10A), dated 07/07/2025, prepared by Tilteco, Inc., signed and sealed by Walter A. Tillit Jr., P.E.

B. TESTS

1. Test reports on 1) Uniform Static Air Pressure Test, Loading per FBC TAS 202-94
2) Large Missile Impact Test per FBC, TAS 201-94
3) Cyclic Wind Pressure Loading per FBC, TAS 203-94
along with marked-up drawings and installation diagram of Models PTG-42MD (PTAC) & VTG-30MD (VTAC) Aluminum Louver Systems, prepared by American Test Lab of South Florida, Test Report No. **0202.01-23**, dated 10/20/2023, signed and sealed by Stephen Warter, P.E.

C. CALCULATIONS

1. Anchoring calculations, prepared by Tilteco, Inc, dated 10/20/2023, signed and sealed by Walter A. Tillit Jr., P.E.

D. QUALITY ASSURANCE

1. Miami-Dade Department of Regulatory and Economic Resources (RER).

E. MATERIAL CERTIFICATIONS

1. None.

F. STATEMENTS

1. Amended Sales Agreement made on April 8th, 2024 by S&P Air Control, LLC.
2. Statement letter of code conformance to the 7th edition (2020) and 8th edition (2023) of the FBC, issued by Tilteco, Inc., dated 10/19/2023, signed and sealed by Walter A. Tillit Jr., P.E.
3. Statement letter of no financial interest letter, issued by Tilteco, Inc., dated 10/19/2023, signed and sealed by Walter A. Tillit Jr., P.E.



Carlos M. Utrera, P.E.
Product Control Examiner
NOA No. 25-0805.09

Expiration Date: December 28, 2028
Approval Date: September 18, 2025

GENERAL NOTES:

1. MODELS PTG-42MD (PTAC) & VTG-30MD (VTAC) ALUMINUM LOUVER SYSTEMS SHOWN ON THIS PRODUCT APPROVAL DOCUMENT (P.A.D.) HAVE BEEN VERIFIED FOR COMPLIANCE IN ACCORDANCE WITH THE **2020 (7th EDITION) & 2023 (8th EDITION)** OF THE FLORIDA BUILDING CODE. THESE PRODUCTS MAY BE INSTALLED WITHIN HIGH VELOCITY HURRICANE ZONES (HVHZ).

DESIGN WIND LOADS SHALL BE DETERMINED AS PER SECTION 1620 OF THE ABOVE MENTIONED CODE, USING **ASCE 7-16 (FBC 2020) & ASCE 7-22 (FBC 2023)** STANDARD, AND SHALL NOT EXCEED THE MAXIMUM (A.S.D.) DESIGN PRESSURE RATING INDICATED ON THIS SHEET.

IN ORDER TO VERIFY THE ABOVE CONDITION, ULTIMATE DESIGN WIND LOADS DETERMINED PER **ASCE 7-16 (FBC 2020) AND ASCE 7-22 (FBC 2023)** SHALL BE FIRST REDUCED TO A.S.D. DESIGN WIND LOADS BY MULTIPLYING THEM BY 0.6 IN ORDER TO COMPARE THESE W/MAX. (A.S.D.) DESIGN PRESSURE RATINGS INDICATED BELOW.

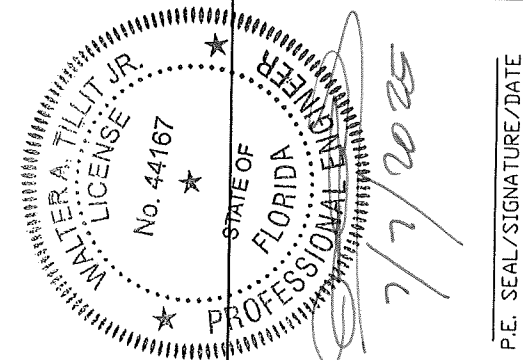
MAXIMUM A.S.D. DESIGN PRESSURE RATING
+150.0, -150.0 psf.
LARGE MISSILE IMPACT RESISTANCE

PRODUCT'S VERIFICATION FOR IMPACT AND FATIGUE RESISTANCE HAS BEEN VERIFIED IN ACCORDANCE WITH SECTION 1626 OF THE ABOVE MENTIONED CODE AS PER AMERICAN TESTING LAB OF SOUTH FLORIDA **REPORT #0202.01-23 ,PER TAS-201, TAS-202 & TAS-203 PROTOCOLS**, AS WELL AS PER ANSI/AMCA IMPACT STANDARD 540, AND AS PER SUBMITTED STRUCTURAL CALCULATIONS, PERFORMED AS PER SECTION 1616 OF THE ABOVE MENTIONED BUILDING CODE.

- 2. ALL ALUMINUM EXTRUSIONS SHALL BE 6063-T6 ALLOY (UNLESS OTHERWISE NOTED).
- 3. ALL SCREWS TO BE STAINLESS STEEL 304 OR 316 SERIES WITH 50 KSI YIELD STRENGTH AND 90 KSI TENSILE STRENGTH OR CORROSION RESISTANT CARBON STEEL AS PER DIN 50018 AND SHALL COMPLY WITH FLORIDA BUILDING CODE SECTION 2411.3.3.4.
- 4. ALL WELDING OF ALUMINUM FRAMING SHALL BE IN ACCORDANCE WITH THE AMERICAN WELDING SOCIETY A.W.S. D.1.2 REGULATIONS. USE CERTIFIED WELDERS. USE ER-5356 ELECTRODES.
- 5. ANCHOR REQUIREMENTS FOR FRAMING EMBEDMENT AND EDGE DISTANCE ARE BEYOND ANY FINISH.
 - (A) TO EXISTING MIN. 0.090" THICK ALUMINUM (6063-T5 ALLOY) W/MIN. EDGE DISTANCE (E.D.) = 1/2".
- 1/4"Ø x 1", AS MANUFACTURED BY ITW BUILDEX.
 - (B) ANCHORS SHALL BE INSTALLED FOLLOWING ALL OF THE RECOMMENDATIONS AND SPECIFICATIONS OF THE ANCHOR'S MANUFACTURER.
- 6. PRODUCTS ARE NOT APPROVED FOR WATER INFILTRATION, HOWEVER PTAC & VTAC UNITS INSTALLED BEHIND THEM SHALL BE APPROVED FOR WATER INFILTRATION RESISTANCE.
- 7. ALL ALUMINUM EXTRUSIONS IN CONTACT WITH DISSIMILAR MATERIALS SHALL COMPLY WITH SECTION III-6 OF THE ALUMINUM DESIGN MANUAL 2015 & 2020 EDITION.
- 8. SUBSTRATE MATERIAL NOTED ON THIS DRAWING AS EXISTING BY OTHERS, MUST WITHSTAND THE LOADS IMPOSED BY THIS PRODUCT. MIN. ALLOY REQUIRED IS 6063-T5.
- 9. THIS PRODUCT'S INSTALLATION SHALL COMPLY WITH ALL SPECS INDICATED IN THIS DRAWING PLUS ANY BUILDING AND ZONING REGULATIONS PROVIDED BY THE JURISDICTION WHERE PERMIT IS APPLIED TO.

- 10. (a) THIS P.A.D. PREPARED BY THIS ENGINEER IS GENERIC AND DOES NOT PROVIDE INFORMATION FOR A SITE SPECIFIC PROJECT; I.E. WHERE THE SITE CONDITIONS DEVIATE FROM THE P.A.D.
- (b) CONTRACTOR TO BE RESPONSIBLE FOR THE SELECTION, PURCHASE AND INSTALLATION INCLUDING LIFE SAFETY OF THIS PRODUCT, BASED ON THIS P.A.D., PROVIDED HE/SHE DOES NOT DEVIATE FROM THE CONDITIONS DETAILED ON THIS DOCUMENT. CONSTRUCTION SAFETY AT SITE IS THE CONTRACTOR'S RESPONSIBILITY.
- (c) THIS P.A.D. WILL BE CONSIDERED INVALID IF ALTERED BY ANY MEANS.
- (d) SITE SPECIFIC PROJECTS SHALL BE PREPARED BY A PROFESSIONAL ENGINEER OR ARCHITECT WHICH WILL BECOME THE ENGINEER OF RECORD (E.O.R.) FOR THE PROJECT AND WHO WILL BE RESPONSIBLE FOR THE PROPER USE OF THE P.A.D. ENGINEER OF RECORD, ACTING AS A DELEGATED ENGINEER TO THE P.A.D. ENGINEER, SHALL SUBMIT TO THIS LATTER THE SITE SPECIFIC DRAWINGS FOR REVIEW.
- (e) ORIGINAL P.A.D. SHALL BEAR THE DATE AND ORIGINAL SEAL AND SIGNATURE OF THE PROFESSIONAL ENGINEER OF RECORD THAT PREPARED IT.
- 11. PRODUCT MANUFACTURER'S LABEL SHALL BE LOCATED ON A READILY VISIBLE LOCATION AT PRODUCT IN ACCORDANCE WITH SECTION 1703.5 OF THE FLORIDA BUILDING CODE. ONE LABEL SHALL BE PLACED FOR EVERY OPENING.

THIS DRAWING SHALL ONLY BE USED TO OBTAIN PERMITS IN THE STATE OF FLORIDA



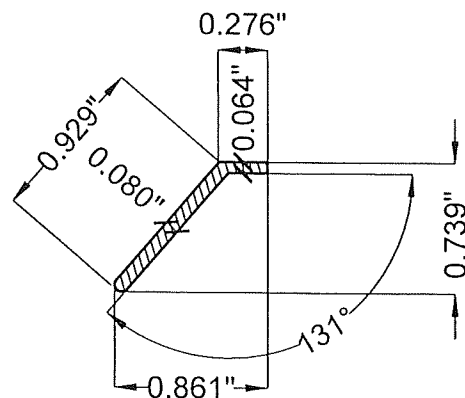
PRODUCT REVISED
as complying with the Florida Building Code
NOA-No. 25-0805.09
Expiration Date 12/28/2028
 By [Signature]
Miami-Dade Product Control

FLORIDA BUILDING CODE (HIGH VELOCITY HURRICANE ZONE)

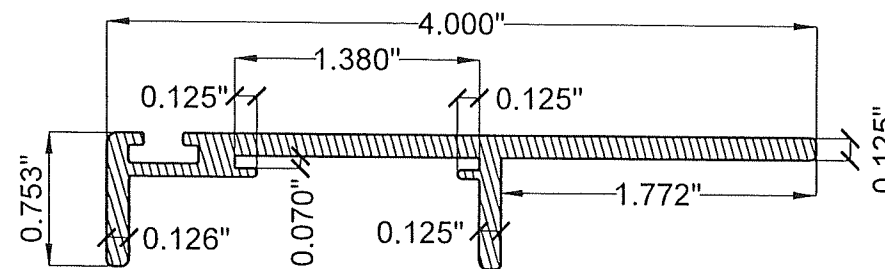
<p>MODELS PTG-42MD (PTAC) & VTG-30MD (VTAC) ALUMINUM BLADE LOUVER SYSTEMS. (L.M.I.)</p> <p>S&P AIR CONTROL, LLC. 3005 SOUTH HICKORY ST. HARTFORD, AL 36344 CHATTANOOGA, TN 37407 PHONE: (423)698-7715 FAX: (423)698-6629</p>	<p>W.H. DRAWN BY: 07/07/2025 DATE: 25-063 DRAWING No. SHEET 1 OF 12</p> <table border="1" style="width: 100%; border-collapse: collapse;"> <thead> <tr> <th>REV. NO</th> <th>DESCRIPTION</th> <th>DATE</th> <th>REV. NO</th> <th>DESCRIPTION</th> <th>DATE</th> </tr> </thead> <tbody> <tr> <td>1</td> <td>OLD</td> <td>23-222</td> <td>7/7/25</td> <td>3</td> <td>-</td> </tr> <tr> <td>2</td> <td></td> <td></td> <td>4</td> <td></td> <td></td> </tr> </tbody> </table>	REV. NO	DESCRIPTION	DATE	REV. NO	DESCRIPTION	DATE	1	OLD	23-222	7/7/25	3	-	2			4		
REV. NO	DESCRIPTION	DATE	REV. NO	DESCRIPTION	DATE														
1	OLD	23-222	7/7/25	3	-														
2			4																
<p>02025 TILTECO, INC.</p> <p>TILTECO INC.</p> <p>TILLIT TESTING & ENGINEERING COMPANY 6555 N.W. 36th St., Ste. 305, VIRGINIA GARDENS, FL 33166 Phone: (305)971-1531 Fax: (305)971-1531 WALTER A. TILLIT JR., P.E. FLORIDA Lic. # 44167</p>																			
<p>P.E. SEAL/SIGNATURE/DATE</p>																			
<p>MIAMI-DADE COUNTY</p>																			

BILL OF MATERIALS MODEL PTG-42MD (PTAC) BLADE SYSTEM: INSIDE-FLUSH MOUNT

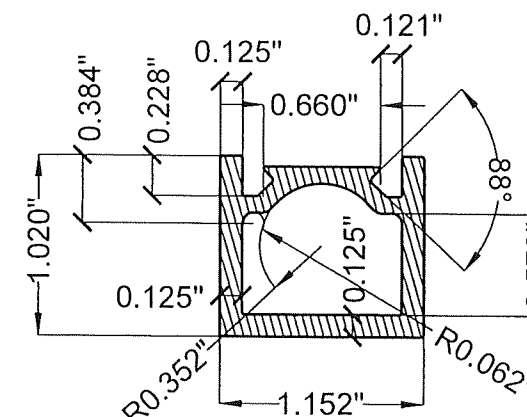
COMPONENT #	DESCRIPTION	MATERIAL	NOTES	LOUVER SYSTEM
①	PTAC - BLADE	6063-T6 ALUMINUM ALLOY/TEMPER	WELDED TO 5. NOTCHED AT EA 1 LOCATION. (SEE SECTION Y-Y ON SHEET 4)	PTAC
③	CHANNEL FRAME INSIDE-FLUSH MOUNT	6063-T6 ALUMINUM ALLOY/TEMPER	ALL AROUND, FASTENED W/⑦	PTAC
④	TUBE SUPPORT	6063-T6 ALUMINUM ALLOY/TEMPER	INSTALLED VERTICALLY & WELDED TO ③	PTAC
⑤	BRACE BAR	6063-T6 ALUMINUM ALLOY/TEMPER	INSTALLED VERTICALLY	PTAC
⑥	LG CORNER LUG ANGLES	6063-T6 ALUMINUM ALLOY/TEMPER	USE (4) EACH UNIT	PTAC
⑦	1/4-14 X 1" TEK SCREWS	401 S.S.	MANUFACTURED BY ITW/BUILDEX	PTAC
⑧	1/8" POP RIVET	S.S.	USE (2)@ ⑥ (VERT. LEG) TO ③	PTAC



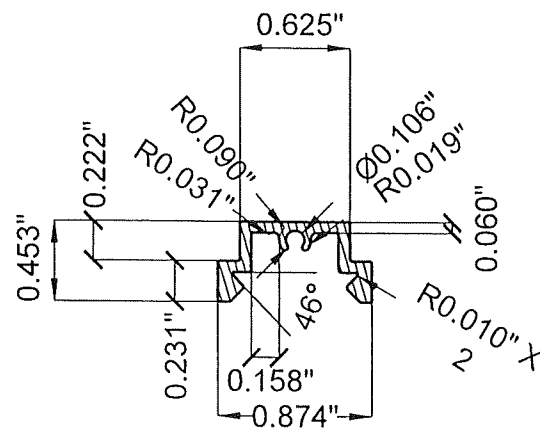
① **PTAC BLADE**
ALLOY 6063-T6 ALUM



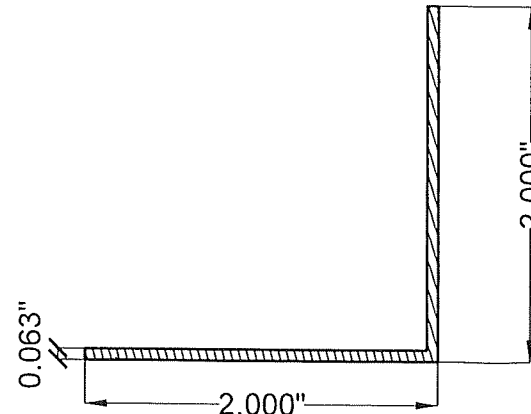
③ **CHANNEL FRAME: INSIDE-FLUSH MOUNT**
ALLOY 6063-T6 ALUM



④ **TUBE SUPPORT**
ALLOY 6063-T6 ALUM



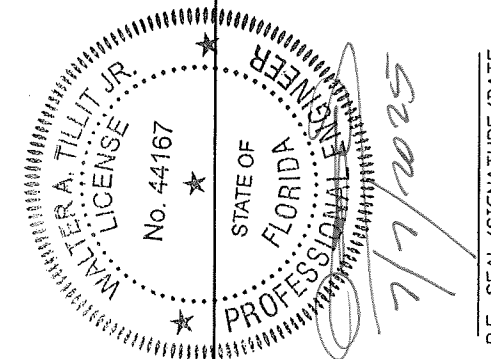
⑤ **BRACE BAR**
ALLOY 6063-T6 ALUM



⑥ **LG CORNER LUG ANGLES**
2" X 2" X 0.063" X 1.313"
ALLOY 6063-T6 ALUM

COMPONENTS:
MODEL PTG-42MD (PTAC)
BLADE SYSTEM

SCALE: N.T.S



PRODUCT REVISED
as complying with the Florida
Building Code
NOA-No. 25-0805.09
Expiration Date 12/28/2028
By *[Signature]*
Miami-Dade Product Control

FLORIDA BUILDING CODE (HIGH VELOCITY HURRICANE ZONE)

©2025 TILTECO, INC.

TILTECO INC.

TILLIT TESTING & ENGINEERING COMPANY
6355 N.W. 36th St., Ste. 305, VIRGINIA GARDENS, FL 33166
Phone: (305)871-1530, Fax: (305)871-1531
CA-0006719
WALTER A. TILLIT Jr. P.E.
FLORIDA Lic. # 44167

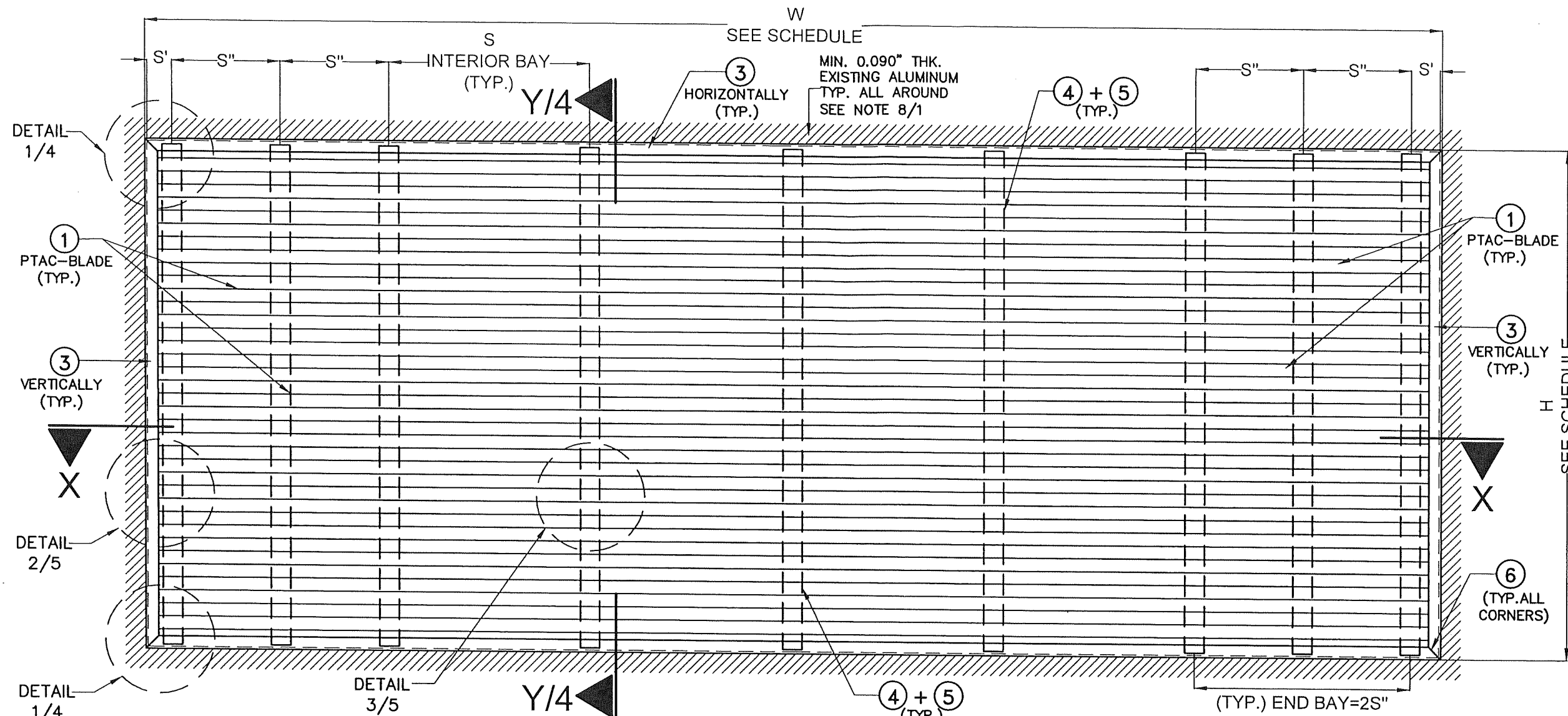
MODELS PTG-42MD (PTAC) & VTG-30MD (VTAC)
ALUMINUM BLADE LOUVER SYSTEMS. (L.M.I.)

S&P AIR CONTROL, LLC.
3005 SOUTH HICKORY ST.
CHATTANOOGA, TN 37407
PHONE: (423)698-7715 FAX: (423)698-6629

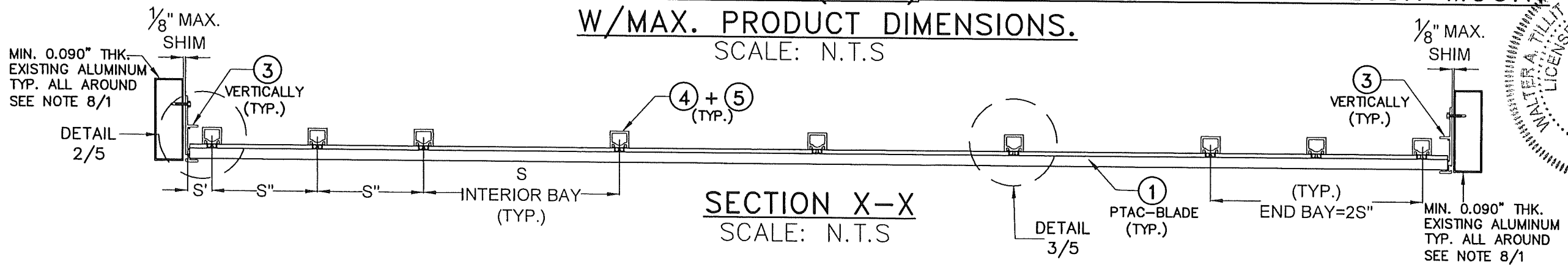
REV. NO	DESCRIPTION	DATE	REV. NO	DESCRIPTION	DATE
1	OLD 23-222	7/7/25	3		
2			4		

W.H. DRAWN BY: 07/07/2025 DATE: 25-063 DRAWING No. SHEET 2 OF 12

MIAMI-DADE COUNTY



TYPICAL ELEVATION FOR MODEL PTG-42MD (PTAC) BLADE SYSTEM: INSIDE-FLUSH MOUNT
 W/MAX. PRODUCT DIMENSIONS.
 SCALE: N.T.S

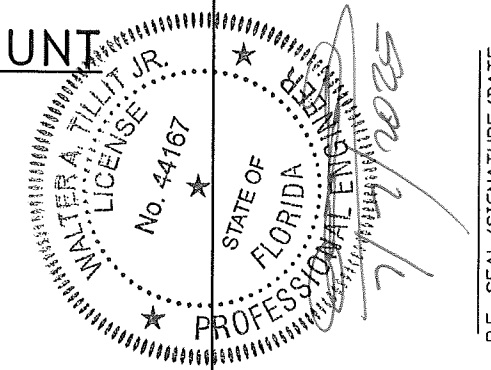


SECTION X-X
 SCALE: N.T.S

MODEL PTG-42MD (PTAC) MAX. DIMENSIONS SCHEDULE

CASE	W	H	S	S'	S''
MAX.	80"	30 1/4"	13"	1 11/16"	6 3/4"

LEGEND:
 S= TYPICAL MAX (4) + (5) INTERIOR SPACING FAR FROM ENDS BAYS
 S'= TYPICAL MAX (4) + (5) FIRST/LAST DISTANCE TO JAMBS (3)
 S''= TYPICAL MAX (4) + (5) SPACING AT END BAYS.



PRODUCT REVISED
 as complying with the Florida Building Code
 NOA-No. 25-0805.09
 Expiration Date 12/28/2028
 By *[Signature]*
 Miami-Dade Product Control

FLORIDA BUILDING CODE (HIGH VELOCITY HURRICANE ZONE)

©2025 TILTECO, INC.

TILTECO INC.
 TILLIT TESTING & ENGINEERING COMPANY
 6355 N.W. 36th St. Ste. 305, VIRGINIA CAROLINA, FL 33166
 Phone: (305)871-1530 Fax: (305)871-1531
 CA-0008719
 WALTER A. TILLITT JR., P.E.
 FLORIDA Lic. # 44167

MODELS PTG-42MD (PTAC) & VTG-30MD (VTAC) ALUMINUM BLADE LOUVER SYSTEMS. (L.M.I.)

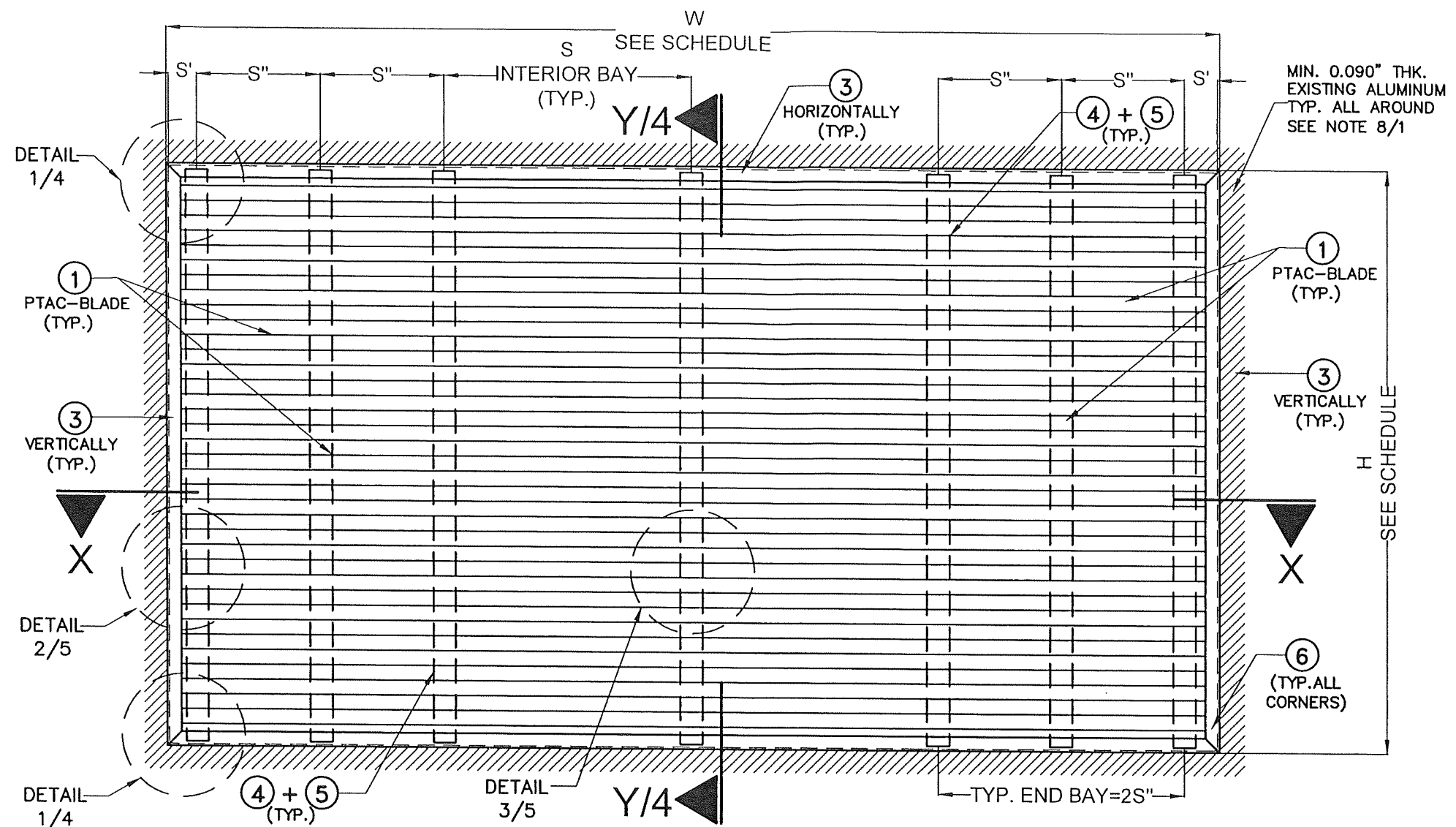
S&P AIR CONTROL, LLC.
 3005 SOUTH HICKORY ST. 158 GENCO DRIVE
 CHATTANOOGA, TN 37407 HARTFORD, AL 36344
 PHONE: (423)698-7715 FAX:(423)698-6629

REV. NO	DESCRIPTION	DATE	REV. NO	DESCRIPTION	DATE
1	OLD 23-222	7/7/25	3		
2			4		

W.H. DRAWN BY: 07/07/2025 DATE: 25-063 DRAWING No. SHEET 3 OF 12

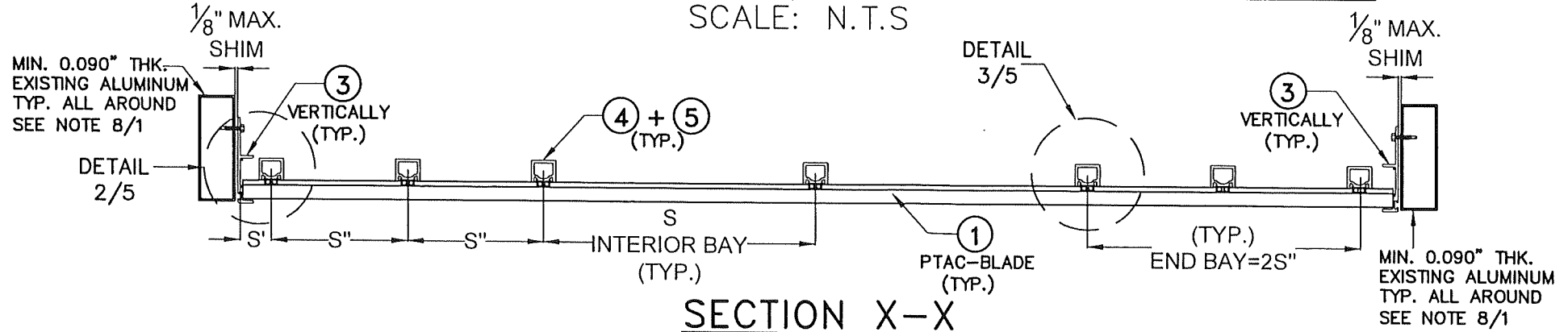
P.E. SEAL/SIGNATURE/DATE

MIAMI-DADE COUNTY



**TYPICAL ELEVATION FOR MODEL PTG-42MD (PTAC) BLADE SYSTEM:
INSIDE-FLUSH MOUNT W/MIN. PRODUCT DIMENSIONS**

SCALE: N.T.S



SECTION X-X
SCALE: N.T.S

MODEL PTG-42MD (PTAC) MIN. DIMENSIONS SCHEDULE

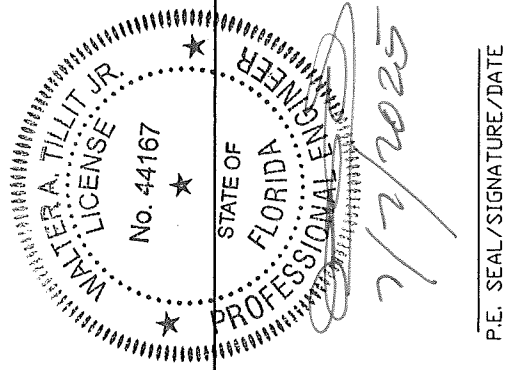
CASE	W	H	S	S'	S''
MIN.	42 1/4"	16 1/4"	10 1/8"	1"	4 1/8"

LEGEND:

S= TYPICAL MIN. ④ + ⑤ INTERIOR SPACING FAR FROM ENDS BAYS

S'= TYPICAL MIN. ④ + ⑤ FIRST/LAST DISTANCE TO JAMBS ③

S''= TYPICAL MIN. ④ + ⑤ SPACING AT END BAYS.



FLORIDA BUILDING CODE (HIGH VELOCITY HURRICANE ZONE)

©2025 TILTECO, INC.

TILTECO INC.

TILLIT TESTING & ENGINEERING COMPANY
3005 SOUTH HICKORY ST. HARTFORD, AL 36344
6355 N.W. 36th St. SUITE 305 VIRGINIA GARDENS, FL 33166
Phone: (305)871-1530 Fax: (305)871-1531
CA-0006719
WALTER A. TILLIT JR., P.E.
FLORIDA Lic. # 44167

MODELS PTG-42MD (PTAC) & VTG-30MD (VTAC) ALUMINUM BLADE LOUVER SYSTEMS. (L.M.I.)

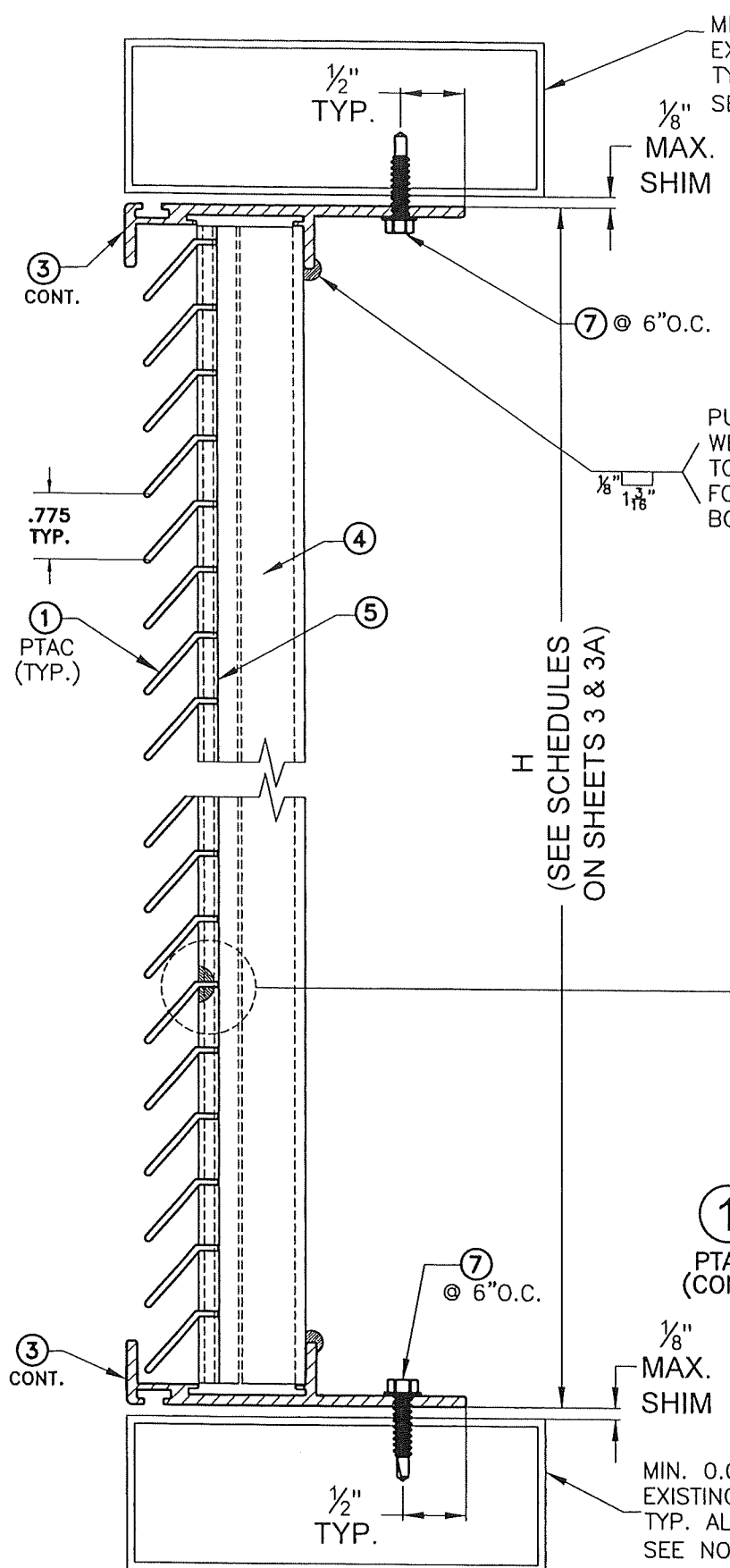
S&P AIR CONTROL, LLC.
3005 SOUTH HICKORY ST. HARTFORD, AL 36344
PHONE: (423)698-7715 FAX:(423)698-6629

REV. NO	DESCRIPTION	DATE	REV. NO	DESCRIPTION	DATE
1	OLD 23-222	7/7/25	3		
2			4		

W.H. DRAWN BY: 07/07/2025 DATE: 25-063 DRAWING NO. SHEET 3A OF 12

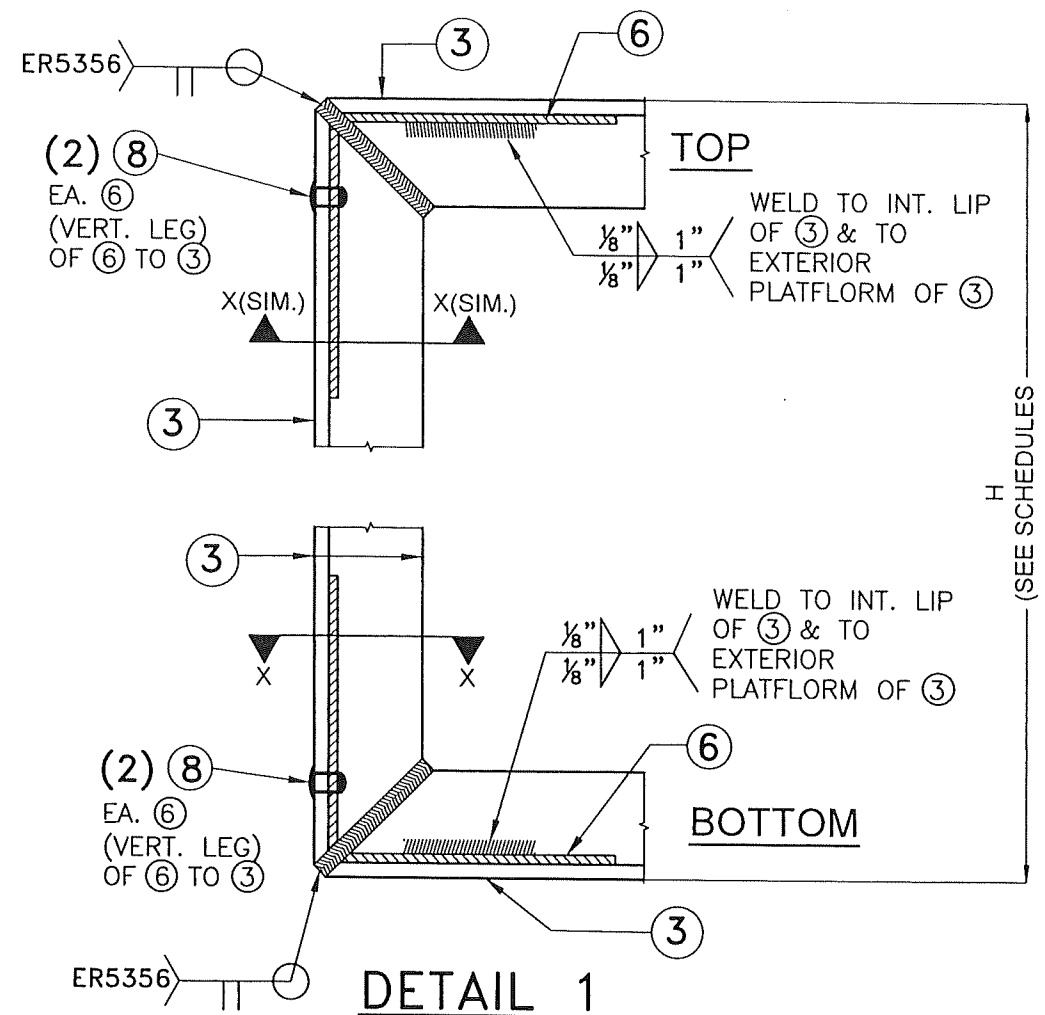
PRODUCT REVISED
as complying with the Florida Building Code
NOA-No. 25-0805.09
Expiration Date 12/28/2028
By *[Signature]*
Miami-Dade Product Control

MIAMI-DADE COUNTY

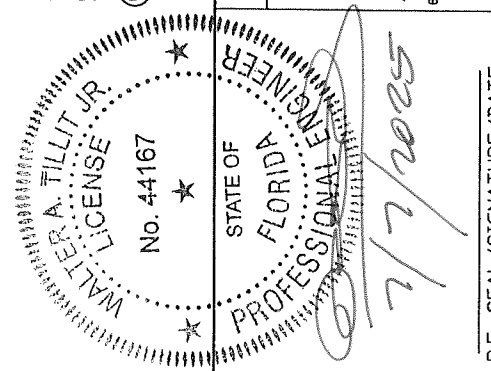
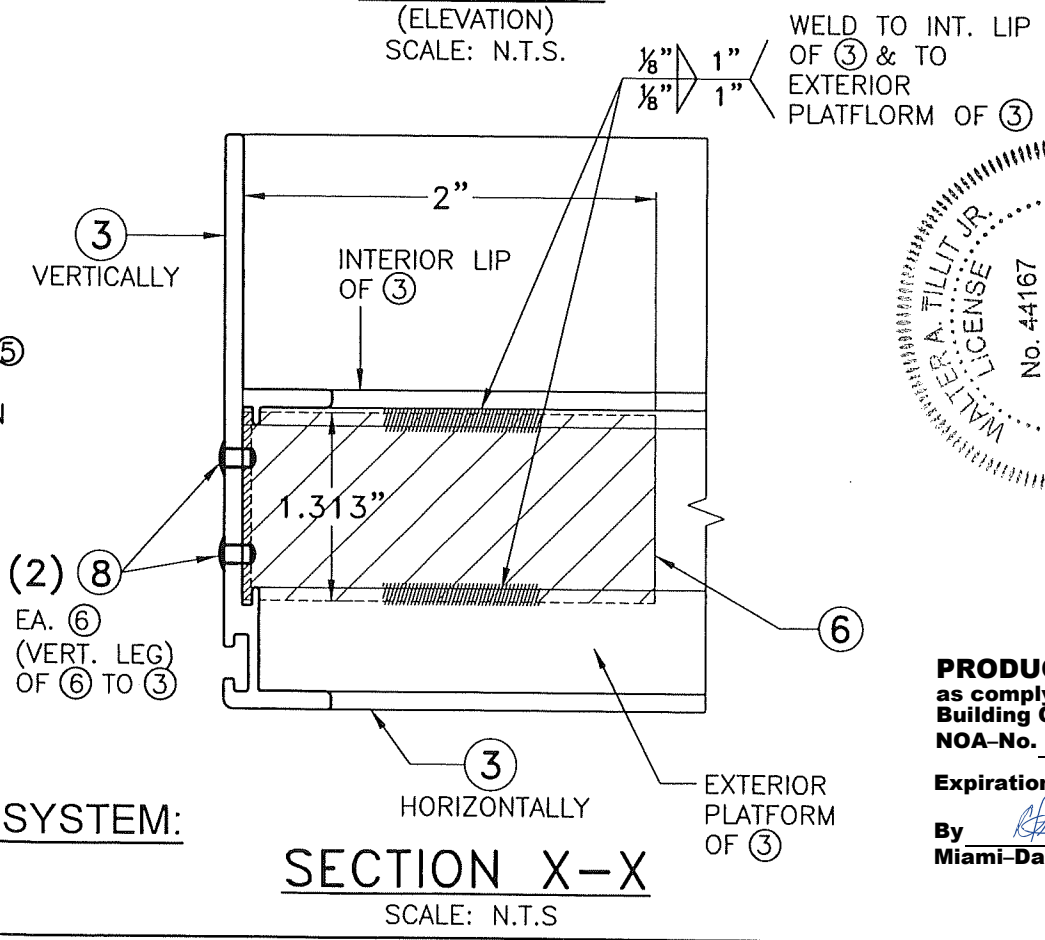


SECTION Y-Y
SCALE: N.T.S.

**MODEL PTG-42MD (PTAC) BLADE SYSTEM:
INSIDE-FLUSH MOUNT**



SECTION X-X
SCALE: N.T.S.



PRODUCT REVISED
as complying with the Florida
Building Code
NOA-No. 25-0805.09
Expiration Date 12/28/2028
By *[Signature]*
Miami-Dade Product Control

FLORIDA BUILDING CODE (HIGH VELOCITY HURRICANE ZONE)

©2025 TILTECO, INC.

TILTECO INC.
TILLIT TESTING & ENGINEERING COMPANY
6355 N.W. 36th St., Suite 305, Virginia, CA 95655, FL 33166
Phone: (305)871-1530, Fax: (305)871-1531
WALTER A. TILLIT JR., P.E.
FLORIDA Lic. # 44167

MODELS PTG-42MD (PTAC) & VTG-30MD (VTAC)
ALUMINUM BLADE LOUVER SYSTEMS. (L.M.I.)

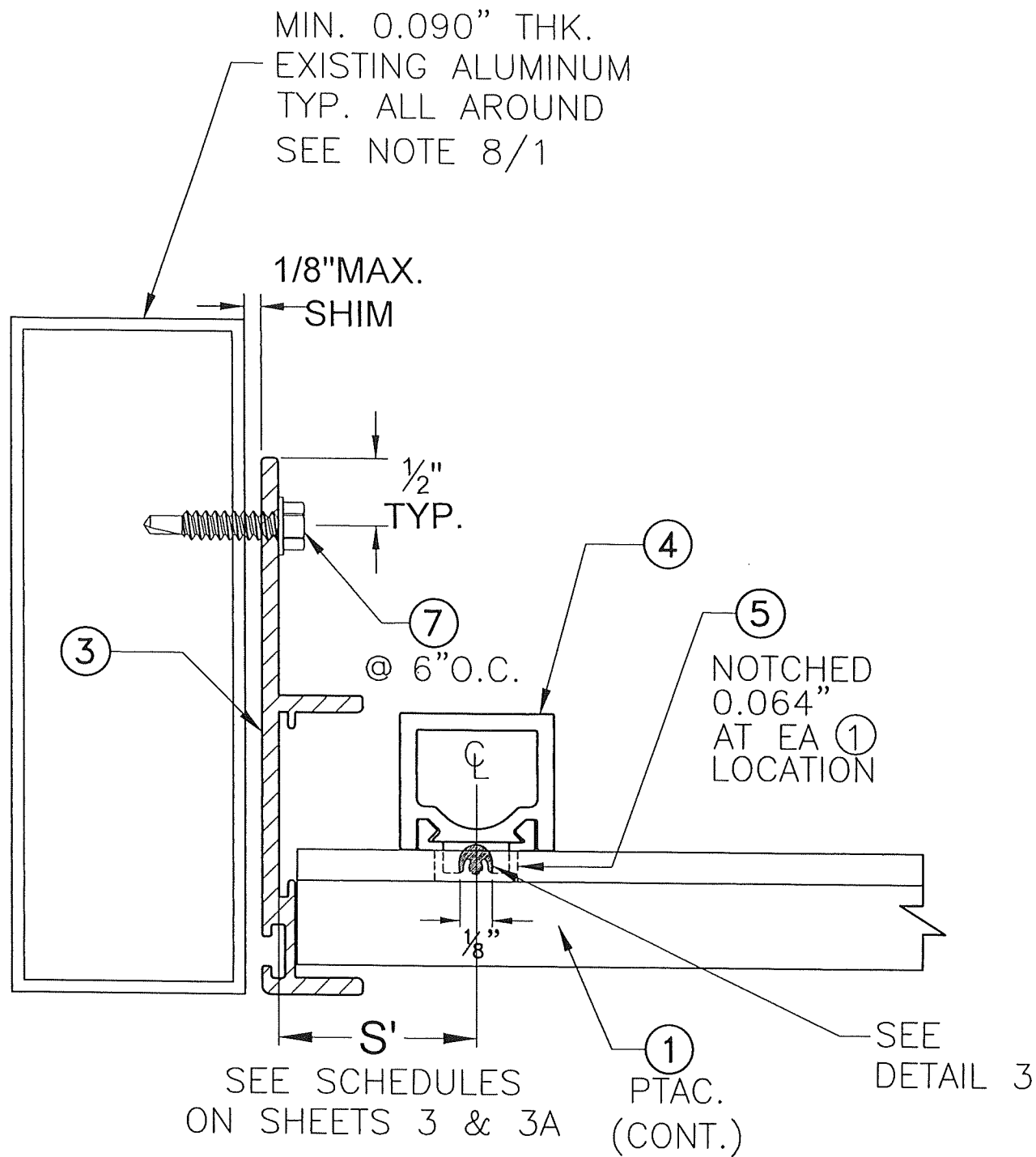
S&P AIR CONTROL, LLC.
159 GENCO DRIVE
HARTFORD, AL 36344
PHONE: (423)698-7715 FAX: (423)698-6629

REV. NO	DESCRIPTION	DATE	REV. NO	DESCRIPTION	DATE
1	OLD 23-222	7/7/25	3		
2			4		

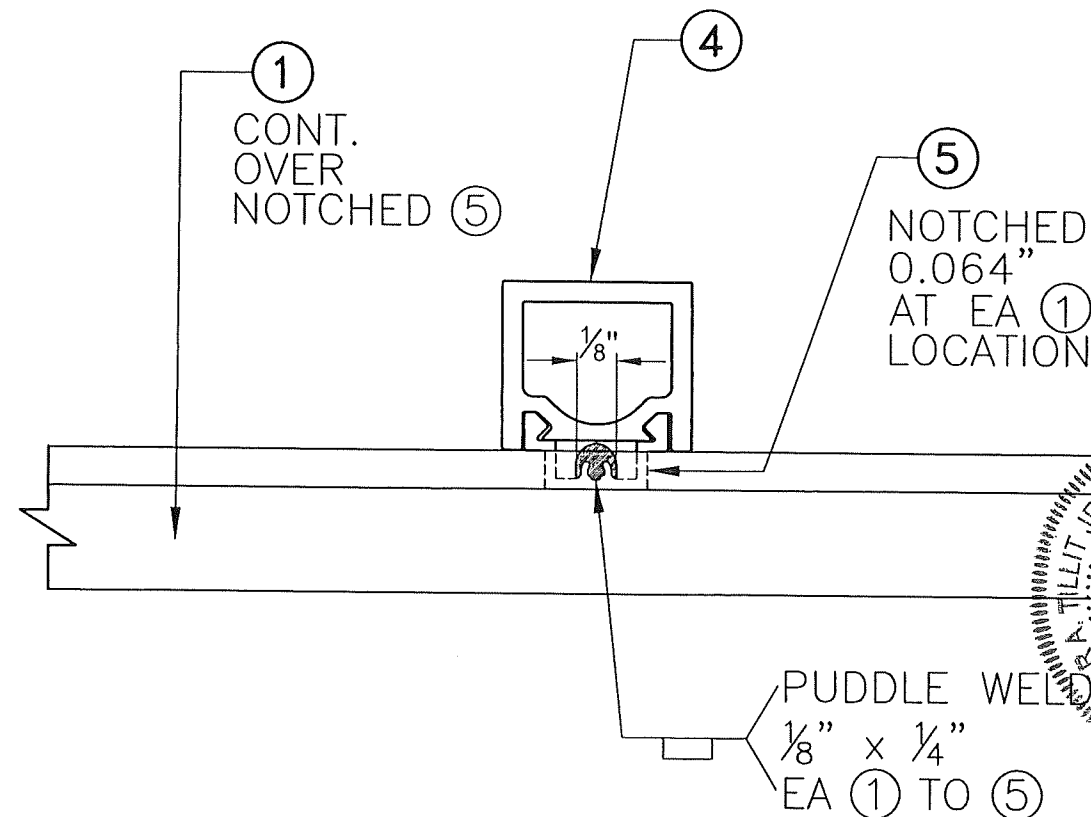
W.H. DRAWN BY: 07/07/2025 DATE: 25-063 DRAWING No. SHEET 4 OF 12

P.E. SEAL/SIGNATURE/DATE

MIAMI-DADE COUNTY



DETAIL 2 (PLAN)
JAMB ATTACHMENT
 SCALE: N.T.S



DETAIL 3 (PLAN)
 SCALE: N.T.S

MODEL PTG-42MD (PTAC) BLADE SYSTEM:
INSIDE-FLUSH MOUNT

SEE SCHEDULES ON SHEETS 3 & 3A
 PTAC. (CONT.)

SEE DETAIL 3

PUDDLE WELD
 1/8" x 1/4"
 EA ① TO ⑤

MIN. 0.090" THK.
 EXISTING ALUMINUM
 TYP. ALL AROUND
 SEE NOTE 8/1

1/8" MAX.
 SHIM

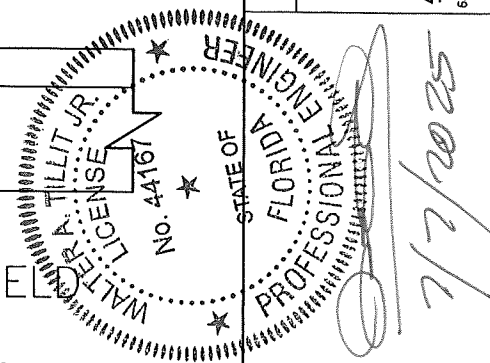
1/2"
 TYP.

⑦
 @ 6" O.C.

⑤
 NOTCHED
 0.064"
 AT EA ①
 LOCATION

①
 CONT.
 OVER
 NOTCHED ⑤

⑤
 NOTCHED
 0.064"
 AT EA ①
 LOCATION



P.E. SEAL/SIGNATURE/DATE

PRODUCT REVISED
 as complying with the Florida
 Building Code
 NOA-No. 25-0805.09
 Expiration Date 12/28/2028
 By *[Signature]*
 Miami-Dade Product Control

MIAMI-DADE COUNTY

FLORIDA BUILDING CODE (HIGH VELOCITY HURRICANE ZONE)

MODELS PTG-42MD (PTAC) & VTG-30MD (VTAC)
 ALUMINUM BLADE LOUVER SYSTEMS. (L.M.I.)

S&P AIR CONTROL, LLC.

3005 SOUTH HICKORY ST.
 CHATTANOOGA, TN 37407 HARTFORD, AL 36344
 PHONE: (423)698-7715 FAX: (423)698-6629

REV. NO	DESCRIPTION	DATE	REV. NO	DESCRIPTION	DATE
1	OLD 23-222	7/7/25	3	-	-
2	-	-	4	-	-

©2025 TILTECO, INC.

TILTECO INC.
 TILLIT TESTING & ENGINEERING COMPANY
 6355 N.W. 36th. St. Ste. 305, VIRGINIA GARDENS, FL 33166
 Phone : (305)871-1530 Fax : (305)871-1531
 CA-0006719
 WALTER A. TILLIT JR., P.E.
 FLORIDA Lic. # 44167

W.H.
 DRAWN BY:

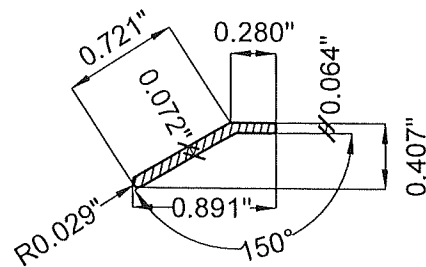
07/07/2025
 DATE:

25-063
 DRAWING No.

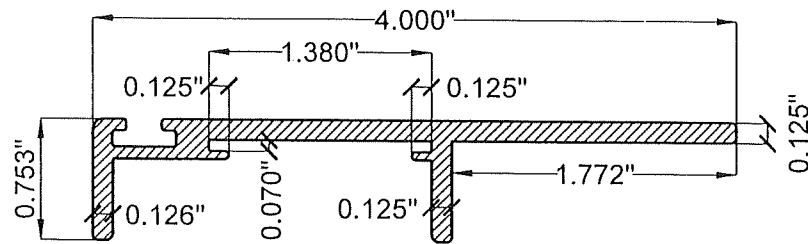
SHEET 5 OF 12

BILL OF MATERIALS MODEL VTG-30MD (VTAC) BLADE SYSTEM : INSIDE-FLUSH & BUILD-OUT MOUNTS

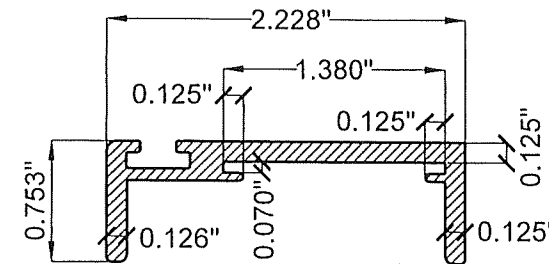
COMPONENT #	DESCRIPTION	MATERIAL	NOTES	LOUVER SYSTEM
②	VTAC - BLADE	6063-T6 ALUMINUM ALLOY/TEMPER	WELDED TO 5. NOTCHED AT EA 1 LOCATION.(SEE SECTION Y1-Y1 ON SHEET 8 & Y2-Y2 ON SHEET 11)	VTAC
③A	CHANNEL FRAME: INSIDE-FLUSH MOUNT	6063-T6 ALUMINUM ALLOY/TEMPER	ALL AROUND, FASTENED W/ ⑦	VTAC
③B	CHANNEL FRAME: BUILD-OUT MOUNT	6063-T6 ALUMINUM ALLOY/TEMPER	ALL AROUND, FASTENED W/ ⑦	VTAC
④	TUBE SUPPORT	6063-T6 ALUMINUM ALLOY/TEMPER	INSTALLED VERTICALLY & WELDED TO ③B	VTAC
⑤	BRACE BAR	6063-T6 ALUMINUM ALLOY/TEMPER	INSTALLED VERTICALLY	VTAC
⑥	LG CORNER LUG ANGLES	6063-T6 ALUMINUM ALLOY/TEMPER	USE (4) EACH UNIT	VTAC
⑦	1/4-14 X 1" TEK SCREWS	401 S.S.	MANUFACTURED BY ITW/BUILDEX	VTAC
⑧	1/8" POP RIVET	S.S.	USE (2) @ ⑥ (VERT. LEG) TO ③B	VTAC
⑨	JAMB ANGLE FOR ③B	6063-T6 ALUMINUM ALLOY/TEMPER	CONTINUOUS FASTENED W/ ⑦	VTAC



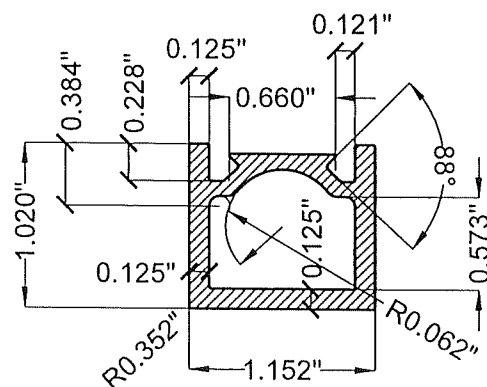
② VTAC BLADE
ALLOY 6063-T6 ALUM



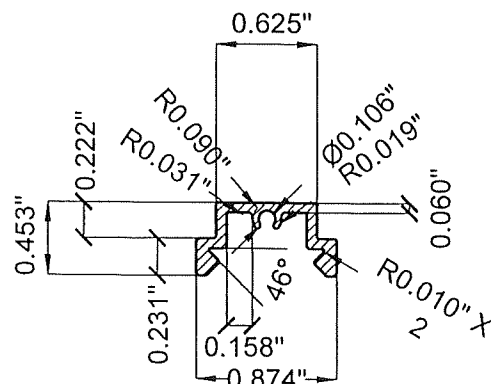
③A CHANNEL FRAME: INSIDE-FLUSH MOUNT
ALLOY 6063-T6 ALUM



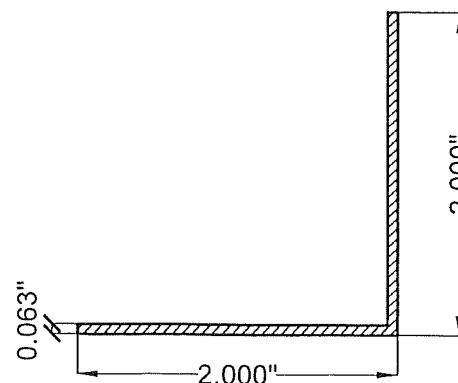
③B CHANNEL FRAME: BUILD OUT-FLUSH MOUNT
ALLOY 6063-T6 ALUM



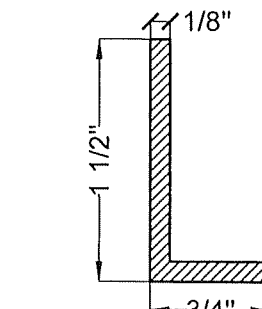
④ TUBE SUPPORT
ALLOY 6063-T6 ALUM



⑤ BRACE BAR
ALLOY 6063-T6 ALUM



⑥ LG CORNER LUG ANGLES
2" X 2" X 0.063" X 1.313"
ALLOY 6063-T6 ALUM



⑨ JAMB ANGLE FOR ③B:
BUILD-OUT MOUNT
3/4" X 1 1/2" X 1/8"
ALLOY 6063-T6 ALUM

COMPONENTS:
MODEL VTG-30MD (VTAC) BLADE SYSTEM: INSIDE-FLUSH & BUILD OUT- FLUSH MOUNTS

SCALE: N.T.S

FLORIDA BUILDING CODE (HIGH VELOCITY HURRICANE ZONE)

MODELS PTG-42MD (PTAC) & VTG-30MD (VTAC) ALUMINUM BLADE LOUVER SYSTEMS. (L.M.I.)

©2025 TILTECO, INC.

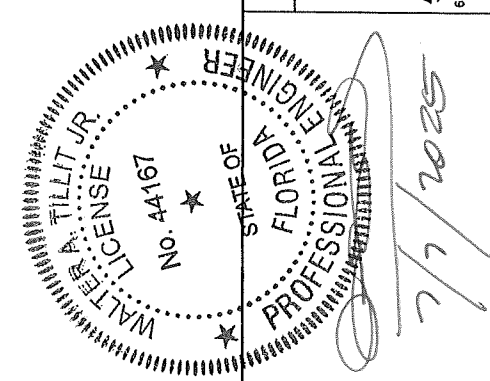
TILTECO INC.
TILLIT TESTING & ENGINEERING COMPANY
6355 N.W. 36th St., Ste. 305, VIRGINIA GARDENS, FL 33166
Phone : (305)871-1530 . Fax : (305)871-1531
CA-0006719
WALTER A. TILLIT Jr. P.E.
FLORIDA Lic. # 44167

W.H. DRAWN BY:

07/07/2025 DATE:

25-063 DRAWING NO.

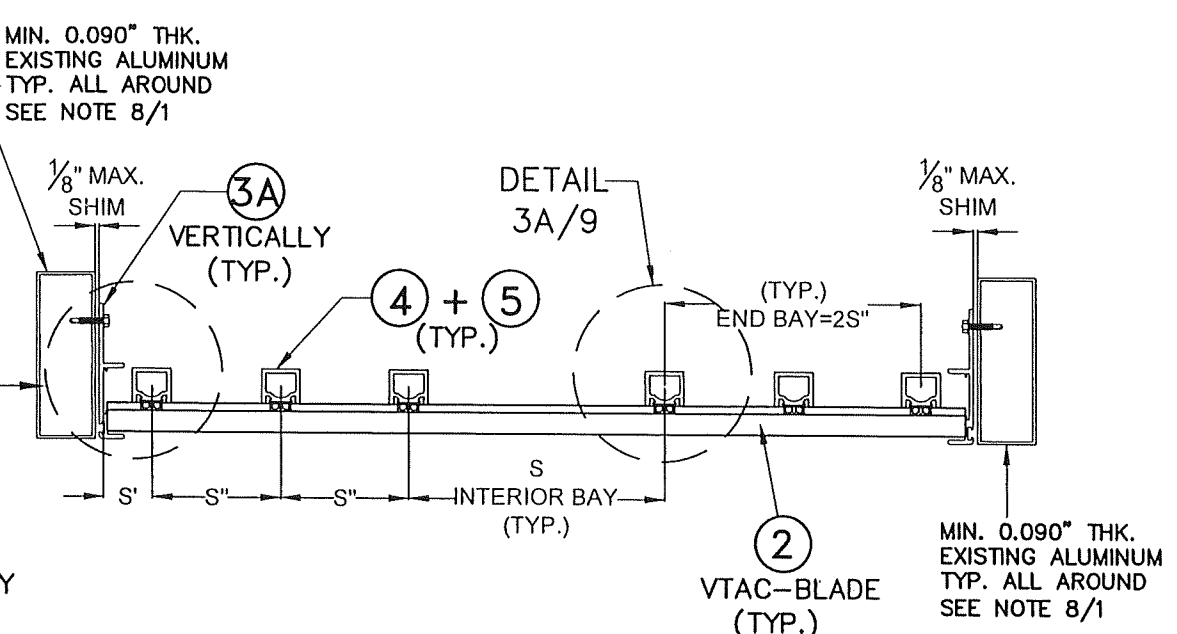
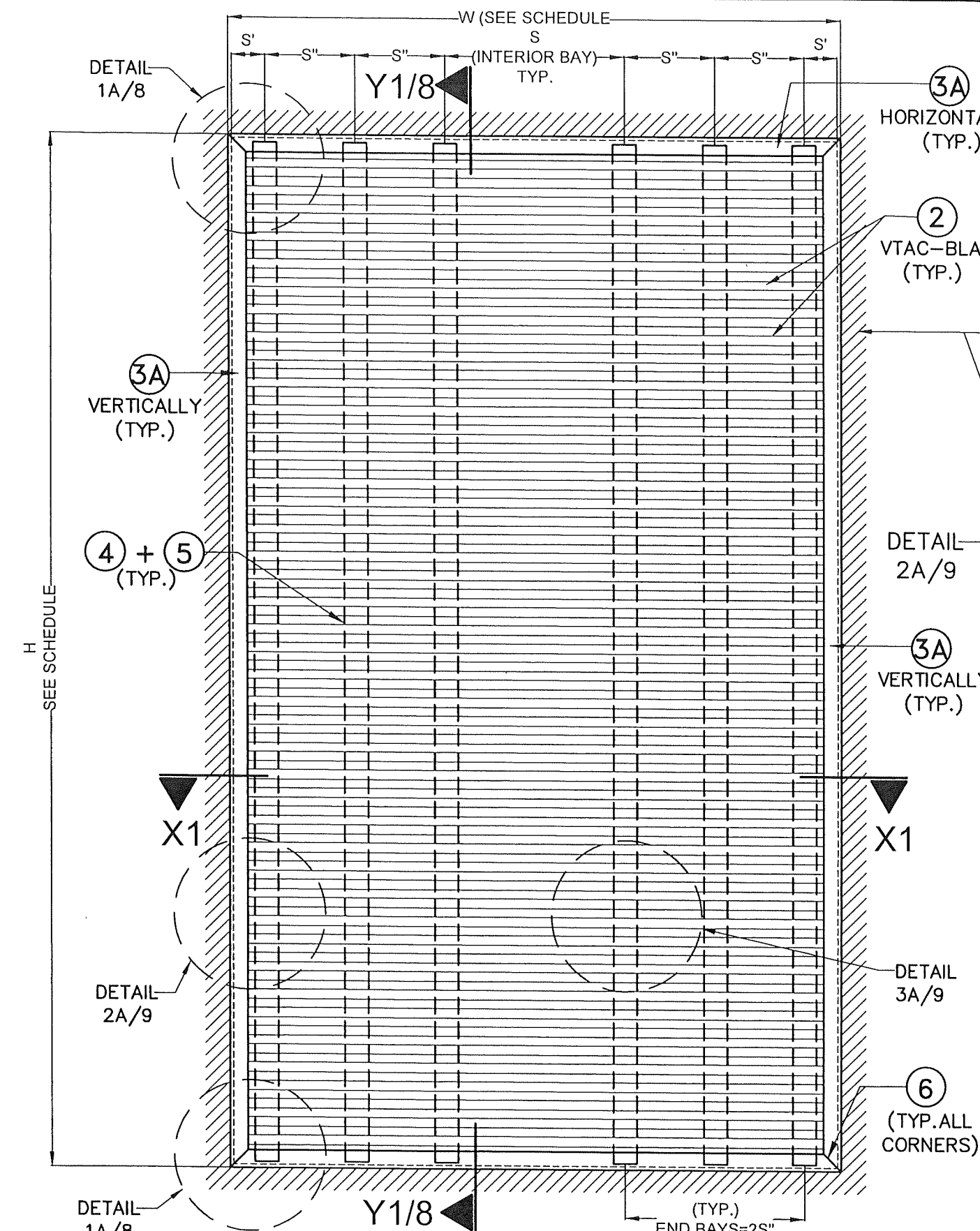
SHEET 6 OF 12



P.E. SEAL/SIGNATURE/DATE

PRODUCT REVISED
as complying with the Florida Building Code
NOA-No. 25-0805.09
Expiration Date 12/28/2028
By *[Signature]*
Miami-Dade Product Control

MIAMI-DADE COUNTY



SECTION X1-X1
SCALE: N.T.S

MODEL VTG-30MD (VTAC):MAX. DIMENSIONS SCHEDULE

CASE	W	H	S	S'	S''
MAX.	36"	54"	11"	1 13/16"	5 3/4"

LEGEND:
 S= TYPICAL MAX (4) + (5) INTERIOR SPACING FAR FROM ENDS BAYS
 S'= TYPICAL MAX (4) + (5) FIRST/LAST DISTANCE TO JAMBS (3)
 S''= TYPICAL MAX (4) + (5) SPACING AT END BAYS.

TYPICAL ELEVATION FOR MODEL VTG-30MD (VTAC) BLADE SYSTEM W/ (3A) INSIDE-FLUSH MOUNT W/MAX. PRODUCTS DIMENSIONS
SCALE: N.T.S

FLORIDA BUILDING CODE (HIGH VELOCITY HURRICANE ZONE)

W.H. DRAWN BY: DATE: 07/07/2025
 MODELS PTG-42MD (PTAC) & VTG-30MD (VTAC) ALUMINUM BLADE LOUVER SYSTEMS. (L.M.I.)
 S&P AIR CONTROL, LLC.
 3005 SOUTH HICKORY ST. 159 GENCO DRIVE CHATTANOOGA, TN 37407 HARTFORD, AL 36344
 PHONE: (423)698-7715 FAX:(423)698-6629

REV. NO. DESCRIPTION DATE REV. No. DESCRIPTION DATE
 1 OLD 23-222 7/7/25 3 - -
 2 - - - - -

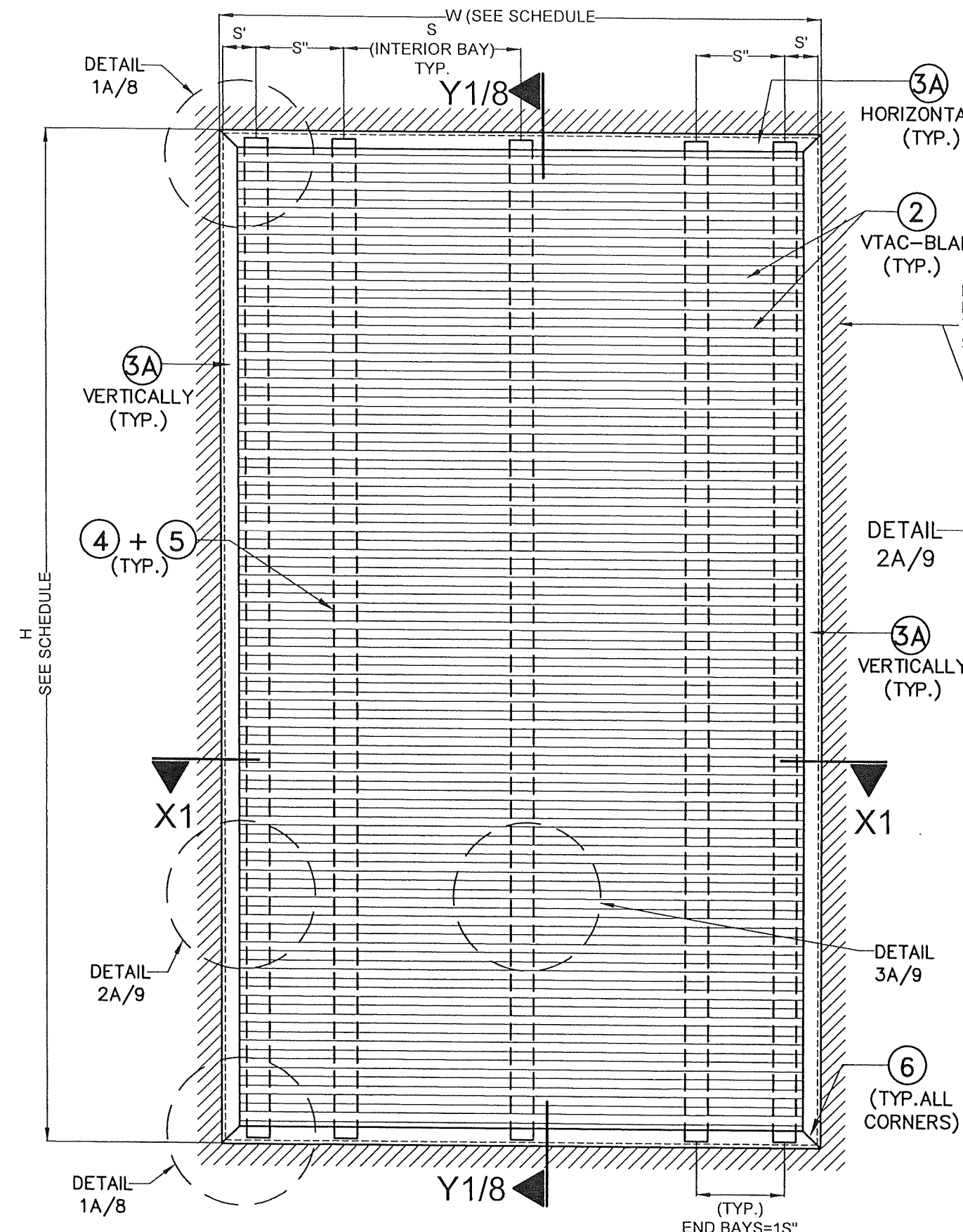
©2025 TILTECO, INC.
TILTECO INC.
 TILLIT TESTING & ENGINEERING COMPANY
 6355 N.W. 36th St. Ste. 305 VIRGINIA GARDENS, FL 33166
 Phone : (305)871-1530 Fax : (305)871-1531
 WALTER A. TILLIT JR. P.E.
 FLORIDA Lic. # 44167

FLORIDA PROFESSIONAL ENGINEER
 WALTER A. TILLIT JR.
 LICENSE No. 44167

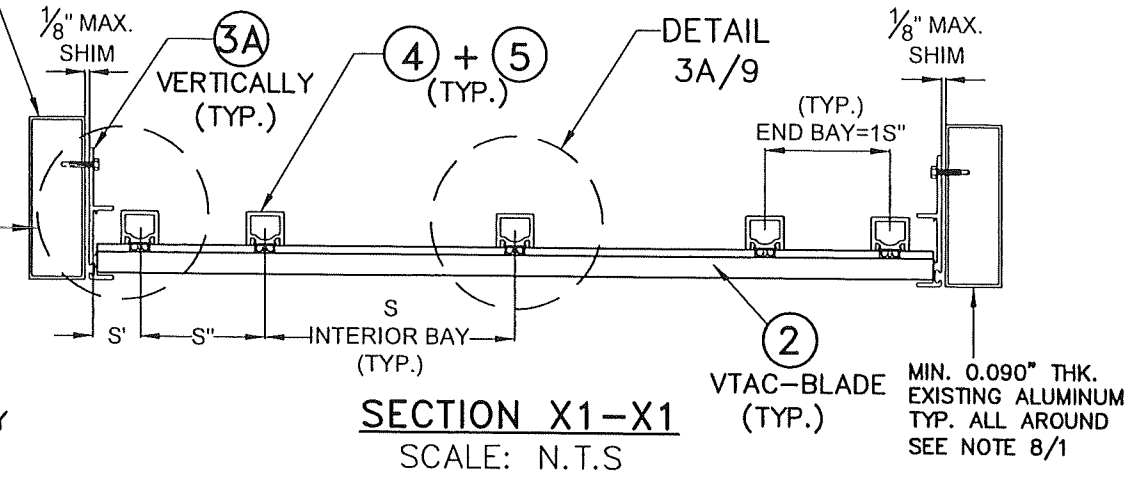
STATE OF FLORIDA
 P.E. SEAL/SIGNATURE/DATE

PRODUCT REVISED
 as complying with the Florida Building Code
 NOA-No. 25-0805.09
 Expiration Date 12/28/2028
 By *[Signature]*
 Miami-Dade Product Control

MIAMI-DADE COUNTY
 SHEET 7 OF 12



MIN. 0.090" THK. EXISTING ALUMINUM TYP. ALL AROUND SEE NOTE 8/1



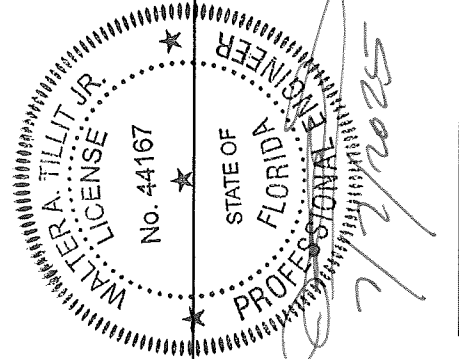
SECTION X1-X1
SCALE: N.T.S

MODEL VTG-30MD (VTAC):MIN. DIMENSIONS SCHEDULE

CASE	W	H	S	S'	S''
MIN.	20"	24"	4 1/8"	1 7/8"	3 7/16"

LEGEND:
 S= TYPICAL MIN. (4) + (5) INTERIOR SPACING FAR FROM ENDS BAYS
 S'= TYPICAL MIN. (4) + (5) FIRST/LAST DISTANCE TO JAMBS (3)
 S''= TYPICAL MIN. (4) + (5) SPACING AT END BAYS.

TYPICAL ELEVATION FOR MODEL VTG-30MD (VTAC) BLADE SYSTEM W/ (3A) INSIDE-FLUSH MOUNT W/MIN. PRODUCT DIMENSIONS
SCALE: N.T.S



PRODUCT REVISED
as complying with the Florida Building Code
NOA-No. 25-0805.09
Expiration Date 12/28/2028
By *[Signature]*
Miami-Dade Product Control

FLORIDA BUILDING CODE (HIGH VELOCITY HURRICANE ZONE)

©2025 TILTECO, INC.

TILTECO INC.
TILLIT TESTING & ENGINEERING COMPANY
6355 N.W. 35th St., Ste. 305, VIRGINIA GARDENS, FL 33166
Phone : (305)871-1530 • Fax : (305)871-1531
CA-0006719
WALTER A. TILLIT JR., P.E.
FLORIDA Lic. # 44167

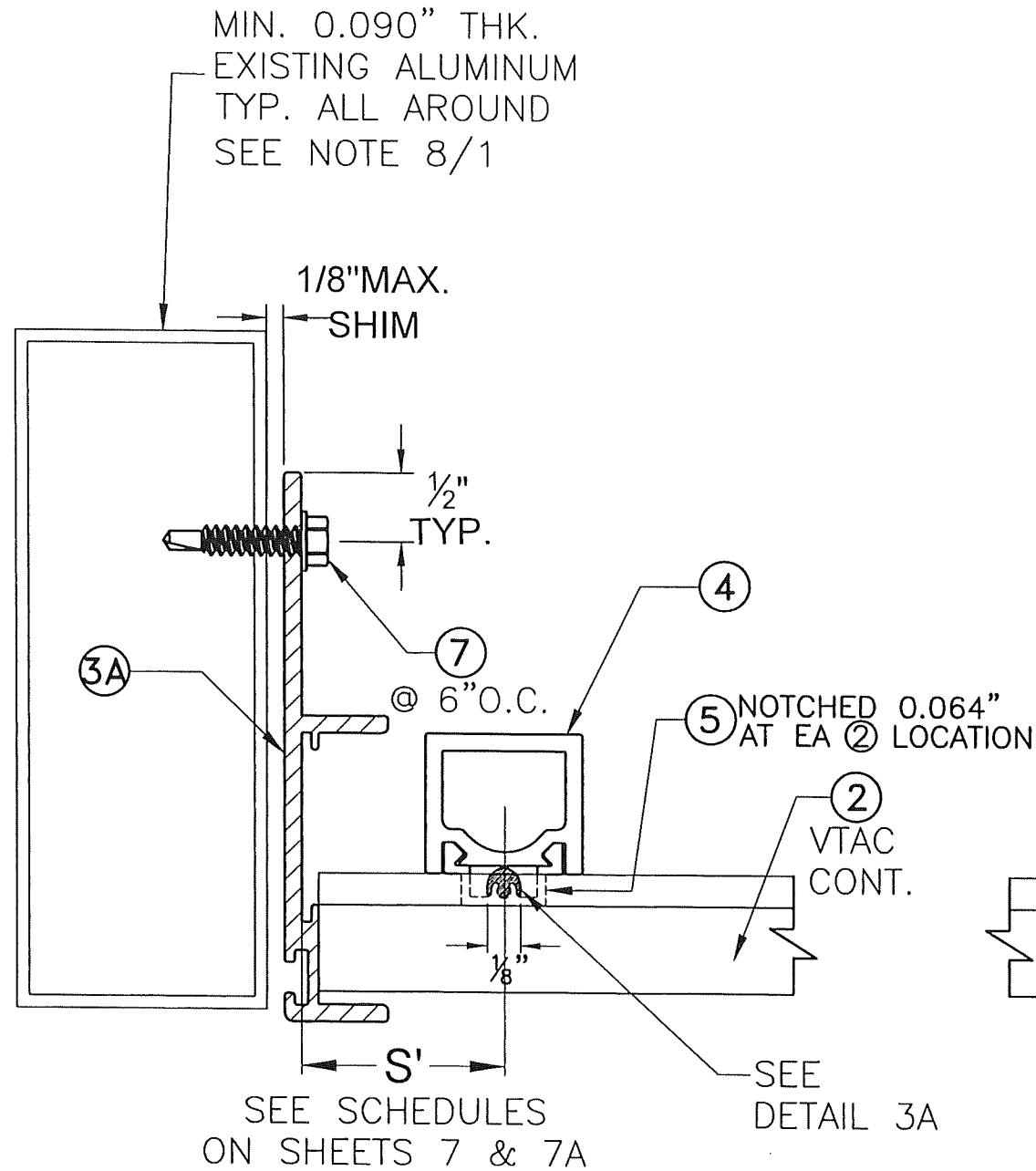
MODELS PTG-42MD (PTAC) & VTG-30MD (VTAC) ALUMINUM BLADE LOUVER SYSTEMS. (L.M.I.)

S&P AIR CONTROL, LLC.
3005 SOUTH HICKORY ST. 159 GENCO DRIVE
CHATTANOOGA, TN 37407 HARTFORD, AL 36344
PHONE: (423)698-7715 FAX:(423)698-6629

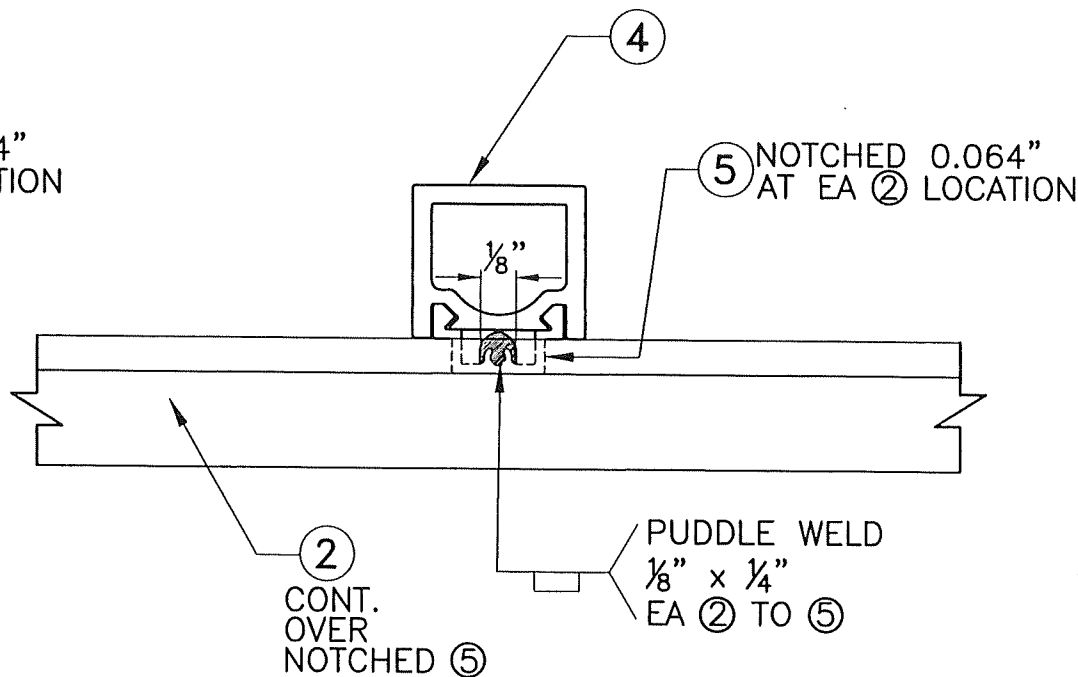
REV. NO	DESCRIPTION	DATE	REV. No.	DESCRIPTION	DATE
1	OLD 23-222	7/7/25	3		
2			4		

W.H. DRAWN BY: 07/07/2025 DATE: 25-063 DRAWING No. SHEET 7A OF 12

MIAMI-DADE COUNTY



DETAIL 2A (PLAN)
JAMB ATTACHMENT
 SCALE: N.T.S



DETAIL 3A (PLAN)
 SCALE: N.T.S

MODEL VTG-30MD (VTAC) BLADE SYSTEM:
INSIDE-FLUSH MOUNT W/3A

FLORIDA BUILDING CODE (HIGH VELOCITY HURRICANE ZONE)				
W.H. DRAWN BY:	07/07/2025 DATE:			
MODELS PTG-42MD (PTAC) & VTG-30MD (VTAC) ALUMINUM BLADE LOUVER SYSTEMS. (L.M.I.)				
S&P AIR CONTROL, LLC.				
3005 SOUTH HICKORY ST. 159 GENCO DRIVE CHATTANOOGA, TN 37407 HARTFORD, AL 36344 PHONE: (423)698-7715 FAX: (423)698-6629				
REV. NO	DATE	REV. NO	DESCRIPTION	DATE
1	0LD 23-222	7/7/25	3	-
2	-	4	-	-

©2025 TILTECO, INC.

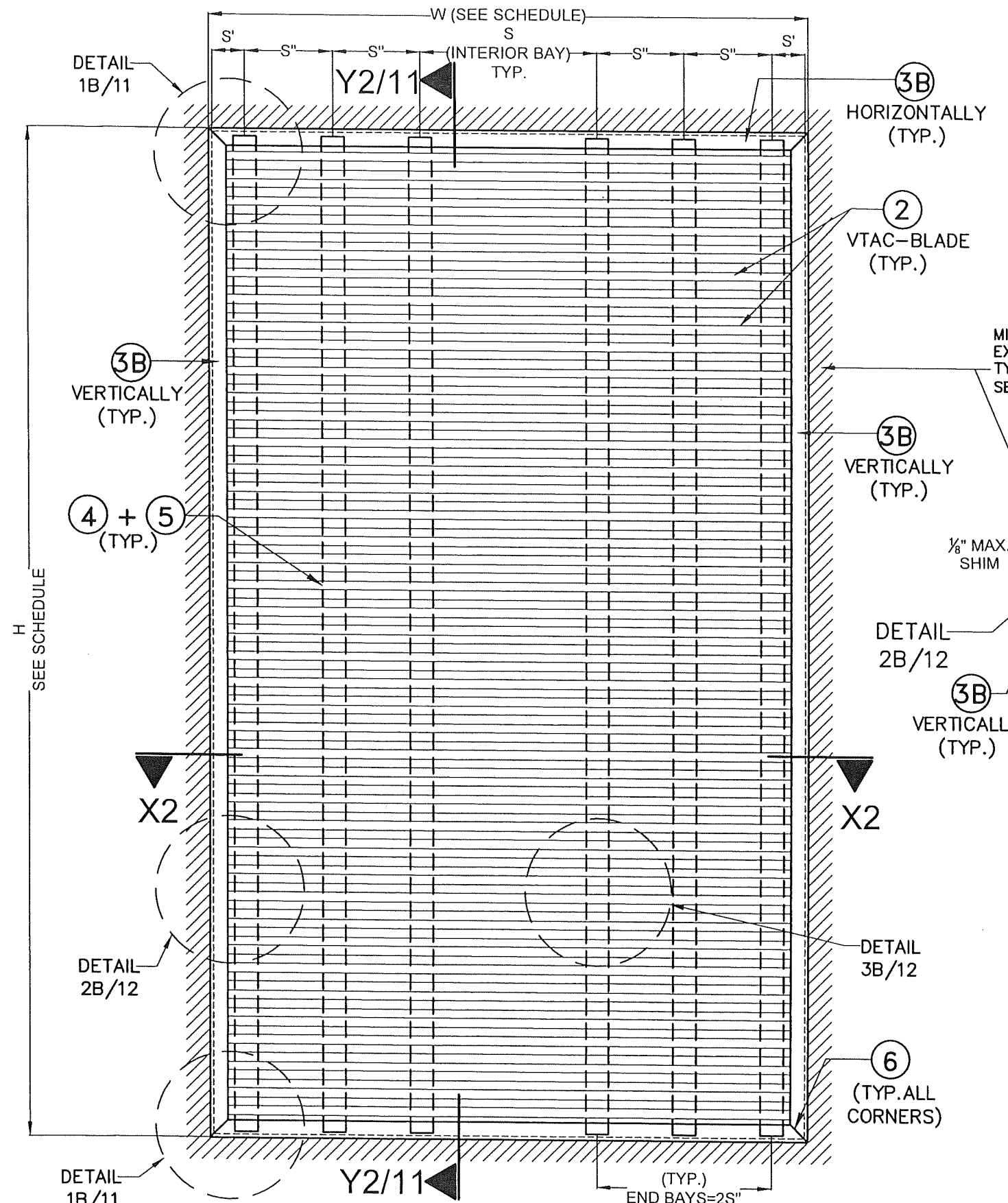
TILTECO INC.

TILLIT TESTING & ENGINEERING COMPANY
 6355 N.W. 36th St., Ste. 305, VIRGINIA GARDENS, FL 33166
 Phone: (305)871-1530 Fax: (305)871-1531
 CA-0006719
 WALTER A. TILLIT JR., P.E.
 FLORIDA Lic. # 44167

Professional Engineer Seal for Walter A. Tillit Jr., State of Florida, License No. 44167. Includes a signature and date: 7/7/2025.

PRODUCT REVISED
 as complying with the Florida Building Code
 NOA-No. 25-0805.09
 Expiration Date 12/28/2028
 By *[Signature]*
 Miami-Dade Product Control

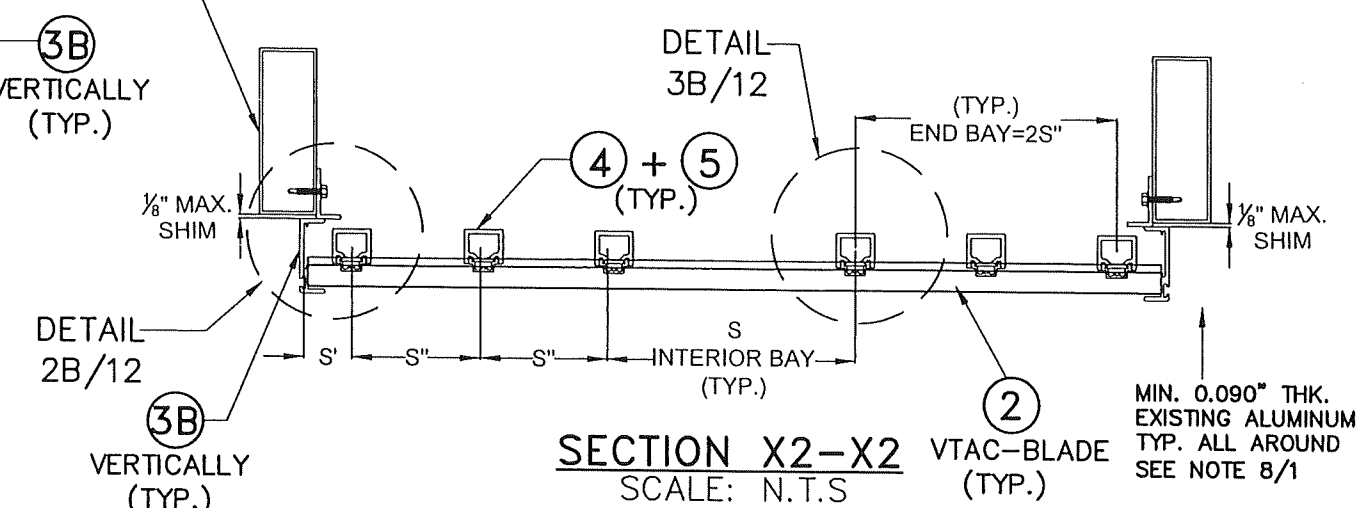
MIAMI-DADE COUNTY



TYPICAL ELEVATION FOR MODEL VTG-30MD (VTAC) BLADE SYSTEM W/ BUILD OUT-FLUSH MOUNT W/MAX. PRODUCT DIMENSIONS SCALE: N.T.S

(3B) HORIZONTALLY (TYP.)
 (2) VTAC-BLADE (TYP.)
 (3B) VERTICALLY (TYP.)
 (4) + (5) (TYP.)
 (3B) VERTICALLY (TYP.)
 (3B) VERTICALLY (TYP.)
 (6) (TYP. ALL CORNERS)

MIN. 0.090" THK. EXISTING ALUMINUM TYP. ALL AROUND SEE NOTE 8/1

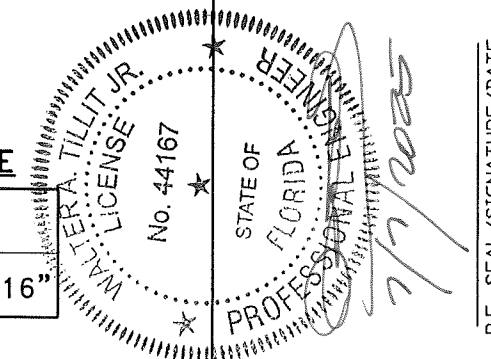


SECTION X2-X2 SCALE: N.T.S

MODEL VTG-30MD (VTAC):MAX. DIMENSIONS SCHEDULE

CASE	W	H	S	S'	S''
MAX.	36 1/8"	54"	10 15/16"	1 13/16"	5 13/16"

LEGEND:
 S= TYPICAL MAX (4) + (5) INTERIOR SPACING FAR FROM ENDS BAYS
 S'= TYPICAL MAX (4) + (5) FIRST/LAST DISTANCE TO JAMBS (3)
 S''= TYPICAL MAX (4) + (5) SPACING AT END BAYS.



PRODUCT REVISED as complying with the Florida Building Code
 NOA-No. 25-0805.09
 Expiration Date 12/28/2028
 By *[Signature]*
 Miami-Dade Product Control

FLORIDA BUILDING CODE (HIGH VELOCITY HURRICANE ZONE)

©2025 TILTECO, INC.

TILTECO INC.
 TILLIT TESTING & ENGINEERING COMPANY
 6355 N.W. 36th St., Ste. 305, VIRGINIA GARDENS, FL 33166
 Phone: (305)871-1530, Fax: (305)871-1531
 CA-0006719
 WALTER A. TILLIT JR., P.E.
 FLORIDA Lic. # 44167

MODELS PTG-42MD (PTAC) & VTG-30MD (VTAC) ALUMINUM BLADE LOUVER SYSTEMS. (L.M.I.)

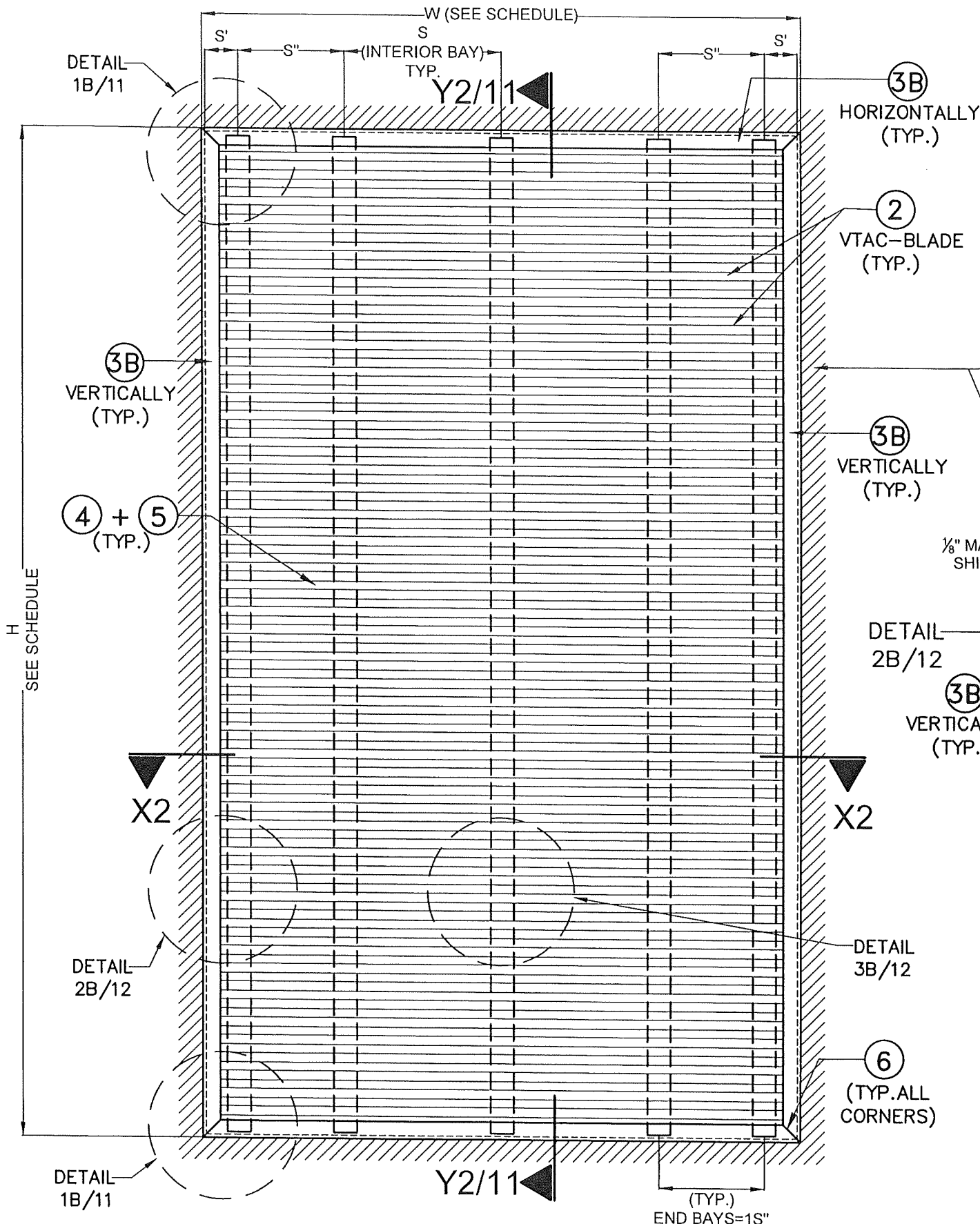
S&P AIR CONTROL, LLC.
 3005 SOUTH HICKORY ST., 159 GENCO DRIVE
 CHATTANOOGA, TN 37407 HARTFORD, AL 36344
 PHONE: (423)698-7715 FAX:(423)698-6629

W.H. DRAWN BY: 07/07/2025 DATE: 25-063 DRAWING No. SHEET 10 OF 12

REV. NO.	DESCRIPTION	DATE	REV. NO.	DESCRIPTION	DATE
1	OLD 23-222	7/7/25	3		
2			4		

P.E. SEAL/SIGNATURE/DATE

MIAMI-DADE COUNTY



③B
HORIZONTALLY
(TYP.)

②
VTAC-BLADE
(TYP.)

③B
VERTICALLY
(TYP.)

③B
VERTICALLY
(TYP.)

DETAIL
3B/12

⑥
(TYP. ALL
CORNERS)

MIN. 0.090" THK.
EXISTING ALUMINUM
TYP. ALL AROUND
SEE NOTE 8/1

1/8" MAX.
SHIM

③B
VERTICALLY
(TYP.)

DETAIL
2B/12

④ + ⑤
(TYP.)

DETAIL
3B/12

(TYP.)
END BAY=1S"

1/8" MAX.
SHIM

MIN. 0.090" THK.
EXISTING ALUMINUM
TYP. ALL AROUND
SEE NOTE 8/1

INTERIOR BAY
(TYP.)

②
VTAC-BLADE
(TYP.)

SECTION X2-X2
SCALE: N.T.S

MODEL VTG-30MD (VTAC):MIN. DIMENSIONS SCHEDULE

CASE	W	H	S	S'	S''
MIN.	20 1/16"	24"	5 3/16"	1 15/16"	3 7/16"

LEGEND:

- S= TYPICAL MIN. ④ + ⑤ INTERIOR SPACING FAR FROM ENDS BAYS
- S'= TYPICAL MIN. ④ + ⑤ FIRST/LAST DISTANCE TO JAMBS ③
- S''= TYPICAL MIN. ④ + ⑤ SPACING AT END BAYS.

TYPICAL ELEVATION FOR MODEL VTG-30MD (VTAC) BLADE SYSTEM W/ ③B
BUILD OUT-FLUSH MOUNT W/MIN. PRODUCT DIMENSIONS
SCALE: N.T.S

FLORIDA BUILDING CODE (HIGH VELOCITY HURRICANE ZONE)

MODELS PTG-42MD (PTAC) & VTG-30MD (VTAC)
ALUMINUM BLADE LOUVER SYSTEMS. (L.M.I.)

TILECO INC.
TILLIT TESTING & ENGINEERING COMPANY
6355 N.W. 36th St., Ste. 305, VIRGINIA GARDENS, FL 33166
Phone : (305)871-1530 • Fax : (305)871-1531
CA-0006719
WALTER A. TILLIT JR., P.E.
FLORIDA Lic. # 44167

WALTER A. TILLIT JR.
LICENSE
No. 44167
STATE OF FLORIDA
PROFESSIONAL ENGINEER
7/7/2025

PRODUCT REVISED
as complying with the Florida
Building Code
NOA-No. 25-0805.09
Expiration Date 12/28/2028

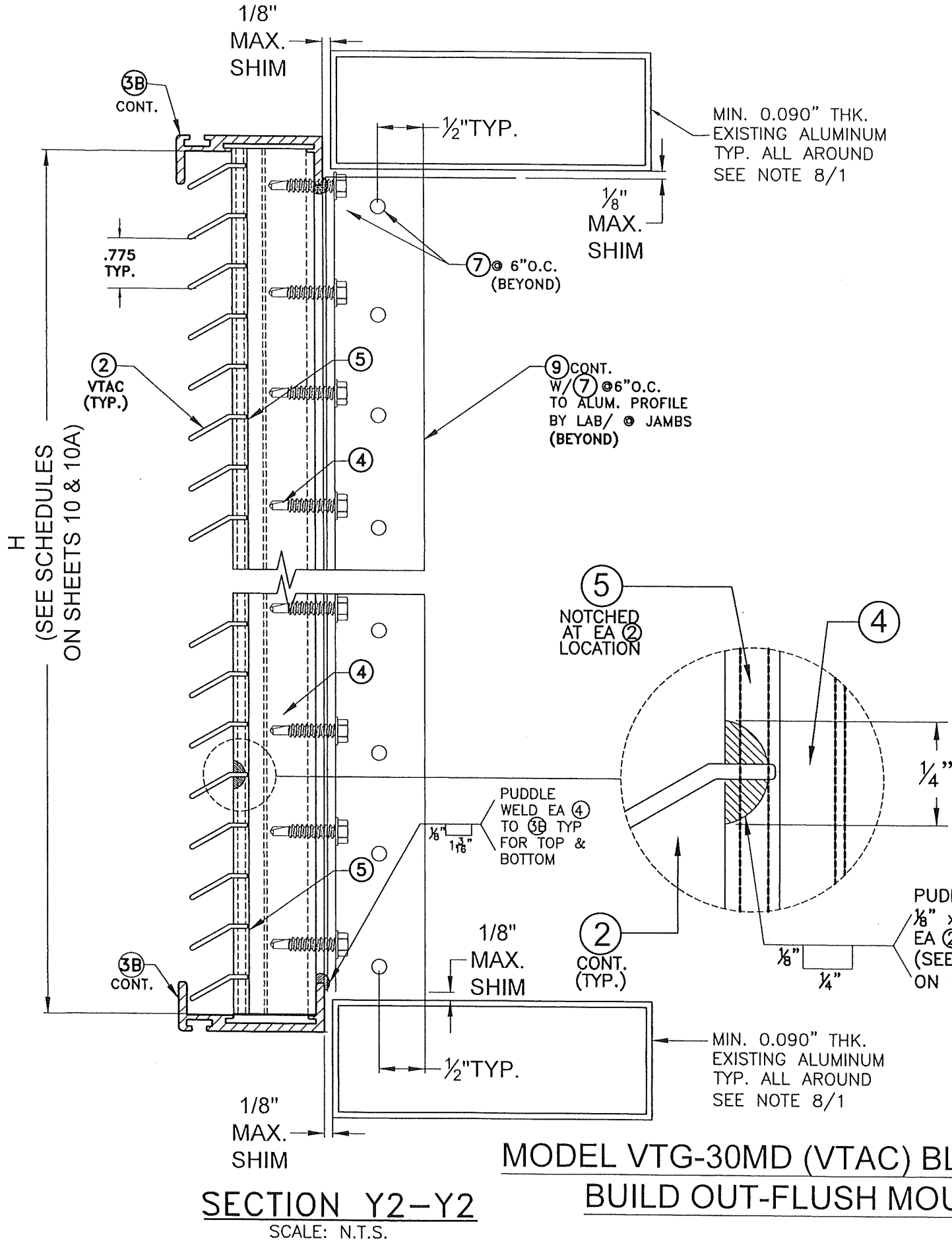
By *[Signature]*
Miami-Dade Product Control

W.H. DRAWN BY:
07/07/2025 DATE:
25-063 DRAWING NO.
SHEET 10A OF 12

REV. NO	DESCRIPTION	DATE	REV. NO	DESCRIPTION	DATE
1	OLD 23-222	7/7/25	3		
2			4		

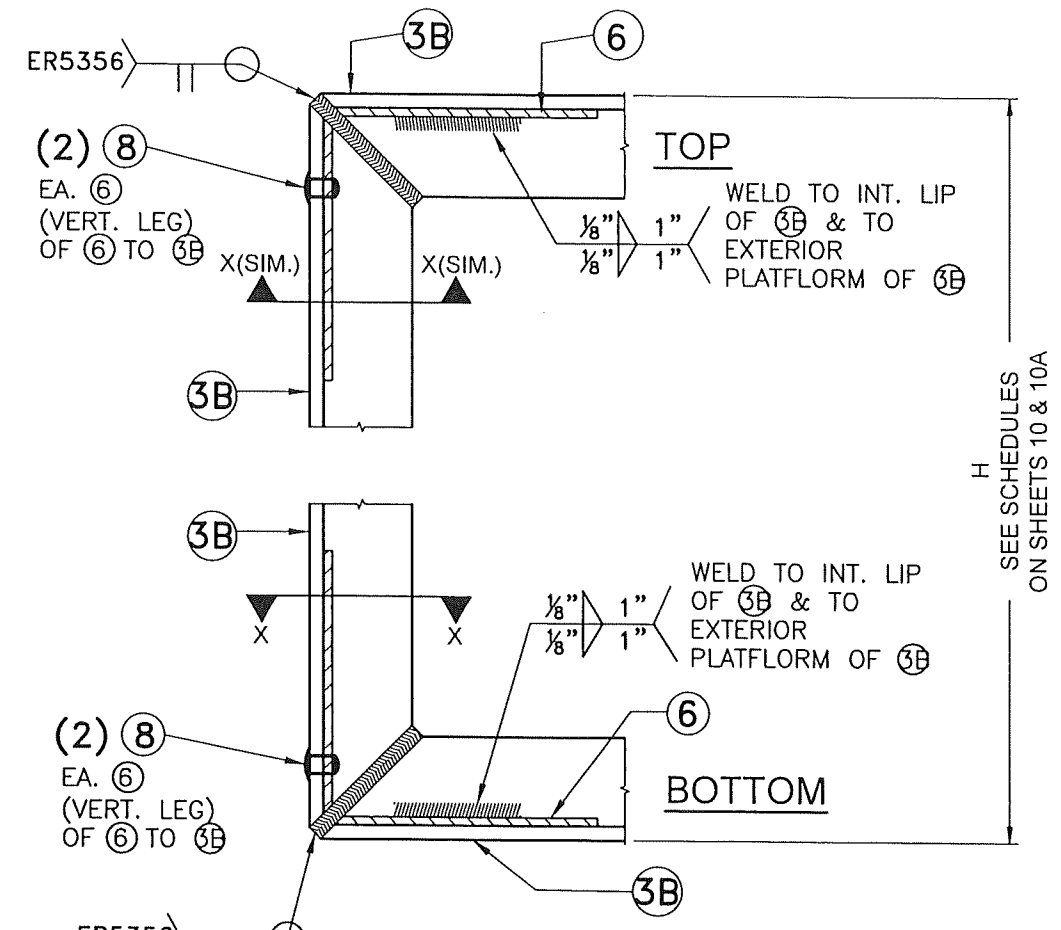
P.E. SEAL/SIGNATURE/DATE

MIAMI-DADE COUNTY

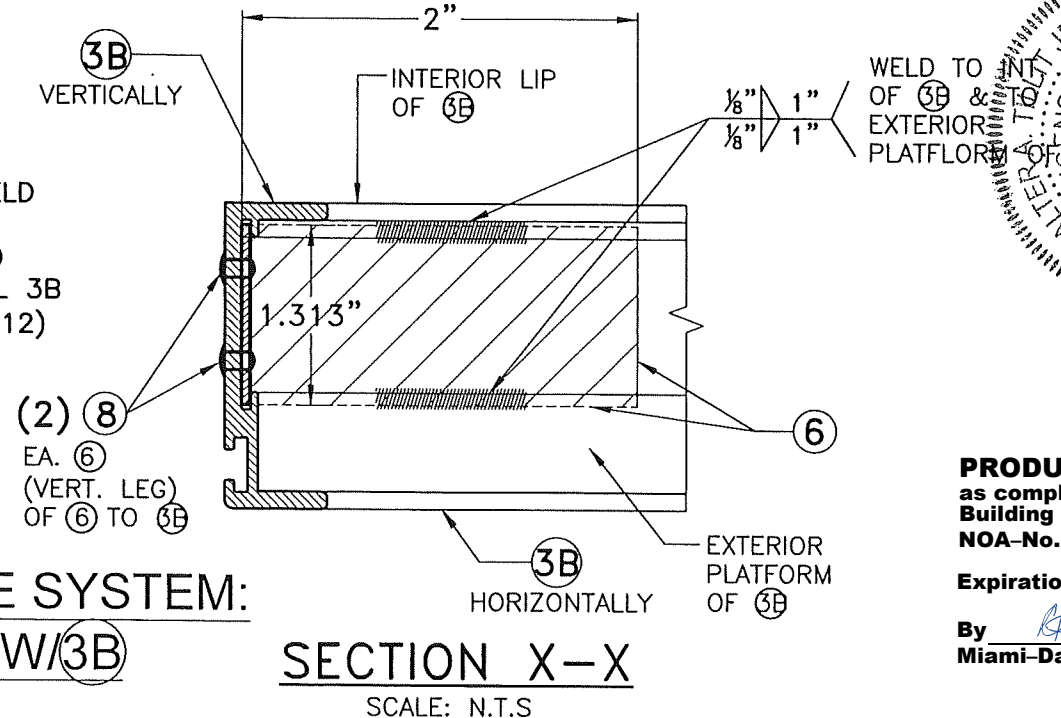


SECTION Y2-Y2
SCALE: N.T.S.

**MODEL VTG-30MD (VTAC) BLADE SYSTEM:
BUILD OUT-FLUSH MOUNT W/3B**



DETAIL 1B
(ELEVATION)
SCALE: N.T.S.



SECTION X-X
SCALE: N.T.S.

FLORIDA BUILDING CODE (HIGH VELOCITY HURRICANE ZONE)

MODELS PTG-42MD (PTAC) & VTG-30MD (VTAC)
ALUMINUM BLADE LOUVER SYSTEMS. (L.M.I.)

W.H. DRAWN BY: 07/07/2025 DATE: 25-063 DRAWING No. SHEET 11 OF 12

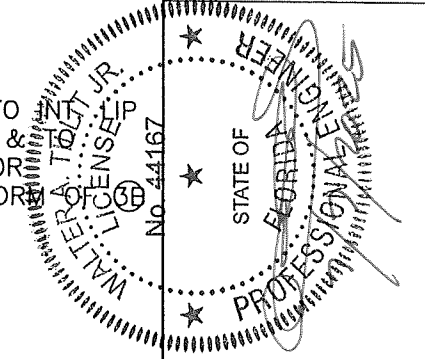
S&P AIR CONTROL, LLC.
3005 SOUTH HICKORY ST. 159 GENCO DRIVE
CHATTANOOGA, TN 37407 HARTFORD, AL 36344
PHONE: (423)698-7715 FAX: (423)698-6629

REV. NO.	DESCRIPTION	DATE	REV. No.	DATE
1	OLD 23-222	7/7/25	3	-
2	-	-	4	-

©2025 TILTECO, INC.

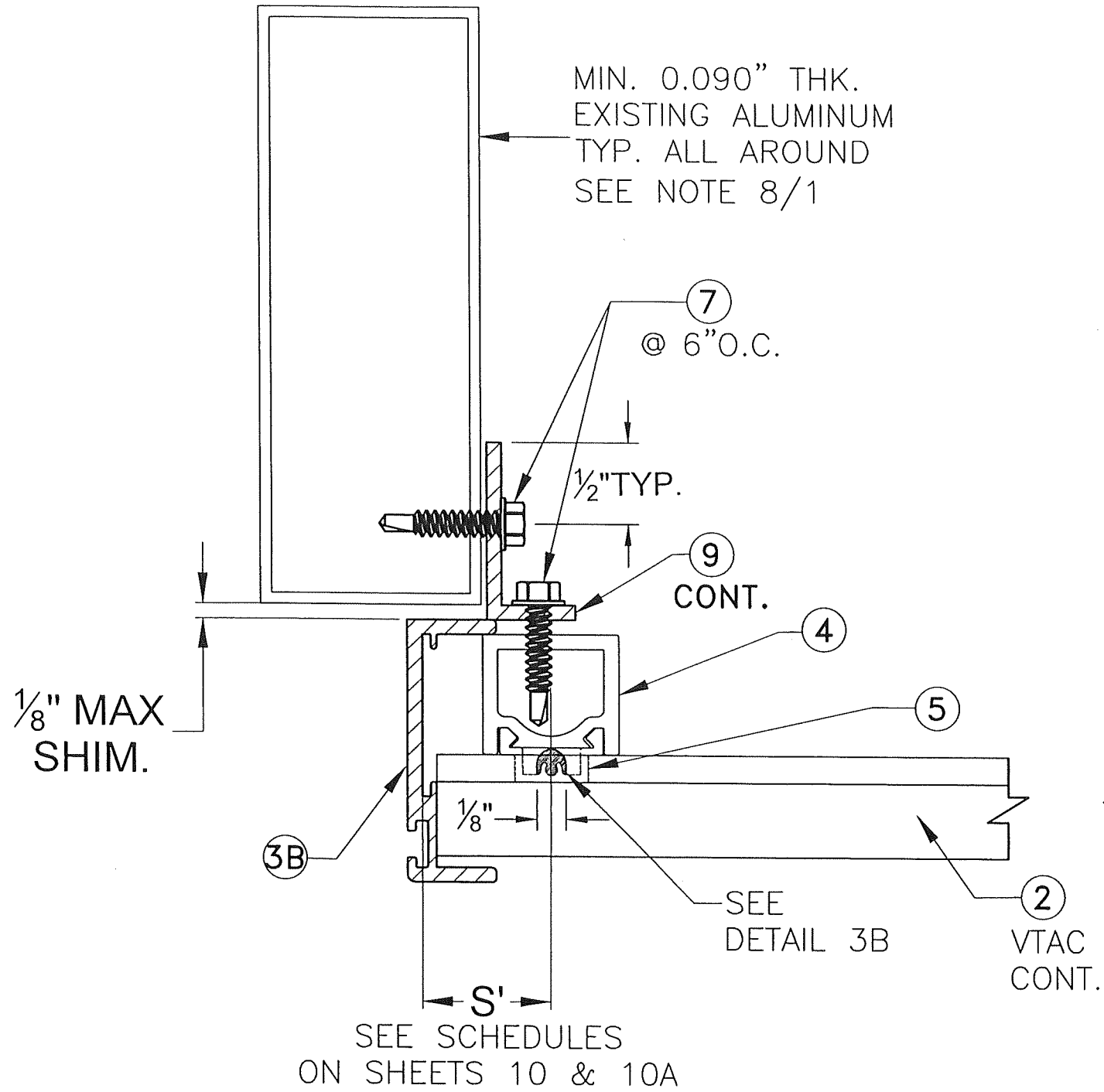
TILTECO INC.

TILLIT TESTING & ENGINEERING COMPANY
6355 N.W. 38th St., Ste. 305, VIRGINIA GARDENS, FL 33166
Phone: (305)871-1530 Fax: (305)871-1531
CA-0006719
WALTER A. TILLIT JR., P.E.
FLORIDA Lic. # 44167

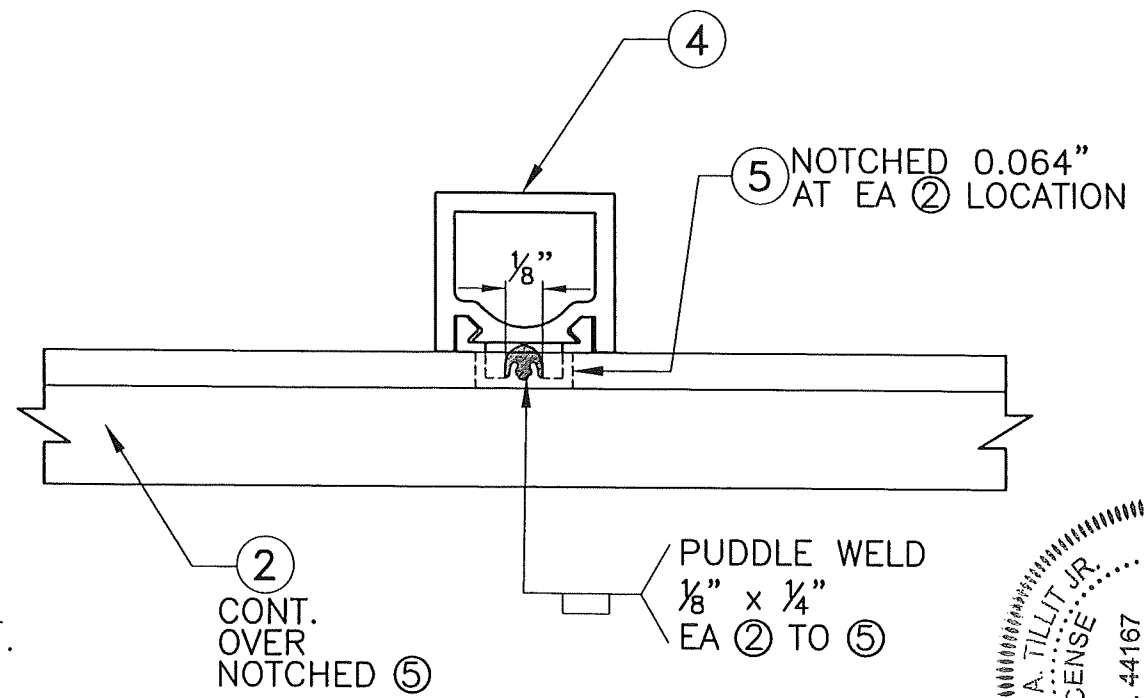


PRODUCT REVISED
as complying with the Florida Building Code
NOA-No. 25-0805.09
Expiration Date 12/28/2028
By *[Signature]*
Miami-Dade Product Control

P.E. SEAL/SIGNATURE/DATE
MIAMI-DADE COUNTY



DETAIL 2B (PLAN)
JAMB ATTACHMENT
 N.T.S.



DETAIL 3B (PLAN)
 SCALE: N.T.S

MODEL VTG-30MD (VTAC) BLADE SYSTEM:
BUILD OUT-FLUSH MOUNT W/3B

FLORIDA BUILDING CODE (HIGH VELOCITY HURRICANE ZONE)

©2025 TILTECO, INC.

TILTECO INC.

TILLIT TESTING & ENGINEERING COMPANY
 6355 N.W. 36th St., Ste. 305, VIRGINIA GARDENS, FL 33166
 Phone: (305)871-1530 Fax: (305)871-1531
 CA-0006719
 WALTER A. TILLIT JR. P.E.
 FLORIDA Lic. # 44167

WALTER A. TILLIT JR.
 LICENSE
 No. 44167
 STATE OF FLORIDA
 PROFESSIONAL ENGINEER

Walter A. Tillit Jr.
 7/7/2025

P.E. SEAL/SIGNATURE/DATE

PRODUCT REVISED
 as complying with the Florida
 Building Code
 NOA-No. 25-0805.09
 Expiration Date 12/28/2028
 By *[Signature]*
 Miami-Dade Product Control

MIAMI-DADE COUNTY

W.H. DRAWN BY:	07/07/2025
DATE:	
DRAWING No.	25-063
SHEET	12 OF 12

REV. NO.	DESCRIPTION	DATE	REV. NO.	DESCRIPTION	DATE
1	OLD 23-222	7/7/25	3		
2			4		

MODELS PTG-42MD (PTAC) & VTG-30MD (VTAC)
 ALUMINUM BLADE LOUVER SYSTEMS. (L.M.I.)

S&P AIR CONTROL, LLC.
 3005 SOUTH HICKORY ST.
 CHATTANOOGA, TN 37407
 PHONE: (423)698-7715 FAX: (423)698-6629