



DEPARTMENT OF REGULATORY AND ECONOMIC RESOURCES (RER)
BOARD AND CODE ADMINISTRATION DIVISION

MIAMI-DADE COUNTY
PRODUCT CONTROL SECTION

11805 SW 26 Street, Room 208
Miami, Florida 33175-2474
T (786) 315-2590 F (786) 315-2599

www.miamidade.gov/economy

NOTICE OF ACCEPTANCE (NOA)

Wayne Dalton a Div. of Overhead Door Corporation

**3395 Addison Drive
Pensacola, FL 32514**

SCOPE:

This NOA is being issued under the applicable rules and regulations governing the use of construction materials. The documentation submitted has been reviewed and accepted by Miami-Dade County RER-Product Control Section to be used in Miami Dade County and other areas where allowed by the Authority Having Jurisdiction (AHJ).

This NOA shall not be valid after the expiration date stated below. The Miami-Dade County Product Control Section (In Miami-Dade County) and/ or the AHJ (in areas other than Miami-Dade County) reserve the right to have this product or material tested for quality assurance purposes. If this product or material fails to perform in the accepted manner, the manufacturer will incur the expense of such testing and the AHJ may immediately revoke, modify, or suspend the use of such product or material within their jurisdiction. RER reserves the right to revoke this acceptance if it is determined by Miami-Dade County Product Control Section that this product or material fails to meet the requirements of the applicable building code.

This product is approved as described herein and has been designed to comply with the Florida Building Code, including the High Velocity Hurricane Zone.

DESCRIPTION: Series 8000 Steel Sectional Garage Door up to 9'-2" Wide w/ Optional EPS Insulation and Impact Resistant Glazing

APPROVAL DOCUMENT: Drawing No. **D-329928**, titled "8024/8124/8224 9'2" max. width", sheets 1 through 4 of 4, dated 02/18/2020, prepared by Wayne Dalton, signed and sealed by Dwayne J. Kornish, P.E. 09/29/2020, bearing the Miami-Dade County Product Control renewal stamp with the Notice of Acceptance number and the expiration date by the Miami-Dade County Product Control Section.

MISSILE IMPACT RATING: Large and Small Missile Impact Resistant

LABELING: A permanent label with the manufacturer's name or logo, manufacturing addresses in Mount Hope, OH, model number, the positive and negative design pressure rating, indicate impact rated if applicable, installation instruction drawing reference number, approval number (NOA), the applicable test standards, and the statement reading 'Miami-Dade County Product Control Approved' is to be located on the door's side track, bottom angle, or inner surface of a panel.

LIMITATION: This door has not been tested for air infiltration.

RENEWAL of this NOA shall be considered after a renewal application has been filed and there has been no change in the applicable building code negatively affecting the performance of this product.

TERMINATION of this NOA will occur after the expiration date or if there has been a revision or change in the materials, use, and/or manufacture of the product or process. Misuse of this NOA as an endorsement of any product, for sales, advertising or any other purposes shall automatically terminate this NOA. Failure to comply with any section of this NOA shall be cause for termination and removal of NOA.

ADVERTISEMENT: The NOA number preceded by the words Miami-Dade County, Florida, and followed by the expiration date may be displayed in advertising literature. If any portion of the NOA is displayed, then it shall be done in its entirety.

INSPECTION: A copy of this entire NOA shall be provided to the user by the manufacturer or its distributors and shall be available for inspection at the job site at the request of the Building Official.

This NOA **renews NOA # 23-1120.09** and consists of this page 1 and evidence pages E-1 & E-2 as well as approval document mentioned above.

The submitted documentation was reviewed by **Carlos M. Utrera, P.E.**



10/15/25

NOA No. 25-0902.07
Expiration Date: December 17, 2030
Approval Date: October 23, 2025

Wayne Dalton a Div. of Overhead Door Corporation

NOTICE OF ACCEPTANCE: EVIDENCE SUBMITTED

1. Evidence submitted under previous approval NOA #20-0416.06

A. DRAWINGS

1. Drawing No. **D-329928**, titled “8024/8124/8224 9’2” max. width”, sheets 1 through 4 of 4, dated 02/18/2020, prepared by Wayne Dalton, signed and sealed by Dwayne J. Kornish, P.E. 09/29/2020.

B. TESTS

1. Test reports on 1) Uniform Static Air Pressure Test, Loading per FBC TAS 202-94
2) Large Missile Impact Test per FBC, TAS 201-94
3) Cyclic Wind Pressure Loading per FBC, TAS 203-94
4) Forced Entry Test, per FBC, TAS 202-94
5) Tensile Test per ASTM E8
along with marked-up drawings and installation diagram of Sectional Garage Doors 8000, prepared by Intertek, Test Report No. **K3485.01-801-18 R2**, dated 02/26/2020, revised on 08/04/2020, signed and sealed by Tyler Westerling, P.E.

C. CALCULATIONS

1. Anchor load calculations prepared by Wayne Dalton, dated 03/09/2020, signed and sealed by Dwayne J. Kornish, P.E.

D. QUALITY ASSURANCE

1. Miami-Dade Department of Regulatory and Economic Resources (RER)

E. MATERIAL CERTIFICATIONS

1. UL evaluation report on flame spread and smoke developed of STYROPEK EPS resins per ASTM E84, ANSI/UL723, prepared by UL, LLC, Evaluation Report # **UL ER38219-01**, dated 04/08/2015.
2. Test report on ignition temperature of Drew Foam Company EPS per ASTM D1929-16, prepared by Element Materials Technology, Test Report # **19-06-P0083**, dated 06/24/2019, signed by Rubaiyat Khondker.
3. Notice of Acceptance No. **18-0918.06** issued to Plaskolite, LLC for its TUFFAK Polycarbonate Sheets, approved on 11/15/2018 and expiring on 08/27/2022.

F. STATEMENTS

1. Statement letter of code conformance to the 6th edition (2017) and 7th edition (2020) FBC issued by Wayne Dalton, dated 06/10/2020, signed and sealed by Dwayne J. Kornish, P.E.
2. Statement letter of no financial interest issued by Wayne Dalton, dated 09/29/2020, signed and sealed by Dwayne J. Kornish, P.E.



Carlos M. Utrera, P.E.
Product Control Examiner
NOA No. 25-0902.07
Expiration Date: December 17, 2030
Approval Date: October 23, 2025

Wayne Dalton a Div. of Overhead Door Corporation

NOTICE OF ACCEPTANCE: EVIDENCE SUBMITTED

2. NEW EVIDENCE SUBMITTED

A. DRAWINGS

1. None.

B. TESTS

1. None.

C. CALCULATIONS

1. None.

D. QUALITY ASSURANCE

1. Miami-Dade Department of Regulatory and Economic Resources (RER).

E. MATERIAL CERTIFICATIONS

1. None.

F. STATEMENTS

1. Statement letter of code conformance to the 8th edition (2023) of the FBC, issued by Wayne Dalton, a div. of Overhead Door Corporation, dated 08/25/2025, signed and sealed by Dwayne J. Kornish, P.E.



Carlos M. Utrera, P.E.
Product Control Examiner
NOA No. 25-0902.07
Expiration Date: December 17, 2030
Approval Date: October 23, 2025

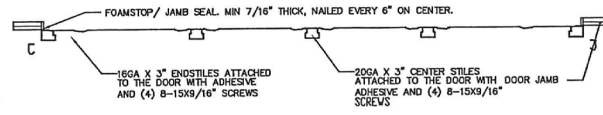
NOTES: (UNLESS OTHERWISE SPECIFIED)

- RATED DESIGN LOAD +46/-52 PSF.
- SECTION HEIGHTS MAY VARY TO CREATE VARIOUS DOOR HEIGHTS, 20.8" MAXIMUM SECTION HEIGHT.
- FOAMSTOP OR JAMB SEAL ON ALL JAMBS REQUIRED TO MEET NEGATIVE DESIGN PRESSURES NAILED 6" O.C.
- TESTED IN ACCORDANCE WITH DADE COUNTY PROTOCOLS TAS 201-94, TAS 202-94, & TAS 203-94.
- DOOR SKIN MUST BE 25,000 PSI MIN. YIELD STRENGTH.
- JAMB LOAD CALCULATIONS:
 $F_j = (1/2 \text{ DOOR WIDTH})(1 \text{ FT OF HEIGHT})(\text{DESIGN PRESSURE})$
 $F_j = (4.567)(1 \text{ FOOT})(46.00 \text{ AND } -52.00)(210.082/-237.484) \text{ LB.}$
- JAMB FASTENER REQUIREMENTS:
 $F_j = (1/2 \text{ DOOR WIDTH})(1 \text{ FT OF HEIGHT})(\text{DESIGN PRESSURE})$
 $F_j = 237.484 \text{ LBS.}$
- DOOR SKIN MATERIAL SHALL BE GALVANIZED ACCORDING TO ASTM A-525 TO G90 MIN, WITH BAKED-ON PRIMER, AND BAKED-ON POLYESTER PAINT TOP COAT.
- FOR ANCHORING INTO WOOD, USE ONE 5/16" LAG SCREW PER JAMB BRACKET WITH 1-1/2" EMBEDMENT INTO SOUTHERN PINE (G=0.55) OR BETTER.
- APPROVED INSULATED AND NON-INSULATED: 8024 (24GA), 8124 (24GA), 8224 (24GA), 0.0209" MIN STEEL.
- WELD SLOT ON ANGLE AND 3/32" X 1" LONG ON 12" CENTERS. "IF WELDING MOUNTING OPTION IS CHOSEN."
- LIFT UP MECHANISM-MANUAL, CHAIN LIFT, OR OPERATOR IS NOT PART OF THIS APPROVAL.
- STANDARD LIFT, HIGH LIFT, VERTICAL LIFT, AND LOW HEADROOM TRACK IS AVAILABLE. FOR LOW HEADROOM LIFT CONDITIONS TOP BRACKET SHALL BE 13 GA LHR 7/4 TOP BRACKET WITH A MIN OF (3) 1/4 - 14 X 7/8" SELF DRILLING CRIMPITTE SCREWS IN LIEU OF THE BRACKET SHOWN ON DRAWING. U-BAR ON TOP SECTION SHALL BE INSTALLED ON TOP OF LHR TOP BRACKETS.
- ATTACH STRUTS WITH (2) 1/4-14x7/8" SELF DRILLING CRIMPITTE SCREWS AT ALL STILE LOCATIONS, TYP. LOCATED WITHIN 6", +/- 3" FROM TOP OF SECTION.
- KEY LOCK, SLIDE LOCK, OR DRAWBAR OPERATOR REQUIRED.
- IMPACT RESISTANT GLAZING OPTION- IMPACT RESISTANT GLAZING SYSTEM MAY BE INSTALLED INTERMEDIATE SECTION OR TOP SECTION. GLAZING SHALL BE 1/4" POLYCARBONATE. 13-3/4" X 20-1/8" MAXIMUM SIZE, FASTENED WITH # 8 X 1" SMS: 3X MIN ALONG THE HORIZONTAL AND 2X MIN ALONG THE VERTICAL. SEE DETAIL F-F ON SHEET 2 FOR ASSEMBLY DETAILS.
- THE DESIGN OF THE SUPPORTING STRUCTURAL ELEMENTS SHALL BE THE RESPONSIBILITY OF THE PROFESSIONAL OF RECORD FOR THE BUILDING OR STRUCTURE AND IN ACCORDANCE WITH CURRENT BUILDING CODES FOR THE LOADS LISTED ON THIS DRAWING.
- VENTS PROVIDE 60 SQUARE INCHES PER VEHICLE.

PRODUCT RENEWED
 as complying with the Florida
 Building Code
 NOA-No. 25-0902.07

Expiration Date 12/17/2030

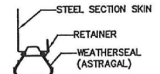
By *[Signature]*
 Miami-Dade Product Control



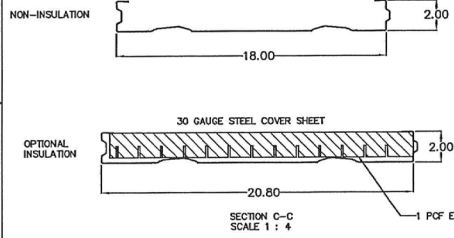
SECTION A-A
 SCALE 1 : 12



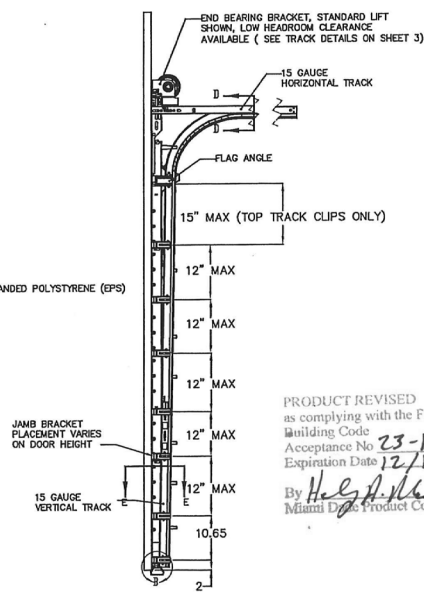
SECTION D-D
 SCALE 1 : 4



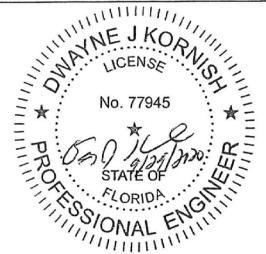
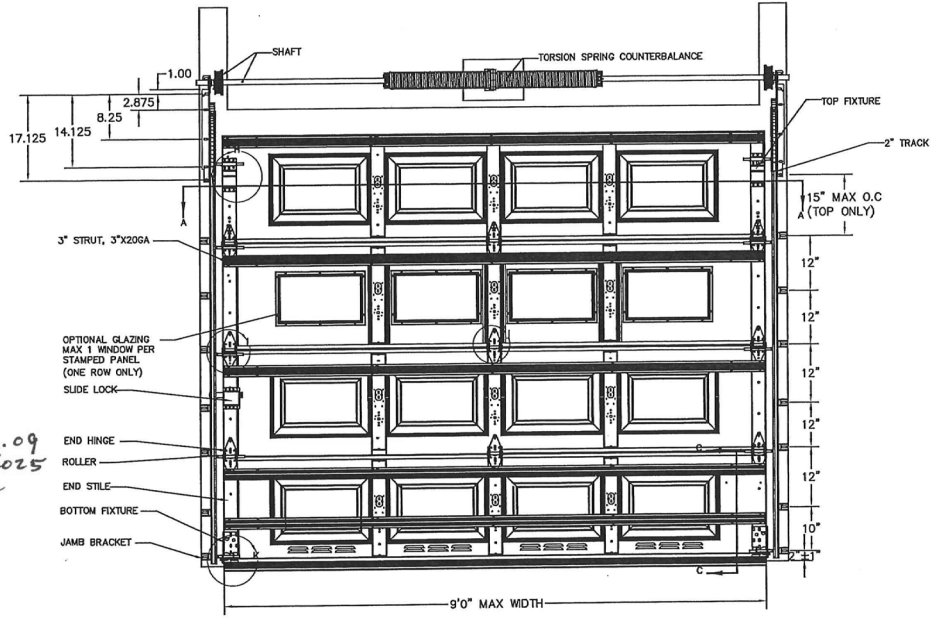
DETAIL B
 SCALE 1 : 4



SECTION C-C
 SCALE 1 : 4



PRODUCT REVISED
 as complying with the Florida
 Building Code
 Acceptance No 23-1120.09
 Expiration Date 12/17/2025
 By *[Signature]*
 Miami-Dade Product Control



DWAYNE J. KORNISH, PE
 4576 COUNTY ROAD 160
 MOUNT HOPE, OHIO
 FL PE 77945
 TX PE 117868
 PROFESSIONAL ENGINEER'S SEAL PROVIDED ONLY FOR
 VERIFICATION OF WINDLOAD CONSTRUCTION DETAILS.

PRODUCT APPROVED
 as complying with the Florida
 Building Code
 NOA-No. 20-0416.06
 Approval Date 12/17/2020
 By *[Signature]*
 Miami-Dade Product Control

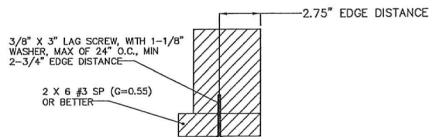
THIRD ANGLE PROJECTION 	UNLESS OTHERWISE SPECIFIED TOLERANCES: .X = ±.1 .XX = ±.03 .XXX = ±.010 ANGULAR = ±.5° HOLES: < Ø.251 = +.004/-0.003 Ø.251-Ø.500 = +.006/-0.003 > Ø.500 = +.008/-0.003 ALL GEOMETRY GOVERNED BY 3D CAD DATABASE:	APPROVALS DATE G.CLARK 4-11-19 D. KORNISH 2-18-20	Wayne Dalton DAMAGE DOORS PENSACOLA, FLORIDA
		DRAWN CHECKED APPROVED MATERIAL FINISH	DESCRIPTION 8024/8124/8224 9'0" MAX WIDTH
A DIVISION OF OVERHEAD DOOR CORP 3395 ADDISON DRIVE PENSACOLA, FLORIDA 32514 (850)-474-9890	DIMS CIRCLED WITH SYMBOL ARE CRITICAL TO QUALITY DESIGN FEATURES & MUST MEET APPLICABLE IN-PROCESS INSPECTION STANDARDS.	WINDLOAD SPECIFICATION OPTION CODE 1300	SIZE DWG NO. D D-329928 SCALE 1:12 UOM = EA SHEET 1 OF 4

NOTES: (UNLESS OTHERWISE SPECIFIED)

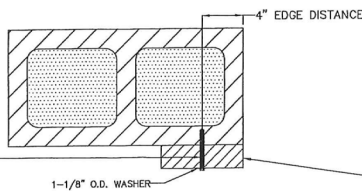
PRODUCT RENEWED
 as complying with the Florida
 Building Code
 NOA-No. 25-0902.07

Expiration Date 12/17/2030

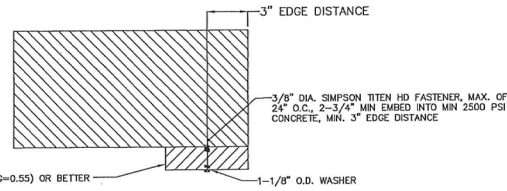
By *[Signature]*
Miami-Dade Product Control



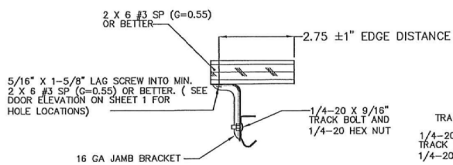
WOOD MOUNTED TO #3 SOUTHERN PINE SUBSTRATE



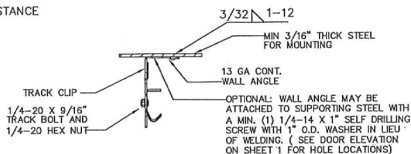
WOOD MOUNTED TO GROUT FILLED MASONRY BLOCK DETAIL



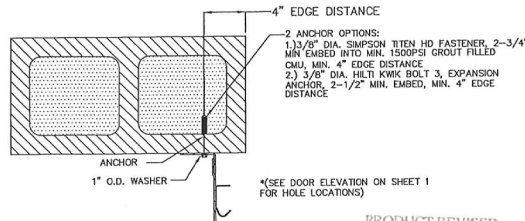
WOOD MOUNTED TO 2500PSI CONCRETE DETAIL



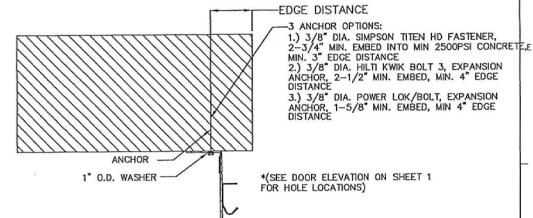
MOUNTING TO WOOD JAMB DETAIL



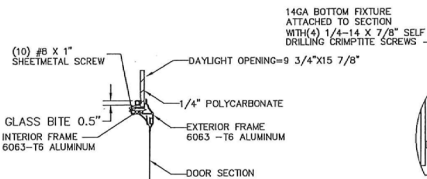
MOUNTING TO STEEL JAMB DETAIL



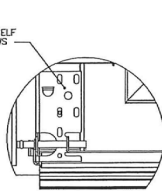
MOUNTING TO GROUT FILLED MASONRY BLOCK DETAIL



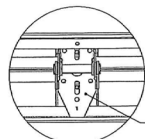
MOUNTING TO 2500PSI CONCRETE DETAIL



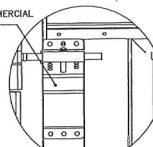
WINDOW DETAIL
 SECTION F - F
 SCALE 1 : 4



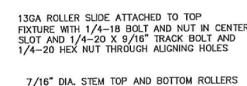
DETAIL K
 SCALE 1 : 4



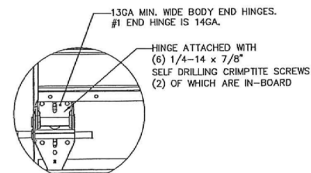
DETAIL J
 SCALE 1 : 4



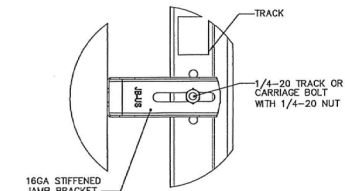
DETAIL H
 SCALE 1 : 4



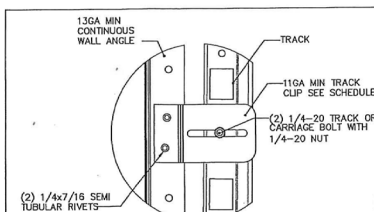
OPTIONAL WALL ANGLE TRACK



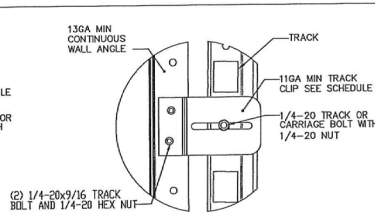
DETAIL K
 SCALE 1 : 4



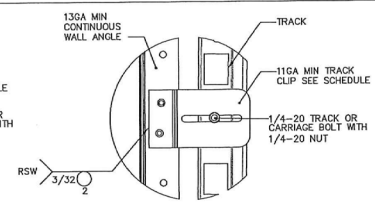
TYPICAL TRACK AND JAMB FASTENERS DETAIL



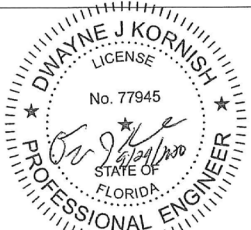
TYPICAL TRACK CLIP RIVETING DETAIL



TYPICAL TRACK CLIP BOLTING DETAIL



TYPICAL TRACK CLIP WELDING DETAIL



PRODUCT APPROVED
 as complying with the Florida
 Building Code
 NOA-No. 20-0416.06

Approval Date 12/17/2020

By *[Signature]*
Miami-Dade Product Control

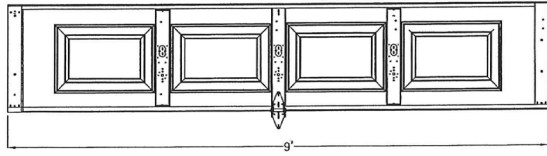
DWAYNE J. KORNISH, PE
 4576 COUNTY ROAD 160
 MOUNT HOPE, OHIO
 FL PE 77945
 TX PE 117868

PROFESSIONAL ENGINEER'S SEAL PROVIDED ONLY FOR VERIFICATION OF WINDLOAD CONSTRUCTION DETAILS.

THIRD ANGLE PROJECTION	UNLESS OTHERWISE SPECIFIED TOLERANCES: INTERPRET DIMS & TOLS PER ASME Y14.5M ALL DIMS ARE IN INCHES DO NOT SCALE DIMS CIRCLED WITH SYMBOL ARE CRITICAL TO QUALITY DESIGN FEATURES & MUST MEET APPLICABLE IN-PROCESS INSPECTION STANDARDS.	APPROVALS DATE DRAWN G.CLARK 4-11-19 CHECKED D. KORNISH 2-18-20 APPROVED MATERIAL FINISH	Wayne Dalton PENSACOLA, FLORIDA 8024/8124/8224 9'0" MAX WIDTH
ALL GEOMETRY GOVERNED BY 3D CAD DATABASE:		SCALE 1:12 UOM = EA SHEET 2 OF 4	

NOTES: (UNLESS OTHERWISE SPECIFIED)

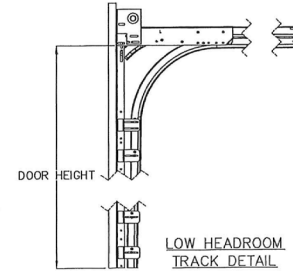
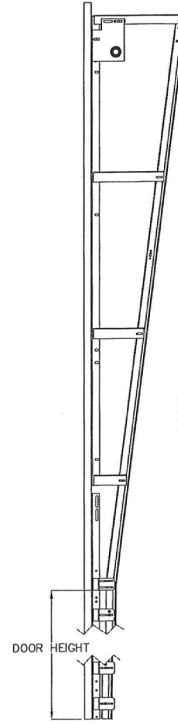
CENTER STILE AND INTERMEDIATE HINGE LOCATIONS



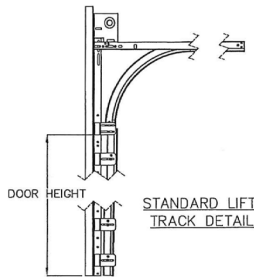
PRODUCT RENEWED
 as complying with the Florida
 Building Code
 NOA-No. 25-0902.07
 Expiration Date 12/17/2030
 By [Signature]
 Miami-Dade Product Control

PRODUCT APPROVED
 as complying with the Florida
 Building Code
 NOA-No. 20-0416.06
 Approval Date 12/17/2020
 By [Signature]
 Miami-Dade Product Control

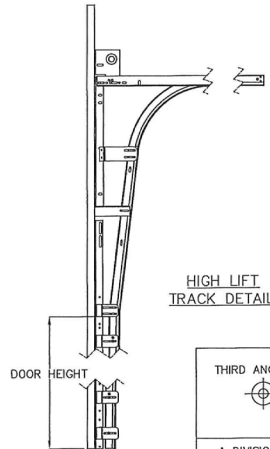
VERTICAL LIFT
 TRACK DETAIL



LOW HEADROOM
 TRACK DETAIL

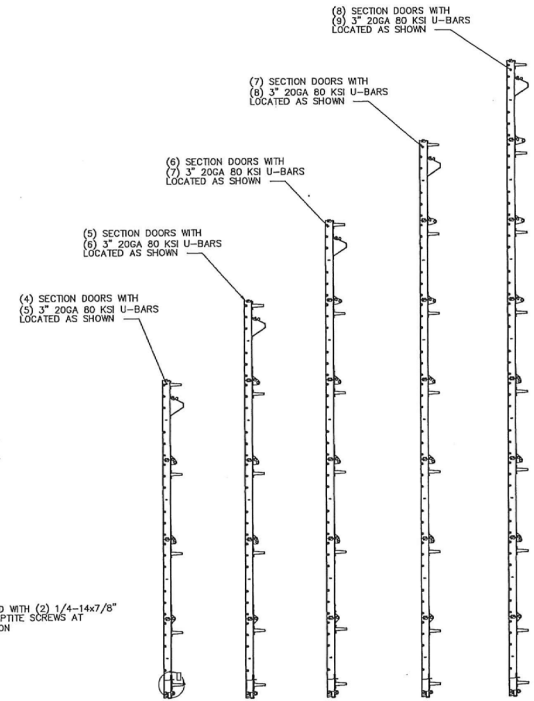


STANDARD LIFT
 TRACK DETAIL

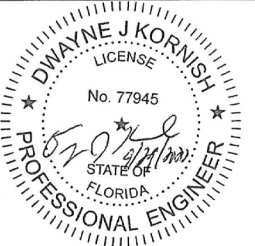
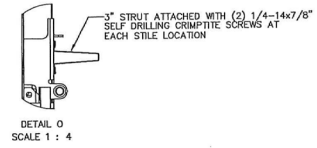


HIGH LIFT
 TRACK DETAIL

PRODUCT REVISED
 as complying with the Florida
 Building Code
 Acceptance No. 23-1122.09
 Expiration Date 12/17/2025
 By [Signature]
 Miami-Dade Product Control



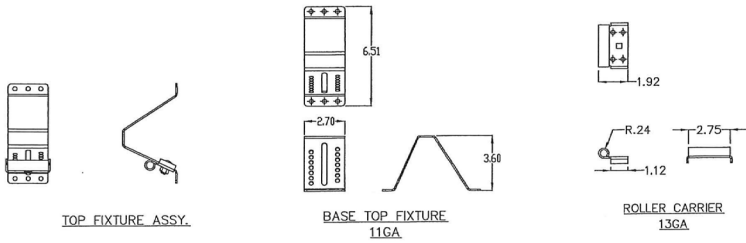
STRUT LOCATIONS
 SCALE 1 : 16



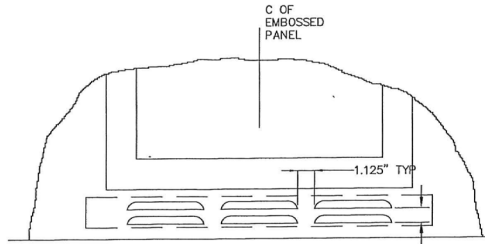
DWAYNE J. KORNISH, PE
 4576 COUNTY ROAD 160
 MOUNT HOPE, OHIO
 FL PE 77945
 TX PE 117868
 PROFESSIONAL ENGINEER'S SEAL PROVIDED ONLY FOR
 VERIFICATION OF WINDLOAD CONSTRUCTION DETAILS.

THIRD ANGLE PROJECTION		UNLESS OTHERWISE SPECIFIED TOLERANCES:		APPROVALS DATE		Wayne Dalton GARAGE DOORS	PENSACOLA, FLORIDA
		INTERPRET DIMS & TOLS PER ASME Y14.5M ALL DIMS ARE IN INCHES DO NOT SCALE DIMS CIRCLED WITH SYMBOL ARE CRITICAL TO QUALITY DESIGN FEATURES & MUST MEET APPLICABLE IN-PROCESS INSPECTION STANDARDS.		DRAWN G. CLARK 4-11-19 CHECKED D. KORNISH 2-18-20 APPROVED - - - MATERIAL - - - FINISH - - -			
A DIVISION OF OVERHEAD DOOR CORP 3395 ADDISON DRIVE PENSACOLA, FLORIDA 32514 (850)-474-9890		TOLERANCES: .X = ±.1 .XX = ±.03 .XXX = ±.010 ANGULAR = ±.5° HOLES: < 0.251 = +.004/- .003 0.251-0.500 = +.006/- .003 > 0.500 = +.008/- .003		WINDLOAD SPECIFICATION OPTION CODE 1300		SIZE DWG NO. D D-329928	REV P-04
ALL GEOMETRY GOVERNED BY 3D CAD DATABASE:				SCALE 1:12 UOM = EA		SHEET 3 OF 4	

NOTES: (UNLESS OTHERWISE SPECIFIED)
 1. FOR DIMENSIONS AND NOTE REFERENCES, REFER TO INDIVIDUAL DRAWINGS.

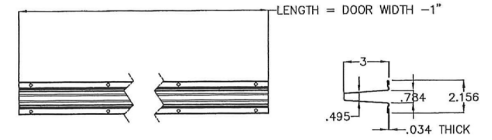


TOP FIXTURE DETAILS



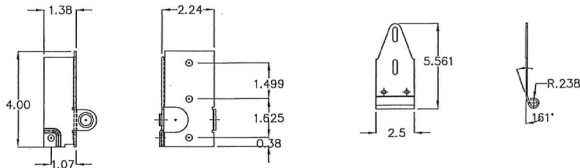
THE VENT IS AN OPTIONAL FEATURE AND .9375\"/>

VENT DETAILS

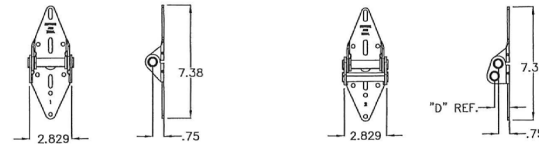


3\"/>

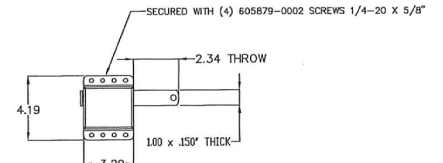
STRUT DETAILS



BOTTOM FIXTURE DETAILS



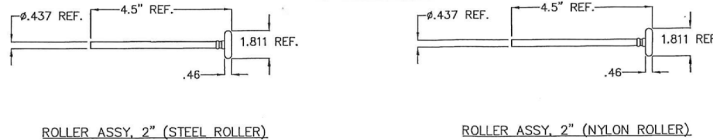
HINGE DETAILS



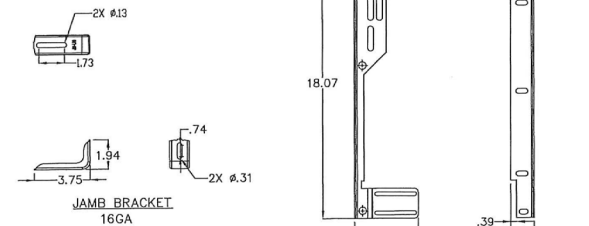
SIDE LOCK ASSY.
 LOCK DETAILS

PRODUCT RENEWED
 as complying with the Florida Building Code
 NOA-No. 25-0902.07
 Expiration Date 12/17/2030
 By *[Signature]*
 Miami-Dade Product Control

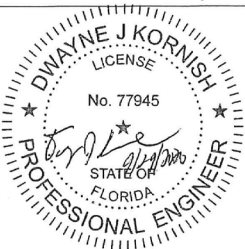
PRODUCT REVISED
 as complying with the Florida Building Code
 Acceptance No. 23-1120.07
 Expiration Date 12/17/2025
 By *[Signature]*
 Miami-Dade Product Control



ROLLER STEM ASSY DETAILS



BRACKET DETAILS



DWAYNE J. KORNISH, PE
 4576 COUNTY ROAD 160
 MOUNT HOPE, OHIO
 FL PE 77945
 TX PE 117568
 PROFESSIONAL ENGINEER'S SEAL PROVIDED ONLY FOR VERIFICATION OF WINDLOAD CONSTRUCTION DETAILS.

PRODUCT APPROVED
 as complying with the Florida Building Code
 NOA-No. 20-0416.06
 Approval Date 12/17/2020
 By *[Signature]*
 Miami-Dade Product Control

THIRD ANGLE PROJECTION		UNLESS OTHERWISE SPECIFIED:		APPROVALS DATE		Wayne Dalton PENSACOLA, FLORIDA	
		INTERPRET DIMS & TOLS PER ASME Y14.5M ALL DIMS ARE IN INCHES DO NOT SCALE DIMS CIRCLED WITH SYMBOL ARE CRITICAL TO QUALITY DESIGN FEATURES & MUST MEET APPLICABLE IN-PROCESS INSPECTION STANDARDS.		TOLERANCES: .X = ±.1 .XX = ±.03 .XXX = ±.010 ANGULAR = ±.5° HOLES: < 0.251 = +.004/- .003 0.251-0.500 = +.006/- .003 > 0.500 = +.008/- .003			DRAWN G.CLARK 4-11-19 CHECKED D. KORNISH 2-18-20 APPROVED - - MATERIAL - - FINISH - -
		ALL GEOMETRY GOVERNED BY 3D CAD DATABASE:		WINDLOAD SPECIFICATION OPTION CODE 1300		SIZE DWG NO. D D-329928	REV P-04
A DIVISION OF OVERHEAD DOOR CORP 3395 ADDISON DRIVE PENSACOLA, FLORIDA 32514 (850)-474-9890				SCALE 1:12 UOM = EA SHEET 4 OF 4			