



DEPARTMENT OF REGULATORY AND ECONOMIC RESOURCES (RER)
BOARD AND CODE ADMINISTRATION DIVISION
NOTICE OF ACCEPTANCE (NOA)

Custom Window Systems, Inc.
1900 SW 44th Avenue
Ocala, FL 34474

SCOPE:

This NOA is being issued under the applicable rules and regulations governing the use of construction materials. The documentation submitted has been reviewed and accepted by Miami-Dade County RER - Product Control Section to be used in Miami Dade County and other areas where allowed by the Authority Having Jurisdiction (AHJ).

This NOA shall not be valid after the expiration date stated below. The Miami-Dade County Product Control Section (In Miami-Dade County) and/ or the AHJ (in areas other than Miami-Dade County) reserve the right to have this product or material tested for quality assurance purposes. If this product or material fails to perform in the accepted manner, the manufacturer will incur the expense of such testing and the AHJ may immediately revoke, modify, or suspend the use of such product or material within their jurisdiction. RER reserves the right to revoke this acceptance if it is determined by Miami-Dade County Product Control Section that this product or material fails to meet the requirements of the applicable building code.

This product is approved as described herein and has been designed to comply with the Florida Building Code, including the High Velocity Hurricane Zone.

DESCRIPTION: Series "7300 (Flange-Frame)" Aluminum Fixed Window – S.M.I.

APPROVAL DOCUMENT: Drawing No. **CWS-1263**, titled "Series-7300 Aluminum Fixed Window (Flange Frame) SMI", sheets 1 through 5 of 5, dated SEP 03, 2025, prepared by manufacturer, signed and sealed by Thomas J. Sotos, P.E., bearing the Miami-Dade County Product Control Approval stamp with the Notice of Acceptance number and expiration date by the Miami-Dade County Product Control Section.

MISSILE IMPACT RATING: Small Missile Impact Resistant

LIMITATIONS:

1. General statement in sheets **3** and **4** reference to tempered glass & laminated glass compliance to CFR 1201 and or ANSI Z97.1 to be verified by AHJ with glass labeled on the product and it doesn't qualify automatic.
2. There is **NO** ANSI-Z 97.1 test, conducted with this fixed window approval.
3. See sheet **1** for max. window height & width. See sheet **3** for Design Pressure charts Vs Sizes and glass types. See sheet **4** for laminated & insulated laminated glass composition.

LABELING: Each unit shall bear a permanent label with the manufacturer's name or logo, city, state, series, and following statement: "Miami-Dade County Product Control Approved", unless otherwise noted herein.

RENEWAL of this NOA shall be considered after a renewal application has been filed and there has been no change in the applicable building code negatively affecting the performance of this product.

TERMINATION of this NOA will occur after the expiration date or if there has been a revision or change in the materials, use, and/ or manufacture of the product or process. Misuse of this NOA as an endorsement of any product, for sales, advertising or any other purposes shall automatically terminate this NOA. Failure to comply with any section of this NOA shall be cause for termination and removal of NOA.

ADVERTISEMENT: The NOA number preceded by the words Miami-Dade County, Florida, and followed by the expiration date may be displayed in advertising literature. If any portion of the NOA is displayed, then it shall be done in its entirety.

INSPECTION: A copy of this entire NOA shall be provided to the user by the manufacturer or its distributors and shall be available for inspection at the job site at the request of the Building Official.

This NOA consists of this page 1 and evidence pages E-1, as well as approval document mentioned above.

The submitted documentation was reviewed by **Ishaq I. Chanda, P.E.**

Ishaq I. Chanda



NOA No. 25-1015.04
Expiration Date: November 26, 2030
Approval Date: November 26, 2025
Page 1

NOTICE OF ACCEPTANCE: EVIDENCE SUBMITTED

1. EVIDENCE SUBMITTED

A. DRAWINGS

1. Manufacturer's die drawings and sections.
2. Drawing No. **CWS-1263**, titled "Series-7300 Aluminum Fixed Window (Flange Frame) SMI", sheets 1 through 5 of 5, dated SEP 03, 2025, prepared by manufacturer, signed and sealed by Thomas J. Sotos, P.E.

B. TESTS

1. Test reports on: 1) Air Infiltration Test, per FBC, TAS 202-94
2) Uniform Static Air Pressure Test, Loading per FBC, TAS 202-94
3) Water Resistance Test, per FBC, TAS 202-94
4) Forced Entry Test, per FBC 2411.3.2.1, and TAS 202-94
5) Small Missile Impact Test per FBC, TAS 201-94
6) Cyclic Wind Pressure Loading per FBC, TAS 203-94
along with marked-up drawings and installation diagram of a series 7300 aluminum fixed window, prepared by QAI Laboratories, Test Report No. **21-1264a**, dated 08/29/25, signed and sealed by Idalmis Ortega, P.E.

C. CALCULATIONS

1. Anchor verification calculations and structural analysis, complying with FBC 8th Edition (2023), prepared by manufacturer, dated 08/21/25, signed and sealed by Thomas J. Sotos, P.E.
2. Glazing complies with ASTM E1300-09/-16

D. QUALITY ASSURANCE

1. Miami-Dade Department of Regulatory and Economic Resources (RER).

E. MATERIAL CERTIFICATIONS

1. Notice of Acceptance No. **22-1116.01** issued to **Kuraray America, Inc.** for their "**SentryGlas® (Clear and White) Glass Interlayers**", expiring on 07/04/28.
2. Notice of Acceptance No. **22-1130.05** issued to **Eastman Chemical Company (MA)** for their "**Saflex Storm - Saflex and Saflex HP Composite Glass Interlayers with PET Core**", expiring on 12/11/28.

F. STATEMENTS

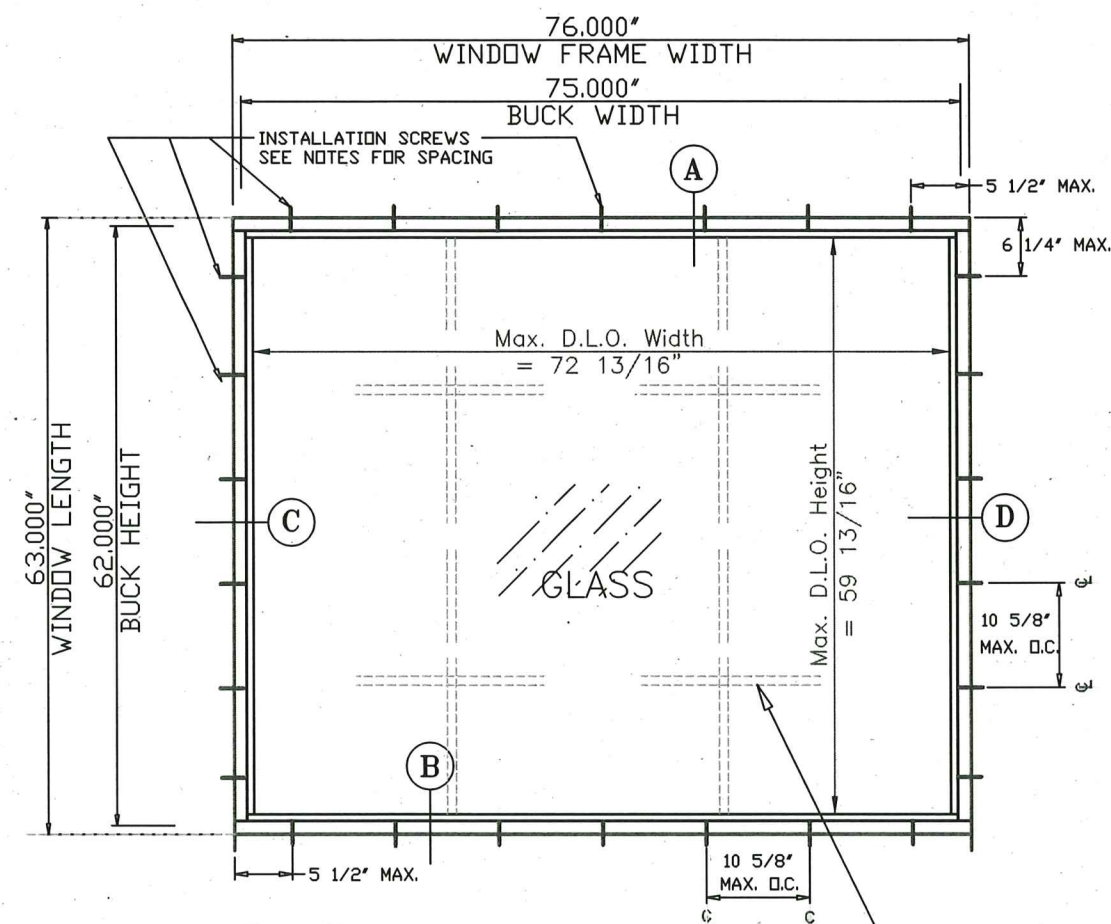
1. Statement letter of conformance, complying with **FBC 8th Edition (2023)**, dated OCT 27, 2025, issued by manufacturer, signed and sealed by Thomas J. Sotos, P.E.

G. OTHERS

1. Test proposal # 16-1467 dated DEC 13, 2016, approved by Product Control, RER.

Ishaq I. Chanda

Ishaq I. Chanda, P.E.
Product Control Unit Supervisor
NOA No. 25-1015.04
Expiration Date: November 26, 2030
Approval Date: November 26, 2025



FIXED WINDOW ELEVATION

NOTE:
MAXIMUM GLASS AREA TESTED APPLIES TO
GLASS TYPES: A, B, C AND D. - SEE DESIGN
LOAD CAPACITY TABLES ON SHEET 3 OF 5
FOR SIZE LIMITATIONS OF EACH GLASS TYPE.

EXT. & INT. FALSE COLONIAL
MUNTINS ARE APPLIED W/
W/ SILICONE AND ARE
AVAILABLE AS OPTIONAL.

TEST UNIT PERFORMANCE SUMMARY

FLANGE FRAME TEST SIZE = 74" W. X 63" H.
LOAD PERFORMANCE TEST: TAS-202
DESIGN LOADS @ PA-202 = +90.0, -120.0 PSF
STRUCTURAL TEST LOADS = +135.0, -180.0 PSF
SMALL MISSILE IMPACT TEST: TAS-201
CYCLIC LOAD TEST: TAS-203
TESTED GLASS = (SEE GLASS DATA CHART)

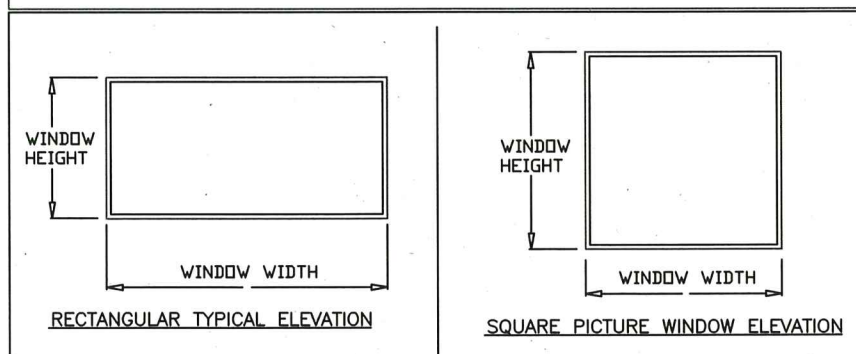
(W/ 7/16" LAMINATED - MONOLITHIC
& 11/16" INSULATED-LAMINATED)

NOTES:

- FOR GLAZING DETAILS, GLASS TYPES, COMPOSITION, AND DESCRIPTION REFER TO SHEET 4 OF 5.
- FOR VERTICAL AND HORIZONTAL CROSS-SECTION DETAILS REFER TO SHEET 2 OF 5.

**WINDOWS ARE S.M. IMPACT APPROVED
SHUTTERS NOT REQUIRED ABOVE 30 FT. ELEVATION**

APPROVED WINDOW ELEVATIONS (S.M.IMPACT)



SERIES: 7300

SMALL MISSILE IMPACT PICTURE WINDOW - FLANGE FRAME

General Notes:

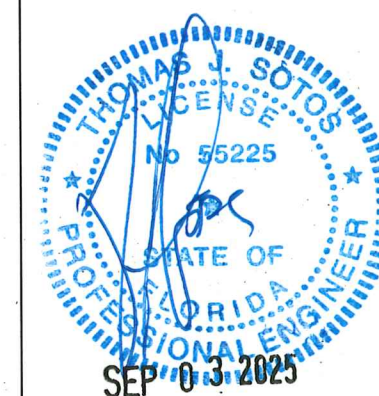
- THIS WINDOW SYSTEM IS DESIGNED AND TESTED TO COMPLY WITH THE REQUIREMENTS OF THE FLORIDA BUILDING CODE (2023-8th Edition) INCLUDING HIGH VELOCITY HURRICANE ZONE (HVHZ) AND ASTM 1300-16. THIS PRODUCT IS SMALL MISSILE IMPACT RESISTANT. (SHUTTERS NOT REQUIRED ABOVE 30 FT. ELEVATION)
- WOOD BUCKS SHALL BE INSTALLED AND ANCHORED SO THAT THE BUILDING RESISTS THE SUPERIMPOSED LOADS IN ACCORDANCE WITH THE REQUIREMENTS OF F.B.C. & TO BE REVIEWED BY BUILDING OFFICIAL.
- ANCHORS SHOWN ON THE ELEVATION ARE AS PER TEST UNITS. ANCHORS ON ALL WINDOW SIZES ARE NOT TO EXCEED THESE MAXIMUM SPACINGS ON CENTER (O.C.) .
- ANCHOR CONDITIONS NOT DESCRIBED IN THESE DRAWING'S ARE TO BE ENGINEERED ON A SITE SPECIFIC BASIS, UNDER SEPARATE APPROVAL AND TO BE REVIEWED BY BUILDING OFFICIAL.
- WINDOWS ARE QUALIFIED FOR USE WITH SINGLE GLAZE LAMINATED GLASS TYPES, AND FOR USE WITH DOUBLE GLAZE LAMINATED INSULATED GLASS TYPES TABULATED HEREIN; (SEE SHEET 4 OF 5 FOR GLASS TYPES AND SHEET 3 OF 5 FOR MAX. DESIGN PRESSURES).
- WINDOWS WITH GLASS TYPES "B, OR D" INSTALLED ABOVE 30ft. IN THE HVHZ, THE I.G. EXTERIOR LITE SHALL BE TEMPERED TO COMPLY WITH THE SMALL MISSILE IMPACT RESISTANCE REQUIREMENTS (FBC-Chapter 24 Section 2411.3.3.7).
- FOR OPTIONAL FRAME INSTALLATION DETAILS SEE SHEETS 5 OF 5.
- EXT. & INT. FALSE COLONIAL MUNTINS ARE OPTIONAL & AND ARE APPLIED W/ SILICONE
- WOOD BUCKS IN CONTACT WITH CONCRETE MUST BE PRESSURE TREATED AND ANCHORED (BY OTHERS), PRIOR TO WINDOW INSTALLATION. (SEE SHEET 2 OF 5 FOR DETAIL & NOTES)
- APPROVAL APPLIES TO SINGLE UNITS OR SIDE BY SIDE MULLED UNITS.
- MULLING FIXED WINDOWS WITH OTHER TYPES OF FBC OR MIAMI-DADE COUNTY (HVHZ). APPROVED PRODUCTS USING A FBC OR MIAMI-DADE COUNTY APPROVED (HVHZ), CLIPPED MULLION BETWEEN ARE ACCEPTABLE BUT THE LOWER DESIGN PRESSURE FROM THE WINDOWS OR MULLION APPROVAL WILL APPLY TO THE ENTIRE MULLED SYSTEM.
- SEE SHEET 5 OF 5 FOR MULLION/METAL ATTACHMENT DETAILS & OPTIONS.



1900 SW 44TH AVE.
OCALA, FLORIDA 34474
WWW.CWS.CC

7300 ALUMINUM FIXED WINDOW - FLANGE SMALL MISSILE IMPACT

NO.	DESCRIPTION	BY	DATE



DATE
THOMAS J. SOTOS, P.E.
FL P.E. LIC. # 55225

SHEET DESCRIPTION:
APPROVED ELEVATIONS,
CONFIGURATIONS AND
GENERAL NOTES

DRAWN BY: N. Erazo DATE: 08/11/2025

REV. BY: --- DATE: ---

DWG #: CWS-1263 REV #:

SCALE: --- SHEET 1 OF 5

Approved as complying with the
Florida Building Code
Date 11/26/2025
NOA# 25-1015-04
Miami Dade Product Control
By [Signature]

— #14 W.S. W/ 1 1/4"
MIN. EMBEDMENT INTO WOOD.
(SEE ELEVATION AT SHEET #1
FOR MAX. FASTENER SPACING)

10 SILICONE ADHESIVE
BEDDING COMPOUND

LAMINATED GLASS

—PT. WOOD BUCKS

1/4" ULTRACON + W/ 1 3/4"
MIN. EMBEDMENT INTO CONC.
(SEE ELEVATION AT SHEET #1
FOR MAX. FASTENER SPACING)

**7300 ALUMINUM
FIXED WINDOW - FLANGE
SMALL MISSILE IMPACT**

1900 SW 44TH AVE.
OCALA, FLORIDA 34474
WWW.CWS.CC

1/4" TAPCON W/ 1 3/4"
MIN. EMBEDMENT INTO CONC.
(SEE ELEVATION AT SHEET #1
FOR MAX. FASTENER SPACING)

1 1/2' MIN.
EDGE DISTANCE

1 3/4" MIN.
EMBEDMENT

EXTERIOR GRADE—
PERIMETER CAULKING

- P.T WOOD BUCK NOT BY CWS
MUST SUSTAIN IMPOSED LOADS

— SILICONE ADHESIVE
BEDDING COMPOUND

WINDOW FRAME FLANGE HEIGHT -

EXTERIOR

INTERIOR

EXTERIOR GRADE—
PERIMETER CAULKING

1 3/4" MIN.
EMBEDMENT

WINDOW INSTALLATION NOTES:

1. THE WINDOW FRAME FLANGE TO BE BACK-BEDDED W/ AN EXT. GRADE CAULK THROUGHOUT THE ENTIRE PERIMETER OF FLANGE BY WINDOW INSTALLER (TYP.)
2. THE EXPOSED EXT. PERIMETER OF THE WINDOW FRAME TO BE CAULKED AND SEALED W/ AN APPROVED EXTERIOR GRADE CAULK BY OTHERS (TYP.)
3. WOOD BUCK SPECIFIC GRAVITY = 0.55 MIN.
4. CONCRETE COMPRESSIVE STRENGTH = 3KSI MIN.

* WHEN THE GAP BETWEEN THE WINDOW FRAME AND THE BUCK OR MASONRY IS LESS THAN 1/8", SHIMS ARE NOT REQUIRED.

NOTE:

ANCHORS TO BE:

#14 SMS OR WOOD. SCREWS INTO WOOD,
1-1/4" EMBEDMENT AND 1" MIN. EDGE DISTANCE.

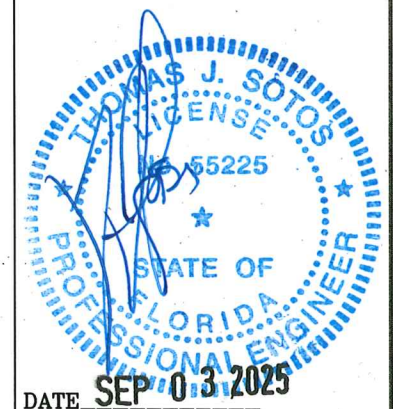
#12 SMS THRU ALUMINUM MULLION.

DEWALT ULTRACON + & 1/4" TAPCONS INTO 3KSI
CONCRETE, GROUT FILLED BLOCK OR HOLLOW BLOCK
(AT JAMBS ONLY) 1-3/4" EMBEDMENT AND 1-1/2"
EDGE DISTANCE.

* TAPCON YIELD STRENGTH: $F_y=148\text{Ksi}$
ULTIMATE STRENGTH: $F_u=164\text{Ksi}$

Approved as complying with the
Florida Building Code
Date 11/26/2025
NOA# 25-1015-04
Miami Dade Product Control

By Iskender I. Chandra



THOMAS J. SOTOS, P.E.
FL P.E. LIC. # 55225

SHEET DESCRIPTION:
VERTICAL AND HORIZONTAL
WINDOW CROSS SECTIONS,
AND NOTES

DRAWN BY:	DATE:
N. Erazo	08/11/2025

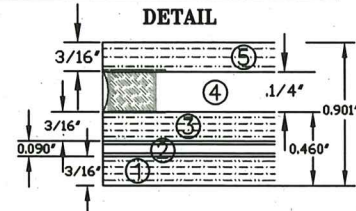
REV. BY:	DATE:
----------	-------

DWG #:	REV #:
CWS 1263	

SCALE:	SHEET 2 OF 5
--------	-----------------

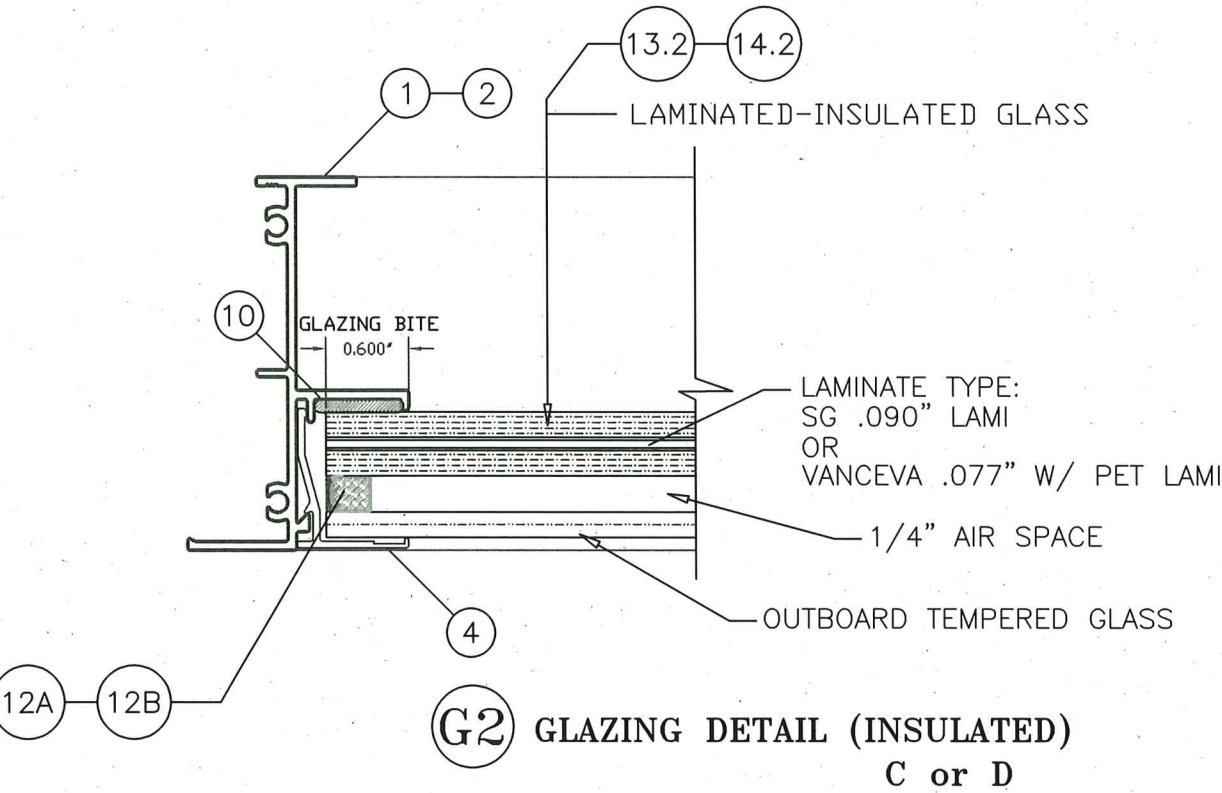
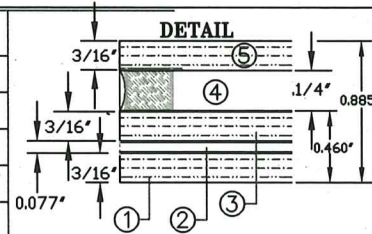
LAMINATED INSULATED GLASS COMPOSITION TYPE C

ITEM	DESCRIPTION
1	3/16" HEAT-STRENGTHENED GLASS
2	0.090" SENTRYGLASS by: Kuraray America, Inc.
3	3/16" HEAT-STRENGTHENED GLASS
4	1/4" INSULATED AIR SPACE
5	3/16" TEMPERED OUTBOARD GLASS



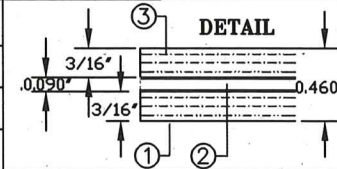
LAMINATED INSULATED GLASS COMPOSITION TYPE D

ITEM	DESCRIPTION
1	3/16" HEAT-STRENGTHENED GLASS
2	0.077" VANCEVA SAFLEX W/ PET CORE by: EASTMAN CHEMICAL
3	3/16" HEAT-STRENGTHENED GLASS
4	1/4" INSULATED AIR SPACE
5	3/16" TEMPERED OUTBOARD GLASS



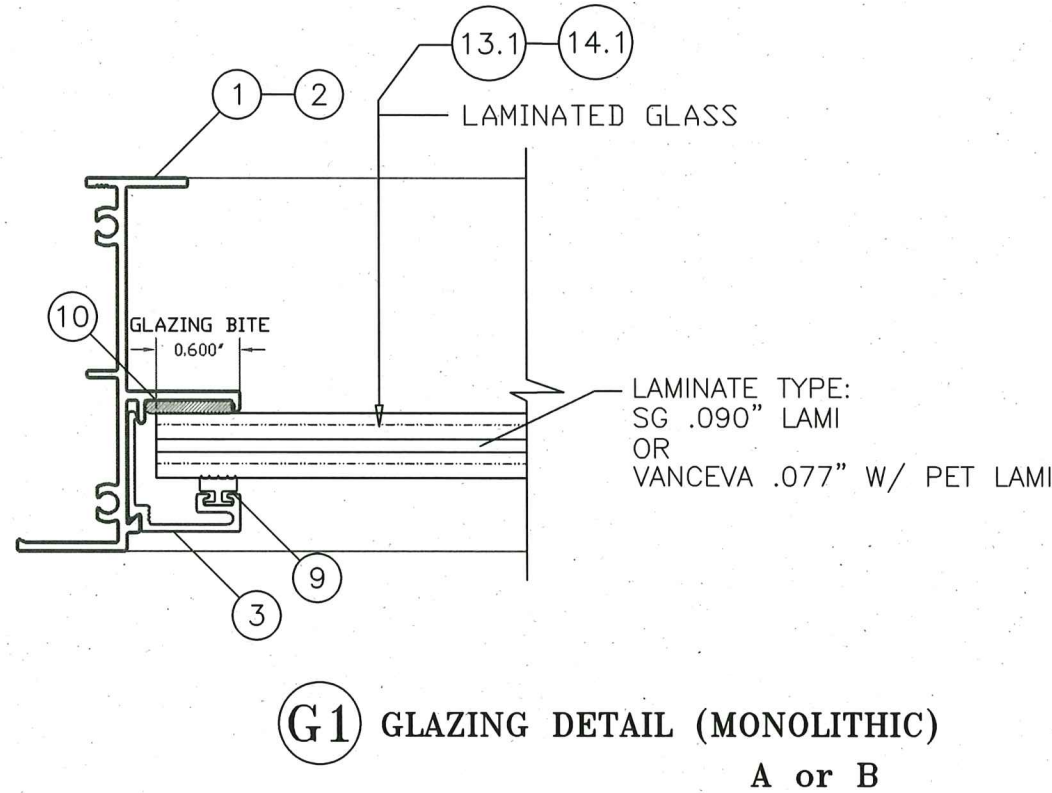
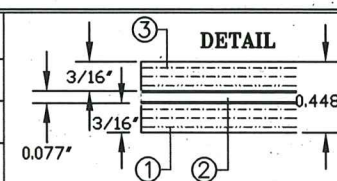
7/16" LAMINATED GLASS COMPOSITION - TYPE A

ITEM	GLASS DESCRIPTION
1	3/16" HEAT-STRENGTHENED GLASS
2	0.090" SENTRYGLASS by: Kuraray America, Inc.
3	3/16" HEAT-STRENGTHENED GLASS



7/16" LAMINATED GLASS COMPOSITION - TYPE B

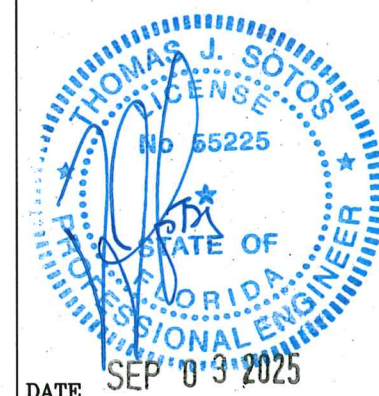
ITEM	GLASS DESCRIPTION
1	3/16" HEAT-STRENGTHENED GLASS
2	0.077" VANCEVA SAFLEX W/ PET CORE by: EASTMAN CHEMICAL
3	3/16" HEAT-STRENGTHENED GLASS



1900 SW 44TH AVE.
OCALA, FLORIDA 34474
WWW.CWS.CC

7300 ALUMINUM
FIXED WINDOW - FLANGE
SMALL MISSILE IMPACT

NO.	DESCRIPTION	BY	DATE



DATE: SEP 03 2025
THOMAS J. SOTOS, P.E.
FL P.E. LIC. # 55225

SHEET DESCRIPTION:
LAMINATED GLASS TYPES,
GLAZING DETAILS AND NOTES

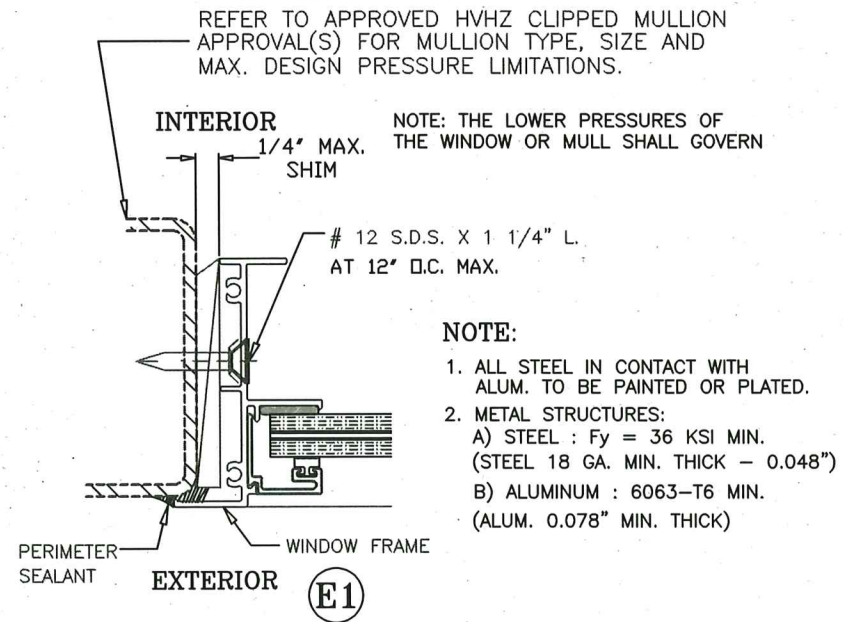
DRAWN BY:	DATE:
N. Erazo	08/11/2025
REV. BY:	DATE:
---	---
DWG #:	REV #:
CWS-1263	
SCALE:	SHEET
---	4 OF 5

Notes:

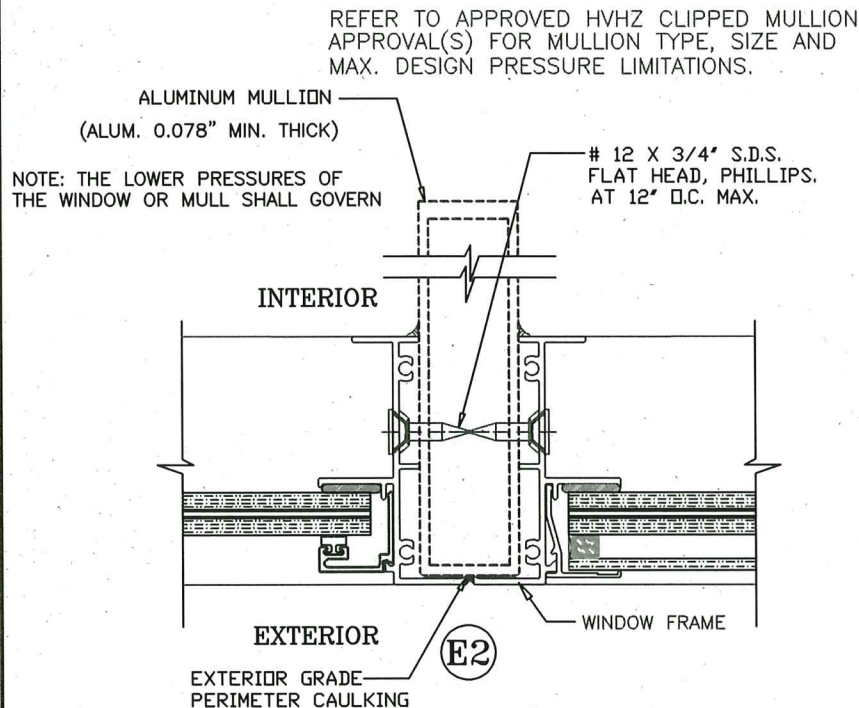
- SEE SHEET 3 OF 5 FOR DESIGN LOADS LOAD CAPACITY TABLES.
- * THE EXTERIOR LITE OF THE I.G. WINDOWS WITH GLASS TYPES "B" OR "D", SHALL BE TEMPERED TO COMPLY WITH THE SMALL MISSILE IMPACT RESISTANCE REQUIREMENTS (FBC-Chapter 24 Section 2411.3.3.7).

* Tempered glass and Laminated Glass marked and in compliance with Section 2406 Safety Glazing: CPSC 16 CFR Part 1201" or "ANSI Z97.1-2015.

Approved as complying with the
Florida Building Code
Date 11/26/2025
NOA# 35-1025.04
Miami Dade Product Control
By 1/26/2025

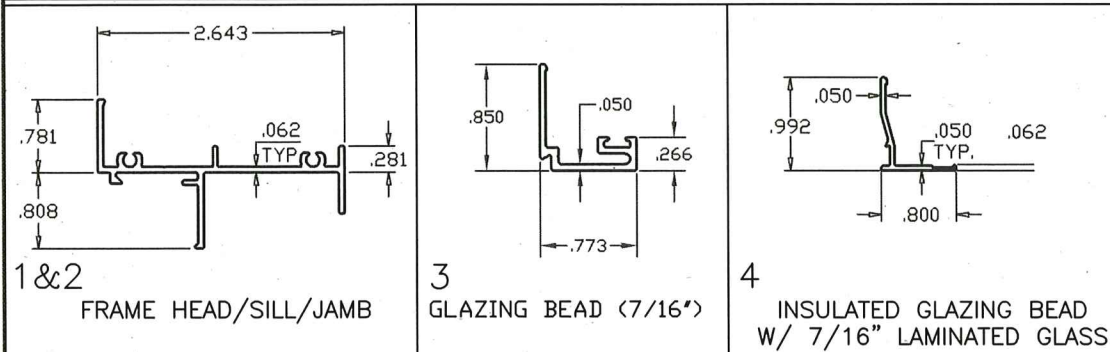


METAL STRUCTURE ATTACHMENT DETAIL

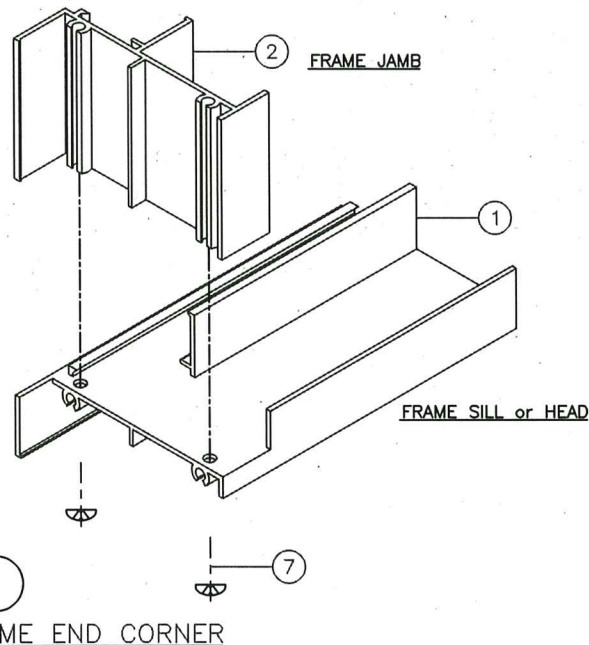


FRAME CLIPPED MULLING DETAIL

WINDOW FRAME EXTRUSION DETAILS



BILL OF MATERIALS					
ITEM	PART #	QUANTITY	DESCRIPTION	MATERIAL	REMARKS
1	LAW-4201	2	FRAME HEAD/SILL	6063-T6	ALUMINUM
2	LAW-4201	2	FRAME JAMB	6063-T6	ALUMINUM
3	LAW-4205	4	GLAZING BEAD (7/16" & 13/32" GLASS)	6063-T6	ALUMINUM
4	LAW-6211	4	GLAZING BEAD (7/16" GLASS - INSULATED)	6063-T6	ALUMINUM
5	N/A	N/A	N/A	N/A	N/A
6	N/A	N/A	N/A	N/A	N/A
7	#8 X 1"	2/ CORNER	FRAME ASSEMBLY SCREWS	-	P.H. / SQ. RECESS
8	#12 X 2 1/4"	AS REQ'D.	FRAME INSTALLATION SCREWS	S.M.S.	F.H. PHIL. / S.M.S.
9	LAW-4206	AS REQD.	GLAZING WEDGE/GASKET	PVC	-
10	DC-899	AS REQD.	GLAZING NEUTRAL CURE SILICONE	SILICONE	DOW CORNING 899
	GE-2800	AS REQD.	GLAZING SILICONE	SILICONE	GE-2800
11	SM5504/5591	AS REQ'D.	ITW ACRYL-R JOINT SEALANT	ACRYLIC	SELF-LEVELING
12 a	*	AS REQD.	"Duraseal" Spacer	BLACK	1/4" AIR SPACE
12 b	*	AS REQD.	QUANEX "SuperSpacer" w/ Isomelt M	BLACK	1/4" AIR SPACE
13.1	DETAIL G1	1	7/16" H.S. LAMINATED GLASS	*	SG .090" LAMI
13.2	DETAIL G2	1	LAMINATED-INSULATED 3/16" TEMP GLASS	*	SG .090" LAMI
14.1	DETAIL G1	1	7/16" H.S. LAMINATED GLASS	VANCEVA	.077" W/ PET CORE LAMI
14.2	DETAIL G2	1	LAMINATED-INSULATED 3/16" TEMP. GLASS	VANCEVA	.077" W/ PET CORE LAMI



FRAME CORNER & JOINT DETAILS

SEALANT:

FRAME CORNERS, OR JOINTS SEALED WITH A COLORED or CLEAR SEALANT AND PERIMETER OF GLAZING BEAD WITH CLEAR SILICONE

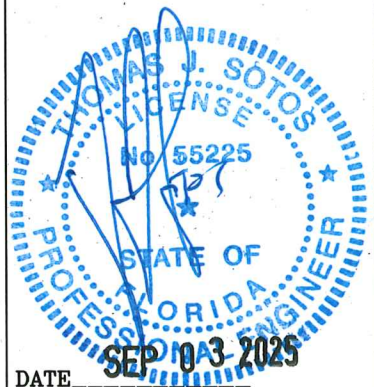
Approved as complying with the
Florida Building Code
Date 11/26/2025
NOA# 25-1015-04
Miami Dade Product Control
By Ishay J. Chante



1900 SW 44TH AVE.
OCALA, FLORIDA 34474
WWW.CWS.CC

7300 ALUMINUM
FIXED WINDOW - FLANGE
SMALL MISSILE IMPACT

NO.	DESCRIPTION	BY	DATE



THOMAS J. SOTOS, P.E.
FL P.E. LIC. # 55225

SHEET DESCRIPTION:
BILL OF MATERIALS, EXTRUSION
TYPES, MULLING-ATTACHMENT
DETAILS AND CORNER-JOINT
ASSEMBLY DETAILS

DRAWN BY:	DATE:
N. Erazo	08/11/2025
REV. BY:	DATE:
---	---
DWG #:	REV #:
CWS-1263	
SCALE:	SHEET
---	5 OF 5