



DEPARTMENT OF REGULATORY AND ECONOMIC RESOURCES (RER)  
BOARD AND CODE ADMINISTRATION DIVISION

## NOTICE OF ACCEPTANCE (NOA)

MIAMI-DADE COUNTY, FLORIDA  
PRODUCT CONTROL SECTION

11805 SW 26 Street, Room 208  
T (786) 315-2590 F (786) 315-2599

[www.miamidade.gov/economy](http://www.miamidade.gov/economy)

Aire Technologies, Inc.  
1502 Industrial Drive  
Monongahela, PA 15063

### SCOPE:

This NOA is being issued under the applicable rules and regulations governing the use of construction materials. The documentation submitted has been reviewed and accepted by Miami-Dade County RER-Product Control Section to be used in Miami-Dade County and other areas where allowed by the Authority Having Jurisdiction (AHJ).

This NOA shall not be valid after the expiration date stated below. The Miami-Dade County Product Control Section (In Miami-Dade County) and/ or the AHJ (in areas other than Miami-Dade County) reserve the right to have this product or material tested for quality assurance purposes. If this product or material fails to perform in the accepted manner, the manufacturer will incur the expense of such testing and the AHJ may immediately revoke, modify, or suspend the use of such product or material within their jurisdiction. RER reserves the right to revoke this acceptance if it is determined by Miami-Dade County Product Control Section that this product or material fails to meet the requirements of the applicable building code.

This product is approved as described herein and has been designed to comply with the Florida Building Code, including the High Velocity Hurricane Zone.

### DESCRIPTION: Model DC-638 6" Deep Aluminum Louver

**APPROVAL DOCUMENT:** Drawing No. **08-00626**, titled "DC-638 Louver System – Large and Small Missile Impact", sheets 1 through 10 of 10, dated 10/07/2008, with revision B dated 10/09/2024, prepared by L. Roberto Lomas, P.E., signed and sealed by Luis R. Lomas, P.E., bearing the Miami-Dade County Product Control Section renewal stamp with the Notice of Acceptance number and expiration date by the Miami-Dade County Product Control Section.

### MISSILE IMPACT RATING: Large and Small Missile Impact Resistant

**LABELING:** A permanent label with the manufacturer's name or logo, city, state, model/series, and following statement: "Miami-Dade County Product Control Approved", is to be located on each unit.

**RENEWAL** of this NOA shall be considered after a renewal application has been filed and there has been no change in the applicable building code negatively affecting the performance of this product.

**TERMINATION** of this NOA will occur after the expiration date or if there has been a revision or change in the materials, use, and/or manufacture of the product or process. Misuse of this NOA as an endorsement of any product, for sales, advertising or any other purposes shall automatically terminate this NOA. Failure to comply with any section of this NOA shall be cause for termination and removal of NOA.

**ADVERTISEMENT:** The NOA number preceded by the words Miami-Dade County, Florida, and followed by the expiration date may be displayed in advertising literature. If any portion of the NOA is displayed, then it shall be done in its entirety.

**INSPECTION:** A copy of this entire NOA shall be provided to the user by the manufacturer or its distributors and shall be available for inspection at the job site at the request of the Building Official.

This NOA **renews NOA # 24-1101.04** and consists of this page 1, evidence pages E-1 and E-2, as well as the approval document mentioned above.

The submitted documentation was reviewed by **Carlos M. Utrera, P.E.**



12/10/25

NOA No. 25-1203.02  
Expiration Date: November 25, 2030  
Approval Date: December 18, 2025  
Page 1

**NOTICE OF ACCEPTANCE: EVIDENCE SUBMITTED**

**1. EVIDENCE SUBMITTED UNDER PREVIOUS NOA # 20-0305.03**

**A. DRAWINGS**

1. Drawing No. **08-00626**, titled “DC-638 Louver System – Large and Small Missile Impact”, sheets 1 through 10 of 10, dated 10/07/2008, prepared by L. Roberto Lomas, P.E., signed and sealed by Luis R. Lomas, P.E. on 09/30/2020.

**B. TESTS**

1. Test reports on: 1) Uniform Static Air Pressure Test, Loading per FBC, TAS 202-94  
2) Large Missile Impact Test per FBC, TAS 201-94  
3) Cyclic Wind Pressure Loading per FBC, TAS 203-94  
along with marked-up drawings and installation diagram of DC-638 Aluminum Louvers, prepared by National Certified Testing Laboratories, Test Report No. **NCTL-210-4172-01**, dated 03/20/2020, signed and sealed by Douglas J. McDougall, P.E.

**C. CALCULATIONS**

1. Anchoring structural calculations dated 06/24/2020, prepared by L. Roberto Lomas, P.E., signed and sealed by Luis R. Lomas, P.E.

**D. QUALITY ASSURANCE**

1. Miami-Dade Department of Regulatory and Economic Resources (RER).

**E. MATERIAL CERTIFICATIONS**

1. None.

**F. STATEMENTS**

1. Statement letter of conformance to 6<sup>th</sup> Edition (2017) and 7<sup>th</sup> Edition (2020) and of no financial interest, dated 06/24/2020, issued by L. Roberto Lomas, P.E., signed and sealed by Luis R. Lomas, P.E.



---

**Carlos M. Utrera, P.E.**  
**Product Control Examiner**  
**NOA No. 25-1203.02**  
**Expiration Date: November 25, 2030**  
**Approval Date: December 18, 2025**

**NOTICE OF ACCEPTANCE: EVIDENCE SUBMITTED**

**2. EVIDENCE SUBMITTED UNDER NOA # 24-1101.04 AND NEW**

**A. DRAWINGS**

1. Drawing No. **08-00626**, titled “DC-638 Louver System – Large and Small Missile Impact”, sheets 1 through 10 of 10, dated 10/07/2008, with revision B dated 10/09/2024, prepared by L. Roberto Lomas, P.E., signed and sealed by Luis R. Lomas, P.E.

**B. TESTS**

1. None.

**C. CALCULATIONS**

1. None.

**D. QUALITY ASSURANCE**

1. Miami–Dade Department of Regulatory and Economic Resources (RER).

**E. MATERIAL CERTIFICATIONS**

1. None.

**F. STATEMENTS**

1. Statement letter of code conformance to the 8<sup>th</sup> edition (2023) of the FBC, and of no financial interest, dated 11/26/2025, issued by L. Roberto Lomas, P.E., signed and sealed by Luis R. Lomas, P.E.
2. Statement letter of code conformance to the 8<sup>th</sup> edition (2023) of the FBC, and of no financial interest, dated 10/09/2024, issued by L. Roberto Lomas, P.E., signed and sealed by Luis R. Lomas, P.E.



---

**Carlos M. Utrera, P.E.**  
**Product Control Examiner**  
**NOA No. 25-1203.02**  
**Expiration Date: November 25, 2030**  
**Approval Date: December 18, 2025**

REVISIONS			
REV	DESCRIPTION	DATE	APPROVED
B	REVISED NOTE 1	10/09/2024	R.L.

#### GENERAL NOTES:

1. THE PRODUCT SHOWN HEREIN IS DESIGNED AND MANUFACTURED TO COMPLY WITH REQUIREMENTS OF THE FLORIDA BUILDING CODE 8TH EDITION (2023), INCLUDING THE HVHZ.
2. WOOD BUCK OR STUD FRAMING TO BE DESIGNED AND ANCHORED TO PROPERLY TRANSFER ALL LOADS TO STRUCTURE, BUCK OR FRAMING IS RESPONSIBILITY OF ARCHITECT OF RECORD.
3. APPROVED IMPACT PROTECTIVE SYSTEM IS NOT REQUIRED. FOR THIS PRODUCT IN WIND BORNE DEBRIS REGIONS. SEE DESIGN PRESSURE RATINGS SHEETS 2 TO 5.
4. ISOLATE ALL SUBSTRATE ANCHOR CLIPS/ ANGLES, PART NUMBERS 9, 13, 14 & 21 FROM MASONRY/CONCRETE SUBSTRATE BY OTHERS.
5. ALLOWABLE STRESS INCREASE OF 1/3 WAS NOT USED IN THE DESIGN OF THE PRODUCT SHOWN HEREIN. WIND LOAD DURATION FACTOR  $C_d=1.6$  WAS USED FOR WOOD ANCHOR CALCULATIONS.
6. THIS SYSTEM WAS NOT TESTED FOR WATER INFILTRATION AND IT IS TO BE INSTALLED ONLY WHERE PENETRATION RESISTANCE IS NOT REQUIRED.

#### ANCHORING NOTES:

1. SHIM AS REQUIRED AT EACH SET OF INSTALLATION ANCHORS USING LOAD BEARING SHIMS. MAX. ALLOWABLE SHIM STACK TO BE 1/4". USE SHIMS WHERE SPACE GREATER THAN 1/16" IS PRESENT.
2. INSTALL LOUVER SYSTEM INTO CONCRETE/GROUT FILLED MASONRY USING 3/8" HILTI KWIK BOLT 3 AT EACH CLIP WITH SUFFICIENT LENGTH TO ACHIEVE A 3 1/2" MINIMUM EMBEDMENT WITH A 3/4" MINIMUM EDGE DISTANCE. LOCATE CLIPS PER ELEVATION AND INSTALLATION DETAILS.
3. INSTALL LOUVER SYSTEM INTO SYP WOOD FRAMING USING 7/16" LAG BOLTS AT EACH CLIP WITH SUFFICIENT LENGTH TO ACHIEVE A 3 1/2" MINIMUM EMBEDMENT. LOCATE CLIPS PER ELEVATION AND INSTALLATION DETAILS.
4. ALL ANCHORS/FASTENERS TO BE CORROSION RESISTANT.
5. INSTALLATION ANCHORS SHALL BE INSTALLED IN ACCORDANCE WITH ANCHOR MANUFACTURER'S INSTALLATION INSTRUCTIONS, AND ANCHORS SHALL NOT BE USED IN SUBSTRATES WITH STRENGTHS LESS THAN THE MINIMUM STRENGTH SPECIFIED BELOW
  - A. WOOD: MINIMUM SPECIFIC GRAVITY OF  $G=0.50$
  - B. CONCRETE AND GROUT: MINIMUM COMPRESSIVE STRENGTH OF 3,000 PSI.
  - C. MASONRY: STRENGTH CONFORMANCE TO ASTM C-90, GRADE N, TYPE 1 (OR GREATER).

**PRODUCT RENEWED**  
as complying with the Florida  
Building Code  
**NOA-No.** 25-1203.02

**Expiration Date** 11/25/2030

By   
**Miami-Dade Product Control**

SIGNED: 10/09/2024

**PRODUCT REVISED**  
as complying with the Florida  
Building Code  
**NOA-No.** 24-1101.04

**Expiration Date** 11/25/2025

By   
**Miami-Dade Product Control**

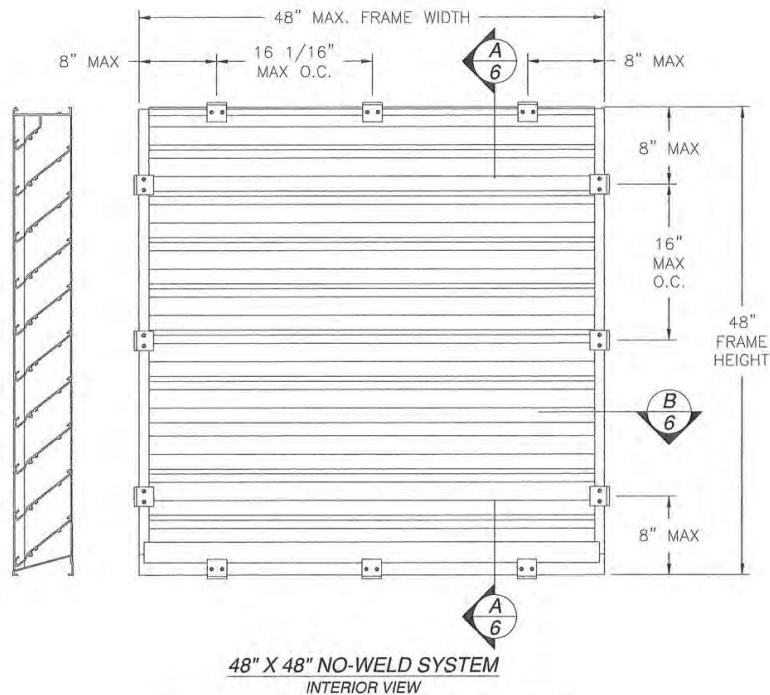
TABLE OF CONTENTS	
SHEET NO.	DESCRIPTION
1	GENERAL NOTES
2 - 5	ELEVATIONS
6 - 9	INSTALLATION DETAILS
10	COMPONENTS

AIRE TECHNOLOGIES, INC. 1502 INDUSTRIAL DRIVE E. MONONGAHELA, PA 15063		
DC-638 LOUVER SYSTEM LARGE AND SMALL MISSILE IMPACT GENERAL NOTES		
DRAWN: TJH	DWG. NO. 08-00626	REV B
SCALE NTS	DATE 10/07/08	SHEET 1 OF 10
L. ROBERTO LOMAS P.E. 208 7th Ave, INDIALANTIC, FL 32903 434-688-0609 rilomas@rilomaspe.com		

LUIS R. LOMAS  
LICENSE  
No. 62514  
STATE OF  
FLORIDA  
PROFESSIONAL ENGINEER

Luis R. Lomas P.E.  
FL No.: 62514

REVISIONS			
REV	DESCRIPTION	DATE	APPROVED
B	REVISED NOTE 1	10/09/2024	R.L.



- NOTES:
1. HEAD ATTACHED TO JAMB AT CORNERS WITH (2) #8 X 3/4" LONG TEK SCREW, THROUGH JAMB INTO HEAD.
  2. BOTTOM ATTACHED TO JAMB AT CORNERS WITH (2) #8 X 3/4" LONG TEK SCREW THROUGH BOTTOM INTO JAMB.

**PRODUCT RENEWED**  
as complying with the Florida  
Building Code  
NOA-No. 25-1203.02

Expiration Date 11/25/2030

By *[Signature]*  
Miami-Dade Product Control

DESIGN PRESSURE RATING	IMPACT RATING
±90.0PSF	LARGE AND SMALL MISSILE IMPACT

48" X 48" PANEL SHOWN. OTHER SIZES ARE APPROVED AS LONG AS WIDTH DOES NOT EXCEED 48", PANEL HEIGHT IS UNLIMITED

**PRODUCT REVISED**  
as complying with the Florida  
Building Code  
NOA-No. 24-1101.04

Expiration Date 11/25/2025

By *[Signature]*  
Miami-Dade Product Control

SIGNED: 10/09/2024

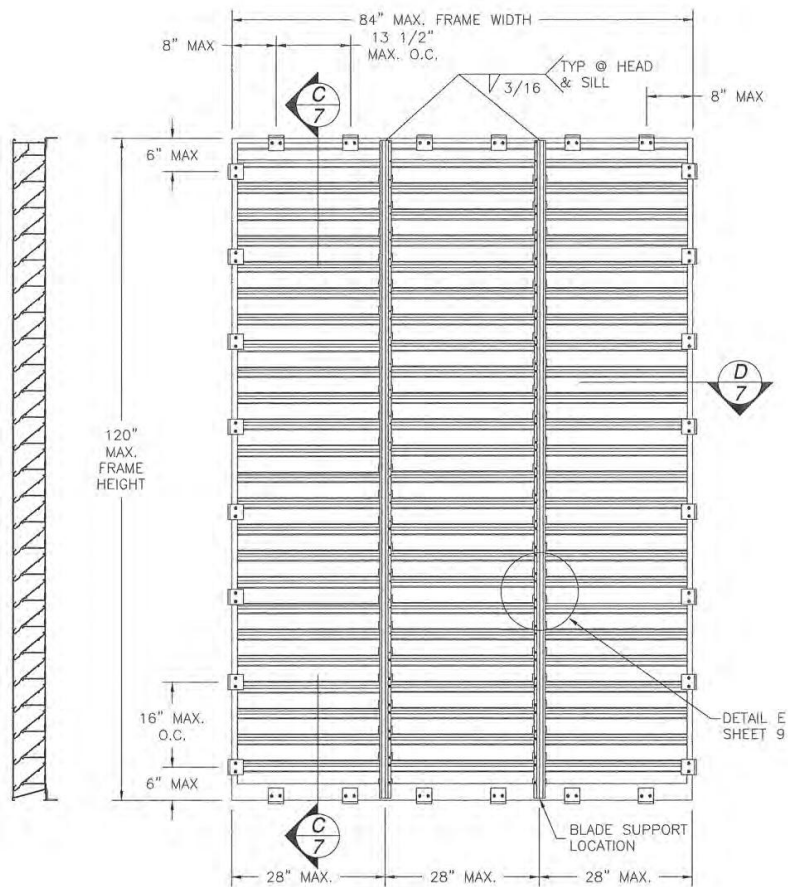
AIRE TECHNOLOGIES, INC. 1502 INDUSTRIAL DRIVE E. MONONGAHELA, PA 15063		
DC-638 LOUVER SYSTEM LARGE AND SMALL MISSILE IMPACT 48" X 48" NO-WELD SYSTEM		
DRAWN: TJH	DWG NO. 08-00626	REV B
SCALE: NTS	DATE: 10/07/08	SHEET 2 OF 10
L. ROBERTO LOMAS P.E. 208 7th Ave, INDIALANTIC, FL 32903 434-688-0609 rllomas@rlomaspe.com		

LUIS R. LOMAS  
LICENSE  
No. 62514  
STATE OF  
FLORIDA  
PROFESSIONAL ENGINEER

*[Signature]*

Luis R. Lomas P.E.  
FL No.: 62514





**84" X 120" WELDED SYSTEM**  
INTERIOR VIEW

DESIGN PRESSURE RATING	IMPACT RATING
±150.0PSF	LARGE AND SMALL MISSILE IMPACT

84" X 120" PANEL SHOWN. OTHER SIZES ARE APPROVED AS LONG AS 84" WIDTH AND 120" HEIGHT ARE NOT EXCEEDED

#### NOTES:

1. HEAD ATTACHED TO JAMB AT CORNERS WITH (2) #8 X 3/4" LONG TEK SCREW, THROUGH JAMB INTO HEAD, WELDED ON OUTSIDE WITH A 3 1/2" WELD.
2. BOTTOM ATTACHED TO JAMB AT CORNERS WITH (2) #8 X 3/4" LONG TEK SCREW THROUGH BOTTOM INTO JAMB. WELDED WITH 3 1/2" WELD OUTSIDE OF JAMB.
3. BLADE ATTACHED TO JAMB AT CORNERS WITH (2) #8 X 3/4" LONG TEK SCREW THROUGH JAMB INTO BLADE. WELDED ON BACK SIDE OF BLADE 3 3/4" WELD.

**PRODUCT RENEWED**  
as complying with the Florida  
Building Code  
NOA-No. 25-1203.02

Expiration Date 11/25/2030

By *[Signature]*  
Miami-Dade Product Control

SIGNED: 10/09/2024

<b>AIRE TECHNOLOGIES, INC.</b> 1502 INDUSTRIAL DRIVE E. MONONGAHELA, PA 15063			
DC-638 LOUVER SYSTEM LARGE AND SMALL MISSILE IMPACT 84" X 120" WELDED SYSTEM			
DRAWN: TJH	DWG. NO. 08-00626	REV B	
SCALE NTS	DATE 10/07/08	SHEET 3 OF 10	
L. ROBERTO LOMAS P.E. 208 7th Ave, INDIALANTIC, FL 32903 434-688-0609 rllomas@lrilomaspe.com			

LUIS R. LOMAS  
LICENSE  
No. 62514  
STATE OF  
FLORIDA  
PROFESSIONAL ENGINEER

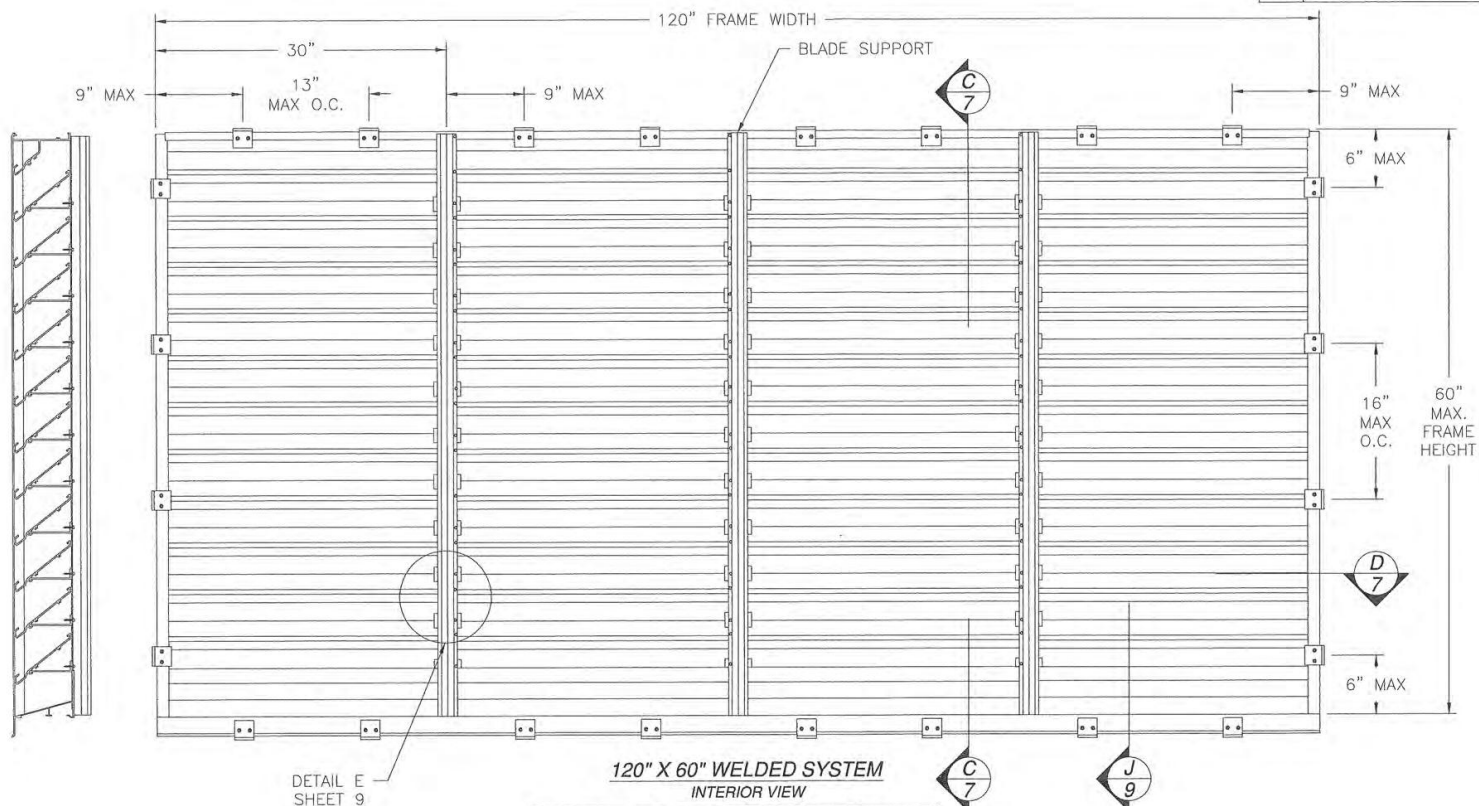
Luis R. Lomas P.E.  
FL No.: 62514

**PRODUCT REVISED**  
as complying with the Florida  
Building Code  
NOA-No. 24-1101.04

Expiration Date 11/25/2025

By *[Signature]*  
Miami-Dade Product Control

REVISIONS			
REV	DESCRIPTION	DATE	APPROVED
B	REVISED NOTE 1	10/09/2024	R.L.



DESIGN PRESSURE RATING	IMPACT RATING
±150.0PSF	LARGE AND SMALL MISSILE IMPACT

120" X 60" PANEL SHOWN. OTHER SIZES ARE APPROVED AS LONG AS HEIGHT DOES NOT EXCEED 60". WIDTH IS UNLIMITED.

#### NOTES:

- HEAD ATTACHED TO JAMB AT CORNERS WITH (2) #8 X 3/4" LONG TEK SCREW, THROUGH JAMB INTO HEAD, WELDED OUTSIDE WITH A 3 1/2" WELD.
- BOTTOM ATTACHED TO JAMB AT CORNERS WITH (2) #8 X 3/4" LONG TEK SCREW THROUGH BOTTOM INTO JAMB. WELDED WITH 3 1/2" WELD OUTSIDE OF JAMB.
- BLADE ATTACHED TO JAMB AT CORNERS WITH (2) #8 X 3/4" LONG TEK SCREW THROUGH JAMB INTO BLADE. WELDED ON BACK SIDE OF BLADE 3 3/4" WELD.

**PRODUCT REVISED**  
as complying with the Florida  
Building Code  
NOA-No. **24-1101.04**

Expiration Date **11/25/2025**

By *[Signature]*  
**Miami-Dade Product Control**

**PRODUCT RENEWED**  
as complying with the Florida  
Building Code  
NOA-No. **25-1203.02**

Expiration Date **11/25/2030**

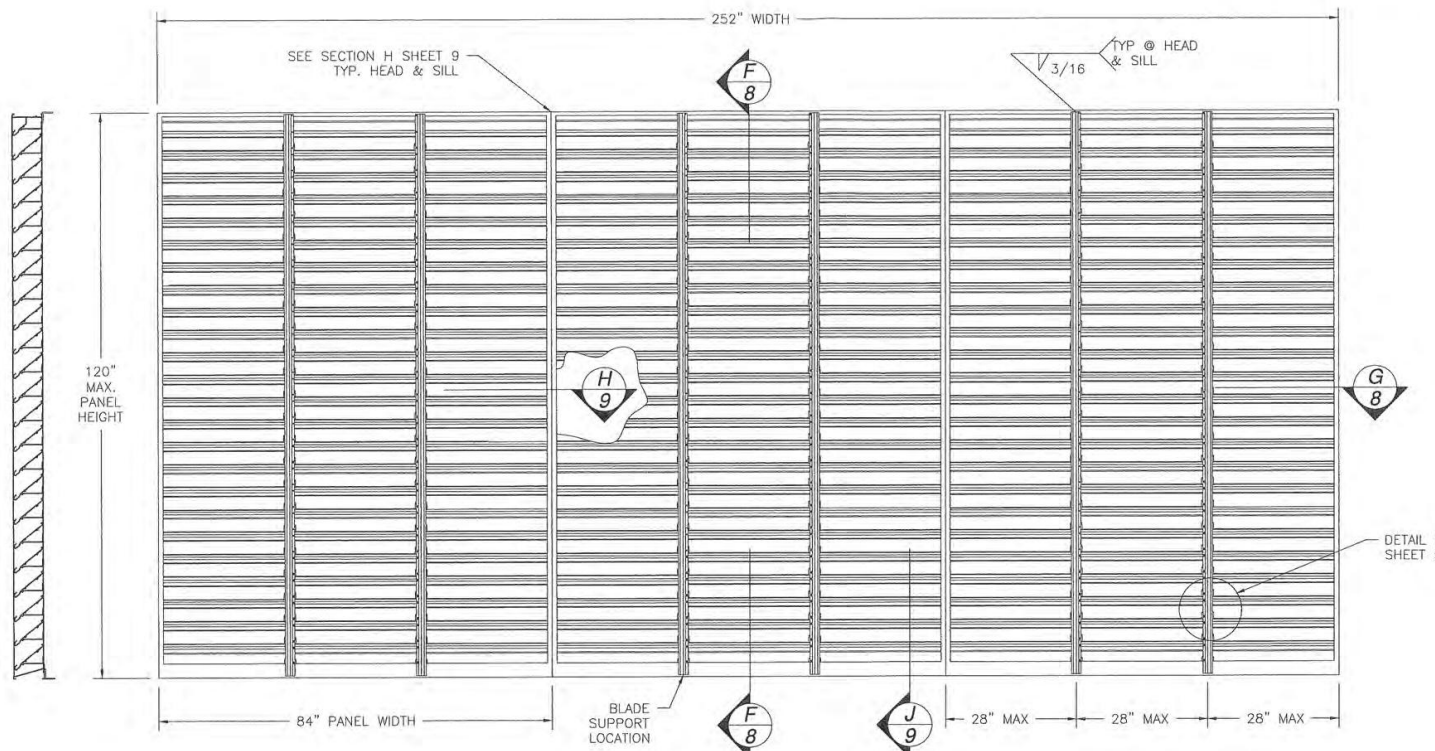
By *[Signature]*  
**Miami-Dade Product Control**

SIGNED: 10/09/2024

<b>AIRE TECHNOLOGIES, INC.</b> 1502 INDUSTRIAL DRIVE E. MONONGAHELA, PA 15063			
DC-638 LOUVER SYSTEM LARGE AND SMALL MISSILE IMPACT MULTIPLE PANEL ELEVATION			
DRAWN: TJH	DWG. NO. 08-00626	REV B	
SCALE: NTS	DATE: 10/07/08	SHEET 4 OF 10	
L. ROBERTO LOMAS P.E. 208 7th Ave, INDIAN LANTIC, FL 32903 434-688-0609 rllomas@rlomaspe.com			Luis R. Lomas P.E. FL No.: 62514



REVISIONS			
REV	DESCRIPTION	DATE	APPROVED
B	REVISED NOTE 1	10/09/2024	R.L.



**MULLED SYSTEM**  
INTERIOR VIEW

**NOTES:**

1. HEAD ATTACHED TO JAMB AT CORNERS WITH (2) #8 X 3/4" LONG TEK SCREW, THROUGH JAMB INTO HEAD, WELDED OUTSIDE WITH A 3 1/2" WELD.
2. BOTTOM ATTACHED TO JAMB AT CORNERS WITH (2) #8 X 3/4" LONG TEK SCREW THROUGH BOTTOM INTO JAMB. WELDED WITH 3 1/2" WELD OUTSIDE OF JAMB.
3. BLADE ATTACHED TO JAMB AT CORNERS WITH (2) #8 X 3/4" LONG TEK SCREW THROUGH JAMB INTO BLADE. WELDED ON BACK SIDE OF BLADE 3 3/4" WELD.

252" X 120" SYSTEM SHOWN. OTHER SIZES ARE APPROVED AS LONG AS HEIGHT DOES NOT EXCEED 120". WIDTH IS UNLIMITED.

DESIGN PRESSURE RATING	IMPACT RATING
±90.0PSF	LARGE AND SMALL MISSILE IMPACT

**PRODUCT RENEWED**  
as complying with the Florida  
Building Code  
NOA-No. 25-1203.02

Expiration Date 11/25/2030

By *[Signature]*  
Miami-Dade Product Control

**PRODUCT REVISED**  
as complying with the Florida  
Building Code  
NOA-No. 24-1101.04

Expiration Date 11/25/2025

By *[Signature]*  
Miami-Dade Product Control

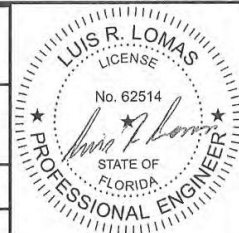
SIGNED: 10/09/2024

AIRE TECHNOLOGIES, INC.  
1502 INDUSTRIAL DRIVE  
E. MONONGAHELA, PA 15063

DC-638 LOUVER SYSTEM  
LARGE AND SMALL MISSILE IMPACT  
MULTIPLE PANEL ELEVATION

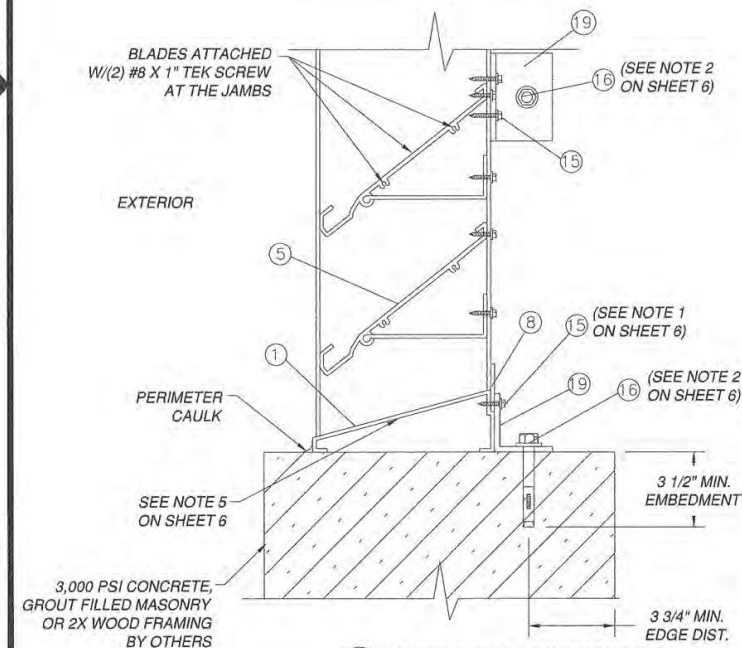
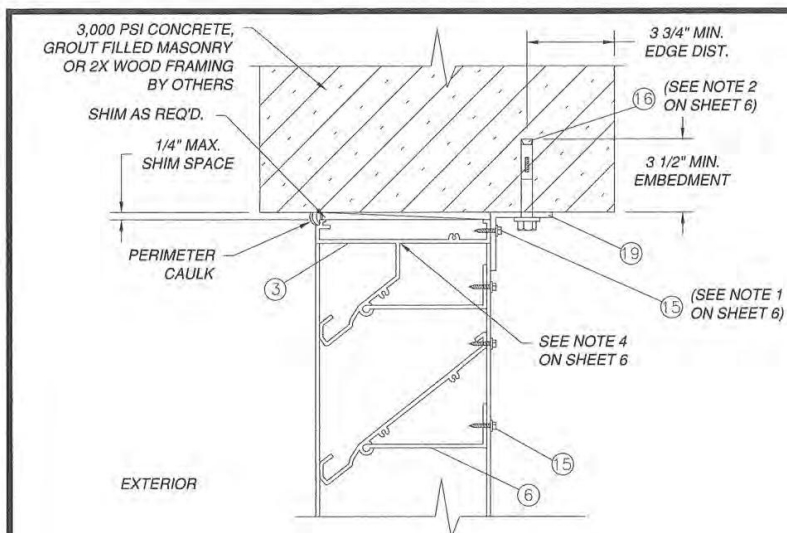
DRAWN: TJH	DWG. NO. 08-00626	REV B
SCALE NTS	DATE 10/07/08	SHEET 5 OF 10

L. ROBERTO LOMAS P.E.  
208 7th Ave, INDIANLANTIC, FL 32903  
434-688-0609 rllomas@rlomaspe.com

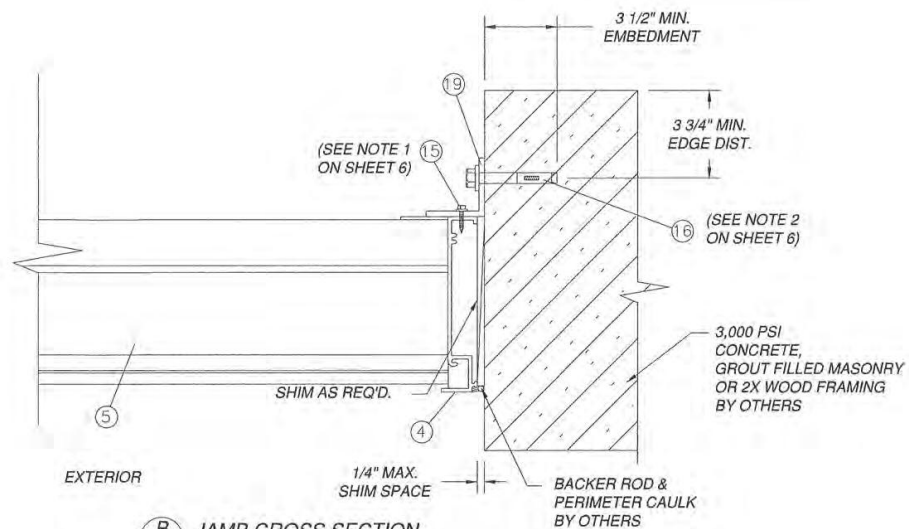


Luis R. Lomas P.E.  
FL No.: 62514





**A**  
6  
VERTICAL CROSS SECTION



**B**  
6  
JAMB CROSS SECTION

**NOTE:**

- 1) ATTACH ANGLE CLIPS (ITEM 19) TO DC-638-1 LOUVER SYSTEM WITH TWO (2) # 12-14 X .88 TEK SCREWS (ITEM #15).
- 2) WHEN ATTACHING TO A WOOD SUBSTRATE, REPLACE 3/8\" HILTI KWIK BOLT 3 ANCHOR (ITEM #16) WITH 7/16\" X 4\" LAG SCREW (ITEM #23).
- 3) FOR ANGLE SPACING REFER TO ELEVATIONS.
- 4) HEAD ATTACHED TO JAMB AT CORNERS WITH (2) #8 X 3/4\" LONG TEK SCREW, THROUGH JAMB INTO HEAD.
- 5) BOTTOM ATTACHED TO JAMB AT CORNERS WITH (2) #8 X 3/4\" LONG TEK SCREW, THROUGH BOTTOM INTO JAMB.

**PRODUCT REVISED**  
as complying with the Florida  
Building Code  
NOA-No. 24-1101.04

Expiration Date **11/25/2025**

By *[Signature]*  
Miami-Dade Product Control

REVISIONS			
REV	DESCRIPTION	DATE	APPROVED
B	REVISED NOTE 1	10/09/2024	R.L.

**PRODUCT RENEWED**  
as complying with the Florida  
Building Code  
NOA-No. 25-1203.02

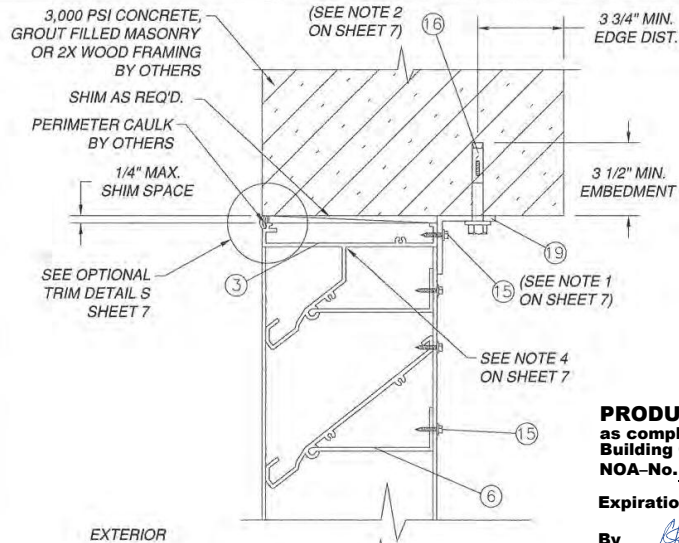
Expiration Date **11/25/2030**

By *[Signature]*  
Miami-Dade Product Control

SIGNED: 10/09/2024

AIRE TECHNOLOGIES, INC. 1502 INDUSTRIAL DRIVE E. MONONGAHELA, PA 15063			
DC-638 LOUVER SYSTEM LARGE AND SMALL MISSILE IMPACT DC-638-1 INSTALLATION DETAILS			
DRAWN:	DWG. NO.	REV	
TJH	08-00626	B	
SCALE NTS	DATE	SHEET	OF
	10/07/08	6	10
L. ROBERTO LOMAS P.E. 208 7th Ave, INDIALANTIC, FL 32903 434-688-0609 rllomas@rlomaspe.com			

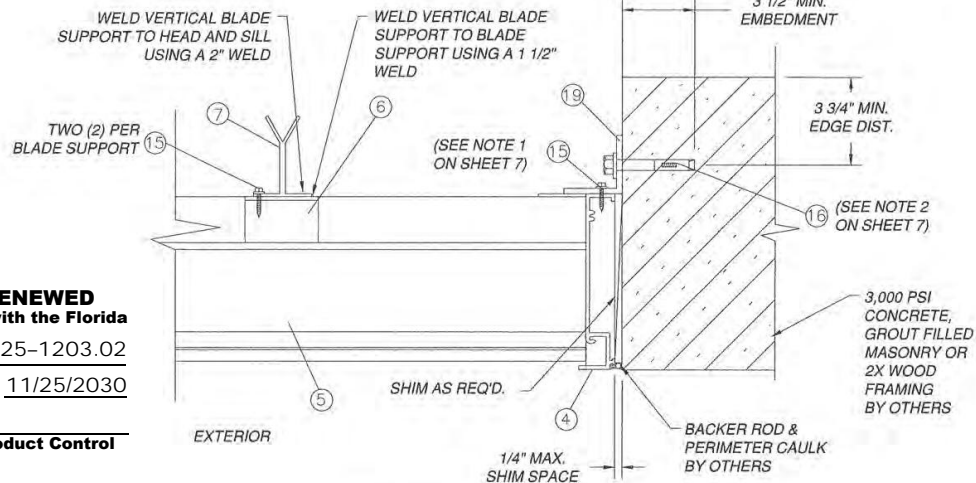
LUIS R. LOMAS  
 LICENSE  
 No. 62514  
 STATE OF  
 FLORIDA  
 PROFESSIONAL ENGINEER  
 Luis R. Lomas P.E.  
 FL No.: 62514



**PRODUCT RENEWED**  
as complying with the Florida  
Building Code  
NOA-No. 25-1203.02

Expiration Date 11/25/2030

By *[Signature]*  
Miami-Dade Product Control

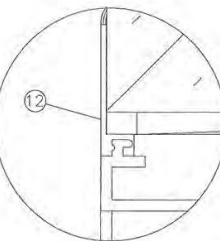


**D**  
7 JAMB CROSS SECTION

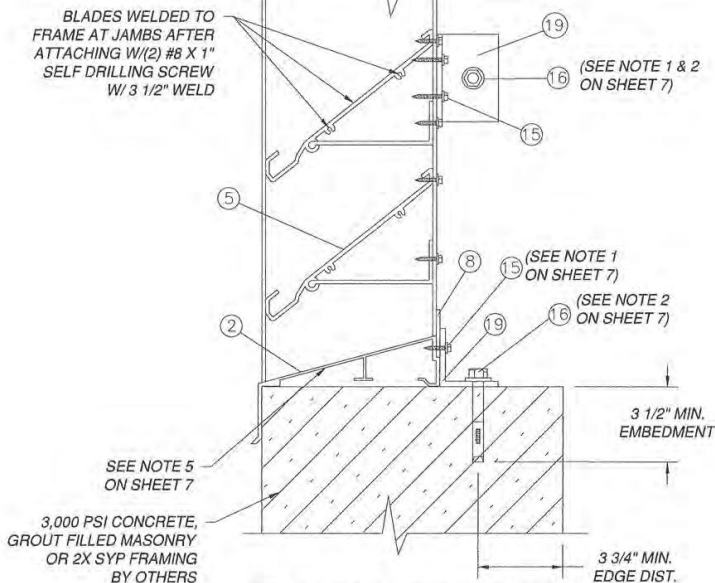
NOTE:

- 1) ATTACH ANGLE CLIPS (ITEM 19) TO DC-638-2 LOUVER SYSTEM WITH TWO (2) # 12-14 X .88 TEK SCREWS (ITEM #15).
- 2) WHEN ATTACHING TO A SYP WOOD SUBSTRATE, REPLACE 3/8\" HILTI KWIK BOLT 3 ANCHOR (ITEM #16) WITH 7/16\" X 4\" LAG SCREW (ITEM #23).
- 3) FOR ANGLE SPACING REFER TO ELEVATIONS.
- 4) HEAD ATTACHED TO JAMB AT CORNERS WITH (2) #8 X 3/4\" LONG TEK SCREW, THROUGH JAMB INTO HEAD WELDED OUTSIDE WITH 3 1/2\" WELD.
- 5) BOTTOM ATTACHED TO JAMB AT CORNERS WITH (2) #8 X 3/4\" LONG TEK SCREW, THROUGH BOTTOM INTO JAMB WELDED WITH 3 1/2\" WELD OUTSIDE OF JAMB.

SIGNED: 10/09/2024



OPTIONAL TRIM DETAIL S  
IF NOT TRIMMED BACKER  
ROD & CAULK REQ'D.



**C**  
7 VERTICAL CROSS SECTION

**PRODUCT REVISED**  
as complying with the Florida  
Building Code  
NOA-No. 24-1101.04

Expiration Date 11/25/2025

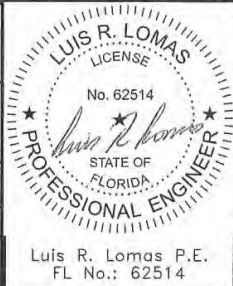
By *[Signature]*  
Miami-Dade Product Control

AIRE TECHNOLOGIES, INC.  
1502 INDUSTRIAL DRIVE  
E. MONONGAHELA, PA 15063

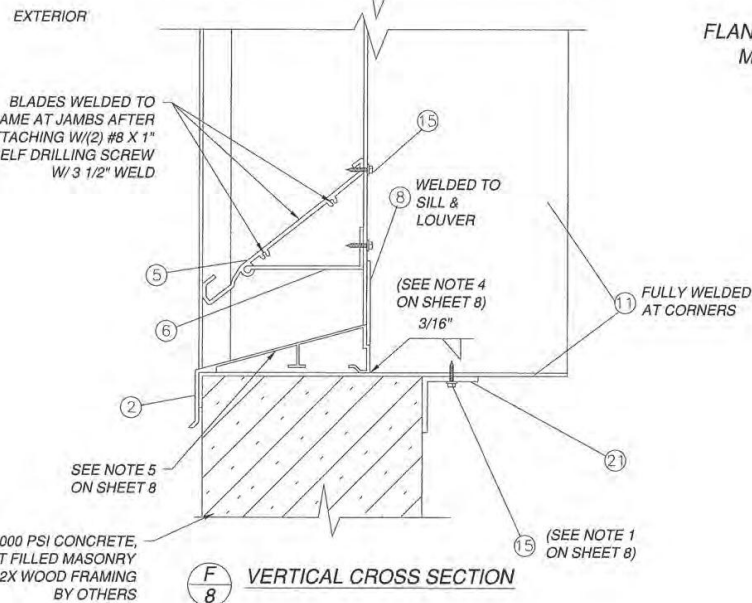
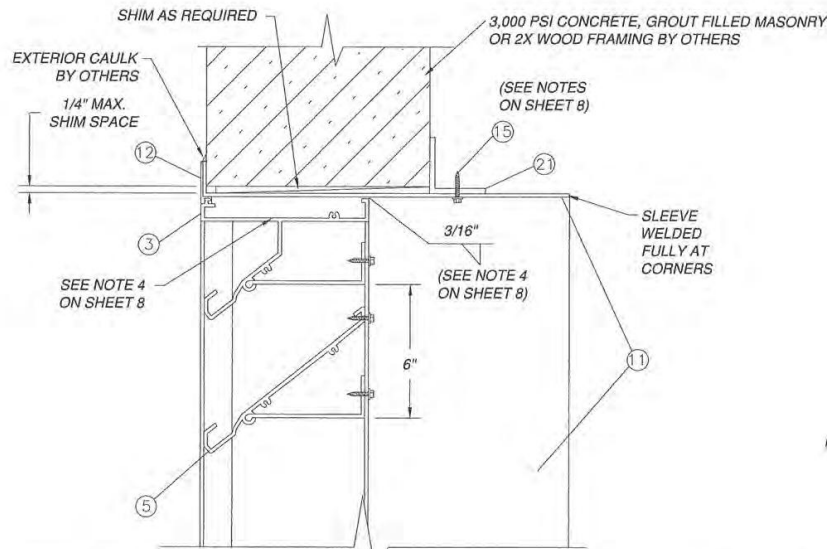
DC-638 LOUVER SYSTEM  
LARGE AND SMALL MISSILE IMPACT  
DC-638-2 INSTALLATION DETAILS

DRAWN:	DWG. NO.	REV
TJH	08-00626	B
SCALE NTS	DATE 10/07/08	SHEET 7 OF 10

L. ROBERTO LOMAS P.E.  
208 7th Ave, INDIAN LANTIC, FL 32903  
434-688-0609 rllomas@rlomaspe.com



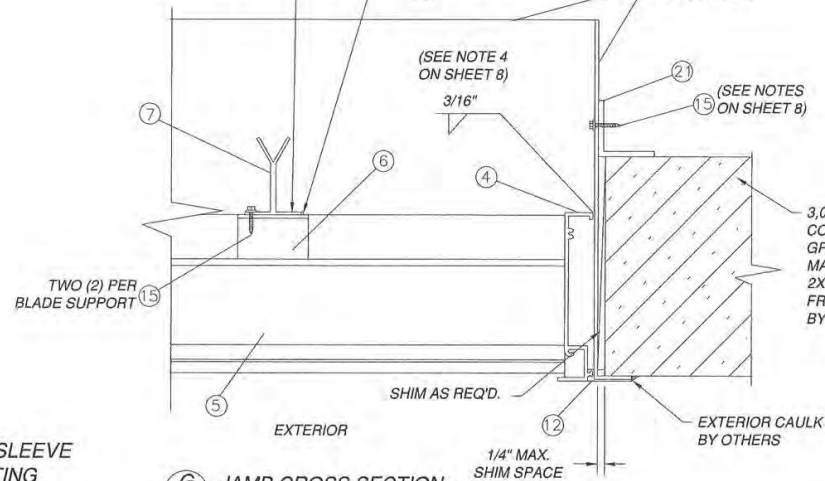




FLANGED SLEEVE  
MOUNTING

WELD VERTICAL BLADE  
SUPPORT TO HEAD AND SILL  
USING A 2" WELD

WELD VERTICAL BLADE  
SUPPORT TO BLADE  
SUPPORT USING A 1 1/2" WELD



G  
8 JAMB CROSS SECTION

NOTE:

- 1) ATTACH CONTINUOUS ANGLE (ITEM #21) TO SLEEVE (ITEM #11) WITH #12-14 X .88 TEK SCREWS (ITEM #15) SPACING AS FOLLOWS: HEAD AND SILL; 8" FROM ENDS, 13 1/2" MAX. O.C. JAMBS; AT 6" FROM ENDS, 10" MAX. O.C.
- 2) THIS CONFIGURATION DC-638-4 LOUVER SYSTEM IS NOT MECHANICALLY FASTENED TO SUBSTRATE.
- 3) SLEEVE TO BE WELDED TO LOUVER SYSTEM WITH 1/8" X 1 1/2" FILLET WELD LOCATED 4" FROM EACH END AND 14" MAX. MAX. O.C. THEREAFTER.
- 4) HEAD ATTACHED TO JAMB AT CORNERS WITH (2) #8 X 3/4" LONG TEK SCREW, THROUGH JAMB INTO HEAD WELDED OUTSIDE WITH 3 1/2" WELD.
- 5) BOTTOM ATTACHED TO JAMB AT CORNERS WITH (2) #8 X 3/4" LONG TEK SCREW, THROUGH BOTTOM INTO JAMB WELDED WITH 3 1/2" WELD OUTSIDE OF JAMB.

**PRODUCT REVISED**  
as complying with the Florida  
Building Code  
NOA-No. **24-1101.04**

Expiration Date **11/25/2025**

By *[Signature]*  
Miami-Dade Product Control

AIRE TECHNOLOGIES, INC.  
1502 INDUSTRIAL DRIVE  
E. MONONGAHELA, PA 15063

DC-638 LOUVER SYSTEM  
LARGE AND SMALL MISSILE IMPACT  
DC-638-4 INSTALLATION DETAILS

DRAWN: TJH DWG. NO. 08-00626 REV B  
SCALE NTS DATE 10/07/08 SHEET 8 OF 10

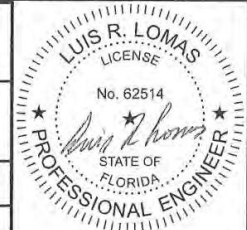
L. ROBERTO LOMAS P.E.  
208 7th Ave, INDIAN LANTIC, FL 32903  
434-688-0609 rllomas@rlomaspe.com

**PRODUCT RENEWED**  
as complying with the Florida  
Building Code  
NOA-No. **25-1203.02**

Expiration Date **11/25/2030**

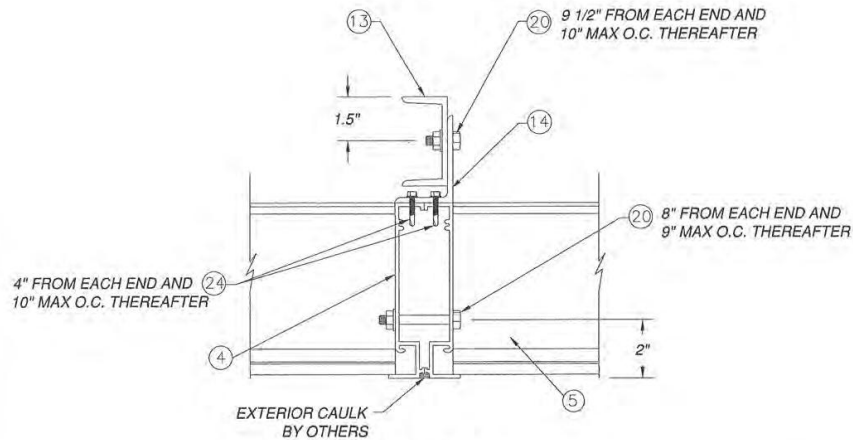
By *[Signature]*  
Miami-Dade Product Control

SIGNED: 10/09/2024

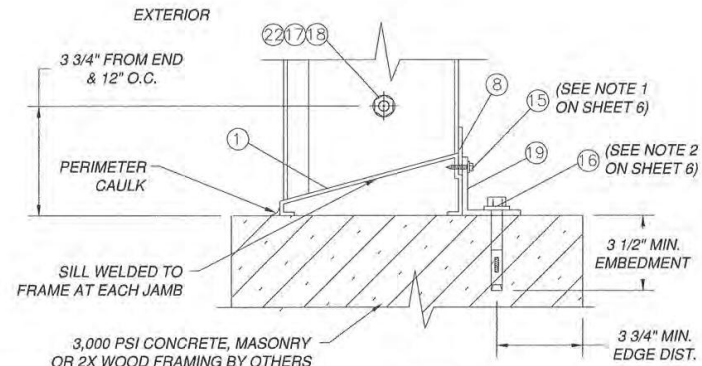


Luis R. Lomas P.E.  
FL No.: 62514

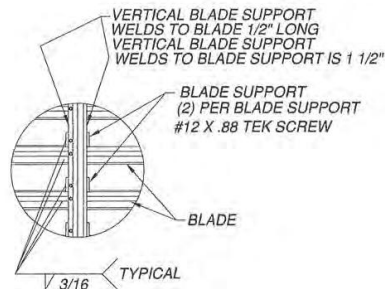
REVISIONS			
REV	DESCRIPTION	DATE	APPROVED
B	REVISED NOTE 1	10/09/2024	R.L.



SECTION H



SECTION J



SECTION E

**PRODUCT RENEWED**  
as complying with the Florida  
Building Code  
NOA-No. 25-1203.02

Expiration Date 11/25/2030

By [Signature]  
Miami-Dade Product Control

**PRODUCT REVISED**  
as complying with the Florida  
Building Code  
NOA-No. 24-1101.04

Expiration Date 11/25/2025

By [Signature]  
Miami-Dade Product Control

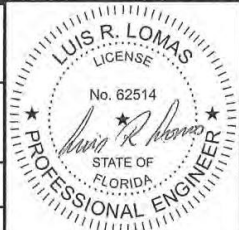
AIRE TECHNOLOGIES, INC.  
1502 INDUSTRIAL DRIVE  
E. MONONGAHELA, PA 15063

DC-638 LOUVER SYSTEM  
LARGE AND SMALL MISSILE IMPACT  
DC-638 INSTALLATION DETAILS

DRAWN:	DWG. NO.	REV
TJH	08-00626	B
SCALE: NTS	DATE: 10/07/08	SHEET 9 OF 10

L. ROBERTO LOMAS P.E.  
208 7th Ave, INDIAN LANTIC, FL 32903  
434-688-0609 rllomas@rlomaspe.com

SIGNED: 10/09/2024

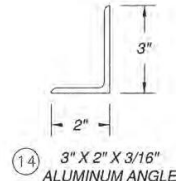
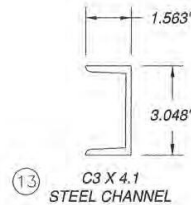
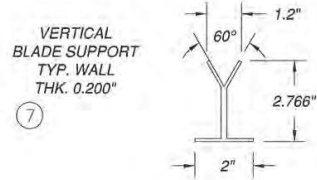
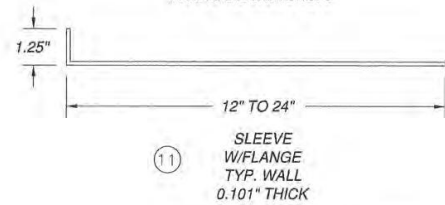
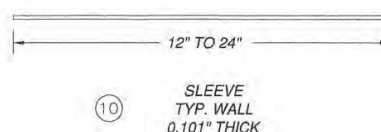
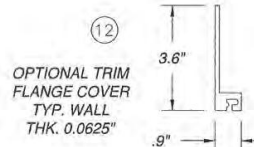
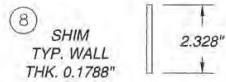
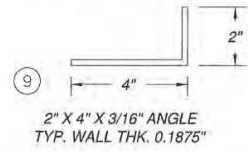
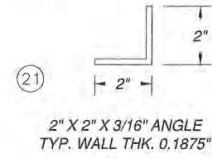
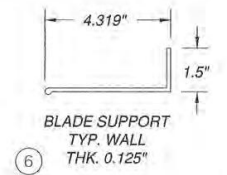
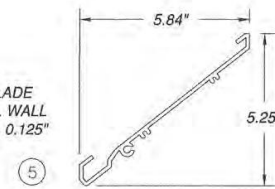
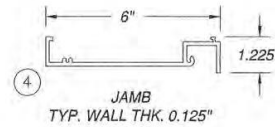
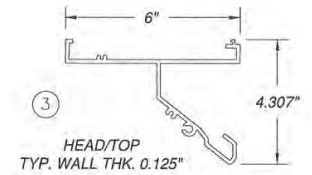
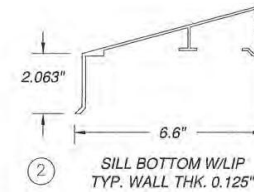
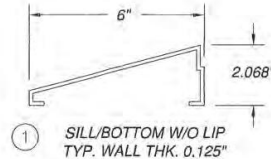


Luis R. Lomas P.E.  
FL No.: 62514



BILL OF MATERIALS				
ITEM NO.:	PART NUMBER	DESCRIPTION	MANUFACTURER	MATERIAL
1	80466	SILL/BOTTOM W/O LIP	BRT EXTRUSIONS	ALUMINUM 6063-T5
2	22855	SILL/BOTTOM W/LIP	BRT EXTRUSIONS	ALUMINUM 6063-T5
3	22943	HEAD/TOP	BRT EXTRUSIONS	ALUMINUM 6063-T5
4	22852	JAMB	BRT EXTRUSIONS	ALUMINUM 6063-T5
5	22851	BLADE	BRT EXTRUSIONS	ALUMINUM 6063-T5
6	22854	BLADE SUPPORT	BRT EXTRUSIONS	ALUMINUM 6063-T5
7		VERTICAL BLADE SUPPORT	BRT EXTRUSIONS	ALUMINUM 6063-T5
8		SHIM	AIRE TECHNOLOGIES	
9		2" X 4" X 3/16" ANGLE	AIRE TECHNOLOGIES	ALUMINUM 6063-T5
10		SLEEVE	AIRE TECHNOLOGIES	ALUMINUM 6063-T5
11		FLANGE SLEEVE	AIRE TECHNOLOGIES	ALUMINUM 6063-T5
12		OPTIONAL TRIM FLANGE COVER	AIRE TECHNOLOGIES	ALUMINUM 6063-T5
13		C3 X 4.1 CHANNEL		STAINLESS STEEL
14		3" X 2" X 3/16" ALUMINUM ANGLE		ALUMINUM 6063-T5
15		#12-14 X .88" TEK SCREW		STAINLESS STEEL
16		3/8" HILTI KWIK BOLT 3	HILTI	STAINLESS STEEL
17		3/8" LOCK WASHER		STAINLESS STEEL
18		3/8-16 NUT		STAINLESS STEEL
19		2" X 2" X 3/16" 2" ANGLE	AIRE TECHNOLOGIES	ALUMINUM 6063-T5
20		5/16" X 1" BOLT & NUT		STAINLESS STEEL
21		2" X 2" X 3/16" ANGLE	AIRE TECHNOLOGIES	ALUMINUM 6063-T5
22		3/8-16 X 3" BOLT		STAINLESS STEEL
23		7/16" X 4" LAG SCREW		STAINLESS STEEL
24		#12-14 X 1" TEK SCREW		STAINLESS STEEL

REVISIONS			
REV	DESCRIPTION	DATE	APPROVED
B	REVISED NOTE 1	10/09/2024	R.L.



**PRODUCT REVISED**  
as complying with the Florida  
Building Code  
NOA-No. **24-1101.04**  
Expiration Date **11/25/2025**  
By *[Signature]*  
Miami-Dade Product Control

AIRE TECHNOLOGIES, INC. 1502 INDUSTRIAL DRIVE E. MONONGAHELA, PA 15063		
DC-638 LOUVER SYSTEM LARGE AND SMALL MISSILE IMPACT BILL OF MATERIALS & COMPONENTS		
DRAWN: TJH	DWG. NO. 08-00626	REV B
SCALE NTS	DATE 10/07/08	SHEET 10 OF 10
L. ROBERTO LOMAS P.E. 208 7th Ave, INDIALANTIC, FL 32903 434-688-0609 rllomas@rilomaspe.com		

SIGNED: 10/09/2024

