



DEPARTMENT OF REGULATORY AND ECONOMIC RESOURCES (RER)
BOARD AND CODE ADMINISTRATION DIVISION

MIAMI-DADE COUNTY
PRODUCT CONTROL SECTION
11805 SW 26 Street, Room 208
Miami, Florida 33175-2474
T (786) 315-2590 F (786) 315-2599

NOTICE OF ACCEPTANCE (NOA)

www.miamidade.gov/economy

**Haas Door Company
320 Sycamore Street
Wauseon, OH 43567**

SCOPE: This NOA is being issued under the applicable rules and regulations governing the use of construction materials. The documentation submitted has been reviewed and accepted by Miami-Dade County RER-Product Control Section to be used in Miami-Dade County and other areas, where allowed by the Authority Having Jurisdiction (AHJ).

This NOA shall not be valid after the expiration date stated below. The Miami-Dade County Product Control Section (In Miami-Dade County) and/ or the AHJ (in areas other than Miami-Dade County) reserve the right to have this product or material tested for quality assurance purposes. If this product or material fails to perform in the accepted manner, the manufacturer will incur the expense of such testing and the AHJ may immediately revoke, modify, or suspend the use of such product or material within their jurisdiction. RER reserves the right to revoke this acceptance if it is determined by Miami-Dade County Product Control Section that this product or material fails to meet the requirements of the applicable building code.

This product is approved as described herein and has been designed to comply with the Florida Building Code, including the High Velocity Hurricane Zone.

DESCRIPTION:

Series PAN 2000 & 2400 Steel Sectional Garage Door up to 9ft-2in Wide with Optional EPS Insulation

APPROVAL DOCUMENT: Drawing No. **WL-2000-0110-08-65-74M-D**, titled “9’-2” PAN 2000 & 2400 Series HVHZ Wind Load Sectional Door”, sheets 1 through 3 of 3, dated 03/11/2015, with revision **D** dated 06/26/2023, prepared by Haas Door Company, signed and sealed by John E. Scates, P.E., bearing the Miami-Dade County Product Control renewal stamp with the Notice of Acceptance number and expiration date by the Miami-Dade County Product Control Section.

MISSILE IMPACT RATING: Large and Small Missile Impact Resistant

LABELING: A permanent label with the manufacturer’s name or logo, manufacturing address, model number, the positive and negative design pressure rating, indicate impact rated if applicable, installation instruction drawing reference number, approval number (NOA), the applicable test standards, and the statement reading ‘Miami-Dade County Product Control Approved’ is to be located on the door’s sidetrack, bottom angle, or inner surface of a panel.

RENEWAL of this NOA shall be considered after a renewal application has been filed and there has been no change in the applicable building code negatively affecting the performance of this product.

TERMINATION of this NOA will occur after the expiration date or if there has been a revision or change in the materials, use, and/ or manufacture of the product or process. Misuse of this NOA as an endorsement of any product, for sales, advertising or any other purposes shall automatically terminate this NOA. Failure to comply with any section of this NOA shall be cause for termination and removal of NOA.

ADVERTISEMENT: The NOA number preceded by the words Miami-Dade County, Florida, and followed by the expiration date may be displayed in advertising literature. If any portion of the NOA is displayed, then it shall be done in its entirety.

INSPECTION: A copy of this entire NOA shall be provided to the user by the manufacturer or its distributors and shall be available for inspection at the job site at the request of the Building Official.

This NOA **renews NOA # 23-0830.06** and consists of this page 1 and evidence pages E-1, E-2 and E-3, as well as approval document mentioned above.

The submitted documentation was reviewed by **Carlos M. Utrera, P.E.**



01/16/26

NOA-No. 25-1218.02
Expiration Date: February 11, 2031
Approval Date: January 22, 2026

NOTICE OF ACCEPTANCE: EVIDENCE SUBMITTED

1. EVIDENCE SUBMITTED UNDER PREVIOUS NOA's

A. DRAWINGS “Submitted under NOA #17-0313.05”

1. Drawing No. **WL-2000-0110-08-65-74M-D**, titled “9'-2” PAN 2000 & 2400 Series HVHZ Wind Load Sectional Door”, sheets 1 through 3 of 3, dated 03/11/2015, with revision A dated 01/20/2017, prepared by Haas Door Company, signed and sealed by Thomas D. Sullivan, P.E.

B. TESTS “Submitted under NOA #15-0721.08”

1. Test reports on 1) Uniform Static Air Pressure Test, Loading per FBC TAS 202-94
2) Large Missile Impact Test per FBC, TAS 201-94
3) Cyclic Wind Pressure Loading per FBC, TAS 203-94
4) Forced Entry Resistance Test, per TAS 202-94
along with marked-up drawings and installation diagram of 9'-2" wide x 8" height Pan 2000 Series Sectional Steel Garage Doors, prepared by Intertek/ATI, Test Report No. **E1289.04-550-18**, dated 01/07/2015, signed and sealed by Justin P. McDonald, P.E.
2. Test report on Tensile Test per ASTM E8, of steel sheet, prepared by Intertek/ATI, Test Report No. **E1289.14-106-18**, dated 02/26/2015, signed and sealed by Gary T. Hartman, P.E.
3. Test report on Salt Spray per ASTM B117 of coated metal steel panels, prepared by Intertek/ATI, Test Report No. **E1289.10-106-18**, dated 11/24/2014, signed and sealed by Gary T. Hartman, P.E.

C. CALCULATIONS “Submitted under NOA #15-0721.08”

1. Anchor calculations prepared by JB&B Engineering Consultants, LLC, dated 07/01/2015, signed and sealed by Thomas D. Sullivan, P.E.

D. QUALITY ASSURANCE

1. Miami-Dade Department of Regulatory and Economic Resources (RER).

E. MATERIAL CERTIFICATIONS “Submitted under NOA #15-0721.08”

1. Test report on Surface Burning Characteristics, per ASTM E84 of Type I EPS, prepared by Intertek Testing Services, NA, Inc., Test Report No. **3094867SAT-001**, dated 04/13/2006, signed by C. Anthony Peñaloza.
2. Test report on Self-Ignition Temperature per ASTM D1929 of Type I EPS, prepared by Intertek Testing Services, NA, Test Report No. **3094867SAT-002**, dated 04/04/2006, signed by C. Anthony Peñaloza, P.E.



Carlos M. Utrera, P.E.
Product Control Examiner
NOA-No. 25-1218.02
Expiration Date: February 11, 2031
Approval Date: January 22, 2026

Haas Door Company

NOTICE OF ACCEPTANCE: EVIDENCE SUBMITTED

F. STATEMENTS “Submitted under NOA #17-0313.05”

1. Statement letter of code conformance to the 5th edition (2014) FBC issued by JB&B Engineering Consultants, LLC, dated 02/27/2017, signed and sealed by Thomas D. Sullivan, P.E.
2. Statement letter of no financial interest issued by JB&B Engineering Consultants, LLC, dated 02/27/2017, signed and sealed by Thomas D. Sullivan, P.E.

2. EVIDENCE SUBMITTED UNDER PREVIOUS NOA-No. 17-1023.08

A. DRAWINGS

1. Drawing No. **WL-2000-0110-08-65-74M-D**, titled “9’-2” PAN 2000 & 2400 Series HVHZ Wind Load Sectional Door”, sheets 1 through 3 of 3, dated 03/11/2015, with revision **B** dated 10/25/2017, prepared by Haas Door Company, signed and sealed by John E. Scates, P.E.

B. TESTS

1. None.

C. CALCULATIONS

1. Anchor calculations, dated 10/27/2017, prepared, signed and sealed by John E. Scates, P.E.

D. QUALITY ASSURANCE

1. Miami-Dade Department of Regulatory and Economic Resources (RER).

E. MATERIAL CERTIFICATIONS

1. None.

F. STATEMENTS

1. Statement letter of code conformance to **6th Edition (2017) FBC**, dated 10/27/2017, prepared, signed and sealed by John E. Scates, P.E.
2. Statement letter of no financial interest, dated 10/27/2017, issued, signed and sealed by John E. Scates, P.E.



Carlos M. Utrera, P.E.
Product Control Examiner
NOA-No. 25-1218.02
Expiration Date: February 11, 2031
Approval Date: January 22, 2026

Haas Door Company

NOTICE OF ACCEPTANCE: EVIDENCE SUBMITTED

3. EVIDENCE SUBMITTED UNDER PREVIOUS NOA # 20-1104.04 AND # 23-0830.06

A. DRAWINGS

1. Drawing No. **WL-2000-0110-08-65-74M-D**, titled “9’-2” PAN 2000 & 2400 Series HVHZ Wind Load Sectional Door”, sheets 1 through 3 of 3, dated 03/11/2015, with revision **D** dated 06/26/2023, prepared by Haas Door Company, signed and sealed by John E. Scates, P.E.

B. TESTS

1. Test reports on 1) Uniform Static Air Pressure Test, Loading per FBC TAS 202-94
2) Large Missile Impact Test per FBC, TAS 201-94
3) Cyclic Wind Pressure Loading per FBC, TAS 203-94
4) Forced Entry Resistance Test, per TAS 202-94
5) Tensile Test per ASTM E8
along with marked-up drawings and installation diagram of 9’-2” wide x 8” height Pan 2000 Series Sectional Steel Garage Door, prepared by American Test Lab, Inc., Test Report No. **ATLNC 1104.01-25**, dated 12/22/2025, signed and sealed by David W. Johnson, P.E.

C. CALCULATIONS

1. None.

D. QUALITY ASSURANCE

1. Miami-Dade Department of Regulatory and Economic Resources (RER).

E. MATERIAL CERTIFICATIONS

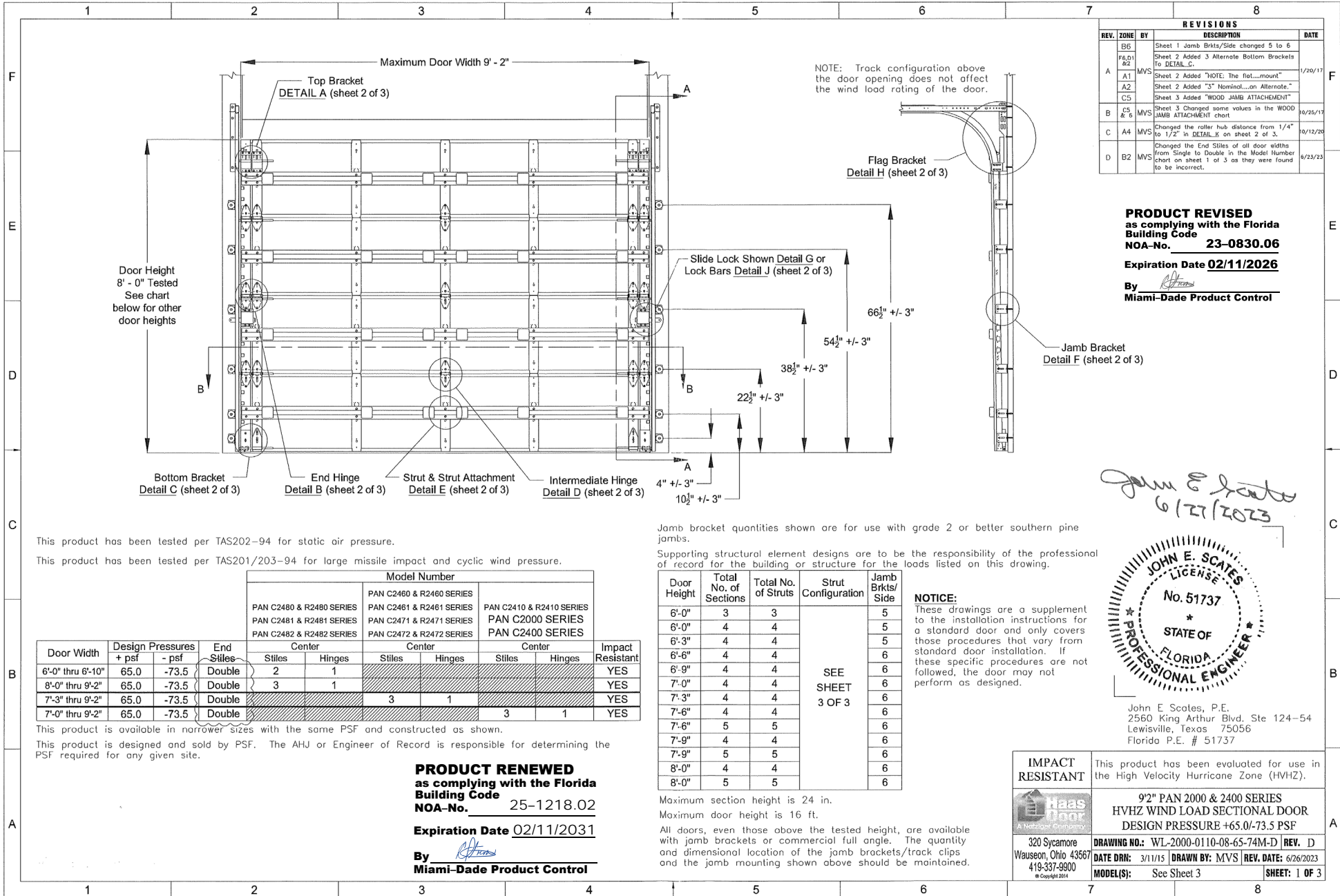
1. None.

F. STATEMENTS

1. Statement letter of code conformance to the 8th Edition (2023) of the FBC, issued by John E. Scates, P.E., dated 06/27/2023, signed and sealed by John E. Scates, P.E.
2. Statement letter of no financial interest, issued by John E. Scates, P.E., dated 06/27/2023, signed and sealed by John E. Scates, P.E.



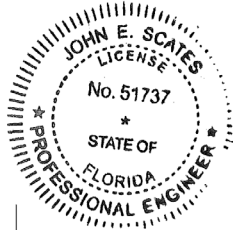
Carlos M. Utrera, P.E.
Product Control Examiner
NOA-No. 25-1218.02
Expiration Date: February 11, 2031
Approval Date: January 22, 2026



REVISIONS				
REV.	ZONE	BY	DESCRIPTION	DATE
B6	F&G1	MS	Sheet 1 Jamb Brkts/Side changed 5 to 6	
A1		MVS	Sheet 2 Added 3 Alternate Bottom Brackets To DETAIL C.	1/26/17
A2		MVS	Sheet 2 Added "NOTE: the flat...mount"	
C5		MVS	Sheet 2 Added "3" Nominal...on Alternate."	
		MVS	Sheet 3 Added "WOOD JAMB ATTACHMENT"	
B	C5 & 6	MVS	Sheet 3 Changed some values in the WOOD JAMB ATTACHMENT chart	10/26/19
C	A4	MVS	Changed the roller hub distance from 1/4" to 1/2" in DETAIL K on sheet 2 of 3.	10/12/20
D	B2	MVS	Changed the End Stiles of all door widths from Single to Double in the Model Number chart on sheet 1 of 3 as they were found to be incorrect.	6/23/23

PRODUCT REVISED
 as complying with the Florida
 Building Code
NOA-No. 23-0830.06
 Expiration Date **02/11/2026**
 By *[Signature]*
Miami-Dade Product Control

John E. Scates
 6/27/2023



John E. Scates, P.E.
 2560 King Arthur Blvd. Ste 124-54
 Lewisville, Texas 75056
 Florida P.E. # 51737

This product has been tested per TAS202-94 for static air pressure.
 This product has been tested per TAS201/203-94 for large missile impact and cyclic wind pressure.

Model Number	Center		Impact Resistant
	Stiles	Hinges	
PAN C2480 & R2480 SERIES	2	1	YES
PAN C2481 & R2481 SERIES	3	1	YES
PAN C2482 & R2482 SERIES	3	1	YES

Door Width	Design Pressures		End Stiles	Center		Impact Resistant
	+ psf	- psf		Stiles	Hinges	
6'-0" thru 6'-10"	65.0	-73.5	Double	2	1	YES
8'-0" thru 9'-2"	65.0	-73.5	Double	3	1	YES
7'-3" thru 9'-2"	65.0	-73.5	Double	3	1	YES
7'-0" thru 9'-2"	65.0	-73.5	Double	3	1	YES

This product is available in narrower sizes with the same PSF and constructed as shown.
 This product is designed and sold by PSF. The AHJ or Engineer of Record is responsible for determining the PSF required for any given site.

PRODUCT RENEWED
 as complying with the Florida
 Building Code
NOA-No. 25-1218.02
 Expiration Date **02/11/2031**
 By *[Signature]*
Miami-Dade Product Control

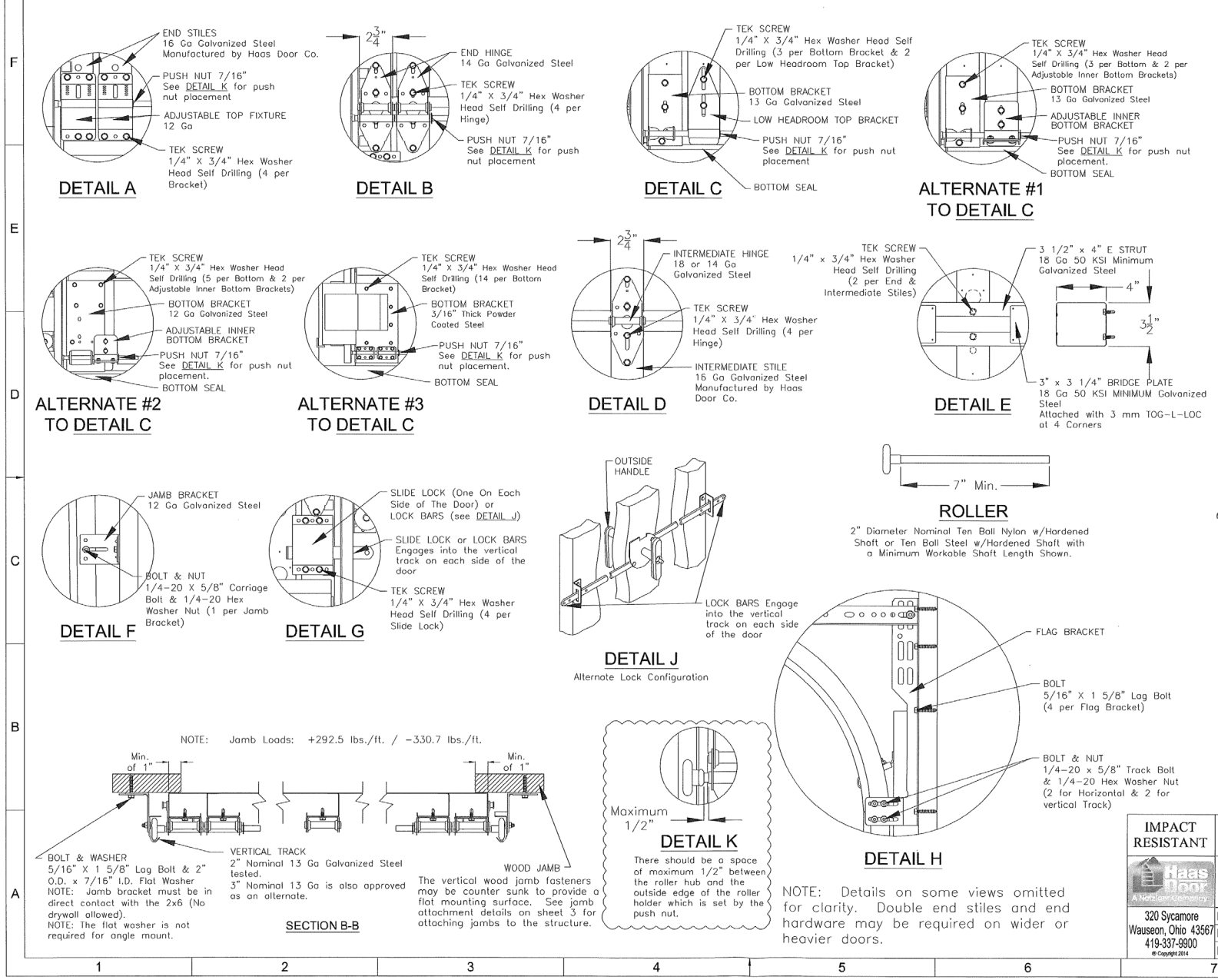
Jamb bracket quantities shown are for use with grade 2 or better southern pine jambs.
 Supporting structural element designs are to be the responsibility of the professional of record for the building or structure for the loads listed on this drawing.

Door Height	Total No. of Sections	Total No. of Struts	Strut Configuration	Jamb Brkts/ Side
6'-0"	3	3	SEE SHEET 3 OF 3	5
6'-0"	4	4		5
6'-3"	4	4		5
6'-6"	4	4		6
6'-9"	4	4		6
7'-0"	4	4		6
7'-3"	4	4		6
7'-6"	4	4		6
7'-6"	5	5		6
7'-9"	4	4		6
7'-9"	5	5	6	
8'-0"	4	4	6	
8'-0"	5	5	6	

NOTICE:
 These drawings are a supplement to the installation instructions for a standard door and only covers those procedures that vary from standard door installation. If these specific procedures are not followed, the door may not perform as designed.

Maximum section height is 24 in.
 Maximum door height is 16 ft.
 All doors, even those above the tested height, are available with jamb brackets or commercial full angle. The quantity and dimensional location of the jamb brackets/track clips and the jamb mounting shown above should be maintained.

IMPACT RESISTANT	This product has been evaluated for use in the High Velocity Hurricane Zone (HVHZ).	
	9'2" PAN 2000 & 2400 SERIES HVHZ WIND LOAD SECTIONAL DOOR DESIGN PRESSURE +65.0/-73.5 PSF	
320 Sycamore Wauseon, Ohio 43567 419-337-9900	DRAWING NO.: WL-2000-0110-08-65-74M-D	REV. D
© Copyright 2014	DATE DRN: 3/11/15	DRAWN BY: MVS
	MODEL(S): See Sheet 3	REV. DATE: 6/26/2023
		SHEET: 1 OF 3



REVISIONS				
REV.	ZONE	BY	DESCRIPTION	DATE
B6			Sheet 1 Jamb Brkts/Side changed 5 to 6	
Fg.01			Sheet 2 Added 3 Alternate Bottom Brackets to DETAIL C.	
A1	MVS		Sheet 2 Added "NOTE: The flat washer"	1/20/17
A2			Sheet 2 Added "3" Nominal on Alternate."	
C5			Sheet 3 Added "WOOD JAMB ATTACHMENT"	
B	8	MVS	Sheet 3 Changed some values in the WOOD JAMB ATTACHMENT chart	09/25/17
C	A4	MVS	Changed the roller hub distance from 1/4" to 1/2" in DETAIL K on sheet 2 of 3.	09/12/20
D	B2	MVS	Changed the End Stiles of all door widths from Single to Double in the Jamb Number chart on sheet 1 of 3 as they were found to be incorrect.	6/23/23

PRODUCT RENEWED
 as complying with the Florida
 Building Code
 NOA-No. 25-1218.02

Expiration Date 02/11/2031

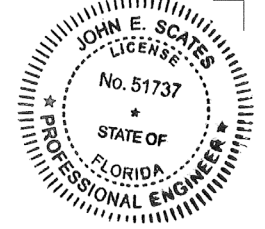
By *[Signature]*
 Miami-Dade Product Control

PRODUCT REVISED
 as complying with the Florida
 Building Code
 NOA-No. 23-0830.06

Expiration Date 02/11/2026

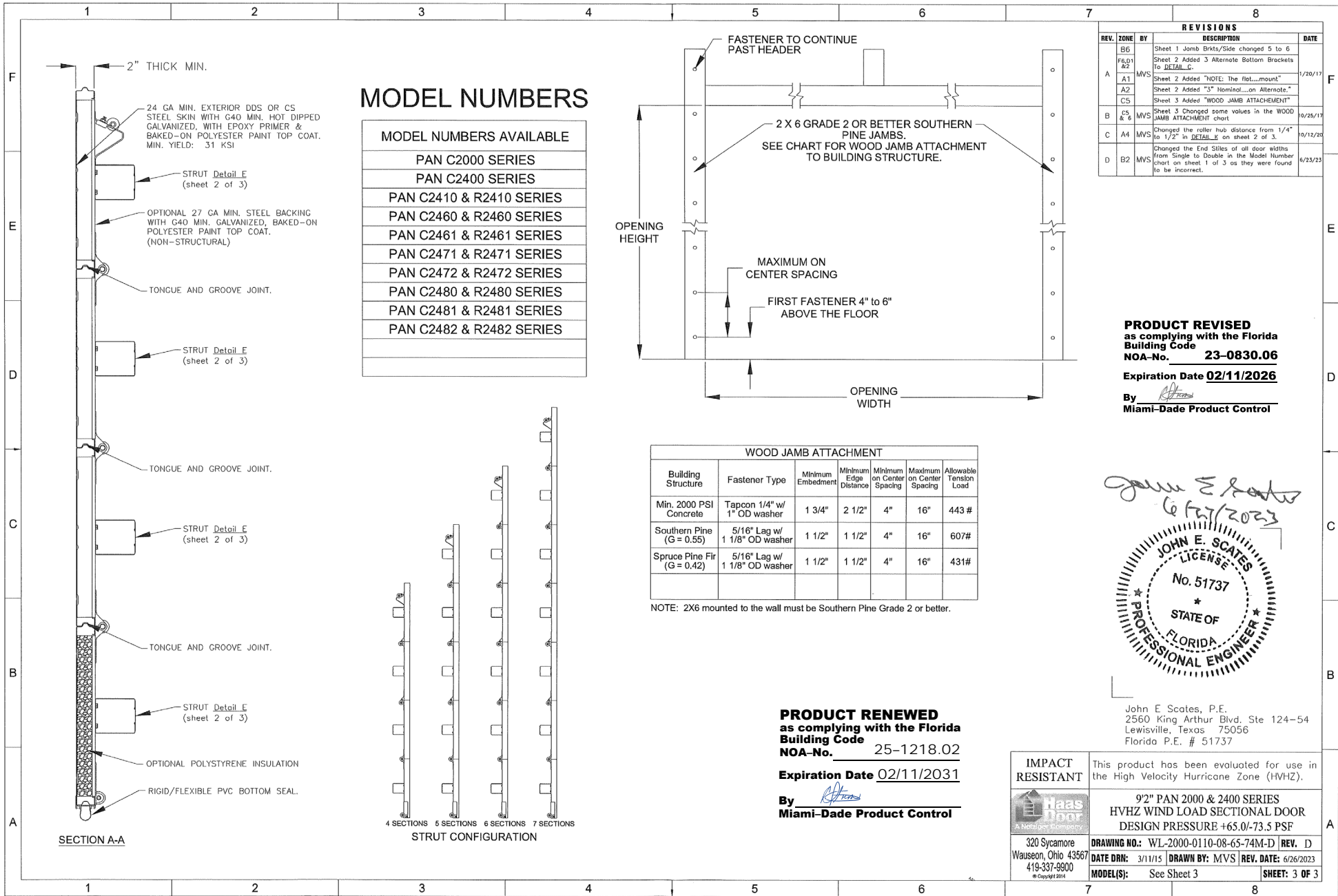
By *[Signature]*
 Miami-Dade Product Control

John E. Scates
 6/27/2023



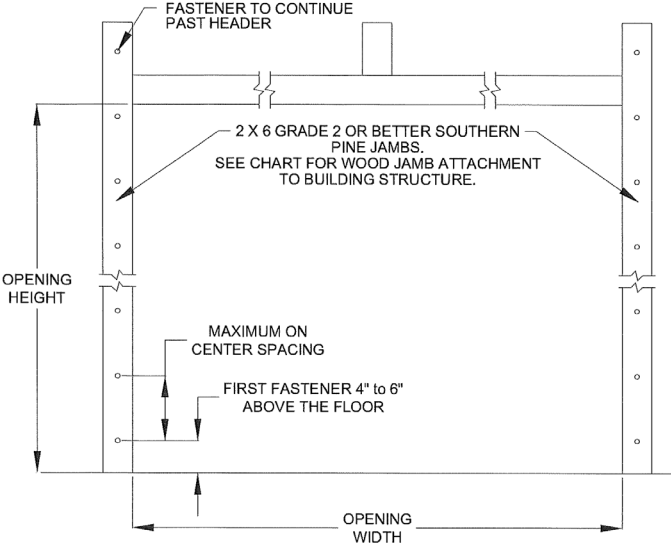
John E. Scates, P.E.
 2560 King Arthur Blvd. Ste 124-54
 Lewisville, Texas 75056
 Florida P.E. # 51737

	IMPACT RESISTANT This product has been evaluated for use in the High Velocity Hurricane Zone (HVHZ).
	92" PAN 2000 & 2400 SERIES HVHZ WIND LOAD SECTIONAL DOOR DESIGN PRESSURE +65.0/-73.5 PSF
320 Sycamore Wauseon, Ohio 43667 419-337-9900 © Copyright 2014	DRAWING NO.: WL-2000-0110-08-65-74M-D DATE DRN: 3/11/15 MODEL(S): See Sheet 3
REV. D DATE: 6/26/2023	SHEET: 2 OF 3



MODEL NUMBERS

MODEL NUMBERS AVAILABLE	
PAN C2000 SERIES	
PAN C2400 SERIES	
PAN C2410 & R2410 SERIES	
PAN C2460 & R2460 SERIES	
PAN C2461 & R2461 SERIES	
PAN C2471 & R2471 SERIES	
PAN C2472 & R2472 SERIES	
PAN C2480 & R2480 SERIES	
PAN C2481 & R2481 SERIES	
PAN C2482 & R2482 SERIES	



WOOD JAMB ATTACHMENT						
Building Structure	Fastener Type	Minimum Embedment	Minimum Edge Distance	Minimum on Center Spacing	Maximum on Center Spacing	Allowable Tension Load
Min. 2000 PSI Concrete	Tapcon 1/4" w/ 1" OD washer	1 3/4"	2 1/2"	4"	16"	443 #
Southern Pine (G = 0.55)	5/16" Lag w/ 1 1/8" OD washer	1 1/2"	1 1/2"	4"	16"	607#
Spruce Pine Fir (G = 0.42)	5/16" Lag w/ 1 1/8" OD washer	1 1/2"	1 1/2"	4"	16"	431#

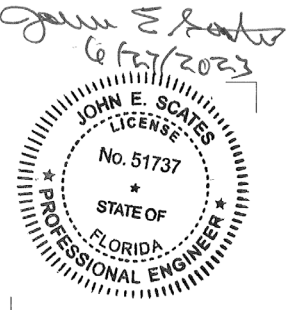
NOTE: 2X6 mounted to the wall must be Southern Pine Grade 2 or better.

PRODUCT RENEWED
 as complying with the Florida Building Code
 NOA-No. 25-1218.02

Expiration Date 02/11/2031
 By *[Signature]*
 Miami-Dade Product Control

REVISIONS				
REV.	ZONE	BY	DESCRIPTION	DATE
B6			Sheet 1 Jamb Brkts/Side changed 5 to 6	
F&G1 & 2			Sheet 2 Added 3 Alternate Bottom Brackets To DETAIL C	
A1	MVS		Sheet 2 Added "NOTE: the flt...mount!"	1/20/17
A2			Sheet 2 Added "3" Nominal...on Alternate."	
C5			Sheet 3 Added "WOOD JAMB ATTACHEMENT"	
B	C5 & 6	MVS	Sheet 3 Changed some values in the WOOD JAMB ATTACHEMENT chart	9/25/19
C	A4	MVS	Changed the roller hub distance from 1/4" to 1/2" in DETAIL E on sheet 2 of 3.	9/12/20
D	B2	MVS	Changed the End Sills of all door widths from Single to Double in the Model Number chart on sheet 1 of 3 as they were found to be incorrect.	6/23/23

PRODUCT REVISED
 as complying with the Florida Building Code
 NOA-No. 23-0830.06
 Expiration Date 02/11/2026
 By *[Signature]*
 Miami-Dade Product Control



John E. Scates, P.E.
 2560 King Arthur Blvd. Ste 124-54
 Lewisville, Texas 75056
 Florida P.E. # 51737

	IMPACT RESISTANT	This product has been evaluated for use in the High Velocity Hurricane Zone (HVHZ).
		9'2" PAN 2000 & 2400 SERIES HVHZ WIND LOAD SECTIONAL DOOR DESIGN PRESSURE +65.0/-73.5 PSF
320 Sycamore Wauseon, Ohio 43567 419-337-9900 <small>© Copyright 2014</small>	DRAWING NO.: WL-2000-0110-08-65-74M-D DATE DRN: 3/11/15 MODEL(S): See Sheet 3	REV. D DATE: 6/26/2023 SHEET: 3 OF 3