



MIAMI-DADE COUNTY
PRODUCT CONTROL SECTION
 11805 SW 26 Street, Room 208
 Miami, Florida 33175-2474
 T (786) 315-2590 F (786) 315-2599
www.miamidade.gov/economy

DEPARTMENT OF REGULATORY AND ECONOMIC RESOURCES (RER)
 BOARD AND CODE ADMINISTRATION DIVISION
NOTICE OF ACCEPTANCE (NOA)

Haas Door Company
320 Sycamore Street
Wauseon, OH 43567

SCOPE: This NOA is being issued under the applicable rules and regulations governing the use of construction materials. The documentation submitted has been reviewed and accepted by Miami-Dade County RER-Product Control Section to be used in Miami Dade County and other areas where allowed by the Authority Having Jurisdiction (AHJ). This NOA shall not be valid after the expiration date stated below. The Miami-Dade County Product Control Section (In Miami Dade County) and/or the AHJ (in areas other than Miami Dade County) reserve the right to have this product or material tested for quality assurance purposes. If this product or material fails to perform in the accepted manner, the manufacturer will incur the expense of such testing and the AHJ may immediately revoke, modify, or suspend the use of such product or material within their jurisdiction. RER reserves the right to revoke this acceptance, if it is determined by Miami-Dade County Product Control Section that this product or material fails to meet the requirements of the applicable building code.

This product is approved as described herein and has been designed to comply with the Florida Building Code, including the High Velocity Hurricane Zone.

DESCRIPTION: Series HT 5000 Insulated Aluminum Sectional Garage Door up to 9ft.-2in. Wide

APPROVAL DOCUMENT: Drawing No. **WL-5000-0110-08-65-74M-D**, titled “9’-2” HT 5000 Aluminum Series HVHZ Wind Load Sectional Door”, sheets 1 through 3 of 3, dated 03/11/15, with revision C dated 10/12/20, prepared by manufacturer, signed and sealed by John E. Scates, P.E., bearing the Miami-Dade County Product Control Renewal stamp with the Notice of Acceptance number and expiration date by the Miami-Dade County Product Control Section.

MISSILE IMPACT RATING: Large and Small Missile Impact Resistant

LABELING: Each unit shall bear a permanent label with the manufacturer’s name or logo, manufacturing address, model number, the positive and negative design pressure rating, indicate impact rated if applicable, installation instruction drawing reference number, approval number (NOA), the applicable test standards, and the statement reading ‘Miami-Dade County Product Control Approved’ is to be located on the door’s side track, bottom angle, or inner surface of a panel.

RENEWAL of this NOA shall be considered after a renewal application has been filed and there has been no change in the applicable building code negatively affecting the performance of this product.

TERMINATION of this NOA will occur after the expiration date or if there has been a revision or change in the materials, use, and/or manufacture of the product or process. Misuse of this NOA as an endorsement of any product, for sales, advertising or any other purposes shall automatically terminate this NOA. Failure to comply with any section of this NOA shall be cause for termination and removal of NOA.


ADVERTISEMENT: The NOA number preceded by the words Miami-Dade County, Florida, and followed by the expiration date may be displayed in advertising literature. If any portion of the NOA is displayed, then it shall be done in its entirety.

INSPECTION: A copy of this entire NOA shall be provided to the user by the manufacturer or its distributors and shall be available for inspection at the job site at the request of the Building Official.

This NOA **renews NOA No. 23-0830.08** and consists of this page 1 and evidence pages E-1, E-2 and E-3, as well as approval document mentioned above.

The submitted documentation was reviewed by **Manuel Perez, P.E.**




 1/20/26

NOA No. 25-1218.04
Expiration Date: February 18, 2031
Approval Date: January 29, 2026
 Page 1

NOTICE OF ACCEPTANCE: EVIDENCE SUBMITTED

1. EVIDENCE SUBMITTED UNDER PREVIOUS NOA's

A. DRAWINGS

1. Manufacturer's die drawings and sections.
(Submitted under NOA No. 15-0721.10)
2. Drawing No. **WL-5000-0110-08-65-74M-D**, titled "9'-2" HT 5000 Aluminum Series HVHZ Wind Load Sectional Door", sheets 1 through 3 of 3, dated 03/11/15, with revision C dated 10/12/20, prepared by manufacturer, signed and sealed by John E. Scates, P.E.
(Submitted under NOA No. 20-1104.06)

B. TESTS


1. Test reports on: 1) Uniform Static Air Pressure Test, Loading per FBC, TAS 202-94
2) Large Missile Impact Test per FBC, TAS 201-94
3) Cyclic Wind Pressure Loading per FBC, TAS 203-94
4) Forced Entry Test, per TAS 202-94
along with marked-up drawings and installation diagram of 9'-2" wide x 8'-0" height HT 5000 Series Aluminum Sectional Garage Doors, prepared by Intertek/ATI, Test Report No. **E1289.07-550-18**, dated 02/04/15, signed and sealed by Justin P. McDonald, P.E.
(Submitted under NOA No. 15-0721.10)
2. Test report on: 1) Tensile Test per ASTM E8, of steel sheet, prepared by Intertek/ATI, Test Report No. **E1289.13-106-18**, dated 02/26/15, signed and sealed by Gary T. Hartman, P.E.
(Submitted under NOA No. 15-0721.10)

C. CALCULATIONS

1. Anchor load calculations prepared by manufacturer, dated 10/27/17, signed and sealed by John E. Scates, P.E.
(Submitted under NOA No. 17-1023.10)

D. QUALITY ASSURANCE

1. Miami-Dade Department of Regulatory and Economic Resources (RER)


Manuel Perez, P.E.
Product Control Examiner
NOA No. 25-1218.04
Expiration Date: February 18, 2031
Approval Date: January 29, 2026

Haas Door Company

NOTICE OF ACCEPTANCE: EVIDENCE SUBMITTED

1. EVIDENCE SUBMITTED UNDER PREVIOUS NOA's (CONTINUED)

E. MATERIAL CERTIFICATIONS

1. Test report on Surface Burning Characteristics of the Rubitherm WP 19669 polyurethane foam insulation per ASTM E84, prepared by QAI Laboratories, Test Reports No. **RJ5251F-1** and **RJ5251F-2**, both dated 01/26/17, signed and sealed by V. Andrew Tan, P.E.
(Submitted under NOA No. 17-0313.07)
2. Test report on Ignition Temperature of Plastics of the Rubitherm WP 19669 polyurethane foam insulation per ASTM D1929, prepared by QAI Laboratories, Test Report No. **RJ5255F-1**, dated 02/02/17, signed and sealed by V. Andrew Tan, P.E.
(Submitted under NOA No. 17-0313.07)

F. STATEMENTS

1. Statement letter of conformance, complying with **FBC 8th Edition (2023)**, dated June 27, 2023, issued by manufacturer, signed and sealed by John E. Scates, P.E.
(Submitted under NOA No. 23-0830.08)
2. Statement letter of no financial interest, dated June 27, 2023, issued by manufacturer, signed and sealed by John E. Scates, P.E.
(Submitted under NOA No. 23-0830.08)

G. OTHERS

1. Notice of Acceptance No. **20-1104.06**, issued to Haas Door Company, for their Series HT 5000 Insulated Aluminum Sectional Garage Door up to 9ft.-2in. Wide, approved on 01/21/21 and expiring on 02/18/26.



Manuel Perez, P.E.
Product Control Examiner
NOA No. 25-1218.04
Expiration Date: February 18, 2031
Approval Date: January 29, 2026

NOTICE OF ACCEPTANCE: EVIDENCE SUBMITTED

2. NEW EVIDENCE SUBMITTED

A. DRAWINGS

1. None.

B. TESTS

1. Test reports on: 1) Uniform Static Air Pressure Test, Loading per FBC, TAS 202-94
2) Large Missile Impact Test per FBC, TAS 201-94
3) Cyclic Wind Pressure Loading per FBC, TAS 203-94
4) Forced Entry Test, per TAS 202-94
5) Tensile Test, per ASTM E8

along with marked-up drawings and installation diagram of 9'-2" wide x 8'-0" height HT 600 Series Sectional Steel Garage Doors, prepared by American Test Lab, Inc., Test Report No. **ATLNC 1111.02-25**, dated 12/22/25, signed and sealed by David W. Johnson, P.E.

C. CALCULATIONS

1. None.

D. QUALITY ASSURANCE

1. Miami-Dade Department of Regulatory and Economic Resources (RER)

E. MATERIAL CERTIFICATIONS


1. None.

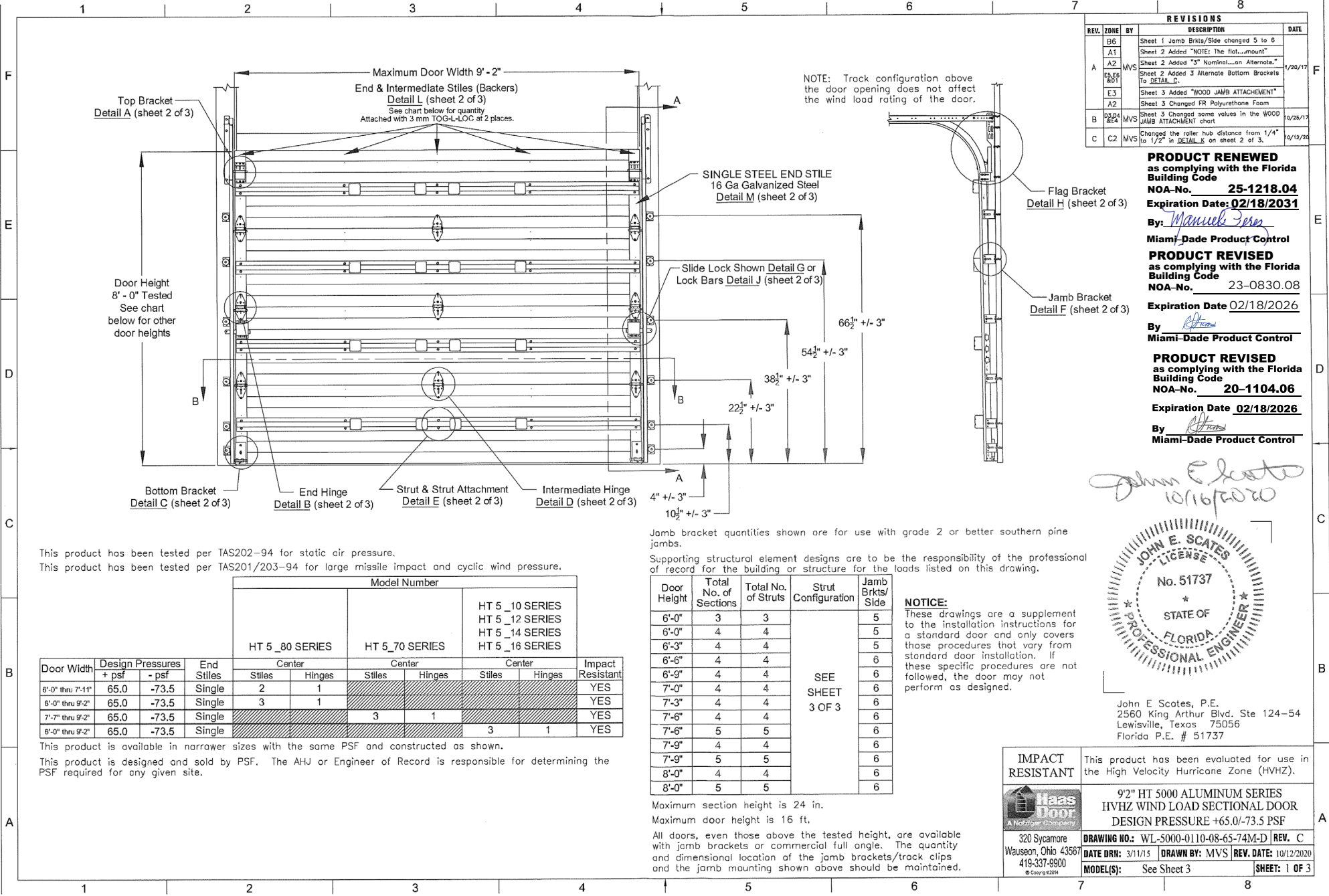
F. STATEMENTS

1. Statement letter of conformance, complying with **FBC 8th Edition (2023)**, dated December 4, 2025, issued by manufacturer, signed and sealed by John E. Scates, P.E.
2. Statement letter of no financial interest, dated December 4, 2025, issued by manufacturer, signed and sealed by John E. Scates, P.E.

G. OTHERS

1. Notice of Acceptance No. **23-0830.08**, issued to Haas Door Company, for their Series HT 5000 Insulated Aluminum Sectional Garage Door up to 9ft.-2in. Wide, approved on 10/19/23 and expiring on 02/18/26.


Manuel Perez, P.E.
Product Control Examiner
NOA No. 25-1218.04
Expiration Date: February 18, 2031
Approval Date: January 29, 2026



REVISIONS				
REV.	ZONE	BY	DESCRIPTION	DATE
B6			Sheet 1 Jamb Brkts/Side changed 5 to 6	
A1			Sheet 2 Added "NOTE: The flat...mount"	
A2	MVS		Sheet 2 Added "3" Nominal...on Alternate... To DETAIL G.	1/20/17
E3			Sheet 3 Added "WOOD JAMB ATTACHMENT"	
A2			Sheet 3 Changed FR Polyurethane Foam	
B324	MVS		Sheet 3 Changed some values in the WOOD JAMB ATTACHMENT chart	10/25/17
C2	MVS		Changed the roller hub distance from 1/4" to 1/2" in DETAIL K on sheet 2 of 3.	10/19/20

PRODUCT RENEWED
as complying with the Florida Building Code
NOA-No. **25-1218.04**
Expiration Date: **02/18/2031**

By: *Manuel Fern*
Miami-Dade Product Control

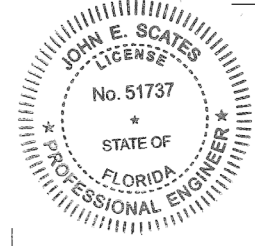
PRODUCT REVISED
as complying with the Florida Building Code
NOA-No. **23-0830.08**
Expiration Date **02/18/2026**

By: *[Signature]*
Miami-Dade Product Control

PRODUCT REVISED
as complying with the Florida Building Code
NOA-No. **20-1104.06**
Expiration Date **02/18/2026**

By: *[Signature]*
Miami-Dade Product Control

John E. Scates
10/16/2020



John E. Scates, P.E.
2560 King Arthur Blvd. Ste 124-54
Lewisville, Texas 75056
Florida P.E. # 51737

Jamb bracket quantities shown are for use with grade 2 or better southern pine jambs.
Supporting structural element designs are to be the responsibility of the professional of record for the building or structure for the loads listed on this drawing.

Door Height	Total No. of Sections	Total No. of Struts	Strut Configuration	Jamb Brkts/ Side
6'-0"	3	3	SEE SHEET 3 OF 3	5
6'-0"	4	4		5
6'-3"	4	4		5
6'-6"	4	4		6
6'-9"	4	4		6
7'-0"	4	4		6
7'-3"	4	4		6
7'-6"	4	4		6
7'-6"	5	5		6
7'-9"	4	4		6
7'-9"	5	5	6	
8'-0"	4	4	6	
8'-0"	5	5	6	

NOTICE:
These drawings are a supplement to the installation instructions for a standard door and only covers those procedures that vary from standard door installation. If these specific procedures are not followed, the door may not perform as designed.

Maximum section height is 24 in.
Maximum door height is 16 ft.
All doors, even those above the tested height, are available with jamb brackets or commercial full angle. The quantity and dimensional location of the jamb brackets/track clips and the jamb mounting shown above should be maintained.

This product has been tested per TAS202-94 for static air pressure.
This product has been tested per TAS201/203-94 for large missile impact and cyclic wind pressure.

Model Number	HT 5_80 SERIES						HT 5_70 SERIES		HT 5_10 SERIES		HT 5_12 SERIES		HT 5_14 SERIES		HT 5_16 SERIES		
	Center		Center		Center		Center		Center		Center		Center		Center		
	Stiles	Hinges	Stiles	Hinges	Stiles	Hinges	Stiles	Hinges	Stiles	Hinges	Stiles	Hinges	Stiles	Hinges	Stiles	Hinges	
8'-0" thru 7'-11"	2	1															YES
8'-0" thru 9'-2"	3	1															YES
7'-7" thru 9'-2"			3	1													YES
8'-0" thru 9'-2"													3	1			YES

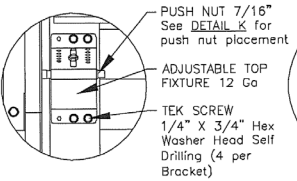
Door Width	Design Pressures + psf	Design Pressures - psf	End Stiles	Center Stiles	Center Hinges	Impact Resistant
8'-0" thru 7'-11"	65.0	-73.5	Single	2	1	YES
8'-0" thru 9'-2"	65.0	-73.5	Single	3	1	YES
7'-7" thru 9'-2"	65.0	-73.5	Single			YES
8'-0" thru 9'-2"	65.0	-73.5	Single			YES

This product is available in narrower sizes with the same PSF and constructed as shown.
This product is designed and sold by PSF. The AHJ or Engineer of Record is responsible for determining the PSF required for any given site.

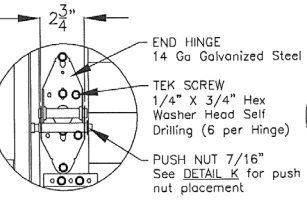
	IMPACT RESISTANT This product has been evaluated for use in the High Velocity Hurricane Zone (HVHZ).
	9'2" HT 5000 ALUMINUM SERIES HVHZ WIND LOAD SECTIONAL DOOR DESIGN PRESSURE +65.0/-73.5 PSF
320 Sycamore Wauseon, Ohio 43567 419-337-9900 © Copyright 2020	DRAWING NO.: WL-5000-0110-08-65-74M-D REV. C DATE DRN: 3/11/15 DRAWN BY: MVS REV. DATE: 10/12/2020 MODEL(S): See Sheet 3 SHEET: 1 OF 3

REVISIONS				
REV.	ZONE	BY	DESCRIPTION	DATE
B6			Sheet 1 Jamb Brkts/Side changed 5 to 6	
A1			Sheet 2 Added "NOTE: The fl...mount"	
A2	MVS		Sheet 2 Added "3" Nominal...an Alternate."	1/20/17
E5, E6 & B1			Sheet 2 Added 3 Alternate Bottom Brackets TO DETAIL C.	
E3			Sheet 3 Added "WOOD JAMB ATTACHMENT"	
A2			Sheet 3 Changed FR Polyurethane Foam	
B3, B4 & B5	MVS		Sheet 3 Changed some values in the WOOD JAMB ATTACHMENT chart.	10/25/17
C	C2	MVS	Changed the roller hub distance from 1/4" to 1/2" in DETAIL K on sheet 2 of 3.	10/12/20

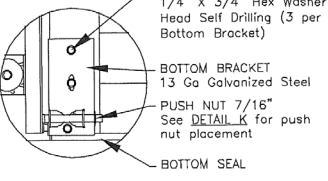
PRODUCT REVISED
 as complying with the Florida Building Code
NOA-No. 20-1104.06
 Expiration Date **02/18/2026**
 By *[Signature]*
Miami-Dade Product Control



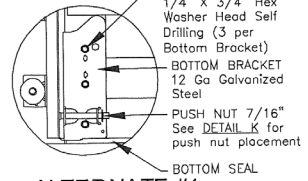
DETAIL A



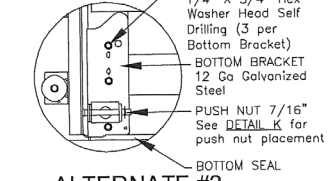
DETAIL B



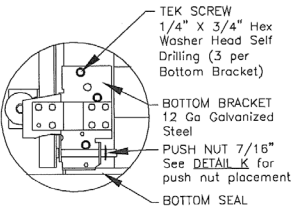
DETAIL C



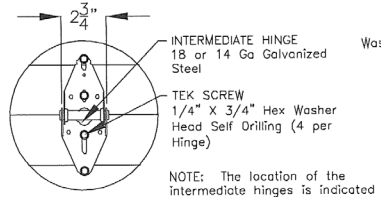
ALTERNATE #1 TO DETAIL C



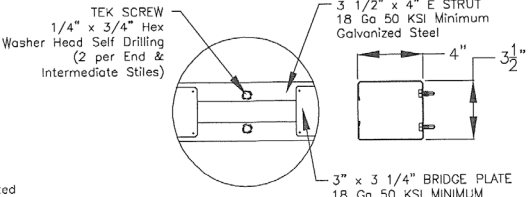
ALTERNATE #2 TO DETAIL C



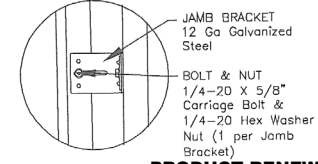
ALTERNATE #3 TO DETAIL C



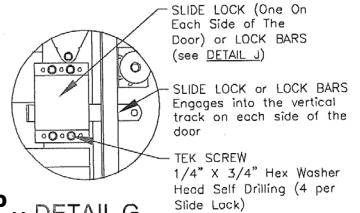
DETAIL D



DETAIL E



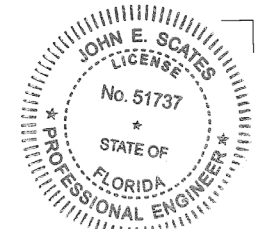
DETAIL F



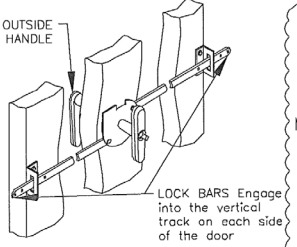
DETAIL G

PRODUCT RENEWED
 as complying with the Florida Building Code
NOA-No. 25-1218.04
 Expiration Date: **02/18/2031**
 By: *[Signature]*
Miami-Dade Product Control
PRODUCT REVISED
 as complying with the Florida Building Code
NOA-No. 23-0830.08
 Expiration Date **02/18/2026**
 By: *[Signature]*
Miami-Dade Product Control

John E. Scates
 10/16/2020

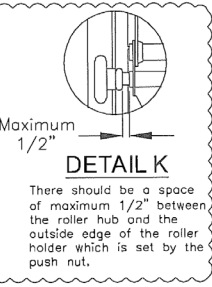


John E. Scates, P.E.
 2560 King Arthur Blvd. Ste 124-54
 Lewisville, Texas 75056
 Florida P.E. # 51737

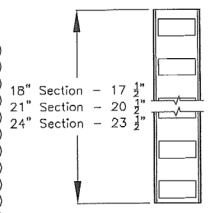


DETAIL J

Alternate Lock Configuration

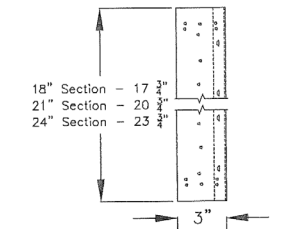


DETAIL K



DETAIL L

MATERIAL: 20 GA CS Steel, G40 Min. Hot Dipped Galvanized

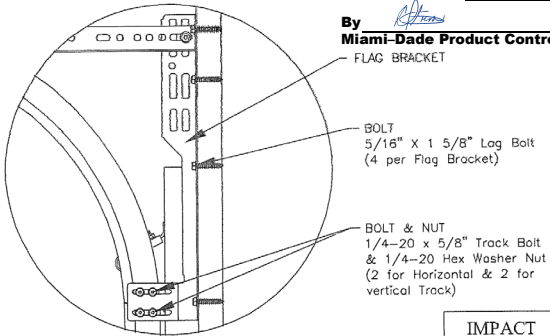


DETAIL M

MATERIAL: 16 GA CS Steel, G40+ Min. Hot Dipped Galvanized

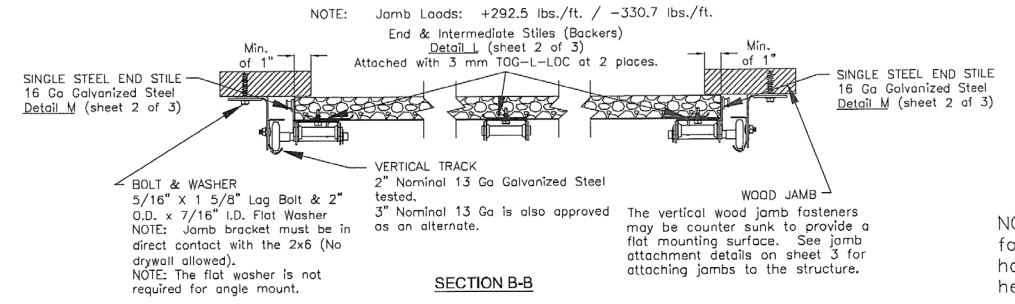
ROLLER

2" Diameter Nominal Eleven Ball Nylon or Ten Ball Steel with a Minimum Workable Shaft Length Shown.



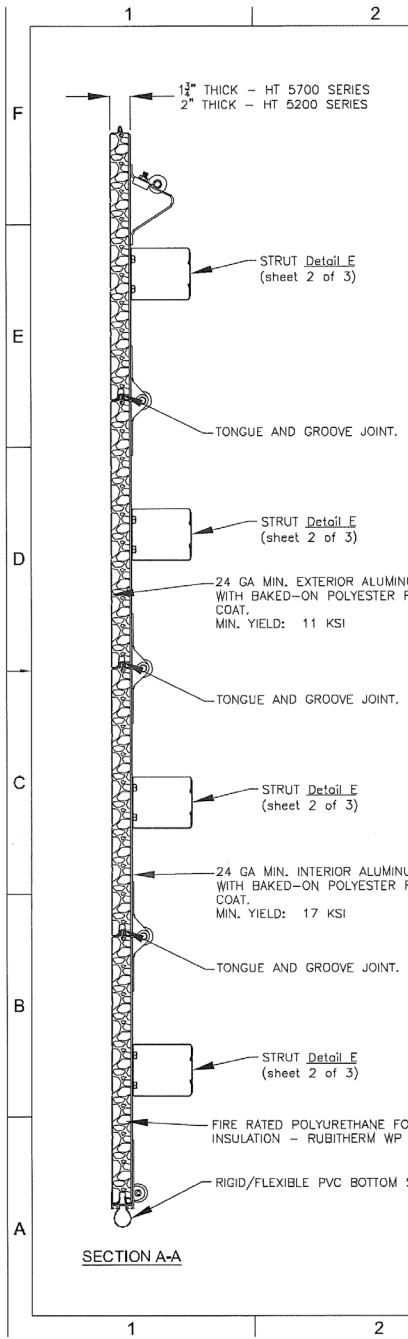
DETAIL H

NOTE: Details on some views omitted for clarity. Double end stiles and end hardware may be required on wider or heavier doors.



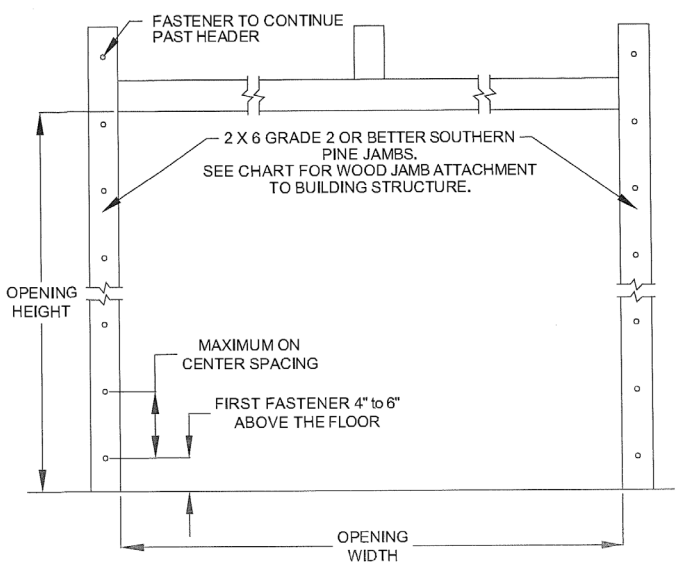
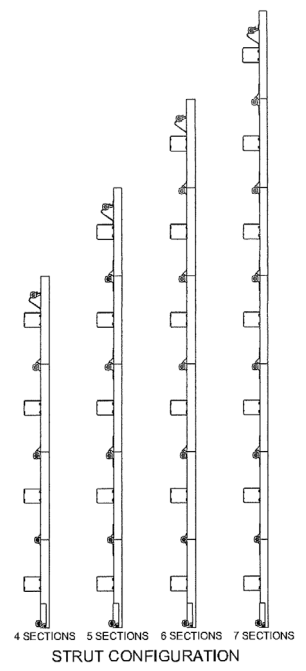
SECTION B-B

320 Sycamore Wauseon, Ohio 43680 419-337-9900 © Copyright 2024	This product has been evaluated for use in the High Velocity Hurricane Zone (HVHZ). 92" HT 5000 ALUMINUM SERIES HVHZ WIND LOAD SECTIONAL DOOR DESIGN PRESSURE +65.0/-73.5 PSF
	DRAWING NO.: WL-5000-0110-08-65-74M-D REV. C DATE DRN: 3/11/15 DRAWN BY: MVS REV. DATE: 10/12/2020 MODEL(S): See Sheet 3 SHEET: 2 OF 3



WOOD JAMB ATTACHMENT						
Building Structure	Fastener Type	Minimum Embedment	Minimum Edge Distance	Minimum on Center Spacing	Maximum on Center Spacing	Allowable Tension Load
Min. 2000 PSI Concrete	Tapcon 1/4" w/ 1" OD washer	1 3/4"	2 1/2"	4"	16"	443 #
Southern Pine (G = 0.55)	5/16" Lag w/ 1 1/8" OD washer	1 1/2"	1 1/2"	4"	16"	607 #
Spruce Pine Fir (G = 0.42)	5/16" Lag w/ 1 1/8" OD washer	1 1/2"	1 1/2"	4"	16"	431 #

NOTE: 2X6 mounted to the wall must be Southern Pine Grade 2 or better.



MODEL NUMBERS

MODEL NUMBERS AVAILABLE
HT 5 _10 SERIES
HT 5 _12 SERIES
HT 5 _14 SERIES
HT 5 _16 SERIES
HT 5 _70 SERIES
HT5 _80 SERIES

REVISIONS				
REV.	ZONE	BY	DESCRIPTION	DATE
B6			Sheet 1 Jamb Brkts/Side changed 5 to 6	
A1			Sheet 2 Added "NOTE: The flat...mount"	
A2	MVS		Sheet 2 Added "3" Nominal...on Alternots."	1/20/17
E3, E5 & B1			Sheet 2 Added 3 Alternate Bottom Brackets To DETAIL C.	
E3			Sheet 3 Added "WOOD JAMB ATTACHMENT"	
A2			Sheet 3 Changed FR Polyurethane Foam	
B3, B4 & B4	MVS		Sheet 3 Changed some values in the WOOD JAMB ATTACHMENT chart	10/25/17
C	C2	MVS	Changed the roller hub distance from 1/4" to 1/2" in DETAIL K on sheet 2 of 3.	10/12/20

PRODUCT RENEWED
as complying with the Florida Building Code
NOA-No. **25-1218.04**

Expiration Date: **02/18/2031**

By: *Manuel Fern*

Miami-Dade Product Control
PRODUCT REVISED
as complying with the Florida Building Code
NOA-No. **23-0830.08**

Expiration Date **02/18/2026**

By: *John E. Scates*

Miami-Dade Product Control

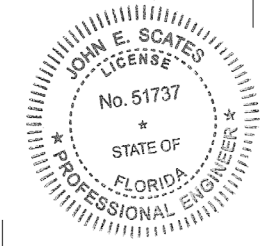
PRODUCT REVISED
as complying with the Florida Building Code
NOA-No. **20-1104.06**

Expiration Date **02/18/2026**


By: *John E. Scates*

Miami-Dade Product Control

John E. Scates
10/16/2020



John E. Scates, P.E.
2560 King Arthur Blvd. Ste 124-54
Lewisville, Texas 75056
Florida P.E. # 51737

IMPACT RESISTANT	This product has been evaluated for use in the High Velocity Hurricane Zone (HVHZ).
	9'2" HT 5000 ALUMINUM SERIES HVHZ WIND LOAD SECTIONAL DOOR DESIGN PRESSURE +65.0/-73.5 PSF
320 Sycamore Wauseon, Ohio 43567 419-337-9900 © CopyRight 2020	DRAWING NO.: WL-5000-0110-08-65-74M-D REV. C DATE DRN: 3/11/15 DRAWN BY: MVS REV. DATE: 10/12/2020 MODEL(S): See Sheet 3 SHEET: 3 OF 3