



MIAMI-DADE COUNTY
PRODUCT CONTROL SECTION
 11805 SW 26 Street, Room 208
 Miami, Florida 33175-2474
 T (786) 315-2590 F (786) 315-2599
www.miamidade.gov/economy

DEPARTMENT OF REGULATORY AND ECONOMIC RESOURCES (RER)
 BOARD AND CODE ADMINISTRATION DIVISION
NOTICE OF ACCEPTANCE (NOA)

Haas Door Company
320 Sycamore Street
Wauseon, OH 43567

SCOPE: This NOA is being issued under the applicable rules and regulations governing the use of construction materials. The documentation submitted has been reviewed and accepted by Miami-Dade County RER-Product Control Section to be used in Miami Dade County and other areas where allowed by the Authority Having Jurisdiction (AHJ).

This NOA shall not be valid after the expiration date stated below. The Miami-Dade County Product Control Section (In Miami Dade County) and/or the AHJ (in areas other than Miami Dade County) reserve the right to have this product or material tested for quality assurance purposes. If this product or material fails to perform in the accepted manner, the manufacturer will incur the expense of such testing and the AHJ may immediately revoke, modify, or suspend the use of such product or material within their jurisdiction. RER reserves the right to revoke this acceptance, if it is determined by Miami-Dade County Product Control Section that this product or material fails to meet the requirements of the applicable building code.

This product is approved as described herein and has been designed to comply with the Florida Building Code, including the High Velocity Hurricane Zone.

DESCRIPTION:

Series PAN 2000 & 2400 Steel Sectional Garage Door up to 18ft.-2in. Wide with Optional EPS Insulation

APPROVAL DOCUMENT: Drawing No. **WL-2000-0218-08-45-50M-D**, titled “18’-2” PAN 2000 & 2400 Series HVHZ Wind Load Sectional Door”, sheets 1 through 3 of 3, dated 03/11/15, with revision **C** dated 10/12/20, prepared by manufacturer, signed and sealed by John E. Scates, P.E., bearing the Miami-Dade County Product Control Renewal stamp with the Notice of Acceptance number and expiration date by the Miami-Dade County Product Control Section.

MISSILE IMPACT RATING: Large and Small Missile Impact Resistant

LABELING: Each unit shall bear a permanent label with the manufacturer’s name or logo, manufacturing address, model number, the positive and negative design pressure rating, indicate impact rated if applicable, installation instruction drawing reference number, approval number (NOA), the applicable test standards, and the statement reading ‘Miami-Dade County Product Control Approved’ is to be located on the door’s side track, bottom angle, or inner surface of a panel.

RENEWAL of this NOA shall be considered after a renewal application has been filed and there has been no change in the applicable building code negatively affecting the performance of this product.

TERMINATION of this NOA will occur after the expiration date or if there has been a revision or change in the materials, use, and/or manufacture of the product or process. Misuse of this NOA as an endorsement of any product, for sales, advertising or any other purposes shall automatically terminate this NOA. Failure to comply with any section of this NOA shall be cause for termination and removal of NOA.

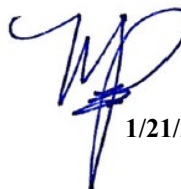
ADVERTISEMENT: The NOA number preceded by the words Miami-Dade County, Florida, and followed by the expiration date may be displayed in advertising literature. If any portion of the NOA is displayed, then it shall be done in its entirety.

INSPECTION: A copy of this entire NOA shall be provided to the user by the manufacturer or its distributors and shall be available for inspection at the job site at the request of the Building Official.

This NOA **renews NOA No. 23-0830.10** and consists of this page 1 and evidence pages E-1, E-2 and E-3, as well as approval document mentioned above.

The submitted documentation was reviewed by **Manuel Perez, P.E.**




 1/21/26

NOA No. 25-1218.06
Expiration Date: February 11, 2027
Approval Date: January 29, 2026
 Page 1

Haas Door Company

NOTICE OF ACCEPTANCE: EVIDENCE SUBMITTED

1. EVIDENCE SUBMITTED UNDER PREVIOUS NOA's

A. DRAWINGS

1. Manufacturer's die drawings and sections.
(Submitted under NOA No. 15-1104.02)
2. Drawing No. **WL-2000-0218-08-45-50M-D**, titled "18'-2" PAN 2000 & 2400 Series HVHZ Wind Load Sectional Door", sheets 1 through 3 of 3, dated 03/11/15, with revision **C** dated 10/12/20, prepared by manufacturer, signed and sealed by John E. Scates, P.E.
(Submitted under NOA No. 20-1104.08)

B. TESTS


1. Test reports on: 1) Uniform Static Air Pressure Test, Loading per FBC, TAS 202-94
2) Large Missile Impact Test per FBC, TAS 201-94
3) Cyclic Wind Pressure Loading per FBC, TAS 203-94
4) Forced Entry Test, per TAS 202-94
along with marked-up drawings and installation diagram of 18'-2" wide x 8'-0" height Pan 2000 Series Sectional Steel Garage Doors, prepared by Intertek/ATI, Test Report No. **E1289.06-550-18**, dated 02/04/15, signed and sealed by Justin P. McDonald, P.E.
(Submitted under NOA No. 15-1104.02)
2. Test report on: 1) Tensile Test per ASTM E8, of steel sheet, prepared by Intertek/ATI, Test Report No. **E1289.14-106-18**, dated 02/26/15, signed and sealed by Gary T. Hartman, P.E.
(Submitted under NOA No. 15-1104.02)
3. Test report on: Salt Spray per ASTM B117, of coated metal steel panels, prepared by Intertek/ATI, Test Report No. **E1289.10-106-18**, dated 11/24/14, signed and sealed by Gary T. Hartman, P.E.
(Submitted under NOA No. 15-1104.02)

C. CALCULATIONS

1. Anchor load calculations prepared by manufacturer, dated 10/27/17, signed and sealed by John E. Scates, P.E.
(Submitted under NOA No. 17-1023.12)

D. QUALITY ASSURANCE

1. Miami-Dade Department of Regulatory and Economic Resources (RER)


Manuel Perez, P.E.
Product Control Examiner
NOA No. 25-1218.06
Expiration Date: February 11, 2027
Approval Date: January 29, 2026

Haas Door Company

NOTICE OF ACCEPTANCE: EVIDENCE SUBMITTED

1. EVIDENCE SUBMITTED UNDER PREVIOUS NOA's (CONTINUED)

E. MATERIAL CERTIFICATIONS


1. Test report on Surface Burning Characteristics, per ASTM E84 of Type I EPS, prepared by Intertek Testing Services, NA, Inc., Test Report No. **3094867SAT-001**, dated 04/13/06, signed by C. Anthony Peñaloza.
(Submitted under NOA No. 15-1104.02)
2. Test report on Self-Ignition Temperature per ASTM D1929 of Type I EPS, prepared by Intertek Testing Services, NA, Test Report No. **3094867SAT-002**, dated 04/04/06, signed by C. Anthony Peñaloza, P.E.
(Submitted under NOA No. 15-1104.02)

F. STATEMENTS

1. Statement letter of conformance, complying with **FBC 8th Edition (2023)**, dated June 27, 2020, issued by manufacturer, signed and sealed by John E. Scates, P.E.
(Submitted under NOA No. 23-0830.10)
2. Statement letter of no financial interest, dated June 27, 2020, issued by manufacturer, signed and sealed by John E. Scates, P.E.
(Submitted under NOA No. 23-0830.10)

G. OTHERS

1. Notice of Acceptance No. **20-1104.08**, issued to Haas Door Company, for their Series PAN 2000 & 2400 Steel Sectional Garage Door up to 18ft.-2in. Wide with Optional EPS Insulation, approved on 01/21/21 and expiring on 02/11/26.


Manuel Pérez, P.E.
Product Control Examiner
NOA No. 25-1218.06
Expiration Date: February 11, 2027
Approval Date: January 29, 2026

Haas Door Company

NOTICE OF ACCEPTANCE: EVIDENCE SUBMITTED

2. NEW EVIDENCE SUBMITTED

A. DRAWINGS

1. None.

B. TESTS

1. None.

C. CALCULATIONS

1. None.

D. QUALITY ASSURANCE

1. Miami-Dade Department of Regulatory and Economic Resources (RER)

E. MATERIAL CERTIFICATIONS


1. None.

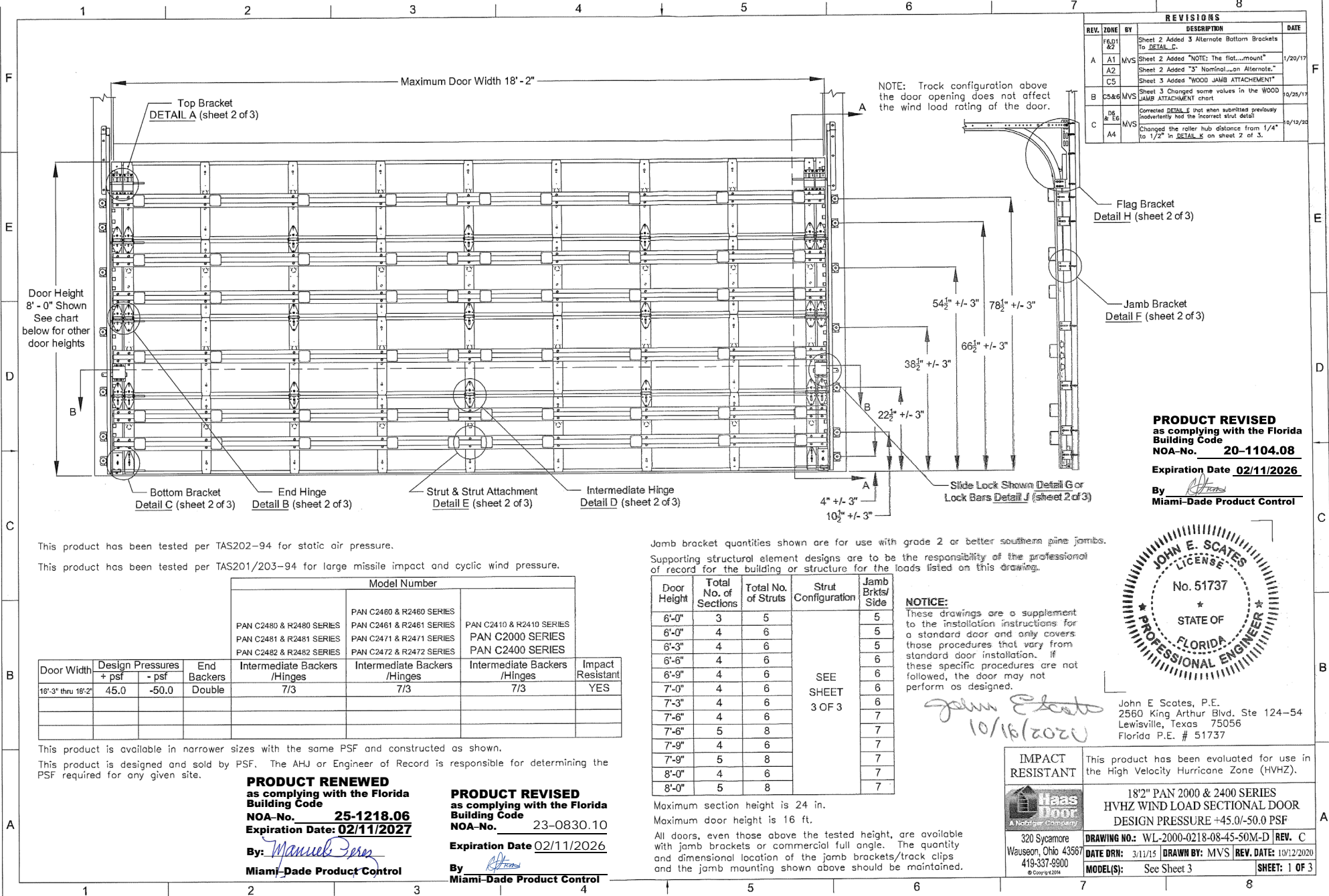
F. STATEMENTS

1. Statement letter of conformance, complying with **FBC 8th Edition (2023)**, dated December 4, 2025, issued by manufacturer, signed and sealed by John E. Scates, P.E.
2. Statement letter of no financial interest, dated December 4, 2025, issued by manufacturer, signed and sealed by John E. Scates, P.E.
3. Letter from manufacturer requesting a 1-year renewal extension to allow time to perform verification test, dated 01/21/26, signed by Mark Schweitzer.
4. Testing agreement letter, dated 01/20/26 between American Test Lab, Inc. and the Haas Door Company, issued by ATL, Inc. and signed by Keith Owen, Lab Director, ATLNC.

G. OTHERS

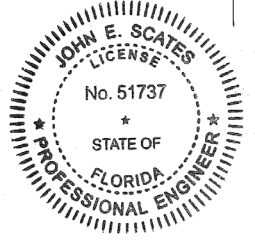
1. Notice of Acceptance No. **23-0830.10**, issued to Haas Door Company, for their Series PAN 2000 & 2400 Steel Sectional Garage Door up to 18ft.-2in. Wide with Optional EPS Insulation, approved on 10/19/23 and expiring on 02/11/26.
2. This is a one-year approval, subjected to successful verification test, the final approval will be issued for a total of 5 years.


Manuel Pérez, P.E.
Product Control Examiner
NOA No. 25-1218.06
Expiration Date: February 11, 2027
Approval Date: January 29, 2026



REVISIONS				
REV.	ZONE	BY	DESCRIPTION	DATE
R6.01	R2		Sheet 2 Added 3 Alternate Bottom Brackets To DETAIL C.	
A	A1	MVS	Sheet 2 Added "NOTE: The flat...mount"	1/20/17
	A2		Sheet 2 Added "3" Nominal...on Alternates."	
	C5		Sheet 3 Added "WOOD JAMB ATTACHMENT"	
B	C5&6	MVS	Sheet 3 Changed some values in the WOOD JAMB ATTACHMENT chart.	10/28/17
	D6		Corrected DETAIL E not when submitted previously inadvertently had the incorrect strut detail	9/12/20
C	A4	MVS	Changed the roller hub distance from 1/4" to 1/2" in DETAIL K on sheet 2 of 3.	

PRODUCT REVISED
 as complying with the Florida Building Code
NOA-No. 20-1104.08
 Expiration Date **02/11/2026**
 By *[Signature]*
Miami-Dade Product Control



NOTICE:
 These drawings are a supplement to the installation instructions for a standard door and only covers those procedures that vary from standard door installation. If these specific procedures are not followed, the door may not perform as designed.

John E. Scates
 10/16/2020

John E. Scates, P.E.
 2560 King Arthur Blvd. Ste 124-54
 Lewisville, Texas 75056
 Florida P.E. # 51737

Jamb bracket quantities shown are for use with grade 2 or better southern pine jambs. Supporting structural element designs are to be the responsibility of the professional of record for the building or structure for the loads listed on this drawing.

Door Height	Total No. of Sections	Total No. of Struts	Strut Configuration	Jamb Brkts/ Side
6'-0"	3	5	SEE SHEET 3 OF 3	5
6'-0"	4	6		5
6'-3"	4	6		5
6'-6"	4	6		6
6'-9"	4	6		6
7'-0"	4	6		6
7'-3"	4	6		6
7'-6"	4	6		7
7'-6"	5	8		7
7'-9"	4	6		7
7'-9"	5	8	7	
8'-0"	4	6	7	
8'-0"	5	8	7	

Maximum section height is 24 in.
 Maximum door height is 16 ft.

All doors, even those above the tested height, are available with jamb brackets or commercial full angle. The quantity and dimensional location of the jamb brackets/track clips and the jamb mounting shown above should be maintained.

This product has been tested per TAS202-94 for static air pressure.
 This product has been tested per TAS201/203-94 for large missile impact and cyclic wind pressure.

Model Number				Impact Resistant
Design Pressures + psf	Design Pressures - psf	End Backers	Model Number	
18'-3" thru 18'-2"	45.0	-50.0	Double	YES

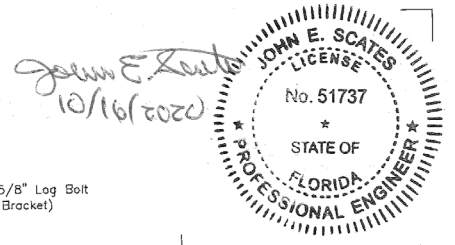
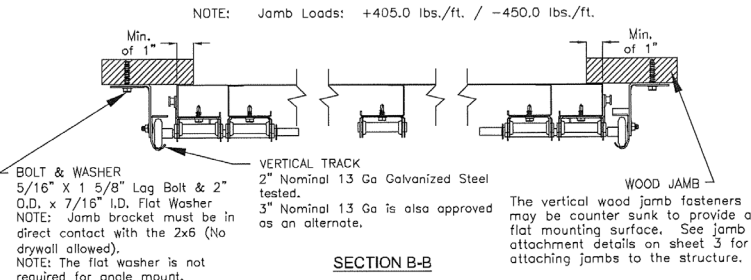
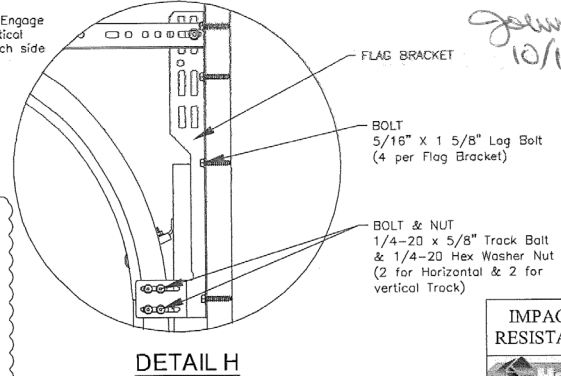
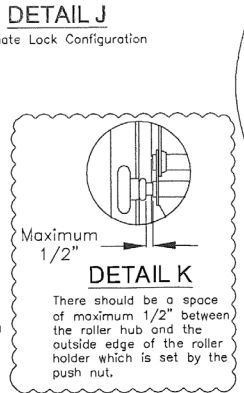
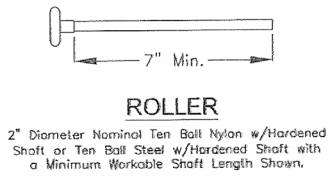
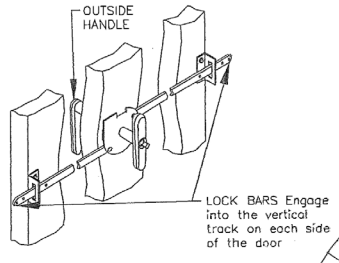
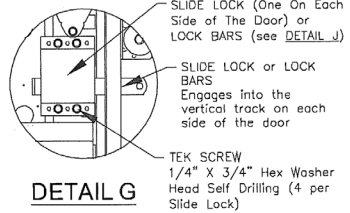
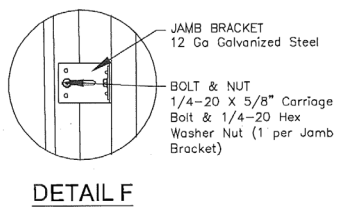
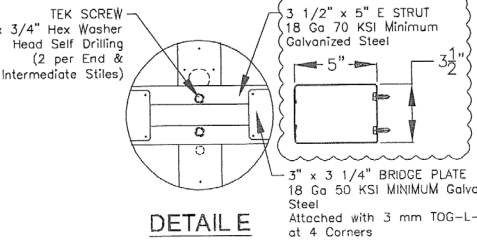
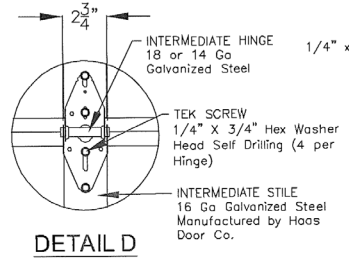
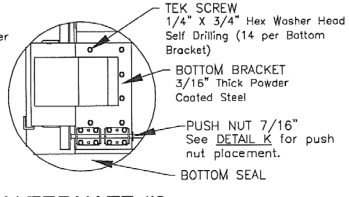
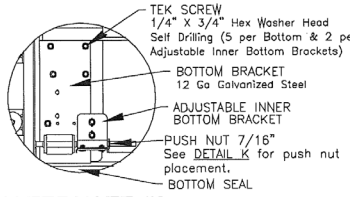
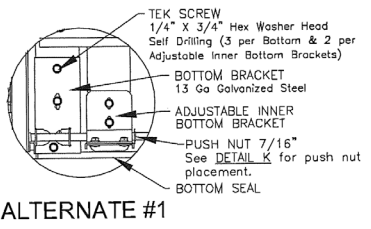
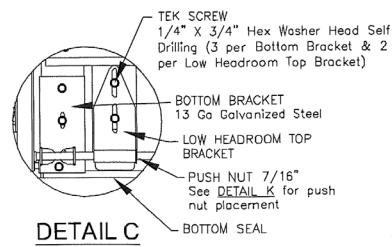
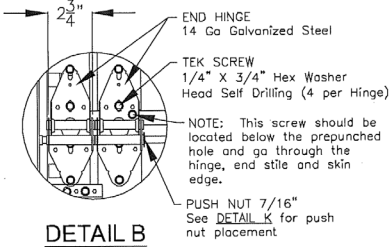
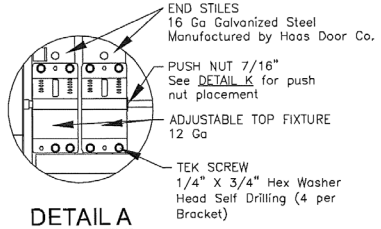
This product is available in narrower sizes with the same PSF and constructed as shown.
 This product is designed and sold by PSF. The AHJ or Engineer of Record is responsible for determining the PSF required for any given site.

PRODUCT RENEWED
 as complying with the Florida Building Code
NOA-No. 25-1218.06
 Expiration Date: **02/11/2027**
 By: *Manuel Fern*
Miami-Dade Product Control

PRODUCT REVISED
 as complying with the Florida Building Code
NOA-No. 23-0830.10
 Expiration Date **02/11/2026**
 By: *[Signature]*
Miami-Dade Product Control

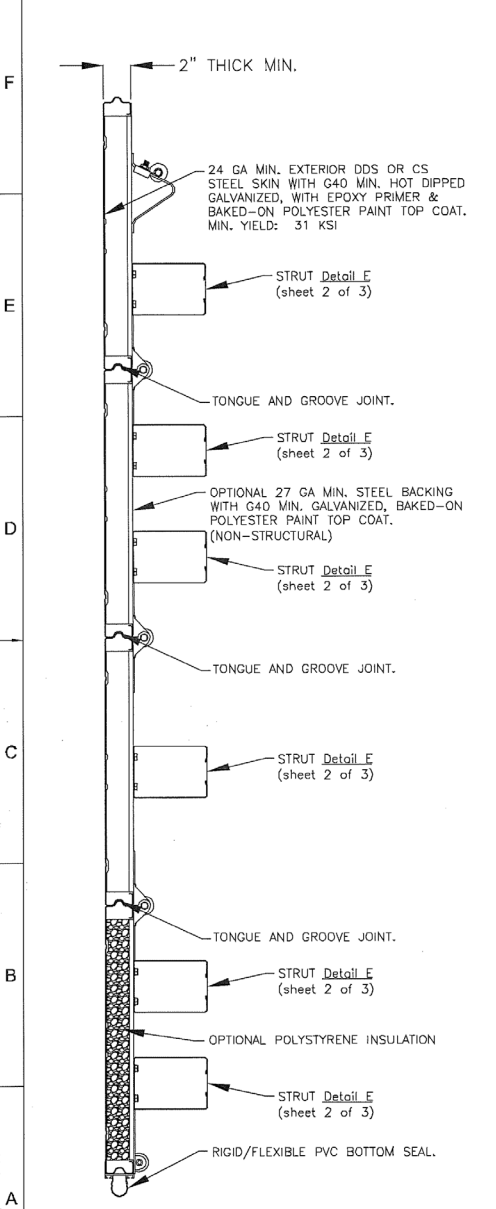
IMPACT RESISTANT	This product has been evaluated for use in the High Velocity Hurricane Zone (HVHZ).
	18"2" PAN 2000 & 2400 SERIES HVHZ WIND LOAD SECTIONAL DOOR DESIGN PRESSURE +45.0/-50.0 PSF
320 Sycamore Wauseon, Ohio 43569 419-337-9900 © Copyright 2020	DRAWING NO.: WL-2000-0218-08-45-50M-D REV. C DATE DRN: 3/11/15 DRAWN BY: MVS REV. DATE: 10/12/2020 MODEL(S): See Sheet 3 SHEET: 1 OF 3

REVISIONS				
REV.	IDNE	BY	DESCRIPTION	DATE
R6.01	62		Sheet 2 Added 3 Alternate Bottom Brackets To DETAIL E	1/20/17
A	A1	MVS	Sheet 2 Added "NOTE: The flat...mount"	
	A2		Sheet 2 Added "3" Nominal...on Alternate."	
	C5		Sheet 3 Added "WOOD JAMB ATTACHMENT"	
B	C5&6	MVS	Sheet 3 Changed some values in the WOOD JAMB ATTACHMENT chart	10/29/17
C	D6 & E6	MVS	Corrected DETAIL E that when submitted previously inadvertently had the incorrect strut detail	10/12/20
	A4		Changed the roller hub distance from 1/4" to 1/2" in DETAIL K on sheet 2 of 3.	



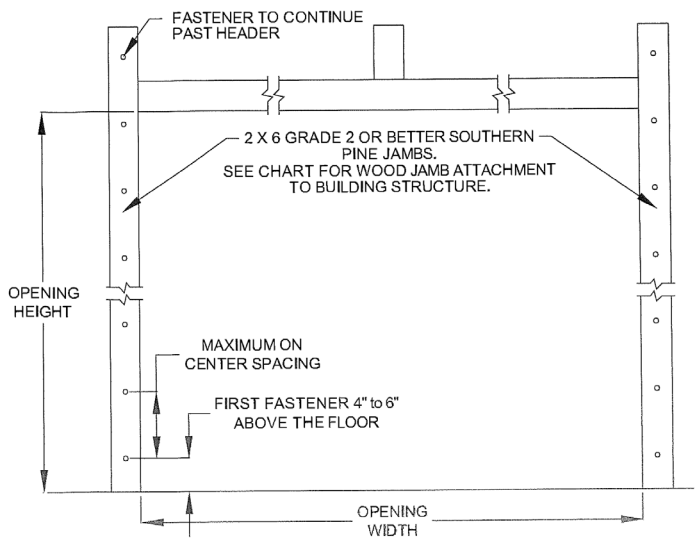
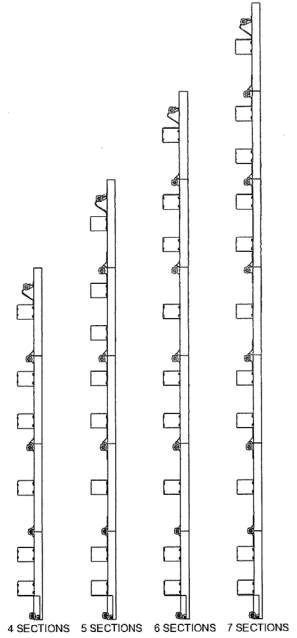
John E. Scates, P.E.
2560 King Arthur Blvd. Ste 124-54
Lewisville, Texas 75056
Florida P.E. # 51737

IMPACT RESISTANT	This product has been evaluated for use in the High Velocity Hurricane Zone (HVHZ).
	18"2 PAN 2000 & 2400 SERIES HVHZ WIND LOAD SECTIONAL DOOR DESIGN PRESSURE +45.0/-50.0 PSF
320 Sycamore Wauseon, Ohio 43569 419-337-8900 © Copyright 2014	DRAWING NO.: WL-2000-0218-08-45-50M-D REV. C DATE DRN: 3/11/15 DRAWN BY: MVS REV. DATE: 10/12/2020 MODEL(S): See Sheet 3 SHEET: 2 OF 3



MODEL NUMBERS

MODEL NUMBERS AVAILABLE	
PAN C2000 SERIES	
PAN C2400 SERIES	
PAN C2410 & R2410 SERIES	
PAN C2460 & R2460 SERIES	
PAN C2461 & R2461 SERIES	
PAN C2471 & R2471 SERIES	
PAN C2472 & R2472 SERIES	
PAN C2480 & R2480 SERIES	
PAN C2481 & R2481 SERIES	
PAN C2482 & R2482 SERIES	



WOOD JAMB ATTACHMENT						
Building Structure	Fastener Type	Minimum Embedment	Minimum Edge Distance	Minimum on Center Spacing	Maximum on Center Spacing	Allowable Tension Load
Min. 2000 PSI Concrete	Tapcon 1/4" w/ 1" OD washer	1 3/4"	2 1/2"	4"	12"	443 #
Southern Pine (G = 0.55)	3/8" Lag w/ 1 1/8" OD washer	1 1/2"	1 1/2"	4"	12"	620 #
Spruce Pine Fir (G = 0.42)	3/8" Lag w/ 1 1/8" OD washer	1 1/2"	2"	4"	12"	482 #

NOTE: 2X6 mounted to the wall must be Southern Pine Grade 2 or better.

REVISIONS				
REV.	ZONE	BY	DESCRIPTION	DATE
16.01	R2		Sheet 2 Added 3 Alternate Bottom Brackets to DETAIL C.	
A	A1	MVS	Sheet 2 Added "NOTE: The flat...mount"	1/20/17
	A2		Sheet 2 Added "3" Nominal...on Alternate."	
	C5		Sheet 3 Added "WOOD JAMB ATTACHMENT"	
B	C5&6	MVS	Sheet 3 Changed some values in the WOOD JAMB ATTACHMENT chart.	10/28/17
	D6		Corrected DETAIL E (not when submitted previously inadvertently had the incorrect strut detail)	
C	A4	MVS	Changed the roller hub distance from 1/4" to 1/2" in DETAIL E on sheet 2 of 3.	10/12/20

PRODUCT RENEWED
as complying with the Florida Building Code
NOA-No. 25-1218.06
Expiration Date: 02/11/2027

By: *Manuel Perez*
Miami-Dade Product Control

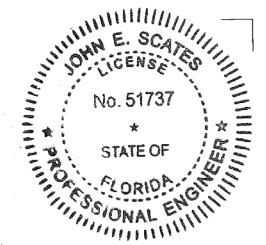
PRODUCT REVISED
as complying with the Florida Building Code
NOA-No. 23-0830.10

Expiration Date 02/11/2026

By: *RH Peters*
Miami-Dade Product Control

PRODUCT REVISED
as complying with the Florida Building Code
NOA-No. 20-1104.08
Expiration Date 02/11/2026

By: *RH Peters*
Miami-Dade Product Control



John E. Scates
10/16/2020

John E. Scates, P.E.
2560 King Arthur Blvd. Ste 124-54
Lewisville, Texas 75056
Florida P.E. # 51737

IMPACT RESISTANT	This product has been evaluated for use in the High Velocity Hurricane Zone (HVHZ).
	18" PAN 2000 & 2400 SERIES HVHZ WIND LOAD SECTIONAL DOOR DESIGN PRESSURE +45.0/-50.0 PSF
320 Sycamore Wauseon, Ohio 43567 419-337-9900	DRAWING NO.: WL-2000-0218-08-45-50M-D REV. C
DATE DRN: 3/11/15 DRAWN BY: MVS REV. DATE: 10/12/2020	MODEL(S): See Sheet 3 SHEET: 3 OF 3