



MIAMI-DADE COUNTY
PRODUCT CONTROL SECTION
 11805 SW 26 Street, Room 208
 Miami, Florida 33175-2474
 T (786) 315-2590 F (786) 315-2599
www.miamidade.gov/economy

DEPARTMENT OF REGULATORY AND ECONOMIC RESOURCES (RER)
 BOARD AND CODE ADMINISTRATION DIVISION
NOTICE OF ACCEPTANCE (NOA)

Haas Door Company
320 Sycamore Street
Wauseon, OH 43567

SCOPE: This NOA is being issued under the applicable rules and regulations governing the use of construction materials. The documentation submitted has been reviewed and accepted by Miami-Dade County RER-Product Control Section to be used in Miami Dade County and other areas where allowed by the Authority Having Jurisdiction (AHJ).

This NOA shall not be valid after the expiration date stated below. The Miami-Dade County Product Control Section (In Miami Dade County) and/or the AHJ (in areas other than Miami Dade County) reserve the right to have this product or material tested for quality assurance purposes. If this product or material fails to perform in the accepted manner, the manufacturer will incur the expense of such testing and the AHJ may immediately revoke, modify, or suspend the use of such product or material within their jurisdiction. RER reserves the right to revoke this acceptance, if it is determined by Miami-Dade County Product Control Section that this product or material fails to meet the requirements of the applicable building code.

This product is approved as described herein and has been designed to comply with the Florida Building Code, including the High Velocity Hurricane Zone.

DESCRIPTION:

Series HT 600, 700, 800 & 2000 Insulated Steel Sectional Garage Door up to 16ft.-2in. Wide

APPROVAL DOCUMENT: Drawing No. **WL-0600-0194-08-48-52M-D**, titled “16’-2” HT 600, 700, 2000 & 800 Steel Series HVHZ Wind Load Sectional Door”, sheets 1 through 3 of 3, dated 12/01/14, with revision **D** dated 06/26/23, prepared by manufacturer, signed and sealed by John E. Scates, P.E., bearing the Miami-Dade County Product Control Revision stamp with the Notice of Acceptance number and expiration date by the Miami-Dade County Product Control Section.

MISSILE IMPACT RATING: Large and Small Missile Impact Resistant

LABELING: Each unit shall bear a permanent label with the manufacturer’s name or logo, manufacturing address, model number, the positive and negative design pressure rating, indicate impact rated if applicable, installation instruction drawing reference number, approval number (NOA), the applicable test standards, and the statement reading ‘Miami-Dade County Product Control Approved’ is to be located on the door’s side track, bottom angle, or inner surface of a panel.

RENEWAL of this NOA shall be considered after a renewal application has been filed and there has been no change in the applicable building code negatively affecting the performance of this product.

TERMINATION of this NOA will occur after the expiration date or if there has been a revision or change in the materials, use, and/or manufacture of the product or process. Misuse of this NOA as an endorsement of any product, for sales, advertising or any other purposes shall automatically terminate this NOA. Failure to comply with any section of this NOA shall be cause for termination and removal of NOA.

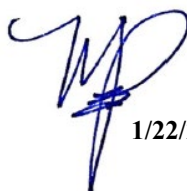
ADVERTISEMENT: The NOA number preceded by the words Miami-Dade County, Florida, and followed by the expiration date may be displayed in advertising literature. If any portion of the NOA is displayed, then it shall be done in its entirety.

INSPECTION: A copy of this entire NOA shall be provided to the user by the manufacturer or its distributors and shall be available for inspection at the job site at the request of the Building Official.

This NOA **revises and renews NOA No. 23-0830.11** and consists of this page 1 and evidence pages E-1, E-2 and E-3, as well as approval document mentioned above.

The submitted documentation was reviewed by **Manuel Perez, P.E.**




 1/22/26

NOA No. 25-1218.07
 Expiration Date: February 11, 2031
 Approval Date: January 29, 2026
 Page 1

Haas Door Company

NOTICE OF ACCEPTANCE: EVIDENCE SUBMITTED

1. EVIDENCE SUBMITTED UNDER PREVIOUS NOA's

A. DRAWINGS

1. Manufacturer's die drawings and sections.
(Submitted under NOA No. 15-1104.03)
2. Drawing No. **WL-0600-0194-08-48-52M-D**, titled "16'-2" HT 600, 700, 2000 & 800 Steel Series HVHZ Wind Load Sectional Door", sheets 1 through 3 of 3, dated 12/01/14, with revision **C** dated 10/12/20, prepared by manufacturer, signed and sealed by John E. Scates, P.E.
(Submitted under NOA No. 20-1104.09)

B. TESTS


1. Test reports on: 1) Uniform Static Air Pressure Test, Loading per FBC, TAS 202-94
2) Large Missile Impact Test per FBC, TAS 201-94
3) Cyclic Wind Pressure Loading per FBC, TAS 203-94
4) Forced Entry Test, per TAS 202-94
along with marked-up drawings and installation diagram of 16'-2" wide x 8'-0" height HT 600 Series Sectional Steel Garage Doors, prepared by Intertek/ATI, Test Report No. **E1289.02-550-18**, dated 12/05/14, signed and sealed by Justin P. McDonald, P.E.
(Submitted under NOA No. 15-1104.03)
2. Test report on: 1) Tensile Test per ASTM E8, of steel sheet, prepared by Intertek/ATI, Test Report No. **E1289.11-106-18**, dated 12/12/14, signed and sealed by Gary T. Hartman, P.E.
(Submitted under NOA No. 15-1104.03)
3. Test report on: Salt Spray per ASTM B117, of coated metal steel panels, prepared by Intertek/ATI, Test Report No. **E1289.10-106-18**, dated 11/24/14, signed and sealed by Gary T. Hartman, P.E.
(Submitted under NOA No. 15-1104.03)

C. CALCULATIONS

1. Anchor load calculations prepared by manufacturer, dated 10/27/17, signed and sealed by John E. Scates, P.E.
(Submitted under NOA No. 17-1023.13)

D. QUALITY ASSURANCE

1. Miami-Dade Department of Regulatory and Economic Resources (RER)


Manuel Perez, P.E.
Product Control Examiner
NOA No. 25-1218.07
Expiration Date: February 11, 2031
Approval Date: January 29, 2026

Haas Door Company

NOTICE OF ACCEPTANCE: EVIDENCE SUBMITTED

1. EVIDENCE SUBMITTED UNDER PREVIOUS NOA's (CONTINUED)

E. MATERIAL CERTIFICATIONS


1. Test report on Surface Burning Characteristics of the Rubitherm WP 19669 polyurethane foam insulation per ASTM E84, prepared by QAI Laboratories, Test Reports No. **RJ5251F-1** and **RJ5251F-2**, both dated 01/26/17, signed and sealed by V. Andrew Tan, P.E.
(Submitted under NOA No. 17-0313.10)
2. Test report on Ignition Temperature of Plastics of the Rubitherm WP 19669 polyurethane foam insulation per ASTM D1929, prepared by QAI Laboratories, Test Report No. **RJ5255F-1**, dated 02/02/17, signed and sealed by V. Andrew Tan, P.E.
(Submitted under NOA No. 17-0313.10)

F. STATEMENTS

1. Statement letter of conformance, complying with **FBC 8th Edition (2023)**, dated June 27, 2023, issued by manufacturer, signed and sealed by John E. Scates, P.E.
(Submitted under NOA No. 23-0830.11)
2. Statement letter of no financial interest, dated June 27, 2023, issued by manufacturer, signed and sealed by John E. Scates, P.E.
(Submitted under NOA No. 23-0830.11)

G. OTHERS

1. Notice of Acceptance No. **20-1104.09**, issued to Haas Door Company, for their Series HT 600, 700, 800 & 2000 Insulated Steel Sectional Garage Door up to 16ft.-2in. Wide, approved on 01/21/21 and expiring on 02/11/26.


Manuel Perez, P.E.
Product Control Examiner
NOA No. 25-1218.07
Expiration Date: February 11, 2031
Approval Date: January 29, 2026

Haas Door Company

NOTICE OF ACCEPTANCE: EVIDENCE SUBMITTED

2. NEW EVIDENCE SUBMITTED

A. DRAWINGS

1. Drawing No. **WL-0600-0194-08-48-52M-D**, titled “16’-2” HT 600, 700, 2000 & 800 Steel Series HVHZ Wind Load Sectional Door”, sheets 1 through 3 of 3, dated 12/01/14, with revision **D** dated 06/26/23, prepared by manufacturer, signed and sealed by John E. Scates, P.E.

B. TESTS

1. Test reports on: 1) Uniform Static Air Pressure Test, Loading per FBC, TAS 202-94
2) Large Missile Impact Test per FBC, TAS 201-94
3) Cyclic Wind Pressure Loading per FBC, TAS 203-94
4) Forced Entry Test, per TAS 202-94
5) Tensile Test, per ASTM E8

along with marked-up drawings and installation diagram of 16’-2” wide x 8’-0” height HT 600 Series Sectional Steel Garage Doors, prepared by American Test Lab, Inc., Test Report No. **ATLNC 1111.01-25**, dated 12/22/25, signed and sealed by David W. Johnson, P.E.

C. CALCULATIONS

1. None.

D. QUALITY ASSURANCE

1. Miami-Dade Department of Regulatory and Economic Resources (RER)

E. MATERIAL CERTIFICATIONS


1. None.

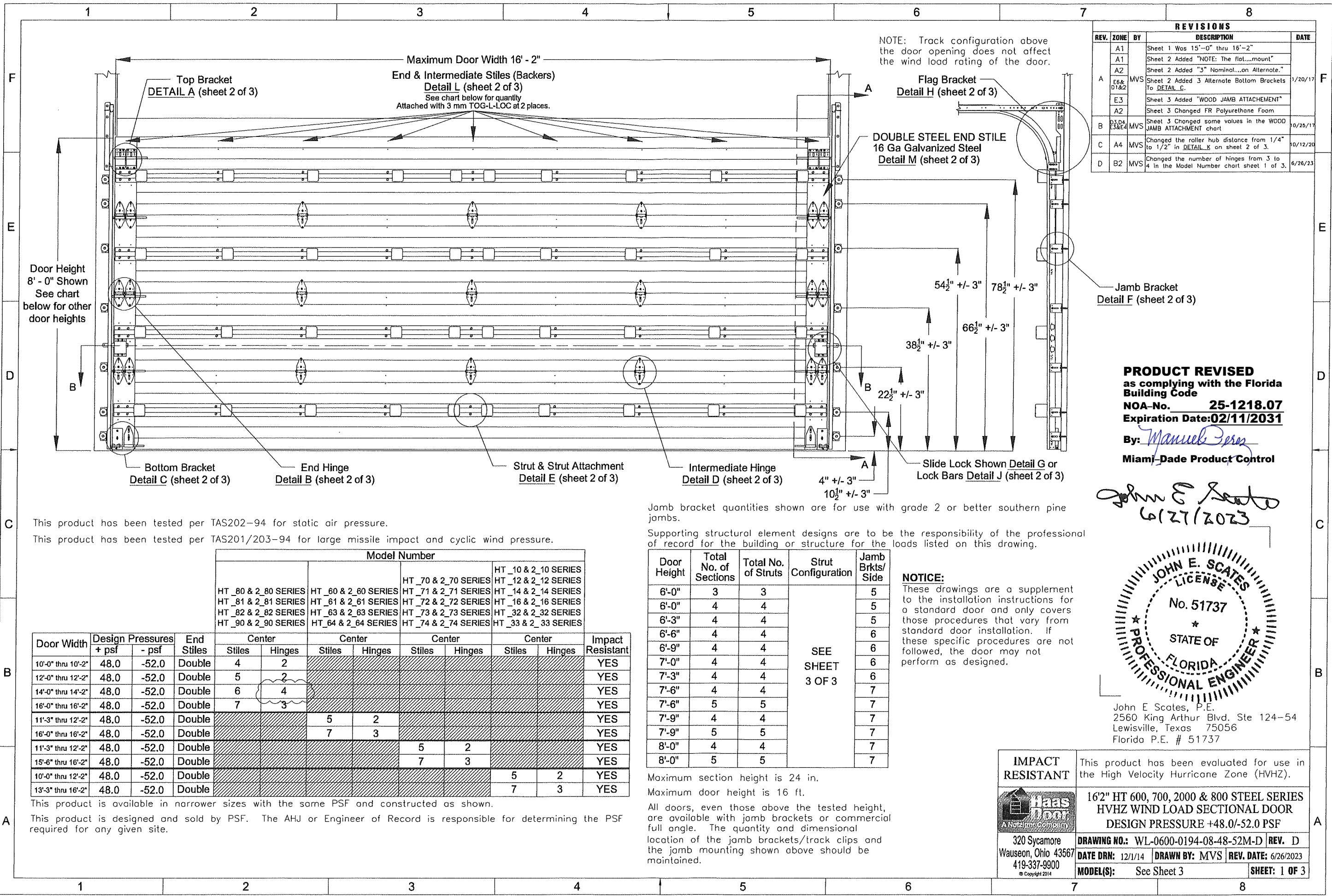
F. STATEMENTS

1. Statement letter of conformance, complying with **FBC 8th Edition (2023)**, dated December 4, 2025, issued by manufacturer, signed and sealed by John E. Scates, P.E.
2. Statement letter of no financial interest, dated December 4, 2025, issued by manufacturer, signed and sealed by John E. Scates, P.E.

G. OTHERS

1. Notice of Acceptance No. **23-0830.11**, issued to Haas Door Company, for their Series HT 600, 700, 800 & 2000 Insulated Steel Sectional Garage Door up to 16ft.-2in. Wide, approved on 10/19/23 and expiring on 02/11/26.

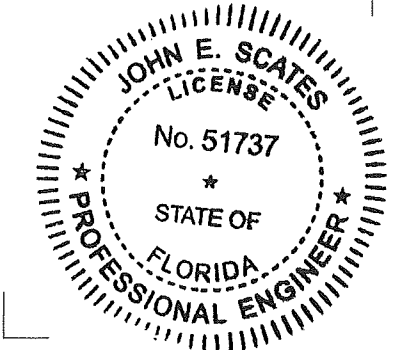

Manuel Pérez, P.E.
Product Control Examiner
NOA No. 25-1218.07
Expiration Date: February 11, 2031
Approval Date: January 29, 2026



REVISIONS				
REV.	ZONE	BY	DESCRIPTION	DATE
A1			Sheet 1 Was 15'-0" thru 16'-2"	
A1			Sheet 2 Added "NOTE: The flat...mount"	
A2			Sheet 2 Added "3" Nominal...on Alternate."	
A	E6 & D1&2	MVS	Sheet 2 Added 3 Alternate Bottom Brackets To DETAIL G.	1/20/17
E3			Sheet 3 Added "WOOD JAMB ATTACHMENT"	
A2			Sheet 3 Changed FR Polyurethane Foam	
B	D3, D4, E3 & E4	MVS	Sheet 3 Changed some values in the WOOD JAMB ATTACHMENT chart	10/25/17
C	A4	MVS	Changed the roller hub distance from 1/4" to 1/2" in DETAIL K on sheet 2 of 3.	10/12/20
D	B2	MVS	Changed the number of hinges from 3 to 4 in the Model Number chart sheet 1 of 3.	6/26/23

PRODUCT REVISED
 as complying with the Florida Building Code
 NOA-No. **25-1218.07**
 Expiration Date: **02/11/2031**
 By: *Manuel Fern*
 Miami-Dade Product Control

John E. Scates
 6/27/2023



John E. Scates, P.E.
 2560 King Arthur Blvd. Ste 124-54
 Lewisville, Texas 75056
 Florida P.E. # 51737

 320 Sycamore Wauseon, Ohio 43567 419-337-9900 <small>© Copyright 2014</small>	IMPACT RESISTANT This product has been evaluated for use in the High Velocity Hurricane Zone (HVHZ).
	16'2" HT 600, 700, 2000 & 800 STEEL SERIES HVHZ WIND LOAD SECTIONAL DOOR DESIGN PRESSURE +48.0/-52.0 PSF
DRAWING NO.: WL-0600-0194-08-48-52M-D REV. D DATE DRN: 12/1/14 DRAWN BY: MVS REV. DATE: 6/26/2023 MODEL(S): See Sheet 3 SHEET: 1 OF 3	

Jamb bracket quantities shown are for use with grade 2 or better southern pine jombs.
 Supporting structural element designs are to be the responsibility of the professional of record for the building or structure for the loads listed on this drawing.

Door Height	Total No. of Sections	Total No. of Struts	Strut Configuration	Jamb Brkts/Side
6'-0"	3	3	SEE SHEET 3 OF 3	5
6'-0"	4	4		5
6'-3"	4	4		5
6'-6"	4	4		6
6'-9"	4	4		6
7'-0"	4	4		6
7'-3"	4	4		6
7'-6"	4	4		7
7'-6"	5	5		7
7'-9"	4	4		7
7'-9"	5	5	7	
8'-0"	4	4	7	
8'-0"	5	5	7	

NOTICE:
 These drawings are a supplement to the installation instructions for a standard door and only covers those procedures that vary from standard door installation. If these specific procedures are not followed, the door may not perform as designed.

Maximum section height is 24 in.
 Maximum door height is 16 ft.

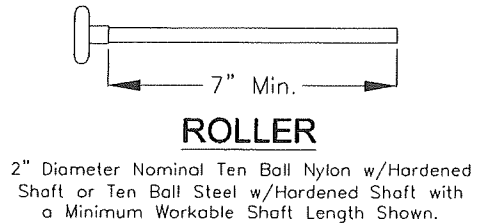
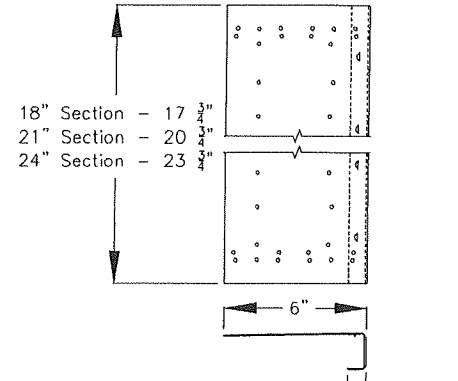
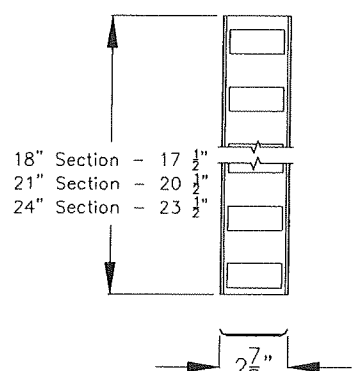
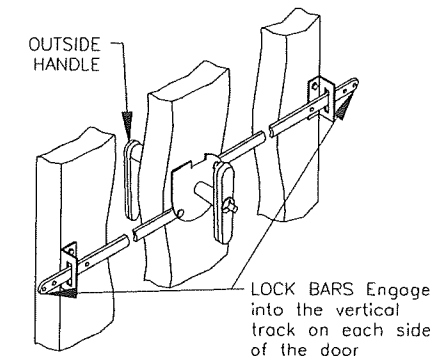
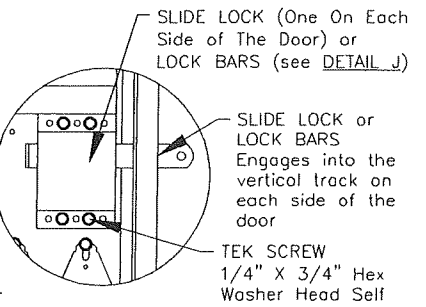
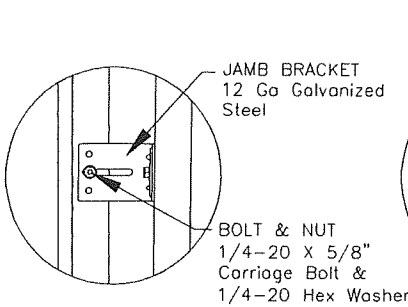
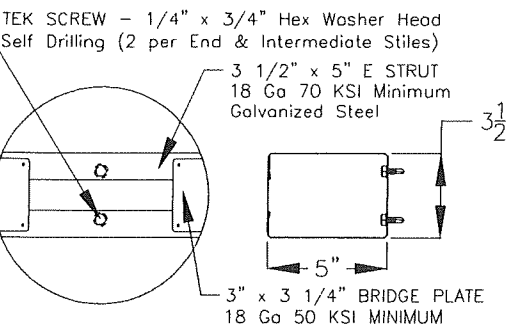
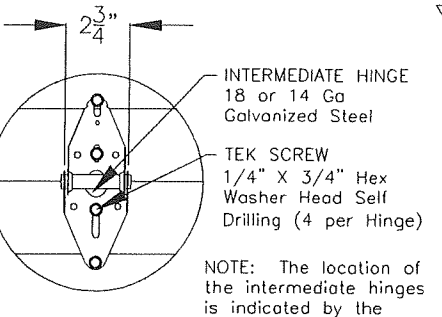
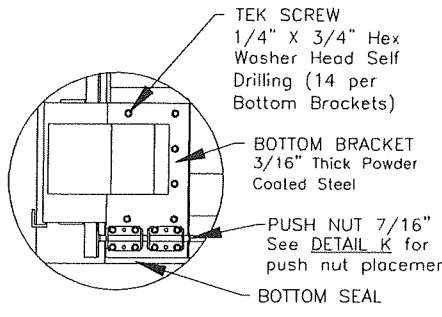
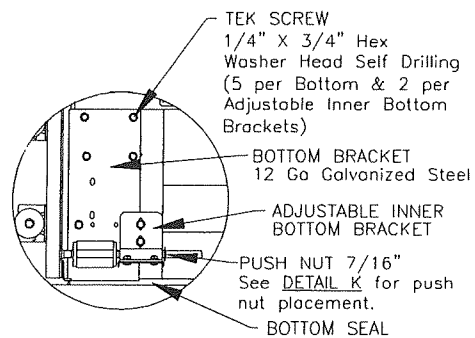
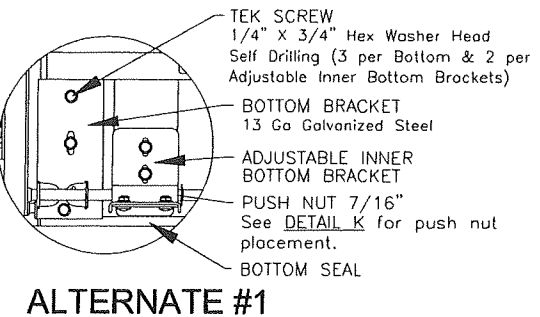
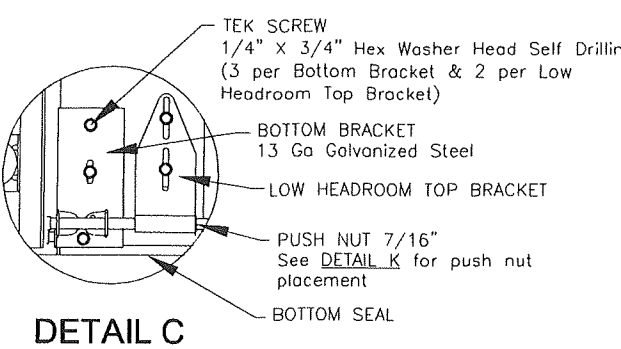
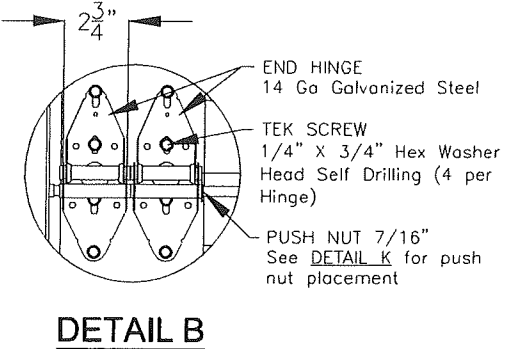
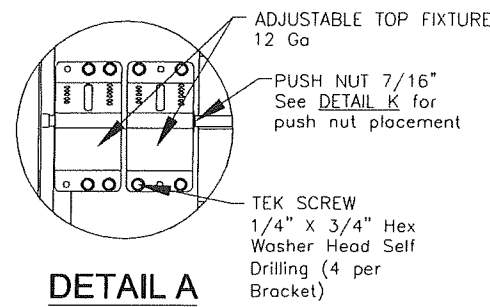
All doors, even those above the tested height, are available with jamb brackets or commercial full angle. The quantity and dimensional location of the jamb brackets/track clips and the jamb mounting shown above should be maintained.

This product has been tested per TAS202-94 for static air pressure.
 This product has been tested per TAS201/203-94 for large missile impact and cyclic wind pressure.

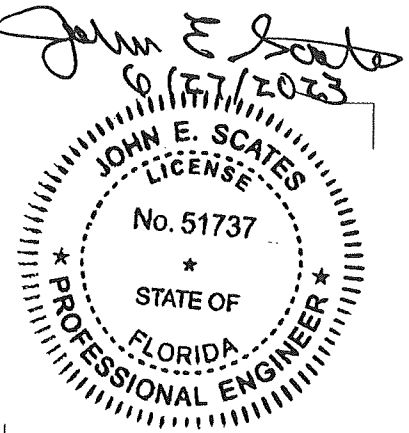
Model Number								
		Center		Center		Center		Impact Resistant
Door Width	Design Pressures	End Stiles	Stiles	Hinges	Stiles	Hinges	Stiles	
10'-0" thru 10'-2"	48.0 -52.0	Double	4	2				YES
12'-0" thru 12'-2"	48.0 -52.0	Double	5	2				YES
14'-0" thru 14'-2"	48.0 -52.0	Double	6	4				YES
16'-0" thru 16'-2"	48.0 -52.0	Double	7	3				YES
11'-3" thru 12'-2"	48.0 -52.0	Double			5	2		YES
16'-0" thru 16'-2"	48.0 -52.0	Double			7	3		YES
11'-3" thru 12'-2"	48.0 -52.0	Double					5 2	YES
15'-6" thru 16'-2"	48.0 -52.0	Double					7 3	YES
10'-0" thru 12'-2"	48.0 -52.0	Double					5 2	YES
13'-3" thru 16'-2"	48.0 -52.0	Double					7 3	YES

This product is available in narrower sizes with the same PSF and constructed as shown.
 This product is designed and sold by PSF. The AHJ or Engineer of Record is responsible for determining the PSF required for any given site.

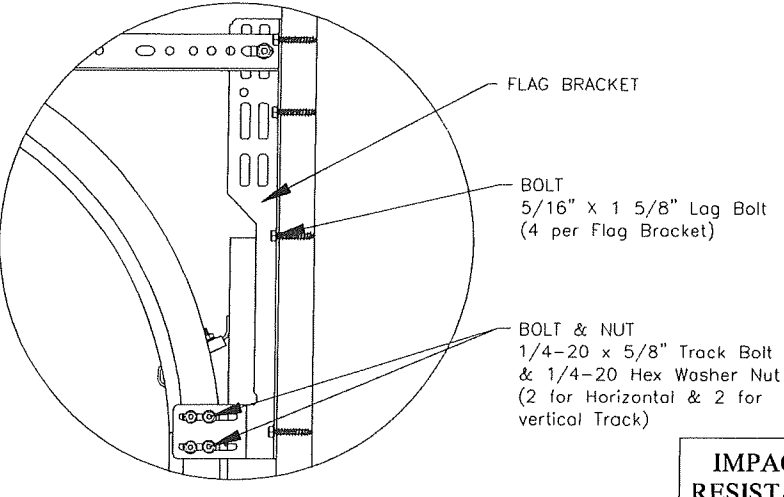
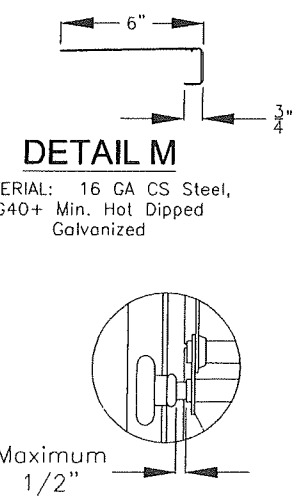
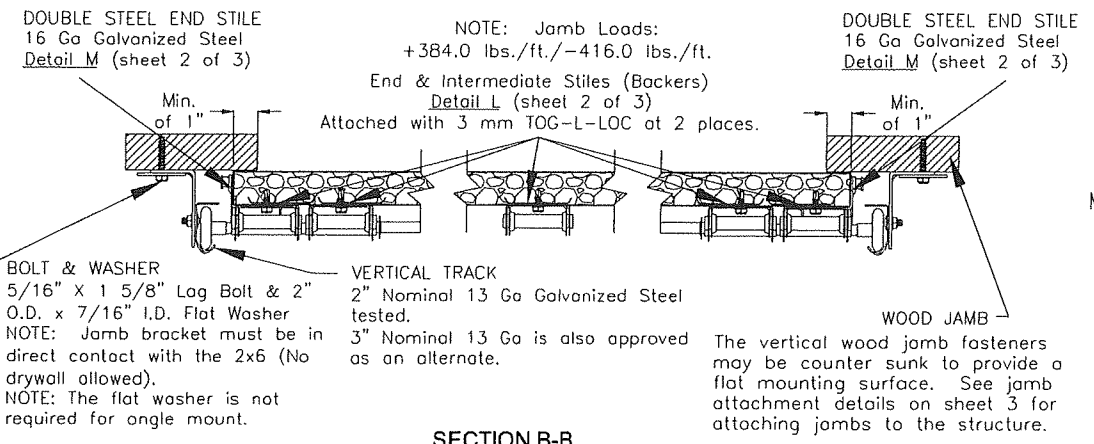
REVISIONS				
REV.	ZONE	BY	DESCRIPTION	DATE
A1			Sheet 1 Was 15'-0" thru 16'-2"	
A1			Sheet 2 Added "NOTE: The flat...mount"	
A2			Sheet 2 Added "3" Nominal...an Alternate."	
E6&D1&2		MVS	Sheet 2 Added 3 Alternate Bottom Brackets To DETAIL C.	1/20/17
E3			Sheet 3 Added "WOOD JAMB ATTACHEMENT"	
A2			Sheet 3 Changed FR Polyurethane Foam	
D3,D4,E3&E4		MVS	Sheet 3 Changed some values in the WOOD JAMB ATTACHMENT chart	10/25/17
C	A4	MVS	Changed the roller hub distance from 1/4" to 1/2" in DETAIL K on sheet 2 of 3.	6/12/20
D	B2	MVS	Changed the number of hinges from 3 to 4 in the Model Number chart sheet 1 of 3.	6/26/23



PRODUCT REVISED
as complying with the Florida Building Code
NOA-No. **25-1218.07**
Expiration Date: **02/11/2031**
By: *Manuel Perez*
Miami-Dade Product Control

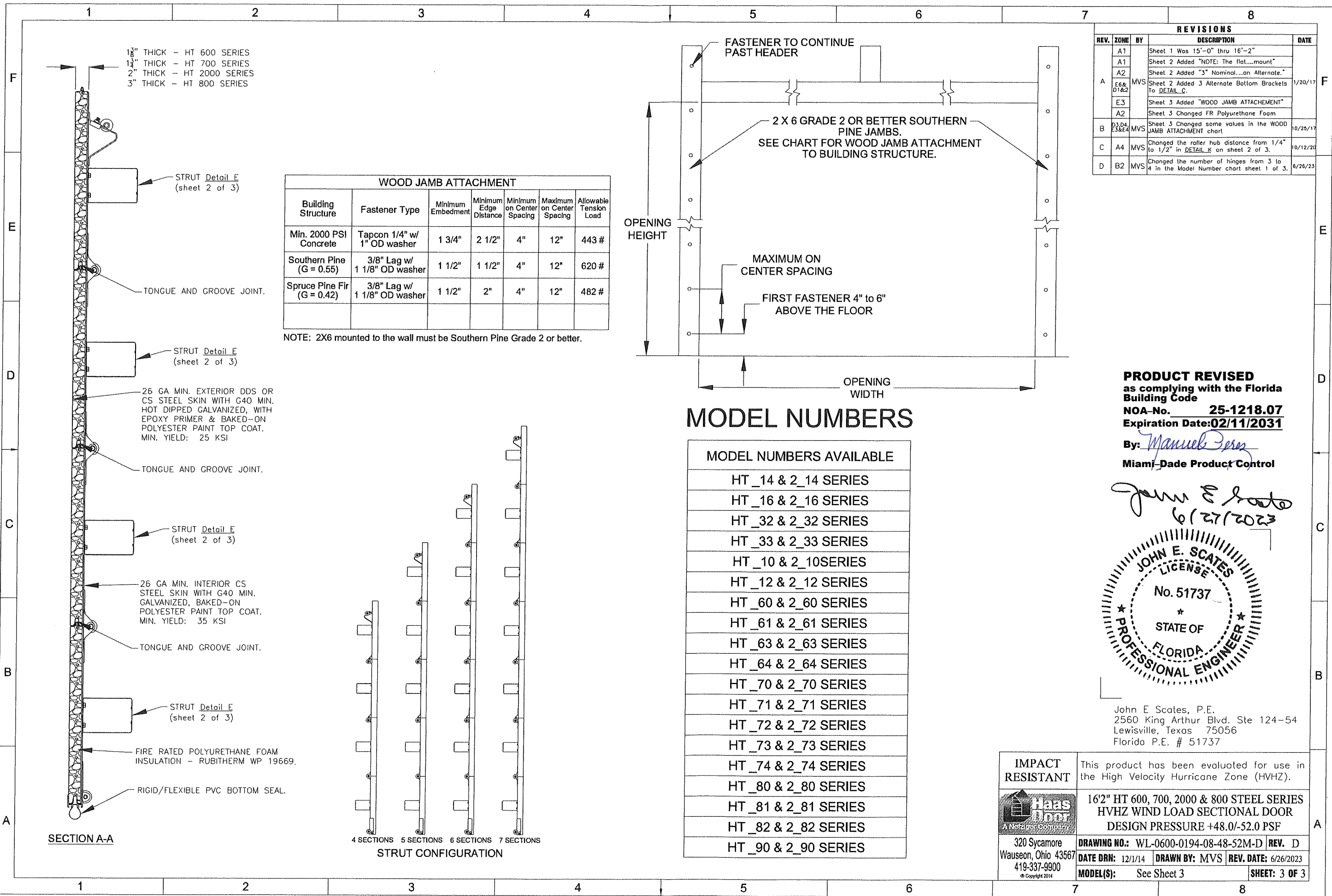


John E. Scates, P.E.
2560 King Arthur Blvd. Ste 124-54
Lewisville, Texas 75056
Florida P.E. # 51737



NOTE: Details on some views omitted for clarity. Double end stiles and end hardware may be required on wider or heavier doors.

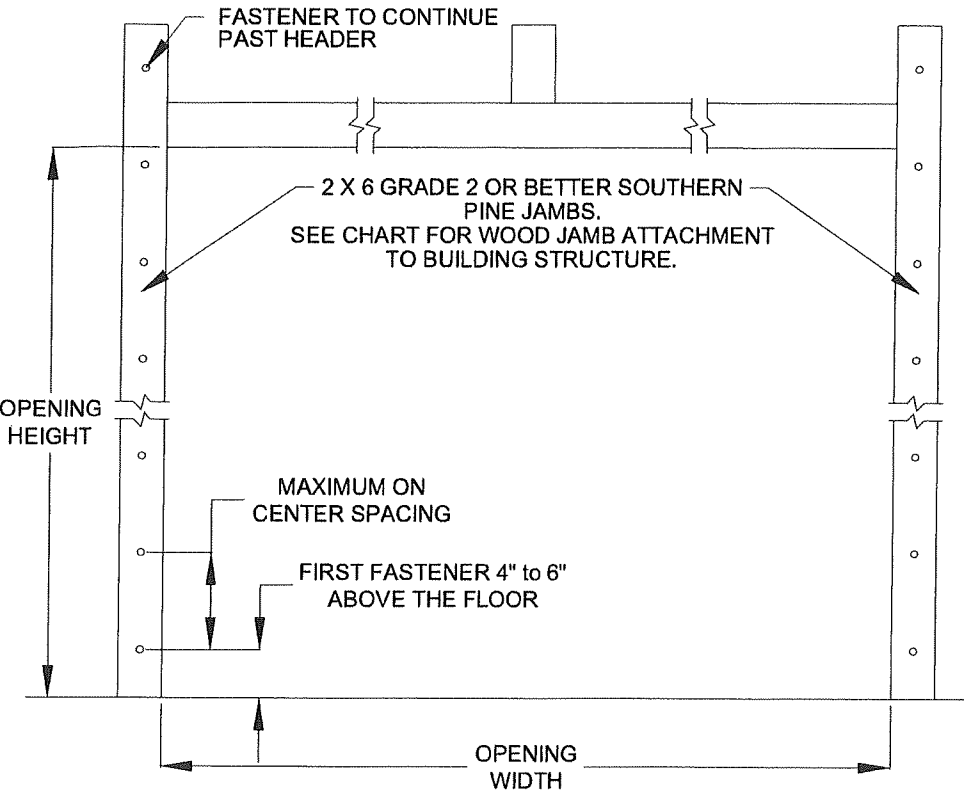
IMPACT RESISTANT	This product has been evaluated for use in the High Velocity Hurricane Zone (HVHZ).
	16 1/2" HT 600, 700, 2000 & 800 STEEL SERIES HVHZ WIND LOAD SECTIONAL DOOR DESIGN PRESSURE +48.0/-52.0 PSF
320 Sycamore Wauseon, Ohio 43567 419-337-9900 © Copyright 2014	DRAWING NO.: WL-0600-0194-08-48-52M-D REV. D DATE DRN: 12/1/14 DRAWN BY: MVS REV. DATE: 6/26/2023 MODEL(S): See Sheet 3 SHEET: 2 OF 3



1/8" THICK - HT 600 SERIES
 1 3/4" THICK - HT 700 SERIES
 2" THICK - HT 2000 SERIES
 3" THICK - HT 800 SERIES

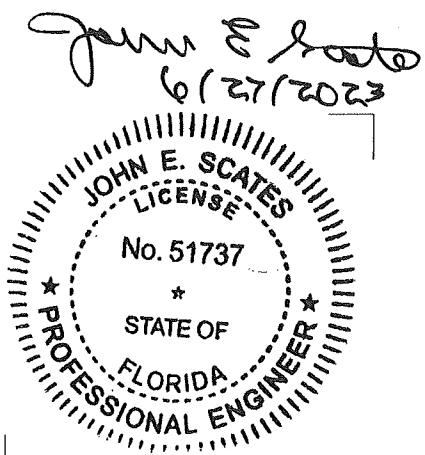
WOOD JAMB ATTACHMENT						
Building Structure	Fastener Type	Minimum Embedment	Minimum Edge Distance	Minimum on Center Spacing	Maximum on Center Spacing	Allowable Tension Load
Min. 2000 PSI Concrete	Tapcon 1/4" w/ 1" OD washer	1 3/4"	2 1/2"	4"	12"	443 #
Southern Pine (G = 0.55)	3/8" Lag w/ 1 1/8" OD washer	1 1/2"	1 1/2"	4"	12"	620 #
Spruce Pine Fir (G = 0.42)	3/8" Lag w/ 1 1/8" OD washer	1 1/2"	2"	4"	12"	482 #

NOTE: 2X6 mounted to the wall must be Southern Pine Grade 2 or better.



REVISIONS				
REV.	ZONE	BY	DESCRIPTION	DATE
A1			Sheet 1 Was 15'-0" thru 16'-2"	
A1			Sheet 2 Added "NOTE: The flat...mount"	
A2			Sheet 2 Added "3" Nominal...on Alternate."	
E6& D1&2		MVS	Sheet 2 Added 3 Alternate Bottom Brackets To DETAIL C.	1/20/17
E3			Sheet 3 Added "WOOD JAMB ATTACHMENT"	
A2			Sheet 3 Changed FR Polyurethane Foam	
B3,D4 E3&E4		MVS	Sheet 3 Changed some values in the WOOD JAMB ATTACHMENT chart	10/25/17
C	A4	MVS	Changed the roller hub distance from 1/4" to 1/2" in DETAIL K on sheet 2 of 3.	10/12/20
D	B2	MVS	Changed the number of hinges from 3 to 4 in the Model Number chart sheet 1 of 3.	6/26/23


PRODUCT REVISED
 as complying with the Florida Building Code
 NOA-No. **25-1218.07**
 Expiration Date: **02/11/2031**
 By: *Manuel Fern*
 Miami-Dade Product Control



John E. Scates, P.E.
 2560 King Arthur Blvd. Ste 124-54
 Lewisville, Texas 75056
 Florida P.E. # 51737

MODEL NUMBERS

MODEL NUMBERS AVAILABLE
HT_14 & 2_14 SERIES
HT_16 & 2_16 SERIES
HT_32 & 2_32 SERIES
HT_33 & 2_33 SERIES
HT_10 & 2_10SERIES
HT_12 & 2_12 SERIES
HT_60 & 2_60 SERIES
HT_61 & 2_61 SERIES
HT_63 & 2_63 SERIES
HT_64 & 2_64 SERIES
HT_70 & 2_70 SERIES
HT_71 & 2_71 SERIES
HT_72 & 2_72 SERIES
HT_73 & 2_73 SERIES
HT_74 & 2_74 SERIES
HT_80 & 2_80 SERIES
HT_81 & 2_81 SERIES
HT_82 & 2_82 SERIES
HT_90 & 2_90 SERIES

IMPACT RESISTANT	This product has been evaluated for use in the High Velocity Hurricane Zone (HVHZ).
	16'2" HT 600, 700, 2000 & 800 STEEL SERIES HVHZ WIND LOAD SECTIONAL DOOR DESIGN PRESSURE +48.0/-52.0 PSF
320 Sycamore Wauseon, Ohio 43567 419-337-9900 © Copyright 2014	DRAWING NO.: WL-0600-0194-08-48-52M-D REV. D DATE DRN: 12/1/14 DRAWN BY: MVS REV. DATE: 6/26/2023 MODEL(S): See Sheet 3 SHEET: 3 OF 3