



**MIAMI-DADE COUNTY  
PRODUCT CONTROL SECTION**

11805 SW 26 Street, Room 208  
Miami, Florida 33175-2474  
T (786) 315-2590 F (786) 315-2599

**DEPARTMENT OF REGULATORY AND ECONOMIC RESOURCES (RER)  
BOARD AND CODE ADMINISTRATION DIVISION**

[www.miamidade.gov/economy](http://www.miamidade.gov/economy)

**NOTICE OF ACCEPTANCE (NOA)**

**Haas Door Company  
320 Sycamore Street  
Wauseon, OH 43567**

**SCOPE:** This NOA is being issued under the applicable rules and regulations governing the use of construction materials. The documentation submitted has been reviewed and accepted by Miami-Dade County RER-Product Control Section to be used in Miami Dade County and other areas where allowed by the Authority Having Jurisdiction (AHJ).

This NOA shall not be valid after the expiration date stated below. The Miami-Dade County Product Control Section (In Miami Dade County) and/or the AHJ (in areas other than Miami Dade County) reserve the right to have this product or material tested for quality assurance purposes. If this product or material fails to perform in the accepted manner, the manufacturer will incur the expense of such testing and the AHJ may immediately revoke, modify, or suspend the use of such product or material within their jurisdiction. RER reserves the right to revoke this acceptance, if it is determined by Miami-Dade County Product Control Section that this product or material fails to meet the requirements of the applicable building code.

This product is approved as described herein and has been designed to comply with the Florida Building Code, including the High Velocity Hurricane Zone.

**DESCRIPTION:**

**Series HT 600, 700, 800 & 2000 Insulated Steel Sectional Garage Door up to 18ft.-2in. Wide**

**APPROVAL DOCUMENT:** Drawing No. **WL-0600-0218-08-45-50M-D**, titled “18’-2” HT 600, 700, 2000 & 800 Steel Series HVHZ Wind Load Sectional Door”, sheets 1 through 3 of 3, dated 01/08/15, with revision C dated 10/12/20, prepared by manufacturer, signed and sealed by John E. Scates, P.E., bearing the Miami-Dade County Product Control Renewal stamp with the Notice of Acceptance number and expiration date by the Miami-Dade County Product Control Section.

**MISSILE IMPACT RATING: Large and Small Missile Impact Resistant**

**LABELING:** Each unit shall bear a permanent label with the manufacturer’s name or logo, manufacturing address, model number, the positive and negative design pressure rating, indicate impact rated if applicable, installation instruction drawing reference number, approval number (NOA), the applicable test standards, and the statement reading ‘Miami-Dade County Product Control Approved’ is to be located on the door’s side track, bottom angle, or inner surface of a panel.

**RENEWAL** of this NOA shall be considered after a renewal application has been filed and there has been no change in the applicable building code negatively affecting the performance of this product.

**TERMINATION** of this NOA will occur after the expiration date or if there has been a revision or change in the materials, use, and/or manufacture of the product or process. Misuse of this NOA as an endorsement of any product, for sales, advertising or any other purposes shall automatically terminate this NOA. Failure to comply with any section of this NOA shall be cause for termination and removal of NOA.

**ADVERTISEMENT:** The NOA number preceded by the words Miami-Dade County, Florida, and followed by the expiration date may be displayed in advertising literature. If any portion of the NOA is displayed, then it shall be done in its entirety.

**INSPECTION:** A copy of this entire NOA shall be provided to the user by the manufacturer or its distributors and shall be available for inspection at the job site at the request of the Building Official.

This NOA **renews NOA No. 23-0830.12** and consists of this page 1 and evidence pages E-1, E-2 and E-3, as well as approval document mentioned above.

The submitted documentation was reviewed by **Manuel Perez, P.E.**



1/22/26

**NOA No. 25-1218.08  
Expiration Date: February 11, 2031  
Approval Date: January 29, 2026  
Page 1**

**Haas Door Company**

**NOTICE OF ACCEPTANCE: EVIDENCE SUBMITTED**

**1. EVIDENCE SUBMITTED UNDER PREVIOUS NOA's**

**A. DRAWINGS**

1. Manufacturer's die drawings and sections.  
*(Submitted under NOA No. 15-1104.04)*
2. Drawing No. **WL-0600-0218-08-45-50M-D**, titled "18'-2" HT 600, 700, 2000 & 800 Steel Series HVHZ Wind Load Sectional Door", sheets 1 through 3 of 3, dated 01/08/15, with revision **C** dated 10/12/20, prepared by manufacturer, signed and sealed by John E. Scates, P.E.  
*(Submitted under NOA No. 20-1104.10)*

**B. TESTS**


1. Test reports on: 1) Uniform Static Air Pressure Test, Loading per FBC, TAS 202-94  
2) Large Missile Impact Test per FBC, TAS 201-94  
3) Cyclic Wind Pressure Loading per FBC, TAS 203-94  
4) Forced Entry Test, per TAS 202-94  
along with marked-up drawings and installation diagram of 16'-2" wide x 8'-0" height HT 600 Series Sectional Steel Garage Doors, prepared by Intertek/ATI, Test Report No. **E1289.03-550-18**, dated 12/22/14, signed and sealed by Justin P. McDonald, P.E.  
*(Submitted under NOA No. 15-1104.04)*
2. Test report on: 1) Tensile Test per ASTM E8, of steel sheet, prepared by Intertek/ATI, Test Report No. **E1289.11-106-18**, dated 12/12/14, signed and sealed by Gary T. Hartman, P.E.  
*(Submitted under NOA No. 15-1104.04)*
3. Test report on Salt Spray per ASTM B117 of coated metal steel panels, prepared by Intertek/ATI, Test Report No. **E1289.10-106-18**, dated 11/24/14, signed and sealed by Gary T. Hartman, P.E.  
*(Submitted under NOA No. 15-1104.04)*

**C. CALCULATIONS**

1. Anchor load calculations prepared by manufacturer, dated 10/27/17, signed and sealed by John E. Scates, P.E.  
*(Submitted under NOA No. 17-1023.14)*

**D. QUALITY ASSURANCE**

1. Miami-Dade Department of Regulatory and Economic Resources (RER)

  
Manuel Pérez, P.E.  
Product Control Examiner  
NOA No. 25-1218.08  
Expiration Date: February 11, 2031  
Approval Date: January 29, 2026

**Haas Door Company**

**NOTICE OF ACCEPTANCE: EVIDENCE SUBMITTED**

**1. EVIDENCE SUBMITTED UNDER PREVIOUS NOA's (CONTINUED)**

**E. MATERIAL CERTIFICATIONS**


1. Test report on Surface Burning Characteristics of the Rubitherm WP 19669 polyurethane foam insulation per ASTM E84, prepared by QAI Laboratories, Test Reports No. **RJ5251F-1** and **RJ5251F-2**, both dated 01/26/17, signed and sealed by V. Andrew Tan, P.E.  
*(Submitted under NOA No. 17-0313.11)*
2. Test report on Ignition Temperature of Plastics of the Rubitherm WP 19669 polyurethane foam insulation per ASTM D1929, prepared by QAI Laboratories, Test Report No. **RJ5255F-1**, dated 02/02/17, signed and sealed by V. Andrew Tan, P.E.  
*(Submitted under NOA No. 17-0313.11)*

**F. STATEMENTS**

1. Statement letter of conformance, complying with **FBC 8<sup>th</sup> Edition (2023)**, dated June 27, 2023, issued by manufacturer, signed and sealed by John E. Scates, P.E.  
*(Submitted under NOA No. 23-0830.12)*
2. Statement letter of no financial interest, dated June 27, 2023, issued by manufacturer, signed and sealed by John E. Scates, P.E.  
*(Submitted under NOA No. 23-0830.12)*

**G. OTHERS**

1. Notice of Acceptance No. **20-1104.10**, issued to Haas Door Company, for their Series HT 600, 700, 800 & 2000 Insulated Steel Sectional Garage Door up to 18ft.-2in. Wide, approved on 01/21/21 and expiring on 02/11/26.

  
Manuel Pérez, P.E.  
Product Control Examiner  
NOA No. 25-1218.08  
Expiration Date: February 11, 2031  
Approval Date: January 29, 2026

**Haas Door Company**

**NOTICE OF ACCEPTANCE: EVIDENCE SUBMITTED**

**2. NEW EVIDENCE SUBMITTED**

**A. DRAWINGS**

1. None.

**B. TESTS**

1. Test reports on: 1) Uniform Static Air Pressure Test, Loading per FBC, TAS 202-94  
2) Large Missile Impact Test per FBC, TAS 201-94  
3) Cyclic Wind Pressure Loading per FBC, TAS 203-94  
4) Forced Entry Test, per TAS 202-94  
5) Tensile Test, per ASTM E8

along with marked-up drawings and installation diagram of 18'-2" wide x 8'-0" height HT 600 Series Sectional Steel Garage Doors, prepared by American Test Lab, Inc., Test Report No. **ATLNC 1106.01-25**, dated 12/22/25, signed and sealed by David W. Johnson, P.E.

**C. CALCULATIONS**

1. None.

**D. QUALITY ASSURANCE**

1. Miami-Dade Department of Regulatory and Economic Resources (RER)

**E. MATERIAL CERTIFICATIONS**


1. None.

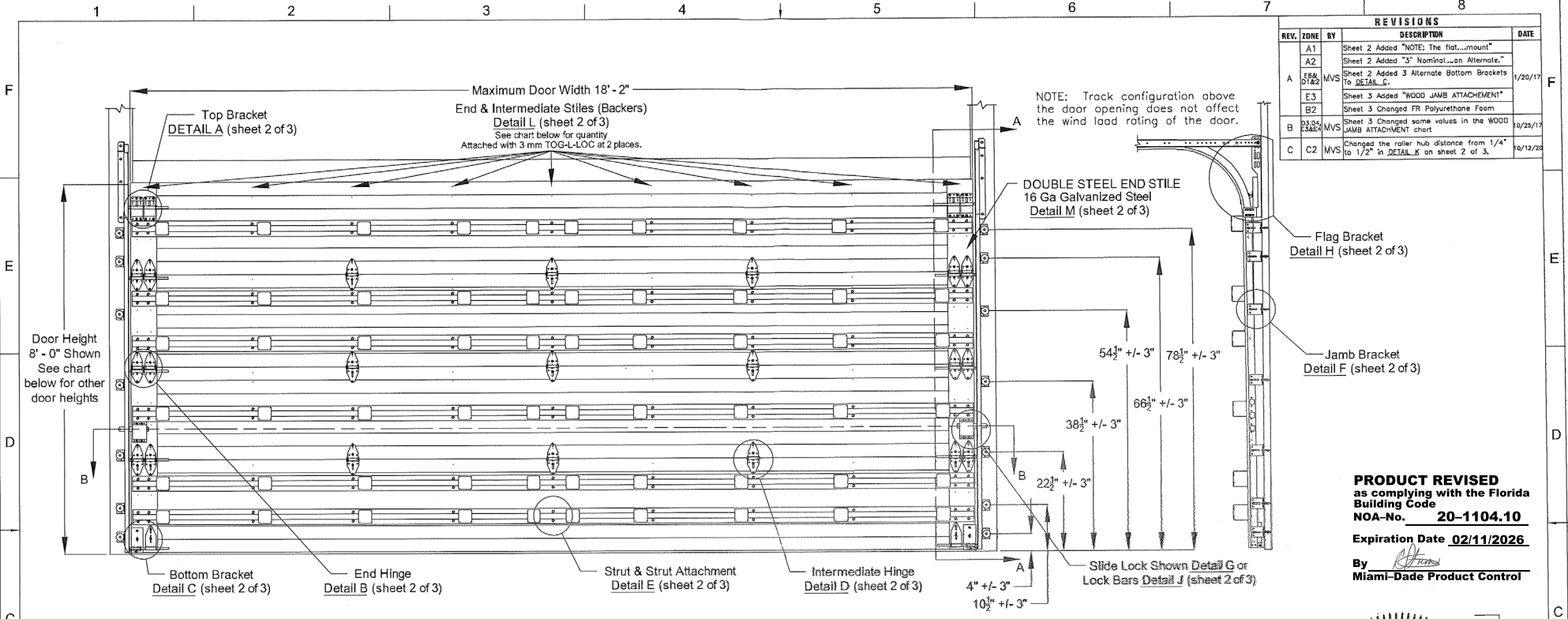
**F. STATEMENTS**

1. Statement letter of conformance, complying with **FBC 8<sup>th</sup> Edition (2023)**, dated December 4, 2025, issued by manufacturer, signed and sealed by John E. Scates, P.E.
2. Statement letter of no financial interest, dated December 4, 2025, issued by manufacturer, signed and sealed by John E. Scates, P.E.

**G. OTHERS**

1. Notice of Acceptance No. **23-0830.12**, issued to Haas Door Company, for their Series HT 600, 700, 800 & 2000 Insulated Steel Sectional Garage Door up to 18ft.-2in. Wide, approved on 10/19/23 and expiring on 02/11/26.

  
Manuel Pérez, P.E.  
Product Control Examiner  
NOA No. 25-1218.08  
Expiration Date: February 11, 2031  
Approval Date: January 29, 2026



REVISIONS				
REV.	ZONE	BY	DESCRIPTION	DATE
A1			Sheet 2 Added "NOTE: The flat...mount"	
A2			Sheet 2 Added "3" Nominal...on Alternate."	
A	FR&D1&2	MVS	Sheet 2 Added 3 Alternate Bottom Brackets To DETAIL C.	1/20/17
E3			Sheet 3 Added "WOOD JAMB ATTACHMENT"	
B2			Sheet 3 Changed FR Polyurethane Foam	
B	D3,D4,E3&4	MVS	Sheet 3 Changed some values in the WOOD JAMB ATTACHMENT chart.	10/29/17
C	C2	MVS	Changed the roller hub distance from 1/4" to 1/2" in DETAIL K on sheet 2 of 3.	10/12/20

**PRODUCT REVISED**  
 as complying with the Florida Building Code  
**NOA-No. 20-1104.10**  
 Expiration Date **02/11/2026**  
 By *[Signature]*  
**Miami-Dade Product Control**

This product has been tested per TAS202-94 for static air pressure.  
 This product has been tested per TAS201/203-94 for large missile impact and cyclic wind pressure.

**PRODUCT RENEWED**  
 as complying with the Florida Building Code  
**NOA-No. 25-1218.08**  
**Expiration Date: 02/11/2031**  
 By: *Manuel Fern*  
**Miami-Dade Product Control**

Door Width	Design Pressures		End Backers	Model Number												Impact Resistant
	+ psf	- psf		Center		Center		Center		Center		Center		Center		
18'-3" thru 18'-2"	45.0	-50.0	Double	7	3	7	3	7	3	7	3	7	3	7	3	YES

This product is available in narrower sizes with the same PSF and constructed as shown.  
 This product is designed and sold by PSF. The AHJ or Engineer of Record is responsible for determining the PSF required for any given site.

**PRODUCT REVISED**  
 As complying with the Florida Building Code  
**NOA-No. 20-0830.12**  
**Expiration Date: 02/11/2026**

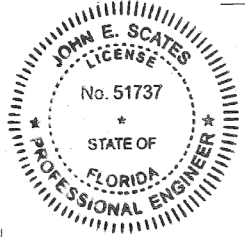
By: *[Signature]*  
**Miami-Dade Product Control**

Jamb bracket quantities shown are for use with grade 2 or better southern pine jambs.  
 Supporting structural element designs are to be the responsibility of the professional of record for the building or structure for the loads listed on this drawing.

Door Height	Total No. of Sections	Total No. of Struts	Strut Configuration	Jamb Brkts/ Side
6'-0"	3	5	SEE SHEET 3 OF 3	5
6'-0"	4	6		5
6'-3"	4	6		5
6'-6"	4	6		6
6'-9"	4	6		6
7'-0"	4	6		6
7'-3"	4	6		6
7'-6"	4	6		7
7'-6"	5	8		7
7'-9"	4	6		7
7'-9"	5	8	7	
8'-0"	4	6	7	
8'-0"	5	8	7	

**NOTICE:**  
 These drawings are a supplement to the installation instructions for a standard door and only covers those procedures that vary from standard door installation. If these specific procedures are not followed, the door may not perform as designed.

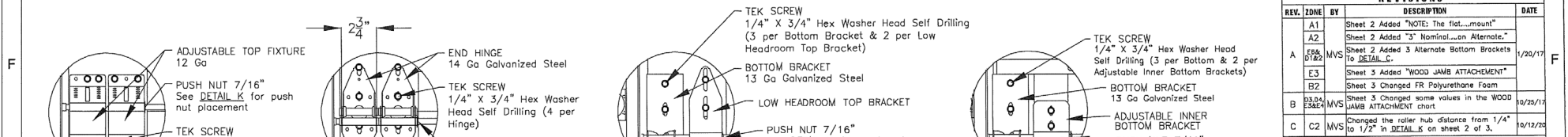
*John E. Scates*  
 10/16/2020



John E. Scates, P.E.  
 2560 King Arthur Blvd. Ste 124-54  
 Lewisville, Texas 75056  
 Florida P.E. # 51737

	<b>IMPACT RESISTANT</b> This product has been evaluated for use in the High Velocity Hurricane Zone (HVHZ).
	18'2" HT 600, 700, 2000 & 800 STEEL SERIES HVHZ WIND LOAD SECTIONAL DOOR DESIGN PRESSURE +45.0/-50.0 PSF
320 Sycamore Wauseon, Ohio 43567 419-337-9900 <small>© Copyright 2016</small>	<b>DRAWING NO.:</b> WL-0600-0218-08-45-50M-D <b>REV. C</b> <b>DATE DRN:</b> 1/8/15 <b>DRAWN BY:</b> MVS <b>REV. DATE:</b> 10/12/2020 <b>MODEL(S):</b> See Sheet 3 <b>SHEET: 1 OF 3</b>

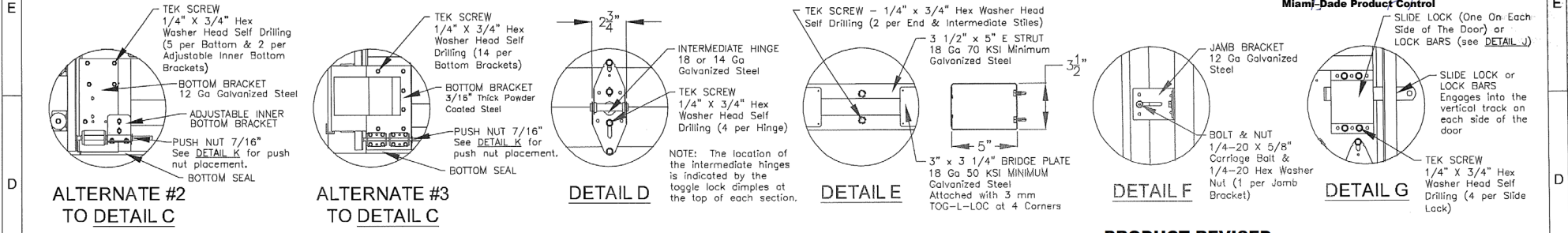
Maximum section height is 24 in.  
 Maximum door height is 16 ft.  
 All doors, even those above the tested height, are available with jamb brackets or commercial full angle. The quantity and dimensional location of the jamb brackets/track clips and the jamb mounting shown above should be maintained.



**REVISIONS**

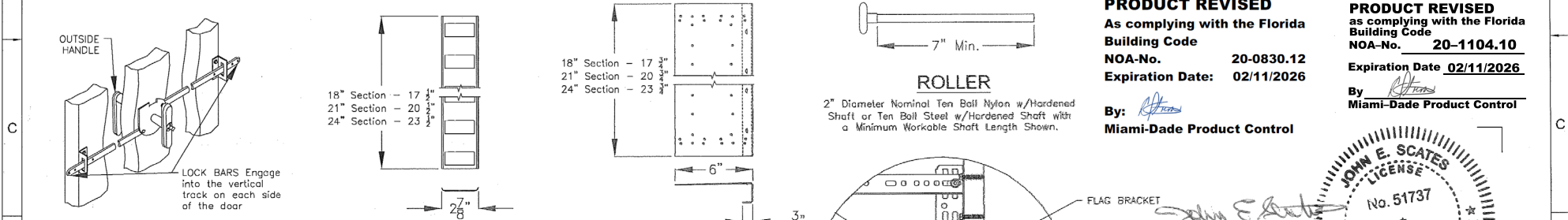
REV.	ZONE	BY	DESCRIPTION	DATE
A1			Sheet 2 Added "NOTE: The flat...mount"	
A2			Sheet 2 Added "3" Nominal...on Alternate."	
E8& D1&2	MVS		Sheet 2 Added 3 Alternate Bottom Brackets to DETAIL C.	1/20/17
E3			Sheet 3 Added "WOOD JAMB ATTACHMENT"	
B2			Sheet 3 Changed FR Polyurethane Foam	10/25/17
D3, D4, D5&6	MVS		Sheet 3 Changed some values in the WOOD JAMB ATTACHMENT sheet.	
C2	MVS		Changed the roller hub distance from 1/4" to 1/2" in DETAIL K on sheet 2 of 3.	10/12/20

**PRODUCT RENEWED**  
as complying with the Florida Building Code  
**NOA-No. 25-1218.08**  
Expiration Date: **02/11/2031**  
By: *Manuel Fern*  
**Miami-Dade Product Control**



**PRODUCT REVISED**  
as complying with the Florida Building Code  
**NOA-No. 20-0830.12**  
Expiration Date: **02/11/2026**  
By: *R. Hines*  
**Miami-Dade Product Control**

**PRODUCT REVISED**  
as complying with the Florida Building Code  
**NOA-No. 20-1104.10**  
Expiration Date: **02/11/2026**  
By: *R. Hines*  
**Miami-Dade Product Control**

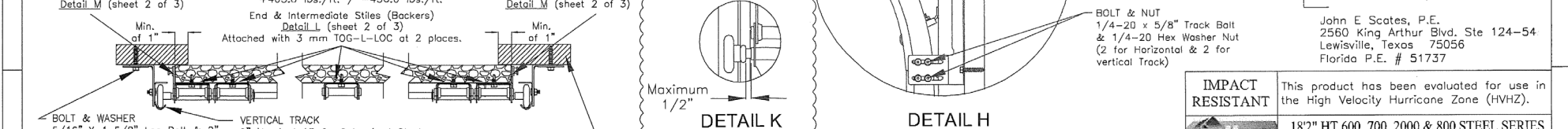


**DETAIL M**  
MATERIAL: 16 GA CS Steel, G40+ Min. Hot Dipped Galvanized

**DETAIL N**  
MATERIAL: 20 GA CS Steel, G40 Min. Hot Dipped Galvanized

**DETAIL O**  
MATERIAL: 16 GA Galvanized Steel, Detail M (sheet 2 of 3)

**DETAIL P**  
MATERIAL: 16 GA Galvanized Steel, Detail M (sheet 2 of 3)



**DETAIL K**  
Maximum 1/2"  
There should be a space of maximum 1/2" between the roller hub and the outside edge of the roller holder which is set by the push nut.

**DETAIL H**  
NOTE: Details on some views omitted for clarity. Double end stiles and end hardware may be required on wider or heavier doors.

**SECTION B-B**  
DOUBLE STEEL END STILE 16 Ga Galvanized Steel, Detail M (sheet 2 of 3)  
NOTE: Jamb Loads: +405.0 lbs./ft. / -450.0 lbs./ft.  
End & Intermediate Stiles (Backers) Detail L (sheet 2 of 3)  
Attached with 3 mm TOG-L-LOC at 2 places.  
BOLT & WASHER 5/16" X 1 5/8" Lag Bolt & 2" O.D. x 7/16" I.D. Flat Washer  
NOTE: Jamb bracket must be in direct contact with the 2x6 (No drywall allowed).  
NOTE: The flat washer is not required for angle mount.  
VERTICAL TRACK 2" Nominal 13 Ga Galvanized Steel tested.  
3" Nominal 13 Ga is also approved as an alternate.  
WOOD JAMB  
The vertical wood jamb fasteners may be counter sunk to provide a flat mounting surface. See jamb attachment details on sheet 3 for attaching jambs to the structure.

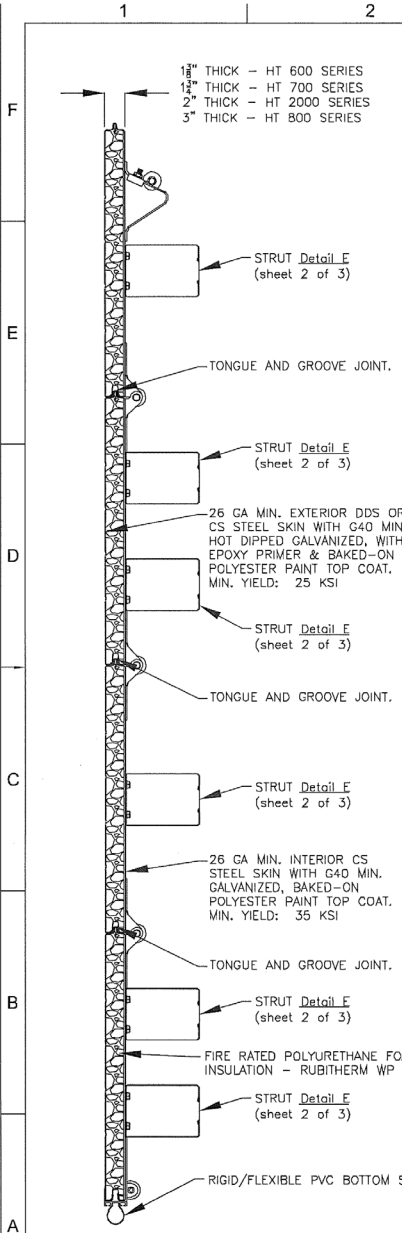
**IMPACT RESISTANT**  
This product has been evaluated for use in the High Velocity Hurricane Zone (HVHZ).

**Haas Door**  
A NonPanic Company  
320 Sycamore  
Wauseon, Ohio 43569  
419-337-9900  
© Copyright 2024

**18'2" HT 600, 700, 2000 & 800 STEEL SERIES HVHZ WIND LOAD SECTIONAL DOOR DESIGN PRESSURE +45.0/-50.0 PSF**

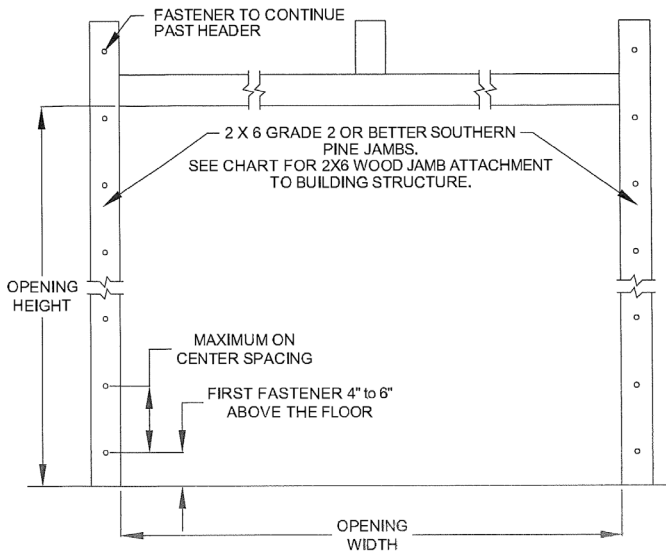
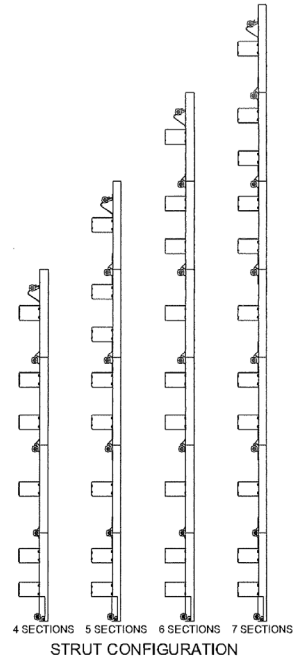
**DRAWING NO.:** WL-0600-0218-08-45-50M-D **REV. C**  
**DATE DRN:** 1/8/15 **DRAWN BY:** MVS **REV. DATE:** 10/12/2020  
**MODEL(S):** See Sheet 3 **SHEET: 2 OF 3**

John E. Scates, P.E.  
2560 King Arthur Blvd. Ste 124-54  
Lewisville, Texas 75056  
Florida P.E. # 51737



WOOD JAMB ATTACHMENT						
Building Structure	Fastener Type	Minimum Embedment	Minimum Edge Distance	Minimum on Center Spacing	Maximum on Center Spacing	Allowable Tension Load
Min. 2000 PSI Concrete	Tapcon 1/4" w/ 1" OD washer	1 3/4"	2 1/2"	4"	12"	443 #
Southern Pine (G = 0.55)	3/8" Lag w/ 1 1/8" OD washer	1 1/2"	1 1/2"	4"	12"	620 #
Spruce Pine Fir (G = 0.42)	3/8" Lag w/ 1 1/8" OD washer	1 1/2"	2"	4"	12"	482 #

NOTE: 2X6 mounted to the wall must be Southern Pine Grade 2 or better.



REVISIONS				
REV.	ZONE	BY	DESCRIPTION	DATE
A1			Sheet 2 Added "NOTE: The flat...mount"	
A2			Sheet 2 Added "3" Nominal...on Alternate."	
A	E&G	MVS	Sheet 2 Added 3 Alternate Bottom Brackets To DETAIL C.	1/20/17
E3			Sheet 3 Added "WOOD JAMB ATTACHMENT"	
B2			Sheet 3 Changed FR Polyurethane Foam	
B	D1-D4	MVS	Sheet 3 Changed some values in the WOOD JAMB ATTACHMENT chart.	10/25/17
C	C2	MVS	Changed the roller hub distance from 1/4" to 1/2" in DETAIL K on sheet 2 of 3.	10/12/20

### MODEL NUMBERS

MODEL NUMBERS AVAILABLE
HT_14 & 2_14 SERIES
HT_16 & 2_16 SERIES
HT_32 & 2_32 SERIES
HT_33 & 2_33 SERIES
HT_10 & 2_10SERIES
HT_12 & 2_12 SERIES
HT_60 & 2_60 SERIES
HT_61 & 2_61 SERIES
HT_63 & 2_63 SERIES
HT_64 & 2_64 SERIES
HT_70 & 2_70 SERIES
HT_71 & 2_71 SERIES
HT_72 & 2_72 SERIES
HT_73 & 2_73 SERIES
HT_74 & 2_74 SERIES
HT_80 & 2_80 SERIES
HT_81 & 2_81 SERIES
HT_82 & 2_82 SERIES
HT_90 & 2_90 SERIES

**PRODUCT REVISED**  
 As complying with the Florida Building Code  
**NOA-No. 20-0830.12**  
**Expiration Date: 02/11/2026**  
 By: *[Signature]*  
**Miami-Dade Product Control**

**PRODUCT REVISED**  
 as complying with the Florida Building Code  
**NOA-No. 20-1104.10**  
**Expiration Date 02/11/2026**  
 By: *[Signature]*  
**Miami-Dade Product Control**

**PRODUCT RENEWED**  
 as complying with the Florida Building Code  
**NOA-No. 25-1218.08**  
**Expiration Date: 02/11/2031**  
 By: *[Signature]*  
**Miami-Dade Product Control**



*John E Scates*  
 10/2/2020

John E Scates, P.E.  
 2560 King Arthur Blvd. Ste 124-54  
 Lewisville, Texas 75056  
 Florida P.E. # 51737

	IMPACT RESISTANT This product has been evaluated for use in the High Velocity Hurricane Zone (HVHZ).
	18'2" HT 600, 700, 2000 & 800 STEEL SERIES HVHZ WIND LOAD SECTIONAL DOOR DESIGN PRESSURE +45.0/-50.0 PSF
320 Sycamore Wauseon, Ohio 43567 419-337-9900 <small>© Copyright 2014</small>	<b>DRAWING NO.:</b> WL-0600-0218-08-45-50M-D <b>REV. C</b> <b>DATE DRN:</b> 1/8/15 <b>DRAWN BY:</b> MVS <b>REV. DATE:</b> 10/12/2020 <b>MODEL(S):</b> See Sheet 3 <b>SHEET: 3 OF 3</b>