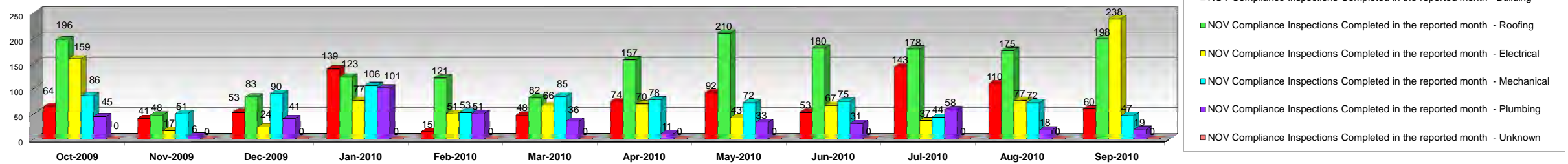


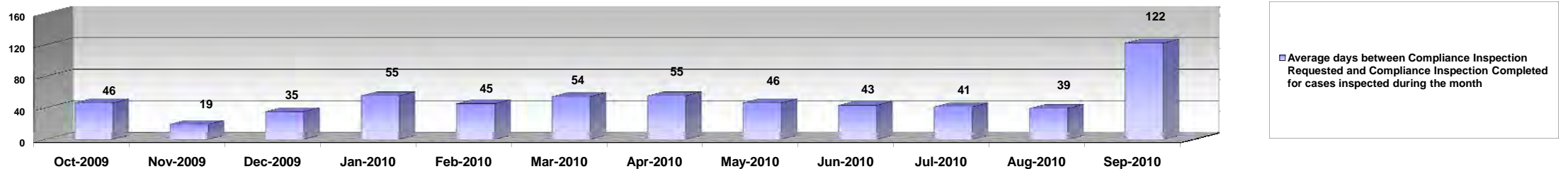
MIAMI-DADE COUNTY
BUILDING AND NEIGHBORHOOD COMPLIANCE DEPARTMENT
Business Plan
NOTICE OF VIOLATION (NOV) COMPLIANCE INSPECTIONS PERFORMED FOR BUILDING CODE VIOLATIONS
FY 2009-2010

	Oct-2009	Nov-2009	Dec-2009	Jan-2010	Feb-2010	Mar-2010	Apr-2010	May-2010	Jun-2010	Jul-2010	Aug-2010	Sep-2010
NOV Compliance Inspections Completed in the reported month - Building	64	41	53	139	15	48	74	92	53	143	110	60
NOV Compliance Inspections Completed in the reported month - Roofing	196	48	83	123	121	82	157	210	180	178	175	198
NOV Compliance Inspections Completed in the reported month - Electrical	159	17	24	77	51	66	70	43	67	37	77	238
NOV Compliance Inspections Completed in the reported month - Mechanical	86	51	90	106	53	85	78	72	75	44	72	47
NOV Compliance Inspections Completed in the reported month - Plumbing	45	6	41	101	51	36	11	33	31	58	18	19
NOV Compliance Inspections Completed in the reported month - Unsafe Structures *	32	1	3	19	13	29	14	6	2	2	12	5
NOV Compliance Inspections Completed in the reported month - Unknown	0	0	0	0	0	0	0	0	0	0	0	0
NOV Compliance Inspections Completed in the reported month	582	164	294	565	304	346	404	456	408	462	464	567
Average days between NOV Compliance Inspection Requested and NOV Compliance Inspection Completed for cases inspected during the month - Building	15	10	38	38	19	70	55	65	64	46	29	30
Average days between NOV Compliance Inspection Requested and NOV Compliance Inspection Completed for cases inspected during the month - Roofing	26	13	29	43	33	39	70	43	37	24	23	17
Average days between NOV Compliance Inspection Requested and NOV Compliance Inspection Completed for cases inspected during the month - Electrical	83	14	22	95	77	89	80	81	76	50	115	248
Average days between NOV Compliance Inspection Requested and NOV Compliance Inspection Completed for cases inspected during the month - Mechanical	50	34	34	47	23	20	7	12	5	6	12	9
Average days between NOV Compliance Inspection Requested and NOV Compliance Inspection Completed for cases inspected during the month - Plumbing	34	9	50	68	69	61	31	52	56	102	48	233
Average days between NOV Compliance Inspection Requested and NOV Compliance Inspection Completed for cases inspected during the month - Unsafe Structures *	45	18	25	71	55	82	55	34	1	28	20	26
Average days between NOV Compliance Inspection Requested and NOV Compliance Inspection Completed for cases inspected during the month - Unknown Trade	0	0	0	0	0	0	0	0	0	0	0	0
Average days between Compliance Inspection Requested and Compliance Inspection Completed for cases inspected during the month	46	19	35	55	45	54	55	46	43	41	39	122

NOV Compliance Inspections Performed



Average days between NOV Compliance Inspection Requested and NOV Compliance Inspection Completed for cases inspected during the month



* Unsafe Structure means cases assigned to Hearing Specialist due to ticket appealed process