

**MIAMI-DADE COUNTY
BUILDING DEPARTMENT**

Business Plan

PLANS TRACKING INITIAL REVIEW - COMMERCIAL

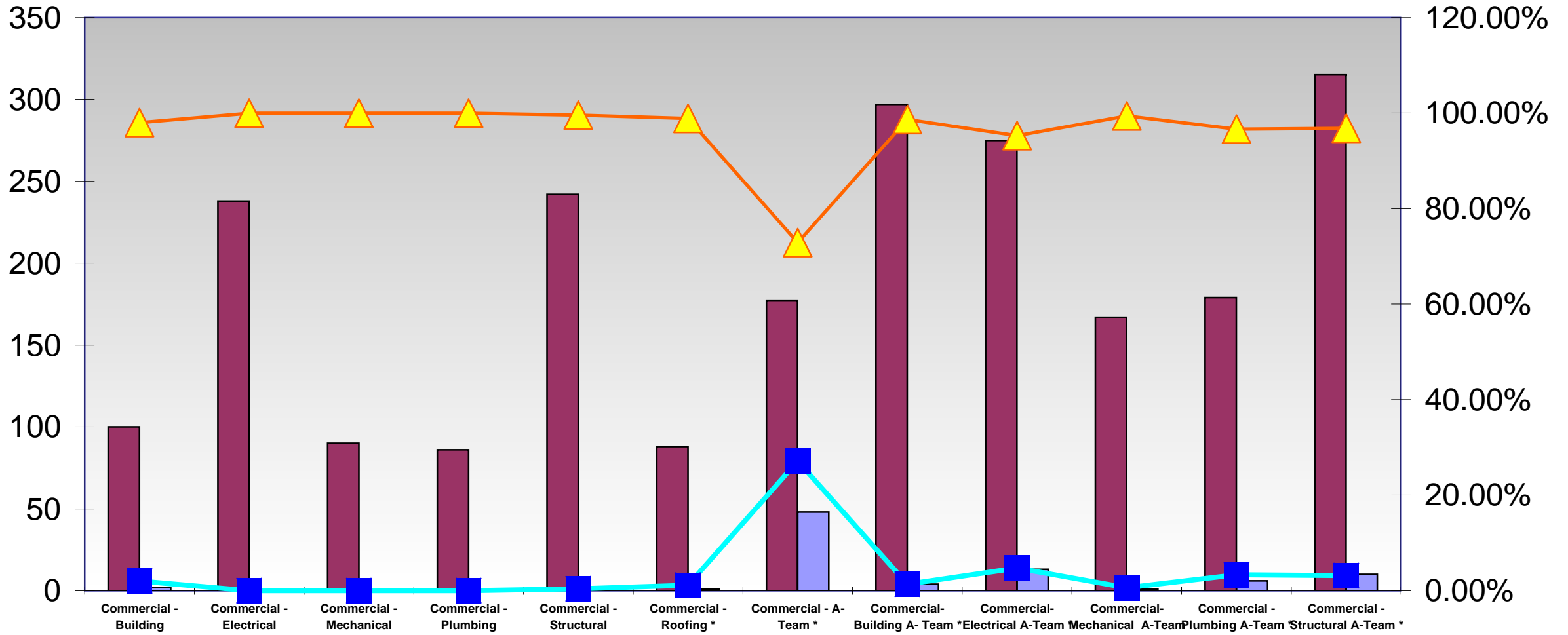
FY 2007-2008

	Oct-07				Nov-07				Dec-07				Jan-08			
	Total # of Plans Reviewed	Total # of Plans Late	Percentage of Plans Completed On Time	Percentage of Plans Late	Total # of Plans Reviewed	Total # of Plans Late	Percentage of Plans Completed On Time	Percentage of Plans Late	Total # of Plans Reviewed	Total # of Plans Late	Percentage of Plans Completed On Time	Percentage of Plans Late	Total # of Plans Reviewed	Total # of Plans Late	Percentage of Plans Completed On Time	Percentage of Plans Late
Commercial- Building	180	4	97.78%	2.22%	159	1	99.37%	0.63%	199	8	95.98%	4.02%	199	4	97.99%	2.01%
Commercial - Electrical	324	0	100.00%	0.00%	276	2	99.28%	0.72%	293	0	100.00%	0.00%	293	0	100.00%	0.00%
Commercial- Mechanical	146	0	100.00%	0.00%	100	0	100.00%	0.00%	121	0	100.00%	0.00%	140	0	100.00%	0.00%
Commercial- Plumbing	135	1	99.26%	0.74%	98	1	98.98%	1.02%	109	1	99.08%	0.92%	115	0	100.00%	0.00%
Commercial - Structural	378	2	99.47%	0.53%	340	1	99.71%	0.29%	420	6	98.57%	1.43%	448	1	99.78%	0.22%
Commercial - Roofing *	157	1	99.36%	0.64%	134	4	97.01%	2.99%	172	4	97.67%	2.33%	151	1	99.34%	0.66%
Commercial - A-Team *	549	120	78.14%	21.86%	502	169	66.33%	33.67%	499	153	69.34%	30.66%	399	93	76.69%	23.31%

	Feb-08				Mar-08				Apr-08				May-08			
	Total # of Plans Reviewed	Total # of Plans Late	Percentage of Plans Completed On Time	Percentage of Plans Late	Total # of Plans Reviewed	Total # of Plans Late	Percentage of Plans Completed On Time	Percentage of Plans Late	Total # of Plans Reviewed	Total # of Plans Late	Percentage of Plans Completed On Time	Percentage of Plans Late	Total # of Plans Reviewed	Total # of Plans Late	Percentage of Plans Completed On Time	Percentage of Plans Late
Commercial- Building	222	1	99.55%	0.45%	135	0	100.00%	0.00%	115	3	97.39%	2.61%	126	5	96.03%	3.97%
Commercial- Electrical	340	0	100.00%	0.00%	270	1	99.63%	0.37%	243	4	98.35%	1.65%	226	0	100.00%	0.00%
Commercial- Mechanical	167	0	100.00%	0.00%	104	0	100.00%	0.00%	93	0	100.00%	0.00%	88	1	98.86%	1.14%
Commercial - Plumbing	164	0	100.00%	0.00%	113	0	100.00%	0.00%	82	7	91.46%	8.54%	100	4	96.00%	4.00%
Commercial - Structural	383	1	99.74%	0.26%	318	2	99.37%	0.63%	306	4	98.69%	1.31%	231	3	98.70%	1.30%
Commercial - Roofing *	132	0	100.00%	0.00%	112	0	100.00%	0.00%	133	2	98.50%	1.50%	154	0	100.00%	0.00%
Commercial - A-Team *	506	84	83.40%	16.60%	332	61	81.63%	18.37%	271	116	57.20%	42.80%	231	129	44.16%	55.84%
Commercial- Building A-Team*					173	55	68.21%	31.79%	243	9	96.30%	3.70%	263	20	92.40%	7.60%
Commercial- Electrical A-Team *					84	26	69.05%	30.95%	131	9	93.22%	6.78%	206	35	83.01%	16.99%
Commercial- Mechanical A-Team *					82	1	98.78%	1.22%	108	0	100.00%	0.00%	147	3	97.96%	2.04%
Commercial - Plumbing A-Team *					79	10	87.34%	12.66%	122	15	87.70%	12.30%	160	11	93.12%	6.88%
Commercial - Structural A-Team *					168	9	94.64%	5.36%	227	44	80.62%	19.38%	270	114	57.78%	42.22%

	Jun-08				Jul-08				Aug-08				Sep-08			
	Total # of Plans Reviewed	Total # of Plans Late	Percentage of Plans Completed On Time	Percentage of Plans Late	Total # of Plans Reviewed	Total # of Plans Late	Percentage of Plans Completed On Time	Percentage of Plans Late	Total # of Plans Reviewed	Total # of Plans Late	Percentage of Plans Completed On Time	Percentage of Plans Late	Total # of Plans Reviewed	Total # of Plans Late	Percentage of Plans Completed On Time	Percentage of Plans Late
Commercial - Building	108	2	98.15%	1.85%	129	1	99.22%	0.78%	98	8	91.84%	8.16%	100	2	98.00%	2.00%
Commercial - Electrical	219	0	100.00%	0.00%	291	1	99.66%	0.34%	242	2	99.17%	0.83%	238	0	100.00%	0.00%
Commercial - Mechanical	71	0	100.00%	0.00%	119	0	100.00%	0.00%	80	0	100.00%	0.00%	90	0	100.00%	0.00%
Commercial - Plumbing	78	0	100.00%	0.00%	110	2	98.18%	1.82%	95	11	88.42%	11.58%	86	0	100.00%	0.00%
Commercial - Structural	254	7	97.24%	2.76%	250	1	99.60%	0.40%	250	8	96.80%	3.20%	242	1	99.59%	0.41%
Commercial - Roofing *	115	0	100.00%	0.00%	99	2	97.98%	2.02%	142	1	99.30%	0.70%	88	1	98.86%	1.14%
Commercial - A-Team *	221	91	58.82%	41.18%	212	82	61.32%	38.68%	180	53	70.56%	29.44%	177	48	72.88%	27.12%
Commercial- Building A- Team *	296	88	70.27%	29.73%	329	10	96.96%	3.04%	305	10	96.72%	3.28%	297	4	98.65%	1.35%
Commercial- Electrical A-Team *	226	12	94.69%	5.31%	213	18	91.55%	8.45%	258	25	90.31%	9.69%	275	13	95.27%	4.73%
Commercial- Mechanical A-Team *	154	2	98.70%	1.30%	175	1	99.43%	0.57%	171	1	99.42%	0.58%	167	1	99.40%	0.60%
Commercial - Plumbing A-Team *	164	7	95.73%	4.27%	170	20	88.24%	11.76%	196	24	87.76%	12.24%	179	6	96.65%	3.35%
Commercial - Structural A-Team *	312	115	63.14%	36.86%	348	26	92.53%	7.47%	330	18	94.55%	5.45%	315	10	96.83%	3.17%

SEPTEMBER INITIAL REVIEW COMMERCIAL



■ Sep-08 Total # of Plans Reviewed

■ Sep-08 Total # of Plans Late

▲ Sep-08 Percentage of Plans Completed On Time

■ Sep-08 Percentage of Plans Late