

**MIAMI-DADE COUNTY  
BUILDING DEPARTMENT**

**Business Plan**

**PLANS TRACKING INITIAL REVIEW - COMMERCIAL**

**FY 2006-2007**

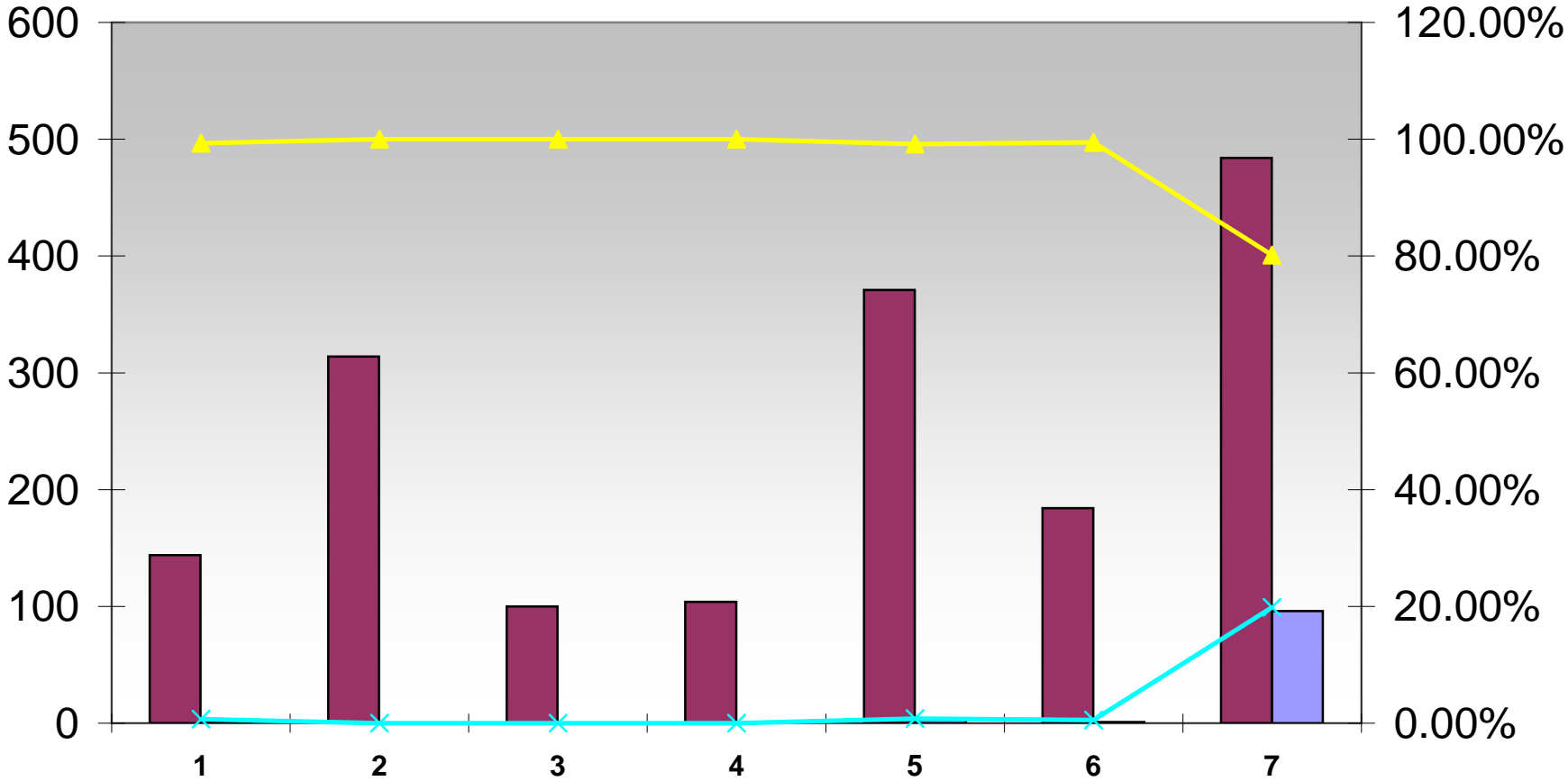
	Oct-06				Nov-06				Dec-06				Jan-07			
	Total # of Plans Reviewed	Total # of Plans Late	Percentage of Plans Completed On Time	Percentage of Plans Late	Total # of Plans Reviewed	Total # of Plans Late	Percentage of Plans Completed On Time	Percentage of Plans Late	Total # of Plans Reviewed	Total # of Plans Late	Percentage of Plans Completed On Time	Percentage of Plans Late	Total # of Plans Reviewed	Total # of Plans Late	Percentage of Plans Completed On Time	Percentage of Plans Late
Commercial- Building	165	11	93.33%	6.67%	165	8	95.15%	4.85%	173	6	96.53%	3.47%	185	0	100.00%	0.00%
Commercial - Electrical	237	0	100.00%	0.00%	246	0	100.00%	0.00%	270	0	100.00%	0.00%	266	1	99.62%	0.38%
Commercial- Mechanical	96	0	100.00%	0.00%	101	0	100.00%	0.00%	115	0	100.00%	0.00%	152	0	100.00%	0.00%
Commercial- Plumbing	84	1	98.81%	1.19%	89	0	100.00%	0.00%	107	1	99.07%	0.93%	106	0	100.00%	0.00%
Commercial - Structural	366	8	97.81%	2.19%	335	4	98.81%	1.19%	431	12	97.22%	2.78%	334	2	99.40%	0.60%
Commercial - Roofing*	377	63	83.29%	16.71%	191	2	98.95%	1.05%	240	3	98.75%	1.25%	157	5	96.82%	3.18%
Commercial - A-Team*	518	238	54.05%	45.95%	433	137	68.36%	31.64%	497	148	70.22%	29.78%	517	120	76.79%	23.21%

	Feb-07				Mar-07				Apr-07				May-07			
	Total # of Plans Reviewed	Total # of Plans Late	Percentage of Plans Completed On Time	Percentage of Plans Late	Total # of Plans Reviewed	Total # of Plans Late	Percentage of Plans Completed On Time	Percentage of Plans Late	Total # of Plans Reviewed	Total # of Plans Late	Percentage of Plans Completed On Time	Percentage of Plans Late	Total # of Plans Reviewed	Total # of Plans Late	Percentage of Plans Completed On Time	Percentage of Plans Late
Commercial- Building	181	0	100.00%	0.00%	222	5	97.75%	2.25%	186	11	94.09%	5.91%	187	14	92.51%	7.49%
Commercial- Electrical	258	0	100.00%	0.00%	396	0	100.00%	0.00%	277	0	100.00%	0.00%	303	0	100.00%	0.00%
Commercial- Mechanical	97	0	100.00%	0.00%	171	0	100.00%	0.00%	133	0	100.00%	0.00%	127	1	99.21%	0.79%
Commercial - Plumbing	121	0	100.00%	0.00%	159	0	100.00%	0.00%	113	0	100.00%	0.00%	123	0	100.00%	0.00%
Commercial - Structural	356	0	100.00%	0.00%	468	2	99.57%	0.43%	447	5	98.88%	1.12%	407	1	99.75%	0.25%
Commercial - Roofing*	195	1	99.49%	0.51%	262	16	93.89%	6.11%	220	7	96.82%	3.18%	158	1	99.37%	0.63%
Commercial - A-Team*	492	56	88.62%	11.38%	623	148	76.24%	23.76%	580	195	66.38%	33.62%	672	228	66.07%	33.93%

	Jun-07				Jul-07				Aug-07				Sep-07			
	Total # of Plans Reviewed	Total # of Plans Late	Percentage of Plans Completed On Time	Percentage of Plans Late	Total # of Plans Reviewed	Total # of Plans Late	Percentage of Plans Completed On Time	Percentage of Plans Late	Total # of Plans Reviewed	Total # of Plans Late	Percentage of Plans Completed On Time	Percentage of Plans Late	Total # of Plans Reviewed	Total # of Plans Late	Percentage of Plans Completed On Time	Percentage of Plans Late
Commercial - Building	161	0	100.00%	0.00%	172	4	97.67%	2.33%	154	2	98.70%	1.30%	144	1	99.31%	0.69%
Commercial - Electrical	247	0	100.00%	0.00%	360	0	100.00%	0.00%	313	0	100.00%	0.00%	314	0	100.00%	0.00%
Commercial - Mechanical	111	0	100.00%	0.00%	140	0	100.00%	0.00%	149	0	100.00%	0.00%	100	0	100.00%	0.00%
Commercial - Plumbing	111	0	100.00%	0.00%	140	0	100.00%	0.00%	140	0	100.00%	0.00%	104	0	100.00%	0.00%
Commercial - Structural	379	1	99.74%	0.26%	414	2	99.52%	0.48%	480	10	97.92%	2.08%	371	3	99.19%	0.81%
Commercial - Roofing*	165	8	95.15%	4.85%	285	0	100.00%	0.00%	279	0	100.00%	0.00%	184	1	99.46%	0.54%
Commercial - A-Team*	634	205	67.67%	32.33%	544	174	68.01%	31.99%	580	188	67.59%	32.41%	484	96	80.17%	19.83%

\* These Reviews have a department Established benchmark of 24 hours

### SEPTEMBER INITIAL REVIEW COMMERCIAL



■ Sep-07 Total # of Plans Reviewed

■ Sep-07 Total # of Plans Late

▲ Sep-07 Percentage of Plans Completed On Time

✕ Sep-07 Percentage of Plans Late