

**MIAMI-DADE COUNTY  
BUILDING DEPARTMENT**

**Business Plan**

**PLANS TRACKING INITIAL REVIEW - RESIDENTIAL**

**FY 2006-2007**

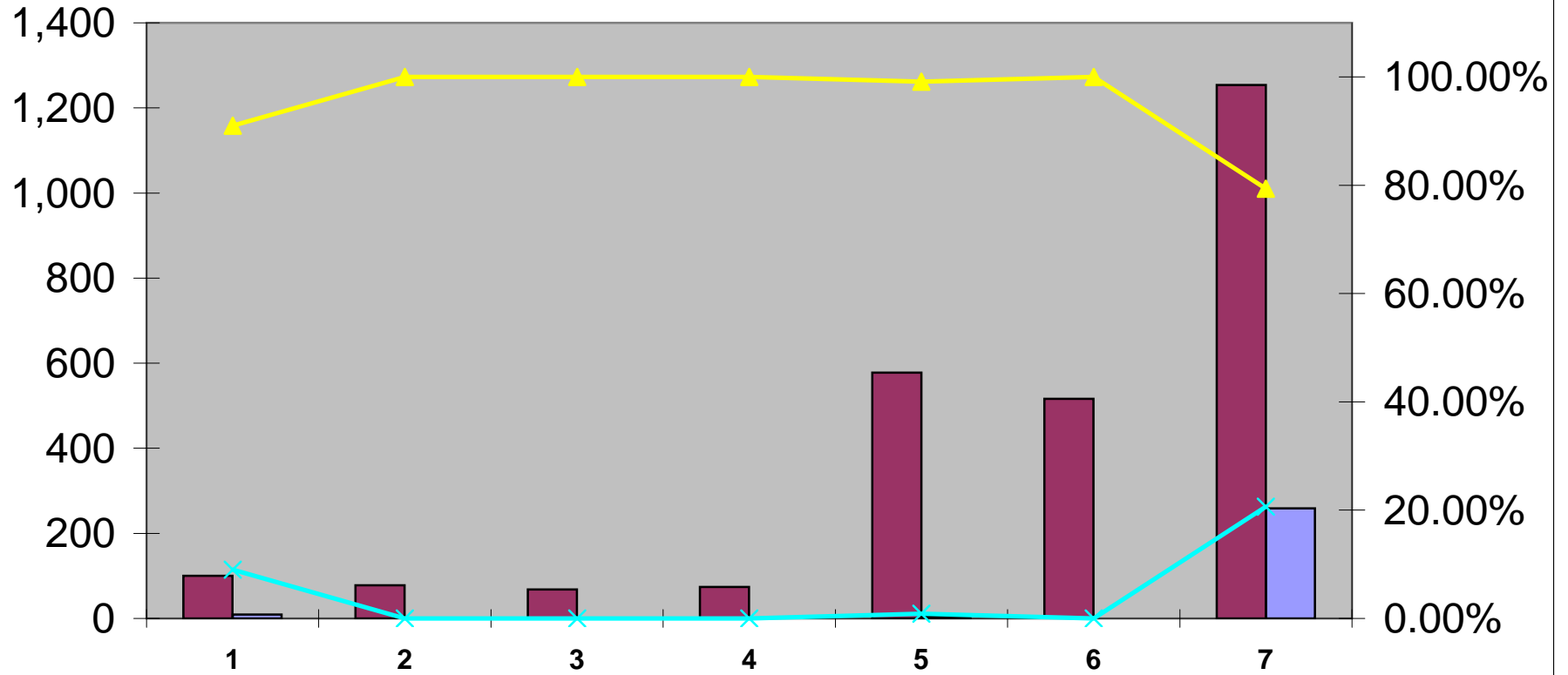
	Oct-06				Nov-06				Dec-06				Jan-07			
	Total # of Plans Reviewed	Total # of Plans Late	Percentage of Plans Completed On Time	Percentage of Plans Late	Total # of Plans Reviewed	Total # of Plans Late	Percentage of Plans Completed On Time	Percentage of Plans Late	Total # of Plans Reviewed	Total # of Plans Late	Percentage of Plans Completed On Time	Percentage of Plans Late	Total # of Plans Reviewed	Total # of Plans Late	Percentage of Plans Completed On Time	Percentage of Plans Late
Residential - Building	183	14	92.35%	7.65%	134	16	88.06%	11.94%	196	37	81.12%	18.88%	125	3	97.60%	2.40%
Residential - Electrical	106	0	100.00%	0.00%	109	0	100.00%	0.00%	167	2	98.80%	1.20%	107	0	100.00%	0.00%
Residential - Mechanical	115	2	98.26%	1.74%	98	0	100.00%	0.00%	155	0	100.00%	0.00%	84	0	100.00%	0.00%
Residential - Plumbing	96	0	100.00%	0.00%	115	0	100.00%	0.00%	157	0	100.00%	0.00%	93	0	100.00%	0.00%
Residential - Structural	835	67	91.98%	8.02%	683	18	97.36%	2.64%	745	52	93.02%	6.98%	669	3	99.55%	0.45%
Residential - Roofing *	1,617	418	74.15%	25.85%	1,115	30	97.31%	2.69%	1,084	17	98.43%	1.57%	1,039	8	99.23%	0.77%
Residential - A-Team *	1,960	1,081	44.85%	55.15%	1,853	697	62.39%	37.61%	1,611	621	61.45%	38.55%	1,678	480	71.39%	28.61%

	Feb-07				Mar-07				Apr-07				May-07			
	Total # of Plans Reviewed	Total # of Plans Late	Percentage of Plans Completed On Time	Percentage of Plans Late	Total # of Plans Reviewed	Total # of Plans Late	Percentage of Plans Completed On Time	Percentage of Plans Late	Total # of Plans Reviewed	Total # of Plans Late	Percentage of Plans Completed On Time	Percentage of Plans Late	Total # of Plans Reviewed	Total # of Plans Late	Percentage of Plans Completed On Time	Percentage of Plans Late
Residential - Building	209	7	96.65%	3.35%	196	13	93.37%	6.63%	126	8	93.65%	6.35%	116	10	91.38%	8.62%
Residential - Electrical	135	0	100.00%	0.00%	167	0	100.00%	0.00%	92	0	100.00%	0.00%	117	0	100.00%	0.00%
Residential - Mechanical	129	0	100.00%	0.00%	166	1	99.40%	0.60%	90	0	100.00%	0.00%	105	0	100.00%	0.00%
Residential - Plumbing	142	0	100.00%	0.00%	160	0	100.00%	0.00%	84	0	100.00%	0.00%	110	0	100.00%	0.00%
Residential - Structural	624	3	99.52%	0.48%	782	21	97.31%	2.69%	682	7	98.97%	1.03%	713	17	97.62%	2.38%
Residential - Roofing *	1,003	4	99.60%	0.40%	1,165	27	97.68%	2.32%	912	29	96.82%	3.18%	945	4	99.58%	0.42%
Residential - A-Team *	1,548	192	87.60%	12.40%	2,032	501	75.34%	24.66%	1,753	671	61.72%	38.28%	1,987	853	57.07%	42.93%

	Jun-07				Jul-07				Aug-07				Sep-07			
	Total # of Plans Reviewed	Total # of Plans Late	Percentage of Plans Completed On Time	Percentage of Plans Late	Total # of Plans Reviewed	Total # of Plans Late	Percentage of Plans Completed On Time	Percentage of Plans Late	Total # of Plans Reviewed	Total # of Plans Late	Percentage of Plans Completed On Time	Percentage of Plans Late	Total # of Plans Reviewed	Total # of Plans Late	Percentage of Plans Completed On Time	Percentage of Plans Late
Residential - Building	149	6	95.97%	4.03%	98	5	94.90%	5.10%	132	5	96.21%	3.79%	100	9	91.00%	9.00%
Residential - Electrical	142	0	100.00%	0.00%	124	1	99.19%	0.81%	118	0	100.00%	0.00%	78	0	100.00%	0.00%
Residential - Mechanical	124	0	100.00%	0.00%	89	0	100.00%	0.00%	86	1	98.84%	1.16%	68	0	100.00%	0.00%
Residential - Plumbing	121	0	100.00%	0.00%	97	0	100.00%	0.00%	103	0	100.00%	0.00%	74	0	100.00%	0.00%
Residential - Structural	788	29	96.32%	3.68%	744	9	98.79%	1.21%	670	28	95.82%	4.18%	578	5	99.13%	0.87%
Residential - Roofing *	897	34	96.21%	3.79%	784	2	99.74%	0.26%	728	0	100.00%	0.00%	516	0	100.00%	0.00%
Residential - A-Team *	1,811	582	67.86%	32.14%	1,574	568	63.91%	36.09%	1,614	499	69.08%	30.92%	1,254	259	79.35%	20.65%

\* These Reviews have a department Established benchmark of 24 hours

### SEPTEMBER INITIAL REVIEW RESIDENTIAL



■ Sep-07 Total # of Plans Reviewed

■ Sep-07 Total # of Plans Late

▲ Sep-07 Percentage of Plans Completed On Time

× Sep-07 Percentage of Plans Late